

Investigating inequalities in HIV testing in sub-Saharan Africa: insights from a spatial analysis of 25 countries

Pearl Anne Ante-Testard^{1,2§}, Gabriel Carrasco-Escobar^{3,4}, Tarik Benmarhnia⁴, Laura Temime^{1,2},
Kévin Jean^{1,2,5}

1 Laboratoire MESuRS, Conservatoire national des Arts et Métiers, Paris, France

2 Unité PACRI, Institut Pasteur, Conservatoire national des Arts et Métiers, Paris, France

3 Health Innovation Laboratory, Institute of Tropical Medicine “Alexander Von Humboldt”,
Universidad Peruana Cayetano Heredia, Lima, Peru

4 Scripps Institution of Oceanography, University of California, San Diego, California, USA

5 MRC Centre for Global Infectious Disease Analysis, Department of Infectious Disease
Epidemiology, Imperial College London, United Kingdom

§ Corresponding author: Pearl Anne Ante-Testard

Laboratoire MESuRS, Conservatoire national des Arts et Métiers

292 rue Saint Martin, 75003 Paris, France

Email: pearlannemante@gmail.com or pearl.ante@ucsf.edu

E-mail addresses of authors:

P.A.A.-T.: pearlannemante@gmail.com or pearl.ante@ucsf.edu

G.C.-E.: gabriel.carrasco@upch.pe

T.B.: tbenmarhnia@ucsd.edu

L.T.: laura.temime@lecnam.net

K.J.: kevin.jean@lecnam.net

Keywords: socioeconomic inequality, HIV, HIV testing, spatial analysis, sub-Saharan Africa,
social epidemiology

Word count:

Abstract: 349/350

Main text: 3475/3500

35 **Abstract**

36 **Introduction:**

37 We aim to explore spatial variations in socioeconomic inequalities in self-reported recent HIV
38 testing uptake in sub-Saharan Africa (SSA) at different geographical scales, in order to identify
39 potential geographical hotspots of inequalities. Additionally, to evaluate the potential benefits of
40 HIV testing programs, we assess whether local levels of HIV testing match the local levels of
41 HIV prevalence.

42

43 **Methods:**

44 We analyzed data from 25 countries in SSA with Demographic and Health Surveys between
45 2011 and 2019. We quantified socioeconomic inequalities in self-reported HIV testing in the last
46 12 months with both the Slope Index of Inequality (SII) and Relative Index of Inequality (RII) in
47 different geographical scales to capture sex-specific within-country spatial variations. We also
48 conducted sampling cluster-level analyses based on the Local Indicator of Spatial Association to
49 consider the autocorrelation in SII and RII across SSA countries. To assess the spatial efficiency
50 of HIV testing programs, we measured the correlation between recent HIV testing uptake and
51 HIV prevalence through Pearson correlation across geographical scales.

52

53 **Results:**

54 We observed pro-rich inequalities on both absolute and relative scales in recent HIV testing in
55 the majority of SSA countries in female and male participants at the national level. We also
56 identified inequalities at subnational levels. Within- and between-country heterogeneities in sex-
57 specific inequalities on both inequality scales and their respective spatial distributions varied
58 depending on the scale used. Clustering of high absolute and relative inequalities were mostly
59 observed in Western and Central Africa with a few regions in Eastern and Southern Africa.
60 Despite significant sex-specific correlations between HIV testing and HIV prevalence in all
61 countries when assessed at the national level, we report an absence of such a correlation at fine
62 scale in 39 of 50 sex-country combinations.

63 **Conclusions:**

64 These findings highlight the importance of investigating the spatial variability of various HIV
65 indicators and related inequalities. Results may help local, national and international
66 policymakers to prioritize areas and socioeconomic subgroups in need of HIV testing services.
67 Our results also show the need to monitor efficiency of HIV testing programs in relation to HIV
68 risk at subnational levels as a complementary to national estimates.

69

70

71

72

73

74

75

76

77

78

79

80

81

82

83

84

85

86

87

88 **Introduction**

89 The role of HIV testing in the fight against HIV/AIDS is crucial since it is the gateway to HIV
90 prevention and care, especially in sub-Saharan Africa (SSA), the global epicenter of the disease.
91 Over the years, testing has scaled up due to the increasing availability of antiretroviral therapy
92 (ART) and in response to the UNAIDS 90-90-90 and 95-95-95 targets by 2020 and 2030,
93 respectively [1,2].

94

95 Socioeconomic inequalities have been reported in HIV testing uptake in SSA. Numerous studies
96 have found that people in higher socioeconomic position (SEP) were more likely to seek HIV
97 testing or know their HIV status [3–8]. However, most of these studies assessed testing
98 inequalities at the national level. Very few studies have analyzed the spatial distribution of these
99 inequalities. To the best of our knowledge, such a local analysis has only been performed in a
100 single country, Malawi [9].

101

102 Spatial analysis at local scales has proved useful for the control and prevention of infectious
103 diseases, by uncovering spatial variations in the transmission or the access to prevention [10–12].
104 Regarding HIV, it has helped identify high transmission areas [13] and understand access
105 difficulties to healthcare facilities in underserved areas in Africa [14]. However, it has not been
106 frequently utilized in monitoring inequalities in the HIV response, particularly in HIV testing.
107 Notably, uptake of HIV testing has been reported to be higher in countries with the greatest HIV
108 burden at the national level. Nevertheless, whether this association also exists at a finer scale has
109 not been empirically assessed. Observing such spatial variations is important not only for
110 ensuring equity in epidemic control but also for prioritizing areas with the greatest burden in
111 terms of infection and/or inequalities [15]. Mapping HIV testing uptake and their inequalities
112 across different geographical scales and identifying their local hotspots has become especially
113 relevant in a context of decreasing international funding for the HIV response.

114

115 Here, we aim: i) to explore spatial variations in socioeconomic inequalities in HIV testing uptake
116 across geographical scales; ii) to identify geographical hotspots for such inequalities in several
117 SSA countries; and iii) to assess spatial correlations between HIV testing and HIV prevalence at
118 the national and subnational levels as a way to approximate the potential benefits of existing
119 programs.

120

121 **Methods**

122 **Study design and data sources**

123 We carried out a multi-country analysis of cross-sectional surveys in SSA countries, namely the
124 Demographic and Health Surveys (DHS). The DHS are nationally representative surveys
125 regularly conducted in the Global South collecting information on a broad range of indicators
126 such as sociodemographic indicators, maternal and child health, malaria and HIV/AIDS. They
127 are based on a two-stage sampling design, with Primary Sampling Units (PSU) selected in the
128 first stage and households in the second. Women aged 15-49 years and men aged 15-54/59 years
129 in participating households are eligible. Depending on the survey, data for men for the HIV
130 indicators, biomarkers or both might be collected only from a sub-sample of the selected
131 households. Some DHS include HIV serological surveys in which participants are asked for
132 consent to be tested for HIV, which is done anonymously in most of the surveys. Individuals
133 who consented are interviewed face-to-face by trained interviewers who use a standard
134 questionnaire. The agencies and research institutes that conducted the surveys were responsible
135 for acquiring ethical clearance in each country.

136

137 DHS Global Positioning System coordinates were obtained from the DHS database. These
138 coordinates were intentionally and randomly displaced to ensure confidentiality of the
139 respondents. Urban clusters were displaced between 0 and 2 kilometers (km), while rural clusters
140 were displaced between 0 and 5 km. The spatial boundaries were also obtained from the
141 DHS spatial database repository (<https://spatialdata.dhsprogram.com/home/>). The DHS data
142 were linked to these spatial data.

143 For our analysis, we selected SSA countries with available DHS surveys between 2011 and
144 2019 that contained the variables of interest and spatial data. We selected the more recent survey
145 (as of November 2021) in countries with more than one eligible survey.

146

147 **Data/ Variables**

148 SEP was defined as the relative rank of the participants in the cumulative distribution of the DHS
149 wealth index. The wealth index is a composite measure of living standards based on household
150 assets and living characteristics. The DHS divided the wealth index homogenously into quintiles
151 from poorest to richest.

152

153 The outcome of interest was the self-report of recent (< 12 months) HIV testing uptake.
154 Participants were asked if they recently had an HIV test and the time since last test. Being HIV
155 positive was defined as testing positive in the serological survey.

156

157 **Statistical analysis**

158 First, for each country and sex, we calculated the HIV prevalence and the proportion of recent
159 HIV testing uptake while accounting for survey design and sampling weights at different
160 geographical scales: i) national, ii) first administrative subnational level (hereafter, province),
161 and iii) PSU level (hereafter referred to as “fine scale”).

162

163 Second, we measured national-, province-, and PSU-level socioeconomic inequalities both on the
164 absolute and relative scales. We estimated the Slope Index of Inequality (SII) and the Relative
165 Index of Inequality (RII) to assess the absolute and relative inequalities, respectively [16]. It is
166 highly recommended to report inequalities on both scales as conclusions may diverge depending
167 on the scale used [17].

168

169 At the national and province levels, both indicators were obtained by fitting a modified Poisson
170 regression (with robust variance) with a log link function [18] to estimate the association
171 between recent HIV testing at each wealth level and the hierarchical ranking of wealth.
172 Generalized estimating equations were used to account for the clustering of observations [19].
173 The SII represents the absolute difference in the predicted proportions between the richest and
174 the poorest participants, whereas the RII expresses the ratio of the predicted outcomes between
175 these two extremes.

176

177 Due to the smaller sample sizes at the PSU-level (at least 10 individuals), we fitted a linear
178 regression to estimate fine-scale inequality indicators. When performed on small samples,
179 regressions may lead to negative RII values, which we truncated to zero when estimating the
180 fine-scale RII.

181

182 Third, spatial autocorrelations of the fine-scale SII and RII across SSA and between sexes were
183 assessed using the local *Getis-Ord Gi** statistic for PSUs with a sample size of at least 10. The
184 *Getis-Ord Gi** statistic identifies local patterns and clusters of high- or low-inequality across
185 countries that may not be evident when using global statistics [20]. More specifically,
186 a distance-based neighborhood structure was used for its computation. Neighboring PSUs were
187 defined based on the distance d that assigns a number of nearest neighbors (k) to each PSU. We
188 selected the number of nearest neighbors that gave high spatial autocorrelation based on a global
189 Moran's I statistic for each sex and inequality indicator. We categorized the *Gi** statistic based
190 on the sign (cold- or hotspot for negative and positive signs, respectively) and percentile (90%,
191 95%, 99%) to avoid bias due to multiple and dependent tests [21].

192

193 We assessed the spatial correlation of the proportion of recent HIV testing and level of HIV
194 prevalence across various geographical scales through Pearson correlation. Indeed, HIV
195 prevalence drives, at least partly, the local risk of incident HIV infection as it reflects the
196 probability for one's sexual partner to be infected by HIV [22].

197 **Sensitivity analysis**

198 SII and RII were calculated for PSUs with a sample size of at least 20 and 30 and their local
199 spatial autocorrelations were assessed as sensitivity analysis. We also conducted similar analyses
200 for countries with surveys between 2011 and 2014 and for countries with surveys between 2015
201 and 2019 to assess possible temporal trends in the spatial distribution of inequalities.

202

203 **Results**

204 **Study population characteristics**

205 Twenty-five countries were eligible based on data availability between 2011 and 2019: Angola,
206 Burundi, Cameroon, Chad, Côte d'Ivoire, Democratic Republic of Congo (Congo DR), Ethiopia,
207 Gabon, Ghana, Guinea, Lesotho, Liberia, Malawi, Mali, Mozambique, Namibia, Rwanda,
208 Senegal, Sierra Leone, Tanzania, Togo, Uganda, South Africa, Zambia, and Zimbabwe. Table 1
209 shows the summary statistics by country and sex. There was a total of 472,763 participants
210 (311,652 women and 161,111 men) with 351,921 individuals (74.4%, 252,508 women and
211 99,413 men) from PSUs with a sample size of at least 10 and complete data (Table S1). The
212 sample size in the provinces ranged between 275 and 11,342 among women and between 135
213 and 3,236 among men. At a finer scale, sample size in PSUs ranged between 10 and 96 women
214 and between 10 and 54 men. The distributions of PSU sample size and proportion of recent HIV
215 testing are shown in Figure S1.

216 **Table 1. Summary estimates of national level HIV prevalence, HIV testing, absolute and relative inequalities in HIV testing uptake in the**
 217 **previous 12 months in 25 sub-Saharan African countries between 2011 and 2019 by country and sex.**

<i>Country</i>	Year	N	Female				Male				
			HIV prevalence	HIV testing[†]	SII (x 100)[‡] (95% CI)	RII (95% CI)	N	HIV prevalence	HIV testing[†]	SII (x 100)[‡] (95% CI)	RII (95% CI)
<i>AO</i> <i>Angola</i>	2015-16	14379	3%	29%	40 (37; 44)	4.07 (3.54; 4.69)	5684	1%	20%	26 (21; 31)	3.23 (2.63; 3.97)
<i>BI</i> <i>Burundi</i>	2016-17	17269	1%	30%	7 (4; 10)	1.26 (1.15; 1.39)	7552	0.7%	20%	7 (4; 11)	1.42 (1.19; 1.69)
<i>CD</i> <i>Congo DR</i>	2013-14	18827	2%	9%	19 (16; 22)	18.29 (12.83; 26.08)	8656	0.5%	7%	16 (13; 19)	12.83 (8.47; 19.43)
<i>CI</i> <i>Côte d'Ivoire</i>	2011-12	5183	6%	4%	6 (3; 9)	6.04 (3.10; 11.75)	4503	3%	4%	4 (2; 6)	4.34 (2.11; 8.95)
<i>CM</i> <i>Cameroon</i>	2018	14677	4%	41%	40 (36; 44)	2.68 (2.43; 2.96)	6978	2%	35%	42 (36; 47)	3.05 (2.65; 3.52)
<i>ET</i> <i>Ethiopia</i>	2019	15 683	1%	21%	44 (39; 48)	4.73 (4.13; 5.42)	12688	0.5%	19%	35 (31; 39)	4.11 (3.52; 4.79)
<i>GA</i> <i>Gabon</i>	2012	8 422	6%	33%	16 (12; 20)	1.68 (1.45; 1.94)	5654	3%	24%	23 (20; 27)	3.52 (2.80; 4.42)
<i>GH</i> <i>Ghana</i>	2014	9 396	3%	14%	11 (8; 13)	2.11 (1.74; 2.56)	4388	1%	6%	11 (8; 15)	5.75 (3.25; 10.15)
<i>GN</i> <i>Guinea</i>	2018	10 874	2%	8%	23 (19; 26)	11.09 (8.20; 14.98)	4117	1%	6%	15 (11; 20)	12.25 (7.17; 20.95)
<i>LB</i> <i>Liberia</i>	2019	9 239	2%	20%	5 (1; 8)	1.26 (1.06; 1.49)	4118	2%	13%	14 (10; 17)	3.28 (2.30; 4.67)
<i>LS</i> <i>Lesotho</i>	2014	6 621	30%	59%	-10 (-14; -6)	0.85 (0.78; 0.91)	2931	19%	38%	23 (17; 30)	1.86 (1.57; 2.20)
<i>ML</i> <i>Mali</i>	2018	10 424	1%	6%	26 (21; 30)	22.66 (16.15; 31.78)	4399	0.9%	6%	20 (15; 25)	14.74 (8.89; 24; 44)

<i>MW</i>	2015-16	2 4562	11%	44%	1	1.02	7478	7%	43%	-0.2	0.996
<i>Malawi</i>					(-2; 3)	(0.96; 1.08)				(-4; 4)	(0.91; 1.09)
<i>MZ</i>	2015	7 749	15%	30%	27	2.08	5283	10%	19%	32	3.35
<i>Mozambique</i>					(22; 32)	(1.82; 2.38)				(26; 37)	(2.77; 4.04)
<i>NM</i>	2013	10 018	17%	51%	-4	0.91	4481	11%	38%	17	1.57
<i>Namibia</i>					(-8; -1)	(0.85; 0.99)				(12; 22)	(1.36; 1.81)
<i>RW</i>	2014-15	13 497	4%	39%	3	1.08	6217	2%	37%	-3	0.92
<i>Rwanda</i>					(-0.2; 7)	(0.99; 1.18)				(-7; 1)	(0.82; 1.04)
<i>SL</i>	2019	15 574	2%	24%	12	1.74	7197	1%	13%	20	4.93
<i>Sierra Leone</i>					(9; 16)	(1.50; 2.02)				(16; 24)	(3.71; 6.56)
<i>SN</i>	2017	16 787	0.5%	14%	5	1.47	6977	0.4%	6%	8	4.48
<i>Senegal</i>					(3; 7)	(1.25; 1.74)				(6; 11)	(3.02; 6.65)
<i>TD</i>	2014-15	17 719	2%	9%	5	6.82	5248	1%	7%	16	9.09
<i>Chad</i>					(3; 6)	(4.34; 10.72)				(11; 20)	(5.58; 14.80)
<i>TG</i>	2013-14	9 480	3%	17%	19	3.15	4476	2%	12%	21	6.90
<i>Togo</i>					(15; 22)	(2.58; 3.85)				(17; 25)	(4.84; 9.84)
<i>TZ</i>	2011-12	10 967	6%	33%	12	1.44	8352	4%	28%	13	1.61
<i>Tanzania</i>					(8; 15)	(1.29; 1.61)				(9; 17)	(1.41; 1.85)
<i>UG</i>	2011	12 153	8%	12%	5	1.48	9588	6%	12%	5	1.46
<i>Uganda</i>					(2; 7)	(1.18; 1.85)				(2; 7)	(1.17; 1.82)
<i>ZA</i>	2016	8 514	28%	61%	-8	0.87	3618	14%	46%	9	1.21
<i>South Africa</i>					(-12; -4)	(0.82; 0.93)				(3; 14)	(1.06; 1.38)
<i>ZM</i>	2018	13 683	14%	66%	9	1.15	12132	8%	53%	14	1.31
<i>Zambia</i>					(5; 13)	(1.07; 1.22)				(10; 18)	(1.22; 1.41)
<i>ZW</i>	2015	9 955	17%	51%	-4	0.92	8396	11%	37%	7	1.19
<i>Zimbabwe</i>					(-7; -1)	(0.86; 0.99)				(3; 11)	(1.08; 1.32)
<i>Average</i>			8%	29%				5%	22%		

218

219 N: Total number of participants; SII: Slope index of inequality; RII: Relative index of inequality; 95% CI: 95% Confidence Interval.

220 † Self-reported recent (< 12 months) uptake of HIV testing.

221 ‡ SII values and their 95% CIs were multiplied by 100 so that they may be easily interpreted as percentage point differences (instead of proportion
222 differences).

223 **National-level estimates**

224 Table 1 also presents the national estimates of HIV prevalence, testing, and inequalities in recent
225 HIV testing. Overall, at the national level, HIV prevalence ranged from 0.5% (Senegal) to 30%
226 (Lesotho) among women and from 0.4% (Senegal) to 19% (Lesotho) among men. Self-reported
227 uptake of recent testing ranged from 4% (Côte d'Ivoire) to 66% (Zambia) among women and
228 from 4% (Côte d'Ivoire) to 53% (Zambia) among men. Women tended to have higher HIV
229 prevalence and proportion of recent testing than men.

230

231 On the absolute scale, we observed pro-rich absolute inequalities in recent testing in 19 of 25
232 countries for women and 23 of 25 countries for men (SII > 0) (Table 1). Absolute inequalities
233 ranged between -8 (95% Confidence Interval [95% CI] -12; -4) percentage points (% points) in
234 South Africa and 44 (39; 48) % points in Ethiopia among women. This means that the absolute
235 difference between the richest and poorest quintiles was -8 (-12; -4) % points (i.e., pro-poor)
236 among women in South Africa and 44 (39; 48) % points in Ethiopia (i.e., pro-rich). Meanwhile,
237 among men, SII ranged between -3 (-7; 1) % points in Rwanda and 42 (0.36; 0.47) % points in
238 Cameroon.

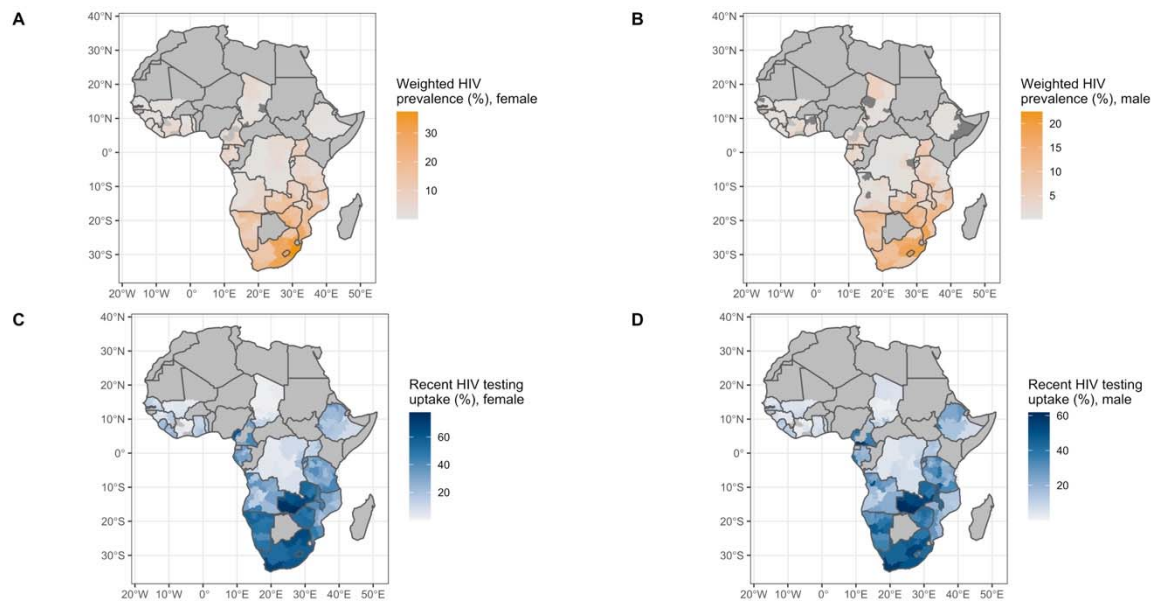
239

240 We observed pro-rich relative inequalities in 18 of 25 countries for women and 23 of 25
241 countries for men (RII > 1) (Table 1). Relative inequalities ranged between 0.85 (0.78; 0.91) in
242 Lesotho and 22.66 (16.15; 31.78) in Mali among women. This translates to the richest women
243 being 0.85 (0.78; 0.91) times as likely to report recent HIV testing than the poorest participants
244 in Lesotho (i.e., pro-poor), while 22.66 times (16.15; 31.78) more likely in Mali (i.e., pro-rich).
245 Among men, it ranged between 0.92 (0.82; 1.04) in Rwanda and 14.74 (8.89; 24.44) in Mali.

246

247 **Province-level estimates**

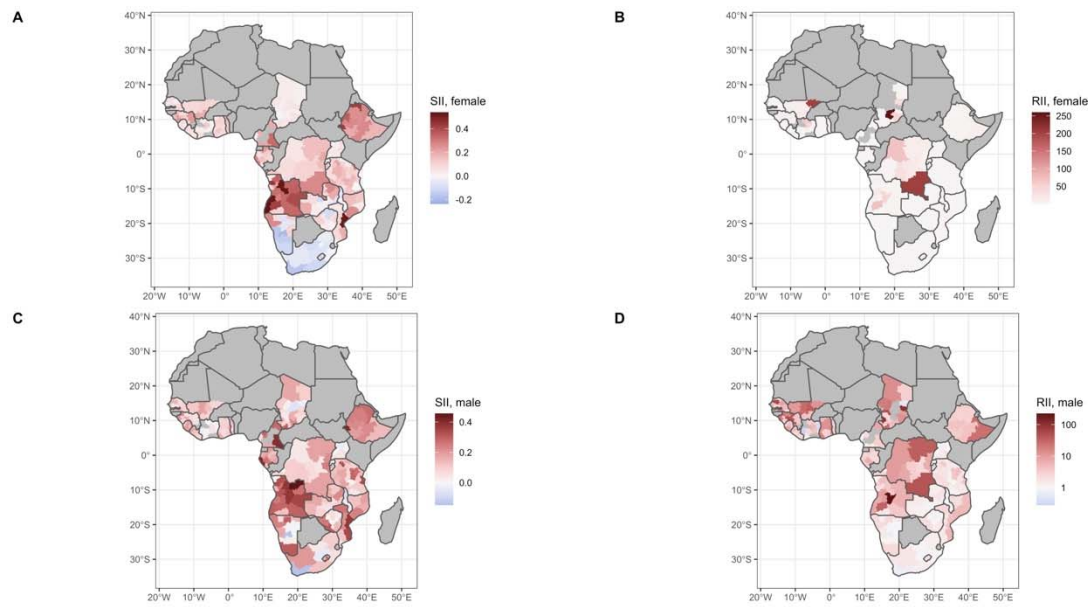
248 The distribution of province-level HIV prevalence and proportion of recent HIV testing are
249 mapped in Figure 1. We observed within- and between-country variations in their respective
250 spatial distributions.



251
252 **Figure 1. Province-level distribution of weighted HIV prevalence among A) female and B) male participants**
253 **and weighted percentage of self-reported recent (<12 months) uptake of HIV testing among C) female and D)**
254 **male participants.** Dark grey colours indicate unavailability of the HIV biomarker. Missing polygons within the
255 country indicate no data is available for this province from the Demographic and Health Surveys.

256
257 Figure 2 maps the provincial absolute and relative inequalities in recent HIV testing. We also
258 observed spatial heterogeneities of these inequalities for all sexes and inequality scales. On the
259 absolute scale, we observed pro-rich spatial distribution of SIIs in most of the provinces in SSA
260 except for a few areas in Eastern and Southern Africa (ESA) such as South Africa, Namibia, and
261 Malawi. On the relative scale, higher pro-rich relative inequalities were observed more
262 frequently in Western and Central Africa (WCA), while lower inequalities tended to be observed
263 in ESA.

264



265

266 **Figure 2. Province-level distribution of wealth-related inequalities in self-reported recent (<12 months)**
267 **uptake of HIV testing at the A) and C) absolute scale and B) and D) relative scale among female and male**
268 **participants, respectively, across 25 sub-Saharan African countries. SII, Slope Index of Inequality; RII,**
269 **Relative Index of Inequality. Capped RII values between 0.1 and 300. Missing polygons in Chad represent provinces**
270 **with extreme RII values (> 300 for females) and (< 0.1 for males).**

271

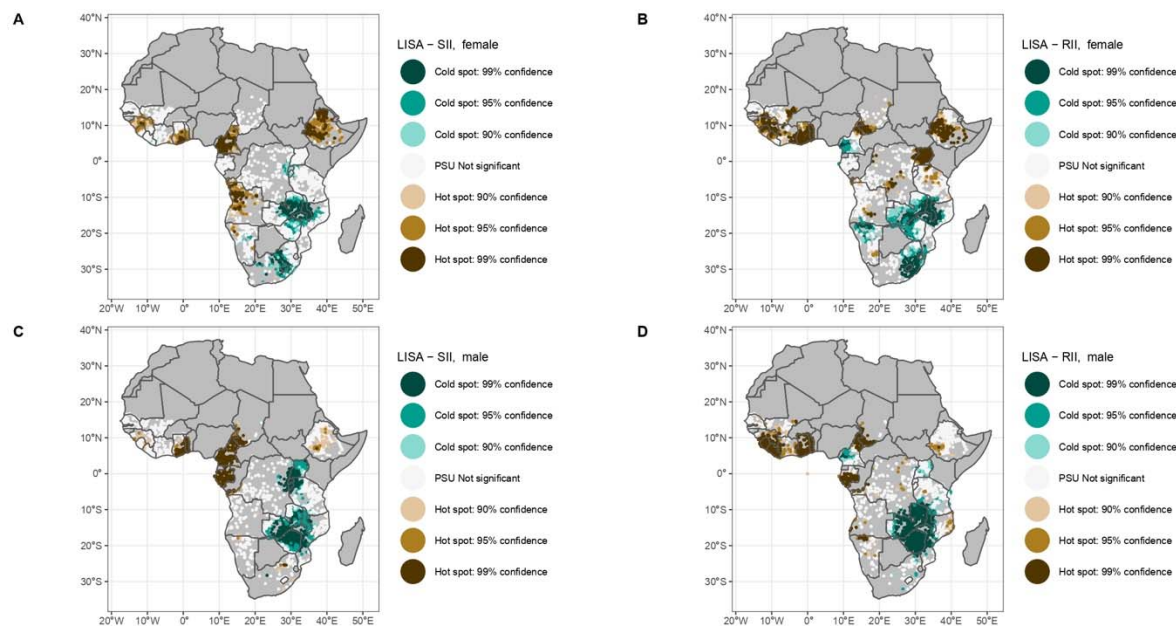
272 **Spatial clustering analysis at fine scale**

273 Global Moran's I showed that using 1 or 2 nearest neighbors gave the highest spatial
274 autocorrelation for both sexes and inequality indicators (Figure S2). For uniformity, we used $k=2$
275 to calculate for the Getis-Ord G_i^* statistics. Hotspots and coldspots of inequalities across SSA
276 depended on the inequality scale used and sex (Figure 3). Overall, hotspots on both scales were
277 more marked in WCA and a few ESA countries such as Ethiopia (for both sexes), Mozambique
278 and Tanzania (only on relative scales for both sexes).

279

280

281



282

283 **Figure 3. Local spatial autocorrelation of socioeconomic inequalities in self-reported recent (<12 months)**
284 **uptake of HIV testing as Local Getis-Ord G_i^* at Primary Sampling Unit (PSU) level (two nearest neighbors)**
285 **across 25 sub-Saharan African countries between 2011 and 2019.** Spatial clustering at the absolute scales among
286 A) and C) absolute scales and B) and D) relative scales among female and male participants, respectively. Only
287 PSUs with a sample size of at least 10 and more than one wealth quintile were included. LISA, Local Indicator of
288 Spatial Autocorrelation; SII, Slope Index of Inequality; RII, Relative Index of Inequality.

289

290 On the absolute scale, we observed numerous pockets of high SII values in western Africa with a
291 few areas in eastern Africa. Hotspots of absolute inequalities in recent HIV testing were
292 observed in Cameroon, Ghana, Togo, and Ethiopia for both sexes. Coldspots or pockets of low
293 SIIs were mostly observed in ESA including Zambia, Zimbabwe, Burundi, Rwanda, and small
294 areas in Mozambique for both sexes and in South Africa for women.

295

296 On the relative scale, we observed hotspots of RII values mostly in WCA with a few areas in
297 eastern Africa. Coldspots were noted in ESA including Burundi and Rwanda both sexes and in
298 South Africa for women.

299

300 Moreover, we observed diverging patterns of hotspots and coldspots for each sex in the same
301 country. There were hotspots of RIIs in Uganda among women, while coldspots in a few areas
302 were noted among men. Contrastingly, areas in Namibia displayed coldspots among women,
303 while hotspots were noted among men.

304

305 **Spatial correlation between HIV testing and HIV prevalence**

306 We assessed the spatial correlation between HIV testing and HIV prevalence across geographical
307 scales – whether testing services are reaching those with high HIV risk in the population. At the
308 national level, HIV prevalence and proportion of recent HIV testing were found to be positively
309 correlated among women and men (Figure S3).

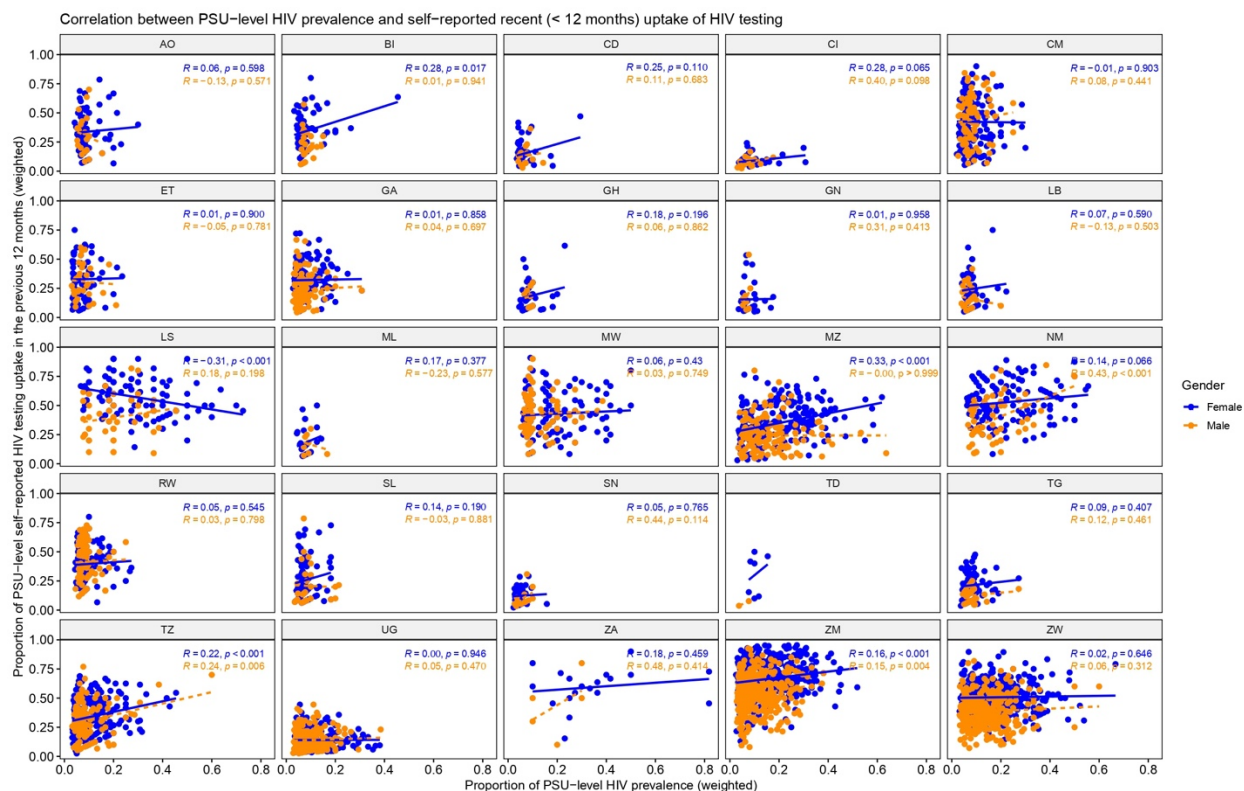
310

311 However, this observation was not sustained at subnational levels. Within-country correlation of
312 province-level HIV prevalence and proportion of testing showed that in many countries, both
313 variables were uncorrelated (i.e., the level of HIV testing did not always match the magnitude of
314 HIV prevalence). Out of 50 settings (2 sex-specific results for each of the 25 countries), we
315 observed only 11 that had statistically significant positive correlations (p -value < 0.05) or what
316 we termed as having “efficient HIV testing services” (Figure S4): both sexes (Côte d’Ivoire,
317 Ethiopia, and Tanzania), females (Rwanda and Zambia) and males (Liberia, Lesotho, and Sierra
318 Leone).

319

320 Similarly, Figure 4 shows that at the PSU level, HIV prevalence did not correlate with the level
321 of recent HIV testing in many of the countries for both sexes. Only in Burundi (female),
322 Mozambique (female), Namibia (male), Tanzania (both sexes), and Zambia (both sexes) did we
323 observe a significant positive correlation. Meanwhile, in Lesotho, HIV prevalence and recent
324 testing had a significant negative correlation (i.e., PSUs with higher HIV prevalence had lesser
325 uptake of recent HIV testing).

326



327
 328 **Figure 4. Correlation (Pearson correlation coefficient R and p-value) between the proportion of HIV**
 329 **prevalence and proportion of self-reported recent (< 12 months) uptake of HIV testing at the Primary**
 330 **Sampling Unit (PSU) level in 25 sub-Saharan African countries stratified by sex.** Only included PSUs with a
 331 sample size equal or higher than 10 with both the HIV biomarker and HIV testing variables. There were not
 332 sufficient clusters to calculate the Pearson correlation R and p-values in Chad (TD). Each point represents a PSU.
 333 Refer to Table 1 for full country names.

334
 335 **Sensitivity analysis**

336 Results of the local spatial clustering analysis were consistent when sub-setting by cluster size of
 337 at least 20 or 30 (Figures S5 and S6). Areas with pockets of high and low inequalities were also
 338 consistent when conducting spatial clustering analysis across countries with surveys between
 339 2011 and 2014 and between 2015 and 2019 separately (Figures S7 and S8).

340
 341

342 **Discussion**

343 In this study, we quantified and mapped absolute and relative socioeconomic inequalities of
344 recent HIV testing at different geographical scales. We also conducted spatial clustering analysis
345 of such inequalities and explored the spatial correlation between HIV testing and HIV prevalence
346 at various geographical scales across SSA. Our results show existing inequalities at the national,
347 province, and PSU levels. Heterogeneities in the spatial distribution of these inequalities at
348 subnational levels and hotspot areas varied depending on the inequality scales and sex groups.
349 Most hotspots of inequalities were observed in WCA with a few areas in ESA such as Ethiopia,
350 Mozambique, and Tanzania. Meanwhile, coldspots were rather observed in ESA. We also
351 revealed that, while HIV testing programs seemed efficient in reaching those with high risk of
352 acquiring HIV at the national level, they seemed to be less efficient at the subnational levels in
353 most of the countries. Indeed, the provinces and PSUs with higher recent testing uptake did not
354 match the level of HIV prevalence in many of the countries for both sexes.

355

356 We tended to observe higher HIV prevalence and proportion of recent HIV testing among
357 women and countries located in ESA. As expected, we report higher pro-rich inequalities among
358 men and in WCA countries. These findings were consistent with previous studies [5,7]. Higher
359 HIV burden among women may be explained by higher vulnerability than men in SSA due to
360 several biological, societal, and economic factors [23].

361

362 We also highlighted that recent HIV testing was not shared equally across wealth levels in SSA
363 (within and between countries) and that such inequalities were not randomly distributed across
364 space. Indeed, our results also showed varying spatial patterns of recent HIV testing inequalities
365 between absolute and relative scales and between women and men. This highlights the necessity
366 for HIV testing programs to be tailored depending on the level of inequality to be addressed and
367 the needs of each sex. We observed that in a few countries like Namibia, national-level
368 inequality estimates showed low relative inequality for women and even pro-poor inequality on
369 the absolute scale for both sexes suggesting that pro-rich inequalities are not a fatality and might
370 be overcome. Nevertheless, hotspots of inequalities were still observed in some areas within

371 these countries that achieved equitable HIV testing levels. This suggests that national-level
372 inequality estimates may hide remaining pro-rich inequalities at lower scales.

373

374 However, one could argue that pro-rich inequalities are not necessarily unfair, especially if those
375 with higher SEP also tend to be the ones who are more at-risk of acquiring HIV. Several early
376 studies reported higher levels of HIV prevalence among higher SEP [24,25]. However, this
377 initial inverse social gradient, an unusual feature as compared to most of the diseases, is likely in
378 a process of reversion. Last-generation HIV prevalence surveys now report higher levels of HIV
379 prevalence among the poorest in some countries such as Côte d'Ivoire, Ethiopia, Lesotho, and
380 Zimbabwe. Moreover, a recent cohort study relying on a two-decade follow-up in rural Uganda
381 documented a changing socioeconomic gradient over time, with a higher risk of incident HIV
382 infection among the poorest [26]. Thus, suggesting that these pro-rich inequalities might indeed
383 be unfair and contributing to the reversing social gradient that is probably ongoing in some
384 settings.

385

386 There are various criteria for health programs that can be used to evaluate their public benefit
387 which include efficiency. Efficiency is concerned with the optimal production and distribution of
388 scarce health resources and is critical for sustainability and maximizing health gains [27]. In this
389 study, we did not conduct a formal impact evaluation of HIV testing programs, but rather to
390 investigate the spatial correlations between HIV testing and HIV prevalence across geographical
391 scales to capture their potential benefits. Community-level HIV prevalence has been found to be
392 a strong predictor of HIV incidence in a recent meta-analysis [22]. The seemingly sub-optimal
393 efficiency of HIV testing programs at subnational levels may suggest the failure of HIV
394 programs in some settings to reach those who are at higher risk of HIV. However, risk may have
395 been affected when people with HIV (PWH) undergo ART which ensures viral suppression, thus
396 preventing transmission. Another potential reason why the level of HIV testing did not match the
397 level of HIV risk is that in settings with high prevalence, people with known HIV infection
398 (possibly under treatment) do not necessarily need to seek HIV testing. A further similar survey

399 might be useful to assess recent HIV testing among the at-risk population only (i.e., excluding
400 PWH under ART), however our data do not allow us to do so.

401
402 This study carries several limitations. First, the self-reported nature of HIV testing uptake may be
403 subject to recall and social desirability biases resulting to underreporting. Second, differential
404 accuracy in self-reporting between socioeconomic groups might have biased our results.
405 Evidence in cancer screening suggest that overreporting of self-reported screening is common
406 among marginalized groups such as racial minorities [28]. If this also applies to HIV testing, this
407 may have led to an under-estimation of the pro-rich inequalities and over-estimation of the pro-
408 poor inequalities. While self-reported lifetime HIV testing was found to be highly sensitive (96-
409 99%) [29], testing in the past 12 months may be prone to telescoping bias that may have led to
410 over-reporting [30]. Third, the wealth index can only measure relative wealth within a country.
411 However, it can measure long-term SEP and has also been found to be stable especially in the
412 Global South. Lastly, some available DHS surveys were conducted before 2014 and may not
413 have captured more recent patterns of inequalities.

414
415 Despite these limitations, to our knowledge, this is the first study to provide a comprehensive
416 context of the socioeconomic inequalities in HIV testing in SSA by quantifying and mapping
417 them at different geographical levels on both absolute and relative scales and by assessing the
418 spatial efficiency of HIV testing at different levels. This study revealed the importance of
419 monitoring inequalities at different geographical scales. First, national estimates are often use for
420 funding allocations by donors, prioritization of programs and comparison of inequality metrics.
421 Second, province-level estimates are essential for program implementation, and for within-
422 country funding allocations. Lastly, fine-level estimates allow us to visualize small-scale
423 heterogeneities to precisely target communities in need.

424
425 **Conclusions**

426 Our results show the need to monitor inequalities and assess the efficiency of HIV testing
427 services in reaching those who are at-risk of HIV at smaller geographical scales, beyond national
428 estimates that may mask disparities. By providing estimates of such inequalities at national-,
429 province-, and PSU- level, and by localizing their hotspots, these findings may help
430 policymakers, local and international organizations to prioritize areas and groups that need HIV
431 testing efforts, while increasing efficiency.

432

433

434 **Competing interests**

435 The authors declare no competing interests.

436

437 **Authors' contributions**

438 P.A.A.-T., L.T. and K.J. conceived and discussed the study with inputs from G.C.-E. and T.B.
439 P.A.A.-T. collated and processed the DHS. P.A.A.-T. conducted the analysis with inputs from
440 G.C.-E., T.B., L.T. and K.J. P.A.A.-T. produced output figures and tables with inputs from G.C.-
441 E, T.B., L.T. and K.J. All authors contributed to the interpretation of the results. P.A.A.-T. wrote
442 the initial draft with inputs from L.T. and K.J. All authors contributed to subsequent revisions.
443 All authors read and approved the final version of the manuscript.

444

445 **Acknowledgements**

446 Funding: INSERM-ANRS (France Recherche Nord and Sud Sida-HIV Hépatites), grant number
447 ANRS-12377 B104.

448 Disclaimer: Funding agency had no role in the study design, data collection and analysis.

449

450 **Additional files**

451 Additional file 1: **Appendices**

452 Description:

453 **Table S1.** Total number of participants in Primary Sampling Units that have at least 10 samples.

454 **Figure S1 (A).** PSU distribution among women A) sample size and B) proportion of self-
455 reported uptake of recent (< 12 months) HIV testing.

456 **Figure S1 (B).** PSU distribution among men A) sample size and B) proportion of self-reported
457 uptake of recent (< 12 months) HIV testing.

458 **Figure S2 (A).** Global Moran's I statistic test by number of nearest neighbor (1-10) by inequality
459 scales among women.

460 **Figure S2 (B).** Global Moran's I statistic test by number of nearest neighbor (1-10) by gender
461 and inequality scales.

462 **Figure S3.** Correlation (Pearson's correlation coefficient R and p-value) between weighted HIV
463 prevalence and weighted self-reported recent (< 12 months) uptake of HIV testing at the national
464 level in 25 sub-Saharan African countries by gender.

465 **Figure S4.** Correlation (Pearson's correlation coefficient R and p-value) between weighted HIV
466 prevalence and weighted self-reported recent (< 12 months) uptake of HIV testing at the regional
467 level in 25 sub-Saharan African countries by gender.

468 **Figure S5.** Sensitivity analysis of local spatial autocorrelation of socioeconomic inequalities in
469 self-reported (<12 months) uptake of HIV testing as Local Getis-Ord G_i^* at Primary Sampling
470 Unit (PSU) level (2 nearest neighbors) with at least 20 participants across sub-Saharan African
471 countries.

472 **Figure S6.** Sensitivity analysis of local spatial autocorrelation of socioeconomic inequalities in
473 self-reported (<12 months) uptake of HIV testing as Local Getis-Ord G_i^* at Primary Sampling
474 Unit (PSU) level (2 nearest neighbors) with at least 20 participants across sub-Saharan African
475 countries.

476 **Figure S7.** Sensitivity analysis of local spatial autocorrelation of HIV testing socioeconomic
477 inequalities as Local Getis-Ord G_i^* at PSU level (two nearest neighbors) across sub-Saharan
478 African countries with surveys between 2011 and 2014.

479 **Figure S8.** Sensitivity analysis of local spatial autocorrelation of HIV testing socioeconomic
480 inequalities as Local Getis-Ord G_i^* at PSU level (two nearest neighbors) across sub-Saharan
481 African countries with surveys between 2015 and 2019.

482

483

484 **References**

- 485 1. UNAIDS. Fast-Track: Ending the AIDS Epidemic by 2030 [Internet]. 2014. Available
486 from:
487 https://www.unaids.org/sites/default/files/media_asset/JC2686_WAD2014report_en.pdf
- 488 2. UNAIDS. 90-90-90 An ambitious treatment target to help end the AIDS epidemic
489 [Internet]. 2014. Available from: Available from:
490 https://www.unaids.org/sites/default/files/media_asset/90-90-90_en.pdf
- 491 3. Ante-Testard PA, Benmarhnia T, Bekelynck A, Baggaley R, Ouattara E, Temime L, et al.
492 Temporal trends in socioeconomic inequalities in HIV testing: an analysis of cross-
493 sectional surveys from 16 sub-Saharan African countries. *Lancet Glob Health*. 2020
494 Jun;8(6):e808–18.
- 495 4. Awopegba OE, Ologunowa TO, Ajayi AI. HIV testing and self-testing coverage among
496 men and women in South Africa: an exploration of related factors. *Trop Med Int Health*.
497 2021 Feb;26(2):214–27.
- 498 5. Hamidouche M, Ante-Testard PA, Baggaley R, Temime L, Jean K. Monitoring
499 socioeconomic inequalities across HIV knowledge, attitudes, behaviours and prevention in
500 18 sub-Saharan African countries. *AIDS*. 2022 May 1;36(6):871–9.
- 501 6. Jean K, Anglaret X, Moh R, Lert F, Dray-Spira R. Barriers to HIV Testing in Côte d’Ivoire:
502 The Role of Individual Characteristics and Testing Modalities. Braitstein P, editor. *PLoS*
503 *ONE*. 2012 Jul 18;7(7):e41353.
- 504 7. Kim SW, Skordis-Worrall J, Haghparast-Bidgoli H, Pulkki-Brännström AM. Socio-
505 economic inequity in HIV testing in Malawi. *Glob Health Action*. 2016 Dec 1;9(1):31730.
- 506 8. Kirakoya-Samadoulougou F, Jean K, Maheu-Giroux M. Uptake of HIV testing in Burkina
507 Faso: an assessment of individual and community-level determinants. *BMC Public Health*.
508 2017 Dec;17(1):486.
- 509 9. Kim SW, Haghparast-Bidgoli H, Skordis-Worrall J, Batura N, Petrou S. A method for
510 measuring spatial effects on socioeconomic inequalities using the concentration index. *Int J*
511 *Equity Health*. 2020 Dec;19(1):9.

- 512 10. Rice BL, Golden CD, Randriamady HJ, Rakotomalala AANA, Vonona MA, Anjaranirina
513 EJJ, et al. Fine-scale variation in malaria prevalence across ecological regions in
514 Madagascar: a cross-sectional study. *BMC Public Health*. 2021 Dec;21(1):1018.
- 515 11. Carrasco-Escobar G, Fornace K, Benmarhnia T. Mapping socioeconomic inequalities in
516 malaria in Sub-Saharan African countries. *Sci Rep*. 2021 Dec;11(1):15121.
- 517 12. Mosser JF, Gagne-Maynard W, Rao PC, Osgood-Zimmerman A, Fullman N, Graetz N, et
518 al. Mapping diphtheria-pertussis-tetanus vaccine coverage in Africa, 2000–2016: a spatial
519 and temporal modelling study. *The Lancet*. 2019 May;393(10183):1843–55.
- 520 13. Bulstra CA, Hontelez JAC, Giardina F, Steen R, Nagelkerke NJD, Bärnighausen T, et al.
521 Mapping and characterising areas with high levels of HIV transmission in sub-Saharan
522 Africa: A geospatial analysis of national survey data. Barnabas RV, editor. *PLOS Med*.
523 2020 Mar 6;17(3):e1003042.
- 524 14. Kim H, Musuka GN, Mukandavire Z, Branscum A, Cuadros DF. When distance matters:
525 Mapping HIV health care underserved communities in sub-Saharan Africa. Eke R, editor.
526 *PLOS Glob Public Health*. 2021 Nov 24;1(11):e0000013.
- 527 15. Stresman GH, Mwesigwa J, Achan J, Giorgi E, Worwui A, Jawara M, et al. Do hotspots
528 fuel malaria transmission: a village-scale spatio-temporal analysis of a 2-year cohort study
529 in The Gambia. *BMC Med*. 2018 Dec;16(1):160.
- 530 16. Moreno-Betancur M, Latouche A, Menvielle G, Kunst AE, Rey G. Relative Index of
531 Inequality and Slope Index of Inequality: A Structured Regression Framework for
532 Estimation. *Epidemiology*. 2015 Jul;26(4):518–27.
- 533 17. King NB, Harper S, Young ME. Use of relative and absolute effect measures in reporting
534 health inequalities: structured review. *BMJ*. 2012 Sep 3;345(sep03 1):e5774–e5774.
- 535 18. Zou G. A Modified Poisson Regression Approach to Prospective Studies with Binary Data.
536 *Am J Epidemiol*. 2004 Apr 1;159(7):702–6.
- 537 19. Yelland LN, Salter AB, Ryan P. Performance of the Modified Poisson Regression
538 Approach for Estimating Relative Risks From Clustered Prospective Data. *Am J Epidemiol*.
539 2011 Oct 15;174(8):984–92.
- 540 20. Getis A, Ord JK. The Analysis of Spatial Association by Use of Distance Statistics. *Geogr*
541 *Anal*. 2010 Sep 3;24(3):189–206.
- 542 21. Caldas de Castro M, Singer BH. Controlling the False Discovery Rate: A New Application
543 to Account for Multiple and Dependent Tests in Local Statistics of Spatial Association.
544 *Geogr Anal*. 2006 Apr;38(2):180–208.
- 545 22. Jia KM, Eilerts H, Edun O, Lam K, Howes A, Thomas ML, et al. Risk scores for predicting
546 HIV incidence among adult heterosexual populations in sub-Saharan Africa: a systematic

- 547 review and meta-analysis. *J Int AIDS Soc* [Internet]. 2022 Jan [cited 2022 Jul 27];25(1).
548 Available from: <https://onlinelibrary.wiley.com/doi/10.1002/jia2.25861>
- 549 23. Ramjee G, Daniels B. Women and HIV in Sub-Saharan Africa. *AIDS Res Ther*.
550 2013;10(1):30.
- 551 24. Hargreaves JR, Glynn JR. Educational attainment and HIV-1 infection in developing
552 countries: a systematic review. *Trop Med Int Health*. 2002 Jun;7(6):489–98.
- 553 25. Fox AM. The Social Determinants of HIV Serostatus in Sub-Saharan Africa: An Inverse
554 Relationship between Poverty and HIV? *Public Health Rep*. 2010 Jul;125(4_suppl):16–24.
- 555 26. Santelli JS, Chen I, Makumbi F, Wei Y, Nalugoda F, Lutalo T, et al. Household wealth and
556 HIV incidence over time, rural Uganda, 1994–2018. *AIDS*. 2021 Sep 1;35(11):1835–43.
- 557 27. Ding J, Hu X, Zhang X, Shang L, Yu M, Chen H. Equity and efficiency of medical service
558 systems at the provincial level of China’s mainland: a comparative study from 2009 to
559 2014. *BMC Public Health*. 2018 Dec;18(1):214.
- 560 28. Burgess DJ, Powell AA, Griffin JM, Partin MR. Race and the validity of self-reported
561 cancer screening behaviors: Development of a conceptual model. *Prev Med*. 2009
562 Feb;48(2):99–107.
- 563 29. Xia Y, Milwid RM, Godin A, Boily MC, Johnson LF, Marsh K, et al. Accuracy of self-
564 reported HIV-testing history and awareness of HIV-positive status in four sub-Saharan
565 African countries. *AIDS*. 2021 Mar 1;35(3):503–10.
- 566 30. Rubin DC, Baddeley AD. Telescoping is not time compression: A model. *Mem Cognit*.
567 1989 Nov;17(6):653–61.

568

569

570

571