

Title page

Associations of maternal education, area deprivation, proximity to greenspace during pregnancy and gestational diabetes with Body Mass Index from early childhood to early adulthood: A proof-of-concept federated analysis in seventeen birth cohorts

Author information

Tim Cadman, MRC Integrative Epidemiology Unit, University of Bristol, UK. t.cadman@bristol.ac.uk
Ahmed Elhakeem, MRC Integrative Epidemiology Unit, University of Bristol, UK. a.elhakeem@bristol.ac.uk
Johan Lerbech Vinther Section of Epidemiology, Department of Public Health, University of Copenhagen, Copenhagen, Denmark. johan.vinther@sund.ku.dk;
Demetris Avraam, Population Health Sciences Institute, Newcastle University, UK.
Demetris.Avraam@newcastle.ac.uk ORCID ID: <https://orcid.org/0000-0001-8908-2441>
Paula Carrasco Espi Department of Medicine, Universitat Jaume I, Castellón, Spain; Epidemiology and Environmental Health Joint Research Unit FISABIO-Universitat Jaume I-Universitat de València, Valencia, Spain. pcarrasc@uji.es
Lucinda Calas, Université Paris Cité, Inserm, INRAE, Centre of Research in Epidemiology and Statistics (CRESS), F-75004 Paris, France. lucinda.calas@inserm.fr
Marloes Cardol, Department of Epidemiology, University of Groningen, University Medical Center Groningen, Groningen, The Netherlands. m.cardol@umcg.nl
Marie-Aline Charles Marie-Aline Charles Joint unit Elfe, Ined, Inserm, EFS, Aubervilliers, France. marie-aline.charles@inserm.fr ORCID: 0000-0003-4025-4390
Eva Corpeleijn, Department of Epidemiology, University of Groningen, University Medical Center Groningen, Groningen, The Netherlands. e.corpeleijn@umcg.nl ORCID ID [0000-0002-2974-3305](https://orcid.org/0000-0002-2974-3305)
Sarah Crozier, MRC Lifecourse Epidemiology Centre, University of Southampton, Southampton General Hospital Southampton, SO16 6YD UK. src@mrc.soton.ac.uk ORCID: 0000-0002-9524-1127
Montserrat de Castro, ISGlobal, Barcelona, Spain. Universitat Pompeu Fabra (UPF), Barcelona, Spain. Spanish Consortium for Research on Epidemiology and Public Health (CIBERESP), Madrid, Spain. montserrat.decastro@isglobal.org ORCID: 0000-0001-6547-5953
Marisa Estarlich, Department of Infirmary and Chiropody, University of Valencia, Valencia, Spain. Joint Research Unit in Epidemiology, Environment and Health FISABIO-University of Valencia - Universitat Jaume I, Valencia, Spain. Spanish Consortium for Research On Epidemiology and Public Health (CIBERESP), Instituto de Salud Carlos III, Madrid, Spain. m.luisa.estarlich@uv.es ORCID ID: 0000-0001-9818-2663
Amanda Fernandes ISGlobal, Barcelona, Spain. Universitat Pompeu Fabra (UPF), Barcelona, Spain. Spanish Consortium for Research on Epidemiology and Public Health (CIBERESP), Madrid, Spain. amanda.fernandes@isglobal.org ORCID: 0000-0002-1823-3473
Serena Fossatti ISGlobal, Barcelona, Spain. Universitat Pompeu Fabra (UPF), Barcelona, Spain. Spanish Consortium for Research on Epidemiology and Public Health (CIBERESP), Madrid, Spain. serena.fossatti@isglobal.org
Dariusz Gruszfeld, Neonatal Dept., Children's Memorial Health Institute, Warsaw, Poland. D.Gruszfeld@IPCZD.PL ORCID: 0000-0002-2414-4928
Kathrin Guerlich Division of Metabolic and Nutritional Medicine, Department of Pediatrics, Dr. von Hauner Children's Hospital, University Hospital, LMU Munich, Germany. Kathrin.Guerlich@med.uni-muenchen.de ORCID-ID: 0000-0001-5471-3215
Veit Grote, Division of Metabolic and Nutritional Medicine, Department of Pediatrics, Dr. von Hauner Children's Hospital, University Hospital, LMU Munich, Munich, Germany. veit.grote@med.lmu.de ORCID-ID: 0000-0001-7168-2385
Sido Haakma, UMCG Genetics Department, University Medical Centre Groningen, Genetics Department (GCC - Genomic Coordination Centre), Groningen, The Netherlands. s.haakma@rug.nl ORCID-ID: 0000-0003-1278-9144
Jennifer R. Harris, Centre for Fertility and Health, Norwegian Institute of Public Health, Oslo, Norway. JenniferRuth.Harris@fhi.no ORCID: 000-0003-3249-8918
Barbara Heude, Université Paris Cité, Inserm, INRAE, Centre of Research in Epidemiology and Statistics (CRESS) , F-75004 Paris, France. barbara.heude@inserm.fr ORCID: 0000-0002-1565-1629
Rae-Chi Huang Nutrition & Health Innovation Research Institute, Edith Cowan University, Australia. Rae-Chi.Huang@telethonkids.org.au ORCID: 0000-0002-8464-6639
Jesús Ibarluzea, Spanish Consortium for Research on Epidemiology and Public Health (CIBERESP); University of the Basque Country (UPV/EHU); Biodonostia, Environmental Epidemiology and Child Development Group;

NOTE: This preprint reports new research that has not been certified by peer review and should not be used to guide clinical practice.

Health Department of Basque Government, Sub-directorate of Public Health of Gipuzkoa, Spain. mambien3-san@euskadi.eus

Hazel Inskip MRC Lifecourse Epidemiology Centre, University of Southampton, Southampton General Hospital Southampton, SO16 6YD UK. hmi@mrc.soton.ac.uk ORCID: 0000-0001-8897-1749

Vincent Jaddoe Department of Pediatrics, Erasmus MC, University Medical Center Rotterdam, The Generation R Study Group, (Na 29-18), PO Box 2040, 3000 CA, Rotterdam, The Netherlands; Generation R Study Group, Erasmus MC, University Medical Center Rotterdam, PO Box 2040, 3000 CA, Rotterdam, The Netherlands. v.jaddoe@erasmusmc.nl ORCID: 0000-0003-2939-0041

Berthold Koletzko, LMU – Ludwig Maximilians Universität Munich, Dept. Pediatrics, Dr. von Hauner Children's Hospital, LMU University Hospitals Munich, Germany. Berthold.Koletzko@med.uni-muenchen.de

Sandrine Lioret, Université Paris Cité, Inserm, INRAE, Centre of Research in Epidemiology and Statistics (CRESS), F-75004 Paris, France. sandrine.lioret@inserm.fr ORCID: 0000-0002-2483-7820

Veronica Luque, Universitat Rovira i Virgili, Pediatric Nutrition and Development Research Unit, Serra Hunter Fellow, IISPV. veronica.luque@urv.cat

Yannis Manios, Department of Nutrition and Dietetics, School of Health Science and Education, Harokopio University, Athens, Greece; Institute of Agri-food and Life Sciences, Hellenic Mediterranean University Research Centre, Heraklion, Greece. manios@hua.com ORCID ID: 0000-0001-6486-114X

Giovenale Moirano, Cancer Epidemiology Unit, Department of Medical Sciences, University of Turin, Italy. giovenale.moirano@unito.it ORCID ID: 0000-0001-8748-3321

George Moschonis, Department of Food, Nutrition and Dietetics, School of Allied Health, Human Services and Sport, La Trobe University, Australia. g.moschonis@latrobe.edu.au ORCID ID: 0000-0003-3009-6675

Johanna Nader Department of Genetics and Bioinformatics, Division of Health Data and Digitalisation, Norwegian Institute of Public Health, Oslo, Norway. JohannaLuciaThorbjornsrud.Nader@fhi.no ORCID ID: 0000-0002-2045-1269

Mark Nieuwenhuijsen, ISGlobal, Barcelona, Spain. Universitat Pompeu Fabra (UPF), Barcelona, Spain. Spanish Consortium for Research on Epidemiology and Public Health (CIBERESP), Madrid, Spain. mark.nieuwenhuijsen@isglobal.org

Anne-Marie Nybo-Andersen, Section of Epidemiology, Department of Public Health, University of Copenhagen, Copenhagen, Denmark. amny@sund.ku.dk ORCID ID: 0000-0002-4296-8488

Rosmary McEachen, Bradford Institute for Health Research, Bradford Teaching Hospitals NHS Foundation Trust, Bradford, UK. Rosie.McEachan@bthft.nhs.uk ORCID ID: 0000-0003-1302-6675

Angela Pinot de Moira, Section of Epidemiology, Department of Public Health, University of Copenhagen, Copenhagen, Denmark. anpi@sund.ku.dk ORCID ID: 0000-0003-3593-8472

Maja Popovic, Cancer Epidemiology Unit, Department of Medical Sciences, University of Turin, Italy. maja.popovic@unito.it ORCID ID: 0000-0003-4500-6572

Theodosia Salika, MRC Lifecourse Epidemiology Centre, University of Southampton, Southampton General Hospital, Southampton, SO16 6YD UK. ts@mrc.soton.ac.uk

Theano Roumeliotaki, Department of Social Medicine, University of Crete, Greece. roumeliot@uoc.gr

Loreto Santa Marina, Spanish Consortium for Research on Epidemiology and Public Health (CIBEREP); Biodonostia, Environmental Epidemiology and Child Development Group; Health Department of Basque Government, Sub-directorate of Public Health of Gipuzkoa, Spain. ambien4ss-san@euskadi.eus

Susana Santos The Generation R Study Group, Erasmus MC, University Medical Center Rotterdam, Rotterdam, the Netherlands; Department of Pediatrics, Erasmus MC – Sophia Children's Hospital, University Medical Center Rotterdam, Rotterdam, the Netherlands; EPIUnit - Instituto de Saúde Pública, Universidade do Porto, Porto, Portugal; Laboratório para a Investigação Integrativa e Translacional em Saúde Populacional (ITR), Porto, Portugal. s.dasilvasantos@erasmusmc.nl ORCID ID: 0000-0003-0613-3181

Sylvain Serbert, Center for life-course health research; faculty of Medicine, University of Oulu, Oulu, Finland. Sylvain.Seibert@oulu.fi ORCID ID: 0000-0001-6681-6983

Evangelia Tzorovili, Pragmatic Clinical Trials Unit, Centre for Evaluation and Methods, Wolfson Institute of Population Health, Queen Mary University of London, London, UK; Department of Nutrition and Dietetics, School of Health Science and Education, Harokopio University, Athens, Greece. evangeliatzo@gmail.com ORCID ID: 0000-0001-7051-5286

Marina Vafeiadi, Department of Social Medicine, University of Crete, Greece. bafom@uoc.gr

Elvira Verduci, Department of Pediatrics Ospedale dei Bambini Vittore Buzzi di Milano, Università degli Studi di Milano, Italy. elvira.verduci@unimi.it

Martine Vrijheid, ISGlobal, Barcelona, Spain; Universitat Pompeu Fabra (UPF), Barcelona, Spain; CIBER Epidemiología y Salud Pública (CIBERESP), Spain. martine.vrijheid@isglobal.org ORCID ID: 000-0002-7090-1758.

Marieke Welten Department of Pediatrics, Erasmus MC, University Medical Center Rotterdam, The Generation R Study Group, (Na 29-18), PO Box 2040, 3000 CA, Rotterdam, The Netherlands; Generation R Study Group, Erasmus MC, University Medical Center Rotterdam, PO Box 2040, 3000 CA, Rotterdam, The Netherlands. m.welten@erasmusmc.nl

ORCID ID: <https://orcid.org/0000-0003-4351-3757>

John Wright, Bradford Institute for Health Research, Bradford Teaching Hospitals NHS Foundation Trust, Bradford, UK 0000-0001-9572-7293 John.Wright@bthft.nhs.uk

Tiffany C Yang, Bradford Institute for Health Research, Bradford Teaching Hospitals NHS Foundation Trust, Bradford, UK 0000-0003-4549-7850 tiffany.Yang@bthft.nhs.uk

Daniela Zugna, Cancer Epidemiology Unit, Department of Medical Sciences, University of Turin, Italy. daniela.zugna@unito.it ORCID ID:

Deborah Lawlor, Integrative Epidemiology Unit, University of Bristol, UK. Orcid ID: 0000-0002-6793-2262. D.A.Lawlor@bristol.ac.uk

Details of the full LifeCycle consortia are provided in Supplementary Materials S1.

Target journal: European Journal of Epidemiology

Abstract

Background: International sharing of cohort data for research is important and challenging. The LifeCycle project aimed to harmonise data across birth cohorts and develop methods for efficient federated analyses of early life stressors on offspring outcomes. **Aim:** To explore feasibility of federated analyses of associations between four different types of pregnancy exposures (maternal education, area deprivation, proximity to green space and gestational diabetes) with offspring BMI from infancy to 17 years. **Methods:** We used harmonised exposure and outcome data from 17 cohorts (n=200,650 mother-child pairs) from the EU Child Cohort Network. For each child, we derived BMI at five age periods: (i) 0-1 years, (ii) 2-3, (iii) 4-7, (iv) 8-13 and (v) 14-17 years. Associations were estimated using linear regression via one-stage individual participant data meta-analysis using the federated analysis platform DataSHIELD. **Results:** Associations between lower maternal education and higher child BMI emerged from age 4 years and increased with age (difference in BMI z-score comparing low with high education age 0-1 years = 0.02 [95% CI 0.00, 0.03], 2-3 years = 0.01 [CI -0.02, 0.04], 4-7 years = 0.14 [CI 0.13, 0.16], 8-13 years = 0.22 [CI 0.20, 0.24], 14-17 years = 0.20 [CI 0.16, 0.23]). A similar pattern was found for area deprivation. Gestational diabetes was positively associated with BMI from 8 years (8-13 years = 0.17 [CI 0.10, 0.24], 14-17 years = 0.012 [CI -0.13, 0.38]) but not at younger ages. The normalised difference vegetation index measure of maternal proximity to green space was weakly associated with higher BMI in the first year of life but not at older ages. **Conclusions:** Associations between maternal education, area-based socioeconomic position and GDM with BMI increased with age. Maternal proximity to green space was not associated with offspring BMI, other than a weak association in infancy. Opportunities and challenges of cross-cohort federated analyses are discussed.

Keywords

BMI, maternal education, area deprivation, green spaces, gestational diabetes, cohort data sharing, federated analyses

Introduction

Prospective cohort studies can contribute to numerous important health and social science research questions, but they are resource intensive (society, funder and participants). Over recent decades, national and international funders and cohort data custodians have emphasised the importance of data sharing across cohorts [1-4]. This provides economic efficiency (avoiding unnecessary new data collection), enables replication and triangulation of findings across different studies, increases the period of the life course that can be studied for repeated measures, and increases statistical power particularly for rare outcomes. Some government funders, including the UK Economic and Social Research Council and Medical Research Council, and the US National Institute of Health, mandate such data sharing whilst recognising the challenges of governance and custodian responsibilities [2, 3].

To help address these issues, the EU Horizon 2020 funded LifeCycle project has harmonised data across international birth cohorts to tackle key research questions about the potential effects of early life stressors on health from infancy through to adulthood [5, 6]. The LifeCycle project has established an open and sustainable network (The EU Child Cohort Network; ECCN), that currently brings together 20 pregnancy and childhood cohorts across 12 countries in Europe and Australia comprising more than 250,000 participants. It is designed in such a way that new harmonized data can be added to the repertoire of harmonized measures and other cohorts can join with their data. In addition to increasing power and supporting replication, this network contains extensive repeated-measures data and thus enables researchers to explore how associations might differ across the life course. A key innovation of the ECCN is implementation of a federated data analysis infrastructure via DataSHIELD, a software solution which enables the remote analysis of data without data being transferred and without researchers being able to view participant-level data [7].

The aim of this paper is to demonstrate the potential of the ECCN by studying associations of maternal exposures with offspring body mass index (BMI) from infancy to early adulthood. BMI was chosen as a suitable outcome for this proof-of-concept study as (i) reducing childhood overweight and obesity is a major global public health challenge, and (ii) it is hypothesised that higher BMI starts to be ‘programmed’ in intrauterine and early infancy [8, 9]. Furthermore, as weight and height are often measured at repeated time points it provides an opportunity to explore potential changes in exposure-BMI outcomes across the life course. Despite repeated measurements of BMI in many cohorts, few studies have systematically explored the age at which associations between key exposures and BMI emerge and how they change as children age. This is likely due to the lack of data in sufficiently large numbers at older ages, something that the ECCN is well-placed to address.

For this proof-of-concept study we chose four different types of pregnancy-related exposure each of which have been hypothesised to potentially influence offspring BMI, and that together could demonstrate challenges and opportunities of harmonisation and federated analyses with different types of data. These exposures are briefly summarised below.

Individual and area based socioeconomic position (SEP). Lower maternal SEP at the time of pregnancy and at birth is associated with higher child BMI in medium and high-income countries [10-15]. SEP could influence childhood BMI via family factors, including through exposure to an obesogenic environment [16-18]. Families with lower income may have a greater reliance on cheaper foods with higher energy density, and those living in deprived areas may have a greater exposure to unhealthy food outlets and reduced opportunities for exercise [19-22]. Whilst studies have consistently found lower family SEP to be associated with higher child BMI, evidence regarding the age at which these inequalities emerge and the course they take is not consistent. [10-14, 23, 24]. Studies have also reported that living in a more deprived neighbourhood is associated with higher BMI and overweight/obesity after adjusting for family-level SEP but again there is limited evidence for the age at which these associations emerge or how they change with age [24, 25].

Residential Proximity to green space. Whilst deprived neighbourhoods often contain lower levels of surrounding greenness this is not always the case [26], and thus it is important to explore the impact of proximity to greenness separately. Maternal availability of green spaces could influence offspring BMI via increased physical activity during pregnancy, stress reduction or reduced exposure to pollution [27, 28]. As the child is likely to live in the same area in early life there could also be postnatal effects related to child physical activity, outdoor play, stress and exposure to air pollution. Some studies have reported that higher postnatal exposure to green spaces is associated with lower BMI but evidence is not conclusive [29-31]. Whilst increased prenatal exposure to green spaces has been consistently associated with higher birth weight [32, 33], little is known about associations with BMI at older ages [34].

Gestational Diabetes Mellitus (GDM, defined as hyperglycaemia in pregnancy) [35] is robustly associated with higher mean birth weight, macrosomia (high birth weight) and large for gestational age, with recent evidence showing that increased fetal growth can occur earlier than the timing of the GDM diagnosis [36, 37] and Mendelian randomization suggesting a potential causal effect [38, 39]. Higher birth weight is in turn associated with higher future offspring BMI, fat mass and lean mass [40, 41] thus it has been proposed that intrauterine fetal overgrowth related to higher maternal circulating glucose may result in lifelong higher offspring BMI [42, 43]. However, few studies have explored whether any association of GDM with offspring BMI changes as the offspring age. This is important as a lasting effect into older age and/or a cumulative (increasing) effect across both childhood and adulthood might lead to higher risk of adverse adult cardiometabolic outcomes than association that is limited only to childhood [44].

Methods

Inclusion criteria and participating cohorts

Pregnancy and birth cohort studies from the ECCN were eligible to participate if they (i) had information on at least one of the four exposures and BMI measured at a minimum of one time point, (ii) the study was approved by their institutional review boards, and (iii) the data were available for analysis via DataSHIELD. Further details of each cohort can be found in Jaddoe et al. [5] and each cohort's profile paper referenced below. All 17 core LifeCycle cohorts were invited, plus one additional cohort from the wider LifeCycle network which had harmonised data available (The Healthy Growth Study, HGS) [45]. Of these 18 studies, 17 were able to participate: Avon Longitudinal Study of Parents and Children (ALSPAC, University of Bristol) [46, 47], Born in Bradford (BiB, Bradford Institute for Health Research, Bradford Teaching Hospitals NHS Foundation Trust) [48], European Childhood Obesity Project Trial (CHOP, University of Munich and collaborators) [49], Danish National Birth Cohort (DNBC, University of Copenhagen) [50], Etude des Déterminants pré- et postnatals du développement et de la santé de l'Enfant, Nancy & Poitiers (EDEN, French Institute for Medical Research and Health) [51], Etude Longitudinale Française depuis l'Enfance (ELFE, French Institute for Medical Research and Health) [52], Groningen Expert Center for Kids with Obesity (GECKO, University of Groningen) [53], Generation Rotterdam (GEN-R, Erasmus MC) [54], Infancia y Medio Ambiente Gipuzkoa, Sabadell & Valencia (INMA, Barcelona Institute for Global Health) [55], Norwegian Mother, Father and Child Cohort (MoBa, Norwegian Institute of Public Health) [56, 57], North Finland Birth Cohort 1966 (NFBC1966, University of Oulu) [58], North Finland Birth Cohort 1986 (NFBC1986, University of Oulu) [59], Nascita e INFanzia: gli Effetti dell'Ambiente (NINFEA, University of Turin) [60], The Raine study (Raine, The University of Western Australia) [61], Rhea (University of Crete) [62], The Southampton Women's Survey (SWS, University of Southampton) [63] and The Healthy Growth Study, HGS) [45]

The analysis sample thus consisted of 17 cohorts with a maximum sample size of $n = 200,560$ (Figure 1). All participants gave written informed consent and ethical approval was granted by local ethics boards (Supplementary Materials S1). The analysis plan can be viewed at <https://osf.io/58vau/>.

Exposures

Maternal education at birth

SEP is a complex exposure encompassing several different domains of family resources with maternal education at birth being a commonly used indicator. A harmonised maternal education variable was created in each cohort based on the International Standard Classification of Education 97 (ISCED-97) and consisted of three categories: Low (No education to lower secondary; ISCED-97 categories 0-2), Medium (Upper and post-secondary; ISCED-97 categories 3-4), High (Degree and above; ISCED-97 categories 5-6) [64]. Data was available in all cohorts.

Area deprivation

Area deprivation in pregnancy was estimated using country-specific deprivation indices (e.g Index of Multiple Deprivation; full details provided in Table S1). A harmonised ordinal variable was derived indicating the within-cohort tertile of deprivation based on residential address (low, medium, high). Data was available for nine cohorts (ALSPAC, BiB, DNBC, EDEN, GEN-R, INMA, MoBa, NINFEA & Rhea).

Green spaces

Exposure to green space during pregnancy was captured using Normalized Difference Vegetation Index (NDVI) within a 300m buffer from the residential address using Geographic Information System approaches previously

described [65]. NDVI (range 0-1) quantifies vegetation by measuring the difference between near-infrared and red-light reflection based on satellite imagery. Extremely low values (0 - 0.1) indicate areas of barren rock, sand or snow; moderate values (0.2 - 0.5) indicate sparse vegetation such as shrubs and grasslands, whilst high values (0.6 - 1) indicate dense vegetation [66]. Data was available for the same nine cohorts as area deprivation.

Gestational diabetes

A binary variable indicating the presence or absence of evidence for GDM was harmonised for each cohort based either on extraction from clinical records or maternal self-report (Table S2). For most of the included cohorts at the time of pregnancy no universal diagnostic test was used, meaning that selective misclassification of some women with GDM being treated as 'healthy', particularly if they had no clear risk factors for GDM, is possible. To test this, we performed a sensitivity analysis only in those studies in which all women in the sample had a blood measure of hyperglycaemia, including HbA1c, fasting or random glucose, oral glucose challenge or tolerance test (BiB & Eden). For the main analyses, data was available for all cohorts except HGS, NFBC66 and NFBC86.

Outcome

The outcome was offspring BMI z-scores based on either clinic or parental reported height and weight measurements (Table S3). Sex-and-age specific z-scores were estimated per month for BMI using external WHO standards [67] and references [68] excluding observations ± 5 standard deviations from the population median. We defined five age periods *a priori*: (i) 0 to 1 years, (ii) 2 to 3 years, (iii) 4 to 7 years, (iv) 8 to 13 years, (v) 14 to 17 years. These represent key developmental periods of change (early infancy, adiposity rebound, puberty and late adolescence). If participants had more than one measurement within an age bracket we used the earliest recorded measurement.

Confounders

We defined confounders as any characteristic that was a known or plausible causal risk factor for the maternal exposure of interest and offspring BMI. We used Directed Acyclic Graphs (DAGs) to depict confounders for each analysis (Figure S1). All confounders were assessed via self-report except pre-pregnancy BMI (self-report or clinical measurement). In the main models, for analyses of maternal education with offspring BMI no confounders were included as we did not identify plausible causes of variation in both maternal education and offspring BMI. For area deprivation we adjusted for potential confounding by maternal education. For analyses with NDVI as exposure we adjusted for maternal education, area deprivation and parity. For analyses with GDM as the exposure we adjusted for maternal education, maternal age at birth (years), maternal pre-pregnancy BMI (kg/m^2), parity (nulliparous, multiparous) and maternal smoking during pregnancy (yes/no). In addition, all analyses were adjusted for cohort, child sex and age at weight and height measurements (months) to improve statistical precision. All cohorts had some available data on the above confounders. Maternal ethnicity also fit our definition of a confounder for all exposures but was only available (defined as Western vs other) in 8 of the 17 cohorts (ALSPAC, BiB, CHOP, ELFE, GECKO, GEN-R, INMA & Raine; maximum N = 40,019 representing 20% of the 200,560 participants). In a sensitivity analyses we therefore repeated all association analyses in this subset of cohorts with additional adjustment for ethnicity.

Federated analyses using DataSHIELD

All analyses were performed using DataSHIELD version 6.1.0 and R version 3.5.2. Briefly, each participating cohort stored their harmonised data on a local server protected by a firewall, over which they maintain full control. Researchers granted permission to access the data use DataSHIELD to conduct remote analysis of individual participant data. The innovation of DataSHIELD is that it provides data security by preventing researchers viewing, copying or transferring any data. Instead, analysis commands are performed on each server and only non-disclosive summary statistics (cohort-specific or pooled) returned to the researcher.

Associations between each exposure and BMI at each age period were tested using linear regression and one-stage Individual Participant Data (IPD) meta-analysis. All regression models included a dummy variable for cohort and were adjusted for confounders as described above. We repeated analyses using two-stage IPD random effects meta-analysis in order to describe estimates within each cohort and explore between-cohort heterogeneity. We tested for sex differences in exposure-outcome associations by testing for sex by exposure interactions and repeating analyses stratified by sex. Finally, we assessed the influence of two large cohorts (DNBC & MoBa) by repeating analyses with these cohorts excluded. Analysis code can be viewed at <https://github.com/lifecycle-project/wp4-bmi-poc>.

Missing data

The analysis sample consisted of participants with available data on at least one exposure and BMI in at least one outcome period. There were minimal differences between participants in the analysis sample and those excluded, except included participants were of slightly lower education and had lower rates of smoking in pregnancy (Table S4). Missing data were handled through complete case analysis, with the percentage of participants who were complete cases ranging from 10% to 65% (Table S5). Estimates from linear regression models using complete cases are unbiased if the chance of being missing is not associated with the outcome after adjusting for covariates [69]. To explore this assumption, for each exposure-outcome analysis we derived a variable indicating whether each participant had complete data. We then regressed this variable on child BMI adjusting for non-missing covariates (Figure S2). For all exposures, associations between BMI at all ages and the chance of having complete data were close to null.

Results

Participants' characteristics

There were large differences between cohorts in the education level of mothers, with MoBa and NINFEA containing mostly highly educated mothers whilst BiB, NFBC66 and Raine contained mothers with lowest levels of education (Figure 2a). Nine cohorts had data on area deprivation, and for some cohorts (DNBC, MoBa, NINFEA) the exposure was only derived for a subset of the full cohort within specific urban areas (Figure 2b). INMA, NINFEA and Rhea had the lowest values for NDVI indicating exposure to lower levels of vegetation (Figure 2c). There was marked heterogeneity between cohorts in estimated rates of GDM (e.g. Gen-R = 0.8%, NINFEA = 8.1%; Figure 2d). Cohort-specific information on covariates and child BMI, height, weight and age at measurement are shown in Tables S6-10.

Associations between pregnancy exposures and child BMI

Figures 3-6 show associations between each exposure and BMI z-scores within each age period. At ages 0-1 and 2-3 years associations between maternal education and BMI were close to null; however, at older ages a consistent pattern emerged with lower maternal education associated with higher childhood BMI (Figure 3). There was some evidence of a linear relationship as the magnitude of the association increased across categories of maternal education. Results were consistent when using 2-stage IPD (Figures S2a & S2b). Whilst there was considerable heterogeneity between cohorts (I^2 range 0-92%) the direction of association was largely consistent for all cohorts.

A similar pattern was observed for area deprivation in pregnancy. At younger ages there was minimal evidence of an association between deprivation and childhood BMI; however higher deprivation was associated with higher BMI from age 4-7 years (Figure 4). There was again some evidence of a linear relationship with associations greater where mothers lived in highly deprived areas than for areas with medium deprivation. Findings were similar using 2-stage IPD with the direction of associations largely consistent across cohorts (Figures S3a & S3b). Heterogeneity was moderate (I^2 range 0-53%).

At ages 0-1 higher NDVI in pregnancy was associated with slightly higher BMI, however at older ages associations were close to null (Figure 5). Repeating analyses using 2-stage IPD showed considerable heterogeneity between cohorts (I^2 range 0-66%): for example at age 2-3 higher NDVI was associated with higher BMI in BiB but lower BMI in Rhea (Figure S4).

Between ages 0-7 associations between GDM and childhood BMI was close to null; however at ages 8-13 GDM was associated with higher BMI (Figure 6). These results were replicated using 2-stage IPD with 10 out of 13 cohorts showing a positive association at ages 8-13 ($I^2 = 0 - 73%$; Figure S5). At ages 14-17 associations attenuated towards null, however within this age period only three cohorts had available data.

Sensitivity and subgroup analyses

To test for potential confounding by indication, we repeated analyses for GDM comparing cohorts where assessment was via a universal blood-based glucose test vs self-report or non-universal test, and found estimates to be very similar (Table S11). We also explored sex differences by repeating each analysis separately in males and females. Associations between maternal education and BMI were stronger in females at older ages whilst the association between GDM and BMI at ages 8-13 was stronger in males (Table S12 & S13). We additionally adjusted for ethnicity in the subset of up to 40,019 participants with available data, which attenuated associations of maternal education and area deprivation towards the null (Table S14). Finally we repeated analyses removing the two largest cohorts (DNBC and MoBa; Table S15), however this did not change the direction of any associations or markedly change their magnitude.

Discussion

In this meta-analysis of 16 prospective and one retrospective cohort study with a maximum sample of 200,560 children we explored associations between key pregnancy exposures and BMI across childhood. These analyses demonstrate the feasibility and utility of federated analyses of harmonised data from large numbers of participants across many international cohorts. Such federated analyses remove the need for data transfer and in this example facilitate investigating the potential change in associations of early life exposures with outcomes measured across the life course. We found consistent evidence that lower maternal education and higher area deprivation were associated with increased childhood BMI. This association emerged from ages 4-7 and increased in magnitude with age. Greater exposure to green vegetation was associated with slightly higher BMI in the first year of life, however associations at older ages were close to null. We also found evidence that GDM was associated with higher child BMI at ages 8-13 but not at younger ages.

Opportunities and challenges of federated data analysis

Using data from the ECCN provided both opportunities and challenges. The large quantity of repeated measures data enabled us to explore how associations between early exposures and BMI changed with age, and the considerable sample size gave us more precise estimates, especially important for categorical outcomes (GDM). For many variables (e.g green spaces) harmonisation of data according to a common framework ensured comparability across cohorts. Including 17 cohorts also allowed us to explore the consistency of findings across populations which may have different confounding structures. In contrast to a standard meta-analysis, an IPD approach enabled us to define the same outcome windows in each cohort, select our confounders, and avoid potential publication bias. Federated analysis using DataSHIELD also provided practical benefits. As one researcher can remotely conduct analysis on all cohorts, it ensures that the analyses are done identically in all studies and removes the need for individual researchers within each cohort to run analysis scripts. It also provides flexibility if-and-when co-authors or reviewers ask for changes to the analysis. Rather than needing to circulate a new analysis script (in this case requiring 17 researchers re-running analysis), the lead researcher can modify one script and re-run all analyses themselves.

This approach also has limitations. Whilst some harmonisations are straightforward (e.g. BMI), for other variables the data comes to represent the lowest common denominator of information. For example, maternal education was reduced to three categories from more granular detail within many of the cohorts. Information on area deprivation also varied considerably across cohort, and harmonisation could only be achieved by defining within-cohort tertiles of deprivation and thus only provides information about relative deprivation within each cohort. Maternal ethnicity (a potential key confounder) was harmonised to a crude measure of Western vs other because many of the cohorts in LifeCycle were predominantly of White European ancestry or did not record more detailed information. One pitfall of this loss of information in covariates is that it may increase the risk of residual confounding. Whilst additional analysis could be performed separately in cohorts with greater information, this would add considerable workload and lose the advantages of federated analysis.

Using DataSHIELD for analysis also has limitations. Only a small subset of analysis packages are available in DataSHIELD, and whilst the functionality is ever evolving, at the time of writing multivariable imputation was not available. We were therefore limited to complete case analyses with complete cases reflecting between 10% to 66% of the initial cohort sample across studies and age categories. However, we found little evidence that the chance of missingness was associated with the outcome, and under these conditions, attrition should not bias findings using complete case analysis [69]. Additionally, when this paper was conceived linear mixed models were unavailable in DataSHIELD. Future research could use these methods to take account of the repeated measures data available within LifeCYCLE. A further limitation of federated analysis is the requirement for investment in stable server infrastructure. Finally, the LifeCycle project is interested in potential mediation of early life exposures on later health by epigenomic and metabolomic mechanisms and in causal analyses including using genomic instrumental variables (i.e. Mendelian randomization) but the extent to which such large scale highly correlated data could be accommodated in federated analyses with the approval of data custodians is the subject of ongoing work.

Interpretation of applied illustrative findings

This was a large meta-analysis containing 16 prospective birth cohorts and one retrospective cohort study. Our finding of an inverse socioeconomic gradient in offspring BMI emerged from age 4 and widened with age replicates and extends previous findings. Previous studies using individual cohorts contained within this study (ALSPAC, DNBC, Gen-R, MoBa) have also reported that associations between maternal education and BMI emerge from around age 4 (though cf. EDEN who found a social gradient from one month, especially in girls) [11-

14, 23]. Here we build on these findings by showing that this pattern is consistent across additional EU cohorts and that the strength of these associations increase across childhood. Children born in lower SEP circumstances will be exposed to multiple risk factors for overweight including early exposure to sub-optimal food, increased screen time and inadequate opportunities to exercise [20-22]. One explanation for the increase in inequalities over childhood time is that this early exposure creates behavioural patterns that result in steeper BMI trajectories. Additionally, if a family's SEP status remains stable over time, children from lower SEP backgrounds will continue to be disproportionately exposed to these risks across childhood.

The finding that area deprivation in pregnancy was associated with higher child BMI from age 4 also aligns with previous research. For example, a US study which explored associations between deprivation and obesity from age 2-18 found that associations increased with age and were strongest between ages 11-18 [24]. Adjusting for maternal education in our analyses suggests – not withstanding residual confounding – that neighbourhood may exert an independent effect on obesity to family SEP. In contrast to maternal education, associations emerged slightly later but also increased in magnitude with age. Many children will remain in the same neighbourhood across childhood, thus these findings likely reflect both the specific influence of deprivation in pregnancy and the continued influence of neighbourhood on BMI across childhood (e.g. via prevalence of unhealthy food outlets [21]). Future studies could use repeated measures data on area deprivation to elucidate these pathways.

Our finding that pregnancy exposure to green spaces was associated with slightly higher BMI at ages 0-1 was consistent with previous studies reporting an association between prenatal green space exposure and birth weight [32, 33, 70]. There are multiple potential mechanisms for this effect, for example reduced exposure to air pollution [27], or improved maternal mental or physical health due to increased opportunities to exercise [28]. However, we failed to replicate the findings of a recent study which reported that prenatal exposure to green spaces was associated with lower BMI at age 5 [34]. We found considerable heterogeneity between cohorts – for example between ages 4-7 higher NDVI exposure in pregnancy was associated with lower BMI in Gen-R (Netherlands) but higher BMI in ALSPAC and BiB (UK). These differences remained after adjusting for ethnicity in these cohorts as a potential confounder. Social patterning of urban environment has been shown to differ across EU cities [71], so these cohort differences may be due to residual confounding that differs across cohort. Furthermore, our measure of exposure to green spaces (NDVI) provides information about the average level of vegetation within a buffer, but does not provide information about the accessibility or quality of spaces (e.g. facilities, safety) or the opportunities to engage in physical activities which may be more important determinants of BMI [72].

Exposure to higher maternal pregnancy glucose results in faster fetal growth and larger birth size, with Mendelian randomization analyses suggesting this may be causal [38, 39]. Within sibship analyses, that control for family level confounding, including parental BMI, also support a potential causal effect of intrauterine exposure to higher maternal glucose levels, particularly in early adulthood [73, 74]. Observationally in the Born in Bradford study (one of the cohorts included here), the association of maternal GDM (assessed universally by a diagnostic OGTT) and more rapid fetal growth [75, 76] (using repeat ultrasound scan data) and birth weight was no longer apparent in relation to BMI measured at ~ 4years [77]. Similar results have been reported in other cohorts not included in LifeCycle, including that associations of GDM with birthweight attenuate in infancy and up to 3 to 4 years of age [78, 79]. Systematic reviews show between study heterogeneity and poor adjustment for confounders (including parental BMI) and most of the contributing studies explore mean BMI (or overweight / obesity) assessed in childhood [80, 81]. Thus, it is possible that higher maternal BMI in pregnancy relates to higher birth weight and subsequently with BMI from later childhood and into adulthood as we find here in confounder adjusted analyses, though exploring this with BMI trajectories in larger numbers to older ages and with life course Mendelian randomization would be valuable. For all but two cohorts, GDM was not assessed via universal screening and thus there is a high risk of confounding by indication. However, a sensitivity analysis showed similar estimates for the cohorts with (Born in Bradford, EDEN) and without universal screening.

We also found evidence that associations between maternal education and BMI were stronger for girls compared to boys at older ages. Body composition differs between boys and girls, with higher percentage of fat mass in girls [82], therefore it is plausible that girls respond more than boys to an obesogenic environment, which is related to SEP. Furthermore, obesogenic stimuli (e.g. physical activity) are often not equally distributed across sexes [83]. We also observed stronger associations between GDM and BMI for boys rather than girls. This does not fit with the above hypotheses, but is coherent with some earlier reports of sex-specific associations [84, 85].

Summary & future implications

In this study we have illustrated the scientific gains of collaboration and data sharing between international birth cohorts. We have demonstrated how federated analysis using the ECCN provides exciting opportunities to tackle key research questions, replicate findings across cohorts and have the power to explore how associations change across age. In our specific example, our findings show consistent associations between socioeconomic exposures and child BMI that increase with age. We also found evidence of an association between GDM and BMI at older ages, however we only found evidence for an association between exposure to green spaces and BMI within the first year of life. The increasing associations between both family and neighbourhood SEP and BMI as children age highlight the importance of systemic early interventions focused on prevention (e.g. through tackling obesogenic aspects of neighbourhoods) [86]. The ECCN is an open network, and we recommend additional birth cohorts to join the project, and for researchers to make use of this rich data resource.

References

1. Pilat D, Fukasaku Y. OECD principles and guidelines for access to research data from public funding. *Data Science Journal* 2007.
2. Medical Research Council. Guidance on sharing of research data from population and patient studies. 2011.
3. National Institutes of Health. Data management & sharing policy overview. 2023.
4. Social Sciences and Humanities Research Council. Research Data Archiving Policy. 2016. https://www.sshrc-crsh.gc.ca/about-au_sujet/policies-politiques/statements-enonces/edata-donnees_electroniques-eng.aspx. Accessed 10th May 2022.
5. Jaddoe VWV, Felix JF, Andersen A-MN, et al. The LifeCycle Project-EU Child Cohort Network: a federated analysis infrastructure and harmonized data of more than 250,000 children and parents. *European Journal of Epidemiology*. 2020;35(7):709-24. doi:10.1007/s10654-020-00662-z
6. Pinot de Moira A, Haakma S, Strandberg-Larsen K, et al. The EU Child Cohort Network's core data: establishing a set of findable, accessible, interoperable and re-usable (FAIR) variables. *European Journal of Epidemiology*. 2021;36(5):565-80. doi:10.1007/s10654-021-00733-9
7. Gaye A, Marcon Y, Isaeva J, et al. DataSHIELD: taking the analysis to the data, not the data to the analysis. *International Journal of Epidemiology*. 2014;43(6):1929-44. doi:10.1093/ije/dyu188
8. Dodd JM, Turnbull D, McPhee AJ, et al. Antenatal lifestyle advice for women who are overweight or obese: LIMIT randomised trial. *BMJ*. 2014;348:g1285. doi:10.1136/bmj.g1285
bmj.g1285 [pii]
9. Koletzko B, Godfrey KM, Poston L, et al. Nutrition during pregnancy, lactation, and early childhood and its implications for maternal and long-term child health: the EarlyNutrition Project recommendations. *Ann Nutr Metab*. 2019;74:93–106. doi:0.1159/000496471
10. Bramsved R, Regber S, Novak D, Mehlig K, Lissner L, Marild S. Parental education and family income affect birthweight, early longitudinal growth and body mass index development differently. *Acta paediatrica (Oslo, Norway : 1992)*. 2018;107(11):1946-52. doi:10.1111/apa.14215
11. Ballon M, Botton J, Charles MA, et al. Socioeconomic inequalities in weight, height and body mass index from birth to 5 years. *International Journal of Obesity*. 2018;42(9):1671-9. doi:10.1038/s41366-018-0180-4
12. Morgen CS, Andersen PK, Mortensen LH, et al. Socioeconomic disparities in birth weight and body mass index during infancy through age 7 years: a study within the Danish National Birth Cohort. *BMJ Open*. 2017;7(1):e011781. doi:10.1136/bmjopen-2016-011781
13. Howe LD, Tilling K, Galobardes B, Smith GD, Ness AR, Lawlor DA. Socioeconomic disparities in trajectories of adiposity across childhood. *Int J Pediatr Obes*. 2011;6(2-2):e144-53. doi:10.3109/17477166.2010.500387
14. Bouthoorn SH, Wijtzes AI, Jaddoe VW, Hofman A, Raat H, van Lenthe FJ. Development of socioeconomic inequalities in obesity among Dutch pre-school and school-aged children. *Obesity (Silver Spring)*. 2014;22(10):2230-7. doi:10.1002/oby.20843
15. Langnäse K, Mast M, Danielzik S, Spethmann C, Müller MJ. Socioeconomic gradients in body weight of German children reverse direction between the ages of 2 and 6 years. *J Nutr*. 2003;133(3):789-96. doi:10.1093/jn/133.3.789
16. Janssen I, Boyce WF, Simpson K, Pickett W. Influence of individual- and area-level measures of socioeconomic status on obesity, unhealthy eating, and physical inactivity in Canadian adolescents. *Am J Clin Nutr*. 2006;83(1):139-45. doi:10.1093/ajcn/83.1.139
17. Pearson N, Griffiths P, Biddle SJH, Johnston JP, Haycraft E. Individual, behavioural and home environmental factors associated with eating behaviours in young adolescents. *Appetite*. 2017;112:35-43. doi:10.1016/j.appet.2017.01.001
18. Yee AZ, Lwin MO, Ho SS. The influence of parental practices on child promotive and preventive food consumption behaviors: a systematic review and meta-analysis. *Int J Behav Nutr Phys Act*. 2017;14(1):47. doi:10.1186/s12966-017-0501-3

19. Drewnowski A, Darmon N, Briend A. Replacing Fats and Sweets With Vegetables and Fruits—A Question of Cost. *American Journal of Public Health*. 2004;94(9):1555-9. doi:10.2105/ajph.94.9.1555
20. Reidpath DD, Burns C, Garrard J, Mahoney M, Townsend M. An ecological study of the relationship between social and environmental determinants of obesity. *Health & Place*. 2002;8(2):141-5. doi:[https://doi.org/10.1016/S1353-8292\(01\)00028-4](https://doi.org/10.1016/S1353-8292(01)00028-4)
21. Cetateanu A, Jones A. Understanding the relationship between food environments, deprivation and childhood overweight and obesity: evidence from a cross sectional England-wide study. *Health Place*. 2014;27(100):68-76. doi:10.1016/j.healthplace.2014.01.007
22. Pabayo R, Belsky J, Gauvin L, Curtis S. Do area characteristics predict change in moderate-to-vigorous physical activity from ages 11 to 15 years? *Social Science & Medicine*. 2011;72(3):430-8. doi:<https://doi.org/10.1016/j.socscimed.2010.09.039>
23. Mekonnen T, Papadopoulou E, Arah OA, Brantsæter AL, Lien N, Gebremariam MK. Socioeconomic inequalities in children's weight, height and BMI trajectories in Norway. *Scientific Reports*. 2021;11(1):4979. doi:10.1038/s41598-021-84615-w
24. Alvarado SE. Neighborhood disadvantage and obesity across childhood and adolescence: Evidence from the NLSY children and young adults cohort (1986–2010). *Social Science Research*. 2016;57:80-98. doi:<https://doi.org/10.1016/j.ssresearch.2016.01.008>
25. Oliver LN, Hayes MV. Neighbourhood socio-economic status and the prevalence of overweight Canadian children and youth. *Can J Public Health*. 2005;96(6):415-20. doi:10.1007/bf03405180
26. Robinson O, Tamayo I, de Castro M, et al. The Urban Exposome during Pregnancy and Its Socioeconomic Determinants. *Environmental Health Perspectives*. 126(7):077005. doi:10.1289/EHP2862
27. Pedersen M, Giorgis-Allemand L, Bernard C, et al. Ambient air pollution and low birthweight: a European cohort study (ESCAPE). *The Lancet Respiratory Medicine*. 2013;1(9):695-704.
28. Nieuwenhuijsen MJ, Kruize H, Gidlow C, et al. Positive health effects of the natural outdoor environment in typical populations in different regions in Europe (PHENOTYPE): a study programme protocol. *BMJ open*. 2014;4(4):e004951.
29. Petravičienė I, Grazulevičienė R, Andrusaitytė S, Dedele A, Nieuwenhuijsen MJ. Impact of the Social and Natural Environment on Preschool-Age Children Weight. *International journal of environmental research and public health* 2018 doi:10.3390/ijerph15030449.
30. Davdand P, Villanueva CM, Font-Ribera L, et al. Risks and benefits of green spaces for children: a cross-sectional study of associations with sedentary behavior, obesity, asthma, and allergy. *Environ Health Perspect*. 2014;122(12):1329-35. doi:10.1289/ehp.1308038
31. James P, Banay RF, Hart JE, Laden F. Erratum to: A Review of the Health Benefits of Greenness. *Current Epidemiology Reports*. 2015;2(3):218-. doi:10.1007/s40471-015-0044-6
32. Nieuwenhuijsen MJ, Agier L, Basagaña X, et al. Influence of the Urban Exposome on Birth Weight. *Environmental Health Perspectives*. 2019;127(4):047007. doi:doi:10.1289/EHP3971
33. Dzhambov AM, Dimitrova DD, Dimitrakova ED. Association between residential greenness and birth weight: Systematic review and meta-analysis. *Urban Forestry & Urban Greening*. 2014;13(4):621-9. doi:<https://doi.org/10.1016/j.ufug.2014.09.004>
34. de Bont J, Hughes R, Tilling K, et al. Early life exposure to air pollution, green spaces and built environment, and body mass index growth trajectories during the first 5 years of life: A large longitudinal study. *Environmental Pollution*. 2020;266:115266. doi:<https://doi.org/10.1016/j.envpol.2020.115266>
35. WHO. Diagnostic criteria and classification of hyperglycaemia first detected in pregnancy: a World Health Organization Guideline. *Diabetes Res Clin Pract*. 2014;103(3):341-63. doi:10.1016/j.diabres.2013.10.012
36. Brand JS, West J, Tuffnell D, et al. Gestational diabetes and ultrasound-assessed fetal growth in South Asian and White European women: findings from a prospective pregnancy cohort. *BMC Med*. 2018;16(1):203. doi:10.1186/s12916-018-1191-7

37. Sovio U, Murphy HR, Smith GC. Accelerated Fetal Growth Prior to Diagnosis of Gestational Diabetes Mellitus: A Prospective Cohort Study of Nulliparous Women. *Diabetes Care*. 2016;39(6):982-7. doi:10.2337/dc16-0160
38. Tyrrell J, Richmond RC, Palmer TM, et al. Genetic Evidence for Causal Relationships Between Maternal Obesity-Related Traits and Birth Weight. *Jama*. 2016;315(11):1129-40. doi:10.1001/jama.2016.1975
39. Thompson WD, Beaumont RN, Kuang A, et al. Higher maternal adiposity reduces offspring birthweight if associated with a metabolically favourable profile. *Diabetologia*. 2021;64(12):2790-802. doi:10.1007/s00125-021-05570-9
40. Rogers IS, Ness AR, Steer CD, et al. Associations of size at birth and dual-energy X-ray absorptiometry measures of lean and fat mass at 9 to 10 y of age. *Am J Clin Nutr*. 2006;84(4):739-47. doi:10.1093/ajcn/84.4.739
41. Yu ZB, Han SP, Zhu GZ, et al. Birth weight and subsequent risk of obesity: a systematic review and meta-analysis. *Obes Rev*. 2011;12(7):525-42. doi:10.1111/j.1467-789X.2011.00867.x
42. Lawlor DA. The Society for Social Medicine John Pemberton Lecture 2011. Developmental overnutrition—an old hypothesis with new importance?*. *International Journal of Epidemiology*. 2013;42(1):7-29. doi:10.1093/ije/dys209
43. Dabelea D, Hanson RL, Lindsay RS, et al. Intrauterine exposure to diabetes conveys risks for type 2 diabetes and obesity: a study of discordant sibships. *Diabetes*. 2000;49(12):2208-11. doi:10.2337/diabetes.49.12.2208
44. Richardson TG, Sanderson E, Elsworth B, Tilling K, Davey Smith G. Use of genetic variation to separate the effects of early and later life adiposity on disease risk: mendelian randomisation study. *BMJ*. 2020;369:m1203. doi:10.1136/bmj.m1203
45. Moschonis G, Kaliora AC, Karatzi K, et al. Perinatal, sociodemographic and lifestyle correlates of increased total and visceral fat mass levels in schoolchildren in Greece: the Healthy Growth Study. *Public Health Nutrition*. 2017;20(4):660-70. doi:10.1017/S1368980016002640
46. Boyd A, Golding J, Macleod J, et al. Cohort Profile: The 'Children of the 90s'—the index offspring of the Avon Longitudinal Study of Parents and Children. *International Journal of Epidemiology*. 2012;42(1):111-27. doi:10.1093/ije/dys064
47. Fraser A, Macdonald-Wallis C, Tilling K, et al. Cohort Profile: The Avon Longitudinal Study of Parents and Children: ALSPAC mothers cohort. *International Journal of Epidemiology*. 2012;42(1):97-110. doi:10.1093/ije/dys066
48. Wright J, Small N, Raynor P, et al. Cohort Profile: The Born in Bradford multi-ethnic family cohort study. *International Journal of Epidemiology*. 2012;42(4):978-91. doi:10.1093/ije/dys112
49. Group ECOTS. Lower protein in infant formula is associated with lower weight up to age 2 y: a randomized clinical trial. *The American Journal of Clinical Nutrition*. 2009;89(6):1836-45. doi:10.3945/ajcn.2008.27091
50. Olsen J, Melbye M, Olsen SF, et al. The Danish National Birth Cohort - its background, structure and aim. *Scandinavian Journal of Public Health*. 2001;29(4):300-7. doi:10.1177/14034948010290040201
51. Heude B, Forhan A, Slama R, et al. Cohort Profile: The EDEN mother-child cohort on the prenatal and early postnatal determinants of child health and development. *International Journal of Epidemiology*. 2015;45(2):353-63. doi:10.1093/ije/dyv151
52. Charles MA, Thierry X, Lanoe J-L, et al. Cohort Profile: The French national cohort of children (ELFE): birth to 5 years. *International Journal of Epidemiology*. 2019;49(2):368-9j. doi:10.1093/ije/dyz227
53. L'Abée C, Sauer PJ, Damen M, Rake J-P, Cats H, Stolk RP. Cohort Profile: The GECKO Drenthe study, overweight programming during early childhood. *International Journal of Epidemiology*. 2008;37(3):486-9. doi:10.1093/ije/dym218
54. Jaddoe VVW, van Duijn CM, Franco OH, et al. The Generation R Study: design and cohort update 2012. *European Journal of Epidemiology*. 2012;27(9):739-56. doi:10.1007/s10654-012-9735-1

55. Guxens M, Ballester F, Espada M, et al. Cohort Profile: The INMA—INfancia y Medio Ambiente—(Environment and Childhood) Project. *International Journal of Epidemiology*. 2011;41(4):930-40. doi:10.1093/ije/dyr054
56. Magnus P, Irgens LM, Haug K, et al. Cohort profile: The Norwegian Mother and Child Cohort Study (MoBa). *International Journal of Epidemiology*. 2006;35(5):1146-50. doi:10.1093/ije/dyl170
57. Magnus P, Birke C, Vejrup K, et al. Cohort Profile Update: The Norwegian Mother and Child Cohort Study (MoBa). *International Journal of Epidemiology*. 2016;45(2):382-8. doi:10.1093/ije/dyw029
58. Järvelin M-R, Sovio U, King V, et al. Early Life Factors and Blood Pressure at Age 31 Years in the 1966 Northern Finland Birth Cohort. *Hypertension*. 2004;44(6):838-46. doi:10.1161/01.HYP.0000148304.33869.ee
59. Järvelin MR, Hartikainen-Sorri A-L, Rantakallio P. Labour induction policy in hospitals of different levels of specialisation. *BJOG: An International Journal of Obstetrics & Gynaecology*. 1993;100(4):310-5. doi:<https://doi.org/10.1111/j.1471-0528.1993.tb12971.x>
60. Richiardi L, Baussano I, Vizzini L, Douwes J, Pearce N, Merletti F. Feasibility of recruiting a birth cohort through the Internet: the experience of the NINFEA cohort. *European Journal of Epidemiology*. 2007;22(12):831-7. doi:10.1007/s10654-007-9194-2
61. Newnham JP, Evans SF, Michael CA, Stanley FJ, Landau LI. Effects of frequent ultrasound during pregnancy: a randomised controlled trial. *The Lancet*. 1993;342(8876):887-91. doi:[https://doi.org/10.1016/0140-6736\(93\)91944-H](https://doi.org/10.1016/0140-6736(93)91944-H)
62. Chatzi L, Plana E, Daraki V, et al. Metabolic Syndrome in Early Pregnancy and Risk of Preterm Birth. *American Journal of Epidemiology*. 2009;170(7):829-36. doi:10.1093/aje/kwp211
63. Inskip HM, Godfrey KM, Robinson SM, et al. Cohort profile: The Southampton Women's Survey. *International Journal of Epidemiology*. 2005;35(1):42-8. doi:10.1093/ije/dyi202
64. UNESCO United Nations Educational, Scientific and Cultural Organization. *International Standard Classification of Education, ISCED 1997*; Springer; 2003.
65. Maitre L, de Bont J, Casas M, et al. Human Early Life Exposome (HELIX) study: a European population-based exposome cohort. *BMJ Open*. 2018;8(9):e021311. doi:10.1136/bmjopen-2017-021311
66. Weier J. HD. Measuring vegetation (NDVI & EVI). 2000. http://earthobservatory.nasa.gov/Features/MeasuringVegetation/measuring_vegetation_2.php.
67. de Onis M, Lobstein T. Defining obesity risk status in the general childhood population: which cut-offs should we use? *Int J Pediatr Obes*. 2010;5(6):458-60. doi:10.3109/17477161003615583
68. de Onis M, Onyango AW, Borghi E, Siyam A, Nishida C, Siekmann J. Development of a WHO growth reference for school-aged children and adolescents. *Bull World Health Organ*. 2007;85(9):660-7. doi:10.2471/blt.07.043497
69. Hughes RA, Heron J, Sterne JAC, Tilling K. Accounting for missing data in statistical analyses: multiple imputation is not always the answer. *International Journal of Epidemiology*. 2019;48(4):1294-304. doi:10.1093/ije/dyz032
70. Akaraci S, Feng X, Suesse T, Jalaludin B, Astell-Burt T. A Systematic Review and Meta-Analysis of Associations between Green and Blue Spaces and Birth Outcomes. *International Journal of Environmental Research and Public Health*. 2020;17(8):2949.
71. Robinson O, Tamayo I, de Castro M, et al. The Urban Exposome during Pregnancy and Its Socioeconomic Determinants. *Environ Health Perspect*. 2018;126(7):077005. doi:10.1289/ehp2862
72. Markevych I, Schoierer J, Hartig T, et al. Exploring pathways linking greenspace to health: Theoretical and methodological guidance. *Environmental Research*. 2017;158:301-17. doi:<https://doi.org/10.1016/j.envres.2017.06.028>
73. Lawlor DA, Lichtenstein P, Långström N. Association of maternal diabetes mellitus in pregnancy with offspring adiposity into early adulthood: sibling study in a prospective cohort of 280,866 men from 248,293 families. *Circulation*. 2011;123(3):258-65. doi:10.1161/circulationaha.110.980169
74. Lawlor DA, Relton C, Sattar N, Nelson SM. Maternal adiposity—a determinant of perinatal and offspring outcomes? *Nature Reviews Endocrinology*. 2012;8(11):679-88. doi:10.1038/nrendo.2012.176

75. Brand JS, West J, Tuffnell D, et al. Gestational diabetes and ultrasound-assessed fetal growth in South Asian and White European women: findings from a prospective pregnancy cohort. *BMC Medicine*. 2018;16(1):203. doi:10.1186/s12916-018-1191-7
76. Lawlor DA, West J, Fairley L, et al. Pregnancy glycaemia and cord-blood levels of insulin and leptin in Pakistani and white British mother-offspring pairs: findings from a prospective pregnancy cohort. *Diabetologia*. 2014;57(12):2492-500. doi:10.1007/s00125-014-3386-6
77. West J, Santorelli G, Whincup PH, et al. Association of maternal exposures with adiposity at age 4/5 years in white British and Pakistani children: findings from the Born in Bradford study. *Diabetologia*. 2018;61(1):242-52. doi:10.1007/s00125-017-4457-2
78. Ong KK, Diderholm B, Salzano G, et al. Pregnancy insulin, glucose, and BMI contribute to birth outcomes in nondiabetic mothers. *Diabetes Care*. 2008;31(11):2193-7. doi:10.2337/dc08-1111
79. Knight B, Shields BM, Hill A, Powell RJ, Wright D, Hattersley AT. The impact of maternal glycemia and obesity on early postnatal growth in a nondiabetic Caucasian population. *Diabetes Care*. 2007;30(4):777-83. doi:10.2337/dc06-1849
80. Kim SY, England JL, Sharma JA, Njoroge T. Gestational diabetes mellitus and risk of childhood overweight and obesity in offspring: a systematic review. *Exp Diabetes Res*. 2011;2011:541308. doi:10.1155/2011/541308
81. Nehring I, Chmitorz A, Reulen H, von Kries R, Ensenauer R. Gestational diabetes predicts the risk of childhood overweight and abdominal circumference independent of maternal obesity. *Diabet Med*. 2013;30(12):1449-56. doi:10.1111/dme.12286
82. Jackson AS, Stanforth PR, Gagnon J, et al. The effect of sex, age and race on estimating percentage body fat from body mass index: The Heritage Family Study. *Int J Obes Relat Metab Disord*. 2002;26(6):789-96. doi:10.1038/sj.ijo.0802006
83. Guthold R, Stevens GA, Riley LM, Bull FC. Worldwide trends in insufficient physical activity from 2001 to 2016: a pooled analysis of 358 population-based surveys with 1.9 million participants. *The Lancet Global Health*. 2018;6(10):e1077-e86. doi:10.1016/S2214-109X(18)30357-7
84. Li S, Zhu Y, Yeung E, et al. Offspring risk of obesity in childhood, adolescence and adulthood in relation to gestational diabetes mellitus: a sex-specific association. *International journal of epidemiology*. 2017;46(6):2104-. doi:10.1093/ije/dyx211
85. Le Moullec N, Fianu A, Maillard O, et al. Sexual dimorphism in the association between gestational diabetes mellitus and overweight in offspring at 5-7 years: The OBEGEST cohort study. *PLoS One*. 2018;13(4):e0195531. doi:10.1371/journal.pone.0195531
86. Wright J, Hayward A, West J, et al. ActEarly: a City Collaboratory approach to early promotion of good health and wellbeing [version 1; peer review: 2 approved]. *Wellcome Open Research*. 2019;4(156). doi:10.12688/wellcomeopenres.15443.1

Statements and declarations

Funding

The LifeCycle project received funding from the European Union's Horizon 2020 research and innovation programme (Grant Agreement No. 733206 LifeCycle).

TC received funding from the European Union's Horizon 2020 research and innovation programme under grant agreement N: 733206, LIFE-CYCLE project.

VJ received funding from a Consolidator Grant from the European Research Council (ERC-2014-CoG-648916).

KG received funding from the European Union's Horizon 2020 research and innovation programme under grant agreement Nr: 733206, LIFE-CYCLE project.

APM is funded by a Lundbeck Foundation fellowship (R264-2017-3099).

BK is the Else Kröner Seniorprofessor of Paediatrics at LMU – University of Munich, financially supported by Else Kröner-Fresenius-Foundation, LMU Medical Faculty and LMU University Hospitals.

RM, TY and JW receive funding from the National Institute for Health Research under its Applied Research Collaboration Yorkshire and Humber [NIHR200166].

JRH is supported, in part, by The Research Council of Norway through its Centres of Excellence funding scheme, project nr. 262700.

HI was supported by the UK Medical Research Council, the UK National Institute for Health Research, and the European Union's Horizon 2020 research and innovation programme under grant agreement N: 733206, LIFE-CYCLE project during the conduct of this research.

Funding details for each cohort are provided in Supplementary Materials S2.

Competing interests

All authors report no conflicts of interest

Ethics approval (include appropriate approvals or waivers)

All participating cohorts received ethical approval via their local ethics boards (Supplementary Materials S1).

Consent to participate (include appropriate statements)

All participants provided informed consent to participate (Supplementary Materials S1).

Consent for publication (include appropriate statements)

Representatives from all participating cohorts reviewed the manuscript and gave consent for publication.

Figure 1: Flow chart of cohorts and participants

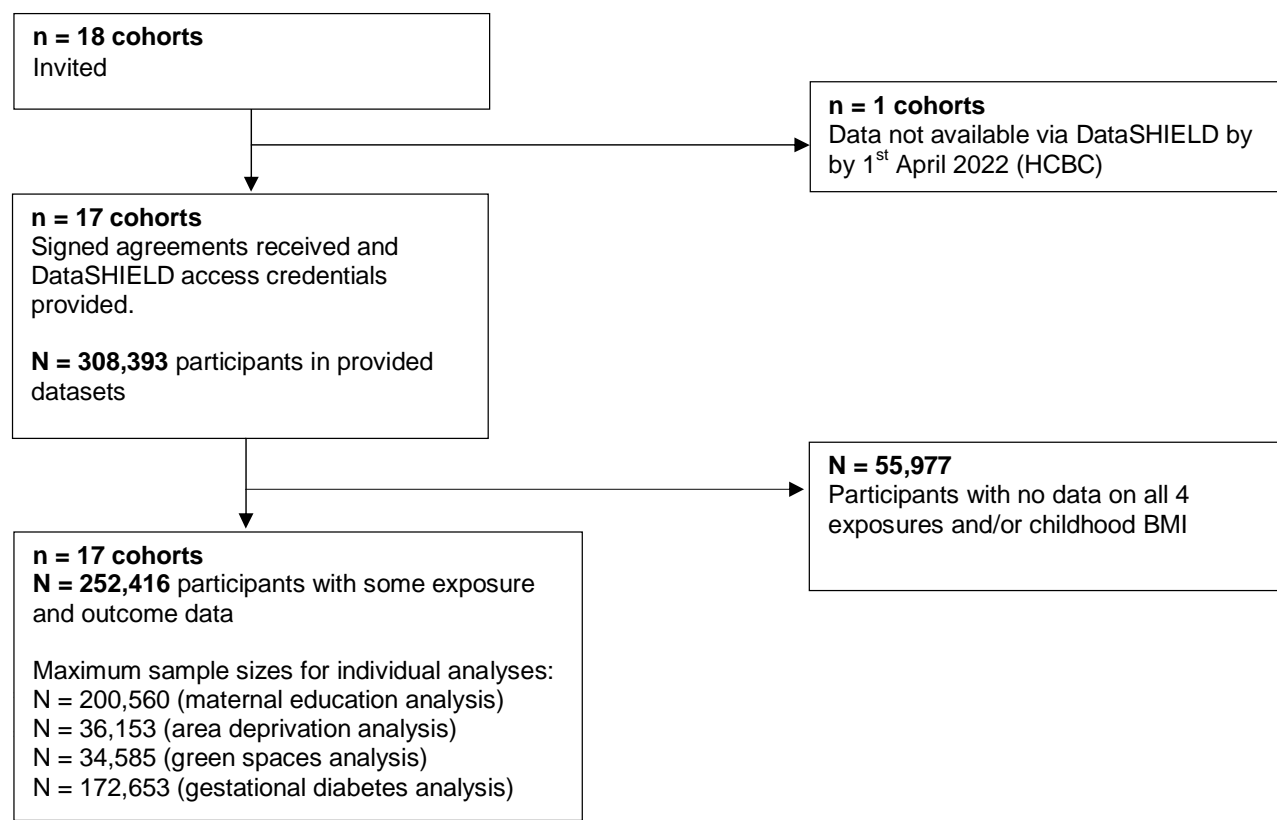


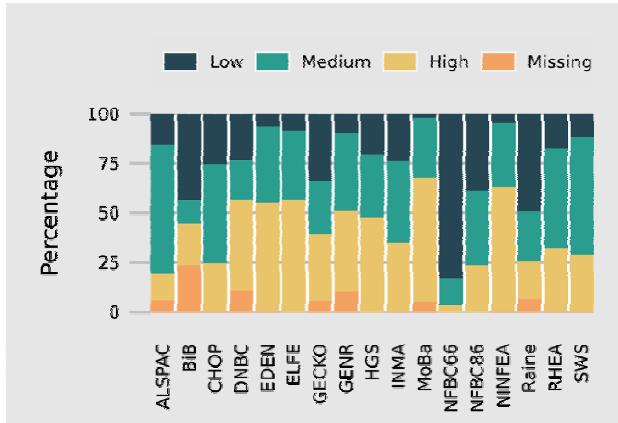
Table 1: Summary of cohort characteristics

Cohort name	Country	City/area	Design	N included children	Birth year(s)	Age range of included children (years)
ALSPAC	United Kingdom	Greater Bristol	Prospective	10499	1991 - 1992	0 - 17
BiB	United Kingdom	Bradford	Prospective	13400	2007 - 2011	0 - 10
CHOP	Germany, Belgium, Italy, Poland, Spain	Munich, Nuremberg, Liege, Brussels, Milano, Warsaw, Reus, Tarragona	Prospective	1669	2002 - 2004	0 - 11
DNBC	Denmark	Greater Copenhagen	Prospective	77534	1996 - 2002	0 - 18
EDEN	France	Nancy & Poitiers	Prospective	1765	2003 - 2005	0 - 12
ELFE	France		Prospective	17926	2011	0 - 9
GECKO	Netherlands	Drenthe	Prospective	2748	2006 - 2007	0 - 11
Gen-R	Netherlands	Rotterdam	Prospective	8680	2002 - 2006	0 - 10
HGS	Greece	Attica, Etoloakarnania, Thessaloniki, Iraklion	Cross-sectional*	2570	1994 - 2000	10 - 14
INMA	Spain	Gipuzkoa, Sabadell, Valencia	Prospective	1918	2003 - 2008	0 - 11
MoBa	Norway		Prospective	85589	1999 - 2008	0 - 13
NFBC66	Finland		Prospective	7709	1966	0 - 16
NFBC86	Finland		Prospective	7315	1985 - 1986	0 - 16
NINFEA	Italy	Florence, Rome, Turin	Prospective	6532	2005 - 2016	0 - 14
Raine	Australia	Perth	Prospective	2548	1989 - 1992	1 - 17
Rhea	Greece	Crete	Prospective	1002	2007 - 2008	0 - 12
SWS	United Kingdom	Southampton	Prospective	3012	1998 - 2007	0 - 10

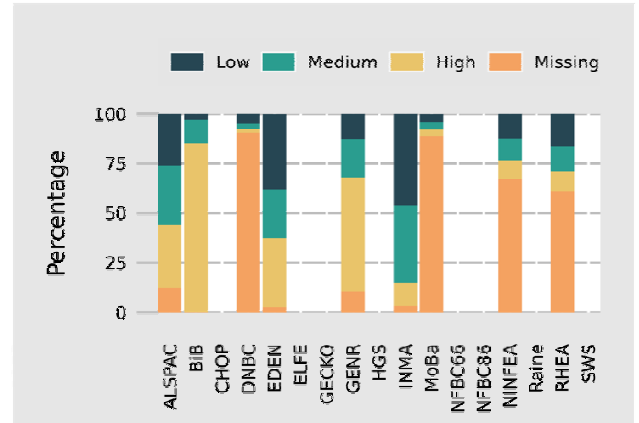
*Information on early life exposures collected retrospectively

Figure 2: Exposure descriptive statistics

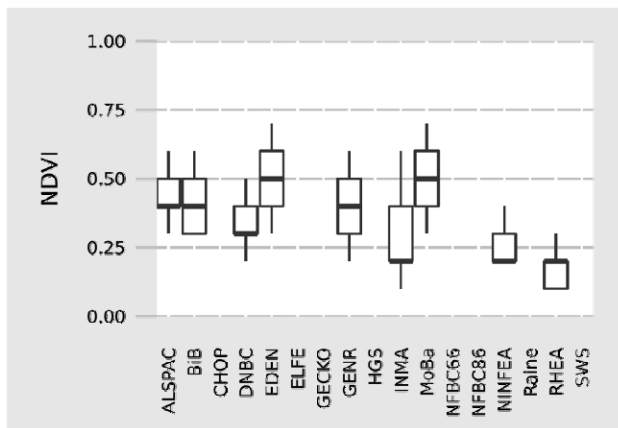
2a: Maternal education



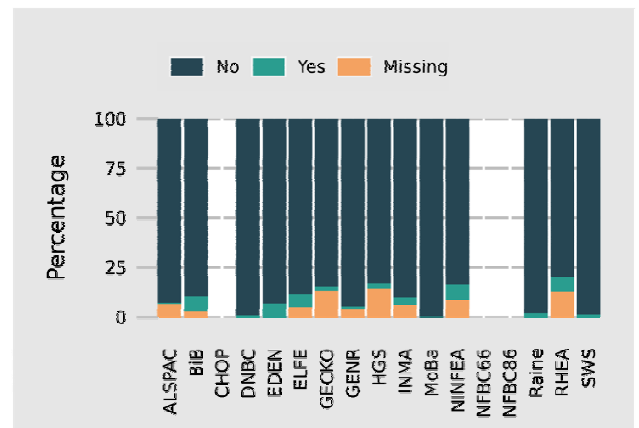
2b: Area Deprivation



2c: Normalised Difference Vegetation Index

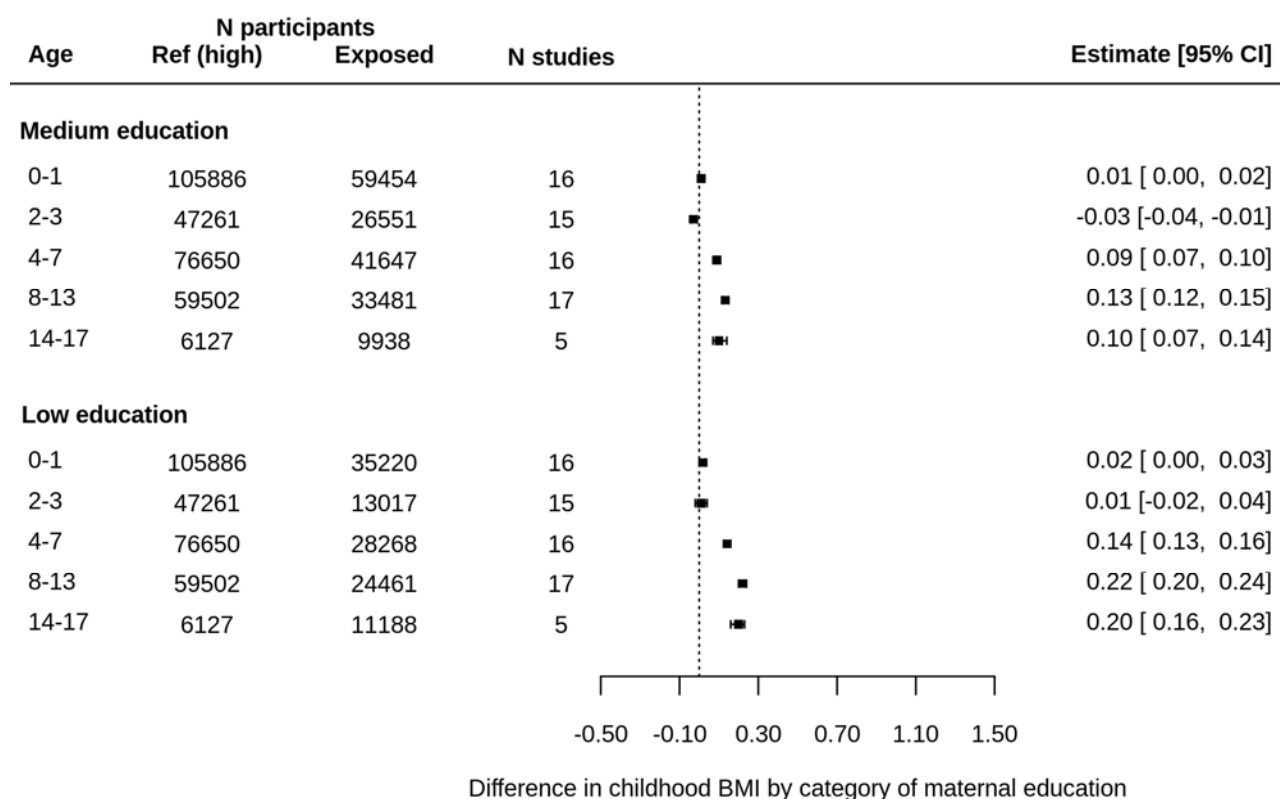


2d: Gestational diabetes



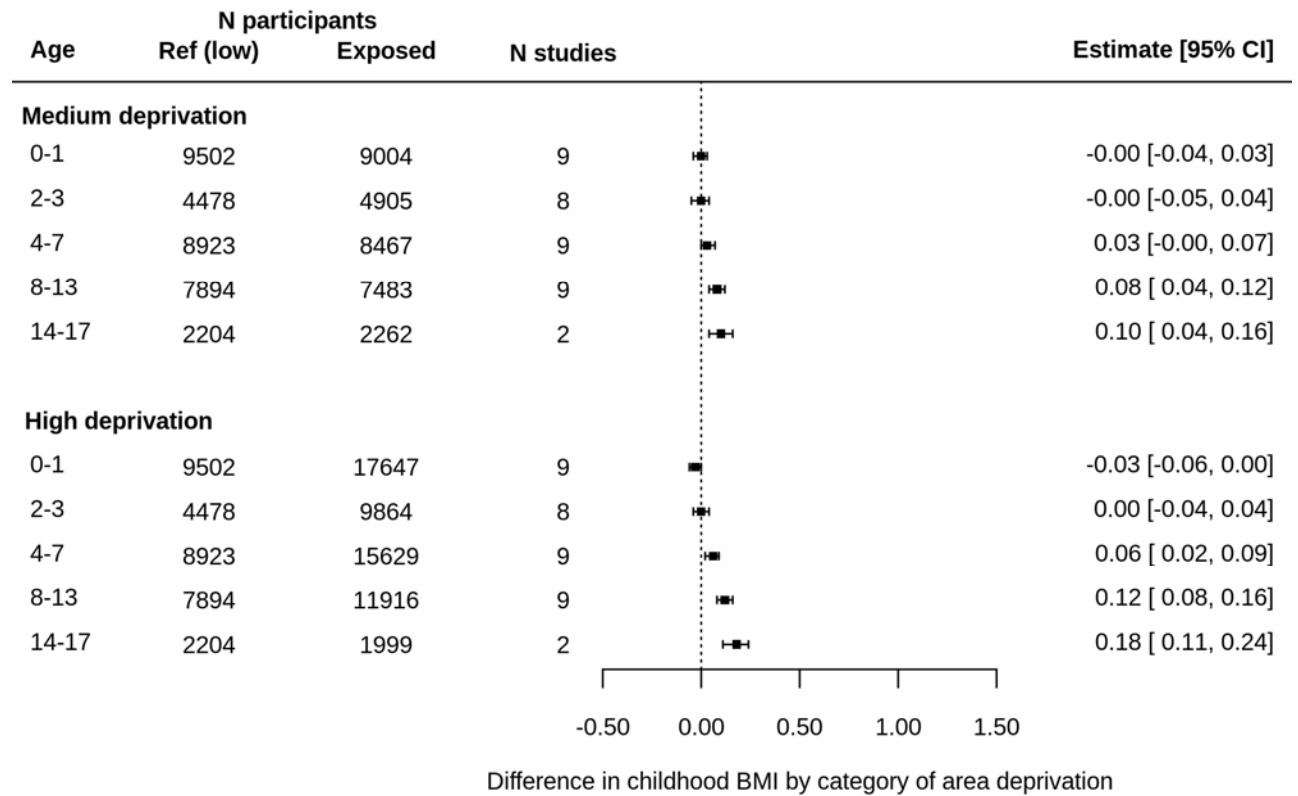
*Note: No data was available on gestational diabetes for CHOP as this was an exclusion criterion for entry into the study. For all other studies, figures are blank where the exposure is entirely missing. Values for NDVI represent median and interquartile range.

Figure 3: Associations between maternal education at birth and child BMI z-scores using one-stage IPD meta-analysis



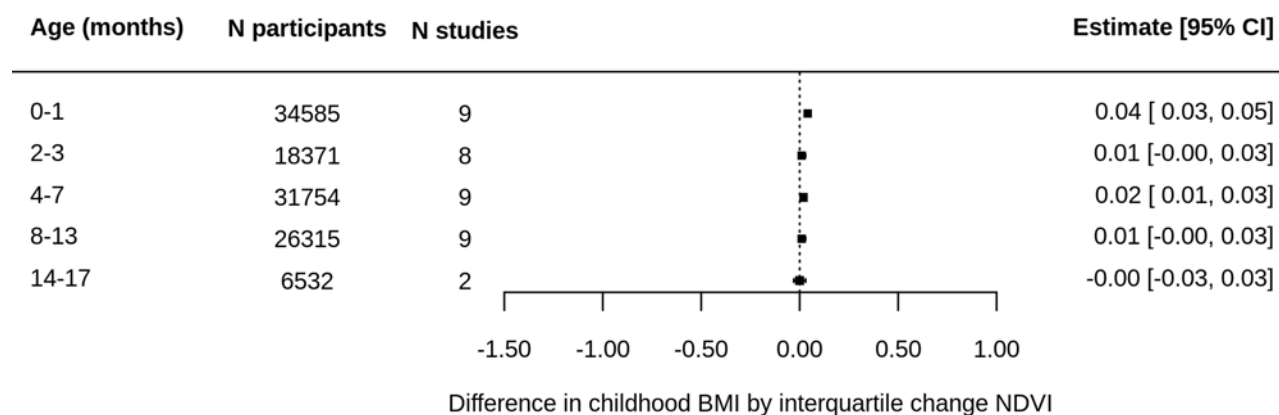
Note: models adjusted for cohort, child sex and exact age at measurement in days.

Figure 4: Associations between area deprivation in pregnancy and child BMI z-scores using one-stage IPD meta-analysis



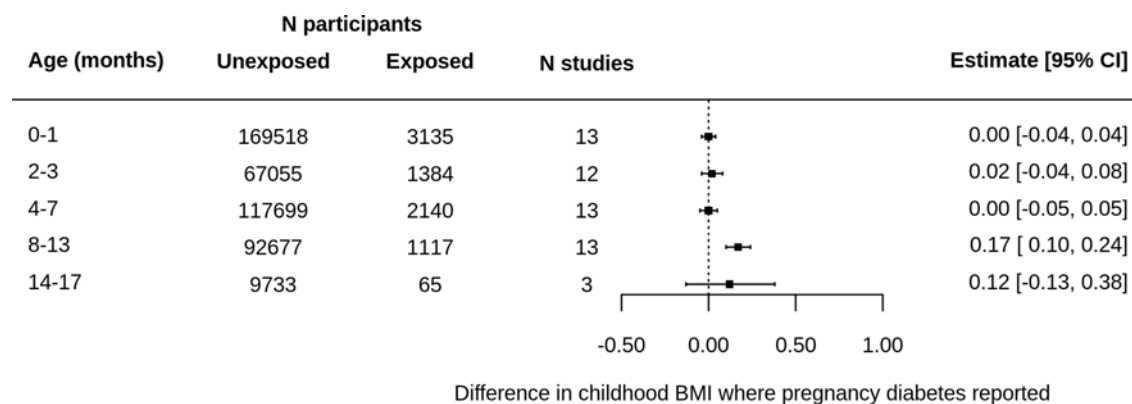
Note: models adjusted for maternal education, cohort, child sex and exact age at measurement.

Figure 5: Associations between Normalised Difference Vegetation Index in pregnancy and child BMI z-scores using one-stage IPD meta-analysis



Note: models adjusted for cohort, child sex, exact age at measurement, maternal education, parity and area deprivation.

Figure 6: Associations between gestational diabetes and child BMI z-scores using one-stage IPD meta-analysis



Note: models adjusted for cohort, child sex, exact age at measurement, maternal education, maternal age at birth, pre-pregnancy BMI, pregnancy smoking and parity.