

Petersen, 23/06/2023

1 *Running title:* Olfactory bulb volumetry after COVID-19

2

3 ORIGINAL CONTRIBUTION

4

5 Reduced Olfactory Bulb Volume Accompanies Olfactory Dysfunction
6 After Mild SARS-CoV-2 Infection

7

8 Marvin Petersen, MD^{1#}; Benjamin Becker, MD^{2#}; Maximilian Schell¹, Carola Mayer¹,

9 Felix L. Nägele¹, Elina Petersen, MSc^{3,4}; Raphael Twerenbold, MD^{3,4,5,6}; Götz

10 Thomalla, MD¹; Bastian Cheng, MD¹; Christian Betz, MD², Anna S. Hoffmann, MD²

11

12 ¹ Department of Neurology, University Medical Center Hamburg-Eppendorf,
13 Hamburg, Germany

14 ² Department of Otorhinolaryngology and Head and Neck Surgery, University Medical
15 Center Hamburg-Eppendorf, Hamburg, Germany

16 ³ Population Health Research Department, University Heart and Vascular Center,
17 Hamburg, Germany

18 ⁴ Department of Cardiology, University Heart and Vascular Center, Hamburg,
19 Germany

20 ⁵ German Center for Cardiovascular Research (DZHK), partner site
21 Hamburg/Kiel/Luebeck, Hamburg, Germany

22 ⁶ University Center of Cardiovascular Science, University Heart and Vascular Center,
23 Hamburg, Germany

24

25 # These authors contributed equally

26

27

Petersen, 23/06/2023

28 **SUMMARY**

29

30 **Background:** *Despite its high prevalence, the determinants of smelling impairment in*
31 *COVID-19 remain not fully understood. In this work, we aimed to examine the*
32 *association between olfactory bulb volume and the clinical trajectory of COVID-19-*
33 *related smelling impairment in a large-scale magnetic resonance imaging (MRI)*
34 *analysis.*

35

36 **Methodology/Principal:** *Data of non-vaccinated COVID-19 convalescents recruited*
37 *within the framework of the Hamburg City Health Study COVID Program between*
38 *March and December 2020 were analyzed. On average 8 months after recruitment,,*
39 *participants underwent MRI and neuropsychological testing as well as a structured*
40 *questionnaire for olfactory function. Between March and April 2022 olfactory function*
41 *was assessed at an additional timepoint including quantitative olfactometric testing*
42 *with Sniffin' Sticks.*

43

44 **Results:** *This study included 233 individuals recovered from mainly mild to moderate*
45 *SARS-CoV-2 infections. Longitudinal assessment demonstrated a declining prevalence*
46 *of olfactory dysfunction from 67.1% at acute infection, 21.0% at baseline examination*
47 *and 17.5% at follow-up. Participants with post-acute olfactory dysfunction had a*
48 *significantly lower olfactory bulb volume at scan-time than normally smelling*
49 *individuals. Olfactory bulb volume predicted olfactometric scores at follow-up.*
50 *Performance in neuropsychological testing was not significantly associated with the*
51 *olfactory bulb volume.*

52

53 **Conclusions:** *Our work demonstrates an association of long-term smelling dysfunction*
54 *and olfactory bulb integrity in a sample of individuals recovered from mainly mild to*
55 *moderate COVID-19. Collectively, our results highlight olfactory bulb volume as a*
56 *surrogate marker that may inform diagnosis and guide rehabilitation strategies in*
57 *COVID-19.*

58

59

60 **Key words:** *COVID-19, MRI, Olfactory bulb, Olfactory dysfunction, SARS-CoV-2*

61

62

Petersen, 23/06/2023

63 INTRODUCTION

64 The coronavirus disease 2019 (COVID-19) pandemic, which is caused by severe acute
65 respiratory syndrome coronavirus 2 (SARS-CoV-2), has affected societies worldwide.
66 Olfactory dysfunction is among the most common symptoms in COVID-19 with a
67 reported prevalence of up to 85%.^(1–8) COVID-19 features olfactory dysfunction in
68 varying degrees – e.g., anosmia, hyposmia or parosmia – which occur often before the
69 onset of respiratory symptoms.⁽³⁾ Compared to other COVID-19-related symptoms like
70 cough, fever or fatigue, olfactory dysfunction proved to be more predictive of SARS-
71 CoV-2 infection.^(9,10) Despite its relevance, the understanding of the pathophysiology
72 of SARS-CoV-2-related olfactory dysfunction is still incomplete.

73

74 There is ongoing research in the mechanisms of COVID-19-related olfactory
75 dysfunction. Commonly, anosmia in the absence of rhinorrhea or nasal congestion is
76 described as an early symptom which suggests other causal mechanisms than a common
77 cold with conductive deficits causing olfactory dysfunction.^(3,4,11,12) SARS-CoV-2
78 might affect the olfactory system at different breakpoints of its trajectory ranging from
79 disruption of sustentacular cells and olfactory sensory neurons situated in the olfactory
80 mucosa to functional disarray of the olfactory cortex.^(13,14) Yet, there is only vague
81 understanding of how these aspects relate to clinical outcomes.

82

83 Magnetic resonance imaging (MRI) provides a promising avenue to investigate the
84 pathomechanistic substrates of olfactory dysfunction in SARS-CoV-2 infection in vivo.
85 Previous MRI studies put emphasis on the integrity of the olfactory bulb (OB) as a
86 structural correlate of olfactory function in general.^(15–17) Volume reduction of the OB
87 accompanies olfactory loss in conditions like acute or chronic rhinosinusitis and head
88 trauma.⁽¹⁸⁾ Abnormalities in psychophysical olfactory testing are demonstrably
89 associated with OB volume alterations in health and disease.^(19–21) Furthermore, the
90 duration and degree of olfactory loss is proportional to the OB volume.⁽²²⁾ So far,
91 studies relating OB volumetry and olfactory function in COVID-19 rely on case reports
92 and small sample sizes yielding heterogeneous results.^(14,23–27) Therefore, further
93 investigations are warranted.

94

95 Based on previous evidence, we hypothesized that olfactory dysfunction in COVID-19
96 corresponds with interindividual volumetric differences of the OB. To address this

Petersen, 23/06/2023

97 hypothesis, we quantified the OB volume based on structural MRI to see if there is a
98 difference in the OB volume between the smell impaired and the normal individuals
99 and performed a longitudinal assessment of olfactory function in a large sample of
100 individuals recovered from mainly mild to moderate COVID-19. We also addressed if
101 the OB volume is predictive for the long-term olfactory function. As affections of the
102 olfactory system might precede COVID-19-related neuropathology, we additionally
103 probed for a relationship of OB alterations and neuropsychological test score results in
104 an exploratory analysis. With this work we aimed to further the understanding of the
105 effects SARS-CoV-2 exerts on the olfactory system and deepen our insight in the
106 longitudinal trajectory of subjective smelling impairment as well as the
107 pathophysiology underlying the clinical sequelae of COVID-19.

108

109 **MATERIALS AND METHODS**

110

111 **Study population and clinical examination**

112 In this work we investigated data from participants of the Hamburg City Health Study
113 (HCHS) Covid Program with available MRI data. A detailed description of the study
114 design has been published separately.^(28,29) Our reporting complies with the
115 Strengthening the Reporting of Observational Studies in Epidemiology (STROBE)
116 statement guidelines.⁽³⁰⁾ In brief, citizens of the city of Hamburg, Germany, were
117 considered for enrollment if they met two criteria: (1) a laboratory-confirmed positive
118 polymerase chain reaction (PCR) test for SARS-CoV-2, which was obtained between
119 1st March and 31st December 2020 but at least 4 months prior to study enrollment; (2)
120 age between 45 and 74 years at the time of inclusion. An invitation was issued upon
121 identification via the clinical information system of the University Medical Center
122 Hamburg-Eppendorf or a response to a public call for participation. Recruited
123 participants underwent an extended study protocol of the Hamburg City Health Study
124 (HCHS): besides the standard HCHS work up including MRI and assessment of
125 cognitive function (Trail Making Test B, Word List Recall, Animal Naming Test, Mini
126 Mental State Exam), depressive symptoms (PHQ-9) and quality of life (EQ-5D),
127 participants were required to retrospectively report on disease severity and SARS-CoV-
128 2-associated symptoms via a structured questionnaire.⁽³¹⁾ A mild to moderate COVID-
129 19 severity was defined as a symptomatic disease course not requiring intensive care
130 unit treatment. The presented study was only conducted based on the post-SARS-CoV-
131 2 cohort – i.e., the matched cohort of control subjects as described previously could not
132 be leveraged as the required high-resolution T2-weighted MRI data was not
133 available.^(28,32) To assess the trajectory of olfactory function, participants were reinvited

Petersen, 23/06/2023

134 between 15th March and 15th April 2022. For a timeline of this study refer to
135 supplementary figure E1. Follow-up investigations comprised a structured
136 questionnaire regarding olfactory function as well as olfactometric assessment via
137 Sniffin' Sticks Screening 12 test by two trained otorhinolaryngologists (B.B.,
138 A.S.H.).^(33,34) The test score ranges from 0 to 12 (0-6: anosmia, 7-10: hyposmia, 11-12:
139 normosmia) and is based on normative information derived from more than 1200
140 patients assessed with Sniffin' Sticks Screening and olfactive evoked potentials.
141 Eventually, information about self-reported olfactory dysfunction (based on a yes/no-
142 question) from structured questionnaires was available for three timepoints: (1) during
143 the acute infection, (2) at the baseline investigation and (3) at follow-up. MRI and
144 neuropsychological testing were only performed during baseline examination.

145 **Ethics approval**

146 Written informed consent was obtained from all participants. The study was approved
147 by the local ethics committee of the Landesärztekammer Hamburg (State of Hamburg
148 Chamber of Medical Practitioners, PV5131) and conducted complying with the
149 Declaration of Helsinki.⁽³⁵⁾

150 **MRI acquisition**

151 High-resolution 3D T2-weighted images were acquired at baseline on a 3T scanner
152 (MAGNETOM™Skyra, Siemens Healthineers, Erlangen, Germany) with the following
153 sequence parameters: TR=3200 ms, TE=407 ms, 256 axial slices, ST=0.94 mm, and
154 IPR=0.9×0.9mm.

155 **Olfactory bulb segmentation**

156 We performed OB segmentation on high-resolution T2-weighted images leveraging a
157 novel fully-automated deep learning-based pipeline specifically designed for OB
158 volumetry.⁽³⁶⁾ All resulting segmentations underwent visual quality assessment.
159 Exemplary segmentation results are illustrated in *figure 1* as well as *supplementary*
160 *materials E2-5*. The summed volume of both OBs was used for further analysis.

161 **Statistical analysis**

162 OB volume and olfactometry scores were compared between individuals with and
163 without self-reported olfactory dysfunction (yes/no) at different timepoints employing

Petersen, 23/06/2023

164 analyses of covariance (ANCOVA). Multiple linear regression analysis was performed
165 for assessing the linear relationship of olfactometry scores, as well as neuropsychiatric
166 scores with OB volume. A further ANCOVA was performed to test whether the OB
167 volume at baseline differed between individuals with sustained olfactory dysfunction
168 at follow-up and those that recovered until then. The association between the time
169 interval from positive PCR to examination was assessed via Spearman correlation. Age,
170 sex and smoking behavior were included as covariates in ANCOVAs and linear models
171 as they represent potential confounders.⁽³⁷⁾ Statistical computations and plotting were
172 performed in Python 3.9.7 harnessing matplotlib (v.3.5.1), numpy (v.1.22.3), pandas
173 (v.1.4.2), pingouin (v.0.5.1) and seaborn (v.0.11.2).^(38–42)

174

175 **RESULTS**

176

177 **Sample characteristics**

178 Data from 233 HCHS Covid Program participants was available for primary analysis.
179 Nine subjects were excluded pre-analysis: 3 since they reported to have had olfactory
180 dysfunction before their SARS-CoV-2 infection, 3 because of a missing OB and 3
181 because of erroneous segmentations. Thus, data from n=224 participants were available
182 for the final analysis. Sample characteristics are summarized in *table 1*. On average
183 participants were 55.79 [95% confidence interval (CI95); 54.83, 56.73] years old,
184 44.2% were female and 5.4% were current smokers. 8.4% of participants were
185 hospitalized due to COVID-19.

186 **Longitudinal trajectory of olfactory function**

187 The baseline examination happened on average 253 days after the positive PCR test
188 prompting recruitment, the follow-up at 663 days. 143 participants were available at
189 follow-up (81 study drop-outs). Of these, 67.1% (n=96) described olfactory dysfunction
190 during the acute phase of infection, 21.0% (n=30) at the baseline examination and
191 17.5% (n=25) at follow-up (*figure 2a*). Assessment of olfactory dysfunction severity
192 via the visual analogue scale resulted in a coherent trajectory: 7.62 [CI95; 7.06, 8.18]
193 (acute infection), 3.79 [3.12, 4.47] (baseline), 2.96 [2.07, 3.84] (follow-up).

194 **Olfactometry**

Petersen, 23/06/2023

195 To assess long term olfactory outcomes, olfactometry with the Sniffin' Sticks Screening
196 12 test was performed on participants at follow-up. Olfactometry scores at follow-up
197 were 10.18 [CI95, 9.89, 10.48]. Participants with self-reported olfactory dysfunction at
198 the acute infection did not differ from normally smelling participants regarding
199 olfactometry scores at follow-up (mean [CI95], 10.04 [9.65, 10.44] vs. 10.46
200 [10.08,10.84], $\eta_p^2=0.01$, $p=0.211$; *supplementary materials E6*). Yet, participants
201 with olfactory dysfunction at baseline had lower olfactometric scores than normally
202 smelling individuals (mean [CI95], 8.67 [7.73, 9.60] vs. 10.58 [10.36,10.81],
203 $\eta_p^2=0.19$, $p<0.005$) and the same applied for participants impaired at follow-up (mean
204 [CI95], 8.40 [7.33, 9.47] vs. 10.56 [10.34, 10.78], $\eta_p^2=0.22$, $p<0.005$).

205 **Olfactory bulb volume and olfactory function**

206 The mean OB volume was 45.53 [CI95, 43.84, 47.21] mm³. The ANCOVA yielded no
207 significant group difference in OB volume at acute infection between individuals with
208 and without olfactory dysfunction (mean [CI95], 45.85 [43.26, 48.43] vs. 45.21[40.83,
209 49.59], $\eta_p^2=0.00$, $p=0.837$; *figure 2b*). Individuals with self-reported sustained
210 olfactory dysfunction at baseline and at follow-up had significantly lower OB volume
211 than normally smelling subjects at that time (mean [CI95], baseline: 40.76 [36.08,
212 45.44] vs. 46.74 [44.22, 49.26], $\eta_p^2=0.03$, $p=0.046$; follow-up: 40.45 [35.51, 45.38]
213 vs. 46.55 [44.07, 49.03], $\eta_p^2=0.03$, $p=0.036$). In participants with olfactory
214 dysfunction lower OB volume was accompanied by a shorter time-period between a
215 positive PCR for SARS-CoV-2, signifying the timepoint of acute SARS-CoV-2
216 infection, and the baseline examination ($r_{sp}=0.161$, $p=0.016$; *figure 2c*).

217 **Longitudinal prediction of olfactory function**

218 OB volume derived from MRI at baseline was significantly linearly associated with
219 olfactometry scoring at follow-up ($r_{sp}=0.154$, $p=0.025$; *figure 2d*). Participants with
220 sustained olfactory dysfunction at follow-up had lower OB volume at baseline (mean
221 [CI95], 40.64 [35.51, 45.77] vs. 47.58 [44.68, 50.48], $\eta_p^2=0.06$, $p=0.018$; *figure 2e*)
222 than those that had recovered by the time of reassessment.

223 **Clinical analysis**

224 To further explore potential clinical implications of our findings, correlations of OB
225 volume and neuropsychological cognitive test scores and psychiatric test scores were

Petersen, 23/06/2023

226 performed. To summarize, no significant associations of OB volume and scores of the
227 Trail Making Test B ($r_{sp}=0.014$, $p=0.722$), Animal Naming Test ($r_{sp}=-0.090$, $p=0.069$),
228 Word List Recall Test ($r_{sp}=-0.050$, $p=0.587$), Mini Mental State Exam ($r_{sp}=-0.025$,
229 $p=0.689$), PHQ-9 ($r_{sp}=0.098$, $p=0.404$) and EQ-5D ($r_{sp}=-0.009$, $p=0.306$) were found.
230 Corresponding visualizations are displayed in *supplementary materials E7*.

231

232 **DISCUSSION**

233

234 We report on an association of OB volume and olfactory dysfunction in a large sample
235 of mainly mildly to moderately affected COVID-19 convalescents. Longitudinal
236 assessment demonstrated sustained olfactory dysfunction up to two years after acute
237 infection. Participants suffering from olfactory dysfunction beyond acute infection had
238 a significantly lower OB volume at baseline than normally smelling individuals.
239 Moreover, OB volume was predictive for olfactometric performance in the Sniffin'
240 Sticks test 22 months after the acute infection as well as for the binary outcome of
241 recovery from olfactory dysfunction at follow-up. Neuropsychological test
242 performances were not significantly associated with OB volume. Taken together, our
243 findings suggest that lower volume of the OB may be a promising surrogate marker of
244 smelling function in COVID-19 at post-acute disease stages.

245

246 **Longitudinal trajectory of olfactory dysfunction**

247 Its frequency and the concomitant effects on quality of life render olfactory dysfunction
248 a burdensome symptom of COVID-19. Our 2-year longitudinal assessment of olfactory
249 function provided insights about time-dependent development of these symptoms. At
250 acute infection, the proportion of participants reporting olfactory dysfunction was
251 67.1% which is coherent with previous study reports ranging from 30% to 85%.^(1-4,6,7)
252 After the acute infection, the prevalence decreased to 21% at the baseline examination
253 (on average 253 days post infection) and 17.5% at follow-up (on average 664 days post
254 infection; *figure 2a*). These numbers support previous literature finding high rates of
255 long term olfactory dysfunction in COVID-19.⁽⁴³⁻⁴⁵⁾ Of note, a recent meta-analysis
256 reports persistent olfactory dysfunction in less patients (11.6%; 95% confidence
257 interval 5.2% to 23.9%).⁽⁴⁶⁾ We attribute this difference to design differences with
258 respect to our work: the studies included in the meta-analysis also considered young

Petersen, 23/06/2023

259 adults (>18 years) possibly exhibiting higher regenerative capacity as well as recent
260 SARS-CoV-2 variants demonstrably affecting patient olfaction less severely than the
261 wild type variant mainly prevalent at the pandemic onset.⁽⁴⁷⁾ Overall, these findings
262 indicate that although most former COVID-19 patients completely recover, subjective
263 olfactory dysfunction persisted in relevant proportion of individuals.

264

265 To assess long term olfactory outcomes, olfactometry with the Sniffin' Sticks Screening
266 12 test was performed at follow-up. Participants suffering from olfactory dysfunction
267 beyond the acute infection, plausibly showed significantly lower olfactometry scores
268 than normally smelling or recovering subjects. Collectively, our results support
269 previous evidence of sustained olfactory dysfunction in around 20% of patients
270 underscoring the possible long lasting burden following a SARS-CoV-2 infection.^(6,44)

271

272 **Long-term olfactory dysfunction is associated with lower olfactory bulb volume**

273 Olfactory dysfunction is demonstrably accompanied by lower OB volume in many
274 otorhinolaryngological conditions like post-infectious olfactory disorder, head trauma
275 as well as acute and chronic rhinosinusitis.⁽¹⁸⁾ In line with this notion, our work showed
276 a lower OB volume in individuals with sustained olfactory dysfunction after the acute
277 SARS-CoV-2 infection indicating COVID-19-related OB atrophy (*figure 2b*). Thus,
278 our results corroborate previous reports derived from case studies and small samples
279 suggesting lower OB volume in SARS-CoV-2-induced olfactory dysfunction.^(23–26)

280

281 Previous reports demonstrated an inverse correlation between OB volume and the
282 duration of symptoms in post-infectious olfactory disorder suggesting its predictive
283 capacity.⁽²²⁾ To further investigate this, we related the OB volume with olfactometry
284 scores which were acquired approximately 1 year after the MRI. Notably, the OB
285 volume predicted olfactometry scores at follow-up (*figure 2d*). Yet, the observed
286 correspondence was of a rather low degree, indicating that further determinants of long-
287 term olfactory dysfunction should be considered. Possibly, MRI assessment closer to
288 the acute infection would have resulted in the observation of stronger effects.
289 Furthermore, OB volume was higher in participants in which the smelling sense fully
290 recovered until follow-up compared to those with sustained olfactory dysfunction
291 (*figure 2e*). Hence, the OB volume appears to be a predictor of recovery from olfactory
292 dysfunction, i.e., potentially capturing the severity of damage SARS-CoV-2 exerts on

Petersen, 23/06/2023

293 the olfactory system. Interestingly, individuals exhibited higher OB volume the longer
294 the time interval between the positive PCR and the MRI was (*figure 2c*). This might
295 indicate that an increasing OB volume may reflect recovery of olfactory function.
296 However, longitudinal imaging assessment is warranted here. Taken together, these
297 findings suggest that a lower OB volume indicates more severe disruption of the
298 olfactory system and predict persistent olfactory dysfunction in COVID-19 patients.

299

300 **Pathomechanistic underpinnings of abnormal olfactory bulb volume**

301 There are multiple potential mechanisms that might explain the observed link between
302 olfactory dysfunction and OB dysintegrity. In the olfactory mucosa, olfactory sensory
303 neurons (OSN) – sensing molecular signatures as odor information – as well as
304 supporting epithelial cells (sustentacular cells) ensure proper sense of smell.
305 Sustentacular cells express angiotensin-converting enzyme 2 (ACE-2) and appear to be
306 a major infection target of the virus.^(13,48) As they support OSN in a glial-like fashion,
307 impairment of sustentacular cells is considered to contribute to COVID-19-related
308 olfactory dysfunction.⁽⁴⁹⁾ How OSN are affected by SARS-CoV-2 is controversial.
309 Discussed mechanisms are neurotropism, affection by an impaired support system and
310 damage caused by the immune response to the virus.^(13,49,50) Recent analyses failed to
311 detect signs of neurotropism and neural invasion through SARS-CoV-2 challenging the
312 notion of the olfactory system serving the virus as an entry point.^(49,51,52) As the OB
313 serves as a relay for projections from the OSN, volumetric reductions might occur as
314 an effect of indirect OSN affection - e.g., via inflammation or microvasculopathy –
315 rather than direct damage from the virus leading to reduced tissue integrity.⁽⁵²⁾ Taking
316 the link between OB integrity and long-term olfactory function into account, OB
317 volume might serve as an indicator of severe structural disruption of the olfactory
318 system which corresponds with unfavorable outcomes. Nonetheless, further
319 longitudinal neuroimaging research is warranted to support this notion.

320

321 **Olfactory bulb volume is not associated with neuropsychological test scores**

322 By now, COVID-19 is recognized to cause post-acute neurological and psychiatric
323 symptoms like executive dysfunction, fatigue, anxiety, depression and sleep
324 impairment.^(53–56) Coherent with these observations, a comprehensive MRI analysis on
325 COVID-19 convalescents from the UK Biobank has shown widespread gray matter
326 volume reductions in areas receiving projections from the olfactory cortex.⁽⁵⁴⁾ Its

Petersen, 23/06/2023

327 evident exposition to deleterious SARS-CoV-2 effects renders the OB a candidate
328 indicator of COVID-19-related neuropathology beyond the olfactory system. Thus, we
329 tested whether the OB volume is associated with results of neuropsychological test
330 scores. OB volume showed no significant association with tests of cognitive function
331 (Trail Making Test B, Word List Recall, Animal Naming Test), depressive symptoms
332 (Patient Health Questionnaire-9, PHQ-9) and quality of life (EQ-5D). Consequently,
333 pathology of the olfactory system might be disjunct to non-olfaction-related
334 neuropathology in SARS-CoV-2 infection. Nonetheless, our findings might be partially
335 attributable to the overall mild to moderate disease course captured in our sample
336 resulting in negative results. Further investigations of determinants of neurological and
337 psychiatric sequelae of COVID-19 are necessary.

338

339 **Strengths and limitations**

340 The strengths of this work lie in its considerable sample size; high quality imaging and
341 phenotypical data; a modern fully-automated MRI-based segmentation of the OB
342 enabling volumetry at scale; olfactory assessment at different time points post infection,
343 including quantitative olfactory testing (at follow-up) providing longitudinal
344 information for up to 2 years. Yet, this study has some limitations. First, MRI
345 acquisition and olfactometry with Sniffin' sticks were performed only at one timepoint,
346 which makes it difficult to completely address pre-infectious group differences. For
347 instance, our results could partially be explained by individuals with lower OB volume
348 being more susceptible to olfactory dysfunction caused by SARS-CoV-2 infection.
349 Previous work hypothesizes that smaller OB volume and pre-existing reduced number
350 of olfactory receptor neurons increased the patient's vulnerability to develop post-
351 infectious olfactory loss. With less functional tissue existing in the first place, damage
352 to existing sensory cells might lead to more pronounced olfactory dysfunction.⁽⁵⁷⁾ Here,
353 evidence from future longitudinal studies is warranted. As more severely impaired
354 individuals might be more motivated and thus more likely to participate in our study
355 than the average population, our results could possibly be influenced by our recruitment
356 strategy. Additionally, a more in-depth assessment of olfactory function based on odor
357 thresholds was not conducted at follow-up because high dropout rates due to
358 compliance issues were expected. Parosmia may serve as a potential confounding factor
359 in the observed associations, thus necessitating cautious interpretation of our results.
360 Unfortunately, information on parosmia was not available for this study. Lastly, the

Petersen, 23/06/2023

361 different SARS-CoV-2 strains appear to differ in terms of olfactory dysfunction
362 frequency and intensity. Our study lacks information about SARS-CoV-2 strains
363 rendering it incapable to address inter-strain differences. However, the investigation
364 started at an early stage of the pandemic most likely soothing the problem of different
365 COVID-19 strains and vaccinations as confounders.

366

367 **Conclusion**

368

369 In this work, we performed OB volumetry as a neuroimaging marker of olfactory
370 dysfunction in patients recovered from mainly mild to moderate COVID-19. By
371 revealing an alteration of the OB in participants with olfactory dysfunction, our results
372 highlight the relevance of the olfactory system in the overall pathophysiology of the
373 disease. However, a connection between OB volume and neuropsychological signs of
374 COVID-19 could not be established. Collectively, these results demonstrate that the OB
375 is a promising target for assessment of olfactory dysfunction in COVID-19.

376

377

378 **ACKNOWLEDGEMENTS**

379

380 The authors wish to acknowledge all participants of the Hamburg City Health Study
381 and cooperation partners, patrons and the Deanery from the University Medical Center
382 Hamburg—Eppendorf for supporting the Hamburg City Health Study. Special thanks
383 applies to the staff at the Epidemiological Study Center for conducting the study. The
384 participating institutes and departments from the University Medical Center Hamburg-
385 Eppendorf contribute all with individual and scaled budgets to the overall funding. The
386 Hamburg City Health Study is also supported by Amgen, Astra Zeneca, Bayer, BASF,
387 Deutsche Gesetzliche Unfallversicherung (DGUV), DIFE, the Innovative medicine
388 initiative (IMI) under grant number No. 116074 and the Fondation Leducq under grant
389 number 16 CVD 03., Novartis, Pfizer, Schiller, Siemens, Unilever and “Förderverein
390 zur Förderung der HCHS e.V.”. The publication has been approved by the Steering
391 Board of the Hamburg City Health Study.

392

393 **AUTHORSHIP CONTRIBUTION**

394

Petersen, 23/06/2023

395 We describe contributions to the paper using the CRediT contributor role taxonomy.
396 Conceptualization: M.P, A.S.H.; Data Curation: M.P., B.B., M.S., C.M., F.N., A.S.H.;
397 Formal analysis: M.P.; Funding acquisition: G.T, B.C, C.B., A.S.H.; Investigation:
398 M.P., B.B., M.S., C.M., F.N., E.P., R.T., G.T., B.C., C.B., A.S.H.; Methodology: M.P.;
399 Software: M.P.; Supervision: C.B., A.S.H.; Visualization: M.P.; Writing—original
400 draft: M.P., B.B.; Writing—review & editing: M.P., B.B., M.S., C.M., F.N., E.P., R.T.,
401 G.T., B.C., C.B., A.S.H.
402 Data access: M.P., B.B., and A.S.H. had full access to all the data in the study and take
403 responsibility for the integrity of the data and the accuracy of the data analysis.

404

405 **CONFLICT OF INTEREST**

406

407 GT has received fees as consultant or lecturer from Acandis, Alexion, Amarin, Bayer,
408 Boehringer Ingelheim, BristolMyersSquibb/Pfizer, Daichi Sankyo, Portola, and Stryker
409 outside the submitted work. The remaining authors declare no conflicts of interest.

410

411 **FUNDING**

412

413 This work was supported by grants from the German Research Foundation (Deutsche
414 Forschungsgemeinschaft, DFG), Schwerpunktprogramm (SPP) 204 – project number
415 454012190 – and Sonderforschungsbereich (SFB) 936 – project number 178316478 –
416 Project C2 (M.P., C.M., G.T., and B.C.).

417

418 **DATA AVAILABILITY**

419

420 Data will be made available on reasonable request from any qualified investigator after
421 evaluation of the request by the Steering Board of the HCHS. Analysis code and
422 documentation is publicly available on GitHub ([https://github.com/csi-](https://github.com/csi-hamburg/CSIframe/blob/main/pipelines/obseg/obseg.sh)
423 [hamburg/CSIframe/blob/main/pipelines/obseg/obseg.sh](https://github.com/csi-hamburg/CSIframe/blob/main/pipelines/obseg/obseg.sh), [https://github.com/csi-](https://github.com/csi-hamburg/CSIframe/wiki/Olfactory-bulb-segmentation)
424 [hamburg/CSIframe/wiki/Olfactory-bulb-segmentation](https://github.com/csi-hamburg/CSIframe/wiki/Olfactory-bulb-segmentation) and [https://github.com/csi-](https://github.com/csi-hamburg/2022_petersen_ob_postcovid)
425 [hamburg/2022_petersen_ob_postcovid](https://github.com/csi-hamburg/2022_petersen_ob_postcovid)).

426

427 **REFERENCES**

428

Petersen, 23/06/2023

- 429 1. von Bartheld CS, Hagen MM, Butowt R. Prevalence of Chemosensory
430 Dysfunction in COVID-19 Patients: A Systematic Review and Meta-analysis
431 Reveals Significant Ethnic Differences. *ACS Chem Neurosci*. 2020;11(19):2944–
432 61.
- 433 2. Butowt R, von Bartheld CS. Anosmia in COVID-19: Underlying Mechanisms and
434 Assessment of an Olfactory Route to Brain Infection. *Neuroscientist*.
435 2021;27(6):582–603.
- 436 3. Cooper KW, Brann DH, Farruggia MC, et al. COVID-19 and the Chemical Senses:
437 Supporting Players Take Center Stage. *Neuron*. 2020;107(2):219–33.
- 438 4. Lechien JR, Chiesa-Estomba CM, De Siati DR, et al. Olfactory and gustatory
439 dysfunctions as a clinical presentation of mild-to-moderate forms of the
440 coronavirus disease (COVID-19): a multicenter European study. *Eur Arch*
441 *Otorhinolaryngol*. 2020;277(8):2251–61.
- 442 5. Eliezer M, Hautefort C, Hamel A-L, et al. Sudden and Complete Olfactory Loss of
443 Function as a Possible Symptom of COVID-19. *JAMA Otolaryngology–Head &*
444 *Neck Surgery*. 2020;146(7):674–5.
- 445 6. Lechien JR, Chiesa-Estomba CM, Beckers E, et al. Prevalence and 6-month
446 recovery of olfactory dysfunction: a multicentre study of 1363 COVID-19
447 patients. *J Intern Med*. 2021;290(2):451–61.
- 448 7. Agyeman AA, Chin KL, Landersdorfer CB, Liew D, Ofori-Asenso R. Smell and
449 Taste Dysfunction in Patients With COVID-19: A Systematic Review and Meta-
450 analysis. *Mayo Clinic Proceedings*. 2020;95(8):1621–31.
- 451 8. Parma V, Ohla K, Veldhuizen MG, et al. More Than Smell-COVID-19 Is
452 Associated With Severe Impairment of Smell, Taste, and Chemesthesis. *Chem*
453 *Senses*. 2020;45(7):609–22.
- 454 9. Moein ST, Hashemian SM, Mansourafshar B, Khorram-Tousi A, Tabarsi P, Doty
455 RL. Smell dysfunction: a biomarker for COVID-19. *Int Forum Allergy Rhinol*.
456 2020;10(8):944–50.
- 457 10. Menni C, Valdes AM, Freidin MB, et al. Real-time tracking of self-reported
458 symptoms to predict potential COVID-19. *Nat Med*. 2020;26(7):1037–40.
- 459 11. Vaira LA, Deiana G, Fois AG, et al. Objective evaluation of anosmia and ageusia
460 in COVID-19 patients: Single-center experience on 72 cases. *Head Neck*.
461 2020;42(6):1252–8.
- 462 12. Ahmed AK, Sayad R, Mahmoud IA, et al. “Anosmia” the mysterious collateral
463 damage of COVID-19. *J Neurovirol* [Internet]. 2022 [cited 2022 Apr 19];
464 Available from: <https://doi.org/10.1007/s13365-022-01060-9>

Petersen, 23/06/2023

- 465 13. Meinhardt J, Radke J, Dittmayer C, et al. Olfactory transmucosal SARS-CoV-2
466 invasion as a port of central nervous system entry in individuals with COVID-19.
467 *Nat Neurosci.* 2021;24(2):168–75.
- 468 14. Esposito F, Mario Cirillo, Rosa De Micco, et al. Olfactory loss and brain
469 connectivity after COVID -19. *Human Brain Mapping.* 2022;
- 470 15. Haehner A, Rodewald A, Gerber JC, Hummel T. Correlation of Olfactory
471 Function With Changes in the Volume of the Human Olfactory Bulb. *Archives of*
472 *Otolaryngology–Head & Neck Surgery.* 2008;134(6):621–4.
- 473 16. Lu R, Aziz NA, Reuter M, Stöcker T, Breteler MMB. Evaluation of the
474 Neuroanatomical Basis of Olfactory Dysfunction in the General Population.
475 *JAMA Otolaryngology–Head & Neck Surgery.* 2021;147(10):855–63.
- 476 17. Das S. Olfactory Bulb Volume—A Novel Preclinical Biomarker for Smell Loss and
477 Neurodegenerative Disease. *JAMA Otolaryngology–Head & Neck Surgery.*
478 2021;147(10):864–5.
- 479 18. Hummel T, Urbig A, Huart C, Duprez T, Rombaux P. Volume of olfactory bulb
480 and depth of olfactory sulcus in 378 consecutive patients with olfactory loss. *J*
481 *Neurol.* 2015;262(4):1046–51.
- 482 19. Rombaux P, Mouraux A, Bertrand B, Nicolas G, Duprez T, Hummel T. Retronasal
483 and orthonasal olfactory function in relation to olfactory bulb volume in
484 patients with posttraumatic loss of smell. *Laryngoscope.* 2006;116(6):901–5.
- 485 20. Rombaux P, Weitz H, Mouraux A, et al. Olfactory function assessed with
486 orthonasal and retronasal testing, olfactory bulb volume, and chemosensory
487 event-related potentials. *Arch Otolaryngol Head Neck Surg.*
488 2006;132(12):1346–51.
- 489 21. Rombaux P, Martinage S, Huart C, Collet S. Post-infectious olfactory loss: a
490 cohort study and update. *B-ENT.* 2009;5 Suppl 13:89–95.
- 491 22. Yao L, Yi X, Pinto JM, et al. Olfactory cortex and Olfactory bulb volume
492 alterations in patients with post-infectious Olfactory loss. *Brain Imaging Behav.*
493 2018;12(5):1355–62.
- 494 23. Chiu A, Fischbein N, Wintermark M, Zaharchuk G, Yun PT, Zeineh M. COVID-19-
495 induced anosmia associated with olfactory bulb atrophy. *Neuroradiology.*
496 2021;63(1):147–8.
- 497 24. Altunisik E, Baykan AH, Sahin S, Aydin E, Erturk SM. Quantitative Analysis of the
498 Olfactory System in COVID-19: An MR Imaging Study. *AJNR Am J Neuroradiol.*
499 2021;42(12):2207–14.

Petersen, 23/06/2023

- 500 25. Güney B, Bacaksızlar Sarı F, Özdemir MY, Çullu N, Doğan E, Togan T. Changes in
501 olfactory bulb volume and olfactory sulcus depth in the chronic period after
502 COVID-19 infection. *Acta Otolaryngol.* 2021;141(8):786–90.
- 503 26. Tsivgoulis G, Fragkou PC, Lachanis S, et al. Olfactory bulb and mucosa
504 abnormalities in persistent COVID-19-induced anosmia: a magnetic resonance
505 imaging study. *Eur J Neurol.* 2021;28(1):e6–8.
- 506 27. Frosolini A, Parrino D, Fabbris C, et al. Magnetic Resonance Imaging Confirmed
507 Olfactory Bulb Reduction in Long COVID-19: Literature Review and Case Series.
508 *Brain Sciences.* 2022;12(4):430.
- 509 28. Petersen EL, Goßling A, Adam G, et al. Multi-organ assessment in mainly non-
510 hospitalized individuals after SARS-CoV-2 infection: The Hamburg City Health
511 Study COVID programme. *European Heart Journal.* 2022;ehab914.
- 512 29. Petersen M, Nägele FL, Mayer C, et al. Brain imaging and neuropsychological
513 assessment of individuals recovered from a mild to moderate SARS-CoV-2
514 infection. *Proceedings of the National Academy of Sciences.*
515 2023;120(22):e2217232120.
- 516 30. von Elm E, Altman DG, Egger M, et al. The Strengthening the Reporting of
517 Observational Studies in Epidemiology (STROBE) statement: guidelines for
518 reporting observational studies. *Lancet.* 2007;370(9596):1453–7.
- 519 31. Petersen M, Nägele FL, Mayer C, et al. Brain network architecture constrains
520 age-related cortical thinning. *NeuroImage.* 2022;264:119721.
- 521 32. Petersen M, Nägele FL, Mayer C, et al. Brain imaging and neuropsychological
522 assessment of individuals recovered from mild to moderate SARS-CoV-2
523 infection [Internet]. medRxiv; 2022 [cited 2022 Dec 9]. p. 2022.07.08.22277420.
524 Available from:
525 <https://www.medrxiv.org/content/10.1101/2022.07.08.22277420v1>
- 526 33. Hummel T, Whitcroft KL, Andrews P, et al. Position paper on olfactory
527 dysfunction. *Rhinol Suppl.* 2017;54(26):1–30.
- 528 34. Hummel T, Welge-Lüssen A. Assessment of olfactory function. *Adv*
529 *Otorhinolaryngol.* 2006;63:84–98.
- 530 35. Petersen M, Frey BM, Schlemm E, et al. Network Localisation of White Matter
531 Damage in Cerebral Small Vessel Disease. *Scientific Reports.* 2020;10(1):9210.
- 532 36. Estrada S, Lu R, Diers K, et al. Automated olfactory bulb segmentation on high
533 resolution T2-weighted MRI. *NeuroImage.* 2021;242:118464.
- 534 37. Fitzek M, Patel PK, Solomon PD, et al. Integrated age-related
535 immunohistological changes occur in human olfactory epithelium and olfactory
536 bulb. *J Comp Neurol.* 2022;530(12):2154–75.

Petersen, 23/06/2023

- 537 38. Caswell TA, Droettboom M, Lee A, et al. matplotlib/matplotlib: REL: v3.5.2
538 [Internet]. Zenodo; 2022 [cited 2022 May 9]. Available from:
539 <https://zenodo.org/record/6513224>
- 540 39. Harris CR, Millman KJ, van der Walt SJ, et al. Array programming with NumPy.
541 *Nature*. 2020;585(7825):357–62.
- 542 40. Reback J, McKinney W, jbrockmendel, et al. pandas-dev/pandas: Pandas 1.0.3
543 [Internet]. Zenodo; 2020 [cited 2022 May 9]. Available from:
544 <https://zenodo.org/record/3715232>
- 545 41. Vallat R. Pingouin: statistics in Python. *JOSS*. 2018;3(31):1026.
- 546 42. Waskom ML. seaborn: statistical data visualization. *Journal of Open Source*
547 *Software*. 2021;6(60):3021.
- 548 43. Mendes Paranhos AC, Nazareth Dias ÁR, Machado da Silva LC, et al.
549 Sociodemographic Characteristics and Comorbidities of Patients With Long
550 COVID and Persistent Olfactory Dysfunction. *JAMA Network Open*.
551 2022;5(9):e2230637.
- 552 44. Boscolo-Rizzo P, Hummel T, Hopkins C, et al. High prevalence of long-term
553 olfactory, gustatory, and chemesthesis dysfunction in post-COVID-19 patients: a
554 matched case-control study with one-year follow-up using a comprehensive
555 psychophysical evaluation. *Rhinology*. 2021;59(6):517–27.
- 556 45. Lucidi D, Molinari G, Silvestri M, et al. Patient-reported olfactory recovery after
557 SARS-CoV-2 infection: A 6-month follow-up study. *Int Forum Allergy Rhinol*.
558 2021;11(8):1249–52.
- 559 46. Tan BKJ, Han R, Zhao JJ, et al. Prognosis and persistence of smell and taste
560 dysfunction in patients with covid-19: meta-analysis with parametric cure
561 modelling of recovery curves. *BMJ*. 2022;378:e069503.
- 562 47. Klimek L, Hagemann J, Hummel T, et al. Olfactory dysfunction is more severe in
563 wild-type SARS-CoV-2 infection than in the Delta variant (B.1.617.2). *World*
564 *Allergy Organization Journal*. 2022;15(6):100653.
- 565 48. Chen M, Shen W, Rowan NR, et al. Elevated ACE-2 expression in the olfactory
566 neuroepithelium: implications for anosmia and upper respiratory SARS-CoV-2
567 entry and replication. *Eur Respir J*. 2020;56(3):2001948.
- 568 49. Khan M, Yoo S-J, Clijsters M, et al. Visualizing in deceased COVID-19 patients
569 how SARS-CoV-2 attacks the respiratory and olfactory mucosae but spares the
570 olfactory bulb. *Cell*. 2021;184(24):5932-5949.e15.
- 571 50. Clara B, Audrey SA, Ophélie A-G, et al. Neutrophils initiate the destruction of
572 the olfactory epithelium during SARS-CoV-2 infection in hamsters [Internet].

Petersen, 23/06/2023

- 573 Immunology; 2022 Mar [cited 2022 Jun 26]. Available from:
574 <http://biorxiv.org/lookup/doi/10.1101/2022.03.15.484439>
- 575 51. Khan M, Clijsters M, Choi S, et al. Anatomical barriers against SARS-CoV-2
576 neuroinvasion at vulnerable interfaces visualized in deceased COVID-19
577 patients. *Neuron*. 2022;110(23):3919-3935.e6.
- 578 52. Ho C-Y, Salimian M, Hegert J, et al. Postmortem Assessment of Olfactory Tissue
579 Degeneration and Microvasculopathy in Patients With COVID-19. *JAMA Neurol*.
580 2022;
- 581 53. Paterson RW, Brown RL, Benjamin L, et al. The emerging spectrum of COVID-19
582 neurology: clinical, radiological and laboratory findings. *Brain*.
583 2020;143(10):3104–20.
- 584 54. Douaud G, Lee S, Alfaro-Almagro F, et al. SARS-CoV-2 is associated with changes
585 in brain structure in UK Biobank. *Nature*. 2022;1–17.
- 586 55. Carfi A, Bernabei R, Landi F, for the Gemelli Against COVID-19 Post-Acute Care
587 Study Group. Persistent Symptoms in Patients After Acute COVID-19. *JAMA*.
588 2020;324(6):603–5.
- 589 56. Al-Aly Z, Xie Y, Bowe B. High-dimensional characterization of post-acute
590 sequelae of COVID-19. *Nature*. 2021;594(7862):259–64.
- 591 57. Patterson A, Hähner A, Kitzler HH, Hummel T. Are small olfactory bulbs a risk for
592 olfactory loss following an upper respiratory tract infection? *Eur Arch*
593 *Otorhinolaryngol*. 2015;272(11):3593–4.

594
595

596 **CORRESPONDING AUTHOR**

597

598 Marvin Petersen, MD

599 mar.petersen@uke.de

600 Department of Neurology

601 University Medical Center Hamburg-Eppendorf

602 Martinistraße 52, 20246 Hamburg, Germany

603 +4940-7410-59094

604

605 **FIGURES**

606 Figure 1: Exemplary 3D visualization of olfactory bulb segmentation results.

607 Volumetric visualization of the left and right olfactory bulb (highlighted) and

Petersen, 23/06/2023

608 surrounding brain areas. a) coronal, anterior-posterior; b) axial, inferior-superior; c)
609 sagittal, right-left.

610 Figure 2: Association of olfactory bulb volume and olfactory function. a) Trajectory of
611 olfactory function along timepoints. Blue dots indicate proportion of individuals with
612 olfactory dysfunction. Gray dots show the average impairment as operationalized by
613 the visual analogue scale. b) Group differences of olfactory bulb volume at baseline
614 between participants with and without olfactory dysfunction with respect to different
615 timepoints. Olfactory bulb volume at baseline was significantly lower in individuals
616 that exhibited olfactory dysfunction during both examination timepoints but not during
617 the acute infection. c) Association of the time interval from positive PCR to
618 examination and olfactory bulb volume. A smaller interval was significantly associated
619 with lower olfactory bulb volume. d) Linear associations between olfactory bulb
620 volume and olfactometry scores. A low olfactory bulb volume at baseline was
621 significantly associated with a lower olfactometry score at follow-up. e) Group
622 differences of olfactory bulb volume between participants with sustained olfactory
623 dysfunction at follow-up and those with recovered olfaction to that point. Olfactory
624 bulb volume was significantly lower in participants with sustained olfactory
625 dysfunction. Abbreviations: η_p^2 = partial eta squared indicating the effect size as
626 provided by the analysis of covariance, p = p-value, r_{sp} = spearman correlation
627 coefficient, PCR = polymerase chain reaction, T1 = at baseline, T2 = at follow-up.

628

629

630 TABLES

631 **Table 1. Characteristics of Post-SARS-CoV-2 Individuals**

Demographics	
Age in years, mean [CI95] (n)	55.79 [54.83, 56.73] (224)
Female sex at birth, % (n)	44.2 (224)
Education in years, mean [CI95] (n)	15.83 [15.50, 16.16] (224)
Current smokers, % (n)	5.4 (224)
Allergic rhinitis, %	33.3 (224)

Petersen, 23/06/2023

Diabetes, %	4.4 (224)
COVID-19	
Days between first positive SARS-CoV-2 PCR test and baseline (T1), mean [CI95] (n)	253.15 [242.00, 264.29] (223)
Days between first positive SARS-CoV-2 PCR test and follow-up (T2), mean [CI95] (n)	663.51 [646.04, 680.98] (143)
Hospitalization, %	8.4 (224)
Olfaction and olfactory bulb volume	
Subjective olfactory dysfunction at acute infection, %	67.1 (143)
Olfactory dysfunction severity (VAS), acute infection, mean [CI95] (n)	7.62 [7.06, 8.18] (95)
Subjective olfactory dysfunction, T1, % (n)	21.0 (143)
Olfactory dysfunction severity (VAS), T1, mean [CI95] (n)	3.79 [3.12, 4.47] (29)
Subjective olfactory impairment, T2, % (n)	17.5 (143)
Olfactory dysfunction severity (VAS), T2 mean [CI95] (n)	2.96 [2.07, 3.84] (24)
Olfactometry score, T2, mean [CI95] (n)	10.18 [9.89, 10.48] (143)
Olfactory bulb volume in mm ³ , T1, mean [CI95] (n)	45.53 [43.84, 47.21] (224)
Neuropsychological scores	
Trail Making Test B, T1, mean [CI95] (n)	69.96 [66.55, 73.37] (206)
Word List Recall Test, T1, mean [CI95] (n)	8.51 [8.28, 8.74] (205)
Animal Naming Test, T1, mean [CI95] (n)	28.25 [27.42, 29.08] (206)
Mini Mental State Exam, T1, mean [CI95] (n)	28.42 [28.25, 28.60] (205)

Petersen, 23/06/2023

Patient Health Questionnaire 9, T1, mean [CI95] (n)	3.54 [3.05, 4.03] (218)
EQ5D, T1, mean [CI95] (n)	80.74 [78.76, 82.72] (206)

632

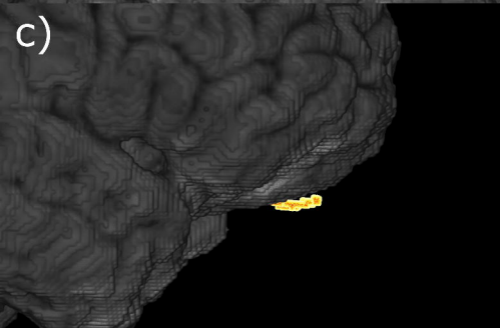
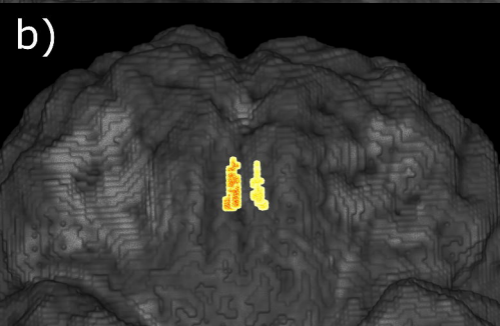
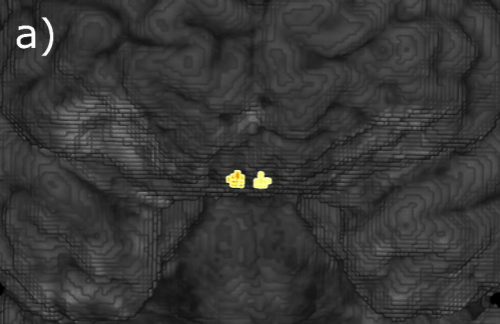
633 *Abbreviations:* CI95 = 95% confidence interval of the mean, n = number of data

634 points, PCR = polymerase chain reaction, post-SARS-CoV-2 = individuals who have

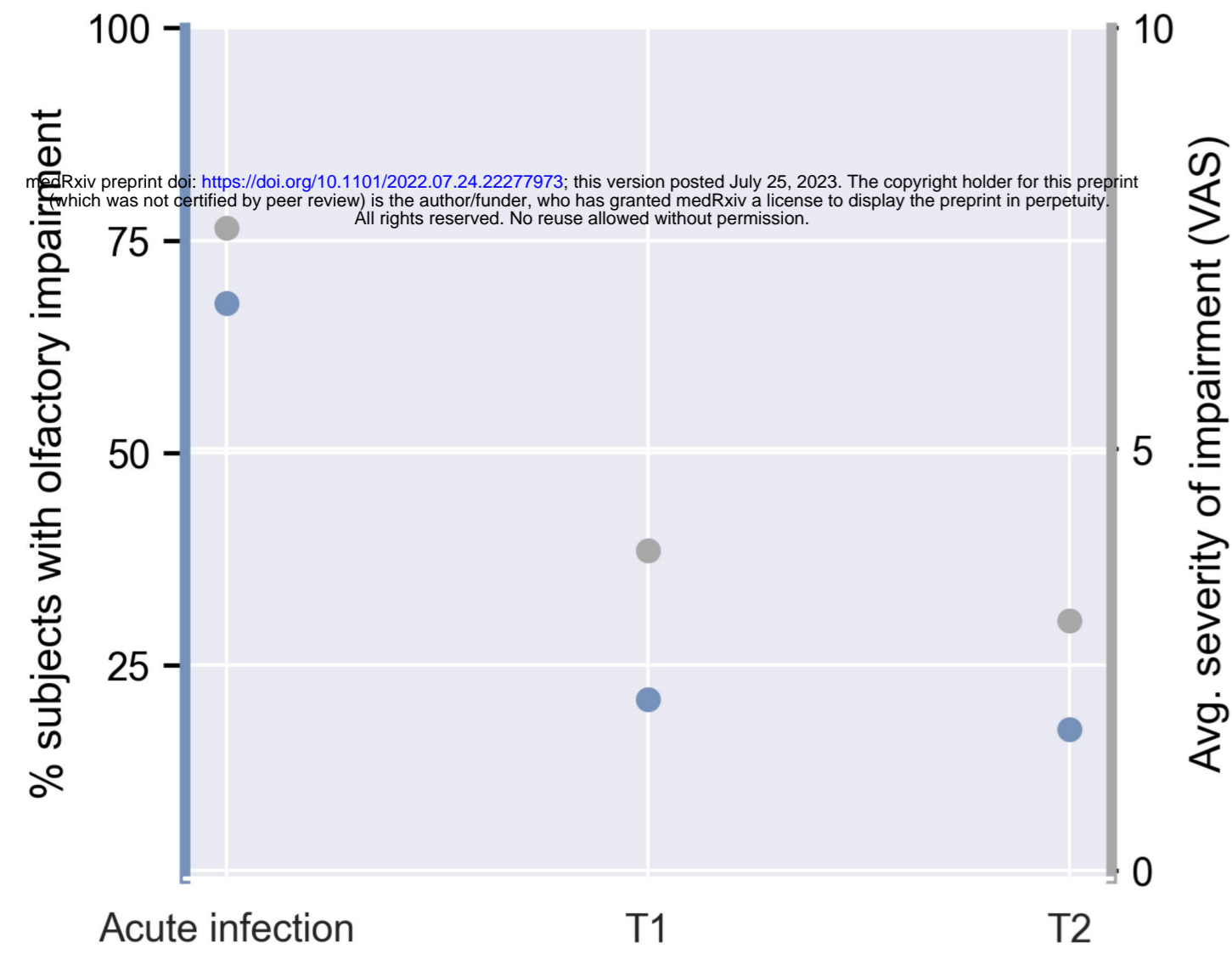
635 recovered from a severe acute respiratory coronavirus type 2 infection, T1 = at

636 baseline, T2 = at follow-up.

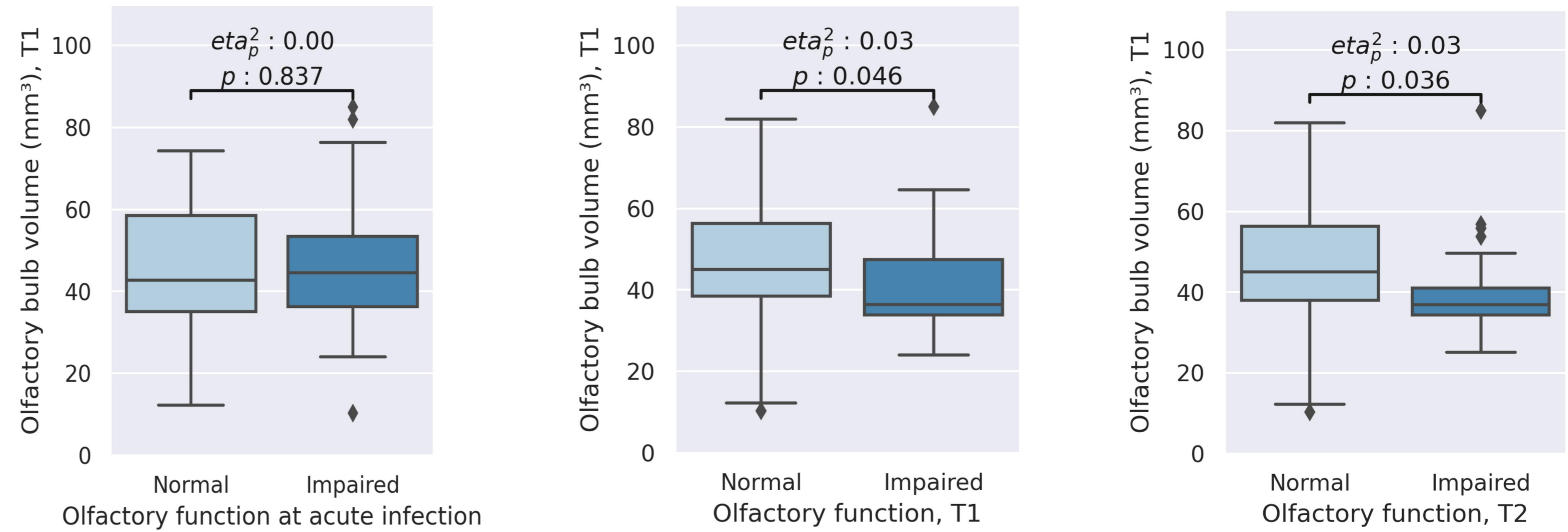
637



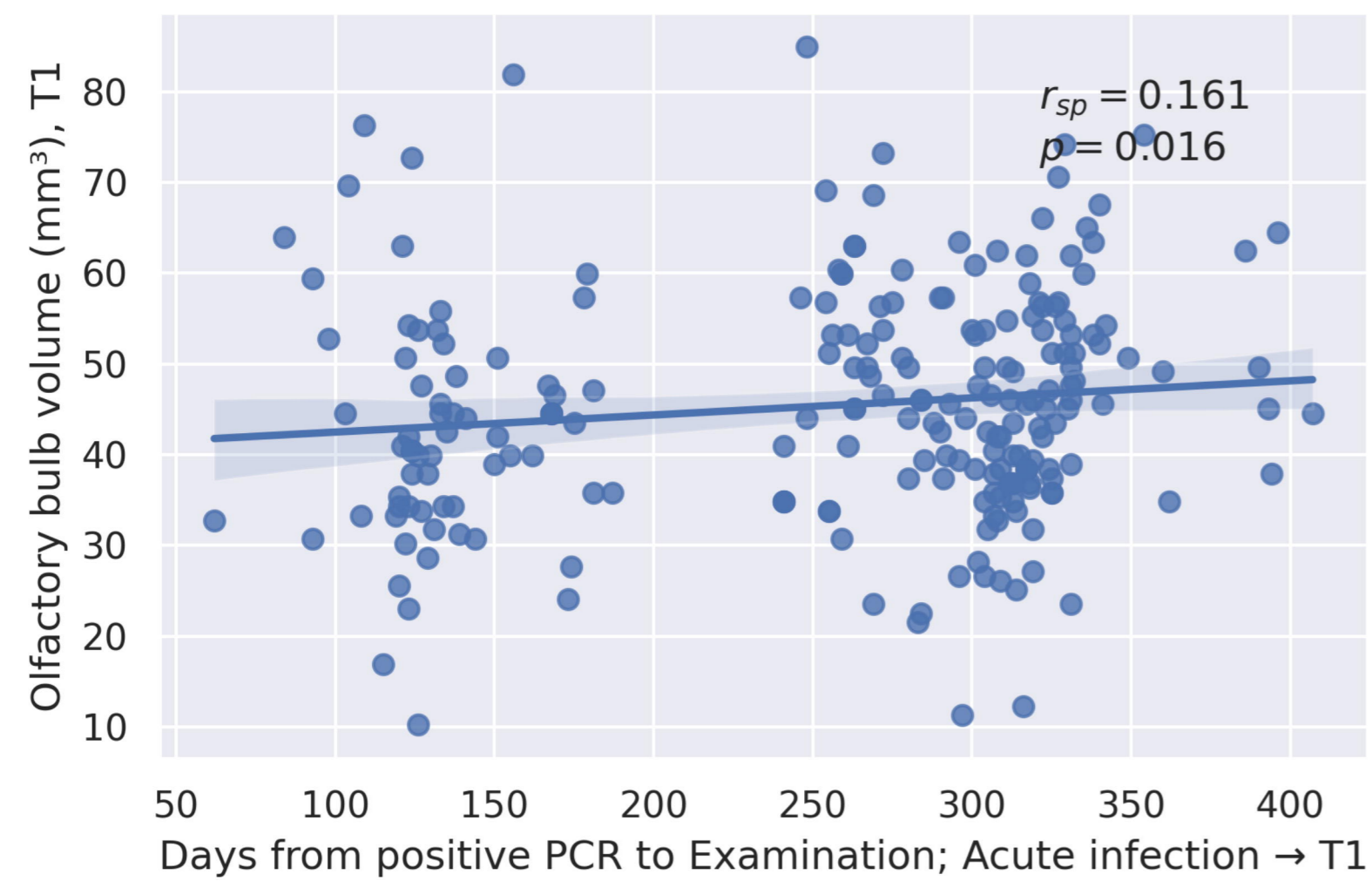
a)



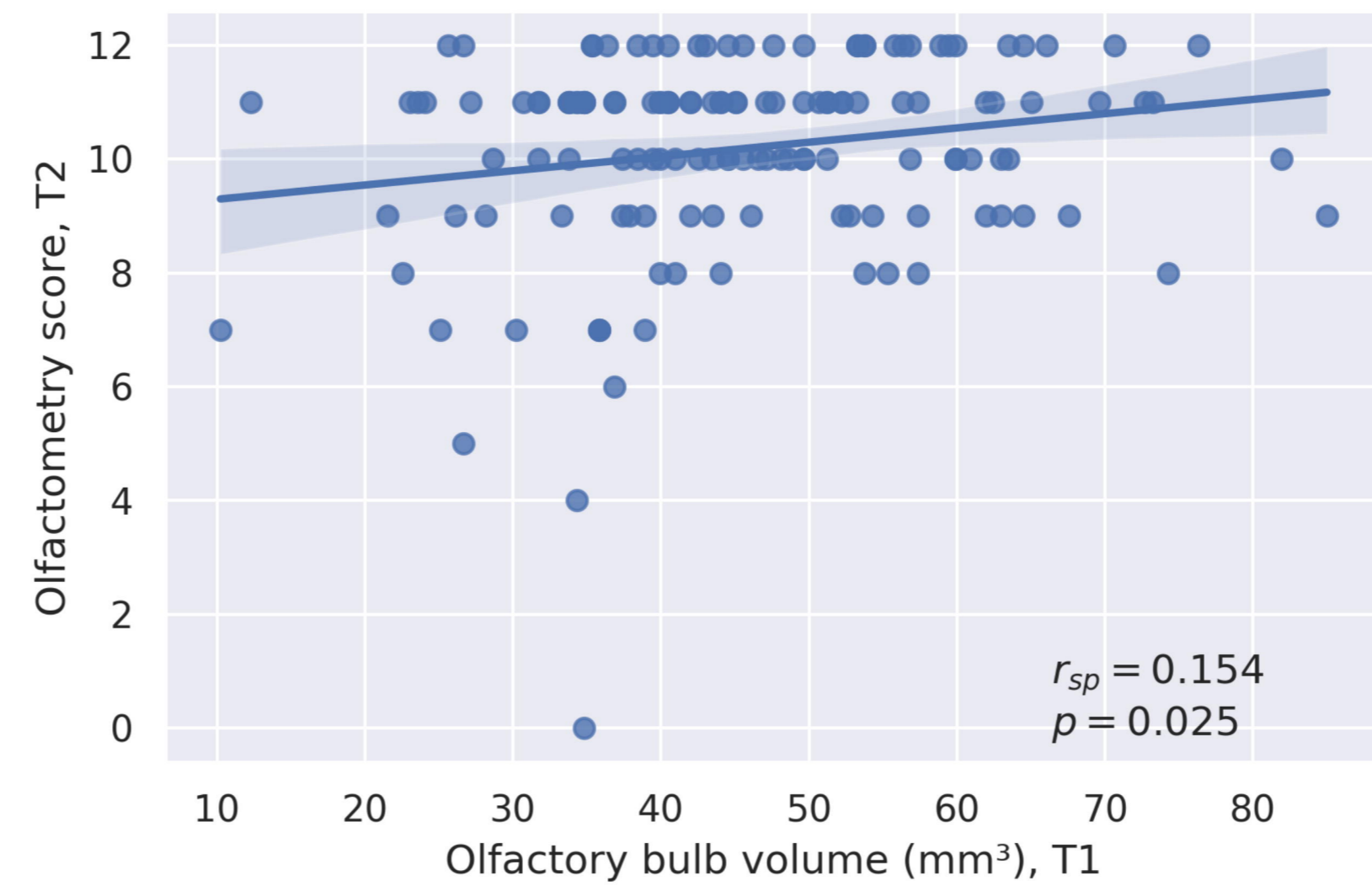
b)



c)



d)



e)

