
Validation of SeptiCyte RAPID to discriminate sepsis from non-infectious systemic inflammation

Robert Balk^{1*}, Annette M. Esper², Greg S. Martin², Russell R. Miller III³, Bert K. Lopansri^{4,5}, John P. Burke^{4,5}, Mitchell Levy⁶, Steven Opal⁶, Richard E. Rothman⁷, Franco R. D'Alessio⁷, Venkataramana K. Sidhaye⁷, Neil R. Aggarwal⁸, Jared A. Greenberg¹, Mark Yoder¹, Gourang Patel¹, Emily Gilbert⁹, Jorge P. Parada⁹, Majid Afshar¹⁰, Jordan A. Kempker², Tom van der Poll¹¹, Marcus J. Schultz¹¹, Brendon P. Scicluna¹², Peter M.C. Klein Klouwenberg¹³, Janice Liebler¹⁴, Emily Blodget¹⁴, Santhi Kumar¹⁴, Krupa Navalkar¹⁵, Thomas D. Yager^{15*}, Dayle Sampson¹⁵, James T. Kirk¹⁵, Silvia Cermelli¹⁵, Roy F. Davis¹⁵, and Richard B. Brandon^{15*}

¹Rush Medical College and Rush University Medical Center, Chicago, Illinois; Robert_Balk@rush.edu (RB); Jared_Greenberg@rush.edu (JAG); Mark_A_Yoder@rush.edu (MY); gourang_p_patel@rush.edu (GP)

²Grady Memorial Hospital and Emory University School of Medicine, Atlanta, Georgia; aesper@emory.edu (AE); greg.martin@emory.edu (GM); jkempke@emory.edu (JAK)

³FirstHealth of the Carolinas, Pinehurst, North Carolina; russmedunc@gmail.com

⁴Intermountain Medical Center, Murray, Utah; Bert.Lopansri@imail.org (BKL); John.burke@imail.org (JPB)

⁵University of Utah School of Medicine, Salt Lake City, Utah;

⁶Brown University, Providence, Rhode Island; Mitchell_Levy@brown.edu (ML); steven_opal@brown.edu (SO)

⁷Johns Hopkins University School of Medicine, Baltimore, Maryland; rrothma1@jhmi.edu (RER); fdaless2@jhmi.edu (FRDA); vsidhay1@jhmi.edu (VKS)

⁸Anschutz Medical Campus, University of Colorado, Denver, Colorado; NEIL.AGGARWAL@cuanschutz.edu

⁹Loyola University Medical Center, Maywood, Illinois; EMGILBERT@lumc.edu (EG); JPARADA@lumc.edu (JPP)

¹⁰University of Wisconsin School of Medicine and Public Health, Madison, Wisconsin; mafshar@medicine.wisc.edu

¹¹Amsterdam UMC, University of Amsterdam, Amsterdam, the Netherlands; t.vanderpoll@amsterdamumc.nl (TvdP); marcus.j.schultz@gmail.com (MJS)

¹²Centre for Molecular Medicine and Biobanking, University of Malta, Malta; and Department of Applied Biomedical Science, Faculty of Health Sciences, Mater Dei hospital, University of Malta, Malta; brendon.scicluna@um.edu.mt

¹³Isala Hospital, Zwolle, the Netherlands; peterkk@live.com

¹⁴Keck Hospital of University of Southern California (USC); and Los Angeles County and USC Medical Center; liebler@usc.edu (JL); eblodget@med.usc.edu (EB); santhi.kumar@med.usc.edu (SK)

¹⁵Immunexpress Inc., Seattle, Washington; krupa.n@immunexpress.com (KN); thomas.y@immunexpress.com (TDY); dayle.sampson@gmail.com (DS); james.k@immunexpress.com (JTK); silvia.c@immunexpress.com (SC); roy.d@immunexpress.com (RD); richard.b@immunexpress.com (RBB)

*Correspondence: RB: Robert_Balk@rush.edu; RBB: richard.b@immunexpress.com; TY: thomas.y@immunexpress.com.

Abstract: (1) Background: SeptiCyte RAPID is a molecular test for discriminating sepsis from non-infectious systemic inflammation, and for estimating sepsis probabilities. The objective of this study was the clinical validation of SeptiCyte RAPID, based on testing retrospective banked and prospectively collected patient samples. (2) Methods: The cartridge-based SeptiCyte RAPID test accepts a PAXgene blood RNA sample and provides sample-to-answer processing in ~1 hour. The test output (SeptiScore, range 0-15) falls into four interpretation bands, with higher scores indicating higher probabilities of sepsis. Retrospective (N=356) and prospective (N=63) samples were tested from adult patients in ICU either having the systemic inflammatory response syndrome (SIRS), or suspected of / diagnosed with sepsis. Patients were clinically evaluated by a panel of three expert physicians blinded to the SeptiCyte test results. Results were interpreted under either the Sepsis-2 or Sepsis-3 framework. (3) Results: Under the Sepsis-2 framework, SeptiCyte RAPID performance for the combined retrospective and prospective cohorts had Area Under the ROC Curve (AUC) ranging from 0.82 to 0.85, negative predictive value 0.91 (sensitivity 0.94) for SeptiScore Band 1 (score range 0.1-5.0; lowest risk of sepsis), and positive predictive value 0.81 (specificity 0.90) for SeptiScore Band 4 (score range 7.4-15; highest risk of sepsis). Performance estimates for the prospective cohort ranged from AUC 0.86-0.95. For physician-adjudicated sepsis cases that were blood culture (+) or blood, urine culture (+)(+), 43/48 (90%) of SeptiCyte scores fell in Bands 3 or 4. In multivariable analysis with up to 14 additional clinical variables, SeptiScore was the most important variable for sepsis diagnosis. Comparable performance was obtained for the majority of patients reanalyzed under the Sepsis-3 definition, although a subgroup of 16 patients was identified that was called septic under Sepsis-2 but not under Sepsis-3. (4) Conclusions: This study validates SeptiCyte RAPID for

estimating sepsis probability, under both the Sepsis-2 and Sepsis-3 frameworks, for hospitalized patients on their first day of ICU admission.

Keywords: sepsis, diagnosis, host response, SIRS, sepsis scoring systems

1. Introduction

Sepsis is an important and expensive global health problem with high morbidity and mortality. According to the World Health Organization, more than 11 million people die from sepsis worldwide annually - more than the deaths caused by all cancers combined [2] and comprising almost 20% of all deaths annually [1]. Sepsis is the leading cause of death in U.S. hospitals and is ranked as the most expensive disease state to manage for admitted patients [3], with total annual costs of treatment and rehabilitation estimated at \$62 billion [4]. Before the COVID-19 pandemic, at least 1.7 million adults in the United States developed sepsis annually [5]. During the pandemic, this problem was exacerbated as a large fraction of COVID-19 deaths appeared due to viral and/or bacterial sepsis [6, 7].

Early identification of sepsis and implementation of treatment bundles have been shown to improve outcomes for sepsis patients [8]. However, early identification of sepsis is difficult for many reasons. In the early stages of the disease, patients present with inflammatory clinical signs which may be early indicators of a septic response, but which are also common to many other non-infectious conditions [9]. Proof of infection by the conventional ‘gold standard’ criterion of culture positivity lacks timeliness [10] and cultures are negative in a significant fraction of retrospectively diagnosed sepsis cases [11,12]. The presence of infection could

perhaps be inferred from the clinician's act of therapeutic antibiotic administration, but this is also problematic, as antibiotics are found in retrospect to often be overprescribed [13-15]. Also, in the early stages of sepsis, organ dysfunction (the *sine qua non* for sepsis under the Sepsis-3 definition) may not yet be highly evident or easily detected. In short, the detection of sepsis in its early stages where treatment could be most effective (i.e. before organ damage is extensive) remains a challenge. This point of concern has been raised by a number of authors in connection with the Sepsis-3 definition [16-21].

We previously reported on the development and validation of a diagnostic test (SeptiCyte LAB) to differentiate patients with sepsis from those exhibiting a non-infectious systemic inflammatory response syndrome (SIRS). The test provided a probability of sepsis, based on measurement of four host immune response biomarkers, PLA2G7, PLAC8, CEACAM4 and LAMP1 [22,23]. Here we describe SeptiCyte RAPID, a simplified and improved cartridge-based version of the earlier SeptiCyte LAB test, which achieves simultaneous amplification and detection of two of the original four RNA transcripts (PLA2G7 and PLAC8) in human blood samples. The specific aim of the present work is to provide clinical validation data demonstrating robust performance of SeptiCyte RAPID for the estimation of sepsis probabilities, under both the Sepsis-2 and Sepsis-3 frameworks, in a combined cohort of 419 hospitalized patients on their first day of ICU admission. SeptiCyte RAPID addresses a clinical need for more rapid and accurate differentiation of sepsis from SIRS within a clinically actionable (~1 hour) time frame. Some of these results have been presented earlier in the form of an abstract [24].

2. Materials and Methods

2.1 Study cohorts

Clinical validation of SeptiCyte RAPID for the discrimination of sepsis from SIRS according to the Sepsis-2 definition used PAXgene blood RNA samples from retrospective (N=356) and prospective (N=63) patient cohorts. A flow diagram describing the origin of all samples used in the study is provided in the Supplementary Information, Section 1.

The retrospective cohort was drawn from the observational MARS, VENUS and VENUS Supplement trials (www.clinicaltrials.gov NCT01905033 and NCT02127502) which have been previously described [23]. The retrospective cohort comprised 80% of the 447 patients used for the 510(k) clearance of SeptiCyte LAB, for which duplicate banked PAXgene blood RNA samples remained available. The recruitment dates were Jan 2011 - Dec 2013 (MARS), May 2014 - Apr 2015 (VENUS) and Mar - Aug 2016 (VENUS Supplement).

The prospective cohort consisted of 63 critically ill adult subjects enrolled in an observational trial (NEPTUNE, www.clinicaltrials.gov NCT05469048) between the dates May 26, 2020 - April 25, 2021 at Emory University / Grady Memorial Hospital (Atlanta GA), Rush University Medical Center (Chicago IL) and University of Southern California (USC) Medical Center (with two separate sites, Keck Hospital of USC, and Los Angeles county + USC Medical Center, in Los Angeles CA). By design, the NEPTUNE inclusion/exclusion criteria matched the criteria used earlier in the MARS, VENUS, and VENUS Supplement studies. Subjects were considered for inclusion in NEPTUNE if they were adults (≥ 18 years old), exhibited two or more

SIRS criteria, and received an ICU admission order. Subjects were operationally defined as “suspected of sepsis” if microbiological tests were ordered within 24 hours of the ICU admission order. Subjects were excluded if therapeutic intravenous antibiotic treatment was initiated >24 hours before ICU admission order, as this would be expected to decrease blood culture positivity [25,26], thus potentially confounding the retrospective physician diagnosis (RPD) process. Extensive early antibiotic treatment could also potentially affect the host response to infection, introducing bias into the SeptiCyte RAPID test scores. As much as possible, enrolments were consecutive; however, during the COVID-19 pandemic, screening did not happen every day, and initial consenting sometimes resulted in later refusal to participate. PAXgene blood samples were collected within 24 hours of ICU admission order and run fresh on Idylla instruments installed at the sites. Clinical data were collected on case report forms as described previously [23].

2.2 Ethics approval and consent to participate

Ethics approval for the MARS trial was given by the Medical Ethics Committee of the Amsterdam Medical Center (approval # 10-056C). Ethics approvals for the VENUS trial were given by the relevant Institutional Review Boards as follows: Intermountain Medical Center/Latter Day Saints Hospital (approval # 1024931); Johns Hopkins Hospital (approval # IRB00087839); Rush University Medical Center (approval # 15111104-IRB01); Loyola University Medical Center (approval # 208291); Northwell Healthcare (approval #16-02-42-03). Ethics approvals for the NEPTUNE trial were given by the relevant Institutional Review Boards as follows: Emory University (approval # IRB00115400); Grady Memorial Hospital (approval # 00-115400); Rush University Medical Center (approval # 19101603-IRB01); University of Southern California Medical Center (approval # HS-19-0884-CR001). All subjects, or their

legally authorized representatives, gave informed consent for participation in this study. All methods used in this study were carried out in accordance with the relevant guidelines and regulations.

2.3 The SeptiCyte RAPID test

SeptiCyte RAPID is run on the Idylla platform (Biocartis NV, Mechelen, Belgium). The test is performed by pipetting 0.9 mL of PAXgene-stabilized blood (corresponding to 0.24 mL of drawn blood) into a custom cartridge which performs all assay steps including sample extraction/purification and RT-qPCR for the detection and relative quantification of the PLAC8 and PLA2G7 mRNA targets. Test results are calculated and presented automatically through a software-generated report which includes a quantitative score (SeptiScore, range 0-15), calculated as the difference between the RT-qPCR Cq values for PLA2G7 and PLAC8 and proportional to sepsis probability. The test has a hands-on time of ~2 min and a turnaround time of ~1 hour.

2.4 Reference diagnosis (comparator) under Sepsis-2

Clinical performance of SeptiCyte RAPID was evaluated by comparison to a ‘gold standard’ of clinical adjudication. The adjudication process, termed retrospective physician diagnosis (RPD), consisted of clinical evaluations by an external three-member panel of experienced physicians not involved in the care of the patients. For each patient, a chart review was conducted independently by each panel member, leading to a three-way classification (sepsis, SIRS or indeterminate) in accordance with the Sepsis-2 definition under which sepsis is defined as ≥ 2 SIRS criteria + infection [27]. The vote tally for each patient was either unanimous, consensus (2

of 3), or indeterminate. There were 41/419 (9.8%) indeterminates, which were then reanalyzed by forcing into either the sepsis or SIRS categories by a second RPD. The Sepsis-2 definition was used in this initial analysis because the majority of patients were recruited before the Sepsis-3 definition became available. Additional details are provided in Supplementary Information, Section 2.

2.5 Reference diagnosis (comparator) under Sepsis-3

An additional analysis was conducted under the Sepsis-3 definition. Figure 1 of Singer et al. (2016) [28] describes how we operationalized the Sepsis-3 definition. Singer et al. proposed that patients with organ dysfunction (SOFA scores ≥ 2) and with definite or suspected infection could be considered to have sepsis. Therefore, the key to transitioning from a Sepsis-2 to Sepsis-3 framework lies in determining whether patients with organ dysfunction (SOFA scores ≥ 2) are infection-positive or infection-negative. Under the Sepsis-2 framework, when the RPD panelists called a patient septic, this implied that the patient exhibited ≥ 2 SIRS criteria *and* had a definite or probable infection. Therefore, a call of sepsis by the RPD panelists implied that they classified the patient as infection-positive.

As measures of organ dysfunction, we considered both the complete SOFA score [29] which had been collected for 289/419 (69.0%) of patients, and also, following Grissom et al. [30] and Lambden et al. [31], a partial SOFA score (pSOFA) in which 4 or more of the 7 SOFA components were present. The pSOFA could be computed for 372/419 (88.8%) of patients.

2.6 Statistical calculations

Sepsis probability as a function of SeptiScore was calculated by a “sliding window” approach [32]. A custom R script was written to conduct a sliding window calculation of the sepsis probability (P) across the 0-15 SeptiScore range. The sliding window was 4 SeptiScore units wide and was shifted in 1-unit increments from the lower to the upper limit of the SeptiScore range. In each 4-unit wide window, the numbers of sepsis calls (N_{sepsis}) and SIRS calls (N_{SIRS}) were tabulated according to each RPD method, and $P = (N_{\text{sepsis}}) / (N_{\text{sepsis}} + N_{\text{SIRS}})$ was computed for that window. The process was repeated stepwise over the entire 0-15 SeptiScore range.

Sepsis probability as a function of SeptiScore was parsed into four bands, with higher SeptiScores representing higher probabilities of sepsis. Band boundaries were pre-defined on the basis of an independent set of 195 clinical samples from the MARS consortium. The samples for setting the band boundaries were independent of the 419 samples in the validation dataset, and were not used in the performance evaluation. The band boundaries were set to give 90% sensitivity for binarization at the Band 1/2 boundary (SeptiScore 4.95) and 80% specificity for binarization at the Band 3/4 boundary (SeptiScore 7.45), using site clinical adjudications as Ground Truth values. The intermediate zone between the Band 1/2 and Band 3/4 boundaries was divided in half to define the Band 2/3 boundary (SeptiScore 6.15).

Receiver-Operating Characteristic (ROC) curve analysis was performed in accordance with Clinical and Laboratory Standards Institute EP24-A2 using the pROC package [33]. Other clinical performance measures (clinical sensitivity, clinical specificity, sepsis and SIRS probabilities, and likelihood ratios) were also calculated. Additional statistical methods for data

analyses, including methods for imputing missing data and for combining the SeptiScore with other clinical variables, are described in the Supplementary Information, Sections 3-5.

3. Results

3.1 Description of the SeptiCyte RAPID test

SeptiCyte RAPID is a fully automated sample-to-result test, with all reagents integrated in a single-use cartridge. The test provides an actionable result in ~1 hour, in the form of a SeptiScore ranging from 0 to 15 and falling into one of four “SeptiScore Bands” of increasing sepsis probability. SeptiCyte RAPID provides a significant technical advance over the earlier SeptiCyte LAB assay which was based upon the conventional 96- well Applied Biosystems 7500 Fast Dx format with a turnaround time of ~8 hours [23]. Correlation of SeptiScore values between SeptiCyte LAB and SeptiCyte RAPID, based upon the retrospective sample set (N=356) run on both platforms, was high with Pearson’s sample correlation coefficient $r = 0.88$. (Supplementary Information, Section 6).

SeptiCyte RAPID quantitatively measures the relative expression levels of two host immune response genes PLAC8 (Placenta Associated 8) and PLA2G7 (Phospholipase A2 Group 7). This expression signature was discovered using a purely bioinformatic approach which compared SIRS patients that had been retrospectively diagnosed as having either infection or no infection [22]. With respect to biological roles in the host immune response to infection, PLAC8 is reportedly an interferon inducible gene expressed in a variety of tissues rich in immune cells (e.g. whole blood, spleen, lymph node, colon), and up-regulated in sepsis across a broad range of different peripheral blood cell types including plasmacytoid dendritic and natural killer cells. PLA2G7 encodes the protein platelet-activating factor (PAF) acetylhydrolase, a secreted enzyme primarily produced by macrophages that catalyzes the degradation of PAF and hydrolyses the

oxidized short chain phospholipids of low-density lipoproteins (LDL), thereby releasing pro-inflammatory mediators (lysophospholipids and oxidized fatty acids). Further discussion and literature references are provided in the Supplementary Information, Section 7.

3.2 Demographic and clinical characteristics of the study cohorts

Clinical validation of SeptiCyte RAPID was based on testing samples from retrospective (n=356) and prospective (n=63) patient cohorts. Demographic characteristics of the study cohorts are presented in **Table 1**. The majority of patients were recruited over the dates Jan 2011 - Dec 2013 (MARS), May 2014 - Apr 2015 (VENUS) and Mar - Aug 2016 (VENUS Supplement), which largely predate the Sepsis-3 definition [28]. Sepsis, SIRS or indeterminate diagnoses were assigned by RPD under the Sepsis-2 definition, although reanalysis under Sepsis-3 was also performed and is described below. When compared to patients with SIRS, patients adjudicated as septic tended to be older ($p = 0.016$). There were no significant differences by sex or race/ethnicity. Although the patients were evaluated in intensive care, they originated from a variety of hospital locations. Patients coming from hospital wards exhibited a higher proportion of sepsis relative to patients coming from the ED ($p = 0.003$), the post-anesthesia unit / post-operating room ($p < 0.00001$), or the ICU / cardiac care unit ($p = 0.02$).

Table 1. Demographic characteristics of study population

Parameter		SIRS (N=224) (Consensus)	Sepsis (N=154) (Consensus)	p-value
		N (%)	N (%)	
Age	Median (Interquartile range, IQR)	57 (42-69)	62 (49-71)	p = 0.016
Sex	Female	98 (58%)	71 (42%)	female vs. male p = 0.65
	Male	126 (60%)	83 (40%)	
Race / Ethnicity	Asian	10 (53%)	9 (47%)	white vs. non-white ¹ p = 0.75
	Black (American or European of African descent)	65 (64%)	37 (36%)	
	Hispanic	11 (52%)	10 (48%)	white vs. black p = 0.39
	Other	1 (50%)	1 (50%)	
	Unknown	2 (50%)	2 (50%)	
	White	135 (59%)	95 (41%)	
Study Site	Europe (1 site)	76 (60%)	50 (40%)	Europe vs. USA p = 0.76
	United States (9 sites)	148 (59%)	104 (41%)	
Source of Admission	Emergency department	138 (59%)	95 (41%)	ED vs. ward p = 0.0026
	Post Anesthesia Unit or Post-Operating Room	34 (83%)	7 (17%)	
	ICU	7 (58%)	5 (42%)	(post-anaesthesia or post-op) vs. ward p < 0.00001
	ICU, other hospital	14 (54%)	12 (46%)	
	Coronary care facility (CCF)	4 (80%)	1 (20%)	
	Wards	13 (33%)	26 (67%)	
	Other	13 (62%)	8 (38%)	ICU or CCF vs. ward p = 0.024

¹Hispanic grouped with non-white for this comparison

Table 1. Demographic characteristics of study population. There were 41 (9.8%) indeterminates by consensus RPD, which are not shown in this table or included in the p-value calculations. Student's t-test was used to calculate p-values for the indicated comparisons.

Clinical characteristics of the study cohorts are presented in **Tables 2 and 3**. Of particular note are positive culture results of high statistical significance. Positive results for blood+ , urine+ and blood+/urine+ cultures were very highly associated with RPD diagnoses of sepsis as opposed to SIRS, with p-values of <0.00001, <0.00001, and <0.001 respectively. Also, positive results for blood+, urine+, and blood+/urine+ cultures were associated with elevated SeptiScores, especially SeptiScores in Band 4 (see Methods for Band definitions). Of the 48 patients that were called septic by RPD with positive blood+ or blood+/urine+ culture results, 34/48 (71%) of SeptiScores fell in band 4 and 9/48 (19%) fell in band 3. Of the 42 patients with positive blood+ culture results, only one had a SeptiScore in Band 1; this patient was diagnosed as SIRS by RPD, with the blood culture result being considered a probable contaminant by the attending physician and the RPD panelists.

A taxonomic analysis of the culture-confirmed pathogens for the sepsis cases is presented in the Supplementary Information, Sections 8-9. In our study cohorts, SeptiScore does not appear to be significantly affected by the type of pathogen (bacterial, viral, fungal) underlying a sepsis event. In particular, we observed no significant difference ($p = 0.264$) between the SeptiScore distributions for septic patients with Gram-positive infections (n=55) versus Gram-negative infections (n=36).

Table 2. Clinical characteristics of the study population

Category	SIRS (n=224; 59.3%)	Sepsis (n=154; 40.7%)	p-value
	N (%) or Median (IQR)	N (%) or Median (IQR)	
Culture results			
Blood (+/- Other)	3 (1.34%)	38 (24.7%)	<0.0001
Urine (+/- Other)	2 (0.89%)	21 (13.6%)	<0.0001
Blood + Urine (+/- Other) (double positive)	0 (0%)	10 (6.49%)	<0.0001
Sputum (+/- Other)	13 (5.8%)	19 (12.3%)	0.03
Other culture*	19 (8.5%)	20 (13.0%)	0.2
Viral positives / coinfections (by PCR)	9 (4.0%)	16 (10.4%)	0.02
No culture data recorded**	178 (79.5%)	30 (19.5%)	<0.0001
Presumed initial site of infection			
Pulmonary (N=58)	8 (3.6%)	50 (32.5%)	<0.0001
Abdominal (N=28)	1 (0.45%)	27 (17.5%)	<0.0001
Blood (N=16)	0 (0%)	16 (10.4%)	<0.0001
Urinary Tract (N=25)	2 (0.89%)	23 (14.9%)	<0.0001
Central Nervous System (N=9)	4 (1.8%)	5 (3.25%)	0.4
Other (N=16)	2 (0.89%)	14 (9.1%)	0.0001
Multiple (N=5)	0 (0%)	5 (3.25%)	0.007
Not Identified at Initial Evaluation (N=226)	207 (92.4%)	19 (12.3%)	<0.0001
Clinical parameters (Median, IQR)			
Minimum Temperature (°C)	36 (35.5-36.4)	36.1 (35.2-36.7)	0.9
Maximum Temperature (°C)	37.2 (36.9-37.8)	37.8 (37.2-38.6)	< 0.001
SOFA	6.0 (4.0-8.0)	7.0 (5.0-9.0)	0.004
Procalcitonin (ng/mL)	0.28 (0.05-1.33)	5.19 (0.85-25.72)	<0.0001
WBC max (cells/uL x 10 ⁻³)	12.65 (8.3-17.20)	14.9 (9.94-21.15)	0.0002

Category	SIRS (n=224; 59.3%)	Sepsis (n=154; 40.7%)	p-value
	N (%) or Median (IQR)	N (%) or Median (IQR)	
Lactate (mmol/L)	2.05 (1.40-3.27)	2.40 (1.55-4.05)	0.5
Interventions (Median, IQR)			
Invasive mechanical ventilation	86 (38.4%)	52 (33.8%)	0.4
Antibiotic administration	134 (59.8%)	149 (96.8%)	<0.0001
Vasopressor Use	59 (26.3%)	68 (44.2%)	0.003
Outcomes (Median, IQR)			
Hospital length of stay (days)	4 (3-7)	8 (4-15)	< 0.001
ICU length of stay (days)	1.8 (1.2-3.3)	3.2 (1.7-7.0)	< 0.001
Death	19 (8.5%)	22 (14.3%)	0.08
SeptiCyte RAPID Score *** (Median, IQR)	5.3 (4.6-6.3)	7.9 (6.8-9.6)	<0.0001

* Other culture includes the following sample types: bronchial combicath, bronchoalveolar lavage (BAL), cerebrospinal fluid (CSF), pus, nares, stool, throat swab, drain fluid, body fluid, interstitial fluid, skin swab. This category also includes one Cryptococcal antigen positive result.

** including 7 positive blood cultures deemed to be false positives

*** Clinicians did not have access to SeptiCyte RAPID Scores during their clinical assessments of patients

Table 2. Clinical characteristics of the study population. Consensus RPD was used as the comparator. There were 41/419 (9.8%) indeterminates by consensus RPD, which are not shown in this table or included in the p-value calculations. For categorical variables, the chi-squared test was used to calculate p-values for the difference in prevalence (%) of observations of each type across the SIRS

and sepsis categories. For continuous variables, Welch's two sample t-test was used to calculate p-values across the SIRS and sepsis categories. Abbreviation: n.a., not appropriate.

Table 3. Characteristics of all patients stratified by RPD, demographic and clinical parameters, and SeptiScore band

Category	Subcategory	SeptiScore 0-4.9 (Band B1) (N=104; 24.8%)	SeptiScore 5-6.1 (Band B2) (N=103; 24.6%)	SeptiScore 6.2-7.3 (Band B3) (N=82; 19.6%)	SeptiScore 7.4-15 (Band B4) (N=130; 31.0%)	Significance
RPD Process						
RPD: Consensus (sepsis+SIRS = 378)	Indeterminate (N=41; 9.8%)	8 (7.7%)	11 (10.7%)	11 (13.4%)	11 (8.5%)	p(B1,B2,B3,B4) = 1.6 x 10 ⁻⁹ , 4.7 x 10 ⁻⁴ , 0.53, <1.0 x 10 ⁻¹⁵
	Sepsis (N=154; 36.8%)	9 (8.6%)	19 (18.4%)	30 (36.6%)	96 (73.8%)	
	SIRS (N=224; 53.5%)	87 (83.6%)	73 (70.9%)	41 (50.0%)	23 (17.7%)	
RPD: Forced (sepsis+SIRS = 419)	Sepsis (N=176; 42.0%)	13 (12.5%)	23 (22.3%)	37 (45.1%)	103 (79.2%)	p(B1,B2,B3,B4) = 1.1 x 10 ⁻⁹ , 5.2 x 10 ⁻⁵ , 0.57, <1.0 x 10 ⁻¹⁵
	SIRS (N=243; 58.0%)	91 (87.5%)	80 (77.7%)	45 (54.9%)	27 (20.8%)	
RPD: Unanimous (sepsis+SIRS = 276)	Sepsis (N=119; 28.4%)	7 (6.7%)	12 (11.6%)	23 (28.0%)	77 (59.2%)	p(B1,B2,B3,B4) = 6.3 x 10 ⁻⁷ , 6.0 x 10 ⁻⁴ , 0.97, 3.2 x 10 ⁻¹⁵
	SIRS (N=157; 37.5%)	60 (57.7%)	51 (49.5%)	30 (36.6%)	16 (12.3%)	
	N/A (N=143; 34.1%)	37 (35.6%)	40 (38.8%)	29 (35.4%)	37 (28.5%)	
Demographics						
Age	Median, (Q1-Q3)	56.5 (42.8-68.2)	59 (44.5-69)	58 (41.2-74)	62 (48.2-70)	p = 0.6
Sex	female (N=187; 44.6%)	46 (44.2%)	41 (39.8%)	37 (45.1%)	63 (48.5%)	p(B1,B2,B3,B4) = 0.93, 0.33, 0.92, 0.38
	male (N=232; 55.4%)	58 (55.8%)	62 (60.2%)	45 (54.9%)	67 (51.5%)	
Race	Black (N=115; 27.4%)	25 (24.0%)	33 (32.0%)	21 (25.6%)	36 (27.7%)	p(B1,B2,B3,B4) = 0.70, 0.22, 0.20, 0.92
	White (N=254; 60.6%)	65 (62.5%)	63 (61.2%)	46 (56.1%)	80 (61.5%)	
	Other (N=50; 11.9%)	14 (13.5%)	7 (6.8%)	15 (18.3%)	14 (10.8%)	
Culture Results*						
Blood (+/- secondary)	Number (%) positive (out of 42)	1 (2.4%)	7 (16.6%)	8 (19.5%)	26 (63.4%)	p < 0.0001
Urine (+/- secondary)	Number (%) positive (out of 24)	4 (16.6%)	4 (16.6%)	3 (12.5%)	13 (54.2%)	p = 0.1

Category	Subcategory	SeptiScore 0-4.9 (Band B1) (N=104; 24.8%)	SeptiScore 5-6.1 (Band B2) (N=103; 24.6%)	SeptiScore 6.2-7.3 (Band B3) (N=82; 19.6%)	SeptiScore 7.4-15 (Band B4) (N=130; 31.0%)	Significance
Blood + Urine (+/- tertiary)	Number (%) double positive (out of 10)	0 (0.0%)	1 (10%)	1 (10%)	8 (80%)	p = 0.008
Sputum (+/- secondary)	Number (%) positive (out of 35)	8 (22.9%)	1 (2.9%)	9 (25.7%)	17 (48.5%)	p = 0.02
Other culture/results**	Number (%) positive (out of 42)	11 (26%)	10 (24%)	8 (19%)	13 (31%)	p = 0.99
Viral acute (by PCR)	Number (%) positive (out of 24)	1 (4%)	3 (12%)	8 (32%)	12 (52%)	p = 0.01
No positive culture or PCR data recorded ***	Number (%) without positive culture or PCR data recorded (out of 242)	79 (32.8%)	77 (32%)	45 (18.7%)	41 (16.5%)	p <0.0001
Presumed Initial Site of Infection*						
Pulmonary	Number (%) out of 74	6 (8%)	11 (15%)	17 (23%)	40 (54%)	p <0.0001
Abdominal	Number (%) out of 34	2 (5.9%)	7 (20.6%)	6 (17.6%)	19 (55.9%)	p = 0.01
Blood	Number (%) out of 17	1 (5.9%)	2 (11.8%)	3 (17.6%)	11 (64.7%)	p = 0.02
Urinary Tract	Number (%) out of 26	3 (11.5%)	5 (19.2%)	2 (7.7%)	16 (61.5%)	p = 0.008
Central Nervous System	Number (%) out of 11	2 (18.2%)	2 (18.2%)	3 (27.3%)	4 (36.4%)	p = 0.8
Other	Number (%) out of 16	1 (6.3%)	1 (6.3%)	6 (37.5%)	8 (50%)	p = 0.03
Multiple	Number (%) out of 5	0 (0.0%)	2 (40.0%)	0 (0.0%)	3 (60.0%)	p = 0.3
Not Identified at Initial Evaluation	Number (%) out of 241	89 (36.9%)	75 (31.1%)	45 (18.7%)	32 (13.3%)	p <0.0001
Clinical Parameters						
Temperature (Min)	Median, (Q1-Q3)	36.0 (35.2-36.4)	36.2 (35.6-36.6)	36.2 (35.5-36.7)	36.0 (35.4-36.7)	p = 0.2
Temperature (Max)	Median, (Q1-Q3)	37.2 (37.0-37.8)	37.3 (36.8-37.9)	37.3 (36.9-38.2)	37.8 (37.2-38.4)	p < 0.001
Lactate	Median, (Q1-Q3)	1.9 (1.3-3.3)	2.1 (1.6-3.3)	2.2 (1.5-3.3)	2.6 (1.6-4.1)	p = 0.7
WBC.Max	Median, (Q1-Q3)	13.5 (8.5-17.2)	12.2 (8.4-17.4)	13.9 (10.2-17.9)	14.6 (9.1-21.1)	p = 0.02
Procalcitonin	Median, (Q1, Q3)	0.3 (0.1-0.9)	0.3 (0.1-1.1)	0.6 (0.2-2.6)	5.6 (1.7-25.8)	p < 0.0001
SeptiScore	Median, (Q1-Q3)	4.3 (3.8-4.7)	5.6 (5.3-5.8)	6.8 (6.5-7.0)	8.7 (8.0-10.1)	p < 0.0001

* If small sample size (<5) in one or more categories, implying an increased uncertainty in the quantitative value of p, then calculation of p was performed by Monte Carlo simulation-based method [see <https://www.statskingdom.com/310GoodnessChi.html> for applet and R code].

** "Other culture/results" includes the following sample types: bronchial combicath, bronchoalveolar lavage (BAL), cerebrospinal fluid (CSF), pus, nares, stool, throat swab, drain fluid, body fluid, interstitial fluid, skin

*** including 7 blood culture false positives

Table 3. Characteristics of all patients stratified by RPD, demographic and clinical parameters, and SeptiScore band. A chi-squared test or ANOVA was used, for categorical variables or continuous variables, respectively, to estimate p-values across or within the SeptiScore bands as appropriate. In the chi-squared analyses, $p(B_i, i=1\dots 4)$ means the probability of the observed vs. expected distributions of patients across sub-categories (e.g. male, female; or Black, White, Other) within band B_i .

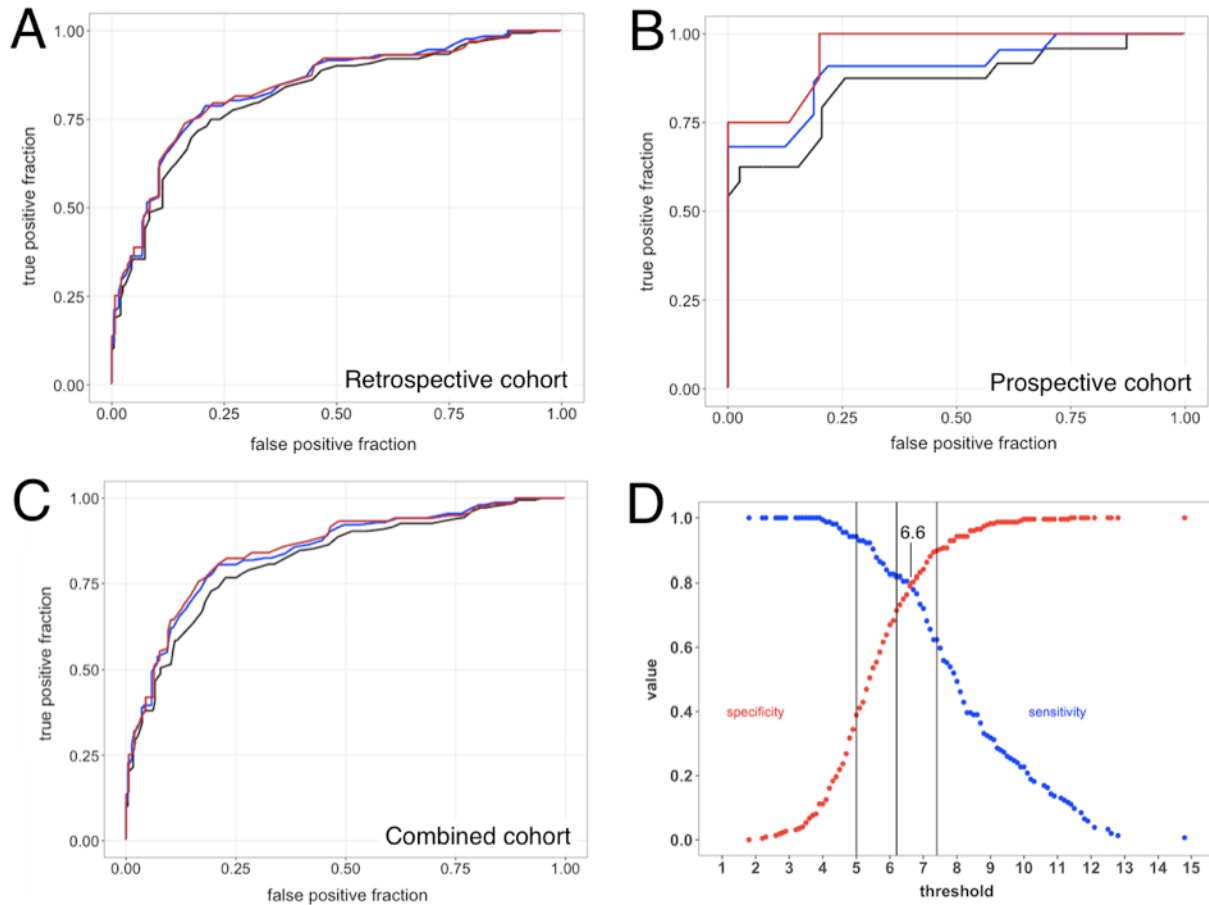
3.3 SeptiCyte RAPID performance under Sepsis-2

3.3.1 ROC curve analyses: Receiver operating characteristic (ROC) curve analyses for sepsis vs. SIRS were performed for the retrospective cohort (**Figure 1A**), the prospective cohort (**Figure 1B**), and the combined retrospective + prospective cohorts (**Figure 1C**). Performance estimates for the retrospective cohort ranged from AUC 0.82-0.85 (depending upon RPD method) and were statistically indistinguishable both from each other, and from the AUC values previously obtained for SeptiCyte LAB [23]. Performance estimates for the prospective cohort ranged from AUC 0.86-0.95 (depending upon RPD method) and again were statistically indistinguishable from each other.

Figure 1. Diagnostic performance of SeptiCyte RAPID. ROC curve analyses for SeptiCyte RAPID were performed using three different RPD methods (consensus, forced and unanimous), for either the retrospective, prospective, or full cohorts. **(A)** Retrospective cohort ROC curves for forced (black), consensus (blue) and unanimous (red) RPD, with AUC = 0.82, 0.85 and 0.85 respectively. **(B)** Prospective cohort ROC curves for forced (black), consensus (blue) and unanimous (red) RPD, with AUC = 0.86, 0.90 and 0.95 respectively. **(C)** Combined cohort ROC curves for forced (black), consensus (blue) and unanimous (red) RPD, with AUC = 0.82, 0.85 and 0.85 respectively. **(D)** Sensitivity (blue) and specificity (red) as a function of threshold SeptiScore. Comparator = consensus RPD. Band boundaries at 5.0, 6.2, 7.4 are shown as vertical black lines.

It is made available under a [CC-BY-NC-ND 4.0 International license](https://creativecommons.org/licenses/by-nc-nd/4.0/).

Balk R et al. Validation of SeptiCyte RAPID for sepsis vs. SIRS



DeLong's test [33] showed no significant difference between the ROC curves from Figure 1A (retrospective cohort) vs. 1B (prospective cohort), when either forced or consensus RPD was used as comparator. When unanimous RPD was used as comparator, DeLong's test gave $p = 0.013$. For the retrospective + prospective dataset, using consensus RPD as comparator and assuming a binary distinction between sepsis and SIRS, the relationship between cutpoint, sensitivity, and specificity is shown in **Figure 1D**.

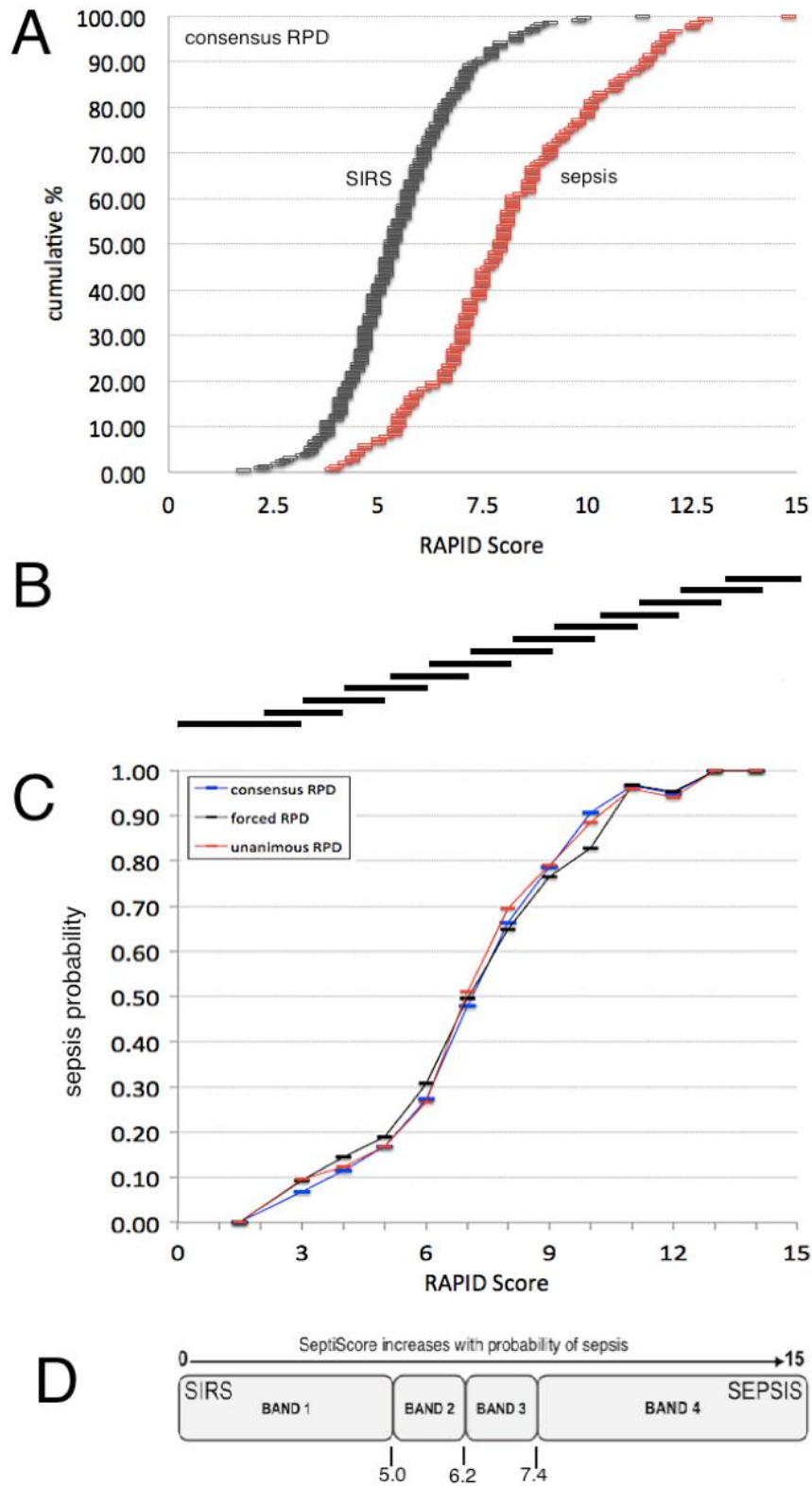
3.3.2 Sepsis probability distributions: The distribution of SeptiScores for septic patients falls above that for patients with SIRS (**Figure 2A**). A sliding window analysis (**Figure 2B**) was used to calculate the probability of sepsis as a function of SeptiScore (**Figure 2C**). Patients with

higher SeptiScores had higher probabilities of sepsis. As described in Methods, the 0-15 SeptiScore range has been divided into four probability bands (**Figure 2D**) defined by the pre-set band boundaries of 4.95, 6.15 and 7.45. **Figure 3** and **Table 4** present SeptiScores for the complete (retrospective + prospective) cohort, and for the retrospective and prospective cohorts separately, after parsing into the four bands. Using consensus RPD as comparator, Band 1 had negative predictive value 0.91 (sensitivity 0.94), and Band 4 had positive predictive value 0.81 (specificity 0.90). Chi-squared analyses (**Table 4**) indicated that, after sorting patients into the four SeptiScore bands, no significant influences were found with respect to the baseline demographic criteria or sex, age, race or ethnicity (**Table 3**).

Figure 2. Probability of sepsis as a function of SeptiScore. **(A)** Cumulative distributions of the SeptiScore for SIRS patients (black) and sepsis patients (red), as evaluated by consensus RPD. **(B)** Basis of sliding window calculation of P(sepsis) across the 0-15 SeptiScore range. A sliding window was defined to be 3 score-units wide initially (from 0 to 3), and 2-score-units wide thereafter. It was shifted in 1-unit increments. The number of sepsis and SIRS in each placement of the window was counted, and $P(\text{sepsis})$ calculated as $N_{\text{sepsis}} / (N_{\text{sepsis}} + N_{\text{SIRS}})$. **(C)** Probability of sepsis as function of SeptiScore, from the sliding window analysis. Key: black curve, forced RPD; blue curve, consensus RPD; red curve, unanimous RPD. **(D)** Division of SeptiScore range into four sepsis probability bands.

It is made available under a [CC-BY-NC-ND 4.0 International license](https://creativecommons.org/licenses/by-nc-nd/4.0/).

Balk R et al. Validation of SeptiCyte RAPID for sepsis vs. SIRS



It is made available under a [CC-BY-NC-ND 4.0 International license](https://creativecommons.org/licenses/by-nc-nd/4.0/).

Balk R et al. Validation of SeptiCyte RAPID for sepsis vs. SIRS

Figure 3. Comparison of sepsis probabilities per band for (A) SeptiCyte RAPID combined retrospective + prospective cohorts (N=378), (B) SeptiCyte RAPID retrospective cohort (N=324), and (C) SeptiCyte RAPID prospective cohort (N=54). Assignment of sepsis or SIRS was by consensus RPD. Subjects called “indeterminate” by consensus RPD are not included. The ratio to the right of each whisker (x:y) indicates the number of patients called as sepsis (x) or SIRS (y) in the associated SeptiScore band. The number above each whisker describes the percentage of sepsis calls in each band. The error bars represent the lower and upper bounds of the 80% confidence interval for the sample proportion, calculated using the exact binomial formula.

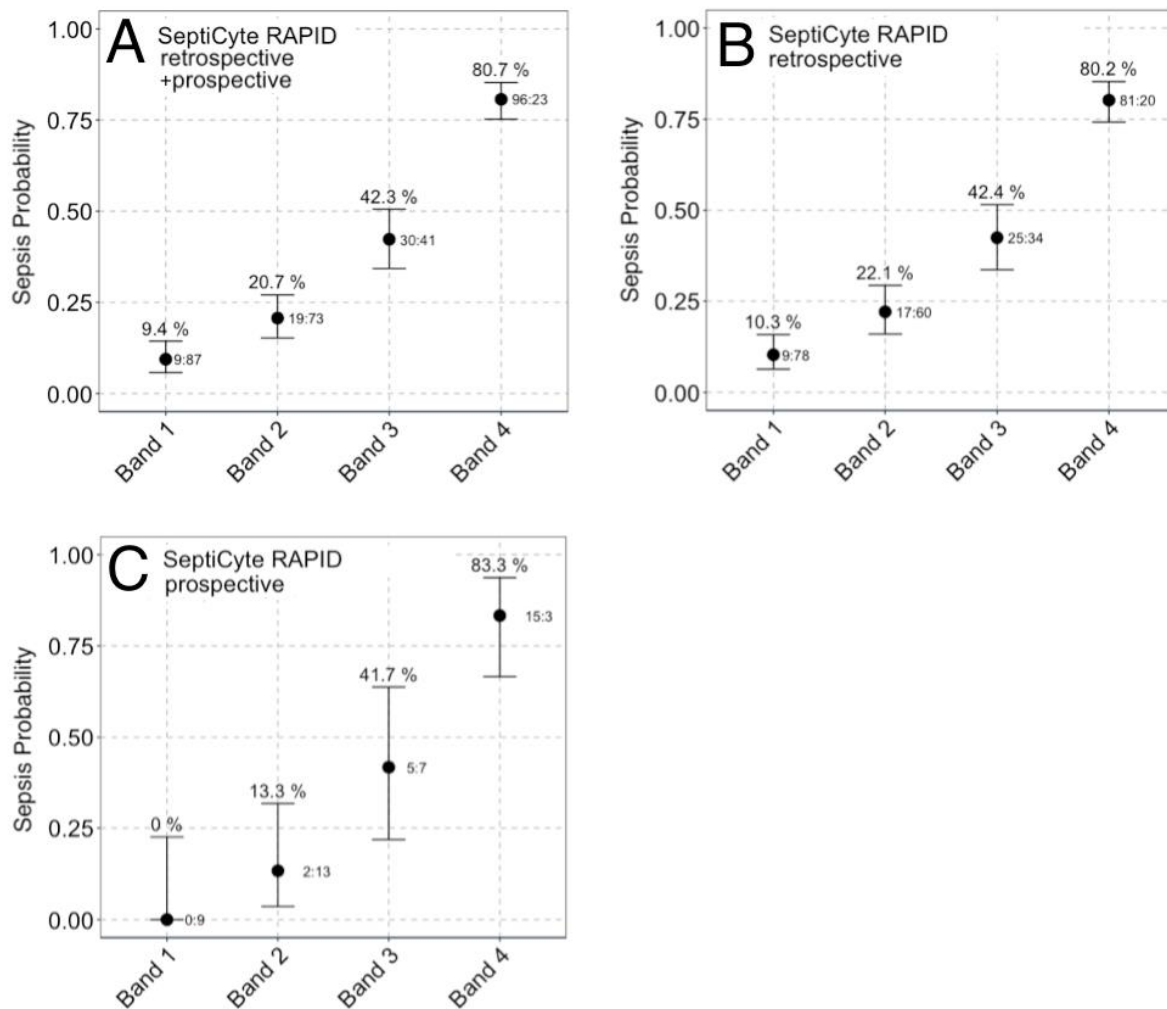


Table 4. Interpretation of SeptiCyte RAPID scores

SeptiScore Band	Cohort	Average Probability		Sepsis Likelihood Ratio	Percentage of Cohort
		SIRS	Sepsis		
Band 4 (7.4 – 15) High Risk of Sepsis	Retrospective	20 (20%)	81 (80%)	5.89	31%
	Prospective	3 (17%)	15 (83%)	7.27	33%
	Combined	23 (19%)	96 (81%)	6.07	32%
Band 3 (6.2 – 7.3)	Retrospective	34 (58%)	25 (42%)	1.07	18%
	Prospective	7 (58%)	5 (42%)	1.04	22%
	Combined	41 (58%)	30 (42%)	1.06	19%
Band 2 (5.0 – 6.1)	Retrospective	60 (78%)	17 (22%)	0.41	24%
	Prospective	13 (87%)	2 (13%)	0.22	28%
	Combined	73 (79%)	19 (21%)	0.38	24%
Band 1 (0 – 4.9) Low Risk of Sepsis	Retrospective	78 (90%)	9 (10%)	0.17	27%
	Prospective	9 (100%)	0 (0%)	0.00	17%
	Combined	87 (91%)	9 (9%)	0.15	25%

Table 4. Interpretation of SeptiCyte RAPID scores. This table provides the performance metrics for SeptiScores falling within each band. The consensus RPD method was used as comparator in all analyses.

3.3.3 Multivariable analysis: Under the Sepsis-2 framework, we asked if SeptiCyte RAPID could provide diagnostic clinical utility for discriminating between sepsis and SIRS patients, beyond that provided by other clinical variables and laboratory assessments available on the first day of ICU admission. Fourteen variables in addition to SeptiCyte RAPID were examined (see Supplementary Information, Sections 4-5). We evaluated all 32,767 possible combinations of the fifteen variables, and performance (sepsis vs. SIRS under the Sepsis-2 framework) was assessed by AUC against consensus RPD. Procalcitonin was included in this analysis, as well as lactate which is commonly used in determining which patients should receive sepsis treatment bundles [35, 36]. **Figure 4A** shows the results of the multivariable analysis for the combined retrospective and prospective cohorts, while **Figure 4B** shows the comparable results for just the prospective cohort. The AUC distributions for the prospective cohort appear somewhat high compared to those for the full patient cohort, possibly because of overfitting (the prospective cohort has only 54 patients with SIRS or sepsis by consensus RPD, as compared to 154 in the full patient cohort). With respect to individual variables, SeptiScore was found to rank highest by AUC. When combinations of clinical variables were considered, those containing SeptiScore were found to have higher AUCs than all combinations lacking SeptiScore.

Figure 4. Comparison of lactate, procalcitonin and SeptiScore, without or with additional clinical variables, for discrimination of sepsis vs. SIRS. **(A)** Data from the combined retrospective and prospective cohorts. **(B)** Data from just the prospective cohort. Area under curve (AUC) distributions are shown for all 32,767 possible logistic combinations of the following variables: age, race (African-American or not), sex, MAP max, T min, T max, HR min, HR max, WBC min, WBC max, glucose max, lactate, procalcitonin, SeptiScore, num.SIRS. (Abbreviations: MAP, mean

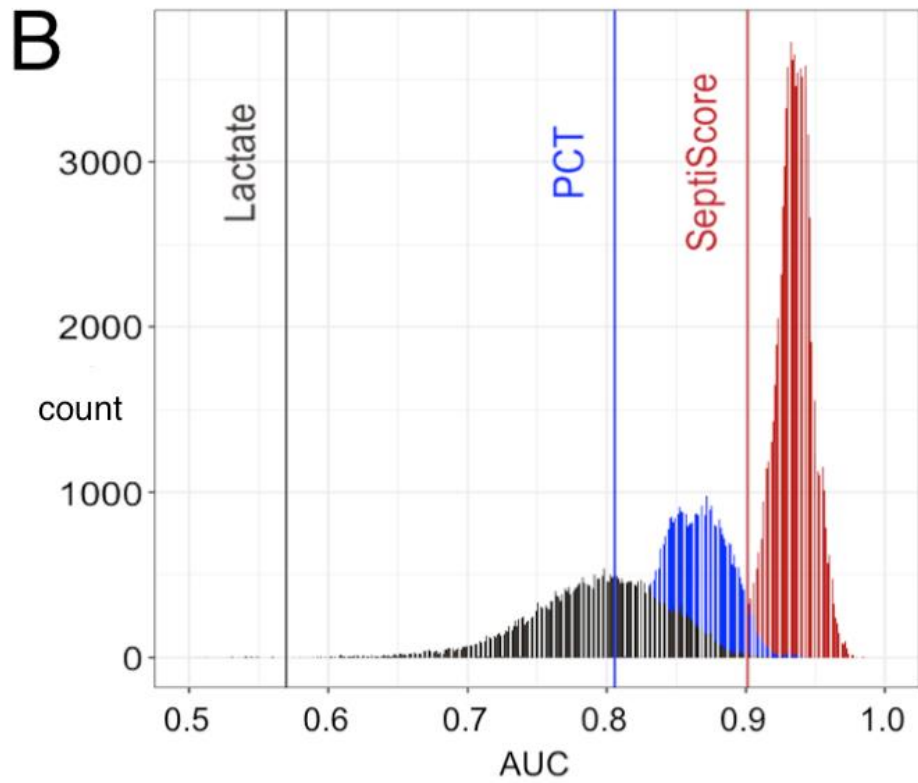
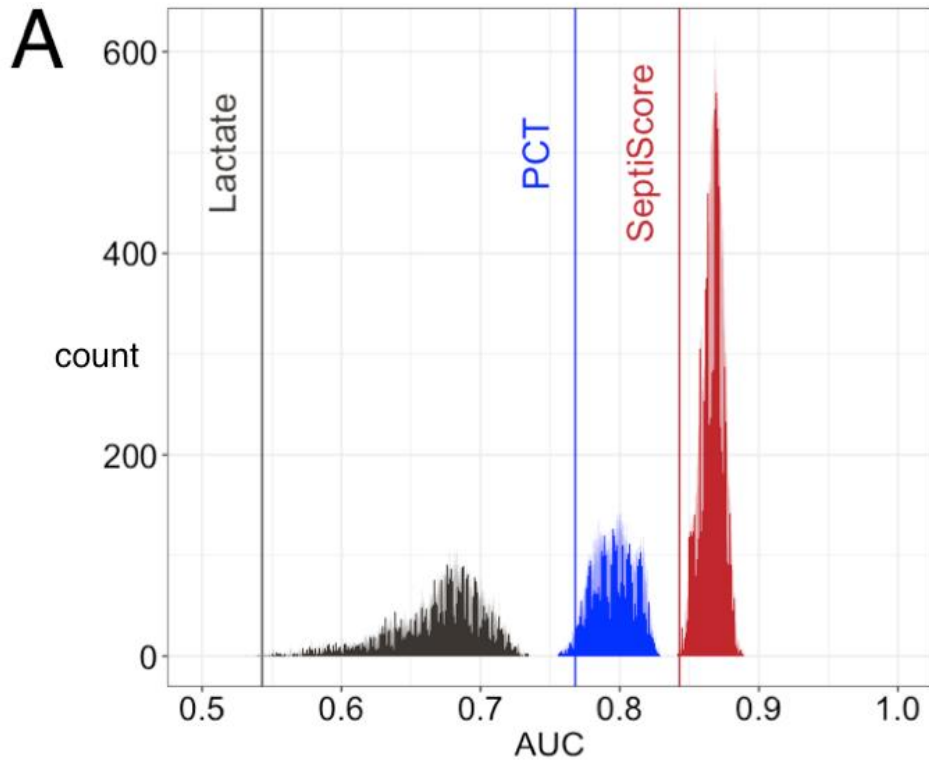
It is made available under a [CC-BY-NC-ND 4.0 International license](#) .

Balk R et al. Validation of SeptiCyte RAPID for sepsis vs. SIRS

arterial pressure; T, core body temperature; HR, heart rate; WBC, white blood cell count; num.SIRS, number of SIRS criteria met.) Performance was assessed against consensus RPD. Key: grey vertical line, lactate alone; grey distribution, lactate combined with other clinical variables except SeptiScore or PCT; blue vertical line, PCT alone; blue distribution, PCT combined with other clinical variables except SeptiScore; red vertical line, SeptiScore alone; red distribution, SeptiScore combined with other clinical variables.

It is made available under a [CC-BY-NC-ND 4.0 International license](https://creativecommons.org/licenses/by-nc-nd/4.0/).

Balk R et al. Validation of SeptiCyte RAPID for sepsis vs. SIRS



3.4 SeptiCyte RAPID performance under Sepsis-3

In 2016, Singer et al. [28] proposed that the Sepsis-2 definition be replaced with Sepsis-3 which identifies sepsis as “life-threatening organ dysfunction caused by a dysregulated host response to infection”. We compared the performance of SeptiCyte RAPID for discriminating sepsis vs. non-sepsis under the Sepsis-2 vs. Sepsis-3 definitions. **Figure 5** displays 2x2 tables for classifying patients in terms of (+/- organ dysfunction) x (+/- infection). Panels A, B employ the Sepsis-2 definition, while Panels C, D employ the Sepsis-3 definition. In each panel, the numbers in red indicate septic patients, according to whether organ dysfunction was indicated by complete SOFA score ≥ 2 (Panels A, C) or by partial SOFA score ≥ 2 (Panels B, D). A striking feature of these tables is that they reveal nearly all the patients in the study cohort display some amount of organ dysfunction, indicated by SOFA ≥ 2 ($256/267 = 95.9\%$ of patients) or pSOFA ≥ 2 ($316/372 = 84.9\%$ of patients). This however might be expected, since all patients in the cohort were admitted to ICU.

Figure 5. Classification of patients in terms of 2x2 tables (+/- organ dysfunction) x (+/- infection), according to the Sepsis-2 vs. Sepsis-3 definitions. The numbers in red indicate the septic patients according to the respective definitions. **(A)** Sepsis-2 definition, with complete SOFA score ≥ 2 indicating organ dysfunction. **(B)** Sepsis-2 definition, with partial SOFA score ≥ 2 indicating organ dysfunction. **(C)** Sepsis-3 definition, with complete SOFA score ≥ 2 indicating organ dysfunction. **(D)** Sepsis-3 definition, with partial SOFA score ≥ 2 indicating organ dysfunction.

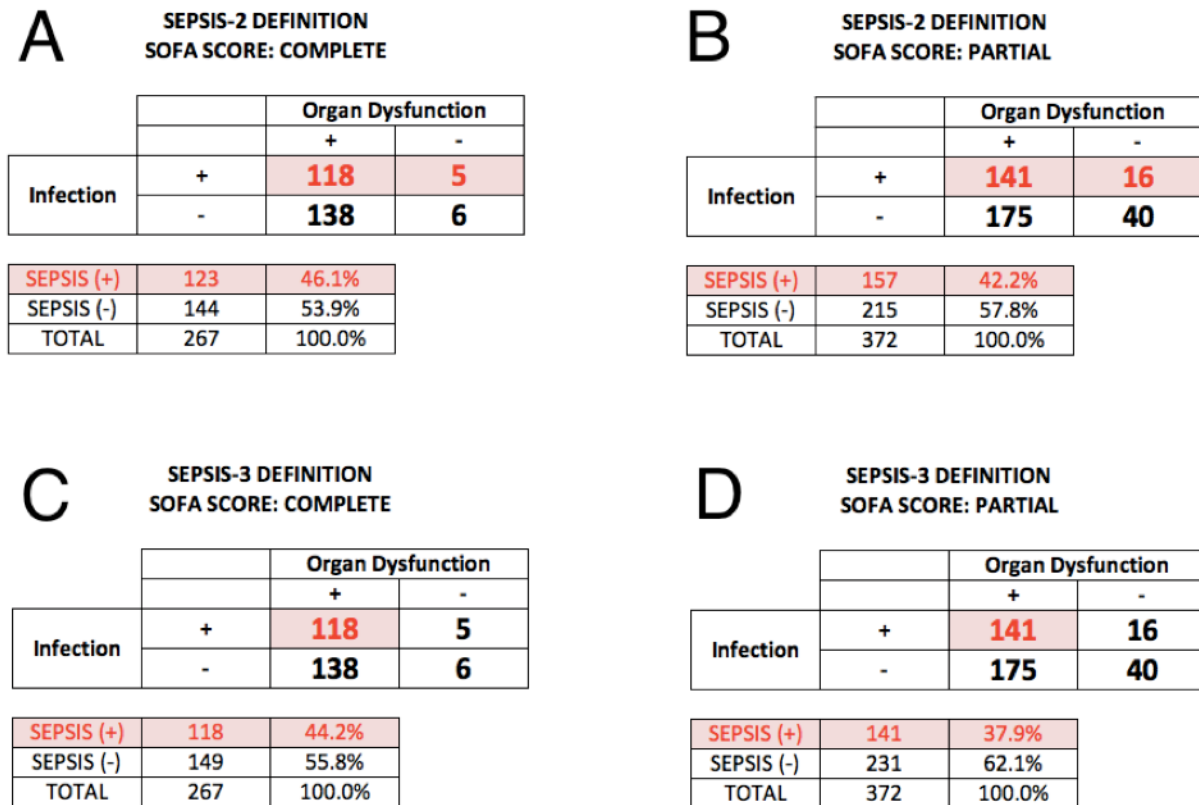
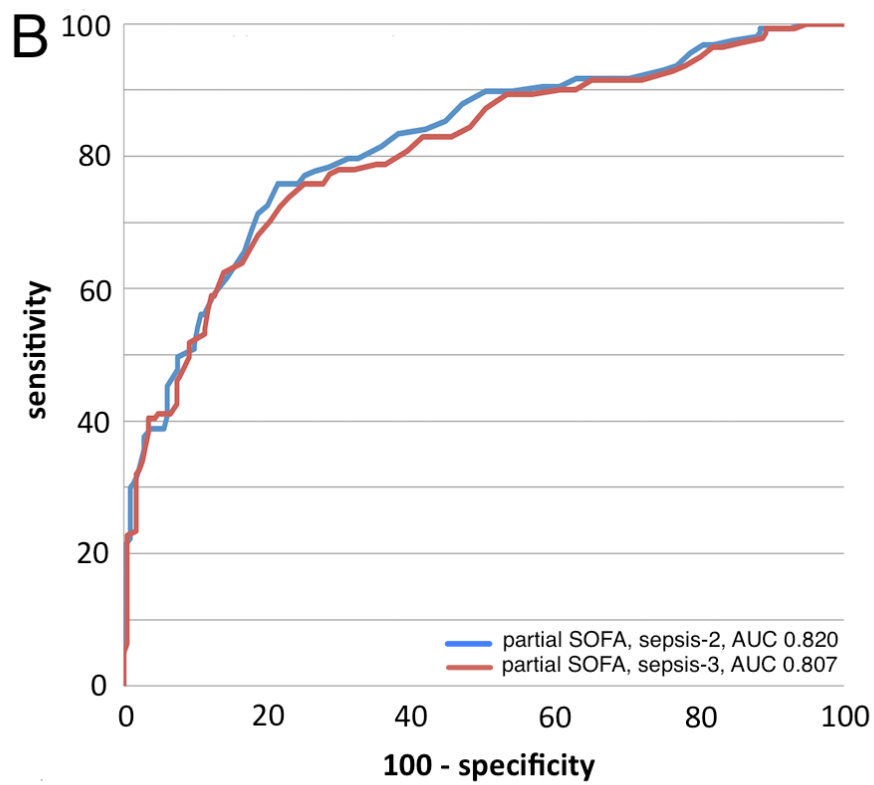
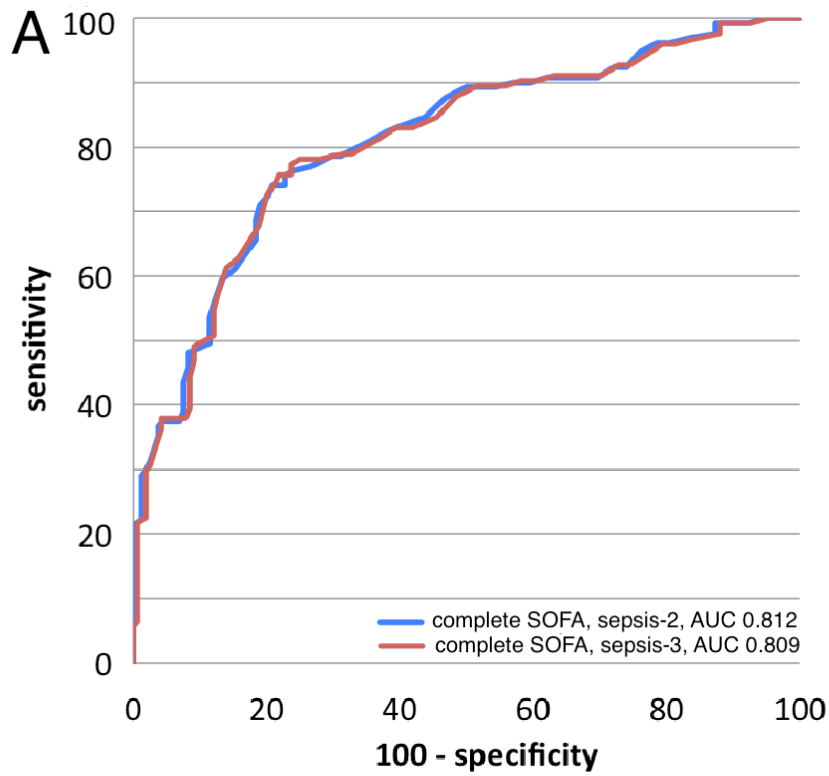


Figure 6 builds upon Figure 5, using ROC analysis to evaluate SeptiCyte RAPID performance for each patient grouping. Performance under the Sepsis-2 vs. Sepsis-3 definitions is compared when organ dysfunction is indicated either by complete SOFA score ≥ 2 (panel **A**) or by partial SOFA score ≥ 2 (panel **B**). The ROC curves were found statistically equivalent across all these comparisons, with AUC values ranging from 0.807 to 0.820. Additional analyses, concerning the relative independence of SeptiScore on the extent of organ dysfunction, are presented in Supplementary Material, Section 10.

Figure 6. SeptiCyte RAPID performance by ROC analysis. **(A)** ROC curves for discriminating sepsis vs. non-sepsis under the Sepsis-2 vs. Sepsis-3 definitions when organ dysfunction is indicated by complete SOFA score ≥ 2 . Blue curve: sepsis-2 definition, AUC 0.812. Red curve: sepsis-3 definition, AUC 0.809. **(B)** ROC curves for discriminating sepsis vs. non-sepsis under the Sepsis-2 vs. Sepsis-3 definitions when organ dysfunction is indicated by partial SOFA score ≥ 2 . Blue curve: sepsis-2 definition, AUC 0.820. Red curve: sepsis-3 definition, AUC 0.807.

It is made available under a [CC-BY-NC-ND 4.0 International license](https://creativecommons.org/licenses/by-nc-nd/4.0/).

Balk R et al. Validation of SeptiCyte RAPID for sepsis vs. SIRS



1

2 **4. Discussion**

3 We have presented data validating the use of SeptiCyte RAPID for discriminating sepsis from SIRS and for
4 estimating the probability of sepsis in critically ill adult patients, within a clinically actionable time frame.

5 Analysis was performed under both the Sepsis-2 and Sepsis-3 frameworks. Patients in this study came from
6 the ED, post-anesthesia unit, post-operating rooms and wards, and were tested in the ICU. For the full (ret-
7 rospective + prospective) cohort, diagnostic performance of SeptiCyte RAPID under the Sepsis-2 definition
8 was equivalent or superior to that previously reported for SeptiCyte LAB [23].

9 In a multivariable analysis under the Sepsis-2 framework, we examined all possible combinations of
10 SeptiScore and up to 14 additional clinical or laboratory variables, including lactate and PCT. We found that
11 SeptiScore alone had greater performance than any combination of variables without SeptiScore, for differ-
12 entiating sepsis vs. SIRS (Figure 4). However, the analysis also indicated it should be possible to moderately
13 boost the performance of SeptiCyte RAPID by combining the SeptiScore with other clinical parameters.

14 We reanalyzed our data under the Sepsis-3 framework, using the SOFA or pSOFA score as a quantitative
15 measure of organ dysfunction [29-31], and interpreting a RPD call of sepsis as indicating probable or definite
16 infection. The results (Figure 6) indicated that SeptiScore has high diagnostic performance for detecting sepsis
17 (AUC 0.807-0.820) under either the Sepsis-2 or Sepsis-3 framework. Because SeptiCyte RAPID performance
18 appears independent of organ dysfunction, we hypothesize that the SeptiCyte RAPID expression signature
19 may be responding to some process or condition in the septic trajectory occurring earlier than organ damage,
20 likely related to the presence of an infection. A similar hypothesis has been stated by Lukaszewski et al. [16] in
21 connection with an independently discovered sepsis signature.

22 Our reanalysis under Sepsis-3 also identified a subset of 16 patients called septic by the RPD panelists
23 under the Sepsis-2 definition, but without appreciable organ dysfunction (Figure 5B). Under the Sepsis-3
24 framework, these patients would not be called septic, and therefore represent a discordance between the two
25 sepsis definitions. We are continuing to study the clinical characteristics of these patients, to understand why
26 they were called sepsis under Sepsis-2 but not Sepsis-3. We note that Engoren et al. [37] has identified a
27 similar discordance: in a large retrospective analysis of over 29,000 hospitalized patients with suspected in-
28 fection, 44% were called septic according to Sepsis-2, and 41% called septic according to Sepsis-3, but only
29 23% satisfied both sets of criteria, implying poor agreement (kappa 0.213) between Sepsis-2 and Sepsis-3 in
30 their cohort. These investigators hypothesized that Sepsis-2 and Sepsis-3 represent different phenotypes that
31 only partially overlap.

32 Our study has several limitations. Our comparator method (RPD) is imperfect. In the complete (n=419)
33 validation dataset, three expert clinicians failed to reach either a unanimous or consensus diagnosis for 41/419
34 (9.8%) of patients. The use of an imperfect comparator sets an upper limit on the measurable diagnostic
35 performance of a new test [38]. Our cohort consisted of adult patients within 24 hours of ICU admission, so
36 generalization to other patient cohorts not been established. To avoid potential confounding effects, the study
37 excluded subjects who received therapeutic antibiotic treatment > 24 hours before ICU admission, which
38 could comprise a significant fraction of patients transferred from the floor to ICU. Most of the study was based
39 on re-analysis of banked samples (356/419 = 85%), while only 63/419 (15%) were prospectively collected.
40 We have not conducted serial sampling to measure variation in SeptiCyte RAPID scores as patients move
41 through the ICU. We have, however, previously reported strong diagnostic performance of SeptiCyte LAB
42 in children [39], and the high correlation between SeptiCyte LAB and SeptiCyte RAPID suggests that an

43 equivalently strong performance in children will be found for SeptiCyte RAPID. SeptiScores falling in Bands
44 2 or 3 do not provide definitive conclusions (i.e. very high or low probabilities) regarding the absence or
45 presence of sepsis. Interpretation of SeptiScores in this range would be enhanced by combining with other
46 clinical variables to adjust the post-test sepsis probabilities (see Figure 4).

47 During the discovery and initial validation of the PLAC8 and PLA2G7 biomarkers [22, 23], patients with
48 a broad range of co-morbidities were examined, including septic patients with confirmed bacterial, viral,
49 fungal infections and malignancies, and non-septic patients with non-infectious systemic inflammation of
50 varying etiologies. The present validation cohort also included use of a broad range of prescribed medica-
51 tions such as immunosuppressants, anti-neoplastic drugs, antithrombotics, corticosteroids and statins. To our
52 knowledge, SeptiCyte RAPID results are unaffected by these factors, as reported in a previous preliminary
53 analysis [40]. However, there may be other specific conditions and treatments we have not yet examined, that
54 could affect SeptiCyte RAPID performance.

55 Although the dynamic range of SeptiCyte RAPID is broad and extends well below and above the
56 4,000-11,000 WBC/uL normal reference range, we have not yet completed an evaluation of the assay on se-
57 verely neutropenic patients, although in a previous preliminary analysis we reported that SeptiCyte perfor-
58 mance was maintained in patients treated with anti-neoplastic drugs [40]. It is possible that SeptiCyte RAPID
59 scores might be skewed by selective leukopenias due to disease or medications, for example T cell depletion in
60 HIV / AIDS. However, it is known from single cell sequencing studies that both PLAC8 and PLA2G7 are
61 expressed across a range of different white cell types [41] which would mitigate the effect of a selective
62 leukopenia.

63 The recently updated Surviving Sepsis Campaign (SSC) guidelines (2021) divide patients into three
64 groups (low, intermediate, and high) based on sepsis probability, and recommend appropriate evaluation and
65 treatment of these groups [42]. SeptiCyte RAPID aligns well with these guidelines and could have a role in
66 supporting their implementation. The SSC ‘low sepsis probability’ group has, under previous guidelines, been
67 treated early resulting in poor antibiotic stewardship. The new guidelines recommend deferring antibiotics,
68 and monitoring and evaluate for other etiologies that may underlie the presenting symptoms. A SeptiScore <5
69 (Band 1) with a sensitivity of 0.94 in this group of patients could potentially support the deferring of antibi-
70 otics, at least until clinical microbiology results became available, thereby facilitating antibiotic and diag-
71 nostic stewardship. For patients falling in the SSC ‘intermediate sepsis probability (without shock)’ group, the
72 SSC recommendation is a rapid assessment of infectious versus non-infectious cause of the illness. In this
73 probability range, the information typically obtained from other clinical variables could be augmented by
74 information from SeptiCyte RAPID to shift the post-test probability of sepsis to either a lower or higher value
75 (Figure 4). Per the SSC guidelines, those patients in the ‘high sepsis probability’ group, differentiated by the
76 presence of shock, should appropriately be treated within 1 hour of recognition. SeptiScores in Band 4 (>7.5)
77 in this patient group, with specificity 0.9 or greater, would provide evidence for a high probability of sepsis
78 and the continuation of antibiotics.

79 Although SeptiCyte RAPID provides a fast turnaround time (~1 hour) between pipetting a blood sample
80 into the SeptiCyte RAPID cartridge and generating a test report, by the time patient blood is drawn and de-
81 livered e.g. to a STAT lab, the total time between blood draw and presentation of the test result to an attending
82 clinician is likely to be 1.5-2 hours. Although this is longer than requirements to implement a 1-hour sepsis
83 bundle, SeptiCyte RAPID would provide timely information with respect to implementing a 3-hour sepsis

84 bundle, which has been shown to have a low level of compliance in US hospitals [43,44]. Compliance with a
85 3-hour sepsis bundle in patients with severe sepsis and septic shock has been shown to improve survival and
86 reduce overall costs [44].

87

88 **5. Conclusions**

89 This study validates SeptiCyte RAPID for discrimination of sepsis from non-infectious systemic inflammation,
90 and for the estimation of probability of sepsis on the first day of ICU admission, under either the Sepsis-2 or
91 Sepsis-3 frameworks. With a turnaround time of ~1 hour, SeptiCyte RAPID provides actionable test results
92 within a clinically relevant timeframe. SeptiCyte RAPID may thus provide clinical utility through helping to
93 guide patient management decisions on the implementation and timing of sepsis bundles.

94 **Supplementary Materials:** The following supporting information can be downloaded at:

95 www.mdpi.com/xxx/ Balk et al. (2023) Supplementary Information

96 **Author Contributions:** Conceptualization: RFD, SC, RBB, DS, TDY, JTK; Methodology: RFD, SC, DS,
97 TDY, KN, JTK; Investigation: RB, AME, GSM, RRM III, BKL, JPB, ML, SO, RER, FRDA, VKS, NRA,
98 JAG, MY, GP, EG, MA, JPP, JAK, TvdP, MJS, BPS, PMCKK, JL, EB, SK, JTK; Supervision: SC, RFD,
99 RB, AME, GSM, RRM III, BKL, TvdP, MJS, JL, EG; Data Curation & Review: SC, DS, KN, JTK; Clinical
100 Validation (Reference Diagnoses): SO, RER, ML; Custom software: DS, KN; Visualization: DS, KN, TDY;
101 Formal analysis: DS, KN, TDY, SC; Writing: original & successive drafts: TDY, RBB, RFD; Writing:
102 review and editing: TDY, RBB, RFD, SC, JTK, RB, GSM, JAK, BPS, TvdP, PMCKK ; Project
103 Administration: TDY, SC.

104

105 **Funding:** This work was funded by Immunexpress, Inc.

106

107 **Institutional Review Board Statement:** Ethics approval for the MARS trial was given by the medical
108 ethics committee of AMC, Amsterdam (approval # 10-056C). Ethics approvals for the VENUS trial were
109 given by the relevant Institutional Review Boards as follows: Intermountain Medical Center/Latter Day
110 Saints Hospital (approval # 1024931); Johns Hopkins Hospital (approval # IRB00087839); Rush University
111 Medical Center (approval # 15111104-IRB01); Loyola University Medical Center (approval # 208291);
112 Northwell Healthcare (approval #16-02-42-03). Ethics approvals for the NEPTUNE trial were given by the
113 relevant Institutional Review Boards as follows: Emory University (approval # IRB00115400); Grady
114 Memorial Hospital (approval # 00-115400); Rush University Medical Center (approval # 19101603-IRB01);
115 University of Southern California Medical Center (approval # HS-19-0884-CR001). All methods used in
116 this study were carried out in accordance with the relevant guidelines and regulations.

117

118 **Informed Consent Statement:** All subjects, or their legally authorized representatives, gave informed
119 consent for participation in this study.

120

121 **Data Availability Statement:** The datasets used and/or analysed during the current study are available from
122 the corresponding author upon reasonable request.

123

124

125 **Acknowledgments:** The authors thank the clinical study coordinators of the NEPTUNE study: Joyce D.
126 Brown (Rush University), Liliacna Jara (University of Southern California), Leona Wells and Maya C.
127 Whaley (Grady Memorial Hospital). The authors also thank the laboratory technical staff at each institu-
128 tion, at Reach Bio (Seattle WA), and at Biocartis (Mechelen, Belgium).

129

130 **Conflicts of Interest:** KN, TDY, DS, JTK, SC, RFD and RBB declare they are present or past employees or
131 shareholders of Immunexpress, Inc. No other competing interests are declared.

132

133

134 **References**

- 135 1. Rudd KE, Johnson SC, Agesa KM, Shackelford KA, Tsoi D, Kievlan DR, et al. Global, regional, and na-
136 tional sepsis incidence and mortality, 1990–2017: analysis for the Global Burden of Disease Study. *Lancet*.
137 2020;395:200–11. DOI: 10.1016/S0140-6736(19)32989-7.
- 138 2. Kempker JA, Martin GS. A global accounting of sepsis. *Lancet*. 2020;395:168-70. DOI:
139 10.1016/S0140-6736(19)33065-X.
- 140 3. Torio CM, Moore BJ. National Inpatient Hospital Costs: The Most Expensive Conditions by Payer, 2013.
141 In: *Healthcare Cost and Utilization Project (HCUP) Statistical Briefs [Internet]*. Statistical Brief #204,
142 published May, 2016. Rockville (MD): Agency for Healthcare Research and Quality (US). Available from:
143 <https://www.ncbi.nlm.nih.gov/books/NBK368492/>
- 144 4. Paoli, C. J., Reynolds, M. A., Sinha, M., Gitlin, M. & Crouser, E. Epidemiology and Costs of Sepsis in
145 the United States—An Analysis Based on Timing of Diagnosis and Severity Level. *Crit Care Med*.
146 2018;46:1889–97. DOI: 10.1097/CCM.0000000000003342.
- 147 5. Rhee C, Dantes R, Epstein L, Murphy DJ, Seymour CW, Iwashyna TJ, et al.; CDC Prevention Epicenter
148 Program. Incidence and Trends of Sepsis in US Hospitals Using Clinical vs Claims Data, 2009-2014. *JA-*
149 *MA*. 2017;318:1241-9. DOI: 10.1001/jama.2017.13836.

- 150 6. Elezkurtaj S, Greuel S, Ihlow J, Michaelis EG, Bischoff P, Kunze CA, et al. Causes of death and
151 comorbidities in hospitalized patients with COVID-19. *Sci Rep.* 2021;11:4263. DOI:
152 10.1038/s41598-021-82862-5.
- 153
- 154 7. Shappell CN, Klompas M, Chan C, Chen T, Kanjilal S, McKenna C, Rhee C; CDC Prevention Epicenters
155 Program. Use of Electronic Clinical Data to Track Incidence and Mortality for SARS-CoV-2-Associated
156 Sepsis. *JAMA Netw Open.* 2023;6(9):e2335728. DOI: 10.1001/jamanetworkopen.2023.35728.
- 157
- 158 8. Levy MM, Evans LE, Rhodes A. The Surviving Sepsis Campaign Bundle: 2018 update. *Intensive Care*
159 *Med.* 2018; 44:925-8. DOI: 10.1007/s00134-018-5085-0.
- 160 9. Liu VX, Bhimarao M, Greene JD, Manickam RN, Martinez A, Schuler A, et al. The Presentation, Pace,
161 and Profile of Infection and Sepsis Patients Hospitalized Through the Emergency Department: An Explora-
162 tory Analysis. *Critical Care Explor.* 2021;3:e0344. DOI: 10.1097/CCE.0000000000000344.
- 163 10. Lambregts, M. M. C., Bernards, A. T., Beek, M. T. van der, Visser, L. G. & Boer, M. G. de. Time to
164 positivity of blood cultures supports early re-evaluation of empiric broad-spectrum antimicrobial therapy.
165 *PLOS One.* 2019;14:e0208819. DOI: 10.1371/journal.pone.0208819.
- 166 11. Panday, RSN, Lammers, E. M. J., Alam, N. & Nanayakkara, P. W. B. An overview of positive cultures
167 and clinical outcomes in septic patients: a sub-analysis of the Prehospital Antibiotics Against Sepsis
168 (PHANTASi) trial. *Crit Care.* 2019;23:182. DOI: 10.1186/s13054-019-2431-8.

- 169 12. Panday RSN, Wang S, Ven PM van de, Hekker TAM, Alam N, Nanayakkara PWB. Evaluation of blood
170 culture epidemiology and efficiency in a large European teaching hospital. PLOS One. 2019;14:e0214052.
171 DOI: 10.1371/journal.pone.0214052.
- 172 13. Minderhoud TC, Spruyt C, Huisman S, Oskam E, Schuit SCE, Levin MD. Microbiological outcomes
173 and antibiotic overuse in Emergency Department patients with suspected sepsis. Neth J Med.
174 2017;75:196-203. PMID: 28653945.
- 175
- 176 14. Shappell CN, Klompas M, Ochoa A, Rhee C; CDC Prevention Epicenters Program. Likelihood of
177 Bacterial Infection in Patients Treated With Broad-Spectrum IV Antibiotics in the Emergency Department.
178 Crit Care Med. 2021;49:e1144-e1150. DOI: 10.1097/CCM.0000000000005090.
- 179
- 180 15. Bae EY, Smith TT, Monogue ML. A case-control study evaluating the unnecessary use of intravenous
181 broad-spectrum antibiotics in presumed sepsis and septic-shock patients in the emergency department.
182 Antimicrob Steward Healthcare Epidemiol. 2022;2:e193. DOI: 10.1017/ash.2022.341.
- 183
- 184 16. Lukaszewski RA, Jones HE, Gersuk VH, Russell P, Simpson A, Brealey D, et al. Presymptomatic
185 diagnosis of postoperative infection and sepsis using gene expression signatures. Intensive Care Med.
186 2022;48:1133-1143. DOI: 10.1007/s00134-022-06769-z.
- 187

- 188 17. Zhang Z, Smischney NJ, Zhang H, Van Poucke S, Tsigotis P, Rello J, et al. AME evidence series
189 001-The Society for Translational Medicine: clinical practice guidelines for diagnosis and early
190 identification of sepsis in the hospital. *J Thorac Dis.* 2016;8:2654-2665. DOI: 10.21037/jtd.2016.08.03.
191
- 192 18. Tusgul S, Carron PN, Yersin B, Calandra T, Dami F. Low sensitivity of qSOFA, SIRS criteria and
193 sepsis definition to identify infected patients at risk of complication in the prehospital setting and at the
194 emergency department triage. *Scand J Trauma Resusc Emerg Med.* 2017;25:108. DOI:
195 10.1186/s13049-017-0449-y.
196
- 197 19. Dorsett M, Kroll M, Smith CS, Asaro P, Liang SY, Moy HP. qSOFA has poor sensitivity for Prehospital
198 identification of severe sepsis and septic shock. *Prehosp Emerg Care.* 2017; 21:489-497. DOI:
199 10.1080/10903127.2016.1274348.
200
- 201 20. Sartelli M, Kluger Y, Ansaloni L, Hardcastle TC, Rello J, Watkins RR, et al. Raising concerns about
202 the Sepsis-3 definitions. *World J Emerg Surg.* 2018;13:6. DOI: 10.1186/s13017-018-0165-6.
203
- 204 21. Kim HI, Park S. Sepsis: Early Recognition and Optimized Treatment. *Tuberc Respir Dis (Seoul).*
205 2019;82:6-14. DOI: 10.4046/trd.2018.0041.
206
- 207 22. McHugh L, Seldon TA, Brandon RA, Kirk JT, Rapisarda A, Sutherland AJ, et al. A Molecular Host Re-
208 sponse Assay to Discriminate Between Sepsis and Infection-Negative Systemic Inflammation in Critically

- 209 Ill Patients: Discovery and Validation in Independent Cohorts. *PLOS Med.* 2015;12:e1001916. DOI:
210 10.1371/journal.pmed.1001916.
- 211 23. Miller RR 3rd, Lopansri BK, Burke JP, Levy M, Opal S, Rothman RE, et al. Validation of a Host Re-
212 sponse Assay, SeptiCyte LAB, for Discriminating Sepsis from Systemic Inflammatory Response Syndrome
213 in the ICU. *Am J Resp Crit Care Med.* 2018;198:903-13. DOI: 10.1164/rccm.201712-2472OC.
- 214 24. Kirk J, Yager T, Cermelli S, Sampson D, Brandon R, Sillekens P, et al. Clinical performance of a rapid
215 sepsis test on a near-patient molecular testing platform. Abstract # P481, ISICEM 2020, Brussels, Belgium.
- 216 25. Rand KH, Beal SG, Rivera K, Allen B, Payton T, Lipori GP. Hourly Effect of Pretreatment With IV An-
217 tibiotics on Blood Culture Positivity Rate in Emergency Department Patients. *Open Forum Infect Dis.*
218 2019;6:ofz179. DOI: 10.1093/ofid/ofz179.
- 219 26. Scheer CS, Fuchs C, Gründling M, Vollmer M, Bast J, Bohnert JA, et al. Impact of antibiotic admin-
220 istration on blood culture positivity at the beginning of sepsis: a prospective clinical cohort study. *Clin Mi-
221 crobiol Infect.* 2019;25:326-331. DOI: 10.1016/j.cmi.2018.05.016.
- 222 27. Levy MM, Fink MP, Marshall JC, Abraham E, Angus D, Cook D, et al. 2001
223 SCCM/ESICM/ACCP/ATS/SIS international sepsis definition conference. *Crit Care Med.* 2003;31:1250-
224 1256. DOI: 10.1097/01.CCM.0000050454.01978.3B.
- 225 28. Singer M, Deutschman CS, Seymour CW, Shankar-Hari M, Annane D, Bauer M, et al. The Third
226 International Consensus Definitions for Sepsis and Septic Shock (Sepsis-3). *JAMA.* 2016;315:801-810. DOI:
227 10.1001/jama.2016.0287.

- 228 29. Seymour CW, Liu VX, Iwashyna TJ, Brunkhorst FM, Rea TD, Scherag A, et al. Assessment of Clinical
229 Criteria for Sepsis: For the Third International Consensus Definitions for Sepsis and Septic Shock (Sepsis-3).
230 JAMA. 2016;315:762-774. DOI: 10.1001/jama.2016.0288. Erratum in: JAMA. 2016;315:2237. DOI:
231 10.1001/jama.2016.5850.
- 232 30. Grissom CK, Brown SM, Kuttler KG, Boltax JP, Jones J, Jephson AR, Orme JF Jr. A modified sequential
233 organ failure assessment score for critical care triage. Disaster Med Public Health Prep. 2010;4:277-284. DOI:
234 10.1001/dmp.2010.40.
- 235 31. Lambden S, Laterre PF, Levy MM, Francois B. The SOFA score-development, utility and challenges of
236 accurate assessment in clinical trials. Crit Care. 2019;23:374-382. DOI: 10.1186/s13054-019-2663-7.
- 237 32. Arasu A & Manku GS. Approximate Counts and Quantiles over Sliding Windows. PODS 2004:
238 Proceedings of the twenty-third ACM SIGMOD-SIGACT-SIGART symposium on principles of database
239 systems, June 14-16, 2004. Pages 286–296. DOI: 10.1145/1055558.1055598.
- 240
- 241 33. Robin X, Turck N, Hainard A, Tiberti N, Lisacek F, Sanchez J-C et al. pROC: an open-source package
242 for R and S+ to analyze and compare ROC curves. BMC Bioinformatics. 2011;12:77-84. DOI :
243 10.1186/1471-2105-12-77.
- 244 34. DeLong ER, DeLong DM, Clarke-Pearson DL. Comparing the areas under two or more correlated
245 receiver operating characteristic curves: a nonparametric approach. Biometrics. 1988;44:837-845.

- 246 35. Faust JS, Weingart SD. The Past, Present, and Future of the Centers for Medicare and Medicaid Services
247 Quality Measure SEP-1: The Early Management Bundle for Severe Sepsis/Septic Shock. *Emerg Med Clin*
248 *North Am.* 2017;35:219-31. DOI: 10.1016/j.emc.2016.09.006.
- 249 36. Rhee C, Chiotos K, Cosgrove SE, Heil EL, Kadri SS, Kalil AC, et al. Infectious Diseases Society of
250 America Position Paper: Recommended Revisions to the National Severe Sepsis and Septic Shock Early
251 Management Bundle (SEP-1) Sepsis Quality Measure. *Clin Infect Dis.* 2020;72:ciaa059. DOI:
252 10.1093/cid/ciaa059.
- 253 37. Engoren M, Seelhammer T, Freundlich RE, Maile MD, Sigakis MJG, Schwann TA. A Comparison of
254 Sepsis-2 (Systemic Inflammatory Response Syndrome Based) to Sepsis-3 (Sequential Organ Failure
255 Assessment Based) Definitions-A Multicenter Retrospective Study. *Crit Care Med.* 2020;48(9):1258-1264.
256 DOI: 10.1097/CCM.0000000000004449.
- 257 38. Lopansri BK, Miller RR III, Burke JP, Levy M, Opal S, Rothman RE, et al. Physician agreement on the
258 diagnosis of sepsis in the intensive care unit: estimation of concordance and analysis of underlying factors in
259 a multicenter cohort. *J Intensive Care.* 2019;7:13. DOI: 10.1186/s40560-019-0368-2.
- 260 39. Zimmerman JJ, Sullivan E, Yager TD, Cheng C, Permut L, Cermelli S, et al. Diagnostic Accuracy of a
261 Host Gene Expression Signature That Discriminates Clinical Severe Sepsis Syndrome and Infec-
262 tion-Negative Systemic Inflammation Among Critically Ill Children. *Crit Care Med.* 2017;45:e418–e425.
263 DOI: 10.1097/CCM.0000000000002100.

- 264 40. Davis R, Navalkar K, van der Poll T, Schultz M, Zimmerman J, Cremer O, Bonton M. SeptiCyte RAPID
265 in Sepsis Cases With Malignancy or Treated With Antineoplastics/Immunosuppressants. Crit Care Med.
266 2021;49:643. DOI:10.1097/01.ccm.0000730988.05701.eb.
- 267 41. Reyes M, Filbin MR, Bhattacharyya RP, Billman K, Eisenhaure T, Hung DT, et al. An immune-cell
268 signature of bacterial sepsis. Nat Med. 2020;26:333–40. DOI: 10.1038/s41591-020-0752-4.
- 269 42. Evans L, Rhodes A, Alhazzani W, Antonelli M, Coopersmith CM, French C, et al. Surviving Sepsis
270 Campaign: International Guidelines for Management of Sepsis and Septic Shock 2021. Crit Care Med.
271 2021;49:e1063-e1143. DOI: 10.1007/s00134-021-06506-y.
- 272 43. Deis, A. S., Whiles, B. B., Brown, A. R., Satterwhite, C. L. & Simpson, S. Q. Three-Hour Bundle Com-
273 pliance and Outcomes in Patients With Undiagnosed Severe Sepsis. Chest. 2018;153:39–45. DOI:
274 10.1016/j.chest.2017.09.031.
- 275 44. Leisman DE, Doerfler ME, Ward MF, Masick KD, Wie BJ, Gribben JL, et al. Survival Benefit and Cost
276 Savings From Compliance With a Simplified 3-Hour Sepsis Bundle in a Series of Prospective, Multisite,
277 Observational Cohorts. Crit Care Med. 2017;45:395-406. DOI: 10.1097/ccm.0000000000002184.
278