

## **Use of statins and other lipid-modifying agents across pregnancy – a nationwide drug utilization study of 822 071 pregnancies in Norway in 2005-2018**

Jacob J. Christensen<sup>1</sup>, Martin P. Bogsrud<sup>2</sup>, Kirsten B. Holven<sup>1,3</sup>, Kjetil Retterstøl<sup>1,4</sup>, Marit B. Veierød<sup>5</sup>, Hedvig Nordeng<sup>6,7</sup>

1 Department of Nutrition, University of Oslo, Oslo, Norway

2 Unit for Cardiac and Cardiovascular Genetics, Oslo University Hospital, Oslo, Norway

3 Norwegian National Advisory Unit on Familial Hypercholesterolemia, Oslo University Hospital, Oslo, Norway

4 The Lipid Clinic, Oslo University Hospital, Oslo, Norway

5 Oslo Centre for Biostatistics and Epidemiology, Department of Biostatistics, University of Oslo, Oslo, Norway

6 PharmacoEpidemiology and Drug Safety Research Group and PharmaTox Strategic Research Initiative, University of Oslo, Oslo, Norway

7 Department of Child Health and Development, Norwegian Institute of Public Health, Oslo, Norway

**Correspondence:** Jacob J. Christensen, PhD, e-mail: [j.j.christensen@medisin.uio.no](mailto:j.j.christensen@medisin.uio.no)

**Disclaimers:** None.

**Short running head:** Statin use across pregnancy

**Abbreviations:** ATC, The World Health Organization's Anatomical Therapeutic Chemical Classification System; DDDs, defined daily doses; ICD-10, The International Classification of

**NOTE:** This preprint reports new research that has not been certified by peer review and should not be used to guide clinical practice.

Norway Control and Payment of Health Reimbursement Database; LMA, lipid-modifying agents; MBRN, The Medical Birth Registry of Norway; NorPD, The Norwegian Prescription Registry; NPR, The Norwegian Patient Registry

1 **Abstract**

2 **Background:** Statins are becoming more widely used among women of reproductive age;  
3 however, nationwide data on statin use across pregnancy is scarce. We therefore aimed to  
4 describe the drug utilization patterns for statins and other lipid-modifying agents (LMAs)  
5 before, during, and after pregnancy, for all pregnancies in Norway from 2005 to 2018.

6 **Methods:** We linked individual-level data from four nationwide electronic health care  
7 registries in Norway and characterized the prescription fills of statins and other LMAs across  
8 pregnancy. We also examined trends in pregnancy-related LMA use, and characterized  
9 women using statins and other LMAs on parameters of health status and co-morbidity.

10 **Results:** In total 822 071 pregnancies for 503 723 women were included. The number of  
11 statin prescription fills decreased rapidly during first trimester and returned to pre-  
12 pregnancy levels about one year postpartum. Pregnancy-related statin use increased from  
13 2005 (approx. 0.11 % of all pregnancies) to 2018 (approx. 0.29 % of all pregnancies);  
14 however, in total, few statin prescriptions were filled within any trimester of pregnancy (n =  
15 331, 0.04 % of all pregnancies). Statin use was more common in women with higher age,  
16 higher weight, smoking, and comorbidities such as hypertension and diabetes mellitus; also,  
17 statin users often had co-medication pertinent to these conditions.

18 **Conclusions:** Although statins and other LMAs were increasingly being used around the time  
19 of pregnancy among women in Norway, drug use was mostly discontinued during first  
20 trimester. Our results suggest that pregnancy-related statin use should be monitored, and  
21 that drug safety analyses for maternal and offspring health outcomes are needed.

22

23 **Keywords:** drug utilization, statins, lipid-modifying agents, pregnancy, registry, nationwide

24

## 25 Introduction

26 Statins (HMG coenzyme A [HMG-CoA] reductase inhibitors) reduce plasma LDL cholesterol  
27 (LDL-C) and thereby the risk of atherosclerotic cardiovascular disease (ASCVD) both  
28 effectively and safely [1, 2]. Statins therefore constitute the main line of therapy for patients  
29 with elevated ASCVD risk [3–5]. In recent years, clinical guidelines have further lowered the  
30 threshold for initiating treatment with statins [3–5]; thus, statins are now more commonly  
31 used among the general population [6]. Drug Wholesales Statistics in Norway show that  
32 statin use has increased over time also among women of reproductive age [7]. In 2004, 1 in  
33 182 women aged 20-44 years in Norway prescribed at least one lipid-modifying agent (LMA,  
34 ATC [Anatomical Therapeutic Chemical Classification] group C10), the majority of which was  
35 statin monotherapy (ATC group C10AA). In 2020, the rate of LMA use had increased to 1 in  
36 126 women aged 20-44 years.

37 We may expect a further increase in the number of women of reproductive age who are  
38 eligible for statin therapy in the coming years. The reason is at least two-fold. First, as  
39 hypercholesterolemia is being detected more frequently and earlier in life, and the threshold  
40 for initiating treatment is lowered, so is the age that statin therapy is started. This is a  
41 natural consequence of the realization that *duration of treatment* (number of treatment  
42 years) is key to effective risk reduction [8]. Second, the average maternal age at first  
43 pregnancy is still increasing, leading to a higher proportion of women of reproductive age  
44 with elevated ASCVD risk [9]. Importantly, considering that a proportion of all pregnancies  
45 are unplanned, the expected increase in statin use will probably affect the population-wide  
46 exposure to statins also in early pregnancy. However, statins are *contraindicated* during

47 pregnancy and lactation, due to proposed teratogenic effects and lack of safety data.

48 Women planning pregnancy are therefore recommended to stop statin therapy [4].

49 Although important both from a cardioprotective and safety point of view, nationwide data

50 on statin use across pregnancy is scarce. Therefore, in the present study, we aimed to

51 describe the complex drug utilization patterns for statins and other lipid-modifying agents

52 (LMAs) before, during, and after pregnancy, for all pregnancies in Norway in the period 2005

53 to 2018, using nationwide linked electronic health care registries. A secondary aim was to

54 determine health-related characteristics of women using statins and other LMAs during

55 pregnancy.

56

## 57 **Material and methods**

### 58 *Study design, data sources and study population*

59 The present study was a nationwide registry drug utilization study where we described the  
60 use of statins and other LMAs across pregnancy for all pregnancies in Norway in the period  
61 2005 to 2018.

62 Using the unique, personal identity number of Norwegian citizens, we linked individual-level  
63 data from four national health registries in Norway up until 2018: The Medical Birth Registry  
64 of Norway (MBRN), the Norwegian Prescription Registry (NorPD), the Norwegian Patient  
65 Registry (NPR), and the Norway Control and Payment of Health Reimbursement Database  
66 (KUHR).

67 The MBRN has registered pregnancy-related information since 1967, including pregnancy  
68 duration, complications, growth of the fetus, and health status of both the mother and the  
69 child, for all pregnancies in Norway ending after gestational week 12 [10]. NorPD has  
70 recorded all prescribed medications dispensed at Norwegian pharmacies to non-  
71 institutionalized individuals since 2004, including the type of drug, the date of prescription  
72 filling, and the number of defined daily doses (DDDs) dispensed [11]. Medications in NorPD  
73 are classified according to the World Health Organization's Anatomical Therapeutic Chemical  
74 Classification (ATC) System (see <https://www.whocc.no/> for details).

75 NPR includes information on activity in both secondary and tertiary health care settings in  
76 Norway. The NPR uses the International Classification of Diseases, version 10 (ICD-10). KUHR  
77 stores information on activity in *primary* health care settings in Norway. KUHR records the  
78 reason for the utilization of health care services, which includes visits to general

79 practitioners (GPs) and emergency services. KUHR uses both ICD-10 diagnostic codes and the  
80 International Classification of Primary Care-2 (ICPC-2) codes.

81 For the present study, we included all women with a pregnancy recorded in the MBRN in  
82 2005-2018. We excluded pregnancies with missing gestational length, as timing of drug  
83 exposure could not be calculated for these pregnancies (**Figure 1**). Pregnancies where  
84 women used statins and other LMAs were identified through dispensed prescriptions in  
85 NorPD.

86 To characterize women using LMAs during pregnancy, we classified pregnancies into  
87 different subgroups based on different criteria. First, limited to one year before conception  
88 to one year after delivery, we classified pregnancies into the following groups:

- 89 • Classification no. 1 (statin groups): Pregnancies for women using any statin or specific  
90 statins subtypes.
- 91 • Classification no. 2 (non-statin LMA groups): Pregnancies for women using any non-  
92 statin LMA, or specific non-statin LMA subtypes.

93 Similarly, limited to any time before conception to one year after delivery, we classified  
94 pregnancies into the following groups:

- 95 • Classification no. 3 (“discontinuation” groups): 1) pregnancies where women  
96 discontinued their statin prescription fills at least three months before conception, 2)  
97 pregnancies where women discontinued their statin prescription fills within three  
98 months before conception, 3) pregnancies where women filled their statin  
99 prescription during pregnancy, and 4) other.



- 100 • Classification no. 4 (groups based on history of statin use before pregnancy): 1)  
101 pregnancies for long-term, “experienced” statin users (10-148 prescription fills), 2)  
102 pregnancies for “intermediate-term” users (4-9 prescription fills), and 3) pregnancies  
103 for “short-term users and beginners” (1-3 prescription fills). History of statin use was  
104 calculated as the chronological, rolling count of prescription fills per woman and  
105 pregnancy. We determined the ranges by binning the number of prescriptions into  
106 three groups of approximately equal number of observations.
- 107 • Classification no. 5 (dyslipidemia diagnosis groups): 1) pregnancies for women with a  
108 dyslipidemia diagnosis (ICPC-2 code T93) not using LMAs, and 2) pregnancies for  
109 women with a dyslipidemia diagnosis using LMAs.
- 110 • Classification no. 6 (co-morbidity groups based on number of indications for LMA  
111 therapy): pregnancies for women using LMA with 1) 0 indications for LMA use, 2) 1  
112 indication for LMA use, 3) 2-3 indications for LMA use, 4) 4-8 indications for LMA use,  
113 or 5)  $\geq 9$  indications for LMA use. Number of LMA indications was defined as the per-  
114 pregnancy sum of unique drugs used in diabetes (ATC code A10), antithrombotic  
115 agents (B01), and cardiovascular system (C other than C10), and the unique diagnosis  
116 codes defined in **Table S1**.

117 This project was approved by the Regional Committee for Research Ethics in South-Eastern  
118 Norway (approval number 2018/140/REK South-East) and by the Data Protection Officer at  
119 the University of Oslo (approval number 58033).

120

121 *Exposure to statins and other LMAs*

122 Exposure to statins and other LMAs was defined based on the date of prescription  
123 dispensing and the dispensed amount expressed in number of DDDs. We assumed that all  
124 the dispensed statins were consumed as 1 DDD per day. The main exposures of interest  
125 were prescription fills of statins, as well as prescription fills of other, non-statin LMAs. The  
126 ATC codes for statins include C10AA01 (simvastatin), C10AA05 (atorvastatin), and C10AA07  
127 (rosuvastatin). The ATC codes for other LMA included C10AC01 (colestyramine), C10AX06  
128 (omega-3 triglycerides incl. other esters and acids), and C10AX09 (ezetimibe).

129 We defined exposure as the presence of at least one prescription fill within each time frame.  
130 Time frames of interest were mainly between one year before conception to one year after  
131 delivery, including the entire pregnancy and pregnancy trimesters (trimester 1: 1-93 days  
132 after time of conception; trimester 2: 94-186 days after conception; trimester 3: > 186 days  
133 after conception).

134

### 135 *Co-medication*

136 We examined co-medication among women using statins and other LMAs. Among co-  
137 medication where LMAs would likely be indicated, we included drugs used in diabetes (ATC  
138 code A10), antithrombotic agents (B01), and cardiovascular system (C other than C10). We  
139 also had access to a range of other co-medications which we examined using the first ATC  
140 level, including alimentary tract and metabolism (A), blood and blood-forming organs (B),  
141 genito-urinary system and sex hormones (G), systemic hormonal preparations excl. sex  
142 hormones and insulins (H), antiinfectives for systemic use (J), musculo-skeletal system (M),  
143 and nervous system (N). Where relevant, we also considered co-medications at the second  
144 ATC level. We omitted some ATC codes that had either few observations or were considered

145 less relevant, such as dermatologicals (D), antineoplastic and immunomodulating agents (L),  
146 antiparasitic products, insecticides and repellents (P), respiratory system (R), sensory organs  
147 (S), and various (V).

148

#### 149 *Diagnoses*

150 We examined diagnoses among women using statins and other LMAs using ICD-10 codes in  
151 NPR and ICD-10 and ICPC-2 codes in KUHR. Among diagnostic codes where LMAs would  
152 likely be indicated, we included 28 second level ICD-10 codes from endocrine, nutrition and  
153 metabolic (ICD-10 main group E) and circulatory (I) diagnostic groups; we also included 22  
154 second level ICPC-2 codes from the cardiovascular (K) and endocrine, metabolic and  
155 nutrition (T) (Table S1). Where relevant, we highlighted aggregated subgroups, such as T9,  
156 which cover diabetes type 2 (ICPC-2 code T90) and dyslipidemias (T93). Notably, we did not  
157 have access to some relevant diagnosis such as metabolic disorders (E70-E90) which include  
158 dyslipidemias (E78) and the subgroup familial hypercholesterolemia (E78.0).

159 We also had access to a range of other diagnoses, including the following ICD-10 codes:  
160 psychiatric and behavior (F), nervous system (G), pregnancy, birth and maternity (O), and  
161 miscellaneous (Z); for the ICPC-2 codes, we included musculoskeletal (L), nervous system (N),  
162 psychiatric (P), airways (R), urinary tract (U), and pregnancy, birth and family (W). We  
163 omitted some diagnosis codes that had either few observations or were considered less  
164 relevant, such as skin (L) and respiratory (J) for ICD-10, and social (Z) for ICPC-2.

165

#### 166 *Maternal characteristics*

167 We derived the following information from the MBRN: maternal age at delivery, marital  
168 status, parity, pre-pregnancy body weight, employment, pre-pregnant folate use, smoking,  
169 comorbidities (asthma, chronic hypertension, chronic renal disease, pre-existing diabetes,  
170 epilepsy, and rheumatoid arthritis), plurality, previous pregnancy loss, and an obstetric  
171 comorbidity index (adapted from [12]). Variables were categorized as presented in the  
172 tables and figures.

173

#### 174 *Recurrent pregnancies*

175 Recurrent pregnancy was defined as any record of a pregnancy ending after gestational  
176 week 12, including both live and non-live births (that is, elective terminations, late  
177 miscarriages after gestational week 12, and stillbirths).

178

#### 179 *Data analyses*

180 We estimated the number of prescription fills for statins and other LMAs from one year  
181 before conception, during pregnancy, and up to one year after delivery. We also estimated  
182 the time trends of use from 2005 to 2018 as a proportion of total number of pregnancies per  
183 year. We used several visualization approaches to display the results, for example using the  
184 number of prescription fills per 2-week period as a function of time (using estimated time of  
185 conception as time zero). See further details in each figure legend.

186 Using descriptive statistics, we evaluated the main characteristics, comorbidities, and  
187 concomitant medications of women with and without LMA prescription fills. For example, in  
188 tables, we present frequencies (%) and medians (interquartile ranges, IQR).

189 All data analyses were performed in R version 3.6.2 [13] using RStudio (Boston, MA, USA,  
190 [www.rstudio.com](http://www.rstudio.com)) and the tidyverse framework [14].

191

192 **Results**

193 We included 822 071 pregnancies for 503 723 unique women (Figure 1). Half of the women  
194 contributed with one pregnancy (n = 250 664, 49.8 %), and a sizable proportion contributed  
195 with two (n = 196 579, 39.0 %) or three pregnancies (n = 49 119, 9.8 %); few women  
196 contributed with four or more pregnancies (n = 7 361, 1.5 %). The characteristics of the  
197 pregnancies is shown in **Table 1**. Compared to non-statin users, statin users had higher  
198 maternal age (47 vs. 31 % above 32 years for any statin use and no statin use, respectively),  
199 higher pre-pregnancy maternal weight (70 vs. 65 kg), higher prevalence of smoking (25 vs. 19  
200 %), and comorbidities, such as any chronic illness (24 vs. 6.7 %), chronic hypertension (6.5 vs.  
201 0.5 %), or diabetes (18 vs. 3.5 %) (Table 1). This pattern was consistent from 2005 to 2018  
202 (**Figure S1**).

203

204 *LMA use across pregnancy*

205 In the period 2005 to 2018, between one year before conception and one year after  
206 delivery, 8 255 prescriptions were filled for an LMA, covering 2 772 pregnancies and 2 304  
207 unique women; of these, 6 703 prescription fills (81.2 %) were for a statin, covering 2 439  
208 pregnancies and 2 010 unique women (**Figure 2**). The main statin types used were  
209 simvastatin and atorvastatin. Although the number of prescriptions decreased during the  
210 first trimester of pregnancy, statin prescriptions were filled in first trimester for a total of  
211 298 unique pregnancies (0.036 % of all pregnancies), and in any trimester for a total of 331  
212 unique pregnancies (0.04 % of all pregnancies). The reduction in prescription fills started  
213 already three months before pregnancy, from almost 150 to about 100 prescription fills per  
214 two-week period. The number of prescription fills remained low throughout second and

215 third trimester (less than 10 prescription fills per two-week period), increased steadily  
216 following pregnancy, and returned to pre-pregnancy levels after almost one year  
217 postpartum. The pattern was similar for all statin types and doses (**Figure S2**).

218 Non-statin LMAs were less commonly used across pregnancy compared with statins. In the  
219 period 2005 to 2018, between one year before conception and one year after delivery, 1 659  
220 prescriptions were filled for a non-statin LMA, covering 599 pregnancies and 519 unique  
221 women (**Figure S3**). While ezetimibe use followed a pattern similar to that of statins, the use  
222 of cholestyramine and omega-3 was more stable across pregnancy. Non-statin LMA  
223 prescriptions were filled in first trimester for a total of 89 unique pregnancies (0.011 % of all  
224 pregnancies), and in any trimester for a total of 121 unique pregnancies (0.015 % of all  
225 pregnancies).

226

### 227 *Temporal trends in pregnancy-related LMA use*

228 Pregnancy-related LMA use increased from 2005 to 2018, both for statins and other LMAs  
229 (**Figure 3**). Within 1 year before pregnancy, any LMA use increased from 0.14 % of all  
230 pregnancies in 2006 to 0.29 % of all pregnancies in 2018; similarly, within 1 year after  
231 pregnancy, any LMA use increased from 0.11 % of all pregnancies in 2005 to 0.23 % of all  
232 pregnancies in 2017. In contrast, any LMA use during pregnancy was approximately 0.05 %  
233 of all pregnancies throughout the whole period. Simvastatin was the most frequently used  
234 drug until approximately 2013, when atorvastatin (and rosuvastatin) became more  
235 frequently used. Use of ezetimibe and colestyramine also increased over time.

236

237 *Co-medication across pregnancy*

238 Women using LMAs were using cardiovascular co-medication across pregnancy (**Figure 4**).

239 For example, co-medication with alimentary tract and metabolism drugs (ATC group A)

240 increased in pregnancy, partly resulting from diabetes drugs (A10). Similarly, drugs for blood

241 and blood-forming organs (B) increased during pregnancy, mainly as a result of anti-

242 thrombotic agents (B01). Also, certain subgroups of cardiovascular system drugs (C)

243 increased slightly towards the end of pregnancy and in the immediate time following

244 delivery, such as vasoprotectives (C05), beta-blockers (C07), calcium channel blockers (C08),

245 and renin-angiotensin system (C09).

246 Approximately 37 % of women who used LMAs in pregnancies also used a cardiovascular

247 system drug *other* than LMAs, including antihypertensives, and 16 % used diabetes drugs

248 (data not shown).

249

250 *Diagnoses across pregnancy*

251 Women using LMAs were being diagnosed with conditions across pregnancy pertinent to

252 LMA use (**Figure 5**). For example, group E1 in ICD-10, covering endocrine, nutrition and

253 metabolic diseases including diabetes spiked during pregnancy; however, T9 in ICPC-2, which

254 include diabetes mellitus type 2 and dyslipidemia, did not. Group I in ICD-10 (circulatory)

255 increased towards the end of pregnancy and following delivery, while group K in ICPC-2

256 (cardiovascular) increased following delivery. We counted at least one diagnosis of

257 dyslipidemia (ICPC-2 code T93 in KUHR) for 62 % of all pregnancies where a prescription for

258 an LMA had been filled between one year before conception and one year following delivery

259 (**Figure S4**).



260

261 *Characteristics of pregnancies based on additional subgroups*

262 In the Supplementary Results and Discussion, we present and discuss the characteristics of  
263 pregnancies for LMA users more in-depth, based on several additional subgroups, including  
264 use of non-statin LMAs, and discontinuation (**Table S2-S6, Figure S5-S7**).

265

## 266 Discussion

267 In the present work, we explored the use of statins and other LMAs across pregnancy for all  
268 pregnancies in Norway in the period 2005 to 2018. We found that statin use displayed a  
269 distinct pattern across pregnancy: The number of statin prescription fills decreased during  
270 first trimester, which indicates that women discontinue statins once they know they are  
271 pregnant, as recommended by guidelines. Furthermore, we found that pregnancy-related  
272 LMA use increased from 2005 to 2018, and that women using statins and other LMAs had  
273 different characteristics than other women. Our results highlight the importance of  
274 monitoring pregnancy-related statin use and should inform drug safety analyses for  
275 maternal and offspring health outcomes.

276

### 277 *LMA use displayed a distinct pattern across pregnancy*

278 The number of statin prescription fills decreased during first trimester, indicating that  
279 women discontinue statins once they know they are pregnant. In fact, the decrease in statin  
280 prescription fills started already three months before pregnancy, likely reflecting pregnancy  
281 planning, at least among a subgroup of the population. Also, despite the high number of  
282 pregnancies ( $n = 822\ 071$ ), in relatively few pregnancies ( $n = 298$ , 0.036 %), a prescription for  
283 a statin had been filled during first trimester. This is largely in line with data from other  
284 populations [15–19]. Although reassuring, the low frequency of statin exposure during  
285 pregnancy limits the power of drug safety analyses.

286 The increase in prescription fills occurred slowly and returned to pre-pregnancy levels about  
287 one year postpartum. The slow increase could reflect at least two things: statin  
288 contraindication during breastfeeding, and leftover pills from before pregnancy. Notably,

289 there was a trend that beginners started using statins earlier than other women; this group  
290 likely comprise women that during pregnancy become aware they are at increased ASCVD  
291 risk. These data suggest that, in practice, pregnancy is used by the clinicians to assess ASCVD  
292 risk and to initiate treatment, at least for some women. Doing this more systematically for all  
293 women could be one way to bridge the gap in ASCVD assessment and treatment for women  
294 compared to men, which has recently been highlighted [20, 21]. Also, because pregnancy  
295 can be considered a physiological test of the pregnant woman and family, pregnancy-related  
296 assessment of ASCVD risk may be a primordial prevention strategy worth considering  
297 implemented on a more large-scale level [22, 23].

298 The pregnancy-induced changes in prescription fills for non-statin LMAs were also  
299 remarkable. While prescription fills for ezetimibe followed a pattern similar to that of  
300 statins, other non-statin LMAs were less affected by pregnancy. Because there is a lack of  
301 safety data for *all* LMAs, guidelines generally recommend that *no* LMAs – statin or non-statin  
302 – be dispensed during pregnancy or lactation [4]. However, bile acid sequestrants such as  
303 cholestyramine may be considered for women with a severe FH phenotype, since these are  
304 not absorbed. Therefore, in the present data, cholestyramine use can potentially be seen as  
305 a marker of a severe type of FH in the absence of the actual ICD-10 code for FH (E78.0).

306

#### 307 *Pregnancy-related LMA use increased over time*

308 Pregnancy-related LMA use increased from 2005 to 2018. As expected, monotherapy with  
309 simvastatin and atorvastatin were the main groups of LMAs, corresponding well with trends  
310 in use of statin type in clinical trials [4]. Interestingly, the use of combination therapy  
311 increased in the past few years, possibly due to the results from the IMPROVE-IT trial, which

312 confirmed clinical benefit of adding ezetimibe on top of statin therapy for ASCVD prevention  
313 [24]. Following new reimbursement policies in June 2005, simvastatin was made the drug of  
314 choice in Norway [25]. In accordance with these regulations, many low dose atorvastatin  
315 users switched to simvastatin instead, and new users were more often put on simvastatin.  
316 Over time, atorvastatin again became more widely used, and is now the drug of choice, likely  
317 also because of reimbursement rules and introduction of cheap, generic medications [6].  
318 Rosuvastatin monotherapy also became more popular the last decade, which may be related  
319 to improved detection and treatment of subjects with familial hypercholesterolemia (FH). In  
320 general, these patterns of statin use correspond well with the pattern of statin use in the  
321 whole Norwegian population [6].

322

323 *Women using statins and other LMAs across pregnancy had different characteristics than*  
324 *other women*

325 Women using statins and other LMAs across pregnancy had higher pre-pregnancy age and  
326 weight, a larger proportion of smokers, and various co-morbidities, such as hypertension,  
327 kidney disease and diabetes mellitus; factors that reflect elevated ASCVD risk and thereby  
328 indication for treatment with statins [4]. This is in line with previous observations: pregnant  
329 women using statins generally have a more metabolic unhealthy phenotype than those not  
330 using statins, for example due higher prevalence of diabetes mellitus, smoking, or  
331 dyslipidemia, depending on the study population [16, 17]. Scientists have long argued that  
332 people with high *lifetime* risk of ASCVD events would likely benefit with statin treatment  
333 already early in life, even if the *short-term* risk is negligible [26–28]. For dyslipidemia,  
334 evidence from FH is the archetypical example in this regard, although contemporary studies

335 using genetics have facilitated a wider recognition across medical sub-disciplines [27].

336 However, the lifetime ASCVD risk related to *other* risk factors is also highly relevant, as our  
337 data here point to. With time, as the concept of lifetime risk is being adopted by clinicians,  
338 more people are likely to be treated at a younger age, including women of reproductive age.  
339 It is therefore pivotal to keep pregnancy-related statin use under surveillance.

340

341 *Co-medication and diagnoses were common among women using statins and other LMAs,*  
342 *supporting a more prevalent co-morbidity*

343 Interestingly, each pharmacological group and diagnosis group showed very distinct patterns  
344 across pregnancy. The use of both anti-thrombotic and anti-diabetic medication increased in  
345 first trimester and decreased after delivery. Concomitant use of non-LMA cardiovascular  
346 drugs was also common across pregnancy, and for some pharmacological subgroups even  
347 increased slightly in third trimester (vasoprotectives, beta-blockers, calcium channel  
348 blockers, and renin-angiotensin system). Collectively, these data further suggest that the  
349 pregnancies of women using LMAs can be considered high-risk pregnancies. Also, the  
350 pronounced co-medication highlights the importance of considering the concurrent use of  
351 *other* potentially teratogenic drugs and interaction of these with statins when evaluating  
352 statin safety [19].

353 Interestingly, the use of ICD-10 diagnoses for diabetes mellitus (group E1) was high already  
354 before pregnancy among LMA users, and increased midway through first trimester. Prenatal  
355 care in Norway and elsewhere focuses on detecting alterations in glucose homeostasis in  
356 pregnant women, and for good reason [29]. The HAPO study found that maternal glucose  
357 concentration associated with risk of developing several adverse health outcomes, such as

358 pre-eclampsia, preterm delivery and macrosomia [30]. Importantly, in that study, the  
359 association was both linear and had no apparent threshold. In addition, gestational diabetes  
360 mellitus is an excellent predictor of future development of insulin resistance and diabetes  
361 mellitus in both mother and offspring [22, 23]. In contrast, the use of ICPC-2 diagnoses for  
362 both diabetes mellitus and dyslipidemia (group T9) went slightly down in pregnancy.  
363 Because pregnancy induces a physiological hyperlipidemia, guidelines for prenatal care do  
364 usually not recommend routinely measuring lipids in pregnancy, thereby masking the  
365 pattern observed with ICD-10 diagnoses.

366

#### 367 *Implications, importance & generalizability*

368 The use of complete data from nationwide registries with mandatory reporting are  
369 important strengths of our study. Nationwide data on statin use across pregnancy is scarce,  
370 despite the importance both from a cardioprotective and safety point of view. ASCVD is  
371 ubiquitous worldwide, and lipid-modification is the primary strategy for ASCVD risk  
372 reduction. The present work is therefore likely generalizable to other populations where use  
373 of statins and other LMAs is becoming more prevalent also among young people. Also, one  
374 implication of our results is that multi-national collaboration projects may be needed to  
375 reliably answer pressing research questions on statin safety, for example related to  
376 outcomes such as birth defects in the offspring. Our study covers all pregnant women in  
377 Norway from 2005 to 2018, as opposed to a prospective cohort study that includes only a  
378 sample of a population. Another strength is that the registry data was collected in  
379 standardized forms by health personnel, in contrast to observational studies using differing  
380 assessment methods, and self-reporting.

381 *Limitations*

382 This work has some limitations that warrant mention. First, the exposure is ‘prescription fill’,  
383 not *actual* drug use; however, we assume that these associate closely [31]. Note that the  
384 impact of primary non-adherence is limited by the fact that only information on drugs  
385 actually dispensed from pharmacies to patients is recorded in the NorPD, which is more  
386 indicative of use than databases including all drugs prescribed by physicians [32]. Second,  
387 because this study is a sub-study under a larger project regarding medications in pregnancy,  
388 we only had access to certain diagnostic codes; for example, we did not have available the  
389 ICD-10 code for FH (E78.0). Third, the data is descriptive, and cannot draw any conclusions  
390 about the appropriateness of treatment.

391 *Conclusions*

392 In conclusion, the use of statins and other LMAs displayed a distinct pattern across  
393 pregnancy. Reassuringly, the number of prescription fills decreased during first trimester.  
394 Pregnancy-related statin use increased over time, and women using statins and other LMAs  
395 had more co-morbidity compared to other women. These results suggest that pregnancy-  
396 related statin use should be monitored and emphasize the need for drug safety analyses for  
397 maternal and offspring health outcomes. Finally, our data point to a more widespread use of  
398 periconceptual counselling to women of childbearing age that may require statins or other  
399 LMAs.

400

401 **Acknowledgements**

402 We would like to thank Sarah Hjorth, Department of Pharmacy at UiO, for pre-processing of  
403 the raw registry data.

404 **Sources of support**

405 This work was funded by the University of Oslo (Oslo, Norway), the National Advisory Unit  
406 on FH at OUH (Oslo, Norway), the Throne-Holst Foundation for Nutrition Research (Oslo),  
407 and the South-Eastern Regional Health Authority (Oslo, Norway). Data access fees were  
408 covered by the PharmacoEpidemiology and Drug Safety Research Group, Department of  
409 Pharmacy, University of Oslo (Oslo, Norway).

410 **Conflicts of interest**

411 Dr. Christensen has received research grants and/or personal fees from Mills DA, none of  
412 which is related to the content of this manuscript. Dr. Holven has received research grants  
413 and/or personal fees from Tine DA, Mills DA, Olympic Seafood, Amgen, and Sanofi, none of  
414 which are related to the content of this manuscript. Dr. Bogsrud has received personal fees  
415 from Amgen, and Sanofi, none of which are related to the content of this manuscript. The  
416 other authors have no financial relationships relevant to disclose.

417 **Authorship**

418 Authorship overview according to CRediT – Contributor Roles Taxonomy: Conceptualization:  
419 JJC, KBH, MPB, HN; Data curation: JJC, HN; Formal analysis: JJC; Funding acquisition: HN,  
420 KBH, MPB; Investigation: JJC, HN; Methodology: JJC; Project administration: JJC, KBH, HN;  
421 Resources: HN; Software: JJC; Supervision: MPB, KBH, KR, MBV, HN; Validation: JJC;



422 Visualization: JJC; Writing – original draft: JJC; Writing – review & editing: JJC, MPB, KBH, KR,

423 MBV, HN.

## References

1. Collins R, Reith C, Emberson J, Armitage J, Baigent C, Blackwell L, et al. Interpretation of the evidence for the efficacy and safety of statin therapy. *The Lancet*. 2016;388:2532–61.
2. Cholesterol Treatment Trialists' (CTT) Collaboration, Fulcher J, O'Connell R, Voysey M, Emberson J, Blackwell L, et al. Efficacy and safety of LDL-lowering therapy among men and women: meta-analysis of individual data from 174,000 participants in 27 randomised trials. *Lancet*. 2015;385:1397–405.
3. Visseren FLJ, Mach F, Smulders YM, Carballo D, Koskinas KC, Bäck M, et al. 2021 ESC Guidelines on cardiovascular disease prevention in clinical practice: Developed by the Task Force for cardiovascular disease prevention in clinical practice with representatives of the European Society of Cardiology and 12 medical societies With the special contribution of the European Association of Preventive Cardiology (EAPC). *European Heart Journal*. 2021. <https://doi.org/10.1093/eurheartj/ehab484>.
4. Mach F, Baigent C, Catapano AL, Koskinas KC, Casula M, Badimon L, et al. 2019 ESC/EAS Guidelines for the management of dyslipidaemias: lipid modification to reduce cardiovascular risk: The Task Force for the management of dyslipidaemias of the European Society of Cardiology (ESC) and European Atherosclerosis Society (EAS). *European Heart Journal*. 2020;41:111–88.
5. Arnett DK, Blumenthal RS, Albert MA, Buroker AB, Goldberger ZD, Hahn EJ, et al. 2019 ACC/AHA Guideline on the Primary Prevention of Cardiovascular Disease: A Report of the American College of Cardiology/American Heart Association Task Force on Clinical Practice Guidelines. *Circulation*. 2019;140.

6. Sommerschild H, Berg C, Blix H, Dansie L, Litleskare I, Olsen K, et al. Legemiddelforbruket i Norge 2016–2020. Data fra Grossistbasert legemiddelstatistikk og Reseptregisteret/ Drug Consumption in Norway 2016-2020 - Data from Norwegian Drug Wholesales Statistics and the Norwegian, Legemiddelstatistikk 2021. Oslo: Folkehelseinstituttet; 2021.
7. Reseptregisterets statistikkbank / Summary statistics from The Norwegian Prescription Database (NorPD). 2021.
8. Ference BA, Ginsberg HN, Graham I, Ray KK, Packard CJ, Bruckert E, et al. Low-density lipoproteins cause atherosclerotic cardiovascular disease. 1. Evidence from genetic, epidemiologic, and clinical studies. A consensus statement from the European Atherosclerosis Society Consensus Panel. *Eur Heart J*. 2017;38:2459–72.
9. Medisinsk fødselsregister statistikkbank / Summary statistics from the Medical Birth Registry of Norway (MBRN). 2021.
10. Irgens LM. [Medical birth registry--an essential resource in perinatal medical research]. *Tidsskr Nor Laegeforen*. 2002;122:2546–9.
11. Furu K, Wettermark B, Andersen M, Martikainen JE, Almarsdottir AB, Sørensen HT. The Nordic countries as a cohort for pharmacoepidemiological research. *Basic Clin Pharmacol Toxicol*. 2010;106:86–94.
12. Bateman BT, Mhyre JM, Hernandez-Diaz S, Huybrechts KF, Fischer MA, Creanga AA, et al. Development of a comorbidity index for use in obstetric patients. *Obstet Gynecol*. 2013;122:957–65.

13. R Core Team. R: A Language and Environment for Statistical Computing. Vienna, Austria; 2019.
14. Wickham H, Averick M, Bryan J, Chang W, McGowan L, François R, et al. Welcome to the Tidyverse. *Journal of Open Source Software*. 2019;4:1686.
15. Chang J-C, Chen Y-J, Chen I-C, Lin W-S, Chen Y-M, Lin C-H. Perinatal Outcomes After Statin Exposure During Pregnancy. *JAMA Network Open*. 2021;4:e2141321.
16. Lee M-S, Hekimian A, Doctorian T, Duan L. Statin exposure during first trimester of pregnancy is associated with fetal ventricular septal defect. *Int J Cardiol*. 2018;269:111–3.
17. Bateman BT, Hernandez-Diaz S, Fischer MA, Seely EW, Ecker JL, Franklin JM, et al. Statins and congenital malformations: cohort study. *BMJ*. 2015;350:h1035.
18. Colvin L, Slack-Smith L, Stanley FJ, Bower C. Linking a pharmaceutical claims database with a birth defects registry to investigate birth defect rates of suspected teratogens. *Pharmacoepidemiol Drug Saf*. 2010;19:1137–50.
19. Zomerdijk IM, Ruiters R, Houweling LMA, Herings RMC, Straus SMJM, Stricker BH. Dispensing of potentially teratogenic drugs before conception and during pregnancy: a population-based study. *BJOG*. 2015;122:1119–29.
20. Rachamin Y, Grischott T, Rosemann T, Meyer MR. Inferior control of low-density lipoprotein cholesterol in women is the primary sex difference in modifiable cardiovascular risk: A large-scale, cross-sectional study in primary care. *Atherosclerosis*. 2021;324:141–7.
21. Farukhi ZM, Mora S. Misperceptions and management of risk: Ongoing challenges in women’s cardiovascular health. *Atherosclerosis*. 2021;324:109–11.

22. Aceti A, Santhakumaran S, Logan KM, Philipps LH, Prior E, Gale C, et al. The diabetic pregnancy and offspring blood pressure in childhood: a systematic review and meta-analysis. *Diabetologia*. 2012;55:3114–27.
23. Cheung NW, Byth K. Population health significance of gestational diabetes. *Diabetes Care*. 2003;26:2005–9.
24. Cannon CP, Blazing MA, Giugliano RP, McCagg A, White JA, Theroux P, et al. Ezetimibe Added to Statin Therapy after Acute Coronary Syndromes. *New England Journal of Medicine*. 2015;372:2387–97.
25. Sakshaug S, Furu K, Karlstad Ø, Rønning M, Skurtveit S. Switching statins in Norway after new reimbursement policy: a nationwide prescription study. *Br J Clin Pharmacol*. 2007;64:476–81.
26. Steinberg D. Earlier intervention in the management of hypercholesterolemia: what are we waiting for? *J Am Coll Cardiol*. 2010;56:627–9.
27. Ference BA, Graham I, Tokgozoglu L, Catapano AL. Impact of Lipids on Cardiovascular Health: JACC Health Promotion Series. *Journal of the American College of Cardiology*. 2018;72:1141–56.
28. Langslet G, Holven KB, Bogsrud MP. Treatment goals in familial hypercholesterolaemia—time to consider low-density lipoprotein-cholesterol burden. *European Journal of Preventive Cardiology*. 2021;:zwab228.
29. Helsedirektoratet. Nasjonal faglig retningslinje for svangerskapsomsorgen / Norwegian national guideline for maternity care. Oslo: Helsedirektoratet; 2018.

30. The HAPO Study Cooperative Research Group. Hyperglycemia and Adverse Pregnancy Outcomes. *New England Journal of Medicine*. 2008;358:1991–2002.

31. Hafferty JD, Campbell AI, Navrady LB, Adams MJ, MacIntyre D, Lawrie SM, et al. Self-reported medication use validated through record linkage to national prescribing data. *J Clin Epidemiol*. 2018;94:132–42.

32. Herings R, Pedersen L. Pharmacy-based medical record linkage systems. In: Strom B, Kimmel S, Hennessy S, editors. *Pharmacoepidemiology*. 2012. p. 270–86.

## Tables

Table 1

**Table 1.** Characteristics of the 822 071 pregnancies in 2005-2018, stratified by statin use between one year before conception and one year after delivery (covering 2 439 pregnancies and 2 010 unique women).

		No statin use	Any statin use	Specific statin use			
	n	n = 819 632	n = 2 439	Simvastatin, n = 1 235	Atorvastatin, n = 1 144	Rosuvastatin, n = 192	Other statin, n = 81
Age	822 071						
< 28 yrs		322 172 (39)	662 (27)	328 (27)	320 (28)	62 (32)	18 (22)
28 - 32 yrs		240 268 (29)	640 (26)	313 (25)	304 (27)	51 (27)	17 (21)
> 32 yrs		257 192 (31)	1 137 (47)	594 (48)	520 (45)	79 (41)	46 (57)
Employed, yes	656 916	530 164 (81)	1 578 (81)	760 (78)	748 (82)	147 (89)	48 (77)
Civil status	822 071						
Registered partner/cohabitant		760 647 (93)	2 218 (91)	1 112 (90)	1 048 (92)	178 (93)	76 (94)
Other		58 985 (7.2)	221 (9.1)	123 (10.0)	96 (8.4)	14 (7.3)	5 (6.2)
Parity	822 071						
Nulliparous		346 176 (42)	997 (41)	483 (39)	476 (42)	82 (43)	38 (47)
Primiparous		297 202 (36)	832 (34)	436 (35)	383 (33)	66 (34)	21 (26)
Multiparous		176 254 (22)	610 (25)	316 (26)	285 (25)	44 (23)	22 (27)
Previous pregnancy loss, yes	771 869	182 315 (24)	603 (26)	304 (26)	292 (27)	45 (24)	19 (25)
Weight (pre-pregnancy), kg	422 081	65 (58-75)	70 (61-84)	72 (62-87)	70 (61-84)	69 (60-80)	65 (59-73)
Folate use (pre-pregnancy), yes	822 071	232 852 (28)	806 (33)	388 (31)	370 (32)	73 (38)	29 (36)
Smoking, yes	552 527	107 213 (19)	442 (25)	252 (30)	196 (22)	23 (14)	12 (26)
Obstetric comorbidity index	822 071						
0		539 888 (66)	1 058 (43)	486 (39)	527 (46)	113 (59)	25 (31)
1		184 660 (23)	655 (27)	348 (28)	298 (26)	47 (24)	15 (19)
2		66 027 (8.1)	382 (16)	208 (17)	175 (15)	21 (11)	13 (16)
3 or more		29 057 (3.5)	344 (14)	193 (16)	144 (13)	11 (5.7)	28 (35)

Chronic illness, yes	822 071	54 981 (6.7)	596 (24)	329 (27)	264 (23)	22 (11)	35 (43)
Chronic hypertension, yes	822 071	4 286 (0.5)	158 (6.5)	98 (7.9)	66 (5.8)	4 (2.1)	6 (7.4)
Any diabetes mellitus, yes	822 071	28 717 (3.5)	438 (18)	238 (19)	205 (18)	13 (6.8)	16 (20)

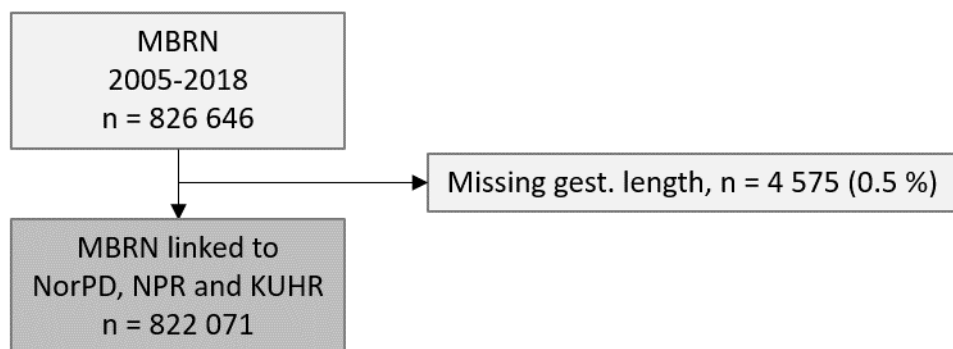
---

n (%); Median (25%-75%)



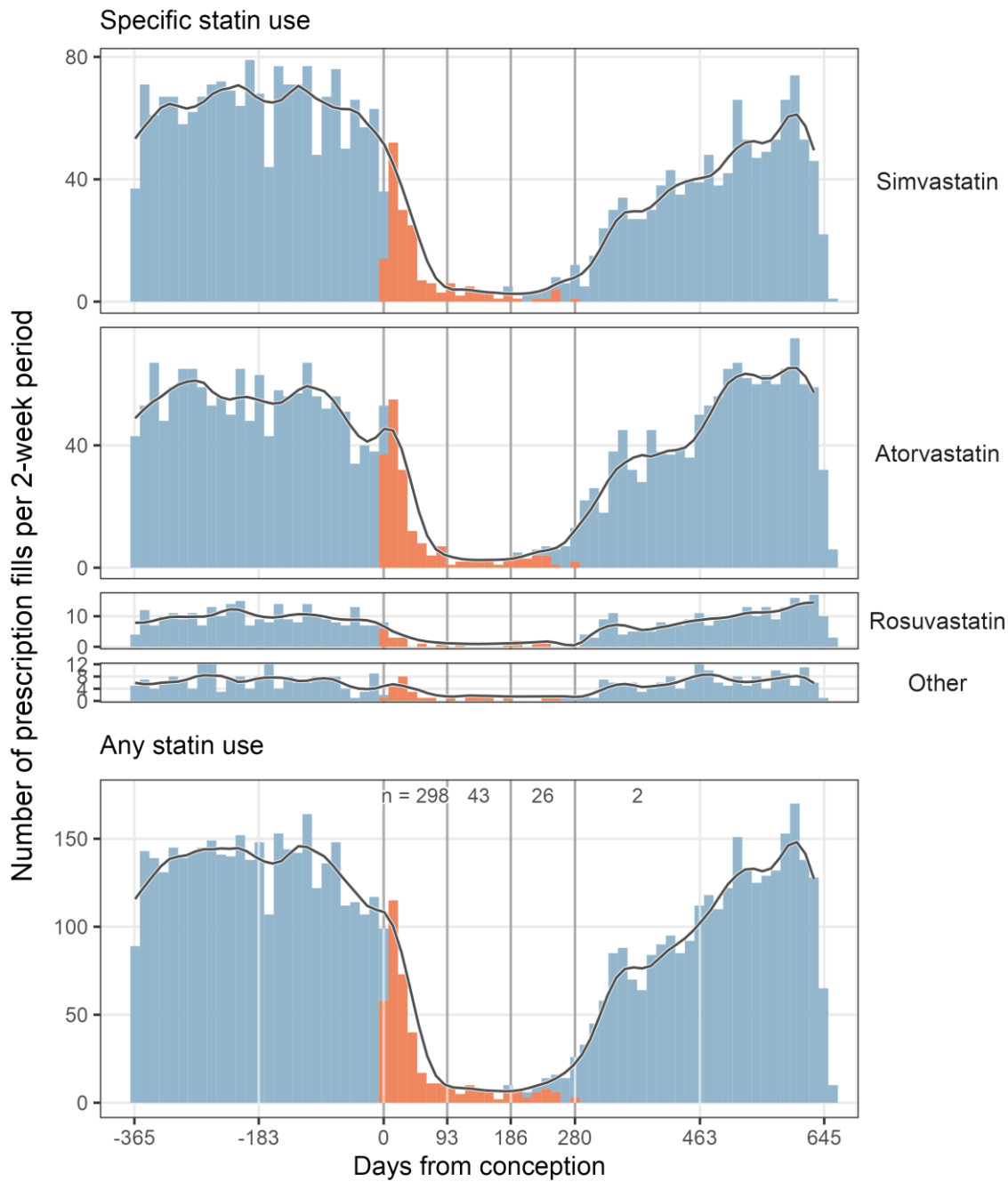
## Figure legends

Figure 1



**Figure 1.** *Study flow chart.* Abbreviations: gest, gestational; KUHR, the Norway Control and Payment of Health Reimbursement Database; MBRN, the Medical Birth Registry of Norway; NorPD, the Norwegian Prescription Registry; NPR, the Norwegian Patient Registry.

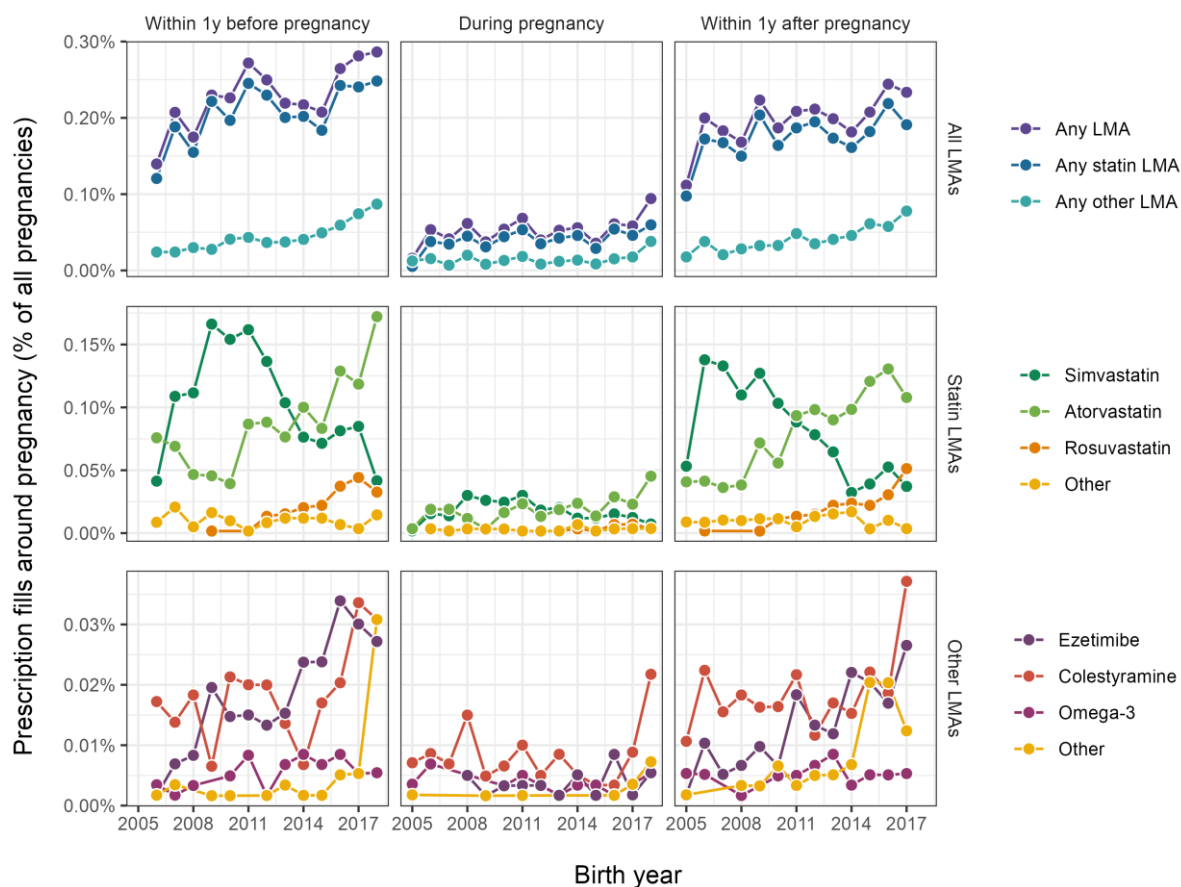
Figure 2



**Figure 2.** Pattern of prescription fills for statins, one year before, during, and one year after pregnancy. The figure shows the number of prescriptions fills for statins (6 703 prescription fills, 2 439 pregnancies, 2 010 unique women) in 2-week bins, as well as a smoothed 2-month average (one month prior and the subsequent two weeks; local regressions were fit on 10 % of the data points along the line). Blue and red color represents prescription fill of a

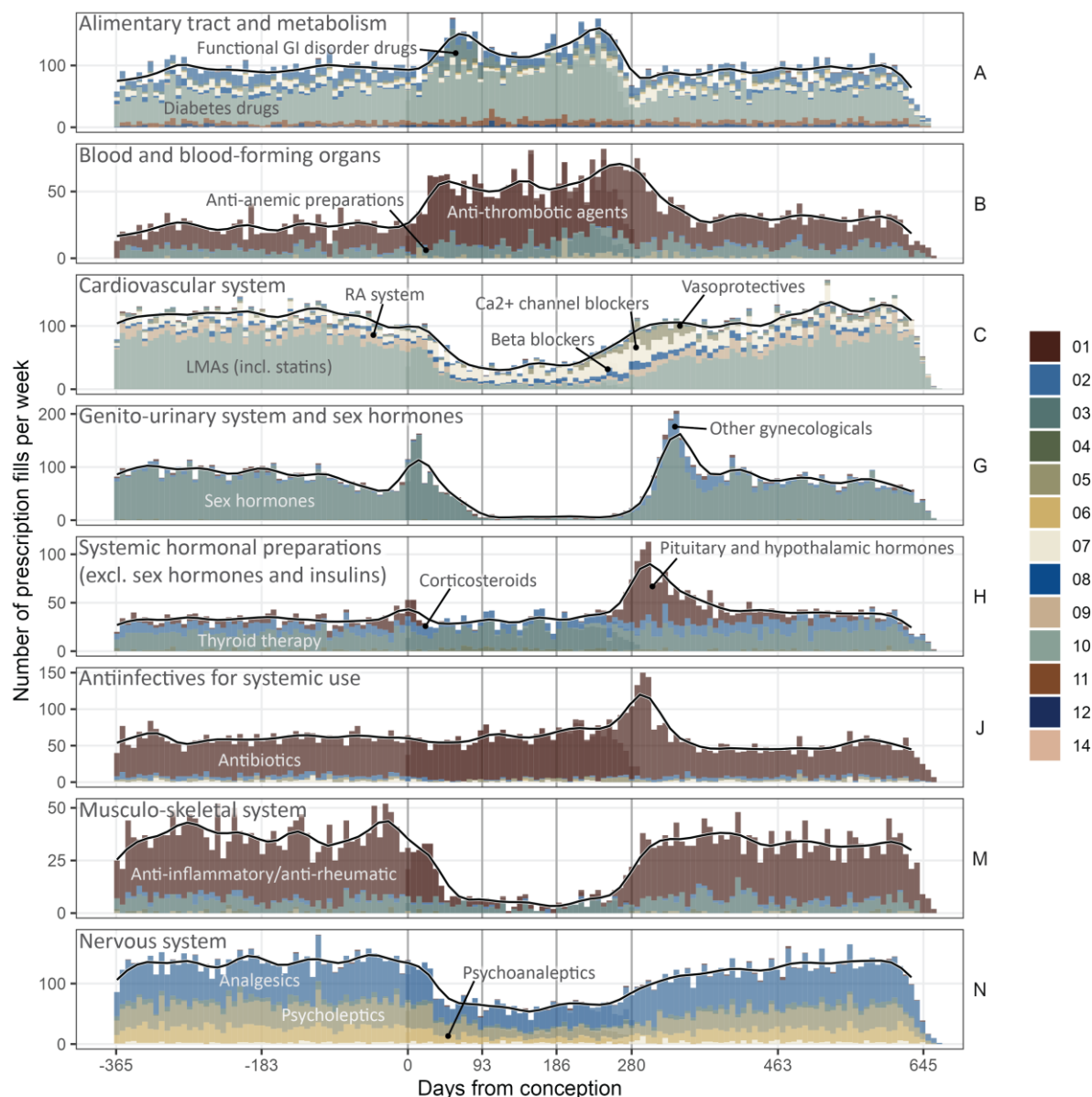
statin *outside* or *within* any trimester of pregnancy, respectively. Numbers between the vertical lines in the upper part of the lowest panel represent the number of unique pregnancies where a statin prescription had been filled inside pregnancy, per trimester. The vertical lines represent key timepoints in relation to time of conception, including conception and trimester transitions.

Figure 3



**Figure 3.** Trends in prescription fills for LMAs, one year before, during, and one year after pregnancy. The figure shows trends in use for groups of LMAs (top row) and individual LMAs (middle and bottom rows), for the periods from 1 year before pregnancy to conception (left column), during pregnancy (middle column), and from delivery until 1 year after delivery (right column). Note that 2005 was excluded for the period within 1 year before pregnancy, as this would largely reflect 2004; similarly, 2018 was excluded for the period within year after pregnancy, as this would largely reflect 2019. Abbreviations: LMA, lipid-modifying agent; y, year.

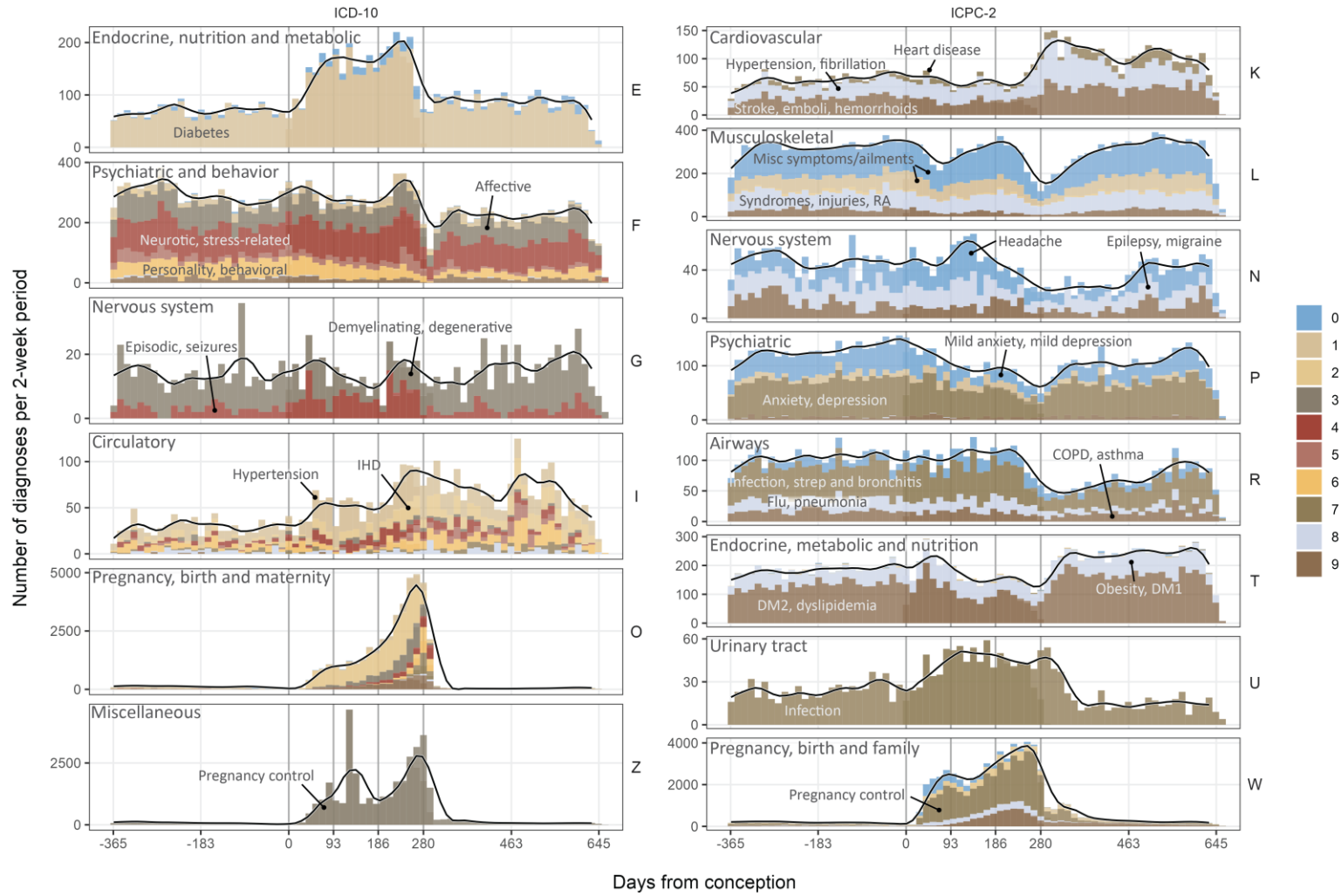
Figure 4



**Figure 4.** Pattern of co-medication among LMA users one year before, during, and one year after pregnancy. The figure shows the number of prescriptions fills of various medication in 1-week bins for women using statins across pregnancy (those included in Figure 2, covering 2 439 pregnancies and 2 010 unique women), as well as a smoothed 1-month average (two weeks prior and the subsequent week; local regressions were fit on 10 % of the data points along the line). The panels and colors correspond to the first and second level of ATC codes,

respectively. Some of the most notable second level ATC codes are annotated by their common names. The vertical lines represent key timepoints in relation to time of conception, including conception and trimester transitions..

Figure 5



**Figure 5.** *Pattern of the most common diagnoses given among LMA users one year before, during, and one year after pregnancy.* The figure shows the number of diagnoses in 2-week bins for women using statins across pregnancy (those included in Figure 2, covering 2 439 pregnancies and 2 010 unique women), as well as a smoothed 2-month average (one month prior and the subsequent two weeks; local regressions were fit on 10 % of the data points along the line). The count for ICD-10 was based on either NPR or KUHR. The data was not restricted to first occurrence of a diagnosis; hence, each woman can be represented by the same diagnosis multiple times. The panels and colors correspond to the first and second level diagnosis codes, respectively. Some of the most notable second level diagnosis codes are annotated by keywords reflecting broad sets of diagnosis terms. The vertical lines represent key timepoints in relation to time of conception, including conception and trimester transitions.