

1 **Cardiovascular disease and subsequent risk of psychiatric**
2 **disorders: a nationwide sibling-controlled study**

3 Full author list:

4 Qing Shen^{1,4}; Huan Song^{1,2,3,4}; Thor Aspelund⁴; Jingru Yu¹; Donghao Lu^{2,5,8}; Jóhanna
5 Jakobsdóttir⁴; Jacob Bergstedt⁵; Lu Yi¹; Patrick F. Sullivan^{1,6}; Arvid Sjölander¹; Weimin Ye
6 ¹; Katja Fall^{5,7}; Fang Fang^{5,*}; Unnur Valdimarsdóttir^{4,5,8,*}

7
8 Author affiliations:

9 ¹Department of Medical Epidemiology and Biostatistics, Karolinska Institutet, Stockholm,
10 Sweden

11 ²West China Biomedical Big Data Center, West China Hospital, Sichuan University,
12 Chengdu, China

13 ³Medical Big Data Center, Sichuan University, Chengdu, China

14 ⁴Center of Public Health Sciences, Faculty of Medicine, University of Iceland, Reykjavík,
15 Iceland

16 ⁵Unit of Integrative Epidemiology, Institute of Environmental Medicine, Karolinska Institutet,
17 Stockholm, Sweden

18 ⁶Departments of Genetics and Psychiatry, University of North Carolina, Chapel Hill, United
19 States

20 ⁷Clinical Epidemiology and Biostatistics, School of Medical Sciences, Örebro University,
21 Örebro, Sweden

22 ⁸Department of Epidemiology, Harvard T.H. Chan School of Public Health, Boston,
23 Massachusetts, United States

24

25 * Equal contribution

26

27 Correspondence to:

28 Qing Shen (qing.shen@ki.se)

29 Department of Medical Epidemiology and Biostatistics, Karolinska Institutet, Nobelsväg 12A,

30 171 65 Solna, Sweden.

31 Unnur Valdimarsdóttir (unnurav@hi.is)

32 Unit of Integrative Epidemiology, Institute of Environmental Medicine, Karolinska Institutet,

33 Stockholm, Sweden

34

35 Running title: Cardiovascular disease and psychiatric disorders

36 Word count: abstract 344; text 2965; reference 45

37 Number of tables/figures: 1 table; 4 figures; 7 supplementary tables 7; 4 supplementary

38 figures

39

40

41 **Abstract**

42 **Background**

43 The association between cardiovascular disease (CVD) and selected psychiatric disorders has
44 frequently been suggested while inadequate control of familial factors and comorbidities has
45 halted causal inferences.

46 **Methods**

47 We identified 869 056 patients newly diagnosed with CVD from 1987 to 2016 in Sweden
48 while no history of psychiatric disorders, and 910 178 full siblings of these patients and 10
49 individually age- and sex-matched unrelated population controls (N=8 690 560). Adjusting
50 for multiple comorbid conditions, we used flexible parametric models and Cox regression to
51 estimate the association of CVD with risk of all subsequent psychiatric disorders, comparing
52 rates of first incident psychiatric disorder among CVD patients with rates among unaffected
53 full siblings and population controls.

54 **Results**

55 The median age at diagnosis was 60 years for patients with cardiovascular disease and 59.2%
56 were male. During up to thirty years of follow-up, the crude incidence rates of psychiatric
57 disorder were 7.1, 4.6 and 4.0 per 1000 person-years for patients with cardiovascular disease,
58 their siblings and population controls. In the sibling comparison, we observed an increased
59 risk of psychiatric disorder during the first year after cardiovascular diagnosis (hazard ratio
60 [HR], 2.74; 95% confidence interval [CI], 2.62-2.87) and thereafter (1.45; 95% CI, 1.42-
61 1.48). Increased risks were observed for all types of psychiatric disorders and among all
62 diagnoses of cardiovascular disease. We observed similar associations in the population
63 comparison. Cardiovascular patients who developed a comorbid psychiatric disorder during

64 the first year after diagnosis were at increased risk of subsequent cardiovascular death
65 compared to patients without such comorbidity (HR 1.55; 95% CI 1.44-1.67).

66 **Conclusions**

67 Patients diagnosed with cardiovascular disease are at an elevated risk for subsequent
68 psychiatric disorders independent of familial factors and comorbid conditions. Cardiovascular
69 patients with comorbid psychiatric disorders are at increased risk of cardiovascular mortality
70 suggesting that surveillance and treatment of psychiatric comorbidities should be considered
71 as an integral part of clinical management of newly diagnosed patients with cardiovascular
72 disease.

73

74 **Funding:** this work was supported by the EU Horizon 2020 Research and Innovation Action
75 Grant (CoMorMent, Grant nr. 847776 to UV, PFS and FF), Grant of Excellence, Icelandic
76 Research Fund (grant no. 163362-051 to UV), ERC Consolidator Grant (StressGene, grant
77 no: 726413 to UV), Swedish Research Council (Vetenskapsrådet, award D0886501 to PFS)
78 and US NIMH R01 MH123724 (to PFS).

79

80

81

82 Key words: Cardiovascular disease, psychiatric disorder, sibling, family design

83

84

85 **Introduction**

86 Being diagnosed and living with a major life-threatening disease is stressful and associated
87 with multiple biologic processes that combined may contribute to the development of
88 psychiatric disorders. It is for instance firmly demonstrated that a cancer diagnosis is
89 associated with a rapid rise of psychiatric disorders¹ and self-inflicted injury,² which further is
90 associated with a compromised cancer specific survival.³ Psychiatric comorbidities have also
91 been reported among patients with cardiovascular disease (CVD), e.g. after stroke,⁴ heart
92 failure,⁵ and myocardial infarction.^{6,7} with indications of elevated risk of overall mortality.^{8,9}
93 Yet, evidence on the association between CVD and subsequent development of psychiatric
94 disorders is still limited as previous research has mainly relied on selected patient populations
95 instead of complete follow-up of general population as well as limited control of reverse
96 causality and important confounding factors, e.g. familial factors and comorbidities.¹⁰⁻¹²

97 We thoroughly searched the existing literature of investigating the association between CVD
98 and clinically confirmed psychiatric disorders or psychiatric symptoms. After excluding most
99 studies with either cross-sectional or retrospective designs, we only found 12 prospective
100 cohort studies investigating the risk of selected psychiatric disorders following diagnosis of
101 cardiovascular disease (summarized in Table S1, Supplementary Appendix). While these
102 prospective studies suggest a positive association between hypertension, heart disease, and
103 stroke with depressive symptoms^{11,13-15} and stress-related disorders,¹⁶ they were limited to
104 elderly populations,^{17,18} and using self-reported ascertainment of psychiatric outcomes.^{17,18}

105 Only few of these studies addressed incident or first diagnosed psychiatric disorders among
106 patients with CVD, e.g. excluding patients with history of psychiatric disorders, and no study
107 addressed the issue of familial confounding. Indeed, genetic correlation between these two
108 complex diseases have recently been documented¹⁹⁻²¹ as well as the importance of early life
109 environment for the development of both cardiovascular disease²² and psychiatric disorders.²³

110 It is therefore unknown whether the reported association between CVD and psychiatric
111 disorder can be attributed to unmeasured confounding shared within families.^{19–21} Thus, a
112 comprehensive evaluation of the association between all CVDs and risk of any incident
113 psychiatric disorder, addressing the abovementioned shortcomings, is warranted.

114 With up to thirty years of follow-up and with nationwide complete information on family
115 links in Sweden, we aimed to comprehensively investigate the association between CVD
116 diagnosed in specialist care and subsequent risk of incident psychiatric disorders while
117 accounting for familial factors through a sibling comparison. We further aimed to estimate the
118 potential role of psychiatric comorbidity in cardiovascular mortality among patients with
119 CVD.

120

121 **Materials and Methods**

122 **Study Design**

123 The Swedish Patient Register contains national information on inpatient care with complete
124 coverage since 1987 and outpatient specialized care since 2001.²⁵ The Swedish Multi-
125 Generation Register includes nearly complete familial information for Swedish residents born
126 since 1932.²⁶ Using personal identification numbers assigned to all Swedish residents, we
127 identified all individuals born in Sweden after 1932 who received a first diagnosis of any
128 CVD that attended in inpatient or outpatient specialized care between 1 January 1987 and 31
129 December 2016 (N=986 726). Patients diagnosed with CVD before age 5 (N=6 091, probable
130 congenital heart disease) or with a history of any psychiatric disorder before the diagnosis of
131 CVD (N=111 579) were excluded, leaving 869 056 patients in the analysis (Fig S1,
132 Supplementary Appendix). Date of first CVD diagnosis was used as the index date for the
133 exposed patients.

134 Through the Multi-Generation Register, we identified all full siblings of patients with CVD
135 (58.6% of all CVD patients) who were alive and free of CVD and psychiatric disorder at the
136 time when their affected sibling was diagnosed (N=910 178). In addition, for each patient
137 with CVD, we randomly selected 10 age- and sex-matched individuals from the general
138 population who were free of CVD or psychiatric disorder when the index patient was
139 diagnosed (N=8 690 560). The date of CVD diagnosis for the index patient was used as the
140 index date for their unaffected siblings and matched population controls.

141 All study participants were followed from the index date until first diagnosis of any
142 psychiatric disorder, death, emigration, first diagnosis of CVD (for unaffected siblings and
143 matched population controls), or the end of the study period (31 December 2016), whichever
144 occurred first.

145

146 **Ascertainment of Cardiovascular Disease and Psychiatric Disorder**

147 We defined CVD as any first inpatient or outpatient hospital visit with CVD as the primary
148 diagnosis from the Swedish Patient Register. Incident psychiatric disorder was defined as any
149 first inpatient or outpatient hospital visit with psychiatric disorder as the primary diagnosis.

150 We used the 9th and 10th Swedish revisions of the International Classification of Diseases
151 (ICD-9 and 10) codes to identify CVD and psychiatric disorders and their subtypes (Table S2,
152 Supplementary Appendix). In line with previous study,²⁷ we classified CVD as ischemic heart
153 disease, cerebrovascular disease, emboli/thrombosis, hypertensive disease, heart failure, and
154 arrhythmia/conduction disorder. We classified psychiatric disorders as non-affective
155 psychotic disorders, affective psychotic disorders, alcohol or drug misuse, mood disorders
156 excluding psychotic symptoms, anxiety and stress-related disorders, eating disorders, and
157 personality disorders.²⁸

158 **Covariates**

159 We extracted socioeconomic information for each participant, including educational level,
160 individualized family income and cohabitation status, from the Longitudinal Integration
161 Database for Health Insurance and Labor Market.²⁹ Missing information on socioeconomic
162 status was categorized as unknown or missing group. A history of somatic diseases was
163 defined as having any of the following conditions before the index date: chronic pulmonary
164 disease, connective tissue disease, diabetes, renal diseases, liver disease, ulcer diseases,
165 malignancies, and HIV infection/AIDS (Table S2, Supplementary Appendix). We defined a
166 family history of psychiatric disorders as a diagnosis of any psychiatric disorder among
167 biological parents and full siblings of the study participants before the index date according to
168 the Swedish Patient Register.

169 **Statistical Analysis**

170 We used flexible parametric survival models to estimate the time-varying association between
171 CVD and subsequent risk of incident psychiatric disorders,³⁰ by comparing the rates of
172 incident psychiatric disorders in CVD patients with the corresponding rates in their unaffected
173 full siblings and matched population controls. As we observed a marked risk increase of
174 psychiatric disorders immediately following the CVD diagnosis, we separately assessed the
175 association within one year of CVD diagnosis and beyond one year. Hazard ratios (HRs) and
176 their 95% confidence intervals (CIs) were derived from stratified Cox regression models,
177 using time since the index date as the underlying time scale. We estimated HRs for any
178 psychiatric disorder and categories of psychiatric disorders. We performed subgroup analyses
179 by sex, age at index date (<50, 50-60, or >60 years), age at follow-up (<60 or ≥60 years),
180 calendar year at index date (1987-1996, 1997-2006, or 2007-2016), history of somatic
181 diseases (no or yes), and family history of psychiatric disorder (no or yes). In the sibling
182 comparison, all Cox models were stratified by sibling sets and adjusted for sex, birth year,

183 educational level, individualized family income, cohabitation status, and history of somatic
184 diseases. In the population comparison, all Cox models were stratified by the matching
185 variables birth year and sex and adjusted for all abovementioned covariates plus family
186 history of psychiatric disorder.

187 To study the impact of additional cardiovascular comorbidity (i.e., patients with another type
188 of CVD after diagnosis of the first CVD), we analyzed the association by presence or absence
189 of cardiovascular comorbidity after the index date according to the type of first CVD. This
190 analysis was restricted to follow-up beyond one year to focus on patients who survived their
191 first CVD to be able to receive the diagnosis of another CVD. As a patient with CVD might
192 have different types of CVD, we identified all diagnoses of CVD during follow-up and
193 considered CVD comorbidity as a time-varying variable through splitting the person-time
194 according to each diagnosis.

195 Because the Swedish Patient Register includes only information related to specialist care, we
196 might have misclassified patients with psychiatric symptoms who were only attended by
197 primary care. In a sensitivity analysis, we excluded also individuals with prescribed use of
198 psychotropic drugs before the index date (ascertained from the Swedish Prescribed Drug
199 Register including information on all prescribed medication use in Sweden since July 2005),
200 and followed the remaining participants during 2006-2016. Use of psychotropic drugs during
201 follow-up was also considered as having psychiatric disorder in this analysis.

202 To study rate of cardiovascular mortality (ascertained from the Swedish Causes of Death
203 Register) in relation to psychiatric comorbidities after CVD diagnosis, we plotted Kaplan-
204 Meier survival curves beyond the first year of follow-up for CVD patients with or without a
205 diagnosis of psychiatric disorder during the first year of follow-up, separately. In addition to
206 this 1-year time window, we also studied six months or two years since CVD diagnosis, to

207 assess the robustness of these survival curves. We calculated the HRs of cardiovascular
208 mortality for these two groups of patients using Cox regression model.
209 Analyses were performed in STATA 17.0 (StataCorp LP). All tests were two sided and
210 $P < 0.05$ was used as statistically level of significance. The study was approved by the Ethical
211 Vetting Board in Stockholm, Sweden (DNRs 2012/1814-31/4 and 2015/1062-32).

212 **Role of the funding source**

213 The funders of the study had no role in study design, data collection, data analysis, data
214 interpretation, or writing of the report.

215

216 **Results**

217 The median age at index date was 60 years for CVD patients and 55 years for their unaffected
218 full siblings (Table 1). 59.2% of the CVD patients and 48.4% of their unaffected siblings
219 were male. CVD patients were more likely to have a history of somatic diseases than their
220 unaffected siblings and matched population controls (15.6% vs. 8.8% and 11.0%). The most
221 common diagnoses among the CVD patients were ischemic heart diseases (24.5%),
222 arrhythmia/conduction disorders (24.2%), and hypertensive diseases (17.3%). The majority
223 of the CVD patients had only one CVD diagnosis (without additional CVD comorbidities)
224 during follow-up (69.7%).

225

226 **Table 1. Characteristics of CVD patients diagnosed in Sweden between 1987 and 2016,**
227 **their unaffected siblings and matched population controls.**

Characteristics	Sibling comparison		Population comparison	
	CVD patients (N=509 467)	Unaffected full siblings (N=910 178)	CVD patients (N=869 056)	Matched population controls (N=8 690 560)
Median age at index date in years (IQR)	57 (48-65)	55 (46-63)	60 (51-68)	60 (51-68)
Median follow-up time in years (IQR)	8.1 (3.7-13.7)	8.1 (3.8-13.7)	7.7 (3.3-13.2)	7.1 (3.2-12.4)
Male sex	308 203 (60.5)	440 177 (48.4)	514 388 (59.2)	5 143 880 (59.2)

Educational level				
<9 years	149 555 (29.4)	261 752 (28.8)	272 960 (31.4)	2 294 482 (26.4)
9-12 years	225 548 (44.3)	413 702 (45.5)	376 917 (43.4)	3 548 338 (40.8)
>12 years	134 364 (26.4)	234 724 (25.8)	219 179 (25.2)	2 847 740 (32.8)
Yearly individualized family income level				
Top 20%	1 079 90 (21.2)	175 658 (19.3)	139 098 (16.0)	1 757 726 (20.2)
Middle	301 706 (59.2)	549 842 (60.4)	535 109 (61.6)	5 152 938 (59.3)
Lowest 20%	99 485 (19.5)	184 588 (20.3)	192 858 (22.2)	1 706 931 (19.6)
Unknown	286 (0.1)	90 (0.0)	1 991 (0.2)	72 965 (0.8)
Cohabitation status				
Non-cohabitating	223 134 (43.8)	392 256 (43.1)	373 337 (43.0)	3 744 116 (43.1)
Cohabitating	286 047 (56.2)	517 832 (56.9)	493 728 (56.8)	4 873 479 (56.1)
Missing	286 (0.1)	90 (0.0)	1 991 (0.2)	72 965 (0.8)
History of somatic disease ^a	71 273 (14.0)	79 679 (8.8)	135 473 (15.6)	955 030 (11.0)
Family history of psychiatric disorder ^b	133 094 (26.1)	251 237 (27.6)	209 957 (24.2)	2 003 161 (23.1)
Type of first onset cardiovascular disease				
Ischemic heart disease	122 084 (24.0)	-	212 737 (24.5)	-
Cerebrovascular disease	71 030 (13.9)	-	126 860 (14.6)	-
Emboli and thrombosis	25 338 (5.0)	-	42 857 (4.9)	-
Hypertensive disease	89 818 (17.6)	-	150 337 (17.3)	-
Heart failure	15 726 (3.1)	-	30 469 (3.5)	-
Arrhythmia/conduction disorder	126 738 (24.9)	-	210 654 (24.2)	-
Others	58 733 (11.5)	-	95 142 (11.0)	-
Number of cardiovascular diagnoses during follow-up				
One	365 266 (71.7)	-	605 615 (69.7)	-
Two	99 921 (19.6)	-	179 472 (20.7)	-
Three or more	44 280 (8.7)	-	83 969 (9.7)	-

228 IQR: interquartile range. CVD: cardiovascular disease

229 ^a History of somatic diseases included chronic pulmonary disease, connective tissue disease, diabetes, renal
230 diseases, liver diseases, ulcer diseases and HIV infection/AIDS that diagnosed before index date.

231 ^b The difference between exposed patients and unaffected full siblings was due to different number of siblings
232 for exposed patients. The family history of psychiatric disorder was constant within each family.

233

234

235 During up to thirty years of follow-up, the crude incidence rates of psychiatric disorder were

236 7·1, 4·6 and 4·0 per 1000 person-years among CVD patients, their unaffected full siblings,

237 and matched population controls, respectively (Table S3, Supplementary Appendix).

238 Compared with unaffected siblings, CVD patients showed an increased risk of incident

239 psychiatric disorder, especially immediately after diagnosis (Fig 1). The risk declined rapidly

240 within the first few months after diagnosis and decreased gradually thereafter: the HR was

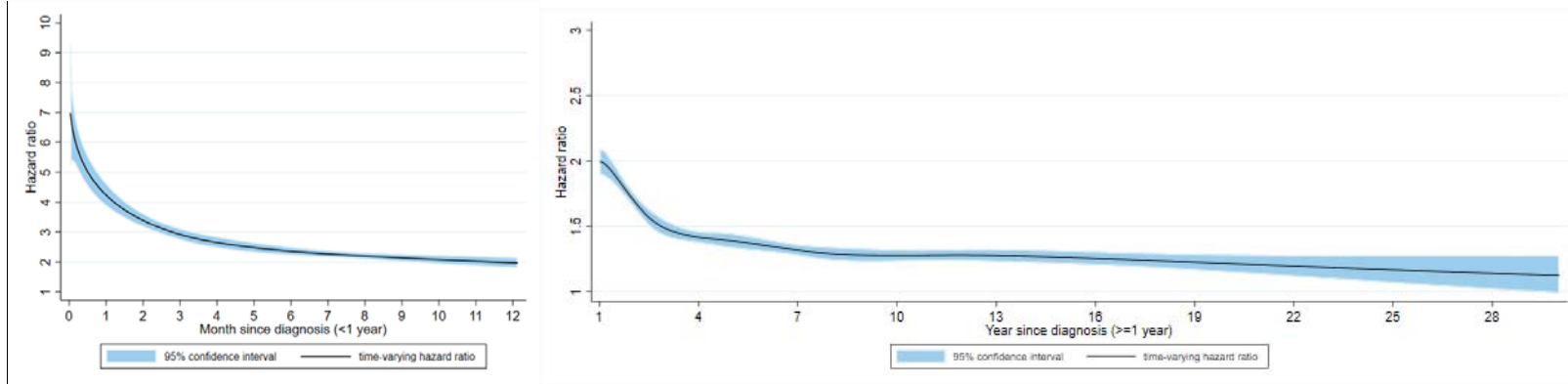
241 2·74 (95% CI 2·62 to 2·87) within first year and 1·45 (95% CI 1·42 to 1·48) beyond first year

242 (Table S4, Supplementary Appendix). The risk increment was noted in all types of psychiatric

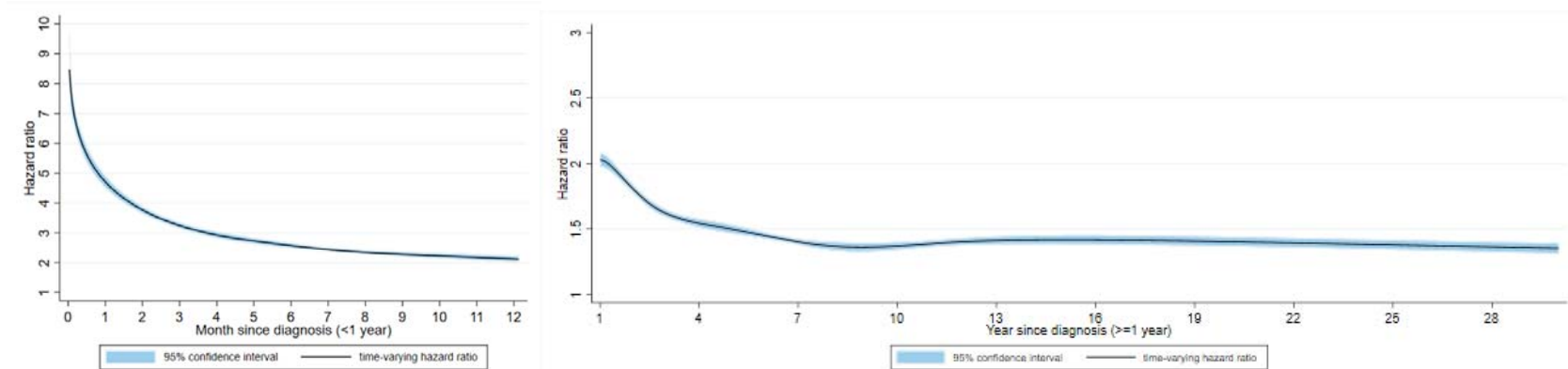
243 disorders within and beyond first year of follow-up (Fig 2). Overall, the observed risk
244 increase was similar in sibling and population comparisons, although the HR of non-affective
245 psychotic disorders beyond one year of CVD diagnosis was smaller in the sibling comparison
246 than in the population comparison. During the entire follow-up, we found similar positive
247 associations across sex, age at index date, age at follow-up, history of somatic diseases and
248 family history of psychiatric disorders (Table S3). A greater risk increment was observed in
249 recent calendar years than earlier years.

250

251 **Figure 1. Time-varying hazard ratios for an incident psychiatric disorder among CVD patients, compared with their unaffected full**
 252 **siblings (sibling comparison) or matched population controls (population comparison), by time of follow-up (<1 year and >=1 year from**
 253 **CVD diagnosis)***
 254 **A. Sibling comparison**



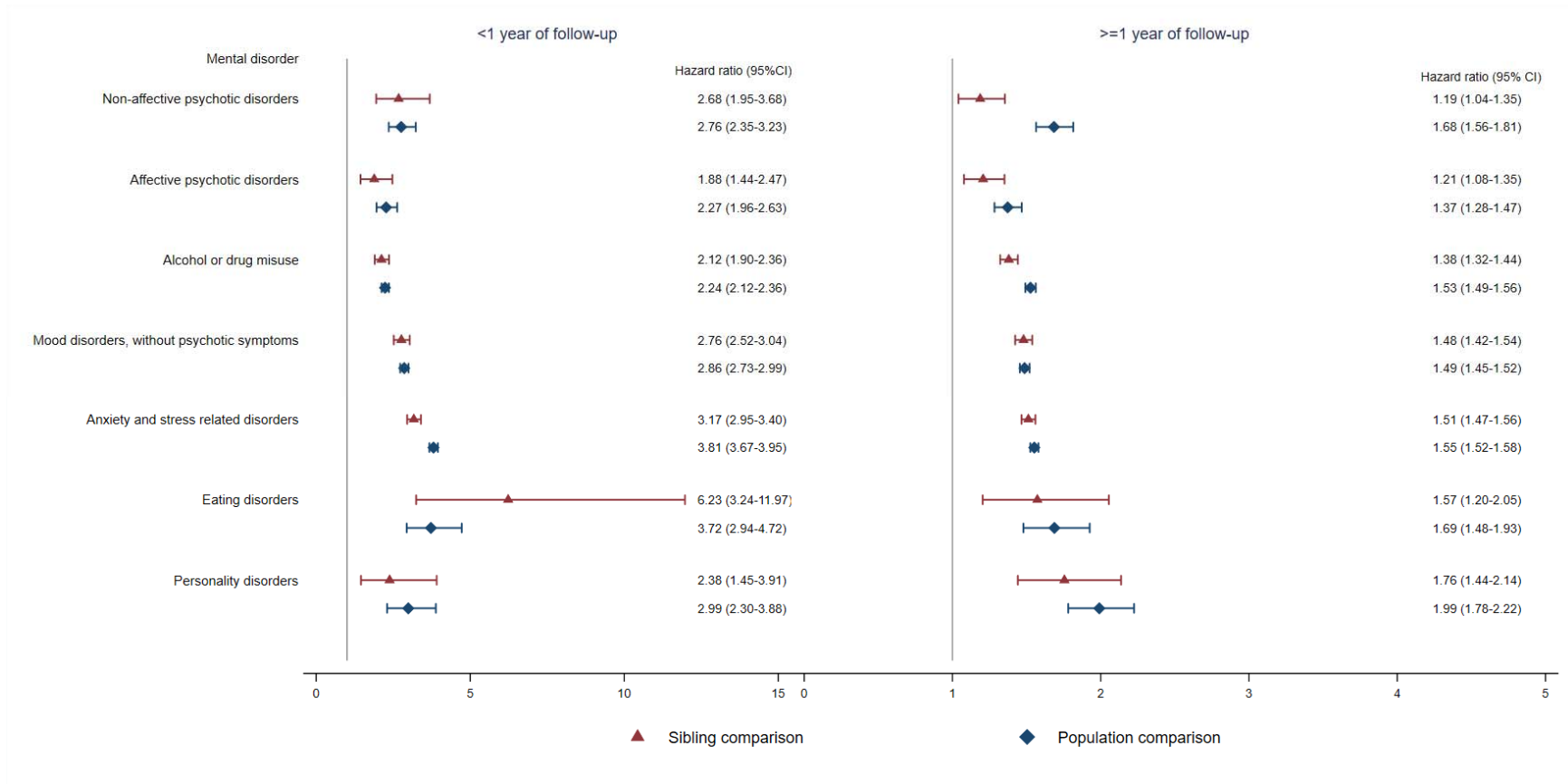
255 **B. Population comparison**
 256
 257



258 * CVD: cardiovascular disease. Time-varying hazard ratios and 95% confidence intervals were derived from flexible parametric survival models, allowing the effect of
 259 psychiatric disorder to vary over time. A spline with 5 df was used for the baseline rate, and 3 df was used for the time-varying effect. All models were adjusted for age at
 260 index date, sex, educational level, yearly individualized family income, cohabitation status, history of somatic diseases, as well as family history of psychiatric disorder (for
 261 population comparison).
 262

263
264
265

Figure 2. Hazard ratios with 95% confidence intervals for different types of psychiatric disorder among CVD patients compared with their full siblings and matched population controls, by time of follow-up (<1 or >=1 year from CVD diagnosis)*

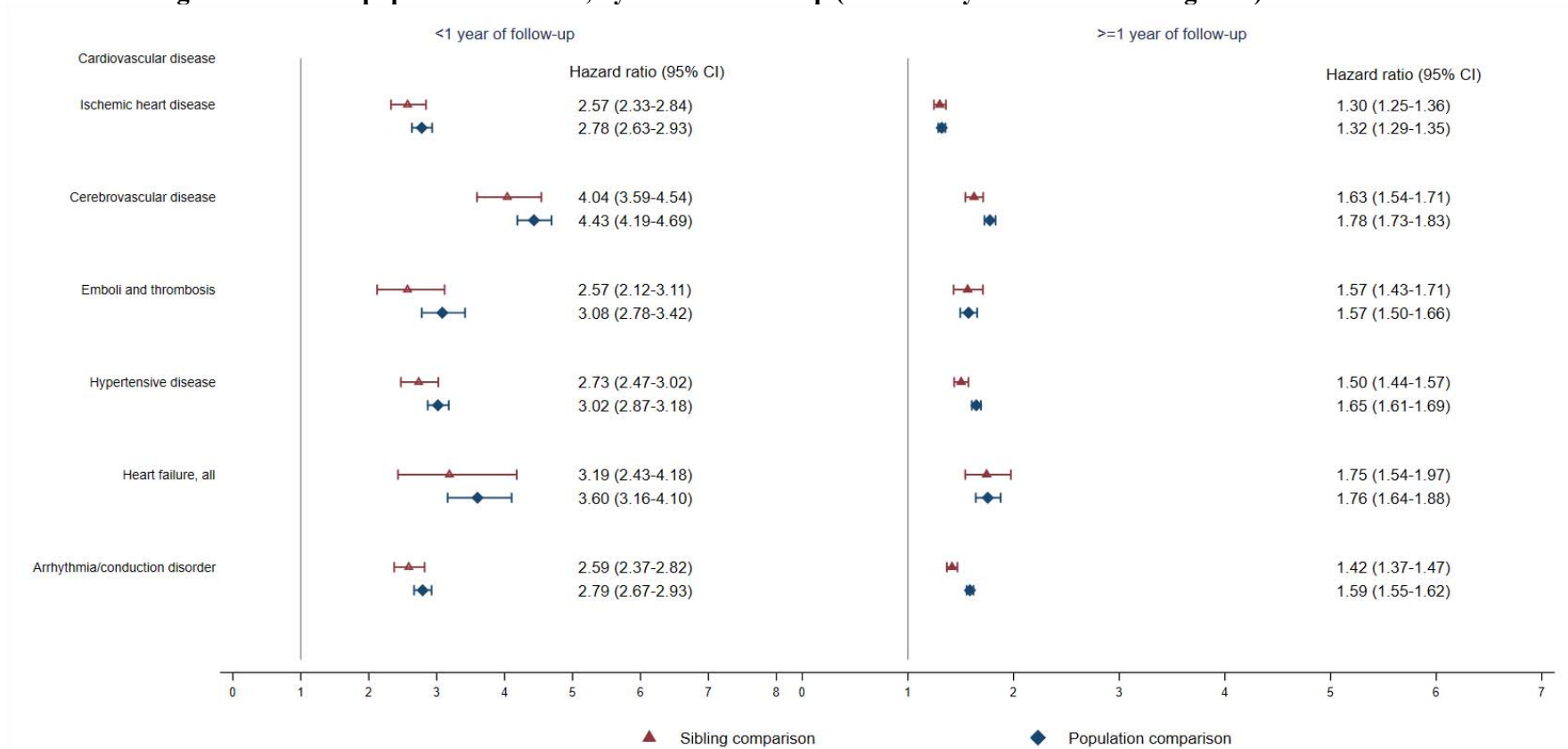


266
267
268
269

* CVD: cardiovascular disease. Cox regression models were stratified by family identifier for sibling comparison or matching identifier (birth year and sex) for population comparison, controlling for age at index date, sex, educational level, individualized family income, cohabitation status, history of somatic diseases, and family history of psychiatric disorder (in population comparison). Time since index date was used as underlying time scale.

270 We found an increased risk of incident psychiatric disorder among all groups of CVD patients,
271 with the most marked risk increase observed among patients with cerebrovascular disease and
272 heart failure (Fig 3). A greater risk increase of incident psychiatric disorder was noted among
273 CVD patients with additional cardiovascular comorbidities beyond one year of first CVD
274 diagnosis compared with CVD patients without such comorbidities, except among those with
275 heart failure (Fig S2, Supplementary Appendix). We found a similar positive association
276 between CVD and risk of incident psychiatric disorder, when including use of psychotropic
277 drugs as a definition of psychiatric disorder (Table S5, Supplementary Appendix).

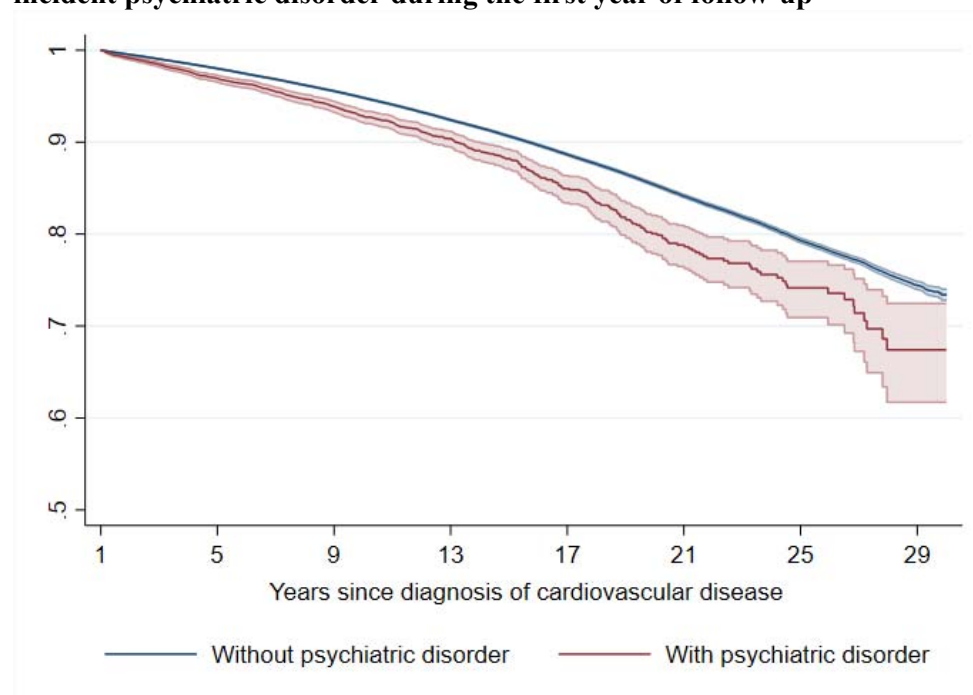
278 **Figure 3. Hazard ratios with 95% confidence intervals for psychiatric disorders among different groups of CVD patients compared with**
 279 **their full siblings and matched population controls, by time of follow-up (<1 or >=1 year from CVD diagnosis)***



280
 281 * CVD: cardiovascular disease. Cox regression models were stratified by family identifier for sibling comparison or matching identifier (birth year and sex) for population
 282 comparison, controlling for age at index date, sex, education level, individualized family income, cohabitation status, history of somatic diseases, and family history of
 283 psychiatric disorder (in population comparison). Time since index date was used as underlying time scale. We identified all cardiovascular diagnoses during follow-up and
 284 considered CVD comorbidity as a time-varying variable by grouping the person-time according to each diagnosis.
 285

286 CVD patients diagnosed with subsequent psychiatric disorder showed a reduced CVD-
287 specific survival compared with patients without such diagnosis (Fig 4, and Supplementary
288 Appendix Fig S3 and S4). The HR of cardiovascular death was 1.55 (95% CI 1.44 to 1.67)
289 when comparing CVD patients with a diagnosis of psychiatric disorder to patients without
290 such diagnosis (mortality rate, 9.2 and 7.1 per 1 000 person-years, respectively).

291
292 **Figure 4. Kaplan-Meier estimates of CVD death in CVD patients with and without**
293 **incident psychiatric disorder during the first year of follow-up***



294
295 * CVD: cardiovascular disease. Time since index date was used as underlying time scale. 90.36% of CVD
296 patients (N=785,287) survived the first year of follow-up and included in this analysis.
297

298

299 Discussion

300 Our large population-based sibling-controlled cohort study including all patients diagnosed
301 with their first CVD between 1987 and 2016 in Sweden, their unaffected full siblings, as well
302 as a set of randomly selected unaffected population controls reveals a robust association
303 between CVD and subsequent risk of incident psychiatric disorder. We found that patients

304 with CVD were at elevated risk of various types of psychiatric disorders, independent of
305 confounding factors shared within families and history of somatic diseases. The risk
306 increment was greatest during the year after CVD diagnosis, indicating an opportunity for
307 clinical surveillance in a high-risk time window. Further, an occurrence of psychiatric
308 comorbidity after CVD diagnosis was associated with an approximately 55% increased risk of
309 subsequent death from cardiovascular causes. This finding further underscores the importance
310 of surveillance and, if needed, treatment of psychiatric comorbidities among newly diagnosed
311 CVD patients.

312 **Strengths and Limitations**

313 The strengths of our study include its large sample size of the entire Swedish nation and the
314 prospective study design with sibling comparison that significantly alleviates concerns of
315 familial confounding from shared genetic and early-life environmental factors between
316 siblings. The Swedish population and health registers provide the opportunity to obtain
317 complete follow-up as well as prospectively and independently collected information on
318 disease identification, minimizing the risk of selection and information biases. The large
319 sample size of our study further enables detailed subgroup analyses by types of CVD, types of
320 psychiatric disorders, and patient characteristics.

321 Some limitations need to be acknowledged. First, we identified patients with CVD and
322 psychiatric disorder through inpatient or outpatient hospital visit. The later inclusion of
323 outpatient records in the Swedish Patient Register may lead to underestimation of the actual
324 numbers of patients with CVD and psychiatric disorder, especially those with relatively
325 milder symptoms. Second, we missed individuals attended in primary care, which may
326 underestimate the proportion of individuals with history of psychiatric problems at study
327 entry. To alleviate such concerns, we additionally considered the use of prescribed
328 psychotropic drugs and found similar results. Further, patients with CVD have an established

329 contact with health care and may therefore be more likely than others to be diagnosed with
330 psychiatric disorder. Although such surveillance bias may to some extent explain the
331 increased risks during the first few months after CVD diagnosis, it is unlikely that the risk
332 elevation during the entire follow-up is attributed to such bias. Finally, we could not directly
333 control for lifestyle factors (e.g., smoking, diet, and physical exercise) and therefore cannot
334 exclude the possibility of residual confounding not fully controlled for in the sibling
335 comparison.

336 **Comparison with other studies**

337 Our findings are consistent with the existing literature suggesting a positive association
338 between CVD and different types of psychiatric disorders. In previous studies, an increased
339 risk of depression^{13–15} and anxiety¹¹ was noted after diagnosis of stroke,^{11,13–15} hypertension,¹⁷
340 coronary artery disease³¹ and atrial fibrillation.³² Such risk elevations has been suggested to
341 be persistent over time,^{10,33,34} and, in parallel with our findings, associated with compromised
342 survival.^{8,35,36} However, the evidence from prospective cohort studies with a long and
343 complete follow-up as well as with a thorough control of confounding factors and comorbid
344 conditions has, up to this point, been limited. Our study therefore complements previous
345 findings revealing a positive association between a broader range of CVDs and subsequent
346 risk of incident psychiatric disorder, using a large cohort with control of various confounding
347 factors. We found the association to be robust both in sibling and population comparisons,
348 and after additional adjustment for various comorbidities including other additional CVDs,
349 indicating that the association is unlikely explained by shared familial factors and various
350 comorbidities. We showed that CVD patients with psychiatric comorbidity was associated
351 with an increased risk of subsequent CVD death, highlighting the importance of surveillance
352 and prevention on psychiatric comorbidities for those newly diagnosed CVD patients.

353 The association between CVD and psychiatric disorders was noted both in men and women,
354 across all age groups and calendar periods, as well as among individuals with or without a
355 history of somatic diseases and family history of psychiatric disorders. Previous studies have
356 indicated that major depression was more commonly recognized among individuals with
357 multimorbidity (more than one CVD diagnosis) than those with only one condition.³⁷ In our
358 study, about 30% of the CVD patients developed one or more cardiovascular comorbidities
359 during follow-up, and a higher risk of psychiatric disorder was indeed noted among patients
360 with multiple CVD diagnoses. A compromised survival from CVD cause was indeed
361 observed among most patients with common types of first CVD diagnosis and comorbid with
362 psychiatric disorder.

363 **Potential mechanisms**

364 The pathophysiological mechanisms linking CVD and psychiatric disorders are complex and
365 not well understood, and may vary with specific diagnoses of CVD and psychiatric disorders.
366 The highly increased risk noted immediately after CVD diagnosis may indicate a direct
367 impact of stress reaction of being diagnosed with a life-threatening disease.³⁸ In addition, it
368 has been proposed that biological alterations in the cardiovascular system to a severe stress
369 response may increase the risk of various psychiatric disorders.³⁹ For example,
370 cardiovascular risk factors including hypercoagulability, dyslipidemia, and an impaired
371 immune response have been associated with impaired psychological health.³⁹ Some biological
372 changes in patients with coronary heart disease (e.g., decreased heart rate variability,
373 increased arterial stiffness, and endothelial dysfunction) have been observed in patients with
374 depressive and anxiety disorders.⁴⁰⁻⁴² Chronic inflammation may induce the development of
375 atherosclerosis and arterial thrombosis, and elevation in inflammatory biomarkers (i.e., IL-6
376 and C-reactive protein) has been reported in various psychiatric disorders including post-

377 traumatic stress disorder and major depression.^{43–45} Other behavioral and psychosocial factors
378 may as well interact with these pathways and need to be understood further.

379 **Conclusions**

380 Using a large population-based sibling-controlled cohort with up to thirty years of follow-up,
381 we demonstrate that patients with CVD have an increased risk of first-diagnosed psychiatric
382 disorder, independent of familial background, history of somatic diseases, and other
383 cardiovascular comorbidities. Our study further indicates an impact of psychiatric
384 comorbidities on cardiovascular mortality among patients with CVD, motivating increased
385 surveillance of psychiatric comorbidity among newly diagnosed patients with CVD.

386

387

388 **Competing interest:** The authors declare that there is no conflict of interest.

389

390 **Author Contributions:** Drs Shen, Fang, and Valdimarsdóttir had full access to all the data in
391 the study and take responsibility for the integrity of the data and the accuracy of the data.

392 *Concept and design:* Shen, Fang, and Valdimarsdóttir.

393 *Acquisition, analysis, or interpretation of data:* All authors.

394 *Drafting of the manuscript:* Shen, Fang, and Valdimarsdóttir.

395 *Statistical analysis:* Shen, Song, Fang, and Valdimarsdóttir.

396 *Obtained funding:* Fang, Valdimarsdóttir and Sullivan.

397 *Administrative, technical, or material support:* Shen, Fang, Valdimarsdóttir, Yu and Ye.

398 *Supervision:* Fang and Valdimarsdóttir.

399

400 **Role of the Funder:** The funding sources had no role in the design and conduct of the study;
401 collection, management, analysis, and interpretation of the data; preparation, or approval of
402 the manuscript; and decision to submit the manuscript for publication.

403

404 **Ethical approval:** The study was approved by the Ethical Vetting Board in Stockholm,
405 Sweden (DNRs 2012/1814-31/4 and 2015/1062-32). Informed consent to each participant was
406 waived by Swedish law in nationwide registry data.

407

408 **Data availability statement:** Data analyses were performed in STATA 17.0 (StataCorp LP).
409 STATA script used in the primary analyses has been made available as supplementary
410 appendix. Aggregated data used for generating figures are available in supplementary
411 appendix. The original data used in this study are owned by the Swedish National Board of
412 Health and Welfare and Statistics Sweden. The authors are not able to make the dataset
413 publicly available according to the Public Access to Information and Secrecy Act in Sweden.
414 Any researchers (including international researchers) interested in accessing the data can send
415 request to the authorities for data application by: 1) apply for ethical approval from local
416 ethical review board; 2) contact the Swedish National Board of Health and Welfare
417 (<https://bestalladata.socialstyrelsen.se/>, email: registerservice@socialstyrelsen.se) and/or
418 Statistics Sweden (<https://www.scb.se/vara-tjanster/bestall-data-och-statistik/>, email:
419 scb@scb.se) with the ethical approval and submit a formal application for access to register
420 data. The same contacts can be used for detailed information about how to apply for access to
421 register data for research purposes.”

422

423 **Transparency declaration:** UV affirms that the manuscript is an honest, accurate, and
424 transparent account of the study being reported; that no important aspects of the study have
425 been omitted; and that any discrepancies from the study as planned have been explained.

426

427

428 REFERENCES

- 429 1. Lu D, Andersson TML, Fall K, et al. Clinical Diagnosis of Mental Disorders Immediately
430 Before and After Cancer Diagnosis: A Nationwide Matched Cohort Study in Sweden.
431 *JAMA Oncol.* 2016;2(9):1188-1196. doi:10.1001/jamaoncol.2016.0483
- 432 2. Shen Q, Lu D, Schelin MEC, et al. Injuries before and after diagnosis of cancer:
433 nationwide register based study. *BMJ.* Published online August 31, 2016:i4218.
434 doi:10.1136/bmj.i4218
- 435 3. Zhu J, Fang F, Sjölander A, Fall K, Adami HO, Valdimarsdóttir U. First-onset mental
436 disorders after cancer diagnosis and cancer-specific mortality: a nationwide cohort study.
437 *Ann Oncol.* 2017;28(8):1964-1969. doi:10.1093/annonc/mdx265
- 438 4. Lindén T, Blomstrand C, Skoog I. Depressive disorders after 20 months in elderly stroke
439 patients: a case-control study. *Stroke.* 2007;38(6):1860-1863.
440 doi:10.1161/STROKEAHA.106.471805
- 441 5. Rutledge T, Reis VA, Linke SE, Greenberg BH, Mills PJ. Depression in Heart Failure: A
442 Meta-Analytic Review of Prevalence, Intervention Effects, and Associations With
443 Clinical Outcomes. *J Am Coll Cardiol.* 2006;48(8):1527-1537.
444 doi:10.1016/j.jacc.2006.06.055
- 445 6. Thombs BD, Bass EB, Ford DE, et al. Prevalence of depression in survivors of acute
446 myocardial infarction. *J Gen Intern Med.* 2006;21(1):30-38. doi:10.1111/j.1525-
447 1497.2005.00269.x
- 448 7. Shemesh E, Yehuda R, Milo O, et al. Posttraumatic stress, nonadherence, and adverse
449 outcome in survivors of a myocardial infarction. *Psychosom Med.* 2004;66(4):521-526.
450 doi:10.1097/01.psy.0000126199.05189.86
- 451 8. Doering LV, Moser DK, Riegel B, et al. Persistent comorbid symptoms of depression and
452 anxiety predict mortality in heart disease. *Int J Cardiol.* 2010;145(2):188-192.
453 doi:10.1016/j.ijcard.2009.05.025
- 454 9. Wrenn KC, Mostofsky E, Tofler GH, Muller JE, Mittleman MA. Anxiety, anger, and
455 mortality risk among survivors of myocardial infarction. *Am J Med.* 2013;126(12):1107-
456 1113. doi:10.1016/j.amjmed.2013.07.022
- 457 10. Lincoln NB, Brinkmann N, Cunningham S, et al. Anxiety and depression after stroke: a 5
458 year follow-up. *Disabil Rehabil.* 2013;35(2):140-145.
459 doi:10.3109/09638288.2012.691939
- 460 11. Morrison V, Pollard B, Johnston M, MacWalter R. Anxiety and depression 3 years
461 following stroke: demographic, clinical, and psychological predictors. *J Psychosom Res.*
462 2005;59(4):209-213. doi:10.1016/j.jpsychores.2005.02.019
- 463 12. Romanelli J, Fauerbach JA, Bush DE, Ziegelstein RC. The significance of depression in
464 older patients after myocardial infarction. *J Am Geriatr Soc.* 2002;50(5):817-822.
465 doi:10.1046/j.1532-5415.2002.50205.x

- 466 13. Wium-Andersen IK, Wium-Andersen MK, Jørgensen MB, Osler M. Anti-inflammatory
467 treatment and risk for depression after first-time stroke in a cohort of 147 487 Danish
468 patients. *J Psychiatry Neurosci JPN*. 2017;42(5):320-330. doi:10.1503/jpn160244
- 469 14. Baccaro A, Wang YP, Candido M, et al. Post-stroke depression and cognitive impairment:
470 Study design and preliminary findings in a Brazilian prospective stroke cohort (EMMA
471 study). *J Affect Disord*. 2019;245:72-81. doi:10.1016/j.jad.2018.10.003
- 472 15. Pohjasvaara T, Vataja R, Leppävuori A, Kaste M, Erkinjuntti T. Depression is an
473 independent predictor of poor long-term functional outcome post-stroke. *Eur J Neurol*.
474 2001;8(4):315-319. doi:10.1046/j.1468-1331.2001.00182.x
- 475 16. Chang JC, Yen AMF, Chen HH, et al. Comorbid diseases as risk factors for incident
476 posttraumatic stress disorder (PTSD) in a large community cohort (KCIS no.PSY4). *Sci*
477 *Rep*. 2017;7:41276. doi:10.1038/srep41276
- 478 17. Petersson S, Mathillas J, Wallin K, Olofsson B, Allard P, Gustafson Y. Risk factors for
479 depressive disorders in very old age: a population-based cohort study with a 5-year
480 follow-up. *Soc Psychiatry Psychiatr Epidemiol*. 2014;49(5):831-839.
481 doi:10.1007/s00127-013-0771-2
- 482 18. Zhang X, Norton J, Carrière I, Ritchie K, Chaudieu I, Ancelin ML. Risk factors for late-
483 onset generalized anxiety disorder: results from a 12-year prospective cohort (the
484 ESPRIT study). *Transl Psychiatry*. 2015;5(3):e536. doi:10.1038/tp.2015.31
- 485 19. Barnett JH, Smoller JW. The genetics of bipolar disorder. *Neuroscience*.
486 2009;164(1):331-343. doi:10.1016/j.neuroscience.2009.03.080
- 487 20. Kathiresan S, Srivastava D. Genetics of Human Cardiovascular Disease. *Cell*.
488 2012;148(6):1242-1257. doi:10.1016/j.cell.2012.03.001
- 489 21. Rødevand L, Bahrami S, Frei O, et al. Polygenic overlap and shared genetic loci between
490 loneliness, severe mental disorders, and cardiovascular disease risk factors suggest
491 shared molecular mechanisms. *Transl Psychiatry*. 2021;11(1):1-11. doi:10.1038/s41398-
492 020-01142-4
- 493 22. Kelishadi R, Poursafa P. A review on the genetic, environmental, and lifestyle aspects of
494 the early-life origins of cardiovascular disease. *Curr Probl Pediatr Adolesc Health Care*.
495 2014;44(3):54-72. doi:10.1016/j.cpped.2013.12.005
- 496 23. Rokita KI, Dauvermann MR, Donohoe G. Early life experiences and social cognition in
497 major psychiatric disorders: A systematic review. *Eur Psychiatry J Assoc Eur Psychiatr*.
498 2018;53:123-133. doi:10.1016/j.eurpsy.2018.06.006
- 499 24. D'Onofrio BM, Lahey BB, Turkheimer E, Lichtenstein P. Critical need for family-based,
500 quasi-experimental designs in integrating genetic and social science research. *Am J*
501 *Public Health*. 2013;103 Suppl 1:S46-55. doi:10.2105/AJPH.2013.301252
- 502 25. Ludvigsson JF, Andersson E, Ekblom A, et al. External review and validation of the
503 Swedish national inpatient register. *BMC Public Health*. 2011;11:450.
504 doi:10.1186/1471-2458-11-450

- 505 26. Ekbom A. The Swedish Multi-generation Register. In: Dillner J, ed. *Methods in*
506 *Biobanking*. Vol 675. Methods in Molecular Biology. Humana Press; 2011:215-220.
507 doi:10.1007/978-1-59745-423-0_10
- 508 27. Song H, Fang F, Arnberg FK, et al. Stress related disorders and risk of cardiovascular
509 disease: population based, sibling controlled cohort study. *BMJ*. 2019;365.
510 doi:10.1136/bmj.11255
- 511 28. Nevriana A, Pierce M, Dalman C, et al. Association between maternal and paternal
512 mental illness and risk of injuries in children and adolescents: nationwide register based
513 cohort study in Sweden. *BMJ*. 2020;369. doi:10.1136/bmj.m853
- 514 29. Longitudinell integrationsdatabas för sjukförsäkrings- och arbetsmarknadsstudier (LISA).
515 Statistiska Centralbyrån. Accessed May 22, 2018. [http://www.scb.se/vara-](http://www.scb.se/vara-tjanster/bestalla-mikrodata/vilka-mikrodata-finns/longitudinella-register/longitudinell-integrationsdatabas-for-sjukforsakrings--och-arbetsmarknadsstudier-lisa/)
516 [tjanster/bestalla-mikrodata/vilka-mikrodata-finns/longitudinella-register/longitudinell-](http://www.scb.se/vara-tjanster/bestalla-mikrodata/vilka-mikrodata-finns/longitudinella-register/longitudinell-integrationsdatabas-for-sjukforsakrings--och-arbetsmarknadsstudier-lisa/)
517 [integrationsdatabas-for-sjukforsakrings--och-arbetsmarknadsstudier-lisa/](http://www.scb.se/vara-tjanster/bestalla-mikrodata/vilka-mikrodata-finns/longitudinella-register/longitudinell-integrationsdatabas-for-sjukforsakrings--och-arbetsmarknadsstudier-lisa/)
- 518 30. Lambert PC, Royston P. Further Development of Flexible Parametric Models for Survival
519 Analysis. *Stata J Promot Commun Stat Stata*. 2009;9(2):265-290.
520 doi:10.1177/1536867X09000900206
- 521 31. Rutledge T, Kenkre TS, Bittner V, et al. Anxiety associations with cardiac symptoms,
522 angiographic disease severity, and healthcare utilization: the NHLBI-sponsored
523 Women's Ischemia Syndrome Evaluation. *Int J Cardiol*. 2013;168(3):2335-2340.
524 doi:10.1016/j.ijcard.2013.01.036
- 525 32. Baumgartner C, Fan D, Fang MC, et al. Anxiety, Depression, and Adverse Clinical
526 Outcomes in Patients With Atrial Fibrillation Starting Warfarin: Cardiovascular
527 Research Network WAVE Study. *J Am Heart Assoc*. 2018;7(8).
528 doi:10.1161/JAHA.117.007814
- 529 33. Zawadzka E, Domańska Ł. Assessment of select dimensions of patients' emotional
530 functioning at different time periods after stroke. *Appl Neuropsychol Adult*.
531 2014;21(2):87-93. doi:10.1080/09084282.2012.747959
- 532 34. Berg A, Palomäki H, Lehtihalmes M, Lönnqvist J, Kaste M. Poststroke depression: an 18-
533 month follow-up. *Stroke*. 2003;34(1):138-143. doi:10.1161/01.str.0000048149.84268.07
- 534 35. Cai W, Mueller C, Li YJ, Shen WD, Stewart R. Post stroke depression and risk of stroke
535 recurrence and mortality: A systematic review and meta-analysis. *Ageing Res Rev*.
536 2019;50:102-109. doi:10.1016/j.arr.2019.01.013
- 537 36. Boden R, Molin E, Jernberg T, Kieler H, Lindahl B, Sundstrom J. Higher mortality after
538 myocardial infarction in patients with severe mental illness: a nationwide cohort study. *J*
539 *Intern Med*. 2015;277(6):727-736. doi:10.1111/joim.12329
- 540 37. Findley P, Shen C, Sambamoorthi U. Multimorbidity and persistent depression among
541 veterans with diabetes, heart disease, and hypertension. *Health Soc Work*.
542 2011;36(2):109-119. doi:10.1093/hsw/36.2.109
- 543 38. Fang F, Fall K, Mittleman MA, et al. Suicide and Cardiovascular Death after a Cancer
544 Diagnosis. *N Engl J Med*. 2012;366(14):1310-1318. doi:10.1056/NEJMoa1110307

- 545 39. Levine GN, Cohen BE, Commodore-Mensah Y, et al. Psychological Health, Well-Being,
546 and the Mind-Heart-Body Connection: A Scientific Statement From the American Heart
547 Association. *Circulation*. Published online January 25, 2021.
548 doi:10.1161/CIR.0000000000000947
- 549 40. Sherwood Andrew, Hinderliter Alan L., Watkins Lana L., Waugh Robert A., Blumenthal
550 James A. Impaired Endothelial Function in Coronary Heart Disease Patients With
551 Depressive Symptomatology. *J Am Coll Cardiol*. 2005;46(4):656-659.
552 doi:10.1016/j.jacc.2005.05.041
- 553 41. Seldenrijk A, van Hout HPJ, van Marwijk HWJ, et al. Depression, Anxiety, and Arterial
554 Stiffness. *Biol Psychiatry*. 2011;69(8):795-803. doi:10.1016/j.biopsych.2010.12.034
- 555 42. Stein PK, Carney RM, Freedland KE, et al. Severe depression is associated with markedly
556 reduced heart rate variability in patients with stable coronary heart disease. *J Psychosom*
557 *Res*. 2000;48(4):493-500. doi:10.1016/S0022-3999(99)00085-9
- 558 43. Libby P. Inflammation and cardiovascular disease mechanisms. *Am J Clin Nutr*.
559 2006;83(2):456S-460S. doi:10.1093/ajcn/83.2.456S
- 560 44. Sumner JA, Nishimi KM, Koenen KC, Roberts AL, Kubzansky LD. Posttraumatic Stress
561 Disorder and Inflammation: Untangling Issues of Bidirectionality. *Biol Psychiatry*.
562 2020;87(10):885-897. doi:10.1016/j.biopsych.2019.11.005
- 563 45. Miller AH, Raison CL. The role of inflammation in depression: from evolutionary
564 imperative to modern treatment target. *Nat Rev Immunol*. 2016;16(1):22-34.
565 doi:10.1038/nri.2015.5
- 566
567

568 **Figure legends**

569

570 **Figure 1. Time-varying hazard ratios for an incident psychiatric disorder among CVD**
571 **patients, compared with their unaffected full siblings (sibling comparison) or matched**
572 **population controls (population comparison), by time of follow-up (<1 year and >=1**
573 **year from CVD diagnosis)***

574

575 **C. Sibling comparison**

576 **D. Population comparison**

577

578 * CVD: cardiovascular disease. Time-varying hazard ratios and 95% confidence intervals were derived from
579 flexible parametric survival models, allowing the effect of psychiatric disorder to vary over time. A spline with 5
580 df was used for the baseline rate, and 3 df was used for the time-varying effect. All models were adjusted for age
581 at index date, sex, educational level, yearly individualized family income, cohabitation status, history of somatic
582 diseases, as well as family history of psychiatric disorder (for population comparison).

583

584

585 **Figure 2. Hazard ratios with 95% confidence intervals for different types of psychiatric**
586 **disorder among CVD patients compared with their full siblings and matched population**
587 **controls, by time of follow-up (<1 or >=1 year from CVD diagnosis)***

588

589 * CVD: cardiovascular disease. Cox regression models were stratified by family identifier for sibling comparison
590 or matching identifier (birth year and sex) for population comparison, controlling for age at index date, sex,
591 educational level, individualized family income, cohabitation status, history of somatic diseases, and family
592 history of psychiatric disorder (in population comparison). Time since index date was used as underlying time
593 scale.

594

595

596 **Figure 3. Hazard ratios with 95% confidence intervals for psychiatric disorders among**
597 **different groups of CVD patients compared with their full siblings and matched**
598 **population controls, by time of follow-up (<1 or >=1 year from CVD diagnosis)***

599

600 * CVD: cardiovascular disease. Cox regression models were stratified by family identifier for sibling comparison
601 or matching identifier (birth year and sex) for population comparison, controlling for age at index date, sex,
602 education level, individualized family income, cohabitation status, history of somatic diseases, and family
603 history of psychiatric disorder (in population comparison). Time since index date was used as underlying time
604 scale. We identified all cardiovascular diagnoses during follow-up and considered CVD comorbidity as a time-
605 varying variable by grouping the person-time according to each diagnosis.

606

607

608 **Fig 4. Kaplan-Meier estimates of CVD death in CVD patients with and without incident**
609 **psychiatric disorder during the first year of follow-up^a**

610

611 ^a CVD: cardiovascular disease. Time since index date was used as underlying time scale. 90.4% of CVD
612 patients (N=785 287) survived the first year of follow-up and included in this analysis.

613

614

Supplementary Appendix

Table S1. Summary of prospective cohort studies addressing the association between various indications of cardiovascular disease and risk of psychiatric disorders/psychiatric symptoms.

Paper	Study design and database	Exposure	Outcome	Sample size and follow-up	Main findings	Control for	
						familial factors?	other cardiovascular comorbidities?
Petersson S, 2014 ¹	population-based cohort study; baseline measured between 2000 and 2006	hypertension and stroke in structured interviews	incident depressive disorders	567 very old people ≥85 years; with 5 years of follow-up; .	hypertension OR 2.83 (1.08-7.42) and history of stroke OR 3.25 (1.12-9.44)	no	no
Zhang X, 2015 ²	Community-based study; random sampling between March 1999 and February 2001	arrhythmia and heart failure in self-report questionnaire	Generalized anxiety disorder (GAD)	1711 individuals aged 65 years and above; median follow-up time was 9.7 years	arrhythmia and heart failure HR 1.67 (1.04-2.70)	no	no
Chang JC, 2017 ³	longitudinal cohort study; a community health-screening program between 1999-2004 in Taiwan	clinical diagnosis of cardiovascular disease	clinical diagnosis of incident posttraumatic stress disorder (PTSD)	76,417 aged 30 years and above and mean follow-up of 3.13 (1-5) years	cardiovascular disease HR 1.45 (1.03–2.04)	no	no
Feng HP, 2016 ⁴	cohort study; National Health Insurance Research Database in Taiwan during January 1 and December 31, 2005	clinically diagnosed myocardial infarction	clinical diagnosis of anxiety or depressive disorder	1396 patients with myocardial infarction and matched 13,960 individuals without MI (63% men); follow-up of 2 years	HR 5.06 (4.61–5.54) for anxiety disorders and HR 7.23 (4.88–10.88) for depressive disorders	no	control for hypertension and cerebrovascular disease in model

Kivimäki M, 2012 ⁵	prospective cohort study; London-based office staff, self-reported questionnaire and medical records	Vascular risk assessed with the Framingham Cardiovascular, Coronary Heart Disease, and Stroke Risk Scores	New depressive symptoms identified by General Health Questionnaire (GHQ) ≥ 5 , and Center for Epidemiologic Studies Depression Scale score (CES-D) ≥ 16 , and use of antidepressant medication.	5318 participants (mean age 54.8 years, 31% women); baseline examination in 1991 and follow-up screenings in 1997, 2003, and 2008	Diagnosed vascular disease (coronary heart disease or stroke) with an increased risk for depressive symptoms, OR 1.5 (1.0–2.2) to 2.0 (1.4–3.0) depending on indicators	no	no
Zimmerman JA, 2009 ⁶	Logitudinal study among community dwelling elder Mexican Americans during 1993-1994	self-reported vascular risk factors (hypertension, stroke and myocardial infarction)	Depressive symptom Measured with Center for Epidemiologic Studies Depression Scale (CES-D ≥ 16)	964 participants (mean age 72) with two year of follow-up; 53% women	Hypertension: OR 2.3 (1.39-3.70); stroke: OR 0.83 (0.25-2.74); myocardial infarction: 1.48 (0.71-3.10)	no	no
Kim JM, 2006 ⁷	community-based prospective study from 2001-2003	self-reported vascular disease risk (stroke, heart disease, hypertension)	Depression assessed using the community version of the Geriatric Mental State (GMS)	661 community participants (mean age 73) with two year of follow-up; 55% women	Pre-existing heart disease: OR 2.2 (1.3-3.7); incident stroke: OR 2.2 (1.0-5.0)	no	no
Mast BT, 2008 ⁸	Community residents	prevalent vascular disease	incidence depressive symptoms using Center for Epidemiologic Studies Depression (CES-D > 8) scale.	1,796 elders ages 70–79 with two year of follow-up;	Coronary heart disease: OR 1.68 (1.09-2.59); myocardial infarction: OR 2.69 (0.99-7.28); atrial fibrillation: OR 0.80 (0.19-3.42); left ventricular hypertrophy: OR 1.17 (0.65-2.12); congestive heart failure: OR 0.90 (0.27-3.06); hypertension: OR 1.07 (0.73-1.57); peripheral arterial disease: OR 1.58 (0.75-3.33)	no	Charlson index
Godin O, 2012 ⁹	multicenter cohort study with random sample during 1999-2010	Measures of systolic and diastolic blood pressure or using antihypertensive medication	major depressive symptoms according to the Mini-International Neuropsychiatric Interview or taking antidepressant medication	3,090 with ten years of follow-up; 59.9% female	Hypertension: RR 0.97 (0.76-1.22)	no	no

Garcia-Fabela L, 2009 ¹⁰	longitudinal study of community-dwelling persons	self-reported hypertension	depressive symptoms	3,276 persons aged 60 years and older with two year of follow-up;	Hypertension: OR 1.18 (1.01–1.40)	no	Adjust for stroke, ischemic cardiopathy in model
Simning A, 2018 ¹¹	nationally representative longitudinal survey of U.S. Medicare beneficiaries initiated in 2011	new onset heart attack or stroke in interview	PHQ-2 identified clinically significant depressive symptoms	5,643 aged 65 years and older with one year follow-up	Among those no close contact: heart attack OR 5.57 (1.68-18.44), stroke OR 4.44 (1.03-19.14); among those with close contacts: heart attack OR 1.19 (0.68-2.07), stroke OR 2.51 (1.76-3.59)	no	Adjust for medical conditions (include hypertension and heart disease)
Chuang CS, 2014 ¹²	Cohort study using National Health Insurance (NHI) data sets from Taiwan in period 2000-2002	hyperlipidemia (comorbidity as hypertension) from insurance database	an insurance claim for diagnosis and treatment of depression	26,852 exposed and 107,408 unexposed individuals	Hypertension: HR 1.70 (1.57–1.83)	no	no

¹Petersson, S. et al (2014). “Risk factors for depressive disorders in very old age: a population-based cohort study with a 5-year follow-up.” *Soc Psychiatry Psychiatr Epidemiol* 49, 831–839

²Zhang, X. et al (2015). “Risk factors for late-onset generalized anxiety disorder: results from a 12-year prospective cohort (The ESPRIT study).” *Transl Psychiatry* 5, e536

³Chang, JC. et al (2017). “Comorbid diseases as risk factors for incident posttraumatic stress disorder (PTSD) in a large community cohort (KCIS no.PSY4).” *Sci Rep* 7, 41276.

⁴Feng, H-P et al. “Risk of anxiety and depressive disorders in patients with myocardial infarction: A nationwide population-based cohort study.” *Medicine* vol. 95,34 (2016): e4464.

⁵Kivimäki M et al (2012). “Vascular risk status as a predictor of later-life depressive symptoms: a cohort study.” *Biological Psychiatry*;72:324–330

⁶Zimmerman JA et al (2009). “Vascular risk and depression in the Hispanic Established Population for the Epidemiologic Study of the Elderly (EPSE).” *Int J Geriatr Psychiatry*; 24: 409–416.

⁷Kim JM et al (2006). “Vascular risk factors and incident late-life depression in a Korean population.” *Br J Psychiatry*; 189: 26–30.

⁸Mast BT et al (2008). “Vascular disease and future risk of depressive symptomatology in older adults: findings from the Health, Aging, and Body Composition study.” *Biol Psychiatry*; 64: 320–326.

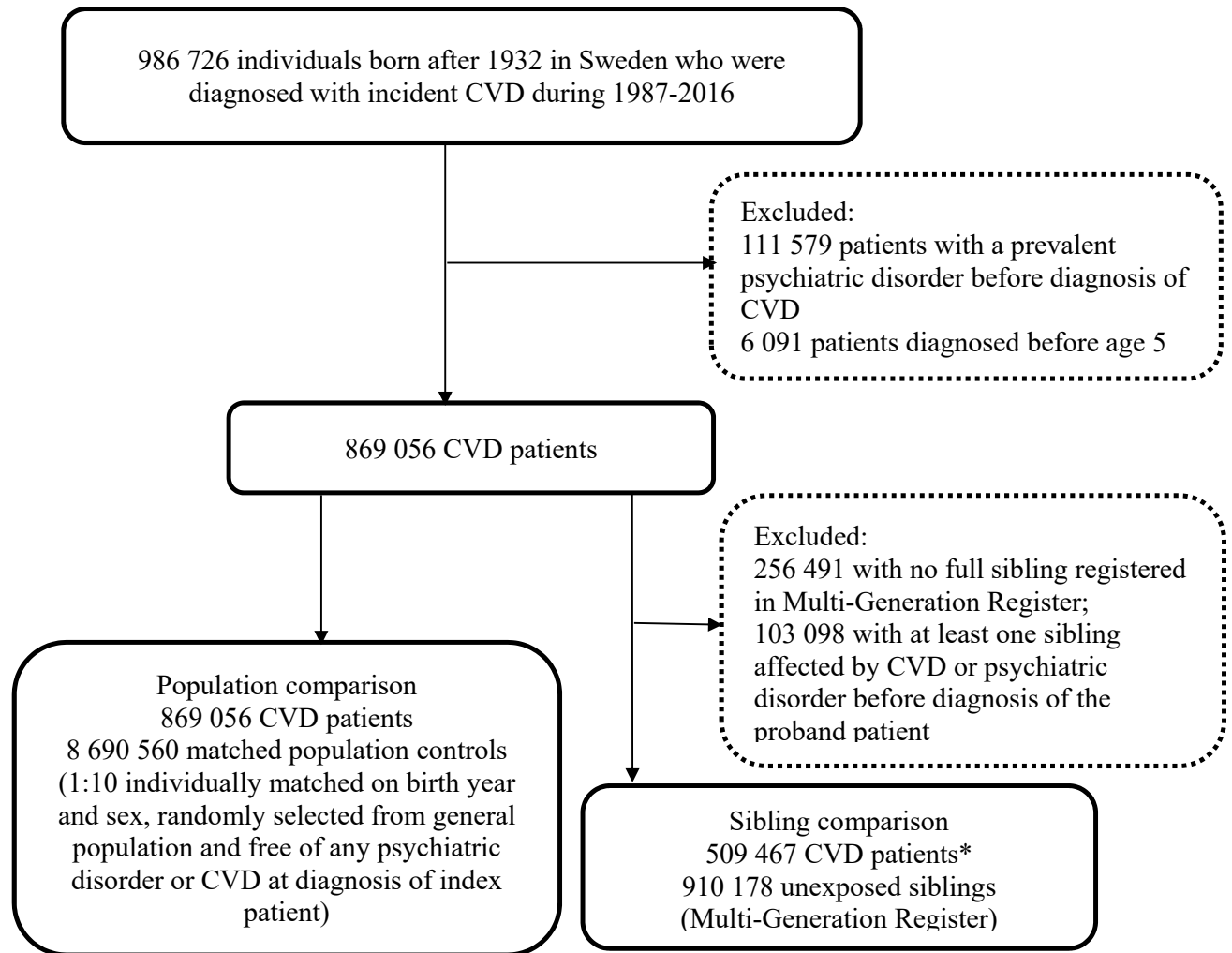
⁹Godin O et al (2012). “Body mass index, blood pressure, and risk of depression in the elderly: a marginal structural model.” *Am J Epidemiol*; 176: 204–213.

¹⁰Garcia-Fabela L et al (2009). “Hypertension as a risk factor for developing depressive symptoms among community-dwelling elders.” *Rev Invest Clin*; 61: 274–280.

¹¹Simning A et al (2018). “The association of a heart attack or stroke with depressive symptoms stratified by the presence of a close social contact: findings from the National Health and Aging Trends Study Cohort.” *International journal of geriatric psychiatry* vol. 33,1: 96-103.

¹²Chuang CS et al (2014). “Hyperlipidemia, statin use and the risk of developing depression: a nationwide retrospective cohort study.” *Gen Hosp Psychiatry*;36(5):497-501.

Figure S1. Study design



CVD: cardiovascular disease.

* 67 745 families had more than one sibling affected by CVD.

Table S2. International Classification of Diseases (ICD) codes for exposure, outcome and covariates identifications.

	ICD-9	ICD-10
Any psychiatric disorder	291,292, 295-311	F10-F69
Non-affective psychotic disorders	295, 297, 298, excluding 295H and 298B	F20-24, F28-29
Affective psychotic disorders	296, 295H, 298B	F25, F30-31, F32.3, F33.3
Alcohol or drug misuse	291, 292, 303, 304	F10-16, F18-19
Mood disorders, excluding those with psychotic symptoms	300E, 311	F32-34, F38-39, excluding F32.3 and F33.3
Anxiety and stress related disorders	300A-D, 300F-H, 300W-X, 306, 307A, 308, 309	F40-48
-Acute stress reaction	308, 309A	F43.0
Eating disorders	307B, 307F	F50
Personality disorders	301	F60-63, F68-69
Any cardiovascular disease	390-438, 440,444,445	I00-I70, I730, I74- I75
Ischemic heart disease	410-414	I20-I24, I25 (excluding I25.5)
Cerebrovascular disease	430-434, 436-438	I60-I69
Emboli and thrombosis	415, 444,445	I26, I74, I75
Hypertensive disease	401-405	I10-I16, I674
Heart failure	428	I25.5, I42.0, I42.8, I42.9, I50
Arrhythmia/conduction disorder	426, 427	I44-I49
Covariates: history of severe somatic conditions		
Chronic pulmonary disease	500-505, 506C	J60-J67, J684, J70, J703
Connective tissue disease	710A, 710B, 710E, 714A, 714B, 714C, 714W,714X, 725	M05, M06, M315, M32-M34, M351, M353, M360
Diabetes	250A, 250G	E100, E101, E106, E108, E109, E110, E111, E116, E118, E119, E120, E121, E126, E128, E129, E130, E131, E136, E138, E139, E140, E141, E146, E148, E149
Diabetes with end organ damage	250D-250F	E102-E105, E107, E112-E115, E117, E122-E125, E127, E132-E135, E137, E142-E145, E147
Moderate or severe renal disease	582, 583A, 583B, 583C, 583E,	I120, I131, N032-N037, N052-N057, N18, N19, N250, Z490-Z492, Z940, Z992
Mild liver disease	583G, 583H, 585, 586, 588	B18, K700-K703, K709, K713-K715, K717, K73, K74, K760, K762--K764, K768, K769, Z944
Moderate or severe liver disease	571C, 571E,571F, 571G	I850, I859, I864, I982, K704, K711, K721, K729, K765, K766, K767
Ulcer disease	572C, 572D, 572E, 572W, 456A, 456B, 456C	K25-K28
Any malignancy, including leukemia and lymphoma	140-172, 174-195, 200-208	C00-C26, C30-C34, C37-C41, C43, C45-C58, C60-C76, C81-C85, C88, C90-C97
Metastatic cancer	196,197,198,199A, 199B	C77- C80
HIV/AIDS	042, 043, 044	B20-B22, B24

Table S3. Crude incidence rates (IRs) and hazard ratios (HRs) with 95% confidence intervals (CIs) for incident psychiatric disorder among CVD patients compared with their full siblings or matched population controls, by patient characteristics

	Sibling comparison					Population comparison				
	Unaffected full siblings		CVD patients			Matched population controls		CVD patients		
	No. of cases	IR (per 1000 person years)	No. of cases	IR (per 1000 person years)	HR (95% CI) ^a	No. of cases	IR (per 1000 person years)	No. of cases	IR (per 1000 person years)	HR (95% CI) ^a
Overall	38 367	4.6	25 793	7.0	1.55 (1.53-1.58)	289 437	4.0	41 479	7.1	1.67 (1.65-1.69)
By sex										
male	17 368	4.4	14 196	6.4	1.51 (1.46-1.56)	147 978	3.4	22 546	6.4	1.80 (1.78-1.83)
female	20 999	4.8	11 597	8.0	1.56 (1.50-1.62)	141 459	4.9	18 933	8.0	1.58 (1.55-1.60)
By age at cohort entry										
<50	21 391	5.9	13 324	9.4	1.51 (1.47-1.55)	158 883	5.7	22 046	9.4	1.54 (1.52-1.57)
50-60	11 316	3.8	7 598	5.9	1.55 (1.48-1.62)	81 273	2.9	12 682	5.6	1.95 (1.91-1.99)
>60	5 660	3.2	4 871	5.1	1.69 (1.60-1.78)	49 281	3.1	6 751	5.3	1.74 (1.70-1.79)
By age during follow-up										
<60	25,165	10.2	16 995	15.0	1.51 (1.47-1.56)	169 074	10.5	24 592	16.4	1.48 (1.46-1.51)
>=60	13,202	2.3	8 798	3.5	1.46 (1.41-1.51)	120 363	2.1	16 887	3.9	1.77 (1.74-1.80)
By calendar year at cohort entry										
1987-1996	9 288	3.7	4 931	5.1	1.49 (1.43-1.55)	66 521	3.5	7 648	5.1	1.43 (1.39-1.46)
1997-2006	18 905	5.0	12 144	7.2	1.49 (1.45-1.54)	141 660	4.4	18 996	7.2	1.58 (1.55-1.60)
2007-2016	10 174	5.0	8 718	8.4	1.69 (1.63-1.74)	81 256	4.0	14 835	8.6	2.01 (1.97-2.04)
By history of somatic disease										
No	35 983	4.6	23 223	6.9	1.56 (1.52-1.59)	265 039	3.9	36 847	6.9	1.71 (1.69-1.73)
Yes	2 384	5.2	2 570	8.2	1.49 (1.26-1.75)	24 398	4.9	4 632	8.4	1.99 (1.86-2.12)
By family history of psychiatric disorder										
No	26 406	4.2	18 201	6.4	1.55 (1.51-1.58)	218 922	3.8	29 369	6.3	1.66 (1.64-1.68)
Yes	11 961	6.0	7 592	9.2	1.56 (1.51-1.61)	70 515	5.0	12 110	9.9	1.89 (1.84-1.94)

CVD: cardiovascular disease.

^aCox regression models, stratified by family identifier for sibling comparison or matching identifier (birth year and sex) for population comparison, adjusting for sex, birth year, educational level, individualized family income, cohabitation status, history of somatic disease and family history of psychiatric disorder. Time since index date was used as underlying time scale.

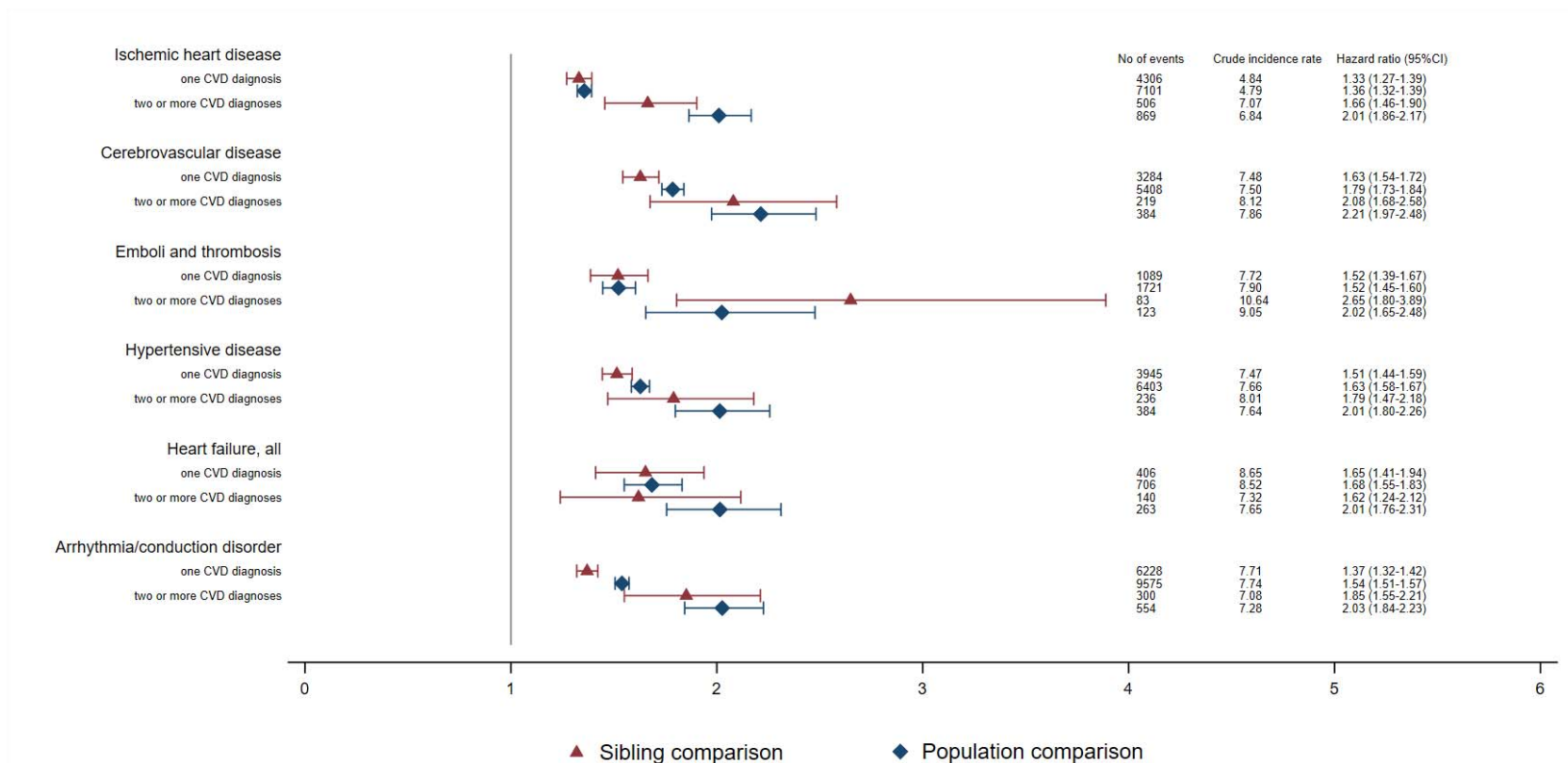
Table S4. Crude incidence rates (IRs) and hazard ratios (HRs) with 95% confidence intervals (CIs) for incident psychiatric disorders among CVD patients compared with their full siblings or matched population controls, by time of follow-up (<1 or ≥1 year from CVD diagnosis)

	Sibling comparison			Population comparison		
	No. of cases	IR (per 1000 person years)	HR (95% CI) ^a	No. of cases	IR (per 1000 person years)	HR (95% CI) ^a
<1 year follow-up						
Full siblings/matched population controls	4 024	4.6	1.0	33 625	4.1	1.0
CVD patients_ controlled for sex, birth year, educational level, individualized family income and cohabitation status	5 695	12.6	2.76 (2.64-2.89)	9 545	12.6	3.06 (2.99-3.14)
As above + history of somatic diseases			2.74 (2.62-2.87)			3.02 (2.95-3.09)
As above + family history of psychiatric disorder			-			3.00 (2.93-3.07)
≥1 year follow-up						
Full siblings/ matched population controls	36 021	4,8	1.0	271 900	4.3	1.0
CVD patients_ controlled for sex, birth year, educational level, individualized family income and cohabitation status	23 955	6.9	1.46 (1.43-1.49)	38 414	6.9	1.60 (1.58-1.61)
As above + history of somatic diseases			1.45 (1.42-1.48)			1.56 (1.54-1.57)
As above + family history of psychiatric disorder			-			1.54 (1.53-1.56)

CVD: cardiovascular disease.

^aCox regression models, stratified by family identifier for sibling comparison or matching identifier (birth year and sex) for population comparison. Time since index date was used as underlying time scale.

Figure S2. Crude incidence rates and hazard ratios with 95% confidence intervals (CIs) for an incident psychiatric disorder among different types of CVD patients compared with their full siblings or matched population controls, by number of CVD diagnoses during ≥ 1 year of follow-up^a



CVD: cardiovascular disease.

^aCox regression models, stratified by family identifier for sibling comparison or matching identifier (birth year and sex) for population comparison, and controlled for educational level, individualized family income, cohabitation status, as well as sex and birth year (in sibling comparison). Time since index date was used as underlying time scale. For patients with two or more CVD diagnoses, follow up time started from diagnosis of that cardiovascular comorbidity.

Table S5. Crude incidence rates (IRs) and hazard ratios (HRs) with 95% confidence intervals (CIs) for psychiatric disorders among CVD patients compared with their full siblings or matched population controls, excluding CVD patients medicated with psychotropic drugs, by time of follow-up (<1 or ≥1 year from CVD diagnosis)^a

	Sibling comparison [§]			Population comparison [§]		
	No. of cases	IR (per 1000 person years)	HR (95% CI) ^b	No. of cases	IR (per 1000 person years)	HR (95% CI) ^b
<1 year follow up						
Full siblings/matched population controls	12 439	35.4	1.0	129 332	36.3	1.0
CVD patients controlled for sex, birth year, educational level, individualized family income and cohabitation status	22 609	122.2	3.73 (3.62-3.83)	40 008	130.5	3.62 (3.57-3.66)
As above + history of somatic diseases			3.70 (3.60-3.81)			3.60 (3.56-3.65)
As above + family history of psychiatric disorder			-			3.61 (3.56-3.65)
≥1 year follow up						
Full siblings/ matched population controls	45 253	32.2	1.0	466 103	33.8	1.0
CVD patients controlled for sex, birth year, educational level, individualized family income and cohabitation status	31 508	43.6	1.41 (1.39-1.44)	55 074	47.4	1.39 (1.37-1.40)
As above + history of somatic diseases			1.40 (1.38-1.43)			1.39 (1.38-1.41)
As above + family history of psychiatric disorder			-			1.40 (1.38-1.41)

CVD: cardiovascular disease.

^a CVD patients diagnosed during 2006-2016 were included in this analysis due to the availability of data on prescribed drug. In sibling comparison, 27.8% CVD patients and 23.5% siblings were excluded due to prior medication of psychotropic drugs before index date. In population comparison, 30.6% CVD patients and 25.0% population controls were excluded due to prior medicated with psychotropic drugs before index date.

^b Cox regression models, stratified by family identifier for sibling comparison or matching identifier (birth year and sex) for population comparison. Time since index date was used as underlying time scale. Definition of psychiatric disorder included hospital visits as well as use of psychotropic drugs during follow-up.

Table S6. Crude incidence rates (IRs) for psychiatric disorders among different groups of CVD patients, their full siblings and matched population controls, by time of follow-up (<1 or ≥1 year from CVD diagnosis)^a

	Sibling comparison		Population comparison	
	No. of cases	IR (per 1000 person years)	No. of cases	IR (per 1000 person years)
<1 year follow-up				
Unaffected siblings/individuals	4 024	4.6	33 625	4.1
1. Ischemic heart disease	1 043	9.7	1 751	9.4
2. Cerebrovascular disease	1 039	17.0	1 793	16.7
3. Emboli and thrombosis	301	14.1	488	13.8
4. Hypertensive disease	1,124	13.5	1 941	14.0
5. Heart failure, all	177	15.6	324	15.1
6. Arrhythmia/conduction disorder	1 445	12.7	2 332	12.5
≥1 year follow-up				
Unaffected siblings/individuals	36 021	4.8	271 900	4.3
1. Ischemic heart disease	4 253	4.8	7 024	4.7
2. Cerebrovascular disease	3 354	7.5	5 539	7.5
3. Emboli and thrombosis	1 143	7.9	1 819	8.1
4. Hypertensive disease	4 294	7.5	7 000	7.6
5. Heart failure, all	614	8.4	1 080	8.2
6. Arrhythmia/conduction disorder	6 842	7.7	10 668	7.7

CVD: cardiovascular disease.

^a We identified all cardiovascular diagnoses during follow-up and considered CVD comorbidity as a time-varying variable by grouping the person-time according to each diagnosis.

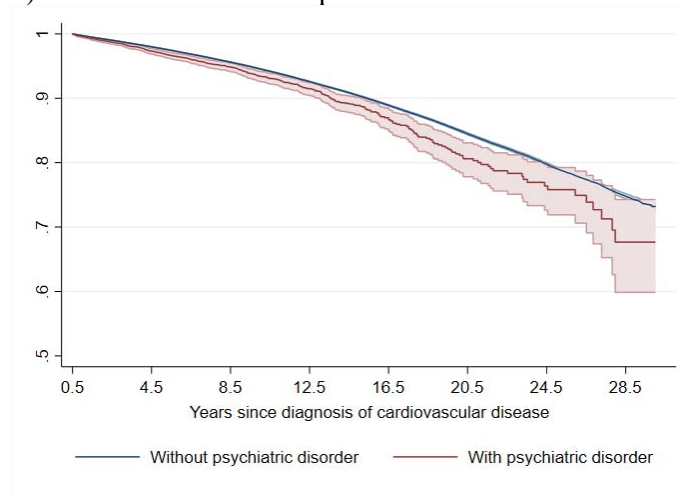
Table S7. Crude incidence rates (IRs) of different types of psychiatric disorder among CVD patients, their full siblings, and matched population controls, by time of follow-up (<1 or >=1 year from CVD diagnosis)

	Sibling comparison				Population comparison			
	Unaffected full siblings		CVD patients		Matched population controls		CVD patients	
	No. of cases	IR (per 1000 person years)	No. of cases	IR (per 1000 person years)	No. of cases	IR (per 1000 person years)	No. of cases	IR (per 1000 person years)
<1 year follow up								
Non-affective psychotic disorders	111	0.1	125	0.3	879	0.1	227	0.3
Affective psychotic disorders	132	0.2	131	0.3	1 177	0.1	234	0.3
Alcohol or drug misuse	845	1.0	1 031	2.3	8 848	1.1	1 786	2.4
Mood disorders, excluding those with psychotic symptoms	956	1.1	1 353	3.0	8 660	1.0	2 341	3.1
Anxiety and stress related disorders	1 649	1.9	2 620	5.8	11 954	1.4	4 263	5.6
Eating disorders	34	0.0	75	0.2	268	0.0	96	0.1
Personality disorders	48	0.1	47	0.1	294	0.0	84	0.1
>=1 year follow up								
Non-affective psychotic disorders	1 048	0.1	519	0.2	6 109	0.1	919	0.2
Affective psychotic disorders	1 155	0.2	632	0.2	8 226	0.1	1 023	0.2
Alcohol or drug misuse	7 906	1.1	5 516	1.6	66 544	1.0	8 959	1.6
Mood disorders, excluding those with psychotic symptoms	9 079	1.2	6 072	1.7	70 301	1.1	9 852	1.8
Anxiety and stress related disorders	14 301	1.9	9 533	2.7	108 054	1.7	14 999	2.7
Eating disorders	269	0.0	188	0.1	1 654	0.0	264	0.1
Personality disorders	378	0.1	261	0.1	2 235	0.0	415	0.1

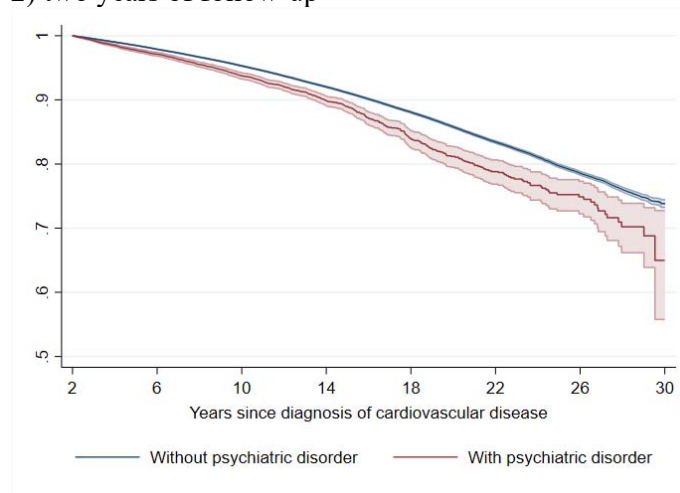
CVD: cardiovascular disease.

Figure S3. Kaplan-Meier estimates of CVD death in CVD patients with and without incident psychiatric disorder during 1) six months or 2) two years of follow-up

1) six months of follow-up^a



2) two years of follow-up^b

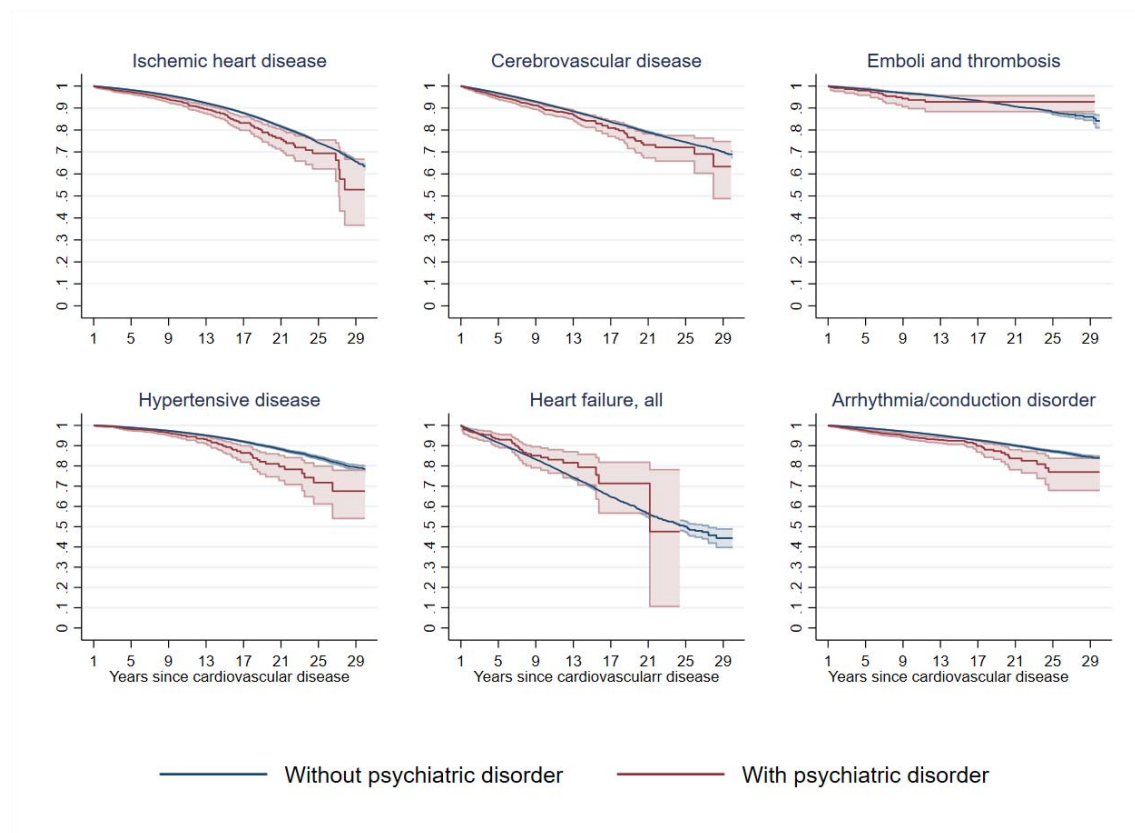


CVD: cardiovascular disease.

^a Time since index date was used as underlying time scale. 94.1% of CVD patients (N=817 748) survived the six months of follow-up and included in this analysis. The hazard ratio of cardiovascular death was 1.40 (95% confidence interval 1.27 to 1.54) when comparing CVD patients with psychiatric disorder to patients without such a psychiatric diagnosis (mortality rate, 8.1 and 7.0 per 1000 person-years, respectively).

^b Time since index date was used as underlying time scale. 83.8% of CVD patients (N=728 179) survived the two years of follow-up and included in this analysis. The hazard ratio of cardiovascular death was 1.52 (95% confidence interval 1.43 to 1.62) when comparing CVD patients with psychiatric disorder to patients without such a psychiatric diagnosis (mortality rate, 9.1 and 7.4 per 1000 person-years, respectively).

Figure S4. Kaplan-Meier estimates of CVD death in CVD patients with and without incident psychiatric disorder during the first year of follow-up, according to types of first CVD diagnosis^a



CVD: cardiovascular disease.

^a Time since index date was used as underlying time scale. 90.4% of CVD patients (N=785 287) survived the first year of follow-up and included in this analysis.