

1
2
3
4
5
6
7
8
9
10
11
12
13
14
15
16
17
18
19
20
21
22
23
24
25
26
27
28
29
30
31
32
33
34
35
36
37

Dietary Exposure to Oxidized Lipids in US Infants

Lisaura Maldonado-Pereira^{1,4}, Kristin Isaacs², Carlo Barnaba³, Ilce Gabriela Medina-Meza^{1,4} *

¹Department of Chemical Engineering and Materials Science, Michigan State University, East Lansing, MI, USA. maldon60@msu.edu

²Center for Computational Toxicology and Exposure, Office of Research and Development, U.S. Environmental Protection Agency (U.S. EPA), Research Triangle Park, NC, USA

³Institute of Quantitative Health Science and Engineering, Michigan State University, East Lansing, MI, USA. barnabac@msu.edu

⁴Department of Biosystems and Agricultural Engineering, East Lansing, MI, USA. ilce@msu.edu

Corresponding Author

Medina-Meza, Ilce Gabriela, Ph.D.
Department of Biosystems and Agricultural Engineering
469 Wilson Rd. | Room 302C
East Lansing, MI
ilce@msu.edu
Phone: 517-884-1971

38
39
40
41
42
43
44
45
46
47
48
49
50
51
52

53
54
55
56
57
58
59
60
61

Abstract

Baby Foods (BFs) and Infant formulas (IFs) are the main sources of nutrition for an infant throughout the 1st year of life. A variety of enriched products are commercially available for parents seeking to fulfill their baby's nutritional needs. Consequently, different bioactive lipids are present in BFs and IFs including dietary oxidative substances (DOxS) whose known toxicity has been associated with mutagenicity, cancer, and other chronic diseases. In this work, we performed an exposure assessment of 25 bioactive lipids on a total of 63 baby food samples (50 – IFs and 13 – BFs) commercially available in the US. To determine the dietary exposure to DOxS, we used EPA's SHEDS-HT probabilistic model. Even though β -Sitosterol was the most exposed bioactive lipid with 75,4 $\mu\text{g}/\text{day}$, cholesterol was the most absorbed compound during the entire first year (19,320 $\mu\text{g}/\text{day}$). Additionally, we found 7 α -hydroxycholesterol (7 α -OH) as a potential DOxS biomarker of the BFs manufacturing process. This is the first time that an exposure assessment including DOxS ingested by infants after BFs and IFs consumption is performed, enabling much-needed information regarding these hazardous compounds and their potential effects on infants' health.

Keywords: Oxidized lipids, Dietary exposure, Toxicity, Baby foods, Infant formula, Oxysterols

62 **1. Introduction**

63 Diet, during the first year of life of a newborn, plays a crucial role to ensure an infant's
64 proper growth and brain development (Babawale et al., 2018; CDC, 2021b; Harris & Pomeranz,
65 2020; Timby, Domellöf, Hernell, Lönnerdal, & Domellöf, 2014). Despite the U. S. Dietary
66 Guidelines for Americans recommendation for breastfeeding during the first 6 months, reports
67 show that only 25% of babies are exclusively breastfed in the US (CDC, 2021a), and globally,
68 only 40% have been estimated (Collective, 2017; Timby et al., 2021). Different circumstances
69 influence the mother's decision to rely mainly on infant formulations (IFs) instead of breast milk.
70 After the baby is 6 months old, baby foods (BFs), also known as complementary foods, are
71 commonly introduced to the infant, and it is not until the infant's 1st or 2nd year that they will be
72 eating almost the same foods as any other adult (CDC, 2021b).

73 Cholesterol content in human milk is typically comprised of 0.34 to 1.3 wt% based on total
74 lipids (Jensen, 1999). On the contrary, standard IF doesn't contain cholesterol but it is high in
75 plant-based oils such as palm and soybean oil (Zubin Maslov, Hill, Lüscher, & Narula, 2021)
76 which provide other lipid classes such as phytosterols and tocopherols also needed for a healthy
77 growth and development processes. During weaning (4-6 months), BFs are gradually introduced.
78 BFs consist of unsweetened, unsalted, no added starch or artificial flavors/colors puree of fruits,
79 vegetables, grains, and blends of meats or poultry. All these ingredients are good sources of
80 protein, iron, zinc, and other much-needed nutrients (Gerber, 2021a, 2021b).

81 The main purpose of IFs and BFs manufacturing relies on providing the best, most nutritious,
82 and safest food for the most vulnerable population, infants. Both IF and BFs undergo industrial
83 processing to guarantee their microbiological safety. Processing, in particular thermal
84 processing, act on macro and micronutrients of raw material, potentially favoring changes in the

85 nutritional properties of these foods. For instance, several lipid oxidation molecules, such as
86 dietary oxysterols (DOxS), are formed because of food's over-processing during their
87 confection, storage, and even transportation processes.

88 The oxidation of cholesterol results in the accumulation of DOxS. The formation of DOxS is
89 triggered by high temperature, hydrostatic pressure used for nonthermal pasteurization, light
90 exposure, and aging of food (Cais-Sokolińska, Walkowiak-Tomczak, & Rudzińska, 2022; Chudy
91 & Teichert, 2021; Lisaura Maldonado-Pereira, 2021; Risso et al., 2022; Sabolová et al., 2017).
92 Several studies have summarized the biological activities of these compounds which have been
93 extensively associated with different chronic diseases including pro-inflammatory and pro-
94 oxidant activities, as well as promote carcinogenesis (Garcia-Llatas, Mercatante, López-García,
95 & Rodríguez-Estrada, 2021; L. Maldonado-Pereira, Schweiss, Barnaba, & Medina-Meza, 2018;
96 Poli et al., 2022; Willinger, 2019; Zmysłowski & Szterk, 2019). Our group recently studied the
97 metabolomic signatures of liquid and powder infant formulations and proposed that 7-keto could
98 be considered a biomarker of powder IFs (A. Kilvington, Barnaba, Rajasekaran, Laurens
99 Leimanis, & Medina-Meza, 2021). Additionally, Risso and coworkers pointed out that the shelf-
100 life is the primary determinant of DOxS after analyzing whole milk powders (Risso et al., 2022).
101 Their study serves as another example of how DOxS could be used as markers to further quantify
102 and characterize the nutritional quality and freshness, not only of ingredients but also of
103 composite products such as commercial chocolate milk and whole powder milk. These findings
104 highlight the potential relationship of DOxS loads with specific unit operations used in food
105 processing. This knowledge may be a critical factor in identifying processing steps that may
106 increase their formation in foods and could prevent infants' exposure to these compounds and
107 their long-term effect on their health. Previously, we assessed the dietary exposure of DOxS on

108 infant formula-fed infants in the first 6 months of life (Alice Kilvington, Barnaba, Rajasekaran,
109 Laurens, & Gabriela Medina-Meza, 2021). To date, the estimated exposure level of DOxS in
110 infants (0-1 years old) has not been addressed.

111 The present study provides a dietary assessment of sterols and their oxidized derivatives
112 using a probabilistic exposure assessment model during the first year of infant development for
113 several sterols species (previously analyzed in our laboratory) present in various IFs and BFs
114 commercially available in the US market (A. Kilvington et al., 2021; A. Kilvington,
115 Maldonado-Pereira, Torres-Palacios, & Medina-Meza, 2019). The dietary exposure
116 assessment will provide an estimation of the exposure extent of these compounds in infants
117 which is the first step in conducting a risk assessment of these sterols and their oxidative species
118 that could become a potential health risk in the infant's community (Wei et al., 2022).

119 **2. Methods**

120 *2.1. Stochastic Human Exposure and Dose Simulation (SHEDS-HT)*

121 SHEDS-HT was coded in the R language (v. 2.15.3). Several modifications were performed
122 to the code's input files to enable the dietary exposure analysis of bioactive lipids including
123 sterols (both animal and plant origin), squalene, and tocopherols. A complete description of the
124 SHEDS-HT model can be found in Isaacs' work (Isaacs et al., 2014). The following sections will
125 explain the modifications employed in this analysis.

126 *2.1.1. Chemical Pathway and Scenario*

127 A list of the compounds analyzed in this study is shown in **Table 1**. The chemical and
128 physical properties of the compounds required by SHEDS-HT were obtained from The
129 Metabolomics Innovation Centre and the ChemSpider webpages (Centre, 2021; ChemSpider,
130 2021). Concentration values of these chemicals in Infant Formulas (IFs) were obtained from

131 previous work performed in the Food and Health Engineering Laboratory (FHEL) at Michigan
132 State University (A. Kilvington et al., 2019).

133

134 **Table 1:** Chemical properties used in SHEDS-HT to evaluate exposure of the compounds of interest.

135

Compound	Water Solubility (mg/L)	Absorption factor (f_{abs})
7keto	0.0027 ¹	0.12 ³
Triol	0.000156 ¹	0.15 ³
5,6alpha-Epoxy	0.005104 ²	0.28 ³
5,6beta-Epoxy	0.005104 ²	0.32 ³
7beta-OH	0.48 ¹	0.42 ³
7alpha-OH	0.48 ¹	0.30 ³
20alpha-OH	0.57 ¹	0.40*
22-OH	0.65 ¹	0.40 ⁴
24-OH	0.40 ¹	0.40*
25-OH	0.24 ¹	0.40*
Campesterol	0.05803 ⁵	0.1431 ⁵
Beta-sitosterol	0.02739 ⁵	0.05074 ⁵
Stigmasterol	0.0000112 ⁵	0.040 ⁵
Brassicasterol	0.06420 ⁵	0.3121 ⁵
Alpha-Tocopherol	0.003317 ⁵	0.03394 ⁵
Beta-Tocopherol	0.02826 ⁵	0.03423 ⁵
Delta-Tocopherol	0.2477 ⁵	0.03477 ⁵
Gamma-Tocopherol	0.02852 ⁵	0.03424 ⁵
Cholesterol	0.077038 ⁵	0.314705 ⁵
Squalene	0.004897 ⁵	0.986721 ⁵
Desmosterol	0.049427 ⁵	0.378243 ⁵

136

137 ¹The Metabolomics Innovation Centre (<https://www.metabolomicscentre.ca/>)

138 ²ChemSpider – Search and share chemistry (www.chemspider.com)

139 ³Value obtained from the paper: Osada, Sasaki, & Sugano, 1994

140 ⁴Value obtained from the paper: Tranheim Kase et al., 2012

141 ⁵Properties provided by SHEDS-HT

142 *Absorption value of 22-OH was used for these compounds since no estimated value could be found for these
143 specific DOxS (20alpha-OH, 24-OH, and 25-OH)

144

145 DOxS concentrations from Baby Foods (BFs) were obtained experimentally as is explained
146 in sections 2.2-2.4. Since this study was focused on ingestion of DOxS because of BFs and IFs
147 consumption, SHEDS-HT only needs to consider the dietary pathway and the direct ingestion
148 scenario of the samples tested. In this study, the dietary exposures are calculated by determining

149 the total daily mass of chemical intake for each simulated person via different foods.
150 Concentration distributions for each food are provided as input. For each individual, daily
151 concentrations (μg of sterol per g of food) are sampled (one for each food item). Dietary
152 exposures are calculated as the sum (over food groups) of the food item's concentration and
153 mass of food consumed (as determined by the assigned food diary for the person). Exposure
154 equation used by SHEDS-HT:

$$155 \quad \text{Exposure} \left(\frac{\mu\text{g}}{\text{day}} \right) = \text{Consumption} \left(\frac{\text{g of food}}{\text{day}} \right) * \text{Residue of the Compound in Food} \left(\frac{\mu\text{g}}{\text{g food}} \right)$$

156 Intake dose estimates are calculated using distributions of route-specific fractional
157 absorptions as it is shown below:

$$158 \quad \text{Dose Intake} \left(\frac{\text{mg}}{\text{kg} - \text{day}} \right) = \frac{\text{abs dermal} \left(\frac{\text{mg}}{\text{day}} \right) + \text{exp ingest} \left(\frac{\text{mg}}{\text{day}} \right) + \text{dose inhale} \left(\frac{\text{mg}}{\text{day}} \right)}{1000 * \text{BW}}$$

160 Where *abs dermal* is the absorption of the compound through the skin, *exp ingest* is the
161 exposure of the compound through ingestion of the food item, and *dose inhale* is the dose of the
162 compound inhaled by the infant.

163 Absorption values are obtained using the estimated absorption factor (f_{abs}) of each bioactive
164 lipid in the following equation:

$$165 \quad \text{Absorption} \left(\frac{\text{ug}}{\text{day}} \right) = \text{Exposure} \left(\frac{\text{ug}}{\text{day}} \right) * f_{\text{abs}}$$

166 A full description of the exposure equations used in SHEDS-HT and their corresponding
167 input parameter distributions are provided in Isaacs' work (Isaacs et al., 2014).

168 2.1.2. Population Module

169 Input-based data from the U.S. Census was used to generate a simulated population
170 representative of the U.S. population in terms of age and gender. A population of 10,000

171 individuals was selected for this study. Afterward, Monte Carlo methods were used to assign
172 relevant exposure factors and cohort-matched activity and food intake diaries to each person.

173 Food diaries were based on the National Health and Nutrition Examination Survey-What We
174 Eat in America (NHANES-WWEIA) 1999–2018 two-day food intake diaries (USDA, 2018).
175 Food diaries calculated the mass of each food group consumed by the individual.

176 *2.2. Bioactive Lipids Extraction in Baby Foods*

177 Bioactive lipids were extracted from 13 baby foods according to a slightly modified Folch's
178 (Folch, Lees, & Sloane Stanley, 1957) cold extraction method as is described in Maldonado-
179 Pereira et al. (2022). Thirty grams of sample were minced and placed in a 500 ml glass bottle
180 with a screwcap with 200 mL of chloroform:methanol solution (1:1, v/v). The sample was mixed
181 for 15 min at 300 rpm. Homogenization was performed using an Ultra-Tourrax for 3 minutes.
182 The bottle was kept in an oven at 60°C for 20 min before adding 100 mL chloroform. Then, the
183 bottle was vortexed for 2 min following by filtration. The filtrate was mixed thoroughly with 100
184 mL of 1 M KCl solution. Samples were left overnight at 4 °C. Then, the lower phase containing
185 lipids was collected and dried at 60°C with a vacuum evaporator at 25 in Hg. Total fat content
186 was determined gravimetrically (L. Maldonado-Pereira, Barnaba, De los Campos, & Medina-
187 Meza, 2021).

188 *2.3. Determination of Total Cholesterol, Tocopherols, and Phytosterols Content in Baby* 189 *Foods by GC-MS*

190 A simultaneous quantification method for cholesterol, tocopherols, and phytosterols
191 developed by our group was used (A. Kilvington et al., 2021). Cold saponification at room
192 temperature was performed following Bonoli's protocol with some modifications (Matteo Bonoli
193 et al., 2008). Two hundred mg of lipid were mixed with 50 µg of 19-hydroxycholesterol and 140

194 μg of 5α -cholestane as internal standards for the determination of dietary COPs and total
195 cholesterol, respectively. Subsequently, the sample was mixed with 10 mL of 1 N KOH solution
196 in methanol and left under gentle agitation, and covered from the light for at least 15 h (Sander,
197 Addis, Park, & Smith, 1989). One-tenth of the unsaponifiable matter was subjected to silylation.
198 The sample was mixed with 100 μL of pyridine and 100 μL of the Sweeley's reactive mixture
199 (pyridine/hexamethyldisilazane/trimethylchlorosilane, 10:2:1, v/v/v) at 75°C for 45 min, dried
200 under nitrogen stream and dissolved in 1 mL of n-hexane. One microliter of the silylated solution
201 was injected into a gas chromatograph using a fitted with a ZebronTMZB-5HT (Phenomenex,
202 Torrance, CA) capillary column (30 m \times 0.25 mm \times 0.25 μm). Oven temperature conditions
203 were set up as follows: 260 to 300°C at $2.5^\circ\text{C}/\text{min}$, then from 300 to 320°C at $8^\circ\text{C}/\text{min}$, and
204 finally hold at 320°C for 1 min. The injector and detector were both set at 320°C . Helium was
205 used as the carrier gas at a flow rate of 54.0 mL/min, the split ratio at 1:50, and the pressure
206 constant at 134 kPa.

207 *2.4. DOxS profiling in Baby Foods*

208 The other nine-tenths of the sample was used for the quantification of dietary COPs.
209 Purification by NH_2 -SPE was performed according to the literature (Rose-Sallin, 1995). The
210 enriched fraction was recovered and evaporated to dryness under a nitrogen stream.
211 Subsequently, the purified fraction was silylated with Sweeley's reactive mixture (at 75°C for
212 45 min), dried under a nitrogen stream and dissolved in 1 mL of n-hexane.

213 Dietary DOxS were identify using the selected ion molecule (SIM) method with a GCMS-
214 QP2010 SE single quadrupole Shimadzu Corporation (Kyoto, Japan). One μL of the silylated
215 DOxS was injected into a single quadrupole (GCMS-QP2010 SE) with the following conditions:
216 from 250 to 280°C at $2^\circ\text{C}/\text{min}$, hold at 280°C for 7 min, and from 280 to 315°C at $1.5^\circ\text{C}/\text{min}$.

217 Helium was used as a carrier gas (flow rate of 0.37 mL/min); the split ratio was 1:15 and the
218 pressure was 49.2 kPa. The interface temperature for the GC-MS was 320 °C, with the electron
219 multiplier voltage set at 0 kV and the injector at 320 °C. A fused silica column (30 m x 0.25 mm
220 i.d. x 0.25 µm thickness) coated with 5% phenyl polysiloxane (Phenomenex Zebron ZB-5) was
221 used.

222 2.5. Statistical Analysis

223 Descriptive statistics were obtained from the SHEDS-HT model. Mean, standard deviation,
224 and the following quantiles: 5%, 25%, 50%, 75%, 90%, and 95%, were reported. Since the data
225 did not follow a normal distribution after a Shapiro-Wilk test a non-parametric Mann-Whitney *U*-
226 test was performed at a $p < 0.05$ significance level. Data normalization was performed for
227 exposure, absorption, and dose intake results for comparison purposes. A sparse PLS-DA (sPLS-
228 DA) was used to evaluate relationships between a single ‘omics data set. Additionally, a
229 biomarker analysis, including the ROC curves, were performed using MetaboAnalyst in its web
230 server version (Chong et al., 2018) All the statistical analysis were computed using RStudio
231 (version 1.4.1717 © 2009-2021 RStudio, PBC)

232 3. Results and discussion

233 3.1 Bioactive Lipids Profiling in BF

234 A complete list of the BF samples, their codes, and results can be found in the Supplemental
235 Material – **Table 1S and Table 2S**. Cholesterol was the most abundant compound in BF (**Figure**
236 **1S**), reaching a concentration value of 1,247.2 mg/100g fat for BF1 (**Table 1S**). A higher
237 cholesterol value compared to the one reported in the nutritional facts label was observed for
238 samples: BF1, BF6, and BF11. The items presenting higher fat content had mainly beef, turkey,
239 and dairy products as the main ingredient in their preparation process. Plain meat BFs after the

240 first 6 months of age is recommended by the CDC to avoid iron deficiency (CDC, 1998; Fox,
241 Pac, Devaney, & Jankowski, 2004; Miller, 2013). Even though a higher fat content was observed
242 for those specific BFs, fat consumption is normally promoted during the infants' first years of
243 life because of its essential role during the infants' growth phase. Restricting fat before the age of
244 two is not recommended and could be harmful during the infants' growing stage (Allen &
245 Myers, 2006; Hardy & Kleinman, 1994; Johnson, 1998; Öhlund, Hörnell, Lind, & Hernell,
246 2008).

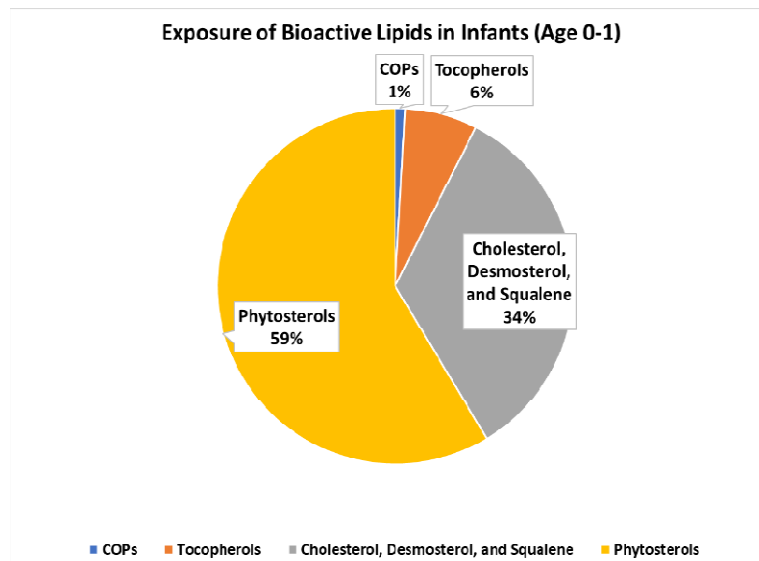
247 Phytosterols comprised 39% of the total bioactive lipid's distribution, followed by DOxS
248 with only 2%. Tocopherols, desmosterol, and squalene were not detected in our BF samples.

249 β -Sitosterol was the dominant phytosterol which agrees with previous studies (Guadalupe
250 García-Llatas et al., 2008; G. García-Llatas & Rodríguez-Estrada, 2011; A. Kilvington et al.,
251 2021). The presence of high amounts of β -Sitosterol reflect the use of vegetable oils in the
252 preparation of most BFs.

253 *3.2 Dietary Exposure from IFs and BFs during Infant's 1st Year of Life*

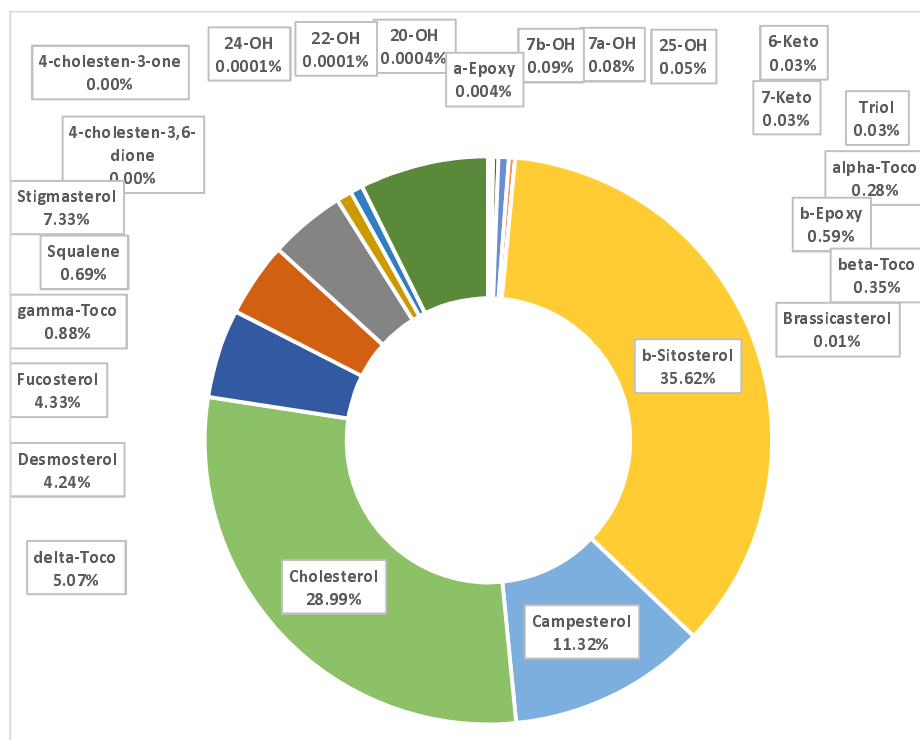
254 The equation used by SHEDS-HT to calculate the exposure value of each compound is
255 shown above. Exposure results are reported in units of $\mu\text{g}/\text{day}$ (**Table 3S**) and are based on the
256 quantities of IFs and BFs ingested by infants between 0 and 1 year old reported by the
257 NHANES-WWEIA 1999-2018. Overall, 59% of the most exposed bioactive lipids were
258 phytosterols (**Figure 1**) - specifically, β -Sitosterol with 75,410 $\mu\text{g}/\text{day}$ (**Figure 2**) - which is the
259 most abundant group and lipid reported in our previous study (A. Kilvington et al., 2021).
260 Cholesterol and campesterol were the 2nd and 3rd most exposed bioactive lipids. Among DOxS,
261 5,6 β -epoxycholesterol, 7 β -OH, and 7 α -OH obtained the 8th, 9th, and 10th highest exposure levels
262 with 1,244.4, 191.8, and 165.5 $\mu\text{g}/\text{day}$, respectively. These DOxS have been related to several

263 adverse effects on human health in previous studies such as cardiovascular diseases -
264 atherosclerosis, hypertension, ischemic stroke-, neurological diseases, viral infections, and
265 cancer (A. Kilvington et al., 2021; Lisaura Maldonado-Pereira, 2021; L. Maldonado-Pereira et
266 al., 2018; Zmysłowski & Szterk, 2019), which arise concerns related to their consumption by
267 infants.



268
269
270

Figure 1: Bioactive Lipids Exposure in IFs and BF Consumption during 1st Year of Life



271
272 **Figure 2:** Percentages of the Bioactive Lipids Exposure Values in IFs and BF after their Consumption during the
273 1st Year of Life according to Supplemental Material - Table 3S

274 *3.1 Dietary Dose Intake and Absorption of Bioactive Lipids by Infants (0-1 years old)*

275 The dietary dose intake of phytosterols (**Figure 3B**) was higher than any other bioactive lipid
276 group which agrees with previous studies (Claumarchirant, Matencio, Sanchez-Siles, Alegría, &
277 Lagarda, 2015; Hamdan, Claumarchirant, Garcia-Llatas, Alegría, & Lagarda, 2017).

278 β -Sitosterol showed the largest dose intake among all bioactive lipids reaching a value of
279 9.64 mg/kg day in females (Hamdan, Sanchez-Siles, Garcia-Llatas, & Lagarda, 2018; Hamdan,
280 Sanchez-Siles, Matencio, et al., 2018).

281 Interestingly, dietary dose intakes (mg/kg-day) were higher in male infants compared to
282 females for most of the DOxS (5,6 β -epoxycholesterol, 6-ketocholesterol, 7-ketocholesterol, 7 α -
283 OH, and 7 β -OH) and α -tocopherol (**Figure 3A and 3C**). On the other hand, dietary dose intake
284 of β -sitosterol, cholesterol, δ -tocopherol, and 25-OH were slightly higher for female infants.

285 Even though this difference in dose intake values between sexes was not significant, it highlights
286 the effect of body weight's average variability between females and males (body weight usually
287 varies by only 0.79 kg) (CDC, 2001). In our previous study focused only on IFs consumption,
288 the difference in dietary dose intake values between males and females was also not statistically
289 significant (A. Kilvington et al., 2021).

290 The estimated absorption factors (f_{abs}) provided a predicted absorption value (mg/kg-day) for
291 each specific bioactive lipid analyzed in this model (**Figure 4A and 4B**). Cholesterol showed the
292 highest absorption value with 1.90 mg/kg-day. Subsequently, β -sitosterol, campesterol, and
293 desmosterol showed values of 0.38, 0.34, and 0.33 mg/kg-day, respectively.

294

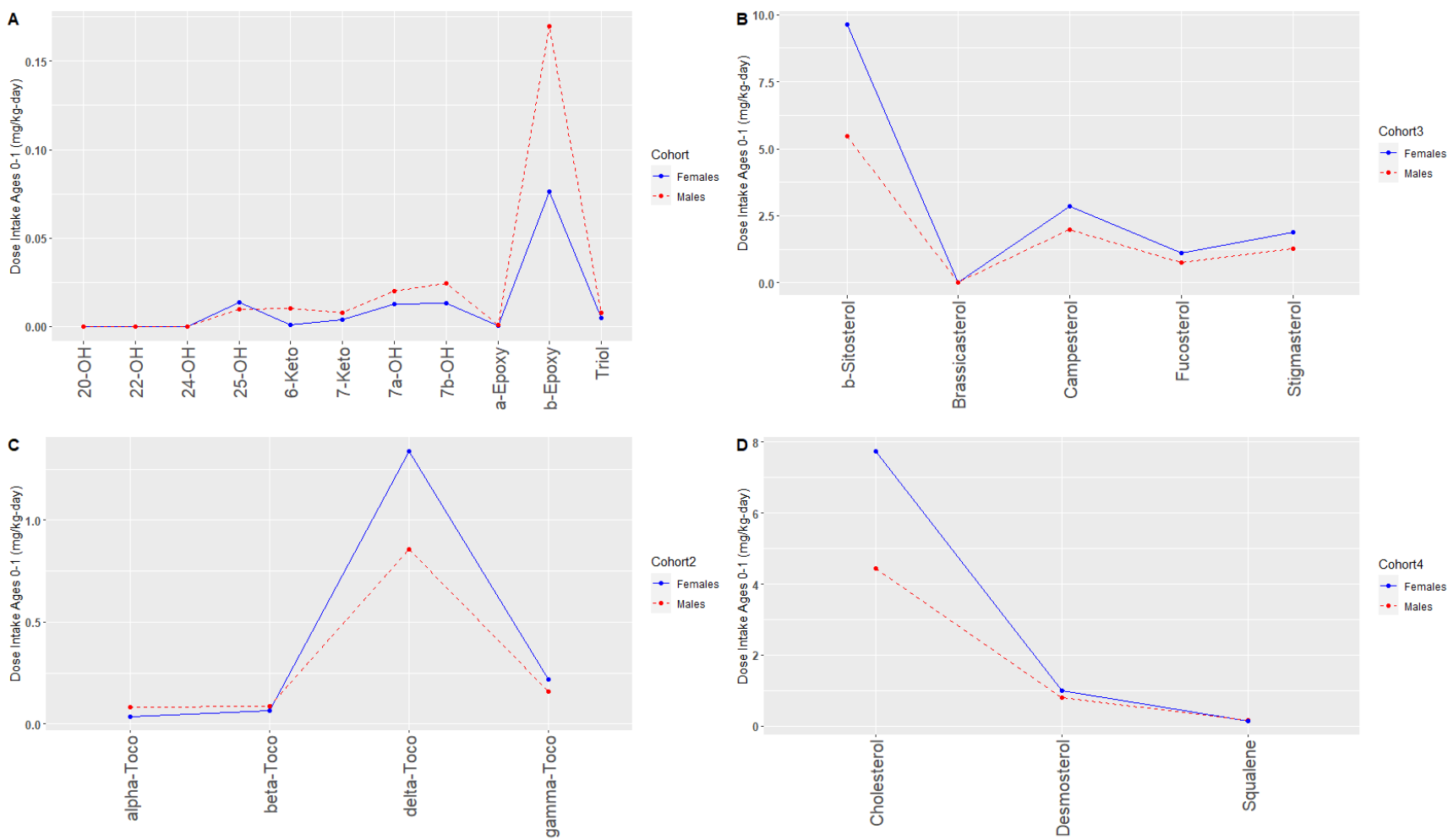


Figure 3: Dose Intake (mg/kg-day) of A) DOxS, B) Phytosterols, C) Tocopherols, and D) Cholesterol, Desmosterol, and Squalene

295

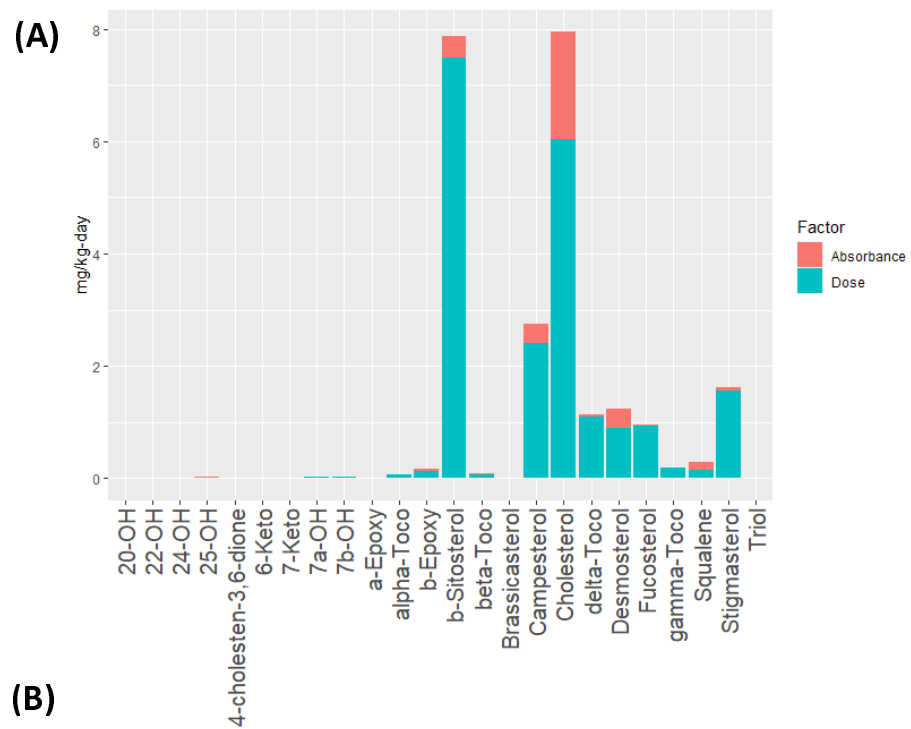
296

297 Even though β -sitosterol was the compound with the highest exposure value, cholesterol was
298 absorbed by 80% more. The bioaccessibility of β -sitosterol has been reported to be lower than
299 other sterols, which explains the reason for being less absorbed than other sterols, despite its
300 higher exposure level, and dietary dose intake (Claumarchirant et al., 2015).

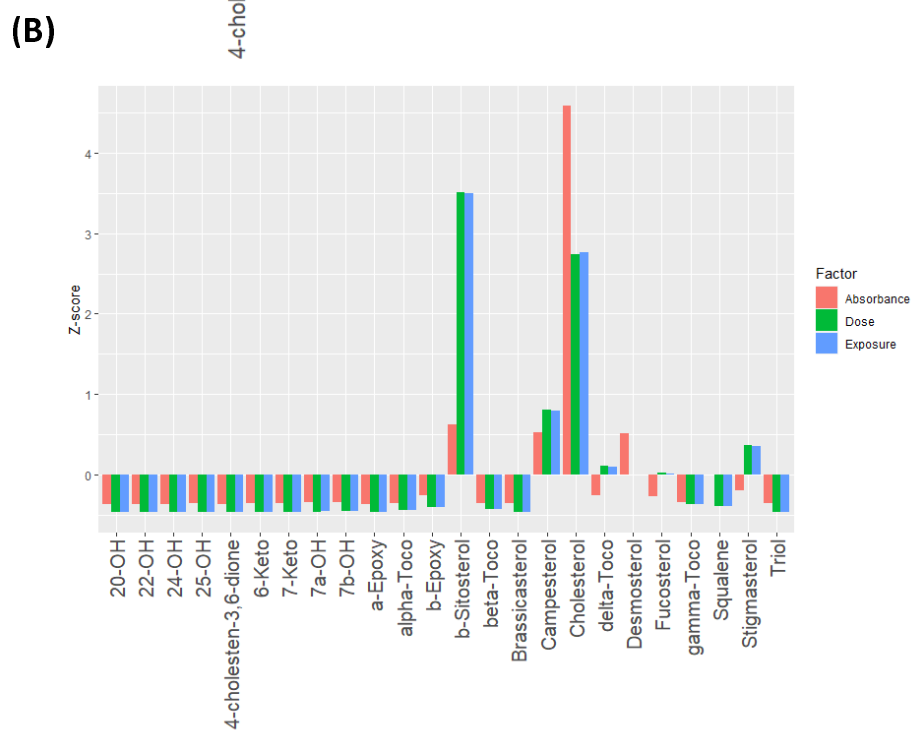
301 All DOxS together showed an absorption value of 0.062 mg/kg-day, being 5,6 β -
302 epoxycholesterol the DOxS with the highest absorption value (0.040 mg/kg-day). There's a clear
303 distinction between DOxS absorption comparing 0-6 and 6-12 months of life of an infant. The
304 presence of 7-keto in IFs was previously seen in metabolomics studies such as the one performed
305 by our group (A. Kilvington et al., 2021), where 7-keto was proposed as a processing biomarker
306 for powder IFs. Here, it is observed that it is not the most exposed, ingested, and absorbed sterol
307 (**Figure 4A**) once solids foods are introduced into the infant's diet. Therefore, it could be stated
308 that it's highly absorbed by infants, probably during just the first 6 months of life based on their
309 dietary intake through *only* IFs consumption. With the introduction of solid foods past the first 6
310 months of life, 5,6 β -epoxycholesterol resulted to be more absorbed. Absorption of these two
311 DOxS raises concerns since their toxicity has been reported in previous studies in concentrations
312 as low as 30.0 and 39.7 ng/mg of biological tissue, specifically in atherosclerosis patients
313 (Micheletta et al., 2004). Maldonado-Pereira and coworkers provided a comprehensive review
314 that reported the concentration of DOxS that exerted biological activities (L. Maldonado-Pereira
315 et al., 2018). It is crucial to study in-depth the relationship between infants' exposure and
316 absorption of these DOxS with the future development of different chronic diseases.

317 *3.2 Comparison of Bioactive Lipids Exposure, Dose Intake, and Absorption*

318 Normalized values of exposure, dose intake, and absorption for all compounds are shown in



319



320
321

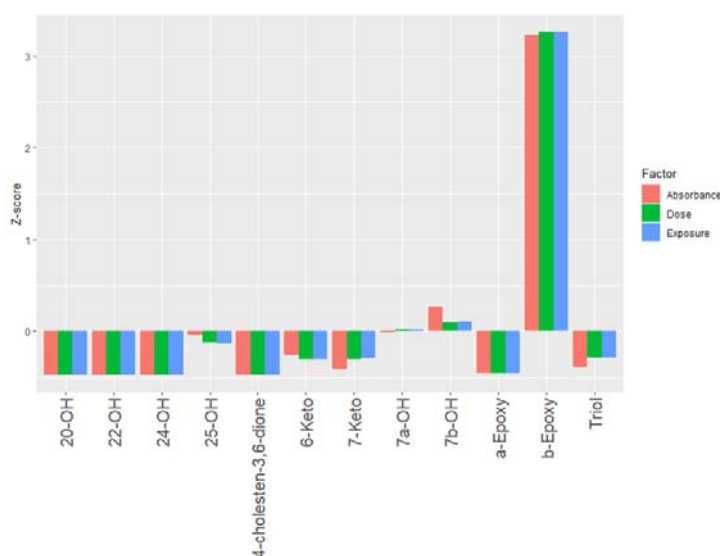
322
323

Figure 4: A) Comparison of absorption and Dose Intake. B) Normalization of Exposure, Dose Intake, and Absorption

324

325 **Figure 4B.** Cholesterol's normalized absorption value was almost doubled compared to either its
326 normalized exposure or dose intake values. It is known that massive amounts of cholesterol are
327 needed for an infant's growth (especially during the first 0-24 months of life) since every
328 membrane requires cholesterol with especially high amounts in neuronal cells (Lawrence &
329 Lawrence, 2022; Woollett & Heubi, 2000; Zubin Maslov et al., 2021). Therefore, such a high
330 absorption rate of cholesterol was already expected.

331 Overall, 5,6 β -epoxycholesterol was the most absorbed DOxS. It is noteworthy to mention
332 that DOxS were absorbed in a significantly less proportion than cholesterol (**Figure 5**) as a result
333 of their lower solubility in the mixed micelles and/or lower esterification inside the enterocytes
334 (Garcia-Llatas et al., 2021). Additionally, the dominant presence of phytosterols in BF and IF
335 could be exerting an antioxidant effect that promotes such high cholesterol absorption rate while
336 it hinders further absorption of COPs. This high presence of phytosterols could result in a
337 positive attribute of IF and BF by reducing the absorption of the DOxs and promoting cholesterol
338 absorption which is much needed by infants at this early stage of life.



339
340 **Figure 5:** Normalization of Exposure, Dose Intake, and Absorption Only for COPs during 1st Year of Life

341 For β -sitosterol, a higher dose intake was obtained after comparing the exposure level. As it
342 was mentioned above, β -sitosterol is an abundant phytosterol in vegetable oils which is the main
343 ingredient of IF and certain BFs. Additionally, it could be the exerting an antioxidant effect
344 during the bioactive lipids absorption process after BFs and IFs consumption.

345 Lastly, since the absorption values for 25-OH, triol, and 7-keto were estimated values
346 obtained from 2 different scientific sources (Centre, 2021; ChemSpider, 2021), an Absorption,
347 Digestion, Metabolism, and Excretion (ADME) study is needed to obtained realistic absorption
348 rates that will facilitate more accurate exposure assessments.

349 *3.3 Dietary Dose Intake Comparison between SHEDS-HT and Theoretical Equation*

350 After comparing the results from this exposure assessment with our previous study
351 (Kilvington et al., 2021), a better idea of the dietary intake and potential absorption values was
352 obtained. Kilvington and her co-worker estimated dose intake values using the theoretical
353 equation:

$$DI = \frac{[C] \times Intake \times Abs}{BW}$$

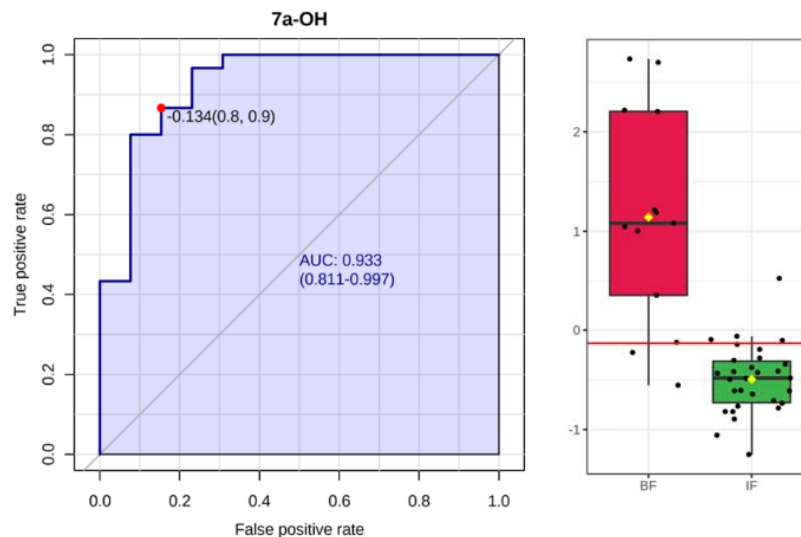
354 This equation was modified to analyze the ingestion and dose intake during the first 6 months
355 of life of several bioactive lipids. Our previous work identified 7-keto as a potential biomarker
356 for IFs. Lately, Risso and coworkers also suggested 7-keto as a biomarker in their study using
357 powder milk samples (Risso et al., 2022).

358 Our results -which are derived from the equation previously mentioned used by SHEDS-HT-
359 revealed that compared to the first 6 months of an infant where their diet is mainly comprised of
360 IFs, 5,6 β -epoxycholesterol, 7 β -OH, and 7 α -OH were the most absorbed DOxS from BFs

361 consumption. 5,6 β -epoxycholesterol, 7 β -OH, and 7 α -OH have been previously found in several
362 types of meat and poultry samples (Chiu, 2018; Gehring et al., 2020; Grau, Codony, Grimpa,
363 Baucells, & Guardiola, 2001; Khan et al., 2015; Musto, Faraone, Cellini, & Musto, 2014; Osada,
364 Hoshina, Nakamura, & Sugano, 2000; Pie, 1991; Rant et al., 2019). Compared to IFs, BFs'
365 protein content commonly comes from different meat and poultry ingredients used during their
366 confection. Interestingly, based on unpublished results from our lab, 5,6 β -epoxycholesterol has
367 been found present in human placenta samples. This finding could somehow relate the higher
368 absorption rate of this DOxS with prenatal factors such as hormones present during the infant's
369 fetal development (Prins et al., 2022; Rodríguez-Rodríguez et al., 2018; Wu, Tian, & Lin, 2015)

370 Biomarker analysis for our BF and IF data revealed that a 7 α -OH could be a DOxS
371 processing biomarker for BFs (**Figure 6**). From these results and considering our previous study,
372 we suggest that 7 α -OH is a biomarker for BFs while 7-keto serves as a biomarker for powder IF.
373 It is worth noting that 7-OH isomers are direct precursors of 7-keto. Differences in the type of
374 thermal processing of each type of food (IF and BF) are the main reason that leads to the
375 formation of certain DOxS, which suggests them as potential biomarkers of either BF or powder
376 IF. This hypothesis is strongly supported by previous studies that have reported differences in
377 DOxS dominance on the same food matrices cooked under different conditions (Francesc
378 Guardiola, 2002; F. Guardiola, Bou, Boatella, & Codony, 2004; Lisaura Maldonado-Pereira,
379 2021; L. Maldonado-Pereira et al., 2018).

380 An sPLS-DA was performed to evaluate the accuracy of our models. Data were classified by
381 BF, Liquid IFs (L-IFs), and Powder IF (P-IFs) to highlight any potential differences in IF
382 processing techniques. **Figures 7A** show that there is indeed a noticeable difference between the
383 confection process of BF, L, and P that affects the values of the DOxS present in the samples.



384

385

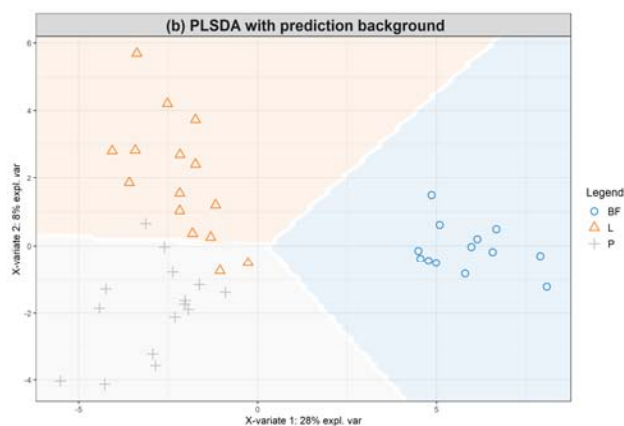
Figure 6: 7α -OH as a Potential Biomarkers of BFs

386 Additionally, **Figure 7B** shows the prediction zone for other samples based on our data. In
387 our model, only 3 out of 63 samples were incorrectly classified, reaching a 95.2% accuracy. Both
388 of these figures provide intuition on how novel samples would be classified according to the
389 generated model. Lastly, **Figure 8** shows a ROC for all 3 models (BF, L-IFs, and P-IFs) with
390 highly positive sensitivity rates for each one (BF: 0.1, P-IFs: 0.9905, and L-IFs: 0.981, allowing
391 a good prediction rate for future data.

392



393

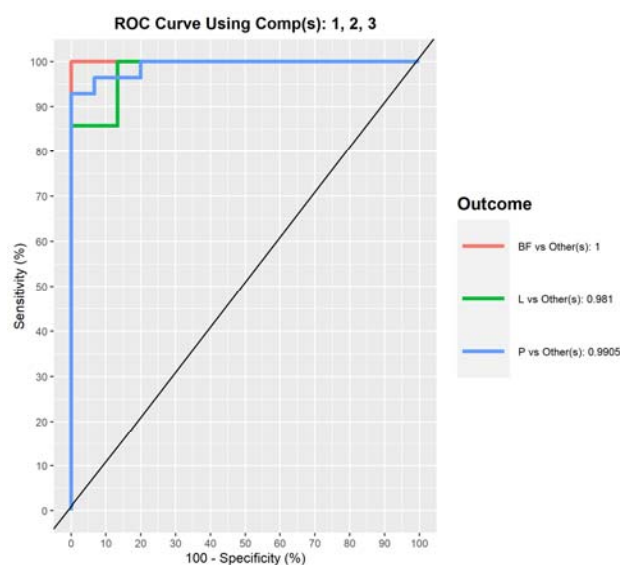


394

Figure 7: A) IF and BF data with confidence ellipses and B) Prediction Zones

395 Besides the use of 7α -OH and 7-keto as biomarkers of thermal processing techniques
396 employed during the confection of BFs and IFs, it is important to keep in mind their biological
397 toxicity that could become a potential hazard among infants. Comparing both DOxS, 7α -OH and
398 7-keto have been found in patients suffering different chronic diseases such as hypertension,
399 multiple sclerosis, cancer, atherosclerosis, among others (L. Maldonado-Pereira et al., 2018). The
400 lowest concentrations exerting a toxicological effect previously reported for 7α -OH and 7-keto
401 were 0.004 and 0.006 $\mu\text{g/mL}$ of blood plasma, respectively, in atherosclerosis patients. Since
402 there is so little available information regarding the relationship between these compounds and
403 the development of these diseases as a result of the consumption of IFs and BFs by infants, this

404 vulnerable population could be potentially at a health risk. More accurate information regarding
405 DOxS absorption values, their metabolism, and excretion rates is needed to start reducing this
406 knowledge gap. Therefore, we suggest the development of an Absorption, Digestion,
407 Metabolism, and Excretion (ADME) study followed by the completion of a risk assessment to
408 identify the real hazard and protect our infants.



409

410 **Figure 8:** ROC for BF, Liquid Formula, and Infant Formula Models

411 **4. Conclusions**

412 Bioactive lipid distribution of BF is dominated by cholesterol (59%) from animal based
413 foods, followed by phytosterols (~39%) from plant based foods. β -Sitosterol was the most
414 abundant phytosterol as a result of its dominant presence in vegetable oils, which is the BF's
415 main ingredient.

416 Dietary exposure assesment showed that phytosterols had the highest exposure
417 percentages (59%) compared to DOxS, tocopherols, cholesterol, squalene, and desmosterol. β -
418 Sitosterol was the most exposed compound (0.38 mg/kg-day) but the 2nd most absorbed

419 compound because of its lower bioaccessibility which has been previously reported
420 (Claumarchirant et al., 2015). Cholesterol was the most absorbed lipid with a 1.90 mg/kg-day.

421 5,6 β -epoxycholesterol was the DOxS with the highest absorption value (0.040 mg/kg-day)
422 which places it overall in the 7th position among all bioactive lipids absorbed. Even though
423 absorbance of all DOxS together accounted for only 1.86% (0.062 mg/kg-day), there's evidence
424 of their biological effect which raises concerns related to their consumption by infants. There is a
425 critical need to deeper investigate the relationship of infants diet – especially during the 1 year of
426 life – with future development of chronic diseases.

427 One of our model's limitations includes the lack of information regarding the absorption
428 fractions (f_{abs}) of 25-OH, triol, and 7-keto. For the purpose of our study, these values were
429 estimated from the available data found from 2 different scientific sources (Centre, 2021;
430 ChemSpider, 2021). This is why the FHEL suggests and is currently conducting an Absorption,
431 Digestion, Metabolism, and Excretion (ADME) study – especially of DOxS - to obtain more
432 accurate absorption values to enable a more precise exposure assessment. Despite this weakness,
433 this is the first time that an exposure assessment including DOxS ingested by infants after BFs
434 and IFs consumption is performed, enabling information regarding these hazardous compounds
435 and their potential future effects on infants' health.

436 Based on the biomarker analysis, 7 α -OH could be a potential biomarker of BFs which could
437 not be predicted by just analyzing the exposure and absorption data obtained from SHEDS-HT.

438 The difference in DOxS distribution between BF, IFs-L, and IFs-P as a result of processing
439 techniques variability, was confirmed after an sPLS-DA was performed. All 3 groups showed
440 segregation among samples of the same classification group. Therefore, based on our results

441 which also compared processing techniques between BF, L-IFs, and P-IFs and their significance,
442 we support Kilvington's proposal of 7-ketocholesterol as a biomarker for powder IF based on its
443 specific spray drying and canning techniques employed during its confection (A. Kilvington et
444 al., 2019; Risso et al., 2022).

445 **Acknowledgments:**

446 This study was funding by the Center for Research Ingredients Safety (CRIS) with the
447 GR100229 grant, the USDA National Institute of Food and Agriculture, Hatch project
448 MICL02526 to I.G.M.M. Authors are grateful to Nama Naseem, Nicole Urrea, Ashley Xu,
449 Rosemary Laurito, Grant Gmitter, and Lisa Zou for their assistance during lipid extraction.

450 **Conflict of interest**

451 The authors have declared no conflict of interest.

452

453 **References**

- 454 Allen, R. E., & Myers, A. L. (2006). Nutrition in toddlers. *Am Fam Physician*, *74*(9), 1527-1532.
- 455 Babawale, E. A., Jones, P. J., Mercer, K. E., Lin, H., Yeruva, L., Bar Yoseph, F., & Rutherford, S. M.
- 456 (2018). Modulating Sterol Concentrations in Infant Formula Influences Cholesterol
- 457 Absorption and Synthesis in the Neonatal Piglet. *Nutrients*, *10*(12).
- 458 doi:10.3390/nu10121848
- 459 Cais-Sokolińska, D., Walkowiak-Tomczak, D., & Rudzińska, M. (2022). Photosensitized oxidation
- 460 of cholesterol and altered oxysterol levels in sour cream: Effects of addition of cucumber
- 461 pickles. *J Dairy Sci*, *105*(6), 4760-4771. doi:10.3168/jds.2022-21856
- 462 CDC. (1998). *Recommendations to prevent and control iron deficiency in the United States*.
- 463 MMWR
- 464 CDC. (2001). *Data Table of Infant Weight-for-age Charts*. Retrieved from
- 465 https://www.cdc.gov/growthcharts/html_charts/wtageinf.htm
- 466 CDC. (2021a). *Maternity Practices in Infant Nutrition and Care (mPINC) Survey*. Retrieved from
- 467 <https://www.cdc.gov/breastfeeding/data/mpinc/index.htm>
- 468 CDC. (2021b). *Vitamins & Minerals*. Retrieved from
- 469 <https://www.cdc.gov/nutrition/infantandtoddlernutrition/vitamins-minerals/index.html>
- 470 Centre, T. M. I. (2021). The Metabolomics Innovation Centre. Retrieved from
- 471 <https://www.metabolomicscentre.ca/>
- 472 ChemSpider. (2021). ChemSpider. Retrieved from <http://www.chemspider.com/>
- 473 Chiu, C.-W. a. K. T.-H. a. C. B.-H. (2018). Improved Analytical Method for Determination of
- 474 Cholesterol-Oxidation Products in Meat and Animal Fat by QuEChERS Coupled with Gas
- 475 Chromatography–Mass Spectrometry. *Journal of Agricultural and Food Chemistry*,
- 476 *66*(13), 3561-3571. doi:10.1021/acs.jafc.8b00250
- 477 Chong, J., Soufan, O., Li, C., Caraus, I., Li, S., Bourque, G., . . . Xia, J. (2018). MetaboAnalyst 4.0:
- 478 towards more transparent and integrative metabolomics analysis. *Nucleic Acids Res*,
- 479 *46*(W1), W486-W494. doi:10.1093/nar/gky310
- 480 Chudy, S., & Teichert, J. (2021). Oxysterols in stored powders as potential health hazards.
- 481 *Scientific Reports*, *11*(1), 21192. doi:10.1038/s41598-021-00636-5
- 482 Claumarchirant, L., Matencio, E., Sanchez-Siles, L. M., Alegría, A., & Lagarda, M. J. (2015). Sterol
- 483 Composition in Infant Formulas and Estimated Intake. *J Agric Food Chem*, *63*(32), 7245-
- 484 7251. doi:10.1021/acs.jafc.5b02647
- 485 Collective, G. B. (2017). *Global Breastfeeding Scorecard 2017,*
- 486 *tracking progress for breastfeeding policies and programmes*. Paper presented at the UNICEF
- 487 and World Health Organization, New York and Geneva.
- 488 Folch, J., Lees, M., & Sloane Stanley, G. (1957). A simple method for the isolation and
- 489 purification of total lipides from animal tissues. *J biol Chem*, *226*(1), 497-509.
- 490 Fox, M. K., Pac, S., Devaney, B., & Jankowski, L. (2004). Feeding infants and toddlers study:
- 491 What foods are infants and toddlers eating? *J Am Diet Assoc*, *104*(1 Suppl 1), s22-30.
- 492 doi:10.1016/j.jada.2003.10.026
- 493 Garcia-Llatas, G., Mercatante, D., López-García, G., & Rodríguez-Estrada, M. T. (2021).
- 494 Oxysterols – how much do we know about food occurrence, dietary intake and
- 495 absorption? *Current Opinion in Food Science*.
- 496 doi:<https://doi.org/10.1016/j.cofs.2021.08.001>

- 497 García-Llatas, G., Cercaci, L., Rodríguez-Estrada, M. T., Lagarda, M. J., Farré, R., & Lercker, G.
498 (2008). Sterol Oxidation in Ready-to-Eat Infant Foods During Storage. *Journal of*
499 *Agricultural and Food Chemistry*, 56(2), 469-475. doi:10.1021/jf072475g
- 500 García-Llatas, G., & Rodríguez-Estrada, M. T. (2011). Current and new insights on phytosterol
501 oxides in plant sterol-enriched food. *Chem Phys Lipids*, 164(6), 607-624.
502 doi:10.1016/j.chemphyslip.2011.06.005
- 503 Gehring, J., Touvier, M., Baudry, J., Julia, C., Buscail, C., Srour, B., . . . Allès, B. (2020).
504 Consumption of Ultra-Processed Foods by Pesco-Vegetarians, Vegetarians, and Vegans:
505 Associations with Duration and Age at Diet Initiation. *The Journal of Nutrition*, 151(1),
506 120-131. doi:10.1093/jn/nxaa196
- 507 Gerber. (2021a). Baby Food. In.
- 508 Gerber. (2021b). Daily nutrition goals & food groups for Crawlers. Retrieved from
509 <https://www.gerber.com/learning-center/crawler-nutrition-basics>
- 510 Grau, A., Codony, R., Grimpa, S., Baucells, M. D., & Guardiola, F. (2001). Cholesterol oxidation in
511 frozen dark chicken meat: influence of dietary fat source, and alpha-tocopherol and
512 ascorbic acid supplementation. *Meat Science*, 57(2), 197-208. doi:10.1016/s0309-
513 1740(00)00094-2
- 514 Guardiola, F. (2002). *Cholesterol and phytosterol oxidation products: analysis, occurrence, and*
515 *biological effects*: The American Oil Chemists Society.
- 516 Guardiola, F., Bou, R., Boatella, J., & Codony, R. (2004). Analysis of sterol oxidation products in
517 foods. *Journal of Aoac International*, 87(2), 441-466.
- 518 Hamdan, I. J. A., Claumarchirant, L., Garcia-Llatas, G., Alegria, A., & Lagarda, M. J. (2017). Sterols
519 in infant formulas: validation of a gas chromatographic method. *Int J Food Sci Nutr*,
520 68(6), 695-703. doi:10.1080/09637486.2017.1287883
- 521 Hamdan, I. J. A., Sanchez-Siles, L. M., Garcia-Llatas, G., & Lagarda, M. J. (2018). Sterols in Infant
522 Formulas: A Bioaccessibility Study. *J Agric Food Chem*, 66(6), 1377-1385.
523 doi:10.1021/acs.jafc.7b04635
- 524 Hamdan, I. J. A., Sanchez-Siles, L. M., Matencio, E., Bermúdez, J. D., Garcia-Llatas, G., & Lagarda,
525 M. J. (2018). Sterols in human milk during lactation: bioaccessibility and estimated
526 intakes. *Food Funct*, 9(12), 6566-6576. doi:10.1039/c8fo01795f
- 527 Hardy, S. C., & Kleinman, R. E. (1994). Fat and cholesterol in the diet of infants and young
528 children: implications for growth, development, and long-term health. *J Pediatr*, 125(5
529 Pt 2), S69-77. doi:10.1016/s0022-3476(06)80739-0
- 530 Harris, J. L., & Pomeranz, J. L. (2020). Infant formula and toddler milk marketing: opportunities
531 to address harmful practices and improve young children's diets. *Nutr Rev*, 78(10), 866-
532 883. doi:10.1093/nutrit/nuz095
- 533 Isaacs, K. K., Glen, W. G., Egeghy, P., Goldsmith, M. R., Smith, L., Vallero, D., . . . Ozkaynak, H.
534 (2014). SHEDS-HT: An Integrated Probabilistic Exposure Model for Prioritizing Exposures
535 to Chemicals with Near-Field and Dietary Sources. *Environmental Science & Technology*,
536 48(21), 12750-12759. doi:10.1021/es502513w
- 537 Jensen, R. G. (1999). Lipids in human milk. *Lipids*, 34(12), 1243-1271.
538 doi:<https://doi.org/10.1007/s11745-999-0477-2>
- 539 Johnson, R. (1998). Young children and dietary fat intake: how much is too little? *J Am Diet*
540 *Assoc*, 98(4), 402. doi:10.1016/S0002-8223(98)00091-1

- 541 Khan, M. I., Min, J. S., Lee, S. O., Yim, D. G., Seol, K. H., Lee, M., & Jo, C. (2015). Cooking, storage,
542 and reheating effect on the formation of cholesterol oxidation products in processed
543 meat products. *Lipids Health Dis*, 14, 89. doi:10.1186/s12944-015-0091-5
- 544 Kilvington, A., Barnaba, C., Rajasekaran, S., Laurens Leimanis, M. L., & Medina-Meza, I. G.
545 (2021). Lipid profiling and dietary assessment of infant formulas reveal high intakes of
546 major cholesterol oxidative product (7-ketocholesterol). *Food Chem*, 354, 129529.
547 doi:10.1016/j.foodchem.2021.129529
- 548 Kilvington, A., Barnaba, C., Rajasekaran, S., Laurens, M. L. L., & Gabriela Medina-Meza, I. (2021).
549 Lipid profiling and dietary assessment of infant formulas reveal high intakes of major
550 cholesterol oxidative product (7-ketocholesterol). *Food Chemistry*, 129529.
551 doi:<https://doi.org/10.1016/j.foodchem.2021.129529>
- 552 Kilvington, A., Maldonado-Pereira, L., Torres-Palacios, C., & Medina-Meza, I. (2019).
553 Phytosterols and their oxidative products in infant formula. *Journal of Food Process*
554 *Engineering*, e13151.
- 555 Lawrence, R. M., & Lawrence, R. A. (2022). 10 - Normal Growth, Growth Faltering, and Obesity
556 in Breastfed Infants. In R. A. Lawrence & R. M. Lawrence (Eds.), *Breastfeeding (Ninth*
557 *Edition)* (pp. 298-325). Philadelphia: Elsevier.
- 558 Maldonado-Pereira, L. (2021). *Comprehensive Study of the Oxidative Stability of the Most*
559 *Consumed Ultra-Processed Foods in the USA*. (Ph.D.). Michigan State University, Ann
560 Arbor. Retrieved from
561 [http://ezproxy.msu.edu/login?url=https://www.proquest.com/dissertations-](http://ezproxy.msu.edu/login?url=https://www.proquest.com/dissertations-theses/comprehensive-study-oxidative-stability-most/docview/2536440379/se-2?accountid=12598)
562 [theses/comprehensive-study-oxidative-stability-most/docview/2536440379/se-](http://ezproxy.msu.edu/login?url=https://www.proquest.com/dissertations-theses/comprehensive-study-oxidative-stability-most/docview/2536440379/se-2?accountid=12598)
563 [2?accountid=12598](http://ezproxy.msu.edu/login?url=https://www.proquest.com/dissertations-theses/comprehensive-study-oxidative-stability-most/docview/2536440379/se-2?accountid=12598) Retrieved from
564 [http://resolver.ebscohost.com/openurl?ctx_ver=Z39.88-](http://resolver.ebscohost.com/openurl?ctx_ver=Z39.88-2004&ctx_enc=info:ofi/enc:UTF-8&rft_id=info:sid/ProQuest+Dissertations+%26+Theses+Global&rft_val_fmt=info:ofi/fmt:kev:mtx:dissertation&rft.genre=dissertations+%26+theses&rft.jtitle=&rft.atitle=&rft.au=Maldonado-Pereira%2C+Lisaura&rft.aulast=Maldonado-Pereira&rft.aufirst=Lisaura&rft.date=2021-01-01&rft.volume=&rft.issue=&rft.spage=&rft.isbn=9798738634932&rft.btitle=&rft.title=Comprehensive+Study+of+the+Oxidative+Stability+of+the+Most+Consumed+Ultra-Processed+Foods+in+the+USA&rft.issn=&rft_id=info:doi/)
565 [2004&ctx_enc=info:ofi/enc:UTF-](http://resolver.ebscohost.com/openurl?ctx_ver=Z39.88-2004&ctx_enc=info:ofi/enc:UTF-8&rft_id=info:sid/ProQuest+Dissertations+%26+Theses+Global&rft_val_fmt=info:ofi/fmt:kev:mtx:dissertation&rft.genre=dissertations+%26+theses&rft.jtitle=&rft.atitle=&rft.au=Maldonado-Pereira%2C+Lisaura&rft.aulast=Maldonado-Pereira&rft.aufirst=Lisaura&rft.date=2021-01-01&rft.volume=&rft.issue=&rft.spage=&rft.isbn=9798738634932&rft.btitle=&rft.title=Comprehensive+Study+of+the+Oxidative+Stability+of+the+Most+Consumed+Ultra-Processed+Foods+in+the+USA&rft.issn=&rft_id=info:doi/)
566 [8&rft_id=info:sid/ProQuest+Dissertations+%26+Theses+Global&rft_val_fmt=info:ofi/fm](http://resolver.ebscohost.com/openurl?ctx_ver=Z39.88-2004&ctx_enc=info:ofi/enc:UTF-8&rft_id=info:sid/ProQuest+Dissertations+%26+Theses+Global&rft_val_fmt=info:ofi/fmt:kev:mtx:dissertation&rft.genre=dissertations+%26+theses&rft.jtitle=&rft.atitle=&rft.au=Maldonado-Pereira%2C+Lisaura&rft.aulast=Maldonado-Pereira&rft.aufirst=Lisaura&rft.date=2021-01-01&rft.volume=&rft.issue=&rft.spage=&rft.isbn=9798738634932&rft.btitle=&rft.title=Comprehensive+Study+of+the+Oxidative+Stability+of+the+Most+Consumed+Ultra-Processed+Foods+in+the+USA&rft.issn=&rft_id=info:doi/)
567 [t:kev:mtx:dissertation&rft.genre=dissertations+%26+theses&rft.jtitle=&rft.atitle=&rft.au=](http://resolver.ebscohost.com/openurl?ctx_ver=Z39.88-2004&ctx_enc=info:ofi/enc:UTF-8&rft_id=info:sid/ProQuest+Dissertations+%26+Theses+Global&rft_val_fmt=info:ofi/fmt:kev:mtx:dissertation&rft.genre=dissertations+%26+theses&rft.jtitle=&rft.atitle=&rft.au=Maldonado-Pereira%2C+Lisaura&rft.aulast=Maldonado-Pereira&rft.aufirst=Lisaura&rft.date=2021-01-01&rft.volume=&rft.issue=&rft.spage=&rft.isbn=9798738634932&rft.btitle=&rft.title=Comprehensive+Study+of+the+Oxidative+Stability+of+the+Most+Consumed+Ultra-Processed+Foods+in+the+USA&rft.issn=&rft_id=info:doi/)
568 [=Maldonado-Pereira%2C+Lisaura&rft.aulast=Maldonado-](http://resolver.ebscohost.com/openurl?ctx_ver=Z39.88-2004&ctx_enc=info:ofi/enc:UTF-8&rft_id=info:sid/ProQuest+Dissertations+%26+Theses+Global&rft_val_fmt=info:ofi/fmt:kev:mtx:dissertation&rft.genre=dissertations+%26+theses&rft.jtitle=&rft.atitle=&rft.au=Maldonado-Pereira%2C+Lisaura&rft.aulast=Maldonado-Pereira&rft.aufirst=Lisaura&rft.date=2021-01-01&rft.volume=&rft.issue=&rft.spage=&rft.isbn=9798738634932&rft.btitle=&rft.title=Comprehensive+Study+of+the+Oxidative+Stability+of+the+Most+Consumed+Ultra-Processed+Foods+in+the+USA&rft.issn=&rft_id=info:doi/)
569 [Pereira&rft.aufirst=Lisaura&rft.date=2021-01-](http://resolver.ebscohost.com/openurl?ctx_ver=Z39.88-2004&ctx_enc=info:ofi/enc:UTF-8&rft_id=info:sid/ProQuest+Dissertations+%26+Theses+Global&rft_val_fmt=info:ofi/fmt:kev:mtx:dissertation&rft.genre=dissertations+%26+theses&rft.jtitle=&rft.atitle=&rft.au=Maldonado-Pereira%2C+Lisaura&rft.aulast=Maldonado-Pereira&rft.aufirst=Lisaura&rft.date=2021-01-01&rft.volume=&rft.issue=&rft.spage=&rft.isbn=9798738634932&rft.btitle=&rft.title=Comprehensive+Study+of+the+Oxidative+Stability+of+the+Most+Consumed+Ultra-Processed+Foods+in+the+USA&rft.issn=&rft_id=info:doi/)
570 [01&rft.volume=&rft.issue=&rft.spage=&rft.isbn=9798738634932&rft.btitle=&rft.title=C](http://resolver.ebscohost.com/openurl?ctx_ver=Z39.88-2004&ctx_enc=info:ofi/enc:UTF-8&rft_id=info:sid/ProQuest+Dissertations+%26+Theses+Global&rft_val_fmt=info:ofi/fmt:kev:mtx:dissertation&rft.genre=dissertations+%26+theses&rft.jtitle=&rft.atitle=&rft.au=Maldonado-Pereira%2C+Lisaura&rft.aulast=Maldonado-Pereira&rft.aufirst=Lisaura&rft.date=2021-01-01&rft.volume=&rft.issue=&rft.spage=&rft.isbn=9798738634932&rft.btitle=&rft.title=Comprehensive+Study+of+the+Oxidative+Stability+of+the+Most+Consumed+Ultra-Processed+Foods+in+the+USA&rft.issn=&rft_id=info:doi/)
571 [omprehensive+Study+of+the+Oxidative+Stability+of+the+Most+Consumed+Ultra-](http://resolver.ebscohost.com/openurl?ctx_ver=Z39.88-2004&ctx_enc=info:ofi/enc:UTF-8&rft_id=info:sid/ProQuest+Dissertations+%26+Theses+Global&rft_val_fmt=info:ofi/fmt:kev:mtx:dissertation&rft.genre=dissertations+%26+theses&rft.jtitle=&rft.atitle=&rft.au=Maldonado-Pereira%2C+Lisaura&rft.aulast=Maldonado-Pereira&rft.aufirst=Lisaura&rft.date=2021-01-01&rft.volume=&rft.issue=&rft.spage=&rft.isbn=9798738634932&rft.btitle=&rft.title=Comprehensive+Study+of+the+Oxidative+Stability+of+the+Most+Consumed+Ultra-Processed+Foods+in+the+USA&rft.issn=&rft_id=info:doi/)
572 [Processed+Foods+in+the+USA&rft.issn=&rft_id=info:doi/](http://resolver.ebscohost.com/openurl?ctx_ver=Z39.88-2004&ctx_enc=info:ofi/enc:UTF-8&rft_id=info:sid/ProQuest+Dissertations+%26+Theses+Global&rft_val_fmt=info:ofi/fmt:kev:mtx:dissertation&rft.genre=dissertations+%26+theses&rft.jtitle=&rft.atitle=&rft.au=Maldonado-Pereira%2C+Lisaura&rft.aulast=Maldonado-Pereira&rft.aufirst=Lisaura&rft.date=2021-01-01&rft.volume=&rft.issue=&rft.spage=&rft.isbn=9798738634932&rft.btitle=&rft.title=Comprehensive+Study+of+the+Oxidative+Stability+of+the+Most+Consumed+Ultra-Processed+Foods+in+the+USA&rft.issn=&rft_id=info:doi/) Dissertations & Theses @ CIC
573 Institutions; ProQuest Dissertations & Theses Global database. (28497722)
- 574 Maldonado-Pereira, L., Barnaba, C., De los Campos, G., & Medina-Meza, I. (2021). Evaluation of
575 the Nutritional Quality of Ultra-Processed Foods (Ready to Eat + Fast Food): Fatty Acid
576 Composition. *medRxiv*, 2021.2004.2016.21255610. doi:10.1101/2021.04.16.21255610
- 577 Maldonado-Pereira, L., Schweiss, M., Barnaba, C., & Medina-Meza, I. G. (2018). The role of
578 cholesterol oxidation products in food toxicity. *Food and Chemical Toxicology*, 118, 908-
579 939. doi:10.1016/j.fct.2018.05.059
- 580 Micheletta, F., Natoli, S., Misuraca, M., Sbarigia, E., Diczfalusy, U., & Iuliano, L. (2004). Vitamin E
581 supplementation in patients with carotid atherosclerosis: reversal of altered oxidative
582 stress status in plasma but not in plaque. *Arterioscler Thromb Vasc Biol*, 24(1), 136-140.
583 doi:10.1161/01.ATV.0000104028.07929.72

- 584 Miller, J. L. (2013). Iron deficiency anemia: a common and curable disease. *Cold Spring Harbor*
585 *perspectives in medicine*, 3(7), a011866. doi:10.1101/cshperspect.a011866
- 586 Musto, M., Faraone, D., Cellini, F., & Musto, E. (2014). Changes of DNA quality and meat
587 physicochemical properties in bovine supraspinatus muscle during microwave heating.
588 *Journal of the Science of Food and Agriculture*, 94(4), 785-791. doi:10.1002/jsfa.6441
- 589 Osada, K., Hoshina, S., Nakamura, S., & Sugano, M. (2000). Cholesterol Oxidation in Meat
590 Products and Its Regulation by Supplementation of Sodium Nitrite and Apple Polyphenol
591 before Processing. *Journal of Agricultural and Food Chemistry*, 48(9), 3823-3829.
592 doi:10.1021/jf991187k
- 593 Pie, J. E. a. S. K. a. S. C. (1991). Cholesterol oxidation in meat products during cooking and
594 frozen storage. *Journal of Agricultural and Food Chemistry*, 39(2), 250-254.
595 doi:10.1021/jf00002a005
- 596 Poli, G., Leoni, V., Biasi, F., Canzoneri, F., Risso, D., & Menta, R. (2022). Oxysterols: From redox
597 bench to industry. *Redox Biol*, 49, 102220. doi:10.1016/j.redox.2021.102220
- 598 Prins, J. R., Schoots, M. H., Wessels, J. I., Campmans-Kuijpers, M. J. E., Navis, G. J., van Goor, H.,
599 . . . Gordijn, S. J. (2022). The influence of the dietary exposome on oxidative stress in
600 pregnancy complications. *Molecular Aspects of Medicine*, 87, 101098.
601 doi:<https://doi.org/10.1016/j.mam.2022.101098>
- 602 Rant, W., Radzik-Rant, A., Świątek, M., Niżnikowski, R., Szymańska, Ż., Bednarczyk, M., . . .
603 Ślęzak, M. (2019). The effect of aging and muscle type on the quality characteristics and
604 lipid oxidation of lamb meat. *Arch Anim Breed*, 62(2), 383-391. doi:10.5194/aab-62-383-
605 2019
- 606 Risso, D., Leoni, V., Canzoneri, F., Arveda, M., Zivoli, R., Peraino, A., . . . Menta, R. (2022).
607 Presence of cholesterol oxides in milk chocolates and their correlation with milk powder
608 freshness. *PLoS One*, 17(3), e0264288. doi:10.1371/journal.pone.0264288
- 609 Rodríguez-Rodríguez, P., Ramiro-Cortijo, D., Reyes-Hernández, C. G., López de Pablo, A. L.,
610 González, M. C., & Arribas, S. M. (2018). Implication of Oxidative Stress in Fetal
611 Programming of Cardiovascular Disease. *Frontiers in physiology*, 9, 602-602.
612 doi:10.3389/fphys.2018.00602
- 613 Rose-Sallin, C. (1995). Quantification of Cholesterol Oxidation Products in Milk Powders Using
614 [2H7]Cholesterol To Monitor Cholesterol Autoxidation Artifacts. *Journal of agricultural*
615 *and food chemistry*, 43(4), 935-941.
- 616 Sabolová, M., Pohořelá, B., Fišnar, J., Kouřimská, L., Chrpová, D., & Pánek, J. (2017). Formation
617 of oxysterols during thermal processing and frozen storage of cooked minced meat. *J Sci*
618 *Food Agric*, 97(15), 5092-5099. doi:10.1002/jsfa.8386
- 619 Sander, B. D., Addis, P. B., Park, S. W., & Smith, D. E. (1989). Quantification of Cholesterol
620 Oxidation-Products in a Variety of Foods. *Journal of food protection*, 52(2), 109-114.
- 621 Timby, N., Adamsson, M., Domellöf, E., Grip, T., Hernell, O., Lönnerdal, B., & Domellöf, M.
622 (2021). Neurodevelopment and growth until 6.5 years of infants who consumed a low-
623 energy, low-protein formula supplemented with bovine milk fat globule membranes: a
624 randomized controlled trial. *Am J Clin Nutr*, 113(3), 586-592. doi:10.1093/ajcn/nqaa354
- 625 Timby, N., Domellöf, E., Hernell, O., Lönnerdal, B., & Domellöf, M. (2014). Neurodevelopment,
626 nutrition, and growth until 12 mo of age in infants fed a low-energy, low-protein

627 formula supplemented with bovine milk fat globule membranes: a randomized
628 controlled trial. *Am J Clin Nutr*, 99(4), 860-868. doi:10.3945/ajcn.113.064295
629 USDA. (2018). *What We Eat in America, NHANES 1999–2018*. National Center for Health
630 Statistics: Hyattsville, MD.: Centers for Disease Control and Prevention Retrieved from
631 <https://www.cdc.gov/nchs/nhanes/wweia.htm>
632 Wei, S., Wei, Y., Gong, Y., Chen, Y., Cui, J., Li, L., . . . Yi, L. (2022). Metabolomics as a valid
633 analytical technique in environmental exposure research: application and progress.
634 *Metabolomics*, 18(6), 35. doi:10.1007/s11306-022-01895-7
635 Willinger, T. (2019). Oxysterols in intestinal immunity and inflammation. *J Intern Med*, 285(4),
636 367-380. doi:10.1111/joim.12855
637 Woollett, L. A., & Heubi, J. E. (2000). Fetal and Neo-natal Cholesterol Metabolism. In *Endotext*.
638 South Dartmouth, MA: MDText.com, Inc.
639 Wu, F., Tian, F.-J., & Lin, Y. (2015). Oxidative Stress in Placenta: Health and Diseases. *BioMed*
640 *Research International*, 2015, 293271. doi:10.1155/2015/293271
641 Zmysłowski, A., & Szterk, A. (2019). Oxysterols as a biomarker in diseases. *Clin Chim Acta*, 491,
642 103-113. doi:10.1016/j.cca.2019.01.022
643 Zubin Maslov, P., Hill, J. A., Lüscher, T. F., & Narula, J. (2021). High-sugar feeding and increasing
644 cholesterol levels in infants. *Eur Heart J*, 42(12), 1132-1135.
645 doi:10.1093/eurheartj/ehaa868
646 Öhlund, I., Hörnell, A., Lind, T., & Hernell, O. (2008). Dietary fat in infancy should be more
647 focused on quality than on quantity. *European Journal of Clinical Nutrition*, 62(9), 1058-
648 1064. doi:10.1038/sj.ejcn.1602824
649

Table 1S: Food Codes for Baby Foods Used in this Study

<i>Sample ID</i>	<i>Baby Food</i>	<i>Brand</i>
BF1 - RTE	Beef and broth/gravy	Beech-Nut
BF2 - RTE	Chicken and broth/gravy	Gerber
BF3 - RTE	Vegetables and beef	Gerber
BF4 - RTE	Vegetables and chicken	Gerber
BF5 - RTE	Chicken noodle dinner	Gerber
BF6 - RTE	Macaroni, tomato, and cheese	Gerber
BF7 - RTE	Turkey, and rice	Gerber
BF8 - RTE	Turkey and broth/gravy	Beech-Nut
BF9 - RTE	Fruit yogurt	Gerber
BF10 - RTE	Chicken with rice	Gerber
BF11 - RTE	Vegetables and turkey	Gerber
BF12 - RTE	Macaroni and cheese with vegetables	Gerber
BF13 - RTE	Pasta pick-ups (cheese ravioli)	Gerber

Table 2S: DOxS Profiling in BF Samples

	<i>BF1</i>	<i>BF2</i>	<i>BF3</i>	<i>BF4</i>	<i>BF5</i>	<i>BF6</i>	<i>BF7</i>	<i>BF8</i>	<i>BF9</i>	<i>BF10</i>	<i>BF11</i>	<i>BF12</i>	<i>BF13</i>	Total Average <i>±STD</i>
Serving Size (g)	71.00	113.40	113.40	113.40	113.40	128.00	113.40	71.00	113.40	113.40	113.40	113.40	85.00	-
Cholesterol (mg/100 g fat) ± STD	1,247.23 ± 227.45	673.84 ± 98.50	58.17 ± 8.50	319.43 ± 83.74	348.65 ± 82.26	123.24 ± 29.61	263.77 ± 76.69	683.55 ± 310.63	162.73 ± 95.67	251.02 ± 57.95	313.34 ± 27.54	172.87 ± 17.84	327.40 ± 87.35	380.40 ± 307.85
Cholesterol Reference (mg/100 g fat)	1,000.00	833.33	250.00	500.00	400.00	7.81	400.00	875.00	333.33	333.33	285.71	333.33	500.00	-
Phytosterols (mg/100 g fat) ±STD														
Brassicasterol	ND	ND	ND	ND	ND	ND	ND	ND	ND	ND	19.72 ± 3.21	29.60 ± 3.30	ND	24.66 ± 4.94
Campesterol	ND	ND	10.48 ± 5.14	182.76 ± 53.20	136.48 ± 47.29	21.98 ± 6.84	190.88 ± 21.15	ND	ND	48.06 ± 9.69	ND	99.33 ± 24.73	44.86 ± 3.55	91.85 ± 66.85
Stigmasterol	ND	ND	6.52 ± 1.87	75.16 ± 41.86	33.77 ± 7.19	ND	ND	ND	ND	25.41 ± 14.33	48.31 ± 2.23	ND	ND	37.83 ± 23.04
β-Sitosterol	ND	ND	47.10 ± 13.21	498.98 ± 129.71	391.77 ± 93.78	100.31 ± 19.76	421.59 ± 137.27	ND	ND	160.14 ± 26.56	435.62 ± 41.06	236.18 ± 18.19	ND	286.46 ± 160.91
Fucosterol	ND	ND	ND	ND	ND	ND	ND	ND	ND	ND	ND	ND	0.046 ± 0.014	0.046 ± 0.000
Total Phytosterols	ND	ND	64.1	756.9	562.02	122.29	612.47	0	0	233.61	503.65	365.11	44.91	251.16 ± 264.06

*P-value < 0.001

Table 2S: DOxS Profiling in BF Samples (cont'd)

	<i>BF1</i>	<i>BF2</i>	<i>BF3</i>	<i>BF4</i>	<i>BF5</i>	<i>BF6</i>	<i>BF7</i>	<i>BF8</i>	<i>BF9</i>	<i>BF10</i>	<i>BF11</i>	<i>BF12</i>	<i>BF13</i>	<i>Total Average ±STD</i>
	COPs <i>(mg/100 g fat) ±STD</i>													
7α-OH	8.97 ± 5.42	2.92 ± 0.73	0.10 ± 0.031	1.80 ± 0.22	2.10 ± 0.50	3.73 ± 1.98	2.12 ± 0.16	5.85 ± 1.82	0.68 ± 0.12	2.08 ± 0.63	0.66 ± 0.092	0.41 ± 0.10	4.22 ± 3.77	2.74 ± 2.40
7β-OH	24.61 ± 15.21	2.27 ± 0.64	0.065 ± 0.037	1.61 ± 0.24	1.94 ± 0.37	0.66 ± 0.12	2.38 ± 0.15	4.91 ± 1.12	0.59 ± 0.17	1.62 ± 0.46	0.58 ± 0.020	0.40 ± 0.078	1.27 ± 0.89	3.30 ± 6.27
5,6α-epoxy	0.69 ± 0.36	0.044 ± 0.012	ND	ND	0.052 ± 0.021	ND	ND	0.030 ± 0.019	ND	0.027 ± 0.016	ND	ND	0.062 ± 0.023	0.15 ± 0.24
5,6β-epoxy	1.39 ± 0.81	0.033 ± 0.0062	ND	ND	0.045 ± 0.027	ND	ND	0.073 ± 0.039	ND	0.042 ± 0.032	1.05 ± 0.12	ND	0.10 ± 0.025	0.39 ± 0.53
7-keto	16.69 ± 5.45	0.84 ± 0.34	ND	0.57 ± 0.065	0.59 ± 0.18	0.67 ± 0.42	0.48 ± 0.15	1.68 ± 0.61	0.24 ± 0.075	0.65 ± 0.087	ND	ND	1.31 ± 0.83	2.37 ± 4.79
Triol	2.63 ± 0.46	0.22 ± 0.031	ND	0.27 ± 0.086	0.31 ± 0.091	0.20 ± 0.034	0.39 ± 0.056	0.27 ± 0.10	0.21 ± 0.050	0.35 ± 0.041	0.12 ± 0.036	0.18 ± 0.013	0.15 ± 0.03	0.44 ± 0.66
6-keto	ND	0.11 ± 0.064	ND	ND	ND	ND	ND	0.12 ± 0.018	ND	ND	ND	0.10 ± 0.044	ND	0.11 ± 0.01
20α-OH	ND	ND	0.65 ± 0.17	ND	ND	ND	ND	ND	ND	ND	5.29 ± 0.40	ND	ND	2.97 ± 2.32
22-OH	ND	ND	0.07 ± 0.03	ND	ND	ND	ND	ND	ND	ND	ND	ND	ND	0.07 ± 0.00
24-OH	ND	ND	ND	ND	ND	0.11 ± 0.06	0.13 ± 0.02	0.45 ± 0.20	ND	ND	ND	ND	0.25 ± 0.19	0.24 ± 0.14

25-OH	3.60 ± 1.22	0.24 ± 0.055	ND	0.16 ± 0.056	0.27 ± 0.16	ND	ND	0.67 ± 0.16	ND	0.27 ± 0.047	ND	ND	0.47 ± 0.32	0.81 ± 1.15
Total COPs	58.59 ± 27.02	6.68 ± 1.80	0.88 ± 0.11	4.61 ± 0.64	5.31 ± 1.22	5.37 ± 2.51	5.51 ± 0.15	14.06 ± 3.95	1.71 ± 0.37	5.04 ± 1.25	7.69 ± 0.42	1.08 ± 0.23	7.85 ± 6.04	9.57 ± 14.53

Table 3S: Values of Exposure, Dose Intake, and Absorption Provided by SHEDS-HT

	Females			Males			Total		
	<i>Exposure (ug/day)</i>	<i>Dose Intake (ug/day)</i>	<i>Absorption (mg/kg-day)</i>	<i>Exposure (ug/day)</i>	<i>Dose Intake (ug/day)</i>	<i>Absorption (mg/kg-day)</i>	<i>Exposure (ug/day)</i>	<i>Dose Intake (ug/day)</i>	<i>Absorption (mg/kg-day)</i>
Cholesterol	77,575.04	7.75	2.44	46,101.42	4.44	1.40	61,391.3	6.04	1.90
Desmosterol	9,689.138	0.99	0.38	8,286.66	0.79	0.30	8,967.98	0.90	0.34
Squalene	1,339.386	0.13	0.13	1,576.29	0.15	0.15	1,461.20	0.14	0.14
Phytosterols									
Brassicasterol	0.087003	9.10E-06	2.84E-06	42.59	0.0041	0.0013	21.94	0.0021	0.00066
β-Sitosterol	94,659.75	9.64	0.49	57,224.17	5.46	0.28	75410.37	7.49	0.38
Campesterol	27,609.45	2.85	0.41	20,512.97	1.97	0.28	23,960.44	2.40	0.34
Fucoesterol	10,530.81	1.10	0.044	7,890.36	0.76	0.030	9,173.092	0.93	0.037
Stigmasterol	18,091.73	1.88	0.075	13,095.2	1.27	0.051	15,522.51	1.56	0.063
Tocopherols									
α-Tocopherol	333.66	0.034	0.0011	844.76	0.082	0.0028	596.47	0.059	0.0020
β-Tocopherol	604.36	0.064	0.0022	866.75	0.085	0.0029	739.28	0.075	0.0026
δ-Tocopherol	12,780.61	1.34	0.047	8,782.58	0.86	0.030	10,724.83	1.09	0.038
γ-Tocopherol	2,75.94	0.22	0.0075	1,656.91	0.16	0.0055	1,860.48	0.19	0.0065
DOxS									
20-OH	0.38	4.03E-05	1.61E-05	1.30	0.00013	5.03E-05	0.86	8.42E-05	3.37E-05
22-OH	0.30	3.12E-05	1.25E-05	0.21	2.04E-05	8.16E-06	0.25	2.56E-05	1.03E-05
24-OH	0.32	3.29E-05	1.32E-05	0.31	2.98E-05	1.19E-05	0.31	3.13E-05	1.25E-05
25-OH	132.46	0.014	0.0056	98.85	0.0096	0.0038	115.17	0.012	0.0047
4-cholesten-3,6-dione	0	0	0	0.0055	5.28E-07	2.15E-07	0.0028	2.71E-07	1.1E-07
6-Keto	8.64	0.00091	0.00037	103.38	0.010	0.0042	57.35	0.0057	0.0023
7α-OH	120.85	0.013	0.0038	207.76	0.020	0.0060	165.54	0.017	0.0050
7β-OH	127.20	0.013	0.0056	252.86	0.024	0.010	191.81	0.019	0.0080
7-Keto	36.18	0.0038	0.00046	80.57	0.0078	0.00094	59.01	0.0059	0.00071
5,6α-Epoxy	4.67	0.00049	0.00014	10.25	0.00099	0.00028	7.54	0.00075	0.00021
5,6β-Epoxy	732.54	0.076	0.024	1,727.98	0.17	0.054	1,244.39	0.12	0.040
Triol	45.87	0.0048	0.00072	78.35	0.0076	0.0011	62.57	0.0063	0.00094

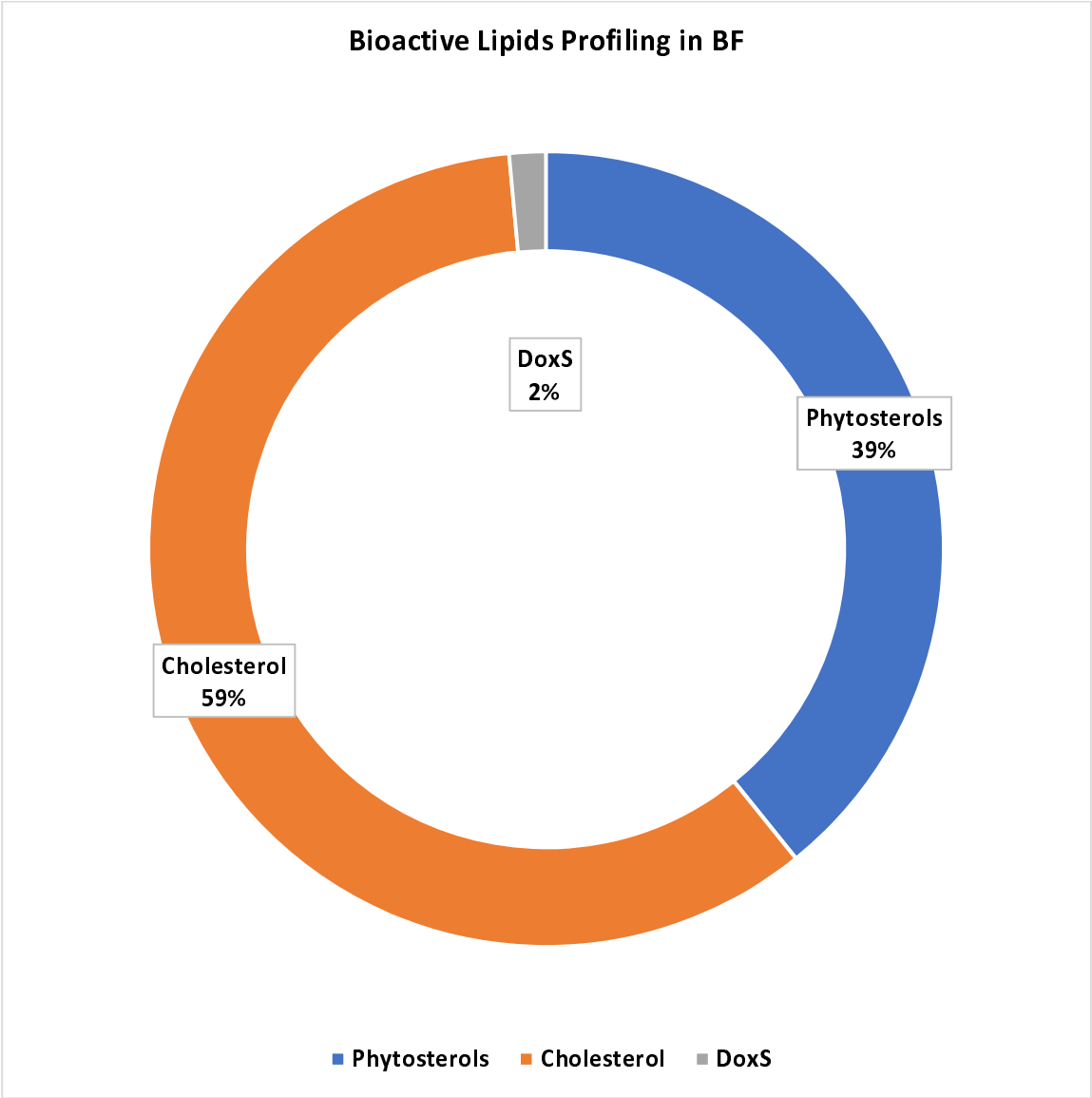


Figure 1S: Distribution of Bioactive Lipids Concentrations Among BF