

1 **Designing a flow-controlled STA-MCA anastomosis based on the Hagen-Poiseuille law**  
2 **for preventing postoperative hyperperfusion in adult moyamoya disease**

3 Jianjian Zhang, M.D., Ph.D<sup>1</sup>; Miki Fujimura, M.D., Ph.D<sup>2</sup>; Tsz Yeung Lau, M.D., Ph.D<sup>3</sup>;  
4 Jincao Chen, M.D., Ph.D<sup>1</sup>.

5 <sup>1</sup>Department of Neurosurgery, Zhongnan Hospital of Wuhan University, Wuhan 430071,  
6 China

7 <sup>2</sup>Department of Neurosurgery, Hokkaido University Graduate School of Medicine, Sapporo,  
8 Japan

9 <sup>3</sup>Department of Neurosurgery, Houston Methodist Hospital, Houston, TX, USA

10 **Corresponding Author contact information:** Jincao Chen, MD, PhD and Jianjian Zhang  
11 MD, PhD. Department of Neurosurgery, Zhongnan Hospital of Wuhan University, Donghu  
12 Road 169#, Wuhan, 430071, China  
13 Tel: 86-13971091714; Fax: 86-27-67811802; E-mail: chenjincao2012@hotmail.com and  
14 zj57470@126.com

15 **Running Title:** Flow-controlled STA-MCA anastomosis for adult MMD

16 **Key Words:** Direct bypass ■ Cerebral hyperperfusion ■ Moyamoya disease ■ Middle  
17 cerebral artery

18 **Abstract word count: 236; Text word count: 2682; Number of references: 24; Number**  
19 **of tables and/or figures (total): 6.**

20 **Abstract**

21 **OBJECTIVE:** Technical improvements for preventing postoperative symptomatic cerebral  
22 hyperperfusion (CHP) during superficial temporal artery-middle cerebral artery (STA-MCA)  
23 anastomosis for moyamoya disease (MMD) were seldom reported. The aim of this study was  
24 to investigate the significance of application of a novel flow-controlled concept which  
25 voluntarily reduces the hemodynamic difference between the donor and recipient arteries  
26 based on the Hagen-Poiseuille law when performing direct anastomoses of recipient  
27 parasylvian cortical arteries (PSCAs) with anterograde hemodynamic sources from the MCA  
28 (M-PSCAs) in adult MMD.

29 **METHODS:** Recently direct anastomoses of recipient M-PSCAs were performed on 89  
30 symptomatic hemispheres in 82 adult MMD patients in our hospital. They were divided into  
31 the flow-controlled group and non-flow-controlled group. The patients' basic characteristics  
32 and incidence of postoperative CHP were compared between the two groups. Risk factors for  
33 occurrence of postoperative CHP were analyzed.

34 **RESULTS:** The earlier 36 and later 53 anastomoses were respectively included in the  
35 non-flow-controlled group and flow-controlled group. The incidences of postoperative focal  
36 (22.6%) and symptomatic CHP (5.7%) in the flow-controlled group were significantly lower  
37 than those (focal, 52.8%; symptomatic, 25.0%) in the non flow-controlled group ( $P = 0.003$   
38 and  $0.009$ , respectively). Multivariate analysis revealed that the flow-controlled concept used  
39 or not was significantly associated with the development of focal ( $P = 0.005$ ) and  
40 symptomatic ( $P = 0.012$ ) CHP.

41 **CONCLUSIONS:** The flow-controlled STA-MCA anastomosis can significantly decrease

- 42 the incidence of postoperative CHP during direct anastomoses of recipient M-PSCAs in adult
- 43 MMD.

## 44 **Background**

45 Moyamoya disease (MMD) is a chronic, occlusive cerebrovascular disease of unknown  
46 etiology characterized by bilateral stenotic-occlusive changes at the terminal portion of the  
47 internal carotid artery and an abnormal vascular network at the base of the brain.<sup>11</sup> Direct  
48 revascularizations, such as superficial temporal artery-middle cerebral artery (STA-MCA)  
49 anastomosis, play a major role in immediately augmenting blood flow to the oxygen-deprived  
50 brain in MMD patients.<sup>14</sup> Conventionally, to improve ischemic conditions of the  
51 hypo-perfused brain, neurosurgeons preferred to maximally achieve the goal of “flow  
52 augmentation” during the bypass procedures. However, with recent advances in microsurgical  
53 techniques, postoperative symptomatic cerebral hyperperfusion (CHP) becomes a big issue  
54 during STA-MCA anastomoses for adult MMD patients, it could result in transient  
55 neurological deficits (TND) and even cerebral hemorrhage.<sup>3,5,6,15,20</sup> It seems that there lacks  
56 effective surgical treatments to prevent the appearance of postoperative symptomatic CHP  
57 under the traditional STA-MCA bypass procedure.

58 In the present study, as a continuation of our previous research<sup>23</sup>, we put forward a new  
59 flow-controlled concept of STA-MCA anastomosis when performing direct anastomoses of  
60 parasylvian cortical arteries (PSCAs) with anterograde hemodynamic sources from the MCA  
61 (named M-PSCAs). Because this kind of direct anastomoses were demonstrated to have a  
62 high risk of postoperative CHP,<sup>23</sup> this new concept suggested a “controlled”, rather than a  
63 “maximized” augmentation of blood flow through reducing the hemodynamic difference  
64 between the donor and recipient arteries based on the Hagen-Poiseuille equation during their  
65 surgical procedures. The aim of this study is to analyze whether application of this kind of

66 flow-controlled anastomosis decreased the incidence of the postoperative symptomatic CHP  
67 or not in adult MMD.

## 68 **Methods**

### 69 **Patients**

70 We retrospectively collected data of adult patients with MMD who underwent STA-MCA  
71 anastomosis combined with encephaloduromyosynangiosis (EDMS) revascularization in our  
72 hospital from January 2020 to June 2021. The diagnosis for each patient was established by  
73 an 8-vessel (bilateral internal carotid arteries, external carotid arteries, common carotid  
74 arteries and vertebral arteries) digital subtraction angiography (DSA). All patients satisfied  
75 the diagnostic criteria of the Research Committee on Spontaneous Occlusion of the Circle of  
76 Willis of the Ministry of Health, Labor, and Welfare, Japan.<sup>7,18</sup> The magnetic resonance  
77 imaging (MRI) and angiography (MRA) scans were performed before surgery and within 1  
78 week after surgery in each patient to evaluate underlying structural brain abnormalities and  
79 confirm the patency of the anastomosis. The cerebral perfusion status was routinely assessed  
80 by <sup>99m</sup>Tc-ECD single-photon emission computed tomography (<sup>99m</sup>Tc-ECD-SPECT) before  
81 and one day after surgery in all patients.

82 The inclusion criteria of patients in this study were strict as patients who were performed  
83 direct anastomoses of recipient PSCAs with their hemodynamic sources from the MCA  
84 (M-PSCAs). Patients with blood flow of the recipient PSCAs from the non-MCAs were  
85 excluded from the study. The method for analyzing hemodynamic sources of PSCAs was  
86 reported elsewhere.<sup>23</sup> Additionally, patients with aneurysms were also excluded because  
87 different surgical approaches were used during their revascularization surgeries (Figure 1).

88 This study protocol was approved by the Institutional Review Board at Zhongnan  
89 Hospital of Wuhan University (approval number: Kelun-2017005) and was in accordance  
90 with the Declaration of Helsinki revised in 1983. Written informed consent was obtained  
91 from all patients.

## 92 **Surgical Procedure and postoperative management**

93 The indication for surgery included patients with symptomatic MMD (ischemic or  
94 hemorrhagic) with apparent hemodynamic compromise. The craniotomy was performed  
95 around the Sylvian fissure end to obtain more suitable recipient arteries on the cortical  
96 surface of the craniotomy site. The technical note of the traditional maximized flow  
97 augmentation STA-MCA anastomosis was already introduced by previous articles and  
98 books.<sup>2,22,24</sup> The definition of focal (both asymptomatic and symptomatic) CHP and  
99 postoperative management for preventing CHP were as described elsewhere.<sup>4,5,23</sup>

## 100 **The flow-controlled STA-MCA anastomosis**

101 The basic principle of the “flow-controlled” STA-MCA anastomosis was to reduce the  
102 hemodynamic difference between the donor and recipient arteries and ensure forward blood  
103 flow from the donor to the recipient at the same time. According to the famous  
104 Hagen-Poiseuille equation<sup>8</sup>:  $Q=\pi\times r^4\times\Delta p/(8\eta L)$ , we designed the procedure of  
105 “flow-controlled” as follows:

106 1) Controlling the “L” in the equation: If there was a significant difference between the  
107 diameter of the frontal and parietal branches of the STA, the thinner one would be selected as  
108 the donor artery while ensuring its diameter > 1mm and the length of the final donor artery >  
109 10 cm. Dissection of the STA branch with sufficient length could ensure enough small

110 diameter of the stump of the STA branch suitable for the next controlling procedure.

111 2) Controlling the “ $\Delta p$ ” in the equation: We kept the patency of the STA when dissecting  
112 it from the scalp and during the craniotomy. Before anastomosis, a flow 800 indocyanine  
113 green (ICG) video angiography was performed to observe the velocity difference between the  
114 STA and the cortical arteries. If there was a significant velocity difference between the  
115 M-PSCAs, we selected the artery with the closest blood flow velocity to the STA as the  
116 recipient vessel on the cerebral surface. However, it needed to be guaranteed that all the  
117 anastomoses were performed on M-PSCAs responsible for the hypoperfused brain.

118 3) Controlling the “ $r$ ” in the equation: First, avoiding dilation of the STA when rinsing  
119 the lumen by heparin salt solution. Second, a micro-ruler was used to measure the diameters  
120 of STA and potential recipient M-PSCAs under microscope. Select one of the M-PSCAs with  
121 its diameter about or near to 1mm as the recipient artery.<sup>9</sup> Third, designing the length of the  
122 arteriotomy less than 1.2-fold the diameter of the recipient artery.

### 123 **Statistical Analysis**

124 A one-way ANOVA test was performed to see if there were any statistical differences of age  
125 and systolic blood pressure (SBP) between the groups. Categorical variables, such as sex,  
126 Suzuki stage, surgical side, initial onset type, focal CHP and symptomatic CHP were  
127 analyzed in contingency tables with Chi-square test. Multivariate statistical analysis of the  
128 factors related to symptomatic CHP was performed using a logistic regression model. All  
129 analyses were performed with IBM SPSS Statistics Desktop, version 24 (IBM Corp.). The  
130 results with values of  $P < 0.05$  were considered significant.

### 131 **Results**

## 132 **Grouping and patient's basic characteristics**

133 Eighty-two adult patients with MMD (patients aged 19-65 years old, mean 47.03 years old)  
134 met the inclusion criteria and were retrospectively collected in this study. A total 89  
135 symptomatic hemispheres of these patients were performed direct STA-MCA (M4)  
136 anastomosis combined indirect EDMS. Consequently, the earlier 36 hemispheres were  
137 included in the non-flow-controlled group while the later 53 hemispheres in the  
138 flow-controlled group. The basic characteristics of the hemispheres are summarized in Table  
139 1.

## 140 **Comparison of incidence of postoperative CHP between both groups**

141 As summarized in Table 1, there were no significant differences of age, sex, initial onset type,  
142 surgical side, SBP before surgery, SBP one day after surgery and Suzuki stage between the  
143 flow-controlled group and non-flow-controlled group ( $P$  all $>0.05$ ). In the flow-controlled  
144 group, the incidence of postoperative focal CHP detected by SPECT was only 22.6% (12/53  
145 hemispheres), which was significantly lower than that (52.8%, 19/36 hemispheres) in the  
146 non-flow-controlled group ( $P = 0.003$ ). More importantly, the number of patients who  
147 developed symptomatic CHP in the flow-controlled group (3 patients, 5.7%) was  
148 significantly less than that (9 patients, 25.0%) in the non-flow-controlled group ( $P = 0.009$ ).  
149 The representative image of the qualitative analysis of hemodynamic change from SPECT  
150 revealed significant intense increases in CBF at the sites of anastomosis (Figure 2A).  
151 Postoperative MRI/MRA showed no ischemic changes, and the thick high signal intensity of  
152 STA on the operated hemisphere was evident in all 89 hemispheres (Figure 2B). The 6 month  
153 follow up MRA showed graft occlusion occurred in 2 (2/53, 3.8%) hemispheres. Together,



154 the rates of bypass graft patency during the operation and 6 month follow up were 100% and  
155 96.2%, respectively.

156 Among the 33 patients with 36 operated hemispheres of the non-flow-controlled group,  
157 9 patients (9 hemispheres) occurred symptomatic CHP. The clinical presentations of  
158 symptomatic CHP included small cerebral hematoma (7ml) in 1 patient, moderate cerebral  
159 hematoma (20ml) in 1 patient, aphasia in 5 patients, seizure in 2 patients, and motor  
160 weakness in 7 patients. Most of the patients completely recovered, except that the patient  
161 with moderate cerebral hematoma developed permanent neurological deficits (Table 2).

162 In comparison, among the 49 patients with 53 operated hemispheres of the  
163 flow-controlled group, only 3 patients (3 hemispheres) suffered from temporary neurological  
164 deterioration due to postoperative focal CHP (Table 2). Importantly, no intraoperative or  
165 postoperative cerebral hemorrhage occurred in this group.

166 The results of the multivariate analysis revealed that the flow-controlled procedure was  
167 significantly associated with the development of focal ( $P = 0.005$ ) and symptomatic ( $P =$   
168  $0.012$ ) CHP. Moreover, other factors such as age, sex, surgical side, initial onset type, and  
169 Suzuki stage were not associated with both focal and symptomatic CHP (Table 3).

## 170 **Illustrative Case**

171 This case was a young man (36-40 years old) who presenting with recurrent weakness of the  
172 left limbs for 3 months and diagnosed with MMD by DSA. Although no cerebral infarct was  
173 observed from the MRI images,  $^{99m}\text{Tc}$ -ECD-SPECT showed there was significantly  
174 decreased CBF in the right frontal and parietal lobes. The DSA demonstrated that blood flow  
175 of the PSCAs above the sylvian fissure totally came from the anterograde MCA. Then we

176 decided to perform a flow-controlled anastomosis on a PSCA above the sylvian fissure of the  
177 right hemisphere (the detailed procedure was introduced in Figure 3). The temporary  
178 occlusion time was 16 minutes. Postoperative blood pressure was maintained in the normal  
179 range, and he did not present any neurological deficit perioperatively.

## 180 **Discussion**

181 In this study, we proposed, for the first time, a new concept of surgical revascularization  
182 which named as “flow-controlled” STA-MCA anastomosis for adult patients with MMD  
183 during performing direct anastomoses on recipient arteries with antegrade hemodynamic  
184 sources from the MCA (M-PSCAs). This “flow-controlled” anastomosis can reduce the  
185 incidence of postoperative CHP for those high-risk patients.

### 186 **Flow-controlled STA-MCA anastomosis and postoperative CHP**

187 According to our previous study, direct anastomoses of M-PSCAs had a high risk of  
188 postoperative CHP during STA-MCA anastomosis in adult patients with MMD.<sup>23</sup> The  
189 M-PSCAs were defined as PSCAs with antegrade blood flow that came from the ICA via  
190 the stenotic MCA or moyamoya vessels to the cortical arteries. Thus, the M-PSCAs  
191 represents a less efficiently hemodynamic blood flow distribution system when selected as  
192 recipient arteries.<sup>23</sup> The poor vascular network related to the M-PSCAs makes the  
193 pathological vessels unable to control the suddenly and maximumly increased CBF after  
194 STA-MCA anastomosis, CHP develops in consequence.<sup>16,19,21</sup> According to the long term  
195 follow up data of combined bypass for adult MMD in our center, the DSA images showed  
196 direct revascularization performed on recipient PSCAs with hemodynamic flow from the  
197 MCA provided much less contribution to postoperative flow augmentation than indirect

198 revascularization regardless of using the “flow-controlled” or not. Thus we preferred to  
199 sacrifice part of the bypass flow in this cohort patients with a high risk of postoperative CHP.  
200 On the other hand, to ensure a success direct anastomosis, we guaranteed the diameters of the  
201 selected recipient arteries to be about 1mm. As a result, in the flow-controlled group of this  
202 study, the rate of bypass graft patency during the operation and 6 month follow up was 100%  
203 and 96.2%, respectively. The symptoms of all the ischemic MMD patients improved  
204 immediately after surgery. Although flow-controlled, improved cerebral perfusion was  
205 observed postoperatively during 6 month follow up in this cohort patients.

206 In the present study, the recipient arteries in less than half of the hemispheres (48.9%,  
207 89/182) had blood flow from the MCA. Of these 89 hemispheres, the earlier 36 hemispheres  
208 were performed STA-MCA anastomoses using the traditional maximized flow augmentation  
209 concept. However, there were amazingly high incidences of focal (52.8%) and symptomatic  
210 (25%) postoperative CHP observed during their surgical procedures. Consequently, the  
211 following 53 hemispheres were performed the specifically designed flow-controlled  
212 STA-MCA anastomoses. As the result demonstrated, the incidences of focal and symptomatic  
213 postoperative CHP were significantly decreased after using the flow-controlled concept.  
214 Furthermore, the clinical presentations of symptomatic CHP in the flow-controlled group  
215 were much milder than those in the non-flow-controlled group. Multivariate analysis revealed  
216 that using the flow-controlled concept or not was significantly associated with the  
217 development of focal and symptomatic CHP. Together, these findings suggest that the  
218 flow-controlled method can significantly decrease the incidence of postoperative CHP and  
219 help to prevent the occurrence of symptomatic CHP. Our goal is to control the extent of

220 increased intracranial blood flow for this kind of specific patients, rather than to maximize it  
221 indiscriminately.

## 222 **Basic principles of the flow-controlled STA-MCA anastomosis**

223 As the vasculature is a dynamic and pulsatile system, the post-anastomosis hemodynamic  
224 changes may not be completely consistent with that seen in a rigid tube as the  
225 Hagen-Poiseuille equation described.<sup>8</sup> Nevertheless, the correlation among the blood flow,  
226 lumen diameter, flow velocity and other parameters is still valid.<sup>13</sup> In our traditional  
227 understanding of STA-MCA anastomosis, in order to improve intracranial ischemia and  
228 hypoperfusion, techniques that aimed to maximumly realize the blood flow augmentation  
229 were adopted, such as mild dilation of the STA with pressurized saline containing heparin, a  
230 arteriotomy (oblique transection of the distal STA at a 60° angle as well as a longitudinal  
231 incision in the arterial wall) to increase the area of the anastomosis site, shorten the length of  
232 the STA, selecting the stronger STA branch (if possible) as the donor artery and the cortical  
233 artery with the largest size (if possible) as the recipient artery, etc. These techniques were in  
234 accordance with the procedures introduced in the previous studies.<sup>2,22,24</sup>

235 The concept of the flow-controlled STA-MCA anastomosis is basically contrary to that  
236 of the maximized flow augmentation STA-MCA anastomosis with the aim of reducing the  
237 hemodynamic difference between the STA and recipient M-PSCAs, however, it  
238 simultaneously ensures positive blood flow to the brain. Several basic principles of the  
239 “flow-controlled” STA-MCA anastomosis should be noted based on the Poiseuille equation:

240 1) Controlling the “L” in the equation: First, ensuring the length of the final donor  
241 STA > 10 cm, which is similar to one reported study;<sup>12</sup> As we know, a linear relationship

242 exists between the vessel length and the resistance, which is often exploited during bypass  
243 surgery to regulate the vascular resistance, thereby adjusting the flow into the recipient vessel  
244 through the graft.<sup>16</sup> Second, selecting the thinner branch of the STA as the donor artery, but  
245 ensuring its diameter > 1mm, if possible. Most of time it is easy to achieve because the mean  
246 diameter of the STA was 1.3mm.<sup>21</sup>

247 2) Controlling the “ $\Delta p$ ” in the equation: Normally, there are several PSCAs suitable for  
248 anastomosis and the mean diameter of the PSCAs is 1.4 mm (0.8mm-1.6mm), which makes  
249 the choosing of recipient artery a difficult and confusing problem for neurosurgeons.<sup>1,10,12</sup> Our  
250 “flow-controlled” method suggests selecting one with its diameter about or near to 1mm as  
251 the recipient artery for avoiding postoperative poor revascularization. In addition, we follow a  
252 principle of matching selection of donor and recipient vessels when deciding the recipient  
253 artery.<sup>9</sup>

254 3) Controlling the “r” in the equation: According to the Hagen-Poiseuille equation, a  
255 change in radius alters resistance and it therefore has the biggest impact on flow. Due to lack  
256 of reference standards, we designed the length of the arteriotomy less than 1.2-fold the  
257 diameter of the recipient artery. This ensures positive blood flow from STA to the brain but  
258 not excessive.

## 259 **Limitations**

260 Our study is limited by its retrospective nature. Moreover, it is a single-center study which  
261 creates regional bias of the sample which could be an issue. As FLOW 800 analysis allows  
262 only detection of procedure-related hemodynamic changes within the microcirculation and  
263 macrocirculation but not assessment of quantitative perfusion or flow,<sup>17</sup> precise flow

264 evaluation was absent in this study. Large sample size studies with accurate flow  
265 measurement are needed in the future.

## 266 **Conclusions**

267 In this study, we suggested a new concept of STA-MCA anastomosis for adult MMD, which  
268 named as flow-controlled anastomosis. As a complementary method to the traditional direct  
269 bypass procedure, the flow-controlled anastomosis ensures a “controlled”, rather than a  
270 “maximized” augmentation of blood flow through reducing the hemodynamic difference  
271 between the STA and recipient M-PSCAs, and consequently decreases the incidence of  
272 postoperative CHP in adult patients with MMD.

## 273 **Acknowledgments**

274 This study was partly supported by two projects of the National Natural Science Foundation  
275 of China (81671157 and 8217052644).

## 276 **References**

- 277 1. Bai J, Zhao YL, Wang R, Zhang D, Wang S, Zhao JZ, et al: Regional cerebral perfusion  
278 and ischemic status after standard superficial temporal artery-middle cerebral artery  
279 (STA-MCA) bypass surgery in ischemic cerebrovascular disease. **Childs Nerv Syst**  
280 **28:579-586**, 2012
- 281 2. Esposito G, Kronenburg A, Fierstra J, Braun KP, Klijn CJ, van der Zwan A, et al:  
282 Surgical Techniques in Moyamoya Vasculopathy: Tricks of the Trade. **New York,**  
283 **Vereinigte Staaten: Georg Thieme Verlag; 2019; 60-67.**
- 284 3. Fujimura M, Kaneta T, Tominaga T: Efficacy of superficial temporal artery-middle  
285 cerebral artery anastomosis with routine postoperative cerebral blood flow measurement

- 286 during the acute stage in childhood moyamoya disease. **Childs Nerv Syst** **24**:827-832,  
287 2008
- 288 4. Fujimura M, Niizuma K, Endo H, Sato K, Inoue T, Shimizu H, et al: Quantitative  
289 analysis of early postoperative cerebral blood flow contributes to the prediction and  
290 diagnosis of cerebral hyperperfusion syndrome after revascularization surgery for  
291 moyamoya disease. **Neurol Res** **37**:131-138, 2015
- 292 5. Fujimura M, Shimizu H, Inoue T, Mugikura S, Saito A, Tominaga T: Significance of  
293 focal cerebral hyperperfusion as a cause of transient neurologic deterioration after  
294 extracranial-intracranial bypass for moyamoya disease: comparative study with  
295 non-moyamoya patients using N-isopropyl-p-[(123)I]iodoamphetamine single-photon  
296 emission computed tomography. **Neurosurgery** **68**:957-964; discussion 964-955, 2011
- 297 6. Fujimura M, Tominaga T: Lessons learned from moyamoya disease: outcome of  
298 direct/indirect revascularization surgery for 150 affected hemispheres. **Neurol Med Chir**  
299 **(Tokyo)** **52**:327-332, 2012
- 300 7. Fukui M: Guidelines for the diagnosis and treatment of spontaneous occlusion of the  
301 circle of Willis ('moyamoya' disease). Research Committee on Spontaneous Occlusion of  
302 the Circle of Willis (Moyamoya Disease) of the Ministry of Health and Welfare,  
303 Japan. **Clin Neurol Neurosurg** **99 Suppl 2**:S238-240, 1997
- 304 8. Holmes AP, Ray CJ, Kumar P, Coney AM: A student practical to conceptualize the  
305 importance of Poiseuille's law and flow control in the cardiovascular system. **Adv**  
306 **Physiol Educ** **44**:436-443, 2020

- 307 9. Hu, Zeng X, Su K, Tian X, Chen J, Zhang: Matching Selection of Donor-Recipient  
308 Vessels in Revascularization Surgery Effectively Reduce the Incidence of Postoperative  
309 Hyperperfusion Syndrome in Adult Moyamoya Disease: A Retrospective Comparison  
310 Study. **Cerebrovasc Dis** **49**:361-368, 2020
- 311 10. Kathuveetil A, Sylaja PN, Senthilvelan S, Kesavadas C, Banerjee M, Jayanand Sudhir B:  
312 Vessel Wall Thickening and Enhancement in High-Resolution Intracranial Vessel Wall  
313 Imaging: A Predictor of Future Ischemic Events in Moyamoya Disease. **AJNR Am J**  
314 **Neuroradiol** **41**:100-105, 2020
- 315 11. Kuroda S, Houkin K: Moyamoya disease: current concepts and future  
316 perspectives. **Lancet Neurol** **7**:1056-1066, 2008
- 317 12. Lee M, Guzman R, Bell-Stephens T, Steinberg GK: Intraoperative blood flow analysis of  
318 direct revascularization procedures in patients with moyamoya disease. **J Cereb Blood**  
319 **Flow Metab** **31**:262-274, 2011
- 320 13. Li J, Jin M, Sun X, Li J, Liu Y, Xi Y, et al: Imaging of Moyamoya Disease and  
321 Moyamoya Syndrome: Current Status. **J Comput Assist Tomogr** **43**:257-263, 2019
- 322 14. Liu JJ, Steinberg GK: Direct Versus Indirect Bypass for Moyamoya Disease. **Neurosurg**  
323 **Clin N Am** **28**:361-374, 2017
- 324 15. Ogasawara K, Komoribayashi N, Kobayashi M, Fukuda T, Inoue T, Yamadate K, et al:  
325 Neural damage caused by cerebral hyperperfusion after arterial bypass surgery in a  
326 patient with moyamoya disease: case report. **Neurosurgery** **56**:E1380; discussion E1380,  
327 2005



- 328 16. Ogasawara K, Yukawa H, Kobayashi M, Mikami C, Konno H, Terasaki K, et al:  
329 Prediction and monitoring of cerebral hyperperfusion after carotid endarterectomy by  
330 using single-photon emission computerized tomography scanning. **J Neurosurg**  
331 **99**:504-510, 2003
- 332 17. Prinz V, Hecht N, Kato N, Vajkoczy P: FLOW 800 allows visualization of hemodynamic  
333 changes after extracranial-to-intracranial bypass surgery but not assessment of  
334 quantitative perfusion or flow. **Neurosurgery 10 Suppl 2**:231-238; discussion 238-239,  
335 2014
- 336 18. Research Committee on the P, Treatment of Spontaneous Occlusion of the Circle of W,  
337 Health Labour Sciences Research Grant for Research on Measures for Infractable D:  
338 Guidelines for diagnosis and treatment of moyamoya disease (spontaneous occlusion of  
339 the circle of Willis). **Neurol Med Chir (Tokyo) 52**:245-266, 2012
- 340 19. Sato S, Kojima D, Shimada Y, Yoshida J, Fujimato K, Fujiwara S, et al: Preoperatively  
341 reduced cerebrovascular contractile reactivity to hypocapnia by hyperventilation is  
342 associated with cerebral hyperperfusion syndrome after arterial bypass surgery for adult  
343 patients with cerebral misery perfusion due to ischemic moyamoya disease. **J Cereb**  
344 **Blood Flow Metab 38**:1021-1031, 2018
- 345 20. Uchino H, Kuroda S, Hirata K, Shiga T, Houkin K, Tamaki N: Predictors and clinical  
346 features of postoperative hyperperfusion after surgical revascularization for moyamoya  
347 disease: a serial single photon emission CT/positron emission tomography study. **Stroke**  
348 **43**:2610-2616, 2012

- 349 21. van Mook WN, Rennenberg RJ, Schurink GW, van Oostenbrugge RJ, Mess WH,  
350 Hofman PA, et al: Cerebral hyperperfusion syndrome. **Lancet Neurol** 4:877-888, 2005
- 351 22. Veeravagu A, Guzman R, Patil CG, Hou LC, Lee M, Steinberg GK: Moyamoya disease  
352 in pediatric patients: outcomes of neurosurgical interventions. **Neurosurg Focus** 24:E16,  
353 2008
- 354 23. Zhang J, Li S, Fujimura M, Lau TY, Wu X, Hu M, et al: Hemodynamic analysis of the  
355 recipient parasylvian cortical arteries for predicting postoperative hyperperfusion during  
356 STA-MCA bypass in adult patients with moyamoya disease. **J Neurosurg**:1-8, 2019
- 357 24. Zipfel GJ, Fox DJ, Jr., Rivet DJ: Moyamoya disease in adults: the role of cerebral  
358 revascularization. **Skull Base** 15:27-41, 2005

359 **Figure Legend:**

360 **Figure 1. Patient inclusion flowchart.**

361 MMD, moyamoya disease; STA, superficial temporal artery; MCA, middle cerebral artery;  
362 EDMS, encephaloduromysynangiosis; CBF, cerebral blood flow; PSCA, parasylvian  
363 cortical artery; 3D DSA-MR fusion imaging, three-dimensional (3D) digital subtraction  
364 angiography (DSA)-magnetic resonance (MR) fusion imaging; CHP, cerebral hyperperfusion.

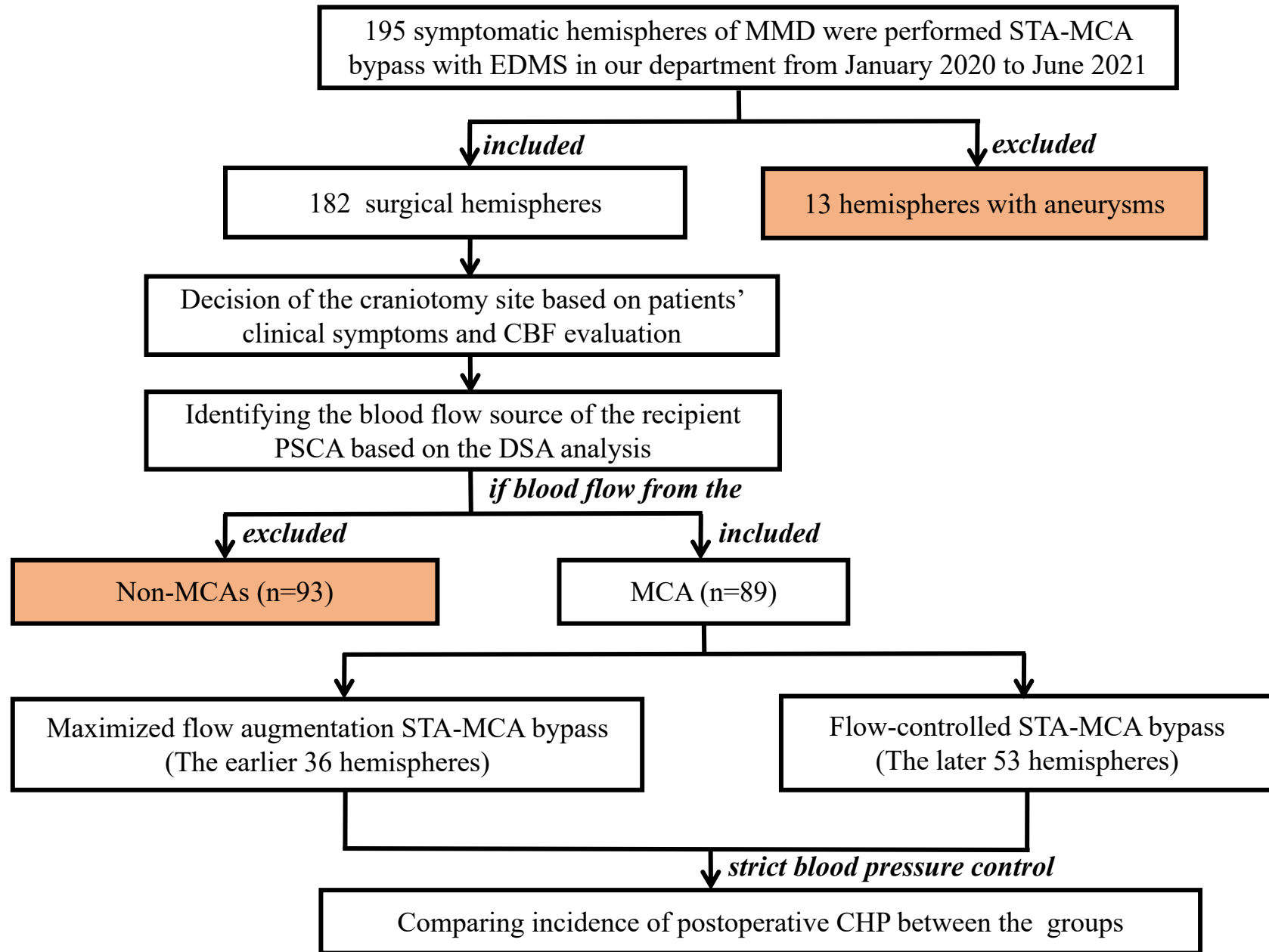
365 **Figure 2. Representative images of focal cerebral hyperperfusion**

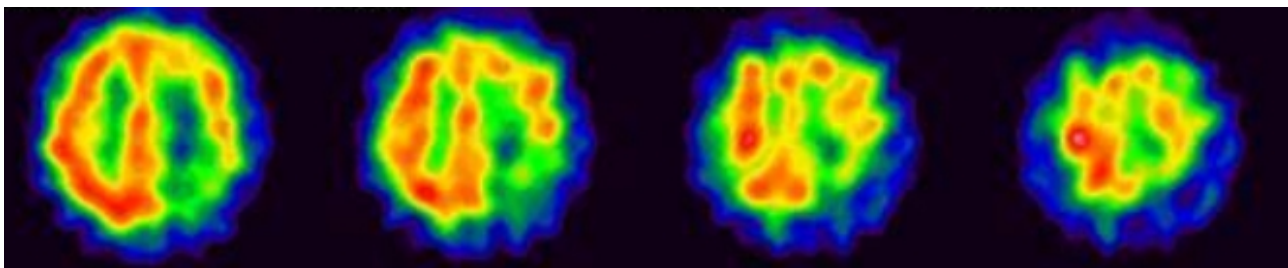
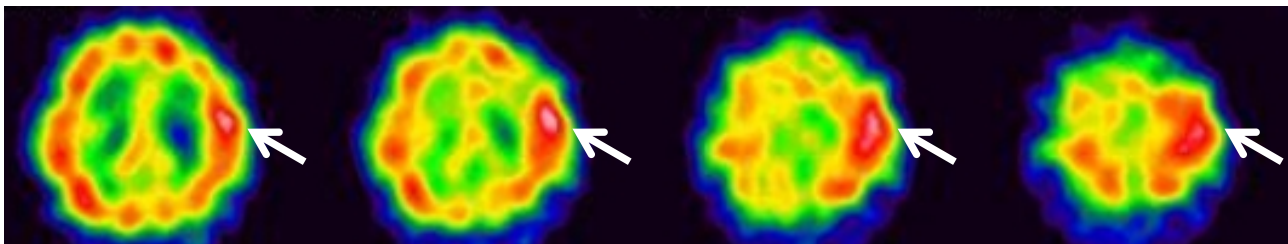
366 **(A)** 99mTc-ECD single-photon emission computed tomography (99mTc-ECD-SPECT) one  
367 day after left STA-MCA anastomosis with EDMS. Focal increase in cerebral blood flow  
368 (CBF) was evident at the site of the anastomosis (white arrows in A). **(B)** MRA two days after  
369 operation, demonstrating high signal intensity of the STA branch (red arrow in B).

370 **Figure 3. A representative case performed the flow-controlled STA-MCA anastomosis**

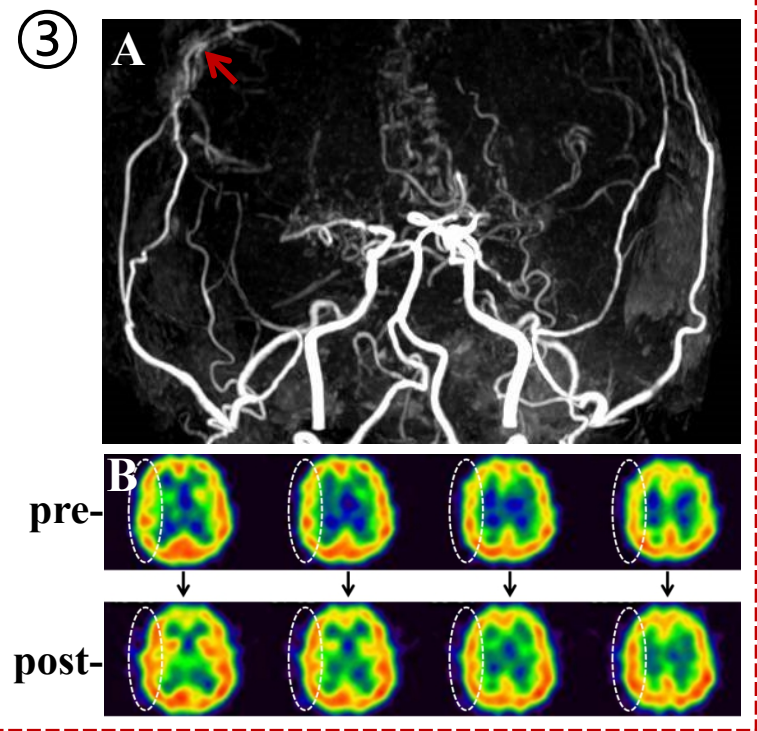
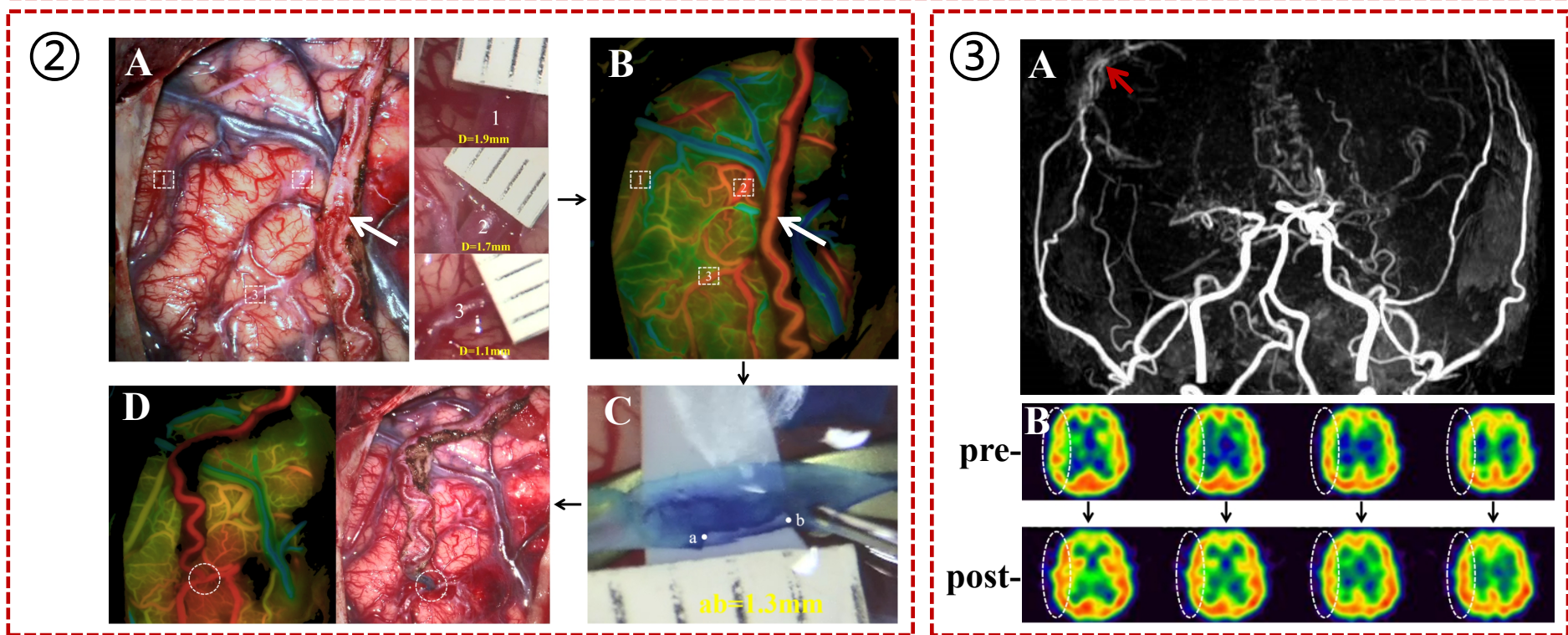
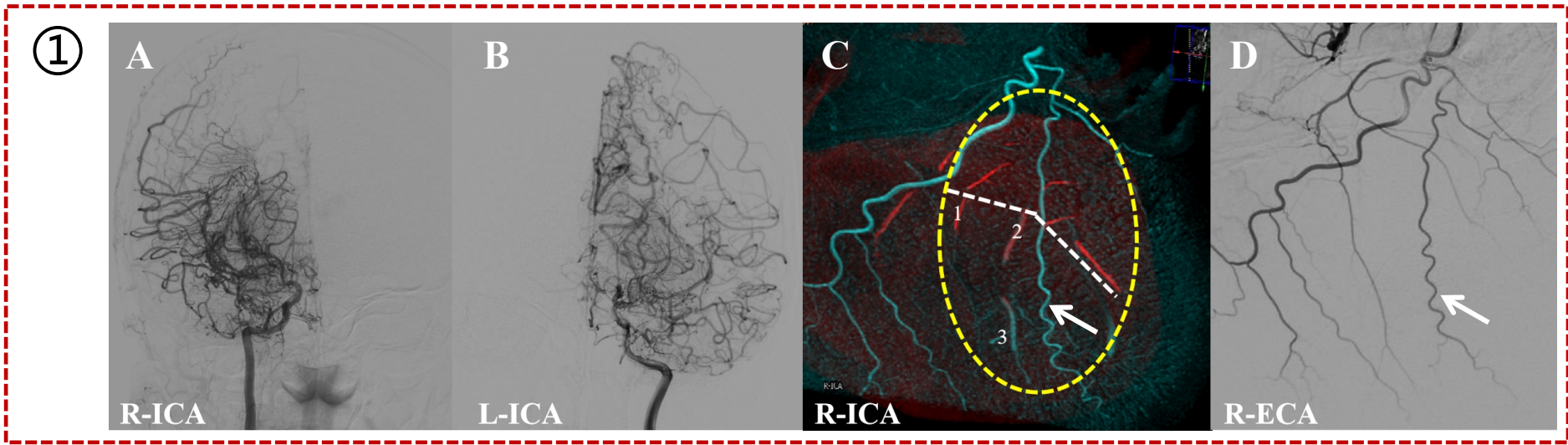
371 ① **(A and B)** the diagnosis of MMD was established by DSA imaging. **(C)** Using 3D  
372 DSA-MR fusion imaging, the hemodynamic sources of the PSCAs in the operating field  
373 (yellow dashed oval) were clearly identified from the right MCA. Red indicates the blood on  
374 the 3D DSA images and cyan represents the blood on the MRA images. **(D)** the DSA showed  
375 two branches of STA, the thinner one (white arrow) was selected as the donor artery. ② **(A)**  
376 the STA branch was kept patency when dissecting it from the scalp and during the craniotomy.  
377 The diameters of all potential recipient PSCAs (Number 1, 2 and 3) were 1.9 mm, 1.7 mm  
378 and 1.1 mm, respectively. **(B)** a flow 800 indocyanine green (ICG) video angiography was  
379 performed to observe the velocity difference between the donor artery and all potential  
380 recipient PSCAs. **(C)** Because the PSCA labeled No.3 had a very close flow velocity to the

381 donor artery and only 1.1 mm in diameter, it was ultimately selected as the recipient artery  
382 and the length of the arteriotomy was designed to be 1.3 mm. **(D)** Post-anastomosis flow-800  
383 analysis showed the patency of the anastomosis and increased cerebral perfusion around it.  
384 **③ (A)** Postoperative MRA 2 days after surgery demonstrated the high signal intensity of the  
385 donor STA branch (red arrow). **(B)** 99mTc-ECD-SPECT 1 day after surgery revealed an  
386 overall rather than focal increase in CBF at the surgical hemisphere compared to the  
387 preoperative CBF (white dashed ovals).



**A****Pre-****Post-****B**





**Table 1 Comparison of basic characteristics and incidence of postoperative CHP between two groups**

|                           | “Maximized flow augmentation” bypass<br>(n=36) | “Flow-controlled ” bypass<br>(n=53) | <i>P</i> Value |
|---------------------------|--|-------------------------------------|----------------|
| Age, y                    | 46.75 ± 11.30                                  | 47.23 ± 9.32                        | 0.829          |
| Male sex (%)              | 20 (55.6)                                      | 20 (37.7)                           | 0.097          |
| Hemorrhagic onset (%)     | 11 (30.6)                                      | 21 (39.6)                           | 0.382          |
| Surgical side (lt, %)     | 18 (50.0)                                      | 27 (50.9)                           | 0.930          |
| SBP before surgery        | 126.81 ± 15.03                                 | 128.68 ± 14.70                      | 0.560          |
| SBP one day after surgery | 121.33 ± 11.72                                 | 123.17 ± 8.98                       | 0.405          |
| Suzuki Stage (%)          |  |                                     | 0.148          |
| 2                         | 4 (11.1)                                       | 9 (17.0)                            |                |
| 3                         | 17 (47.2)                                      | 33 (62.3)                           |                |
| 4                         | 14 (38.9)                                      | 11 (20.7)                           |                |
| 5                         | 1 (2.8)  | 0 (0)                               |                |
| Focal CHP                 | 19 (52.8)                                      | 12 (22.6)                           | 0.003          |
| Symptomatic CHP           | 9 (25.0)                                       | 3 (5.7)                             | 0.009          |

CHP = Cerebral hyperperfusion. SBP = systolic blood pressure.



**Table 2 Clinical presentations and outcome of symptomatic CHP**

| No. | Age range | Sex    | Surgical side | Suzuki's stage | Onset type  | "Flow-controlled" | Clinical presentations of symptomatic CHP                                       | Prognosis |
|-----|-----------|--------|---------------|----------------|-------------|-------------------|---|-----------|
| 1   | 20-25     | Male   | Right         | 3              | Ischemic    | Yes               | Dysarthria, seizure   | Good      |
| 2   | 46-50     | Female | Left          | 4              | Ischemic    | Yes               | Motor aphasia   | Good      |
| 3   | 46-50     | Female | Left          | 3              | Ischemic    | Yes               | Motor aphasia, weakness of the right limbs                                      | Good      |
| 4   | 50-55     | Male   | Right         | 4              | Ischemic    | No                | Seizure, weakness of the left limbs   | Good      |
| 5   | 15-20     | Female | Left          | 3              | Hemorrhagic | No                | Motor aphasia, weakness of the right limbs                                      | Good      |
| 6   | 50-55     | Male   | Left          | 5              | Ischemic    | No                | Moderate hematoma in the bypass site (20ml), motor aphasia and right hemiplegia | Disabled  |
| 7   | 50-55     | Female | Right         | 2              | Ischemic    | No                | Sensory aphasia, weakness of the right limbs                                    | Good      |
| 8   | 46-50     | Female | Left          | 2              | Ischemic    | No                | Motor aphasia   | Good      |
| 9   | 46-50     | Male   | Left          | 4              | Hemorrhagic | No                | Small hematoma near the bypass site (7ml)                                       | Good      |
| 10  | 51-55     | Female | Left          | 4              | Ischemic    | No                | Numbness and weakness of the right limbs  | Good      |
| 11  | 46-50     | Female | Right         | 3              | Ischemic    | No                | Seizure, weakness of the left limbs   | Good      |
| 12  | 56-60     | Female | Left          | 3              | Ischemic    | No                | Motor aphasia, weakness of the right limbs                                      | Good      |

CHP = Cerebral hyperperfusion; ml = milliliter.

**Table 3 Multivariate analysis of postoperative CHP after direct anastomoses of recipient PSCAs with anterograde hemodynamic sources from the MCA**

| Factors                                      | Focal CHP     |              | OR (95% CI)          | P value | Symptomatic CHP |              | OR (95% CI)           | P value |
|--|---------------|--------------|----------------------|---------|-----------------|--------------|-----------------------|---------|
|  | Yes<br>(n=31) | No<br>(n=58) |                      |         | Yes<br>(n=12)   | No<br>(n=77) |                       |         |
| Age, y                                       | 47.13 ± 10.88 | 46.98 ± 9.77 | 0.997 (0.952-1.045)  | 0.913   | 45.92 ± 12.03   | 47.21 ± 9.86 | 0.967 (0.908-1.029)   | 0.286   |
| Male sex (%)                                 | 12 (38.7%)    | 28 (48.3%)   | 2.340 (0.828-6.613)  | 0.109   | 4 (33.3%)       | 36 (46.8%)   | 2.652 (0.594-11.849)  | 0.202   |
| Suzuki stage (2/3/4/5)                       | 4/15/11/1     | 9/35/14/0    | 1.445 (0.696- 3.002) | 0.323   | 2/5/4/1         | 11/45/21/0   | 1.520 (0.558- 4.140)  | 0.412   |
| Surgical side (lt, %)                        | 15 (48.4%)    | 30 (51.7%)   | 1.324 (0.508- 3.451) | 0.565   | 8 (66.7%)       | 37 (48.1%)   | 0.375 (0.086- 1.639)  | 0.192   |
| Hemorrhagic onset (%)                        | 10 (32.3%)    | 22 (37.9%)   | 1.095 (0.402- 2.984) | 0.860   | 2 (16.7%)       | 30 (39.0%)   | 3.786 (0.636- 22.543) | 0.144   |
| Flow-controlled /maximized flow augmentation | 12/19         | 41/17        | 0.238 (0.088-0.644)  | 0.005   | 3/9             | 50/27        | 0.140 (0.030-0.647)   | 0.012   |

CHP = Cerebral hyperperfusion; PSCAs = parasylvian cortical arteries; MCA = middle cerebral artery; OR = Odd Ratio; CI = Confidence Interval.