

1 **Evidence for altered neural activity patterns after MDMA-assisted therapy in adults with**
2 **chronic and severe post-traumatic stress disorder: a pilot study**

3
4 S. Parker Singleton¹, Julie B. Wang, M.P.H, Ph.D.², Michael Mithoefer, M.D. ^{2,3}, Colleen
5 Hanlon, Ph.D.⁴, Mark S. George, M.D.^{3,5}, Annie Mithoefer², Oliver Mithoefer, M.D.³, Allison R.
6 Coker, Ph.D. ^{2,6}, Berra Yazar-Klosinski, Ph.D.⁷, Amy Emerson ², Rick Doblin, Ph.D.⁷, Amy
7 Kuceyeski, Ph.D.^{1,8}

8
9 ¹ Department of Computational Biology, Cornell University, Ithaca, NY 14850, USA

10 ²MAPS Public Benefit Corporations, San Jose, CA 95117, USA.

11 ³Department of Psychiatry and Behavioral Sciences, Medical University of South Carolina,
12 Charleston, SC 29425-0742, USA.

13 ⁴Wake Forest School of Medicine, Winston-Salem, NC 27101 USA

14 ⁵ Ralph H. Johnson VA Medical Center, Charleston, SC 29425 USA

15 ⁶ Department of Neurology, University of California, San Francisco, San Francisco, CA, USA

16 ⁷ Multidisciplinary Association for Psychedelic Studies, San Jose, CA 95117, USA.

17 ⁸ Department of Radiology, Weill Cornell Medicine, New York, New York 10021, USA

18

19 **Corresponding Author:** S. Parker Singleton; Email: sps253@cornell.edu

20

21 For submission as an Original Article to the *Frontiers in Psychiatry*

22 Total word count = <10,000 words

MDMA-AT Neural Response

23 **Role of Funding Sources:** The clinical trial was sponsored by the Multidisciplinary Association
24 for Psychedelic Studies (MAPS), a 501(c)(3) nonprofit organization. MAPS provided the
25 MDMA and fully funded this study from private and foundation donations. MAPS Public
26 Benefit Corporation (MAPS PBC), wholly owned by MAPS, was the trial organizer. SPS is
27 supported by the National Science Foundation Graduate Research Fellowship (Grant No. DGE-
28 1650441). AK is supported by the National Institutes of Health (RF1MH123232 and
29 R01NS102646).

30 **Contributors:** SPS and AK had full access to all the data in the study and take responsibility for
31 the integrity of the data and for the accuracy of the data analysis. BYK, AE, MM, RD conceived
32 and designed the clinical trial part of the study. MM & AM carried out experimental treatments
33 and recorded participant scripts. AE carried out sponsor oversight of data collection. CH and
34 MSG designed the imaging tasks and acquisition. CH, MSG, and OM oversaw the scanning and
35 data collection. SPS, AK, JW, AC drafted the paper. SPS carried out preprocessing, analysis, and
36 interpretation of data. RD obtained funding for the study. All authors contributed to the critical
37 review and final version of the manuscript.

38 **Conflict of Interest:** MM was paid as a contractor by MAPS PBC. AE, CP, AC, and JW
39 received salary support for full-time employment with MAPS PBC. BYK and RD received
40 salary support for full-time employment with MAPS. MM is on the Clinical Advisory Board of
41 Awakn Life Sciences.

42 **Acknowledgements:** The authors would like to thank the candidates who were willing to be
43 screened for eligibility; the participants in the trial who contributed their data; S. Sadler for her
44 dedication as the Study Coordinator; S. Braswell for serving as night attendant, M. Wagner and
45 J. Wymer for Independent Rater assessments. The authors would also like to thank: J. Holland

MDMA-AT Neural Response

46 who supported this trial as a Medical Monitor; L. Jerome for her numerous and varied
47 contributions to this Clinical Development Program since prior to its inception with global
48 systematic literature reviews and medical coding; C. Hennigan for data management; R.
49 Matthews and B. Shechet for clinical operations and monitoring; J. Sonstroem and A. Seltzer for
50 randomization support and system programming; E. Sola, Y. Gelfand, and B. Cohen for
51 conducting adherence ratings to facilitate standardization of therapy; I. Gorman for development
52 of adherence ratings; A. Wilens for supporting video recording. The authors would like to thank
53 Dr. Edmund Higgins for catalyzing the first discussions about acquiring imaging data in the
54 MAPS trial.

55

56

57 **ABSTRACT**

58 3,4-methylenedioxyamphetamine-assisted therapy (MDMA-AT) for post-traumatic stress
59 disorder (PTSD) has demonstrated promise in multiple clinical trials. MDMA is hypothesized to
60 facilitate the therapeutic process, in part, by decreasing fear response during fear memory
61 processing while increasing extinction learning retention. The acute administration of MDMA in
62 healthy controls modifies recruitment of brain regions involved in the hyperactive fear response
63 in PTSD such as the amygdala and hippocampus. However, to date there have been no
64 neuroimaging studies aimed at directly elucidating the neural impact of MDMA-AT in PTSD
65 patients. We analyzed brain activity and connectivity via functional MRI during both rest and
66 autobiographical memory (trauma and neutral) response before and two-months after MDMA-
67 AT for PTSD in nine veterans and first-responders. We find that MDMA-AT (i) increases
68 amygdala-hippocampal resting-state functional connectivity, and (ii) reduces amygdala-
69 precuneus functional connectivity during neutral autobiographical memory recall in a manner
70 that co-varies with reduction of PTSD severity. These findings compliment previous research
71 indicating that amygdala-hippocampal functional connectivity is a potential target of MDMA-AT
72 and highlights other regions of interest related to memory processes. More research is necessary
73 to determine if these findings are specific to MDMA-AT compared to other types of treatment
74 for PTSD.

75

76 This study: NCT02102802 Parent-study: NCT01211405

77

MDMA-AT Neural Response

78 Keywords: PTSD, MDMA, amygdala, hippocampus, precuneus, symptom provocation,
79 retrosplenial cortex, dissociation, insula, fMRI, functional connectivity, resting-state,
80 autobiographical memory.

81 **1. INTRODUCTION**

82 Post-traumatic stress disorder (PTSD), which can arise following exposure to a traumatic event
83 or repeated stressful events, impacts hundreds of millions of people, and is a debilitating social
84 and economic burden on individuals and their families. PTSD is associated with an increased
85 fear response (VanElzakker, Staples-Bradley, and Shin 2018) and distressing and intrusive re-
86 experiencing of traumatic memories (Ehlers 2010) that often serves as a barrier to the therapeutic
87 process. Current psychological therapies for PTSD have high dropout rates (Goetter et al. 2015),
88 especially trauma focused therapies (Lewis et al. 2020). When presented with trauma-related
89 stimuli, PTSD patients have shown increased activation in the precuneus, retrosplenial cortex,
90 anterior cingulate cortex (ACC), and amygdala compared to neutral stimuli (Sartory et al. 2013),
91 suggesting augmented recruitment of brain regions involved in self-referential processing
92 (Cavanna and Trimble 2006), salient autobiographical memory (Svoboda, McKinnon, and
93 Levine 2006; Spreng, Mar, and Kim 2009; Sestieri et al. 2011; Maddock 1999), and fear and
94 emotion (LeDoux 2003).

95
96 3,4-methylenedioxymethamphetamine-assisted therapy (MDMA-AT) is hypothesized to reduce
97 the fear response associated with re-experiencing traumatic memories, and therefore may
98 facilitate tolerable processing of traumatic content in patients with PTSD (Mithoefer et al. 2011).
99 Phase 2 and 3 trials have demonstrated promise for MDMA-AT as a viable treatment for PTSD
100 (Mitchell et al. 2021; Mithoefer et al. 2019; Wang et al. 2021; Jerome et al. 2020). In healthy
101 individuals, acute administration of MDMA has been shown to enhance positive and reduce
102 negative affect during the recollection of autobiographical memories, while preserving vividness
103 and emotional intensity (Carhart-Harris et al. 2014). In another study, MDMA was found to

MDMA-AT Neural Response

104 preserve the memory accuracy when administered during both encoding and retrieval phases,
105 while attenuating the recollection of salient details for both positive and negative memories,
106 suggesting that MDMA alters emotional memory representations (Doss et al. 2018). Again in
107 healthy controls, MDMA was found to enhance fear extinction retention rates compared to
108 placebo when administered during extinction training phases (Maples-Keller et al. 2022). These
109 findings suggest that MDMA may aid the therapeutic process, in part, by enabling patient access
110 to emotionally challenging material and facilitating memory reconsolidation/fear extinction
111 processes (Feduccia and Mithoefer 2018).

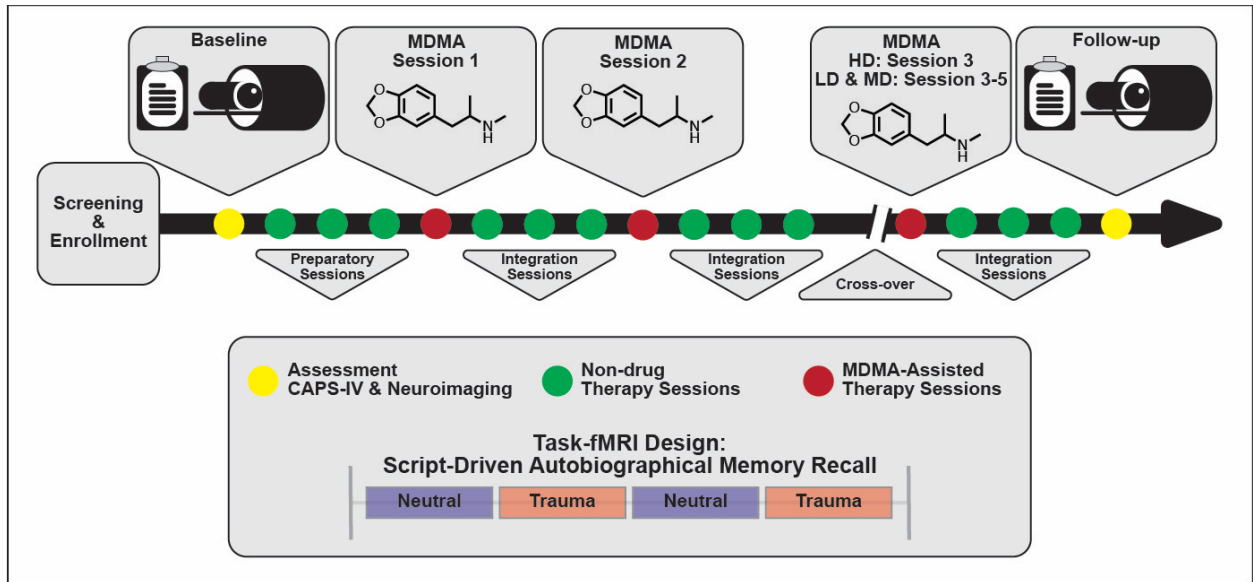
112
113 The exact neurobiological underpinnings of PTSD and the specific effects of MDMA-AT in
114 individuals with PTSD have not been fully characterized, but several studies suggest the
115 amygdala and hippocampus play an important role. The amygdala is broadly associated with fear
116 response, and the hippocampus, associated with learning and memory, may provide contextual
117 information necessary for cognitive-affect during memory recall (LeDoux 2003; Harnett,
118 Goodman, and Knight 2020; Pitman et al. 2012). Sripada et al. (2012) found combat veterans
119 with PTSD have decreased amygdala-hippocampal resting-state functional connectivity (RSFC)
120 compared to combat veterans without PTSD, which the authors speculate may represent an
121 inability to contextualize affective information in PTSD. In healthy volunteers, the acute
122 administration of MDMA has the reverse effect, namely, increased amygdala-hippocampal
123 RSFC (Carhart-Harris, 2015). Despite evidence that RSFC between the amygdala and
124 hippocampus is implicated in PTSD and that this connection may be modulated by MDMA, no
125 study to date has shown relationships between changes in these regions' functional connectivity
126 and the therapeutic effects of MDMA-AT.

127
128 Herein, we describe results from a study of combat veterans and first-responders undergoing
129 MDMA-AT for PTSD in a randomized, double-blind, dose-response phase 2 clinical trial
130 (Mithoefer et al. 2018). Both resting-state and task-fMRI data, acquired while individuals
131 listened to a trauma-related or neutral script, were collected before and two months after
132 MDMA-AT (follow-up scans were collected after the blind was broken). Prior to analysis, we
133 hypothesized that MDMA-AT would increase RSFC between the amygdala and hippocampus
134 (Sripada et al. 2012; Carhart-Harris et al. 2015). We further hypothesized that, at baseline, brain
135 activity would be higher during the trauma-related listening task compared with the neutral
136 listening task in regions associated with autobiographical memory, fear, and emotion, such as the
137 precuneus, retrosplenial cortex, ACC, and amygdala, and that this effect would be reduced post-
138 treatment (Sartory et al. 2013). Finally, we hypothesized that the magnitude of the pre-to-post
139 treatment change in the functional connectivity of the amygdala and hippocampus would be
140 correlated with the magnitude of change in the pre-to-post treatment Clinician-Administered
141 PTSD Scale (CAPS-IV) total severity scores (Blake et al. 1990). Understanding the
142 neurobiological mechanisms of PTSD and how we may modulate these mechanisms is
143 imperative to developing effective, personalized treatments to reduce the burden of this disease.

144

145 **2. METHODS**

MDMA-AT Neural Response



146

147

148

149

150

151

152

153

154

155

156

157

158

2.1 Trial design

159

160

161

Figure 1: Study design. Subjects were assessed and imaged at the start of the study (baseline). All subjects (low dose (LD), medium dose (MD), and high dose (HD)) underwent three non-drug preparatory therapy sessions prior to their first MDMA dosing session. Each MDMA session was followed by three non-drug integration therapy sessions. After MDMA Session 2 and the subsequent integration sessions, subjects were assessed and the dosing blind was broken. HD subjects completed their final set of drug and non-drug therapy sessions unblinded, and LD/MD subjects crossed over into the HD arm where they completed three sets of drug and non-drug sessions, now with the higher dose and unblinded. All subjects were assessed and underwent MRI approximately two months following their last HD MDMA session.

The present study analyzed data from a sub-study (NCT02102802) of a Phase 2 randomized, double-blind, dose-response trial of MDMA-AT in veterans and first responders with severe and chronic PTSD (NCT01211405) (Mithoefer et al. 2018). A detailed study description of the

MDMA-AT Neural Response

162 parent study can be found in (Mithoefer et al. 2018), here we summarize the study design.
163 Participants were recruited and screened between November 10, 2010 and January 29, 2015.
164 Veterans and first responders with severe PTSD as measured by a Clinician-Administered PTSD
165 Scale (CAPS-IV) (Blake et al. 1990) total severity score of 50 or more were enrolled in the study
166 and received three 90-minutes preparatory therapy sessions. In Stage 1, participants were
167 randomly assigned to three groups (1:1:2) that received blinded 30, 75 or 125 mg MDMA HCl
168 (followed by a supplemental half-dose unless withheld or declined) with therapy in two 8-hour
169 dosing sessions. Each of the dosing sessions was followed by three non-drug 90-minute follow-
170 up integration sessions that were one month apart. Psychological assessments were collected at
171 baseline and the primary endpoint which was one month after the second dosing session. In
172 Stage 2 of the study, the blind was broken and participants originally in the HD (125 mg) group
173 participated in a final open-label session at the same dose, while participants originally in the LD
174 (30 mg) or MD (75 mg) groups participated in three HD (100 – 125 mg) open-label sessions.
175 Each dosing session in Stage 2 was followed by three non-drug 90-minute integrative sessions.
176 Psychological assessments were collected approximately 2 months and 12 months after the final
177 dosing session in Stage 2. Psychological assessment included the clinician-administered
178 measures CAPS-IV and Global Assessment of Functioning (GAF; general psychological
179 function; Guze 1995), and self-reported measures including Beck Depression Inventory-II (BDI-
180 II; depression symptoms; Beck et al. 1996), Pittsburgh Sleep Quality Index (PSQI; sleep quality;
181 Buysse et al. 1989), Post-Traumatic Growth Inventory (PTGI; perceived growth following
182 trauma; Tedeschi and Calhoun 1996), and the Dissociative Experiences Scale II (DES-II;
183 symptoms of dissociation; Carlson and Putnam 1993).

184 Participants in the parent study were able to opt into the MRI-based sub-study after which they
185 provided written informed consent approved by the Medical University of South Carolina
186 Institutional Review Board. They were screened for additional neuroimaging related eligibility
187 criteria and were excluded for any conditions that could render MRI unsafe. Following baseline
188 CAPS-IV assessment in the parent study, sub-study participants worked with investigators to
189 create two scripts: one describing a personally traumatic event and one reflecting their typical
190 morning routine at home. Two audio recordings, each six minutes in length, were created from
191 the participant's reading of each script. Each audio recording was divided into two 3-minute
192 blocks for the task-fMRI. All participants were imaged at baseline, prior to therapy, and again at
193 the follow-up visit two months after their final dosing session. LD (N = 2) and MD (N = 2)
194 participants were additionally imaged after the primary endpoint visit in Stage 1 (one month
195 following their second dosing session), however the small sample sizes prevented any
196 meaningful analysis with these scans. The present analysis focuses on the pre- and post-therapy
197 effects of MDMA-AT on fMRI biomarkers, and thus uses the scans collected at pre-treatment
198 (baseline) and at least 2 months after the largest dose of MDMA (follow-up).

199

200 **2.2 MRI acquisition**

201 At each scanning session, participants underwent MRI on a 32 channel 3T Siemens system. T1
202 anatomical scans with TR/TE=1900/2.34 ms and 0.9x0.9x1.0 mm voxel size were collected,
203 followed by two identical task fMRI (design described below) (TR/TE = 2200/35ms, 3.0 mm
204 isotropic voxel size, length of each scan = 14:25 min) and one resting state fMRI (TR/TE =
205 2000/30ms, 3.3x3.3x3.0 mm voxel size, length = 5:00 min).

206 Participants' 6-minute trauma and neutral audio scripts were divided into two three-minute
207 trauma and neutral blocks each (See 2.1 Trial design for description of audio recordings). During
208 fMRI, participants were presented with the visual cue "allow" and instructed to allow themselves
209 to experience the scripts as their audio recordings were played for both neutral and trauma
210 blocks. Each task scan had an alternating block design (neutral 1, trauma 1, neutral 2, trauma 2)
211 with an 18 second 'rest' period at the start of the scan and between each block, and about a
212 minute of rest at the end of the scan. The precise length of each audio block was 2.95 min.

213

214 **2.3 Image preprocessing**

215 FreeSurfer (Dale, Fischl, and Sereno 1999) was applied to the T1s to create white matter (WM),
216 gray matter (GM) and cerebrospinal fluid (CSF) segmentations. FMRIB Software Library (FSL)
217 (Smith et al. 2004) was used for 1) brain extraction, 2) registration between T1s and fMRI's
218 (brain-boundary registration, non-linear, full-search), 3) high-pass filtering 4) slice-time and 5)
219 motion correction.

220

221 **2.4 Activation analysis: brain response to trauma versus neutral audio listening**

222 FSL's FEAT tool (Woolrich et al. 2004) was used for fitting a general linear model (GLM) to the
223 voxelwise timeseries for each task scan after spatial smoothing using a Gaussian kernel function
224 (6 mm full width at half maximum (FWHM)). We constrained our search to four bilateral
225 regions of interest (ROIs) in PTSD symptom provocation (Sartory et al. 2013) using the
226 Desikan-Killiany atlas (Desikan et al. 2006): the precuneus, isthmus cingulate (containing the
227 retrosplenial cortex), rostral anterior cingulate, and amygdala. For 1st- level analysis, models
228 were generated for the neutral block, the trauma block, and a contrast of the two (trauma >

229 neutral). Confound explanatory variables (EVs) included the temporal derivative of each block, 5
230 nuisance regressors each for WM and CSF signal, and 6 directions of motion (x/y/z mm/rad).
231 Second-level analysis averaged the models from each of the two task scans performed at each
232 time point. Third-level analyses, using a two-sided, one-sample t-test (FSL randomize; Winkler
233 et al. 2014) identified group-level response for the contrast model (i) at baseline, and (ii) at the
234 two-month follow-up. A final third-level analysis (iii) compared the group-level responses to the
235 contrast model at baseline and follow-up using a two-sample, two-sided, paired t-test (FSL
236 randomize; Winkler et al. 2014). Third-level results were corrected for multiple comparisons
237 using threshold-free cluster enhancement (TFCE; $p < 0.05$) (Smith and Nichols 2009).

238

239 **2.5 Functional connectivity**

240 Functional connectivity here is defined as the statistical relationship (in this case Pearson
241 correlation) between two brain regions' blood-oxygen level dependent (BOLD) time series
242 extracted from fMRI scans.

243 Prior to extraction of functional connectivity, in addition to the preprocessing steps taken in 2.3,
244 fMRI data were further denoised using an in-house pipeline

245 (<https://github.com/kjamison/fmriclean>). FMRI data were bandpass filtered and regressed for 24

246 motion confounds (Friston et al. 1996), 5 nuisance regressors each for WM and CSF, and one for
247 global GM signal. The first five frames (scanner start-up noise) and confound frames were

248 discarded. Gray matter was further parcellated into 68 cortical and 16 subcortical regions of

249 interest (ROIs) (Desikan et al. 2006). The cerebellum was excluded due to incomplete scan

250 coverage of this structure.

251 In the pre-hoc analysis of the resting-state fMRI data, resting-state functional connectivity
252 (RSFC) between the right and left amygdala and right or left hippocampus was evaluated. One-
253 tailed, paired *t*-tests were used to compare the 4 RSFC measures before and after MDMA-AT.
254 Functional connectivity during task fMRI between the four regions of interest (bilateral
255 amygdala and hippocampus) and the rest of the brain was assessed. This was done with the time-
256 series extracted from the (a) neutral block and (b) trauma block, separately. See the
257 Supplemental Information for functional connectivity analysis using the entire scan. Group-level
258 changes from pre- to post-therapy in the strength of functional connections were assessed using
259 two-tailed, paired *t*-tests.

260 After obtaining whole-brain activation and functional connectivity results from the task data,
261 which highlighted the precuneus as a region of interest, we performed a post-hoc analysis of the
262 RSFC between both amygdalae and hippocampi with the right and left precuneus. We used two-
263 tailed, paired *t*-tests to compare the 8 RSFC measures before and after MDMA-AT.
264 Pearson correlations were calculated between individuals' changes in functional connection
265 strength and change in CAPS-IV total severity scores (follow-up – baseline). All *p*-values were
266 corrected for multiple comparisons using the Benjamini-Hochberg algorithm (Benjamini and
267 Hochberg 1995) where indicated.

268

269

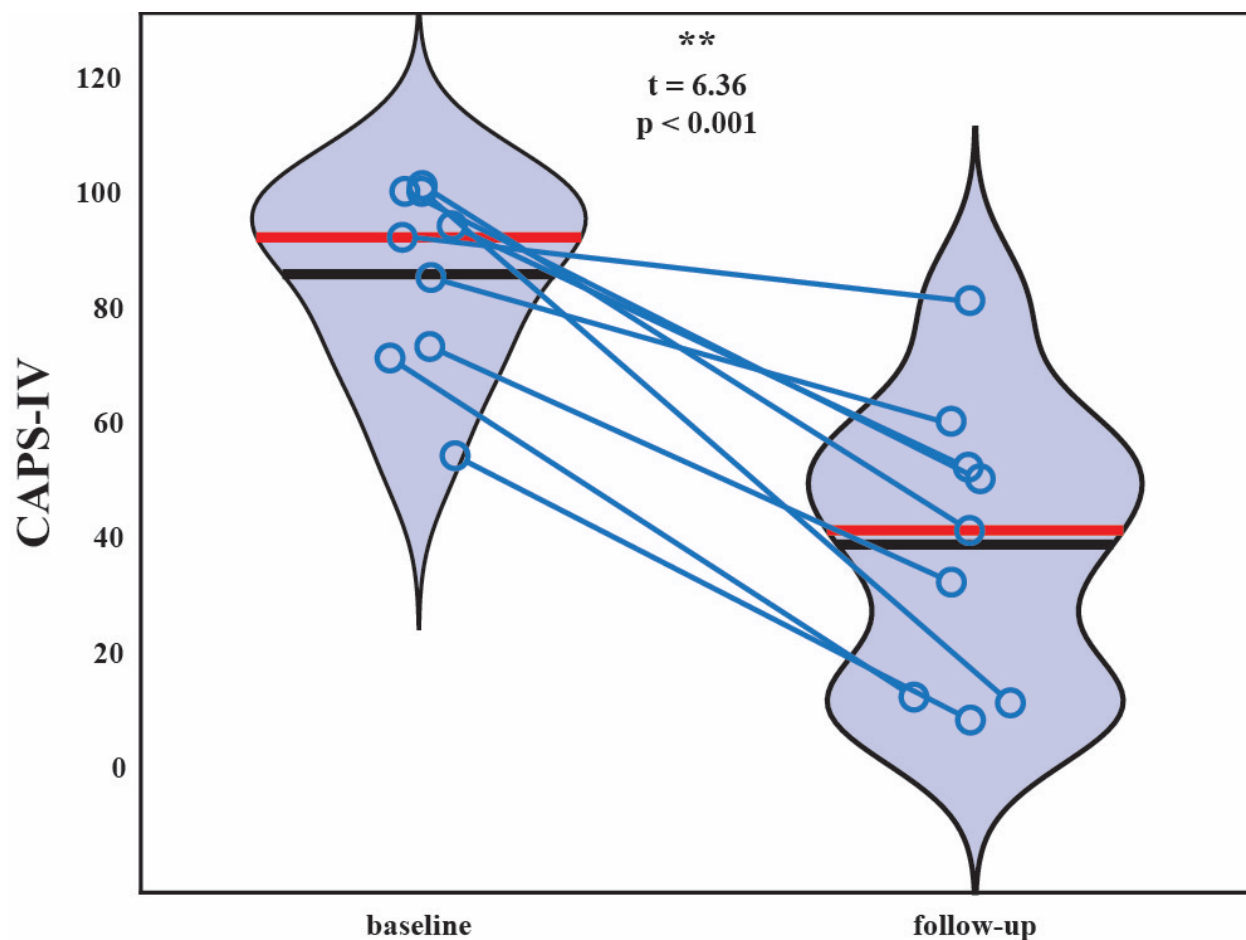
270 **3. RESULTS**

271 **3.1 CAPS significantly decreases after HD MDMA-AT**

272 Ten participants enrolled in the sub-study, and one withdrew consent after baseline due to
273 anxiety in the MRI scanner, leaving nine participants with MRI data at both time points (6 male,

MDMA-AT Neural Response

274 aged 41.3; standard deviation (SD) = ± 10.9 years; 8 veterans and 1 first responder). All
275 participants self-reported moderate depression as indexed by BDI-II (Beck et al. 1996). One
276 subject's baseline resting-state fMRI was truncated due to technical issues, leaving eight subjects
277 for resting-state analysis and nine for the task fMRI analysis. Mean (SD) CAPS-IV total severity
278 scores of the nine individuals pre- and post-MDMA-AT were 86 (± 16) and 39 (± 25),
279 respectively, representing a significant decrease in PTSD symptom severity between the two
280 time points (Figure 2; $N=9$, $t = 6.36$, $p = 0.00022$). The average percent decrease in CAPS was
281 57 (± 26)%. Results on all participants enrolled in the Phase 2 parent trial have been previously
282 reported (Mithoefer et al. 2018).
283



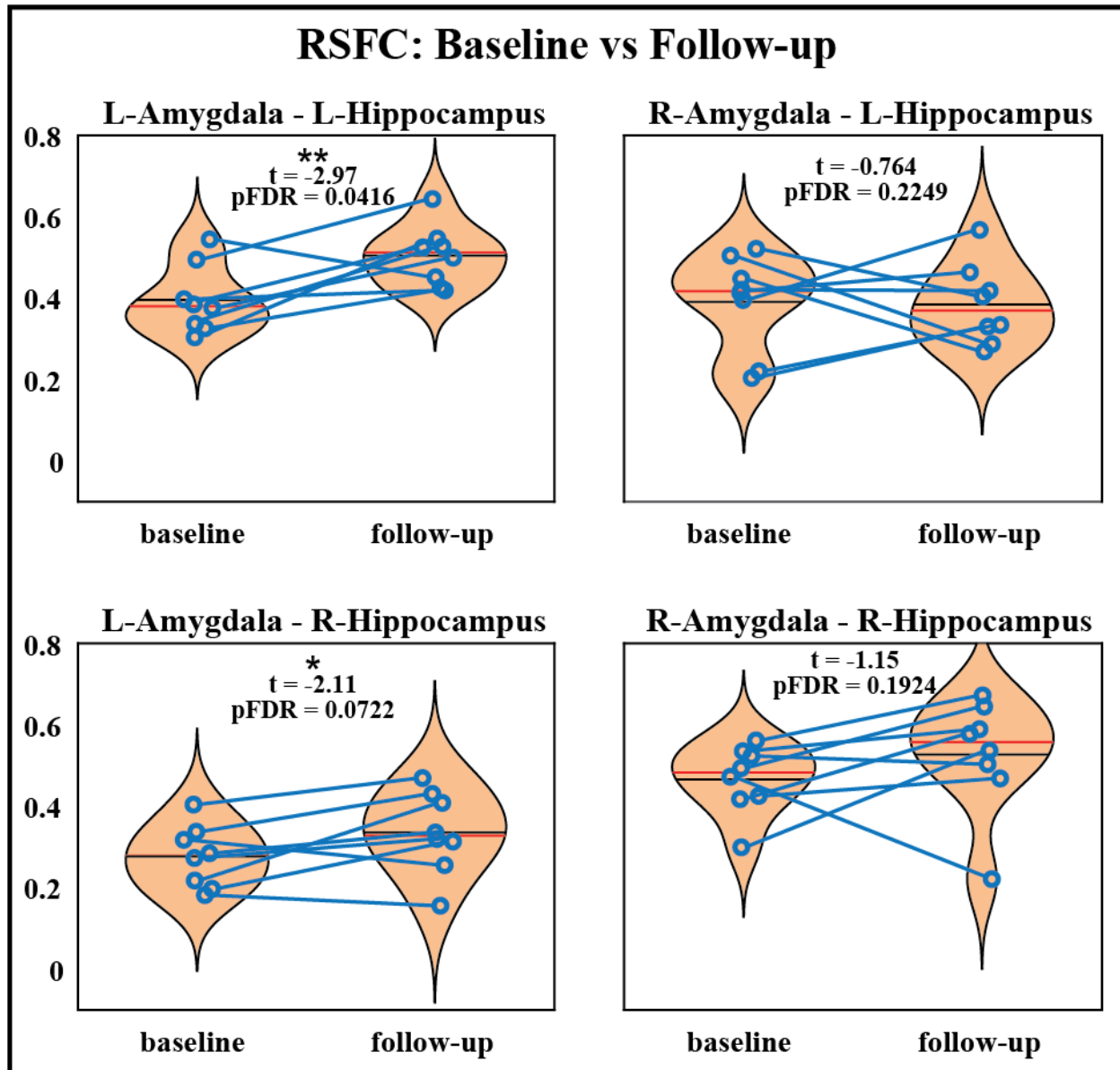
284

285 Figure 2: Patient CAPS-IV total severity scores at the baseline (pre-therapy) and two-month
286 follow-up (post-therapy) scanning sessions. Black and red lines indicate group means and
287 medians, respectively. A significant reduction in PTSD severity was observed after MDMA-AT
288 (baseline > follow-up; $N=9$, $t = 6.36$, $p = 0.00022$).

289

290 **3.2 Amygdala-hippocampal RSFC increases after HD MDMA-AT**

291 The RSFC was assessed between the amygdala and hippocampus before and after MDMA-AT
292 and the strengths of these connections are illustrated in Figure 3. All connections trended
293 towards increased functional connectivity after therapy compared to before therapy (using a one-
294 sided paired t-test), with left amygdala to both hippocampi having significant increases ($t = -$
295 2.97 , uncorrected $p = 0.0104$, $pFDR = 0.0416$ and $t = -2.11$, uncorrected $p = 0.0361$, $pFDR =$
296 0.0722 for left and right hippocampus, respectively. $N=8$).



297

298 Figure 3: RSFC between the amygdala and hippocampus before and after MDMA-AT. P-values
299 from a one-sided, paired t-test have been corrected for multiple comparisons. Black and red lines
300 indicate group means and medians, respectively. (N = 8; t-statistics indicate baseline > follow-
301 up; * uncorrected $p < 0.05$, ** $pFDR < 0.05$).

302

303 Individual-level pre-to-post-therapy changes between the strength of these functional

304 connections were then correlated with changes in CAPS scores. All four correlations showed that

305 larger increases in connectivity strength after therapy were associated with larger reductions in
306 symptom severity (improvement in PTSD). Only one of these (right amygdala to left
307 hippocampus) was significant before correction ($N = 8$; $R = -0.773$, uncorrected $p = 0.0244$,
308 $pFDR = 0.0976$).

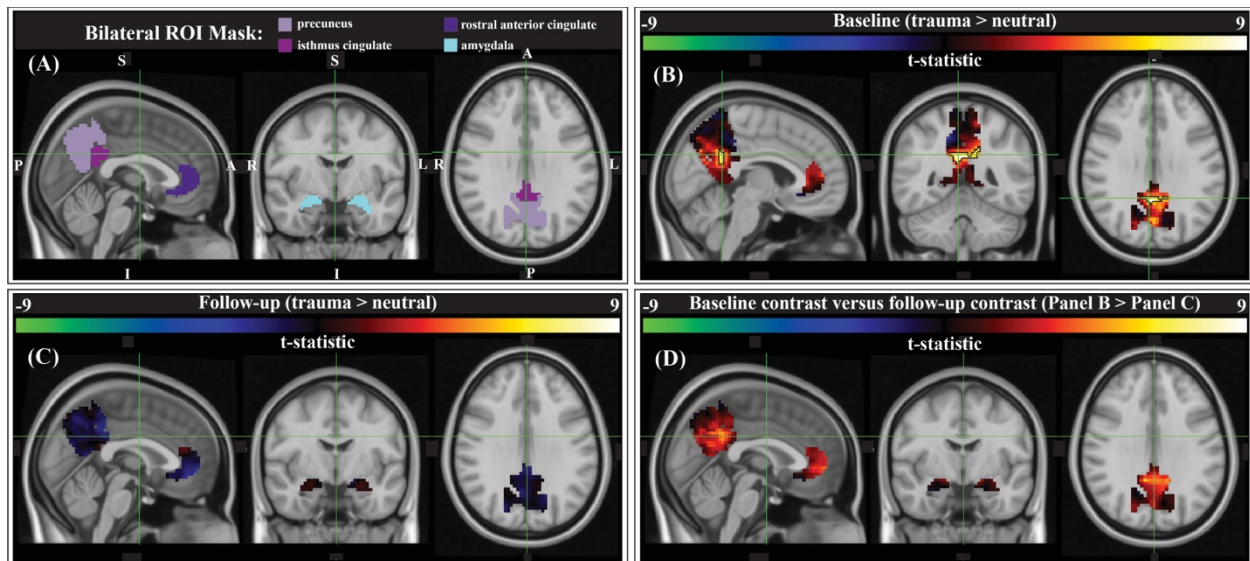
309

310 **3.3 Increased precuneus and retrosplenial cortex activation during symptom provocation**

311 We compared script-driven activations (trauma > neutral) in four pre-determined ROIs: the
312 bilateral precuneus, isthmus cingulate (anatomical gyrus containing the retrosplenial cortex),
313 rostral anterior cingulate cortex (ACC), and amygdala (Figure 4A). These regions have
314 previously been shown to activate more during trauma-related stimuli than neutral stimuli in
315 PTSD patients (Sartory et al. 2013). Before therapy, there tended to be stronger responses to the
316 trauma script versus the neutral script in our ROIs, as evidenced by the generally positive t-
317 statistics (Figure 4B). After correction using threshold free cluster enhancement (TFCE), there
318 was significantly greater activation during the trauma scripts compared to the neutral scripts in a
319 cluster on the border of the bilateral precuneus and bilateral isthmus cingulate/retrosplenial
320 cortex (Figure 4B, black outline; $N=9$, cluster corrected, $p<0.05$). After therapy, there was less
321 contrast between the two scripts, and no significant clusters (Figure 4C). Finally, we assessed the
322 differences in the contrast model before and after therapy (baseline > follow-up). There was
323 generally greater (positive) contrast between the trauma and neutral scripts at baseline than at
324 follow-up, however no clusters survived correction for multiple comparisons (Figure 4D).

325

MDMA-AT Neural Response



326

327 Figure 4: Group-level activation contrasts for trauma versus neutral script listening tasks. (A)
328 Results were constrained to four bilateral anatomical ROIs from PTSD symptom provocation
329 literature (Sartory et al. 2013): the precuneus, isthmus cingulate (retrosplenial cortex), rostral
330 anterior cingulate cortex (ACC), and the amygdala (Desikan et al. 2006). Panels B, C, & D show
331 the t-statistic from the corresponding comparison. (B) Pre-therapy there is a significant cluster
332 within the bilateral precuneus/isthmus cingulate (outlined in black; center of gravity: MNI -1, -
333 51, 28, 60 voxels (1620 mm³), peak z -value = 2.89; $p < 0.05$, cluster corrected; $N = 9$). (C) There
334 were no significant activation contrast clusters after therapy. (D) Comparing the group-level
335 contrasts between time points (baseline > follow-up), there were no clusters that met significance
336 thresholds after correction.

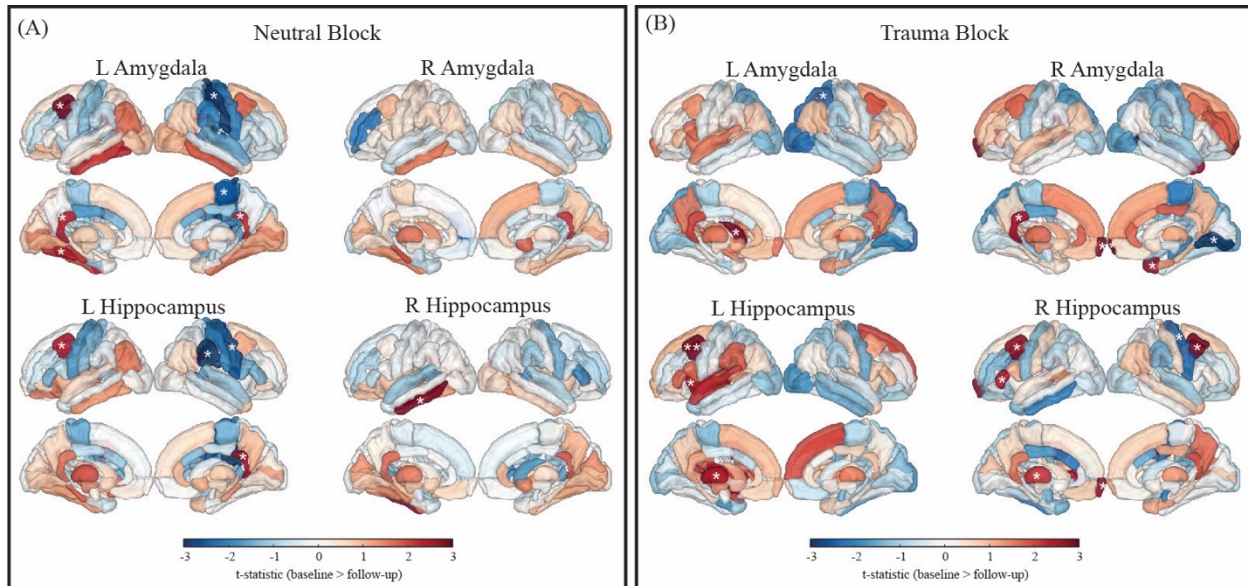
337

338 3.4 MDMA-AT associated changes in task functional connectivity

339 We compared the pre- and post-therapy strength of amygdalae and hippocampal functional
340 connections with the rest of the brain during the neutral and trauma blocks separately (Figure
341 5A/B). There were several connections with a trend for change from pre- to post-therapy (SI

MDMA-AT Neural Response

342 Tables 1 and 2). After correction for multiple comparisons, the left hippocampus and left caudal
343 middle frontal gyrus functional connectivity during trauma recall was significantly reduced at the
344 two-month follow-up post-therapy ($N = 9$, $t = 7.13$, $p\text{FDR} = 0.0082$).



345
346 Figure 5: Paired t-statistics shown for differences in functional connectivity between all brain
347 regions and the amygdalae and hippocampi during (A) neutral memory audio listening and (B)
348 trauma memory audio listening ($N = 9$; baseline > follow-up; * two-tailed $p < 0.05$, uncorrected;
349 ** $p\text{FDR} < 0.05$, corrected).

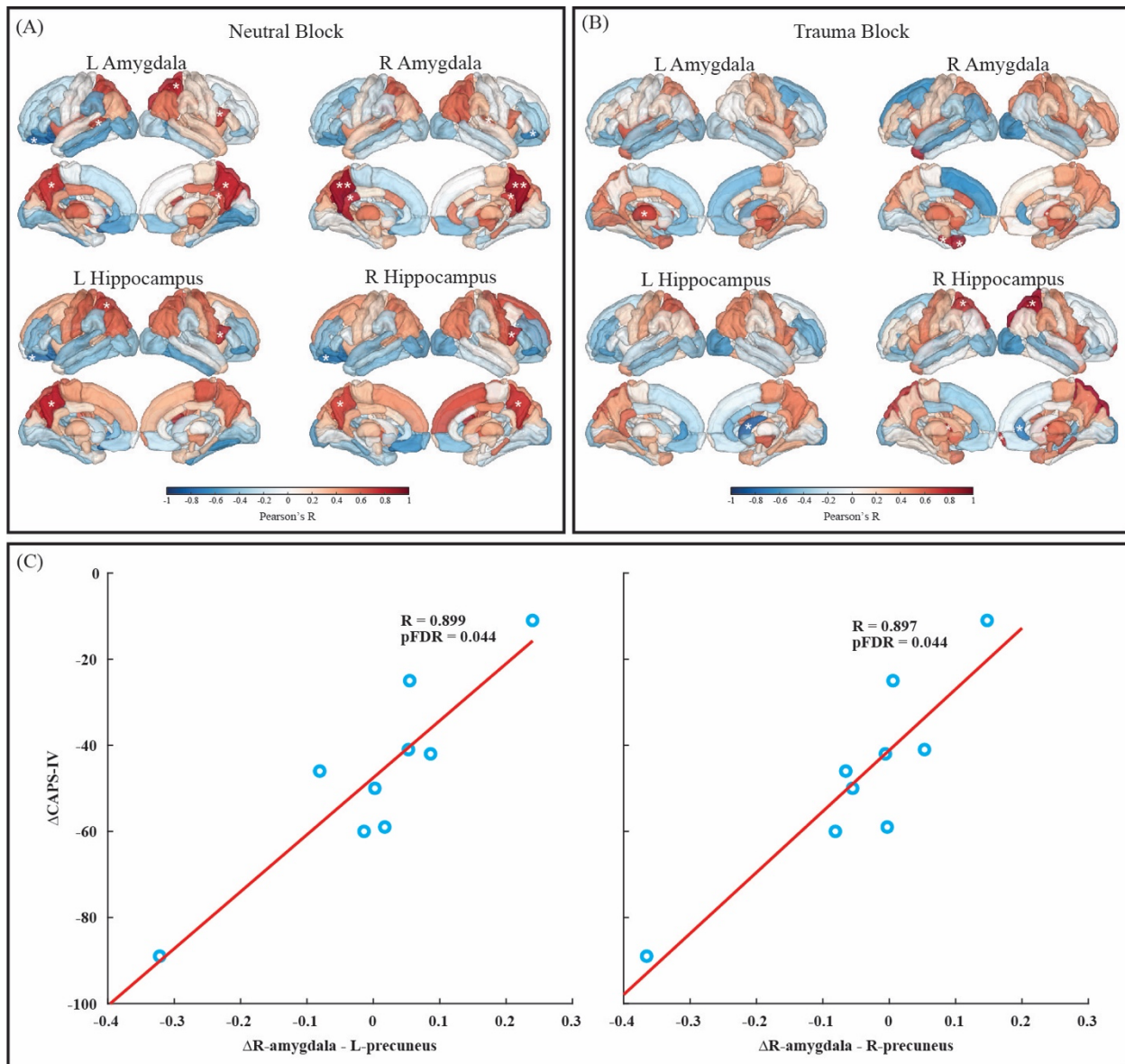
350

351

352 Individual-level pre-to-post therapy changes in the functional connections calculated in the
353 previous section were then correlated with the individual-level reductions in CAPS scores
354 (Figure 6). Many significant correlations (corrected and uncorrected) were positive, meaning that
355 larger reductions in connectivity from pre- to post-therapy corresponded to larger improvements
356 in PTSD symptomology (SI Tables 3 and 4). Following correction for multiple comparisons, the

MDMA-AT Neural Response

357 two positive correlations between changes in right amygdala and bilateral precuneus connectivity
358 during neutral memory recall and CAPS scores remained significant (Figure 6C).



359
360 Figure 6: Pearson correlation values between changes in each functional connection during (A)
361 neutral memory audio listening and (B) trauma memory audio listening and changes in CAPS
362 scores. (C) Scatter plots of the significant correlations from the neutral condition (N = 9; follow-
363 up – baseline; * p-value < 0.05, uncorrected; ** pFDR < 0.05, corrected).

364

365

366 **3.4 Post-hoc analysis of amygdala and hippocampus RSFC with the precuneus**

367 As change in the task-based functional connectivity between the amygdala and precuneus was
368 found to be related to improvement of PTSD severity scores, we performed post-hoc analyses of
369 RSFC between the precuneus and amygdalae and hippocampi to identify 1) any changes before
370 and after therapy and 2) any correlations between change in functional connectivity and change
371 in CAPS. We did not find any pre- and post-therapy changes in functional connection strength of
372 amygdalae or hippocampi with the precuneus. Pre-to-post therapy changes in the RSFC between
373 the right amygdala and both the right and left precuneus correlated with the reductions in CAPS
374 scores, albeit at a trend level ($N = 9$; $R = 0.687$, uncorrected $p = 0.0599$; $R = 0.667$, uncorrected p
375 $= 0.0709$ for the right and left precuneus, respectively), reflecting the task-based functional
376 connectivity finding during the neutral block.

377

378 **3.5 Correlations with other outcome measures**

379 Although not the primary focus of our analysis, we also repeated the previous correlations using
380 other secondary outcome measures in place of CAPS-IV total severity scores. Namely, changes
381 between baseline and follow-up in the BDI-II (depression symptoms), the PSQI (sleep quality),
382 the PTGI (perceived growth following trauma), the DES-II (symptoms of dissociation), and the
383 GAF (general psychological function) were used. Following correction for multiple
384 comparisons, only three correlations remained significant and, notably, all three were between
385 changes in task functional connectivity and symptoms of dissociation. During the neutral task,
386 reduction in functional connectivity between the left hippocampus and the left pre- and post-
387 central gyrus (motor) at follow-up compared to baseline correlated with reductions in

388 dissociative symptoms (lower DES-II scores; pre-central: $R = 0.930$, $pFDR = 0.0226$; post-
389 central: $R = 0.904$, $pFDR = 0.0346$). During the trauma task, reduction in functional connectivity
390 between the right amygdala and right insula at follow-up compared to baseline correlated with
391 reduction in dissociative symptoms ($R = 0.925$, $pFDR = 0.029$).

392

393 **DISCUSSION**

394 We report signatures of brain response during rest and audio listening task in eight veterans and
395 one first-responder with clinically diagnosed chronic and severe PTSD before and two-months
396 after MDMA-assisted therapy. We found a significant reduction in CAPS-IV total severity
397 scores after therapy, indicating our sub-study participants mirrored the results from the parent
398 study (Mithoefer et al. 2018). RSFC between the amygdala and hippocampus was significantly
399 strengthened post-therapy, providing more evidence that modulation of amygdalae-hippocampal
400 RSFC may be an important component of MDMA-AT for PTSD (Sripada et al. 2012; Carhart-
401 Harris et al. 2015). We also found participants had increased activation in the
402 precuneus/retrosplenial cortex while listening to traumatic versus neutral memory narrations pre-
403 therapy, and that no significant contrast existed after MDMA-AT (the comparison between the
404 two time points was also not significant). Finally, the pre- to post-therapy reduction in functional
405 connectivity between the right amygdala and right precuneus during neutral memory audio
406 strongly and significantly correlated with PTSD symptom improvement.

407

408 Previous work quantifying functional connectivity in PTSD (Sripada et al. 2012) and acute
409 MDMA administration in controls (Carhart-Harris et al. 2015) suggests one mechanism of
410 MDMA-AT may be to increase pathologically lowered amygdala-hippocampal RSFC (Feduccia

MDMA-AT Neural Response

411 and Mithoefer 2018). The amygdala is associated with fear expression, threat recognition, and
412 heightened response to emotional memories and is often dysregulated in patients with PTSD
413 (LeDoux 2003; Pitman et al. 2012; Liberzon et al. 1999; Etkin and Wager 2007; Bremner et al.
414 2005; Harnett, Goodman, and Knight 2020). The hippocampus also plays a central role in PTSD
415 as it is thought to provide contextual information important for cognitive-affect during memory
416 recollection (Harnett, Goodman, and Knight 2020; Pitman et al. 2012). Sripada et al (2012)
417 found combat veterans with PTSD had reduced amygdala-hippocampal RSFC compared to
418 combat-exposed controls, leading them to speculate that this may relate to an inability to
419 contextualize affective information in PTSD. Carhart-Harris et al (2015) demonstrated that
420 amygdala-hippocampal RSFC is increased acutely in MDMA administration compared to
421 placebo and this increase occurred in a manner that correlated with the drug's subjective effects
422 at a near-significant level, leading these researchers to propose that this functional connection
423 was a primary target of MDMA-AT. Prior to our analysis (although after the study was designed
424 and the data collected), we hypothesized that the RSFC between the amygdala and hippocampus
425 would be higher after MDMA-AT compared to pre-therapy levels, which we confirmed. We also
426 found that the amount of increased amygdala-hippocampal RSFC after MDMA-AT positively
427 correlated with PTSD symptom improvement at a near-significant level. Our current findings
428 provide further evidence that one mechanism driving MDMA-AT's treatment of PTSD could be
429 an increase in amygdala-hippocampus RSFC.

430
431 We next sought to study brain-response during autobiographical memory listening to draw
432 additional conclusions about MDMA-AT's effects in individuals with PTSD. Before therapy,
433 participants had larger activation in a cluster of voxels located in the bilateral precuneus and

MDMA-AT Neural Response

434 retrosplenial cortex during an individualized trauma script listening task compared to neutral
435 audio script listening. The precuneus is involved in self-processing operations (e.g. first-person
436 perspective taking), episodic memory retrieval, and visual-spatial imagery (Cavanna and Trimble
437 2006). Its activation is often correlated with activation of the retrosplenial cortex (Cauda et al.
438 2010), which is implicated in autobiographical memory recollection (Svoboda, McKinnon, and
439 Levine 2006; Spreng, Mar, and Kim 2009). The retrosplenial cortex is also found to be
440 consistently activated by emotionally salient stimuli, and has been proposed to play a role in the
441 interaction between emotion and memory (Maddock 1999). We conjecture that increased
442 activation in these regions during traumatic compared to neutral audio listening (Figure 4B)
443 could be related to an increased intensity of the recollection or re-experiencing of traumatic
444 memories compared to neutral ones for patients before therapy. At 2-month follow-up to
445 MDMA-AT, there was no significant difference in the trauma vs neutral script activation of this
446 area (Figure 4C). Although the longitudinal comparison of these two time points also showed no
447 significant difference after correction for multiple comparisons, the positive t-statistics indicate
448 that the contrast between trauma and neutral was generally larger at baseline, particularly in the
449 precuneus/retrosplenial cortex and the anterior cingulate cortex (ACC) (Figure 4D). Larger
450 studies may allow more statistical power to identify longitudinal differences if they do indeed
451 exist. These findings are consistent with previous studies — a meta-analysis by Sartory et al
452 (2013) (the source of our ROIs) found that PTSD patients had greater activations in the
453 precuneus and retrosplenial cortex, as well as the bi-lateral amygdala and anterior cingulate
454 cortex during trauma-related stimuli compared to neutral stimuli. In addition, other longitudinal
455 studies of individuals with PTSD have found the amount of decrease in precuneus/posterior
456 cingulate cortex (PCC; of which the isthmus cingulate/retrosplenial cortex is a part) activation

MDMA-AT Neural Response

457 during symptom provocation at the end of study to be correlated with amount of reduction in
458 symptom severity (Garrett et al. 2019; Ke et al. 2016).

459

460 PTSD is often associated with hyperactivity in the amygdala (Pitman et al. 2012); the acute
461 administration of MDMA in healthy volunteers decreases blood flow to the amygdala during rest
462 (Carhart-Harris et al. 2015) and attenuates its response to angry faces (Bedi et al. 2009). We had
463 hypothesized that we would observe hyperactivity of the amygdala to trauma versus neutral
464 scripts at baseline and that MDMA-AT would attenuate this response, however we observed
465 neither. It is important to note inconsistencies in the literature here. Amygdala hyperactivity in
466 PTSD is not always observed, possibly due to differences in subtypes, sex, cultural
467 representations, or choice of paradigm (van Huijstee and Vermetten 2018; Lanius et al. 2001;
468 Lanius et al. 2002; Helpman et al. 2021; Chiao et al. 2008; Liddell and Jobson 2016).

469 Additionally, while MDMA did suppress amygdala activity during rest and in response to angry
470 faces as previously mentioned, there was no observed impact on its response to autobiographical
471 memories (Carhart-Harris et al. 2014). While activation-based analyses deserve continued
472 attention in future studies to rectify these inconsistencies, functional connectivity is a
473 complimentary approach we can use to extract additional information from fMRI.

474

475 In a task-free setting, amygdala activity has been found to be anti-correlated with activity in
476 areas involved in effortful regulation of affect, including the precuneus (Roy et al. 2009; Zhang
477 and Li 2012). In healthy adults, amygdala-precuneus functional connectivity increases following
478 the acute exposure to social stress (Veer et al. 2011, 2). This functional connection has been
479 implicated in mood disorders including depression (Cullen et al. 2014; K. D. Young et al. 2018;

MDMA-AT Neural Response

480 Wei et al. 2018; Feurer et al. 2021; Peng et al. 2020), bipolar disorder (Stoddard et al. 2015;
481 Singh et al. 2015) and anxiety (Strawn et al. 2012; Toazza et al. 2016), childhood emotional
482 maltreatment (Werff et al. 2013), and PTSD (Nicholson et al. 2015; Bluhm et al. 2009; R. A.
483 Lanius et al. 2010). One study found adults who experienced childhood emotional maltreatment
484 show increased (decreased magnitude negative) connectivity between the amygdala and
485 precuneus compared to controls (Werff et al. 2013), and another found PTSD patients with
486 dissociative sub-type had increased connectivity compared to PTSD patients without dissociative
487 sub-type (Nicholson et al. 2015). Here, we find a strong, significant correlation between pre- to
488 post-therapy decreases in right amygdala-precuneus functional connectivity during neutral
489 scripts and pre- to post-therapy decreases in CAPS-IV. Attenuated correlation between the
490 activity patterns of these two regions at follow-up possibly suggests a decreased intensity of
491 recalled events, less ‘re-experiencing’, or reduced negative affect.

492
493 It is worth noting here that *increased* amygdala-precuneus functional connectivity during both
494 rest and positive autobiographical memory recall was found to correlate with improved
495 depressive symptoms in adults using real-time fMRI neurofeedback targeting amygdala
496 activation (K. D. Young et al. 2018). Depression is characterized by decreased arousal
497 (depressed mood) and diminished positive affect, therefore these findings may be reflective of an
498 increased emotional response to positive memories that is associated with symptom
499 improvement (Dunn et al. 2020). However, another study in adolescents found that those with
500 depression had greater amygdala-precuneus RSFC compared to healthy controls (Cullen et al.
501 2014), so replication is necessary. It seems likely that this functional connection is relevant to
502 cognitive affect in mood disorders, however more research is needed to determine if these

MDMA-AT Neural Response

503 findings are reflective of differences in depression and PTSD, or the context in which the study
504 populations were being imaged (i.e. studying processes and tasks related positive affect in the
505 case of depression and negative affect in the case of PTSD). Considering the co-morbidity of
506 depression and PTSD (Brady et al. 2000), amygdala-precuneus functional connectivity may
507 deserve increased attention in future studies.

508

509 Also of interest were the significant correlations found between reduction in symptoms of
510 dissociation and changes in task functional connectivity. During neutral memory audio listening,
511 the reduction of left hippocampus to both left motor (pre- and post-central) gyri functional
512 connectivity correlated with reduction in dissociative symptoms. These two functional
513 connections appear to be higher in cases of trait anxiety (Yang et al. 2017). Lastly, MDMA
514 acutely alters insula functional connectivity (Walpola et al. 2017), a region implicated in anxiety
515 (Etkin and Wager 2007). Baur et al. (2013) provided evidence that amygdala-insula functional
516 connectivity indexes individual differences in state anxiety. Here, we find that reductions in right
517 amygdala-insula functional connectivity during trauma audio listening after MDMA-AT
518 correlates with reductions in dissociative symptoms, possibly relating to reduced anxiety or
519 dissociation during traumatic memory recall after treatment.

520 PTSD is characterized by decreased fear extinction in response to trauma-related stimuli. One
521 possible mechanism through which MDMA-AT operates is enhanced reconsolidation and/or fear
522 extinction processes (Feduccia and Mithoefer 2018). Several studies with MDMA implicate
523 reconsolidation or fear extinction processes, and while it is currently unclear whether MDMA
524 acts on only one or both, it is important to note that the two interact (Suzuki et al. 2004). Rodent
525 models have demonstrated that the administration of MDMA prior to extinction learning

MDMA-AT Neural Response

526 enhances post-acute extinction retention and this effect is blocked by acute and chronic treatment
527 with a serotonin transporter inhibitor (M. B. Young et al. 2015; B. Young et al. 2017). Hake et
528 al. (2019) found that MDMA administered during extinction learning phases did not enhance
529 fear extinction memory, while MDMA administration during reconsolidation phases resulted in
530 prolonged reductions in conditioned fear. In addition, MDMA administered prior to trauma-cue
531 exposure (reconsolidation phase) in rodents resulted in reduced stress-related behavioral
532 responses 7 days later (Arluk et al. 2022). A randomized, controlled clinical trial in healthy
533 humans found that those who were administered MDMA (100 mg) prior to extinction learning
534 showed a higher rate of total extinction retention 48 hours later compared to the placebo group
535 (Maples-Keller et al. 2022). Doss et al. (2018) found that 1 mg/kg of MDMA in healthy humans
536 attenuated the encoding and retrieval of salient details from positive and negative stimuli (but not
537 neutral stimuli), suggesting an ability for MDMA to alter emotional memory representation.
538 Interestingly, a fMRI study in healthy humans found decreased activation in the precuneus/PCC
539 during fear extinction learning (Ridderbusch et al. 2021), regions highlighted by our present
540 study and others in PTSD (Garrett et al. 2019; Ke et al. 2016) .

541 **LIMITATIONS**

542 The small sample size of the present study and the lack of a control population (e.g. trauma-
543 exposed controls) may decrease the generalizability of these findings. The trial design was
544 placebo-controlled for dose-response (low, medium, and high), however, the follow-up scans
545 used in this study were after the breaking of the blind and dose cross-over (low/medium to high)
546 had occurred. For neuroimaging studies, comparisons with control populations are helpful for
547 contextualizing longitudinal changes in brain response and provide information about whether
548 changes in patient populations represent an abnormal response being restored to normality or a

MDMA-AT Neural Response

549 compensatory mechanism. In addition, multi-point imaging of healthy control or non-treatment
550 (placebo) groups allow for the quantification of test-retest variability.

551

552 Here it must be discussed that PTSD is a disorder exhibiting at least two major sub-types with
553 characteristically opposing phenomenological and physiological responses to symptom
554 provocation, which may explain inconsistencies in the PTSD neurobiology literature (van
555 Huijstee and Vermetten 2018). In addition to sub-type heterogeneity, males and females with
556 PTSD may also differ in their neural responses (Helpman et al. 2021). Limited by our sample
557 size, we did not investigate these sub-groups in this study.

558

559 The accepted standard for assessing PTSD severity is the Clinician-Administered PTSD Scale
560 (Blake et al. 1990). Specifically, CAPS-IV was used in this study. CAPS-IV involves an hour-
561 long semi-structured interview with a clinician and, though comprehensive, faces limitations. In
562 their baseline CAPS-IV assessment, and subsequently thereafter, patients were asked to refer to
563 an index trauma that was measured throughout the study. This may present an issue in accurately
564 assessing global PTSD severity if an adjacent or un-related trauma surfaces during therapy and
565 becomes the prominent driver of their symptoms. These issues, combined with difficulty in
566 blinding and expectancy effects, present additional challenges in accurately mapping fMRI
567 metrics to clinical outcomes. At the same time, these challenges motivate the need to improve
568 our ability to detect biomarkers of PTSD to accompany psychological indexes.

569

570 The task design used in this study examined differences in brain response to personalized audio
571 scripts generated from narrations of traumatic and mundane (neutral) memories. Many different

MDMA-AT Neural Response

572 stimuli have been used in fMRI studies of PTSD (R. A. Lanius et al. 2006; Sartory et al. 2013;
573 Patel et al. 2012), each providing its own unique advantages and disadvantages. Our present
574 design optimizes personal relevance of the stimuli; however, this has the consequence of
575 presenting each subject with a different set of stimuli, whereby brain responses within each block
576 are not time-locked across participants. Also, it has previously been shown that PTSD survivors
577 take longer to retrieve unrelated autobiographical information when listening to taped imagery
578 scripts of their traumatic memories (Kleim, Wallott, and Ehlers 2008). This suggests the
579 possibility that those with the most severe PTSD will take the longest to cognitively transition to
580 the neutral block from the trauma block. If this is true, then there would perhaps be an inverse-
581 “U” relationship between PTSD severity and contrast between the trauma and neutral conditions,
582 if the blocks are not spaced far enough apart to allow adequate time for patients to return to a
583 baseline level of cognitive functioning.

584

585 Finally, the pre-specified aim of this study was to estimate longitudinal (baseline to 2-months
586 after final MDMA session) changes in ROI response to traumatic audio scripts. Between the start
587 of data collection and analysis, new literature emerged (Carhart-Harris et al. 2015) implicating
588 amygdala-hippocampus RSFC as a potential target of MDMA-AT, compelling us to expand our
589 analysis beyond the pre-specified aims.

590

591 **CONCLUSION**

592 We report functional brain changes associated with MDMA-AT in participants with PTSD. We
593 provide further evidence that MDMA-AT may act through strengthening the RSFC between the
594 amygdala and hippocampus, a connection which is weaker in PTSD populations (Sripada et al.

MDMA-AT Neural Response

595 2012) and increased acutely by MDMA in healthy volunteers (Carhart-Harris et al. 2015). We
596 also provide preliminary evidence that MDMA-AT alters amygdala and precuneus response
597 during symptom provocation. These regions, associated with fear response and self-referential
598 processing, respectively, are commonly found to be hyperactive in PTSD patients (Sartory et al.
599 2013; Patel et al. 2012). However, the reduction of right amygdala-precuneus functional
600 connectivity co-varying with symptom reduction in PTSD is a novel finding. More research is
601 necessary to confirm this result and determine if this is an effect specific to MDMA-AT, or if it
602 would be found in other longitudinal treatment cohorts as well.

603

604

----- *END OF MANUSCRIPT* -----

605

REFERENCES

- Arluk, Shira, Michael A. Matar, Lior Carmi, Oded Arbel, Joseph Zohar, Doron Todder, and Hagit Cohen. 2022. “MDMA Treatment Paired with a Trauma-Cue Promotes Adaptive Stress Responses in a Translational Model of PTSD in Rats.” *Translational Psychiatry* 12 (1): 1–11. <https://doi.org/10.1038/s41398-022-01952-8>.
- Baur, Volker, Jürgen Hänggi, Nicolas Langer, and Lutz Jäncke. 2013. “Resting-State Functional and Structural Connectivity within an Insula-Amygdala Route Specifically Index State and Trait Anxiety.” *Biological Psychiatry* 73 (1): 85–92. <https://doi.org/10.1016/j.biopsych.2012.06.003>.
- Beck, A. T., R. A. Steer, R. Ball, and W. Ranieri. 1996. “Comparison of Beck Depression Inventories -IA and -II in Psychiatric Outpatients.” *Journal of Personality Assessment* 67 (3): 588–97. https://doi.org/10.1207/s15327752jpa6703_13.
- Bedi, Gillinder, K. Luan Phan, Mike Angstadt, and Harriet de Wit. 2009. “Effects of MDMA on Sociability and Neural Response to Social Threat and Social Reward.” *Psychopharmacology* 207 (1): 73–83. <https://doi.org/10.1007/s00213-009-1635-z>.
- Benjamini, Yoav, and Yocef Hochberg. 1995. “Controlling the False Discovery Rate: A Practical and Powerful Approach to Multiple Testing.” *Journal of the Royal Statistical Society. Series B (Methodological)* 57 (1): 289–300.
- Blake, Dudley, Frank Weathers, LN Nagy, D. Kaloupek, G. Klauminzer, Dennis Charney, and Terence Keane. 1990. “A Clinician Rating Scale for Assessing Current and Lifetime PTSD: The CAPS-1.” *Behav. Ther.* 18 (January).
- Bluhm, Robyn L., Peter C. Williamson, Elizabeth A. Osuch, Paul A. Frewen, Todd K. Stevens, Kristine Boksman, Richard W. J. Neufeld, Jean Théberge, and Ruth A. Lanius. 2009. “Alterations in Default Network Connectivity in Posttraumatic Stress Disorder Related to Early-Life Trauma.” *Journal of Psychiatry and Neuroscience* 34 (3): 187–94.
- Brady, Kathleen T, Therese Killeen, Tim Brewerton, and Sylvia Lucerini. 2000. “Comorbidity of Psychiatric Disorders and Posttraumatic Stress Disorder.” *J Clin Psychiatry* 61: 11.
- Bremner, J. Douglas, Eric Vermetten, Christian Schmahl, Viola Vaccarino, Meena Vythilingam, Nadeem Afzal, Christian Grillon, and Dennis S. Charney. 2005. “Positron Emission Tomographic Imaging of Neural Correlates of a Fear Acquisition and Extinction Paradigm in Women with Childhood Sexual-Abuse-Related Post-Traumatic Stress Disorder.” *Psychological Medicine* 35 (6): 791–806. <https://doi.org/10.1017/S0033291704003290>.
- Buysse, D. J., C. F. Reynolds, T. H. Monk, S. R. Berman, and D. J. Kupfer. 1989. “The Pittsburgh Sleep Quality Index: A New Instrument for Psychiatric Practice and Research.” *Psychiatry Research* 28 (2): 193–213. [https://doi.org/10.1016/0165-1781\(89\)90047-4](https://doi.org/10.1016/0165-1781(89)90047-4).
- Carhart-Harris, R. L., M. B. Wall, D. Erritzoe, M. Kaelen, B. Ferguson, I. De Meer, M. Tanner, et al. 2014. “The Effect of Acutely Administered MDMA on Subjective and BOLD-FMRI Responses to Favourite and Worst Autobiographical Memories.” *International Journal of Neuropsychopharmacology* 17 (4): 527–40. <https://doi.org/10.1017/S1461145713001405>.
- Carhart-Harris, Robin L., Kevin Murphy, Robert Leech, David Erritzoe, Matthew B. Wall, Bart Ferguson, Luke T.J. Williams, et al. 2015. “The Effects of Acutely Administered 3,4-Methylenedioxymethamphetamine on Spontaneous Brain Function in Healthy Volunteers

- Measured with Arterial Spin Labeling and Blood Oxygen Level–Dependent Resting State Functional Connectivity.” *Biological Psychiatry* 78 (8): 554–62.
<https://doi.org/10.1016/j.biopsych.2013.12.015>.
- Carlson, Eve Bernstein, and Frank W. Putnam. 1993. “An Update on the Dissociative Experiences Scale.” *Dissociation: Progress in the Dissociative Disorders* 6 (1): 16–27.
- Cauda, Franco, Giuliano Geminiani, Federico D’Agata, Katuscia Sacco, Sergio Duca, Andrew P. Bagshaw, and Andrea E. Cavanna. 2010. “Functional Connectivity of the Posteromedial Cortex.” *PLoS ONE* 5 (9): e13107.
<https://doi.org/10.1371/journal.pone.0013107>.
- Cavanna, Andrea E., and Michael R. Trimble. 2006. “The Precuneus: A Review of Its Functional Anatomy and Behavioural Correlates.” *Brain: A Journal of Neurology* 129 (Pt 3): 564–83. <https://doi.org/10.1093/brain/awl004>.
- Chiao, Joan Y., Tetsuya Iidaka, Heather L. Gordon, Junpei Nogawa, Moshe Bar, Elissa Aminoff, Norihiro Sadato, and Nalini Ambady. 2008. “Cultural Specificity in Amygdala Response to Fear Faces.” *Journal of Cognitive Neuroscience* 20 (12): 2167–74.
<https://doi.org/10.1162/jocn.2008.20151>.
- Cullen, Kathryn R., Melinda K. Westlund, Bonnie Klimes-Dougan, Bryon A. Mueller, Alaa Houry, Lynn E. Eberly, and Kelvin O. Lim. 2014. “Abnormal Amygdala Resting-State Functional Connectivity in Adolescent Depression.” *JAMA Psychiatry* 71 (10): 1138–47.
<https://doi.org/10.1001/jamapsychiatry.2014.1087>.
- Dale, A. M., B. Fischl, and M. I. Sereno. 1999. “Cortical Surface-Based Analysis. I. Segmentation and Surface Reconstruction.” *NeuroImage* 9 (2): 179–94.
<https://doi.org/10.1006/nimg.1998.0395>.
- Desikan, Rahul S., Florent Ségonne, Bruce Fischl, Brian T. Quinn, Bradford C. Dickerson, Deborah Blacker, Randy L. Buckner, et al. 2006. “An Automated Labeling System for Subdividing the Human Cerebral Cortex on MRI Scans into Gyral Based Regions of Interest.” *NeuroImage* 31 (3): 968–80. <https://doi.org/10.1016/j.neuroimage.2006.01.021>.
- Doss, Manoj K., Jessica Weafer, David A. Gallo, and Harriet de Wit. 2018. “MDMA Impairs Both the Encoding and Retrieval of Emotional Recollections.” *Neuropsychopharmacology* 43 (4): 791–800. <https://doi.org/10.1038/npp.2017.171>.
- Dunn, Barnaby D., Ramaris E. German, Gabi Khazanov, Colin Xu, Steven D. Hollon, and Robert J. DeRubeis. 2020. “Changes in Positive and Negative Affect During Pharmacological Treatment and Cognitive Therapy for Major Depressive Disorder: A Secondary Analysis of Two Randomized Controlled Trials.” *Clinical Psychological Science* 8 (1): 36–51. <https://doi.org/10.1177/2167702619863427>.
- Ehlers, Anke. 2010. “Understanding and Treating Unwanted Trauma Memories in Posttraumatic Stress Disorder.” *Zeitschrift Für Psychologie / Journal of Psychology* 218 (2): 141–45.
<https://doi.org/10.1027/0044-3409/a000021>.
- Etkin, Amit, and Tor D. Wager. 2007. “Functional Neuroimaging of Anxiety: A Meta-Analysis of Emotional Processing in PTSD, Social Anxiety Disorder, and Specific Phobia.” *American Journal of Psychiatry* 164 (10): 1476–88.
<https://doi.org/10.1176/appi.ajp.2007.07030504>.
- Feduccia, Allison A., and Michael C. Mithoefer. 2018. “MDMA-Assisted Psychotherapy for PTSD: Are Memory Reconsolidation and Fear Extinction Underlying Mechanisms?” *Progress in Neuro-Psychopharmacology and Biological Psychiatry* 84 (June): 221–28.
<https://doi.org/10.1016/j.pnpbp.2018.03.003>.

- Feurer, Cope, Jagan Jimmy, Fini Chang, Scott A. Langenecker, K. Luan Phan, Olusola Ajilore, and Heide Klumpp. 2021. "Resting State Functional Connectivity Correlates of Rumination and Worry in Internalizing Psychopathologies." *Depression and Anxiety* 38 (5): 488–97. <https://doi.org/10.1002/da.23142>.
- Friston, K. J., S. Williams, R. Howard, R. S. Frackowiak, and R. Turner. 1996. "Movement-Related Effects in FMRI Time-Series." *Magnetic Resonance in Medicine* 35 (3): 346–55. <https://doi.org/10.1002/mrm.1910350312>.
- Garrett, Amy, Judith A. Cohen, Sanno Zack, Victor Carrion, Booil Jo, Joseph Blader, Alexis Rodriguez, Thomas J. Vanasse, Allan L. Reiss, and W. Stewart Agras. 2019. "Longitudinal Changes in Brain Function Associated with Symptom Improvement in Youth with PTSD." *Journal of Psychiatric Research* 114 (July): 161–69. <https://doi.org/10.1016/j.jpsychires.2019.04.021>.
- Goetter, Elizabeth M., Eric Bui, Rebecca A. Ojserkis, Rebecca J. Zakarian, Rebecca Weintraub Brendel, and Naomi M. Simon. 2015. "A Systematic Review of Dropout From Psychotherapy for Posttraumatic Stress Disorder Among Iraq and Afghanistan Combat Veterans." *Journal of Traumatic Stress* 28 (5): 401–9. <https://doi.org/10.1002/jts.22038>.
- Guze, Samuel B. 1995. "Diagnostic and Statistical Manual of Mental Disorders, 4th Ed. (DSM-IV)." *American Journal of Psychiatry* 152 (8): 1228–1228. <https://doi.org/10.1176/ajp.152.8.1228>.
- Hake, Holly S., Jazmyne K. P. Davis, River R. Wood, Margaret K. Tanner, Esteban C. Loetz, Anais Sanchez, Mykola Ostrovskyy, et al. 2019. "3,4-Methylenedioxymethamphetamine (MDMA) Impairs the Extinction and Reconsolidation of Fear Memory in Rats." *Physiology & Behavior* 199 (February): 343–50. <https://doi.org/10.1016/j.physbeh.2018.12.007>.
- Harnett, Nathaniel G., Adam M. Goodman, and David C. Knight. 2020. "PTSD-Related Neuroimaging Abnormalities in Brain Function, Structure, and Biochemistry." *Experimental Neurology* 330 (August): 113331. <https://doi.org/10.1016/j.expneurol.2020.113331>.
- Helpman, Liat, Xi Zhu, Sigal Zilcha-Mano, Benjamin Suarez-Jimenez, Amit Lazarov, Bret Rutherford, and Yuval Neria. 2021. "Reversed Patterns of Resting State Functional Connectivity for Females vs. Males in Posttraumatic Stress Disorder." *Neurobiology of Stress* 15 (November): 100389. <https://doi.org/10.1016/j.ynstr.2021.100389>.
- Huijstee, Jytte van, and Eric Vermetten. 2018. "The Dissociative Subtype of Post-Traumatic Stress Disorder: Research Update on Clinical and Neurobiological Features." *Current Topics in Behavioral Neurosciences* 38: 229–48. https://doi.org/10.1007/7854_2017_33.
- Jerome, Lisa, Allison A. Feduccia, Julie B. Wang, Scott Hamilton, Berra Yazar-Klosinski, Amy Emerson, Michael C. Mithoefer, and Rick Doblin. 2020. "Long-Term Follow-up Outcomes of MDMA-Assisted Psychotherapy for Treatment of PTSD: A Longitudinal Pooled Analysis of Six Phase 2 Trials." *Psychopharmacology* 237 (8): 2485–97. <https://doi.org/10.1007/s00213-020-05548-2>.
- Ke, Jun, Li Zhang, Rongfeng Qi, Weihui Li, Cailan Hou, Yuan Zhong, Zhong He, Lingjiang Li, and Guangming Lu. 2016. "A Longitudinal FMRI Investigation in Acute Post-Traumatic Stress Disorder (PTSD)." *Acta Radiologica* 57 (11): 1387–95. <https://doi.org/10.1177/0284185115585848>.
- Kleim, Birgit, Franziska Wallott, and Anke Ehlers. 2008. "Are Trauma Memories Disjointed from Other Autobiographical Memories in Posttraumatic Stress Disorder? An

- Experimental Investigation.” *Behavioural and Cognitive Psychotherapy* 36 (2): 221–34. <https://doi.org/10.1017/S1352465807004080>.
- Lanius, R. A., R. L. Bluhm, N. J. Coupland, K. M. Hegadoren, B. Rowe, J. Théberge, R. W. J. Neufeld, P. C. Williamson, and M. Brimson. 2010. “Default Mode Network Connectivity as a Predictor of Post-Traumatic Stress Disorder Symptom Severity in Acutely Traumatized Subjects.” *Acta Psychiatrica Scandinavica* 121 (1): 33–40. <https://doi.org/10.1111/j.1600-0447.2009.01391.x>.
- Lanius, R. A., R. Bluhm, U. Lanius, and C. Pain. 2006. “A Review of Neuroimaging Studies in PTSD: Heterogeneity of Response to Symptom Provocation.” *Journal of Psychiatric Research* 40 (8): 709–29. <https://doi.org/10.1016/j.jpsychires.2005.07.007>.
- Lanius, R. A., P. C. Williamson, M. Densmore, K. Boksman, M. A. Gupta, R. W. Neufeld, J. S. Gati, and R. S. Menon. 2001. “Neural Correlates of Traumatic Memories in Posttraumatic Stress Disorder: A Functional MRI Investigation.” *The American Journal of Psychiatry* 158 (11): 1920–22. <https://doi.org/10.1176/appi.ajp.158.11.1920>.
- Lanius, Ruth A., Peter C. Williamson, Kristine Boksman, Maria Densmore, Madhulika Gupta, Richard W. J. Neufeld, Joseph S. Gati, and Ravi S. Menon. 2002. “Brain Activation during Script-Driven Imagery Induced Dissociative Responses in PTSD: A Functional Magnetic Resonance Imaging Investigation.” *Biological Psychiatry* 52 (4): 305–11. [https://doi.org/10.1016/s0006-3223\(02\)01367-7](https://doi.org/10.1016/s0006-3223(02)01367-7).
- LeDoux, Joseph. 2003. “The Emotional Brain, Fear, and the Amygdala.” *Cellular and Molecular Neurobiology* 23 (4): 727–38. <https://doi.org/10.1023/A:1025048802629>.
- Lewis, Catrin, Neil P. Roberts, Samuel Gibson, and Jonathan I. Bisson. 2020. “Dropout from Psychological Therapies for Post-Traumatic Stress Disorder (PTSD) in Adults: Systematic Review and Meta-Analysis.” *European Journal of Psychotraumatology* 11 (1): 1709709. <https://doi.org/10.1080/20008198.2019.1709709>.
- Liberzon, Israel, Stephan F. Taylor, Richard Amdur, Tara D. Jung, Kenneth R. Chamberlain, Satoshi Minoshima, Robert A. Koepp, and Lorraine M. Fig. 1999. “Brain Activation in PTSD in Response to Trauma-Related Stimuli.” *Biological Psychiatry* 45 (7): 817–26. [https://doi.org/10.1016/S0006-3223\(98\)00246-7](https://doi.org/10.1016/S0006-3223(98)00246-7).
- Liddell, Belinda J., and Laura Jobson. 2016. “The Impact of Cultural Differences in Self-Representation on the Neural Substrates of Posttraumatic Stress Disorder.” *European Journal of Psychotraumatology* 7 (1): 30464. <https://doi.org/10.3402/ejpt.v7.30464>.
- Maddock, R. J. 1999. “The Retrosplenial Cortex and Emotion: New Insights from Functional Neuroimaging of the Human Brain.” *Trends in Neurosciences* 22 (7): 310–16. [https://doi.org/10.1016/s0166-2236\(98\)01374-5](https://doi.org/10.1016/s0166-2236(98)01374-5).
- Maples-Keller, Jessica L., Seth D. Norrholm, Mark Burton, Collin Reiff, Callan Coghlan, Tanja Jovanovic, Carly Yasinski, et al. 2022. “A Randomized Controlled Trial of 3,4-Methylenedioxymethamphetamine (MDMA) and Fear Extinction Retention in Healthy Adults.” *Journal of Psychopharmacology (Oxford, England)*, February, 2698811211069124. <https://doi.org/10.1177/02698811211069124>.
- Mitchell, Jennifer M., Michael Bogenschutz, Alia Lilienstein, Charlotte Harrison, Sarah Kleiman, Kelly Parker-Guilbert, Marcela Ot’alora G., et al. 2021. “MDMA-Assisted Therapy for Severe PTSD: A Randomized, Double-Blind, Placebo-Controlled Phase 3 Study.” *Nature Medicine* 27 (6): 1025–33. <https://doi.org/10.1038/s41591-021-01336-3>.
- Mithoefer, Michael C., Allison A. Feduccia, Lisa Jerome, Anne Mithoefer, Mark Wagner, Zach Walsh, Scott Hamilton, Berra Yazar-Klosinski, Amy Emerson, and Rick Doblin. 2019.

- “MDMA-Assisted Psychotherapy for Treatment of PTSD: Study Design and Rationale for Phase 3 Trials Based on Pooled Analysis of Six Phase 2 Randomized Controlled Trials.” *Psychopharmacology* 236 (9): 2735–45. <https://doi.org/10.1007/s00213-019-05249-5>.
- Mithoefer, Michael C., Ann T. Mithoefer, Allison A. Feduccia, Lisa Jerome, Mark Wagner, Joy Wymer, Julie Holland, et al. 2018. “3,4-Methylenedioxymethamphetamine (MDMA)-Assisted Psychotherapy for Post-Traumatic Stress Disorder in Military Veterans, Firefighters, and Police Officers: A Randomised, Double-Blind, Dose-Response, Phase 2 Clinical Trial.” *The Lancet Psychiatry* 5 (6): 486–97. [https://doi.org/10.1016/S2215-0366\(18\)30135-4](https://doi.org/10.1016/S2215-0366(18)30135-4).
- Mithoefer, Michael C., Mark T. Wagner, Ann T. Mithoefer, Lisa Jerome, and Rick Doblin. 2011. “The Safety and Efficacy of {+/-}3,4-Methylenedioxymethamphetamine-Assisted Psychotherapy in Subjects with Chronic, Treatment-Resistant Posttraumatic Stress Disorder: The First Randomized Controlled Pilot Study.” *Journal of Psychopharmacology (Oxford, England)* 25 (4): 439–52. <https://doi.org/10.1177/0269881110378371>.
- Nicholson, Andrew A., Maria Densmore, Paul A. Frewen, Jean Théberge, Richard WJ Neufeld, Margaret C. McKinnon, and Ruth A. Lanius. 2015. “The Dissociative Subtype of Posttraumatic Stress Disorder: Unique Resting-State Functional Connectivity of Basolateral and Centromedial Amygdala Complexes.” *Neuropsychopharmacology* 40 (10): 2317–26. <https://doi.org/10.1038/npp.2015.79>.
- Patel, Ronak, R. Nathan Spreng, Lisa M. Shin, and Todd A. Girard. 2012. “Neurocircuitry Models of Posttraumatic Stress Disorder and beyond: A Meta-Analysis of Functional Neuroimaging Studies.” *Neuroscience & Biobehavioral Reviews* 36 (9): 2130–42. <https://doi.org/10.1016/j.neubiorev.2012.06.003>.
- Peng, Xiaoling, Way K. W. Lau, Chanyu Wang, Lingfang Ning, and Ruibin Zhang. 2020. “Impaired Left Amygdala Resting State Functional Connectivity in Subthreshold Depression Individuals.” *Scientific Reports* 10 (1): 17207. <https://doi.org/10.1038/s41598-020-74166-x>.
- Pitman, Roger K., Ann M. Rasmusson, Karestan C. Koenen, Lisa M. Shin, Scott P. Orr, Mark W. Gilbertson, Mohammed R. Milad, and Israel Liberzon. 2012. “Biological Studies of Post-Traumatic Stress Disorder.” *Nature Reviews Neuroscience* 13 (11): 769–87. <https://doi.org/10.1038/nrn3339>.
- Rauch, Scott L., Lisa M. Shin, and Elizabeth A. Phelps. 2006. “Neurocircuitry Models of Posttraumatic Stress Disorder and Extinction: Human Neuroimaging Research--Past, Present, and Future.” *Biological Psychiatry* 60 (4): 376–82. <https://doi.org/10.1016/j.biopsych.2006.06.004>.
- Ravindran, Lakshmi N., and Murray B. Stein. 2009. “Pharmacotherapy of PTSD: Premises, Principles, and Priorities.” *Brain Research* 1293 (October): 24–39. <https://doi.org/10.1016/j.brainres.2009.03.037>.
- Ridderbusch, Isabelle C., Adrian Wroblewski, Yunbo Yang, Jan Richter, Maike Hollandt, Alfons O. Hamm, Hans-Ulrich Wittchen, et al. 2021. “Neural Adaptation of Cingulate and Insular Activity during Delayed Fear Extinction: A Replicable Pattern across Assessment Sites and Repeated Measurements.” *NeuroImage* 237 (August): 118157. <https://doi.org/10.1016/j.neuroimage.2021.118157>.

- Roy, Amy Krain, Zarrar Shehzad, Daniel S. Margulies, A. M. Clare Kelly, Lucina Q. Uddin, Kristin Gotimer, Bharat B. Biswal, F. Xavier Castellanos, and Michael P. Milham. 2009. “Functional Connectivity of the Human Amygdala Using Resting State FMRI.” *NeuroImage* 45 (2): 614–26. <https://doi.org/10.1016/j.neuroimage.2008.11.030>.
- Sartory, Gudrun, Jan Cwik, Helge Knuppertz, Benjamin Schürholt, Morena Lebens, Rüdiger J. Seitz, and Ralf Schulze. 2013. “In Search of the Trauma Memory: A Meta-Analysis of Functional Neuroimaging Studies of Symptom Provocation in Posttraumatic Stress Disorder (PTSD).” *PloS One* 8 (3): e58150. <https://doi.org/10.1371/journal.pone.0058150>.
- Sestieri, Carlo, Maurizio Corbetta, Gian Luca Romani, and Gordon L. Shulman. 2011. “Episodic Memory Retrieval, Parietal Cortex, and the Default Mode Network: Functional and Topographic Analyses.” *The Journal of Neuroscience: The Official Journal of the Society for Neuroscience* 31 (12): 4407–20. <https://doi.org/10.1523/JNEUROSCI.3335-10.2011>.
- Singh, Manpreet K., Ryan G. Kelley, Kiki D. Chang, and Ian H. Gotlib. 2015. “Intrinsic Amygdala Functional Connectivity in Youth With Bipolar I Disorder.” *Journal of the American Academy of Child & Adolescent Psychiatry* 54 (9): 763–70. <https://doi.org/10.1016/j.jaac.2015.06.016>.
- Smith, Stephen M., Mark Jenkinson, Mark W. Woolrich, Christian F. Beckmann, Timothy E. J. Behrens, Heidi Johansen-Berg, Peter R. Bannister, et al. 2004. “Advances in Functional and Structural MR Image Analysis and Implementation as FSL.” *NeuroImage* 23 Suppl 1: S208-219. <https://doi.org/10.1016/j.neuroimage.2004.07.051>.
- Smith, Stephen M., and Thomas E. Nichols. 2009. “Threshold-Free Cluster Enhancement: Addressing Problems of Smoothing, Threshold Dependence and Localisation in Cluster Inference.” *NeuroImage* 44 (1): 83–98. <https://doi.org/10.1016/j.neuroimage.2008.03.061>.
- Spreng, R. Nathan, Raymond A. Mar, and Alice S. N. Kim. 2009. “The Common Neural Basis of Autobiographical Memory, Prospection, Navigation, Theory of Mind, and the Default Mode: A Quantitative Meta-Analysis.” *Journal of Cognitive Neuroscience* 21 (3): 489–510. <https://doi.org/10.1162/jocn.2008.21029>.
- Sripada, Rebecca, Anthony King, Sarah Garfinkel, Xin Wang, Chandra Sripada, Robert Welsh, and Israel Liberzon. 2012. “Altered Resting-State Amygdala Functional Connectivity in Men with Posttraumatic Stress Disorder.” *Journal of Psychiatry & Neuroscience* 37 (4): 241–49. <https://doi.org/10.1503/jpn.110069>.
- Stoddard, Joel, Derek Hsu, Richard C. Reynolds, Melissa A. Brotman, Monique Ernst, Daniel S. Pine, Ellen Leibenluft, and Daniel P. Dickstein. 2015. “Aberrant Amygdala Intrinsic Functional Connectivity Distinguishes Youths with Bipolar Disorder from Those with Severe Mood Dysregulation.” *Psychiatry Research: Neuroimaging* 231 (2): 120–25. <https://doi.org/10.1016/j.psychresns.2014.11.006>.
- Strawn, Jeffrey R., Samantha M. Bitter, Wade A. Weber, Wen-Jang Chu, Rachel M. Whitsel, Caleb Adler, Michel A. Cerullo, James Eliassen, Stephen M. Strakowski, and Melissa P. DelBello. 2012. “Neurocircuitry of Generalized Anxiety Disorder in Adolescents: A Pilot Functional Neuroimaging and Functional Connectivity Study.” *Depression and Anxiety* 29 (11): 939–47. <https://doi.org/10.1002/da.21961>.
- Suzuki, Akinobu, Sheena A. Josselyn, Paul W. Frankland, Shoichi Masushige, Alcino J. Silva, and Satoshi Kida. 2004. “Memory Reconsolidation and Extinction Have Distinct

- Temporal and Biochemical Signatures.” *Journal of Neuroscience* 24 (20): 4787–95.
<https://doi.org/10.1523/JNEUROSCI.5491-03.2004>.
- Svoboda, Eva, Margaret C. McKinnon, and Brian Levine. 2006. “The Functional Neuroanatomy of Autobiographical Memory: A Meta-Analysis.” *Neuropsychologia* 44 (12): 2189–2208.
<https://doi.org/10.1016/j.neuropsychologia.2006.05.023>.
- Tedeschi, R. G., and L. G. Calhoun. 1996. “The Posttraumatic Growth Inventory: Measuring the Positive Legacy of Trauma.” *Journal of Traumatic Stress* 9 (3): 455–71.
<https://doi.org/10.1007/BF02103658>.
- Toazza, Rudineia, Alexandre Rosa Franco, Augusto Buchweitz, Roberta Dalle Molle, Danitsa Marcos Rodrigues, Roberta Sena Reis, Amanda Brondani Mucellini, et al. 2016. “Amygdala-Based Intrinsic Functional Connectivity and Anxiety Disorders in Adolescents and Young Adults.” *Psychiatry Research: Neuroimaging* 257 (November): 11–16. <https://doi.org/10.1016/j.psychresns.2016.09.010>.
- VanElzakker, Michael B., Lindsay K. Staples-Bradley, and Lisa M. Shin. 2018. “The Neurocircuitry of Fear and PTSD.” In *Sleep and Combat-Related Post Traumatic Stress Disorder*, edited by Eric Vermetten, Anne Germain, and Thomas C. Neylan, 111–25. New York, NY: Springer. https://doi.org/10.1007/978-1-4939-7148-0_10.
- Veer, Ilya M., Nicole Y. L. Oei, Philip Spinhoven, Mark A. van Buchem, Bernet M. Elzinga, and Serge A. R. B. Rombouts. 2011. “Beyond Acute Social Stress: Increased Functional Connectivity between Amygdala and Cortical Midline Structures.” *NeuroImage* 57 (4): 1534–41. <https://doi.org/10.1016/j.neuroimage.2011.05.074>.
- Walpola, Ishan C., Timothy Nest, Leor Roseman, David Erritzoe, Amanda Feilding, David J. Nutt, and Robin L. Carhart-Harris. 2017. “Altered Insula Connectivity under MDMA.” *Neuropsychopharmacology* 42 (11): 2152–62. <https://doi.org/10.1038/npp.2017.35>.
- Wang, Julie B., Jessica Lin, Leah Bedrosian, Allison Coker, Ilsa Jerome, Allison Feduccia, Alia Lilienstein, et al. 2021. “Scaling Up: Multisite Open-Label Clinical Trials of MDMA-Assisted Therapy for Severe Posttraumatic Stress Disorder.” *Journal of Humanistic Psychology*, June, 00221678211023663. <https://doi.org/10.1177/00221678211023663>.
- Wei, Shengnan, Miao Chang, Ran Zhang, Xiaowei Jiang, Fei Wang, and Yanqing Tang. 2018. “Amygdala Functional Connectivity in Female Patients with Major Depressive Disorder with and without Suicidal Ideation.” *Annals of General Psychiatry* 17 (1): 37. <https://doi.org/10.1186/s12991-018-0208-0>.
- Werff, S. J. A. van der, J. N. Pannekoek, I. M. Veer, M.-J. van Tol, A. Aleman, D. J. Veltman, F. G. Zitman, S. a. R. B. Rombouts, B. M. Elzinga, and N. J. A. van der Wee. 2013. “Resting-State Functional Connectivity in Adults with Childhood Emotional Maltreatment.” *Psychological Medicine* 43 (9): 1825–36. <https://doi.org/10.1017/S0033291712002942>.
- Winkler, Anderson M., Gerard R. Ridgway, Matthew A. Webster, Stephen M. Smith, and Thomas E. Nichols. 2014. “Permutation Inference for the General Linear Model.” *NeuroImage* 92 (May): 381–97. <https://doi.org/10.1016/j.neuroimage.2014.01.060>.
- Woolrich, Mark W., Timothy E. J. Behrens, Christian F. Beckmann, Mark Jenkinson, and Stephen M. Smith. 2004. “Multilevel Linear Modelling for fMRI Group Analysis Using Bayesian Inference.” *NeuroImage* 21 (4): 1732–47. <https://doi.org/10.1016/j.neuroimage.2003.12.023>.

MDMA-AT Neural Response

- Yang, Yang, Fanlu Jia, Wai Ting Siok, and Li Hai Tan. 2017. “The Role of Anxiety in Stuttering: Evidence from Functional Connectivity.” *Neuroscience* 346 (March): 216–25. <https://doi.org/10.1016/j.neuroscience.2016.11.033>.
- Young, Kymberly D., Greg J. Siegle, Masaya Misaki, Vadim Zotev, Raquel Phillips, Wayne C. Drevets, and Jerzy Bodurka. 2018. “Altered Task-Based and Resting-State Amygdala Functional Connectivity Following Real-Time fMRI Amygdala Neurofeedback Training in Major Depressive Disorder.” *NeuroImage: Clinical* 17 (January): 691–703. <https://doi.org/10.1016/j.nicl.2017.12.004>.
- Young, M. B., R. Andero, K. J. Ressler, and L. L. Howell. 2015. “3,4-Methylenedioxymethamphetamine Facilitates Fear Extinction Learning.” *Translational Psychiatry* 5 (9): e634–e634. <https://doi.org/10.1038/tp.2015.138>.
- Young, Matthew B., Seth D. Norrholm, Lara M. Khoury, Tanja Jovanovic, Sheila A.M. Rauch, Collin M. Reiff, Boadie W. Dunlop, Barbara O. Rothbaum, and Leonard L. Howell. 2017. “Inhibition of Serotonin Transporters Disrupts the Enhancement of Fear Memory Extinction by 3,4-Methylenedioxymethamphetamine (MDMA).” *Psychopharmacology* 234 (19): 2883–95. <https://doi.org/10.1007/s00213-017-4684-8>.
- Zhang, Sheng, and Chiang-shan R. Li. 2012. “Functional Connectivity Mapping of the Human Precuneus by Resting State fMRI.” *NeuroImage* 59 (4): 3548–62. <https://doi.org/10.1016/j.neuroimage.2011.11.023>.