

1 Title page

2 **Title:** Representation of evidence-based clinical practice guideline recommendations on
3 FHIR

4 **Authors:** Gregor Lichtner^{1,2,3}, Carlo Jurth³, Brian S Alper^{4,5}, Claudia Spies^{3,6}, Martin Boeker⁷, Joerg
5 J Meerpohl^{8,9}, Falk von Dincklage^{1,2,3}

6 ¹ Universitätsmedizin Greifswald, Department of Anesthesia, Critical Care, Emergency
7 and Pain Medicine, Greifswald, Germany.

8 ² Charité – Universitätsmedizin Berlin, corporate member of Freie Universität Berlin,
9 Humboldt-Universität zu Berlin, and Berlin Institute of Health, Institute of Medical
10 Informatics, Berlin, Germany.

11 ³ Charité – Universitätsmedizin Berlin, corporate member of Freie Universität Berlin,
12 Humboldt-Universität zu Berlin, and Berlin Institute of Health, Department of
13 Anesthesiology and Operative Intensive Care Medicine, Berlin, Germany.

14 ⁴ Computable Publishing LLC, Ipswich, Massachusetts USA.

15 ⁵ Scientific Knowledge Accelerator Foundation, Ipswich, Massachusetts USA.

16 ⁶ Einstein Center Digital Future, Berlin, Germany.

17 ⁷ Institute for Artificial Intelligence and Informatics in Medicine, Chair of Medical
18 Informatics, Medical Center rechts der Isar, Technical University of Munich, Munich,
19 Germany.

20 ⁸ Institute for Evidence in Medicine, Medical Center & Faculty of Medicine, University
21 of Freiburg, Freiburg, Germany.

22 ⁹ Cochrane Germany, Cochrane Germany Foundation, Freiburg, Germany.

23

24 Abstract

25 Background

26 Various formalisms have been developed to represent clinical practice guideline recommendations in
27 a computer-interpretable way. However, none of the existing formalisms leverage the structured and
28 computable information that emerge from the evidence-based guideline development process. Thus,
29 we here propose a FHIR-based guideline representation format that is structurally aligned to the
30 knowledge artifacts emerging during the process of evidence-based guideline development.

31 Methods

32 We identified the information required to represent evidence-based clinical practice guideline
33 recommendations and reviewed the knowledge artifacts emerging during the evidence-based
34 guideline development process. Then we conducted a consensus-based design process with domain
35 experts to develop an information model for guideline recommendation representation that is
36 structurally aligned to the evidence-based guideline recommendation development process and a
37 corresponding representation based on evidence-based medicine (EBM)-on-FHIR resources.

38 Results

39 The information model of clinical practice guideline recommendations and its EBMonFHIR-based
40 representation contain the clinical contents of individual guideline recommendations, a set of
41 metadata for the recommendations, the ratings for the recommendations (e.g., strength of
42 recommendation, certainty of overall evidence), the ratings of certainty of evidence for individual
43 outcomes (e.g., risk of bias) and links to the underlying evidence (systematic reviews based on primary
44 studies). We created profiles and an implementation guide for all FHIR resources required to represent
45 a complete clinical practice guideline and used the profiles to implement an exemplary clinical
46 guideline recommendation.

47 Conclusions

48 Our EBMonFHIR-based representation of clinical practice guideline recommendations allows to
49 directly link the evidence assessment process through systematic reviews and evidence grading, and
50 the underlying evidence from primary studies to the resulting guideline recommendations. This not
51 only allows to evaluate the evidence on which recommendations are based on transparently and
52 critically, but also allows for a more direct and in future automatable way to generate computer-
53 interpretable guideline recommendations based on computable evidence.

54 Introduction

55 A plethora of approaches have been developed to specify computer-interpretable representations of
56 clinical practice guideline recommendations, such as Asbru, EON, GLIF3, SAGE or GUIDE [1–7]. Despite
57 their many differences, all these representations have in common that they are designed based on the
58 concept that computer-interpretable guideline recommendations are derived by translating
59 unstructured recommendations into the formalism of the respective representation. However, with
60 the emergence of evidence-based medicine over the last decades [8], guideline recommendations are
61 developed in a structured process in which knowledge artifacts, such as the effect size estimates from
62 primary studies or the grading of available evidence, are derived at each step. Leveraging these
63 structured knowledge artifacts for the computer-interpretable representation of clinical guideline
64 recommendations might require a reconsideration of the current computer-interpretable guideline
65 recommendation formalisms.

66 The systematic development process of evidence-based guideline recommendations for a specific
67 clinical question is based on a systematic review of studies providing data that address the clinical
68 question, potentially followed by aggregations of the study data in meta-analyses and finally balancing
69 and grading all available information in structured evidence-to-decision frameworks, resulting in
70 trustworthy recommendations [9–12]. With digitalization spreading, more and more structured data
71 becomes available from this process. Considering that this structured data is the basis to formulate
72 unstructured guideline recommendations, translating these unstructured guideline recommendations
73 back into structured recommendation representations induces unnecessary workload. As an
74 alternative approach, we propose a format to represent computer-interpretable guideline
75 recommendations in a structure that directly builds on the knowledge artifacts emerging during the
76 guideline recommendation development process.

77 To represent such knowledge artifacts that emerge during guideline recommendation development,
78 the HL7 Clinical Decision Support (CDS) Work Group-sponsored Evidence-based Medicine (EBM) on
79 Fast Healthcare Interoperable Resources (FHIR) project sub-work group (EBMonFHIR) created a
80 collection of FHIR resources [13]. These FHIR resources provide a standardized way of describing data
81 formats and elements that are related to both the evidence generation and evidence assessment parts
82 of evidence-based guideline development, such as the effect size for certain outcomes of a specific
83 intervention on a specific population, the grading of the certainty of evidence, and metadata such as
84 the group of authors or publication status and version of knowledge artifacts.

85 Based on these resources, we developed an interoperable, computer-interpretable representation of
86 clinical practice guideline recommendations that combines the structured data emerging during the
87 development of evidence-based guideline recommendations, from the evidence generation in primary

- 88 studies and systematic reviews and the structured evidence assessment in evidence-to-decision
89 frameworks to the resulting guideline recommendations.

90 Methods

91 Requirements Engineering

92 To establish which information about the contents and the metadata of clinical practice guideline
93 recommendations need to be captured in the FHIR-based representation, we performed an iterative
94 consensus-based requirements engineering process. In this process, we included five clinical
95 stakeholders (health care professionals) and five guideline developers from German university
96 hospitals, medical societies and Cochrane Germany to identify both the required information for
97 practical use of clinical guideline recommendations and the metadata that is required to assess e.g.
98 the credibility and strength of recommendations, as well as the information required to connect
99 individual recommendations to their underlying evidence from systematic reviews of primary studies.
100 Participants of the requirements engineering process were recruited from the members of the COVID-
101 19 evidence ecosystem (CEOsys) project of the German COVID-19 Research Network of University
102 Medicine (“Netzwerk Universitätsmedizin”) [14].

103 Information Modelling

104 After establishing the list of required information, we developed an information model of the collected
105 items by identification of the item types, item cardinalities, relationships between items and grouping
106 of the items. Input from clinical stakeholders and guideline developers helped defining the entity
107 relationships for the items. The Cochrane PICO Ontology guided discussions for medical relationships
108 among the recommendation contents [15]. The candidate models were reviewed with clinical
109 stakeholders and medical information scientists for semantic and syntactic appropriateness and
110 completeness.

111 FHIR Mapping

112 Following the definition of the information model, we performed an iterative consensus-based process
113 to map the model’s items and relationships to their correspondences in FHIR. We included FHIR
114 developers and EBMonFHIR maintainers as well as the clinical stakeholders and guideline developers
115 from the requirements engineering process for necessary feedback and validation of the mapping.

116 In close collaboration with the EBMonFHIR maintainers, we derived a mapping of the information
117 model to existing EBMonFHIR resources. During this process, suboptimal applicability of the resources
118 to our use case were resolved by introducing differential changes to the EBMonFHIR resources in the
119 FHIR specification. We therefore developed our FHIR profiles and implementation guide based on the
120 latest available FHIR development build, which was at the time of writing the daily continuous
121 integration build of FHIR R5 as of April 1, 2022.

122 Development

123 The specification of the appropriate use of FHIR resources for representation of clinical guideline
124 recommendations was performed by means of creating FHIR resource profiles and an implementation
125 guide. Development was performed using software versioning and continuous integration and
126 continuous development (CI/CD) workflows on GitHub [16].

127 To maximize ease of implementation and adherence to the FHIR standard, the development of FHIR
128 profiles was carried out under the condition that no extensions should be used in the profiles unless
129 necessary.

130 Profiling was performed using the FHIR ShortHand (FSH) language (version 1.2.0) and the SUSHI
131 software (version 2.3.0) for translation to FHIR structure definitions in JSON format. For each profile,
132 we required that at least one instance (i.e., example) was defined that instantiated that profile.
133 Automated syntax and code checking were performed using the HL7 FHIR validator as implemented in
134 the FSH validator python package (version 0.2.2; [17]). This package was also used to test and validate
135 each defined instance against the profile it instantiates in the CI/CD workflow.

136 The implementation guide was created using the HL7 FHIR IG Publisher tool version 1.1.115-SNAPSHOT
137 (modified) and the FHIR core artifacts version 5.6.41-SNAPSHOT (modified). Both software tools were
138 modified to implement the continuous integration FHIR build as of April 1, 2022. Modified sources and
139 compiled executables are provided in the respective repositories of our GitHub organization [18].

140 A custom template was used for creation of the implementation guide's html pages. The creation and
141 deployment of the implementation guide to GitHub pages [19] is automatically triggered by commits
142 to the main branch of the project's GitHub repository in order to always keep the source profiles and
143 the implementation guide in synchronization.

144 Evaluation

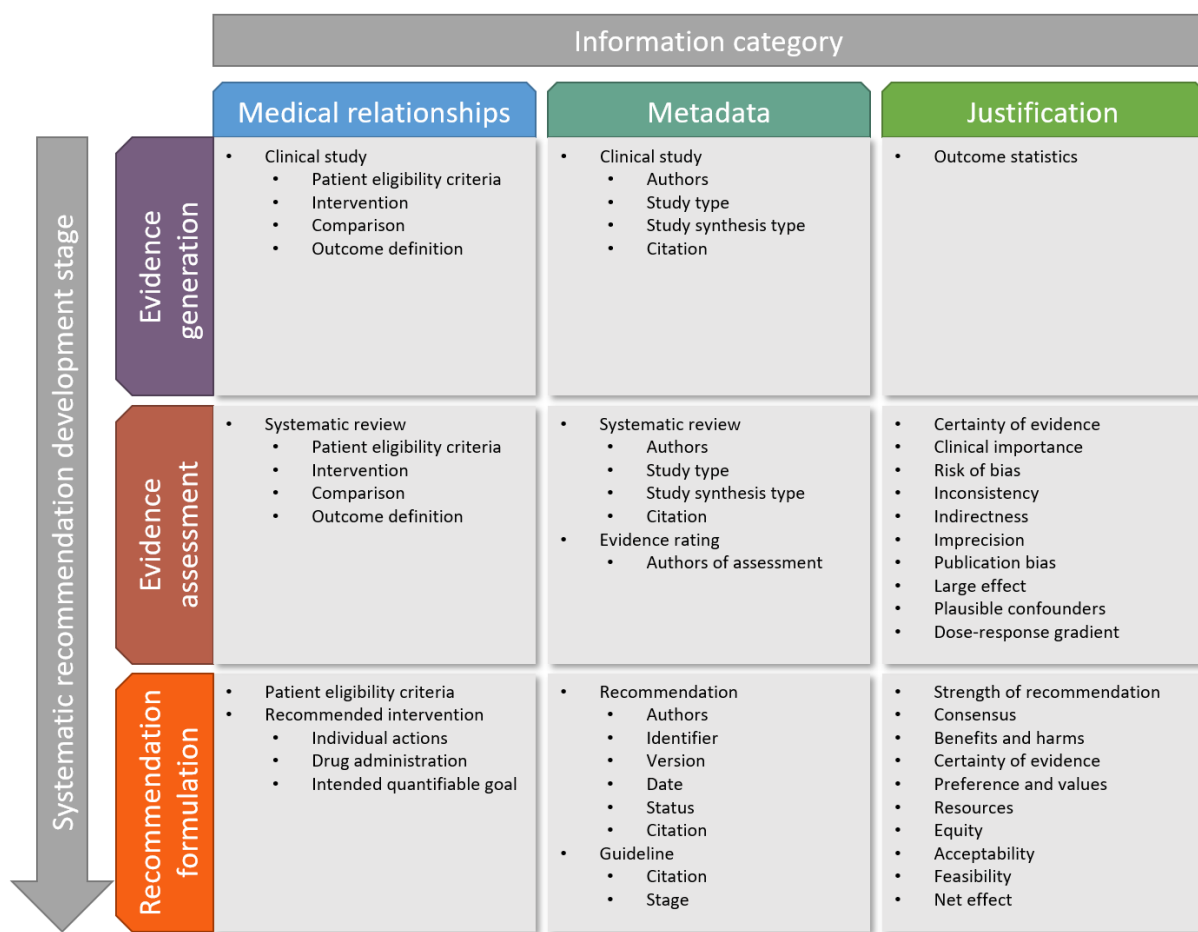
145 To evaluate syntactic and semantic completeness and appropriateness of the EBMonFHIR-based
146 guideline recommendation representation, we implemented a recent COVID-19 guideline
147 recommendation for the treatment of hospitalized patients. The implementation was reviewed with
148 clinical stakeholders and medical information scientists to confirm the appropriateness and
149 completeness of the implemented information.

150

151 Results

152 Information model

153 We identified the required and optional information that need to be captured in a representation of
 154 clinical guideline recommendations and categorized these information items into groups on two
 155 dimensions (Figure 1). The first dimension describes the content type categories of the information
 156 items including (i) items describing the medical relationships, (ii) the metadata items such as study
 157 types or authors, and (iii) items describing the justification for the recommendation, including statistics
 158 of primary studies and systematic reviews as well as the gradings of individual outcomes and of the
 159 final guideline recommendation. The second dimension describes the stages of the guideline
 160 recommendation development process from (i) the primary evidence generation in clinical studies, (ii)
 161 the systematic review and evidence assessment of individual outcomes, and (iii) the derivation of the
 162 recommendation including evidence grading across all outcomes. In the following sections, we provide
 163 details on each of the content type categories.



164

165 Figure 1 High level information model of the guideline recommendation representation.

166 Medical relationships

167 The medical relationships that a clinical question is made of can be decomposed using the “PICO”
168 framework into the four components of Population, Intervention, Comparison and Outcome. These
169 components distinctly define to which patients a clinical question applies (population), which
170 intervention or treatment is considered (intervention), which control treatment is used as a
171 comparison for the investigated intervention (comparison) and which outcome is considered
172 (outcome). Using the PICO framework to decompose the clinical questions of primary clinical studies
173 and meta-analyses is standard methodology in evidence-based medicine [20]. To leverage the PICO
174 framework to describe the medical relationships of guideline recommendations, only the two
175 components P and I are required. These allow to define distinctly in which patients (the “population”)
176 which treatment or action (the “intervention”) is recommended. As guideline recommendations are
177 commonly defined as absolute recommendations and not in relation to a specific comparison, the
178 comparison component of PICO is not required to describe the medical relationship of a guideline
179 recommendation. Likewise, as guideline recommendations summarize across all outcomes, the
180 individual outcomes are not a required component of the recommendation itself. Instead, a guideline
181 recommendation could include an “outcome net effect” (see “justification” below), but this does not
182 require describing a specific outcome on the guideline recommendation level.

183 Metadata

184 The metadata category considers descriptive metadata such as the authors of all parts of the guideline
185 development process including those of the clinical studies, the systematic review, the evidence
186 assessment, and of the grading of the final recommendation. The metadata may also include
187 versioning information of the recommendation (e.g., version number, date, publication status), which
188 are particularly important in the context of living guidelines that are regularly updated. Additionally,
189 citations of individual studies, published systematic reviews, recommendations and guidelines are part
190 of the metadata.

191 Justification

192 The justification category considers all information items on the basis of which the recommendation
193 is ultimately given. For individual outcomes, these include the effect size (i.e., outcome statistics) of
194 the intervention as determined from clinical studies or the systematic review and furthermore the
195 quality of evidence rating according to GRADE [12]. For the final recommendation as a whole, the
196 justification includes ratings according to the GRADE Evidence-to-Decision (EtD) [9,10] as well as the
197 outcome net effect of the recommended intervention (weighting of benefits and harms) [21].

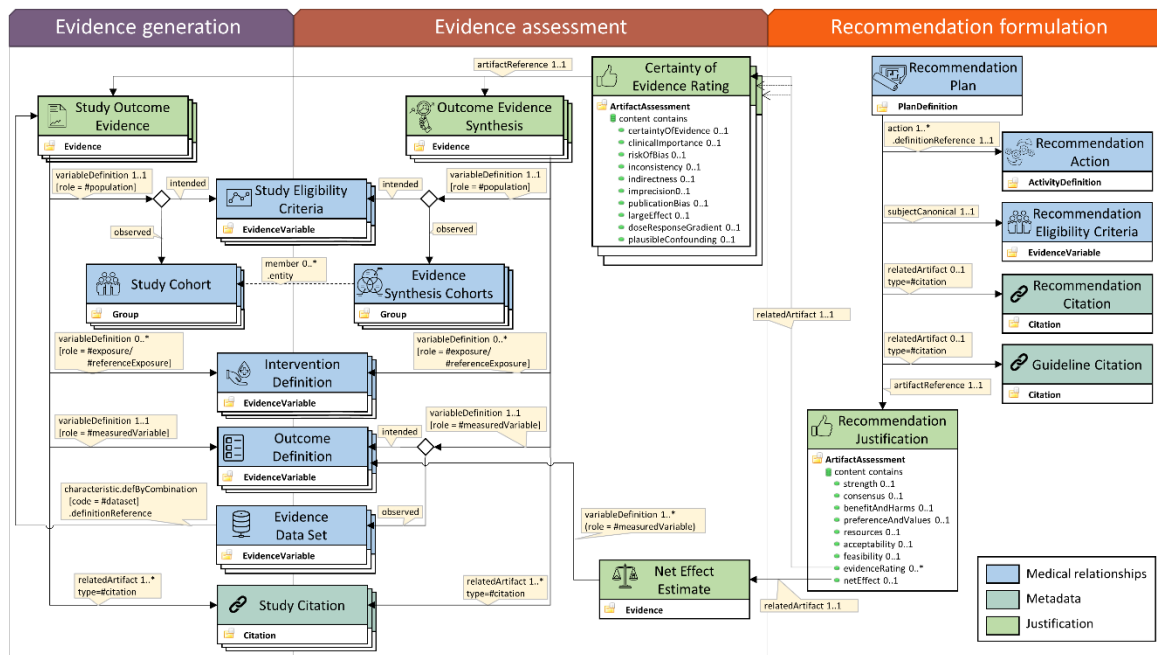
198 **FHIR Mapping**

199 **Overview**

200 The structure of our EBMonFHIR-based guideline representation combines multiple interlinked FHIR
 201 resources for the representation of the different parts and aspects of a clinical practice guideline and
 202 the individual recommendations (Table 1). The definition of the recommended intervention serves as
 203 the root of the structure and references the group of patients (“population”) for which the intervention
 204 is recommended, as well as the recommendation ratings according to the GRADE EtD framework
 205 (Figure 2). We created profiles for each resource to consistently constrain the representation of the
 206 clinical guideline recommendations. The following sections describe each of the profiles in more detail.

Category	Item	FHIR Resource(s)	Profile Name(s)	Required
Guideline	Collection of recommendations	Composition	Guideline	
Recommendation	Population	EvidenceVariable	RecommendationEligibilityCriteria	✓
	Intervention	PlanDefinition, ActivityDefinition	RecommendationPlan, RecommendationAction	✓
	Recommendation Citation	Citation	RecommendationCitation	
	Guideline Citation	Citation	GuidelineCitation	
Recommendation Justification	Strength of Recommendation	ArtifactAssessment	RecommendationJustification	
	Consensus			
	Benefits and Harms			
	Certainty of Evidence			
	Preference and values			
	Resources			
	Equity			
	Acceptability			
	Feasibility			
Outcome	Outcome Definition	EvidenceVariable	OutcomeDefinition	
	Certainty of Evidence	ArtifactAssessment	CertaintyOfEvidenceRating	
	Clinical Importance			
	Risk of Bias			
	Inconsistency			
	Indirectness			
	Imprecision			
	Publication Bias			
	Large Effect			
	Plausible Confounders			
	Dose-Response Gradient			
Net Effect	Net Effect	Evidence	NetEffectEstimate	
Studies (primary & systematic reviews)	Intended Study Population	EvidenceVariable	StudyEligibilityCriteria	
	Intervention/Comparison	EvidenceVariable	InterventionDefinition	
	Study Citation	Citation	StudyCitation	
Primary Studies	Observed Study Population	Group	StudyCohort	
	Outcome Statistics (relative effect / mean difference)	Evidence	StudyOutcomeEvidence	
Systematic reviews	Observed Populations from Primary Studies	Group	EvidenceSynthesisCohorts	
	Aggregated Outcome Statistics	Evidence	OutcomeEvidenceSynthesis	
	Observed Outcomes from Primary Studies	EvidenceVariable	EvidenceDataSet	

207 *Table 1 Information items of evidence-based clinical practice guidelines and their mapping to FHIR.*
 208 *Shown are the items and the FHIR resource name and profile name, which are used to represent the*
 209 *respective item.*



211
 212 *Figure 2 Overview of the resources and profiles used for representing clinical practice guideline*
 213 *recommendations on EBMonFHIR. Note that depending on the type of study (primary study vs*
 214 *systematic review), the PICO elements (eligibility criteria, intervention definition, outcome definition)*
 215 *for the evidence may be part of evidence generation or evidence assessment, respectively.*

216 **Intervention**

217 The recommended intervention is represented in the *RecommendationPlan* profile of the
 218 *PlanDefinition* resource. This resource allows to specify detailed clinical workflows, consisting of
 219 individual actions that are to be taken (or should not be taken) during specified circumstances. These
 220 individual actions are defined using the *RecommendationAction* profile of the *ActivityDefinition*
 221 resource and are referenced by the *RecommendationPlan* profile.

222 The *RecommendationPlan* profile serves as the root of an individual guideline recommendation
 223 representation, referencing – directly or indirectly – all further defining parts of an individual guideline
 224 recommendation. Most importantly, the profile directly references the definition of the population,
 225 for which the specified intervention is recommended, via the *subjectReference* field. The
 226 *RecommendationPlan* profile, together with the *RecommendationAction* profile and the
 227 *RecommendationEligibilityCriteria* profiles form the required core of a computer-interpretable
 228 guideline recommendation representation that allows for automated integration with clinical data to
 229 provide clinical decision support.

230 Next to the core components, the *RecommendationPlan* profile references via the *relatedArtifact* field
 231 the *RecommendationJustification* profile of the *ArtifactAssessment* resource to represent the

232 justification of the recommendation in accordance with the GRADE EtD framework. Additionally, the
233 *RecommendationPlan* profile references the *RecommendationCitation* and *GuidelineCitation* profiles
234 of the *Citation* resource to provide references to the published recommendation and/or guideline that
235 contains the recommendation, respectively.

236 The *InterventionDefinition* profile of *EvidenceVariable* is used to represent the general, non-executable
237 definition of an intervention in clinical studies or systematic reviews. In contrast to
238 *RecommendationPlan* and *RecommendationAction*, the intervention represented by the
239 *InterventionDefinition* profile does not usually describe the intervention in sufficient detail to provide
240 automated clinical decision support.

241 Population

242 The patients to which the recommended intervention defined in the *RecommendationPlan* profile is
243 applicable is specified via the *RecommendationEligibilityCriteria* profile of the *EvidenceVariable*
244 resource. This profile leverages the newly introduced option of the *EvidenceVariable* resource to
245 specify complex characteristics for a population definition, such as temporal dependencies between
246 individual characteristics. Thereby, the *EvidenceVariable* resource allows to specify much more
247 complex population characteristics than the *Group* resource, and such complex definitions are
248 required to represent population definitions from actual guideline recommendations as well as from
249 study eligibility criteria.

250 Recommendation Justification

251 To represent the rating of the recommendation regarding its strength, the achieved consensus among
252 the guideline developers, the certainty of evidence and additional ratings according to the GRADE EtD
253 framework [10], the *RecommendationJustification* profile of the *ArtifactAssessment* resource is used.
254 The *ArtifactAssessment* resource is newly introduced in FHIR Release 5 and is used to represent one or
255 more comments, ratings, or classifications about another resource. Here, that other resource is the
256 *RecommendationPlan* profile that describes the guideline recommendation. The profile includes the
257 individual ratings as justification for the recommendation in the content field and uses different value
258 sets and code systems for the individual components (Table 2).

259 Additionally, *RecommendationJustification* references the ratings of individual evidence (i.e., primary
260 studies or meta-analyses) in accordance with GRADE via the *CertaintyOfEvidenceRating* profile of
261 *ArtifactAssessment*. The *RecommendationJustification* profile also references the *NetEffectEstimate*
262 profile of the *Evidence* resource to describe the combined net effect (net harm / net benefit) of the
263 recommendation given the considered outcomes [21].

264 A single instance of the *RecommendationJustification* profile is used for a particular recommendation.

265 Certainty of Evidence Rating

266 The ratings of the individual outcomes that are relevant to a specific recommendation are represented
267 using the *CertaintyOfEvidenceRating* profile of the *ArtifactAssessment* resource (Table 3). The assessed
268 artifact for each *CertaintyOfEvidenceRating* instance is an instance of the *StudyOutcomeEvidence* or
269 *OutcomeEvidenceSynthesis* profile of the *Evidence* resource, which represents the statistics related to
270 that specific outcome and references the systematically collated body of evidence from which the
271 effect estimates are derived. For each individual outcome, a different instance of the
272 *CertaintyOfEvidenceRating* profile is used.

273

Item	ValueSet	CodeSystem	Defined by	Codes
Strength of Recommendation	RecommendationStrength	RecommendationStrength	CEOsyst	strong-for strong-against weak-for weak-against
Consensus	RatingConsensus	StrengthOfRecommendationRating	FHIR	strong weak
Benefits and Harms	RatingCertaintyOfEvidence	EvidenceCertaintyRating	FHIR	high moderate low very-low
Certainty of Evidence	RatingBenefitAndHarms	EvidenceToDecisionCertaintyRating	CEOsyst	small-net-benefit substantial-net-benefit important-harms
Preference and values	RatingPreferenceAndValues	EvidenceToDecisionCertaintyRating	CEOsyst	factor-not-considered substantial-variability no-substantial-variability few-want-intervention
Resources	RatingResources	EvidenceToDecisionCertaintyRating	CEOsyst	factor-not-considered important-issues-or-not-investigated no-important-issues important-negative-issues
Equity	RatingEquity	EvidenceToDecisionCertaintyRating	CEOsyst	factor-not-considered important-issues-or-not-investigated no-important-issues intervention-increases-inequity
Acceptability	RatingAcceptability	EvidenceToDecisionCertaintyRating	CEOsyst	factor-not-considered important-issues-or-not-investigated no-important-issues intervention-poorly-accepted
Feasibility	RatingFeasibility	EvidenceToDecisionCertaintyRating	CEOsyst	factor-not-considered important-issues-or-not-investigated no-important-issues intervention-difficult-to-implement

274 *Table 2 Ratings in the RecommendationJustification profile. Shown are the ratings that are represented in the RecommendationJustification profile, together with the value set*
275 *binding on content.classifier, the code system used in the respective value set, the organization that defined the code system and the codes included in the respective value set.*

Item	ValueSet	CodeSystem	Defined by	Codes
Certainty of Evidence	RatingCertaintyOfEvidence	EvidenceCertaintyRating	FHIR	high moderate low very-low
Clinical Importance	RatingClinicalImportance	ClinicalImportance	CEOsyst	1 2 3 4 5 6 7 8 9
Risk of Bias	RatingConcernDegree	EvidenceCertaintyRating	FHIR	no-concern serious-concern very-serious-concern extremely-serious-concern
Inconsistency	RatingConcernDegree	EvidenceCertaintyRating	FHIR	no-concern serious-concern very-serious-concern extremely-serious-concern
Indirectness	RatingConcernDegree	EvidenceCertaintyRating	FHIR	no-concern serious-concern very-serious-concern extremely-serious-concern
Imprecision	RatingConcernDegree	EvidenceCertaintyRating	FHIR	no-concern serious-concern very-serious-concern extremely-serious-concern
Publication Bias	RatingConcernDegree	EvidenceCertaintyRating	FHIR	no-concern serious-concern very-serious-concern extremely-serious-concern
Large Effect	RatingUpratingTwoLevels	EvidenceCertaintyRating	FHIR	no-change upcode1 upcode2
Plausible Confounders	RatingUpratingOneLevel	EvidenceCertaintyRating	FHIR	no-change upcode1
Dose-Response Gradient	RatingUpratingOneLevel	EvidenceCertaintyRating	FHIR	no-change upcode1

276 *Table 3 Ratings in the CertaintyOfEvidenceRating profile. Shown are the ratings that are represented in the CertaintyOfEvidenceRating profile, together with the value set binding*
277 *on content.classifier, the code system used in the respective value set, the organization that defined the code system and the codes included in the respective value set.*

278 Outcome

279 The definition of an individual outcome (e.g., 30-day all-cause mortality), possibly including parameters
280 such as timing and method of outcome measurement, is represented using the *OutcomeDefinition*
281 profile of *EvidenceVariable*.

282 The evidence for individual outcomes, i.e., summary statistics from systematic reviews of clinical
283 studies or from primary studies, are represented by an instance of the *StudyOutcomeEvidence* profile
284 (for primary studies) or *OutcomeEvidenceSynthesis* (for systematic reviews) of the *Evidence* resource.
285 These instances hold the statistics associated with the particular outcome (e.g., the relative risk for
286 intervention vs. comparison and the associated 95% confidence interval). For that purpose,
287 *StudyOutcomeEvidence* and *OutcomeEvidenceSynthesis* may reference to the definition of an
288 intervention and a comparison via the *InterventionDefinition* profile of *EvidenceVariable*.

289 As the study population may be different from the recommendation population, the
290 *StudyOutcomeEvidence* and *OutcomeEvidenceSynthesis* profiles references the *StudyEligibilityCriteria*
291 profile of *EvidenceVariable* for the *intended* definition of the population in the studies from which the
292 evidence is derived. For the actually *observed* study population, the *StudyCohort* profile of *Group* is
293 used for primary studies to describe the number of participants, and the *EvidenceSynthesisCohorts*
294 profile of *Group* is used for systematic reviews, describing the total number studies and referencing
295 the individual *StudyCohort* instances from the primary studies.

296 As the evidence on which a systematic review is based on is a dataset of results from primary studies,
297 the *OutcomeEvidenceSynthesis* references the *EvidenceDataSet* profile of *EvidenceVariable*, which
298 combines the *StudyOutcomeEvidence* instances from the primary studies into the dataset of the
299 systematic review.

300 Additionally, *StudyOutcomeEvidence* and *OutcomeEvidenceSynthesis* may reference *StudyCitation*
301 instances for the published systematic review and/or primary studies.

302 Net Effect

303 The net effect is the overall expected effect of following a recommendation, calculated as an
304 importance-weighted average of the individual outcome effects. It thus quantifies the balance
305 between desirable and undesirable effects of an intervention [21]. When the net effect should be
306 specified, it can be represented using the *NetEffectEstimate* profile of the *Evidence* resource. It
307 references the individual outcomes that are included in the calculation of the net effect and their
308 relative importance weightings as model characteristics.

309 Guidelines

310 To represent the collection of multiple recommendations in a guideline, the *Guideline* profile of the
311 *Composition* resource is used. The *Composition* resource sections are references to the individual
312 *RecommendationPlan* instances that define the individual recommendations. Additionally, the
313 guideline publication may be referenced via the *GuidelineCitation* profile of the *Citation* resource.

314 The whole collection of all resources defined here may be bundled using the *GuidelineBundle* profile
315 of the *Bundle* resource.

316 Terminologies

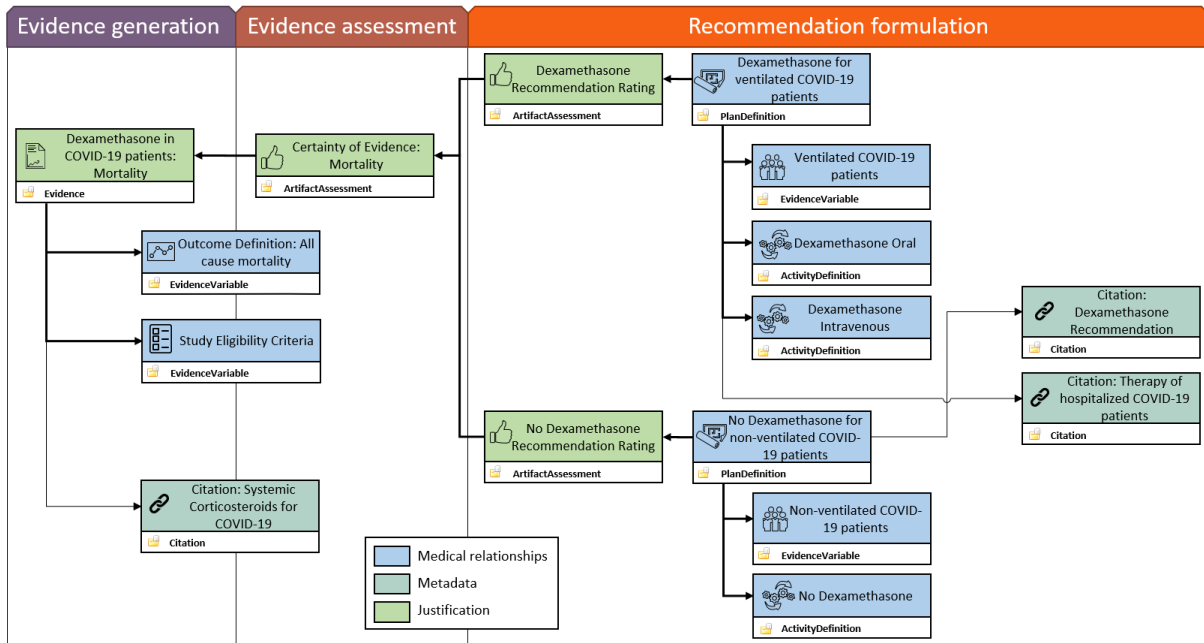
317 To identify the different contents of clinical practice guideline recommendations according to the PICO
318 framework, we used concepts from the Cochrane PICO ontology [15] as well as SNOMED CT concepts
319 if available. To identify the rating types and values of the evidence-to-decision framework, we used
320 code systems defined by HL7 FHIR and developed new code systems if required (Table 2, Table 3). To
321 represent the clinical variables, the vocabularies intended to be used are the *Systematized*
322 *Nomenclature of Medicine - Clinical Terms* (SNOMED CT) for conditions, substances, and general
323 concepts [22], *Logical Observation Identifiers Names and Codes* (LOINC) for laboratory observation
324 [23], *International Statistical Classification of Diseases and Related Health Problems, 10th revision* (ICD-
325 10) for diagnoses [24], *Anatomical Therapeutic Chemical Classification System* (ATC) for drugs [25] and
326 *Unified Code for Units of Measure* (UCUM) for measurement units [26]. Other vocabularies may be
327 used when suitable.

328 Evaluation

329 To validate our proposed guideline recommendation structure, we implemented a recent
330 recommendation from a guideline for the treatment of COVID-19 intensive care patients [27–29]. As
331 this recommendation is part of a living guideline, it is ideally suited to validate the agility of our
332 proposed guideline recommendation representation as new evidence is added or certainty ratings for
333 specific outcomes or the actual recommendations changed. We selected a recommendation that
334 included both a treatment that should be performed on a specific population of patients and one that
335 should not be performed on another population of patients. Specifically, the guideline includes a
336 recommendation for treating ventilated COVID-19 patients with the systemic corticosteroid
337 Dexamethasone, applied for 10 days orally or intravenously, and a recommendation against treating
338 non-ventilated patients with any Dexamethasone. The recommendation is based on a systematic
339 review [30], which is part of the evidence generation process. The different outcomes, most
340 importantly all-cause mortality, was evaluated as part of the evidence assessment process and the
341 recommendations were formulated based on the evaluated evidence (Figure 3). We created instances

342 for all appropriate profiles and included them as examples in the implementation guide [19] and on
343 the FEVIR platform [31].

344



345

346 *Figure 3 Overview of the guideline recommendation implementation from a treatment guideline for*
347 *hospitalized COVID-19 patients.*

348

349 Discussion

350 We here present an EBMonFHIR-based representation for computer-interpretable guideline
351 recommendations that leverages the structured data emerging during the development of evidence-
352 based guidelines, ranging from primary evidence-generating studies over systematic reviews and the
353 evidence assessment using evidence-to-decision frameworks to the formulated recommendation. We
354 have developed the representation based on an iterative, consensus-based requirements engineering
355 process and mapping of the thereby derived information model items to EBMonFHIR resources. We
356 developed profiles for all used FHIR resources and created an implementation guide for the guideline
357 representation format. To evaluate the format, we implemented a recent guideline recommendation
358 in our representation format.

359 The here presented computer-interpretable representation of the whole evidence-based guideline
360 development process offers a set of advantages over just representing the final guideline
361 recommendations:

362 First, representing the evidence from primary studies and systematic reviews (i.e., effect size statistics)
363 and evidence-to-decision process artifacts in a computer-interpretable way allows them to be used for
364 semi-automated guideline recommendation formulation. Indeed, knowledge artifacts from evidence
365 generation and evidence assessment (i.e., ratings of existing evidence) in our representation format
366 may be published in repositories, e.g. on collaborative guideline development platforms such as
367 MAGICapp [32], and be reused for different guideline recommendation development processes.

368 Second, the representation of the evidence generation and evidence assessment artifacts may be
369 particularly valuable during the lifecycle of living guidelines that are regularly updated as new evidence
370 is published or existing evidence is re-evaluated in light of new findings.

371 Third, integrating a complete guideline recommendation representation into clinical decision support
372 or recommendation monitoring systems allows to close the loop from evidence to recommendation
373 back to evidence: Currently, the information flow is unidirectional from evidence generation via
374 evidence assessment to the formulated recommendation. However, when these recommendations
375 are implemented in a hospital setting by means of automated integration with electronic health
376 records (EHR), the treatment of patients according or not according to the recommendation in
377 connection with appropriate outcome data generates real-world evidence for (or against) the
378 intervention. This evidence, readily representable in the here proposed guideline recommendation
379 representation format, can be evaluated and used in an update process of the recommendation.

380 Fourth, representation of the full process of evidence-based recommendation development allows the
381 target audience of the guideline recommendations a direct and transparent assessment of the

382 evidence generation and evidence assessment process that underlies the recommendations. It has to
383 be noted that the structured evidence generation and evidence assessment artifacts are generated in
384 any case within the context of a structured guideline recommendation development process;
385 representing them in a computer-interpretable way therefore comes at no or only little further cost
386 during guideline recommendation development.

387 Even though some of the existing guideline recommendation formalisms that only represent the final
388 guideline recommendations would allow to represent all of the information, the effort to newly encode
389 it from scratch appears as a relevant barrier. In contrast, the focus of our formalism is to enable using
390 data generated during the guideline recommendation development process, thus reducing the
391 required effort to include the additional data. However, as each representation formalism has its own
392 advantages and specialized scope of functions, our proposed representation might complement
393 existing formalisms instead of substituting them. In that way, mapping the treatment recommendation
394 part of our representation format to other formalisms would allow to close the gap between these
395 formalisms and the knowledge artifacts emerging during evidence-based guideline recommendation
396 development.

397 Apart from the previously described differences in content, in contrast to most previous guideline
398 recommendation formalisms, we have based our representation on FHIR, which currently might be
399 considered the most important standard for defining interoperable medical data exchange, with
400 growing support from EHR software vendors. There has been considerable work done on representing
401 the contents of clinical guideline recommendations in FHIR, namely the CPG-on-FHIR project [33]. This
402 project, like the EBMonFHIR project sponsored by the HL7 Clinical Decision Support Work Group, has
403 developed a comprehensive implementation guide for the representation of guideline
404 recommendation contents. However, in contrast to our project, the CPG-on-FHIR implementation
405 guide does not include profiles for linking the full evidence generation and evidence assessment
406 process to the final guideline recommendations – although for example the strength of
407 recommendation and quality of evidence are supported via FHIR extensions. Additionally, the CPG-on-
408 FHIR project uses the *Group* resource for the definition of the population part of guideline
409 recommendations, whereas we are using the newly introduced characteristics backbone element of
410 the *EvidenceVariable* resource, which allows for much more complex definitions of patient group
411 characteristics than does the *Group* resource. To allow more complex definitions, the use of clinical
412 quality language (CQL) was introduced into the *Group* resource recently; additionally, it would be
413 possible to outsource the population characteristics definition into newly introduced concepts from a
414 code system. However, both solutions outsource the definition into another language or domain,
415 potentially reducing interoperability and limiting leveraging the query capabilities that are offered by
416 pure FHIR-based solutions. However, the CPG-on-FHIR project and our guideline recommendation

417 representation format are not mutually exclusive and combining efforts in the future may increase the
418 utility of both approaches.

419 In the current work, we have not restricted the use of concepts in the definition of the population or
420 intervention to particular code systems such as SNOMED CT or LOINC. However, a major aim of our
421 representation, as of any computer-interpretable guideline recommendation formalism, is the
422 automated applicability in computerized clinical decision support systems. In such a setting, the
423 concepts used for the definition of the population and intervention must be mapped to the concepts
424 used in individual EHR systems in clinics. To reduce the need for additional mapping of concept and
425 variables, a possible approach is to provide the clinical data from the EHR system in the OMOP common
426 data model (CDM), as this uses a standardized vocabulary for clinical concepts, and further constraining
427 the profiles for the intervention (*RecommendationPlan*, *RecommendationAction*) and population (*RecommendationEligibilityCriteria*) to only allow concepts from the OMOP standardized vocabulary.
428 While this shifts the need of mapping individual EHR systems to concepts to the mapping to the OMOP
429 CDM, the provision of clinical data in OMOP CDM allows for a large range of clinical and research use
430 case in the individual clinics, far beyond the integration of clinical guideline recommendations with the
431 clinical data. However, constraining FHIR resources to the use of OMOP standardized vocabulary
432 concepts is currently hampered by the unavailability of that vocabulary as a FHIR *CodeSystem* resource
433 and additional work is required to better link the two domains of FHIR and OMOP regarding OMOP's
434 standard vocabulary [34].
435

436 Our proposed FHIR-based representation of guideline recommendations has three main limitations:
437 First, it is based on EBMonFHIR resources, which are mostly at a low maturity level and subject to
438 frequent, even breaking, changes. The implementation guide therefore needs to be constantly kept in
439 synchronization with current developments of EBMonFHIR resources. However, this is ensured by our
440 active collaboration and participation in the development of the EBMonFHIR resources.

441 Second, there is currently no execution engine available for our representation format that would
442 allow to automatically integrate the recommended interventions with clinical data to provide clinical
443 decision support. However, a prototype implementation for such an execution engine to be used with
444 clinical data in the OMOP common data model (CDM) format is currently being developed.
445 Additionally, translators may be implemented that translate the FHIR-based representation to other
446 guideline recommendation formalisms that already have an execution engine implemented (e.g. the
447 GLIF3 execution engine or the SAGE execution engine for EON [35,36]).

448 Third, not all information for guideline recommendation execution can be expressed in current FHIR
449 resources: The dependence and relationship between recommendations from the same or different
450 guidelines cannot be modeled in the *PlanDefinition* resource without the introduction of extensions.

451 We expect that in the maturation process of resources from the Clinical Decision Support group, which
452 maintains the *PlanDefinition* resource, and EBMonFHIR, additional concepts and relationships of
453 declarative process modelling will be introduced to completely represent relationships between
454 recommendations and guidelines.

455 The proposed EBMonFHIR-based guideline recommendation representation is currently being
456 implemented in several German university hospitals, where it is used as a computer-interpretable
457 guideline recommendation representation to be automatically integrated with standardized clinical
458 patient data to provide information about individual patient guideline recommendation applicability
459 and adherence. In the context of this project, and as the EBMonFHIR resources evolve, our guideline
460 recommendation representation will be continuously updated and improved where necessary.

461 Conclusion

462 To leverage the structured, computable knowledge artifacts that emerge during evidence-based
463 guideline recommendation development, we have developed a FHIR-based guideline
464 recommendation representation that is aligned with these knowledge artifacts. Thereby, our
465 EBMonFHIR-based representation of clinical practice guideline recommendations allows to directly link
466 the systematic evidence assessment and the underlying evidence from systematic reviews and primary
467 studies to the resulting guideline recommendations. This not only allows for a transparent and critical
468 evaluation of the evidence on which recommendations are based, but also provides a more
469 straightforward and, in the future, automatable way to generate computer-interpretable guideline
470 recommendations from the available evidence.

471

472 Funding

473 The COVID-19 Evidence Ecosystem (CEOsys) project is funded under a scheme issued by the Network
474 of University Medicine (Nationales Forschungsnetzwerk der Universitätsmedizin (NUM)) by the
475 Federal Ministry of Education and Research of Germany (Bundesministerium für Bildung und
476 Forschung (BMBF)) grant number 01KX2021. The CODEX+ project is funded under a scheme issued by
477 the Network of University Medicine (Nationales Forschungsnetzwerk der Universitätsmedizin (NUM))
478 by the Federal Ministry of Education and Research of Germany (Bundesministerium für Bildung und
479 Forschung (BMBF)) grant number 01KX2121.

480 Code availability

481 All code used for the development of the profiles and the implementation guide is available at
482 <https://github.com/CEOsys/cpg-on-ebm-on-fhir>. The implementation guide is hosted on
483 <https://ceosys.github.io/cpg-on-ebm-on-fhir/>. All code systems, value sets and examples are
484 additionally hosted on the FEVIR platform [31].

485

486 References

- 487 [1] A. Seyfang, S. Miksch, M. Marcos, Combining diagnosis and treatment using asbru, *Int. J. Med.*
488 *Inf.* 68 (2002) 49–57. [https://doi.org/10.1016/S1386-5056\(02\)00064-3](https://doi.org/10.1016/S1386-5056(02)00064-3).
- 489 [2] S.W. Tu, M.A. Musen, Modeling Data and Knowledge in the EON Guideline Architecture,
490 *MEDINFO 2001*. (2001) 280–284. <https://doi.org/10.3233/978-1-60750-928-8-280>.
- 491 [3] A.A. Boxwala, M. Peleg, S. Tu, O. Ogunyemi, Q.T. Zeng, D. Wang, V.L. Patel, R.A. Greenes, E.H.
492 Shortliffe, GLIF3: a representation format for sharable computer-interpretable clinical practice
493 guidelines, *J. Biomed. Inform.* 37 (2004) 147–161. <https://doi.org/10.1016/j.jbi.2004.04.002>.
- 494 [4] S.W. Tu, J.R. Campbell, J. Glasgow, M.A. Nyman, R. McClure, J. McClay, C. Parker, K.M. Hrabak,
495 D. Berg, T. Weida, J.G. Mansfield, M.A. Musen, R.M. Abarbanel, The SAGE Guideline Model:
496 Achievements and Overview, *J. Am. Med. Inform. Assoc. JAMIA*. 14 (2007) 589–598.
497 <https://doi.org/10.1197/jamia.M2399>.
- 498 [5] P. Ciccarese, E. Caffi, S. Quaglini, M. Stefanelli, Architectures and tools for innovative Health
499 Information Systems: The Guide Project, *Int. J. Med. Inf.* 74 (2005) 553–562.
500 <https://doi.org/10.1016/j.ijmedinf.2005.02.001>.
- 501 [6] M. Peleg, Computer-interpretable clinical guidelines: A methodological review, *J. Biomed.*
502 *Inform.* 46 (2013) 744–763. <https://doi.org/10.1016/j.jbi.2013.06.009>.
- 503 [7] D. Riaño, M. Peleg, A. ten Teije, Ten years of knowledge representation for health care (2009–
504 2018): Topics, trends, and challenges, *Artif. Intell. Med.* 100 (2019) 101713.
505 <https://doi.org/10.1016/j.artmed.2019.101713>.
- 506 [8] B. Djulbegovic, G.H. Guyatt, Progress in evidence-based medicine: a quarter century on, *The*
507 *Lancet*. 390 (2017) 415–423. [https://doi.org/10.1016/S0140-6736\(16\)31592-6](https://doi.org/10.1016/S0140-6736(16)31592-6).
- 508 [9] P. Alonso-Coello, H.J. Schünemann, J. Moberg, R. Brignardello-Petersen, E.A. Akl, M. Davoli, S.
509 Treweek, R.A. Mustafa, G. Rada, S. Rosenbaum, A. Morelli, G.H. Guyatt, A.D. Oxman, the G.W. Group,
510 GRADE Evidence to Decision (EtD) frameworks: a systematic and transparent approach to making well
511 informed healthcare choices. 1: Introduction, *BMJ*. 353 (2016) i2016.
512 <https://doi.org/10.1136/bmj.i2016>.
- 513 [10] P. Alonso-Coello, A.D. Oxman, J. Moberg, R. Brignardello-Petersen, E.A. Akl, M. Davoli, S.
514 Treweek, R.A. Mustafa, P.O. Vandvik, J. Meerpohl, G.H. Guyatt, H.J. Schünemann, the G.W. Group,
515 GRADE Evidence to Decision (EtD) frameworks: a systematic and transparent approach to making well

516 informed healthcare choices. 2: Clinical practice guidelines, *BMJ*. 353 (2016) i2089.
517 <https://doi.org/10.1136/bmj.i2089>.

518 [11] R. Graham, M. Mancher, D. Miller Wolman, S. Greenfield, E. Steinberg, eds., *Clinical Practice*
519 *Guidelines We Can Trust*, National Academies Press (US), Washington (DC), 2011.
520 <https://doi.org/10.17226/13058>.

521 [12] G. Guyatt, A.D. Oxman, E.A. Akl, R. Kunz, G. Vist, J. Brozek, S. Norris, Y. Falck-Ytter, P. Glasziou,
522 H. deBeer, R. Jaeschke, D. Rind, J. Meerpohl, P. Dahm, H.J. Schünemann, *GRADE guidelines: 1.*
523 *Introduction—GRADE evidence profiles and summary of findings tables*, *J. Clin. Epidemiol.* 64 (2011)
524 383–394. <https://doi.org/10.1016/j.jclinepi.2010.04.026>.

525 [13] B. Alper, M. Mayer, K. Shahin, J. Richardson, L. Schilling, M. Tristan, N. Salas, *Achieving*
526 *evidence interoperability in the computer age: setting evidence on FHIR*, *BMJ Evid.-Based Med.* 24
527 (2019) A15–A15. <https://doi.org/10.1136/bmjebm-2019-EBMLive.28>.

528 [14] What is CEOsys?, CEOsys. (n.d.). <https://covid-evidenz.de/what-is-ceosys/> (accessed April 8,
529 2022).

530 [15] Cochrane PICO Ontology, (n.d.). <https://data.cochrane.org/ontologies/pico/index-en.html>
531 (accessed March 15, 2022).

532 [16] *Clinical Practice Guidelines on EBMonFHIR*, (2022). [https://github.com/CEOsyst/cpg-on-ebm-](https://github.com/CEOsyst/cpg-on-ebm-on-fhir)
533 [on-fhir](https://github.com/CEOsyst/cpg-on-ebm-on-fhir) (accessed March 15, 2022).

534 [17] G. Lichtner, *FHIR Shorthand Validator*, (2021). <https://github.com/glichtner/fsh-validator>
535 (accessed March 15, 2022).

536 [18] CEOsys, GitHub. (n.d.). <https://github.com/CEOsyst> (accessed March 15, 2022).

537 [19] *Clinical Practice Guidelines (CPG) on EBMonFHIR*, (n.d.). [https://ceosyst.github.io/cpg-on-ebm-](https://ceosyst.github.io/cpg-on-ebm-on-fhir/)
538 [on-fhir/](https://ceosyst.github.io/cpg-on-ebm-on-fhir/) (accessed March 15, 2022).

539 [20] C. Schardt, M.B. Adams, T. Owens, S. Keitz, P. Fontelo, *Utilization of the PICO framework to*
540 *improve searching PubMed for clinical questions*, *BMC Med. Inform. Decis. Mak.* 7 (2007) 16.
541 <https://doi.org/10.1186/1472-6947-7-16>.

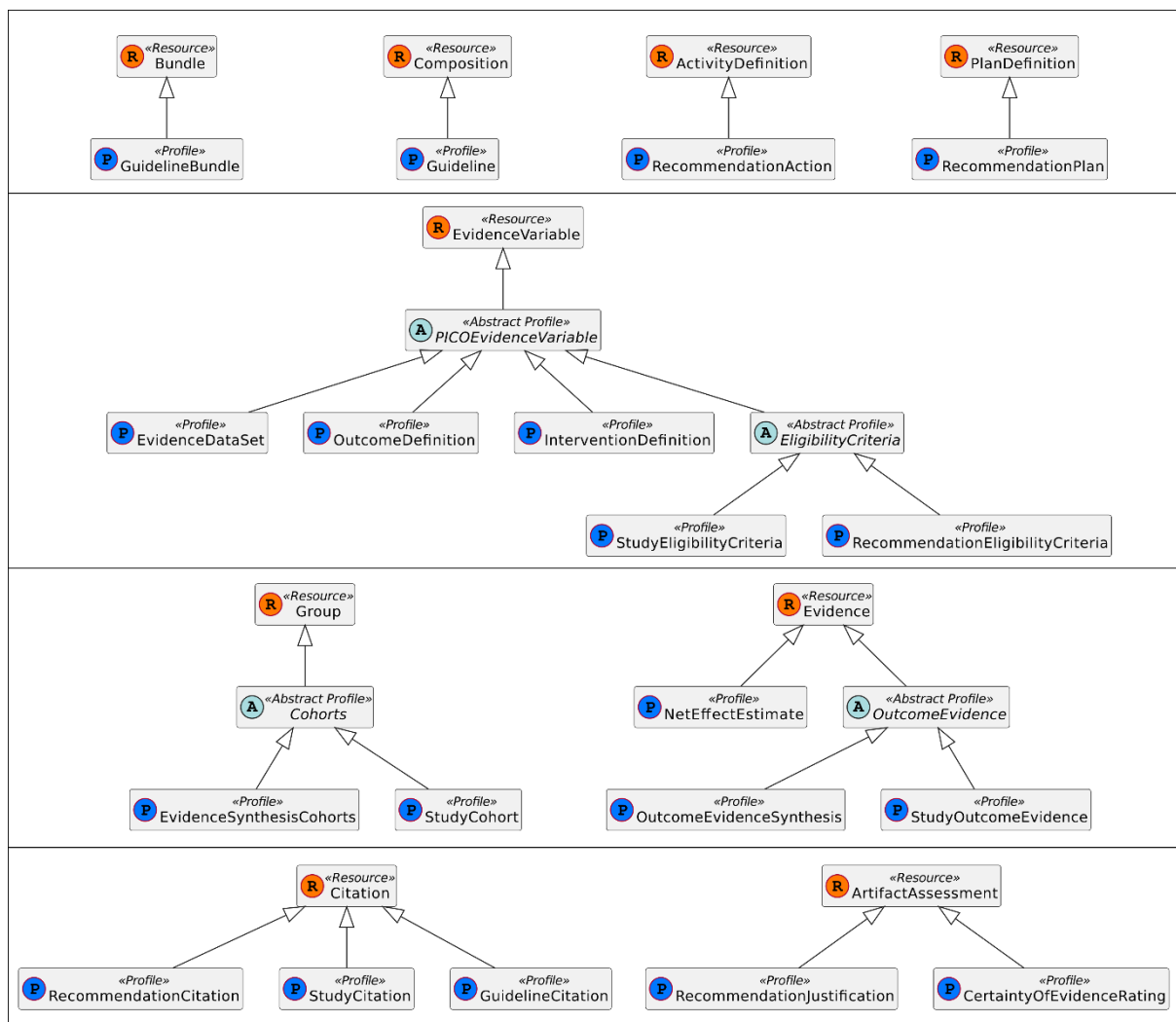
542 [21] B.S. Alper, P. Oettgen, I. Kunnamo, A. Iorio, M.T. Ansari, M.H. Murad, J.J. Meerpohl, A. Qaseem,
543 M. Hultcrantz, H.J. Schünemann, G. Guyatt, *Defining certainty of net benefit: a GRADE concept paper*,
544 *BMJ Open.* 9 (2019) e027445. <https://doi.org/10.1136/bmjopen-2018-027445>.

545 [22] SNOMED CT, SNOMED. (n.d.). <https://www.snomed.org/> (accessed March 16, 2022).

- 546 [23] C.J. McDonald, S.M. Huff, J.G. Suico, G. Hill, D. Leavelle, R. Aller, A. Forrey, K. Mercer, G.
547 DeMoor, J. Hook, W. Williams, J. Case, P. Maloney, for the Laboratory LOINC Developers, LOINC, a
548 Universal Standard for Identifying Laboratory Observations: A 5-Year Update, *Clin. Chem.* 49 (2003)
549 624–633. <https://doi.org/10.1373/49.4.624>.
- 550 [24] International Classification of Diseases (ICD), (n.d.).
551 <https://www.who.int/standards/classifications/classification-of-diseases> (accessed March 22, 2022).
- 552 [25] Anatomical Therapeutic Chemical (ATC) Classification, (n.d.). [https://www.who.int/tools/atc-](https://www.who.int/tools/atc-ddd-toolkit/atc-classification)
553 [ddd-toolkit/atc-classification](https://www.who.int/tools/atc-ddd-toolkit/atc-classification) (accessed March 22, 2022).
- 554 [26] The Unified Code for Units of Measure, (n.d.). <https://ucum.org/trac> (accessed March 16,
555 2022).
- 556 [27] S. Kluge, U. Janssens, T. Welte, S. Weber-Carstens, G. Schälte, Christoph D. Spinner, Jakob J.
557 Malin, Petra Gastmeier, Florian Langer, Martin Wepler, Michael Westhoff, Michael Pfeifer, Klaus F.
558 Rabe, Florian Hoffmann, Bernd W. Böttiger, Julia Weinmann-Menke, Alexander Kersten, Peter Berlit,
559 Marcin Krawczyk, Wiebke Nehls, Reiner Haase, Monika Nothacker, Gernot Marx, Christian
560 Karagiannidis, S3-Leitlinie Empfehlungen zur stationären Therapie von Patienten mit COVID-19, AWMF
561 (Arbeitsgemeinschaft der Wissenschaftlichen Medizinischen Fachgesellschaften e.V.), 2021.
562 <https://www.awmf.org/leitlinien/detail/II/113-001LG.html>.
- 563 [28] S. Kluge, U. Janssens, C.D. Spinner, M. Pfeifer, G. Marx, C. Karagiannidis, Guideline group,
564 Clinical Practice Guideline: Recommendations on Inpatient Treatment of Patients with COVID-19,
565 *Dtsch. Arzteblatt Int.* 118 (2021) arztebl.m2021.0110. <https://doi.org/10.3238/arztebl.m2021.0110>.
- 566 [29] J.J. Malin, C.D. Spinner, U. Janssens, T. Welte, S. Weber-Carstens, G. Schälte, P. Gastmeier, F.
567 Langer, M. Wepler, M. Westhoff, M. Pfeifer, K.F. Rabe, F. Hoffmann, B.W. Böttiger, J. Weinmann-
568 Menke, A. Kersten, P. Berlit, M. Krawczyk, W. Nehls, F. Fichtner, S. Laudi, M. Stegemann, N. Skoetz, M.
569 Nothacker, G. Marx, C. Karagiannidis, S. Kluge, Key summary of German national treatment guidance
570 for hospitalized COVID-19 patients : Key pharmacologic recommendations from a national German
571 living guideline using an Evidence to Decision Framework (last updated 17.05.2021), *Infection.* (2021).
572 <https://doi.org/10.1007/s15010-021-01645-2>.
- 573 [30] C. Wagner, M. Griesel, A. Mikolajewska, A. Mueller, M. Nothacker, K. Kley, M.-I. Metzendorf,
574 A.-L. Fischer, M. Kopp, M. Stegemann, N. Skoetz, F. Fichtner, Systemic corticosteroids for the treatment
575 of COVID-19, *Cochrane Database Syst. Rev.* 8 (2021) CD014963.
576 <https://doi.org/10.1002/14651858.CD014963>.

- 577 [31] FEvIR Project - CPG-on-EBMonFHIR, FEvIR Platf. (n.d.).
578 <https://fevir.net/resources/Project/46952> (accessed May 13, 2022).
- 579 [32] MAGICapp, (n.d.). <https://app.magicapp.org/> (accessed March 21, 2022).
- 580 [33] FHIR Clinical Guidelines (v1.0.0) (STU 1), (n.d.). <http://hl7.org/fhir/uv/cpg/index.html>
581 (accessed March 15, 2022).
- 582 [34] M. Lawley, J. Steel, J. Grimes, FHIR Terminology Services for OMOP – opportunities report,
583 (n.d.) 21.
- 584 [35] D. Wang, M. Peleg, S.W. Tu, A.A. Boxwala, O. Ogunyemi, Q. Zeng, R.A. Greenes, V.L. Patel, E.H.
585 Shortliffe, Design and implementation of the GLIF3 guideline execution engine, J. Biomed. Inform. 37
586 (2004) 305–318. <https://doi.org/10.1016/j.jbi.2004.06.002>.
- 587 [36] D. Isern, A. Moreno, Computer-based execution of clinical guidelines: A review, Int. J. Med. Inf.
588 77 (2008) 787–808. <https://doi.org/10.1016/j.ijmedinf.2008.05.010>.
- 589

590 Supplementary Figures



591

592 Supplementary Figure 1 Class Diagram of CPG-on-EBMonFHIR profiles.