

1 **The Proportion of Randomized Controlled Trials That Inform Clinical Practice: A**
2 **Longitudinal Cohort Study of Trials Registered on ClinicalTrials.gov**

3
4

5 Nora Hutchinson¹ M.D.,C.M., MPhil, Hannah Moyer¹ BSc, Deborah A. Zarin² MD,
6 Jonathan Kimmelman^{1*} PhD

7
8

9 1. Studies of Translation, Ethics and Medicine (STREAM), Biomedical Ethics Unit,
10 McGill University, Montreal, Quebec

11

12 2. Multi-Regional Clinical Trials Center of Brigham and Women's Hospital and
13 Harvard, Cambridge, Massachusetts

14

15 *Corresponding Author:

16 Dr. Jonathan Kimmelman

17 School of Population and Global Health, McGill University

18 2001 McGill College Avenue, Montreal QC H3A 1G1

19 Canada

20

21 Telephone: 514-398-3306

22 Email: jonathan.kimmelman@mcgill.ca

23

24 Word Count: 3031 words

25

26 Conflicts of Interest: JK received consulting fees from Amylyx Inc. Authors declare no
27 other potential conflicts of interest.

28

29

30 **Abstract**

31

32 Background

33 Prior studies suggest that clinical trials are often hampered by problems in design,
34 conduct and reporting that limit their uptake in clinical practice. We have described
35 “informativeness” as the ability of a trial to guide clinical, policy or research decisions.
36 Little is known about the proportion of initiated trials that inform clinical practice.

37

38 Methods

39 We created a cohort of randomized interventional clinical trials in three disease areas
40 (ischemic heart disease, diabetes mellitus and lung cancer), that were initiated between
41 1 January 2009 and 31 December 2010 using ClinicalTrials.gov. We restricted inclusion
42 to trials aimed at answering a clinical question related to the treatment or prevention of
43 disease. Our primary outcome was the proportion of clinical trials fulfilling four
44 conditions of informativeness: importance of the clinical question, trial design,
45 feasibility, and reporting of results.

46

47 Results

48 Our study included 125 clinical trials. The proportion meeting four conditions for
49 informativeness was 26.4% (95% CI 18.9 – 35.0). Sixty-seven percent of participants
50 were enrolled in informative trials. The proportion of informative trials did not differ
51 significantly between our three disease areas.

52

53 Conclusions

54 Our results suggest that the majority of clinical trials designed to guide clinical practice
55 possess features that may compromise their ability to do so. This highlights
56 opportunities to improve the scientific vetting of clinical research.

57

58 Funding

59 This study was funded by the Fonds de recherche Santé Québec postdoctoral
60 research grant (NH). This funding body was not involved in study design, conduct or
61 reporting.

62

63

64

65

66

67

68

69

70

71

72

73

74

75 **Introduction**

76
77

78 The ultimate goal of clinical research is to produce evidence that supports
79 clinical and policy decisions. Numerous analyses suggest that a substantial proportion
80 of clinical trials aimed at informing clinical practice are marred by flaws in design,
81 execution, analysis and reporting.¹⁻⁸ The initial research response to COVID-19
82 illustrated the fact that existing oversight mechanisms fail to prevent the initiation of
83 flawed trials.⁹ While unexpected events can stymie well-conceived and implemented
84 studies, trials that have features rendering them unlikely to inform clinical practice may
85 do harm by misleading potential participants of their benefits, and by diverting patient-
86 participants from otherwise informative research efforts.¹⁰

87 We have previously described five conditions that trials should fulfill to support
88 clinical or policy decision-making.^{10,11} First, trials must ask an important and clinically
89 relevant question that is not yet resolved. Second, trials must be designed to provide a
90 meaningful answer to that question. Third, trials must be feasible, with achievable
91 enrollment goals and timely primary outcome completion. Fourth, outcomes must be
92 analyzed in ways that support valid interpretation. Last, trial results must be made
93 accessible in a timely fashion.

94 In what follows, we created surrogate measures for four conditions of
95 informativeness: trial importance, design quality, feasibility, and reporting (the fifth
96 condition, analytical integrity, did not lend itself to objective, dichotomous assessment,
97 and is not assessed below). We then evaluated the proportion of “clinically directed
98 randomized controlled trials” in three common disease areas meeting these four

99 conditions. This information can be used to help healthcare and research systems
100 identify studies in need of further scrutiny, thereby improving the impact of their
101 research.

102

103 **Methods**

104

105

106 Overview of Approach

107

108 We created a cohort of randomized, interventional clinical trials in three broad
109 disease areas that are representative of the clinical research enterprise and that have a
110 significant impact on patient morbidity and mortality: ischemic heart disease, diabetes
111 mellitus and lung cancer. We restricted inclusion to trials that appeared to be aimed at
112 informing clinical practice by selecting trials with a stated purpose of treatment or
113 prevention of disease and with a primary clinical outcome or appropriate surrogate. We
114 established milestones that could serve as objectively verifiable surrogates for four
115 conditions of informativeness. Trials in our sample were then tracked forward to assess
116 the proportion attaining each informativeness condition. “Informative trials” were trials
117 that fulfilled all four conditions of informativeness.

118

119

120 Surrogate Measures for Four Conditions of Informativeness

121

122 We formulated surrogate measures for each condition of informativeness.

123 Measures were chosen based on i) close correspondence with each informativeness
124 condition; ii) objective and reproducible dichotomous scoring; and iii) feasibility of
125 assessment. The four surrogates of informativeness, described in greater detail below,

126 were as follows: trial importance (determined by citation of reported trial results in high
127 quality clinical synthesizing documents; the premise of this surrogate is that these
128 documents focus on questions of clinical importance); trial design quality (assessed
129 using a modified Cochrane risk of bias (ROB) tool which is designed to identify threats
130 to study internal validity); trial feasibility (established based on ability to achieve
131 adequate participant enrollment and timely primary outcome completion); and
132 reporting (based on accessibility of primary outcome results via deposition on
133 ClinicalTrials.gov or in journal publications).

134
135
136 Clinical Trial Sampling

137
138 We identified all trials registered on ClinicalTrials.gov in our three disease areas
139 with a start date from 1 January 2009 to 31 December 2010 inclusive (eMethods 1 –
140 search criteria). Our time range provided a minimum of nine years of follow-up for
141 maturation toward trial completion and fulfillment of all four surrogates of
142 informativeness. Trials were downloaded from ClinicalTrials.gov on 15 May 2020. We
143 updated trial status and enrollment for all trials meeting our inclusion criteria on 6
144 October 2021.

145 We included randomized trials i) evaluating interventions of any type; ii) aimed at
146 the treatment or prevention of ischemic heart disease, diabetes mellitus or lung cancer;
147 iii) with at least one site in the United States (most of which will thus have a regulatory
148 requirement for results reporting);¹² and iv) interventions that were FDA approved, that
149 advanced to FDA approval, or interventions not subject to FDA approval (e.g. cardiac
150 rehabilitation). We did not include trials that we deemed unlikely to be targeted at

151 informing clinical practice by excluding: i) studies that exclusively evaluated safety,
152 diagnostic or screening interventions; and ii) early phase trials (phase 0 or phase 1)
153 (eMethods 2 – inclusion/exclusion criteria; Figure 1 – flow diagram for trial inclusion;
154 eMethods 3 – flow diagrams by disease; eMethods 4 – assessment of regulatory
155 approval status). Phase 2 trials were included in our study as they are frequently used
156 to inform both clinical and regulatory decision-making, particularly in cancer, where
157 over one quarter of recent FDA cancer drug approvals were based on the results of
158 phase 1/2 or phase 2 clinical trials.¹³ Trials were independently screened and assessed
159 for eligibility by two authors (NH & HM), with disagreements resolved by a third
160 reviewer (JK).

161

162

163

164

165

166

167

168

169

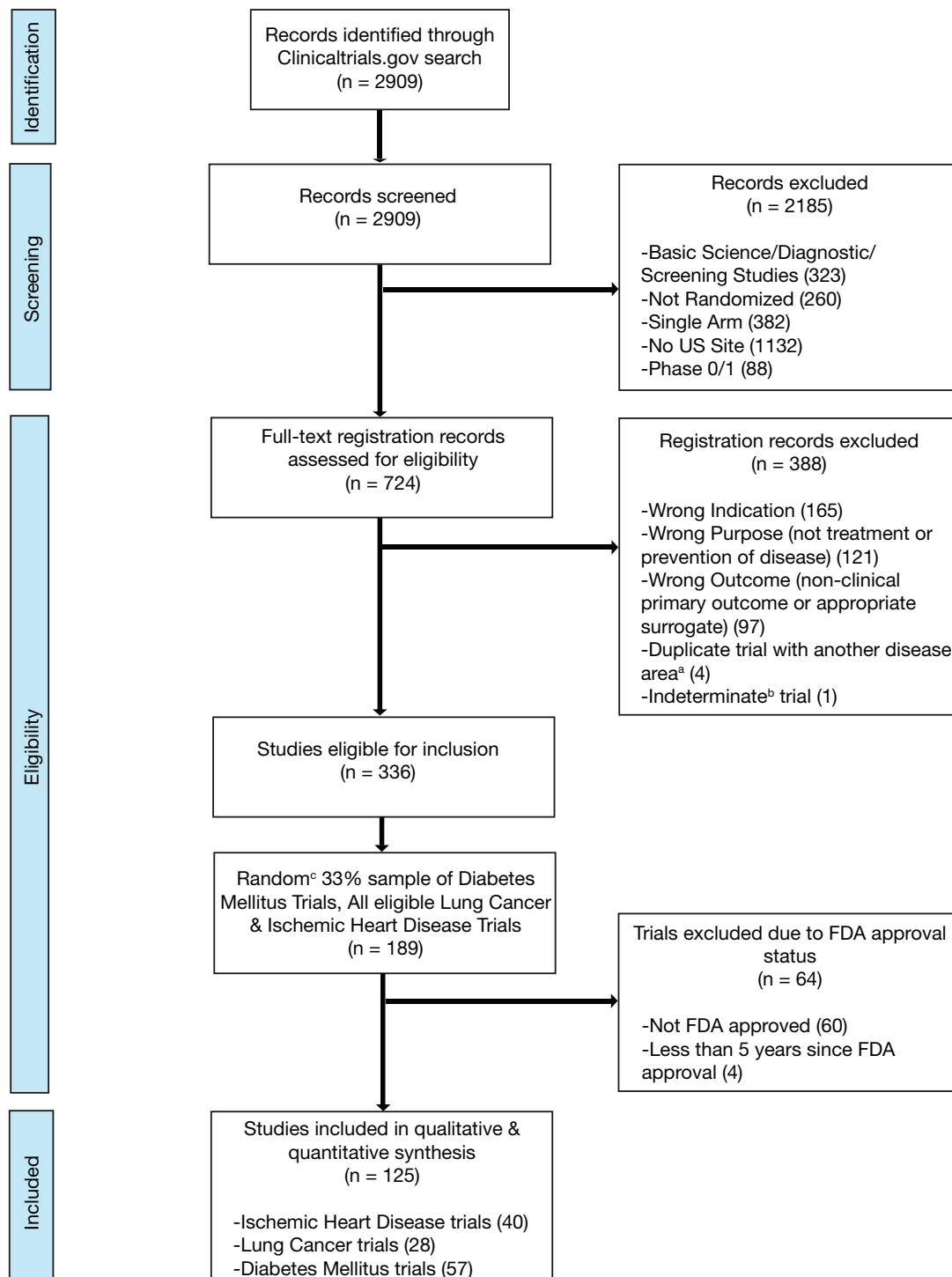
170

171

172

173

174 **Figure 1. Flow Diagram for Trial Inclusion**
 175



176
 177
 178 a) Trials overlapping more than one disease area (for example, diabetes mellitus and ischemic heart
 179 disease) were allocated based on the disease evaluated in the primary outcome
 180 b) An indeterminate trial is an ongoing trial that has not surpassed twice the planned primary outcome
 181 completion date
 182 c) We used a random number generator (RAND function in Microsoft Excel) to create our 33% sample

183 Scoring Conditions of Informativeness

184

185 Two authors (NH & HM) independently scored all trials for the surrogate

186 measures of the four conditions of informativeness (eTable 1; eMethods 5).

187 Disagreements were resolved by a third reviewer (JK). Because of their logical

188 relationship among surrogate measures (e.g. citation in a high quality clinical

189 synthesizing documents cannot be assessed unless trial results are available) and

190 workflow (e.g. risk of bias information is often available in systematic reviews),

191 conditions were scored sequentially. Trials not meeting one condition were not

192 advanced for evaluation of subsequent conditions. The order of scoring was as follows:

193 i) feasibility; ii) reporting; iii) importance; and iv) design. Trials meeting all four

194 conditions were deemed informative; trials failing on any condition possessed features

195 that compromised their informativeness.

196 Our assessments of informativeness began by evaluating feasibility based on

197 timely trial completion and patient-participant recruitment success. Terminated trials

198 were deemed infeasible if the reason for termination in the ClinicalTrials.gov

199 registration record involved accrual, feasibility, funding or another non-scientific reason

200 (as opposed to termination due to accumulated scientific data suggesting early

201 efficacy, futility or toxicity) (eMethods 6 – classification of reason for termination).

202 Completed trials were deemed to have not fulfilled feasibility if final participant

203 enrollment was less than 85% of expected enrollment as listed in the final registration

204 record prior to study start, thus reflecting a substantial loss of statistical power for the

205 primary outcome.¹⁴ Trials that were ongoing were categorized as infeasible if they had

206 already surpassed double the intended time for primary completion, which was

207 calculated by subtracting the intended primary completion date (as stated in the final
208 registration record prior to study start) from the trial start date, then multiplying by two.

209 We next assessed results reporting by determining whether primary outcome
210 results were publicly available. Trials were categorized as reported if they either had
211 primary outcome results available on ClinicalTrials.gov or in a publication (eMethods 7
212 – methodology for publication search). When more than one publication presented
213 primary outcome results, the earliest published report was identified and advanced to
214 the next step of assessment. ClinicalTrials.gov results reporting and publication search
215 were updated in October 2021 for those trials previously deemed to have not met the
216 criteria for reporting.

217 Importance was scored by determining whether trial results were included in a
218 high-quality review document designed to inform medical decision-making. To credit
219 trials with being informative even if they produced negative results, trials were first
220 assessed for inclusion in the results of a high-quality systematic review (SR), given that
221 SR citation practices are results neutral. We assessed for trial results citation in a
222 Cochrane SR, Agency for Healthcare Research and Quality (AHRQ) SR or in an SR
223 deemed of high quality based on a modified AMSTAR score (eMethods 8 – SR search
224 strategy and quality assessment). Trials not cited in the results of high-quality SRs
225 were evaluated for inclusion in a high-quality CPG; remaining uncited trials were then
226 assessed for inclusion in an UpToDate review article¹⁵ (eMethods 9 – CPG search
227 strategy, CPG quality assessment and point-of-care medical database search). Trials
228 cited in high-quality review documents were deemed to have fulfilled the importance

229 condition. Assessment of importance was updated in October 2021 for all trials
230 previously deemed to have not met the criterion for importance.

231 Finally, design was assessed by determining whether studies were at elevated
232 risk of bias, using a modified Cochrane Risk of Bias (ROB) tool¹⁶ (eMethods 10). When
233 available, ROB scores were extracted directly from high-quality SRs identified during
234 the assessment of trial importance. When unavailable, ROB scores were independently
235 performed by two authors (NH & HM), with disagreements resolved by a third reviewer
236 (JK). Trials were deemed to have fulfilled the design condition of informativeness if all
237 ROB elements were deemed to be of low risk of bias, or a majority were low risk of
238 bias with a minority of elements deemed to be of unclear risk of bias.

239
240
241 Statistical Analysis

242
243 Our primary outcome was the proportion of trials that met all four conditions of
244 trial informativeness. We provided a 95% binomial confidence interval for our primary
245 outcome. We performed a sensitivity analysis on our primary outcome excluding small,
246 pilot-type studies that would not have been designed to inform clinical decision-
247 making. These were identified based on an anticipated participant enrollment below
248 the lowest quartile of target enrollment for our cohort of trials. Due to concern that
249 phase 2 trials are less likely to inform clinical practice than trials of a higher phase, we
250 performed a second sensitivity analysis on our primary outcome excluding phase 1/2
251 and phase 2 trials.

252 As secondary outcomes, we estimated the proportion of trial participants who
253 were enrolled in informative trials, as well as the proportion of informative trials in each

254 of our three disease areas. We also report the proportion of trials advancing across
255 each condition of informativeness. We provided 95% binomial confidence intervals for
256 these secondary outcomes.

257 We compared the proportion of informative trials between disease categories
258 and by trial sponsor using the Chi-square test (`chisq.test` function in R) and provided
259 binomial confidence intervals for each stratum. We used the `fisher.test` function in R to
260 perform a two-sided Fisher's Exact test assessing the proportion of informative trials
261 by type of intervention and trial phase and provided exact confidence intervals for
262 each. We calculated inter-rater agreement rates using Cohen's kappa (eTable 2). We
263 defined $p < 0.05$ as statistically significant. All analyses were performed using R version
264 4.0.2.¹⁷

265 Our study was not subject to Institutional Review Board approval, as it relied on
266 publicly accessible data. The study protocol was prospectively registered on Open
267 Science Framework;¹⁸ deviations and amendments to the study protocol are detailed in
268 eMethods 11. The code¹⁹ and data set¹⁸ used in this analysis are available online. This
269 study follows the Strengthening the Reporting of Observational Studies in
270 Epidemiology (STROBE) reporting guidelines for cohort studies (eMethods 12).

271

272

273 **Results**

274

275 Over half of the 125 interventional trials in our cohort were studies of drug or
276 biologic interventions (77 trials; 61.6%). The majority were Phase 2 (24 trials, 19.2%) or

277 Phase 3 trials (50 trials, 40.0%). Trial status was “Completed” in 99 of 125 trials
 278 (79.2%) and “Terminated” in 15 trials (12.0%) (Table 1).

279

280 **Table 1. Characteristics of Intervention Trial Cohort**

281

Category	Ischemic Heart Disease Trials N = 40	Diabetes Mellitus Trials N = 57	Lung Cancer Trials N = 28	All Trials N = 125 (%)
Trial Phase				
2 ^a	6 (15.0)	5 (8.8)	13 (46.4)	24 (19.2)
3 ^b	11 (27.5)	26 (45.6)	13 (46.4)	50 (40.0)
4	10 (25.0)	9 (15.8)	0 (0.0)	19 (15.2)
NA	13 (32.5)	17 (29.8)	2 (7.1)	32 (25.6)
Intervention				
Drug/Biologic	19 (47.5)	34 (59.6)	24 (85.7)	77 (61.6)
Combination ^c	7 (17.5)	0 (0.0)	1 (3.6)	8 (6.4)
Device	4 (10.0)	4 (7.0)	0 (0.0)	8 (6.4)
Other ^d	10 (25.0)	19 (33.3)	3 (10.7)	32 (25.6)
Trial Status				
Completed	29 (72.5)	53 (93.0)	17 (60.7)	99 (79.2)
Terminated	7 (17.5)	1 (1.8)	7 (25.0)	15 (12.0)
Active, NR	0 (0.0)	1 (1.8)	4 (14.3)	5 (4.0)
Unknown	4 (10.0)	2 (3.5)	0 (0.0)	6 (4.8)
Outcome				
Clinical	24 (60.0)	8 (14.0)	10 (35.7)	42 (33.6)
Surrogate	16 (40.0)	49 (86.0)	18 (64.3)	83 (66.4)
Sponsor ^e				
Industry	18 (45.0)	27 (47.4)	13 (46.4)	58 (46.4)
Other	22 (55.0)	30 (52.6)	15 (53.6)	67 (53.6)

282

283 ^aIncluding Phase 1/2

284 ^bIncluding Phase 2/3

285 ^cIncluding Drug + Device, Drug + Procedure, Behavioural + Device, Radiation Therapy + Drug

286 ^dIncluding Behavioural Intervention, Radiation Therapy, Surgical Procedure, Cellular Intervention

287 ^eAs defined in ClinicalTrials.gov registration records

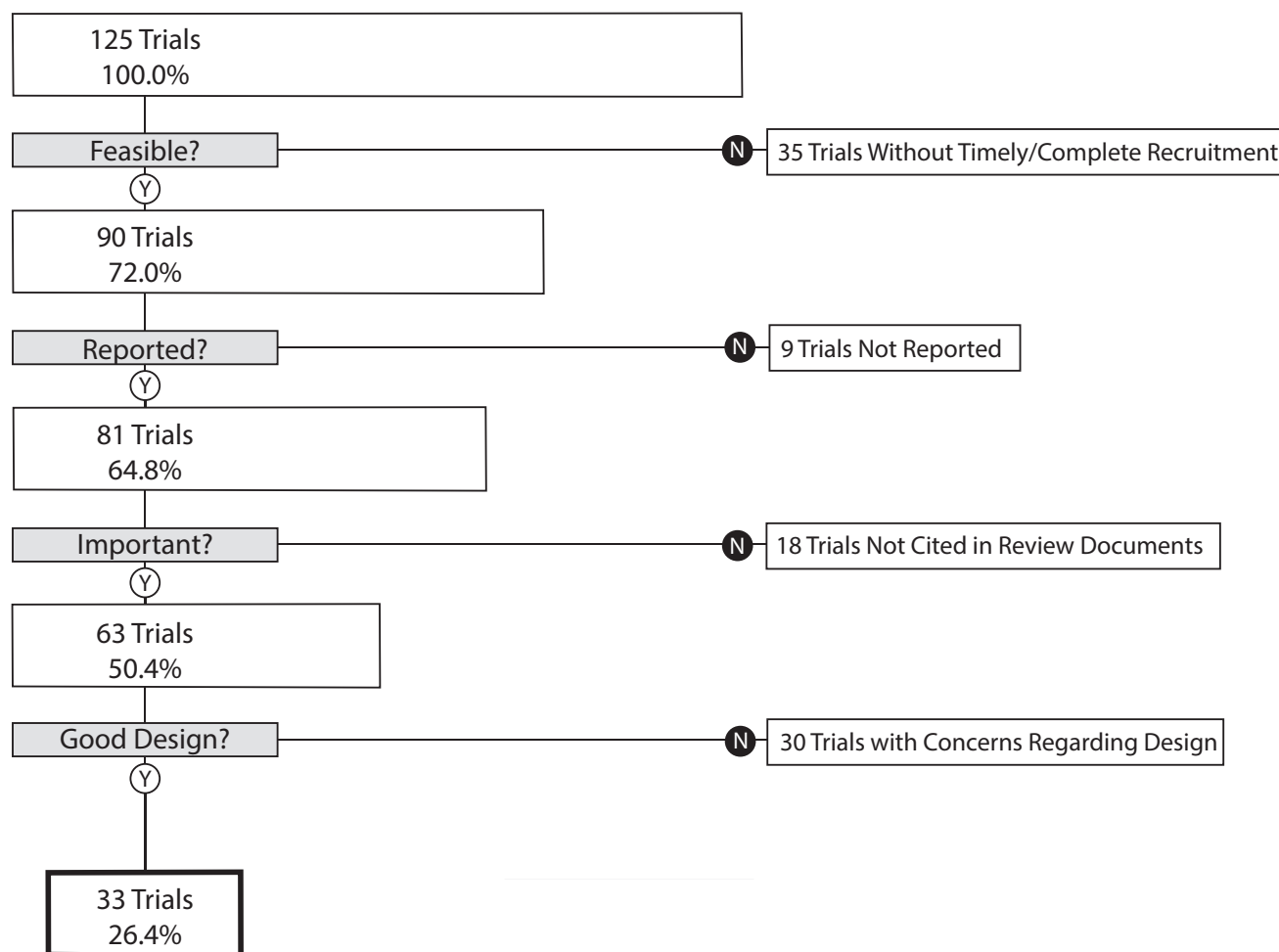
288

289

290

291 Our primary outcome, the proportion of trials that informed clinical practice, was
292 26.4% (95% CI 18.9 – 35.0) (Figure 2). As a sensitivity analysis, we re-analyzed our
293 primary outcome excluding the 35 trials in the lowest quartile for target enrollment. This
294 resulted in a proportion of informative trials of 35.6% (95% CI 25.7 – 46.3). We
295 performed a second sensitivity analysis on our primary outcome excluding phase 1/2
296 and phase 2 trials. This resulted in 30.7% (95% CI 21.9 – 40.7) of trials meeting 4
297 conditions of informativeness.

298
299 **Figure 2. Flow Diagram - The Proportion of Trials Meeting Four Conditions of**
300 **Informativeness**
301



302
303

304 A total of 193,839 participants were enrolled in the 125 trials in our cohort, of
305 which 129,973 (67.1% (95% CI 66.8 – 67.3)) were enrolled in informative trials. The
306 proportion of ischemic heart disease trials that was informative was 27.5% (95% CI
307 14.6 – 43.9); the proportion for diabetes mellitus trials was 31.6% (95% CI 19.9 – 45.2),
308 and the proportion for lung cancer was 14.3% (95% CI 4.0 – 32.7) (Figure 3).
309 Proportions did not vary significantly by disease area (p value = 0.23) (Figure 4). Each
310 surrogate measure contributed considerably to the stepwise decline in the proportion
311 of informative trials (eTable 3).

312 Studies sponsored by industry were significantly more likely to fulfill all four
313 conditions of informativeness than those not sponsored by industry (50.0% vs. 6.0%, p
314 value < 0.001)(Figure 4). Using the two-sided Fisher’s exact test, there was a non-
315 random association between trial phase and informativeness, and type of intervention
316 and informativeness (Figure 4).

317

318

319

320

321

322

323

324

325

326

327

328

329

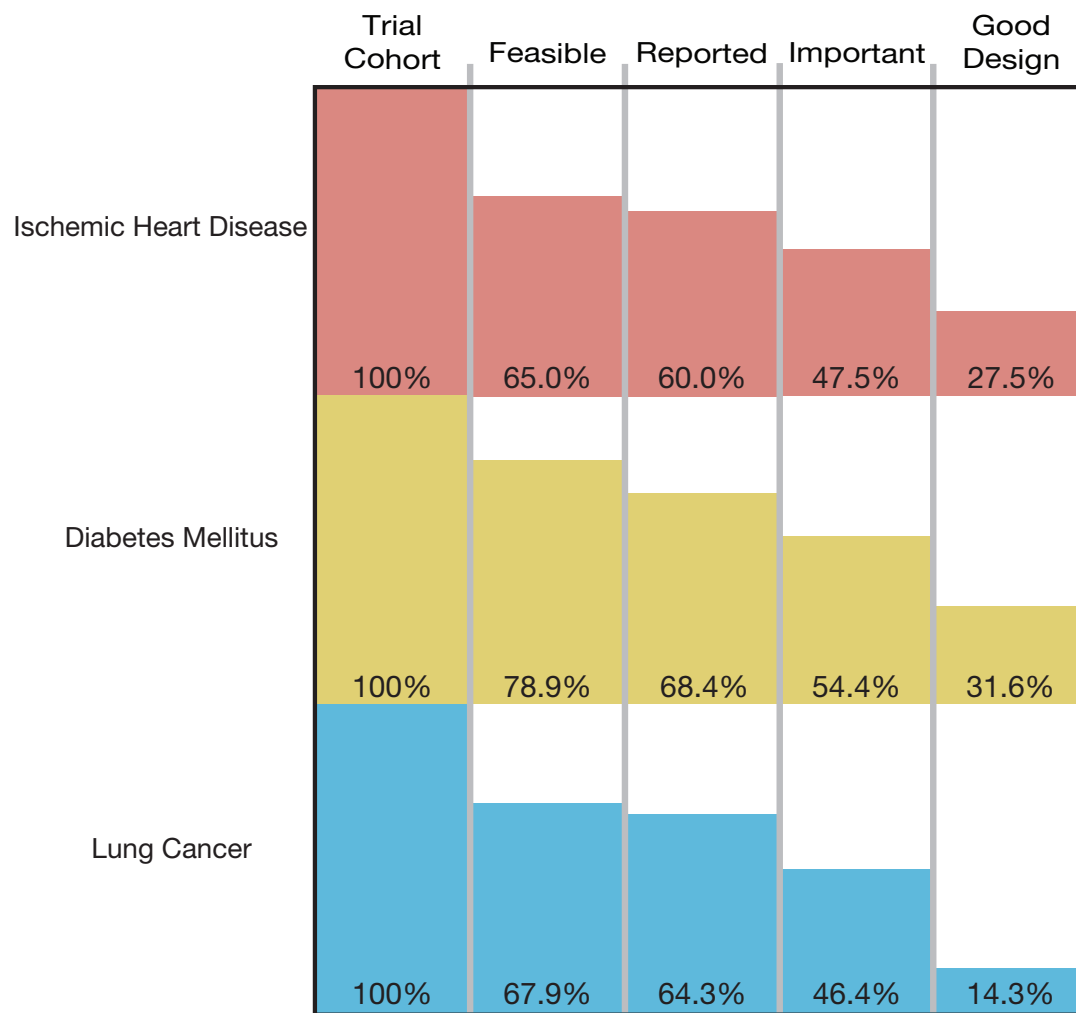
330

331

332

333

334 **Figure 3. The Cumulative Proportion of Trials Meeting Four Conditions of**
335 **Informativeness by Disease Area**
336
337



338
339

340

341

342

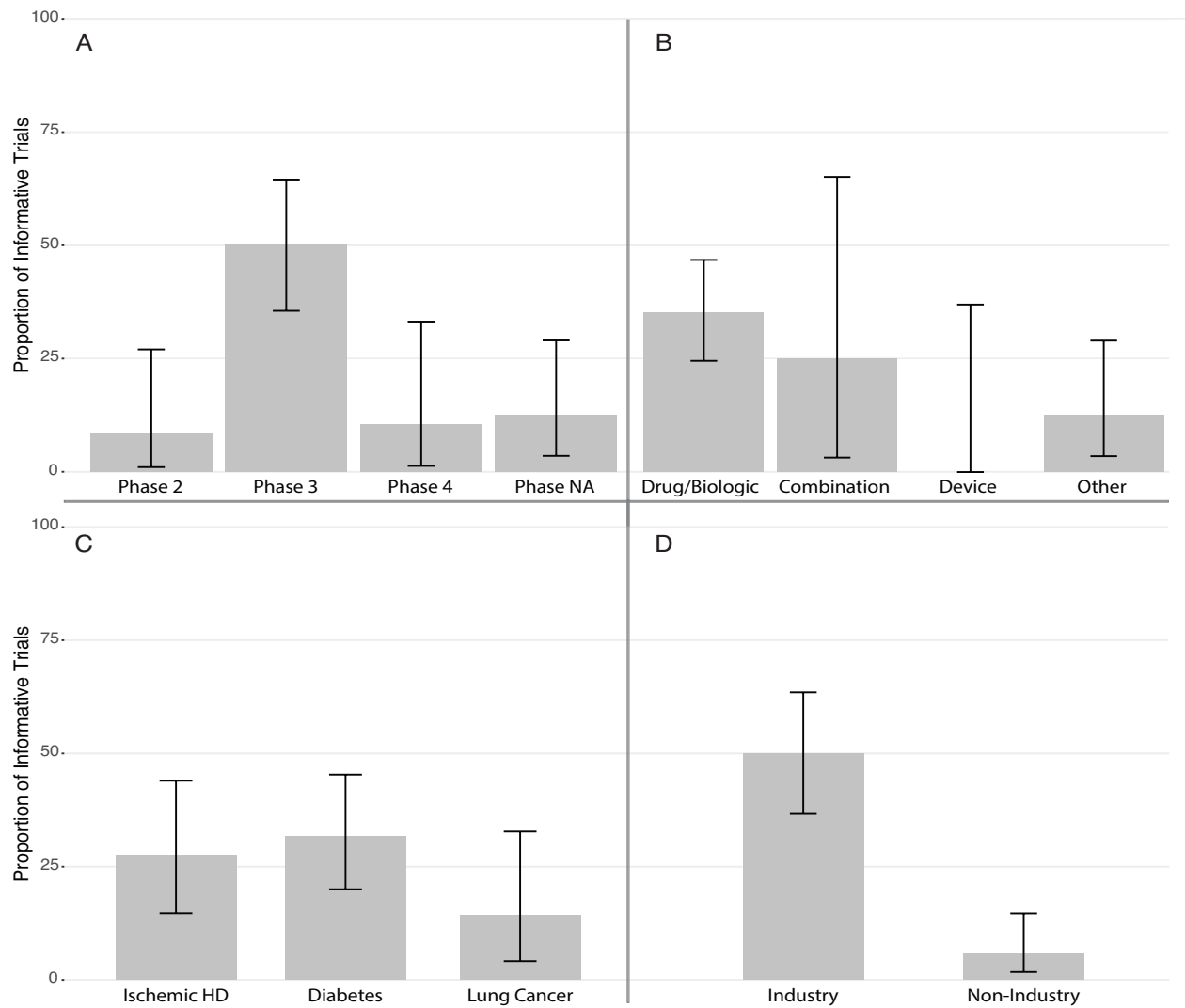
343

344

345

346 **Figure 4. The Proportion of Informative Trials by Trial Property**

347



348

349

350

351

352 A – Proportion of Informative Trials by Phase (p-value = 5.19×10^{-5})

353 B – Proportion of Informative Trials by Intervention Type (p-value = 0.02)

354 C – Proportion of Informative Trials by Disease Area (HD = Heart Disease) (p-value = 0.23)

355 D – Proportion of Informative Trials by Sponsor (p-value = 8.06×10^{-8})

356

357 **Discussion**

358

359 This study provides the first assessment of the proportion of randomized trials
360 fulfilling four key conditions of informativeness. In our analysis, just over one fourth of
361 trials demonstrated adequacy for study feasibility, reporting, importance, and design.
362 The remaining 73.6% contained a limitation in design, conduct or reporting that
363 compromised their ability to inform clinical decision-making.

364 Certain shortcomings of clinical trials are a result of experimenting in a dynamic
365 real-world environment and cannot be entirely avoided. Clinical trials are difficult to
366 plan, and there may be defensible reasons for falling short of some conditions. For
367 example, changes in medical practice may render a research question irrelevant to
368 clinical practice; an emerging viral pandemic might lead to under-recruitment.

369 However, our findings underscore the major challenges sponsors and clinical
370 investigators confront in fulfilling the scientific and ethical warrant for enrolling patient-
371 participants in randomized trials. The goal should be to address foreseeable limitations
372 in trial design, conduct or reporting. For example, increased oversight by research
373 funders, including requirements for landscape analysis of completed and ongoing
374 clinical trials to ensure trials are addressing important questions, and the provision of
375 independent scientific review to highlight vulnerabilities in trial design,²⁰ are measures
376 that can be implemented to increase the likelihood that trials will be informative. Many
377 methodological weaknesses in trial design can be corrected at minor cost.⁸

378 The proportion of informative trials did not differ significantly between ischemic
379 heart disease, diabetes mellitus and lung cancer, indicating shared challenges in
380 design, implementation, and reporting. Our study also demonstrated that each

381 condition of informativeness goes unfulfilled in roughly equal proportions (eTable 2),
382 suggesting that vigilance is required throughout the life cycle of a trial. Our estimates
383 for the fraction of studies fulfilling criteria for recruitment feasibility are in line with prior
384 studies.^{14,21-23} The fraction of trials at low risk of bias is similar to prior estimates.^{8,24,25}
385 Our estimate for the fraction of studies fulfilling reporting requirements (90.0%) is in line
386 with prior studies that evaluated both ClinicalTrials.gov results deposition and
387 publication,^{26,27} both of which were deemed acceptable means of results reporting in
388 our study. To our knowledge, our study is the first to apply these conditions jointly to a
389 sample of trials, in addition to assessing importance via citation in clinical synthesizing
390 documents.

391 Our results also indicate that certain types of trials may be at greater risk for
392 having their informativeness compromised. Phase 4 trials fared worse than Phase 3
393 trials, with only 2 of 19 fulfilling all 4 conditions of informativeness (eTable 4). Trials
394 sponsored by industry funders were far more likely to fulfill all four conditions than
395 those with non-industry sponsorship (50.0% vs. 6.0%). This is in keeping with prior
396 research demonstrating greater recruitment challenges for non-industry funded trials,¹⁴
397 in addition to diminished compliance with timely results reporting on
398 ClinicalTrials.gov.²⁸

399 These results suggest that funding bodies and academic medical centers may
400 not provide adequate resources for fulfilling the clinical mission of the trials they
401 support. Several recent initiatives aim at improving various aspects of informativeness,
402 including increased consideration given to the importance and clinical relevance of the
403 research question, the evidentiary basis for proposed research, study registration and

404 reporting, by many funders.²⁹ The implementation of new frameworks, such as
405 INQUIRE, developed to guide academic institutions in addressing waste in research,
406 including assessments of research design, feasibility, transparency, relevance, and
407 internal and external validity, if widely adopted, may lead to further improvements in
408 research quality.³⁰ The SARS-CoV-2 pandemic has highlighted both the susceptibility
409 of our clinical research enterprise to substandard trials, while also showing what is
410 possible with robust research vetting, coordination and collaboration.³¹

411

412 Limitations

413 Our study should be interpreted considering several limitations. First, our
414 measures for each condition of informativeness are proxies for the concepts they
415 represent. For example, scoring trial importance required citation in a clinical
416 synthesizing document. This measure may have erroneously classified some
417 informative trials as at risk of being uninformative (e.g. trials that evaluate disease
418 management in niche populations that are not addressed in practice guidelines or
419 systematic reviews). It may also have misclassified some trials as informative (e.g. trials
420 addressing already resolved clinical hypotheses, which might nevertheless be cited in
421 systematic reviews). To the former, none of the 18 trials not fulfilling the importance
422 condition involved niche populations (eTable 5). We also acknowledge that some trials
423 may inform clinical practice despite failing our criteria. The DAPT Study (NCT00977938)
424 was a large Phase 4 study that was deemed at high risk of bias in several high-quality
425 systematic reviews.^{32,33} However, this study has had an important impact on the clinical
426 management of antiplatelet therapy following drug-eluting stent placement.³⁴ Our

427 metrics are best understood as capturing factors that seriously (but not fatally)
428 compromise a trial’s prospects of informing practice, and that are rectifiable. Second,
429 we applied strict inclusion/exclusion criteria when identifying out cohort of “clinically
430 directed randomized controlled trials,” thus limiting generalizability to other types of
431 trials, including those involving diagnostics or interventions that do not advance to FDA
432 approval. The latter would require different criteria, given their primary goal of informing
433 regulatory decision-making. Third, we used a longitudinal approach, since conditions
434 like publication or citation are only fulfilled after a study is completed. Changes in
435 research practices or policy occurring over the last decade might produce different
436 estimates for the proportion of randomized trials that are informative.

437

438 **Conclusions**

439 Trial volunteers are generally told that their participation will advance clinical
440 practice. However, one third (33%) of patient-participants in our study were enrolled in
441 trials that possessed at least one feature that compromised their goal of informing
442 clinical practice. Sponsors and investigators often face unforeseeable challenges, and
443 trials with flaws in design and implementation occasionally uncover actionable insights.
444 Nevertheless, research systems and oversight should address persistent barriers to
445 fulfilling the societal mission of clinical research.

446

447 Bibliography

448

449 1. Chalmers I, Bracken MB, Djulbegovic B, et al. How to increase value and reduce
450 waste when research priorities are set. *The Lancet*. 2014;383(9912):156-165.

451 2. Chan A-W, Song F, Vickers A, et al. Increasing value and reducing waste:
452 addressing inaccessible research. *The Lancet*. 2014;383(9913):257-266.

453 3. Fergusson D, Glass KC, Hutton B, Shapiro S. Randomized controlled trials of
454 aprotinin in cardiac surgery: could clinical equipoise have stopped the bleeding?
455 *Clin Trials*. 2005;2(3):218-229; discussion 229-232.

456 4. Glasziou P, Altman DG, Bossuyt P, et al. Reducing waste from incomplete or
457 unusable reports of biomedical research. *The Lancet*. 2014;383(9913):267-276.

458 5. Ioannidis JPA, Greenland S, Hlatky MA, et al. Increasing value and reducing
459 waste in research design, conduct, and analysis. *The Lancet*.
460 2014;383(9912):166-175.

461 6. Salman RA-S, Beller E, Kagan J, et al. Increasing value and reducing waste in
462 biomedical research regulation and management. *The Lancet*.
463 2014;383(9912):176-185.

464 7. Yordanov Y, Dechartres A, Atal I, et al. Avoidable waste of research related to
465 outcome planning and reporting in clinical trials. *BMC Med*. 2018;16(1):87.

466 8. Yordanov Y, Dechartres A, Porcher R, Boutron I, Altman DG, Ravaud P.
467 Avoidable waste of research related to inadequate methods in clinical trials.
468 *BMJ*. 2015;350:h809.

469 9. Bugin K, Woodcock J. Trends in COVID-19 therapeutic clinical trials. *Nat Rev*
470 *Drug Discov*. 2021;20(4):254-255.

471 10. Zarin DA, Goodman SN, Kimmelman J. Harms From Uninformative Clinical
472 Trials. *JAMA*. 2019;322(9):813-814.

473 11. London AJ, Kimmelman J. Against pandemic research exceptionalism. *Science*.
474 2020;368(6490):476-477.

475 12. U.S. Public Law 110-85 (Food and Drug Administration Amendments Act of
476 2007), Title VIII, Section 801. (<https://www.govinfo.gov/content/pkg/PLAW-110publ85/pdf/PLAW-110publ85.pdf>) Accessed 2020/07/24.
477

478 13. Tibau A, Molto C, Ocana A, et al. Magnitude of Clinical Benefit of Cancer Drugs
479 Approved by the US Food and Drug Administration. *J Natl Cancer Inst*.
480 2018;110(5):486-492.

- 481 14. Carlisle B, Kimmelman J, Ramsay T, MacKinnon N. Unsuccessful trial accrual
482 and human subjects protections: an empirical analysis of recently closed trials.
483 *Clin Trials*. 2015;12(1):77-83.
- 484 15. UpToDate. (<https://www.uptodate.com/home>).
- 485 16. Higgins JP, Altman DG, Gotzsche PC, et al. The Cochrane Collaboration's tool
486 for assessing risk of bias in randomised trials. *BMJ*. 2011;343:d5928.
- 487 17. R Core Team. R: A language and environment for statistical computing. R
488 Foundation for Statistical Computing, Vienna, Austria. 2013. <http://R-project.org>.
- 489 18. What Fraction of Trials Inform Clinical Practice? A Longitudinal Cohort Study of
490 Trials Registered on ClinicalTrials.gov. DOI 10.17605/OSF.IO/3EGKU.
491 <https://osf.io/3egku/>.
- 492 19. https://codeberg.org/nhutchin/Informative_Trials.
- 493 20. Bierer BE, Strauss DH, White SA, Zarin DA. Universal Funder Responsibilities
494 That Advance Social Value. *Am J Bioeth*. 2018;18(11):30-32.
- 495 21. Cheng SK, Dietrich MS, Dilts DM. Predicting accrual achievement: monitoring
496 accrual milestones of NCI-CTEP-sponsored clinical trials. *Clin Cancer Res*.
497 2011;17(7):1947-1955.
- 498 22. Korn EL, Freidlin B, Mooney M, Abrams JS. Accrual experience of National
499 Cancer Institute Cooperative Group phase III trials activated from 2000 to 2007.
500 *J Clin Oncol*. 2010;28(35):5197-5201.
- 501 23. Walters SJ, Bonacho Dos Anjos Henriques-Cadby I, Bortolami O, et al.
502 Recruitment and retention of participants in randomised controlled trials: a
503 review of trials funded and published by the United Kingdom Health Technology
504 Assessment Programme. *BMJ Open*. 2017;7(3):e015276.
- 505 24. Ndounga Diakou LA, Ntoumi F, Ravaud P, Boutron I. Avoidable waste related to
506 inadequate methods and incomplete reporting of interventions: a systematic
507 review of randomized trials performed in Sub-Saharan Africa. *Trials*.
508 2017;18(1):291.
- 509 25. Vale CL, Tierney JF, Burdett S. Can trial quality be reliably assessed from
510 published reports of cancer trials: evaluation of risk of bias assessments in
511 systematic reviews. *BMJ*. 2013;346:f1798.
- 512 26. Chen R, Desai NR, Ross JS, et al. Publication and reporting of clinical trial
513 results: cross sectional analysis across academic medical centers. *BMJ*.
514 2016;352:i637.

- 515 27. Phillips AT, Desai NR, Krumholz HM, Zou CX, Miller JE, Ross JS. Association of
516 the FDA Amendment Act with trial registration, publication, and outcome
517 reporting. *Trials*. 2017;18(1):333.
- 518 28. DeVito NJ, Bacon S, Goldacre B. Compliance with legal requirement to report
519 clinical trial results on ClinicalTrials.gov: a cohort study. *The Lancet*.
520 2020;395(10221):361-369.
- 521 29. Moher D, Glasziou P, Chalmers I, et al. Increasing value and reducing waste in
522 biomedical research: who's listening? *The Lancet*. 2016;387(10027):1573-1586.
- 523 30. von Niederhausern B, Guyatt GH, Briel M, Pauli-Magnus C. Academic response
524 to improving value and reducing waste: A comprehensive framework for
525 INcreasing QUality In patient-oriented academic clinical REsearch (INQUIRE).
526 *PLoS Med*. 2018;15(6):e1002580.
- 527 31. Kimmel SE, Califf RM, Dean NE, Goodman SN, Ogburn EL. COVID-19 Clinical
528 Trials: A Teachable Moment for Improving Our Research Infrastructure and
529 Relevance. *Ann Intern Med*. 2020;173(8):652-653.
- 530 32. Xu Y, Shen Y, Chen D, Zhao P, Jiang J. Efficacy and Safety of Dual Antiplatelet
531 Therapy in Patients Undergoing Coronary Stent Implantation: A Systematic
532 Review and Network Meta-Analysis. *J Interv Cardiol*. 2021;2021:9934535.
- 533 33. Yin SH, Xu P, Wang B, et al. Duration of dual antiplatelet therapy after
534 percutaneous coronary intervention with drug-eluting stent: systematic review
535 and network meta-analysis. *BMJ*. 2019;365:l2222.
- 536 34. Cutlip DE, Nicolau JC. Long-term antiplatelet therapy after coronary artery
537 stenting in stable patients In: UpToDate, Dardas TF (Ed), UpToDate, Waltham,
538 MA.
539
540

541 Supplementary Material

542

543 eMethods 1 – ClinicalTrials.gov search criteria

544 eMethods 2 – Trial Inclusion and Exclusion criteria

545 eMethods 3 – Flow Diagrams for Each Disease

546 eMethods 4 – Assessment of Regulatory Approval Status

547 eTable 1 – Addressing 4 Conditions for Informative Clinical Trials

548 eMethods 5 – Flow Chart of Informative Criteria Assessment

549 eMethods 6 – Classification of Reason for Termination

550 eMethods 7 – Methodology for Publication Search

551 eMethods 8 – Systematic Review Citation Search Strategy and Quality Assessment

552 eMethods 9 – Clinical Practice Guideline and Point-of-Care Medical Database Search

553 Strategies and Quality Assessment

554 eMethods 10 – Operationalization of modified Cochrane Risk of Bias score

555 eMethods 11 – Deviations to the Study Protocol

556 eMethods 12 – STROBE Checklist for Cohort Studies

557 eTable 2 – Inter-rater Agreement Rates

558 eTable 3 – Proportion of Trials Meeting Each Criterion for Informativeness

559 eTable 4 – Phase 4 Trials Not Meeting 4 Informativeness Criteria

560 eTable 5 – Trials Not Cited in Clinical Review Documents

561

562

563

564 **eMethods 1 – ClinicalTrials.gov search criteria**

565

566 1. Condition or disease search terms:

567 a) ISCHEMIC HEART DISEASE: coronary artery disease OR coronary disease OR
568 coronary heart disease OR coronary occlusion OR acute coronary syndrome OR
569 myocardial ischemia OR angina pectoris OR angina, stable OR angina, unstable
570 OR myocardial infarction OR ischemic heart disease

571

572 b) LUNG CANCER: Lung cancer OR lung neoplasm OR lung carcinoma OR non-
573 small-cell lung cancer OR non-small-cell lung carcinoma OR small cell lung
574 cancer OR small cell lung carcinoma OR lung tumor OR lung tumour

575

576 c) DIABETES: diabetes mellitus OR diabetes

577

578 2. Study type: “Interventional Studies (Clinical Trials)”

579

580 3. Recruitment status: “Recruiting, Completed, Suspended, Terminated, Active not
581 recruiting, enrolling by invitation and unknown status”

582

583 4. Study start: 2009-01-01 to 2010-12-31

584

585

586 **eMethods 2 – Trial Inclusion and Exclusion criteria**

587

588 Inclusion criteria:

- 589 -Primary outcome = clinical decision-related outcome: including mortality, morbidity,
- 590 quality of life, functional status, need for further interventions, or an appropriate
- 591 surrogate measures (for example, ejection fraction, Hgb A1c, or progression free
- 592 survival in ischemic heart disease, diabetes mellitus and lung cancer respectively)
- 593 -Intervention of any type (drug, device, behavioral, surgical or other) directed towards
- 594 the treatment or prevention of ischemic heart disease/lung cancer/diabetes mellitus
- 595 (and not side-effects of the disease or complications from disease treatment)
- 596 -Trials with a US site
- 597 -Randomized trials
- 598 -Multi-arm trials
- 599 -Trials of interventions subject to FDA regulations and are FDA approved prior to trial
- 600 start
- 601 -Trials of interventions not subject to FDA regulations
- 602 -Trials of interventions subject to FDA regulations, FDA approved post trial start, and
- 603 have at least 5 years of follow-up since FDA approval, to allow for ample time for
- 604 results incorporation into systematic reviews/clinical practice guidelines/UpToDate

605

606 Exclusion criteria:

- 607 -Exclusively evaluating safety, diagnostic or screening interventions
- 608 -Exclusion of phase 0 or phase 1 trials (given these early phase trials would be unlikely
- 609 to inform clinical decision-making)
- 610 -Exclusion of extension studies with primary aim to enable continued access to drug
- 611 (and without additional post-marketing surveillance outcomes)
- 612 -Indeterminate trials, which are ongoing trials have not surpassed double the allotted
- 613 time for primary outcome completion (as first stated in the historical clinicaltrials.gov
- 614 registration record)

615

616

617

618

619

620

621

622

623

624

625

626

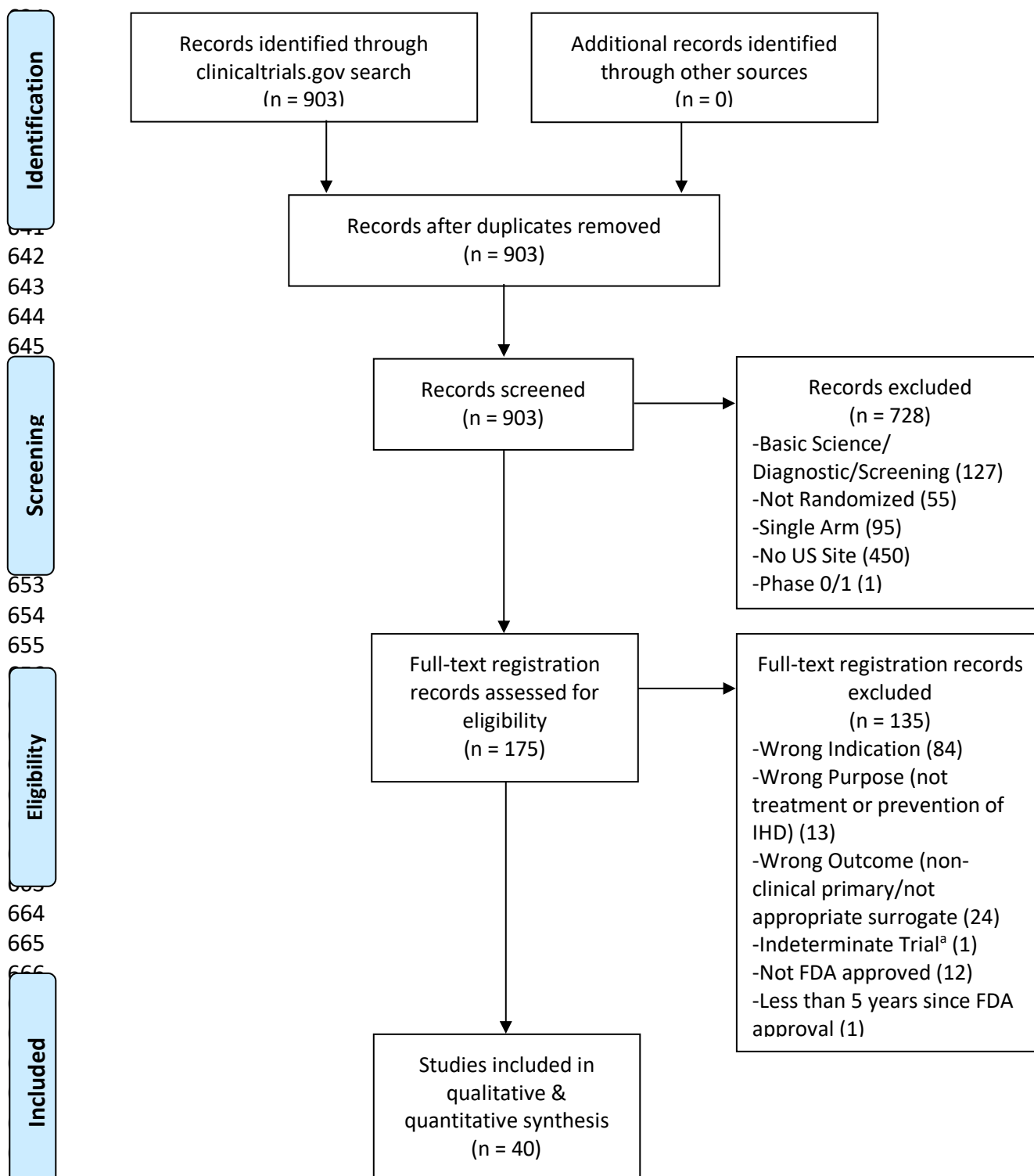
627

628

629

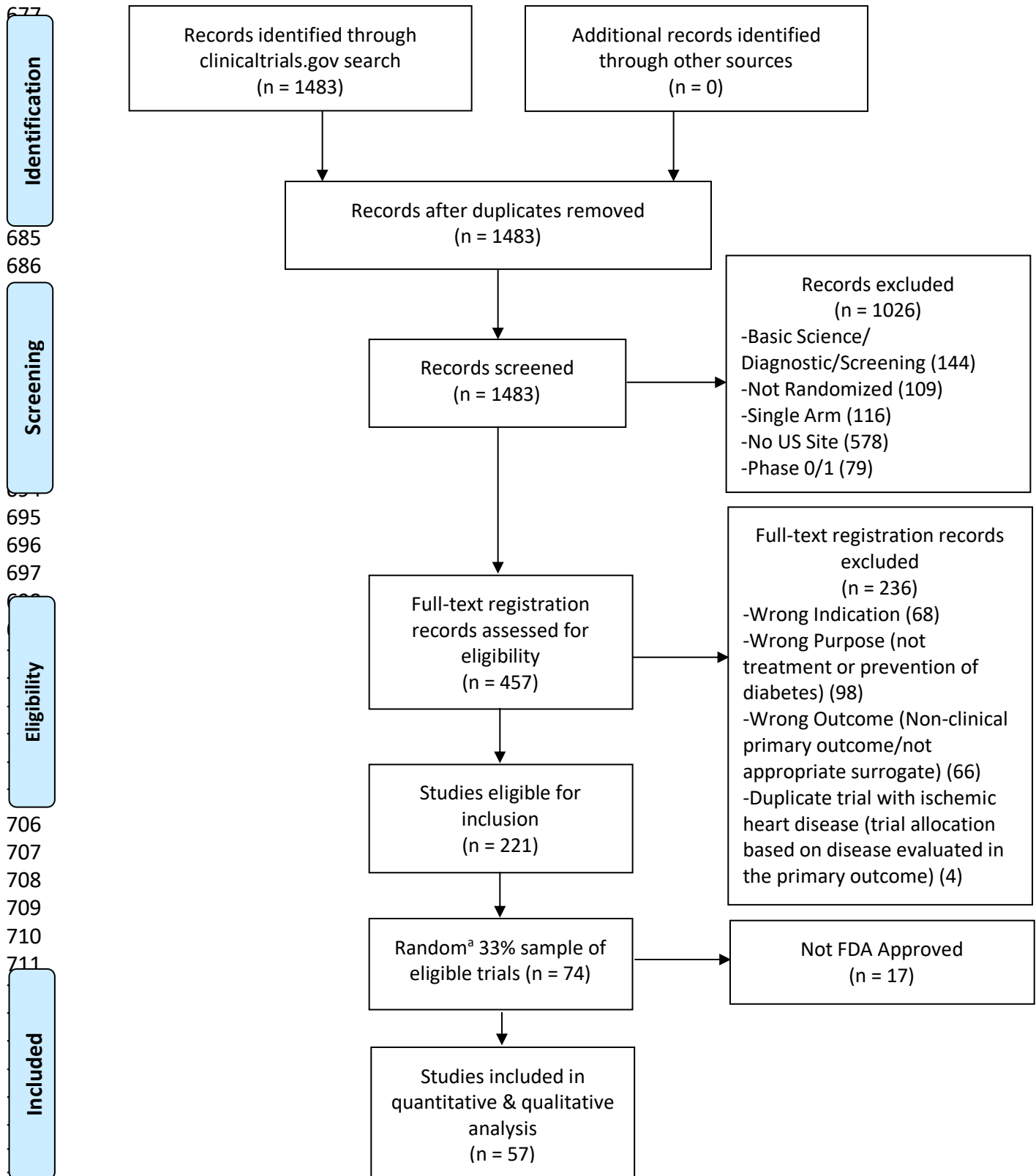
630

631 **eMethods 3 – Flow Diagrams for Each Disease**
 632 **Flow Diagram for Ischemic Heart Disease Interventional Trials**
 633



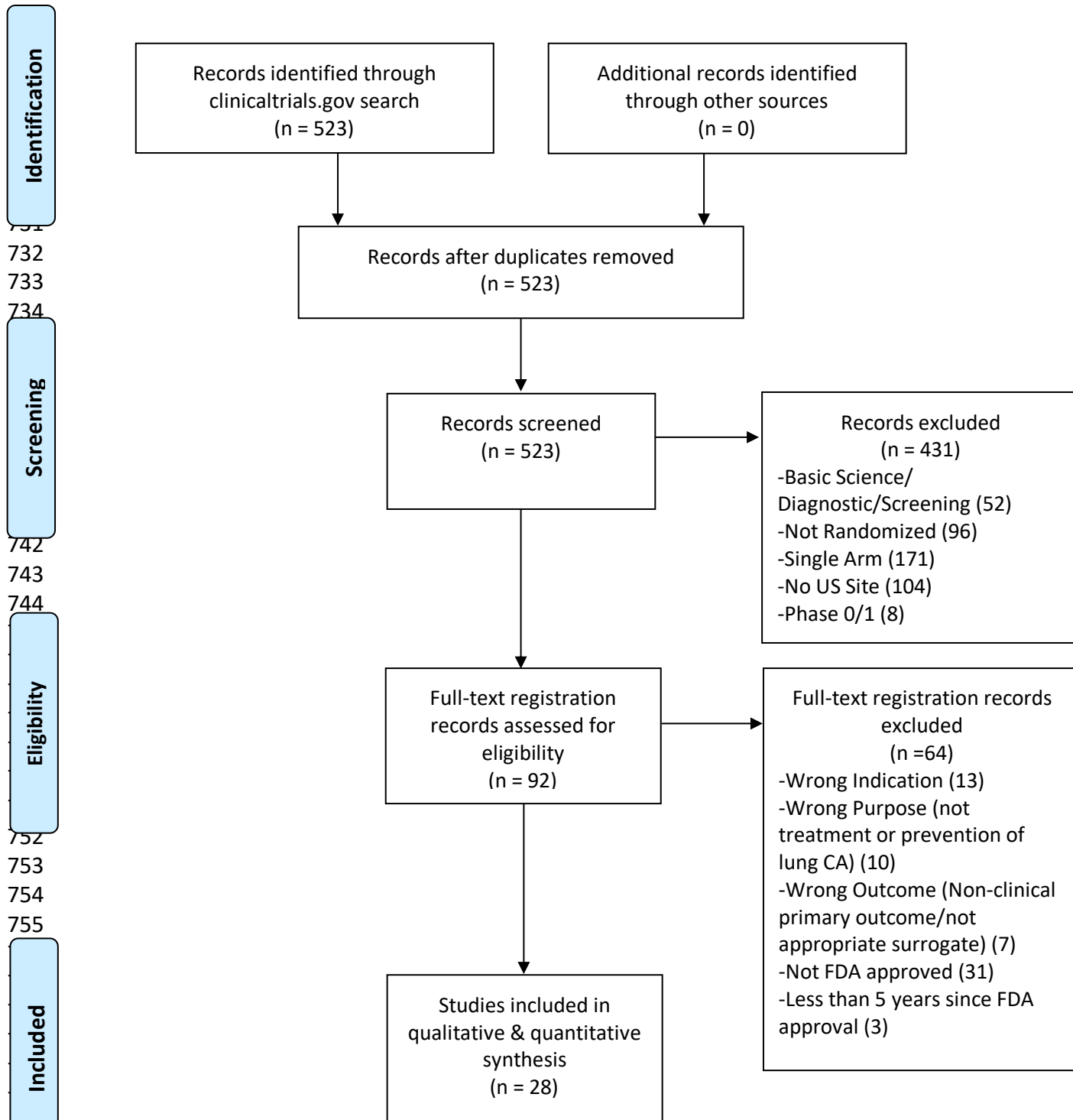
674 a) An indeterminate trial is an ongoing trial that has not surpassed twice the planned primary outcome
 675 completion date

676 Flow Diagram for Diabetes Mellitus Interventional Trials



720 a) We used a random number generator (RAND function in Microsoft Excel) to create our 33% sample

721
722 Flow Diagram for Lung Cancer Interventional Trials
723



764

765 **eMethods 4 – Assessment of Regulatory Approval Status**

766

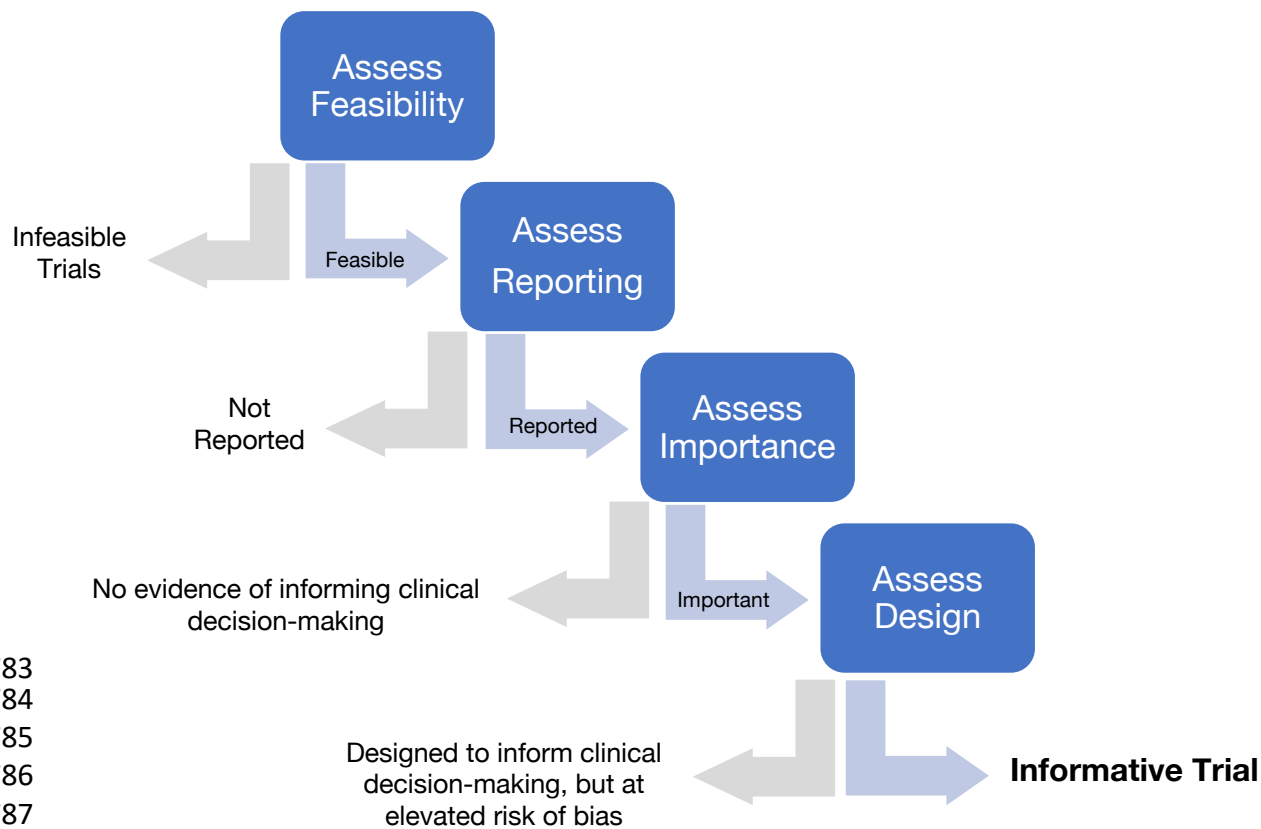
767 Two authors (NH & HM) independently evaluated all eligible trials for regulatory
768 approval status using Drugs@FDA¹ for drug and biological interventions and the 510(k)
769 Premarket Notification website for devices.² Interventions were classified into one of 3
770 categories: i) FDA approved prior to trial start (drug, biological or device interventions
771 approved for any use by the time of trial start); ii) FDA approved at least 5 years ago
772 ((drug, biological or device interventions approved for any use prior to October 31,
773 2016); and, iii) interventions not subject to FDA approval.

774 **eTable 1 – Addressing the 4 Conditions for Informative Clinical Trials**
 775

Conditions for Informativeness¹	Manner in which this is evaluated
<p><u>Importance:</u> Trial hypothesis is likely to inform an important scientific, medical or policy question</p>	<p>-Trials are selected for inclusion in our cohort based on their potential to inform clinical decision-making, based on presence of a primary clinical outcome or appropriate surrogate. -We also assess importance by evaluating the proportion of trials that are cited in clinical review documents (systematic reviews, clinical practice guidelines or point-of-care medical database articles).</p>
<p><u>Design:</u> Trial methods are likely to provide meaningful evidence related to study hypothesis</p>	<p>-We assess trials that are designed to inform clinical decision-making for evidence of low risk of bias</p>
<p><u>Feasibility:</u> Trial is likely to be feasible</p>	<p>-Feasible trials include: -Completed trials that have reached $\geq 85\%$ planned recruitment -Terminated trials stopped for an informative reason (such as efficacy, futility or safety) -Ongoing trials that have not surpassed double their anticipated primary completion timeline</p>
<p><u>Reporting:</u> Systems are in place to ensure timely, complete and accurate reporting</p>	<p>-A trial is reported if primary outcome results are made available through publication or results deposition on ClinicalTrials.gov</p>

776
 777 ¹Column “Conditions for Informativeness” extracted from column1 in eTable 1³
 778

779 **eMethods 5 – Flow Chart of Informative Criteria Asses**
780
781
782



783
784
785
786
787
788
789
790
791
792
793

794 **eMethods 6 – Classification of Reason for Termination**

795

NCT	Reason for Termination	Outcome
NCT00831441	None Provided	Advanced to next step of assessment
NCT00863512	None Provided	Advanced to next step of assessment
NCT00887315	Accrual; Loss of sponsor	Infeasible
NCT00910299	Futility	Advanced to next step of assessment
NCT00932152	Accrual	Infeasible
NCT00965055	Accrual	Infeasible
NCT01041781	DSMB Recommendation	Advanced to next step of assessment
NCT01078272	Accrual	Infeasible
NCT01246011	Accrual	Infeasible
NCT00976677	None Provided	Advanced to next step of assessment
NCT01177592	Funding	Infeasible
NCT01179308	PI closed study site	Infeasible
NCT01197963	IRB Decision	Advanced to next step of assessment
NCT01231750	Accrual	Infeasible
NCT01413750	Accrual	Infeasible

796

797 **eMethods 7 – Methodology for Publication Search**

798

799 The search for publications was independently performed by two authors (NH & HM)
800 and included an evaluation of publication links provided on ClinicalTrials.gov, as well
801 as directed searches on Google Scholar, Scopus and Medline using a combination of
802 the unique trial registration number (NCT number), surname of the principal
803 investigator, indication, intervention, phase and study design. Publication identity was
804 confirmed by comparing trial arms, sample size, intervention details, comparators and
805 sponsor with the registration record. A published abstract was not counted as a full
806 publication. Publication search was repeated in October 2021 by NH & HM for those
807 trials without publications when first assessed.

808

809

810 **eMethods 8 – Systematic Review Citation Search Strategy and Quality**
 811 **Assessment**

812
 813 Assessment of citation of trial results in high quality systematic reviews (SRs) was
 814 independently performed by two authors (NH & HM). This first involved a search for
 815 sources that are well known for producing high quality SRs: Cochrane SRs on the
 816 Cochrane Database of Systematic Reviews⁴ and Agency for Healthcare Research and
 817 Quality (AHRQ) SRs⁵. If trials were not included in Cochrane or AHRQ reviews,
 818 additional SRs for published studies were identified using the Scopus database⁶
 819 citation analysis search function or via Google Scholar⁷ for unpublished studies. SRs
 820 identified through Scopus or Google Scholar that included trial results in review results
 821 were assessed for quality using a modified AMSTAR scoring system:

822
 823 Operationalization of modified AMSTAR^{8,9} scoring system

<p>1. Was an “a priori” design provided? Yes – the authors stated that methods were established prior to conducting the review or provided a link to a registered protocol record</p> <p>No – the authors stated that there’s no protocol available or no information is provided</p>	<p><input type="checkbox"/> Yes (1)</p> <p><input type="checkbox"/> No (0)</p>
<p>2. Was there duplicate study selection and data extraction? Yes – at least two individuals independently performed study selection and data extraction; the method for reaching consensus in the setting of disagreement was reported</p> <p>No – only one person performed either study selection or data extraction</p> <p>Can’t answer – no information about independent study selection and/or data extraction was provided</p>	<p><input type="checkbox"/> Yes (1)</p> <p><input type="checkbox"/> No (0)</p> <p><input type="checkbox"/> Can't answer (0)</p>
<p>3. Was a comprehensive literature search performed? Yes – at least two electronic sources were searched; keywords or MESH terms were provided</p> <p>No – only one database was searched; no keywords or MESH terms were provided</p> <p>Can’t answer – partial or no information reported</p>	<p><input type="checkbox"/> Yes (1)</p> <p><input type="checkbox"/> No (0)</p> <p><input type="checkbox"/> Can't answer (0)</p>
<p>4. Was a list of studies (included and excluded) provided?</p>	<p><input type="checkbox"/> Yes (1)</p>

Yes - a list of included and excluded studies was provided	<input type="checkbox"/> No (0)
No – a list of included and excluded studies was not provided	
5. Was the scientific quality of the included studies assessed and documented with a study-specific quality score provided?	<input type="checkbox"/> Yes (1)
Yes – risk of bias or another quality metric was used and reported	<input type="checkbox"/> No (0)
No – no risk of bias or quality metric was used	<input type="checkbox"/> Can't answer (0)
Can't answer – the authors state that a quality metric was done, but do not provide additional information	

824 High quality review = score of $\geq 3/5$

825

826 Trials were deemed to have fulfilled the importance criterion if they were cited in the
827 results of a Cochrane SR, an AHRQ SR, or an SR achieving a modified AMSTAR score
828 of greater or equal to 3 out of 5.

829

830 Assessment of citation of trial results in SRs was repeated in October 2021 by NH &
831 HM for those trials without an informative citation when first assessed.

832

833

834

835

836 **eMethods 9 – Clinical Practice Guideline and Point-of-Care Medical Database**
 837 **Search Strategies and Quality Assessment**

838
 839 Assessment of citation of trial results in Clinical Practice Guidelines (CPGs) was
 840 independently performed by two authors (NH & HM). CPGs were identified via Scopus
 841 ⁶ citation analysis for published studies or via Google Scholar ⁷ for unpublished trials.
 842 Quality of CPGs was assessed using a modified AGREE II scoring system:

843
 844 Operationalization of modified AGREE II ¹⁰ scoring system

<p>1. Were systematic methods used to search for evidence and criteria for selection of evidence clearly described?</p> <p>Yes – the authors described electronic databases/sources where search was performed, time periods searched, key terms used; inclusion/exclusion criteria for evidence selection were outlined</p> <p>No – no description was available/no systematic search for evidence conducted/no criteria for selection of evidence described</p>	<p><input type="checkbox"/> Yes (1)</p> <p><input type="checkbox"/> No (0)</p>
<p>2. Were the strengths and limitations of the body of evidence clearly described?</p> <p>Yes – description of the tools used to assess quality of evidence provided (e.g. GRADE framework) or explicit discussion of the quality of the entire group of included trials provided</p> <p>No – no evaluation of quality</p>	<p><input type="checkbox"/> Yes (1)</p> <p><input type="checkbox"/> No (0)</p>
<p>3. Were the methods for formulating recommendations clearly described?</p> <p>Yes – description of the recommendation development process was included (e.g. voting procedures) and level of consensus reached were described</p> <p>No – no clear description of the process involved in formulating recommendations provided</p>	<p><input type="checkbox"/> Yes (1)</p> <p><input type="checkbox"/> No (0)</p>
<p>4. Were the guidelines externally reviewed prior to publication?</p>	<p><input type="checkbox"/> Yes (1)</p> <p><input type="checkbox"/> No (0)</p>

<p>Yes – guidelines were externally reviewed and reviewers were not involved in the guideline development group</p> <p>No – no external review performed or reviewers not independent of guideline information</p> <p>Can't answer – insufficient information to evaluate external review process</p>	<p><input type="checkbox"/> Can't answer (0)</p>
<p>5. Were competing interests of guideline developers recorded and addressed?</p> <p>Yes – a description of competing interests was provided and their potential impact on guideline development discussed; guideline developers were independent from funding body / funding body did not influence final recommendations</p> <p>No – no competing interests described, or impact on guideline development not assessed, or unclear if funding body has influenced guideline development</p>	<p><input type="checkbox"/> Yes (1)</p> <p><input type="checkbox"/> No (0)</p>

845 High quality review = score of $\geq 3/5$

846

847

848 Trials were deemed to have fulfilled criteria for importance if they were cited in the
 849 results of a high-quality CPG. The remaining uncited trials were assessed for inclusion
 850 in a point-of-care medical database article by two authors (NH & HM). Using disease
 851 and intervention keywords, we searched UpToDate¹¹ to identify any articles citing the
 852 remaining trials.

853

854 Assessment of citation of trial results in Clinical Practice Guidelines (CPGs) was
 855 repeated in October 2021 by NH & HM for those trials without an informative citation
 856 when first assessed.

857

858 **eMethods 10 – Operationalization of modified Cochrane Risk of Bias score**

859
860 We employed a modified 2011 version of the Cochrane Risk of Bias Assessment Tool
861 (detailed criteria for judging risk of bias provided in Table 8.5d of the Cochrane
862 Handbook for Systematic Reviews of Interventions version 5.1) ¹². When available, ROB
863 scores were extracted directly from high-quality SRs identified during the assessment
864 of trial importance. When not available, assessment was independently carried out by
865 two authors (NH & HM), with differences resolved by a third (JK). Assessment included
866 the following elements: i) random sequence generation; ii) allocation concealment; iii)
867 blinding of participants and personnel; iv) blinding of outcome assessment; v)
868 incomplete outcome data; and, vi) selective reporting. Trials were deemed of sufficient
869 design quality if all elements were deemed to be “low risk of bias” or if a minority of
870 elements were deemed of “unclear risk” and the remaining were “low risk.” Any “high
871 risk” of bias element equated with poor trial design.

872
873 Of the 63 trials assessed for trial design, 36 ROB scores were extracted directly from
874 SRs, the remaining 27 trials were assessed by the study team.

875
876
877

878 **eMethods 11 – Deviations to the Study Protocol**

879

880 1. For our feasibility assessment, we first evaluated feasibility of goal patient enrollment
881 and planned date of primary completion based on the first record available on
882 ClinicalTrials.gov (this was independently double-coded). However, we repeated this
883 assessment using the final registration record prior to trial start date as this was felt to
884 provide a better evaluation of feasibility, allowing investigators to adjust enrollment
885 plans and primary outcome timeline prior to trial start. The latter method was single
886 coded and did not produce any change in the results of our feasibility assessment.

887

888 2. We performed two additional sensitivity analyses on the primary outcome: i)
889 excluding all trials in the lower quartile of goal patient enrollment; and, ii) excluding all
890 phase 1/2 and phase 2 trials from the assessment.

891

892 3. We excluded evaluation of primary outcome integrity from our assessment of trial
893 informativeness, given concerns that there can be scientifically valid reasons for
894 altering a primary outcome. For example, a primary outcome might be changed due to
895 evolving clinical practice or in response to new data from outside the trial.

896

897 4. We excluded trials of interventions that were subject to FDA regulations, but were
898 never approved for any indication, or were FDA approved after trial start, but did not
899 have 5 years of follow-up time from 31 October 31 2016 post-approval to allow for
900 enough time for trial results to be included in systematic reviews/clinical practice
901 guidelines/UpToDate.

902

903 5. We excluded Indeterminate trials from our cohort, defined as ongoing trials that have
904 not surpassed double the allotted time for primary outcome completion (as first stated
905 in the historical clinicaltrials.gov registration record)

906

907

908 eMethods 12 – STROBE Checklist for Cohort Studies

	Item No	Recommendation	Page No
Title and abstract	1	(a) Indicate the study's design with a commonly used term in the title or the abstract	1
		(b) Provide in the abstract an informative and balanced summary of what was done and what was found	2
Introduction			
Background/rationale	2	Explain the scientific background and rationale for the investigation being reported	3
Objectives	3	State specific objectives, including any prespecified hypotheses	3
Methods			
Study design	4	Present key elements of study design early in the paper	4-5
Setting	5	Describe the setting, locations, and relevant dates, including periods of recruitment, exposure, follow-up, and data collection	4-5
Participants	6	(a) Give the eligibility criteria, and the sources and methods of selection of participants. Describe methods of follow-up (b) For matched studies, give matching criteria and number of exposed and unexposed	5-6
Variables	7	Clearly define all outcomes, exposures, predictors, potential confounders, and effect modifiers. Give diagnostic criteria, if applicable	8-10
Data sources/ measurement	8*	For each variable of interest, give sources of data and details of methods of assessment (measurement). Describe comparability of assessment methods if there is more than one group	8-10
Bias	9	Describe any efforts to address potential sources of bias	10
Study size	10	Explain how the study size was arrived at	Figure1
Quantitative variables	11	Explain how quantitative variables were handled in the analyses. If applicable, describe which groupings were chosen and why	10-11
Statistical methods	12	(a) Describe all statistical methods, including those used to control for confounding (b) Describe any methods used to examine subgroups and interactions (c) Explain how missing data were addressed (d) If applicable, explain how loss to follow-up was addressed (e) Describe any sensitivity analyses	10-11
Results			
Participants	13*	(a) Report numbers of individuals at each stage of study—eg numbers potentially eligible, examined for eligibility, confirmed eligible, included in the study, completing follow-up, and analysed (b) Give reasons for non-participation at each stage (c) Consider use of a flow diagram	Figure1 7
Descriptive data	14*	(a) Give characteristics of study participants (eg demographic, clinical, social) and information on exposures and potential confounders (b) Indicate number of participants with missing data for each variable of interest (c) Summarise follow-up time (eg, average and total amount)	Table1 11-12
Outcome data	15*	Report numbers of outcome events or summary measures over time	13

909

Main results	16	(a) Give unadjusted estimates and, if applicable, confounder-adjusted estimates and their precision (eg, 95% confidence interval). Make clear which confounders were adjusted for and why they were included (b) Report category boundaries when continuous variables were categorized (c) If relevant, consider translating estimates of relative risk into absolute risk for a meaningful time period	13-14
Other analyses	17	Report other analyses done—eg analyses of subgroups and interactions, and sensitivity analyses	13-14

Discussion

Key results	18	Summarise key results with reference to study objectives	17
Limitations	19	Discuss limitations of the study, taking into account sources of potential bias or imprecision. Discuss both direction and magnitude of any potential bias	19-20
Interpretation	20	Give a cautious overall interpretation of results considering objectives, limitations, multiplicity of analyses, results from similar studies, and other relevant evidence	17-20
Generalisability	21	Discuss the generalisability (external validity) of the study results	20

Other information

Funding	22	Give the source of funding and the role of the funders for the present study and, if applicable, for the original study on which the present article is based	2
---------	----	---	---

910

911

912

913 **eTable 2 – Inter-rater Agreement Rates**

914

Category	Unweighted Cohen’s Kappa
Screening trials for inclusion/exclusion	0.83
Evaluating trial Feasibility	0.98
Evaluating trial Reporting	0.79
Evaluating trial Importance	0.67
Evaluating trial Design	0.84

915

916

917 **eTable 3 – Proportion of Trials Meeting Each Criterion for Informativeness**
918

Condition for Informativeness	Ratio	% (95% CI)
Feasibility	90 of 125 trials	72.0 (63.3 – 79.7)
Reporting	81 of 90 trials	90.0 (81.9 – 95.3)
Importance	63 of 81 trials	77.8 (67.2 – 86.3)
Design	33 of 63 trials	52.4 (39.4 – 65.1)

919
920

921 **eTable 4 – Phase 4 Trials Not Meeting All 4 Informativeness Criteria**
 922

NCT	Disease	Title	Trial Status	Sponsor	Informativeness Assessment
NCT00954707	IHD	A Prospective, Randomized, Multi-Center, Double-Blind Trial to Assess the Effectiveness and Safety of Different Durations of Dual Anti-Platelet Therapy in Subjects Undergoing Percutaneous Coronary Intervention With the CYPHER® Sirolimus-eluting Coronary Stent (CYPHER® Stent)	Unknown (Previously, Active, NR)	Industry	Not cited in review documents
NCT00977938	IHD	A Prospective, Multi-center, Randomized, Double-blind Trial to Assess the Effectiveness and Safety of 12 Versus 30 Months of Dual Antiplatelet Therapy in Subjects Undergoing Percutaneous Coronary Intervention With Either Drug-eluting Stent or Bare Metal Stent Placement for the Treatment of Coronary Artery Lesions	Completed	Non-Industry	Elevated Risk of Bias Score
NCT01050348	IHD	A Double Blinded Randomized Placebo Controlled Study: To Investigate the Role of Upstream High Dose Statin Treatment in Patients With ST Segment Elevation Myocardial Infarction	Completed	Non-Industry	Not Reported
NCT01069003	IHD	EDUCATE: a Prospective, Multi-center Study Designed to Collect Real-world Safety and Clinical Outcomes in Subjects Receiving One or More Endeavor Zotarolimus-Eluting Stents and Either Clopidogrel and Aspirin or Prasugrel and Aspirin as Part of a Dual Antiplatelet Therapy Drug Regimen	Completed	Industry	Elevated Risk of Bias Score
NCT01106534	IHD	XIENCE V® Everolimus Eluting Coronary Stent System USA Post-Approval Study (XIENCE V® USA DAPT Cohort) (XVU-AV DAPT)	Completed	Industry	Poor Feasibility
NCT01178268	IHD	XIENCE V Everolimus Eluting Coronary Stent System China: Post-Approval Randomized Control Trial	Completed	Industry	Not cited in review documents
NCT01221272	IHD	A Phase 4, Randomized, Double-Blind, Placebo-Controlled, Cross-over Trial to Evaluate the Effects of Ranolazine on Myocardial Perfusion Assessed by Serial Quantitative Exercise SPECT Imaging	Completed	Industry	Poor Feasibility
NCT01230892	IHD	The Evaluation of The Effects of Nebivolol in Comparison to Atenolol on Wall Shear Stress and Rupture Prone Coronary Artery Plaques in Patients With Moderate Coronary Artery Disease	Completed	Non-Industry	Not cited in review documents

NCT01246011	IHD	Significance of Antibodies to Heparin/Platelet Factor 4 Complex in Vein Graft Patency and Potential Role of Argatroban for Prevention of Vein Graft Occlusion	Terminated	Non-Industry	Poor Feasibility
NCT01101867	DM	Prandial Insulin Dosing Using the Carbohydrate Counting Technique in Hospitalized Patients With Diabetes	Completed	Non-Industry	Not cited in review documents
NCT01267448	DM	A Pilot Study of Outpatient Discharge Therapy With Saxagliptin + Metformin XR or Sulphonylurea for Recently Diagnosed Type 2 Diabetes Presenting With Severe Hyperglycemia	Unknown (Previously, Recruiting)	Non-Industry	Poor Feasibility
NCT00978796	DM	Pilot Study Assessing Glucose Effects of Sitagliptin (Januvia) in Adult Patients With Type 1 Diabetes	Completed	Non-Industry	Not cited in review documents
NCT00979628	DM	Basal Bolus Versus Basal Insulin Regimen for the Treatment of Hospitalized Patients With Type 2 Diabetes Mellitus	Completed	Non-Industry	Elevated Risk of Bias Score
NCT01107717	DM	Durability of Early Initial Combination Therapy With Exenatide/Pioglitazone/Metformin vs Conventional Therapy in New Onset Type 2 Diabetes	Active, NR	Non-Industry	Poor Feasibility
NCT00939250	DM	A Comprehensive Intervention for Diabetes and Comorbid Depression in Primary Care	Completed	Non-Industry	Poor Feasibility
NCT00950677	DM	The Effect of the Glucagon Suppressors Pramlintide and Exenatide on Postprandial Glucose Metabolism in Children With Type 2 Diabetes Mellitus	Completed	Non-Industry	Not Reported
NCT01221090	DM	Employing Diabetes Self-Management Models to Reduce Health Disparities in Texas	Completed	Non-Industry	Elevated Risk of Bias Score

923 IHD – Ischemic Heart Disease
 924 DM – Diabetes Mellitus

925
 926

927 **eTable 5 – Trials Not Cited in Clinical Review Documents**
928

NCT	Disease	Title	Phase	Trial Status	Sponsor	Published Results
NCT00924118	IHD	A Safety and Efficacy Evaluation of Sodium Nitrite Injection for the Prevention of Ischemia-Reperfusion Injury Associated with Acute Myocardial Infarction	2	Completed	Non-Industry	NO
NCT00954707	IHD	A Prospective, Randomized, Multi-Center, Double-Blind Trial to Assess the Effectiveness and Safety of Different Durations of Dual Anti-Platelet Therapy (DAPT) in Subjects Undergoing Percutaneous Coronary Intervention with the CYPHER Sirolimus-eluting Coronary Stent	4	Unknown (Previously, Active, Not Recruiting)	Industry	NO
NCT01175018	IHD	Anakinra to Prevent Adverse Post-infarction Remodeling	2	Completed	Non-Industry	YES
NCT01178268	IHD	XIENCE V Everolimus Eluting Coronary Stent System China: Post-Approval Randomized Control Trial	4	Completed	Industry	NO
NCT01230892	IHD	The Evaluation of The Effects of Nebivolol in Comparison to Atenolol on Wall Shear Stress and Rupture Prone Coronary Artery Plaques in Patients With Moderate Coronary Artery Disease	4	Completed	Non-Industry	YES
NCT01101867	DM	Prandial Insulin Dosing Using the Carbohydrate Counting Technique in Hospitalized Patients With Diabetes	4	Completed	Non-Industry	YES
NCT01194245	DM	A Phase II, Randomized, Double Blind, 2-Way Crossover Safety and Efficacy Study of Subcutaneously Injected Prandial Insulins: Lispro-PH20 or Aspart-PH20 Compared to Insulin Lispro (Humalog) in Patients With Type 1 Diabetes	2	Completed	Industry	NO
NCT00916357	DM	Phase 2, Double-Blind Randomized, 3-way Cross-Over Liquid Meal Study With Optimal Doses of SC Administered Insulin Lispro With and Without rHuPH20 and Regular Human Insulin With rHuPH20 to Compare Pharmacokinetics, Postprandial Glycemic Response, and Optimal Insulin Dose in Patients With T2DM	2	Completed	Industry	YES
NCT00993824	DM	Use of Continuous Glucose Monitoring With Ambulatory	2/3	Completed	Non-Industry	YES

		Glucose Profile Analysis to Demonstrate the Glycemic Effect of Colesevelam HCl (Welchol) in Patients With Type 2 Diabetes				
NCT00918138	DM	A 4-Week, Multicenter, Randomized, Double-Blind, Phase 3b Trial to Evaluate the Efficacy of Saxagliptin in Combination With Metformin XR 1500 mg Versus Up-titrated Metformin XR to 2000 mg in Subjects With Type 2 Diabetes Who Have Inadequate Glycemic Control With Diet and Exercise and a Stable Dose of Metformin XR 1500 mg	3	Completed	Industry	YES
NCT00844090	DM	The Role of Apathy in Glycemic Control	NA	Completed	Non-Industry	NO
NCT00978796	DM	Pilot Study Assessing Glucose Effects of Sitagliptin (Januvia) in Adult Patients With Type 1 Diabetes	4	Completed	Non-Industry	YES
NCT01089569	DM	Evaluation of Insulin Glargine and Exenatide: A Randomized Clinical Trial with Continuous Glucose Monitoring and Ambulatory Glucose Profile Analysis	NA	Completed	Non-Industry	YES
NCT00918203	Lung CA	A Randomized Phase 2 Study of Human Anti-PDGFR α Monoclonal Antibody (IMC-3G3) with Paclitaxel/Carboplatin or Paclitaxel/Carboplatin Alone in Previously Untreated Patients with Locally Advanced or Metastatic Non-Small Cell Lung Cancer	2	Completed	Industry	YES
NCT00976677	Lung CA	Randomized Double-Blind Placebo Controlled Phase II Trial Evaluating Erlotinib in Non-Smoking Patients With (Bevacizumab-Eligible and Ineligible) Advanced Non-Small Cell Lung Cancer	2	Terminated	Non-Industry	NO
NCT00977470	Lung CA	Phase II Study of Erlotinib With or Without Hydroxychloroquine in Patients With Previously Untreated Advanced NSCLC and EGFR Mutations	2	Active, NR	Non-Industry	NO
NCT01085136	Lung CA	Phase III Randomized Trial of BIBW 2992 Plus Weekly Paclitaxel Versus Investigator's Choice of Chemotherapy Following BIBW 2992 Monotherapy in Non-Small Cell Lung Cancer Patients Failing Previous Erlotinib or Gefitinib Treatment (LUX Lung 5)	3	Completed	Industry	YES

NCT01104155	Lung CA	Eribulin Mesylate in Combination with Intermittent Erlotinib in Patients with Previously Treated, Advanced Non-Small Cell Lung Cancer	2	Completed	Industry	YES
-------------	------------	---	---	-----------	----------	-----

929 IHD – Ischemic Heart Disease

930 DM – Diabetes Mellitus

931 Lung CA – Lung Cancer

932 **Supplementary Bibliography**

- 933
- 934 1. Drugs@FDA <https://www.accessdata.fda.gov/scripts/cder/daf/index.cfm>.
- 935 2. 510(k) Premarket Notification
- 936 <https://www.accessdata.fda.gov/scripts/cder/daf/index.cfm>.
- 937 3. Zarin DA, Goodman SN, Kimmelman J. Harms From Uninformative Clinical
- 938 Trials. *JAMA*. 2019;322(9):813-814.
- 939 4. Cochrane Database of Systematic Reviews.
- 940 (<https://www.cochranelibrary.com/cdsr/reviews>)
- 941 5. Agency for Healthcare Research and Quality.
- 942 (<https://effectivehealthcare.ahrq.gov>).
- 943 6. Scopus. (<https://www.scopus.com>)
- 944 7. Google Scholar. (<https://scholar.google.ca>).
- 945 8. Shea BJ, Hamel C, Wells GA, et al. AMSTAR is a reliable and valid measurement
- 946 tool to assess the methodological quality of systematic reviews. *J Clin*
- 947 *Epidemiol*. 2009;62(10):1013-1020.
- 948 9. Flodgren G, Eccles MP, Shepperd S, Scott A, Parmelli E, Beyer FR. An overview
- 949 of reviews evaluating the effectiveness of financial incentives in changing
- 950 healthcare professional behaviours and patient outcomes. *Cochrane Database*
- 951 *Syst Rev*. 2011(7):CD009255.
- 952 10. Brouwers MC, Kho ME, Browman GP, et al. AGREE II: advancing guideline
- 953 development, reporting and evaluation in health care. *CMAJ*.
- 954 2010;182(18):E839-842.
- 955 11. UpToDate. (<https://www.uptodate.com/home>).
- 956 12. The Cochrane Collaboration. Cochrane Handbook for Systematic Reviews of
- 957 Interventions version 5.1.0. Eds J.P.T. Higgins & S.Green. 2011.
- 958 <https://training.cochrane.org/handbook/archive/v5.1/>.
- 959
- 960
- 961