

Title: Covid-19 vaccine effectiveness against general SARS-CoV-2 infection from the omicron variant: A retrospective cohort study

Authors: Lior Rennert,^{1*} PhD, Zichen Ma,¹ PhD, Christopher S. McMahan,² PhD, Delphine Dean,³ PhD

Affiliations

¹ Department of Public Health Sciences, Clemson University, Clemson, SC, USA

² School of Mathematical and Statistical Sciences, Clemson University, Clemson, SC, USA

³ Department of Bioengineering, Clemson University, Clemson, SC, USA

***Corresponding author**

Lior Rennert, PhD

Department of Public Health Sciences, Clemson University

517 Edwards Hall

Clemson, SC, 29601

864-656-7434

liorr@clemson.edu

ABSTRACT

Objective: To estimate the effectiveness of 2-dose and 3-dose mRNA vaccination (BNT162b2 and mRNA-1273) against general SARS-CoV-2 infection (asymptomatic or symptomatic) caused by the omicron variant.

Design: Propensity-score matched retrospective Cohort Study.

Setting: Large public university undergoing weekly Covid-19 testing in South Carolina, USA.

Participants: Population consists of 24,145 university students and employees undergoing weekly Covid-19 testing between January 3rd and January 31st, 2022. The analytic sample was constructed via propensity score matching on vaccination status: Unvaccinated, completion of 2-dose mRNA series within previous 5 months, and receipt of mRNA booster dose within previous 5 months. The resulting analytic sample consists of 1,944 university students and 658 university employees.

Intervention: Vaccination with a two dose or 3 dose regimen of the BNT162b2 or mRNA-1273 vaccine.

Results: Booster protection against any SARS-CoV-2 infection was 66.4% among employees (95% CI: 46.1-79.0%; $P<.001$) and 45.4% among students (95% CI: 30.0-57.4%; $P<.001$). Compared to the 2-dose mRNA series, estimated increase in protection from the booster dose was 40.8% among employees ($P=.024$) and 37.7% among students ($P=.001$). We did not have enough evidence to conclude a statistically significant protective effect of the 2-dose mRNA vaccination series, nor did we have enough evidence to conclude that protection waned in the 5-month period after receipt of the 2nd or 3rd mRNA dose. Furthermore, we did not find evidence that protection varied by manufacturer.

Conclusions: Covid-19 mRNA booster doses offer moderate protection against any SARS-CoV-2 infection caused by the omicron variant and provide a substantial increase in protection relative to the 2-dose mRNA vaccination series.

INTRODUCTION

The B.1.1529 (omicron) variant of Severe Acute Respiratory Syndrom Coronavirus 2 (SARS-CoV-2), first detected in South Africa in November 2021, is more infectious than any previous variant of SARS-CoV-2.¹ Omicron has caused record number of daily SARS-CoV-2 infections in the United States (US) and world wide.² Preliminary studies suggest Covid-19 vaccines have lower neutralization efficacy against omicron and are less protective against hospitalization.^{3,4} However, data on the extent to which Covid-19 vaccines are protective against general infection from omicron, including asymptomatic, presymptomatic, and symptomatic infection, is limited.

While SARS-CoV-2 infections caused by the omicron variant are associated with a reduced risk of severe disease compared to previous variants,⁵ high infection rates increase the risk of severe disease for the population as a whole. Protection against any SARS-CoV-2 infection is therefore important for reduction of both individual and community risk. In this study, we assess effectiveness of the 2-dose and 3-dose messenger RNA (mRNA) vaccination series approved by the U.S. Food and Drug Administration (FDA), BNT162b2 (Pfizer-BioNTech) and mRNA-1273 (Moderna), in a large public university student and employee population undergoing mandatory weekly testing during the Spring 2022 semester. Because such screening captures all infections (including asymptomatic and pre-symptomatic), this study setting is ideal for evaluation of protection against any SARS-CoV-2 infection.

METHODS

Study Design and Population

The study population consists of students and employees undergoing mandatory weekly testing between January 3rd and January 31st at Clemson University in South Carolina (SC). The study sample was restricted to young-adult students between 18 and 24 years and university employees between 18 and 64 years. Exclusion criteria is provided in Figure 1, and consists of student athletes, recipient of a vaccine dose other than BNT162b2 or mRNA-1273, individuals receiving the second dose of BNT162b2 less than 21 days after their first dose or

second dose of mRNA-1273 less than 28 days after first dose, recipient of a booster dose less than 5 months after the second dose of the mRNA-1273 or BNT162b2, and individuals with invalid vaccination cards. Per surveillance testing protocols, individuals testing positive were not required to partake in mandatory pre-arrival or surveillance testing for 90 days since the original positive test result, and are therefore excluded from analyses.⁶ Individuals who have self-reported conditions impacting immune response, including HIV, cancer, lupus, rheumatoid arthritis, or solid organ or bone marrow transplant, and who have self-reported medication use of steroids, chemotherapy, or immunosuppressants, were excluded from the sample. Students vaccinated prior to March 31st, 2021, and employees vaccinated prior to March 8th, 2021, were excluded, since only high-risk individuals were eligible to be vaccinated in SC during this time period. Ethical review for this study was obtained by the Institutional Review Board (IRB) of Clemson University (IRB # 2021-043-02).

Vaccination Status

Vaccine information was collected through voluntary upload of vaccination cards through Clemson University's COVID-19 Voluntary Vaccine Upload Tool. Financial incentives were provided to individuals uploading proof of complete vaccination during the Fall 2021 semester.⁷ Individuals also had the option to upload information on booster doses at any point. While this was encouraged through university communications, financial incentives were not offered for booster upload. Vaccination data includes vaccine manufacturer and administration dates of first, second, and booster doses.

Individuals who were not affiliated with the University during the Fall 2021 semester were excluded from analyses, since this population was not eligible to participate in the University's financial incentive program for voluntary upload of Covid-19 vaccination and is therefore subject to underreporting. The incentive program only required proof of full vaccination (e.g., completion of 2-dose mRNA series). Many individuals likely received a booster dose after uploading proof of full vaccination. Because financial incentives were not offered for booster upload, those reporting full vaccination likely contain a mixture of individuals completing the 2-dose and 3-dose mRNA vaccination series. From the fully vaccinated cohort (i.e., people reporting only a 2-dose mRNA

vaccination series), we excluded all individuals who received their 2nd dose more than 5 months prior to the end of the follow-up (Jan 31st, 2022). This ensures that the resulting fully vaccinated cohort would be devoid of boosted individuals since its constituents would not be eligible to receive the mRNA booster dose during the study period.

Vaccination status was coded as partially vaccinated if 14-days had passed since the first dose of mRNA-1273 or BNT162b2, fully vaccinated if at least 14 days had passed since the second dose of BNT162b2 or mRNA-1273,⁸ and boosted if 7 days had passed since the receipt of a the BNT162b2 or mRNA-1273 booster dose.⁹ The analytic sample was restricted to individuals reporting no vaccination, completion of the 2-dose mRNA vaccination series within 5 months of end of follow-up (fully vaccinated), and receipt of an mRNA booster dose (boosted).

SARS-CoV-2 Testing

Pre-arrival testing was required for all individuals between January 3rd and January 12th (in-person instruction), followed by weekly surveillance testing. Residential students were also required to test upon arrival to residence halls (beginning January 9th). All students had the option of receiving a SARS-CoV-2 test on campus or obtaining their test elsewhere and uploading their result to the University's Covid-19 test upload portal. Accepted methods included nasal, throat, or saliva-based polymerase-chain-reaction (PCR) tests.¹⁰ Testing was available on-campus through the University's high-complexity CLIA-certified clinical diagnostics lab, which utilized saliva-based PCR tests. This comprised the majority of tests conducted during the study follow-up period (N=101,982; 92.9% of all tests). Test results with quantification cycle (Cq) values under 33 were considered positive for SARS-CoV-2 (test sensitivity $\geq 95\%$, test specificity $\geq 99.5\%$).^{11,12} Testing was mandated for all university-affiliated individuals; access to campus facilities was restricted until a negative test result was obtained. Pre-arrival and surveillance testing protocols for previous semesters, including clinical descriptions of testing procedures, are described elsewhere.^{6,11} It is estimated that 99.2% of all SARS-CoV-2 infections in South Carolina were caused by the omicron variant in January of 2022.¹³

Propensity Score Matching

Propensity-score matching was used to adjust for confounding of vaccine effectiveness estimates due to reporting bias and differences in health-seeking behavior. To achieve covariate balance while preserving sample size, matching was conducted using a common-referent approach.¹⁴ In the student sample, 1:1 nearest neighbor caliper matching was conducted between boosted and fully vaccinated individuals and 1:2 nearest neighbor caliper matching was conducted between boosted and unvaccinated individuals.^{15,16} The post-matched student sample consists of unvaccinated and fully vaccinated individuals who had a common match with a boosted individual.¹⁴ In the employee study sample, 1:4 nearest neighbor caliper matching was conducted between fully vaccinated and boosted individuals and 1:4 nearest neighbor caliper matching was conducted between fully vaccinated and unvaccinated individuals. The post-matched employee sample consists of boosted and unvaccinated individuals who had a common match with a fully vaccinated individual. The caliper width was set to 0.20 times the standard deviation of the logit of the propensity scores.¹⁷ Variables in the propensity score model included age, sex, affiliation (students: residential or non-residential living, employees: faculty or staff), graduate student status (students only), race/ethnicity, self-reported pre-existing conditions (high blood pressure, heart disease, diabetes, overweight or obesity, kidney disease or dialysis, previous stroke or other neurological condition affecting ability to cough, liver disease, or lung disease), use of tobacco or nicotine products, number of SARS-CoV-2 tests in Fall 2020, Spring 2021, and Fall 2021 semesters, and history of previous SARS-CoV-2 infection.

Statistical Analyses

Demographic and clinical characteristics are provided for the analytic sample and stratified by vaccination status in Table 1A/B. Differences between unvaccinated, fully vaccinated, and boosted individuals were assessed using ANOVA for continuous variables and chi-squared tests for categorical variables. Time-varying Cox proportional hazard models were used to estimate the relative risk (RR) of SARS-CoV-2 infection by vaccination status during the follow-up period (1/3/2022-1/31/2022). The outcome was days between start of follow-up and date of first SARS-CoV-2 positive test (event date). Individuals who did not test positive during the follow-up period were right censored at their last negative test date (censoring date). Vaccination status was modeled as a time-varying exposure variable. Because university students tend to engage in high-density social interactions which result in

exposure to higher viral loads,¹⁸ models were run independently for student and employee populations. We adjust for all potential confounders included in the propensity score models to account for residual imbalance after matching.¹⁹ Specifically, models were adjusted for previous SARS-CoV-2 infection history, age, race, gender, residential status, self-reported pre-existing conditions, use of nicotine or other smoking products, and number of previous SARS-CoV-2 tests (surrogate for health-seeking behavior).^{20,21} Vaccine effectiveness was estimated by 1-RR.⁶ Overall mRNA vaccine protection was estimated via Model 1.1 (Appendix 1). Effectiveness by vaccine manufacturer was estimated via Model 1.2 (Appendix 1).

To evaluate vaccine effectiveness by previous infection history, an interaction term between vaccine status and previous infection was included in separate models (Appendix 1, Models 1.3-1.4). To account for heavy censoring of event times, we apply Firth's penalized likelihood method.²² Waning vaccine effectiveness over time was evaluated by including time since vaccination as a predictor (Appendix 2, Models 2.1-2.2). Time-adjusted RR of SARS-CoV-2 infection between the boosted and fully vaccinated groups were estimated via Model 2.3 (Appendix 2). Additional model details are provided in the Appendix. All analyses were conducted using R version 4.1.2.

RESULTS

Descriptive characteristics for students and employees in the post-matching analytic sample are presented in Table 1A/B. This sample consists of 1,944 students who were tested for Covid-19 during the follow-up period, of which 954 did not report any vaccination (49.0%), 495 reported full vaccination (25.5%), and 495 reported receiving a booster dose (25.5%). The average age of this population was 19.64 years (SD=1.42). The majority of the population was non-Hispanic White (81.3%), female (66.4%), lived in residential housing (50.7%), did not report any pre-existing condition (97.0%), did not use tobacco or nicotine products (98.1%), and did not have a previous SARS-CoV-2 infection (77.2%). The average number of SARS-CoV-2 tests per person was 30.61 (SD=11.96). Statistically significant differences were observed in the proportion of residential students (boosted: 48.7%, fully vaccinated: 45.7%, unvaccinated: 54.3%, $P = .005$) and the number of SARS-CoV-2 tests during the Spring 2022 semester (boosted: 4.24, fully vaccinated: 3.34, unvaccinated: 3.17, $P < .001$). However, the latter variable was

not included in the propensity score models since it is strongly correlated with the outcome (due to the 90-day exemption from mandatory testing after a positive result). In total, 28.3% of individuals tested positive during the follow-up period. Positivity rates were significantly lower ($P < .001$) among boosted individuals (16.2%) compared to fully vaccinated (34.5%) and unvaccinated individuals (31.3%).

The post-matching analytic sample for employees consists of 658 individuals who were tested for Covid-19 during the follow-up period, of which 342 did not report any vaccination (52.0%), 87 reported full vaccination (13.2%), and 229 reported receiving a booster dose (34.8%). The average age of this population was 43.05 years ($SD=12.22$). The majority of the population was non-Hispanic White (83.3%), female (64.7%), staff (86.5%), did not report any pre-existing condition (72.0%), did not use tobacco or nicotine products (97.6%), and did not have a previous SARS-CoV-2 infection (83.3%). The average number of SARS-CoV-2 tests per person was 27.55 ($SD=13.43$). Statistically significant differences were observed in the individuals' age (boosted: 45.10, fully vaccinated: 42.97, unvaccinated: 41.70, $P = .005$), the number of individuals with a previous SARS-CoV-2 infection (boosted: 9.2%, fully vaccinated: 13.8%, unvaccinated: 22.5%, $P < .001$), the number of SARS-CoV-2 tests during the Fall 2021 semester (boosted: 11.50, fully vaccinated: 11.01, unvaccinated: 10.25, $P = .01$), and the number of SARS-CoV-2 tests during the Spring 2022 semester (boosted: 4.44, fully vaccinated: 4.13, unvaccinated: 3.81, $P < .001$); the latter variable was not included in the propensity score models. In total, 21.4% of individuals tested positive during the follow-up period. Positivity rates were significantly lower ($P < .001$) among boosted individuals (9.6%) compared to fully vaccinated (26.4%) and unvaccinated individuals (28.1%).

The matching protocol substantially improved balanced on most variables, as measured by standardized differences pre- and post-matching (Figure S1A/B). Using a threshold of standardized differences < 0.25 ,²³ balance was achieved on 100% and 95.5% of pairwise comparisons between all variables for students and employees, respectively. Using a threshold of 0.10,^{19,23} balance was achieved on 86.3% and 60.0% of pairwise comparisons. For employees, the lower proportion is due to, at least in part, the small sample size for fully

vaccinated individuals.¹⁹ Residual imbalance is adjusted for through inclusion of all confounders in the models for vaccine effectiveness.¹⁹

Vaccine Effectiveness

Estimates of vaccine effectiveness for students and employees are presented in Table 2A/B and Figure 2. The median time between full vaccination and end of follow-up was 4.49 months for students (range: 0.66-5.25) and 4.43 months for employees (range: 0.79-5.21). Protection from the 2-dose mRNA vaccination series was 7.7% among students (95% CI: -11.5-23.5%; $P = .409$) and 25.6% among employees (95% CI: -17.6-52.9%; $P = 0.205$). Differences between manufacturers were not statistically significant for students ($P = .328$) or employees ($P = .626$).

The median time between booster dose and end of follow-up was 1.31 months for students (range: 0.39-3.51) and 2.03 months for employees (range: 0.52-4.00). Protection from the mRNA booster dose was 45.4% among students (95% CI = 30.0-57.4%; $P < .001$) and 66.4% among employees (95% CI = 46.1-79.0%; $P < .001$). Differences between booster manufacturers were not statistically significant for students ($P = .652$) or employees ($P = .417$). Furthermore, statistically significant differences were not observed between individuals who mixed and matched (i.e., 2-dose primary series and booster dose from different manufacturers) and those completing the 3-dose BNT16b2 sequence (students: $P = .360$, employees $P = .985$), or those completing the 3-dose mRNA-1273 sequence (students: $P = .353$, employees: $P = .589$).

Compared to completion of the 2-dose mRNA series, receipt of the mRNA booster dose increased protection by 37.7% among students (95% CI: 15.3-60.2%; $P = .001$) and 40.8% among employees (95% CI: 5.4-76.2%; $P = .024$). In a separate analysis accounting for time since vaccination, we directly compare protection among individuals receiving the mRNA booster dose to those completing the 2-dose mRNA series (Appendix 2, Model 2.3). Relative to the 2-dose series, the (time-adjusted) risk of SARS-CoV-2 infection for those receiving the mRNA booster dose was 2.16 times lower for students (95% CI: 1.47-3.18, $P < .001$) and 1.52 times lower for

employees (95% CI: 0.66-3.46, $P = .324$); however, we did not have enough evidence to conclude statistical significance for the latter effect.

We did not have evidence to conclude that mRNA vaccine protection varied by previous infection history. Significant interactions were not observed between previous SARS-CoV-2 infection and the 2-dose mRNA vaccination series (students: $P = .130$, employees: $P = .184$) or mRNA booster dose (students: $P = .599$, employees: $P = .085$). Months since completion of the 2-dose mRNA vaccination series was not a statistically significant predictor of SARS-CoV-2 infection from Omicron among students (RR = 0.93, 95% CI: 0.86-1.02; $P = .110$) or employees (RR = 0.99, 95% CI: 0.82-1.19; $P = .549$). A significant decline in mRNA booster protection was not observed among students (RR = 1.27, 95% CI: 0.81-1.98; $P = .304$) or employees (RR = 1.03, 95% CI: 0.65-1.65; $P = .886$).

DISCUSSION

In this study setting, 21.4% of university employees and 28.3% of university students tested positive for SARS-CoV-2 during a 4-week period in which omicron was the dominant SARS-CoV-2 variant. The mRNA booster dose offered moderately high protection for employees (66.4%) and moderate protection for students (45.4%) against any SARS-CoV-2 infection caused by the omicron variant. Furthermore, estimated protection from the mRNA vaccine booster dose was approximately 40% higher for both students and employees relative to the 2-dose mRNA vaccine series.

We did not have enough evidence to conclude that the 2-dose mRNA series was protective against general SARS-CoV-2 infection from the omicron variant. Compared to our study, recent studies have found higher 2-dose and 3-dose mRNA vaccine effectiveness against symptomatic and severe SARS-CoV-2 infection from omicron.^{3,24,25} This is to be expected, since this study evaluates protection against any SARS-CoV-2 infection from omicron (asymptomatic, pre-symptomatic, and symptomatic) as opposed to severe infection. While protection against severe SARS-CoV-2 infection is the primary objective of Covid-19 vaccination, protection against general

infection is important for mitigating community transmission, since asymptomatic and pre-symptomatic individuals are substantial contributors to disease spread.²⁶ Therefore, less protection against general infection increases the risk for all individuals in the population. Taken together, this study and others provide evidence that booster shots are beneficial for both individual health and reduction in community transmission.^{27,28}

On the surface, our findings of higher protection in older university employees relative to younger university students appear to contradict evidence that Covid-19 vaccines are (relatively) less protective in older adults.^{29,30} However, the risk of infection is dependent on the size of the infecting dose of the virus (i.e., viral load).^{31–36} Compared to the average adult, university students typically engage in more frequent and higher-density social interactions.^{18,37} Such social behavior increases exposure to higher viral loads and subsequently impacts the protective effect of vaccines.

Due to mandated weekly testing, this study design is well-suited for evaluating vaccine effectiveness against any SARS-CoV-2 infection caused by Omicron. Based on the temporal dynamics in SARS-CoV-2 viral shedding,^{38,39} most cases were likely detected since the start of January. Mandatory testing also reduces the risk of confounding that may occur in clinical populations due to differences in risk-seeking behavior.⁴⁰ Relative to the general population, there is a higher degree of homogeneity in this study sample of university students and employees. This feature, combined with stratification by affiliation (student, employee), propensity score matching, and covariate adjustment based on demographics, occupation, clinical characteristics, and health-seeking behavior, further reduces the risk of confounding in this study.

Our study is subject to several limitations. First, due to low variability in month of vaccination in our study sample and a relatively short follow-up period, there was insufficient power to assess waning vaccine immunity after the 2nd and 3rd dose against any SARS-CoV-2 infection caused by omicron. Second, the omicron surge in South Carolina began at least one week before arrival testing was initiated.⁴¹ While underreporting of infections prior to this period was less likely for symptomatic individuals (proof of a positive SARS-CoV-2 test provided a

90-day exemption from mandatory testing), asymptomatic individuals during this time-period were less likely to be tested and reported. Because vaccinated individuals are more likely to have mild infections relative to unvaccinated individuals, it is likely that a larger proportion of vaccine breakthrough infections were underreported during this time. While this would lead to overestimation of vaccine effectiveness, the overall impact of underreporting is expected to be low, since only a small fraction of Omicron infections in South Carolina are estimated to have occurred prior to 2022.⁴¹

Third, misclassification of vaccination status may bias estimates of vaccine effectiveness.⁸ Financial incentives offered during the Fall 2021 semester for voluntary vaccination upload likely minimized underreporting of the 2-dose mRNA series. Therefore, unvaccinated individuals are unlikely to be misclassified since the analytic population was restricted to those affiliated with the university during Fall 2021. However, booster doses became widely available after the financial incentive program was announced. It is therefore possible that booster doses are underreported among fully vaccinated individuals (i.e., recipients of the 2-dose mRNA series) who are booster eligible. Underreporting of boosters in this situation would lead to overestimation of 2-dose mRNA vaccine effectiveness among individuals who received their 2nd dose more than 5 months prior to the end of study follow-up (i.e., booster-eligible individuals). For this reason, we excluded this population from analysis.

Conclusions

Messenger RNA (mRNA) booster doses offer moderate protection against general SARS-CoV-2 infection caused by the omicron variant. In both university students and employees, receipt of the mRNA booster dose substantially increased protection relative to the 2-dose mRNA vaccination series. The effectiveness of mRNA boosters on both individual health and reduction in community transmission support continued efforts for Covid-19 booster doses. This is especially important in the young-adult population, which has suboptimal vaccine uptake yet is a major contributor to community spread. However, given that approximately one-third to one-half of the study population remains susceptible to breakthrough infection, certain precautions after vaccination may still be warranted.

Acknowledgements: We thank the Clemson University administration, medical staff, and all other testing providers who helped implement and manage SARS-CoV-2 testing at Clemson University. We thank Clemson's Computing & Information Technology department for their role in collecting, managing, and distributing test results. LR and DD acknowledge support from US National Institutes of Health (P20 GM121342) during conduct of this study. DD acknowledges support from the State of South Carolina (CARES act) for building of the on-campus Covid-19 testing lab and support from US National institutes of Health (R01 MH111366) during conduct of this study. LR, ZM, and CM acknowledge salary support from Clemson University for consulting and modelling work pertaining to development and evaluation of public health strategies (project #1502934).

Author Contributions: LR and CM contributed to the conceptualization of the study. LR did the literature search. ZM did the figures and visualizations. LR, ZM, CM, and DD contributed to the methods, LR, ZM, and CM contributed to the results. LR and DD contributed to the project administration. LR, ZM, CM, and DD verified the data. LR wrote the first draft, and all other authors reviewed the manuscript. The corresponding author had full access to all the data in this study and had final responsibility for the decision to submit for publication.

Competing interests: None declared.

Material & Correspondence: All inquiries should be made to Lior Rennert (liorr@clemson.edu).

Supplementary Material: Additional detail, including information on propensity score matching, statistical models, the STROBE checklist for cohort studies, are provided in the Appendix.

Data Availability: Data collected for this study has not received institutional approval to be shared at this time.

Code Availability: Not applicable.

REFERENCES

1. Karim SSA, Karim QA. Omicron SARS-CoV-2 variant: a new chapter in the COVID-19 pandemic. *The Lancet*. 2021;0(0). doi:10.1016/S0140-6736(21)02758-6
2. Taylor L. Covid-19: Omicron drives weekly record high in global infections. *BMJ*. 2022;376:o66. doi:10.1136/bmj.o66
3. Collie S, Champion J, Moultrie H, Bekker LG, Gray G. Effectiveness of BNT162b2 Vaccine against Omicron Variant in South Africa. *New England Journal of Medicine*. 2021;0(0):null. doi:10.1056/NEJMc2119270
4. Nemet I, Kliker L, Lustig Y, et al. Third BNT162b2 Vaccination Neutralization of SARS-CoV-2 Omicron Infection. *New England Journal of Medicine*. 2021;0(0):null. doi:10.1056/NEJMc2119358
5. Lewnard JA, Hong VX, Patel MM, Kahn R, Lipsitch M, Tartof SY. *Clinical Outcomes among Patients Infected with Omicron (B.1.1.529) SARS-CoV-2 Variant in Southern California.*; 2022:2022.01.11.22269045. doi:10.1101/2022.01.11.22269045
6. Rennert L, McMahan C. Risk of SARS-CoV-2 reinfection in a university student population. *Clinical Infectious Diseases*. 2021;(ciab454). doi:10.1093/cid/ciab454
7. Clemson University Student Affairs. Clemson Announces Incentives for Proof of Vaccine Uploads. Clemson News. Published August 11, 2021. Accessed September 5, 2021. <https://news.clemson.edu/clemson-announces-incentives-for-proof-of-vaccine-uploads/>
8. Thompson MG, Stenehjem E, Grannis S, et al. Effectiveness of Covid-19 Vaccines in Ambulatory and Inpatient Care Settings. *New England Journal of Medicine*. 2021;0(0):null. doi:10.1056/NEJMoa2110362
9. Barda N, Dagan N, Cohen C, et al. Effectiveness of a third dose of the BNT162b2 mRNA COVID-19 vaccine for preventing severe outcomes in Israel: an observational study. *The Lancet*. 2021;0(0). doi:10.1016/S0140-6736(21)02249-2
10. OUR Clemson. Clemson announces testing and health requirements for the Spring semester return · Clemson News. Clemson News. Published December 8, 2021. Accessed January 14, 2022. <https://news.clemson.edu/clemson-announces-testing-and-health-requirements-for-the-spring-semester-return/>
11. Rennert L, McMahan C, Kalbaugh CA, et al. Surveillance-based informative testing for detection and containment of SARS-CoV-2 outbreaks on a public university campus: an observational and modelling study. *The Lancet Child & Adolescent Health*. 2021;5(6):428-436. doi:10.1016/S2352-4642(21)00060-2
12. Vogels CBF, Watkins AE, Harden CA, et al. SalivaDirect: A Simplified and Flexible Platform to Enhance SARS-CoV-2 Testing Capacity. *Med*. 2021;2(3):263-280.e6. doi:10.1016/j.medj.2020.12.010
13. CDC. COVID Data Tracker. Centers for Disease Control and Prevention COVID Data Tracker. Variant Proportions. Published March 28, 2020. Accessed March 7, 2022. <https://covid.cdc.gov/covid-data-tracker>
14. Rassen JA, Shelat AA, Franklin JM, Glynn RJ, Solomon DH, Schneeweiss S. Matching by Propensity Score in Cohort Studies with Three Treatment Groups: *Epidemiology*. 2013;24(3):401-409. doi:10.1097/EDE.0b013e318289dedf

15. Rosenbaum PR, Rubin DB. Constructing a Control Group Using Multivariate Matched Sampling Methods That Incorporate the Propensity Score. *The American Statistician*. 1985;39(1):33-38. doi:10.2307/2683903
16. Austin PC. Some methods of propensity-score matching had superior performance to others: results of an empirical investigation and Monte Carlo simulations. *Biom J*. 2009;51(1):171-184. doi:10.1002/bimj.200810488
17. Austin PC. Optimal caliper widths for propensity-score matching when estimating differences in means and differences in proportions in observational studies. *Pharm Stat*. 2011;10(2):150-161. doi:10.1002/pst.433
18. Rennert L, Kalbaugh CA, Shi L, McMahan C. Modelling the impact of presemester testing on COVID-19 outbreaks in university campuses. *BMJ Open*. 2020;10(12):e042578. doi:10.1136/bmjopen-2020-042578
19. Austin PC. Balance diagnostics for comparing the distribution of baseline covariates between treatment groups in propensity-score matched samples. *Stat Med*. 2009;28(25):3083-3107. doi:10.1002/sim.3697
20. Griffith GJ, Morris TT, Tudball MJ, et al. Collider bias undermines our understanding of COVID-19 disease risk and severity. *Nat Commun*. 2020;11(1):5749. doi:10.1038/s41467-020-19478-2
21. Byrne KA, Six SG, Anaraky RG, Harris MW, Winterlind EL. Risk-taking unmasked: Using risky choice and temporal discounting to explain COVID-19 preventative behaviors. *PLOS ONE*. 2021;16(5):e0251073. doi:10.1371/journal.pone.0251073
22. Heinze G, Schemper M. A solution to the problem of monotone likelihood in Cox regression. *Biometrics*. 2001;57(1):114-119. doi:10.1111/j.0006-341x.2001.00114.x
23. Stuart EA, Lee BK, Leacy FP. Prognostic score-based balance measures for propensity score methods in comparative effectiveness research. *J Clin Epidemiol*. 2013;66(8 0):S84-S90.e1. doi:10.1016/j.jclinepi.2013.01.013
24. Accorsi EK, Britton A, Fleming-Dutra KE, et al. Association Between 3 Doses of mRNA COVID-19 Vaccine and Symptomatic Infection Caused by the SARS-CoV-2 Omicron and Delta Variants. *JAMA*. Published online January 21, 2022. doi:10.1001/jama.2022.0470
25. Abu-Raddad LJ, Chemaitelly H, Ayoub HH, et al. Effect of mRNA Vaccine Boosters against SARS-CoV-2 Omicron Infection in Qatar. *New England Journal of Medicine*. 2022;0(0):null. doi:10.1056/NEJMoa2200797
26. Johansson MA, Quandelacy TM, Kada S, et al. SARS-CoV-2 transmission from people without COVID-19 symptoms. *JAMA Network Open*. 2021;4(1):e2035057. doi:10.1001/jamanetworkopen.2020.35057
27. Bar-On YM, Goldberg Y, Mandel M, et al. Protection of BNT162b2 Vaccine Booster against Covid-19 in Israel. *New England Journal of Medicine*. 2021;0(0):null. doi:10.1056/NEJMoa2114255
28. Levine-Tiefenbrun M, Yelin I, Alapi H, et al. Viral loads of Delta-variant SARS-CoV-2 breakthrough infections after vaccination and booster with BNT162b2. *Nat Med*. Published online November 2, 2021:1-3. doi:10.1038/s41591-021-01575-4
29. Andrews N, Tessier E, Stowe J, et al. Duration of Protection against Mild and Severe Disease by Covid-19 Vaccines. *New England Journal of Medicine*. 2022;386(4):340-350. doi:10.1056/NEJMoa2115481

30. Ranzani OT, Hitchings MDT, Dorion M, et al. Effectiveness of the CoronaVac vaccine in older adults during a gamma variant associated epidemic of covid-19 in Brazil: test negative case-control study. *BMJ*. 2021;374:n2015. doi:10.1136/bmj.n2015
31. Sehrawat S, Rouse BT. COVID-19: disease, or no disease? - that is the question. It's the dose stupid! *Microbes and Infection*. 2021;23(1):104779. doi:10.1016/j.micinf.2021.104779
32. Van Damme W, Dahake R, van de Pas R, Vanham G, Assefa Y. COVID-19: Does the infectious inoculum dose-response relationship contribute to understanding heterogeneity in disease severity and transmission dynamics? *Medical Hypotheses*. 2021;146:110431. doi:10.1016/j.mehy.2020.110431
33. Little P, Read RC, Amlôt R, et al. Reducing risks from coronavirus transmission in the home—the role of viral load. *BMJ*. 2020;369:m1728. doi:10.1136/bmj.m1728
34. Hodgson SH, Mansatta K, Mallett G, Harris V, Emary KRW, Pollard AJ. What defines an efficacious COVID-19 vaccine? A review of the challenges assessing the clinical efficacy of vaccines against SARS-CoV-2. *The Lancet Infectious Diseases*. Published online October 27, 2020. doi:10.1016/S1473-3099(20)30773-8
35. McKeigue PM, McAllister DA, Caldwell D, et al. Relation of severe COVID-19 in Scotland to transmission-related factors and risk conditions eligible for shielding support: REACT-SCOT case-control study. *BMC Medicine*. 2021;19(1):149. doi:10.1186/s12916-021-02021-5
36. Kaslow DC. Certainty of success: three critical parameters in coronavirus vaccine development. *npj Vaccines*. 2020;5(1):1-7. doi:10.1038/s41541-020-0193-6
37. Matheson NJ, Warne B, Weekes MP, Maxwell PH. Mass testing of university students for covid-19. *BMJ*. 2021;375:n2388. doi:10.1136/bmj.n2388
38. CDC. Ending Isolation and Precautions for People with COVID-19: Interim Guidance. Centers for Disease Control and Prevention. Published February 11, 2020. Accessed October 4, 2021. <https://www.cdc.gov/coronavirus/2019-ncov/hcp/duration-isolation.html>
39. He X, Lau EHY, Wu P, et al. Temporal dynamics in viral shedding and transmissibility of COVID-19. *Nature Medicine*. 2020;26(5):672-675. doi:10.1038/s41591-020-0869-5
40. Dean NE, Hogan JW, Schnitzer ME. Covid-19 Vaccine Effectiveness and the Test-Negative Design. *New England Journal of Medicine*. 2021;0(0):null. doi:10.1056/NEJMe2113151
41. South Carolina Department of Health and Environmental Control. South Carolina County-Level Data for COVID-19. Accessed March 21, 2022. <https://scdhec.gov/covid19/covid-19-data/south-carolina-county-level-data-covid-19>

Table 1A: Descriptive Characteristics for Students in the Analytic Sample after Propensity Score Matching.

Characteristic	Total N = 1944	Unvaccinated N = 954	Fully vaccinated* N = 495	Booster N = 495	P-value
Age: Mean (SD)	19.64 (1.42)	19.56 (1.42)	19.73 (1.43)	19.70 (1.40)	0.07
Race/Ethnicity: N (%)					
...White non-Hispanic	1580 (81.3%)	778 (81.6%)	407 (82.2%)	395 (79.8%)	0.59
...Black non-Hispanic	91 (4.7%)	43 (4.5%)	24 (4.8%)	24 (4.8%)	0.94
...Any race Hispanic	143 (7.4%)	70 (7.3%)	34 (6.9%)	39 (7.9%)	0.83
...All other races non-Hispanic	130 (6.7%)	63 (6.6%)	30 (6.1%)	37 (7.5%)	0.67
Gender: N (%)					
...Female	1291 (66.4%)	639 (67.0%)	330 (66.7%)	322 (65.1%)	0.75
...Male	646 (33.2%)	311 (32.6%)	164 (33.1%)	171 (34.5%)	0.76
...Not reported	7 (0.4%)	4 (0.4%)	1 (0.2%)	2 (0.4%)	0.79
Affiliation: N (%)					
...Residential	985 (50.7%)	518 (54.3%)	226 (45.7%)	241 (48.7%)	0.005
...Non-residential	959 (49.3%)	436 (45.7%)	269 (54.3%)	254 (51.3%)	0.005
Graduate student: N (%)	63 (3.2%)	31 (3.2%)	17 (3.4%)	15 (3.0%)	0.94
Pre-existing condition: N (%) [■]	58 (3.0%)	30 (3.1%)	13 (2.6%)	15 (3.0%)	0.7
...High blood pressure	9 (0.5%)	2 (0.2%)	3 (0.6%)	4 (0.8%)	0.45
...Heart disease	1 (0.1%)	1 (0.1%)	0 (0.0%)	0 (0.0%)	1
...Diabetes	14 (0.7%)	9 (0.9%)	1 (0.2%)	4 (0.8%)	0.2
...Overweight	36 (1.9%)	18 (1.9%)	9 (1.8%)	9 (1.8%)	1
...Kidney disease	0 (0.0%)	0 (0.0%)	0 (0.0%)	0 (0.0%)	NA
...Cough inefficacy	0 (0.0%)	0 (0.0%)	0 (0.0%)	0 (0.0%)	NA
...Liver disease	1 (0.1%)	1 (0.1%)	0 (0.0%)	0 (0.0%)	1
Use of tobacco or nicotine products: N (%)	37 (1.9%)	15 (1.6%)	13 (2.6%)	9 (1.8%)	0.24
SARS-CoV-2 Tests Per Person: Mean (SD)	30.61 (11.96)	29.67 (11.66)	30.58 (12.15)	32.45 (12.17)	<0.001
...Fall 2020 Semester	3.62 (4.11)	3.45 (4.05)	3.65 (4.10)	3.92 (4.24)	0.12
...Spring 2021 Semester	7.30 (7.59)	6.98 (7.42)	7.38 (7.53)	7.84 (7.93)	0.12
...Fall 2021 Semester	16.20 (3.49)	16.07 (3.46)	16.21 (3.25)	16.45 (3.75)	0.15
...Spring 2022 Semester ^{¶*}	3.49 (1.44)	3.17 (1.35)	3.34 (1.44)	4.24 (1.34)	<0.001
Previous SARS-CoV-2 Infection: N (%) [†]	444 (22.8%)	218 (22.9%)	114 (23.0%)	112 (22.6%)	0.99
SARS-CoV-2 Infection During Follow-up: N (%) [#]	550 (28.3%)	299 (31.3%)	171 (34.5%)	80 (16.2%)	<0.001

* 2nd dose administered within 5.25 months of study end date

■ Self-reported presence of any of the following conditions: high blood pressure, heart disease, diabetes, overweight or obesity, kidney disease or dialysis, previous stroke or other neurological condition affecting ability to cough, liver disease, or lung disease; sample size may not add to N due to non-selection of specific conditions.

¶ During follow-up period (1/3/2022 to 1/31/2022)

† Infection occurring prior to follow-up period (1/3/22)

% is proportion of individuals within each population infected with SARS-CoV-2 during follow-up period

* Variable not included in propensity score model

Table 1B: Descriptive Characteristics for Employees in the Analytic Sample after Propensity Score Matching.

Characteristic	Total N = 658	Unvaccinated N = 342	Fully vaccinated* N = 87	Booster N = 229	P-value
Age: Mean (SD)	43.05 (12.22)	41.70 (12.61)	42.97 (11.41)	45.10 (11.69)	0.005
Race/Ethnicity: N (%)					
...White, non-Hispanic	548 (83.3%)	289 (84.5%)	69 (79.3%)	190 (83.0%)	0.5
...Black, non-Hispanic	45 (6.8%)	21 (6.1%)	8 (9.2%)	16 (7.0%)	0.6
...All other, races non-Hispanic	65 (9.9%)	32 (9.4%)	10 (11.5%)	23 (10.0%)	0.83
Gender: N (%)					
...Female	426 (64.7%)	225 (65.8%)	58 (66.7%)	143 (62.4%)	0.66
...Male	232 (35.3%)	117 (34.2%)	29 (33.3%)	86 (37.6%)	0.66
Affiliation: N (%)					
...Faculty	89 (13.5%)	39 (11.4%)	10 (11.5%)	40 (17.5%)	0.1
...Staff	569 (86.5%)	303 (88.6%)	77 (88.5%)	189 (82.5%)	0.1
Pre-existing condition: N (%)[‡]	184 (28.0%)	86 (25.1%)	23 (26.4%)	75 (32.8%)	0.91
...High blood pressure	88 (13.4%)	44 (12.9%)	10 (11.5%)	34 (14.8%)	0.87
...Heart disease	5 (0.8%)	3 (0.9%)	0 (0.0%)	2 (0.9%)	0.88
...Diabetes	23 (3.5%)	7 (2.0%)	2 (2.3%)	14 (6.1%)	1
...Overweight	128 (19.5%)	57 (16.7%)	15 (17.2%)	56 (24.5%)	1
...Kidney disease	0 (0.0%)	0 (0.0%)	0 (0.0%)	0 (0.0%)	NA
...Cough inefficacy	0 (0.0%)	0 (0.0%)	0 (0.0%)	0 (0.0%)	NA
...Liver disease	2 (0.3%)	1 (0.3%)	0 (0.0%)	1 (0.4%)	1
Use of tobacco or nicotine products: N (%)	16 (2.4%)	8 (2.3%)	3 (3.4%)	5 (2.2%)	0.84
SARS-CoV-2 Tests Per Person: Mean (SD)	27.55 (13.43)	26.34 (13.84)	27.39 (13.30)	29.42 (12.67)	0.03
...Fall 2020 Semester	1.92 (2.58)	1.94 (3.01)	1.74 (1.89)	1.97 (2.08)	0.76
...Spring 2021 Semester	10.77 (8.16)	10.35 (8.21)	10.52 (8.51)	11.51 (7.92)	0.23
...Fall 2021 Semester	10.79 (5.07)	10.25 (5.39)	11.01 (4.55)	11.50 (4.68)	0.01
...Spring 2022 Semester [¶]	4.07 (1.61)	3.81 (1.63)	4.13 (1.68)	4.44 (1.48)	<0.001
Previous SARS-CoV-2 Infection: N (%)[†]	110 (16.7%)	77 (22.5%)	12 (13.8%)	21 (9.2%)	<0.001
SARS-CoV-2 Infections During Follow-up: N (%)^{##}	141 (21.4%)	96 (28.1%)	23 (26.4%)	22 (9.6%)	<0.001

* 2nd dose administered within 5.25 months of study end date

[‡] Self-reported presence of any of the following conditions: high blood pressure, heart disease, diabetes, overweight or obesity, kidney disease or dialysis, previous stroke or other neurological condition affecting ability to cough, liver disease, or lung disease; sample size may not add to N due to non-selection of specific conditions.

[¶] During follow-up period (1/3/2022 to 1/31/2022)

[†] Infection occurring prior to follow-up period (1/3/22)

[#] % is proportion of individuals within each population infected with SARS-CoV-2 during follow-up period

* Variable not included in propensity score model

Table 2: Estimated protection from vaccination against any SARS-CoV-2 infection between January 3rd-31st, 2022.

Vaccination Protection	# of Individuals	# Positive (%)	Protection: % (95% CI)
Students			
Unvaccinated	954	299 (31.3%)	<i>Reference</i>
Fully Vaccinated* [•]	495	171 (34.5%)	7.7% (-11.5-23.5) ^a
...mRNA-1273	176	53 (30.1%)	17.3% (-10.8-38.3) ^b
...BNT162b2	319	118 (37%)	2.1% (-21.2-21.0) ^b
Booster*	495	80 (16.2%)	45.4% (30.0-57.4) ^a
...mRNA-1273	199	30 (15.1%)	48.5% (25.0-64.7) ^b
...BNT162b2	296	50 (16.9%)	42.8% (22.7-57.6) ^b
Employees			
Unvaccinated	342	96 (28.1%)	<i>Reference</i>
Fully Vaccinated* [•]	87	23 (26.4%)	25.6% (-17.6-52.9) ^a
...mRNA-1273	30	10 (33.3%)	14.4% (-64.2-55.4) ^b
...BNT162b2	57	13 (22.8%)	30.1% (-24.5-60.8) ^b
Booster*	229	22 (9.6%)	66.4% (46.1-79.0) ^a
...mRNA-1273	140	16 (11.4%)	60.4% (32.4-76.8) ^b
...BNT162b2	89	6 (6.7%)	74.3% (42.1-88.6) ^b

*Protection is relative to unvaccinated individuals

• 2nd dose administered within 5.25 months of study end date

^a Estimated via Model 1.1 in Appendix 1

^b Estimated via Model 1.2 in Appendix 1

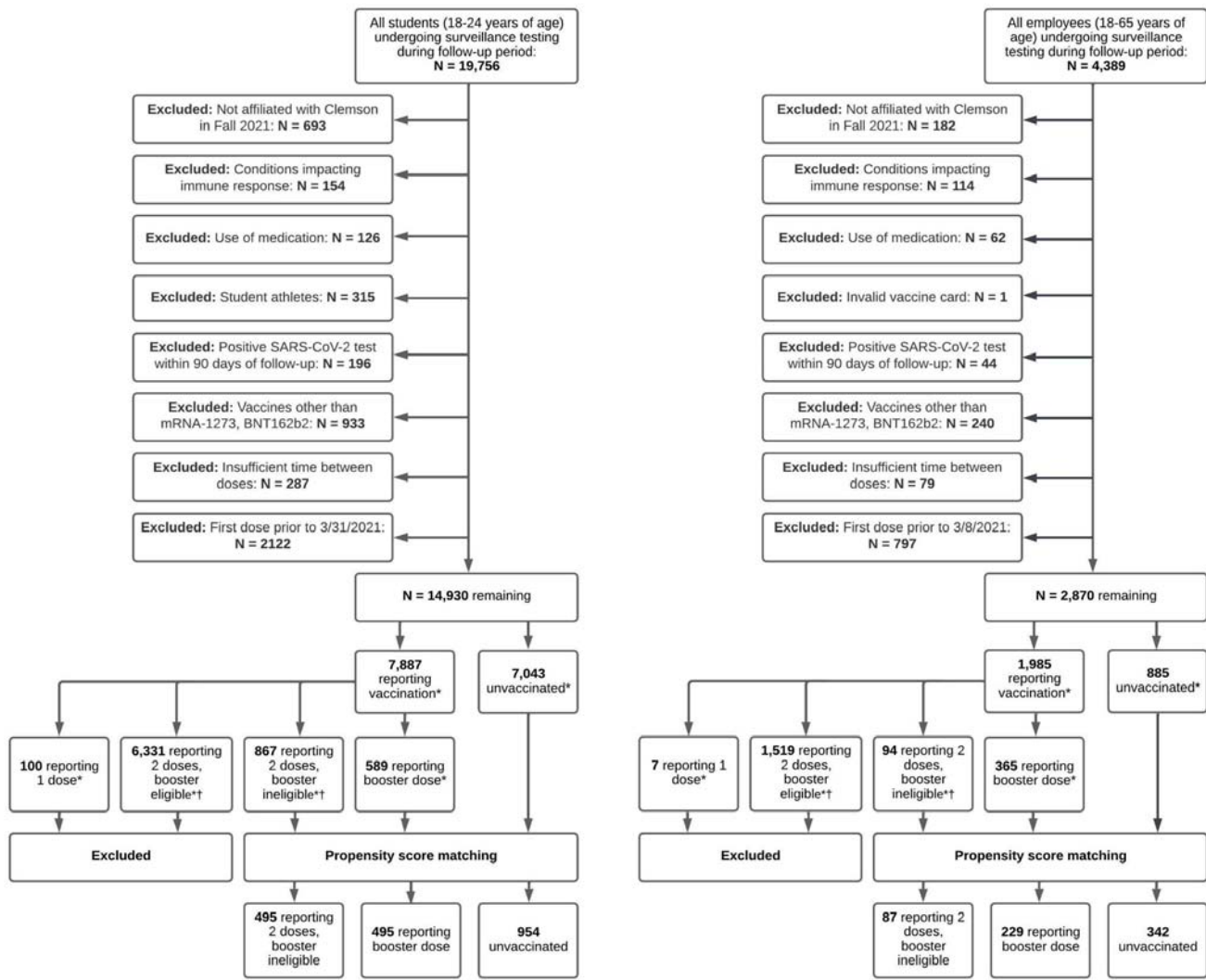


Figure 1: Flowchart of sample selection process for students and employees in main analysis during follow-up period between January 3rd, 2022 and January 31st, 2022.

*By end of follow-up (Jan 31st, 2022)

† Booster eligible individuals are those receiving their 2nd mRNA dose prior to August 24, 2021

The fully vaccinated, *booster eligible* cohort could consist of a mix of fully vaccinated individuals (completion of 2-dose mRNA series) and boosted individuals (completion of 3-dose mRNA series), and are therefore excluded. The fully vaccinated, *booster ineligible* cohort consists of individuals vaccinated within 5 months of end of follow-up (Jan 31st, 2022) and were therefore not eligible to receive the booster dose.

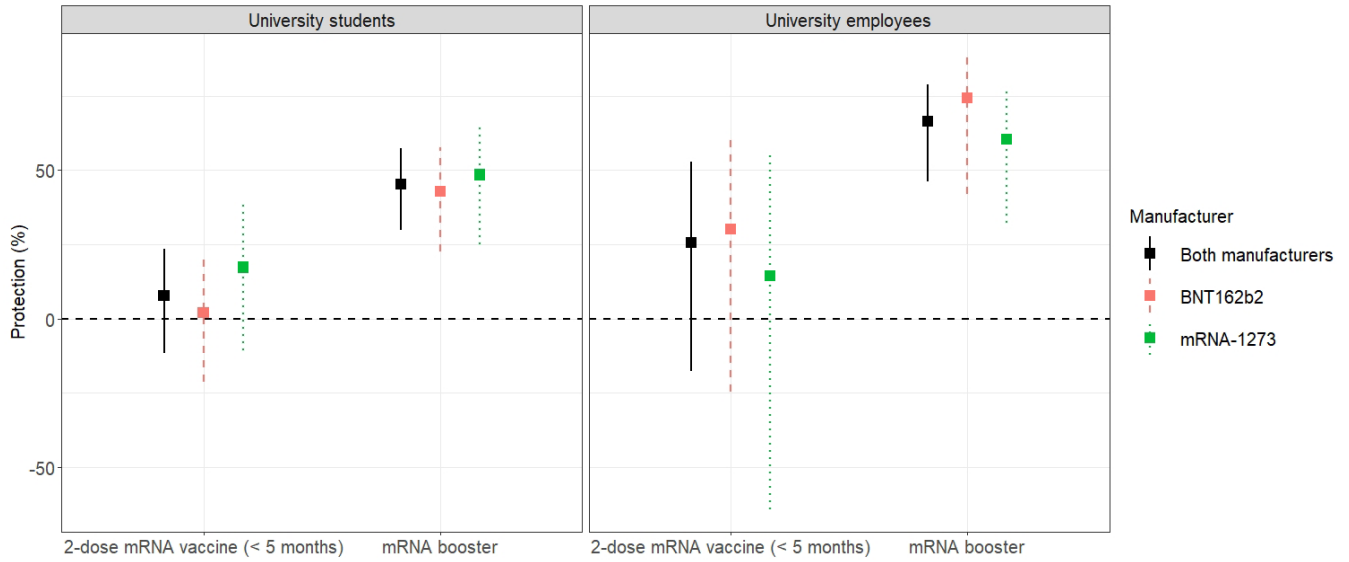


Figure 2: Estimates of vaccine protection against any SARS-CoV-2 infection caused by the omicron variant in university students (left) and employees (right).

