

# 1 **Quantifying spatial heterogeneity of malaria in the endemic Papua region** 2 **of Indonesia: analysis of epidemiological surveillance data**

3 Ihsan Fadilah, MSc<sup>a</sup> · Bimandra A. Djaafara, MSc<sup>a, b</sup> · Karina D. Lestari, BSc<sup>a</sup> · Sri Budi Fajariyani,  
4 BSc<sup>c</sup> · Edi Sunandar, MSc<sup>d</sup> · Billy Graham Makamur, BSc<sup>d</sup> · Berry Wopari, MD<sup>e</sup> · Silas Mabui, MSc<sup>e</sup> ·  
5 Lenny L. Ekawati, MPH<sup>a, f</sup> · Rahmat Sagara, MSc<sup>a</sup> · Rosa N. Lina, MSc<sup>a</sup> · Guntur Argana, MD<sup>c</sup> ·  
6 Desriana E. Ginting, MD<sup>c</sup> · Maria Endang Sumiwi, MD<sup>g</sup> · Ferdinand J. Laihad, MD<sup>g</sup> · Ivo Mueller,  
7 PhD<sup>h</sup> · Jodie McVernon, PhD<sup>i</sup> · J. Kevin Baird, PhD<sup>a, f</sup> · Henry Surendra, PhD<sup>a</sup> · Iqbal R. F. Elyazar,  
8 DPhil<sup>a</sup>

9 <sup>a</sup> Eijkman-Oxford Clinical Research Unit, Jakarta, Indonesia

10 <sup>b</sup> MRC Centre for Global Infectious Disease Analysis, Department of Infectious Disease  
11 Epidemiology, Imperial College London, London, United Kingdom

12 <sup>c</sup> Sub-Directorate for Malaria Control, Ministry of Health, Jakarta, Indonesia

13 <sup>d</sup> West Papua Provincial Health Office, Papua Barat, Indonesia

14 <sup>e</sup> Papua Provincial Health Office, Papua, Indonesia

15 <sup>f</sup> Centre for Tropical Medicine and Global Health, Nuffield Department of Medicine, University of  
16 Oxford, Oxford, United Kingdom

17 <sup>g</sup> UNICEF Indonesia Country Office, Jakarta, Indonesia

18 <sup>h</sup> Division of Population Health and Immunity, Walter and Eliza Hall Institute, Melbourne, Australia

19 <sup>i</sup> Peter Doherty Institute for Infection and Immunity, University of Melbourne, Melbourne, Australia

20

## 21 **Corresponding authors**

22 Ihsan Fadilah, MD MSc · [ifadilah@eocru.org](mailto:ifadilah@eocru.org)

23 Iqbal R. F. Elyazar, MPH DPhil · [ielyazar@eocru.org](mailto:ielyazar@eocru.org)

24 Eijkman-Oxford Clinical Research Unit

25 Jalan Diponegoro 69, Jakarta Pusat 10430, Indonesia

26 Phone: (+6221) 3910414

27

## 28 **Author details**

29 Eijkman-Oxford Clinical Research Unit

30 Jalan Diponegoro 69, Jakarta Pusat 10430, Indonesia

31 · Ihsan Fadilah, MSc [ifadilah@eocru.org](mailto:ifadilah@eocru.org)

32 · Henry Surendra, PhD [hsurendra@eocru.org](mailto:hsurendra@eocru.org)

33 · Karina D. Lestari, BSc [kdlestari@eocru.org](mailto:kdlestari@eocru.org)

34 · Lenny L. Ekawati, MPH [lekawati@eocru.org](mailto:lekawati@eocru.org)

35 · Rahmat Sagara, MSc [rsagara@eocru.org](mailto:rsagara@eocru.org)

- 36 · Rosa N. Lina, MSc rlina@eocru.org  
37 · Prof J. Kevin Baird, PhD kbaird@eocru.org  
38 · Iqbal R. F. Elyazar, DPhil ielyazar@eocru.org
- 39 Department of Infectious Disease Epidemiology, Imperial College London  
40 St Mary's Campus, Norfolk Place, London W2 1PG, United Kingdom
- 41 · Bimandra A. Djaafara, MSc bimandra.djaafara15@imperial.ac.uk
- 42 Sub-Directorate for Malaria Control, Ministry of Health  
43 Jalan H. R. Rasuna Said Blok X 5 Kav. 4-9, Jakarta Selatan 12950, Indonesia
- 44 · Guntur Argana, MD subditmalaria\_kemenkes@yahoo.co.id  
45 · Desriana E. Ginting, MD subditmalaria\_kemenkes@yahoo.co.id  
46 · Sri Budi Fajariyani, BSc subditmalaria\_kemenkes@yahoo.co.id
- 47 West Papua Provincial Health Office  
48 Jalan Brigjen Marinir (Purn) Abraham O. Atururi, Arfai, Manokwari 98315, Papua Barat, Indonesia
- 49 · Edi Sunandar, MSc ediis\_75@yahoo.com  
50 · Billy Graham Makamur, BSc billygraham1643@gmail.com
- 51 Papua Provincial Health Office  
52 Jalan Raya Abepura, Kotaraja, Jayapura 99225, Papua, Indonesia
- 53 · Berry Wopari, MD gfmalariapapua@yahoo.co.id  
54 · Silas Mabui, MSc gfmalariapapua@yahoo.co.id
- 55 UNICEF Indonesia Country Office  
56 Jalan Sudirman Kav. 31, Wisma Metropolitan II, FI 10 th, 12920, Jakarta, Indonesia
- 57 · Maria Endang Sumiwi, MD msumiwi@unicef.org  
58 · Ferdinand J. Laihad, MD laihad@centrin.net.id
- 59 Division of Population Health and Immunity, Walter and Eliza Hall Institute  
60 1G Royal Parade, Parkville Victoria 3052, Australia
- 61 · Prof Ivo Mueller, PhD mueller@wehi.edu.au
- 62 Peter Doherty Institute for Infection and Immunity, University of Melbourne  
63 792 Elizabeth Street, Melbourne 3000, Australia
- 64 · Prof Jodie McVernon, PhD j.mcvernon@unimelb.edu.au  
65
- 66 **Abstract**
- 67 **Background** As control efforts progress towards elimination, malaria is likely to become more  
68 spatially concentrated in few local areas. The purpose of this study was to quantify and characterise  
69 spatial heterogeneity in malaria transmission-intensity across highly endemic Indonesian Papua.

70 **Methods** We analysed individual-level malaria surveillance data for nearly half a million cases  
71 (2019–2020) reported in the Papua and West Papua provinces and adapted the Gini index approach to  
72 quantify spatial heterogeneity at the district and health-unit levels. We showed malaria incidence  
73 trends and the spatial and temporal distribution of sociodemographic characteristics and aetiological  
74 parasites among cases.

75 **Findings** While Papua province accounted for the majority of malaria cases reported in the region and  
76 had seen a rise in transmission since 2015, West Papua province had maintained a comparatively low  
77 incidence. We observed that Gini index estimates were high, particularly when the lower spatial scale  
78 of health units was evaluated. The Gini index appears to be inversely associated to annual parasite-  
79 incidence, as well as the proportions of vivax malaria, male sex, and adults.

80 **Interpretation** This study suggests that areas with varying levels of transmission-intensities exhibited  
81 distinct characteristics. Malaria was distributed in a markedly disproportionate manner throughout the  
82 region, emphasising the need for spatially targeted interventions. Periodic quantification and  
83 characterisation of risk heterogeneity at various spatial levels using routine malaria surveillance data  
84 may aid in tracking progress towards elimination and guiding evidence-informed prioritisation of  
85 resource allocation.

86 **Funding** Strengthening Preparedness in the Asia-Pacific Region through Knowledge (SPARK)  
87 project.

88 Word count (abstract): 246 (max: 250)

89

## 90 **Research in context**

91 **Evidence before this study** We searched PubMed up to and including November 19, 2021, for  
92 relevant articles on the spatial distribution of malaria in the Papua region of Indonesia, using the terms  
93 ("malaria") AND ("distribution" OR "variation" OR "heterogeneity" OR "cluster" OR "aggregation")  
94 AND ("Papua") AND ("Indonesia"). Despite the region's mostly stable transmission areas, there has  
95 been considerable variation in transmission intensity across the region. According to community  
96 surveys conducted up to 2010, estimates of parasite prevalence of *Plasmodium falciparum* and  
97 *Plasmodium vivax* were highly variable, ranging from 0% to at least 40% and from 0% to at least 7%,  
98 respectively, across the region. Similarly, when the Papuan subset of the 2007 National Basic Health  
99 Research data was used, the degree of spatial heterogeneity in malaria risk among Papuan districts  
100 remained apparent even after sociodemographic were adjusted. Current evidence that is more  
101 representative of the current situation, including an easily interpretable and comparable measure of  
102 spatial heterogeneity across space and time, is limited.

103 **Added value of this study** Our analysis of large-scale and routinely collected malaria surveillance  
104 data from January 2019 to December 2020 revealed significant spatial heterogeneity across the Papua

105 region, as measured by the Gini index. Complementing conventional approaches using geospatial  
106 maps and risk tables, the Gini index can be used to provide a single, and sensitive numerical indicator  
107 summarising the degree of transmission heterogeneity at a specified spatial level of interest. Along  
108 with the previously recognised high spatial heterogeneity among districts, this study revealed a greater  
109 degree of intra-district heterogeneity at the health-unit level. That is, within the districts, there were  
110 also few health centres and hospitals with a disproportionately higher malaria burden. We observed  
111 distinct characteristics of individuals who contracted malaria in districts with varying levels of  
112 incidence. The higher transmission magnitude was associated with a lower Gini index, as well as with  
113 lower proportions of vivax malaria, male sex, and adults among the cases.

114 **Implications of all the available evidence** This study provides contemporary empirical evidence for  
115 the spatial heterogeneity of malaria distribution across the Papua region of Indonesia, particularly at  
116 the lower spatial resolution of health units. Evaluating spatial heterogeneity at a lower spatial scale is  
117 likely essential to refine and update local malaria control strategic planning. The combination of  
118 comprehensive, routine malaria surveillance data and the Gini index may enable policymakers to  
119 assess the magnitude and characteristics of spatial heterogeneity with increased frequency,  
120 interpretability, and comparability, allowing for the rapid identification of transmission foci and the  
121 deployment of public health measures. Effective control of parasite reservoirs associated with intense  
122 transmission may further shrink the risk of infection in adjacent areas with a lower degree of malaria  
123 exposure.

124 Word count (research in context): 447

125

## 126 **Background**

127 Despite its declining trend, malaria continues to be a significant global health burden, with an  
128 estimated 229 million cases and 409,000 deaths in 2019.<sup>1</sup> As transmission declines, malaria risk  
129 becomes more heterogeneous and is often concentrated in specific locations or populations.  
130 Heterogeneity of infection refers to the clustering of infection and clinical disease such that a small  
131 fraction of individuals bears most of the population's burden.<sup>2</sup> Transmission heterogeneity can be  
132 defined in terms of spatial or temporal boundaries, as well as individual- and environment-level  
133 characteristics purported to be disease determinants.

134 To better target interventions in areas moving towards elimination, it is critical to detect and quantify  
135 transmission heterogeneity and understand factors that may contribute to disease persistence in these  
136 locations.<sup>3</sup> The detection of local level clusters of infection can have an important role in  
137 understanding the micro-epidemiological patterns of disease transmission, and ensuring that control  
138 strategies are tailored to the specific epidemiological characteristics in an area as much as is feasible.<sup>4</sup>  
139 Mathematical modelling indicates that well-targeted interventions could have a four-fold impact on  
140 the population to untargeted interventions.<sup>5</sup>

141 Indonesia has been one of the major malaria hotspots in the WHO South-East Asia region, with an  
142 estimated 658,380 cases and 1170 deaths in 2019.<sup>1</sup> As in many Southeast Asian settings, malaria  
143 elimination in Indonesia becomes more challenging with the presence of multi-species infections  
144 combined with the difficulty of identifying in which locations persistent transmission might be  
145 occurring.<sup>6</sup> Although more than half of the districts in Indonesia were declared malaria-free by 2017,<sup>7</sup>  
146 two provinces in the Papua region (West Papua and Papua) still combat high transmission of the  
147 infection. In 2020, both provinces contributed to nearly 90% of all nationally reported cases, which  
148 poses a challenge for achieving the nationwide elimination goal targeted by 2030.<sup>8</sup> However, robust  
149 assessment of transmission heterogeneity in Indonesia has been focused on national and provincial  
150 level estimates, mainly due to the availability of data.<sup>9,10</sup>

151 Synthesising estimates of parasite prevalence from independently conducted community surveys  
152 across Indonesia (up to 2010), Elyazar and colleagues observed highly heterogeneous transmission in  
153 the Papua region despite its status as containing mostly stable transmission areas (annual parasite  
154 incidence [API] of 0.1 or more cases per 1000 population under surveillance).<sup>9,10</sup> The parasite  
155 prevalence of *P. falciparum* and *P. vivax* varied across the region from 0% to at least 40% and from  
156 0% and at least 7%, respectively.<sup>9,10</sup> Based on data from the Papuan subset of the 2007 National Basic  
157 Health Research (n = 21,772), risk heterogeneity of clinical malaria was detectable across districts,  
158 even after controlling for sociodemographic characteristics.<sup>11</sup> However, empirical evidence on  
159 transmission heterogeneity in the context of current endemicity is scarce and no single summary  
160 estimate for this heterogeneity has been provided in Indonesian Papua. This study quantified and  
161 characterised spatial heterogeneity in the Papua region using contemporary and large-scale malaria  
162 surveillance data.

163

## 164 **Methods**

### 165 **Study design and data sources**

#### 166 *Malaria surveillance*

167 We obtained anonymised, individual-level data of 446,786 notified malaria cases in the Papua region  
168 from the electronic malaria surveillance information system (Sismal) database between January 2019  
169 and December 2020. While the surveillance system was established just over a decade ago as part of  
170 Indonesia's National Malaria Control Programme, it has steadily improved over time. Recently,  
171 individual case data have become available electronically for more detailed analysis.

172 The database contains detailed information about the demographic, geographical, clinical, and  
173 epidemiological characteristics of malaria cases. Passive case detection, defined as the detection of  
174 cases by patients presenting with their illness to healthcare services, comprised 90% or more of the  
175 methods for identifying cases. Microscopy, rapid diagnostic testing, or polymerase chain reaction

176 were used to confirm each reported case. Informed consent from patients included in these  
177 anonymised data was waived due to the secondary nature of these routine surveillance data.

178 Missing diagnostic days were uniformly imputed by the first day of the month, in which case was  
179 notified. If the diagnosis month was missing, the case was not considered. Additionally, we excluded  
180 a small number of observations due to missing data in a few other variables. For instance, to describe  
181 the proportion of infecting species in 2020, 0.04% (89 out of 220,435) of the data in species variable  
182 missing. We assumed that such a degree of missingness was unlikely to result in significant bias.

### 183 *Population-at-risk*

184 We estimated the population at risk of contracting malaria under surveillance using annual projected  
185 population sizes. Statistics Indonesia (*Badan Pusat Statistik*) provides these projections at the  
186 administrative level specified, e.g., provinces, districts (*kota/kabupaten*), either overall or by 5-year  
187 age group and sex.<sup>12</sup> At the health unit level, catchment populations were generally undocumented.  
188 We divided the population-at-risk in a district by the number of within-district health units as  
189 recorded in the database or as officially published by the Ministry of Health for 2020,<sup>13</sup> whichever  
190 was greater. Discrepancies in the numbers of health units between 2019 and 2020 were determined to  
191 be negligible, if they existed at all. For weekly or monthly calculations involving populations-at-risk,  
192 we assumed that the population-at-risk estimates were identical to the corresponding annual estimates,  
193 implying that the figures remained relatively stable over a given year.

### 194 **Data analysis**

#### 195 *Transmission intensity and epidemiological characteristics*

196 To estimate transmission intensity at the provincial, district, or health-unit level, we divided the  
197 number of laboratory-confirmed malaria cases (numerator) over a specified period (e.g., a week,  
198 month, or year) by the population-at-risk (denominator), expressed as cases per 1,000 population  
199 under surveillance. When the numerator is the total number of cases reported during a given year, the  
200 estimated incidence risk is commonly referred to as the annual parasite incidence per 1,000 (API per  
201 1,000, or for simplicity, API).

202 We calculated malaria incidence risk by location, time period, age group, sex, and/or parasite  
203 aetiology. The proportions of cases are presented for various types of health units and occupation.  
204 Additionally, we used locally estimated scatterplot smoothing (loess) to visualise the relationship  
205 between the natural logarithm of API and district-level proportions of *P. vivax*, adults, and males, by  
206 year.

#### 207 *Quantifying spatial heterogeneity*

208 We adapted the Gini index as a proxy for the spatially asymmetric distribution of transmission  
209 intensity across the Papua region. More than a century ago, Corrado Gini introduced this statistical  
210 measure to quantify the degree of wealth or income inequality within a specified population.<sup>14</sup>

211 Although it is most commonly used in economics, the Gini index has been widely applied in a diverse  
212 range of research, including infectious-disease epidemiology.<sup>15</sup>

213 As Lana and colleagues recently demonstrated in measuring the unequal distribution of malaria in  
214 Brazil,<sup>16</sup> the Gini index  $G$  is defined by the formula

$$G = 2 \left( \sum_{i=1}^N \frac{1}{2} (P_i - P_{i-1}) (C_i + C_{i-1}) \right) - 1,$$

215 where  $i$  denotes the index for each spatial unit of interest (e.g., district, health unit),  $N$  is the number of  
216 spatial units at a given level (e.g., number of districts in a given province),  $P_i$  is the cumulative  
217 proportion of the population in unit  $i$ ,  $C_i$  is the cumulative proportion of cases in unit  $i$ , and  $P_0, C_0 = 0$ .  
218 The formula is evaluated by first ranking the units in decreasing order of incidence risk (i.e., API).  
219 The Gini index is a numeric value between 0 and 1 (equivalently, 0% and 100%), where  $G = 0$   
220 indicates a perfectly proportional distribution of cases to unit population sizes and  $G = 1$  indicates a  
221 perfectly disproportionate distribution of cases in which only one unit is responsible for all the cases  
222 occurring in the region. The index was calculated at two levels, namely, districts and health units, for  
223 each province and district. The 95% confidence interval (95% CI) around the Gini index estimate was  
224 constructed using a data-driven, nonparametric percentile bootstrap with 10,000 replicates.<sup>17,18</sup> To  
225 approximate the sampling distribution, we used an identical estimator for  $G$  in each bootstrap  
226 replicate. We employed linear regression to visualise the association between the within-district Gini  
227 index and the natural logarithm of API.

228 To aid interpretation, we visualised spatial heterogeneity using the Lorenz curve,<sup>19</sup> where the vertical  
229 and horizontal axes correspond to the cumulative proportions of malaria cases and population (ranked  
230 from the lowest to highest API), respectively. The 45° diagonal line relates to a perfectly proportional  
231 distribution of cases in the region ( $G = 0$ ). Deviations from the line imply some degree of spatial  
232 heterogeneity, where a larger area under the Lorenz curve corresponds to a Gini index closer to unity.  
233 We conducted all statistical analyses and visualised data using R version 4.1.0.

#### 234 **Role of the funding source**

235 The study funder had no role in study design, data collection, data analysis, interpretation, and writing  
236 of the manuscript.

237

## 238 **Results**

### 239 **Transmission intensity and epidemiological characteristics**

240 Over the past decade (2011–2020), there were 2,046,833 reported malaria cases in Indonesian Papua.  
241 Of which, 1,820,566 (88.9%) and 226,267 (11.1%) cases were detected in Papua and West Papua,  
242 respectively. *P. falciparum* and *P. vivax*, either mono- or mixed-infections, caused 90–95% of these  
243 cases. The remaining small proportions were due to *P. malariae*, *P. ovale*, and aetiologically

244 unspecified cases. Over the first half of the decade, the cumulative incidence of malaria decreased  
245 significantly (figure 1A). While incidence in West Papua continued to decline until the end of 2016,  
246 Papua experienced a rebound in 2015. For the remainder of the decade, Papua's cumulative incidence  
247 increased steadily. In contrast, West Papua has maintained a low notified cases of less than two per  
248 1000 population in recent years. In the last two years (2019–2020), we observed around 40% of cases  
249 in Papua were consistently caused by *P. vivax* (figure 1B). In West Papua, the share was initially  
250 higher of approximately 50% in 2019 but appears to have declined to around 40% in the following  
251 year.

252 The annual parasite incidence varied widely across the region (figures 2A, 2B, and S1). In a few  
253 districts (e.g., Keerom, Mimika, Sarmi), API reached nearly 400 cases per 1000 population. In other  
254 districts, such as Lanny Jaya, Sorong Selatan, or Maybrat, it was less than one case per 1000  
255 population. Of the 42 districts across the region during 2020, seven (16.7%), ten (23.8%), 14 (33.3%),  
256 and 11 (26.2%) had an API of [100, 1000), [10, 100), [1, 10), and [0, 1) cases per 1000 population,  
257 respectively. More districts with a lower API (e.g., API of [0, 10)) experienced a relative reduction in  
258 API than districts with a higher API (e.g., API of [10, 1000)) (figure S1).

259 Throughout 2019–2020, more males contracted malaria both in Papua (56–57%) and West Papua  
260 (59–63%) (figure 3A). API was highest in under-5 and young children, then gradually decreased in  
261 productive age and older groups (2020, figure 3B). This age-related pattern was not dissimilar in the  
262 preceding year of 2019. In terms of aetiology, *P. falciparum* and *P. vivax* were equally likely to cause  
263 malaria in West Papua in 2019, while *P. falciparum* caused a greater proportion of malaria in Papua.  
264 *P. falciparum* became more predominant in West Papua in 2020.

265 At the district level, for instance in three selected districts representative of a comparatively high,  
266 moderate, and low level of transmission intensity (Keerom, Nabire, Jayawijaya, respectively), the age  
267 patterns of cases in different settings appear distinctive (figure 4). We observed that API was highest  
268 in children in the high transmission setting (Keerom) but was particularly highest in young adults and  
269 productive age groups in the low transmission setting (Jayawijaya). Malaria events in Jayawijaya  
270 were predominated by *P. vivax*, in contrast to those in the moderate-to-high risk areas of Keerom and  
271 Nabire where *P. falciparum* remained the primary causative agent (figures 4 and S2). In the more  
272 moderate setting (Nabire), the age patterns were between the two extremes. Here, children under-5  
273 years up to early-40 years adults appear to have approximately comparable API.

274 We found that parasite species, age, and sex of the notified cases were all associated with the  
275 magnitude of API in 2019 or 2020. Districts with a lower proportion of *P. vivax* tended to be in a  
276 higher transmission setting (figure 5A), implying the predominance of *P. falciparum*. Districts with a  
277 higher API were more likely to detect cases among younger demographics (figure 5B). For sex, we  
278 observed a similar pattern. As API increased, cases were more equally likely to occur between males



279 and females (figure 5C). Males were most likely to develop cases in districts with a low API.  
280 Additionally, hospitals, which reported relatively more severe cases (figure S3), accounted for a  
281 sizeable proportion of malaria cases in some districts, including Mamberamo Raya and Merauke  
282 (figure S4). Among individuals aged 18 years and older, farmers and housewives formed a large  
283 majority of patients in most districts (figures 6A, 6B).

#### 284 **Spatial heterogeneity of transmission intensity**

285 The Lorenz curves represent the degree of spatial heterogeneity at two administrative levels (districts  
286 and health units) (figure 7). We found that all the curves deviated significantly from the 45° diagonal  
287 lines. At the district level, Papua Province consistently had a larger area under the curve than West  
288 Papua in both 2019 and 2020 (figure 7A). A larger area under the curve indicates a Gini index closer  
289 to one, or equivalently, 100% (table). Additionally, the curve provides an alternate perspective on  
290 heterogeneity. Approximately 80% of *P. falciparum* cases in 2020 occurred in districts that  
291 collectively accounted for about 20% of the population of Papua province.

292 Assessing at the health unit level, we observed larger areas under the curves than at the district level  
293 (figure 7B), corresponding to a Gini index of more than 80% regardless of province, species, or year  
294 (table). At this level, for instance, approximately 80% of *P. falciparum* cases in 2020 occurred in  
295 districts that combined contained only 10% of the population size of Papua province.

296 We observed that even within-district Gini index estimates varied markedly across the Papua region  
297 (figures 2C and 2D). These estimates were evaluated at health unit level. Districts with a higher Gini  
298 index were more likely to be in a lower transmission setting and *vice versa* (figure 8).

299

## 300 **Discussion**

### 301 **Key findings**

302 Using large-scale, contemporary malaria surveillance data, this study aimed to quantify and  
303 characterise spatial heterogeneity in malaria transmission-intensity across Indonesian Papua. We  
304 observed that, between 2019 and 2020, the distribution of malaria across the region was highly  
305 heterogeneous. Our analysis indicates that this marked variation in transmission intensities was also  
306 linked to unique epidemiological characteristics of malaria in different areas.

307 We found heterogeneity of transmission ranging from high to extremely high (Gini index of [0.5, 1]).  
308 High Gini index values suggest the existence of a small number of spatial units or clusters (in our  
309 context, districts and health units) that experience a disproportionately greater burden of malaria than  
310 their counterparts. When we examined the data at the smaller spatial scale of health unit, we observed  
311 more pronounced heterogeneity, a common pattern with what had been reported from other  
312 countries.<sup>16,20</sup> Not only within provinces, but also within districts, was there heterogeneity. We found  
313 noticeable variation in the within-district Gini index, suggesting there was clustering of the health

314 facilities that accounted for a major proportion of cases despite containing a minority of the district's  
315 population. Our findings emphasise the critical importance of not overlooking spatial heterogeneity at  
316 lower spatial resolution. Targeted interventions towards clustering cases at a lower level may improve  
317 efficiency and effectiveness because control efforts can be more focused. Risk factors in  
318 subpopulations of a particular cluster are likely to be more similar, allowing resource deployment  
319 with less operational complexity.

320 While conventional strategies for case reduction can be maintained or further scaled up in areas with a  
321 high malaria burden (such as in Keerom, where children were most clinically affected), more complex  
322 strategies to further shrink malaria clusters in low transmission settings that involve distinct  
323 transmission processes (such as in Jayawijaya, where transmission events peaked among older  
324 children and adults of working age) are equally essential for local elimination. Malaria elimination  
325 requires at least a three-year consecutive period of zero malaria incidence of indigenous origin, as  
326 well as fully functional surveillance and response system.<sup>21</sup> Despite rational arguments that there is no  
327 one-size-fits-all path to elimination,<sup>16</sup> malaria-eliminating countries have identified common features  
328 of regions on closely reaching elimination, including geospatial clustering and increased proportions  
329 of cases caused by *P. vivax*, as well as in males, imported, among migrants and marginalised  
330 populations.<sup>22</sup> For instance, within the Brazilian Amazon Basin, high-transmission municipalities had  
331 cases predominantly among children and had similar proportions of men and women contracting  
332 malaria and while in low-transmission and near-elimination settings, the disease was more prevalent  
333 among men of working age.<sup>16</sup>

334 In our analysis, many districts with less intense transmission exhibited some of these features, where  
335 districts with lower API tended to have a higher proportion of cases attributable to *P. vivax* and  
336 occurring in adult men. Furthermore, lower transmission intensity was also associated with higher  
337 heterogeneity. Considering some similarities (e.g., malaria were broadly more prevalent among men  
338 than women) and differences (e.g., *P. vivax* had been long predominated in Brazil due to the more  
339 rapid decrease in *P. falciparum* cases under similarly high monthly incidence to Indonesian Papua,  
340 where *P. falciparum* still often slightly predominated or was equally prevalent to *P. vivax*), we  
341 observed comparable trends between the Amazon Basin and Indonesian Papua.<sup>16</sup> That is, it suggests  
342 more generally that as a local area approaches local malaria elimination, we may expect more  
343 clustering and these clusters may demonstrate distinctive characteristics that are harder to control. For  
344 instance, *P. vivax* infection is known to be less susceptible to malaria control and elimination owing  
345 to, among other factors, its pre-onset gametocytaemia, more efficient transmission to vectors at lower  
346 parasitaemia, lower sensitivity of diagnostic tests for parasitaemia detection, dormant liver stages  
347 resulting in relapses and ongoing transmission, and poor adherence of patients to hypnozoitocidal  
348 treatment, which frequently involves a 14-day regimen associated with severe drug-induced  
349 haemolysis.<sup>23</sup> These facts highlight the current challenges confronting locations with low

350 transmission, which are mainly combating *P. vivax*, as well as the potential hurdle for locations in the  
351 Papua region, where both *P. falciparum* and *P. vivax* extensively coexist, as *P. vivax* may eventually  
352 be the ultimate nemesis before achieving elimination.<sup>22</sup> A healthcare and surveillance system that is  
353 less sensitive to detecting and adapting to the region's differentially changing malaria epidemiology  
354 could stall progress towards elimination.

355 According to mathematical models, the proportion of clinical malaria among under-5 children varies  
356 from over 60% to less than 20% in high- and low-transmission settings, respectively.<sup>24</sup> Under-5 and  
357 younger children are also at considerable risk of morbidity and mortality<sup>25</sup>, and districts that continue  
358 to bear a disproportionate share of burden may prioritise reducing morbidity and mortality in this  
359 subpopulation. Meanwhile, districts with a case predilection towards male adults may focus on  
360 decreasing infection transmission.<sup>22</sup> Differential age distributions between areas may also be  
361 indicative of infection transmission processes. Lana and colleagues suggest that because malaria  
362 affects all age and sex groups in high-transmission Brazilian municipalities, the infection distribution  
363 reflect the underlying demographic population.<sup>16</sup> Transmission processes in these areas are typically  
364 peri-domestic in nature, i.e., occurring in or near human households.<sup>16</sup> Areas in low intensity, on the  
365 other hand, may show a predisposition in men of working age<sup>16</sup> that may be related to their  
366 occupation and behaviours outside the home.<sup>22</sup>

367 We observed that in many districts, a substantial proportion of malaria patients identified themselves  
368 as a farmer or a housewife, indicating transmission likely occurring in human settlements and  
369 agricultural fields. Bionomics of the primary vectors for malaria in Indonesian Papua, i.e., the  
370 *Anopheles punctulatus* complex, reflects the finding.<sup>26</sup> These mosquitoes prefer open, sunlit spaces,  
371 either natural or artificial.<sup>26</sup> This is in contrast to bionomics of the primary vectors in the adjacent  
372 Greater Mekong Subregion within Southeast Asia where most malarious regions are located in the  
373 forests (hence the term 'forest malaria') that involve more shaded spots and water collections for larval  
374 breeding.<sup>27</sup> Greater understanding of this distinctive feature of vector bionomics may help in  
375 designing the most effective vector control in Indonesian Papua. Control measures that are effective  
376 in preventing peri-domestic transmission, such as insecticide-treated nets (emphasised heavily in the  
377 Papua region) but implemented in occupational and outdoor-related settings are unlikely to work. As  
378 in Brazil,<sup>16</sup> human activities such as deforestation and migration likely played an important role in  
379 driving transmission heterogeneity and characteristics in Indonesian Papua. In 1980s, people  
380 transmigration from more populated islands of Java, Lombok, and Bali was initiated to newly  
381 deforested locations across the endemic Papua region.<sup>28</sup> This in part led to the abundance of breeding  
382 sites for the *An. punctulatus* complex and mixing of nonimmune and malaria-carrying individuals.<sup>28</sup>

383 Recently, a phase-2b R21/MM malaria vaccine randomised trial conducted in Burkina Faso showed  
384 that the vaccine was more than 75% effective at reducing the risk of clinical falciparum malaria in  
385 children aged 5–17 months.<sup>29</sup> While this is encouraging, particularly for populations where *P.*

386 *falciparum* malaria still predominates in young children (e.g., districts with the highest intensity such  
387 as Keerom and Sarmi), the relevance of vaccines designed to mitigate early childhood mortality in  
388 African settings may be less impactful in settings such as Indonesian Papua. Vaccines that increase  
389 the pool of asymptomatic carriers may also not be suitable for low- and near-elimination settings  
390 where this pool is likely the main problem.

391 Over the last decade, the cumulative incidence of malaria in the Papua region had fallen dramatically,  
392 owing, in part, to increased funding and capacity building for malaria control involving improved  
393 vector control, case detection, antimalarial therapy, and strengthened health systems, as well as socio-  
394 economic development.<sup>7</sup> These factors may have acted differentially across the region. In particular,  
395 endemicity in West Papua province, where a monthly incidence risk of fewer than two cases per 1,000  
396 population, had been sustained since late 2015. Papua province, on the other hand, had since  
397 experienced a rising trajectory. Districts with the highest API (e.g., of [100, 1000) cases per 1000  
398 population) remained restricted to Papua province, while districts with a lower baseline API in 2019  
399 tended to achieve a greater relative reduction in API in the following year, further amplifying  
400 transmission heterogeneity.

#### 401 **Strengths and limitations**

402 The strengths of this study include its extensive use of large-scale and contemporary data derived  
403 from the routinely collected malaria surveillance system in Indonesia. These data, which cover over  
404 446,000 malaria patients in the past two years alone, incorporate cases identified through a variety of  
405 methods, including passive case detection, house visits, active mass blood surveys, and prenatal  
406 screening. This breadth and depth of data may enable us to improve estimation accuracy and  
407 precision, either overall or within subpopulations of interest. Second, we quantified spatial  
408 heterogeneity using the Gini index. This index has been shown to be a sensitive and intuitive measure  
409 to capture the heterogeneity of transmission intensity over space and time.<sup>15</sup> When compared to other  
410 potential measures of heterogeneity, such as the coefficient of variation, which can exceed 100%  
411 while being highly correlated with the Gini index, the Gini index, bounded between [0, 100]%, can  
412 facilitate interpretation and comparability across studies.<sup>15</sup> Along with visualising different levels of  
413 malaria intensity using geospatial maps, summarising heterogeneity into a single metric using the Gini  
414 index may be useful and complementary for tracking progress towards elimination.<sup>15</sup>

415 Several aspects may limit our study. At the moment, we can only estimate the Gini index in 2019 and  
416 2020, obscuring the trend of heterogeneity over time. In Brazil, heterogeneity increased in a roughly  
417 linear manner over time as malaria incidence declined, irrespective of administrative levels  
418 considered.<sup>16</sup> However, because the Sismal database is continually updated, our study can serve as a  
419 starting point for research on temporal dynamics of spatial heterogeneity. Furthermore, using districts  
420 as observation units (instead of years), we did find an approximately linear, inverse relationship  
421 between transmission intensity and spatial heterogeneity. We still lacked information on several

422 important characteristics of notified malaria cases, such as infection sources (indigenous or imported)  
423 and recurrence status (reinfection, relapse, or recrudescence). In the current version of the database,  
424 several of these features either had a high proportion of missingness or were recorded in an  
425 uninformative way. Given that the database is mostly (90% or more) composed of routinely collected  
426 data from healthcare services, it is reasonable to expect that the improvements in collecting  
427 information from notified cases in the clinics would benefit the surveillance system and research  
428 purposes.<sup>30</sup>

### 429 **Implications**

430 Malaria remains a serious problem that impacts people of all ages and various occupations in  
431 Indonesian Papua because transmission occurs where they live, work, and go to school. That  
432 transmission is highly heterogeneous and unique in its epidemiological features. This emphasises that  
433 a one-size-fits-all approach to malaria control and elimination is unlikely to be the most cost-effective  
434 strategy, and that additional attention to spatially explicit interventions may be required. Distinct  
435 epidemiological characteristics also imply that more tailored resource priorities may be needed  
436 according to each area's transmission level. By leveraging routinely collected data across the region  
437 and the Gini index to measure heterogeneity, stakeholders now have a method for identifying and  
438 characterising malaria transmission hotspots on a regular basis, allowing interventions to be targeted  
439 to those most vulnerable. Locally enhanced epidemiologic investigations and surveillance can be  
440 extremely invaluable, for instance, by increasing the capacity of malaria village workers. Lastly, we  
441 noted several opportunities to further improve the data quality of the malaria surveillance system for  
442 research purposes.

443 Word count (main text): 4189 (out of 3500–5000)

444

### 445 **Contributors**

446 IF and IRFE conceived the study. GA, SBF, ES, BGM, and BW were responsible for data collection  
447 and provision. IF, BAD, KDL, and IRFE curated and verified the data. IF was responsible for formal  
448 analysis, visualisation, and writing the initial draft with input from BAD, HS, and IRFE. IM, JM,  
449 JKB, and IRFE were responsible for project oversight. All authors had access to the data, critically  
450 reviewed the study for intellectual content, and had full responsibility for the decision to submit the  
451 final manuscript.

452

### 453 **Declaration of interests**

454 All authors declare no competing interests.

455

### 456 **Data sharing**

457 The datasets supporting the conclusions of this study can be accessed at <http://www.sismal.malaria.id/>  
458 (available upon request to the Indonesian Sub-Directorate for Malaria Control),  
459 <https://www.bps.go.id/> (publicly available), and <http://bppsdmk.kemkes.go.id/web/> (publicly  
460 available) for the individual-level malaria surveillance data, the projected population sizes, and the  
461 numbers of health units in the Papua region, respectively. Reproducible code for data analysis and  
462 visualisation is available at <https://github.com/ihsanfadi/spark-hetero>.

463

## 464 **Acknowledgments**

465 This study was funded by the Centre for Health Security at the Australian Department of Foreign  
466 Affairs and Trade through the Strengthening Preparedness in the Asia-Pacific Region through  
467 Knowledge (SPARK) project. We are grateful to all the healthcare staff who contributed to the  
468 establishment and maintenance of the malaria surveillance system, particularly the provincial and  
469 district health offices in Papua and West Papua, as well as the Sub-Directorate for Malaria Control,  
470 for making the data accessible. We thank Dr Narimane Nekkab who helped clarify the mathematical  
471 formula of the Gini index and its R-code implementation.

472

## 473 **References**

- 474 1 World malaria report 2020. <https://www.who.int/publications-detail-redirect/9789240015791>  
475 (accessed Aug 3, 2021).
- 476 2 Bousema T, Baidjoe A. Heterogeneity in malaria transmission: underlying factors and implications  
477 for disease control. In: Ecology of parasite-vector interactions. Wageningen: Wageningen  
478 Academic Publishers, 2013: 197–220.
- 479 3 Bannister-Tyrrell M, Verdonck K, Hausmann-Muela S, Gryseels C, Muela Ribera J, Peeters  
480 Grietens K. Defining micro-epidemiology for malaria elimination: systematic review and meta-  
481 analysis. *Malar J* 2017; **16**: 164.
- 482 4 Bousema T, Griffin JT, Sauerwein RW, *et al.* Hitting Hotspots: Spatial Targeting of Malaria for  
483 Control and Elimination. *PLoS Med* 2012; **9**: e1001165.
- 484 5 Carter R, Mendis KN, Roberts D. Spatial targeting of interventions against malaria. *Bull World*  
485 *Health Organ* 2000; **78**: 1401–11.
- 486 6 Elyazar IRF, Hay SI, Baird JK. Malaria Distribution, Prevalence, Drug Resistance and Control in  
487 Indonesia. In: Advances in Parasitology. Elsevier, 2011: 41–175.
- 488 7 Sitohang V, Sariwati E, Fajariyani SB, *et al.* Malaria elimination in Indonesia: halfway there. *Lancet*  
489 *Glob Health* 2018; **6**: e604–6.
- 490 8 "Zero malaria starts with me": history of malaria elimination in Indonesia helps to shape a malaria-  
491 free future. [https://www.who.int/indonesia/news/feature-stories/detail/zero-malaria-starts-with-me-](https://www.who.int/indonesia/news/feature-stories/detail/zero-malaria-starts-with-me-history-of-malaria-elimination-in-indonesia-helps-to-shape-a-malaria-free-future)  
492 [history-of-malaria-elimination-in-indonesia-helps-to-shape-a-malaria-free-future](https://www.who.int/indonesia/news/feature-stories/detail/zero-malaria-starts-with-me-history-of-malaria-elimination-in-indonesia-helps-to-shape-a-malaria-free-future) (accessed Aug 3,  
493 2021).

- 494 9 Elyazar IRF, Gething PW, Patil AP, *et al.* Plasmodium falciparum Malaria Endemicity in Indonesia  
495 in 2010. *PLoS ONE* 2011; **6**: e21315.
- 496 10 Elyazar IRF, Gething PW, Patil AP, *et al.* Plasmodium vivax Malaria Endemicity in Indonesia in  
497 2010. *PLoS ONE* 2012; **7**: e37325.
- 498 11 Hanandita W, Tampubolon G. Geography and social distribution of malaria in Indonesian Papua: a  
499 cross-sectional study. *Int J Health Geogr* 2016; **15**: 13.
- 500 12 Badan Pusat Statistik.  
501 [https://www.bps.go.id/publication/2013/10/07/053d25bed2e4d62aab3346ec/proyeksi-penduduk-](https://www.bps.go.id/publication/2013/10/07/053d25bed2e4d62aab3346ec/proyeksi-penduduk-indonesia-2010-2035.html)  
502 [indonesia-2010-2035.html](https://www.bps.go.id/publication/2013/10/07/053d25bed2e4d62aab3346ec/proyeksi-penduduk-indonesia-2010-2035.html) (accessed Sept 9, 2021).
- 503 13 Informasi SDM Kesehatan Nasional. [http://bppsdmk.kemkes.go.id/info\\_sdmk/info/](http://bppsdmk.kemkes.go.id/info_sdmk/info/) (accessed Sept  
504 9, 2021).
- 505 14 Giorgi GM, Gagliarano C. The Gini concentration index: A review of the inference literature. *J*  
506 *Econ Surv* 2017; **31**: 1130–48.
- 507 15 Abeles J, Conway DJ. The Gini coefficient as a useful measure of malaria inequality among  
508 populations. *Malar J* 2020; **19**: 444.
- 509 16 Lana R, Nekkab N, Siqueira AM, *et al.* The top 1%: quantifying the unequal distribution of  
510 malaria in Brazil. *Malar J* 2021; **20**: 87.
- 511 17 Dixon PM, Weiner J, Mitchell-Olds T, Woodley R. Bootstrapping the Gini Coefficient of  
512 Inequality. *Ecology* 1987; **68**: 1548–51.
- 513 18 Efron B. The Jackknife, the Bootstrap and Other Resampling Plans. Society for Industrial and  
514 Applied Mathematics, 1982 DOI:10.1137/1.9781611970319.
- 515 19 Lorenz MO. Methods of Measuring the Concentration of Wealth. *Publ Am Stat Assoc* 1905; **9**:  
516 209.
- 517 20 Bejon P, Williams TN, Nyundo C, *et al.* A micro-epidemiological analysis of febrile malaria in  
518 Coastal Kenya showing hotspots within hotspots. *eLife* 2014; **3**: e02130.
- 519 21 World Health Organization. A framework for malaria elimination. Geneva: World Health  
520 Organization, 2017 <https://apps.who.int/iris/handle/10665/254761> (accessed Sept 14, 2021).
- 521 22 Cotter C, Sturrock HJ, Hsiang MS, *et al.* The changing epidemiology of malaria elimination: new  
522 strategies for new challenges. *The Lancet* 2013; **382**: 900–11.
- 523 23 Price RN, Commons RJ, Battle KE, Thriemer K, Mendis K. Plasmodium vivax in the Era of the  
524 Shrinking P. falciparum Map. *Trends Parasitol* 2020; **36**: 560–70.
- 525 24 Griffin JT, Ferguson NM, Ghani AC. Estimates of the changing age-burden of Plasmodium  
526 falciparum malaria disease in sub-Saharan Africa. *Nat Commun* 2014; **5**: 3136.
- 527 25 Patriani D, Arguni E, Kenangalem E, *et al.* Early and late mortality after malaria in young children  
528 in Papua, Indonesia. *BMC Infect Dis* 2019; **19**: 922.
- 529 26 Elyazar IRF, Sinka ME, Gething PW, *et al.* The Distribution and Bionomics of Anopheles Malaria  
530 Vector Mosquitoes in Indonesia. In: *Advances in Parasitology*. Elsevier, 2013: 173–266.

- 531 27 Cui L, Yan G, Sattabongkot J, *et al.* Malaria in the Greater Mekong Subregion: Heterogeneity and  
532 complexity. *Acta Trop* 2012; **121**: 227–39.
- 533 28 Church CJ, Atmosoedjono S, Bangs MJ. A review of anopheline mosquitoes and malaria control  
534 strategies in Irian Jaya, Indonesia. 1995; **23**: 3–17.
- 535 29 Dattoo MS, Natama MH, Somé A, *et al.* Efficacy of a low-dose candidate malaria vaccine, R21 in  
536 adjuvant Matrix-M, with seasonal administration to children in Burkina Faso: a randomised  
537 controlled trial. *The Lancet* 2021; **397**: 1809–18.
- 538 30 Hemkens LG, Contopoulos-Ioannidis DG, Ioannidis JPA. Routinely collected data and  
539 comparative effectiveness evidence: promises and limitations. *Can Med Assoc J* 2016; **188**: E158–  
540 64.
- 541 Reference count: 30 (max: 30)



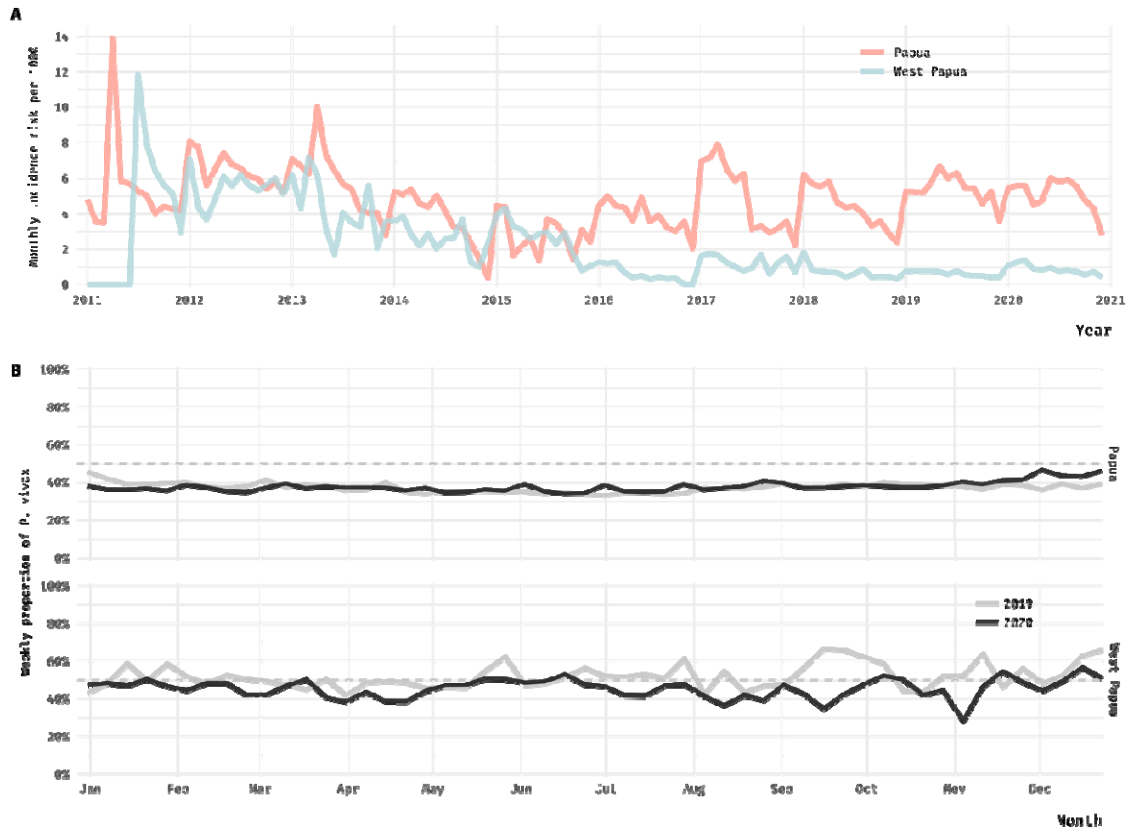
542 **Table and figures**

543 **Table. Gini index estimates for district and health unit levels, by year, province, and parasite**  
 544 **species.**

		Year	
		2019	2020
<b>District level</b>			
Province	Species	Gini index (95% CI)	Gini index (95% CI)
Papua	<i>P. falciparum</i>	74.1 (58.9–82.6)	73.5 (58.4–82.7)
	<i>P. vivax</i>	74.3 (56.6–77.9)	74.4 (58.2–82.7)
West Papua	<i>P. falciparum</i>	65.7 (39.4–75.5)	67.1 (38.4–75.8)
	<i>P. vivax</i>	57.3 (27.0–61.2)	62.5 (34.3–69.9)
<b>Health-unit level</b>			
Province	Species	Gini index (95% CI)	Gini index (95% CI)
Papua	<i>P. falciparum</i>	88.3 (85.7–90.3)	87.9 (85.3–90.1)
	<i>P. vivax</i>	87.8 (85.1–89.6)	88.2 (85.4–90.1)
West Papua	<i>P. falciparum</i>	87.5 (81.2–91.1)	85.1 (80.7–88.1)
	<i>P. vivax</i>	83.7 (76.2–87.5)	82.2 (77.6–85.2)

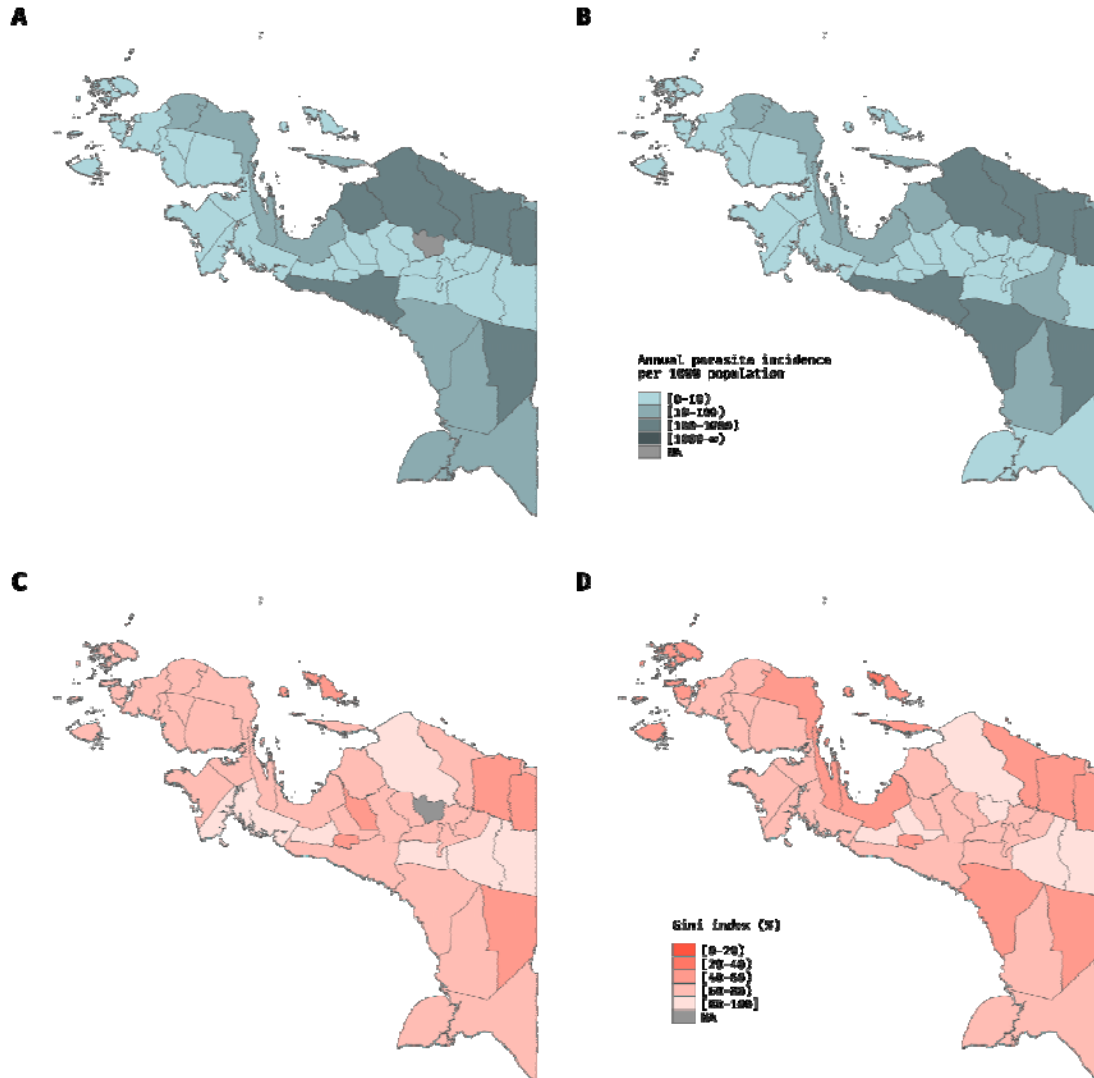
545 The Gini index is expressed as a percentage (%), accurate to one decimal place. Confidence intervals were calculated using the percentile-  
 546 bootstrap method. Supplementary material provides the full bootstrap distributions for the Gini index estimates (figures S5 and S6).

- 1 **Figure 1. Malaria epidemiological trends in the Papua region, Indonesia.** (A) Monthly incidence
- 2 risk of malaria per 1,000 population in Papua and West Papua over the last decade (2011–2020).
- 3 (B) Weekly proportions of *P. vivax* malaria infections in 2019 and 2020. The dashed horizontal line
- 4 indicates when *P. vivax* and *P. falciparum* had been present in equal proportions in all cases.

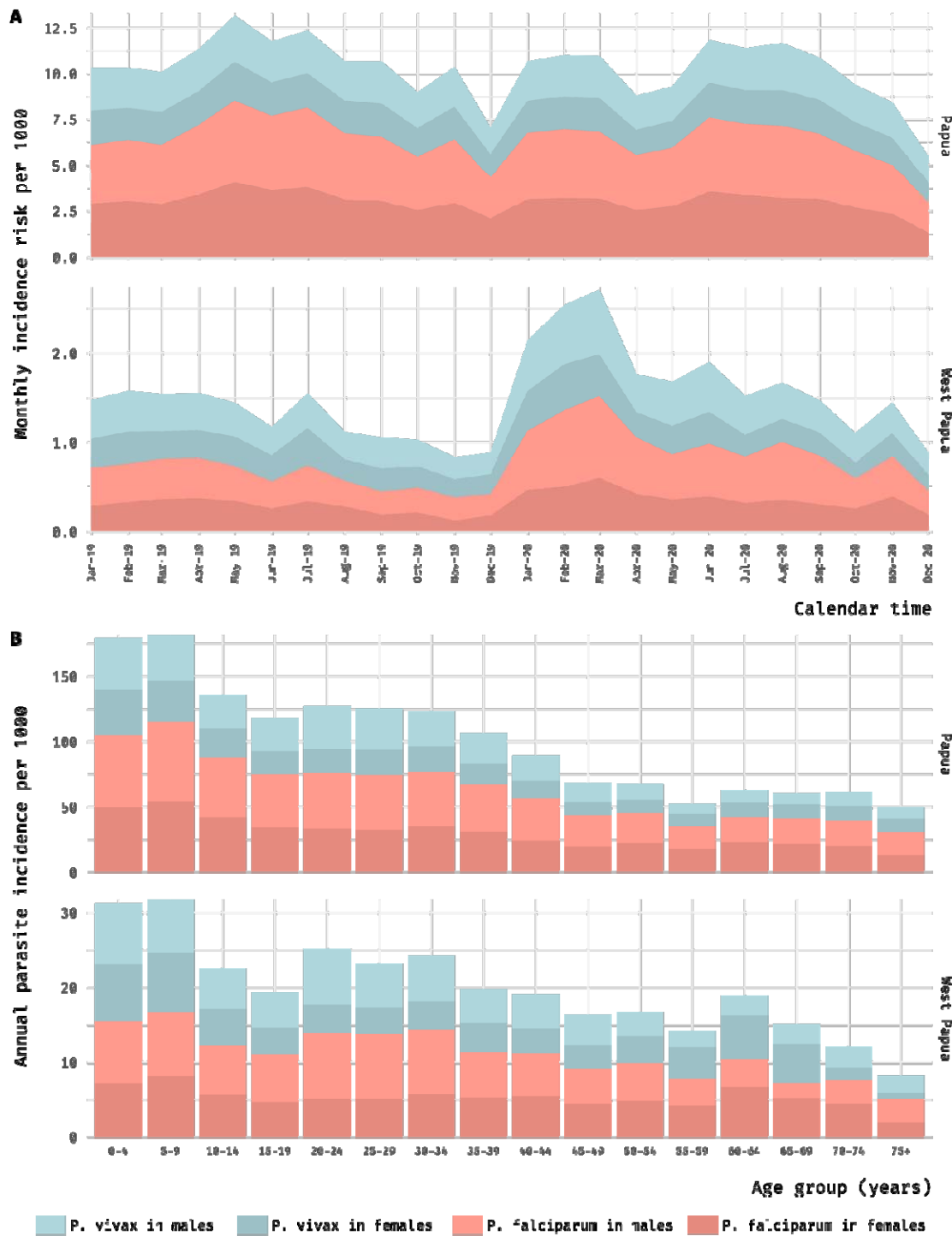


5

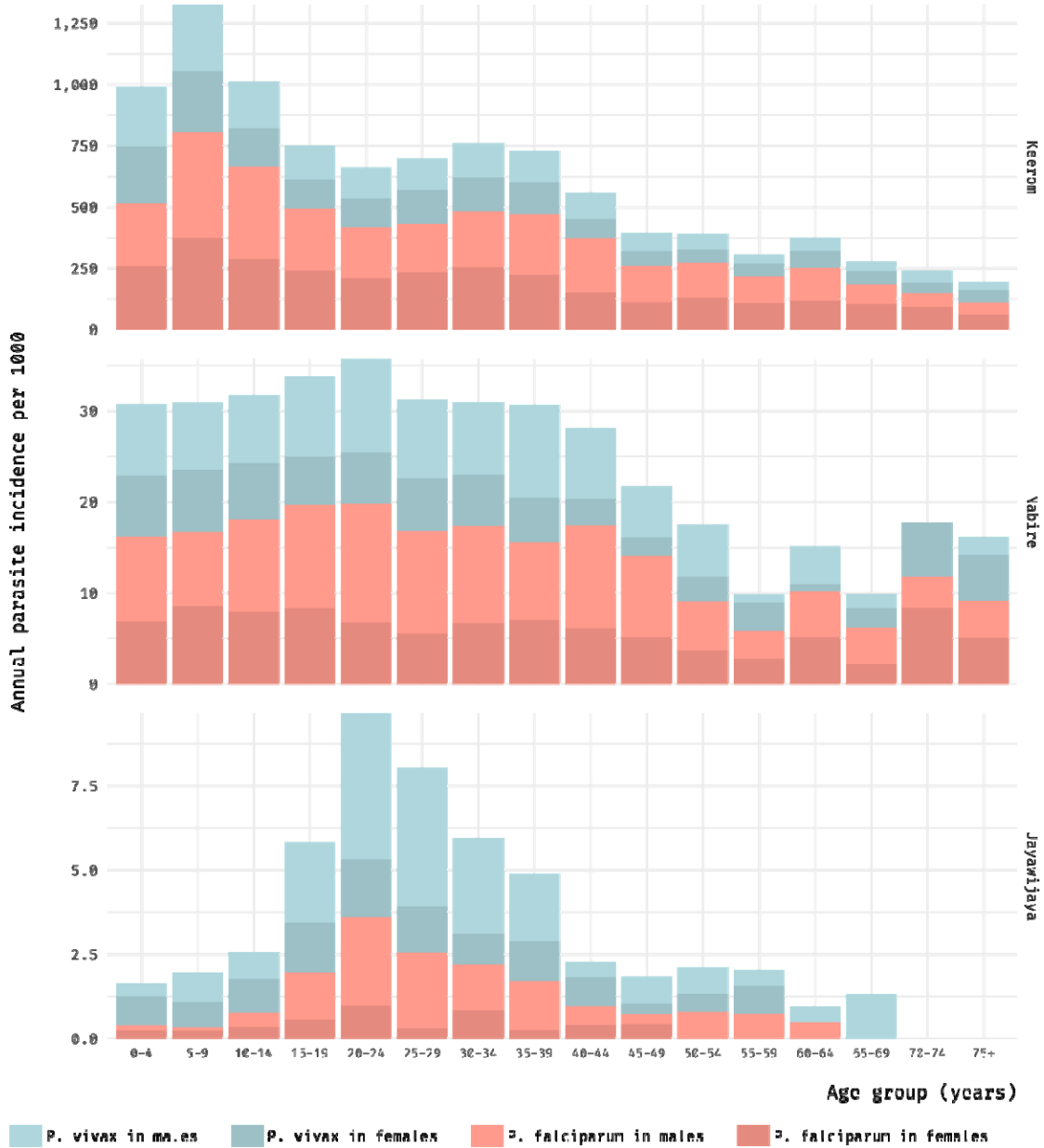
6 **Figure 2. Spatially heterogeneous transmission intensity of malaria across districts in the Papua**  
7 **region, Indonesia.** The polygon represents a district that has been coloured proportionally to the  
8 annual parasite incidence in 2019 (A) or 2020 (B), as well as the Gini index at health unit level in  
9 2019 (C) or 2020 (D). Interval notation is used to represent categories of API and the Gini index.



11 **Figure 3. Distributions of malaria cases by age, sex, and parasite species in Papua and West**  
 12 **Papua, Indonesia. (A) Monthly incidence risk of malaria per 1,000 population (2019–2020), by sex**  
 13 **and species. (B) Annual parasite incidence by age group in 2020.**

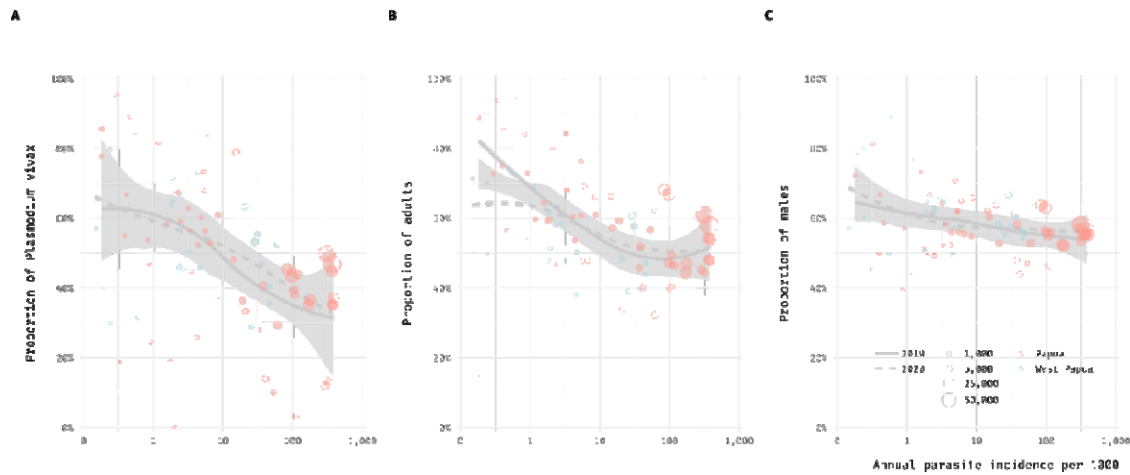


15 **Figure 4. District-specific annual parasite incidence by age group in Keerom, Nabire, and**  
 16 **Jayawijaya (2020).** The plot illustrates a district that is representative of an area with a high level of  
 17 transmission intensity (Keerom), a moderate level of transmission intensity (Nabire), and a low level  
 18 of transmission intensity (Jayawijaya).

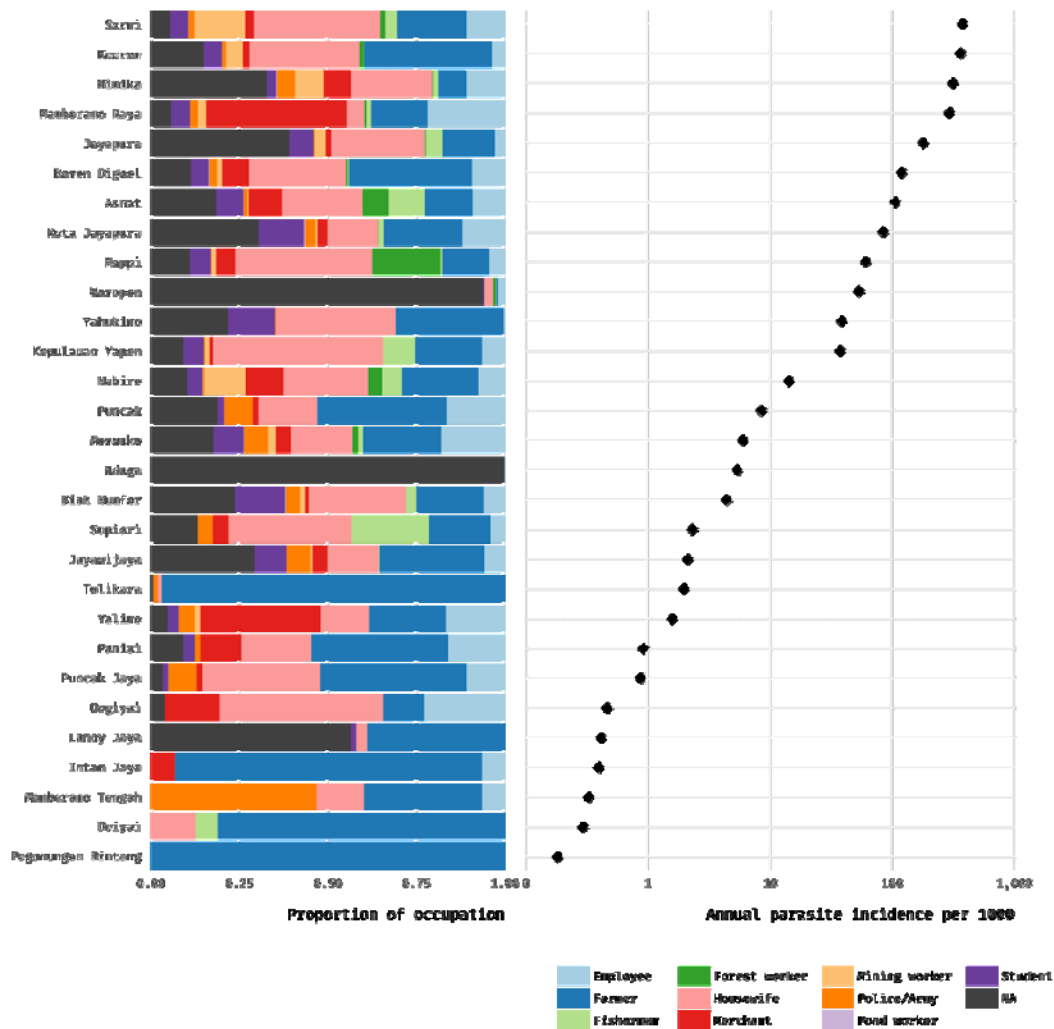


19  
20

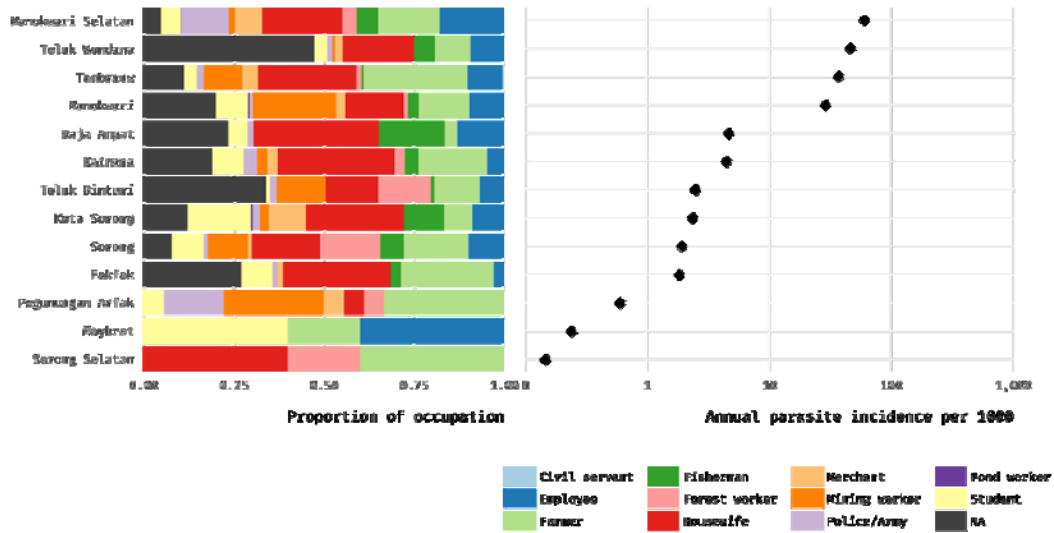
21 **Figure 5. District-specific transmission intensity and its relation to the proportions of *P. vivax*,**  
22 **adults, and male sex among the notified cases.** Proportions of (A) *P. vivax*, (B) adults (18 years and  
23 older), and (C) male sex against the natural logarithm of API. Smoothing of scatterplots was used to  
24 model the curves (loess). Shaded grey areas around the curves represent the 95% confidence intervals.  
25 Each dot is proportional in size to the total number of cases. Horizontal axes are represented by a  
26 logarithmic scale.



28 **Figure 6A. District-specific relative proportions of different occupation types in Papua (2020).** Districts are  
 29 arranged in decreasing order of API. Horizontal axis of the right-hand plot is shown on the logarithmic scale.  
 30 NA not available.



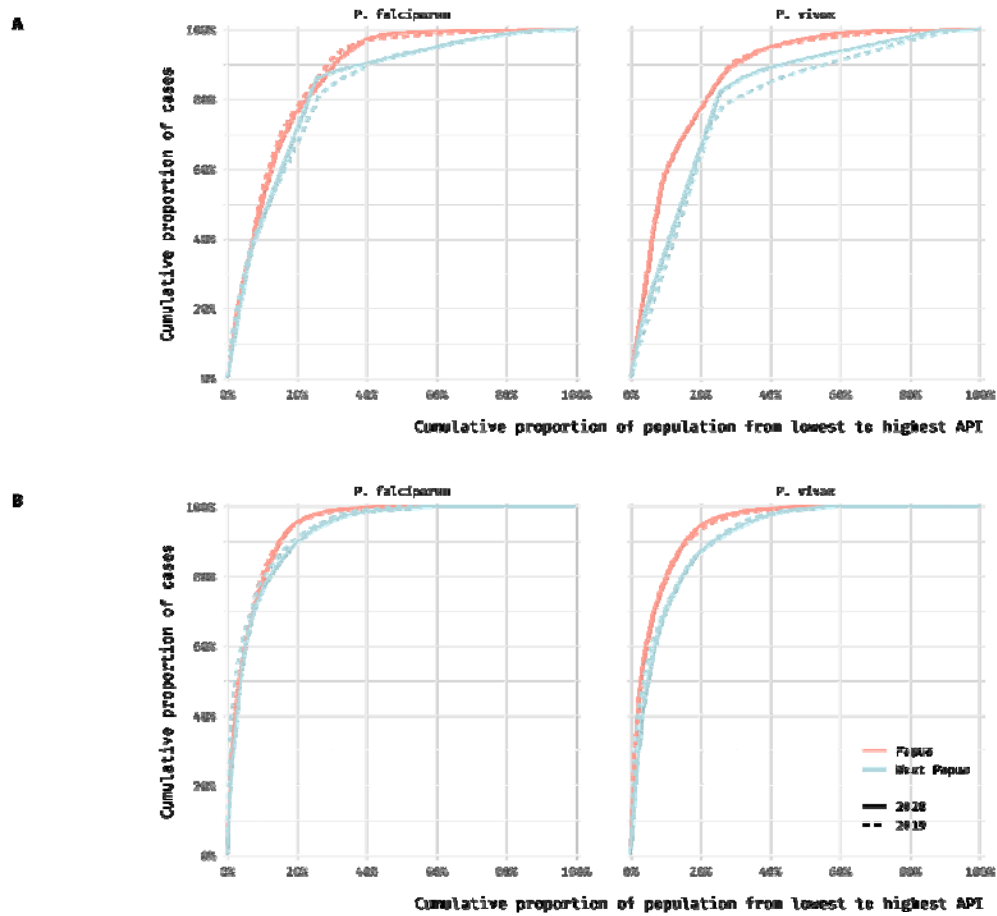
32 **Figure 6B. District-specific relative proportions of different occupation types in West Papua (2020).**  
33 Districts are arranged in decreasing order of API. Horizontal axis of the right-hand plot is shown on the  
34 logarithmic scale. NA not available.



35



36 **Figure 7. Lorenz curves for the spatial heterogeneity of transmission intensity, by species and**  
37 **administrative level. (A) District level. (B) Health unit level. Degree of heterogeneity is proportional**  
38 **to the area under the curve.**



39

40 **Figure 8. District-specific transmission intensity and its association with the Gini index.** Straight  
41 lines were modelled by linear regression. Shaded grey areas around the lines represent the 95%  
42 confidence intervals. Each dot is proportional in size to the total number of cases. Horizontal axes are  
43 represented by a logarithmic scale.

