

1 **Title**

2 “*Younger women had more access to COVID-19 information*”: An Intersectional Analysis of
3 Factors Influencing Women and Girls' Access to COVID-19 Information in Rohingya and
4 Host Communities in Bangladesh.

5 **Authors**

6 Ateeb Ahmad Parray¹, Muhammad Riaz Hossain¹, Rafia Sultana¹, Bachera Aktar¹, and
7 Sabina Faiz Rashid¹

8 **Affiliation**

9 1. The Center of Excellence for Gender, Sexual and Reproductive Health and Rights,
10 BRAC James P Grant School of Public Health, BRAC University

11 **Correspondence**

12 Ateeb Ahmad Parray, Assistant Research Coordinator, The Center of Excellence for
13 Gender, Sexual and Reproductive Health and Rights (CGSRHR), BRAC James P Grant
14 School of Public Health, BRAC University, 6th Floor, Medona Tower, 28 Mohakhali
15 Commercial Area, Bir Uttam A K Khandakar Road, Mohakhali, Dhaka-1213, Bangladesh.
16 Phone # +8801302843604. (ateeb.ahmad@bracu.ac.bd).

17

18 **Keywords** – Intersectionality, COVID-19, Rohingya Refugees, Humanitarian Crisis, Access
19 to Information, Qualitative Research

20

21

22 **Abstract**

23 **Introduction**

24 The Rohingya and Bangladeshi host communities live at a heightened risk of COVID-19
25 impact due to their pre-existing vulnerabilities, religious beliefs, and strict socio-cultural
26 and gender norms that render primarily women and girls vulnerable. However, the extent
27 of this vulnerability varies within and across population groups in the host and Rohingya
28 communities. The intersectionality lens helps identify, recognize, and understand these
29 factors that create inequities within populations. This study explored the factors that
30 influenced the women and girls' access to information during the COVID-19 pandemic
31 through an intersectional lens.

32 **Methodology**

33 This paper presents partial findings from the exploratory qualitative part of mixed-method
34 research conducted in ten Rohingya camps and four wards of the adjacent host
35 communities in Cox's Bazar, Bangladesh. Data were extracted from 24 in-depth interviews
36 (12 in each community) conducted from November 2020 to March 2021 with diverse
37 participants, including adolescent girls, younger women, adult women, pregnant and
38 lactating mothers, persons with disabilities, older adults, and single female-household
39 heads. All participants provided verbal informed consent before the interviews. In the case
40 of the adolescents, assent was taken from the participants, and verbal informed consent
41 was taken from their parents/guardians. The ethical clearance of this study was sought
42 from the institutional review board of BRAC James P Grant School of Public Health, BRAC
43 University.

44

45

46 **Result**

47 We find that the women and girls living in Rohingya communities exhibit a more profound
48 structural interplay of factors within their socio-ecological ecosystem depending on their
49 age, power, and position in the society, physical (dis)abilities, and pre-existing
50 vulnerabilities stemming from their exodus, making them more vulnerable to COVID-19
51 impact by hindering their access to information. Unlike Rohingya, the host women and
52 girls explain the impact of the COVID-19 pandemic on their access to information through
53 the lens of intergenerational poverty and continuous strain on existing resources, thereby
54 highlighting shrinking opportunities due to the influx, COVID-19 infodemic and
55 misinformation, access to digital devices amongst the adolescents, and restricted mobility
56 mainly due to transport, school closures, and distance-related issues. Moreover, the socio-
57 cultural beliefs and the gender norms imposed on women and adolescent girls played an
58 essential role in accessing information regarding the COVID-19 pandemic and
59 consequently influenced their perception of and response to the disease and its safety
60 protocols. Socio-cultural gender norms led to mobility restrictions, which compounded by
61 lockdowns influenced their access to information resulting in dependency on secondary
62 sources, usually from male members of their families, which can easily mislead/provide
63 mis/partial information. The younger age groups had more access to primary sources of
64 information and a broader support network. In comparison, the older age groups were
65 more dependent on secondary sources, and their social networks were limited to their
66 family members due to their movement difficulty because of age/aging-related physical
67 conditions.

68 Conclusion

69 This study explored and analyzed the intersectional factors that influenced the women and
70 girls' access to information during the COVID-19 pandemic from two contexts with varying
71 degrees of pre-existing vulnerability and its extent. These include gender, age, state of
72 vulnerability, power and privilege, socio-economic status, and physical (dis)ability. It is
73 imperative that services geared towards the most vulnerable are contextualized and
74 consider the intersectional factors that determine the communities' access to information.

75 Introduction

76 Intersectionality stems from the work of African American feminist scholars (1–3). It
77 adopts multiple categories of analysis, such as race, gender, sex, ethnicity, socio-
78 economic status, class, marital status, etc., to analyze the various tenets of social
79 identities and the interactions between them (4). It considers what occurs when multiple
80 axes of inequalities enter each other in a particular context and ascertain that focusing on
81 only one axis of inequality at a time hinders the natural pandemic effect and its unequal
82 distribution across social groups within the society (5,6). Therefore, the application of
83 intersectionality offers to learn the interplay between different factors and helps in the
84 identification of deep-rooted vulnerabilities and advantages to uncover the complex social
85 influencing factors and power structures that create, sustain, and often intensify them (7).

86 The intersectionality lens is increasingly being adopted in global health research to
87 understand how multiple dimensions of one’s identity can intersect and add to social
88 inequalities and health disparities within and across subgroups of most-vulnerable
89 populations (8). For instance, the social and health inequities that limit access to
90 information for such groups are compounded by intersectional factors such as gender,
91 age, socio-economic status, pre-existing vulnerabilities, power, privilege, physical
92 disability, and religion (5–8). In any humanitarian crisis (e.g., the Rohingya Refugee crisis),
93 communities live in an already vulnerable state compounded by the COVID-19 pandemic
94 (13). Communities who have fled violence, genocide, persecution, natural disasters, etc.,
95 and are living in confined camps are likely to have less access to information than those in
96 the host communities (local populations). Conversely, communities in the camps may
97 have greater access to resources as more humanitarian workers may concentrate their

98 services in the centers. In such a situation, many intersectional factors influence how
99 people access information about/regarding the pandemic. The intersectionality lens helps
100 identify, recognize, and understand these factors that create such inequities.

101 Since August 2017, more than one million Rohingya have been residing in Cox's Bazar,
102 Bangladesh (14). These refugees live in the world's most densely populated 34 refugee
103 camps in Ukhiya and Teknaf sub-districts in the Cox's Bazar (13), one of the poverty-
104 stricken southern districts of Bangladesh. The Rohingya have limited freedom of
105 movement outside the camps, reduced access to necessities, and live in vulnerable
106 conditions heightened by their history of fleeing a genocide (15), making them especially
107 vulnerable to COVID-19 impact. There is compelling evidence that the COVID-19
108 pandemic is inflicting varying degrees of negative implications on the refugee camps and
109 local communities, including effects on social security, safety, social cohesion, shrinking
110 livelihood opportunities, and erosion of dignity and well-being (16–20), particularly for
111 Most Vulnerable groups (MVGs) - Single women who are household heads, pregnant and
112 lactating mothers, adolescents, youth, elderly, and persons with disabilities (21). We
113 define "*Vulnerabilities*" as the characteristics of an individual, household, or sub-group
114 within a given population and their situation in Cox's Bazar that influence their capacity to
115 meet basic needs, as well as their exposure to physical or mental harm (2).

116 Due to their restricted mobility in the camps, the MVGs exhibit minimal education
117 and skill development (10). They are more exposed to physical and mental harm due to
118 their gender roles and caregiving responsibilities, which also render them dependent on
119 other individuals and have been compounded by the COVID-19 pandemic, making them
120 highly vulnerable to abuse, intimidation, sexual and gender-based violence (10). The

121 Rohingya are a conservative community with rigid social and cultural norms that frown
122 upon and create undue tensions around women and girl empowerment. In general,
123 Rohingya Women and girls experience barriers to mobility and access to and control over
124 resources (23).

125 Hindsight hints that the increased domestic violence in the home and harassment
126 outside it for Rohingya women and girls may be attributed to the increased paid work for
127 women (23). A Rapid Gender Analysis (RGA) conducted with Rohingya reported that every
128 woman and girl was either a survivor of sexual assault or a witness to it from their time in
129 Myanmar, but the same woman or girl felt relatively safe in camps in Bangladesh (24).
130 However, as stateless people dependent on relief and humanitarian aid, all Rohingya in
131 camps in Bangladesh are vulnerable. Various reports have shown that COVID-19
132 pandemic-induced lockdowns, cramped conditions, lack of appropriate sanitation
133 facilities, and disrupted services put women and girls at risk of gender-based violence
134 (GBV), including sexual harassment and assault, and sexual violence (10).

135 Women's mobility is also hindered by the observance of purdah - a religious
136 doctrine imposed on women and girls that requires them not to be seen by any male
137 person except their family members (*Mahrams*), which limits their ability to access aid,
138 livelihood opportunities, humanitarian services including GBV services (24). Adolescent
139 girls are generally more vulnerable to GBV threats and have very restricted mobility
140 outside the home, so their access to services and information is even more limited (19).
141 However, many of them have access to digital media (mobile phones, social media,
142 messaging applications, etc.) and tend to be comparatively more updated than the others
143 (25). Compounded by the onset of COVID-19 and strict lockdowns restricting all essential

144 and non-essential movements in the camps, women, and girls had to suffer the greater
145 brunt of the COVID-19 crisis (25).

146 The Rohingya are also surrounded by around half-million Bangladeshi host communities -
147 one of the poorest populations in Bangladesh with a poverty rate of 33% [7]. In August
148 2017, the host communities gathered resources of many forms and quantities to alleviate
149 the refugees' sufferings, even before the Bangladesh government committed to the
150 humanitarian effort formally (26). However, within a year of the previous refugee arrival in
151 2017, visible solidarity and support for the migrants waned. As COVID-19 approached, the
152 hostility against refugees and humanitarian assistance organizations was palpable,
153 especially among the impoverished local people in Cox's Bazar region (27,28). The early
154 negative implications of refugee settlement were the most severe for the hosts due to the
155 scarcity of resources and possibilities. Additionally, the degradation of public services such
156 as birth and death registration fueled dissatisfaction against the government's overall
157 approach to the refugee crisis (26). Inflation in the pricing of critical goods, declining
158 salaries for low-skilled employees, competition for scarce natural resources, and loss of
159 livelihood exacerbated the tension between refugees and Bangladeshi host communities.
160 (29). In general, the host community believes that the government of Bangladesh's
161 unilateral humanitarian assistance to refugees demonstrates a failure of the government
162 to recognize the harmful effect of poverty on the indigenous population in a number of its
163 policies and initiatives (20).

164 Caused by overpopulation and a lack of privacy, women in host communities have
165 claimed increasing restrictions on their freedom of movement and voiced fear of the
166 Rohingya (29). In the host community, the risk of GBV is significant and is expected to rise

167 during times of economic hardship (26). As is the case with the Rohingya, child marriage is
168 prevalent in the host society and is employed as a coping mechanism by the poorest and
169 most vulnerable families during times of crisis (24). Domestic violence, mainly IPV is also
170 common in both communities (30); women are the primary victims, while their husbands
171 are the abusers, with an increased risk of domestic violence in the Rohingya community
172 since their relocation (24). This is considered an internal family matter requiring no
173 external intervention. Female-headed families, particularly those with no male
174 representation, are significantly more susceptible (30). According to one study conducted
175 by ACAPS with the host community, 45 percent of female-headed families in the host
176 community were vulnerable or very vulnerable in December 2017, compared to 35 percent
177 of male-headed households (30). Another research, based on a December 2017 evaluation,
178 suggests that food insecurity is almost as severe for women in the host community as it is
179 for Rohingya women, with just one in three women having access to a diverse diet (31).
180 Female-headed households, in particular, have been identified to be among the most
181 vulnerable (13,32). However, this list omits single women who traveled alone during the
182 exodus and their difficulties in providing for basic requirements - traveling outside the
183 house to gather daily essentials, firewood, or water, seeking healthcare for themselves
184 and their children, and generating an income. Due to a shortage of income-generating
185 options for women, they and their families are financially insecure in host communities
186 (22,30).

187 The COVID-19 pandemic has also exacerbated the current fragility of living
188 conditions, healthcare, disaster management (floods, fires, etc.), other services and
189 facilities, and increasing competition over scarce resources between the refugee and host
190 communities (33). Due to the COVID-19 pandemic, the women and girls, including the

191 persons with disabilities and the elderly in these communities faced added barriers to
192 accessing necessities such as healthcare consultations or freedom of movement outside
193 the house due to their society's deep-rooted existing gendered, social, cultural, and
194 religious norms [8]. Evidence suggests that adult women and children among Rohingya,
195 are most vulnerable to the COVID-19 due to their misconceptions and lack of awareness
196 regarding the same (16). In contrast, older adults are more susceptible to COVID-19 due to
197 age-related complications (34,35). These factors play an important role in how different
198 groups, especially the most vulnerable within the two communities received information
199 about and responded to the COVID-19 pandemic.

200 Despite the issue's urgency and effect on the host community, there has been a shortage
201 of pertinent research addressing the complicated nexus between the refugee crisis and
202 host communities in Bangladesh, as well as the impact of COVID-19 on both populations
203 in terms of access to COVID-19 information (36). Recent work has concentrated on
204 poverty, livelihoods, security issues, illicit trafficking, and environmental degradation but
205 has largely overlooked their access to COVID-19 information and services (30,31,33). By
206 bringing host communities and the existing COVID-19 crisis and its implications into the
207 center of the analysis, the paper underlines the need for a more nuanced rather
208 intersectional approach involving the MVGs in both communities and putting them at the
209 locus of the humanitarian response. We analyze the interplay of intersectional factors that
210 influenced the access to COVID-19 information of women and girls in the Rohingya camps
211 and host communities in Cox's Bazar.

212 **Materials and Methods**

213 This study was part of a larger participatory action research project [9] that explored the
214 most-vulnerable groups (MVGs) and their perceptions, needs and impact during the
215 COVID-19 pandemic. An exhaustive literature review was undertaken to list the MVGs
216 from the Rohingya and host communities. These lists were further reinforced during the
217 expert consultation workshops done with humanitarian researchers and practitioners
218 working in the Rohingya Humanitarian Response, Cox's Bazar, in November 2020 to
219 identify the MVGs and the factors that determine their vulnerabilities. The final list of
220 MVGs was developed after validation through field visits and face-to-face interviews with
221 a diverse range of people from both communities. Since this paper focuses on women and
222 girls, we have thus included a sub-set of the data collected regarding MVGs in both the
223 Rohingya and host contexts, including pregnant and lactating mothers, female persons
224 with disabilities (PWDs), adolescent girls, single female household heads (SFHH) and the
225 female older adults (elderly), thereby excluding the male MVGs, i.e., adolescent boys,
226 young male adults, and the male elderly.

227 This qualitative study was conducted in 10 selected Rohingya refugee camps in the
228 Ukhiya sub-district of Cox's Bazar, Bangladesh, and four adjoining wards of the
229 Rajapalong union in the surrounding host communities. The data collection took place
230 from November 2020 to March 2021. We employed an exploratory qualitative design
231 whereby 24 in-depth case studies, 12 in each Rohingya and the host community, were
232 conducted with purposively selected participants from the list of MVGs identified in the
233 larger research project, serving as inclusion criteria for recruitment to this study.

234 An in-depth interview (IDI) guideline was developed to conduct the case studies
235 and was pre-tested in both the Rohingya and host communities. Some modifications were

236 made to the policy after the pilot. Because of the language barrier, the researchers paired
237 with locally recruited trained data enumerators fluent in both the local Bangla (the host
238 community's language) and Rohingya dialects (Ruáingga) and acted as translators while
239 conducting qualitative interviews. The data was collected in both Bangla and Ruáingga.
240 Each interview lasted for an average of 85 minutes. After data collection, the recorded
241 data were transcribed verbatim in Bangla within 24 hours by the local enumerators and
242 then translated into English by a group of professional translators. After that, the
243 researchers cross-checked the data and familiarized themselves with it. Subsequently,
244 inductive coding was done to identify key themes and sub-themes. Thematic analysis was
245 conducted using the qualitative software - Atlas Ti, version 9.0.

246 **Ethics Statement**

247 The Institutional Review Board of BRAC James P Grant School of Public Health, BRAC
248 University provided the ethical clearance for the study under reference number IRB-6
249 November 20-057. The clearance for the broader research project was sought and
250 obtained from the Refugee, Relief, and Repatriation Commissioner (RRRC), the Camp-in-
251 Charges (CiC) of all the selected camps, the Union Parishad Office, and local community
252 leaders from both communities. Verbal informed consents were obtained from all
253 participants. Informed verbal Assent was also taken from the adolescent participants after
254 consent was taken either from their guardian(s) or parent(s). Participant names were
255 replaced with pseudonyms, and only limited personal information important for analysis
256 was collected, such as age, gender, occupation, and education. datation, including Bangla
257 and English transcripts, was stored in a secured locker at the home institute of the
258 researcher, where only the selected research team members had access. Furthermore,

259 because this research was conducted during a pandemic, the research team followed
260 recommended COVID-19 safety precautions during fieldwork to prevent coronavirus
261 transmission to community members, research participants, and researchers. All the IDI
262 and KII participants were given hygiene packets (face masks, soap, toothpaste, toothbrush
263 shampoo) as a token of appreciation for their participation in the study.

264 **Results**

265 **Respondents Profile**

266 Among the 24 participants, 12 were from the Rohingya community, and 12 were from the
267 host community: participants included adolescent girls, married and unmarried women,
268 pregnant women, single female household heads, persons with disabilities (PWD), and
269 older adults. In the host community sample, all adult women were involved in income
270 generation activities, such as community volunteers, small business owners, and private
271 jobholders. However, in the Rohingya sample, except for one participant, all were
272 homemakers. One-third of the host participants identified themselves as Hindus while all
273 the Rohingya participants identified themselves as Muslims. Table 1 presents the profile of
274 the respondents included in this study.

275 Table 1: Profile of the respondents included in this study

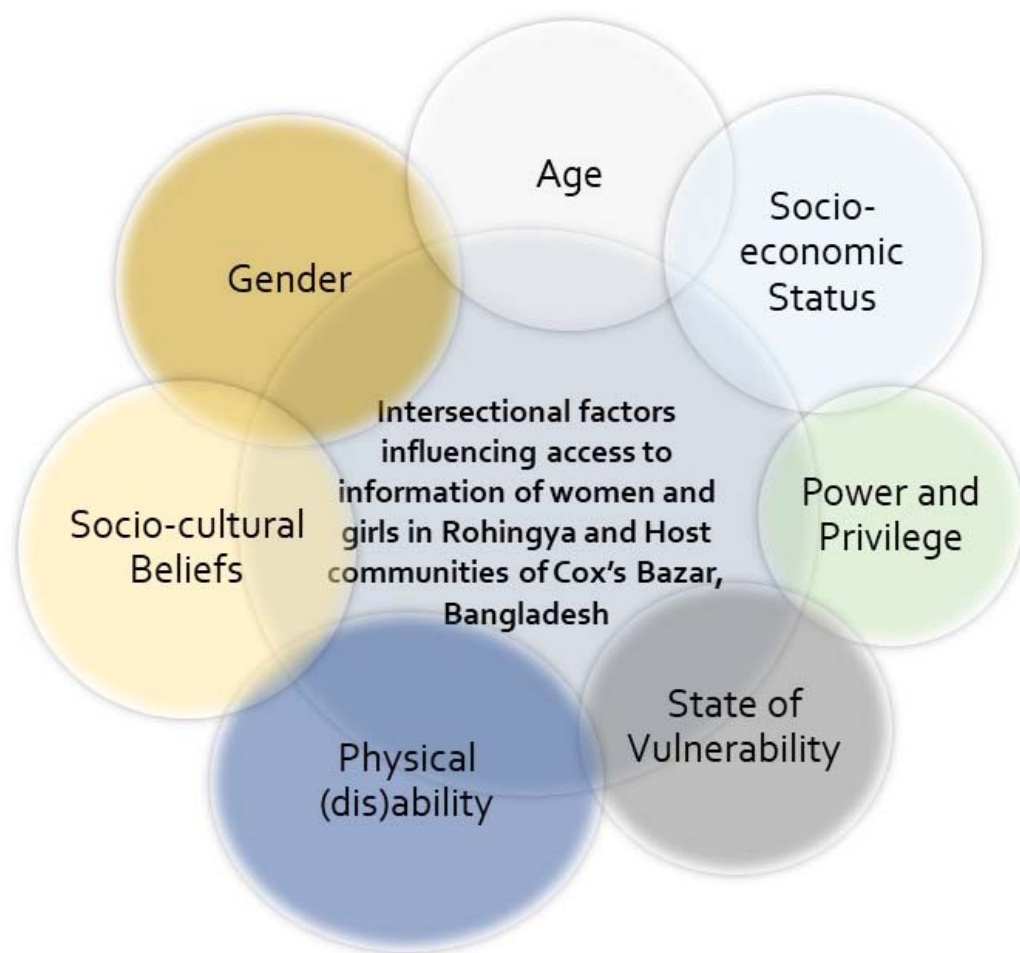
Characteristic	Group	
Type of Participants	Rohingya participants	Host community participants
Single female household heads	3	3
Persons with disabilities	2	2
Adolescents	2	2
Pregnant and Lactating Women	3	3
Elderly	2	2
Total (N)	12	12
Age (In Years)		
11-17	2	2
18-64 year	8	8
Above 65 year	2	2
Occupation		
Homemakers	10	8
Community volunteers	1	1
Small business	-	1
Student	-	1
Private job	1	1
Religion		
Muslim	12	8
Hindu	-	4

276

277

278 **Intersectional factors influencing women and girls' access to COVID-19 information**

279 Our analysis found that the intersectional factors that influenced the women and girls'
280 access to information during the COVID-19 pandemic include gender, age, socio-
281 economic status, state of vulnerability, power, and privilege, and physical (dis)ability
282 (Figure 1).



283

284 ***Figure 1: Intersectional factors influencing women and girls' access to information during***
285 ***COVID-19 pandemic in Rohingya and Host communities of Cox's Bazar***

286 **Socio-cultural beliefs and gender norms limit access to accurate information**

287 Our data showed that socio-cultural beliefs and gender norms imposed on women and
288 adolescent girls played an important role in how they accessed information regarding the

289 COVID-19 pandemic and consequently influenced their perception of and response to the
290 disease.

291 Rooted in orthodox religious values, the socio-cultural beliefs in both the Rohingya and
292 host communities restrict their mobility to public spaces and thus, limit their access to
293 information beyond their immediate homes. As a result, they usually receive information
294 from secondary sources such as the male family members resulting in misinformation
295 being spread within households, especially among women. Often important pieces of
296 information are changed or left out in the process of being relayed. Although many
297 participants referred to community health workers (CHWs) visiting door-to-door and
298 disseminating COVID-19 awareness information, however, in many instances, participants
299 were unable to talk to CHWs because of their household chores or did not have permission
300 from their husbands or male household heads (for example, fathers/fathers-in-
301 law/brother) for interacting with any outsider (including male CHWs) and therefore lacked
302 primary sources of information.

303 For instance, an adult Rohingya female participant informed that she first heard about
304 COVID-19 (that it was a disease and had originated in China) in April 2020 from her
305 husband, who had heard about it from other men of their community at the mosque after
306 prayers. Since she did not venture out of the home, her only source of information was her
307 husband. The secondary sources of information often lead to the relay of partial
308 information or incorrect information within the family members. For instance, an elderly
309 Rohingya woman shared that since she was sick and lived with her son, she rarely
310 ventured outside her house. Her son had told her that COVID-19 was a "flu". As such, she

311 could not understand how it could be a deadly disease, *"My son says it is a flu...If it's just*
312 *like the flu then it will go away also... Why be so afraid?"*, she mentioned.

313 Rohingya adolescent girl participants informed that culturally, unmarried Rohingya
314 adolescent girls are not permitted to go outside their houses and their male family
315 members bring them their daily necessities. Therefore, they most often do not have
316 exposure to the outside world including any sources of information other than their family
317 members. As one Rohingya adolescent girl said that she did not know about COVID-19
318 because she did not go outside her house, and no one shared anything about this. She
319 mentioned that she practiced *"purdah"* – a religious doctrine that required her to be seen
320 by no male persons except for her family members. Such strict practices invigorated
321 altruistic notions about COVID-19 among a few participants. For instance, one young adult
322 woman with a disability mentioned that she cared less about COVID-19 as it had come
323 from *Allah* and she practiced *purdah* which means that even if she died due to COVID-19,
324 she would go to the *Jannat* (heaven). When asked where she heard about COVID-19 from
325 and if she had spoken to any CHW before, she mentioned,

326 *"My husband told me about COVID-19...He is a god-loving person...He said that Kiyamat*
327 *(doomsday) is near and I should practice purdah even more strictly"*.

328 This quote highlights the extent of trust and dependency Rohingyas women exhibit in
329 their male counterparts who due to rigid socio-cultural beliefs, often act as barriers to their
330 access to COVID-19 information or/and relay incorrect or partial information. This,
331 compounded by the participant's physical disability and the COVID-19 lockdown put these
332 women and girls in hostile and supportless situations in the camps.

333 The situation was similar in the host community, albeit the socio-cultural norms there
334 were somewhat lenient than in the Rohingya community. As such, some women were
335 able to access information on their own and relay it to their peers, neighbors, and family
336 members. For instance, one young lactating mother in the host community said that she
337 had first heard about COVID-19 from a local NGO volunteer. Even though, because of her
338 small child, she was confined to her home, the NGO volunteer would come to her once a
339 week and talk to her about the pandemic. As she said,
340 *"I can't go outside because my baby is small, and my in-laws don't let me go out... but my*
341 *friend (NGO worker) can work. So, when she gets any new information, she comes and tells*
342 *me."* (Lactating Mother, Host)

343 In the host community, adolescent girls had greater access to primary sources of
344 information as they were able to talk to their peers and access social media through their
345 mobile devices or the mobile devices of their family members. However, some adolescent
346 girls mentioned that due to the closure of educational institutions they were unable to talk
347 to their peers as they were barred from going outside their homes. The elderly women in
348 the host community had similar experiences to those in the Rohingya community and
349 were mostly unaware of the severity of COVID-19.

350 **Access to community health workers, and the digital divide between Rohingya and** 351 **Host communities**

352 According to our analysis, in both communities, age and health status, access to CHWS
353 and the digital divide or the access to digital media among the Rohingya and host
354 communities played a role in women and girls' access to accurate COVID-19 information,

355 how they internalized it and whether they were willing to abide by safety measures
356 against the virus.

357 In the Rohingya community, adolescent girls and young adults faced restrictions on
358 mobility outside of their homes due to the rigid socio-cultural beliefs and gender norms
359 and had little-to-no access to mobile phones, television, radio, and social media. Their
360 main sources of COVID-19 information amid the pandemic were mostly their male family
361 members and to some extent, the local female community youth volunteers.

362 Most of the younger adult Rohingya women, many of whom were pregnant and lactating,
363 were burdened with added caregiving responsibilities during the lockdown and had no
364 scope to talk to the CHWs. Thus, they were totally dependent on their husbands for any
365 COVID-19 related information and were inclined towards misconceptions, rumors, and
366 fatalistic notions about COVID-19.

367 Comparatively, Rohingya adolescent girls, despite being as restricted as young adults,
368 identified CHWs as their primary sources of COVID-19 information and pointed out their
369 trust in CHWs, how they helped them stay updated during the lockdowns (March 2020 –
370 July 2020), and their dedication to following the safety protocols. In the words of one
371 adolescent Rohingya girl,

372 *"I first about Corona from Jyoti (Pseudonym) Apa. When she told me that people are dying in*
373 *China and America, I was so scared...My father will never allow me to go to the pharmacy*
374 *myself if I have flu or anything. During lockdown having the flu means we would be half-dead*
375 *due to fear (of contracting COVID-19) ... Whenever Jyoti Apa came, I would listen to her...I*
376 *would follow her suggestions..."* (Adolescent Girl, Rohingya).

377 This quote highlights the trust these girls have in local community volunteers (NGO
378 personnel, CHWs, etc.) from their area, and notwithstanding their mobility restrictions,
379 they were able to connect with these trusted sources, get updated about the latest
380 COVID-19 information, and follow it, much as their situation allowed.

381 On the other hand, elderly women, many of whom were PWDs, were reluctant to believe
382 in and abide by the safety measures due to their lack of mobility and access to first-hand
383 COVID-19 information. Although their mobility issues stemmed from their weak physical
384 health, it made them dependent on the male members of their families, similar to the
385 young Rohingya adults.

386 For instance, one elderly Rohingya woman mentioned that she heard about
387 Corona from her son, who had heard it in a gathering that he attended at a local tea stall.
388 According to her, the virus was a rumor to frighten the elderly and people living with
389 multiple health conditions. In her own words,

390 *"My son told me about this disease (COVID-19) ...He told me that I should not sit near the*
391 *window or I may get infected...I think he just wants me to be on the bed all the*
392 *time...otherwise, why would anybody fear Corona. Has anybody ever died from it?" (Elderly*
393 *Woman, Rohingya).*

394

395 The situation was entirely different in the host community with most of the adolescent
396 girls, younger women, and some middle-aged adult women having more access to
397 information through the internet, social networking sites, and mobile-based applications
398 like WhatsApp, Facebook, etc. As mentioned by one adolescent girl from the host
399 community,

400 *"I heard about COVID-19 when my friend shared me the link to a newspaper article on Corona*
401 *on WhatsApp..."* (Adolescent Girl, Host).

402 In contrast to the camps, most of the participants in the host sample had access to TV,
403 radio, and social media. Many of them mentioned learning about the COVID-19 disease
404 and its safety measures through the TV. However, their concerns stemmed from fear of
405 the refugees whom most of them described as "outsiders". As a result, during the
406 lockdowns, women and girls faced added restrictions from their families. As mentioned by
407 one young adult married woman living in one of the villages of host communities,

408 *"Even though there is no rickshaw or tempo [battery-operated three-wheeler] available now-*
409 *a-days [during the lockdown], my family still does not allow me to go outside because the*
410 *Barmas [a local term for Rohingya refugees] are everywhere. What if they abduct me?"*
411 (Young Woman, Host).

412 Compared to Rohingya older adults, the elderly participants in the host sample exhibited
413 better knowledge about COVID-19 and its subsequent protocols, claiming better access to
414 COVID-19 information through digital media including TV, Radio, Mobiles available in
415 their households, etc. For instance, one adult PWD woman said that she had first heard
416 about COVID-19 from the news on the TV and she was alarmed by it. She said, *"I was so*
417 *scared that I immediately started cleaning my hands and my child's hands as well. If it's on*
418 *the news then it must be very serious, right?"* (Adult Woman Host). Even though adolescents
419 had more access to digital media, being in the same household indicated transmission of
420 COVID-19 information within the family members. As was in case of Shamima
421 (pseudonym), an old woman living in the host communities. Shamima had attained no
422 formal education but she could demonstrate the WHO-recommended handwashing

423 method and describe the significance of more-or-less all steps. She mentioned that her
424 granddaughter – an adolescent girl studying in a nearby community-based school, had
425 watched a video on her phone and explained to her the importance of handwashing.

426 However, this level of household discussion regarding health-related issues (For
427 e.g., COVID-19) was not referred by any of the participants in the Rohingya sample. The
428 Rohingya participants' thoughts were mostly inclined towards fatalistic notions stemming
429 from their religious beliefs, pre-existing vulnerabilities due to facing genocide, and COVID-
430 19 seemed to be lower in the hierarchy of worries.

431 Interestingly, a few older adult participants in the host sample, despite access to
432 CHWs, TV, and Radio expressed their disbelief towards the severity of COVID-19. Most of
433 them identified religious reasons when asked about the origin of COVID-19 indicating the
434 influence of religious values on health beliefs. Due to this, they chose to stay confined to
435 their rooms and prayed as they believed prayers could save them from COVID-19. In this
436 confinement, despite incidences of ailments like joint pain, headache, dental pain, etc.,
437 many older adult participants in the host sample were confined to their rooms and hardly
438 got any chance to talk to CHWs or listen to awareness messages. Additionally, due to the
439 unavailability of transportation and the fear of contracting COVID-19, their caregivers also
440 denied accompanying them to the health facilities where they could have probably
441 obtained correct information about COVID-19 that could have aided in their
442 understanding of the severity of the disease. The religious beliefs, coupled with the
443 fatalistic thoughts stemming from religious beliefs, and dependency on caregivers
444 influenced the access to COVID-19 information for older adult participants in the host
445 community sample.

446 Describing the COVID-19 pandemic as “*Kiyyamat*” (the day of judgment; a religious
447 belief in the Muslim faith), and fuelled by fatalistic thoughts, one elderly woman from the
448 host community, confined herself to her room so that she could pray. In her own words,
449 “*This is Qayamat [dooms day – a concept in the Muslim faith] ... Corona will only hurt those*
450 *who are disbelievers and have committed sins... [Besides] I have already approached my*
451 *time. I cannot eat what I want, I cannot go where I want... Now I cannot go to the hospital*
452 *also.... [because] my son is afraid [of contracting COVID-19] in Hospital... I do not care about*
453 *Corona...*” (Elderly Woman, Host).

454 This quote highlights how religious beliefs, dependency, and fatalistic beliefs influenced
455 the perceptions of these women by hindering access to information.

456 **Socio-economic status and social support networks also determine access to**
457 **information**

458 The data found that women and girls from comparatively well-off families and/or with
459 better social support networks in both Rohingya and host communities had more access
460 to information.

461 In the Rohingya community, the socio-economic status can be depicted by the number of
462 male members in the household who were able to work and earn income and provide for
463 their families. In addition, working also entailed venturing outside their homes, talking to
464 their peers, attending informal gatherings at tea stalls and prayers in the mosques.

465 Women and girls from these households had greater access to information regarding the
466 pandemic as the working family members (most men and boys) would learn about the
467 pandemic from outside and share parts of that information with the women and girls at
468 home.

469 For instance, one middle-aged Rohingya woman said,

470 *"One of my sons has a small shop in the Bazar and he hears many things about the world. I*
471 *heard about this virus from him first. A group of customers told him and he told all of us."*
472 *(Adult Woman, Rohingya).*

473 Another young Rohingya female had also learned about the pandemic from her family
474 member who worked in a local NGO. She mentioned,

475 *"Even before the NGO workers came to us, I heard about Corona from my Sujon (Pseudonym;*
476 *an NGO worker). I told all my friends as well. I often hear things from him and let my friends*
477 *know."* (Young Adult, Rohingya).

478 The Socio-economic status of Rohingya families was also determined by how
479 much of the savings, jewellery and other notable good they were able to carry with them
480 during the exodus of August 2017. Even though they had to bargain most of these items to
481 navigate their way to the refugee camps, some families still possessed such items. These
482 commodities held a great influence on how people perceived families which possessed
483 them. Such families were perceived well-off by their peers which entailed that the women
484 from the neighborhood and other active female members of the society (such as
485 community leaders' wife, youth volunteer, etc.) would often visit them during the
486 lockdowns and discuss COVID-19 related information thereby aiding access to correct
487 COVID-19 information for women and girls in such households. In the words of Morjina, a
488 middle-aged mother of three children,

489 *"We are lucky that the community leader's wife comes to our home.... She told me*
490 *that I should be careful about the virus and ask my husband to wash thoroughly [when he*
491 *returns from outside] ...One Youth volunteer and her friend also come to my home... They*

492 *taught them how to tighten the mask if it is loose...I think they come to our house because we*
493 *are a bit better off than others [in the block] ...Alhamdulillah. We have some hard-earned*
494 *items [referring to jewellery] ...My husband had to go to the market to sell many times"*
495 *(Adult Woman, Rohingya).*

496 The reputation of being "better-off" in the block put these women and their families in
497 privilege and facilitated their access to COVID-19 information.

498 Similar to the participants in the Rohingya sample, participants in the host sample with
499 economically well-off or educated families had greater access to information regarding
500 the pandemic. This was due to the fact that often their families had TVs or devices that
501 had access to social media or they had access to government/NGO structures that
502 provided information. This was evident from the experience of a young woman whose
503 family owned a shop in the local market. She had her own mobile phone and was able to
504 access social media sites which is where she first learned about the pandemic. In her own
505 words,

506 *"I saw on Facebook that a virus was all over the world. I was very scared because my [family*
507 *member] lives in another country and I did not want him to suffer alone. I asked him to come*
508 *back but he didn't. He just asked me to stay away from everyone and wash my hands. I also*
509 *saw on YouTube that I need to wash my hands. So now, my husband and I always wash our*
510 *hands as much as possible."* (Young Woman, Host).

511 Another adolescent girl whose family members worked as NGO community volunteers
512 also said that she had learned about the pandemic prior to any of her friends knowing
513 what Corona was. This was because her siblings had been briefed at work and they were
514 able to relay the information to her as well.

515 As was in the case of another adolescent girl from host communities. Her family members
516 worked as volunteers in local NGOs. When COVID-19 first arrived in Bangladesh, she was
517 one of the first to know about the disease among her peers. In her own words,
518 *"My family members told me about it (COVID-19). At first, I did not want to believe them but*
519 *then I saw on TV as well that it is a deadly disease. Also, they heard from their offices so it*
520 *must have been right."* (Adolescent Girl, Host).

521 **State of vulnerability**

522 According to our analysis, an individual's state of vulnerability (pre-existing vulnerabilities
523 before the COVID-19 pandemic) also influences their access to information regarding
524 COVID-19.

525 Restricted mobility, denied citizenship, forced displacements, and enduring persecution
526 for decades indicate the levels and extent of vulnerabilities, Rohingya women and girls live
527 with. COVID-19 impact – loss of livelihood, food insecurity complete loss of income put
528 such families through a strain making the women and children vulnerable to abuse,
529 especially in the contexts where husbands or male family members are the main sources
530 of information and the only way of linking with the outside world for the Rohingya
531 women. Those who were victims of intimate partner violence (IPV) were often deprived of
532 getting information from that only source.

533 As was in the case of one adult Rohingya woman who faced intimate partner violence
534 (IPV) and believed that she did not possess the means to be worried about a virus. She was
535 not at liberty to worry about COVID-19 because asking questions about it would trigger an
536 episode of IPV in her household. In terms of risks, COVID-19 appeared low in the hierarchy

537 of concerns, and she was overcome with the daily fears of physical beatings and abuse
538 from her husband. According to her,
539 *"How will I worry about this disease when anytime I ask my husband about it, he gets angry?*
540 *I don't want to anger him and create problems for myself. I don't even know what it is, so why*
541 *should I worry?" (Adult Woman, Rohingya).*

542 Conversely, the host community also lived in a vulnerable state but evidently, their
543 vulnerability was of a different kind stemming from poverty as they lived in one of the
544 most impoverished sub-districts of Bangladesh. Although participants in the host
545 community sample, generally expressed having greater mobility than those in the
546 Rohingya community and thus more access to COVID-19 information. However, for some
547 participants, particularly the single female household heads, access to COVID-19
548 information was challenging. The socio-cultural and gender norms restricted their
549 mobility and hindered their access to the COVID-19 information, and for those who had
550 the mobility of some sort, the geographical barriers – hilly terrains, muddy roadways, and
551 lack of transportation due to COVID-19 -induced lockdown in the area made it difficult for
552 them to access the health facilities where they could probably obtain the required COVID-
553 19 information.

554 One middle-aged single woman from the host community said, *"I wish I could earn money.*
555 *But I can't. Since I don't go out, I don't know about this virus. But I've heard from my children*
556 *that some virus is here. We can barely eat...virus is far away from my mind."* (Single Woman,
557 *Host*).

558 This quote highlights the state and extent of the pre-existing vulnerabilities of single
559 women living in host communities which limited their access to COVID-19 information.

560 Power and Privilege

561 According to our analysis, power within a community and the associated privileges exist
562 even in the direst contexts including the stateless Rohingya community and the
563 impoverished Bangladeshi host community. Within the women and girls in the Rohingya
564 and host communities, power and privilege exist primarily in two ways; one is direct power
565 which leads to privilege such as a woman being a CHW or an NGO volunteer. The other is
566 indirect power which also leads to privilege such as being the wife or daughter of a
567 community leader or from a well-connected socio-economically better off family.
568 Therefore, a Rohingya NGO volunteer was far more aware and well-networked about the
569 pandemic and had access to support from NGOs and other stakeholders than other
570 Rohingya women her age. She shared,

571 *"I wear masks and always ask others to wear them as well. I know this is how we can be safe*
572 *from COVID-19. I hope my work has helped others to gain some knowledge about this*
573 *disease."* (NGO Volunteer, Rohingya).

574 On the other hand, the middle-aged woman, the wife of a community leader also had
575 more access to information and resources regarding the virus as her husband was directly
576 involved with the NGOs that were providing information and other resources. She said,

577 *"My husband came and told our family about Corona when he heard from the NGO people. I*
578 *was the first one to tell other women in my block. I also told them to wash their hands and*
579 *not sit so close to one another when we sit and talk. I also told them to stop their children*
580 *from going out and playing."* (Adult Woman, Rohingya).

581 Similarly, an adolescent girl who belonged to a family that was economically better off, in
582 the host community, had greater access to information. She said that her family had not

583 suffered financially due to the lockdown and she had been able to continue her studies as
584 she had access to the internet. According to her,
585 *"I study online. I also heard about this (COVID-19) from Facebook first. It came from China,*
586 *right? I told my mom to wash everything when I heard about it coming to Bangladesh."*
587 *(Adolescent Girl, Host)*

588 However, this was not the case for all adolescent girls. Many adolescent girls had to
589 discontinue their studies due to the pandemic and the closure of educational institutions.
590 While many of them were married off and others suffered from the pressure of a looming
591 early marriage. As was in the case of another adolescent girl, who had to drop out of
592 school as the lockdown ensued. Her father was a day laborer who lost his income as soon
593 as the government imposed a lockdown and their family's situation was not such that she
594 could join online classes. The participant mentioned having to stay at home and do
595 household chores and take care of her younger siblings thereby losing her social
596 connections and networks from which she could get information because of her inability
597 to attend online classes. In her own words,

598 *"I don't know if I will be able to study again. I wanted to be a nurse. To help people.... now I*
599 *just hope I don't have to get married soon. My parents have already talked about it a bit.*
600 *They are looking for a boy...but I don't want to get married."* (Adolescent Girl, Host).

601 **Physical (dis)ability**

602 According to our analysis, in the Rohingya and host communities of Cox's Bazar, physical
603 ability or disability also dictates the access to information of the women and girls
604 regarding COVID-19. The women and girls with disabilities in these communities are not
605 only dependent on others for their mobility but also for their information regarding the

606 pandemic. In the Rohingya community, this is further prevalent as the terrain is hilly (and
607 vulnerable to landslides), and a PWD would have a difficult time navigating it by
608 themselves thus hindering their mobility. Coupled with the strict socio-cultural and gender
609 norms, women and girls with disabilities have even less access to information. An
610 adolescent Rohingya girl with a disability said,

611 *"I was unable to attend the meetings held by NGOs because of my sickness (disability) but I*
612 *heard from others that people with Corona symptoms should visit hospitals. But many people*
613 *don't."* (PWD, Rohingya).

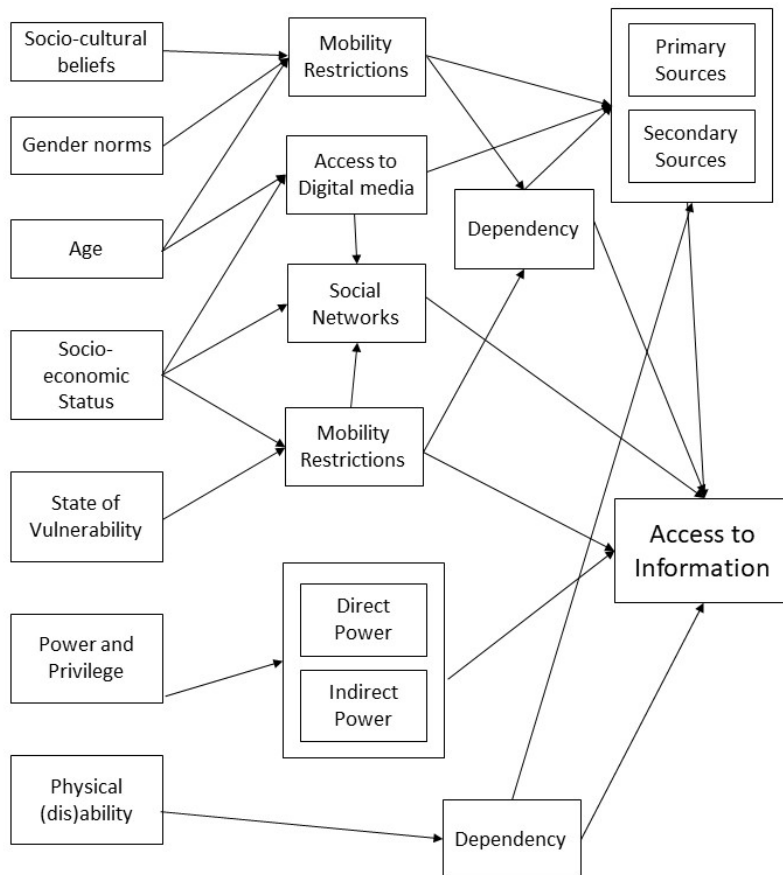
614 She further added that she did not know much about the virus because she could not
615 venture outside and the little, she knew was all from her father and brother.

616 In the host community, many PWD participants pointed out that they were dependent on
617 their caregivers for mobility and information. As COVID-19 lockdown was enforced in
618 March 2020, their caregivers could not go out and were disconnected from their peers,
619 friends, relatives, etc. As a result, the caregivers had little-to-no information about COVID-
620 19 and so did the PWD participants. As was in the case of one adult PWD woman in the
621 host community. She did not express much anxiety about COVID-19. She was dependent
622 on her caregiver for all the information relating to the pandemic and she said, *"I don't*
623 *really know much. But that's okay. Because she (caregiver) knows, and if something bad*
624 *happens she is supposed to tell me. How else can I know if she does not tell me?"* (PWD,
625 *Host*).

626 **Discussion**

627 The findings of this study elucidate that the many intersectional factors have played an
628 integral role in determining the access to COVID-19 information of women and girls in the

629 Rohingya and host communities of Cox's Bazar regarding the COVID-19 pandemic. **Figure**
630 **2** presents a visual framework that depicts the interplay of intersectional factors that
631 influenced the access to information of women and girls in the studied contexts.



632

633 *Figure 2: Visual Framework that depicts the intersectional interplay of factors that influenced*
634 *the access to information of women and girls during the COVID-19 pandemic*

635 First, gender played an important role in how the women and girls across age groups in
636 both communities gathered and accessed information because the rigid socio-cultural
637 norms stemming from deep-rooted orthodox religious beliefs perpetuated certain gender
638 norms in the communities leading to mobility restrictions and resulting in dependency on
639 secondary sources that can be misleading and confusing as it is often the partial
640 information.

641 Women and girls, in many other humanitarian contexts (37–39), have limited
642 access to the world outside their homes and thus have less access to information
643 regarding the COVID-19 pandemic and how to maintain safety measures [4]. The younger
644 age group in both communities had more access to primary sources of information and
645 wider social support networks, while the older age groups were more dependent on
646 secondary sources and their social networks were limited to their family members due to
647 their difficulties in movement stemming from age-related complications. This meant that
648 for these women and girls, information was often delayed or not relayed properly leading
649 to misinformation and gaps in information. Additionally, because women and girls had to
650 depend on their male counterparts for information this may have increased their
651 dependency on men which could lead to increased cases of IPV and other forms of gender-
652 based violence (GBV). Many situation analyses conducted during the COVID-19 by the
653 humanitarian service providers in other humanitarian contexts also highlight similar
654 findings (40–43) i.e., an increase in IPV and domestic violence cases among women and
655 girls during COVID-29 lockdown (26). This is consistent with the global data and highlights
656 the heightened risk these women and girls face and that COVID-19 has exacerbated these
657 vulnerabilities (3,5,7,15,28,44).

658 The socio-economic status of women and girls in these communities also affected their
659 access to information. Our evidence suggests that in the Rohingya community, a better
660 socio-economic status meant that the household had more earning members, mostly
661 men. This also means that women and girls were more dependent on them for
662 information regarding the pandemic. Conversely, socioeconomic status also indicated a
663 privilege, and such families had better access to COVID-19 information as more socially
664 active members like youth volunteers, community health workers, etc, visited them time

665 and again. We thus highlight that women and girls who work as community health
666 workers or volunteers have more access to information and are able to create awareness
667 amongst their social circles. As such, their power and privilege aid those who are near to
668 them. However, due to the rigid gender norms prevalent in society, this power and
669 privilege can have added risks for women and girls. The community people may believe
670 that they are changing gender norms through their work which may create issues for
671 them. Additionally, if these working women happen to be younger, that may add another
672 layer of risk as their families may want them to stop working and get married early [10].
673 Evidence suggests that child marriage is used as a coping mechanism for the poorest host
674 community households and is known to increase aftershocks such as natural disasters. For
675 instance, after the influx of Rohingya refugees, a survey reported that 23% of host
676 communities reported an increase in child marriage practices within three months,
677 indicating an increase in the use of this practice as a negative coping mechanism (30). It is
678 to be noted that the increased strain on resources due to the COVID-19 pandemic may
679 boost the use of negative coping mechanisms as is evident from increasing GBV, IPV, and
680 child marriage cases in both communities (13).

681 The state of vulnerability or pre-existing vulnerabilities of women and girls in both
682 communities directly impacted their access to information. In the Rohingya community,
683 women and girls faced greater vulnerabilities in the camps with increased rates of IPV and
684 GBV (10). The IOM's Needs and Population Monitoring (NPM) report estimates that 12
685 percent of households in the Rohingya community are likely to be female-headed and that
686 17.35 percent of the Rohingya mothers are single mothers (13). In both communities,
687 single female household heads were in a uniquely vulnerable position where they were
688 confined to their households due to rigid socio-cultural and religious norms. This directly

689 impacted their access to information as they remained confined in their homes and also
690 compounded the mental distress they faced amid a global pandemic. The extent of strain
691 COVID-19 has put the single female-headed household through, it is likely that children
692 from such households may engage in child labor through informal economic activities or
693 drug trafficking, both of which are highly prevalent in Ukhiya, Cox's Bazar (13). As of
694 January 2018, over 85 percent of children in host communities were predicted to be
695 engaged in paid and unpaid labor, one of the highest percentages relative to other groups
696 studied (Rohingya in camps, Rohingya in settlements and Rohingya in host communities)
697 (33).

698 PWDs were particularly affected due to lack of information as they often did not have the
699 ability to collect the information by themselves. Additionally, their dependency on
700 caregivers also limited their access to information and COVID-19 services altogether. This
701 is in line with one report on the Asia Pacific region where women with disabilities detailed
702 their lack of understanding regarding the pandemic due to a lack of access to information
703 about it (45). There is compelling evidence that PWDs and older persons face significant
704 barriers to accessing vital services such as latrines, water stations, health centers, and
705 assistance distribution due to mountainous and flood-prone terrain and a lack of adapted
706 facilities and inclusive initiatives (33). Social stigma is a major barrier preventing access to
707 essential services and participation in community activities and decision-making processes
708 (30). Specialized support is restricted for persons seeking mental health and psychiatric
709 treatment, and there are few certified experts available to meet the scope of these
710 demands in the camps (17).

711 **Conclusion**

712 This paper explored the interplay of factors that affect the access to COVID-19
713 information of women and girls in the Rohingya and host communities of Cox's Bazar
714 amid the COVID-19 pandemic through an intersectionality lens. The findings revealed that
715 both Rohingya and Bangladeshi women and girls face many barriers to accessing COVID-
716 19 information in these communities because of their gender, socio-cultural beliefs, age,
717 socio-economic status, state of vulnerability, power, and privileges, and the prevalent
718 patriarchal norms which suppress their rights.

719 In any humanitarian crisis where communities are already facing multifaceted risks, it is
720 imperative that services geared towards them are contextualized and keep in mind the
721 myriad barriers to access for the communities. While planning COVID-19 interventions,
722 intersectionality should be used as an approach to recognize critical aspects of the
723 populations which if ignored may produce pockets of vulnerable populations within the
724 society. This implies first identifying the axes of intersectionality and then considering
725 them while planning responses. Any precautionary measure to COVID-19 that is
726 disseminated in Cox's Bazar must be mindful of the intersectional identities of women and
727 girls and the barriers they face to access services and information because of their
728 intersectional identities.

729 References

- 730 1. Collins PH. *Black Feminist Thought*: Knowledge, Consciousness, and the Politics of
731 Empowerment. 2nd ed. New York: Routledge (2000). doi: 10.4324/9780203900055
- 732 2. Crenshaw K. Demarginalizing the intersection of race and sex: A black feminist critique of
733 antidiscrimination doctrine, feminist theory and antiracist politics. *u Chi Legal f*, (1989)139.
734 <https://philpapers.org/archive/CREDTI.pdf?ncid=txtInkusaolp00000603> [Accessed February
735 10, 2022]
- 736 3. Hankivsky O. Women's health, men's health, and gender and health: Implications of
737 intersectionality. *Social Science & Medicine* (2012) **74**:1712–1720. doi:
738 <https://doi.org/10.1016/j.socscimed.2011.11.029>

- 739 4. Bowleg L. We're Not All in This Together: On COVID-19, Intersectionality, and Structural
740 Inequality. *American Journal of Public Health* (2020) **110**:917. doi:
741 10.2105/AJPH.2020.305766
- 742 5. Birchall J. Gender, intersectionality and Covid-19. *COVID-19 Responses for Equity (CORE)*
743 (2021) <https://c19re.org/gender-intersectionality-and-covid-19/> [Accessed September 26,
744 2021]
- 745 6. Viruell-Fuentes EA, Miranda PY, Abdulrahim S. More than culture: structural racism,
746 intersectionality theory, and immigrant health. *Soc Sci Med* (2012) **75**:2099–2106. doi:
747 10.1016/j.socscimed.2011.12.037
- 748 7. Hankivsky O, Kapilashrami A. Beyond sex and gender analysis: an intersectional view of the
749 COVID-19 pandemic outbreak and response. *Global Policy Institute, Queen Mary University*
750 *of London* (2020) [https://www.qmul.ac.uk/media/global-policy-institute/Policy-brief-COVID-](https://www.qmul.ac.uk/media/global-policy-institute/Policy-brief-COVID-19-and-intersectionality.pdf)
751 [19-and-intersectionality.pdf](https://www.qmul.ac.uk/media/global-policy-institute/Policy-brief-COVID-19-and-intersectionality.pdf) [Accessed September 26, 2021]
- 752 8. Lapalme J, Haines-Saah R, Frohlich KL. More than a buzzword: how intersectionality can
753 advance social inequalities in health research. *Critical Public Health* (2020) **30**:494–500. doi:
754 10.1080/09581596.2019.1584271
- 755 9. Lokot M, Avakyan Y. Intersectionality as a lens to the COVID-19 pandemic: implications for
756 sexual and reproductive health in development and humanitarian contexts. *Sexual and*
757 *Reproductive Health Matters* (2020) **28**:1764748. doi: 10.1080/26410397.2020.1764748
- 758 10. International Rescue Committee. The Shadow Pandemic: Gender-Based Violence among
759 Rohingya refugees in Cox's Bazar. *Cox's Bazar* (2020). [https://www.rescue-](https://www.rescue-uk.org/sites/default/files/document/2247/theshadowpandemicbangladesh.pdf)
760 [uk.org/sites/default/files/document/2247/theshadowpandemicbangladesh.pdf](https://www.rescue-uk.org/sites/default/files/document/2247/theshadowpandemicbangladesh.pdf) [Accessed
761 September 26, 2021]
- 762 11. Kapilashrami A, Hankivsky O. Intersectionality and why it matters to global health. *Lancet*
763 (2018) **391**:2589–2591. doi: 10.1016/S0140-6736(18)31431-4
- 764 12. Sasser JS, Leebaw B, Ivey C, Brown B, Takeshita C, Nguyen A. Commentary: Intersectional
765 perspectives on COVID-19 exposure. *Journal of Exposure Science & Environmental*
766 *Epidemiology* (2021) **31**:401–403. doi: 10.1038/s41370-021-00336-2
- 767 13. Intersectoral Coordination Group (ISCG) Secretariat. Joint Response Plan for the Rohingya
768 Humanitarian Crisis. *Cox's Bazar* (2021).
769 https://reliefweb.int/sites/reliefweb.int/files/resources/2021_jrp_with_annexes.pdf
770 [Accessed September 26, 2021]
- 771 14. Fischer L, Zigman J, Chowdhury H, Bazle R, Islam M, Hughes J, George M, Price R, Shidhaye
772 R, James A, et al. An assessment of perceptions of justice in Rohingya refugees to identify
773 mental health and psychosocial services needs and inform programme development in
774 Bangladesh: a qualitative survey. *The Lancet Global Health* (2020) **8**:S23. doi:
775 [https://doi.org/10.1016/S2214-109X\(20\)30164-9](https://doi.org/10.1016/S2214-109X(20)30164-9)
- 776 15. UNHCR, CARE, ActionAid. An Intersectional Analysis of Gender amongst Rohingya Refugees
777 and Host Communities in Cox's Bazar, Bangladesh. *Cox's Bazar* (2020).
778 [https://www.humanitarianresponse.info/sites/www.humanitarianresponse.info/files/docu-](https://www.humanitarianresponse.info/sites/www.humanitarianresponse.info/files/documents/files/gender_and_intersectionality_analysis_report_2020-19th_october_2020.pdf)
779 [ments/files/gender_and_intersectionality_analysis_report_2020-19th_october_2020.pdf](https://www.humanitarianresponse.info/sites/www.humanitarianresponse.info/files/documents/files/gender_and_intersectionality_analysis_report_2020-19th_october_2020.pdf)
780 [Accessed September 26, 2021]

- 781 16. Shishir NN. Rohingya camps in Bangladesh vulnerable to Covid-19 outbreak. *Earth*
782 *Journalism Network* (2020) [https://earthjournalism.net/stories/rohingya-camps-in-](https://earthjournalism.net/stories/rohingya-camps-in-bangladesh-vulnerable-to-covid-19-outbreak)
783 [bangladesh-vulnerable-to-covid-19-outbreak](https://earthjournalism.net/stories/rohingya-camps-in-bangladesh-vulnerable-to-covid-19-outbreak) [Accessed June 3, 2020]
- 784 17. Islam MM, Yunus MDY. Rohingya refugees at high risk of COVID-19 in Bangladesh. *The*
785 *Lancet Global Health* (2020) **8**:e993–e994.
- 786 18. Truelove S, Abraham O, Altare C, Azman AS, Spiegel PB. COVID-19: Projecting the impact in
787 Rohingya refugee camps and beyond. Baltimore, Maryland (2020).
788 [http://hopkinshumanitarianhealth.org/assets/documents/COVID-](http://hopkinshumanitarianhealth.org/assets/documents/COVID-19__Rohinya_Refugees__Beyond_-_Summary_FINAL_March_25_2020.pdf)
789 [19__Rohinya_Refugees__Beyond_-_Summary_FINAL_March_25_2020.pdf](http://hopkinshumanitarianhealth.org/assets/documents/COVID-19__Rohinya_Refugees__Beyond_-_Summary_FINAL_March_25_2020.pdf) [Accessed
790 December 13, 2021]
- 791 19. Rahman MM, Baird S, Seager J. COVID-19's impact on Rohingya and Bangladeshi
792 adolescents in Cox's Bazar. *UNHCR Blogs* (2020) [https://www.unhcr.org/blogs/covid-19s-](https://www.unhcr.org/blogs/covid-19s-impact-on-rohingya-and-bangladeshi-adolescents-in-coxs-bazar/)
793 [impact-on-rohingya-and-bangladeshi-adolescents-in-coxs-bazar/](https://www.unhcr.org/blogs/covid-19s-impact-on-rohingya-and-bangladeshi-adolescents-in-coxs-bazar/) [Accessed July 1, 2021]
- 794 20. Islam MN, Inan TT, Islam AKMN. COVID-19 and the Rohingya Refugees in Bangladesh: The
795 Challenges and Recommendations. *Asia-Pacific Journal of Public Health* (2020) **32**:283–284.
796 doi: 10.1177/1010539520932707
- 797 21. International Development Research Centre. Bridging Communities in Cox's Bazar:
798 Mitigating Risks and Promoting Gender, Governance, and Localization of Humanitarian
799 Responses in the COVID-19 Era. *COVID-19 Responses for Equity (CORE)*
800 [https://c19re.org/project/bridging-communities-in-coxs-bazar-mitigating-risks-and-](https://c19re.org/project/bridging-communities-in-coxs-bazar-mitigating-risks-and-promoting-gender-governance-and-localization-of-humanitarian-responses-in-the-covid-19-era/)
801 [promoting-gender-governance-and-localization-of-humanitarian-responses-in-the-covid-19-](https://c19re.org/project/bridging-communities-in-coxs-bazar-mitigating-risks-and-promoting-gender-governance-and-localization-of-humanitarian-responses-in-the-covid-19-era/)
802 [era/](https://c19re.org/project/bridging-communities-in-coxs-bazar-mitigating-risks-and-promoting-gender-governance-and-localization-of-humanitarian-responses-in-the-covid-19-era/) [Accessed September 30, 2021]
- 803 22. ACAPS. Vulnerabilities in the Rohingya refugee camps. Cox's Bazar (2019).
804 [https://www.acaps.org/sites/acaps/files/products/files/20191220_acaps_analysis_hub_in_c](https://www.acaps.org/sites/acaps/files/products/files/20191220_acaps_analysis_hub_in_coxs_vulnerabilities_in_the_rohingya_refugee_camps_0.pdf)
805 [oxs_vulnerabilities_in_the_rohingya_refugee_camps_0.pdf](https://www.acaps.org/sites/acaps/files/products/files/20191220_acaps_analysis_hub_in_coxs_vulnerabilities_in_the_rohingya_refugee_camps_0.pdf) [Accessed March 13, 2022]
- 806 23. Jean K, Miks J. Preventing a silent crisis for Rohingya women and girls during COVID-19
807 pandemic. *UNICEF* (2020) [https://www.unicef.org/coronavirus/preventing-silent-crisis-](https://www.unicef.org/coronavirus/preventing-silent-crisis-rohingya-women-and-girls-during-covid-19-pandemic)
808 [rohingya-women-and-girls-during-covid-19-pandemic](https://www.unicef.org/coronavirus/preventing-silent-crisis-rohingya-women-and-girls-during-covid-19-pandemic) [Accessed February 14, 2022]
- 809 24. Toma I, Chowdhury M, Laiju M, Gora N, Padamada N, Novales C, Opolot S, Haider D, Debebe
810 S. Rohingya Refugee Response Gender Analysis: Recognizing and responding to gender
811 inequalities. Oxford (2017). 1–70 p.
812 [https://oxfamlibrary.openrepository.com/bitstream/handle/10546/620528/rr-rohingya-](https://oxfamlibrary.openrepository.com/bitstream/handle/10546/620528/rr-rohingya-refugee-response-gender-analysis-010818-en.pdf?sequence=1&isAllowed=y)
813 [refugee-response-gender-analysis-010818-en.pdf?sequence=1&isAllowed=y](https://oxfamlibrary.openrepository.com/bitstream/handle/10546/620528/rr-rohingya-refugee-response-gender-analysis-010818-en.pdf?sequence=1&isAllowed=y) [Accessed
814 March 7, 2022]
- 815 25. Guglielmi S, Seager J, Mitu K, Baird S, Jones N. Exploring the impacts of COVID-19 on
816 Rohingya adolescents in Cox's Bazar: A mixed-methods study. *Journal of Migration and*
817 *Health* (2020) **1–2**:100031. doi: <https://doi.org/10.1016/j.jmh.2020.100031>
- 818 26. Ansar A, Faisal A, Khaled M. From solidarity to resistance: host communities' evolving
819 response to the Rohingya refugees in Bangladesh. doi: 10.1186/s41018-021-00104-9
- 820 27. World Bank Group. Impacts of Covid-19 on Work and Wages in Cox's Bazar: Part 1-Host
821 Communities. Dhaka (2020).
822 <https://documents1.worldbank.org/curated/en/163691622731451722/pdf/Impacts-of->

- 823 COVID-19-on-Work-and-Wages-in-Coxs-Bazar-Part-1-Host-Communities.pdf [Accessed July
824 1, 2021]
- 825 28. ISCG Gender Hub, ACAPS, NPM Analysis Hub, Care Bangladesh, Oxfam International, UN
826 Women. In the Shadows of the Pandemic: The Gendered Impact of Covid-19 on Rohingya
827 and Host Communities. Cox's Bazar (2020).
828 [https://reliefweb.int/sites/reliefweb.int/files/resources/in_the_shadows_of_the_pandemic](https://reliefweb.int/sites/reliefweb.int/files/resources/in_the_shadows_of_the_pandemic_gendered_impact_of_covid19_on_rohingya_and_host_communities_october2020.pdf)
829 [_gendered_impact_of_covid19_on_rohingya_and_host_communities_october2020.pdf](https://reliefweb.int/sites/reliefweb.int/files/resources/in_the_shadows_of_the_pandemic_gendered_impact_of_covid19_on_rohingya_and_host_communities_october2020.pdf)
830 [Accessed September 26, 2021]
- 831 29. Rahman S, Ahmed O, Hasan R, Yeahyea H binth, Azam SW, Hossain Zihan. Covid-19's Impact
832 on Host communities across Cox's Bazar. Cox's Bazar (2020). [https://www.inspira-](https://www.inspira-bd.com/covid-19-retrospect-covid-19s-impact-on-host-communities-across-coxs-bazar/)
833 [bd.com/covid-19-retrospect-covid-19s-impact-on-host-communities-across-coxs-bazar/](https://www.inspira-bd.com/covid-19-retrospect-covid-19s-impact-on-host-communities-across-coxs-bazar/)
834 [Accessed July 1, 2021]
- 835 30. ACAPS-NPM Analysis Hub. Rohingya crisis: Host Communities Review. Cox's Bazar (2018). 1–
836 18 p. <https://www.acaps.org/special-report/rohingya-crisis-host-communities-review>
837 [Accessed March 7, 2022]
- 838 31. World Food Programme, Bangladesh Food Security Sector. Rohingya Emergency
839 Vulnerability Assessment (REVA) - Summary Report. Cox's Bazar (2017).
840 <https://reliefweb.int/sites/reliefweb.int/files/resources/WFP-0000050429.pdf> [Accessed
841 March 7, 2022]
- 842 32. World Food Programme. Host Community Brief. Cox's Bazar (2020).
843 [https://docs.wfp.org/api/documents/WFP-](https://docs.wfp.org/api/documents/WFP-0000121054/download/?_ga=2.250719366.1841149486.1625074697-187706802.1625074697)
844 [0000121054/download/?_ga=2.250719366.1841149486.1625074697-](https://docs.wfp.org/api/documents/WFP-0000121054/download/?_ga=2.250719366.1841149486.1625074697-187706802.1625074697)
845 [187706802.1625074697](https://docs.wfp.org/api/documents/WFP-0000121054/download/?_ga=2.250719366.1841149486.1625074697-187706802.1625074697) [Accessed July 1, 2021]
- 846 33. ACAPS-NPM Analysis Hub. Considering age and disability in the Rohingya response. Cox's
847 Bazar (2021). 1–7 p.
848 [https://www.acaps.org/sites/acaps/files/products/files/20210208_acaps_cxb_analysis_hub](https://www.acaps.org/sites/acaps/files/products/files/20210208_acaps_cxb_analysis_hub_secondary_data_review_on_disability_0.pdf)
849 [_secondary_data_review_on_disability_0.pdf](https://www.acaps.org/sites/acaps/files/products/files/20210208_acaps_cxb_analysis_hub_secondary_data_review_on_disability_0.pdf) [Accessed March 7, 2022]
- 850 34. Mistry SK, Ali ARMM, Yadav UN, Ghimire S, Hossain MB, Saha M, Reza S, Bakshi P, Bhuiyan
851 ATMRH, Harris M. Misconceptions about COVID-19 among older Rohingya (forcefully
852 displaced Myanmar nationals) adults in Bangladesh: findings from a cross-sectional study.
853 *BMJ Open* (2021) **11**: doi: 10.1136/bmjopen-2021-050427
- 854 35. Mistry SK, Ali ARMM, Yadav UN, Huda MN, Ghimire S, Bestman A, Hossain MB, Reza S,
855 Qasim R, Harris MF. Difficulties faced by older Rohingya (forcibly displaced Myanmar
856 nationals) adults in accessing medical services amid the COVID-19 pandemic in Bangladesh.
857 *BMJ Global Health* (2021) **6**:e007051. doi: 10.1136/BMJGH-2021-007051
- 858 36. Kepayet M. COVID-19: 1.1 million refugees are extremely vulnerable in Bangladesh. *Modern*
859 *Diplomacy* (2020) [https://moderndiplomacy.eu/2020/05/20/covid-19-1-1-million-refugees-](https://moderndiplomacy.eu/2020/05/20/covid-19-1-1-million-refugees-are-extremely-vulnerable-in-bangladesh/)
860 [are-extremely-vulnerable-in-bangladesh/](https://moderndiplomacy.eu/2020/05/20/covid-19-1-1-million-refugees-are-extremely-vulnerable-in-bangladesh/) [Accessed June 3, 2020]
- 861 37. Parray AA, Kaufman S, Karki J, Chhetri D, Dutta M, Wani A, Mohmand S, Ullah MdI, Tamjid A,
862 Bushra MS, et al. "A Saga of Vulnerability" - The Impact of COVID-19 on Yemini Women.
863 *Journal of Gynecology and Women's Health* (2021) **22**:01–04. doi:
864 10.19080/JGWH.2021.22.556077

- 865 38. Ogbé E, Parray AA, Asi Y. “The gendered impacts of COVID-19 in the Mediterranean region:
866 A focus on gender-based violence.” In: S&D Group, editor. *Gender gap in the*
867 *Mediterranean during the Covid-19 pandemic*. Socialists and Democrats in the European
868 Parliament (2021). p. 19–27 [https://case-research.eu/en/e-book-gender-gap-in-the-](https://case-research.eu/en/e-book-gender-gap-in-the-mediterranean-during-the-covid-19-pandemic-101702)
869 [mediterranean-during-the-covid-19-pandemic-101702](https://case-research.eu/en/e-book-gender-gap-in-the-mediterranean-during-the-covid-19-pandemic-101702) [Accessed March 12, 2021]
- 870 39. Chauhan BG, Jungari S. Prevalence and predictors of spousal violence against women in
871 Afghanistan: evidence from Demographic and Health Survey data. *Journal of Biosocial*
872 *Science* (2021)1–18. doi: 10.1017/S0021932020000759
- 873 40. World Health Organization. Rohingya Crisis Situation Report #19. Cox’s Bazar (2021).
- 874 41. ISCG. Situation Report Rohingya Refugee Crisis. Cox’s Bazar (2021).
875 [https://cdn.who.int/media/docs/default-source/searo/bangladesh/bangladesh---rohingya-](https://cdn.who.int/media/docs/default-source/searo/bangladesh/bangladesh---rohingya-crisis---pdf-reports/sitreps/2021/who-cxb-situation-report-2.pdf?sfvrsn=e984927c_7)
876 [crisis---pdf-reports/sitreps/2021/who-cxb-situation-report-2.pdf?sfvrsn=e984927c_7](https://cdn.who.int/media/docs/default-source/searo/bangladesh/bangladesh---rohingya-crisis---pdf-reports/sitreps/2021/who-cxb-situation-report-2.pdf?sfvrsn=e984927c_7)
877 [Accessed December 13, 2021]
- 878 42. IMMAP. COVID-19 SITUATION ANALYSIS. Dhaka (2020).
879 [https://reliefweb.int/sites/reliefweb.int/files/resources/iMMAP_COVID-](https://reliefweb.int/sites/reliefweb.int/files/resources/iMMAP_COVID-19_Bangladesh_Analysis%20Report_022021.pdf)
880 [19_Bangladesh_Analysis%20Report_022021.pdf](https://reliefweb.int/sites/reliefweb.int/files/resources/iMMAP_COVID-19_Bangladesh_Analysis%20Report_022021.pdf) [Accessed July 1, 2021]
- 881 43. WHO. COVID-19 Situation Report #16. Dhaka (2020). [https://www.who.int/docs/default-](https://www.who.int/docs/default-source/searo/bangladesh/covid-19-who-bangladesh-situation-reports/who-covid-19-update-16-20200615.pdf)
882 [source/searo/bangladesh/covid-19-who-bangladesh-situation-reports/who-covid-19-](https://www.who.int/docs/default-source/searo/bangladesh/covid-19-who-bangladesh-situation-reports/who-covid-19-update-16-20200615.pdf)
883 [update-16-20200615.pdf](https://www.who.int/docs/default-source/searo/bangladesh/covid-19-who-bangladesh-situation-reports/who-covid-19-update-16-20200615.pdf) [Accessed July 29, 2021]
- 884 44. Jean K, Miks J. Preventing a silent crisis for Rohingya women and girls during COVID-19
885 pandemic. *UNICEF* (2020) [https://www.unicef.org/coronavirus/preventing-silent-crisis-](https://www.unicef.org/coronavirus/preventing-silent-crisis-rohingya-women-and-girls-during-covid-19-pandemic)
886 [rohingya-women-and-girls-during-covid-19-pandemic](https://www.unicef.org/coronavirus/preventing-silent-crisis-rohingya-women-and-girls-during-covid-19-pandemic) [Accessed September 26, 2021]
- 887 45. Un Women. “The Virus has changes us all”: Experiences of women with disabilities during
888 the COVID-19 pandemic. New York (2021).
889 [https://reliefweb.int/sites/reliefweb.int/files/resources/Brief-Experiences-of-women-with-](https://reliefweb.int/sites/reliefweb.int/files/resources/Brief-Experiences-of-women-with-disabilities-in-the-Asia-Pacific-region-during-COVID-19-en_0.pdf)
890 [disabilities-in-the-Asia-Pacific-region-during-COVID-19-en_0.pdf](https://reliefweb.int/sites/reliefweb.int/files/resources/Brief-Experiences-of-women-with-disabilities-in-the-Asia-Pacific-region-during-COVID-19-en_0.pdf) [Accessed February 10,
891 2022]

892

893 **Funding Information**

894 This study utilizes a sub-set of one larger participatory action research project funded by
895 the International Development Research Centre, Canada.

896 **Acknowledgments**

897 The authors are also thankful to the larger research team members; Professor M. Shafiq
898 Rahman, Kazi Sameen Nasar, Saifa Raz, Abdul Jabbar Topu, ASM Nadim, Zuhrat Mahfuza
899 Inam, and Dr. Ashrafuzzaman Khan, for their support during the data collection.

900 **Authors Contributions-**

- 901 Conceptualization: AAP, RS, SFR, BA
- 902 Intro: AAP and RS
- 903 Methods: AAP and BA
- 904 Data Collection: AAP, RS, MRH, ZMI, AJT, and ASMN
- 905 Results: AAP, RS, and MRH
- 906 Discussion: AAP and MRH
- 907 Conclusion: AAP and RS
- 908 Referencing: AAP
- 909 Overall Coordination: AAP
- 910 Overall review and approval: All authors
- 911