

The Cerebellum Plays More Than One Role in the Dysregulation of Appetite: Review of Structural Evidence from Typical and Eating Disorder Populations

Authors: Michelle Sader^{1*}, Gordon D. Waiter¹, Justin H. G. Williams^{1,2,3}

¹Biomedical Imaging Centre, University of Aberdeen, United Kingdom

²School of Medicine, Griffith University, Queensland, Australia

³Gold Coast Mental Health and Specialist Services, Gold Coast, Queensland, Australia

***Correspondence:** Michelle Sader – m.sader.19@abdn.ac.uk; (+44) 01224 438365

Abstract

Objective: Dysregulated appetite control is characteristic of anorexia nervosa (AN), bulimia nervosa (BN) and obesity (OB). Studies using a broad range of methods suggest the cerebellum plays an important role in aspects of weight and appetite control, and is implicated in both AN and OB by reports of aberrant grey matter volume (GMV) compared to non-clinical populations. As functions of the cerebellum are anatomically segregated, specific localization of aberrant anatomy may indicate the mechanisms of its relationship with weight and appetite in different states. We sought to determine if there were consistencies in regions of cerebellar GMV changes in AN/BN and OB, as well as across normative variation. **Method:** Systematic review and meta-analysis using GingerALE. **Results:** Twenty-six publications were identified as either case-control studies (nOB=277; nAN/BN=510) or regressed weight from normative (NOR) data against brain volume (total n=3,830). AN/BN and OB analyses both showed consistently decreased GMV within Crus I and Lobule VI, but volume reduction was bilateral for AN/BN and unilateral for OB. Analysis of the normative dataset identified a cluster in right posterior lobe which overlapped with AN/BN cerebellar reduction. Sensitivity analyses indicated robust repeatability for NOR and AN/BN cohorts, but found OB-specific heterogeneity. **Discussion:** Findings suggest that more than one area of the cerebellum is involved in control of eating behaviour and is differentially affected in normal variation and pathological conditions. Specifically, we hypothesise an association with sensorimotor and emotional learning via Lobule VI in AN/BN, and executive function via Crus I in OB.

Keywords: *Meta-analysis, Review, Eating Disorders, Appetite, BMI, Cerebellum, Obesity, Anorexia*

Nervosa, Bulimia Nervosa, Obesity. **NOTE: This preprint reports new research that has not been certified by peer review and should not be used to guide clinical practice.**

1.0 – Introduction

1.1 – Importance of Studying Appetite Control Mechanisms

Appetite control has a complex and multifaceted nature, and problems with eating behaviour arise from a variety of genetic, cognitive, emotional and physiological factors. Irregular appetite patterns result in abnormal body weight for height (indexed by the Body Mass Index – BMI) as well as metabolic and mental health¹⁻³.

Obesity (OB), characterised by a BMI of >30 , is a major public health concern pertaining to appetite dysregulation that is on the increase and constitutes as a major risk factor for conditions such as hypertension, diabetes, cardiovascular diseases and cancer⁴⁻⁶. In the past 35 years, worldwide OB prevalence rates have nearly doubled. Currently, 15% and 11% of women and men respectively were classified with OB, and approximately 42 million children <5 years were classified as having excess weight (EW)⁷. It is a priority for research to identify mechanisms that control appetite which may serve as a treatment targets.

At the opposite end of the BMI scale are individuals with anorexia nervosa (AN) who refrain from eating and harbour pathological fears of weight gain and food consumption⁸. AN is a complex multidimensional eating disorder characterised by pathologically decreased weight-for-age/height, with lifetime prevalence as high as 4%⁹. Recently, publications found an increase in reported AN cases over time, although increased incidence may correlate with increased specificity of reporting protocols^{10,11}. While AN is relatively uncommon compared to other psychiatric disorders, mortality rates are greater, reporting between 2-6%^{12,13}. While risk of AN development is far lower than risk OB development, AN serves as a vital example of consequences related to appetite dysregulation.

Whilst AN and OB may not technically be eating disorders at opposite ends of a singular spectrum, there are prominent neuroanatomical¹⁴⁻²⁶, metabolic and genetic²⁷⁻³¹ factors linking both disorders. An intriguing possibility is whether common neurobiological or neuroanatomical mechanisms could be implicated in both OB and AN. Both conditions present

dysregulation of BMI/appetite, with individuals prone to engaging in behaviours that exacerbate pathological weight increase/decrease. As OB and AN are so disparately associated with body weight, such mechanisms likely function in condition-dependent manners, or that similar, rather than identical mechanisms underlie both conditions.

1.2 – A Cerebellar Role in Weight & Appetite Regulation

Cerebellar roles (displayed in *Figure S1*³²) in body-weight or appetite control³³⁻³⁵ receive surprisingly little attention in appetite-related research. Traditionally, this brain region was thought to solely serve motor coordination and somatic functions, but further investigation reveals that the cerebellum plays varieties of diverse roles. Researchers have reported the cerebellum demonstrates organisational similarity to that of the cerebral cortex³⁶ with anatomically segregated functions. Cerebellar contributions to intrinsic connectivity networks have shown that particular regions of the cerebellum are distinctly involved in different cognitive functions³⁷⁻³⁹ and is implicated in five intrinsic connectivity networks, including the executive control network ([ECN] via Lobule VIIB; Crus I/II), default-mode network (via Lobule IX), salience network (via Lobule VI), and sensorimotor network (via Lobule VI)³⁷. Contrasting traditional conceptualization, motor tasks are largely consigned to Lobule VIIIa/b and represent limited cerebellar functionality³⁹.

Current views of the cerebellum implicate it in homeostatic regulation^{40,41}, executive/cognitive functionality^{37,39,42-47} (including habit formation⁴⁵, conditioning behaviours^{37,45,48-51}, procedural knowledge storage^{37,48,49,52}, working memory function^{39,51} and cravings⁵³), and emotional regulation^{37,39,46,49,50,54-58}. Importantly, evidence suggests the cerebellum may participate in aspects of food intake and appetite control through multiple mechanisms, including physiological (i.e., feeding circuit connectivity, response/influence on gut hormones/neurotransmitters), cognitive (i.e., food palatability, feeding-related memories) and emotional (i.e., food-related cravings) means^{59,60}.

On a physiological scale, the cerebellum interacts via extensive signalling networks with the hypothalamus and insula, which both contain networks specific to food intake^{42,60} via neural and hormonal mechanisms^{14,42,61}. Enteric nervous system gut hormones, such as leptin and ghrelin, interactively modulate regions of the brain associated with food intake control including the cerebellum, hypothalamus and brainstem^{62,63}. In response to ghrelin, cerebellar activation decreases and likely works to stimulate appetite via ghrelin-induced suppression of satiety hormones, such as cholecystokinin, within vagal afferent neurons⁶⁴⁻⁶⁶. Recently, Choe et al. (2021)⁶⁷ investigated synchrony between gastric rhythm and brain activity, identifying the strongest synchrony within the cerebellum⁶⁷, suggesting a more direct relationship between gastric mechanisms and cerebellar functionality.

The cerebellum is also implicated in genetic aspects associated with bodyweight disorders. Beyond neuroanatomical/biological aspects of appetite dysregulation, disorders on the extremes of the standard BMI-measure (i.e., AN/OB) exhibit shared genetic and metabolic correlations²⁷⁻³⁰ to the extent with which they have been termed metabolic “mirror images” of one another³¹. Cerebellar tissues and pathways have recently been implicated in aspects of genetic risk for both conditions^{27,68}. Evidence from AN- and cerebellum-related studies suggest that deficits in cerebellar mRNA expression occur in foetal and early-life AN pathogenesis⁶⁸, and altered cerebellar volume may explain body image disturbances in AN^{27,69-71}. In OB, a multitude of genes have been associated with increased risk, predominantly the fat mass (FTO) and melanocortin-4 receptor genes. FTO is expressed in regions such as the hypothalamus, hippocampus and cerebellum⁷²⁻⁷⁵, and research suggests it is highly associated with OB outcome^{28,29}.

The cerebellum is also repeatedly reported to participate in neurobiological modulation of dopaminergic and serotonergic signalling^{76,77}, which becomes dysregulated in conditions of abnormal weight/BMI⁷⁸⁻⁸³. Dopaminergic-related mechanisms driving both OB and AN have also been associated with addiction-resembling behaviour related to eating behaviour⁸⁴⁻⁸⁶. Recently, Low *et al.* (2021)⁸⁷ used a reverse-translational approach to identify a cerebellar-

based satiation network. In humans, food cues activate cerebellar output neurons to promote satiation through reductions in phasic dopaminergic responses to food. As such, the cerebellum is likely implicated in altered neurobiological mechanisms associated with dysregulated appetite or weight, such as those with AN/OB.

1.3 – Cerebellar Volume and Dysregulation of Appetite

Structural associations between the cerebellum and conditions of dysregulated BMI and appetite have been consistently documented. This includes evidence from loss-of-function studies⁸⁸, as well as animal studies where lesions or removal of cerebellar hemispheres leads to reduced appetite, pathological weight loss and increased mortality rate⁸⁹. In humans, Oya *et al.* (2014)⁹⁰ reports a high proportion of cerebellar tumour detection with associated AN. Similarly, cerebellar degeneration associated with ataxia correlates with increased likelihood of being underweight or experiencing abnormal appetite⁹³⁻⁹⁶⁹¹⁻⁹⁴. Due to appetite disturbances emerging post-cerebellar structural abnormalities, these studies indicate that cerebellar deficits could play a causative role in the loss of appetite.

Cerebellar volume has also been directly associated with conditions of under- and over-eating. Excess weight (BMI>25.5) or OB (BMI>30.0) has been associated with both increased¹⁶ and decreased concentrations of grey matter volume (GMV) in the left¹⁶, bilateral¹⁵ and bilateral posterior¹⁹ cerebellum. Prefronto-cerebellar circuits, implicated in cognition, emotion, executive function and error detection, exhibit volume reduction in those with OB^{14,16}. Recovery from OB is also associated with positive changes in cerebellar volume, and is thought to be important in treatment as well as conditioning of eating behaviour²⁰. Evidence suggests affected cerebellar regions in excess weight play roles in the storage of procedurally learned knowledge¹⁶, which may influence food consumption and emotional eating behaviours via the alteration or dysfunction of food-related learning strategies and tasks, particularly concerning knowledge on healthy dietary practices. Alternatively, the cerebellum may play a role in appetite during states of OB/excess weight via functional alterations in hypothalamic

networks^{17,18}. Differences in cerebellar volume have been noted in both rat and human models of AN^{84,95,96}. Within humans, cerebellar atrophy and cellular loss is associated with AN disease duration, poor treatment success²⁶, persists post weight-recovery, and is suggested to play a role in maintaining a low body weight^{21,22}.

1.4 – A Cerebellar Role in Volitional Appetite Control?

Extant literature also suggests that the cerebellum may participate in more conscious domains of appetite, such as emotional and cognitive aspects driving appetitive behaviours. The cerebellum may play a substantive role in cognitive aspects of appetite control via an individuals' subjective feeling of craving or outcome expectation built off previous experience and memory. This region has been a focal point of research into the experience of craving, with studies using drug- and food-related stimuli to assess cerebellar effects⁵³. In those with OB as well as binge-eaters, greater connectivity between the cerebellum and anterior cingulate cortex was observed during food-related cues^{53,97,98}. Studies using cocaine-/tobacco-related cues demonstrate similarly increased activation and effects overlapped with those seen in food-related cue studies^{99,100}. A meta-analysis¹⁰¹ examining brain activation across food/drug/sex/gambling cues identified cerebellar activation to all cue types, including food-related cues.

The cerebellum is also associated with traits of impulsivity and loss-of-control (LOC) eating. Recent investigations unveiled cerebellar roles in the portion size effect (PSE)¹⁰²⁻¹⁰⁴, the phenomenon where more is eaten when large quantities of food are available. English *et al.* (2019)¹⁰⁵ measured traits of impulsivity including LOC eating in association with regional brain activation, reporting increased activation of the left cerebellum when adolescent LOC participants viewed pictures of food items with high vs. low energy density. This mechanism has been proposed to play a role in the PSE, appetite dysregulation and the development of obesity¹⁰⁵. Interestingly, findings regarding a reduction of cerebellar volume in those with OB contrast reports of increased activity during food-/drug-related tasks and in LOC eating, which

may suggest multiple cerebellar structures differentially contribute to OB or excess consumption. In those with AN relative to controls, cerebellar and prefrontal hyperactivation was reported during response inhibition in a physical activity paradigm and suggested to contribute to altered executive function and inhibitory control¹⁰⁶.

Altogether, the cerebellum may function as a pivotal point of behavioural tuning in relation to the cognitive aspects of appetite regulation. Schmahmann *et al.* (2019)¹⁰⁷ described associations between the posterior lobe and cognition and proposed “The Dysmetria of Thought” theory. This theory suggests that the cerebellum modulates cognition in a similar way to which it smooths and fine-tunes coordination of motor behaviour by receiving multimodal inputs and establishing procedurally optimized behavioural modulation, similar to that observed in motor control and likely to occur in connection with the prefrontal cortex. The cerebellum may perform similarly in regards to the input and integration of appetite-related stimuli, such as individualised food-related memories and expectations. Concerning restrictive eating and low BMI reported in AN, it is possible that cerebellar regions attending to salience of food stimuli, such as Lobule VI, may be associated with changes in bodyweight/appetite via formations of negative associations with food. Alternatively, cognitive/executive abnormalities reported in those with OB may suggest associations with cerebellar regions prominent to the ECN, such as Crus I, where reward value or experiential engagement with food stimuli may be altered. As both conditions, regardless of disparate body-weight states, also report with altered emotional/cognitive traits, it is also possible that both salience- and executive-associated cerebellar circuits are implicated in AN and OB but in condition-dependent manners.

1.5 – Aims of Study

Evidence provided by wide-ranging cerebellar research demonstrates that the cerebellum is important in modulating aspects of appetite control and implicated in both OB and AN. However, whether identical or differing areas of the cerebellum are associated with AN and OB are unclear. This systematic review aimed to examine cerebellar anatomy reported

in case-control AN and OB literature, as well as across the weight range via normative/non-clinical populations to investigate whether cerebellar structure differs across body-weight states and disorders. We generated two alternative hypotheses: We first hypothesised that a singular area of the cerebellum, such as Crus I (implicated in executive control circuits²⁰), would be associated with abnormal BMI conditions, and that respective regions affected in OB and AN would be similar. Our alternative, competing hypothesis, was that separate cerebellar regions would be altered across conditions and shown in distinct regions. For instance, Crus I volume could be primarily affected in OB, while Lobule VI volume (implicated in salience/sensorimotor circuits) could be primarily affected in AN.

2.0 – Methodology

2.1 – Selection of Literature

Literature was searched on June 29, 2022 using SCOPUS, PubMed Central (PMC), and Web of Science (WoS) using identical search criteria. SCOPUS identified 2,638 publications involving cerebellar volume during OB [search criteria: [(*cerebell** AND *obesity* AND *MRI*)] and 572 publications regarding AN [(*cerebell** AND *anorexia* AND *MRI*)]. PMC identified 4,950 publications relating to OB, as well as 461 papers regarding AN. Lastly, 2,588 and 233 papers were identified through WoS regarding cerebellar characteristics in those with OB and AN respectively. Inclusion criteria involved presence of key phrases utilised in search, including “grey literature”, or findings produced outside of traditional publishing. Exclusion criteria were as follows: 1.) Publications older than 10 years, as CB imaging methods have significantly improved since 2010¹⁰⁸⁻¹¹⁰; 2.) Animal studies; 3.) Publications not reporting case-control studies 4.) Inclusion of clinical groups/correlations unrelated to the study scope; 5.) Publications not utilising voxel-based morphometry (i.e., DTI/fMRI studies); 6.) Publications with results not reported in Talairach/MNI coordinates. Individual studies fitting criteria were additionally collected from meta-analyses (n=3).

Two publications, (Huang et al., 2019¹¹¹; Frank et al., 2013¹¹²) could not be further assessed as results comprised of increased cerebellar volume/positive correlations, and insufficient data was available across cohorts to generate positive CB findings. Three AN publications (Joos et al., 2010¹¹³; Amianto et al., 2013¹¹⁴; D’Agata et al., 2015¹¹⁵) included individuals with bulimia nervosa (BN) that contributed to AN findings. As both conditions report with significant diagnostic crossover¹¹⁶, these papers were included to form the AN/BN cohort. Due to the limited literature, we were unable to correct for age and gender across datasets.

In summary, 6 OB¹¹⁷⁻¹²² and 11 AN/BN^{113-115,123-128} papers included coordinates and were selected for final analysis (Participant numbers: nCase-Control=787; nOB=134 vs.

nHC=143; nAN=228 & nBN=48 vs. nHC=234) (*Table 1.; Figure 1.*). As an exploratory assessment of condition-specific effects, an AN-only cohort was comprised by excluding three previously included AN papers¹¹³⁻¹¹⁵ evaluating those with BN in conjunction with AN (8 papers; nAN=178 vs. nHC=185).

While conducting the OB literature search, publications were identified evaluating correlations between BMI and GMV in non-clinical, normative (NOR) populations that fell in line with remaining inclusion criteria (n=9 papers; 10 studies). As authors within the NOR subgroup predominantly conducted recruitment using community-based methods and data repositories, participant aggregation generated larger sample sizes than the OB and AN/BN literature. Papers were included in a separate NOR dataset for analysis (participant number=3,830)¹²⁹⁻¹³⁶ for a total participant sample size of n=4,617.

Table 1. Sociodemographic and statistical data for included studies across AN/BN (n=11), OB (n=6) and NOR (n=10) cohorts

First Author	No. Subjects				Age, y (Mean±SD)				BMI (Mean±SD)			DOI, M. (Mean±SD)		Correction Type		
	AN/BN ^a	nAN	nHC	nBN	M:F Ratio	AN	HC	BN	A* ¹	AN	HC	BN	AN	BN	FWE* ²	Thresh.
<i>Lenhart, 2022</i>		22	18	0	0:40	15.2±1.2	16.8±0.9	N/A	0	15.4±1.4	21.2±1.0	N/A	9.4±6.8	N/A	1	p<0.05
<i>Mishima, 2021</i>		35	35	0	0:70	36.3±10.0	36.0±9.6	N/A	1	14.2±2.5	21.0±2.9	N/A	188.4±108.0	N/A	1	p<0.05
<i>Phillipou, 2018</i>		26	27	0	0:53	22.8±6.7	22.5±3.2	N/A	1	16.6±1.2	22.6±3.5	N/A	77.0±89.2	N/A	1	1.68
<i>D'Agata, 2015^a</i>		21	17	18	0:56	21.0±5.0	22.0±5.0	23.0±4.0	1	16.1±0.9	21.5±2.3	22.0±2.3	>24.0	>24.0	1	1.71
<i>Fonville, 2014</i>		33	33	0	N/A	23.0±10.0	25.0±4.0	N/A	1	15.8±1.4	21.8±1.8	N/A	84.0±120.0	N/A	1	1.67
<i>Amianto, 2013^a</i>		17	14	13	0:44	20.0±4.0	24.0±3.0	22.0±3.0	1	16.0±1.0	21.0±2.0	22.0±2.0	13.0±8.0	10.0±5.0	1	1.7
<i>Bomba, 2013</i>		11	8	0	0:19	13.6±2.8	13.4±2.4	N/A	0	12.8±0.8	19.9±1.5	N/A	14.5±10.9	N/A	1	1.78
<i>Brooks, 2011</i>		14	21	0	0:35	26.0±1.9	26.0±2.1	N/A	1	15.6±0.4	21.4±0.5	N/A	110.4±22.8	N/A	1	1.69
<i>Boghi, 2011</i>		21	27	0	0:48	29.0±10.0	30.8±8.7	N/A	1	15.5±1.8	21.9±1.5	N/A	11.3±12.1	N/A	1	1.7
<i>Gaudio, 2011</i>		16	16	0	0:32	15.2±1.7	15.1±1.5	N/A	0	14.2±1.4	20.2±1.6	N/A	5.3±3.2	N/A	0	p<0.001
<i>Joos, 2010^a</i>		12	18	17	0:47	25.0±4.8	26.9±5.8	24.5±4.8	1	16.0±1.2	21.1±2.0	21.1±2.5	56.4±43.2	90.0±68.4	0	3.1
OB	nOB	nHC	-	M:F Ratio	OB	HC	-	A*¹	OB	HC	-	-	-	-	FWE*²	Thresh.
<i>Shan, 2019</i>		37	39	-	41:35	27.8±6.9	26.7±6.8	-	1	40.0±6.5	21.8±1.8	-	-	-	1	1.67
<i>Wang, 2017</i>		31	49	-	13:7	39.6±1.9	29.6±1.4	-	1	34.4±0.7	21.9±0.3	-	-	-	0	2.64
<i>Ou, 2015</i>		12	12	-	1:1	9.1±0.9	9.8±0.7	-	0	24.4±3.4	5.8±1.0	-	-	-	1	1.73
<i>Jauch-Chara, 2015</i>		15	15	-	30:0	24.7±0.7	24.6±0.7	-	1	36.3±1.0	23.2±0.4	-	-	-	1	1.7
<i>Dommes, 2013</i>		12	12	-	0:24	29.3±7.3	27.5±4.3	-	1	36.3±4.8	20.9±1.7	-	-	-	1 (FDR)	p<0.05
<i>Mueller, 2012</i>		27	16	-	22:21	26.4±5.4	24.8±3.0	-	1	33.0±6.4	22.5±2.0	-	-	-	1	1.68
NOR	nOB	nHC	-	M:F Ratio	OB	HC	-	A*¹	OB	HC	-	-	-	-	FWE*²	Thresh.
<i>Weise, 2019a</i>		0	136	-	11:23	N/A	29.6±3.2	-	1	N/A	27.5±4.9	-	-	-	1	1.66
<i>Weise, 2019b</i>		0	306	-	20:31	N/A	29.4±3.4	-	1	N/A	26.3±4.7	-	-	-	1	1.65
<i>Huang, 2019</i>		0	653	-	204:449	N/A	19.5±1.5	-	1	N/A	20.8±2.7	-	-	-	1	p<0.05
<i>Yao, 2016</i>		0	109	-	62:47	N/A	35.2±11.2	-	1	N/A	27.6±6.1	-	-	-	0	p=0.001
<i>Figley, 2016</i>		0	32	-	1:1	N/A	23.5±4.2	-	1	N/A	N/A	-	-	-	1	p<0.05
<i>Masouleh, 2016</i>		0	617	-	359:258	N/A	68.7±4.6	-	1	N/A	27.5±4	-	-	-	1	3.1
<i>Janowitz, 2015</i>		0	2344	-	1087:1,257	N/A	46.3±11.3	-	1	N/A	27.2±4.4	-	-	-	1	1.65
<i>Kurth, 2013</i>		0	115	-	54:61	N/A	45.2±15.5	-	1	N/A	25.0±4.1	-	-	-	1	1.66
<i>Weise, 2013</i>		0	76	-	13:6	N/A	32.1±8.8	-	1	N/A	29.8±8.9	-	-	-	1	p<0.05
<i>Walther, 2010</i>		0	95	-	0:95	N/A	69.3±9.3	-	1	N/A	28.3±2.1	-	-	-	0	p<0.001

Table 1. Demographics for the publications pertaining to anorexia nervosa (AN), bulimia nervosa (BN), obesity (OB) and healthy controls (HC) cerebellar function, as well as a sample of normative publications (NOR) evaluating cerebellar volume across BMI.

*¹Adult Sample Present; 1=yes; 0=no

*²Correction for family-wise error; 1=yes; 0=no

^a Publications utilised in AN/BN cohort analysis, but excluded from exploratory AN-only analysis

[**Abbreviations:** AN – Anorexia Nervosa; BN – Bulimia Nervosa; CPW – Clusterwise Corrected *p*; DOI – duration of illness; FDR – False Discovery Rate; HC – Healthy Control; M – Months; N/A – Not Applicable; NOR – Normative; OB – Obesity; Thresh – Significance Threshold]

2.2 – Voxel-Based Morphometry and ALE Analysis

Cerebellar coordinates (values depicted in *Table S1*) were respectively incorporated into GingerALE, an Activation Likelihood Estimate (ALE) meta-analysis software using both Talairach and MNI space¹³⁷. GingerALE converted Talairach coordinates to MNI space using the *icbm2tal* transform. P thresholds for individual analyses were conducted at the whole-brain level and corrected for family-wise error (FWE; 0.05) at 1,000 permutations and set to $p < 0.01$. Firstly, individual observations on respective AN/BN (n=510) and OB (n=277) cohorts were conducted, with a third analysis investigating negative correlations between BMI and cerebellar volume within a NOR data set (n=3,830). As an additional analysis, the AN dataset was re-assessed upon exclusion of publications¹¹³⁻¹¹⁵ evaluating volumetric differences in BN (AN-only), but not further investigated for overlap. Condition-respective findings were assessed for overlap via logical overlays and conjunction analyses to visualise combinatorial clusters within AN/BN-OB, AN/BN-NOR, and OB-NOR datasets. Jackknife analyses were conducted to assess robustness of findings via identical re-assessment of cohort data upon one-by-one omission of publications. Additional information regarding cerebellar parcellation, subregion locations, and conjunction analysis thresholding is described within the *Supporting Information*.

3.0 – Results

3.1 – Volumetric Reduction in Obesity

Within OB studies, volume of the cerebellum was found to be decreased in the left cerebellar hemisphere, with no bilateral effect. The cluster comprised of 3.58 cm³ with a cluster centre of -27, -56, -31. Analysis revealed four peaks of significance partially anteriorly and posteriorly located (*Table 2*). Specific cerebellar regions affected are Lobule VI, Crus I and the dentate gyrus (*Figure 2*).

Table 2. Coordinates of significance in OB studies (n=6)

Region (OB<HC)	MNI			Volume (cm ³)	ALE Score	P	Z
	Coordinates						
	x	y	z				
L CB	-27	-56	-31	3.58	0.00960	5.89E-05	3.85
<i>L CB, Anterior L.</i>	-32	-56	-28		0.00956	5.89E-05	3.85
<i>L CB, Anterior L.</i>	-30	-60	-26		0.00941	6.13E-05	3.84
<i>L CB, Posterior L.</i>	-28	-54	-34		0.00920	1.36E-04	3.64
<i>L CB, Posterior L.</i>	-18	-54	-34		0.00878	2.27E-04	3.51

Table 2. Decreased cerebellar GMV in OB cases compared with HCs (OB < HC) including all OB studies (n = 6). Data is presented in order of significance, with the bolded coordinates comprising of the cluster centre.

[**Abbreviations:** ALE – Activation Likelihood Estimation; CB – Cerebellum; HC – Healthy Controls; L – Left; L. – Lobe; MNI – Montreal Neurological Institute; OB – Obesity; R - Right]

3.2 – Volumetric Reduction in Anorexia Nervosa

The AN/BN GingerALE analysis revealed two significant clusters displaying bilateral reduction of cerebellar volume. The larger cluster was located within the left posterior lobe, contained a volume of 7.09 cm³ with a cluster centre of -25, -55, -31. The region contained an additional 7 peaks, with 4 of these occurring in the posterior lobe (*Table 3.*). The smaller cluster comprising of 4.56 cm³ was located in the right hemisphere, with 3/5 peaks located in the anterior lobe. Identified subregions included Crus I, the bilateral Lobule IV, and the bilateral dentate (*Figure 3.*). Contrasting AN/BN findings, the exploratory AN-only GingerALE analysis revealed no significant clusters displaying volumetric reduction within the cerebellum.

Table 3. Coordinates of significance in AN/BN studies (n=11)

Region (AN/BN<HC)	MNI Coordinates			Volume (cm ³)	ALE score	P	Z
	x	y	z				
L CB	-25	-55	-31	7.09	0.0106	2.10E-05	4.10
<i>L CB, Anterior L.</i>	-24	-54	-26		0.0106	2.10E-05	4.10
<i>L CB, Posterior L.</i>	-28	-56	-36		0.0105	2.18E-05	4.09
<i>L CB, Posterior L.</i>	-36	-48	-36		0.00983	5.41E-05	3.87
<i>L CB, Posterior L.</i>	-18	-58	-34		0.00973	6.88E-05	3.81
<i>L CB, Anterior L.</i>	-20	-48	-30		0.00960	7.23E-05	3.80
<i>L CB, Anterior L.</i>	-30	-54	-16		0.00923	1.37E-04	3.64
<i>L CB, Posterior L.</i>	-20	-68	-36		0.00916	1.72E-04	3.56
R CB	24	-56	-26	4.56	0.0105	2.20E-05	4.09
<i>R CB, Anterior L.</i>	26	-56	-34		0.0105	2.20E-05	4.09
<i>R CB, Anterior L.</i>	28	-50	-16		0.0103	2.45E-05	4.06
<i>R CB, Anterior L.</i>	24	-50	-26		0.0102	2.63E-05	4.04
<i>R CB, Posterior L.</i>	22	-62	-12		0.00975	5.68E-05	3.86
<i>R CB, Posterior L.</i>	22	-62	-40		0.00932	1.18E-04	3.68

Table 3. Decreased cerebellar GMV in AN/BN cases compared with HCs (AN/BN < HC) including all AN/BN studies (n = 11). Data is presented in order of significance, with the bolded set of coordinates comprising of cluster centres.

[Abbreviations: ALE – Activation Likelihood Estimation; AN – Anorexia Nervosa; BN – Bulimia Nervosa; CB – Cerebellum; HC – Healthy Controls; L – Left; L. – Lobe; MNI – Montreal Neurological Institute; R – Right]

3.3 – Normative Analysis: Cerebellum GMV vs. BMI

Analysis of the NOR dataset evaluating correlations between volumetric measures and BMI revealed a singular posterior cluster where cerebellum GMV negatively correlated with BMI. The cluster had a volume of 8.02 cm³ with a cluster centre at 30, -71, -32 (*Table 4.; Figure 4.*). The cluster comprised of 7 peaks, all located within the posterior lobe affecting regions such as right Crus I/II, Lobule VI, Lobule VIIb and the dentate.

Table 4. Clusters associated with increased BMI in NOR populations (n=9/10)

(NOR; CB GMV vs. BMI)	MNI Coordinates			Volume (cm ³)	ALE score	P	Z
	x	y	z				
R CB	30	-71	-32	8.02	0.0224	1.39E-08	5.56
<i>R CB, Posterior L.</i>	28	-70	-42		0.0224	1.39E-08	5.56
<i>R CB, Posterior L.</i>	44	-72	-30		0.0207	5.54E-08	5.31
<i>R CB, Posterior L.</i>	18	-66	-30		0.0189	4.14E-07	4.93
<i>R CB, Posterior L.</i>	28	-80	-24		0.0138	1.50E-05	4.17
<i>R CB, Posterior L.</i>	34	-78	-28		0.0133	1.91E-05	4.12
<i>L CB, Posterior L.</i>	36	-72	-18		0.011	6.86E-05	3.81

Table 4. Decreased cerebellar GMV in NOR populations when correlated with BMI and weight class (n = 9 papers, 10 studies). Data is presented in order of significance, with the bolded set of coordinates representing the cluster centre.

[Abbreviations: ALE – Activation Likelihood Estimation; CB – Cerebellum; L – Left; L. – Lobe; GMV – Grey Matter Volume; MNI – Montreal Neurological Institute; NOR – Normative; R – Right]

3.4 – Pooled Volumetric Reduction and Conjunction Analyses

Pooling combinations of data (AN/BN-OB, AN/BN-NOR, OB-NOR) showed that cerebellar volume reduction both significantly overlapped across cohorts but were also largely distinct according to bodyweight condition as well as across BMI (*Figure S2*). OB and NOR clusters were exclusive to the left and right hemispheres respectively, while AN/BN clusters were bilaterally located. Logical overlays on *MANGO* delineated significant inter-condition overlap, which prompted three conjunction analyses (*Figure 5*). The AN/BN-OB conjunction analysis revealed a large region of overlap. The cluster was located in the left Lobule VI with a volume of 0.214 cm³ and centre coordinates of -24, -55, -33 (*Figure 6.1*; *Table 5*). Conjunction analyses between clinical cohorts and the NOR cohort conducting correlational analyses between volume and BMI revealed additional findings. The AN/BN-NOR conjunction analysis revealed a unilateral overlap of structural reduction. The cluster was 0.0296 cm³ with a cluster centre of 23, -64, -39, and primarily located within right Lobule VI, but also affected the surrounding Crus II and Dentate Nucleus regions (*Figure 6.2*; *Table 5*). No overlap or combinatorial clusters falling within our significance threshold were found in the OB-NOR conjunction analysis.

Table 5. Conjunction analysis clusters of significance in AN/BN, NOR and OB cohorts

Study (AN/BN-OB)	MNI Coordinates			Volume (cm ³)	Volume Breakdown (%)	ALE score
	<i>x</i>	<i>y</i>	<i>z</i>			
<i>L CB</i>	-24	-55	-33	0.214	54.9% Ant.; 45.1% Post.	0.00850
<i>L CB, Posterior</i>	-28	-54	-34			0.00854
<i>L CB, Posterior</i>	-18	-56	-34			0.00768
(AN/BN-NOR)						
<i>R CB</i>	23	-64	-39	0.029	100% Post.	0.00690
<i>R CB, Posterior</i>	24	-64	-40			0.00689
(OB-NOR)						
NS						

Table 5. Decreased cerebellar GMV in both AN/BN cohorts and negative NOR correlations (AN/BN-NOR) including all 21 studies (*n*NOR = 10; *n*AN/BN = 11; *n*OB=6).

[**Abbreviations:** ALE – Activation Likelihood Estimation; AN – Anorexia Nervosa; Ant. – Anterior Lobe; BN – Bulimia Nervosa; CB – Cerebellum; L – Left; MNI – Montreal Neurological Institute; NOR – Normative; NS – Not Significant; OB – Obesity; Post. – Posterior Lobe; R – Right]

3.5 – Sensitivity Analyses

Sensitivity analyses were conducted on all available cohort datasets (*Table S2.*). One-by-one omission of publications identified heterogeneity across OB findings, in which the left posterior and anterior cerebellar clusters were present in 3/6 analyses. Alternatively, NOR and AN/BN findings were robust, with the right posterior cerebellar cluster demonstrating repeatability in 10/10 NOR analyses, as well as left and right AN/BN cerebellar clusters appearing in 11/11 and 9/11 analyses respectively. While the AN-only cohort did not report findings, the jackknife analysis identified the left posterior CB as reduced upon removal of Lenhart et al. (2022)¹²⁶, Phillipou et al. (2018)¹²⁵, Fonville et al. (2014)¹²⁴ and Bomba et al. (2013)¹²³.

4.0 – Discussion

4.1 – Cerebellar Differences: OB vs. AN/BN vs. HC

Compiling data from OB and AN publications, as well as correlations between BMI and brain volume, confirms cerebellar structure to be significantly decreased at both extremes of the spectrum of bodyweight disorders. Regions Crus I and Lobule VI were most consistently and significantly affected, identifying two cerebellar regions with respective executive and sensorimotor functionality associated with conditions of dysregulated BMI. In addition, findings indicate both condition-specific differences as well as significant overlap in cerebellar GMV reduction between AN/BN, OB and NOR cohorts. Reduced GMV in Lobule VI, Crus I and the dentate nucleus was present in all cohorts, but differed according to hemisphere. In the NOR population, affected regions correlating with increased BMI overlapped with cerebellar reduction seen in AN/BN, but not the OB analysis. Differential hemispheric involvement of two regions that reportedly comprise distinct cortico-cerebellar circuits leads us to suggest that multiple cerebellar regions are reliably and consistently involved across states of appetite dysfunction. Understanding of these regional functions may provide insight as to how the cerebellum may differentially contribute to the dysregulation of body-weight.

Crus I, structurally reduced in all cohorts, is reported to play predominant executive-, memory- and some emotional-related functions. Crus I and II contain specific functional localisation that corresponds to cerebral cortical zones^{37,39,138-140,143} and falls within the executive control network (ECN)³⁷⁻³⁹. In typical populations, this network plays roles in executive function, spatial attention¹⁴⁴ and verbal working memory^{39,140-143}, as well as goal-directed behaviour via communication with the hippocampus¹⁴². Recently, Crus II is

reported to serve emotional self-experience and social mentalising¹⁴⁵, expanding emotional roles played by posterior cerebellar lobes.

Functional hemispheric differences reported in Crus I may explain how the cerebellum is implicated, but likely plays distinct roles in cases of pathological under- and over-eating. Bilateral cerebellar reduction has previously been associated in those with AN¹⁴⁶. Despite no cluster-based findings within the exploratory AN-only cohort, Crus I reduction within the AN/BN cohort may be associated with general executive and attentional deficits reported in undereating¹⁴⁷, such as body-image disturbance and behavioural rigidity towards food. Alternatively, reduction of Crus I within this cohort may be more so associated with BN-specific symptomatology, such as altered traits of impulsivity or LOC eating. Additionally, volumetric reduction of Crus II was only identified within the NOR and AN/BN findings, suggesting socio-emotional functions of Crus II could play a less prominent role in those with OB. Crus I reduction was specific to the left hemisphere in the OB cohort, which interestingly overlaps with previous unilateral cerebellar PSE¹⁰⁵ findings as well as regions activated in spatial attention¹⁴⁴ and social processing tasks¹⁴³. Thus, cerebellar volume reduction in cases of over-eating or OB seen in this meta-analysis may suggest altered measures of food-related attention, impulsivity, working memory or loss of control, aspects characteristic of OB¹⁴⁸⁻¹⁵³. However, sensitivity analyses reported heterogeneity amongst OB study findings, likely due lacking study from limited literature. Further region-of-interest structural studies as well as resting-state and fMRI tasks relating to impulsivity, working memory and decision making would aid in furthering condition-specific interpretations from this work.

Within NOR populations, reduction of Crus I was associated with increased BMI, but reduction was unilateral to the right hemisphere and included reduction of Crus II, suggesting differential mechanisms underlying non-pathological weight gain in comparison to states of OB. While it is important to note the differential study power between cohorts, with NOR

findings derived from a significantly larger sample size than OB findings, findings nonetheless corroborate that the cerebellum is differentially associated with non-pathological weight gain.

Lobule VI consistently identified as structurally reduced within all cohorts, and its known functional distinction from Crus I furthers the concept that more than one region of the cerebellum participates in aspects of the dysregulation of body-weight. Lobule VI has recently been recognised as serving several cognitive and emotional functions, and plays roles in the salience^{37,39,154-156}, somatomotor, ventral attention and visual networks¹⁴⁵. Roles of the salience network, predominantly represented via Lobule VI, involve autonomic and interoceptive processing in response to various forms of salience such as emotion, reward, and homeostatic regulation¹⁵⁷⁻¹⁵⁹. Tractography studies demonstrate connections between the motor cortex, Lobule VI and dentate nucleus^{160,161}, and fMRI studies report consistent Lobule VI activity in emotional, social and environmental learning tasks¹⁶²⁻¹⁶⁴. Computational models also support that circuits implicated Lobule VI are important for Pavlovian conditioning and emotional learning¹⁶⁵⁻¹⁶⁹, including perceptual inferences such as startle responses and spontaneous behaviour¹⁷⁰. Such mechanisms may contribute to AN or BN via development of food aversion or negative food/weight associations which tend to exacerbate low dietary intake or restriction. Alternatively, food may be conditioned as an excessively rewarding or positive stimulus, which may be associated with overeating or LOC consumption.

Similar to Crus I findings, differential hemispheric reduction of Lobule VI across cohorts suggests differential cerebellar involvement. While the exploratory AN-only analysis identified no clusters of interest, the AN/BN analysis identified bilateral reduction of Lobule VI. Those with AN have previously demonstrated reduced bilateral volume of the mid-posterior cerebellum, which is suggested to contribute towards characteristic AN symptoms such as food aversion¹⁴⁶, but further functional studies focusing on the cerebellum are warranted to further understand this relationship, as well as additional studies to specify between AN and BN findings. Reduction of Lobule VI in OB was restricted to

the left hemisphere, which contains regions specific to social processing tasks¹⁴³. In contrast to the OB cohort, reduction of Lobule VI volume within the NOR population was specific to the right hemisphere. While there is currently no specific ascribed role to the right Lobule VI, differing hemisphericity of effect between OB and NOR cohorts similarly suggests differential cerebellar participation between pathological/non-pathological overeating.

Lastly, reduction of the dentate nucleus was seen in all cohorts. This region is highly connected to the hypothalamus and thought to interact with the lateral hypothalamic area, ventromedial nucleus, dorsomedial nucleus, and paraventricular nucleus to modulate forelimb movements in food grasping behaviour¹⁷¹. As with previous findings, the recruitment of the dentate nucleus within multiple cohorts not only suggests cerebellar implication in both non-pathological and clinical states of body-weight dysregulation, which likely functionally differs due to associations with opposing hemispheres, but also that multiple cerebellar regions are associated with the dysregulation of bodyweight and BMI.

4.2 – Cerebellar Overlap: OB vs. AN/BN vs. HC

Volumetric overlap among cohorts revealed that cases of dysregulated appetite across the BMI-spectrum exhibit significant reduction in similar cerebellar regions, which have been known for distinct sensorimotor (Lobule VI) and executive (Crus I/II) roles and suggest multimodal cerebellar association across the BMI spectrum. Structural reduction in cases of AN/BN and OB, as well as within NOR populations assessing cerebellar volume alongside increased BMI, was predominant to Lobule VI and Crus I. Findings relating to non-pathological BMI increase via the NOR cohort as well as the AN/BN cohort overlapped within the right Lobule VI, Crus II and dentate nucleus. Alternatively, Lobule VI and Crus I were both reduced in OB and NOR datasets, but difference of effect according to hemisphere meant no overlap in volume reduction was identified. The implication of similar cerebellar

regions yet differing hemisphericity of effect again suggests that while these cerebellar regions participate in differing forms of body-weight states, the main sources of variation among healthy controls may be quite different to those driving differences in clinical conditions.

4.3 – Limitations

4.3.1 – Number of Studies

Our review was limited by low study numbers used for some individual analyses, and we were unable to provide sufficient information on race/ethnicity and socioeconomic status. Availability of data also prevented further evaluation into sex, age, hormonal differences and brain inflammation values across participants. Due to such limitations, we confined our analysis to changes in GMV. Future research would benefit from utilising more specified imaging technology catered to WMV alterations, such as diffusion tensor- and weighted-imaging.

Similarly, while there is no definitive instruction on the minimum number of studies needed to conduct an ALE meta-analysis, the GingerALE (2.0) manual mentions that a minimum of 20-30 coordinates per experiment, as seen in our analyses, is sufficient to produce significant and valid clusters for simple paradigms. Later on, Eickhoff *et al.* (2016)¹⁷² recommended approximately 15-17 studies for reliability of analysis results, which were not present in our study. While cohort-specific sensitivity analyses were implemented to attempt to account for heterogeneity across findings, little can be done to correct or adjust for small sample sizes via GingerALE. A method of counteracting potentially unreliable results from future smaller studies would be to analyse small-cohort findings alongside larger datasets, or to incorporate quantifications of bias from small sample sizes (i.e., Egger test) within GingerALE software utility.

4.3.2 – Assumptions

The research question posed by this review – to determine if areas of the cerebellum are involved in different disorders of appetite control were the same or distinct, was driven by

a review of the literature providing extensive evidence that the cerebellum is implicated in disorders of appetite control (see Introduction). Therefore, our study is based on this assumption and does not independently verify it. This is because we only reviewed studies that included cerebellum findings rather than all MRI studies of eating disorders. Additionally, both AN/BN and OB are associated with elevated inflammation within the brain^{173,174}, which may influence findings related to volumetric reduction of the cerebellum. Future studies would benefit from including brain inflammation factors within analysis.

4.3.3 – Causality and Direction of Effects

Further, we are unable to verify the direction of causation in found associations. A common limitation in neuroimaging studies is their capacity to determine causality. The studies reviewed here are only able to demonstrate associations between volume abnormalities and condition, and it is unclear whether reduced volumes are a cause or subsequent effect.

4.3.4 – Bulimia Nervosa

Although we excluded the majority of BN patients, approximately 20% of clinical AN data consisted of those with BN which we were unable to remove. As there were insufficient BN papers (n=3) to conduct individualised cohort analyses for AN and BN, datasets were thus pooled into one AN/BN cohort. While there is a significant overlap in comorbidity and symptomatology between those with AN and BN¹¹⁶, including this group may have resulted in volume reduction not linked to states relating to those with AN, and findings from this meta-analysis are unable to distinguish between those with mixed AN/BN pathology and those with AN alone. We attempted to mitigate limitations regarding AN/BN etiological heterogeneity by conducting an exploratory assessment with AN-only publications. Nevertheless, our study still focuses on reduced cerebellar volume in eating disorders, which is clearly the case for bulimic individuals.

Conclusion

While theories proposing cerebellar functions in emotional, cognition and conditioning behaviours are now receiving wide acceptance, a role in weight and appetite is rarely discussed. In this review, we found utility in exploring cerebellar differences and similarities in states at opposite ends of the bodyweight dimension, and collated structural evidence from many sources. Altogether, results of our ALE analyses support the concept that the cerebellum is associated with states dysregulated appetite, eating disorders and bodyweight, in both pathological and non-pathological states. We found that while cerebellar associations with bodyweight issues recruited similar regions, hemispherical effects differed according to the type of appetitive condition, suggesting different cerebellar circuitry contributing to eating behaviour between non-clinical and pathological populations. Such findings add to a body of evidence theorising cerebellar participation in appetite- and feeding-related domains. Utilising our knowledge of the emotional and cognitive functions of the cerebellum will assist in identifying novel remedial approaches to manage disorders of appetite-regulation as well as increase efficacy of interventions provided to clinical populations.

References

1. Farshchi HR, Taylor MA, Macdonald IA. Beneficial metabolic effects of regular meal frequency on dietary thermogenesis, insulin sensitivity, and fasting lipid profiles in healthy obese women. *The American journal of clinical nutrition*. 2005 Jan 1;81(1):16-24.
2. Alhussain MH, Macdonald IA, Taylor MA. Irregular meal-pattern effects on energy expenditure, metabolism, and appetite regulation: a randomized controlled trial in healthy normal-weight women. *The American journal of clinical nutrition*. 2016 Jul 1;104(1):21-32.
3. Buyukkurt A, Bourguignon C, Antinora C, et al. Irregular eating patterns associate with hypomanic symptoms in bipolar disorders. *Nutritional Neuroscience*. 2019 Mar 8:1-2.
4. Abell JE, Egan BM, Wilson PW, Lipsitz S, Woolson RF, Lackland DT. Age and race impact the association between BMI and CVD mortality in women. *Public health reports*. 2007 Jul;122(4):507-512.
5. Zhang H, Rodriguez-Monguio R. Racial disparities in the risk of developing obesity-related diseases: a cross-sectional study. *Ethnicity & disease*. 2012 Jul 15;22(3):308-316.
6. Arroyo-Johnson C, Mincey KD. Obesity epidemiology worldwide. *Gastroenterology Clinics*. 2016 Dec 1;45(4):571-579.
7. World Health Organization. Global status report on noncommunicable diseases 2014. World Health Organization; 2014.
8. American Psychiatric Association. Diagnostic and statistical manual of mental disorders (DSM-5®). American Psychiatric Pub; 2013 May 22.
9. Smink FR, van Hoeken D, Hoek HW. Epidemiology, course, and outcome of eating disorders. *Current opinion in psychiatry*. 2013 Nov 1;26(6):543-548.
10. Sweeting H, Walker L, MacLean A, Patterson C, Räisänen U, Hunt K. Prevalence of eating disorders in males: a review of rates reported in academic research and UK mass media. *International journal of men's health*. 2015;14(2).
11. Erskine HE, Whiteford HA, Pike KM. The global burden of eating disorders. *Current opinion in psychiatry*. 2016 Nov 1;29(6):346-53.
12. Wakeling A. Epidemiology of anorexia nervosa. *Psychiatry Research*. 1996 Apr 16;62(1):3-9.
13. Arcelus J, Mitchell AJ, Wales J, Nielsen S. Mortality rates in patients with anorexia nervosa and other eating disorders: a meta-analysis of 36 studies. *Archives of general psychiatry*. 2011 Jul 4;68(7):724-731.
14. Allen G, McColl R, Barnard H, Ringe WK, Fleckenstein J, Cullum CM. Magnetic resonance imaging of cerebellar–prefrontal and cerebellar–parietal functional connectivity. *Neuroimage*. 2005 Oct 15;28(1):39-48.

15. Kakoschke N, Lorenzetti V, Caeyenberghs K, Verdejo-García A. Impulsivity and body fat accumulation are linked to cortical and subcortical brain volumes among adolescents and adults. *Scientific reports*. 2019 Feb 22;9(1):1-1.
16. Brooks SJ, Barker GJ, O'Daly OG, Brammer M, Williams SC, Benedict C, Schiöth HB, Treasure J, Campbell IC. Restraint of appetite and reduced regional brain volumes in anorexia nervosa: a voxel-based morphometric study. *BMC psychiatry*. 2011 Dec;11(1):1-1.
17. Leggio M, Olivito G. Topography of the cerebellum in relation to social brain regions and emotions. In *Handbook of clinical neurology* 2018 Jan 1 (Vol. 154, pp. 71-84). Elsevier.
18. Martín-Pérez C, Contreras-Rodríguez O, Vilar-López R, Verdejo-García A. Hypothalamic networks in adolescents with excess weight: stress-related connectivity and associations with emotional eating. *Journal of the American Academy of Child & Adolescent Psychiatry*. 2019 Feb 1;58(2):211-220.
19. García-García I, Michaud A, Dadar M, et al. Neuroanatomical differences in obesity: meta-analytic findings and their validation in an independent dataset. *International Journal of Obesity*. 2019 May;43(5):943-51.
20. Augustijn MJ, D'Hondt E, Leemans A, et al. Weight loss, behavioral change, and structural neuroplasticity in children with obesity through a multidisciplinary treatment program. *Human Brain Mapping*. 2019 Jan;40(1):137-150.
21. Boghi A, Sterpone S, Sales S, et al. In vivo evidence of global and focal brain alterations in anorexia nervosa. *Psychiatry Research: Neuroimaging*. 2011 Jun 30;192(3):154-159.
22. Nagahara Y, Nakamae T, Nishizawa S, et al. A tract-based spatial statistics study in anorexia nervosa: abnormality in the fornix and the cerebellum. *Progress in Neuro-Psychopharmacology and Biological Psychiatry*. 2014 Jun 3;51:72-7.
23. Brooks SJ, Barker GJ, O'Daly OG, et al. Restraint of appetite and reduced regional brain volumes in anorexia nervosa: a voxel-based morphometric study. *BMC psychiatry*. 2011 Dec 1;11(1):179.
24. Amianto F, D'Agata F, Lavagnino L, et al. Intrinsic connectivity networks within cerebellum and beyond in eating disorders. *The Cerebellum*. 2013 Oct 1;12(5):623-631.
25. Sanders N, Smeets PA, van Elburg AA, et al. Altered food-cue processing in chronically ill and recovered women with anorexia nervosa. *Frontiers in Behavioral Neuroscience*. 2015 Feb 27;9:46.
26. Milos G, Kaufmann LK, Jäncke L, et al. Does local cerebellar volume predict treatment success in anorexia nervosa?. *Psychiatry Research: Neuroimaging*. 2021 Aug 8:111355.
27. Watson HJ, Yilmaz Z, Thornton LM, et al. Genome-wide association study identifies eight risk loci and implicates metabo-psychiatric origins for anorexia nervosa. *Nature genetics*. 2019 Aug;51(8):1207-1214.

28. Fawcett KA, Barroso I. The genetics of obesity: FTO leads the way. *Trends in genetics*. 2010 Jun 1;26(6):266-274.
29. Yang, Q., Xiao, T., Guo, J. and Su, Z., 2017. Complex relationship between obesity and the fat mass and obesity locus. *International journal of biological sciences*, 13(5), p.615.
30. Chen M, Lu P, Ma Q, et al. CTNNB1/ β -catenin dysfunction contributes to adiposity by regulating the cross-talk of mature adipocytes and preadipocytes. *Science advances*. 2020 Jan 1;6(2):eaax9605.
31. Bulik CM, Flatt R, Abbaspour A, Carroll I. Reconceptualizing anorexia nervosa. *Psychiatry and clinical neurosciences*. 2019 Sep;73(9):518-25.
32. Diedrichsen J, Zotow E. Surface-based display of volume-averaged cerebellar imaging data. *PloS one*. 2015 Jul 31;10(7):e0133402.
33. Zhu JN, Wang JJ. The cerebellum in feeding control: possible function and mechanism. *Cellular and molecular neurobiology*. 2008 Jun 1;28(4):469-478.
34. Mendoza J, Pévet P, Felder-Schmittbuhl MP, Bailly Y, Challet E. The cerebellum harbors a circadian oscillator involved in food anticipation. *Journal of Neuroscience*. 2010 Feb 3;30(5):1894-904.
35. Tuulari JJ, Karlsson HK, Antikainen O, et al. Bariatric Surgery Induces White and Grey Matter Density Recovery in the Morbidly Obese: A Voxel-Based Morphometric Study. *Human brain mapping*. 2016 Nov;37(11):3745-3756.
36. Herrup K. Thoughts on the cerebellum as a model for cerebral cortical development and evolution. In *Novartis Foundation Symposium 2000* Jan 1 (pp. 15-29). Chichester; New York; John Wiley; 1999.
37. Habas C, Kamdar N, Nguyen D, et al. Distinct cerebellar contributions to intrinsic connectivity networks. *Journal of neuroscience*. 2009 Jul 1;29(26):8586-8594.
38. Stoodley CJ. The cerebellum and cognition: evidence from functional imaging studies. *The Cerebellum*. 2012 Jun;11(2):352-65.
39. Stoodley CJ, Schmahmann JD. Functional topography in the human cerebellum: a meta-analysis of neuroimaging studies. *Neuroimage*. 2009 Jan 15;44(2):489-501.
40. Supple WF, Kapp BS. The anterior cerebellar vermis: essential involvement in classically conditioned bradycardia in the rabbit. *Journal of Neuroscience*. 1993 Sep 1;13(9):3705-3711.
41. Saker P, Farrell MJ, Adib FR, Egan GF, McKinley MJ, Denton DA. Regional brain responses associated with drinking water during thirst and after its satiation. *Proceedings of the National Academy of Sciences*. 2014 Apr 8;111(14):5379-5384.

42. Contreras-Rodríguez O, Vilar-López R, Andrews ZB, Navas JF, Soriano-Mas C, Verdejo-García A. Altered cross-talk between the hypothalamus and non-homeostatic regions linked to obesity and difficulty to lose weight. *Scientific reports*. 2017 Aug 30;7(1):1-9.
43. Leiner HC, Leiner AL, Dow RS. Does the cerebellum contribute to mental skills?. *Behavioral neuroscience*. 1986 Aug;100(4):443.
44. Stoodley CJ, Valera EM, Schmahmann JD. Functional topography of the cerebellum for motor and cognitive tasks: an fMRI study. *Neuroimage*. 2012 Jan 16;59(2):1560-1570.
45. D'Angelo E, Casali S. Seeking a unified framework for cerebellar function and dysfunction: from circuit operations to cognition. *Frontiers in neural circuits*. 2013 Jan 10;6:116.
46. Buckner RL. The cerebellum and cognitive function: 25 years of insight from anatomy and neuroimaging. *Neuron*. 2013 Oct 30;80(3):807-815.
47. Koziol LF, Budding D, Andreasen N, et al. Consensus paper: the cerebellum's role in movement and cognition. *The Cerebellum*. 2014 Feb 1;13(1):151-177.
48. Dolan RJ. A cognitive affective role for the cerebellum. *Brain*. 1998;121(4):545-546.
49. Habas C, Shirer WR, Greicius MD. Delineation of cerebrocerebellar networks with MRI measures of functional and structural connectivity. *Handbook of the cerebellum and cerebellar disorders*. Springer Science+ Business Media, Dordrecht. 2013:571-585.
50. Utz A, Thürling M, Ernst TM, et al. Cerebellar vermis contributes to the extinction of conditioned fear. *Neuroscience Letters*. 2015 Sep 14;604:173-177.
51. Molinari M, Chiricozzi FR, Clausi S, Tedesco AM, De Lisa M, Leggio MG. Cerebellum and detection of sequences, from perception to cognition. *The Cerebellum*. 2008 Dec 1;7(4):611-615.
52. Zhu L, Sacco T, Strata P, Sacchetti B. Basolateral amygdala inactivation impairs learning-induced long-term potentiation in the cerebellar cortex. *PloS one*. 2011 Jan 31;6(1):e16673.
53. Carnell, S., Benson, L., Pantazatos, S. P., Hirsch, J., & Geliebter, A. (2014). Amodal brain activation and functional connectivity in response to high-energy-density food cues in obesity. *Obesity*, 22(11), 2370-2378.
54. Baumann O, Mattingley JB. Functional topography of primary emotion processing in the human cerebellum. *NeuroImage*. 2012 Jul 16;61(4):805-811.
55. Shobe ER. Independent and collaborative contributions of the cerebral hemispheres to emotional processing. *Frontiers in human neuroscience*. 2014 Apr 22;8:230.
56. Lupo M, Troisi E, Chiricozzi FR, Clausi S, Molinari M, Leggio M. Inability to process negative emotions in cerebellar damage: a functional transcranial doppler sonographic study. *The Cerebellum*. 2015 Dec 1;14(6):663-669.

57. Adamaszek M, D'Agata F, Ferrucci R, et al. Consensus paper: cerebellum and emotion. *The Cerebellum*. 2017 Apr 1;16(2):552-576.
58. Schmammann JD, Pandya DN. The cerebrocerebellar system. *International review of neurobiology*. 1997 Jan 1;41:31-60.
59. Wright H, Li X, Fallon NB, et al. Differential effects of hunger and satiety on insular cortex and hypothalamic functional connectivity. *European Journal of Neuroscience*. 2016 May;43(9):1181-1189.
60. Cavdar S, Onat F, Aker R, Şehirli Ü, Şan T, Raci Yananli H. The afferent connections of the posterior hypothalamic nucleus in the rat using horseradish peroxidase. *Journal of Anatomy*. 2001 Apr;198(4):463-472.
61. Zhao J, Li M, Zhang Y, et al. Intrinsic brain subsystem associated with dietary restraint, disinhibition and hunger: an fMRI study. *Brain imaging and behavior*. 2017 Feb 1;11(1):264-277.
62. Bouret SG, Draper SJ, Simerly RB. Trophic action of leptin on hypothalamic neurons that regulate feeding. *Science*. 2004 Apr 2;304(5667):108-110.
63. Hommel JD, Trinko R, Sears RM, et al. Leptin receptor signaling in midbrain dopamine neurons regulates feeding. *neuron*. 2006 Sep 21;51(6):801-810.
64. Jones RB, McKie S, Astbury N, et al. Functional neuroimaging demonstrates that ghrelin inhibits the central nervous system response to ingested lipid. *Gut*. 2012 Nov 1;61(11):1543-1551.
65. Gavello D, Carbone E, Carabelli V. Leptin-mediated ion channel regulation: PI3K pathways, physiological role, and therapeutic potential. *Channels*. 2016 Jul 3;10(4):282-296.
66. Al Massadi O, López M, Tschöp M, Diéguez C, Nogueiras R. Current understanding of the hypothalamic ghrelin pathways inducing appetite and adiposity. *Trends in neurosciences*. 2017 Mar 1;40(3):167-180.
67. Choe AS, Tang B, Smith KR, Honari H, Lindquist MA, Caffo BS, Pekar JJ. Phase-locking of resting-state brain networks with the gastric basal electrical rhythm. *PloS one*. 2021 Jan 5;16(1):e0244756.
68. Cheng B, Qi X, Liang C, et al. Integrative Genomic Enrichment Analysis Identified the Brain Regions and Development Stages Related to Anorexia Nervosa and Obsessive-Compulsive Disorder. *Cerebral Cortex*. 2020 Dec;30(12):6481-9.
69. Leibovitz Z, Mandel H, Falik-Zaccai TC, et al. Walker-Warburg syndrome and tectocerebellar dysraphia: A novel association caused by a homozygous DAG1 mutation. *European journal of paediatric neurology*. 2018 May 1;22(3):525-31.
70. Briatore F, Pregno G, Di Angelantonio S, et al. Dystroglycan Mediates Clustering of Essential GABAergic Components in Cerebellar Purkinje Cells. *Frontiers in Molecular Neuroscience*. 2020 Aug 28;13:164.

71. Gaudio S, Nocchi F, Franchin T, Genovese E, Cannatà V, Longo D, Fariello G. Gray matter decrease distribution in the early stages of Anorexia Nervosa restrictive type in adolescents. *Psychiatry Research: Neuroimaging*. 2011 Jan 30;191(1):24-30.
72. Madsen MB, Birck MM, Fredholm M, Cirera S. Expression studies of the obesity candidate gene FTO in pig. *Animal Biotechnology*. 2009 Dec 23;21(1):51-63.
73. McTaggart JS, Lee S, Iberl M, Church C, Cox RD, Ashcroft FM. FTO is expressed in neurones throughout the brain and its expression is unaltered by fasting. *PloS one*. 2011 Nov 30;6(11):e27968.
74. Wang Y, Rao K, Yuan L, et al. Chicken FTO gene: tissue-specific expression, brain distribution, breed difference and effect of fasting. *Comparative Biochemistry and Physiology Part A: Molecular & Integrative Physiology*. 2012 Nov 1;163(3-4):246-252.
75. Miller JL, Couch J, Schwenk K, et al. Early childhood obesity is associated with compromised cerebellar development. *Developmental neuropsychology*. 2009 May 11;34(3):272-283.
76. Cutando L, Puighermanal E, Castell L, Tarot P, Belle M, Bertaso F, Arango-Lievano M, Ango F, Rubinstein M, Quintana A, Chédotal A. Cerebellar dopamine D2 receptors regulate social behaviors. *Nature Neuroscience*. 2022 Jun 16:1-2.
77. Oostland M, Hooft JA. Serotonin in the cerebellum. In *Essentials of cerebellum and cerebellar disorders 2016* (pp. 243-247). Springer, Cham.
78. Berridge KC, Ho CY, Richard JM, DiFeliceantonio AG. The tempted brain eats: pleasure and desire circuits in obesity and eating disorders. *Brain research*. 2010 Sep 2;1350:43-64.
79. Kaye WH, Wierenga CE, Bailer UF, Simmons AN, Bischoff-Grethe A. Nothing tastes as good as skinny feels: the neurobiology of anorexia nervosa. *Trends in neurosciences*. 2013 Feb 1;36(2):110-20.
80. Carter A, Hendrikse J, Lee N, et al. The neurobiology of “food addiction” and its implications for obesity treatment and policy. *Annual review of nutrition*. 2016 Jul 17;36:105-28.
81. van Galen KA, Ter Horst KW, Booij J, la Fleur SE, Serlie MJ. The role of central dopamine and serotonin in human obesity: lessons learned from molecular neuroimaging studies. *Metabolism*. 2018 Aug 1;85:325-39.
82. Kawakami I, Iritani S, Riku Y, Umeda K, Takase M, Ikeda K, Niizato K, Arai T, Yoshida M, Oshima K, Hasegawa M. Neuropathological investigation of patients with prolonged anorexia nervosa. *Psychiatry and Clinical Neurosciences*. 2022 May;76(5):187-94.
83. Bohon C. Brain response to taste in overweight children: A pilot feasibility study. *PloS one*. 2017 Feb 24;12(2):e0172604.

84. O'Hara CB, Campbell IC, Schmidt U. A reward-centred model of anorexia nervosa: a focussed narrative review of the neurological and psychophysiological literature. *Neuroscience & Biobehavioral Reviews*. 2015 May 1;52:131-152.
85. Berridge KC. 'Liking' and 'wanting' food rewards: brain substrates and roles in eating disorders. *Physiology & behavior*. 2009 Jul 14;97(5):537-50.
86. C Barbarich-Marsteller N, W Foltin R, Timothy Walsh B. Does anorexia nervosa resemble an addiction?. *Current drug abuse reviews*. 2011 Sep 1;4(3):197-200.
87. Low AY, Goldstein N, Gaunt JR, Huang KP, Zainolabidin N, Yip AK, Carty JR, Choi JY, Miller AM, Ho HS, Lenherr C. Reverse-translational identification of a cerebellar satiation network. *Nature*. 2021 Dec;600(7888):269-73.
88. Zhu JN, Wang JJ. The cerebellum in feeding control: possible function and mechanism. *Cellular and molecular neurobiology*. 2008 Jun 1;28(4):469-78.
89. Colombel C, Lalonde R, Caston J. The effects of unilateral removal of the cerebellar hemispheres on motor functions and weight gain in rats. *Brain research*. 2002 Sep 20;950(1-2):231-8.
90. Oya S, Nejo T, Indo M, Matsui T. Pearls & Oy-sters: Anorexia and emaciation in patients with cerebellar hemangioblastoma. *Neurology*. 2014 Sep 30;83(14):1298-300.
91. Sánchez-Kuhn A, Medina Y, Pérez-García M, et al. Neurorehabilitation treatment of dysphagia after-stroke with transcranial direct current stimulation: A clinical case. *Brain Stimulation: Basic, Translational, and Clinical Research in Neuromodulation*. 2017 Mar 1;10(2):431.
92. Ross LJ, Capra S, Baguley B, et al. Nutritional status of patients with ataxia-telangiectasia: A case for early and ongoing nutrition support and intervention. *Journal of paediatrics and child health*. 2015 Aug;51(8):802-7.
93. Kronemer SI, Slapik MB, Pietrowski JR, et al. Neuropsychiatric Symptoms as a Reliable Phenomenology of Cerebellar Ataxia. *The Cerebellum*. 2020 Sep 30:1-0.
94. Rönnefarth M, Hanisch N, Brandt AU, et al. Dysphagia Affecting Quality of Life in Cerebellar Ataxia—a Large Survey. *The Cerebellum*. 2020 Mar 13:1-9.
95. Fagundo AB, De la Torre R, Jiménez-Murcia S, et al. Executive functions profile in extreme eating/weight conditions: from anorexia nervosa to obesity. *PloS one*. 2012 Aug 21;7(8):e43382.
96. Moyse E, Arsenault M, Gaudreau P, Ferland G, Ramassamy C. Brain region-specific effects of long-term caloric restriction on redox balance of the aging rat. *Mechanisms of ageing and development*. 2019 Apr 1;179:51-59.

97. Geliebter A, Benson L, Pantazatos SP, Hirsch J, Carnell S. Greater anterior cingulate activation and connectivity in response to visual and auditory high-calorie food cues in binge eating: preliminary findings. *Appetite*. 2016 Jan 1;96:195-202.
98. Moreno-Rius J, Miquel M. The cerebellum in drug craving. *Drug and Alcohol Dependence*. 2017 Apr 1;173:151-8.
99. Tomasi D, Wang GJ, Wang R, Caparelli EC, Logan J, Volkow ND. Overlapping patterns of brain activation to food and cocaine cues in cocaine abusers: association to striatal D2/D3 receptors. *Human brain mapping*. 2015 Jan;36(1):120-36.
100. Garrison KA, Sinha R, Lacadie CM, Scheinost D, Jastreboff AM, Constable RT, Potenza MN. Functional connectivity during exposure to favorite-food, stress, and neutral-relaxing imagery differs between smokers and nonsmokers. *Nicotine & Tobacco Research*. 2016 Sep 1;18(9):1820-9.
101. Noori HR, Linan AC, Spanagel R. Largely overlapping neuronal substrates of reactivity to drug, gambling, food and sexual cues: A comprehensive meta-analysis. *European Neuropsychopharmacology*. 2016 Sep 1;26(9):1419-30.
102. Rolls BJ, Roe LS, Meengs JS. Reductions in portion size and energy density of foods are additive and lead to sustained decreases in energy intake. *The American journal of clinical nutrition*. 2006 Jan 1;83(1):11-7.
103. Herman CP, Polivy J, Pliner P, Vartanian LR. Mechanisms underlying the portion-size effect. *Physiology & Behavior*. 2015 May 15;144:129-36.
104. Steenhuis I, Poelman M. Portion size: latest developments and interventions. *Current obesity reports*. 2017 Mar;6(1):10-7.
105. English LK, Masterson TD, Fearnbach SN, et al. Increased brain and behavioural susceptibility to portion size in children with loss of control eating. *Pediatric obesity*. 2019 Feb;14(2):e12436.
106. Kullmann S, Giel KE, Hu X, Bischoff SC, Teufel M, Thiel A, Zipfel S, Preissl H. Impaired inhibitory control in anorexia nervosa elicited by physical activity stimuli. *Social cognitive and affective neuroscience*. 2014 Jul 1;9(7):917-23.
107. Schmahmann JD, Guell X, Stoodley CJ, Halko MA. The theory and neuroscience of cerebellar cognition. *Annual review of neuroscience*. 2019 Jul 8;42:337-364.
108. Sirin S, Gonul E, Kahraman S, Timurkaynak E. Imaging of posterior fossa epidermoid tumors. *Clinical neurology and neurosurgery*. 2005 Oct 1;107(6):461-7.
109. Diedrichsen J, Maderwald S, Küper M, et al. Imaging the deep cerebellar nuclei: a probabilistic atlas and normalization procedure. *Neuroimage*. 2011 Feb 1;54(3):1786-94.

110. Gutierrez DR, Awwad A, Meijer L, et al. Metrics and textural features of MRI diffusion to improve classification of pediatric posterior fossa tumors. *American Journal of Neuroradiology*. 2014 May 1;35(5):1009-15.
111. Huang Y, Li X, Jackson T, Chen S, Meng J, Qiu J, Chen H. Interaction Effect of Sex and Body Mass Index on Gray Matter Volume. *Frontiers in Human Neuroscience*. 2019 Oct 17;13:360.
112. Frank, G. K., Shott, M. E., Hagman, J. O., & Mittal, V. A. (2013). Alterations in brain structures related to taste reward circuitry in ill and recovered anorexia nervosa and in bulimia nervosa. *American Journal of Psychiatry*, 170(10), 1152-1160.
113. Joos A, Klöppel S, Hartmann A, et al. Voxel-based morphometry in eating disorders: correlation of psychopathology with grey matter volume. *Psychiatry Research: Neuroimaging*. 2010 May 30;182(2):146-51.
114. Amianto F, Caroppo P, D'Agata F, et al. Brain volumetric abnormalities in patients with anorexia and bulimia nervosa: a voxel-based morphometry study. *Psychiatry Research: Neuroimaging*. 2013 Sep 30;213(3):210-6.
115. D'Agata F, Caroppo P, Amianto F, et al. Brain correlates of alexithymia in eating disorders: A voxel-based morphometry study. *Psychiatry and clinical neurosciences*. 2015 Nov;69(11):708-16.
116. Eddy KT, Dorer DJ, Franko DL, Tahilani K, Thompson-Brenner H, Herzog DB. Diagnostic crossover in anorexia nervosa and bulimia nervosa: implications for DSM-V. *American Journal of Psychiatry*. 2008 Feb;165(2):245-50.
117. Jauch-Chara K, Binkofski F, Loebig M, et al. Blunted brain energy consumption relates to insula atrophy and impaired glucose tolerance in obesity. *Diabetes*. 2015 Jun 1;64(6):2082-91.
118. Mueller K, Sacher J, Arelin K, et al. Overweight and obesity are associated with neuronal injury in the human cerebellum and hippocampus in young adults: a combined MRI, serum marker and gene expression study. *Translational psychiatry*. 2012 Dec;2(12):e200.
119. Ou X, Andres A, Pivik RT, Cleves MA, Badger TM. Brain gray and white matter differences in healthy normal weight and obese children. *Journal of Magnetic Resonance Imaging*. 2015 Nov;42(5):1205-13.
120. Dommes E, Georgiewa P, Klingebiel R. Grey matter volume differences in obese as compared to normal-weight individuals: A voxel-based morphometric study. *Arch Euromed*. 2013 Jan 1;3(2):11-6.
121. Shan H, Li P, Liu H, et al. Gray matter reduction related to decreased serum creatinine and increased triglyceride, Hemoglobin A1C, and low-density lipoprotein in subjects with obesity. *Neuroradiology*. 2019 Jun 1;61(6):703-10.
122. Wang H, Wen B, Cheng J, Li H. Brain structural differences between normal and obese adults and their links with lack of perseverance, negative urgency, and sensation seeking. *Scientific reports*. 2017 Jan 16;7(1):1-7.

123. Bomba M, Riva A, Morzenti S, Grimaldi M, Neri F, Nacinovich R. Global and regional brain volumes normalization in weight-recovered adolescents with anorexia nervosa: preliminary findings of a longitudinal voxel-based morphometry study. *Neuropsychiatric disease and treatment*. 2015;11:637.
124. Fonville L, Giampietro V, Williams SC, Simmons A, Tchanturia K. Alterations in brain structure in adults with anorexia nervosa and the impact of illness duration. *Psychological Medicine*. 2014 Jul 1;44(9):1965.
125. Phillipou A, Rossell SL, Gurvich C, Castle DJ, Abel LA, Nibbs RG, Hughes ME. Differences in regional grey matter volumes in currently ill patients with anorexia nervosa. *European Journal of Neuroscience*. 2018 Jan;47(2):177-83.
126. Lenhart L, Gander M, Steiger R, Dabkowska-Mika A, Mangesius S, Haid-Stecher N, Fuchs M, Buchheim A, Sevecke K, Gizewski ER. Attachment status is associated with grey matter recovery in adolescent anorexia nervosa: Findings from a longitudinal study. *European Journal of Neuroscience*. 2022 Mar;55(5):1373-87.
127. Mishima R, Isobe M, Noda T, Tose K, Kawabata M, Noma SI, Murai T. Structural brain changes in severe and enduring anorexia nervosa: A multimodal magnetic resonance imaging study of gray matter volume, cortical thickness, and white matter integrity. *Psychiatry Research: Neuroimaging*. 2021 Dec 30;318:111393.
128. Gaudio S, Nocchi F, Franchin T, Genovese E, Cannatà V, Longo D, Fariello G. Gray matter decrease distribution in the early stages of Anorexia Nervosa restrictive type in adolescents. *Psychiatry Research: Neuroimaging*. 2011 Jan 30;191(1):24-30.
129. Janowitz D, Wittfeld K, Terock J, et al. Association between waist circumference and gray matter volume in 2344 individuals from two adult community-based samples. *Neuroimage*. 2015 Nov 15;122:149-57.
130. Kurth F, Levitt JG, Phillips OR, et al. Relationships between gray matter, body mass index, and waist circumference in healthy adults. *Human brain mapping*. 2013 Jul;34(7):1737-46.
131. Masouleh SK, Arélin K, Horstmann A, et al. Higher body mass index in older adults is associated with lower gray matter volume: implications for memory performance. *Neurobiology of aging*. 2016 Apr 1;40:1-0.
132. Weise CM, Bachmann T, Pleger B. Brain structural differences in monozygotic twins discordant for body mass index. *Neuroimage*. 2019 Nov 1;201:116006.
133. Figley CR, Asem JS, Levenbaum EL, Courtney SM. Effects of body mass index and body fat percent on default mode, executive control, and salience network structure and function. *Frontiers in neuroscience*. 2016 Jun 14;10:234.
134. Yao L, Li W, Dai Z, Dong C. Eating behavior associated with gray matter volume alternations: A voxel based morphometry study. *Appetite*. 2016 Jan 1;96:572-9.

135. Weise CM, Thiyyagura P, Reiman EM, Chen K, Krakoff J. Fat-free body mass but not fat mass is associated with reduced gray matter volume of cortical brain regions implicated in autonomic and homeostatic regulation. *Neuroimage*. 2013 Jan 1;64:712-21.
136. Walther K, Birdsill AC, Glisky EL, Ryan L. Structural brain differences and cognitive functioning related to body mass index in older females. *Human brain mapping*. 2010 Jul;31(7):1052-64.
137. Eickhoff SB, Laird AR, Grefkes C, Wang LE, Zilles K, Fox PT. Coordinate-based activation likelihood estimation meta-analysis of neuroimaging data: A random-effects approach based on empirical estimates of spatial uncertainty. *Human brain mapping*. 2009 Sep 15;30(9):2907-2926.
138. Marron EM, Viejo-Sobera R, Cuatrecasas G, et al. Prefronto-cerebellar neuromodulation affects appetite in obesity. *International Journal of Obesity*. 2019 Oct;43(10):2119-2124.
139. Heinitz S, Reinhardt M, Piaggi P, et al. Neuromodulation directed at the prefrontal cortex of subjects with obesity reduces snack food intake and hunger in a randomized trial. *The American Journal of Clinical Nutrition*. 2017 Dec 1;106(6):1347-1357.
140. Edge AL, Marple-Horvat DE, Apps R. Lateral cerebellum: functional localization within crus I and correspondence to cortical zones. *European Journal of Neuroscience*. 2003 Sep;18(6):1468-1485.
141. Shen KK, Welton T, Lyon M, et al. Structural core of the executive control network: A high angular resolution diffusion MRI study. *Human brain mapping*. 2020 Apr 1;41(5):1226-36.
142. Iglói K, Doeller CF, Paradis AL, et al. Interaction between hippocampus and cerebellum crus I in sequence-based but not place-based navigation. *Cerebral Cortex*. 2015 Nov 1;25(11):4146-4154.
143. Guell X, Schmahmann JD, Gabrieli JD, Ghosh SS. Functional gradients of the cerebellum. *Elife*. 2018 Aug 14;7:e36652.
144. Ciricugno A, Ferrari C, Rusconi ML, Cattaneo Z. The left posterior cerebellum is involved in orienting attention along the mental number line: An online-TMS study. *Neuropsychologia*. 2020 Jun 1;143:107497.k
145. Van Overwalle F, Ma Q, Heleven E. The posterior crus II cerebellum is specialized for social mentalizing and emotional self-experiences: a meta-analysis. *Social cognitive and affective neuroscience*. 2020 Sep;15(9):905-28.
146. Zhang S, Wang W, Su X, et al. Psychoradiological investigations of gray matter alterations in patients with anorexia nervosa. *Translational psychiatry*. 2018 Dec 13;8(1):1-1.
147. Gaudio S, Olivo G, Beomonte Zobel B, Schiöth HB. Altered cerebellar-insular-parietal-cingular subnetwork in adolescents in the earliest stages of anorexia nervosa: a network-based statistic analysis. *Translational psychiatry*. 2018 Jul 6;8(1):1-0.

148. Cortese S, Vincenzi B. Obesity and ADHD: clinical and neurobiological implications. In *Behavioral neuroscience of attention deficit hyperactivity disorder and its treatment 2011* (pp. 199-218). Springer, Berlin, Heidelberg.
149. Cortese S, Moreira-Maia CR, St. Fleur D, Morcillo-Peñalver C, Rohde LA, Faraone SV. Association between ADHD and obesity: a systematic review and meta-analysis. *American Journal of Psychiatry*. 2016 Jan 1;173(1):34-43.
150. Pineda-Alhucema W, Aristizabal E, Escudero-Cabarcas J, Acosta-López JE, Vélez JI. Executive function and theory of mind in children with ADHD: A systematic review. *Neuropsychology Review*. 2018 Sep 1;28(3):341-358.
151. Coppin G, Nolan-Poupart S, Jones-Gotman M, Small DM. Working memory and reward association learning impairments in obesity. *Neuropsychologia*. 2014 Dec 1;65:146-155.
152. Wu N, Chen Y, Yang J, Li F. Childhood obesity and academic performance: the role of working memory. *Frontiers in psychology*. 2017 Apr 19;8:611.
153. Yang Y, Shields GS, Guo C, Liu Y. Executive function performance in obesity and overweight individuals: A meta-analysis and review. *Neuroscience & Biobehavioral Reviews*. 2018 Jan 1;84:225-244.
154. Seeley WW, Menon V, Schatzberg AF, et al. Dissociable intrinsic connectivity networks for salience processing and executive control. *Journal of Neuroscience*. 2007 Feb 28;27(9):2349-2356.
155. Stoodley CJ, Schmahmann JD. Evidence for topographic organization in the cerebellum of motor control versus cognitive and affective processing. *Cortex*. 2010 Jul 1;46(7):831-844.
156. Cacciola A, Milardi D, Livrea P, Flace P, Anastasi G, Quartarone A. The known and missing links between the cerebellum, basal ganglia, and cerebral cortex. *The Cerebellum*. 2017 Jun 1;16(3):753-755.
157. Craig AD. How do you feel? Interoception: the sense of the physiological condition of the body. *Nature reviews neuroscience*. 2002 Aug;3(8):655-666.
158. Eisenberger NI, Lieberman MD, Williams KD. Does rejection hurt? An fMRI study of social exclusion. *Science*. 2003 Oct 10;302(5643):290-292.
159. Critchley HD, Wiens S, Rotshtein P, Öhman A, Dolan RJ. Neural systems supporting interoceptive awareness. *Nature neuroscience*. 2004 Feb;7(2):189-195.
160. Habas C, Manto M. Probing the neuroanatomy of the cerebellum using tractography. In *Handbook of clinical neurology 2018* Jan 1 (Vol. 154, pp. 235-249). Elsevier.
161. Kelly, R.M. and Strick, P.L., 2003. Cerebellar loops with motor cortex and prefrontal cortex of a nonhuman primate. *Journal of neuroscience*, 23(23), pp.8432-8444.

162. Takahashi H, Koeda M, Oda K, et al. An fMRI study of differential neural response to affective pictures in schizophrenia. *Neuroimage*. 2004 Jul 1;22(3):1247-1254.
163. Bermpohl F, Pascual-Leone A, Amedi A, et al. Dissociable networks for the expectancy and perception of emotional stimuli in the human brain. *Neuroimage*. 2006 Apr 1;30(2):588-600.
164. Olivo G, Swenne I, Zhukovsky C, et al. Reduced resting-state connectivity in areas involved in processing of face-related social cues in female adolescents with atypical anorexia nervosa. *Translational psychiatry*. 2018 Dec 13;8(1):1-8.
165. Pezzulo G. An Active Inference view of cognitive control. *Frontiers in psychology*. 2012 Nov 5;3:478.
166. Adams RA, Shipp S, Friston KJ. Predictions not commands: active inference in the motor system. *Brain Structure and Function*. 2013 May 1;218(3):611-643.
167. Brown H, Adams RA, Pares I, Edwards M, Friston K. Active inference, sensory attenuation and illusions. *Cognitive processing*. 2013 Nov 1;14(4):411-427.
168. Barrett LF, Quigley KS, Hamilton P. An active inference theory of allostasis and interoception in depression. *Philosophical Transactions of the Royal Society B: Biological Sciences*. 2016 Nov 19;371(1708):20160011.
169. Pu M, Heleven E, Delplanque J, et al. The posterior cerebellum supports the explicit sequence learning linked to trait attribution. *Cognitive, Affective & Behavioral Neuroscience*. 2020 Jun 3.
170. Friston K, Herreros I. Active inference and learning in the cerebellum. *Neural computation*. 2016 Sep;28(9):1812-1839.
171. Martin JH, Cooper SE, Hacking A, Ghez C. Differential effects of deep cerebellar nuclei inactivation on reaching and adaptive control. *Journal of neurophysiology*. 2000 Apr 1;83(4):1886-1899.
172. Eickhoff SB, Nichols TE, Laird AR, et al. Behavior, sensitivity, and power of activation likelihood estimation characterized by massive empirical simulation. *Neuroimage*. 2016 Aug 15;137:70-85.
173. Spyridaki EC, Avgoustinaki PD, Margioris AN. Obesity, inflammation and cognition. *Current Opinion in Behavioral Sciences*. 2016 Jun 1;9:169-75.
174. Seitz J, Belheouane M, Schulz N, Dempfle A, Baines JF, Herpertz-Dahlmann B. The impact of starvation on the microbiome and gut-brain interaction in anorexia nervosa. *Frontiers in endocrinology*. 2019 Feb 12;10:41.

Figures:

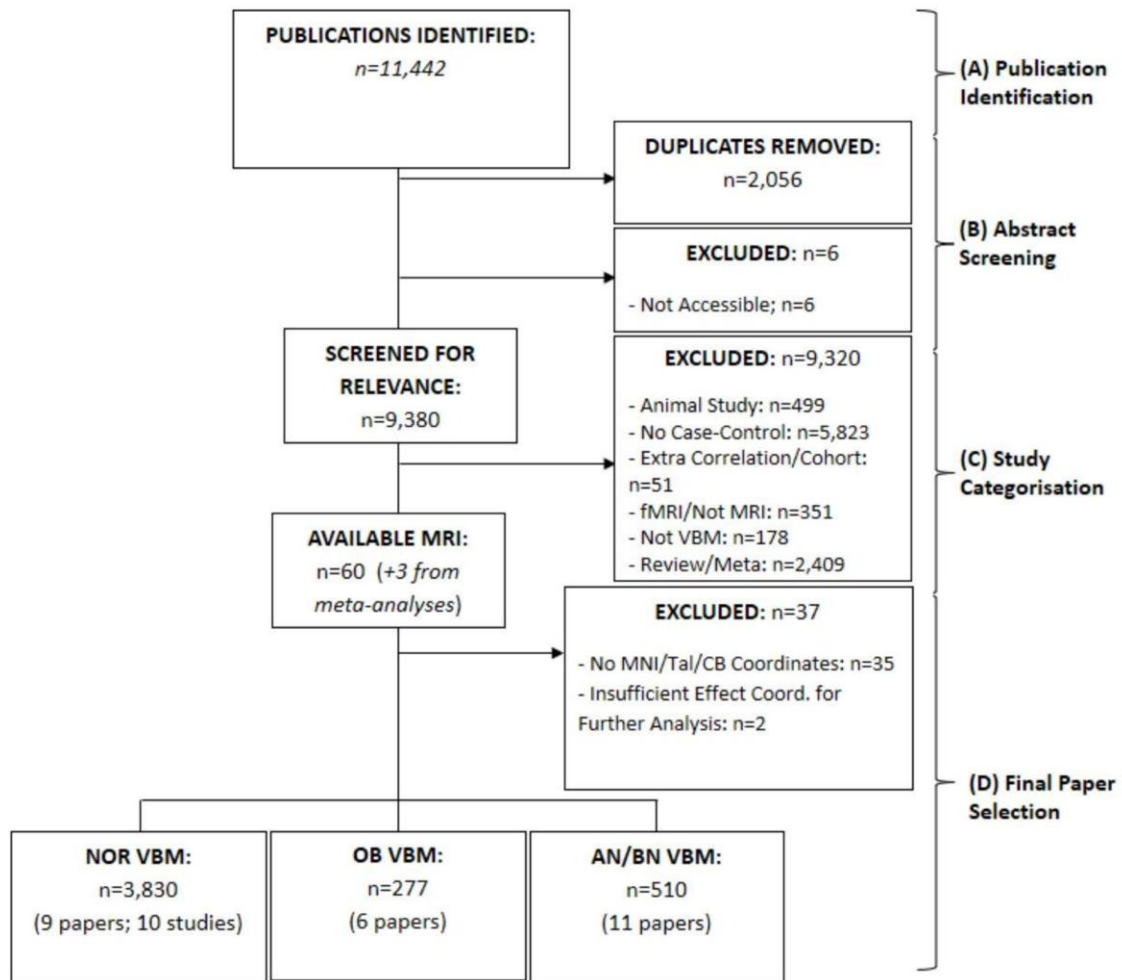


Figure 1. Flowchart depicting the identification (A), abstract screening (B), categorisation (C) and final selection (D) of papers. Three papers were also found from meta-analyses (Dommes et al., 2013¹²⁰; Figley et al., 2016¹³³; Frank et al., 2013¹¹²).

[Abbreviations: AN – Anorexia Nervosa; BN – Bulimia Nervosa; CB – Cerebellum; Coord. - Coordinates; fMRI – Functional Magnetic Resonance Imaging; MNI – Montreal Neurological Institute; MRI – Magnetic Resonance Imaging; NOR – Normative; OB – Obesity; Tal – Talairach; VBM – Voxel-based Morphometry]

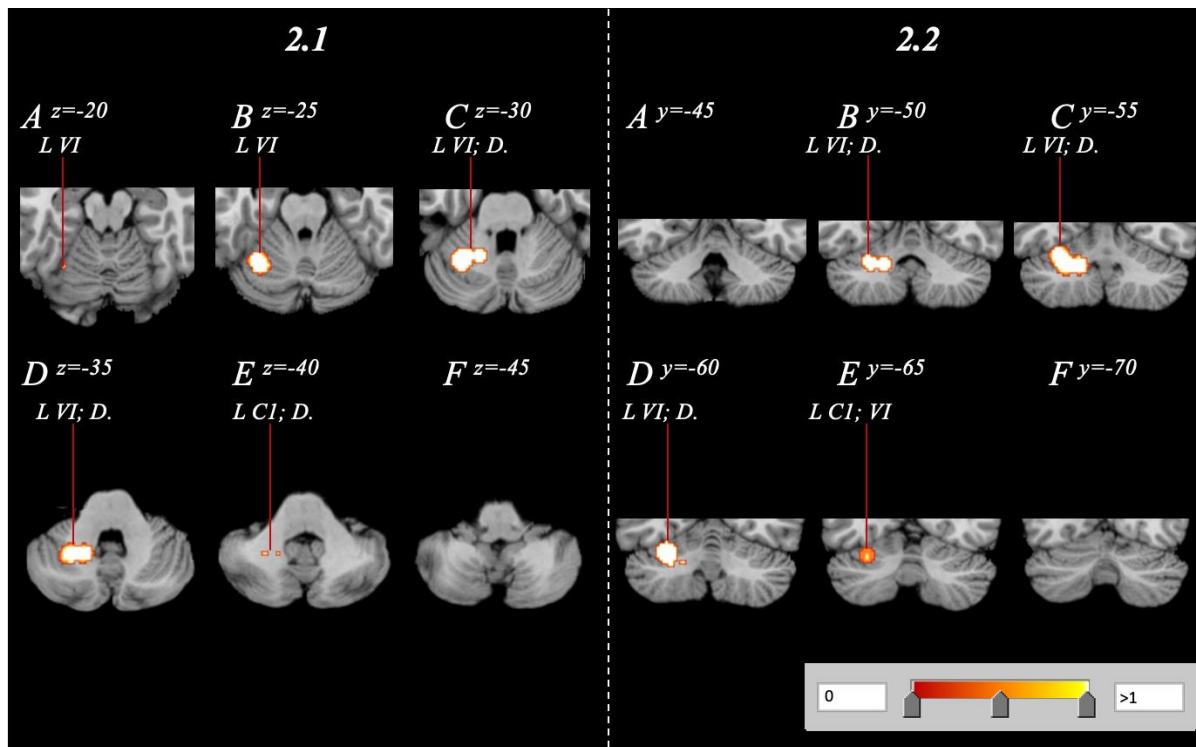


Figure 2. Cerebellar volume reduction of OB subjects relative to HCs, spanning the right cerebellum with a range of $z=-20$ - $z=-40$ and $y=-50$ - $y=-65$ in both axial (2.1A-F) and coronal (2.2A-F) orientations.

[Abbreviations: C1 – Crus 1; D. – Dentate; L – Left; R – Right; VI – Lobule 6]

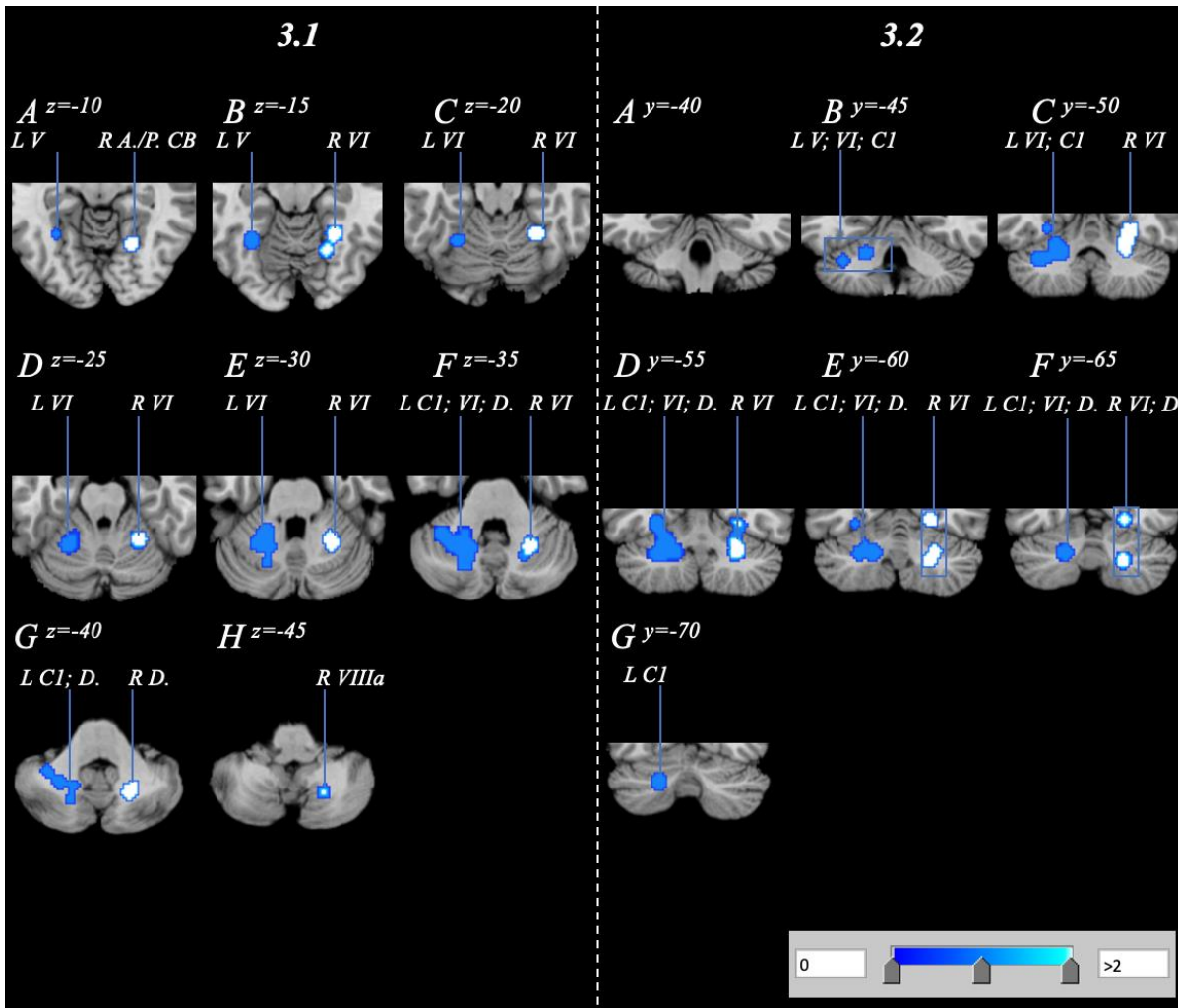


Figure 3. Cerebellar volume reduction of AN/BN subjects relative to HCs, spanning the bilateral cerebellum with a range of $z=-10$ - $z=-45$ and $y=-45$ - $y=-70$ in axial (3.1A-H) and coronal (3.2A-G) orientations.

[Abbreviations: A. – Anterior; C1 – Crus 1; CB – Cerebellum; D. – Dentate; L – Left; P. – Posterior; R – Right; VI – Lobule 6; VIIIa – lobule 8a]

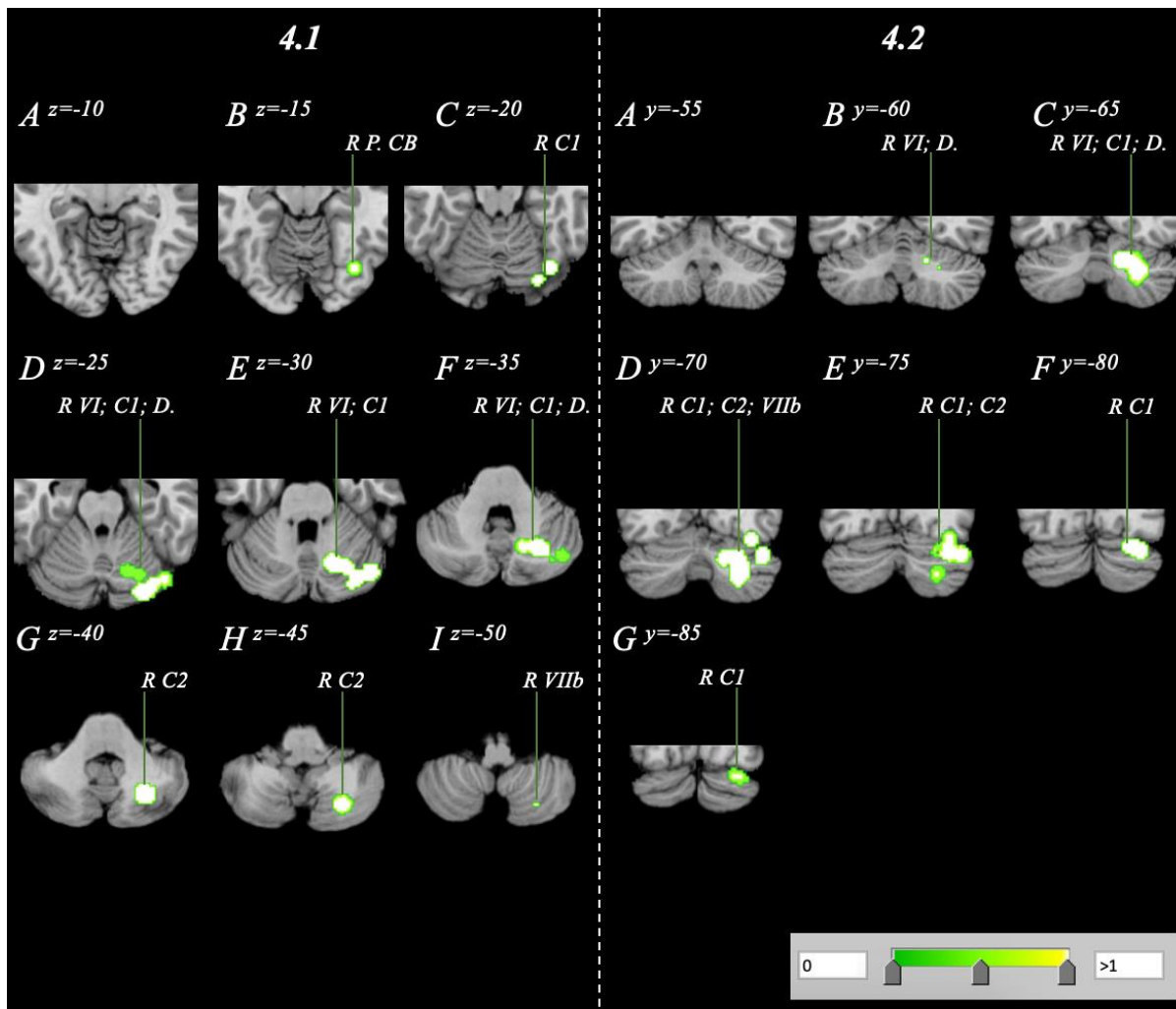


Figure 4. Volume reduction within a normative sample analysis spanning the right cerebellum with a range of $z=-15$ - $z=-50$ and $y=60$ - $y=-85$ in axial (4.1A-I) and coronal (4.2A-G) orientations.

[Abbreviations: C1 – Crus 1; C2 – Crus 2; D. – Dentate; L – Left; P. – Posterior; R – Right; VI – Lobule 6; VIIb – Lobule 7b; VIIIa/b – Lobule 8a/b]

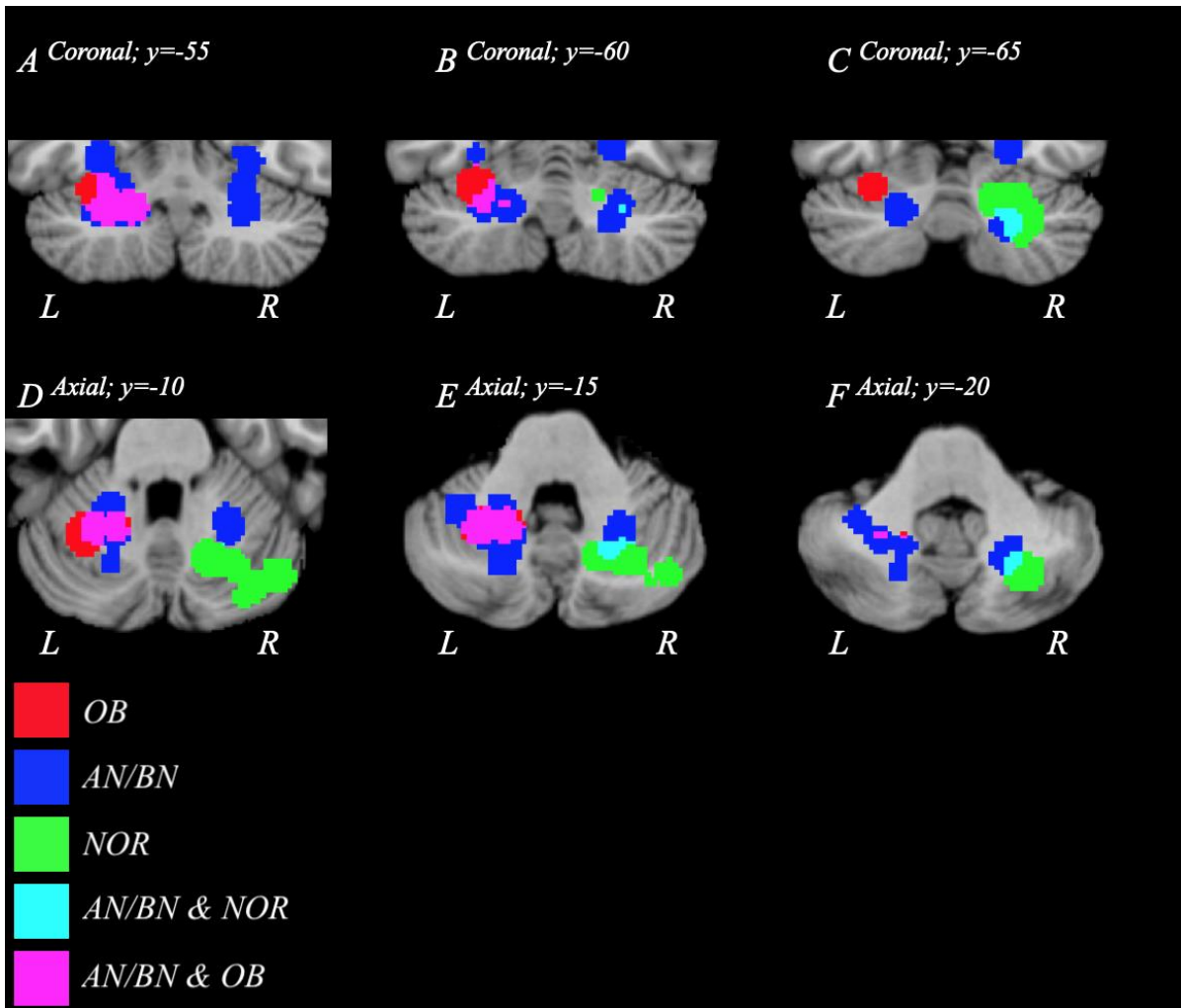


Figure 5. FWE-corrected overlay clusters visualising decreases in volume from AN/BN (blue) OB (red) and NOR (green) data. Regions of the cerebellum where AN/BN and OB data overlap are shown in purple, while an overlap in AN/BN and NOR data are displayed in cyan. No overlap between OB and NOR data was present. Figures 5A-C and D-F depict the logical overlays in axial and coronal orientations respectively.

[Abbreviations: AN – Anorexia Nervosa; BN – Bulimia Nervosa; L – Left; NOR – Normative; OB – Obesity; R – Right]

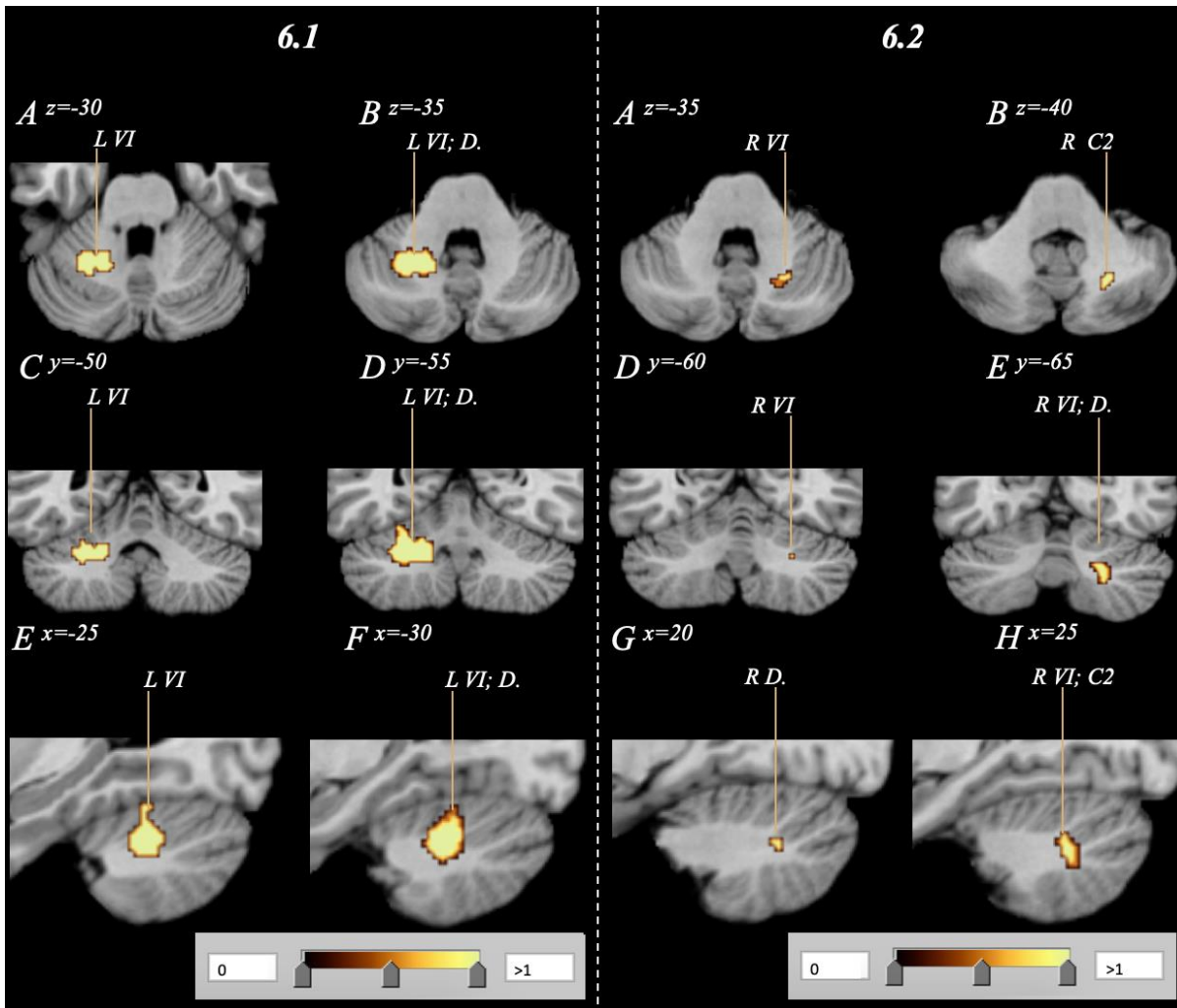
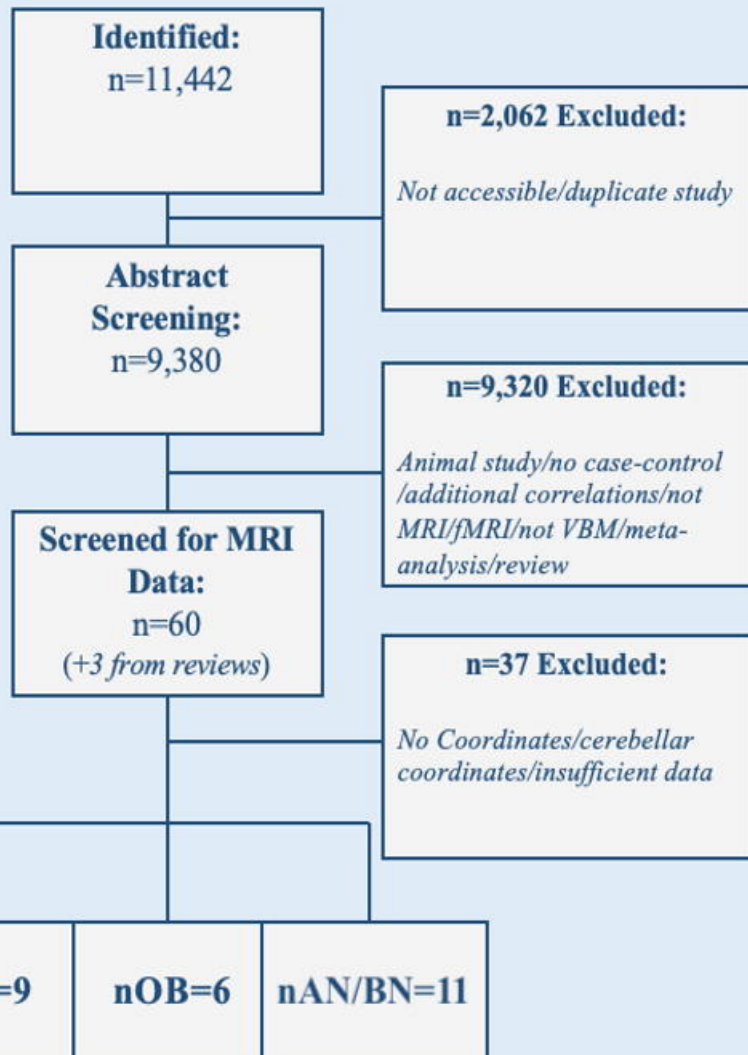


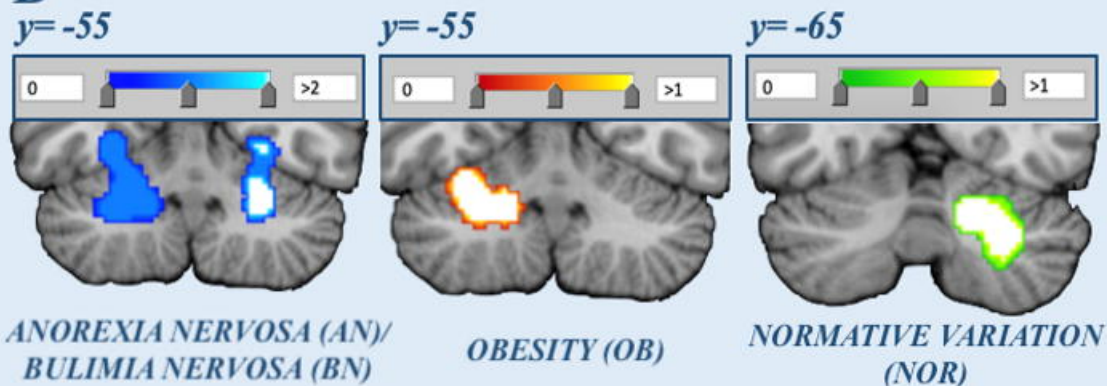
Figure 6. Subsequent conjunction analysis combining respective AN/BN and OB data (6.1) as well as AN/BN and NOR data (6.2) to visualise affected regions of overlap. Analyses confirm an overlap in volumetric decrease in both AN/BN and OB subjects, as well as AN/BN and NOR subjects primarily within Lobule VI ($p < 0.05$). Subfigures 6A/B, C/D and D/E depict the combinatorial clusters in axial, coronal and sagittal orientations respectively. No overlap between OB and NOR data was identified.

[**Abbreviations:** AN – Anorexia Nervosa; BN – Bulimia Nervosa; C2 – Crus 2; D. – Dentate; L – Left; NOR – Normative; OB – Obesity; R – Right; VI – Lobule 6]

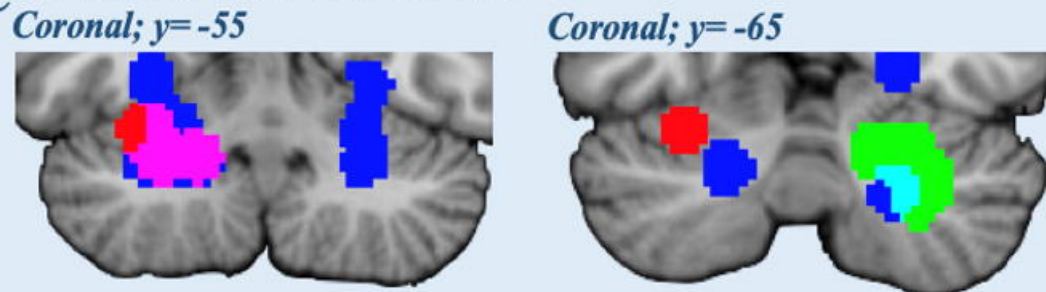
A LITERATURE SEARCH



B INDIVIDUAL COHORT ANALYSES



C POOLED LOGICAL OVERLAYS



Significant clinical overlap, but also distinct cerebellar neurocorrelates for anorexia/bulimia, obesity and normative variation?

