

Correlations between kidney and heart function bioindicators and the expressions of Toll-Like, ACE2, and NRP-1 receptors in COVID-19

Rabab Hussain Sultan^{1*}, Maged Abdallah², Tarek Mohamed Ali³, Hebatallah Hany Assal⁴, Amr E. Ahmed¹, Basem H Elesawy⁵, and Osama M. Ahmed⁶

1 Biotechnology and Life Sciences Department, Faculty of Postgraduate Studies for Advanced Sciences, Beni-Suef University, Beni-Suef, Egypt.

2 Department of anesthesia and intensive care, Kasr Alaini hospital, Cairo University, Egypt.

3 Department of Physiology, College of Medicine, Taif University, P.O. Box 11099, Taif 21944, Saudi Arabia.

4 Chest Department, Kasr Alaini hospital, Cairo University, Egypt.

5 Department of Pathology, College of Medicine, Taif University, P.O. Box 11099, Taif 21944, Saudi Arabia.

6 Physiology Division, Department of Zoology, Faculty of Science, Beni-Suef University, P.O. Box 62521, Beni-Suef, Egypt.

Corresponding author: Rabab Hussain Sultan, 00201029819222, E-mail: rababsoltan080@gmail.com

Abstract

30 **Background:** COVID-19 impacts the cardiovascular system resulting in myocardial
31 damage and also affects the kidneys leading to renal dysfunction. This effect is mostly
32 through the binding with angiotensin-converting enzyme-2 (ACE2) and Neuropilin-
33 1(NRP-1) receptors. Toll-Like Receptors (TLRs) typically combine with microbial
34 pathogens and provoke an inflammatory response.

35 **Aim:** This work aims to compare the changes in kidney and heart function bioindicators
36 and expressions of TLRs (TLR2 and TLR2) as well as ACE2 and NRP-1 receptors in
37 moderate and severe COVID-19 patients. The correlations between kidney and heart
38 function bioindicators and expressions of these receptors are also studied.

39 **Patients and Methods:** In this study, 50 healthy control and 100 COVID-19 patients (55
40 male and 45 female) were enrolled. According to WHO guidelines, these participants
41 were divided into severe (50 cases) and moderate (50 cases). Serum creatinine, blood
42 urea, CKMB, LDH, and Troponin I were estimated. We measured the gene expression
43 for Toll-Like Receptors (TLR2, TLR4), ACE2, and NRP-1 in the blood samples using
44 quantitative real-time PCR (qRT -PCR).

45 **Results:** In comparison with the healthy group, all patients exhibited a significant
46 elevation in the serum creatinine, blood urea, cardiac enzymes, and CRP. As well, all
47 studied patients revealed a significant elevation in the expression levels of TLR2, TLR4,
48 ACE2, and NRP-1 mRNA. In all patients, CKMB, ACE2, and NRP-1 mRNA expression
49 levels were positively correlated to both TLR2 and TLR4 expression levels.
50 Moreover, serum creatinine and blood urea were positively correlated to both TLR2 and
51 TLR 4 expression levels in the severe group only.

52 **Conclusions:** Our study concluded that expression levels for TLR2, TLR4, ACE2, and
53 NRP-1 mRNA in both severe and moderate patients were positively correlated with
54 renal biomarkers and cardiac enzymes. Innate immune markers can be important
55 because they correlate with the severity of illness in COVID-19.

56
57 **Keywords:** Renal function; cardiac enzymes; ACE2; NRP-1; TLRs; COVID-19

58
59
60
61
62

63 **Introduction:**

64 Coronaviruses are described as a large family of enveloped RNA viruses with a single
65 positive strand. They are capable of infecting humans and many animal species. Based
66 on their pathogenicity, human coronaviruses can be categorized into many types.

67 Highly pathogenic types include severe acute respiratory syndrome coronavirus (SARS-
68 CoV), middle east respiratory syndrome coronavirus (MERS-CoV), and the new severe
69 acute respiratory syndrome coronavirus 2 (SARS-CoV-2) (**Weiss and Navas- Martin,**
70 **2005**). SARS-CoV-2 has led to the severest pandemic of this century with coronavirus
71 disease 2019 (COVID-19). With the world's second year of the coronavirus pandemic,
72 governments are still struggling to immunize their populations to the herd immunity
73 levels.

74 On November 5, 2021, the total confirmed cases reached about 248,467,363 with
75 5,027,128 deaths due to COVID-19 worldwide (**WHO, 2021**). Originally recognized as
76 respiratory disease, COVID-19 interacts with the cardiovascular system and causes
77 damage to the heart muscle, and results in cardiac and endothelial dysfunction
78 principally via the angiotensin-converting enzyme 2 (ACE2) receptor (**Wang et al.,**
79 **2020**). The different tissue tropism between SARS-CoV and SARS-CoV-2 raised the
80 possibility of additional host factors being involved. SARS-CoV-2 advanced protein
81 comprises a cleavage site for protease furin which is not found in SARS-CoV (**Peacock**
82 **et al., 2021**).

83 Cantuti-Castelvetri et al. illustrated that neuropilin-1 (NRP-1), which is known to bind
84 furin-cleaved substrates, increases the infectivity of SARS-CoV-2 (**Cantuti et al., 2020**).
85 Viral invasion actuates the host immune system inducing the creation of a large amount
86 of cytokine and interferons to rule out pathogens. Taking the exception of viral
87 DNA/RNA, the viral proteins are also considered as targets of the model recognition
88 receptor. Membrane-linked receptors like (TLRs 1, 2, 4, 6, and 10) refer to viral protein
89 recognition (**Boozari et al., 2019**). Distinct Toll-like receptors (TLRs) play a protective
90 and harmful role for a specific virus. The real mechanistic vision of the pathogenicity of
91 SARS-CoV-2 remains uncertain. This is attributable to the lack of knowledge about why
92 the virus chose humans as its primary host and in what way the virus can escape the
93 innate immune system in humans. In particular, the interactions between human TLRs
94 and viral antigens, and the mechanism of cytokine storms that affect several human
95 organs, are not mostly known. Though, the pathophysiology of COVID-19 usually
96 includes the invasion of the virus into the pulmonary alveoli, usually via the respiratory
97 tract, primarily by way of respiratory droplets, through the airways (**Boozari et al.,**
98 **2019**). The spike protein, a viral glycoprotein on its capsid, binds to the ACE2 receptor

99 then the RNA genome comes into the host cell through the receptor (**Rothan and**
100 **Byrareddy 2020**). After being inside the host cell, viral RNA replicates are formed from
101 mRNA, resulting in quick reproduction of viral RNA and other required structural
102 proteins. Then again, the viral antigens interact with the host's immune cells and this
103 interaction initiates pro-inflammatory reactions like vasodilation, increased capillary
104 permeability, and gathering of humoral factors (**V'kovski et al., 2021**). All these factors
105 cause the impedance of gas exchange and dyspnea. The exact cause of SARS-CoV-2 and
106 the character of each constituent of the innate and adaptive immune systems are still
107 unidentified (**Sette and Crotty 2021**). The deficiency of a comprehensive consideration
108 of the pathogenic and immunologic characteristics of the virus made the situation even
109 more alarming to humankind (**V'kovski et al., 2021**). So, this study aims to evaluate the
110 correlations between mRNA expression levels of Toll-Like Receptors, ACE2 and
111 Neuropilin-1 receptors, and cardiac and renal dysfunction biomarkers in COVID-19.

112

113 **Patients and Methods**

114 **Study population:** We received laboratory-confirmed medical records and edited
115 data of COVID-19 inpatients stated to the National Health Commission in the period
116 from December 2019 to January 2020. The data deadline for the study was March 2021.
117 All the participants were isolated at Misr International Hospital, Cairo, Egypt, in the
118 period from March 2021 to April 2021. Severe COVID-19 patients are defined as those
119 having hypoxemia ($\leq 93\%$ percutaneous oxygen saturation (SpO₂) or ≥ 30 /min
120 respiratory rate on room air who are on the high-flow nasal cannula or noninvasive
121 mechanical ventilation). Patients not fulfilling the above criteria were weighed as
122 moderate. Informed printed consent was taken from all participants after the ethical
123 committee of the institutional review board was permitted this research.

124 Cases of Covid19 were confirmed by the presence of positive results for high-throughput
125 sequencing or real-time reverse transcriptase-polymerase chain reaction (RT-PCR)
126 testing of swab samples in the nose and throat (**Raoult et al., 2020**).

127

128 **Patients:** Only cases identified in the laboratory were involved in the study. Eligible
129 COVID-19 patients aged 20-70 years were divided into 2 groups (50 patients each)
130 (**Chen et al., 2020**).

131 **Group1**; included patients with moderate symptoms infected by a coronavirus.
132 **Group2**; included patients with severe symptoms infected by a coronavirus and
133 admitted to the intensive care unit (ICU).

134 **Inclusion and Exclusion Criteria:** Healthy individuals were chosen as COVID-19
135 free volunteers. All patients were recruited between 20-70-year-old and were diagnosed
136 as having COVID-19 according to their PCR and chest CT, as identified by WHO
137 2020. Key exclusion criteria included hypertensive patients treated with ACE2
138 inhibitors, pre-existing respiratory disorder, kidney or liver failure, thyroid dysfunction,
139 autoimmune disorders, cerebrovascular diseases, heart diseases, pregnant and lactating
140 women. In addition, patients who receive immunomodulatory drugs or those who have
141 medical conditions such as other infections, malignant tumors, and alcohol abuse.

142 **The demographic data:** Anthropometric variables such as gender and body mass
143 index (BMI) were obtained.

144 **Blood samples:** Serum samples were rapidly separated, aliquoted, and stored at - 40°C
145 until the biochemical measurements. Serum CK-MB and Troponin I were determined by
146 a standard sandwich enzyme-linked immune-sorbent assay (ELISA) Kit gotten from
147 R&D Systems (USA) as guided by the manufacturer. Gene expression of ACE2 mRNA,
148 NRP-1 mRNA, TLR2, TLR4 were spotted in the healthy control, moderate and severe
149 groups in blood samples (**Chen et al., 2020**) using quantitative real-time PCR (qRT-
150 PCR). Gene sequence (5'-3') procedures were performed conferring to the kit
151 instructions provided in the laboratory assay.

152 **Laboratory assays:**

153 Serum creatinine levels were determined using reagent kits bought from Diamond
154 Diagnostics (Egypt) conferring to the technique of **Henry (1974) (Henry et al., 1974)**.

155 Urea concentration was determined according to the technique of **Kaplan (1984)**
156 (**Kaplan 1984**) using a reagent kit purchased from Diamond Diagnostics (Egypt). Serum
157 lactate dehydrogenase (LDH) activity was measured according to the method of
158 **Buhland Jackson (1978) (Buhland and Jackson 1978)**.

159 **RNA isolation and qRT-PCR:**

160 Blood samples of all groups were used separately to extract total RNA via TRIzol
161 Reagent purchased from Fermentas, Germany. Then cDNA synthesis was performed
162 utilizing the High-Capacity cDNA Reverse Transcription Kit purchased from Invitrogen,
163 Germany according to the manufacturer's directions.

164 Real-time PCR was carried out in a 20 μ L system having 10 μ L of 1x Sso- Fast Eva
165 Green Supermix (Bio-Rad, Hercules, CA, USA), 2 μ L of cDNA, 6 μ L of RNase/DNase-
166 free water, and 500nM of the primer pair sequences: NPR1, F:5-AACAACGGCTCGGA
167 CTGGAAGA-3 and R:5-GGTAGATCCTGATGAATCGCGTG -3 (NM001024628);
168 ACE2, F: 5-TCCATTGGTCTTCTGTCACCCG-3 and R: 5-AGACCATCCACCTCC
169 ACTTCTC-3 (NM021804.3) β -actin, F: 5-GGAACGGTGAAGGTGACAGCAG-3 and
170 R-5-TGTGGACTTGGGAGAGGACTGG-3 (XM004268956.3); TLR2, F: 5-ATCCTCC
171 AATCAGGCTTCTCT3 and R-5ACACCTCTG TAGGTCACT GTTG3 (NM00131878
172 9.2); TLR4, F:5-ATATTGACAGGAAACCCCATCCA-3, and R:
173 AGAGAGATTGAGT AGGGGCATTT-3 (NM138554.5); β -
174 actin, F-5AGGAACGGTGAAGGTGACAGCA G-3 and R-
175 5TGTGGACTTGGGAGAGGACTGG-3 (XM00426 8956.3).

176 The amplification data were analyzed by using the manufacturer's programmer
177 according to **Livak and Schmittgen** methods (**Livak and Schmittgen 2001**) and the
178 variables were normalized to β -actin.

179 **Statistical analysis.**

180 The result values were accessible as mean \pm standard error. SPSS version 20 for
181 Windows (IBM Corp., 2011) was used for data analysis. The one-way analysis of
182 variance (ANOVA) was used to show the statistical differences among groups. This was
183 followed by Duncan's method for post hoc analysis. By means of the Pearson correlation
184 coefficients method, correlation analysis was estimated between different studied
185 parameters. P-value < 0.05 has been considered as being statistically significant.

187 **Results:**

188 Table 1 shows that the age was significantly higher (p=0.000) in moderate and severe
189 cases compared to healthy controls. Male patients in severe cases were more than female
190 patients. On the other hand, BMI was insignificant (p>0.05) in both infected groups
191 compared to healthy control.

192 Table 1 shows the levels of the kidney function biomarkers and the cardiac enzymes in
193 all groups. Serum creatinine was significantly higher in severe cases (p=0.000) than in
194 moderate and control cases. No significant difference was found between moderate and
195 control cases. The levels of serum high-sensitivity C-reactive protein (hsCRP)
196 (p=0.000), creatinine kinase MB (CKMB) (p=0.000), lactate dehydrogenase (LDH)
197 (p=0.000), and troponin I (p<0.01) were significantly increased among the severe group

198 and moderate group compared to healthy control. Serum (hsCRP) ($p=0.000$) and levels
199 of lactate dehydrogenase (LDH) ($p=0.000$) were significantly higher among the severe
200 group compared to the moderate group.

201

202 Table (1): Demographic and Laboratory findings of severe and moderate COVID-19.

	Healthy controls	Moderate patients	Severe patients
	(n=50)	(n=50)	(n=50)
Age (Year)	34.12±1.24	58.24±1.24 ^{***}	57.36±1.43 ^{***}
Gender, no. (%)			
Male	25(50%)	25(50%)	29 (58%)
Female	25(50%)	25(50%)	21 (42%)
BMI (kg/m ²)	24.25±0.35	24.73±0.48	25.03±0.52
CRP(mg/dl)	1.97 ±0.19	61.90 ±6.05 ^{+ ***}	73.92 ±3.42 ^{***}
Creatinine (mg/dl)	0.89 ±0.03	0.85 ±0.06 ⁺⁺⁺	1.75 ±0.30 ^{**}
Urea (mg/dl)	25.1 ±0.93	48.68 ± 5.49 ^{+++ **}	79.52 ± 9.14 ^{***}
CKMB (ng/ml)	1.29 ±0.05	4.07 ±0.29 ^{***}	3.55 ±0.20 ^{***}
LDH (mg/dl)	261.6±3.00	339.24±25.96 ^{++ **}	418.7±26.12 ^{***}
Troponin I (ng/ml)	0.02 ±0.002	0.03 ±0.003	0.04 ±0.01 ^{***}

203 Table 1: Data are presented as mean+/-SE. BMI: Body mass index, CRP: C-reactive protein,
204 CKMB: creatinine kinase Myocardial Band, LDH: Lactate dehydrogenase was significantly
205 different at ^{**} $P < 0.01$ level, ^{***} $P < 0.001$ level versus healthy controls, and ⁺ $P < 0.05$, ⁺⁺⁺ $P < 0.001$
206 versus severe group.

207

208 Discussion

209 The COVID-19 is a global pandemic. From its starting to spread in December 2019, this
210 viral infection continued to spread internationally. So, efforts are instantly done to stop
211 this virus invasion and guard the world.

212 To progress an effective treatment and vaccine for COVID-19 infection, decoding the
213 precise immune response to this infection is an essential step. In this case, recovery and
214 disease severity were linked to appropriate immune responses and impaired immune
215 reactions, respectively. Our present data has revealed an increase in serum creatinine and
216 blood urea nitrogen (BUN) compared to patients with normal kidney function. In

217 agreement with our results, **Cheng et al.** their clinical evidence has shown an elevation
218 in both serum creatinine and BUN in COVID-19 patients, and near 5% of their
219 prospective study in China, patients were diagnosed with acute kidney injury during
220 hospitalization (**Cheng et al., 2020**).

221 **Ahmadian et al.; Buonaguro et al.; Huang et al. and Wan et al.** reported that
222 kidney dysfunction mainly acute kidney injury, occurs in cases with COVID-19 within 3
223 weeks after the beginning of the symptoms; nevertheless, kidney complications are
224 linked to the higher death rate. They concluded that COVID-19 induced organ
225 impairment is mostly facilitated by cytokine storms and that strategies to diminish or
226 eradicate inflammatory cytokines would be effective in avoiding cytokine-induced organ
227 injury. Aiming to the creation of IL1, IL6, TNF, and INF- γ related-inhibitors are
228 reported (**Ahmadian et al., 2021; Buonaguro et al., 2020; Huang et al., 2020 and Wan**
229 **et al., 2020**). Kidney injury induced by the SARS-CoV-2 virus is probably related to
230 several factors. The virus can infect renal podocytes and cells of the proximal tubules.
231 Disruptive glomerulopathy, leakage of protein in Bowman's capsule, acute tubular
232 necrosis, and mitochondrial damage based on the angiotensin-converting enzyme 2
233 (ACE2) pathway (**Fan et al., 2021**).

234 Acute kidney injury can result from dysregulation of the immune response, such as
235 cytokine storms and macrophage activation syndrome with lymphopenia (**Ahmadin et**
236 **al., 2021**). The development of cytokine storms after viral infection, directly and
237 indirectly, affects the kidneys and can induce sepsis, shock, hypoxia, and
238 rhabdomyolysis. Among the other probable causes of kidney injury induced by COVID-
239 19 is the organ interactions between the pulmonary, cardiac, and renal tissues (**Qian et**
240 **al., 2021**).

241 The present study detected a highly significant upsurge of ACE2 mRNA receptor
242 expressions, NRP-1 mRNA co-receptors, in COVID-19 patients.

243 This finding was consistent with the results of **Imig and Ryan; Cantuti-Castelvetri et**
244 **al.; Daly et al.; Freeman and Swartzand** who reported that one of the major receptors
245 for SARS-CoV-2 is ACE2 which is broadly dispersed in the lung, intestinal, liver, heart,
246 vascular endothelium, testis, and kidney cells.

247 The fact that ACE2 is expressed in respiratory and olfactory epithelial cells at very low
248 protein levels increases the likelihood that other factors are needed to promote virus-host
249 cell communications in the cells that express low ACE2. NRP-1 may be considered as
250 an ACE2 enhancer by facilitating the interface of the virus and ACE2. In addition, TLRs
251 are associated with acute kidney injury, which correlates with the severity of renal

252 disease and inflammatory markers (**Imig and Ryan 2013; Cantuti-Castelvetri et al.,**
253 **2020; Daly et al., 2020 and Freeman and Swartz 2020).**

254 Moreover, **Rivero et al. and Choudhury and Mukherjee**, concluded these TLRs (2
255 and 4) can encourage the expression of chemokine in epithelial cells of renal tubules
256 (**Rivero et al., 2009 Choudhury and Mukherjee 2020**). Viruses interrelate with precise
257 receptors to enter target cells. SARS-CoV-2 interacts with the angiotensin-converting
258 enzyme 2 receptors (ACE2), which is broadly distributed in the lung, intestinal, liver,
259 heart, vascular endothelium, testis, and kidney cells (**Gheblawi et al., 2020**). With the
260 help of the type II transmembrane serine protease (TMPRSS2), SARS-CoV-2 comes
261 into the host cells by endocytosis (**Hoffman et al., 2020**). Zhang et al. revealed that
262 severe COVID-19 patients must show a hyper inflammation nature in comparison to
263 non-severe patients (**Zhang et al., 2020**).

264 S1 subunit of the S spike of SARS-CoV-2 has a c-terminal domain that guarantees a
265 very high attraction for the ACE2 receptor (**Huang et al., 2020**). This declines the ACE2
266 expression on the cell surface and upsurges inflammation leading to tissues destruction
267 (**Li et al., 2020**). ACE2 plays an anti-inflammatory role by converting angiotensin II into
268 angiotensin (1-7) (**Issa et al., (2021)** and reducing vaso-permeability, edema, and
269 pulmonary neutrophil infiltration.

270 **Ziegler et al.** recommended that SARS-CoV-2 may raise ACE2 expression and further
271 increase infection (**Ziegler et al., 2020**). The spike protein of SARS-CoV-2 comprises a
272 cleavage site for the protease furin which is lacking in SARS-CoV. **Cantuti Castelvetri**
273 **et al.** presented that neuropilin-1 (NRP-1), which is identified to bind to furin-cleaving
274 substrates, enhances SARS-CoV-2 infectivity (**Cantuti-Castelvetri et al., 2020**).

275 **Daly et al.** reported that the furin-cleaving S1 fragment of the spike protein directly
276 combines to cell surface NRP-1 and the blocking of this contact with small molecule
277 inhibitors or monoclonal antibodies, will reduce viral invasion in cell culture (**Daly et**
278 **al., 2020**). Viral invasion initiates inflammation, stimulation of specialized antigen-
279 presenting cells (APCs) that make the viral peptides presentable to T cells (CD4 and
280 CD8) and stimulates B cells directly. Inflammation is dependent on the first line of
281 innate immune response (**Shah et al., 2020**). As soon as SARS-CoV-2 enters the host
282 cell, it triggers the pyrin domain containing 3 (NLRP3) inflammasome, one of the Nod-
283 like receptor family. Once the viral RNA interacts with TLRs 3, 7, 8, and 9, A
284 downstream of the NF- κ B pathway becomes activated, which augments the production
285 of pro-inflammatory cytokines (**Browne 2020**). TLR2 and TLR4 are crucial due to their
286 exciting capability to identify different molecular forms of attacking pathogens

287 **(Mukherjee et al., 2016)**. Subsequently, the inflammation twitches and the activated
288 immune cells explode the release of a large number of cytokines. Collectively, these
289 mechanisms participate in augmenting the inflammatory response that plays a major role
290 in the pathogenesis of COVID-19 **(Ye et al., 2020)**. The "cytokine storm syndrome" is
291 believed to be a major underlying factor in the immune-pathogenicity of COVID-19.
292 This storm is responsible for the start of tissue damage, hyper inflammation, and even
293 mortality **(Tang et al., 2020)**. It was activated by the hyperactivation of immune cells
294 leading to a boom of cytokines release. The overexpression of induced IL-10,
295 macrophage IL-1 α , hepatocyte growth factor, IFN- γ , IL-3, and were highly related to
296 the severity of the disease **(Tang et al., 2020)**. **Freeman and Swartz** concluded that
297 SARS-CoV-2 is typified by strong and fast stimulation of the innate immune defense,
298 involving triggering of the NLRP3 pathway, and the release of the IL-6 and IL-1 **(Daly**
299 **et al., 2020)**. **Blanco-Melo et al.** verified that SARS-CoV-2 infection of the epithelial
300 cells of human bronchi gave rise to the expression of numerous cytokines and
301 chemokines like TNF- α , IL-1 β , and IL-6 **(Blanco-Melo et al., 2020)**. In addition, our
302 present data showed an elevated troponin I, lactate dehydrogenase (LDH), and CKMB in
303 moderate and severe COVID-19 patients when compared with the control group.
304 COVID-19 has been shown to interrelate and disturb the cardiovascular system,
305 primarily via the ACE2 receptor, resulting in myocardial damage, cardiac damage, and
306 endothelial dysfunction **(Basu-Ray et al., 2020)**. The interface of SARS-CoV-2 with
307 ACE2 can give rise to changes in the ACE2 pathways, causing acute cardiac injury. A
308 few studies propose that SARS-CoV-2 can result in viral myocarditis by direct infection
309 of the myocardium. In many cases, myocardial damage seems to be triggered by
310 increased cardiac metabolic demand which accompanies systemic infections and
311 persistent severe pneumonia-induced hypoxia **(Basu-Ray et al., 2020 and Bugert et al.,**
312 **2021)**. Moreover, the release of high levels of interleukin 2, 10, 6, 8, and TNF- α can
313 harm several tissues, like vascular endothelium and cardiac myocytes **(Tang et al.,**
314 **2020)**. Cytokine storms may be associated with the dangerousness of the disease **(Hojoyo**
315 **et al., 2020)**. In a series of situations that affect the kidneys as well as the heart,
316 dysfunction of one organ can encourage dysfunction of the other organ. Chronic or acute
317 systemic conditions can impair the function of these two organs **(Damman and Testani**
318 **2015)**. COVID-19-induced acute kidney injury may be related to the crosstalk between
319 the cardiovascular system and the kidney. COVID-19 set off myocarditis to weaken the
320 cardiac output and affect end-organ perfusion. Additionally, the associated proper
321 ventricular disorder produces diastolic disorder and venous congestion that transmit back

322 to the kidney and in addition compromise its blood supply via way of means of growing
323 kidney congestion (**Legrand et al., 2021**). In addition, acute viral myocarditis together
324 with cytokine cardiomyopathy can induce hypotension, renal venous congestion, and
325 decreased renal blood flow, which can decrease the glomerular filtration rate (**Faour et**
326 **al., 2022**).

327 **Conclusions**

328 Our study concluded that impaired renal biomarkers and cardiac enzymes may be
329 attributed to increased expression levels of TLR2, TLR4, ACE2, and NRP-1 mRNA in
330 both severe and moderate COVID-19 patients. So. it is critical to recognize the
331 molecular mechanisms and focus on the vital molecules involved in the pathogenicity of
332 the diseases to design novel drugs to control and prevent the disease. By blocking the
333 virus access pathways including the viral receptors and regulating immune responses we
334 can reduce multi-organ dysfunction induced by COVID-19.

335

336 **Supporting information**

337 **Fig 1 :** (A, B) shows a comparison between the relative expression of TLR-2 and TLR-
338 4 in all studied groups. There were significant ($p=0.000$), ($p=0.000$) increases
339 respectively, in TLR2, TLR4 expression levels in moderate and severe cases compared
340 to healthy controls.

341 **Fig 1:** (A) TLR2; Toll-like receptor 2 and (B) TLR4; Toll-like receptor 2 in moderate
342 and severe groups compared to healthy controls.

343 **Fig 2:** (C, D) shows a comparison between the relative ACE2 and NRP-1 mRNA
344 expression levels. This figure exhibited that ACE2 and NRP-1 mRNA expression levels
345 were significantly ($p=0.000$, $p=0.000$ respectively), increased in the moderate group and
346 severe group compared to the healthy controls group.

347 **Fig 2:** (C) ACE2; Angiotensin-converting enzyme- 2 and (D) NPR-1; Neuropilin-1 in
348 moderate and severe groups compared to healthy control

349 **Fig 3: (E-I) in the moderate group**, shows a significant positive correlation between
350 urea and TLR2 ($p=0.000$). Also, positively correlated between CKMB and Troponin I
351 with both TLR2 ($p=0.000$), ($p<0.05$) and TLR4 ($p=0.000$, $p=0.000$, respectively).

352 **Fig 3: (E-I)** Correlations among the moderate group, between TLR2 with (E) urea, (F)
353 CKMB, (G) Troponin I and TLR4 with (H) CKMB, (I) Troponin I. Correlation was
354 significant ** at the 0.01 level, *** at the 0.001 level. CKMB: creatinine kinase
355 myocardial band; TLR2, 4: Toll-like receptor 2, 4.

356 **Fig4: (J-M)** ACE2 and NRP-1 mRNA expression levels, exhibited a significant positive
357 ($p=0.000$) correlation with TLR2, TLR4 in the moderate group.

358 **Fig 4: (J-M)** Correlations among the moderate group, between ACE2 with (J) TLR2, (K)
359 TLR4, and NRP-1 with (L) TLR2, (M) TLR4. The correlation was significant ** at the 0.01
360 level, *** at the 0.001 level. ACE2: Angiotensin-converting enzyme; NPR1: Neuroplini-1
361 and TLR2, 4: Toll-like receptor 2, 4.

362 **Fig 5 :(N-Q) in the severe group**, both serum creatinine and urea were positively
363 correlated to TLR2 and TLR4 ($p<0.05$).

364 **Fig 5: (N-Q)** Correlations among the severe group, between creatinine with (N)
365 TLR2, (O) TLR4, and urea with (P) TLR2, (Q) TLR4. The correlation was significant
366 ** at the 0.01 level, *** at the 0.001 level. TLR2, 4: Toll-like receptor 2, 4.

367 **Fig 6 :(R-T)** CKMB showed a positive correlation with TLR2 ($p=0.000$) and TLR4
368 ($p<0.05$). Furthermore, Troponin I observed a positive correlation with TLR4 ($p<0.05$)
369 among the severe group.

370 **Fig 6: (R-T)** Correlations among the severe group, between CKMB with (R) TLR2, (S)
371 TLR4 and Troponin I with (T) TLR4. The correlation was significant ** at the 0.01
372 level, *** at the 0.001 level. CKMB: creatinine kinase myocardial band; TLR2, 4: Toll-
373 like receptor 2, 4.

374 **Fig 7 :(U, V)** shows that ACE2 mRNA expressions were positively ($p=0.000$)
375 correlated

376 with TLR2 and TLR4 in the severe group.

377 **Fig 7: (U, V)** Correlations among the severe group, between ACE2 with (U) TLR2,
378 (V) TLR4. The correlation was significant ** at the 0.01 level, *** at the 0.001 level.

379 ACE2: Angiotensin-converting enzyme; TLR2, 4: Toll-like receptor 2, 4.

380 **Fig 8: (W, X)** shows that NRP-1 mRNA expressions were positively (p=0.000)
381 correlated

382 to TLR2 and TLR4 in the severe group.

383 **Fig 8: (W, X)** Correlations among the severe group, between NRP-1 with (W) TLR2,
384 (X) TLR4. The correlation was significant ** at the 0.01 level, *** at the 0.001 level.

385 ACE2: Angiotensin-converting enzyme; NPR-1: Neuroplini-1; TLR2, 4: Toll-like
386 receptor 2, 4.

387 **Acknowledgments**

388 The authors would like to thank Taif University, Taif, Saudi Arabia for supporting this
389 research (Taif University researchers supporting project number: TURSP-2020/127).
390 Thank you very much Dr. Ahmed Abdelhafeiz consultant of Medical Biochemistry - Al
391 Azhar University.

392

393 **Funding**

394 “This work was supported by [Taif University, Taif, Saudi Arabia] (Grant number
395 [TURSP-2020/127]. The author, Basem Hassan Elesawy has received research support
396 from Taif University, Taif, Saudi Arabia.”

397

398 **Ethics Statement**

399 The studies were reviewed and approved by the Ethics Committee of Faculty of Post-
400 graduate studies for Advanced Science, Beni-Suef University, Egypt, and approval
401 from Misr International Hospital was obtained.

402 **Consent to participate**

403 All patients/participants or their relatives provided their written informed consent to
404 participate in this study.

405 **Authors contribution**

406 Conceptualization: [Maged Abdallah, Osama M. Ahmed]; Methodology: [Rabab
407 Hussain Sultan, Amr E. Ahmed, Basem Hassan Elesawy, Maged Abdallah]; Formal
408 analysis and investigation: [Hebatallah Hany Assal, Tarek Mohamed Ali, Osama M.
409 Ahmed]; Writing - original draft preparation: [Rabab Hussain Sultan, Tarek Mohamed
410 Ali, Osama M. Ahmed]; Writing - review and editing: [Tarek Mohamed Ali, Osama M.
411 Ahmed, Hebatallah Hany Assal]; Funding acquisition: [Basem Hassan Elesawy];
412 Resources: [Rabab Hussain Sultan, Maged Abdallah, Tarek Mohamed Ali, Hebatallah
413 Hany Assal, Amr E. Ahmed, Basem Hassan Elesawy]; Supervision: [Osama M. Ahmed,
414 Maged Abdallah, Hebatallah Hany Assal, Amr E. Ahmed].

415 **Competing Interests**

416 “The authors have no relevant financial or non-financial interests to disclose.”

417 **Consent to publish**

418 All authors agreed with the content and that all gave explicit consent to submit and that
419 they obtained consent from the responsible authorities at the institute/organization where
420 the work has been carried out **before** the work is submitted.

421 **Data and availability of material**

422 All authors guarantee transparency on the re-use of material and that there is no
423 unpublished material (for example manuscripts in press) included in the manuscript

424 **References**

- 425 **Ahmadian, E.; Hosseiniyan Khatibi, S. M.; Razi Soofiyani, S.; Abediazar, S.;**
426 **Shoja, M. M.; Ardalan, M. and Zununi Vahed, S. (2021):** COVID-19 and kidney
427 injury: Pathophysiology and molecular mechanisms. *Reviews in medical*
428 *virology*, 31(3), e2176.
- 429 **Basu-Ray, I.; Almaddah, N. K.; Adeboye, A. and Soos, M. P. (2021):** Cardiac
430 Manifestations Of Coronavirus (COVID-19). In *StatPearls*. StatPearls Publishing.
- 431 **Blanco-Melo, D.; Nilsson-Payant, B. E.; Liu, W. C.; Uhl, S.; Hoagland, D.; Møller,**
432 **R.; Jordan, T. X.; Oishi, K.; Panis, M.; Sachs, D.; Wang, T. T.; Schwartz, R. E.;**
433 **Lim, J. K.; Albrecht, R. A., and tenOever, B. R. (2020):** Imbalanced Host Response
434 to SARS-CoV-2 Drives Development of COVID-19. *Cell*, 181(5), 1036–1045.e9.
- 435 **Boozari, M.; Butler, A.E. and Sahebkar A. (2019):** Impact of curcumin on toll-like
436 receptors. *J Cell Physiol.* 2019; 234(8):12471-12482.
- 437 **Browne E. P. (2020):** The Role of Toll-Like Receptors in Retroviral
438 Infection. *Microorganisms*, 8(11), 1787.
- 439 **Bugert, C. L.; Kwiat, V.; Valera, I. C.; Bugert, J. J. and Parvatiyar, M. S. (2021):**
440 Cardiovascular Injury Due to SARS-CoV-2. *Current clinical microbiology reports*, 1–
441 11. Advance online publication.
- 442 **Buhl, S. N. and Jackson, K. Y. (1978):** Optimal conditions and comparison of lactate
443 dehydrogenase catalysis of the lactate-to-pyruvate and Pyruvate-to-lactate in human
444 serum at 25, 30- and 37-degree C. *Clin. Chem.*, 24: 828.
- 445 **Buonaguro, F. M.; Ascierto, P. A.; Morse, G. D.; Buonaguro, L.; Puzanov, I.;**
446 **Tornesello, M. L.; Bréchet, C. and Gallo, R. C. (2020).** Covid-19: Time for a
447 paradigm change. *Reviews in medical virology*, 30(5), e2134.
- 448 **Cantuti-Castelvetri, L.; Ojha, R.; Pedro, L. D.; Djannatian, M.; Franz, J.;**
449 **Kuivanen, S.; van der Meer, F.; Kallio, K.; Kaya, T.; Anastasina, M.; Smura, T.;**
450 **Levanov, L.; Szirovicza, L.; Tobi, A.; Kallio-Kokko, H.; Österlund, P.; Joensuu,**
451 **M.; Meunier, F. A.; Butcher, S. J.; Winkler, M. S. and Simons, M. (2020):**
452 Neuropilin-1 facilitates SARS-CoV-2 cell entry and infectivity. *Science (New York,*
453 *N.Y.)*, 370(6518), 856–860.

- 454 **Chen, G.; Wu, D.; Guo, W.; Cao, Y.; Huang, D.; Wang, H.; Wang, T.; Zhang, X.;**
455 **Chen, H.; Yu, H.; Zhang, X.; Zhang, M.; Wu, S.; Song, J.; Chen, T.; Han, M.; Li,**
456 **S.; Luo, X.; Zhao, J. and Ning, Q. (2020):** Clinical and immunological features of
457 severe and moderate coronavirus disease 2019. *The Journal of clinical*
458 *investigation*, 130(5), 2620–2629.
- 459 **Cheng, Y.; Luo, R.; Wang, K.; Zhang, M.; Wang, Z.; Dong, L.; Li, J.; Yao, Y.;**
460 **Ge, S. and Xu, G. (2020):** kidney disease is associated with in-hospital death of
461 patients with COVID-19. *Kidney International*, 97(5), 829–838.
- 462 **Choudhury, A. and Mukherjee, S. (2020):** In silico studies on the comparative
463 characterization of the interactions of SARS-CoV-2 spike glycoprotein with ACE2
464 receptor homologs and human TLRs. *Journal of medical virology*, 92(10), 2105–2113.
- 465 **Daly, J. L.; Simonetti, B.; Klein, K.; Chen, K. E.; Williamson, M. K.; Antón-**
466 **Plágaro, C.; Shoemark, D. K.; Simón-Gracia, L.; Bauer, M.; Hollandi, R.; Greber,**
467 **U. F.; Horvath, P.; Sessions, R. B.; Helenius, A.; Hiscox, J. A.; Teesalu, T.;**
468 **Matthews, D. A.; Davidson, A. D.; Collins, B. M.; Cullen, P. J. and ... Yamauchi,**
469 **Y. (2020):** Neuropilin-1 is a host factor for SARS-CoV-2 infection. *Science (New*
470 *York, N.Y.)*, 370(6518), 861–865.
- 471 **Damman, K. and Testani, J. M. (2015):** The kidney in heart failure: an
472 update. *European heart journal*, 36(23), 1437–1444.
- 473 **Fan, C.; Lu, W.; Li, K.; Ding, Y. and Wang, J. (2021):** ACE2 Expression in Kidney
474 and Testis May Cause Kidney and Testis Infection in COVID-19 Patients. *Frontiers in*
475 *medicine*, 7, 563893.
- 476 **Faour, W. H.; Choib, A.; Issa, E., Choueiry, F. E.; Shbaklo, K.; Alhajj, M.;**
477 **Sawaya, R. T.; Harhous, Z.; Alefishat, E. and Nader, M. (2022):** Mechanisms of
478 COVID-19-induced kidney injury and current pharmacotherapies. *Inflammation*
479 *research: official journal of the European Histamine Research Society ... [et*
480 *al.]*, 71(1), 39–56.
- 481 **Freeman, T. L., and Swartz, T. H. (2020):** Targeting the NLRP3 Inflammasome in
482 Severe COVID-19. *Frontiers in immunology*, 11, 1518.
- 483 **Gheblawi, M.; Wang, K.; Viveiros, A.; Nguyen, Q.; Zhong, J. C.; Turner, A. J.;**
484 **Raizada, M. K.; Grant, M. B. and Oudit, G. Y. (2020):** Angiotensin-Converting

485 Enzyme 2: SARS-CoV-2 Receptor and Regulator of the Renin-Angiotensin System:
486 Celebrating the 20th Anniversary of the Discovery of ACE2. *Circulation*
487 *Research*, 126(10), 1456–1474.

488 **Henry T.J. 2nd ed. Harper and Row Publishers (1974): New York: Clinical**
489 **Chemistry Principles and techniques.[Google Scholar]**

490 **Hoffmann, M.; Kleine-Weber, H.; Schroeder, S.; Krüger, N.; Herrler, T.;**
491 **Ericksen, S.; Schiergens, T. S.; Herrler, G.; Wu, N. H.; Nitsche, A.; Müller, M. A.;**
492 **Drosten, C. and Pöhlmann, S. (2020): SARS-CoV-2 Cell Entry Depends on ACE2**
493 **and TMPRSS2 and Is Blocked by a Clinically Proven Protease Inhibitor. *Cell*, 181(2),**
494 **271–280.e8.**

495 **Hojyo, S.; Uchida, M.; Tanaka, K.; Hasebe, R.; Tanaka, Y.; Murakami, M. and**
496 **Hirano, T. (2020): How COVID-19 induces cytokine storm with high**
497 **mortality. *Inflammation and regeneration*, 40, 37.**

498 **Huang, C.; Wang, Y.; Li, X.; Ren, L.; Zhao, J.; Hu, Y.; Zhang, L.; Fan, G.; Xu, J.;**
499 **Gu, X.; Cheng, Z.; Yu, T.; Xia, J.; Wei, Y.; Wu, W.; Xie, X.; Yin, W.; Li, H.; Liu,**
500 **M.; Xiao, Y. and... Cao, B. (2020): Clinical features of patients infected with 2019**
501 **novel coronavirus in Wuhan, China. *Lancet (London, England)*, 395(10223), 497–506.**

502 **Huang, Y.; Yang, C.; Xu, X. F.; Xu, W. and Liu, S. W. (2020): Structural and**
503 **functional properties of SARS-CoV-2 spike protein: potential antiviral drug**
504 **development for COVID-19. *Acta pharmacologica Sinica*, 41(9), 1141–1149.**

505 **Imig, J. D., and Ryan, M. J. (2013): Immune and inflammatory role in renal**
506 **disease. *Comprehensive Physiology*, 3(2), 957–976.**

507 index in coronavirus (COVID-19) infected patients. *British journal of*
508 *haematology*, 189(3), 428–437.

509 **Issa, H.; Eid, A. H.; Berry, B.; Takhviji, V.; Khosravi, A.; Mantash, S.; Nehme,**
510 **R.; Hallal, R.; Karaki, H.; Dhayni, K.; Faour, W. H.; Kobeissy, F.; Nehme, A. and**
511 **Zibara, K. (2021): Combination of Angiotensin (1-7) Agonists and Convalescent**
512 **Plasma as a New Strategy to Overcome Angiotensin-Converting Enzyme 2 (ACE2)**
513 **Inhibition for the Treatment of COVID-19. *Frontiers in medicine*, 8, 620990.**

- 514 **Kaplan A. (1984):** Urea Clin Chem. Pbl. The C.V. Mosby Co. St Louis. Toronto.
515 Princeton, PP. 1257-1260 and 437 and 418.
- 516 **Legrand, M.; Bell, S.; Forni, L.; Joannidis, M.; Koyner, J. L.; Liu, K. and**
517 **Cantaluppi, V. (2021):** Pathophysiology of COVID-19-associated acute kidney
518 injury. *Nature reviews. Nephrology*, 17(11), 751–764.
- 519 **Li, Y.; Zhou, W.; Yang, L.; You, R. (2020):** Physiological and pathological
520 regulation of ACE2, the SARS-CoV-2 receptor. *Pharmacological Research*, 157,
521 104833.
- 522 **Livak, K.J. and Schmittgen, T.D. (2001):** Analysis of relative gene expression data
523 using real-time quantitative PCR and the 2(-Delta Delta C (T)) method. *Methods*. 2001;
524 25(4): 402–408.
- 525 **Mukherjee, S.; Karmakar, S. and Babu, S. P. (2016):** TLR2 and TLR4 mediated
526 host immune responses in major infectious diseases: a review. *The Brazilian journal of*
527 *infectious diseases: an official publication of the Brazilian Society of Infectious*
528 *Diseases*, 20(2), 193–204.
- 529 **Peacock, T. P., Goldhill, D. H., Zhou, J., Baillon, L., Frise, R., Swann, O. C.,**
530 **Kugathasan, R., Penn, R., Brown, J. C., Sanchez-David, R. Y., Braga, L.,**
531 **Williamson, M. K., Hassard, J. A., Staller, E., Hanley, B., Osborn, M., Giacca, M.,**
532 **Davidson, A. D., Matthews, D. A., & Barclay, W. S. (2021).** The furin cleavage site
533 in the SARS-CoV-2 spike protein is required for transmission in ferrets. *Nature*
534 *microbiology*, 6(7), 899–909.
- 535 **Qian, J. Y.; Wang, B.; Lv, L. L. and Liu, B. C. (2021):** Pathogenesis of Acute
536 Kidney Injury in Coronavirus Disease 2019. *Frontiers in physiology*, 12, 586589.
537 <https://doi.org/10.3389/fphys.2021.586589>.
- 538 **Raoult, D.; Zumla, A.; Locatelli, F.; Ippolito, G. and Kroemer, G.**
539 **(2020):** Coronavirus infections: epidemiological, clinical and immunological features
540 and hypotheses. *Cell Stress*. 2020; 4:66-75. 10.15698/cst2020.04.216
- 541 **Rivero, A.; Mora, C.; Muros, M.; García, J.; Herrera, H. and Navarro-González,**
542 **J. F. (2009):** Pathogenic perspectives for the role of inflammation in diabetic
543 nephropathy. *Clinical science (London, England: 1979)*, 116 (6), 479–492.

- 544 **Rothan, H.A., and Byrareddy, S.N. (2020):** The epidemiology and pathogenesis of
545 coronavirus disease (COVID-19) outbreak. *J Autoimmun.* 2020;109:102433
546 10.1016/j.jaut.2020.102433
- 547 **Sette, A., and Crotty, S. (2021):** Adaptive immunity to SARS-CoV-2 and COVID-
548 19. *Cell*, 184(4), 861–880.
- 549 **Shah, V. K.; Firmal innate immune responses, P.; Alam, A.; Ganguly, D. and**
550 **Chattopadhyay, S. (2020):** Overview of Immune Response During SARS-CoV-2
551 Infection: Lessons From the Past. *Frontiers in immunology*, 11, 1949.
- 552 **Tang, Y.; Liu, J.; Zhang, D.; Xu, Z.; Ji, J. and Wen, C. (2020):** Cytokine Storm in
553 COVID-19: The Current Evidence and Treatment Strategies. *Frontiers in*
554 *immunology*, 11, 1708.
- 555 **V'kovski, P., Kratzel, A., Steiner, S., Stalder, H., and Thiel, V. (2021):** Coronavirus
556 biology and replication: implications for SARS-CoV-2. *Nature reviews.*
557 *Microbiology*, 19(3), 155–170.
- 558 **Wan, S.; Yi, Q.; Fan, S.; Lv, J.; Zhang, X.; Guo, L.; Lang, C.; Xiao, Q.; Xiao, K.;**
559 **Yi, Z.; Qiang, M.; Xiang, J.; Zhang, B.; Chen, Y. and Gao, C. (2020):** Relationships
560 among lymphocyte subsets, cytokines, and the pulmonary inflammation
- 561 **Wang, D.; Hu, B.; Hu, C.; Zhu, F.; Liu, X.; Zhang, J.; Wang, B.; Xiang, H.;**
562 **Cheng, Z.; Xiong, Y, Zhao, Y.; Li, Y.; Wang, X. and Peng, Z. (2020):** Clinical
563 Characteristics of 138 Hospitalized Patients With 2019 Novel Coronavirus-Infected
564 Pneumonia in Wuhan, China. *JAMA*. 2020 Mar 17; 323(11):1061-1069.
- 565 **Weiss, S.R. and Navas-Martin S. (2005):** Coronavirus pathogenesis and the emerging
566 pathogen severe acute respiratory syndrome coronavirus. *Microbiol Mol Biol*
567 *Rev.* 2005 Dec; 69(4):635-64.
- 568 **World Health Organization, (2021):** WHO Coronavirus (COVID-19) Dashboard.
- 569 **Ye, Q.; Wang, B. and Mao, J. (2020):** The pathogenesis and treatment of the
570 'Cytokine Storm' in COVID-19. *The Journal of infection*, 80(6), 607–613.
- 571 **Zhang, J. J.; Dong, X.; Cao, Y. Y.; Yuan, Y. D.; Yang, Y. B.; Yan, Y. Q.; Akdis, C.**
572 **A. and Gao, Y. D. (2020):** Clinical characteristics of 140 patients infected with SARS-
573 CoV-2 in Wuhan, China. *Allergy*, 75(7), 1730–1741.

574 **Ziegler, C.; Allon, S. J.; Nyquist, S. K.; Mbanjo, I. M.; Miao, V. N.; Tzouanas, C.**
575 **N.; Cao, Y.; Yousif, A. S.; Bals, J.; Hauser, B. M.; Feldman, J.; Muus, C.;**
576 **Wadsworth, M. H.; 2nd, Kazer, S. W.; Hughes, T. K.; Doran, B.; Gatter, G. J.;**
577 **Vukovic, M.; Taliaferro, F.; Mead, B. E. and ... HCA Lung Biological Network**
578 **(2020): SARS-CoV-2 Receptor ACE2 Is an Interferon-Stimulated Gene in Human**
579 **Airway Epithelial Cells and Is Detected in Specific Cell Subsets across**
580 **Tissues. *Cell*, 181(5), 1016–1035.e19.**

1
2
3
4
5
6
7
8
9
10
11
12
13
14
15
16
17
18
19
20
21
22
23
24
25
26
27
28
29

Correlations between kidney and heart function bioindicators and the expressions of Toll-Like, ACE2, and NRP-1 receptors in COVID-19

Rabab Hussain Sultan^{1*}, Maged Abdallah², Tarek Mohamed Ali³, Hebatallah Hany Assal⁴, Amr E. Ahmed¹, Basem H Elesawy⁵, and Osama M. Ahmed⁶

1 Biotechnology and Life Sciences Department, Faculty of Postgraduate Studies for Advanced Sciences, Beni-Suef University, Beni-Suef, Egypt.

2 Department of anesthesia and intensive care, Kasr Alaini hospital, Cairo University, Egypt.

3 Department of Physiology, College of Medicine, Taif University, P.O. Box 11099, Taif 21944, Saudi Arabia.

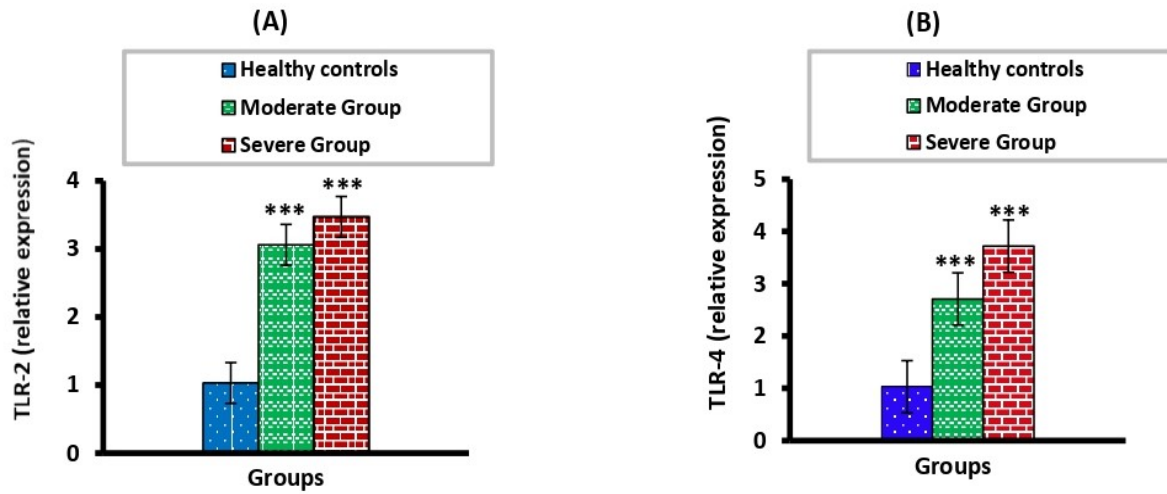
4 Chest Department, Kasr Alaini hospital, Cairo University, Egypt.

5 Department of Pathology, College of Medicine, Taif University, P.O. Box 11099, Taif 21944, Saudi Arabia.

6 Physiology Division, Department of Zoology, Faculty of Science, Beni-Suef University, P.O. Box 62521, Beni-Suef, Egypt.

Corresponding author: Rabab Hussain Sultan, 00201029819222, E-mail: rababsoltan080@gmail.com

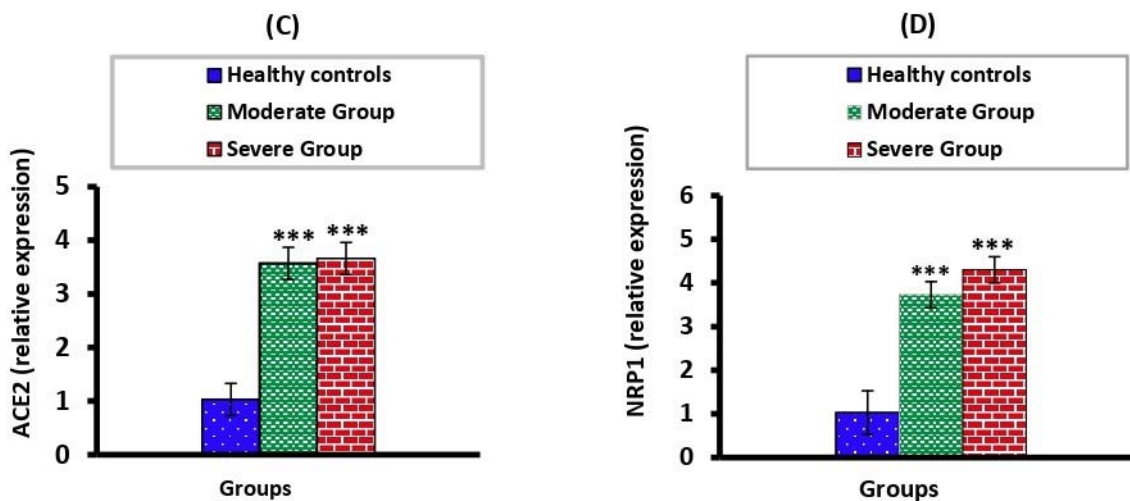
30 **Fig 1 :** (A, B) shows a comparison between the relative expression of TLR-2 and TLR-4
31 in all studied groups. There were significant ($p=0.000$), ($p=0.000$) increases respectively,
32 in TLR2, TLR4 expression levels in moderate and severe cases compared to healthy
33 controls.



34

35 **Fig 1:** (A) TLR2; Toll-like receptor 2 and (B) TLR4; Toll-like receptor 2 in moderate and severe
36 groups compared to healthy controls.

37 **Fig 2:** (C, D) shows a comparison between the relative ACE2 and NRP-1 mRNA
38 expression levels. This figure exhibited that ACE2 and NRP-1 mRNA expression levels
39 were significantly ($p=0.000$, $p=0.000$ respectively), increased in the moderate group and
40 severe group compared to the healthy controls group.

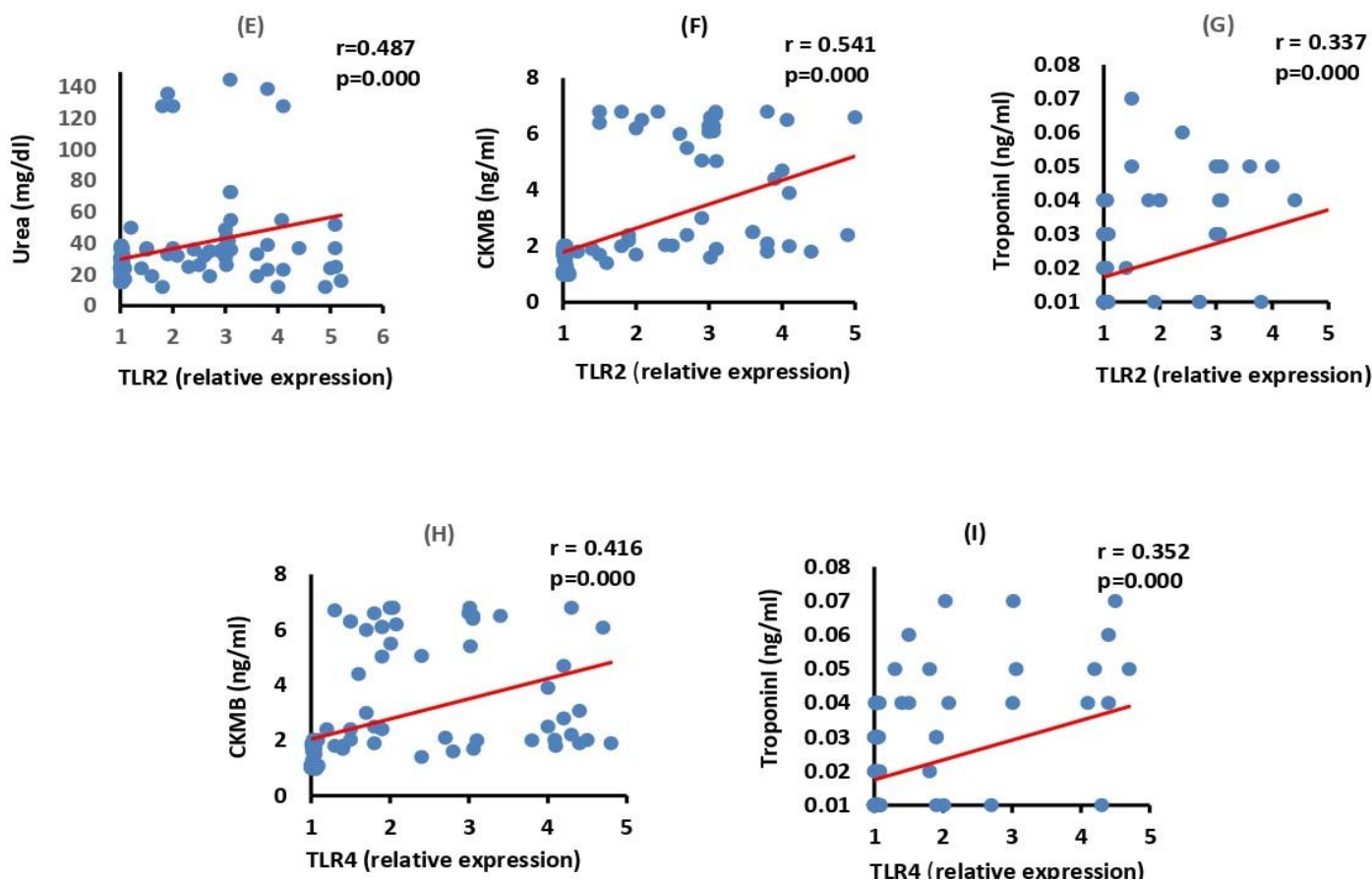


41

42 **Fig 2:** (C) ACE2; Angiotensin-converting enzyme- 2 and (D) NPR-1; Neuropilin-1 in moderate and
43 severe groups compared to healthy control

44 **Fig 3: (E-I) in the moderate group**, shows a significant positive correlation between
45 urea and TLR2 ($p=0.000$). Also, positively correlated between CKMB and Troponin I
46 with both TLR2 ($p=0.000$), ($p<0.05$) and TLR4 ($p=0.000$, $p=0.000$, respectively).

47



49

50

51 **Fig 3: (E-I)** Correlations among the moderate group, between TLR2 with (E) urea, (F) CKMB, (G)
52 Troponin I and TLR4 with (H) CKMB, (I) Troponin I. Correlation was significant ** at the 0.01 level,
53 *** at the 0.001 level. CKMB: creatinine kinase myocardial band; TLR2, 4: Toll-like receptor 2, 4.

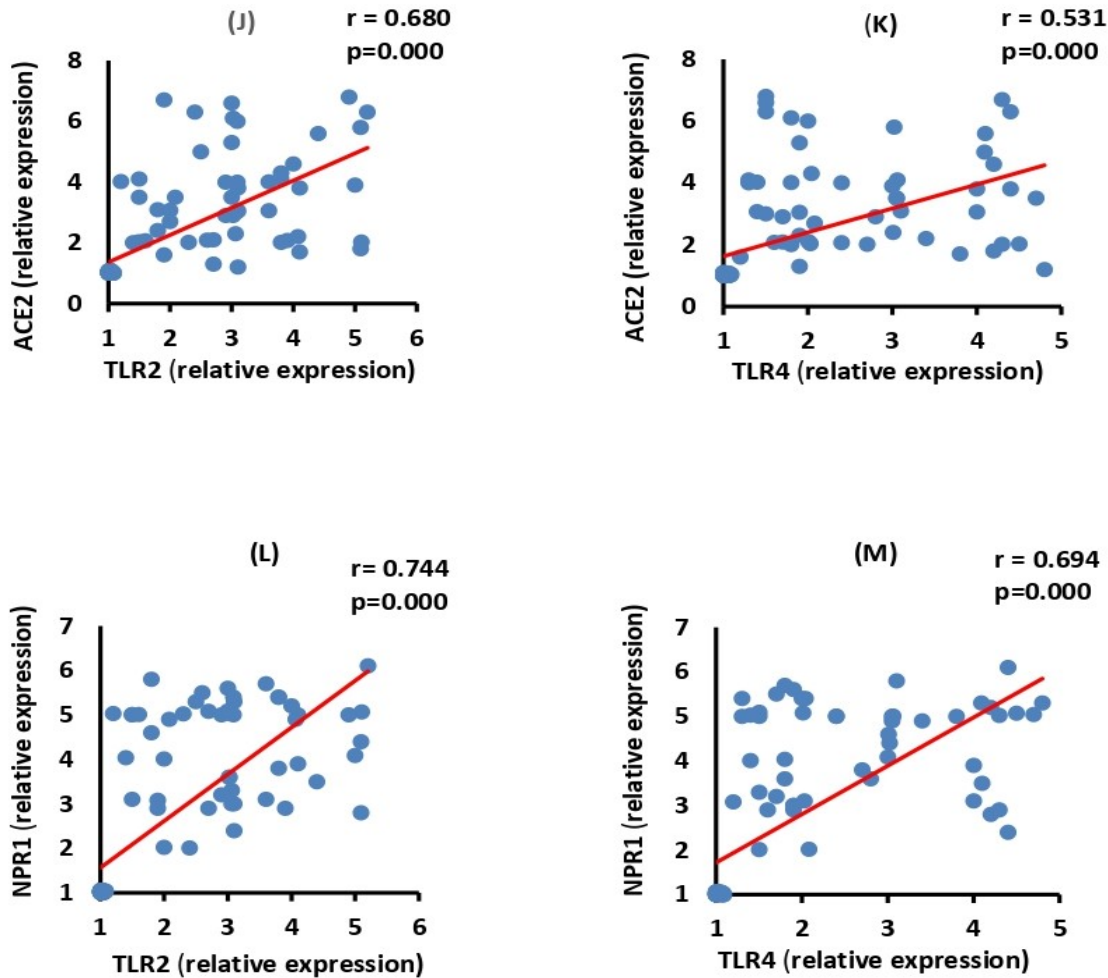
54

55

56

57 **Fig4: (J-M)** ACE2 and NRP-1 mRNA expression levels, exhibited a significant positive
58 ($p=0.000$) correlation with TLR2, TLR4 in the moderate group.

59



60

61 **Fig 4: (J-M)** Correlations among the moderate group, between ACE2 with (J) TLR2, (K) TLR4, and
62 NRP-1 with (L) TLR2, (M) TLR4. The correlation was significant ** at the 0.01 level, *** at the 0.001
63 level. ACE2: Angiotensin-converting enzyme; NPR1: Neuropilin-1 and TLR2, 4: Toll-like receptor 2, 4.

64

65

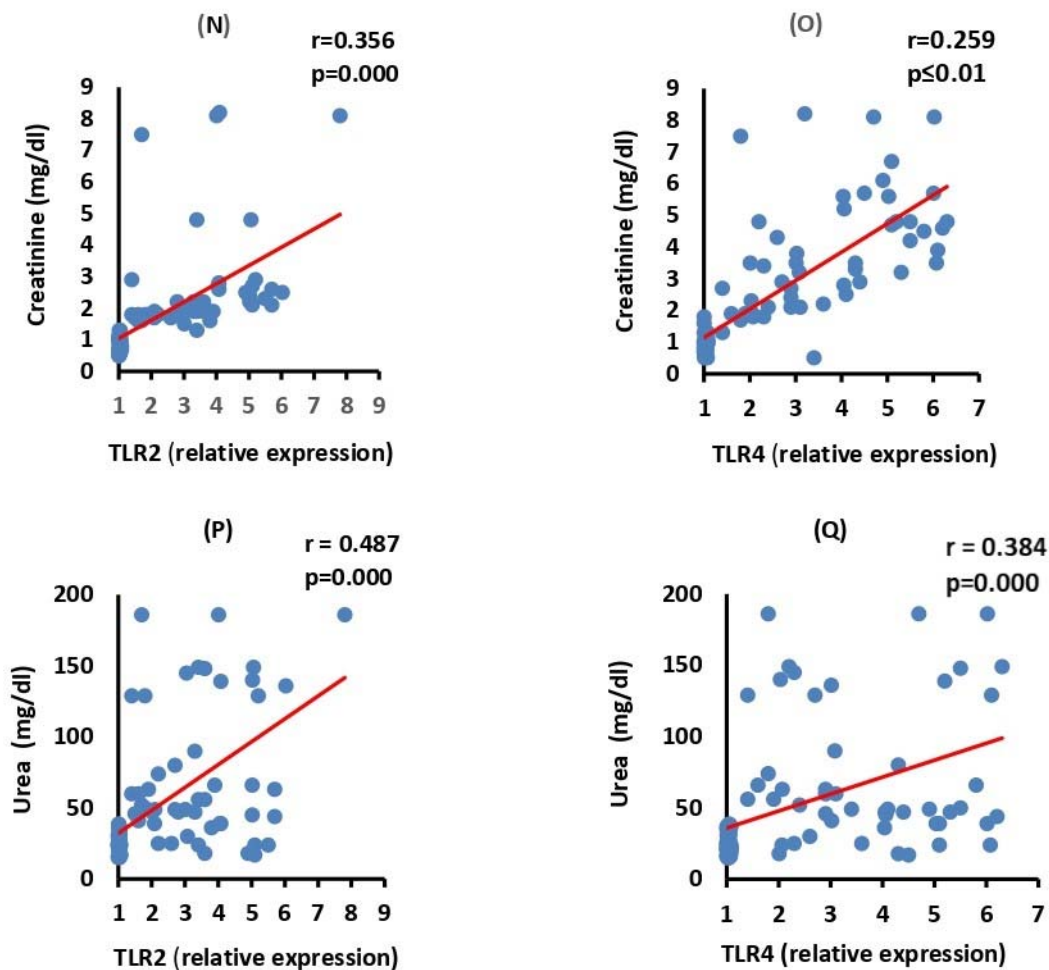
66

67

68

69 **Fig 5 :**(N-Q) in the severe group, both serum creatinine and urea were positively
70 correlated to TLR2 and TLR4 ($p < 0.05$).

71



72

73 **Fig 5:** (N-Q) Correlations among the severe group, between creatinine with (N) TLR2, (O)
74 TLR4, and urea with (P) TLR2, (Q) TLR4. The correlation was significant ** at the 0.01 level, ***
75 at the 0.001 level. TLR2, 4: Toll-like receptor 2, 4.

76

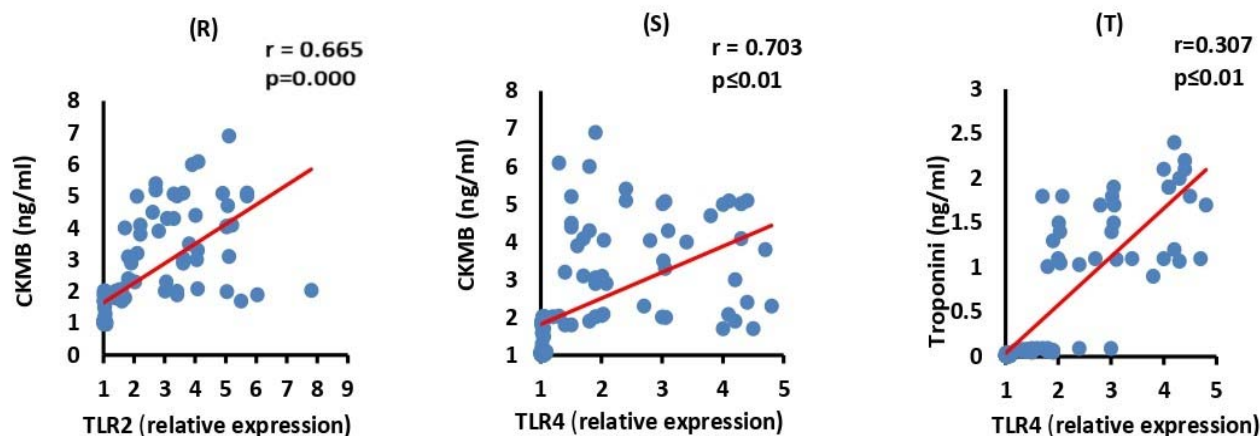
77

78

79

80 **Fig 6 :**(R-T) CKMB showed a positive correlation with TLR2 ($p=0.000$) and TLR4
81 ($p<0.05$). Furthermore, Troponin I observed a positive correlation with TLR4 ($p<0.05$)
82 among the severe group.

83



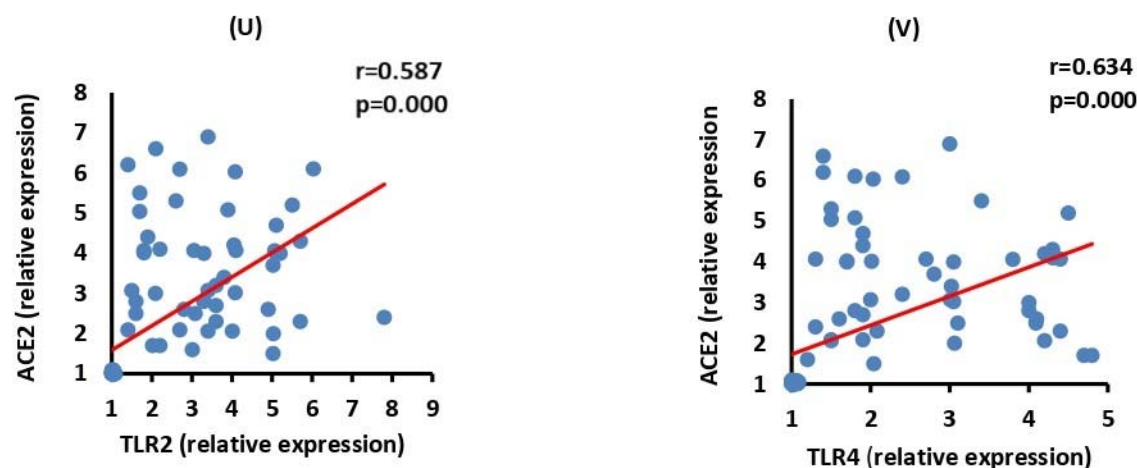
84

85 **Fig 6: (R-T)** Correlations among the severe group, between CKMB with (R) TLR2, (S) TLR4 and
86 Troponin I with (T) TLR4. The correlation was significant ** at the 0.01 level, *** at the 0.001
87 level.

88 CKMB: creatinine kinase myocardial band; TLR2, 4: Toll-like receptor 2, 4.

89

90 **Fig 7 :**(U, V) shows that ACE2 mRNA expressions were positively ($p=0.000$) correlated
91 with TLR2 and TLR4 in the severe group.



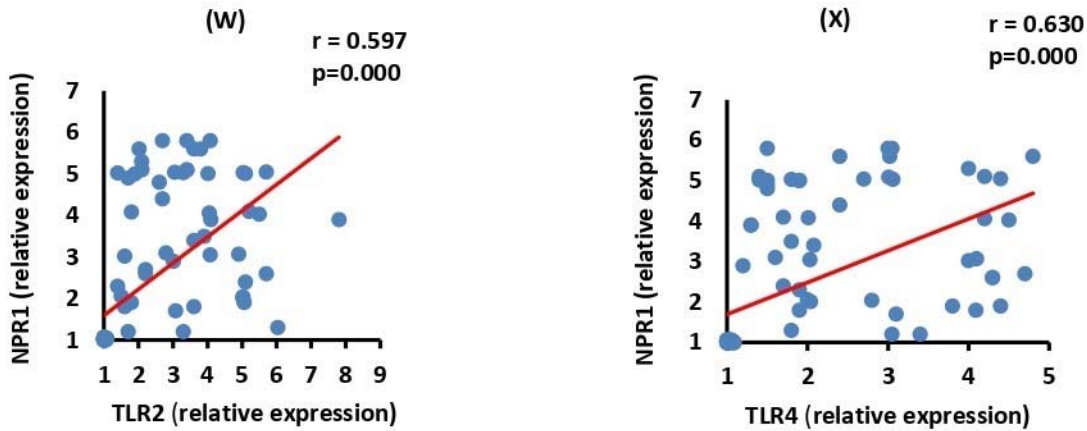
93 **Fig 7: (U, V)** Correlations among the severe group, between ACE2 with (U) TLR2, (V) TLR4. The
94 correlation was significant ** at the 0.01 level, *** at the 0.001 level. ACE2: Angiotensin-converting
95 enzyme; TLR2, 4: Toll-like receptor 2, 4.

96

97

98

99 **Fig 8:** (W, X) shows that NRP-1 mRNA expressions were positively (p=0.000)
100 correlated
101 to TLR2 and TLR4 in the severe group.
102



103

104 **Fig 8:** (W, X) Correlations among the severe group, between NRP-1 with (W) TLR2, (X) TLR4. The
105 correlation was significant ** at the 0.01 level, *** at the 0.001 level. ACE2: Angiotensin-converting
106 enzyme; NPR-1: Neuroplini-1; TLR2, 4: Toll-like receptor 2, 4.

107