

1 Title page

2

3 **A non-muscle myosin heavy chain 9 genetic variant is associated with graft failure following**  
4 **kidney transplantation.**

5 Felix Poppelaars<sup>1</sup>, Siawosh K. Eskandari<sup>1</sup>, Jeffrey Damman<sup>2</sup>, Marc A. Seelen<sup>1</sup>, Bernardo Faria<sup>1,3,\*</sup>,  
6 Mariana Gaya da Costa<sup>1,4,\*</sup>

7

8 \* Authors contributed equally

9

10 <sup>1</sup> Department of Internal Medicine, Division of Nephrology, University Medical Center Groningen, University  
11 of Groningen, Groningen, The Netherlands.

12 <sup>2</sup> Department of Pathology, Erasmus Medical Center, University Medical Center, Rotterdam, The Netherlands.

13 <sup>3</sup> Nephrology and Infectious Disease R&D Group, INEB, Institute of Investigation and Innovation in Health  
14 (i3S), University of Porto, Porto, Portugal.

15 <sup>4</sup> Department of Anesthesiology, University of Groningen, University Medical Center Groningen, Groningen,  
16 The Netherlands.

17

18 Running head: A genetic variant in *MYH9* associates with graft loss

19 Keywords: Molecular motor proteins, kidney transplantation, nephrology, genetics.

20

21 Word Title: 18 words

22 Running head: 50

23 Word count abstract 288 words

24 Word count body: 2.883 words

25 Number of pages: 34

26 Number of figures: 4

27 Number of tables: 5

28 References: 32

NOTE: This preprint reports new research that has not been certified by peer review and should not be used to guide clinical practice.

1 **Address for Correspondence:**

2 Felix Poppelaars, M.D./Ph.D.

3 University Medical Center Groningen

4 Department of Internal Medicine, Division of Nephrology, AA53

5 Postbus 196

6 9700 AD Groningen, The Netherlands

7 Phone: +31 50 3610544

8 Fax: +31 50 3619320

9 E-Mail: [f.poppelaars@umcg.nl](mailto:f.poppelaars@umcg.nl)

10

1 **Abbreviations**

2	<i>APOL1</i>	Apolipoprotein L1 gene
3	BPAR	Biopsy-proven acute rejection
4	CIT	Cold ischemia time
5	CKD	Chronic kidney disease
6	DBD	Donation after circulatory death
7	DCD	Donation after brain death
8	DGF	Delayed graft function
9	ESKD	End-stage kidney disease
10	HLA	Human leukocyte antigen
11	HR	Hazard ratio
12	<i>MYH9</i>	Myosin heavy chain 9 gene
13	PRA	Panel-reactive antibody
14	OR	Odds ratio
15	SNP	Single-nucleotide polymorphism
16	WIT	Warm ischemia time
17		

1 **Key points**

- 2 • In recipients, the *MYH9* SNP was associated with delayed graft function and biopsy-proven acute  
3 rejection after kidney transplantation, although the significance was lost in multivariable analysis.
- 4 • Presence of the *MYH9* variant in both the donor and recipient significantly associated with long-  
5 term kidney allograft survival in multivariable analysis.
- 6 • Our present findings suggests that matching donor-recipient transplant pairs based on the *MYH9*  
7 polymorphism may attenuate the risk of graft loss.

8

1 **Abstract**

2

3 **Background**

4 Despite current matching efforts to identify optimal donor-recipient pairs in kidney transplantation,  
5 alloimmunity remains a major proponent of late transplant failure. While kidney allocation based on  
6 human leukocyte antigen (HLA) matching has markedly prolonged short-term graft survival, new data  
7 suggests that additional genetic parameters in donor-recipient matching could help improve the long-  
8 term outcomes. Here, we studied the impact of a recently discovered non-muscle myosin heavy chain  
9 9 gene (*MYH9*) polymorphism on kidney allograft failure.

10 **Methods**

11 We conducted a prospective observational cohort study, analyzing the DNA of 1,271 kidney donor-  
12 recipient transplant pairs from a single academic hospital for the *MYH9* rs11089788 C>A polymorphism.  
13 The association of the *MYH9* genotype with the risk of graft failure (primary outcome), biopsy-proven  
14 acute rejection (BPAR), and delayed graft function (DGF) (secondary outcomes) were determined.

15 **Results**

16 The *MYH9* polymorphism in the donor was not associated with 15-year death-censored kidney graft  
17 survival, whereas a trend was seen for the association between the *MYH9* polymorphism in the recipient  
18 and graft failure (recessive model,  $P=0.056$ ). Having the AA-genotype of the *MYH9* polymorphism in  
19 recipients was associated with a higher risk of DGF ( $P=0.031$ ) and BPAR ( $P=0.021$ ), although the  
20 significance was lost after adjustment for potential confounders ( $P=0.15$  and  $P=0.10$ , respectively). The  
21 combined presence of the *MYH9* polymorphism in donor-recipient pairs was significantly associated  
22 with long-term kidney allograft survival ( $P=0.036$ ), in which recipients with an AA-genotype receiving a  
23 graft with an AA-genotype had the worst outcome. After adjustment for covariates, this combined  
24 genotype remained significantly associated with 15-year death-censored kidney graft survival (HR 1.68,  
25 95%-CI: 1.05 – 2.70,  $P=0.031$ ).

26 **Conclusions**

27 Our results reveal that recipients with an AA-genotype *MYH9* polymorphism receiving a donor kidney  
28 with an AA-genotype, have a significantly elevated risk of graft failure after kidney transplantation.

29

## 1 Introduction

2 Despite the excellent short-term outcomes following solid organ transplantation, the long-term survival  
3 of kidney transplants has only negligibly improved in recent years.<sup>1</sup> As a consequence, one out of five  
4 patients on the waitlist for kidney transplantation are candidates whose previous grafts failed.<sup>2</sup>  
5 Maximizing the long-term outcomes of transplantation and preventing re-transplantation is, thus,  
6 paramount—not only for improving transplant recipients' outcomes, but also for reducing waitlist  
7 pressures. Among the many drivers of late graft loss, alloimmunity, otherwise known as host anti-donor  
8 immune responses, remains to be the preeminent cause, notably, despite efforts to optimally match  
9 donor-recipient pairs.<sup>3,4</sup> Recently, there are signs of a paradigm shift in the transplant field, with  
10 suggestions that allograft matching efforts should be updated to include novel genetic markers that  
11 better ensure long-term graft survival after kidney transplantation.<sup>5,6</sup>

12 In this regard, non-muscle myosin heavy chain II-A (MHCII-A), encoded by the myosin heavy  
13 chain 9 gene (*MYH9*), is a target of particular interest (Fig. 1A). Non-muscle MHCII-A is a ubiquitously  
14 expressed contractile protein involved in a myriad of processes ranging from cell division and adhesion  
15 to providing cytoskeletal support.<sup>7</sup> Mutations in the *MYH9* cause a complex set of disorders, known as  
16 *MYH9*-related diseases, that can affect every system in the body but are characterized by congenital  
17 thrombocytopenia, giant platelets and leucocyte inclusions.<sup>7</sup> Although non-muscle MHCII-A is  
18 expressed by a variety of cell types, the podocyte lineage in particular, expressed high levels of this  
19 protein.<sup>7</sup> Unsurprisingly, patients with *MYH9*-related disorders can clinically present with persistent  
20 proteinuria and a progressive decline in kidney function leading to end-stage kidney disease (ESKD).<sup>7,8</sup>  
21 Subsequent studies linked common *MYH9* polymorphisms to an increased risk of developing focal  
22 segmental glomerulosclerosis and non-diabetic ESKD.<sup>9,10</sup> However, it is worthy to note that these  
23 associations were later shown to be dependent on a strong linkage disequilibrium of these *MYH9*  
24 polymorphisms with variants in the apolipoprotein L1 gene (*APOL1*).<sup>7,11</sup> Still, there are studies that show  
25 an association between *MYH9* polymorphisms and chronic kidney disease (CKD) independently of  
26 linkage with *APOL1*, suggesting a potential role for *MYH9* polymorphisms in the pathogenesis of  
27 ESKD.<sup>12,13</sup>

28 In a recent genome-wide linkage analysis, a significant association between the *MYH9*  
29 rs11089788 polymorphism and kidney function was identified in a meta-analysis of three European  
30 populations.<sup>14</sup> This *MYH9* polymorphism was additionally found to be significantly associated with

1 progressive loss of kidney function in other cohorts.<sup>13,15</sup> Importantly, the associations between *MYH9*  
2 rs11089788 and kidney function could not be explained by linkage disequilibrium with *APOL1*.<sup>15</sup>

3 Here, we investigated the impact of the recently discovered rs11089788 *MYH9* polymorphism  
4 on long-term graft survival in the context of kidney transplantation (Fig. 1B). As a secondary outcome,  
5 we also assessed the association of this polymorphism with biopsy-proven acute rejection (BPAR) and  
6 delayed graft function (DGF).

7

## 1 **Materials and Methods**

2

### 3 **Patient selection and study end-point**

4 Patients receiving a single kidney transplantation at the University Medical Center Groningen (UMCG)  
5 in the Netherlands were recruited between March 1993 and February 2008. 1,271 of the 1,430 screened  
6 donor-recipient kidney transplant pairs were included in the current study as previously reported.<sup>16–21</sup>  
7 Ethical approval for this study and the study protocol was given by the Institutional Review Board of the  
8 University Medical Center Groningen in Groningen, The Netherlands (Medical Ethical Committee  
9 2014/077). The study protocol adhered to the Declaration of Helsinki. All subjects provided written  
10 informed consent. Reasons for exclusion of patients in this study were technical complications during  
11 surgery, lack of DNA, loss of follow-up, or re-transplantation at the time of recruitment. The primary  
12 endpoint of this study was long-term death-censored graft survival and the maximum follow-up period  
13 was 15 years. Graft failure was defined as the need for dialysis and/or re-transplantation. Secondary  
14 endpoints included: The occurrence of delayed graft function (DGF; described by the United Network  
15 for Organ Sharing as, “The need for at least one dialysis treatment in the first week after kidney  
16 transplantation,”) and biopsy-proven acute rejection (BPAR; based on the Banff ‘07 classification).

17

### 18 **DNA extraction and *MYH9* genotyping**

19 Peripheral blood mononuclear cells from blood or splenocytes were obtained from both the donor and  
20 recipient. DNA isolation was done with a commercial kit according to the manufacturer’s instructions  
21 and stored at -80°C. Genotyping of the single nucleotide polymorphism (SNP) was performed using the  
22 Illumina VeraCode GoldenGate Assay kit as per the manufacturer’s instructions (Illumina, San Diego,  
23 CA, USA). We opted for the *MYH9* rs11089788 C>A SNP, which has previously been associated with  
24 kidney function in healthy individuals and with disease progression in patients with CKD.<sup>13–15</sup> Genotype  
25 clustering and calling were performed using BeadStudio Software (Illumina). The overall genotype  
26 success rate was 99.9% and only two samples were excluded from subsequent analyses because of a  
27 missing call rate.

28

### 29 **Statistical analysis**



1 SPSS software version 25 (SPSS Inc, Chicago, IL, USA) was used for our statistical analyses. Data  
2 are presented as the total number of patients with percentage [n (%)] for nominal variables, mean  $\pm$   
3 standard deviation for parametric variables, and median [IQR] for non-parametric variables. Differences  
4 among groups were tested with the  $\chi^2$  test for categorical variables or Student's *t*-test for normally  
5 distributed variables, and the Mann-Whitney *U*-test for not-normally divided variables, respectively. The  
6 Log-rank test was used to test for differences in kidney allograft survival or rejection-free survival among  
7 the different genotypes. Logistic regression was used to assess the association of the *MYH9*  
8 polymorphism with DGF. Univariable analysis was used to examine the association of the *MYH9*  
9 polymorphism, recipient, donor, and transplant characteristics with BPAR as well as death-censored  
10 graft survival. Significant associations in univariable analyses were then assessed in a multivariable  
11 Cox regression. Two-tailed tests were regarded as significant at  $P < 0.05$ .

12

## 1 Results

2

### 3 Study population and determinants of graft failure

4 All patients who underwent a single kidney transplantation at the University Medical Center Groningen  
5 were recruited for this study (n=1,271). Baseline patient characteristics are shown in [Table 1](#). During  
6 the mean study period of 6.2 years  $\pm$  4.2, 215 of 1,271 kidney transplant recipients (16.9%) developed  
7 graft failure. The main reason for graft failure was rejection (n = 126, containing acute rejection,  
8 transplant glomerulopathy, and chronic antibody-mediated rejection). Other causes for graft loss were  
9 surgical complications (n = 33), relapse of the original kidney disease (n = 16), other causes (n = 16),  
10 vascular disease (n = 12), and unknown cause (n = 12). In univariable analysis, DGF, recipient age,  
11 recipient blood type (AB vs others), donor type (living vs cadaveric), donor age, donor blood type (AB  
12 vs others), cold ischemia time, warm ischemia time, use of cyclosporin, and use of corticosteroids were  
13 all associated with graft failure ( $P < 0.05$ ).

14

### 15 Distribution of the *MYH9* polymorphism

16 The observed genotypic frequencies of the *MYH9* SNP (rs11089788 C>A) did not differ between donors  
17 (n = 1269; CC, 25.0%; CA, 54.1%; AA, 20.9%) and recipients (n = 1269; CC, 25.7%; CA, 50.0%; AA,  
18 24.3%) ( $P = 0.07$ ). The distribution of the SNP was in Hardy–Weinberg equilibrium. Compared to the  
19 1000 genomes project, the genotypic frequencies of the *MYH9* polymorphism in recipients and donors  
20 were significantly different ( $P < 0.001$ ).<sup>22</sup> In both recipients and donors, the A-allele of the *MYH9* SNP  
21 was more prevalent than the reported allele and genotype frequencies in the 1000 genomes project.  
22 The percentage of kidney allografts with DGF significantly differed based on the recipient *MYH9*  
23 genotype (33.7% in CC, 29.6% in CA, 37.7% in AA,  $P = 0.041$ ), but not for the donor *MYH9* genotype  
24 ( $P = 0.93$ ). For further analysis, heterozygotes (CA) and homozygotes (CC)-genotypes were combined  
25 into one group (CA/CC). In logistic regression, recipients carrying the AA-genotype of the *MYH9*  
26 polymorphism had a significantly elevated risk of DGF (OR = 1.34 compared to CA/CC-genotypes; 95%-  
27 CI: 1.03 – 1.76;  $P = 0.031$ ). In multivariable logistic regression, the AA-genotype of the *MYH9*  
28 polymorphism in recipients was no longer significantly associated with the occurrence of DGF (OR =  
29 1.26 compared to CA/CC-genotypes; 95%-CI: 0.92 – 1.72;  $P = 0.15$ , [Table 2](#)). There was no difference  
30 in the overall BPAR frequency among the *MYH9* genotypes in the donor (34.7% in CC, 33.0% in CA,

1 35.8% in AA,  $P = 0.69$ ). In contrast, the distribution of the *MYH9* polymorphism in the recipient showed  
2 a trend towards a higher risk of BPAR (31.6% in CC, 32.4% in CA, 39.3% in AA,  $P = 0.068$ , Fig. 2A). A  
3 significant association was found with BPAR when the AA-genotype of the *MYH9* polymorphism in the  
4 recipient was compared to CA- and CC-genotypes (39.3% in AA versus 32.2% in CA/CC,  $P = 0.021$ ,  
5 Fig. 2B). In multivariable Cox regression, the AA-genotype of the *MYH9* polymorphism in recipients was  
6 no longer significantly associated with the occurrence of BPAR (HR = 1.22 compared to CA/CC-  
7 genotypes; 95%-CI: 0.97 – 1.54;  $P = 0.10$ , Table 3). In summary, although the AA-genotype of the *MYH9*  
8 polymorphism in recipients was associated with DGF and BPAR, the significance was lost when  
9 correcting for potential confounders.

10

### 11 **Long-term kidney graft survival based on the *MYH9* genotypes**

12 Kaplan–Meier survival analysis demonstrated no association between the *MYH9* SNP in the recipient  
13 or the donor and death-censored kidney graft survival (Figure 3). However, a trend was seen for a  
14 heightened rate of graft failure in the recipients with an AA-genotype of the *MYH9* polymorphism  
15 compared to CA- and CC-genotypes (graft loss: 33.2% in AA versus 24.1% in CA/CC,  $P = 0.056$ , Fig.  
16 3B). Next, donor-recipient pairs were separated into four groups according to the presence or absence  
17 of the AA-genotype of the *MYH9* polymorphism in the donor and recipient. Kaplan–Meier survival  
18 analyses showed a significant difference in graft failure rates among the four groups ( $P = 0.036$ , Fig.  
19 4A). Intriguingly, the AA-genotype of the *MYH9* polymorphism in the donor seemed to have a marginal  
20 positive impact on graft survival, whereas the AA-genotype in the recipient had a modest detrimental  
21 impact compared to donor-recipient pairs with the combined CC/CA-genotype. Recipients with an AA-  
22 genotype receiving a graft with an AA-genotype had the worst outcome. This combined genotype was  
23 identified in 6.3% of the donor-recipient pairs. Moreover, the significant association with graft failure  
24 increased when the combined AA-genotype of the *MYH9* polymorphism in donor-recipient pairs was  
25 compared to the other groups ( $P = 0.011$ , Fig. 4B). The cumulative 15-year death-censored kidney  
26 allograft survival was 50.4% in this combined AA-genotype group and 74.9% in the reference group,  
27 respectively. These data suggest that matching donor-recipient pairs on the *MYH9* polymorphism may  
28 impact long-term graft survival in kidney transplantation.

29

### 30 **Regression analysis for the *MYH9* polymorphism in donor-recipient pairs and graft failure**

1 Finally, we investigated if the *MYH9* variant in donor-recipient pairs is an independent risk factor for  
2 graft failure. In univariable analysis, the combined AA-genotype of the *MYH9* SNP in donor-recipient  
3 pairs was associated with a hazard ratio of 1.78 (95%-CI: 1.13 – 2.79;  $P=0.012$ ) for graft failure after  
4 complete follow-up. Subsequently, multivariable analysis was performed to adjust for potential  
5 confounders, including donor and patient characteristics as well as transplant variables (Table 4). In  
6 these Cox regression analyses, the combined AA-genotype of the *MYH9* SNP in donor-recipient pairs  
7 remained significantly associated with graft failure. Lastly, we performed a multivariable Cox regression  
8 analysis using all variables that were significantly associated with graft failure in univariable analysis  
9 (Table 5). In this model, the *MYH9* SNP (rs11089788) in donor-recipient pairs, the occurrence of DGF,  
10 recipient age, and donor age were all significantly associated with graft loss. After adjustment, the  
11 hazard ratio for graft failure of the combined AA-genotype for the *MYH9* SNP in donor-recipient pairs  
12 was 1.68 (95% CI: 1.05 – 2.70,  $P=0.031$ ). In conclusion, our results reveal that recipients with an AA-  
13 genotype of the *MYH9* SNP receiving a kidney allograft with an AA-genotype have a significantly  
14 elevated risk of graft failure after kidney transplantation.

15

## 1 Discussion

2 A multitude of strategies can be pursued to improve the long-term outcomes after kidney transplantation,  
3 ranging from the development of novel drugs that can pull the brakes on allo-immune cascades, to the  
4 refinement of donor-recipient matching systems to minimize the severity of allograft recognition.  
5 Regarding allograft matching, HLA-centric systems remains the cornerstone of allocating kidney  
6 allografts—although a paradigm shift in the approach to donor-recipient matching is urgently needed.<sup>23</sup>  
7 Genetic analyses in transplantation provides a particularly unique opportunity for the development of  
8 innovative strategies that can improve donor-recipient pairing and drive personalized medicine, in part  
9 by enabling individualized risk stratification.<sup>24,25</sup> Presently, we report the impact of a recently discovered  
10 polymorphism in *MYH9* on long-term kidney allograft survival. The key finding of our study is that  
11 recipients with an AA-genotype of the *MYH9* rs11089788 variant receiving a kidney allograft with an  
12 AA-genotype of the same variant, have a significantly elevated risk of developing graft loss. In contrast,  
13 no association for the *MYH9* polymorphism with long-term allograft survival was found in either the  
14 recipient or donor when assessed individually. Hence, our study provides evidence that matching  
15 recipients with donor kidneys based on the *MYH9* polymorphism may well impact the risk of graft loss.

16 To our knowledge, our study is the first to show an association between this *MYH9* variant and  
17 long-term graft survival after kidney transplantation. Specifically, we found that the combined AA-  
18 genotype in donor-recipient pairs nearly doubled the risk of graft failure. Genome-wide linkage analysis  
19 recently highlighted the *MYH9* rs11089788 polymorphism as a top variant for kidney function in a meta-  
20 analysis of three European populations.<sup>14</sup> In accordance with our results, the C-allele of the *MYH9*  
21 rs11089788 polymorphism was consistently associated with better kidney function in healthy  
22 Europeans.<sup>14</sup> Furthermore, in a Chinese cohort of IgA nephropathy patients, the A-allele of this variant  
23 was associated with hastened progression to kidney failure.<sup>13</sup> Other groups, however, did not  
24 recapitulate an association between this *MYH9* variant and kidney outcomes.<sup>26,27</sup> In particular,  
25 Franceschini and colleagues found no relationship between the *MYH9* rs11089788 polymorphism and  
26 kidney function or CKD in native Americans.<sup>27</sup> Importantly, we found no relationship of this *MYH9* variant  
27 in the recipient or the donor alone with death-censored kidney graft survival either. Our findings, thus,  
28 suggest that only donor-recipient interactions in *MYH9* may lead to kidney function decline after renal  
29 transplantation.

1           The importance of the *MYH9* for the kidney has been investigated by several group but remains  
2 controversial. Initial reports linked certain variants in the *MYH9* to a greater risk of CKD.<sup>9,10</sup> Later studies  
3 uncovered that this association was based on the strong linkage disequilibrium between *MYH9* variants  
4 and variants in *APOL1*.<sup>7,11</sup> Nonetheless, patients with rare mutations in *MYH9* leading to *MYH9*-related  
5 diseases often present with signs of CKD and can develop ESKD.<sup>7,8</sup> In line with these results,  
6 heterozygous mice with mutations in *Myh9* manifest similar pathological kidney phenotypes as humans  
7 with *MYH9*-related diseases, including proteinuria, focal segmental glomerulosclerosis, and CKD.<sup>28</sup>  
8 Intriguingly, *Myh9* knockdown in zebrafish lead to the malformation and dysfunction of their glomeruli.<sup>29</sup>  
9 More specifically, these zebrafish failed to correctly develop the glomerular capillary structure, lacking  
10 fenestration in the endothelial cells and having an absence or reduced number of mesangial cells  
11 together with irregular thickening of the glomerular basement membrane.<sup>29</sup> Although kidney clearance  
12 experiments showed that the glomerular barrier function remained unaltered, glomerular filtration in  
13 these zebrafish was significantly reduced.<sup>29</sup> Altogether, these findings attest a key role for *MYH9* and  
14 non-muscle myosin heavy chain II-A in kidney development and physiology.

15           In humans, non-muscle myosin II-A, whose heavy chains are encoded by *MYH9*, is expressed  
16 in the podocytes, tubular cells, endothelial cells of the peritubular capillaries, interlobular arteries, and  
17 arterioles.<sup>30</sup> A potential mechanism underpinning the association between *MYH9* polymorphism and  
18 graft failure would likely be dependent on kidney-expressed non-muscle myosin heavy chain II-A. On  
19 the basis of our findings, however, alternative mechanisms may be more probable. Firstly, in the  
20 recipients a trend was found for the association between the *MYH9* polymorphism and graft loss, while  
21 there was no association in the donor genotypes. Secondly, the AA-genotype of the *MYH9* variant in  
22 the recipient, but not the donor, was associated with BPAR and DGF, although significance was lost  
23 after adjusting for potential confounders. Lastly, in the genotypic analysis of the donor-recipient pairs,  
24 the isolated donor AA-genotype was marginally protective while the isolated AA-genotype in the  
25 recipient had a modest detrimental effect on graft survival. Additional evidence supporting a systemic  
26 role of the *MYH9* variant in determining kidney allograft outcomes is provided by case report of a patient  
27 with focal segmental glomerulosclerosis, where proteinuria rapidly recurred following a deceased donor  
28 kidney transplantation that therapeutically responded to plasmapheresis.<sup>31</sup> Moreover, the fact that  
29 donor-recipient pairs with the combined AA-genotype of the *MYH9* variant had the highest risk of graft  
30 loss in our population, suggests both donor-recipient interactions in *MYH9* with perhaps a leading role

1 for extra-renal expressed non-muscle myosin heavy chain II-A. A case report of two kidney transplants  
2 in pediatric patients suggested a similar donor-recipient *MYH9* interaction.<sup>32</sup>

3 Overall, there are several limitations to our study that warrant consideration. First, our study  
4 design is observational in nature and thus cannot determine whether associations are based on  
5 causality. Therefore, we cannot exclude the possibility that the *MYH9* rs11089788 variant is a tag SNP  
6 in the neighboring *APOL1* to *APOL6* region, justifying further investigation in this regard. Second, we  
7 investigated a single polymorphism in *MYH9* and did not examine the impact of *MYH9* haplotypes.  
8 Nevertheless, crucial strengths of our study were the analysis of the recently described *MYH9*  
9 polymorphism in both donors and recipients, our large patient population, the long and complete follow-  
10 up, and the hard clinical endpoints.

11 In conclusion, we found that patients with an AA-genotype of the *MYH9* rs11089788 variant  
12 receiving a donor kidney with the AA-genotype have an elevated risk of late graft loss. Considering the  
13 impact of this combined genotype, our findings imply donor-recipient interactions in *MYH9* that  
14 negatively influence the long-term allograft survival of kidney allografts.

1    **Disclosures**

2    The authors declare that there are no competing interests to disclose.

3

4    **Acknowledgments**

5    The authors thank the members of the REGaTTA cohort (REnal GeneTics TrAnsplantation; University

6    Medical Center Groningen, University of Groningen, Groningen, the Netherlands): S. J. L. Bakker, J.

7    van den Born, M. H. de Borst, H. van Goor, J. L. Hillebrands, B. G. Hepkema, G. J. Navis and H. Snieder.

8    The illustrations of Figure 1 were made by Siawosh K. Eskandari.

9



## 1   **References**

- 2   1.    Ibrahim HN, Murad DN, Knoll GA: Thinking Outside the Box: Novel Kidney Protective  
3       Strategies in Kidney Transplantation. *Clin. J. Am. Soc. Nephrol.* [Internet] 17: CJN.15070920,  
4       2021 Available from: <https://doi.org/10.2215/CJN.15070920> [cited 2021 May 6]
- 5   2.    Fiorentino M, Gallo P, Giliberti M, Colucci V, Schena A, Stallone G, Gesualdo L, Castellano G:  
6       Management of patients with a failed kidney transplant: what should we do? *Clin. Kidney J.*  
7       [Internet] 14: 98–106, 2021 Available from:  
8       <https://academic.oup.com/ckj/article/14/1/98/5870987> [cited 2021 May 6]
- 9   3.    Langewisch E, Mannon RB: Chronic Allograft Injury. *Clin. J. Am. Soc. Nephrol.* [Internet] 16:  
10       CJN.15590920, 2021 Available from: <https://doi.org/10.2215/CJN.15590920> [cited 2021 May  
11       6]
- 12  4.    Mayrdorfer M, Liefeldt L, Wu K, Rudolph B, Zhang Q, Friedersdorff F, Lachmann N, Schmidt  
13       D, Osmanodja B, Naik MG, Duettmann W, Halleck F, Merkel M, Schrezenmeier E, Waiser J,  
14       Duerr M, Budde K: Exploring the Complexity of Death-Censored Kidney Allograft Failure. 1–  
15       14, 2021
- 16  5.    Farouk S, Zhang Z, Menon MC: Non-HLA donor–recipient mismatches in kidney  
17       transplantation—A stone left unturned [Internet]. *Am. J. Transplant.* 20: 19–24, 2020 Available  
18       from: <https://pubmed.ncbi.nlm.nih.gov/31550409/> [cited 2021 May 6]
- 19  6.    Otten HG, Joosten I, Allebes WA, van der Meer A, Hilbrands LB, Baas M, Spierings E, Hack  
20       CE, van Reekum F, van Zuilen AD, Verhaar MC, Bots ML, Seelen MAJ, Sanders JSF,  
21       Hepkema BG, Lambeck AJ, Bungener LB, Roozendaal C, Tilanus MGJ, Vanderlocht J,  
22       Voorter CE, Wieten L, van Duijnhoven E, Gelens M, Christiaans M, van Ittersum F,  
23       Nurmohamed A, Lardy NM, Swelsen WT, van Donselaar-van der Pant KAMI, van der Weerd  
24       NC, ten Berge IJM, Bemelman FJ, Hoitsma AJ, de Fijter JW, Betjes MGH, Roelen DL, Claas  
25       FHJ: The PROCARE consortium: Toward an improved allocation strategy for kidney allografts.  
26       *Transpl. Immunol.* [Internet] 31: 184–190, 2014 Available from:  
27       <http://dx.doi.org/10.1016/j.trim.2014.09.008>
- 28  7.    Pecci A, Ma X, Savoia A, Adelstein RS: MYH9: Structure, functions and role of non-muscle  
29       myosin IIA in human disease. *Gene* [Internet] 664: 152–167, 2018 Available from:  
30       <https://pubmed.ncbi.nlm.nih.gov/29679756/> [cited 2022 Mar 11]

- 1 8. Tabibzadeh N, Fleury D, Labatut D, Bridoux F, Lionet A, Jourde-Chiche N, Vrtovsniak F,  
2 Schlegel N, Vanhille P: MYH9-related disorders display heterogeneous kidney involvement  
3 and outcome. *Clin. Kidney J.* [Internet] 12: 494–502, 2018 Available from:  
4 <https://pubmed.ncbi.nlm.nih.gov/31384440/> [cited 2022 Mar 17]
- 5 9. Kao WHL, Klag MJ, Meoni LA, Reich D, Berthier-Schaad Y, Li M, Coresh J, Patterson N,  
6 Tandon A, Powe NR, Fink NE, Sadler JH, Weir MR, Abboud HE, Adler SG, Divers J, Iyengar  
7 SK, Freedman BI, Kimmel PL, Knowler WC, Kohn OF, Kramp K, Leehey DJ, Nicholas SB,  
8 Pahl M V., Schelling JR, Sedor JR, Thornley-Brown D, Winkler CA, Smith MW, Parekh RS: A  
9 genome-wide admixture scan identifies MYH9 as a candidate locus associated with non-  
10 diabetic end stage renal disease in African Americans. *Nat. Genet.* [Internet] 40: 1185, 2008  
11 Available from: [/pmc/articles/PMC2614692/](https://pubmed.ncbi.nlm.nih.gov/18794856/) [cited 2022 Mar 11]
- 12 10. Kopp JB, Smith MW, Nelson GW, Johnson RC, Freedman BI, Bowden DW, Oleksyk T,  
13 McKenzie LM, Kajiyama H, Ahuja TS, Berns JS, Briggs W, Cho ME, Dart RA, Kimmel PL,  
14 Korbet SM, Michel DM, Mokrzycki MH, Schelling JR, Simon E, Trachtman H, Vlahov D,  
15 Winkler CA: MYH9 is a major-effect risk gene for focal segmental glomerulosclerosis. *Nat.*  
16 *Genet.* [Internet] 40: 1175–1184, 2008 Available from:  
17 <https://pubmed.ncbi.nlm.nih.gov/18794856/> [cited 2022 Mar 11]
- 18 11. Genovese G, Friedman DJ, Ross MD, Lecordier L, Uzureau P, Freedman BI, Bowden DW,  
19 Langefeld CD, Oleksyk TK, Uscinski Knob AL, Bernhardt AJ, Hicks PJ, Nelson GW,  
20 Vanhollebeke B, Winkler CA, Kopp JB, Pays E, Pollak MR: Association of trypanolytic ApoL1  
21 variants with kidney disease in African Americans. *Science* [Internet] 329: 841–845, 2010  
22 Available from: <https://pubmed.ncbi.nlm.nih.gov/20647424/> [cited 2022 Mar 11]
- 23 12. O'Seaghdha CM, Parekh RS, Hwang SJ, Li M, ttgen AK, Coresh J, Yang Q, Fox CS, Linda  
24 Kao WH: The MYH9/APOL1 region and chronic kidney disease in European-Americans. *Hum.*  
25 *Mol. Genet.* [Internet] 20: 2450–2456, 2011 Available from:  
26 <https://pubmed.ncbi.nlm.nih.gov/21429915/> [cited 2022 Mar 11]
- 27 13. Cheng W, Zhou X, Zhu L, Shi S, Lv J, Liu L, Zhang H: Polymorphisms in the nonmuscle  
28 myosin heavy chain 9 gene (MYH9) are associated with the progression of IgA nephropathy in  
29 Chinese. *Nephrol. Dial. Transplant* [Internet] 26: 2544–2549, 2011 Available from:  
30 <https://pubmed.ncbi.nlm.nih.gov/21245129/> [cited 2022 Mar 11]

- 1 14. Pattaro C, Aulchenko YS, Isaacs A, Vitart V, Hayward C, Franklin CS, Polasek O, Kolcic I,  
2 Biloglav Z, Campbell S, Hastie N, Lauc G, Meitinger T, Oostra BA, Gyllensten U, Wilson JF,  
3 Pichler I, Hicks AA, Campbell H, Wright AF, Rudan I, Van Duijn CM, Riegler P, Marroni F,  
4 Pramstaller PP: Genome-wide linkage analysis of serum creatinine in three isolated European  
5 populations. *Kidney Int.* [Internet] 76: 297–306, 2009 Available from:  
6 <https://pubmed.ncbi.nlm.nih.gov/19387472/> [cited 2022 Mar 7]
- 7 15. Voskarides K, Demosthenous P, Papazachariou L, Arsali M, Athanasiou Y, Zavros M,  
8 Stylianou K, Xydakis D, Daphnis E, Gale DP, Maxwell PH, Elia A, Pattaro C, Pierides A, Deltas  
9 C: Epistatic role of the MYH9/APOL1 region on familial hematuria genes. *PLoS One* [Internet]  
10 8: 2013 Available from: <https://pubmed.ncbi.nlm.nih.gov/23516419/> [cited 2022 Mar 11]
- 11 16. Poppelaars F, Gaya Da Costa M, Eskandari SK, Damman J, Seelen MA 5: Donor genetic  
12 variants in interleukin-6 and interleukin-6 receptor associate with biopsy-proven rejection  
13 following kidney transplantation. *medRxiv* [Internet] 2021.04.17.21255669, 2021 Available  
14 from: <https://doi.org/10.1101/2021.04.17.21255669> [cited 2021 May 31]
- 15 17. Poppelaars F, Gaya da Costa M, Faria B, Eskandari SK, Damman J, Seelen MA: A functional  
16 TGFB1 polymorphism in the donor associates with long-term graft survival after kidney  
17 transplantation. *Clin. Kidney J.* [Internet] 2021 Available from:  
18 <https://academic.oup.com/ckj/advance-article/doi/10.1093/ckj/sfab175/6371866> [cited 2021  
19 Dec 21]
- 20 18. Poppelaars F, Costa MG da, Faria B, Eskandari SK, Seelen MA, Damman J: Tumor necrosis  
21 factor- $\alpha$  gene polymorphism is associated with short- and long-term kidney allograft outcomes.  
22 *medRxiv* [Internet] 2021.07.28.21261294, 2021 Available from:  
23 <https://www.medrxiv.org/content/10.1101/2021.07.28.21261294v1> [cited 2021 Dec 21]
- 24 19. Damman J, Kok JL, Snieder H, Leuvenink HG, Van Goor H, Hillebrands JL, Van Dijk MC,  
25 Hepkema BG, Reznichenko A, Van den Born J, De Borst MH, Bakker SJ, Navis GJ, Ploeg RJ,  
26 Seelen MA: Lectin complement pathway gene profile of the donor and recipient does not  
27 influence graft outcome after kidney transplantation. *Mol. Immunol.* [Internet] 50: 1–8, 2012  
28 Available from: <http://dx.doi.org/10.1016/j.molimm.2011.11.009>
- 29 20. Damman J, Nijboer WN, Schuurs T a., Leuvenink HG, Morariu AM, Tullius SG, Van Goor H,  
30 Ploeg RJ, Seelen M a.: Local renal complement C3 induction by donor brain death is

- 1 associated with reduced renal allograft function after transplantation. *Nephrol. Dial. Transplant.*  
2 [Internet] 26: 2345–2354, 2011 Available from: <http://www.ncbi.nlm.nih.gov/pubmed/21127132>  
3 [cited 2016 Jun 29]
- 4 21. Dessing MC, Kers J, Damman J, Navis GJ, Florquin S, Leemans JC: Donor and recipient  
5 genetic variants in NLRP3 associate with early acute rejection following kidney transplantation.  
6 *Sci. Rep.* 6: 2016
- 7 22. Auton A, Abecasis GR, Altshuler DM, Durbin RM, Bentley DR, Chakravarti A, Clark AG,  
8 Donnelly P, Eichler EE, Flicek P, Gabriel SB, Gibbs RA, Green ED, Hurles ME, Knoppers BM,  
9 Korbel JO, Lander ES, Lee C, Lehrach H, Mardis ER, Marth GT, McVean GA, Nickerson DA,  
10 Schmidt JP, Sherry ST, Wang J, Wilson RK, Boerwinkle E, Doddapaneni H, Han Y, Korchina  
11 V, Kovar C, Lee S, Muzny D, Reid JG, Zhu Y, Chang Y, Feng Q, Fang X, Guo X, Jian M, Jiang  
12 H, Jin X, Lan T, Li G, Li J, Li Y, Liu S, Liu X, Lu Y, Ma X, Tang M, Wang B, Wang G, Wu H,  
13 Wu R, Xu X, Yin Y, Zhang D, Zhang W, Zhao J, Zhao M, Zheng X, Gupta N, Gharani N, Toji  
14 LH, Gerry NP, Resch AM, Barker J, Clarke L, Gil L, Hunt SE, Kelman G, Kulesha E, Leinonen  
15 R, McLaren WM, Radhakrishnan R, Roa A, Smirnov D, Smith RE, Streeter I, Thormann A,  
16 Toneva I, Vaughan B, Zheng-Bradley X, Grocock R, Humphray S, James T, Kingsbury Z,  
17 Sudbrak R, Albrecht MW, Amstislavskiy VS, Borodina TA, Lienhard M, Mertes F, Sultan M,  
18 Timmermann B, Yaspo ML, Fulton L, Ananiev V, Belaia Z, Beloslyudtsev D, Bouk N, Chen C,  
19 Church D, Cohen R, Cook C, Garner J, Hefferon T, Kimelman M, Liu C, Lopez J, Meric P,  
20 O'Sullivan C, Ostapchuk Y, Phan L, Ponomarov S, Schneider V, Shekhtman E, Sirotkin K,  
21 Slotta D, Zhang H, Balasubramaniam S, Burton J, Danecek P, Keane TM, Kolb-Kokocinski A,  
22 McCarthy S, Stalker J, Quail M, Davies CJ, Gollub J, Webster T, Wong B, Zhan Y, Campbell  
23 CL, Kong Y, Marcketta A, Yu F, Antunes L, Bainbridge M, Sabo A, Huang Z, Coin LJM, Fang  
24 L, Li Q, Li Z, Lin H, Liu B, Luo R, Shao H, Xie Y, Ye C, Yu C, Zhang F, Zheng H, Zhu H, Alkan  
25 C, Dal E, Kahveci F, Garrison EP, Kural D, Lee WP, Leong WF, Stromberg M, Ward AN, Wu  
26 J, Zhang M, Daly MJ, DePristo MA, Handsaker RE, Banks E, Bhatia G, Del Angel G,  
27 Genovese G, Li H, Kashin S, McCarroll SA, Nemesh JC, Poplin RE, Yoon SC, Lihm J,  
28 Makarov V, Gottipati S, Keinan A, Rodriguez-Flores JL, Rausch T, Fritz MH, Stütz AM, Beal K,  
29 Datta A, Herrero J, Ritchie GRS, Zerbino D, Sabeti PC, Shlyakhter I, Schaffner SF, Vitti J,  
30 Cooper DN, Ball E V., Stenson PD, Barnes B, Bauer M, Cheetham RK, Cox A, Eberle M, Kahn

1 S, Murray L, Peden J, Shaw R, Kenny EE, Batzer MA, Konkel MK, Walker JA, MacArthur DG,  
2 Lek M, Herwig R, Ding L, Koboldt DC, Larson D, Ye K, Gravel S, Swaroop A, Chew E,  
3 Lappalainen T, Erlich Y, Gymrek M, Willems TF, Simpson JT, Shriver MD, Rosenfeld JA,  
4 Bustamante CD, Montgomery SB, De La Vega FM, Byrnes JK, Carroll AW, DeGorter MK,  
5 Lacroute P, Maples BK, Martin AR, Moreno-Estrada A, Shringarpure SS, Zakharia F, Halperin  
6 E, Baran Y, Cerveira E, Hwang J, Malhotra A, Plewczynski D, Radew K, Romanovitch M,  
7 Zhang C, Hyland FCL, Craig DW, Christoforides A, Homer N, Izatt T, Kurdoglu AA, Sinari SA,  
8 Squire K, Xiao C, Sebat J, Antaki D, Gujral M, Noor A, Ye K, Burchard EG, Hernandez RD,  
9 Gignoux CR, Haussler D, Katzman SJ, Kent WJ, Howie B, Ruiz-Linares A, Dermitzakis ET,  
10 Devine SE, Kang HM, Kidd JM, Blackwell T, Caron S, Chen W, Emery S, Fritsche L,  
11 Fuchsberger C, Jun G, Li B, Lyons R, Scheller C, Sidore C, Song S, Sliwerska E, Taliun D,  
12 Tan A, Welch R, Wing MK, Zhan X, Awadalla P, Hodgkinson A, Li Y, Shi X, Quitadamo A,  
13 Lunter G, Marchini JL, Myers S, Churchhouse C, Delaneau O, Gupta-Hinch A, Kretzschmar  
14 W, Iqbal Z, Mathieson I, Menelaou A, Rimmer A, Xifara DK, Oleksyk TK, Fu Y, Liu X, Xiong M,  
15 Jorde L, Witherspoon D, Xing J, Browning BL, Browning SR, Hormozdiari F, Sudmant PH,  
16 Khurana E, Tyler-Smith C, Albers CA, Ayub Q, Chen Y, Colonna V, Jostins L, Walter K, Xue Y,  
17 Gerstein MB, Abyzov A, Balasubramanian S, Chen J, Clarke D, Fu Y, Harmanci AO, Jin M,  
18 Lee D, Liu J, Mu XJ, Zhang J, Zhang Y, Hartl C, Shakir K, Degenhardt J, Meiers S, Raeder B,  
19 Casale FP, Stegle O, Lameijer EW, Hall I, Bafna V, Michaelson J, Gardner EJ, Mills RE,  
20 Dayama G, Chen K, Fan X, Chong Z, Chen T, Chaisson MJ, Huddleston J, Malig M, Nelson  
21 BJ, Parrish NF, Blackburne B, Lindsay SJ, Ning Z, Zhang Y, Lam H, Sisu C, Challis D, Evani  
22 US, Lu J, Nagaswamy U, Yu J, Li W, Habegger L, Yu H, Cunningham F, Dunham I, Lage K,  
23 Jespersen JB, Horn H, Kim D, Desalle R, Narechania A, Sayres MAW, Mendez FL, Poznik  
24 GD, Underhill PA, Mittelman D, Banerjee R, Cerezo M, Fitzgerald TW, Louzada S, Massaia A,  
25 Yang F, Kalra D, Hale W, Dan X, Barnes KC, Beiswanger C, Cai H, Cao H, Henn B, Jones D,  
26 Kaye JS, Kent A, Kerasidou A, Mathias R, Ossorio PN, Parker M, Rotimi CN, Royal CD,  
27 Sandoval K, Su Y, Tian Z, Tishkoff S, Via M, Wang Y, Yang H, Yang L, Zhu J, Bodmer W,  
28 Bedoya G, Cai Z, Gao Y, Chu J, Peltonen L, Garcia-Montero A, Orfao A, Dutil J, Martinez-  
29 Cruzado JC, Mathias RA, Hennis A, Watson H, McKenzie C, Qadri F, LaRocque R, Deng X,  
30 Asogun D, Folarin O, Happi C, Omoniwa O, Strelau M, Tariyal R, Jallow M, Joof FS, Corrah

- 1 T, Rockett K, Kwiatkowski D, Kooner J, Hien TT, Dunstan SJ, ThuyHang N, Fonnier R, Garry  
2 R, Kanneh L, Moses L, Schieffelin J, Grant DS, Gallo C, Poletti G, Saleheen D, Rasheed A,  
3 Brooks LD, Felsenfeld AL, McEwen JE, Vaydylevich Y, Duncanson A, Dunn M, Schloss JA: A  
4 global reference for human genetic variation. *Nature*. 526: 68–74, 2015
- 5 23. Montgomery RA, Tatapudi VS, Leffell MS, Zachary AA: HLA in transplantation. *Nat. Rev.*  
6 *Nephrol.* 14: 558–570, 2018
- 7 24. Zaroni F, Kiryluk K: Genetic background and transplantation outcomes: Insights from genome-  
8 wide association studies [Internet]. *Curr. Opin. Organ Transplant.* 25: 35–41, 2020 Available  
9 from: <https://pubmed.ncbi.nlm.nih.gov/31815792/> [cited 2021 May 6]
- 10 25. Yang JYC, Sarwal MM: Transplant genetics and genomics. *Nat. Rev. Genet.* 18: 309–326,  
11 2017
- 12 26. Pazik J, Lewandowski Z, Oldak M, Oziębło D, Perkowska Ptasinska A, Sadowska A,  
13 Nowacka-Cieciura E, Nowaczyk M, Malejczyk J, Kwiatkowski A, Durlik M: Association of  
14 MYH9 rs3752462 and rs5756168 Polymorphisms With Transplanted Kidney Artery Stenosis.  
15 *Transplant. Proc.* [Internet] 48: 1561–1565, 2016 Available from:  
16 <https://pubmed.ncbi.nlm.nih.gov/27496447/> [cited 2022 Mar 12]
- 17 27. Franceschini N, Voruganti VS, Haack K, Almasy L, Laston S, Göring HHH, Umans JG, Lee  
18 ET, Best LG, Fabsitz RR, MacCluer JW, Howard B V., North KE, Cole SA: The association of  
19 the MYH9 gene and kidney outcomes in American Indians: the Strong Heart Family Study.  
20 *Hum. Genet.* [Internet] 127: 295, 2010 Available from: [/pmc/articles/PMC2930187/](https://pubmed.ncbi.nlm.nih.gov/2090187/) [cited 2022  
21 Mar 12]
- 22 28. Zhang Y, Conti MA, Malide D, Dong F, Wang A, Shmist YA, Liu C, Zerfas P, Daniels MP,  
23 Chan CC, Kozin E, Kachar B, Kelley MJ, Kopp JB, Adelstein RS: Mouse models of MYH9-  
24 related disease: mutations in nonmuscle myosin II-A. *Blood* [Internet] 119: 238–250, 2012  
25 Available from: <https://pubmed.ncbi.nlm.nih.gov/21908426/> [cited 2022 Mar 12]
- 26 29. Müller T, Rumpel E, Hradetzky S, Bollig F, Wegner H, Blumenthal A, Greinacher A, Endlich K,  
27 Endlich N: Non-muscle myosin IIA is required for the development of the zebrafish glomerulus.  
28 *Kidney Int.* [Internet] 80: 1055–1063, 2011 Available from:  
29 <https://pubmed.ncbi.nlm.nih.gov/21849970/> [cited 2022 Mar 12]
- 30 30. Noris M, Remuzzi G: Non-muscle myosins and the podocyte. *Clin. Kidney J.* [Internet] 5: 94,

- 1           2012 Available from: [/pmc/articles/PMC5783220/](#) [cited 2022 Mar 12]
- 2   31.   Babayeva S, Miller M, Zilber Y, Kares R El, Bernard C, Bitzan M, Goodyer P, Torban E:
- 3           Plasma from a case of recurrent idiopathic FSGS perturbs non-muscle myosin IIA (MYH9
- 4           protein) in human podocytes. *Pediatr. Nephrol.* [Internet] 26: 1071–1081, 2011 Available from:
- 5           <https://pubmed.ncbi.nlm.nih.gov/21380797/> [cited 2022 Mar 12]
- 6   32.   Freedman BI, Nagaraj SK, Lin JJ, Gautreaux MD, Bowden DW, Iskandar SS, Stratta RJ,
- 7           Rogers J, Hartmann EL, Farney AC, Reeves-Daniel AM: Potential donor-recipient MYH9
- 8           genotype interactions in posttransplant nephrotic syndrome after pediatric kidney
- 9           transplantation. *Am. J. Transplant* [Internet] 9: 2435–2440, 2009 Available from:
- 10          <https://pubmed.ncbi.nlm.nih.gov/19764949/> [cited 2022 Mar 12]
- 11
- 12

1 **Tables**

2



1 **Table 1: Baseline characteristics of the donors and recipients**

	All Patients (n = 1271)	Functioning graft (n = 1056)	Graft loss (n = 215)	P-value*	HR	P-value#
<b>Donor</b>						
<b>MYH9 SNP</b>	CC, n (%)	317 (25.0)	264 (25.0)	53 (24.8)	0.97	0.98
	CA, n (%)	687 (54.1)	572 (54.2)	115 (53.7)		
	AA, n (%)	265 (20.9)	219 (20.8)	46 (21.5)		
Age, years	44.4 ± 14.4	44.1 ± 14.6	46.1 ± 13.4	<b>0.044</b>	1.02	<b>&lt;0.001</b>
Male sex, n (%)	645 (50.7)	535 (50.7)	110 (51.2)	0.89		0.96
<b>Blood group</b>						
Type O, n (%)	642 (50.5)	541 (51.3)	101 (47.2)	<b>0.033</b>	0.39	<b>0.004</b>
Type A, n (%)	502 (39.5)	414 (39.3)	88 (41.1)		0.42	<b>0.01</b>
Type B, n (%)	97 (7.6)	82 (7.8)	15 (7.0)		0.36	<b>0.012</b>
Type AB, n (%)	27 (2.1)	17 (1.6)	10 (4.7)		Ref	<b>0.035</b>
<b>Donor type</b>						
Living, n (%)	282 (22.2)	257 (24.3)	25 (11.6)	<b>&lt;0.001</b>	Ref	<b>0.002</b>
Brain death, n (%)	787 (61.9)	642 (60.8)	145 (67.4)		1.94	
Circulatory death, n (%)	202 (15.9)	157 (14.9)	45 (20.9)			
<b>Recipient</b>						
<b>MYH9 SNP</b>	CC, n (%)	326 (25.7)	270 (25.6)	56 (26.2)	0.15	0.31
	CA, n (%)	635 (50.0)	539 (51.1)	96 (44.9)		
	AA, n (%)	308 (24.3)	246 (23.3)	62 (29.0)		
Age, years	47.9 ± 13.5	48.5 ± 13.4	45.0 ± 13.2	<b>&lt;0.001</b>	0.99	<b>0.027</b>
Male sex, n (%)	739 (58.1)	607 (57.5)	132 (61.4)	0.29		0.21
<b>Primary kidney disease</b>						
Glomerulonephritis, n (%)	340 (26.8)	271 (25.6)	69 (32.2)	0.28		0.45
Polycystic disease, n (%)	208 (16.4)	188 (17.8)	20 (9.3)			
Vascular disease, n (%)	145 (9.9)	123 (11.6)	22 (10.3)			
Pyelonephritis, n (%)	148 (11.4)	120 (11.4)	28 (13.1)			
Diabetes, n (%)	51 (4.0)	44 (4.2)	7 (3.3)			
Idiopathic, n (%)	168 (13.2)	134 (12.7)	34 (15.9)			
Other, n (%)	211 (16.6)	177 (16.7)	34 (15.9)			
<b>Blood group</b>						
Type O, n (%)	567 (44.6)	474 (44.9)	93 (43.3)	<b>0.004</b>	0.46	<b>0.002</b>
Type A, n (%)	536 (42.2)	448 (42.4)	88 (40.9)		0.46	<b>0.002</b>
Type B, n (%)	113 (8.9)	98 (9.3)	15 (7.0)		0.35	<b>0.002</b>
Type AB, n (%)	55 (4.3)	36 (3.4)	19 (8.8)		Ref	<b>0.008</b>
Dialysis vintage, weeks	172 [91 – 263]	174 [87 – 261]	168 [109 – 270]	0.15		0.10
Highest PRA, in %	10.1 ± 23.6	10.0 ± 23.3	10.9 ± 25.0	0.60		0.75
<b>Immunosuppression</b>						
Anti-CD3 Moab, n (%)	19 (1.5)	14 (1.3)	5 (2.3)	0.27		0.51
ATG, n (%)	103 (8.1)	79 (7.5)	24 (11.2)	0.07		0.14
Azathioprine, n (%)	72 (5.7)	53 (5.0)	19 (8.8)	<b>0.027</b>		0.29
Corticosteroids, n (%)	1201 (94.5)	1002 (94.9)	199 (92.6)	0.17	0.51	<b>0.01</b>
Cyclosporin, n (%)	1085 (85.4)	911 (86.3)	174 (80.9)	<b>0.044</b>	0.66	<b>0.016</b>
Interleukin-2 RA, n (%)	199 (15.7)	163 (15.4)	36 (16.7)	0.63		0.12
Mycophenolic acid, n (%)	907 (71.4)	775 (73.4)	132 (61.4)	<b>&lt;0.001</b>		0.06
Sirolimus, n (%)	38 (3.0)	33 (3.1)	5 (2.3)	0.53		0.54
Tacrolimus, n (%)	97 (7.6)	77 (7.3)	20 (9.3)	0.31		0.39
<b>Transplantation</b>						
CIT, in hours	17.7 [10.9 – 23.0]	17.0 [8.6 – 23.0]	20.0 [15.3 – 25.0]	<b>&lt;0.001</b>	1.03	<b>0.001</b>
WIT, in minutes	37.0 [31 – 45]	37.0 [30 – 45]	38.0 [32 – 45]	0.12	1.02	<b>0.003</b>
Total HLA mismatches	2 [1 – 3]	2 [1 – 3]	2 [1 – 3]	0.48		0.11
DGF, n (%)	415 (32.7)	289 (27.4)	126 (58.6)	<b>&lt;0.001</b>	3.79	<b>&lt;0.001</b>

2 Data are displayed as mean ± standard deviation for parametric variables; median [IQR] for non-

3 parametric variables, and nominal data as the total number of patients with the corresponding

1 percentage [n (%)]. *MYH9*, non-muscle myosin heavy chain 9 gene; *PRA*, panel-reactive antibody;  
2 *CD3*, cluster of differentiation 3; *ATG*, Anti-thymocyte globulin; *RA*, receptor antagonist; *CIT*, cold  
3 ischemia time; *WIT*, warm ischemia time; *HLA*, human leukocyte antigen; *DGF*, delayed graft function.

4 Bold values are used to show which testing was statistically significant ( $P$ -value < 0.05)

5  $P$ -value\* indicates the  $P$ -value for the differences in baseline characteristics between the groups,  
6 tested by Student's  $t$ -test or the Mann–Whitney  $U$ -test for continuous variables, with the  $\chi^2$  test for  
7 categorical variables.

8  $P$ -value# indicates the  $P$ -value for univariable analysis with 15-year death censored graft survival.

9

1 **Table 2**

2 **Logistic regression analysis for the risk of delayed graft function after kidney transplantation**

<b>Variables</b>	<b>P-value</b>	<b>Hazard Ratio</b>
<i>MYH9</i> rs111089788 SNP in the recipient (AA versus CA/CC)	0.15	1.26 (0.92 – 1.72)
Donor age (in years)	<0.001	1.02 (1.01 – 1.03)
Donor gender (male versus female)	0.001	1.61 (1.22 – 2.13)
Donor type (deceased versus living)	0.001	31.61 (4.14 – 214.57)
Total HLA mismatches	0.006	1.16 (1.04 – 1.30)
Dialysis vintage (in years)	0.007	1.08 (1.02 – 1.14)
Warm ischemia time (in minutes)	0.020	1.01 (1.00 – 1.03)
Recipient age (in years)	0.44	1.00 (0.99 – 1.02)
Cold ischemia time (in minutes)	0.47	1.00 (1.00 – 1.00)

3  
4 Multivariable logistic regression was performed for delayed graft function after kidney transplantation.  
5 Only variables with a  $P < 0.05$  in the univariable analysis were included. Data are presented as an odds  
6 ratio with a 95% confidence interval (CI) and  $P$ -value. Donor age, donor gender, donor type, total HLA  
7 mismatches, dialysis vintage, and warm ischemia time were significant, whereas the *MYH9* SNP  
8 (rs111089788) in the recipient, recipient age, and cold ischemia time were not.

9

1 **Table 3**

2 **Multivariable analysis for the risk of biopsy-proven acute rejection after kidney transplantation**

<b>Variables</b>	<b>P-value</b>	<b>Hazard Ratio</b>
<i>MYH9</i> rs111089788 SNP in the recipient (AA versus CA/CC)	0.10	1.22 (0.97 – 1.54)
Recipient age (in years)	<0.001	0.97 (0.97 – 0.98)
Total HLA mismatches	<0.001	1.20 (1.11 – 1.29)
Delayed graft function (yes versus no)	0.015	1.31 (1.05 – 1.62)
Recipient gender (female versus male)	0.039	1.25 (1.01 – 1.55)
Warm ischemia time (in minutes)	0.08	0.99 (0.98 – 1.00)

3

4 Multivariable Cox regression was performed for biopsy-proven acute rejection (BPAR) after kidney  
5 transplantation. Only variables with a  $P < 0.05$  in the univariable analysis were included. Data are  
6 presented as a hazard ratio with a 95% confidence interval (CI) and  $P$ -value. Recipient age, total HLA  
7 mismatches, delayed graft function (DGF), and recipient gender were significant, whereas the *MYH9*  
8 SNP (rs11089788) in the recipient and warm ischemia time were not.

9

1 **Table 4**  
2 **Associations of non-muscle myosin heavy chain 9 polymorphism in donor-recipient pairs with**  
3 **graft loss after kidney transplantation.**

	<b>MYH9 SNP (rs1800472) in donor-recipient pairs</b>		
	<b>Hazard ratio (AA+AA vs. others)</b>	<b>95% CI</b>	<b>P-value</b>
<b>Model 1</b>	1.78	1.13 – 2.79	0.012
<b>Model 2</b>	1.90	1.19 – 3.02	0.007
<b>Model 3</b>	1.95	1.24 – 3.08	0.004
<b>Model 4</b>	1.91	1.16 – 3.12	0.011

4  
5 Data are presented as a hazard ratio with a 95% confidence interval (CI) and *P*-value.

6 **Model 1:** Crude model.

7 **Model 2:** Adjusted for model 1 plus recipient characteristics: Recipient age, recipient sex, recipient  
8 blood type, and dialysis vintage.

9 **Model 3:** Adjusted for model 1 plus donor characteristics: Donor age, donor sex, donor blood type, and  
10 donor origin.

11 **Model 4:** Adjusted for model 1 plus transplant characteristics: Cold and warm ischemia time, and the  
12 number of human leukocyte antigen (HLA)-mismatches.

13

1 **Table 5**

2 **Multivariable analysis for the risk of graft loss after renal transplantation**

<b>Variables</b>	<b>P-value</b>	<b>Hazard Ratio</b>
rs111089788 in donor-recipient pairs (AA+AA versus <i>others</i> )	0.031	1.68 (1.05 – 2.70)
Delayed graft function ( <i>yes</i> versus <i>no</i> )	<0.001	3.47 (2.56 – 4.72)
Recipient age ( <i>in years</i> )	<0.001	0.98 (0.97 – 0.99)
Donor age ( <i>in years</i> )	0.001	1.02 (1.01 – 1.03)
Recipient blood type ( <i>AB</i> versus <i>other</i> )	0.061	
Warm ischemia time ( <i>in minutes</i> )	0.12	1.01 (1.00 – 1.02)
Corticosteroids	0.20	1.53 (0.80 – 2.95)
Cold ischemia time ( <i>in minutes</i> )	0.32	1.00 (1.00 – 1.00)
Donor type ( <i>living</i> versus <i>deceased</i> )	0.41	0.76 (0.39 – 1.46)
Cyclosporin A	0.71	1.04 (0.71 – 1.66)
Donor blood type ( <i>AB</i> versus <i>other</i> )	0.90	

3  
4 Multivariable cox regression was performed for kidney graft survival. Only variables with a  $P < 0.05$  in  
5 the univariable analysis were included. Data are presented as a hazard ratio with a 95% confidence  
6 interval (CI) and  $P$ -value. In the final model, the *MYH9* SNP (rs11089788) in donor-recipient pairs, the  
7 occurrence of delayed graft function, recipient age, and donor age were significant, whereas recipient  
8 blood type, warm ischemia time, use of corticosteroids, cold ischemia time, donor type, use of  
9 cyclosporin A, and donor blood type were not.

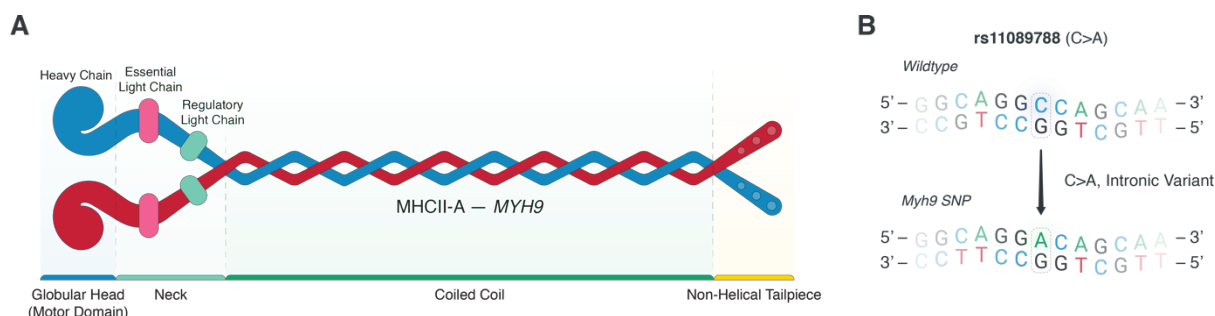
10

1 **Figures**

2

3 **Figure 1**

4 **Illustration of the non-muscle myosin heavy chain 9 and the examined *MYH9* polymorphisms.**



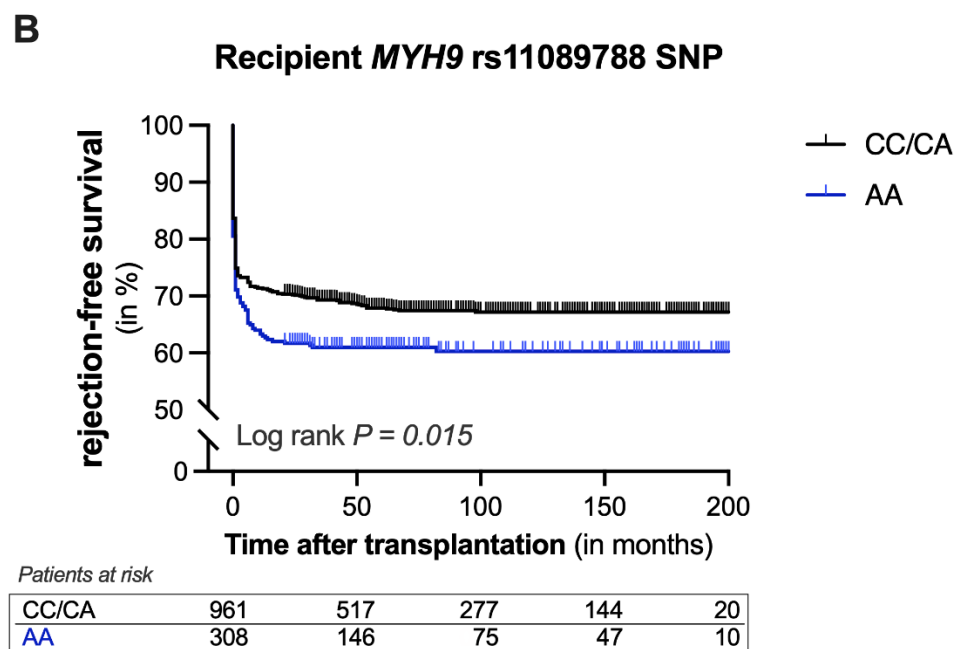
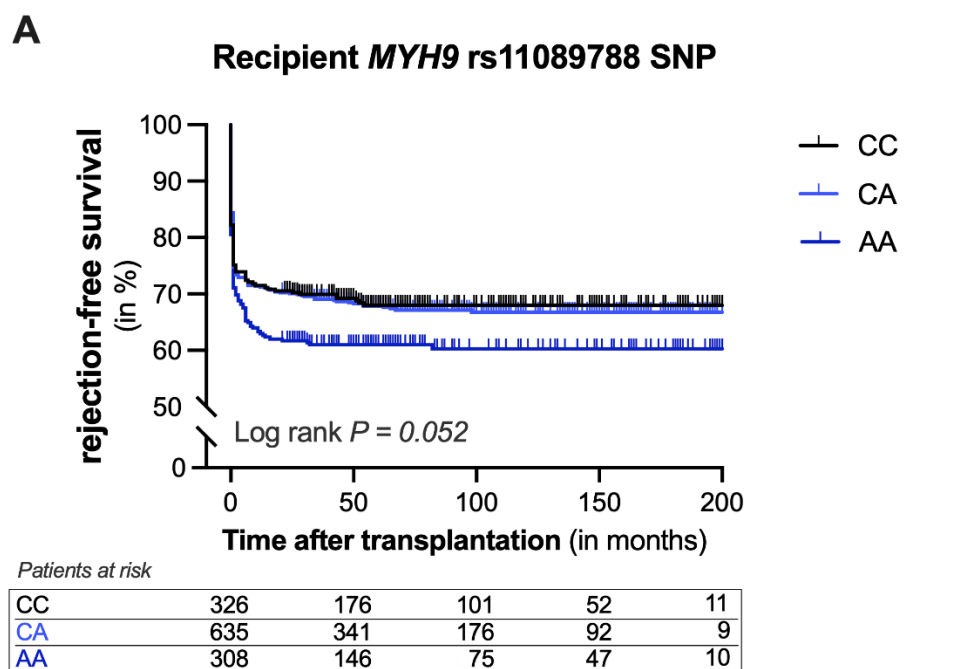
5

6 **(A)** Non-muscle myosin heavy chain II-A (MHCII-A) is a contractile protein comprised of several  
7 domains: A globular motor head portion (heavy chain), a neck domain (essential light chain and  
8 regulatory light chain), coiled coil tail segment (MHCII-A), and non-helical tailpiece that can be  
9 phosphorylated. The coiled coil segment is notably encoded by the myosin heavy chain 9 (*MYH9*) gene.

10 **(B)** In this study, we assessed the association of rs11089788 (C>A) *MYH9* single-nucleotide  
11 polymorphism (SNPs) in kidney allograft donors and recipients with long-term graft survival outcomes.  
12 MHCII-A, non-muscle heavy chain II-A; *MYH9*, myosin heavy chain 9 gene; SNP, single nucleotide  
13 polymorphism.

14

- 1 **Figure 2**
- 2 **Kaplan-Meier curves for rejection-free survival of kidney allografts according to the presence**
- 3 **of a non-muscle myosin heavy chain 9 gene polymorphism in the recipient.**

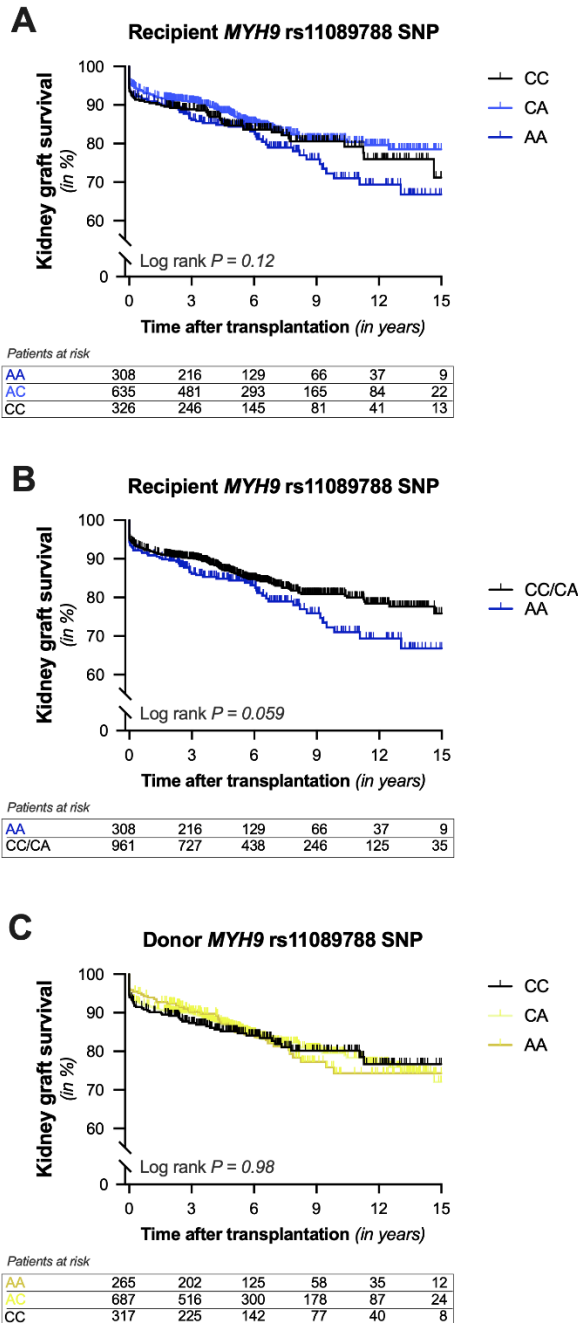


- 4
- 5 **(A)** Cumulative rejection-free survival of kidney allografts according to the presence of the *MYH9* SNP
- 6 **rs11089788** in the recipient. **(B)** Cumulative rejection-free survival of kidney allografts in recipients with
- 7 the AA-genotype of the *MYH9* SNP rs11089788 versus the AC/CC-genotype. Log-rank test was used
- 8 to compare the incidence of biopsy-proven rejection between the groups.

9



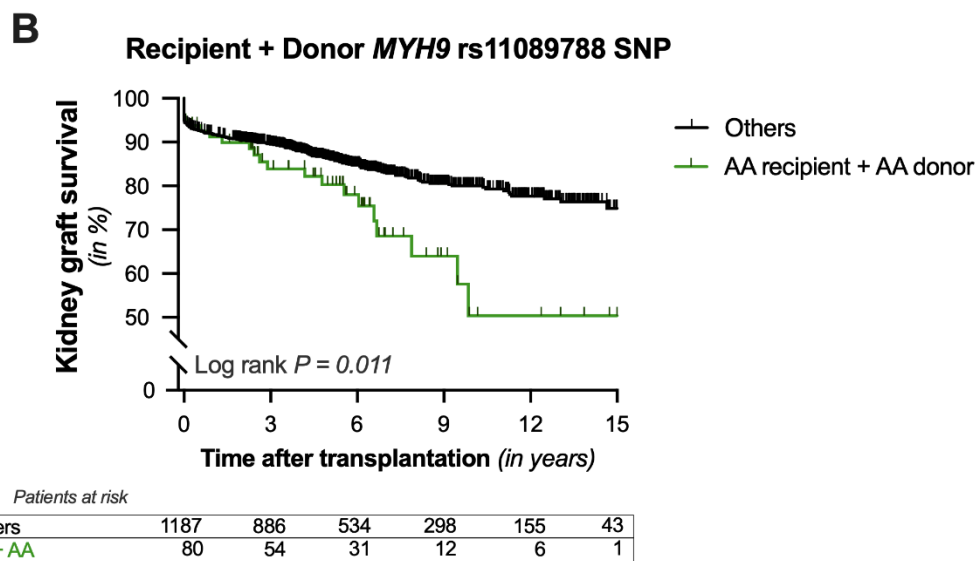
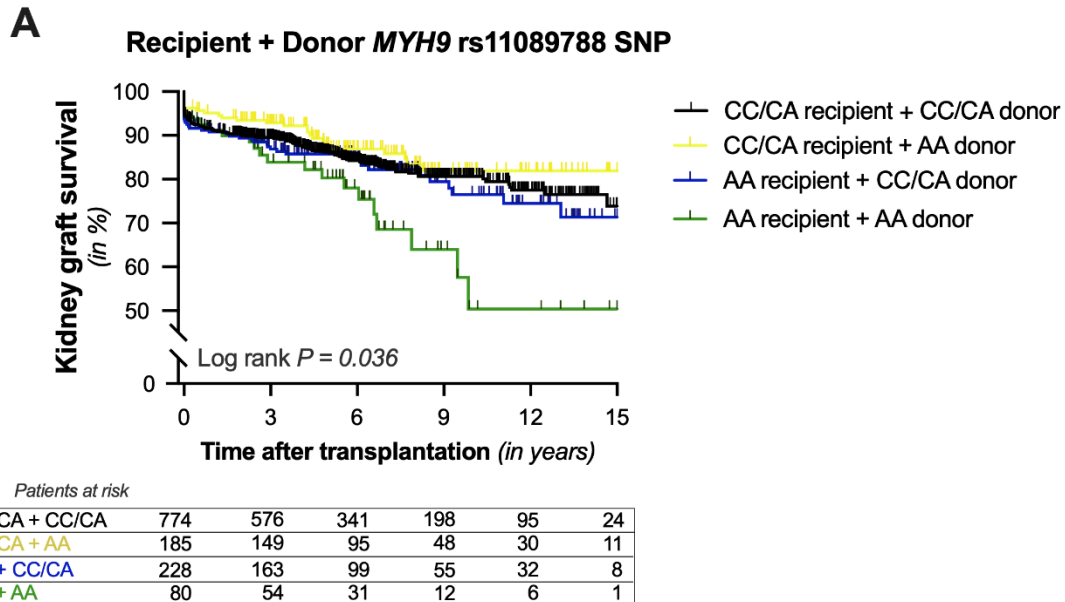
- 1 **Figure 3**
- 2 **Kaplan-Meier curves for 15-year death-censored kidney graft survival according to the presence**
- 3 **of a non-muscle myosin heavy chain 9 gene polymorphism in the donor or recipient.**



- 4
- 5 **(A)** Cumulative 15-year death-censored kidney graft survival according to the presence of a genetic
- 6 variant in non-muscle myosin heavy chain 9 gene (*MYH9*, rs11089788 C>A) in (A, B) the recipient (blue
- 7 line) or (C) the donor (yellow line). **(B)** Cumulative 15-year death-censored graft survival of kidney
- 8 allografts in recipients with the AA-genotype of the *MYH9* SNP rs11089788 versus the AC/CC-genotype.
- 9 Log-rank test was used to compare the incidence of graft loss between the groups.

10

- 1 **Figure 4**
- 2 **Kaplan-Meier curves for 15-year death-censored kidney graft survival according to the presence**
- 3 **of a non-muscle myosin heavy chain 9 gene polymorphism in donor-recipient pairs.**



- 4
- 5 Cumulative 15-year death-censored kidney graft survival is shown according to the presence of the
- 6 *MYH9* polymorphism in donor-recipient pairs. (A) Pairs were divided into four groups according to the
- 7 absence (black line) or presence of the AA-genotype in the recipient (blue line), donor (yellow line), or
- 8 both (green line). (B) In addition, the presence of the AA-genotype in both the recipient and donor
- 9 (green line) was compared to the rest (black line). Log-rank test was used to compare the incidence of
- 10 graft loss between the groups.