

Common and distinct cortico-striatal volumetric changes in cocaine and heroin use disorder

Running title: Gray matter volume in cocaine and heroin use disorder

Ahmet O Ceceli ¹, Yuefeng Huang ¹, Greg Kronberg ¹, Pias Malaker ¹, Pazia Miller ¹, Sarah King ^{1,2}, Pierre-Olivier Gaudreault ¹, Natalie McClain ¹, Lily Gabay ¹, Devarshi Vasa ¹, Defne Ekin ¹, Nelly Alia-Klein ^{1,2}, & Rita Z Goldstein ^{1,2}

¹ Department of Psychiatry, Icahn School of Medicine at Mount Sinai, 1 Gustave L. Levy Place, Box 1230, New York, NY 10029

² Department of Neuroscience, Friedman Brain Institute, Icahn School of Medicine at Mount Sinai, 1 Gustave L. Levy Place, Box 1065, New York, NY 10029

Corresponding author: Rita Z. Goldstein (rita.goldstein@mssm.edu)

Tel: 212-659-8886

Keywords: addiction, opiate, stimulant, prefrontal cortex, striatum, gray matter

Abstract

Drugs of abuse impact cortico-striatal dopaminergic targets and their morphology across substance types in common and unique ways. While the dorsal striatum drives addiction severity across drug classes, opiates impact ventromedial prefrontal cortex (vmPFC) and nucleus accumbens (NAcc) neuroplasticity in preclinical models, and psychostimulants alter inhibitory control, rooted in cortical regions such as the inferior frontal gyrus (IFG). We hypothesized parallel gray matter volume (GMV) changes in individuals with cocaine or heroin use disorder (CUD/HUD): decreased GMV of vmPFC/NAcc in HUD and IFG in CUD, and putamen GMV to be associated with addiction severity. We quantified GMV in age/sex/IQ-matched individuals with CUD (n=20; 5 women), HUD (n=20; 6 women), and healthy controls (HC; n=20; 5 women), further replicated in an extended sample (combined n=96). Overall, addicted individuals had smaller vmPFC volumes than HC ($p < 0.05$ -corrected), driven by HUD ($p < 0.05$ -corrected; similar NAcc reduction). Right IFG reductions were specifically evident in CUD vs. HUD ($p < 0.05$ -corrected). Posterior putamen volume increased as a function of craving in CUD vs. HUD ($p < 0.05$ -corrected). These results indicate compression of dopamine-innervated regions (in the vmPFC and NAcc) across cocaine- or heroin-addicted individuals, more severely in the latter. For the first time we demonstrate IFG compression specifically in CUD. This group also showed a unique association between craving and increased putamen volume, together indicating a signature of enhanced cue-sensitivity and habit formation. Results suggest common and substance-specific morphometry volumetric changes in human psychostimulant or opiate addiction, with implications for fine-tuning biomarker and treatment identification by primary drug of abuse.

Introduction

Psychostimulants and opiates are among two of the most treatment-resistant drugs of abuse (1), together contributing to over 100,000 deaths in the United States annually (2). Drugs of abuse converge in their dopamine receptor-targeted mechanisms of action (3), as associated with the morphology of the mesocorticolimbic regions that dopamine innervates (4). Drugs of abuse also demonstrate distinct neurobehavioral signatures (5), together suggesting both common and unique effects on behavior and brain volume. For example, volumetric decreases, exacerbated with addiction severity (e.g., years of use), have been reported in drug-addicted individuals for the ventromedial prefrontal cortex (vmPFC) (6–9). These vmPFC volumetric decreases potentially contribute to deficits in this region’s core functions, namely salience/value processing (10), extinction learning (11), and goal-directed control (12), a cognitive and emotional pattern contributing to the drug addiction phenomenology (13,14). . In an opposite direction but still common to drug-addicted individuals (i.e., spanning different drug classes), volumetric increases have been reported for the dorsal striatum (15) that regulates habit formation (16,17), potentially related to its dopaminergically-mediated role in cue sensitivity and craving (18).

On the other hand, chronic self-administration of heroin, but not cocaine (19), in rats contributes to decreased dendritic spine density in the vmPFC/orbitofrontal cortex (OFC) (20,21) and impaired extinction learning (e.g., persistent drug seeking despite unavailability of the drug) (22), suggesting an especially robust impact of heroin on the vmPFC. The nucleus accumbens (NAcc), a motivational hub with core roles in perceived salience (23,24), reward anticipation (25), and drug craving (23), has also been a major focus of investigation in these studies.

Similarly to the direction of impact on the vmPFC/OFC, chronic opiate self-administration in rats is associated with decreased measures of neuroplasticity (dendritic branching and spine

density) in the medium spiny neurons of the NAcc (21), a result in line with NAcc gray matter volume (GMV) reductions in human heroin addiction (26). In contrast, escalation to cocaine but not heroin self-administration is more likely in rats that are high in trait impulsivity (27,28). Similarly in humans, impulsivity and inhibitory control deficits, regulated by cortical regions including the inferior frontal gyrus (IFG) (29–31), may be more closely aligned with the symptom profile of cocaine addiction (5,32). Consistent with this suggestion, a study of 169 male polysubstance users (cocaine: ≥ 1 gram/week; alcohol: ≥ 21 drinks/week for heavy, 1-21 drinks/week for light drinkers; marijuana: ≥ 1 joint/week; tobacco: > 1 cigarette/day) revealed decreased IFG volumes as a function of monthly cocaine use when controlling for the use of the other substances, although this study did not account for opiate use (33).

Complementing the mostly preclinical efforts, several meta-analyses of GMV studies in human addiction similarly allow the comparison between different drugs classes (6,7,9,34,35). These meta-analyses support shared vmPFC reductions across substances (6,7,9) and suggest several substance-specific patterns [e.g., alcohol-specific reductions in the NAcc (6), and cocaine-specific (relative to methamphetamine) reductions in the superior frontal gyrus (34)]. However, to the best of our knowledge, only two studies to date have directly assessed the overlapping and distinct neuroanatomical underpinnings related to psychostimulant and opiate use as they manifest in gray matter (36,37). In one study, group comparisons revealed GMV reductions in parietal and precentral/postcentral gyrus in 28 individuals with a history of heroin abuse, and in hippocampus, posterior cingulate cortex, and cerebellum in 14 individuals with a history of cocaine abuse (36). In the other study, compared to a group of 21 individuals with polysubstance use disorder that included cocaine and alcohol use, a group of 27 individuals with opioid use disorder (not specific to heroin) had cortical thinning in the posterior superior frontal gyrus and

temporo-parietal junction (37). Notably, opposite to expectations from the preclinical literature, in these studies the vmPFC, NAcc, IFG or dorsal striatum were not implicated.

Here, to investigate the common and distinct cortico-striatal GMV patterns related to opiate or stimulant addiction, we used voxel-based morphometry (VBM) of T1-weighted magnetic resonance imaging (MRI) in demographically matched groups of individuals with cocaine or heroin use disorder (CUD/HUD) and healthy controls (HC), with an internal replication of analyses in an extended sample. We aimed to address the following hypotheses: 1) compared to HC, drug-addicted individuals would exhibit reduced GMV in the vmPFC, with this reduction most pronounced in HUD, 2) the HUD group would show reduced GMV in the NAcc, 3) the IFG would be smaller in CUD compared to HUD, and 4) the common and/or unique neuroanatomical patterns in the CUD and HUD would be further supported by potentially distinct associations with addiction severity measures including craving, a measure of cue sensitivity and habitual associations; here, we speculated a role for the dorsal striatum.

Methods

Participants

Three age-, sex-, education- and IQ-matched groups of 20 individuals with HUD (40.9±10 years, 6 women), 20 individuals with CUD (42.8±7 years, 5 women), and 20 HC (41.4±9 years, 5 women), comprised our main sample of 60 participants. An additional 12 participants per group yielded a larger total sample (n=96) for internal replication purposes (see Table 1 for details on both samples). Subjects with CUD were recruited by advertisements and flyers (in local newspapers, bulletin boards, and online) as well as from educational talks provided to groups of staff and patients at collaborating substance abuse prevention and treatment institutes in the New York metropolitan area. HC were recruited from the same communities for matching purposes. Individuals with HUD were recruited from a single inpatient drug addiction rehabilitation facility (Samaritan Daytop Village, NY). The Icahn School of Medicine at Mount Sinai's institutional review board approved study procedures, and all participants provided written informed consent.

Participants underwent a series of clinical and neuropsychological assessments delivered by trained research staff under a clinical psychologist's supervision. These assessments included the Mini International Neuropsychiatric Interview (38) (for the HUD) or the Structured Clinical Interview for DSM-IV or DMS-5 Axis I and II Disorders (39) (for the CUD and HC); the Addiction Severity Index (40), a semi-structured interview that assesses history and severity of substance use problems for all individuals with substance use disorder (SUD); the Cocaine Selective Severity Assessment (41) or Short Opiate Withdrawal Scale (42) to evaluate abstinence/withdrawal symptomology related to cocaine or heroin, respectively (range-corrected to a common scale for group comparisons in withdrawal); the Severity of Dependence scale for all SUD participants (43); and the Cocaine Craving Questionnaire (44) or the Heroin Craving

Questionnaire (range-corrected to a common scale for group comparisons in craving) (45).

Participants underwent a brief physical examination including urine drug toxicology, breath carbon monoxide and alcohol measurements, and review of medical history.

All individuals with CUD and HUD met criteria for SUD with cocaine or heroin as the primary drug of choice, respectively. Other comorbidities included alcohol use disorder (CUD original sample n=7, extended n=11; HUD original n=2, extended n=3), marijuana use disorder (CUD original n=2, extended n=7; HUD original n=1, extended n=1), sedative use disorder (CUD extended n=1; HUD original n=3, extended n=4), phencyclidine use disorder (CUD extended n=1), meth/amphetamine use disorder (CUD extended n=1; HUD original n=1, extended n=2), major depressive disorder (HUD original n=2, extended n=3), post-traumatic stress disorder (CUD original n=1, extended n=1), and specific phobias (CUD original n=1, extended n=2). All SUD comorbidities were in partial or sustained remission at the time of study. Within the CUD sample, four participants in the original and eight in the extended sample also met criteria for HUD, and within the HUD, five participants in the original and eight in the extended sample also met criteria for CUD; however, these individuals' primary drug of abuse was identified to be congruent with their assignment to their respective groups. Among the CUD group, urine screen results confirmed the presence of cocaine in 10 participants in the original and 14 participants in the extended samples. All participants in the HUD group were under medication assisted treatment, with urine toxicology positive for: methadone (original n=18; extended n=26), buprenorphine (original n=1; extended n=5), and methadone and buprenorphine (original n=1, extended n=1). Mean methadone doses were 103.8 ± 63.3 mg (original sample, 2 missing) or 99.4 ± 56.4 mg (extended, 2 missing); buprenorphine 12 mg (original, 1 missing) or 14.7 ± 8.3 mg (extended, 3 missing). The route of drug administration included smoking (CUD original

n=15, extended n=22; HUD original n=3, extended n=3), intranasal (CUD original n=4, extended n=8; HUD original n=6, extended n=11), intravenous (CUD extended n=1; HUD original n=11, extended n=17), oral (HUD extended n=1), and smoking and intranasal (original CUD n=1, extended CUD n=1).

Exclusion criteria were: 1) present or past history of DSM-IV or DSM-5 diagnoses of psychotic disorder (e.g., schizophrenia) or neurodevelopmental disorder (e.g., autism); 2) history of head trauma with loss of consciousness (> 30 min); 3) history of neurological disorders including seizures; 4) current use of any medication (with the exception of medication assisted treatment in the HUD) that may affect neurological functions; 5) current evident infection and/or medical illness including cardiovascular disease (e.g., high blood pressure), as well as metabolic, endocrinological, oncological or autoimmune diseases, and infectious diseases common in individuals with SUD including Hepatitis B and C or HIV/AIDS for the HUD group; 6) MRI contraindications including any metallic implants, pacemaker device, or pregnancy. We did not exclude SUD subjects for history of other drug addiction (e.g., alcohol, marijuana, stimulants/opiates) or other psychiatric disorders at high co-morbidity with drug addiction (e.g., depression, post-traumatic stress disorder); and 7) HC participants were excluded for a positive breathalyzer test for alcohol or positive urine screen for any psychoactive drugs.

MRI data acquisition

MRI scans were acquired using a Siemens 3.0 Tesla Skyra (Siemens Healthcare, Erlangen, Germany) with a 32-channel head coil. T1-weighted anatomical image acquisition parameters were as follows: 3D MPRAGE sequence with $256 \times 256 \times 179$ mm³ FOV, 0.8 mm isotropic resolution, TR/TE/TI=2400/2.07/1000 ms, 8° flip angle with binomial (1, -1) fat saturation, 240

Hz/pixel bandwidth, 7.6 ms echo spacing, and in-plane acceleration (GRAPPA) factor of 2, with a total acquisition time of approximately 7 min.

Voxel-based morphometry

We followed the optimized VBM approach as documented by Good *et al.* (46) using *FSL-VBM* (47,48). First, raw DICOM images were converted to the NIFTI format via *dcm2niix* (49) and adapted to Brain Imaging Data Structure (BIDS) standards to enhance portability and reproducibility (50). Structural images were skull-stripped using FSL's brain extraction tools and segmented into gray matter, white matter, and cerebrospinal fluid using FSL's *fast*. FSL's *sienax* was used to calculate normalized total brain volume (TBV). Next, all skull-stripped images were nonlinearly registered to the standard gray matter ICBM-152 template and averaged to yield an unbiased (inclusive of all participants, equally representing each group) study-specific, isotropic 2 mm template. Individual gray matter images were re-registered to this study specific template, modulated to account for registration-related warping, and spatially smoothed using a Gaussian kernel (7 mm full-width at half maximum).

To address our *a priori* hypotheses, we employed the general linear model approach using our original sample (n=60). We included group (HC, CUD, and HUD), age, and total brain volume (TBV) as regressors in the model to produce age- and TBV-corrected linear contrasts comparing HC to both SUD groups (an "SUD" map encompassing both CUD and HUD), HC to CUD and HUD separately, and the CUD and HUD groups to each other. We accounted for the potential contribution of other explanatory variables on our results by first comparing HC, CUD, and HUD groups on demographic and neuropsychological measures using one-way ANOVAs (and pairwise comparisons where appropriate) for continuous and chi-square tests (or Fisher's exact tests where appropriate) for categorical variables, corrected for familywise error ($\alpha=.05/8=.006$

for the eight comparisons between HC, CUD, and HUD; $\alpha=.05/6$ for the six comparisons between CUD and HUD). Then, variables showing significant group differences were entered into VBM correlations to detect potential relationships with GMV across all participants. Those with significant group differences and GMV correlations were used as controlled variables in VBM analyses to correct for their potential contribution to the group differences in GMV.

For SUD group comparisons in drug use-related patterns as a function of GMV, we used separate models for each regressor (the use variables that did not differ by group: days since last use, lifetime use in years, craving, withdrawal, Table 1) to avoid multicollinearity, and compared the slopes of the correlations between CUD and HUD groups to derive CUD- and HUD-specific correlation maps (corrected for familywise error, $p<.05/4=.012$). For completeness, we also inspected severity of dependence in VBM analyses independently from the above. We did not examine past month use, as only four out of the 32 individuals with HUD in the extended sample reported non-zero values. To look for potential group similarities, we also tested correlations between these drug use measures with GMV using the whole-brain analyses in the combined SUD group (both samples).

Because parametric methods rely on a Gaussian distribution assumption that is difficult to achieve due to the inherent noise in MRI data (51), unlike prior inspections of GMV differences between CUD and HUD (36), we used permutation-based non-parametric statistical tests using FSL's *randomise* to compute all contrasts. We applied 5,000 permutations per test and threshold free cluster enhancement (corrected to $p<.05$ for primary group differences and $p<.012$ for the four drug use variable models) to detect significant clusters (52). We repeated these VBM analyses using our larger replication sample ($n=96$), reporting small volume corrected results within an *a priori* selected cortico-striatal anatomical mask. This combined mask encompassed

the vmPFC (inclusive of frontal medial, frontal orbital, and subcallosal cortices), striatum (inclusive of NAcc, caudate, putamen), and IFG (inclusive of pars opercularis and triangularis subregions), derived from the Harvard-Oxford Cortical/Subcortical Atlas with a 50% probabilistic threshold applied to each region.

Results

Participants

Groups were comparable in age, sex, education, verbal and non-verbal IQ in both the original and extended samples ($p \geq .121$; see Table 1). Group differences were evident in race in both samples (driven by fewer Black and more White participants in the HUD group compared to the other groups) and self-reported depression in the extended sample (driven by higher scores in HUD compared to HC). However, race and depression did not display a significant relationship with GMV across the original or the replication samples (all $p \geq .159$), and thus were not included as controlled variables in testing our main hypotheses. The three groups further differed in cigarette smoking status (fewest current smokers in the HC group); however, there were no significant differences in smoking status between HUD and CUD groups [original: Fisher's exact test $p = .106$; extended: Fisher's exact test $p = .011$, FWE-corrected]. Finally, past month use was by definition lower in the inpatient HUD than CUD in both the original (at a trend level) and extended samples. However, despite trends for lower lifetime use in the HUD than CUD group, the former group showed significantly higher severity of dependence in both samples.

SUD compared to HC

Compared to HC, the SUD group showed significantly lower GMV in the vmPFC ($p = .039$; Table 2), as also reflected by a trend in the replication sample ($p = .059$).

CUD compared to HC

There were no significant results when comparing the CUD group to the HC group in either the main whole-brain or the small volume corrected replication VBM analyses.

HUD compared to HC

Compared to the HC, the HUD group showed significantly lower GMV in the vmPFC ($p=.013$), left NAcc ($p=.045$), bilateral OFC (left: $p=.042$, right: $p=.049$), and pons ($p=.004$) (Figures 1-2, Table 2). The replication analysis also revealed significant GMV reductions in the HUD group compared to HC in the vmPFC ($p=.006$) and the left NAcc ($p=.037$; Figures 1-2, Table 2), with trends in the right OFC ($p=.091$) and caudate ($p=.082$). Note that the pons was not a region of *a priori* interest, and was not included in our replication mask for small volume correction. While the original sample did not reveal significantly higher GMV in HUD compared to HC, the small volume corrected replication indicated higher left IFG GMV in HUD ($p=.010$).

CUD compared to HUD

The direct contrast between CUD and HUD indicated that the former group showed significantly lower right IFG GMV ($p=.029$) (Figure 3, Table 2). This effect persisted in the replication analysis (right: $p=.005$).

The CUD>HUD contrast revealed significantly higher pons GMV in CUD ($p=.033$). We did not test this effect in the replication analysis. However, a trend was evident in the vmPFC GMV (CUD>HUD, $p=.074$).

Whole-brain GMV and addiction severity correlations

Whole-brain GMV correlations with the drug use variables revealed that the higher the posterior putamen GMV, the higher the craving in the CUD compared to the HUD group (Figure 4, $\alpha=.012$; 111 voxels, peak MNI coordinates 34, -8, 8, $p=.011$). This correlation was supported ($\alpha=.012$) in the replication analysis (19 voxels, peak MNI coordinates 32, -8, 8, $p=.039$, small volume corrected). No other drug use variable correlated significantly with GMV using the

whole-brain analyses in CUD or HUD or the combined SUD groups, in the original or extended samples.

Discussion

Although GMV reductions in individuals with SUD have been commonly documented (53), research directly interrogating the common and distinct patterns in human CUD and HUD has been limited, largely highlighting posterior (temporo-parietal and cerebellar) volumetric differences between these different drug types (36,37). Here, using demographically well-matched groups of CUD, HUD, and HC, we identified cortico-striatal similarities and differences in GMV changes (from HC) between these drug classes and internally replicated our results in an extended sample of participants. First, we replicated the previously reported reductions in vmPFC GMV in addicted individuals in our original sample, showing a similar trend in the replication sample, as driven by the HUD group. Second, the HUD group also showed lower NAcc GMV, discernable when compared to the HC group. Third, when directly compared to the HUD group, the CUD group showed significantly lower right IFG GMV and, fourth, this direct contrast also revealed a unique (positive) correlation in the CUD group between drug craving and the posterior putamen.

In both SUD groups, and driven by the HUD, lower vmPFC GMV compared to HC replicates similar findings in addicted individuals across substance types as reported by studies using meta-/mega-analyses (6,7), and those focused on stimulants (34,54–59) and opiates (35,60,61) independently. Drug use may play a causal role in structural vmPFC degradation (53) as suggested by decreased vmPFC volume following randomization to chronic cocaine self-administration in non-human primates (62), and this region's volumetric recovery with abstinence from cocaine (as associated with recovery of relevant neuropsychological functions including decision-making) in humans (63). Alternatively, alterations in vmPFC gray matter may be a biomarker of addiction vulnerability, as lower vmPFC/OFC cortical thickness predicts

increased adolescent drug experimentation (number of drugs tried) in individuals exposed to maternal cigarette smoking during gestation (64). The HUD group also showed NAcc decreases, a result that extends prior efforts in humans (26) and is consistent with evidence of decreased NAcc neuroplasticity following chronic opiate self-administration in rodents (21). Lack of such an effect in the CUD is consistent with the mixed prior evidence in chronic psychostimulant use (65), with studies showing both higher (66) and lower NAcc volume compared to HC (67).

Several mechanisms may underlie these drug associated volumetric reductions in both the vmPFC and NAcc encompassing reduced tonic dopamine neurotransmission mediated by striatal medium spiny neurons that serve as a dopaminergic input nexus from the PFC (68,69). Indeed, dopamine receptor D2/3 availability (measured via PET with [¹⁸F] Fallypride and [¹¹C] Raclopride) is reduced in human drug addiction (70,71)] as associated with decreased gray matter (evaluated with VBM) in the medial PFC and NAcc (4). Other mechanisms affecting the PFC, and especially the vmPFC/anterior PFC, include cerebral glucose metabolism reductions following chronic psychostimulant use as documented using 2-[¹⁴C] Deoxyglucose in non-human primates (72,73) and [¹⁸F] Fluorodeoxyglucose in humans (74–76). The severity of deficit in the HUD group is possibly also driven by cellular downregulation [measured by the phosphorylation of protein kinases such as the ERK and MAPK that play a role in neuronal growth (77) and are activated by neurotrophic factors (78)], as suggested by post-mortem evaluations of PFC cytoarchitecture in opiate-addicted individuals (heroin or methadone) (79). Interestingly, ERK phosphorylation in the NAcc is also decreased following chronic (but not acute) morphine administration (80). Results in humans in vivo are consistent with these suggestions as documented by decreased measures of neuronal integrity in mostly medial PFC gray matter assessed with magnetic resonance spectroscopy (via *N*-acetyl compounds and

myoinositol) in chronic users of heroin (81) and cocaine (82). Taken together, these results of reduced mesocorticolimbic integrity especially in individuals with HUD need to be explored vis-à-vis functional measures of salience/value processing, extinction learning, and goal-directed control.

The volumetric right IFG compression in the CUD compared to the HUD group in our study agrees with extensive evidence for lower IFG GMV in chronic stimulant users compared to HC (34,57,86,87). Given the well-established role of the right IFG in impulsivity and inhibitory control (29–31,88), and the heightened impulsivity characterizing psychostimulant use disorder [cocaine (5,32,57) and methamphetamine (87)], these results suggest a potential correlate in CUD for deficits in impulse control. Accordingly, we also found a CUD-specific positive correlation between the posterior putamen GMV and drug craving. The posterior putamen is a node of the habit network (89,90), and activity in this region increases as a function of stimulus-response training reflective of sensitivity to salient cues (17), which, in CUD, may be related to the drug cue-induced dorsal striatal dopamine release as associated with craving (18). Posterior putamen gray matter density negatively correlates with behavioral indices of goal-directed control, such that the higher its density, the worse (more habitual) the performance (91), as potentially mediated by reduced glutamate concentration and turnover in CUD (92). Taken together, the combined IFG and putamen GMV profiles in the current study suggest a unique marker towards an enhanced propensity to develop impulsive drug-seeking behaviors specifically in the CUD.

There were several null and/or unexpected results in this study. First, although previously reported (53,54), we did not find a significant relationship between decreased vmPFC/OFC GMV and longer duration of drug (including cocaine) use. Second, contrary to prior evidence

(35), the HUD in the extended (but not original) sample exhibited higher left IFG GMV than HC. Third, while putamen GMV is generally reported to be increased in drug addiction (15) [although decreases in this region were also reported in chronic opioid users (93)] we did not observe putamen GMV differences between our groups. Future efforts to resolve these discrepancies may benefit from larger samples that should also be more closely matched in drug use patterns such as recent use frequency and dependence severity. Furthermore, considering that abstinence from drug use has been associated with cortico-striatal recovery in addicted individuals (94), the longitudinal inspection of treatment-related effects is needed. Relatedly, since tobacco use has been linked to decreases in PFC GMV (33,95), accounting for smoking-related patterns in more balanced samples (e.g., including more HC participants who smoke cigarettes) is warranted. Sex-specific IFG GMV compression has been documented in cocaine-addicted individuals such that cocaine-addicted women exhibit lower IFG [and insula (96)] GMV than non-addicted women (97), warranting a closer inspection of potential sex differences and hormonal effects in substance-specific neural morphology. The CUD and HUD groups further differed in race; however, race did not yield a significant relationship with GMV in our results, in line with the lack of race-related gray matter concentration patterns in CUD (55). Finally, while we report key differences in the vmPFC, NAcc, IFG, and putamen morphology, behavioral measures (e.g., of drug cue reactivity and its extinction, value based decision-making, reward prediction error, impulsivity, and habit formation) would be needed to link these anatomical results to function.

To the best of our knowledge, this is the first demonstration of both unique and overlapping prefrontal cortico-striatal gray matter morphology changes in human cocaine and heroin addiction, providing insight into the brain-related variability accompanying the use of these

different drug classes. Specifically, we demonstrate vmPFC GMV compression across both CUD and HUD combined (with a more severe pattern in the latter) in addition to NAcc decreases in HUD, and IFG reductions in CUD. Together with the IFG compression, the unique relationship between increased cocaine craving and increased posterior putamen GMV underscores a potential biomarker in CUD, suggestive of a disease profile that may be conducive to cue-triggered habits/impulsive behaviors. In general, these results extend patterns observed in rodent models of chronic drug self-administration to addiction in humans, alluding to the cross-species conservation of cortico-striatal alterations with the chronic use of psychostimulants and opiates. These results call for closer examination of differences between drug classes in functions supported by these brain regions inclusive of select behaviors, cognitions and emotions and functional network organizations. Importantly, these findings underscore the importance of treating the human addiction experience as a multifaceted disease that takes into account the primary drug of abuse and warrants tailored interventions.

Acknowledgments

This work was supported by 1R01AT010627 and 1R01DA048301 to RZG. This manuscript has been posted on a preprint server.

Disclosures

Ahmet O. Ceceli declares no conflicts of interests. Yuefeng Huang declares no conflicts of interests. Greg Kronberg declares no conflicts of interests. Pias Malaker declares no conflicts of interests. Pazia Miller declares no conflicts of interests. Sarah King declares no conflicts of interests. Pierre-Oliver Gaudreault declares no conflicts of interests. Natalie McClain declares no conflicts of interests. Lily Gabay declares no conflicts of interests. Devarshi Vasa declares no

conflicts of interests. Defne Ekin declares no conflicts of interests. Nelly Alia-Klein declares no conflicts of interests. Rita Z. Goldstein declares no conflicts of interests.

References

1. Bossert JM, Ghitza UE, Lu L, Epstein DH, Shaham Y (2005): Neurobiology of relapse to heroin and cocaine seeking: An update and clinical implications. *European Journal of Pharmacology* 526: 36–50.
2. Ahmad F, Rossen L, Sutton P (2022): Provisional drug overdose death counts. National Center for Health Statistics.
3. Wise RA (2004): Dopamine, learning and motivation [no. 6]. *Nature Reviews Neuroscience* 5: 483–494.
4. Woodward ND, Zald DH, Ding Z, Riccardi P, Ansari MS, Baldwin RM, *et al.* (2009): Cerebral morphology and dopamine D2/D3receptor distribution in humans: A combined [18F]fallypride and voxel-based morphometry study. *Neuroimage* 46: 31–38.
5. Badiani A, Belin D, Epstein D, Calu D, Shaham Y (2011): Opiate versus psychostimulant addiction: the differences do matter. *Nat Rev Neurosci* 12: 685–700.
6. Mackey S, Allgaier N, Chaarani B, Spechler P, Orr C, Bunn J, *et al.* (2019): Mega-Analysis of Gray Matter Volume in Substance Dependence: General and Substance-Specific Regional Effects. *Am J Psychiatry* 176: 119–128.
7. Ersche KD, Williams GB, Robbins TW, Bullmore ET (2013): Meta-analysis of structural brain abnormalities associated with stimulant drug dependence and neuroimaging of addiction vulnerability and resilience. *Curr Opin Neurobiol* 23: 615–624.
8. Tanabe J, Tregellas JR, Dalwani M, Thompson L, Owens E, Crowley T, Banich M (2009): Medial orbitofrontal cortex gray matter is reduced in abstinent substance-dependent individuals. *Biol Psychiatry* 65: 160–164.
9. Mackey S, Paulus M (2013): Are there volumetric brain differences associated with the use of cocaine and amphetamine-type stimulants? *Neuroscience & Biobehavioral Reviews* 37: 300–316.

10. O'Doherty J, Kringelbach ML, Rolls ET, Hornak J, Andrews C (2001): Abstract reward and punishment representations in the human orbitofrontal cortex [no. 1]. *Nature Neuroscience* 4: 95–102.
11. Phelps EA, Delgado MR, Nearing KI, LeDoux JE (2004): Extinction learning in humans: role of the amygdala and vmPFC. *Neuron* 43: 897–905.
12. Reber J, Feinstein JS, O'Doherty JP, Liljeholm M, Adolphs R, Tranel D (2017): Selective impairment of goal-directed decision-making following lesions to the human ventromedial prefrontal cortex. *Brain* 140: 1743–1756.
13. Goldstein RZ, Volkow ND (2002): Drug addiction and its underlying neurobiological basis: neuroimaging evidence for the involvement of the frontal cortex. *Am J Psychiatry* 159: 1642–1652.
14. Everitt BJ, Robbins TW (2005): Neural systems of reinforcement for drug addiction: from actions to habits to compulsion. *Nat Neurosci* 8: 1481–1489.
15. Pando-Naude V, Toxto S, Fernandez-Lozano S, Parsons CE, Alcauter S, Garza-Villarreal EA (2021): Gray and white matter morphology in substance use disorders: a neuroimaging systematic review and meta-analysis [no. 1]. *Translational Psychiatry* 11: 1–18.
16. Balleine BW, O'Doherty JP (2009): Human and Rodent Homologies in Action Control: Corticostriatal Determinants of Goal-Directed and Habitual Action. *Neuropsychopharmacology* 35: 48–69.
17. Tricomi E, Balleine BW, O'Doherty JP (2009): A specific role for posterior dorsolateral striatum in human habit learning. *European Journal of Neuroscience* 29: 2225–2232.
18. Volkow ND, Wang G-J, Telang F, Fowler JS, Logan J, Childress A-R, *et al.* (2006): Cocaine Cues and Dopamine in Dorsal Striatum: Mechanism of Craving in Cocaine Addiction. *J Neurosci* 26: 6583–6588.
19. Robinson TE, Gorny G, Mitton E, Kolb B (2001): Cocaine self-administration alters the morphology of dendrites and dendritic spines in the nucleus accumbens and neocortex. *Synapse* 39: 257–266.

20. Robinson TE, Gorny G, Savage VR, Kolb B (2002): Widespread but regionally specific effects of experimenter- versus self-administered morphine on dendritic spines in the nucleus accumbens, hippocampus, and neocortex of adult rats. *Synapse* 46: 271–279.
21. Robinson TE, Kolb B (2004): Structural plasticity associated with exposure to drugs of abuse. *Neuropharmacology* 47: 33–46.
22. Ahmed SH (2011): Escalation of drug use. *Animal Models of Drug Addiction*. Totowa, NJ, US: Humana Press, pp 267–292.
23. Berridge KC, Robinson TE (2016): Liking, Wanting and the Incentive-Sensitization Theory of Addiction. *Am Psychol* 71: 670–679.
24. Kutlu MG, Zachry JE, Melugin PR, Cajigas SA, Chevee MF, Kelly SJ, *et al.* (2021): Dopamine release in the nucleus accumbens core signals perceived saliency. *Current Biology* 31: 4748-4761.e8.
25. Knutson B, Adams CM, Fong GW, Hommer D (2001): Anticipation of Increasing Monetary Reward Selectively Recruits Nucleus Accumbens. *J Neurosci* 21: RC159–RC159.
26. Seifert CL, Magon S, Sprenger T, Lang UE, Huber CG, Denier N, *et al.* (2015): Reduced volume of the nucleus accumbens in heroin addiction. *Eur Arch Psychiatry Clin Neurosci* 265: 637–645.
27. McNamara R, Dalley J, Robbins T, Everitt B, Belin D (2010): Trait-like impulsivity does not predict escalation of heroin self-administration in the rat. *Psychopharmacology* 212: 453–64.
28. Dalley JW, Fryer TD, Brichard L, Robinson ESJ, Theobald DEH, Lääne K, *et al.* (2007): Nucleus accumbens D2/3 receptors predict trait impulsivity and cocaine reinforcement. *Science* 315: 1267–1270.
29. Verbruggen F, Logan GD (2008): Response inhibition in the stop-signal paradigm. *Trends Cogn Sci (Regul Ed)* 12: 418–424.
30. Aron AR, Fletcher PC, Bullmore ET, Sahakian BJ, Robbins TW (2003): Stop-signal inhibition disrupted by damage to right inferior frontal gyrus in humans. *Nat Neurosci* 6: 115–116.

31. Aron AR, Robbins TW, Poldrack RA (2014): Inhibition and the right inferior frontal cortex: one decade on. *Trends Cogn Sci (Regul Ed)* 18: 177–185.
32. Ersche KD, Roiser JP, Robbins TW, Sahakian BJ (2008): Chronic cocaine but not chronic amphetamine use is associated with perseverative responding in humans. *Psychopharmacology (Berl)* 197: 421–431.
33. Kaag AM, Schulte MHJ, Jansen JM, van Wingen G, Homberg J, van den Brink W, *et al.* (2018): The relation between gray matter volume and the use of alcohol, tobacco, cocaine and cannabis in male polysubstance users. *Drug Alcohol Depend* 187: 186–194.
34. Hall MG, Alhassoon OM, Stern MJ, Wollman SC, Kimmel CL, Perez-Figueroa A, Radua J (2015): Gray matter abnormalities in cocaine versus methamphetamine-dependent patients: a neuroimaging meta-analysis. *Am J Drug Alcohol Abuse* 41: 290–299.
35. Wollman SC, Alhassoon OM, Hall MG, Stern MJ, Connors EJ, Kimmel CL, *et al.* (2017): Gray matter abnormalities in opioid-dependent patients: A neuroimaging meta-analysis. *Am J Drug Alcohol Abuse* 43: 505–517.
36. Gardini S, Venneri A (2012): Reduced grey matter in the posterior insula as a structural vulnerability or diathesis to addiction. *Brain Research Bulletin* 87: 205–211.
37. Muller AM, Pennington DL, Meyerhoff DJ (2022): Substance-Specific and Shared Gray Matter Signatures in Alcohol, Opioid, and Polysubstance Use Disorder. *Frontiers in Psychiatry* 12. Retrieved February 9, 2022, from <https://www.frontiersin.org/article/10.3389/fpsy.2021.795299>
38. Sheehan DV, Lecrubier Y, Sheehan KH, Amorim P, Janavs J, Weiller E, *et al.* (1998): The Mini-International Neuropsychiatric Interview (M.I.N.I.): the development and validation of a structured diagnostic psychiatric interview for DSM-IV and ICD-10. *J Clin Psychiatry* 59 Suppl 20: 22-33;quiz 34-57.
39. First MB, Gibbon M (2004): The Structured Clinical Interview for DSM-IV Axis I Disorders (SCID-I) and the Structured Clinical Interview for DSM-IV Axis II Disorders (SCID-II). *Comprehensive*

- Handbook of Psychological Assessment, Vol. 2: Personality Assessment*. Hoboken, NJ, US: John Wiley & Sons, Inc., pp 134–143.
40. McLellan AT, Kushner H, Metzger D, Peters R, Smith I, Grissom G, *et al.* (1992): The fifth edition of the addiction severity index. *Journal of Substance Abuse Treatment* 9: 199–213.
41. Kampman KM, Volpicelli JR, McGinnis DE, Alterman AI, Weinrieb RM, D’Angelo L, Epperson LE (1998): Reliability and validity of the Cocaine Selective Severity Assessment. *Addict Behav* 23: 449–461.
42. Handelsman L, Cochrane KJ, Aronson MJ, Ness R, Rubinstein KJ, Kanof PD (1987): Two new rating scales for opiate withdrawal. *Am J Drug Alcohol Abuse* 13: 293–308.
43. Gossop M, Griffiths P, Powis B, Strang J (1992): Severity of dependence and route of administration of heroin, cocaine and amphetamines. *Br J Addict* 87: 1527–1536.
44. Tiffany ST, Singleton E, Haertzen CA, Henningfield JE (1993): The development of a cocaine craving questionnaire. *Drug Alcohol Depend* 34: 19–28.
45. Heinz AJ, Epstein DH, Schroeder JR, Singleton EG, Heishman SJ, Preston KL (2006): Heroin and cocaine craving and use during treatment: measurement validation and potential relationships. *J Subst Abuse Treat* 31: 355–364.
46. Good CD, Johnsrude IS, Ashburner J, Henson RNA, Friston KJ, Frackowiak RSJ (2001): A Voxel-Based Morphometric Study of Ageing in 465 Normal Adult Human Brains. *NeuroImage* 14: 21–36.
47. Smith SM, Jenkinson M, Woolrich MW, Beckmann CF, Behrens TEJ, Johansen-Berg H, *et al.* (2004): Advances in functional and structural MR image analysis and implementation as FSL. *Neuroimage* 23 Suppl 1: S208-219.
48. Douaud G, Smith S, Jenkinson M, Behrens T, Johansen-Berg H, Vickers J, *et al.* (2007): Anatomically related grey and white matter abnormalities in adolescent-onset schizophrenia. *Brain* 130: 2375–2386.

49. Li X, Morgan PS, Ashburner J, Smith J, Rorden C (2016): The first step for neuroimaging data analysis: DICOM to NIfTI conversion. *J Neurosci Methods* 264: 47–56.
50. Gorgolewski KJ, Auer T, Calhoun VD, Craddock RC, Das S, Duff EP, *et al.* (2016): The brain imaging data structure, a format for organizing and describing outputs of neuroimaging experiments. *Sci Data* 3: 1–9.
51. Rajagopalan V, Yue GH, Pioro EP (2014): Do preprocessing algorithms and statistical models influence voxel-based morphometry (VBM) results in amyotrophic lateral sclerosis patients? A systematic comparison of popular VBM analytical methods. *Journal of Magnetic Resonance Imaging* 40: 662–667.
52. Smith SM, Nichols TE (2009): Threshold-free cluster enhancement: addressing problems of smoothing, threshold dependence and localisation in cluster inference. *Neuroimage* 44: 83–98.
53. Ceceli AO, Bradberry CW, Goldstein RZ (2021): The neurobiology of drug addiction: cross-species insights into the dysfunction and recovery of the prefrontal cortex. *Neuropsychopharmacology*. <https://doi.org/10.1038/s41386-021-01153-9>
54. Alia-Klein N, Parvaz MA, Woicik PA, Konova AB, Maloney T, Shumay E, *et al.* (2011): Gene x disease interaction on orbitofrontal gray matter in cocaine addiction. *Arch Gen Psychiatry* 68: 283–294.
55. Franklin TR, Acton PD, Maldjian JA, Gray JD, Croft JR, Dackis CA, *et al.* (2002): Decreased gray matter concentration in the insular, orbitofrontal, cingulate, and temporal cortices of cocaine patients. *Biol Psychiatry* 51: 134–142.
56. Smith DG, Jones PS, Williams GB, Bullmore ET, Robbins TW, Ersche KD (2015): Overlapping decline in orbitofrontal gray matter volume related to cocaine use and body mass index. *Addict Biol* 20: 194–196.
57. Moreno-López L, Catena A, Fernández-Serrano MJ, Delgado-Rico E, Stamatakis EA, Pérez-García M, Verdejo-García A (2012): Trait impulsivity and prefrontal gray matter reductions in cocaine dependent individuals. *Drug Alcohol Depend* 125: 208–214.

58. Yip SW, Worhunsky PD, Xu J, Morie KP, Constable RT, Malison RT, *et al.* (2018): Gray-matter relationships to diagnostic and transdiagnostic features of drug and behavioral addictions. *Addict Biol* 23: 394–402.
59. Konova AB, Moeller SJ, Tomasi D, Parvaz MA, Alia-Klein N, Volkow ND, Goldstein RZ (2012): Structural and behavioral correlates of abnormal encoding of money value in the sensorimotor striatum in cocaine addiction. *Eur J Neurosci* 36: 2979–2988.
60. Yuan Y, Zhu Z, Shi J, Zou Z, Yuan F, Liu Y, *et al.* (2009): Gray matter density negatively correlates with duration of heroin use in young lifetime heroin-dependent individuals. *Brain Cogn* 71: 223–228.
61. Qiu Y, Lv X, Jiang G, Su H, Yu T, Tian J, *et al.* (2014): Reduced ventral medial prefrontal cortex (vmPFC) volume and impaired vmPFC-default mode network integration in codeine-containing cough syrups users. *Drug and Alcohol Dependence* 134: 314–321.
62. Jedema HP, Song X, Aizenstein HJ, Bonner AR, Stein EA, Yang Y, Bradberry CW (2021): Long-Term Cocaine Self-administration Produces Structural Brain Changes That Correlate With Altered Cognition. *Biol Psychiatry* 89: 376–385.
63. Parvaz MA, Moeller SJ, d’Oleire Uquillas F, Pflumm A, Maloney T, Alia-Klein N, Goldstein RZ (2017): Prefrontal gray matter volume recovery in treatment-seeking cocaine-addicted individuals: a longitudinal study. *Addict Biol* 22: 1391–1401.
64. Lotfipour S, Ferguson E, Leonard G, Perron M, Pike B, Richer L, *et al.* (2009): Orbitofrontal Cortex and Drug Use During Adolescence: Role of Prenatal Exposure to Maternal Smoking and BDNF Genotype. *Arch Gen Psychiatry* 66: 1244.
65. Narayana PA, Datta S, Tao G, Steinberg JL, Moeller FG (2010): Effect of cocaine on structural changes in brain: MRI volumetry using tensor-based morphometry. *Drug and Alcohol Dependence* 111: 191–199.

66. Jan RK, Lin JC, Miles SW, Kydd RR, Russell BR (2012): Striatal volume increases in active methamphetamine-dependent individuals and correlation with cognitive performance. *Brain Sci* 2: 553–572.
67. Bittencourt AML, Bampi VF, Sommer RC, Schaker V, Juruena MFP, Soder RB, *et al.* (2021): Cortical thickness and subcortical volume abnormalities in male crack-cocaine users. *Psychiatry Res Neuroimaging* 310: 111232.
68. Gerfen CR (1992): The neostriatal mosaic: multiple levels of compartmental organization. *Trends Neurosci* 15: 133–139.
69. Dubé L, Smith AD, Bolam JP (1988): Identification of synaptic terminals of thalamic or cortical origin in contact with distinct medium-size spiny neurons in the rat neostriatum. *J Comp Neurol* 267: 455–471.
70. Hou H, Wang C, Jia S, Hu S, Tian M (2014): Brain dopaminergic system changes in drug addiction: a review of positron emission tomography findings. *Neurosci Bull* 30: 765–776.
71. Volkow ND, Fowler JS, Gatley SJ, Logan J, Wang GJ, Ding YS, Dewey S (1996): PET evaluation of the dopamine system of the human brain. *J Nucl Med* 37: 1242–1256.
72. Porrino LJ, Lyons D (2000): Orbital and Medial Prefrontal Cortex and Psychostimulant Abuse: Studies in Animal Models. *Cerebral Cortex* 10: 326–333.
73. Porrino LJ, Smith HR, Nader MA, Beveridge TJR (2007): The Effects of Cocaine: A Shifting Target over the Course of Addiction. *Prog Neuropsychopharmacol Biol Psychiatry* 31: 1593–1600.
74. Volkow ND, Fowler JS, Wolf AP, Hitzemann R, Dewey S, Bendriem B, *et al.* (1991): Changes in brain glucose metabolism in cocaine dependence and withdrawal. *Am J Psychiatry* 148: 621–626.
75. Volkow ND, Hitzemann R, Wang G-J, Fowler JS, Wolf AP, Dewey SL, Handlesman L (1992): Long-Term frontal brain metabolic changes in cocaine abusers. *Synapse* 11: 184–190.
76. London ED, Cascella NG, Wong DF, Phillips RL, Dannals RF, Links JM, *et al.* (1990): Cocaine-Induced Reduplication of Glucose Utilization in Human Brain: A Study Using Positron Emission

- Tomography and [Fluorine 18]-Fluorodeoxyglucose. *Archives of General Psychiatry* 47: 567–574.
77. Guo Y-J, Pan W-W, Liu S-B, Shen Z-F, Xu Y, Hu L-L (2020): ERK/MAPK signalling pathway and tumorigenesis (Review). *Experimental and Therapeutic Medicine* 19: 1997–2007.
78. Russo SJ, Mazei-Robison MS, Ables JL, Nestler EJ (2009): Neurotrophic factors and structural plasticity in addiction. *Neuropharmacology* 56: 73–82.
79. Ferrer-Alcón M, García-Fuster MJ, La Harpe R, García-Sevilla JA (2004): Long-term regulation of signalling components of adenylyl cyclase and mitogen-activated protein kinase in the pre-frontal cortex of human opiate addicts. *J Neurochem* 90: 220–230.
80. Muller DL, Unterwald EM (2004): In Vivo Regulation of Extracellular Signal-Regulated Protein Kinase (ERK) and Protein Kinase B (Akt) Phosphorylation by Acute and Chronic Morphine. *J Pharmacol Exp Ther* 310: 774–782.
81. Haselhorst R, Dürsteler–MacFarland KM, Scheffler K, Ladewig D, Müller–Spahn F, Stohler R, *et al.* (2002): Frontocortical N-acetylaspartate reduction associated with long-term IV heroin use. *Neurology* 58: 305–307.
82. Chang L, Ernst T, Strickland T, Mehringer CM (1999): Gender effects on persistent cerebral metabolite changes in the frontal lobes of abstinent cocaine users. *Am J Psychiatry* 156: 716–722.
83. Keiflin R, Janak PH (2015): Dopamine prediction errors in reward learning and addiction: from theory to neural circuitry. *Neuron* 88: 247–263.
84. Berridge KC (2007): The debate over dopamine’s role in reward: the case for incentive salience. *Psychopharmacology (Berl)* 191: 391–431.
85. Gallo EF, Meszaros J, Sherman JD, Chohan MO, Teboul E, Choi CS, *et al.* (2018): Accumbens dopamine D2 receptors increase motivation by decreasing inhibitory transmission to the ventral pallidum. *Nat Commun* 9: 1086.

86. Matuskey D, Bhagwagar Z, Planeta B, Pittman B, Gallezot J-D, Chen J, *et al.* (2014): Reductions in brain 5-HT_{1B} receptor availability in primarily cocaine-dependent humans. *Biol Psychiatry* 76: 816–822.
87. Tabibnia G, Monterosso JR, Baicy K, Aron AR, Poldrack RA, Chakrapani S, *et al.* (2011): Different Forms of Self-Control Share a Neurocognitive Substrate. *J Neurosci* 31: 4805–4810.
88. McDonald V, Hauner KK, Chau A, Krueger F, Grafman J (2016): Networks underlying trait impulsivity: Evidence from voxel-based lesion-symptom mapping. *Hum Brain Mapp* 38: 656–665.
89. Haber SN (2016): Corticostriatal circuitry. *Dialogues Clin Neurosci* 18: 7–21.
90. Ceceli AO, Tricomi E (2018): Habits and goals: a motivational perspective on action control. *Current Opinion in Behavioral Sciences* 20: 110–116.
91. de Wit S, Watson P, Harsay HA, Cohen MX, van de Vijver I, Ridderinkhof KR (2012): Corticostriatal connectivity underlies individual differences in the balance between habitual and goal-directed action control. *J Neurosci* 32: 12066–12075.
92. Ersche KD, Lim TV, Murley AG, Rua C, Vaghi MM, White TL, *et al.* (2021): Reduced Glutamate Turnover in the Putamen Is Linked With Automatic Habits in Human Cocaine Addiction. *Biological Psychiatry* 89: 970–979.
93. Bach P, Frischknecht U, Reinhard I, Bekier N, Demirakca T, Ende G, *et al.* (2021): Impaired working memory performance in opioid-dependent patients is related to reduced insula gray matter volume: a voxel-based morphometric study. *Eur Arch Psychiatry Clin Neurosci* 271: 813–822.
94. Parvaz MA, Rabin RA, Adams F, Goldstein RZ (2022): Structural and functional brain recovery in individuals with substance use disorders during abstinence: A review of longitudinal neuroimaging studies. *Drug Alcohol Depend* 232: 109319.
95. Fritz H-C, Wittfeld K, Schmidt CO, Domin M, Grabe HJ, Hegenscheid K, *et al.* (2014): Current smoking and reduced gray matter volume—a voxel-based morphometry study. *Neuropsychopharmacology* 39: 2594–2600.

96. Rabin RA, Mackey S, Parvaz MA, Cousijn J, Li C, Pearlson G, *et al.* (2022): Common and gender-specific associations with cocaine use on gray matter volume: Data from the ENIGMA addiction working group. *Human Brain Mapping* 43: 543–554.
97. Rando K, Tuit K, Hannestad J, Guarnaccia J, Sinha R (2013): Sex differences in decreased limbic and cortical grey matter volume in cocaine dependence: a voxel-based morphometric study. *Addict Biol* 18: 147–160.

Legends for tables and figures

Table 1. Sample profile.

Cocaine and heroin craving and withdrawal measures were acquired using different questionnaires, thus cocaine craving and withdrawal responses in cocaine use disorder (CUD) and heroin craving and withdrawal responses in heroin use disorder (HUD) were range-corrected for between group comparisons. FWE-corrected significant differences (.05/8 variables comparing healthy control (HC), CUD, and HUD= $p<.006$; .05/6 comparing CUD and HUD=.008 denoted with asterisks. Missing data included three participants' depression scores (original sample: 1 HC; replication sample: 1 HC and 1 HUD); one participant's drug craving score (original sample: 1 HUD), and one participant's severity of dependence score (replication sample: 1 CUD). Missing drug-related values were substituted with their respective measures' mean scores across the entire substance use disorder (SUD) samples (mean drug craving=44.4; mean severity of dependence=8) to maintain group size and study-specific templates across analyses. ^{HU}: value differs from that of HUD participants. ^{HC}: value differs from that of HC participants.

Table 2. Substance-general and specific gray matter volume differences.

Clusters are corrected to $p<.05$ following permutation-based non-parametric hypothesis testing and threshold-free cluster enhancement. [†]: Clusters reflecting trends in replication analyses as identified by one-tailed t-tests. Voxel locations are presented in MNI space, sorted by y-axis coordinates (anterior to posterior).

Figure 1. Ventromedial prefrontal cortex gray matter volume reductions in heroin use disorder.

Heroin-addicted individuals in the original sample (n=60) exhibited significantly reduced ventromedial prefrontal cortex gray matter volume (left panel; whole-brain corrected to $p<.05$) compared to healthy control subjects. This effect showed a similar trend ($p=.059$) in the extended sample (n=96; right panel) within an *a priori* combined bilateral mask of the ventromedial prefrontal cortex, inferior frontal gyrus, and striatum denoted in white (small volume corrected to $p<.05$). Contrasts in both analyses were corrected for age and total brain volume.

Figure 2. Nucleus accumbens gray matter volume reductions in heroin use disorder.

Heroin-addicted individuals in the original sample (n=60) exhibited significantly reduced left nucleus accumbens gray matter volume (left panel; whole-brain corrected to $p<.05$) compared to healthy control participants. This effect was replicated in the extended sample (n=96; right panel) within an *a priori* combined bilateral mask of the ventromedial prefrontal cortex, inferior frontal gyrus, and striatum denoted in white (small volume corrected to $p<.05$). Contrasts in both analyses were corrected for age and total brain volume.

Figure 3. Inferior frontal gyrus gray matter volume reductions in cocaine compared to heroin use disorder.

Cocaine-addicted individuals in the original sample (n=60) exhibited significantly reduced right inferior frontal gray matter volume (left panel; whole-brain corrected to $p<.05$) compared to

heroin-addicted individuals. This effects was replicated in the extended sample (n=96; right panel) within an *a priori* combined bilateral mask of the ventromedial prefrontal cortex, inferior frontal gyrus, and striatum, denoted in white (small volume corrected to $p<.05$). Contrasts in both analyses were corrected for age and total brain volume.

Figure 4. Increased posterior putamen volume as a function of drug craving in cocaine compared to heroin use disorder.

Posterior putamen volume was more positively correlated with cocaine craving in cocaine-addicted individuals compared to heroin craving in heroin-addicted individuals in our original sample (n=60; left panel; whole-brain corrected to $p<.012$ for multiple comparisons). This effect was supported in the extended sample (n=96; right panel) within an *a priori* combined bilateral mask of the ventromedial prefrontal cortex, inferior frontal gyrus, and striatum denoted in white (small volume corrected, $p=.039$). Contrasts in both analyses were corrected for age and total brain volume.

Table 1. Sample profile.

	Original sample (N=60)				Replication sample (N=96)			
	HC (n=20)	CUD (n=20)	HUD (n=20)	<i>p</i>	HC (n=32)	CUD (n=32)	HUD (n=32)	<i>p</i>
Age	41.4 (8.8)	42.8 (7.3)	40.9 (10.0)	0.766	41.1 (8.8)	43.4 (7.4)	40.2 (8.8)	0.304
Sex (female/male)	5/15	5/15	6/14	0.918	6/26	6/26	7/25	0.936
Race (Black/White/Other)	14/3/3 ^{HU}	13/2/5 ^{HU}	3/12/5	<0.001*	22/6/4 ^{HU}	21/4/7 ^{HU}	3/22/7	<0.001*
Education	12.7 (1.9)	12.3 (1.7)	12.4 (2.4)	0.862	12.9 (1.7)	12.3 (1.5)	12.2 (2.3)	0.269
Nonverbal IQ	11.3 (2.2)	11.1 (2.6)	11.3 (2.1)	0.894	10.8 (2.3)	10.8 (2.6)	10.7 (2.7)	0.993
Verbal IQ	97.5 (11.0)	94.6 (13.2)	92.0 (12.2)	0.372	99.4 (9.6)	94.4 (12.6)	94.0 (12.2)	0.121
Depression	6.63 (8.1)	6.80 (6.3)	10.9 (11.1)	0.230	5.53 (7.0) ^{HU}	7.53 (7.4)	13.7 (12.3)	0.002*
Cigarette smoker (Current/Past/Never)	9/3/8	16/4/0 ^{HC}	20/0/0 ^{HC}	<0.001*	9/7/16	25/6/1 ^{HC}	32/0/0 ^{HC}	<0.001*
Severity of Dependence	--	5.15 (4.9)	10.1 (4.0)	0.001*	--	5.48 (5.1)	10.4 (3.6)	<0.001*
Days since last use	--	168 (565)	235 (303)	0.646	--	241 (545)	199 (258)	0.697
Past month use	--	6.7 (9.1)	0.05 (0.2)	0.004*	--	5.62 (8.2)	0.22 (0.7)	<0.001*
Lifetime use in years	--	18.2 (7.6)	12.0 (8.3)	0.017	--	16.5 (8.4)	11.0 (7.7)	0.009
Drug craving	--	46.4 (27.4)	42.3 (18.6)	0.585	--	43.8 (27.7)	42.8 (15.9)	0.873
Withdrawal	--	4.87 (3.7)	3.35 (3.8)	0.206	--	4.39 (3.2)	3.16 (3.4)	0.141

Note: Cocaine and heroin craving and withdrawal measures were acquired using different questionnaires, thus cocaine craving and withdrawal responses in cocaine use disorder (CUD) and heroin craving and withdrawal responses in heroin use disorder (HUD) were range-corrected for between group comparisons. FWE-corrected significant differences (.05/8 variables comparing healthy control (HC), CUD, and HUD= $p < .006$;

.05/6 comparing CUD and HUD= $p < .008$) denoted with asterisks. Missing data included three participants' depression scores [original sample: 1 HC; replication sample: 1 HC and 1 HUD]; one participant's drug craving score (original sample: 1 HUD), and one participant's severity of dependence score (replication sample: 1 CUD). Missing drug-related values were substituted with their respective measures' mean scores across the entire substance use disorder (SUD) samples (mean drug craving=44.4; mean severity of dependence=8) to maintain group size and study-specific templates across analyses. ^{HU}: value differs from that of HUD participants. ^{HC}: value differs from that of HC participants.

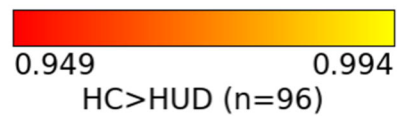
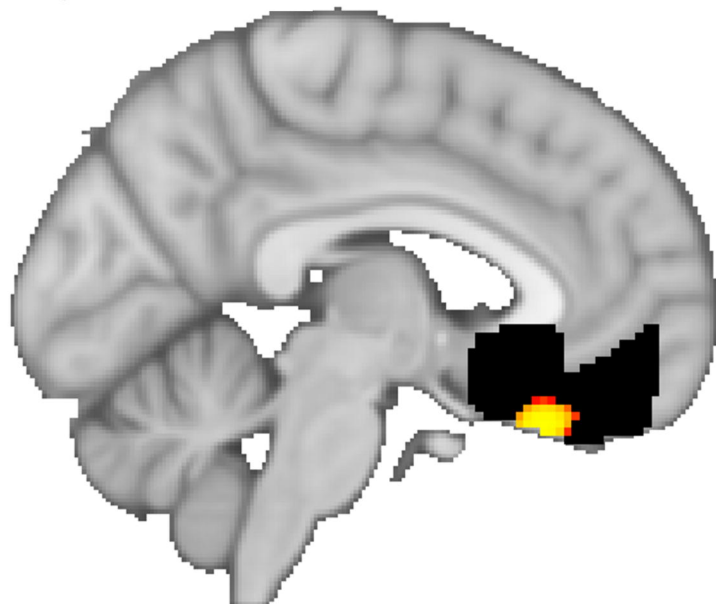
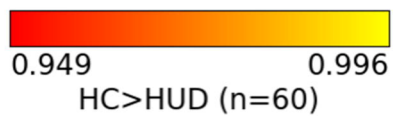
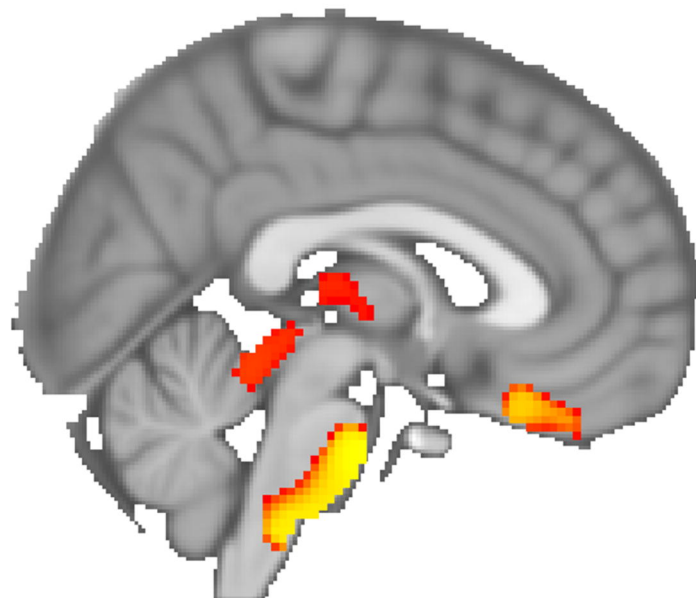
Table 2. Substance-general and specific gray matter volume differences.

Contrast	Original sample (N=60)						Replication sample (N=96)					
	Region	Voxels	<i>p</i>	MNI x y z			Region	Voxels	<i>p</i>	MNI x y z		
HC>SUD	Ventromedial PFC	102	.039	-4	36	-26	Ventromedial PFC †	38	.059	-4	30	-28
SUD>HC	No significant clusters						No significant clusters					
HC>CUD	No significant clusters						No significant clusters					
CUD>HC	No significant clusters						No significant clusters					
HC>HUD	Ventromedial PFC	325	.013	2	26	-24	Ventromedial PFC	167	.006	-4	28	-26
	Nucleus accumbens	69	.045	-10	12	-10	Putamen/Nucleus accumbens	86	.037	-16	8	-12
	Orbitofrontal cortex	3	.049	12	6	-22	Orbitofrontal cortex †	8	.091	14	8	-18
	Orbitofrontal cortex	50	.042	-14	6	-24	Caudate †	22	.082	14	4	12
	Pons	1,801	.004	12	-18	-38	--	--	--	--	--	--
HUD>HC	No significant clusters						Inferior frontal gyrus	166	.010	-56	16	16
HUD>CUD	Inferior frontal gyrus	129	.029	56	18	6	Inferior frontal gyrus	347	.005	56	18	8
CUD>HUD	Pons	257	.033	8	-14	-34	--	--	--	--	--	--
	--	--	--	--	--	--	Ventromedial PFC †	11	.074	-4	22	-26

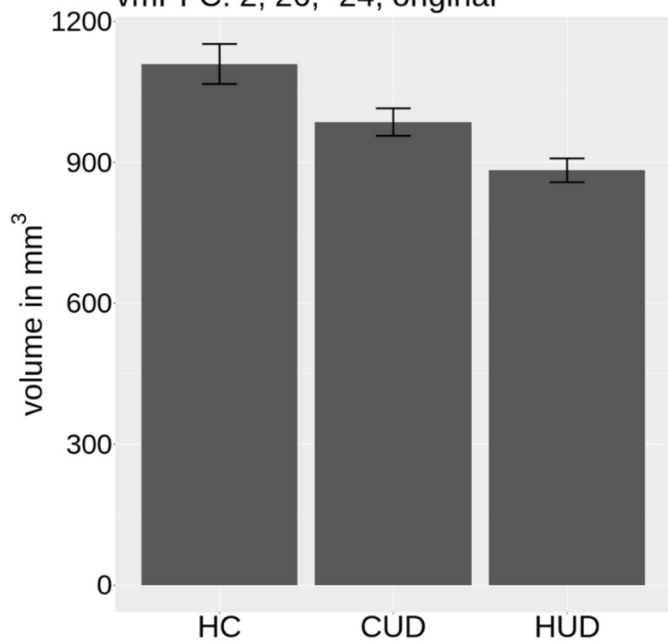
Clusters are corrected to $p < .05$ following permutation-based non-parametric hypothesis testing and threshold-free cluster enhancement. †: Clusters reflecting trends in replication analyses as identified by one-tailed t-tests. Voxel locations are presented in MNI space, sorted by y-axis coordinates (anterior to posterior).

original

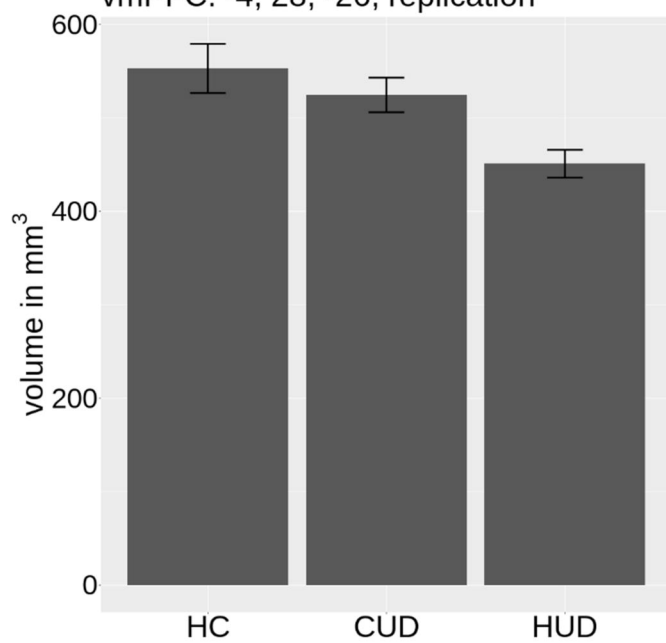
replication



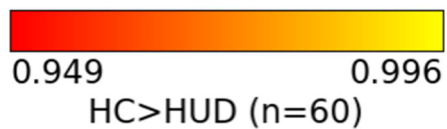
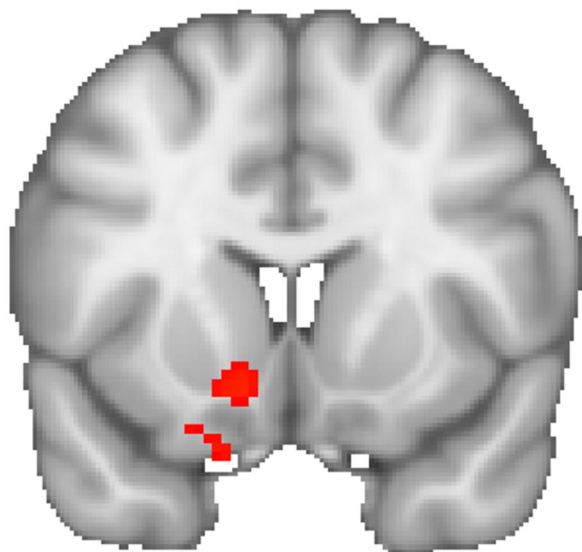
vmPFC: 2, 26, -24, original



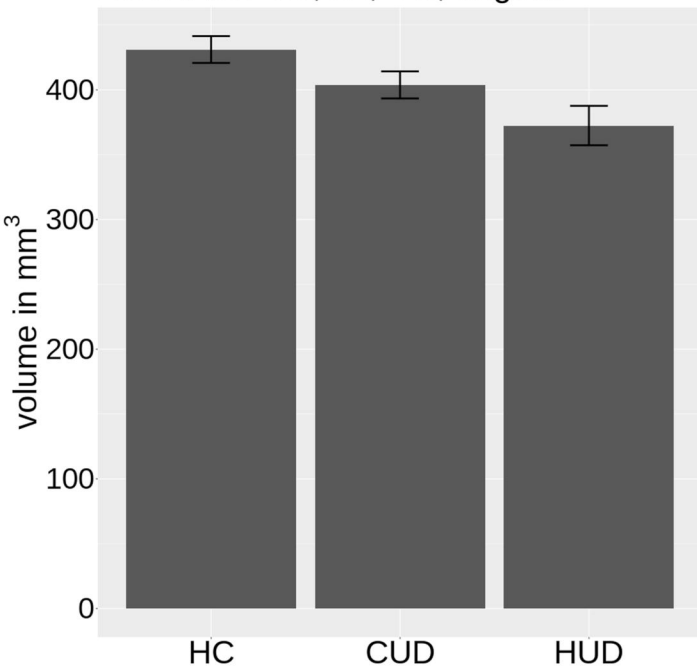
vmPFC: -4, 28, -26, replication



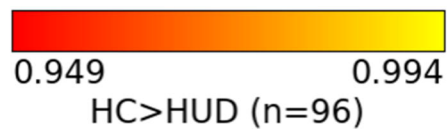
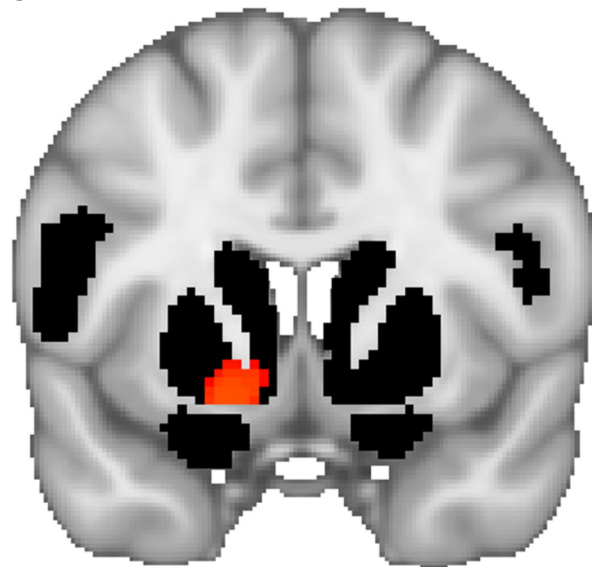
original



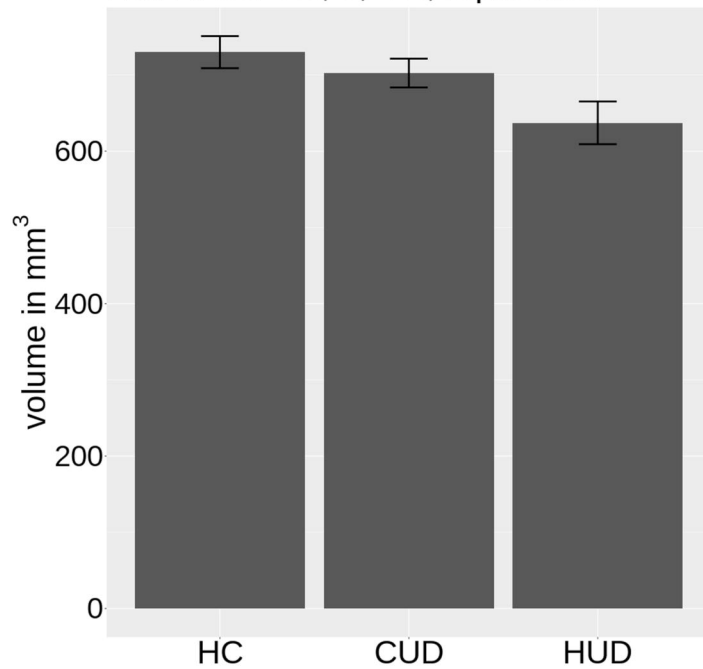
Left NAcc: -10, 12, -10, original



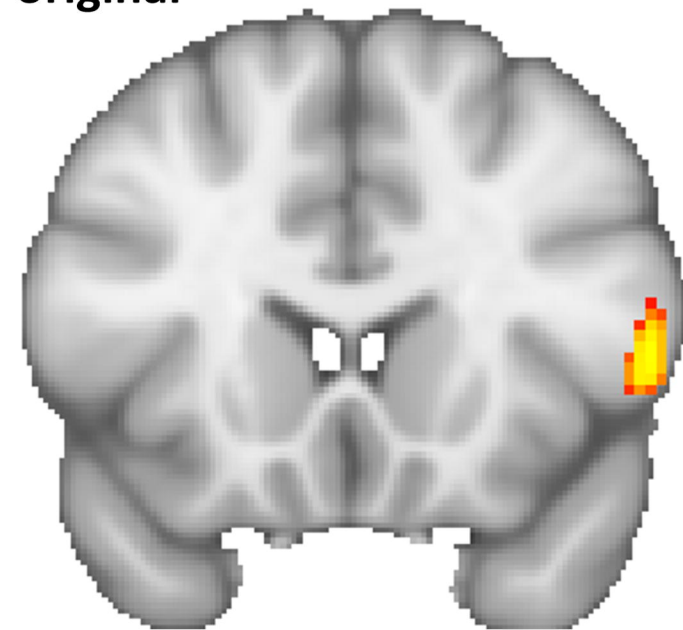
replication



Left NAcc: -16, 8, -12, replication



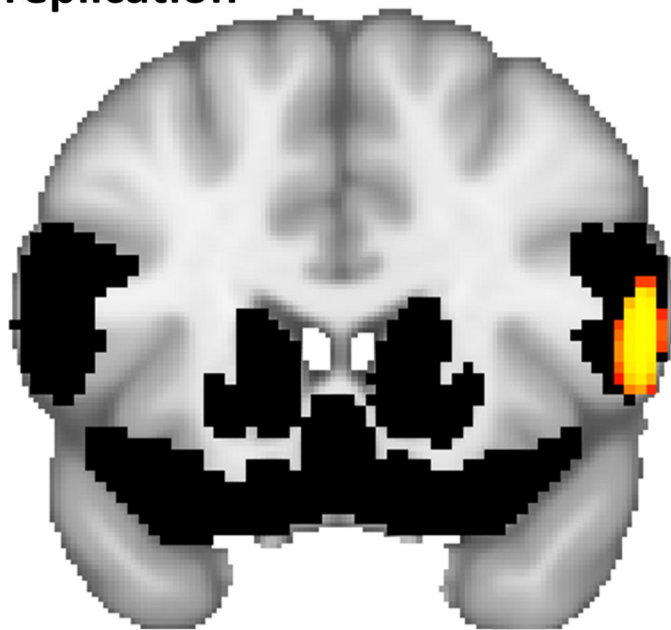
original



0.949 0.971

HUD>CUD (n=60)

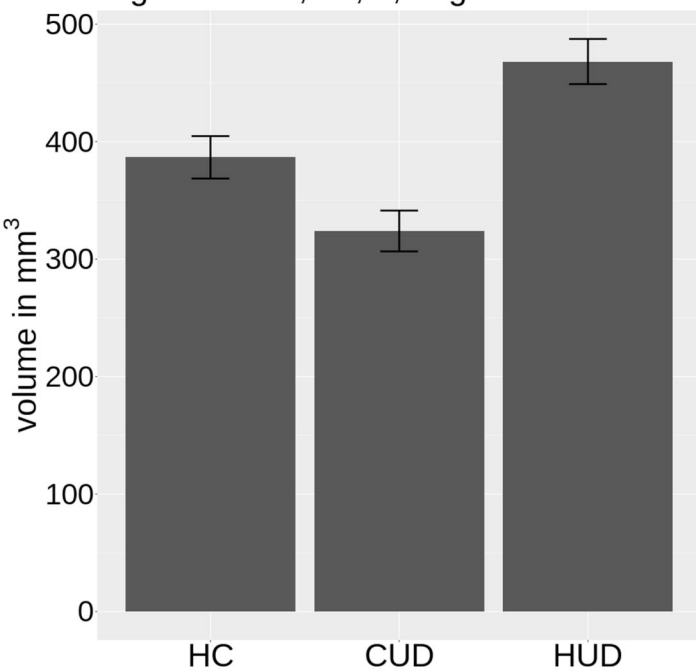
replication



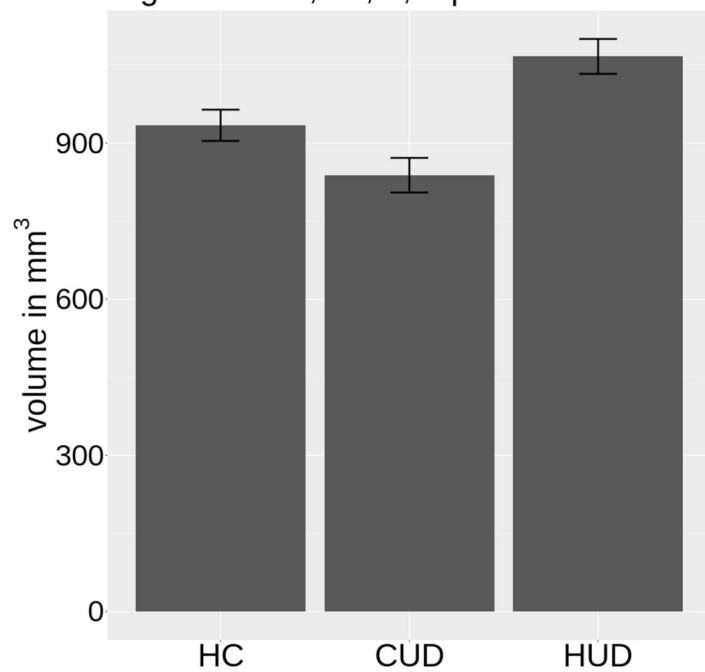
0.949 0.995

HUD>CUD (n=96)

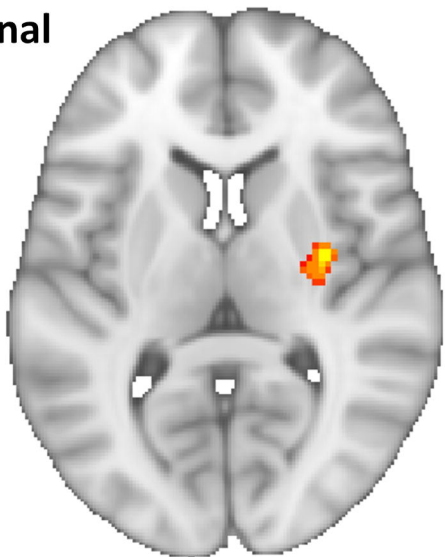
Right IFG: 56, 18, 6, original



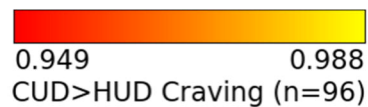
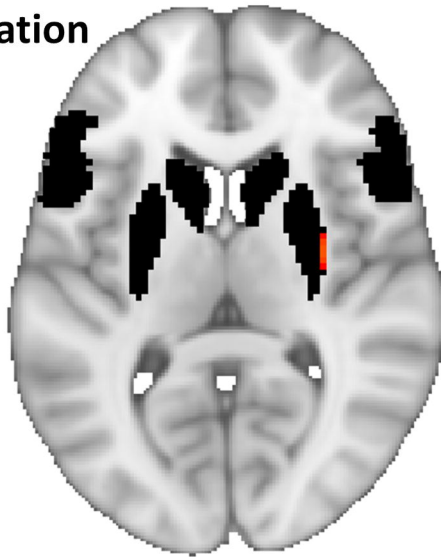
Right IFG: 56, 18, 4, replication



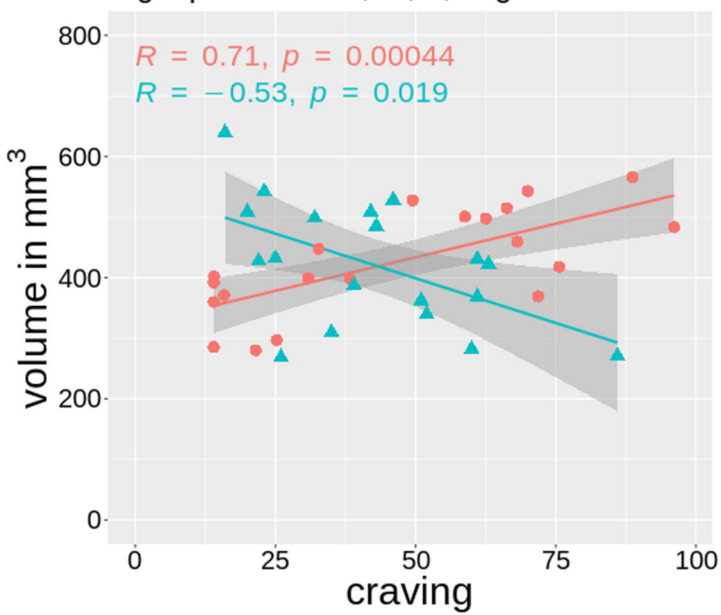
original



replication



Right putamen: 34, -8, 8, original



Right putamen: 32, -8, 8, replication

