

1
2
3
4
5
6
7
8
9
10
11
12
13
14
15
16
17
18
19
20
21
22
23
24
25

Spatio-temporal epidemiology of SARS-CoV-2 virus lineages in Teesside, UK, in 2020: effects of socio-economic deprivation, weather, and lockdown on lineage dynamics

Moss, E.D.¹, Rushton, S.P.², Baker, P.³, Bashton, M.⁴, Crown, M.R.⁴, dos Santos, R.N.⁵, Nelson, A.⁵, O'Brien, S.J.², Richards, Z.⁵, Sanderson, R.A.^{2*}, Yew, W.C.⁵, Young, G.R.⁴, McCann, C.M.⁴ and Smith, D.L.^{4**}

¹ Population Health Sciences Institute, Newcastle University – Newcastle upon Tyne, UK

² School of Natural and Environmental Sciences, Newcastle University – Newcastle upon Tyne, UK

³ South Tees Hospitals NHS Foundation Trust – Newcastle upon Tyne, UK

⁴ Hub for Biotechnology in the Built Environment, Northumbria University – Newcastle upon Tyne, UK

⁵ Department of Applied Sciences, Northumbria University – Newcastle upon Tyne, UK

*Corresponding author

Correspondence: roy.sanderson@newcastle.ac.uk

**On behalf of the COVID-19 Genomics UK (COG-UK) consortium. See Supplementary Material for full list of COVID-19 Genomics UK Consortium names and affiliations.

ABSTRACT

Background: SARS-CoV-2 emerged in the UK in January 2020. The UK government introduced control measures including national ‘lockdowns’ and local ‘tiers’ in England to control virus transmission. As the outbreak continued, new variants were detected through two national monitoring programmes that conducted genomic sequencing. This study aimed to determine the effects of weather, demographic features, and national and local COVID-19 policies on disease spread at a local scale.

Methods: We analysed the spatio-temporal dynamics of COVID-19 in Teesside, UK, from January to December 2020, capturing the first two waves of the epidemic. We used a combination of disease mapping and mixed-effect modelling to analyse the dynamics of total positive tests, and those of the eight most common virus lineages, in response to potential infection risk factors: socio-economic deprivation, population size, temperature, rainfall, government interventions, and a government restaurant subsidy (“Eat Out to Help Out”).

Results: Total positive tests of SARS-CoV-2 were decreased by temperature and the first national lockdown (the only one to include school closures), while rainfall, deprivation, population, the second national lockdown, and the local tiered interventions all increased

43 cases. The restaurant subsidy had no apparent effect. The relationships between positive
44 tests and covariates varied greatly between lineages, likely due to the strong heterogeneity
45 in their spatio-temporal distributions. Cases during the second wave appeared to be higher
46 in areas that recorded fewer first-wave cases, however, an additional model showed the
47 number of first-wave cases was not predictive of second-wave cases.

48 **Discussion:** National and local government interventions appeared to be ineffective at a
49 local level if they did not include school closures. Examination of viral lineages at a local
50 scale was less useful in terms of investigating transmissibility but may be more useful for
51 tracking spread within communities. Our study highlights the importance of analysing the
52 spatio-temporal dynamics of COVID-19 at the optimum spatial and temporal scales for the
53 research objectives and the relevant epidemiological processes.

54
55 **Keywords:** COVID-19, variant, spatio-temporal models, non-pharmaceutical interventions, local
56 transmission

57

58

59

Introduction

61 COVID-19 is a highly transmissible acute respiratory disease that spread across the globe rapidly in
62 2019 and 2020 and caused a devastating pandemic. It is widely understood that many factors can affect
63 COVID-19 transmission via social and/or epidemiological mechanisms, including weather, lineage of
64 SARS-CoV-2 (the virus causing COVID-19), mask wearing, and government control measures (non-
65 pharmaceutical interventions) that limit social contact (Bo et al., 2021; Volz et al., 2021; Ganslmeier et al.,
66 2021; Ge et al., 2022). The risk of contracting COVID-19 can also be affected by demographic factors such
67 as socio-economic deprivation and race (Whittle & Diaz-Artilles, 2020; Brainard et al., 2022; Holt et al.,
68 2022). However, these relationships are complex and there is considerable variation in the observed
69 impact of these factors between different countries, at national vs. regional scales, and during different
70 waves of the pandemic (Gao et al., 2021; Bo et al., 2021; Hunter et al., 2021; Ganslmeier et al., 2021;
71 Brainard et al., 2022; Ge et al., 2022). It is imperative that these relationships are better understood to
72 improve future pandemic/epidemic responses, especially in countries like the United Kingdom, which
73 experienced high case numbers and excess deaths relative to its neighbours (Islam et al., 2021; Hunter et
74 al., 2021). While there is evidence that nationwide UK interventions during the first wave reduced COVID-
75 19 cases and mortality (Hunter et al., 2021), there has been very little evaluation at local or regional
76 scales or during subsequent epidemic waves. In addition, there is an insufficient understanding of how
77 weather, socio-economic deprivation, and viral lineage affected the spatio-temporal dynamics of the
78 COVID-19 epidemic in the UK.

79 The first recorded cases of COVID-19 in the UK were in January 2020. After cases rose rapidly in
80 March, a complete social and economic lockdown was introduced in England on 23/03/2020 (UK
81 Government, 2020a), which led to a swift reduction in cases (Covid-19 control measures differed in
82 Scotland, Wales, and Northern Ireland and were decided by their own devolved parliaments). A second
83 major outbreak in autumn 2020 led to the introduction of further interventions in England: a
84 heterogenous “tier” system applied at local scales (UK Government, 2020c), and a short national
85 lockdown in November 2020 (UK Government, 2020d). When these failed to reduce hospital admissions
86 and deaths, a further national lockdown was introduced in January 2021 (UK Government, 2021). The
87 positive impact of the national interventions during the first wave of the pandemic is also seen in other
88 countries, with school closures and measures that reduce social gatherings proving the most effective
89 (Brauner et al., 2021; Hunter et al., 2021; Mendez-Brito et al., 2021; Ge et al., 2022). However, the
90 picture is less clear for later waves of the pandemic, as the effectiveness of control measures changed
91 and as countries diverged in terms of both the implementation of interventions and patterns of cases
92 (Pozo-Martin et al., 2021; Mendez-Brito et al., 2021; Ge et al., 2022). The epidemic response in the
93 England is complicated further by a government subsidy that encouraged people to eat in restaurants
94 during August 2020, which appears to have increased COVID-19 transmission and infections (Fetzer,
95 2022).

96 The relationship between socio-economic deprivation and COVID-19 mortality has been well-
97 documented, with a majority of studies demonstrating increased mortality in areas of high deprivation,
98 including in the UK (Brainard et al., 2022; McGowan & Bambra, 2022). This is due to a combination of
99 underlying factors that can be summarised as unequal exposure due to employment and living conditions
100 and unequal vulnerability due to pre-existing health conditions (McGowan & Bambra, 2022). However,
101 the relationship between deprivation and COVID-19 infection is more complicated and less clear; the UK
102 context is typical of the broader picture with some studies finding an increase in infections linked to
103 higher deprivation while others find the opposite or no relationship (Niedzwiedz et al., 2020; Brainard et
104 al., 2022; McGowan & Bambra, 2022).

105 The relationship between COVID-19 infection and weather is also complex. Higher temperatures have
106 been associated with a reduction in cases in many countries including the UK (Ganslmeier et al., 2021;
107 Alaniz et al., 2023; Nottmeyer et al., 2023), though a minority of studies have reported a positive effect
108 (Tan & Schultz, 2022). Increased rainfall effects are more uncertain due to less research focus, with a
109 meta-analysis finding evidence of increased infections (Tan & Schultz, 2022), while other research
110 detected no relationship (Ganslmeier et al., 2021). The impacts of weather on COVID-19 infections are
111 complicated by the interaction between several mechanisms. Weather can affect transmission directly,
112 e.g. increased temperatures reduce the viability of the virus particles (Ganslmeier et al., 2021), and also

113 indirectly via social behaviours, e.g. colder temperatures or higher rainfall could discourage outdoor
114 socialising and reduce transmission, or encourage indoor socialising and increase transmission. Several
115 studies have also shown that the presence and strength of these indirect effects is mediated by other
116 factors, such as how closely the timing of weather patterns and events coincides with mealtimes and the
117 presence/absence of government control measures (Ganslmeier et al., 2021; Fetzer, 2022).

118 Previous research has demonstrated that transmissibility of COVID-19 varies greatly between
119 different lineages of the SARS-CoV-2 virus, which can explain how some lineages become dominant at
120 certain points in time (Volz et al., 2021; Panovska-Griffiths et al., 2022). For example, lineage B.1.1.7 (the
121 Alpha variant) has been estimated to be between 20-100% more transmissible than the wild type
122 (estimates vary by study), which likely explains how this lineage became dominant across the UK in
123 autumn/winter 2020 (Volz et al., 2021; Hinch et al., 2022; Panovska-Griffiths et al., 2022). However, there
124 are also examples of lineages that became dominant despite no, or only a small, increase in
125 transmissibility, like that of lineage B.1.177 during autumn 2020 in the UK (Hodcroft et al., 2021;
126 Vöhringer et al., 2021; Hinch et al., 2022). Establishment of a lineage is subject to epidemiological factors
127 as well as transmissibility, such as the number of introductions (Grubaugh et al., 2020), which could be
128 facilitated by a relaxation of travel restrictions (Hodcroft et al., 2021). It seems likely that other non-
129 pharmaceutical interventions and other environmental factors could also affect the number of cases of
130 different COVID-19 lineages, regardless of whether they demonstrate increased transmissibility. While
131 some research has investigated the impact of interventions and vaccinations on the spread of specific
132 lineages (Hinch et al., 2022; Panovska-Griffiths et al., 2022), there has been very little comparison across
133 many lineages, and no investigations that also incorporate other factors like weather and socio-economic
134 deprivation.

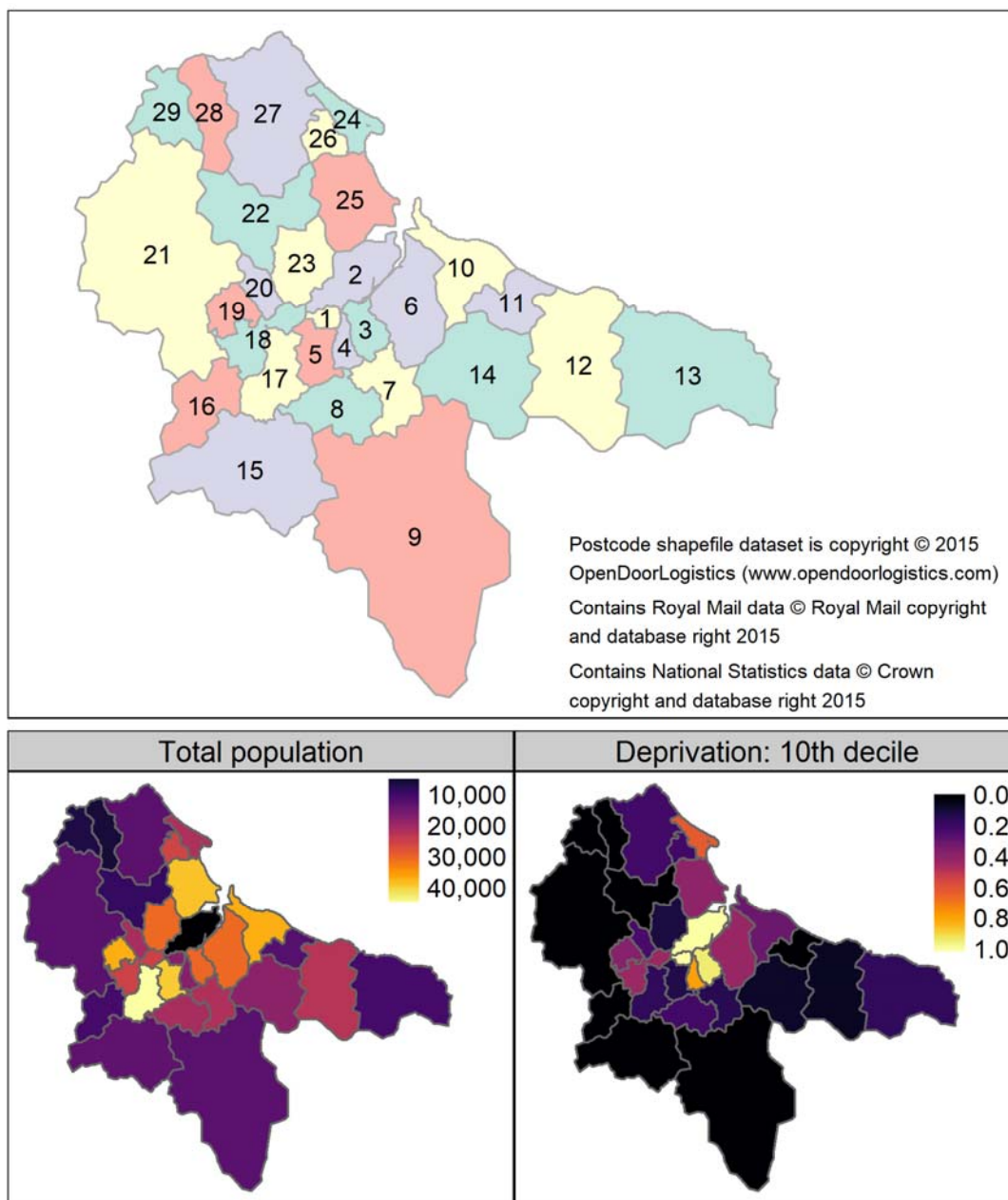
135 Our aim was to investigate the spatio-temporal dynamics of COVID-19 disease spread at a local scale
136 and determine how this was affected by a range of variables that might influence transmission and
137 disease risk. We examined longitudinal records of COVID-19 cases in the Teesside area of North East
138 England during 2020. Teesside is an area that contains a mixture of urban, suburban, and rural
139 environments, some of which have high levels of socio-economic deprivation, and while it has good local
140 and national transport links it is relatively far (about 350 km) from London. Teesside provides a good case
141 study for investigating a local-scale context that is distant from the political and economic capital of
142 England; this allows us to evaluate the effectiveness of national policies at a local scale. We used
143 Generalised Linear Mixed Effect Models (GLMMs) to investigate how government interventions, weather,
144 socio-economic deprivation, and the government restaurant subsidy impacted: 1) the total number of
145 COVID-19 cases during 2020 in Teesside; and 2) the number of cases of each of the most common
146 lineages in Teesside during 2020. We also used Bayesian spatial models to determine patterns of disease
147 risk across Teesside during 2020.

148 **Methods**

149 **Data collation**

150 The UK government introduced two 'pillars' of COVID-19 testing. Pillar 1 testing was of hospital
151 patients and health and care workers, while pillar 2 was community testing and was introduced later
152 (Dept. Health & Social Care, 2021). Polymerase chain reaction (PCR) analyses were conducted on tests
153 from both pillars, which permitted genomic sequencing to characterise genetic lineages of SARS-CoV-2 in
154 individual cases (COVID-19 Genomics UK (COG-UK) Consortium, 2020). We collated records of positive
155 tests in the Teesside area during 2020, from the Covid-19 Genomics UK (COG-UK) dataset, which
156 provided the dates and postcodes of all positive tests for SARS-CoV-2 from January 2020 to January 2021.
157 We summarised the number of cases for all lineages, and each lineage separately, by week of year and
158 individual postcode districts (TS1 to TS29, see Figure 1). In addition, we also summarised the total
159 number of cases of each lineage recorded by each pillar during the period when sampling was run
160 contemporaneously for both pillars (from week of year 19 to 53) and ran a correlation on the two pillars.
161 This was to check for a sampling bias for different lineages between the two pillars, as only pillar 1 tested
162 the most severely ill patients, and illness severity can vary between lineages (Sievers et al., 2022;
163 Goethem et al., 2022).

164 We used recent demographic data on socio-economic deprivation (Index of Multiple Deprivation IMD
165 (UK Government, 2019)) to calculate the proportion of the population in each postcode district that was
166 in the most deprived category (10th decile), relative to England as a whole (Figure 1 and Table S1 in
167 Supplementary Material). Mean weekly temperature and rainfall values were summarised from raw daily
168 data (calculated from daily means and daily totals respectively) obtained from weather stations in
169 Teesside International Airport (temperature) and Hartlepool (rainfall). We collated the start and end
170 dates of both the national government interventions (lockdowns) and the local “tier” system of
171 interventions (where higher tiers had greater restrictions) as applied to Teesside. The tier system was
172 applied at the local government level, but during 2020 the same tier restrictions were applied to all local
173 authority areas in Teesside. We also collated the start/end dates of the government restaurant subsidy
174 (“Eat Out to Help Out Scheme”) that was introduced to support hospitality businesses, which provided
175 customers with a 50% discount at participating restaurants. The interventions and subsidy dates were
176 converted to week of year format, where values counted the number of weeks since the measure was
177 introduced (weeks before introduction and after stoppage were given a value of zero). The national
178 lockdowns in England were defined by: stay-at-home orders, closure of all non-essential businesses,
179 prohibition of all social gatherings and events (UK Government, 2020a), and the first lockdown also
180 included school closures (UK Government, 2020b) (Table 1). The local tier 2 and 3 restrictions in England
181 (Local Covid Alert Levels ‘High’ and ‘Very High’) allowed for some non-essential businesses to remain
182 open and permitted outdoor socialising in small groups (UK Government, 2020c) (see Table 1 for details).
183 The end date of the first lockdown is complicated, as different restrictions were lifted at different times
184 (Table 2). We used the earliest end date applicable to Teesside to define the final week of the first
185 lockdown (week 23).



186

187

188

189

190

191

192

Figure 1 - Labeled map of the 29 Teesside postcode districts ("TS" prefixes have been omitted for clarity and colours are purely to aid discrimination between polygons), and maps of the total resident population and proportion of the population within the 10th decile of the Index of Multiple Deprivation (when assessed at the scale of England as a whole) for each Teesside postcode district (Source: Office for National Statistics licensed under the Open Government Licence v.3.0).

193 **Table 1** - Summary of the control measures included in each national and local restriction category
 194 in England. Business closures during tier 3 varied across England, those shown below were applied
 195 to Teesside during 2020.

Included measures	1st Lockdown	2nd Lockdown	Tier 1	Tier 2	Tier 3	Tier 4
Stay at home orders	X	X				X
School closures	X					
Face masks indoors in public spaces		X	X	X	X	X
<i>Business/venue closures:</i>						
Pubs, bars, and restaurants	X	X			X	X
Retail	X	X				X
Personal care	X	X				X
Leisure and entertainment	X	X			X	X
Gyms	X	X				X
Places of worship	X	X				
<i>Prohibition of social gatherings:</i>						
Indoors up to 6 people	X	X		X	X	X
Indoors more than 6 people	X	X	X	X	X	X
Outdoors up to 6 people	X	X				X

196

197 **Table 2** - First and last dates of government control measures applied in Teesside, restaurant
 198 subsidy, and school and university terms in Teesside during 2020.

Event	First date	Last date	First week	Last week
National lockdown:	23/03/2020	08/06 - 03/07/2020	13	23-27
Business closures (hospitality, entertainment etc.)	21/03/2020	03/07/2020	12	27
Other non-essential businesses	23/03/2020	15/06/2020	13	25
Teesside school closures	23/03/2020	07-14/06/2020	13	23-24
Restrictions on social gathering	23/03/2020	01/06/2020	13	23
Restaurant subsidy	04/08/2020	26/08/2020	32	35
Local Tier 2 (Teesside)	14/10/2020	04/11/2020	42	44
National lockdown	05/11/2020	01/12/2020	45	48
Local Tier 3 (Teesside)	02/12/2020	30/12/2020	49	53
Local Tier 4 (Teesside)	31/12/2020	--	53	--
Teesside school autumn term dates	01/09/2020	23/10/2020	36	43
	02/11/2020	18/12/2020	45	51
Teesside University term dates	21/09/2020	18/12/2020	39	51

199

200 Disease mapping

201 To help us define the spatial dynamics of COVID-19 in Teesside, we used Bayesian spatial models
 202 (Riebler et al., 2016) to assess the area-specific relative risk of a positive test in each postcode district
 203 across the study period. We separately modelled all disease cases (regardless of lineage), and cases of
 204 each of the most common lineages in Teesside that had sufficient data. We used the most recent version
 205 of the Besag, York, Mollie "BYM" model (Besag et al., 1991), the "BYM2" (Riebler et al., 2016), which is a
 206 conditional autoregressive model that adjusts for spatial dependency between adjacent spatial units, as
 207 numbers of cases in one district are likely to be partially dependent on those arising in neighbouring
 208 districts, with which there may be contact leading to enhanced transmission. We included the expected

209 number of cases for each postcode district (calculated using district population sizes, total population
210 across all districts, and total cases in all districts) in our models to allow the output to be converted to the
211 risk of a positive test in each district relative to the overall risk across all districts (Blangiardo & Cameletti,
212 2015). These models were fitted using Integrated Nested Laplace Approximation via the “INLA” package
213 (Rue et al., 2009) in R version 4.2.2 (R Core Team, 2022). The response variables in these models are
214 aggregated counts or rates, therefore we compared Poisson and negative binomial error distributions
215 and evaluated their fits to the data via DIC (Blangiardo & Cameletti, 2015); this indicated Poisson to be
216 the better fit. The shapefiles for the Teesside postcode districts that were used in this analysis (and
217 figures) were downloaded from: <https://www.opendoorlogistics.com/data/>.

218 **Mixed-effect modelling**

219 We used generalised linear mixed-effect models (GLMMs) to investigate the role of socio-economic
220 deprivation (proportion of the population in the 10th Decile of IMD), weather (mean weekly temperature
221 and rainfall), UK government interventions (national lockdowns and local tiers), and government
222 restaurant subsidy on the dynamics of positive PCR tests recorded each week of 2020 in each postcode
223 district. We separately modelled all disease cases (regardless of lineage), cases of each of the most
224 common lineages in Teesside that had sufficient data, and the total cases of the most common second
225 wave lineages. We included postcode district as a random variable (random intercept) to account for
226 repeated measures of postcodes across time and for unmeasured geographical variation that might have
227 influenced the recording of cases (except for two lineages where the model was singular (random effect
228 variance was 0), which were refit with only fixed effects). We controlled for population size and time (of
229 positive test) by including district total population and week of year as fixed effects. We fitted an
230 additional model to the all-case data, including all the same fixed effects and a random gradient for week
231 for each postcode district, which allowed us to map and compare the rate of change in cases reported
232 each week across the different postcodes. The second-wave lineages model also included the total cases
233 of the most common first wave lineages for each postcode district as a fixed effect, which allowed us to
234 investigate the potential for increased immunity between successive waves of the epidemic due to
235 previous infections. To account for variation in symptom onset and testing delay after infection, we
236 applied a two-week time lag to all temporal variables (temperature, rainfall, and the government
237 interventions and subsidy) (Hunter et al., 2021). As our response variable (positive tests) is a count, we fit
238 our models with Poisson and negative binomial distributions before validating them with the “DHARMA”
239 R package (Hartig, 2022), which demonstrated negative binomial to be a superior fit for the data in all
240 models. We chose to retain all variables in the models regardless of AIC or significance as they are all
241 biologically/epidemiologically meaningful. Predictor variables were only removed if the variance inflation
242 factor (VIF) (calculated using the “performance” R package (Lüdtke et al., 2021)) indicated
243 multicollinearity between several of the variables, when we followed the procedure defined by Zuur et al.
244 (2010) of removing variables sequentially until none of the recalculated VIF values were above 3. All
245 regression models were fit using the package “gmmTMB” (Brooks et al., 2017) in R version 4.2.2.

246 **Results**

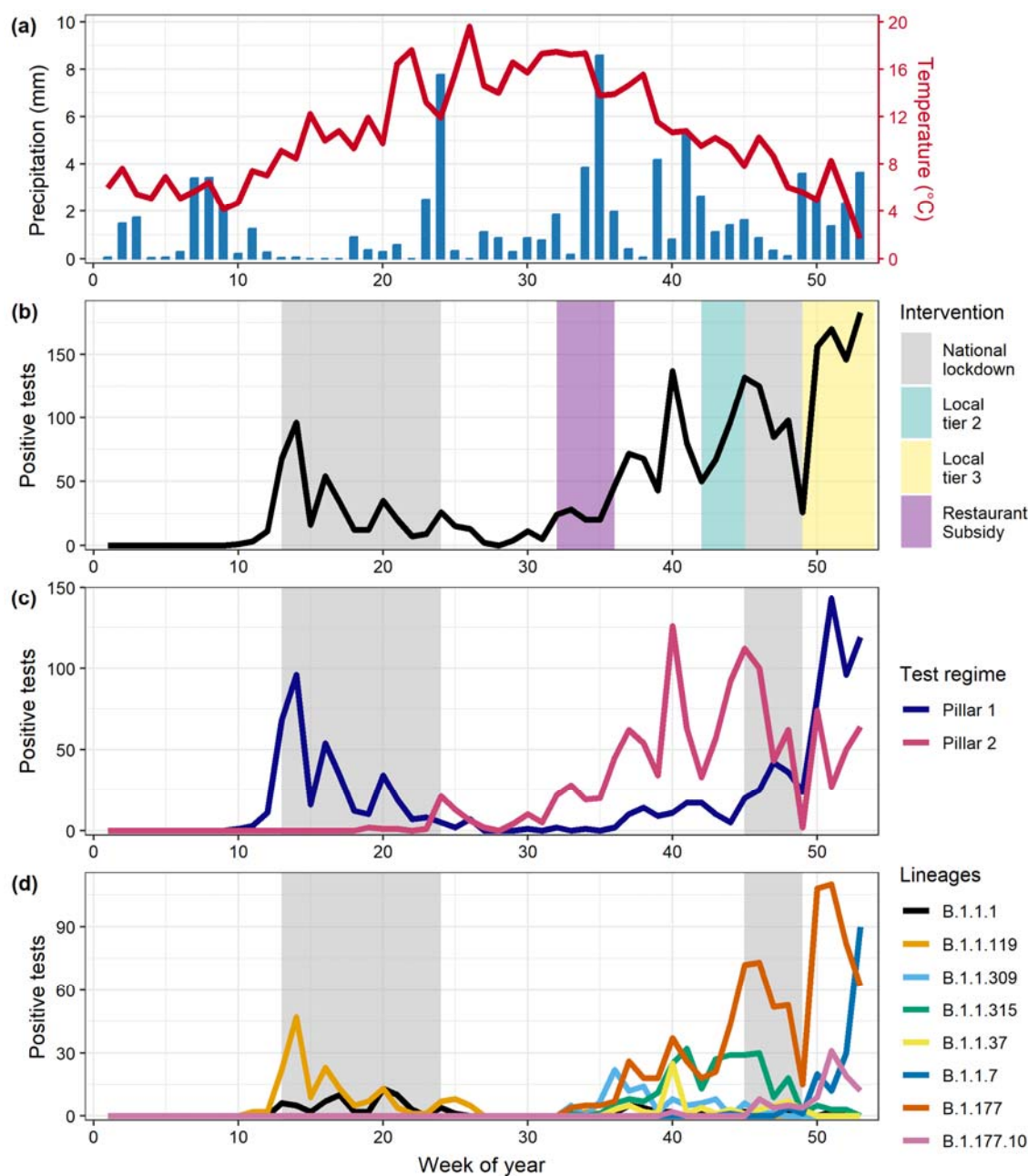
247 **Data and trends**

248 The Teesside postal area had a population of 599,600 people across the 29 postcode districts, with
249 considerable variation in the proportion of the total population in the 10th IMD decile (Figure 1, Table S1).
250 The populations of urban postcode districts of central Middlesbrough (TS1, TS4 and TS3) all had high
251 proportions of their populations in the 10th decile for IMD, whereas many of the suburban and rural
252 postcode districts had little to none of their population in this decile. There were 2,328 positive COVID-19
253 tests for all lineages of which 1,073 were pillar 1 and 1,255 were pillar 2. Temperature was highest in
254 summer while rainfall was generally lowest in spring and summer, but there were also periods of heavy
255 rain in early and late summer (Figure 2a).

256 The overall temporal trend in positive tests was bimodal with a first wave in spring (cases peaked in
257 week 14, early April 2020) followed by a decline through the summer after introduction of the first
258 lockdown, before the onset of the second wave of the epidemic in the early autumn (week 36) (Figure
259 2b). There was a large spike in cases around week 40 that were mainly detected via pillar 2 community

260 testing (Figure 2c), which coincided with the start of school and university autumn terms in Teesside
261 (Table 2). There was a strong positive correlation between the total number of cases of each lineage that
262 were recorded by the two different pillars ($\rho=0.65$, $S=14017$, $df=60$, $P<0.001$), suggesting that both
263 pillars were reflecting similar patterns of infection across Teesside.

264 Out of 86 distinct lineages recorded in Teesside during 2020, only 8 were recorded more than 60
265 times: B.1.1.1, B.1.1.119, B.1.1.309, B.1.1.315, B.1.1.37, B.1.1.7, B.1.177 and B.1.177.10 (Figure 2d).
266 These 8 lineages were recorded elsewhere in the UK before being recorded in Teesside. There were two
267 dominant lineages in the first wave of the epidemic, B.1.1.1 and B.1.1.119, records for which declined to
268 minimal levels during the late spring and summer. Patterns for other lineages were more complex in the
269 second wave. B.1.177 and B.1.1.315 both increased in frequency during weeks 32 to 45 before declining
270 during the second lockdown. However, after the end of this lockdown, B.1.177 increased substantially
271 whilst B.1.1.315 did not. The highly transmissible SARS-CoV-2 variant, B.1.1.7 (Alpha variant; VoC
272 202012/1), was first detected in the UK in December 2020 (Public Health England, 2021) and cases
273 increased rapidly in Teesside after the end of the second national lockdown.



274

275

276

277

278

279

280

281

Figure 2 - Trends in weather and positive tests of COVID-19 over the course of 2020, in Teesside. (a) Mean temperature and rainfall per week (b) Total positive tests per week (across all lineages), coloured areas represent the periods of different interventions: national lockdown, weak local restrictions (Local tier 2), stricter local restrictions (Local tier 3), and the 'Eat out to help out' government subsidy to promote eating within restaurants. (c) Positive tests detected via the two testing regimes per week. (d) Positives tests of the eight most commonly detected lineages in Teesside per week.

282

Disease mapping

283

284

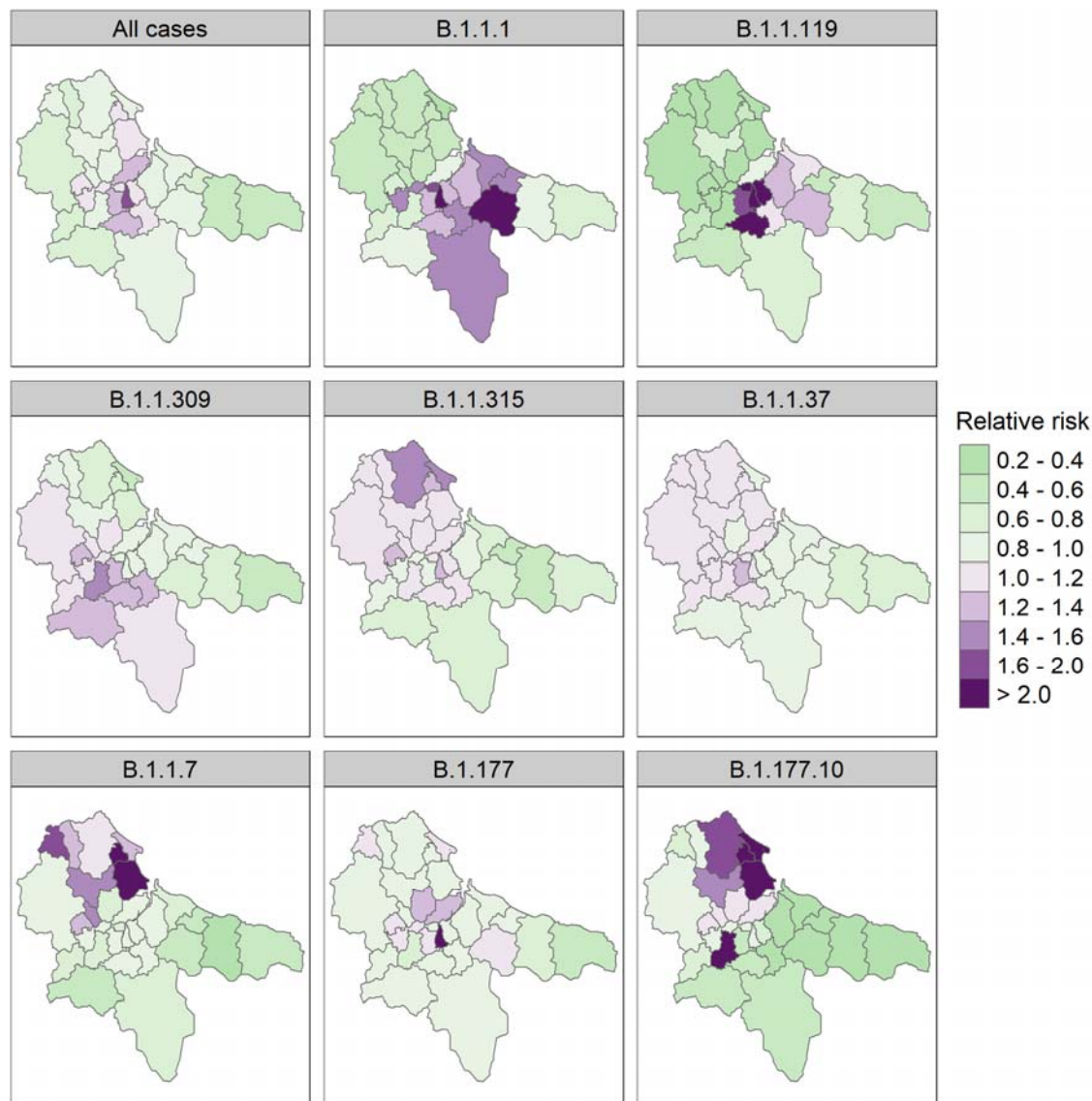
285

286

287

The relative risk of a positive test for COVID-19 in each Teesside postcode varied greatly amongst the 8 most common lineages and between the two waves of the epidemic (Figure 3). The spatial pattern of risk of a positive test for any lineage was highest in some of the central areas, particularly in central Middlesbrough (40-60% higher in TS4), while the lowest risks were in the more rural eastern and western districts (20-60% lower). The spatial pattern does not follow a clear urban-rural divide however, as some

288 urban and suburban areas had relative risks up to 20% lower than the overall risk across all districts (e.g.,
289 Thornaby (TS17), Redcar (TS10), and Eston (TS6)). During the first wave of the pandemic (lineages B.1.1.1
290 and B.1.1.119), risk was highest in the central areas of Teesside, particularly Middlesbrough (TS4, TS1,
291 TS3, and TS8) and Guisborough (TS14), while northern and western districts had a very low risk. Three of
292 the second wave lineages (B.1.1.309, B.1.1.315, and B.1.1.37) showed a more homogenous pattern,
293 whereby risk was not elevated or lowered much in any area (Figure S1 in Supplementary Material also
294 shows the higher risk values to be more uncertain). Relative risk for lineage B.1.177 was also more
295 homogenous, except for a high risk in central Middlesbrough (TS4), though there is a higher degree of
296 uncertainty around this value (Figures S1, S2). The remaining two lineages (B.1.1.7 and B.1.177.10) are
297 those that occurred mainly towards the end of 2020; the spatial risk pattern for these lineages is less
298 uniform and more focussed in northern districts with the highest risks in Hartlepool (TS24, TS25, and
299 TS26) and Thornaby (TS17), where the relative risk increase likely exceeds 50% (Figures S1, S2).



300

301 **Figure 3** - Area-specific relative risk of a positive test for any SARS-CoV-2 lineage, and the 8 most
302 common lineages, in each Teesside postcode district during 2020 (from the spatial CAR models).
303 Values are a ratio: green colours indicate a risk of infection that is lower than the overall risk for the
304 entire study area (< 1), while purple colours indicate a higher risk (>1), and colour intensity indicates
305 the strength of this effect. See Figures S1 and S2 in Supplementary Material for corresponding
306 exceedance probabilities.

307 **Mixed-effect modelling**

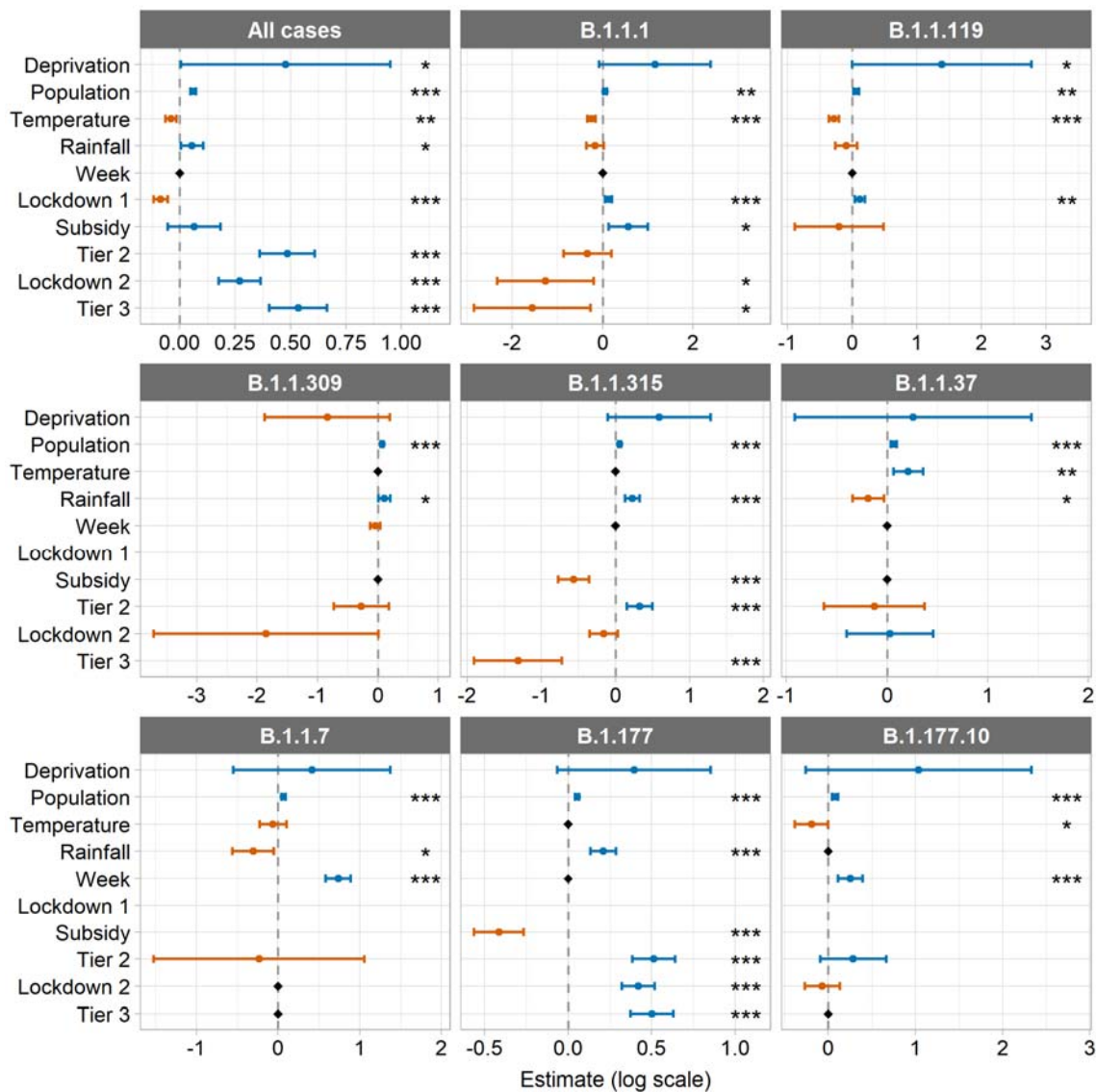
308 All GLMMs had at least one fixed effect covariate with a VIF value > 3, so all models reported here are
309 the simplified ones where these fixed effects have been dropped (see Supplementary Materials for
310 model output from both the full and simplified versions).

311 There were significant negative relationships between total positive tests of COVID-19 and mean
312 weekly temperature and the time since imposition of the first lockdown (Figure 4, Table S2). There were
313 significant positive relationships between cases and total population, socio-economic deprivation
314 (proportion of the population in the most deprived IMD decile), mean weekly rainfall, and the time since
315 imposition of local tier 2, the second national lockdown, and tier 3, while the restaurant subsidy had no
316 significant effect. The rate of increase in the total number of cases over time relative to the mean, was
317 slower in areas that experienced higher case numbers during the first wave, and faster in areas that
318 experienced more records during the second wave (Figures 5, 3 and S4, Table S5, see Figure S3 for
319 observed records per week per postcode).

320 The relationships between cases and covariates for the two first wave lineages (B.1.1.1 and B.1.1.119)
321 were similar, with significant negative relationships for temperature, and the second lockdown and tier 3
322 for B.1.1.1 (cases of B.1.1.119 dropped to 0 before the autumn interventions were imposed), while there
323 were significant positive relationships for deprivation (for B.1.1.119), population, the first lockdown, and
324 the restaurant subsidy (for B.1.1.1) (Figure 4, Table S6). Rainfall and tier 2 had no significant effect.

325 The patterns for the second wave lineages are less uniform, but there are some consistencies;
326 deprivation had no significant effects, while population showed a significant positive association in all
327 models (Figure 4, Table S6). Temperature had a significant negative relationship with cases of B.1.177.10,
328 and a positive relationship with cases of B.1.1.37. There were significant negative relationships between
329 Rainfall and cases of B.1.1.37 and B.1.1.7, and positive relationships with cases of B.1.1.309, B.1.1.315,
330 and B.1.177. Cases significantly increased over time (week of year) for B.1.1.7 and B.1.177.10. Cases were
331 significantly decreased in relation to the restaurant subsidy for B.1.1.315 and B.1.177, while cases were
332 significantly increased in relation to tier 2 for the same lineages. The only significant relationship between
333 cases and the second lockdown was a positive one for B.1.177. Cases of B.1.1.315 were significantly
334 decreased in relation to tier 3, while they were significantly increased for B.1.177. Finally, the second-
335 wave lineages model showed no relationship between the total number of cases of the six second wave
336 lineages (B.1.1.309, B.1.1.315, B.1.1.37, B.1.1.7, B.1.177, and B.1.177.10) and the total number of cases
337 of the two first wave lineages (B.1.1.1 and B.1.1.119) (see Table S7 for model output).

338



339

340

341

342

343

344

345

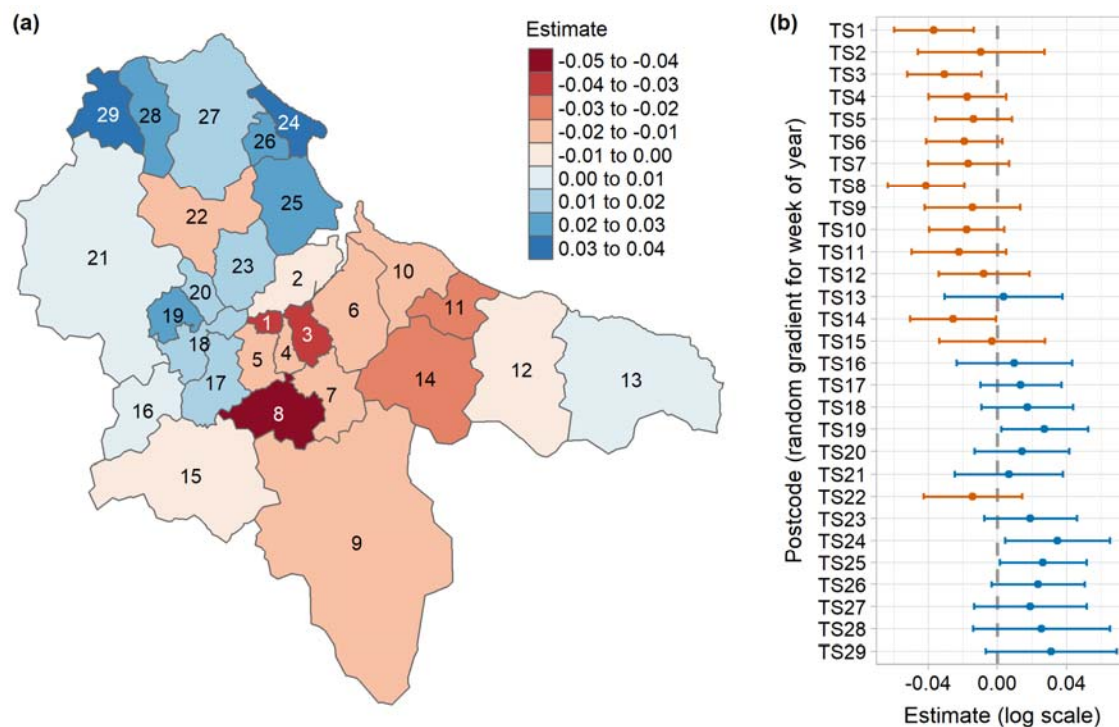
346

347

348

Figure 4 - Fixed effects estimates and 95% confidence intervals from the simplified versions of the GLMMs examining all cases and the 8 most common lineages in Teesside. All models include a random intercept for postcode, except where the model was singular (B.1.1.309 and B.1.1.37). Black diamonds indicate variables that were dropped from the models due to VIF values > 3 (remaining absent values represent non-overlap between some of the lineages and temporal variables (see Figure 2)). Display order of fixed effects is as follows: spatial variables, continuous temporal variables, transient temporal variables (in chronological order of imposition). Estimates are on the original model scale (log), asterisks indicate significance (see Tables S2 and S6 for full model summary values).

349



350

351

352

353

354

355

356

357

358

Figure 5 - Random gradient estimates from the all-cases GLMM that included a random gradient for week for each postcode district, showing (a) the estimates on a map, and (b) the estimates with their 95% confidence intervals. Values represent the rate of change in the number of cases over time relative to the mean, where blue values are higher than the mean and a faster rate of increase (a steeper and more curved gradient), and red values are lower and a slower rate of increase (a shallower and less curved gradient) (see Figure S4 for predicted rate of change curves for each postcode district from the same model). Estimates are on the original model scale (log) (see Table S5 for full random effect summary values).

359

Discussion

360

361

362

363

364

365

366

367

368

369

370

371

372

373

374

375

376

377

378

379

Our analyses indicate there was considerable spatial and temporal variation in occurrence of SARS-CoV-2 in Teesside during 2020 and that the patterns were related to demographic features, weather, and government interventions. These results must be interpreted with caution due to several limitations. Firstly, positive test ascertainment differed between the two epidemic waves during 2020. Community testing (pillar 2) was not introduced until late into the first wave and did not become widespread until later in the year, which means that testing during the first wave will be biased towards symptomatic individuals, healthcare workers, and those who sought help from primary care. While the positive correlation between the number of pillar 1 vs pillar 2 tests for each lineage suggests that this bias did not affect the detection of different lineages, it is possible that it could have contributed to differences in the covariate associations that we found between the two waves. Secondly, the resolution of the data aggregation may have been too coarse to detect some relationships. Aggregation was essential to ensure anonymity of records. However, the spatial resolution of postcode districts and the temporal resolution of one week, may have been too coarse to capture the spatial and temporal variation in the underlying epidemiological processes of transmission or other social and environmental drivers. And finally, many covariates associated with disease transmission, including proximity to infectious individuals and social contacts, could not be measured. The covariates used in our models were therefore surrogates for the underlying mechanisms associated with disease transmission and spread.

The spatial variation in total positive SARS-CoV-2 tests across the Teesside area was caused (at least in part) by demographic factors, as we found the number of positive tests was increased in postcode districts with a higher population and those with higher levels of socio-economic deprivation. These are

380 logical outcomes as transmission is more likely to occur in more densely-populated areas and amongst
381 people who have higher exposure due to employment and living conditions (Niedziedz et al., 2020;
382 Whittle & Diaz-Artiles, 2020; McGowan & Bamba, 2022). We observed no clear pattern of risk of, or rate
383 of increase in, positive tests in relation to how urban or rural the postcode districts are. Research
384 conducted in the US has found higher case rates in more rural areas (Huang et al., 2021; Rifat & Liu,
385 2022), while evidence from pillar 1 testing during the first wave in the East of England region has found
386 higher risks of infection in more urban areas (Brainard et al., 2022). This disparity could be due to
387 differences in transportation habits and differences in social contact between urban and rural
388 environments in the two countries. It is possible that the size of our spatial units were too large and
389 heterogenous in terms of their social environments to be able to detect a relationship like that found by
390 Brainard et al. (2022), however, it is also possible that our longer timescale and inclusion of community
391 testing collected a more representative sample of positive tests, or that this relationship does not hold in
392 more urban and deprived areas like Teesside.

393 Our findings indicate that weather variables affected the temporal dynamics of total positive tests
394 across Teesside in 2020. We found positive tests were reduced by higher temperatures, in accordance
395 with previous research (Ganslmeier et al., 2021; Alaniz et al., 2023; Nottmeyer et al., 2023). This is
396 probably due to both indirect and direct mechanisms, as warmer weather encourages outdoor (rather
397 than indoor) socialising and increased indoor ventilation, while also reducing transmissibility of the virus
398 particles (Ganslmeier et al., 2021). We also found that positive tests were increased by higher rainfall,
399 which has also been documented in other studies conducted in Europe (Tan & Schultz, 2022). This is likely
400 an indirect effect as rainfall has the opposite influence on socialising behaviours, favouring indoors rather
401 than outdoors. There is also evidence indicating that the effects of weather variables on positive tests are
402 stronger during periods that facilitate transmission, such as mealtimes and when there are low/no
403 restrictions on movement and socialising (Ganslmeier et al., 2021; Fetzer, 2022). Therefore, a finer
404 temporal resolution than was used in this study is required to clarify the links between weather,
405 transmission, and cases. It is also likely that the temporal resolution we used was too coarse to detect an
406 impact of the government restaurant subsidy on cases, as the effects would have been limited to days
407 when the subsidy applied (Monday-Wednesday) and mealtimes. Other research has found that cases
408 were increased by the subsidy, but this effect was weaker when high rainfall coincided with mealtimes
409 (Fetzer, 2022).

410 The government interventions introduced to manage COVID-19 cases during 2020 had mixed impacts
411 on the total number of positive tests in Teesside. The first lockdown was successful in reducing cases,
412 while all of the later interventions appeared to have the opposite effect. The only difference between the
413 two national lockdowns in terms of the control measures they mandated, was that the first lockdown
414 included school closures, whereas the second did not. A growing body of evidence has demonstrated that
415 school closures were one of the most important interventions in controlling COVID-19 (Brauner et al.,
416 2021; Davies et al., 2021; Hunter et al., 2021; Ge et al., 2022; Torres et al., 2022). The length of the
417 second lockdown was also shorter than the first one, but in Teesside it was immediately followed by tier
418 3 restrictions, which only differed in terms of the reopening of non-essential businesses that were not
419 hospitality/entertainment. The closure of such businesses has been shown to provide only modest or no
420 additional benefits (Brauner et al., 2021; Hunter et al., 2021), which suggests that school closures were
421 the main driver of the success of the first lockdown relative to the failure of the second. The apparent
422 positive effect of the second lockdown and the tier 2 and 3 restrictions could be due to the timing of
423 imposition coinciding with one or more events that are epidemiologically important, such as the
424 introduction of more transmissible lineages of the virus, like B.1.177 and B.1.1.7 (Volz et al., 2021; Hinch
425 et al., 2022; Panovska-Griffiths et al., 2022); or temporary changes in social behaviour or movement that
426 facilitated transmission, like the reopening of retail businesses during the Christmas season.

427 Our findings suggest that the local tier system of interventions was less effective at reducing cases
428 than national lockdowns, especially when lockdowns included school closures, which has also been found
429 in other studies (Davies et al., 2021; Torres et al., 2022). This suggests that if there are any positive
430 benefits to applying local-scale interventions in response to local-scale cases (rather than cases in a
431 distant region), they are masked by the significance of school closures. Another possibility is that the
432 tiered restrictions were not followed as rigorously, either intentionally due to “pandemic fatigue” or

433 accidentally due to poor communication (Smith et al., 2022; Delussu et al., 2022), especially as the tier
434 levels in the UK could change at short notice and were not applied consistently across locations.

435 The analyses of positive tests of the eight most common SARS-CoV-2 lineages in Teesside
436 demonstrated different spatio-temporal relationships between the lineages, which also differed to those
437 of total positive tests, with differences in both magnitude and direction. Some of this disparity could be
438 explained by the relatively small sample sizes of the lineage models; for example, the effect of socio-
439 economic deprivation was significant for only one lineage (B.1.1.119), but the error bars for this variable
440 were very large in all models. It seems likely that most of the differences between the total cases model
441 and the separate lineages models are caused by the restricted spatial or temporal presence of the
442 individual lineages when compared to all cases. For example, positive tests of lineage B.1.1.37 were
443 positively related to temperature, but case numbers were very low and the only peak in cases occurred
444 two weeks after a peak in temperature. While it is likely that some of the differences we observed in the
445 spatio-temporal patterns between the different lineages are due to differences in transmissibility,
446 particularly for B.1.1.7 (the alpha variant) (Volz et al., 2021; Hinch et al., 2022; Panovska-Griffiths et al.,
447 2022), differences in the timing, location, and number of introductions are also likely to be a factor
448 (Vöhringer et al., 2021). While the utility of examining covariate relationships for individual lineages over
449 small geographic areas (with low numbers of positive tests) may appear to be low, the use of genomic
450 sequencing to track community spread over such local scales holds great potential. Such forensic tracking
451 could be used to further increase epidemiological understanding and perhaps target local interventions
452 more effectively.

453 It has been well documented by large-scale studies that previous infections can confer natural
454 immunity to subsequent infections (Flacco et al., 2022; Hall et al., 2022; Murugesan et al., 2022).
455 Therefore, it is possible that natural immunity could explain some of the different spatio-temporal
456 patterns between lineages in our data, particularly as the relative risk and the rate of increase in cases
457 during the second wave were higher in areas that had low relative risk and case numbers during the first
458 wave. However, the number of cases of first wave lineages was not related to the number of cases of
459 second wave lineages in our model. It seems likely that we were not able to detect a natural immunity
460 effect because of the low numbers of positive tests in our study. This suggests that natural immunity, and
461 possibly other disease processes, are easier to detect at larger spatial scales with larger populations.

462 Our study has demonstrated the effects of weather and government interventions on the spatio-
463 temporal dynamics of SARS-CoV-2 positive tests at a local scale in Teesside, UK. The number of COVID-19
464 cases was negatively related to temperature and the first national lockdown. There were positive
465 relationships between cases and total population, socio-economic deprivation, rainfall, the second
466 lockdown, and local tiered restrictions. While further research is needed to investigate these
467 relationships during different waves of the epidemic and in different locations, we feel confident to make
468 several recommendations regarding future epidemic policy responses, based on both ours and other's
469 findings. Firstly, school closures are one of the most important interventions in controlling transmission
470 and mortality (Brauner et al., 2021; Davies et al., 2021; Hunter et al., 2021; Ge et al., 2022; Torres et al.,
471 2022), therefore school closures should be included in national and local/regional lockdowns. Secondly,
472 transmission is promoted by social gatherings and in restaurants (Brauner et al., 2021; Hunter et al.,
473 2021; Fetzer, 2022), therefore governments should avoid issuing hospitality promotions and subsidies.
474 Thirdly, transmission at the national and regional scale is dependent on introductions (da Silva Filipe et
475 al., 2021; Lane et al., 2021; Vöhringer et al., 2021), particularly during periods of low restrictions (Lemey
476 et al., 2021), so long-distance domestic and international travel restrictions should be imposed quickly at
477 the start of an epidemic and the latter maintained. And finally, regional and local transmission is
478 dependent on both the transmissibility, location, and number of introductions of different lineages (da
479 Silva Filipe et al., 2021; Lane et al., 2021; Vöhringer et al., 2021), therefore the possibility of using
480 genomic sequencing to conduct forensic tracking of community spread should be investigated.

481 **Acknowledgements**

482 The authors thank colleagues within COG-UK for constructive comments on earlier versions of this
483 manuscript.

484 **Data, scripts, code, and supplementary information availability**

485 Data are available online: at <https://doi.org/10.25405/data.ncl.23815077> . Supplementary material
486 referenced in the text is also available at <https://doi.org/10.25405/data.ncl.23815077> and at
487 <https://doi.org/10.1101/2022.02.05.22269279>

488 **Conflict of interest disclosure**

489 The authors declare that they comply with the PCI rule of having no financial conflicts of interest in
490 relation to the content of the article.

491 **Funding**

492 This research was funded under COG-UK; this is supported by funding from the Medical Research
493 Council (MRC) part of UK Research & Innovation (UKRI), the National Institute of Health Research (NIHR)
494 [grant code: MC_PC_19027], and Genome Research Limited, operating as the Wellcome Sanger Institute.

495 **Ethics approval**

496 The surveillance activities within which this study was conducted are part of Public Health England's
497 responsibility to monitor COVID-19 during the current pandemic. Public Health England has legal
498 permission, provided by Regulation 3 of The Health Service (Control of Patient Information) Regulations
499 2002 to process confidential patient information under Sections 3(i) a–c, 3(i) d(i and ii), and 3(iii) as part
500 of its outbreak response activities. This study falls within the research activities approved by the Public
501 Health England Research Ethics and Governance of Public Health Practice Group. Informed consent was
502 obtained from all individual participants included in the study. No individual patient data in any form is
503 included in this manuscript.

504 **References**

- 505 Alaniz AJ, Carvajal MA, Carvajal JG, Vergara PM (2023) Effects of air pollution and weather on the initial
506 COVID-19 outbreaks in United States, Italy, Spain, and China: A comparative study. *Risk Analysis*, **43**,
507 8–18. <https://doi.org/10.1111/risa.14080>
- 508 Besag J, York J, Mollié A (1991) Bayesian image restoration, with two applications in spatial statistics.
509 *Annals of the Institute of Statistical Mathematics*, **43**, 1–20. <https://doi.org/10.1007/BF00116466>
- 510 Blangiardo M, Cameletti M (2015) *Spatial and Spatio-temporal Bayesian Models with R - INLA*. John Wiley
511 & Sons, Chichester, UK.
- 512 Bo Y, Guo C, Lin C, Zeng Y, Li HB, Zhang Y, Hossain MS, Chan JWM, Yeung DW, Kwok KO, Wong SYS, Lau
513 AKH, Lao XQ (2021) Effectiveness of non-pharmaceutical interventions on COVID-19 transmission in
514 190 countries from 23 January to 13 April 2020. *International Journal of Infectious Diseases*, **102**, 247–
515 253. <https://doi.org/10.1016/j.ijid.2020.10.066>
- 516 Brainard J, Rushton S, Winters T, Hunter PR (2022) Spatial Risk Factors for Pillar 1 COVID-19 Excess Cases
517 and Mortality in Rural Eastern England, UK. *Risk Analysis*, **42**, 1571–1584.
518 <https://doi.org/10.1111/risa.13835>
- 519 Brauner JM, Minderhann S, Sharma M, Johnston D, Salvatier J, Gavenčiak T, Stephenson AB, Leech G,
520 Altman G, Mikulik V, Norman AJ, Monrad JT, Besiroglu T, Ge H, Hartwick MA, Teh YW, Chindelevitch L,
521 Gal Y, Kulveit J (2021) Inferring the effectiveness of government interventions against COVID-19.
522 *Science*, **371**, eabd9338. <https://doi.org/10.1126/science.abd9338>
- 523 Brooks ME, Kristensen K, Bentham KJ van, Magnusson A, Berg CW, Nielsen A, Skaug HJ, Maechler M,
524 Bolker BM (2017) glmmTMB Balances Speed and Flexibility Among Packages for Zero-inflated
525 Generalized Linear Mixed Modeling. *The R Journal*, **9**, 378–400. <https://doi.org/10.32614/RJ-2017-066>

- 526 COVID-19 Genomics UK (COG-UK) Consortium (2020) An integrated national scale SARS-CoV-2 genomic
527 surveillance network. *The Lancet Microbe*, **1**, e99–e100. [https://doi.org/10.1016/S2666-5247\(20\)30054-9](https://doi.org/10.1016/S2666-5247(20)30054-9)
- 529 Davies NG, Barnard RC, Jarvis CI, Russell TW, Semple MG, Jit M, Edmunds WJ (2021) Association of tiered
530 restrictions and a second lockdown with COVID-19 deaths and hospital admissions in England: a
531 modelling study. *The Lancet Infectious Diseases*, **21**, 482–492. [https://doi.org/10.1016/S1473-3099\(20\)30984-1](https://doi.org/10.1016/S1473-3099(20)30984-1)
- 533 Delussu F, Tizzoni M, Gauvin L (2022) Evidence of pandemic fatigue associated with stricter tiered COVID-
534 19 restrictions. *PLOS Digital Health*, **1**, e0000035. <https://doi.org/10.1371/journal.pdig.0000035>
- 535 Dept. Health & Social Care (2021) COVID-19 testing data: methodology note.
536 <https://web.archive.org/web/20200905041538/https://www.gov.uk/government/publications/coronavirus-covid-19-testing-data-methodology/covid-19-testing-data-methodology-note>.
- 537 Fetzer T (2022) Subsidising the spread of COVID-19: Evidence from the UK'S Eat-Out-to-Help-Out
538 Scheme*. *The Economic Journal*, **132**, 1200–1217. <https://doi.org/10.1093/ej/ueab074>
- 540 Flacco ME, Acuti Martellucci C, Baccolini V, De Vito C, Renzi E, Villari P, Manzoli L (2022) Risk of
541 reinfection and disease after SARS-CoV-2 primary infection: Meta-analysis. *European Journal of
542 Clinical Investigation*, **52**, e13845. <https://doi.org/10.1111/eci.13845>
- 543 Ganslmeier M, Furceri D, Ostry JD (2021) The impact of weather on COVID-19 pandemic. *Scientific
544 Reports*, **11**, 22027. <https://doi.org/10.1038/s41598-021-01189-3>
- 545 Gao Y, Ding M, Dong X, Zhang J, Kursat Azkur A, Azkur D, Gan H, Sun Y, Fu W, Li W, Liang H, Cao Y, Yan Q,
546 Cao C, Gao H, Brügggen M-C, van de Veen W, Sokolowska M, Akdis M, Akdis CA (2021) Risk factors for
547 severe and critically ill COVID-19 patients: A review. *Allergy*, **76**, 428–455.
548 <https://doi.org/10.1111/all.14657>
- 549 Ge Y, Zhang W-B, Liu H, Ruktanonchai CW, Hu M, Wu X, Song Y, Ruktanonchai NW, Yan W, Cleary E, Feng
550 L, Li Z, Yang W, Liu M, Tatem AJ, Wang J-F, Lai S (2022) Impacts of worldwide individual non-
551 pharmaceutical interventions on COVID-19 transmission across waves and space. *International Journal
552 of Applied Earth Observation and Geoinformation*, **106**, 102649.
553 <https://doi.org/10.1016/j.jag.2021.102649>
- 554 Goethem NV, Vandromme M, Oyen HV, Haarhuis F, Brondeel R, Catteau L, André E, Cuypers L,
555 Surveillance BCG on C-19 H, Consortium C-19 GB, Blot K, Serrien B (2022) Severity of infection with
556 the SARS-CoV-2 B.1.1.7 lineage among hospitalized COVID-19 patients in Belgium. *PLOS ONE*, **17**,
557 e0269138. <https://doi.org/10.1371/journal.pone.0269138>
- 558 Grubaugh ND, Hanage WP, Rasmussen AL (2020) Making Sense of Mutation: What D614G Means for the
559 COVID-19 Pandemic Remains Unclear. *Cell*, **182**, 794–795. <https://doi.org/10.1016/j.cell.2020.06.040>
- 560 Hall V, Foulkes S, Insalata F, Kirwan P, Saei A, Atti A, Wellington E, Khawam J, Munro K, Cole M,
561 Tranquillini C, Taylor-Kerr A, Hettiarachchi N, Calbraith D, Sajedi N, Milligan I, Themistocleous Y,
562 Corrigan D, Cromey L, Price L, Stewart S, de Lacy E, Norman C, Linley E, Otter AD, Semper A, Hewson J,
563 D'Arcangelo S, Chand M, Brown CS, Brooks T, Islam J, Charlett A, Hopkins S (2022) Protection against
564 SARS-CoV-2 after Covid-19 Vaccination and Previous Infection. *New England Journal of Medicine*, **386**,
565 1207–1220. <https://doi.org/10.1056/NEJMoa2118691>
- 566 Hartig F (2022) DHARMA: Residual Diagnostics for Hierarchical (Multi-Level / Mixed) Regression Models. R
567 package version 0.4.6. <https://CRAN.R-project.org/package=DHARMA>.
- 568 Hinch R, Panovska-Griffiths J, Probert WJM, Ferretti L, Wymant C, Di Lauro F, Baya N, Ghafari M, Abeler-
569 Dörner L, The COVID-19 Genomics UK (COG-UK) Consortium, Fraser C (2022) Estimating SARS-CoV-2
570 variant fitness and the impact of interventions in England using statistical and geo-spatial agent-based
571 models. *Philosophical Transactions of the Royal Society A: Mathematical, Physical and Engineering
572 Sciences*, **380**, 20210304. <https://doi.org/10.1098/rsta.2021.0304>
- 573 Hodcroft EB, Zuber M, Nadeau S, Vaughan TG, Crawford KHD, Althaus CL, Reichmuth ML, Bowen JE, Walls
574 AC, Corti D, Bloom JD, Veasler D, Mateo D, Hernando A, Comas I, González-Candelas F, Stadler T,
575 Neher RA (2021) Spread of a SARS-CoV-2 variant through Europe in the summer of 2020. *Nature*, **595**,
576 707–712. <https://doi.org/10.1038/s41586-021-03677-y>
- 577 Holt H, Talaei M, Greenig M, Zenner D, Symons J, Relton C, Young KS, Davies MR, Thompson KN, Ashman
578 J, Rajpoot SS, Kayyale AA, Rifai SE, Lloyd PJ, Jolliffe D, Timmis O, Finer S, Iliodromiti S, Miners A,
579 Hopkinson NS, Alam B, Lloyd-Jones G, Dietrich T, Chapple I, Pfeffer PE, McCoy D, Davies G, Lyons RA,

- 580 Griffiths C, Kee F, Sheikh A, Breen G, Shaheen SO, Martineau AR (2022) Risk factors for developing
581 COVID-19: a population-based longitudinal study (COVIDENCE UK). *Thorax*, **77**, 900–912.
582 <https://doi.org/10.1136/thoraxjnl-2021-217487>
- 583 Huang Q, Jackson S, Derakhshan S, Lee L, Pham E, Jackson A, Cutter SL (2021) Urban-rural differences in
584 COVID-19 exposures and outcomes in the South: A preliminary analysis of South Carolina. *PLOS ONE*,
585 **16**, e0246548. <https://doi.org/10.1371/journal.pone.0246548>
- 586 Hunter PR, Colón-González FJ, Brainard J, Rushton S (2021) Impact of non-pharmaceutical interventions
587 against COVID-19 in Europe in 2020: a quasi-experimental non-equivalent group and time series
588 design study. *Eurosurveillance*, **26**, 2001401. <https://doi.org/10.2807/1560-7917.ES.2021.26.28.2001401>
- 590 Islam N, Shkolnikov VM, Acosta RJ, Klimkin I, Kawachi I, Irizarry RA, Alicandro G, Khunti K, Yates T, Jdanov
591 DA, White M, Lewington S, Lacey B (2021) Excess deaths associated with covid-19 pandemic in 2020:
592 age and sex disaggregated time series analysis in 29 high income countries. *BMJ*, **373**, n1137.
593 <https://doi.org/10.1136/bmj.n1137>
- 594 Lane CR, Sherry NL, Porter AF, Duchene S, Horan K, Andersson P, Wilmot M, Turner A, Dougall S, Johnson
595 SA, Sait M, Gonçalves da Silva A, Ballard SA, Hoang T, Stinear TP, Cally L, Sintchenko V, Graham R,
596 McMahon J, Smith D, Leong LE, Meumann EM, Cooley L, Schwessinger B, Rawlinson W, van Hal SJ,
597 Stephens N, Catton M, Looker C, Crouch S, Sutton B, Alprent C, Williamson DA, Seemann T, Howden BP
598 (2021) Genomics-informed responses in the elimination of COVID-19 in Victoria, Australia: an
599 observational, genomic epidemiological study. *The Lancet Public Health*, **6**, e547–e556.
600 [https://doi.org/10.1016/S2468-2667\(21\)00133-X](https://doi.org/10.1016/S2468-2667(21)00133-X)
- 601 Lemey P, Ruktanonchai N, Hong SL, Colizza V, Poletto C, Van den Broeck F, Gill MS, Ji X, Lévassieur A, Oude
602 Munnink BB, Koopmans M, Sadilek A, Lai S, Tatem AJ, Baele G, Suchard MA, Dellicour S (2021)
603 Untangling introductions and persistence in COVID-19 resurgence in Europe. *Nature*, **595**, 713–717.
604 <https://doi.org/10.1038/s41586-021-03754-2>
- 605 Lüdecke D, Ben-Shachar MS, Patil I, Waggoner P, Makowski D (2021) performance: An R Package for
606 Assessment, Comparison and Testing of Statistical Models. *Journal of Open Source Software*, **6**, 3139.
607 <https://doi.org/10.21105/joss.03139>
- 608 McGowan VJ, Bamba C (2022) COVID-19 mortality and deprivation: pandemic, syndemic, and endemic
609 health inequalities. *The Lancet Public Health*, **7**, e966–e975. [https://doi.org/10.1016/S2468-2667\(22\)00223-7](https://doi.org/10.1016/S2468-2667(22)00223-7)
- 611 Mendez-Brito A, El Bcheraoui C, Pozo-Martin F (2021) Systematic review of empirical studies comparing
612 the effectiveness of non-pharmaceutical interventions against COVID-19. *Journal of Infection*, **83**,
613 281–293. <https://doi.org/10.1016/j.jinf.2021.06.018>
- 614 Murugesan M, Mathews P, Paul H, Karthik R, Mammen JJ, Rupali P (2022) Protective effect conferred by
615 prior infection and vaccination on COVID-19 in a healthcare worker cohort in South India. *PLOS ONE*,
616 **17**, e0268797. <https://doi.org/10.1371/journal.pone.0268797>
- 617 Niedzwiedz CL, O'Donnell CA, Jani BD, Demou E, Ho FK, Celis-Morales C, Nicholl BI, Mair FS, Welsh P,
618 Sattar N, Pell JP, Katikireddi SV (2020) Ethnic and socioeconomic differences in SARS-CoV-2 infection:
619 prospective cohort study using UK Biobank. *BMC Medicine*, **18**, 160. <https://doi.org/10.1186/s12916-020-01640-8>
- 621 Nottmeyer L, Armstrong B, Lowe R, Abbott S, Meakin S, O'Reilly KM, von Borries R, Schneider R, Royé D,
622 Hashizume M, Pascal M, Tobias A, Vicedo-Cabrera AM, Lavigne E, Correa PM, Ortega NV, Kynčl J,
623 Urban A, Orru H, Rytí N, Jaakkola J, Dallavalle M, Schneider A, Honda Y, Ng CFS, Alahmad B, Carrasco-
624 Escobar G, Holobáč IH, Kim H, Lee W, Íñiguez C, Bell ML, Zanobetti A, Schwartz J, Scovronick N, Coélho
625 M de SZS, Saldiva PHN, Diaz MH, Gasparrini A, Sera F (2023) The association of COVID-19 incidence
626 with temperature, humidity, and UV radiation – A global multi-city analysis. *Science of The Total
627 Environment*, **854**, 158636. <https://doi.org/10.1016/j.scitotenv.2022.158636>
- 628 Panovska-Griffiths J, Swallow B, Hinch R, Cohen J, Rosenfeld K, Stuart RM, Ferretti L, Di Lauro F, Wymant
629 C, Izzo A, Waites W, Viner R, Bonell C, Fraser C, Klein D, Kerr CC, null null (2022) Statistical and agent-
630 based modelling of the transmissibility of different SARS-CoV-2 variants in England and impact of
631 different interventions. *Philosophical Transactions of the Royal Society A: Mathematical, Physical and
632 Engineering Sciences*, **380**, 20210315. <https://doi.org/10.1098/rsta.2021.0315>

- 633 Pozo-Martin F, Weishaar H, Cristea F, Hanefeld J, Bahr T, Schaade L, El Bcheraoui C (2021) The impact of
634 non-pharmaceutical interventions on COVID-19 epidemic growth in the 37 OECD member states.
635 *European Journal of Epidemiology*, **36**, 629–640. <https://doi.org/10.1007/s10654-021-00766-0>
636 Public Health England (2021) *Variant Of Concern 202012/01: Technical Briefing 2. Investigation of novel*
637 *SARS-CoV-2 variant*.
638 [https://web.archive.org/web/20210210034324/https://assets.publishing.service.gov.uk/government/](https://web.archive.org/web/20210210034324/https://assets.publishing.service.gov.uk/government/uploads/system/uploads/attachment_data/file/959361/Technical_Briefing_VOC202012-2_Briefing_2.pdf)
639 [uploads/system/uploads/attachment_data/file/959361/Technical_Briefing_VOC202012-](https://web.archive.org/web/20210210034324/https://assets.publishing.service.gov.uk/government/uploads/system/uploads/attachment_data/file/959361/Technical_Briefing_VOC202012-2_Briefing_2.pdf)
640 [2_Briefing_2.pdf](https://web.archive.org/web/20210210034324/https://assets.publishing.service.gov.uk/government/uploads/system/uploads/attachment_data/file/959361/Technical_Briefing_VOC202012-2_Briefing_2.pdf).
641 R Core Team (2022) R: A language and environment for statistical computing. R Foundation for Statistical
642 Computing, Vienna, Austria. <http://www.R-project.org/>.
643 Riebler A, Sørbye SH, Simpson D, Rue H (2016) An intuitive Bayesian spatial model for disease mapping
644 that accounts for scaling. *Statistical Methods in Medical Research*, **25**, 1145–1165.
645 <https://doi.org/10.1177/0962280216660421>
646 Rifat SAA, Liu W (2022) One year into the pandemic: the impacts of social vulnerability on COVID-19
647 outcomes and urban–rural differences in the conterminous United States. *International Journal of*
648 *Environmental Health Research*, **32**, 2601–2619. <https://doi.org/10.1080/09603123.2021.1979196>
649 Rue H, Martino S, Chopin N (2009) Approximate Bayesian inference for latent Gaussian models by using
650 integrated nested Laplace approximations. *Journal of the Royal Statistical Society: Series B (Statistical*
651 *Methodology)*, **71**, 319–392. <https://doi.org/10.1111/j.1467-9868.2008.00700.x>
652 Sievers C, Zacher B, Ullrich A, Huska M, Fuchs S, Buda S, Haas W, Diercke M, Heiden M an der, Kröger S
653 (2022) SARS-CoV-2 Omicron variants BA.1 and BA.2 both show similarly reduced disease severity of
654 COVID-19 compared to Delta, Germany, 2021 to 2022. *Eurosurveillance*, **27**, 2200396.
655 <https://doi.org/10.2807/1560-7917.ES.2022.27.22.2200396>
656 da Silva Filipe A, Shepherd JG, Williams T, Hughes J, Aranday-Cortes E, Asamaphan P, Ashraf S, Balcazar C,
657 Bruncker K, Campbell A, Carmichael S, Davis C, Dewar R, Gallagher MD, Gunson R, Hill V, Ho A, Jackson
658 B, James E, Jesudason N, Johnson N, McWilliam Leitch EC, Li K, MacLean A, Mair D, McAllister DA,
659 McCrone JT, McDonald SE, McHugh MP, Morris AK, Nichols J, Niebel M, Nomikou K, Orton RJ, O’Toole
660 Á, Palmarini M, Parcell BJ, Parr YA, Rambaut A, Rooke S, Shaaban S, Shah R, Singer JB, Smollett K,
661 Starinskij I, Tong L, Sreenu VB, Wastnedge E, Holden MTG, Robertson DL, Templeton K, Thomson EC
662 (2021) Genomic epidemiology reveals multiple introductions of SARS-CoV-2 from mainland Europe
663 into Scotland. *Nature Microbiology*, **6**, 112–122. <https://doi.org/10.1038/s41564-020-00838-z>
664 Smith LE, Potts HWW, Amløt R, Fear NT, Michie S, Rubin GJ (2022) Tiered restrictions for COVID-19 in
665 England: knowledge, motivation and self-reported behaviour. *Public Health*, **204**, 33–39.
666 <https://doi.org/10.1016/j.puhe.2021.12.016>
667 Tan L, Schultz DM (2022) How Is COVID-19 Affected by Weather? Metaregression of 158 Studies and
668 Recommendations for Best Practices in Future Research. *Weather, Climate, and Society*, **14**, 237–255.
669 <https://doi.org/10.1175/WCAS-D-21-0132.1>
670 Torres AR, Rodrigues AP, Sousa-Uva M, Kislalya I, Silva S, Antunes L, Dias C, Nunes B (2022) Impact of
671 stringent non-pharmaceutical interventions applied during the second and third COVID-19 epidemic
672 waves in Portugal, 9 November 2020 to 10 February 2021: an ecological study. *Eurosurveillance*, **27**,
673 2100497. <https://doi.org/10.2807/1560-7917.ES.2022.27.23.2100497>
674 UK Government (2019) English indices of deprivation 2019.
675 <https://www.gov.uk/government/statistics/english-indices-of-deprivation-2019>.
676 UK Government (2020a) Prime Minister’s statement on coronavirus (COVID-19): 23 March 2020.
677 [https://web.archive.org/web/20200325010057/https://www.gov.uk/government/speeches/pm-](https://web.archive.org/web/20200325010057/https://www.gov.uk/government/speeches/pm-address-to-the-nation-on-coronavirus-23-march-2020)
678 [address-to-the-nation-on-coronavirus-23-march-2020](https://web.archive.org/web/20200325010057/https://www.gov.uk/government/speeches/pm-address-to-the-nation-on-coronavirus-23-march-2020).
679 UK Government (2020b) Prime Minister’s statement on coronavirus (COVID-19): 22 March 2020.
680 [https://web.archive.org/web/20200324014333/https://www.gov.uk/government/speeches/pm-](https://web.archive.org/web/20200324014333/https://www.gov.uk/government/speeches/pm-statement-on-coronavirus-22-march-2020)
681 [statement-on-coronavirus-22-march-2020](https://web.archive.org/web/20200324014333/https://www.gov.uk/government/speeches/pm-statement-on-coronavirus-22-march-2020).
682 UK Government (2020c) Local COVID alert levels: what you need to know.
683 [https://web.archive.org/web/20201014194215/https://www.gov.uk/guidance/local-covid-alert-](https://web.archive.org/web/20201014194215/https://www.gov.uk/guidance/local-covid-alert-levels-what-you-need-to-know#history)
684 [levels-what-you-need-to-know#history](https://web.archive.org/web/20201014194215/https://www.gov.uk/guidance/local-covid-alert-levels-what-you-need-to-know#history).

- 685 UK Government (2020d) New National Restrictions from 5 November.
686 [https://web.archive.org/web/20201105234705/https://www.gov.uk/guidance/new-national-](https://web.archive.org/web/20201105234705/https://www.gov.uk/guidance/new-national-restrictions-from-5-november)
687 [restrictions-from-5-november.](https://web.archive.org/web/20201105234705/https://www.gov.uk/guidance/new-national-restrictions-from-5-november)
- 688 UK Government (2021) Prime Minister's address to the nation: 4 January 2021.
689 [https://web.archive.org/web/20210105084446/https://www.gov.uk/government/speeches/prime-](https://web.archive.org/web/20210105084446/https://www.gov.uk/government/speeches/prime-ministers-address-to-the-nation-4-january-2021)
690 [ministers-address-to-the-nation-4-january-2021.](https://web.archive.org/web/20210105084446/https://www.gov.uk/government/speeches/prime-ministers-address-to-the-nation-4-january-2021)
- 691 Vöhringer HS, Sanderson T, Sinnott M, De Maio N, Nguyen T, Goater R, Schwach F, Harrison I, Hellewell J,
692 Ariani CV, Gonçalves S, Jackson DK, Johnston I, Jung AW, Saint C, Sillitoe J, Suciú M, Goldman N,
693 Panovska-Griffiths J, Birney E, Volz E, Funk S, Kwiatkowski D, Chand M, Martincorena I, Barrett JC,
694 Gerstung M (2021) Genomic reconstruction of the SARS-CoV-2 epidemic in England. *Nature*, **600**, 506–
695 511. <https://doi.org/10.1038/s41586-021-04069-y>
- 696 Volz E, Mishra S, Chand M, Barrett JC, Johnson R, Geidelberg L, Hinsley WR, Laydon DJ, Dabrera G,
697 O'Toole Á, Amato R, Ragonnet-Cronin M, Harrison I, Jackson B, Ariani CV, Boyd O, Loman NJ, McCrone
698 JT, Gonçalves S, Jorgensen D, Myers R, Hill V, Jackson DK, Gaythorpe K, Groves N, Sillitoe J,
699 Kwiatkowski DP, Flaxman S, Ratmann O, Bhatt S, Hopkins S, Gandy A, Rambaut A, Ferguson NM (2021)
700 Assessing transmissibility of SARS-CoV-2 lineage B.1.1.7 in England. *Nature*, **593**, 266–269.
701 <https://doi.org/10.1038/s41586-021-03470-x>
- 702 Whittle RS, Diaz-Artiles A (2020) An ecological study of socioeconomic predictors in detection of COVID-
703 19 cases across neighborhoods in New York City. *BMC Medicine*, **18**, 271.
704 <https://doi.org/10.1186/s12916-020-01731-6>
- 705 Zuur AF, Ieno EN, Elphick CS (2010) A protocol for data exploration to avoid common statistical problems.
706 *Methods in Ecology and Evolution*, **1**, 3–14. <https://doi.org/10.1111/j.2041-210X.2009.00001.x>