

1 **Title:** Enterovirus D68 epidemic, UK, 2018, was caused by subclades B3 and D1, predominantly  
2 in children and adults respectively, with both subclades exhibiting extensive genetic diversity

3 **Authors:** Hannah C. Howson-Wells, Theocharis Tsoleridis, Izzah Zainuddin, Alexander W.  
4 Tarr, William L. Irving, Jonathan K. Ball, Louise Berry, Gemma Clark and C. Patrick McClure

5 **Affiliations:**

6 Nottingham University Hospitals, Nottingham, UK (H.C. Howson-Wells, I. Zainuddin, G. Clark)

7 University of Nottingham, Nottingham, UK (T. Tsoleridis, A.W. Tarr, J.K. Ball, C.P. McClure)

8 Nottingham University Hospitals, Nottingham, UK; University of Nottingham, Nottingham, UK  
9 (L. Berry, W.L. Irving)

10 **Abstract—word count 150**

11 Enterovirus D68 (EV-D68) has been recently identified in biennial epidemics coinciding with  
12 diagnoses of non-polio acute flaccid paralysis/myelitis (AFP/AFM). We investigated the  
13 prevalence, genetic relatedness and associated clinical features of EV-D68 in 194 known EV  
14 positive samples from late 2018, UK. EV-D68 was detected in 83 (58%) of the 143 EV positive  
15 samples. Sequencing and phylogenetic analysis revealed an extensive genetic diversity, split  
16 between subclades B3 (n=50) and D1 (n=33), suggesting epidemiologically unrelated infections.  
17 B3 predominated in children and younger adults, and D1 in older adults and the elderly  
18 (p=0.0009). Clinical presentation indicated causation or exacerbation of respiratory distress in  
19 91.4% of EV-D68-positive individuals, principally: cough (75.3%), shortness of breath (56.8%),  
20 coryza (48.1%), wheeze (46.9%), supplemental oxygen required (46.9%) and fever (38.9%).  
21 Clinical features were not distinguished by subclade. Two cases of AFM were observed, one  
22 with EV-D68 detectable in the cerebrospinal fluid, otherwise neurological symptoms were rarely  
23 reported (n=4).

24 **Keywords:** Virology; Enterovirus; Enterovirus 68, Human; EV-D68; Enterovirus 68;

25 Epidemiology, Molecular; genotype; Genetic Epidemiology

26

27 **Address for correspondence:**

28 C. Patrick McClure, University of Nottingham, West Block, A Floor, Queens Medical Centre,

29 Nottingham, NG7 2UH, UK. Phone: +44 115 8231633 e-mail:

30 [patrick.mcclure@nottingham.ac.uk](mailto:patrick.mcclure@nottingham.ac.uk)

31

32

33 **Text—word count 3493**

34 **Introduction**

35 The Enterovirus (EV) genus within the non-enveloped ssRNA Picornaviridae family  
36 includes seven species infecting humans: three rhinovirus species (Rhinovirus A – Rhinovirus C)  
37 and four enterovirus species (Enterovirus A- Enterovirus D) (1). These EV species are further  
38 divided into distinct serotypes, prefixed with ‘A’, ‘B’, ‘C’ or ‘D’ to indicate their species  
39 assignment. Enterovirus infections in humans are caused by in excess of 100 serotypes and  
40 manifest as a diverse array of symptoms from asymptomatic infection to respiratory, epidermal,  
41 gastrointestinal and neurological presentations (2). Globally EV infections represent a  
42 considerable burden of morbidity and mortality (2, 3) and they remain the leading cause of viral  
43 meningitis worldwide.

44 Since its recent re-emergence, enterovirus D68 (EV-D68) has been associated with  
45 biennial (2014, 2016 and 2018) seasonal epidemics of respiratory infections and, more rarely,  
46 acute flaccid myelitis (AFM) across Northern America (4-6), with subsequent identification of  
47 similar patterns globally (7-9). There are limited studies looking at the true burden EV-D68.  
48 Multiple contemporary strains of EV-D68 have been associated with neuropathology in mouse  
49 models following dissemination to the central nervous system (10, 11) with others suggesting  
50 this is a universal EV-D68 phenotype including the archetypal 1962 Fermon strain (12). Despite  
51 its neurotropic nature, EV-D68 is primarily an infection of the respiratory tract and in contrast to  
52 many other enterovirus species, transmission is primarily by airborne routes and fomites (13, 14).  
53 EV-D68 is infrequently found in faeces (15) and is not thought to spread by the faecal-oral route  
54 as it is acid labile (2, 16). There are four identified EV-D68 clades, designated A-D, with  
55 subclades B3 and D1 contemporaneously predominating in global sequence data (8, 17-21).

56 Evidence is emerging to suggest severity of EV-D68 infection is associated with the presence of  
57 other co-morbidities (22); these individuals are more likely to present with complications  
58 associated with EV-D68 infection. This large retrospective study also highlighted an upsurge in  
59 D1 cases in the adult population at a time when B3 and D1 were co-circulating.

60 Serological studies have retrospectively indicated an increasing prevalence of EV-D68  
61 since at least 2006 (13, 23, 24), highlighting a growing importance and foothold in the roster of  
62 common childhood infections. The detection of enterovirus antibodies in the cerebrospinal fluid  
63 (CSF) of patients with an AFM diagnosis (25) provides further evidence to link enterovirus  
64 infection and AFM, however EV-D68 RNA is rarely detected in CSF (7, 26-28)

65 Enterovirus infections are now routinely diagnosed by molecular methods and are further  
66 sub-typed by neutralization or sequence based methods (2). Sequencing of the VP1 gene,  
67 encoding one of four viral capsid proteins, is considered the current diagnostic typing ‘gold-  
68 standard’ (29), rather than the highly conserved 5’ untranslated (5’ UTR) genomic region due to  
69 recombination events observed within this genomic region (30). Perhaps due to the recent re-  
70 emergence of EV-D68 after a period of apparent low prevalence [25, 26], many nucleic acid-  
71 based diagnostic assays perform relatively poorly in the detection of this subtype [27].

72 This study retrospectively re-screened EV positive samples from patients assessed at a  
73 regional UK hospital between September and December 2018, to determine the prevalence,  
74 genetic relatedness and clinical characteristics of EV-D68 infection. Two simple, novel EV-D68-  
75 specific RT-PCR assays were designed for both qualitative detection and sequencing of the VP1  
76 gene. VP1 sequences were compared to the entire EV-D68 global dataset and clinical  
77 characteristics audited to assess clade phenotype.

78 **Methods**

79 *Specimens and ethics*

80 Original samples previously underwent routine diagnostic testing for EV RNA by  
81 Nottingham University Hospitals (NUH) Clinical Microbiology department, East Midlands, UK,  
82 between 2nd September and 15th December 2018. This included total nucleic acid (TNA)  
83 extraction (bioMérieux™ NucliSENS® easyMAG® system) in a 50 µl elution volume and EV  
84 RNA detection by the AusDiagnostics Respiratory Viruses (16-well) (REF 20602) and/or Viral  
85 8-well (Ref 27093) assays for the High-Plex 24 system (REF 9150). All TNA extracts were  
86 subsequently stored at -80°C.

87 To prevent bias on analysis, TNA extracts were deduplicated to ensure only one  
88 specimen per patient was included with neurological panel positives preferentially retained. If  
89 multiple TNA extracts were available from the same anatomical site, the earliest TNA extract  
90 was selected. All available residual TNA extracts of sufficient volume were included here  
91 (n=194) and derived from: throat swabs (n=117) and nasopharyngeal aspirates (n=41), swabs  
92 from other sites (n=19), CSF (n=7), sputum (n=4), faeces (n=2), bronchiolar lavage (n=2), whole  
93 blood (n=1) and endotracheal secretions (n=1). Ethical approval for the use of residual material  
94 and association with anonymized patient information was locally approved under the  
95 Nottingham Health Science Biobank Research Tissue Bank, REC reference 15/NW/0685.

96 *RT-PCR, Primer Design and sequencing*

97 cDNA was synthesized and amplified from TNA extracts as previously described (31).  
98 Samples were targeted with a generic 5' UTR based assay generating a ~480 bp product as  
99 previously described (31, 32), and two novel EV-D68 specific assays: EV-D68 assay primers  
100 were designed following alignment of all available complete EV-D68 genomes (n=348)  
101 published on Genbank by November 2018 (NCBI:txid42789). Two overlapping amplicons were

102 generated to ensure full coverage of the EV-D68 VP1 gene: primers D68\_1442F  
103 (CCCTGATAATACCTTGGATYAGTGG) combined with D68\_2267R  
104 (GCTGARTTAATRCACATAAARGGTAT) and D68\_2167F  
105 (GACACTNCARGCAATGTTYGT) with D68\_2762R  
106 (CCTGTRTTRCAYTTRCAYCTTGCTAT) generated circa 820bp and 600bp products  
107 respectively. PCR products of expected size were diluted 1:10 in molecular grade water and  
108 subjected to Sanger sequencing (Source BioScience, UK) with primers D68\_2267R and  
109 D68\_2167F as appropriate. Sequence identity was assessed using NCBI Standard Nucleotide  
110 BLAST (BLASTn) and the Genome Detective online Enterovirus Genotyping Tool (Version 2.9)  
111 (33). Complete VP1 sequences were uploaded to Genbank under accession numbers MZ576283  
112 - MZ576352.

### 113 *Phylogenetic and statistical analyses*

114 All publicly available complete VP1 sequences were retrieved from Genbank in June  
115 2021 and aligned with the study sequences using Geneious Prime 2019.2.3. A phylogenetic tree  
116 was constructed from the alignment in IQTREE2 (34) by the Maximum Likelihood method with  
117 the GTR+F+I model and 1000 SH-aLRT bootstraps. Clinical features were compared by  
118 genotype using a binary logistic regression model in GraphPad Prism v.9.2.0.

## 119 **Results**

### 120 *Enteroviral epidemiology in Nottingham, UK, Autumn 2018*

121 The AusDiagnostics respiratory virus panel allows for non-specific detection of both  
122 rhinovirus (RV) and enterovirus (non-differentiated dual target: RV/EV), and specific detection  
123 of EV, in TNA. Detection of RV/EV and EV in respiratory specimens increased from week 36 of  
124 2018 (early September) and EV diagnoses remained elevated until week 45 (November, Figure

125 1). RV/EV numbers remained high after the decline in EV, as had been seen for the  
126 corresponding period of 2017 (data not shown). Retrospective analysis of EV positive TNA was  
127 performed on samples received for routine testing during this peak period of 2018, between  
128 weeks 36 and 50 inclusively. In total, 308 positive patients were identified, of which 194 residual  
129 TNA extracts had sufficient volume for further analysis.

130 To investigate the prevalence of EV-D68 in the cohort, two novel EV-D68 specific  
131 primer combinations, amplifying the VP1 capsid gene, were utilized. An additional novel pan-  
132 enterovirus specific control assay targeting the conserved 5' UTR region was also employed  
133 (31).

134 Of these 194 EV clinical-assay-positive extracts, our study assays confirmed EV in 143  
135 (73.7%). Of the confirmed EV positive samples, EV-D68 RNA was detected in 58.0% of cases  
136 (n=83) as determined by sequencing of products from either or both VP1 study assays.

137 The diagnostic results for the 51 (26.3%) TNA extracts where EV RNA was not detected  
138 by our in-house EV assays were reviewed. All had either a high ratio of combined RV/EV viral  
139 load to EV specific viral load, indicating potential cross-reactivity with rhinoviruses in the EV  
140 specific AusDiagnostics assays, three of which were confirmed by sequencing; or alternatively a  
141 low EV value on initial screening, suggesting a low EV viral load in the original sample below  
142 the lower limit of detection of the study assays or degradation of RNA within the TNA extract on  
143 repeat freeze thaw.

144 *Enterovirus D68 epidemiology, 2018 weeks 36 to 50*

145 All amplicons were sequenced by Sanger and typed using the Genome Detective online  
146 tool (33). A full VP1 sequence was amplified and used for subsequent phylogenetic analysis in  
147 70 of 83 (84.3 %) samples but sequencing of a partial VP1 region in isolation still allowed for

148 successful subtyping. Co-circulation of two EV-D68 subclades was observed as reported  
149 concurrently elsewhere in Europe (18-20), with 50 subclade B3 and 33 subclade D1 positives  
150 identified (Figure 2). EV-D68 B3 predominated in the peak epidemic period of weeks 40 and 41,  
151 whilst strains belonging to the less prevalent subclade D1 were present throughout the study  
152 period, with peaks seen in weeks 38 and 43 (Figure 2).

153 Patients with EV-D68 B3 were significantly younger than those infected with subclade  
154 D1 (p value = 0.0009, Table 1) with 64.0 % (n=32) of B3 positive patients  $\leq$ 18 years of ages, and  
155 78.1 % (n=25) of those patients under five years (figure 3). In contrast, 91% (n=30) of patients  
156 with EV-D68 subclade D1 were >18 years, with the majority (75.6%, n=25) of patients aged 45  
157 years and over (Figure 3).

#### 158 *Clinical features of EV-D68 positive patients*

159 Detailed clinical information was available for 81 of 83 EV-D68 positive individuals and  
160 analysis of a range of these features associated with either EV-D68 genotype D1 or genotype B3  
161 was performed using binary logistic regression (Table 1). This regression model indicated that  
162 greater age was associated with EV-D68 D1 infection, while immunocompromise significantly  
163 associated with B3 infection. Overall, the model correctly predicted 85.19% of cases.

164 Respiratory symptoms were present for 91.4 % of patients, most commonly a cough (75.3%),  
165 shortness of breath (56.8%), coryza (48.1%), wheeze and a requirement for oxygen (both  
166 46.9%). Fever was also frequently reported (38.3%) as were co-morbidities (56.8%).

167 Neurological symptoms were reported in only four cases (4.9%), including two cases of AFM,  
168 one in a young adult and the other in a 1-year old child. In both cases EV-D68 clade B3 was  
169 detected; in the CSF of the adult and, unusually, in the faeces of the paediatric AFM case. No  
170 other CSF or faecal samples in the study period were found to be EV-D68 positive. The adult



171 AFM patient required intensive care as did five other patients – another young adult and four  
172 children aged 0-9 years. All five patients were infected with EV-D68 clade B3.  
173 *Genetic epidemiology of Enterovirus D68 in Nottingham, UK, between September and December*  
174 *2018*

175 To investigate the genetic relationship of the study EV-D68 strains, a phylogenetic tree  
176 with our 70 complete VP1 sequences and the entire available global dataset of c.1500 sequences  
177 (Supplementary Figure 1) was constructed. Clade D1 VP1 sequences presented as a closely  
178 related group within the total dataset (Figure 4), whilst B3 sequences were split across two  
179 distinct phyletic groups (Figure 5 and 6).

180 The VP1 subtree harbouring all the D1 sequences from this study (Figure 4) was most  
181 closely out-grouped, yet distinct from, both prior-2016 isolates from East Asia (e.g. MH780679  
182 and KY358058), a contemporary 2018 French sample (MK121713 (19)) and later-2019 isolates  
183 from Europe (e.g. LR743441 (17)). The subtree containing all 30 full-length VP1 D1 sequences  
184 from this study and 39 database references could be subdivided into two further phyletic groups.  
185 The first (Figure 4, lower half) contained exclusively contemporary European isolates from  
186 investigations in France and Italy ((18, 19), whereas the other (Figure 4, upper half) additionally  
187 contained a well-supported subgroup with four 2017 sequences from the USA and Hong Kong, a  
188 2018 French isolate (MK121728 (19)) and a single Nottingham sequence. Interestingly, this  
189 latter patient (NUH\_EVD68\_60) was the only one in the cohort to report recent travel history to  
190 East Asia. Our study sequences frequently shared a closer genetic relationship with  
191 contemporary isolates from continental Europe than with each other. For example, samples  
192 NUH\_EVD68\_21, 23 & 25 were all sampled within 24 hours of each other, yet appeared in

193 discrete, well-supported regions of the tree with a closer genetic identity to various European  
194 isolates than each other (Figure 4).

195 The Nottingham EV-D68 B3 sequences (Figures 5 and 6) presented a similar picture of  
196 co-mingling with contemporary European isolates, with for example NUH\_EVD68\_34 residing  
197 in a well-supported cluster of EV-D68 B3 sequences with three French and one Italian strain  
198 (Figure 6). Whereas the chronologically adjacent UK sequence NUH\_EVD68\_33 sampled on the  
199 previous day, appeared in an entirely different but equally well-supported sub-clade of B3  
200 (Figure 5).

201 Recent travel history was also noted for other patients in both clades (NUH\_EVD68\_4, 7,  
202 20 & 27, Figures 4-6). Of note, NUH\_EVD68\_20 (Figure 6), with recent Spanish travel history,  
203 presented in a distinct supported phyletic group with four Chinese sequences from 2016 and  
204 2017 (35). The other cases, with travel histories to the USA, Denmark and Spain did not present  
205 any distinctive sub-groupings with reference sequences. However, NUH\_EVD68\_4 (Figure 6),  
206 also with recent Spanish travel history, presented an identical VP1 sequence to NUH\_EVD68\_15  
207 received 13 days later. Both these patients were 5 years old and shared the same hometown and  
208 outer UK postcode. There were eight other instances of identical pairs or clusters of study  
209 sequences, but clinical details did not suggest a direct familial or geographical association. Most  
210 were relatively closely sampled in time, but NUH\_EVD68\_35 and 65 were received two months  
211 apart in different but adjacent UK outer postcodes.

212 Taken together, these observations would suggest both Europe-wide and local circulation  
213 of multiple strains of both B3 and D1 clades underlying the Autumn 2018 EV-D68 epidemic.

## 214 **Discussion**

215 Enteroviruses can cause a wide range of severe clinical manifestations, notably in young  
216 children and are a leading cause of meningitis globally (2). Continued surveillance of  
217 enteroviruses within the UK despite the elimination of Polio is still highly relevant, notably  
218 highlighted by the recent resurgence and recurrent epidemic seasonality of EV-D68 with  
219 associated AFM globally and nationally in the UK (36-39).

220 Growing recognition of AFM and enteroviral association in Autumn 2018 prompted us to  
221 further investigate enterovirus positive samples using novel in house RT-PCR assays and Sanger  
222 sequencing. Whilst this approach is well established and more recently over-shadowed by whole  
223 genome sequencing using deep sequencing methods, it provides a flexible, inexpensive and fast  
224 route to enteroviral typing and epidemiology in a clinical setting.

225 We found a significant burden of EV-D68 infection in our 2018 study period between  
226 September and December, coinciding with an overall increase in EV/RV positivity, responsible  
227 for 58.0% of 143 confirmed enteroviral positives, over ten-fold higher than its overall recent EU  
228 prevalence of 4.53% (2). It is difficult to determine the context of this spike in EV-D68 positivity  
229 locally, relative to both the rest of 2018 and other years, without routine typing of all enterovirus  
230 positive respiratory samples in addition to the more frequently assessed neurological symptom-  
231 associated enteroviral infections (2, 26, 31, 40). EV-D68 is an endemic infection maintained in  
232 the population and is still detected in Europe out of the currently expected biennial peak years  
233 (17), but resources were not available to routinely type respiratory samples outside of our  
234 focused study period.

235 We targeted the highly variable and type-indicative enteroviral VP1 region (26) with  
236 novel primers specific to EV-D68 to not only discriminate EV-D68 infection (no cross-reactivity  
237 was observed with other enteroviruses), but also determine the relative contribution by

238 circulating clades. To our knowledge, this allows us to present the largest fully typed EV-D68  
239 cohort from a single centre and epidemic season. Whilst both clades were present throughout our  
240 sampling period, an approximately 60:40 predominance of clade B3 relative to D1 was observed.  
241 This was the reverse of clade prevalence seen in other European studies of the 2018 EV-D68  
242 season in France (19) and Italy (18), but in agreement with other investigations of previous  
243 seasons in France (20), Italy (21) and more generally in Europe post-2018 (17).

244 Universal typing and relatively large cohort size enabled us to investigate EV-D68 clade  
245 association with clinical characteristics with more statistical power than most other studies to  
246 date. Here we found a highly significant association between age and clade type, with clade B3  
247 predominantly affecting children and adolescents, whilst conversely D1 was seen in older adults  
248 and the elderly. This finding is in agreement with previous observations (8, 19, 21), but only one  
249 other study of sufficient size and scope to assign statistical significance (41).

250 EV-D68 seroprevalence in adults is almost universal with primary infection seen  
251 frequently in the first two years of life (23, 24). The predominance of the novel D1 clade in  
252 hospitalized older adults may indicate an evolutionary adaptation of EV-D68 to evade a pre-  
253 existing immune response and facilitate repeat infection. Recent and rapid evolution of antigenic  
254 regions of the outer viral capsid corresponding to neutralizing epitopes has been suggested to be  
255 implicated (8, 21, 41). Lineage specific protection determined by a primary infection influencing  
256 virus-type age distribution has been described for several other viral infections, notably Influenza  
257 A and B (42, 43).

258 Despite the significant differences in age profile for each clade and our cohort size, no  
259 difference was seen in clinical presentations recorded, in agreement with others (20). The general  
260 clinical picture of symptoms indicative of both upper and lower respiratory tract infections was

261 consistent with other studies (18, 19, 21, 28, 44). Although all severe cases, including those with  
262 neurological involvement such as AFM, presented with clade B3, their infrequency prevents  
263 robust analysis and all were in younger individuals shown to be more likely infected by clade  
264 B3. Indeed AFM is not restricted to the B3 clade (4, 45, 46) and is perhaps more likely  
265 associated with the predominant local strain infecting a naïve population and overall infection  
266 rates, rather than recently acquired properties as hypothesized by some (46) and thus not a  
267 recently acquired phenotype (12).

268         Perhaps more notable in both of the AFM cases was the infrequently reported viral  
269 genome detection in CSF and faeces, with EV-D68 being a predominantly respiratory pathogen  
270 and thus typically detected by sampling the respiratory tract (2, 47). This finding supports a role  
271 for viral replication disseminated from the respiratory tract in EV-D68-associated AFM,  
272 although EV-D68 detection in sewage in the UK (48) and elsewhere (49) suggests faecal  
273 shedding may not be an unusual feature of infection in general.

274         We observed a considerable genetic diversity within the VP1 regions of both the B3 and  
275 D1 clades within our single epidemic season analysis, consistent and co-mingling with other  
276 contemporary European cohorts (18, 19). In conjunction with the post-summer spike in case  
277 incidence, this is suggestive of a high level of community infection seeded by many regional  
278 and international introductions as described in more detail elsewhere (41) and foreshadowing  
279 SARS-CoV-2 pandemic dynamics (50). Our complete VP1 sequencing in conjunction with a  
280 detailed clinical audit provides greater granularity than many other studies. Notably an individual  
281 with immediate East Asian travel history presented an EV-D68 VP1 sequence distinct from any  
282 other European isolates recorded to date, suggesting direct intercontinental importation. Other  
283 cases with recent summer travel history in Europe, combined with well-supported genetically

284 related sequences from both Europe and the immediate local neighbourhood, are anecdotally  
285 suggestive of acquisition on holiday and onward transmission thereafter. Another case with  
286 Spanish travel history clustered exclusively with sequences from previous years in China,  
287 suggestive of considerable yet undetected intercontinental and international transmission chains  
288 occurring.

289         However, with minimal global surveillance in comparison to that seen with SARS-CoV-  
290 2, assessing onward transmission from such introductions is difficult to definitely ascertain in the  
291 short term, with prevailing introductions apparent only in subsequent epidemic periods. Yet  
292 despite this lack of resolution, EV-D68 VP1 sequencing assured local infection control teams in  
293 retrospect that individuals sharing hospital wards did not harbour genetically identical viruses  
294 and thus nosocomial transmission was unlikely and infection prevention measures in place were  
295 effective.

296         We acknowledge several limitations in the work presented, principally the relatively short  
297 single time-period assessed. Continuous and routine typing of all candidate EV positive  
298 specimens received from an earlier outset would have provided a more complete picture and  
299 understanding of the evolving local EV-D68 burden. We thus could not assign a start and end  
300 point to our EV-D68 epidemic season. Recent initiatives such as the European non-polio  
301 enterovirus network (26, 36, 40) to which NUH NHS Trust Clinical Microbiology have  
302 contributed, will undoubtedly assist in increasing such surveillance. Working retrospectively  
303 with available diagnostic surplus further reduced both the sampling in the selected time period  
304 and also generally meant only single patient samples were available, thus for example general  
305 faecal shedding from patients with respiratory symptoms could not be investigated. We also may  
306 have overlooked some low titre EV-D68 positive patients by not re-screening routine diagnostic

307 assay negative samples. Sub-optimal performance in diagnosing EV-D68 and other EV by our  
308 chosen routine diagnostic assay and others has indeed been observed (40).

309 In summary, EV-D68 contributed significantly to the burden of enteroviral respiratory  
310 disease treated at our regional UK hospital between September and December 2018. Underlying  
311 this period of high prevalence were genetically distinct strains of clade B3 and D1 EV-D68,  
312 which differed in their infected host's age group, but not in clinical presentation. Despite  
313 considerable contemporary concern and focus on the severe associated outcomes of EV-D68  
314 infection, ultimately confirmed AFM cases were rare even in this largely hospitalized cohort.  
315 Nevertheless, the apparently increasing burden of EV-D68 and diverse, rapidly evolving genome  
316 demands continued heightened surveillance.

### 317 **Acknowledgments**

318 None to report

### 319 **Disclaimers**

320 None to report

### 321 **Funding**

322 No external funding was received for this study.

### 323 **Conflicts of interest**

324 The authors have no relevant conflicts as outlined by the ICMJE to declare.

### 325 **References**

- 326 1. Simmonds P, Gorbalenya AE, Harvala H, Hovi T, Knowles NJ, Lindberg AM, et al.  
327 Recommendations for the nomenclature of enteroviruses and rhinoviruses. Arch Virol.  
328 2020 Mar;165(3):793-7.

- 329 2. Bubba L, Broberg EK, Jasir A, Simmonds P, Harvala H, Enterovirus study c. Circulation  
330 of non-polio enteroviruses in 24 EU and EEA countries between 2015 and 2017: a  
331 retrospective surveillance study. *Lancet Infect Dis.* 2019 Dec 20.
- 332 3. Pons-Salort M, Grassly NC. Serotype-specific immunity explains the incidence of  
333 diseases caused by human enteroviruses. *Science.* 2018 Aug 24;361(6404):800-3.
- 334 4. Greninger AL, Naccache SN, Messacar K, Clayton A, Yu G, Somasekar S, et al. A novel  
335 outbreak enterovirus D68 strain associated with acute flaccid myelitis cases in the USA  
336 (2012-14): a retrospective cohort study. *Lancet Infect Dis.* 2015 Jun;15(6):671-82.
- 337 5. Eshaghi A, Duvvuri VR, Isabel S, Banh P, Li A, Peci A, et al. Global Distribution and  
338 Evolutionary History of Enterovirus D68, with Emphasis on the 2014 Outbreak in  
339 Ontario, Canada. *Front Microbiol.* 2017;8:257.
- 340 6. Messacar K, Schreiner TL, Maloney JA, Wallace A, Ludke J, Oberste MS, et al. A  
341 cluster of acute flaccid paralysis and cranial nerve dysfunction temporally associated with  
342 an outbreak of enterovirus D68 in children in Colorado, USA. *Lancet.* 2015 Apr  
343 25;385(9978):1662-71.
- 344 7. Kirolos A, Mark K, Shetty J, Chinchankar N, McDougall C, Eunson P, et al. Outcome of  
345 paediatric acute flaccid myelitis associated with enterovirus D68: a case series. *Dev Med  
346 Child Neurol.* 2019 Mar;61(3):376-80.
- 347 8. Lau SK, Yip CC, Zhao PS, Chow WN, To KK, Wu AK, et al. Enterovirus D68 Infections  
348 Associated with Severe Respiratory Illness in Elderly Patients and Emergence of a Novel  
349 Clade in Hong Kong. *Sci Rep.* 2016 Apr 28;6:25147.



- 350 9. Gong YN, Yang SL, Shih SR, Huang YC, Chang PY, Huang CG, et al. Molecular  
351 evolution and the global reemergence of enterovirus D68 by genome-wide analysis.  
352 *Medicine (Baltimore)*. 2016 Aug;95(31):e4416.
- 353 10. Hixon AM, Yu G, Leser JS, Yagi S, Clarke P, Chiu CY, et al. A mouse model of  
354 paralytic myelitis caused by enterovirus D68. *PLoS Pathog*. 2017 Feb;13(2):e1006199.
- 355 11. Brown DM, Hixon AM, Oldfield LM, Zhang Y, Novotny M, Wang W, et al.  
356 Contemporary Circulating Enterovirus D68 Strains Have Acquired the Capacity for Viral  
357 Entry and Replication in Human Neuronal Cells. *mBio*. 2018 Oct 16;9(5).
- 358 12. Rosenfeld AB, Warren AL, Racaniello VR. Neurotropism of Enterovirus D68 Isolates Is  
359 Independent of Sialic Acid and Is Not a Recently Acquired Phenotype. *mBio*. 2019 Oct  
360 22;10(5).
- 361 13. Vogt MR, Crowe JE, Jr. Current Understanding of Humoral Immunity to Enterovirus  
362 D68. *J Pediatric Infect Dis Soc*. 2018 Dec 26;7(suppl\_2):S49-S53.
- 363 14. Oberste MS, Maher K, Schnurr D, Flemister MR, Lovchik JC, Peters H, et al.  
364 Enterovirus 68 is associated with respiratory illness and shares biological features with  
365 both the enteroviruses and the rhinoviruses. *J Gen Virol*. 2004 Sep;85(Pt 9):2577-84.
- 366 15. Levy A, Roberts J, Lang J, Tempone S, Kesson A, Dofai A, et al. Enterovirus D68  
367 disease and molecular epidemiology in Australia. *J Clin Virol*. 2015 Aug;69:117-21.
- 368 16. Foster CB, Friedman N, Carl J, Piedimonte G. Enterovirus D68: a clinically important  
369 respiratory enterovirus. *Cleve Clin J Med*. 2015 Jan;82(1):26-31.
- 370 17. Midgley SE, Benschop K, Dyrdak R, Mirand A, Bailly JL, Bierbaum S, et al. Co-  
371 circulation of multiple enterovirus D68 subclades, including a novel B3 cluster, across  
372 Europe in a season of expected low prevalence, 2019/20. *Euro Surveill*. 2020 Jan;25(2).

- 373 18. Pellegrinelli L, Giardina F, Lunghi G, Uceda Renteria SC, Greco L, Fratini A, et al.  
374 Emergence of divergent enterovirus (EV) D68 sub-clade D1 strains, northern Italy,  
375 September to October 2018. *Euro Surveill.* 2019 Feb;24(7).
- 376 19. Bal A, Sabatier M, Wirth T, Coste-Burel M, Lazrek M, Stefic K, et al. Emergence of  
377 enterovirus D68 clade D1, France, August to November 2018. *Euro Surveill.* 2019  
378 Jan;24(3).
- 379 20. Kramer R, Sabatier M, Wirth T, Pichon M, Lina B, Schuffenecker I, et al. Molecular  
380 diversity and biennial circulation of enterovirus D68: a systematic screening study in  
381 Lyon, France, 2010 to 2016. *Euro Surveill.* 2018 Sep;23(37).
- 382 21. Piralla A, Principi N, Ruggiero L, Girello A, Giardina F, De Sando E, et al. Enterovirus-  
383 D68 (EV-D68) in pediatric patients with respiratory infection: The circulation of a new  
384 B3 clade in Italy. *J Clin Virol.* 2018 Feb - Mar;99-100:91-6.
- 385 22. Duval M, Mirand A, Lesens O, Bay JO, Caillaud D, Gallot D, et al. Retrospective Study  
386 of the Upsurge of Enterovirus D68 Clade D1 among Adults (2014-2018). *Viruses.* 2021  
387 Aug 13;13(8).
- 388 23. Kamau E, Harvala H, Blomqvist S, Nguyen D, Horby P, Pebody R, et al. Increase in  
389 Enterovirus D68 Infections in Young Children, United Kingdom, 2006-2016. *Emerg*  
390 *Infect Dis.* 2019 Jun;25(6):1200-3.
- 391 24. Harrison CJ, Weldon WC, Pahud BA, Jackson MA, Oberste MS, Selvarangan R.  
392 Neutralizing Antibody against Enterovirus D68 in Children and Adults before 2014  
393 Outbreak, Kansas City, Missouri, USA(1). *Emerg Infect Dis.* 2019 Mar;25(3):585-8.

- 394 25. Mishra N, Ng TFF, Marine RL, Jain K, Ng J, Thakkar R, et al. Antibodies to  
395 Enteroviruses in Cerebrospinal Fluid of Patients with Acute Flaccid Myelitis. *mBio*. 2019  
396 Aug 13;10(4).
- 397 26. Harvala H, Broberg E, Benschop K, Berginc N, Ladhani S, Susi P, et al.  
398 Recommendations for enterovirus diagnostics and characterisation within and beyond  
399 Europe. *J Clin Virol*. 2018 Apr;101:11-7.
- 400 27. Bowers JR, Valentine M, Harrison V, Fofanov VY, Gillece J, Delisle J, et al. Genomic  
401 Analyses of Acute Flaccid Myelitis Cases among a Cluster in Arizona Provide Further  
402 Evidence of Enterovirus D68 Role. *mBio*. 2019 Jan 22;10(1).
- 403 28. Wang H, Diaz A, Moyer K, Mele-Casas M, Ara-Montojo MF, Torrus I, et al. Molecular  
404 and Clinical Comparison of Enterovirus D68 Outbreaks among Hospitalized Children,  
405 Ohio, USA, 2014 and 2018. *Emerg Infect Dis*. 2019 Nov;25(11):2055-63.
- 406 29. Nix WA, Oberste MS, Pallansch MA. Sensitive, seminested PCR amplification of VP1  
407 sequences for direct identification of all enterovirus serotypes from original clinical  
408 specimens. *J Clin Microbiol*. 2006 Aug;44(8):2698-704.
- 409 30. Simmonds P, Welch J. Frequency and dynamics of recombination within different  
410 species of human enteroviruses. *J Virol*. 2006 Jan;80(1):483-93.
- 411 31. Howson-Wells HC, Winckles S, Alikier C, Tarr AW, Irving WL, Clark G, et al.  
412 Enterovirus subtyping in a routine UK laboratory setting between 2013 and 2017. *J Clin*  
413 *Virol*. 2020 Nov;132:104646.
- 414 32. Dierssen U, Rehren F, Henke-Gendo C, Harste G, Heim A. Rapid routine detection of  
415 enterovirus RNA in cerebrospinal fluid by a one-step real-time RT-PCR assay. *J Clin*  
416 *Virol*. 2008 May;42(1):58-64.

- 417 33. Kroneman A, Vennema H, Deforche K, v d Avoort H, Penaranda S, Oberste MS, et al.  
418 An automated genotyping tool for enteroviruses and noroviruses. *J Clin Virol*. 2011  
419 Jun;51(2):121-5.
- 420 34. Minh BQ, Schmidt HA, Chernomor O, Schrempf D, Woodhams MD, von Haeseler A, et  
421 al. IQ-TREE 2: New Models and Efficient Methods for Phylogenetic Inference in the  
422 Genomic Era. *Mol Biol Evol*. 2020 May 1;37(5):1530-4.
- 423 35. Tang SH, Yuan Y, Xie ZH, Chen MJ, Fan XD, Guo YH, et al. Enterovirus D68 in  
424 hospitalized children with respiratory symptoms in Guangdong from 2014 to 2018:  
425 Molecular epidemiology and clinical characteristics. *J Clin Virol*. 2021 Aug;141:104880.
- 426 36. Fischer TK, Simmonds P, Harvala H. The importance of enterovirus surveillance in a  
427 post-polio world. *Lancet Infect Dis*. 2021 Jul 12.
- 428 37. Carrion Martin AI, Pebody RG, Danis K, Ellis J, Niazi S, S DEL, et al. The emergence of  
429 enterovirus D68 in England in autumn 2014 and the necessity for reinforcing enterovirus  
430 respiratory screening. *Epidemiol Infect*. 2017 Jul;145(9):1855-64.
- 431 38. Park SW, Pons-Salort M, Messacar K, Cook C, Meyers L, Farrar J, et al. Epidemiological  
432 dynamics of enterovirus D68 in the United States and implications for acute flaccid  
433 myelitis. *Sci Transl Med*. 2021 Mar 10;13(584).
- 434 39. The United Kingdom Acute Flaccid Paralysis Afp Task F. An increase in reports of acute  
435 flaccid paralysis (AFP) in the United Kingdom, 1 January 2018-21 January 2019: early  
436 findings. *Euro Surveill*. 2019 Feb;24(6).
- 437 40. Hayes A, Nguyen D, Andersson M, Anton A, Bailly JL, Beard S, et al. A European  
438 multicentre evaluation of detection and typing methods for human enteroviruses and  
439 parechoviruses using RNA transcripts. *J Med Virol*. 2019 Dec 28.

- 440 41. Hodcroft EB, Dyrdak R, Andrés C, Egli A, Reist J, García Martínez de Artola D, et al.  
441 Evolution, geographic spreading, and demographic distribution of Enterovirus D68.  
442 bioRxiv. 2020:2020.01.10.901553.
- 443 42. Vieira MC, Donato CM, Arevalo P, Rimmelzwaan GF, Wood T, Lopez L, et al. Lineage-  
444 specific protection and immune imprinting shape the age distributions of influenza B  
445 cases. *Nat Commun.* 2021 Jul 14;12(1):4313.
- 446 43. Gostic KM, Ambrose M, Worobey M, Lloyd-Smith JO. Potent protection against H5N1  
447 and H7N9 influenza via childhood hemagglutinin imprinting. *Science.* 2016 Nov  
448 11;354(6313):722-6.
- 449 44. Schuster JE, Selvarangan R, Hassan F, Briggs KB, Hays L, Miller JO, et al. Clinical  
450 Course of Enterovirus D68 in Hospitalized Children. *Pediatr Infect Dis J.* 2017  
451 Mar;36(3):290-5.
- 452 45. Kaida A, Iritani N, Yamamoto SP, Kanbayashi D, Hirai Y, Togawa M, et al. Distinct  
453 genetic clades of enterovirus D68 detected in 2010, 2013, and 2015 in Osaka City, Japan.  
454 *PLoS One.* 2017;12(9):e0184335.
- 455 46. Zhang Y, Cao J, Zhang S, Lee AJ, Sun G, Larsen CN, et al. Genetic changes found in a  
456 distinct clade of Enterovirus D68 associated with paralysis during the 2014 outbreak.  
457 *Virus Evol.* 2016 Jan;2(1):vew015.
- 458 47. Chong PF, Kira R, Mori H, Okumura A, Torisu H, Yasumoto S, et al. Clinical Features  
459 of Acute Flaccid Myelitis Temporally Associated With an Enterovirus D68 Outbreak:  
460 Results of a Nationwide Survey of Acute Flaccid Paralysis in Japan, August-December  
461 2015. *Clin Infect Dis.* 2018 Feb 10;66(5):653-64.

- 462 48. Majumdar M, Martin J. Detection by Direct Next Generation Sequencing Analysis of  
 463 Emerging Enterovirus D68 and C109 Strains in an Environmental Sample From  
 464 Scotland. *Front Microbiol.* 2018;9:1956.
- 465 49. Weil M, Mandelboim M, Mendelson E, Manor Y, Shulman L, Ram D, et al. Human  
 466 enterovirus D68 in clinical and sewage samples in Israel. *J Clin Virol.* 2017 Jan;86:52-5.
- 467 50. du Plessis L, McCrone JT, Zarebski AE, Hill V, Ruis C, Gutierrez B, et al. Establishment  
 468 and lineage dynamics of the SARS-CoV-2 epidemic in the UK. *Science.* 2021 Feb  
 469 12;371(6530):708-12.

## 470 Tables

471 Table 1. Clinical features of EV-D68 patients, Nottingham, UK, Autumn 2018

Characteristic	All EV-D68		EV-D68 B3		EV-D68 D1		Odds ratio range	95% CI	p value
<b>Age range</b>	23 days to 92 years		23 days to 92 years (median 4.5 years)		8 months to 89 years (median 56 years)		1.1	1.037 to 1.136	<b>0.000</b> *** <b>9</b>
	<i>n</i>	%	<i>n</i>	%	<i>n</i>	%			
<b>Female gender</b>	44	54.3	24	48	20	64.5	0.5	0.092 to 2.124	0.310 1 <i>ns</i>
<b>Respiratory symptoms</b>	74	91.4	46	92	28	90.3	1.1	0.068 to 19.91	0.928 <i>ns</i>
<b>Cough</b>	61	75.3	37	74	24	77.4	4.1	0.502 to 37.37	0.188 5 <i>ns</i>
<b>Shortness of breath</b>	46	56.8	29	58	17	54.8	2.2	0.422 to 13.05	0.347 8 <i>ns</i>
<b>Coryza</b>	39	48.1	29	58	10	32.3	0.9	0.181 to 4.801	0.945 7 <i>ns</i>
<b>Wheeze</b>	38	46.9	28	56	10	32.3	7.0	1.022 to 67.29	0.062 <i>ns</i>
<b>Oxygen</b>	38	46.9	25	50	13	41.9	0.4	0.069 to 2.231	0.314 3 <i>ns</i>
<b>Sore throat</b>	8	9.9	4	8	4	12.9	4.9	0.482 to 66.36	0.193 <i>ns</i>
<b>Bronchiolitis</b>	8	9.9	6	12	2	6.5	12.6	0.941 to 207.0	0.055 4 <i>ns</i>
<b>Pneumonia</b>	7	8.6	1	2	6	19.4	1.7	0.098 to 67.89	0.724 2 <i>ns</i>
<b>Fever</b>	31	38.3	19	38	12	38.7	0.6	0.124 to 2.928	0.550 2 <i>ns</i>
<b>Suspected sepsis</b>	7	8.6	5	10	2	6.5	0.0	0.0005 to 1.100	0.078 9 <i>ns</i>
<b>Co-morbidities</b>	46	56.8	23	46	23	74.2	3.1	0.627 to 19.11	0.183 8 <i>ns</i>
<b>Neurological</b>	4	4.9	3	6	1	3.2	0.8	0.017 to	0.878 <i>ns</i>

<b>symptoms</b>								19.74	
<b>Immunocompromised</b>	14	17.3	9	18	5	16.1	0.1	0.004 to 0.4574	<b>0.015</b> *
<b>Total</b>	<b>81</b>		<b>50</b>		<b>31</b>				<b>5</b>

*Clinical parameters were determined from existing clinical records on each patient. Data with continuous variables, and categorical variables (including comorbidities, presence of fever, presence of neurological symptoms, and previous evidence of immunocompromise) were included in a binary logistic regression model. ns = non-significant, CI = confidence interval*

472

## 473 **Figure Legends**

474 Figure 1: The number of respiratory specimens from which rhinovirus/enterovirus (RV/EV) and  
475 enterovirus (EV; species A-D) were detected between 2018 week 32 and 2019 week 3, as  
476 reported by NUH NHS Trust, Nottingham, UK. TNA from samples received from weeks 36 to  
477 50 (marked by dashed lines) were subjected to further analysis.

478

479 Figure 2: EV-D68 prevalence by individual patient and clade, from weeks 36 to 50 of 2018 at  
480 NUH NHS Trust, Nottingham UK.

481

482 Figure 3: Age distribution of patients infected with EV-D68, stratified by subclade (B3 and D1).

483

484 Figure 4: Phylogenetic relationship by maximum likelihood method of Nottingham, UK, 2018  
485 complete EV-D68 VP1 sequences (927-930 bp) designated genotype D1 (colored in red) with all  
486 closely related publically available genomes retrieved from Genbank in June 2021 (identified by  
487 accession number). The phylogeny depicted is a subtree of a complete tree with entire study and  
488 global sequence dataset presented in the appendix (Supplementary Figure 1). Numbers above  
489 individual branches indicate SH-aLRT bootstrap support, with values less than 70 not shown.  
490 Branch lengths are drawn to a scale of nucleotide substitutions per site, with scale indicated.

491

492 Figure 5: Phylogenetic relationship by maximum likelihood method of Nottingham, UK, 2018  
493 complete EV-D68 VP1 sequences (927-930 bp) designated genotype B3, subgroup 1 (coloured  
494 in red) with all closely related publically available genomes retrieved from Genbank in June  
495 2021 (identified by accession number). The phylogeny depicted is a subtree of a complete tree  
496 with entire study and global sequence dataset presented in the appendix (Supplementary Figure  
497 1). Numbers above individual branches indicate SH-aLRT bootstrap support, with values less  
498 than 70 not shown. Branch lengths are drawn to a scale of nucleotide substitutions per site, with  
499 scale indicated.

500

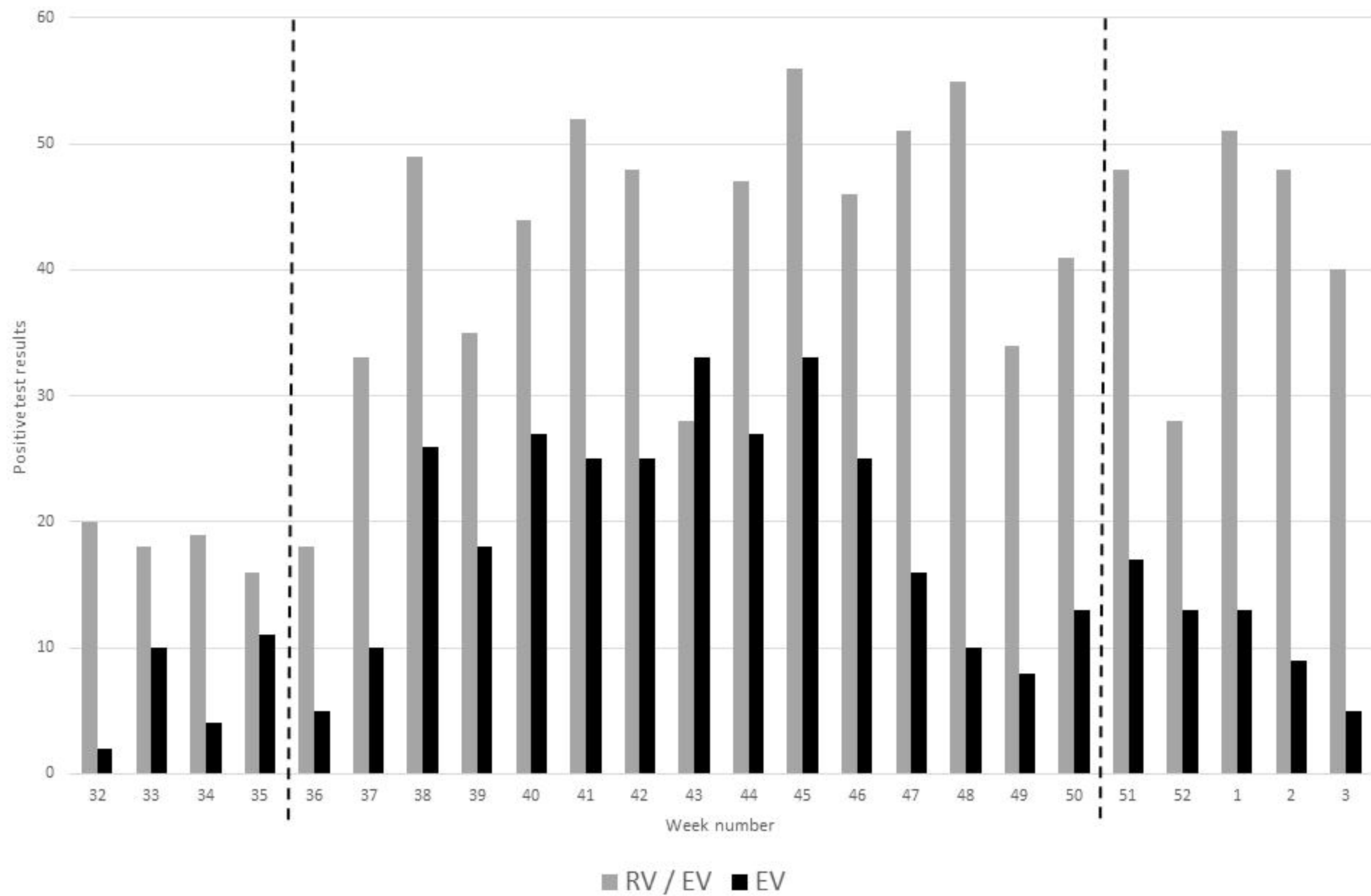
501 Figure 6: Phylogenetic relationship by maximum likelihood method of Nottingham, UK, 2018  
502 complete EV-D68 VP1 sequences (927-930 bp) designated genotype B3, subgroup 2 (coloured  
503 in red) with all closely related publically available genomes retrieved from Genbank in June  
504 2021 (identified by accession number). The phylogeny depicted is a subtree of a complete tree  
505 with entire study and global sequence dataset presented in the appendix (Supplementary Figure  
506 1), with well supported branches containing no study sequences collapsed to improve clarity.  
507 Numbers above individual branches indicate SH-aLRT bootstrap support, with values less than  
508 70 not shown. Branch lengths are drawn to a scale of nucleotide substitutions per site, with scale  
509 indicated.

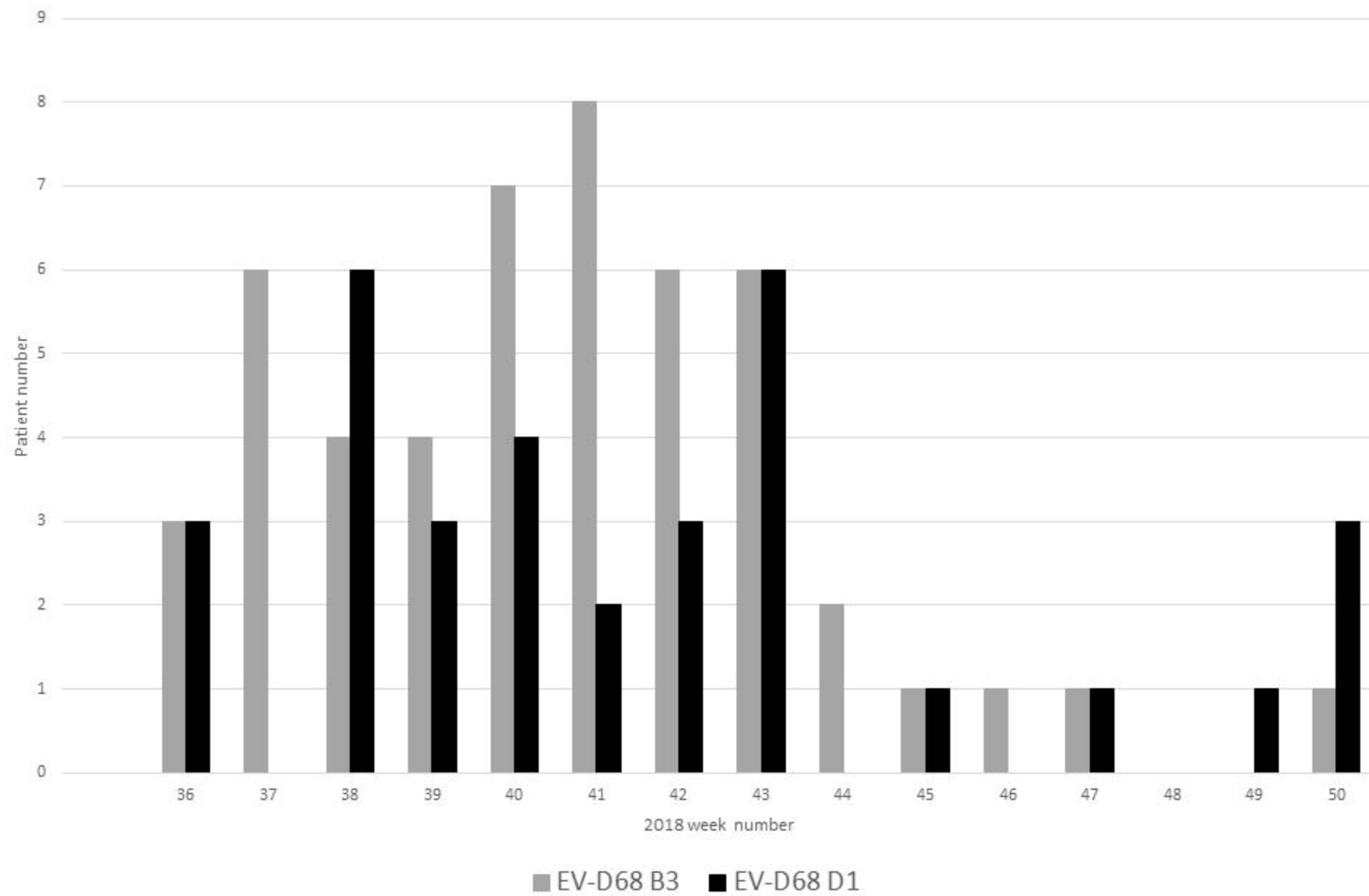
510

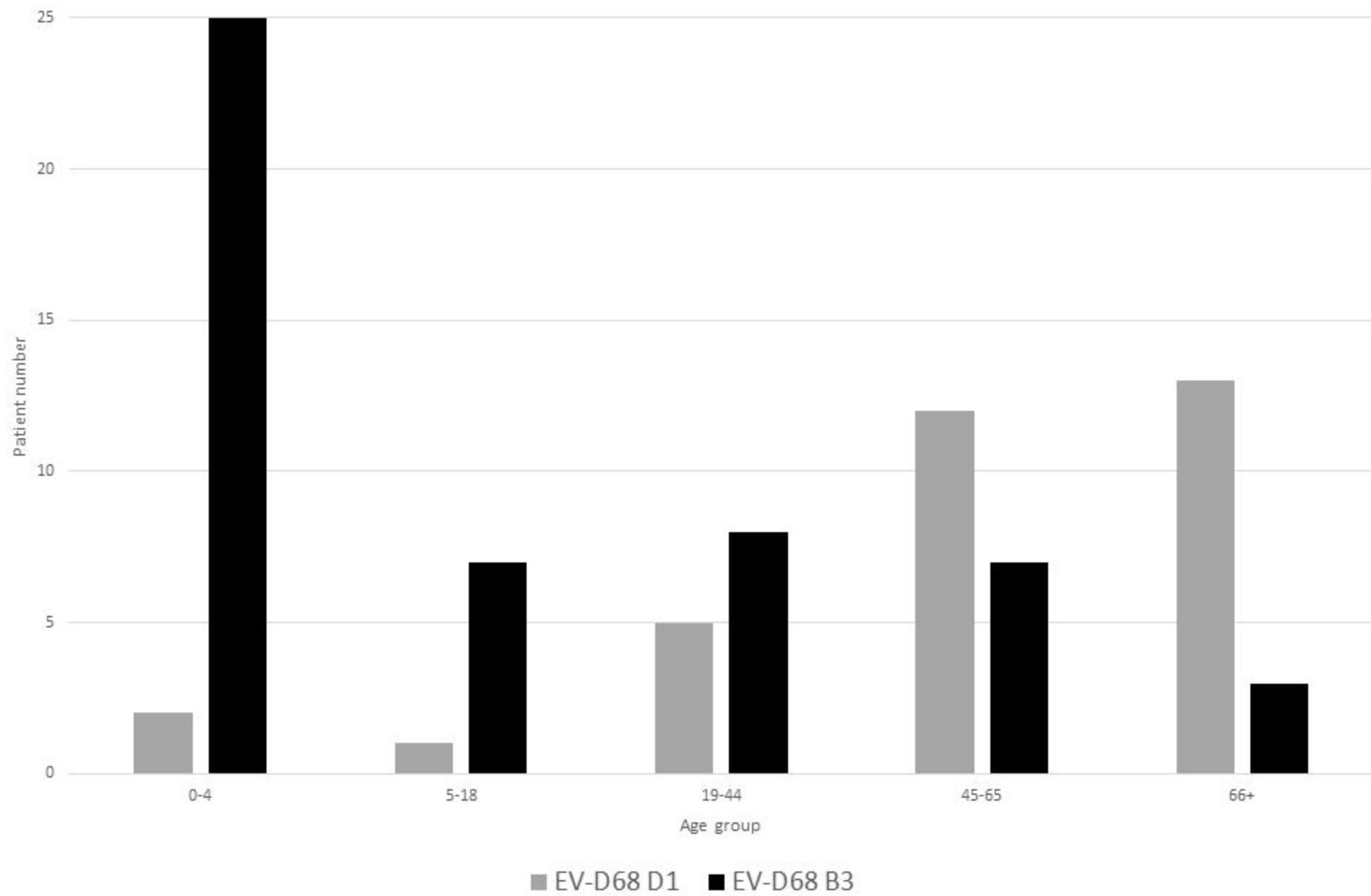
511 **Supplementary Figure 1.** Phylogenetic relationship by maximum likelihood method of  
512 Nottingham, UK, 2018 complete EV-D68 VP1 sequences (927-930 bp, coloured in red) with all  
513 publically available genomes retrieved from Genbank in June 2021 (identified by accession  
514 number). Position of subtrees presented as figures 4 - 6 in main text is annotated. SH-aLRT

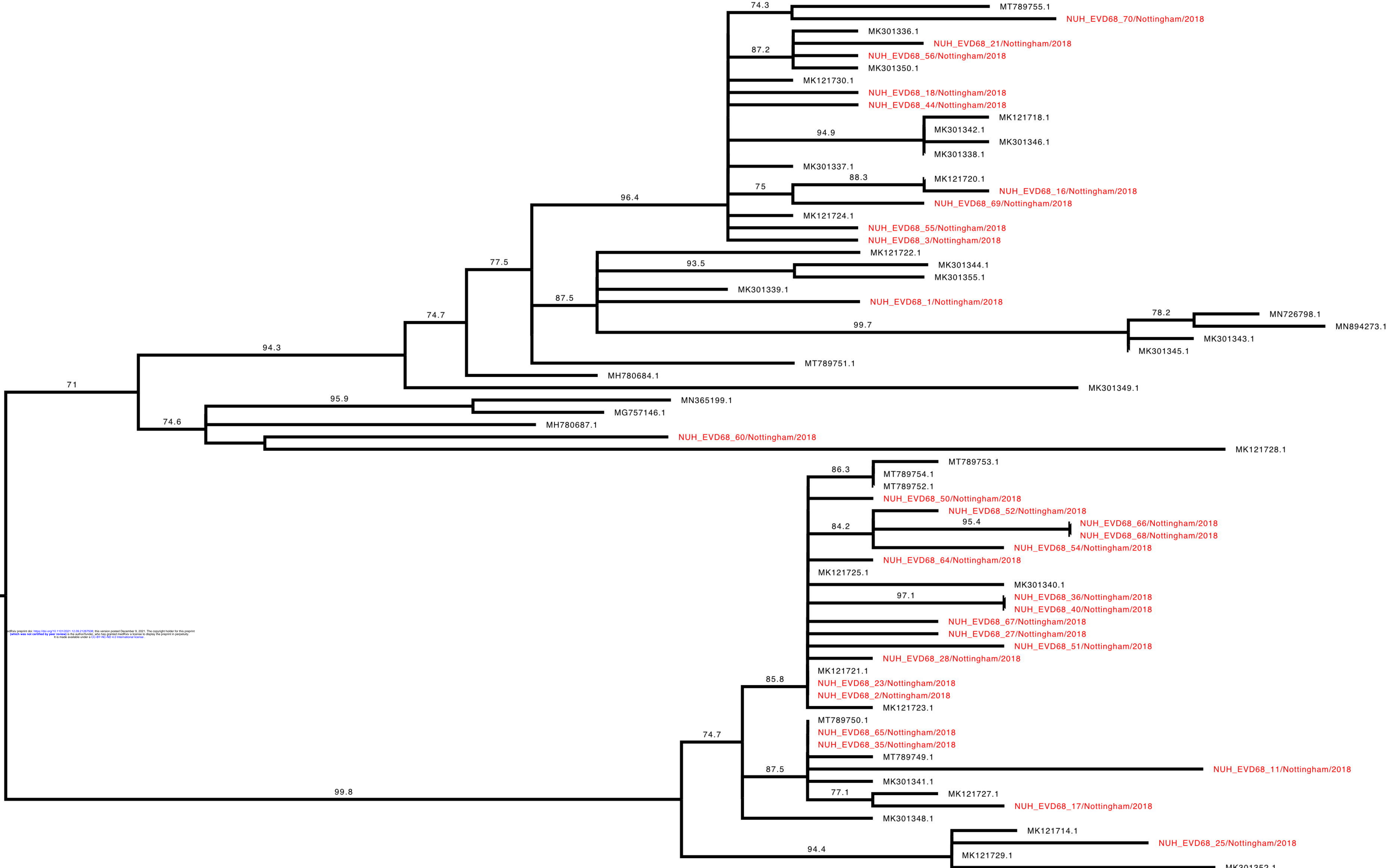


515 bootstrap support values have been omitted for clarity. Branch lengths are drawn to a scale of  
516 nucleotide substitutions per site, with scale indicated.



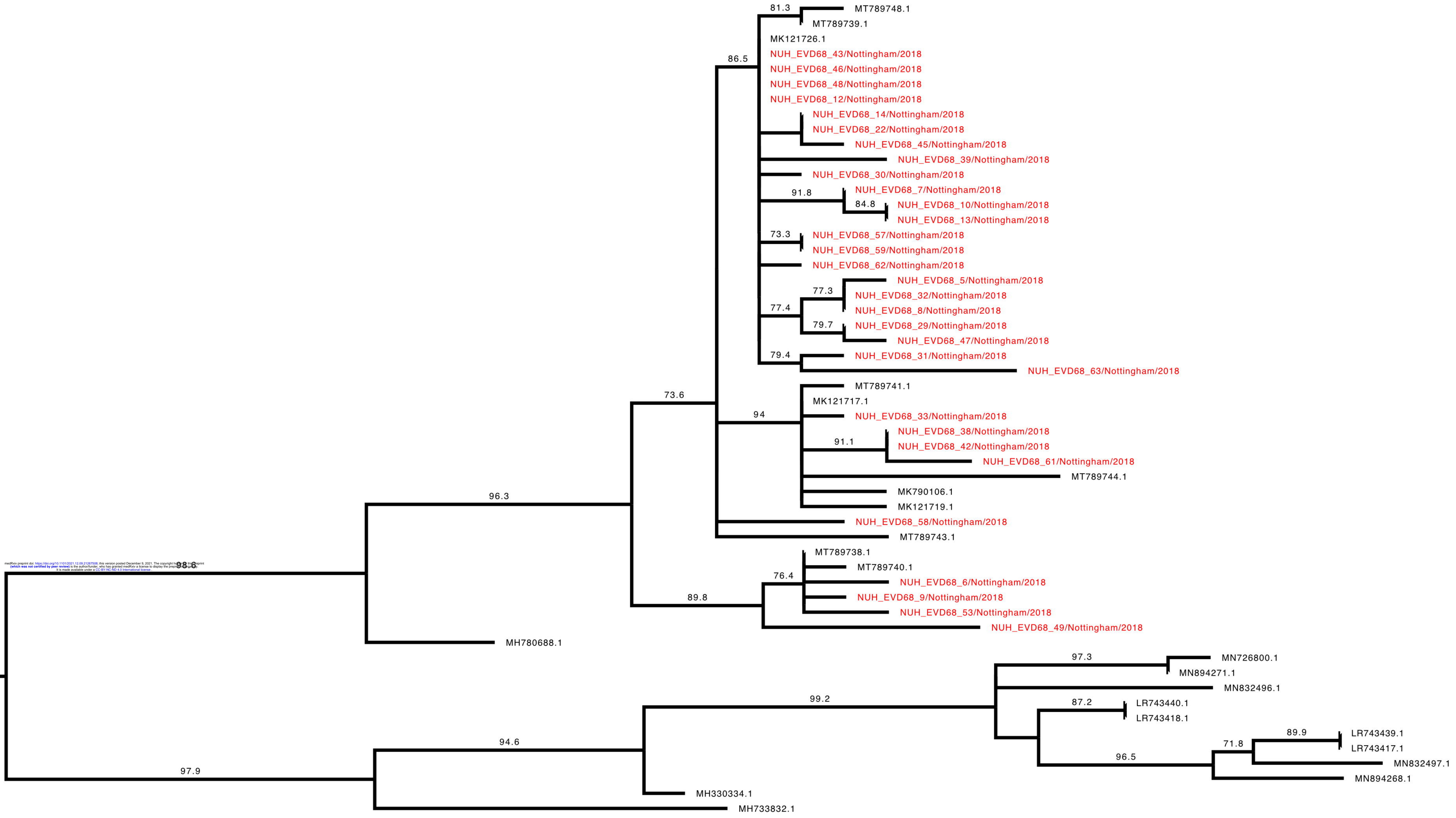


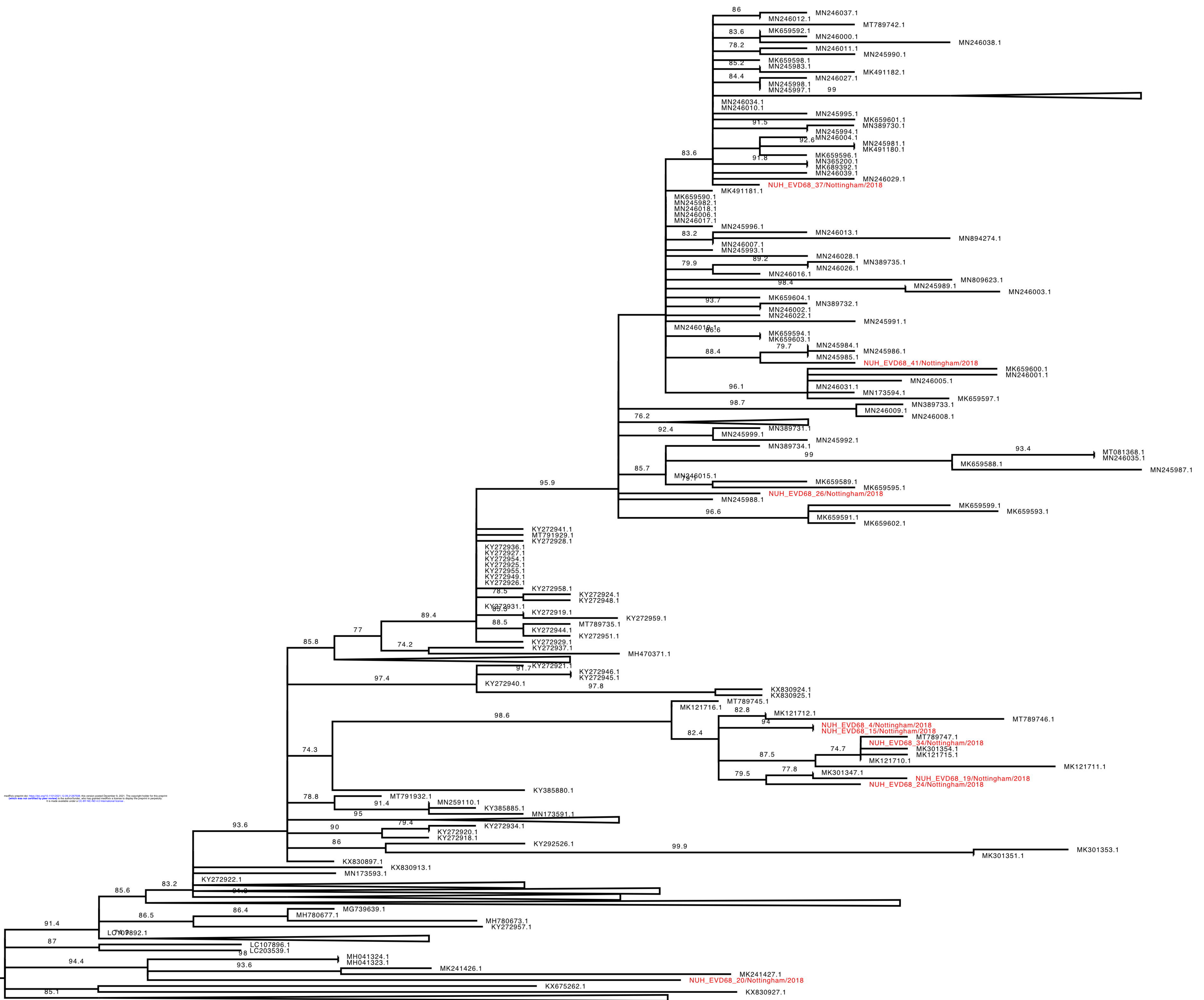




bioRxiv preprint doi: <https://doi.org/10.1101/2021.12.09.462758>; this version posted December 9, 2021. The copyright holder for this preprint (which was not certified by peer review) is the author/funder, who has granted bioRxiv a license to display the preprint in perpetuity. It is made available under aCC-BY-NC-ND 4.0 International license.

0.003





bioRxiv preprint doi: <https://doi.org/10.1101/2021.12.09.462958>; this version posted December 9, 2021. The copyright holder for this preprint (which was not certified by peer review) is the author/funder, who has granted bioRxiv a license to display the preprint in perpetuity. It is made available under aCC-BY 4.0 International license.

0.003

Clade B3 study sequences subgroup 1

Clade D1 study sequences

Clade B3 study sequences subgroup 2

0.03

