

1 Brain activity measured by functional brain imaging predicts breathlessness improvement
2 during pulmonary rehabilitation

3

4 Sarah L. Finnegan¹ (sarah.finnegan@ndcn.ox.ac.uk)

5 Michael Browning^{5,6}

6 Eugene Duff⁷

7 Catherine J. Harmer^{5,6}

8 Andrea Reinecke⁵

9 Najib M. Rahman^{3,4}

10 Kyle T.S. Pattinson¹ (kyle.pattinson@nda.ox.ac.uk)

11

12

13 ¹ Wellcome Centre for Integrative Neuroimaging and Nuffield Division of Anaesthetics, Nuffield
14 Department of Clinical Neurosciences, University of Oxford, Oxford, UK.

15 ² Department of Psychiatry, University of Oxford, Warneford Hospital, Oxford, UK

16 ³ Nuffield Department of Medicine, University of Oxford, Oxford, UK

17 ⁴ Oxford NIHR Biomedical Research Centre, Oxford OX3 7JX

18 ⁵. Department of Psychiatry, Medical Sciences, University of Oxford, Oxford, UK;

19 ⁶. Oxford Health NHS Foundation Trust, Warneford Hospital Oxford

20 ⁷. Department of Paediatrics, Medical Sciences Division, University of Oxford, Oxford, UK

21

22 **Corresponding author: Sarah L. Finnegan;** sarah.finnegan@ndcn.ox.ac.uk

23 6th Floor, West Wing, John Radcliffe Hospital, Oxford, OX3 9DU; 01865 234 544

24

25

26

27

Research in context

28

NOTE: This preprint reports new research that has not been certified by peer review and should not be used to guide clinical practice.

29 **Evidence before the study.** Despite considerable research we still do not know which patient
30 characteristics predict clinical improvements in breathlessness following pulmonary
31 rehabilitation. Recent evidence suggests that the brain processes associated with
32 breathlessness-expectation play an important contributory role in breathlessness severity.
33 However, this has never been examined as a predictor of pulmonary rehabilitation outcome.
34 The ability to predict outcomes has a number of potential benefits, including identifying targets
35 for personalised medicine and the better allocation of scarce healthcare resources via parallel
36 care pathways.

37 **Added value of the study.** This study analysed data from a longitudinal experimental
38 medicine study of 71 patients with COPD over a course of pulmonary rehabilitation, that used
39 functional magnetic resonance imaging testing breathlessness-expectation mechanisms in
40 the brain. Participants were randomised in a double-blind procedure to receive either 250mg
41 oral D-cycloserine or a matched placebo. Using baseline variables to train machine learning
42 models we revealed that only models containing brain markers of breathlessness-expectation
43 successfully predicted improvements in dyspnoea-12 score (sensitivity 0.88, specificity 0.77).
44 D-cycloserine use was independently associated with breathlessness improvements. Models
45 that only contained questionnaire and clinical measure did not predict outcome (sensitivity
46 0.68, specificity 0.2).

47 **Implications of all the available evidence.** These findings are the first evidence that
48 breathlessness-expectation related brain activity is a strong predictor of clinical improvement
49 in breathlessness over pulmonary rehabilitation. This implies that expectation is a key
50 mechanism in breathlessness perception and that the manipulation of the brain's expectation
51 pathways merits further testing as a novel therapeutic approach for breathlessness.

52

53

54 **Abstract**

55 **Background:** Chronic breathlessness in COPD is effectively treated with pulmonary
56 rehabilitation. However, baseline patient characteristics predicting improvements in
57 breathlessness are unknown. This knowledge may provide better understanding of the
58 mechanisms engaged in treating breathlessness, helping to individualise therapy. Increasing
59 evidence supports the role of expectation (i.e. placebo and nocebo effects) in breathlessness
60 perception. In this study, we tested functional brain imaging markers of breathlessness
61 expectation as predictors of therapeutic response to pulmonary rehabilitation, and whether D-
62 cycloserine, a brain-active drug known to influence expectation mechanisms, modulates any
63 predictive model.

64 **Methods:** Data from 72 participants with mild-to-moderate COPD recruited to a randomised
65 double-blind controlled experimental medicine study of D-cycloserine given during pulmonary
66 rehabilitation was analysed (ID: NCT01985750). Baseline variables, including brain-activity,
67 self-report questionnaires responses, clinical measures of respiratory function and drug
68 allocation were used to train machine-learning models to predict the outcome, a minimally
69 clinically relevant change in the dyspnoea-12 score.

70 **Findings:** Only models that included brain imaging markers of breathlessness-expectation
71 successfully predicted improvements in dyspnoea-12 score (sensitivity 0.88, specificity 0.77).
72 D-cycloserine was independently associated with breathlessness improvement. Models that
73 included only questionnaires and clinical measures did not predict outcome (sensitivity 0.68,
74 specificity 0.2).

75 **Interpretation:** Brain activity to breathlessness related cues is a strong predictor of clinical
76 improvement in breathlessness over pulmonary rehabilitation. This implies that expectation is
77 key in breathlessness perception. Manipulation of the brain's expectation pathways (either
78 pharmacological or non-pharmacological) merits further testing in the treatment of chronic
79 breathlessness.

80 **Funding**

81 This work was supported by the JABBS Foundation

82 **Introduction**

83 Chronic breathlessness is a key feature of chronic obstructive pulmonary disease (COPD)
84 with symptoms often persisting despite maximal medical therapy. Pulmonary rehabilitation is
85 the best treatment for chronic breathlessness in COPD [1] but the response is variable. Thirty
86 percent of people who complete pulmonary rehabilitation derive no clinical benefit [2]. Despite
87 considerable research, we still do not know which patient characteristics predict beneficial
88 response to pulmonary rehabilitation [2-5]. The ability to predict outcome has a number of
89 potential benefits. These include improving our understanding of underlying mechanisms,
90 identifying targets for personalised medicine, and may allow more accurate allocation of
91 scarce healthcare resources.

92

93 Breathlessness severity is often poorly explained by objective clinical measures [6]. This has
94 prompted research into identifying brain perceptual mechanisms that may explain this
95 discordance. A body of work has recently identified that brain processes relating to expectation
96 (akin to placebo and nocebo effects) have an important role in contributing to breathlessness
97 severity. Whether brain-derived metrics may help predict outcome from pulmonary
98 rehabilitation is unknown, and prediction models until now have not included measures of
99 expectation.

100

101 Between-subject variability in therapeutic response is increasingly recognised as a confounder
102 in clinical trials. A personalised medicine approach aims to identify subgroups of patients that
103 respond to a specific therapy. In psychiatry, brain-derived metrics using functional
104 neuroimaging have taken similar approaches to identifying subtypes of depression that may
105 respond to bespoke therapies [7]. Such techniques rely on biomarkers, which may consist of
106 predictive combinations of biochemical, genetic, demographic, physiological or cognitive
107 measures. In the context of treating breathlessness, predictive biomarkers could pave the way
108 for novel pharmacological and non-pharmacological treatments. These may either work as
109 standalone therapies, or by enhancing other therapies, such as pulmonary rehabilitation.

110

111 In this study, we aimed to predict improvements in breathlessness during pulmonary
112 rehabilitation by analysing baseline data from a longitudinal experimental medicine study of
113 D-cycloserine upon breathlessness during pulmonary rehabilitation. We selected D-
114 cycloserine, which is a partial agonist at the NMDA receptor in the brain, for its action on neural
115 plasticity and influence on brain expectation mechanisms associated with cognitive
116 behavioural therapies [8-10] . Brain based pharmacological adjuncts may be one opportunity
117 to boost the effects of pulmonary rehabilitation. We hypothesised baseline brain activity in
118 response to breathlessness-related expectation would predict improvement in breathlessness
119 over pulmonary rehabilitation, and that if D-cycloserine indeed had an effect upon expectation
120 then it would emerge as a significant factor in the prediction model. Given that moderators of
121 treatment success of pharmacological agents such as D-cycloserine remain unclear, this
122 information will not only help us build a better picture of the brain-behaviour changes that may
123 underly response to pulmonary rehabilitation and therefore its potential value as a therapeutic
124 target.

125

126 **Methods and Materials**

127 A brief overview of materials and methods is presented here with full details included within
128 the supplementary materials. The study and statistical analysis plan were pre-registered on
129 bioXIV (<https://osf.io/bfqds/>). This was an analysis of data from a longitudinal experimental
130 medicine study of patients with COPD over a course of pulmonary rehabilitation. Parts of the
131 study were first published in a characterisation of baseline patient clusters [11] and
132 subsequently in the investigation of the effect of D-cycloserine on brain activity (preprint -
133 <https://tinyurl.com/3pyupwkj>). The analysis conducted for this study is novel, not previously
134 reported and is the first use of predictive analysis using this dataset.

135

136 ***Participants***

137 71 participants (18 female, median age 71 years (46-85 years)) (Supplementary Table 1) were
138 recruited immediately prior to enrolment in a National Health Service-prescribed course of
139 pulmonary rehabilitation. Written informed consent was obtained from all participants prior to
140 the start of the study. Study approval was granted by South Central Oxford REC B (Ref:
141 118784, Ethics number: 12/SC/0713). Full demographic details are included within the
142 supplementary materials and are published separately (preprint is available at
143 <https://tinyurl.com/3pyupwkj>).

144

145 ***Study Protocol***

146 Data for this analysis were acquired at baseline assessment held at the start of a pulmonary
147 rehabilitation course, and following completion of the pulmonary rehabilitation at 6-8 weeks.
148 At each study visit, identical measures were collected. Following the first visit, participants
149 were randomized in a double-blind procedure to receive either 250mg oral D-cycloserine or a
150 matched placebo. Participants received a single dose on four occasions 30 minutes prior to
151 the onset of the first four pulmonary rehabilitation sessions.

152

153 *Self-report questionnaires:* All questionnaires were scored according to respective manuals:
154 Dyspnoea-12 (D12) Questionnaire [12], Centre for Epidemiologic Studies Depression Scale
155 (CES-D) [13], Trait Anxiety Inventory (TRAIT) [14], Fatigue Severity Scale [15], St George's
156 Respiratory Questionnaire (SGRQ) [16], Medical Research Council (MRC) breathlessness
157 scale [17], Breathlessness catastrophising scale, adapted from the Catastrophic Thinking
158 Scale in Asthma [18], Breathlessness vigilance, adapted from the Pain Awareness and
159 Vigilance Scale Breathlessness Awareness and Vigilance Scale [19].

160

161 *Physiological Measures:* Spirometry and two Modified Shuttle Walk Tests (MSWT) were
162 collected using standard protocols [20, 21]. Participant height and weight were recorded at
163 each visit. Arterial oxygen saturations were collected at rest and following the MSWT.

164

165 ***MRI Measures***

166 *Image acquisition:* Magnetic resonance imaging of the brain was carried out using a Siemens
167 3T MAGNETOM Trio. A T1-weighted (MPRAGE) structural scan (voxel size: 1 x 1 x 1 mm)
168 was collected and used for registration purposes. A T2*-weighted, gradient echo planar image
169 (EPI) scan sequence (TR, 3000ms; TE 30ms; voxel size: 3 x 3 x 3 mm) was used to collect
170 functional imaging data during the word cue task.

171

172 *Word cue task:* Given sufficient fearful breathlessness exposures, the suggestion alone of the
173 situation can be sufficient to drive a top-down neural cascade and produce breathlessness in
174 the absence of afferent inputs. We drew on this link to probe the neural responses of
175 breathlessness-related expectation by examining the activity of brain regions responding to
176 breathlessness-related word cues [22, 23]. Brain activity was correlated with corresponding
177 visual analogue ratings of breathlessness and breathlessness-anxiety collected during
178 scanning. During the fMRI scanning, participants were presented with a word cue, e.g.,
179 "climbing stairs" in white text on a black background for 7 seconds. Participants were then
180 asked, "how breathless would this make you feel" (wB) and "how anxious would this make you

181 feel” (wA). To each question participants responded within a 7 second window using a button
182 box and visual analogue scale (VAS). The response marker always initially appeared at the
183 centre of the scale, with the anchors “Not at all” and “Very much” at either end. Scan duration
184 was 7 minutes and 33 seconds.

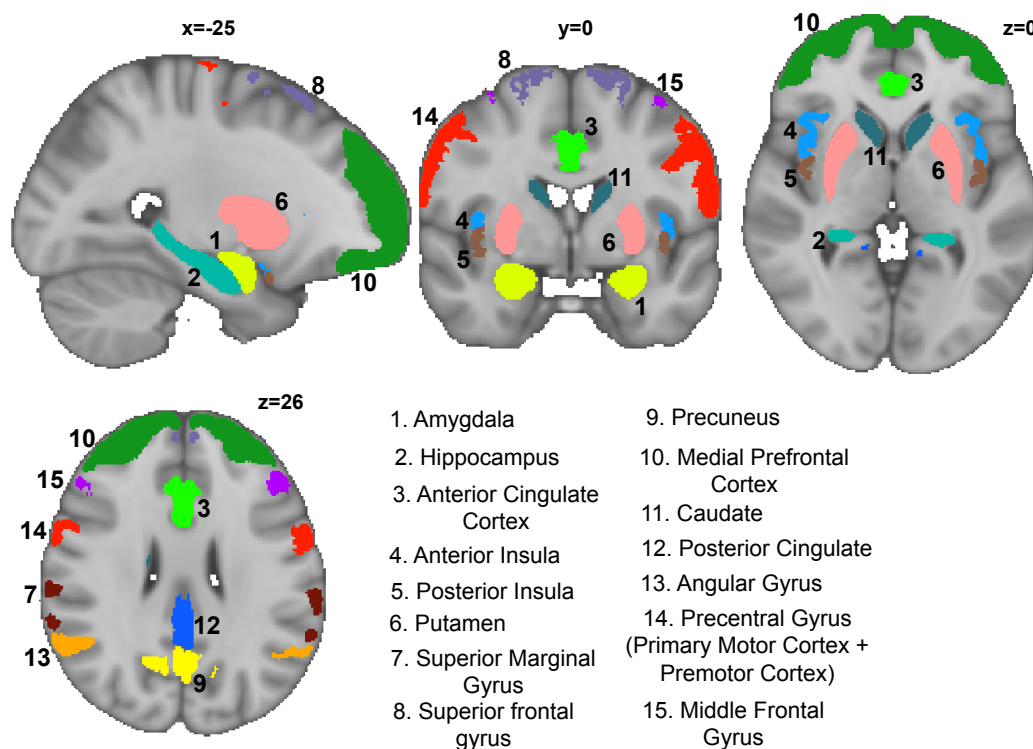
185
186

187 Analysis

188

189 Regions of interest

190 15 regions of interest were selected a-priori (Figure 1), encompassing regions associated with
191 sensory and affective processing of breathlessness as well as body, symptom perception and
192 emotional salience [22, 24, 25]. Regions were defined by standard anatomical atlas maps
193 (Harvard-Oxford Atlas and Destrieux’ cortical atlas), thresholded at 40% probability and
194 binarized.



195

196 **Figure 1.** Region of interest map showing 15 brain areas.

197

198 Brain Imaging Analysis

199 Image processing was carried out using the Oxford Centre for Functional Magnetic
200 Resonance Imaging of Brain Software Library (FMRIB, Oxford, UK; FSL version 5.0.8;
201 <https://www.fmrib.ox.ac.uk/fsl/>), MATLAB R2018b (Mathworks, Natick, MA) and associated
202 custom scripts. Functional MRI processing was performed using FEAT (FMRI Expert Analysis
203 Tool, within the FSL package).

204

205 ***Pre-processing and single subject models***

206 Data were pre-processed according to standard protocols which included motion correction
207 and physiological noise removal, before being entered into single subject general linear
208 models. These models captured brain activity during the periods in which the breathlessness-
209 related word cues were presented allowing us to examine expectation-related processes
210 (Supplementary Figure 3). Further details regarding pre-processing and model specifics can
211 be found within the supplementary materials. For each participant the mean signal in response
212 to the breathlessness-related word cues was extracted for each brain region (Figure 1). This
213 gave each participant 15 brain-derived scores to enter into the predictive models.

214

215 **Definition of response to pulmonary rehabilitation**

216 Responsiveness to pulmonary rehabilitation was defined as a change in D12 score, a well-
217 validated clinical measure of breathlessness, of three or more points, consistent with the
218 minimal clinically important difference (MCID) [12]. To examine whether baseline D12 score
219 differed significantly between responders and non-responders to pulmonary rehabilitation we
220 conducted a comparison of mean baseline D12 score. In addition, a single logistic regression
221 model was applied to the data using MATLAB's `mnrfit` function to examine whether baseline
222 D12 explained pulmonary rehabilitation outcome over and above the best model prediction.
223 Significance was set as False Discovery Rate (FDR) corrected $p < 0.05$.

224

225 **Predictive Models**

226 **Table 1.** List of measures included within each of the three models (indicated by “x”). Drug ID labels
 227 corresponded to whether the participant received D-cycloserine or placebo. Dyspnoea-12 (D12), Centre
 228 for Epidemiologic Studies Depression Scale (CES-D), Trait Anxiety Inventory (TRAIT), Fatigue Severity
 229 Scale (FSS), St George’s Respiratory Questionnaire (SGRQ), Medical Research Council (MRC)
 230 breathlessness scale, Breathlessness catastrophising scale (BCS), Heart Rate (HR), Oxygen
 231 Saturation (Sats).

Included data	Brain only model	Brain & non imaging measures model	Non imaging measure model
Drug ID	x	x	x
Responder or non-responder label	x	x	x
Brain activity			
Amygdala	x	x	
Hippocampus	x	x	
Anterior insula	x	x	
Anterior cingulate	x	x	
Posterior insula	x	x	
Putamen	x	x	
Superior marginal gyrus	x	x	
Superior frontal gyrus	x	x	
Precuneus	x	x	
Medial prefrontal cortex	x	x	
Caudate	x	x	
Posterior cingulate	x	x	
Angular gyrus	x	x	
Precentral gyrus	x	x	
Middle frontal gyrus	x	x	
Questionnaires			
D12		x	x
CES-D		x	x
TRAIT		x	x
FSS		x	x
SGRQ		x	x
MRC		x	x
BCS		x	x
Vigilance		x	x
Physiology			
FEV1/FVC		x	x

MSWT – HR change	x	x
MSWT – Sats change	x	x
MSWT – Distance	x	x
MSWT – BORG change	x	x
BMI	x	x
Pack Years	x	x
Age	x	x
Sex	x	x

232

233

234 *Physiological Measures:* Spirometry and two Modified Shuttle Walk Tests (MSWT) were
 235 collected using standard protocols [20, 21]. Participant height and weight were recorded at
 236 each visit. Sex was self-reported. Arterial oxygen saturations were collected at rest and
 237 following the MSWT.

238

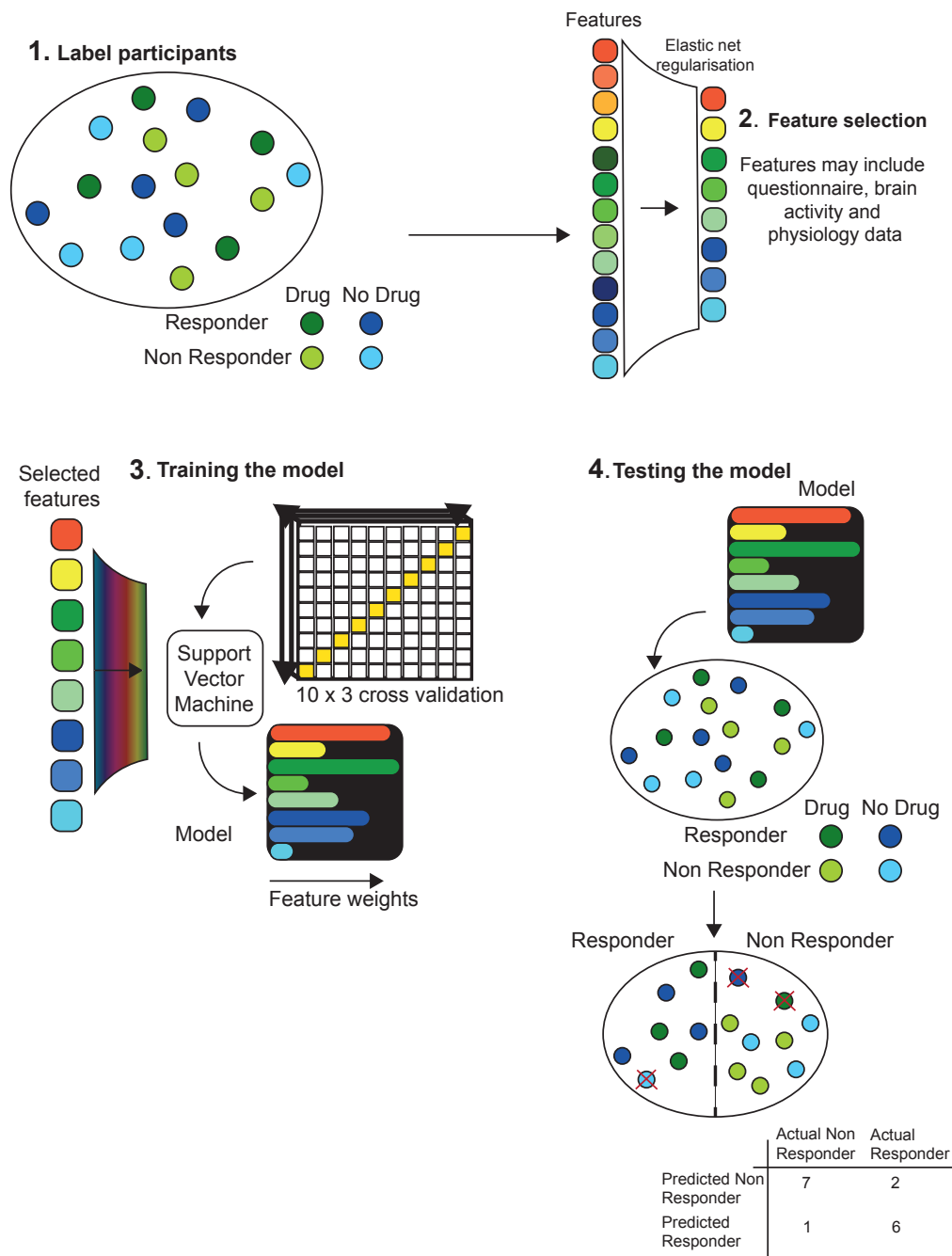
239 Models were programmed using R version 3.6.1 (2019-07-05). Modelling procedure remained
 240 the same for each of the three models (Figure 2).

241 1. All measures were centred and scaled. Checks were performed to determine whether
 242 any measures were highly correlated ($R > 0.8$) or linear combinations of each other
 243 (Supplementary Figure 3).

244 2. To correct for imbalance in the number of responders/non-responder a resampling
 245 procedure. Imbalanced classes can affect classifier performance. Random
 246 OverSample Examples (ROSE) was carried out. ROSE, an R package, creates an
 247 artificially balanced sample using a smoothed bootstrap approach [26].

248 3. An elastic net procedure was used to identify the number most relevant features for
 249 inclusion into the model. Elastic net procedure was selected for its ability to regularise,
 250 improve data sparsity via feature selection and cluster correlated measures together
 251 (for more details see supplementary materials). Features were selected based on
 252 ranked coefficients.

- 253 4. Model training parameters – C, kappa and sigma were selected based on an internal
254 repeated cross-validation procedure (10-fold cross validation repeated 3 times). In all
255 instances automated tuning parameter selection for the values, with a tune length of
256 5, was utilised within R's *caret* package. Train-test data were kept separate across
257 folds, with the algorithm never having access to the entire dataset. The best tuning
258 parameters were selected automatically by R's *caret* package from across cross
259 validation folds.
- 260 5. These parameters were used to train a Support Vector Classifier (SVC) with radial
261 kernel to predict outcomes in the entire dataset.
- 262 6. Model performance was assessed internally using accuracy, sensitivity, specificity and
263 area under the curve (AUC). Full confusion matrices are presented. Model significance
264 was assessed with a one-tailed binomial test of model accuracy compared to the null
265 information rate.



266

267 **Figure 2.** A schematic of the modelling procedure adapted from an illustration by Chekroud and
 268 colleagues [27]. 1. Participants received two labels, the first corresponding to drug or placebo and the
 269 second “responder” or “non-responder” to treatment. 2. An elastic net procedure was used to rank and
 270 select the top features. 3. Selected features were used to develop model training parameters in a
 271 repeated-cross validation procedure in which the algorithm never has access to the entire dataset. 4.
 272 The Trained SVM was then provided with the entire dataset to classify. In addition to model statistics,
 273 full confusion matrices were output to assess sensitivity and specificity.

274

275

276
277
278
279
280
281
282
283
284
285
286
287
288
289
290
291
292
293
294
295
296
297
298
299
300
301
302
303

Results

Responders and non-responders

41 / 71 participants in the primary dataset met the criteria of a change in D12 score of three or more points to be considered a responder [12] (24 D-cycloserine, 17 placebo), and 30 did not (13 D-cycloserine, 17 placebo). No significant interaction between responders and non-responders and drug was identified using Chi squared analysis ((1,N=71) = 1.6, p=0.21).

Feature selection – brain imaging only model

The elastic net procedure identified 13 of 15 brain derived metrics and drug as relevant for model inclusion. These features were: brain activity within amygdala, caudate, prefrontal cortex, hippocampus, superior frontal gyrus, anterior insula, drug, posterior cingulate cortex, putamen, posterior insula, middle frontal gyrus, precuneus, precentral gyrus and angular gyrus.

Feature selection – brain and non-imaging measure model

The elastic net procedure identified 12 of 15 brain derived metrics, 13 of 20 non-imaging measures including drug as relevant for model inclusion. These features were brain activity within: superior frontal gyrus, hippocampus, angular gyrus, superior marginal gyrus, amygdala, prefrontal cortex, precuneus, anterior cingulate cortex, anterior insula, middle frontal gyrus, posterior insula and putamen. Behavioural features identified as relevant for model inclusion were D12, anxiety, depression, MRC, the three St George’s domains (active, impact, symptoms), MWST BORG, heart rate and Sats change, fatigue, age and BMI.

Feature selection – non-imaging measures model

Of the 20 questionnaire and physiological features available, only D12 survived the feature selection process.

304 **Model results – Internal validation**

305 Three models with variables selected by the elastic net procedure were assessed for their
306 ability to discriminate responders from non-responders (Table 3).

307

308 The combination of brain and behaviour metrics produced the best classification performance
309 (accuracy - 0.83 (95% CI 0.75-0.90); sensitivity – 0.88; specificity – 0.77; $p < 0.001$) (Table 3).

310 Weighted variable importance was found to be similar across features, as demonstrated by
311 the thickness of the lines in Figure 3. The brain only model was able to correctly categorise
312 participants with statistically significant likelihood (accuracy 0.70 (95% CI 0.58-0.81)).

313

314

315 **Table 2.** Logistic regression coefficients for predictive power of the computationally derived brain-
 316 behaviour model (model prediction labels), and baseline D12 on pulmonary rehabilitation outcome,
 317 measured as a change in D12 score above the minimal clinical important difference. Significance is
 318 expressed as False Discovery Rate (FDR) -corrected p-values.

	Coefficient	P value
Intercept	3.571	0.007
Model prediction labels	-2.809	<0.001
Baseline D12	0.071	0.191

319

320

321

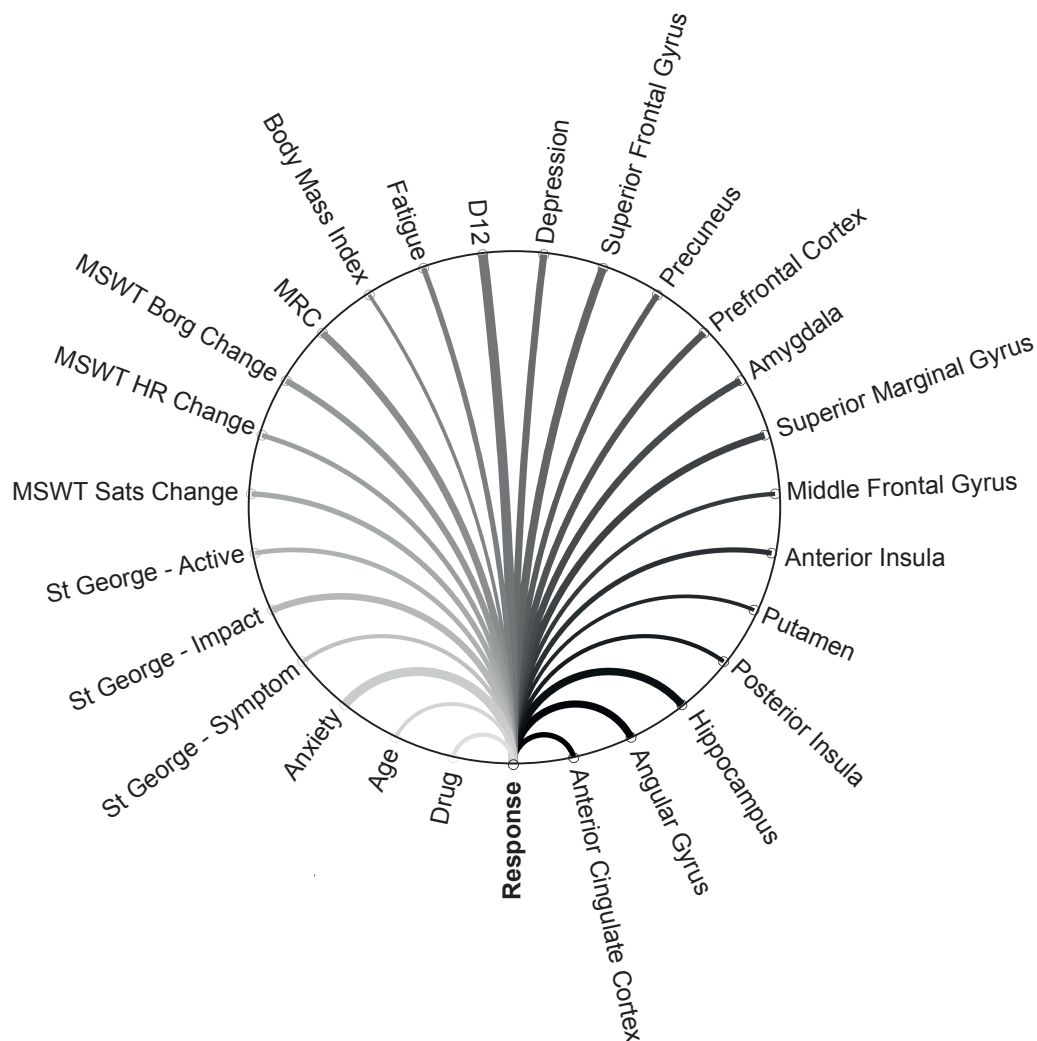
322 **Table 3.** Model statistics for brain imaging only, brain and non-imaging measure models and non-
 323 imaging measures only model. All models contained Drug ID as an additional term. AUC – area under
 324 the curve. CI – confidence interval. P-value is expressed as the result of a one-tailed binomial test of
 325 model accuracy compared to the null information rate.

	Brain only full model	Brain & non-imaging measures full model	Non-imaging measures full model				
Accuracy	0.70	0.83	0.66				
95% CI	58-81	0.72-0.90	0.54-0.77				
Sensitivity	0.93	0.88	0.68				
Specificity	0.40	0.77	0.20				
AUC	0.79	0.87	0.70				
p-value	0.02*	<0.001**	0.09				
Confusion matrices	Reference		Reference		Reference		
	Yes	No	Yes	No	Yes	No	
Prediction	Yes	38	18	36	7	28	11
	No	3	12	5	23	13	19

326

327

328



329

330 **Figure 3.** Schematic representation of the best predictive model. Predictive brain imaging and non-
331 imaging measures are shown linked to treatment response by weighted lines, indicating variable
332 importance. **MSWT** – Modified Shuttle Walk Test; **Sats** – Oxygen saturation; **HR** – Heart Rate; **MRC** –
333 Medical Research Council;

334

335 **Discussion**

336 **Key Findings**

337 Using supervised machine learning, this study successfully identified markers that predict
338 clinically relevant improvements in breathlessness over a course of pulmonary rehabilitation.

339 The best model combined brain-imaging markers of breathlessness-expectation, self-report
340 questionnaires and physiology measures, and demonstrated high sensitivity and specificity.

341 Whether or not a participant received D-cycloserine was a significant feature in this model.

342 Our findings demonstrate the first predictive model of change in breathlessness across
343 pulmonary rehabilitation and, for the first time, the clinical relevance of expectation-related
344 brain activity as a therapeutic target in the treatment of breathlessness.

345

346

347 To date, no study has produced a model capable of predicting an individual's change in
348 breathlessness over pulmonary rehabilitation from baseline traits [2-4]. Although previous
349 studies have shown correlations between baseline variables and outcomes [5], none have
350 attempted to predict outcomes at an individual level. This study is therefore the first to directly
351 predict an individual's change in breathlessness over pulmonary rehabilitation. This was
352 achieved using sensitive brain imaging techniques in order to capture personalised responses
353 to breathlessness expectation which has, until recently remained relatively unexplored.

354

355 Expectation has been linked with symptom severity across conditions including
356 breathlessness and pain [28, 29], and is well recognised to underly the placebo and nocebo
357 effects. An example of the nocebo effect in breathlessness is provided by a study of healthy
358 volunteers in which, using a conditioning paradigm, a harmless odour was initially paired with
359 induced breathlessness. Subsequently, the odour alone was shown to drive brain activity in
360 the periaqueductal gray and anterior cingulate cortex leading to breathlessness despite the
361 absence of afferent respiratory input [29]. In Abdallah et al [30], expectation-related brain
362 activity was associated with poorer responses to opioids in breathlessness, potentially

363 explaining why clinical trials of opioids in the management of breathlessness have been
364 unsuccessful [31, 32].

365

366 Fear and anxiety are key components of expectation, which recent research suggests may
367 play a key role in the mechanisms and maintenance of breathlessness [22, 33, 34]. Despite
368 this, expectation-related effects have not previously been considered in prediction studies of
369 pulmonary rehabilitation outcome. Our previous work showed a clear correlation between
370 expectation-related brain activity in areas that include the anterior insula, anterior cingulate
371 cortex and prefrontal cortex, and improvements in breathlessness over pulmonary
372 rehabilitation [22]. However, while these studies suggest baseline cognitive state may be a
373 therapeutically relevant target, importantly, the methods employed so far did not attempt to
374 predict the response of an individual. Taken together, converging lines of evidence point
375 towards expectation-related processes as a clear potential therapeutic target.

376

377 In this study we focused on brain activity changes within a set of pre-selected regions of
378 interest associated with breathlessness-expectation and body and symptom perception [22,
379 24, 25]. In the original trial we hypothesised that D-cycloserine would augment the therapeutic
380 effects of pulmonary rehabilitation across this network, via its effects on neural plasticity and
381 promotion of expectation related learning [10, 35].

382

383 Using data driven techniques, 13 of the 15 brain derived metrics (and drug) were identified as
384 relevant for model inclusion. Selected brain areas spanned the components of relevant body
385 and symptom perception and emotional salience networks. The resulting brain-only model,
386 while statistically significant ($p=0.02$) and possessing good sensitivity (0.93), did not
387 distinguish responders from non-responders with sufficient specificity (0.40).

388

389 By, enriching the brain-only models with questionnaire and physiology measures improved
390 performance considerably. In this enriched model, 12 brain derived metrics and 13 non-

391 imaging derived metrics, which included self-report questionnaire measures, physiology and
392 drug, were identified as relevant for model inclusion. Measures of accuracy (0.83), sensitivity
393 (0.88) and specificity (0.77) all suggest this model was able to significantly ($p < 0.001$) predict
394 pulmonary rehabilitation outcome.

395

396 Within the non-imaging measure only model, D12 alone was selected by the elastic net and
397 was not found to be significantly ($p = 0.09$, sensitivity=0.68, specificity=0.20) predictive of
398 pulmonary rehabilitation outcome. No other of the 13 non-imaging derived metrics available
399 was found to contribute to the model. That only D12 was selected suggests that the remaining
400 measures, which were important predictors of rehabilitation outcome in the enriched model,
401 interact strongly with brain activity. These results highlight the value of approaching
402 breathlessness from a multimodal data perspective.

403

404 The retained brain activity features implicate a range of brain networks encompassing
405 functions of cognitive control, symptom perception and sensory integration. Activity within
406 these regions has been shown to predict outcome to cognitive behavioural therapy in social
407 anxiety disorder [36] and obsessive-compulsive disorder [37]. In our paradigm, in which
408 patients were shown breathlessness related word-cues, triggering expectation related
409 processes, activity within cognitive control network may indicate the allocation of attentional
410 resources. The retained questionnaires within the brain and non-imaging measure model
411 together highlight another important domain of breathlessness: symptom perception. We
412 suggest that baseline symptom perception may act to directly influence the interpretation of
413 the new experiences of pulmonary rehabilitation as positive or negative.

414

415 D-cycloserine has shown promise in trials examining anxiety, posttraumatic stress disorder
416 and other mental health conditions [8-10], where acute dosages administered prior to
417 exposure based therapies appear to augment changes to expectation, boosting therapeutic
418 effects as a result. As a drug which acts on expectation-related brain activity pathways it is

419 therefore not surprising that whether a participant received D-cycloserine or placebo was a
420 retained as a feature in both the brain only model, and to a lesser extent the brain and non-
421 imaging model.

422

423 **Limitations and future work**

424 The major limitation of this study is the lack validation of the model in an external dataset.
425 While some studies hold out a proportion of the original data to create an external validation
426 dataset, this technique was not possible here due to restrictions of sample size. To address
427 these limitations, we used a cross validation approach in which the support vector machine
428 was exposed to multiple iterations of the sub-sampled dataset during model training, and
429 therefore never “saw” the entire dataset until the test phase. Models with a large number of
430 measures compared to events (responder or non-responder) risk overfitting and demonstrate
431 poor generalisability to novel datasets. Our dataset contained 35 potential features and
432 therefore was at risk of overfitting. To address this issue, we reduced the number of data-
433 dimensions via feature selection, employed cross-validation and used an automated tuning of
434 the regularisation parameter “C”. However, while these techniques may ameliorate some of
435 the risk of overfitting, a future study with larger sample size, or independently collected
436 datasets, would take the next steps to externally validate the brain-behaviour model and allow
437 assessment of generalisability. Finally, a key feature of support vector machines is that they
438 fit high-dimensional discriminatory planes between multiple measures to predict an outcome.
439 While this multivariate approach does afford greater sensitivity in distinguishing between non-
440 separable distributions, it also leads to less intuitive interpretations. Assigning directions to the
441 relationships between variables or onto outcomes is not possible with this technique. Thus,
442 the researcher must plan to scrutinise models via interventional studies.

443

444

445 While larger sample sizes are now required to translate these mechanistic models into clinical
446 relevance, the data provides evidence that breathlessness expectation related brain activity

447 at baseline strongly influences how patients respond to treatment in a predictable manner.
448 Further work is now needed in order to move towards model validation and eventual clinical
449 application.

450

451

452 **Conclusions**

453 This study offers the first steps towards brain-based predictive biomarkers for pulmonary
454 rehabilitation outcome. We have shown that by models including objective brain markers of
455 breathlessness-expectation are able to predict, for the first time, which patients will have
456 clinically important improvements in breathlessness over pulmonary rehabilitation. Such
457 models could reduce the burden of complex decisions placed on the clinicians and pave the
458 way for targeted behavioural and pharmacological interventions.

459

460

461

462

463

464

465

466

- 467 1. Reijnders, T., et al., *The impact of disease-specific fears on outcome measures of*
468 *pulmonary rehabilitation in patients with COPD*. *Respiratory Medicine*, 2019. **146**: p.
469 87-95.
- 470 2. Garrod, R., et al., *Predictors of success and failure in pulmonary rehabilitation*.
471 *European Respiratory Journal*, 2006. **27**(4): p. 788.
- 472 3. Selzler, A.M., et al., *Pulmonary rehabilitation in chronic obstructive pulmonary*
473 *disease: predictors of program completion and success*. *Copd*, 2012. **9**(5): p. 538-45.
- 474 4. Vagaggini, B., et al., *Clinical predictors of the efficacy of a pulmonary rehabilitation*
475 *programme in patients with COPD*. *Respir Med*, 2009. **103**(8): p. 1224-30.
- 476 5. Boutou, A.K., et al., *An evaluation of factors associated with completion and benefit*
477 *from pulmonary rehabilitation in COPD*. *BMJ Open Respir Res*, 2014. **1**(1): p.
478 e000051.
- 479 6. Stefan, M.S., et al., *How well do patients and providers agree on the severity of*
480 *dyspnea?* *J Hosp Med*, 2016. **11**(10): p. 701-707.
- 481 7. Chen, C.H., et al., *Brain imaging correlates of depressive symptom severity and*
482 *predictors of symptom improvement after antidepressant treatment*. *Biol Psychiatry*,
483 2007. **62**(5): p. 407-14.
- 484 8. Ressler, K.J., et al., *Cognitive enhancers as adjuncts to psychotherapy: use of D-*
485 *cycloserine in phobic individuals to facilitate extinction of fear*. *Arch Gen Psychiatry*,
486 2004. **61**(11): p. 1136-44.
- 487 9. Hofmann, S.G., et al., *D-Cycloserine as an augmentation strategy with cognitive-*
488 *behavioral therapy for social anxiety disorder*. *Am J Psychiatry*, 2013. **170**(7): p. 751-
489 8.
- 490 10. Reinecke, A., et al., *Neurocognitive processes in d-cycloserine augmented single-*
491 *session exposure therapy for anxiety: A randomized placebo-controlled trial*.
492 *Behaviour Research and Therapy*, 2020. **129**: p. 103607.
- 493 11. Finnegan, S.L., et al., *Breathlessness in COPD: linking symptom clusters with brain*
494 *activity*. *Eur Respir J*, 2021.
- 495 12. Yorke, J., et al., *Quantification of dyspnoea using descriptors: development and initial*
496 *testing of the Dyspnoea-12*. 2010. **65**(1): p. 21-26.
- 497 13. Radloff, L.S., *The CES-D Scale: A Self-Report Depression Scale for Research in the*
498 *General Population*. 1977. **1**(3): p. 385-401.
- 499 14. Spielberger, C.D., *State-Trait Anxiety Inventory*, in *The Corsini Encyclopedia of*
500 *Psychology*. 2010.
- 501 15. Krupp, L.B., et al., *The fatigue severity scale: Application to patients with multiple*
502 *sclerosis and systemic lupus erythematosus*. *Archives of Neurology*, 1989. **46**(10): p.
503 1121-1123.
- 504 16. Jones, P.W., et al., *A self-complete measure of health status for chronic airflow*
505 *limitation. The St. George's Respiratory Questionnaire*. *Am Rev Respir Dis*, 1992.
506 **145**(6): p. 1321-7.
- 507 17. Bestall, J.C., et al., *Usefulness of the Medical Research Council (MRC) dyspnoea scale*
508 *as a measure of disability in patients with chronic obstructive pulmonary disease*.
509 *Thorax*, 1999. **54**(7): p. 581-586.
- 510 18. De Peuter, S., et al., *Illness-specific catastrophic thinking and overperception in*
511 *asthma*. *Health Psychol*, 2008. **27**(1): p. 93-9.

- 512 19. McCracken, L.M., K.E. Vowles, and C. Eccleston, *Acceptance-based treatment for*
513 *persons with complex, long standing chronic pain: a preliminary analysis of*
514 *treatment outcome in comparison to a waiting phase*. Behav Res Ther, 2005. **43**(10):
515 p. 1335-46.
- 516 20. Bradley, J., et al., *Validity of a modified shuttle test in adult cystic fibrosis*. Thorax,
517 1999. **54**(5): p. 437-9.
- 518 21. Levy, M.L., et al., *Diagnostic spirometry in primary care: Proposed standards for*
519 *general practice compliant with American Thoracic Society and European Respiratory*
520 *Society recommendations: a General Practice Airways Group (GPIAG)1 document, in*
521 *association with the Association for Respiratory Technology & Physiology (ARTP)2*
522 *and Education for Health3 1 www.gpiag.org 2 www.artp.org 3*
523 *www.educationforhealth.org.uk*. Prim Care Respir J, 2009. **18**(3): p. 130-47.
- 524 22. Herigstad, M., et al., *Treating breathlessness via the brain: changes in brain activity*
525 *over a course of pulmonary rehabilitation*. Eur Respir J, 2017. **50**(3).
- 526 23. Herigstad, M., et al., *Development of a dyspnoea word cue set for studies of*
527 *emotional processing in COPD*. Respiratory physiology & neurobiology, 2016. **223**: p.
528 37-42.
- 529 24. Esser, R.W., et al., *Brain Activation during Perception and Anticipation of Dyspnea in*
530 *Chronic Obstructive Pulmonary Disease*. Frontiers in physiology, 2017. **8**: p. 617-617.
- 531 25. Faull, O.K., A. Hayen, and K.T.S. Pattinson, *Breathlessness and the body:*
532 *Neuroimaging clues for the inferential leap*. Cortex; a journal devoted to the study of
533 the nervous system and behavior, 2017. **95**: p. 211-221.
- 534 26. Nicola Lunardon, G.M., and Nicola Torelli, *ROSE: a Package for Binary Imbalanced*
535 *Learning*. R Journal, 2014. **6**(1): p. 82-92.
- 536 27. Chekroud, A.M., et al., *Cross-trial prediction of treatment outcome in depression: a*
537 *machine learning approach*. Lancet Psychiatry, 2016. **3**(3): p. 243-50.
- 538 28. Janssens, T. and T. Ritz, *Perceived triggers of asthma: key to symptom perception and*
539 *management*. Clinical and experimental allergy : journal of the British Society for
540 Allergy and Clinical Immunology, 2013. **43**(9): p. 1000-1008.
- 541 29. Vlemincx, E., C. Sprenger, and C. Büchel, *Expectation and dyspnea: The*
542 *neurobiological basis of respiratory nocebo effects*. European Respiratory Journal,
543 2021: p. 2003008.
- 544 30. Abdallah, S.J., et al., *Opioids for breathlessness: psychological and neural factors*
545 *influencing response variability*. European Respiratory Journal, 2019. **54**(3): p.
546 1900275.
- 547 31. Ferreira, D.H., et al., *Controlled-Release Oxycodone vs. Placebo in the Treatment of*
548 *Chronic Breathlessness-A Multisite Randomized Placebo Controlled Trial*. J Pain
549 Symptom Manage, 2020. **59**(3): p. 581-589.
- 550 32. Currow, D., et al., *Regular, sustained-release morphine for chronic breathlessness: a*
551 *multicentre, double-blind, randomised, placebo-controlled trial*. Thorax, 2020. **75**(1):
552 p. 50-56.
- 553 33. Janssens, T., et al., *Dyspnea Perception in COPD: Association Between Anxiety,*
554 *Dyspnea-Related Fear, and Dyspnea in a Pulmonary Rehabilitation Program*. Chest,
555 2011. **140**(3): p. 618-625.
- 556 34. Marlow, L.L., et al., *Breathlessness and the brain: the role of expectation*. Current
557 Opinion in Supportive and Palliative Care, 2019. **13**(3).

- 558 35. Monahan, J.B., et al., *D-cycloserine, a positive modulator of the N-methyl-D-*
559 *aspartate receptor, enhances performance of learning tasks in rats*. *Pharmacol*
560 *Biochem Behav*, 1989. **34**(3): p. 649-53.
- 561 36. Klumpp, H., et al., *Prefrontal control and predictors of cognitive behavioral therapy*
562 *response in social anxiety disorder*. *Social cognitive and affective neuroscience*, 2016.
563 **11**(4): p. 630-640.
- 564 37. Falconer, E., et al., *Inhibitory neural activity predicts response to cognitive-behavioral*
565 *therapy for posttraumatic stress disorder*. *J Clin Psychiatry*, 2013. **74**(9): p. 895-901.
566

567

568 **Author contributions**

569 **S.L.F** – Acquisition of data, analysis, interpretation, drafting, editing and approving
570 manuscript

571 **M.B** – Approval of statistical methods, editing and approving manuscript

572 **E.D** – Approval of statistical methods, editing and approving manuscript

573 **C.J.H** – Data interpretation, editing and approving manuscript

574 **A.R** – Data interpretation, editing and approving manuscript

575 **N.J.R** – Study interpretation, editing and approving manuscript

576 **K.T.S.P** - Study design, interpretation, editing and approving manuscript
577

578

579

579 **Declaration of interests**

580 Dr. Harmer has valueless shares in p1vital and serves on their advisory panel. She has
581 received consultancy payments from p1vital, Zogenix, J&J, Pfizer, Servier, Eli-Lilly, Astra
582 Zeneca, Lundbeck. Dr. Pattinson is named as co-inventors on a provisional U.K. patent
583 application titled “Use of cerebral nitric oxide donors in the assessment of the extent of
584 brain dysfunction following injury. Dr. Rahman, has received consulting fees from Rocket
585 Medical U.K. Dr Browning has received travel expenses from Lundbeck for attending
586 conferences, has shares in P1vtial Products Ltd and has acted as a consultant for Jansen and
587 for CHDR. The remaining authors have no biomedical financial interests or potential conflicts
588 of interest.

589

590

591 **Funding**

592 This work was supported by the JABBS Foundation. This research was funded in whole, or in
593 part, by the Wellcome Trust 203139/Z/16/Z. For the purpose of Open Access, the author has
594 applied a CC-BY public copyright licence to any Author Accepted Manuscript version arising
595 from this submission.

596 CJH is supported by the National Institute for Health Research Biomedical Research Centre
597 based at Oxford Health NHS Foundation Trust and The University of Oxford, and by the UK
598 Medical Research Council. KTSP and NMR are supported by the National Institute for Health
599 Research Biomedical Research Centre based at Oxford University Hospitals NHS Foundation
600 Trust and the University of Oxford. AR is funded by a fellowship from MQ: Transforming Mental
601 Health.

602