

1 **SARS-CoV-2 Convalescent Sera Binding and Neutralizing Antibody Concentrations**  
2 **Compared with COVID-19 Vaccine Efficacy Estimates Against Symptomatic**  
3 **Infection**

4 Amy J. Schuh<sup>1</sup>, Panayampalli S. Satheshkumar<sup>1</sup>, Stephanie Dietz<sup>1</sup>, Lara Bull-Otterson<sup>1</sup>, Myrna Charles<sup>1</sup>,  
5 Chris Edens<sup>1</sup>, Jefferson M. Jones<sup>1</sup>, Kristina L. Bajema<sup>1</sup>, Kristie E.N. Clarke<sup>1</sup>, L. Clifford McDonald<sup>1</sup>,  
6 Sadhna Patel<sup>1</sup>, Kendra Cuffe<sup>1</sup>, Natalie J. Thornburg<sup>1</sup>, Jarad Schiffer<sup>1</sup>, Kelly Chun<sup>2</sup>, Monique Bastidas<sup>2</sup>,  
7 Manory Fernando<sup>2</sup>, Christos J. Petropoulos<sup>2</sup>, Terri Wrin<sup>2</sup>, Suqin Cai<sup>2</sup>, Dot Adcock<sup>2</sup>, Deborah Sesok-  
8 Pizzini<sup>2</sup>, Stanley Letovsky<sup>2</sup>, Alicia M. Fry<sup>1</sup>, Aron J. Hall<sup>1</sup>, Adi V. Gundlapalli<sup>1</sup>

9 <sup>1</sup>CDC COVID-19 Response, United States Centers for Disease Control and Prevention, Atlanta, GA

10 <sup>2</sup>Labcorp, Burlington, NC

11 **Running title:** Convalescent sera antibody levels compared to vaccine efficacy estimates

12 **Abstract word count:** 172

13 **Text word count:** 3,282

14 **Footnotes**

15 <sup>1</sup>Potential conflicts of interest have been disclosed within the ICMJE Disclosure Forms.

16 <sup>2</sup>This work was supported by the United States Centers for Disease Control and Prevention.

17 <sup>3</sup>This work has not been presented at any national or international meeting.

18 <sup>4</sup>Correspondence: Adi V. Gundlapalli, MD, PhD, Center for Surveillance, Epidemiology, and

19 Laboratory Services, United States Centers for Disease Control and Prevention, Atlanta, Georgia,

20 30333; [agundlapalli@cdc.gov](mailto:agundlapalli@cdc.gov)

21 **ABSTRACT**

22 Previous vaccine efficacy (VE) studies have estimated neutralizing and binding antibody  
23 concentrations that correlate with protection from symptomatic infection; how these estimates compare  
24 to those generated in response to SARS-CoV-2 infection is unclear. Here, we assessed quantitative  
25 neutralizing and binding antibody concentrations using standardized SARS-CoV-2 assays on 3,067  
26 serum specimens collected during July 27, 2020-August 27, 2020 from COVID-19 unvaccinated persons  
27 with detectable anti-SARS-CoV-2 antibodies using qualitative antibody assays. Quantitative neutralizing  
28 and binding antibody concentrations were strongly positively correlated ( $r=0.76$ ,  $p<0.0001$ ) and were  
29 noted to be several fold lower in the unvaccinated study population as compared to published data on  
30 concentrations noted 28 days post-vaccination. In this convenience sample, ~88% of neutralizing and  
31 ~63-86% of binding antibody concentrations met or exceeded concentrations associated with 70%  
32 COVID-19 VE against symptomatic infection from published VE studies; ~30% of neutralizing and 1-  
33 14% of binding antibody concentrations met or exceeded concentrations associated with 90% COVID-  
34 19 VE. These data support observations of infection-induced immunity and current recommendations  
35 for vaccination post infection to maximize protection against symptomatic COVID-19.

36

37 **Keywords:** SARS-CoV-2, COVID-19, quantitative anti-SARS-CoV-2 IgG, neutralizing antibodies,  
38 correlation, antibody, immune, protection, correlate of protection

## 39 BACKGROUND

40 As of October 18, 2021, 66.7% of the US population 12 years of age and older has been fully  
41 vaccinated for COVID-19 [1]. A recent Gallup survey found that 18% of Americans would not agree to  
42 be vaccinated if a US Food and Drug Administration (FDA)-approved COVID-19 vaccine were  
43 available to them immediately at no cost [2]. One of the primary reasons cited for vaccine hesitancy was  
44 a history of SARS-CoV-2 infection and resultant antibodies.

45 Cumulative evidence indicates that SARS-CoV-2 antibodies are protective against SARS-CoV-2 re-  
46 infection [3]. A series of non-human primate challenge studies demonstrated the central role of SARS-  
47 CoV-2 neutralizing antibodies in protection from re-infection [4-6]. A randomized clinical trial  
48 involving the subcutaneous administration of REGEN-COV, a combination of two SARS-CoV-2  
49 neutralizing monoclonal antibodies, or placebo within 96 hours of SARS-CoV-2 exposure demonstrated  
50 that REGEN-COV prevented symptomatic COVID-19 and asymptomatic SARS-CoV-2 infection [7]. A  
51 longitudinal study of >12,000 health care workers showed that SARS-CoV-2 infection-induced  
52 protective immunity lasts for at least 6 months [8].

53 The establishment of the First World Health Organization (WHO) International Standard for Anti-  
54 SARS-CoV-2 Immunoglobulin [9] for quantitative assessment of neutralizing and binding antibody  
55 concentrations has made it possible for COVID-19 vaccine efficacy (VE) studies [10-13] to describe and  
56 propose standardized immune correlates of protection against symptomatic infection (or risk of  
57 symptomatic infection) in fully-vaccinated persons (i.e., 2 weeks after their second dose in a 2-dose  
58 series, such as Pfizer-BioNTech (BNT162b2), Moderna (mRNA-1273), or AstraZeneca (ChAdOx1)  
59 vaccines OR 2 weeks after a single-dose vaccine, such as Johnson & Johnson's Janssen [JNJ-78436735]  
60 vaccine) across vaccine trials that have used different antibody assays. Comparing antibody  
61 concentrations of unvaccinated persons with anti-SARS-CoV-2 antibodies to COVID-19 vaccinated  
62 cohorts and to estimated antibody concentrations associated with COVID-19 vaccine effectiveness

63 would accomplish three goals: 1) improve understanding of the population distribution of antibody  
64 concentrations in response to infection and vaccination, 2) help establish relationship of quantitative  
65 antibody levels to those associated with protection against illness from published studies, and 3) inform  
66 better targeted messaging for universal COVID-19 vaccination.

67 Numerous SARS-CoV-2 serological assays have been developed over the course of the COVID-19  
68 pandemic to measure virus-specific antibody responses [14]. Persons who recover from SARS-CoV-2  
69 infection or receive a COVID-19 vaccine typically develop virus-specific neutralizing antibodies, with  
70 most of these antibodies directed against the immunodominant receptor binding domain (RBD) of the  
71 spike (S) protein [15, 16]. Efficacy trials of the ChAdOx1 [11] and mRNA-1273 [12] vaccines showed  
72 that higher anti-SARS-CoV-2 S IgG, anti-SARS-CoV-2 RBD IgG, and SARS-CoV-2 neutralizing  
73 antibody concentrations were correlated with a reduced risk of symptomatic infection. Both trials  
74 determined antibody concentrations associated with varying levels of VE against symptomatic COVID-  
75 19 [11, 12]. The ChAdOx1 vaccine trial estimated that 70% and 90% VE against symptomatic COVID-  
76 19 was associated with 50% neutralizing antibody titer (NT<sub>50</sub>) concentrations of 3.7 and 64.1  
77 international units per mL (IU/mL), respectively, and 70% and 90% VE was associated with anti-RBD  
78 IgG antibodies concentrations of 165.0 and 2360.0 binding antibody units per mL (BAU/mL),  
79 respectively [11]. The mRNA-1273 vaccine trial estimated that 70% and 90% VE against symptomatic  
80 COVID-19 was associated with NT<sub>50</sub> concentrations of 4.0 and 83.0 IU/mL, respectively, and 70% and  
81 90% VE was associated with anti-RBD IgG antibodies concentrations of 8.0 and 775.0 BAU/mL,  
82 respectively [12]. However, it remains unclear how these antibody concentrations compare to those  
83 generated in response to SARS-CoV-2 infection in COVID-19 unvaccinated persons. To answer this  
84 question, we tested 3,067 pre-vaccination sera collected as part of a nationwide commercial laboratory  
85 seroprevalence study led by the US Centers for Disease Control and Prevention (CDC) [17] that had  
86 previously tested positive for anti-SARS-CoV-2 antibodies using standardized anti-SARS-CoV-2 RBD

87 IgG and SARS-CoV-2 pseudovirus neutralization antibody assays, and then compared these antibody  
88 concentrations to concentrations measured in COVID-19 vaccinated cohorts (28 days post-vaccination)  
89 and to those associated with 70% and 90% COVID-19 VE against symptomatic infection for two of the  
90 vaccines for which such data are published to date.

## 91 **METHODS**

### 92 **Specimen Source and Study Design**

93 Sera were collected by two US-based commercial laboratories for routine or acute clinical care (e.g.,  
94 cholesterol screening or a sick visit) as part of a nationwide seroprevalence study; detailed methods have  
95 previously been described [17]. Briefly, blood specimens collected for COVID-19-related reasons were  
96 excluded. Sera were tested [17] for anti-SARS-CoV-2 antibodies using one of the following three  
97 qualitative assays issued emergency use authorization by the FDA that were in use in the clinical  
98 laboratories: 1) Architect™ SARS-CoV-2 IgG Assay (nucleocapsid (N) protein; Abbott, Chicago, IL),  
99 2) VITROS® Anti-SARS-CoV-2 IgG Assay (S protein; Ortho-Clinical Diagnostics, Raritan, NJ), and 3)  
100 Elecsys® Anti-SARS-CoV-2 Assay (N protein; Roche, Indianapolis, IN) (Supplementary figure 3).  
101 Among 84,683 total serum samples collected during July 27, 2020-August 27, 2020 identified as anti-  
102 SARS-CoV-2 antibody positive and had linked age and sex information (as part of the larger  
103 serosurveillance study) [17], 3067 serum specimens were selected by convenience sampling for reflex  
104 testing with anti-SARS-CoV-2 quantitative IgG and neutralizing antibody assays. Data on race,  
105 ethnicity, and occurrence or date of SARS-CoV-2 infection or symptoms were not available; data on  
106 prior SARS-CoV-2 quantitative reverse transcription polymerase chain reaction qRT-PCR test results  
107 were not available for most persons.

108 **Ethics**

109 This activity was reviewed by CDC and was conducted consistent with applicable federal law and  
110 CDC policy (45 C.F.R. part 46, 21 C.F.R. part 56; 42 U.S.C. Sect. 241(d); 5 U.S.C. Sect. 552a; 44  
111 U.S.C. Sect. 3501 et seq.). Informed consent was waived, as all data were deidentified.

112 **PhenoSense® CoV Neutralizing Antibody Assay**

113 Neutralizing antibodies against the SARS-CoV-2 S protein were measured using the PhenoSense  
114 CoV Neutralizing Antibody Assay® [18]. To measure SARS-CoV-2 neutralizing antibodies, human  
115 immunodeficiency virus-1 pseudovirions expressing the SARS-CoV-2 S protein were prepared by co-  
116 transfecting HEK293 producer cells with an HIV-1 genomic vector and a SARS-CoV-2 envelope  
117 protein expression vector. Serial dilutions of sera were incubated with recombinant pseudovirions and  
118 neutralizing activity was assessed by measuring the inhibition of luciferase activity in HEK293 target  
119 cells co-expressing the angiotensin-converting enzyme 2 and transmembrane serine protease 2 receptors.  
120 Fifty percent neutralizing antibody titers (NT<sub>50</sub>) were expressed as the reciprocal of the serum dilution  
121 conferring 50% inhibition of pseudovirus infection. Calibration of the PhenoSense CoV Neutralizing  
122 Antibody Assay® with the First WHO International Standard for Anti-SARS-CoV-2 Immunoglobulin  
123 (20/136, National Institute for Biological Standards and Controls, UK) [9] allowed us to generate a  
124 calibration factor of 0.0653 (S protein containing G614) and convert NT<sub>50</sub> values from titers to  
125 international units per mL (IU/mL) by multiplying by the calibration factor .

126 **Cov2Quant IgG® Assay**

127 Anti-SARS-CoV-2 RBD IgG in sera were quantified using the electrochemiluminescent (ECL)  
128 Cov2Quant IgG® Assay [19]. Briefly, sera were incubated with biotin-conjugated, recombinant SARS-  
129 CoV-2 RBD antigen bound to a streptavidin, carbon-coated microtiter well plate. After washing the  
130 plate, the wells were incubated with ruthenium-conjugated anti-IgG and a final wash was performed to  
131 remove unbound material. Voltage was applied to the metallic electrode on the base of the plate and a

132 photomultiplier was used to measure the ECL signal generated from each well. The signal in relative  
133 light units (RLU) is directly proportional to the anti-RBD IgG concentration in sera. Each assay batch  
134 included a dilution series of affinity-purified human IgG standard that was used to calculate the anti-  
135 SARS-CoV-2 RBD IgG concentration of each serum. Calibration of the Cov2Quant IgG® Assay with  
136 the WHO International Standard allowed us to generate a calibration factor of 25 and convert anti-  
137 SARS-CoV-2 RBD IgG concentrations from  $\mu\text{g/mL}$  to binding antibody units per mL (BAU/mL) by  
138 multiplying by the calibration factor.

### 139 **Comparison of Study Antibody Data to Antibody Concentrations Associated with COVID-19 VE**

140 Of the COVID-19 vaccines in use around the world currently, serological correlates of protection  
141 thresholds associated with VE have been estimated for ChAdOx1 [11] and mRNA-1273 [12] using the  
142 First WHO International Standard for Anti-SARS-CoV-2 Immunoglobulin. As the quantitative antibody  
143 assays used in our study were calibrated to the same standard, we were able to compare antibody  
144 concentrations in our study to those estimated to be associated with 70% and 90% COVID-19 VE to  
145 ChAdOx1 and mRNA-1273.

### 146 **Statistical Analyses**

147 Data management tasks, and statistical analyses were performed using SAS version 9.4 (SAS  
148 Institute Inc., Cary, NC) and GraphPad Prism 9.0.0 (GraphPad Software, San Diego, CA). T-tests on  
149  $\log_{10}$ -transformed data were used to determine if there were statistically significant differences between  
150 geometric mean anti-SARS-CoV-2 RBD IgG and  $\text{NT}_{50}$  concentrations by sex. ANOVAs on  $\log_{10}$ -  
151 transformed data were used to determine if there were statistically significant differences between  
152 geometric mean anti-SARS-CoV-2 RBD IgG and  $\text{NT}_{50}$  concentration according to previous qualitative  
153 antibody test and age category. Post-hoc Tukey's tests were performed to identify previous qualitative  
154 antibody tests and age categories with significantly different anti-SARS-CoV-2 RBD IgG and  $\text{NT}_{50}$   
155 concentrations; p-values were adjusted to account for multiple comparisons. Pearson's correlation was



156 used to assess the overall relationship between  $\log_{10}$ anti-RBD IgG and  $\log_{10}$ NT<sub>50</sub> concentrations, as well  
157 as the relationships between the two variables across sex and age category. Two-sided p-values <0.05  
158 were considered statistically significant.

## 159 RESULTS

160 Of the overall convenience sample of 3,067 serum specimens collected during July 27, 2020-August  
161 27, 2020 with detectable anti-SARS-CoV-2 antibodies on a qualitative assay, 1,309 were from males  
162 (42.7%) and 1,758 (57.3%) were from females, 779 (25.4%) were from persons aged <18 years, 982  
163 (32.0%) were from persons aged 18–49 years, 798 (26.0%) were from persons aged 50–64 years, and  
164 508 (16.6%) were from persons aged  $\geq 65$  years.

165 Most of the serum specimens (n=2568, 83.7%) tested positive for both quantitative SARS-CoV-2  
166 neutralizing antibodies and quantitative anti-SARS-CoV-2 RBD IgG; 271 sera (8.8%) tested negative  
167 for both neutralizing antibodies and anti-RBD IgG, 83 sera (2.7%) tested negative for neutralizing  
168 antibodies only, and 145 sera (4.7%) tested negative for anti-RBD IgG only. Geometric mean NT<sub>50</sub>  
169 concentrations differed significantly according to the qualitative antibody test type that was used to  
170 screen sera for study inclusion (p<0.0001; Supplementary Figure 4A), while geometric mean anti-RBD  
171 IgG concentrations did not differ significantly according to the qualitative antibody test type that was  
172 used to screen sera for study inclusion (p=0.02998; Supplementary Figure 4B).

173 The overall geometric mean NT<sub>50</sub> concentration was 28.8 IU/mL (95% confidence interval (CI):  
174 26.8, 31.0) and did not differ significantly according to sex (male: 30.9 IU/mL, 95% CI: 27.4, 34.8;  
175 female: 27.3 IU/mL, 95% CI: 25.0, 30.0; p=0.1088) but differed significantly according to age category  
176 (<18 years: 31.3 IU/mL, 95% CI: 28.4, 34.6; 18–49 years: 23.1 IU/mL, 95% CI: 20.3, 26.2; 50–64  
177 years: 38.0 IU/mL, 95% CI: 32.5, 44.4;  $\geq 65$  years: 25.0 IU/mL, 95% CI: 20, 31.3; p<0.0001; Figure  
178 1A). Persons aged <18 years had significantly higher NT<sub>50</sub> concentrations compared to persons aged 18–  
179 49 years (p=0.0108), and persons aged 50–64 years had significantly higher NT<sub>50</sub> concentrations

180 compared to persons aged 18–49 years ( $p < 0.0001$ ) and persons aged  $\geq 65$  years ( $p = 0.0020$ ) (Figure 1A).  
181 The overall geometric mean anti-RBD IgG concentration was 162.5 BAU/mL (95% CI: 152.9, 172.7)  
182 and did not differ significantly according to sex (male: 171.3 BAU/mL, 95% CI: 155.6, 188.5; female:  
183 156.3 BAU/mL, 95% CI: 144.4, 169.1;  $p = 0.1447$ ) but did differ significantly according to age category  
184 ( $< 18$  years: 218.2 BAU/mL, 95% CI: 199.2, 239.1; 18–49 years: 122.2 BAU/mL, 95% CI: 109.8, 136.1;  
185 50–64 years: 189.0 BAU/mL, 95% CI: 167.2, 213.7;  $\geq 65$  years: 141.4 BAU/mL, 95% CI: 117.8, 169.8;  
186  $p < 0.0001$ ; Figure 1B). Like the age-associated patterns of neutralizing antibody concentrations, persons  
187 aged  $< 18$  years had significantly higher anti-RBD IgG concentrations compared to persons aged 18–49  
188 years ( $p < 0.0001$ ) and persons aged  $\geq 65$  years ( $p < 0.0001$ ), and persons aged 50–64 years had  
189 significantly higher anti-RBD IgG concentrations compared to persons aged 18–49 years ( $p < 0.0001$ )  
190 and persons aged  $\geq 65$  years ( $p = 0.0147$ ) (Figure 1B).

191 We found an overall significant, strong positive correlation between  $NT_{50}$  concentrations and anti-  
192 RBD IgG concentrations ( $r = 0.76$ ,  $p < 0.0001$ ; Figure 1A). The strength of the relationship remained  
193 consistent across sex (male:  $r = 0.76$ ,  $p < 0.0001$ ; female:  $r = 0.76$ ,  $p < 0.0001$ ; Figure 1B) and increased with  
194 increasing age category ( $< 18$  years:  $r = 0.67$ ,  $p < 0.0001$ ; 18–49 years:  $r = 0.69$ ,  $p < 0.0001$ ; 50–64 years:  
195  $r = 0.79$ ,  $p < 0.0001$ ;  $\geq 65$  years:  $r = 0.88$ ,  $p < 0.0001$ ; Figure 2).

196  $NT_{50}$  concentrations in the overall convenience sample of 3,067 serum specimens collected during  
197 July 27, 2020–August 27, 2020 with detectable anti-SARS-CoV-2 antibodies on a qualitative assay were  
198 2.7-fold lower and 8.6-fold lower than concentrations reported from serum specimens collected 28 days  
199 post COVID-19 vaccination from ChAdOx1 [11] and mRNA-1273 [12] VE study participants classified  
200 as not having COVID-19 during the follow-up period, respectively (Figures 3A and B). Likewise, anti-  
201 RBD IgG concentrations in the overall convenience sample were 1.5-fold lower and 24.2-fold lower  
202 than concentrations reported from serum specimens collected 28 days post COVID-19 vaccination from  
203 ChAdOx1 and mRNA-1273 VE study participants classified as not having COVID-19 during the

204 follow-up period, respectively (Figure 3C and D). Overall, 88.3% of serum specimens in this study met  
205 or exceeded the concentration of SARS-CoV-2 neutralizing antibodies associated with 70% ChAdOx1  
206 and mRNA-1273 VE, while 32.9% and 27.1% of sera met or exceeded the concentration of SARS-CoV-  
207 2 neutralizing antibodies associated with 90% ChAdOx1 and mRNA-1273 VE, respectively (Figure  
208 1A). For binding antibodies, we found that 63.1% and 86.4% of serum specimens from this study met or  
209 exceeded the concentration of anti-RBD IgG antibodies associated with 70% ChAdOx1 and mRNA-  
210 1273 VE, respectively, and 1.3% and 13.6% of sera met or exceeded the concentration of anti-RBD IgG  
211 antibodies associated with 90% ChAdOx1 and mRNA-1273 VE, respectively (Figure 1B). A greater  
212 percentage of males and persons aged  $\geq 50$  years met or exceeded the concentrations of SARS-CoV-2  
213 neutralizing antibodies and anti-RBD Ig associated with 70% ChAdOx1 and mRNA-1273 VE than  
214 females and persons aged  $< 50$  years, respectively.

## 215 **DISCUSSION**

216 Similar to the ChAdOx1 [11] and mRNA-1273 [12] VE trial serologic testing results reported in the  
217 literature, we demonstrate a statistically significant, strong positive correlation between standardized  
218 anti-SARS-CoV-2 RBD IgG and SARS-CoV-2 NT<sub>50</sub> concentrations, across all sex and age categories,  
219 using sera from unvaccinated persons with previous SARS-CoV-2 infection. Based on these broad  
220 correlations, our results suggest that high-throughput, quantitative anti-SARS-CoV-2 RBD IgG assays  
221 can be used as surrogates for SARS-CoV-2 pseudovirus neutralization assays that are considered  
222 mechanistic correlates of protection [12]. Performing high-throughput, commercially available  
223 quantitative IgG assays is logistically feasible and practical on a large scale compared to performing  
224 time- and resource-intensive neutralization assays. Thus, there is a continued need for FDA-approved  
225 quantitative anti-SARS-CoV-2 S and RBD IgG assays in the management of the pandemic to facilitate  
226 assessment of antibody concentrations associated with protection from infection and/or disease [14].

227 While our finding that most serum specimens in this study met or exceeded antibody concentrations  
228 associated with 70% COVID VE estimates support the real-world observations of infection-induced  
229 immunity from re-infection, it is important to note that less than 33% of sera from unvaccinated persons  
230 with previous SARS-CoV-2 infection met or exceeded antibody concentrations associated with 90%  
231 ChAdOx1 and mRNA-1273 vaccine efficacy. This suggests that not all persons with a history of SARS-  
232 CoV-2 infection generate antibody responses of sufficient magnitude, as measured by a single, randomly  
233 timed blood test, to protect them against symptomatic re-infection. In addition to the circulation of the  
234 hyper-transmissible Delta variant of SARS-CoV-2, this finding may also partially explain the rise in  
235 COVID-19 cases that occurred in the United States in August 2021 despite a national serosurvey in May  
236 2021 showing that 83.3% of the population had SARS-CoV-2 infection- and/or vaccine-induced  
237 antibodies [20]. Meanwhile, at least in the short-term (28 days), COVID-19 vaccination can provide 2.7  
238 to 8.6-fold higher neutralizing antibody concentrations and 1.5 to 24.2-fold higher binding antibody  
239 concentrations. Thus, our results support current guidance that all eligible persons should consider  
240 COVID-19 vaccination to maximize their protection against symptomatic COVID-19 regardless of their  
241 SARS-CoV-2 infection history.

242 Our sampling approach of selecting specimens identified as positive using at least one qualitative  
243 anti-SARS-CoV-2 antibody assay would have selected for persons who had more severe disease and  
244 thus higher antibody concentrations, and/or in whom antibodies had not waned. This selection bias may  
245 have led us to overestimate the percentage of persons with antibody concentrations meeting or  
246 exceeding those concentrations associated with 70% and 90% COVID-19 VE and would have missed  
247 persons infected with SARS-CoV-2 who did not mount a measurable post-infection immune response or  
248 had antibodies below detectable levels.

249 Our study has several limitations. First, due to the absence of information on whether persons had  
250 symptoms or if testing had been done or, if so, the date of COVID-19 symptom onset and/or a positive

251 SARS-CoV-2 qRT-PCR or antigen test, we were unable to calculate the number of days that had elapsed  
252 between infection and collection of serum for antibody testing and thus the measurements might not  
253 reflect peak antibody concentrations. The ChAdOx1 and mRNA-1273 VE trials measured serum  
254 antibody concentrations 28 days after the second vaccine dose, presumably at the peak of the measurable  
255 humoral immune response to the vaccine. Therefore, if the sera used in this study were collected >28  
256 days after SARS-CoV-2 infection, it is possible that the percentage of persons with antibody  
257 concentrations meeting or exceeding those concentrations associated with 70% and 90% COVID-19 VE  
258 were underestimated. However, as a result of the sharp rise in COVID-19 cases in the United States in  
259 mid-June 2020 (Supplementary Figure 2) [21], >50% of cases reported in the country prior to July 27,  
260 2020 (date first specimens used in this study were collected) occurred after June 15, 2020. This indicates  
261 that the majority of sera in this study were likely to have been collected within 73 days of SARS-CoV-2  
262 infection, a time before IgG antibody concentrations would be expected to have significantly waned  
263 from peak post-infection levels [22].

264       Second, 13.6% of persons had anti-RBD IgG concentrations below the cutoff value of the assay  
265 (37.5 BAU/mL). However, the anti-RBD IgG concentration associated with 70% mRNA-1273 VE (8.0  
266 BAU/mL) is below the cutoff value of the Cov2Quant IgG® Assay used in this study. Therefore, it is  
267 possible that some persons below the assay cutoff value might have had anti-RBD IgG concentrations  
268 greater than or equal to 8.0 BAU/mL, leading us to underestimate the percentage of persons with  
269 antibody concentrations meeting or exceeding those concentrations associated with 70% mRNA-1274  
270 COVID-19 VE.

271       Third, extrapolating these population-level results to individual-level clinical decision making with  
272 regard to immune protection based on a single antibody test poses a challenge. The sera tested here were  
273 untimed with regard to onset of infection and we have no knowledge of the immune status of the  
274 individuals in terms of co-morbidities and medications. These challenges are also applicable to post-

275 vaccination sera in terms of certain populations responding less well to vaccines in terms of neutralizing  
276 and binding antibodies as compared to healthy volunteers in vaccine trials and limited availability of  
277 standardized quantitative assays [3].

278 Fourth, our findings, as well as the timing of the ChAdOx1 CoV-19 and mRNA-1273 VE trials,  
279 predate the circulation of the Delta variant of SARS-CoV-2 that exhibits a decreased sensitivity to post-  
280 vaccination antibody neutralization compared to the Alpha variant of the virus [23]. Therefore, our data  
281 is not able to address potential protection of persons infected SARS-CoV-2 in mid-2020 against  
282 infection with the Delta variant of the virus.

283 Finally, the efficiency and redundancy of the immune system, especially for the prevention of severe  
284 disease, in terms of humoral [12], cellular immunity, memory and anamnestic response on second  
285 exposure to SARS-CoV-2 likely contribute to protection beyond an estimate indicated solely by single  
286 antibody concentrations [6, 24].

287 In conclusion, we demonstrate that in this sample, most non-vaccinated persons with qualitative  
288 antibody evidence of prior infection had quantitative antibody concentrations against SARS-CoV-2 that  
289 met or exceeded antibody levels associated with 70% VE. However, only a small proportion had  
290 antibody responses that met or exceeded levels associated with 90% VE. Our findings suggest that  
291 persons with a prior COVID-19 would benefit from vaccination to maximize protective antibody  
292 concentrations against symptomatic COVID-19.

293 **Notes**

294 **Acknowledgments.** The authors thank Marla Williams, Morgan Herle, Wade Tanico, and Paul Theobald  
295 from Labcorp for help received in planning and execution of sample logistics and data acquisition. A  
296 special thanks goes to the reference laboratory operators that performed Cov2Quant IgG® and  
297 PhenoSense® CoV Neutralizing Antibody assays. We also thank members of the Multistate Assessment  
298 of SARS-CoV-2 Seroprevalence (MASS) steering group, including Lyle Peterson, Margaret Honein,  
299 Adam MacNeil, Eduardo Azziz-Baumgartner, Francisco Averhoff, Sridhar Basavaraju, Tina Benoit,  
300 Carla Black, Kevin Berney, Ryan Weigand, Michele Owen, Ruchi Pancholy, and Lisa Grohskopf.

301 **Disclaimer.** The findings and conclusions in this report are those of the authors and do not necessarily  
302 represent the official position of the Centers for Disease Control and Prevention.

303 **Financial support.** This work was supported by the United States Centers for Disease Control and  
304 Prevention, Atlanta, Georgia.

## 305 REFERENCES

- 306 1. US Centers for Disease Control and Prevention. COVID-19 Vaccinations in the United States.  
307 Available at: [https://covid.cdc.gov/covid-data-tracker/#vaccinations\\_vacc-total-admin-rate-total](https://covid.cdc.gov/covid-data-tracker/#vaccinations_vacc-total-admin-rate-total).  
308 Accessed October 14, 2021.
- 309 2. Jones JM. About One in Five Americans Remain Vaccine-Resistant. Available at:  
310 <https://news.gallup.com/poll/353081/one-five-americans-remain-vaccine-resistant.aspx>. Accessed  
311 September 12, 2021.
- 312 3. US Centers for Disease Control and Prevention. Science Brief: SARS-CoV-2 Infection-induced and  
313 Vaccine-induced Immunity. Available at: [https://www.cdc.gov/coronavirus/2019-  
314 ncov/science/science-briefs/vaccine-induced-immunity.html](https://www.cdc.gov/coronavirus/2019-ncov/science/science-briefs/vaccine-induced-immunity.html). Accessed November 5, 2021 2021.
- 315 4. Chandrashekar A, Liu J, Martinot AJ, et al. SARS-CoV-2 infection protects against rechallenge in  
316 rhesus macaques. *Science* **2020**; 369:812-7.
- 317 5. McMahan K, Yu J, Mercado NB, et al. Correlates of protection against SARS-CoV-2 in rhesus  
318 macaques. *Nature* **2021**; 590:630-4.
- 319 6. Corbett KS, Nason MC, Flach B, et al. Immune correlates of protection by mRNA-1273 vaccine  
320 against SARS-CoV-2 in nonhuman primates. *Science* **2021**; 373:eabj0299.
- 321 7. O'Brien MP, Forleo-Neto E, Musser BJ, et al. Subcutaneous REGEN-COV Antibody Combination  
322 to Prevent Covid-19. *N Engl J Med* **2021**; 385:1184-95.
- 323 8. Lumley SF, O'Donnell D, Stoesser NE, et al. Antibody Status and Incidence of SARS-CoV-2  
324 Infection in Health Care Workers. *N Engl J Med* **2021**; 384:533-40.
- 325 9. Mattiuzzo G, Bentley EM, Hassall M, et al. Establishment of the WHO International Standard and  
326 Reference Panel for anti-SARS-CoV-2 antibody (WHO/BS/2020/2403): World Health Organization,  
327 **2020**.



- 328 10. Earle KA, Ambrosino DM, Fiore-Gartland A, et al. Evidence for antibody as a protective correlate  
329 for COVID-19 vaccines. *Vaccine* **2021**; 39:4423-8.
- 330 11. Feng S, Phillips DJ, White T, et al. Correlates of protection against symptomatic and asymptomatic  
331 SARS-CoV-2 infection. *medRxiv* **2021**.
- 332 12. Gilbert PB, Montefiori DC, McDermott A, et al. Immune Correlates Analysis of the mRNA-1273  
333 COVID-19 Vaccine Efficacy Trial. *medRxiv* **2021**.
- 334 13. Khoury DS, Cromer D, Reynaldi A, et al. Neutralizing antibody levels are highly predictive of  
335 immune protection from symptomatic SARS-CoV-2 infection. *Nat Med* **2021**; 27:1205-11.
- 336 14. Gundlapalli AV, Salerno RM, Brooks JT, et al. SARS-CoV-2 Serologic Assay Needs for the Next  
337 Phase of the US COVID-19 Pandemic Response. *Open Forum Infect Dis* **2021**; 8:ofaa555.
- 338 15. Ju B, Zhang Q, Ge J, et al. Human neutralizing antibodies elicited by SARS-CoV-2 infection. *Nature*  
339 **2020**; 584:115-9.
- 340 16. Robbiani DF, Gaebler C, Muecksch F, et al. Convergent antibody responses to SARS-CoV-2 in  
341 convalescent individuals. *Nature* **2020**; 584:437-42.
- 342 17. Bajema KL, Wiegand RE, Cuffe K, et al. Estimated SARS-CoV-2 Seroprevalence in the US as of  
343 September 2020. *JAMA Intern Med* **2021**; 181:450-60.
- 344 18. Markmann AJ, Giallourou N, Bhowmik DR, et al. Sex disparities and neutralizing antibody  
345 durability to SARS-CoV-2 infection in convalescent individuals. *medRxiv* **2021**.
- 346 19. Kappelman MD, Weaver KN, Boccieri M, et al. Humoral Immune Response to Messenger RNA  
347 COVID-19 Vaccines Among Patients With Inflammatory Bowel Disease. *Gastroenterology* **2021**.
- 348 20. Jones JM, Stone M, Sulaeman H, et al. Estimated US Infection- and Vaccine-Induced SARS-CoV-2  
349 Seroprevalence Based on Blood Donations, July 2020-May 2021. *JAMA* **2021**.

- 350 21. US Centers for Disease Control and Prevention. Trends in Number of COVID-19 Cases and Deaths  
351 in the US Reported to CDC, by State/Territory. Available at: [https://covid.cdc.gov/covid-data-](https://covid.cdc.gov/covid-data-tracker/#trends_dailycases)  
352 [tracker/#trends\\_dailycases](https://covid.cdc.gov/covid-data-tracker/#trends_dailycases). Accessed October 14, 2021.
- 353 22. Egbert ER, Xiao S, Colantuoni E, et al. Durability of Spike Immunoglobulin G Antibodies to SARS-  
354 CoV-2 Among Health Care Workers With Prior Infection. *JAMA Netw Open* **2021**; 4:e2123256.
- 355 23. Planas D, Veyer D, Baidaliuk A, et al. Reduced sensitivity of SARS-CoV-2 variant Delta to  
356 antibody neutralization. *Nature* **2021**; 596:276-80.
- 357 24. Sette A, Crotty S. Adaptive immunity to SARS-CoV-2 and COVID-19. *Cell* **2021**; 184:861-80.

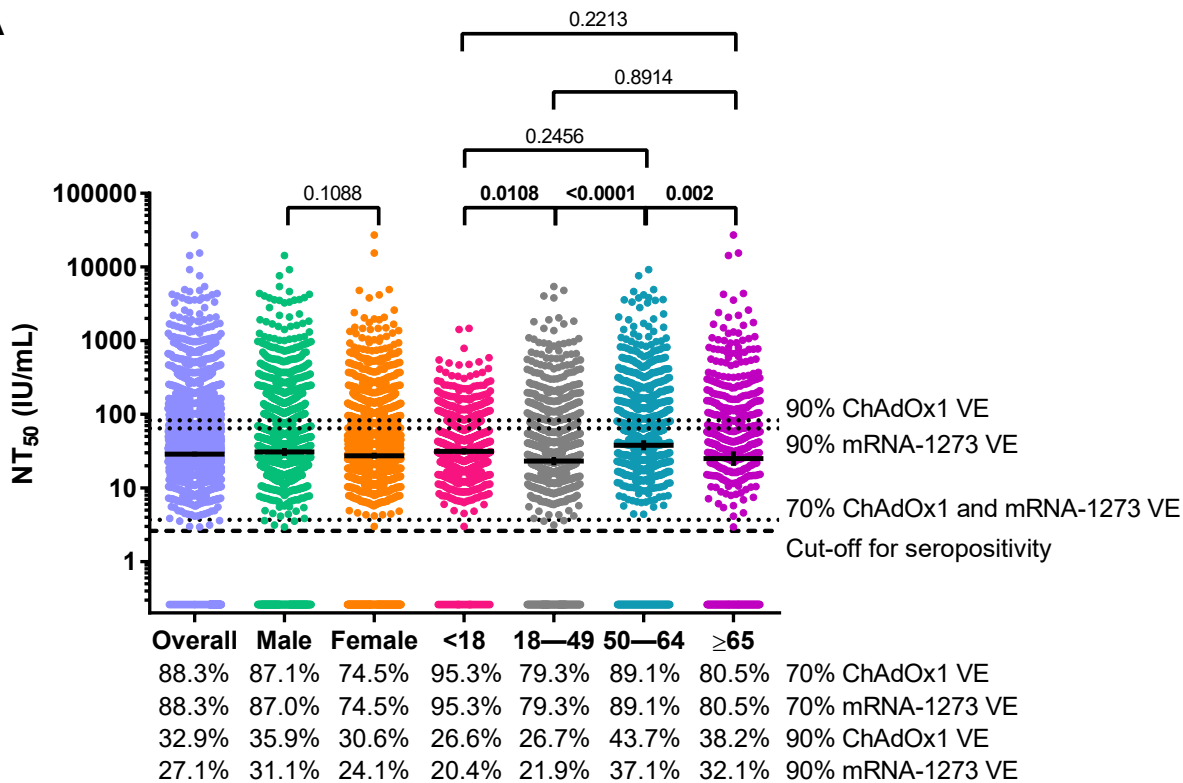
358 **Figure 1.** SARS-CoV-2 50% neutralizing antibody titer (NT<sub>50</sub>) concentrations and anti-SARS-CoV-2  
359 receptor binding domain (RBD) IgG concentrations for the overall convenience sample of 3,067 serum  
360 specimens collected during July 27,2020-August 27, 2020 with detectable anti-SARS-CoV-2 antibodies  
361 on a qualitative assay, and according to sex and age category. A) SARS-CoV-2 NT<sub>50</sub> concentrations in  
362 international units per mL (IU/mL) and B) Anti-SARS-CoV-2 RBD IgG concentrations in binding  
363 antibody units per mL (BAU/mL). Horizontal bars represent geometric means, vertical error bars  
364 represent 95% confidence intervals, and dashed horizontal lines represent assay cut-off values for  
365 seropositivity. P-values from t-tests (sex) and post-hoc Tukey tests (age class) are shown for each sex  
366 and age class comparison. Bolded p-values denote statistical significance (p<0.05). Dotted horizontal  
367 lines represent antibody concentrations associated with 70% and 90% ChAdOx1 [11] and mRNA-1273  
368 [12] vaccine efficacy (VE). The percentage of sera with antibody concentrations that meet or exceed the  
369 concentrations represented by each of the horizontal dotted lines are shown below the charts.

370 **Figure 2.** Correlations between SARS-CoV-2 50% neutralizing antibody titer (NT<sub>50</sub>) concentrations in  
371 international units per mL (IU/mL) and anti-SARS-CoV-2 receptor binding domain (RBD) IgG  
372 concentrations in binding antibody units per mL (BAU/mL) for the convenience sample of 3,067 serum  
373 specimens collected during July 27,2020-August 27, 2020 with detectable anti-SARS-CoV-2 antibodies  
374 on a qualitative assay. A) Overall, B) by sex, and C) by age class.

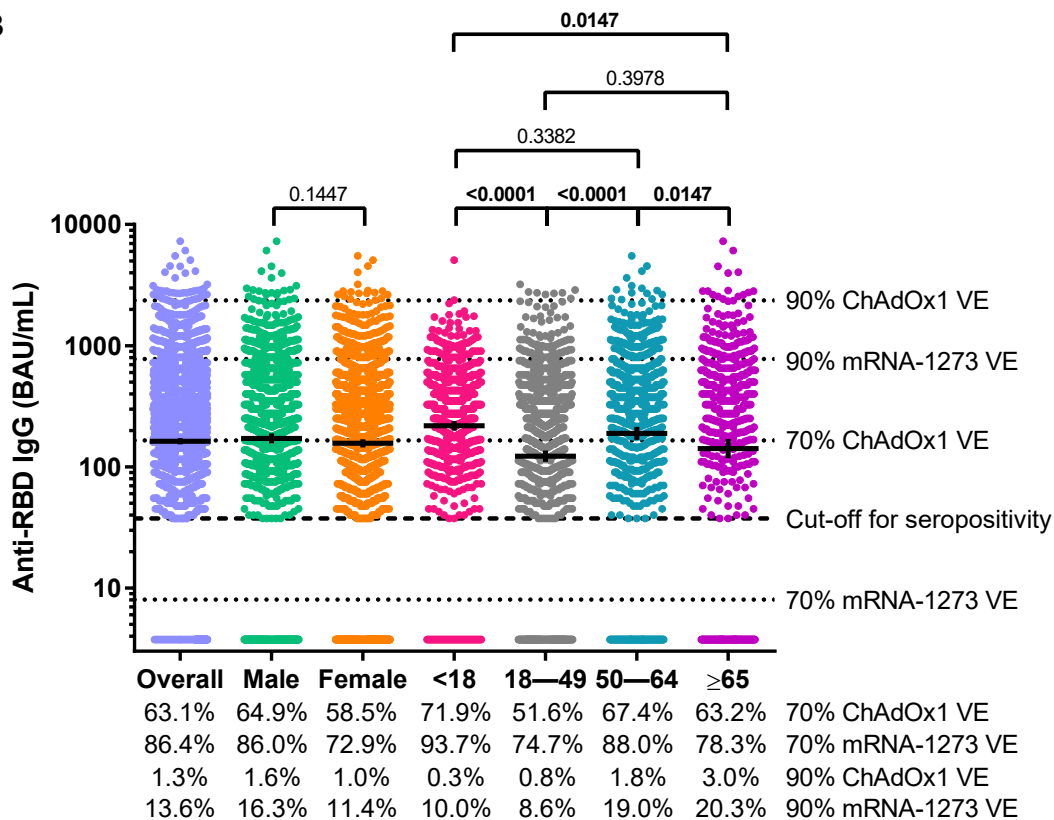
375 **Figure 3.** SARS-CoV-2 50% neutralizing antibody titer (NT<sub>50</sub>) concentrations in international units per  
376 mL (IU/mL) and anti-SARS-CoV-2 receptor binding domain (RBD) IgG concentrations in binding  
377 antibody units per mL (BAU/mL) for the overall convenience sample of 3,067 serum specimens  
378 collected during July 27,2020-August 27, 2020 with detectable anti-SARS-CoV-2 antibodies on a  
379 qualitative assay compared to 28 days post COVID-19 vaccination concentrations in ChAdOx1 [11] and  
380 mRNA-1273 [12] VE study participants classified as not having COVID-19 during the follow-up period.  
381 A) Median and interquartile range SARS-CoV-2 NT<sub>50</sub> concentrations for the overall convenience

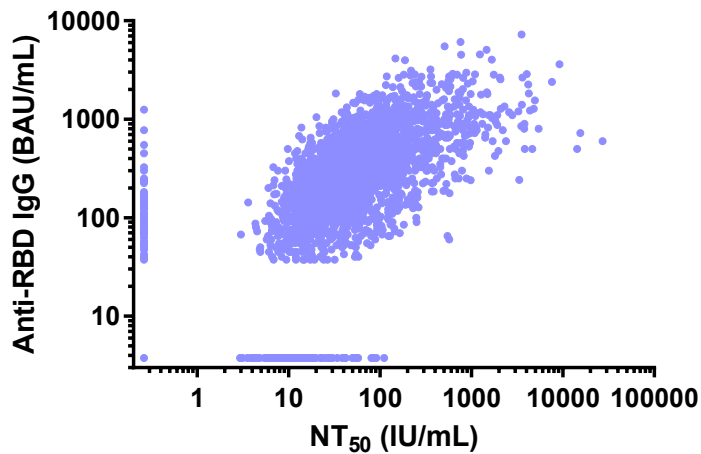
382 sample compared to concentrations in VE study participants who received the ChAdOx1 vaccine and  
383 were classified as not having COVID-19 during the follow-up period, B) Geometric mean and 95%  
384 confidence interval SARS-CoV-2 NT<sub>50</sub> concentrations for the overall convenience sample compared to  
385 concentrations in VE study participants who received the mRNA-1273 vaccine and were classified as  
386 not having COVID-19 during the follow-up period, C) Median and interquartile range anti-SARS-CoV-  
387 2 RBD IgG concentrations for the overall convenience sample compared to concentrations in VE study  
388 participants who received the ChAdOx1 vaccine and were classified as not having COVID-19 during the  
389 follow-up period, and D) Geometric mean and 95% CI anti-SARS-CoV-2 RBD IgG concentrations for  
390 the overall convenience sample compared to concentrations in VE study participants who received the  
391 mRNA-1273 vaccine and were classified as not having COVID-19 during the follow-up period.  
392 Horizontal bars represent medians or geometric means, and vertical error bars represent the interquartile  
393 range surrounding the median or 95% confidence intervals surrounding the geometric mean.

**A**

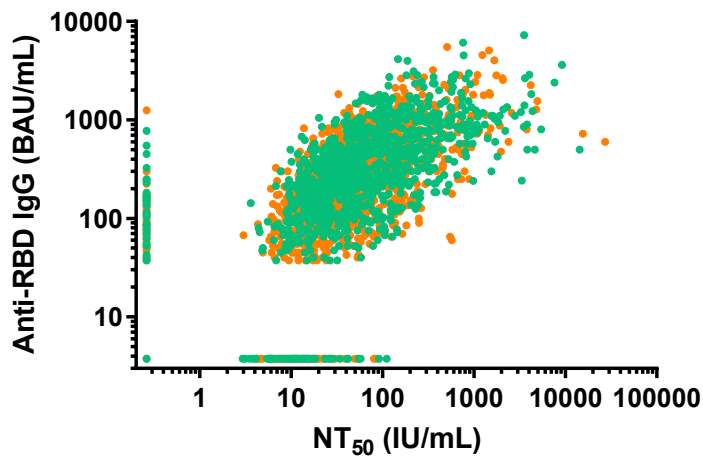


**B**



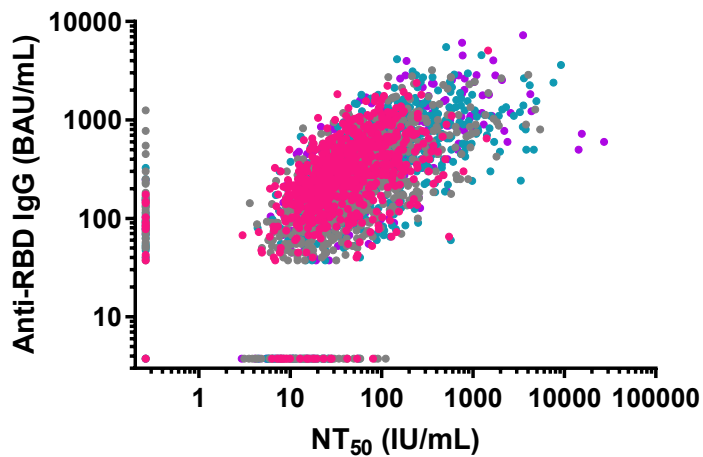
**A**

• Overall ( $r=0.76$ ,  $p<0.0001$ )

**B**

• Male ( $r=0.76$ ,  $p<0.0001$ )

• Female ( $r=0.76$ ,  $p<0.0001$ )

**C**

• <18 ( $r=0.67$ ,  $p<0.0001$ )

• 18—49 ( $r=0.69$ ,  $p<0.0001$ )

• 50—64 ( $r=0.79$ ,  $p<0.0001$ )

• >65 ( $r=0.88$ ,  $p<0.0001$ )

