

1 **Responsivity of the striatal dopamine system to methylphenidate – a**  
2 **within-subject I-123-β-CIT-SPECT study in children and adolescents**  
3 **with Attention-Deficit/Hyperactivity Disorder**

4 **Hans-Christoph Aster<sup>1,2\*</sup>, Marcel Romanos<sup>1</sup>, Susanne Walitza<sup>3</sup>, Manfred Gerlach<sup>1</sup>, Andreas**  
5 **Mühlberger<sup>4</sup>, Natalie Hasenauer<sup>5</sup>, Philipp E. Hartrampf<sup>5</sup>, Kai Nerlich<sup>5</sup>, Christoph Reiners<sup>5</sup>,**  
6 **Reinhard Lorenz<sup>5</sup>, Andreas K. Buck<sup>5</sup>, Lorenz Deserno<sup>1,6,7\*</sup>**

7 <sup>1</sup> Department of Child and Adolescent Psychiatry, Psychotherapy and Psychosomatics, University of  
8 Würzburg, Germany;

9 <sup>2</sup> Department of Neurology, University of Würzburg, Germany

10 <sup>3</sup> Department of Child and Adolescent Psychiatry and Psychotherapy, University Hospital of  
11 Psychiatry, University of Zürich, Switzerland

12 <sup>4</sup> Department of Psychology, Clinical Psychology and Psychotherapy, University of Regensburg,  
13 Germany;

14 <sup>5</sup> Department of Nuclear Medicine, University of Würzburg, Germany;

15 <sup>6</sup> Max Planck Institute for Human Cognitive and Brain Sciences, Leipzig, Germany;

16 <sup>7</sup> Department of Psychiatry and Psychotherapy, Technische Universität Dresden, Germany

17

18 \*Corresponding authors:

19 Lorenz Deserno, MD; Hans-Christoph Aster, MD

20 Klinik für Kinder- und Jugendpsychiatrie, Psychotherapie und Psychosomatik

21 Universitätsklinikum Würzburg

22 Margarete-Höppel Platz 1, 97080 Würzburg

23 Email: Deserno\_L@ukw.de; Aster\_H@ukw.de

24

25 **Length of Manuscript: 12 pages, 4606 words.**

26

## **Responsivity of the striatal dopamine system to methylphenidate – a within-subject I-123-β-CIT-SPECT study in adolescent males with ADHD**

### 27 **Abstract**

28 Background: Methylphenidate (MPH) is the first-line pharmacological treatment of attention-  
29 deficit/hyperactivity disorder (ADHD). MPH binds to the dopamine (DA) transporter (DAT), which  
30 has high density in the striatum. Assessments of the striatal dopamine transporter by single positron  
31 emission computed tomography (SPECT) in childhood and adolescent patients are rare but can provide  
32 insight in how effects of MPH affect DAT availability. The aim of our within-subject study was to  
33 investigate the effect of MPH on DAT availability and how responsivity to MPH in DAT availability  
34 is linked to clinical symptoms and cognitive functioning.

35 Methods: Thirteen adolescent male patients (9-16 years) with diagnosis of ADHD according to DSM-  
36 IV and long-term stimulant medication (for at least 6 months) with MPH were assessed twice within 7  
37 days using SPECT after application of I-123-β-CIT to examine DAT binding potential (DAT BP).  
38 SPECT measures took place in on and off-MPH status balanced for order across participants. A virtual-  
39 reality continuous-performance test was performed at each time point. Further clinical symptoms were  
40 assessed for baseline off-MPH.

41 Results: On-MPH status was associated with a highly significant decrease (-27,6%) of striatal DAT BP  
42 as compared to off-MPH ( $t=4.93$ ,  $p<0.001$ ). More pronounced decrease in striatal DAT BP was  
43 associated with higher off-MPH attentional and externalizing symptom ratings (Pearson  $r=0.68$ ,  
44  $p=0.01$ ). Striatal DAT BP off-MPH, but not on- MPH, was associated with higher symptom ratings  
45 off-MPH (Pearson  $r=0.56$ ,  $p=0.04$ ). In further exploratory analysis in left vs. right striatal sub-regions,  
46 stronger decrease in DAT BP in the right caudate nucleus was weakly associated with improved  
47 performance in the continuous-performance test (Pearson  $r= - 0.54$ ,  $p=0.07$ ).

48 Conclusion: Our findings corroborate previous reports from mainly adult samples that MPH reduces  
49 striatal DAT BP availability and suggest higher off-MPH DAT BP, likely reflecting low baseline DA  
50 levels, as a marker of symptom severity. More speculatively, regional specific responsivity of DAT BP  
51 to MPH may reflect treatment response with respect to cognitive functioning. However, implications  
52 from this small patient sample should be treated with caution and warrant replication.

53

## **Responsivity of the striatal dopamine system to methylphenidate – a within-subject I-123-β-CIT-SPECT study in adolescent males with ADHD**

### **54 Introduction**

55 Attention-deficit/hyperactivity disorder (ADHD) is a common child and adolescent psychiatric  
56 disorder associated with substantial psychosocial impairment on the individual and family level (1).  
57 ADHD significantly impacts on mental health and the social services (1). The clinical phenotype is  
58 characterized by motor hyperactivity, increased impulsivity and impaired attention starting in the most  
59 cases in childhood. There is a relevant increase of comorbid symptoms and disorders, for example  
60 social oppositional and conduct problems, substance use and depression (2). Clinically relevant ADHD  
61 symptoms persist into adulthood to a large extent (3).

62 Pharmacological interventions by stimulant medication, such as methylphenidate (MPH), are effective  
63 and save (4). MPH binds primarily to the dopamine and to some extent to noradrenaline transporter  
64 and because of the high density of the dopamine transporter (DAT) in the striatum, striatal DAT is one  
65 of MPH's main neurochemical targets (5) and may thus be related to MPH treatment response.  
66 Considering different response criteria the response to MPH is limited to approx. 70% of childhood  
67 patients (6), the identification of the neurobiological correlates (or even determinants) may allow to  
68 establish quantitative markers of treatment response in the long run to provide more individualized  
69 outcome predictions in the future. Therefore, the investigation of the striatal dopamine system by  
70 means of Single-Positron-Emission-Computed Tomography (SPECT) and Positron Emission  
71 Tomography (PET), and in particular its modulation by stimulant medication in an children's and  
72 adolescents population, may provide a better understanding of whether MPH-related changes in DAT  
73 availability are indeed related to changes in clinical symptoms.

74 Numerous functional magnetic resonance imaging (fMRI) and Electroencephalography (EEG) studies  
75 have been published on altered neurocognitive processes in fronto-striatal brain circuits of ADHD  
76 patients for example during executive function (7, 8), Studies approaching the striatal dopaminergic  
77 system by SPECT or PET are clearly more challenging to conduct, especially in an children's and  
78 adolescents population. However, molecular imaging techniques can provide insights to neurochemical  
79 targets of a drug (9). Due to the ethical limitations and high costs of neurochemical imaging studies  
80 with radioactive ligands, only few studies with relatively small numbers of patients were published  
81 until now (10). These studies are highly heterogeneous in regard to sample characteristics as well as  
82 the applied tracers rendering direct comparisons considerably difficult, especially when results are  
83 conflicting. Nonetheless, DAT has been studied most consistently as summarized in a meta-analysis  
84 of 9 PET and SPECT studies in adult patients (10). Adult patients with ADHD had a higher striatal  
85 DAT availability (likely indicating lower striatal DA levels (11)). However, the study showed that  
86 about half of the variability in DAT availability was related to medication status. Patients who were  
87 already treated with psychostimulants, such as MPH, showed a significantly higher DAT availability  
88 than groups of patients who were drug-naïve (10). This was discussed as an adaptive response to the  
89 long-term blockade of dopamine transporters by continuous treatment. This could in turn explain the  
90 partial decrease in long-term efficacy of MPH at the same dose. However, only cross-sectional studies  
91 were included (10), which limits conclusions in this regard. A longitudinal study, however, confirmed  
92 that one year treatment on MPH in adult ADHD lead to enhanced DAT availability (12). Nonetheless,  
93 when using a tracer that binds to D2 receptor to measures displacement by one-year MPH treatment as  
94 marker of DA levels in adult ADHD, it was found that MPH treatment lead to elevated DA levels (13).  
95 This increase in DA levels (measured via D2 receptor displacement) was correlated with improved  
96 inattention symptoms after one-year MPH (13).

97 Although the dopaminergic system undergoes substantial development changes (14, 15), to our  
98 knowledge only two studies investigating the effect of MPH therapy on DAT have been published in

## Responsivity of the striatal dopamine system to methylphenidate – a within-subject I-123-β-CIT-SPECT study in adolescent males with ADHD

99 adolescent ADHD. Results from both studies indicate that MPH treatment leads to a decrease in DAT  
100 availability in response to MPH treatment (16). However, only one of the two studies found a relation  
101 to clinical symptoms based on a subgroup analysis. Neither study reported on relationships with  
102 neurocognitive performance measures. To fill this gap, we here detail a 123-β-CIT SPECT study on  
103 13 male children and adolescents with ADHD, who were on continuous medication (for at least 6  
104 months) on MPH before study enrollment. All patients performed two SPECT measurements (counter-  
105 balanced for order), one on MPH, and another one after 7 days of treatment cessation (off-MPH).  
106 Binding of 123-β-CIT is aiming at quantifying DAT density 24h after injection. We concomitantly  
107 applied both clinical rating scales as well as neurocognitive testing procedures in a virtual reality setting  
108 in order to determine whether DAT density was correlated to measures of ADHD symptoms and  
109 cognitive performance.  
110

### 111 **Methods**

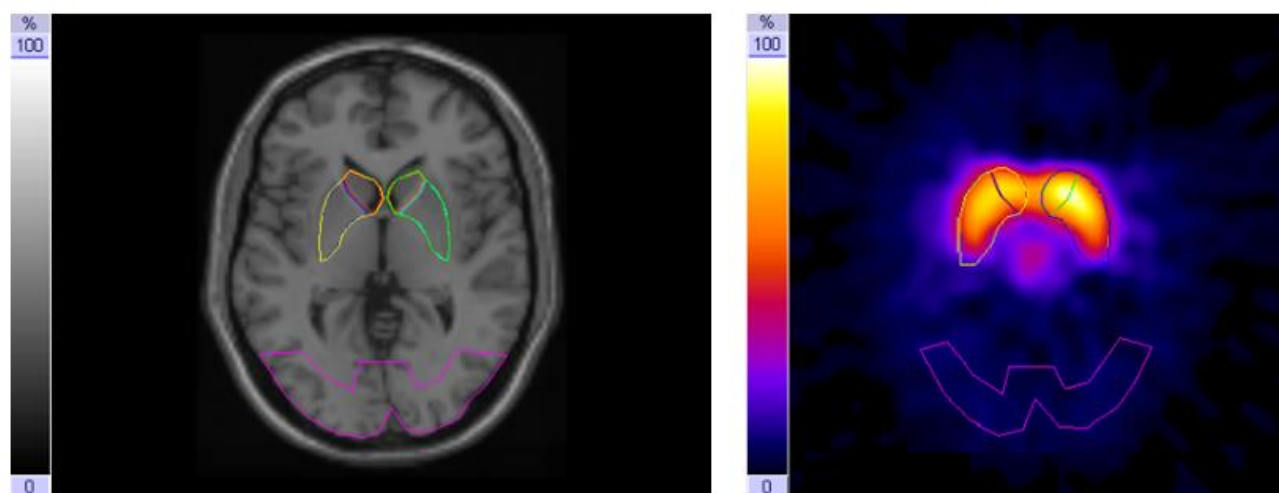
112 *Study design.* All participants were on continuous MPH medication for at least 6 months prior to  
113 inclusion in the study. During this period, MPH was taken once a day between 7 and 8 a.m. by oral  
114 administration. Patients received daily doses of MPH between 0.4 and 1.2 mg/kg body weight. Those  
115 dosage regimes were met individually based on clinical needs and prescribed by the respective treating  
116 child and adolescent psychiatrists. All participants received long-acting MPH preparations (Medikinet  
117 retard® or Concerta®) ensuring continuous efficacy of the treatment during the lengthy procedures of  
118 the study. The cessation phases required for participation were organized to comply with clinical  
119 demands such as regular drug holidays or yearly cessation to determine further necessity of the drug.  
120 In all patients, treatment was reintroduced after study participations based on the families and the  
121 physicians estimate that medication provided significant benefit. The study procedure was  
122 accomplished on four days. Day A and B were two consecutive days as were day C and D with one  
123 week in between. Investigations on day A and B were performed on MPH, on day C and D off-MPH.  
124 To counter-balance for order effects, 9 patients were investigated first on MPH, and then again after 7  
125 days of cessation while 4 patients initially stopped medication for 7 days before the first SPECT  
126 measurement and were assessed a second time after 7 days of MPH treatment. Study compliance was  
127 assessed by self- and mother's report.

128 *Sample.* The study was approved by the Federal Office for Radiation Protection (“Bundesamt für  
129 Strahlenschutz”) and the ethics committee of the University of Wuerzburg and was performed in  
130 accordance with the ethical standards laid down in the latest version of the Declaration of Helsinki. 13  
131 male children and adolescent patients with diagnosis of ADHD according to DSM-IV and aged 9-16  
132 years (mean ± S.D.: 11.3 ± 2.8) were recruited in the outpatient clinic of the Department of Child and  
133 Adolescent Psychiatry, Psychosomatics and Psychotherapy of the University of Wuerzburg. All  
134 patients and their legal guardians gave written informed consent before inclusion in the study. All  
135 participants were thoroughly assessed by complete semi-structured interview (Kiddie-Sads-PL,  
136 German version) determining ADHD status and comorbid disorders. Parents filled in the Child  
137 behavior Checklist and the “Depressionsinventar für Kinder- und Jugendliche” determining depressive  
138 symptoms. Exclusion criteria were female, sex, history of birth complication, traumatic head injury,  
139 seizures, severe somatic or neurological disorders, psychosis, autism spectrum disorder, severe conduct  
140 disorder, and IQ below 85. All patients had received continuous pharmacological treatment with MPH  
141 for at least 6 months before inclusion in the study (see Table 1 for sample characteristics).

142 *Single Photon Emission Computed Tomography.* To assess the DAT availability and binding potential,  
143 respectively, the highly affine presynaptic dopamine transporter ligand, Iodine-123-β-CIT [2-β-

## Responsivity of the striatal dopamine system to methylphenidate – a within-subject I-123- $\beta$ -CIT-SPECT study in adolescent males with ADHD

144 carboxy-methoxy-3- $\beta$ -(4-iodophenyl)-tropane] was used (17, 18). Image acquisition was performed on  
145 Day B and D 24 h after i.v. injection of weight-adapted activity of Iodine-123- $\beta$ -CIT on Day A and C  
146 (19) with a dual-head gamma camera (E.cam duet; Siemens) fitted with middle-energy, parallel-hole  
147 collimators. Energy window for iodine-123 was set on 160 keV +/- 15%. For each scan, 60 projections  
148 (40s per frame) were collected in step-and-shoot mode on a circular orbit. The image data were  
149 reconstructed by standard filtered back projection using Butterworth filter with cut-off frequency of  
150 0,6/cm and order 8, followed by attenuation correction using a first-order method (20). To block  
151 binding of free iodine in the thyroid gland, the patients took 16,4mg/kgKG sodium perchlorate (Irenat)  
152 orally 20 minutes before injection of I-123- $\beta$ -CIT, followed by 6mg/kgKG Irenat three times a day the  
153 following three days. For evaluation (intra-individual comparison of the influence of methylphenidate  
154 treatment) and standardized quantification by stereotactic normalization patient studies were co-  
155 registered with a normal template of a healthy age matched control subject. Standardized templates (in  
156 size and shape) created in our normal template (based on Colin 27 NMR-Brain (21)) were used for  
157 defining the striatal regions of interest. After transforming the region of interests (ROI) templates for  
158 the striatum and its subregions as well as for the reference region in the occipital lobe from the normal  
159 template onto the two SPECT/CT patient studies of interest (on/off MPH), the position of the ROI  
160 templates were manually adjusted to fit individuals because of anatomical differences (Figure 1). We  
161 evaluated the data derived from three consecutive transverse slices, which showed the highest tracer  
162 accumulation in the basal ganglia. For semi-quantitative evaluation, DAT availability was calculated  
163 using the binding potential (22) ratios [(STR-BKG)/BKG] in the striatum (STR) and its subregions  
164 (putamen, caudate nucleus) with an occipital reference region used as background (BKG), as  
165 recommended by EANM Guidelines (23) and already implemented in this way in other previous  
166 studies (24).  
167



168  
169 Figure 1: MRI with ROI-template-set covering the striatum with caudate nucleus and putamen and an  
170 occipital background ROI (left); I-123- $\beta$ -CIT-SPECT (summation of the three consecutive slices with  
171 the highest tracer uptake in the basal ganglia (right))

172 *Continuous performance test in virtual reality classroom.* On Day A and Day C, patients performed a  
173 neurocognitive testing procedure in a Virtual Reality Classroom (VRC) (25, 26) thus assessing the  
174 participants' attention in a more ecological valid setting. Within the VRC, a continuous performance  
175 test (CPT) was presented on a blackboard while distracting visual (e.g., another teacher coming into  
176 the room) and auditory (e.g., coughing classmate) stimuli appear. Participants' head movements were  
177 measured. The VR environment and instructions were presented with a Z800 3D Visor head-mounted  
178 display (HMD; eMagin, Hopewell Junction, USA) and a closed headphone (Sennheiser, Wedemark,

## **Responsivity of the striatal dopamine system to methylphenidate – a within-subject I-123-β-CIT-SPECT study in adolescent males with ADHD**

179 Germany), both connected to a notebook with Microsoft Windows operating system. The head position  
180 was monitored by an electromagnetic tracking device (Minuteman, Polhemus Corporation, Colchester,  
181 USA) in order to adapt the field of view to head movements and to assess head orientation.

182 The experimenter explained the VRC equipment, made sure the child's eyesight, hearing and cognitive  
183 capabilities were unimpaired and adjusted the HMD to the child's head, so that the interior of the virtual  
184 classroom could be seen. The child then was instructed to look around in the room to adapt to the  
185 virtual environment. The child was then given the first task (warm-up task) by the virtual teacher. It  
186 was instructed to view a series of numbers appearing on the blackboard and to hit the button of the  
187 responding device every time the number "5" preceded by the number "9" occurred. Each of the  
188 numbers remained on the blackboard for 200 milliseconds (ms) followed by an interstimulus interval  
189 of 800 ms. Altogether twenty number stimuli were presented containing five target sequences. If  
190 necessary instructions and warm-up trial were repeated. In case the task was completed without making  
191 more than one error, the second task (main task) started after a short break.

192 In the main task the participant was instructed by a virtual teacher to view a series of letters presented  
193 on the blackboard. The participant had to press the response button as quickly as possible every time  
194 he detected the letter "K" preceded by the letter "A". Altogether two blocks of each 680 letter stimuli  
195 including 72 target stimuli were presented with a stimulus duration of 200 ms and an interstimulus  
196 interval of 800 ms. The first block included no distracters. Directly after the first block a second block  
197 including the same stimuli and target number was presented. This block included pure auditory (typical  
198 classroom sounds like whispering, dropping pencils, etc.), pure visual (paper plane flying across the  
199 room) or mixed auditory/visual (bus noisefully driving by outside left window) distracters distributed  
200 over the whole block. Each block lasted 11 minutes and 20 seconds.

201 *Child Behavior Checklist (CBCL)*. The CBCL in the version for children and adolescents aged 4-18  
202 years captures parents' assessments of their children's competencies and problems. The evaluation of  
203 this questionnaire includes the following scales and scores: 3 competency scales (activity, social skills,  
204 and school), 8 cross-assessment syndromes (Social Withdrawal, Physical Discomfort,  
205 Anxiety/Depressive, Social Problems, Schizoid/Compulsive, Attention Deficit Disorder, Dissocial  
206 Behavior, Aggressive Behavior) where comparison is possible across parent, teacher, and self-report  
207 forms of this questionnaire system. Scales of internalizing and externalizing behavior and an overall  
208 problem behavior score are formed from the syndrome scales (27, 28). The questionnaire was  
209 completed by the patients' parents at the time off-MPH.

210 *Statistical Analysis*. The statistical analyses were conducted using the JASP Toolbox (JASP Team  
211 (2020, Version 0.14.1). Specific DAT binding of the patients on and off-MPH 24h after administration  
212 of 123-β-CIT was compared using a generalized linear mixed effects model with medication status as  
213 fixed effect and individual subjects and medication order as random effects (striatal binding potential  
214 ~ medication status + (1|participant) + (1|order). Change scores in regional binding potential and  
215 performance in the CPT were calculated by the difference of the respective values at the time of off  
216 medication minus on medication. The influence of MPH on the performance in the virtual classroom  
217 setting was also analyzed using a generalized linear mixed effects model (correct choices ~ medication  
218 status + (1|participant) + (1|order). For correlations, after testing for a normal distribution using the  
219 Shapiro-Wilk test, we used Pearson correlation coefficients. All variables were z-scored before  
220 analysis. Comparison of correlation coefficients, when indicated, were calculated by a Fisher's z-  
221 transformation (29).

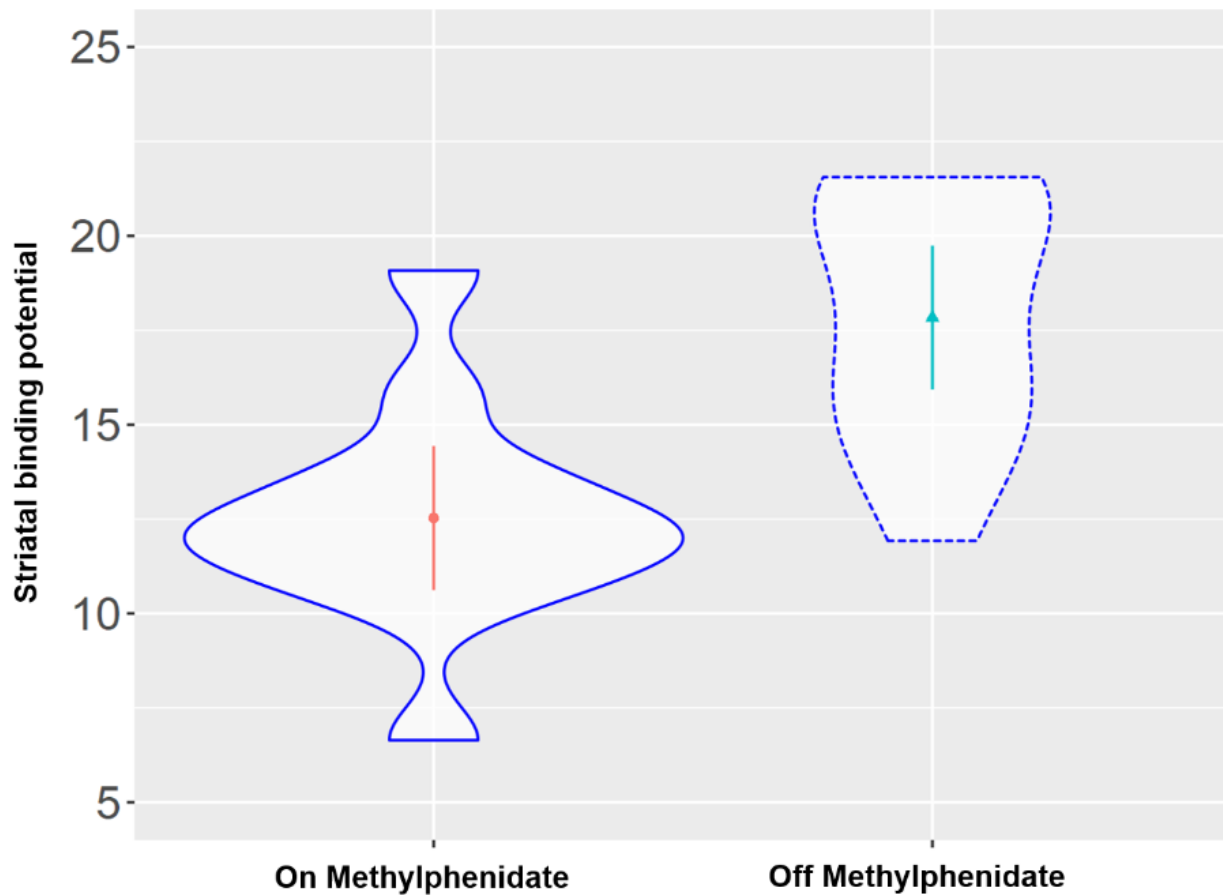
222

## Responsivity of the striatal dopamine system to methylphenidate – a within-subject I-123-β-CIT-SPECT study in adolescent males with ADHD

### 223 Results

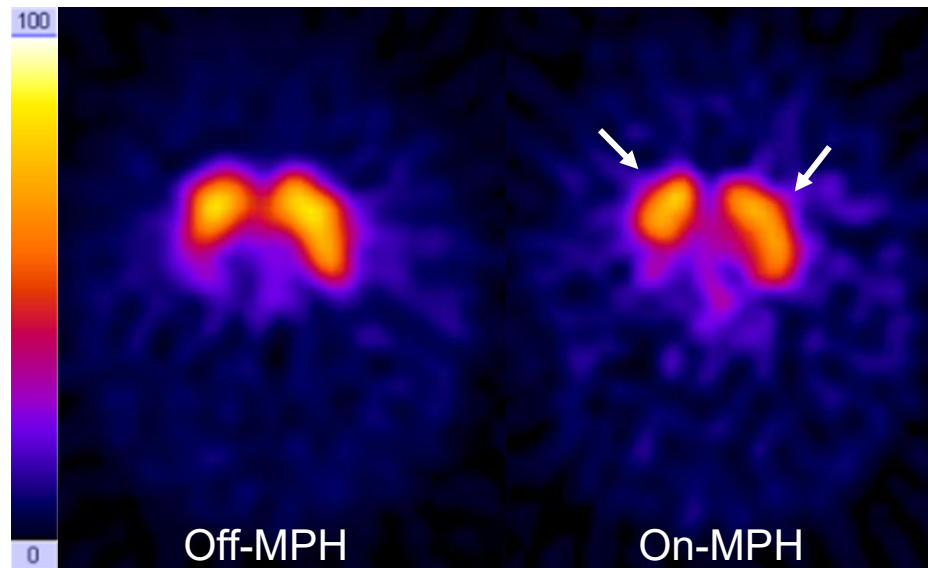
224 For a sample description, see Table 1.

225 *Single Photon Emission Computed Tomography.* In a linear mixed effects model with the individual  
226 participants as random effects, there was a significant difference in striatal binding potential (BP)  
227 between the on and off-MPH DAT BP (degrees of freedom: 20.6, t-value: 4.93, p-value < 0.001, beta  
228 estimate: -2.68 (SD: 0.54), see Figure 2 and 3). The medium reduction of DAT binding potential was  
229 27,6 % (median 32.1%), ranging from -7.4% to 68.9% (SD: 19.4%). Nominal reductions in the  
230 medication condition vs. the non-medication condition were found in all participants except for one,  
231 who showed basically no change in DAT and a second participant, who displayed a nominal increase  
232 of DAT.



233 Figure 2: Comparison of striatal DAT binding potential on and off-methylphenidate ( $p < 0.001$ ).  
234  
235

## Responsivity of the striatal dopamine system to methylphenidate – a within-subject I-123-β-CIT-SPECT study in adolescent males with ADHD



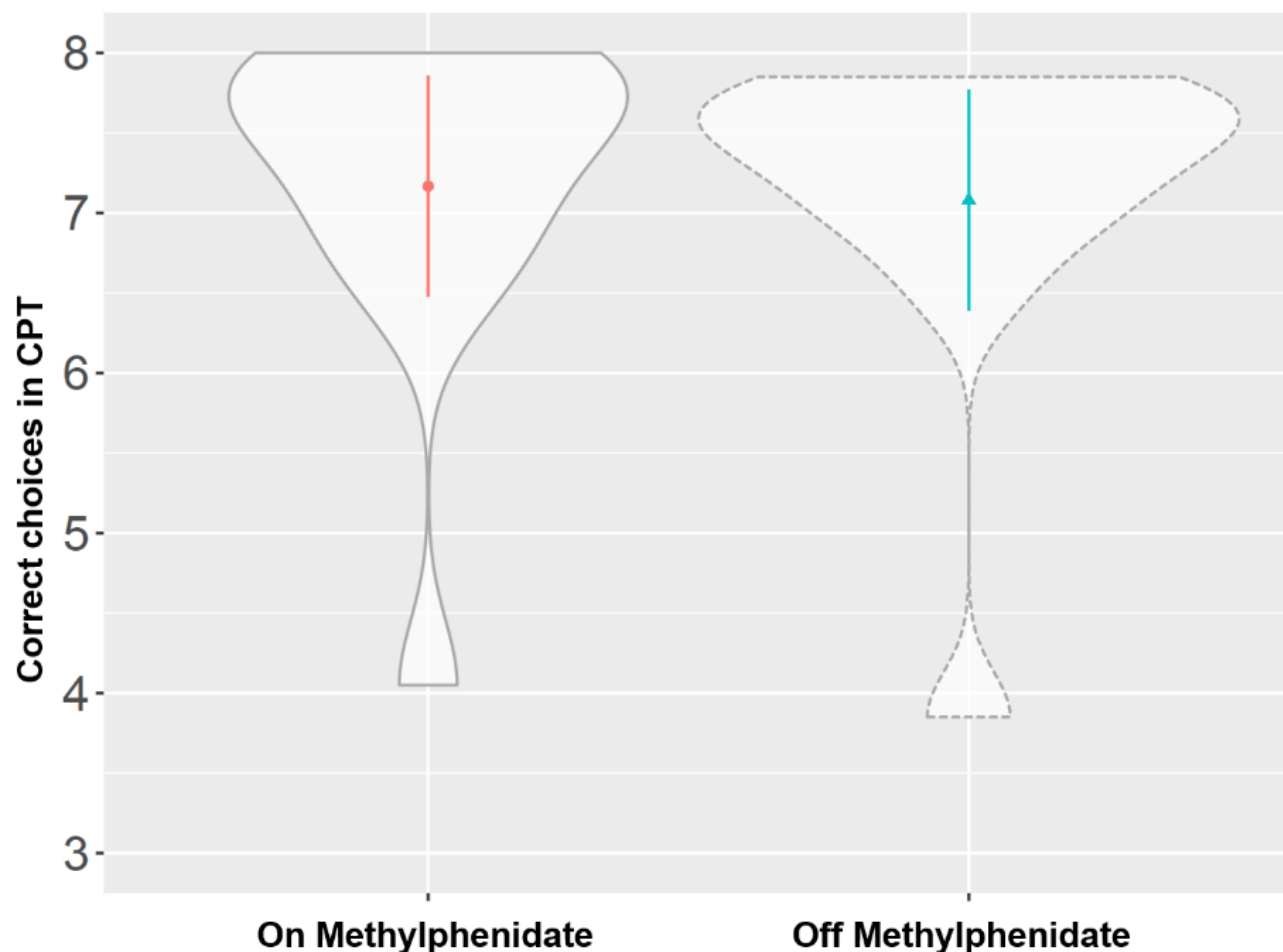
236 Figure 3: DAT-scans on and off-MPH in a single subject. Acquisition time points were 24h after tracer  
237 application. Color scale is hot metal. Time span between the two images was seven days. On the right  
238 side a decrease of tracer accumulation in the basal ganglia can be seen (arrows).  
239

240

241 *Continuous Performance Task.* In a mixed linear effects model with medication status as a fixed effect  
242 and participants as a random effect showed no significant effect on the continuous performance task  
243 parameters (correct choice (Figure 4), errors and head movement (degrees of freedom: 11, t-value:  
244 0.74, p-value: 0.47, estimate: 0.04 (SD:0.06))).



## Responsivity of the striatal dopamine system to methylphenidate – a within-subject I-123-β-CIT-SPECT study in adolescent males with ADHD



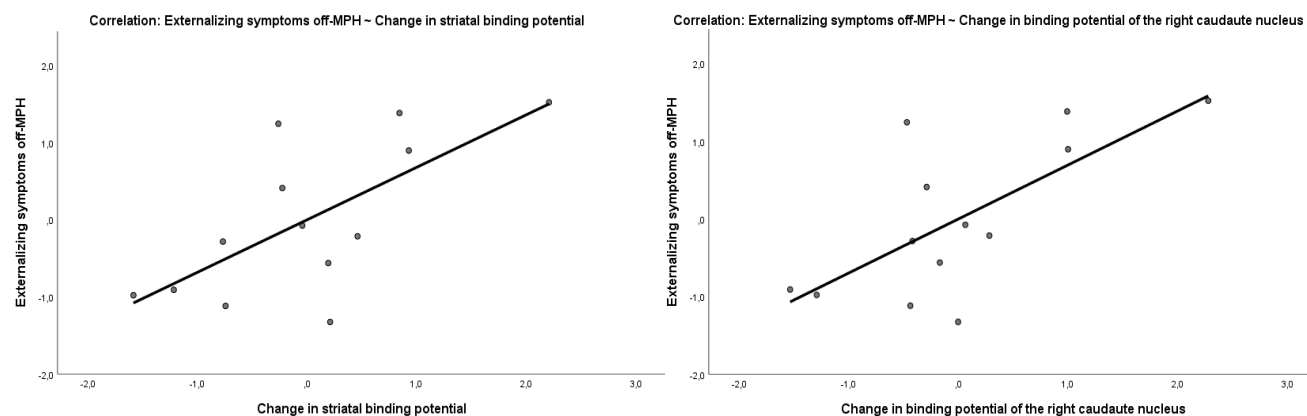
245  
246 Figure 4: Comparison of correct choices in the continuous performance task on and off-MPH (p-value:  
247 0.47).  
248

249 *Correlations between change of binding potential and clinical measures.* The parent-rated severity of  
250 internalizing and externalizing symptoms was evaluated at the time off-MPH using the CBCL  
251 questionnaire. The severity of externalizing symptoms correlated with the change in binding potential  
252 in the striatum due to MPH medication (Pearson  $r=0.68$ ,  $p=0.01$ , Figure 5). This effect was driven by  
253 the level of striatal binding potential off MPH (Pearson  $r=0.56$ ,  $p=0.04$ ) and not by the striatal binding  
254 potential on MPH (Pearson  $r=-0.36$ ,  $p=0.22$ ). The severity of internalizing symptoms was neither  
255 correlated with the change in striatal binding potential (Pearson  $r=0.47$ ,  $p=0.11$ ) nor the striatal binding  
256 potential off ( $r=0.43$ ,  $p=0.19$ ) and on ( $r=-0.19$ ,  $p=0.54$ ) MPH.

257 To explore potential regional and hemisphere specific effects in the striatum linked to symptom  
258 severity, the binding potentials of the left and right caudate nucleus and the putamen were estimated  
259 separately. In a first step, we compared the correlation coefficients of the change in the binding  
260 potential of the caudate nucleus (Pearson  $r=0.74$ ,  $p=0.004$ ) and the putamen (Pearson  $r=0.47$ ,  $p=0.1$ )  
261 with externalizing symptom severity, which differed significantly ( $z=-1.99$ ,  $p=0.04$ ). Between the  
262 hemispheres, no relevant differences in correlation strength were found. The change of the binding  
263 potential in the left putamen ( $r=0.63$ ,  $p=0.02$ ) had a stronger, but not significantly stronger ( $z=-1.79$ ,  
264  $p=0.09$ ), correlation with externalizing symptoms than the change of the binding potential of the right  
265 putamen ( $r=0.17$ ,  $p=0.58$ ). The change of the binding potential of right caudate nucleus (Pearson  $r=0.7$ )

## Responsivity of the striatal dopamine system to methylphenidate – a within-subject I-123-β-CIT-SPECT study in adolescent males with ADHD

266 showed only a slightly stronger correlation with the externalizing symptoms score than the correlation  
267 of the left caudate nucleus (Pearson  $r=0.65$ ) with the externalizing symptoms score, which was not  
268 significant ( $z=0.5182$ ,  $p\text{-value}=0.6043$ ). The strongest correlation with symptom scores and change in  
269 binding potential was seen in the right caudate nucleus. Change in binding potential of the right caudate  
270 nucleus correlated with the externalizing (Pearson  $r=0.7$ ,  $p=0.008$ ) (Figure 5), but also with the  
271 internalizing ( $r=0.58$ ,  $p=0.04$ ) symptom severity of the patients at the time off-MPH.  
272  
273

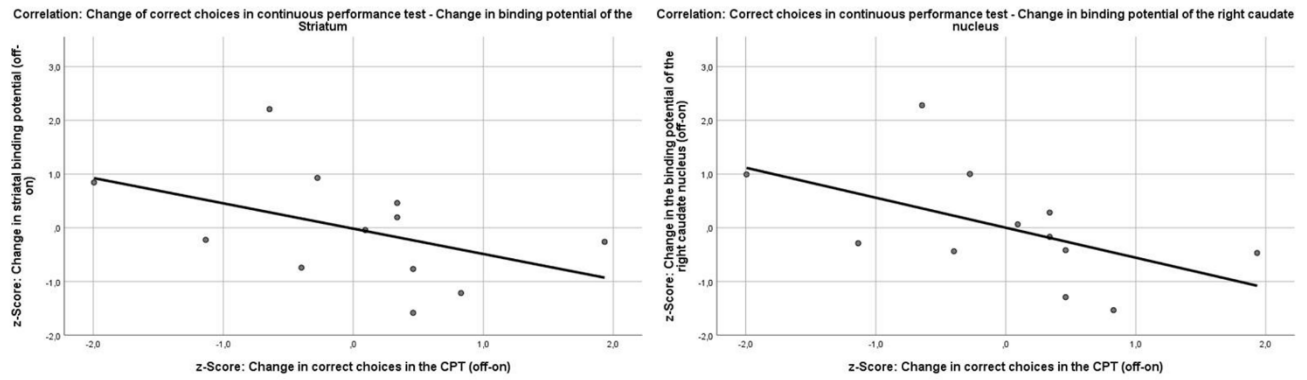


274 Figure 5. Correlation of the externalizing symptoms score off MPH with the change of binding  
275 potential in the striatum (Pearson  $r=0.68$ ,  $p=0.01$ ) and in the right caudate nucleus (Pearson  $r=0.7$ ,  
276  $p=0.008$ ).  
277

278 *Correlations of changes in CPT measures and binding potentials.* Because the CPT was performed  
279 twice within subject on and off MPH, change scores could also be calculated in this case. The change  
280 in striatal binding potential did not correlate with a change in CPT outcomes (correct choices (Pearson  
281  $r=-0.45$ ,  $p=0.14$ ), errors (Pearson  $r=0.34$ ,  $p=0.28$ ), reaction times (Pearson  $r=0.09$ ,  $p=0.78$ ), head  
282 movement (Pearson  $r=-0.42$ ,  $p=0.19$ )).

283 In explorative analyses, there was a marginally non-significant correlation of the change in the binding  
284 potential of the right caudate nucleus with the change in the correct responses in the CPT (Pearson  $r=$   
285  $-0.54$ ,  $p=0.07$ ). Because the change scores of the binding potentials and the CPT scores were calculated  
286 off-on MPH, a better performance in the CPT under medication implies a decrease in the change score,  
287 therefore the correlation of the change of the binding potential and the correct responses in the CPT is  
288 negative (Figure 6). To test whether this effect was specific to the right caudate nucleus, the correlation  
289 coefficients of the change in correct responses in the CPT and binding potentials in the right putamen  
290 and left caudate nucleus were compared with those of the right caudate nucleus. There was a significant  
291 difference in the strength of the correlation between the right caudate nucleus and the right putamen ( $z$   
292  $= -2.5917$ ,  $p\text{-value} = 0.009$ ) and a marginal difference in the correlation strength between the left and  
293 right caudate nucleus ( $z = 1.9124$ ,  $p\text{-value} = 0.05$ ). The change in binding potential in the right caudate  
294 nucleus did not correlate with any other outcome change in the CPT (errors (Pearson  $r= 0.38$ ,  $p=0.23$ ),  
295 head movement (Pearson  $r=-0.31$ ,  $p=0.36$ ) and reaction time (Pearson  $r=0.1$ ,  $p=0.75$ )). The change of  
296 binding potential of the right ( $r=0.22$ ,  $p=0.49$ ) and left ( $r= -0.47$ ,  $p=0.12$ ) putamen, or the left caudate  
297 nucleus ( $r= -0.32$ ,  $p=0.32$ ) did not correlate with the change of correct responses in the CPT.  
298

## Responsivity of the striatal dopamine system to methylphenidate – a within-subject I-123-β-CIT-SPECT study in adolescent males with ADHD



299

300

301

302

303

304

Figure 6. Correlations between the change of the binding potentials in the striatum (Pearson  $r=-0.45$ ,  $p=0.14$ ) and the right caudate nucleus (Pearson  $r=-0.54$ ,  $p=0.07$ ) and the change of correct choices in the continuous performance test.

## **Responsivity of the striatal dopamine system to methylphenidate – a within-subject I-123-β-CIT-SPECT study in adolescent males with ADHD**

### **305 Discussion**

306 We present one of few within-subject studies assessing striatal DAT density in children and adolescents  
307 with ADHD. Our results show that MPH administration leads to a significant decrease in DAT  
308 availability. The severity of externalizing symptoms off-MPH correlated with the change in DAT.  
309 Further explorative analyses indicated a correlation between change in DAT in the right caudate  
310 nucleus and change in the correct choices in the CPT. Especially correlations with symptoms and CPT  
311 thus add substantially to the small body of literature. Further, our study extends previous studies by the  
312 type of design.

313 Our data corroborate the observation from previous studies that MPH on a group level leads to a  
314 significant reduction of DAT binding (likely reflecting higher striatal DA levels). Despite this already  
315 established finding in adults and adolescents (5, 13, 30), our study is the first to actually provide  
316 evidence for a positive correlation between striatal DAT binding off-MPH and the severity of  
317 externalizing symptoms off-MPH. Region-specific analyses showed a marginally non-significant  
318 correlation between the decrease in DAT availability in the right caudate nucleus and the improvement  
319 in performance on the CPT. To our knowledge, previous studies in children or adolescents have not  
320 investigated this question (31, 32) or did not find significant correlations (24, 33). The study by Szobot  
321 et al. recruited psychostimulant-naive patients with substance abuse disorder including cannabis,  
322 cocaine and alcohol. Medication of MPH (1.2mg per kg body weight) for 3 weeks decreased core  
323 ADHD symptoms and striatal DAT availability. However, neither naive DAT availability related to  
324 clinical effect, nor were there correlations between changes in ADHD symptomatology and DAT  
325 availability (24). The study by Akay et al. included under-age patients over a 2-month period to  
326 evaluate the effects of MPH on striatal DAT availability and ADHD core symptomatology. Therapy  
327 with MPH lead to reduced striatal DAT availability (and ADHD core symptomatology). In the latter  
328 study, a subgroup comparison showed that the patients with significantly reduced ADHD core  
329 symptomatology by MPH, also showed a greater decrease in DAT availability (16). However, all  
330 patients included in our studies received long-term MPH treatment, which has been discussed to lead  
331 to an upregulation of DAT in adaption to long-term MPH treatment (10).

332 Both of the previous studies used <sup>99m</sup>Tc-TRODAT-1 as radioligand to quantify active dopamine  
333 transporters in the striatum, whereas our study used I-123-β-CIT as radioligand. In a study with  
334 Parkinson's disease patients, I-123-β-CIT was found to be superior in sensitivity and specificity for  
335 quantifying the functionality of dopaminergic synapses (34). Furthermore, both studies recruited only  
336 psychostimulant-naive patients, whereas the patients in our study were all long-term treated with MPH  
337 before study inclusion. This may have had an effect on the availability of DAT off-MPH (10, 12, 13).  
338 Our study results are in line with meta-analytic evidence from genome-wide association studies for an  
339 association between the genes encoding DAT (SLC6A3), Catechol-O-Methyltransferase (COMT) or  
340 the dopamine receptor D4 (DRD4) and the clinical efficacy of MPH (35). MPH and amphetamines,  
341 which both act mainly at DAT, are established as the most effective medication as first-line therapy  
342 (4). A large number of cognitive neuroimaging studies have shown alterations in the dopaminergic  
343 mesolimbic system, a neural circuit associated with motivated behaviors, reward learning and higher-  
344 order cognition (36-38). One hypothesis is that extracellular dopamine levels and tonic release of  
345 dopamine are decreased in ADHD patients, resulting in increased stimulus-dependent phasic releases  
346 of dopamine (potentially via presynaptic auto-receptors (39)). This impaired signal-to-noise ratio could  
347 provide increased distractibility to external stimuli (40). Another hypothesis is that both phasic and  
348 tonic release of dopamine is decreased in ADHD patients, which would explain why effects of  
349 reinforcement are weakened in ADHD patients to motivate behavior (41-43). Indeed, increased DAT  
350 availability could indicate lowered extracellular dopamine levels. In sum, our study is in line with

## **Responsivity of the striatal dopamine system to methylphenidate – a within-subject I-123-β-CIT-SPECT study in adolescent males with ADHD**

351 relatively lower DA levels (higher DAT) before treatment but cannot contribute to the question how  
352 phasic DA release might be altered. However, also the factors contributing to decreased extracellular  
353 dopamine levels are still matter of ongoing research. For example, an overactivity of the DAT itself, a  
354 dysfunction of dopamine receptors or presynaptic autoreceptors are conceivable to play a role (44, 45).  
355 These effects could also emerge as a result of aberrant glutamatergic and GABAergic influences over  
356 the dopamine system (46).

357 The right caudate nucleus and its possible role in the pathophysiology of ADHD is already described  
358 in other publications. A study attempted to measure tonic release and phasic dopamine release with a  
359 D2 PET displacement measurement during a response inhibition task. They found that dopamine levels  
360 of ADHD patients, specifically in the right caudate nucleus, were generally lower but higher during  
361 the response inhibition task (putatively reflecting higher phasic release) as compared to healthy adults  
362 (47). While these changes were also visible throughout the striatum, they were significant in the right  
363 caudate nucleus (47). A larger PET study in adult ADHD patients also confirmed increased DAT  
364 availability in the right caudate nucleus of ADHD patients, which could be indicative of lower tonic  
365 dopamine levels (48). A meta-analysis comparing structural MRI images between ADHD patients and  
366 healthy controls showed that specifically the right caudate nucleus is one of the regions that differ most  
367 in volume from controls in ADHD patients (49). A meta-analysis of 23 fMRI found a significant  
368 difference between minor and adult ADHD patients exclusively in the right caudate nucleus. In this  
369 meta-analysis, activation in the right caudate nucleus was lower in minors than in adult ADHD patients  
370 during response inhibition tasks (50). A randomized clinical trial using a Go/NoGo task during fMRI  
371 to assess potential biomarkers for predicting clinical response to MPH showed increased baseline  
372 activation in the right caudate nucleus in patients with a particularly good clinical response to MPH,  
373 but only when considered in combination with response to atomoxetine (51).

374 One limitation of our study is that we provide intra-individual comparisons of pre-medicated patients  
375 in absence of a healthy control group. Thus, we cannot determine the effects of chronic medication on  
376 the status prior to installation of MPH in our participants. However, a meta-analysis on SPECT and  
377 PET studies investigating DAT binding in ADHD compared to controls suggests that a history of  
378 medication may lead to adaptation resulting in higher DAT binding (10). One may argue that in line  
379 with the meta-analysis by Fusar-Poli et al. DAT binding in our sample has already been increased due  
380 to chronic medication and that cessation of chronic MPH treatment may have further increased DAT  
381 availability. This increase in DAT availability over 12 months of MPH therapy has already been  
382 demonstrated in a prospective study (12). In line with this notion, secondary adaptation processes may  
383 reverse or at least weaken the initial pharmacological effect of reducing DAT availability. This has  
384 been suggested as an account of decreased efficacy of MPH treatment in the long run. Another  
385 limitation of our study design was that no on-drug clinical evaluations were collected to examine the  
386 clinical effect of MPH and correlate it with the changes in binding potentials. Only the continuous  
387 performance test was performed on and off drug. Given our small sample size of 13 patients, our results  
388 should be considered an exploratory analysis that requires replication with a larger sample also because  
389 sample sizes are prone to substantially overestimate effect sizes (52). This needs to be emphasized in  
390 particular because exploratory correlation analyses reported were not corrected for multiple  
391 comparisons.

392 In summary, the results of our study support the importance of the DAT, specifically in the striatum,  
393 in relation to responsivity to MPH. Our findings could inform future studies exploring individualized  
394 prediction of the treatment efficacy of MPH in childhood and adolescent patients. This potential has  
395 already been indicated by two other studies in adolescent (53) and adult (54) ADHD patients. Besides  
396 the established nuclear imaging methods, it would also be beneficial to test proxy markers of DA, and  
397 also monoamine function more generally, for example by making use of recently developed

**Responsivity of the striatal dopamine system to methylphenidate – a within-subject I-123-β-CIT-SPECT study in adolescent males with ADHD**

398 quantitative MRI methods (55). In combination with specifically designed neurocognitive tests  
399 targeting the interaction of cognition and motivation from a reinforcement learning perspective (56)  
400 this could provide an in-depth understanding of inter-individual differences in the treatment response  
401 to MPH to enable more individualized treatments in the future.

402

403

404

## **Responsivity of the striatal dopamine system to methylphenidate – a within-subject I-123-β-CIT-SPECT study in adolescent males with ADHD**

405 Acknowledgements:

406 Funding. This study was supported by a grant from the Interdisciplinary Centre of Clinical Research  
407 at the Medical Faculty of the University of Würzburg ("Untersuchungen des Dopamin-Transporters  
408 mittels TC-99m-TRODAT-1-SPECT bei Jugendlichen mit ADHS") and by the German Research  
409 Foundation (DFG) as part of KFO 125 "Attention Deficit/Hyperactivity Syndrome (ADHD):  
410 Molecular Pathogenesis and Endophenotypes in the Course of Treatment", project number 5397423.  
411 HCA is supported by a Clinician Scientist Program at the Interdisciplinary Centre of Clinical Research  
412 at the Medical Faculty of the University of Würzburg. LD is supported by the IFB Adiposity Diseases,  
413 Federal Ministry of Education and Research (BMBF), Germany, GN: 01EO150 and the German  
414 Research Foundation (DFG) as part of the Collaborative Research Centre 265 "Losing and Regaining  
415 Control over drug intake" (402170461, Project A02).

416 Author contribution. HCA statistically analyzed the data and drafted the manuscript under supervision  
417 of LD. MR, SW, MG developed the study design, recruited patients and collected clinical data. AM  
418 collected and analyzed the CPT data. RL, CR, AB, PH, NH, KN were involved in SPECT data  
419 collection and analyzed SPECT binding potentials data. All authors read and revised the manuscript.

420

421

## Responsivity of the striatal dopamine system to methylphenidate – a within-subject I-123-β-CIT-SPECT study in adolescent males with ADHD

422

### 423 **References**

- 424 1. Franke B, Michelini G, Asherson P, Banaschewski T, Bilbow A, Buitelaar JK, et al. Live fast,  
425 die young? A review on the developmental trajectories of ADHD across the lifespan. *Eur*  
426 *Neuropsychopharmacol.* 2018;28(10):1059-88.
- 427 2. Faraone SV, Asherson P, Banaschewski T, Biederman J, Buitelaar JK, Ramos-Quiroga JA, et  
428 al. Attention-deficit/hyperactivity disorder. *Nat Rev Dis Primers.* 2015;1:15020.
- 429 3. Biederman J, Petty CR, O'Connor KB, Hyder LL, Faraone SV. Predictors of persistence in girls  
430 with attention deficit hyperactivity disorder: results from an 11-year controlled follow-up study. *Acta*  
431 *Psychiatr Scand.* 2012;125(2):147-56.
- 432 4. Cortese S, Adamo N, Del Giovane C, Mohr-Jensen C, Hayes AJ, Carucci S, et al. Comparative  
433 efficacy and tolerability of medications for attention-deficit hyperactivity disorder in children,  
434 adolescents, and adults: a systematic review and network meta-analysis. *Lancet Psychiatry.*  
435 2018;5(9):727-38.
- 436 5. Krause J, la Fougere C, Krause KH, Ackenheil M, Dresel SH. Influence of striatal dopamine  
437 transporter availability on the response to methylphenidate in adult patients with ADHD. *Eur Arch*  
438 *Psychiatry Clin Neurosci.* 2005;255(6):428-31.
- 439 6. Wender PH, Reimherr FW, Marchant BK, Sanford ME, Czajkowski LA, Tomb DA. A one year  
440 trial of methylphenidate in the treatment of ADHD. *J Atten Disord.* 2011;15(1):36-45.
- 441 7. Cortese S, Kelly C, Chabernaud C, Proal E, Di Martino A, Milham MP, et al. Toward systems  
442 neuroscience of ADHD: a meta-analysis of 55 fMRI studies. *Am J Psychiatry.* 2012;169(10):1038-55.
- 443 8. Arns M, Conners CK, Kraemer HC. A decade of EEG Theta/Beta Ratio Research in ADHD: a  
444 meta-analysis. *J Atten Disord.* 2013;17(5):374-83.
- 445 9. Volkow ND, Fowler JS, Wang GJ. The addicted human brain viewed in the light of imaging  
446 studies: brain circuits and treatment strategies. *Neuropharmacology.* 2004;47 Suppl 1:3-13.
- 447 10. Fusar-Poli P, Rubia K, Rossi G, Sartori G, Balottin U. Striatal dopamine transporter alterations  
448 in ADHD: pathophysiology or adaptation to psychostimulants? A meta-analysis. *Am J Psychiatry.*  
449 2012;169(3):264-72.



## **Responsivity of the striatal dopamine system to methylphenidate – a within-subject I-123-β-CIT-SPECT study in adolescent males with ADHD**

- 450 11. Vaughan RA, Foster JD. Mechanisms of dopamine transporter regulation in normal and disease  
451 states. *Trends Pharmacol Sci.* 2013;34(9):489-96.
- 452 12. Wang GJ, Volkow ND, Wigal T, Kollins SH, Newcorn JH, Telang F, et al. Long-term stimulant  
453 treatment affects brain dopamine transporter level in patients with attention deficit hyperactive  
454 disorder. *PloS one.* 2013;8(5):e63023.
- 455 13. Volkow ND, Wang GJ, Tomasi D, Kollins SH, Wigal TL, Newcorn JH, et al. Methylphenidate-  
456 elicited dopamine increases in ventral striatum are associated with long-term symptom improvement  
457 in adults with attention deficit hyperactivity disorder. *J Neurosci.* 2012;32(3):841-9.
- 458 14. Telzer EH. Dopaminergic reward sensitivity can promote adolescent health: A new perspective  
459 on the mechanism of ventral striatum activation. *Developmental Cognitive Neuroscience.* 2016;17:57-  
460 67.
- 461 15. Galván A. Adolescent development of the reward system. *Frontiers in Human Neuroscience.*  
462 2010;4(6).
- 463 16. Akay AP, Kaya G, Kose S, Yazıcıoğlu Ç E, Erkurun H, Güney SA, et al. Genetic imaging study  
464 with [Tc-(99m)] TRODAT-1 SPECT in adolescents with ADHD using OROS-methylphenidate. *Prog*  
465 *Neuropsychopharmacol Biol Psychiatry.* 2018;86:294-300.
- 466 17. Seibyl JP, Marek K, Sheff K, Zoghbi S, Baldwin RM, Charney DS, et al. Iodine-123-beta-CIT  
467 and iodine-123-FPCIT SPECT measurement of dopamine transporters in healthy subjects and  
468 Parkinson's patients. *J Nucl Med.* 1998;39(9):1500-8.
- 469 18. Neumeyer JL, Wang SY, Milius RA, Baldwin RM, Zea-Ponce Y, Hoffer PB, et al. [123I]-2  
470 beta-carbomethoxy-3 beta-(4-iodophenyl)tropane: high-affinity SPECT radiotracer of monoamine  
471 reuptake sites in brain. *J Med Chem.* 1991;34(10):3144-6.
- 472 19. Piepsz A, Hahn K, Roca I, Ciofetta G, Toth G, Gordon I, et al. A radiopharmaceuticals schedule  
473 for imaging in paediatrics. Paediatric Task Group European Association Nuclear Medicine. *Eur J Nucl*  
474 *Med.* 1990;17(3-4):127-9.
- 475 20. Nowak DJ, Eisner RL, Fajman WA. Distance-weighted backprojection: a SPECT  
476 reconstruction technique. *Radiology.* 1986;159(2):531-6.
- 477 21. Holmes CJ, Hoge R, Collins L, Woods R, Toga AW, Evans AC. Enhancement of MR images  
478 using registration for signal averaging. *J Comput Assist Tomogr.* 1998;22(2):324-33.

**Responsivity of the striatal dopamine system to methylphenidate – a within-subject I-123-β-CIT-SPECT study in adolescent males with ADHD**

- 479 22. Mintun MA, Raichle ME, Kilbourn MR, Wooten GF, Welch MJ. A quantitative model for the  
480 in vivo assessment of drug binding sites with positron emission tomography. *Ann Neurol.*  
481 1984;15(3):217-27.
- 482 23. Darcourt J, Booij J, Tatsch K, Varrone A, Vander Borgh T, Kapucu OL, et al. EANM  
483 procedure guidelines for brain neurotransmission SPECT using (123)I-labelled dopamine transporter  
484 ligands, version 2. *Eur J Nucl Med Mol Imaging.* 2010;37(2):443-50.
- 485 24. Szobot CM, Shih MC, Schaefer T, Júnior N, Hoexter MQ, Fu YK, et al. Methylphenidate DAT  
486 binding in adolescents with Attention-Deficit/ Hyperactivity Disorder comorbid with Substance Use  
487 Disorder--a single photon emission computed tomography with [Tc(99m)]TRODAT-1 study.  
488 *Neuroimage.* 2008;40(3):1195-201.
- 489 25. A.A. Rizzo JGB, T. Bowerly, C. Van Der Zaag, L. Humphrey, U. Neumann, C. Chua, C.  
490 Kyriakakis, A. Van Rooyen, and D. Sisemore. The Virtual Classroom: A Virtual Reality Environment  
491 for the Assessment and Rehabilitation of Attention Deficits. *CyberPsychology & Behavior.*  
492 2000;3(3):483-99.
- 493 26. Mühlberger A, Jekel K, Probst T, Schecklmann M, Conzelmann A, Andreatta M, et al. The  
494 Influence of Methylphenidate on Hyperactivity and Attention Deficits in Children With ADHD: A  
495 Virtual Classroom Test. *J Atten Disord.* 2020;24(2):277-89.
- 496 27. Roessner V, Becker A, Rothenberger A, Rohde LA, Banaschewski T. A cross-cultural  
497 comparison between samples of Brazilian and German children with ADHD/HD using the Child  
498 Behavior Checklist. *Eur Arch Psychiatry Clin Neurosci.* 2007;257(6):352-9.
- 499 28. Klasen H, Woerner W, Wolke D, Meyer R, Overmeyer S, Kaschnitz W, et al. Comparing the  
500 German versions of the Strengths and Difficulties Questionnaire (SDQ-Deu) and the Child Behavior  
501 Checklist. *Eur Child Adolesc Psychiatry.* 2000;9(4):271-6.
- 502 29. Dunn OJ, & Clark, V. Correlation coefficients measured on the same individuals. 1969;64:366-  
503 77.
- 504 30. Dresel S, Krause J, Krause KH, LaFougere C, Brinkbäumer K, Kung HF, et al. Attention deficit  
505 hyperactivity disorder: binding of [99mTc]TRODAT-1 to the dopamine transporter before and after  
506 methylphenidate treatment. *Eur J Nucl Med.* 2000;27(10):1518-24.

**Responsivity of the striatal dopamine system to methylphenidate – a within-subject I-123-β-CIT-SPECT study in adolescent males with ADHD**

- 507 31. Feron FJ, Hendriksen JG, van Kroonenburgh MJ, Blom-Coenjaerts C, Kessels AG, Jolles J, et  
508 al. Dopamine transporter in attention-deficit hyperactivity disorder normalizes after cessation of  
509 methylphenidate. *Pediatr Neurol*. 2005;33(3):179-83.
- 510 32. Vles JS, Feron FJ, Hendriksen JG, Jolles J, van Kroonenburgh MJ, Weber WE.  
511 Methylphenidate down-regulates the dopamine receptor and transporter system in children with  
512 attention deficit hyperkinetic disorder (ADHD). *Neuropediatrics*. 2003;34(2):77-80.
- 513 33. Cheon KA, Ryu YH, Kim YK, Namkoong K, Kim CH, Lee JD. Dopamine transporter density  
514 in the basal ganglia assessed with [123I]IPT SPET in children with attention deficit hyperactivity  
515 disorder. *Eur J Nucl Med Mol Imaging*. 2003;30(2):306-11.
- 516 34. Van Laere K, De Ceuninck L, Dom R, Van den Eynden J, Vanbilloen H, Cleynhens J, et al.  
517 Dopamine transporter SPECT using fast kinetic ligands: 123I-FP-beta-CIT versus 99mTc-TRODAT-  
518 1. *Eur J Nucl Med Mol Imaging*. 2004;31(8):1119-27.
- 519 35. Myer NM, Boland JR, Faraone SV. Pharmacogenetics predictors of methylphenidate efficacy  
520 in childhood ADHD. *Mol Psychiatry*. 2018;23(9):1929-36.
- 521 36. Posner J, Polanczyk GV, Sonuga-Barke E. Attention-deficit hyperactivity disorder. *Lancet*.  
522 2020;395(10222):450-62.
- 523 37. Posner J, Rauh V, Gruber A, Gat I, Wang Z, Peterson BS. Dissociable attentional and affective  
524 circuits in medication-naïve children with attention-deficit/hyperactivity disorder. *Psychiatry Res*.  
525 2013;213(1):24-30.
- 526 38. Cools R, D'Esposito M. Inverted-U-shaped dopamine actions on human working memory and  
527 cognitive control. *Biol Psychiatry*. 2011;69(12):e113-25.
- 528 39. Grace AA. Dysregulation of the dopamine system in the pathophysiology of schizophrenia and  
529 depression. *Nat Rev Neurosci*. 2016;17(8):524-32.
- 530 40. Sikström S, Söderlund G. Stimulus-dependent dopamine release in attention-  
531 deficit/hyperactivity disorder. *Psychol Rev*. 2007;114(4):1047-75.
- 532 41. Frank MJ, Santamaria A, O'Reilly RC, Willcutt E. Testing computational models of dopamine  
533 and noradrenaline dysfunction in attention deficit/hyperactivity disorder. *Neuropsychopharmacology*.  
534 2007;32(7):1583-99.

**Responsivity of the striatal dopamine system to methylphenidate – a within-subject I-123-β-CIT-SPECT study in adolescent males with ADHD**

- 535 42. Luman M, Oosterlaan J, Sergeant JA. The impact of reinforcement contingencies on AD/HD:  
536 a review and theoretical appraisal. *Clin Psychol Rev.* 2005;25(2):183-213.
- 537 43. Luman M, Van Meel CS, Oosterlaan J, Sergeant JA, Geurts HM. Does reward frequency or  
538 magnitude drive reinforcement-learning in attention-deficit/hyperactivity disorder? *Psychiatry Res.*  
539 2009;168(3):222-9.
- 540 44. Olsen D, Wellner N, Kaas M, de Jong IEM, Sotty F, Didriksen M, et al. Altered dopaminergic  
541 firing pattern and novelty response underlie ADHD-like behavior of SorCS2-deficient mice.  
542 *Translational psychiatry.* 2021;11(1):74.
- 543 45. Del Campo N, Chamberlain SR, Sahakian BJ, Robbins TW. The roles of dopamine and  
544 noradrenaline in the pathophysiology and treatment of attention-deficit/hyperactivity disorder. *Biol*  
545 *Psychiatry.* 2011;69(12):e145-57.
- 546 46. Gainetdinov RR, Mohn AR, Bohn LM, Caron MG. Glutamatergic modulation of hyperactivity  
547 in mice lacking the dopamine transporter. *Proceedings of the National Academy of Sciences.*  
548 2001;98(20):11047-54.
- 549 47. Badgaiyan RD, Sinha S, Sajjad M, Wack DS. Attenuated Tonic and Enhanced Phasic Release  
550 of Dopamine in Attention Deficit Hyperactivity Disorder. *PloS one.* 2015;10(9):e0137326.
- 551 48. Spencer TJ, Biederman J, Madras BK, Dougherty DD, Bonab AA, Livni E, et al. Further  
552 evidence of dopamine transporter dysregulation in ADHD: a controlled PET imaging study using  
553 altropane. *Biol Psychiatry.* 2007;62(9):1059-61.
- 554 49. Valera EM, Faraone SV, Murray KE, Seidman LJ. Meta-analysis of structural imaging findings  
555 in attention-deficit/hyperactivity disorder. *Biol Psychiatry.* 2007;61(12):1361-9.
- 556 50. Lei D, Du M, Wu M, Chen T, Huang X, Du X, et al. Functional MRI reveals different response  
557 inhibition between adults and children with ADHD. *Neuropsychology.* 2015;29(6):874-81.
- 558 51. Schulz KP, Bedard AV, Fan J, Hildebrandt TB, Stein MA, Ivanov I, et al. Striatal Activation  
559 Predicts Differential Therapeutic Responses to Methylphenidate and Atomoxetine. *J Am Acad Child*  
560 *Adolesc Psychiatry.* 2017;56(7):602-9 e2.
- 561 52. Bock M, Mohrs OK, Voigtlaender T, Kauczor HU, Semmler W. [MRI safety aspects and  
562 artifacts of atrial septal defect and patent foramen ovale occluders at 1.5 tesla: a phantom study]. *Rofo.*  
563 2006;178(3):272-7.

**Responsivity of the striatal dopamine system to methylphenidate – a within-subject I-123-β-CIT-SPECT study in adolescent males with ADHD**

564 53. Ilgin N, Senol S, Gucuyener K, Gokcora N, Sener S. Is increased D2 receptor availability  
565 associated with response to stimulant medication in ADHD. *Dev Med Child Neurol.* 2001;43(11):755-  
566 60.

567 54. Krause J, la Fougere C, Krause KH, Ackenheil M, Dresel SH. Influence of striatal dopamine  
568 transporter availability on the response to methylphenidate in adult patients with ADHD. *European*  
569 *Archives of Psychiatry and Clinical Neuroscience.* 2005;255(6):428-31.

570 55. Tabelow K, Balteau E, Ashburner J, Callaghan MF, Draganski B, Helms G, et al. hMRI - A  
571 toolbox for quantitative MRI in neuroscience and clinical research. *Neuroimage.* 2019;194:191-210.

572 56. Westbrook A, Bosch Rvd, Määttä JI, Hofmans L, Papadopetraki D, Cools R, et al. Dopamine  
573 promotes cognitive effort by biasing the benefits versus costs of cognitive work. *Science.*  
574 2020;367(6484):1362-6.

575

576

577