

1 **Metacognitive insight into cognitive performance in pre and early-stage Huntington's disease**

2 Hewitt, Samuel RC*[1], White, Alice J*[1], Mason, Sarah L[1], Barker, Roger A[1]

3 [1] John Van Geest Centre for Brain Repair, Department of Clinical Neuroscience, University of
4 Cambridge

5 * These authors contributed equally to this work

6 Corresponding Authors: SRH (s.hewitt.17@ucl.ac.uk) and AJW (ajw283@cam.ac.uk)

7

8 **ABSTRACT**

9 **Objectives**

10 Insight is an important predictor of quality of life in Huntington's disease and other
11 neurodegenerative conditions. However, estimating insight with traditional methods such as
12 questionnaires is challenging and subject to limitations. This cross-sectional study
13 experimentally quantified metacognitive insight into cognitive performance in Huntington's
14 disease gene-carriers.

15 **Methods**

16 We dissociated perceptual decision-making performance and metacognitive insight into
17 performance in healthy controls (n=29), premanifest (n=19) and early-manifest (n=10)
18 Huntington's disease gene-carriers. Insight was operationalised as the degree to which a
19 participant's confidence in their performance was informative of their actual performance
20 (metacognitive efficiency) and estimated using a computational model (HMeta-d).

21 **Results**

22 We found that pre and early-manifest Huntington's disease gene-carriers were impaired in
23 making perceptual decisions compared to controls. Gene-carriers required more evidence in
24 favour of the correct choice to achieve similar performance and perceptual impairments were
25 increased in those with manifest disease. Surprisingly, despite marked perceptual impairments,
26 Huntington's disease gene-carriers retained metacognitive insight into their perceptual
27 performance. This was the case after controlling for confounding variables and regardless of
28 disease stage.

29 **Conclusion**

30 We report for the first time a dissociation between impaired cognition and intact metacognition
31 (trial-by-trial insight) in the early-stages of a neurodegenerative disease. This unexpected
32 finding contrasts with the prevailing assumption that cognitive deficits are associated with

33 impaired insight. Future studies should investigate how intact metacognitive insight could be
34 used by some early Huntington's disease gene-carriers to positively impact their quality of life.

35

36 Key words: Huntington's disease, decision-making, cognition, insight, metacognition

37 INTRODUCTION

38 Huntington's disease (HD) is a neurodegenerative disorder caused by a CAG expansion in exon 1
39 of the Huntingtin gene (1). HD gene-carriers are currently diagnosed with manifest disease
40 when abnormal movements emerge, but true disease onset begins years earlier. The cognitive
41 features of HD develop in the premanifest stage and include impaired executive cognition
42 (planning, reasoning, working memory and attention (2)), psychomotor processing speed,
43 visuospatial functions and emotion recognition (3). Patients tend to perceive their abilities
44 differently from their carers; typically underestimating their impairments when asked to
45 explicitly reflect on them (4). We refer to this as global insight, and it is thought that HD
46 patients become increasingly impaired as disease burden increases.

47

48 However, studies of global metacognitive insight such as those which rely on self-report are
49 subject to several confounding influences which limit their interpretability. This is because
50 global insight is a complex concept which is influenced by many individual differences. For
51 instance, systematic response biases (e.g., optimism), personality dimensions or temporary
52 psychological states (e.g., trait-anxiety or stress) and other critical cognitive functions (e.g.,
53 episodic memory) can all affect the way that patients report on themselves. Here, we specify
54 metacognitive insight as the accuracy of reflection on performance in a cognitive task (i.e.,
55 insight into task performance on a trial-by-trial basis). This has been referred to as local
56 metacognition and is distinct from global insight (5). Global insight is hierarchically more
57 abstract,, spans longer timescales and captures how we feel about performance broadly, for
58 example, across an entire task, a cognitive domain or in daily life (6).

59

60 Local metacognitive insight has been associated with neural substrates which are also affected
61 early on in HD. For example, in healthy controls it has been associated with increased anterior
62 and medial prefrontal cortex activity (6–8) and altered hippocampal myelination (9).
63 Premanifest HD gene-carriers are known to exhibit grey matter loss in the prefrontal cortex (10)
64 and hippocampal dysfunction is reported with late premanifest and manifest HD (11). However,
65 local metacognitive insight, as defined here, has not been explicitly tested in HD.

66

67 In this study, we dissociated perceptual cognitive performance from metacognitive insight into
68 performance, in premanifest and early-manifest HD, and age- and sex-matched healthy
69 controls. In order to quantify metacognitive insight independently of confounding influences,
70 we controlled perceptual decision-making performance across participants and employed an
71 established computational model of metacognition (12). We hypothesised that HD gene-
72 carriers would show impairments in decision-making performance, and this would be

73 compounded by a reduction in metacognitive insight into performance. We predicted that
74 these impairments would be significantly greater in those with early-manifest disease.

75

76 **METHODS**

77 **Participants**

78 Sixty-three participants completed this study: 14 patients with early-manifest HD, 20
79 premanifest gene-carriers and 29 healthy controls between September 2019 and November
80 2020. All HD gene-carriers were genetically confirmed (CAG \geq 36). Patients were defined as
81 having early-manifest disease when they had a Unified Huntington's Disease Rating Scale
82 (UHDRS) total motor score $>$ 5 (13). The groups were matched for age and sex. Inclusion criteria
83 were Mini Mental State Examination (MMSE) score $>$ 26 (normal range) and UHDRS initiation
84 and saccade velocity total scores less than or equal to 1 (indicating minimal impairment in one
85 domain only; maximum score is 16). Therefore, all included participants with gene-positive HD
86 had no global cognitive or saccadic impairments as detected during examination by an
87 experienced Consultant Neurologist (R.A.B). Exclusion criteria were any significant comorbid
88 psychiatric or neurological diagnoses. Participants with HD were recruited from the HD Clinic at
89 the University of Cambridge and Cambridge Universities Hospitals NHS (National Health
90 Service) Foundation Trust. Controls were recruited from the local community. All participants
91 gave prior written informed consent. This study was approved by the Oxford South Central-C
92 Research Ethics Committee and the Medical Health Research Authority in the United Kingdom.
93 Clinical data were collected and managed using REDCap (Research Electronic Data Capture)
94 electronic data capture tools hosted at the University of Cambridge (14,15). This study is
95 reported in accordance with the STROBE reporting checklist (16).

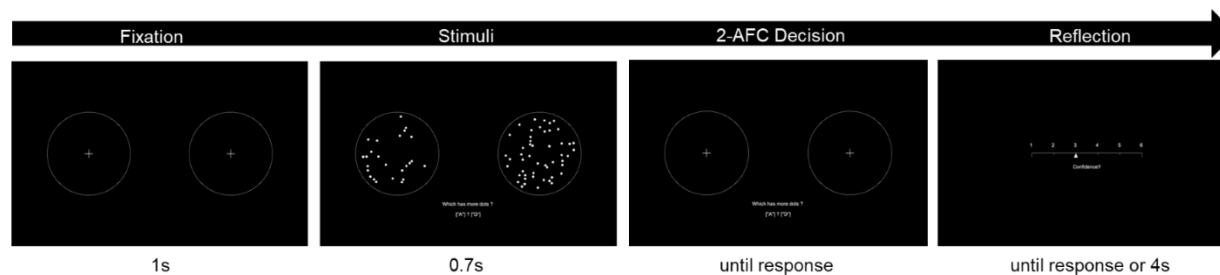
96

97 **Stimuli and Procedure**

98 We employed a task previously used to separately assess perceptual decision-making and
99 metacognition (7), implemented in MATLAB using Psychtoolbox (17). The code used to run the
100 task is available online (12) . Participants were required to make an alternative forced-choice
101 judgement about which of two briefly presented (0.7secs) circles contained more dots, for
102 which there was no response time limit. One of the two circles contained 50 dots while the
103 other circle contained a number bounded between 1 and 100. On each trial, this was followed
104 by a confidence rating which had to be made within 4s of the confidence scale being shown. All
105 stimuli were high contrast (white on black; Figure 1). A one-up two-down staircase procedure
106 equated performance across participants based on response accuracy by manipulating the
107 stimulus strength (Δ dots) such that performance was constant (\sim 71%, Figure 2A). The staircase
108 procedure was initiated during a practice phase which provided feedback on decision accuracy.

109 Feedback was not given after the practice. The experiment was divided into 8 blocks of 25
110 trials, separated by a break of length determined by the participant.

111



112 Figure 1. Meta-dots task. Participants are required to make an alternative forced choice judgement (2-AFC) about which of the two stimuli (circles)
113 contain more dots. This is immediately followed by a confidence rating. Figure adapted from Fleming et al., 2014.

112

113

114 Participants also completed the Hospital Anxiety and Depression Scale (HADS), Mini Mental
115 State Examination (MMSE) and the National Adult Reading Test (NART), which was used to
116 calculate predicted verbal IQ.

117

118 Metacognitive insight

119 We used metacognitive efficiency (M-ratio) as an index for metacognitive insight across
120 premanifest HD, early manifest-HD, and healthy controls. M-ratio is an established marker of
121 metacognition based on signal detection theory (16,17). M-ratio describes how much of the
122 available signal (i.e., a participant's perceptual sensitivity, d') is captured by their confidence
123 about their performance on that trial. Specifically, M-ratio is the ratio between metacognitive
124 sensitivity ($meta-d'$) and perceptual sensitivity (d'). As such, this method controls for differences
125 in perceptual ability as well as response biases (e.g., repeatedly high confidence) and is well-
126 suited to compare metacognitive insight in clinical groups. An M-ratio of 1 would represent
127 optimal sensitivity to perceptual performance. If M-ratio < 1, there is some noise in the
128 confidence ratings, such that the individual does not exploit all the available perceptual signal
129 for their metacognitive judgement. If M-ratio > 1, this implies that the individual can draw on
130 additional information about themselves or the task (beyond the available perceptual signal)
131 (20). We estimated M-ratio using a hierarchical modelling approach implemented in an openly
132 available MATLAB toolbox (HMeta-d, (18)). This toolbox is a Bayesian extension of the original
133 metacognitive efficiency model (21) and provides robust parameter estimates in the face of
134 uncertainty inherent in clinical groups of small sample size and relative heterogeneity (18).

135

136 Perceptual decision-making

137 We also complimented the analysis of perceptual (first-order cognitive) decisions by estimating
138 latent components of the decision-making process using the hierarchical drift diffusion model
139 (HDDM) (22). Like HMeta-d, HDDM is particularly well suited to clinical research studies
140 because it captures sources of uncertainty in the data (e.g., small group size and heterogeneous
141 group features) in the form of posterior probability distributions of the parameter estimates.
142 HDDM uses the choice and reaction time data to calculate latent parameters which estimate
143 *how* individuals made perceptual decisions during the task. This was implemented in the openly
144 available HDDM python toolbox (v0.8.0). Full details of the implementation process, model
145 comparison and validation, and results of this approach are available in Supplementary
146 Information.

147

148 **Statistical power**

149 We powered this study *a priori* to detect a difference in metacognitive insight based on the
150 effect size obtained by Fleming et al. (2014) as there are no published findings in HD. Their
151 study detected differences across two clinical groups and controls using the same task and
152 analysis method. We estimated the effect size (Cohen's $f = 0.53$, $\alpha = 0.05$, two-tailed) based on
153 reported means (23). This revealed that a total sample size of 39 was required to achieve power
154 of 0.8.

155

156 **RESULTS**

157 **Participant demographics**

158 Five participants were excluded prior to the analysis; four early-manifest HD patients were
159 excluded due to saccadic impairment and one individual with premanifest HD was excluded due
160 to a technical error while they completed the task. Included participants (N=58) were well-
161 matched for age and sex across the groups (Table 1). All participants had MMSE scores in the
162 normal range, but the early-manifest HD group had lower scores ($H(2)=10.5$, $p=0.005$).
163 Premorbid verbal IQ was significantly lower in the pre- and early-manifest groups ($F(2, 54)=5.2$,
164 $p=0.009$). Linear regression models were later used to understand if these differences were
165 related to metacognitive efficiency. The early-manifest group had lower total functional
166 capacity (TFC) scores than premanifest HD patients, as expected ($W=164$, $p<0.01$). Three of the
167 early manifest patients and one premanifest gene-carrier were taking low-dose Olanzapine
168 (2.5-5mg/day) for clinical reasons relating to their condition.

169

170

171 Table 1. Participant demographics. Groups were matched for age and sex. Groups had clinically normal,
 172 yet statistically different general cognitive and verbal IQ scores. The premanifest and early-manifest
 173 patients were different in their total UHDRS motor scores and functional capacity, as expected. Bolded
 174 p-values indicate significance at $p < 0.05$.

175 *Abbreviations: MMSE = Mini-Mental State Examination; UHDRS = Unified Huntington’s Disease Rating*
 176 *Scale; TFC = Total Functional Capacity. *One premanifest individual had an unusually high motor score*
 177 *(12) due to an unrelated hand injury. **One premanifest individual did not complete the National Adult*
 178 *Reading Test for verbal IQ so this cell contains one fewer measurement.*

	Premanifest HD (N=19)	Early- manifest HD (N=10)	Control (N=29)	Test Statistic	p-value
Age				1.5	0.226 (1)
- Mean	47.8	55.9	51.6		
- Range	28.7 - 75.4	37.2 - 67.0	29.3 - 73.4		
Sex, Female	11 (57.9%)	7 (70.0%)	12 (41.4%)	2.9	0.238 (2)
MMSE				10.5	0.005 (3)
- Mean	29.7	28.6	29.7		
- Range	28.0 - 30.0	26.0 - 30.0	28.0 - 30.0		
Premorbid Verbal IQ				5.2	0.009 (1)
- Mean	113.5**	111.6	118.1		
- Range	100.0 - 127.0	104.0 - 124.0	107.0 - 127.0		
UHDRS Total Motor				4	<0.001(4)
- Mean	2.3	14.7	-		
- Range	0.0 - 12.0*	6.0 - 26.0	-		
TFC				164	<0.001(4)
- Mean	12.8	11.4	-		
- Range	11.0 - 13.0	10.0 - 13.0	-		

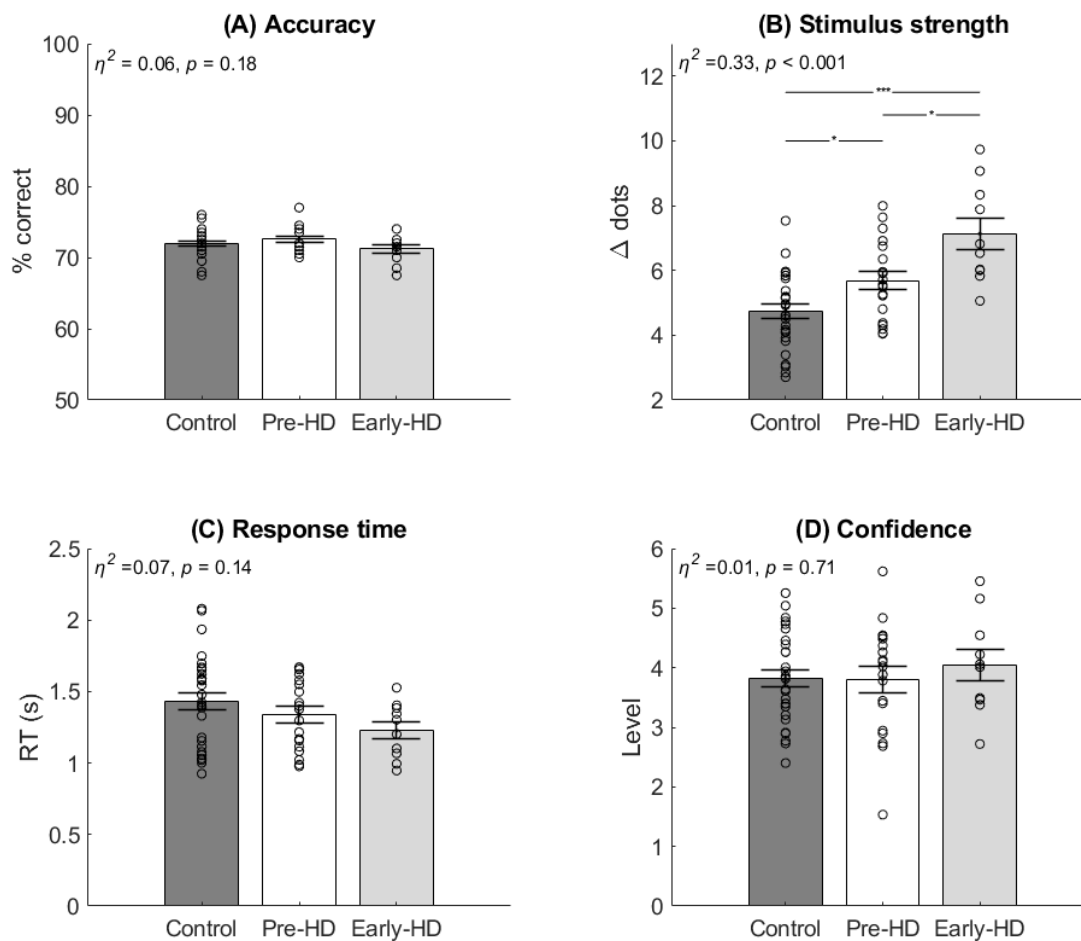
- 179 1. Linear Model ANOVA
 180 2. Pearson’s Chi-squared test
 181 3. Kruskal-Wallis one way ANOVA
 182 4. Wilcoxon Mann-Whitney Rank Sum test

183
 184 **Behavioural analysis**

185 To assess behavioural performance, we compared mean accuracy (% correct), stimulus strength
 186 (Δ dots), response time and confidence ratings using one-way ANOVA or Kruskal-Wallis tests as
 187 non-parametric equivalent (see Supplementary Information for methods of statistical test)

188 selection). The staircase procedure successfully matched accuracy (% correct; Figure 2A) across
189 the groups ($H(2, 55) = 1.91, p = 0.38, \eta^2 = 0.06$). However, the mean stimulus strength to
190 achieve that performance differed significantly between the groups ($F(2, 55) = 13.85, p < 0.001,$
191 $\eta^2 = 0.33$; Figure 2B). Pairwise comparison with Bonferroni correction method showed that
192 patients with early-manifest HD (mean = $7.13 \pm \text{SEM} = 0.4$) completed the task with significantly
193 greater stimulus strength (i.e., reduced difficulty level) compared with the premanifest group
194 (mean = $5.68 \pm \text{SEM} = 0.29$; 95% CIs of mean difference = 1.25 - 3.53, adjusted $p < 0.001$), and
195 also compared with healthy controls (mean = $4.74 \pm \text{SEM} = 0.23$; 95% CIs of mean difference =
196 0.24 - 2.67, adjusted $p = 0.014$). Further, the premanifest group performed with a significantly
197 greater stimulus strength than the control group (95% CIs of mean difference = 0.02 - 1.86,
198 adjusted $p = 0.043$). This shows that individuals with premanifest and early-manifest HD were
199 impaired in making perceptual decisions compared to healthy controls. There were no
200 significant differences in mean response time ($F(2, 55) = 2.03, p = 0.14, \eta^2 = 0.07$; Figure 2C).
201 However, the trend towards reduced response time with manifest HD was further explored
202 using the HDDM. There were also no differences in confidence level across the groups ($F(2, 55)$
203 $= 0.34, p = 0.71, \eta^2 = 0.01$; Figure 2D). This confirms that all participants were able to execute
204 the perceptual decision and use the confidence scale as instructed. In addition, task accuracy
205 was also matched across the groups throughout the entire experiment. There were no
206 differences in accuracy across the eight task blocks ($F(7, 440) = 0.59, p = 0.77, \eta^2_p = 0.01$), and
207 no interaction effect of group by block ($F(14, 440) = 1.02, p = 0.43, \eta^2_p = 0.03$).

208



209
210 Figure 2. Behavioural data. (A) Accuracy was controlled across the groups at approximately 71%. (B)
211 Stimulus strength (Δ dots) was significantly increased in the early-manifest group, compared with both
212 groups, and also in the premanifest group compared to the control group. (C) No significant difference in
213 mean response time. (D) No significant difference in mean confidence. Bars = mean \pm SEM (errors). Circles
214 = individual mean values. *Bonferroni corrected $p < 0.05$. ***Bonferroni corrected $p < 0.001$. η^2 = ETA
215 squared effect size. Abbreviations: pre-HD = premanifest Huntington's disease, early-HD= early manifest
216 Huntington's disease.

217

218 Perceptual decision-making model

219 We compared a limited number of regression models in order to determine the best-fitting
220 HDDM to perceptual reaction time data. The best fitting model (lowest BPIC and DIC;
221 Supplementary Table 1) was characterised by a regression in which drift rate was modulated by
222 group and stimulus strength, their interaction, and decision threshold was modulated by group.
223 Model parameters were reproducible (Supplementary Table 2) and simulated reaction time
224 data based on these also accurately reproduced response times observed in our participants,

225 including the trend towards faster response times with manifest HD (Supplementary Figure 2).
226 Analysis of the posterior distributions of model parameters showed that healthy controls
227 responded to stronger evidence (Δ dots, z-scored within-subjects) by significantly increasing
228 their rate of evidence accumulation (drift rate), compared to both premanifest ($P < 0.001$) and
229 early-manifest gene-carriers ($P < 0.001$) who did not differ ($P = 0.34$). Furthermore, premanifest
230 gene-carriers set significantly lower decision thresholds for evidence accumulation than
231 controls ($P < 0.001$), an impairment which was significantly greater in those with early-manifest
232 disease ($P < 0.001$, Supplementary Figure 3).

233

234 **Metacognitive insight**

235 M-ratio for each group was estimated separately and a higher value indicated better
236 metacognitive insight. To assess if meaningful differences existed between the groups, we
237 calculated 95% high density intervals (HDI) of differences between two distributions in pair-
238 wise comparisons and compared the resulting difference distribution with 0. If the 95% HDI
239 excluded 0, we considered this to be a meaningful (significant) difference.

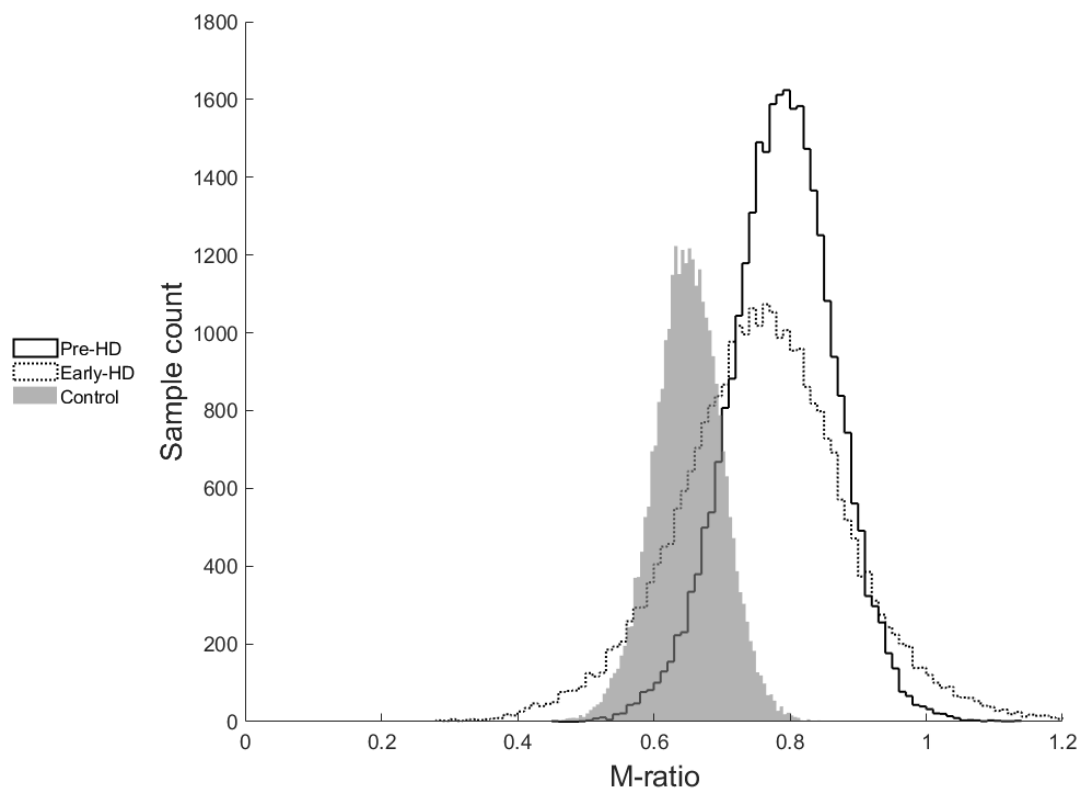
240

241 There was no difference in metacognitive efficiency (M-ratio) between healthy controls (M:
242 0.68) and premanifest HD gene-carriers (M: 0.82; $P = 0.1$, 95% HDIs: -0.095 - +0.388). There was
243 also no difference between the early-manifest HD gene-carriers (M: 0.79) and the control group
244 ($P = 0.25$, 95% HDIs: -0.282 - +0.475). M-ratio was not reduced with greater disease burden,
245 since early-manifest HD gene-carriers did not significantly differ from the premanifest group (P
246 = 0.59, 95% HDIs: -0.458 - +0.34; Figure 3).

247

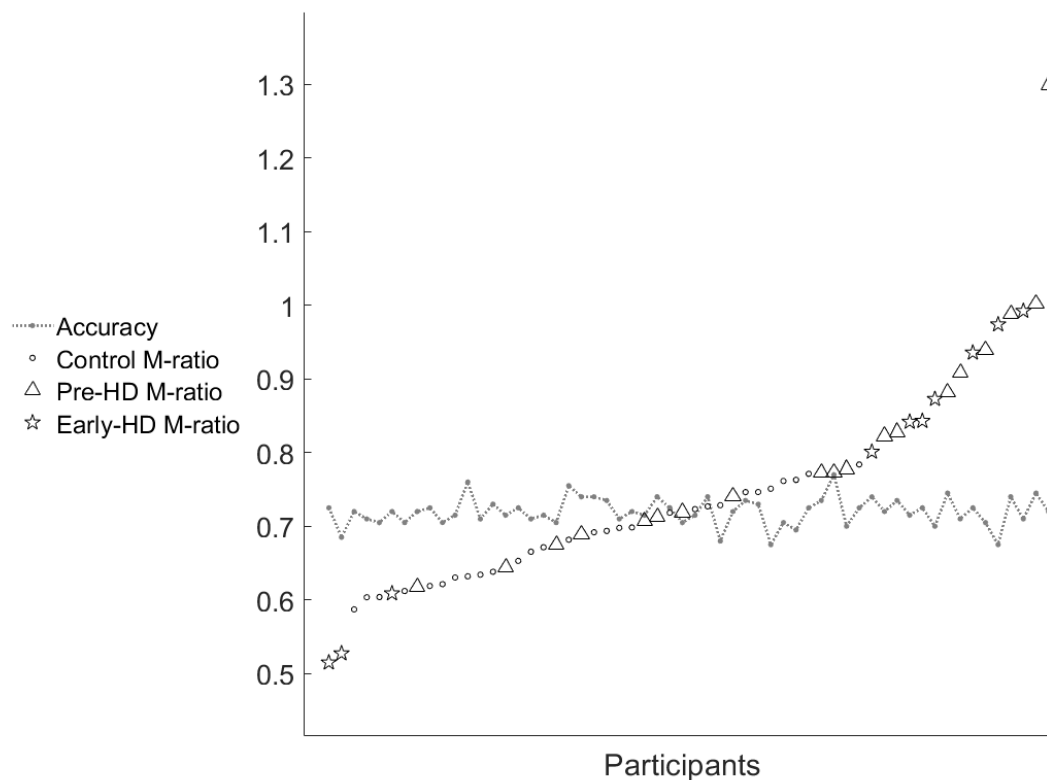
248

249



250

251 Figure 3. M-ratio sample estimates across the groups. There is significant overlap in the distributions
252 indicating that gene-carriers showed similar metacognitive insight to controls.



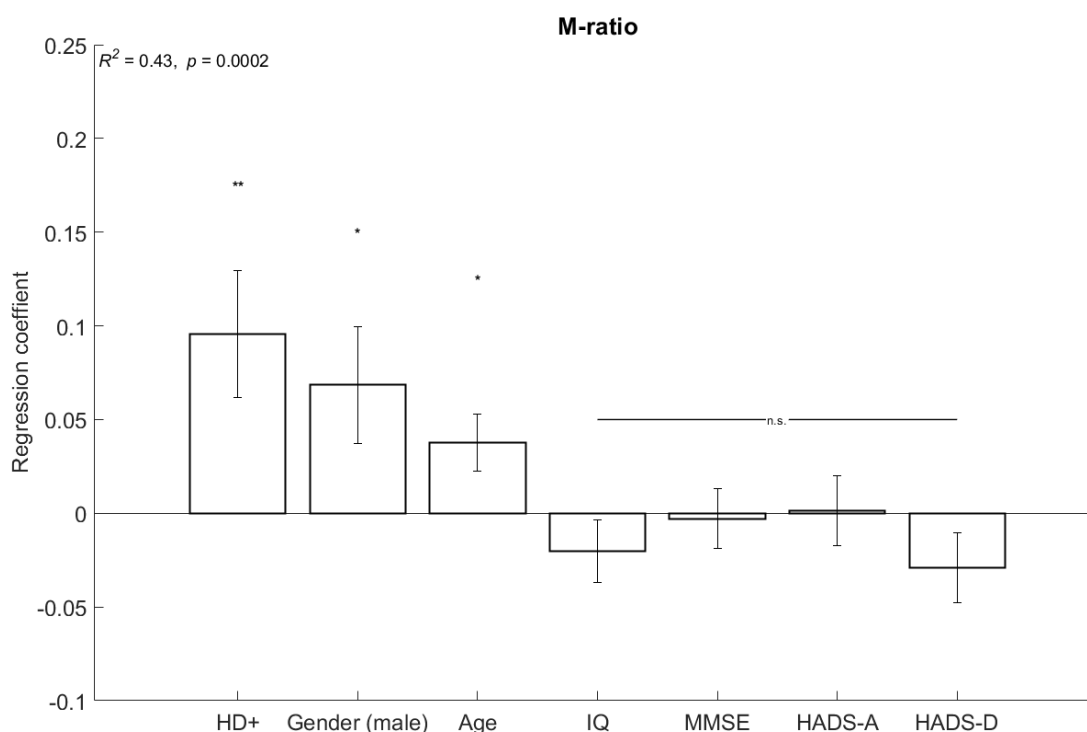
253

254 Figure 4. Individual mean accuracy (proportion correct) controlled at approximately 0.71 and mean M-
255 ratio estimates. Each participant is a point on the X-axis.

256

257 To understand the contribution of individual differences, we conducted a post-hoc regression
258 analysis in which metacognitive parameters (“M-ratio”, “metacognitive sensitivity”, “perceptual
259 sensitivity”, “confidence”) were dependent variables. Predictors were HD gene status and
260 several clinical covariates (age, gender, IQ, MMSE score, HADS-Anxiety score, HADS-Depression
261 score). Continuous predictor variables were z-scored prior to the regression. Significance level
262 for each regression model was adjusted using Bonferroni correction for the number of
263 dependent variables ($0.05/4 = 0.0125$). This confirmed the previous finding that HD patients
264 had intact metacognitive insight. A genetic diagnosis of HD was a significant predictor of
265 improved metacognitive efficiency ($\beta = +0.096$, $p = 0.007$) after controlling for confounding
266 individual differences ($R^2 = 0.43$, $p < 0.001$; Figure 5). We found that HD gene status ($\beta = +0.114$,
267 $p = 0.003$) was also a significant positive predictor of metacognitive sensitivity ($R^2 = 0.4$, $p <$
268 0.001) but did not predict perceptual sensitivity ($R^2 = 0.06$, $p = 0.83$). Since metacognitive
269 efficiency is simply the ratio between metacognitive and perceptual sensitivity (M-ratio), this
270 confirms that intact metacognitive efficiency in HD gene-carriers was driven by *increased*
271 *metacognitive* sensitivity (*meta-d'*) and not *reduced perceptual* sensitivity (*d'*). Mean confidence

272 was not directly associated with HD gene status, age, gender, IQ, cognition, anxiety or
273 depression ($R^2 = 0.22$, $p = 0.09$).



274
275 Figure 5. Linear regression coefficients for M-ratio (metacognitive efficiency) with independent
276 predictors: HD gene status, age, gender, IQ, MMSE (Mini-Mental State Examination) score, HADS-
277 Anxiety and HADS-Depression (Hospital Anxiety and Depression Score). n.s. = not significant, * $p < 0.05$
278 and ** $p < 0.01$. Error bars indicate SEM.

279

280

281 DISCUSSION

282 We report two novel findings about HD. Firstly, there is a deficit in perceptual decision-making
283 that can be seen in the premanifest stage of the condition and gets worse in manifest disease,
284 indicating that it is a product of the disease process rather than a genotype effect. Secondly,
285 despite impaired perceptual decision-making performance, both premanifest and manifest HD
286 gene-carriers demonstrated similar metacognitive insight into their performance compared to
287 controls. In summary, we report a dissociation between impaired first-order cognition and
288 intact, second-order, metacognition (trial-by-trial insight) in premanifest and early-HD gene-
289 carriers.

290

291 HD gene-carriers required the perceptual decisions to be made objectively easier in order to
292 perform as well as controls. Further, a computational model revealed this was underlined by
293 impairments in evidence accumulation and reduced evidence thresholds. This was expected, as
294 early manifest HD patients are impaired in the identification of ambiguous shapes and objects
295 (24) and both premanifest and manifest gene-carriers show impairments in the recognition of
296 faces and emotions (25–27).

297

298 In contrast, we predicted that metacognitive insight would be impaired in HD gene-carriers but
299 found evidence to reject this hypothesis. Posterior distributions of metacognitive efficiency
300 across all 3 groups did not differ. In a post-hoc analysis, having the HD gene was a significant
301 predictor of improved metacognitive efficiency after controlling for the influence of age,
302 gender, IQ, cognition, anxiety and depression. This was due to increased metacognitive
303 sensitivity in HD gene-carriers and not reduced perceptual sensitivity. Age and gender were also
304 significant predictors of metacognitive efficiency but IQ, cognition, anxiety and depression were
305 not (Figure 5).

306

307 A possible explanation for intact metacognitive performance (despite impaired perceptual
308 decision-making) is that a genetic diagnosis of HD induces a prior belief of current or future
309 impairment and this leads to increased vigilance to performance- either consciously or
310 subconsciously. In line with this, gene-carriers and their families often report “symptom
311 hunting” and it is possible that trial-by-trial metacognitive insight in cognitively unimpaired
312 individuals is attuned by this. However, we found no evidence of a negative confidence bias in
313 gene-carriers (i.e., generally lower confidence; Figure 2D). Although intact metacognitive insight
314 in HD gene-carriers was contrary to our hypothesis, other recent studies have identified
315 performance improvements associated with HD gene-expansion. For example, Huntingtin gene
316 expansion in low pathological ranges is associated with improved cognitive test scores and
317 superior IQ performance in far-from-onset gene-carriers (28,29).

318

319 Intact metacognitive insight despite (impaired) cognitive performance in premanifest and early-
320 HD is of clinical interest because it may be used to enhance subjective well-being and mental
321 health (5). HD causes a wide range of psychological difficulties, but the literature on
322 psychological interventions for people affected by HD is extremely limited (30). A recent
323 feasibility study has shown that mindfulness-based cognitive therapy (which exploits
324 metacognition) can be beneficial to individuals with premanifest HD (31). Our finding that early-
325 HD gene-carriers retain good metacognitive insight further indicates that psychological
326 therapies designed to apply this skill positively, may help maintain psychological well-being
327 following a genetic diagnosis of HD.

328

329 **Limitations**

330 The aim of this study was to assess whether local (trial-by-trial) metacognitive insight into
331 cognitive performance is affected in the early stages of the HD disease process. We have shown
332 that in relatively high functioning HD gene-carriers, metacognitive insight into cognitive
333 performance is intact even though the performance itself is impaired. However, these findings
334 relate only to HD gene-carriers who have *not* developed marked functional and cognitive
335 impairments. Metacognitive insight may well decline as HD progresses. Consistent with this,
336 there was increased uncertainty in the M-ratio for the early-manifest HD group; the posterior
337 distribution is wider, with longer tails (Figure 3). This is likely due to the smaller sample size and
338 greater heterogeneity of this group.

339

340 Secondly, changes in metacognitive performance may still occur early in HD in other cognitive
341 domains or over different timescales (e.g., global insight). Research into metamemory in
342 Alzheimer's dementia has shown that local (i.e., trial-by-trial) metacognitive estimates are
343 intact but global self-estimates are altered (32). Future studies should consider the progression
344 between (early-stage, intact) local and (later-stage, impaired) global metacognitive insight in HD
345 gene-carriers.

346

347 We did not include medication effects in our analyses. Dopamine is well-known to affect
348 cognition (33) and manifest HD patients are often prescribed dopamine antagonists to help
349 with the disease features, but these can increase the rate of cognitive decline (34). However,
350 only 4 of 29 (13.8%) gene-carriers in this study were taking anti-dopaminergic medication, and
351 all at low dose, so the pattern of findings cannot be explained by this.

352

353 **Conclusion**

354 By dissociating perception and metacognition in HD, we show that perceptual decision-making
355 impairments exist in HD gene-carriers without any other obvious symptoms or signs. However,
356 metacognitive insight into cognitive performance remains intact, even in those who have
357 progressed to manifest disease. Low-level perceptual issues which appear early in the disease
358 may drive higher-order cognitive deficits that are often seen in the HD clinic. However, since
359 metacognition is closely related to well-being and quality of life, clinicians and researchers
360 should investigate how to exploit the high degree of local metacognitive insight that early HD
361 gene-carriers can demonstrate.

362

363 Acknowledgements

364 We would like thank the staff and study participants at the Huntington's disease clinic at the
365 John Van Geest Centre for Brain Repair who gave their time for this study.

366 **Competing Interests:** none

367 **Funding:** S.R.H is funded by the Medical Research Council (MR/N013867/1). A.J.W is funded by
368 the Parasol Foundation Trust through the Cambridge Trust and by the Donald R. Shepherd
369 award from the University of California at Los Angeles. S.L.M. is supported by the Huntington's
370 Disease Association and by the NIHR Cambridge Biomedical Research Centre (BRC-1215-20014).
371 R.A.B is supported by the NIHR Cambridge Biomedical Research Centre (BRC-1215-20014). The
372 views expressed are those of the authors and not necessarily those of the NIHR or the
373 Department of Health and Social Care.

374 **Data availability statement:** the task and HMeta-d toolbox for implementation in Matlab can
375 be accessed thanks to Meta-Lab, UCL (<https://github.com/metacoglab>). Data and scripts used
376 for data analysis in this study are available
377 (https://github.com/samrchewitt/HD_perception_metacognition). Tutorials and installation
378 guides for the *HDDM* toolbox (http://ski.clps.brown.edu/hddm_docs/). We encourage readers
379 to contact the corresponding authors if they would like advice on applying or replicating this
380 approach.

381

382 REFERENCES

383

- 384 1. The Huntington's Disease Collaborative Research Group. A novel gene containing a
385 trinucleotide repeat that is expanded and unstable on Huntington's disease chromosomes.
386 The Huntington's Disease Collaborative Research Group. *Cell* (1993) 72:971–983.
- 387 2. Ho AK, Sahakian BJ, Brown RG, Barker RA, Hodges JR, Ané M-N, Snowden J, Thompson J,
388 Esmonde T, Gentry R, et al. Profile of cognitive progression in early Huntington's disease.
389 *Neurology* (2003) 61:1702–1706.
- 390 3. McColgan P, Tabrizi SJ. Huntington's disease: a clinical review. *Eur J Neurol* (2018) 25:24–
391 34. doi:10.1111/ene.13413
- 392 4. Ho AK, Robbins AOG, Barker RA. Huntington's disease patients have selective problems
393 with insight. *Mov Disord Off J Mov Disord Soc* (2006) 21:385–389. doi:10.1002/mds.20739
- 394 5. Seow TXF, Rouault M, Gillan CM, Fleming SM. How Local and Global Metacognition Shape
395 Mental Health. *Biol Psychiatry* (2021) doi:10.1016/j.biopsych.2021.05.013

- 396 6. David AS, Bedford N, Wiffen B, Gillean J. Failures of metacognition and lack of insight in
397 neuropsychiatric disorders. *Philos Trans R Soc B Biol Sci* (2012) 367:1379–1390.
398 doi:10.1098/rstb.2012.0002
- 399 7. Fleming SM, Ryu J, Golfinos JG, Blackmon KE. Domain-specific impairment in
400 metacognitive accuracy following anterior prefrontal lesions. *Brain* (2014) 137:2811–2822.
401 doi:10.1093/brain/awu221
- 402 8. Yuki S, Nakatani H, Nakai T, Okanoya K, Tachibana RO. Regulation of action selection based
403 on metacognition in humans via a ventral and dorsal medial prefrontal cortical network.
404 *Cortex* (2019) 119:336–349. doi:10.1016/j.cortex.2019.05.001
- 405 9. Allen M, Glen JC, Müllensiefen D, Schwarzkopf DS, Fardo F, Frank D, Callaghan MF, Rees G.
406 Metacognitive ability correlates with hippocampal and prefrontal microstructure.
407 *NeuroImage* (2017) 149:415–423. doi:10.1016/j.neuroimage.2017.02.008
- 408 10. Lambrecq V, Langbour N, Guehl D, Bioulac B, Burbaud P, Rotge J-Y. Evolution of brain gray
409 matter loss in Huntington’s disease: a meta-analysis. *Eur J Neurol* (2013) 20:315–321.
410 doi:10.1111/j.1468-1331.2012.03854.x
- 411 11. Begeti F, Schwab LC, Mason SL, Barker RA. Hippocampal dysfunction defines disease onset
412 in Huntington’s disease. *J Neurol Neurosurg Psychiatry* (2016) 87:975–981.
413 doi:10.1136/jnnp-2015-312413
- 414 12. Fleming SM. *Code for running a dot-density perceptual decision experiment + confidence*
415 *ratings: metacoglab/meta_dots*. MetaLab (2018). Available at:
416 https://github.com/metacoglab/meta_dots [Accessed June 14, 2019]
- 417 13. Huntington Study Group. Unified Huntington’s disease rating scale: Reliability and
418 consistency. *Mov Disord* (1996) 11:136–142. doi:<https://doi.org/10.1002/mds.870110204>
- 419 14. Harris PA, Taylor R, Thielke R, Payne J, Gonzalez N, Conde JG. Research Electronic Data
420 Capture (REDCap) - A metadata-driven methodology and workflow process for providing
421 translational research informatics support. *J Biomed Inform* (2009) 42:377–381.
422 doi:10.1016/j.jbi.2008.08.010
- 423 15. Harris PA, Taylor R, Minor BL, Elliott V, Fernandez M, O’Neal L, McLeod L, Delacqua G,
424 Delacqua F, Kirby J, et al. The REDCap Consortium: Building an International Community of
425 Software Platform Partners. *J Biomed Inform* (2019) 95:103208.
426 doi:10.1016/j.jbi.2019.103208
- 427 16. Vandenberg JP, von Elm E, Altman DG, Gøtzsche PC, Mulrow CD, Pocock SJ, Poole C,
428 Schlesselman JJ, Egger M, STROBE Initiative. Strengthening the Reporting of Observational
429 Studies in Epidemiology (STROBE): explanation and elaboration. *PLoS Med* (2007) 4:e297.
430 doi:10.1371/journal.pmed.0040297

- 431 17. Brainard DH. The Psychophysics Toolbox. *Spat Vis* (1997) 10:433–436.
432 doi:10.1163/156856897X00357
- 433 18. Fleming SM. HMeta-d: hierarchical Bayesian estimation of metacognitive efficiency from
434 confidence ratings. *Neurosci Conscious* (2017) 2017: doi:10.1093/nc/nix007
- 435 19. Fleming SM, Lau HC. How to measure metacognition. *Front Hum Neurosci* (2014) 8:443.
436 doi:10.3389/fnhum.2014.00443
- 437 20. Fleming SM, Daw ND. Self-Evaluation of Decision-Making: A General Bayesian Framework
438 for Metacognitive Computation. *Psychol Rev* (2017) 124:91–114. doi:10.1037/rev0000045
- 439 21. Maniscalco B, Lau H. A signal detection theoretic approach for estimating metacognitive
440 sensitivity from confidence ratings. *Conscious Cogn* (2012) 21:422–430.
441 doi:10.1016/j.concog.2011.09.021
- 442 22. Wiecki TV, Sofer I, Frank MJ. HDDM: Hierarchical Bayesian estimation of the Drift-Diffusion
443 Model in Python. *Front Neuroinformatics* (2013) 7: doi:10.3389/fninf.2013.00014
- 444 23. Faul F, Erdfelder E, Lang A-G, Buchner A. G*Power 3: a flexible statistical power analysis
445 program for the social, behavioral, and biomedical sciences. *Behav Res Methods* (2007)
446 39:175–191. doi:10.3758/bf03193146
- 447 24. Coppin EM, Jacobs M, van der Zwaan KF, Middelkoop HAM, Roos RAC. Visual Object
448 Perception in Premanifest and Early Manifest Huntington’s Disease. *Arch Clin*
449 *Neuropsychol Off J Natl Acad Neuropsychol* (2019) 34:1320–1328.
450 doi:10.1093/arclin/acz002
- 451 25. Johnson SA, Stout JC, Solomon AC, Langbehn DR, Aylward EH, Cruce CB, Ross CA, Nance M,
452 Kayson E, Julian-Baros E, et al. Beyond disgust: impaired recognition of negative emotions
453 prior to diagnosis in Huntington’s disease. *Brain* (2007) 130:1732–1744.
454 doi:10.1093/brain/awm107
- 455 26. Kempnich CL, Andrews SC, Fisher F, Wong D, Georgiou-Karistianis N, Stout JC. Emotion
456 Recognition Correlates With Social-Neuropsychiatric Dysfunction in Huntington’s Disease.
457 *J Int Neuropsychol Soc JINS* (2018) 24:417–423. doi:10.1017/S1355617717001308
- 458 27. Martínez-Horta S, Horta-Barba A, Perez-Perez J, Antoran M, Pagonabarraga J, Sampedro F,
459 Kulisevsky J. Impaired face-like object recognition in premanifest Huntington’s disease.
460 *Cortex J Devoted Study Nerv Syst Behav* (2020) 123:162–172.
461 doi:10.1016/j.cortex.2019.10.015
- 462 28. Schultz JL, Saft C, Nopoulos PC. Association of CAG Repeat Length in the Huntington Gene
463 With Cognitive Performance in Young Adults. *Neurology* (2021)
464 doi:10.1212/WNL.0000000000011823

- 465 29. Lee JK, Ding Y, Conrad AL, Cattaneo E, Epping E, Mathews K, Gonzalez-Alegre P, Cahill L,
466 Magnotta V, Schlaggar BL, et al. Sex-specific effects of the Huntington gene on normal
467 neurodevelopment. *J Neurosci Res* (2017) 95:398–408. doi:10.1002/jnr.23980
- 468 30. Zarotti N, Dale M, Eccles F, Simpson J. Psychological Interventions for People
469 with Huntington’s Disease: A Call to Arms. *J Huntingt Dis* (2020) 9:231–243.
470 doi:10.3233/JHD-200418
- 471 31. Eccles FJR, Craufurd D, Smith A, Davies R, Glenny K, Homberger M, Rose L, Theed R,
472 Peeren S, Rogers D, et al. Experiences of Mindfulness-Based Cognitive Therapy for
473 Premanifest Huntington’s Disease. *J Huntingt Dis* (2021) doi:10.3233/JHD-210471
- 474 32. Gallo DA, Cramer SJ, Wong JT, Bennett DA. Alzheimer’s disease can spare local
475 metacognition despite global anosognosia: revisiting the confidence-accuracy relationship
476 in episodic memory. *Neuropsychologia* (2012) 50:2356–2364.
477 doi:10.1016/j.neuropsychologia.2012.06.005
- 478 33. Cools R, D’Esposito M. Inverted-U-shaped dopamine actions on human working memory
479 and cognitive control. *Biol Psychiatry* (2011) 69:e113-125.
480 doi:10.1016/j.biopsych.2011.03.028
- 481 34. Harris, Kuan W-L, Mason SL, Barker RA. Antidopaminergic treatment is associated with
482 reduced chorea and irritability but impaired cognition in Huntington’s disease (Enroll-HD).
483 *J Neurol Neurosurg Psychiatry* (2020) 91:622–630. doi:10.1136/jnnp-2019-322038
- 484