

## **Applying Behavioral Nudges in a Dietary Comparator for Surgical Trials: Developing the MediDiet**

Irene Y. Zhang,<sup>1</sup> Daniel Norwitz,<sup>2</sup> Adam Drewnowski,<sup>3</sup> Nidhi Agrawal,<sup>4</sup> David R. Flum,<sup>1</sup> Joshua M. Liao<sup>5</sup>

<sup>1</sup> Surgical Outcomes Research Center, Department of Surgery, University of Washington School of Medicine, Seattle WA 98195

<sup>2</sup> University of Southern California, Los Angeles, CA 90089

<sup>3</sup> Department of Epidemiology, University of Washington School of Public Health, Seattle WA 98195

<sup>4</sup> Department of Marketing, University of Washington Foster School of Business, Seattle WA 98195

<sup>5</sup> Department of Medicine, University of Washington School of Medicine, Seattle WA 98195

## **Abstract**

*Introduction:* The Mediterranean diet is being studied as an alternative to surgery for common gastrointestinal conditions. However, dietary change can be challenging. “Nudges” – behavioral science strategies seeking to influence cognitive processes to promote good behaviors – may help. We conducted a pilot study evaluating the acceptability of the MediDiet, a behaviorally designed dietary intervention incorporating nudges and recommendations based on the Mediterranean Diet.

*Methods:* We conducted a three-phase pilot study involving parallel randomized surveys of U.S. adults. After completing a validated questionnaire assessing dietary consistency with a Mediterranean diet, participants were randomized to feedback containing no nudge versus nudge: peer comparison; peer comparison + positive affect induction; or default. Participants then rated their positive and negative emotions, motivation for dietary change, and interest in recipes. Responses were analyzed using baseline covariate-adjusted regression.

*Results:* Among 1,709 participants, 56% were men, 73% were White, and the mean age was 38. In response to dietary feedback, participants reported low negative emotions, high positive emotions, moderate motivation for dietary change and high interest in recipes. Nudges did not affect the extent of negative ( $p=0.104$ ) or positive ( $p=0.34$ ) emotions, motivation ( $p=0.139$ ), or interest ( $p=0.86$ ). In exploratory analyses, those with moderate and high consistency with the Mediterranean diet, with or without nudges, reported lower negative affect, greater positive affect, greater motivation, and greater interest in recipes, than the minimally consistent, no nudge group.

*Conclusion:* Delivering dietary feedback based on the Mediterranean diet using behavioral nudges was acceptable among U.S. adults, rousing positive reactions without triggering negative

ones. As early evidence, this pilot study provides the basis for testing nudge-based dietary guidance among individuals with symptomatic gallstones, diverticulitis, and other gastrointestinal diseases.

### **Highlights**

- The MediDiet is being developed as a novel, behaviorally designed dietary intervention for the non-operative management of common gastrointestinal conditions including symptomatic gallstones and diverticulitis, classically managed with surgery.
- In this exploratory pilot study, delivering dietary feedback based on the Mediterranean diet using behavioral nudges was acceptable among U.S. adults.
- This foundational work will help serve as the basis for testing nudge-based dietary guidance among individuals with symptomatic gallstones, diverticulitis, and other gastrointestinal diseases, and ultimately conducting clinical trials to compare dietary interventions to surgical management for these conditions.

## **Introduction**

Many medical conditions that can be managed surgically also have non-operative alternatives, presenting important choices for patients. These non-surgical options often require patients to make and sustain diet and lifestyle behavior changes. For example, two of the most common gastrointestinal conditions with surgical treatments – symptomatic gallstones and diverticulitis – can be managed non-operatively with dietary change focused on fatty food avoidance and high fiber intake.

Due to well-known challenges with dietary change and inadequacy of general guidance about foods, specific dietary interventions are likely needed to maximize the benefit of non-operative management options. In particular, the Mediterranean diet (low animal fat and high fiber from legumes, nuts and seeds, vegetables and fruit), which has been demonstrated to be beneficial in randomized trials of cardiovascular disease, is now being studied for the management of symptomatic gallstones, diverticulitis, and other gastrointestinal diseases.<sup>1-5</sup>

The opportunity is ripe for clinical studies that compare the Mediterranean diet to surgery for the management of common gastrointestinal conditions. However, even evidence-based recommendations and counseling about the Mediterranean diet may have limited impact on patient outcomes if they do not incorporate insights from behavioral science. Diet change is fundamentally behavioral, and diet-based management options may be more effective if guidance is paired with behavioral “nudges” – strategies that acknowledge how humans process and respond to information, and seek to influence those cognitive processes to promote good behaviors.<sup>6-8</sup> Nudges have been used in a number of health settings, and have shown promise including in increasing healthy dietary and nutritional choices for overweight individuals.<sup>9-12</sup>

Unfortunately, little is known about if and how best to provide Mediterranean diet guidance using behavioral nudges for the purposes of non-operative disease management. To address this gap and identify dietary interventions that could be studied as alternatives to surgical treatment, we conducted a multi-phase pilot study evaluating the acceptability of the MediDiet – a behaviorally designed dietary intervention that uses nudges to deliver recommendations based on the Mediterranean Diet.

## **Methods**

We conducted a three-phase pilot study involving parallel, two-arm randomized surveys of U.S. adults. The study was deemed exempt by the University of Washington Institutional Review Board, and informed consent was waived.

### *Nudges*

Given the dearth of existing knowledge on this topic and the exploratory nature of this study, we sought to evaluate the acceptability of nudges as a class of strategies, compared to no nudge. We chose three types of nudges based on their application to dietary change and other health care choices<sup>12</sup>: *peer comparisons* that seek to motivate behavior by providing individuals with information about their behaviors compared to those of their peers (e.g., “your diet is more consistent with a Mediterranean diet than nearly all U.S. adults”); *positive affect induction* that seeks to drive behavior by encouraging a positive, self-efficacious frame of mind (e.g., “think of a time when you felt good about your diet”); and *defaults* that prompt behavior by leveraging the tendency for individuals to choose pre-selected options (e.g., “you will be emailed 5 easy, delicious recipes based on a Mediterranean diet that you can use to improve your health; you

may opt out if you wish”). Nudges were incorporated into messages that were provided to participants with feedback about how consistent their diets were with the Mediterranean diet.

### *Study Population*

Participants were U.S. adults (ages  $\geq 18$ ) recruited from Amazon Mechanical Turk (MTurk), a web-based crowdsourcing platform that has been used for survey-based clinical and health services research.<sup>13–15</sup> Consistent with prior work, we required participants to have a history of completing surveys and excluded those with duplicate IP addresses, suspicious geocode locations, or responses signaling automated responses.<sup>13,16</sup>

### *Survey Instrument and Outcomes*

The survey was designed and administrated through the Qualtrics survey platform.<sup>17</sup> Participants were asked to complete a dietary questionnaire, the Mediterranean Diet Adherence Score (MEDAS), a validated instrument that has been used in clinical trials to measure and track the consistency of one’s diet with a Mediterranean diet, on a scale of 0 (inconsistent) to 14 (most consistent).<sup>1</sup>

All participants were then given feedback based on their MEDAS about how consistent their diet was with a Mediterranean diet, categorized based on prior work as highly consistent (MEDAS 7 to 14), moderately consistent (MEDAS 3 to 6), or minimally consistent (MEDAS 0 to 2).<sup>9,18–20</sup> These categories were then used to stratify randomization such that within each consistency category, participants were then randomized to no additional information (*no nudge*) versus one of several nudges: peer comparison; peer comparison + positive affect induction; or default.

All participants were then asked to rate their levels of positive and negative emotions, in questions adapted from the Positive and Negative Affect Schedule (5-point Likert; 1 = Not at all, 5 = Extremely),<sup>21</sup> as well as motivation for dietary change and interest in new recipes (7-point Likert; 1 = Not at all, 7 = Extremely). The outcomes for the study were dichotomized versions of these responses: high positive affect (top quartile vs. other quartiles), low negative affect (bottom quartile vs. other quartiles), high motivation (top quartile vs. other quartiles), and high interest (top quartile vs. other quartiles).

Additionally, participants were asked to self-report sociodemographic information and prior dietary and cooking experiences. They received compensation of \$1.00 for participation. The survey required five and a half minutes on average to complete.

### *Data Analysis*

Data were described using mean (standard deviation) for continuous variables and frequency (percentages) for categorical variables, and analyzed using baseline covariate-adjusted logistic regression.<sup>22,23</sup> The regression models were adjusted for baseline characteristics identified *a priori* as potentially influencing the relationship between interventions and outcomes: age, gender, race, ethnicity, BMI, familiarity with a Mediterranean diet, cooking experience, income, and weekly spending on food.<sup>1,24,25</sup>

Main analyses compared individuals who received nudge versus no nudge in the overall cohort. In exploratory analyses, we compared outcomes between nudge and no nudge groups across different categories of Mediterranean dietary consistency – i.e., comparing the effect of nudges across individuals with diets that were highly versus moderately versus minimally consistent with the Mediterranean diet. We aimed to recruit 100 participants per stratified arm

for the first two study phases, consistent with prior exploratory work.<sup>13</sup> Based on those initial results, the third study phase was designed to have 80% power to detect a >15% difference in outcomes. Statistical tests were two-tailed with  $\alpha = 0.05$ . Analyses were conducted in R, version 4.1.0.<sup>26</sup>

The funding source had no role in the study.

## Results

Among 1,709 participants in total, 56% were men, 73% were White, 83% were non-Hispanic, and the mean age was 38 years (Table 1). Overall, 43% had completed college or higher levels of education, while 41% reported an annual income of \$50,000 or less. The average BMI was 25, based on self-reported height and weight. These factors were similarly distributed across the three study phases.

At baseline, most participants indicated some familiarity with the Mediterranean diet. About half (54%) had experience with a dieting program in the past, while a minority (32%) had any dietary restriction. They reported an average weekly spending of \$124 on food. On the dietary questionnaire, most participants reported baseline diets that were moderately consistent with a Mediterranean diet (mean MEDAS 6 +/- 3). The majority of participants reported dietary practices either highly or moderately consistent with a Mediterranean diet; approximately 10% of participants reported diets that were minimally consistent with a Mediterranean diet.

In response to feedback messages about their diet, participants reported low levels of negative emotions (e.g., sad, guilty, disappointed) and high levels of positive emotions (e.g., proud, inspired, and enthusiastic) overall. The use of nudges did not affect the extent of negative ( $p = 0.104$ ) or positive ( $p = 0.34$ ) emotions (Fig. 1).



After receiving feedback messages, participants overall reported moderate levels of motivation for dietary change and high levels of interest in new recipes that could be used to make their diet more consistent with a Mediterranean diet. Motivation and interest in new recipes did not differ based on the use of nudges ( $p = 0.139$  and  $p = 0.86$ , respectively) (Fig. 1).

In exploratory analyses, affect, motivation, and interest in new recipes were consistent between nudge versus no nudge groups within each dietary consistency category, but varied across categories. Compared to individuals in the minimally consistent category that did not receive a nudge, those in the moderately consistent category reported greater positive affect, lower negative affect, and greater motivation and interest in recipes whether they received a nudge or not (Fig. 2). Similarly, all participants with diets highly consistent with the Mediterranean diet reported greater positive affect, lower negative affect, and greater motivation and interest in recipes, as compared to participants in the minimally consistent category who did not receive a nudge (Fig. 2).

## **Discussion**

In this exploratory pilot study, delivering dietary feedback based on the Mediterranean diet using behavioral nudges was acceptable among U.S. adults. This approach did not adversely affect emotions, motivation for dietary change, or interest in new recipes, overall or within strata of individuals with dietary habits that varied in consistency with the Mediterranean Diet.

This study fits into a larger body of work on dietary interventions for the purpose of disease management. Adherence to dietary interventions has been reported to be as high as 89% for the management of cardiovascular disease, but only 30% of individuals with symptomatic gallstones can manage the condition with dietary change under current practices.<sup>27,28 29</sup> Methods

for improving adherence in prior work have varied,<sup>28,30,31</sup> and the extent to which they have been applied systematically in clinical practice is not clear. This context helps underscore the need and rationale for this study and future work designing elements of the MediDiet – to identify effective dietary interventions for disease management, and assess the potential of nudges for doing so.<sup>12</sup>

Study limitations include a non-clinical setting and participants that may not have the medical conditions that would ultimately be targeted by the MediDiet intervention. Most participants also reported dietary practices that were consistent with the Mediterranean diet at baseline. Additionally, three candidate nudges were selected for this exploratory study, but other types of nudges should be tested and compared directly in future work.

Nonetheless, as early evidence, this multi-phase pilot study provides foundational work that can serve as the basis for additional validation and testing. In particular, our findings help provide the basis for testing nudge-based dietary guidance among individuals with symptomatic gallstones, diverticulitis, and other gastrointestinal diseases, and ultimately conducting clinical trials to compare dietary interventions to surgical management for these conditions.

## Tables and Figures

Table 1. Sample characteristics

Characteristic	Overall, N = 1,709 <sup>1</sup>
Age, mean (SD)	38 (11)
Gender	
Man	952 (56%)
Woman	748 (44%)
Other	4 (0.2%)
Prefer not to say	5 (0.3%)
Race	
White	1,242 (73%)
Black or African American	264 (15%)
Asian	120 (7.0%)
American Indian or Alaska Native	12 (0.7%)
Native Hawaiian or Pacific Islander	6 (0.4%)
Other or Multiracial	56 (3.3%)
Prefer not to say	9 (0.5%)
Ethnicity	
Non-Hispanic	1,413 (83%)
Hispanic	265 (16%)
Prefer not to say	31 (1.8%)
BMI, mean (SD)	25 (8)
Education	
High School or Some College	593 (35%)
Completed College or Higher	722 (42%)
Other	394 (23%)
Annual Income	

---

Characteristic	Overall, N = 1,709 <sup>1</sup>
<\$25,000	190 (11%)
\$25,000-50,000	512 (30%)
\$50,001-75,000	482 (28%)
\$75,001-100,000	279 (16%)
>\$100,000	246 (14%)

---

<sup>1</sup>Mean (SD); n (%)

Figure 1. The Effect of Nudges on Study Outcomes

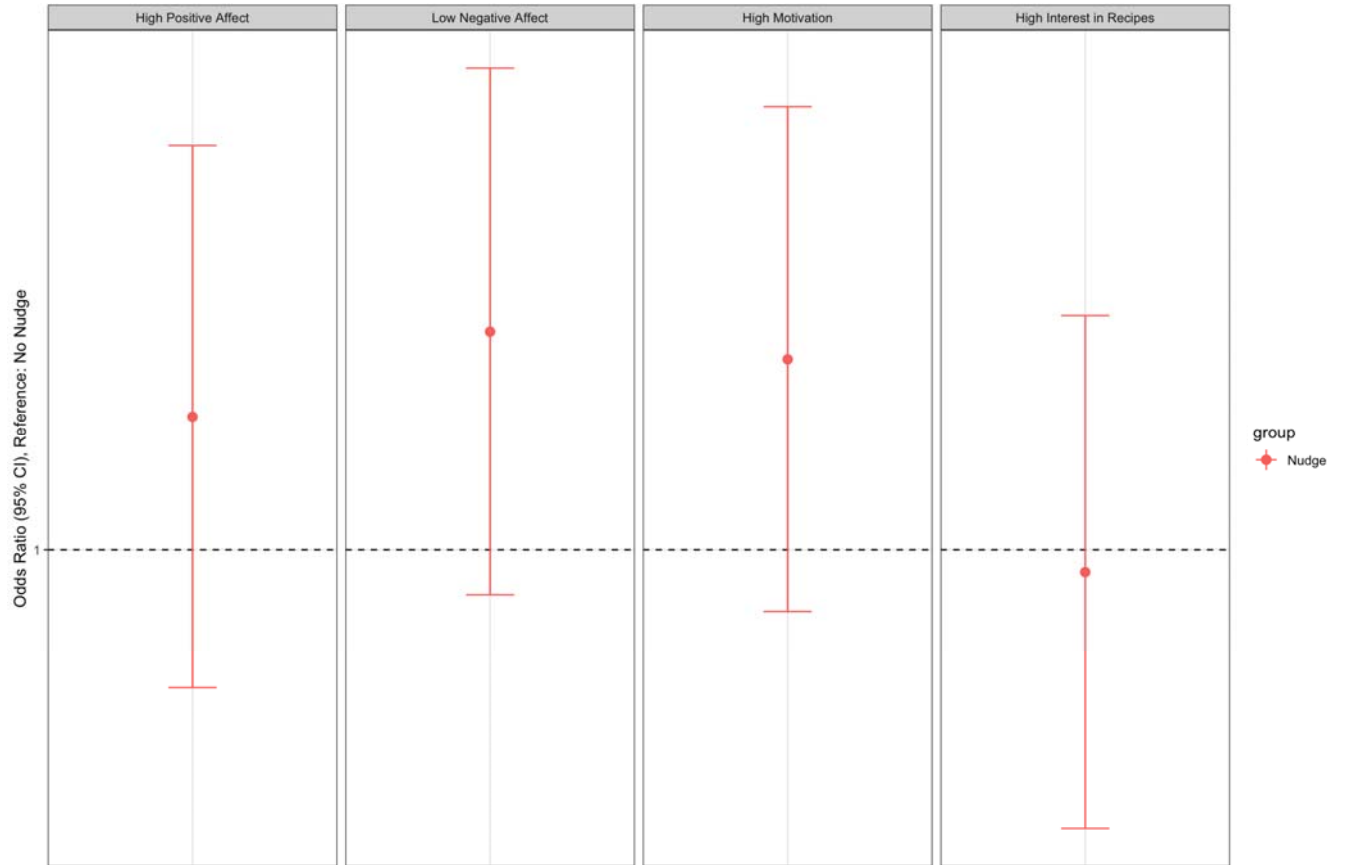
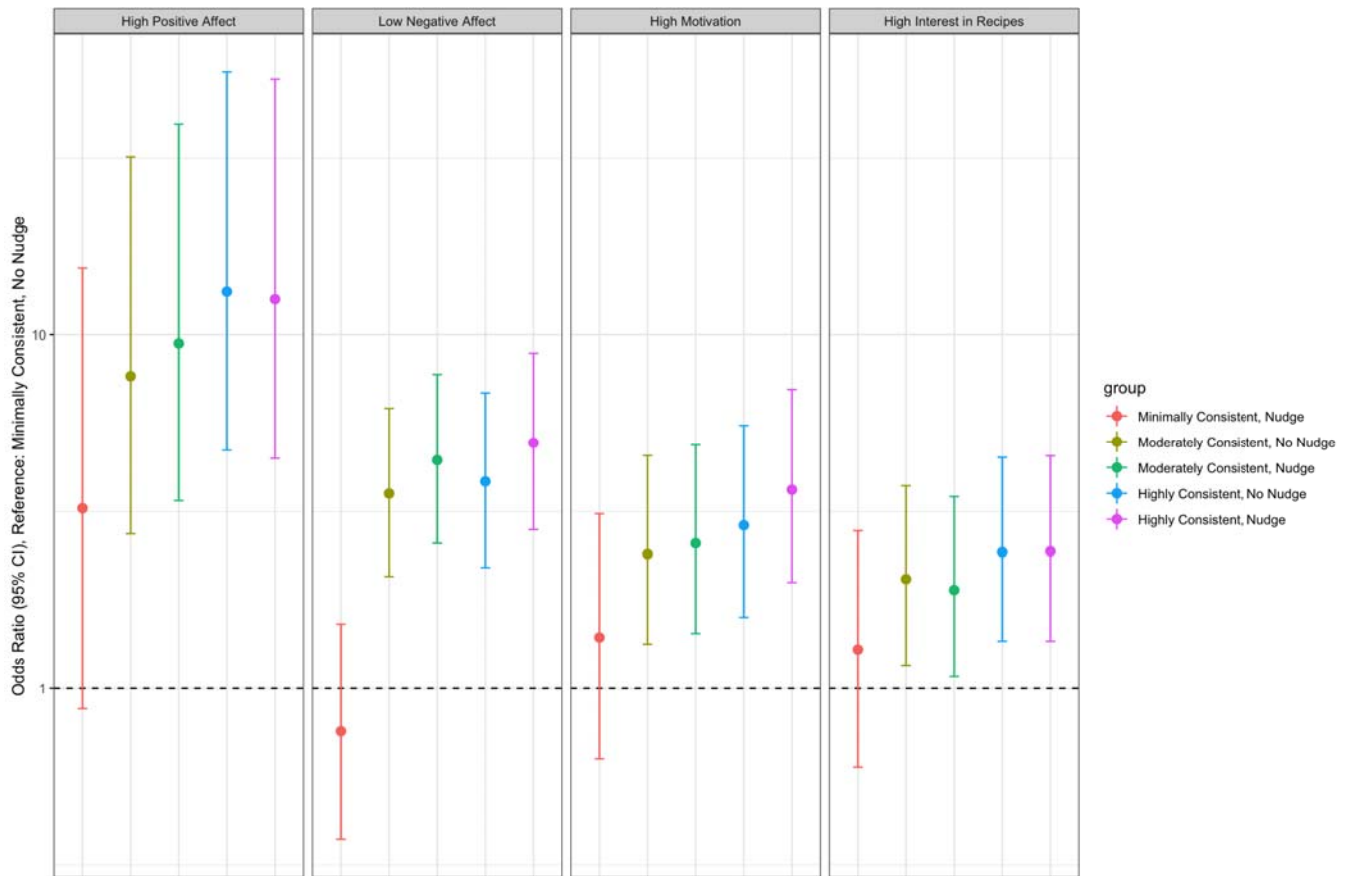


Figure 2. The Effect of Nudges on Study Outcomes, Stratified by Study Arm and Dietary

Consistency Categories



## **Acknowledgements**

Dr. Zhang was supported by the National Institute of Diabetes and Digestive and Kidney Diseases of the National Institutes of Health under Award Number T32DK070555. This work was also funded in part by a generous gift from Marty and Linda Ellison. The content is solely the responsibility of the authors and does not necessarily represent the official views of the National Institutes of Health.

## References

1. Estruch R, Ros E, Salas-Salvadó J, et al. Primary Prevention of Cardiovascular Disease with a Mediterranean Diet Supplemented with Extra-Virgin Olive Oil or Nuts. *N Engl J Med* 2018; 378: e34.
2. Wirth J, Song M, Fung TT, et al. Diet-quality scores and the risk of symptomatic gallstone disease: A prospective cohort study of male US health professionals. *Int J Epidemiol* 2018; 47: 1938–1946.
3. Strate LL, Keeley BR, Cao Y, et al. Western Dietary Pattern Increases, and Prudent Dietary Pattern Decreases, Risk of Incident Diverticulitis in a Prospective Cohort Study. *Gastroenterology* 2017; 152: 1023-1030.e2.
4. Spiridakis KG, Intzepogazoglou DS, Flamourakis ME, et al. Acute diverticulitis in patients under 50 years of age. *G Chir* 2018; 34: 319–322.
5. Ma W, Nguyen LH, Song M, et al. Intake of Dietary Fiber, Fruits, and Vegetables and Risk of Diverticulitis. *Am J Gastroenterol* 2019; 114: 1531–1538.
6. Tversky A, Kahneman D. Judgment under Uncertainty: Heuristics and Biases. *Science* 1974; 185: 1124–1131.
7. Patel VL, Kaufman DR, Arocha JF. Emerging paradigms of cognition in medical decision-making. *J Biomed Inform* 2002; 35: 52–75.
8. Zhang IY, Liao JM. Applying behavioral science insights to medical management strategies: the role of validation testing. *Healthcare* 2021; 9: 100582.
9. Meeker D, Linder JA, Fox CR, et al. Effect of behavioral interventions on inappropriate antibiotic prescribing among primary care practices: a randomized clinical trial. *JAMA* 2016; 315: 562–570.



10. Montoy JCC, Dow WH, Kaplan BC. Patient choice in opt-in, active choice, and opt-out HIV screening: Randomized clinical trial. *BMJ*; 352. Epub ahead of print 2016. DOI: 10.1136/bmj.h6895.
11. Peterson JC, Charlson ME, Hoffman Z, et al. A randomized controlled trial of positive-affect induction to promote physical activity after percutaneous coronary intervention. *Arch Intern Med* 2012; 172: 329–336.
12. Arno A, Thomas S. The efficacy of nudge theory strategies in influencing adult dietary behaviour: A systematic review and meta-analysis. *BMC Public Health* 2016; 16: 1–11.
13. Turner MC, O'Brien JD, Kahn RM, et al. Impact of disgust on intentions to undergo colorectal surgery. *Dis Colon Rectum* 2018; 61: 1386–1392.
14. Solnick RE, Peyton K, Kraft-Todd G, et al. Effect of Physician Gender and Race on Simulated Patients' Ratings and Confidence in Their Physicians: A Randomized Trial. *JAMA Netw Open* 2020; 3: e1920511.
15. Chen SP, Kirsch S, Zlatev D V., et al. Optical biopsy of bladder cancer using crowd-sourced assessment. *JAMA Surg* 2016; 151: 90–93.
16. Robinson J, Rosenzweig C, Moss AJ, et al. Tapped out or barely tapped? Recommendations for how to harness the vast and largely unused potential of the Mechanical Turk participant pool. *PLoS One* 2019; 14: 1–29.
17. Qualtrics, <https://www.qualtrics.com> (2020).
18. Jacobs DR, Petersen KS, Svendsen K, et al. Considerations to facilitate a US study that replicates PREDIMED. *Metabolism* 2018; 85: 361–367.
19. Patel MS, Kurtzman GW, Kannan S, et al. Effect of an Automated Patient Dashboard Using Active Choice and Peer Comparison Performance Feedback to Physicians on Statin

- Prescribing: The PRESCRIBE Cluster Randomized Clinical Trial. *Jama Netw Open* 2018; 1: e180818.
20. Patel MS, Volpp KG, Rosin R, et al. A Randomized Trial of Social Comparison Feedback and Financial Incentives to Increase Physical Activity. *Am J Heal Promot* 2016; 30: 416–424.
  21. Thompson ER. Development and validation of an internationally reliable short-form of the Positive and Negative Affect Schedule (PANAS). *J Cross Cult Psychol* 2007; 38: 227–242.
  22. Kahan BC, Jairath V, Doré CJ, et al. The risks and rewards of covariate adjustment in randomized trials: An assessment of 12 outcomes from 8 studies. *Trials* 2014; 15: 1–7.
  23. Ciolino JD, Palac HL, Yang A, et al. Ideal vs. real: A systematic review on handling covariates in randomized controlled trials. *BMC Med Res Methodol* 2019; 19: 1–11.
  24. Knight CJ, Jackson O, Rahman I, et al. The mediterranean diet in the stroke belt: A cross-sectional study on adherence and perceived knowledge, barriers, and benefits. *Nutrients*; 11. Epub ahead of print 2019. DOI: 10.3390/nu11081847.
  25. Bottcher MR, Marincic PZ, Nahay KL, et al. Nutrition knowledge and Mediterranean diet adherence in the southeast United States: Validation of a field-based survey instrument. *Appetite* 2017; 111: 166–176.
  26. R Core Team. R: A language and environment for statistical computing, <https://www.r-project.org/> (2020).
  27. Lemstra M, Bird Y, Nwankwo C, et al. Weight loss intervention adherence and factors promoting adherence: a meta-analysis. *Patient Prefer Adherence* 2016; 10: 1547–1559.
  28. Quintana-Navarro GM, Alcalá-Díaz JF, López-Moreno J, et al. Long-term dietary

adherence and changes in dietary intake in coronary patients after intervention with a Mediterranean diet or a low-fat diet: the CORDIOPREV randomized trial. *Eur J Nutr* 2020; 59: 2099–2110.

29. Association of Upper Gastrointestinal Surgeons of Great Britain and Ireland. *Commissioning Guide: Gallstone Disease*. 2016.
30. Rodriguez-Leyva D, Weighell W, Edel AL, et al. Potent antihypertensive action of dietary flaxseed in hypertensive patients. *Hypertension* 2013; 62: 1081–1089.
31. Berendsen AAM, van de Rest O, Feskens EJM, et al. Changes in Dietary Intake and Adherence to the NU-AGE Diet Following a One-Year Dietary Intervention among European Older Adults—Results of the NU-AGE Randomized Trial. *Nutrients*; 10. Epub ahead of print 2018. DOI: 10.3390/nu10121905.