

1 **Title:** Clinical and genomic epidemiology of *mcr-9*-carrying carbapenem-resistant
2 Enterobacterales isolates in Metropolitan Atlanta, 2012-2017

3
4 **Authors:** Ahmed Babiker^{1,2}, Chris Bower³⁻⁵, Joseph D. Lutgring⁶, Jessica Howard-
5 Anderson¹, Uzma Ansari⁶, Gillian McAllister⁶, Michelle Adamczyk^{6,7}, Erin Breaker⁶,
6 Sarah W. Satola^{1,2,3}, Jesse T. Jacob^{1,3}, Michael H. Woodworth^{1,3}

7
8 **Affiliations:**

9
10 1- Division of Infectious Diseases, Department of Medicine, Emory University School of
11 Medicine, Atlanta, GA

12
13 2- Department of Pathology and Laboratory Medicine, Emory University School of
14 Medicine, Atlanta, GA

15
16 3- Georgia Emerging Infections Program, Decatur, GA

17
18 4- Atlanta VA Medical Center, Decatur, GA

19
20 5- Foundation for Atlanta Veterans Education and Research, Decatur, GA

21
22 6- Division of Healthcare Quality Promotion, Centers for Disease Control and
23 Prevention, Atlanta, Georgia, USA

24

25 7- Goldbelt C6, LLC, Chesapeake, Virginia, USA

26

27 **Running title:** Genomic epidemiology of mcr-9

28

29 **Key words:** healthcare epidemiology, next generation sequencing, CRE, MDR, AMR

30

31 **Corresponding Author:** Michael H. Woodworth, Division of Infectious Diseases,

32 Department of Medicine, Emory University School of Medicine, Atlanta, GA, USA.

33 Email: michael.holmes.woodworth@emory.edu

34

35 **Alternative Corresponding author:** Ahmed Babiker, Division of Infectious Diseases,

36 Department of Medicine, Emory University School of Medicine, Atlanta, GA, USA.

37 Email: ahmed.babiker@emory.edu

38 **Abstract (Word limit: 250, word count: 250)**

39 Colistin is a last-resort antibiotic for multidrug-resistant gram-negative infections.
40 Recently, the ninth allele of the mobile colistin resistance (*mcr*) gene family, designated
41 *mcr-9*, was reported. However, its clinical and public health significance remains
42 unclear. We queried genomes of carbapenem-resistant Enterobacterales (CRE) for
43 *mcr-9* from a convenience sample of clinical isolates collected between 2012-2017
44 through the Georgia Emerging Infections Program, a population- and laboratory-based
45 surveillance program. Isolates underwent phenotypic characterization and whole
46 genome sequencing. Phenotypic characteristics, genomic features, and clinical
47 outcomes of *mcr-9* positive and negative CRE cases were then compared. Among 235
48 sequenced CRE genomes, thirteen (6%) were found to harbor *mcr-9*, all of which were
49 *Enterobacter cloacae* complex. The median MIC, rates of heteroresistance and
50 inducible resistance to colistin were similar between *mcr-9* positive and negative
51 isolates. However, rates of resistance were higher among *mcr-9* positive isolates across
52 most antibiotic classes. All cases had significant healthcare exposures. The 90-day
53 mortality was similarly high in both *mcr-9* positive (31%) and negative (7%) CRE cases.
54 Nucleotide identity and phylogenetic analysis did not reveal geo-temporal clustering.
55 *mcr-9* positive isolates had a significantly higher number of median [range] AMR genes
56 (16 [4-22] vs. 6 [2-15]; $p < 0.001$) compared to *mcr-9* negative isolates. Pan genome
57 tests confirmed a significant association of *mcr-9* detection with mobile genetic element
58 and heavy metal resistance genes. Overall, the presence of *mcr-9* was not associated
59 with significant changes in colistin resistance or clinical outcomes but continued
60 genomic surveillance to monitor for emergence of AMR genes is warranted.

61

62 **Introduction**

63

64 With the rise of carbapenem-resistant organisms over the past few decades (1, 2),
65 polymyxins (colistin or polymyxin B) remain last-resort antibiotics for multidrug-resistant
66 gram-negative infections (3). While concerns regarding efficacy and nephrotoxicity (4)
67 have relegated polymyxins to the second or third line of the antibiotic armamentarium
68 (5), these agents remain listed as critically important antibiotics by the WHO and are
69 widely used globally.

70

71 In 2015, a colistin-resistance gene localized on a plasmid was designated mobilized
72 colistin resistance-1 (*mcr-1*) (6). The *mcr-1* gene encodes a transferase that adds a
73 phosphoethanolamine residue to cell membrane lipid A, altering the binding site of
74 colistin, and consequently leading to colistin resistance (6). Since its initial description in
75 *Escherichia coli* (6), multiple *mcr* alleles (*mcr-2* to *mcr-10.1*) have been described (7).
76 The *mcr-9* allele was reported in 2019 and is most similar to *mcr-3* among previously
77 described *mcr* alleles (8). A recent search of publicly-available sequence databases
78 revealed a wide global distribution of *mcr-9*-harboring isolates, across six continents
79 and in at least 9 *Enterobacterales* species (7, 9). However, it is most commonly
80 detected among *Enterobacter* species (9).

81

82 In the US, the initial wave of carbapenem-resistant Enterobacterales (CRE) was
83 predominantly driven by proliferation of KPC-harboring *Klebsiella pneumoniae* (1, 10);

84 however, as demonstrated in recent reports, a second wave of CRE in the US seems to
85 be driven by the rise of *Enterobacter* species (1, 11). Genomic analysis indicates this
86 second wave is associated with a high degree of clonal diversity among isolates (12).
87 With the increasing spread of carbapenem-resistant *Enterobacter*, the dissemination of
88 *mcr-9* is highly probable. Despite its global distribution, the impact of *mcr-9* on colistin
89 phenotypic susceptibility remain unclear. Moreover, its association with patient clinical
90 outcomes or potential for outbreaks of public health concern is yet to be examined.

91
92 The Centers for Disease Control and Prevention (CDC)-funded Georgia Emerging
93 Infections Program (GA EIP) performs active, population- and laboratory- based
94 surveillance for CRE isolated from sterile sites or urine in metropolitan Atlanta, GA
95 (population ~4 million). We aimed to estimate the frequency of *mcr-9* among CRE cases
96 within the GA EIP catchment area and to compare clinical outcomes and
97 microbiological, genomic, and clinical characteristics of *mcr-9* positive and *mcr-9*
98 negative cases.

99

100 **Results**

101

102 *The mcr-9 allele was infrequently detected among GA EIP isolates between 2012-2017*

103

104 Between 2012-2017, the GA EIP identified 1,507 incident CRE cases, 716 (47.5%)
105 were *K. pneumoniae*; 415 (27.5%), *Escherichia coli*; 270 (17.9%), *Enterobacter cloacae*
106 complex; 72 (4.8%), *Klebsiella aerogenes* (formerly *Enterobacter*); and 34 (2.3%)

107 *Klebsiella oxytoca* cases. The overall crude annual CRE incidence across GA EIP
108 increased from 4.6 to 9.6 per 100,000 population from 2012 to 2017. Carbapenem-
109 resistant *E. cloacae* complex incidence, in particular, increased from 0.37 to 2.3 per
110 100,000 population during the study period. This increase coincided with revision of the
111 CDC case surveillance definition for CRE (13). (**Figure 1 A/B, Supplementary Table 1,**
112 **Supplementary Figure 1**).

113
114 A convenience sample of 384 isolates which met the GA EIP CRE case definition was
115 sent to the CDC for further characterization. Of the 384, 235 (61%) underwent whole
116 genome sequencing (WGS). Among 235 sequenced CRE isolates, thirteen (6%) were
117 found to harbor *mcr-9*, all of which were *E. cloacae* complex. All remaining sequenced
118 *mcr-9* negative *E. cloacae* complex (n=14) were included as a comparative group,
119 yielding a total number of 27 *E. cloacae* complex isolates.

120 121 *Microbiology Characteristics*

122
123 Following collection, isolates underwent reference antimicrobial susceptibility testing by
124 broth microdilution (BMD) at CDC. Of the *E. cloacae* complex isolates that underwent
125 WGS from 2012-2017, twenty-two isolates (81.7%, 22/27) were confirmed to be
126 carbapenem-resistant. Carbapenem resistance was similar among *mcr-9* positive and
127 negative cases (84.6% (11/13) vs. 78.6% (11/14); $p=1.00$). Fluoroquinolone resistance
128 was significantly higher among *mcr-9* positive isolates compared to *mcr-9* negative
129 isolates (100% (13/13) vs. 57.1% (8/14); $p=0.03$). This contributed to a higher proportion

130 of isolates being classified as difficult-to-treat resistance (DTR) (14). Overall, 48.1%
131 (13/27) were classified as harboring DTR (14, 15). with *mcr-9* isolates having higher-
132 rates of DTR (61.5% (8/13) vs. 35.7% (5/14) $p=0.34$). Similarly, rates of aminoglycoside,
133 tetracycline, and trimethoprim-sulfamethoxazole resistance were higher among *mcr-9*
134 positive isolates compared to *mcr-9* negative isolates (**Supplementary Table 2**).

135
136 The median [range of concentrations tested] colistin MIC for all *E. cloacae* complex
137 isolates was 0.5 $\mu\text{g/mL}$ [≤ 0.25 ->8.0]. Proportions of resistance, heteroresistance and
138 inducible resistance were 11.1% (3/27), 48.1% (13/27) and 14.8% (4/27), respectively.
139 There was no significant difference in colistin MIC, heteroresistance or inducible
140 resistance between *mcr-9* positive and negative isolates (**Table 1**). Of the three *E.*
141 *cloacae* complex isolates which were colistin-resistant by BMD, none were *mcr-9*
142 positive, although one was positive for *mcr-10.1*.

143
144 *Clinical characteristics of mcr-9 positive and negative CRE cases.*

145
146 *E. cloacae* complex isolates were commonly isolated from urine (88.9%, 24/27),
147 followed by blood (7.4%, 2/27) and peritoneal fluid (3.7%, 1/27). All cases had
148 significant healthcare exposures, with 14 cases (51.9%) long term care facility onset, 10
149 (37.0%) healthcare-associated community onset, and 3 (11.1%) hospital onset. Ten
150 patients (37.0%) were hospitalized at time of culture or within 29 days of CRE culture.
151 Among the 10 hospitalized patients, 3 (30.0%) patients were admitted to the ICU within
152 seven days of culture and one patient died during the period of hospitalization (10.0%).

153 Among hospitalized patients with available follow up data (n=7), 42.8% (3/7) were
154 readmitted within 30 days. Overall unadjusted all-cause 90-day mortality was 18.5%
155 (5/27). No clinical characteristics and outcomes were significantly different, and most
156 were numerically similar among *mcr-9* positive and negative cases. 90-day mortality
157 was higher among *mcr-9* positive cases (30.7% (4/13) vs. 7.1% (1/14)) compared to
158 *mcr-9* negative cases but this was not statistically significant ($p=0.28$).

159

160 *Genomic Analysis*

161

162 To expand the analytic genome set, a comparator cohort of nine publicly-available
163 clinical and environmental carbapenem-resistant *E. cloacae* complex (three *mcr-9*
164 positive, six *mcr-9* negative) genomes downloaded from National Center for
165 Biotechnology Information (NCBI). Review of associated metadata revealed isolates to
166 have been collected between January 2012 and December 2016 at the National
167 Institutes of Health (NIH) clinical center (Bethesda, MD) (PRJNA430442) (16). These
168 genomes were combined with the 27 GA EIP isolates, resulting in 36 isolate draft
169 genomes included in further comparative genomic analyses.

170

171 The 13 *mcr-9* positive *E. cloacae* complex isolates were obtained from 10 distinct GA
172 EIP facilities across the study period (2012-2017). Average nucleotide identity pairwise
173 comparisons revealed three distinct clusters (**Figure 2**). This clustering did appear to be
174 related to geographical location or year of isolation. NIH isolates clustered with GA EIP
175 isolates, and GA EIP isolates did not cluster by facility or year (**Supplementary Figure**

176 2). Their distribution throughout the genome phylogeny suggested that the *mcr-9*
177 positive isolates were largely genetically distinct from one another.
178
179 Median [range] AMR gene content (excluding *mcr-9*) was significantly higher among
180 *mcr-9* positive isolates compared to *mcr-9* negative isolates (16 [4-22] vs. 6 [2-15]; p
181 <0.001) (**Figure 3**). Among the three isolates with elevated colistin MICs, no point
182 mutations in *pmrA/pmrB*, a two-component system regulator of lipopolysaccharide (the
183 target site of colistin) modifications, were detected. Pan-genome-wide association tests
184 revealed a significant association of *mcr-9* detection with the detection of mobile genetic
185 element (MGE)-associated genes such as *repB*, *parM*, *hns2*; heavy metal resistance
186 (HMR) genes such as *arsC2*, *arsB2*, *fieF2*, *pcoE2* and *merA*; and virulence genes such
187 *hipA* (**Table 2, Supplementary Table 2, Supplementary Figure 3**). Taken together,
188 these comparative genomic analyses across two sites with *mcr-9* positive *E. cloacae*
189 complex isolate draft genomes confirmed the colocalization of *mcr-9* with plasmid-
190 mobilized heavy metal resistance genes but did not provide evidence of a high-identity
191 outbreak cluster in space or time.

192

193 Discussion

194

195 Among 235 CRE isolates collected through a comprehensive, population-based
196 surveillance program targeting the most common CRE species, we found a low
197 prevalence of *mcr-9*, all of which were detected in *Enterobacter cloacae* isolates. Our
198 phylogenetic analyses revealed a genetically diverse *mcr-9* positive CRE population,

199 suggesting sporadic carriage rather than clonal spread. Using multi-modal phenotypic
200 testing, we were unable to detect impacts of *mcr-9* on colistin susceptibility, however
201 genomic analysis revealed an association with increased AMR, HMR and virulence
202 genes. In addition, our *mcr-9*-containing CRE isolates were exclusively acquired in
203 healthcare settings, with a trend towards increased mortality. Since their initial
204 description, recognition of *mcr* genes associated with colistin resistance has spread
205 rapidly across the globe (7). Our study of *mcr-9*-harboring CRE cases provides unique
206 insights into the phenotypic and genomic implications of *mcr-9*, and is one of the first to
207 examine clinical outcomes.

208
209 Whether *mcr-9* confers colistin resistance has been debated (17). The first isolate
210 identified to harbor *mcr-9* was also susceptible to colistin but the allele was found to
211 confer resistance to colistin when cloned into a colistin-susceptible *E. coli* and
212 expressed under the control of an IPTG-induced promoter. However, this was only at 1,
213 2, and 2.5 mg/L, but not at 5 mg/L of colistin (8). Kieffer *et al.* later reported that *mcr-9*
214 expression was inducible in the presence of colistin when located upstream of the two-
215 component sensor kinase system *qseBC* (17). This two-component signaling network
216 allows bacteria to sense and respond to their changing environments. In particular, the
217 *qseC* and *qseB* genes encode a histidine kinase sensor (*qseC*) and its cognate partner
218 (*qseB*). The *qseBC* system has been shown to interact with *pmrA/pmrB*, to induce
219 resistance to the colistin(18). However, a study of *mcr-9*-containing isolates from retail
220 meat conducted by the National Antimicrobial Resistance Monitoring System (NARMS),
221 found all 105 isolates (99 *S. enterica* and 6 *E. coli*) tested to be susceptible to colistin,

222 including 10 isolates with *qseBC* (19), indicating that the previously demonstrated
223 impact of *qseBC* on *mcr-9* expression and colistin resistance may be dependent on
224 strain backgrounds, as originally demonstrated in *E. coli* (17). Among clinical CRE
225 isolates, we found the presence of *mcr-9* was not associated with frank or inducible
226 colistin resistance. Furthermore, our study is the first to examine the association of *mcr-*
227 *9* with heteroresistance. Heteroresistance is a largely unrecognized form of antibiotic
228 resistance where only a subset of cells within a bacterial population are resistant to a
229 given drug (20). These resistant cells can be selected for in the presence of the
230 antibiotic and cause colistin treatment failures *in-vivo* (21). In a multisite surveillance
231 study of colistin heteroresistance among CRE, *Enterobacter spp.* and in particular *E.*
232 *cloacae*, displayed the highest proportion of colistin heteroresistance (22). However,
233 here we found no association between *mcr-9* and colistin heteroresistance.

234
235 Carbapenem-resistant gram-negatives are a public health threat broadly prioritized by
236 public health organizations (23). Given the limited therapeutic options, morbidity and
237 mortality rates are increased disproportionately when compared to infections caused by
238 susceptible bacteria. We observed high 90-day mortality rates, but these were similar to
239 reported CRE mortality rates at other US academic centers (1). However, there was a
240 non-significant trend for higher mortality among *mcr-9* positive isolates. This association
241 should be further evaluated in larger studies, with adjustment for potentially-confounding
242 variables associated with mortality such as severity of illness, age and comorbidities as
243 our small size may underestimate differences in mortality (1). This finding may be
244 related to the increase in phenotypic resistance and AMR gene content associated with

245 *mcr-9*. A similar finding was previously reported describing 1,035 *mcr-9*-containing
246 isolates in which 97% (1003/1035) were classified as MDR (7). This increased AMR
247 gene content, renders isolates not only carbapenem-resistant, but also with DTR,
248 further limiting therapeutic options (14). DTR is a clinically relevant and functional
249 classification of resistance which signifies *in vitro* resistance to all high-efficacy, low-
250 toxicity (or first-line) agents and is associated with worse clinical outcomes when
251 compared to carbapenem-resistant phenotypes (14). Moreover, genome-wide
252 association studies, revealed a difference in key virulence genes such *hipA*, a
253 eukaryote-like serine threonine kinase that inhibits cell growth and induces bacterial
254 persistence (24).

255
256 We found the presence of *mcr-9* to be associated with HMR genes such *arsA*, *merA*,
257 conferring arsenic and mercury resistance, respectively. There has been increasing
258 evidence for the co-selection of AMR and HMR genes through either co-resistance or
259 cross-resistance (25). Co-resistance occurs when AMR and HMR genes are carried on
260 the same mobile genetic element. IncH12 plasmids, which frequently harbor HMR
261 genes (8), have been found to be the predominant replicon type carrying *mcr-9* and
262 frequently demonstrated in our isolates. Hospital wastewater is an increasingly
263 recognized reservoir for resistant gram-negative organisms that cause healthcare-
264 associated infections (26) and HMR genes may allow for continued persistence in the
265 environment (27). While the community setting is starting to represent an increased
266 source of multidrug-resistant infections (28), the healthcare setting still represents a
267 major risk for MDR acquisition, as was seen among our cohort.

268

269 Our study combines detailed epidemiological, clinical, phenotypic, and genomic data to
270 examine the significance of *mcr-9* but has some limitations. Firstly, we could not do a
271 full interrogation of *mcr-9*-containing plasmids, due to limitations of short read
272 sequencing. However, prior studies have significantly characterized the genomic
273 background of *mcr-9*-containing plasmids (9). Second, our study did not include
274 *Salmonella* species which are a major reservoir for *mcr-9* or other *Enterobacterales*
275 species such as *Citrobacter* (7) , and our findings may not be generalizable to these
276 species. However, our dataset of 235 includes the most common and significant clinical
277 CRE species (1, 23) and is one of few studies carried out on clinical human isolates
278 (19). Third, while we assessed for presence of the *pmrA/pmrB* regulatory system (29),
279 we did not include assessment of the two-component system *qseBC* (8) or testing
280 conditions (such as the use of cation-adjusted Mueller-Hinton broth) (30) which have
281 been shown to influence *mcr-9* expression and the colistin MIC results, respectively.
282 Fourth, while our overall cohort is from a population-based surveillance program, the
283 collected and sequenced isolates represent a convenience sample which may limit
284 generalizability and our sample size was not powered to detect clinical outcomes.

285

286 In conclusion, *mcr-9* may not have actionable public health implications as other *mcr*
287 alleles, most of which consistently display colistin resistance. However, given the
288 increased AMR and HMR gene content, continued genomic surveillance of multidrug-
289 resistant organisms to monitor for the emergence of AMR genes such as *mcr-9* is

290 prudent. Especially as changes in the up or downstream genetic context or the
291 accumulation of mutations may impact its ability to confer colistin resistance.

292

293 **Methods**

294

295 CRE cases were identified by routine queries on automated testing instruments in the
296 clinical labs that serve residents of the GA EIP catchment area. Clinical characteristics
297 were obtained through medical record review, all-cause mortality data was obtained
298 through the Georgia Vital Statistics records, and hospital readmission data was
299 obtained through the Department of Public Health's hospital discharge datasets.

300 Georgia EIP surveillance activities are reviewed and approved by the Emory University
301 Institutional Review Board.

302

303 From 2012-2015, a CRE case was defined as an isolate of *E. coli*, *E. cloacae*
304 complex, *K. (formally Enterobacter) aerogenes*, *K. pneumoniae*, or *K. oxytoca* collected
305 from a normally sterile body site (e.g., bloodstream) or urine that tested non-susceptible
306 to ≥ 1 carbapenem (imipenem, meropenem, or doripenem) and resistant to all 3rd
307 generation cephalosporins tested (ceftriaxone, ceftazidime, and cefotaxime) by testing
308 performed at the local collection microbiology laboratory. Beginning in 2016, the
309 phenotypic case definition was changed to resistance to ≥ 1 carbapenem (now including
310 ertapenem) with no cephalosporin parameter. Antibiotic susceptibility interpretations
311 were determined using the current Clinical and Laboratory Standards Institute
312 breakpoints (31). Fluoroquinolone resistance was defined as non-susceptibility

313 (intermediate or resistant) to ≥ 1 fluoroquinolone. DTR was defined as intermediate or
314 resistant to all reported agents in carbapenem, β -lactam, and fluoroquinolone categories
315 (14, 15).

316
317 An incident CRE case was defined as the first CRE isolate from a patient during a 30-
318 day period that met the surveillance definition. All incident CRE cases underwent
319 medical record review using a standardized abstraction form. Both inpatient and
320 outpatient medical records were reviewed for patient demographics, underlying clinical
321 comorbidities, location of culture collection, specimen source, associated infectious
322 syndromes, relevant health care exposures and patient outcomes. 90-day mortality was
323 determined based by matching to vital records.

324
325 A convenience sample of CRE isolates are collected annually and submitted to the CDC
326 for further characterization. Isolates that are collected and matched to an incident case
327 with a completed case report form are eligible for shipment. All isolates undergo repeat
328 reference BMD at the CDC followed by whole genome sequencing using an Illumina
329 MiSeq benchtop sequencer.

330
331 All *mcr-9* positive and a comparative control group of *mcr-9* negative *E. cloacae*
332 complex isolates underwent additional population analysis profiling and inducible
333 resistance testing at the Emory Investigational Clinical Microbiology Core as previously
334 described (20). Briefly, all isolates were tested via the population analysis profile (PAP)
335 method. This consists of plating overnight cultures of each isolate onto solid Muller-

336 Hinton (MH) agar with or without colistin concentrations of 0.5, 1, 2, 4, 16, 32, and 100
337 µg/ml. Surviving colonies were enumerated and used to detect colistin-resistant
338 subpopulations characteristic of heteroresistance (20). Inducible resistance testing was
339 performed as previously described (32). Briefly, a single colony of each clinical isolate
340 was grown in Muller-Hinton (MH) broth overnight at 37°C, and cultures were diluted
341 1:100 in MH broth containing serially increasing concentrations of colistin, starting at the
342 one-half MIC value of the respective isolate, and doubling every 24 hours until bacterial
343 growth was completely inhibited (with no bacteria growth after spreading 100 µL of the
344 culture on MH agar plates supplemented with corresponding concentration of colistin).
345 The concentration of colistin at which bacterial growth was completely inhibited was
346 recorded as the final colistin concentration.

347

348 *Bioinformatic Methods*

349

350 Fastq files of *Enterobacter cloacae* complex isolates of interest were downloaded from
351 the Sequence Read Archive (SRA) repository maintained by the National Center for
352 Biotechnology Information (NCBI) using the fasterq-dump tool from the SRA Toolkit V.
353 2.5.7 (<http://ncbi.github.io/sra-tools/>). Illumina reads were quality filtered using
354 Trimmomatic (33) and assembled *de novo* using SPAdes v3.13 (34). Pairwise
355 comparisons of average nucleotide identity on the assembled genomes were performed
356 with the Mashmap method using fastANI v1.32 (35). Gene sequences were predicted
357 with Prodigal v2.6.3 (36) and annotated with Prokka v1.14.6 (37). Antimicrobial
358 resistance and virulence gene content was assessed using AMRFinder Plus (38).

359 Presence of plasmids and point mutations in housekeeping genes associated with
360 colistin resistance were assessed using the ResFinder and PlasmidFinder web interface
361 with default settings and the *E. coli* database (39, 40). AMR gene presence/absence
362 heatmaps were created using the package pheatmap on R version 4.0.2 (Vienna,
363 Austria) and the RStudio interface version 1.3.1073 (Boston, MA, USA). Core genes
364 were defined using Roary v3.13 (41). A phylogenetic tree based on a core gene
365 alignment containing 1942 genes was generated using IQtree v2.0.3 (42). A maximum
366 likelihood tree was generated by running 1,000 bootstrap replicates under the
367 generalized time-reversible model of evolution. The tree was visualized and annotated
368 using Interactive Tree of Life (iTOL) v4 (43). Pan-genome wide comparison of core
369 genomes of *mcr-9* positive to *mcr-9* negative genomes was completed using scoary
370 (44).

371

372 *Statistical analysis*

373

374 Annual incidence rates for CRE cases were calculated using the annual US census
375 estimates of the surveillance area population as the denominator. Descriptive analyses
376 were performed to summarize specimen information, health care exposures, outcomes,
377 and microbiological results of incident cases; χ^2 and Wilcoxon rank sum tests were
378 used to compare groups when applicable. Gene differences were assessed by a *p*-
379 value adjusted with Bonferroni's method for multiple comparisons correction. Statistical
380 analysis was performed using R version 4.0.2 (Vienna, Austria) and the RStudio

381 interface version 1.3.1073 (Boston, MA, USA). A 2-sided P value of <.05 was
382 considered statistically significant.

383

384 **Funding**

385

386 EIP Surveillance of the Multi-site Gram-Negative Surveillance Initiative (MuGSI) was
387 funded through the Centers for Disease Control and Prevention's Emerging Infections
388 Program [U50CK000485].

389

390

391 **Acknowledgments**

392

393 We would like to thank the EIP and MuGSI staff and the CDC laboratory staff for their
394 dedication and work to collect, validate, clean, and maintain the data used in this
395 analysis. We would like to thank Alison Laufer Halpin for supervising the sequencing
396 efforts of these isolates.

397

398

399 **Table 1: Carbapenem-resistant *E. cloacae* complex clinical and microbiological**
 400 **characteristics**
 401

	All (N=27) n (%)	<i>mcr-9</i> positive (N=13) n (%)	<i>mcr-9</i> negative * (N=14) n (%)	<i>p</i> value
Culture Source				0.33
Urine	24 (88.9)	12 (92.3)	12 (85.7)	
Blood	2 (7.4)	1 (7.7)	1 (7.1)	
Peritoneal Fluid	1 (3.7)	0 (0.0)	1 (7.1)	
Year				0.62
2012	1 (3.7)	1 (7.7)	0 (0.0)	
2013	8 (29.6)	2 (15.4)	6 (42.9)	
2014	2 (7.4)	1 (7.7)	1 (7.1)	
2015	3 (11.1)	3 (23.1)	0 (0.0)	
2016	9 (33.3)	4 (30.8)	5 (35.7)	
2017	4 (14.9)	2 (15.4)	2 (14.3)	
Infection Onset				0.71
Hospital Onset	3 (11.1)	2 (15.4)	1 (7.1)	
Healthcare Associated- Community Onset	10 (37.0)	4 (30.8)	6 (42.9)	
Long Term Care Facility Onset	14 (51.9)	7 (53.8)	7 (50.0)	

Microbiology Characteristics

Colistin MIC (median[range])**	0.5 [<0.25 ->0.8]	0.5 [<0.25 -1.00]	0.5 [<0.25 ->8.0]	0.11
Resistant	3 (11.1)	0	3 (21.4)	0.25
Heteroresistant	13 (48.1)	5 (38.5)	8 (57.1)	0.56
Inducible resistance	4 (14.8)	2 (15.4)	2 (14.3)	1.00
Difficult-to-Treat Resistance	13 (48.1)	8 (61.5)	5 (35.7)	0.34
Outcomes				
Hospitalization within 29 days after culture	10 (37.0)	5 (38.5)	5 (35.7)	0.86
ICU admission ***^	4 (40.0)	2 (40.0)	2 (40.0)	1.00
In-hospital mortality ^	1 (10.0)	1 (20.0)	0 (0.0)	0.59
90-day Mortality	5 (18.5)	4 (30.8)	1 (7.1)	0.28

402

403 *1 *mcr-10* positive isolate

404 ** MIC units : µg/mL

405 *** Any ICU admission 7 days prior or 6 days after specimen collection

406 ^ among 10 hospitalized patients, 5 in each group (*mcr-9* positive and negative)

407

408 **Table 2. Highest ranking genes for association with *mcr-9* presence**

409

Gene*	Comment	Odds Ratio	Bonferroni adjusted <i>p</i>- value
<i>smc</i>	Chromosome partition protein Smc	∞	1.60E-06
<i>dcm2</i>	DNA-cytosine methyltransferase	∞	1.60E-06
<i>pcoE2</i>	putative copper-binding protein PcoE	∞	2.88E-05
<i>hns2</i>	DNA-binding protein H-NS, plasmid	∞	3.36E-05
group_10390	Tn3 family transposase ISEc63	∞	3.36E-05
<i>hipA</i>	Serine/threonine-protein kinase toxin HipA	∞	3.36E-05
<i>rcnR2</i>	Transcriptional repressor RcnR	∞	0.00030219
<i>hha2</i>	Hemolysin expression-modulating protein Hha	∞	0.00036934
<i>uvrD2</i>	DNA helicase II	∞	0.00036934
parM	Plasmid segregation protein	∞	0.00036934
<i>higB-1</i>	Toxin HigB-1	∞	0.00036934
group_1846	Tn3 family transposase ISEc63	∞	0.00036934
<i>dam2</i>	DNA adenine methylase	∞	0.00036934
<i>repB</i>	RepFIB replication protein A	∞	0.00036934
<i>traC</i>	Protein TraC	∞	0.00036934
group_7173	Stable plasmid inheritance protein	∞	0.00036934
<i>yjcD</i>	Putative ATP-dependent DNA helicase YjcD	304	0.00054522
<i>umuD2</i>	Protein UmuD	∞	0.00283164

<i>dsbC_2</i>	Thiol:disulfide interchange protein DsbC	∞	0.00283164
<i>virB</i>	Virulence regulon transcriptional activator VirB	∞	0.00283164
<i>umuC_3</i>	Protein UmuC	∞	0.00283164
group_7174	IS110 family transposase ISEsa2	142.5	0.00540586
<i>merA</i>	Mercuric reductase	∞	0.01698985
<i>fieF_2</i>	Ferrous-iron efflux pump FieF	90.7	0.03283809
<i>arsB_2</i>	Arsenical pump membrane protein	67.5	0.04368339
group_7063	ISNCY family transposase ISEsa1	67.5	0.04368339
group_8953	ISNCY family transposase ISBcen27	67.5	0.04368339
<i>arsH</i>	NADPH-dependent FMN reductase ArsH	67.5	0.04368339
<i>arsC2</i>	Arsenate reductase	67.5	0.04368339

410

411 hypothetical proteins not included

412

413

414

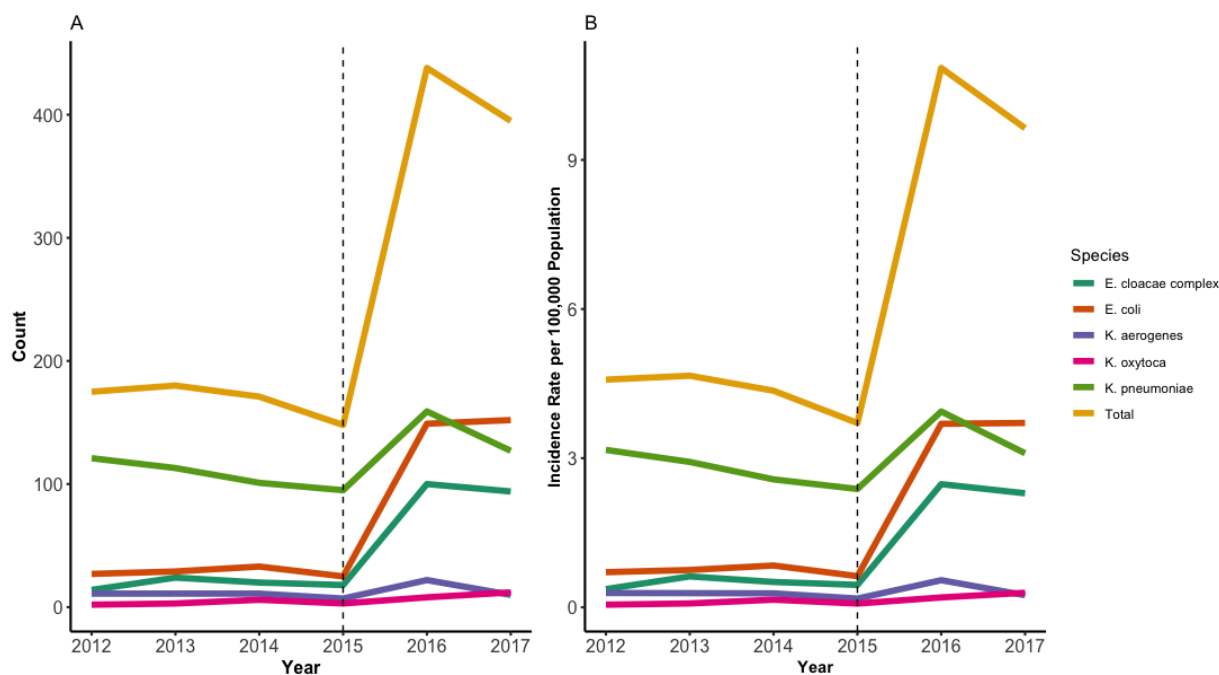
415

416

417 **Figure 1.**

418

419



420

421

422 **Figure Legend 1.** Carbapenem-resistant Enterobacteriales (CRE) count (A) and crude

423 annual incidence per 100,000 population (B) by species across from the Georgia

424 Emerging Infections program from 2012 to 2017. Beginning in 2016, the phenotypic

425 CRE case definition was changed to resistance to ≥ 1 carbapenem (now including

426 ertapenem) with no cephalosporin parameter.

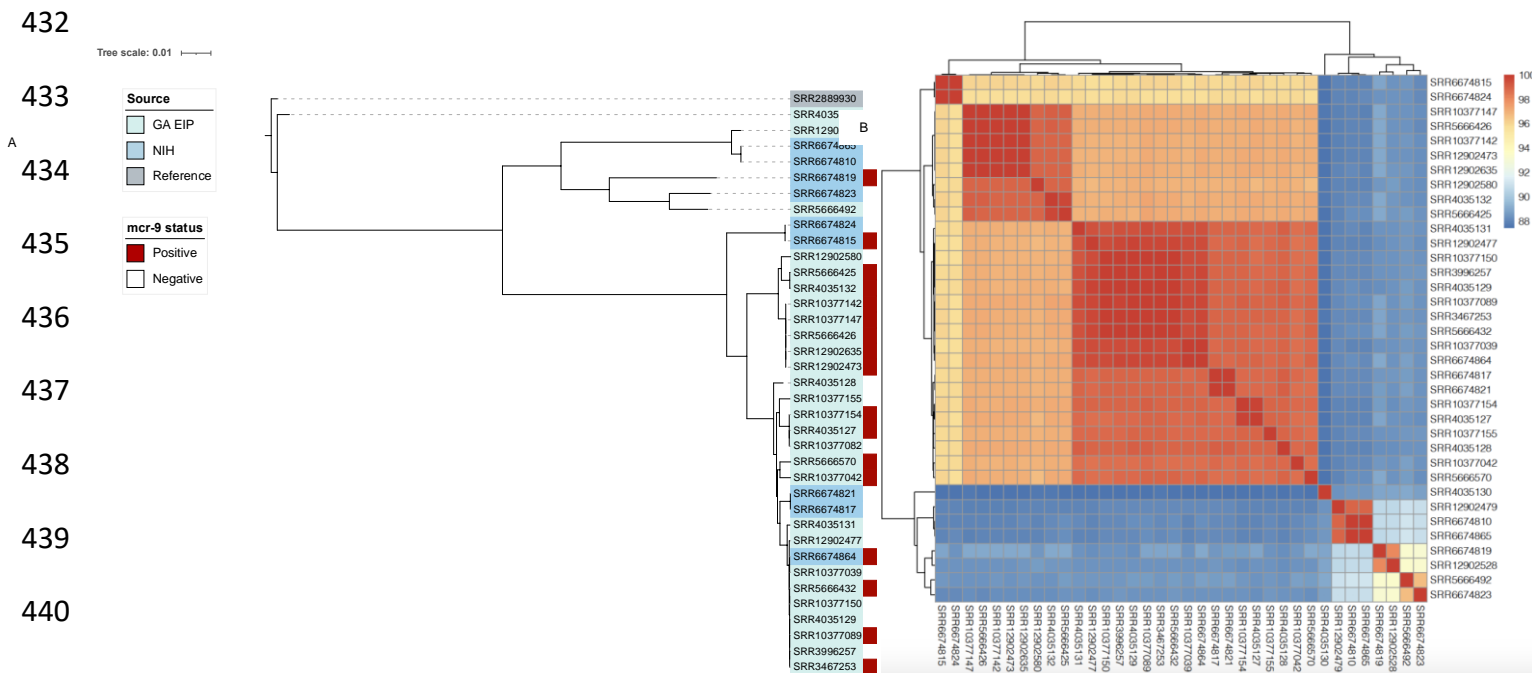
427

428

429

430

431 **Figure 2**



443 **Figure Legend 2:** Phylogeny (A) and average nucleotide identity heatmap (B) of *mcr-9*

444 positive (n=13) and *mcr-9* negative (n=14) *E. cloacae* complex genomes from Georgia

445 Emerging Infection program in addition to 9 available *E. cloacae* complex genomes

446 (three *mcr-9* positive, six *mcr-9* negative) from the National Institutes of Health. A

447 phylogenetic tree based on a core gene alignment containing 1,904 genes defined

448 using Roary v3.13.0. was generated using IQtree v2.0.3. A maximum likelihood tree

449 was generated by running 1,000 bootstrap replicates under the generalized time-

450 reversible model of evolution. The tree was visualized and annotated using Interactive

451 Tree of Life (iTOL) v4. Pairwise comparisons of average nucleotide identity on the

452 assembled genomes were performed with the Mashmap method using fastANI v1.32.

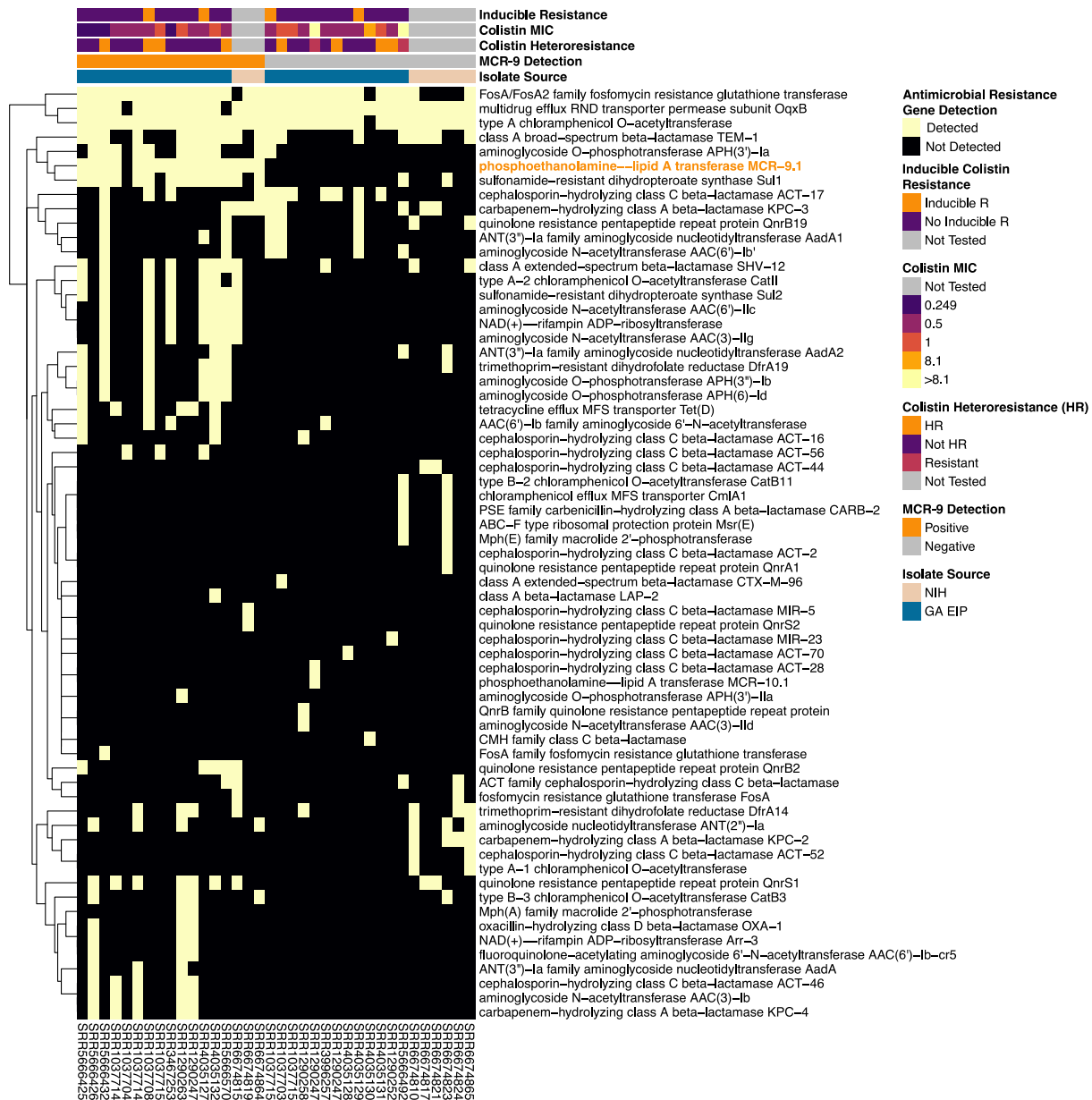
453

454 Abbreviations: GA EIP: Georgia Emerging Infections Program, NIH: National Institutes

455 of Health,

456

457 **Figure 3**



458

459 **Figure 3 Legend:** Antimicrobial resistance gene heatmap of *mcr-9* positive (n=13) and
460 *mcr-9* negative (n=14) *E. cloacae* complex genomes from Georgia Emerging Infections
461 program in addition to 9 available *E. cloacae* complex A genomes (three *mcr-9* positive,
462 six *mcr-9* negative) from the National Institutes of Health. Genomes were annotated
463 using Prodigal v2.6.3 and antimicrobial resistance gene content was assessed using

464 AMRFinder Antimicrobial resistance gene presence/absence heatmaps were
465 created using the package pheatmap on R version 4.0.2 (Vienna, Austria) and the
466 RStudio interface version 1.3.1073 (Boston, MA, USA).

467 **References**

468

- 469 1. Babiker A, Clarke LG, Saul M, Gealey JA, Clancy CJ, Nguyen MH, Shields RK. 2020.
470 Changing epidemiology and decreased mortality associated with Carbapenem-resistant
471 Gram-negative bacteria from 2000 - 2017. Clin Infect Dis doi:10.1093/cid/ciaa1464.
- 472 2. Babiker A, Evans DR, Griffith MP, McElheny CL, Hassan M, Clarke LG, Mettus RT,
473 Harrison LH, Doi Y, Shields RK, Van Tyne D. 2020. Clinical and Genomic Epidemiology
474 of Carbapenem-Nonsusceptible *Citrobacter* spp. at a Tertiary Health Care Center over 2
475 Decades. Journal of Clinical Microbiology 58:e00275-20.
- 476 3. World Health Organization. 2019. Critically important antimicrobials for human
477 medicine, 6th revision
478 . www.who.int/foodsafety/publications/antimicrobials-sixth/en/. Accessed 7th May 2021.
- 479 4. Eljaaly K, Bidell MR, Gandhi RG, Alshehri S, Enani MA, Al-Jedai A, Lee TC. 2021.
480 Colistin Nephrotoxicity: Meta-analysis of Randomized Controlled Trials. Open Forum
481 Infectious Diseases doi:10.1093/ofid/ofab026.
- 482 5. Strich JR, Ricotta E, Warner S, Lai YL, Demirkale CY, Hohmann SF, Rhee C, Klompas
483 M, Palmore T, Powers JH, Dekker JP, Adjemian J, Matsouaka R, Woods CW, Danner
484 RL, Kadri SS. 2021. Pharmacoepidemiology of Ceftazidime-Avibactam Use: A
485 Retrospective Cohort Analysis of 210 US Hospitals. Clin Infect Dis 72:611-621.
- 486 6. Liu YY, Wang Y, Walsh TR, Yi LX, Zhang R, Spencer J, Doi Y, Tian G, Dong B, Huang
487 X, Yu LF, Gu D, Ren H, Chen X, Lv L, He D, Zhou H, Liang Z, Liu JH, Shen J. 2016.
488 Emergence of plasmid-mediated colistin resistance mechanism *mcr-1* in animals and
489 human beings in China: a microbiological and molecular biological study. Lancet Infect
490 Dis 16:161-8.

- 491 7. Ling Z, Yin W, Shen Z, Wang Y, Shen J, Walsh TR. 2020. Epidemiology of mobile
492 colistin resistance genes *mcr-1* to *mcr-9*. Journal of Antimicrobial Chemotherapy
493 75:3087-3095.
- 494 8. Carroll LM, Gaballa A, Guldumann C, Sullivan G, Henderson LO, Wiedmann M. 2019.
495 Identification of Novel Mobilized Colistin Resistance Gene *mcr-9* in a Multidrug-
496 Resistant, Colistin-Susceptible *Salmonella enterica* Serotype Typhimurium Isolate. mBio
497 10:e00853-19.
- 498 9. Li Y, Dai X, Zeng J, Gao Y, Zhang Z, Zhang L. 2020. Characterization of the global
499 distribution and diversified plasmid reservoirs of the colistin resistance gene *mcr-9*.
500 Scientific Reports 10:8113.
- 501 10. Munoz-Price LS, Poirel L, Bonomo RA, Schwaber MJ, Daikos GL, Cormican M,
502 Cornaglia G, Garau J, Gniadkowski M, Hayden MK, Kumarasamy K, Livermore DM,
503 Maya JJ, Nordmann P, Patel JB, Paterson DL, Pitout J, Villegas MV, Wang H, Woodford
504 N, Quinn JP. 2013. Clinical epidemiology of the global expansion of *Klebsiella*
505 *pneumoniae* carbapenemases. Lancet Infect Dis 13:785-96.
- 506 11. Wilson BM, El Chakhtoura NG, Patel S, Saade E, Donskey CJ, Bonomo RA, Perez F.
507 2017. Carbapenem-Resistant *Enterobacter cloacae* in Patients from the US Veterans
508 Health Administration, 2006-2015. Emerg Infect Dis 23:878-880.
- 509 12. Annavajhala MK, Gomez-Simmonds A, Uhlemann AC. 2019. Multidrug-Resistant
510 *Enterobacter cloacae* Complex Emerging as a Global, Diversifying Threat. Front
511 Microbiol 10:44.
- 512 13. Chea N, Bulens SN, Kongphet-Tran T, Lynfield R, Shaw KM, Vagnone PS, Kainer MA,
513 Muleta DB, Wilson L, Vaeth E, Dumyati G, Concannon C, Phipps EC, Culbreath K,
514 Janelle SJ, Bamberg WM, Guh AY, Limbago B, Kallen AJ. 2015. Improved Phenotype-
515 Based Definition for Identifying Carbapenemase Producers among Carbapenem-
516 Resistant Enterobacteriaceae. Emerging infectious diseases 21:1611-1616.

- 517 14. Kadri SS, Lai YL, Ricotta EE, Strich JR, Babiker A, Rhee C, Klompas M, Dekker JP,
518 Powers JH, III, Danner RL, Adjemian J, Initiative NAROR. 2019. External Validation of
519 Difficult-to-Treat Resistance Prevalence and Mortality Risk in Gram-Negative
520 Bloodstream Infection Using Electronic Health Record Data From 140 US Hospitals.
521 *Open Forum Infectious Diseases* 6.
- 522 15. Kadri SS, Adjemian J, Lai YL, Spaulding AB, Ricotta E, Prevots DR, Palmore TN, Rhee
523 C, Klompas M, Dekker JP, Powers JH, 3rd, Suffredini AF, Hooper DC, Fridkin S, Danner
524 RL. 2018. Difficult-to-Treat Resistance in Gram-negative Bacteremia at 173 US
525 Hospitals: Retrospective Cohort Analysis of Prevalence, Predictors, and Outcome of
526 Resistance to All First-line Agents. *Clin Infect Dis* 67:1803-1814.
- 527 16. Weingarten RA, Johnson RC, Conlan S, Ramsburg AM, Dekker JP, Lau AF, Khil P,
528 Odom RT, Deming C, Park M, Thomas PJ, Henderson DK, Palmore TN, Segre JA,
529 Frank KM. 2018. Genomic Analysis of Hospital Plumbing Reveals Diverse Reservoir of
530 Bacterial Plasmids Conferring Carbapenem Resistance. *mBio* 9.
- 531 17. Kieffer N, Royer G, Decousser J-W, Bourrel A-S, Palmieri M, Ortiz De La Rosa J-M,
532 Jacquier H, Denamur E, Nordmann P, Poirel L. 2019. *mcr-9* an Inducible Gene Encoding
533 an Acquired Phosphoethanolamine Transferase in *Escherichia coli*, and Its Origin.
534 *Antimicrobial Agents and Chemotherapy* 63:e00965-19.
- 535 18. Breland EJ, Zhang EW, Bermudez T, Martinez CR, 3rd, Hadjifrangiskou M. 2017. The
536 Histidine Residue of QseC Is Required for Canonical Signaling between QseB and PmrB
537 in Uropathogenic *Escherichia coli*. *J Bacteriol* 199.
- 538 19. Tyson GH, Li C, Hsu C-H, Ayers S, Borenstein S, Mukherjee S, Tran T-T, McDermott
539 PF, Zhao S. 2020. The *mcr-9* Gene of *Salmonella* and *Escherichia coli* is Not Associated
540 with Colistin Resistance in the United States. *Antimicrobial Agents and Chemotherapy*
541 64:e00573-20.

- 542 20. Nicoloff H, Hjort K, Levin BR, Andersson DI. 2019. The high prevalence of antibiotic
543 heteroresistance in pathogenic bacteria is mainly caused by gene amplification. *Nat*
544 *Microbiol* 4:504-514.
- 545 21. Band VI, Satola SW, Burd EM, Farley MM, Jacob JT, Weiss DS, Hunstad DA, Hultgren
546 SJ. 2018. Carbapenem-Resistant *Klebsiella pneumoniae* Exhibiting Clinically
547 Undetected Colistin Heteroresistance Leads to Treatment Failure in a Murine Model of
548 Infection. *mBio* 9:e02448-17.
- 549 22. Band VI, Satola SW, Smith RD, Hufnagel DA, Bower C, Conley AB, Rishishwar L, Dale
550 SE, Hardy DJ, Vargas RL, Dumyati G, Kainer MA, Phipps EC, Pierce R, Wilson LE,
551 Sorensen M, Nilsson E, Jordan IK, Burd EM, Farley MM, Jacob JT, Ernst RK, Weiss DS.
552 2021. Colistin Heteroresistance Is Largely Undetected among Carbapenem-Resistant
553 Enterobacterales in the United States. *mBio* 12:e02881-20.
- 554 23. Centers for Disease Control. 2019. Antibiotic resistance threats in the United States,
555 2019.
- 556 24. Germain E, Castro-Roa D, Zenkin N, Gerdes K. 2013. Molecular mechanism of bacterial
557 persistence by *HipA*. *Mol Cell* 52:248-54.
- 558 25. Nguyen CC, Hugie CN, Kile ML, Navab-Daneshmand T. 2019. Association between
559 heavy metals and antibiotic-resistant human pathogens in environmental reservoirs: A
560 review. *Frontiers of Environmental Science & Engineering* 13:46.
- 561 26. Kizny Gordon AE, Mathers AJ, Cheong EYL, Gottlieb T, Kotay S, Walker AS, Peto TEA,
562 Crook DW, Stoesser N. 2017. The Hospital Water Environment as a Reservoir for
563 Carbapenem-Resistant Organisms Causing Hospital-Acquired Infections—A Systematic
564 Review of the Literature. *Clinical Infectious Diseases* 64:1435-1444.
- 565 27. Kamathewatta K, Bushell R, Rafa F, Browning G, Billman-Jacobe H, Marenda M. 2020.
566 Colonization of a hand washing sink in a veterinary hospital by an *Enterobacter*

- 567 *hormaechei* strain carrying multiple resistances to high importance antimicrobials.
568 Antimicrobial Resistance & Infection Control 9:163.
- 569 28. Jernigan JA, Hatfield KM, Wolford H, Nelson RE, Olubajo B, Reddy SC, McCarthy N,
570 Paul P, McDonald LC, Kallen A, Fiore A, Craig M, Baggs J. 2020. Multidrug-Resistant
571 Bacterial Infections in U.S. Hospitalized Patients, 2012-2017. N Engl J Med 382:1309-
572 1319.
- 573 29. Chen HD, Groisman EA. 2013. The biology of the PmrA/PmrB two-component system:
574 the major regulator of lipopolysaccharide modifications. Annu Rev Microbiol 67:83-112.
- 575 30. Gwozdzinski K, Azarderakhsh S, Imirzalioglu C, Falgenhauer L, Chakraborty T. 2018.
576 An Improved Medium for Colistin Susceptibility Testing. Journal of Clinical Microbiology
577 56:e01950-17.
- 578 31. Clinical and Laboratory Standards Institute. 2021. Performance standards for
579 antimicrobial susceptibility testing, 31st informational supplement.
- 580 32. Luo Q, Niu T, Wang Y, Yin J, Wan F, Yao M, Lu H, Xiao Y, Li L. 2019. In vitro reduction
581 of colistin susceptibility and comparative genomics reveals multiple differences between
582 MCR-positive and MCR-negative colistin-resistant *Escherichia coli*. Infection and drug
583 resistance 12:1665-1674.
- 584 33. Bolger AM, Lohse M, Usadel B. 2014. Trimmomatic: a flexible trimmer for Illumina
585 sequence data. Bioinformatics 30:2114-20.
- 586 34. Prjibelski A, Antipov D, Meleshko D, Lapidus A, Korobeynikov A. 2020. Using SPAdes
587 De Novo Assembler. Current Protocols in Bioinformatics 70:e102.
- 588 35. Jain C, Rodriguez-R LM, Phillippy AM, Konstantinidis KT, Aluru S. 2018. High
589 throughput ANI analysis of 90K prokaryotic genomes reveals clear species boundaries.
590 Nature Communications 9:5114.

- 591 36. Hyatt D, Chen GL, Locascio PF, Land ML, Larimer FW, Hauser LJ. 2010. Prodigal:
592 prokaryotic gene recognition and translation initiation site identification. *BMC*
593 *Bioinformatics* 11:119.
- 594 37. Seemann T. 2014. Prokka: rapid prokaryotic genome annotation. *Bioinformatics*
595 30:2068-9.
- 596 38. Feldgarden M, Brover V, Gonzalez-Escalona N, Frye JG, Haendiges J, Haft DH,
597 Hoffmann M, Pettengill JB, Prasad AB, Tillman GE, Tyson GH, Klimke W. 2021.
598 AMRFinderPlus and the Reference Gene Catalog facilitate examination of the genomic
599 links among antimicrobial resistance, stress response, and virulence. *Sci Rep* 11:12728.
- 600 39. Zankari E, Allesøe R, Joensen KG, Cavaco LM, Lund O, Aarestrup FM. 2017.
601 PointFinder: a novel web tool for WGS-based detection of antimicrobial resistance
602 associated with chromosomal point mutations in bacterial pathogens. *J Antimicrob*
603 *Chemother* 72:2764-2768.
- 604 40. Carattoli A, Zankari E, García-Fernández A, Voldby Larsen M, Lund O, Villa L, Møller
605 Aarestrup F, Hasman H. 2014. In silico detection and typing of plasmids using
606 PlasmidFinder and plasmid multilocus sequence typing. *Antimicrobial agents and*
607 *chemotherapy* 58:3895-3903.
- 608 41. Page AJ, Cummins CA, Hunt M, Wong VK, Reuter S, Holden MTG, Fookes M, Falush
609 D, Keane JA, Parkhill J. 2015. Roary: rapid large-scale prokaryote pan genome analysis.
610 *Bioinformatics (Oxford, England)* 31:3691-3693.
- 611 42. Kalyanamoorthy S, Minh BQ, Wong TKF, von Haeseler A, Jeremiin LS. 2017.
612 ModelFinder: fast model selection for accurate phylogenetic estimates. *Nature Methods*
613 14:587-589.
- 614 43. Letunic I, Bork P. 2021. Interactive Tree Of Life (iTOL) v5: an online tool for phylogenetic
615 tree display and annotation. *Nucleic Acids Research* doi:10.1093/nar/gkab301.

- 616 44. Brynildsrud O, Bohlin J, Scheffer L, Eldholm V. 2016. Rapid scoring of genes in
617 microbial pan-genome-wide association studies with Scoary. *Genome Biol* 17:238.
618

619 **Supplementary Material**

620 **Supplemental Table 1:** Definitions of carbapenem-resistant Enterobacterales

621 (CRE) and difficult-to-treat resistance (DTR) used during the study period.

622

623

Definition	Period	Species	Susceptibility Phenotype
Initial GA EIP surveillance definition	2011–2015	<i>Escherichia coli</i> <i>Klebsiella pneumoniae</i> <i>Klebsiella oxytoca</i> <i>Enterobacter cloacae</i> complex <i>Klebsiella aerogenes</i> ^a	<u>Intermediate or resistant to:</u> - Imipenem (MIC ≥2 µg/mL), or - Meropenem (MIC ≥2 µg/mL), or - Doripenem (MIC ≥2 µg/mL) <u>AND resistant to^b:</u> - Ceftazidime (MIC ≥16 µg/mL), and - Ceftriaxone (MIC ≥4 µg/mL), and - Cefotaxime (MIC ≥4 µg/mL)
Revised GA EIP surveillance definition	2016–present	<i>Escherichia coli</i> <i>Klebsiella pneumoniae</i> <i>Klebsiella oxytoca</i> <i>Enterobacter cloacae</i> complex <i>Klebsiella aerogenes</i> ^a	<u>Resistant to:</u> - Imipenem (MIC ≥4 µg/mL), or - Meropenem (MIC ≥4 µg/mL), or - Doripenem (MIC ≥4 µg/mL), or - Ertapenem (MIC ≥2 µg/mL)

DTR	2011–2017	<i>Enterobacter cloacae</i> complex	Intermediate or resistant to all tested and reported agents in carbapenem, β -lactam, and fluoroquinolone categories

624

625 a. Formerly *Enterobacter aerogenes*

626 b. If the antibiotics were tested

627

628 Abbreviations: GA EIP: Georgia Emerging Infections Program; DTR: difficult-to-treat

629 resistance; MIC: minimum inhibitory concentrations

630

631

632

633 **Supplementary Table 2: Antimicrobial Susceptibility testing of Carbapenem-**

634 **resistant *E. cloacae* complex by *mcr-9* status**

635

636

Antibiotic	Median (range) MIC*		Susceptible N (%)		Intermediate N (%)**		Resistant N (%)		P value ***
	<i>mcr-9</i> positive (n=13)	<i>mcr-9</i> negative (n=14)	<i>mcr-9</i> positive (n=13)	<i>mcr-9</i> negative (n=14)	<i>mcr-9</i> positive (n=13)	<i>mcr-9</i> negative (n=14)	<i>mcr-9</i> positive (n=13)	<i>mcr-9</i> negative (n=14)	
Aminoglycosides									
Amikacin	≤1 (≤1->64)	≤1 (≤1-16)	12 (92.3)	14 (100)	0 (0)	0 (0)	1 (7.7)	0 (0)	0.97
Gentamicin	8 (≤0.25->16)	0.37 (≤0.25->16)	4 (30.8)	11 (78.6)	3 (23.1)	1 (7.1)	6 (46.2)	2 (14.3)	0.04
Tobramycin	8 (≤0.5->16)	≤0.5 (≤0.5->16)	3 (23.1)	9 (64.3)	4 (30.8)	2 (14.3)	6 (46.2)	3 (21.4)	0.10
B-lactams									
Aztreonam	>64 (64->64)	>64 (32->64)	0 (0)	0 (0)	0 (0)	0 (0)	13 (100)	14 (100)	n/a
Ceftriaxone	>32 (16->32)	>32 (32->32)	0 (0)	0 (0)	0 (0)	0 (0)	13 (100)	14 (100)	n/a
Ceftazidime	>128 (64->128)	>128 (64->128)	0 (0)	0 (0)	0 (0)	0 (0)	13 (100)	14 (100)	n/a
Cefepime	>32 (1->32)	16 (≤0.5->32)	1 (7.7)	5 (35.7)	1 (7.7)	1 (7.1)	11 (84.6)	8 (57.1)	0.21
Ertapenem	8 (≤0.12->8)	4 (0.25->8)	2 (15.4)	3 (21.4)	0 (0)	0 (0)	11 (84.6)	11 (78.6)	1.00
Doripenem	2 (≤0.12->8)	1 (≤0.12->8)	5 (38.5)	8 (57.1)	3 (23.1)	2 (14.3)	5 (38.5)	4 (28.6)	0.61
Imipenem	2 (≤0.5->8)	1 (≤0.5->64)	5 (38.5)	7 (50.0)	2 (15.4)	1 (7.1)	6 (46.2)	6 (42.9)	0.73
Piperacillin-Tazobactam	>128 (16->128)	>128 (≤4->128)	1 (7.7)	1 (7.1)	1 (7.7)	0 (0)	11 (84.6)	13 (92.9)	0.57
Meropenem	2 (≤0.12->8)	0.5 (≤0.12->8)	5 (38.5)	8 (57.1)	4 (30.8)	0 (0)	4 (30.8)	6 (42.9)	0.08
Fluoroquinolones									
Ciprofloxacin	>8 (0.5->8)	3 (≤0.25->8)	0 (0)	6 (42.9)	1 (7.7)	0 (0)	12 (92.3)	8 (57.1)	0.02
Levofloxacin	>8 (0.1->8)	3 (≤0.12->8)	0 (0)	6 (42.9)	1 (7.7)	0 (0)	12 (92.3)	8 (57.1)	0.02
Tetracyclines									
Tetracycline	16 (≤2.0->32)	4 (≤2-32)	5 (38.5)	9 (64.3)	1 (7.7)	1 (7.1)	7 (53.8)	4 (28.6)	0.38
Tigecycline	1 (≤0.5->4)	0.76 (≤0.5->4)	11 (84.6)	9 (64.3)	1 (7.7)	4 (28.6)	1 (7.7)	1 (7.1)	0.37
Miscellaneous									
Trimethoprim-	>8 (1->8)	(≤0.5 (≤0.5->8)	2 (15.4)	12 (85.7)	0 (0)	0 (0)	11 (84.6)	2 (14.3)	0.001

Sulfamethoxazole

637

638 * MICs in $\mu\text{g/mL}$

639 ** Intermediate is equivalent to the category susceptible dose dependent for cefepime

640 *** Calculated for proportion *mcr-9* positive categorized as S/I/R compared to *mcr-9*

641 negative isolates.

642

643 Abbreviation: MIC: minimum inhibitory concentration

644

645

646

647

648 **Supplementary Table 3: Plasmid contents of Carbapenem-resistant *E. cloacae***

649 **complex genomes by *mcr-9* status**

650

Isolate	Plasmid	Identity (%)	Plasmid Accession
<i>mcr-9</i> positive			
SRR10377147	ColRNAI	100	DQ298019
	IncFIA(HI1)	98.0	AF250878
	IncHI2A	100	BX664015
	pKPC-CAV1193	98.7	CP013325
SRR3467253	IncHI2A	100	BX664015
SRR4035127	IncHI2A	99.5	BX664015
	IncFII(pECLA)	96.8	CP001919
	IncFIB(pECLA)	99.5	CP001919
SRR4035132	IncHI2A	100	BX664015
	IncR	100	DQ449578
SRR5666570	Col440I	83.2	CP023920
	IncFII(pECLA)	96.1	CP001919
	IncHI2A	100	BX664015
	pKPC-CAV1193	98.7	CP013325
SRR5666425	IncHI2A		BX664015
SRR5666426	IncFIA(HI1)	98.0	AF250878
	IncHI2A	100	BX664015
	pKPC-CAV1193	98.7	CP013325
SRR5666432	IncFIB(pB171)	91.2	AB024946

	IncFII(SARC14)	94.8	JQ418540
	IncHI2A	100	BX664015
	pKPC-CAV1193	98.7	CP013325
SRR10377089	Col440I	83.2	CP023920
	Col440II	84.6	CP023921
	IncHI2A	100	BX664015
	IncX5	99.7	MF062700
SRR10377142	IncFIA(HI1)	98.0	AF250878
	IncFIB(pECLA)	100	CP001919
	IncFII(pECLA)	100	CP001919
	IncHI2A	100	BX664015
SRR10377154	Col440II	83.9	CP023921
	IncFIB(pECLA)	100	CP001919
	IncFII(pECLA)	100	CP001919
SRR12902635	IncFIA(HI1)	98.0	AF250878
	IncFIB(pECLA)	100	CP001919
	IncFII(pECLA)	100	CP001919
	IncHI2A	100	BX664015
	pKPC-CAV1193	98.7	CP013325
SRR12902473	IncFIA(HI1)	97.8	AF250878
	IncFIB(pECLA)	100	CP001919
	IncFII(pECLA)	100	CP001919
	IncHI2A	100	BX664015
	pKPC-CAV1193	98.7	CP013325
SRR6674815	Col440II	84.3	CP023921
	IncFIB(pECLA)	100	CP001919

	IncFII(pECLA)	99.6	CP001919
	IncHI2A	100	BX664015
	IncN	99.6	AY046276
	IncR	100	DQ449578
	Col(pHAD28)		
	Col440II	90.8	CP023921
	IncFIB(K)	84.8	JN233704
SRR6674819	IncFII(pECLA)	99.5	CP001919
	IncHI2A	100	BX664015
	IncQ2	94.2	FJ696404
	IncR	100	DQ449578
SRR6674864	IncHI2A	100	BX664015
	pKPC-CAV1193	100	CP013325
<i>mcr-9</i> negative			
SRR3996257	Col440II	84.4	CP023921
	IncX3	100	JN247852
SRR4035128	n/a		
SRR4035129	Col440II	84.6	
	pKPC-CAV1193	100	CP013325
SRR4035130	n/a		
SRR4035131	n/a		
SRR12902528	Col440II	84.4	CP023921
	IncFII(pECLA)	99.9	CP001919
	IncFIB(pECLA)	100	CP001919
SRR5666492	IncFIB(pENTE01)	81.1	CP000654
	IncFII(pECLA)	100	CP001919
	IncHI1A(NDM-CIT)	100	JX182975

	IncHI1B(pNDM-CIT)	99.1	JX182975
	Col440II	84.4	CP023921
	IncFIB(pB171)	91.2	AB024946
SRR10377150	IncFIB(pHCM2)	97.5	AL513384
	IncFII(SARC14)	94.8	JQ418540
	pKPC-CAV1193	98.7	CP013325
	IncX5	100	
SRR10377039	pKPC-CAV1193	100	CP013325
	IncFIA(HI1)	97.8	AF250878
	IncFIB(pECLA)	100	CP001919
SRR10377142	IncFII(pECLA)	100	CP001919
	IncHI2A	100	BX664015
	IncFII(pECLA)	97.5	
SRR10377155	IncR	94.0	
	IncFIB(pECLA)	100	CP001919
SRR12902580	IncFII(pECLA)	100	CP001919
	IncFIB(pECLA)	100	CP001919
SRR12902479	IncFII(pECLA)	100	CP001919
	IncFIB(pHCM2)	97.3	AL513384
SRR12902477	IncFIB(pQil)	100	JN233705
SRR3996257	IncX3	100	JN247852
SRR6674810	IncN	99.8	AY046276
	IncFIB(pECLA)	100	CP001919
	IncFIB(pENTE01)	80.7	CP000654
SRR6674817	IncFIB(pQil)	100	JN233705
	IncFII(pECLA)	97.9	CP001919
	IncQ2	81.1	FJ696404

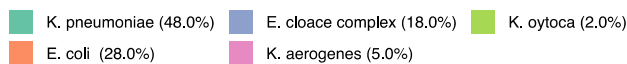
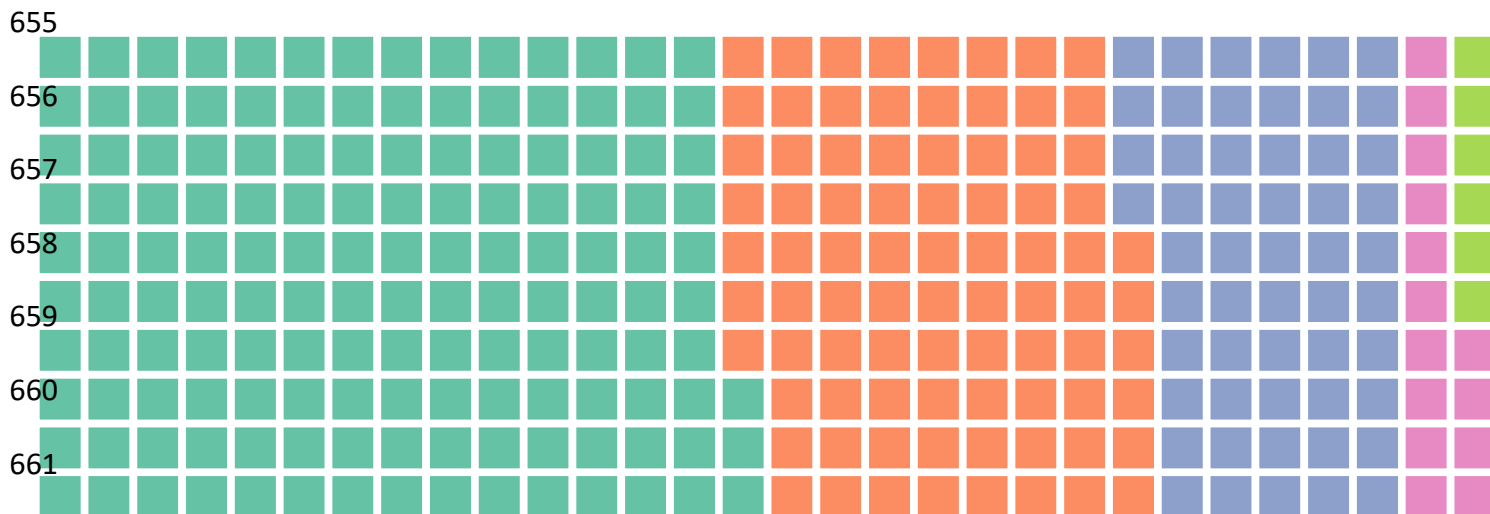
	pKPC-CAV1193	100	CP013325
	IncFIB(pECLA)	100	CP001919
	IncFIB(pENTE01)	80.7	CP000654
SRR6674821	IncFIB(pQil)	100	JN233705
	IncFII(pECLA)	99.9	CP001919
	IncQ2	81.1	FJ696404
	pKPC-CAV1193	100	CP013325
SRR6674823	IncFIB(pENTAS01)	93.2	CP003027
	IncFII(SARC14)	99.5	JQ418540
	Col440II	84.0	CP023921
	IncFIB(pECLA)	100	CP001919
SRR6674824	IncFII(pECLA)	99.6	CP001919
	IncN	99.8	AY046276
	IncR	100	DQ449578
SRR6674865	IncN	99.8	AY046276

651

652

653 **Supplementary Figures**

654 **Supplementary Figure 1**



665 **Supplementary Figure 1 legend: Waffle-plot of Carbapenem-resistant**

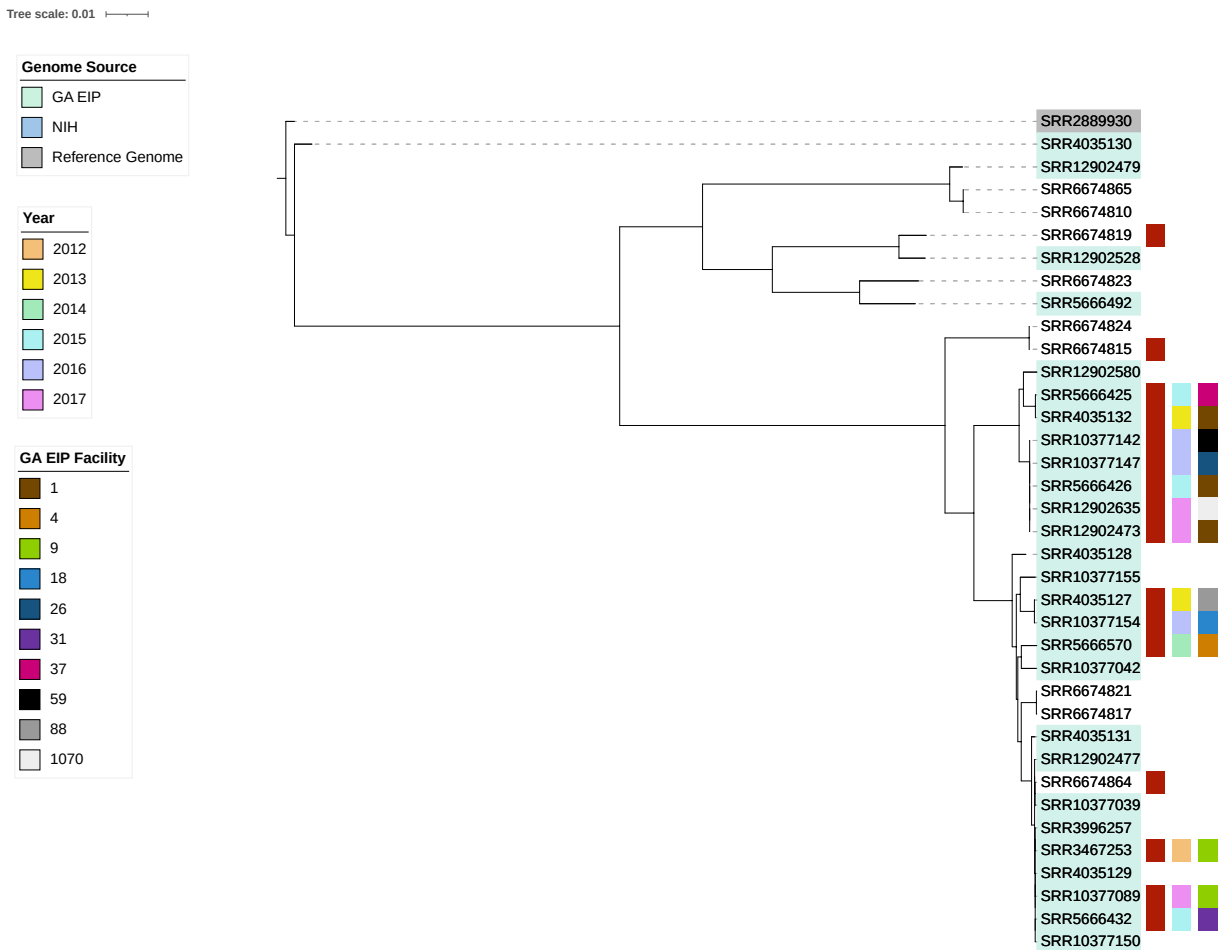
666 Enterobacteriales cases by species collected by Georgia Emerging Infections Program

667 between 2012-2017.

668

669 **Supplementary Figure 2**

670



671

672

673 **Supplementary Figure 2 legend:** Phylogeny of *mcr-9* positive (n=13) and *mcr-9*
674 negative (n=14) *E. cloacae* complex from Georgia Emerging Infections program (GA
675 EIP) in addition to 9 available *E. cloacae* complex (three *mcr-9* positive, six *mcr-9*
676 negative) from the National Institutes of Health. A phylogenetic tree based on a core
677 gene alignment containing 1,904 genes defined using Roary v3.13.0. was generated
678 using IQtree v2.0.3. A maximum likelihood tree was generated by running 1,000
679 bootstrap replicates under the generalized time-reversible model of evolution. The tree

680 was visualized and Facility IDs and year of isolation were annotated using Interactive

681 Tree of Life (iTOL) v4. for GA EIP *mcr-9* positive genomes only.

682

683 Abbreviations: GA EIP: Georgia Emerging Infections Program, NIH: National Institutes

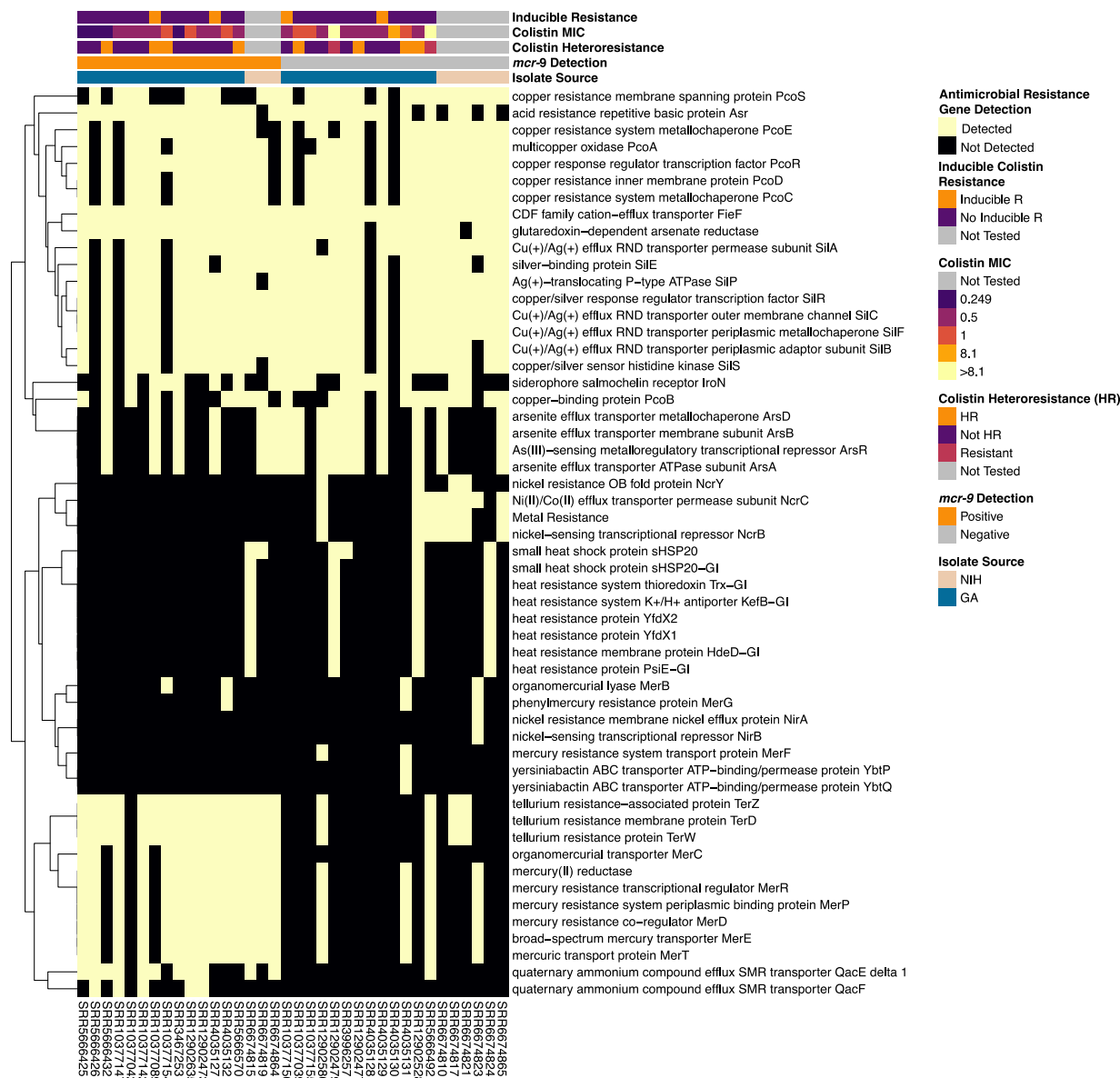
684 of Health

685

686

687 **Supplementary Figure 3**

688



689

690

691 **Supplementary Figure 3 Legend: Genomes were annotated using Prodigal and**

692 virulence gene content was assessed using AMRFinder. Virulence gene

693 presence/absence heatmaps were created using the package pheatmap on R version
694 4.0.2 (Vienna, Austria) and the RStudio interface version 1.3.1073 (Boston, MA, USA).
695