

# Cellular and Antibody Immunity after COVID-19 Vaccination at >4-Month Follow Up in Immunocompetent and Immunocompromised Subjects

1 **Rakesh Sindhi<sup>1</sup>, Chethan Ashokkumar<sup>1</sup>, Vineeta Singh<sup>2</sup>, Brianna Spishock<sup>2</sup>, Maggie Saunders<sup>2</sup>,**  
2 **Angelo Mabasa<sup>3</sup>, Elizabeth Sindhi<sup>2</sup>, Pradeep Sethi<sup>2</sup>, Ashok Reddy<sup>2</sup>, Shankar Subramaniam<sup>4</sup>,**  
3 **Bobby Nibhanupudy<sup>5</sup>**

4 <sup>1</sup>University of Pittsburgh Medical Center (UPMC) Children's Hospital of Pittsburgh, Hillman Center  
5 for Pediatric Transplantation, Pittsburgh, PA

6 <sup>2</sup>Plexision, Inc., Pittsburgh, PA

7 <sup>3</sup>Columbia University Medical Center, New York, NY

8 <sup>4</sup>Department of Bioengineering, University of California San Diego, La Jolla, CA

9 <sup>5</sup>Advent Health Transplant Institute, Orlando, FL

## 10 \* Correspondence:

11 Corresponding Author

12 rakesh.sindhi@chp.edu

13 **Keywords: COVID-19; Vaccination; Cellular immunity; Antibody; Spike protein; Receptor**  
14 **binding domain; Immunocompromised; B-cells**

## 15 Abstract

16 We evaluated post-vaccination immunity after COVID-19 vaccination with serial changes in cellular and  
17 antibody responses to the spike protein S, its S2 component which is conserved between SARS-CoV-2 and  
18 human coronaviruses, and the S1 component, which is specific to SARS-CoV-2 and also contains its receptor  
19 binding domain (RBD). In 21 healthy immunocompetent subjects all of whom demonstrated circulating IgG  
20 antibodies 4 months after mRNA1273 or BNT162b vaccination, a) the strength of S-IgG was stable while  
21 RBD-IgG declined, b) S2-reactive B-cell frequencies increased progressively ( $p=0.002$ ) c) S1-reactive  
22 CD8+T-cells and CD19+B-cells were undetectable after a transient increase, and d) monocytic and  
23 polymorphonuclear myeloid-derived suppressor cells (M-MDSC, PMN-MDSC) increased after the first  
24 vaccine dose. Compared with 4-month measurements from immunocompetent subjects, single samples from  
25 20 vaccinated immunocompromised (IC) subjects revealed a) circulating S-IgG and RBD-IgG in 13 (65%) and  
26 9 (45%) subjects, respectively, b) no differences in S2-reactive T- and B-cells, c) undetectable S1-reactive T-  
27 and B-cells, and d) fewer S-reactive CD8+T-cells and CD19+B-cells ( $p<0.05$ ). Among 11 IC recipients who  
28 failed to make RBD-IgG, frequencies of PMN-MDSC were significantly higher ( $p<0.0004$ ) compared with IC  
29 or immunocompetent subjects with RBD-IgG. COVID-19 vaccination induces stable antibodies to the spike  
30 protein and expands circulating B-cells reactive to the conserved spike protein sequence in immunocompetent  
31 subjects. MDSC which are known to suppress T- and B-cells, and which increase after vaccination, may limit  
32 post-vaccination responses especially among immunocompromised subjects. Antibody and cellular responses  
33 to SARS-CoV-2-specific spike antigenic sequences appear to be less durable.

34

35

36

37

## Cellular and antibody immunity after COVID-19 mRNA vaccination at >4-month follow-up

### 38 INTRODUCTION

39 Cellular immunity to the COVID-19 coronavirus is of great interest because of concerns about  
40 vaccine efficacy against emerging SARS-CoV-2 variants and the lower seroconversion rates after  
41 vaccination in older and immunosuppressed subjects (1-3). Following COVID-19 vaccination,  
42 antibodies only develop in a half of transplant recipients, inflammatory bowel disease patients  
43 receiving anti-tumor necrosis factor antibodies, and those with hematologic malignancies (3-5). The  
44 seroconversion rate is only 23% in those with B-cell malignancies (5).

45 The post-vaccination immune response likely recapitulates the discordant kinetics of T-cell  
46 responsiveness and SARS-CoV-2 antibodies observed by us early after moderate to severe COVID-  
47 19 infection (6). Although anti-spike IgG antibodies appeared within two weeks after COVID-19  
48 infection in immunocompetent subjects, T-cells from severely ill COVID-19 patients displayed  
49 impaired in vitro reactivity to the spike antigen, while circulating myeloid derived suppressor cells  
50 (MDSC) increased significantly. MDSC arise during acute viral infections and suppress T-cells (7-9).  
51 In immunosuppressed transplant recipients, we observed a lower incidence of antibody to the SARS-  
52 CoV-2-specific receptor binding domain (RBD) of the spike protein, significantly impaired T-cell  
53 responses to stimulation with conserved spike antigen, and a 34% incidence of CMV co-infection  
54 early after COVID-19 infection. The S antigenic sequence consists of the less conserved N-terminal  
55 S1 component, which contains the receptor binding domain (RBD), and the C-terminal S2 sequence  
56 which is relatively conserved between human coronaviruses and SARS-CoV-2 (10).

57 To better understand the post-vaccination response, we now characterize T-cell, B-cell and IgG  
58 responses to S antigenic sequences before and after each dose of mRNA1273 and BNT162b2  
59 vaccines before and over the course of 4 months after starting vaccination in 21 healthy  
60 immunocompetent subjects. Single samples from 20 immunocompromised (IC) subjects vaccinated  
61 with the mRNA vaccines and Ad26.COV2.S are also evaluated with the same assays.

### 62 METHODS

63 Subjects were enrolled after informed consent under IRB-approved protocols Pro00045352 and  
64 Pro00053511 (Advarra IRB, Columbia, MD) (NCT#04883164). Samples were collected before, two  
65 weeks after each vaccine dose, and 4 months after the first vaccine dose in healthy immunocompetent  
66 subjects. Samples were collected at any time after completion of vaccination in immunocompromised  
67 subjects. All PBL samples were stimulated with overlapping peptide mixtures which represented the  
68 less conserved S1 component, the conserved S2 component, and complete S antigenic sequences  
69 (JPT Peptides, Germany). The frequencies of CD4+, CD8+ T-cells and CD19+B-cells that expressed  
70 CD154 were measured with flow cytometry (6). Monocytic (M-MDSC) and polymorphonuclear  
71 (PMN-MDSC) MDSC frequencies were measured as described (6). Anti-RBD and anti-S IgG were  
72 measured with ELISA as the optical density at 490 nm (OD<sub>490</sub>). An OD<sub>490</sub> of 0.45 or greater was  
73 considered a positive test for each antibody as described (Xu). Antibody strength was inferred from  
74 OD<sub>490</sub>.

### 75 RESULTS

76 For 21 immunocompetent and 20 IC subjects, mean (SEM) age was 51 (3.7) years and 52 (4.7) years,  
77 male: female distribution was 8: 13 and 9: 11, race Caucasian: African-American: Asian was 16: 1: 4  
78 and 18: 1: 1, and vaccine type mRNA1273 (Moderna, Cambridge, MA) vs BNT162b2 (Pfizer, New  
79 York, NY) vs Ad26.COV2.S (J and J, NJ) was 11: 9: 0 and 5: 13: 1, respectively. Among  
80 immunocompetent subjects, sample collection occurred before vaccination, and at mean±SEM

## COVID-19 Vaccination & Cellular and Antibody Immunity in Healthy & Immunocompromised

81 15±0.2, 47± and 133±4.6, respectively. Single samples from 20 IC subjects were collected earlier, at  
82 mean±SEM 101±12.8 days after vaccination, compared with the timing of the last collection from  
83 immunocompetent subjects (p=0.029).

84 *Antibody incidence and strength increases after vaccination followed by early decline in anti-RBD*  
85 *IgG in healthy immunocompetent subjects:* The incidence of RBD-IgG and spike-IgG increased from  
86 17/21 and 19/21 two weeks after the first dose, to all 21 subjects being positive for either antibody  
87 two weeks after the second dose. By month 4, 1/21 subjects had turned negative for RBD-IgG. This  
88 subject has since received a booster. All those with spike-IgG remained positive.

89 RBD-IgG strength inferred from the mean ± SEM OD<sub>490</sub> increased significantly from pre-dose to the  
90 first (p=2.8E-05) and from the first to the second doses (p=1E-04). This strength decreased  
91 significantly between the second dose and month 4 after vaccination, from OD<sub>490</sub> of 2.87 +/- 0.013 to  
92 2.15 +/- 0.2, p=0.005. The OD<sub>490</sub> for anti-S IgG also increased significantly after each dose but was  
93 unchanged after the second dose to month 4 (p=0.573, NS). These OD<sub>490</sub> values were also  
94 noteworthy for the larger interindividual variation after the first vaccine dose, and smaller variation  
95 after the second dose (Figure 1).

96 To evaluate whether the long-term antibody response depended on early antibody kinetics, subjects  
97 were arbitrarily divided into those with median OD<sub>490</sub> less than and greater than the median of 1.2  
98 after the first dose. Four months after vaccination, antibody strength for RBD-IgG (p=0.008) and  
99 Spike-IgG (p=0.1, NS) was lower in those subjects with lower median OD<sub>490</sub> after the first dose,  
100 compared with those with higher OD<sub>490</sub> after the first dose.

101 *S-reactive T-cells and B-cells co-express IFN $\gamma$  and IL-6:* As reported in a companion study, we first  
102 established an assay to examine post-infectious immunity with S-antigen specific T-cells. We  
103 established that CD154 is co-expressed with IFN $\gamma$ , a marker of cytotoxic T-cells, in PBL from 5  
104 healthy human subjects, stimulated overnight with the S peptide mixture (Supplementary Figure 1).  
105 Median (range) frequencies of S-reactive T-cells that co-expressed both markers were 3.1% (1.1-  
106 10.3), and greatly exceeded S-reactive T-cells that expressed either CD154, 0.2% (0.1-0.2) or IFN $\gamma$   
107 0% (0-0.1), respectively. Because nearly all S-reactive IFN $\gamma$ +T-cells co-express CD154, using the  
108 single marker CD154 would overestimate S-reactive IFN $\gamma$ +T-cells by 0.2% divided by the sum of  
109 0.2% and 3.1% times 100, or 6%. Similarly, in four patients with COVID-19 infection, S-reactive  
110 CD154+ IFN $\gamma$ +T-cells were 0.74% (0.48-0.93), and greatly exceeded CD154+T-cells, 0.03% (0-  
111 0.08) or IFN $\gamma$ +T-cells 0% (0-0) respectively. Because all S-reactive IFN $\gamma$ +T-cells co-express CD154,  
112 using the single marker CD154 in patients with COVID-19 would overestimate S-reactive IFN $\gamma$ +T-  
113 cells by 3.9%. In three healthy human subjects, median (range) frequencies of S-reactive B-cells that  
114 co-expressed IL-6 and CD154 were 4.9% (4.7-13.1) and greatly exceeded B-cells that expressed  
115 either CD154, 0.4% (0.3-0.4) or IL-6, 0% (0-0), respectively. Because all S-reactive IL-6+B-cells co-  
116 express CD154, using the single marker CD154 would overestimate S-antigen reactive IL-6+B-cells  
117 by 7.54%. Thus, S-reactive T- and B-cells capture all S-antigen reactive IFN $\gamma$ +T-cells, and IL-6+B-  
118 cells, respectively, and overestimate these cell types by only 3.9-7.5%. In subsequent assays, CD154  
119 was used in lieu of the markers IFN $\gamma$  and IL-6 in T- and B-cells, respectively.

120 *B-cells responsive to the conserved S2 increase progressively, while those to SARS-CoV-2 specific S1*  
121 *spike antigenic sequence increase transiently after vaccination:* S2 reactive T- and B-cells are present  
122 in many healthy individuals who have not been exposed to SARS-CoV-2 because the S2 component  
123 of the spike antigen shares sequence similarities with the human coronaviruses which have caused  
124 seasonal flu-like illnesses since the 1960s (10, 11). S2-reactive B-cells decreased after the first

## Cellular and antibody immunity after COVID-19 mRNA vaccination at >4-month follow-up

125 vaccine dose compared with pre-vaccination levels but increased progressively at subsequent time  
126 points to significantly higher levels ( $p=0.002$ , K-W rank sum test) (Figure 2). We have previously  
127 categorized the population distribution of S2 reactive B-cell frequencies measured in a sample of 47  
128 independent healthy human subjects who had not been exposed to SARS-CoV-2, into four quartiles,  
129 Q1-Q4. Of 21 subjects in the current study, pre-vaccination S2-reactive B-cell frequencies placed 9  
130 subjects in Q1, one subject in Q2, 7 in Q3 and 4 in Q4 (Figure 3). By 4 months after vaccination, S2-  
131 reactive B-cell frequencies were in Q3 ( $n=9$ ) or Q4 ( $n=11$ ) in 20 of 21 subjects. In the remaining  
132 subject, S2-reactive B-cell frequencies were in Q2. None of the 21 vaccinated subjects showed  
133 frequencies in the first quartile. S-reactive B-cells also increased steadily from after the first vaccine  
134 dose to month 4 ( $p=0.015$ ). S1-reactive B-cells increased significantly after the second vaccine dose  
135 compared with pre-vaccination levels but were undetectable 4 months after vaccination ( $p=0.019$ ).

136 *T-cell responsiveness to the SARS-CoV-2-specific S1 sequence but not the conserved S2 sequence*  
137 *increases transiently.* CD8 T-cells that were reactive to the SARS-CoV-2-specific spike antigenic  
138 sequence S1 were absent before vaccination and increased transiently to levels higher than pre-  
139 vaccination levels after the second vaccine dose (Figure 2). S1-reactive cells were not detectable 4  
140 months after vaccination. Differences between observations at all four time points were significant  
141 ( $p=0.002$ , K-W rank sum test). S2- and S-reactive CD4 and CD8 cells decreased after the first  
142 vaccine dose and approached but did not exceed pre-vaccination levels at subsequent timepoints  
143 during the first four months (Figure 2).

144 *Vaccination leads to higher MDSC frequencies.* COVID-19 infection is known to induce MDSC  
145 which suppress T-cells. Frequencies of monocytic (M-MDSC) and polymorphonuclear (PMN-  
146 MDSC) increased significantly after the first vaccine dose and decreased at subsequent time points  
147 approaching but not normalizing to pre-vaccination levels (Figure 4). We also found an inverse  
148 correlation between M-MDSC frequencies and frequencies of S2-reactive CD19, CD8 and CD4 cells  
149 in all 74 samples from all time points in 21 healthy immunocompetent subjects (Figure 4). No such  
150 correlations were identified for PMN-MDSC or for S1-reactive or S-reactive CD4, CD8 and CD19  
151 cells.

152 *Immunocompromised subjects have heterogeneous immune responses and enhanced PMN-MDSC:*  
153 We compared measurements from single samples obtained from 20 IC subjects with those obtained  
154 from the final observational timepoint after vaccination in 21 immunocompetent subjects (Figure 5).  
155 Antibody-strength reflected by OD<sub>490</sub> for RBD-IgG and spike-IgG was lower in 20 IC subjects  
156 compared with 21 immunocompetent. IC subjects also demonstrated lower frequencies of S-reactive  
157 CD4, CD8 and CD19 cells, and elevated frequencies of PMN-MDSC ( $p<0.05$ ).

158 To identify the origins of between-group differences in cellular immunity, we compared 20 of 21  
159 immunocompetent subjects with detectable RBD-IgG with 9 IC subjects, also with detectable RBD-  
160 IgG and 11 IC subjects without detectable RBD-IgG. S-reactive CD4 and S-reactive B-cell  
161 frequencies differed between three groups ( $p<0.05$ , Kruskal-Wallis test). In pairwise comparisons,  
162 these differences arose from significantly lower frequencies for these two cell types in each IC  
163 subgroup, compared with immunocompetent subjects. No such differences were seen between the  
164 two IC subgroups. Interestingly, significant differences in PMN-MDSC frequencies between three  
165 groups ( $p=0.002$ , K-W test) arose from significantly higher PMN-MDSC frequencies in IC patients  
166 who failed to make RBD-IgG compared with IC or healthy subjects with RBD-IgG after vaccination  
167 ( $p<0.0004$ ). Differences between three groups in RBD-IgG strength ( $p=6.9E-06$ ) similarly arose  
168 from lower antibody strength in the RBD-IgG negative IC subjects ( $p<9.3E-07$ ).



## 169 DISCUSSION

170 Four or more months after vaccination, immunocompetent subjects demonstrate declining RBD-IgG  
171 strength and loss of the transient increase in CD8, CD4 and CD19 cell responses to the S1 antigenic  
172 sequence, which is more specific for SARS-CoV-2 (Figures 1 and 2). In contrast, spike-IgG strength  
173 remains stable between the second dose and the fourth month. The most noteworthy change during  
174 this time period is a progressive increase in S2 and S-reactive B-cells (Figures 2 and 3). This change  
175 contrasts with a numeric but not statistically significant decrease in S2 and S-reactive CD4 and CD8  
176 T-cells after the first vaccine dose and a return to pre-vaccination levels. After the first vaccine dose,  
177 M-MDSC and PMN-MDSC increase (Figure 4). Decreased T-cell responses to the spike protein and  
178 increased MDSC frequencies have been observed early after COVID-19 infection (Ashokkumar)(6).  
179 Thus, the T-cell response to vaccines recapitulates the effects of COVID-19 infection.

180 These observations lead to several inferences. *First*, the cellular and antibody response to S1 or its  
181 RBD component, which has some sequence-specificity for SARS-CoV-2 is shorter lived compared  
182 with Spike-IgG which remains stable until the fourth month. Emerging data at 6 months which will  
183 be reported demonstrates stability in the strength of Spike IgG. In this setting, the rationale for early  
184 boosters is the declining RBD-IgG response and not the spike-IgG response. *Second*, vaccination  
185 augments pre-existing B-cell reactivity to the coronaviruses. Nearly all or 20 of 21 vaccinated  
186 immunocompetent subjects achieved S2-reactive B-cell frequencies in the Q3 or Q4 range, 4 months  
187 after vaccination compared with 11 of 21 who were in these ranges prior to vaccination (Figure 3).  
188 Sub-phenotyping of S2-reactive B-cells can help to determine whether these cells are memory B-  
189 cells, which are known to expand after vaccination, and whether these memory cells augur improved  
190 antibody responses to subsequent booster vaccination (Goel)(12). *Third*, the T-cell response to these  
191 first vaccinations against the COVID-19 coronavirus appears transient. S1-reactive T-cells declined  
192 rapidly, while S2-reactive T-cells were not enhanced above pre-vaccination levels in 4-month follow-  
193 up (Figure 2). The T-cell suppressive effect of MDSC which increased significantly after the first  
194 vaccination dose provides one explanation (Figure 4). Minimizing the MDSC response to vaccination  
195 may increase vaccine efficacy. We have avoided co-stimulation or the use of immunodominant  
196 peptides in our cell-based assays, to reduce any likelihood of overinterpreting the T-cell response to  
197 SARS-CoV-2 after vaccination of immunocompromised patients (Braun, Grifoni, Sekine,  
198 Ashokkumar)(6, 13-15). It is possible that if used in our subject population, these assay modifications  
199 may also confirm vaccine-induced reinforcement of pre-existing T-cell immunity to SARS-CoV-2, as  
200 has been reported recently (Loyal)(16).

201 Observations in IC subjects and comparisons between immunocompetent and IC subjects expand on  
202 the abovementioned inferences. RBD-IgG was detected in 9 of 20 or 45% while Spike-IgG was  
203 detected in 13 of 20 or 65% of vaccinated IC subjects, approximating the incidence of these  
204 antibodies in previous reports from vaccinated IC populations (Figure 5). The absence of RBD-IgG  
205 in 11 of 20 IC subjects was associated with enhanced circulating PMN-MDSC frequencies in this sub  
206 cohort compared with immunocompetent subjects ( $p < 0.0004$ ). These associations are supported by  
207 studies in which PMN-MDSC inhibit B-cell proliferation and antibody production (Lelis, Knier)(17,  
208 18). However, MDSC are also known to expand in IC populations such as transplant recipients, and  
209 cancer patients (Lee, Feng, Cassetta)(19-21). This expansion was not apparent in vaccinated IC  
210 subjects with RBD-IgG, in whom M-MDSC and PMN-MDSC frequencies approximated those seen  
211 in immunocompetent subjects. Notably, over half or 11 of 21 immunocompetent subjects received  
212 mRNA1273 vaccination compared with a fourth or 5 of 20 IC subjects ( $p = 0.11$ , NS). Also, 11 IC  
213 subjects without RBD-IgG included six solid organ transplant recipients on Tacrolimus, steroids, or  
214 mycophenolate mofetil (Supplementary Table 1), compared with one such recipient in IC with RBD-

## Cellular and antibody immunity after COVID-19 mRNA vaccination at >4-month follow-up

215 IgG. In the RBD-IgG-negative IC group, belatacept which inhibits donor-specific antibody  
216 development in transplant recipients and velcade which is used to treat antibody mediated rejection in  
217 transplant patients were used in a subject with multiple myeloma and a kidney transplant recipient,  
218 respectively. To better understand the post-vaccine antibody response in IC subjects, the role of  
219 MDSC and immunosuppressive regimens will need ongoing reassessment.

220 Vaccinated IC subjects also revealed a heterogenous cellular response to the conserved S2 and the  
221 complete S antigenic sequences suggesting varying immunogenicity of the spike antigenic sequences  
222 (Figure 5). The frequencies of S2-reactive CD4, CD8 and CD19 B-cells were not significantly  
223 different between immunocompetent subjects and the two IC sub cohorts, one of which failed to  
224 make RBD-IgG. This observation is of interest because S2-reactive B-cell frequencies rose  
225 progressively until the fourth month after vaccination. Thus, similar ranges of S2-reactive B-cell  
226 frequencies in immunocompetent and IC subjects at an average of 132 and 101 days after  
227 vaccination, respectively, would imply a post vaccination augmentation in both types of subjects, and  
228 also suggest that pre-existing immunity due to previous exposure to human coronaviruses may offer  
229 some protection in both types of subjects. Serial observations are needed in IC subjects. In contrast,  
230 S-reactive CD4+T-cell and B-cell frequencies were significantly lower in the IC sub cohorts  
231 compared with immunocompetent subjects but similar between the two IC sub cohorts, one of which  
232 failed to produce RBD-IgG after vaccination. The dynamic range of S-reactive cell frequencies is  
233 larger than S2-reactive cells and may better discern differences between groups. Other reasons may  
234 include a greater immunogenicity of the S1 and S2 components together, than either component  
235 alone. In support of this inference, T- and B-cells responsive to stimulation with the isolated S1  
236 antigenic mixture were not detected 4 months after vaccination, suggesting that this component may  
237 be less immunogenic by itself. This heterogeneity suggests that T- and B-cells respond variably to the  
238 spike antigenic components. Further, cellular and humoral immunity does not go hand in hand in IC  
239 subjects. Thus, protective immunity may be an aggregate of many known and unknown responses to  
240 vaccination.

241 In conclusion, COVID-19 vaccination induces a transient increase in cellular and antibody responses  
242 to the SARS-CoV-2-specific S1 spike antigenic sequence. A sustained antibody response to the  
243 complete spike protein that is stable for at least 4 months is accompanied by a progressive increase in  
244 B-cells that are responsive to this spike protein, and its component that is conserved between the  
245 human coronaviruses and SARS-CoV-2. Although half of the IC subjects in this study failed to  
246 seroconvert after vaccination, T-cell and B-cell reactive to the conserved S2 component of the spike  
247 protein may provide cellular immunity at levels similar to those seen in IC and immunocompetent  
248 subjects who seroconverted after vaccination.

249

### 250 **Conflict of Interest:**

251 Some assays described here are included in University of Pittsburgh Patent 9606019, author: RS, which is  
252 licensed exclusively to Plexision, in which the University and RS own equity. CA is a paid consultant to  
253 Plexision. The remaining authors declare that the research was conducted in the absence of any  
254 commercial or financial relationships that could be construed as a potential conflict of interest.

### 255 **Author Contributions:**

256 Conceptualization: RS, CA, Methodology: RS, CA, Assays: CA, BS, MS, Data accrual, review,  
257 quality assessment and organization: BS, MS, ES, Statistical analysis and graphics: VS, Patient

## COVID-19 Vaccination & Cellular and Antibody Immunity in Healthy & Immunocompromised

258 recruitment: BN, AM, PS, AR, MS. Writing: Original draft: RS. Writing: Final draft, review and  
259 editing: RS, CA, VS, AM, BS, MS, ES, SS, BN.

260 **Funding:** NSF 2033307 for assay standardization and reference ranges.

261 **Acknowledgments:** Ms Kathleen Smith and Carole Ann Capezzuto for manuscript preparation.

262 **Data Availability Statement:** All data needed to evaluate the conclusions in the paper are present in  
263 the paper and/or the Supplementary materials. Additional data and code related to this paper  
264 can be requested from the authors

### 265 **Figure Caption:**

266 **Figure 1.** Changes in strength ( $OD_{490}$ ) of anti-RBD IgG (upper panel) and anti-spike IgG (lower  
267 panel) for 21 immunocompetent subjects before and after the 1st dose, 2nd dose and 4 months after  
268 mRNA vaccination. Also shown are changes for those subjects in each group with  $OD_{490} < 1.2$   
269 (middle panels) and  $> 1.2$  (right panels).  
270

271 **Figure 2.** Box plots show S1-reactive (upper row) S2-reactive (middle row) and S-reactive (lower  
272 row) CD19+B-cells (left column), CD8+T-cells (middle column) and CD4+T-cells (right column)  
273 before (pre) after the first (1st) and 2nd doses and 4 months after starting mRNA vaccination in 21  
274 immunocompetent subjects. Lines connecting boxes for each time point represent mean $\pm$ -SEM.  
275

276 **Figure 3.** Distribution of quartiles for S2-reactive B-cell frequencies, before and after vaccination in  
277 21 immunocompetent subjects.  
278

279 **Figure 4.** Mean and 95% confidence intervals for serial changes in monocytic M-MDSC (upper left  
280 panel) and polymorphonuclear PMN-MDSC (lower left panel). Panels on right show correlations  
281 between frequencies of M-MDSC and S2-reactive-CD19, -CD8 and -CD4 cells for all 74  
282 observations before and after vaccination from 21 immunocompetent subjects.  
283

284 **Figure 5.** Box plots show strength ( $OD_{490}$ ) of RBD-IgG and Spike-IgG (left column), frequencies of  
285 S2-reactive and S-reactive CD4+T-cells, CD8+T-cells and CD19+B-cells (middle column), and  
286 frequencies of monocytic and polymorphonuclear M-MDSC and PMN-MDSC (right column. Upper  
287 row shows comparisons between 20 healthy immunocompetent subjects with detectable RBD-IgG 4  
288 months after vaccination (blue boxes) and 20 immunocompromised subjects (red boxes, IC) sampled  
289 once at 3 or more months after vaccination. In the lower row, immunocompromised subjects have  
290 been grouped into those with detectable anti-RBD IgG (purple boxes, IC-RBD-IgG) and those  
291 without anti-RBD IgG (red boxes, IC-no RBD-IgG).  
292

293 **Supplementary Figure 1.** From Ashokkumar, 2021, *bioRxiv* (2021)

294 doi:10.1101/2021.05.03.442371. Flow cytometry scatterplots show a) expression of CD154 and IFN $\gamma$   
295 in S-reactive and PMA-reactive T-cells and b) expression of CD154 and IL-6 in S-reactive and  
296 PMA-reactive B-cells.

297

298

299

## Cellular and antibody immunity after COVID-19 mRNA vaccination at >4-month follow-up

300

301

302

303

### 304 REFERENCES

- 305 1. Bates, T. A., Leier, H. C., Lyski, Z. L., Goodman, J. R., Curlin, M. E., Messer, W. B., et al.:  
306 Age-Dependent Neutralization of SARS-CoV-2 and P.1 Variant by Vaccine Immune Serum  
307 Samples. *JAMA*, 326(9), 868-9 (2021) doi:10.1001/jama.2021.11656
- 308 2. Schwarz, T., Tober-Lau, P., Hillus, D., Helbig, E. T., Lippert, L. J., Thibeault, C., et al.:  
309 Delayed Antibody and T-Cell Response to BNT162b2 Vaccination in the Elderly, Germany.  
310 *Emerg Infect Dis*, 27(8), 2174-2178 (2021) doi:10.3201/eid2708.211145
- 311 3. Boyarsky, B. J., Werbel, W. A., Avery, R. K., Tobian, A. A. R., Massie, A. B., Segev, D. L., et  
312 al.: Antibody Response to 2-Dose SARS-CoV-2 mRNA Vaccine Series in Solid Organ  
313 Transplant Recipients. *JAMA*, 325(21), 2204-2206 (2021) doi:10.1001/jama.2021.7489
- 314 4. Kennedy, N. A., Lin, S., Goodhand, J. R., Chanchlani, N., Hamilton, B., Bewshea, C., et al.:  
315 Infliximab is associated with attenuated immunogenicity to BNT162b2 and ChAdOx1 nCoV-  
316 19 SARS-CoV-2 vaccines in patients with IBD. *Gut*, 70(10), 1884-1893 (2021)  
317 doi:10.1136/gutjnl-2021-324789
- 318 5. Agha, M., Blake, M., Chilleo, C., Wells, A. and Haidar, G.: Suboptimal response to COVID-  
319 19 mRNA vaccines in hematologic malignancies patients. *medRxiv* (2021)  
320 doi:10.1101/2021.04.06.21254949
- 321 6. Ashokkumar, C., Rohan, V., Kroemer, A. H., Rao, S., Mazariegos, G., Higgs, B. W., et al.:  
322 Impaired T-cell and antibody immunity after COVID-19 infection in chronically  
323 immunosuppressed transplant recipients. *bioRxiv* (2021) doi:10.1101/2021.05.03.442371
- 324 7. Agrati, C., Sacchi, A., Bordoni, V., Cimini, E., Notari, S., Grassi, G., et al.: Expansion of  
325 myeloid-derived suppressor cells in patients with severe coronavirus disease (COVID-19).  
326 *Cell Death Differ*, 27(11), 3196-3207 (2020) doi:10.1038/s41418-020-0572-6
- 327 8. Schulte-Schrepping, J., Reusch, N., Paclik, D., Baßler, K., Schlickeiser, S., Zhang, B., et al.:  
328 Severe COVID-19 Is Marked by a Dysregulated Myeloid Cell Compartment. *Cell*, 182(6),  
329 1419-1440.e23 (2020) doi:10.1016/j.cell.2020.08.001
- 330 9. O'Connor, M. A., Rastad, J. L. and Green, W. R.: The Role of Myeloid-Derived Suppressor  
331 Cells in Viral Infection. *Viral Immunol*, 30(2), 82-97 (2017) doi:10.1089/vim.2016.0125
- 332 10. Jaimes, J. A., André, N. M., Chappie, J. S., Millet, J. K. and Whittaker, G. R.: Phylogenetic  
333 Analysis and Structural Modeling of SARS-CoV-2 Spike Protein Reveals an Evolutionary  
334 Distinct and Proteolytically Sensitive Activation Loop. *J Mol Biol*, 432(10), 3309-3325 (2020)  
335 doi:10.1016/j.jmb.2020.04.009
- 336 11. Kahn, J. S. and McIntosh, K.: History and recent advances in coronavirus discovery. *Pediatr*  
337 *Infect Dis J*, 24(11 Suppl), S223-7, discussion S226 (2005)  
338 doi:10.1097/01.inf.0000188166.17324.60



## COVID-19 Vaccination & Cellular and Antibody Immunity in Healthy & Immunocompromised

- 339 12. Goel, R. R., Apostolidis, S. A., Painter, M. M., Mathew, D., Pattekar, A., Kuthuru, O., et al.:  
340 Distinct antibody and memory B cell responses in SARS-CoV-2 naïve and recovered  
341 individuals following mRNA vaccination. *Sci Immunol*, 6(58) (2021)  
342 doi:10.1126/sciimmunol.abi6950
- 343 13. Braun, J., Loyal, L., Frentsch, M., Wendisch, D., Georg, P., Kurth, F., et al.: SARS-CoV-2-  
344 reactive T cells in healthy donors and patients with COVID-19. *Nature*, 587(7833), 270-274  
345 (2020) doi:10.1038/s41586-020-2598-9
- 346 14. Grifoni, A., Weiskopf, D., Ramirez, S. I., Mateus, J., Dan, J. M., Moderbacher, C. R., et al.:  
347 Targets of T Cell Responses to SARS-CoV-2 Coronavirus in Humans with COVID-19 Disease  
348 and Unexposed Individuals. *Cell*, 181(7), 1489-1501.e15 (2020)  
349 doi:10.1016/j.cell.2020.05.015
- 350 15. Sekine, T., Perez-Potti, A., Rivera-Ballesteros, O., Strålin, K., Gorin, J. B., Olsson, A., et al.:  
351 Robust T Cell Immunity in Convalescent Individuals with Asymptomatic or Mild COVID-19.  
352 *Cell*, 183(1), 158-168.e14 (2020) doi:10.1016/j.cell.2020.08.017
- 353 16. Loyal, L., Braun, J., Henze, L., Kruse, B., Dingeldej, M., Reimer, U., et al.: Cross-reactive  
354 CD4(+) T cells enhance SARS-CoV-2 immune responses upon infection and vaccination.  
355 *Science* (2021) doi:10.1126/science.abh1823
- 356 17. Lelis, F. J. N., Jaufmann, J., Singh, A., Fromm, K., Teschner, A. C., Pöschel, S., et al.:  
357 Myeloid-derived suppressor cells modulate B-cell responses. *Immunol Lett*, 188, 108-115  
358 (2017) doi:10.1016/j.imlet.2017.07.003
- 359 18. Knier, B., Hiltensperger, M., Sie, C., Aly, L., Lepennetier, G., Engleitner, T., et al.: Myeloid-  
360 derived suppressor cells control B cell accumulation in the central nervous system during  
361 autoimmunity. *Nat Immunol*, 19(12), 1341-1351 (2018) doi:10.1038/s41590-018-0237-5
- 362 19. Lee, Y. S., Zhang, T., Saxena, V., Li, L., Piao, W., Bromberg, J. S., et al.: Myeloid-derived  
363 suppressor cells expand after transplantation and their augmentation increases graft survival.  
364 *Am J Transplant*, 20(9), 2343-2355 (2020) doi:10.1111/ajt.15879
- 365 20. Feng, S., Cheng, X., Zhang, L., Lu, X., Chaudhary, S., Teng, R., et al.: Myeloid-derived  
366 suppressor cells inhibit T cell activation through nitrating LCK in mouse cancers. *Proc Natl*  
367 *Acad Sci U S A*, 115(40), 10094-10099 (2018) doi:10.1073/pnas.1800695115
- 368 21. Cassetta, L., Bruderek, K., Skrzeczynska-Moncznik, J., Osiecka, O., Hu, X., Rundgren, I. M.,  
369 et al.: Differential expansion of circulating human MDSC subsets in patients with cancer,  
370 infection and inflammation. *J Immunother Cancer*, 8(2) (2020) doi:10.1136/jitc-2020-001223

371

Figure 1

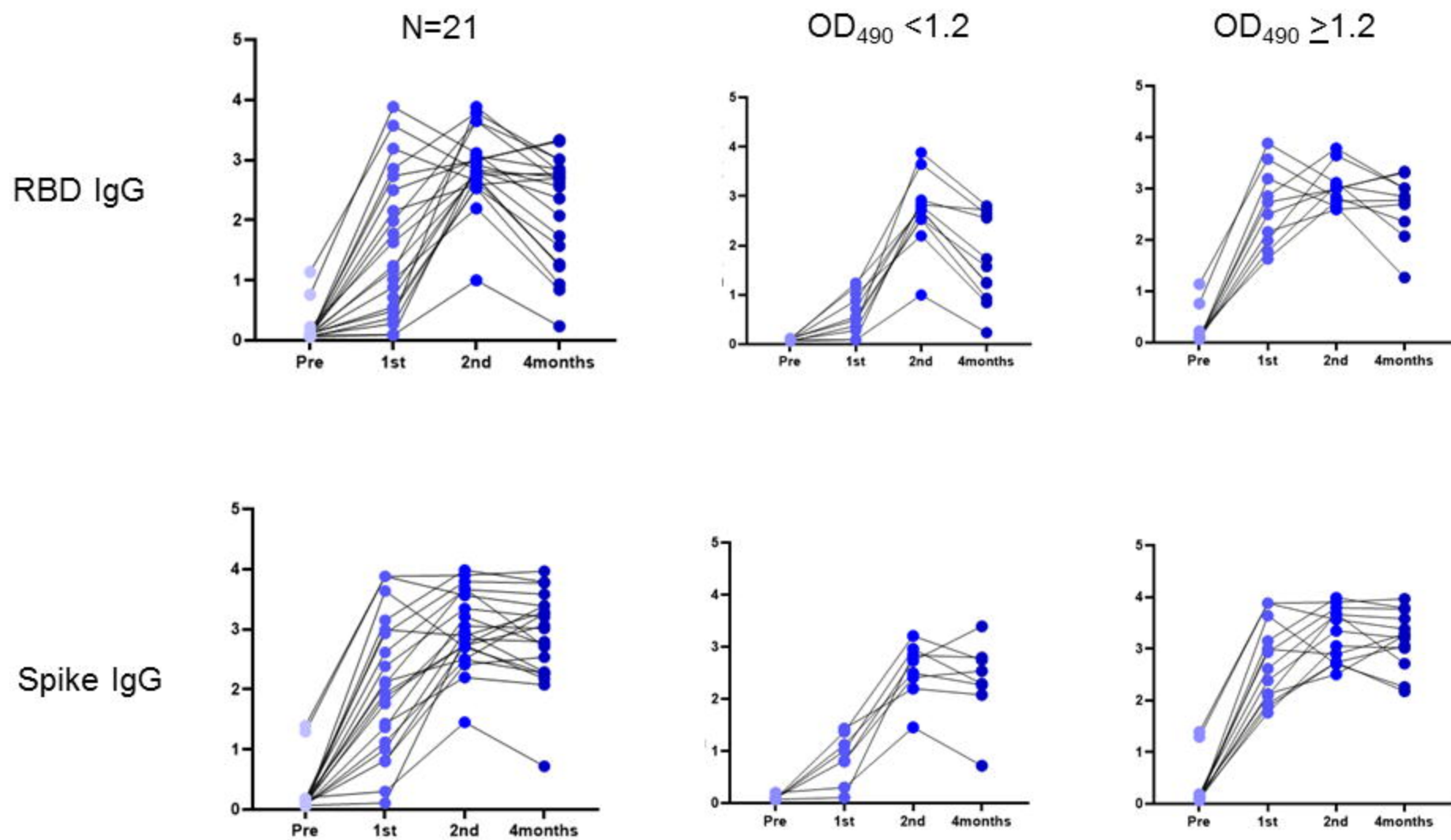


Figure 2

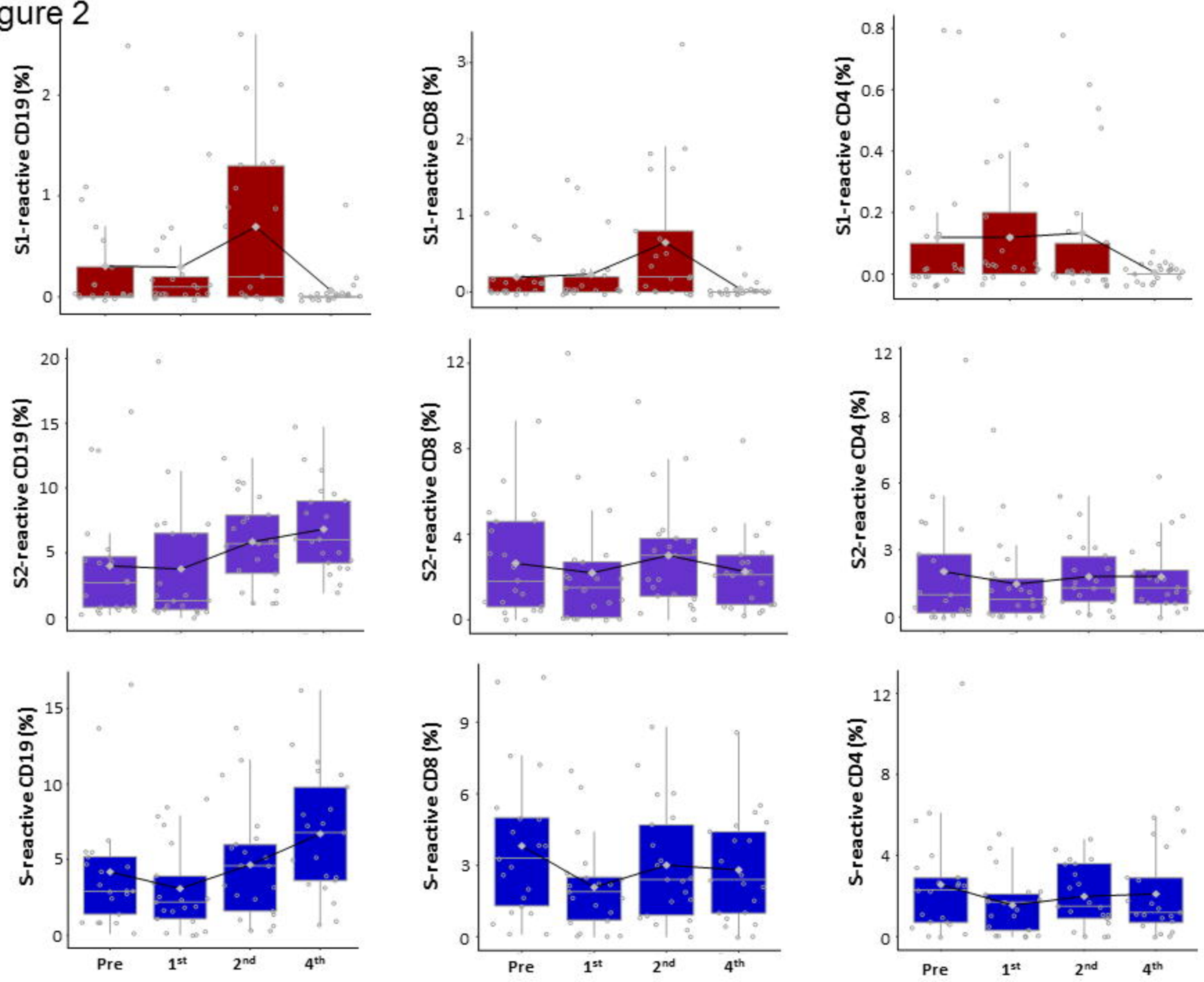


Figure 3

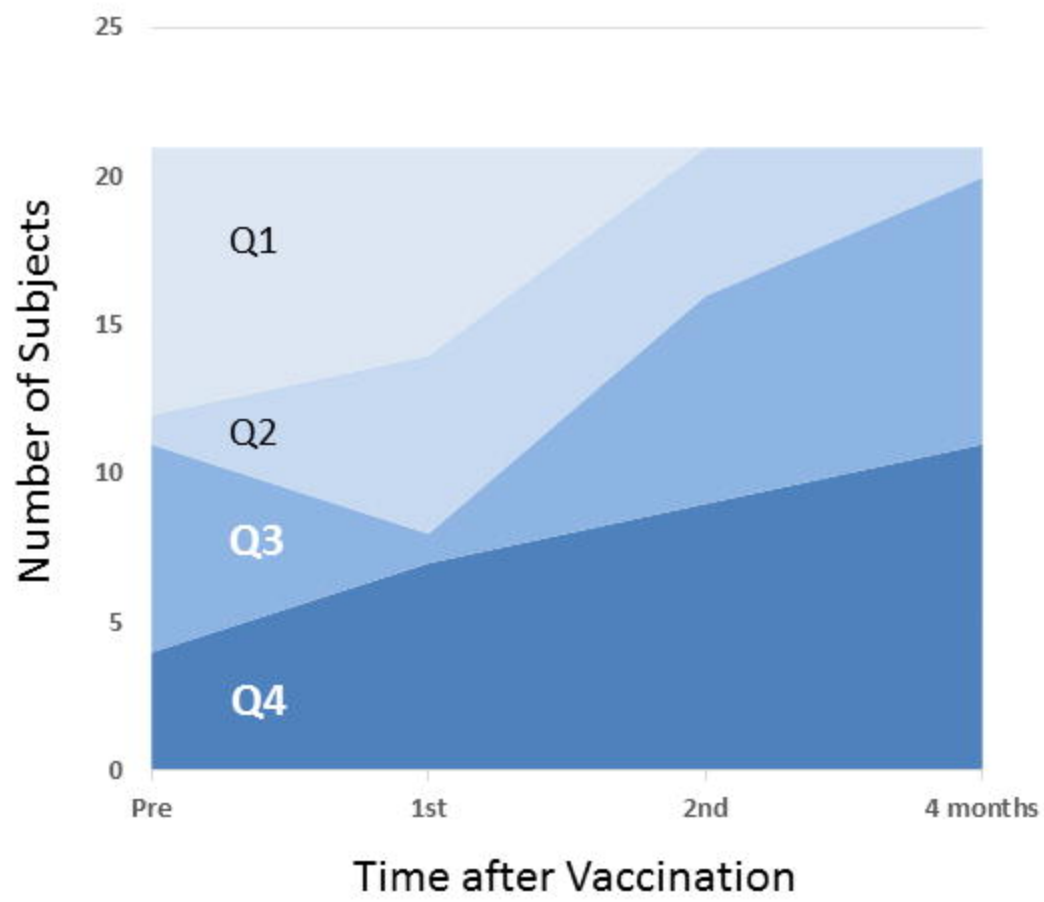




Figure 4

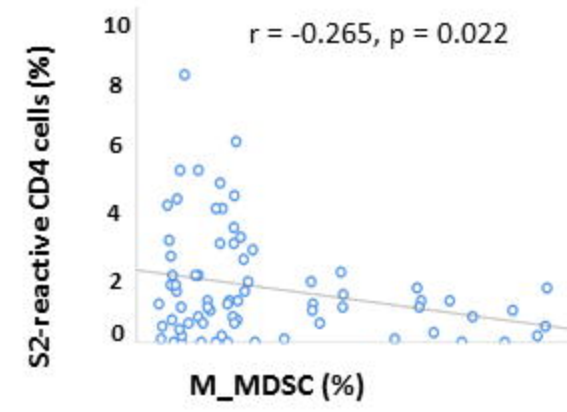
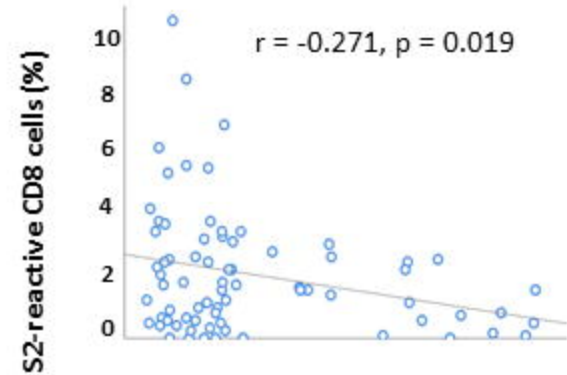
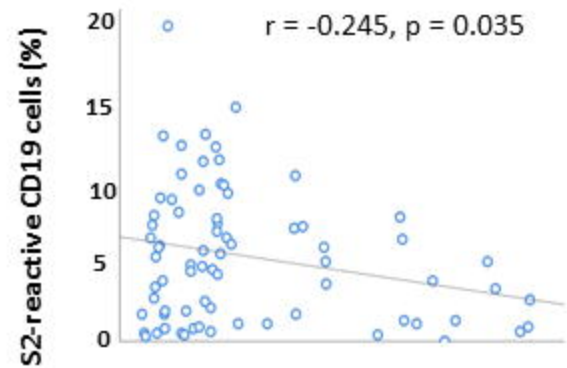
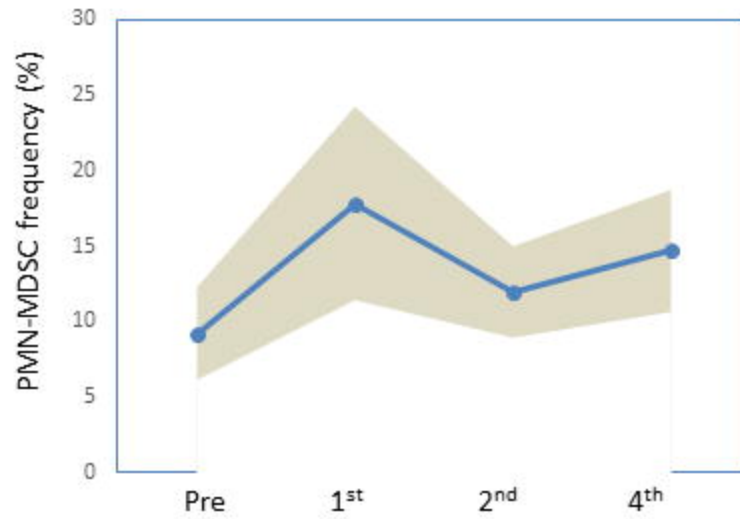
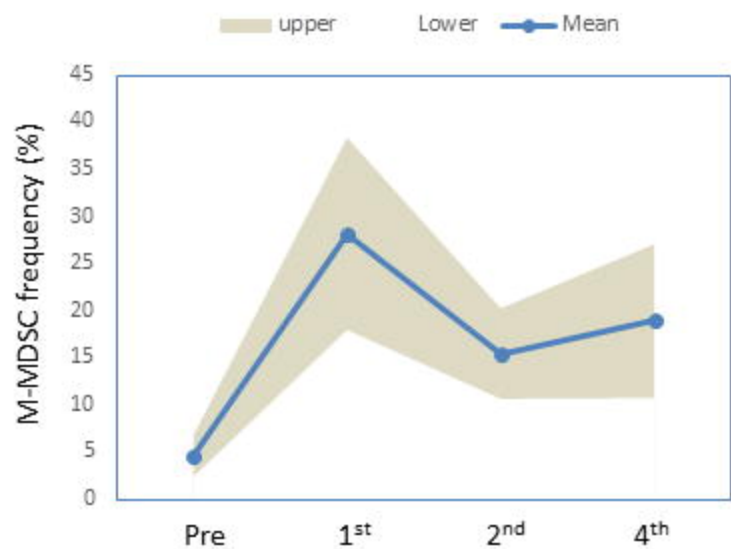


Figure 5

