

1 **TITLE PAGE**

2 **Title:**

3 **“Urban Tertiary Care Centre Experience of Characteristics of Severe COVID-19 Pneumonia”**

4 **RUNNING TITLE:** Characteristics of Severe COVID

5 **TYPE OF MANUSCRIPT:** ORIGINAL ARTICLE

6 **Authors:**

7 **1. Dr. Nehal M Shah MD (Medicine)**

8 Assistant Professor

9 Department of Medicine, SVP hospital,

10 SMT NHL Municipal Medical College, Ellisbridge,Ahmedabad-380006.

11 M. 9898286644

12 Email: [drnehalshah1929@gmail.com](mailto:drnehalshah1929@gmail.com)

13 **2. Dr. Janakkumar R Khambholja MD (Medicine)**

14 Professor

15 Department of Medicine, SVP hospital,

16 SMT NHL Municipal Medical College, Ellisbridge, Ahmedabad-380006.

17 M. 9825447813

18 Email: [drjanak.research@gmail.com](mailto:drjanak.research@gmail.com)

19 **3. Dr. Nilay Suthar MD (Medicine)\* (Corresponding Author)**

20 Professor

21 Department of Medicine, SVP hospital,

22 SMT NHL Municipal Medical College, Ellisbridge, Ahmedabad-380006

23 M. 9825295840

24 Email: [nilaysuthar@gmail.com](mailto:nilaysuthar@gmail.com)

25 **4. Dr. Hemant Tiwari PhD (Population Sciences)**

26 SMT NHL Municipal Medical College, Ellisbridge,Ahmedabad

27 M. 6354929539

28 Email:[tiwarihemant1@rediffmail.com](mailto:tiwarihemant1@rediffmail.com)

29 **5. Dr. Vandit Desai (MBBS), 3<sup>RD</sup> year resident,**

30 SMT NHL Municipal Medical College, Ellis bridge, Ahmedabad—380006.

31 M- 9825493960

32 Email : [blackbuck3@gmail.com](mailto:blackbuck3@gmail.com)

33 **6. Dr. Vishal Beriwal (MBBS), 2<sup>nd</sup> year resident,**

34 SMT NHL Municipal Medical College, Ellis bridge, Ahmedabad—380006.

35 M- 8511773245

36 Email : [vishal.r.beriwala@gmail.com](mailto:vishal.r.beriwala@gmail.com)

37

38 **\*Corresponding Author:**

39 Dr. Nilay N Suthar MD (Medicine)

40 Professor of Medicine

41 Department of Medicine,  
NOTE: This preprint reports new research that has not been certified by peer review and should not be used to guide clinical practice.

42 SMT NHL Municipal Medical College& SVP Institute of Medical & Scientific Research,  
43 Ellisbridge, Ahmedabad-380006.  
44 M. 9825295840  
45 Email: [nilaysuthar@gmail.com](mailto:nilaysuthar@gmail.com)

46 Total number of pages: 15

47 Total number of figures: 5

48 Word counts for abstract: 265

49 Word counts for the text (excluding the references, tables and abstract): 2915

50 Word counts for introduction:72

51 Word counts for discussion: 930

52 Funding source: No FUNDING RECEIVED

53 **Acknowledgment:** Authors would like to thank Dr. Pratik Patel, The Dean Smt NHL  
54 Municipal Medical College, Dr. Sundeep Malhan, The Medical Superintendent,  
55 SVPIMSR and Dr. Ami Parikh, HOD, Dept. of Medicine, Smt NHL Municipal Medical  
56 College for their constant guidance and support. We also acknowledge residents of  
57 our unit for their contribution in gathering data. We are thankful to our esteemed  
58 patients.

59 Any Presentation Previously Done?: None

60 Registration number: Not Applicable

61 Conflict of Interest: None to Disclose from Any Author

62

63

64

65 **TITLE:**

66 **Urban Tertiary Care Centre Experience of Characteristics of Severe COVID-19**  
67 **Pneumonia**

68 **Abstract:**

69 **Introduction:**

70 The global pandemic of novel coronavirus disease 2019 (COVID-19) caused by severe  
71 acute respiratory syndrome coronavirus 2 (SARS-CoV-2) began in Wuhan, China, in  
72 December 2019, and has since spread worldwide.<sup>[1]</sup> This study attempts to summarize current  
73 evidence regarding major inflammatory markers, severity predictors and its impact on outcome,  
74 which provide current clinical experience and treatment guidance for this novel coronavirus.

75 **Methods:**

76 This is a retrospective observational study done at an urban teaching covid-19 designated  
77 hospital. Hospital data were analysed with aim of studying inflammatory markers, predictors  
78 and outcome. Patients were classified in Mild, Moderate, Severe & Critical categories of  
79 COVID cases. Their clinical parameters, laboratory investigations, radiological findings &  
80 Outcome measures were studied. Strength of association & correlation of those parameters  
81 with severity and in-hospital mortality were studied.

82 **Results:**

83 A total 204 (N) patients were clinically classified into different severity groups, as per  
84 MOHFW and qCSI(quick Covid Severity Index) guidelines, as Mild (34), Moderate (56),  
85 Severe (39) and Critical (75). The mean(SD) age of the cohort was 55.1+13.2 years; 74.02%  
86 were male. Severe COVID-19 illness is seen more in patients more than 50 years of age.  
87 COVID-19 patients having IHD develop worse disease with excess early in-hospital mortality.  
88 Respiratory rate & Heart Rate on admission are correlated with severe and stormy disease.  
89 Among Inflammatory markers, on admission LDH, D-Dimer and CRP are related with severity  
90 and excess in-hospital death rate.

91 **Conclusion:**

92 Advanced age, male gender, IHD, Respiratory Rate & Heart Rate on admission were associated  
93 with severe covid-19 illness. S. Lactate Dehydrogenase & D-dimer was associated with severe  
94 covid-19 illness and early in-hospital death.

95 **Keyword:**

96 Severe COVID-19 Pneumonia, ARDS, Inflammatory Markers, Adjunct Treatment

97 **INTRODUCTION:**

98           The global pandemic of novel coronavirus disease 2019 (COVID-19) caused by severe  
99 acute respiratory syndrome coronavirus 2 (SARS-CoV-2) began in Wuhan, China, in  
100 December 2019, and has since spread worldwide.<sup>[1,2]</sup> The viral genome of SARSCoV-2 was  
101 rapidly sequenced to enable diagnostic testing, epidemiologic tracking, and development of  
102 preventive and therapeutic strategies.<sup>[3]</sup>This study attempts to summarize current evidence  
103 regarding major inflammatory markers, severity predictors clinical experience and treatment  
104 guidance for this pandemic coronavirus.

105 **METHODS:**

106 This is a retrospective observational study conducted at a tertiary care Ahmedabad  
107 Municipal Corporation run COVID-19 designated hospital. Cases were enrolled from Hospital  
108 Computerised Data Management System from June 2020 to August 2020. Cases with Different  
109 severity of COVID-19 patients were classified according to institutional SOP, as per guidance  
110 from MOHFW<sup>[4]</sup>.

CRITERIA	MILD	MODERATE	SEVERE	CRITICAL
RR/ O <sub>2</sub> Support	Normal/ No	24-30/ Nasal prongs	≥30/ Mask	HFNC/NIV/IMV
SpO <sub>2</sub>	>94	90-94	<90	<90
O <sub>2</sub> requirement	No	2-4 L/min	≤10 L/min	>10 L/min

111 Case definitions:<sup>[4,5]</sup>

112 Patients were studied for baseline characteristics, laboratory and radiological  
113 characteristics. This study attempts to summarize current evidence regarding major  
114 inflammatory markers, severity predictors and its impact on outcome, which provide current  
115 clinical experience and treatment guidance for this novel coronavirus. Study looked at  
116 outcomes as Death or Discharge and studied its association with several possible predictors.  
117 In-hospital mortality was defined as death during hospitalisation for covid-19 illness.  
118 Correlation with severity and in-hospital death were also accessed.

119 **Statistical analysis:**

120 Looking to approximately twenty per cent of in-hospital mortality rate in covid-19 cases<sup>[6,7]</sup>,  
121 80% of Power of study & Two sided alpha error of 5%, required sample size is 193. Keeping  
122 in view several possibilities we kept effective sample size of 204 for the current study.  
123 Normality of the distribution was tested and Kurtosis was calculated. Categorical variables are  
124 reported as number (%). Normally distributed continuous data were reported as mean ±  
125 standard deviation (SD). Nonparametric data were analysed by Chi square method. Parametric  
126 data were analysed by standard students t test and ANOVA. Pearson Correlation was used  
127 wherever applicable. Binary Logistic Regression was applied for predicting dichotomous  
128 binary dependant outcomes. Receiver operating characteristic(ROC) curves were used to  
129 evaluate the potential predictive value of inflammatory markers on prognosis of hospitalised  
130 COVID-19 patients. The Hosmere-Lemeshow test was used to calibrate the ROC curves.  
131 Statistical software were used as per necessity like SPSS v25/v26, GraphPad Prism, MedCalc &  
132 MS Excel 365. *P*-values less than 0.05 were considered as statistically significant difference.

133 **RESULTS:**

134 This is an observational study conducted at a tertiary care urban teaching hospital. The study  
135 population characteristics and number can be inferred from Figure-1.

136 **Baseline characteristics:**

137 **1. Age and Gender:**

138 Study period was done from June 2020 to August 2020. All the data of vitals, radiological  
139 and pathological tests, clinical notes and relevant treatment records of hospitalized confirmed  
140 COVID-19 adult patients were documented to iHIS, which were transferred to Google forms  
141 for data collection. Data entry and cross verification of each record were done to minimise  
142 human errors. A total 204 (N) patients were studied, and they were clinically classified into  
143 different severity groups, as per MOHFW and qCSI (quick Covid Severity Index) guidelines,  
144 as Mild (34), Moderate (56), Severe (39) and Critical (75), The mean(SD) age of the cohort  
145 was 55.1+13.2 years; 74.02% were male. When we considered age group more than 50years,  
146 it comprises maximum Critical (37%) cases followed by Moderate (17%) illness compared to  
147 patients aged less than 50 years of age. 65 % of cases were aged more than 50 years of age  
148 ( $P=0.024$ ).

149 Furthermore, these four clinical categories ie: mild, moderate, severe and critical were  
150 clubbed to sub-groups. 'NonSevere' cases are in Gr-A, 'Severe & Survived' cases are in Gr-B  
151 and 'Severe & NonSurvived' are in Gr-C (Table-1.1) When considering 50years as the cut-off,  
152 patients more than 50 years had higher pulmonary compromise in the form of higher need of  
153 oxygen or assistive mechanical ventilator support. ( $P<0.001$ )

154 **2. Co-morbidities, vitals, blood groups & COVID Illness:**

155 Gr-B and Gr-C cases had more Hypertension (HTN) than Gr-A. Type II diabetes (DM)  
156 did not have significant difference between both groups. However,  $P$ -value (0.0140) was  
157 observed to be statistically significant among Ischemic Heart Disease patients' groups.

158 Among the vitals on admission of these patients, we found that the difference between  
159 the mean Respiratory Rate ( $P$ -value= 0.0100) was statically significant between both groups  
160 but Heart Rate ( $P$ -value=0.0644) was not. Blood Group analysis of these patients showed that  
161 highest cases of covid-19 pneumonia had B Positive blood group followed by O positive, A  
162 positive and AB positive.

163 **NonSevere (Gr-A), Severe & Survived (Gr-B) and Severe & NonSurvived (Gr-C) Sub-**  
164 **Group Patients' analysis:**

165 The overall age difference in the mean age between the groups (Gr-A, Gr-B & Gr-C)  
166 was found to be highly statistically significant ( $P < 0.001$ ) in our study population. In between  
167 these three groups, we compared the mean difference of age among different age groups, but  
168 only the mean difference was statistically significant, in the age group of less than 50 years,  
169 between Gr-B and Gr-C. Population aged more than 50 years of age have higher chances of  
170 having severe form of COVID-19 pneumonia [ $n=83(61\%)$ ] compared to Gr-A disease  
171 [ $n=52(39\%)$ ] which is statistically significant ( $P=0.023$ ). But, among patients aged  $>50$  years,  
172 male gender has a higher chance of developing severe form of covid-19 illness compared to  
173 female gender [ $59(44\%)$  vs  $24(18\%)$ ]. Although it was statistically not significant ( $P=0.619$ ).

174 When we studied correlation of blood groups with the severity, it was observed in  
175 current study population that it was statistically highly significant between Gr-A vs Gr-C  
176 ( $P=0.019$ ) and Gr-B vs Gr-C ( $P=0.025$ ).

177 Among Gr-C patients, the commonest comorbidity observed is Hypertension (HTN)  
178 (67%) followed by Diabetes Mellitus (DM) (41%) and then Ischemic Heart Diseases (IHD)  
179 (33%). Although, the findings were statistically significantly associated with clinical severity  
180 only in case of IHD ( $P=0.002$ ). On Admission Respiratory Rate (RR) and SpO<sub>2</sub> were found  
181 statistically significant as overall clinical severity of covid-19 cases and among Gr-A vs Gr-B  
182 and Gr-B vs Gr-C. Rest of other observed clinical signs were not found to have significance

### 183 **Measured Laboratory Parameters & Chest X-rays:**

184 We observed several laboratory parameters at the time of hospital admission and during  
185 hospital course. Table-2 describes the detailed observations in various clinical categories. The  
186 mean Haemoglobin, Platelet count & total white blood cell count were not much different in  
187 all the categories on admission. The NLR (Neutrophil- Lymphocyte Ratio) was higher among  
188 the severe and critical categories of cases. All other observed laboratory parameter were found  
189 statistically not significant among these four categories.

190 Chest X-rays of Severe and Critical COVID-19 patients had findings of bilateral ground  
191 glass opacities with patchy consolidations; 26% in Critical covid-19 cases and 13% in severe  
192 covid-19 cases. Although this finding was found to be statistically not significant.

### 193 **Inflammatory markers and Clinical Severity in COVID-19 Pneumonia:**

194 Figure-2 depicts the trend of various inflammatory markers and its association with  
195 clinical severity (Gr-A, Gr-B and Gr-C) over one week since admission. It has been observed  
196 that overall CRP remained elevated in Gr-C COVID 19 pneumonia patients in comparison with

197 Gr-A & Gr-B patients (Figure-2). It was observed that in reference to Gr-C patients, CRP-D7  
198 is significantly high compared to Gr-A patients (OR= 1.03, CI: 1.004-1.067,  $P=0.027$ ). On  
199 studying the statistical correlation of CRP values with Gr-C category of COVID-19 illness,  
200 89.3% of variance ( $R^2=0.893$ ) can be explained by variance in CRP.

201 In reference to D-Dimer values, D-Dimer remained elevated in Gr-C COVID 19  
202 pneumonia patients in comparison with Gr-A and Gr-B patients. It was observed that in  
203 reference to Gr-A patients, D-Dimer-D7 is statistically significant in-Gr-C patients (OR= 1.42,  
204 CI: 1.100-1.836,  $P=0.007$ ). On studying the statistical correlation of D-Dimer values with Gr-  
205 C category of COVID-19 illness, 68.2% of variance ( $R^2=0.682$ ) can be explained by variance  
206 in D-Dimer values.

207 In reference to S. Ferritin values, S. Ferritin remains elevated in Gr-C patients in  
208 comparison with Gr-A and Gr-B patients. On studying the statistical correlation of S. Ferritin  
209 values with Gr-C category of COVID-19 illness, only 29% of variance ( $R^2=0.290$ ) can be  
210 explained by variance in S. Ferritin values. When values of S. Ferritin plotted with dichotomous  
211 outcomes (Death or Discharge) 88.5% variance ( $R^2= 0.885$ ) in outcome would have explained  
212 by S. Ferritin values over Day-0 to Day-7, i.e. First week of COVID-19 hospitalization.

213 In reference to LDH values, LDH remains elevated in Gr-C patients. It was observed  
214 that in reference to Gr-A patients, LDH -D7 and LDH-D1 was associated statistically  
215 significantly with Gr-C patients with OR= 1.01, CI: 1.008-1.024,  $p<0.001$  and OR= 1.01, CI:  
216 1.003-1.020,  $P=0.007$  respectively. On studying the statistical correlation of LDH values with  
217 Gr-C category of COVID-19 illness, 77.1% of variance in Severity ( $R^2=0.771$ ) could be  
218 explained by variance in LDH values. When comparing these four common inflammatory  
219 markers with dichotomous outcome (Death vs Discharge), it has been observed that trend of  
220 LDH and S.CRP values found to explain more than 85% variance observed in the patients  
221 outcome. (LDH  $R^2=0.856$ , S.CRP  $R^2=0.893$ )

## 222 **Receiver Operating Characteristic Curve (ROC) and Area under the ROC Curve (AUC)**

223 For better interpretation of these markers, it's possible utility in predicting the severity  
224 of disease (Figure: 3) and outcome (Figure: 4) of covid-19 patients, we plotted ROC curve. We  
225 calculated AUC and Cut off value for aforesaid markers. Here, we plotted ROC according to  
226 the Day of the measurement of the Parameters (ie: Day-0, Day-1, Day-3 and Day-7).

227 Among all inflammatory markers, LDH on all days has shown fair AUC values  
228 associated with severity ranging from 0.690 to 0.769. When these markers were used to find



229 AUC of ROC for identifying patients with or without Adverse Outcome (Death) in COVID-19  
230 pneumonia, LDH and D-Dimer were found useful (Figure-4). AUC values for LDH were  
231 associated with adverse outcome are ranging from 0.639 to 0.831 while D-Dimer values were  
232 ranging from 0.630 to 0.763.

233 CRP and S. Ferritin were also analysed but their AUC, C-index were not found  
234 statistically significant in correlation with severity and outcome.

235 As per multivariate analysis of mortality and its association with risk factors- age $\geq$ 50  
236 years (OR=3.34,95% CI 1.105: 10.074,  $P=0.032$ ), Ischemic heart disease (OR=4.417, 95% CI  
237 1.730: 11.272,  $P=0.002$ ) and raised Troponin I, a cardiac injury bio- marker(OR=29.382, 95%  
238 CI 8.870: 97.326,  $P<0.001$ ) were significantly associated with excess mortality in COVID -19  
239 pneumonia patients. Male gender, hypertension, Diabetes Mellitus, Vitamin D deficiency (<30  
240 ng/ml), raised D-Dimer (>1000microg/L) and raised uric acid(>6.5 mg/dl) have a trend of  
241 excess mortality but they were not found to be statistically significant (Figure-5).

#### 242 **Predictors and its relationship with Severe COVID-19 Diseases & In-Hospital Death-** 243 **Mortality in COVID-19 Cases (Logistic Regression Analysis)**

244 Binary Logistic Regression analysis was conducted in SPSS v25 & GraphPad Prism  
245 v9. The results were statistically significant in predicting severity and death (Table-3).  
246 Significant regression model ( $p<0.0001$ ) was observed for predicating In-hospital Death  
247 (Table-3). This model included LDH-D0, LDH-D1 and LDH-D7 during indoor care of the  
248 patients. The pseudo  $R^2$  (Nagelkerke R Square) of the model is 0.578. The final logistic  
249 regression predictive model formula found is, In-hospital Death= Intercept( $\beta_0$ ) + ( $\beta_1$ )LDH-D0  
250 + ( $\beta_2$ )LDH-D1 + ( $\beta_3$ )LDH-D7 ie: In-hospital Death= (-7.333) + (-0.01305)LDH-D0 +  
251 (0.009151)LDH-D1 + (0.01235)LDH-D7. Survival was coded as 0 and death was coded as 1 .  
252 The Predicting model shown AUC (C-Index) of 0.9290 (SE: 0.05023, CI: 0.8306 to 1.000,  
253  $p<0.0001$ ) with Negative Predictive Power of 96% and Positive Predictive Power of 70%.

254 Regarding predicting severity, final logistic regression model formula found : Severe  
255 COVID-19 Cases= Intercept( $\beta_0$ ) + ( $\beta_1$ )LDH\_D1 + ( $\beta_2$ )LDH\_D7 ie: Severe COVID-19  
256 Cases= (-3.380)+( 0.004438)xLDH-D1+(0.005640)LDH-D7.Nonsevere category was coded  
257 as 0 and severe category was coded as 1. The Predicting model shown AUC (C-Index) of  
258 0.7433(SE: 0.04526, CI: 0.6546 to 0.8320,  $p<0.0001$ ) with Negative Predictive value of 67%  
259 and Positive Predictive Value of 71%.

260           Hence, it can be inferred that LDH is one of the major markers which can help a  
261 clinician to predict severity and adverse outcome in severe covid-19 cases, than any other  
262 markers.

263

264 **DISCUSSION:**

265 Since the origin of SARS-CoV-2 caused COVID-19 infection, stakeholders alerted the whole  
266 world about the beginning of a new pandemic. Dearth of research papers flourished the  
267 scientific world publication media. A lot of information helped improved management of  
268 patients. But regionally relevant research always found lacking in strength of evidence. We  
269 attempted to fulfil some gap in these concern and tried to improve patient care.

270 **Baseline characteristics:**

271 In our study, all mild cases (Nonsevere) were presented with mild symptoms and had good  
272 prognosis, they mostly recovered within 10 days of symptoms onset and discharged  
273 uneventfully. Rapid clinical deterioration was observed in severe cases in second week of  
274 illness onset, preceded with rise in inflammatory markers. So thorough risk assessment in early  
275 stage of disease might help in predicting disease severity.<sup>[8]</sup>

276 In our study, patients aged more than 50 years (n-135), 73(54.07%) having severe covid-19  
277 illness (Gr-B+ Gr-C) and fatality rate was 14 (19.18%) among them. Which is almost 10% of  
278 all cases above 50 years. Death rates correlated with advanced age as found in other published  
279 studies. Overall case fatality rate was 13% in our study in patients aged over 50 years in having  
280 severe covid-19 disease. This rate was found higher in several other studies done in  
281 China.<sup>[9,10,11,12]</sup>

282 Gender difference in form of male predominance was seen in our study but fatality rate is  
283 almost equal in both genders. Reason for higher male predominance in the disease could be  
284 due to enhanced action of transmembrane protease serine 2 (TMPRSS2), which cleaves  
285 angiotensin converting enzyme-2 (ACE2) receptors and prime spike proteins.<sup>[13]</sup> Global data  
286 shows higher COVID 19 case fatality rate in male ranging from 1.0 to 3.5 in high income  
287 countries while in our country CFR is higher in women due to less detection ratio and delayed  
288 hospitalization.<sup>[9,14]</sup>

289 In our study, symptomatic patients with Rh positive blood types were more likely to be tested  
290 positive with COVID-19 compared to Rh negative type.<sup>[15]</sup> But it has no correlation with  
291 severity of COVID-19 illness. Studies in Italy and Spain demonstrated higher respiratory  
292 failure in “A+ve” blood group, while lower risk was found in “O+ve” blood group patients.<sup>[16]</sup>  
293 In ours study population, “B+ve” blood group was found to have higher number of deaths in  
294 comparison to other blood groups, although this needs further studies.

295 Most common comorbidity identified were Diabetes Mellitus 109(53.43%) followed by  
296 Hypertension 106(51.96%) and Ischemic Heart Diseases 27(13.23%). Comorbidities were  
297 almost similar in study by Adekunle et al.<sup>[17]</sup> Those who have more than one comorbidities,  
298 mortality is high. Similar findings were also observed in a nationwide study conducted at  
299 hospitals throughout China and other studies.<sup>[18,19]</sup> The odds ratio for Ischemic Heart Disease  
300 was suggestive of poor outcome in COVID-19 cases. Tachypnoea on admission is associated  
301 with poor outcome. We observed that NonSevere group patients had less tachypnoea compared  
302 to Severe & Survived and NonSurvived group of patients. It suggested that, respiratory rate on  
303 admission is one of the prognostic indicators in severity of illness.<sup>[20]</sup>

#### 304 **Laboratory markers and Clinical Severity in COVID-19 Pneumonia:**

305 Haemoglobin, Platelet count & total white blood cell count were not much different in all the  
306 categories on admission in current study population. In several studies higher Leukocyte count  
307 was found in critically ill patients. Lymphopenia and eosinopenia were observed in majority  
308 of cases.<sup>[21]</sup> The Neutrophil-Lymphocyte Ratio (NLR) on admission was found statistically  
309 different among these four groups ( $P=0.001$ ). The ratio was higher among the severe categories  
310 of cases.<sup>[22]</sup>

311 Inflammatory markers were found to be increased in severe category of COVID-19 cases,  
312 which usually raised after day three of admission. Which is correlated with other published  
313 studies.<sup>[23]</sup> As per Ji P et al<sup>[23]</sup> trend of elevated inflammatory markers were associated with  
314 early identification, prediction of disease severity and adverse outcome in the form of death.  
315 This study has analysed CRP, Ferritin, D-Dimer & LDH with Severity of the disease and  
316 adverse outcome. This study observed strong C-index (AUC) for LDH post admission with  
317 severity and death.<sup>[24]</sup> Among all inflammatory markers, LDH values after admission helped a  
318 lot in predicting severity.<sup>[25]</sup> As per present study, LDH on day one of admission over 372unit/L  
319 is approximately 70% Sensitive and Specific in predicting severity of covid-19 pneumonia.  
320 This coincides with the data observed across several published studies. Same observation for  
321 LDH on day one of admission was seen with death. LDH value above 468u/L was 77%  
322 sensitive and 84% specific for death. Several studies suggested LDH having relation with early  
323 in-hospital death.<sup>[26]</sup> Even D-Dimer on third day of admission and seventh day of admission are  
324 related with early in-hospital death.<sup>[27]</sup> D-Dimer on third day, more than 1500mcg/L is 87%  
325 sensitive and 65% specific for death, while value on seventh day, more than 3500mcg/L is 69%  
326 sensitive and 86% specific for early in-hospital death. These values correlated with Zhou F et  
327 al<sup>[28]</sup> and other studies.<sup>[29,30]</sup>

328 Deficiencies in certain micronutrients, in particular Vitamin-D deficiency was  
329 discussed a lot in determining the severity of the disease, but was not found significantly  
330 affecting the outcome in our study population. Several studies demonstrated its relation with  
331 severity but it seems to be affected by several confounders.<sup>[31,32]</sup>

332 Advanced age (more than 50 years), Ischemic Heart Disease, Raised troponin are associated  
333 with excess mortality. Several studies demonstrated and expressed issues with raised troponin  
334 not to be used solely as a diagnostic marker of myocardial infarction and heart failure in  
335 COVID-19 illness. This might be due to injury caused by the virus to cardiac tissue rich in  
336 ACE-2 receptors.<sup>[33]</sup>

337 We, attempted to predict severity and in-hospital early outcome by formulating a  
338 regression formula. These needs to be validated on larger study population before using for  
339 routine clinical utility.

340

341 **CONCLUSION:**

342           Advanced age, male gender, IHD, Respiratory Rate & Heart Rate on admission were  
343 associated with severe covid-19 illness. LDH & D-Dimer were associated with severe covid-  
344 19 illness and early in-hospital death.

345

346 **ETHICS STATEMENT:**

347           This study was conducted independently without any external source of funding.  
348   Highest code of conduct was followed with utmost credibility ensured. The study was  
349   conducted after approval from Institutional Review Board (NHL Institutional review Board).  
350   Patient data were anonymized to maintain confidentiality of patient privacy.

351

352 References:

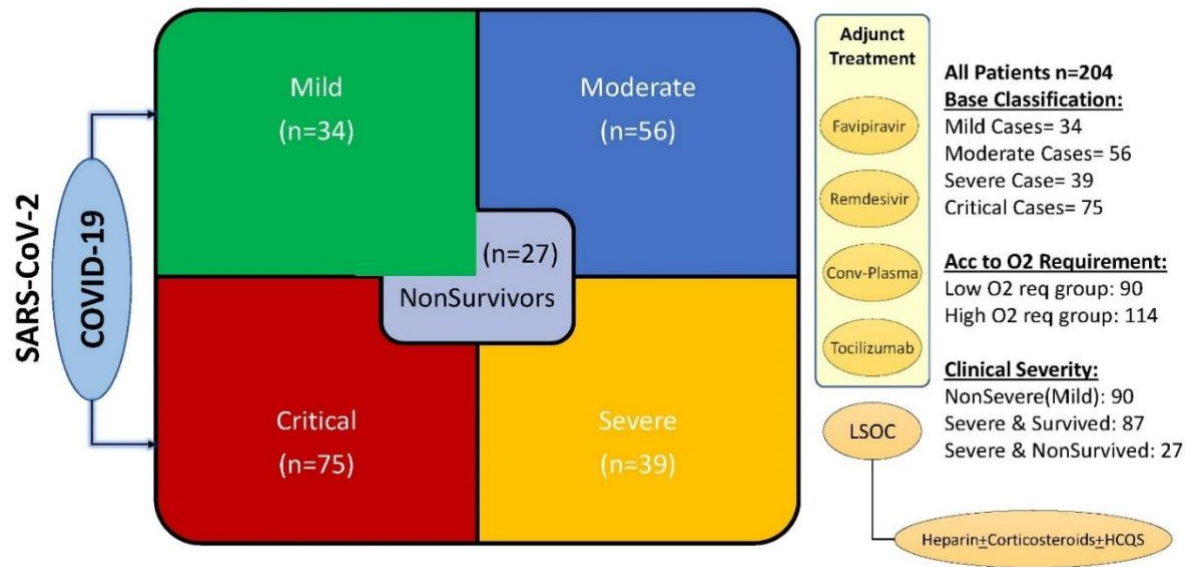
- 353 1. Lai C, Shih T, Ko W, Tang H, of PH-I journal, 2020 undefined. Severe acute  
354 respiratory syndrome coronavirus 2 (SARS-CoV-2) and coronavirus disease-2019 (COVID-  
355 19): The epidemic and the challenges. Elsevier  
356 <https://www.sciencedirect.com/science/article/pii/S0924857920300674>.
- 357 2. WHO Coronavirus Disease (COVID-19) Dashboard | WHO Coronavirus Disease  
358 (COVID-19) Dashboard. Accessed Feb 9, 2021. <https://covid19.who.int/>.
- 359 3. Sanders J, Monogue M, Jodlowski T, Jama JC-, 2020 undefined. Pharmacologic  
360 treatments for coronavirus disease 2019 (COVID-19): a review. jamanetwork.com  
361 <https://jamanetwork.com/journals/jama/article-abstract/2764727>.
- 362 4. (No Title). Accessed Feb 9, 2021.  
363 <https://www.mohfw.gov.in/pdf/UpdatedClinicalManagementProtocolforCOVID19dated0307>  
364 2020.pdf.
- 365 5. Haimovich A, Ravindra N, ... SS-A of emergency, 2020 undefined. Development and  
366 validation of the quick COVID-19 severity index: a prognostic tool for early clinical  
367 decompensation. Elsevier  
368 <https://www.sciencedirect.com/science/article/pii/S0196064420305886>.
- 369 6. Grasselli G, Zangrillo A, Zanella A, et al. Baseline Characteristics and Outcomes of  
370 1591 Patients Infected with SARS-CoV-2 Admitted to ICUs of the Lombardy Region, Italy.  
371 JAMA - J Am Med Assoc 2020;323(16):1574–81. <https://jamanetwork.com/>.  
372 10.1001/jama.2020.5394
- 373 7. Ciceri F, Castagna A, Rovere-Querini P, et al. Early predictors of clinical outcomes of  
374 COVID-19 outbreak in Milan, Italy. Clin Immunol 2020;217:108509.  
375 10.1016/j.clim.2020.108509
- 376 8. Li L, Sun W, Han M, Ying Y, Monitor QW-MS, 2020 undefined. A Study on the  
377 Predictors of Disease Severity of COVID-19. ncbi.nlm.nih.gov  
378 <https://www.ncbi.nlm.nih.gov/pmc/articles/PMC7521067/>.
- 379 9. Chen T, Wu D, Chen H, et al. Clinical characteristics of 113 deceased patients with  
380 coronavirus disease 2019: Retrospective study. BMJ 2020;368.  
381 <https://www.bmj.com/content/368/bmj.m1091>. 10.1136/bmj.m1091



- 382 10. Udhwadia ZF, Tripathi AR, Nanda VJ, Joshi SR. Prognostic Factors for Adverse  
383 Outcomes in COVID-19 Infection. *J Assoc Physicians India* 2020;68(7):62–6.
- 384 11. Wu C, Chen X, Cai Y, et al. Risk Factors Associated With Acute Respiratory Distress  
385 Syndrome and Death in Patients With Coronavirus Disease 2019 Pneumonia in Wuhan, China.  
386 *JAMA Intern Med* 2020;180(7):934.  
387 <https://jamanetwork.com/journals/jamainternalmedicine/fullarticle/2763184>.  
388 10.1001/jamainternmed.2020.0994
- 389 12. Richardson S, Hirsch JS, Narasimhan M, et al. Presenting Characteristics,  
390 Comorbidities, and Outcomes among 5700 Patients Hospitalized with COVID-19 in the New  
391 York City Area. *JAMA - J Am Med Assoc* 2020;323(20):2052–9. 10.1001/jama.2020.6775
- 392 13. Wambier CG, Goren A, Ossimetha A. Androgen-driven COVID-19 pandemic theory.  
393 *papers.ssrn.com* <https://ssrn.com/abstract=3571863>. 10.13140/RG.2.2.21254.11848
- 394 14. Dehingia N, Raj A. Sex differences in COVID-19 case fatality: do we know enough?  
395 *thelancet.com* 2021; [www.thelancet.com/lancetgh](http://www.thelancet.com/lancetgh). 10.1016/S2214-109X(20)30464-2
- 396 15. Latz CA, DeCarlo C, Boitano L, et al. Blood type and outcomes in patients with  
397 COVID-19. *Ann Hematol* 2020;99(9):2113–8. <https://pubmed.ncbi.nlm.nih.gov/32656591/>.  
398 10.1007/s00277-020-04169-1
- 399 16. Ellinghaus D, Degenhardt F, Bujanda L, MedRxiv MB-, 2020 undefined. The ABO  
400 blood group locus and a chromosome 3 gene cluster associate with SARS-CoV-2 respiratory  
401 failure in an Italian-Spanish genome-wide association. *medrxiv.org*  
402 <https://www.medrxiv.org/content/10.1101/2020.05.31.20114991v1.full-text>.
- 403 17. Sanyaolu A, Okorie C, Marinkovic A, et al. Comorbidity and its Impact on Patients  
404 with COVID-19. *SN Compr Clin Med* 2020;2(8):1069–76.  
405 <https://pubmed.ncbi.nlm.nih.gov/32838147/>. 10.1007/s42399-020-00363-4
- 406 18. Yang J, Zheng Y, Gou X, et al. Prevalence of comorbidities and its effects in  
407 coronavirus disease 2019 patients: A systematic review and meta-analysis. *Int J Infect Dis*  
408 2020;94:91–5. 10.1016/j.ijid.2020.03.017
- 409 19. Guan W, Liang W, Zhao Y, ... HL-E, 2020 undefined. Comorbidity and its impact on  
410 1590 patients with COVID-19 in China: a nationwide analysis. *Eur Respir Soc*  
411 <https://erj.ersjournals.com/content/55/5/2000547.short>.

- 412 20. Izquierdo J, Ancochea J, ... JS-J of medical, 2020 undefined. Clinical Characteristics  
413 and Prognostic Factors for Intensive Care Unit Admission of Patients With COVID-19:  
414 Retrospective Study Using Machine Learning. jmir.org  
415 <https://www.jmir.org/2020/10/e21801/>.
- 416 21. Huang C, Wang Y, Li X, et al. Clinical features of patients infected with 2019 novel  
417 coronavirus in Wuhan, China. Elsevier  
418 <https://www.sciencedirect.com/science/article/pii/S0140673620301835>.
- 419 22. Yang A, Liu J, Tao W, immunopharmacology HL-I, 2020 undefined. The diagnostic  
420 and predictive role of NLR, d-NLR and PLR in COVID-19 patients. Elsevier  
421 <https://www.sciencedirect.com/science/article/pii/S156757692030494X>.
- 422 23. Ji P, Zhu J, Zhong Z, et al. Association of elevated inflammatory markers and severe  
423 COVID-19: A meta-analysis. *Medicine (Baltimore)* 2020;99(47):e23315.  
424 10.1097/MD.00000000000023315
- 425 24. Henry B, Aggarwal G, Wong J, ... SB-TA journal of, 2020 undefined. Lactate  
426 dehydrogenase levels predict coronavirus disease 2019 (COVID-19) severity and mortality: A  
427 pooled analysis. Elsevier  
428 <https://www.sciencedirect.com/science/article/pii/S0735675720304368>.
- 429 25. Zhou Y, Ding N, Yang G, Peng W, ... FT-A of, 2020 undefined. Serum lactate  
430 dehydrogenase level may predict acute respiratory distress syndrome of patients with fever  
431 infected by SARS-CoV-2. ncbi.nlm.nih.gov  
432 <https://www.ncbi.nlm.nih.gov/pmc/articles/PMC7575930/>.
- 433 26. Wu MY, Yao L, Wang Y, et al. Clinical evaluation of potential usefulness of serum  
434 lactate dehydrogenase (LDH) in 2019 novel coronavirus (COVID-19) pneumonia. *Respir Res*  
435 2020;21(1). 10.1186/s12931-020-01427-8
- 436 27. Yao Y, Cao J, Wang Q, et al. D-dimer as a biomarker for disease severity and mortality  
437 in COVID-19 patients: A case control study. *J Intensive Care* 2020;8(1). 10.1186/s40560-020-  
438 00466-z
- 439 28. Zhou F, Yu T, Du R, et al. Clinical course and risk factors for mortality of adult  
440 inpatients with COVID-19 in Wuhan, China: a retrospective cohort study. *Lancet*  
441 2020;395(10229):1054–62. 10.1016/S0140-6736(20)30566-3

- 442 29. Wang D, Hu B, Hu C, et al. Clinical Characteristics of 138 Hospitalized Patients with  
443 2019 Novel Coronavirus-Infected Pneumonia in Wuhan, China. *JAMA - J Am Med Assoc*  
444 2020;323(11):1061–9. <https://pubmed.ncbi.nlm.nih.gov/32031570/>. 10.1001/jama.2020.1585
- 445 30. Li Q, Guan X, Wu P, et al. Early Transmission Dynamics in Wuhan, China, of Novel  
446 Coronavirus-Infected Pneumonia. *N Engl J Med* 2020;382(13):1199–207.  
447 10.1056/nejmoa2001316
- 448 31. Maghbooli Z, Sahraian MA, Ebrahimi M, et al. Vitamin D sufficiency, a serum 25-  
449 hydroxyvitamin D at least 30 ng/mL reduced risk for adverse clinical outcomes in patients with  
450 COVID-19 infection. *PLoS One* 2020;15(9 September).  
451 <https://pubmed.ncbi.nlm.nih.gov/32976513/>. 10.1371/journal.pone.0239799
- 452 32. Munshi R, Hussein MH, Toraih EA, et al. Vitamin D insufficiency as a potential culprit  
453 in critical COVID-19 patients. *J. Med. Virol.* 2021;93(2):733–40. Accessed Feb 9, 2021.  
454 <https://pubmed.ncbi.nlm.nih.gov/32716073/>. 10.1002/jmv.26360
- 455 33. Tersalvi G, Vicenzi M, Calabretta D, LB-J of cardiac, 2020 undefined. Elevated  
456 troponin in patients with Coronavirus Disease 2019 (COVID-19): possible mechanisms.  
457 Elsevier <https://www.sciencedirect.com/science/article/pii/S1071916420303572>.
- 458



459

460 Figure-1 Patient groups and Clinical Categories

461

		<b>All</b>	<b>Mild</b>	<b>Moderate</b>	<b>Severe</b>	<b>Critical</b>
		<b>n (%)</b>	<b>n (%)</b>	<b>n (%)</b>	<b>n (%)</b>	<b>n (%)</b>
		<b>mean±SD</b>	<b>mean±SD</b>	<b>mean±SD</b>	<b>mean±SD</b>	<b>mean±SD</b>
Age-Groups	0 to 49 years	69 (33.82%)	12 (35.29%)	16 (28.57%)	16 (41.03%)	25 (33.33%)
	50 to 64 years	85 (41.67%)	12 (35.29%)	24 (42.86%)	14 (35.90%)	35 (46.67%)
	>64 years	50 (24.51%)	10 (29.41%)	16 (28.57%)	9 (23.08%)	15 (20.00%)
	All	204 (100%)	34 (100%)	56 (100.00%)	39 (100.00%)	75 (100.00%)
Gender	Female	53 (25.98%)	8 (23.53%)	12 (21.43%)	12 (30.77%)	21 (28.00%)
	Male	151 (74.02%)	26 (76.47%)	44 (78.57%)	27 (69.23%)	54 (72.00%)
	All	204 (100%)	34 (16.67%)	56 (27.45%)	39 (19.12%)	75 (36.76%)
DM		109 (53.43%)	12 (11.01%)	35 (32.11%)	25 (22.94%)	37 (33.94%)
HTN		106 (51.96%)	12 (11.32%)	29 (27.36%)	24 (22.64%)	41 (38.68%)
IHD		27 (13.24%)	2 (7.41%)	4 (14.81%)	5 (18.52%)	16 (59.26%)
HR (on admission)		94.84±15.1	94.21±12.6	93.63±14.0	91.18±13.4	97.95±17.2
SBP (on admission)		127.24±14.3	125.21±11.9	127.75±12.2	126.38±16.4	128.23±15.6
DBP (on admission)		79.89±7.8	80.24±5.0	80.29±7.5	78.82±7.6	80.00±9.1
RR (on admission)		19.68±6.0	16.44±1.3	18.95±4.1	20.38±5.6	21.33±7.8
SpO2 (on admission)		92.76±9.0	97.03±1.7	94.77±4.1	91.15±9.5	90.16±11.9

462

463 Table-1 Baseline Demographic Details of Study population

464

465

466

**Demographic and Clinical Presentation of study population**

Characteristics	All		Mild to Moderate		Severe to Critical		p-value
	n=204	mean±SD	n=90	mean±SD	n=114	mean±SD	
<b>Age</b>							
All	204	55.09±13.21	90	52.64±13.71	114	57.02±13.71	0.153
0-49 years	69 (34%)	40.73±7.51	38 (42%)	39.81±8.19	31 (27.19%)	41.87±6.53	0.071
50-64 years	85 (42%)	56.94±3.97	34 (38%)	57.05±3.96	51 (44.73%)	56.86±4.01	
≥65 years	50 (24%)	71.76±6.17	18 (20%)	73.84±4.11	32 (28.07%)	71.96±6.66	
<b>Gender</b>							
Men	151 (74.02%)		70 (77.78%)		81 (71.05%)		0.277
Women	53 (25.98%)		20 (22.22%)		33 (28.95%)		
<b>Time to Hospitalisation (days)</b>	1 to 38 days	6.00±4.60	1 to 38 days	5.62±4.58	1 to 32 days	5.61±4.80	
<b>Length of Hospital Stay (days)</b>	2 to 42 days	13.5±6.09	5 to 42 days	12±5.26	2 to 31 days	14.63±6.38	
<b>Comorbidities</b>							
HTN	106 (51.96%)		41 (45.55%)		65 (57.01%)		0.104
DM	109 (53.43%)		47 (52.22%)		62 (54.38%)		0.758
IHD	27 (13.23%)		6 (6.66%)		21 (18.42%)		0.014*
<b>Clinical Parameters</b>							
Systolic BP (On Admission)	127.24±14.26		126.78±12.06		127.59±15.82		0.728
Diastolic BP (On Admission)	79.89±7.80		80.26±6.64		79.59±8.63		0.334
HR (On Admission)	94.84±15.05		93.84±13.42		95.63±16.24		0.064
RR (On Admission)	19.68±5.97		18±3.50		21.00±7.09		0.010*
SpO <sub>2</sub> (On Admission)	92.76±8.96		95.62±3.56		90.5±11.07		0.115
<b>Blood Groups</b>							
A-	5 (2.70%)		3 (3.33%)		2 (1.75%)		0.718
A+	46 (24.70%)		23 (25.56%)		23 (20.18%)		
AB+	20 (10.80%)		10 (11.11%)		10 (8.77%)		
B-	4 (2.20%)		1 (1.11%)		3 (2.63%)		
B+	60 (32.30%)		20 (22.22%)		40 (34.84%)		
O+	51 (27.40%)		23 (25.56%)		28 (24.56%)		

467 Table-1.1 Demographic Details and Baseline Clinical Characteristics

		All		NonSevere (Gr-A)		Severe & Survived (Gr-B)		Severe & NonSurvived (Gr-C)		p-value	Gr-A vs Gr-B	Gr-B vs Gr-C	Gr-A vs Gr-C
		n (%)	mean±SD	n (%)	mean±SD	n (%)	mean±SD	n (%)	mean±SD		p-value	p-value	p-value
Age-Groups	0 to 49 years	69 (33.8%)	40.7±7.5	28 (31.1%)	39.8±8.2	28 (32.2%)	42.8±5.3	13 (48.1%)	35.5±11.1	<0.001*	0.1039#	0.0343#	0.3445#
	50 to 64 years	85 (41.7%)	56.9±3.9	36 (40.0%)	57.0±3.9	39 (44.8%)	56.9±3.8	10 (37.0%)	56.5±4.7		0.9266	0.7240	0.6917
	>64 years	50 (24.5%)	71.8±6.1	26 (28.9%)	71.3±5.3	20 (23.0%)	71.4±5.3	4 (14.8%)	73.1±8.9		0.5233	0.4999	0.9963
	All	204 (100%)	50.1±13.2	90 (44.1%)	52.6±13.7	87 (42.6%)	56.0±11.5	27 (13.2%)	60.1±12.9				
Gender	Female	53 (26%)		20 (22.2%)		26 (49.1%)		7 (13.2%)		0.509	0.248#	0.684#	0.702#
	Male	151 (74%)		70 (77.8%)		61 (40.4%)		20 (13.2%)					
	All	204 (100%)		90 (44.1%)		87 (42.6%)		27 (13.2%)		0.5129*			
Blood Groups	A-	5 (2.7%)		3 (6.0%)		1 (20.0%)		1 (20.0%)		0.440^	0.889	0.025	0.019
	A+	46 (24.7%)		23 (50.0%)		16 (34.8%)		7 (15.2%)					
	AB+	20 (10.8%)		10 (50.0%)		10 (50.0%)		0 (0.0%)					
	B-	4 (2.2%)		1 (25.0%)		3 (75.0%)		0 (0.0%)					
	B+	60 (32.3%)		20 (33.3%)		30 (50.0%)		10 (16.7%)					
	O+	51 (27.4%)		23 (45.1%)		22 (43.1%)		6 (11.8%)					
	All	186 (100%)		80 (43.0%)		82 (44.1%)		24 (12.9%)					
DM	109 (53.4%)		47 (52.2%)		51 (58.6%)		11 (40.7%)		0.254	0.395	0.106	0.296	
HTN	106 (52.0%)		41 (45.6%)		47 (54.0%)		18 (66.7%)		0.138	0.260	0.251	0.055	
IHD	27 (13.2%)		6 (6.7%)		12 (13.8%)		9 (33.3%)		0.002	0.153	0.008	<0.001	
HR (on admission)	94.8±15.1		93.8±13.4		94.6±15.9		99.0±17.1		0.285	0.747	0.179	0.117	
SBP (on admission)	127.2±14.3		126.7±12.1		128.4±15.2		125.1±17.9		0.541	0.463	0.302	0.593	
DBP (on admission)	79.9±7.8		80.3±6.6		79.8±7.8		78.9±11.0		0.720	0.702	0.592	0.424	
RR (on admission)	19.7±6.0		18±3.5		20.7±6.2		22.1±9.5		0.001	0.002	0.275	0.002	
SpO2 (on admission)	92.8±9.0		95.6±3.5		91.2±9.8		88.1±14.4		<0.001	0.001	0.104	<0.001	

\*Two-way ANOVA, #Unpaired t-test, ^Cramer's V

468

469 Table-1.2 Clinical Classification of COVID Patients in the Study

470

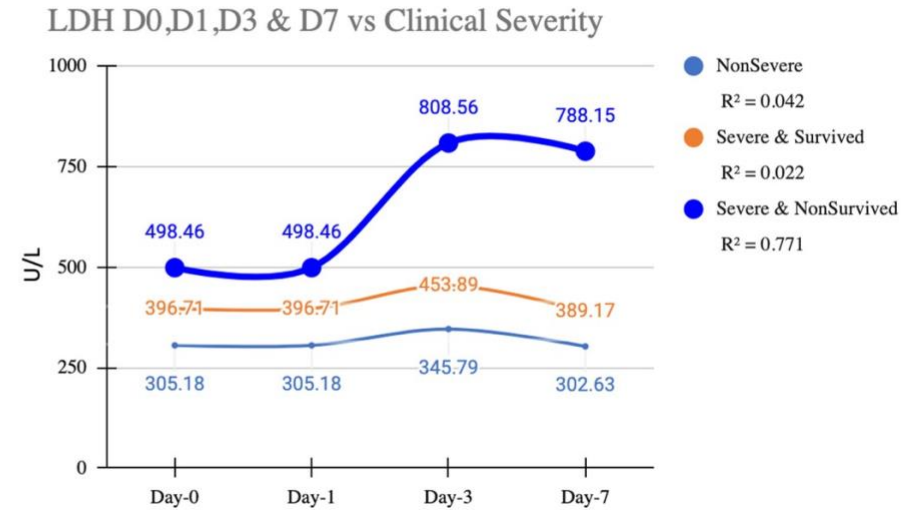
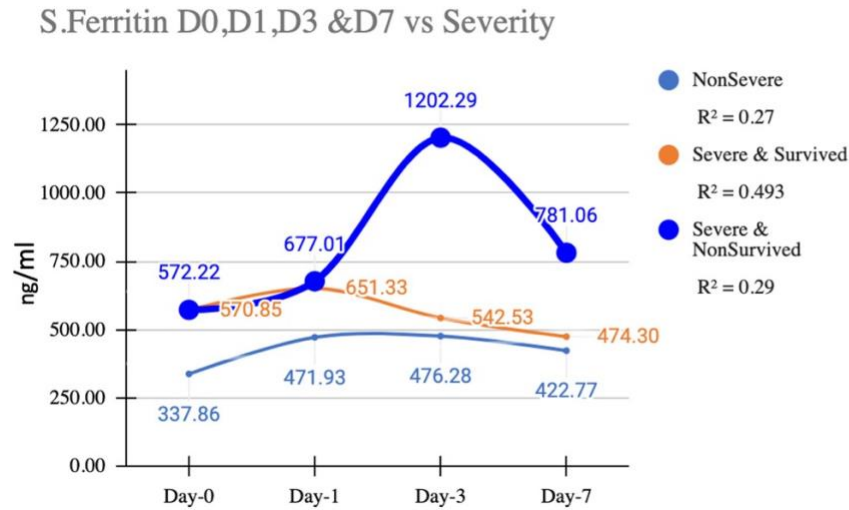
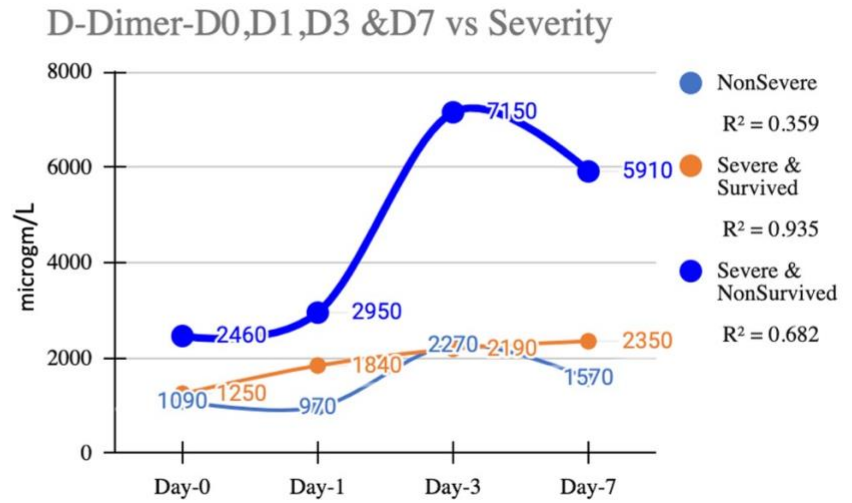
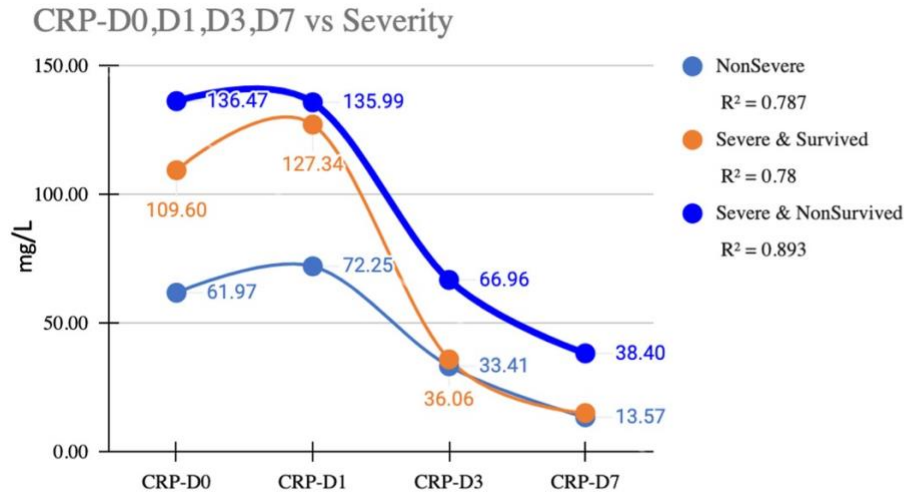
	Disease Clinical Categories								p-value	
	Mild		Moderate		Severe		Critical			
	Mean±SD	N(%)	Mean±SD	N(%)	Mean±SD	N(%)	Mean±SD	N(%)		
Hb on Admission	13±1		13±2		12±2		13±2		0.294 (NS)	
TC on Admission	5438±2058		7166±3168		7352±4236		8025±3952		0.288 (NS)	
On admission NLR	5.15±3.88		6.96±7.22		7.93±5.43		7.81±6.86		0.350 (NS)	
Platelet Count (Lakh)	242764±70568		252732±110253		269666±130071		249466±99587		0.703 (NS)	
IL-6 on Admission	22±20	34(17%)*	24±22	56(27%)*	34±39	39(19%)*	101±177	75(37%)*	0.570 (NS)	
NT Pro BNP	211±224	34(17%)*	623±854	56(27%)*	484±858	39(19%)*	1659±2371	75(37%)*	0.467 (NS)	
Blood Groups	A-		2(6.7%)#		1(2.0%)#		0(0.0%)#		2(2.9%)#	0.718 (NS)
	A+		9(30.0%)#		14(28.0%)#		7(19.4%)#		16(22.9%)#	
	AB+		4(13.3%)#		6(12.0%)#		5(13.9%)#		5(7.1%)#	
	B-		0(0.0%)#		1(2.0%)#		0(0.0%)#		3(4.3%)#	
	B+		9(30.0%)#		11(22.0%)#		16(44.4%)#		24(34.3%)#	
	O+		6(20.0%)#		17(34.0%)#		8(22.2%)#		20(28.6%)#	
Chest X-ray findings*										
B/L GGO	6(2.9%)		15(7.4%)		11(5.4%)		13(6.4%)		0.166 (NS)	
B/L GGO + Interstitial thickening	3(1.5%)		1(0.5%)		1(0.5%)		1(0.5%)			
B/L whiteout lungs	3(1.5%)		1(0.5%)		0(0.0%)		6(2.9%)			
GGO + Patchy consolidation	21(10.3%)		36(17.6%)		27(13.2%)		54(26.5%)			
Normal	1(0.5%)		3(1.5%)		0(0.0%)		1(0.5%)			

471

472 Table-2 Disease Clinical Categories and Measured Laboratory Parameters

473

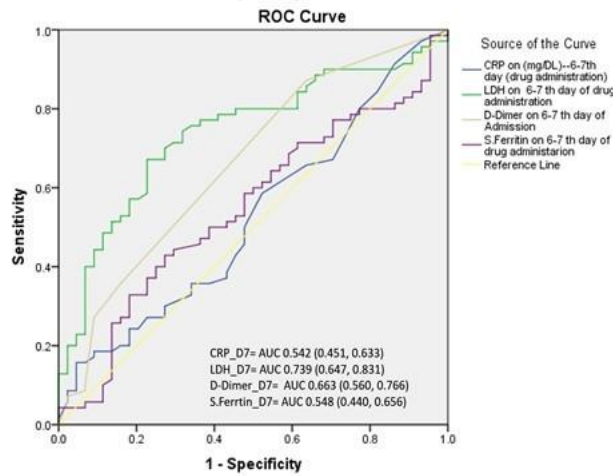
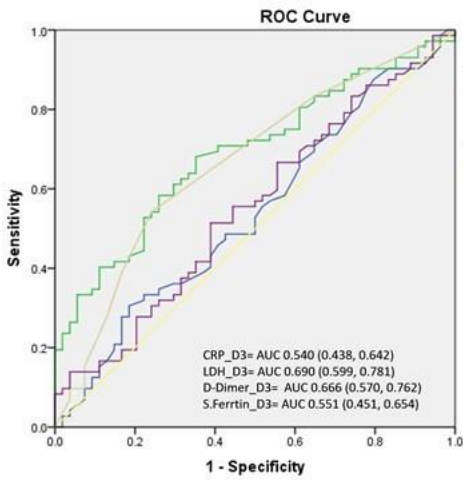
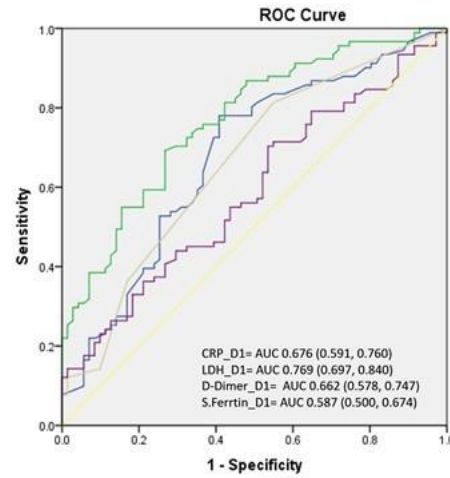
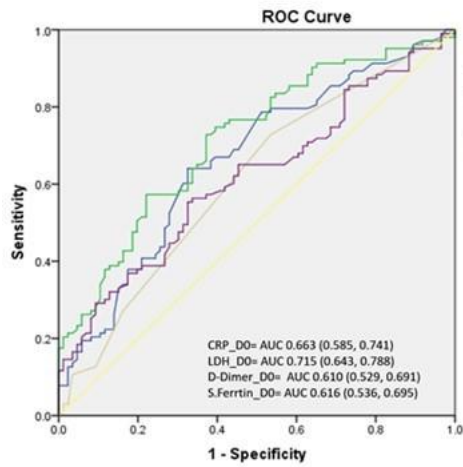




474

475 Figure-2 Inflammatory markers and Clinical Severity in COVID-19 Pneumonia

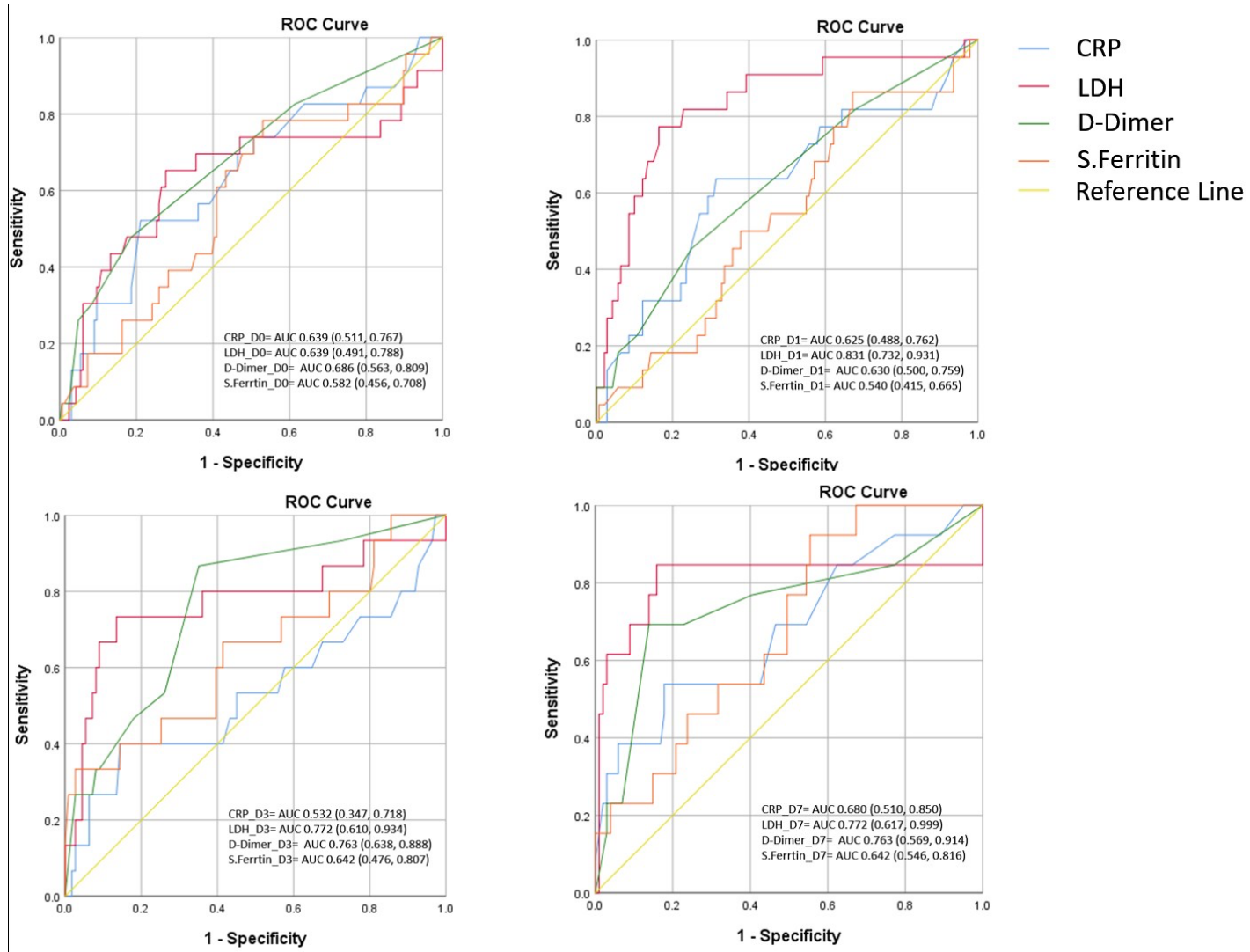
476



477

478 Figure-3 ROC Curve and AUC of Inflammatory Markers vs Severe COVID-19 Pneumonia

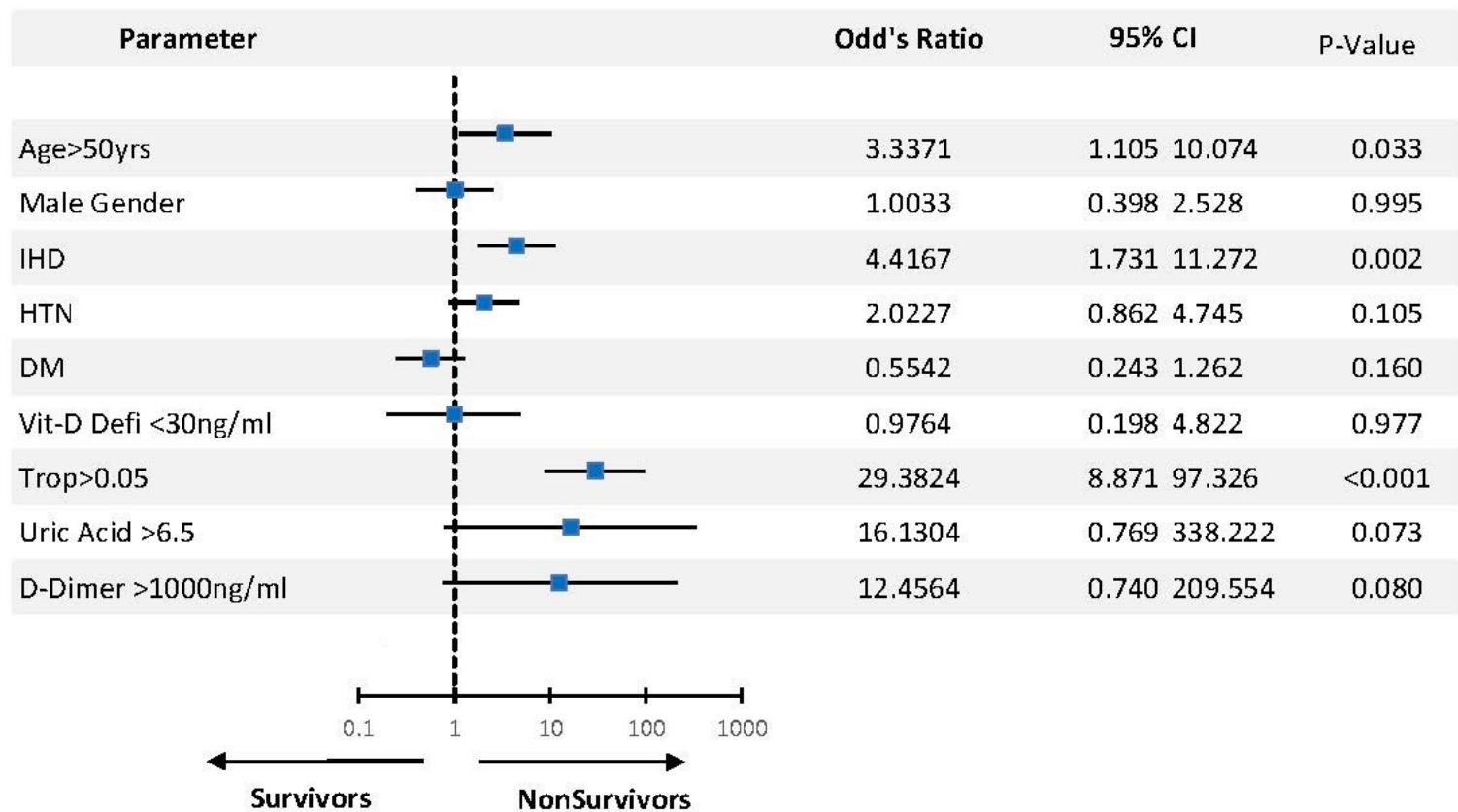
479



480

481 Figure-4 ROC Curve and AUC of Inflammatory Markers vs Adverse Outcome (Death)

482



483

484 Figure-5 Multivariate analysis of Mortality risk factors for patients with COVID-19 pneumonia

Bivariate Multiple Logistic Regression analysis predicting In-hospital Death					
	<b>β</b>	<b>S.E.</b>	<b>Sig.</b>	<b>Exp(β)</b>	<b>95% CI</b>
LDH-D0	-0.0130	0.0040	0.0014	0.9870	0.977 to 0.994
LDH-D1	0.0091	0.0033	0.0058	1.0090	1.004 to 1.018
LDH-D7	0.0123	0.0031	<0.0001	1.0120	1.007 to 1.020
Constant	-7.3330	1.6760	<0.0001	0.0006	1.275e-005 to 0.011
Bivariate Multiple Logistic Regression analysis predicting Severe COVID-19 Disease					
	<b>β</b>	<b>S.E.</b>	<b>Sig.</b>	<b>Exp(β)</b>	<b>95% CI</b>
LDH_D1	0.0044	0.0018	0.0170	1.0040	1.001 to 1.008
LDH_D7	0.0056	0.0018	0.0025	1.0060	1.002 to 1.010
Constant	-3.3800	0.9595	0.0004	0.0340	0.004 to 0.194

Table-3 Bivariate Multiple Logistic regression analysis predicting In-hospital Death & Severe COVID-19 Disease