

1 **Structural racism and COVID-19 response: Higher risk of exposure drives disparate**
2 **COVID-19 deaths among Black and Hispanic/Latinx residents of Illinois, USA**

3 Tobias M Holden¹, Melissa A. Simon², Damon T. Arnold^{3,4}, Veronica Halloway⁴, Jaline
4 Gerardin^{5*}

5 ¹ Northwestern University Feinberg School of Medicine, Chicago, IL

6 ² Department of Obstetrics and Gynecology, Northwestern University, Chicago IL

7 ³ Blue Cross Blue Shield of Illinois, Chicago IL

8 ⁴ Illinois Department of Public Health, Springfield IL

9 ⁵ Department of Preventive Medicine and Institute for Global Health, Northwestern University,
10 Chicago IL

11 *To whom correspondence should be addressed: jgerardin@northwestern.edu

12 **Abstract**

13 BACKGROUND: Structural racism has driven and continues to drive policies that create the
14 social, economic, and community factors resulting in residential segregation, lack of access to
15 adequate healthcare, and lack of employment opportunities that would allow economic mobility.
16 This results in overall poorer population health for minoritized people. In 2020, Black and
17 Hispanic/Latinx communities throughout the United States, including the state of Illinois,
18 experienced disproportionately high rates of COVID-19 cases and deaths. Public health officials
19 in Illinois implemented targeted programs at state and local levels to increase intervention
20 access and reduce disparities.

21
22 METHODS: To quantify how disparities in COVID outcomes evolved through the epidemic, data
23 on SARS-CoV-2 diagnostic tests, COVID-19 cases, and COVID-19 deaths were obtained from
24 the Illinois National Electronic Disease Surveillance System for the period from March 1 to
25 December 31, 2020. Relative risks of COVID-19 cases and deaths were calculated for Black
26 and Hispanic/Latinx vs. White residents, stratified by age group and epidemic interval. Deaths
27 attributable to racial/ethnic disparities in incidence and case fatality were estimated with
28 counterfactual simulations.

29
30 RESULTS: Disparities in case and death rates became less drastic after May 2020, but did not
31 disappear, and were more pronounced at younger ages. From March to May of 2020, the risk of
32 a COVID-19 case for Black and Hispanic/Latinx populations was more than twice that of Whites
33 across all age groups. The relative risk of COVID-19 death reached above 10 for Black and
34 Hispanic/Latinx individuals under 50 years of age compared to age-matched Whites in the early
35 epidemic. In all Illinois counties, relative risk of a COVID-19 case was the same or significantly
36 increased for minoritized populations compared to the White population. 79.3% and 86.7% of

37 disparities in deaths among Black and Hispanic/Latinx populations, respectively, were
38 attributable to differences in age-adjusted incidence compared to White populations rather than
39 differences in case fatality ratios.

40

41 **CONCLUSIONS:** Racial and ethnic disparities in the COVID-19 pandemic are products of
42 society, not biology. Considering age and geography in addition to race/ethnicity can help to
43 identify the structural factors driving poorer outcomes for certain groups. Studies and policies
44 aimed at reducing inequalities in disease exposure will reduce disparities in mortality more than
45 those focused on drivers of case fatality.

46 **Keywords**

47 SARS-CoV-2, COVID-19, Illinois, racial disparities, diagnostic testing, case fatality ratio

48 **Introduction**

49 By the end of 2020, the United States (US) had reported more cases of SARS-CoV-2 infection
50 and COVID-19 deaths than any other country [1]. Minoritized groups, particularly Black and
51 Hispanic/Latinx communities, suffered an outsized share of infection and mortality burden in the
52 US [2]. Structural racism includes decades of disinvestment and racist policies in multiple
53 sectors, which further socioeconomic and health inequality in minoritized populations [3]–[5].
54 The resultant social determinants serve as drivers of health disparities that are particularly
55 salient in infectious disease outbreaks. For a respiratory virus like SARS-CoV-2, structural
56 racism drives systemic differences in both exposure via working and living conditions, and case
57 fatality via prevalence of underlying conditions that increase the likelihood of severe disease [6].

58 Illinois is the fifth most populous US state with Chicago being the third most populous city in the
59 US. Demographically, the state’s age distribution matches that of the wider US, and the percent
60 of the population identifying as Hispanic, non-Hispanic Black/White/Asian/Native
61 American/Other, or more than one race are each within 2% of national estimates [7]. Though
62 diverse, Illinois has high indices of residential segregation between counties and within
63 metropolitan areas [7], perhaps one of the most obvious manifestations of structural racism. A
64 study of mobility patterns in Chicago and other major US cities from March to May 2020 found
65 that people from lower-income and non-white census block groups may have higher infection
66 rates because they had not been able to reduce mobility to the same degree, and tended to visit
67 more crowded locales when mobile [8].

68

69 Structural factors beyond residential segregation predispose minoritized populations to COVID-
70 19 exposure, and the influence of each likely varies across neighborhoods, age groups, and
71 throughout the course of an epidemic. Following significant community transmission of SARS-
72 CoV-2 and hospitalizations due to COVID-19, the governor of Illinois issued a state-wide “Stay-
73 At-Home” order beginning March 21, 2020, which deemed certain occupations “essential work”,
74 and therefore exempt from the requirement to stay home [9]. In the Chicago Metropolitan area,
75 54.1% of essential workers are people of color, compared to 43.9% of all workers [10]. Relative

76 to their share of the civilian workforce, Black workers make up a larger share of firefighters,
77 community/social service workers, and transportation, healthcare support, and material moving
78 occupations state-wide. Hispanic/Latinx workers are overrepresented in production, material
79 moving, construction and extraction, cleaning and maintenance, and food preparation and food
80 service occupations [11]. Several outbreaks in Illinois have been tied to food preparation and
81 meat processing plants [12]. Another early study linked jail cycling in Cook County, where
82 roughly 75% of inmates are Black and 16% are Hispanic, with 15% of all COVID-19 cases in the
83 state of Illinois [13].

84
85 Analysis of disparities that accounts for age and geography can be useful for assessing their
86 structural causes and developing focused interventions to promote justice in public health. In
87 response to early data on racial and ethnic disparities in COVID-19 cases and deaths, public
88 health officials were able to implement directed community programs, improving access to key
89 interventions such as diagnostic testing. In this study, we analyze COVID-19 testing, case, and
90 death data from Illinois across three epidemic intervals from March 1 to December 31, 2020, by
91 race/ethnicity, age, and county to observe the evolution of disparities amidst changing
92 surveillance strategies and public health policies.

93 **Methods**

94 *Datasets*

95 Population counts, including county population by age and race/ethnicity, were obtained from
96 the 2018 American Community Survey (2018 ACS) [14].

97 Confirmed COVID-19 case data (“case data”) were obtained from the Illinois National Electronic
98 Disease Surveillance System (I-NEDSS) database and included all individuals with diagnosed
99 SARS-CoV-2 infection reported to the Illinois Department of Public Health (IDPH). The data for
100 each case included home ZIP code, county, sex, race, ethnicity, dates of specimen collection,
101 hospital admission and death (where applicable), and whether a patient died from COVID-19.
102 Deaths were attributed to COVID-19 in I-NEDSS based on any of the following: 1) the presence
103 of COVID-19 on a death certificate; 2) death within 30 days of diagnosis/symptom onset or
104 during hospitalization, unless cause of death is clearly unrelated to COVID-19, such as
105 homicide or accident; 3) diagnosis of COVID-19 without return to baseline health; or 4) an
106 autopsy result consistent with COVID-19.

107 We began with an initial sample of all COVID-19 cases recorded in I-NEDSS and received from
108 IDPH on February 10, 2021 (Table 1), which we then restricted to those with specimen
109 collection dates between March 1, 2020, and December 31, 2020. We defined admissions as
110 the subset of cases with hospital admission indicated in I-NEDSS or with a valid date of
111 admission before February 10, 2021. We defined COVID-19 deaths as the subset of these
112 cases with a recorded date of death before February 10, 2021, and attribution of death to
113 COVID-19. We estimate this 41-day lag to encompass 95% of confirmed COVID-19 deaths,
114 based on the distribution of time from first positive specimen to deceased date in this dataset.

115 Race and ethnicity are reported as separate variables in I-NEDSS. To account for this while
116 avoiding small sample sizes, we added a new racial category of “Hispanic/Latinx”
117 encompassing all cases with Hispanic/Latinx ethnicity, regardless of race. All other cases were
118 considered non-Hispanic/Latinx and categorized according to the race variable given in I-
119 NEDSS. Cases indicated as belonging to multiple racial groups were categorized as “Other”,
120 unless Hispanic/Latinx ethnicity was also indicated. Cases with race reported as “Unknown” or
121 not reported and ethnicity reported as “Unknown” or “Not Hispanic/Latinx” were categorized as
122 “Unknown”. To evaluate the impact of assuming all cases of unknown ethnicity were non-
123 Hispanic/Latinx, a sensitivity analysis was performed (see supplement) in which cases with
124 unknown ethnicity were either excluded or assumed to be Hispanic/Latinx.

125 COVID-like illness (CLI) admissions data were received from IDPH on February 10, 2021.

126 Data on SARS-CoV-2 diagnostic testing in Illinois were received from IDPH (“test data”) on
127 February 10, 2021 (Table 2). Diagnostic tests included PCR and antigen tests but not
128 serological tests. The test data was aggregated as daily total tests and positive tests by age and
129 race/ethnicity. In this dataset, race and ethnicity were already recorded as a single variable,
130 including Hispanic/Latinx as one group. We restricted our demographic analysis to diagnostic
131 testing among people ages 0-100. Multiple tests on the same individual were counted equally,
132 so positive tests in the test data do not directly correspond to cases in the case data.

133 All moving averages were 7-day lagged moving averages.

134 *Relative risks*

135 Cases were divided into 3 intervals based on specimen collection date: March 1 to May 31
136 (initial outbreak and control), June 1 to September 30 (lower-incidence summer), and October 1
137 to December 31, 2020 (fall resurgence). Relative risks were calculated as the ratio between the
138 cumulative per capita case or death rates for Hispanic/Latinx or Black individuals and age-
139 matched White individuals who tested positive during the same interval.

140 *Mapping COVID-19 case disparities by county*

141 Case data were paired with county demographic data by matching patient county of residence
142 to counties in the 2019 American Community Survey (ACS). All cases with known race/ethnicity
143 and a county within Illinois were included. 892 cases were excluded from county-level analysis
144 due to the county of residence being missing or outside Illinois. An additional 264,556 cases of
145 “Unknown” race/ethnicity in valid counties were also excluded.

146
147 We estimated disparities in each county using the ratio between per capita case rates for age-
148 matched White and non-White residents (naive relative risk) during each epidemic interval.
149 Relative risk was not calculated for counties with fewer than 10 White and 10 non-White cases
150 in any given age group and epidemic interval. 95% confidence intervals were used to determine
151 significance.

152 *Counterfactual death estimation by matching incidence and case fatality ratios*

153 Incidence rates were defined as COVID-19 cases per person per week. Case fatality ratios
 154 (CFR) were defined as the ratio of COVID-19 deaths to COVID cases, where cases were
 155 defined as all SARS-CoV-2 infections recorded in Illinois surveillance. This case definition
 156 excludes infections that were never diagnosed or reported. Deaths used in the numerator for
 157 CFR were all eventual deaths among the cases discovered that week. Weekly incidence, CFR,
 158 and mortality rates were smoothed with a 3-week centered rolling average. We simulated
 159 counterfactual scenarios in which minoritized populations were subject to the same weekly
 160 parameters of incidence, CFR, or mortality rate as age-matched White populations.
 161 Counterfactual weekly deaths were predicted in each scenario as

$$D_{ij} = \sum_k P_{ik} I_{jk} CFR_{jk}$$

162 where D_{ij} is the weekly deaths in minoritized population i under scenario j , P_{ik} is the population
 163 of group i in age group k , I_j is the incidence in age group k in group i for the matched CFR
 164 scenario and in the White population for other scenarios, and CFR_j is the CFR in age group k in
 165 group i for the matched incidence scenario and in the White population for other scenarios.

166 Percent reduction in deaths was calculated between the deaths predicted in each scenario, and
 167 the total deaths under the curve generated from the smoothed weekly death rates.

168

169 **Results**

170 *Racial and ethnic composition of COVID-19 cases, admissions, and deaths in Illinois*

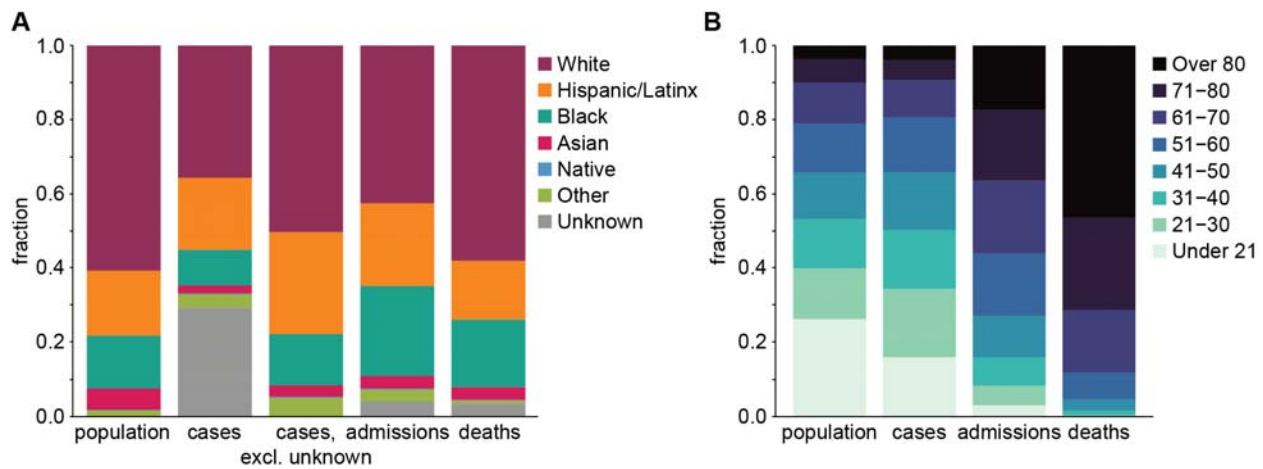
171 From March 1, 2020, to December 31, 2020, Illinois identified 906,647 cases of SARS-CoV-2
 172 infection among its residents, 18,558 of whom died from COVID-19 by February 10, 2021
 173 (Table 1).

	Cases		Admissions		Deaths	
TOTAL	1,045,373	-	57,461	-	18,558	-
Age	1,045,138	99.98%	57,455	99.99%	18,558	100.00%
Race OR Ethnicity	743,637	71.14%	55,111	95.91%	17,917	96.54%
Race	710,805	68.00%	54,358	94.60%	17,903	96.47%
Ethnicity	628,495	60.12%	50,833	88.46%	17,473	94.15%
Date*	906,647	86.73%	51,251	89.19%	18,550	99.96%
Date AND Age AND (Race OR Ethnicity)	641,701	61.38%	49,292	85.78%	17,911	96.51%

174 **Table 1.** Description of individual COVID-19 case data sample obtained from I-NEDSS on
 175 February 10, 2021, including all cases with specimen collection date between March 1 and
 176 December 31, 2020. *"Date" row cutoff – specimen collection: Dec 31, 2020, admission/death:
 177 Feb 10, 2021.

178

179 Compared to their share of the population, individuals of Hispanic/Latinx, Native American, or
180 “Other” race/ethnicity were overrepresented among Illinois COVID-19 cases (Figure 1A).
181 Hispanic/Latinx, Black, and Native American populations were hospitalized and died at higher
182 rates than their portion of overall state demographics, and Black people were overrepresented
183 among admitted cases relative to their share of all cases. The combination of a lower share of
184 cases but higher share of hospitalizations/deaths among Black people suggests either
185 increased susceptibility to severe disease, under-testing, or both, in this population.



186

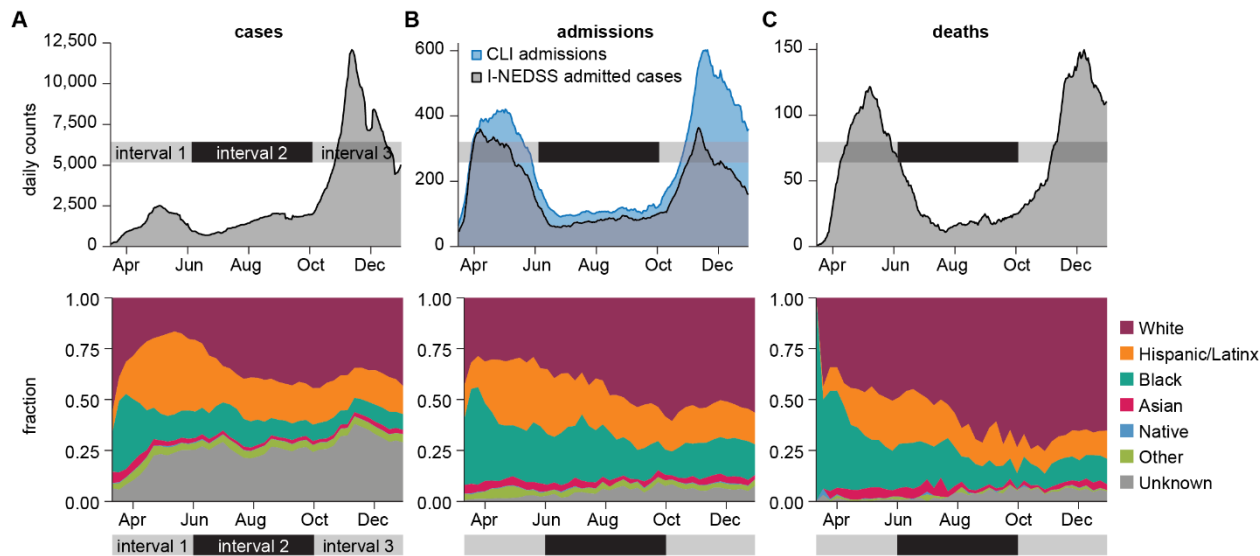
187 **Figure 1.** Demographics of cumulative COVID-19 cases, hospital admissions, and deaths in the
188 state of Illinois through December 31, 2020, by A) race and ethnicity and B) age group,
189 compared with the composition of the general population.

190

191 In Illinois, older adults and the elderly comprise a disproportionate share of admitted cases and
192 deaths, while cases are only slightly skewed toward older individuals (Figure 1B). The
193 overrepresentation of older adults among hospitalizations and deaths reflects the known
194 association between age and severe COVID-19. More than 40% of all confirmed COVID-19
195 deaths among cases detected in this period have been traced to clusters in skilled nursing,
196 rehabilitation, and long-term care facilities. Because the Hispanic/Latinx population is younger in
197 Illinois than the Black population, which is younger than the White population (Figure S1), age
198 effects should be accounted for when quantifying disparities in COVID-19 burden across racial
199 and ethnic groups. Elderly adults over 70 years old are more than 75% White, while younger
200 people under 40 are less than 60% White. Based on these patterns alone, we expect to see the
201 proportion of admissions and deaths that are White to be greater than the White proportion of
202 cases.

203 The COVID-19 epidemic in Illinois through December 31, 2020, can be divided into three
204 intervals: the initial outbreak and containment from March through the end of May, when
205 mitigations began to be lifted [15] (interval 1); a second period of lower transmission from June
206 to October (interval 2); and a third surge in cases beginning in October (interval 3) (Figure 2).
207 Interval 1 disproportionately impacted Black and Hispanic/Latinx residents, who comprised

208 roughly half of all cases, hospitalizations, and deaths from March to June. Throughout the
 209 epidemic, White individuals comprise a larger share of hospitalizations and deaths than of
 210 cases, suggesting a consistently higher fraction of severe disease among White cases. The
 211 elevated case fatality and case hospitalization ratios in the White population is consistent with
 212 their older age structure but could also be due to under-detection of milder COVID-19 cases in
 213 the younger white population.



214
 215 **Figure 2.** Changing racial and ethnic composition of COVID-19 cases, admissions, and deaths
 216 through three epidemic intervals. 7-day moving averages (top) and weekly fraction by
 217 race/ethnicity (bottom) are shown for each indicator from March 1 to December 31, 2020: A)
 218 cases B) admissions and C) deaths. COVID-like illness (CLI) admissions outnumber confirmed
 219 COVID-19 admissions in I-NEDSS.

220
 221 Data quality limits the scope of analysis on racial and ethnic disparities in COVID-19. Race and
 222 ethnicity were not available for 29.2% of all cases, 4.1% of hospital admissions, and 3.5% of
 223 confirmed deaths. Since the peak of interval 1 in late April, the weekly portion of cases without
 224 reported race/ethnicity has ranged from 25% to 45%. Compared to COVID-like illness (CLI)
 225 admission data from hospitals, admitted cases from I-NEDSS are much lower during interval 3
 226 and also lower during interval 1, suggesting limited completeness of this data field. The
 227 remaining analyses therefore focus on cases and deaths rather than admissions.

228 *Testing intensity by age and race/ethnicity*

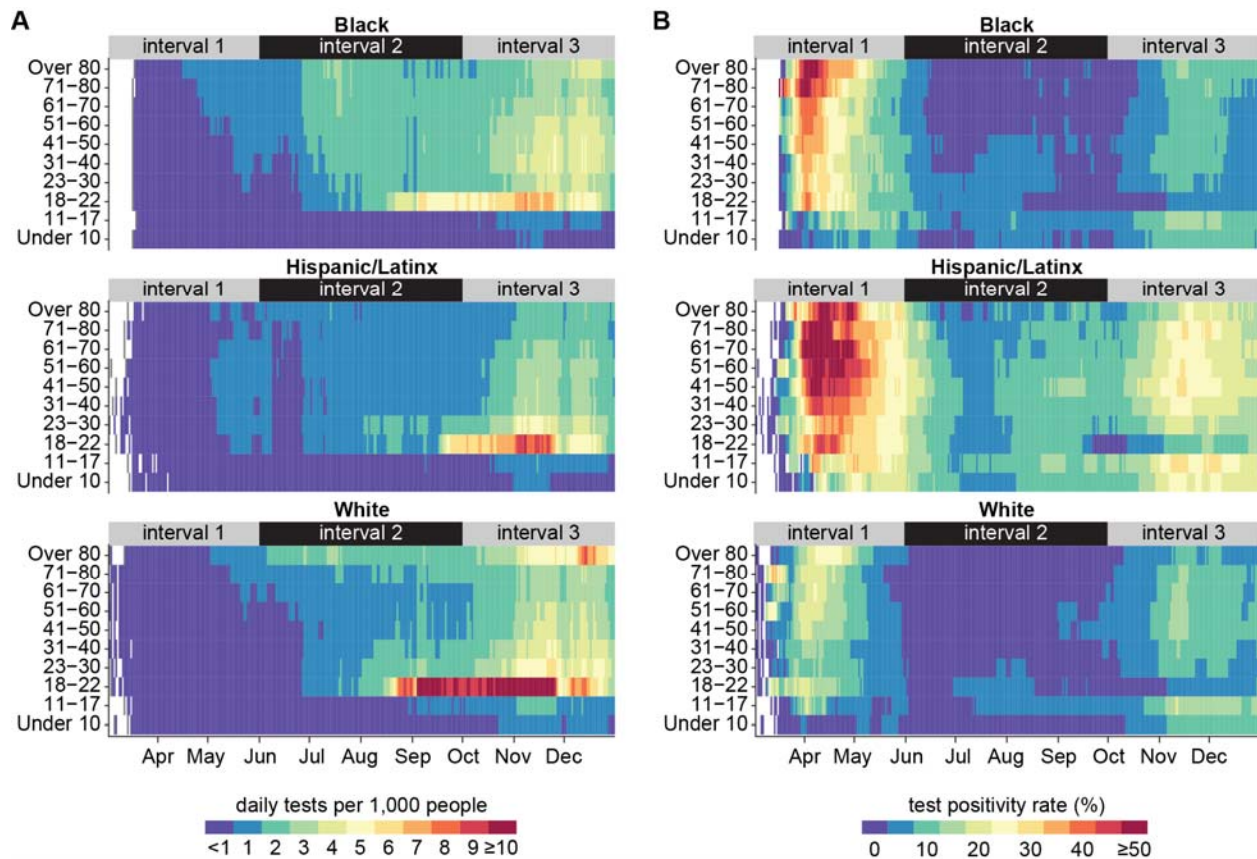
229 Illinois recorded 12,746,916 total tests and 1,131,284 positive results between March 3 and
 230 December 31, 2020, however race/ethnicity was not reported for more than 40% of the dataset
 231 (Table 2).

232
 233

	Total Tests		Positive Tests	
TOTAL	12,746,916	-	1,131,284	-
Age	12,671,596	99.41%	1,125,331	99.47%
Race/Ethnicity	7,143,080	56.04%	652,643	57.69%
Age AND Race/Ethnicity	7,109,855	55.78%	649,493	57.41%

234
 235 **Table 2.** Description of SARS-CoV-2 diagnostic testing data obtained from I-NEDSS on
 236 February 10, 2021, including total tests administered and positive test results between March 3
 237 and December 31, 2020.

238
 239 Reporting of COVID-19 cases relies on access to diagnostic testing, and differences in testing
 240 rates may contribute to differences in case counts. Testing was low for all groups during interval
 241 1, especially prior to May, just exceeding 1 per 1,000 per day in the elderly White population
 242 and among Black and Hispanic/Latinx adults (Figure 3A). Test positivity rates (TPR) for Black
 243 and Hispanic/Latinx populations were much higher than in the White population at this time
 244 (Figure 3B), suggesting relatively insufficient testing in Black and Hispanic/Latinx demographics
 245 despite their slightly higher rate of per capita testing [16]. TPR exceeded 35% in all
 246 Hispanic/Latinx populations over 11 and Black populations over 18 in interval 1, compared with
 247 peak values of around 20% in White.



248

249 **Figure 3.** Diagnostic testing intensity and test positivity rate by age and race/ethnicity through
250 December 31, 2020. A) 7-day moving average of tests administered per 1,000 population. B) 7-
251 day moving average of test positivity rate.

252 In May, testing began to expand among Hispanic/Latinx people over 17 years of age, Black
253 people over 22 years, and White people over 60 years, before dropping again for Black people
254 under 41 and Hispanic/Latinx people Under 81 in June. In early July, testing increased sharply
255 for Black adults, who had the highest per capita testing rates outside of the White people over
256 80. Testing rates for Hispanic/Latinx individuals did not increase as much despite this
257 demographic experiencing the highest caseload during interval 1 and continued high TPR
258 thereafter. During interval 2, test positivity rates remained around 5-10% for Hispanic/Latinx
259 populations, indicating continuous community transmission of SARS-CoV-2.

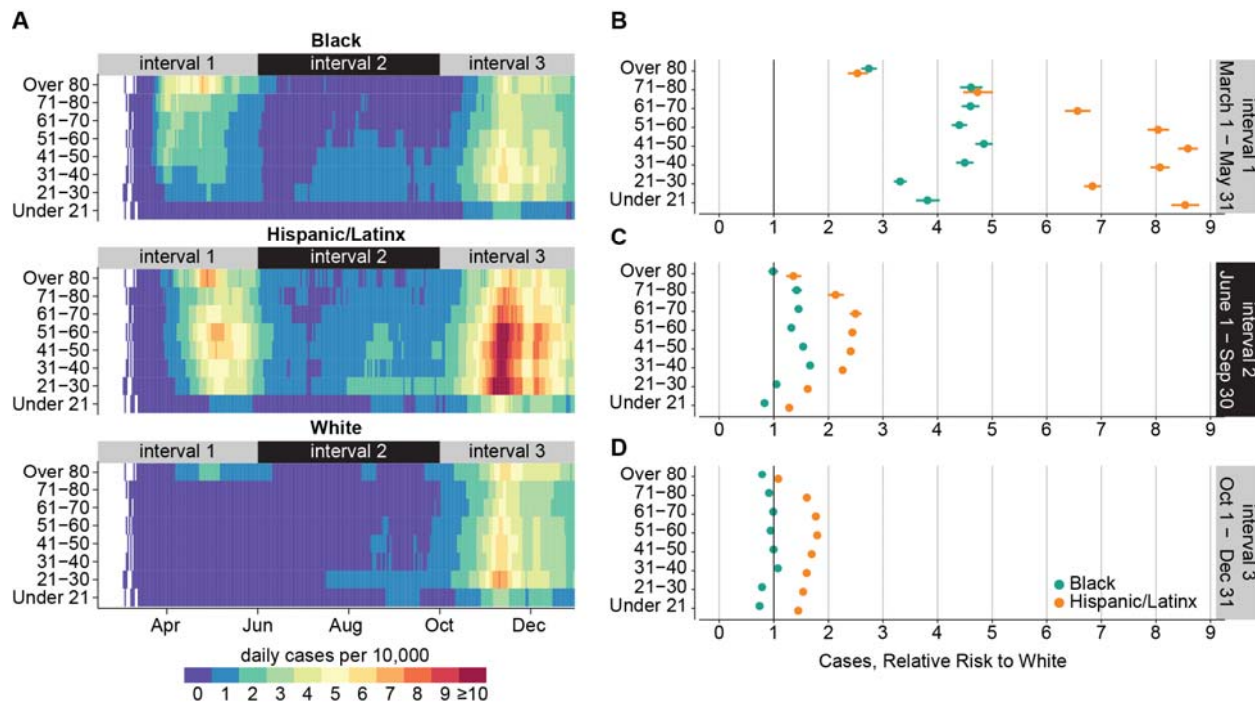
260 Testing rates rose rapidly for people ages 18-22 beginning in August, coinciding with the return
261 of students to college campuses where regular routine testing was implemented. The University
262 of Illinois at Urbana-Champaign, for example, was testing its entire on-campus population of
263 more than 25,000 people twice per week [17]. Daily testing rates increased to above 10 per
264 1,000 in for White people ages 18-22 and plateaued at 6 per 1,000 and 8 per 1,000 for Black
265 and Hispanic/Latinx people ages 18-22 respectively. The higher testing per capita in this age
266 group since September is reflected in their having the lowest test positivity rate (Figure 3B).

267 During interval 3, increases in per capita testing were accompanied by increases in TPR for all
268 demographics, indicating that growth in testing failed to keep pace with the growing epidemic. In
269 November, daily testing rates rose above 3 in 1,000 for adults in all three major racial and ethnic
270 groups except Hispanic/Latinx people over 70. Testing remained lowest in the Hispanic/Latinx
271 population, which was the only racial/ethnic group to see TPR rise above 20% and for some
272 ages, even above 30% during interval 3.

273 *Temporal trends in age-adjusted disparities in risk of a COVID-19 case*

274 The distribution of COVID-19 cases by age was not the same for the three largest racial and
275 ethnic groups in Illinois. Smoothed daily incidence by race/ethnicity and age group is shown in
276 Figure 4A. Incidence was highest for Hispanic/Latinx and Black people over 80, exceeding 7-8
277 per 10,000 per day between April and June, while rates remained below 3 in 10,000 for White
278 people the same age. Meanwhile, daily incidence remained below 1 per 10,000 for White
279 people under 80 years old, lower than for the rate for Black people over 20 and Hispanic-Latinx
280 people in any age group. Incidence in interval 1 was skewed toward the elderly in the White
281 population but less so for Black populations and much less so for Hispanic/Latinx populations.

282 During interval 1, the risk of a COVID-19 case was 2.5-5x greater for Black and 2.5-9x greater
283 for Hispanic/Latinx people compared to White people in the same age group (Figure 4B).
284 Relative risks were lowest in the elderly and increased for younger age groups. For all age
285 groups below 70, relative risks were higher for the Hispanic/Latinx population compared with
286 White than for the Black population compared with White.



287

288 **Figure 4.** Age-adjusted disparities in risk of COVID-19 case by race/ethnicity from March 1 to
 289 December 31, 2020. A) 7-day moving average of COVID-19 cases per 10,000 population, by
 290 age and race/ethnicity. B-D) Relative risk of COVID-19 case over three epidemic intervals.
 291 Horizontal lines indicate 95% confidence intervals.

292

293 Compared with interval 1, incidence was lower in interval 2 (Figure 4A). Cases in interval 2 in
 294 the White population were nearly absent and limited to young adults, especially after universities
 295 began to reopen in August. Hispanic/Latinx individuals continued to experience the highest case
 296 burden, with incidence above 1 per 10,000 per day for all age groups and above 2 per 100,000
 297 adults ages 21-60, from mid-July onward. In Black demographics, incidence was lower for older
 298 age groups, a reversal of the trend seen in the first interval.

299 Risk of a COVID-19 case in Black and Hispanic/Latinx populations relative to White also
 300 decreased in interval 2, although disparities persisted. Hispanic/Latinx individuals of all ages
 301 and Black individuals ages 31-80 were 1.5-2.5x more likely to experience a case of COVID-19
 302 than age-matched White individuals during interval 2 (Figure 4C).

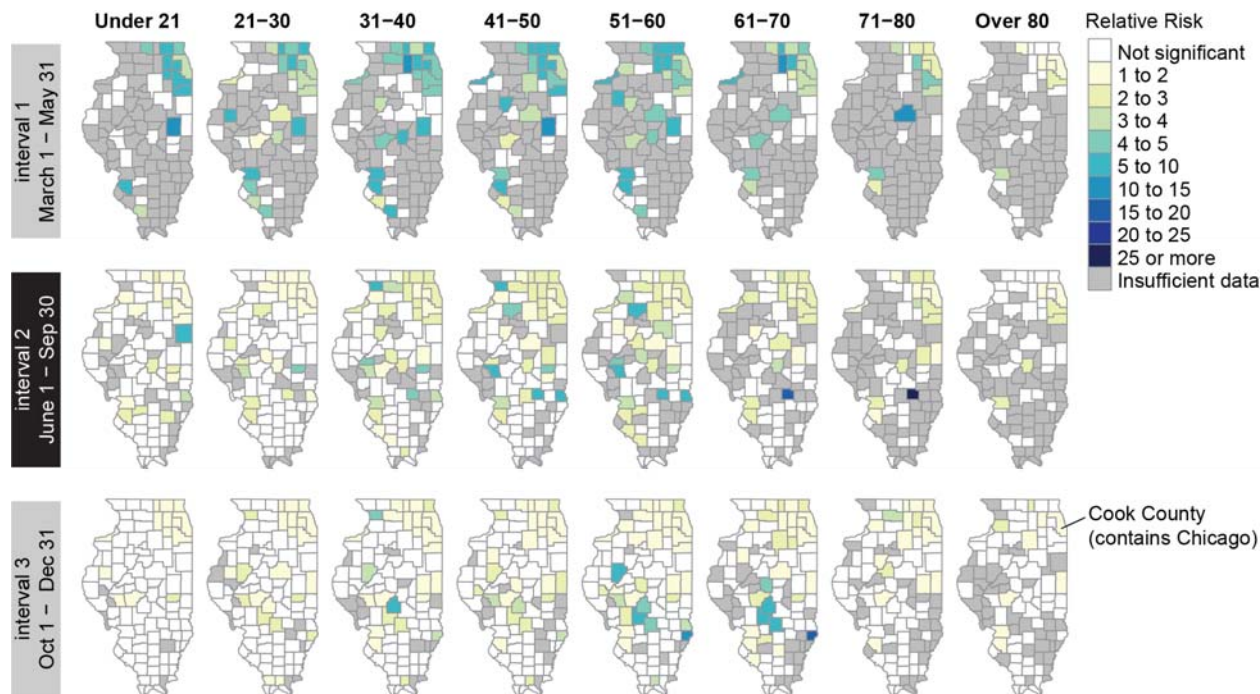
303 During interval 3, cases increased rapidly beginning in October and quickly exceeded peak
 304 numbers from interval 1 for most demographic groups. Compared with interval 1, cases in
 305 interval 3 were much younger. Daily incidence rose above 4 per 10,000 for all demographics
 306 older than 21. Black and White daily incidence was highest among adults under 50, rising above
 307 5 and 6 per 10,000 respectively. Case burden was especially heavy in the Hispanic/Latinx
 308 population, with daily incidence above 10 per 10,000 for working-age adults (ages 21-60). The
 309 relative risk of a COVID-19 case compared to White decreased for all demographics in interval

310 3: the risk of cases in Black demographics was equal to or lower than White, but risk remained
311 elevated for all Hispanic/Latinx demographics (Figure 4D).

312 *Temporal trends in county-level COVID-19 case disparities by age*

313 We assessed relative risk of a COVID-19 case in non-White vs White individuals at the county
314 level for each age group and each of the 3 epidemic intervals (Figure 5). When significant,
315 relative risk was always higher in the non-White than in the White population.

316



317

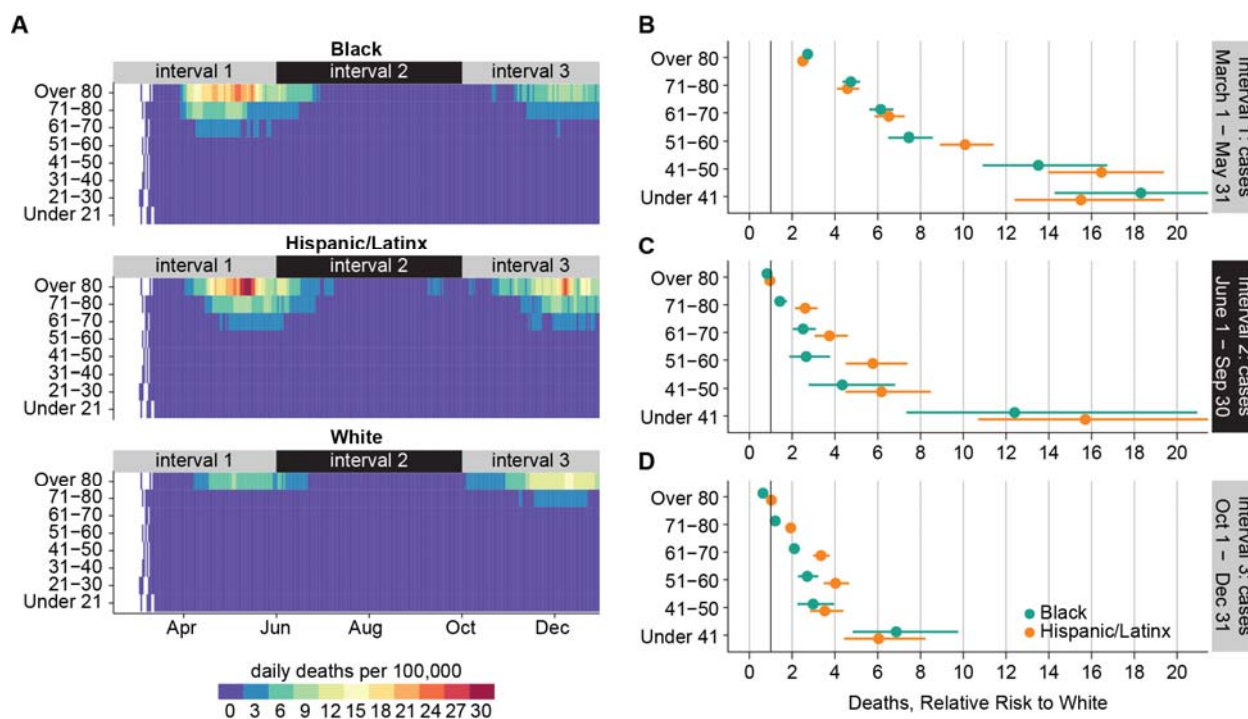
318 **Figure 5.** Relative risk of COVID-19 cases for non-White individuals compared with White
319 individuals, by county and age group, during each epidemic interval from March 1 to December
320 31, 2020. Color indicates x-fold increase in risk for non-White vs. White residents. Counties
321 colored white had relative risk that was not significantly different from 1 based on a 95% CI.
322 Relative risk was not calculated (gray) when a minimum of 10 non-White cases and 10 White
323 cases was not met.

324 Cases in interval 1 were primarily located in northeastern Illinois around Cook County, where
325 Chicago is located, and in southwestern counties across the border from St. Louis, Missouri.
326 Disparities were highest in the counties surrounding Cook County and in the southwest. During
327 intervals 2 and 3, the epidemic spread throughout the state, and the magnitude of disparities
328 decreased across age groups in most counties impacted during interval 1. However, relative risk
329 remained above 1 in the northeast counties for all age groups. In interval 3, disparities were
330 highest among working-age adults in several counties in south central Illinois.

331 *Temporal trends in age-adjusted disparities in risk of a COVID-19 death*

332 Black and Hispanic/Latinx people in Illinois died from COVID-19 at higher rates than White
 333 people in 2020 (Figure 6). Losses were particularly high among minority elders: cumulatively
 334 0.88% and 1.04% of Illinois' Black and Hispanic/Latinx populations over the age of 60 died from
 335 COVID-19 in 2020, compared to 0.54% of the White population over the age of 60.

336 Disparities in COVID-19 mortality were largest during interval 1. Throughout the epidemic, the
 337 daily per capita death rate remained below 3 per 100,000 for White people under 71. In interval
 338 1, death rates exceeded 3 per 100,000 for Hispanic/Latinx and Black people ages 61-70, 9 per
 339 100,000 for those ages 71-80, and 24 per 100,000 for those over 80. For one week in May, the
 340 death rate for Hispanic/Latinx people over 80 surpassed 30 per 100,000.



341
 342 **Figure 6.** Age-adjusted disparities in risk of COVID-19 death by race/ethnicity from March 1 to
 343 December 31, 2020. A) 7-day moving average of COVID-19 deaths per 100,000 population, by
 344 age and race/ethnicity. B-D) Relative risk of COVID-19 death over three epidemic intervals.
 345 Horizontal lines indicate 95% confidence intervals. Deaths are binned into intervals based on
 346 the date of case, and interval 3 is truncated to remove lagged deaths.

347
 348 COVID-19 mortality rates during interval 1 were greater in all Hispanic/Latinx and Black
 349 demographics than in White, and the relative risk of death increased with younger age (Figure
 350 6B). Relative risk of COVID-19 death in the Hispanic/Latinx population was significantly higher
 351 than in the Black population for the 51-60 age group but not significantly different in other
 352 groups. While the absolute risk of death was low for younger adults, Hispanic/Latinx and Black
 353 populations under 41 had mortality rates more than 12 times that of the White population during
 354 interval 1. Risk of COVID-19 death for Black and Hispanic/Latinx compared to White was 4-6

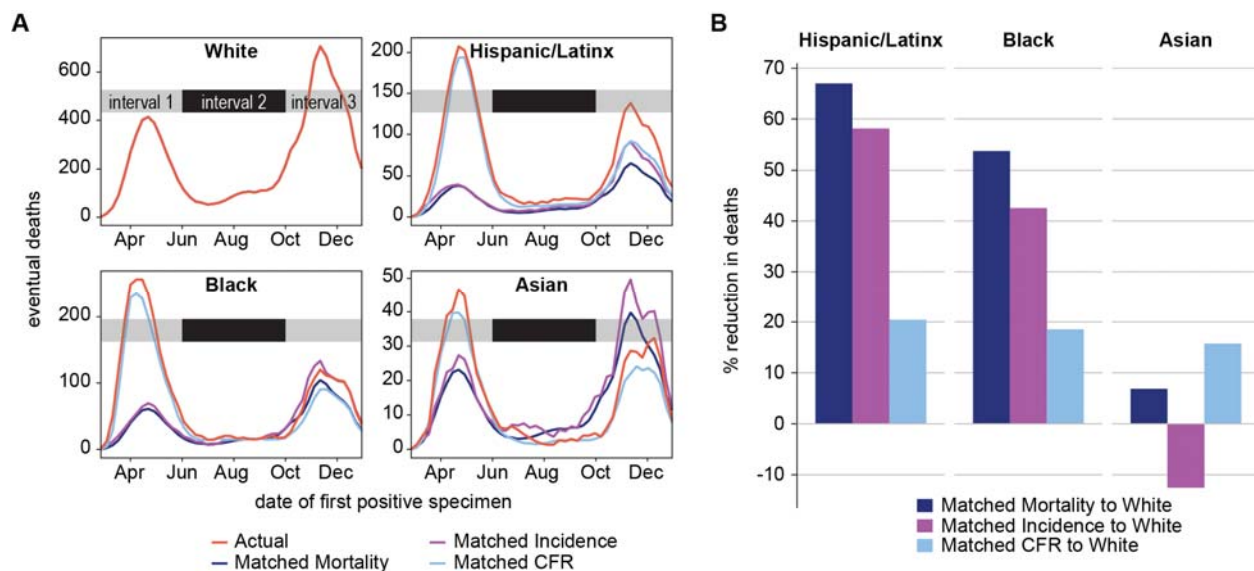
355 times higher for those 61-80 and 2 times higher for those over 80.

356

357 In interval 2, daily per capita death rates fell below 3 per 100,000 for all demographics except
 358 Hispanic/Latinx people over 80. Death rates began to rise again in early October during interval
 359 3. The daily death rate among Hispanic/Latinx people over 80 reached 27 per 100,000 in early
 360 December, and death rates were also higher for Hispanic/Latinx individuals 51-80 compared to
 361 Black and White populations. In December 2020, the daily death rate for the White over-80
 362 population rose above 15 per 100,000: the highest rate seen in this demographic in 2020. Death
 363 rates for Black people of all ages remained below 12 per 100,000 during interval 3.

364 The relative risk of COVID-19 death for Black and Hispanic/Latinx people compared to Whites
 365 fell during intervals 2 and 3 (Figure 6C, 6D), reaching 1 for the over-80 age group. Disparities
 366 persisted for ages below 70. At the end of 2020, relative risk of COVID-19 death compared to
 367 White for ages 51-80 remained significantly higher for Hispanic/Latinx individuals than for Black
 368 individuals the same age. Risk of COVID-19 death in individuals under 41 was still 5-10 times
 369 higher for Black and Hispanic/Latinx individuals than for White.

370 To investigate the drivers of disparities in COVID-19 mortality rate, we considered
 371 counterfactuals where minoritized populations experienced incidence, case fatality ratio (CFR),
 372 or mortality rate at the same level as White people (Figure 7A). All three counterfactuals
 373 reduced mortality for minoritized populations during interval 1, and counterfactual incidence
 374 reduced mortality more than did counterfactual CFR. This difference suggests that the
 375 disparities in COVID-19 mortality early in the epidemic were driven primarily by higher exposure
 376 of minoritized populations to SARS-CoV-2, rather than elevated risk of death given detected
 377 infection.



378

379 **Figure 7.** COVID-19 deaths attributable to differences in age-adjusted incidence, case fatality
 380 ratio, or both, between Asian, Black, and Hispanic/Latinx populations compared to White. A)
 381 Weekly actual and counterfactual deaths by date of first positive specimen. B) Cumulative
 382 percent reduction of deaths, counterfactual vs. actual deaths.

383

384 Starting in June for Asian and September for Black, counterfactual deaths predicted using White
385 incidence begin to exceed the actual deaths observed, reflecting an increased incidence in
386 White populations that outpaced incidence in Asian and Black demographics. Counterfactual
387 deaths remained less than actual deaths among Hispanic/Latinx people, regardless of
388 parameter substitution, indicating continued elevated exposure risk in this demographic.

389 Cumulatively, substituting age-matched White incidence without adjusting CFR reduced Black
390 deaths by 1,424 (42.5%) and Hispanic/Latinx deaths by 1,711 (58.1%) (Figure 7B). Substituting
391 White CFR without adjusting incidence only reduced deaths in these groups by 18-20%. For
392 Asians, substituting White case fatality ratio resulted in fewer deaths than have been reported,
393 although substituting White incidence had the opposite effect. Had they experienced the same
394 average per capita mortality rate as White demographics each week, 1,972 Hispanic/Latinx
395 people, 1,796 Black people, 44 Asian people, 16 Native people, and 79 people of “Other” race
396 would not have died of COVID-19 (Figure 7). By this approach, racial/ethnic disparities account
397 for 3,907 total lives lost to COVID-19 in Illinois in 2020.

398 Discussion

399 Minoritized groups experienced an outsized burden of COVID-19 morbidity and mortality in
400 Illinois during 2020, primarily due to differences in exposure risk. Black and Hispanic/Latinx
401 cases were distributed across age groups or concentrated in working age adults throughout
402 2020, while White cases were concentrated in the elderly in early 2020 and in young adults in
403 mid-2020. Although racial disparities in Illinois lessened following the initial epidemic interval
404 from March through May 2020, Hispanic/Latinx and Black individuals remained significantly
405 more likely to die of COVID-19 through the end of the year in all but the oldest age groups.
406 Given the unknown bias in surveillance quality with respect to cases and TPR as well as the
407 lack of robust hospitalization data, confirmed COVID-19 deaths are the most robust primary
408 outcome to capture the evolution of racial/ethnic disparities in Illinois in the period being studied.

409 If incidence becomes more equitable, structural racism can still cause differences in case fatality
410 and contribute to more deaths among minoritized populations. One consequence of residential
411 segregation is variable access to high-quality care, preventive interventions, and accurate
412 information [18]. This combined with racial-occupational disparities in health insurance and
413 worker’s compensation claim payouts [19] could lead to delays in care and worse outcomes. It
414 is also possible that extant disparities in certain comorbid conditions like diabetes and
415 hypertension [20]-[21] or biased treatment [22] contribute to poorer prognosis for hospitalized
416 Black and Hispanic/Latinx COVID-19 patients. The convergence of COVID-19 incidence and
417 mortality rate in the elderly population for all three racial and ethnic groups in late 2020 suggests
418 that infection fatality rates are likely to be similar across the groups and that prevalence of
419 comorbidities may play only a minor role in explaining disparities in COVID-19 deaths. Our
420 finding that disparities in COVID-19 burden were primarily driven by differences in exposure
421 rather than differences in case fatality rate, similar to what was found in Michigan in early 2020

422 [23], underscores the importance of providing access to and support for COVID-19 prevention in
423 minoritized communities.

424 The low quality of data on hospitalizations in I-NEDSS did not permit analysis of racial and
425 ethnic disparities in incidence of severe COVID-19 infection. Therefore, we could not distinguish
426 between various drivers of case fatality such as access to care, quality of care, and disease
427 severity. An analysis of COVID-19 outcomes from a health system in California, Oregon, and
428 Washington found increased odds of testing positive and hospitalization for all minoritized
429 races/ethnicities, though only Hispanic/Latinx ethnicity was associated with in-hospital mortality,
430 attributed to delays in accessing care [24].

431 We have presented evidence of racial and ethnic disparities in diagnostic testing rates, detected
432 cases, hospital admissions, and confirmed deaths, but our ability to accurately capture the many
433 possible contributions of structural racism to COVID-19 disparities is limited by the data
434 available. Case detection rates were biased by testing patterns and symptom severity,
435 especially early in the epidemic when access to diagnostic testing was very limited. Reason for
436 testing was not systematically reported, obfuscating the interpretation of testing rates and TPR
437 between epidemic intervals and demographic groups with different rates of routine
438 (asymptomatic) testing. In 2020, routine diagnostic testing was conducted in congregate
439 settings such as university communities and among long-term care facility residents and staff. It
440 is possible that different demographic groups were subject to routine testing at different rates
441 and thus routine testing would differentially affect demographic-specific TPR and cases.
442 However, we show that high relative risk of COVID-19 cases among working-age
443 Hispanic/Latinx and Black adults from March to May 2020 was not due to a higher case
444 detection rate in these populations. At the end of 2020, Hispanic/Latinx people of all ages in
445 Illinois remained over-burdened by, and under-tested for, COVID-19 relative to non-Hispanic
446 Whites.

447 Per capita case and death rates were calculated using estimates from the American Community
448 Survey, which includes only the civilian non-institutionalized population. State and county-level
449 disparities may be skewed by cases among incarcerated/detained people, residents of
450 developmental and long-term care facilities, undocumented immigrants, and active-duty military
451 members as these groups are excluded from ACS population estimates.

452 Demographic information was provided to I-NEDSS from various mandated reporters and was
453 not reliably collected in the same way for all patients. Ethnicity was missing for nearly 40% of
454 cases, raising concern for under-counting of cases and deaths as Hispanic/Latinx in this
455 dataset. 43.9% of tests, 29.2% of cases, and 3.5% of deaths were missing both race and
456 ethnicity. Cases with and without race/ethnicity did not differ significantly in their age
457 distributions, nor in the majority race of their home ZIP code populations, suggesting that the
458 missing race/ethnicity data may not be systematically biased at the state level (Supp Figure 2),
459 suggesting that the analyses shown in this study are representative of true trends across Illinois.
460 Analyses presented in this paper assumed non-Hispanic/Latinx ethnicity for all cases of
461 unknown ethnicity. A sensitivity analysis (Figure S3) found that this assumption leads to more

462 conservative relative risk estimates – exclusion of cases with unknown ethnicity gives higher
463 relative risk estimates than those presented.

464 As this pandemic progressed, two major state and local government-led responses called for
465 embedding equity into COVID-19: the IDPH COVID-19 Equity Team and the Chicago Mayor's
466 Racial Equity Rapid Response Team. These initiatives were data-driven, community partnered
467 teams assembled by the Illinois Governor, IDPH, and the Chicago Mayor to address and
468 mitigate COVID-19 illness and death in Black and Brown communities across Illinois. The
469 overarching goals of both initiatives were not only to reduce infection and mortality COVID-19
470 disparities but also to build the groundwork for future work to address the longstanding systemic
471 inequities in Illinois' communities of color.

472
473 Race and ethnicity are socially constructed, and the demographic stratifications employed in this
474 study are commonly used categories that do not necessarily reflect shared experiences or
475 circumstances. Race itself is not a biological risk factor: rather, racial health disparities are the
476 result of generations of structural racism and barriers to health care access, and many possible
477 drivers of disparities have been proposed. Evaluating the extent to which exposure, rather than
478 case fatality ratio, has driven disparities in COVID-19 requires a systematic exploration of the
479 mechanisms by which structural racism drives the behavioral, economic, social, and health
480 factors that kill minoritized populations during a global pandemic. Describing trends in COVID-
481 19 disparities thus far can help identify populations to monitor for long-term implications of
482 disparate COVID-19 burden and inform future epidemic responses that center underserved and
483 over-burdened Black and Hispanic/Latinx communities.

484 Future studies can build upon this work by probing the specific structural drivers of racial/ethnic
485 disparities at high spatial resolution, such as neighborhood-level social vulnerability or
486 environmental justice indices. Our analyses include only cases detected through the end of
487 2020, before vaccines that protect against COVID-19 were widely available. A similar
488 investigation of disparities in later months is needed to understand how vaccination uptake
489 affected the epidemic in different communities.

490 **Conclusions**

491 During the first epidemic wave in March to May 2020, Black and Hispanic/Latinx populations
492 were 2.5-5 times and 2.5-8.5 times more likely to experience a COVID-19 case, respectively,
493 and 2-18 times more likely to die of COVID-19, compared to age-matched White populations.
494 Racial and ethnic disparities in COVID-19 deaths were driven primarily by higher risk of
495 exposure for minoritized populations, which can be explained by underlying structural racism.

496

497 **List of abbreviations**

498 ACS: American Community Survey; CFR: case fatality ratio; CLI: COVID-like illness; IDPH:
499 Illinois Department of Public Health; I-NEDSS: Illinois's National Electronic Disease Surveillance
500 System; TPR: test positivity rate

501 **Declarations**

502 *Ethics approval and consent to participate*

503 This study was carried out as part of a Medical Study “Modeling COVID-19 Epidemiologic Trend
504 and Health Care Impact in Illinois” declared by IDPH on March 23, 2020. All data collection was
505 performed by IDPH as part of routine surveillance for COVID-19 and was deidentified prior to
506 analysis. The Northwestern University Institutional Review Board has ruled that this study does
507 not constitute human subjects research.

508 *Consent for publication*

509 Not applicable

510 *Availability of data and materials*

511 The I-NEDSS and testing by age and race/ethnicity datasets analyzed in this study were used
512 under license for the current study, and so are not publicly available. Restrictions apply to the
513 availability of these data, which contain identifiable private health information. Interested parties
514 should contact IDPH to inquire about access. Public data on cases and testing are available
515 from IDPH (<https://www.dph.illinois.gov/covid19/covid19-statistics>).

516 *Competing interests*

517 The authors declare that they have no competing interests.

518 *Funding*

519 TMH was supported by a grant from NIGMS (T32 GM008152). The funders had no role in the
520 design of the study and collection, analysis, and interpretation of data or in writing the
521 manuscript.

522 *Authors' contributions*

523 TMH and JG conceived the project. TMH completed all analyses. TMH and JG wrote the initial
524 draft. All authors revised and approved the final manuscript.

525 *Acknowledgements*

526 We thank Stacey Hoferka Jensen, Dejan Jovanov, and Sara Rogers for data extraction and
527 preparation from I-NEDSS, and Kiarri Kershaw and Mercedes Carnethon for helpful
528 discussions. We thank Kemba Noel-London for helpful comments on the manuscript.

529 **References**

530 1. Dong E, Du H, Gardner L. An interactive web-based dashboard to track COVID-19 in real
531 time. *Lancet Inf Dis.* 20(5):533-534.

- 532 2. Centers for Disease Control and Prevention. COVID-19 Racial and Ethnic Health Disparities
533 [cited 2021 Feb 25]. Available from: [https://www.cdc.gov/coronavirus/2019-](https://www.cdc.gov/coronavirus/2019-ncov/community/health-equity/racial-ethnic-disparities/)
534 [ncov/community/health-equity/racial-ethnic-disparities/](https://www.cdc.gov/coronavirus/2019-ncov/community/health-equity/racial-ethnic-disparities/)
- 535 3. Yearby R, Mohapatra S. Law, structural racism, and the COVID-19 pandemic. *J. Law Biosci.*
536 7, Isaa036 (2020).
- 537 4. Trent M, Dooley DG, Dougé J. Section On Adolescent Health, Council On Community
538 Pediatrics, and Committee On Adolescence. The impact of racism on child and adolescent
539 health. *Pediatrics.* 2019;144(2):e20191765.
- 540 5. Williams DR, Lawrence J, Davis B. Racism and health: evidence and needed research.
541 *Annual Review of Public Health.* 2019;40:105-125.
- 542 6. E. Abuelgasim E, Saw LJ, Shirke M, Zeinah M, Harky A. COVID-19: unique public health
543 issues facing Black, Asian, and minority ethnic communities. *Curr. Probl. Cardiol.*
544 2020;45:100621
- 545 7. U.S. Census Bureau. 2019 Population Estimates by Age, Sex, Race and Hispanic Origin:
546 Table CC-EST2019-ALLDATA [cited 2020 Dec 17]; Available from:
547 <https://www.census.gov/newsroom/press-kits/2020/population-estimates-detailed.html>
- 548 8. Chang S, Pierson E, Koh PW, et al. Mobility network models of COVID-19 explain inequities
549 and inform reopening. *Nature* 589, 82–87 (2021).
- 550 9. Executive Order 2020-10 [cited 2021 Feb 24]. Available from:
551 <https://www2.illinois.gov/Pages/Executive-Orders/ExecutiveOrder2020-10.aspx>
- 552 10. Chicago Metropolitan Agency for Planning. Metropolitan Chicago’s essential workers
553 disproportionately low-income, people of color. 2020 Apr. Available from:
554 [https://www.cmap.illinois.gov/updates/all/-](https://www.cmap.illinois.gov/updates/all/-/asset_publisher/UIMfSLnFfMB6/content/metropolitan-chicago-s-essential-workers-disproportionately-low-income-people-of-color)
555 [/asset_publisher/UIMfSLnFfMB6/content/metropolitan-chicago-s-essential-workers-](https://www.cmap.illinois.gov/updates/all/-/asset_publisher/UIMfSLnFfMB6/content/metropolitan-chicago-s-essential-workers-disproportionately-low-income-people-of-color)
556 [disproportionately-low-income-people-of-color](https://www.cmap.illinois.gov/updates/all/-/asset_publisher/UIMfSLnFfMB6/content/metropolitan-chicago-s-essential-workers-disproportionately-low-income-people-of-color)
- 557 11. US Census Bureau. 2018 American Community Survey 1-Year Estimates: Table
558 B24010(B,I). [cited 2021 Apr 13]. Generated from: <https://data.census.gov/cedsci>
- 559 12. Gee G, Kravitz D. Confidential coronavirus outbreak data shows undisclosed incidents at
560 prisons, workplaces, schools, meatpacking plants across Illinois [cited 2021 Feb 15].
561 Midwest Center for Investigative Reporting. 2020 Oct 07. Available from:
562 [https://investigatemitwest.org/2020/10/07/confidential-coronavirus-outbreak-data-shows-](https://investigatemitwest.org/2020/10/07/confidential-coronavirus-outbreak-data-shows-undisclosed-incidents-at-prisons-workplaces-schools-meatpacking-plants-across-illinois/)
563 [undisclosed-incidents-at-prisons-workplaces-schools-meatpacking-plants-across-illinois/](https://investigatemitwest.org/2020/10/07/confidential-coronavirus-outbreak-data-shows-undisclosed-incidents-at-prisons-workplaces-schools-meatpacking-plants-across-illinois/)
- 564 13. Reinhart E, Chen DL. Incarceration and its disseminations: COVID-19 pandemic lessons
565 from Chicago’s cook county jail,” *Health Affairs.* 2020;39:1412–1418.
- 566 14. US Census Bureau. 2018 American Community Survey 1-Year Estimates: Table B01001(A-
567 I). [cited 2021 Apr 13]. Generated from: <https://data.census.gov/cedsci>
- 568 15. N. Husain et al., “Illinois coronavirus phase 4 guide: Here’s what to know,” *Chicago Tribune,*
569 *Chicago Tribune,* Jun. 22, 2020.
- 570 16. Holden TM, Richardson RAK, Arevalo P, et al. Geographic and demographic heterogeneity
571 of SARS-CoV-2 diagnostic testing in Illinois, USA, March to December 2020. *BMC Public*
572 *Health* 21, 1105 (2021)
- 573 17. University of Illinois. On-campus COVID-19 testing [cited 2021 Feb 25]. Available from:
574 <https://covid19.illinois.edu/health-and-support/on-campus-covid-19-testing/>
- 575 18. Pirtle WNL. Racial Capitalism: A Fundamental Cause of Novel Coronavirus (COVID-19)
576 Pandemic Inequities in the United States. *Health Education & Behavior* 47(4):504–508.
577 (2020)

- 578 19. McClure ES, Vasudevan P, Bailey Z, Patel S, Robinson WR. Racial Capitalism Within Public
579 Health-How Occupational Settings Drive COVID-19 Disparities. *Am J Epidemiol.* 2020 Nov
580 2;189(11):1244-1253.
- 581 20. Yancy CW. COVID-19 and African Americans. *JAMA.* 2020;323(19):1891–1892.
- 582 21. Jansen T, Aguayo L, Whitacre J, Bobitt J, Payne L, Schwingel A. Diabetes Disparities In
583 Illinois. *Prev Chronic Dis.* 2019;16:E19. Published 2019 Feb 14.
- 584 22. Sjoding, M. W., Dickson, R. P., Iwashyna, T. J., Gay, S. E. & Valley, T. S. Racial bias in
585 pulse oximetry measurement. *N. Engl. J. Med.* 383, 2477–2478 (2020).
- 586 23. Zelner J et al. Racial disparities in coronavirus disease 2019 (COVID-19) mortality are
587 driven by unequal infection risks. *Clin. Infect. Dis.* 2021 Mar 1.
- 588 24. Dai CL, Kornilov SA, Hadlock JJ, et al. Characteristics and factors associated with
589 coronavirus disease 2019 infection, hospitalization, and mortality across race and ethnicity.
590 *Clin. Infect. Dis.* 2021 Feb 20.

591