

1 Evaluation of the Access Bio CareStart™ rapid SARS-CoV-2 antigen test in asymptomatic
2 individuals tested at a community mass-testing program in Western Massachusetts

3

4 **Authors:**

5 Sara Suliman^{1*#}, Wilfredo R. Matias^{2*}, Isabel R Fulcher^{3,4}, Francisco J. Molano^{5,6}, Shannon
6 Collins⁵, Elizabeth Uceta⁵, Jack Zhu⁵, Ryan M. Paxton⁷, Sean F. Gonsalves⁷, Maegan V. Harden⁸,
7 Marissa Fisher⁸, Jim Meldrim⁸, Stacey Gabriel⁸, Molly F. Franke³, Deborah T. Hung⁸, Sandra C.
8 Smole⁹, Lawrence C. Madoff⁹, Louise C. Ivers^{3,5}

9

10 ¹Division of Rheumatology, Inflammation and Immunity, Brigham and Women’s Hospital, Harvard
11 Medical School, Boston, MA, USA

12 ²Department of Medicine, Brigham and Women's Hospital, Boston, MA, USA

13 ³Department of Global Health and Social Medicine, Harvard Medical School, 641 Huntington
14 Avenue, Boston, MA 02115, USA

15 ⁴Harvard Data Science Initiative, Cambridge, MA, USA

16 ⁵Center for Global Health, Massachusetts General Hospital, Boston, MA, USA

17 ⁶Faculty of Medicine, University of Antioquia, Medellín, Antioquia, Colombia

18 ⁷Board of Health, City of Holyoke, Holyoke, MA, USA

19 ⁸Broad Institute of MIT and Harvard, 415 Main St. Cambridge, MA

20 ⁹Massachusetts Department of Public Health, Jamaica Plain, MA, USA

21

22 *Contributed equally

23

24

25

26 **#Corresponding Author:** Sara Suliman, MPH, PhD., Division of Rheumatology, Inflammation
27 and Immunity, Brigham and Women's Hospital, Boston MA Email: ssuliman1@bwh.harvard.edu

28 **Running title:** Performance of CareStart™ SARS-CoV-2 rapid antigen test

29

30 **Word Count:** 3,383

31 **Key words:** COVID-19; Rapid antigen test; SARS-CoV-2; CareStart™; asymptomatic

32 **Abstract (200 words)**

33 **Background:** Point-of-care antigen-detecting rapid diagnostic tests (RDTs) for Severe Acute
34 Respiratory Syndrome Coronavirus 2 (SARS-CoV-2) represent a scalable tool for SARS-CoV-2
35 infections surveillance. Data on their performance in real-world community settings is paramount
36 for their implementation.

37 **Method:** We evaluated the accuracy of CareStart™ COVID-19 Antigen test (CareStart) in a
38 testing site in Holyoke, Massachusetts. We compared CareStart to a SARS-CoV-2 reverse
39 transcriptase quantitative polymerase chain reaction (RT-qPCR) reference, using anterior nasal
40 swab samples. We calculated the sensitivity, specificity, and expected positive and negative
41 predictive values at different SARS-CoV-2 prevalence estimates.

42 **Results:** We performed 666 tests on 591 unique individuals. 573 (86%) were asymptomatic.
43 There were 52 positive tests by RT-qPCR. The sensitivity of CareStart was 49.0% (95%
44 Confidence Interval (CI): 34.8 – 63.4) and specificity was 99.5% (95% CI: 98.5 – 99.9). Among
45 positive RT-qPCR tests, the median cycle threshold (Ct) was significantly lower in samples that
46 tested positive on CareStart. Using a $Ct \leq 30$ as a benchmark for positivity increased the sensitivity
47 to 64.9% (95% CI: 47.5 – 79.8).

48 **Conclusions:** CareStart has a high specificity and moderate sensitivity. The utility of RDTs, such
49 as CareStart, in mass implementation should prioritize use cases in which a higher specificity is
50 more important.

51

52 **Introduction**

53 The Coronavirus disease 2019 (COVID-19) pandemic caused by the Severe Acute
54 Respiratory Syndrome Coronavirus 2 (SARS-CoV-2) is the most significant infectious disease
55 pandemic in the last century (1, 2). In addition to preventive measures such as social distancing,
56 mask wearing, and vaccination, pillars of pandemic control rely on tools to rapidly identify cases
57 and monitor transmission (3). Molecular testing methods based on reverse transcription
58 quantitative polymerase chain reactions (RT-qPCR) remain the backbone of many testing
59 programs globally (4). However, RT-qPCR-based testing is heavily influenced by supply chain
60 restrictions, need for trained personnel and central laboratories, and relatively long turnaround
61 times, particularly in resource-constrained settings (5). Therefore, it is still challenging to scale up
62 RT-qPCR tests for population surveillance and the timely detection of the large proportion of
63 asymptomatic SARS-CoV-2-infected carriers (6). Rapid detection of SARS-CoV-2 infected
64 individuals allows for faster clinical intervention and implementation of public health measures
65 such as isolation and contact-tracing, to prevent forward transmission (7).

66 Rapid antigen-detecting diagnostic tests (RDTs) for COVID-19, many of which can yield
67 actionable results in turnaround times often below 20 minutes, require little laboratory capacity,
68 and can be performed easily by non-laboratory personnel (8). Furthermore, decentralized access
69 to RT-qPCR testing remains sparse in resource-constrained communities (9). The low cost of
70 antigen-detecting RDTs, short turnaround times and ease of use make them excellent candidates
71 to increase their accessibility for large-scale implementation in varied community settings (10).

72 Since the pandemic's onset, several antigen-detecting RDTs have been developed for the
73 detection of SARS-CoV-2 (11). Many of the antigen-detecting RDTs received Emergency Use
74 Authorization (EUA) approvals by the Food and Drug Administration (FDA) (12). However,
75 evaluations to receive EUA were performed by demonstrating accuracy in symptomatic
76 individuals only (13). This narrow indication for antigen-detecting RDTs raises their limited utility

77 in detecting SARS-CoV-2 infection in asymptomatic carriers. In fact, several independent
78 evaluations demonstrate the decreased sensitivity of antigen-detecting RDTs in asymptomatic
79 RT-qPCR positive individuals compared to those with symptoms (14-17). In the United States,
80 studies thus far have focused on 3 RDTs: Quidel Sofia™ (8, 18), BD Veritor™ (13, 19) and Abbott
81 BinaxNOW™ (15, 16, 20). On March 31st, 2021, the FDA also authorized these tests for home
82 use, raising concerns about misinterpretation of false negative results (21). Therefore, evidence
83 to establish their performance characteristics to guide their implementation in real-world settings
84 is even more urgent now.

85 In this study, we evaluated the Access Bio CareStart™ COVID-19 RDT (CareStart), a
86 chromatographic antigen-detecting lateral flow immunoassay that received EUA by the FDA (12,
87 17). We evaluated CareStart in asymptomatic and mildly symptomatic individuals presenting for
88 routine testing at one of the ‘Stop the Spread’ free community testing sites in Holyoke,
89 Massachusetts. Public health messaging for testing at these community testing sites targeted
90 asymptomatic individuals. We evaluate the sensitivity, specificity, and positive (PPV) and negative
91 predictive values (NPV) as a function of different prevalence scenarios.

92

93

94 **Methods**

95 *Study Population and Ethical Approval*

96 This was a prospective evaluation using convenience sampling of asymptomatic and mildly
97 symptomatic individuals presenting for routine testing for COVID-19. The study was performed
98 between January 6 and February 26, 2021, at the Holyoke “Stop the Spread” walk-up testing site,
99 a free Massachusetts public testing program, which targets asymptomatic individuals
100 (<https://www.transformativehc.com/stopthespread.html>). The testing site was open three days a
101 week. Individuals who presented to the site during testing hours were approached by our research

102 staff who explained the nature of the study, risks, benefits, and answered any questions before
103 inviting individuals to participate in the study. Verbal consent was obtained from participants to
104 collect a second anterior nasal swab as well as from guardians of minors below 18 years of age,
105 from whom verbal assent was also obtained. The participants were treated in accordance with
106 Good Clinical Practice guidelines and the Declaration of Helsinki. The study protocol was
107 approved by the Partners Institutional Review Board (Protocol ID: 2020P003892).

108

109 *Study intake and data collection*

110 After enrollment in the study, our study staff implemented an intake questionnaire capturing
111 information on participant demographics, presence or absence of symptoms based on case
112 definitions from the Council for State and Territorial Epidemiologists (22): cough, sore throat,
113 chills, shortness of breath, fever, muscle aches or soreness, nausea, vomiting or diarrhea,
114 decreased sense of smell or taste, loss of appetite, general weakness or fatigue, or headaches.
115 The survey also captured prior COVID-19 testing and potential exposures. Each test was
116 assigned a unique anonymous ID. Data collected was inputted into a secure Research Electronic
117 Data Capture (REDCap) database on encrypted tablets. We used the demographic information
118 and specimen numbers to match the RDTs result with the RT-qPCR data collected at the Broad
119 Institute Clinical Research Sequencing Platform (CRSP) as performed in other studies (15, 23).

120

121 *Swab collection procedure*

122 The sample was collected by trained personnel at the city testing site. We used dry anterior nasal
123 (AN) swabs: Puritan 6" Sterile Standard Foam Swab with Polystyrene Handle (Puritan, Guilford).
124 Both anterior nares were swabbed 2 times (5 rotations in each nostril), once for RT-qPCR testing
125 and once for the RDT sample. For practical reasons, the swabs for RT-qPCR and RDT were not
126 always collected in the same order. Both samples were placed inside closed test tubes. The RT-

127 qPCR sample was transported to the Broad Institute at the Massachusetts Institute of Technology.
128 The second anterior nasal swab sample was transported to a nearby testing station and the RDT
129 was performed within an hour of sample collection. The RT-qPCR testing results were interpreted
130 according to the publicly available rubric for the Broad Institute COVID-19 testing program:
131 <https://sites.broadinstitute.org/safe-for-school/result-code-information>.

132

133 *Rapid test procedure*

134 The CareStart device came with instructions for use and diagrams. The study staff received a
135 one-hour training prior to the study and practiced the RDT on positive and negative control
136 samples provided in the kit. One operator performed the test at a workstation following the
137 CareStart manufacturer's instructions for use (IFU) (24), took pictures of the tests, read the result
138 as positive or negative, and captured into the electronic data entry forms. Participants with a
139 positive RDT were contacted by phone per request from the Department of Public Health within
140 a twenty-four-hour period, informed of their result, and advised to isolate until they received their
141 RT-qPCR result.

142

143 *Reference RT-qPCR standard*

144 The gold standard reference used was the SARS-CoV-2 RT-qPCR laboratory developed test
145 through the Broad Institute CRSP, which is approved by the FDA under EUA. The test provides
146 two cycle threshold (Ct) values, one for the nucleocapsid (N2) gene, and one for an internal
147 positive control RNaseP gene. We compared the sensitivity of CareStart against both the
148 qualitative binary RT-qPCR results and the Ct values of the N2 gene amplification reaction, as
149 previously described (17).

150

151 *Statistical analyses*

152 We calculated sensitivity, specificity, PPV and NPV of the RDT from 2 x 2 contingency tables
153 using RT-qPCR as the gold standard reference. Tests with undetermined CareStart or RT-qPCR
154 results were excluded from these calculations (n=35; 5.2% of all tests). Sensitivity and specificity
155 were further stratified and compared by presence of symptoms and quantitative Ct values. Median
156 Ct values were compared using the non-parametric unpaired Mann-Whitney *U* test. 95% Pearson-
157 Clopper confidence intervals (CI) were calculated for sensitivity and specificity estimates. Since
158 RDTs have been reported to have high accuracy among symptomatic individuals (8, 15-17), we
159 also tested whether presence of symptoms would increase the sensitivity of the CareStart RDT.
160 Statistical analyses were conducted using R V3.6.0 (R Core Team 2020).

161

162 **Results**

163 We performed 666 CareStart RDTs from participants who provided verbal consent at the walk-up
164 testing site (**Table 1 and Figure 1**). The 666 tests performed were comprised of 591 unique
165 participants with 60 participants by chance receiving more than one test, with a total of 75 tests
166 performed in addition to the first test per participant (**Supplementary Table 1**). Among the 591
167 participants, 47.9% were residents from Holyoke, as identified by their residential zip codes. Just
168 over half the participants (51.9%) identified as female. The mean age was 38.1, and 44.7% of
169 participants identified as Hispanic or LatinX (**Table 1A**). Among Holyoke participants, 58.7%
170 identified as Hispanic or LatinX (**Supplementary Table 2**), in line with the reported demographics
171 by the American Community Survey for 2019, which shows that 54% of Holyoke residents
172 identified as LatinX. Participants who tested positive for the CareStart RDT were more likely to
173 report at least one symptom than asymptomatic counterparts (41.9% vs. 12.2%; Chi-square $p <$
174 0.0001) (**Table 1B**).

175 The study staff evaluated the usability of the CareStart devices. All tests showed a positive
176 control band, indicating they were valid. However, plastic in some vial caps was slightly

177 malformed, making it difficult or impossible to properly cap the vials leading to 4 undetermined
178 CareStart RDT results out of 666, since the operator could not load the RDT. Of the valid tests,
179 we noted variable band intensities (**Figure 2**). The positive test line was sometimes so faint that
180 a flashlight was necessary to see it.

181 To determine the accuracy of the CareStart RDT, we calculated the concordance between
182 the RDT and RT-qPCR (**Table 2**). Using all RT-qPCR values below 40 as a positive reference,
183 the sensitivity of the CareStart RDT was 48.1% (95% CI: 34.0%-62.4%), while the specificity was
184 99.0% (95% CI: 97.8%-99.6%) (**Table 3**). Of the 666 visits, participants reported presence of
185 symptoms 93 (14.0%) times (**Table 1B**). Cough was the most reported (n=40, 6.0%) symptom,
186 while loss of smell or taste, a more specific COVID-19 symptom, was only reported in 19 visits
187 (2.9%) (**Supplementary Table 3**). Due to the limited sample size, we only stratified individuals
188 tested by presence (n=93) or absence (n=573) of symptoms to test the CareStart RDT accuracy
189 as a function of symptoms. The sensitivity of CareStart RDT in symptomatic individuals was
190 46.4% (95% CI: 27.5%-66.1%), and the specificity was 100% (95% CI: 95%-100%)
191 (**Supplementary Table 4A and 4B**). In asymptomatic individuals, the sensitivity of the CareStart
192 RDT was 52.2% (95% CI: 30.6%-73.2%), and the specificity was 99.4% (95% CI: 98.3%-99.9%)
193 (**Supplementary Table 4C and 4D**).

194 Next, we used Ct values for amplification of the N2 target as a proxy for viral load, where
195 higher Ct values reflected low viral loads, as previously reported (25). The Ct values of samples
196 recorded as negative using the CareStart RDT were significantly higher than positive counterparts
197 (Mann Whitney *U* p-value < 0.0001, **Figure 3**). Therefore, we also performed a subset analysis
198 where we only considered samples with a Ct < 30 as positive (**Supplementary Table 5A**). Using
199 this cut-off, the CareStart RDT sensitivity and specificity were 64.9% (95% CI: 47.5%-79.8%) and
200 99.3% (95% CI: 98.3%-99.8%), respectively (**Supplementary Table 5B**). Although the CareStart
201 RDT EUA does not indicate a specific Ct threshold for the positivity of the comparator RT-qPCR

202 (24), these data suggest that applying a more stringent Ct value threshold moderately improves
203 the sensitivity of the CareStart RDT.

204 Positive and negative predictive values of diagnostic tests depend on the prevalence of
205 infections in a population, where a higher prevalence increases the PPV at the expense of the
206 NPV (26). We calculated the PPV and NPV values as a function of prevalence rates up to 10%,
207 where the PPV steeply dropped in prevalence rates lower than 5% (**Figure 4**). At a sensitivity of
208 49% and specificity of 99.5% (**Table 3**), the PPV of CareStart was 49.7% at a SARS-CoV-2
209 infection prevalence of 1%, and 91.6% at a prevalence of 10%. In contrast, the NPV was 99.5%
210 at a prevalence of 1%, and 94.6% at a prevalence of 10%.

211 Finally, our cohort included individuals who presented to the testing site multiple times,
212 who had at least one positive RT-qPCR test result. Therefore, we performed an exploratory
213 analysis of their longitudinal test results (**Supplementary Table 1 and Figure 5**). We enrolled 5
214 participants who converted from a negative to positive on RT-qPCR tests, all of which were
215 accurately detected as positive by the RDT. Two participants with both positive RT-qPCR and
216 RDT test results reverted to negative test results on both platforms. However, one participant
217 converted from a positive to negative RDT test result but was detected as positive by the RT-
218 qPCR on the second test, which was conducted in less than a week.

219

220 **Discussion**

221 Antigen-detecting RDTs could provide a scalable and affordable alternative to molecular
222 tests (27). In this study, we present a prospective evaluation of the CareStart antigen-detecting
223 RDT for SARS-CoV-2 detection in a walk-up community COVID-19 testing site in Holyoke,
224 Western Massachusetts. The SARS-CoV-2 testing gap refers to the disparity between where
225 communities rank with respect to numbers of tests performed per 100,000 individuals, and where
226 they rank with respect to SARS-CoV-2 positivity rates in each state (28). Equitable implementation

227 of testing should lead to higher numbers of tests performed per capita in communities with higher
228 proportions of COVID-19 cases (29). In the state of Massachusetts, the SARS-CoV-2 testing gap,
229 was higher in communities with a high social vulnerability index, including Holyoke, highlighting
230 the socioeconomic disparities underlying access to COVID-19 testing (28). Thus, scaling up
231 affordable tests such as antigen-detecting RDTs can help fill this testing gap, following evaluation
232 of their accuracy and implementation feasibility.

233 Compared to a RT-qPCR-based test, we found a much lower sensitivity (49.0%) than what
234 was reported in the FDA package insert (87.2%), which was restricted to 39 symptomatic
235 individuals within 5 days of symptom onset (24). However, this sensitivity was consistent with the
236 reported sensitivity of CareStart in asymptomatic individuals recruited in a recent study at
237 Lawrence General Hospital in Massachusetts (84.8%) (17). Compared to the Abbott BinaxNOW
238 RDT, which has been validated in several studies including a recent study in Massachusetts, the
239 sensitivity of the CareStart RDT was lower overall and when using a Ct positivity cutoff of ≤ 30
240 (15). The specificity of both tests was comparable at nearly $> 99\%$. Consistent with several
241 studies, the sensitivity of antigen detecting RDTs was modest in individuals with no or mild
242 symptoms (8, 14-16, 20). Although viral loads (30) and recovery of viable virus (31) peak in the
243 early days following symptom onset, transmission by asymptomatic individuals remains a main
244 driver of the pandemic (6), especially since absence of symptoms removes the prompt to
245 quarantine. Therefore, implementation of antigen-detecting RDTs needs to weigh the benefits of
246 rapid detection of SARS-CoV-2-infected individuals with the lower sensitivity of these tests in
247 asymptomatic carriers (27). On the other hand, the high specificity of these tests reduces the
248 probability of false positive SARS-CoV-2 test results, that would have otherwise led to restrictions
249 and inconveniences that may interfere with the livelihood of these individuals.

250 Evaluation of RDTs against a highly sensitive gold standard such as RT-qPCR are
251 important to define performance characteristics. The RT-qPCR cycle threshold (Ct) values had a

252 clear impact on the sensitivity of the CareStart RDT, where concordant results showed lower Ct
253 values. In contrast, discordant results had higher Ct values, a proxy for lower viral load, as
254 reported in other evaluations (15, 17, 32). Consistent with this, the CareStart RDT sensitivity
255 improved with a RT-qPCR positivity Ct cut-off of < 30. These data suggest that the CareStart RDT
256 positivity meant higher viral load, which correlates with infectivity of cells *in vitro* (33), and likely
257 transmissibility. Individuals vaccinated with the Pfizer/BioNtech BNT162b2 vaccine, with
258 breakthrough SARS-CoV-2 infections have been reported to show higher Ct values post-
259 vaccination than unvaccinated counterparts, which correlates with lower viral loads (34). The
260 implication, however, is that vaccinated individuals with breakthrough SARS-CoV-2 infections, will
261 be more difficult to detect by antigen-detecting RDT with similar performance characteristics to
262 CareStart. In a study in skilled nursing facility in Chicago, few and mostly asymptomatic break-
263 through infections were identified post-vaccination (35). However, two were hospitalized and one
264 died of COVID-19, suggesting that false negative diagnosis of SARS-CoV-2 infections are likely
265 in postvaccination breakthrough infections (35). Therefore, it is crucial to evaluate the accuracy
266 of RDTs in populations with high vaccination rates. Furthermore, false negative results of antigen-
267 detecting RDTs may be caused by SARS-CoV-2 variants, which may be more transmissible (36).
268 In laboratory studies, lower RT-qPCR Ct values were shown to correlate with increased recovery
269 of viable virus (31, 37). However, epidemiological studies to support the higher contagiousness
270 of individuals with lower Ct values are still lacking. Furthermore, our study shows overlapping RT-
271 qPCR Ct values that could be either detected as positive or negative by the CareStart RDTs.
272 Furthermore, 4 out of 26 negative RDT tests results corresponding to a positive RT-qPCR test
273 result showed relatively low RT-qPCR Ct values (Ct < 25), indicating that false negative RDT
274 results can occur even at high viral loads. Thus, to understand the public health implications of
275 test results, it is imperative to definitively determine the infectiousness of individuals with a positive
276 RT-qPCR, but negative RDT result, even if those negative calls only occurred occasionally.

277 Although our sample of repeat testers was limited, it suggested that individuals who
278 recently converted from negative to positive RT-qPCR test, i.e. recently acquired SARS-CoV-2
279 infection, were easily detectable by the CareStart RDT. Recently infected individuals have been
280 shown to be more contagious (25). Samples from these recently infected individuals had low Ct
281 values, and were thus more likely to transmit the virus (33). Alternatively, the one participant with
282 a “false negative” RDT result after testing positive twice with the RT-qPCR, showed a relatively
283 high RT-qPCR Ct value of 36.4 on the second discordant result, suggesting lower
284 contagiousness. Repeat testing may be influenced by school or work requirements and may
285 reflect a population with a higher susceptibility to exposure such as health care workers.
286 Therefore, this limited sample supports the potential usefulness of serial rapid antigen testing in
287 detecting recent infections to implement containment measures and merits further study (38).
288 Importantly, the public health benefits of serial testing with RDTs should be studied further.

289 There are several advantages to rapid testing. CareStart has a lower turnaround time than
290 RT-qPCR, including 10 minutes to run the test on site where most of the test results were visible
291 in 3-4 minutes. Infected individuals can be notified of their status and begin isolation immediately,
292 resulting in less transmission to contacts compared to tests with longer turnaround times. In
293 addition, using anterior nasal swabs instead of the internationally accepted gold standard
294 nasopharyngeal swabs increases the acceptability of testing. However, it may also compromise
295 the sensitivity of antigen detecting RDTs, although a recent evaluation of swab types disputes
296 this possibility (39). The test is simple, and requires little training to be performed, making it more
297 amenable to self-administration and home testing. The price of RDTs is gradually decreasing to
298 become more affordable. Some individuals might test by RDT who would otherwise not be tested
299 at all. Therefore, a formal assessment of the public health impacts of RDTs should be conducted
300 in future studies.

301 A few factors may have compromised the performance characteristics of CareStart in this
302 study. We had limited control over or ability to monitor the order by which the two bilateral nasal
303 swabs were collected because of embedding the study in a ‘real world’ testing program. It is
304 possible that performing the PCR swab first may decrease the available viral load for the antigen
305 test. However, a recent evaluation of the Abbott BinaxNOW suggested that the order of swabs
306 had little impact on the test result (20). The tests were analyzed indoors to minimize temperature
307 fluctuations. However, the environmental temperature was not systematically monitored in this
308 semi-indoor setting (foyer of the War Memorial Building, Holyoke, MA). Since the study was
309 performed during the winter in Massachusetts, the tests were generally conducted at cold
310 temperatures, which could impact the RDT performance (15, 40). These results are, hence,
311 reflective of a real-world evaluation scenario, where lower temperatures and seasonal fluctuations
312 are expected in regions such as Massachusetts. Finally, study was conducted at the time when
313 vaccination against SARS-CoV-2 was low, which may affect the generalizability of these findings.

314 In conclusion, RDTs such as CareStart, can support SARS-CoV-2 testing efforts in
315 minimally or asymptomatic individuals. However, the impact of the limited sensitivity of these tests
316 on their positive predictive values reinforce caution. The moderate sensitivity of these tests means
317 that some potentially infectious individuals may be classified as SARS-CoV-2-negative.
318 Therefore, implementing RDTs for travel, home testing, or to guide re-openings of schools and
319 workplaces should be interpreted with caution and the utility of RDTs in each of these use cases
320 should be carefully evaluated. Furthermore, implementation studies to analyze their usefulness
321 and acceptability by both users and providers are necessary.

322

323

Demographics	Always Undetermined (N=3)	Always Negative (N=558)	Ever Positive (N=30)	Overall (N=591)
Age (Years) Mean (SD) Median [Min, Max]	25.3 (3.51) 25 [22, 29]	38.2 (17.9) 36 [1, 85]	37.4 (15.4) 34.5 [16, 75]	38.1 (17.8) 36 [1, 85]
Sex Female Male Non-binary Prefer not to answer Not listed	2 (66.7%) 1 (33.3%) 0 (0%) 0 (0%) 0 (0%)	294 (52.7%) 236 (42.3%) 4 (0.7%) 24 (4.3%) 0 (0%)	11 (36.7%) 14 (46.7%) 0 (0%) 4 (13.3%) 1 (3.3%)	307 (51.9%) 251 (42.5%) 4 (0.7%) 28 (4.7%) 1 (0.2%)
Lives in Holyoke zip code Yes No	3 (100%) 0 (0%)	292 (52.3%) 266 (47.7%)	13 (43.3%) 17 (56.7%)	308 (52.1%) 283 (47.9%)
Race/Ethnicity category Hispanic or LatinX White Non-Hispanic Asian Non-Hispanic Black or African American Non-Hispanic Native Hawaiian or Other Pacific Islander Non-Hispanic Other Non-Hispanic Two or more races Non-Hispanic Prefer not to answer	1 (33.3%) 2 (66.7%) 0 (0%) 0 (0%) 0 (0%) 0 (0%) 0 (0%) 0 (0%)	248 (44.4%) 262 (47%) 5 (0.9%) 15 (2.7%) 1 (0.2%) 8 (1.4%) 4 (0.7%) 15 (2.7%)	15 (50.0%) 14 (46.7%) 0 (0%) 0 (0%) 0 (0%) 0 (0%) 0 (0%) 1 (3.3%)	264 (44.7%) 278 (47.0%) 5 (0.8%) 15 (2.5%) 1 (0.2%) 8 (1.4%) 4 (0.7%) 16 (2.7%)
Repeat tester No Yes	3 (100%) 0 (0%)	506 (90.7%) 52 (9.3%)	22 (73.3%) 8 (26.7%)	531 (89.8%) 60 (10.2%)

324
325 **Table 1A:** Demographics of unique study participants who enrolled in the CareStart Rapid
326 Antigen Test evaluation at the Stop the Spread COVID-19 testing site in Holyoke, Massachusetts.

327
328

	Negative (N=631)	Positive (N=31)	Undetermined (N=4)	Overall (N=666)
Any symptoms				
No	554 (87.8%)	18 (58.1%)	1 (25.0%)	573 (86%)
Yes	77 (12.2%)	13 (41.9%)	3 (75.0%)	93 (14%)
Exposure				
Confirmed or suspected	196 (31.1%)	17 (54.8%)	4 (100%)	217 (32.6%)
No exposure	433 (68.6%)	14 (45.2%)	0 (0%)	447 (67.1%)
Did not answer	2 (0.3%)	0 (0%)	0 (0%)	2 (0.3%)
Prior COVID-19 test				
No	110 (17.4%)	9 (29.0%)	2 (50.0%)	121 (18.2%)
Yes	519 (82.3%)	22 (71.0%)	2 (50.0%)	543 (81.5%)
Missing	2 (0.3%)	0 (0%)	0 (0%)	2 (0.3%)

329

330 **Table 1B:** Tester symptoms, exposure history and prior COVID-19 testing per each CareStart
 331 testing occurrence, including repeated tests from the same participants.

332

333

Result of N gene RT-qPCR	Negative (N=583)	Positive (N=52)	Undetermined (N=31)	Overall (N=666)
CareStart test result				
Negative	577 (99%)	26 (50%)	28 (90.3%)	631 (94.7%)
Positive	3 (0.5%)	25 (48.1%)	3 (9.7%)	31 (4.7%)
Undetermined	3 (0.5%)	1 (1.9%)	0 (0%)	4 (0.6%)

334

335 **Table 2:** Concordance between CareStart Test Results and RT-qPCR test results

	n	Total tests	Performance Characteristic	Estimate (%)	95% Confidence Interval
Rapid Test Results					
Positive	25	51	Sensitivity	49.0%	(34.8% - 63.4%)
Negative	577	580	Specificity	99.5%	(98.5% - 99.9%)

336

337 **Table 3:** Performance characteristics of CareStart test results benchmarked against the RT-

338 qPCR gold standard (excluding undetermined results).

339 **Figure Legends:**

340 **Figure 1:** Number of CareStart rapid antigen test administered by date (n=666). The bar colors
341 reflect the results of the rapid tests on different days.

342 **Figure 2:** Examples of images of CareStart rapid test showing variable band intensities.

343 **Figure 3:** N2 gene RT-qPCR Cycle threshold (Ct) values corresponding to positive and negative
344 CareStart rapid antigen test results for all RT-qPCR positive samples (n=52).

345 **Figure 4:** Calculated positive (left) and negative predictive values (right) based on the CareStart
346 performance characteristics and different prevalence estimates of SARS-CoV-2 infections.

347 **Figure 5:** Individuals who enrolled in the study multiple times and had at least one positive gold
348 standard RT-qPCR reference (n=11). The point colors reflect the different combinations of RT-
349 qPCR and CareStart rapid test results. The numbers above the point correspond to Ct values of
350 the RT-qPCR.

351

352

353 **Acknowledgements**

354 The Holyoke Board of Health was instrumental in coordinating study logistics with Fallon
355 Ambulance Services who performed the swabs for RT-qPCR. The MA Department of Public
356 Health and Ginko Bioworks donated the Access Bio testing kits and anterior nares SteriPack
357 swabs for this study. The study was supported by an award from the Massachusetts Life Sciences
358 Center Accelerating Coronavirus Testing Solutions (A.C.T.S) and the Sullivan Family Foundation
359 (LCI).

360

361

362 **Potential conflicts of interest**

363 None.

364

365

366 **References**

- 367 1. Dong E, Du H, Gardner L. An interactive web-based dashboard to track COVID-
368 19 in real time. *Lancet Infect Dis.* 2020;20(5):533-4. Epub 2020/02/23. doi:
369 10.1016/S1473-3099(20)30120-1. PubMed PMID: 32087114; PMCID: PMC7159018.
- 370 2. Liu K, Fang YY, Deng Y, Liu W, Wang MF, Ma JP, Xiao W, Wang YN, Zhong MH,
371 Li CH, Li GC, Liu HG. Clinical characteristics of novel coronavirus cases in tertiary
372 hospitals in Hubei Province. *Chin Med J (Engl).* 2020;133(9):1025-31. Epub 2020/02/12.
373 doi: 10.1097/CM9.0000000000000744. PubMed PMID: 32044814; PMCID:
374 PMC7147277.
- 375 3. Ramdas K, Darzi A, Jain S. 'Test, re-test, re-test': using inaccurate tests to greatly
376 increase the accuracy of COVID-19 testing. *Nat Med.* 2020;26(6):810-1. Epub
377 2020/05/14. doi: 10.1038/s41591-020-0891-7. PubMed PMID: 32398878; PMCID:
378 PMC7215136.
- 379 4. Hellou MM, Gorska A, Mazzaferri F, Cremonini E, Gentilotti E, De Nardo P, Poran
380 I, Leeflang M, Tacconelli E, Paul M. Nucleic-acid-amplification tests from respiratory
381 samples for the diagnosis of coronavirus infections: systematic review and meta-analysis.
382 *Clin Microbiol Infect.* 2020. Epub 2020/11/15. doi: 10.1016/j.cmi.2020.11.002. PubMed
383 PMID: 33188933; PMCID: PMC7657614.
- 384 5. Brown RCH, Kelly D, Wilkinson D, Savulescu J. The scientific and ethical feasibility
385 of immunity passports. *Lancet Infect Dis.* 2020. Epub 2020/10/20. doi: 10.1016/S1473-
386 3099(20)30766-0. PubMed PMID: 33075284; PMCID: PMC7567527.
- 387 6. Oran DP, Topol EJ. Prevalence of Asymptomatic SARS-CoV-2 Infection : A
388 Narrative Review. *Ann Intern Med.* 2020;173(5):362-7. Epub 2020/06/04. doi:
389 10.7326/M20-3012. PubMed PMID: 32491919; PMCID: PMC7281624.
- 390 7. Quilty BJ, Clifford S, Hellewell J, Russell TW, Kucharski AJ, Flasche S, Edmunds
391 WJ, Centre for the Mathematical Modelling of Infectious Diseases C-wg. Quarantine and
392 testing strategies in contact tracing for SARS-CoV-2: a modelling study. *Lancet Public
393 Health.* 2021;6(3):e175-e83. Epub 2021/01/24. doi: 10.1016/S2468-2667(20)30308-X.
394 PubMed PMID: 33484644; PMCID: PMC7826085.
- 395 8. Pray IW, Ford L, Cole D, Lee C, Bigouette JP, Abedi GR, Bushman D, Delahoy
396 MJ, Currie D, Cherney B, Kirby M, Fajardo G, Caudill M, Langolf K, Kahrs J, Kelly P, Pitts
397 C, Lim A, Aulik N, Tamin A, Harcourt JL, Queen K, Zhang J, Whitaker B, Browne H,
398 Medrzycki M, Shewmaker P, Folster J, Bankamp B, Bowen MD, Thornburg NJ, Goffard
399 K, Limbago B, Bateman A, Tate JE, Gieryn D, Kirking HL, Westergaard R, Killerby M,
400 Group CC-SL. Performance of an Antigen-Based Test for Asymptomatic and
401 Symptomatic SARS-CoV-2 Testing at Two University Campuses - Wisconsin,
402 September-October 2020. *MMWR Morb Mortal Wkly Rep.* 2021;69(5152):1642-7. Epub
403 2021/01/01. doi: 10.15585/mmwr.mm695152a3. PubMed PMID: 33382679.
- 404 9. Hopman J, Allegranzi B, Mehtar S. Managing COVID-19 in Low- and Middle-
405 Income Countries. *JAMA.* 2020;323(16):1549-50. Epub 2020/03/17. doi:
406 10.1001/jama.2020.4169. PubMed PMID: 32176764.
- 407 10. WHO. Antigen-detection in the diagnosis of SARS-CoV-2 infection using rapid
408 immunoassays. Interim Guidance. 2020;11 September 2020(Accessed online:

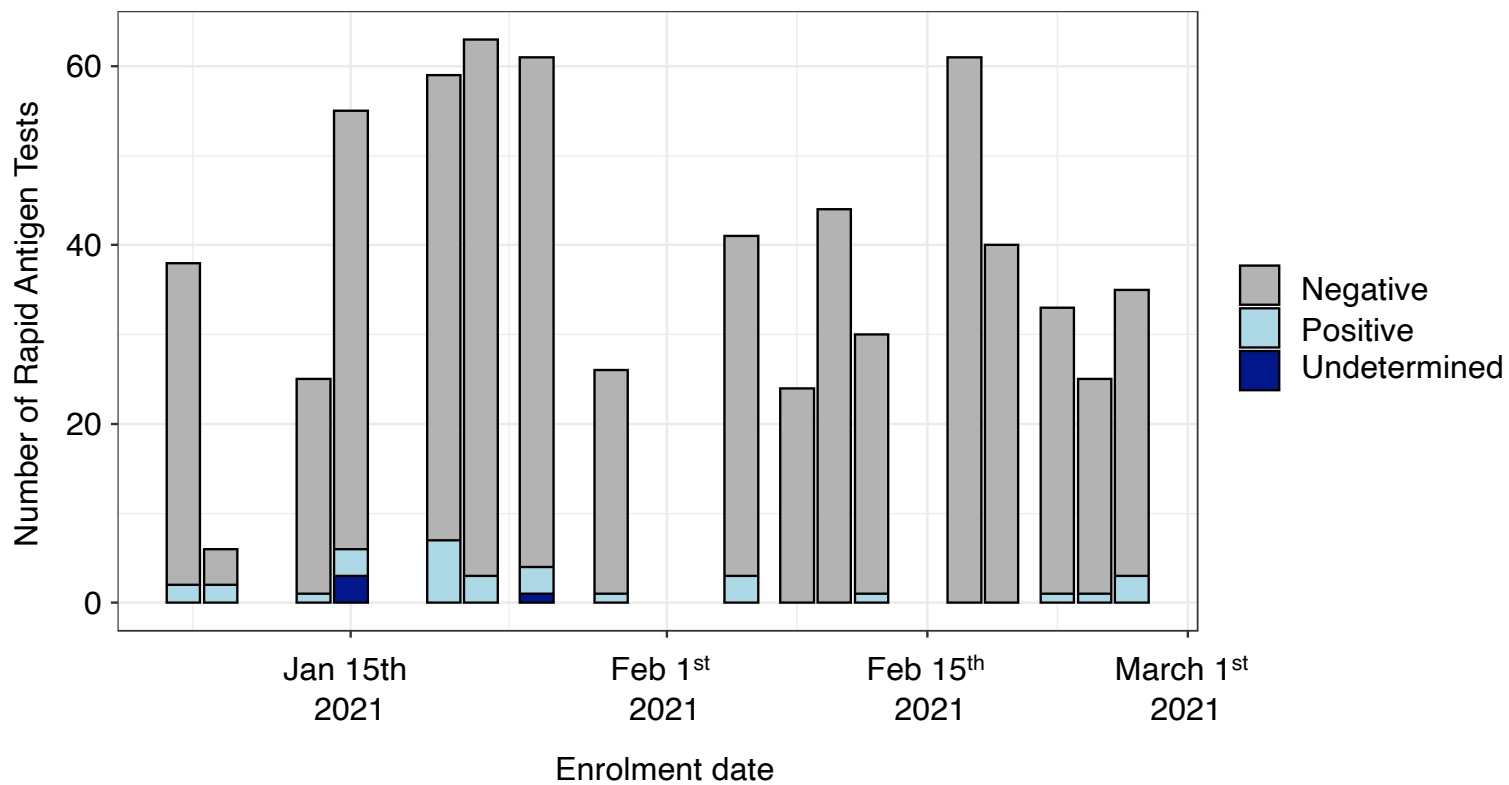
- 409 [https://www.who.int/publications/i/item/antigen-detection-in-the-diagnosis-of-sars-cov-](https://www.who.int/publications/i/item/antigen-detection-in-the-diagnosis-of-sars-cov-2-infection-using-rapid-immunoassays)
410 [2infection-using-rapid-immunoassays](https://www.who.int/publications/i/item/antigen-detection-in-the-diagnosis-of-sars-cov-2-infection-using-rapid-immunoassays)).
- 411 11. Dinnes J, Deeks JJ, Berhane S, Taylor M, Adriano A, Davenport C, Dittrich S,
412 Emperador D, Takwoingi Y, Cunningham J, Beese S, Domen J, Dretzke J, Ferrante di
413 Ruffano L, Harris IM, Price MJ, Taylor-Phillips S, Hooft L, Leeftang MM, McInnes MD,
414 Spijker R, Van den Bruel A, Cochrane C-DTAG. Rapid, point-of-care antigen and
415 molecular-based tests for diagnosis of SARS-CoV-2 infection. *Cochrane Database Syst*
416 *Rev.* 2021;3:CD013705. Epub 2021/03/25. doi: 10.1002/14651858.CD013705.pub2.
417 PubMed PMID: 33760236.
- 418 12. FDA. In Vitro Diagnostics EUAs. . U S Food and Drug Administration.
419 2021;Published online March 8, 2021.(Accessed March 9, 2021.
420 [https://www.fda.gov/medical-devices/coronavirus-disease-2019-covid-19-emergency-](https://www.fda.gov/medical-devices/coronavirus-disease-2019-covid-19-emergency-use-authorizations-medical-devices/vitro-diagnostics-euas)
421 [use-authorizations-medical-devices/vitro-diagnostics-euas](https://www.fda.gov/medical-devices/coronavirus-disease-2019-covid-19-emergency-use-authorizations-medical-devices/vitro-diagnostics-euas)).
- 422 13. Young S, Taylor SN, Cammarata CL, Varnado KG, Roger-Dalbert C, Montano A,
423 Griego-Fullbright C, Burgard C, Fernandez C, Eckert K, Andrews JC, Ren H, Allen J,
424 Ackerman R, Cooper CK. Clinical evaluation of BD Veritor SARS-CoV-2 point-of-care test
425 performance compared to PCR-based testing and versus the Sofia 2 SARS Antigen point-
426 of-care test. *J Clin Microbiol.* 2020. Epub 2020/10/08. doi: 10.1128/JCM.02338-20.
427 PubMed PMID: 33023911.
- 428 14. Landaas ET, Storm ML, Tollanes MC, Barlinn R, Kran AB, Bragstad K, Christensen
429 A, Andreassen T. Diagnostic performance of a SARS-CoV-2 rapid antigen test in a large,
430 Norwegian cohort. *J Clin Virol.* 2021;137:104789. Epub 2021/03/20. doi:
431 10.1016/j.jcv.2021.104789. PubMed PMID: 33736946; PMCID: PMC7944803.
- 432 15. Pollock NR, Jacobs JR, Tran K, Cranston AE, Smith S, O'Kane CY, Roady TJ,
433 Moran A, Scarry A, Carroll M, Volinsky L, Perez G, Patel P, Gabriel S, Lennon NJ, Madoff
434 LC, Brown C, Smole SC. Performance and Implementation Evaluation of the Abbott
435 BinaxNOW Rapid Antigen Test in a High-throughput Drive-through Community Testing
436 Site in Massachusetts. *J Clin Microbiol.* 2021. Epub 2021/02/25. doi:
437 10.1128/JCM.00083-21. PubMed PMID: 33622768.
- 438 16. Pilarowski G, Lebel P, Sunshine S, Liu J, Crawford E, Marquez C, Rubio L, Chamie
439 G, Martinez J, Peng J, Black D, Wu W, Pak J, Laurie MT, Jones D, Miller S, Jacobo J,
440 Rojas S, Rojas S, Nakamura R, Tulier-Laiwa V, Petersen M, Havlir DV, Consortium C,
441 DeRisi J. Performance characteristics of a rapid SARS-CoV-2 antigen detection assay at
442 a public plaza testing site in San Francisco. *J Infect Dis.* 2021. Epub 2021/01/05. doi:
443 10.1093/infdis/jiaa802. PubMed PMID: 33394052; PMCID: PMC7799021.
- 444 17. Pollock NR, Tran K, Jacobs JR, Cranston AE, Smith S, O'Kane CY, Roady TJ,
445 Moran M, Scarry A, Carroll M, Volinsky L, Perez G, Patel P, Gabriel S, Lennon NJ, Madoff
446 LC, Brown C, Smole SC. Performance and Operational Evaluation of the Access Bio
447 CareStart Rapid Antigen Test in a High-throughput Drive-through Community Testing Site
448 in Massachusetts. *MedRxiv.* 2021;Pre-print:
449 <https://www.medrxiv.org/content/10.1101/2021.03.07.21253101v1.full-text>. (Accessed
450 online: April 5, 2021).
- 451 18. Smith RL, Gibson LL, Martinez PP, Ke R, Mirza A, Conte M, Gallagher N, Conte
452 A, Wang L, Fredrickson R, Edmonson DC, Baughman ME, Chiu KK, Choi H, Jensen TW,

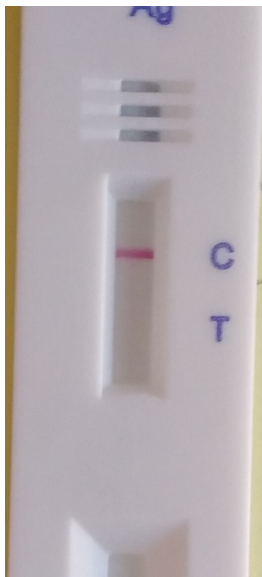
- 453 Scardina KR, Bradley S, Gloss SL, Reinhart C, Yedetore J, Owens AN, Broach J, Barton
454 B, Lazar P, Hennes D, Young T, Dunnett A, Robinson ML, Mostafa HH, Pekosz A,
455 Manabe YC, Heetderks WJ, McManus DD, Brooke CB. Longitudinal assessment of
456 diagnostic test performance over the course of acute SARS-CoV-2 infection. medRxiv.
457 2021. Epub 2021/04/02. doi: 10.1101/2021.03.19.21253964. PubMed PMID: 33791719;
458 PMCID: PMC8010751.
- 459 19. Kilic A, Hiestand B, Palavecino E. Evaluation of Performance of the BD Veritor
460 SARS-CoV-2 Chromatographic Immunoassay Test in COVID-19 Symptomatic Patients.
461 J Clin Microbiol. 2021. Epub 2021/02/28. doi: 10.1128/JCM.00260-21. PubMed PMID:
462 33637583.
- 463 20. Okoye NC, Barker AP, Curtis K, Orlandi RR, Snaveley EA, Wright C, Hanson KE,
464 Pearson LN. Performance Characteristics of BinaxNOW COVID-19 Antigen Card for
465 Screening Asymptomatic Individuals in a University Setting. J Clin Microbiol. 2021. Epub
466 2021/01/30. doi: 10.1128/JCM.03282-20. PubMed PMID: 33509809.
- 467 21. FDA. Coronavirus (COVID-19) Update: FDA Continues to Advance Over-the-
468 Counter and Other Screening Test Development. U S Food and Drug Administration.
469 2021;Press Release, Published online: March 31, 2021.
- 470 22. Epidemiologists) CCoSaT. Update to the standardized surveillance case definition
471 and national notification for 2019 novel coronavirus disease (COVID-19). infectious
472 Disease Committee. 2020;Accessed online:
473 [https://cdn.ymaws.com/www.cste.org/resource/resmgr/ps/positionstatement2020/Interi](https://cdn.ymaws.com/www.cste.org/resource/resmgr/ps/positionstatement2020/Interim-20-ID-02_COVID-19.pdf)
474 [m-20-ID-02_COVID-19.pdf](https://cdn.ymaws.com/www.cste.org/resource/resmgr/ps/positionstatement2020/Interim-20-ID-02_COVID-19.pdf).
- 475 23. Clinical Research Sequencing Platform (CRSP) LatBloMaH. CRSP SARS-CoV-2
476 Real-time Reverse Transcriptase (RT)-PCR Diagnostic Assay.
477 <https://wwwfdagov/media/139858/download>.
- 478 24. Diagnostics A. CareStart COVID-19 Antigen: Rapid Diagnostic Test for the
479 Detection of SARS-CoV-2 Antigen Accessed online: [https://accessbiodiagnosticsnet/wp-](https://accessbiodiagnosticsnet/wp-content/uploads/2021/02/EUA-accessbio-CareStart-Antigen-ifupdf)
480 [content/uploads/2021/02/EUA-accessbio-CareStart-Antigen-ifupdf](https://accessbiodiagnosticsnet/wp-content/uploads/2021/02/EUA-accessbio-CareStart-Antigen-ifupdf). 2020;Instructions for
481 Use Under Emergency Use Authorization.
- 482 25. Jaafar R, Aherfi S, Wurtz N, Grimaldier C, Hoang TV, Colson P, Raoult D, La Scola
483 B. Correlation Between 3790 Quantitative Polymerase Chain Reaction–Positives
484 Samples and Positive Cell Cultures, Including 1941 Severe Acute Respiratory Syndrome
485 Coronavirus 2 Isolates. Clinical Infectious Diseases. 2020;Correspondence.
- 486 26. Hernaez R, Thrift AP. High Negative Predictive Value, Low Prevalence, and
487 Spectrum Effect: Caution in the Interpretation. Clin Gastroenterol Hepatol.
488 2017;15(9):1355-8. Epub 2017/05/16. doi: 10.1016/j.cgh.2017.05.002. PubMed PMID:
489 28501535.
- 490 27. Syal K. Guidelines on newly identified limitations of diagnostic tools for COVID-19
491 and consequences. J Med Virol. 2021;93(4):1837-42. Epub 2020/11/18. doi:
492 10.1002/jmv.26673. PubMed PMID: 33200414; PMCID: PMC7753543.
- 493 28. Dryden-Peterson S, Velasquez GE, Stopka TJ, Davey S, Lockman S, Ojikutu BO.
494 Disparities in SARS-CoV-2 Testing in Massachusetts During the COVID-19 Pandemic.
495 JAMA Netw Open. 2021;4(2):e2037067. Epub 2021/02/10. doi:

- 496 10.1001/jamanetworkopen.2020.37067. PubMed PMID: 33560423; PMCID:
497 PMC7873783.
- 498 29. Figueroa JF, Wadhera RK, Lee D, Yeh RW, Sommers BD. Community-Level
499 Factors Associated With Racial And Ethnic Disparities In COVID-19 Rates In
500 Massachusetts. *Health Aff (Millwood)*. 2020;39(11):1984-92. Epub 2020/08/28. doi:
501 10.1377/hlthaff.2020.01040. PubMed PMID: 32853056.
- 502 30. Weiss A, Jellingso M, Sommer MOA. Spatial and temporal dynamics of SARS-
503 CoV-2 in COVID-19 patients: A systematic review and meta-analysis. *EBioMedicine*.
504 2020;58:102916. Epub 2020/07/28. doi: 10.1016/j.ebiom.2020.102916. PubMed PMID:
505 32711256; PMCID: PMC7374142.
- 506 31. van Kampen JJA, van de Vijver D, Fraaij PLA, Haagmans BL, Lamers MM, Okba
507 N, van den Akker JPC, Endeman H, Gommers D, Cornelissen JJ, Hoek RAS, van der
508 Eerden MM, Hesselink DA, Metselaar HJ, Verbon A, de Steenwinkel JEM, Aron GI, van
509 Gorp ECM, van Boheemen S, Voermans JC, Boucher CAB, Molenkamp R, Koopmans
510 MPG, Geurtsvankessel C, van der Eijk AA. Duration and key determinants of infectious
511 virus shedding in hospitalized patients with coronavirus disease-2019 (COVID-19). *Nat*
512 *Commun*. 2021;12(1):267. Epub 2021/01/13. doi: 10.1038/s41467-020-20568-4.
513 PubMed PMID: 33431879; PMCID: PMC7801729.
- 514 32. Perez-Garcia F, Romanyk J, Gomez-Herruz P, Arroyo T, Perez-Tanoira R, Linares
515 M, Perez Ranz I, Labrador Ballester A, Moya Gutierrez H, Ruiz-Alvarez MJ, Cuadros-
516 Gonzalez J. Diagnostic performance of CerTest and Panbio antigen rapid diagnostic tests
517 to diagnose SARS-CoV-2 infection. *J Clin Virol*. 2021;137:104781. Epub 2021/02/28. doi:
518 10.1016/j.jcv.2021.104781. PubMed PMID: 33639492; PMCID: PMC7897407.
- 519 33. Bullard J, Dust K, Funk D, Strong JE, Alexander D, Garnett L, Boodman C, Bello
520 A, Hedley A, Schiffman Z, Doan K, Bastien N, Li Y, Van Caesele PG, Poliquin G.
521 Predicting infectious SARS-CoV-2 from diagnostic samples. *Clinical infectious diseases*
522 : an official publication of the Infectious Diseases Society of America. 2020. Epub
523 2020/05/23. doi: 10.1093/cid/ciaa638. PubMed PMID: 32442256; PMCID: PMC7314198.
- 524 34. Levine-Tiefenbrun M, Yelin I, Katz R, Herzel E, Golan Z, Schreiber L, Wolf T,
525 Nadler V, Ben-Tov A, Kuint J, Gazit S, Patalon T, Chodick G, Kishony R. Initial report of
526 decreased SARS-CoV-2 viral load after inoculation with the BNT162b2 vaccine. *Nat Med*.
527 2021. Epub 2021/03/31. doi: 10.1038/s41591-021-01316-7. PubMed PMID: 33782619.
- 528 35. Teran RA, Walblay KA, Shane EL, Xydis S, Gretsches S, Gagner A, Samala U, Choi
529 H, Zelinski C, Black SR. Postvaccination SARS-CoV-2 Infections Among Skilled Nursing
530 Facility Residents and Staff Members - Chicago, Illinois, December 2020-March 2021.
531 *MMWR Morb Mortal Wkly Rep*. 2021;70(17):632-8. Epub 2021/04/30. doi:
532 10.15585/mmwr.mm7017e1. PubMed PMID: 33914721; PMCID: PMC8084122
533 Journal Editors form for disclosure of potential conflicts of interest. No potential conflicts of interest
534 were disclosed.
- 535 36. Peng J, Liu J, Mann SA, Mitchell AM, Laurie MT, Sunshine S, Pilarowski G, Ayscue
536 P, Kistler A, Vanaerschot M, Li LM, McGeever A, Chow ED, Marquez C, Nakamura R,
537 Rubio L, Chamie G, Jones D, Jacobo J, Rojas S, Rojas S, Tulier-Laiwa V, Black D,
538 Martinez J, Naso J, Schwab J, Petersen M, Havlir D, DeRisi J, Team ID. Estimation of
539 secondary household attack rates for emergent spike L452R SARS-CoV-2 variants

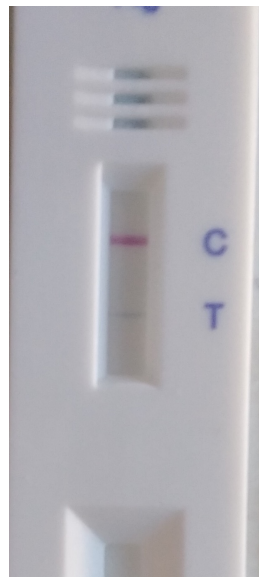
540 detected by genomic surveillance at a community-based testing site in San Francisco.
541 Clinical infectious diseases : an official publication of the Infectious Diseases Society of
542 America. 2021. Epub 2021/04/01. doi: 10.1093/cid/ciab283. PubMed PMID: 33788923.
543 37. Pekosz A, Parvu V, Li M, Andrews JC, Manabe YC, Kodosi S, Gary DS, Roger-
544 Dalbert C, Leitch J, Cooper CK. Antigen-Based Testing but Not Real-Time Polymerase
545 Chain Reaction Correlates With Severe Acute Respiratory Syndrome Coronavirus 2 Viral
546 Culture. Clinical infectious diseases : an official publication of the Infectious Diseases
547 Society of America. 2021. Epub 2021/01/23. doi: 10.1093/cid/ciaa1706. PubMed PMID:
548 33479756; PMCID: PMC7929138.
549 38. Mina MJ, Peto TE, Garcia-Finana M, Semple MG, Buchan IE. Clarifying the
550 evidence on SARS-CoV-2 antigen rapid tests in public health responses to COVID-19.
551 Lancet. 2021. Epub 2021/02/21. doi: 10.1016/S0140-6736(21)00425-6. PubMed PMID:
552 33609444.
553 39. Patriquin G, Davis I, Heinstein C, MacDonald J, Hatchette TF, LeBlanc JJ.
554 Exploring alternative swabs for use in SARS-CoV-2 detection from the oropharynx and
555 anterior nares. J Virol Methods. 2020;285:113948. Epub 2020/08/14. doi:
556 10.1016/j.jviromet.2020.113948. PubMed PMID: 32783913; PMCID: PMC7415171.
557 40. Haage V, Ferreira de Oliveira-Filho E, Moreira-Soto A, Kuhne A, Fischer C, Sacks
558 JA, Corman VM, Muller MA, Drosten C, Drexler JF. Impaired performance of SARS-CoV-
559 2 antigen-detecting rapid diagnostic tests at elevated and low temperatures. J Clin Virol.
560 2021;138:104796. Epub 2021/03/28. doi: 10.1016/j.jcv.2021.104796. PubMed PMID:
561 33773413; PMCID: PMC7962993.
562

Figure 1:

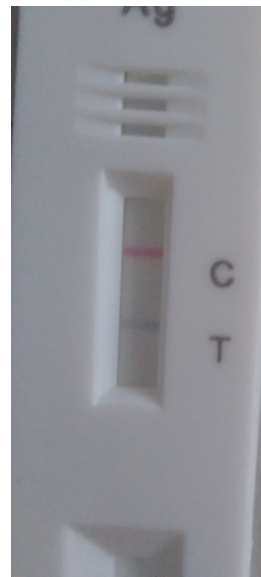




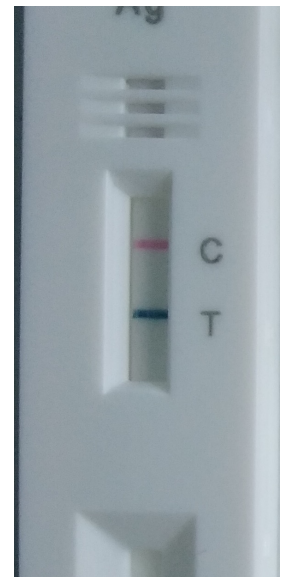
Negative



Positive
(weak)



Positive
(medium)



Positive
(strong)

Figure 3:

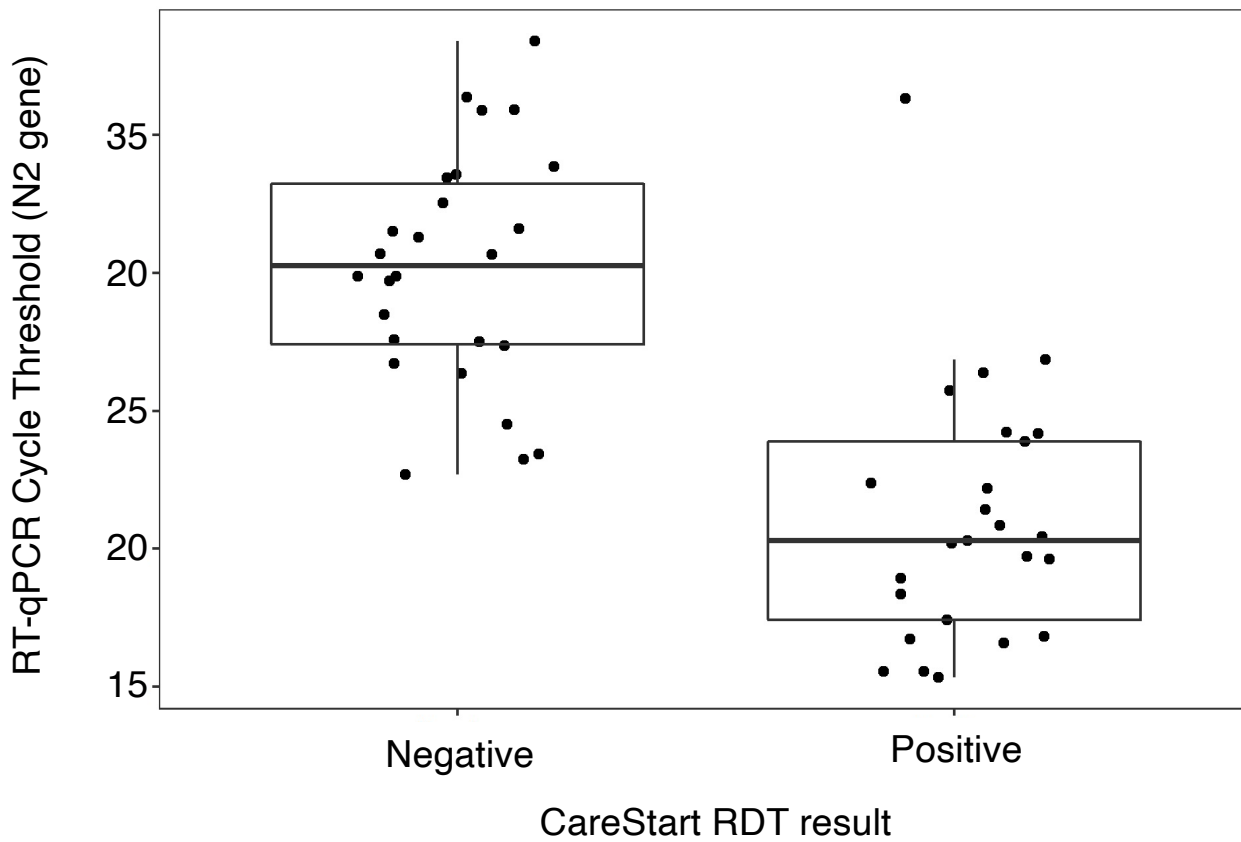


Figure 4:

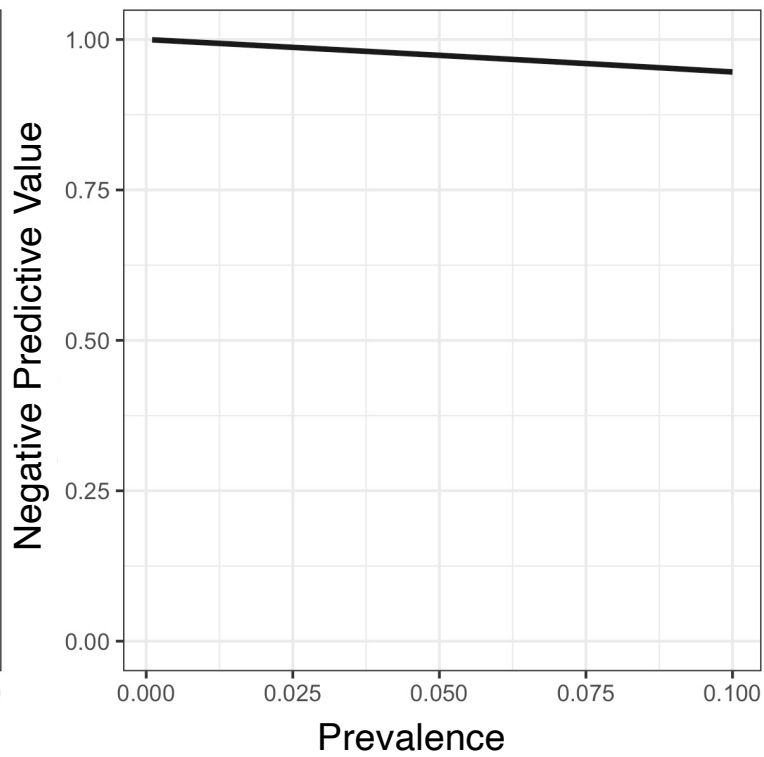
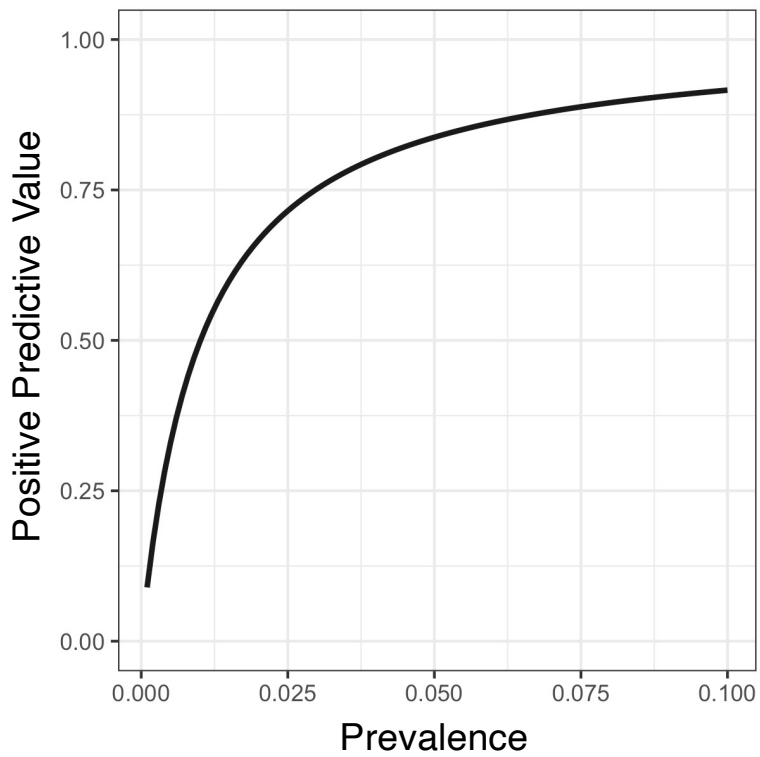
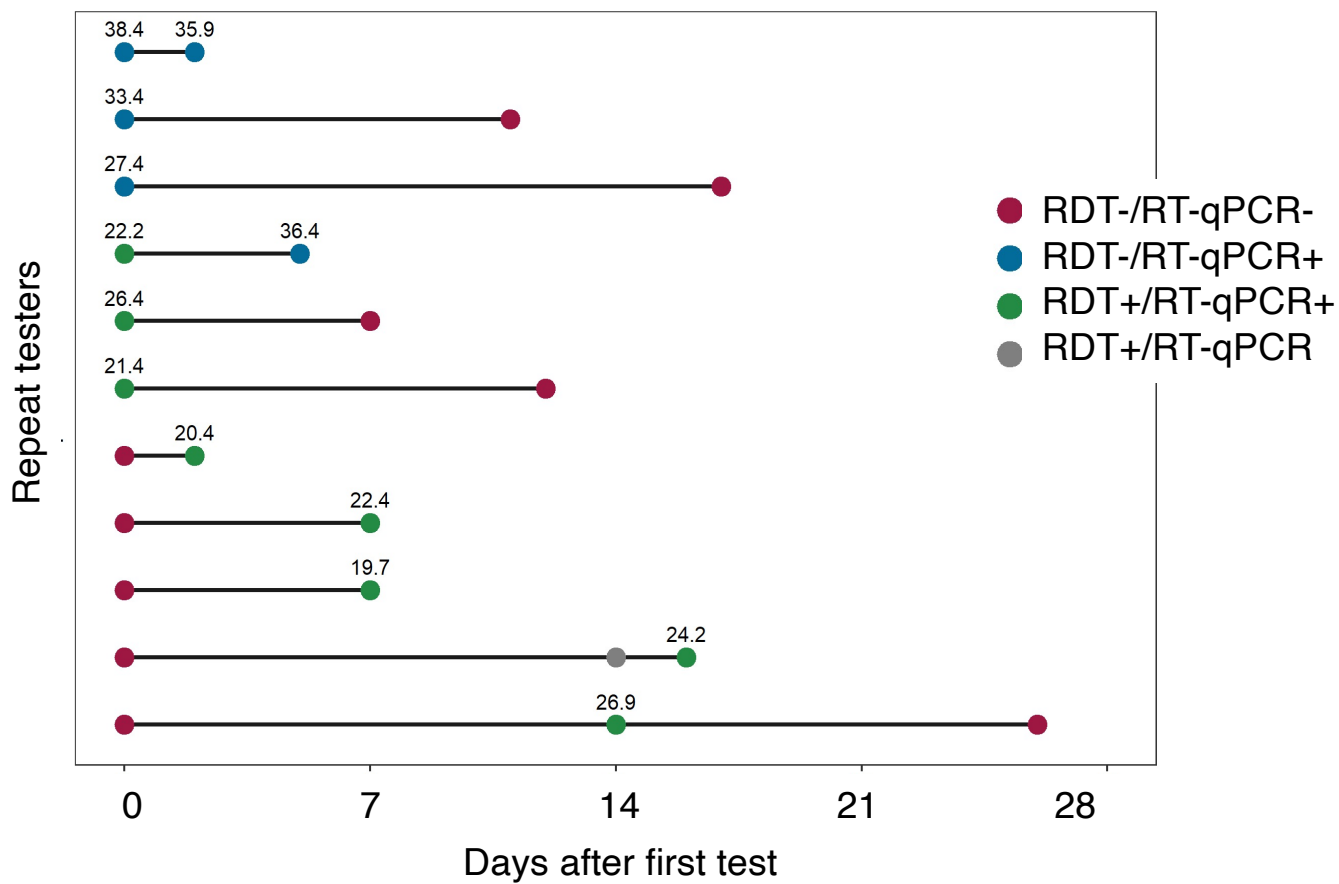


Figure 5:



Supplementary Table 1: Study participants who enrolled multiple times for testing with both RT-qPCR and Access Bio CareStart

Total Repeat Testers	60	Number of tests after first test
Tested 2 Times	50	50
Tested 3 Times	6	12
Tested 4 Times	3	9
Tested 5 Times	1	4
Total repeat tests		75

Supplementary Table 2: Demographics of study participants who are residents of Holyoke, Massachusetts (N=283)

Demographics	Always Negative (N=266)	Ever Positive (N=17)	Overall (N=283)
Age (Years)			
Mean (SD)	39.3 (18.5%)	36.2 (13.3%)	39.1 (18.2%)
Median [Min, Max]	37 [4 - 82]	31 [23 - 66]	36 [4 - 82]
Sex			
Female	145 (54.5%)	6 (35.3%)	151 (53.4%)
Male	108 (40.6%)	7 (41.2%)	115 (40.6%)
Non-binary	2 (0.8%)	0 (0%)	2 (0.7%)
Prefer not to answer	11(4.1%)	4 (23.5%)	15 (5.3%)
Race/Ethnicity category			
Hispanic or LatinX	157 (59%)	9 (52.9%)	166 (58.7%)
Black or African American Non-Hispanic	5 (1.9%)	0 (0%)	5 (1.8%)
Two or more races Non-Hispanic	3 (1.1%)	0 (0%)	3 (1.1%)
White Non-Hispanic	95 (35.7%)	7 (41.2%)	102 (36%)
Prefer not to answer	6 (2.3%)	1 (5.9%)	7 (2.5%)
Repeat tester			
No	229 (86.1%)	13 (76.5%)	242 (85.5%)
Yes	37 (13.9%)	4 (23.5%)	41 (14.5%)

Supplementary Table 3: Symptoms reported at all visits

		Inconclusive (N=4)	Negative (N=631)	Positive (N=31)	Overall (N=666)
Cough	No	2 (50.0%)	600 (95.1%)	24 (77.4%)	626 (94.0%)
	Yes	2 (50.0%)	31 (4.9%)	7 (22.6%)	40 (6.0%)
Sore Throat	No	1 (25.0%)	608 (96.4%)	28 (90.3%)	637 (95.6%)
	Yes	3 (75.0%)	23 (3.6%)	3 (9.7%)	29 (4.4%)
Chills	No	3 (75.0%)	623 (98.7%)	30 (96.8%)	656 (98.5%)
	Yes	1 (25.0%)	8 (1.3%)	1 (3.2%)	10 (1.5%)
Shortness of Breath	No	3 (75.0%)	620 (98.3%)	31 (100%)	654 (98.2%)
	Yes	1 (25.0%)	11 (1.7%)	0 (0%)	12 (1.8%)
Fever	No	3 (75.0%)	623 (98.7%)	28 (90.3%)	654 (98.2%)
	Yes	1 (25.0%)	8 (1.3%)	3 (9.7%)	12 (1.8%)
Muscle Aches or Soreness	No	2 (50.0%)	611 (96.8%)	23 (74.2%)	636 (95.5%)
	Yes	2 (50.0%)	20 (3.2%)	8 (25.8%)	30 (4.5%)
Nausea, Vomiting or Diarrhea	No	2 (50.0%)	612 (97.0%)	30 (96.8%)	644 (96.7%)
	Yes	2 (50.0%)	19 (3.0%)	1 (3.2%)	22 (3.3%)
Decreased Sense of Smell or Taste	No	3 (75.0%)	617 (97.8%)	27 (87.1%)	647 (97.1%)
	Yes	1 (25.0%)	14 (2.2%)	4 (12.9%)	19 (2.9%)
Loss of Appetite	No	4 (100%)	623 (98.7%)	29 (93.5%)	656 (98.5%)
	Yes	0 (0%)	8 (1.3%)	2 (6.5%)	10 (1.5%)
General Weakness or Fatigue	No	3 (75.0%)	604 (95.7%)	27 (87.1%)	634 (95.2%)
	Yes	1 (25.0%)	27 (4.3%)	4 (12.9%)	32 (4.8%)
Headache	No	2 (50.0%)	587 (93.0%)	24 (77.4%)	613 (92.0%)
	Yes	2 (50.0%)	44 (7.0%)	7 (22.6%)	

Supplementary Table 4A: CareStart test results compared to RT-qPCR in symptomatic individuals only

CareStart Results	RT-qPCR Results			
	Negative (N=61)	Positive (N=29)	Undetermined (N=3)	Overall (N=93)
Negative	59 (96.7%)	15 (51.7%)	3 (100%)	77 (82.8%)
Positive	2 (3.3%)	1 (3.4%)	0 (0%)	3 (3.2%)
Undetermined	0 (0%)	13 (44.8%)	0 (0%)	13 (14%)

Supplementary Table 4B: CareStart test result sensitivity and specificity in symptomatic individuals only

Type	RT-qPCR Results			
	n	N	Estimate	95% CI
Sensitivity	13	28	46.4%	27.5% - 66.1%
Specificity	59	59	100%	95% - 100%

Supplementary Table 4C: CareStart test results compared to RT-qPCR in asymptomatic individuals only

CareStart Results	RT-qPCR Results			
	Negative (N=522)	Positive (N=23)	Undetermined (N=28)	Overall (N=573)
Negative	518 (99.2%)	11 (47.8%)	25 (89.3%)	554 (96.7%)
Positive	3 (0.6%)	12 (52.2%)	3 (10.7%)	18 (3.1%)
Undetermined	1 (0.2%)	0 (0%)	0 (0%)	1 (0.2%)

Supplementary Table 4D: CareStart test result sensitivity and specificity in asymptomatic individuals only

Type	RT-qPCR Results			
	n	N	Estimate	95% CI
Sensitivity	12	23	52.2%	30.6% - 73.2%
Specificity	518	521	99.4%	98.3% - 99.9%

Supplementary Table 5A: CareStart test results compared to RT-qPCR using Ct positivity threshold of < 30.

CareStart Results	Negative (Ct >=30) N=597	Positive (Ct <30) N=38	Undetermined N=31	Overall N=666
Negative	590 (98.8%)	13 (34.2%)	28 (90.3%)	631 (94.7%)
Positive	4 (0.7%)	24 (63.2%)	3 (9.7%)	31 (4.7%)
Undetermined	3 (0.5%)	1 (2.6%)	0 (0%)	4 (0.6%)

Supplementary Table 5B: CareStart test result sensitivity and specificity using Ct positivity threshold of < 30.

Type	n	N	Estimate	95% CI
Sensitivity	24	37	64.9%	47.5%-79.8%
Specificity	590	594	99.3%	98.3% - 99.8%