

Clinical outcomes and cost-effectiveness of

COVID-19 vaccination in South Africa

Krishna P. Reddy, MD, MS^{1,2,3,*}

Kieran P. Fitzmaurice, BS¹

Justine A. Scott, MPH¹

Guy Harling, ScD^{4,5,6,7,8}

Richard J. Lessells, MB ChB, PhD⁹

Christopher Panella, BA¹

Fatma M. Shebl, MD, PhD^{1,3}

Kenneth A. Freedberg, MD, MSc^{1,3,10,11,12}

Mark J. Siedner, MD, MPH^{1,3,4,11}

Affiliations

¹ Medical Practice Evaluation Center, Massachusetts General Hospital, Boston, MA, USA

² Division of Pulmonary and Critical Care Medicine, Massachusetts General Hospital, Boston, MA, USA

³ Harvard Medical School, Boston, MA, USA

⁴ Africa Health Research Institute, KwaZulu-Natal, South Africa

⁵ MRC/Wits Rural Public Health & Health Transitions Research Unit (Agincourt), University of

Witwatersrand, South Africa

⁶ School of Nursing & Public Health, College of Health Sciences, University of KwaZulu-Natal, KwaZulu-

Natal, South Africa

⁷ Institute for Global Health, University College London, London, UK

Cost-effectiveness of COVID-19 vaccination in South Africa

⁸ Department of Epidemiology and Harvard Center for Population & Development Studies, Harvard T.H.

Chan School of Public Health, Boston, MA, USA

⁹ KwaZulu-Natal Research Innovation and Sequencing (KRISP), College of Health Sciences,

University of KwaZulu-Natal, Durban, South Africa

¹⁰ Division of General Internal Medicine, Massachusetts General Hospital, Boston, MA, USA

¹¹ Division of Infectious Diseases, Massachusetts General Hospital, Boston, MA, USA

¹² Department of Health Policy and Management, Harvard T.H. Chan School of Public Health, Boston,

MA, USA

***Corresponding Author**

Krishna P. Reddy, MD, MS

Medical Practice Evaluation Center

Massachusetts General Hospital

100 Cambridge Street, Suite 1600

Boston, MA 02114

USA

Phone: +1 617-726-1993

Fax: +1 617-726-4120

Email: kpreddy@mgh.harvard.edu

Keywords: COVID-19, vaccination, cost-effectiveness, South Africa, resource allocation

Running title: Cost-effectiveness of COVID-19 vaccination in South Africa

48 **Main Text Word Count:** 3,754/5,000

49

50 **Acknowledgements**

51 This research was supported by the National Institute of Allergy and Infectious Diseases of the National
52 Institutes of Health [R37 AI058736-16S1] and by the Wellcome Trust [Grant number 210479/Z/18/Z]. For
53 the purpose of open access, the author has applied a CC BY public copyright license to any Author
54 Accepted Manuscript version arising from this submission.

55

56 The funding sources had no role in the study design, data collection, data analysis, data interpretation,
57 writing of the manuscript, or in the decision to submit the manuscript for publication. The content is
58 solely the responsibility of the authors and does not necessarily represent the official views of the
59 funding sources.

60

61 The authors thank Nattanicha Wattananimitgul and Eli Schwamm for technical assistance.

62

ABSTRACT

Low- and middle-income countries are implementing COVID-19 vaccination strategies in light of varying and uncertain vaccine efficacies and costs, supply shortages, and resource constraints. We used a microsimulation model to evaluate clinical outcomes and cost-effectiveness of a COVID-19 vaccination program in South Africa. We varied vaccination coverage, pace, acceptance, effectiveness, and cost as well as epidemic dynamics. Providing vaccine to at least 40% of the population and prioritizing accelerated vaccine rollout prevented >9 million infections and >73,000 deaths and reduced costs due to fewer hospitalizations. Further, the vaccination program was cost-saving even at the lowest examined levels of acceptance (50%), effectiveness against infection (20%), effectiveness against symptomatic disease (30%), and effectiveness against severe/critical disease requiring hospitalization (40%), and with vaccination costs of up to USD25/person. In summary, a COVID-19 vaccination program would reduce both deaths and health care costs in South Africa across a wide range of assumptions. Vaccination program implementation factors, including prompt procurement, distribution, and rollout, are likely more influential than characteristics of the vaccine itself in maximizing public health benefits and economic efficiency.

INTRODUCTION

The development and licensure of COVID-19 vaccines offers a critically important opportunity to curtail the global COVID-19 pandemic.^{1–4} Even before the efficacy and safety of the leading vaccine candidates were established, many high-income countries (HICs) pre-emptively procured stocks of doses in excess of population need.⁵ By contrast, most low- and middle-income countries (LMICs) do not have access to sufficient quantities of vaccine due to cost, limitations in available doses, and logistical challenges of production, distribution, and storage.⁶ Meanwhile, the Africa Centres for Disease Control and Prevention have announced a goal of vaccinating 60% of Africans by the end of 2022.⁷

There has been much discussion about reported efficacies and costs of different vaccines. However, factors specific to implementation, including vaccine supply, vaccination pace, and acceptance among communities, are increasingly recognized to be crucial to the effectiveness of a vaccination program in promoting epidemic control in HICs – in some cases, even more so than vaccine efficacy.^{8–11} How these program implementation factors will affect the clinical and health economic consequences of COVID-19 in LMICs has not been well-defined. This is a particularly urgent question given the emergence of SARS-CoV-2 variants, such as B.1.351 in South Africa, that appear to partially reduce efficacy of some vaccines.^{4,12–15}

We used a microsimulation model to estimate the clinical and economic outcomes of COVID-19 vaccination programs in South Africa, examining different implementation strategies that policymakers could directly influence. Our goal was to inform vaccination program priorities in South Africa and other LMICs.

METHODS

Analytic Overview

We used the Clinical and Economic Analysis of COVID-19 Interventions (CEACOV) dynamic state-transition Monte Carlo microsimulation model to reflect COVID-19 natural history, vaccination, and treatment. We previously used the CEACOV model to project COVID-19 clinical and economic outcomes in a variety of settings, including an analysis of non-pharmaceutical public health interventions in South Africa.^{16–19} In this analysis, we focus on vaccination programs in South Africa and examine different implementation strategies and different vaccine characteristic and epidemic growth scenarios, thereby projecting which have the greatest impact on clinical and economic outcomes and cost-effectiveness.

Starting with SARS-CoV-2 active infection prevalence of 0.1% (or approximately 60,000 active cases, roughly 10 times the number reported in the first 10 days of April 2021), we simulated COVID-19-specific outcomes over 360 days, including daily and cumulative infections (detected and undetected), deaths, resource utilization (hospital and intensive care unit [ICU] bed use), and health care costs from the all-payer (public and private) health sector perspective without discounting.²⁰ Outside the model, we calculated the mean lifetime years-of-life saved (YLS) from each averted COVID-19 death during the 360-day model horizon, stratified by age (mean 17.77 YLS per averted COVID-19 death across all individuals, Supplement p.8). We did not include costs beyond the 360-day model horizon.¹⁶ We determined the incremental cost-effectiveness ratio (ICER), the difference in health care costs (2020 US dollars) divided by the difference in life-years between different vaccination strategies. Our ICER estimates include health care costs during the 360-day model horizon and YLS over a lifetime from averted COVID-19 deaths during the 360-day model horizon.¹⁶ “Cost-saving” strategies were those resulting in higher clinical benefits (fewer life-years lost) and lower costs than an alternative. Though there is no consensus on an ICER threshold for cost-effectiveness in South Africa, for context, the country’s gross domestic

Cost-effectiveness of COVID-19 vaccination in South Africa

product per capita in 2019 was approximately \$6,000, and a published South Africa cost-effectiveness threshold from an opportunity cost approach was approximately \$2,950 (2020 US dollars) per disability-adjusted life-year averted.^{21,22}

Analysis of Vaccination Program Strategies

To understand the trade-offs inherent to policy decisions regarding the total vaccine supply to purchase and the speed with which to administer vaccinations, we compared the clinical and economic outcomes of different strategies of population coverage (vaccine supply) and vaccination pace. We determined the ICER of each strategy compared with other strategies of supply and pace.

Sensitivity Analysis: Vaccine Characteristics and Alternative Scenarios

To understand the influence of extrinsic factors (i.e., those outside the direct control of vaccination program decision makers, such as vaccine effectiveness and costs and epidemic growth), we performed sensitivity analyses in which we varied each of these factors. In each alternative scenario, we projected clinical and economic outcomes and determined the ICER of a reference vaccination program (67% vaccine supply, 150,000 vaccinations/day, similar to stated goals in South Africa) compared with no vaccination program.^{23–25}

Model Structure

Vaccination

In each simulation, we assumed a fixed supply of vaccine that would be administered to eligible and willing individuals, prioritizing older adults, regardless of history of SARS-CoV-2 infection. Available vaccine doses would first be offered to those aged ≥60 years, then to those aged 20-59 years, and finally to those aged <20 years.²⁶

149
150 In the base case, we applied characteristics of Ad26.COV2.S (Johnson & Johnson/Janssen), a single-dose
151 vaccine for which administration in South Africa began through a phase 3b study in health care workers
152 in February 2021.^{4,27} To reflect possible implementation of other vaccines, as well as published data and
153 uncertainties around the type of protection provided by each vaccine, we varied vaccine effectiveness
154 against SARS-CoV-2 infection, effectiveness against symptomatic COVID-19 disease, and effectiveness
155 against severe COVID-19 disease requiring hospitalization. We assumed that a single vaccine dose would
156 be given and did not explicitly model a two-dose schedule.

157 158 *Natural History and Transmission*

159 At model initiation, each individual is either susceptible to SARS-CoV-2, infected with SARS-CoV-2, or
160 immune (by way of prior infection). Each susceptible individual faces a daily probability of SARS-CoV-2
161 infection. Once infected, an individual moves to the pre-infectious latency state and faces age-
162 dependent probabilities of developing asymptomatic, mild/moderate, severe, or critical disease
163 (Supplement p.4, Table S1, Figure S1). Those with critical disease face age-dependent daily probabilities
164 of death. If they survive, they transition to a recuperation state (remaining infectious) before going to
165 the recovery (immune) state. Those in other disease states can transition directly to the recovery state.
166 “Recovered” individuals are assumed immune from repeat infection for the simulation duration and
167 pose no risk of transmission. To capture infection transmission dynamics, all simulated individuals
168 advance through the model simultaneously. Details of COVID-19 transmission and hospital care in the
169 model are described elsewhere and in the Supplement pp.4-7.¹⁶

Resource Utilization

Individuals with severe or critical disease are referred to hospitals and ICUs, respectively. If hospital/ICU bed capacity has been reached, the individual receives the next lower available intervention, which is associated with different mortality risk and cost (e.g., if a person needs ICU care when no ICU beds are available, they receive non-ICU hospital care).

Input Parameters

Cohort Characteristics

We defined the age distribution based on 2019 South Africa population estimates, in which 37% were aged <20 years, 54% were 20-59 years, and 9% were ≥60 years (Table 1).²⁸ We assumed in the base case that, at model initiation, 30% had prior infection and were immune to repeat infection. This assumption was based on an estimate of the proportion of South Africa's population that had been exposed to the B.1.351 variant by 30 January 2021 (Supplement pp.5-6).^{15,29-31}

Vaccination Program Strategies

In the reference vaccination program strategy: a) there would be a sufficient supply of vaccine doses to fully vaccinate 67% of South Africa's population (approximately 40 million vaccinated people);²³ b) pace of vaccination was 150,000 doses/day.^{24,25} Our comparisons of different vaccination program strategies included varying the vaccine supply to that sufficient to cover 0-80% of South Africa's population and increasing the pace of vaccination up to 300,000 doses/day.

Vaccine Uptake and Effectiveness

In the base case, we assumed that vaccine uptake among those eligible was 67%, accounting for vaccine hesitancy and failure to reach some.^{32,33} Vaccine effectiveness was 40% against infection, 52% against

symptomatic disease, and 86% against severe disease requiring hospitalization. The latter two were based on reported efficacies of the Johnson & Johnson/Janssen vaccine ≥ 14 days post-vaccination in South Africa.⁴

Natural History and Transmission

Table S1 indicates daily disease progression probabilities, age-dependent probabilities of developing severe or critical disease, and age-dependent mortality probabilities for those with critical disease. We stratified transmission rates by disease state, adjusting them to reflect an initial effective reproduction number (R_e)=1.4 in the base case.³⁴ We also simulated alternative epidemic growth scenarios with lower or higher initial R_e and a scenario in which there were episodic surges above a lower background basic reproduction number (R_0), as observed in the South Africa epidemic over the past year (Supplement p.7).

Resource Utilization and Costs

The maximum availability of hospital and ICU beds per day was 119,400 and 3,300 (Table 1).³⁵ We applied costs of vaccination and daily costs of hospitalization and ICU stay based on published estimates and/or cost quotes obtained in South Africa (Table 1). In the base case, we applied a total vaccination cost of \$14.81 per person, based on estimated costs in South Africa of \$10/dose for the vaccine and \$4.81/dose for service and delivery (Supplement pp.10-11).³⁶⁻³⁸ We varied vaccination costs in sensitivity analysis.

Validation

We previously validated our natural history assumptions by comparing model-projected COVID-19 deaths with those reported in South Africa.¹⁶ We updated our validation by comparing the model-

projected number of COVID-19 infections and deaths with the number of cases and deaths reported in South Africa through 10 April 2021, accounting for underreporting (Supplement p.11, Figure S2).^{20,39}

Sensitivity Analysis

We used sensitivity analysis to examine the relative influence on clinical and cost projections of various parameters around vaccine characteristics and epidemic growth (Table 1). Specifically, we varied: vaccine acceptance (50-90% among eligible individuals); vaccine effectiveness in preventing infection (20-75%), symptomatic disease (30-79%), and severe/critical disease requiring hospitalization (40-98%); cost (\$9-75/person); initial R_e (1.1-1.8); prior immunity (10-50% of population); reduction in transmission rate among vaccinated but infected individuals (0-50%); and hospital and ICU daily costs (0.5x-2.0x base case costs). The ranges of vaccine effectiveness against symptomatic disease and severe/critical disease requiring hospitalization were based on efficacies and 95% confidence intervals reported in the Johnson & Johnson/Janssen vaccine trial (Supplement pp.8-10).⁴ We also examined ICERs when the relatively high costs of ICU care were excluded and when all hospital care costs (non-ICU and ICU) were excluded. We performed multi-way sensitivity analysis in which we simultaneously varied parameters influential in one-way sensitivity analysis.

RESULTS

Clinical and Economic Benefits of Vaccination Strategies

The scenario without vaccines resulted in the most infections (21,012,100) and deaths (89,300) and highest costs (~\$1.77 billion) (Table 2). Vaccinating 40% of the population decreased deaths to 16,000 and resulted in the lowest total health care costs (~\$1.18 billion), representing reductions of 82% (deaths) and 33% (costs) compared with the scenario without vaccines. Increasing the vaccinated population to 67%, the government's target for 2021, decreased deaths to 14,700 (additional 8% reduction) and raised costs to ~\$1.34 billion, resulting in an ICER of \$9,960/YLS compared with the 40% supply (Table 2). Increasing the vaccine supply to 80%, while simultaneously increasing vaccine acceptance to 80%, reduced deaths and raised costs further, with an ICER of \$4,270 compared with the 40% supply. Due to its higher ICER, the 67% supply strategy was therefore dominated by the 80% supply strategy, meaning that it used resources less efficiently. A vaccine supply of 20%, while less efficient than higher vaccine supply levels, still reduced deaths by 76% and reduced costs by 15% compared with no vaccination. The highest vaccination pace, 300,000 vaccinations daily, resulted in the most favorable clinical outcomes and lowest costs compared with lower paces (Table 2).

Table S2 details the differences between a reference vaccination program (supply 67%, pace 150,000 vaccinations/day) and no vaccination program in age-stratified cumulative infections and deaths, hospital and ICU bed use, and health care costs. The reference vaccination program reduced hospital bed-days by 67% and ICU bed-days by 54% compared with no vaccination program.

When varying both vaccine supply and vaccination pace across different scenarios of epidemic growth (R_e), a faster vaccination pace decreased both COVID-19 deaths and total health care costs, while the impact of a higher vaccine supply on deaths and costs varied (Table 3). In all four R_e scenarios, a

Cost-effectiveness of COVID-19 vaccination in South Africa

vaccination strategy with supply 40% and pace 300,000/day resulted in fewer deaths and lower costs than a strategy with higher supply (67%) and slower pace (150,000/day). At a vaccination pace of 300,000/day, increasing the vaccine supply from 40% to 67% was cost-saving in the two-wave epidemic scenario, while it resulted in ICERs of \$520/YLS when $R_e=1.4$, \$1,160/YLS when $R_e=1.8$, and \$85,290/YLS when $R_e=1.1$.

Sensitivity Analysis: Vaccine Characteristics and Alternative Scenarios

In one-way sensitivity analysis, the reference vaccination program remained cost-saving compared with a scenario without vaccines across different values of effectiveness against infection, effectiveness against symptomatic disease, effectiveness against severe/critical disease, and vaccine acceptance (Table 4). When increasing the cost per person vaccinated up to \$25, the vaccination program remained cost-saving. At cost per person vaccinated between \$26 and \$75, the vaccination program increased health care costs compared with a scenario without vaccines, but the ICERs increased only to \$1,500/YLS (Table 4).

The reference vaccination program had an ICER $< \$100/\text{YLS}$ or was cost-saving compared with a scenario without vaccines across different values of prior immunity (up to 40%), reduction in transmission rate among vaccinated but infected individuals, and costs of hospital and ICU care (Table 4, Table S3). When there was 50% prior immunity, the vaccination program still reduced deaths but it increased costs, with an ICER of \$22,460/YLS compared with a scenario without vaccines. The vaccination program reduced deaths and increased costs compared with no vaccination program in a scenario of R_e 1.1 (ICER \$3,050/YLS) or R_e 1.8 (ICER \$70/YLS). In a two-wave epidemic scenario, the vaccination program was cost-saving compared with no vaccination (Table 4). Notably, when excluding costs of hospital care and

Cost-effectiveness of COVID-19 vaccination in South Africa

ICU care and only considering costs of the vaccination program, the program increased costs, but its ICER compared with no vaccination program was only \$450/YLS (Table S3).

The influence of different scenarios into which the vaccination program would be introduced on cumulative infections, deaths, and health care costs is depicted in Figure 1. Varying the prevalence of prior immunity and R_e had the greatest influence on both infections and deaths, while varying the cost per person vaccinated had the greatest influence on health care costs. Vaccine effectiveness against infection and effectiveness against severe disease requiring hospitalization were more influential than effectiveness against symptomatic disease in terms of reductions in deaths and costs.

Multi-Way Sensitivity Analyses

In a multi-way sensitivity analysis in which we simultaneously varied vaccine effectiveness against infection and cost per person vaccinated, the reference vaccination program was cost-saving compared with a scenario without vaccines when cost per person vaccinated was \$14.81, even when effectiveness against infection was as low as 20% (Figure 2). When cost per person vaccinated was \$25, the program was cost-saving when effectiveness against infection was at least 40%. Even at the highest examined cost per person vaccinated (\$75) and the lowest examined effectiveness against infection (20%), the vaccination program had an ICER <\$2,000/YLS compared with no vaccination program (Figure 2).

We performed several additional multi-way sensitivity analyses in which we simultaneously varied combinations of vaccine supply, vaccination pace, vaccine effectiveness against infection, cost per person vaccinated, R_e , and prevalence of prior immunity (Table 1, Figures S3-S7). Of note, to optimize efficiency, increasing vaccination pace was more important than increasing vaccine supply. At a cost of \$45 or \$75 per person vaccinated, increasing vaccination pace led to similar or lower ICER (greater

Cost-effectiveness of COVID-19 vaccination in South Africa

308 economic efficiency), while increasing vaccine supply led to a similar or higher ICER (less economic
 309 efficiency) (Figure S3). At a cost up to \$25 per person vaccinated, the vaccination program was cost-
 310 saving under nearly all strategies and scenarios (Figures S3-S5). Even when the vaccination program
 311 increased costs, the ICERs were <\$2,000/YLS compared with a scenario without vaccines (Figures S3-S5).
 312

DISCUSSION

Using a dynamic COVID-19 microsimulation model, we found that vaccinating 67% of South Africa's population, meeting the government's goal for 2021,²³ would both decrease COVID-19 deaths and reduce overall health care costs compared with a scenario without vaccines or with a 20% vaccine supply, by reducing the number of infections, hospitalizations, and ICU admissions. Further increasing the vaccine supply to 80%, while simultaneously increasing vaccine acceptance, would save even more lives while modestly increasing costs. Vaccination pace – the number of vaccine doses administered daily, rather than supply itself, may be most influential to maximizing public health benefits and economic efficiency. Increasing the pace would reduce both deaths and overall health care costs. The program remained cost-saving even with conservative estimates of vaccine effectiveness and with higher per-person vaccination costs, highlighting that the characteristics of vaccination program implementation are likely to be more influential than the characteristics of the vaccine itself. Furthermore, the vaccination program remained economically efficient (either cost-saving or with a relatively low ICER representing good clinical value for additional money spent) across most epidemic scenarios, including various rates of epidemic growth and a broad range of prevalence of prior population immunity.

Much has been made about differences in the leading vaccine candidates and the impact of variants, such as the B.1.351 variant which eventually accounted for over 90% of SARS-CoV-2 infections in South Africa, on vaccine effectiveness.^{4,15} However, we found that even with lower effectiveness than that estimated from studies, a vaccination program would still prevent the majority of COVID-19 deaths that would occur without a vaccination program. For example, decreasing vaccine effectiveness against symptomatic disease and severe/critical disease requiring hospitalization to 40% still reduced COVID-19 deaths by 65,800 (74%) compared with a scenario without vaccines. Although effectiveness against

Cost-effectiveness of COVID-19 vaccination in South Africa

symptomatic and severe disease have been the focus of vaccine trials, these were even less influential on population-wide health and cost outcomes than effectiveness against infection, which is less commonly reported in trials.^{1–4} Nonetheless, the effectiveness ranges we examined in sensitivity analysis include the point estimates of efficacy against symptomatic and severe disease reported in clinical trials of the AstraZeneca ChAdOx1, Moderna mRNA-1273, and Pfizer-BioNTech mRNA BNT162b2 vaccines.^{1–3} This suggests that all of these vaccines are likely to have both health and economic benefits.

Similarly, we found that vaccination programs remained economically favorable even at relatively high vaccination costs. Though we did not explicitly account for all implementation and scale-up costs of a vaccination program, our estimates of cost per person vaccinated were based on reported costs of both vaccine and delivery in South Africa.^{36–38} We found that the vaccination program would remain cost-saving at a vaccination cost up to \$25/person and likely cost-effective even at per-person vaccination cost up to \$75/person (ICER \$1,500/YLS). This is due to cost offsets in preventing hospitalizations.

A faster pace of vaccination consistently decreased infections, deaths, and costs across a range of epidemic growth scenarios. Yet, this was not always true of a higher vaccine supply. With lower epidemic growth ($R_e=1.1$), which approximates the basic reproduction number in the intra-wave periods in South Africa, a faster pace remained preferable from a clinical and economic standpoint. But with the faster vaccination pace, increasing the proportion of the population vaccinated from 40% to 67% resulted in higher costs while only modestly reducing years-of-life lost, with an ICER of \$85,290/YLS, well above commonly reported willingness-to-pay thresholds in South Africa.^{16,22,40–42} By contrast, when a higher epidemic growth rate is seen ($R_e=1.8$), as was documented during the first and second waves in South Africa, a faster vaccination pace remained highly preferable, and increasing the proportion of the population vaccinated from 40% to 67% resulted in fewer years-of-life lost and higher costs with a much

lower ICER of \$1,160/YLS. Overall, these results demonstrate the importance of rolling out vaccinations quickly, particularly ahead of any future waves of the epidemic – pace of vaccination is at least as important as vaccine supply from both clinical and economic perspectives. Consequently, policymakers should invest both in procuring vaccine doses and establishing a vaccine distribution and administration system to ensure vaccines will be administered as promptly as possible. Because of the importance of speed, all available distribution channels, including those in public and private sectors, should be leveraged.

Our model projections were sensitive to R_e and to the prevalence of prior immunity to SARS-CoV-2. However, the program was generally economically efficient. The exception was when the prevalence of prior protective immunity was increased to 50%. We assumed that prior infection protects against another SARS-CoV-2 infection for the duration of the simulation period. If this is not the case, either because immunity wanes or viral variants make prior infection poorly protective against re-infection, as appeared to be seen in the second waves in South Africa and Brazil, then the vaccination program could still provide good value even with a high prevalence of prior infection.^{43,44}

These results should be interpreted within the context of several limitations. We assumed that vaccine effectiveness was constant starting 14 days after administration and continuing throughout the 360-day simulation. Early data suggest that post-vaccination immunity lasts at least for months, with additional data accruing as the studies continue their prolonged observation periods.^{1–3,45,46} There may be economies of scale such that the cost per person vaccinated decreases as the vaccine supply or vaccination pace increase and vaccination program resources are used more efficiently. Our modeled vaccination prioritization was based exclusively on age and not on employment type, comorbidity presence, or urban/rural heterogeneity in epidemiology or vaccination delivery. We did not include

Cost-effectiveness of COVID-19 vaccination in South Africa

lifetime costs of health care beyond COVID-19 nor of sequelae among those who recover. We did not consider the impact of COVID-19 or vaccination on other health care programs (e.g., HIV and tuberculosis care) or on other economic sectors. As with all modeling exercises, our results are contingent on assumptions and input parameters. We selected COVID-19 clinical parameters based on the published literature. Where data were limited, lacking, or uncertain, we conducted sensitivity analyses.

In summary, we found that a COVID-19 vaccination program would reduce infections and deaths and likely reduce overall health care costs in South Africa across a range of possible scenarios, even with conservative assumptions around vaccine effectiveness. Our data underscore that in South Africa and similar settings, acquisition and rapid distribution of vaccines should be prioritized over relatively small differences in vaccine effectiveness and price, as vaccination programs are likely to be cost-saving. The pace of vaccination is as or more important than population coverage, and therefore attention to vaccination program infrastructure is critical. Non-pharmaceutical practices such as mask wearing and physical distancing remain crucial to reduce epidemic growth while vaccination programs are being implemented.¹⁰ Policymakers can use our results to guide decisions about vaccine selection, supply, and distribution to maximally reduce the deleterious impact of the COVID-19 pandemic in South Africa.

403 DATA AVAILABILITY

404 This modeling study involved the use of published or publicly available data. The data used and the
405 sources are described in the Manuscript and Supplement. No primary data were collected for this study.
406 Model flowcharts are in the Supplement.

407

408 AUTHOR CONTRIBUTIONS

409 All authors contributed substantively to this manuscript in the following ways: study and model design
410 (all authors), data analysis (KPR, KPF, JAS, FMS, KAF, MJS), interpretation of results (all authors), drafting
411 the manuscript (KPR, MJS), critical revision of the manuscript (all authors) and final approval of the
412 submitted version (all authors).

REFERENCES

1. Voysey, M. *et al.* Safety and efficacy of the ChAdOx1 nCoV-19 vaccine (AZD1222) against SARS-CoV-2: an interim analysis of four randomised controlled trials in Brazil, South Africa, and the UK. *Lancet* **397**, 99–111 (2021).
2. Polack, F. P. *et al.* Safety and efficacy of the BNT162b2 mRNA Covid-19 vaccine. *N Engl J Med* **383**, 2603–2615 (2020).
3. Baden, L. R. *et al.* Efficacy and safety of the mRNA-1273 SARS-CoV-2 vaccine. *N Engl J Med* **384**, 403–416 (2021).
4. Sadoff, J. *et al.* Safety and efficacy of single-dose Ad26.COV2.S vaccine against Covid-19. *N Engl J Med* (2021) doi:10.1056/NEJMoa2101544.
5. Torjesen, I. Covid-19: Pre-purchasing vaccine—sensible or selfish? *BMJ* m3226 (2020) doi:10.1136/bmj.m3226.
6. Nkengasong, J. N., Ndembu, N., Tshangela, A. & Raji, T. COVID-19 vaccines: how to ensure Africa has access. *Nature* **586**, 197–199 (2020).
7. Reuters Staff. Africa foresees 60% of people vaccinated against COVID in two to three years. *Reuters* <https://www.reuters.com/article/us-health-coronavirus-africa-idUSKBN28D1D3> (2020).
8. Paltiel, A. D., Schwartz, J. L., Zheng, A. & Walensky, R. P. Clinical outcomes of a COVID-19 vaccine: implementation over efficacy. *Health Aff (Millwood)* **40**, 42–52 (2021).
9. Paltiel, A. D., Zheng, A. & Schwartz, J. L. Speed versus efficacy: quantifying potential tradeoffs in COVID-19 vaccine deployment. *Ann Intern Med* (2021) doi:10.7326/M20-7866.
10. Giordano, G. *et al.* Modeling vaccination rollouts, SARS-CoV-2 variants and the requirement for non-pharmaceutical interventions in Italy. *Nat Med* (2021) doi:10.1038/s41591-021-01334-5.
11. Sah, P. *et al.* Accelerated vaccine rollout is imperative to mitigate highly transmissible COVID-19 variants. *EClinicalMedicine* **35**, 100865 (2021).

Cost-effectiveness of COVID-19 vaccination in South Africa

- 437 12. Liu, Y. *et al.* Neutralizing activity of BNT162b2-elicited serum. *N Engl J Med* (2021)
438 doi:10.1056/NEJMc2102017.
- 439 13. Madhi, S. A. *et al.* Efficacy of the ChAdOx1 nCoV-19 Covid-19 vaccine against the B.1.351 variant. *N*
440 *Engl J Med* (2021) doi:10.1056/NEJMoa2102214.
- 441 14. Shinde, V. *et al.* Preliminary efficacy of the NVX-CoV2373 Covid-19 vaccine against the B.1.351
442 variant. *medRxiv* 2021.02.25.21252477 (2021) doi:10.1101/2021.02.25.21252477.
- 443 15. Tegally, H. *et al.* Detection of a SARS-CoV-2 variant of concern in South Africa. *Nature* 1–6 (2021)
444 doi:10.1038/s41586-021-03402-9.
- 445 16. Reddy, K. P. *et al.* Cost-effectiveness of public health strategies for COVID-19 epidemic control in
446 South Africa: a microsimulation modelling study. *Lancet Glob Health* **9**, e120–e129 (2021).
- 447 17. Neilan, A. M. *et al.* Clinical impact, costs, and cost-effectiveness of expanded SARS-CoV-2 testing in
448 Massachusetts. *Clin Infect Dis* (2020) doi:10.1093/cid/ciaa1418.
- 449 18. Baggett, T. P. *et al.* Clinical outcomes, costs, and cost-effectiveness of strategies for adults
450 experiencing sheltered homelessness during the COVID-19 pandemic. *JAMA Netw Open* **3**,
451 e2028195 (2020).
- 452 19. Losina, E. *et al.* College campuses and COVID-19 mitigation: clinical and economic value. *Ann Intern*
453 *Med* (2020) doi:10.7326/M20-6558.
- 454 20. National Institute for Communicable Diseases. National COVID-19 Daily Report.
455 [https://www.nicd.ac.za/diseases-a-z-index/covid-19/surveillance-reports/national-covid-19-daily-](https://www.nicd.ac.za/diseases-a-z-index/covid-19/surveillance-reports/national-covid-19-daily-report/)
456 [report/](https://www.nicd.ac.za/diseases-a-z-index/covid-19/surveillance-reports/national-covid-19-daily-report/).
- 457 21. The World Bank. GDP per capita (current US\$) - South Africa.
458 <https://data.worldbank.org/indicator/NY.GDP.PCAP.CD?locations=ZA>.
- 459 22. Edoka, I. P. & Stacey, N. K. Estimating a cost-effectiveness threshold for health care decision-making
460 in South Africa. *Health Policy Plan* **35**, 546–555 (2020).

Cost-effectiveness of COVID-19 vaccination in South Africa

23. COVID-19 Coronavirus vaccine strategy | South African Government. <https://www.gov.za/covid-19/vaccine/strategy>.
24. Parliament of the Republic of South Africa. Portfolio Committee on Health's Zoom Meeting, 7 January 2021. https://www.youtube.com/watch?v=jTZfp__pykY (2021).
25. Matiwane, Z. Covid-19 vaccine rollout: 200,000-a-day jabs plan unveiled. *TimesLIVE* <https://www.timeslive.co.za/sunday-times/news/2021-03-28-covid-19-vaccine-rollout-200000-a-day-jabs-plan-unveiled/> (2021).
26. Pfizer. Pfizer-BioNTech announce positive topline results of pivotal COVID-19 vaccine study in adolescents. <https://www.pfizer.com/news/press-release/press-release-detail/pfizer-biontech-announce-positive-topline-results-pivotal> (2021).
27. Arthur, R. South Africa starts administering Janssen COVID-19 vaccine to health workers. *biopharma-reporter.com* <https://www.biopharma-reporter.com/Article/2021/02/18/South-Africa-starts-administering-Janssen-COVID-19-vaccine-to-health-workers> (2021).
28. Statistics South Africa. Mid-year population estimates 2019. <https://www.statssa.gov.za/publications/P0302/P03022019.pdf> (2019).
29. National Institute for Communicable Diseases. *COVID-19 Weekly Epidemiology Brief - Week 4, 2021*. <https://www.nicd.ac.za/diseases-a-z-index/covid-19/surveillance-reports/weekly-epidemiological-brief/>.
30. Sykes, W. *et al.* Prevalence of anti-SARS-CoV-2 antibodies among blood donors in Northern Cape, KwaZulu-Natal, Eastern Cape, and Free State provinces of South Africa in January 2021. *Res Sq* (2021) doi:10.21203/rs.3.rs-233375/v1.
31. National Institute for Communicable Diseases. *COVID-19 Weekly Epidemiology Brief - Week 46, 2020*. <https://www.nicd.ac.za/wp-content/uploads/2020/11/COVID-19-Weekly-Epidemiology-Brief-week-46.pdf> (2020).

Cost-effectiveness of COVID-19 vaccination in South Africa

32. Larson, H. J. *et al.* The state of vaccine confidence 2016: global insights through a 67-country survey. *EBioMedicine* **12**, 295–301 (2016).
33. Runciman, C., Roberts, B., Alexander, K., Bohler-Muller, N. & Bekker, M. UJ-HSRC Covid-19 Democracy Survey. Willingness to take a Covid-19 vaccine: A research briefing. [http://www.hsrc.ac.za/uploads/pageContent/1045085/2021-01-25%20Vaccine%20briefing%20\(final\).pdf](http://www.hsrc.ac.za/uploads/pageContent/1045085/2021-01-25%20Vaccine%20briefing%20(final).pdf).
34. Covid-19: Estimates for South Africa. *Covid-19* <https://epiforecasts.io/covid/posts/national/south-africa/> (2020).
35. COVID-19 Public Health Response - SA Corona Virus Online Portal. *SA Corona Virus Online Portal* <https://sacoronavirus.co.za/2020/04/11/covid-19-public-health-response/> (2020).
36. Reuters Staff. J&J, African Union in deal for up to 400 million COVID-19 shots. *Reuters* <https://www.reuters.com/article/uk-health-coronavirus-j-j-vaccine-idUSKBN2BL1V4> (2021).
37. Business Insider South Africa. SA is the first country to roll out Johnson & Johnson vaccine - what you need to know about the jab. <https://www.businessinsider.co.za/covid-19-vaccine-johnson-johnson-what-we-know-2020-12> (2021).
38. Moodley, I., Tathiah, N. & Sartorius, B. The costs of delivering human papillomavirus vaccination to Grade 4 learners in KwaZulu-Natal, South Africa. *S Afr Med J* **106**, 497–501 (2016).
39. National Institute for Communicable Diseases. COVID-19 Weekly Hospital Surveillance Update - Week 14, 2021. <https://www.nicd.ac.za/wp-content/uploads/2021/04/NICD-COVID-19-Weekly-Hospital-Surveillance-update-Week-14-2021.pdf> (2021).
40. Reddy, K. P. *et al.* Cost-effectiveness of urine-based tuberculosis screening in hospitalised patients with HIV in Africa: a microsimulation modelling study. *Lancet Glob Health* **7**, e200–e208 (2019).
41. Woods, B., Revill, P., Sculpher, M. & Claxton, K. Country-level cost-effectiveness thresholds: initial estimates and the need for further research. *Value Health* **19**, 929–935 (2016).

Cost-effectiveness of COVID-19 vaccination in South Africa

42. Meyer-Rath, G., van Rensburg, C., Larson, B., Jamieson, L. & Rosen, S. Revealed willingness-to-pay versus standard cost-effectiveness thresholds: evidence from the South African HIV Investment Case. *PLoS One* **12**, e0186496 (2017).
43. Sabino, E. C. *et al.* Resurgence of COVID-19 in Manaus, Brazil, despite high seroprevalence. *Lancet* **397**, 452–455 (2021).
44. Cele, S. *et al.* Escape of SARS-CoV-2 501Y.V2 from neutralization by convalescent plasma. *Nature* **1–6** (2021) doi:10.1038/s41586-021-03471-w.
45. Widge, A. T. *et al.* Durability of responses after SARS-CoV-2 mRNA-1273 vaccination. *N Engl J Med* **384**, 80–82 (2021).
46. Doria-Rose, N. *et al.* Antibody persistence through 6 months after the second dose of mRNA-1273 vaccine for Covid-19. *N Engl J Med* (2021) doi:10.1056/NEJMc2103916.
47. Netcare Hospitals. 2019 Tariffs. <https://www.netcarehospitals.co.za/Portals/3/Images/Content-images/PDF/2019-Private-Paying-Patients.pdf> (2019).
48. Consumer Price Index: All Items for South Africa. *FRED, Federal Reserve Bank of St. Louis* <https://fred.stlouisfed.org/series/ZAFCPIALLMINMEI> (2021).
49. South Africa / U.S. Foreign Exchange Rate. *FRED, Federal Reserve Bank of St. Louis* <https://fred.stlouisfed.org/series/DEXSFUS> (2021).
50. Mahomed, S. & Mahomed, O. H. Cost of intensive care services at a central hospital in South Africa. *S Afr Med J* **109**, 35 (2018).

Table 1. Input parameters for a model-based analysis of COVID-19 vaccination in South Africa.

Parameter	Base case value (Range)	Sources
Initial state		
Age distribution, %		28
<20 years	37	
20-59 years	54	
≥60 years	9	
Initial health state distribution, %		
Susceptible	69.9 (49.9-89.9)	Assumption
Infected with SARS-CoV-2	0.1	Assumption ^a
Recovered (prior immunity)	30 (10-50)	15,29–31
Transmission dynamics		
Effective reproduction number, R_e	1.4 (1.1-1.8)	34
Relative reduction in onward transmission rate among vaccinated individuals, %	0 (0-50)	Assumption
Hospital and ICU care		
Resource availabilities		
Hospital beds, daily, n	119,400	35
ICU beds, daily, n	3,300	35
Costs		
Hospitalization, daily, USD	154 (77-309)	47–49
ICU care, daily, USD	1,751 (875-3,502)	48–50
Vaccination program strategies		
Vaccine supply, % of population	67 (20-80)	23
Vaccinations per day, n	150,000 (150,000-300,000)	24,25
Time to rollout start, days	0 (0-60)	Assumption
Vaccine characteristics^b		
Effectiveness in preventing SARS-CoV-2 infection, %	40 (20-75)	Assumption
Effectiveness in preventing symptomatic COVID-19 disease, %	52 (30-79)	4
Effectiveness in preventing severe COVID-19 disease requiring hospitalization, %	86 (40-98)	4
Number of doses required for effectiveness	1	4
Time to efficacy, days post-vaccination	14	4
Vaccine uptake among those eligible, %	67 (50-90)	33
Vaccination cost per person, USD	14.81 (9-75)	36–38,48,49

R_e : effective reproduction number. ICU: intensive care unit. USD: United States dollars.

Ranges reflect values examined in analyses of alternative vaccination program strategies and in sensitivity analyses of different vaccine characteristics and epidemic growth scenarios.

^aInitial prevalence of each state of infection and disease are in Table S1.

^bIn the base case, we model a vaccination program based on characteristics of the Johnson & Johnson/Janssen Ad26.COV2.S vaccine.⁴ In sensitivity analyses, vaccine effectiveness and cost are varied across a range of possible values to evaluate the influence of these parameters on clinical and economic outcomes and to account for uncertainty around published estimates.

Table 2. Model-projected clinical and economic outcomes and cost-effectiveness of different COVID-19 vaccination program strategies over 360 days in South Africa.

Parameter / Value	Cumulative SARS-CoV-2 infections	Cumulative COVID-19 deaths	Years-of-life lost	Health care costs, USD	ICER, USD per YLS ^a
Vaccine supply, % of population					
40	11,784,700	16,000	275,800	1,177,742,900	--
67	10,585,100	14,700	259,600	1,338,803,500	Dominated
80 ^b	10,410,000	12,000	217,900	1,425,272,800	4,270
20	15,489,500	21,800	397,300	1,508,890,800	Dominated
0	21,012,100	89,300	1,558,700	1,766,856,200	Dominated
Vaccinations per day					
300,000	5,659,400	7,200	120,300	1,016,586,100	--
200,000	8,191,900	9,600	151,300	1,123,694,300	Dominated
150,000	10,585,100	14,700	259,600	1,338,803,500	Dominated
0	21,012,100	89,300	1,558,700	1,766,856,200	Dominated

USD: United States dollars. ICER: incremental cost-effectiveness ratio. YLS: year-of-life saved.

Dominated: the strategy results in a higher ICER than that of a more clinically effective strategy, or the strategy results in less clinical benefit (more years-of-life lost) and higher health care costs than an alternative strategy.

^aStrategies are ordered from lowest to highest cost per convention of cost-effectiveness analysis. ICERs are calculated compared to the next least expensive, non-dominated strategy. Displayed life-years and costs are rounded to the nearest hundred, while ICERs are calculated based on non-rounded life-years and costs.

^bWhen modeling a vaccination program that seeks to vaccinate 80% of the population, uptake among those eligible was increased to 80% to avoid a scenario in which supply exceeds uptake. If uptake is not increased beyond 67%, then the strategy of vaccinating 67% of the population provides the most clinical benefit and results in an ICER of \$9,960/YLS compared with vaccinating 40% of the population.

Table 3. Clinical and economic outcomes of different COVID-19 vaccination program strategies of vaccine supply and vaccination pace under different scenarios of epidemic growth in South Africa.

Scenario and Vaccination Strategy	Cumulative SARS-CoV-2 infections	Cumulative COVID-19 deaths	Years-of-life lost	Health care costs, USD	ICER, USD per year-of-life saved ^a
$R_e = 1.1^b$					
No vaccination	3,719,500	8,200	123,500	382,176,900	--
Vaccine supply 40%, pace 300,000 vaccinations per day	860,900	1,300	24,500	417,756,900	360
Vaccine supply 40%, pace 150,000 vaccinations per day	1,144,800	1,400	24,300	449,386,900	Dominated
Vaccine supply 67%, pace 300,000 vaccinations per day	718,900	1,300	21,700	652,819,400	85,290
Vaccine supply 67%, pace 150,000 vaccinations per day	1,079,100	1,500	25,400	681,669,900	Dominated
$R_e = 1.4$ (base case)					
Vaccine supply 40%, pace 300,000 vaccinations per day	9,866,800	13,000	211,300	969,576,100	--
Vaccine supply 67%, pace 300,000 vaccinations per day	5,659,400	7,200	120,300	1,016,586,100	520
Vaccine supply 40%, pace 150,000 vaccinations per day	11,784,700	16,000	275,800	1,177,742,900	Dominated
Vaccine supply 67%, pace 150,000 vaccinations per day	10,585,100	14,700	259,600	1,338,803,500	Dominated
No vaccination	21,012,100	89,300	1,558,700	1,766,856,200	Dominated
$R_e = 1.8$					
Vaccine supply 40%, pace 300,000 vaccinations per day	21,260,400	38,800	695,700	1,541,112,600	--
Vaccine supply 40%, pace 150,000 vaccinations per day	24,268,200	69,500	1,410,500	1,596,237,800	Dominated
Vaccine supply 67%, pace 300,000 vaccinations per day	18,511,000	33,800	593,600	1,659,492,700	1,160
No vaccination	30,173,000	179,300	3,360,700	1,673,830,400	Dominated
Vaccine supply 67%, pace 150,000 vaccinations per day	24,217,300	68,900	1,403,000	1,803,189,900	Dominated
Two-wave epidemic ^c					
Vaccine supply 67%, pace 300,000 vaccinations per day	2,697,100	3,200	49,300	780,133,600	--
Vaccine supply 40%, pace 300,000 vaccinations per day	6,223,600	7,200	126,900	780,274,900	Dominated
Vaccine supply 40%, pace 150,000 vaccinations per day	7,758,800	10,600	175,100	927,247,000	Dominated
Vaccine supply 67%, pace 150,000 vaccinations per day	5,594,000	7,800	133,700	1,009,741,300	Dominated
No vaccination	19,290,400	70,400	1,206,200	1,691,805,000	Dominated

USD: United States dollars. ICER: incremental cost-effectiveness ratio. R_e : effective reproduction number. Dominated: the strategy results in a higher ICER than that of a more clinically effective strategy, or the strategy results in less clinical benefit (more years-of-life lost) and higher health care costs than an alternative strategy.

^aWithin each R_e scenario, vaccination strategies are ordered from lowest to highest cost per convention of cost-effectiveness analysis. ICERs are calculated compared to the next least expensive, non-dominated strategy. Displayed life-years and costs are rounded to the nearest hundred, while ICERs are calculated based on non-rounded life-years and costs and then rounded to the nearest ten.

^bBecause there are relatively few deaths in the $R_e=1.1$ scenario, the impact of changing vaccination program strategies is attenuated. Due to stochastic variation in simulation model results, and extrapolation from a simulated population of 1 million to South Africa's population of approximately 59 million, results indicate a slight increase in deaths when increasing vaccine supply while pace is maintained at 150,000 vaccinations per day. Also, due to differences in the ages of those who die, there can be discordance between number of deaths and number of years-of-life lost.

^cIn the analysis of an epidemic with periodic surges, the basic reproduction number (R_0) alternates between low and high values over time, and the R_e changes day-to-day as the epidemic and vaccination program progress and there are fewer susceptible individuals. For most of the simulation horizon, R_0 is 1.6 (equivalent to an initial R_e of 1.1). However, during days 90-150 and 240-300 of the simulation, R_0 is increased to 2.6. This results in two epidemic waves with peak R_e of approximately 1.4-1.5 .

Table 4. One-way sensitivity analyses of different COVID-19 vaccine characteristic and epidemic growth scenarios in South Africa.

Parameter / Value	SARS-CoV-2 infections averted, compared with no vaccination	COVID-19 deaths averted, compared with no vaccination	Years-of-life saved, compared with no vaccination	Change in health care costs, compared with no vaccination, USD	ICER, compared with no vaccination, USD per YLS ^a
Vaccine effectiveness in preventing SARS-CoV-2 infection, %					
20	5,466,500	71,600	1,254,900	-166,032,500	Cost-saving
40 (base case)	10,427,000	74,600	1,299,100	-428,052,700	Cost-saving
50	12,758,000	77,500	1,349,700	-554,501,500	Cost-saving
75 ^b	16,067,300	82,000	1,429,400	-750,946,700	Cost-saving
Vaccine effectiveness in preventing symptomatic COVID-19, % ^c					
30	8,310,500	74,000	1,298,900	-377,101,700	Cost-saving
52 (base case)	10,427,000	74,600	1,299,100	-428,052,700	Cost-saving
67	10,625,200	76,200	1,332,200	-410,883,200	Cost-saving
79	10,722,500	75,300	1,316,800	-399,131,600	Cost-saving
Vaccine effectiveness in preventing severe/critical COVID-19 requiring hospitalization, % ^d					
40	10,659,300	65,800	1,180,100	-80,901,300	Cost-saving
86 (base case)	10,427,000	74,600	1,299,100	-428,052,700	Cost-saving
98	10,690,200	77,500	1,341,700	-545,358,200	Cost-saving
Vaccine acceptance among those eligible, %					
50	10,026,700	71,100	1,251,600	-272,592,000	Cost-saving
67 (base case)	10,427,000	74,600	1,299,100	-428,052,700	Cost-saving
90	10,562,000	79,200	1,360,000	-526,334,700	Cost-saving

Cost-effectiveness of COVID-19 vaccination in South Africa

Table 4, continued.

Parameter / Value	SARS-CoV-2 infections averted, compared with no vaccination	COVID-19 deaths averted, compared with no vaccination	Years-of-life saved, compared with no vaccination	Change in health care costs, compared with no vaccination, USD	ICER, compared with no vaccination, USD per YLS ^a
Vaccination cost per person, USD					
9	10,427,000	74,600	1,299,100	-656,846,300	Cost-saving
14.81 (base case)	10,427,000	74,600	1,299,100	-428,052,700	Cost-saving
25	10,427,000	74,600	1,299,100	-26,778,000	Cost-saving
26	10,427,000	74,600	1,299,100	12,601,200	10
35	10,427,000	74,600	1,299,100	367,014,600	280
45	10,427,000	74,600	1,299,100	760,807,300	590
75	10,427,000	74,600	1,299,100	1,942,185,200	1,500
R _e					
1.1	2,640,400	6,600	98,000	299,493,000	3,050
1.4 (base case)	10,427,000	74,600	1,299,100	-428,052,700	Cost-saving
1.8	5,955,700	110,500	1,957,700	129,359,500	70
Two-wave epidemic ^e	13,696,300	62,700	1,072,500	-682,063,700	Cost-saving
Prior immunity to SARS-CoV-2, % of population					
10	8,025,900	147,200	2,581,000	85,889,700	30
20	9,087,700	119,000	2,168,000	55,790,700	30
30 (base case)	10,427,000	74,600	1,299,100	-428,052,700	Cost-saving
40	7,127,300	18,000	279,500	-252,757,900	Cost-saving
50	608,300	1,500	24,300	545,399,700	22,460

USD: United States dollars. ICER: incremental cost-effectiveness ratio. YLS: year-of-life saved. R_e: effective reproduction number.

^aIn these scenario analyses, the reference vaccination program (67% supply, 150,000 vaccinations per day) is compared with no vaccination program under different scenarios. Displayed life-years and costs are rounded to the nearest hundred, while ICERs are calculated based on non-rounded life-years and costs and then rounded to the nearest ten. Cost-saving reflects more years-of-life (greater clinical benefit) and lower costs, and therefore ICERs are not displayed.

^bIn the scenario analysis of a vaccine with 75% effectiveness in preventing SARS-CoV-2 infection, the effectiveness in preventing symptomatic COVID-19 disease was increased to 75% to avoid a scenario in which a vaccine has higher effectiveness in preventing infection than it does in preventing symptomatic disease.

^cVaccine effectiveness in preventing symptomatic COVID-19 (apart from severe/critical disease) has minimal impact on the number of deaths. Therefore, seemingly counterintuitive results are due to stochastic variability in the microsimulation. In the analysis of a vaccine that is 30% effective in preventing symptomatic COVID-19, the vaccine effectiveness in preventing SARS-CoV-2 infection was decreased to 30% to avoid a scenario in which a vaccine is more effective in preventing infection than in preventing symptomatic disease.

^dVaccine effectiveness in preventing severe/critical COVID-19 itself has minimal impact on transmission and the number of infections. Therefore, seemingly counterintuitive results are due to stochastic variability in the microsimulation. In the analysis of a vaccine that is 40% effective in preventing severe COVID-19 requiring hospitalization, the vaccine effectiveness in preventing symptomatic COVID-19 was decreased to 40% to avoid a scenario in which a vaccine is more effective in preventing symptomatic disease than in preventing severe disease requiring hospitalization.

^eIn the analysis of an epidemic with periodic surges, the basic reproduction number (R_0) alternates between low and high values over time, and the R_e changes day-to-day as the epidemic and vaccination program progress and there are fewer susceptible individuals. For most of the simulation horizon, R_0 is 1.6 (equivalent to an initial R_e of 1.1). However, during days 90-150 and 240-300 of the simulation, R_0 is increased to 2.6. This results in two epidemic waves with peak R_e of approximately 1.4-1.5.

FIGURE LEGENDS

Figure 1. One-way sensitivity analysis, influence of each parameter on cumulative SARS-CoV-2 infections, COVID-19 deaths, and health care costs.

This tornado diagram demonstrates the relative influence of varying each key model parameter on clinical and economic outcomes over 360 days. This is intended to reflect the different scenarios in which a reference vaccination program (vaccine supply sufficient for 67% of South Africa's population, pace 150,000 vaccinations per day) might be implemented. The dashed line represents the base case scenario for each parameter. Each parameter is listed on the vertical axis, and in parentheses are the base case value and, after a colon, the range examined. The number on the left of the range represents the left-most part of the corresponding bar, and the number on the right of the range represents the right-most part of the corresponding bar. The horizontal axis shows the following outcomes of a reference vaccination program: (A) cumulative SARS-CoV-2 infections; (B) cumulative COVID-19 deaths; (C) cumulative health care costs. In some analyses, the lowest or highest value of an examined parameter produced a result that fell in the middle of the displayed range of results, due to stochastic variability when the range of results was narrow.

Figure 2. Multi-way sensitivity analysis of vaccine effectiveness against infection and vaccination cost: incremental cost-effectiveness ratio of vaccination program compared with no vaccination.

Each box in the 4x4 plot is colored according to the incremental cost-effectiveness ratio (ICER). The lightest color represents scenarios in which a reference vaccination program (vaccine supply sufficient for 67% of South Africa's population, pace 150,000 vaccinations per day) is cost-saving compared with

Cost-effectiveness of COVID-19 vaccination in South Africa

640 no vaccination program, meaning that it results in clinical benefit and reduces overall health care costs.

641 The darker colors reflect increasing ICERs, whereby a reference vaccination program, compared with no

642 vaccination program, results in both clinical benefit and higher overall health care costs. The ICER is the

643 model-generated difference in costs divided by the difference in years-of-life between a reference

644 vaccination program and no vaccination program. In none of these scenarios is the ICER above

645 \$2,000/year-of-life saved (YLS).

Cost-effectiveness of COVID-19 vaccination in South Africa

FIGURES

Figure 1.

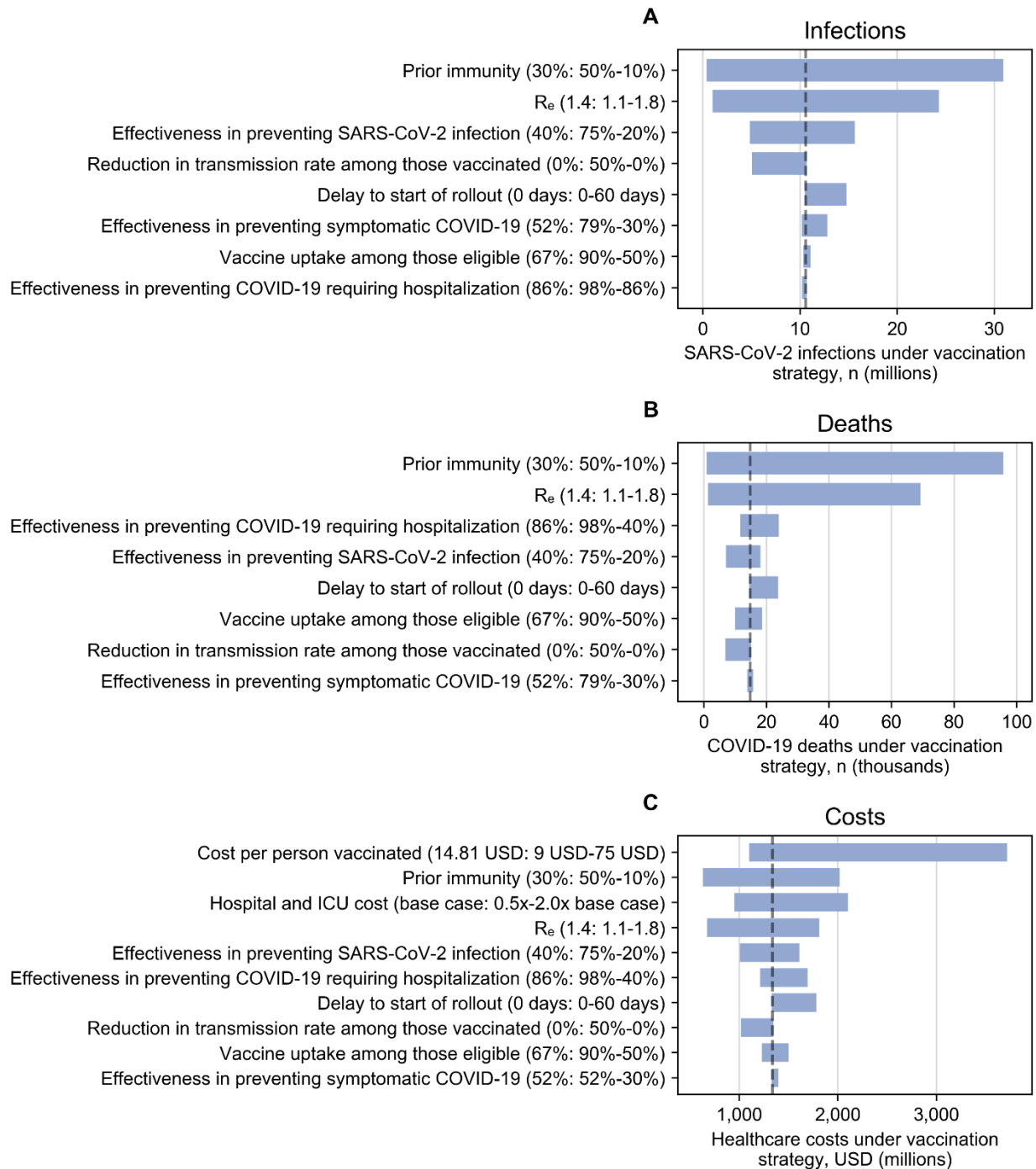


Figure 2.

