

Effects of recreational sports and combined training on blood pressure and glycosylated hemoglobin in middle-aged and older adults: a systematic review and meta-analysis

Authors:

Vinícius Mallmann Schneider^{1,2} (<https://orcid.org/0000-0003-4332-1042>)

Email: vmallmannschneider@gmail.com

Paula Frank^{1,2} (<https://orcid.org/0000-0002-1785-4593>)

Email: paulafrank@gmail.com

Sandra C. Fuchs^{1,2} (<https://orcid.org/0000-0001-6351-9588>)

Email: sfuchs@hcpa.edu.br

Rodrigo Ferrari^{1,2} (<https://orcid.org/0000-0003-1043-821X>)

Email: rodrigo.ferrari@ufrgs.br

¹ Postgraduate Program in Cardiology, School of Medicine, Universidade Federal do Rio Grande do Sul, Porto Alegre, RS, Brazil;

² Sports and Exercise Training Study Group, Hospital de Clínicas de Porto Alegre, RS, Brazil;

ABSTRACT

Background Combined resistance and aerobic training (CT) is the most suitable form of exercise training to simultaneously improve cardiometabolic profile and functional capacity in middle-aged and older adults. Recreational sports (RS) emerge as an alternative to traditional exercises to improve these outcomes that could be used as a retention and continuity strategy, promoting health benefits associated with pleasure and satisfaction during the physical activity.

Objectives The aim was to conduct a meta-analysis on the effects of RS and CT on systolic blood pressure (SBP), diastolic blood pressure (DBP) and glycosylated hemoglobin (HbA1c) in middle-aged and older adults and to compare these exercise interventions to a non-exercising control group (CON).

Data Sources A literature search was conducted using the databases at PubMed, COCHRANE and SciELO between July and August 2020.

Study Eligibility Criteria Studies that included men and women aged ≥ 45 years, healthy or with values of baseline for SBP ≥ 130 mmHg or DBP ≥ 80 mmHg or with type II diabetes, in which the participants performed RS or CT versus CON, and evaluated SBP, DBP and HbA1c.

Study Appraisal and Synthesis Methods Two independent reviewers screened search results, performed data extraction, and assessed of methodological quality of studies. Random effects modeling was used to compare pre- to post-intervention changes in BP and HbA1c from RS and CT versus CON, and the effect size were calculated through the weighted mean difference (MD) with a 95% confidence interval (CI).

Results From 6017 records, 27 studies were included (9 RS and 18 CT interventions). The analysis included 1411 participants with 55 ± 8 years (range, 45–73 years). Overall, RS was associated reduction in SBP (MD: -7.20 mmHg; CI: -13.7 to -0.7) and DBP (MD: -3.6 mmHg; 95%CI: -6.6 to -0.5) versus CON. CT reduction SBP (MD: -3.6 mmHg; 95%CI: -5.2 to -2.0) and DBP (MD: -3.10 mmHg; 95%CI: -3.75 to -2.44) versus CON. RS not reduced HbA1c (MD:

-0.24 %; CI: -0.53 to 0.06) versus CON. However, CT reduced HbA1c (MD: -0.47%; 95%CI: -0.67 to -0.27) versus CON.

Conclusions RS and CT are effective exercise interventions to improve blood pressure in middle-aged and older adults. Additionally, CT seems to be an excellent strategy to reduce HbA1c, and future studies are necessary to confirm the effectiveness of recreational sports to improve HbA1c.

Systematic Review Registration Number CRD42020207250

Key Points

Recreational sports promote similar or even greater blood pressure reduction when compared to traditional exercises.

Combined training promotes improvements in blood pressure and HbA1c in aging adults.

As alternative to traditional exercises, recreational sports emerge as an effective strategy to improve the cardiometabolic profile in middle-aged and older adults.

1. INTRODUCTION

Aging is a continuous phenomenon that leads to a progressive decline in physiological systems (cardiovascular, metabolic, and skeletal muscle), prone to development of noncommunicable diseases, such as hypertension, type II diabetes and coronary artery disease [1, 2]. Although this physiological decline is inexorable, there are alternatives to postpone its progression. Physical exercise is the cornerstone non-pharmacological intervention to improve functionally and cardiometabolic risk factors such as blood pressure (BP) and glycosylated hemoglobin (HbA1c) [3, 4]. Reductions of BP and glycemic level are key components to prevent and treat hypertension and diabetes, and different exercises can be effective for BP control and to lower HbA1c levels [3, 5].

The combination of strength and aerobic training (i.e., combined training) is among the most effective strategies to simultaneously improve physical fitness and prevent age-associated diseases [6, 7]. Although the benefits of combined training have been well described [8], individuals must consistently adhere to the practice to maintain the improvements. Environmental and physical barriers, in addition to lack of motivation resulted from the monotony of the traditional exercises can lead to low adherence to perform exercise regularly, and middle-aged and older adults are particularly vulnerable to failure [9]. Recreational sports emerges as an interesting alternative that could be used as a retention and continuity strategy, promoting health benefits associated with pleasure and satisfaction during the physical activity [10, 11]. The popularity of recreational sports in different countries, the easy accessibility to sports facilities and public areas to practice are among some potential advantages if compared to most traditional exercises. However, in middle-aged and older adults, scarcity data assessing the effects of recreational sports on blood pressure and glycemic profile is available [12], reinforcing the importance of new studies related to this topic.

In relation to the effectiveness of recreational sports and traditional exercises for BP and HbA1c, previous reviews have focused on general population, but no previous meta-analysis has assessed the effects of these two types of physical activity in older populations. Since combined training is the most recommended modality to counteract several age-related declines and recreational sports can also be effective to improve the cardiometabolic profile in aging adults, this systematic review with meta-analysis aimed to investigate the effects of recreational sports and combined training on BP and HbA1c in middle-aged and older adults.

2. METHODS

This review followed the Preferred Reporting Items for Systematic Reviews and Meta-analyses (PRISMA) guidelines [13] and was registered on the International Prospective Register of Systematic Reviews: PROSPERO (CRD42020207250)

2.1 Search Strategy

The electronic search was independently performed by two investigators (V.M.S and P.F) between July and August 2020 using the MEDLINE database (through PubMed), COCHRANE, and SciELO. For PubMed, Medical Subject Headings (MeSH) and Health Sciences Descriptors (DeCS) descriptors were combined using Boolean operators and the strategy is described in Electronic Supplementary Material (ESM) Table S1. Reference lists of original and review articles were also revised. There were no language restrictions, as well as on the publication date and there was no need to contact study authors to identify additional studies.

2.2 Eligibility Criteria

Articles describing randomized and nonrandomized clinical trials, conducted in men and women, aged ≥ 45 years with baseline systolic BP (SBP) ≥ 130 mmHg or diastolic BP (DBP) ≥ 80 mmHg or type II diabetes would be eligible if they had evaluated recreational sports

interventions or combined training for at least eight and no more than 52 weeks, and had reported baseline and endpoint measures of SBP, DBP and HbA1c.

To include combined training interventions, we selected those performing any aerobic exercise on land (i.e., cycling, walking, or running) simultaneously to resistance/strength training (aerobic and resistance exercises could be performed on the same day or on alternate days). Studies on recreational sports were included if the participants performed any team sport practice of a non-professional feature, with no complementary interventions. Studies conducted in participants who have restraints due to cardiac or pulmonary diseases, cognitive impairment, or studies that had co-interventions (diet, titration of medication) were excluded. We also excluded studies in which control groups performed exercise training.

2.3 Study Selection and Data Extraction

Two investigators (V.M.S and P.F) independently performed the screening of title and abstracts to identify potentially relevant articles. The searches were compared to assess agreement among investigator's selection and the final sample was revised to exclude duplicated studies. Disagreements among searches were maintained to be solved in the next step. Subsequently, selected articles underwent a full-length reading and were independently analyzed following a standard criterion that determined both the inclusion and exclusion of studies. Disagreements regarding eligibility of the studies. were solved by consensus and, eventually, by a third party (R.F). The study selection process followed the PRISMA flowchart [14].

Data extraction was independently performed by two investigators (V.M.S and P.F), using a standardized form to obtain number of participants that were included in the analysis, sex, age, level of physical activity, BP and HbA1c values, adherence to the protocol (attend the sessions [%]) and participants dropouts [%]) and BP and HbA1c assessment techniques used in each study. Overall, the methods used to measure BP consisted of an automatic monitor or

aneroid sphygmomanometer. For HbA1c, liquid chromatography, automated analyzer and immunoturbidimetric method were used in the measurement. Data were extracted in their original units to calculate summarized mean, standard deviation (SD) and mean difference before and after the training period for the outcomes SBP, DBP, HbA1c for both, recreational sports and combined training or control group. In instances where results were presented as mean \pm SEM (mean standard error), SEM was converted to SD using $SD = SEM \times \text{square root of populations } (\sqrt{n})$.

2.4 Evaluation of Risk of Bias

Study quality assessment was conducted independently by two investigators (V.M.S and P.F), and disagreements were solved by consensus. The appraisal of methodological quality of the studies included the items proposed by Cochrane [15]: randomization methods, allocation concealment, blinding of patients and therapist, blinding of outcomes evaluators, incomplete outcomes, selective reporting of outcomes and other possible bias sources. The items were defined as high risk of bias, low risk of bias or unclear risk of bias.

2.5 Data Synthesis

Results are presented as the weighted mean difference (MD) for absolute values with a 95% confidence interval (CI) and using an inverse variance method with random effect models. Values of $P < 0.05$ were considered statistically significant. Heterogeneity was assessed through Cochran Q (χ^2) test, with $P < 0.05$ indicating statistically significant heterogeneity between types of exercise effects among the individual trials. The extend of heterogeneity was quantified using the inconsistency index (I^2) [16] and values $> 50\%$ were considered to represent substantial heterogeneity. The analysis with all studies (exercise training [overall]) was performed considering the training modalities recreational sports and combined training used in the studies. Secondary analysis were conducted to test the influence on heterogeneity and estimated the effects of interventions according to $SBP \geq 130\text{mmHg}$ or $DBP \geq 80\text{ mmHg}$ and

HbA1c $\geq 5.7\%$ [18, 19] and characteristics of the intervention (training intensity and duration [weeks]). Statistical analyses were conducted using Review Manager, version 5.4 (Cochrane Collaboration).

3. RESULTS

3.1 Description of Studies

The electronic search identified 6002 titles and 15 additional articles were identified through reference lists. After excluding duplicates, articles were screened, with 245 underwent a full text review, and 27 studies were included in the systematic review and meta-analysis (Figure 1). The analysis included 1411 participants with age of 55.8 ± 8.3 years (range, 45–73 years) and 53% women. Across the sample, 9 out of 27 trials investigated recreational sports vs. no exercise (control group) with 125 and 104 participants, respectively, enrolled in soccer (n=7), rugby (n=1), and skiing (n=1). The remaining 18 studies evaluated combined training vs. no exercise, as a control group, including 654 and 526 participants, respectively. Table 1 shows the main characteristics of the studies.

Table 2 presents the characteristics of the exercise groups with all recreational sports interventions (9 studies) conducted for ≥ 8 weeks (range 8-52 weeks), five groups trained for ≥ 24 weeks and the participants trained for ≥ 2 days/week (range 2-3 days). The intensity of recreational sports interventions were classified as moderate (1 studies; $<80\%$ maximum heart rate [HRmax.]) or vigorous (6 studies; $\geq 80\%$ HRmax.) according to ACSM guidelines [17], and two studies did not report exercise intensities. The sports sessions consisted of 60 minutes per day and 120 to 180 minutes per week. The attendance rate of recreational sports was $76 \pm 13\%$.

Combined training interventions (18 studies) were conducted for ≥ 10 weeks (range 10-48 weeks) and participants trained for ≥ 1 days/week (range 1-4 days). Six groups trained for ≥ 24 weeks. Intensity of aerobic training was classified as moderate (16 studies; $<80\%$ HRmax.)

or vigorous (2 studies; $\geq 80\%$ HRmax.) [17]. The aerobic training was performed for 26.6 ± 9.8 minutes per session.

The intensity of strength training was carried out using percentages 60% (range 40-90%) of one-maximum repetition test (10 studies) or performed 15 (range 8-30 repetitions) maximum repetitions (3 studies) or in 5 (range 2-5) on the perception Borg scale CR-10 [18] (1 study), and four studies did not provide information. Overall, the strength training protocols included 2-3 sets per exercise, 6-30 repetitions, and a total of 4-10 exercises. The total duration of the sessions combined training consisted of 70 ± 26 minutes and a weekly range of 90 to 360 min. The attendance rate of combined training was $90 \pm 4\%$.

3.2 Risk of bias assessment

Two reviewers evaluated methodological quality of the 27 studies included in this review, and 25 presented adequate generation of randomized sequence, 11 reported allocation concealment, 7 blinding of patients and therapist, 7 blinding of outcomes evaluators; 13 presented incomplete outcomes and 8 selective reports of outcomes. Eight studies presented unclear risk in other bias sources. Data on the risk of bias from studies individually are showed in ESM Figure S1.

3.3 Blood Pressure

An overall BP reduction, illustrated in Figures 2 and 3, to any exercise training vs. control group was found in SBP (MD: -4.3 mmHg; 95%CI: -6.1 to -2.5; $I^2 = 71\%$; P for heterogeneity < 0.001) and DBP (MD: -3.0 mmHg; 95%CI: -3.7 to -2.3; $I^2 = 8\%$; P for heterogeneity = 0.36).

The magnitude of SBP and DBP reduction after recreational sports and combined training programs is shown in Figures 2 and 3, respectively. Recreational sports (n=6 intervention groups, with 171 participants) were associated with a reduction in SBP (MD: -7.1 mmHg; 95%CI: -13.7 to -0.7; $I^2 = 86\%$; P for heterogeneity < 0.001) and DBP (MD: -3.5

mmHg; 95%CI: -6.6 to -0.5; $I^2 = 61\%$; P for heterogeneity = 0.02) compared with controls. Combined training (n=17 intervention groups, with 925 participants) was associated with a reduction in SBP (MD: -3.6 mmHg; 95%CI: -5.2 to -2.0; $I^2 = 55\%$; P for heterogeneity = 0.003) and DBP (n=16 intervention groups, with 814 participants) (MD: -3.1 mmHg; 95%CI: -3.7 to -2.4; $I^2 = 0\%$; P for heterogeneity = 0.83) compared with controls.

3.4 Glycosylated Hemoglobin (HbA1c)

The overall reduction in HbA1c is illustrated in Figure 4A for any exercise training vs. control group (MD: -0.40%; 95%CI: -0.56 to -0.23; $I^2 = 0\%$; P for heterogeneity = 0.57). The magnitude of HbA1c reduction after recreational sports and combined training programs is shown in Figure 4B. Combined training (n=11 intervention groups, with 600 participants) was associated with reduction in HbA1c (MD: -0.47%; 95%CI: -0.67 to -0.27; $I^2 = 1\%$; P for heterogeneity = 0.43) compared with controls. No significant reduction ($P = 0.12$) was found in HbA1c for recreational sports (n=4 intervention groups, with 77 participants) (MD: -0.24; 95%CI: -0.53 to 0.06; $I^2 = 0\%$; P for heterogeneity = 0.87) compared with controls.

3.5 Secondary Analyses and Exploration of Heterogeneity

Due to the high heterogeneity in studies involving interventions with combined training ($P = 0.003$) and recreational sports ($P < 0.001$) in the SBP, DBP (only recreational sports), and the necessity to investigate the greatest benefits of these interventions in the above mentioned variables, secondary analyses were performed according to the baseline SBP and DBP values ≥ 130 or ≥ 80 mmHg, respectively, $\text{HbA1c} \geq 5.7\%$ and we also carry out analyses according to the intensity and duration of the intervention.

Blood pressure

High baseline SBP and DBP values were associated with greater reduction (ESM, Table S3). Recreational sports-based interventions (n=4 intervention groups, with 112 participants) were associated with greater reduction in SBP (MD: -12.4 mmHg; 95%CI: -15.5 to -9.2; $I^2 =$

0%; P for heterogeneity = 0.70) and DBP (MD: -5.7 mmHg; 95%CI: -8.1 to -3.3; I^2 = 0%; P for heterogeneity = 0.49) compared with controls. Combined training (n=9 intervention groups, with 514 participants in SBP and n=8 intervention groups, with 344 participants in DBP) was associated with a reduction in SBP (MD: -3.9 mmHg; 95%CI: -6.7 to -1.2; I^2 = 66%; P for heterogeneity = 0.003) and DBP (MD: -2.6 mmHg; 95%CI: -3.7 to -1.5; I^2 = 0%; P for heterogeneity = 0.90) compared with controls.

Analyses according to the intensity of exercise and the duration of the interventions are presented in ESM Table S4. The results showed that recreational sports performed with higher intensities (n=5 intervention groups, with 129 participants) was associated with greater SBP reductions (MD: -9.4 mmHg; 95%CI: -15.3 to -3.5; I^2 = 79%; P for heterogeneity = 0.009), and DBP (MD: -4.5 mmHg; 95%CI: -7.5 to -1.5; I^2 = 52%; P for heterogeneity = 0.08) compared with controls. Analyzing the interventions duration, recreational sports lasting ≥ 24 weeks (n=3 intervention groups, with 59 participants) showed no significance reduction in SBP (MD: -8.5 mmHg; 95%CI: -18.3 to 1.4; I^2 = 88%; P for heterogeneity = 0.003), and studies for < 24 weeks (n=2 intervention groups, with 83 participants) did not significantly reduce SBP (MD: -4.5 mmHg; 95%CI: -20.9 to 11.8; I^2 = 94%; P for heterogeneity < 0.001) compared with controls. On the other hand, for DBP, recreational sports lasting ≥ 24 weeks (n=3 intervention groups, with 88 participants) was associated reduction in DBP (MD: -4.2 mmHg; 95%CI: -7.9 to -0.5; I^2 = 60%; P for heterogeneity = 0.06) and studies lasting < 24 weeks (n=2 intervention groups, with 83 participants) did not reduced DBP (MD: -2.3 mmHg; 95%CI: -9.7 to 5.0; I^2 = 80%; P for heterogeneity = 0.02) compared with controls.

Secondary analyses were conducted in interventions using combined training. No significant SBP reduction was found with combined training performed with higher intensities (n=3 intervention groups, with 238 participants) (MD: -0.1 mmHg; 95%CI: -2.6 to 2.3; I^2 = 0%; P for heterogeneity = 0.89) and lower intensities reduction SBP (n=14 intervention groups, with

687 participants) (MD: -4.4; 95%CI: -6.0 to -2.7; $I^2 = 48\%$; P for heterogeneity = 0.02) compared with controls. For DBP, similar reductions were detected for combined training, performed at higher intensities (n=3 intervention groups, with 238 participants) (MD: -1.9 mmHg; 95%CI: -3.4 to -0.3; $I^2 = 0\%$; P for heterogeneity = 0.65) and lower intensities (n=13 intervention groups, with 577 participants) (MD: -3.4; 95%CI: -4.1 to -2.6; $I^2 = 0\%$; P for heterogeneity = 0.91) compared with controls.

According to the duration of interventions, combined training duration ≥ 24 weeks (n=5 interventions, 444 participants) was associated with a reduction in SBP (MD: -3.0; 95%CI: -5.8 to -0.2; $I^2 = 57\%$; P for heterogeneity = 0.05) and studies lasting < 24 weeks (n=12 interventions, 475 participants) improvement reduction in SBP (MD: -3.9; 95%CI: -5.9 to -1.9; $I^2 = 54\%$; P for heterogeneity = 0.01) compared with controls. In DBP, combined training consisting of studies with ≥ 24 weeks (n=4 interventions, 339 participants) was associated a reduction (MD: -2.0; 95%CI: -3.4 to -0.6; $I^2 = 0\%$; P for heterogeneity = 0.74) and also studies with < 24 weeks (twelve interventions, 475, participants) reduced DBP (MD: -3.4; 95%CI: -4.1 to -2.66; $I^2 = 0\%$; P for heterogeneity = 0.90) compared with controls.

Glycosylated Hemoglobin

The combined training, all participants had an average baseline HbA1c values $\geq 5.7\%$ and no heterogeneity was identified. Therefore, no secondary analyses were performed with this variable. During the sport interventions, in 3 of 4 interventions (60 participants) the participants presented mean HbA1c values $\geq 5.7\%$. No significant reduction in absolute HbA1c (MD: -0.31%; CI: -0.65 to 0.03; $I^2 = 0\%$; P for heterogeneity = 0.99) was found after recreational sports compared with controls (ESM Table S3).

Analyses according to the diagnosis of hypertension at baseline for SBP values ≥ 130 mmHg, were only able to identify the high heterogeneity of SBP in interventions with recreational sports.

4. DISCUSSION

Blood pressure and glycosylated hemoglobin control are key components to prevent and treat hypertension and type 2 diabetes, two chronic conditions with increased prevalence and severity throughout lifespan [19-21]. Besides, they are also predictors of increased mortality [22, 1]. To the best of our knowledge, this is the first meta-analysis that assessed the effects of recreational sports and combined training on BP and HbA1c in middle-aged and older adults. We found that both exercise interventions reduced BP compared with control (Recreational sports: systolic/diastolic BP - 7/4 mmHg; Combined training: systolic/diastolic BP - 4/3 mmHg). Besides, combined training also reduced HbA1c compared to the control group (0.47%), and there was a trend toward reduction after recreational sports, found in participants with baseline HbA1c $\geq 5.7\%$ (-0.31%; $P = 0.08$). In our analyses, recreational sports and combined training were not directly compared because no original study using combined training and recreational sports interventions is available. The present meta-analysis confirmed the efficacy of combined training to improve BP and HbA1c control and provided evidence to support that recreational sport should be considered an interesting alternative to traditional exercises to improve these cardiometabolic parameters, especially BP, in middle-aged and older adults.

Sustained elevation of BP represents a marked condition from the fourth decade of life onwards [21], and physical exercises should be recommended as a key lifestyle therapy for adults with high blood pressure (BP) for the prevention, treatment, and control of hypertension [20]. Effective strategies for BP control are associated to reduction of up to 50% of cardiovascular events [1] with a linear association between the magnitude of BP reduction and the risk of cardiovascular disease and all-cause mortality [23]. Our findings have suggested important reductions on BP after recreational sports (systolic/diastolic BP - 7/4 mmHg) and

combined training (systolic/diastolic BP - 4/3 mmHg) interventions. Considering the above-mentioned associations, this reduction of 4-7 mmHg in systolic BP can reduce cardiac morbidity by 5%, stroke by 8-14%, and all-cause mortality by 4% [20, 24]. In addition, our secondary analyses suggested that hypertensive individuals are prone to achieve greater magnitudes of systolic and diastolic BP reduction only after recreational sports (systolic/diastolic BP - 12/4 mmHg). This result suggests that recreational sports have the potential to be used as an effective strategy to reduce blood pressure in aging adults with hypertension.

Currently, data regarding the optimal exercise intensity to reduce BP remains controversial [25, 26]. We compared the effects of recreational sports and combined training performed at different intensities (i.e., low [$<80\%$ HR_{max}] and high [$\geq 80\%$ HR_{max}]). Recreational sports performed at higher intensities (systolic / diastolic BP - 9/4 mmHg) and combined training performed at lower intensities (systolic / diastolic BP - 4/3 mmHg) showed meaningful reductions in BP. The results suggest that there is a dose-response relationship, especially related to the intensity of exercise in recreational sports and combined training. We observed that recreational sports performed at higher intensities promoted greater magnitudes of reduction in BP than with combined training performed in lower intensities. Something that makes us believe that moderate to higher intensities should be considered to cause great magnitudes of reduction in BP [25, 27]. In contrast, the combined training performed at higher intensities did not show a significant reduction for SBP (- 0.1 mmHg; $P = 0.90$), but for DBP (- 2 mmHg; $P = 0.02$). However, the combined training performed at higher intensities was performed gradually, with the intensity progression occurring over weeks, starting at a lower intensities ($<50\%$ HR_{max}) in weeks 1-3, until reaching high intensity ($\geq 80\%$ HR_{max}) in the final weeks of training, something that possibly interfered with the results when stratifying the combined training at high intensity.

In this systematic review and meta-analysis, combined training has demonstrated statistically significant reduction in HbA1c compared to the control group (-0.47%). This finding is in accordance with a previous meta-analysis [4, 29], confirming the benefits of combined training on glycemic management. An important difference from the previous meta-analysis was that we did not include interventions that combine exercise with dietary monitoring or medication titration, highlighting the benefits of exercise alone to reduce HbA1c. In addition, participants were aged >45 years, providing concise evidence for those who are at risk of developing type 2 diabetes [19]. In relation of the benefits of recreational sports on HbA1c, we have found a trend toward reduction in HbA1c compared to the control group in participants with HbA1c $\geq 5.7\%$. Although this result is promising, future studies are necessary to confirm the effectiveness of recreational sports to reduce HbA1c. Few interventional studies assessed the benefits of recreational sports, resulting in lower number of participants included in our analysis. If compared to the number of studies included in the combined training analyses, we have limited statistical power that may have affected this result [30]. Besides, the baseline HbA1c values of participants of recreational sports that were included in our analyses were lower than those that performed combined training, and the magnitude of glycemic reduction after exercise is directly related to the baseline values of participants [31]. Future randomized clinical trials of high methodological quality should be carried out to confirm the benefits of recreational sports on HbA1c in aging adults.

Exercise adherence plays a vital role in maximizing the desired benefits of exercise, since continuity is essential to maintain the broad-spectrum health improvements resulted from exercise practice. Different studies have observed a high rate of session attendance during recreational sports compared to traditional exercise programs [32, 33]. The monotony and reduced motivation that conventional physical exercise programs may provide [34, 35], and the positive psychosocial results and motivational aspects resulted from recreational sports [10] are

potential explanations that could result in a lower exercise adherence after combined training. The results of our meta-analysis did not confirm these observations. The recreational sports studies included in the present review have reported an overall adherence of 76 %, and most of the trials lasted < 24 week. Of the 20 combined training studies included, 12 reported adherences to the intervention with an overall adherence over 90%. Thus, both interventions seem to be good strategies to improve adherence to exercise programs. An important factor that promotes adherence is the effectiveness of the intervention, since it positively impacts on motivation, confidence, and maintenance of the training program [36]. In the present review, both recreational sports and combined training lead to a good adherence and seems to be effective in improving health outcomes [37]. We emphasize that future studies should directly compare the two forms of exercise to better understand the factors that lead to adherence to these interventions.

Adults with diabetes are at high risk of developing hypertension because common aspects of pathophysiology are shared by both conditions [38]. Studies have demonstrated associations of hyperglycemia with endothelial dysfunction, vascular stiffness [39], reduced nitric oxide production [40], and blood viscosity [41], which are considered key mechanisms linked to increased hypertension and cardiovascular disease [39]. Diabetes and hypertension often coincide, so strategies aimed at improving glucose control may reduce the risk of hypertension among people with diabetes [42]. On the other hand, a small reduction in SBP and DBP has been associated with a reduction in cardiovascular events and mortality in the general population [1] and in patients with diabetes [43]. And even reductions in BP within the normal range can be clinically significant, especially among aging adults [1]. In this context, the results of the present review reinforce the idea of using physical exercise as a non-pharmacological therapy that can help the management of diabetes and hypertension.

This systematic review has some limitations that must be considered. Overall, general quality of the studies was low, reflecting an increased risk of bias since a significant part of the studies included in our analyses did not provide an adequate detailed description of the methods. Other possible limitation is related to the method used to assess BP. Even though office BP can be used to assess and diagnose hypertension, 24-h ambulatory BP monitoring is the gold standard for assessing BP behavior, and future research on the use of recreational sports and combined training should be assessed BP throughout long periods and under usual conditions.

Our meta-analysis has strengths. Eligibility criteria that included only exercise interventions in middle-aged and older adults, without any dietary intervention or titration of medication, specifically highlighting the benefits of combined training and recreational sports for this population. It brings important implications for the exercise prescription targeted to aging individuals who have essential hypertension and/or type 2 diabetes. Combined training programs should be emphasized in older population, since this type of exercise is extremely effective in reducing HbA1c and BP. Recreational sports also proved to be a very effective exercise strategy to reduce BP, but still need additional randomized clinical trials to confirm its effectiveness in reducing HbA1c in middle-aged and older adults.

CONCLUSION

Recreational sports and combined training are effective exercise interventions to reduce blood pressure in middle-aged and older adults. Additionally, combined training seems to be an excellent strategy to reduce HbA1c, and future studies are necessary to confirm the effectiveness of recreational sports to improve glycemic profile in aging population.

REFERENCES

1. Lewington S, Clarke R, Qizilbash N, Peto R, Collins R, Prospective Studies C. Age-specific relevance of usual blood pressure to vascular mortality: a meta-analysis of individual data for one million adults in 61 prospective studies. *Lancet*. 2002;360(9349):1903-13. doi:10.1016/s0140-6736(02)11911-8.
2. Zhong GC, Ye MX, Cheng JH, Zhao Y, Gong JP. HbA1c and Risks of All-Cause and Cause-Specific Death in Subjects without Known Diabetes: A Dose-Response Meta-Analysis of Prospective Cohort Studies. *Sci Rep*. 2016;6:24071. doi:10.1038/srep24071.
3. Cornelissen VA, Smart NA. Exercise training for blood pressure: a systematic review and meta-analysis. *J Am Heart Assoc*. 2013;2(1):e004473. doi:10.1161/JAHA.112.004473.
4. Umpierre D, Ribeiro PA, Kramer CK, Leitao CB, Zucatti AT, Azevedo MJ et al. Physical activity advice only or structured exercise training and association with HbA1c levels in type 2 diabetes: a systematic review and meta-analysis. *JAMA*. 2011;305(17):1790-9. doi:10.1001/jama.2011.576.
5. Tan S, Li W, Wang J. Effects of six months of combined aerobic and resistance training for elderly patients with a long history of type 2 diabetes. *J Sports Sci Med*. 2012;11(3):495-501.
6. Ferrari R, Kruehl L, Cadore E, Alberton C, Izquierdo M, Conceição M et al. Efficiency of twice weekly concurrent training in trained elderly men. *Exp Gerontol*. 2013 doi:10.1016/j.exger.2013.07.016.
7. Corrick K, Hunter G, Fisher G, Glasser S. Changes in vascular hemodynamics in older women following 16 weeks of combined aerobic and resistance training. *J Clin Hypertens*. (Greenwich) 2013 doi:10.1111/jch.12050.
8. Teodoro JL, Izquierdo M, da Silva LXN, Baroni BM, Grazioli R, Lopez P et al. Effects of long-term concurrent training to failure or not in muscle power output, muscle quality and cardiometabolic risk factors in older men: A secondary analysis of a randomized clinical trial. *Exp Gerontol*. 2020;139:111023. doi:10.1016/j.exger.2020.111023.
9. American College of Sports M, Chodzko-Zajko WJ, Proctor DN, Fiatarone Singh MA, Minson CT, Nigg CR et al. American College of Sports Medicine position stand. Exercise and physical activity for older adults. *Med Sci Sports Exerc*. 2009;41(7):1510-30. doi:10.1249/MSS.0b013e3181a0c95c.
10. Krstrup P, Dvorak J, Junge A, Bangsbo J. Executive summary: the health and fitness benefits of regular participation in small-sided football games. *Scand J Med Sci Sports*. 2010;20 Suppl 1:132-5. doi:10.1111/j.1600-0838.2010.01106.x.
11. Carpes L, Jacobsen A, Domingues L, Jung N, Ferrari R. Recreational beach tennis reduces 24-h blood pressure in adults with hypertension: a randomized crossover trial. *Eur J Appl Physiol*. 2021. doi:10.1007/s00421-021-04617-4.
12. Bellissimo MP, Galaviz KI, Paskert MC, Lobelo F. Cardiometabolic Risk Reduction Through Recreational Group Sport Interventions in Adults: A Systematic Review and Meta-analysis. *Mayo Clin Proc*. 2018;93(10):1375-96. doi:10.1016/j.mayocp.2018.03.014.
13. Liberati A, Altman DG, Tetzlaff J, Mulrow C, Gotzsche PC, Ioannidis JP et al. The PRISMA statement for reporting systematic reviews and meta-analyses of studies that evaluate health care interventions: explanation and elaboration. *PLoS Med*. 2009;6(7):e1000100. doi:10.1371/journal.pmed.1000100.
14. Liberati A, Altman DG, Tetzlaff J, Mulrow C, Gøtzsche PC, Ioannidis JPA et al. The PRISMA statement for reporting systematic reviews and meta-analyses of studies that evaluate healthcare interventions: explanation and elaboration. *BMJ*. 2009;339:b2700. doi:10.1136/bmj.b2700.
15. Deeks J HJ, Altman D (eds) Analysing data and undertaking meta-analysis. In: Higgins J, Green S (eds) *Cochrane handbook for systematic reviews of interventions*, version 5.1.0. The cochrane collaboration. Accessed September 2020. 2011.

16. Higgins JPT TJ, Chandler J, Cumpston M, Li T, Page MJ, Welch VA (editors). Cochrane handbook for systematic reviews of interventions, version 6.1 The Cochrane Collaboration 2020.
17. Haskell WL, Lee IM, Pate RR, Powell KE, Blair SN, Franklin BA et al. Physical activity and public health: updated recommendation for adults from the American College of Sports Medicine and the American Heart Association. *Circulation*. 2007;116(9):1081-93. doi:10.1161/CIRCULATIONAHA.107.185649.
18. Borg G. Borg's perceived exertion and pain scales. Borg's perceived exertion and pain scales. Champaign, IL, US: Human Kinetics; 1998.
19. Kirkman MS, Briscoe VJ, Clark N, Florez H, Haas LB, Halter JB et al. Diabetes in older adults. *Diabetes Care*. 2012;35(12):2650-64. doi:10.2337/dc12-1801.
20. Whelton PK, Carey RM, Aronow WS, Casey DE, Jr., Collins KJ, Dennison Himmelfarb C et al. 2017 ACC/AHA/AAPA/ABC/ACPM/AGS/APhA/ASH/ASPC/NMA/PCNA Guideline for the Prevention, Detection, Evaluation, and Management of High Blood Pressure in Adults: A Report of the American College of Cardiology/American Heart Association Task Force on Clinical Practice Guidelines. *Hypertension*. 2018;71(6):e13-e115. doi:10.1161/HYP.0000000000000065.
21. Picon RV, Fuchs FD, Moreira LB, Fuchs SC. Prevalence of hypertension among elderly persons in urban Brazil: a systematic review with meta-analysis. *Am J Hypertens*. 2013;26(4):541-8. doi:10.1093/ajh/hps076.
22. ten Brinke R, Dekker N, de Groot M, Ikkersheim D. Lowering HbA1c in type 2 diabetics results in reduced risk of coronary heart disease and all-cause mortality. *Prim Care Diabetes*. 2008;2(1):45-9. doi:10.1016/j.pcd.2007.12.004.
23. Bundy JD, Li C, Stuchlik P, Bu X, Kelly TN, Mills KT et al. Systolic Blood Pressure Reduction and Risk of Cardiovascular Disease and Mortality: A Systematic Review and Network Meta-analysis. *JAMA Cardiol*. 2017;2(7):775-81. doi:10.1001/jamacardio.2017.1421.
24. Schroeder EC, Franke WD, Sharp RL, Lee DC. Comparative effectiveness of aerobic, resistance, and combined training on cardiovascular disease risk factors: A randomized controlled trial. *PLoS One*. 2019;14(1):e0210292. doi:10.1371/journal.pone.0210292.
25. Figueira FR, Umpierre D, Cureau FV, Zucatti AT, Dalzochio MB, Leitao CB et al. Association between physical activity advice only or structured exercise training with blood pressure levels in patients with type 2 diabetes: a systematic review and meta-analysis. *Sports Med*. 2014;44(11):1557-72. doi:10.1007/s40279-014-0226-2.
26. Costa EC, Hay JL, Kehler DS, Boreskie KF, Arora RC, Umpierre D et al. Effects of High-Intensity Interval Training Versus Moderate-Intensity Continuous Training On Blood Pressure in Adults with Pre- to Established Hypertension: A Systematic Review and Meta-Analysis of Randomized Trials. *Sports Med*. 2018;48(9):2127-42. doi:10.1007/s40279-018-0944-y.
27. Pescatello LS, MacDonald HV, Ash GI, Lamberti LM, Farquhar WB, Arena R et al. Assessing the Existing Professional Exercise Recommendations for Hypertension: A Review and Recommendations for Future Research Priorities. *Mayo Clin Proc*. 2015;90(6):801-12. doi:10.1016/j.mayocp.2015.04.008.
28. Stratton IM, Adler AI, Neil HA, Matthews DR, Manley SE, Cull CA et al. Association of glycaemia with macrovascular and microvascular complications of type 2 diabetes (UKPDS 35): prospective observational study. *BMJ*. 2000;321(7258):405-12. doi:10.1136/bmj.321.7258.405.
29. Boniol M, Dragomir M, Autier P, Boyle P. Physical activity and change in fasting glucose and HbA1c: a quantitative meta-analysis of randomized trials. *Acta Diabetol*. 2017;54(11):983-91. doi:10.1007/s00592-017-1037-3.

30. Andersen TR, Schmidt JF, Thomassen M, Hornstrup T, Frandsen U, Randers MB et al. A preliminary study: effects of football training on glucose control, body composition, and performance in men with type 2 diabetes. *Scand J Med Sci Sports*. 2014;24 Suppl 1:43-56. doi:10.1111/sms.12259.
31. Yang Z, Scott CA, Mao C, Tang J, Farmer AJ. Resistance exercise versus aerobic exercise for type 2 diabetes: a systematic review and meta-analysis. *Sports Med*. 2014;44(4):487-99. doi:10.1007/s40279-013-0128-8.
32. Mohr M, Helge EW, Petersen LF, Lindenskov A, Weihe P, Mortensen J et al. Effects of soccer vs swim training on bone formation in sedentary middle-aged women. *Eur J Appl Physiol*. 2015;115(12):2671-9. doi:10.1007/s00421-015-3231-8.
33. Mendham AE, Duffield R, Coutts AJ, Marino F, Boyko A, Bishop DJ. Rugby-specific small-sided games training is an effective alternative to stationary cycling at reducing clinical risk factors associated with the development of type 2 diabetes: a randomized, controlled trial. *PLoS One*. 2015;10(6):e0127548. doi:10.1371/journal.pone.0127548.
34. Rissardi GdGL, Cipullo JP, Moreira GC, Ciorlia LAS, Cesarino CB, Giollo Junior LT et al. Prevalence of Physical Inactivity and its Effects on Blood Pressure and Metabolic Parameters in a Brazilian Urban Population. *Int J Cardiovasc Sci*. 2018;31:594-602.
35. Kiens B, Beyer N, Brage S, Hyldstrup L, Ottesen LS, Overgaard K et al. [Physical inactivity--consequences and correlations]. *Ugeskr Laeger*. 2007;169(25):2442-5.
36. Fielding RA, Katula J, Miller ME, Abbott-Pillola K, Jordan A, Glynn NW et al. Activity adherence and physical function in older adults with functional limitations. *Med Sci Sports Exerc*. 2007;39(11):1997-2004. doi:10.1249/mss.0b013e318145348d.
37. Jancey J, Lee A, Howat P, Clarke A, Wang K, Shilton T. Reducing Attrition in Physical Activity Programs for Older Adults. *J Aging Phys Act*. 2007;15(2):152. doi:10.1123/japa.15.2.152 10.1123/japa.15.2.152.
38. Long AN, Dagogo-Jack S. Comorbidities of diabetes and hypertension: mechanisms and approach to target organ protection. *J Clin Hypertens (Greenwich)*. 2011;13(4):244-51. doi:10.1111/j.1751-7176.2011.00434.x.
39. Beevers G, Lip GY, O'Brien E. ABC of hypertension: The pathophysiology of hypertension. *BMJ*. 2001;322(7291):912-6. doi:10.1136/bmj.322.7291.912.
40. Cabrales P, Han G, Nacharaju P, Friedman AJ, Friedman JM. Reversal of hemoglobin-induced vasoconstriction with sustained release of nitric oxide. *Am J Physiol Heart Circ Physiol*. 2011;300(1):H49-56. doi:10.1152/ajpheart.00665.2010.
41. Devereux RB, Case DB, Alderman MH, Pickering TG, Chien S, Laragh JH. Possible role of increased blood viscosity in the hemodynamics of systemic hypertension. *Am J Cardiol*. 2000;85(10):1265-8. doi:10.1016/s0002-9149(00)00744-x.
42. Writing Team for the Diabetes C, Complications Trial/Epidemiology of Diabetes I, Complications Research G. Sustained effect of intensive treatment of type 1 diabetes mellitus on development and progression of diabetic nephropathy: the Epidemiology of Diabetes Interventions and Complications (EDIC) study. *JAMA*. 2003;290(16):2159-67. doi:10.1001/jama.290.16.2159.
43. Moreira LB, Fuchs SC, Wiehe M, Gus M, Moraes RS, Fuchs FD. Incidence of hypertension in Porto Alegre, Brazil: a population-based study. *J Hum Hypertens*. 2008;22(1):48-50. doi:10.1038/sj.jhh.1002252.
44. Agner V, Garcia M, Taffarel A, Mourao C, da SI, da SS et al. Effects of concurrent training on muscle strength in older adults with metabolic syndrome: a randomized controlled clinical trial. *Arch Gerontol Geriatr*. 2018 doi:10.1016/j.archger.2017.12.011.
45. Amaro-Gahete FJ, De-la OA, Jurado-Fasoli L, Dote-Montero M, Gutiérrez Á, Ruiz JR et al. Changes in Physical Fitness After 12 Weeks of Structured Concurrent Exercise Training, High Intensity Interval Training, or Whole-Body Electromyostimulation Training in Sedentary

- Middle-Aged Adults: A Randomized Controlled Trial. *Front Physiol.* 2019;10:451. doi:10.3389/fphys.2019.00451.
46. Andersen LJ, Randers MB, Westh K, Martone D, Hansen PR, Junge A et al. Football as a treatment for hypertension in untrained 30-55-year-old men: a prospective randomized study. *Scand J Med Sci Sports.* 2010;20 Suppl 1:98-102. doi:10.1111/j.1600-0838.2010.01109.x.
 47. Andersen TR, Schmidt JF, Pedersen MT, Krstrup P, Bangsbo J. The Effects of 52 Weeks of Soccer or Resistance Training on Body Composition and Muscle Function in +65-Year-Old Healthy Males--A Randomized Controlled Trial. *PLoS One.* 2016;11(2):e0148236. doi:10.1371/journal.pone.0148236.
 48. Balducci S, Leonetti F, Di Mario U, Fallucca F. Is a long-term aerobic plus resistance training program feasible for and effective on metabolic profiles in type 2 diabetic patients? *Diabetes Care.* 2004;27(3):841-2. doi:10.2337/diacare.27.3.841.
 49. Church TS, Blair SN, Cocreham S, Johannsen N, Johnson W, Kramer K et al. Effects of aerobic and resistance training on hemoglobin A1c levels in patients with type 2 diabetes: a randomized controlled trial. *JAMA.* 2010;304(20):2253-62. doi:10.1001/jama.2010.1710.
 50. Da Silva MAR, Baptista LC, Neves RS, De França E, Loureiro H, Lira FS et al. The Effects of Concurrent Training Combining Both Resistance Exercise and High-Intensity Interval Training or Moderate-Intensity Continuous Training on Metabolic Syndrome. *Front Physiol.* 2020;11:572. doi:10.3389/fphys.2020.00572.
 51. Dobrosielski DA, Gibbs BB, Ouyang P, Bonekamp S, Clark JM, Wang NY et al. Effect of exercise on blood pressure in type 2 diabetes: a randomized controlled trial. *J Gen Intern Med.* 2012;27(11):1453-9. doi:10.1007/s11606-012-2103-8.
 52. Jorge ML, de Oliveira VN, Resende NM, Paraiso LF, Calixto A, Diniz AL et al. The effects of aerobic, resistance, and combined exercise on metabolic control, inflammatory markers, adipocytokines, and muscle insulin signaling in patients with type 2 diabetes mellitus. *Metabolism.* 2011;60(9):1244-52. doi:10.1016/j.metabol.2011.01.006.
 53. Krstrup P, Skoradal MB, Randers MB, Weihe P, Uth J, Mortensen J et al. Broad-spectrum health improvements with one year of soccer training in inactive mildly hypertensive middle-aged women. *Scand J Med Sci Sports.* 2017;27(12):1893-901. doi:10.1111/sms.12829.
 54. Lambers S, Van Laethem C, Van Acker K, Calders P. Influence of combined exercise training on indices of obesity, diabetes and cardiovascular risk in type 2 diabetes patients. *Clin Rehabil.* 2008;22(6):483-92. doi:10.1177/0269215508084582.
 55. Loimaala A, Huikuri HV, Koobi T, Rinne M, Nenonen A, Vuori I. Exercise training improves baroreflex sensitivity in type 2 diabetes. *Diabetes.* 2003;52(7):1837-42. doi:10.2337/diabetes.52.7.1837.
 56. Miura H, Nakagawa E, Takahashi Y. Influence of group training frequency on arterial stiffness in elderly women. *European journal of applied physiology* 2008 doi:10.1007/s00421-008-0860-1.
 57. Miura H, Takahashi Y, Maki Y, Sugino M. Effects of exercise training on arterial stiffness in older hypertensive females. *European journal of applied physiology* 2015 doi:10.1007/s00421-015-3168-y.
 58. Mohr M, Lindenskov A, Holm PM, Nielsen HP, Mortensen J, Weihe P et al. Football training improves cardiovascular health profile in sedentary, premenopausal hypertensive women. *Scand J Med Sci Sports.* 2014;24 Suppl 1:36-42. doi:10.1111/sms.12278.
 59. Niederseer D, Ledl-Kurkowski E, Kvita K, Patsch W, Dela F, Mueller E et al. Salzburg Skiing for the Elderly Study: changes in cardiovascular risk factors through skiing in the elderly. *Scand J Med Sci Sports.* 2011 doi:10.1111/j.1600-0838.2011.01341.x.
 60. Ohkubo T, Hozawa A, Nagatomi R, Fujita K, Sauvaget C, Watanabe Y et al. Effects of exercise training on home blood pressure values in older adults: a randomized controlled trial. *J Hypertens.* 2001;19(6):1045-52. doi:10.1097/00004872-200106000-00008.

61. Park S, Lee I. Effects on training and detraining on physical function, control of diabetes and anthropometrics in type 2 diabetes; a randomized controlled trial. *Physiotherapy theory and practice* 2015 doi:10.3109/09593985.2014.958265.
62. Ruangthai R, Phoemsapthawee J. Combined exercise training improves blood pressure and antioxidant capacity in elderly individuals with hypertension. *J Exerc Sci Fit*. 2019 doi:10.1016/j.jesf.2019.03.001.
63. Schmidt JF, Andersen TR, Horton J, Brix J, Tarnow L, Krstrup P et al. Soccer training improves cardiac function in men with type 2 diabetes. *Med Sci Sports Exerc*. 2013;45(12):2223-33. doi:10.1249/MSS.0b013e31829ab43c.
64. Schmidt J, Hansen P, Andersen T, Andersen L, Hornstrup T, Krstrup P et al. Cardiovascular adaptations to 4 and 12 months of football or strength training in 65- to 75-year-old untrained men. *Scand J Med Sci Sports*. 2014 doi:10.1111/sms.12217.
65. Shiotsu Y, Watanabe Y, Tujii S, Yanagita M. Effect of exercise order of combined aerobic and resistance training on arterial stiffness in older men. *Exp Gerontol*. 2018 doi:10.1016/j.exger.2018.06.020.
66. Stewart KJ, Bacher AC, Turner KL, Fleg JL, Hees PS, Shapiro EP et al. Effect of exercise on blood pressure in older persons: a randomized controlled trial. *Arch Intern Med*. 2005;165(7):756-62. doi:10.1001/archinte.165.7.756.
67. Tessier D, Menard J, Fulop T, Ardilouze J, Roy M, Dubuc N et al. Effects of aerobic physical exercise in the elderly with type 2 diabetes mellitus. *Arch Gerontol Geriatr*. 2000;31(2):121-32. doi:10.1016/s0167-4943(00)00076-5.
68. Timmons J, Minnock D, Hone M, Cogan K, Murphy J, Egan B. Comparison of time-matched aerobic, resistance, or concurrent exercise training in older adults. *Scand J Med Sci Sports*. 2018 doi:10.1111/sms.13254.

Table 1. Sample characteristics of included studies

Study	N	Age (years) [mean \pm SD]	Dropouts (n)	Other characteristics
Agner et al. 2018 [44]	23	66 \pm 4	0	Sedentary, T2DM, Hypertension
Amaro-Gahete et al. 2019 [45]	17	54 \pm 4.	4	Sedentary, Healthy
Andersen et al. 2010 [46]	13	46 \pm 7	1	Sedentary, Hypertension
Andersen et al. 2014 [30]	12	50 \pm 7	0	Sedentary, T2DM
Andersen et al. 2016 [47]	9	68 \pm 4	0	Sedentary, Healthy
Balducci et al. 2004 [48]	62	60 \pm 8	10	Sedentary, T2DM
Church et al. 2010 [49]	76	55 \pm 8	5	Sedentary, T2DM
Da silva et al. 2020 [50]	13	71 \pm 4	0	Sedentary, Healthy
Da silva et al. 2020 [50]	13	63 \pm 7	0	Sedentary, Healthy
Dobrosielski et al. 2012 [51]	51	57 \pm 6	19	Sedentary, T2DM
Jorge et al. 2011 [52]	12	57 \pm 9	None	Sedentary, T2DM
Krustrup et al. 2017 [53]	19	45 \pm 6	3	Sedentary, Hypertension
Lambers et al. 2008 [54]	17	58 \pm 9	2	T2DM
Loimaala et al. 2003 [55]	24	53 \pm 6	0	Sedentary, T2DM
Mendham et al. 2015 [33]	10	46 \pm 6	1	Sedentary, T2DM
Miura et al. 2008 [56]	29	69 \pm 6	0	Sedentary, Healthy
Miura et al. 2008 [56]	25	69 \pm 7	0	Sedentary, Healthy
Miura et al. 2015 [57]	45	73 \pm 6	8	Sedentary, Hypertension
Miura et al. 2015 [57]	55	72 \pm 7	3	Sedentary, Healthy
Mohr et al. 2014 [58]	21	45 \pm 3	0	Sedentary, Hypertension

Table 1. (continued)

Study	Participants	Age (years) [mean \pm SD]	Dropouts (n)	Other population characteristics
Niederseer et al. 2011 [59]	22	66 \pm 2	5	Sedentary, Healthy
Ohkubo et al. 2001 [60]	32	67	0	Sedentary, Healthy
Park et al. 2015 [61]	24	71 \pm 3	15	Sedentary, T2DM, Hypertension
Ruangthai et al. 2019 [62]	16	67 \pm 5	1	Sedentary, Hypertension
Schmidt et al. 2013 [63]	10	51 \pm 7	4	Sedentary, T2DM, Hypertension
Schmidt et al. 2014 [64]	9	68 \pm 3	1	Sedentary, Healthy
Shiotsu et al. 2018 [65]	15	70 \pm 3	0	Sedentary, Hypertension
Shiotsu et al. 2018 [65]	15	70 \pm 3	0	Sedentary, Hypertension
Stewart et al. 2005 [66]	51	63	6	Sedentary, Hypertension
Tessier et al. 2000 [67]	19	69 \pm 4	5	Sedentary, T2DM
Timmons et al. 2018 [68]	21	69 \pm 2	0	Sedentary, Healthy

Values reported as mean \pm standard deviation (SD); T2DM type II diabetes mellitus

Table 2. Characteristics of recreational sports and combined training interventions of included studies

Study	Duration (wks) x Frequency (d/wk)	Intervention	Intensity	Duration Aerobic (min)	Protocol strength training	Session duration (min)	Weekly duration (min)	Adherence to Exercise Training (%)
Agner et al. 2018 [44]	12 x 3	Combined Training	80-85% HR _{reserve}	35	40-70% 1RM; 3 sets /8-12 reps/10 exerc	90	180	Uninformed
Amaro-Gahete et al. 2019 [45]	12 x 3	Combined Training	60-65% HR _{reserve}	50	40-50% 1RM; 10 exerc	70	210	Uninformed
Andersen et al. 2010 [46]	12x2	Soccer	83-98% HR _{max} .	-	60	180	Uninformed	Uninformed
Andersen et al. 2014 [30]	24 x 2	Soccer	83% HR _{max} .	-	-	60	120	Uninformed
Andersen et al. 2016 [47]	52 X 2	Soccer	80% HR _{max} .	-	-	60	120	66
Balducci et al. 2004 [48]	48 X 3	Combined Training	40-80% HR _{reserve}	30	40-60% 1RM; 3 sets/ 12 reps/ 10 exerc	Uninformed	Uninformed	90
Church et al. 2010 [49]	39 x 3	Combined Training	50-80% VO2 _{max} .	Uninformed	12RM; 1 set / 12 reps/ 9 exerc	Uninformed	150	Uninformed
Da silva et al. 2020 [50]	12 x 3	Combined Training	60-70% HR _{max} .	25	2-5 CR10 BORG; 2 sets / 8-15 reps/ 15 exerc	50	150	Uninformed
Da silva et al. 2020 [50]	12 x 3	Combined Training	80-90% HR _{max} .	18	2-5 CR10 BORG; 2 sets / 8-15 reps/ 15 exerc	50	150	Uninformed
Dobrosielski et al. 2012 [51]	26 x 3	Combined Training	60-90% HR _{max} .	45	50% 1RM; 2 sets/ 10-15 reps/ 7 exerc	Uninformed	Uninformed	92 ⁵

Table 2. (continued)

Study	Duration (wks) x Frequency (d/wk)	Intervention	Intensity	Duration Aerobic (min)	Protocol strength training	Session duration (min)	Weekly duration (min)	Adherence to Exercise Training (%)
Jorge et al. 2011 [52]	12 x 3	Combined Training	VT2	Uninformed	Uninformed	60	180	96
Krustrup et al. 2017 [53]	48 X 3	Soccer	Uninformed	-	-	60	180	70
Lambers et al. 2008 [54]	12 x 3	Combined Training	60-80% HR _{reserve}	30	60-80% 1RM; 3 sets/ 10-15 reps/ 4 exerc	50	150	85
Loimaala et al. 2003 [55]	48 x 2	Combined Training	65-75% VO2 _{max}	Uninformed	3 sets/ 8-12 reps/ 8 exerc	30	90	Uninformed
Mendham et al. 2015 [33]	8 X 2	Rugby	85% HR _{max}	-	-	56	112	91
Miura et al. 2008 [56]	12 X 1	Combined Training	70-75% HR _{max}	20	15-20RM; 3-5 sets/ 15-20 reps/ 6-8 exerc	90	90	Uninformed
Miura et al. 2008 [56]	12 x 2	Combined Training	70-75% HR _{max}	20	15-20RM; 3-5 sets/ 15-20 reps/ 6-8 exerc	90	180	Uninformed
Miura et al. 2015 [57]	12 x 2	Combined Training	70-75% HR _{max}	20	15-20RM; 3-5 sets/ 15-20 reps/ 6-8 exerc	90	180	Uninformed
Miura et al. 2015 [57]	12 x 2	Combined Training	70-75% HR _{max}	20	15-20RM; 3-5 sets/ 15-20 reps/ 6-8 exerc	90	180	Uninformed
Mohr et al. 2014 [58]	15 x 3	Soccer	80-99% HR _{max}	-	-	60	180	90
Niederseer et al. 2011 [59]	12 X 2-3	Skiing	72% HR _{max}	-	-	67	134-201	89

Table 2. (continued)

Study	Duration (wks) x Frequency (d/wk)	Intervention	Intensity	Duration Aerobic (min)	Protocol strength training	Session duration (min)	Weekly duration (min)	Adherence to Exercise Training (%)
Ohkubo et al. 2001 [60]	25 X 3	Combined Training	50-60% $HRR_{reserve}$	12-25	5 exerc	120	360	80
Park et al. 2015 [61]	12 x 3	Combined Training	9-14 RPE	20	45-75% 1RM; 2 sets/ 10-12 reps/ 6 exerc	60	180	91
Ruangthai et al. 2019[62]	12x3	Combined Training	50-60% HR_{max}	40	50-80% 1RM; 2 sets/ 12 reps/ 12 exerc	60	180	88,7
Schmidt et al. 2013 [63]	24 x 2	Soccer	82-85% HR_{max}	-	-	60	120	60
Schmidt et al. 2014 [64]	48 x 2	Soccer	Uninformed	-	-	60	120	66
Shiotsu et al. 2018 [65]	10 X 2	Combined Training	60% $HR_{reserve}$	20	70-80% 1RM; 3 sets/ 8-12 reps/ 5 exerc	Uninformed	Uninformed	92,5
Shiotsu et al. 2018 [65]	10 X 2	Combined Training	60% $HR_{reserve}$	20	70-80% 1RM; 3 sets/ 8-12 reps/ 5 exerc	Uninformed	Uninformed	93,8
Stewart et al. 2005 [66]	26 x 3	Combined Training	60-90% HR_{max}	45	50% 1RM; 2 sets/ 10-15 reps/ 7 exerc	Uninformed	Uninformed	88
Tessier et al. 2000 [67]	16 X 3	Combined Training	59-79% HR_{max}	20	2 sets; 20 reps	60	180	90
Timmons et al. 2018 [68]	12 x 3	Combined Training	80% $HR_{reserve}$	20	60%-? % 1RM; 4 sets/ 15 reps/ 6 exerc	40	120	86
								5

VO_{2max} : maximum oxygen uptake; VT2 second ventilatory threshold; HR heart rate; RPE borg scale; RM maximum repetitions;

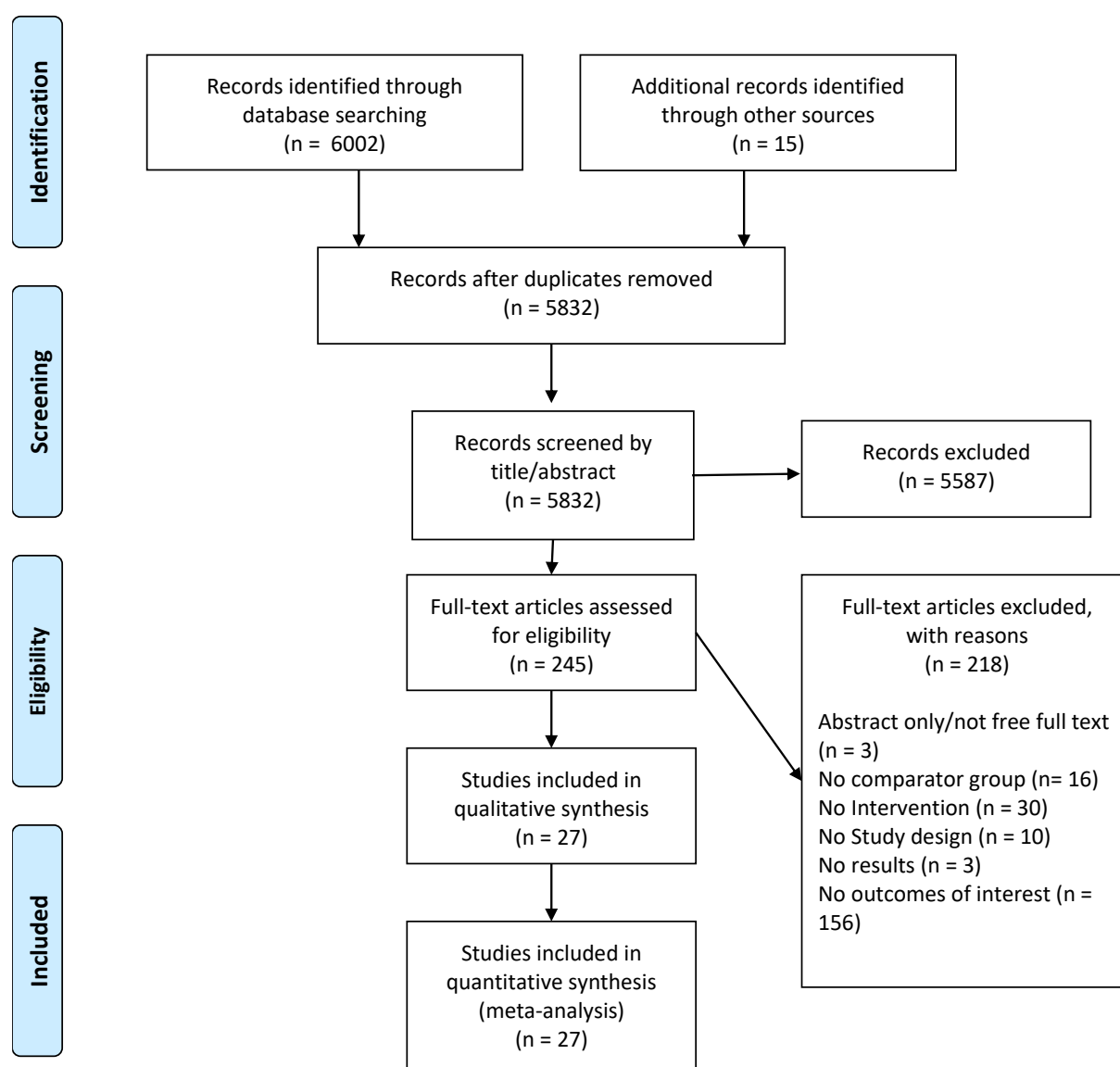


Fig. 1 Flow diagram of the study selection process

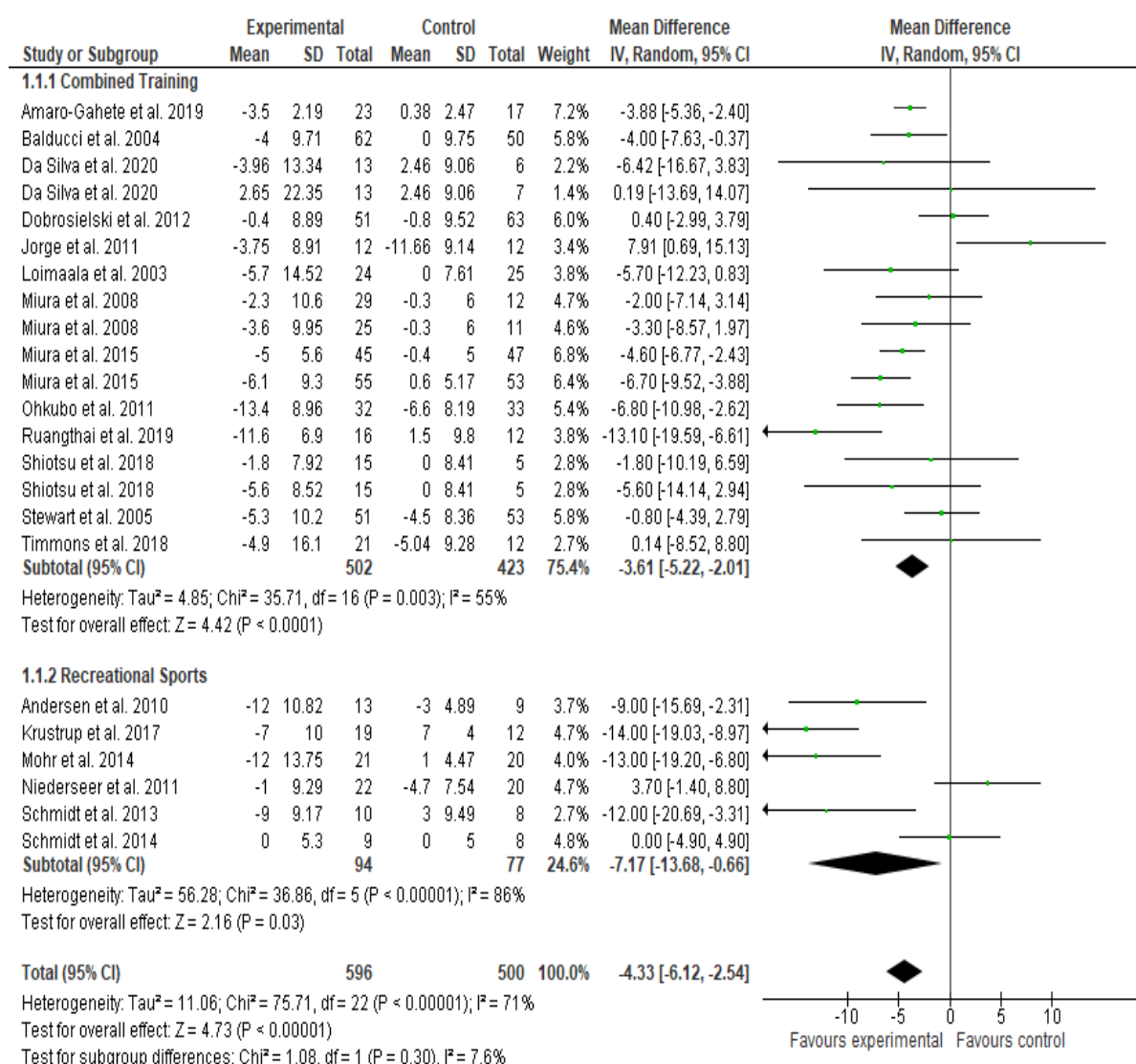


Fig. 2 Absolute changes in systolic blood pressure (SBP) in individual studies of exercise training (overall) and subgroup analyses were carried out considering the training modalities: recreational sports and combined training. Squares represent study-specific estimates; diamonds represent pooled estimates obtained using a random-effect analyses

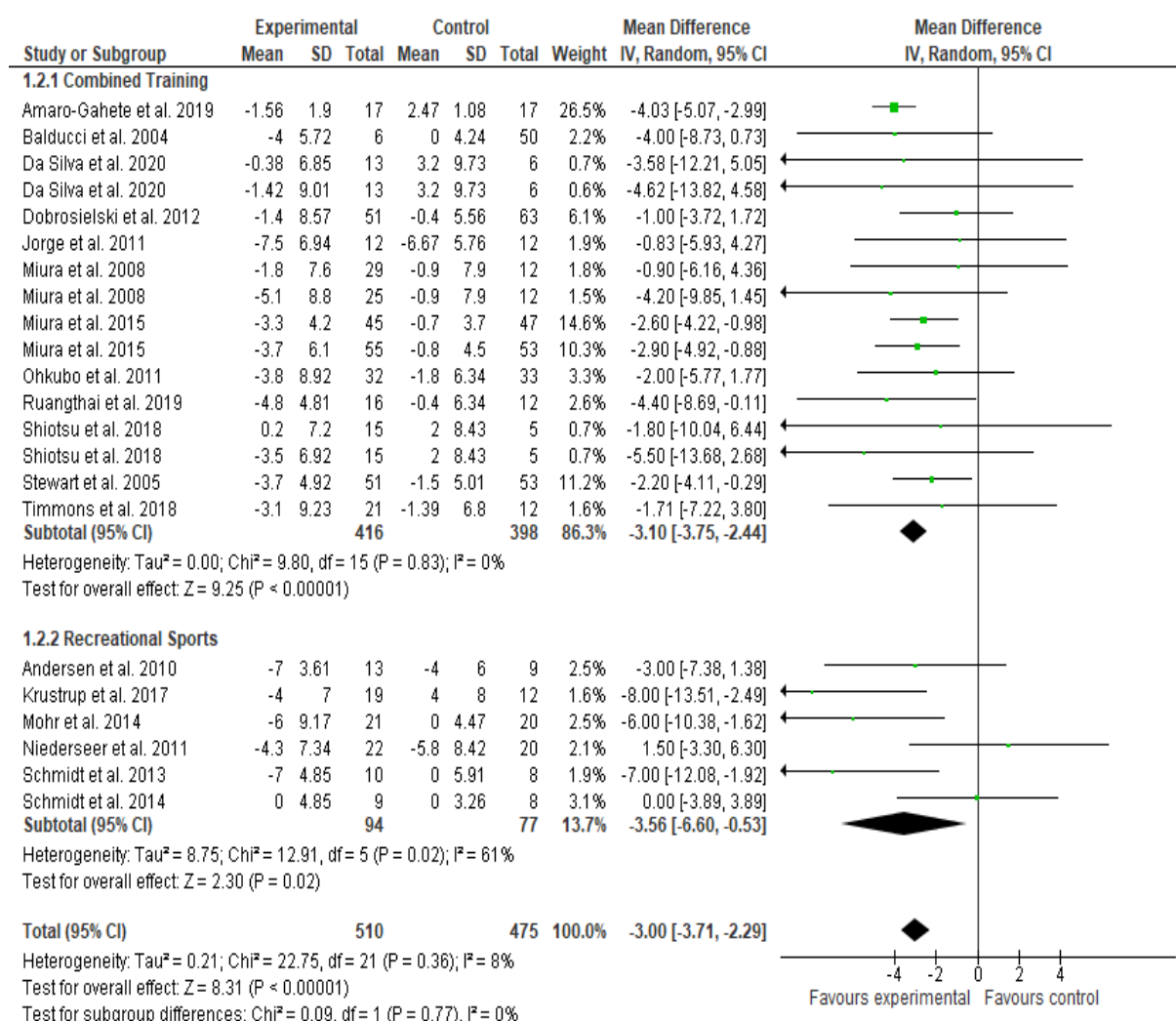


Fig. 3 Absolute changes in diastolic blood pressure (DBP) in individual studies of exercise training (overall) and subgroup analyses were carried out considering the training modalities: recreational sports and combined training

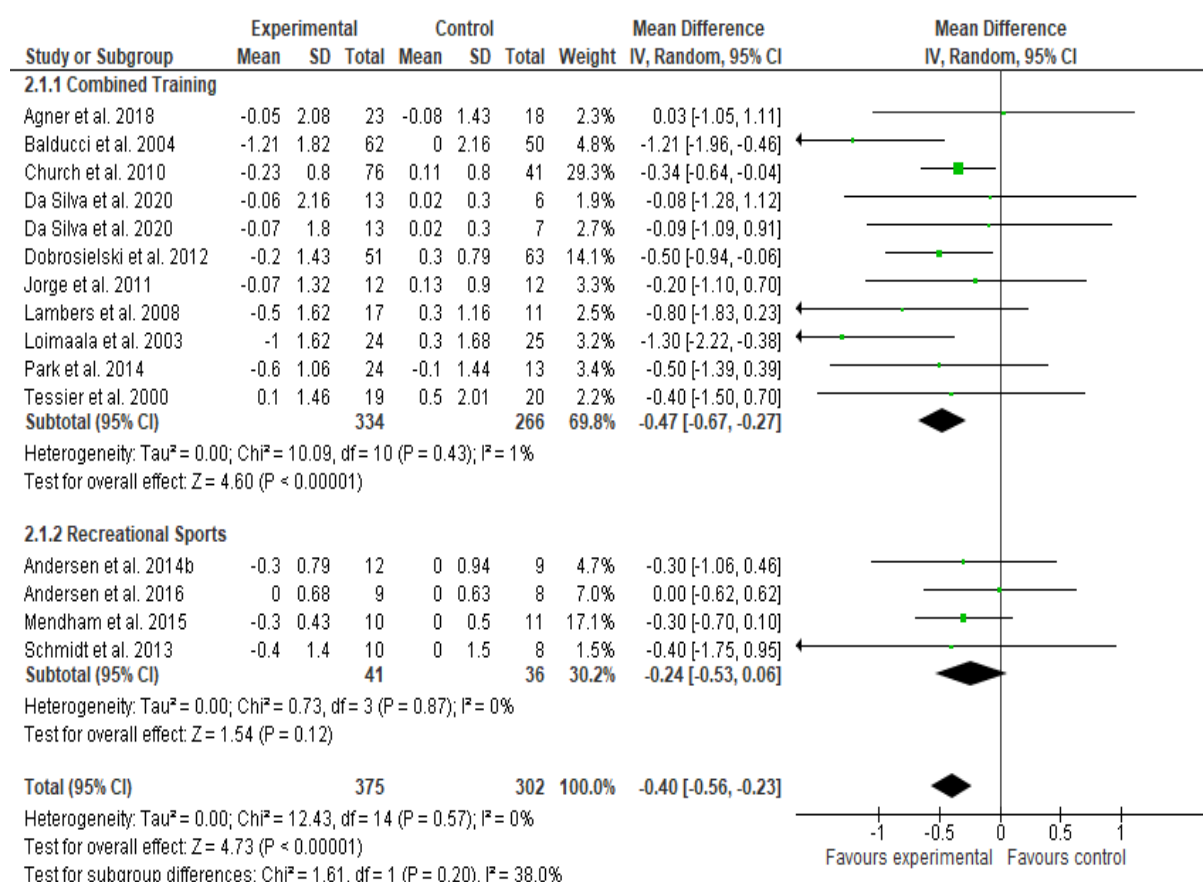


Fig. 4 Absolute changes in glycosylated hemoglobin (HbA1c) in individual studies of exercise training (overall) and subgroup analyses were carried out considering the training modalities: recreational sports and combined training

Electronic Supplementary Material Table S1. Literature search strategy used for the PubMed database

#1 (Older OR Elderly OR "Old age" OR "Senior adults" OR "Older people" OR "Older adults" OR "Old people" OR "Old adults" OR "Aging adults" OR Aging OR "Older population")

#2 (Sports OR "Sports Group" OR "Team sports" OR "Sports activity" OR "Sports participation" OR "Sports clubs" OR "Sports practice" OR "Sports organization" OR "Recreational sports" OR "Team activity" OR "Sports intervention" OR "single sport" OR "individual sports" OR "Sport" OR Volleyball OR Soccer OR Football OR Basketball OR Futbol OR Rugby OR Handball OR Hockey OR Floorball OR Skiing OR "Alpine skiers" OR "Concurrent training" OR "Combined training" OR "simultaneous training" OR "aerobic exercise with resistance training" OR "multicomponent training" OR "multicomponent exercise" OR "circuit training" OR "circuit resistance training" OR "combined exercise training" OR "multi-modal exercise training" OR "same-session exercise" OR "concurrent exercise")

#3 #1 AND #2

	Risk of bias							Overall
	D1	D2	D3	D4	D5	D6	D7	
Agner et al. 2018	+	+	+	-	+	+	+	
Amaro-Gahete et al. 2019	+	+	-	-	+	+	-	
Andersen et al. 2010	+	-	-	-	+	-	-	
Andersen et al. 2014	X	X	-	-	+	+	-	
Andersen et al. 2016	+	+	+	-	-	+	+	
Balducci et al. 2004	+	-	-	-	-	-	-	
Church et al. 2010	+	+	+	-	+	+	+	
Da Silva et al. 2020	+	-	+	+	+	-	-	
Dobrosielski et al. 2012	+	+	-	-	+	-	+	
Jorge et al. 2011	+	-	-	-	+	-	X	
Krustrup et al. 2017	+	-	-	-	+	-	+	
Lambers et al. 2008	+	+	+	-	+	-	+	
Loimaala et al. 2003	+	-	-	-	+	-	+	
Mendham et al. 2015	+	+	-	+	+	+	+	
Miura et al. 2008	+	-	-	-	-	-	X	
Miura et al. 2015	+	+	-	-	-	-	-	
Mohr et al. 2014	+	-	-	-	-	-	-	
Niederseer et al. 2011	+	-	-	-	-	-	X	
Ohkubo et al. 2001	+	+	-	-	-	-	-	
Park et al. 2014	+	+	+	+	+	-	-	
Ruangthai et al. 2019	+	-	+	-	-	+	-	
Schmidt et al. 2013	X	X	-	-	-	-	X	
Schmidt et al. 2014	+	-	-	-	-	+	-	
Shiotsu et al. 2018	+	+	X	-	-	-	-	
Stewart et al. 2005	+	-	-	-	-	-	-	
Tessier et al. 2000	+	-	-	-	-	-	-	
Timmons et al. 2018	+	-	-	+	-	-	-	

D1: Randomization methods
D2: Allocation concealment
D3: Blinding of patients and therapist
D4: Blinding of outcome assessment
D5: Incomplete outcome data
D6: Selective reporting
D7: Other sources of bias

Judgement
X High
- Unclear
+ Low
Not applicable

Electronic Supplementary Material Figure S1. Risk of bias of studies included in the meta-analysis.

Electronic Supplementary Material Table S3. Absolute changes in systolic and diastolic blood pressure and glycosylated hemoglobin (HbA1c) in studies of recreational sports and combined training vs. no intervention stratified according to values according to SBP ≥ 130 mmHg or DBP ≥ 80 mmHg and HbA1c $\geq 5,7\%$

Participants with BP $\geq 130/80$ mmHg			
	N	Mean Difference (95%)	P
Recreational sports			
Systolic BP (mmHg)	112	-12.38 (-15.52; -9.23)	< 0.01
Diastolic BP (mmHg)	112	-5.71 (-2.88; 0.18)	< 0.01
Combined training			
Systolic BP (mmHg)	514	-3.99 (-6.74; -1.23)	< 0.05
Diastolic BP (mmHg)	344	-2.62 (-3.72; -1.51)	< 0.01
Participants with HbA1c $\geq 5,7\%$			
	N	Change (95% CI)	P
Recreational Sports			
HbA1c (%)	60	-0.31 (-0.65; 0.03)	0.08
Combined Training			
HbA1c (%)	600	-0.41 (-0.67; -0.27)	< 0.01

P values statistically significant; BP blood pressure

Electronic Supplementary Material Table S4. Secondary analyses by intensity and intervention duration in absolute changes in systolic blood pressure and diastolic blood pressure in recreational sports and combined training

Subgroup	N of studies (participant)	Mean Difference (95%CI)	P	I²	P
Systolic BP – Intensity					
Recreational sports					
High intensity (≥80% HRmax)	5 (129)	-9.41 (-15.31; - 3.52)	.002	79%	< 0.09
Combined training					
Low intensity	14 (687)	-4.40 (-6.04; - 2.75)	<.001	48%	0.02
High intensity	3 (238)	-0.15 (-2.58; 2.27)	.90	0%	0.89
Diastolic BP - Intensity					
Recreational sports					
High intensity	5 (129)	-4.49 (-7.47; -1.51)	.003	52%	0.08
Combined training					
Low intensity	13 (557)	-3.36 (-4.09; -2.64)	<.001	0%	0.91
High intensity	3 (238)	-1.88 (-3.47; -0.34)	.02	0%	0.65
Systolic BP– Intervention duration (weeks)					
Recreational sports					
< 24	2 (83)	-4.55 (-20.82; 11.81)	.59	94%	< 0.01
≥ 24	3 (88)	-8.47 (-18.31; 1.37)	.09	88%	< 0.03
Combined training					
< 24	12 (475)	-3.96 (-5.98; -1.94)	<.001	54%	0.01
≥ 24	5 (444)	-3.01 (-5.78; -0.24)	.03	57%	0.05

Electronic Supplementary Material Table S4. (continued)

Diastolic BP – Intervention duration (weeks)					
Recreational sports					
< 24	2 (83)	-2.32 (-9.66; 5.03)	.54	80%	0.02
≥ 24	3 (88)	- 4.16 (-7.86; 0.47)	.03	60%	0.06
Combined training					
< 24	12 (475)	-3.41 (-4.15; -2.66)	<.001	0%	0.90
≥ 24	4 (339)	-2.02 (-3.40; -0.64)	.004	0%	0.74

Intensities were determined as Low (HRmax or 1-RM <80%) and High (HRmax & 1-RM ≥80%). *BP* blood pressure; *HR* heart rate; *RM* maximum repetitions. *P* values statistically significant; *P* values statistically significant for heterogeneity.