

1 **Durability of three types of dual active ingredient long-lasting insecticidal net compared**  
2 **to a pyrethroid-only LLIN in Tanzania: protocol for a prospective cohort study nested**  
3 **in a cluster randomized controlled trial.**

4

5 Jackline L Martin<sup>1,2\*</sup>, Louisa A. Messenger<sup>3</sup>, Franklin W Mosh<sup>1</sup>, Eliud Lukole<sup>2</sup>, Jacklin F  
6 Mosh<sup>2</sup>, Manisha Kulkarni<sup>4</sup>, Thomas S Churcher<sup>5</sup>, Ellie Sherrard-Smith<sup>5</sup>, Alphaxard  
7 Manjurano<sup>2</sup>, Natacha Protopopoff<sup>3‡</sup>, Mark Rowland<sup>3‡</sup>

8 <sup>1</sup>*Kilimanjaro Christian Medical University College, Moshi, United Republic of Tanzania*

9 <sup>2</sup>*National Institute for Medical Research- Mwanza Center, United Republic of Tanzania*

10 <sup>3</sup>*London School of Hygiene and Tropical, London, United Kingdom*

11 <sup>4</sup>*University of Ottawa, Canada*

12 <sup>5</sup>*Imperial College, London*

13 \*Corresponding author

14 ‡ These authors contributed equally.

15 *Email: \*JLM – [lyimojaqueen@gmail.com](mailto:lyimojaqueen@gmail.com), LAM- [louisa.messenger@lshtm.ac.uk](mailto:louisa.messenger@lshtm.ac.uk), FWM –*  
16 *[fwmosha@gmail.com](mailto:fwmosha@gmail.com), EL- [Eliud.Lukole@lshtm.ac.uk](mailto:Eliud.Lukole@lshtm.ac.uk), JFM - [jfmosha@yahoo.com](mailto:jfmosha@yahoo.com), TSC-*  
17 *[thomas.churcher@imperial.ac.uk](mailto:thomas.churcher@imperial.ac.uk), ESS - [e.sherrard-smith@imperial.ac.uk](mailto:e.sherrard-smith@imperial.ac.uk), MK-*  
18 *[Manisha.Kulkarni@uottawa.ca](mailto:Manisha.Kulkarni@uottawa.ca), AM - [amanjurano@yahoo.com](mailto:amanjurano@yahoo.com), NP –*  
19 *[natacha.protopopoff@lshtm.ac.uk](mailto:natacha.protopopoff@lshtm.ac.uk) and MR - [mark.rowland@lshtm.ac.uk](mailto:mark.rowland@lshtm.ac.uk)*

20

21

22 *Funding.*

23 This project is funded by the Bill and Melinda Gates Foundation through the Innovative  
24 Vector Control Consortium and under the global health trial, a jointly funded initiative from  
25 The Department of Health and Social Care, the Department for International Development,  
26 the Medical Research Council and the Wellcome Trust (Grant Ref: MR/R006040/1).

27

28 **ABSTRACT**

29 **Introduction:** Progress achieved by long-lasting insecticidal nets (LLINs) against malaria is  
30 threatened by the widespread selection of pyrethroid resistance among vector populations.  
31 LLINs with non-pyrethroid insecticides are urgently needed. This study aims to assess the  
32 durability of three novel dual active ingredient LLINs and to parameterise a mathematical  
33 model to predict epidemiological outcomes of these products for malaria vector control.

34 **Methods:** A WHO Phase 3 active ingredients and textile durability study will be carried out  
35 within a cluster randomised controlled trial in Misungwi district in 40 clusters. The following  
36 treatments will be evaluated; 1/ Interceptor G2® combining chlorfenapyr and a pyrethroid  
37 alpha-cypermethrin, 2/ Royal Guard® treated with pyriproxyfen and alpha-cypermethrin and  
38 3/ Olyset™ Plus which incorporates a synergist piperonyl butoxide and the pyrethroid  
39 permethrin, and 4/ a reference standard pyrethroid-only LLIN (Interceptor®). 750 nets will  
40 be followed in 5 clusters per intervention arm at 6, 12, 24 and 36 months post distribution for  
41 survivorship and hole index assessment. A second cohort of 1950 nets per each type will be  
42 identified in 10 clusters, of which 30 LLINs will be withdrawn for bio-efficacy and chemical  
43 analysis every 6 months up to 36 months and another 30 collected for an experimental hut  
44 trial study every year. Bio-efficacy will be assessed using cone bioassays and tunnel tests  
45 against susceptible and resistant laboratory strains of *Anopheles gambiae* sensu stricto.  
46 Efficacy of field collected nets will be compared in six experimental huts. The main  
47 outcomes will be *Anopheles* mortality up to 72 hours post exposure, blood feeding and egg  
48 maturation using ovary dissection to assess impact on fecundity.

49 **Ethics and dissemination:** Ethical approval was received from the Tanzanian ethics review  
50 committee as well as from each institution. Study findings will be disseminated via reports  
51 and presentations to national and international stakeholders, conferences, and peer-reviewed  
52 publications.

53 **Trial registration number:** NCT03554616

54 **Total word counts 6160** (excluding abstract, tables, figures, acknowledgment and reference)

55

56 **Article summary**

57 **Strengths of this study**

- 58 • This is the first study assessing the durability of these novel dual-A.I. LLINs over three  
59 years alongside a cluster randomised controlled trial (cRCT).
- 60 • The study will support the development of bio-efficacy and physical durability criteria of  
61 performance for the partner A.I. in relation to the cRCT efficacy outcomes and refine  
62 preferred product characteristics developed by the WHO.
- 63 • An experimental hut trial done in the vicinity of the cRCT, with similar vector population  
64 characteristics and using nets sampled from the main trial will allow us to understand the  
65 impact of field conditions, wear-and-tear and insecticidal deterioration on the efficacy of  
66 the dual-A.I. LLINs on entomological outcomes and relate these to the cRCT  
67 epidemiological and entomological outcomes.
- 68 • All other products falling under these novel dual-A.I. LLINs classes will be assessed  
69 according to those criteria alongside non-inferiority studies in experimental huts and  
70 modelling of these data.

71 **Limitations of this study**

72 Potential limitations include 1/ the net loss of follow up used to calculate sample size, which  
73 was taken from another study site and might differ in Misungwi, and 2/ the experimental hut  
74 site is situated in the northern section of the cRCT study area and may not represent vector  
75 species composition of the southern section of the cRCT.

76

77 **Keywords**

78 Bio-efficacy, textile durability, malaria vectors, insecticide resistance, Royal Guard,  
79 Interceptor G2, Olyset Plus, Interceptor, Tanzania, experimental hut trial, long-lasting  
80 insecticidal net.

81

82

83

84 **INTRODUCTION**

85 Long-lasting insecticidal nets (LLINs) are the primary method of malaria control in sub-  
86 Saharan Africa. The World Health Organization (WHO) estimates that over 50% of the  
87 population now sleeps under LLINs. This has helped to reduce malaria incidence by 42% and  
88 mortality by 66% in Africa over the last 15 years.<sup>1</sup> Until recently, pyrethroids were the only  
89 type of insecticide used routinely on LLINs. The rapid spread of pyrethroid resistance in  
90 vector populations threatens to reverse the success achieved so far.<sup>2</sup> Several studies have  
91 demonstrated that LLINs are becoming less effective at killing mosquitoes in areas of high  
92 resistance compared to before.<sup>3 4</sup>

93 The first new type of LLIN developed to control resistant mosquitoes is a combination LLIN  
94 containing permethrin and the synergist piperonyl butoxide (PBO), which inhibits  
95 cytochrome P450 oxidases responsible for metabolic resistance. A community-based cluster  
96 randomized controlled trial (cRCT) conducted in Muleba demonstrated a reduction in the  
97 prevalence of malaria by 44% in the pyrethroid-PBO LLIN arm (Olyset™ Plus) compared to  
98 the standard pyrethroid LLIN after one year and by 33% after two years.<sup>5</sup> Based on this  
99 study, WHO recognized the improved public health value of the pyrethroid-PBO LLIN in  
100 areas of high resistance and provided it an interim recommendation as a new class of vector  
101 control product.<sup>6</sup> Since then, two other dual-active ingredient (dual-A.I.) LLINs (Royal  
102 Guard® and Interceptor G2®) have been evaluated in WHO Phase I and II trials and have  
103 shown promise compared to standard LLINs against pyrethroid resistant vectors. Each of  
104 these putative first-in-class LLINs are required by WHO to undergo cRCTs versus standard  
105 LLINs to demonstrate, unequivocally, evidence of improved malaria control effect.<sup>7</sup> Two  
106 such community cRCTs are currently underway in Misungwi, Tanzania<sup>8</sup> and in Cove, Benin.<sup>9</sup>

107 Assessment of the quality, efficacy and safety is also required for each vector control product  
108 submitted to WHO. Whether the LLIN product is a novel first-in-class LLIN, or a generic  
109 next-in-class LLIN, the LLIN should be evaluated in three different phases (Table 1).<sup>10</sup>

110

111

112

113

114

115

116 *Table 1: Main parameters assessed in Phase I, II and III studies of LLINs.*

Phase	Type of study	Parameters measured
I	Laboratory	<ol style="list-style-type: none"><li>1. Regeneration of insecticidal activity</li><li>2. Efficacy and wash-resistance</li></ol>
II	Small-scale field trial	<ol style="list-style-type: none"><li>1. Wash-resistance</li><li>2. Efficacy as measured by vector mortality and blood-feeding inhibition</li></ol>
III	Large-scale field trial	<ol style="list-style-type: none"><li>1. Long-lasting insecticidal efficacy</li><li>2. Rate of loss or attrition of nets</li><li>3. Physical durability of netting material</li><li>4. Community acceptance</li><li>5. Safety</li></ol>

117

118 In large-scale field trials, physical durability is affected by net care and repair, frequency of  
119 use, and maintenance practices, duration of transmission season, as well as textile physical  
120 features such as fibre material, knitting or weaving pattern.<sup>11</sup> The WHO assumes a good  
121 LLIN will demonstrate a physical life span of 3 years but this duration can vary between  
122 product, endemic regions and condition of use.<sup>12 13</sup> In the WHO guidelines, LLIN  
123 survivorship and fabric integrity are monitored in the community at 6, 12, 24 and 36  
124 months.<sup>10</sup> The pyrethroid component is expected to remain effective for 3 years,<sup>10</sup> while the  
125 residual efficacy of other active ingredients are not yet known.

126 <sup>12 13</sup>

127 After a LLIN has been assessed for its durability (insecticidal and physical) in the field, the  
128 bio-efficacy of these nets can be estimated in experimental hut trials.<sup>14 15</sup> Experimental huts  
129 are designed to mimic commonly used houses in the local area but modified to restrict the  
130 escape of mosquitoes and exclude scavenging insects; live and dead mosquitoes can be  
131 collected in the morning to assess insecticide-induced exiting, mortality and blood feeding  
132 inhibition. Currently, there are three designs of experimental hut recommended to evaluate  
133 LLINs and Indoor Residual Spraying (IRS) formulations.<sup>10</sup> These are East African-style huts,  
134 West African-style huts and Asian style huts. During standard, prospective WHO Phase II  
135 evaluations of LLIN efficacy, each net is expected to retain insecticidal activity for at least 20  
136 standardized washes with respect to vector knock-down, mortality and blood feeding  
137 inhibition.

138 Although community cRCTs provide definitive evidence for the establishment of new  
139 product classes of LLIN, questions remain whether cRCTs should be the sole mechanism to  
140 generate this evidence.<sup>16</sup> It has been proposed that entomological evidence generated by  
141 experimental hut trials may be adequate to contribute to this judgement.<sup>2</sup> The cost of cRCTs  
142 can be comparatively high, making returns on investment more challenging to achieve and  
143 this may act to disincentivise investments in new active ingredients and the criteria set out by  
144 the WHO, requiring two community-based cRCTs in two locations,<sup>17</sup> may not be feasible for  
145 every new LLIN intervention class in a timely manner.<sup>18</sup> Such factors may limit the number  
146 of available, approved malaria vector control 2<sup>nd</sup> in class products for resistance management,  
147 allowing transmission to continue at present in areas of insecticide resistance.<sup>18</sup>

148 Some malaria transmission models make use of LLIN Phase II experimental hut trial data to  
149 estimate the impact of these nets on malaria incidence/prevalence over time.<sup>2</sup> The WHO and  
150 advisory committees have ruled that the evidence base is presently insufficient to judge new  
151 classes of LLINs solely on the basis of entomological evidence.<sup>19</sup>

152 Malaria transmission dynamics mathematical models can be used to predict the public health  
153 impact of different vector control interventions.<sup>20</sup> These models simulate infection in  
154 populations of humans and mosquitoes and could be used to extrapolate the results of cRCTs  
155 to other sites with different epidemiology, entomology or mixtures of control interventions. It  
156 is unclear whether models parameterised with local hut trial data capturing the behaviour of  
157 the local mosquito vector would be more accurate at predicting local epidemiology than this  
158 meta-analysis approach which uses data from disparate locations (with different mosquito  
159 populations). These models have typically used data from LLINs that have been subjected to  
160 standardised washing to simulate the aging process. As a result, their predicted ability may be  
161 limited by the accuracy of standardised washing to reflect real life wear-and-tear and  
162 insecticidal deterioration under field conditions.

163

164 The aims of this study are to assess the insecticidal and physical durability of new dual-A.I.  
165 LLINs, Interceptor G2®, Olyset™ Plus and Royal Guard® compared to a standard LLIN  
166 (Interceptor®) in the community in order to set durability criteria for these first in class dual-  
167 A.I. LLINs and to establish whether entomological outcomes generated during the WHO  
168 product evaluation process (adapted experimental hut trials and supporting bio-efficacy  
169 testing) can provide a proxy for epidemiological outcomes of cRCTs.

## 170 **STUDY SPECIFIC OBJECTIVES**

### 171 **Net durability**

- 172 • To assess the A.I. activity and durability of each of the dual-A.I. LLINs compared to  
173 standard LLINs against susceptible and resistant *An. gambiae* colonies, over 3 years  
174 of continuous use by households (HHs) under field conditions.
- 175 • To determine and compare physical durability (survivorship and fabric integrity) of  
176 the dual-A.I. LLINs and standard LLINs over the 3 year period via a prospective  
177 cohort study.
  - 178 ○ Obtain detailed information on factors influencing the development of holes in  
179 the nets such as handling, washing, and the environment.
  - 180 ○ Assess net user's perception of net condition and usefulness.
  - 181 ○ Correlate user perception and physical condition to determine physical net  
182 status at which a net is considered "useless" or discarded.
- 183 • To assess A.I. content in each of the 4 LLINs under evaluation over 3 years of use by  
184 HHs.
- 185 • To report adverse events that may be associated with each of the LLINs.

### 186 **Efficacy and parameterization of models**

- 187 • To assess entomological efficacy of each of the dual-A.I. LLINs compared to standard  
188 LLINs sampled from cRCT households annually over 3 years, in experimental huts  
189 against free flying *An. gambiae sensu lato* (s.l.) and *An. funestus* s.l. to generate more  
190 realistic entomological outcomes than those achieved using standardized washing.
- 191 • To incorporate outcomes generated by the experimental hut trials in a mathematical  
192 model of malaria transmission to establish whether these entomological outcomes can  
193 predict the epidemiological effect of the cRCT.

## 194 **METHODS AND ANALYSIS**

### 195 **Study area**

196 The WHO Phase III durability study is part of a four-arm cRCT carried out in Misungwi  
197 district (2°51'00.0"S, 33°04'60.0"E), on the Southern border of Lake Victoria, Tanzania. The  
198 cRCT study area includes 72 villages, 42,314 households and a population of 251,155 based  
199 on a census done in 2018 as part of the study. A detailed description has been provided  
200 elsewhere.<sup>8</sup>

201 Six experimental huts have been constructed in Magu district, Mwanza region, Tanzania  
 202 (2°34.673'S, 33°07.170'E). The hut study site is situated north of the cRCT study area (Figure  
 203 1). The main vectors in this area are *Anopheles funestus* sensu stricto (s.s.), *Anopheles*  
 204 *arabiensis* and *Anopheles gambiae* s.s.

205 *Figure 1: Map showing cRCT site and experimental hut site.*

## 206 **Intervention**

207 The four LLINs under evaluation are 1/ Royal Guard®, a net combining pyriproxyfen (PPF),  
 208 which is known to disrupt female reproduction and fertility of eggs, and the pyrethroid alpha-  
 209 cypermethrin; 2/ Interceptor G2®, a mixture net incorporating two adulticides with differing  
 210 modes of action; chlorfenapyr and a pyrethroid (alpha-cypermethrin); 3/ Olyset™ Plus an  
 211 LLIN which incorporates a synergist, piperonyl butoxide (PBO), to enhance the potency of  
 212 pyrethroid insecticides and; 4/ Interceptor® an alpha-cypermethrin only LLIN and the  
 213 reference intervention (Table 2).

214

215 *Table 2: Characteristics of the different type of LLINs under evaluation.*

Intervention arm	LLIN brand	Net specificity			
		Dose AI/m <sup>2</sup> of netting fabric	Denier	Fibre	Manufacturer
Intervention 1	Royal Guard®	1. Alpha-cypermethrin 216 mg 2. <b>Pyriproxyfen 225 mg</b>	120	Polyethylene	Disease Control Technologies, LLC
Intervention 2	Interceptor G2®	1. Alpha-cypermethrin 100 mg 2. <b>Chlorfenapyr 200 mg</b>	100	Polyester	BASF
Intervention 3	Olyset™ Plus	1. Permethrin 800 mg 2. <b>PBO 400 mg</b>	150	Polyethylene	Sumitomo Chemicals
Control	Interceptor®	Alpha-cypermethrin 200 mg	100	Polyester	BASF

216

217 In February 2019, each of the four study LLIN types under evaluation were distributed to 21  
 218 clusters (overall number of clusters in the study area which received LLIN were 84) based on  
 219 restricted randomisation allocation. Each household received one net for every two people.



220 All nets distributed were blue and rectangular (180 cm length×160 cm wide×180 cm high). In  
 221 each intervention arm, net survivorship and fabric integrity (cohort 1) are followed in 250  
 222 households, selected nearby each other in 5 clusters, and nets for bio-efficacy, chemical  
 223 analysis and experimental hut trials (cohort 2) sampled from 650 households in 10 clusters  
 224 (Figure 2).

225 *Figure 2: Study design flow chart*

226

## 227 **Study Outcomes**

228 Study outcomes are summarized in Table 3.

229 *Table 3: Study outcomes measurements.*

Outcomes	Measurements	Collection	Frequency
Bio-efficacy with susceptible and resistant <i>Anopheles</i> strains.	<ol style="list-style-type: none"> <li>1. Mortality recorded immediately (60 minutes) and after 24, 48 and 72 h post exposure.</li> <li>2. Blood feeding inhibition recorded in tunnel test.</li> <li>3. Fecundity/fertility for Royal Guard® compared to standard LLIN and untreated net: proportion of abnormal ovaries.</li> <li>4. Blood feeding inhibition (%): the reduction in blood feeding of mosquitoes in the treatment compared with % feeding in the control tunnel.</li> </ol>	Cone or tunnel test on 4/5 pieces per net from 30 nets per type per time point and 50 nets at 36 months destructively sampled from cohort 2.	At 0, 6*, 12, 18*, 24, 30*, 36 months post distribution.  *test only performed when dual A.I. does not show superior efficacy compared to standard LLIN against resistant <i>Anopheles</i> at the yearly time point.
Net attrition rate (survival).	Household visit and observation of study LLIN presence: % of study nets that are lost (no longer in use for sleeping under) in the receiving household at each time point.	Prospective cohort study cohort 1.	At 6, 12, 24 and 36 months.
Fabric	Number of holes and hole size in study	Prospective cohort study	At 6, 12, 24 and 36 months.

integrity.	LLIN to calculate HI.	cohort 1.	
Chemical content.	HPLC of pyrethroid and partner A.I.: amount of active ingredients in fiber.	bio-efficacy	At 0, 12, 24 and 36 months.
Adverse effect.	Household visit and questionnaire to report: skin itching, facial burning, sneezing, nose running, headache, nausea, eye irritation, other.	Prospective cohort study cohort 1 and 2 nets.	At one month post distribution.
Efficacy against free flying mosquitoes.	<ol style="list-style-type: none"> <li>1. Immediate mortality (%) recorded and after 24, 48 and 72 h.</li> <li>2. Blood feeding inhibition (%): the reduction in blood feeding of mosquitoes in the treatment compared with % feeding in the control huts.</li> <li>3. Deterrency (%): reduction in hut entry relative to the control huts with untreated nets.</li> <li>4. Exophily (%): The proportion of mosquitoes that exit early and are found in exit traps compared with the untreated control.</li> <li>5. Personal protection (%): the reduction in the number of mosquitoes blood-fed compared to number of mosquitoes blood-fed in the untreated control.</li> <li>6. Fecundity reduction (%): the reduction in fecundity per blood-fed female alive at 72h after exposure (using dissection methods) in Royal Guard® compared to standard LLIN and untreated net.</li> </ol>	<ol style="list-style-type: none"> <li>1. Adapted experimental hut at each time point.</li> <li>2. Standard wash resistance experimental hut (0 and 20 wash nets).</li> </ol>	<ol style="list-style-type: none"> <li>1. At, 0, 12, 24 and 36 months.</li> <li>2. Once during the course of the trial.</li> </ol>

231 **Study design: Net durability**

232 The efficacy and physical durability of the nets will be evaluated by means of a prospective  
233 cohort study (Figure 2). A census/enumeration of the household in the hamlet has been  
234 complete as part of the cRCT and for each houses name and GPS coordinate are available.

235 *Net attrition and fabric integrity (cohort 1)*

236 A total of 250 HHs in 5 clusters per arm will be followed for LLIN physical integrity and  
237 attrition. Assuming an average of 3 LLINs per HH based on the average number of sleeping  
238 places, this will yield 750 LLINs. All 750 LLINs will be followed for attrition and for hole  
239 index. In each cluster HHs will be selected close to each other. During the first visit one  
240 month post distribution, in all the households willing to participate used LLIN will be  
241 identified with a unique identification number. Household information on quality of housing  
242 and other socio-demographic characteristics will be collected (supplementary file 1). The  
243 physical presence of all LLINs in the 250 HHs will be recorded at each visit; 6, 12, 24 and 36  
244 months. If the net is still present in the HH, the investigator will record whether the net is  
245 being used for its intended purpose. Nets that are not used anymore will also be recorded. If  
246 the net is no longer in the house, the investigator will determine how it was lost by asking  
247 probing questions. All LLINs followed for attrition and in use will be inspected for, number  
248 of holes (including tears in the netting and split seams) by location on the net and size will be  
249 classified into four categories: smaller than a thumb (0.5–2 cm), larger than a thumb but  
250 smaller than a fist (2–10 cm), larger than a fist but smaller than a head (10–25 cm) and larger  
251 than a head (> 25 cm).

252 Evidence of repairs to the net fabric and the type of repair will be recorded (supplementary  
253 file 1). Hole counts will be made by removing each net and arranging it over a frame and  
254 returning the nets after measuring physical integrity in the field.

255 *Net withdrawal for insecticidal residual activity assessment and experimental hut trials*  
256 *(cohort 2)*

257 LLINs will be withdrawn at different time intervals to be used for bio-efficacy testing and  
258 experimental hut trials. To reduce the impact of this withdrawal on the cRCT outcomes, 10  
259 clusters (5 clusters used for attrition and integrity and 5 additional ones) per arm will be  
260 selected at random. A total of 650 HHs will be selected at random to give approximately  
261 1950 LLINs per type to follow (Figure 2). The unit of observation will be the individual net.

262 As for cohort 1 selected nets for cohort 2 will be labelled and household information  
263 collected.  
264 From each of the 30 LLINs selected for bio-efficacy, one net piece of 30 cm x 30 cm will be  
265 cut from each side at baseline (0 month); in subsequent follow ups only position 2 to 5 will be  
266 cut, as position 1 situated at the bottom of the net may be exposed to extreme abrasion when  
267 tucked under the bed (Figure 3). At each position, 3 samples adjacent to each other will be  
268 removed. The first one will be used for chemical assay (High-Performance Liquid  
269 Chromatography; HPLC) and other two for bio-efficacy (one for exposure to *An. gambiae* s.s.  
270 strain (Kisumu) and the other for exposure to a resistant strain).

271

272 *Figure 3: LLIN sampling pattern taken from WHO Guidelines for laboratory and field-*  
273 *testing of long-lasting insecticidal nets.*

#### 274 Adverse events

275 For 200 HHs per intervention (20 HHs per clusters), we will also record perceived adverse  
276 effects from users or guardian of users of one study LLIN. The HH will be selected at random  
277 from all enrolled in cohort 1 and 2.

278

#### 279 **Study design: Net bio-efficacy**

##### 280 Bio-efficacy: mosquito strains

281 In the context of bioassay testing of dual-A.I. LLINs, we will follow the WHO (2013) and  
282 (2017) guidelines on modifications to testing, where the evidence suggests this is justified to  
283 improve data value or to generate new evidence to inform testing policy.<sup>10 21</sup>

284 A susceptible *An. gambiae* s.s. strain (Kisumu) will be used to assess the bio-efficacy of the  
285 pyrethroid in each of the dual-A.I. LLIN. To assess the durability (bioavailability) of the  
286 partner insecticide, it will be necessary to use a pyrethroid resistant strain or species ideally  
287 with resistance intensity great enough to withstand the effect of the pyrethroid. We will use  
288 the *An. gambiae* s.s. Muleba-kis pyrethroid resistant strain (characterized by both *kdr*-East  
289 L1014S and mixed function oxidases-based resistance) to assess the partner A.I. The strain  
290 will be kept under constant pyrethroid selection pressure and phenotypic and genotypic  
291 resistance will be monitored regularly to assess changes in resistance frequency and intensity.

292 The selection will be done once per each generation at larval stage using 0.08 µg/ml of alpha  
293 cypermethrin. Control larval bowls will be treated with 1ml of ethanol.

#### 294 Bio-efficacy: testing methods

##### 295 *Rationale*

296 In the dual-A.I. LLIN Interceptor G2®, alpha-cypermethrin is fast-acting, and following a  
297 short exposure in contact bioassays, susceptible mosquitoes are knocked down within 1h and  
298 killed within 24h. The pyrrole chlorfenapyr requires a longer exposure, is slow-acting and  
299 takes up to 72h to kill following a contact bioassay; for delayed mortality, the WHO has  
300 proposed that mosquitoes may be held up to 72h with mortality reported every 24h. There is  
301 clear evidence that cone bioassays with 3 min exposures fail to predict field efficacy of  
302 Interceptor G2®.<sup>22</sup> WHO has stated that tunnel tests may be more appropriate to estimate the  
303 field durability of chlorfenapyr.<sup>23</sup>

304 In the dual-A.I. LLIN Royal Guard®, PPF impacts egg development, while alpha-  
305 cypermethrin will induce mortality. The reproductive effects of PPF on blood-fed female  
306 mosquitoes are 3-fold. The first effect of PPF exposure is to disrupt the maturation of eggs  
307 and oviposition by females 2-3 days after blood-feeding. The second observable effect is  
308 reduction in the mean number of eggs per ovipositing female. The third effect is reduction in  
309 the hatch rate of laid eggs or production of viable larvae. Conventionally, the effects on  
310 reproductive outcomes are assessed by observation of oviposition rate and hatch rate in  
311 mosquitoes exposed to PPF compared to unexposed mosquitoes.<sup>24 25</sup> The problem with  
312 oviposition as an indicator of fertility/sterility is the low oviposition rate in control,  
313 unexposed mosquitoes. Furthermore, direct observations require a long follow-up,  
314 appropriate infrastructure and can be laborious. An alternative approach is to dissect  
315 mosquitoes after exposure when eggs should normally have become fully mature (2-3 days  
316 post-blood meal). During the normal gonotrophic cycle, after taking a blood meal, the  
317 mosquito's oocytes change in size and shape, and finally reach Christopher's stage V which  
318 are a distinctive crescent shape (Supplementary file 2).<sup>26</sup> Previous work on PPF-treated  
319 females has shown morphological defects on oocyte maturation in the ovaries following  
320 exposure, with development of PPF-affected oocytes arrested before reaching stage V.<sup>27</sup>

321 In the dual-A.I. LLIN Olyset™ Plus, PBO inhibits the cytochrome P450 oxidases  
322 responsible for metabolic pyrethroid resistance while permethrin will induce mortality. Cone  
323 tests have been used effectively to assess the performance of Olyset™ Plus<sup>28</sup> however, there

324 is a need to use a resistant strain with oxidase-based mechanisms for these bioassays to assess  
325 field durability of PBO.

#### 326 *Cone test*

327 WHO cone tests will be performed on each of the pieces of the 30 (t0-t30) and 50 LLINs  
328 (t36) collected for the following product Royal Guard® and Olyset™ Plus (both with  
329 susceptible and resistant mosquito strain) and Interceptor G2® (only against susceptible  
330 strain).<sup>10</sup> For each net, all pieces cut will be tested. Four replicates will be done per net piece  
331 using 5 mosquitoes per cone for a total of 20 mosquitoes per net piece and 80 mosquitoes per  
332 net (100 for the baseline). An untreated net will be run in parallel during each testing as well  
333 as 2 pieces of the standard LLIN collected at the same time point. The estimated number of  
334 mosquitoes to be tested per time point is detailed in Table 4.

335 Per bioassay, five unfed 2-5 days old *An. gambiae* s.s. will be introduced into each cone.  
336 After 3 min exposure, mosquitoes will be transferred into labelled paper cups covered with  
337 untreated netting with access to 10% sugar solution. The bioassays will be carried out at  
338  $25\pm 2^{\circ}\text{C}$  and  $75\pm 10\%$  RH and at  $27\pm 2^{\circ}\text{C}$ .

#### 339 *Tunnel test*

340 LLIN pieces (Interceptor G2®, Royal Guard® and Olyset™ Plus,) that do not meet the  
341 criteria of  $\geq 95\%$  knockdown (kd) rate after 60 minutes and/or a mortality of  $\geq 80\%$  after 24  
342 hours in cone bioassays (all pieces and replicates for the same net pooled together), will be  
343 evaluated in a tunnel test to determine the efficacy (mortality and blood feeding inhibition)  
344 using a guinea pig as the bait. One netting piece for each failing net will be tested in the  
345 tunnel in two replicates. The net piece that produces mortality closest to the mean mortality  
346 during the cone test will be used in the tunnel test. Because the cone is not suitable for initial  
347 testing of Interceptor G2® using the resistant strain, the piece in position 2 of each of the 30  
348 nets will be systematically tested in the tunnel (Table 4).

349

Table 4: Summary of the bioassay testing plan and outcomes per net type and mosquito strain.

		Interceptor G2®	Royal Guard®	Olyset™ Plus,
<b>Susceptible strain: Assessment of pyrethroid</b>				
	Treatment	1/Untreated, 2/Interceptor, 3/Interceptor G2®	1/Untreated, 2/Interceptor, 3/Royal Guard®	1/Untreated, 2/Interceptor, 3/Olyset™ Plus
Cone	Outcomes	Kd*, mortality 24, 48 and 72 h**	Kd, mortality 24, 48 and 72 h	Kd, mortality 24, 48 and 72 h
	Exposure time	3 minutes	3 minutes	3 minutes
	Total nets	30 nets (t0 to t30), 50 nets (t36)	30 nets (t0 to t30), 50 nets (t36)	30 nets (t0 to t30), 50 nets (t36)
	Total pieces	5 (t0) and 4 subsequent follow ups (position 2 to 5)	5 (t0) and 4 subsequent follow ups (position 2 to 5)	5 (t0) and 4 subsequent follow ups (position 2 to 5)
	Total replicates / piece	4	4	4
	Total Mosquito per test	5	5	5
	Total mosquitoes	Total between 4800 to 6000 per time point	Total between 4800 to 6000 per time point	Total between 4800 to 6000 per time point
Tunnel	Outcomes	Kd, mortality 24, 48 and 72 h, blood feeding	Kd, mortality 24, 48 and 72 h, blood feeding	Kd, mortality 24, 48 and 72 h, blood feeding
	Exposure time	12 to 15 h	12 to 15 h	12 to 15 h
	Total nets	All failed net with cone	All failed net with cone	All failed net with cone
	Total pieces	1 per net	1 per net	1 per net
	Total replicates / piece	2 replicates	2 replicates	2 replicates
	Total Mosquito per test	50	50	50
	Total mosquitoes	Determined by number of failing nets	Determined by number of failing nets	Determined by number of failing nets
<b>Resistant strain: Assessment of partner A.I. or synergist</b>				

Cone	Outcomes		Kd, mortality 24, 48 and 72 h, ovarial development	Kd, mortality 24, 48 and 72 h
	Exposure time		3 minutes	3 minutes
	Total nets		30 nets (t0 to t30), 50 nets (t36)	30 nets (t0 to t30), 50 nets (t36)
	Total pieces		5 (t0) and 4 (t6 to t36)	5 (t0) and 4 (t6 to t36)
	Total replicates / piece		4	4
	Total Mosquito per test		5	5
	Total mosquitoes		Total between 4800 to 6000 per time point	Total between 4800 to 6000 per time point
Tunnel	Outcomes	Kd, mortality 24, 48 and 72 h, blood feeding	Kd, mortality 24, 48 and 72 h, Blood feeding, ovarial development	Kd, mortality 24, 48 and 72 h, blood feeding
	Exposure time	12 to 15 h	12 to 15 h	12 to 15 h
	Total nets	30 nets (t0 to t30), 50 nets (t36)	All failed net with cone	All failed net with cone
	Total pieces	1 per net (position 2)	1 per net	1 per net
	Total replicates / piece	2 replicates	2 replicates	2 replicates
	Total Mosquito per test	50	50	50
	Total mosquitoes	30 (50) nets x 1-piece x 2 replicates x 50 mosquitoes x 3 treatments = 9000	Determined by number of failing nets	Determined by number of failing nets
Net Specificity	slow killing effect 72 hours; mortality main outcome	Ovarial development by dissection at 72 h post exposure	Colony mosquito's resistance strain (kdr*** and kdr+MFO****)	



351

352 The procedure for use of guinea pigs will be compliant with criteria laid down in EC  
353 Directive 86/609/ECC concerning protection of animals used for experimental purposes. The  
354 animal ethics approval has been sought from LSHTM. The glass tunnel is 25 cm<sup>2</sup> and 60 cm  
355 long, divided at one third of the length by a disposable cardboard frame to which the LLIN  
356 netting piece is attached. The surface of netting “available” to mosquitoes is 400 cm<sup>2</sup> (20 cm  
357 x 20 cm). Nine holes, each 1 cm in diameter, (one at the center of the square and the other  
358 eight equidistant at 5 cm from the border) will be made in the netting to allow for passage of  
359 mosquitoes. Netting-covered cages at both ends provide easy access to add and remove  
360 mosquitoes. In one cage, a guinea pig will be restrained. Fifty mosquitoes will be introduced  
361 at the opposite end of the tunnel from where the guinea pig is restrained. The experiment will  
362 begin at 18:00 and end at 08:00 the following morning, mosquitoes will be scored according  
363 to whether they passed through the netting, whether they successfully blood fed and whether  
364 they survived the exposure period.

#### 365 *Cylinder test*

366 The cone and tunnel tests may prove inadequate for evaluating the durability of partner A.I.s  
367 over 1-3 years once the insecticidal content starts to decrease. The standard cone test exposes  
368 mosquitoes for 3 min only, which has been shown to underestimate contact time and the  
369 exposure time and mortality attained in experimental huts using resistant mosquitoes; 30 min  
370 exposure is probably more realistic when using resistant mosquitoes.<sup>29</sup> Mortality generated  
371 for free flying resistant mosquitoes in experimental huts correlates well with mortality  
372 attained in 30 min bioassay for some insecticides tested, e.g., chlorfenapyr and Interceptor  
373 G2® (Rowland and Kirby unpublished data). While the contact time may differ for other  
374 insecticides or when the concentration decreases during 3 years in the field; now that the  
375 precedent is established for one type of dual-A.I. LLIN, the average contact time of free  
376 flying mosquitoes is likely to be longer than 3 min for other nets too. The WHO cylinder test  
377 will be performed for Olyset™ Plus, Royal Guard® and Interceptor G2® on a sub-sample of  
378 nets at each time point and compared to tunnel and cone results.

379 The netting will be stapled to WHO control test papers measuring 15cm x 12cm to facilitate  
380 rolling and fitting into the test cylinder in the same way as an insecticide test paper would be  
381 fitted. Holding rings are inserted to hold back the netting.<sup>30</sup> Bioassays will follow the same  
382 procedure as insecticide susceptibility testing except that exposure time will be 3, 15, 30 and

383 60 min as necessary. Before exposure, 10 mosquitoes will be aspirated into the holding  
384 cylinder of the kit and then blown into the exposure cylinder according to standard  
385 procedures. After exposure, the test insects are blown back into the holding cylinder and 10%  
386 sugar solution provided. Ten mosquitoes per cylinder test would ensure a density per unit  
387 area of netting similar to that of five mosquitoes per cone.

### 388 **Experimental hut design**

389 The experimental huts are a modified version of the standard East African hut,<sup>31</sup> featuring  
390 four brick walls, a wooden ceiling lined with hessian sackcloth, an iron sheeting roof, two  
391 baffled eave gaps above each wall, and a window trap on each wall. The huts are built on  
392 concrete plinths and surrounded by a water-filled moat to deter entry of scavenging ants. In  
393 the modified design, the four verandas are open; the baffled eave gaps above all four sides  
394 allow unimpeded entry of mosquitoes and minimal mosquito exiting. Mosquitoes are  
395 restricted to exiting through the window traps on the four walls of the hut.

396 In each hut, cloth sheets are laid on the floor each night to ease the collection of knocked-  
397 down mosquitoes in the morning. Sugar solution is provided at night in the window traps to  
398 reduce mosquito mortality.

399 The nets will be evaluated using experimental huts for their effects on free-flying, wild *An.*  
400 *gambiae* s.l., *An. funestus* s.l. and *Culex quinquefasciatus* mosquitoes for their ability to deter  
401 entry, repel mosquitoes, induce mortality and inhibit blood-feeding.

### 402 Adapted experimental hut study

403 Each of the 30 individual nets per product type collected from community at t12, 24 and 36  
404 months will be tested in experimental hut. The following treatment shall be assessed at each  
405 time point:

- 406 1. Control: untreated polyethylene net with 6 holes
- 407 2. Standard LLIN: new interceptor washed one time with 6 holes
- 408 3. Interceptor at t12/t24/t36
- 409 4. Interceptor G2® at t12/t24/t36
- 410 5. Royal Guard® at t12/t24/t36
- 411 6. Olyset™ Plus at t12/t24/t36

412

413 The study will be done over a 6 week periods. Sleepers will be rotated between huts on  
414 successive nights to account for individual attractiveness and net treatment every week  
415 following a random Latin square design (supplementary file 3). Every week, collections shall  
416 be performed over 6 days and the last day will be used for cleaning and airing before the  
417 treatment rotation. Six replicates of untreated net and new standard LLIN will be tested per  
418 hut treatment and will be swapped every day within each week of the trial. Field collected  
419 nets will be changed every day and tested for one night only per trial. Because there are 36  
420 day/night collection per treatment for a complete Latin square rotation (sleepers and  
421 treatments) and only 30 field collected individual nets per product type an additional 6 new  
422 LLIN from each treatment will be evaluated (treatment 3 to 6). Six holes of 4 x 4 cm will be  
423 cut in the untreated and new LLINs used in each treatment arm following WHO guidelines.<sup>10</sup>  
424 Hole size will be counted for the field collected nets as for cohort 1 nets followed for fabric  
425 integrity. A hut trial study for each time point will be repeated 2 to 4 times to account for  
426 vector composition seasonality.

#### 427 Mosquito processing

428 All mosquitoes collected in experimental huts will be monitored for three days and mortality  
429 recorded after 24, 48 and 72h post collection. Blood fed mosquitoes collected from Royal  
430 Guard®, Interceptor® and untreated nets, will be dissected after 72h for observation of  
431 fertility/sterility. Mosquitoes will be recorded as fertile if the eggs are fully developed into  
432 Christopher's stage five.

433 A subset of alive and dead mosquitoes from each hut will immediately be killed (if still alive)  
434 and stored in RNAlater® at -80°C for species identification and resistance gene expression  
435 analysis. Following molecular species identification, presence/absence of resistance alleles  
436 will be compared between individuals of assumed resistant (alive) and susceptible (dead)  
437 phenotypes and changes in allele frequency will be compared between hut conditions and  
438 between baseline characterization and post-intervention.

#### 439 Modeling of experimental hut trial entomological surrogates

440 While experimental hut trials are the gold standard for assessing LLIN efficacy against  
441 mosquitoes, mathematical modelling<sup>2 32</sup> can be used to predict the public health impact of  
442 factors such as pyrethroid resistance on LLIN efficacy and malaria transmission.<sup>2</sup> The models  
443 are calibrated to the local area using site specific entomological and epidemiological data

444 collected from the cRCT site (such as baseline mosquito bionomics, history of LLIN use and  
445 baseline malaria prevalence). Two sets of parameters are used to characterise the efficacy of  
446 trial dual-A.I. LLINs. The first uses estimates of the proportions of mosquitoes dying, blood-  
447 feeding and outcomes such as deterrence, exiting and repellence estimated using  
448 experimental hut trials conducted in the region of the cRCT. The second uses estimates for  
449 the same metrics derived from a meta-analysis of all currently available experimental hut trial  
450 data for the same dual-A.I. LLINs from across Africa. Models parameterised with these two  
451 sources of data are used to predict changes in malaria prevalence over time. These two  
452 models are statistically compared to the observed results of the cRCT at different time points  
453 following the mass campaign to investigate the benefit of local LLIN efficacy information.  
454 WHO discriminating dose bioassays are used to quantify the frequency of resistance in the  
455 mosquito populations in the vicinity of the experimental hut site to provide a link between the  
456 outcomes of the trial and widely used assays for assessing the frequency of resistance.

457 There is considerable uncertainty in how the efficacy of nets changes over time. It can be  
458 estimated using the WHO proxy of standardised washing, as described by experimental hut  
459 outcomes from trials evaluating LLINs washed 0 and 20 times. The number of washes taken  
460 to halve the killing activity of the LLIN can be estimated and converted into predictions of  
461 the insecticidal half-life in years considering 20 washes to represent the decay expected in an  
462 LLIN over three years of use in the field. Estimates of the actual duration of insecticidal  
463 activity in the field is one of the more uncertain features of experimental hut trials and  
464 consequently for models evaluating the public health impact of novel LLINs. This is because  
465 of the uncertainty in the relationship between the number of washes and durability of  
466 insecticide in the field over time for non-pyrethroid A.I.s. This uncertainty is important to  
467 include as the average age of LLINs in Africa is over one year old and small changes in  
468 LLIN-induced mortality over time can have a large epidemiological impact as population  
469 LLIN coverage falls two or three years after the last mass distribution campaign. This  
470 problem seems particularly acute for Interceptor G2® as chlorfenapyr cannot be evaluated in  
471 simple cone bioassays and nets washed 20 times.<sup>33</sup> Moreover, LLINs used in experimental  
472 hut trials sometimes appear indistinguishable from unwashed nets whereas under field  
473 condition nets are subject to many environmental factors affecting durability in addition to  
474 washing, such as friction, wood smoke, and everyday wear and tear. Evaluation of naturally  
475 aged LLINs collected from the field in experimental hut trials may allow more precise  
476 predictions of the longevity of a LLIN (i.e. half-life), allowing the decay in insecticidal

477 activity to be directly estimated instead of having to rely on proxy measures. This is  
478 anticipated to improve the accuracy of epidemiological predictions made from entomological  
479 data which can be evaluated by comparing model predictions to the results of the main cRCT.  
480 The utility of incorporating other entomological data collected as part of the trial into the  
481 modelling framework shall be investigated.

## 482 **SAMPLE SIZE CALCULATION**

483 Sample size calculations for prospective LLIN study of net survivorship were performed  
484 using the power log rank command in Stata v.15.1. A total of 750 LLINs per type from 5  
485 clusters per arm (i.e. 150 per cluster) will allow detection of a 9.4% absolute difference  
486 (hazard ratio = 0.8651) in LLIN attrition rate if we assume an attrition rate in the control arm  
487 of 70% over the 3 years. This is assuming an intra-cluster correlation coefficient (ICC) of  
488 0.03. We can detect a hazard ratio=0.7951 (i.e. 14.3% absolute difference) if we assume an  
489 ICC=0.01, and a hazard ratio=0.7478 (i.e. 17.7% absolute difference) for an ICC=0.02.

## 490 **DATA MANAGEMENT & ANALYSIS**

### 491 **Data management**

492 All data on LLIN physical conditions, washing and household characteristics will be  
493 collected using Open Data Kit (ODK) forms. Bioassay data will be recorded on standardised  
494 forms and double entered into an Access file and linked to the database via the net  
495 identification number and time interval. Consistency checking will be done by running  
496 algorithms especially designed to identify sources of error. This database will be sent by the  
497 data manager to the project manager after each time-interval. The project manager will keep  
498 an updated master list of the location and status of each net. Data from bioassay and chemical  
499 residue analysis will be entered separately.

500

501 Hut data will be entered directly in electronic forms prepared in ODK. Standard Operating  
502 Procedures (SOPs) for data collection will be developed and field staff will be appropriately  
503 trained to ensure rigorous data collection. This will include quality control (QC) of their own  
504 performance by checking for missing data or implausible responses. Further QC will be  
505 conducted by a supervisor who monitors performance of field staff by checking for  
506 completeness and internal consistency of responses within hours of data collection. To  
507 maintain participant confidentiality, all consents forms will be kept in a locked cabinet only

508 accessible by an authorized staff. Statistical analysis will be performed using Stata software  
509 v.15.1.

## 510 **Data analysis**

### 511 *Fabric integrity (hole index)*

512 Each of the hole categories will be weighted according to WHO guidelines.<sup>10</sup> HI will be  
513 calculated using the formula  $HI = (1 \times \text{no. of size-1 holes}) + (23 \times \text{no. of size-2}$   
514  $\text{holes}) + (196 \times \text{no. of size-3 holes}) + (576 \times \text{no. size-4 holes})$ . Based on the HI the  
515 nets will be divided into 3 categories 1/ Good: HI <64, 2/ Acceptable: pHI between  
516 >64 &lt;=642, 3/ too torn; pHI >642. Good and acceptable nets will be combined into a  
517 serviceable condition category.

### 518 *Attrition/survival*

519 The rate of attrition will be first calculated as the proportion of study nets lost among all  
520 study nets originally received and further divided into reasons of net loss. To estimate  
521 functional survival only the attrition due to destruction, discarding or use for other purpose  
522 will be included (MPAC recommendation).<sup>34</sup> The functional survival rate (pX) of each type  
523 of study net at each time point will be calculated as:

524  $pX = \frac{\text{number of study net present and "serviceable" at time X}}{\text{number of study net originally received and not given away at time X}} * 100$

526 Descriptive statistics will be used to present the proportion surviving for each study net at  
527 each time point and compare the dual-A.I. LLINs to the standard LLIN. Cluster effect will be  
528 accounted for to estimate the 95% confidence interval.

### 529 *Median survival time*

530 Median survival time is the time point at which 50% of the study nets received are still  
531 present and in serviceable condition. First the functional survival rate to time X will be  
532 compared against a reference survival curve provided by WHO in the VCTEG report.<sup>34</sup> The  
533 functional survival rate to time X will also be compared between the dual-A.I. LLINs against  
534 the standard LLIN. A Kaplan–Meier survival analysis will be used to estimate the median  
535 survival time of each study net and will consider the design effect.

536 *Efficacy and long-lasting effect of the pyrethroid*

537 The dual-A.I. net will meet WHO criteria<sup>10</sup> for efficacy and long-lasting effect of the  
538 pyrethroid if, after 36 months of use, at least 80% of sampled nets tested against a pyrethroid  
539 susceptible mosquito strain are effective in WHO cone tests ( $\geq 95\%$  knockdown or  $\geq 80\%$   
540 mortality after 24 hours) or tunnel tests ( $\geq 80\%$  mortality or  $\geq 90\%$  inhibition of blood-  
541 feeding). Thresholds for the second A.I. of each dual-A.I. LLIN are not known yet and would  
542 need to be established in relation to the cRCT findings. However, dual A.I. LLIN efficacy  
543 outcomes against resistant *Anopheles* strain will be compared to those of standard LLIN to  
544 assess superior effect at each time point.

545 *Experimental hut trial analysis*

546 Proportional outcomes (blood-feeding, exiting and mortality, oviposition) related to each  
547 experimental hut treatment will be assessed using binomial generalized linear mixed models  
548 (GLMMs) with a logit link function. A separate model will be fitted for each outcome. In  
549 addition to the fixed effect of each treatment, each model will include random effects to  
550 account for the following sources of variation: between the huts; between the sleepers;  
551 between the weeks of the trial; between trial rounds; and finally, an observation-level random  
552 effect to account for variation not explained by the other terms in the model (over dispersion).

553 Differences in deterrence, proportions of adult females killed, proportions blood-fed, overall  
554 killing effect, personal protection and number of females laying eggs between the treatments  
555 will be analysed using negative binomial regression based on numbers entering, numbers  
556 blood-fed, killed and numbers observed for oviposition, respectively, with adjustment for the  
557 above-mentioned covariates.

558 Entomological data from the entomological surrogate studies (experimental hut trials and  
559 supporting efficacy bioassays) will be integrated into a meta-analysis and modelling of  
560 disease outcomes to investigate possible relationships between epidemiological and  
561 entomological data from the cRCT.

562 Comparisons of the changes in levels of gene expression will be performed between live  
563 mosquitoes collected from experimental huts containing treated interventions and  
564 experimental huts with no treatment/control treatment (relative to a susceptible laboratory  
565 control colony). The assumptions are that comparing between these two experimental groups  
566 will allow us to differentiate between metabolic genes which are constitutively over-

567 expressed in our field populations and may contribute to resistance (i.e. expression levels  
568 observed in the control hut which contains a mixture of ‘resistant’ and ‘susceptible’ vectors  
569 of unknown phenotype) and those genes which are over-expressed in our field populations in  
570 response to intervention/insecticide exposure (i.e. expression levels observed in the treated  
571 huts compared to the control huts).

### 572 *Frequency of Analyses*

573 Analysis of entomological outcomes from the hut trials will be done at the end of each hut  
574 trial and the data shared with the modellers to generate predicted outcomes ahead of the  
575 cRCT analysis.

### 576 **ETHICS APPROVAL**

577 This protocol has received ethical approval from the Medical Research Coordinating  
578 Committee (MRCC) of the National Institute for Medical Research (NIMR), Kilimanjaro  
579 Christian Medical University College (KCMUCO), and the London School of Hygiene and  
580 Tropical Medicine (LSHTM).

581 For the community phase III durability activity written informed consent will be obtained  
582 from an adult in the household (Supplementary file 4). Written consent forms will also be  
583 obtained from volunteers (sleepers) who agree to participate in the hut study (supplementary  
584 file 5). Only adults of 18 years or older will be recruited, excluding pregnant women.  
585 Volunteers will be offered daily chemoprophylaxis and the risks of malaria explained  
586 (willingness to take will be an inclusion criterion). By sleeping under a mosquito net, they  
587 will obtain protection not dissimilar to exposure they would normally obtain against  
588 mosquitoes in their own home should they use a pyrethroid LLIN. Because an untreated net is  
589 used in one arm, all volunteers will be monitored each day for signs of fever. Confirmed  
590 falciparum parasitaemia will be treated with Coartem (artemether 20 mg/lumefantrine 120  
591 mg) by a local physician. No side effects are expected from the LLIN except possibly some  
592 irritation to mucous membranes; these will be monitored and reported.

593 Guinea pigs will be used in the partner Institutions in Tanzania to feed the colony  
594 mosquitoes. Restrained guinea pigs are also used in WHO tunnel test as bait. KCMUCo and  
595 NIMR laboratories in Tanzania have obtained approval from the Animal Welfare and Ethical  
596 Review Board of LSHTM for the use of animals for this study.



597 **DISSEMINATION**

598 Study findings will be shared in national and international stakeholder meetings. Results will  
599 also be shared through presentation to the relevant WHO programmes and through peer-  
600 reviewed publications, at scientific conferences and will be reported through clinicaltrials.gov.

601 **COMPETING INTEREST**

602 The authors declare that they have no competing interests.

603 **AUTHORS CONTRIBUTIONS**

604 JLM contributed to selection of the study area, implemented and supervised the experimental  
605 hut construction and drafted the manuscript; LAM contributed to selection of the study area  
606 and was a major contributor to the revision of the manuscript; FWM contributed to study  
607 design and supported the field activities and revised the manuscript; JFM & EL & AM  
608 contributed to the overall management of the project, supported field activities, developed  
609 household and net questionnaires for the phase III and revised the manuscript; MK  
610 contributed to study design, provided sample size calculation and statistics support; TSC &  
611 ESS contributed to the design of the experimental hut study, conception of the model and  
612 drafting of the manuscript; NP is the trial principal investigator, designed the study, wrote the  
613 study protocol, supported implementation of field activities and revised the manuscript; MR  
614 designed the study, wrote the protocol, contributed to selection of the study area, and revised  
615 the manuscript. All authors read and approved the final manuscript.

616 **AVAILABILITY OF DATA AND MATERIALS**

617 Not applicable.

618 **CONSENT FOR PUBLICATION**

619 Not applicable.

620 **ACKNOWLEDGEMENT**

621 Special thanks to the community for allowing us to construct our experimental hut in their  
622 area, to the project technicians for collection, processing, and identification of mosquitoes,  
623 and to the volunteers for agreeing to participate in the study. We would like to thank Jackie  
624 Cook and David Macleod to have prepared the random latin square stata do file.

625

626

627

628

629

630

631

632

## 633 REFERENCE

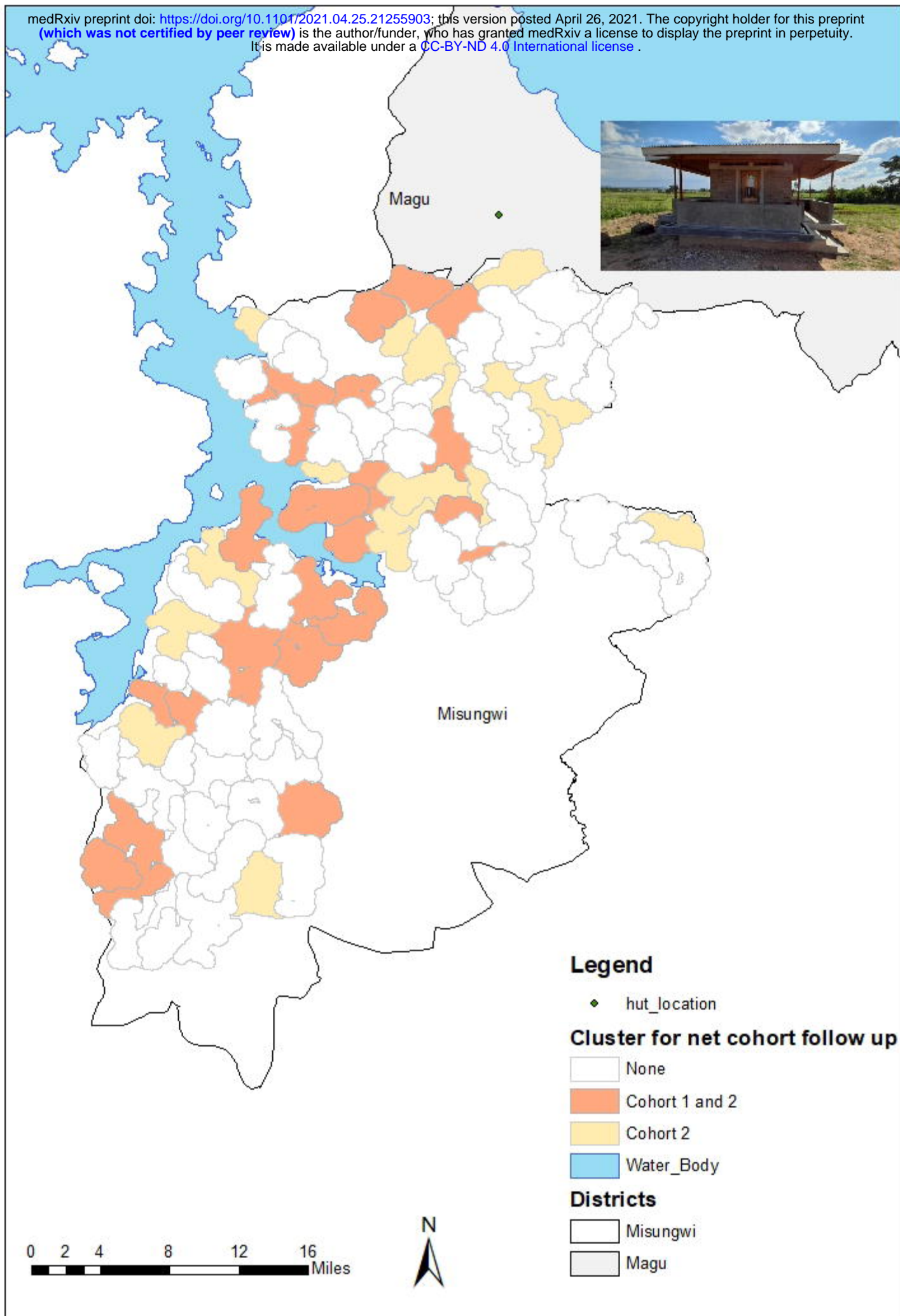
- 634 1. WHO. World Malaria Report. *World Health organization: Geneva, Switzerland* 2018
- 635 2. Churcher TS, Lissenden N, Griffin JT, et al. The impact of pyrethroid resistance on the  
636 efficacy and effectiveness of bednets for malaria control in Africa. *Elife* 2016;5 doi:  
637 10.7554/eLife.16090 [published Online First: 2016/08/23]
- 638 3. Asidi A, N'Guessan R, Akogbeto M, et al. Loss of household protection from use of  
639 insecticide-treated nets against pyrethroid-resistant mosquitoes, benin. *Emerg Infect*  
640 *Dis* 2012;18(7):1101-6. doi: 10.3201/eid1807.120218
- 641 4. Ochomo EO, Bayoh NM, Walker ED, et al. The efficacy of long-lasting nets with  
642 declining physical integrity may be compromised in areas with high levels of  
643 pyrethroid resistance. *Malar J* 2013;12:368. doi: 10.1186/1475-2875-12-368
- 644 5. Protopopoff N, Mosha JF, Lukole E, et al. Effectiveness of a long-lasting piperonyl  
645 butoxide-treated insecticidal net and indoor residual spray interventions, separately  
646 and together, against malaria transmitted by pyrethroid-resistant mosquitoes: a cluster,  
647 randomised controlled, two-by-two factorial design trial. *Lancet*  
648 2018;391(10130):1577-88. doi: 10.1016/S0140-6736(18)30427-6
- 649 6. WHO. Conditions for deployment of mosquito nets treated with a pyrethroid and piperonyl  
650 butoxide. Geneva: World Health Organization, 2017.
- 651 7. WHO. The evaluation process for vector control products. In: WHO, ed. Geneva,  
652 Switzerland: World Health organization, 2017.
- 653 8. Mosha JF, Kulkarni MA, Messenger LA, et al. Protocol for a four parallel-arm, single-  
654 blind, cluster-randomised trial to assess the effectiveness of three types of dual active  
655 ingredient treated nets compared to pyrethroid-only long-lasting insecticidal nets to  
656 prevent malaria transmitted by pyrethroid insecticide-resistant vector mosquitoes in  
657 Tanzania. *BMJ Open* 2021;11(3):e046664. doi: 10.1136/bmjopen-2020-046664
- 658 9. Accrombessi M, Cook J, Ngufor C, et al. Assessing the efficacy of two dual-active  
659 ingredients long-lasting insecticidal nets for the control of malaria transmitted by  
660 pyrethroid-resistant vectors in Benin: study protocol for a three-arm, single-blinded,  
661 parallel, cluster-randomized controlled trial. *BMC Infect Dis* 2021;21(1):194. doi:  
662 10.1186/s12879-021-05879-1 [published Online First: 2021/02/21]
- 663 10. WHO. Guidelines for laboratory and field-testing of long-lasting insecticidal nets: World  
664 Health Organization, 2013.
- 665 11. Patrick Tungu LAM, Matthew J. Kirby, Wema Sudi William Kisinza and Mark Rowland.  
666 Phase III evaluation of the insecticidal efficacy and durability of a deltamethrintreated  
667 polypropylene long-lasting net LifeNet®, in comparison with long-lasting nets made  
668 from polyester and polyethylene: study protocol. 2016 doi: 10.1186/s13690-016-  
669 0168-2
- 670 12. Briet O, Koenker H, Norris L, et al. Attrition, physical integrity and insecticidal activity  
671 of long-lasting insecticidal nets in sub-Saharan Africa and modelling of their impact

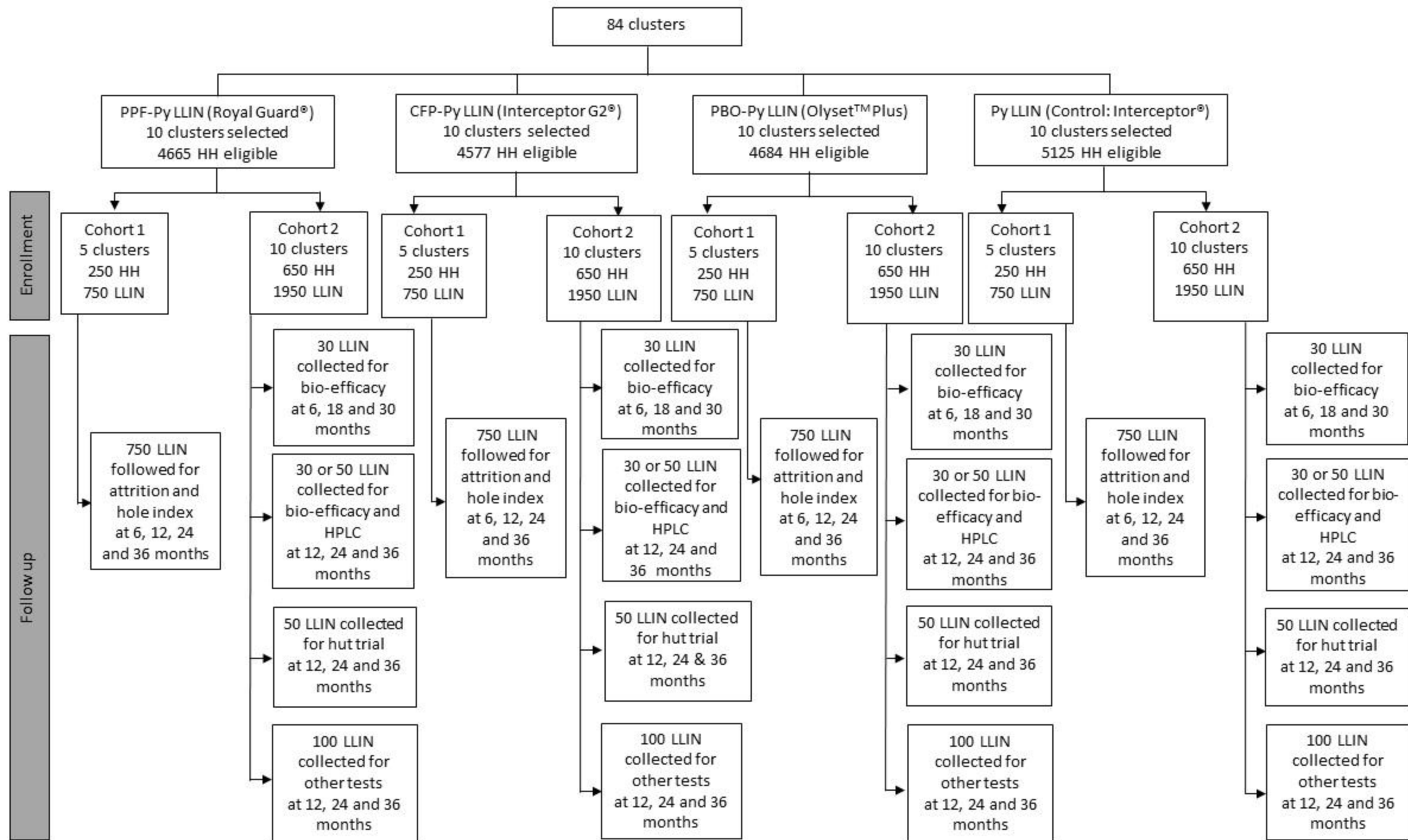
- 672 on vectorial capacity. *Malar J* 2020;19(1):310. doi: 10.1186/s12936-020-03383-6  
673 [published Online First: 2020/08/30]
- 674 13. Kilian A, Obi E, Mansiangi P, et al. Variation of physical durability between LLIN  
675 products and net use environments: summary of findings from four African countries.  
676 *Malar J* 2021;20(1):26. doi: 10.1186/s12936-020-03549-2 [published Online First:  
677 2021/01/09]
- 678 14. Malima RC, Magesa SM, Tungu PK, et al. An experimental hut evaluation of Olyset®  
679 nets against anopheline mosquitoes after seven years use in Tanzanian villages.  
680 *Malaria Journal* 2008;7(1):38. doi: 10.1186/1475-2875-7-38
- 681 15. N'Guessan R, Darriet F, Doannio JM, et al. Olyset Net efficacy against pyrethroid-  
682 resistant *Anopheles gambiae* and *Culex quinquefasciatus* after 3 years' field use in C  
683 te d'Ivoire. *Med Vet Entomol* 2001;15(1):97-104. doi: 10.1046/j.1365-  
684 2915.2001.00284.x [published Online First: 2001/04/12]
- 685 16. Killeen GF, Ranson H. Insecticide-resistant malaria vectors must be tackled. *Lancet*  
686 2018;391(10130):1551-52. doi: 10.1016/s0140-6736(18)30844-4 [published Online  
687 First: 2018/04/16]
- 688 17. Rowland M, Protopopoff N. Dawn of the PBO-Pyrethroid Long Lasting Net – Light at  
689 Last. *Outlooks on Pest Management* 2018;29:242-44. doi: 10.1564/v29\_dec\_01
- 690 18. Rowland M. All Nets are Equal, But Some Nets are More Equal Than Others. *Outlooks*  
691 *on Pest Management* 2020;31:2-4. doi: 10.1564/v31\_feb\_01
- 692 19. WHO. The evaluation process for vector control products. Geneva.pdf. 2017
- 693 20. Sherrard-Smith E, Griffin JT, Winskill P, et al. Systematic review of indoor residual  
694 spray efficacy and effectiveness against *Plasmodium falciparum* in Africa. *Nature*  
695 *Communications* 2018;9(1):4982. doi: 10.1038/s41467-018-07357-w
- 696 21. WHO. How to design vector control efficacy trials. In: WHO, ed. Geneva, Switzerland:  
697 WHO, 2017.
- 698 22. N'Guessan R, Odjo A, Ngufor C, et al. A Chlorfenapyr Mixture Net Interceptor(R) G2  
699 Shows High Efficacy and Wash Durability against Resistant Mosquitoes in West  
700 Africa. *PLoS One* 2016;11(11):e0165925. doi: 10.1371/journal.pone.0165925
- 701 23. WHO. Report of the twentieth WHOPEP working group meeting: Review of Interceptor  
702 G2 LN. Geneva, Switzerland: World Health Organization, 2017:4-46.
- 703 24. Djenontin A, Ahoua Alou LP, Koffi A, et al. Insecticidal and sterilizing effect of Olyset  
704 Duo(R), a permethrin and pyriproxyfen mixture net against pyrethroid-susceptible and  
705 -resistant strains of *Anopheles gambiae* s.s.: a release-recapture assay in experimental  
706 huts. *Parasite* 2015;22:27. doi: 10.1051/parasite/2015027
- 707 25. Ngufor C, Agbevo A, Fagbohoun J, et al. Efficacy of Royal Guard, a new alpha-  
708 cypermethrin and pyriproxyfen treated mosquito net, against pyrethroid-resistant  
709 malaria vectors. *Sci Rep* 2020;10(1):12227. doi: 10.1038/s41598-020-69109-5  
710 [published Online First: 2020/07/24]
- 711 26. Christophers S. The development of the egg follicle in anophelines. *Paludism*. 1911;2:73-  
712 8
- 713 27. Koama B, Namountougou M, Sanou R, et al. The sterilizing effect of pyriproxyfen on the  
714 malaria vector *Anopheles gambiae*: physiological impact on ovaries development.  
715 *Malar J* 2015;14:101. doi: 10.1186/s12936-015-0609-3 [published Online First:  
716 2015/04/17]
- 717 28. Allossogbe M, Gnanguenon V, Yovogan B, et al. WHO cone bio-assays of classical and  
718 new-generation long-lasting insecticidal nets call for innovative insecticides targeting  
719 the knock-down resistance mechanism in Benin. *Malaria Journal* 2017;16(1) doi:  
720 10.1186/s12936-017-1727-x

- 721 29. Oxborough RM, N'Guessan R, Jones R, et al. The activity of the pyrrole insecticide  
722 chlorfenapyr in mosquito bioassay: towards a more rational testing and screening of  
723 non-neurotoxic insecticides for malaria vector control. *Malaria Journal*  
724 2015;14(1):124. doi: 10.1186/s12936-015-0639-x
- 725 30. WHO. Test procedures for insecticide resistance monitoring in malaria vector  
726 mosquitoes. Geneva, Switzerland: World Health organisation, 2016.
- 727 31. Smith A, Chabeda PI. A verandah-trap hut for studying the house-frequenting habits of  
728 mosquitoes and for assessing insecticides. IV. The effect of tetramethrin on the  
729 behaviour and mortality of *Anopheles gambiae* Giles. *Bull Entomol Res*  
730 1969;59(3):457-63. doi: 10.1017/s0007485300003424 [published Online First:  
731 1969/12/01]
- 732 32. Briet OJ, Penny MA, Hardy D, et al. Effects of pyrethroid resistance on the cost  
733 effectiveness of a mass distribution of long-lasting insecticidal nets: a modelling  
734 study. *Malar J* 2013;12:77. doi: 10.1186/1475-2875-12-77
- 735 33. Bayili K, N'do S, Namountougou M, et al. Evaluation of efficacy of Interceptor((R)) G2,  
736 a long-lasting insecticide net coated with a mixture of chlorfenapyr and alpha-  
737 cypermethrin, against pyrethroid resistant *Anopheles gambiae* s.l. in Burkina Faso.  
738 *Malar J* 2017;16(1):190. doi: 10.1186/s12936-017-1846-4 [published Online First:  
739 2017/05/10]
- 740 34. WHO. Vector Control Technical Export Group report to MPAC September 2013:  
741 Estimating functional survival of long-lasting insecticidal nets from field data: World  
742 Health Organisation, 2013.

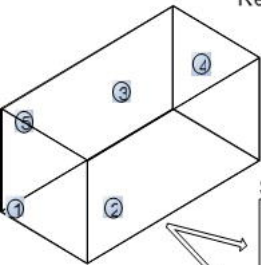
743

744

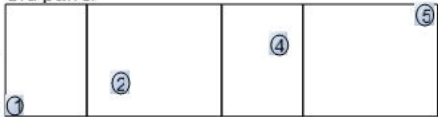




Rectangular



Sid-panel



Roof

