

1 Impact of school-based malaria screening and treatment on *P. falciparum* infection and anemia
2 prevalence in two transmission settings in Malawi
3

4 Lauren M. Cohee, Center for Vaccine Development and Global Health, University of Maryland
5 School of Medicine, Baltimore, MD, USA

6 Ingrid Peterson, Center for Vaccine Development and Global Health, University of Maryland
7 School of Medicine, Baltimore, MD, USA

8 Jenna E. Coalson, Department of Epidemiology, School of Public Health, University of
9 Michigan, Ann Arbor, MI, USA; Current affiliation: Eck Institute for Global
10 Health, University of Notre Dame, Notre Dame, IN, USA

11 Clarissa Valim, Department of Global Health, Boston University School of Public Health,
12 Boston, MA, USA

13 Moses Chilombe, Malaria Alert Center, University of Malawi College of Medicine, Blantyre,
14 Malawi

15 Andrew Ngwira, Malaria Alert Center, University of Malawi College of Medicine, Blantyre,
16 Malawi

17 Andy Bauleni, Malaria Alert Center, University of Malawi College of Medicine, Blantyre,
18 Malawi

19 Sarah Schaffer-DeRoo, University of Maryland School of Medicine, Baltimore, MD, USA;
20 Current affiliation: Children's National Medical Center, Washington, DC,
21 USA

22 Karl B. Seydel, College of Osteopathic Medicine, Michigan State University, East Lansing, MI,
23 USA

24 Mark L. Wilson, Department of Epidemiology, School of Public Health, University of Michigan,
25 Ann Arbor, MI, USA

26 Terrie E. Taylor, College of Osteopathic Medicine, Michigan State University, East Lansing, MI,
27 USA

28 Don P. Mathanga, Malaria Alert Center, University of Malawi College of Medicine, Blantyre,
29 Malawi

30 Miriam K. Laufer, Center for Vaccine Development and Global Health, University of Maryland
31 School of Medicine, Baltimore, MD, USA

32
33 Keywords: chemoprevention, anemia, schoolchildren, adolescent, intervention

34 Running title: School-based malaria screening-and-treatment

35 Corresponding author: Dr. Lauren M Cohee

36 Center for Vaccine Development and Global Health

37 University of Maryland School of Medicine

38 Baltimore, MD 21201 USA

39 lcohee@som.umaryland.edu; 919-699-1592

40 Summary: Malaria screening-and-treatment reduced *P. falciparum* infections but not anemia.
41 Because rapid diagnostic tests failed to detect low-density infections, screening tests with higher
42 sensitivity may be needed in low transmission areas where low-density infections make-up a
43 larger proportion of infections.
44

45 **Abstract (250 word limit – Currently 226)**

46 **Background:** In areas highly endemic for malaria, *Plasmodium falciparum* (*Pf*) infection
47 prevalence peaks in school-age children, adversely affecting their health and education. School-
48 based intermittent preventive treatment reduces this burden, however concerns about cost and
49 widespread use of antimalarial drugs have limited enthusiasm for this approach. School-based
50 screening-and-treatment is an attractive alternative. We conducted a school-based cohort study to
51 evaluate the impact of screening-and-treatment on the prevalence of *Pf* infection and anemia in
52 two different transmission settings.

53 **Methods:** We screened 704 students in four Malawian primary schools for *Pf* infection using
54 rapid diagnostic tests (RDTs). Those testing positive were treated with artemether-lumefantrine.
55 Outcomes were *Pf* infections detected by microscopy or PCR and anemia after six weeks.

56 **Results:** Prevalence of infection by RDT at screening was 37% (range among schools 9-64%).
57 We detected a significant reduction after six weeks in infections by microscopy (adjusted relative
58 reduction (aRR) 47.1%, $p < 0.0001$) and PCR (aRR 23.1%, $p < 0.0001$), but no reduction in
59 anemia. In low, seasonal prevalence areas, sub-patent infections at screening led to persistent
60 infection, but not disease, during follow-up. In high transmission settings, new infections
61 frequently occurred within six weeks after treatment.

62 **Conclusions:** School-based screening-and-treatment reduced *Pf* infection but not anemia. This
63 approach could be enhanced in low transmission settings by using more sensitive screening tests
64 and in high transmission settings by repeating the intervention or using longer acting drugs.

65 **Background**

66 Despite global declines in morbidity and mortality over the last two decades, malaria remains a
67 significant public health burden in most of sub-Saharan Africa.¹ Malaria surveillance and
68 research has largely focused on children less than five-years old and pregnant women, the groups
69 at highest risk of adverse outcomes. Expansion of surveillance to other age-groups has revealed
70 an under-appreciated burden of *Plasmodium falciparum* (*Pf*) infection in school-age children.²
71 While severe disease is less likely in school-age children when compared with younger children,
72 infection in school-age children is associated with anemia³⁻⁹, increased school absenteeism¹⁰⁻¹²,
73 and lower performance on cognitive testing^{3,12-15}.

74
75 School-based preventive treatment of malaria is a promising strategy to reduce *Pf* infection,
76 clinical malaria, and anemia in school-age children.¹⁶ Preventive treatment includes both
77 “intermittent preventive treatment”, in which all students are treated regardless of infection
78 status, and “screen-and-treat”, in which students are screened for infection with a point of care
79 test and treated if positive. To our knowledge, the only clinical trial evaluating the screen-and-
80 treat approach in schoolchildren demonstrated no decrease in prevalence of infection or
81 anemia.¹⁷ One explanation for the lack of efficacy in this large, cluster-randomized trial is the
82 use of a relatively short-acting treatment, artemether-lumefantrine (AL) (duration of prevention
83 13.8 days¹⁸) and students were screened once per school term, allowing substantial time for re-
84 infection. Furthermore, the rapid diagnostic tests (RDTs) used for screening are not sensitive in
85 detecting low-density infections, which are common in school-age children and also comprise a
86 larger proportion of infections in low prevalence settings, such as coastal Kenya where this trial
87 took place.¹⁹ Nevertheless, a screen-and-treat approach has multiple advantages, including

88 limiting treatment to test-positive children, which decreases the cost and adverse effects of
89 medication and the selective pressure for drug resistance. Given these advantages, more evidence
90 evaluating and optimizing the screen-and-treat approach will determine the potential role of
91 screen-and-treat as a tool to maximize health.

92
93 We conducted a school-based, prospective, cohort study to evaluate the epidemiology of *Pf*
94 infections in school-age children and determine the impact of the screen-and-treat approach on
95 *Pf* infection and anemia prevalence among students in two different transmission settings. We
96 hypothesized that RDTs frequently fail to detect low-parasite-density infections, and that these
97 infections contribute considerably to the burden and health consequences of *Pf* infection in
98 school-age children. We further hypothesized that school-age children are frequently reinfected
99 following treatment, necessitating repeated screening and administration of antimalarial therapy
100 to maintain the impact of the intervention. The relative importance of these potential barriers to
101 the effectiveness of screen-and-treat interventions in schoolchildren may differ based on the
102 transmission setting. Our ultimate goal is to inform the development of malaria control
103 interventions to improve the health of school-age children.

104

105 **Methods**

106 **Study sites**

107 We conducted school-based cohort studies of students in four schools that were selected from
108 malaria surveillance sites in southern Malawi.²⁰ Two schools (in Maseya and Makhuwira) had
109 high parasite prevalence in school-age children (>40% in the rainy and dry seasons of 2012-
110 2014 and less than a twofold prevalence difference between seasons). The other two schools (in

111 Bvumbwe and Ngowe) had lower, seasonally variable transmission (<15% prevalence in the
112 rainy and dry seasons of 2012-2014 and at least a twofold difference between seasons). Cohorts
113 were followed at the end of the rainy season (April-May) and during the dry season (September-
114 October) of 2015, when *Pf* transmission is high and low, respectively. Routine malaria control
115 measures in place during our study included long-lasting insecticide treated nets (LLINs) that
116 were distributed nationally in 2012, and freely available malaria diagnosis (using RDTs) and
117 treatment (with AL) in government-operated health facilities.

118 **Study design**

119 Prior to initiating the study, sensitization meetings were held with community leaders, school
120 leaders, and district and local government officials, who provided permission to conduct the
121 study. Using a random number generator, 15 students per grade-level (grades 1-8), were invited
122 to participate. Students were excluded if they did not have a parent/guardian available to provide
123 consent, would not be attending the school for the duration of the study, or had a known allergy
124 to AL. To evaluate the intervention separately in each season, students enrolled in the rainy
125 season cohort were excluded from participating in the dry season cohort.

126
127 Visits were conducted at baseline (1-2 weeks after enrollment), and 1, 2 and 6 weeks later. At the
128 baseline visit, a finger prick blood sample was obtained for point-of-care detection of infection
129 using a histidine-rich protein 2-based RDT in accordance with manufacturer instructions
130 (Paracheck Orchid Biomedical Systems, Goa, India or SD Bioline, Standard Diagnostics Inc.,
131 Suwon City, Republic of Korea), measurement of hemoglobin (Hemocue, Angelholm, Sweden),
132 microscopy and molecular detection tests for *P. falciparum*. Students with infections detected by
133 RDT were treated with AL (Novartis Pharma AG or Ajanta Pharma Ltd) using weight-based

134 dosing. At each follow-up visit, another blood sample was obtained for microscopy and
135 molecular detection of parasites, which was not conducted in real time, and a study team member
136 conducted a one-on-one interview with each student about bed net use the night prior, current or
137 recent illness, and use of antimalarial treatment. At the final visit, RDT and hemoglobin were
138 repeated, and intercurrent fever or malaria treatment was identified by parent interview and
139 review of portable medical records ("health passports"). Data was collected on android-based
140 tablets using OpenDataKit and RedCap.²¹

141 **Sample size determination**

142 Using surveillance data collected in the communities surrounding the intervention schools in the
143 prior three years, we anticipated a 27% overall prevalence of *Pf* infection detected by PCR in
144 school-age children. By sampling 320 students (10 students within each of 8 grades, in four
145 schools) in each season, we would have 80% power to detect a 40% decrease in the overall
146 prevalence of infection after the screen-and-treat intervention. To account for loss to follow-up,
147 we sampled 15 students per grade in each school.

148 **Laboratory methods**

149 Thick smear microscopy slides were stained with Giemsa stain and read by trained, blinded
150 microscopists. Quality control was conducted using published procedures.²² Molecular detection
151 of parasites was conducted using real-time PCR to detect *P. falciparum* lactate dehydrogenase
152 (*Pf*LDH) DNA, as described previously.²³ Plates were run in duplicate and the sample was
153 considered positive if a positive result was detected in at least one run.

154 **Statistical analysis**

155 *Pf* infection was analyzed as a binary variable. Infections detected by microscopy and PCR were
156 analyzed separately. Sub-patent infections were defined as those that were PCR-positive but

157 RDT-negative. Treatment groups were defined based on RDT result at baseline. RDT-positive
158 students with negative PCR results were considered negative for active infection, but were
159 included in the treatment group for analysis because they received AL in the intervention.
160 Anemia was defined as hemoglobin less than 11.0 g/dL. Non-study administered malaria
161 treatment at baseline or during follow-up was defined as any treatment with an effective
162 antimalarial reported by the student, during the parent interview, or in the student's health
163 passport.

164
165 To analyze repeated measures of the following binary outcomes, we used log-binomial and
166 logistic generalized estimating equation (GEE) models, with unstructured covariance and
167 clustering within students nested in schools: PCR-detected *Pf* infection, microscopy-detected *Pf*
168 infection, sub-patent infection, and fever in the past 48 hours. GEE models were used to estimate
169 proportions and odds ratios. Logistic regression was used to model anemia at day 42, and a linear
170 model was used to model hemoglobin at day 42; both models included adjustment for anemia
171 status at baseline. All models were adjusted *a priori* for factors known to be associated with
172 malaria risk: school (as a proxy for transmission intensity), age 5 to 9 years versus 10 to 15
173 years, and season of recruitment; other potential confounding variables were included in the
174 model if they were significant at $P < 0.05$. An interaction term for school*day was significant in
175 models of PCR-detected *Pf* infection, microscopy-detected *Pf* infection and was included in
176 these models. Relative difference in prevalence was calculated as the difference between
177 prevalence at baseline and after six weeks divided by baseline prevalence. Analyses were
178 conducted using SAS statistical software version 9.3 (SAS Institute, Cary, NC).

179 **Human subjects**

180 Written informed consent and assent were obtained from guardians and children in accordance
181 with Good Clinical Practice guidelines. Approval for this study was obtained from the University
182 of Malawi College of Medicine Research and Ethics Committee and the Institutional Review
183 Board of the University of Maryland, Baltimore.

184

185 **Results**

186 A total of 786 students were enrolled: 405 in the rainy season cohort and 381 in the dry season
187 cohort (Figure 1). Screening-and-treatment was conducted at baseline for 704 (90%) students,
188 and complete follow-up was obtained for 616 (78%) students. Baseline characteristics, including
189 sex, bed net use, anemia, recent fever and prevalence of *Pf* infection, varied significantly by
190 school (Table 1). Students had increased odds of being RDT-positive and hence, receiving
191 treatment, if they attended a higher prevalence school, participated in the rainy season cohort,
192 were male, were anemic, or had recently taken an antimalarial medication (Table 2).

193

194 Sub-patent infections were common in the study population. Among the 259 students with
195 infections detected by PCR or microscopy at baseline, 63 (24.3%) were negative by RDT. While
196 these sub-patent infections were more likely to occur in the high transmission schools
197 (Supplementary Table S1), they make up a larger proportion of all infections in Bvumbwe, the
198 school with the lowest prevalence of infection [42.8% vs. 17.3%, (p=0.003) of infections were
199 sub-patent Bvumbwe vs. the other three schools combined (Table 1)]. Compared to microscopy
200 and PCR, respectively, RDTs had a sensitivity of 91.1% and 76.3% and specificity of 76.1% and
201 85.9%. We evaluated the impact of screening-and-treatment on *Pf* infections detected both by
202 microscopy, to facilitate comparisons with prior studies and assess impact on infections more

203 likely to be clinically relevant, and by PCR, to assess the impact including lower density
204 infections.

205

206 **Impact of screening and treatment on prevalence of infection after six weeks**

207 In total, 259 students (37%) were RDT-positive at baseline and were treated with AL. Six weeks
208 after screening-and-treatment, we measured a 47.1% and 23.1% reduction in the prevalence of
209 infections detected by microscopy and PCR, respectively (both $p < 0.001$, Table 3). In analyses
210 stratified by transmission setting, the prevalence of infections detected by microscopy decreased
211 by 42.1% in high transmission schools and by 66.8% in low, seasonal transmission schools
212 ($p < 0.001$, $p = 0.003$, respectively). For infections detected by PCR, we observed a 35.0% decrease
213 in prevalence in the high transmission schools, but a non-statistically significant 13.3% increase
214 in prevalence in the low, seasonal transmission schools ($p < 0.001$, $p = 0.40$, respectively). Results
215 by school are shown in Figure S1.

216

217 **Patterns of infection and variation in the effect of screening-and-treatment by transmission** 218 **setting**

219 To further evaluate patterns of infection and the effect of screening-and-treatment in different
220 transmission settings, we examined school-specific differences in the prevalence of infection
221 during follow-up among treated and untreated students (Figure 2). In the higher transmission
222 schools, RDTs detected most infections and treatment effectively cleared those infections at the
223 one and two week follow-up visits. However, prevalence of infection among both treated and
224 untreated students increased between two and six weeks following the intervention (Figure 3B
225 and 3D).

226

227 In the schools with lower, seasonal transmission, 38% (22/58) of infections at baseline were sub-
228 patent, and thus not detected by RDTs and therefore not treated. Treatment cleared infections
229 detected by microscopy in the students who received treatment (Table 3, Figure 3A). However,
230 there was no overall reduction in infections detected by PCR due to both persistence of
231 infections detected by PCR in untreated students and either uncleared or new infections detected
232 by PCR in the treated students (Table 3, Figure 3C).

233

234 **Impact of screening-and-treatment on anemia**

235 At baseline, 15.1% (95% CI: 12.4%, 17.7%) of students were anemic and the mean hemoglobin
236 was 12.3g/dL (SD: 1.5g/dL) (Table 1). Anemia at baseline was less common among students in
237 Bvumbwe compared to those in other schools, and less common among girls than boys.
238 However, baseline anemia was more common among students with a positive RDT and students
239 with recent fever (Supplemental Table S2). In analysis accounting for baseline anemia and
240 treatment status, risk of anemia six weeks after the intervention was not significantly associated
241 with treatment status of the individual students (adjusted odds ratio (aOR): 1.14; 95% CI: 0.63,
242 2.05; $P=0.5420$, Figure 3).

243

244 **Clinical and parasitological outcomes of sub-patent infections**

245 To evaluate the consequences of sub-patent infections, we compared clinical and parasitological
246 outcomes among students with sub-patent infection to uninfected students, defined as students
247 with negative RDT, microscopy, and PCR at screening. Sub-patent infections at screening were
248 not associated with adverse clinical outcomes at the six week follow-up, including fever (aOR

249 1.05 [95%CI:0.64,1.72]), antimalarial treatment (aOR 0.97 [95%CI: 0.40, 2.32]), anemia (aOR
250 1.05 [95%CI:0.38,2.85]) or mean difference in hemoglobin concentration (g/dl) (0.04 [95%CI:-
251 0,0.39) (Supplementary Table S3). However, baseline sub-patent infections persisted, with these
252 infections increasing in density leading to detection by microscopy (aOR 9.54
253 [95%CI:5.42,16.8]) and PCR (aOR 8.03 [95%CI:5.50,11.7]) during follow-up. Thirty-four
254 percent (20/59) of students with sub-patent infections at baseline had positive RDTs at the six-
255 week follow-up, suggesting that repeated screening-and-treatment may further reduce prevalence
256 of infection.

257 **Discussion**

258 School-based screening-and-treatment is an attractive strategy to decrease the burden of malaria
259 in school-age children. Our results show this strategy successfully decreased the burden of *Pf*
260 infection, nearly halving the prevalence of infections detected by microscopy. However, the
261 ability of RDTs to detect all infections varied by transmission setting, contributing to differences
262 in the impact of the intervention. In lower, seasonal transmission settings, a large proportion of
263 infections went untreated because they were sub-patent. While in higher transmission settings,
264 the duration of the impact of screening-and-treatment was limited by new infections.

265
266 Overall, our results provide insights on which settings and for which outcomes screening-and-
267 treatment warrants further consideration as an approach to deliver school-based preventive
268 treatment. The only published clinical trial evaluating school-based screening-and-treatment
269 showed no long-term impact on *Pf* infection, anemia, or cognition.¹⁷ However, the average
270 transmission in the schools in that cluster-randomized trial in coastal Kenya was similar to
271 transmission intensity of the lower, seasonal prevalence schools our study, where RDTs failed to

272 detect a large proportion of infections. While these sub-patent infections were not associated
273 with clinical disease in our six-week follow-up period, they likely contribute to the lack of long
274 term impact. The lack of efficacy of screening-and-treatment for other target populations,
275 including malaria in pregnancy²⁴ and community-wide interventions^{25,26} has also been attributed
276 to the low sensitivity of currently available RDTs. The sensitivity and specificity of RDTs in our
277 study were similar the prior school-based screen-and-treat trial and other community-based
278 studies.^{17,27-29}

279
280 The different patterns of infection between treated and untreated students in both transmission
281 settings have important implications for the design of school-based malaria control interventions.
282 Our findings suggest that in settings with perennial, moderate-to-high transmission, the screen-
283 and-treat approach using currently available screening tools may be effective in identifying and
284 treating most infections but the duration of the impact is short-lived due to the high frequency of
285 new infection. Thus, in these settings the design of the intervention could be improved by either
286 repeating the intervention or by using a longer acting drug, such as dihydroartemisinin-
287 piperaquine.

288
289 In lower transmission settings where a high proportion of infections fall below the level of
290 detection of commonly used point-of-care tests, a screening test with higher sensitivity than a
291 standard RDT should improve the effectiveness of the screen-and-treat approach. Newly
292 approved point-of-care tests are currently undergoing evaluation and may be suitable for use in
293 school-based interventions, particularly in low transmission settings.³⁰

294

295 The alternative to screening-and-treatment is providing treatment to all students without
296 screening, as in intermittent preventive treatment, an approach used widely to prevent the
297 adverse effects of malaria during pregnancy and for seasonal malaria prevention in children in
298 some settings. In recent meta-analyses of preventive treatment in schoolchildren, the majority of
299 studies provided treatment to all students enrolled in the intervention arm and showed substantial
300 reductions of both *Pf* infection prevalence and clinical malaria.³¹ This approach has the
301 advantages of providing prophylaxis to all students regardless of their infection status and is
302 easier to implement as no blood collection or time for testing is required. However, there are
303 concerns about the cost-benefit of this approach if prevalence is low and the impact of selective
304 pressure on drug resistant parasite resulting from such widespread administration of antimalarial
305 drugs.

306
307 While our findings provide new insights into the utility of school-based screen-and-treat
308 approaches, there are some limitations. We designed our observational study to investigate the
309 dynamics of infections in treated and untreated children after screening. While randomized trials
310 provide more definitive conclusions about the efficacy of the intervention, our approach
311 nevertheless enabled assessment of the effect of the intervention on parasite prevalence in
312 students who did and did not receive treatment based on RDT results in varied transmission
313 settings. However, the absence of a control arm complicates interpretation of some results. In the
314 overall study population, prevalence of anemia was significantly lower six weeks after the
315 intervention. However, in analyses that stratified students by baseline anemia and treatment
316 status, the intervention was not associated with lower anemia at six weeks. This finding is likely
317 due to our inability to control for complex confounders (e.g. nutritional status), and secular

318 trends leading to changes in anemia prevalence not related to the intervention. Furthermore, the
319 study involved only six weeks of follow-up, limiting our ability to comment on the longer-term
320 impacts of sub-patent infections.

321
322 Given these results, the utility of the screen-and-treat approach using currently available RDTs
323 must be evaluated based on the goal of treatment. Sub-patent infections were not associated with
324 clinical disease over the course of follow-up in this population, and the intervention reduced the
325 prevalence of infections detected by microscopy, suggesting that screening-and-treatment may
326 be sufficient to reduce clinical malaria. However, screening-and-treatment failed to reduce
327 anemia and, therefore, may not reduce the impact of malaria on cognitive function and
328 education. The impact preventive treatment of malaria on these endpoints may be increased by
329 either targeting all students with antimalarial medication through intermittent preventive
330 treatment, and/or combining malaria preventive treatment with other interventions, such as
331 deworming and nutrition programs, to jointly tackle the multiple etiologies of anemia in school-
332 age children.

333
334 While the primary aim of school-based malaria control is to decrease the adverse consequences
335 of *Pf* infection in students, there may also be indirect effects on transmission in the
336 community.^{32,33} Increasing evidence suggests both school-age children and persistent infections
337 contribute significantly to malaria transmission.³⁴⁻³⁶ As such, studies of school-based malaria
338 control interventions should also measure the indirect effects on malaria transmission in the
339 community.

340

341 Given the high prevalence of *Pf* infection and the negative impacts of infection on the health and
342 educational achievement of school-age children, development of strategies to decrease this
343 burden is critical. School-based screening-and-treatment effectively reduced *Pf* infection in our
344 study and is an attractive strategy as treatment is targeted to students with documented infection.
345 Further studies are needed to evaluate this approach in different transmission settings as well as
346 the utility of more sensitive screening tests for this purpose.

347

348 **Funding:** This work was supported by the U.S. National Institutes of Health [U19AI089683,
349 K24AI114996 to M.K.L., and K23AI135076 to L.M.C], the Thrasher Research Fund Early
350 Career Award [to L.M.C], and the Burroughs Wellcome Fund/American Society of Tropical
351 Medicine and Hygiene Postdoctoral Fellowship in Tropical Infectious Diseases [to L.M.C.]

352

353 **Acknowledgements:** We thank Heidi Fancher and the administrative team at the Malaria Alert
354 Center for their support in executing the study. We are grateful for the hard work and dedication
355 of the field team, study nurses, teachers, school administrators who made the study possible.
356 Most importantly, we thank the participants for their commitment and patience.

357

358 **References**

- 359 1. World Health Organization. *World Malaria Report 2019*. Geneva. Geneva; 2019.
360 doi:Licence: CC BY-NC-SA 3.0 IGO
- 361 2. Nankabirwa J, Brooker SJ, Clarke SE, et al. Malaria in school-age children in Africa: an
362 increasingly important challenge. *Trop Med Int Health*. August 2014.
363 doi:10.1111/tmi.12374

- 364 3. Clarke SE, Jukes MCH, Njagi JK, et al. Effect of intermittent preventive treatment of
365 malaria on health and education in schoolchildren: a cluster-randomised, double-blind,
366 placebo-controlled trial. *Lancet*. 2008;372(9633):127-138. doi:10.1016/S0140-
367 6736(08)61034-X
- 368 4. Gitonga CW, Edwards T, Karanja PN, Noor AM, Snow RW, Brooker SJ. Plasmodium
369 infection, anaemia and mosquito net use among school children across different settings in
370 Kenya. *Trop Med Int Health*. 2012;17(7):858-870. doi:10.1111/j.1365-3156.2012.03001.x
- 371 5. Barger B, Maiga H, Traore OB, et al. Intermittent preventive treatment using artemisinin-
372 based combination therapy reduces malaria morbidity among school-aged children in
373 Mali. *Trop Med Int Health*. 2009;14(7):784-791. doi:10.1111/j.1365-3156.2009.02294.x
- 374 6. Nankabirwa J, Cundill B, Clarke S, et al. Efficacy, safety, and tolerability of three
375 regimens for prevention of malaria: a randomized, placebo-controlled trial in Ugandan
376 schoolchildren. *PLoS One*. 2010;5(10):e13438. doi:10.1371/journal.pone.0013438
- 377 7. Nankabirwa JI, Wandera B, Amuge P, et al. Impact of intermittent preventive treatment
378 with dihydroartemisinin-piperaquine on malaria in Ugandan schoolchildren: a
379 randomized, placebo-controlled trial. *Clin Infect Dis*. 2014;58(10):1404-1412.
380 doi:10.1093/cid/ciu150
- 381 8. Clarke SE, Rouhani S, Diarra S, et al. Impact of a malaria intervention package in schools
382 on Plasmodium infection, anaemia and cognitive function in schoolchildren in Mali: a
383 pragmatic cluster-randomised trial. *BMJ Glob Heal*. 2017;2(2):e000182.
384 doi:10.1136/BMJGH-2016-000182
- 385 9. Yimgang D, Buchwald A, Coalson J, et al. Population attributable fraction of anemia
386 associated with *P. falciparum* infection in children in Southern Malawi. *Am J Trop Med*

- 387 *Hyg.* 2020.
- 388 10. Brooker S, Guyatt H, Omumbo J, Shretta R, Drake L, Ouma J. Situation analysis of
389 malaria in school-aged children in Kenya - what can be done? *Parasitol Today*.
390 2000;16(5):183-186. <http://www.ncbi.nlm.nih.gov/pubmed/10782073>. Accessed April 15,
391 2019.
- 392 11. King N, Dewey C, Borish D. Determinants of primary school non-enrollment and
393 absenteeism: Results from a retrospective, convergent mixed methods, cohort study in
394 rural western Kenya. *PLoS One*. 2015;10(9). doi:10.1371/journal.pone.0138362
- 395 12. Thuilliez J, Sissoko MS, Toure OB, Kamate P, Berthélemy JC, Doumbo OK. Malaria and
396 primary education in Mali: A longitudinal study in the village of Donéguébougou. *Soc Sci*
397 *Med*. 2010;71(2):324-334. doi:10.1016/j.socscimed.2010.02.027
- 398 13. Nankabirwa J, Wandera B, Kiwanuka N, Staedke SG, Kanya MR, Brooker SJ.
399 Asymptomatic Plasmodium infection and cognition among primary schoolchildren in a
400 high malaria transmission setting in Uganda. *Am J Trop Med Hyg*. 2013;88(6):1102-1108.
401 doi:10.4269/ajtmh.12-0633
- 402 14. Fernando D, De Silva D, Carter R, Mendis KN, Wickremasinghe R. A randomized,
403 double-blind, placebo-controlled, clinical trial of the impact of malaria prevention on the
404 educational attainment of school children. *Am J Trop Med Hyg*. 2006;74(3):386-393.
405 doi:10.4269/ajtmh.2006.74.386
- 406 15. Fernando D, de Silva D, Wickremasinghe R. Short-term impact of an acute attack of
407 malaria on the cognitive performance of schoolchildren living in a malaria-endemic area of
408 Sri Lanka. *Trans R Soc Trop Med Hyg*. 2003;97(6):633-639. doi:10.1016/S0035-
409 9203(03)80093-7

- 410 16. Cohee LM, Opondo C, Clarke SE, et al. Preventive malaria treatment among school-aged
411 children in sub-Saharan Africa: a systematic review and meta-analyses. *Lancet Glob Heal*.
412 2020;8(12):e1499-e1511. doi:10.1016/S2214-109X(20)30325-9
- 413 17. Halliday KE, Okello G, Turner EL, et al. Impact of intermittent screening and treatment
414 for malaria among school children in Kenya: a cluster randomised trial. *PLoS Med*.
415 2014;11(1):e1001594. doi:10.1371/journal.pmed.1001594
- 416 18. Okell LC, Cairns M, Griffin JT, et al. Contrasting benefits of different artemisinin
417 combination therapies as first-line malaria treatments using model-based cost-
418 effectiveness analysis. *Nat Commun*. 2014;5. doi:10.1038/ncomms6606
- 419 19. Okell LC, Bousema T, Griffin JT, Ouédraogo AL, Ghani AC, Drakeley CJ. Factors
420 determining the occurrence of submicroscopic malaria infections and their relevance for
421 control. *Nat Commun*. 2012;3:1237. doi:10.1038/ncomms2241
- 422 20. Walldorf JA, Cohee LM, Coalson JE, et al. School-Age Children Are a Reservoir of
423 Malaria Infection in Malawi. *PLoS One*. 2015;10(7):e0134061.
424 doi:10.1371/journal.pone.0134061
- 425 21. Harris PA, Taylor R, Thielke R, Payne J, Gonzalez N, Conde JG. Research electronic data
426 capture (REDCap)—A metadata-driven methodology and workflow process for providing
427 translational research informatics support. *J Biomed Inform*. 2009;42(2):377-381.
428 doi:10.1016/j.jbi.2008.08.010
- 429 22. The RTS S/CTP. A Phase 3 Trial of RTS,S/AS01 Malaria Vaccine in African Infants. *N*
430 *Engl J Med*. 2012;367(24):2284-2295. doi:10.1056/NEJMoa1208394
- 431 23. Coalson JE, Walldorf JA, Cohee LM, et al. High prevalence of *Plasmodium falciparum*
432 gametocyte infections in school-age children using molecular detection: patterns and

- 433 predictors of risk from a cross-sectional study in southern Malawi. *Malar J.* 2016;15(15).
434 doi:10.1186/s12936-016-1587-9
- 435 24. Desai M, Hill J, Fernandes S, et al. Prevention of malaria in pregnancy. *Lancet Infect Dis.*
436 2018;18(4):e119-e132. doi:10.1016/S1473-3099(18)30064-1
- 437 25. Tiono AB, Ouédraogo A, Ogotu B, et al. A controlled, parallel, cluster-randomized trial of
438 community-wide screening and treatment of asymptomatic carriers of *Plasmodium*
439 *falciparum* in Burkina Faso. *Malar J.* 2013;12:79. doi:10.1186/1475-2875-12-79
- 440 26. Samuels AM, Odero NA, Odongo W, et al. Impact of Community-Based Mass Testing
441 and Treatment on Malaria Infection Prevalence in a High-Transmission Area of Western
442 Kenya: A Cluster Randomized Controlled Trial. *Clin Infect Dis.* April 2020.
443 doi:10.1093/cid/ciaa471
- 444 27. Tiono AB, Ouédraogo A, Diarra A, et al. Lessons learned from the use of HRP-2 based
445 rapid diagnostic test in community-wide screening and treatment of asymptomatic carriers
446 of *Plasmodium falciparum* in Burkina Faso. *Malar J.* 2014;13:30. doi:10.1186/1475-2875-
447 13-30
- 448 28. Ruizendaal E, Schallig HDFH, Scott S, et al. Evaluation of malaria screening during
449 pregnancy with rapid diagnostic tests performed by community health workers in Burkina
450 Faso. *Am J Trop Med Hyg.* 2017;97(4):1190-1197. doi:10.4269/ajtmh.17-0138
- 451 29. Nankabirwa JI, Yeka A, Arinaitwe E, et al. Estimating malaria parasite prevalence from
452 community surveys in Uganda: a comparison of microscopy, rapid diagnostic tests and
453 polymerase chain reaction. *Malar J.* 2015;14(1):528. doi:10.1186/s12936-015-1056-x
- 454 30. World Health Organization. WHO technical consultation on research requirements to
455 support policy recommendations on highly sensitive point-of-care diagnostics for P.

- 456 falciparum malaria. [https://www.who.int/malaria/mpac/mpac-october2018-session7-](https://www.who.int/malaria/mpac/mpac-october2018-session7-report-high-sensitive-poct.pdf)
457 [report-high-sensitive-poct.pdf](https://www.who.int/malaria/mpac/mpac-october2018-session7-report-high-sensitive-poct.pdf). Published 2018. Accessed October 18, 2020.
- 458 31. Cohee LM, Opondo C, Clarke S, Halliday K, Jorge Cano, Andrea G Shipper, Breanna
459 Barger-Kamate, Abdoulaye Djimde, Seybou Diarra, Aditi Dokras, Moses R Kanya,
460 Pascal Lutumba, Alioune Badara Ly, Joaniter I Nankabirwa, J Kiambo Njagi, Hama
461 Maiga, Catherine Maiteki-Sebuguzi, Junior Matangila, George EAI, Chico RM.
462 Preventive malaria treatment among school-age children in sub-Saharan Africa: A
463 systematic review and meta-analyses. *Lancet Glob Heal*. 2020;In press.
- 464 32. Staedke SG, Maiteki-Sebuguzi C, Rehman AM, et al. Assessment of community-level
465 effects of intermittent preventive treatment for malaria in schoolchildren in Jinja, Uganda
466 (START-IPT trial): a cluster-randomised trial. *Lancet Glob Heal*. 2018;6(6):e668-e679.
467 doi:10.1016/S2214-109X(18)30126-8
- 468 33. McCann RS, Cohee LM, Goupeyou-Youmsi J, Laufer MK. Maximizing Impact: Can
469 Interventions to Prevent Clinical Malaria Reduce Parasite Transmission? *Trends*
470 *Parasitol*. 2020;0(0). doi:10.1016/j.pt.2020.07.013
- 471 34. Mwesigwa J, Slater H, Bradley J, et al. Field performance of the malaria highly sensitive
472 rapid diagnostic test in a setting of varying malaria transmission. *Malar J*. 2019;18(1).
473 doi:10.1186/s12936-019-2929-1
- 474 35. Barry A, Bradley J, Stone W, et al. Increased gametocyte production and mosquito
475 infectivity in chronic versus incident Plasmodium falciparum infections. *medRxiv*. April
476 2020:2020.04.08.20057927. doi:10.1101/2020.04.08.20057927
- 477 36. Stone W, Gonçalves BP, Bousema T, Drakeley C. Assessing the infectious reservoir of
478 falciparum malaria: past and future. *Trends Parasitol*. May 2015.

479 doi:10.1016/j.pt.2015.04.004

480

481

482 Tables

Table 1. Baseline characteristics of students enrolled in the study

	Total N=704	Bvumbwe n=184	Ngowe n=186	Maseya n=185	Makhuwira n=149	P^a
Female, n(%)	382(54.3)	118(64.1)	94(50.5)	92(49.7)	78(52.4)	0.019
Older school-age (≥ 10 y), n(%)	513(72.9)	125(67.9)	129(69.4)	143(77.3)	116(77.9)	0.067
Slept under bed net last night ^b , n(%)	309(49.3)	62(53.9)	124(68.5)	65(35.3)	58(39.5)	<.0001
Rainy season, n(%)	364(51.7)	99(53.8)	100(53.8)	97(52.4)	68(45.6)	0.411
Anemic ^c , n(%)	106(15.1)	9(4.9)	35(18.8)	34(18.4)	28(18.8)	0.0002
Hemoglobin in g/dL, mean (SD)	12.3 (1.5)	13.1 (1.3)	12.0 (1.5)	11.9 (1.3)	11.9 (1.3)	<.0001
Fever last 48 hours ^d , n(%)	192(27.8)	28(15.5)	53(29.6)	64(34.8)	47(32.0)	0.0002
Recent malaria treatment ^e , n(%)	121(17.4)	25(13.7)	33(18.2)	35(19.0)	28(19.1)	0.479
RDT Positive, n(%)	259(36.8)	16(8.7)	56(30.1)	91(49.2)	96(64.4)	<.0001
Sub-patent infection ^f , n(%)	63(9.0)	12(6.5)	10(5.4)	22(11.9)	19(12.8)	0.031

^a P-value of differences across school

^b Net use data for Bvumbwe was only available in the dry season

^c Defined as hemoglobin <11.0 g/dL

^d Fever in the last 48 hours reported or measured temperature $\geq 37.5^{\circ}\text{C}$

^e Recent treatment defined as student or parent reported receipt of an effective antimalarial drug in the two weeks preceding the interview

^f At baseline, 63 children had a negative RDT result but had a positive result for malaria PCR (n=61) or microscopy (n=2); higher proportion of *Pf* infections were sub-patent in Bvumbwe compared to the other three schools (42.8% [12/28] of infections were sub-patent vs. 17.3% [51/294], p=0.003)

483

484

Table 2. Associations with *P. falciparum* infections detected by RDT among enrolled students at baseline^a

	n(%) ^b	Unadjusted Prevalence Ratio	Adjusted Prevalence Ratio
School			
Bvumbwe	16(8.7)	1	1
Ngowe	56(30.1)	3.9(2.2-6.7)	3.8(2.2, 6.6)
Maseya	91(49.2)	6.3(3.7-10.6)	5.8(3.4, 9.8)
Makhuwira	96(64.4)	8.3(4.9-13.9)	7.4(4.4, 12.4)
Season			
Rainy	159(43.7)	1	1
Dry	100(29.4)	0.7(0.6-0.8)	0.7(0.6, 0.9)
Age (years)			
5 to 9	61(31.9)	1	1
10 to 15	198(38.6)	1.3(1.0-1.6)	1.0(0.9, 1.3)
Sex			
Male	141(43.8)	1	1
Female	118(30.9)	0.7(0.6-0.9)	0.9(0.7, 1.0)
Anemic^c			
No	193(32.3)	1	
Yes	65(61.3)	1.9(1.6-2.3)	
Fever last 48 hours^d			
No	170(34.1)	1	
Yes	84(43.8)	1.3(1.0-1.6)	
Recent medication^e			
No	193(33.6)	1	
Yes	62(51.2)	1.5(1.2-1.9)	
Slept under bed net last night			
No	150(37.9)	1	
Yes	109(35.3)	0.9(0.8-1.1)	

^a Log-binomial model with school, season, age and sex retained in model *a priori*, all other variables retained if $p < .05$. With the exception of incomplete data, univariate associations were assessed in 704 children, among whom 9 were missing data for recent medication, 13 were missing data for fever in last 48 hours, and 1 was missing data for anemia. The final model included 690 children.

^b Number and percent of children with a positive RDT result within each strata; children with a positive RDT result at baseline were treated and children with a negative RDT result at baseline were not treated.

^c Defined as hemoglobin less than 11.0 g/dL

^d Fever in the last 48 hours reported or measured temperature $\geq 37.5^\circ\text{C}$

^e Recent treatment defined as student or parent reported receipt of an effective antimalarial drug in the two weeks preceding the interview

486

Table 3: Adjusted prevalence and mean of infection outcomes at baseline and six weeks after the intervention^a

	Prevalence at baseline (95% CI)	Prevalence at six weeks (95% CI)	Adjusted relative difference^b (95% CI)	p-value
Microscopy positive – All schools	13.5% (11.2, 16.4)	7.1% (5.7, 8.9)	-47.1% (-34.0, -57.6)	<0.0001
High transmission ^c	28.7% (23.8, 34.6)	16.6% (13.2, 20.9)	-42.1% (-25.4, -55.1)	<0.001
Lower, seasonal transmission ^d	6.7% (4.6, 9.6)	2.2% (1.2, 4.4)	-66.8% (-30.8, -84.0)	0.003
PCR positive – All schools	31.2% (27.9, 34.9)	24.0% (21.2, 27.1)	-23.1% (-12.5, -32.5)	0.0002
High transmission	55.3% (49.3, 62.0)	36.0% (30.8, 41.9)	-35.0% (-26.4, -39.9)	<0.001
Lower, seasonal transmission	12.6% (9.7, 16.5)	14.3% (11.2, 18.3)	+13.3% (-11.5, +66.7)	0.40

^a GEE models for overall prevalence adjusted *a priori* for sex, age, school and season, Log-binomial models by transmission setting adjusted *a priori* for sex, age, and season

^b Relative difference in prevalence is the difference between prevalence at baseline and after six weeks divided by baseline prevalence.

^c High transmission schools were in Maseya and Makhuwira

^d Lower, seasonal transmission schools were in Bvumbwe and Ngowe

487

488 **Figure Legends**

489 Figure 1: Enrollment and follow-up of participants in school-based cohorts

490 Figure 2: Proportion of *P. falciparum* infections stratified by school, treatment status, and

491 detection method. Low, seasonal transmission schools (Bvumbwe-blue circles; Ngowe-red

492 squared) and infections detected by microscopy (A) and PCR (C). High transmission

493 schools (Maseya-green x's; Makhuwira-orange triangles) and detection by microscopy (B)

494 and PCR (D). Treated students-solid lines; Untreated students-hashed lines.

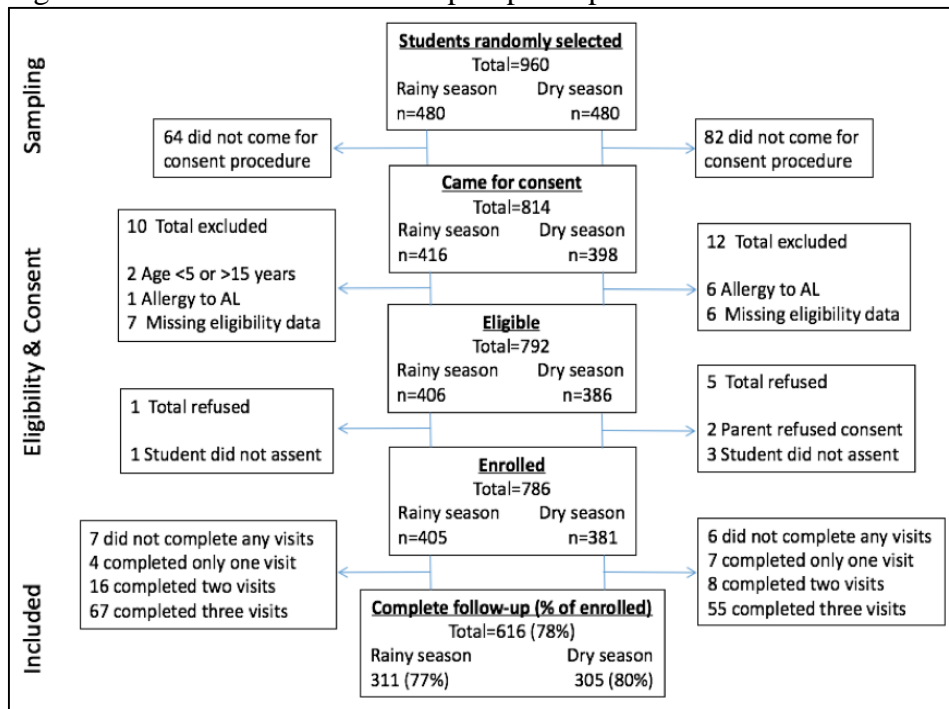
495 Figure 3: Proportion of students with anemia six weeks after the intervention by baseline anemia

496 and treatment, adjusted for school, sex, season, and age. Unadjusted data in Supplement

497 Figure S2.

498

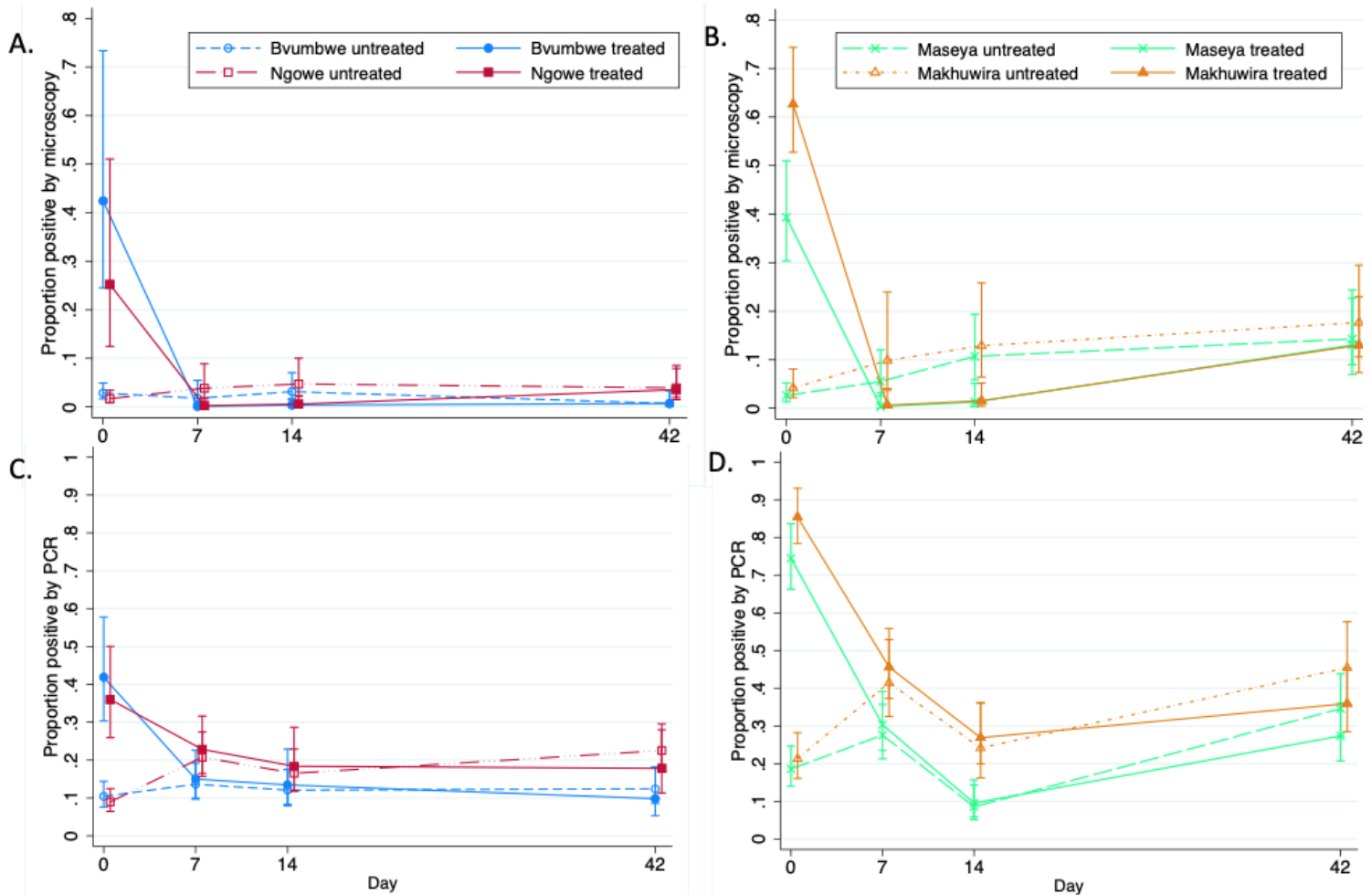
499 Figure 1: Enrollment and follow-up of participants in school-based cohorts



500

501

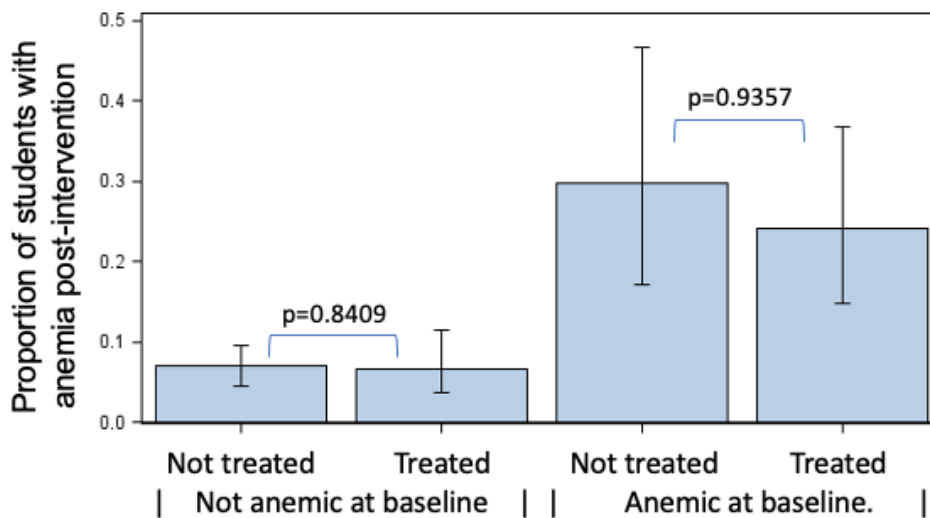
502 Figure 2: Proportion of *P. falciparum* infections stratified by school, treatment status, and
503 detection method. Low, seasonal transmission schools (Bvumbwe-blue circles; Ngowe-red
504 squared) and infections detected by microscopy (A) and PCR (C). High transmission
505 schools (Maseya-green x's; Makhuwira-orange triangles) and detection by microscopy (B)
506 and PCR (D). Treated students-solid lines; Untreated students-hashed lines.



508

509

510 Figure 3: Proportion of students with anemia six weeks after the intervention by baseline anemia
511 and treatment, adjusted for school, sex, season, and age. Unadjusted data in Supplement
512 Figure S2.



513