

The infant gut microbiome and rotavirus vaccine immunogenicity in rural
Zimbabwean infants

1 **The gut microbiome and rotavirus vaccine immunogenicity in rural**
2 **Zimbabwean infants**

3
4

5 Ruairi C. Robertson^a, James A. Church^{a,b}, Thaddeus J. Edens^c, Kuda Mutasa^b, Hyun
6 Min Geum^d, Iman Baharmand^d, Sandeep K. Gill^{d,e}, Robert Ntozini^b, Bernard
7 Chasekwa^b, Lynnea Carr^{d,f}, Florence D. Majo^b, Beth D. Kirkpatrick^g, Benjamin Lee^g,
8 Lawrence H. Moulton^h, Jean H. Humphrey^{b,h}, Andrew J. Prendergast^{a,b,h*}, Ameer R.
9 Manges^{d,e,*} and the SHINE Trial Teamⁱ

10
11

12 ^aCentre for Genomics and Child Health, Blizard Institute, Queen Mary University of London, London,
13 UK

14 ^bZvitambo Institute for Maternal and Child Health Research, Harare, Zimbabwe

15 ^cDevil's Staircase Consulting, West Vancouver, British Columbia, Canada

16 ^dBritish Columbia Centre for Disease Control, Vancouver, British Columbia, Canada

17 ^eSchool of Population and Public Health, University of British Columbia, Vancouver, Canada

18 ^fDepartment of Microbiology and Immunology, University of British Columbia, Canada

19 ^gVaccine Testing Center, College of Medicine, University of Vermont, Burlington, Vermont

20 ^hDepartment of International Health, Johns Hopkins Bloomberg School of Public Health, Baltimore, MD,
21 USA

22 ⁱMembers of the SHINE Trial team who are not named authors are listed in
23 https://academic.oup.com/cid/article/61/suppl_7/S685/358186

24 *Co-senior authors

25
26

27 **Corresponding author:** Ruairi C. Robertson, Centre for Genomics & Child Health, Blizard Institute, 4
28 Newark Street, London E1 2AT, United Kingdom. E-mail: r.robertson@qmul.ac.uk.

29
30
31
32
33
34

The infant gut microbiome and rotavirus vaccine immunogenicity in rural Zimbabwean infants

35 **ABSTRACT**

36

37 *Background:* Oral rotavirus vaccine (RVV) immunogenicity is considerably lower in low- versus
38 high-income populations; however, the mechanisms underlying this remain unclear. Previous
39 evidence suggests that the gut microbiota may contribute to differences in oral vaccine
40 efficacy.

41

42 *Methods:* We performed whole metagenome shotgun sequencing on stool samples and
43 measured anti-rotavirus immunoglobulin A in plasma samples from a subset of infants enrolled
44 in a cluster randomized 2×2 factorial trial of improved water, sanitation and hygiene and infant
45 feeding in rural Zimbabwe (SHINE trial: NCT01824940). We examined taxonomic and
46 functional microbiome composition using random forest models, differential abundance testing
47 and regression analyses to explore associations with RVV immunogenicity.

48

49 *Results:* Among 158 infants with stool samples and anti-rotavirus IgA titres, 34 were RVV
50 seroconverters. The median age at stool collection was 43 days. The infant microbiome was
51 dominated by *Bifidobacterium longum*. The gut microbiome differed significantly between early
52 (≤ 42 days) and later samples (> 42 days) however, we observed no meaningful differences in
53 alpha diversity, beta diversity, species composition or functional metagenomic composition by
54 RVV seroconversion status. *Bacteroides thetaiotaomicron* was the only species associated
55 with anti-rotavirus IgA titre. Random forest models poorly classified seroconversion status by
56 both composition and functional microbiome variables.

57

58 *Conclusions:* RVV immunogenicity is low in this rural Zimbabwean setting, however it is not
59 explained by the composition or function of the early-life gut microbiome. Further research is
60 warranted to examine the mechanisms of poor oral RVV efficacy in low-income countries.

61

62 **Key words:** microbiota, microbiome, rotavirus, shotgun metagenomics, oral rotavirus vaccine

63 **INTRODUCTION**

64 Rotavirus is the leading cause of diarrheal morbidity and mortality in children [1].
65 Although several oral rotavirus vaccines (RVV) are currently available globally, their
66 efficacy varies substantially by population, limiting their impact [2]. Large efficacy
67 studies show RVV efficacy of 85-98% against severe rotavirus gastroenteritis in high-
68 income settings [3, 4], compared to only 48% and 39% in South Asia [5] and sub-
69 Saharan Africa [6] respectively. The reasons for poor oral vaccine efficacy in low-
70 income populations remain poorly understood, however intestinal factors may
71 contribute [7-9].

72 The gut microbiota plays a critical role in the maturation of early-life immune
73 function and intestinal development [10]. The composition of the early-life gut
74 microbiota may also influence susceptibility to viral infections, since antibiotic
75 treatment and segmented filamentous bacteria both reduce the pathogenicity of
76 rotavirus in mice [11, 12]. Emerging evidence suggests that the early-life gut
77 microbiota influences oral vaccine responses by modulating the immune and
78 metabolic environments of the intestine [13]. In mice, antibiotic treatment impairs
79 vaccine responses, an effect that is reversed following restoration of the microbiota
80 [14]. In adults, narrow-spectrum antibiotics did not alter absolute anti-RV IgA titres
81 following RVV, but did lead to a higher proportion of individuals displaying short-term
82 IgA “boosting” (defined as a ≥ 2 -fold rise in anti-RV titre 7 days post-vaccination)
83 compared with placebo or broad-spectrum antibiotics [15]. Observational evidence
84 from children in low-income settings has shown no consistent association between the
85 gut microbiota and RVV efficacy in India [16], while RVV immunogenicity was
86 associated with gut microbiota composition in cohorts in Pakistan [17] and Ghana [18].

The infant gut microbiome and rotavirus vaccine immunogenicity in rural Zimbabwean infants

87 In these settings, RVV seroconverters compared to non-seroconverters displayed a
88 gut microbiota more similar to infants from a high-income setting.

89 We recently reported outcomes of a cluster-randomized trial of improved water,
90 sanitation and hygiene (WASH) in rural Zimbabwe [19]. Among a subset of infants in
91 whom anti-rotavirus IgA titres were measured, only 24% infants seroconverted
92 following oral RVV administration. However, the WASH intervention significantly
93 increased RVV seroconversion by 50% (19.6% in non-WASH arm versus 30.3% in
94 the WASH arm) [20]. We hypothesised that the WASH intervention had reduced the
95 burden of enteropathogens in these infants, thereby improving RVV immunogenicity.
96 However, the WASH intervention had no effect on enteropathogen carriage [21] and
97 enteropathogen burden was not associated with RVV immunogenicity [22]. In this
98 follow-on study, we explore whether alterations in the composition of the gut
99 microbiome are associated with RVV immunogenicity, by conducting whole
100 metagenome shotgun sequencing of stool samples from infants around the time of
101 RVV. Here we report on (i) the composition and function of the early-life gut
102 microbiome in this rural LMIC setting and (ii) its association with RVV immunogenicity.

103

104

105 **MATERIALS AND METHODS**

106

107 Study population

108 We present a sub-study of the Sanitation Hygiene Infant Nutrition Efficacy (SHINE)
109 trial [19], a 2×2 factorial cluster-randomized trial assessing the independent and
110 combined effects of improved WASH and improved infant and young child feeding

The infant gut microbiome and rotavirus vaccine immunogenicity in rural Zimbabwean infants

111 (IYCF) on stunting and anaemia (NCT01824940). Briefly, 5280 pregnant women in
112 rural Zimbabwe were enrolled and cluster-randomized to standard-of-care, IYCF,
113 WASH or combined IYCF+WASH, and children were followed up until 18 months of
114 age. 1169 HIV-unexposed children were enrolled in a sub-study of the SHINE trial
115 which involved longitudinal specimen collection (including plasma and stool) at 1, 3,
116 6, 12 and 18 months of age [23]. Sterile collection tubes were provided to mothers,
117 who collected stool samples from their infants on the day of the study visit. Blood
118 samples were collected from infants by trained nurses. Samples were transported by
119 motorbike in cool boxes to field laboratories where they were aliquoted and stored at
120 -80°C before subsequent transport to the central laboratory in Harare for ongoing
121 storage. 158 infants with available plasma samples, oral rotavirus vaccine records and
122 stool samples collected within 30 days of either vaccine dose were selected for
123 analysis in this study. The SHINE trial was approved by the Medical Research Council
124 of Zimbabwe and the Johns Hopkins Bloomberg School of Public Health Committee
125 on Human Research. Written informed consent was obtained from all caregivers
126 before enrolment in the trial.

127

128 Sub-study population

129 For this study, infants were selected if they had at least one plasma sample collected
130 post-rotavirus vaccination and an available stool sample collected at either 1 or 3-
131 months of age, as per previous analyses [22]. We permitted a 30-day window of stool
132 collection pre- or post-vaccination (either RVV dose), hypothesizing that the gut
133 microbiome soon before, during or after vaccination may contribute to RVV
134 immunogenicity. In order to assess the effect of this chosen 30-day time-window

The infant gut microbiome and rotavirus vaccine immunogenicity in rural Zimbabwean infants

135 around vaccination, we conducted two sensitivity analyses: first, employing a
136 restricted time-window to include those collected prior to 43 days of age (median age
137 of sample collection); and second, restricting to samples collected within 14-days pre
138 or post-RVV. Infants were excluded if they did not have vaccination data recorded or
139 had not received at least one dose of RVV. If more than one sample was available per
140 child, the stool sample collected closest to the first dose of RVV was chosen for
141 analysis. 158 participants meeting these criteria were included in this study. 67 of
142 these participants had previously been selected and had metagenome sequencing
143 data generated as part of a separate investigation into longitudinal infant microbiota
144 maturation from the same cohort [24]. The remaining 91 samples were selected at
145 random for the current study, whilst oversampling seroconverters to increase
146 statistical power, and processed in an identical manner.

147

148 Rotavirus vaccination and anti-rotavirus Immunoglobulin A assay

149 Oral monovalent RVV (Rotarix™; GSK Biologicals) was introduced as part of the
150 national vaccination programme in Zimbabwe in May 2014 and was administered to
151 infants at 6 and 10 weeks of age. National vaccination coverage in 2015-2016 was
152 87-91% [25]. Vaccination was undertaken at local clinics as part of routine national
153 vaccination programmes and was not overseen by the SHINE trial team. Vaccination
154 dates were recorded by SHINE study staff by reviewing child health cards. Plasma
155 anti-rotavirus immunoglobulin A (IgA) was measured on stored plasma samples by
156 enzyme-linked immunosorbent assay (ELISA) using methods previously described
157 [26]. The primary outcome was RVV seroconversion, defined as a post-vaccine
158 plasma concentration of anti-rotavirus IgA ≥ 20 U/mL in infants who were seronegative

The infant gut microbiome and rotavirus vaccine immunogenicity in rural Zimbabwean infants

159 (<20 U/mL) pre-vaccination [27]. Secondary outcomes included anti-rotavirus IgA titre
160 and RVV seropositivity, defined as a post-vaccine titre ≥ 20 U/mL, regardless of pre-
161 vaccine titre. We refer to these outcomes collectively as RVV immunogenicity.

162

163 Stool metagenome sequencing

164 DNA was extracted from ~200mg stool using the Qiagen PowerSoil Kit with bead
165 beating. DNA quality was confirmed by spectrophotometry (SimpliNano) and
166 quantified by fluorometry (Qubit). 1 μ g DNA was used as an input for sequencing library
167 preparation following the Illumina TruSeq PCR-free library preparation protocol, using
168 custom end-repair, adenylation and ligation enzyme premixes. Constructed libraries
169 were assessed for quality of concentration (qPCR) and size (Tapestation 2200) prior
170 to pooling. 48 barcoded samples were pooled in each sequencing run. Positive
171 controls (ZymoBIOMICS) and DNA-free negative controls were included through all
172 steps including DNA extraction and library preparation. One negative control was
173 included in each sequencing pool. Whole metagenome sequencing was performed
174 with 125-nucleotide paired-end reads using either the Illumina HiSeq 2500 or HiSeqX
175 platforms at Canada's Michael Smith Genome Sciences Centre, Vancouver, Canada.

176 *KneadData* was used with default settings to remove short reads (<60bp),
177 duplicate reads, human and other non-microbial reads and to trim off adapters. Filtered
178 sequencing reads were processed through the *MetaPhlan3* pipeline [28] with default
179 settings to generate compositional data. *HUMAnN3* was used with default settings
180 using the UniRef90 database to generate functional annotations (enzyme commission
181 (EC) annotations and pathways) [29]. Compositional and functional data were filtered
182 using a minimum threshold of >0.1% and >0.0001% relative abundance, respectively.

The infant gut microbiome and rotavirus vaccine immunogenicity in rural Zimbabwean infants

183 Taxa were included in the analyses if present at a minimum threshold of 5%
184 prevalence within the entire dataset.

185 A median of 8.1 ± 3.0 million quality filtered reads were produced per sample.
186 Sixteen negative controls were also sequenced with mean 734 quality-filtered reads
187 (range = 149 to 11,432, SD = 3462). Following filtering of annotatable reads, 139
188 species were included in the final analysis, of which 4 were classified as co-abundance
189 gene groups metagenomic assemblies (CAGs) for which no culture-derived
190 representative exists.

191

192 Statistical Analyses

193 All data were analysed using R (v.4.0.2). Beta-diversity was estimated using the Bray-
194 Curtis dissimilarity index. Alpha diversity was assessed using the Shannon index and
195 the number of observed species. Differential abundance analysis was performed by
196 Wilcoxon rank sum test and Analysis of Composition of Microbiomes (ANCOM) [30].
197 Random Forest machine learning models were performed using the *randomForest*
198 package (SIAMCAT package [31]) in which five-fold cross-validation was performed
199 with 100 iterations. Microbiome regression analyses were performed using the
200 *MaAsLin2* package. Seven covariates were chosen for adjustment in regression
201 models and included age at stool sample collection, birthweight, exclusive
202 breastfeeding status (recorded at 3 months old), sex, WASH randomized trial arm,
203 delivery mode and length-for-age Z-score (LAZ) around time of vaccination. These
204 covariates were chosen based on biological plausibility and previous evidence of their
205 independent influence on RVV immunogenicity in the same cohort [32]. Multiple

The infant gut microbiome and rotavirus vaccine immunogenicity in rural Zimbabwean infants

206 comparisons were tested using Benjamini-Hochberg false discovery rate (FDR; q-
207 value <0.05).

208

209

210 **RESULTS**

211

212 Study cohort

213 Among 5280 women enrolled in the SHINE trial, there were 3989 live-born, HIV-
214 unexposed infants. Of these, 882 children had RVV immunogenicity measured and
215 158 of these had stool samples collected within 30 days of either vaccine dose and
216 with valid metagenome sequencing data. **Table 1** outlines the primary characteristics
217 of the 158 participants in this analysis. Of these 158 participants, 115 had
218 seroconversion data available as a primary outcome (n=81 non-seroconverters, n=34
219 seroconverters; **Figure 1a**), whilst secondary outcomes (seropositivity status and IgA
220 titres) were available for all 158 infants (n=113 seronegative, n=45 seropositive).

221 The median age at first dose of RVV was 44 days [interquartile range (IQR):
222 42-49]. The median age at stool sample collection was 43 days (IQR: 35-68; **Figure**
223 **1b**). To test for and account for age-associated changes in microbiota composition,
224 analyses were also split by early (≤ 42 days) and late (> 42 days) stool samples.

225

226 Microbiome alpha and beta diversity associations with RVV immunogenicity

227 PERMANOVA analysis identified a small but significant difference in beta diversity as
228 measured by Bray-Curtis distances by seroconversion status ($P = 0.035$; $R^2 = 0.014$;
229 **Fig. 2a**), however this was largely explained by data dispersion (homogeneity of

The infant gut microbiome and rotavirus vaccine immunogenicity in rural Zimbabwean infants

230 dispersion test; $P = 0.035$). When split by median age of sample collection (43 days),
231 there was a significant difference in Bray-Curtis distances between early and late
232 samples ($P < 0.001$; $R^2 = 0.025$; **Fig. 2b**). Beta diversity analyses did not indicate a
233 significant difference between samples collected immediately prior to or after the first
234 dose of RVV in samples collected in the first 60 days of life (**Fig. S1a**), suggesting that
235 there was no significant difference of the vaccine itself on gut microbiome beta
236 diversity. No significant difference was observed between infants randomized to
237 WASH or non-WASH trial arms (**Fig. S1b**).

238 In sensitivity analyses, when restricting to samples collected within 14 days of
239 either vaccine dose ($n=62$ non-seroconverters, $n=28$ seroconverters), there was a
240 significant difference in Bray-Curtis distances by seroconversion status ($P = 0.011$; R^2
241 $= 0.022$; **Fig. S1 c**), which was partly explained by data dispersion ($P = 0.03$).
242 However, there was no significant difference in Bray-Curtis distances by
243 seroconversion status when restricted to early samples (≤ 42 days; $n=79$ samples; P
244 $= 0.061$; $R^2 = 0.024$). In analysis of secondary outcomes, beta diversity differed
245 significantly by seropositivity status ($P = 0.008$; $R^2 = 0.012$; **Fig. S1 d**) in the total
246 dataset, which was not explained by dispersion ($P = 0.067$), but not when restricted to
247 samples collected before ≤ 42 days ($P = 0.113$; $R^2 = 0.019$).

248 Alpha diversity, as measured by the Shannon index and number of observed
249 species, did not significantly differ by seroconversion (Wilcoxon test: $P = 0.369$ & $P =$
250 0.260 respectively; **Fig. 3a**) and was not associated with anti-rotavirus IgA titre in
251 simple linear regression ($P = 0.306$; **Fig. 3b**). As expected, there were significant
252 differences in alpha diversity between early and late samples ($P = 0.032$).

The infant gut microbiome and rotavirus vaccine immunogenicity in rural Zimbabwean infants

253 In sensitivity analyses, alpha diversity also did not differ by seroconversion
254 status or seropositivity status when restricted to early samples ($P = 0.333$ and $P =$
255 0.260 , respectively) or when restricted to stool samples collected within 14 days of
256 either RVV dose (data not shown). There was also no significant difference in alpha
257 diversity by seropositivity status ($P = 0.18$; **Fig. S2a-b**) or by randomized WASH arms
258 (**Fig. S2c**).

259

260 Infant microbiome taxonomic composition and association with RVV immunogenicity

261 At the phylum level, samples were dominated by Actinobacteria (**Fig. 3c**).
262 *Bifidobacterium longum* was the most abundant species in the entire dataset
263 comprising a median 23% relative abundance, ranging from 0% to 97% across all
264 samples. *Escherichia coli*, *Collinsella aerofaciens*, *B. bifidum* and *B.*
265 *pseudocatenulanum* were the next most highly abundant across all datasets.
266 Differential abundance analysis showed no significant differences in relative
267 abundances of any taxa by seroconversion status (Wilcoxon ranked sum test, $q >$
268 0.05 ; **Fig. 3d**). This negative result was confirmed by the more stringent ANCOM
269 model, which included covariate adjustment for age at stool sample collection,
270 birthweight, exclusive breastfeeding status, sex, trial arm, delivery mode and LAZ
271 around vaccination. Six species were significantly differentially abundant between
272 early and late samples (Wilcoxon, $q < 0.05$: *B. longum*, *Streptococcus mitis*,
273 *Bacteroides ovatus*, *Collinsella aerofaciens*, *Staphylococcus hominis*, *Streptococcus*
274 *pneumoniae*; **Fig. 4a** and **S2e**) which was confirmed by ANCOM following covariate
275 adjustment. In analysis of secondary outcomes, no taxa were significantly different by
276 seropositivity status (**Fig. S2f**). In sensitivity analyses, when restricted to early

The infant gut microbiome and rotavirus vaccine immunogenicity in rural Zimbabwean infants

277 samples or restricted to samples collected within 14 days of either vaccine dose, no
278 taxa were significantly differentially abundant when compared by seroconversion or
279 seropositivity statuses. *Collinsella aerofaciens* was the only species significantly
280 different in relative abundance between WASH and non-WASH infants in this sub-
281 cohort (**Fig. S2f**).

282 Random Forest models were also applied to the datasets to test whether
283 microbiome features could predict seroconversion and age. Early and late samples
284 were strongly classified by the Random Forest model (receiver operating curve area
285 under the curve (AUC) 0.758; **Fig. 4b**). Random Forest regression of age produced
286 moderately strong models ($P = 0.001$; $R^2 = 0.152$; 14% explained variation). However,
287 random Forest poorly classified seroconversion status (AUC 0.589; **Fig. 4c**). In
288 analysis of other secondary outcomes, random forest also poorly classified
289 seropositivity (AUC 0.564; **Fig. S3a**) and WASH trial arm (AUC 0.5; **Fig. S3b**).

290 Regression models were built (MaAsLin2) to identify associations between gut
291 microbial taxa and age or vaccine titres. Following FDR correction and adjustment for
292 covariates, *Bacteroides thetaiotaomicron* was the only species significantly associated
293 with IgA titre ($P = 0.008$). This effect held in sensitivity analyses using samples
294 collected within 14 days of either vaccine dose ($P = 0.053$) whilst also indicating that
295 *Slackia isoflavoniconvertens* was also associated with IgA titre in the restricted
296 sensitivity dataset ($P = 0.049$).

297

298 Infant microbiome functional composition and association with RVV immunogenicity

299 Metagenomic data were also analysed to assess microbiome functional pathways
300 associated with age and RVV responses. Wilcoxon tests identified no functional

The infant gut microbiome and rotavirus vaccine immunogenicity in rural Zimbabwean infants

301 pathway or EC that differed significantly by seroconversion status. Random Forest
302 models of microbiome functional pathways also poorly classified seroconversion
303 status. Two metagenomic pathways (*PWY-5994: palmitate biosynthesis I (animals*
304 *and fungi* and *PWY-1042: glycolysis IV (plant cytosol)*) and 153 ECs were
305 differentially abundant between early and late samples (**Fig. 5**). Random Forest
306 models performed moderately well in classifying early and late samples based on
307 metagenomic pathways (AUC 0.641; **Fig. S3c**). No EC or metagenomic pathway was
308 significantly associated with IgA titre. In sensitivity analyses of early samples or those
309 collected within 14 days of either vaccine dose, no EC or metagenomic pathway was
310 associated with seroconversion and random forest classification was poor. No
311 significant functional differences were observed by seropositivity status.

312

313

314 **DISCUSSION**

315 Here, we report on the stool metagenomes of 158 infants <6 months of age from a
316 rural Zimbabwean birth cohort and their association with RVV immunogenicity. Similar
317 to other low-income settings, RVV was poorly immunogenic in this cohort (24%
318 seroconversion). The reasons for this are unclear, but dynamic changes in the
319 microbiota at this age may influence mucosal immune responses to an oral vaccine.
320 However, we demonstrate here that there is no distinct gut microbiome signature that
321 distinguishes RVV seroconverters from non-seroconverters. Hence, poor vaccine
322 seroconversion in this population does not appear to be explained by the gut
323 microbiome.

The infant gut microbiome and rotavirus vaccine immunogenicity in rural Zimbabwean infants

324 A handful of previous studies have demonstrated conflicting evidence for the
325 association between the infant gut microbiome and oral RVV efficacy. A previous
326 analysis of 170 infants in south India, using 16S amplicon sequencing, failed to find
327 an association between the commensal infant gut microbiome and RVV
328 seroconversion [16]. In the same study, however, RVV seroconverters were more
329 likely to harbour at least one bacterial enteropathogen than non-seroconverters.
330 Conversely, two separate studies in Ghana (n=20) [18] and Pakistan (n=78) [17],
331 employing HITChip microarrays rather than next-generation sequencing, both
332 demonstrated that the gut microbiome of RVV seroconverters differed significantly to
333 non-seroconverters. Both of these studies also reported that the gut microbiome of
334 seroconverters versus non-seroconverters were more similar to infants from a high-
335 income setting in the Netherlands. However, the taxa associated with RVV
336 seroconversion differed between countries. Higher relative abundances of Clostridium
337 cluster XI and Proteobacteria were associated with seroconversion in Pakistan, whilst
338 higher *Streptococcus bovis* and lower Bacteroidetes were associated with
339 seroconversion in Ghana.

340 Due to the methodological differences in sequencing and the geographic
341 differences in the cohorts, it is difficult to draw comparisons with these previous
342 studies. Geographic setting has a major influence on gut microbiome composition and
343 inter-individual variation between children across geographical settings is greater than
344 in adults [33]. The results presented here, using gold-standard metagenome
345 sequencing, failed to find a clear infant microbiome signature that distinguished RVV
346 seroconverters from non-seroconverters. Previous evidence shows that the strongest
347 contributor to infant gut microbiome composition in early-life is exclusivity of

The infant gut microbiome and rotavirus vaccine immunogenicity in rural Zimbabwean infants

348 breastfeeding [34], which was extremely high in this cohort (>80%) due to study
349 interventions designed to promote early and exclusive breastfeeding. Hence, any gut
350 microbiome signatures associated with RVV seroconversion may be outweighed by
351 the influence of breastfeeding and other exposures on the early-life microbiome.

352 We recently reported that enteropathogen carriage was not associated with
353 RVV seroconversion in this cohort [22]. The results presented here extend these
354 observations by showing that neither commensal nor pathogenic enteric microbes
355 influenced RVV seroconversion. Oral RVV is taken up in the small intestine, whereas
356 the gut microbiome and enteropathogen carriage measured in stool largely reflect the
357 colonic intestinal environment. This may partly explain why we observed no
358 association between the stool microbiota and RVV seroconversion in this cohort.
359 Future studies examining the small intestinal microbiota may provide greater insight
360 into the potential interaction between the commensal gut microbiome and oral
361 vaccines. It remains unclear what biological factors contribute to poor RVV
362 immunogenicity in low-income settings. Improved WASH enhanced RVV
363 immunogenicity by 50% in this cohort [20], yet had no impact on enteropathogen
364 carriage [21] or diarrhea [19]. In this subset of infants, WASH similarly had no
365 significant impact on the early-life gut microbiome, suggesting that the effect of WASH
366 on RVV immunogenicity is not driven through the gut microbiome. Hence, the causal
367 pathway linking improved WASH with improved RVV seroconversion remains
368 unexplained and complex.

369 This study benefited from a well-characterized cohort of infants from a large,
370 community-based, cluster randomized trial. RVV seroconversion, measured in a
371 subset of infants, was 23.7% rate despite high vaccine coverage, demonstrating its

The infant gut microbiome and rotavirus vaccine immunogenicity in rural Zimbabwean infants

372 suitability as a representative infant population with low RVV immunogenicity. Within
373 this subgroup, we have previously investigated and reported on a number of
374 environmental factors associated with RVV seroconversion including enteropathogen
375 carriage, WASH, household factors, birthweight and nutritional status [20, 22, 32].
376 Hence the data presented here, albeit negative, add to the evidence base of RVV
377 immunogenicity in a unique, well-characterised cohort by contributing unique insight
378 into the intestinal milieu and its association with oral vaccine efficacy. We employed
379 whole metagenome shotgun sequencing, which has not previously been extensively
380 conducted in low-income settings, allowing us to examine both taxonomic and
381 functional microbiome variables in relation to RVV seroconversion. It is also one of the
382 very few high-resolution, metagenomic datasets from infants in a rural, non-
383 industrialized setting.

384 The study is limited by its relatively small sample size, which is partly due to the
385 low seroconversion rate in this population, the number of stool samples available for
386 sequencing analysis and the criteria of sample selection within a 30-day time-window
387 close to vaccination. This arbitrary time-window was based on the hypothesis that the
388 intestinal environment around the time of vaccination may alter vaccine efficacy and
389 was chosen to complement our previous analyses in this same cohort using the same
390 cut-off around vaccination [22]. The study is limited by this chosen time-window which
391 may lead to confounding effects of age on any potential gut microbiome associations.
392 To mitigate this, we adjusted for age in all regression models and also performed
393 sensitivity analyses using a restricted 14-day time window and analysing a subset of
394 'early' samples collected before 43 days of age (median age of sample set). Secondly,
395 the outcomes assessed in this study (seroconversion and seropositivity) may not be

The infant gut microbiome and rotavirus vaccine immunogenicity in rural Zimbabwean infants

396 accurate correlates of vaccine protection. We focussed on seroconversion as a
397 primary outcome as this depends on both pre and post-vaccine titres and also included
398 seropositivity as a secondary analysis. However, as we and others have reported [32],
399 natural rotavirus infection prior to vaccination may confound IgA titres which limits both
400 seroconversion and seropositivity in particular as an outcome. Furthermore,
401 seroconversion and seropositivity are not perfect correlates of protection against
402 rotavirus protection [35]. Thirdly, due to the difficulties in obtaining viral reads from
403 stool metagenomic data, we were unable to determine the impact of enteroviruses on
404 RVV seroconversion, which has been hypothesized previously to be associated with
405 RVV immunogenicity [16]. Specific analysis of the infant virome may shed more light
406 on RVV underperformance.

407 In conclusion, we found no clear stool microbiome signature associated with
408 oral RVV immunogenicity in rural Zimbabwean infants. Further research into other
409 intestinal and additional biological pathways that explain poor oral vaccine
410 immunogenicity in low-resource settings is warranted.

411

412 **FUNDING**

413 This work was supported by the Wellcome Trust [203905/Z/16/Z to JAC,
414 206455/Z/17/Z to RCR and 093768/Z/10/Z and 108065/Z/15/Z to AJP]. The SHINE
415 trial was funded by the Bill and Melinda Gates Foundation [OPP1021542 and
416 OPP113707]; UK Department for International Development (UK Aid); Swiss Agency
417 for Development and Cooperation and US National Institutes of Health
418 [2R01HD060338-06]. The study funders approved the trial design, but were not
419 involved in data collection, analysis, interpretation, or manuscript preparation.

420

421 **CONFLICT OF INTEREST**

422 The authors declare no conflicts of interest

423

424

425 **ACKNOWLEDGEMENTS**

426 The authors thank all the mothers, babies and their families who participated in THE
427 SHINE trial. The authors gratefully acknowledge the leadership and staff of the
428 Ministry of Health and Child Care in Chirumanzu and Shurugwi districts and Midlands
429 Province (especially environmental health, nursing and nutrition) for their roles in
430 operationalization of the study procedures. The authors acknowledge the Ministry of
431 Local Government officials in each district who supported and facilitated field
432 operations. The authors also acknowledge Monica M. McNeal for her invaluable
433 support in setting up the anti-rotavirus IgA assay.

434

435

436 **All authors attest they meet the ICMJE criteria for authorship.**

The infant gut microbiome and rotavirus vaccine immunogenicity in rural Zimbabwean infants

REFERENCES

1. Collaborators GDD. Estimates of the global, regional, and national morbidity, mortality, and aetiologies of diarrhoea in 195 countries: a systematic analysis for the Global Burden of Disease Study 2016. *Lancet Infect Dis* **2018**; 18(11): 1211-28.
2. Patel M, Shane AL, Parashar UD, Jiang B, Gentsch JR, Glass RI. Oral rotavirus vaccines: how well will they work where they are needed most? *J Infect Dis* **2009**; 200 Suppl 1: S39-48.
3. Ruiz-Palacios GM, Pérez-Schael I, Velázquez FR, et al. Safety and efficacy of an attenuated vaccine against severe rotavirus gastroenteritis. *N Engl J Med* **2006**; 354(1): 11-22.
4. Vesikari T, Matson DO, Dennehy P, et al. Safety and efficacy of a pentavalent human-bovine (WC3) reassortant rotavirus vaccine. *N Engl J Med* **2006**; 354(1): 23-33.
5. Zaman K, Dang DA, Victor JC, et al. Efficacy of pentavalent rotavirus vaccine against severe rotavirus gastroenteritis in infants in developing countries in Asia: a randomised, double-blind, placebo-controlled trial. *Lancet* **2010**; 376(9741): 615-23.
6. Armah GE, Sow SO, Breiman RF, et al. Efficacy of pentavalent rotavirus vaccine against severe rotavirus gastroenteritis in infants in developing countries in sub-Saharan Africa: a randomised, double-blind, placebo-controlled trial. *Lancet* **2010**; 376(9741): 606-14.
7. Kotloff KL, Nataro JP, Blackwelder WC, et al. Burden and aetiology of diarrhoeal disease in infants and young children in developing countries (the Global Enteric Multicenter Study, GEMS): a prospective, case-control study. *Lancet* **2013**; 382(9888): 209-22.
8. Parker EP, Ramani S, Lopman BA, et al. Causes of impaired oral vaccine efficacy in developing countries. *Future Microbiol* **2018**; 13: 97-118.

The infant gut microbiome and rotavirus vaccine immunogenicity in rural Zimbabwean infants

9. Church JA, Parker EP, Kirkpatrick BD, Grassly NC, Prendergast AJ. Interventions to improve oral vaccine performance: a systematic review and meta-analysis. *Lancet Infect Dis* **2019**; 19(2): 203-14.
10. Robertson RC, Manges AR, Finlay BB, Prendergast AJ. The Human Microbiome and Child Growth - First 1000 Days and Beyond. *Trends Microbiol* **2019**; 27(2): 131-47.
11. Uchiyama R, Chassaing B, Zhang B, Gewirtz AT. Antibiotic treatment suppresses rotavirus infection and enhances specific humoral immunity. *J Infect Dis* **2014**; 210(2): 171-82.
12. Shi Z, Zou J, Zhang Z, et al. Segmented Filamentous Bacteria Prevent and Cure Rotavirus Infection. *Cell* **2019**; 179(3): 644-58.e13.
13. de Jong SE, Olin A, Pulendran B. The Impact of the Microbiome on Immunity to Vaccination in Humans. *Cell Host Microbe* **2020**; 28(2): 169-79.
14. Lynn MA, Tumes DJ, Choo JM, et al. Early-Life Antibiotic-Driven Dysbiosis Leads to Dysregulated Vaccine Immune Responses in Mice. *Cell Host Microbe* **2018**; 23(5): 653-60.e5.
15. Harris VC, Haak BW, Handley SA, et al. Effect of Antibiotic-Mediated Microbiome Modulation on Rotavirus Vaccine Immunogenicity: A Human, Randomized-Control Proof-of-Concept Trial. *Cell Host Microbe* **2018**; 24(2): 197-207.e4.
16. Parker EPK, Praharaj I, Zekavati A, et al. Influence of the intestinal microbiota on the immunogenicity of oral rotavirus vaccine given to infants in south India. *Vaccine* **2018**; 36(2): 264-72.
17. Harris V, Ali A, Fuentes S, et al. Rotavirus vaccine response correlates with the infant gut microbiota composition in Pakistan. *Gut Microbes* **2018**; 9(2): 93-101.

The infant gut microbiome and rotavirus vaccine immunogenicity in rural Zimbabwean infants

18. Harris VC, Armah G, Fuentes S, et al. Significant Correlation Between the Infant Gut Microbiome and Rotavirus Vaccine Response in Rural Ghana. *J Infect Dis* **2017**; 215(1): 34-41.
19. Humphrey JH, Mbuya MNN, Ntozini R, et al. Independent and combined effects of improved water, sanitation, and hygiene, and improved complementary feeding, on child stunting and anaemia in rural Zimbabwe: a cluster-randomised trial. *Lancet Glob Health* **2019**; 7(1): e132-e47.
20. Church JA, Rukobo S, Govha M, et al. The impact of improved water, sanitation and hygiene on oral rotavirus vaccine immunogenicity in Zimbabwean infants: sub-study of a cluster-randomized trial. *Clin Infect Dis* **2019**.
21. Rogawski McQuade ET, Platts-Mills JA, Gratz J, et al. Impact of Water Quality, Sanitation, Handwashing, and Nutritional Interventions on Enteric Infections in Rural Zimbabwe: The Sanitation Hygiene Infant Nutrition Efficacy (SHINE) Trial. *J Infect Dis* **2020**; 221(8): 1379-86.
22. Church JA, Rogawski McQuade ET, Mutasa K, et al. Enteropathogens and Rotavirus Vaccine Immunogenicity in a Cluster Randomized Trial of Improved Water, Sanitation and Hygiene in Rural Zimbabwe. *Pediatr Infect Dis J* **2019**; 38(12): 1242-8.
23. Prendergast AJ, Humphrey JH, Mutasa K, et al. Assessment of Environmental Enteric Dysfunction in the SHINE Trial: Methods and Challenges. *Clin Infect Dis* **2015**; 61 Suppl 7: S726-32.
24. Gough EK, Prendergast AJ, Mutasa KE, Stoltzfus RJ, Manges AR, Team SHINEST. Assessing the Intestinal Microbiota in the SHINE Trial. *Clin Infect Dis* **2015**; 61 Suppl 7: S738-44.
25. UNICEF. Zimbabwe: WHO and UNICEF estimates of immunization coverage: 2016 revision. . **2016**.

The infant gut microbiome and rotavirus vaccine immunogenicity in rural Zimbabwean infants

26. Bernstein DI, Smith VE, Sherwood JR, et al. Safety and immunogenicity of live, attenuated human rotavirus vaccine 89-12. *Vaccine* **1998**; 16(4): 381-7.
27. Ward RL, Bernstein DI, Shukla R, et al. Effects of antibody to rotavirus on protection of adults challenged with a human rotavirus. *J Infect Dis* **1989**; 159(1): 79-88.
28. Truong DT, Franzosa EA, Tickle TL, et al. MetaPhlan2 for enhanced metagenomic taxonomic profiling. *Nat Methods* **2015**; 12(10): 902-3.
29. Franzosa EA, McIver LJ, Rahnavard G, et al. Species-level functional profiling of metagenomes and metatranscriptomes. *Nat Methods* **2018**; 15(11): 962-8.
30. Mandal S, Van Treuren W, White RA, Eggesbø M, Knight R, Peddada SD. Analysis of composition of microbiomes: a novel method for studying microbial composition. *Microb Ecol Health Dis* **2015**; 26: 27663.
31. Wirbel J, Zych K, Essex M, et al. SIAMCAT: user-friendly and versatile machine learning workflows for statistically rigorous microbiome analyses. *bioRxiv* **2020**.
32. Church JA, Chasekwa B, Rukobo S, et al. Predictors of oral rotavirus vaccine immunogenicity in rural Zimbabwean infants. *Vaccine* **2020**; 38(13): 2870-8.
33. Yatsunenkov T, Rey FE, Manary MJ, et al. Human gut microbiome viewed across age and geography. *Nature* **2012**; 486(7402): 222-7.
34. Stewart CJ, Ajami NJ, O'Brien JL, et al. Temporal development of the gut microbiome in early childhood from the TEDDY study. *Nature* **2018**; 562(7728): 583-8.
35. Clarke E, Desselberger U. Correlates of protection against human rotavirus disease and the factors influencing protection in low-income settings. *Mucosal Immunol* **2015**; 8(1): 1-17.

FIGURE LEGENDS

Fig 1. Study flow. (a) Flow diagram of stool samples included in the analysis originating from the SHINE trial. (b) Timing of stool samples included in the analysis and associated RVV doses.

Fig. 2. Beta diversity analysis by seroconversion status and early vs late samples. Principal coordinates analysis (PCoA) and associated Bray-Curtis distances to assess beta diversity of seroconversion status (a) and early vs late samples (b) as assessed using PERMANOVA analysis.

Fig. 3. Alpha diversity and taxonomic composition. (a) Alpha diversity, as assessed using the Shannon index and number of observed species, between seroconverters and non-seroconverters. (b) Associations between alpha diversity, age at stool sample collection and RV IgA titre. (c) Phylum composition of entire dataset. (d) Species composition in seroconverters vs non-seroconverters.

Fig. 4. Differential abundance analysis and machine learning models of taxonomic composition. (a) Species that differ significantly in relative abundance between early (≤ 42 days) and late (> 42 days) samples as assessed by Wilcoxon ranked sum test (q value < 0.05). Random Forest machine learning classification model of (a) early vs late samples and (b) seroconverters vs non-seroconverters using all microbiome species.

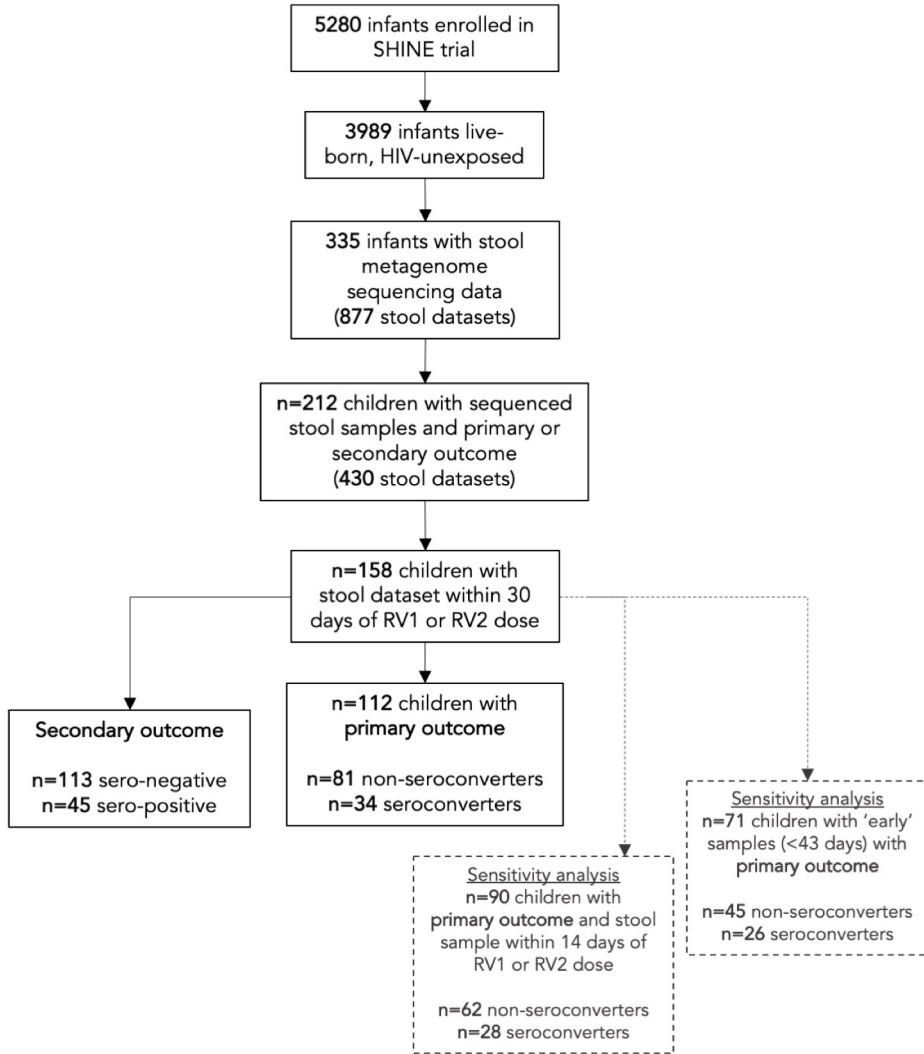
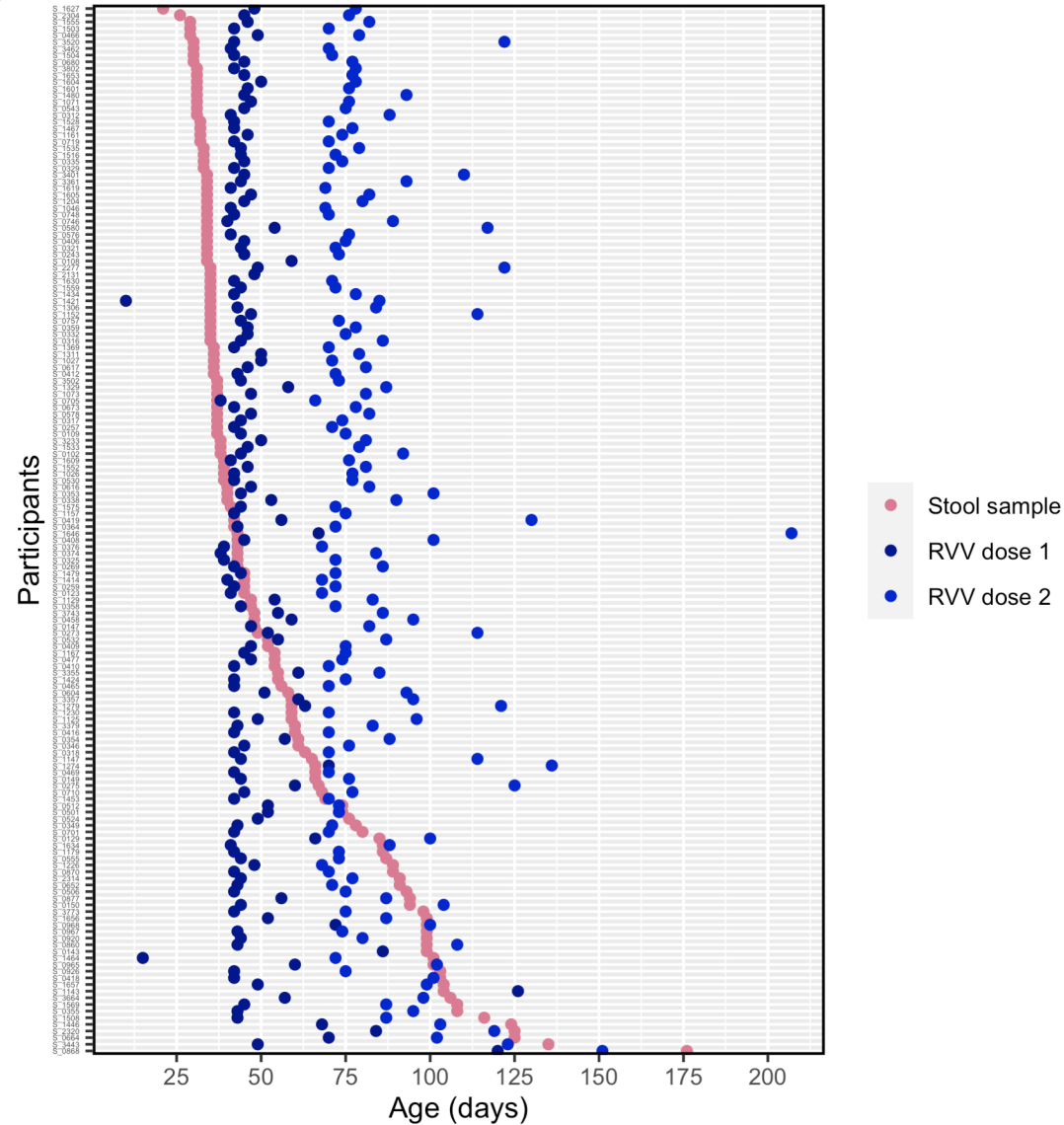
The infant gut microbiome and rotavirus vaccine immunogenicity in rural
Zimbabwean infants

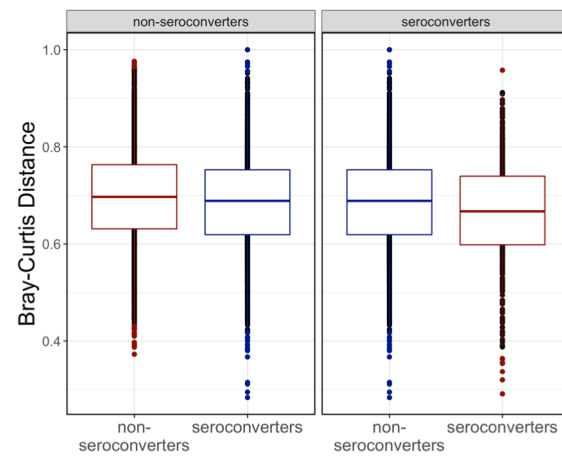
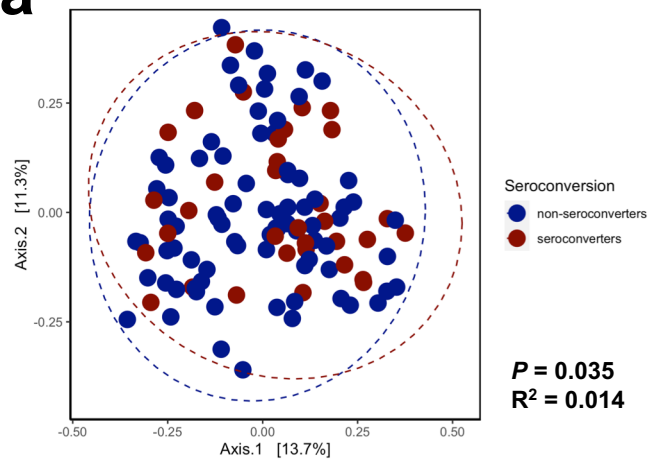
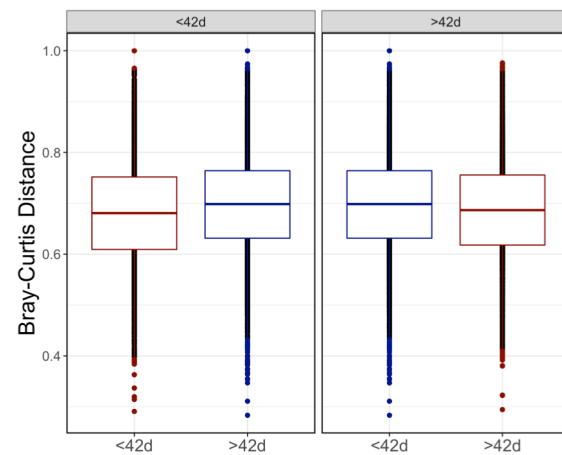
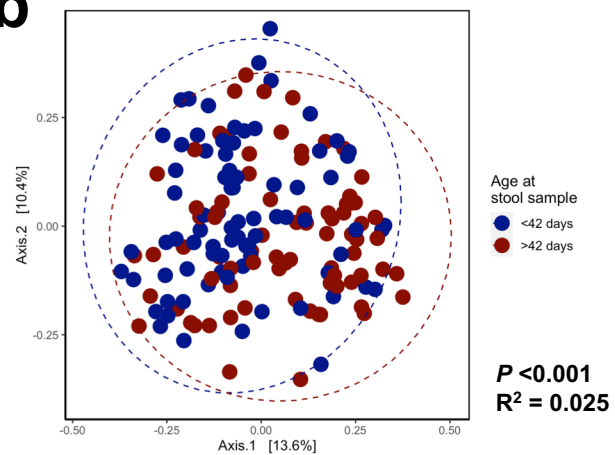
Fig. 5. Functional metagenomic analysis. Enzyme commission annotations that differ significantly in relative abundance between early vs late samples (Wilcoxon rank sum test; q value < 0.05 ; top 20 ECs shows as ranked by q -value).

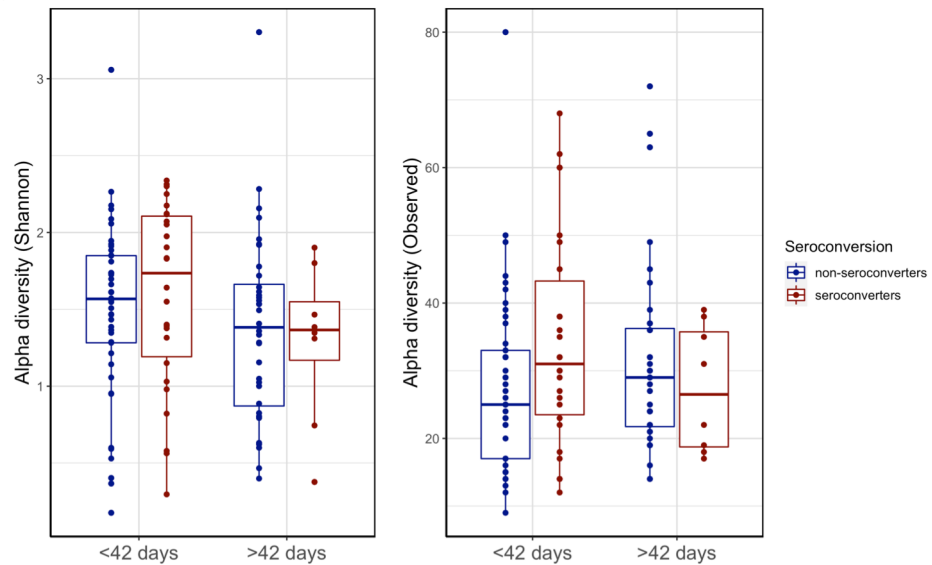
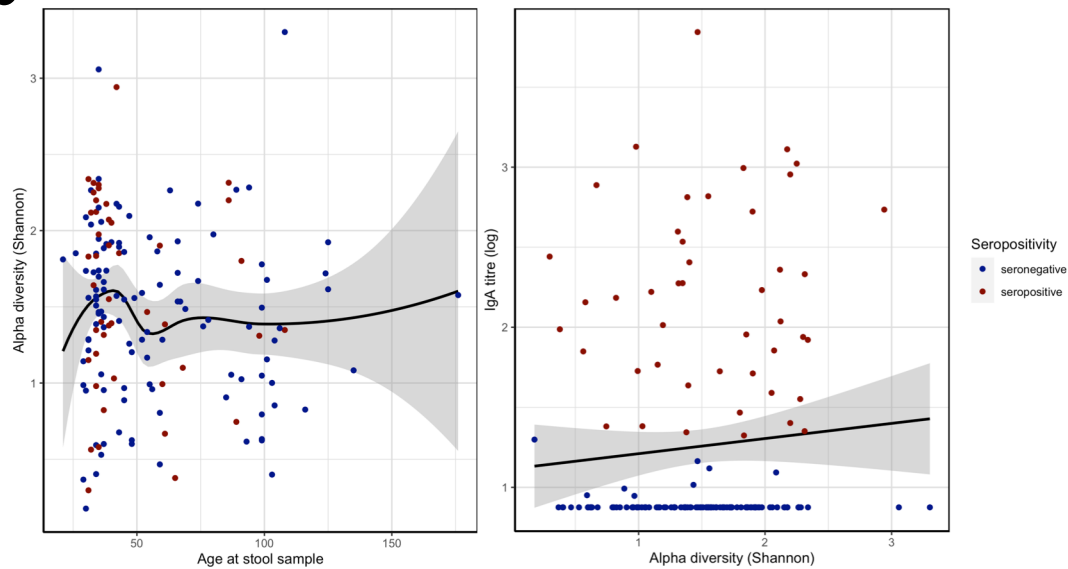
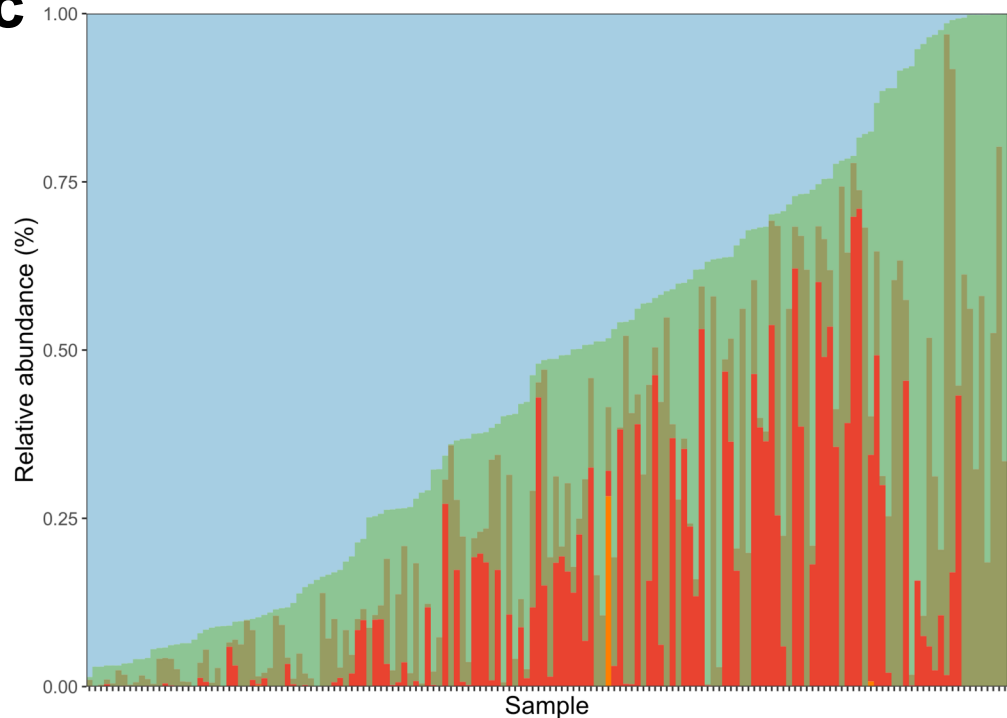
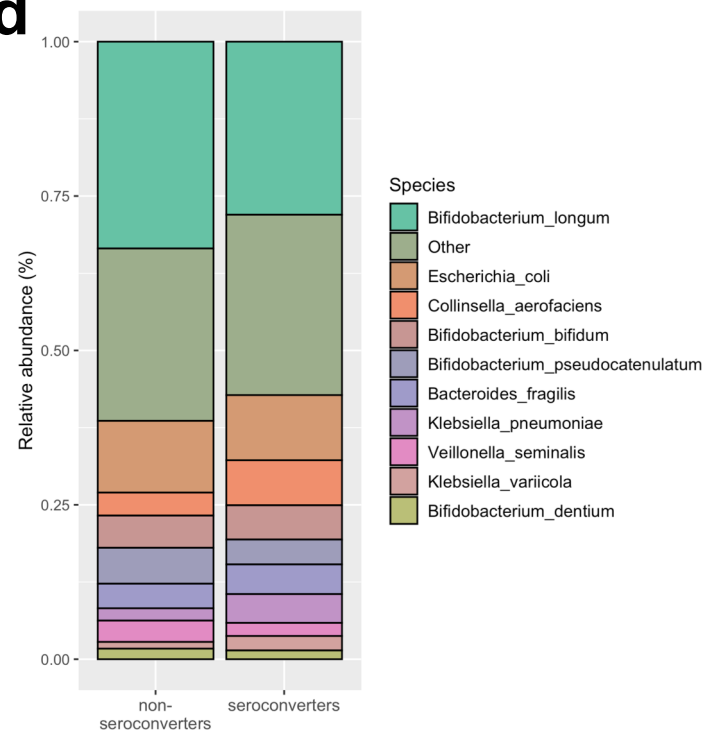
The infant gut microbiome and rotavirus vaccine immunogenicity in rural Zimbabwean infants

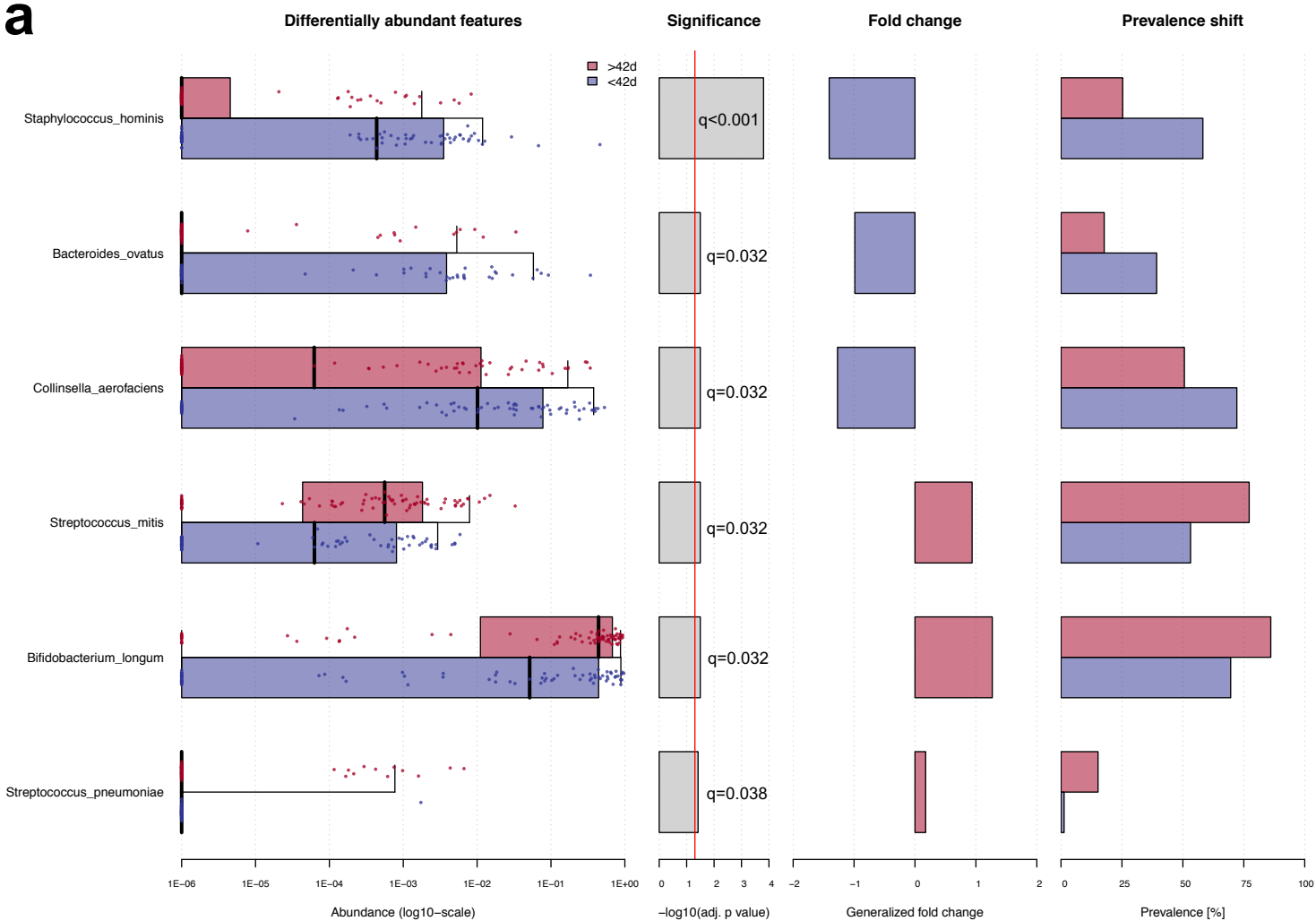
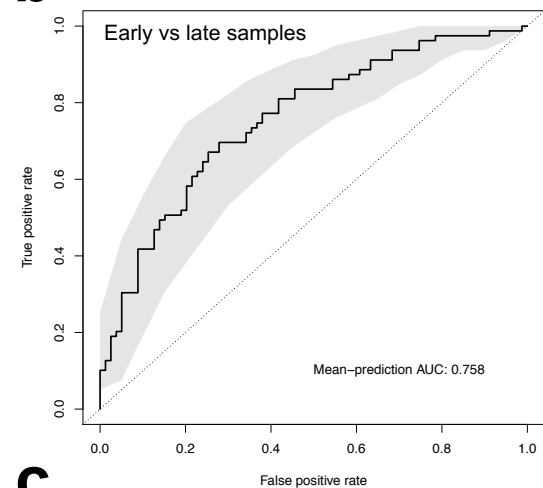
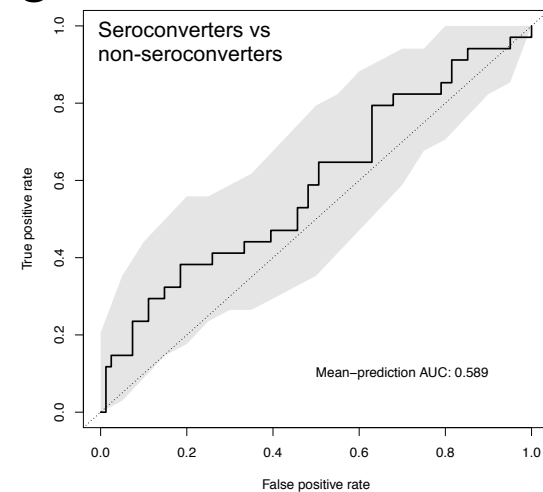
Table 1.

	Seroconversion			Seropositivity		
	Non-seroconverters	Seroconverters	P value	Seronegative	Seropositive	P value
	N=81	N=34		N=113	N=45	
Female, %	61.7	55.9		59.3	48.9	
Birthweight, kg (sd)	3.17 (0.48)	3.06 (0.55)	0.303	3.11 (0.49)	3.06 (0.50)	0.564
Low birthweight, %	4.94	11.8		7.96	8.89	
Vaginal delivery, %	96.3	97.1		95.6	95.6	
Institutional delivery, %	91.2	94.1		93.8	95.6	
Exclusively breastfed (at month 3), %	90.0	97.1		90.1	95.5	
Concurrent OPV vaccination, %	95.7	93.8		96.5	92.1	
Age at stool sample, days [IQR]	38 [34; 66]	37 [33; 41]	0.222	45 [35; 78]	38 [34; 59]	0.034
Age at first RV dose, days [IQR]	46 [43; 54]	44 [42;45]	0.002	45 [42; 50]	44 [42; 45]	0.019
Age at second RV dose, days [IQR]	82 [74; 100]	77 [75;82]	0.037	78 [72; 93]	77 [75; 83]	0.669
LAZ at 1 month visit (sd)	-0.88 (1.09)	-0.80 (1.43)	0.783	-1.00 (1.19)	-0.73 (1.33)	0.267
LAZ at 3 month visit (sd)	-0.90 (1.07)	-0.84 (1.19)	0.786	-0.94 (1.13)	-0.88 (1.25)	0.791
WASH trial arm, %	42.0	47.1		41.6	51.1	
Born in RV season, %	33.3	44.1		29.2	37.8	
Household size	5 [4; 6]	5 [4; 6]	0.126	5 [4; 6]	5 [4; 6]	0.298
Mother age at baseline, years (sd)	27.9 (5.8)	27.3 (6.1)	0.659	27.6 (6.0)	27.2 (6.5)	0.787
Mother height at baseline, cm (sd)	160.7 (6.2)	160.7 (6.0)	0.983	160 (5.9)	161 (6.2)	0.722

a**b**

a**b**

a**b****c****d**

a**b****c**

Differentially abundant features showing top 20 features

Significance

