

Vascular Inflammation in Lungs of Patients with Fatal Coronavirus Disease 2019 (COVID-19) Infection: Possible role for the NLRP3 inflammasome

Oindrila Paul¹, Jian Qin Tao¹, Leslie Litzky², Michael Feldman², Kathleen Montone², Chamith Rajapakse³, Christian Bermudez⁴, Shampa Chatterjee^{1#}

¹Institute for Environmental Medicine and Department of Physiology, ²Department of Pathology, ³Department of Radiology, ⁴Department of Surgery, University of Pennsylvania School of Medicine, Philadelphia PA 19104

#Address Correspondence to:

Shampa Chatterjee, PhD

Institute for Environmental Medicine and Department of Physiology,

University of Pennsylvania Perelman School of Medicine, 3620 Hamilton Walk, Philadelphia, PA 19104, USA

Email: shampac@penmedicine.upenn.edu

Telephone: 215 898 9101

ABSTRACT: Hyperinflammation is a key event that occurs with SARS-CoV-2 infection. In the lung, hyperinflammation leads to structural damage to tissue. To date, numerous lung histological studies have shown extensive alveolar damage, but there is scarce documentation of vascular inflammation in postmortem lung tissue. Here we document histopathological features and monitor the NLRP3 inflammasome in fatal cases of disease caused by SARS Cov2 (COVID-19). We posit that inflammasome formation along the vessel wall is a characteristic of lung inflammation that accompanies COVID-19 and that it is a probable candidate that drives amplification of inflammation post infection.

INTRODUCTION:

It has been more than a year since the pandemic caused by the novel SARS-CoV-2 corona virus (Severe Acute Respiratory Syndrome Coronavirus), also known as COVID-19 has affected large populations globally (13, 39). The virus disproportionately affects the respiratory system and a major cause of fatality is the acute respiratory distress syndrome (ARDS) that accompanies the infection (10, 19). Autopsy-based lung histological studies have been an invaluable tool in understanding the pathobiology of COVID-19; indeed these have shown indications of inflammation, edema, coagulopathy and fibrosis (6, 10, 14, 36, 40).

COVID-19 manifests itself under a wide spectrum of symptoms, but it can broadly be classified as an inflammatory disease where excessive inflammation is the main driver of poor clinical outcome (8, 15). In this direction, the vascular endothelium, a dynamically adaptable interface that is actively involved in recruitment of inflammatory cells, possibly plays a crucial role in regulation, progression, and amplification of inflammation. While post mortem findings have shown alveolar damage, early or intermediate proliferative phase, and presence of thrombi and signs of inflammation in the lungs (6, 10, 40), histopathology in the context of vascular inflammation and altered vascular structures has been somewhat scarce (1, 36).

Inflammatory processes involve the participation of inflammasomes that are multimeric platforms assembled in response to pathogenic stimuli. Dysregulated inflammasome signaling has been well established as a pivotal event in hyper-inflammatory syndromes (25, 33, 37). Among the inflammasomes, the NLRP3 inflammasome comprising of the NLRP3 subunit, ASC and caspase-1, is well established to be activated in response to microbial infection (2, 29) and to drive cell death (3, 31). It is also involved in COVID-19, as evidenced by the detection of inflammasome subunits and products in the sera and lung tissue of COVID-19 patients (27, 34). However, there are no reports of the presence of the inflammasome in the pulmonary vasculature with COVID-19 infection. As the vasculature seems to be crucial in inflammation accompanying COVID-19, the status of NLRP3 along the vascular wall needs to be documented.

We posit that inflammasome formation is characteristic of pulmonary vascular inflammation that accompanies COVID-19. The purpose of this study is to contextualize vascular features in lung tissue in fatal cases of COVID-19 and ascertain NLRP3 expression along the vascular wall. Here we document the major histological findings of 8 postmortem examinations done on patients with clinically confirmed COVID-19. This study contributes to the growing data on this topic (4, 6, 10, 16, 23, 28) .

MATERIALS AND METHODS:

We analyzed lung tissue samples of 8 patients that died of COVID-19 in 2020. Written informed consent was obtained for postmortem examination from the next of kin of these patients. All patients had SARS-CoV-2 infection confirmed by real time PCR analysis at the time of hospital admission. Autopsies were done by trained personnel using personal protective equipment in accordance with the recommendations of the University Of Pennsylvania School Of Medicine.

Tissue blocks taken from the most representative areas of the lung (as identified by macroscopic examination) were fixed in formalin. Paraffin embedded sections of 3 to 5 μ m thickness were stained with hematoxylin and eosin (H & E). Images were captured on the Aperio Pathology System and visualized by ImageScope (Leica Biosystems, Buffalo Grove, IL). High and low powered fields were selected for evaluation. Inflammation and inflammation induced cell death (pyroptosis) were characterized by immunostaining for NLRP3 inflammasome and caspase respectively. Sections were deparaffinized; after antibody retrieval, were stained using anti-human NLRP3 monoclonal antibody at 1:200 or anti-human caspase antibody at 1:100 (both from R&D Systems, Minneapolis, MN). Secondary antibody used was conjugated to Alexa 488 at 1:200 (Life Technologies, Eugene, OR). Appropriate IgG controls were used. Vectashield antifade mounting medium used was from Vector Labs (Burlingame, CA). Images were acquired by epifluorescence microscopy using a Nikon

TMD epifluorescence microscope, equipped a Hamamatsu ORCA-100 digital camera, and MetaMorph imaging software (Universal Imaging, West Chester, PA, USA). Fluorescence images were acquired at excitation= 488 nm; all images were acquired with the same exposure and acquisition settings as reported previously (5, 7, 32).

RESULTS:

Patient demographics and clinical information are summarized in Table 1 and histological findings in Table 2. Patients were 4 men and 4 women, with a mean age of 71.8 years (SD 13.9). All sections from all patients showed diffuse alveolar damage and intraalveolar fibrin deposition. All sections also stained positively for the NLRP3 inflammasome associated markers that were assessed.

Upon light microscopic examination, the lungs of all patients showed extensive alteration of lung microstructure, were patchy and congested (Figure 1A); closer inspection revealed fibrin exudation into alveolar space, thrombi and fibroblastic proliferation, hyaline membrane, fibrin deposition, and early and advanced proliferative phase of diffuse alveolar damage (Figure 1B). Thrombi and microthrombi were identified in 7 of the 8 patients (Figure 2A). Vascular thrombi in small vessels were associated with areas of diffuse alveolar damage. Microthrombi were observed in alveolar septa. Thrombi and microthrombi were widespread in all the samples examined and found in >75% of the fields imaged. Most vessels were obliterated as shown in Figure 2 B. Histological findings are detailed in the legends and in Table 2.

We next assessed the expression of the NLRP3 subunit and caspase-1 in all samples. Intense expression of the NLRP3 and caspase-1, as observed from the green fluorescent signal is shown in Figure 3. Fluorescence around the vessel walls implied NLRP3 expression along the endothelial layer (Figure 3A). In contrast, the effector enzyme, caspase-1 was widely distributed throughout the lungs and was not limited to the vascular structures (Figure 3B).

DISCUSSION:

COVID-19 has been described largely as a respiratory disease; indeed, the respiratory tract and alveolus are amongst the primary sites of infection. However, it is also an inflammatory disease where release of inflammatory cytokines is the cause of organ injury and damage. As the endothelium is the converging site of the inflammation due to its activation (expression of adhesion molecules and cytokines) that leads to immune cell recruitment, it is reasonable to conclude that COVID-19 is potentially a vascular disease (1, 9, 21). While this would be an indirect impact of the virus, more recent studies provide evidence of a direct effect i.e. infection by SARS-CoV-2 virus of endothelial cells (24). Our inspection of autopsies of the 8 COVID-19 patients showed macro and microthrombi in almost all fields imaged, indicating coagulation pathology. As is well established, coagulation is closely linked to endothelial inflammation signaling; inflammatory moieties on the endothelium increase leukocyte infiltration and alter coagulation control driving a procoagulant direction (35). Thus, the COVID-19 which is increasingly being described as a vascular disease is perhaps more accurately defined as a pathology which has its origins in “endothelial inflammation” signaling.

Inflammasome activation on the endothelium plays a major part in cell death and injury with inflammation. The NLRP3 inflammasome is a multiprotein complex comprised of three basic components: (1) A sensor such as a NOD-like receptor (NLR) (2) the adaptor protein apoptosis-associated speck-like protein containing a caspase-recruitment domain (ASC) and (3) the inflammatory cysteine aspartase caspase-1. The assembly of this complex leads to release of an active form of caspase-1 which then exerts its catalytic activity on the pro-inflammatory cytokines (IL-1 β) that after their release perpetuate cell death, specifically inflammation induced cell death or pyroptosis (3, 31).

A recent report showed high levels of NLRP3 inflammasome and caspase-1 in patients with fatal COVID (34). This is not surprising as increased NLRP3 is associated with various inflammatory lung pathologies including

acute lung injury and ARDS (12, 20). The COVID-19 lung autopsies in this study, showed NLRP3 expression throughout the lung, but intense expression was seen along the lung vessel walls implying inflammasome expression on the endothelium. Caspase-1 expression was observed throughout the lungs including in the vascular structures. Caspase-1 is considered as a key pyroptotic mediator; it reportedly drives pulmonary vascular endothelial cell death (31). Elsewhere too, high caspase-1 expression has been reported with both COVID-19 (34) and with other lung inflammatory pathologies (30); however its expression on the endothelium or vascular wall with COVID-19 has not been documented. Possibly the NLRP3-caspase-1 axis can directly (via pyroptosis) or indirectly (via NLRP3 driven chemotactic immune cell recruitment (17)) injure the endothelial layer. This confluence of vascular injury, thrombosis and dysregulated inflammation seems to propagate lung damage with COVID-19 and supports a pivotal role for the pulmonary endothelium in severe and fatal COVID-19.

As NLRP3 inflammasome driven pyroptosis is being considered to play a leading role in the pathogenesis of multi-organ failure with COVID-19 (22), there is some speculation on the mechanisms by which inflammasome activation occurs upon SARS-CoV-2 infection. One possibility is that the SARS-CoV-2 spike protein's binding to cell surface-expressed angiotensin-converting enzyme 2 (ACE2) directly triggers its enzymatic activation and alters membrane polarity that can result in activation of NLRP3 inflammasome (18). Or NLRP3 could be activated via Angiotensin II which is reported to facilitate the assembly of the inflammasome. A third possibility could be via interaction of damage associated molecular patterns (DAMPs that are released post infection) and members of the complement cascade with the SARS-CoV-2 virus. Potent cleavage fragments of DAMPs and complement cascade can potentially activate the inflammasome (26). Yet another possibility is that the stretch from ventilation activates the inflammasome (38). Once activated, the NLRP3 signaling cascade would lead to release of caspase-1 and interleukin-1 β that would facilitate pyroptosis.

To the best of our knowledge, this is the first study on NLRP3 expression in the vascular structures in lungs of fatal cases of COVID-19. The origin of several events that exacerbate inflammation and injury with COVID-19 (such as immune cell aggregation and extravasation, edema, formation of thrombi and leukopenia) possibly lies in pulmonary endothelial inflammasome activation and pyroptotic cell death. Therefore, NLRP3 inhibitors have been suggested for as a potential treatment strategy and are currently being explored for management of moderate COVID-19 symptoms (NCT04540120) (11, 27).

A major drawback of this study is that our sample size is small. Moreover, paraffin based post mortem samples offer a snapshot of the disease and cannot recreate the evolving disease process. Histology is also impacted with the effects of clinical care and treatment as comorbidities, ventilation and medication pose as challenges in interpretation of results. Nevertheless, this study identifies endothelial NLRP3 inflammation, and documents thrombi and altered vascular structures in the lungs of fatal COVID-19 patients. Overall, this report adds to the growing list of studies on COVID-19 associated pulmonary pathology that highlight the importance of vascular endothelial inflammation in progression to severe and fatal disease.

SOURCES OF FUNDING:

This research was supported by NIH R56 HL139559.

REFERENCES:

1. **Ackermann M, Verleden SE, Kuehnel M, Haverich A, Welte T, Laenger F, Vanstapel A, Werlein C, Stark H, Tzankov A, Li WW, Li VW, Mentzer SJ, and Jonigk D.** Pulmonary Vascular Endothelialitis, Thrombosis, and Angiogenesis in Covid-19. *N Engl J Med* 383: 120-128, 2020.
2. **Anand PK, Malireddi RK, and Kanneganti TD.** Role of the nlrp3 inflammasome in microbial infection. *Front Microbiol* 2: 12, 2011.
3. **Bergsbaken T, Fink SL, and Cookson BT.** Pyroptosis: host cell death and inflammation. *Nat Rev Microbiol* 7: 99-109, 2009.
4. **Bradley BT, Maioli H, Johnston R, Chaudhry I, Fink SL, Xu H, Najafian B, Deutsch G, Lacy JM, Williams T, Yarid N, and Marshall DA.** Histopathology and ultrastructural findings of fatal COVID-19 infections in Washington State: a case series. *Lancet* 396: 320-332, 2020.
5. **Browning E, Wang H, Hong N, Yu K, Buerk DG, DeBolt K, Gonder D, Sorokina EM, Patel P, De Leon DD, Feinstein SI, Fisher AB, and Chatterjee S.** Mechanotransduction drives post ischemic revascularization through K(ATP) channel closure and production of reactive oxygen species. *Antioxid Redox Signal* 20: 872-886, 2014.
6. **Carsana L, Sonzogni A, Nasr A, Rossi RS, Pellegrinelli A, Zerbi P, Rech R, Colombo R, Antinori S, Corbellino M, Galli M, Catena E, Tosoni A, Gianatti A, and Nebuloni M.** Pulmonary post-mortem findings in a series of COVID-19 cases from northern Italy: a two-centre descriptive study. *Lancet Infect Dis* 20: 1135-1140, 2020.
7. **Chatterjee S, Tao JQ, Johncola A, Guo W, Caporale A, Langham MC, and Wehrli FW.** Acute exposure to e-cigarettes causes inflammation and pulmonary endothelial oxidative stress in nonsmoking, healthy young subjects. *Am J Physiol Lung Cell Mol Physiol* 317: L155-L166, 2019.
8. **Del Valle DM, Kim-Schulze S, Huang HH, Beckmann ND, Nirenberg S, Wang B, Lavin Y, Swartz TH, Madduri D, Stock A, Marron TU, Xie H, Patel M, Tuballes K, Van Oekelen O, Rahman A, Kovatch P, Aberg JA, Schadt E, Jagannath S, Mazumdar M, Charney AW, Firpo-Betancourt A, Mendu DR, Jhang J, Reich D, Sigel K, Cordon-Cardo C, Feldmann M, Parekh S, Merad M, and Gnajatic S.** An inflammatory cytokine signature predicts COVID-19 severity and survival. *Nat Med* 26: 1636-1643, 2020.
9. **Evans PC, Rainger GE, Mason JC, Guzik TJ, Osto E, Stamataki Z, Neil D, Hofer IE, Fragiadaki M, Waltenberger J, Weber C, Bochaton-Piallat ML, and Back M.** Endothelial dysfunction in COVID-19: a position paper of the ESC Working Group for Atherosclerosis and Vascular Biology, and the ESC Council of Basic Cardiovascular Science. *Cardiovasc Res* 116: 2177-2184, 2020.
10. **Fox SE, Akmatbekov A, Harbert JL, Li G, Quincy Brown J, and Vander Heide RS.** Pulmonary and cardiac pathology in African American patients with COVID-19: an autopsy series from New Orleans. *Lancet Respir Med* 8: 681-686, 2020.
11. **Freeman TL, and Swartz TH.** Targeting the NLRP3 Inflammasome in Severe COVID-19. *Front Immunol* 11: 1518, 2020.
12. **Grailer JJ, Canning BA, Kalbitz M, Haggadone MD, Dhond RM, Andjelkovic AV, Zetoune FS, and Ward PA.** Critical role for the NLRP3 inflammasome during acute lung injury. *J Immunol* 192: 5974-5983, 2014.
13. **Guan WJ, Ni ZY, Hu Y, Liang WH, Ou CQ, He JX, Liu L, Shan H, Lei CL, Hui DSC, Du B, Li LJ, Zeng G, Yuen KY, Chen RC, Tang CL, Wang T, Chen PY, Xiang J, Li SY, Wang JL, Liang ZJ, Peng YX, Wei L, Liu Y, Hu YH, Peng P, Wang JM, Liu JY, Chen Z, Li G, Zheng ZJ, Qiu SQ, Luo J, Ye CJ, Zhu SY, and Zhong NS.** Clinical Characteristics of Coronavirus Disease 2019 in China. *N Engl J Med* 382: 1708-1720, 2020.
14. **Gustine JN, and Jones D.** Immunopathology of Hyperinflammation in COVID-19. *Am J Pathol* 191: 4-17, 2021.
15. **Haberman R, Axelrad J, Chen A, Castillo R, Yan D, Izmirly P, Neimann A, Adhikari S, Hudesman D, and Scher JU.** Covid-19 in Immune-Mediated Inflammatory Diseases - Case Series from New York. *N Engl J Med* 383: 85-88, 2020.
16. **Hanley B, Naresh KN, Roufousse C, Nicholson AG, Weir J, Cooke GS, Thursz M, Manousou P, Corbett R, Goldin R, Al-Sarraj S, Abdolrasouli A, Swann OC, Baillon L, Penn R, Barclay WS, Viola P, and Osborn M.** Histopathological findings and viral tropism in UK patients with severe fatal COVID-19: a post-mortem study. *Lancet Microbe* 1: e245-e253, 2020.

17. **Inoue M, Williams KL, Gunn MD, and Shinohara ML.** NLRP3 inflammasome induces chemotactic immune cell migration to the CNS in experimental autoimmune encephalomyelitis. *Proc Natl Acad Sci U S A* 109: 10480-10485, 2012.
18. **Jha A, Kumar V, Haque S, Ayasolla K, Saha S, Lan X, Malhotra A, Saleem MA, Skorecki K, and Singhal PC.** Alterations in plasma membrane ion channel structures stimulate NLRP3 inflammasome activation in APOL1 risk milieu. *Febs J* 287: 2000-2022, 2020.
19. **Jin Y, Yang H, Ji W, Wu W, Chen S, Zhang W, and Duan G.** Virology, Epidemiology, Pathogenesis, and Control of COVID-19. *Viruses* 12: 2020.
20. **Jones HD, Crother TR, Gonzalez-Villalobos RA, Jupelli M, Chen S, Dagvadorj J, Arditi M, and Shimada K.** The NLRP3 inflammasome is required for the development of hypoxemia in LPS/mechanical ventilation acute lung injury. *Am J Respir Cell Mol Biol* 50: 270-280, 2014.
21. **Kumar A, Narayan RK, Kumari C, Faiq MA, Kulandhasamy M, Kant K, and Pareek V.** SARS-CoV-2 cell entry receptor ACE2 mediated endothelial dysfunction leads to vascular thrombosis in COVID-19 patients. *Med Hypotheses* 145: 110320, 2020.
22. **Lee C, and Choi WJ.** Overview of COVID-19 inflammatory pathogenesis from the therapeutic perspective. *Arch Pharm Res* 44: 99-116, 2021.
23. **Nagashima S, Mendes MC, Camargo Martins AP, Borges NH, Godoy TM, Miggiolaro A, da Silva Deziderio F, Machado-Souza C, and de Noronha L.** Endothelial Dysfunction and Thrombosis in Patients With COVID-19-Brief Report. *Arterioscler Thromb Vasc Biol* 40: 2404-2407, 2020.
24. **Nascimento Conde J, Schutt WR, Gorbunova EE, and Mackow ER.** Recombinant ACE2 Expression Is Required for SARS-CoV-2 To Infect Primary Human Endothelial Cells and Induce Inflammatory and Procoagulative Responses. *mBio* 11: 2020.
25. **Raman KS, and Matsubara JA.** Dysregulation of the NLRP3 Inflammasome in Diabetic Retinopathy and Potential Therapeutic Targets. *Ocul Immunol Inflamm* 1-9, 2020.
26. **Ratajczak MZ, and Kucia M.** SARS-CoV-2 infection and overactivation of Nlrp3 inflammasome as a trigger of cytokine "storm" and risk factor for damage of hematopoietic stem cells. *Leukemia* 34: 1726-1729, 2020.
27. **Rodrigues TS, de Sa KSG, Ishimoto AY, Becerra A, Oliveira S, Almeida L, Goncalves AV, Perucello DB, Andrade WA, Castro R, Veras FP, Toller-Kawahisa JE, Nascimento DC, de Lima MHF, Silva CMS, Caetite DB, Martins RB, Castro IA, Pontelli MC, de Barros FC, do Amaral NB, Giannini MC, Bonjorno LP, Lopes MIF, Santana RC, Vilar FC, Auxiliadora-Martins M, Luppino-Assad R, de Almeida SCL, de Oliveira FR, Batah SS, Siyuan L, Benatti MN, Cunha TM, Alves-Filho JC, Cunha FQ, Cunha LD, Frantz FG, Kohlsdorf T, Fabro AT, Arruda E, de Oliveira RDR, Louzada-Junior P, and Zamboni DS.** Inflammasomes are activated in response to SARS-CoV-2 infection and are associated with COVID-19 severity in patients. *J Exp Med* 218: 2021.
28. **Schurink B, Roos E, Radonic T, Barbe E, Bouman CSC, de Boer HH, de Bree GJ, Bulle EB, Aronica EM, Florquin S, Fronczek J, Heunks LMA, de Jong MD, Guo L, du Long R, Lutter R, Molenaar PCG, Neefjes-Borst EA, Niessen HWM, van Noesel CJM, Roelofs J, Snijder EJ, Soer EC, Verheij J, Vlaar APJ, Vos W, van der Wel NN, van der Wal AC, van der Valk P, and Bugiani M.** Viral presence and immunopathology in patients with lethal COVID-19: a prospective autopsy cohort study. *Lancet Microbe* 1: e290-e299, 2020.
29. **Sha W, Mitoma H, Hanabuchi S, Bao M, Weng L, Sugimoto N, Liu Y, Zhang Z, Zhong J, Sun B, and Liu YJ.** Human NLRP3 inflammasome senses multiple types of bacterial RNAs. *Proc Natl Acad Sci U S A* 111: 16059-16064, 2014.
30. **Simpson JL, Phipps S, Baines KJ, Oreo KM, Gunawardhana L, and Gibson PG.** Elevated expression of the NLRP3 inflammasome in neutrophilic asthma. *Eur Respir J* 43: 1067-1076, 2014.
31. **Singla S, and Machado RF.** Death of the Endothelium in Sepsis: Understanding the Crime Scene. *Am J Respir Cell Mol Biol* 59: 3-4, 2018.
32. **Tao JQ, Sorokina EM, Vazquez Medina JP, Mishra MK, Yamada Y, Satalin J, Nieman GF, Nellen JR, Beduhn B, Cantu E, Habashi NM, Jungraithmayr W, Christie JD, and Chatterjee S.** Onset of Inflammation With Ischemia: Implications for Donor Lung Preservation and Transplant Survival. *Am J Transplant* 16: 2598-2611, 2016.
33. **Toews GB.** Cytokines and the lung. *Eur Respir J Suppl* 34: 3s-17s, 2001.
34. **Toldo S, Bussani R, Nuzzi V, Bonaventura A, Mauro AG, Cannata A, Pillappa R, Sinagra G, Nana-Sinkam P, Sime P, and Abbate A.** Inflammasome formation in the lungs of patients with fatal COVID-19. *Inflamm Res* 70: 7-10, 2021.

35. **van Hinsbergh VW.** Endothelium--role in regulation of coagulation and inflammation. *Semin Immunopathol* 34: 93-106, 2012.
36. **Varga Z, Flammer AJ, Steiger P, Haberecker M, Andermatt R, Zinkernagel AS, Mehra MR, Schuepbach RA, Ruschitzka F, and Moch H.** Endothelial cell infection and endotheliitis in COVID-19. *Lancet* 395: 1417-1418, 2020.
37. **Wang Z, Zhang S, Xiao Y, Zhang W, Wu S, Qin T, Yue Y, Qian W, and Li L.** NLRP3 Inflammasome and Inflammatory Diseases. *Oxid Med Cell Longev* 2020: 4063562, 2020.
38. **Wu J, Yan Z, Schwartz DE, Yu J, Malik AB, and Hu G.** Activation of NLRP3 inflammasome in alveolar macrophages contributes to mechanical stretch-induced lung inflammation and injury. *J Immunol* 190: 3590-3599, 2013.
39. **Xie J, Tong Z, Guan X, Du B, and Qiu H.** Clinical Characteristics of Patients Who Died of Coronavirus Disease 2019 in China. *JAMA Netw Open* 3: e205619, 2020.
40. **Xu Z, Shi L, Wang Y, Zhang J, Huang L, Zhang C, Liu S, Zhao P, Liu H, Zhu L, Tai Y, Bai C, Gao T, Song J, Xia P, Dong J, Zhao J, and Wang FS.** Pathological findings of COVID-19 associated with acute respiratory distress syndrome. *Lancet Respir Med* 8: 420-422, 2020.

LEGENDS TO FIGURES:

Figure 1. Hematoxylin and Eosin stained sections staining from representative regions of the lung parenchyma of post-mortem lung tissue of 8 patients.

A. All patients show extensive alteration of lung microstructure in the form of alveolar damage, fibrin exudation into alveolar space, thrombi and fibroblastic proliferation. The septa are thickened and there is presence of hyaline membranes and dense infiltrates. Scale bar is 3 mm.

- 1: Alveolar damage with collagen deposition and exudative pattern of damage
2. Large thrombi and smaller caliber arteries showing fibrin thrombi (arrows)
3. Alveolar damage pattern arising from fibroblastic proliferations
- 4 and 5. Exudate in the entire lung
6. Necrosis with blood and exudate in the lung parenchyma
7. Hemorrhagic infarction of lung tissue adjacent to a pulmonary artery with thrombotic material
8. Pulmonary hemorrhage with blood and fibrin exudation into the parenchyma

Figure 1 B. H and E staining at higher magnification: All patients had extensive diffuse alveolar damage, microthrombi and edema in regions of the lung.

- A. Fibroblastic proliferation
- B. Plugged airway due to remodeling
- C. Coagulation necrosis with blood in the lung tissue
- D. Proliferative phase of diffuse alveolar damage
- E. Patchy distribution of damage
- F. Proteinaceous exudates in alveolar spaces
- G. Blood and fibrin exudation into parenchyma
- H: Fibroblastic proliferation
- I: Endotheliitis of small vessel <100 μm with infiltration of the vessel wall by lymphocytes (arrow shows infiltrated cells)

Figure 2 A. Thrombi and microthrombi were identified in 7 of the 8 patients. Box is magnified in the right panel. Arrow shows microthrombi on alveolar septa.

Figure 2 B. Representative Images of Obliterated Lung Vessels (Phase) indicate that these are either blocked (middle panel) or there is presence of proteinaceous exudates. Nuclear stain (Blue: DAPI) shows the presence of cells inside the vessels. Inset is magnified to show cells possibly endothelial cells (ec) as they are along the wall. But these are few and far between.

Figure 3. Inflammasome in the lungs of patients with COVID-19 infection. Representative images of the immunofluorescence in lung sections stained with A) anti-NLRP3 and B) caspase-1. The NLRP3 subunit (green) was visualized along the walls of arterioles (arrow). Caspase staining is widely distributed throughout the lungs.

Table 1: Patient characteristics, comorbidities, select immunostaining findings on a score of 0 to 3: 0, absent; 1, mild; 2, moderate; 3, severe.

Table 2. Pulmonary pathological features in COVID-19 autopsy cases on a score of 0 to 4: 0, absent; 1, mild 2, moderate; 3, high; 4, severe.

Patient	Gender	Age	Known Medical History	Substance Abuse (Smoking/Alcohol)	Thrombi/microthrombi	Presence of Inflammation Marker (NLRP3)	Pyroptosis
1.	Female	60s	Asthma and Stroke	Non-smoking	2	2	3
2.	Female	60s	Breast cancer and therapy related Acute Leukemia	Smoking	3	2	3
3.	Female	70s	COPD	Smoking and Alcohol	3	2	3
4.	Female	>85	COPD, Coronary Artery Disease and Sjogrens disease	Not known	3	2	3
5.	Male	50s	Myeloproliferative disorder and Pulmonary/portal Hypertension	Not known	3	2	3
6.	Male	70s	Dementia, Diabetes and Hypertension	Not known	3	3	3
7.	Male	70s	Pulmonary Embolism and Deep Vein Thrombosis and Hypertension	Not known	3	3	3
8.	Male	80s	Cerebral Vascular Disease	Not known	3	2	3

Table 1: Patient characteristics, comorbidities, select immunostaining findings on a score of 0 to 3: 0, absent; 1, mild; 2, moderate; 3, severe.

Patient No.	Hyaline Membranes	Interstitial Fibrosis	Atypical pneumocytes	Pulmonary hemorrhage	Morphological aspects
1.	4	4	4	3	Proliferative phase of diffuse alveolar damage, thrombi/microthrombi.
2.	3	3	4	3	Emphysematous change, microthrombi, alveolar septal thickening, thrombi/microthrombi.
3.	4	4	4	3	Pulmonary edema, alveolar septal thickening
4.	4	4	4	4	Proliferative phase of diffuse alveolar damage, pulmonary hemorrhage, thrombi/microthrombi.
5.	4	4	4	3	Diffuse alveolar damage, Advanced proliferative phase, thrombi/microthrombi.
6.	4	4	4	4	Advanced proliferative phase, pulmonary hemorrhage, thrombi/microthrombi.
7.	4	4	4	4	Exudative phase diffuse alveolar damage, hemorrhage, thrombi/microthrombi.
8.	4	4	4	4	Advanced proliferative phase, hemorrhage, thrombi/microthrombi.

Table 2. Pulmonary pathological features in COVID-19 autopsy cases on a score of 0 to 4: 0, absent; 1, mild 2, moderate; 3, high; 4, severe.

Figure 1 A.

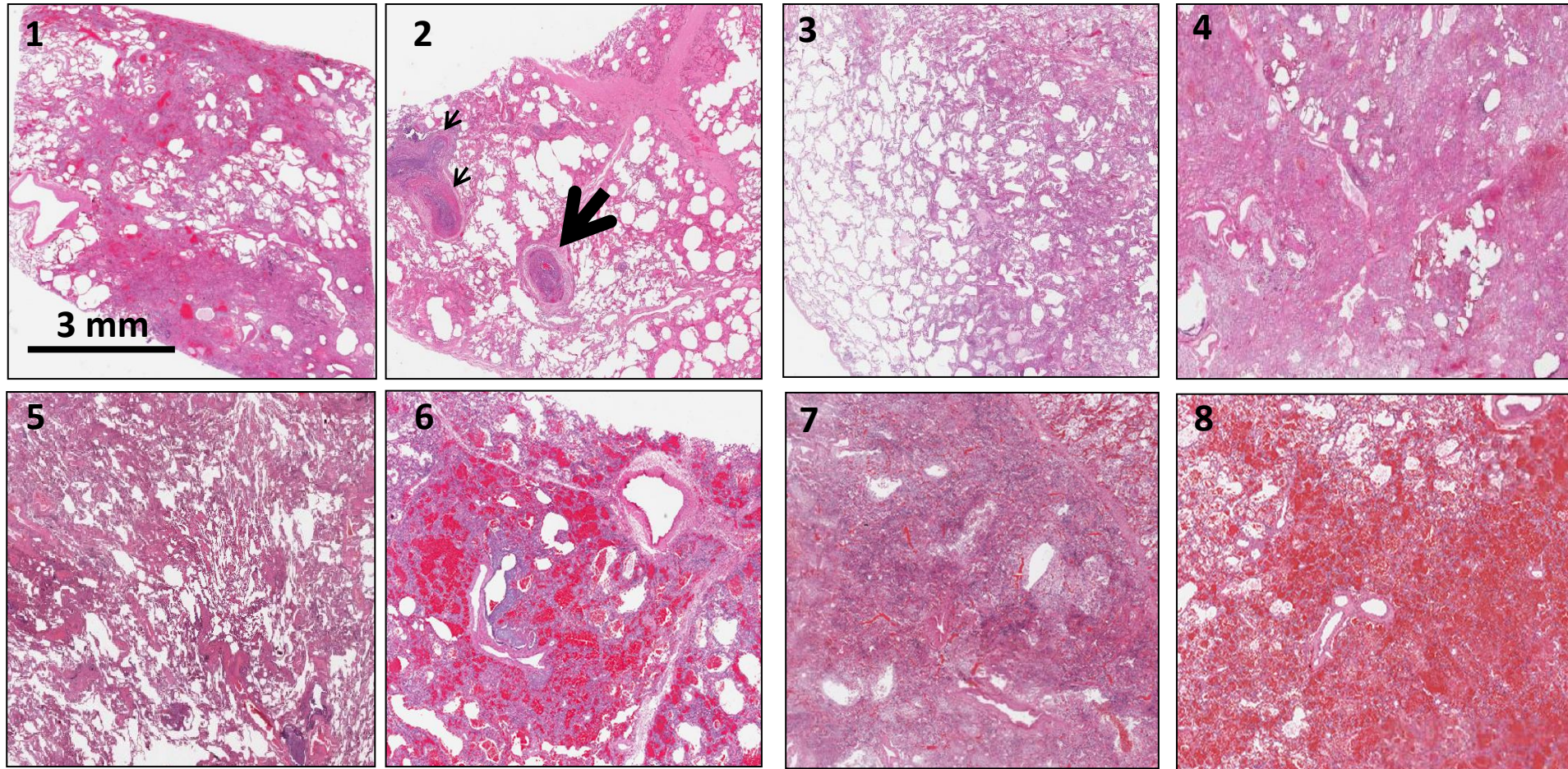


Figure 1 B

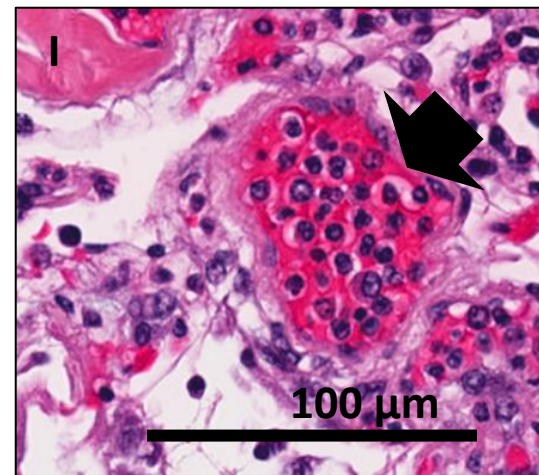
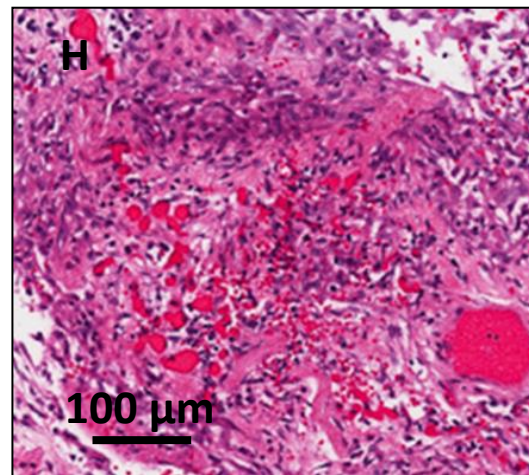
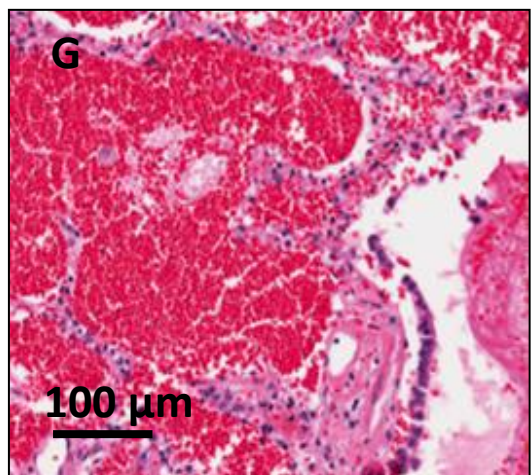
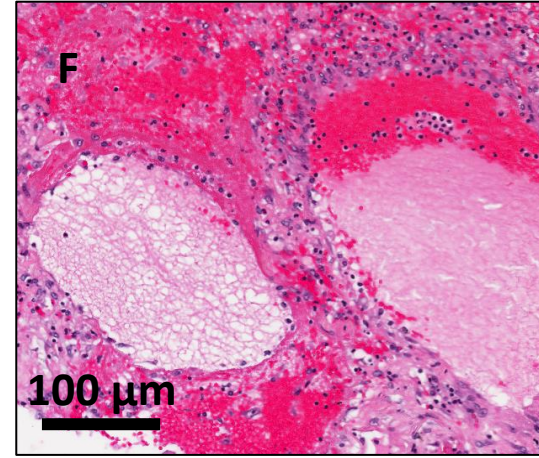
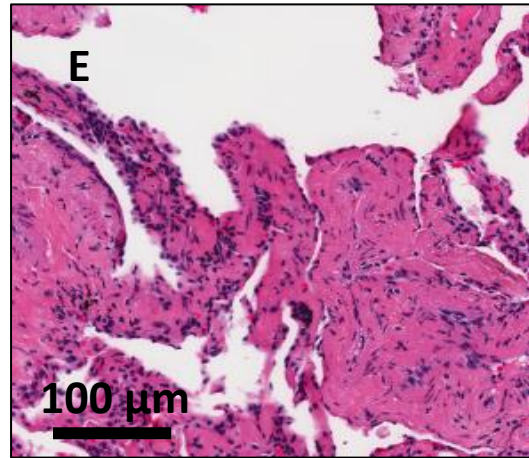
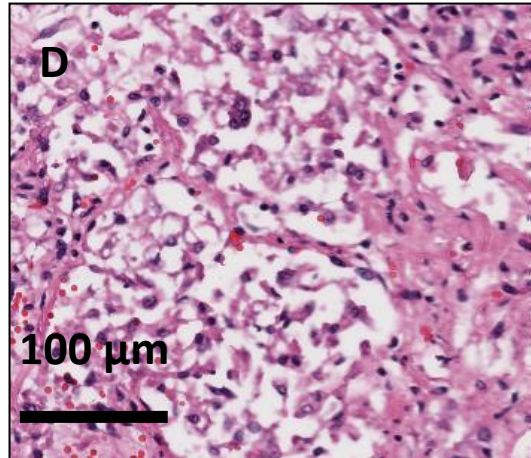
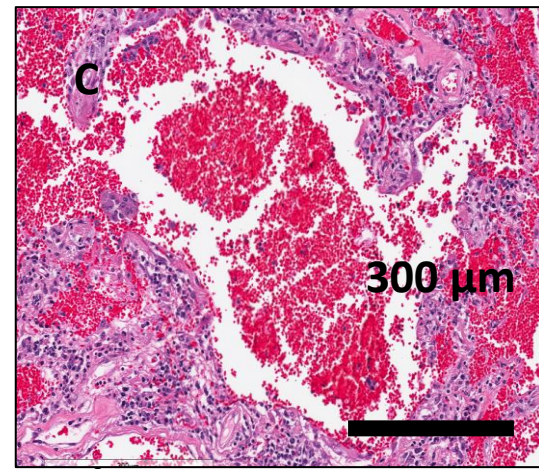
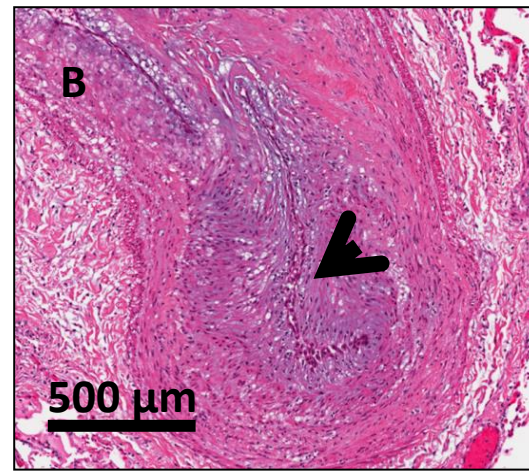
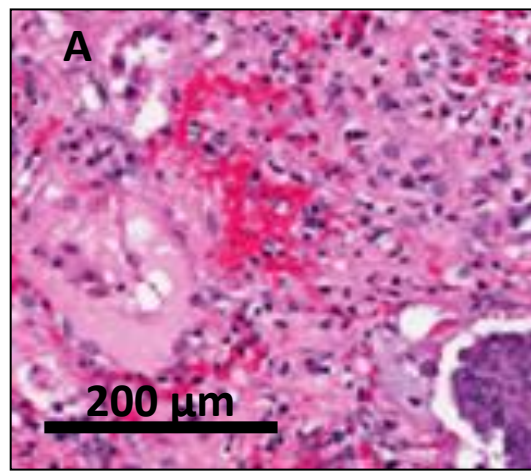


Figure 2A.

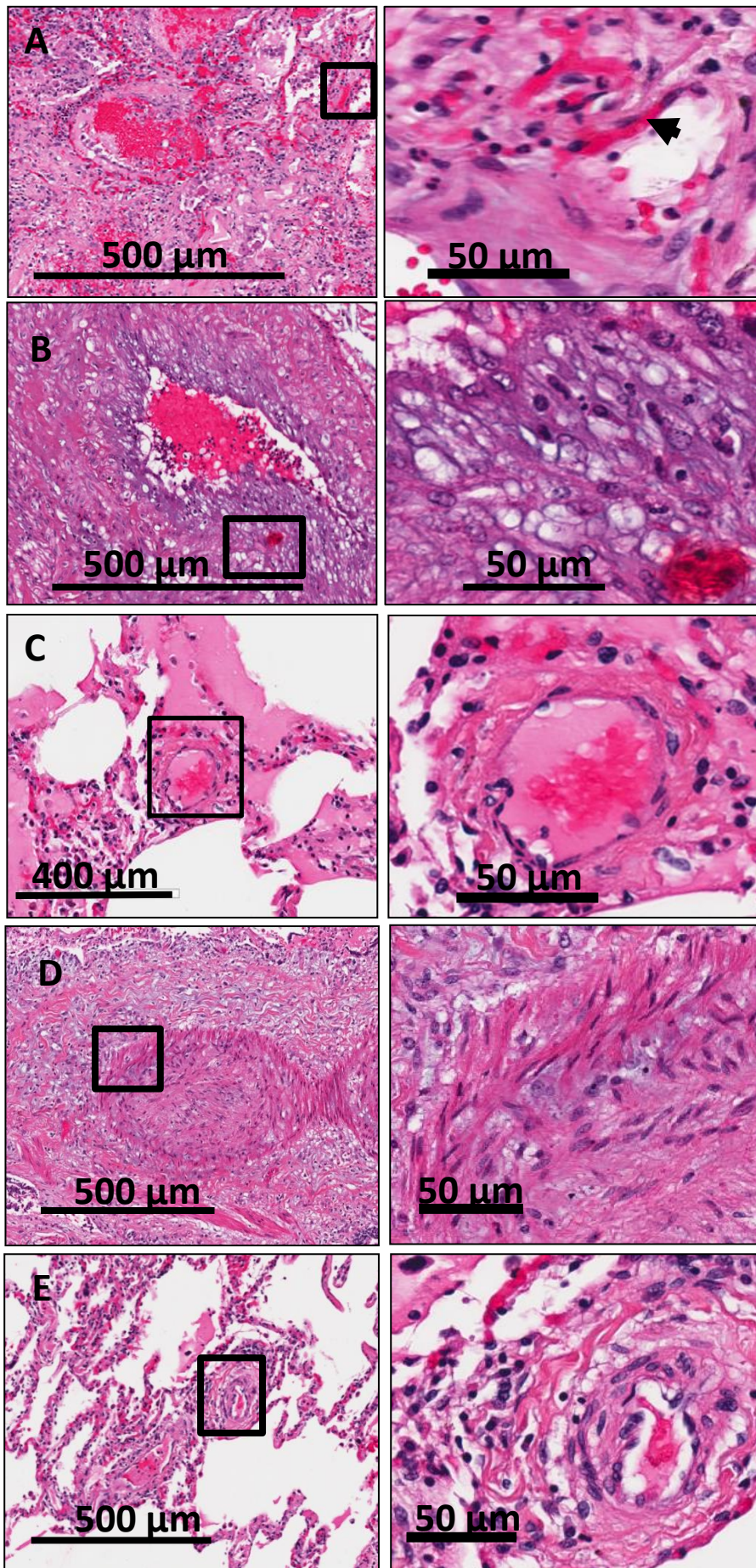


Figure 2B.

Phase

Nucleus

medRxiv preprint doi: <https://doi.org/10.1101/2021.03.19.21253815>; this version posted March 22, 2021. The copyright holder for this preprint (which was not certified by peer review) is the author/funder, who has granted medRxiv a license to display the preprint in perpetuity. All rights reserved. No reuse allowed without permission.

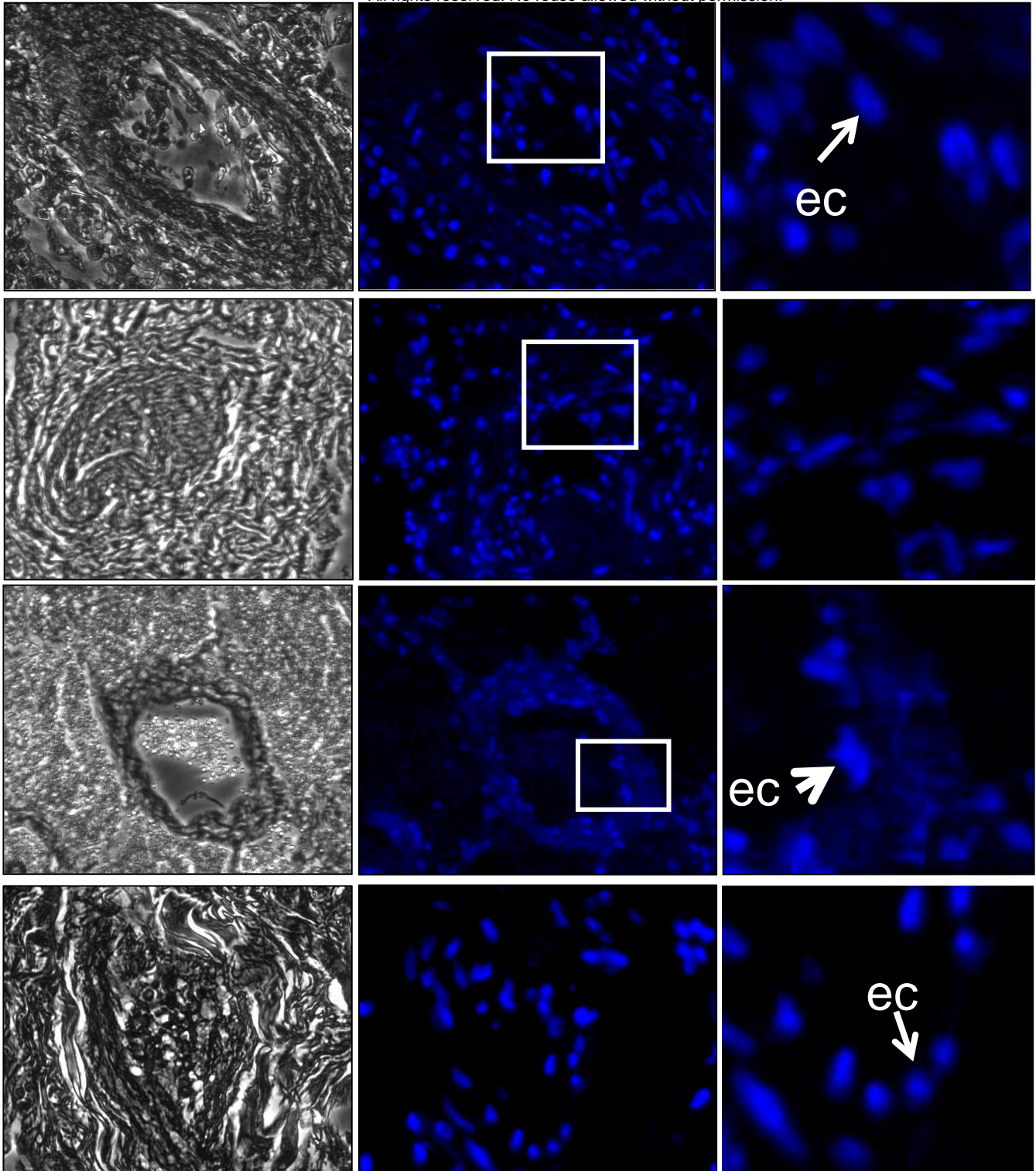


Figure 3A.

medRxiv preprint doi: <https://doi.org/10.1101/2021.03.19.21253815>; this version posted March 22, 2021. The copyright holder for this preprint (which was not certified by peer review) is the author/funder, who has granted medRxiv a license to display the preprint in perpetuity. All rights reserved. No reuse allowed without permission.

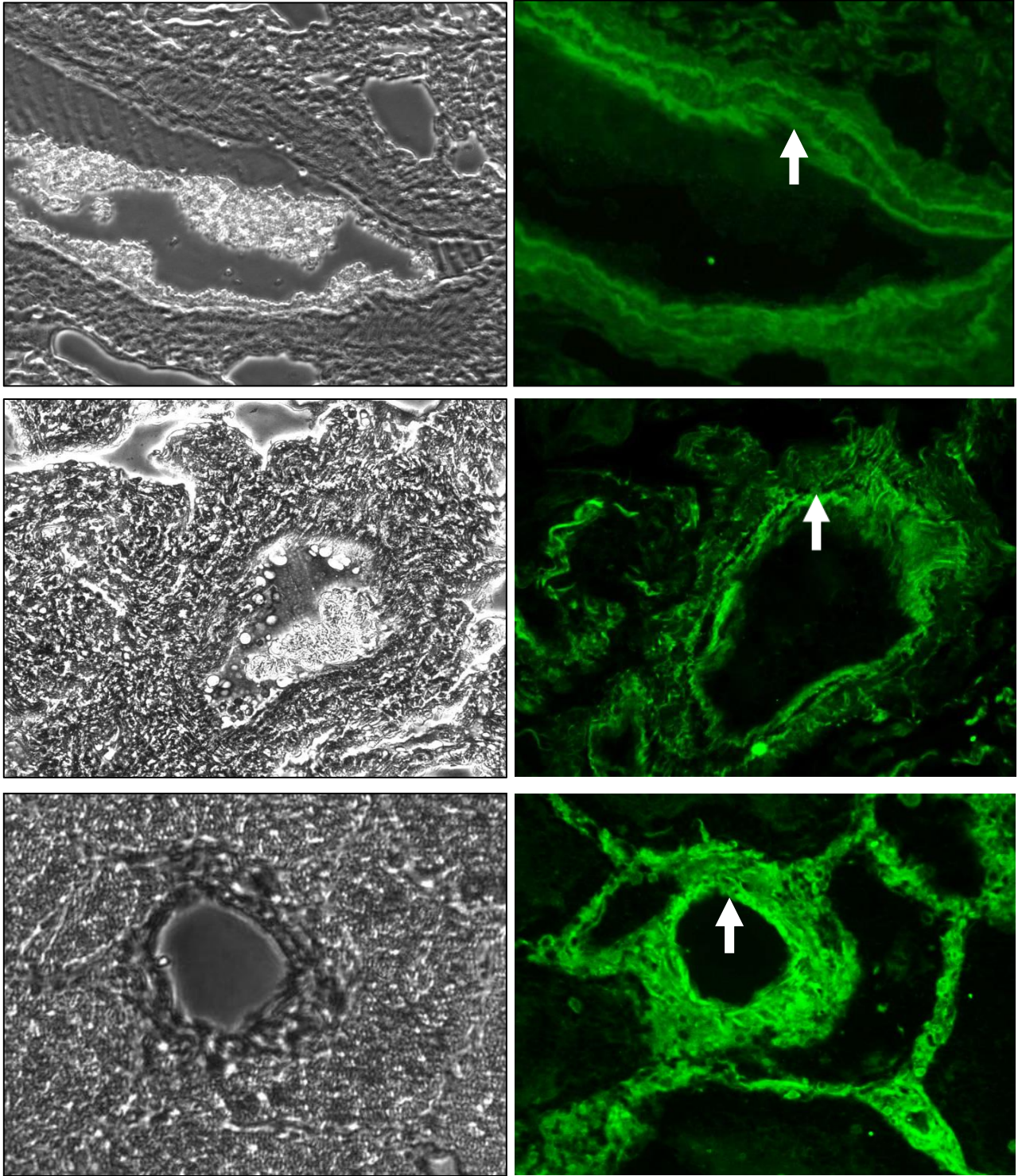


Figure 3B.

medRxiv preprint doi: <https://doi.org/10.1101/2021.03.19.21253815>; this version posted March 22, 2021. The copyright holder for this preprint (which was not certified by peer review) is the author/funder, who has granted medRxiv a license to display the preprint in perpetuity. All rights reserved. No reuse allowed without permission.

