

Evaluation of albumin kinetics in mechanically ventilated patients with COVID-19 compared to those with sepsis-induced ARDS

Authors: Chang Su, PhD¹; Katherine Hoffman, MS¹; Zhenxing, Xu, PhD¹; Elizabeth Sanchez, MD²; Ilias Siempos, MD, Dsc^{3,4}; John S Harrington, MD^{2,3}; Alexandra Racanelli MD, PhD^{2,3}; Maria Plataki, MD, PhD²; Fei Wang*, PhD¹; Edward J. Schenck*, MD, MS^{2,3}

¹Department of Population Health Sciences, Weill Cornell Medicine, New York, NY;

²Department of Medicine, New York-Presbyterian Hospital-Weill Cornell Medical Center, Weill Cornell Medicine, New York, NY;

³Division of Pulmonary & Critical Care Medicine, Joan and Sanford I. Weill Department of Medicine, Weill Cornell Medicine, New York, NY;

⁴First Department of Critical Care Medicine and Pulmonary Services, Evangelismos Hospital, National and Kapodistrian University of Athens Medical School, Athens, Greece

*Corresponding authors

CORRESPONDENCE TO:

Fei Wang,
425 E 61 St. New York City. NY 10065. USA
few2001@med.cornell.edu

Edward J. Schenck,
1300 York Ave. Box 96 New York City. NY 10065. USA
ejs9005@med.cornell.edu

Abstract

COVID-19 outcomes like mortality have been associated with albumin alteration. However, it is unclear whether albumin changes in COVID-19 are pathogen specific or not. To this end, we characterized the kinetics of serum albumin in mechanically ventilated patients with COVID-19 compared to mechanically ventilated patients with sepsis-induced Acute Respiratory Distress Syndrome (ARDS). We discovered two phases of alterations in albumin levels during the course of Covid-19 critical illness, but not for the sepsis-induced ARDS. Our findings suggest the metabolic effects of COVID-19 are pathogen-specific and albumin recovery may signal the cessation of a deleterious immune response in this disease.

[Main text]

COVID-19 has been associated with alterations in cellular metabolism, including many acute phase proteins such as albumin.¹ Indeed, a lower albumin at admission to the hospital has been associated with a higher mortality in COVID-19.² However, it is unclear whether albumin changes in COVID-19 are pathogen specific or are due to interventions such as mechanical ventilation. Our objective was to characterize the kinetics of serum albumin in mechanically ventilated patients with COVID-19 compared to mechanically ventilated patients with sepsis-induced Acute Respiratory Distress Syndrome (ARDS).

Methods

We did a retrospective study at the New York Presbyterian Hospital-Weill Cornell Medical Center (NYP-WCMC) that compared two critically ill cohorts with COVID-19³ and sepsis-induced ARDS⁴, respectively. Adult patients in the COVID-19 cohort were admitted from Mar 3 to Jul 10, 2020. SARS-CoV2 diagnosis was made through reverse-transcriptase–PCR assays performed on nasopharyngeal swabs. The critical care response to the pandemic has been previously described⁵. Adult patients with sepsis-induced ARDS, defined by Sepsis III criteria⁶ and PaO₂/FiO₂ ratio < 300 while treated with mechanical ventilation, were admitted from Dec 12, 2006 to Feb 26, 2019.

We evaluated serum albumin levels from 7 days prior to 30 days after intubation in each cohort. We averaged albumin values over 24 hours if more than 1 value was available. We then examined the albumin progression trajectories, aligned at intubation

time to test the relationship at a similar point in disease progression, in survivors and non-survivors. We hypothesized that albumin recovery would be apparent in COVID-19 survivors. We derived an algorithm based on Chow's test ⁷ to detect the albumin trajectory breakpoint for each patient, where a deteriorating albumin trend changed to a recovering trend. Specifically, for each patient, the Chow's test was performed for each time point of the albumin trajectory, and the breakpoint was determined by rejection ($P < 0.05$ and $F\text{-value} \geq 3$) of the null hypothesis that the coefficients of linear regressions before and after the breakpoint are equal. After that, we fit linear mixed-effects models to estimate the deteriorating and recovering trajectories, for survivors and non-survivors, respectively, adjusting for age and sex. We then analyzed albumin trajectories within the sepsis-induced ARDS cohort for comparison.

We reported descriptive data as mean (standard deviation [SD]) or median (interquartile range [IQR]) for continuous variables and number (percentage) for categorical variables. We assessed the differences between groups using Fisher's exact test for categorical values, and two-sample t test or Wilcoxon rank-sum test for continuous values where appropriate. All the tests were two-sided with a significance level of 0.05.

Results

The COVID-19 cohort consists of 308 intubated patients with confirmed SARS-CoV2 infection (age 61.7 [SD=16.4] years; 31.5% female). 102 COVID-19 patients died prior to extubation during their hospitalization and 206 were successfully extubated. The non-survivors were older than the survivors (67.3 [SD=12.1] years vs 58.9 [SD=14.9] years,

$P < 0.001$). There was no significant difference of comorbidities between the non-survivors and survivors. The albumin level 24 h before intubation was similar in survivors and non-survivors (2.42 [SD=0.56] g/dL vs 2.57 [SD=0.58] g/dL, $P = 0.095$), while the albumin value 24 h after intubation was lower in non-survivors than the survivors (2.03 [SD=0.50] g/dL vs 2.18 [SD=0.44] g/dL, $P = 0.015$).

The sepsis-induced ARDS cohort contains 363 intubated patients with confirmed sepsis (age 68.8 [SD=17.3] years; 40.8% female), of which 52 were non-survivors and 311 were survivors. Overall, the intubated patients with sepsis-induced ARDS showed a higher burden of chronic comorbidities than the COVID-19 patients. Compared to the sepsis-induced ARDS patients, intubated COVID-19 patients had a longer intubation duration (for non-survivors, 18.1 [SD=15.5] days vs 12.8 [SD=17.5] days, $P = 0.070$; for survivors, 24.5 [SD=17.8] days vs 8.3 [SD=12] days, $P < 0.001$) and higher baseline Sequential Organ Failure Assessment score (for non-survivors, 13 [IQR, 11-15] vs 11 [IQR, 9-14], $P = 0.002$; for survivors, 12 [IQR, 11-13] vs 9 [IQR, 7-11], $P < 0.001$). More details of the characteristics of the two cohorts were shown in Table 1.

Albumin trajectory in all critically ill Covid-19 patients consists of two clearly distinct phases (Figure 1). Phase I (deterioration) was defined by rapid albumin loss and Phase II (recovery) showed albumin stabilization or improvement. The Chow's test detected albumin breakpoint for each patient occurred 5.47 [SD=3.83] days after intubation vs 5.61 [SD=4.06] days after intubation ($P = 0.943$), in survivors and non-survivors, while the breakpoint albumin level was lower in non-survivors compared to that in survivors (1.50 [SD=0.43] g/dL vs 1.64 [SD=0.36] g/dL, $P = 0.030$) (Table 1 and Figure 1A). Based on the breakpoint for each patient, linear mixed-effects models

identified clear deterioration phases with similar slopes (i.e., rates of daily change of albumin level), among non-survivors ($\beta=-0.101$, 95% CI, -0.108 to -0.095, $P<0.001$) and survivors ($\beta=-0.104$, 95% CI, -0.109 to -0.099, $P<0.001$) (Figure 1A). Following the deterioration phase, there was a recovery phase in survivors ($\beta=0.022$, 95% CI, 0.021 to 0.023, $P<0.001$), that was higher than non-survivors ($\beta=-0.002$, 95% CI, -0.004 to 0.000, $P=0.068$). In contrast, we did not find a two-phase albumin progression trend in both survivors and non-survivors in the sepsis cohort (Figure 1B).

Discussion

We defined two phases of alterations in albumin levels during the course of Covid-19 critical illness. Albumin fell rapidly following intubation in our COVID-19 cohort regardless of outcome, however albumin recovery predicted clinical improvement in critical COVID-19. We did not see this pattern in a large sepsis-induced ARDS cohort. In our sepsis-induced ARDS cohort, albumin levels were prognostic; but, we did not see a clear recovering pattern in survivors. The albumin kinetics in sepsis-induced ARDS were similar to the ALBIOS study of albumin resuscitation in sepsis.⁸

Different albumin kinetics in COVID-19 compared to sepsis-induced ARDS may be due to differences in the patient's premorbid states. Our COVID-19 patients had a lower burden of chronic liver disease, kidney disease and cancer compared to our sepsis population. However, COVID-19 may have temporally distinct metabolic effects compared to other life-threatening infections.^{1, 9, 10} Lastly, it is unclear whether the lack of albumin recovery in COVID-19 non-survivors was related to ongoing inflammatory viral effects or secondary hospital acquired complications. The metabolic effects of

COVID-19 are pathogen-specific and albumin recovery may signal the cessation of a deleterious immune response in this disease.

Acknowledgments

Author Contributions: EJS, CS and FW conceived of the study. EJS, ES, IIS, AMC, and KH created the data sources and developed case definitions. CS, KH, ZX, FW and EJS did the data analysis. CS and EJS wrote the manuscript and all authors critically edited the final manuscript and approved.

Role of sponsors: The sponsor had no role in the design of the study, the collection and analysis of the data, or the preparation of the manuscript.

FUNDING/SUPPORT: FW and CS are supported by NSF IIS 2027970, 1750326, ONR N00014-18-1-2585.

SUMMARY CONFLICT OF INTEREST STATEMENTS: The authors have declared that no conflict of interest exists.

Ethics approval: Approved by the IRB at WCM #20-04021909, #1811019761

References

1. Shen B, et al. Proteomic and Metabolomic Characterization of COVID-19 Patient Sera. *Cell*. 2020;182(1):59-72.e15. <https://doi.org/https://doi.org/10.1016/j.cell.2020.05.032>
2. Wynants L, et al. Prediction models for diagnosis and prognosis of covid-19: systematic review and critical appraisal. *BMJ*. 2020;369:m1328. <https://doi.org/10.1136/bmj.m1328>
3. Schenck EJ, et al. Respiratory Mechanics and Gas Exchange in COVID-19–associated Respiratory Failure. *Ann Am Thorac Soc*. 2020;17(9):1158-1161. <https://doi.org/10.1513/AnnalsATS.202005-427RL>
4. Schenck E, et al. An Analysis of the Respiratory Subscore of the Sequential Organ Failure Assessment (SOFA) Scoring System in the Weill Cornell-Critical Care Database for Advanced Research (WC-CEDAR). *D45 CRITICAL CARE: LOVE IN THE TIME OF CHOLERA - INFECTION AND SEPSIS IDENTIFICATION AND MANAGEMENT*. American Thoracic Society; 2019:A6490-A6490.
5. Griffin KM, Karas MG, Ivascu NS, Lief L. Hospital Preparedness for COVID-19: A Practical Guide from a Critical Care Perspective. *Am J Respir Crit Care Med*. 2020;201(11):1337-1344. <https://doi.org/10.1164/rccm.202004-1037CP>
6. Singer M, et al. The Third International Consensus Definitions for Sepsis and Septic Shock (Sepsis-3). *JAMA*. 2016;315(8):801-810. <https://doi.org/10.1001/jama.2016.0287>
7. Chow GC. Tests of Equality Between Sets of Coefficients in Two Linear Regressions. *Econometrica*. 1960;28(3):591-605. <https://doi.org/10.2307/1910133>
8. Caironi P, et al. Albumin Replacement in Patients with Severe Sepsis or Septic Shock. *N Engl J Med*. 2014;370(15):1412-1421. <https://doi.org/10.1056/NEJMoa1305727>
9. Lercher A, Baazim H, Bergthaler A. Systemic Immunometabolism: Challenges and Opportunities. *Immunity*. 2020;53(3):496-509. <https://doi.org/https://doi.org/10.1016/j.immuni.2020.08.012>
10. Wi YM, Kim JM, Peck KR. Serum albumin level as a predictor of intensive respiratory or vasopressor support in influenza A (H1N1) virus infection. <https://doi.org/10.1111/ijcp.12249>. *Int J Clin Pract*. 2014;68(2):222-229. <https://doi.org/https://doi.org/10.1111/ijcp.12249>

Table 1. Clinical characteristics of the studied COVID-19 and sepsis cohorts.

Variable	COVID-19 cohort				Sepsis cohort			
	Total	Non-survivors	Survivors	P Value ^a	Total	Non-survivors	Survivors	P Value ^a
Number of patients	308	102	206	-	363	52	311	-
Demographics								
Age, years, Mean (SD)	61.7 (14.6)	67.3 (12.1)	58.9 (14.9)	<0.001	68.8 (17.3)	72.2 (17.5)	68.3 (17.2)	0.140
Sex female, n (%)	97 (31.5)	27 (26.5)	70 (34.0)	0.194	148 (40.8)	16 (30.8)	132 (42.4)	0.128
Race white, n (%)	96 (31.2)	33 (32.4)	63 (30.6)	0.794	116 (32.0)	17 (32.7)	99 (31.8)	0.874
Body mass index, kg/m ² , Mean (SD)	29.3 (8.1)	28.6 (7.8)	29.7 (8.2)	0.183	29.1 (12.7)	27.3 (6.7)	29.4 (13.4)	0.195
Comorbidities, n (%)								
Active Cancer (liquid)	12 (3.9)	7 (6.9)	5 (2.4)	0.067	32 (8.8)	12 (23.1)	20 (6.4)	<0.001
Active Cancer (solid)	8 (2.6)	4 (3.9)	4 (1.9)	0.447	30 (8.3)	3 (5.8)	27 (8.7)	0.596
Congestive heart failure	57 (18.5)	22 (21.6)	35 (17.0)	0.351	131 (36.1)	18 (34.6)	113 (36.3)	0.877
Hypertension	166 (53.9)	59 (57.8)	107 (51.9)	0.334	209 (57.6)	25 (48.1)	184 (59.2)	0.172
Pulmonary Disease	60 (19.5)	23 (22.5)	37 (18.0)	0.360	103 (28.4)	15 (28.8)	88 (28.3)	1
Diabetes Mellitus	93 (30.2)	33 (32.4)	60 (29.1)	0.598	93 (25.6)	10 (19.2)	83 (26.7)	0.305
Renal Disease	24 (7.8)	10 (9.8)	14 (6.8)	0.371	91 (25.1)	16 (30.8)	75 (24.1)	0.304
Liver Disease	6 (1.9)	4 (3.9)	2 (1.0)	0.095	63 (17.4)	15 (28.8)	48 (15.4)	0.028
Duration of mechanical ventilation, days, Mean (SD)	22.4 (17.3)	18.1 (15.5) ^b	24.5 (17.8) ^c	0.002	8.9 (13.0)	12.8 (17.5) ^b	8.3 (12.0) ^c	0.031
P/F ratio, within 24 h after intubation, Mean (SD)	167.6 (90.2)	166.6 (106.6) ^d	168.1(80.9) ^e	0.612	192.9 (141.0)	139.4 (84.8) ^d	201.8 (146.4) ^e	<0.001
SOFA, within 24 h after intubation, Median (IQR)	12 (11-14)	13 (11-15) ^f	12 (11-13) ^g	<0.001	9.0 (7 - 11)	11 (9 - 14) ^f	9 (7 - 11) ^g	<0.001
Albumin level, g/dL, Mean (SD)								
Within 24 h before intubation	2.53 (0.58)	2.42 (0.56)	2.57 (0.58)	0.095	2.65 (0.82)	2.27 (1.00)	2.72 (0.77)	0.102
Within 24 h after intubation	2.14 (0.49)	2.03 (0.50)	2.18 (0.44)	0.015	2.37 (0.58)	2.17 (0.58)	2.41 (0.57)	0.04
Breakpoint Albumin levels								
Time to Breakpoint, days (after intubation), Mean (SD)	5.50 (3.88)	5.61 (4.06)	5.47 (3.83)	0.943	-	-	-	-
Albumin level at breakpoint, g/dL, Mean (SD)	1.61 (0.38)	1.50 (0.43)	1.64 (0.36)	0.030	-	-	-	-
Infection source, n (%)								
Pneumonia	-	-	-	-	157 (43.3)	29 (55.8)	128 (41.2)	0.068

Urinary Tract	-	-	-	-	71 (19.6)	4 (7.7)	67 (21.5)	0.022
Intra-Abdominal	-	-	-	-	66 (18.2)	16 (30.8)	50 (16.1)	0.018

Definition of abbreviations: IQR = interquartile range; P/F ratio = ratio of arterial oxygen partial pressure (PaO₂) to fractional inspired oxygen (FiO₂); SD = standard deviation; SOFA = Sequential Organ Failure Assessment.

^a The P values were calculated to assess the differences between non-survivors and survivors, using Fisher's exact test for categorical values, and two-sample t test or Wilcoxon rank-sum test for continuous values where appropriate.

^b $P=0.070$ for cross cohort comparison of intubation duration of non-survivors.

^c $P<0.001$ for cross cohort comparison of intubation duration of survivors.

^d $P=0.078$ for cross cohort comparison of baseline P/F ratio of non-survivors.

^e $P=0.005$ for cross cohort comparison of baseline P/F ratio of survivors.

^f $P=0.002$ for cross cohort comparison of baseline SOFA score of non-survivors.

^g $P<0.001$ for cross cohort comparison of baseline SOFA score of survivors.

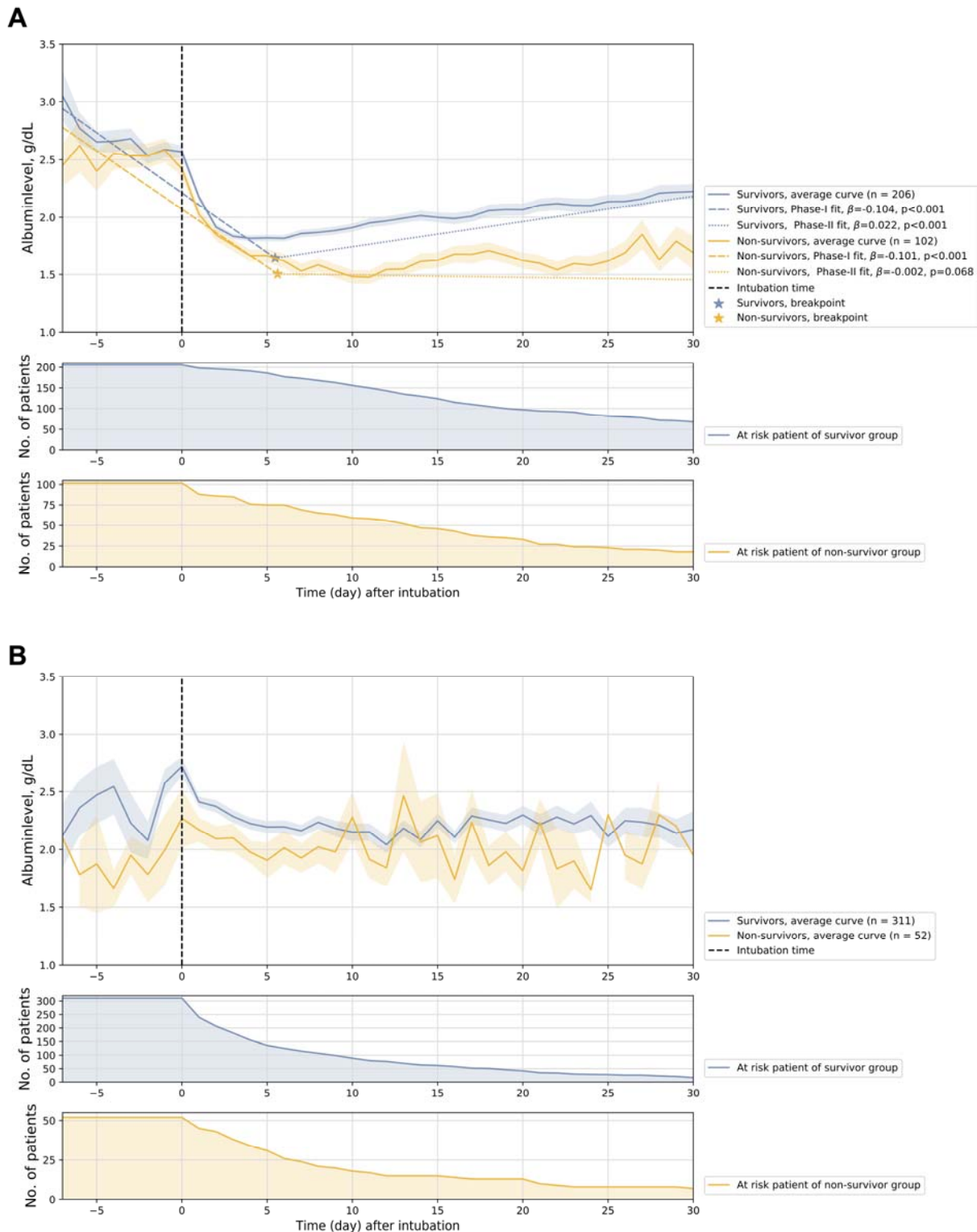


Figure 1. Illustration of albumin trajectories. (A) Albumin trajectories (averaged trajectories and two-phase linear mixed-effects model estimated trajectories) of non-survivors and survivors

of the critically ill COVID-19 cohort. (B) Albumin trajectories (averaged) of non-survivors and survivors of the sepsis-induced ARDS cohort.