

1 **Determinants of losses in the latent tuberculosis infection cascade of care**  
2 **in Brazil: a prospective multicenter cohort study**

3 **Short Title:** Losses in the LTBI cascade in Brazil

4 Alexandra Brito Souza<sup>1,2\*</sup>, María B. Arriaga<sup>3,4,5\*</sup>, Gustavo Amorim<sup>6</sup>, Mariana  
5 Araújo-Pereira<sup>3,4,5</sup>, Betânia M. F. Nogueira<sup>4,7,9</sup>, Artur T. L. Queiroz<sup>4,10</sup>, Marina C.  
6 Figueiredo<sup>7</sup>, Michael S. Rocha<sup>4,7</sup>, Aline Benjamin<sup>11</sup>, Adriana S. R. Moreira<sup>12</sup>,  
7 Jamile G. de Oliveira<sup>13</sup>, Valeria C. Rolla<sup>11</sup>, Betina Durovni<sup>13</sup>, José R. Lapa e  
8 Silva<sup>12</sup>, Afrânio L. Kritski<sup>12</sup>, Solange Cavalcante<sup>11,13</sup>, Timothy R. Sterling<sup>7</sup>, Bruno  
9 B. Andrade<sup>3,4,5,7</sup>, Marcelo Cordeiro-Santos<sup>1,2,14</sup>, for the RePORT Brazil  
10 consortium

11  
12 <sup>1</sup>Fundação Medicina Tropical Doutor Heitor Vieira Dourado, Manaus, Brazil

13 <sup>2</sup>Programa de Pós-Graduação em Medicina Tropical, Universidade do Estado  
14 do Amazonas, Manaus, Brazil

15 <sup>3</sup>Laboratório de Inflamação e Biomarcadores, Instituto Gonçalo Moniz,  
16 Fundação Oswaldo Cruz, Salvador, Brazil

17 <sup>4</sup>Multinational Organization Network Sponsoring Translational and  
18 Epidemiological Research (MONSTER) Initiative, Salvador, Brazil

19 <sup>5</sup>Faculdade de Medicina, Universidade Federal da Bahia, Salvador, Brazil

20 <sup>6</sup>Department of Biostatistics, Vanderbilt University Medical Center, Nashville,  
21 Tennessee, USA

22 <sup>7</sup>Division of Infectious Diseases, Department of Medicine, Vanderbilt University  
23 School of Medicine, Nashville, Tennessee, USA.

24 <sup>8</sup>Instituto Brasileiro para Investigação da Tuberculose, Fundação José Silveira,  
25 Salvador, Brazil

26 <sup>9</sup>Programa de Pós-graduação em Ciências da Saúde, Faculdade de Medicina  
27 da Bahia, Universidade Federal da Bahia, Salvador, Bahia, Brazil

28 <sup>10</sup>Center of Data and Knowledge Integration for Health (CIDACS), Instituto  
29 Gonçalo Moniz, Fundação Oswaldo Cruz, Salvador, Brazil

30 <sup>11</sup>Instituto Nacional de Infectologia Evandro Chagas, Fiocruz, Rio de Janeiro,  
31 Brazil

32 <sup>12</sup>Programa Acadêmico de Tuberculose. Faculdade de Medicina, Universidade  
33 Federal do Rio de Janeiro, Rio de Janeiro, Brazil

34 <sup>13</sup>Secretaria Municipal de Saúde do Rio de Janeiro Rio de Janeiro, Brazil

35 <sup>14</sup>Universidade Nilton Lins, Manaus, Brazil

36 The authors ABS and MBA equally contributed to the work.

37 **Key words:** Latent tuberculosis infection; cascade of care; contact investigation

38

39 **Corresponding author:** Marcelo Cordeiro-Santos, MD, PhD, Fundação de  
40 Medicina Tropical do Amazonas. Av. Pedro Teixeira, 25, CEP: 69040-000  
41 Manaus, AM, Brasil. Fone/fax: 55 92 2127 3489. E-mail:  
42 [marcelocordeiro@uea.edu.br](mailto:marcelocordeiro@uea.edu.br)

43

44 **Alternate corresponding author:** Bruno B. Andrade, MD, PhD, Laboratório de  
45 Inflamação e Biomarcadores, Instituto Gonçalo Moniz, Fundação Oswaldo  
46 Cruz, Rua Waldemar Falcão, 121, Candeal, Salvador, Bahia 40296-710, Brazil.  
47 Phone: +55-71-3176-2264 E-mail: [bruno.andrade@fiocruz.br](mailto:bruno.andrade@fiocruz.br)

48

49 **40-word summary of the article's main point:** We investigated factors  
50 associated with losses in the latent tuberculosis infection cascade of care in a  
51 large cohort of contacts in Brazil. Social vulnerability and HIV infection were the  
52 most relevant determinants of losses in the LTBI cascade of care.

53

#### 54 **Article Information**

55 **Manuscript word count:**2880      **Abstract word count:**205

56 **Main Tables:**01                      **Main Figures:**03

57 **Supplementary Tables:**04      **Supplementary Figures:**04

58

59 **ABSTRACT**

60 **Background:** Factors associated with losses in the latent tuberculosis infection  
61 (LTBI) cascade of care in contacts of tuberculosis (TB) patients were  
62 investigated in a multicenter prospective cohort from highly endemic regions in  
63 Brazil.

64 **Methods:** Close contacts of 1,187 culture-confirmed pulmonary TB patients  
65 were prospectively studied between 2015 and 2019, with follow-up between 6  
66 and 24 months. Data on TB screening by clinical investigation, radiographic  
67 examination and interferon-gamma release assay (IGRA) were collected.  
68 Stepwise multivariable models were used to identify determinants of losses in  
69 the LTBI cascade.

70 **Results:** Among 4,145 TB contacts initially identified, 1,901 were examined  
71 (54% loss). Within those individuals, 933 were people living with HIV,  $\leq 5$  years-  
72 old and/or had positive IGRA results, therefore having recommendation to start  
73 TB preventive treatment (TPT). Of those, 454 (23%) initiated treatment, and 247  
74 (6% of all TB contacts) completed TPT. Multivariable regression analysis  
75 revealed that living with HIV, illiteracy, and black/*pardo* (brown) race were  
76 independently associated with losses in cascade.

77 **Conclusion:** There were losses at all LTBI cascade stages, but particularly at  
78 the initial screening and examination steps. Close contacts who are socially  
79 vulnerable and living with HIV were at heightened risk of not completing the  
80 LTBI cascade of care in Brazil.

81

## 82 INTRODUCTION

83

84 The United Nations (UN) and the World Health Organization (WHO) have set  
85 ambitious targets for reducing the global burden of TB by 2030 and recognize  
86 the essential role of diagnosis and treatment of latent TB infection (LTBI) as a  
87 strategy for TB control and elimination [1, 2]. TB preventive therapy (TPT)  
88 entails treatment of LTBI to prevent progression to active disease [1].

89

90 The impact of TPT in reducing TB incidence at a community level varies  
91 according to the epidemiological scenario. It can be a very effective strategy in  
92 low burden countries, where the risk of reinfection is low. In the US, for  
93 instance, nearly 85% of TB cases originate from reactivation of LTBI [3], and a  
94 significant reduction in the number of cases may be achieved with expansion of  
95 testing and treatment of LTBI, particularly in the foreign-born population, which  
96 accounts for 70% of TB cases [4, 5]. In Brazil, a cluster-randomized trial of LTBI  
97 diagnosis and treatment in HIV clinics led to a significant reduction in TB  
98 incidence and death [6].

99

100 Recent studies conducted in high-income and low- and middle-income countries  
101 indicate that important losses occur at all stages of the LTBI cascade for care  
102 [7] . A study conducted in 12 health facilities in three Brazilian cities with high  
103 TB incidence rates found that most losses in the cascade occurred in the first  
104 two steps, which were contact identification and tuberculin skin testing (TST)  
105 [8]. Another study found that few people who had a positive TST were started  
106 on TPT, and the completion rate was also low [9]. In a study carried out in a

107 pediatric hospital in the state of Rio de Janeiro, Brazil, there was an association  
108 between low human development index and loss to follow-up during TPT in  
109 children and adolescents [10].

110

111 Brazil is one of the 30 high TB-burden nations, and has the largest number of  
112 cases in the Americas [2]. Despite a strong National TB Control Program,  
113 universal free healthcare for all citizens, and a reliable supply of anti-TB drugs,  
114 rates of TB have changed little in recent years [11]. The Brazilian Ministry of  
115 Health recommends TPT for all TB contacts with a positive interferon-gamma  
116 release assay (IGRA) or TST, as well as to all close contacts who are children  $\leq$   
117 5 years old or people living with HIV (PLWH), regardless of the test results [11].  
118 The LTBI care cascade in Brazil and the factors associated with losses are not  
119 fully understood, as most of the studies to date have been retrospective or  
120 cross-sectional. The current study was conceptualized to fill this important gap  
121 in the knowledge, to help the design decision-making strategies to improve the  
122 TB control. To do so, we aimed to evaluate the LTBI care cascade in a  
123 prospective Brazilian cohort of contacts of patients with culture-confirmed  
124 pulmonary TB, and identify factors associated with losses at each phase of the  
125 cascade.

126

## 127 **METHODS**

### 128 **Ethics Statement**

129 The protocol, informed consent, and study documents were approved by the  
130 institutional review boards at all study sites. The Institutional Review Boards and  
131 the protocol approval numbers are as follows: (i) Instituto de Pesquisa Clínica

132 Evandro Chagas, Fundação Oswaldo Cruz, Rio de Janeiro, Brazil (protocol no.  
133 688.067), (ii) Secretaria Municipal de Saude do Rio de Janeiro, Brazil (protocol  
134 no. 740.554), (iii) Hospital Universitario Clementino Fraga Filho Rio de Janeiro,  
135 Brazil (protocol no. 852.519), (iv) Maternidade Climério de Oliveira,  
136 Universidade Federal da Bahia, Salvador, Brazil (protocol no. 723.168), (v)  
137 Fundação de Medicina Tropical Dr. Heitor Vieira Dourado, Manaus, Brazil  
138 (protocol no. 807.595). Participation was voluntary and written informed consent  
139 was obtained from all participants.

140

#### 141 **Study design**

142 In this study, we included data from close TB contacts identified in the Regional  
143 Prospective Observational Research in Tuberculosis (RePORT)-Brazil [12]  
144 between August 27<sup>th</sup>, 2015, and July 18<sup>th</sup>, 2019, with follow-up between 6 and  
145 24 months. The RePORT-Brazil consortium is an ongoing, multicenter, cohort  
146 study, which follows culture-confirmed pulmonary TB cases and their close  
147 contacts. Enrollment sites include The RePORT-Brazil activities take place in  
148 three Brazilian states, recruiting participants from a total of five health units:  
149 Instituto Nacional de Infectologia Evandro Chagas, Clínica da Família Rinaldo  
150 Delamare, and Secretaria de Saúde de Duque de Caxias (all from Rio de  
151 Janeiro state), Instituto Brasileiro para Investigação da Tuberculose (Bahia),  
152 and Fundação Medicina Tropical Dr. Heitor Vieira Dourado (Amazonas).

153

154 For the present study, contacts were eligible to participate if exposed to an  
155 index case of culture-confirmed pulmonary TB who enrolled into RePORT-Brazil

156 and had no evidence of active TB. Exposure to the index TB case was defined  
157 as at least 4 hours in one week in the 6 months prior to TB diagnosis.

158

159 After enrollment of the index case, close contacts were invited to be interviewed  
160 and examined at the RePORT-Brazil healthcare units by phone call, text  
161 message or in person. Eligible contacts who attended the study sites were  
162 approached by study personnel to enroll into the RePORT-Brazil cohort and to  
163 be investigated for LTBI. The contact investigation included clinical evaluation,  
164 chest X-ray, blood collection for IGRA and HIV testing. IGRA collection,  
165 processing and interpretation were performed according to the manufacturer's  
166 recommendations for QuantiFERON® assay (Qiagen). Clinical and demographic  
167 data were collected via standardized case report forms. Per the RePORT-Brazil  
168 protocol, all contacts with a negative or indeterminate baseline IGRA test  
169 underwent repeat testing at month 6.

170

171 TPT was recommended according to the National TB Control Program of Brazil  
172 [2, 11]. TPT was also initiated based on the physician's decision to treat and  
173 RePORT-Brazil did not influence such decision.

174

### 175 **Outcome definition**

176 For this analysis the following steps of the LTBI cascade of care were  
177 considered: i) identified by TB patients as close contacts, to be screened for  
178 LTBI; ii) presented to clinic and agreed to participate, signed informed consent,  
179 and had IGRA performed; iii) completed medical and radiographic evaluations;

180 iv) recommended to receive TPT; v) accepted and initiated TPT; vi) completed  
181 TPT (defined as:  $\geq$  6 months of isoniazid or 4 months of rifampicin).

182

### 183 **Data analysis**

184 Categorical variables were presented as frequencies and compared using  
185 Fisher's exact test (2x2) or Pearson's chi-square test. Continuous variables  
186 were described using median and interquartile ranges and compared using the  
187 Mann-Whitney *U* test (between two groups) or the Kruskal Wallis test (two or  
188 more groups).

189

190 A multivariable generalized estimating equation [13] with a logit link and an  
191 independent working correlation matrix was used to identify factors associated  
192 with losses in the LTBI cascade of care. Close contacts from the same TB index  
193 case were treated as a cluster. Multiple imputation by chained equations [14]  
194 was used to generate 20 imputed datasets and final estimates were obtained  
195 via Rubin's rule [15]. Hierarchical cluster analysis (Ward's method) was  
196 employed to depict the overall profile of the study subgroups stratified according  
197 to the IGRA final status.

198

199 Data analysis was performed using SPSS (IBM Corp. Released in 2015. IBM  
200 SPSS Statistics for Windows, Version 25.0, GraphPad Prism 8.0 (GraphPad  
201 Software, La Jolla, CA, USA), JMP Pro 14.0, and R 3.5.0 (R Foundation,  
202 Vienna, Austria). All analyses were pre-specified and two-tailed. Differences  
203 with p-value  $<0.05$  were considered statistically significant.

204



## 205 RESULTS

### 206 Characteristics of the study participants

207 There were 4,145 close contacts referred from 1,187 pulmonary TB (PTB)  
208 cases (average of 3.5 contacts for each TB case), but only 2,483 contacts of  
209 641 culture confirmed PTB cases could be reached for invitation to present at  
210 the health care units and showed up for LTBI screening (**Figure 1**). Of the 2,483  
211 contacts, 1901 (74%) provided informed consent, and completed the medical  
212 evaluation. The characteristics of TB contacts are presented in **Table 1**. Median  
213 age was 32 years (IQR 16.2-46.8), 1,130 (59%) were female, 1507 (79%) were  
214 black/*pardo* (brown), 192 (10%) were illiterate and 46 (2%) were PLWH. A  
215 positive IGRA result was detected in 43% of the study participants, including  
216 results from baseline and month 6. Participants with a positive IGRA were more  
217 likely to report smoking (30% vs. 24%;  $p=0.002$ ), and secondary smoking (35%  
218 vs. 30%;  $p=0.04$ ) than persons with a negative IGRA result.

219

### 220 Losses of LTBI Cascade of care

221 The losses in the LTBI cascade are presented in **Figure 1**. We observed losses  
222 in all steps of the cascade. Most losses occurred early in the cascade, where  
223 40% of the identified contacts were not evaluated for screening, and another  
224 14% were not examined (**Figure 1A**). Of the 933 contacts who met criteria for  
225 receiving TPT, 441 (47%) initiated TPT (**Figure 1B**). Of the 441 who initiated  
226 treatment, 239 (54% of those initiating; 26% of those eligible; 6% of all contacts)  
227 completed it. Among all study participants, factors associated with overall  
228 losses in the LTBI cascade were black/*pardo* race ( $p=0.024$ ), a wage  $\leq$  the

229 minimum established for Brazil ( $p=0.009$ ), HIV infection ( $p=0.018$ ) and to be  
230 illiterate ( $p<0.001$ ) (**Supplementary Table 1**).

231

232 Analyses of the time from detection of PTB index cases to screening of  
233 contacts are presented in (**Figure 2**). Contacts were evaluated on average  
234 approximately 1 month after the diagnosis of the TB index case (median=36  
235 days) (**Figure 2A and 2B**). Of note, contacts with different outcomes in the  
236 LTBI cascade could not be distinguished based on time from identification of  
237 the TB index case and the first screening for LTBI (**Figure 2B and 2C**).

238

239

#### 240 **Factors associated with overall losses of LTBI cascade of care**

241 **Figure 3** presents associations between clinical and demographic factors and  
242 overall losses in the LTBI cascade for care (i.e., all losses in the LTBI cascade  
243 combined). There were no significant differences in sex distribution or in the  
244 ages of patients who were lost in the LTBI cascade or completed treatment.  
245 However, in univariate analyses, race black or pardo ( $p=0.024$ ), low personal  
246 income ( $p=0.009$ ) and illiteracy ( $p<0.001$ ) were associated with losses in the  
247 LTBI cascade of care (**Supplementary Table 1, Figures 3B and 3C**).

248 Multivariable analyses also revealed that illiteracy (adjusted Odds Ratio [aOR]:  
249 3.67, 95% Confidence Interval [CI]: 2.40-5.62,  $p > 0.001$ ), HIV infection (aOR:  
250 2.63, 95% CI: 1.08-6.4,  $p = 0.032$ ) and race black or pardo (aOR: 1.33, 95% CI:  
251 1.06-1.67,  $p = 0.014$ ) were independently associated with losses in the LTBI  
252 cascade (**Figure 3C**). The impact of time from the identification of the TB  
253 index case to the initial screening of the close contact on the overall losses in

254 the LTBI cascade was only marginal, but statistically significant (**Figure 3C**).  
255 Indeed, each increase in one day between the PTB diagnosis and the  
256 enrollment of the close contact resulted in an adjusted odds of 0.99 (95% CI:  
257 0.98-1.0,  $p=0.032$ ) of being lost in the LTBI cascade of care.

258

### 259 **Factors associated with losses at specific stages of the LTBI cascade** 260 **of care**

261 Considering those participants who were recommended to take TPT but  
262 declined (492 of 933; 53%) (**figure 1B**), they had a lower individual income  
263 ( $p = 0.005$ ), a shorter time between the diagnosis of the TB index case and  
264 evaluation of the contact ( $p=0.027$ ), a higher rate of illiteracy ( $p<0.001$ ) and a  
265 higher rate of secondary smoking ( $p=0.001$ ). Three of these four variables  
266 were independently associated with not initiating TPT: income (aoR:1.36,  
267 95% CI: 1.03-1.80,  $p =0.032$ ), education (aoR:3.05, 95% CI: 1.92-4.86,  $p$   
268  $<0.001$ ) and secondary smoking (aoR:1.61, 95% CI: 1.19-2.16,  $p =0.002$ )  
269 (**Supplementary Figure 2C and Supplementary Table 2**).

270

271 Of 454 contacts who initiated TPT, 202 (44%) did not complete TPT (**figure**  
272 **1A**). Those who did not complete TPT were younger ( $p=0.004$ ) and more  
273 likely to be black or *pardo* ( $p=0.012$ ) and lower income ( $p=0.03$ ) than  
274 contacts who completed TPT. Finally, race black or *pardo* (aOR:1.71, 95%  
275 CI: 1.01-2.90,  $p =0.048$ ) was the only factor that remained associated with  
276 non-completion of TPT after adjusting for confounding variables  
277 (**Supplementary Figure 6 and Supplementary Table 4**).

278

279 **DISCUSSION**

280 We found losses in all steps of the cascade, but the most substantial loss  
281 occurred before the visit to the clinic, when individuals identified by the TB index  
282 cases as contacts did not come for evaluation. This is consistent with findings  
283 from previous studies [7]. Two main reasons for this finding have been identified  
284 previously: (i) not having interest in being tested and (iii) self-perceived low risk  
285 of TB infection [7]. In a study of 1,908 TB contacts, some participants refused  
286 the contact investigation because they strongly believed that they did not have  
287 TB disease given that they did not have any signs or symptoms [16].

288

289 A Brazilian study [17] investigating stigma towards TB in the general population  
290 found that 57% of the participants knew that LTBI could occur, and 90% would  
291 seek treatment for it, suggesting that knowledge and stigma should not be an  
292 important barrier in our population. This factor should be better explored, along  
293 with other possible issues such as economic barriers for health care seeking,  
294 difficulties pertaining to absences from work and risk perception. Regarding  
295 interventions that could reduce losses in the first step of the cascade, one  
296 possibility is to increase participation of the Brazilian family health program [18]  
297 in searching for contacts. The program includes community agents who are  
298 responsible for following a certain number of families and know the community  
299 dynamics. This could be a useful tool to better identify and facilitate access of  
300 TB contacts with the health care system.

301

302 In our study, we found a prevalence of LTBI in close TB contacts of 43%. A  
303 similar result was found in a previous study by our group in a different cohort of

304 1,264 TB contacts and using TST instead of IGRA. The study found a LTBI  
305 prevalence of 41.9% and the incidence of active TB of 2/100,000 inhabitants  
306 [19]. LTBI was significantly more common in women, black/*pardo*, older  
307 individuals, and active and secondhand smokers. Identifying risk factors for  
308 LTBI was not within the scope of the current study, but we did identify known  
309 risk factors such as tobacco smoking [20], and older age [21]. Interestingly,  
310 women were more likely to have LTBI than men, which differs from results  
311 reported in other countries [22, 23]. This finding and the fact that black/*pardo*  
312 individuals were more likely to be infected than other races merit an additional  
313 study, as it could reflect social dynamics in Brazil. The most recent report from  
314 the Instituto de *Pesquisa Econômica Aplicada* (IPEA) demonstrated that the  
315 number of homes with a female as the referent household member has been  
316 increasing over recent decades, but many of these women are homemakers  
317 and do not have a formal job [24]. It is possible that women have higher  
318 exposure time to sick persons in the household, leading to higher risk of LTBI.  
319 The same report identified ethnicity reflecting social vulnerability in Brazil. For  
320 instance, black/*pardo* individuals more frequently have lower income and years  
321 of education, lower access to sanitation, adequate housing and health care,  
322 which could explain our results [25].

323

324 In this prospective, multicenter, cohort study we analyzed the cascade of care  
325 of LTBI in Brazil and found that HIV infection, illiteracy, low income, and race  
326 black or *pardo* were independently associated with greater losses at all stages  
327 of the cascade. All of these factors are related to social vulnerability and  
328 highlight the relevance of social factors in TB care, previously noted in different

329 studies [26]. These results reinforce the need to consider social context when  
330 developing health care public policies.

331

332 Modelling studies suggest that diagnosing and treating LTBI in persons at high  
333 risk of developing active disease will accelerate TB elimination [4, 27].  
334 However, there can be many challenges in implementing this policy  
335 programmatically. Thus, evaluating the cascade of care of LTBI and the factors  
336 associated with failures at each step can provide important insights for TB  
337 control.

338

339 A recently published meta-analysis [28] and literature review analyzing  
340 evidence on interventions to reduce loss in LTBI cascade found that completion  
341 of the initial assessment (e.g., return for medical visits) is significantly improved  
342 by financial and non-financial patient incentives. To a lesser extent, home visits,  
343 reminders and health care worker education were also shown to be helpful.  
344 Patient incentives and education also improved rates of patient acceptance of  
345 LTBI treatment.

346

347 Another point worth noting in our study was that less than half of TB contacts  
348 who had an indication for TPT accepted and started it. This was lower than  
349 what was found in a meta-analysis (72.2%, CI 48-96%) of 6 cohorts from  
350 countries at the low- or middle-income level [7]. However, our study included  
351 patients who came to the medical visit and refused treatment, as well as  
352 patients who never came to get the test results and were not seen by the  
353 physician to have the issue approached.

354

355 In our study, 54% of TB contacts who initiated TPT completed it. A similar  
356 proportion (56%) was observed in a cohort of 336 TB contacts in a primary  
357 health care service in São Paulo state, Brazil and in studies in low or middle-  
358 income countries (about 50%) [7, 9]. We found that older age and lower income  
359 were associated with abandonment of TPT. Barriers to treatment completion  
360 demonstrated before are diverse and vary according to location. Common  
361 barriers include side-effects to drugs, long treatment duration, issues related to  
362 the health-system and individual concerns, such as substance use [7,9].  
363 Financial barriers and low level of knowledge about the cost-benefit of treatment  
364 have also been associated with poor treatment adherence in LTBI patients [29].

365

366 Our study had several limitations. Because the contacts were enrolled in a  
367 study conducted in referral centers, and under research conditions, the results  
368 may not be generalizable to all close contacts of TB index cases. In addition, we  
369 did not capture the proportion of physicians who did or did not recommend TPT  
370 according to Brazilian Guidelines.

371

372 With the above limitations noted, the results presented here illuminate  
373 substantial losses to follow up among a population at high risk of developing  
374 active TB disease. Mitigating losses in the LTBI care cascade is an important  
375 step for the control and eradication of TB.

376

377 **Notes**

378

379 **Acknowledgments:** The authors thank the study participants. We also thank  
380 the teams of clinical and laboratory platforms of RePORT Brazil. A special  
381 thanks to Elze Leite (FIOCRUZ, Salvador, Brazil), Eduardo Gama (FIOCRUZ,  
382 Rio de Janeiro, Brazil), Elcimar Junior (FMT-HVD, Manaus, Brazil) and Hilary  
383 Vansell (VUMC, Nashville, USA), for administrative and logistical support.

384

385 **Disclaimer.** The funders of the study had no role in study design, data  
386 analysis, data interpretation, or writing of the report. All authors had access  
387 to all the data in the study and had final responsibility for the decision to  
388 submit for publication.

389

390 **Financial support:** The study was supported by the Intramural Research  
391 Program of the Fundação Oswaldo Cruz (B.B.A.), Intramural Research Program  
392 of the Fundação José Silveira (B.B.A., M.S.R., B.M.F.N.), Departamento de  
393 Ciência e Tecnologia (DECIT) - Secretaria de Ciência e Tecnologia (SCTIE) –  
394 Ministério da Saúde (MS), Brazil [25029.000507/2013-07 to V.C.R.] and the  
395 National Institutes of Allergy and Infectious Diseases [U01-AI069923 to T.R.S,  
396 ABS, MBA, GA, BMFN, ATLQ, MCF, MSR, AB, ASRM, JGO, VCR, BD, JRLS,  
397 ALK, SC, TRS, BBA, and MCS and U01-AI115940 to B.B.A.]. M.B.A. received a  
398 fellowship from the Fundação de Amparo à Pesquisa da Bahia (FAPESB). MAP  
399 received a fellowship from Coordenação de Aperfeiçoamento de Pessoal de  
400 Nível Superior (Finance code: 001). B.B.A, and A.K. are senior investigators  
401 whereas A.B.S. is a PhD fellow from the Conselho Nacional de  
402 Desenvolvimento Científico e Tecnológico (CNPq), Brazil.

403

404 **Declaration of interests**

405 All authors: none reported.

406

407

408

409

410

411

412

413



414

415     **REFERENCES**

- 416     1.     World Health Organization. Latent tuberculosis infection: updated and  
417             consolidated guidelines for programmatic management, **2020**.
- 418     2.     World Health Organization. Global Tuberculosis Report 2020, **2020**.
- 419     3.     France AM, Grant J, Kammerer JS, Navin TR. A field-validated approach  
420             using surveillance and genotyping data to estimate tuberculosis  
421             attributable to recent transmission in the United States. *Am J Epidemiol*  
422             **2015**; 182(9): 799-807.
- 423     4.     Hill AN, Becerra J, Castro KG. Modelling tuberculosis trends in the USA.  
424             *Epidemiol Infect* **2012**; 140(10): 1862-72.
- 425     5.     LoBue PA, Mermin JH. Latent tuberculosis infection: the final frontier of  
426             tuberculosis elimination in the USA. *Lancet Infect Dis* **2017**; 17(10):  
427             e327-e33.
- 428     6.     Durovni B, Cavalcante SC, Saraceni V, et al. The implementation of  
429             isoniazid preventive therapy in HIV clinics: the experience from the  
430             TB/HIV in Rio (THRio) study. *AIDS* **2010**; 24 Suppl 5: S49-56.
- 431     7.     Alsdurf H, Hill PC, Matteelli A, Getahun H, Menzies D. The cascade of  
432             care in diagnosis and treatment of latent tuberculosis infection: a  
433             systematic review and meta-analysis. *Lancet Infect Dis* **2016**; 16(11):  
434             1269-78.
- 435     8.     Salame FM, Ferreira MD, Belo MT, et al. Knowledge about tuberculosis  
436             transmission and prevention and perceptions of health service utilization  
437             among index cases and contacts in Brazil: Understanding losses in the  
438             latent tuberculosis cascade of care. *PLoS One* **2017**; 12(9): e0184061.

- 439 9. Wysocki AD, Villa TC, Arakawa T, et al. Latent Tuberculosis Infection  
440 Diagnostic and Treatment Cascade among Contacts in Primary Health  
441 Care in a City of Sao Paulo State, Brazil: Cross-Sectional Study. PLoS  
442 One **2016**; 11(6): e0155348.
- 443 10. Mendonca AM, Kritski AL, Land MG, Sant'Anna CC. Abandonment of  
444 Treatment for Latent Tuberculosis Infection and Socioeconomic Factors  
445 in Children and Adolescents: Rio De Janeiro, Brazil. PLoS One **2016**;  
446 11(5): e0154843.
- 447 11. Ministério da Saúde do Brasil, Secretaria de Vigilância em Saúde.  
448 Manual de Recomendações para o Controle da Tuberculose no Brasil.  
449 **2019**:288.
- 450 12. Arriaga MB, Amorim G, Queiroz ATL, et al. Novel stepwise approach to  
451 assess representativeness of a large multicenter observational cohort of  
452 tuberculosis patients: The example of RePORT Brazil. Int J Infect Dis  
453 **2020**; 103: 110-8.
- 454 13. Kung-Yee L, L. Zeger S. Longitudinal Data Analysis Using Generalized  
455 Linear Models. 1 ed: Oxford, **1986**.
- 456 14. van Buuren S, Groothuis-Oudshoorn K. mice: Multivariate Imputation by  
457 Chained Equations in R. Journal of Statistical Software **2011**; 45(3).
- 458 15. B. Rubin D. Multiple Imputation for Nonresponse in Surveys, **2004**.
- 459 16. Phyto AM, Kumar AMV, Soe KT, et al. Contact Investigation of Multidrug-  
460 Resistant Tuberculosis Patients: A Mixed-Methods Study from Myanmar.  
461 Trop Med Infect Dis **2019**; 5(1).

- 462 17. Rebeiro PF, Cohen MJ, Ewing HM, et al. Knowledge and stigma of latent  
463 tuberculosis infection in Brazil: implications for tuberculosis prevention  
464 strategies. *BMC Public Health* **2020**; 20(1): 897.
- 465 18. Harris M, Haines A. Brazil's Family Health Programme. *BMJ* **2010**; 341:  
466 c4945.
- 467 19. Araujo NCN, Cruz CMS, Arriaga MB, et al. Determinants of losses in the  
468 latent tuberculosis cascade of care in Brazil: A retrospective cohort  
469 study. *Int J Infect Dis* **2020**; 93: 277-83.
- 470 20. Bates MN, Khalakdina A, Pai M, Chang L, Lessa F, Smith KR. Risk of  
471 tuberculosis from exposure to tobacco smoke: a systematic review and  
472 meta-analysis. *Arch Intern Med* **2007**; 167(4): 335-42.
- 473 21. Wood R, Liang H, Wu H, et al. Changing prevalence of tuberculosis  
474 infection with increasing age in high-burden townships in South Africa. *Int*  
475 *J Tuberc Lung Dis* **2010**; 14(4): 406-12.
- 476 22. Lee SJ, Lee SH, Kim YE, et al. Risk factors for latent tuberculosis  
477 infection in close contacts of active tuberculosis patients in South Korea:  
478 a prospective cohort study. *BMC Infect Dis* **2014**; 14: 566.
- 479 23. Yeon JH, Seong H, Hur H, et al. Prevalence and risk factors of latent  
480 tuberculosis among Korean healthcare workers using whole-blood  
481 interferon-gamma release assay. *Sci Rep* **2018**; 8(1): 10113.
- 482 24. Teixeira L, Perkins MD, Johnson JL, et al. Infection and disease among  
483 household contacts of patients with multidrug-resistant tuberculosis. *Int J*  
484 *Tuberc Lung Dis* **2001**; 5(4): 321-8.

- 485 25. Instituto de Pesquisa Econômica Aplicada (IPEA) Retrato das  
486 Desigualdades de Gênero e Raça. Brazil: Secretaria de Políticas de  
487 Promoção da Igualdade Racial, **2011**.
- 488 26. Hargreaves JR, Boccia D, Evans CA, Adato M, Petticrew M, Porter JD.  
489 The social determinants of tuberculosis: from evidence to action. *Am J*  
490 *Public Health* **2011**; 101(4): 654-62.
- 491 27. Houben R, Menzies NA, Sumner T, et al. Feasibility of achieving the  
492 2025 WHO global tuberculosis targets in South Africa, China, and India:  
493 a combined analysis of 11 mathematical models. *Lancet Glob Health*  
494 **2016**; 4(11): e806-e15.
- 495 28. Barss L, Moayed-Nia S, Campbell JR, Oxlade O, Menzies D.  
496 Interventions to reduce losses in the cascade of care for latent  
497 tuberculosis: a systematic review and meta-analysis. *Int J Tuberc Lung*  
498 *Dis* **2020**; 24(1): 100-9.
- 499 29. Liu Y, Birch S, Newbold KB, Essue BM. Barriers to treatment adherence  
500 for individuals with latent tuberculosis infection: A systematic search and  
501 narrative synthesis of the literature. *Int J Health Plann Manage* **2018**;  
502 33(2): e416-e33.
- 503
- 504

505 **Tables**

506 **Table 1. Characteristics of the TB contacts by IGRA result**

Characteristics	Negative (n=1059, 57%)	Positive (n=813, 43%)	p-value
<b>Female– no. (%)</b>	606 (57)	509 (63)	0.002
<b>Age – median (IQR)</b>	30 (15-44)	36 (18-50)	0.004
<b>Race/Ethnicity – no. (%)</b>			0.003
Black/ Pardo	813 (77)	671 (83)	
Others <sup>a</sup>	245 (23)	142 (17)	
<b>Income – no. (%)</b>			0.954
More than a minimum wage	409 (40)	276 (35)	
Equal or less than a minimum wage	388 (38)	357 (45)	
Without income	225 (22)	155 (20)	
<b>BCG scar – no. (%)</b>	950 (90)	721 (89)	0.498
<b>HIV infection – no. (%)</b>	32 (3)	14 (2)	0.097
<b>Antiretroviral therapy – no. (%)</b>	26 (8)	10 (7)	0.465
<b>Education– no. (%)</b>			0.137
Literate	943 (89)	743 (91)	
Illiterate	114 (11)	70 (9)	
<b>Smoking – no. (%)</b>	253 (24)	246 (30)	0.002
<b>Secondary smoking – no. (%)</b>	319 (30)	281 (35)	0.04
<b>Alcohol consumption – no. (%)</b>	565 (53)	442 (54)	0.674
<b>Alcohol consumption (years)-median (IQR)</b>	10 (3-18)	14 (5-25)	0.002
<b>CAGE score of 2 and above<sup>b</sup> – no. (%)</b>	110 (30)	67 (24)	0.075
<b>Illicit drug use – no. (%)</b>	102 (10)	84 (10)	0.640
<b>Comorbidities<sup>c</sup>– no. (%)</b>	242 (23)	199 (245)	0.411
Diabetes	58 (6)	34 (4)	0.235
Hypertension	120 (11)	111 (14)	0.137

507 **Table note:** Data represent no. (%). or median with Interquartile range (IQR)

508 <sup>a</sup> Others ethnicities: White, Asian and Indian.

509 <sup>b</sup> Alcohol abuse was defined as a CAGE score  $\geq 2$  points as described in  
510 Methods. Continuous variables were compared using the Mann-Whitney *U* test  
511 and categorical variables were using the Fisher's exact test (2x2) or Pearson's  
512 chi-square test.

513 Missing information was identified in 3 variables: Race (1 [0.05%]), Income (62  
514 [ 3.3%]) and education (2 [0.1%]). The statistical analyzes were carried out  
515 only with the available data, omitting the cases with missing information.

516 <sup>c</sup> Comorbidities: At least one comorbidity (diabetes, hypertension, cancer,  
517 chronic obstructive pulmonary /emphysema, kidney disease, heart disease,  
518 liver disease and depression).

519 \*29 (1.5%) individuals had an indeterminate result in the 1st or 2nd IGRA.

520

521 **Figure legends**

522

523 **Figure 1. Cascade of care of Latent Tuberculosis Infection in contacts**  
524 **from TB cases**

525 **(A)** Losses and drop-outs at each stage of the LTBI cascade of care.  
526 Percentages were calculated among the number of contacts initially identified  
527 (n = 4145). **(B)** This figure shows the number of contacts who started  
528 treatment and those who completed treatment according to the category of  
529 TPT recommendation.

530 <sup>a</sup>4 contacts were still undergoing TPT at the time of analysis (not considered  
531 losses).

532 <sup>b</sup>1 contact was still undergoing TPT at the time of analysis (not considered  
533 loss).

534 Abbreviations: IGRA: Interferon-gamma release assay; PWH: People with HIV;  
535 LTBI: Latent tuberculosis infection. TB: tuberculosis. TPT: TB preventive  
536 therapy.

537

538

539 **Figure 2. Time from detection of TB index cases to screening of their**  
540 **contacts**

541 **(A)** Histograms representing the frequency of TB contacts between time (days)  
542 from visit 1 of the TB index case and visit 1 of the contact. **(B)** Histograms  
543 representing time (days) between visit 1 of the TB index case and visit 1 of the  
544 contact by type of losses in the LTBI cascade for care. **(C)** Scatter plots show  
545 each contact and case and the time difference between visit 1 of the TB index  
546 case and visit 1 of the contact by type of losses in the LTBI cascade for care.  
547 Did not perform 2nd IGRA (n=236), did not initiate recommended TPT (n=493),  
548 did not complete TPT (n=202) and complete TPT (n=247).

549 Abbreviations: IGRA: interferon-gamma release assay. LTBI: Latent  
550 tuberculosis infection. TB: tuberculosis. TPT: TB preventive therapy.

551

552

553 **Figure 3. Association between epidemiological and clinical**  
554 **characteristics and losses in the LTBI cascade of care**

555 **(A)** Age distribution among losses in the LTBI cascade of care and those who  
556 completed the LTBI cascade. Data were compared using the Mann-Whitney *U*  
557 test. **(B)** Frequency of Race/Ethnicity (black and *pardo*), income (see definition  
558 below), secondary smoking, comorbidities (see definition below) and education  
559 (illiterate) between TB contacts stratified based on losses in the LTBI cascade.  
560 Data were compared using Fisher's exact test. **(C)** Generalized estimating  
561 equations analysis to evaluate association between epidemiological and  
562 clinical characteristics and losses in the LTBI cascade of care. The study  
563 population was stratified according to complete TPT in the LTBI cascade  
564 (complete LTBI cascade of care vs. losses in the LTBI cascade of care, see  
565 Supplementary Table 1 for detailed univariate comparisons). A multivariable  
566 analysis (see Methods for details) was employed with each variable  
567 individually (unadjusted) and variables (panels A and C) were included in a  
568 multivariable model (adjusted). In all the comparisons, significant p-values are  
569 shown in bold-type font.

570 Comorbidities: At least one comorbidity (diabetes, hypertension, cancer,  
571 chronic obstructive pulmonary /emphysema, kidney disease, heart disease,  
572 liver disease and depression).

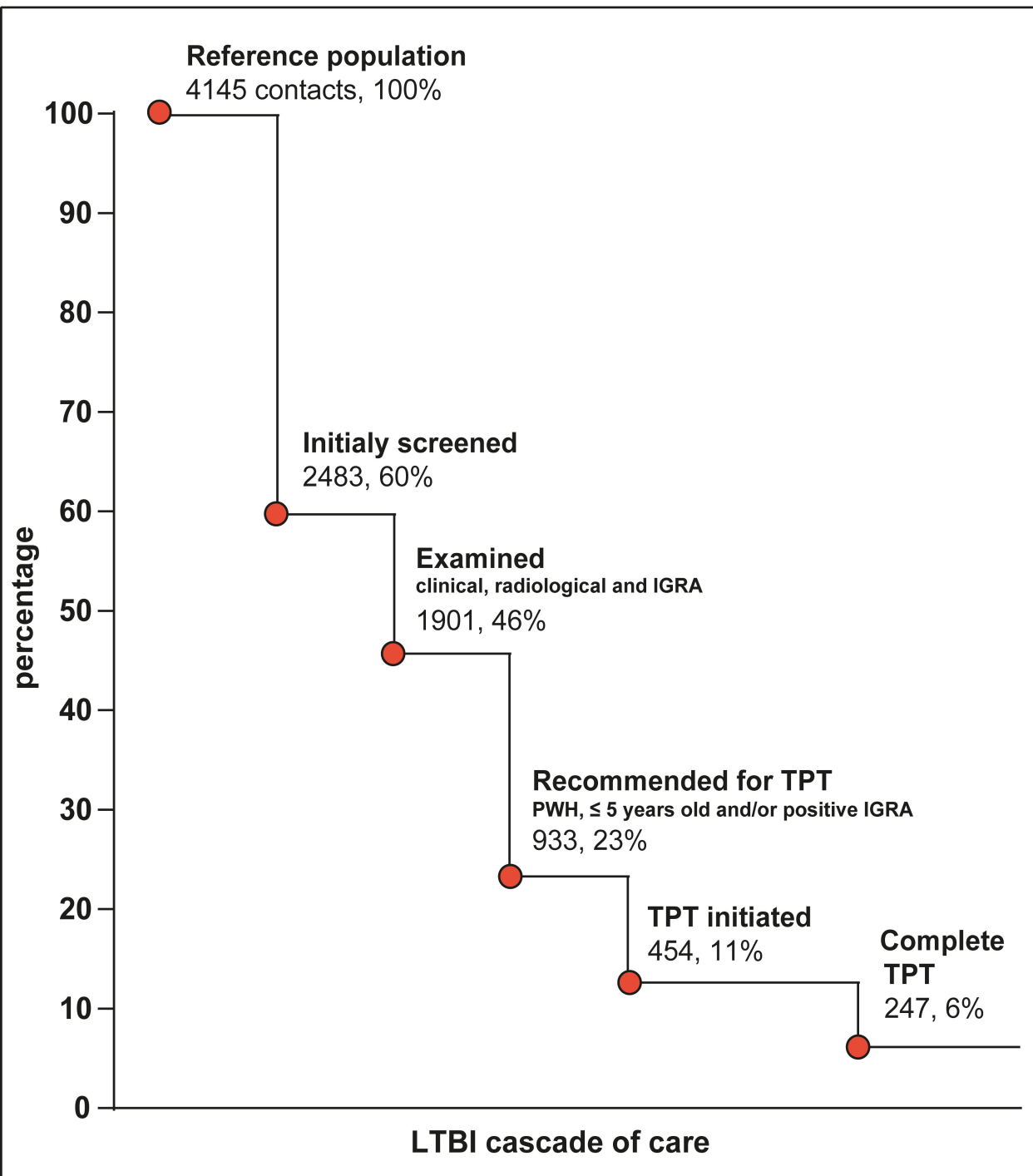
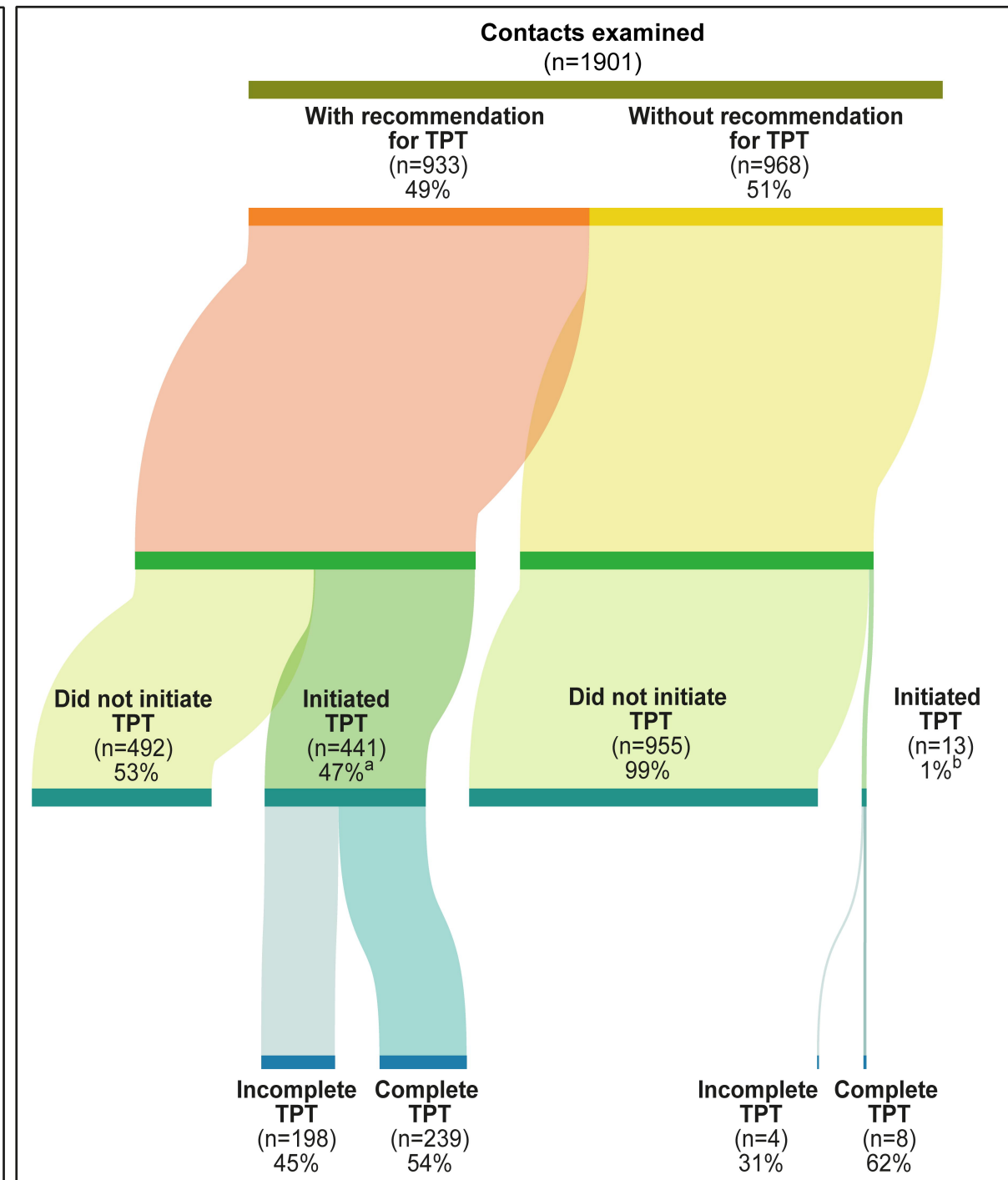
573 Low income: without income/equal or less than a minimum wage (reference:  
574 more than a minimum wage)

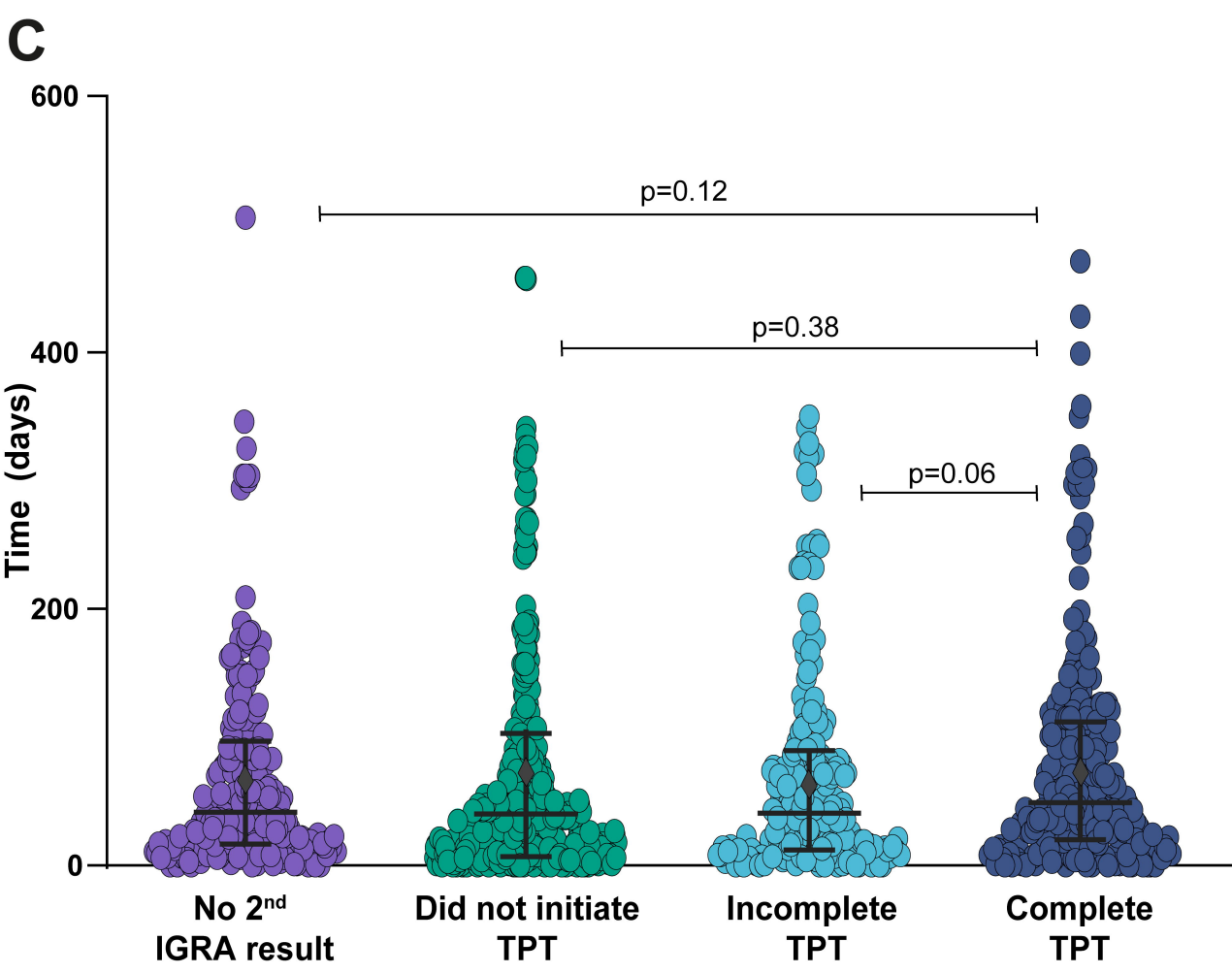
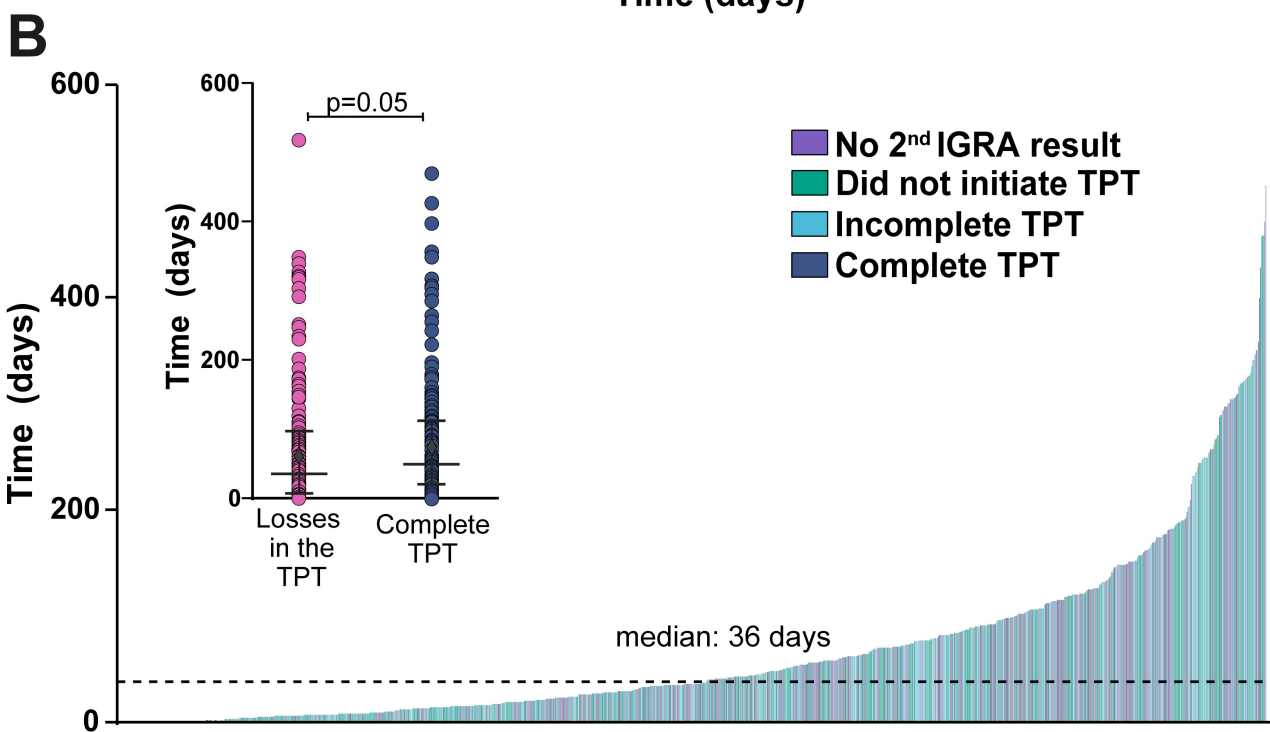
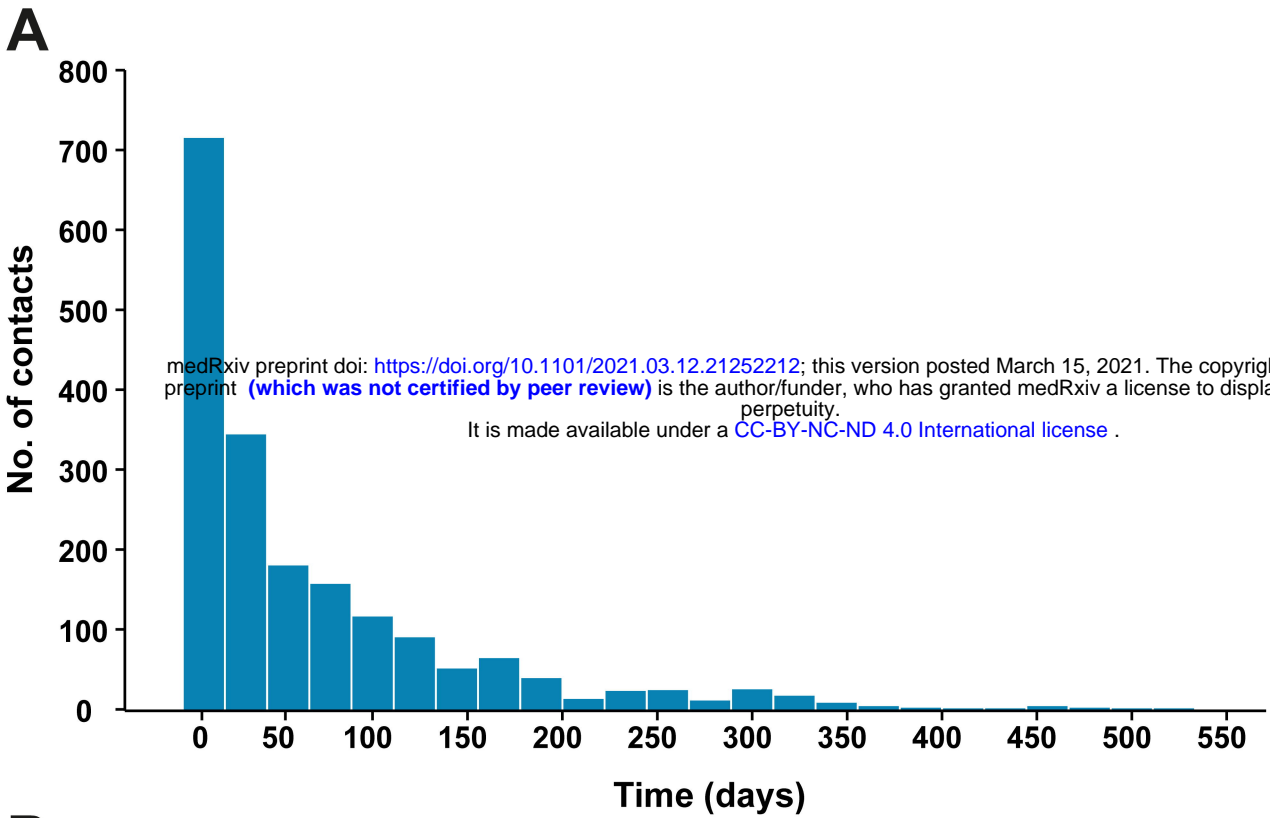
575 Race (Black/*Pardo*) reference: White, Asian, Indian.

576 Abbreviations: 95%CI: 95% confidence interval. Time ( $V_{1TB}-V_{1C}$ ): time (in  
577 weeks) difference between the visit 1 of the TB case and the visit 1 of the  
578 contact. TPT: TB preventive therapy.

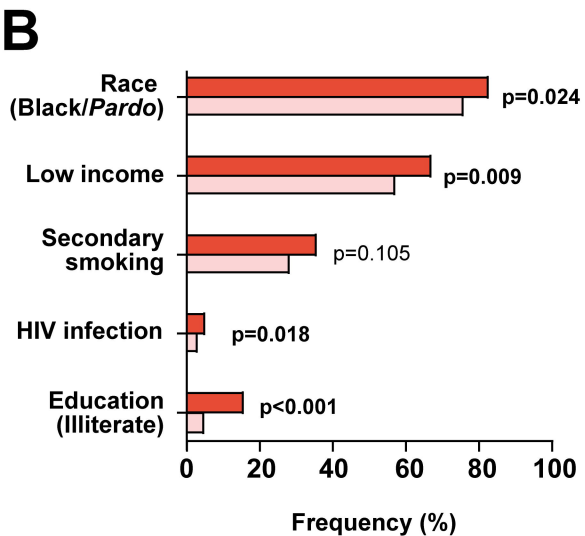
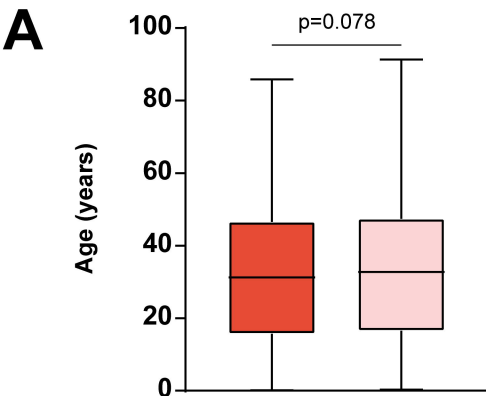
579



**A****B**



■ Losses in the LTBI cascade    □ Complete LTBI cascade



— C

