

ESCAPE: An Open-Label Trial of Personalized Immunotherapy in Critically Ill COVID-19 Patients

Running Title: Personalized Immunotherapy in Covid-19

Eleni Karakike¹, George N. Dalekos², Ioannis Koutsodimitropoulos³, Maria Saridaki¹,
Chryssa Pourzitaki⁴, Georgios Papathanakos⁵, Antigone Kotsaki¹,
Stamatios Chalkatzis¹, Vasiliki Dimakopoulou⁶, Nikolaos Vechlidis¹,
Elisabeth Paramythiotou⁷, Christina Avgoustou¹, Aikaterini Ioakeimidou⁸,
Elli Kouriannidi¹, Apostolos Komnos⁹, Evangelia Neou⁹, Nikoletta Rovina¹⁰,
Eleni Stefanatou³, Haralampos Milionis¹¹, George Nikolaidis⁸, Antonia Koutsoukou¹⁰,
Georgia Damoraki¹, George Dimopoulos⁷, Vassileios Zoumpas¹,
Jesper Eugen-Olsen¹², Karolina Akinosoglou⁶, Nikolaos K. Gatselis²,
Vasilios Koulouras⁵, Eleni Gkeka⁴, Nikolaos Markou³, Mihai G. Netea^{13, 14},
Evangelos J. Giamarellos-Bourboulis¹

¹⁴th Department of Internal Medicine, National and Kapodistrian University of Athens,
Medical School, 124 62 Athens, Greece;

²Department of Medicine and Research Laboratory of Internal Medicine, National
Expertise Center of Greece in Autoimmune Liver Diseases, General University
Hospital of Larissa, 41110 Larissa, Greece;

³Intensive Care Unit of Latseion Burn Center, General Hospital of Eleusis Thriasion,
190 81 Eleusis, Greece;

⁴Intensive Care Unit, AHEPA Thessaloniki General Hospital, 546 36 Thessaloniki, Greece;

⁵Department of Critical Care Medicine, University of Ioannina, School of Health Sciences, Faculty of Medicine, 455 00 Ioannina, Greece;

⁶Department of Internal Medicine, University of Patras, Medical School, 265 04 Rion, Greece;

⁷^{2nd} Department of Critical Care Medicine, National and Kapodistrian University of Athens, Medical School, 124 62 Athens, Greece;

⁸Intensive Care Unit, Asklepeion General Hospital, 166 73 Voula, Greece;

⁹Intensive Care Unit, Koutlimpaneion-Triantafylleion Larissa General Hospital, 412 21 Larissa, Greece;

¹⁰^{1st} Department of Pulmonary Medicine and Intensive Care Unit, National and Kapodistrian University of Athens, Medical School, 115 27 Athens, Greece;

¹¹^{1st} Department of Internal Medicine, University of Ioannina, School of Health Sciences, Faculty of Medicine, 455 00 Ioannina, Greece;

¹²Clinical Research Centre, Copenhagen University Hospital Hvidovre, Denmark

¹³Department of Internal Medicine and Center for Infectious Diseases, Radboud University, 6500 Nijmegen, The Netherlands

¹⁴Immunology and Metabolism, Life & Medical Sciences Institute, University of Bonn, 53115 Bonn, Germany;

Corresponding Author

Evangelos J. Giamarellos-Bourboulis, MD, PhD

⁴th Department of Internal Medicine, ATTIKON University General Hospital

1 Rimini Street 124 62 Athens, Greece

Tel: +30 210 58 31 994/Fax: +30 210 53 26 446

E-mail: egiamarel@med.uoa.gr

Funding

The study was funded in part by the Hellenic Institute for the Study of Sepsis and in part by the Horizon 2020 grant RISKinCOVID.

Contribution of authors

EJGB conceptualized the study design, participated in data analysis and drafting the manuscript, had full access to all of the study data and takes responsibility for their integrity and the accuracy of the analysis. EK, JEO and MGN analysed the data and drafted the manuscript. GND, IK, MS, CP, GP, AK, SC, VD, NV, EP, CA, KI, EK, AP, EN, NR, ES, HM, GN, AK, GDa, GD, VZ, KA, NKG, VK, EG and NM collected clinical data and critically revised the manuscript for important intellectual content. GD performed laboratory measurements and critically revised the manuscript for important intellectual content. All authors gave approval of the final version to be published.

At a Glance Commentary

ESCAPE was an open-label phase II trial where critically ill patients with COVID-19 were allocated to treatment with anakinra or tocilizumab based on immune function tests. Findings suggest most clinical benefit among critically ill patients treated with anakinra when ferritin is more than 4420 ng/ml or when a combination of low expression of HLA-DR on CD14-circulating monocytes and increase of liver aminotransferases is found.

Total word count: 2,354

ABSTRACT

Rationale Macrophage activation syndrome (MAS) and complex immune dysregulation (CID) often underlie acute respiratory distress (ARDS) in COVID-19.

Objective To investigate the outcome of personalized immunotherapy in critical COVID-19.

Methods In this open-label prospective trial, 102 patients with SOFA (sequential organ failure assessment) score ≥ 2 or ARDS by SARS-CoV-2 were screened for MAS (ferritin more than 4420 ng/ml) and CID (ferritin ≤ 4420 ng/ml and low expression of HLA-DR on CD14-monocytes). Patients with MAS and CID with increased aminotransferases were assigned to intravenous anakinra; those with CID and normal aminotransferases to tocilizumab. The primary outcome was at least 25% decrease of SOFA score and/or 50% increase of respiratory ratio by day 8; 28-day mortality, change of SOFA score by day 28; serum biomarkers and cytokine production by mononuclear cells were secondary endpoints.

Measurements and Main Results The primary study endpoint was met in 58.3% of anakinra-treated patients and in 33.3% of tocilizumab-treated patients (odds ratio 3.11; 95% CIs 1.29-7.73; P : 0.011). No differences were found in mortality and in SOFA score changes. By day 4, ferritin was decreased among anakinra-treated patients; interleukin (IL)-6, soluble urokinase plasminogen activator receptor (suPAR) and the expression of HLA-DR were increased among tocilizumab-treated patients. Anakinra increased capacity of mononuclear cells to produce IL-6. Survivors by day 28 who received anakinra were distributed to scales of the WHO clinical progression of lower severity. Greater incidence of secondary infections was found with tocilizumab treatment.

Conclusions Biomarkers may guide favourable anakinra responses in critically ill patients with COVID-19.

Trial Registration: ClinicalTrials.gov, NCT04339712

Key-words: anakinra; tocilizumab; acute respiratory distress syndrome; COVID-19; interleukin-6; ferritin; HLA-DR; macrophage activation; monocytes

Abstract Word count: 250

INTRODUCTION

Early from the start of the pandemic caused by SARS-CoV-2, it was realized that patients with severe or critical illness present with profound immune dysregulation with the main features of lymphopenia, hyper-production of pro-inflammatory cytokines, hyper-ferritinemia and pro-inflammatory/anti-inflammatory imbalance (1-4). An important question arising regarding the transition from severe COVID-19 pneumonia to critical illness and acute respiratory distress syndrome (ARDS) was whether this was identical in all patients, or whether different immune endotypes can be described in the severely ill patients (5). Based on earlier studies, we used serum ferritin and the expression of the human leukocyte antigen (HLA)-DR on circulating monocytes as biomarkers of immune dysregulation. We selected a cut-off ferritin of 4,420 ng/ml for the diagnosis of macrophage activation syndrome (MAS) as previously done for sepsis (6, 7). Analysis showed that almost 25% of patients with ARDS by COVID-19 had MAS, whereas the rest had low expression of HLA-DR on circulating monocytes. This low HLA-DR expression was interpreted as complex immune dysregulation (CID), since circulating monocytes retained their potential for cytokine production (5).

Previous studies in sepsis have shown that patients with MAS have survival benefit from treatment with anakinra, a non-glycosylated recombinant protein of interleukin (IL)-1 receptor antagonist (8). The addition of the IL-6 receptor antagonist tocilizumab in cultures of circulating monocytes of patients with ARDS by COVID-19 and CID restored the expression of HLA-DR (5). These findings guided the concept to approach immunotherapy in critically ill patients with COVID-19 through personalized treatment based on their immune profile, i.e. MAS or CID. ESCAPE (Efficiency in management of organ dysfunction associated with infection by the

novel SARS-CoV-2 virus through A Personalized immunotherapy approach) was an exploratory phase II trial where patients with critical COVID-19 were allocated to open-label treatment with anakinra or tocilizumab if they were presenting with MAS or CID, respectively.

PATIENTS AND METHODS

ESCAPE was an open-label phase II prospective clinical trial conducted in four departments of Internal Medicine and seven Intensive Care Units (ICUs) of tertiary hospitals in Greece between April and November 2020 (EudraCT number 2020-001039-29; Clinicaltrials.gov NCT04339712; approval 30/20 by the National Ethics Committee of Greece; approval IS 021-20 by the National Organization for Medicines of Greece).

Enrolled patients were adults of both genders with written informed consent provided by legal representatives; organ dysfunction; and laboratory findings of MAS or CID. Organ dysfunction was defined as either total SOFA (sequential organ failure assessment) score ≥ 2 or ARDS. MAS was defined as any serum ferritin greater than 4,420ng/ml. CID was defined as serum ferritin $\leq 4,420$ ng/ml and less than 5,000 receptors of the membrane HLA-DR or 30 MFI (mean fluorescence intensity units) of HLA-DR on blood CD14-monocytes by flow cytometry (see online supplement for Methods details). Exclusion criteria were: stage IV malignancy; do not resuscitate decision; active tuberculosis; infection by the human immunodeficiency virus; primary immunodeficiencies; intake of corticosteroids for more 15 days; anti-cytokine biological treatments the last one month; history of systemic lupus erythematosus or demyelinating disorder; and pregnancy or lactation.

Patients were treated with anakinra for MAS and with tocilizumab for CID.

Patients with CID and neutrophil count $< 2,500/\text{mm}^3$ or platelet count $< 100,000/\text{mm}^3$ or serum aminotransferases more than 1.5 x the upper normal when tocilizumab is contraindicated were treated with anakinra. Both drugs were administered intravenously; tocilizumab as single 8mg/kg dose up to 800mg maximum; and anakinra 200 mg every eight hours for seven days; anakinra was adjusted to 100 mg every eight hours for seven days for patients with creatinine clearance less than 30 ml/min.

Peripheral blood mononuclear cells (PBMCs) were isolated at baseline and on day 4 and stimulated for cytokine production. Patients were followed-up daily; adverse events were captured (online supplement).

The primary study endpoint was at least 25% decrease of baseline SOFA score and/or at least 50% increase of the baseline $\text{PaO}_2/\text{FiO}_2$ ratio by day 8. Secondary study endpoints were 28-day mortality; change of SOFA score by day 28; and changes of serum biomarkers and of cytokine production by PBMCs. Exploratory endpoints were the WHO clinical progression scale (CPS) (9) and the length of hospital stay.

Concurrent comparators with ARDS hospitalized at three other ICUs of Greek tertiary hospitals were analysed (online supplement). The primary endpoint was compared between anakinra-treated and tocilizumab-treated patients by the Fisher exact test; odds ratio (OR) and 95% confidence intervals (CIs) were calculated according to Mantel and Haenszel. The primary endpoint was validated by forward stepwise logistic regression analysis. Biomarkers and cytokines were expressed as means \pm SE; serial comparisons were done by the Wilcoxon's paired test and correlations according to Spearman's rank of order. The distribution of the WHO CPS

was compared by the Pearson's chi-square test. The time to hospital discharge was compared by the log-rank test. Any value of *P* below 0.05 was considered significant.

The study was exploratory and no power calculation was done.

RESULTS

The first patient was enrolled on April 2nd 2020 and the last patient on November 16th 2020. A total of 102 patients were enrolled; 42 were allocated to treatment with tocilizumab and 60 to treatment with anakinra. Among anakinra-treated patients, 14 had MAS and 46 had CID with increased aminotransferases (Figure 1). No differences were found between patients allocated to anakinra treatment and to tocilizumab treatment regarding their baseline characteristics (Table 1).

A total of 84 concurrent comparators were used. These were hospitalized during the same time period in three other ICUs of tertiary hospitals. They were selected from a database of 136 patients after applying the inclusion and exclusion criteria of the ESCAPE trial with the exception of the laboratory criteria for CID which were not available (supplementary Figure 1).

The primary study endpoint was met in 58.3% of anakinra-treated patients and in 33.3% of tocilizumab-treated patients (Table 2). This difference was confirmed after stepwise forward logistic regression analysis (OR 3.11; 95% CIs 1.29-7.73; *P*: 0.011) (Table 3). However, no difference was found between the two groups regarding 28-day mortality and the change of SOFA score by day 28 (Table 2).

Immunotherapy was accompanied by changes of biomarkers (Figure 2). By day 8, the absolute lymphocyte counts and the PaO₂/FiO₂ ratio were increased only among anakinra-treated patients; serum C-reactive protein (CRP) was decreased in

both groups. By day 4, circulating ferritin was decreased only among anakinra-treated patients. Notably, on the same day 4 circulating IL-6 and soluble urokinase plasminogen activator receptor (suPAR) were increased among tocilizumab-treated patients. Absolute HLA-DR receptors and the MFI of HLA-DR on circulating CD14-monocytes were also increased among tocilizumab-treated patients.

Analysis of cytokine production capacity by PBMCs showed that the restoration of the cytokine potential capacity by PBMCs by day 4 was associated with better clinical outcome. More precisely, PBMCs of patients treated with anakinra had had increased production capacity for IL-6 compared to baseline before start of treatment; this was not found with tocilizumab. It was also found that the better production capacity for IL-6 by the PBMCs of anakinra-treated patients by day 4 was associated with lower scales of severity of the 28-day 11-point WHO CPS; this was not found with tocilizumab (Figure 3).

Selected concurrent comparators had the same baseline characteristics as patients enrolled in the ESCAPE trial (supplementary Table 1). Among these 84 comparators, seven had MAS as defined by serum ferritin more than 4,420 ng/ml; six of them died by day 28 (85.7%; 95%CI 48.7-97.4%). Among the 14 patients with MAS treated with anakinra, nine died by day 28 (64.3%; 95%CI 38.7-83.6%); 28-day mortality was lower with anakinra treatment (P : 0.033 by the binomial test).

Investigation of the two exploratory endpoints, WHO CPS and length of hospital stay favored anakinra treatment (Figure 4). More precisely, survivors by day 28 who received anakinra were distributed to less severe scales than patients who received tocilizumab; this superiority of anakinra was also shown versus the concurrent comparators (Figure 4A). The median time to hospital discharge was 20 days with anakinra treatment and 31 days with tocilizumab treatment (Figure 4B).

The incidence of secondary infections was greater with tocilizumab treatment. The incidence of aminotransferases increase was also lower with anakinra treatment (Table 4 and supplementary Table 2).

DISCUSSION

A search at the Clinicaltrials.gov repository of on-going trials for COVID-19 indicates that ESCAPE is the only trial that is aiming to deliver immunotherapy to critically ill patients following a personalized approach. The approach is based on the classification of the immune function of the host i.e. MAS or CID. Results showed superior efficacy of anakinra compared to tocilizumab for the achievement of the favorable primary endpoint i.e. decrease of SOFA score and/or increase of the respiratory ratio by the end of treatment. ESCAPE was designed in March 2020 and started in April 2020 well before the WHO CPS was introduced as an endpoint for trials of COVID-19. Exploratory application of WHO CPS showed that despite the lack of difference in mortality by day 28, the allocation of patients treated with anakinra to less severe scales was more frequent compared to tocilizumab. This is compatible with the earlier discharge of anakinra-treated patients from hospital. This superiority of anakinra was also shown versus matched comparators; anakinra provided survival benefit for patients with MAS. A mechanistic insight on the function of PBMCs shows that improvement of the capacity for cytokine production is associated with better clinical outcomes. This was only found for patients treated with anakinra.

It needs to be outscored that the findings of the ESCAPE trial should not be generalized as head-to-head comparisons between the two drugs particularly since several patients were excluded from the study as they could not be immunologically

classified into MAS or CID. However, findings indicate that the immune profile chosen for the application of anakinra is promising. Treatment with anakinra decreased serum ferritin which is a biomarker of macrophage activation (6, 7) so that decreases can be interpreted as an effect of anakinra on macrophage function. We have previously shown that the addition of tocilizumab in the cell cultures of monocytes of patients with ARDS and CID by COVID-19 is reversing the low expression of HLA-DR on CD14-monocytes (5). This was also found at the clinical setting of ESCAPE where the expression of HLA-DR on circulating monocytes was increased over the first four days of treatment. Interestingly, treatment with tocilizumab was accompanied by increase of serum IL-6, a finding also described by others (10). Tocilizumab is antagonizing the receptor of IL-6 and this may lead to reciprocal increase of IL-6. Remarkably, in the same patients suPAR was also increased which is a biomarker of poor prognosis (11, 12). Whether there is a mechanistic link between the increase of IL-6 and suPAR and the lack of clinical improvement more research is needed.

Although several studies support immunotherapies targeting IL-1 and IL-6 as promising strategies for COVID-19, a number of important questions remain unanswered: which is the best candidate patient for which type of treatment, and what is the correct time frame from disease onset to start the treatment. Most of benefit is shown so far in cohorts of patients who are not under mechanical ventilation and who present signs of hyper-inflammation. Retrospective data of the efficacy of anakinra administered intravenously are coming from France and Italy analysing cohorts of 12 patients (13), 29 patients (14) and 65 (15) patients and using concurrent comparators. The minority of patients were under mechanical ventilation and anakinra treatment provided survival benefit after 28 days. In one cohort (15),

anakinra was co-administered with methylprednisolone. All three studies conclude that it is better to start anakinra before mechanical ventilation is needed. ESCAPE was conducted in patients with profound organ dysfunction the majority of which were under mechanical ventilation and results proved that clinical benefit may still be obtained even when COVID-19 has substantially progressed. This is achieved through personalized immunotherapy guided by biomarkers. MAS or CID with increased aminotransferases may guide treatment with anakinra. Results corroborate the reported efficacy of intravenous anakinra in seven mechanically ventilated patients; the administered dose was 200mg three times daily for seven days and five patients were remarkably improved (16).

Similar questions apply for the use of tocilizumab. In an observational study, 104 patients started tocilizumab when daily radiological and laboratory signs indicated disease progression; mortality was 8.5% compared to 11% of regional mortality (17). In a cohort study of 778 patients from Spain with laboratory signs of hyper-inflammation, the only treatment modality associated with prevention of mechanical ventilation or death by day 21 was treatment with tocilizumab (18). A large analysis coming from 18 study sites from Spain included patients with severe COVID-19 of which 268 were treated with tocilizumab and 238 were comparators. Mortality was 16.8% and 31.5%; this difference remained even with corticosteroid treatment (19). Three randomized clinical trials are available for hospitalized patients with severe illness. The first trial included 67 patients treated with tocilizumab and 64 patients with standard-of-care; a trend for lower mortality was shown by day 14 but not by day 28 (20). The second trial included 161 patients who were allocated to tocilizumab and 81 patients to placebo. Tocilizumab failed to prevent the incidence of mechanical ventilation or death (hazard ratio 0.83; P : 0.63) (21). The third trial

included 249 patients allocated to tocilizumab and 121 patients to placebo. Tocilizumab treatment decreased considerably the risk for progression into mechanical ventilation or death (hazard ratio 0.56; *P*: 0.24) (22).

When tocilizumab was administered in patients with critical illness necessitating ICU admission results were not that promising. Two retrospective analyses, one including 45 mechanically ventilated patients treated with tocilizumab and 70 comparators (23) and another including 210 ICU patients treated with tocilizumab and 420 comparators (24) did not show any survival benefit. Another retrospective analysis of 45 severe/critical patients used a primary endpoint much similar to ours i.e. respiratory improvement by day 7; this was achieved in 24.4% (25).

CONCLUSIONS

The findings of the present study suggest clinical benefit among critically ill patients when anakinra treatment is guided by either ferritin more than 4,420 ng/ml which is diagnostic of MAS or with low expression of HLA-DR on CD14-circulating monocytes and increase of aminotransferases. This benefit should be confirmed in a randomized clinical trial.

Conflicts of interest

George N. Dalekos has acted as Advisor/Lecturer for Abbvie, Bristol-Myers Squibb, Gilead, Novartis, Roche, Amgen, MSD, Janssen, Ipsen, Genkyotex, Sobi and Pfizer, has received Grant support from Bristol-Myers Squibb, Gilead, Roche, Janssen, Abbvie and Bayer and was or is currently PI in National & International Protocols sponsored by Abbvie, Bristol-Myers Squibb, Novartis, Gilead, Novo Nordisk,

Genkyotex, Regulus Therapeutics Inc, Tiziana Life Sciences, Bayer, Astellas, Ipsen, Pfizer, Amyndas Pharmaceuticals, CymaBay Therapeutics Inc. and Roche.

E. Karakike has received funding from Horizon 2020 Marie Skłodowska-Curie Grant European Sepsis Academy (grant 676129), outside the submitted work.

Haralampos Milionis reports receiving honoraria, consulting fees and non-financial support from healthcare companies, including Amgen, Angelini, Bayer, Mylan, MSD, Pfizer, and Servier.

J. Eugen-Olsen is a cofounder, shareholder and CSO of ViroGates A7S, Denmark and is named inventor on patents on suPAR owned by Copenhagen University Hospital Hvidovre, Denmark. He is granted by the Horizon 2020 European Grant RISKinCOVID.

M.G. Netea is a scientific founder of TTxD, and received research grants from GSK and ViiV Healthcare.

E.J. Giamarellos-Bourboulis has received honoraria from Abbott CH, Angelini Italy, InflaRx GmbH, MSD Greece, XBiotech Inc., and B·R·A·H·M·S GmbH (Thermo Fisher Scientific); independent educational grants from AbbVie Inc, Abbott CH, Astellas Pharma Europe, AxisShield, bioMérieux Inc, Novartis, InflaRx GmbH, and XBiotech Inc; and funding from the FrameWork 7 program HemoSpec (granted to the National and Kapodistrian University of Athens), the Horizon2020 Marie-Curie Project European Sepsis Academy (granted to the National and Kapodistrian University of Athens), the Horizon 2020 European Grant ImmunoSep (granted to the Hellenic Institute for the Study of Sepsis) and the Horizon 2020 RISKinCOVID (granted to the Hellenic Institute for the Study of Sepsis).

The other authors do not report any conflict of interest.

REFERENCES

1. Qin C, Zhou L, Hu Z, Zhang S, Yang S, Tao Y et al. Dysregulation of immune response in patients with coronavirus 2019 (COVID-19) in Wuhan, China. *Clin Infect Dis* 2020; 71: 762-768.
2. McElvaney OJ, McEvoy NL, McElvaney OF, Carroll TP, Murphy MP, Dunlea DM et al. Characterization of the inflammatory response to severe COVID-19 illness. *Am J Respir Crit Care Med* 2020; 202: 812-821.
3. Ruscitti P, Berardicurti O, Di Benedetto P, Cipriani P, Iagnocco A, Yehuda Shoenfeld Y et al. Another piece in the puzzle of the hyperferritinemic syndrome. an immunomodulatory perspective to alleviate the storm. *Front Immunol* 2020; 11: 1130.
4. Blot M, Bour JB, Quenot JP, Bourredjem B, Nguyen M, Guy J et al. The dysregulated innate immune response in severe COVID-19 pneumonia that could drive poorer outcome. *Transl Med* 2020; 18: 457.
5. Giamarellos-Bourboulis EJ, Netea MG, Rovina N, Akinosoglou K, Antoniadou A, Antonakos N, Damoraki G et al. Complex immune dysregulation in COVID-19 patients with severe respiratory failure. *Cell Host Microbe* 2020; 27: 992-1000.
6. Kyriazopoulou E, Leventogiannis K, Norrby-Teglund A, Dimopoulos G, Pantazi A, Orfanos SE et al. Macrophage activation-like syndrome: an immunological entity associated with rapid progression to death in sepsis. *BMC Med* 2017; 15: 172.
7. Karakike E, Giamarellos-Bourboulis EJ. Macrophage activation-like syndrome: a distinct entity leading to early death in sepsis. *Front Immunol* 2019; 10: 55.
8. Shakoory B, Carcillo JA, Chatham WW, Amdur RL, Zhao H, Dinarello CA et al. Interleukin-1 receptor blockade is associated with reduced mortality in sepsis

- patients with features of macrophage activation syndrome: reanalysis of a prior phase III trial. *Crit Care Med* 2016; 44: 275-281.
9. WHO Working Group on the clinical characterisation and management of COVID-19 infection. A minimal common outcome measure set for COVID-19 clinical research. *Lancet Infect Dis* 2020; 20: e192-e197.
10. Vu CA, DeRonde KJ, Vega AD, Maxam M, Holt G, Natori Y et al. Effects of Tocilizumab in COVID-19 patients: a cohort study. *BMC Infect Dis* 2020; 20: 964.
11. Rovina N, Akinosoglou K, Eugen-Olsen E, Hayek S, Reiser J, Giamarellos-Bourboulis EJ. Soluble urokinase plasminogen activator receptor (suPAR) as an early predictor of severe respiratory failure in patients with COVID-19 pneumonia. *Crit Care* 2020; 24: 187.
12. Azam TU, Shadid H, Blakely P, O'Hayer P, Berlin H, Pan M, et al. Soluble urokinase receptor in COVID-19 related acute kidney injury. *J Am Soc Nephrol* 2020; 31: 2725-2735.
13. Cauchois R, Koubi M, Delarbre D, Manet C, Carvelli J, Blasco VB, et al. Early IL-1 receptor blockade in severe inflammatory respiratory failure complicating COVID-19. *Proc Natl Acad Sci U S A*. 2020; 117: 18951-18953.
14. Cavalli G, De Luca G, Campochiaro C, Della-Torre E, Ripa M, Canetti D, et al. Interleukin-1 blockade with high-dose anakinra in patients with COVID-19, acute respiratory distress syndrome, and hyperinflammation: a retrospective cohort study. *Lancet Rheumatol* 2020; 2: e325-e331.
15. Bozzi G, Mangioni D, Minoia F, Aliberti S, Grasselli G, Barbetta L, et al. Anakinra combined with methylprednisolone in patients with severe COVID-19 pneumonia and hyperinflammation: an observational cohort study. *J Allergy Clin Immunol* 2020; doi.org/10.1016/j.jaci.2020.11.006.

16. Dimopoulos G, de Mast Q, Markou N, Theodorakopoulou M, Komnos A, Mouktaroudi M, et al. Favorable anakinra responses in severe Covid-19 patients with secondary hemophagocytic lymphohistiocytosis. *Cell Host Microbe* 2020; 28: 117-123.
17. Corominas H, Castellví I, Pomar V, Antonijoan R, Mur I, Matas L et al. Effectiveness and safety of intravenous tocilizumab to treat COVID-19-associated hyperinflammatory syndrome: Covizumab-6 observational cohort. *Clin Immunol* 2020; 223: 108631.
18. Rodríguez-Baño J, Pachón J, Carratalà J, Ryan P, Jarrín I, Yllescas M, Arribas JR et al. Treatment with tocilizumab or corticosteroids for COVID-19 patients with hyperinflammatory state: a multicentre cohort study (SAM-COVID-19). *Clin Microbiol Infect* 2020: S1198-743X(20)30492-4. DOI: 10.1016/j.cmi.2020.08.010
19. Ruiz-Antorán B, Sancho-López A, Torres F, Moreno-Torres V, de Pablo-López I, García-López P et al. Combination of tocilizumab and steroids to improve mortality in patients with severe COVID-19 infection: A Spanish, multicenter, cohort study. *Infect Dis Ther* 2020: 1-16. DOI: 10.1007/s40121-020-00373-8.
20. Hermine O, Mariette X, Tharaux PL, Resche-Rigon M, Porcher R, Ravaud P et al. Effect of tocilizumab vs usual care in adults hospitalized with COVID-19 and moderate or severe pneumonia: a randomized clinical trial. *JAMA Intern Med* 2021; 181: 32-40.
21. Stone JH, Frigault MJ, Serling-Boyd NJ, Fernandes AD, Harvey L, Foulkes AS et al. Efficacy of tocilizumab in patients hospitalized with Covid-19. *N Engl J Med* 2020; 383: 2333-2344.
22. Salama C, Han J, Yau L, Reis WG, Kramer B, Neidhart JD, et al. Tocilizumab in patients hospitalized with COVID-19 pneumonia. *N Engl J Med* 2021; 384: 20-30.

23. Fisher MJ, Raymundo LAM, Monteforte M, Taub EM, Go R. Tocilizumab in the treatment of critical COVID-19 pneumonia: a retrospective cohort study of mechanically ventilated patients. *Int J Infect Dis* 2020: S1201-9712(20)32544-3. DOI: 10.1016/j.ijid.2020.12.021
24. Biran N, Ip A, Ahn J, Go RC, Wang S, Mathura S et al. Tocilizumab among patients with COVID-19 in the intensive care unit: a multicentre observational study. *Lancet Rheumatol* 2020;2:e603-e612.
25. Smoke SM, Raja K, Hilden P, Daniel NM. Early clinical outcomes with tocilizumab for severe COVID-19: a two-centre retrospective study. *Int J Antimicrob Agents* 2020: 106265.

Figure legends

Figure 1 Study flow of patients in the ESCAPE trial

Abbreviations ALT: alanine aminotransferase; AST: aspartate aminotransferase; ITT: intent-to-treat; LRTI: lower respiratory tract infection; MAS: macrophage activation syndrome; PLT: absolute platelet count; PMNs: absolute neutrophil count

Figure 2 Change of biomarkers after immunomodulatory treatment for critical COVID-19

Patients with critical COVID-19 were treated with anakinra (n= 60) or tocilizumab (n= 42). Comparative values of day 1 before start of treatment and of day 8 are provided for the absolute lymphocyte count, serum C-reactive protein (CRP), and the ratio of partial oxygen pressure to the fraction of inspired oxygen ($\text{PaO}_2/\text{FiO}_2$). Comparative values of day 1 before start of treatment and of day 4 are provided for interleukin (IL)-6, soluble urokinase plasminogen activator receptor (suPAR), ferritin, absolute number of molecules of HLA-DR (mHLA-DR) and mean fluorescence intensity (MFI) of DLA-DR on circulating monocytes. The *P* values of the respective comparisons by the Wilcoxon's paired test are provided.

Figure 3 Modulation of mononuclear cell function

Panels A to E) Concentrations of tumour necrosis factor-alpha ($\text{TNF}\alpha$), of interleukin (IL)-6, IL-17 and interferon ($\text{IFN}\gamma$) in the supernatants of peripheral blood mononuclear cells (PBMCs) of patients treated with anakinra and with tocilizumab; PBMCs were isolated before start of treatment (day 1) and on day 4 of treatment and

they were stimulated with lipopolysaccharide (LPS) of *Escherichia coli* O55:B5 and with heat-killed *Candida albicans* (HKCA). *P* values indicated the level of significance after comparisons between days 1 and 4 by the Wilcoxon test.

Panels F and G) Correlation between IL-6 produced by PBMCs on day 4 after stimulation with HKCA and the WHO clinical progression scale (CPS) on day 28. The Spearman's correlation co-efficient (r_s) and the *P* values of significance are provided.

Figure 4 Exploratory study endpoints

A) Comparative distribution of the scales of the WHO clinical progression scale by day 28 between anakinra-treated patients, tocilizumab-treated patients; and available comparators; the indicated comparisons are done by the Pearson's chi-square test.

B) Time to hospital discharge of patients receiving treatment with anakinra and with tocilizumab. The *P* value of comparison by the log-rank test is provided.

Table 1 Baseline characteristics of patients enrolled in ESCAPE trial

	Anakinra (N=60)	Tocilizumab (N=42)	P-value
Age, mean (SD)	61.6 (16.4)	66.3 (10.8)	0.125
Male gender, n (%)	45 (75.0)	34 (81.0)	0.631
Mechanical ventilation, n (%)	39 (65.0)	32 (76.2)	0.277
Severity scores, mean (SD)			
Charlson's Comorbidity Index	2.63 (2.38)	2.72 (1.48)	0.827
Pneumonia Severity Index	82.4 (32.9)	89.1 (29.6)	0.312
APACHE II score	10.3 (7.9)	11.3 (11.3)	0.606
SOFA score	4.42 (2.31)	4.74 (2.06)	0.483
Comorbidities, n (%)			
Type 2 diabetes mellitus	9 (15.0)	10 (23.8)	0.306
Chronic heart failure	3 (5.0)	1 (2.4)	0.641
Chronic renal disease	3 (5.0)	1 (2.4)	0.641
Coronary heart disease	8 (13.3)	7 (16.7)	0.778
Arterial hypertension	12 (20.7)	20 (50.0)	0.004
Cerebrovascular disease	2 (3.4)	0 (0.0)	0.514
COPD	3 (5.2)	1 (2.6)	0.646
Atrial fibrillation	5 (8.3)	1 (2.4)	0.396
Dyslipidemia	12 (20.0)	14 (33.3)	0.167
Hypothyroidism	5 (8.3)	2 (4.8)	0.697
Laboratory values, mean (SD)			
Absolute neutrophil count, /mm ³	7284.6 (4605.1)	9392.0 (5501.3)	0.061
Absolute lymphocyte count, /mm ³	879.5 (624.8)	835.0 (693.4)	0.777
Platelets, x10 ³ /mm ³	238.6 (107.8)	281.9 (96.1)	0.059

AST, U/l	61.5 (39.7)	36.4 (15.9)	<0.0001
ALT, U/l	65.7 (48.6)	31.9 (13.9)	<0.0001
Creatinine, mg/dl	1.03 (0.51)	0.87 (0.25)	0.127
Treatment, n (%)			
β-lactamase inhibitor	13 (21.7)	4 (9.5)	0.176
Piperacillin/ tazobactam	24 (40.0)	17 (40.5)	1.00
3 rd generation cephalosporin	21 (35.0)	10 (23.8)	0.277
Ceftaroline	16 (26.7)	15 (35.7)	0.384
Ceftazidime/avibactam	5 (8.3)	8 (19)	0.137
Colistin	25 (41.7)	23 (54.8)	0.229
Meropenem	22 (36.7)	22 (36.7)	0.155
Glycopeptide	11 (18.3)	17 (40.5)	0.023
Linezolid	26 (43.3)	24 (57.1)	0.227
Tigecycline	14 (23.3)	17 (40.5)	0.081
Moxifloxacin	5 (8.3)	11 (26.2)	0.025
<u>Azithromycin</u>	38 (63.3)	19 (45.2)	0.105
Hydroxychloroquine	9 (15.0)	9 (21.4)	0.438
Remdesivir	17 (27.3)	14 (33.3)	0.664
Dexamethasone	35 (58.3)	30 (71.4)	0.212

Abbreviations APACHE II: acute physiology and chronic health evaluation; AST:

aspartate aminotransferase; ALT: alanine aminotransferase; COPD: chronic

obstructive pulmonary disease; n: number; SOFA sequential organ failure

assessment; SD standard deviation

Table 2 Primary and secondary endpoints of the ESCAPE trial

	Anakinra (n= 60)	Tocilizumab (n=42)	OR (95% CI)	P- value
Primary endpoint, n (%; 95% CI)	35 (58.3; 44.9-70.7)	14 (33.3; 20.0-49.6)	2.80 (1.23-6.37)	0.016
At least 25% decrease of baseline SOFA score by day 8	23 (38.3; 26.4-51.8)	7 (16.7; 7.5-32.0)	3.11 (1.19-8.15)	0.027
At least 50% increase of the baseline PaO ₂ /FiO ₂ ratio by day 8	18 (30.0; 19.2-43.4)	12 (28.6; 16.2-44.8)	1.07 (0.45-2.55)	1.000
28-day mortality, n (%; 95% CI)	20 (33.3; 22.0-46.8)	14 (33.3; 20.0-49.6)	1.00 (0.43-2.31)	1.000
Delta SOFA Day 28, median (Q1-Q3)	-10.0 (-75 to 257)	0 (-55 to 440)	NA	0.315

Abbreviations: CI confidence intervals; NA non-applicable; OR odds ratio; Q: quartile; SOFA sequential organ failure assessment score

Table 3 Multivariate analysis of variables associated with the incidence of the primary endpoint

	Meeting primary endpoint (N= 49)	Not meeting primary endpoint (N=53)	Univariate analysis		Multivariate analysis	
			OR (95% CIs)	P- value	OR (95% CIs)	P- value
Age, mean (SD)	60.0 (15.3)	66.7 (13.1)	0.97 (0.94-0.99)	0.024	*	
Male gender, n (%)	37 (75.5)	42 (79.2)	0.81 (0.32-2.05)	0.813	**	
Mechanical ventilation, n (%)	29 (59.2)	42 (79.2)	0.38 (0.16-0.91)	0.033	*	
CCI, mean (SD)	2.19 (1.75)	3.12 (2.22)	0.79 (0.63-0.98)	0.031	0.77 (0.62-0.96)	0.021
PSI, mean (SD)	77.3 (31.9)	92.9 (29.7)	0.98 (0.97-0.99)	0.019	*	
APACHE II score, mean (SD)	11.1 (12.6)	10.4 (4.4)	1.00 (0.96-1.05)	0.745	**	
SOFA score, mean (SD)	4.46 (2.29)	4.62 (2.14)	0.96 (0.81-1.15)	0.688	**	
PaO ₂ /FiO ₂ , mmHg, mean (SD)	175.1 (117.9)	136.8 (61.7)	1.00 (0.99-1.01)	0.059	*	
Absolute neutrophil count, /mm ³ , mean (SD)	8212.7 (4937.8)	8287.3 (5348.2)	1.00 (0.99-1.00)	0.847	**	
Absolute lymphocyte count, /mm ³ , mean (SD)	949.7 (707.6)	767.0 (577.9)	1.00 (0.99-1.00)	0.242	**	

Platelet count, $\times 10^3/\text{mm}^3$, mean (SD)	242.0 (83.7)	275.2 (120.7)	1.00 (0.99-1.00)	0.157		
AST, U/l, mean (SD)	51.9 (32.7)	48.1 (34.4)	1.00 (0.99-1.02)	0.600	**	
ALT, U/l, mean (SD)	52.7 (40.3)	47.8 (41.7)	1.00 (0.99-1.01)	0.582	**	
Ferritin, ng/ml, mean (SD)	1635.5 (1643.1)	2416.6 (3103.9)	1.00 (0.99-1.00)	0.137	**	
Anakinra treatment, n (%)	32 (65.3)	25 (47.2)	2.80 (1.23-6.37)	0.016	3.11 (1.29-7.73)	0.011
Azithromycin treatment, n (%)	32 (65.3)	24 (45.3)	2.10 (0.94-4.68)	0.067	*	
Glycopeptide treatment, n (%)	17 (34.7)	11 (20.8)	2.02 (0.83-4.92)	0.127	*	
Dexamethasone treatment, n (%)	28 (57.1)	37 (69.8)	0.58 (0.26-1.30)	0.185	**	
Remdesivir treatment, n (%)	14 (28.6)	17 (32.1)	0.85 (0.36-1.98)	0.701	**	

*variables were included in the equation of the multivariate analysis but they were excluded after two steps of analysis

**variables not included in the equation

Abbreviations APACHE: acute physiology and chronic health evaluation; AST: aspartate aminotransferase; ALT: alanine aminotransferase; CCI: Charlson's comorbidity index; CI: confidence interval; OR: odds ratio; PSI: pneumonia severity index; SOFA sequential organ failure assessment; SD standard deviation

Table 4 Serious and non-serious adverse events captured during the ESCAPE trial

	Anakinra (n=60)	Tocilizumab (n=42)	P-value
Serious adverse events, n (%)			
Pneumothorax	2 (3.3)	6 (14.3)	0.062
Pulmonary embolism	1 (1.7)	0 (0)	1.00
Deep venous thrombosis	1 (1.7)	0 (0)	1.00
Acute kidney injury	7 (11.7)	5 (11.9)	1.00
Shock	17 (28.3)	10 (23.8)	0.655
Infections			
Ventilator-associated pneumonia	9 (15.0)	15 (15.7)	0.019
Catheter-related bloodstream infection	4 (6.7)	4 (9.5)	0.714
Bloodstream infection	13 (21.7)	17 (40.5)	0.049
<i>Clostridioides difficile</i> infection	3 (5.0)	1 (2.4)	0.641
Arrhythmias			
Ventricular tachycardia	3 (5.0)	0 (0)	0.266
Atrial fibrillation	6 (10.0)	4 (9.5)	1.00
Bradycardia	0 (0)	4 (9.5)	0.026
Grade 4 laboratory investigation	4 (6.7)	5 (11.9)	0.572
Thrombocytopenia	3 (5.0)	4 (9.5)	0.442
Increase of aminotransferases	0 (0)	3 (7.1)	0.067
Increase of CPK	1 (1.7)	2 (4.8)	0.567
Non-serious adverse events			
Grade 1/2 thrombocytopenia	3 (5.0)	4 (9.5)	0.442
Grade 1/2 increase of aminotransferases	5 (8.3)	14 (33.3)	0.002
Grade 1/2 increase of creatinine	6 (10.0)	8 (19.0)	0.246

Grade 1/2 increase of glucose	3 (5.0)	2 (4.8)	1.00
Grade 1/2 hyponatremia	5 (8.3)	4 (9.5)	1.00
Grade 1/2 hypokalemia	1 (1.7)	5 (11.9)	0.079
Grade 1/2 hyperkalemia	5 (8.3)	4 (9.5)	1.00
Grade 1/2 increase of CPK	0 (0)	3 (7.1)	0.067

Adverse events were graded according to the Common Terminology Criteria for Adverse Events (version 5.0). AEs of Grade 4 were considered as SAEs.

Abbreviations: CPK creatinine phosphokinase

ESCAPE trial (April-November 2020)

Screened for eligibility= 144

Excluded= 42

- Failed immune classification= 19
- No increase of SOFA= 8
- Not meeting category 2 or 3 criteria of LRTI involvement= 5
- Corticosteroid intake= 4
- Stage IV malignancy= 3
- Withdrew consent= 3

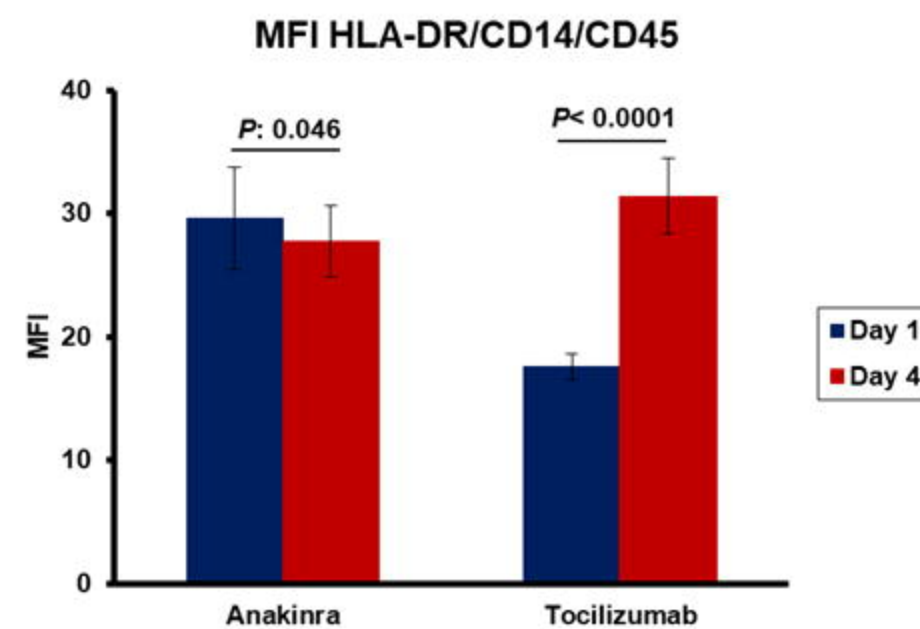
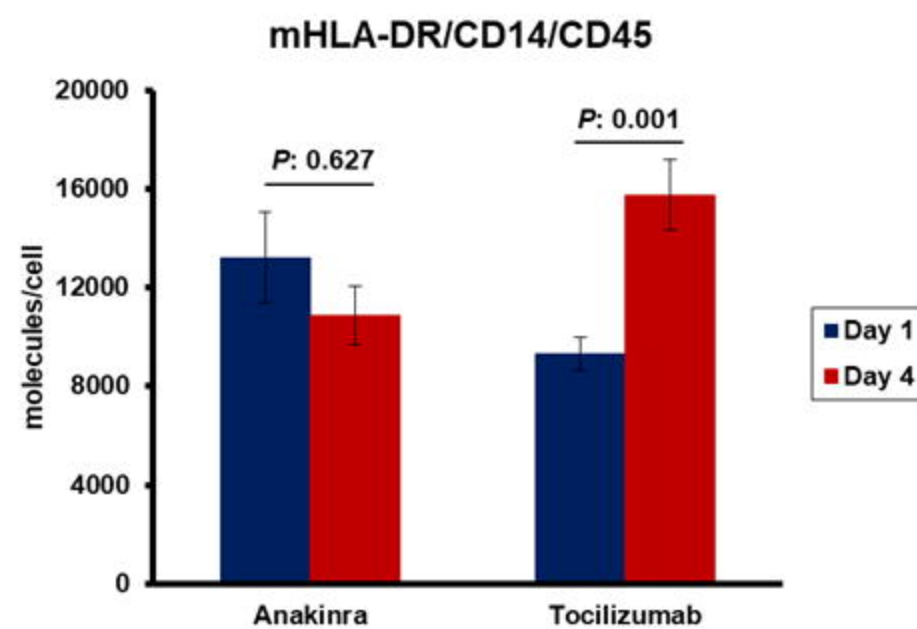
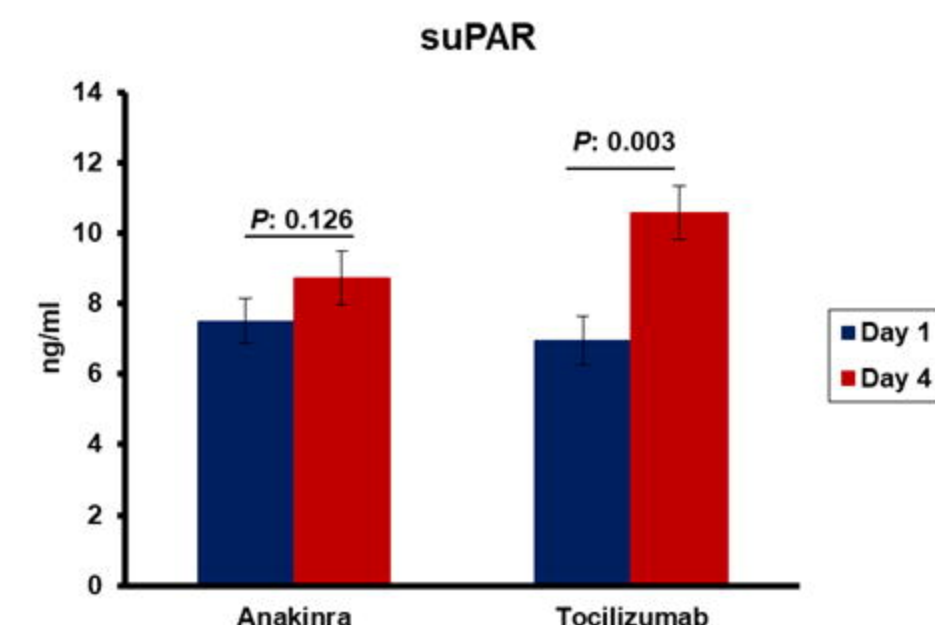
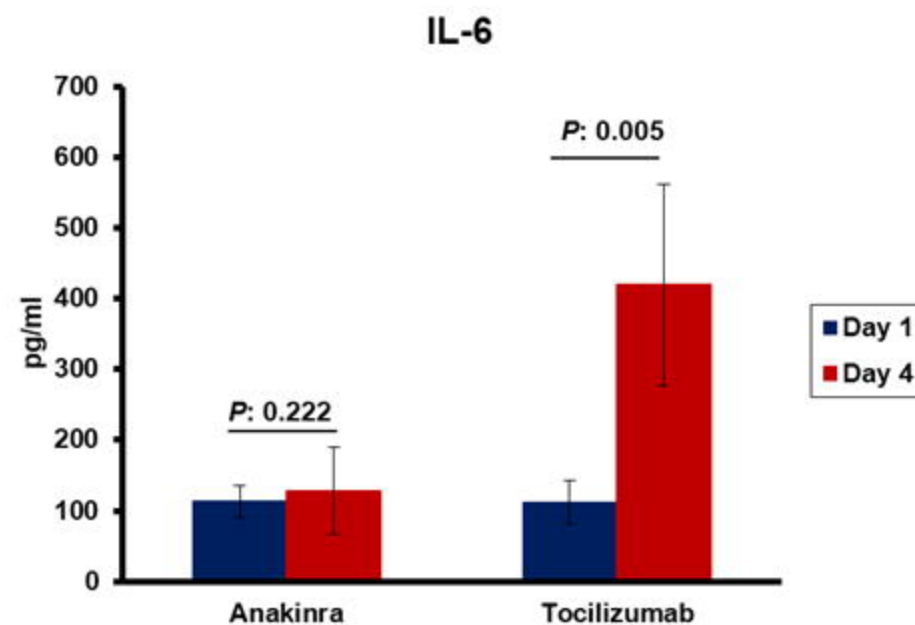
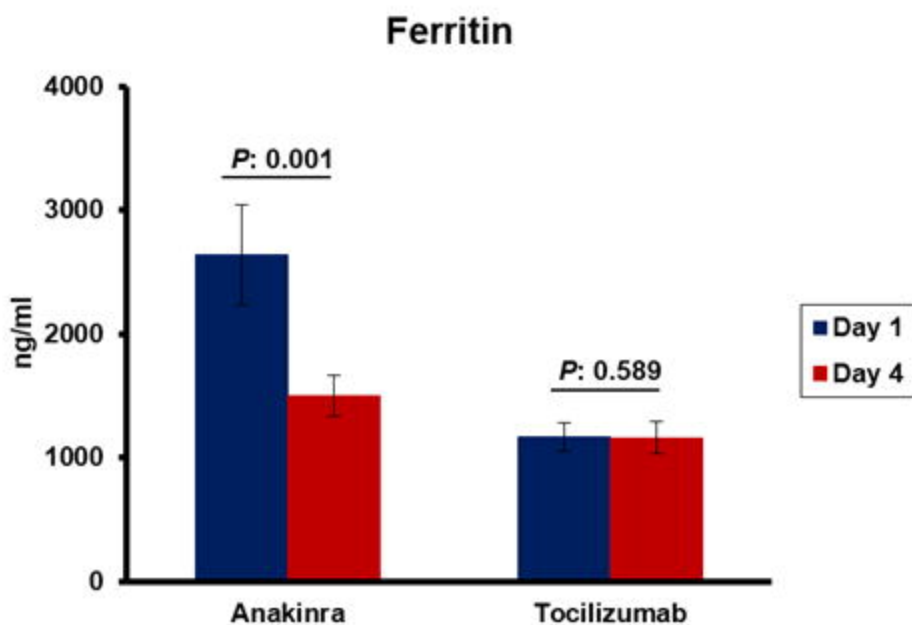
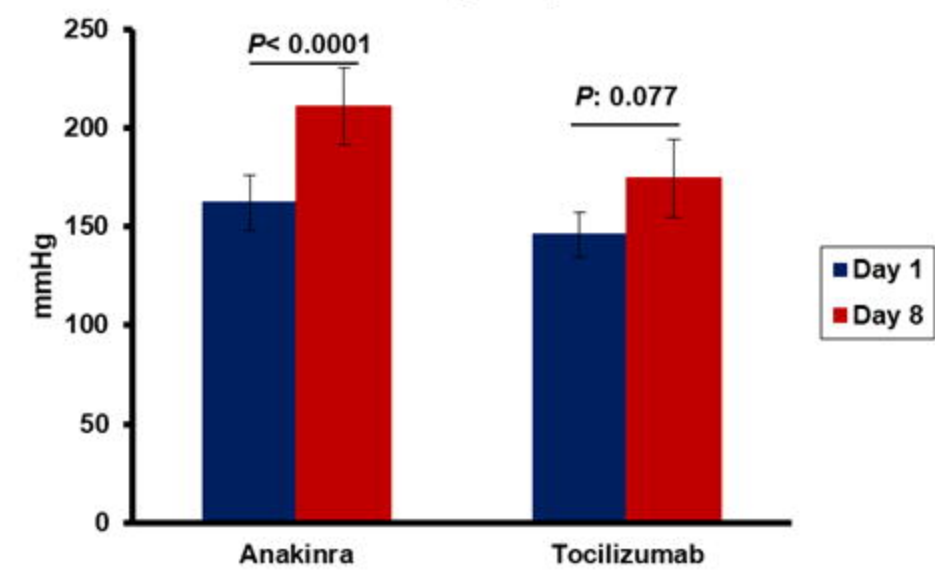
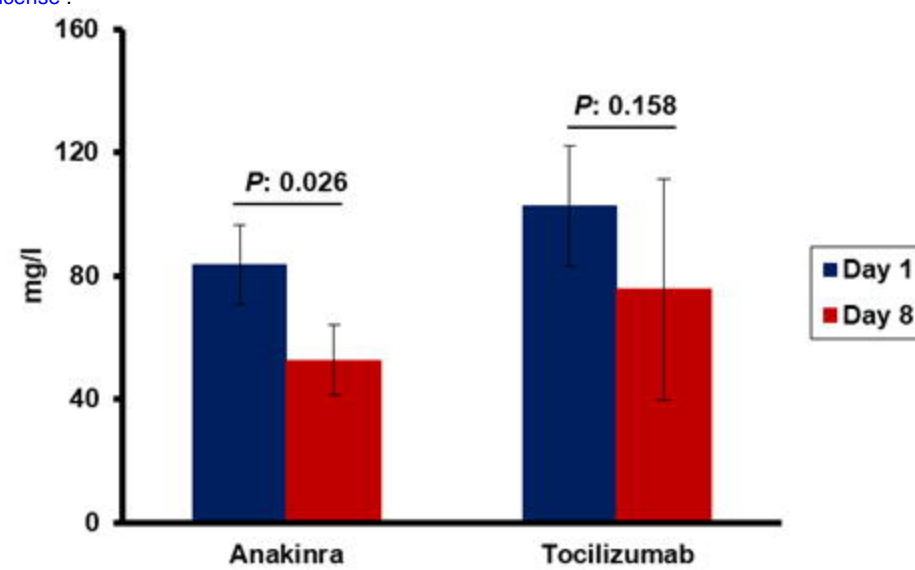
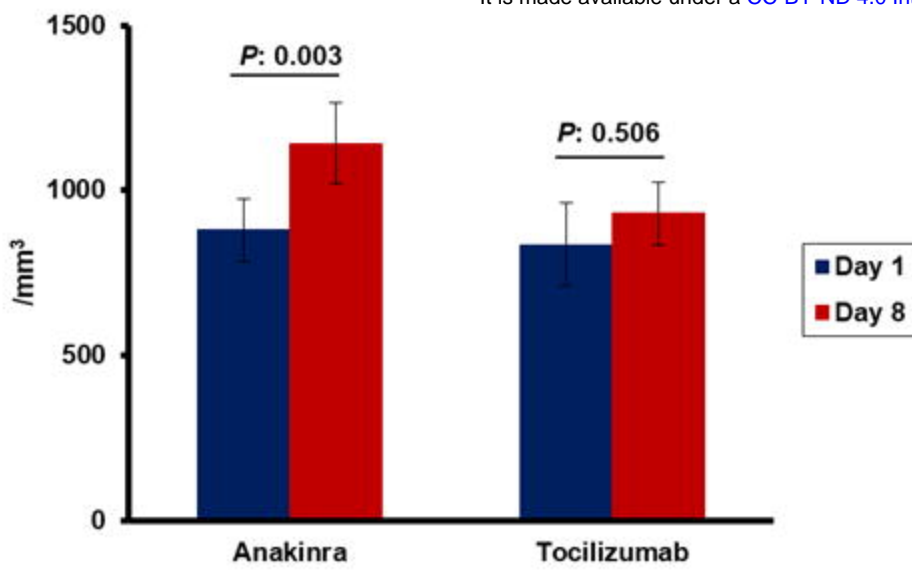
Allocated to personalized treatment (ITT)= 102

Tocilizumab= 42

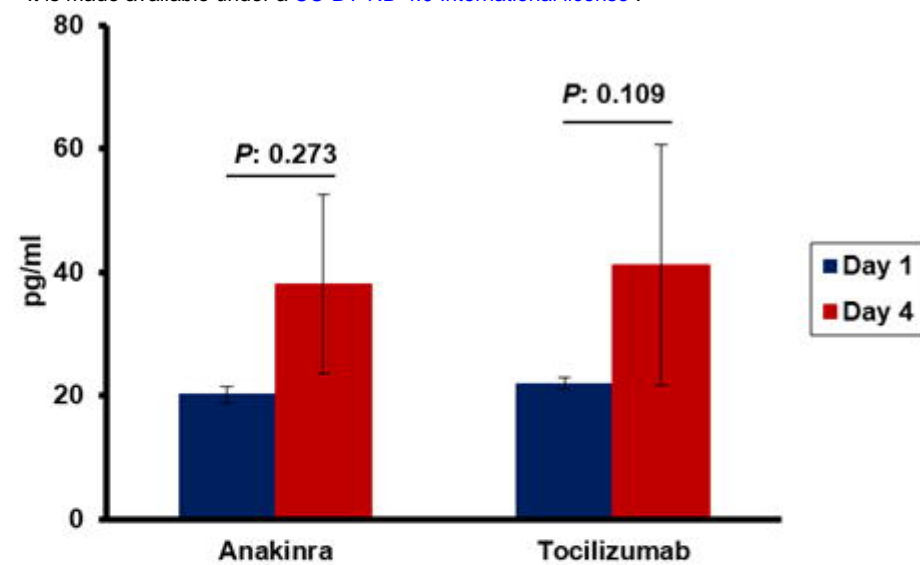
Dysregulation with normal
PMNs, AST/ALT, PLT

Anakinra= 60

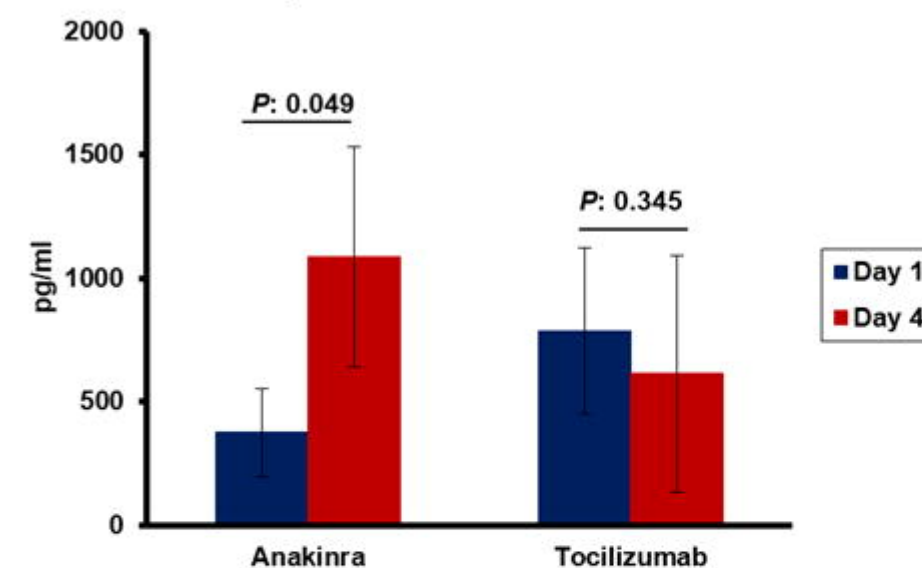
- MAS= 14
- Dysregulation with \uparrow AST/ALT= 46



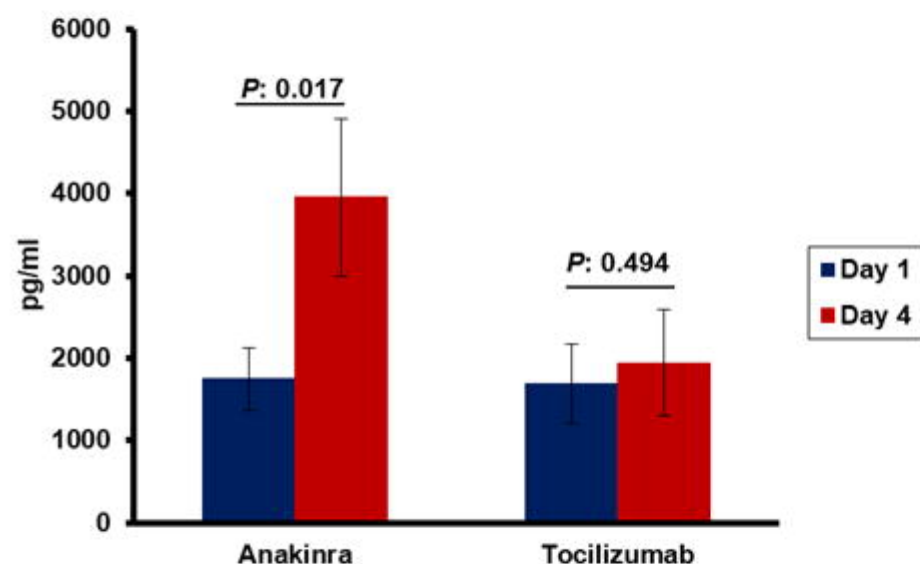
A) TNF α LPS-stimulation



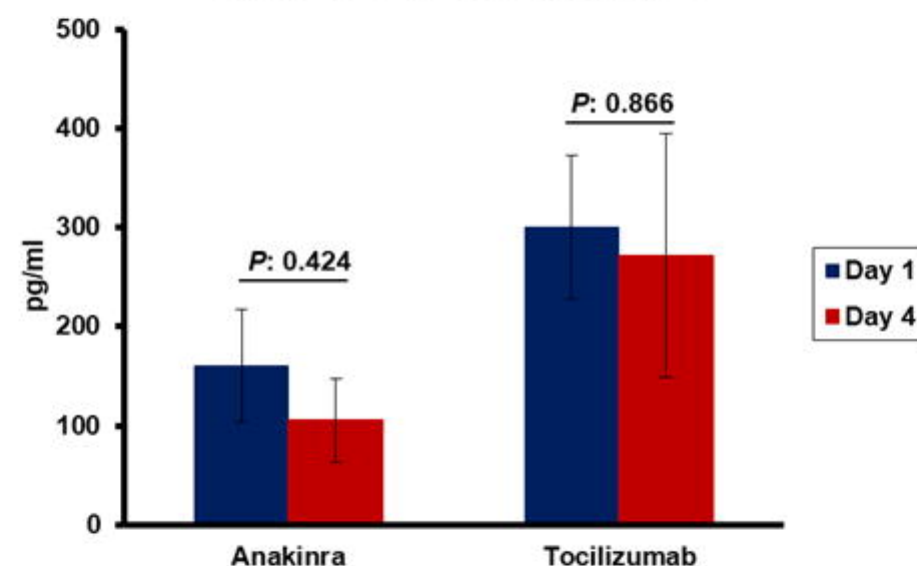
B) IL-6 LPS-stimulation



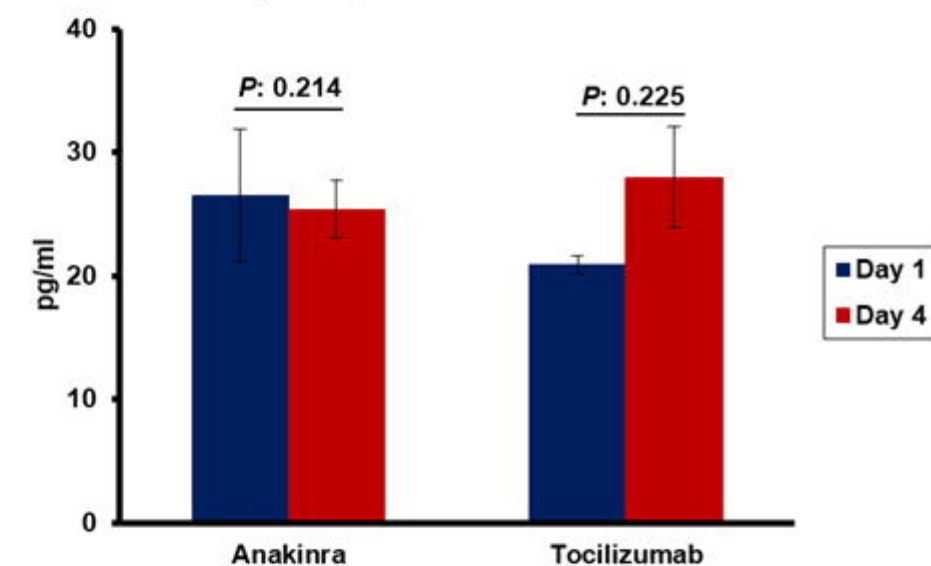
C) IL-6 HKCA-stimulation



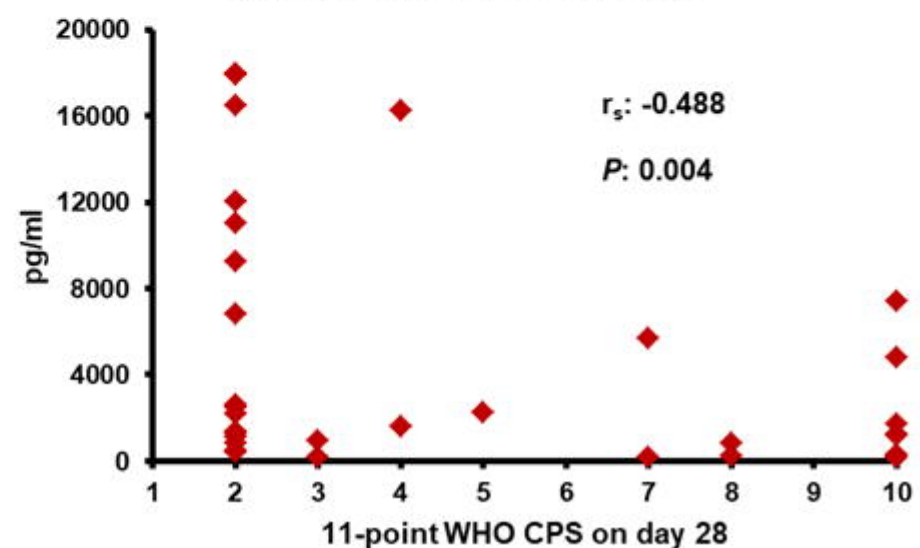
D) IL-17 HKCA-stimulation



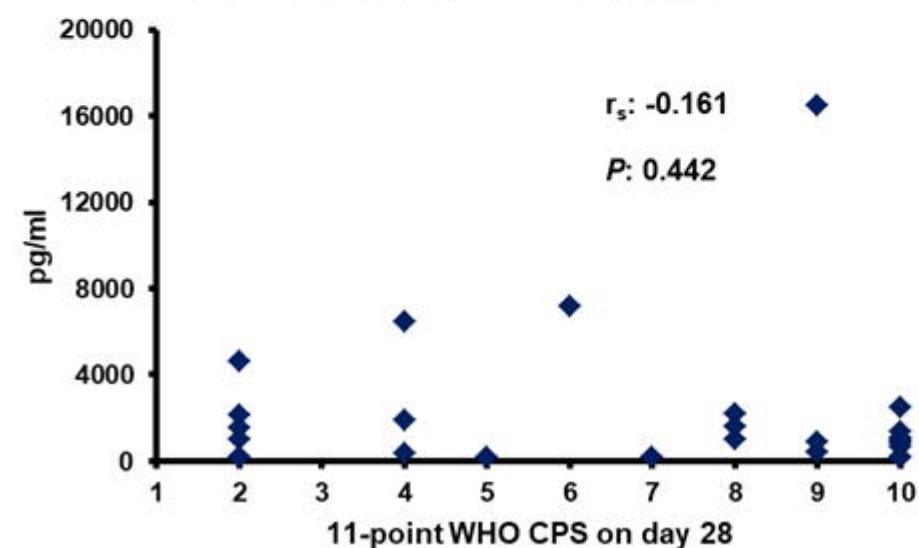
E) IFN γ HKCA-stimulation



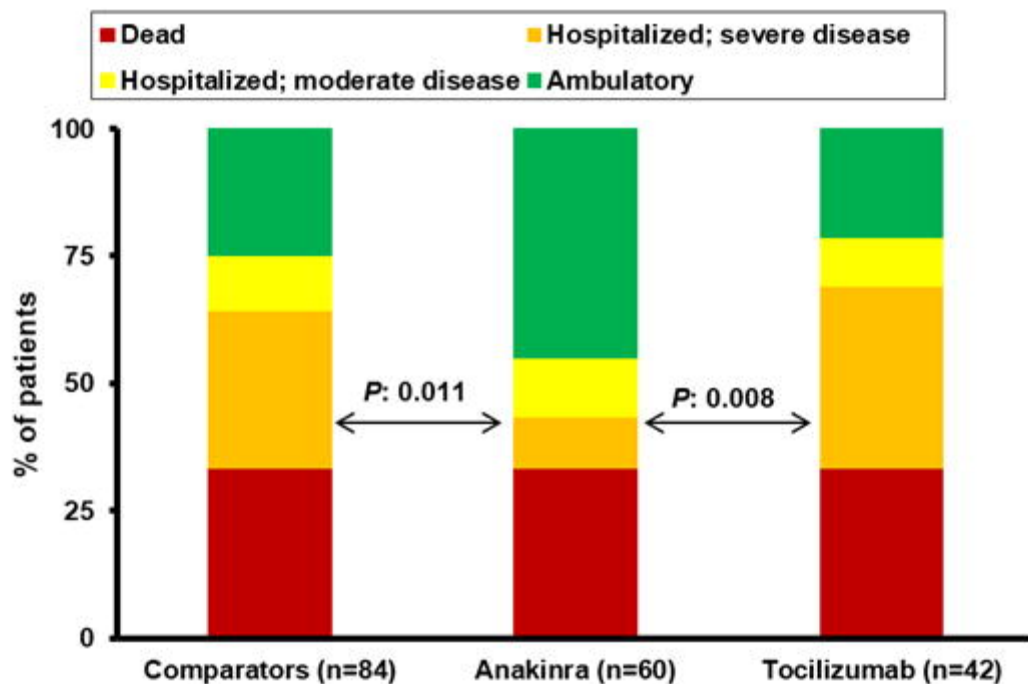
F) IL-6/WHO-CPS Anakinra



G) IL-6/WHO-CPS Tocilizumab



A)



B)

