

1 Rapid Detection of SARS-CoV-2 Antigen from Serum in a Hospitalized Population

2 McAulay K, Kaleta EJ, Grys TE*

3

4 Department of Laboratory Medicine and Pathology, Mayo Clinic, Phoenix AZ

5

6 *Correspondence to: Thomas.Grys@mayo.edu

7

8 Abstract

9 SARS-CoV-2 viremia has been demonstrated in some patients using molecular assays.

10 Here we demonstrate detection of SARS-CoV-2 antigen in a cohort of hospitalized

11 patients using a rapid diagnostic test from Anhui Deepblue Medical Technology Co.,

12 Ltd. We detected antigen in serum from 11 of 13 patients at time points ranging from

13 three to eighteen days from symptom onset and observed that the disappearance of an

14 antigen signal was associated with seroconversion. These results demonstrate proof of

15 principle use of a rapid antigen test with serum samples in a format compatible with

16 point of care testing.

17 Introduction

18 The coronavirus disease 2019 (COVID-19) pandemic, caused by severe acute
19 respiratory syndrome virus 2 (SARS-CoV-2), has placed tremendous strain on
20 centralized clinical laboratories due to high volumes of testing and supply chain
21 challenges. Rapid diagnostic tests (RDT) present an opportunity to reduce the burden
22 on centralized testing labs. Many RDT are lateral flow devices which, with appropriate
23 validation, can easily be performed in a point of care (POC) setting. There are a large
24 number of these tests currently approved by the FDA for antibody detection and the
25 market for rapid antigen detection from respiratory specimens is currently expanding.
26 While concerns remain regarding clinical accuracy[1, 2], these tests are changing the
27 response to the pandemic since the results can be available in as little as 10-20 minutes
28 after specimen collection. This compares favorably to the current gold standard
29 molecular methods, for which laboratory turn-around times for high-throughput batch
30 testing are typically 6-8 hours or more, and when there is a surge of disease or shortage
31 of supplies, actual turn-around may take days.

32 SARS-CoV-2 is known to reach high levels of detectable RNA in the
33 nasopharynx. While there have been several reports of measurable viremia in
34 hospitalized patients, these investigations have focused on nucleic acid detection[3, 4];
35 there are few peer-reviewed reports of SARS-CoV-2 antigenemia[5, 6]. Since some viral
36 proteins are present in multiple copies per virion, we tested whether a rapid antigen kit
37 could detect antigenemia in patients who had been diagnosed with COVID-19.

38

39 Methods

40 Clinical Specimens

41 Residual serum was obtained from 54 standard of care specimens from 13
42 SARS-CoV-2 PCR-positive, hospitalized patients at Mayo Clinic Arizona and stored at -
43 80 °C until further use. The serum reflected samples collected from 2 to 24 days after
44 onset of symptoms. Use of these specimens was reviewed and approved by the Mayo
45 Clinic Institutional Review Board under protocol # 20-004544.

46

47 Antibody Tests

48 Antibody tests were performed using the SARS-CoV-2 IgG/IgM Rapid Test
49 (ACON Laboratories Inc.) according to the manufacturer's instructions. Briefly, 5 µL
50 serum was applied to the sample well, followed by 2-3 drops of buffer. Tests were
51 incubated on a flat surface and read after 15 minutes. Results were recorded in a binary
52 fashion as either positive or negative, with IgM alone, IgG alone, or IgM + IgG all being
53 recorded as "positive".

54

55 Antigen Tests

56 Antigen tests were performed using COVID-19 (SARS-CoV-2) Antigen Test Kit
57 (Colloidal Gold) (Anhui Deepblue Medical Technology Co., Ltd.) using the same
58 process described above for antibody tests. i.e. 5 µL serum was applied to the sample
59 well, followed by 2-3 drops of buffer. Tests were incubated on a flat surface and read
60 after 15 minutes.

61

62 Results & Discussion

63 Serum from 13 hospitalized SARS-CoV-2 RT-PCR-positive patients at Mayo
64 Clinic Arizona were tested for SARS-CoV-2 antigen and antibody using COVID-19
65 (SARS-CoV-2) Antigen Test Kit (Colloidal Gold) (Anhui Deepblue Medical Technology
66 Co., Ltd.) and SARS-CoV-2 IgG/IgM Rapid Test (ACON Laboratories Inc.), respectively.
67 Specimens spanned 2-24 days from the onset of symptoms with a minimum of two and
68 a maximum of eight time points per patient (n = 54). For 12 of the 13 patients tested
69 (51/54 specimens), serum was always positive for either antigen, antibody, or both, and
70 disappearance of antigen was always associated with the presence of antibody. The
71 latest antigen detection occurred 18 days after symptom onset and the earliest antibody
72 detection occurred six days after symptom onset.

73 The potential to offer serology testing in a POC setting, such as a drive-through,
74 provides an opportunity to avoid centralized phlebotomy, thus minimizing the risk of
75 exposure for patients. However, what is particularly striking here is detection of SARS-
76 CoV-2 antigen in the serum of 11 of 13 individuals using an assay designed for
77 pharyngeal and nasopharyngeal specimens. While a small number of studies have
78 described detectable SARS-CoV-2 antigenemia [5,6], to our knowledge this is the first
79 such report using rapid tests with the potential to be used in a POC setting. The authors
80 recognize that these findings must be validated using a larger sample size and including
81 non-hospitalized individuals with mild or asymptomatic infection to verify the sensitivity
82 of antigen detection in serum. Nonetheless, an opportunity to rapidly detect COVID-19
83 infection status at the POC, without respiratory specimen collection, is promising.
84 Further, detectable antigenemia may be a useful prognostic indicator for disease acuity

85 in hospitalized patients and may potentially be used to demonstrate response to
86 therapies; this novel application therefore warrants further study.

87

88 Acknowledgements

89 The authors wish to thank Paramount Labs for providing the Anhui DeepBlue kits and
90 ACON Laboratories for providing the antibody kits. We also recognize salary support for
91 KM and TG and from the Mayo Clinic Center for Individualized Medicine.

92

93 References

- 94 1. Centers for Disease Control and Prevention. 11/05/2020: FDA Lab Alert: FDA
95 Issues Safety Letter about Potential for False Positive Results with Antigen Tests
96 for Rapid Detection of SARS-CoV-2. 2020.
97 https://www.cdc.gov/csels/dls/locs/2020/fda_issues_safety_letter_about_false_p
98 [ositive_results_with_antigen_tests_for_rapid_detection_of_sars-cov-2.html](https://www.cdc.gov/csels/dls/locs/2020/fda_issues_safety_letter_about_false_p)
99 [Accessed 12/13/2020]
- 100 2. Pettengill MA, McAdam AJ. 2020. Can We Test Our Way Out of the COVID-19
101 Pandemic? J Clin Microbiol Oct 21;58(11):e02225-20. doi:
102 <https://doi.org/10.1128/JCM.02225-20>.
- 103 3. Hagman K, Hedenstierna M, Gille-Johnson P, Hammas B, Grabbe M, Dillner J,
104 Ursing J. 2020. SARS-CoV-2 RNA in serum as predictor of severe outcome in
105 COVID-19: a retrospective cohort study. Clin Infect Dis. Aug 28:ciaa1285. doi:
106 <https://doi.org/10.1093/cid/ciaa1285>. Epub ahead of print.

- 107 4. Nijhuis RHT, Russcher A, de Jong GJ, Jong E, Herder GJM, Remijn JA, Verweij
108 SP. 2020. Low prevalence of SARS-CoV-2 in plasma of COVID-19 patients
109 presenting to the emergency department. J Clin Virol Dec;133:104655. doi:
110 <https://doi.org/10.1016/j.jcv.2020.104655>. Epub 2020 Oct 5
- 111 5. Le Hingrat Q, Visseaux B, Laouenan C, Tubiana S, Bouadma L, Yazdanpanah Y,
112 Duval X, Ichou H, Damond F, Bertine M, Benmalek N, French COVID cohort
113 management committee, CoV-CONTACT study group, Choquet C, Timsit J-F,
114 Ghosn J, Charpentier C, Descamps D, Houhou-Fidouh N. 2020. SARS-CoV-2 N-
115 antigenemia: A new alternative to nucleic acid amplification techniques. medRxiv
116 2020.09.14.20191759; doi: <https://doi.org/10.1101/2020.09.14.20191759>
- 117 6. Su B, Yin J, Lin X, Zhang T, Yao X, Xu Y, Lu Y, Wang W, Liu K, Zhang J, Xie L,
118 Jin R, Feng Y. 2020. Quantification of SARS-CoV-2 antigen levels in the blood of
119 patients with COVID-19. Sci China Life Sci Nov 26:1–4. doi:
120 <https://doi.org/10.1007/s11427-020-1830-8>. Epub ahead of print

Subject ID	Test	Days Since Diagnosis																								
		1	2	3	4	5	6	7	8	9	10	11	12	13	14	15	16	17	18	19	20	21	22	23	24	
TS01	Ag					-																				
	Ab					-				-		-														
TS02	Ag									+						+										
	Ab									-						+		+								
TS03	Ag									+																
	Ab									-						+										
TS04	Ag																									
	Ab																									
TS05	Ag																									
	Ab																									
TS06	Ag																									
	Ab																									
TS07	Ag																									
	Ab																									
TS08	Ag																									
	Ab																									
TS09	Ag																									
	Ab																									
TS10	Ag																									
	Ab																									
TS11	Ag																									
	Ab																									
TS12	Ag																									
	Ab																									
TS13	Ag																									
	Ab																									

Table 1. Serum antigen (Ag) and antibody (Ab) results for 13 SARS-CoV-2 PCR-positive, hospitalized individuals as determined by COVID-19 (SARS-CoV-2) Antigen Test Kit (Colloidal Gold) (Anhui Deepblue Medical Technology Co., Ltd.) and SARS-CoV-2 IgG/IgM Rapid Test (ACON Laboratories Inc.), respectively.

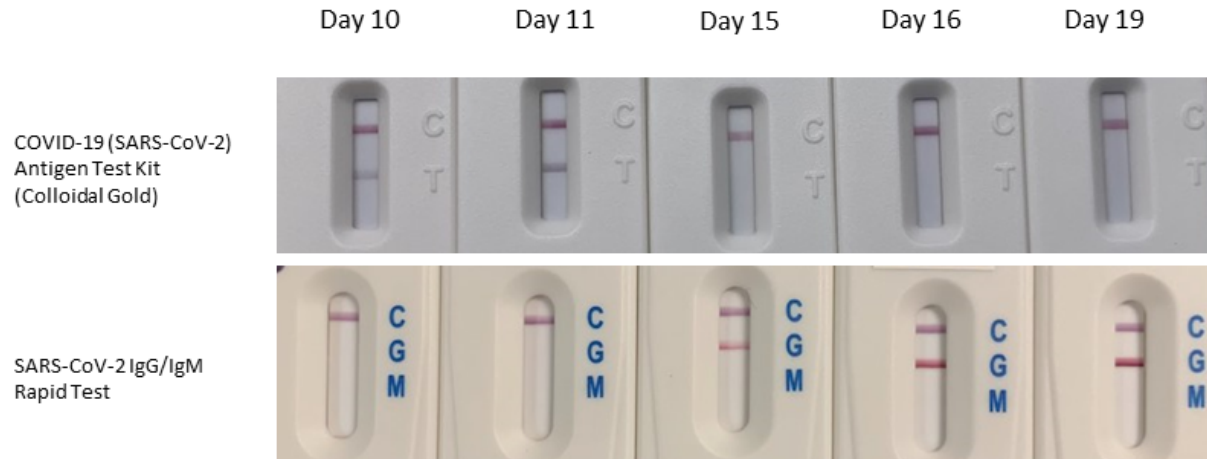


Figure 1. Serum antigen and antibody results for subject TS06 determined by COVID-19 (SARS-CoV-2) Antigen Test Kit (Colloidal Gold) (Anhui Deepblue Medical Technology Co., Ltd.) and SARS-CoV-2 IgG/IgM Rapid Test (ACON Laboratories Inc.), respectively at 10, 11, 15, 16, and 19 days after symptom onset.