

1 A Net Benefit Approach for the Optimal 2 Allocation of a COVID-19 Vaccine 3

4 Erin Kirwin MA^{1,2,*}, Ellen Rafferty PhD¹, Kate Harback PhD¹, Jeff Round PhD^{1,3}, Christopher McCabe
5 PhD^{1,4}

6 ¹Institute of Health Economics, Edmonton, Alberta, Canada

7 ²Health Organisation, Policy, and Economics, School of Health Sciences, University of Manchester, United Kingdom

8 ³School of Public Health, University of Alberta, Edmonton, Alberta, Canada

9 ⁴Department of Emergency Medicine, Faculty of Medicine and Dentistry, University of Alberta, Edmonton, Alberta, Canada

10
11 *Corresponding author. EKirwin@ihe.ca, Institute of Health Economics #1200, 10405 Jasper Avenue Edmonton, AB, Canada T5J 3N4

12 13 Abstract

14 OBJECTIVE. We implement a model-based approach to identify the optimal allocation of a COVID-19
15 vaccine in the province of Alberta, Canada.

16 METHODS. We develop an epidemiologic model to evaluate allocation strategies defined by age and
17 risk target groups, coverage, effectiveness, and cost of vaccine. The model simulates hypothetical
18 immunization scenarios within a dynamic context, capturing concurrent public health strategies and
19 population behaviour changes.

20 RESULTS. In a scenario with 80% vaccine effectiveness, 40% population coverage, and prioritisation
21 of those over the age of 60 at high-risk of poor outcomes, active cases are reduced by 17% and net
22 monetary benefit increased by \$263 million dollars, relative to no vaccine. Concurrent
23 implementation of policies such as school closure and senior contact reductions have similar impacts
24 on incremental net monetary benefit (\$352 vs. 292 million, respectively) when there is no
25 prioritisation given to any age or risk group. When older age groups are given priority, the relative
26 benefit of school closures is much larger (\$214 vs. 118 million). Results demonstrate that the rank
27 ordering of different prioritisation options varies by prioritisation criteria, vaccine effectiveness and
28 coverage, and concurrently implemented policies.

29 CONCLUSIONS. Our results have three implications: (i) optimal vaccine allocation will depend on the
30 public health policies in place at the time of allocation and the impact of those policies on population
31 behaviour; (ii) outcomes of vaccine allocation policies can be greatly supported with interventions
32 targeting contact reduction in critical sub-populations; and (iii) identification of the optimal strategy
33 depends on which outcomes are prioritised.

34

35

36

A Net Benefit Approach for the Optimal Allocation of a COVID-19 Vaccine

1

2

3

4

5

6 **Keywords**

7 COVID-19, SARS-CoV-2, Cost-effectiveness, Net Benefit, Vaccine, Immunisation, Mathematical Modelling,
8 Epidemiologic Modelling, Risk

9 **Word Count**

10 Main body, excluding tables and figures: 4450

11 **Acknowledgments**

12 The authors acknowledge Dr. Marie Varughese and Li Huang for providing epidemiologic data for model input.
13 We also thank Joana Gomes da Costa for assistance in identifying information related to chronic COVID. We
14 acknowledge earlier work on influenza modelling in Alberta, the Pandemic Risk Assessment Model, with Dr.
15 Douglas Dover.

16 **Declarations**

17 **Competing Interests**

18 Erin Kirwin, Ellen Rafferty, Kate Harback, Jeff
19 Round, and Christopher McCabe have no conflicts
20 of interest that are directly relevant to the content
21 of this article.

22 **Availability of data and material**

23 All data sources documented.

24 **Funding**

25 The IHE is funded in part by the Alberta Ministry of
26 Health.

37

27 **Code availability**

28 Available from authors upon request.

29 **Author Contributions**

30 All authors were involved in the conception of the
31 study. EK designed, programmed, and calibrated
32 the model. EK, ER and KH contributed to the
33 collection of data. EK wrote the first draft of the
34 manuscript with ER, KH, JR and CM critically
35 revising for important intellectual content. All
36 authors read and approved the final manuscript.

38

1 Introduction

2 Coronavirus disease 2019 (COVID-19) is a severe, novel virus that has spread globally. On 30 January
3 2020, the World Health Organization (WHO) declared a Public Health Emergency of International
4 Concern and declared a Pandemic on 11 March 2020 [1]. As of 12 March 2021, there have been over
5 118 million confirmed cases and more than 2.6 million deaths worldwide [1].

6 While there are several non-pharmaceutical interventions (NPIs) available to reduce transmission
7 among populations, the introduction of effective vaccines is expected to significantly improve
8 decision makers ability to protect health care systems and the economy whilst gaining control of
9 community transmission of COVID-19. Recommended NPIs for COVID-19 mitigation include hand
10 hygiene, mask wearing, physical distancing in various locations, travel restrictions, testing, contact
11 tracing, isolation of cases, and quarantine of close contacts. As vaccines become available, a key
12 challenge for decision makers will be how to concurrently allocate limited vaccine stockpiles, and
13 select optimal combinations of NPIs to mitigate the health risks of COVID-19 while meeting
14 population needs to access the health system for diagnosis and treatment of other conditions,
15 minimising the loss of economic activity, and promoting social well-being.

16 There are currently more than 200 COVID-19 vaccination products in development, with several in
17 phase III trials, and several have been approved for use in Canada [2, 3]. These vaccines may reduce
18 disease burden by preventing infection in exposed individuals, reducing severity of infection in
19 infected individuals, and/or preventing secondary infections. Within individual health systems,
20 decision makers will need to prioritise access to initially limited vaccine stockpiles [4-6]. Discussions
21 on how to make these prioritisation decisions are well advanced in both the policy and research
22 realms [7-14]. In addition to supply constraints, optimal vaccine allocation will also depend upon
23 population factors such as disease risk, capacity to benefit from vaccine, likelihood of transmission,
24 vaccine effectiveness and vaccine uptake.

25 The optimal allocation of vaccines will also vary according to the objectives of decision makers.
26 Health economic models of the effectiveness and cost effectiveness of different combinations of
27 NPIs and vaccines can enable more informed vaccine allocation decisions, by capturing the dynamic
28 relationship between vaccine characteristics, allocation strategies, NPIs, and population behaviours.
29 Whilst hundreds of models have been developed internationally to support decision making and
30 public health messaging, only a handful of evaluations of vaccine allocation and prioritization
31 strategies have been published to date [13, 15-18]. Only one of the studies evaluates scenarios with
32 concurrent public health mitigation strategies [13]. None of the studies consider interventions
33 targeting individuals by both age and risk group, with well-defined vaccine allocation policies or
34 health economic outputs, limiting their value to decision makers.

35 The aim of this paper is to introduce a model-based evaluation of vaccine allocation, analysing
36 strategies defined by age and risk target groups, coverage, and effectiveness, within a dynamic
37 context considering other public health strategies and population behaviour change. Several
38 potential outcomes can be selected as the objective outcome for the optimization problem. Here we
39 consider total number of cases, hospitalizations, and incremental net monetary benefit (NMB). The
40 NMB framework synthesizes multiple model outcomes: mortality, morbidity, and cost of illness. We
41 evaluate hypothetical retrospective scenarios to test a NMB approach to vaccine allocation.

43 1. Methods

A Net Benefit Approach for the Optimal Allocation of a COVID-19 Vaccine

1 We developed the COVID-19 Risk Assessment Model (CRAM), a transmission dynamic ordinary
2 differential equation compartmental susceptible-exposed-infected-recovered (SEIR) model. We
3 calibrated CRAM to the time variant state of public health interventions and human behaviour, using
4 data from Alberta, Canada. To evaluate the risks and outcomes associated with each strategy,
5 scenarios are characterised by a combination of public health interventions that change over time, in
6 comparison to a baseline scenario. Using CRAM we can estimate active cases, hospitalisations, total
7 cost, Quality Adjusted Life Years (QALYs), and NMB. CRAM was programmed in Wolfram
8 Mathematica, version 12.1.

9 **2.1 Model Structure**

10 CRAM is stratified into 16 age groups (five-year ranges up to 75+ years). Each of these 16 groups is
11 divided further into two risk groups (high-risk and not high-risk), where risk is based on probability of
12 a poor outcome due to COVID-19. An additional group is used to represent the Long-Term Care (LTC)
13 population, which is made up of a subset of high-risk individuals aged 75 years and older. This results
14 in 33 non-null age-risk groups.

15 CRAM has five overarching compartments: Susceptible (which includes Susceptible; Susceptible, No
16 Distancing; Vaccine; and Vaccine Failure), Exposed, Infected (composed of Pre-Symptomatic; LTC;
17 Community; Hospital; and Pre-Isolation), Isolation, and Recovered (comprised of Immunised;
18 Recovered; and Dead) (see Figure 1). The model structure was developed to produce outcomes of
19 interest to decision-makers and to leverage the highest quality data available in real-time during the
20 COVID-19 pandemic. Model inputs are provided in Section 2.2.

21 A fraction of the population is initially allocated to the Exposed compartment, with the remaining
22 population allocated to the Susceptible compartment. Susceptible individuals are vaccinated subject
23 to unique scenarios defined by the following characteristics: (i) program start date, (ii) number of
24 doses available, (iii) the daily immunization delivery capacity and (iv) age and risk group prioritisation
25 policy. Vaccine prioritisation policies allow access to different age and risk groups on different dates.
26 Once vaccinated, after the period required to develop antibodies, individuals move either to the
27 Immunised compartment (with no probability of infection or transmission), or to the Vaccine Failure
28 compartment (with equal probability of infection and transmission to others in the susceptible
29 compartment) as a function of the vaccine effectiveness. Vaccine Failures remain susceptible.

30 Susceptible individuals are exposed to the virus as a function of the force of infection which is
31 determined by the transmissibility of the virus, seasonal variations in transmission, number of
32 persons infected, and rate of contact between individuals across age groups. Susceptible individuals
33 exposed to the virus move to the Exposed compartment and following the latent period move from
34 the Exposed to Infected.

35 Depending on public health guidance, some individuals may move from the Susceptible
36 compartment to the Susceptible, No Distancing compartment which allows for higher rates of
37 contact. For example, children who are not high-risk move to the Susceptible, No Distancing
38 compartment to reflect the higher rates of contact from in-person education.

39 On entry to the Infected compartment, individuals are Pre-Symptomatic. That is, cases in the
40 community that are shedding virus but not experiencing or displaying symptoms. At the end of the
41 pre-symptomatic period, individuals are allocated to Community or Hospital compartments,
42 dependent on their age and risk group. If a case isolation policy is in place, a subset of the
43 Community compartment will move to the Pre-Isolation and subsequently the Isolation
44 compartments, where they remain for the remaining infectious period. All cases contribute to the

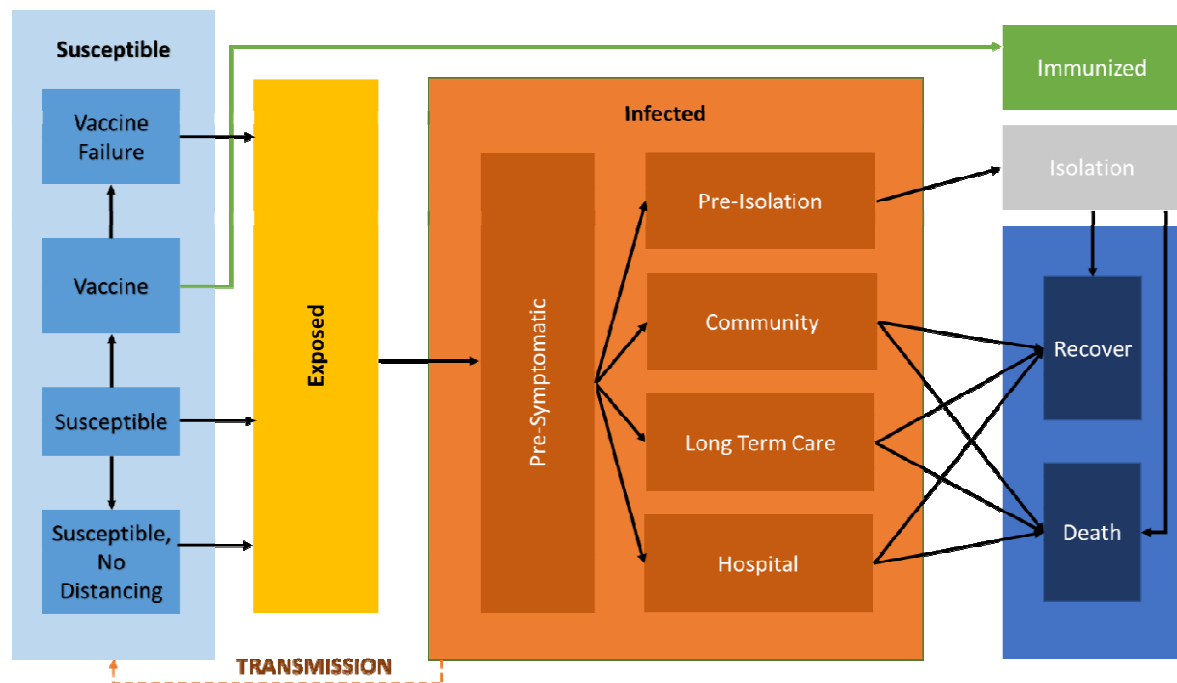
A Net Benefit Approach for the Optimal Allocation of a COVID-19 Vaccine

1 force of infection prior to moving to the Isolation compartment, but individuals in the Isolation
2 compartment do not contribute to the force of infection. The Isolation compartment represents the
3 isolation of cases but not the isolation of close contacts.

4 Entry into LTC and Hospital varies by age group, with individuals from the LTC age-risk group moving
5 from the pre-symptomatic to the infected LTC compartment. Individuals move from the LTC
6 compartment at the end of the infectious period to either the Recovered or Dead compartments.
7 Entry into the Hospital compartment is a function of age and risk, fit by an exponential regression on
8 admissions by age, and adjusted for risk by an odds ratio. The Hospital compartment includes COVID
9 inpatient cases and those admitted to intensive care units (ICUs). At the end of either the infectious
10 period or the hospital length of stay (LOS), individuals move from the Community, LTC or Hospital
11 compartment to either the Recovered, or Dead compartment, at a proportion dependent upon their
12 risk group.

13 We used a synthetic contact matrix disaggregated into four locations: home, workplace, school, and
14 other, where *other* comprises all remaining possible locations [19]. Disaggregating the total contact
15 matrix by location allows for adjustments in contact rates reflecting policy interventions. For
16 example, we can apply work-based interventions to specific age groups by adjusting the work
17 contact matrix at various points in time. The total contact matrix is generated by summing the
18 contacts for each age group across each of the matrices. Contact reductions for seniors aged 75
19 years and older and for high-risk individuals are applied directly to the total contact matrix.
20 Outcomes (cases, hospitalizations, deaths) are tabulated from 01 October, 2020 to 06 February,
21 2021, spanning 92 days. The Electronic Supplementary Material (ESM) reports model equations and
22 assumptions.

23 Figure 1. CRAM Structure



25 Fig1 'Isolation' compartment is infectious, but does not contribute to the force of infection. Figure intended for colour
26 printing

A Net Benefit Approach for the Optimal Allocation of a COVID-19 Vaccine

1 **2.2 Model Inputs**

2 CRAM was parameterised wherever possible with data from Alberta, including estimates for the
3 total population by age group and risk of severe outcome, hospitalisation rate by age group, and LOS
4 for hospitalised cases. Alberta's population is the youngest of all Canadian provinces, making age
5 distribution important to capture in the model [20]. Odds ratios for the risk of hospitalisation were
6 estimated by risk group using logistic regression. Active cases in the model include both diagnosed
7 and undiagnosed cases, fitted using seroprevalence data provided by Alberta Health. Details of all
8 model inputs are provided in Table 1.

9 Data from the Google Community Mobility report [21] were used as key inputs for contact
10 reductions in workplaces and other locations. A rapid expert elicitation exercise was conducted to
11 obtain estimates for unknown model parameters. We adapted elicitation methods and training
12 materials from the Sheffield Elicitation Framework (SHELF) [22] to undertake rapid elicitations for
13 the reduction in contacts for seniors aged 75 years and older, high-risk individuals, reduction in
14 contacts in home locations, and expected return-to-school rates and in-school contact reductions by
15 age group. Detailed results of the elicitations are reported in the ESM.

Table 1. Epidemiologic Parameters

Symbol	Parameter name	Baseline value	Description and source												
β	Transmission		Fitted.												
$expo$	Number of individuals exposed at model initialisation	A multiplier applied to seed infected individuals at initialization, distributed proportionally by population.	Fitted.												
$s_t, season$	Seasonal transmission adjustment	A standard function from mathematical epidemiology [23] was modified, as given in the ESM. <i>Season</i> can take on values between 0 and 1 and is centred to reach its minimum value on the mid-date between the hottest day of the year in Alberta's two largest cities. The function was further calibrated to reach a maximum value of 0.65.	<i>Season</i> = 0.3, which solves to 0.4 at its minimum, meaning that transmission at the seasonal minimum is 40% of transmission at the seasonal maximum.												
su_a	Susceptibility by age group	0.489 if aged <10 years, 1 otherwise.	Estimates taken from a modelling study [24].												
$iso_{school,a,r,t}$	Contact reduction in schools	A 100% reduction in the contact rate is applied for students who do not attend school, which is maintained for the duration of the modelling period in the baseline scenario. The following values were elicited from the expert panel for the fall return to school (median and 90% CI): <table border="1" style="margin-left: 20px;"> <thead> <tr> <th>Age group</th> <th>Contact reduction</th> <th>Proportion returning</th> </tr> </thead> <tbody> <tr> <td>5–9 years</td> <td>0.692 [0.358, 0.869]</td> <td>0.760 [0.399, 0.933]</td> </tr> <tr> <td>10–14 years</td> <td>0.573 [0.314, 0.846]</td> <td>0.831 [0.399, 0.941]</td> </tr> <tr> <td>15–19 years</td> <td>0.522 [0.278, 0.861]</td> <td>0.860 [0.634, 0.994]</td> </tr> </tbody> </table>	Age group	Contact reduction	Proportion returning	5–9 years	0.692 [0.358, 0.869]	0.760 [0.399, 0.933]	10–14 years	0.573 [0.314, 0.846]	0.831 [0.399, 0.941]	15–19 years	0.522 [0.278, 0.861]	0.860 [0.634, 0.994]	Rapid expert elicitation exercise.
Age group	Contact reduction	Proportion returning													
5–9 years	0.692 [0.358, 0.869]	0.760 [0.399, 0.933]													
10–14 years	0.573 [0.314, 0.846]	0.831 [0.399, 0.941]													
15–19 years	0.522 [0.278, 0.861]	0.860 [0.634, 0.994]													
$iso_{home,t}$	Contact reduction in homes at time t	A 41% reduction in the contact rate is applied. <i>Home</i> refers to all residential locations, so that reductions in visits to secondary households are reflected in these contact rates.	Rapid expert elicitation exercise.												
$iso_{work,t}$ $iso_{other,t}$	Contact reduction in workplaces and other locations at time t	Reduction in the contact rate relative to normal (100), given in a weekly interval. Future weeks are expected to remain constant at the rate of the most recent week.	Based on reduction in time spent in workplaces, or combined time spent at retail, grocery, and transit locations from Google Community Mobility data [21].												
$iso_{senior,a}$	Contact reduction for seniors	A 61% reduction in the contact rate for seniors in all locations. Seniors defined in this model as those aged 75 and above.	Rapid expert elicitation exercise.												
iso_r	Contact reduction for high-risk individuals	A 64% reduction in the contact rate is applied to reflect physical distancing for high-risk individuals.	Rapid expert elicitation exercise.												

A Net Benefit Approach for the Optimal Allocation of a COVID-19 Vaccine

pQ_t	Proportion of community infections isolated	0.169 based on seroprevalence studies conducted in Alberta. Note that the <i>Isolation</i> compartment represents case isolation only.	Alberta Health data.
d_{latent}	Latent period	Mean 3.3 days.	PHAC Modelling Evidence summary [25].
$d_{incubation}$	Incubation period	Mean 1.3 days.	PHAC Modelling Evidence summary [25].
$d_{infectious}$	Infectious period	Mean 20.3 days.	PHAC Modelling Evidence summary [25].
d_{hosp}	Days in hospital	Mean 10.8	Alberta Health data.
$d_{isolation}$	Days prior to isolation of cases	5	Assu med.
$d_{immunity}$	Days prior to immune response from immunisation	14	Assu med.
OR_{hosp}	OR of hospital for high-risk individuals	7.3 (95% CI [6.8, 7.8]).	Alberta Health data.
OR_{death}	OR of death for high-risk individuals	23.6 (95% CI [19.9, 28.0]).	Alberta Health data.
pr_{hosp}	Fitting term for hospitalisation probability		Fitted.
hsp_a	Hospitalisation risk by age	Hospitalisation risk by age estimated from cumulative counts converted to proportion by age and analysed in an exponential regression for model input. Fitted values: $-8.2518 + 0.4379(age)$	Alberta Health data.
$h_{a,r}$	Probability of hospitalisation	Function of hsp_a , OR_{hosp} , and the fitted value of pr_{hosp} .	
pr_{ltc}	Fitting term for LTC probability		Fitted.
$l_{a,r}$	Probability of LTC admission	Function of pr_{ltc} .	
$m1_r$	Probability of death from community		Fitted.

A Net Benefit Approach for the Optimal Allocation of a COVID-19 Vaccine

$m_{2,r}$	Probability of death from LTC	Function of $d, OR_{death}, f2$.	
$m_{3,r}$	Probability of death from hospital	Function of $d, OR_{death}, f3$.	
d	Fitting term for deaths from LTC, hospital, and ICU		Fitted.
$f2$	LTC proportion dying	687/4627	Alberta Health data.
$f3$	Hospital proportion dying	947/4002	Alberta Health data.
$N_{a,r}$	Population by age and risk of poor outcome	Total population is split by 5-year age groups up to age 75 years. The population is split into two risk groups, by risk of severe outcome related to COVID-19. <i>High-risk</i> is defined as individuals who have met an administrative data case definition for ischemic heart diseases (ICD-10 codes: I20–I25), respiratory diseases including asthma (ICD-10 codes: J45, J46) and COPD (ICD-10 codes: J41–J44). A subset of the high-risk population aged ≥ 70 years is shifted to a 17 th age group representing LTC residents, with the same contact rates as the high-risk ≥ 75 years age group.	Alberta Health data.
$contact_{a,k}$ and $contact'_{a,k}$	Contact matrix	School, home, workplace, other. Adjusted for different interventions and applied to the $S_{a,r}$ and $SW_{a,r}$ compartments, respectively.	Canadian estimated contact matrices. Transformed to symmetric [19].

Note: CI: confidence interval; COPD: chronic obstructive pulmonary disease; ICD-10: International Statistical Classification of Diseases and Related Health Problems, 10th revision; ICU: intensive care unit; LTC: long-term care; OR: odds ratio; SD: standard deviation; ESM: electronic supplementary material.

1 **2.37 Economic Inputs**

2 The study is conducted from a Canadian health system payer perspective. All costs are converted to
3 2020 Canadian dollars, and discounted at an annual rate of 1.5%, according to CADTH guidelines
4 [26]. Cost inputs include hospitalisation, incremental LTC costs for infection prevention measures,
5 and the cost of purchasing and administering a vaccine. Health utility losses include disutility from
6 infection, hospitalisations and LTC infections (during stay and following discharge), and deaths. We
7 assessed outcomes using the NMB framework [27]. We apply the health opportunity costs estimated
8 for Canada [28], using the value of \$30,000 per QALY.

9 Evidence related to health utility for COVID-19 is currently limited but rapidly emerging. [29] Given
10 the lack of evidence at the time of writing, we identified utility impacts of similar conditions. We
11 estimated disutility for community COVID-19 infections from an EQ-5D survey of individuals with lab
12 confirmed influenza B infections, stratified by age group [30]. Because hospitalised COVID-19 cases
13 are often diagnosed with pneumonia, we used disutility estimates for viral pneumonia inpatients
14 [31] to estimate in-facility treatment utility losses, as well as utility losses for the year following
15 facility discharge. We estimated QALY losses from premature death using the life table approach
16 developed by Briggs et al. [32], adjusting for baseline utility and discounting. Costs related to
17 community infections are not included. We estimated incremental direct costs associated with
18 COVID-19 hospitalisation based on published Alberta per-diem costs, as well as the incremental cost
19 of infection prevention and control for LTC cases. We also estimate utility decrements for ‘chronic’
20 or ‘long’ infections (ESM). Cost and utility decrement estimates are given in Table 2. Estimates are
21 applied to the relevant compartments, and the resulting incremental NMB (iNMB) is estimated for
22 each policy scenario.

23 **2.4 Model Fitting**

24 We fit five parameters: virus transmissibility, the probability of hospitalisation, infections in LTC, and
25 the probability of death from either facility or community infections. Using a deterministic version of
26 the model defined with mean values of each input parameter we fit observed surveillance data for
27 daily hospital census counts, as well as cumulative daily death and LTC counts from 01 October 2020,
28 to 06 February 2021. Given the interdependence in the fitting parameters, we used simultaneous
29 fitting methods by optimizing model fit over a Latin hypercube generated from plausible values for
30 each parameter. Optimal parameter values were identified when the sum of the normalised
31 difference in model and observed outcomes was minimised.

32 **2.5 Outputs**

33 CRAM samples from the probability distributions of model inputs, as either the best fitting 10% of
34 simulations from the model fitting, or as estimated from the parameter source (Tables 1 & 2), to
35 account for outcome uncertainty over 200 iterations, and then generates model outputs from the
36 sampled values. This number of iterations was selected after comparing output stability across
37 different numbers of iterations, for details, see the ESM. Outputs include cumulative estimates for
38 the mean number of active cases, total infections, and hospitalisations, with credibility intervals to
39 present uncertainty over simulations. The outputs include expected NMB, so that comparisons
40 without the use of ratios can be made [27]. For each of the vaccine scenarios, iNMB is estimated
41 relative to the baseline with no vaccine.

A Net Benefit Approach for the Optimal Allocation of a COVID-19 Vaccine

1 Table 2. Cost and Utility Parameters

Parameter Name	Baseline Value	Source and Description																														
Utility decrement, Hospitalisation, LTC case	QALY decrement during facility stay Mean: 0.58 Beta Distribution: $\alpha=230.52$, $\beta=141.41$	QALY loss from viral pneumonia hospitalization, as estimated by [31]. This figure is adjusted for duration in facility compartments in the model.																														
Utility decrement, community case	Quality-adjusted life day (QALD) decrement: <table border="1"> <thead> <tr> <th rowspan="2">Age group</th> <th rowspan="2">Mean</th> <th colspan="2">Gamma Distribution</th> </tr> <tr> <th>α</th> <th>β</th> </tr> </thead> <tbody> <tr> <td>00-15</td> <td>1.82</td> <td>9.76</td> <td>5.07</td> </tr> <tr> <td>16-64</td> <td>2.8</td> <td>1.16</td> <td>0.83</td> </tr> <tr> <td>65+</td> <td>4.41</td> <td>21.29</td> <td>4.36</td> </tr> </tbody> </table>	Age group	Mean	Gamma Distribution		α	β	00-15	1.82	9.76	5.07	16-64	2.8	1.16	0.83	65+	4.41	21.29	4.36	Influenza B estimate from [30]. The study provides QALD losses, which are applied for the duration in the infectious compartment in the model.												
Age group	Mean			Gamma Distribution																												
		α	β																													
00-15	1.82	9.76	5.07																													
16-64	2.8	1.16	0.83																													
65+	4.41	21.29	4.36																													
Utility decrement, facility discharge	QALY decrement one year following discharge. Mean 0.10, SD 0.0158 Beta Distribution: $\alpha=0.469$, $\beta=4.224$	QALY loss from viral pneumonia, as estimated by [31].																														
Utility decrement, chronic COVID	QALY decrement one year following discharge 0.16, with probability 34.8% Beta Distribution for probability: $\alpha=2.410903$, $\beta=4.516979$	Weighted expected QALY decrement for common chronic conditions associated with chronic COVID. See the ESM for details. Probability of chronic COVID taken from the fatigue estimate given in [33].																														
QALY loss, death	<table border="1"> <thead> <tr> <th>Age</th> <th>Mean</th> <th>SD</th> </tr> </thead> <tbody> <tr> <td>0-9</td> <td>41.37</td> <td>1.99</td> </tr> <tr> <td>10-19</td> <td>37.19</td> <td>2.32</td> </tr> <tr> <td>20-29</td> <td>33.37</td> <td>2.31</td> </tr> <tr> <td>30-39</td> <td>29.40</td> <td>2.03</td> </tr> <tr> <td>40-49</td> <td>24.90</td> <td>1.85</td> </tr> <tr> <td>50-59</td> <td>20.18</td> <td>1.47</td> </tr> <tr> <td>60-69</td> <td>15.36</td> <td>1.01</td> </tr> <tr> <td>70-74</td> <td>10.35</td> <td>0.67</td> </tr> <tr> <td>75+</td> <td>5.17</td> <td>0.33</td> </tr> </tbody> </table>	Age	Mean	SD	0-9	41.37	1.99	10-19	37.19	2.32	20-29	33.37	2.31	30-39	29.40	2.03	40-49	24.90	1.85	50-59	20.18	1.47	60-69	15.36	1.01	70-74	10.35	0.67	75+	5.17	0.33	Net present value of total QALYs lost from [32], modified with Canadian population norms and standard deviations.
Age	Mean	SD																														
0-9	41.37	1.99																														
10-19	37.19	2.32																														
20-29	33.37	2.31																														
30-39	29.40	2.03																														
40-49	24.90	1.85																														
50-59	20.18	1.47																														
60-69	15.36	1.01																														
70-74	10.35	0.67																														
75+	5.17	0.33																														
Incremental cost, Hospitalisation and ICU admission	Per diem median \$1391.80, 90 th percentile \$1852.52 Gamma Distribution: $\alpha=18.5$, $\beta=0.01$	Alberta Health Interactive Health Data Application, CMG+ 2018 Grouper 133, Infectious/Parasitic Disease of Respiratory System [34]. Inflation adjusted from 2018 to 2020 using Canada All-Item inflation [35].																														
Incremental cost, LTC case	Per diem mean \$337.65, SD \$548.14. Gamma distribution: $\alpha=0.8547$, $\beta=0.0025$	Cost from [36] converted to CAD using average 2015 exchange rate, inflation adjusted from 2015 to 2020 using Canada All-Item inflation [35].																														
Incremental cost, chronic COVID	Annual cost of \$10,020, with probability 34.8% Beta Distribution for probability: $\alpha=2.410903$, $\beta=4.516979$	Weighted expected annual cost for common chronic conditions associated with chronic COVID. See the ESM for details. Probability of chronic COVID taken from the fatigue estimate given in [33].																														
Vaccine cost per dose	\$40	Assumed based on reporting, includes cold chain and administration. [37]																														

A Net Benefit Approach for the Optimal Allocation of a COVID-19 Vaccine

1 Note: LTC: long term care; QALY: quality-adjusted life year; QALD: quality-adjusted life day; SD: Standard deviation; ESM:
2 electronic supplementary material.

3 **2.6 Scenario Analysis**

4 In the reference scenario (1), no vaccine is available, and all contact matrixes and time variant inputs
5 are held constant at the last observed value from model fitting. Specifically, we maintained contact
6 reductions at the values determined through the expert elicitation for 'home' locations, as well as
7 for seniors and high-risk individuals, and a fall return to school. Moreover, we kept the final
8 observation of reduction in time spent in workplaces and 'other' locations from the Google
9 Community Mobility reports consistent over the model run. In all scenarios, the vaccine is
10 'sterilizing', meaning that effective vaccine protects individuals from infection.

11 A range of NPIs can be estimated by CRAM. Policies which impact contact rates in the home,
12 workplace, school and other locations for different age groups can be simulated through reductions
13 on the corresponding contact matrix. Similarly, broad age-based interventions can be applied to the
14 total contact matrix. In this paper, we considered school closure via a complete reduction in school-
15 based contacts, and policies with increased physical distancing for seniors by reducing contact rates
16 for those aged 75 and older by 50%.

17 Vaccine scenarios represent different vaccine allocation strategies, as well as various vaccine
18 characteristics (i.e., effectiveness and coverage), as described in Table 3. Vaccine scenarios are
19 characterised by the maximum number of doses that can be delivered per day, the start date of the
20 vaccine program, the definition of the priority group, the interval (if any) between access for the
21 priority group and the general population, the effectiveness of the vaccine, and vaccine coverage as
22 a proportion of the total population. The estimates of vaccine effectiveness used in the analysis do
23 not directly align to any of the currently approved vaccine products in Canada or elsewhere, nor
24 does the price or timing of allocation align to the initial approval or distribution of licensed vaccines.

25 If the number of individuals eligible for immunisation exceeded the maximum number of doses that
26 could be delivered on a given day, the maximum number of doses were pro-rated across each
27 eligible age and risk group daily. This means that a group representing 5% of the eligible population
28 would receive 5% of the total number of doses available on a given day.

29 To examine the impact of variations in vaccine effectiveness, we included scenario 7, where
30 effectiveness varies by age. It is assumed that the vaccine is 60% effective over the age of 60, and
31 80% effective otherwise. In all other scenarios, effectiveness is constant across age groups. The
32 scenario with 80% effectiveness approximates preliminary results from three phase three trials
33 which have reported efficacy ranging from approximately 70 to 94% [38-40].

34 In each of the scenarios (1-11), we assumed a simple 30-day interval in access for the prioritized
35 population groups and the general population, starting on 01 November 2020. Depending on the
36 prioritization policy, this could lead to a gap of days during which no immunization would be
37 provided. Extrapolating from the maximum estimate of vaccines per day in Alberta from [41], we
38 assumed that up to 80,000 individuals can be immunised daily. Each of the scenario comparisons
39 implicitly contains the baseline scenario (2) with age and risk-based prioritisation, 80% effectiveness,
40 and 40% coverage, as a common reference point across scenarios. Scenarios that prioritise based on
41 age give first access to those aged 55 and over, while programs that prioritise high-risk individuals
42 prioritise all high-risk individuals irrespective of age.

43

A Net Benefit Approach for the Optimal Allocation of a COVID-19 Vaccine

1 Table 3. Vaccine Scenarios

Scenario (Name, Reference Number)		Prioritization Policy	Vaccine Effectiveness	Population Dose Coverage
No Vaccine	1	No Vaccine	N/A	N/A
Vaccine Baseline	2	Age + Risk	80%	40%
	2a, 2b	Same as 2, but with school closures (2a) or decreased contact rates for seniors (2b), with varying prioritization policies.		
Vaccine Coverage Comparison	3	Age + Risk	80%	20%
	4			70%
Vaccine Effectiveness Comparison	5	Age + Risk	40%	40%
	6		60%	
	7		60% above 60 years old, 80% otherwise	
Vaccine Priority Group Comparison	8	No Priority	80%	40%
	9	Age Only		
	10	Risk Only		
Low Effectiveness and Coverage	11	Age + Risk	40%	20%
	11a, 11b	Same as 11, but with school closures (11a) or decreased contact rates for seniors (11b), with varying prioritization policies.		

2 Note: Age + Risk = high risk population, age > 55, Age Only = age >55, Risk Only = high risk population.

3 Scenario 11 is defined with low vaccine effectiveness (40%) and coverage (20%). For both scenario
 4 11 and the baseline scenario (2), we modelled additional public health measures, including a 50%
 5 reduction in contacts for seniors, and complete school closures (each policy implemented on 01
 6 October 2020). For both sub-scenarios (school closures and seniors contact reduction), we assumed
 7 no additional costs or QALY losses. These simulations compare the impact vaccine policies in
 8 combination with other mitigation strategies, albeit for a small range of potential policy
 9 combinations.

10 3. Results

11 We used the CRAM to produce outputs for each vaccine scenario. For all scenarios, mean values, and
 12 either standard deviation or a 90% credibility interval are presented. In the no vaccine scenario, total
 13 cases were shown to remain relatively low in the initial period, but increase rapidly over time. In the
 14 vaccine baseline scenario (scenario 2), active cases are reduced by 17%. The impact of population
 15 vaccine coverage on outcomes demonstrates improved outcomes with greater population vaccine
 16 coverage, as expected. When coverage is 70%, cases are significantly reduced by 38%. Interestingly,
 17 with 70% coverage, iNMB decreases relative to baseline (Table 4, \$216 vs 263 million). This indicates
 18 decreasing returns to scale, related to approaching herd immunity. The impact of vaccine
 19 effectiveness on outcomes behaved in the expected manner, where NMB increases alongside

A Net Benefit Approach for the Optimal Allocation of a COVID-19 Vaccine

1 effectiveness. With 40% effectiveness, the availability of a vaccine reduces cumulative cases by 10%,
2 while with 60% effectiveness, cumulative cases decrease by 14%. These results are summarised in
3 Table 4 and Figure 2.

4 Vaccine prioritisation strategies demonstrated dynamic results. Prioritizing both high-risk and
5 individuals over the age of 55 had the smallest impact on infections and produced the second lowest
6 value for iNMB. Equal prioritisation to all age and risk groups minimised cumulative cases and had
7 the greatest iNMB value. Prioritisation based on risk levels alone had the second highest iNMB value.
8 Prioritization by age group had the second greatest reduction in cases, but the lowest reduction in
9 iNMB relative to the scenario with no vaccine. The variability in results demonstrates the need for
10 decision makers to clearly identify their objective when determining vaccine allocation strategies.

11 The results of the concurrent NPI scenarios (Table 5) demonstrate several important relationships.
12 First, the relative ranking of each prioritisation scenario varied depending on the outcome of
13 interest. For example, in the worst case scenarios 11a and 11b, risk based prioritization had the
14 second best iNMB and number of hospitalizations, but the second worst number of cases (Figure 3,
15 Table 5).

16 Second, the impact of prioritisation strategies varies greatly depending on concurrent public health
17 interventions. School closures and senior contact reductions have similar impacts on iNMB when
18 there is no prioritisation given to any age or risk group (Table 5, iNMB 352 vs. 292 million,
19 respectively, ratio 1.2:1), but when older groups are given priority, the benefit of school closures is
20 much larger than reducing contacts for seniors (Table 5, iNMB 214 vs. 118 million, respectively, ratio
21 1.8:1).

22 Third, we found that the relative ranking of the prioritisation scenarios changed dynamically
23 between the baseline scenario (Table 4) and the concurrent NPI scenarios (Table 5). In all scenarios,
24 giving equal priority to all age and risk groups maximised iNMB, and minimized cases and
25 hospitalizations in all concurrent NPI scenarios. Conversely, prioritizing older and high-risk
26 individuals had the greatest reduction in hospitalizations in the baseline scenario with no concurrent
27 NPIs.

1 **3.1 Coverage, Effectiveness, and Prioritisation Scenario Results**

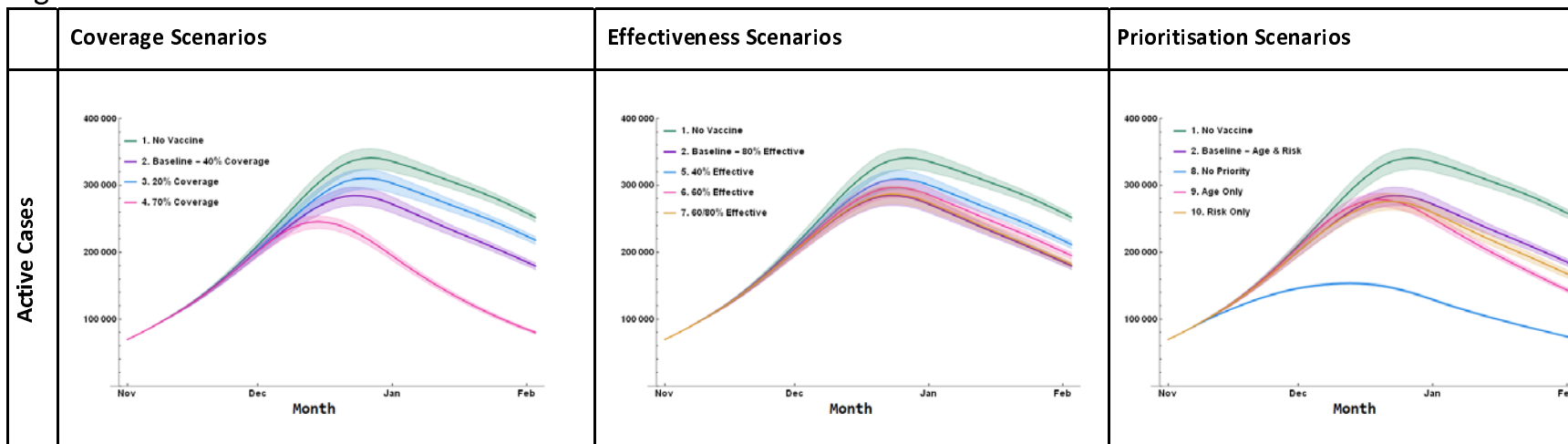
2 Table 4: Scenario Results

Scenario (Reference Number, Name)		Cumulative Cases Mean (SD)	Cumulative Hospitalisations Mean (SD)	NMB, Millions Mean (SD)	iNMB*, Millions Mean (SD)
Reference Scenarios					
1	No Vaccine	12.4 (0.2)	6380 (238)	-980 (112)	n/a
2	Vaccine Baseline [†]	10.3 (0.2)	3419 (112)	-718 (91)	263 (130)
Coverage Scenarios					
3	Coverage 20%	11.3 (0.2)	4580 (162)	-805 (100)	175 (132)
4	Coverage 70%	7.7 (0.1)	2975 (92)	-764 (77)	216 (130)
Effectiveness Scenarios					
5	Effectiveness 40%	11.2 (0.2)	4760 (168)	-902 (100)	78 (140)
6	Effectiveness 60%	10.7 (0.2)	4061 (139)	-807 (95)	174 (142)
7	Effectiveness 60% age 60 and above, 80% otherwise	10.4 (0.2)	3729 (125)	-752 (91)	228 (138)
Prioritisation Scenarios					
2	Age and Risk (Vaccine Baseline) [†]	10.3 (0.2)	3419 (112)	-718 (91)	263 (130)
8	None	5.9 (0.0)	3432 (103)	-692 (60)	288 (124)
9	Age Only	9.4 (0.2)	4277 (147)	-865 (93)	115 (142)
10	Risk Only	9.8 (0.2)	3470 (116)	-706 (88)	274 (136)

3 Note: SD = Standard Deviation, NMB = Net Monetary Benefit, iNMB = Incremental Net Benefit, N/A = Not Applicable. Prioritisation Scenarios are defined as follows: None = equal
 4 priority given to all age and risk groups, Age = priority given to those aged 55 and over, Risk = priority given to high-risk individuals, Age and Risk = prioritisation for who are high-
 5 risk or older than 55. Maximum doses per day is assumed to be 80,000, with access starting on October 15, 2020 for the priority group, and 30 days later for everyone else. *For
 6 all scenarios, iNMB is estimated relative to the scenario with no vaccine. Within each scenario group, the optimal policy is bolded. The dagger (†) denotes the same scenario
 7 repeated in the table for ease of reference.

8

1 Figure 2. Scenario Results - Active Cases



2 Fig2 For scenario definitions, see main text

1 **3.2 Low Effectiveness and Coverage Scenarios: Concurrent Public Health Responses**

2 Table 5. Concurrent Non-Pharmaceutical Intervention Results

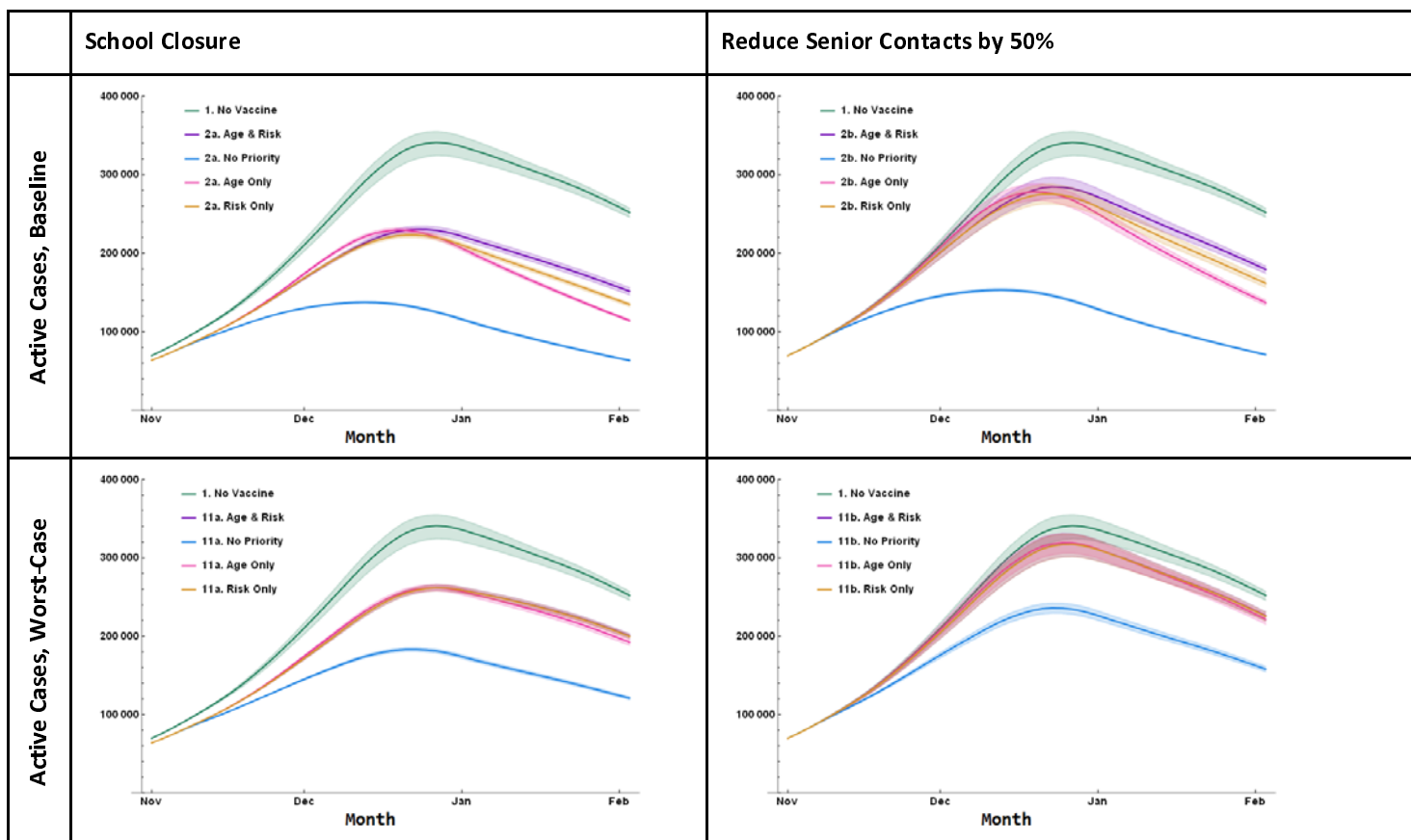
Scenario and Concurrent public health interventions	Prioritisation	Cumulative Cases		Cumulative Hospitalisations		NMB, Millions		iNMB*, Millions	
		Mean (SD), Rank (1-4)		Mean (SD), Rank (1-4)		Mean (SD), Rank (1-4)		Mean (SD), Rank (1-4)	
2a: Baseline, School Closure	Age and Risk	8.6 (0.1)	4	3061 (92)	2	-646 (76)	3	334 (135)	3
	None	5.2 (0.0)	1	3006 (87)	1	-628 (53)	1	352 (120)	1
	Age Only	7.9 (0.1)	2	3738 (116)	4	-767 (77)	4	214 (138)	4
	Risk Only	8.2 (0.1)	3	3086 (91)	3	-633 (73)	2	348 (134)	2
2b: Baseline, Reduce senior contacts 50%	Age and Risk	10.3 (0.2)	4	3366 (110)	2	-715 (90)	3	266 (132)	3
	None	5.9 (0.0)	1	3364 (101)	1	-688 (60)	1	292 (125)	1
	Age Only	9.4 (0.2)	2	4227 (144)	4	-862 (92)	4	118 (149)	4
	Risk Only	9.8 (0.2)	3	3412 (112)	3	-703 (88)	2	278 (129)	2
11a: Worst Case, School Closure	Age and Risk	9.9 (0.1)	4	4480 (144)	3	-765 (87)	3	215 (131)	3
	None	7.2 (0.1)	1	4031 (126)	1	-701 (67)	1	280 (119)	1
	Age Only	9.8 (0.1)	2	4636 (150)	4	-809 (88)	4	171 (128)	4
	Risk Only	9.9 (0.1)	3	4432 (142)	2	-748 (86)	2	232 (139)	2
11b: Baseline, Reduce senior contacts 50%	Age and Risk	11.6 (0.2)	4	4909 (177)	3	-858 (102)	3	122 (131)	3
	None	9.0 (0.1)	1	4735 (160)	1	-820 (84)	1	161 (131)	1
	Age Only	11.6 (0.2)	2	5157 (183)	4	-915 (106)	4	66 (149)	4
	Risk Only	11.6 (0.2)	3	4856 (174)	2	-839 (102)	2	142 (136)	2

3 Note: SD = Standard Deviation, NMB = Net Monetary Benefit, iNMB = Incremental Net Benefit. Prioritisation Scenarios are defined as follows: None = equal priority given to all
 4 age and risk groups, Age = priority given to those aged 55 and over, Risk = priority given to high-risk individuals, Age and Risk = prioritisation for who are high-risk or older than
 5 55. Maximum doses per day is assumed to be 80,000, with access starting on October 15, 2020 for the priority group, and 30 days later for everyone else. *For all scenarios,
 6 iNMB is estimated relative to the scenario with no vaccine. Within each scenario group, rank 1 gives the optimum policy, whereas rank 4 gives the worst, ranking is based on
 7 unrounded results.

8

1
2
3

4 Figure 3. Concurrent Non-Pharmaceutical Intervention Results – Active Cases



5 Fig3 For scenario definitions, see main text

4. Discussion

Our results demonstrate the conflicts faced by decision makers when determining which policy objectives to pursue. In addition to the expected result that the choice of optimal vaccine allocation strategy is dependent on the primary outcome of interest, we also show the importance of considering time-variant epidemiological conditions, NPIs in place while a vaccine stockpile is allocated, vaccine coverage and effectiveness, population prioritisation policies, and timing of vaccine availability.

Cumulative cases and iNMB vary greatly depending upon which concurrent strategies are in place. The optimum vaccine allocation strategy is sensitive to whether policies target morbidity reductions (cases, hospitalizations) or NMB outcomes. The choice over which outcomes to optimize is a reflection of values, and/or of specific concerns (such as hospital capacity) at the time of decision making. Depending on contact patterns and case burden, increases in cases do not imply equivalent marginal increases in hospitalizations, and vice-versa. Similarly, outcomes such as hospitalizations have different impacts by age and risk group, which are not captured in count-based measures. The NMB measure combines the QALY losses and health system costs related to multiple outcomes (cases, hospitalizations, deaths).

With the exception of Chen et al. [13], other studies do not consider concurrent or future public health policies/ and or behavioural factors. We consider this an important oversight, as vaccine roll outs will take place in the context of other public health interventions and variation in behavioural responses. Ignoring this dynamic would risk misallocating the limited and highly valuable vaccine supply. Similarly, very few other studies have examined allocation by age and risk, [13,15,17] which are key factors in vaccine allocation discussions.

Our study applies a health system perspective and incurs immunisation costs, whereas a societal perspective is expected to broadly increase NMB in immunisation scenarios relative to a health system perspective as broader social, economic, and health impacts are considered. For example, the societal cost of school closures are not captured in model results. The model is run for a short time frame such that the full benefits of immunisation are not fully realised, and important dynamics such as waning immunity are unknown and not considered in this analysis. Despite these limitations, the large NMB loss estimates for all scenarios demonstrate the magnitude of the harm caused by the COVID-19 pandemic, and the relative impact of vaccination on NMB in the short term.

Some results from our analysis are unexpected and warrant further explanation. The impact of a lower vaccine effectiveness in those aged 60 and over appears relatively small. This is likely due to the expectation that physical distancing is maintained at a higher level for seniors throughout the period of analysis. If public health guidance or population attitudes shift such that seniors have increasing contact rates, lower effectiveness for older age groups would have a greater impact.

The results for the 'no prioritization' strategy is non-intuitive. While age and risk groups that are older or high-risk have a greater risk of hospitalisation or death from COVID, these outcomes interact dynamically with greater transmission, driven by higher rates of contact, in young and low risk age groups. With increasing evidence of COVID-19 vaccines reducing the probability of viral transmission [42, 40], there is an argument that immunizing those with greater rates of contact will confer greater population level benefits [43]. This dynamic may also be due to relatively high coverage in the scenarios evaluated. These effects may not be as strong with coverage lower than 40%, as evaluated in our

A Net Benefit Approach for the Optimal Allocation of a COVID-19 Vaccine

1 baseline scenarios. With sufficient evidence to support sterilizing immunity, this is an important finding
2 as the implication will be that individuals who cannot avoid contact (due to their employment,
3 socioeconomic status, or living situation) should be prioritized for immunization to minimize onwards
4 transmission and increase protection at a population level.

5 We have modelled 'all or nothing' vaccine effectiveness. Other authors have shown that evaluating
6 'leaky' effectiveness impacted upon the dynamics of the population impact [17]. This would not change
7 the importance of the dynamic relationships our analysis elucidates but would impact upon the relative
8 magnitude of different policy strategies. Future analyses with CRAM could incorporate evidence-based
9 vaccine effectiveness and the identification of critical coverage thresholds needed to achieve herd
10 immunity.

11 Our analysis assumes only susceptible individuals are immunized and does not consider the potential
12 role of serological testing for guiding vaccination strategies [17]. The assumption that only susceptible
13 individuals are tested implies that an accurate method of case identification is in place, and more
14 realistic evaluations intended to inform policies must consider the likely population distribution of
15 recovered cases, to ensure realistic modelling of immunizing both susceptible and recovered individuals.
16 Furthermore, evidence of marginal vaccine effectiveness on recovered individuals would be required.

17 As stated in the introduction, the aim of this paper is to develop a model-based approach to vaccine
18 allocation, analysing strategies defined by age and risk target groups, coverage, and effectiveness,
19 within a dynamic context considering NPIs and population behaviour change. To this end, we evaluated
20 intentionally hypothetical scenarios to avoid direct application of our results rather than our approach
21 to vaccine allocation. Analyses designed to inform decision making must reflect the context within
22 decisions are being made: current epidemiology, the timing of vaccine allocation, vaccine supply,
23 delivery capacity, product effectiveness, proposed dose intervals, inter-dose effectiveness, concurrent
24 NPIs, and population behaviour.

25 Our results have three key policy implications: (i) that optimal vaccine allocation will depend on the
26 public health policies, epidemiology, and human behaviours in place at the time of allocation; (ii) the
27 effectiveness and efficiency of vaccine allocation policies can be greatly enhanced by co-interventions
28 that target contact reduction in critical sub-populations; and (iii) the identification of the optimal
29 strategy depends on which outcomes are prioritised.

30 Future analyses conducted to inform policy directly should reflect these findings. It is critical to identify
31 which outcomes are prioritized in vaccine allocation. Decision makers must not only consider the
32 interventions and behaviours in place at the time of allocation, but also those which could be in place in
33 the future. Whereas our paper evaluates changes to NPIs in separate scenarios, optimal allocation will
34 depend on public health policy, epidemiology, and human behaviour. This creates a dynamic decision-
35 making environment where different combinations and degrees of implementation should be compared
36 for all NPIs. Similarly, it is likely that real-world decision problems will involve the allocation of multiple
37 vaccines, targeting different segments of the population with different availability over time. The full
38 suite of policy options (both NPIs and vaccine allocation options) and combinations thereof must be
39 examined to identify an optimal solution.

40 Public health policies that can be implemented alongside vaccine allocation must be considered within a
41 clear framework reflecting social values and equity. For example, in our model NMB is improved relative

A Net Benefit Approach for the Optimal Allocation of a COVID-19 Vaccine

1 to baseline when seniors continue to reduce their number of contacts, and if vaccines are allocated
2 without prioritizing older and high-risk population groups. However, this would mean that the people
3 with the greatest risk of disease and poor outcomes would also bear the highest burden through
4 additional social isolation. Therefore, the suite of public health policy policies to be implemented
5 alongside the vaccine should be determined prior to dynamic policy optimisation [8].

1 References

- 2 1. World Health Organization. WHO Coronavirus Disease (COVID-19) Dashboard. 2021.
3 [https://covid19.who.int/?gclid=Cj0KCQjw3ZX4BRDmARIsAFYh7ZLuu8BFL-](https://covid19.who.int/?gclid=Cj0KCQjw3ZX4BRDmARIsAFYh7ZLuu8BFL-gYbXtg5OMm4L_P4oqdQ7gbHn9wgTBVlllaKzHD0bPFRU0aAhoWEALw_wcB)
4 [gYbXtg5OMm4L_P4oqdQ7gbHn9wgTBVlllaKzHD0bPFRU0aAhoWEALw_wcB](https://covid19.who.int/?gclid=Cj0KCQjw3ZX4BRDmARIsAFYh7ZLuu8BFL-gYbXtg5OMm4L_P4oqdQ7gbHn9wgTBVlllaKzHD0bPFRU0aAhoWEALw_wcB). Accessed 2021-03-
5 12 2021.
- 6 2. World Health Organization. The push for a COVID-19 vaccine. 2020.
7 [https://www.who.int/emergencies/diseases/novel-coronavirus-2019/covid-19-](https://www.who.int/emergencies/diseases/novel-coronavirus-2019/covid-19-vaccines?gclid=CjwKCAjwz6_8BRBkEiwa3p02VfNzp6CQFFczxUolOmCLjurVQzu8eglhW54TctCLT)
8 [vaccines?gclid=CjwKCAjwz6_8BRBkEiwa3p02VfNzp6CQFFczxUolOmCLjurVQzu8eglhW54TctCLT](https://www.who.int/emergencies/diseases/novel-coronavirus-2019/covid-19-vaccines?gclid=CjwKCAjwz6_8BRBkEiwa3p02VfNzp6CQFFczxUolOmCLjurVQzu8eglhW54TctCLT)
9 [wDrLoW1ONAFrRoCQFwQAvD_BwE](https://www.who.int/emergencies/diseases/novel-coronavirus-2019/covid-19-vaccines?gclid=CjwKCAjwz6_8BRBkEiwa3p02VfNzp6CQFFczxUolOmCLjurVQzu8eglhW54TctCLT). Accessed 2021/03/12.
- 10 3. Government of Canada. Drug and vaccine authorizations for COVID-19: List of applications
11 received. 2021. [https://www.canada.ca/en/health-canada/services/drugs-health-](https://www.canada.ca/en/health-canada/services/drugs-health-products/covid19-industry/drugs-vaccines-treatments/authorization/applications.html#wb-auto-4)
12 [products/covid19-industry/drugs-vaccines-treatments/authorization/applications.html#wb-](https://www.canada.ca/en/health-canada/services/drugs-health-products/covid19-industry/drugs-vaccines-treatments/authorization/applications.html#wb-auto-4)
13 [auto-4](https://www.canada.ca/en/health-canada/services/drugs-health-products/covid19-industry/drugs-vaccines-treatments/authorization/applications.html#wb-auto-4). Accessed 2021/03/12.
- 14 4. Hassoun N. How to Distribute a COVID-19 Vaccine Ethically. *Scientific American*. 2020
15 2020/9/25.
- 16 5. Kupferschmidt K. WHO unveils global plan to fairly distribute COVID-19 vaccine, but
17 challenges await. *Science Magazine*. 2020 2020/9/21.
- 18 6. Weintraub R, Yadav P, Berkley S. A Covid-19 Vaccine Will Need Equitable, Global Distribution.
19 *Harvard Business Review*. 2020 2020/4/2.
- 20 7. Gayle H, Foege W, Brown L, Kahn B, Committee on Equitable Allocation of Vaccine for the
21 Novel C, Board on Health Sciences P et al. *Framework for Equitable Allocation of COVID-19*
22 *Vaccine*. Washington (DC): National Academies Press (US); 2020.
- 23 8. Roope LSJ, Buckell J, Becker F, Candio P, Violato M, Sindelar JL et al. How Should a Safe and
24 Effective COVID-19 Vaccine be Allocated? *Health Economists Need to be Ready to Take the*
25 *Baton*. *Pharmacoecon Open*. 2020;4(4):557-61. doi:10.1007/s41669-020-00228-5.
- 26 9. Persad G, Peek ME, Emanuel EJ. Fairly Prioritizing Groups for Access to COVID-19 Vaccines.
27 *JAMA*. 2020. doi:10.1001/jama.2020.18513.
- 28 10. Emanuel EJ, Persad G, Kern A, Buchanan A, Fabre C, Halliday D et al. An ethical framework
29 for global vaccine allocation. *Science*. 2020;369(6509):1309-12. doi:10.1126/science.abe2803.
- 30 11. Emanuel EJ, Persad G, Upshur R, Thome B, Parker M, Glickman A et al. Fair Allocation of
31 Scarce Medical Resources in the Time of Covid-19. *N Engl J Med*. 2020;382(21):2049-55.
32 doi:10.1056/NEJMs2005114.
- 33 12. Buckner JH, Chowell G, Springborn MR. Optimal Dynamic Prioritization of Scarce COVID-19
34 Vaccines. *medRxiv*. 2020. doi:10.1101/2020.09.22.20199174.
- 35 13. Chen X, Li M, Simchi-Levi D, Zhao T. Allocation of COVID-19 Vaccines Under Limited Supply.
36 *SSRN Electronic Journal*. 2020. doi:10.2139/ssrn.3678986.
- 37 14. Liu Y, Salwi S, Drolet BC. Multivalued ethical framework for fair global allocation of a COVID-
38 19 vaccine. *J Med Ethics*. 2020;46(8):499-501. doi:10.1136/medethics-2020-106516.
- 39 15. Matrajt L, Eaton J, Leung T, Brown ER. Vaccine optimization for COVID-19: Who to vaccinate
40 first? *Sci Adv*. 2020;7(6). doi:10.1126/sciadv.abf1374.

A Net Benefit Approach for the Optimal Allocation of a COVID-19 Vaccine

- 1 16. Meehan MT, Cocks DG, Caldwell JM, Trauer JM, Adekunle AI, Ragonnet RR et al. Age-
2 targeted dose allocation can halve COVID-19 vaccine requirements. *Infectious Diseases (except*
3 *HIV/AIDS)*. 2020. doi:10.1101/2020.10.08.20208108.
- 4 17. Bubar KM, Reinholt K, Kissler SM, Lipsitch M, Cobey S, Grad YH et al. Model-informed
5 COVID-19 vaccine prioritization strategies by age and serostatus. *Science*. 2021;371(6532):916-
6 21. doi:10.1126/science.abe6959.
- 7 18. Moghadas SM, Vilches TN, Zhang K, Nourbakhsh S, Sah P, Fitzpatrick MC et al. Evaluation of
8 COVID-19 vaccination strategies with a delayed second dose. *medRxiv*. 2021.
9 doi:10.1101/2021.01.27.21250619.
- 10 19. Prem K, Cook AR, Jit M. Projecting social contact matrices in 152 countries using contact
11 surveys and demographic data. *PLoS Comput Biol*. 2017;13(9):e1005697.
12 doi:10.1371/journal.pcbi.1005697.
- 13 20. Statistics Canada. CANSIM Table 17-10-0005-01 Population estimates on July 1st, by age
14 and sex. 2021.
- 15 21. Google. COVID-19 Community Mobility Reports. 2021.
16 https://www.google.com/covid19/mobility/data_documentation.html?hl=en. Accessed
17 2021/02/12.
- 18 22. Oakley J, O'Hagan A. SHELF: The Sheffield Elicitation Framework. 2013.
- 19 23. Grassly NC, Fraser C. Seasonal infectious disease epidemiology. *Proc Biol Sci*.
20 2006;273(1600):2541-50. doi:10.1098/rspb.2006.3604.
- 21 24. Davies NG, Klepac P, Liu Y, Prem K, Jit M, group CC-w et al. Age-dependent effects in the
22 transmission and control of COVID-19 epidemics. *Nat Med*. 2020;26(8):1205-11.
23 doi:10.1038/s41591-020-0962-9.
- 24 25. Public Health Agency of Canada. COVID-19: PHAC Modelling Group Weekly Report2020
25 2020/7/3.
- 26 26. Canadian Agency for Drugs and Technologies in Health. Guidelines for the Economic
27 Evaluation of Health Technologies: Canada. 2017.
- 28 27. Stinnett AA, Mullahy J. Net health benefits: a new framework for the analysis of uncertainty
29 in cost-effectiveness analysis. *Med Decis Making*. 1998;18(2 Suppl):S68-80.
30 doi:10.1177/0272989X98018002S09.
- 31 28. Ochalek J, Lomas J, Claxton K. Assessing health opportunity costs for the Canadian health
32 care systems. 2018. [http://www.pmprb-](http://www.pmprb-cepmb.gc.ca/CMFiles/Consultations/new_guidelines/Canada_report_2018-03-14_Final.pdf)
33 [cepmb.gc.ca/CMFiles/Consultations/new_guidelines/Canada_report_2018-03-14_Final.pdf](http://www.pmprb-cepmb.gc.ca/CMFiles/Consultations/new_guidelines/Canada_report_2018-03-14_Final.pdf).
- 34 29. Poteet S, Craig BM. QALYs for COVID-19: A Comparison of US EQ-5D-5L Value Sets. *Patient*.
35 2021. doi:10.1007/s40271-021-00509-z.
- 36 30. Fragaszy EB, Warren-Gash C, White PJ, Zambon M, Edmunds WJ, Nguyen-Van-Tam JS et al.
37 Effects of seasonal and pandemic influenza on health-related quality of life, work and school
38 absence in England: Results from the Flu Watch cohort study. *Influenza Other Respir Viruses*.
39 2018;12(1):171-82. doi:10.1111/irv.12506.
- 40 31. Mangen MJ, Huijts SM, Bonten MJ, de Wit GA. The impact of community-acquired
41 pneumonia on the health-related quality-of-life in elderly. *BMC Infect Dis*. 2017;17(1):208.
42 doi:10.1186/s12879-017-2302-3.

A Net Benefit Approach for the Optimal Allocation of a COVID-19 Vaccine

- 1 32. Briggs AH, Goldstein DA, Kirwin E, Meacock R, Pandya A, Vanness DJ et al. Estimating
2 (quality-adjusted) life-year losses associated with deaths: With application to COVID-19. *Health*
3 *Econ.* 2021;30(3):699-707. doi:10.1002/hec.4208.
- 4 33. Moreno-Perez O, Merino E, Leon-Ramirez JM, Andres M, Ramos JM, Arenas-Jimenez J et al.
5 Post-acute COVID-19 syndrome. Incidence and risk factors: A Mediterranean cohort study. *J*
6 *Infect.* 2021;82(3):378-83. doi:10.1016/j.jinf.2021.01.004.
- 7 34. Alberta Health. Interactive Health Data Application - Health Costing Data. 2021.
8 http://www.ahw.gov.ab.ca/IHDA_Retrieval/selectSubCategory.do. Accessed 2020/11/15.
- 9 35. Statistics Canada. CANSIM Table 18-10-0005-01, Consumer Price Index, annual average, not
10 seasonally adjusted. 2021.
- 11 36. van Rijt AM, Dik JH, Lokate M, Postma MJ, Friedrich AW. Cost analysis of outbreaks with
12 Methicillin-resistant *Staphylococcus aureus* (MRSA) in Dutch long-term care facilities (LTCF).
13 *PLoS One.* 2018;13(11):e0208092. doi:10.1371/journal.pone.0208092.
- 14 37. Gray M. Canada spent \$24M on COVID-19 vaccines received in January: StatCan. CTV News.
15 2021.
- 16 38. Polack FP, Thomas SJ, Kitchin N, Absalon J, Gurtman A, Lockhart S et al. Safety and Efficacy
17 of the BNT162b2 mRNA Covid-19 Vaccine. *N Engl J Med.* 2020;383(27):2603-15.
18 doi:10.1056/NEJMoa2034577.
- 19 39. Baden LR, El Sahly HM, Essink B, Kotloff K, Frey S, Novak R et al. Efficacy and Safety of the
20 mRNA-1273 SARS-CoV-2 Vaccine. *N Engl J Med.* 2021;384(5):403-16.
21 doi:10.1056/NEJMoa2035389.
- 22 40. Voysey M, Clemens SAC, Madhi SA, Weckx LY, Folegatti PM, Aley PK et al. Safety and
23 efficacy of the ChAdOx1 nCoV-19 vaccine (AZD1222) against SARS-CoV-2: an interim analysis of
24 four randomised controlled trials in Brazil, South Africa, and the UK. *Lancet.*
25 2021;397(10269):99-111. doi:10.1016/S0140-6736(20)32661-1.
- 26 41. Dover DC, Kirwin EM, Hernandez-Ceron N, Nelson KA. Pandemic Risk Assessment Model
27 (PRAM): a mathematical modeling approach to pandemic influenza planning. *Epidemiol Infect.*
28 2016;144(16):3400-11. doi:10.1017/S0950268816001850.
- 29 42. Petter E, Mor O, Zuckerman N, Oz-Levi D, Younger A, Aran D et al. Initial real world evidence
30 for lower viral load of individuals who have been vaccinated by BNT162b2. *bioRxiv.* 2021.
31 doi:10.1101/2021.02.08.21251329.
- 32 43. Mulberry N, Tupper P, Kirwin E, McCabe C, Colijn C. Vaccine rollout strategies: The case for
33 vaccinating essential workers early. *bioRxiv.* 2021. doi:10.1101/2021.02.23.21252309.

34