

1 **Automated Western immunoblotting detection of anti-SARS-CoV-2**
2 **serum antibodies.**

3
4 Running title: SARS-CoV-2 Western immunoblotting.

5
6 Edouard, S.^{1,2}, Jaafar, R.^{1,2}, Orain, N.¹, Parola, P.^{1,3}, Colson, P.^{1,2}

7 La Scola, B.^{1,2}, Fournier, P-E.^{1,3}, Raoult, D.^{1,2}, Drancourt, M.^{1,2*}

8
9 **Affiliations:**

10 ¹ IHU-Méditerranée Infection, Marseille, France

11 ² Aix Marseille Univ., IRD, AP-HM, MEPHI, Marseille, France

12 ³ Aix Marseille Univ., IRD, AP-HM, SSA, VITROME, Marseille, France

13
14 *Corresponding author : Michel Drancourt, IHU Méditerranée Infection, 19-21
15 boulevard Jean Moulin, 13005 Marseille, France. Tel.: +33 413 732 401, Fax: +33
16 413 732 402; email: michel.drancourt@univ-amu.fr

17
18 Keywords : SARS-CoV-2, COVID-19, cross-reactivity, serology, automated Western
19 immunoblotting

20
21 Word count: 2475 words

22 **ABSTRACT**

23 ELISA and chemiluminescence serological assays for COVID-19 are currently
24 incorporating only one or two SARS-CoV-2 antigens. We developed an automated
25 Western immunoblotting as a complementary serologic assay for COVID-19. The
26 JessTM Simple Western system, an automated capillary-based assay was used,
27 incorporating an inactivated SARS-CoV-2 lineage 20a strain as antigen, and IgT
28 detection. In total, 602 sera were tested including 223 from RT-PCR-confirmed
29 COVID-19 patients, 76 from patients diagnosed with seasonal HCoVs and 303 from
30 coronavirus-negative control sera. We also compared this assay with the
31 EUROIMMUN® SARS-CoV-2 IgG ELISA kit. Among 223 sera obtained from RT-
32 PCR-confirmed COVID-19 patients, 180/223 (81%) exhibited reactivity against the
33 nucleocapsid and 70/223 (31%) against the spike protein. Nucleocapsid reactivity
34 was further detected in 9/76 (14%) samples collected from patients diagnosed with
35 seasonal HCoVs and in 15/303 (5%) coronavirus-negative control samples. In the
36 subset of sera collected more than 2 weeks after the onset of symptoms, the
37 sensitivity was 94% and the specificity 93%, the latter value probably reflecting
38 cross-reactivity of SARS-CoV-2 with other coronaviruses. The automated Western
39 immunoblotting presented a substantial agreement (90%) with the compared ELISA
40 (Cohen's Kappa=0.64). Automated Western immunoblotting may be used as a
41 second line test to monitor exposition of people to HCoVs including SARS-CoV-2.

42 1. INTRODUCTION

43 To date, seven coronaviruses have been reported as human pathogens,
44 including four seasonal coronaviruses (*Alphacoronavirus* 229E and NL63 and
45 *Betacoronavirus* HKU1 and OC43) here referred to as HCoVs, which are associated
46 to mild-to-severe upper and lower respiratory tract infections (1). Two other
47 betacoronaviruses that caused severe acute respiratory syndrome in 2002 in China
48 (SARS-CoV) and the Middle East Respiratory Syndrome in 2012 in Saudi Arabia
49 (MERS-CoV) (2); and the *Betacoronavirus* SARS-CoV-2 that is the agent of the
50 COVID-19 pandemic has been demonstrated to infect a variety of animals and
51 humans (3). The latter is phylogenetically closely related to HCoV-HKU1 and
52 presents a high sequence homology with SARS-CoV (2).

53 Serological assays used to explore exposition to seasonal HCoVs have
54 previously indicated cross-immunity between all coronaviruses (4–6). SARS-CoV-2
55 exhibits several antigens eliciting a serological response in COVID-19 patients,
56 including spike glycoprotein, its N-terminal (S1) and C-terminal (S2) subunits as well
57 as nucleocapsid (7). Most of routinely used serological COVID-19 assays
58 incorporated only one recombinant protein (8–10). Second generation assays are
59 combining two antigens to increase sensitivity and mostly specificity (7, 11).

60 We developed an automated Western immunoblotting (AWB) assay in order
61 to characterize serological responses to SARS-CoV-2 and the potential cross-
62 reactivity with HCoVs.

63

64 2. PATIENTS AND METHODS

65 **Serum sample collections.** A first set of 27 serum samples from 27 different
66 patients with RT-PCR-documented COVID-19 (12), collected at least 2 weeks after

67 the onset of symptoms were incorporated as a positive control group. All of them
68 presented IgG titer $\geq 1:100$ using in-house indirect immunofluorescence assay (IFA)
69 (13). Of these, 16 serum samples were used for conventional immunoblotting
70 including 3 samples exhibiting low (1:200), moderate (1:800) and high (1:3,200) IgG
71 titers using IFA that were used to fix optimal conditions to be used for AWB (antigen,
72 serum and secondary antibodies concentrations). One serum collected in 2018,
73 before the onset of COVID-19 (negative RT-PCR for HCoV-229E on homologous
74 respiratory specimen) was included as negative control.

75 As for AWB, 223 serum samples (including the 27 serum samples described
76 above) collected from 223 different RT-PCR-confirmed COVID-19 patients were
77 incorporated as a positive control group. Twenty-seven of these sera were tested for
78 antibodies to the recombinant S1 protein by EUROIMMUN® SARS-CoV-2 IgG
79 ELISA (Euroimmun, Bussy Saint-Martin, France) performed using the Elispeed DUO
80 system (Euroimmun) according to the manufacturer's recommendations. The ratio
81 (AUC sample/AUC calibrator) was interpreted as follows: <0.8 negative; ≥ 0.8 to <1.0
82 undetermined; ≥ 1.1 positive. We considered undetermined results as negative for
83 statistical analyses. A negative control group (37 serum samples) consisted of (i) 10
84 serum sampled obtained less than 5 days after the onset of symptoms) in patients
85 presenting high viral loads of SARS-CoV-2 (Ct values < 20); (ii) 14 sera from
86 asymptomatic healthcare workers largely exposed to the virus but exhibiting negative
87 results for RT-PCR and serology by IFA for SARS-CoV-2 during follow-up; and (iii)
88 13 sera from patients collected in 2019 before the pandemic and harbouring
89 negative RT-PCR results for the 4 HCoVs in their nasopharyngeal specimens. These
90 37 serum samples were also all tested by ELISA. A third group of 76 serum samples
91 was retrieved from patients diagnosed with seasonal coronavirus infections (HCoV-

92 NL63 (n=19), HCoV-OC43 (n=21), HCoV-229E (n=8) and HCoV-HKU1 (n=28)) and
93 were collected at least 2 weeks after the diagnosis, of which 45 were also tested by
94 ELISA. A fourth group of 266 sera was collected from children and adults admitted in
95 surgery departments (n=145) and other medical units (=121) before the pandemic, of
96 which 88 serum samples were also tested by ELISA; their HCoVs status was
97 unknown. Altogether, 197 sera tested by ELISA, included 27 sera from COVID-19-
98 positive patients and 170 from COVID-19-negative patients. All sera were
99 retrospectively tested and no sample was collected specifically for this study which
100 was approved by our institution's ethics committee under No.2020-024.

101

102 **Virus growth, purification and concentration.** The SARS-CoV-2 IHUMI2 strain
103 (lineage 20a) was used as antigen as previously described (13). One liter of infected
104 cells was collected and clarified by centrifugation at 700 x g for 10 min and by
105 filtering the supernatant through a 0.45- μ m pore-sized filter and further a 0.2- μ m
106 pore-sized filter. Virions were then aggregated by overnight precipitation at 4°C with
107 10% polyethylene glycol 8000 white flake type (PEG-8000, BioUltra, SIGMA-
108 ALDRICH, USA) and 2.2% crystalline NaCl, with gentle swirling. Precipitated virus
109 particles were then centrifuged at 10,000 x g for 30 min using a SORVALL Evolution
110 centrifuge with SLA-3000 Recent 1 fixed angle rotor pre-cooled at 4°C (Kendro
111 Laboratory Products, Newtown, USA). The pellet was resuspended with HEPES-
112 saline (0.9% NaCl, 10 mL of 1 M HEPES, 990 mL purified water) previously vacuum-
113 sterilized through a 0.2- μ m pore size membrane; swirled in the cold HEPES-saline
114 until dissolution to avoid using pipetting as it may hurts viral spikes at this step. The
115 resuspended pellet was then treated with a 30% sucrose cushion in 25 x 89 mm
116 centrifuge tubes (Ultra-Clear, BECKMAN COULTER, CA, USA). Final purification

117 was achieved by ultracentrifugation at 100,000 x g for 90 min at 4°C followed by two
118 30-min washes with HBSS using SORVALL Discovery 90SE with Surespin 630 rotor
119 (Kendro Laboratory Products). The final pellet was resuspended in 400 µL of
120 HEPES-buffered saline and heat-inactivated at 65°C for 1h.

121

122 **Conventional Western immunoblotting.** SARS-CoV-2 antigens diluted to 0.5
123 mg/mL were mixed (v/v) with 2X Laemmli Sample Buffer (Bio-Rad, Hercules, CA,
124 USA) before a heating step of 5 min at 95°C. This preparation and a ladder were
125 dispensed in wells shaped in a 5 % polyacrylamide stacking gel. The protein
126 separation was then performed in a 10 % polyacrylamide separating gel with a Mini
127 Trans-blot cell device (Bio-Rad) at 160 V for 90 min. After transferring proteins from
128 the gel to a 0.45 µm-pore size nitrocellulose membrane (Bio-Rad) at 100 V and 15°C
129 for 90 min, the membrane was left at 4°C overnight with 5% non-fat milk powder in
130 TBS buffer. Blocked strips were incubated with sera diluted at 1:50 for 60 min. Three
131 washes of 10 min were performed before a 90-min incubation of the strips with goat
132 peroxidase-conjugated anti-human IgG/ IgM/IgA (Jackson ImmunoResearch, Ely,
133 UK) diluted 1:1000. Three washes of 10 min with TBS buffer were made. Strips were
134 put in contact with ECL Western Blotting Substrate (Promega, Madison, USA) and
135 the reaction with secondary antibody peroxydases was revealed with a Fusion Fx
136 chemiluminescence imaging system and analysed with the Fusion software (Vilber,
137 Marne-la-Vallée, France).

138

139 **Automated Western immunoblotting.** The JessTM Simple Western system
140 (ProteinSimple, San Jose CA, USA,) is an automated capillary-based size separation
141 and nano-immunoassay system. To quantify the absolute serological response to

142 viral antigens, we followed the manufacturer's standard method for 12-230-kDa Jess
143 separation module (SM-W004). The SARS-CoV-2 antigen (1 $\mu\text{g}/\mu\text{L}$) was mixed with
144 0.1X Sample buffer and Fluorescent 5X Master mix (ProteinSimple) to achieve a
145 final concentration of 0.25 $\mu\text{g}/\mu\text{L}$ in the presence of fluorescent molecular weight
146 markers and 400 mM dithiothreitol (ProteinSimple). This preparation was denatured
147 at 95°C for 5 minutes. Ladder (12-230-kDa PS-ST01EZ) and SARS-CoV-2 proteins
148 were separated in capillaries as they migrated through a separation matrix at 375
149 volts. A ProteinSimple proprietary photoactivated capture chemistry was used to
150 immobilize separated viral proteins on the capillaries. Patients sera diluted at a 1:2
151 were added and incubated for 60 min. After a wash step, goat HRP-conjugated anti-
152 human IgG/IgM/IgA antibodies (Jackson ImmunoResearch) diluted 1:500 was added
153 for 30 min. The chemiluminescent revelation was established with peroxyde/luminol-
154 S (ProteinSimple). Digital image of chemiluminescence of the capillary was captured
155 with Compass Simple Western software (version 4.1.0, Protein Simple) that
156 calculated automatically heights (chemiluminescence intensity), area and
157 signal/noise ratio. Results could be visualized as electropherograms representing
158 peak of chemiluminescence intensity and as lane view from signal of
159 chemiluminescence detected in the capillary. An internal system control was
160 included in each run.

161

162 **Statistical analysis.** ROC curves were performed using XL stat. The agreement
163 rate and Cohen's Kappa value were determined for agreement between ELISA and
164 AWB. For data comparisons and statistical analyses, the Fisher's exact test, Chi-
165 squared test, Mann-Witney test and standard statistical software (GraphPad Prism
166 v7) were used. A p-value < 0.05 was considered statistically significant.

167 **3. RESULTS**

168 **Fixing automated Western immunoblotting parameters.** Protein profiles of the
169 purified SARS-CoV-2 antigen and uninfected Vero cells were verified on silver-
170 stained 2-D gel. As expected, the viral specific and major dominant proteins were N,
171 S, S1 and S2 proteins at 42, 170, 110 and 90 kDa, respectively. All 16 serum
172 samples collected from 16 different COVID-19 patients exhibited reactivity against
173 the nucleocapsid and spike proteins. Parameter optimization to translate these data
174 on AWB included an antigen concentration of 0.25 $\mu\text{g}/\mu\text{L}$, a serum dilution at 1:2 and
175 a secondary antibody dilution of 1:500 (data not shown). In these conditions, AWB of
176 positive serum samples yielded a prominent 56-kDa band interpreted as the
177 nucleocapsid and a 217-kDa band interpreted as the spike protein (Figure S1).
178 Higher molecular weight values observed with AWB than with SDS-PAGE were due
179 to the different composition of gel in the capillaries. In total, the 16 sera from COVID-
180 19 patients tested with conventional and AWB gave similar results except that AWB
181 failed to detect the spike protein in one sample. Further, AWB yielded significant
182 higher S/N ratio, pick height and area under curve for the nucleocapsid ($p < 0.0001$)
183 and spike proteins ($p < 0.0001$) in the 27 serum samples from COVID-19 patients
184 than in 37 serum samples collected in negative control patients (Table 1). The S/N
185 ratio presented higher Youden Index for nucleocapsid detection, being therefore
186 interpreted as the most pertinent parameter to interpret AWB results. Optimal
187 threshold for the S/N ratio of 110.4 conferred a 96.3% sensitivity and 94.6%
188 specificity for the nucleocapsid detection. Determination of a cut-off to interpret
189 results of spike protein was not useful and could be based only on
190 presence/absence of signal with sensitivity to 66.7% and 100% specificity (Table 2).

191 Therefore, we further used the presence of antibodies to the nucleocapsid with S/N
192 ratio ≥ 110.4 and/or to the spike protein, as criteria to define a positive AWB.

193

194 **Automated Western immunoblotting results.** AWB yielded 395/602 (66%)
195 negative and 207/602 (34%) positive serum samples (Table 3); giving an 81%
196 sensitivity as 181/223 COVID-19 patients were positive (nucleocapsid detected in
197 180/223 (76%) and spike in 67/223 (30%), respectively); and a 93% specificity as
198 26/379 (7%) non-COVID-19 patients were positive; applying above reported cut-off
199 criteria (Figures 1 and 2a). Accordingly, positive (PPV) and negative predictive
200 values (NPV) were of 87% and 89%, respectively. Sera from COVID-19 patients
201 were collected with a median of 13 days (range 0 to 165) after the onset of
202 symptoms. Sensitivity was 54% among sera collected less than 10 days after the
203 onset of symptoms and increased to 94% among sera collected more than 10 days
204 after the onset of symptoms (Figure 3). AWB had a 90% agreement with the herein
205 compared ELISA assay (Cohen's Kappa=0.64) as the latter was positive in 22/27
206 (81.5%) COVID-19 patients and 6/170 (3.5%) non-COVID-19 patients, yielding a
207 sensitivity of 81.5% and specificity of 97% (Table 4).

208 Detailing false-positive AWB, antibodies to the nucleocapsid were detected in
209 3/37 (8%) negative control serum samples. Also, 9/76 (14%) serum sampled from
210 patients diagnosed with seasonal HCoVs, reacted with the nucleocapsid which was
211 detected in 5/28 (18%) of patients with HCoV-HKU1, 2/19 (10.5%) with HCoV-NL63,
212 2/21 (9.5%) with HCoV-OC43 but in none of HCoV-229E patients (Figure 2b). In
213 addition, one HCoV-HKU1 serum and one HCoV-NL63 serum reacted against the
214 spike protein, increasing the number of total cross-reactions to 11/76 (14.5%) for this
215 group. Among 266 serums sampled before the COVID-19 epidemic in France, albeit

216 of unknown status for HCoV-229E, 12/266 (4.5%) reacted against the nucleocapsid but
217 none against the spike protein.

218 Most cross reactivities were detected in 46-65-year-old patients (7/63) and
219 more than 65-year-old (4/43) patients (Figure 2c). Cross reactivity was more
220 prevalent in subjects > 21 years (15/173) than in children ≤ 15 years (6/126) but this
221 difference was not significant ($p = 0.25$, Fisher's exact test).

222

223 **4. DISCUSSION**

224 An AWB, incorporating whole SARS-CoV-2 viral particles, was demonstrate to
225 be efficient in detecting specific antibodies against SARS-CoV-2 dual nucleocapsid
226 and spike proteins, achieving a 87% PPV and a 89% NPV for COVID-19, in the
227 population tested in this study. Accordingly, dual nucleocapsid and spike protein
228 detections exhibited 81% sensitivity and 93% specificity. Indeed, the spike protein
229 was detected in only two non-COVID-19 patients whereas the nucleocapsid protein
230 was detected in 24 non-COVID-19 patients, including 11 patients diagnosed with
231 HCoV-229E. In our study, AWB results were consistent with results obtained using a
232 commercially ELISA incorporating recombinant spike-1 protein. The serological
233 observations obtained in this study therefore indicated that it is worth developing
234 next generation serological assays incorporating both the nucleocapsid and the
235 spike proteins, in order to achieve almost 100% sensitivity and 100% specificity of
236 SARS-CoV-2 infection, which is not the situation with first generation, commercially-
237 available serological assays (7, 11, 14).

238 It should be noted that cross-reactivity was more prevalent in patients infected
239 with other betacoronaviruses (accounting for 31% of cross-reactivity) than in patients
240 infected with alphacoronaviruses (accounting for 12% of cross-reactivity); being

241 mainly supported by SARS-CoV-2 nucleocapsid (in 92% of cross-reacting serum
242 samples); and mostly found in adult patients older than 46 years (accounting for 52%
243 of sera with cross-reactivity). Our observations are consistent with previous reports
244 that cross-reactions were observed with nucleocapsid while serological assays
245 incorporating the spike protein have been reported to be more specific but less
246 sensitive (4–6, 15–18). Cross-reactivity has been described between endemic
247 coronaviruses and SARS-CoV-2 (19). Several studies reported the presence of
248 antibodies reacting with SARS-CoV-2 spike and nucleocapsid proteins in serum
249 sampled before the pandemic and in HCoV patients (20, 21).

250 In a few previous reports of the described AWB (22–24), a recombinant
251 protein was used as the antigen whereas we used purified virus antigen directly
252 produced in the biosafety level 3 laboratory (13). This fact could explain in part the
253 important difference of sensitivity for the spike protein compared to the nucleocapsid,
254 in our assay. Thereby, serum dilution was a critical parameter as the spike protein
255 was detected only for a low, 1:2 dilution of serum. Nevertheless, the herein
256 described AWB assay demonstrated a better standardization and reproducibility than
257 conventional Western immunoblotting, proved to be user-friendly and enabled
258 analyzing 24 serum samples in less than 4 hours. Result interpretation was not only
259 based on presence/absence and intensity of bands but a chemiluminescent image
260 was automatically analyzed with software allowing noise reduction. The “virtual
261 image” of reactions present in the capillaries could be represented by peaks on
262 electropherogram or lane views.

263 In conclusion, the herein described AWB may be incorporated as a first line
264 serological test for the diagnosis of exposure to SARS-CoV-2 if limited series have to
265 be investigated; or as a second-line assay to confirm or exclude the diagnosis of

266 COVID-19 especially in patients with negative, doubtful and discrepant RT-PCR
267 results, and may be used to measure past exposition to the virus.

268

269

270

271 **ACKNOWLEDGMENTS**

272 The authors acknowledge the contribution of the technical staff of the IHU
273 Méditerranée Infection Laboratory. This work was supported by IHU Méditerranée
274 Infection, Marseille, France. RJ benefits from a PhD grant by fondation Méditerranée
275 Infection, Marseille, France.

276

277 **FINANCIAL SUPPORT**

278 This study was funded by ANR-15-CE36-0004-01 and by ANR “Investissements
279 d’Avenir” Méditerranée Infection 10-IAHU-03.

280

281 **DECLARATION OF COMPETING INTEREST**

282 None to declare.

283

284

285 **REFERENCES**

- 286 1. Zimmermann P, Curtis N. 2020. Coronavirus Infections in Children Including
287 COVID-19: An Overview of the Epidemiology, Clinical Features, Diagnosis,
288 Treatment and Prevention Options in Children. *Pediatr Infect Dis J* 39:355–368.
- 289 2. Coronaviridae Study Group of the International Committee on Taxonomy of
290 Viruses. 2020. The species Severe acute respiratory syndrome-related
291 coronavirus: classifying 2019-nCoV and naming it SARS-CoV-2. *Nat Microbiol*
292 5:536–544.
- 293 3. Zhu N, Zhang D, Wang W, Li X, Yang B, Song J, Zhao X, Huang B, Shi W, Lu
294 R, Niu P, Zhan F, Ma X, Wang D, Xu W, Wu G, Gao GF, Tan W, China Novel
295 Coronavirus Investigating and Research Team. 2020. A Novel Coronavirus from
296 Patients with Pneumonia in China, 2019. *N Engl J Med* 382:727–733.
- 297 4. Maache M, Komurian-Pradel F, Rajoharison A, Perret M, Berland J-L, Pouzol S,
298 Bagnaud A, Duverger B, Xu J, Osuna A, Paranhos-Baccalà G. 2006. False-
299 positive results in a recombinant severe acute respiratory syndrome-associated
300 coronavirus (SARS-CoV) nucleocapsid-based western blot assay were rectified
301 by the use of two subunits (S1 and S2) of spike for detection of antibody to
302 SARS-CoV. *Clin Vaccine Immunol* 13:409–414.
- 303 5. Woo PCY, Lau SKP, Wong BHL, Chan K-H, Hui W-T, Kwan GSW, Peiris JSM,
304 Couch RB, Yuen K-Y. 2004. False-positive results in a recombinant severe
305 acute respiratory syndrome-associated coronavirus (SARS-CoV) nucleocapsid
306 enzyme-linked immunosorbent assay due to HCoV-OC43 and HCoV-229E

- 307 rectified by Western blotting with recombinant SARS-CoV spike polypeptide. J
308 Clin Microbiol 42:5885–5888.
- 309 6. Che X-Y, Qiu L-W, Liao Z-Y, Wang Y, Wen K, Pan Y-X, Hao W, Mei Y-B,
310 Cheng VCC, Yuen K-Y. 2005. Antigenic cross-reactivity between severe acute
311 respiratory syndrome-associated coronavirus and human coronaviruses 229E
312 and OC43. J Infect Dis 191:2033–2037.
- 313 7. Burbelo PD, Riedo FX, Morishima C, Rawlings S, Smith D, Das S, Strich JR,
314 Chertow DS, Davey RT, Cohen JI. 2020. Sensitivity in Detection of Antibodies
315 to Nucleocapsid and Spike Proteins of Severe Acute Respiratory Syndrome
316 Coronavirus 2 in Patients With Coronavirus Disease 2019. J Infect Dis 222:206–
317 213.
- 318 8. Deeks JJ, Dinnes J, Takwoingi Y, Davenport C, Spijker R, Taylor-Phillips S,
319 Adriano A, Beese S, Dretzke J, Ferrante di Ruffano L, Harris IM, Price MJ,
320 Dittrich S, Emperador D, Hooft L, Leeflang MM, Van den Bruel A, Cochrane
321 COVID-19 Diagnostic Test Accuracy Group. 2020. Antibody tests for
322 identification of current and past infection with SARS-CoV-2. Cochrane
323 Database Syst Rev 6:CD013652.
- 324 9. Guo L, Ren L, Yang S, Xiao M, Chang D, Yang F, Dela Cruz CS, Wang Y, Wu
325 C, Xiao Y, Zhang L, Han L, Dang S, Xu Y, Yang Q-W, Xu S-Y, Zhu H-D, Xu Y-
326 C, Jin Q, Sharma L, Wang L, Wang J. 2020. Profiling Early Humoral Response
327 to Diagnose Novel Coronavirus Disease (COVID-19). Clin Infect Dis 71:778–
328 785.

- 329 10. Liu Z-L, Liu Y, Wan L-G, Xiang T-X, Le A-P, Liu P, Peiris M, Poon LLM, Zhang
330 W. 2020. Antibody Profiles in Mild and Severe Cases of COVID-19. *Clin Chem*
331 66:1102–1104.
- 332 11. Lynch KL, Whitman JD, Lacanienta NP, Beckerdite EW, Kastner SA, Shy BR,
333 Goldgof GM, Levine AG, Bapat SP, Stramer SL, Esensten JH, Hightower AW,
334 Bern C, Wu AHB. 2020. Magnitude and kinetics of anti-SARS-CoV-2 antibody
335 responses and their relationship to disease severity. *Clin Infect Dis*
336 <https://doi.org/10.1093/cid/ciaa979>.
- 337 12. Amrane S, Tissot-Dupont H, Doudier B, Eldin C, Hocquart M, Mailhe M,
338 Dudouet P, Ormières E, Ailhaud L, Parola P, Lagier J-C, Brouqui P, Zandotti C,
339 Ninove L, Luciani L, Boschi C, La Scola B, Raoult D, Million M, Colson P,
340 Gautret P. 2020. Rapid viral diagnosis and ambulatory management of
341 suspected COVID-19 cases presenting at the infectious diseases referral
342 hospital in Marseille, France, - January 31st to March 1st, 2020: A respiratory
343 virus snapshot. *Travel Med Infect Dis* 101632.
- 344 13. Edouard S, Colson P, Melenotte C, Di pinto Fabrizio, Thomas Laurence, La
345 Scola B, Million M, Tissot-Dupont, Gautret philippe, Stein A, Brouqui P, Parola
346 P, Lagier J-C, Raoult D, Drancourt M. 2020. Evaluating the serological status of
347 COVID-19 patients using an indirect immunofluorescent assay, France. *Eur J*
348 *Clin Microbiol Infect Dis* 1-11 <https://doi.org/10.1007/s10096-020-04104-2>.

349

- 350 14. Kohmer N, Westhaus S, Rühl C, Ciesek S, Rabenau HF. 2020. Brief clinical
351 evaluation of six high-throughput SARS-CoV-2 IgG antibody assays. *J Clin Virol*
352 129:104480.
- 353 15. Meyer B, Drosten C, Müller MA. 2014. Serological assays for emerging
354 coronaviruses: challenges and pitfalls. *Virus Res* 194:175–183.
- 355 16. Ou X, Liu Y, Lei X, Li P, Mi D, Ren L, Guo L, Guo R, Chen T, Hu J, Xiang Z, Mu
356 Z, Chen X, Chen J, Hu K, Jin Q, Wang J, Qian Z. 2020. Characterization of
357 spike glycoprotein of SARS-CoV-2 on virus entry and its immune cross-
358 reactivity with SARS-CoV. *Nat Commun* 11:1620.
- 359 17. Marien J, Michiels J, Heyndrickx L, Kerkhof K, Foque N, Widdowson M-A,
360 Desombere I, Jansens H, Van Esbroeck M, Arien KK. 2020. Evaluating SARS-
361 CoV-2 spike and nucleocapsid proteins as targets for IgG antibody detection in
362 severe and mild COVID-19 cases using a Luminex bead-based assay. *medRxiv*
363 preprint 2020. <https://doi.org/10.1101/2020.07.25.20161943>.
- 364 18. Van Elslande J, Decru B, Jonckheere S, Van Wijngaerden E, Houben E,
365 Vandecandelaere P, Indevuyst C, Depypere M, Desmet S, André E, Van Ranst
366 M, Lagrou K, Vermeersch P. 2020. Antibody response against SARS-CoV-2
367 spike protein and nucleoprotein evaluated by four automated immunoassays
368 and three ELISAs. *Clin Microbiol Infect*
369 <https://doi.org/10.1016/j.cmi.2020.07.038>.
- 370 19. Huang AT, Garcia-Carreras B, Hitchings MDT, Yang B, Katzelnick LC, Rattigan
371 SM, Borgert BA, Moreno CA, Solomon BD, Trimmer-Smith L, Etienne V,
372 Rodriguez-Barraquer I, Lessler J, Salje H, Burke DS, Wesolowski A, Cummings

- 373 DAT. 2020. A systematic review of antibody mediated immunity to
374 coronaviruses: kinetics, correlates of protection, and association with severity.
375 Nat Commun 11:4704.
- 376 20. Khan S, Nakajima R, Jain A, de Assis RR, Jasinskas A, Obiero JM, Adenaiye
377 O, Tai S, Hong F, Milton DK, Davies H, Felgner PL, Prometheus Study Group.
378 2020. Analysis of Serologic Cross-Reactivity Between Common Human
379 Coronaviruses and SARS-CoV-2 Using Coronavirus Antigen Microarray.
380 BioRxiv Prepr Serv Biol <https://doi.org/10.1101/2020.03.24.006544>.
- 381 21. Ng KW, Faulkner N, Cornish GH, Rosa A, Harvey R, Hussain S, Ulferts R, Earl
382 C, Wrobel AG, Benton DJ, Roustan C, Bolland W, Thompson R, Agua-Doce A,
383 Hobson P, Heaney J, Rickman H, Paraskevopoulou S, Houlihan CF, Thomson
384 K, Sanchez E, Shin GY, Spyer MJ, Joshi D, O'Reilly N, Walker PA, Kjaer S,
385 Riddell A, Moore C, Jebson BR, Wilkinson M, Marshall LR, Rosser EC,
386 Radziszewska A, Peckham H, Ciurtin C, Wedderburn LR, Beale R, Swanton C,
387 Gandhi S, Stockinger B, McCauley J, Gamblin SJ, McCoy LE, Cherepanov P,
388 Nastouli E, Kassiotis G. 2020. Preexisting and de novo humoral immunity to
389 SARS-CoV-2 in humans. Science <https://doi.org/10.1126/science.abe1107>.
- 390 22. Yeh H-Y, Serrano KV, Acosta AS, Buhr RJ. 2016. Production of recombinant
391 Salmonella flagellar protein, FlgK, and its uses in detection of anti-Salmonella
392 antibodies in chickens by automated capillary immunoassay. J Microbiol
393 Methods 122:27–32.
- 394 23. Fourier A, Dorey A, Perret-Liaudet A, Quadrio I. 2018. Detection of CSF 14-3-3
395 Protein in Sporadic Creutzfeldt-Jakob Disease Patients Using a New Automated
396 Capillary Western Assay. Mol Neurobiol 55:3537–3545.

397 24. Kodani M, Martin M, de Castro VL, Drobeniuc J, Kamili S. 2019. An Automated
398 Immunoblot Method for Detection of IgG Antibodies to Hepatitis C Virus: a
399 Potential Supplemental Antibody Confirmatory Assay. J Clin Microbiol 57.

400

401

402

403 **Figure Legends.**

404

405 **Figure 1.** Drawing illustrating (a) overall results of automated Western
406 immunoblotting of 602 sera (b) results comparison with commercially available
407 ELISA in 197 sera.

408

409 **Figure 2.** Signal/noise ratio for the detection of nucleocapsid with automated
410 Western immunoblotting: (a) in 602 sera collected from 6 different groups of patients
411 (b) in 76 sera collected from non-COVID-19, HCoV's infected patients (c) in 342 sera
412 collected before the COVID-19 pandemic, classified by age-group.

413

414 **Figure 3.** Automated Western immunoblotting detection of anti-SARS-CoV-2
415 antibodies: positive and negative sera according to delay after the onset of
416 symptoms. The curve represents the proportion of positive sera (%).

417

418

419

420

421

422

423

424

425 **Supplementary Figure.**

426 **Figure S1.** Strips of conventional western immunoblotting (a) and lane view of
427 automated Western immunoblotting (b) incubated with serum collected from one
428 COVID-19 positive patient quoted “+” and serum collected from one non COVID-19
429 patient quoted “-“. The first lane represents the molecular mass marker in kDa. (c)
430 chromatogram of chemiluminescence intensity detected by JessTM Simple Western
431 in the capillaries on positive (blue) and negative (green) sera.

432

433

434

435

Table 1. Automated Western immunoblotting results of 27 sera from COVID-19-positive patients and 37 sera from negative controls used to fix automated Western immunoblotting parameters. (Results expressed as median with 25 and 75 percentile).

Negative controls (n=37)					
	Early sera from COVID-19-positive patients (n=10)	sera from negative HCoV patients collected before the pandemic (n=13)	sera from healthcare workers highly exposed to SARS-CoV-2 (n=14)	All	sera from COVID-19-positive patients (n=27)
Nucleocapside (56 kDa)					
S/N ratio	44 (29.98-64.4)	62.1 (33-78.7)	49.85 (34.95-70.95)	49.85 (34.95-70.95)	421 (214.1-666.8)
Height	6511 (5674-7729)	8854 (6428-12995)	4934 (4397-5605)	6100 (4586-9813)	64065 (32338-121517)
Area	82169 (65588-94895)	124541 (84495-147319)	67780 (61427-76234)	79634 (66110-128111)	839470 (524393-1597656)
Spike (217 kDa)					
S/N	0	0	0	0	27.9 (0-43.1)
Height	0	0	0	0	3174 (0-8621)
Area	0	0	0	0	40699 (0-182108)

Table 2. Sensitivity and specificity of automated Western immunoblotting determined with 27 sera from COVID-19-positive patients and 37 sera from non COVID-19 patients.

n=64	AUC	Youden index	Optimal Cut-off value	Sensitivity (%)	Specificity (%)	True positive (nb)	True negative (nb)	False positive (nb)	False negative (nb)
Nucleocapside									
S/N	0.975	0.907	110.4	96.3	94.6	26	35	2	1
Height	0.982	0.885	24922	88.9	100	24	37	0	3
Area	0.970	0.885	287005	88.9	100	24	37	0	3
Spike									
S/N	0.833	0.667	0	66.7	100	18	37	0	9
Height	0.833	0.667	0	66.7	100	18	37	0	9
Area	0.833	0.667	0	66.7	100	18	37	0	9

AUC= area under the curve.

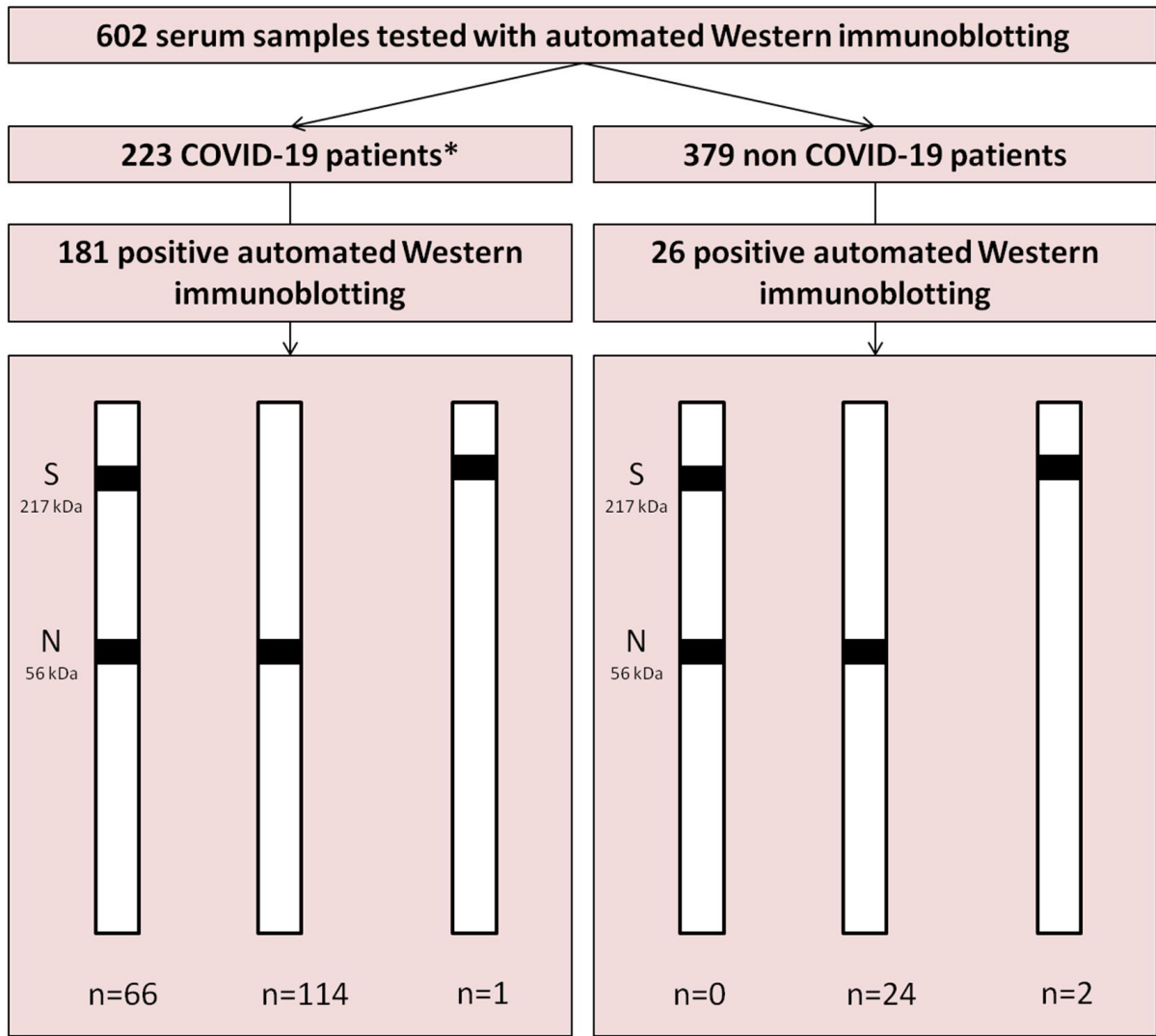
Table 3. Results of automated Western immunoblotting including the 602 sera tested.

	Negative controls			All (n=37)	Sera from patients diagnosed with others HCoV (n=76)	Sera collected before the pandemic from patients with unknown status for HCoV (n=266)	Sera from COVID-19 positive patients (n=223)	Total (n=602)
	Early sera from COVID- 19 positive patients (n=10)	Sera from negative HCoV patients collected before the pandemic (n=13)	Sera from healthcare workers highly exposed to SARS-CoV- 2 (n=14)					
Positive sera (Nb,%)								
Nucleocapside reactivity	1 (10%)	0 (0%)	2 (14)	3 (8)	9 (12)	12 (4.5%)	180 (81)	204 (34)
Spike reactivity	0	0	0	0	2 (3)	0	67 (30)	69 (11%)
Total	1 (10%)	0 (0%)	2 (14)	3 (8)	11 (14.5)	12 (4.5%)	181 (81)	207 (34%)

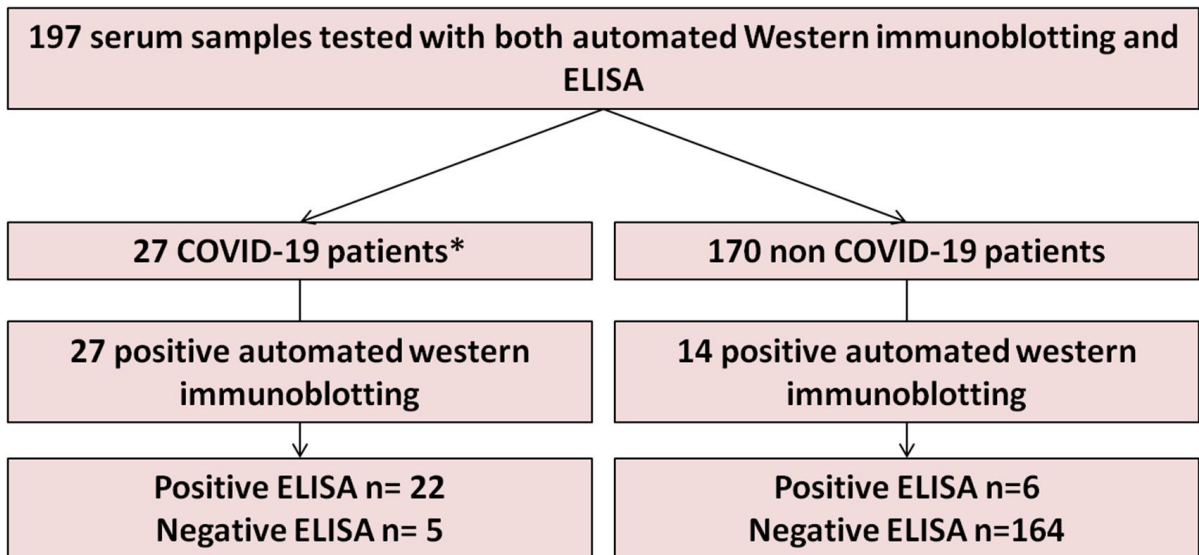
Table 4. Comparison between automated Western immunoblotting and commercial SARS-CoV-2 IgG ELISA on 197 sera.

	AWB IgT Nb (%)	ELISA IgG Nb (%)
Sera from COVID-19 positive patients (n=27)	27 (100%)	22 (81%)
Sera from negative control group (n=37)	3 (8%)	0
Early sera from COVID-19 positive patients (n=10)	1 (10%)	0
Sera from healthcare workers highly exposed to SARS-CoV-2 (n=14)	2 (14%)	0
Sera from negative HCoV patients collected before the pandemic (n=13)	0	0
Sera from patients diagnosed with others HCoV (n=45)	6 (13%)	0
Sera collected before the pandemic from patients with unknown status for HCoV (n=88)	5 (6%)	6 (7%)

a-

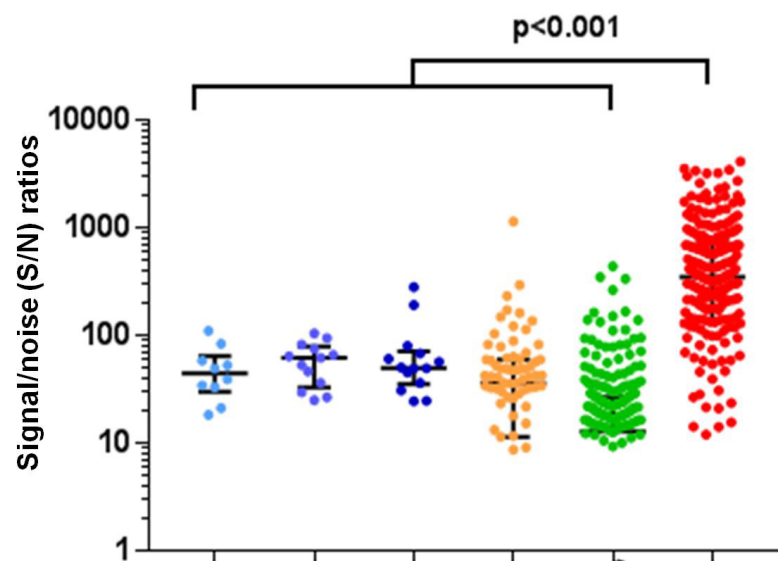


b-

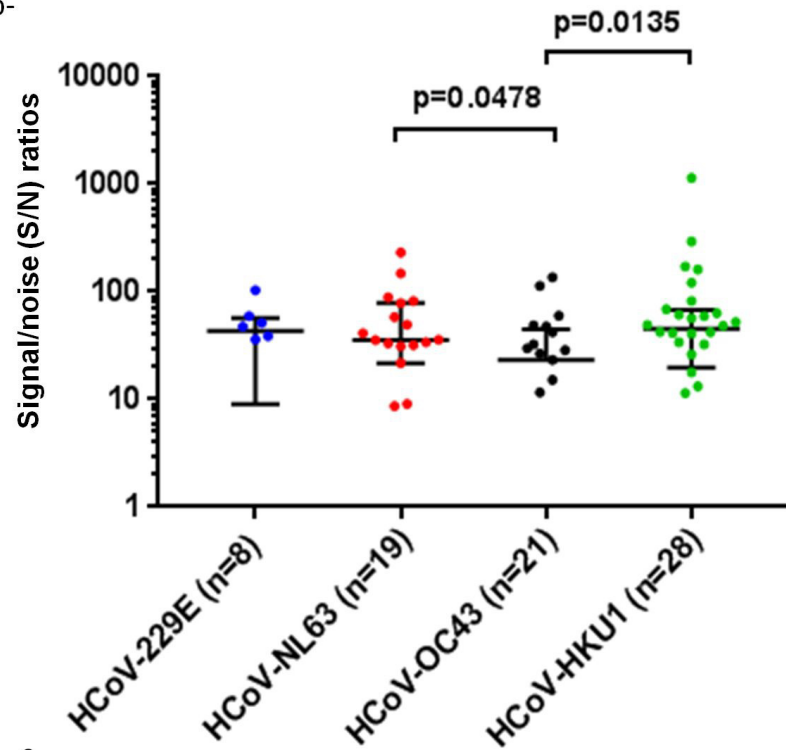


* Confirmed by positive RT-PCR for SARS-CoV-2

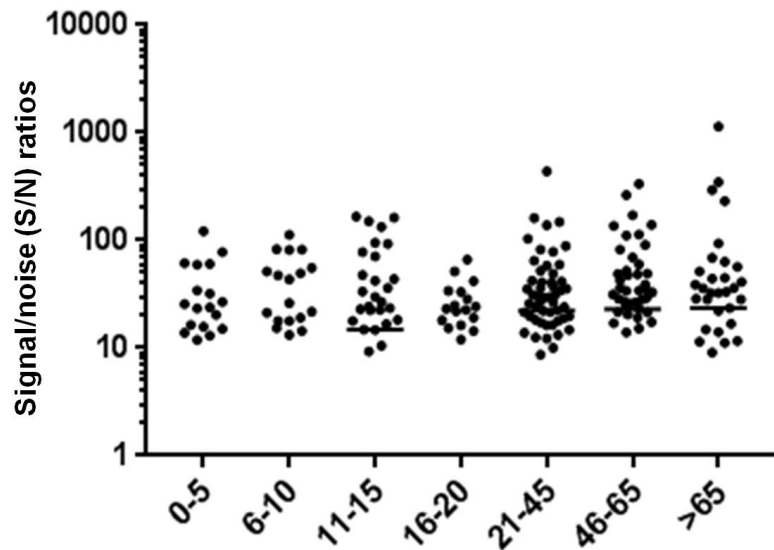
a-



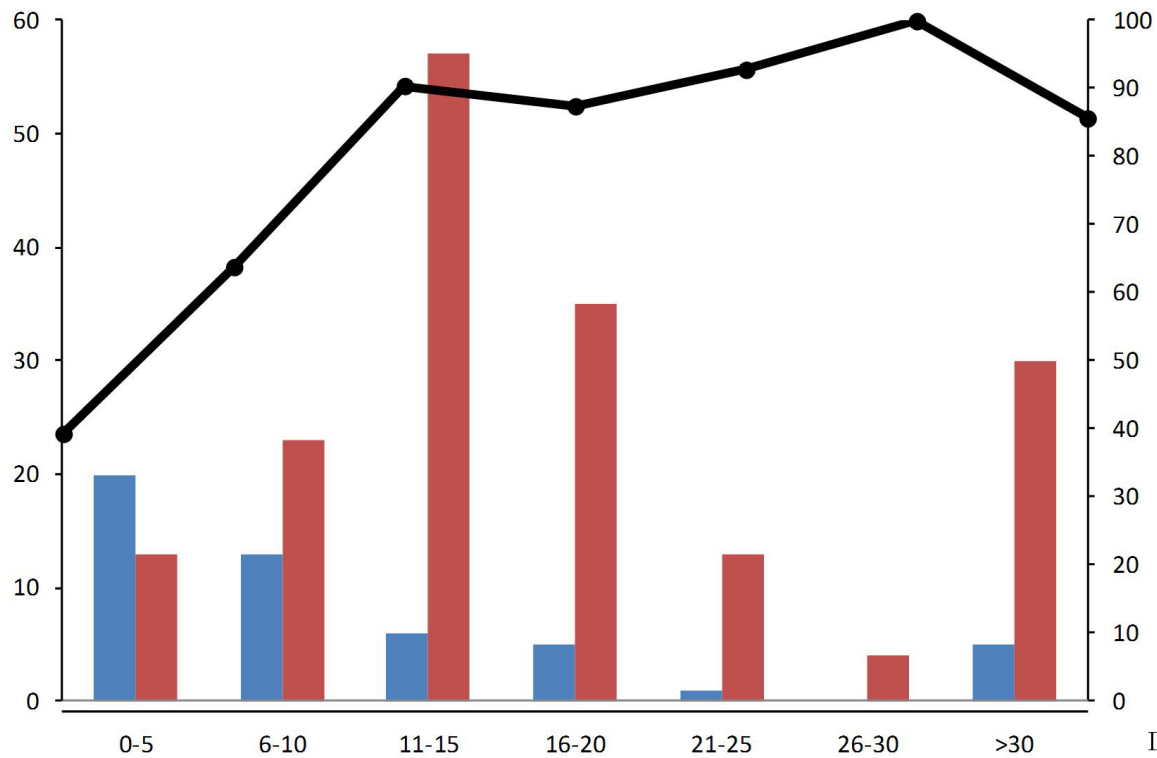
b-



c



Nb of automated western immunoblotting



% of positive automated western immunoblotting

negative sera positive sera %