

1 **Frailty and comorbidity in predicting community COVID-19 mortality in the UK**

2 **Biobank: the effect of sampling**

3

4 Jonathan K. L. Mak^{1*}, Ralf Kuja-Halkola¹, Yunzhang Wang¹, Sara Hägg¹, Juulia Jylhävä¹

5

6 ¹ Department of Medical Epidemiology and Biostatistics, Karolinska Institutet, Stockholm,

7 Sweden

8

9 ***Corresponding author**

10 Jonathan K. L. Mak

11 Department of Medical Epidemiology and Biostatistics, Karolinska Institutet, Nobels väg 12A,

12 171 65 Stockholm, Sweden

13 Email: jonathan.mak@ki.se

14

15 **Word count:** Abstract: 244; Main text: 3164

16 **Abstract**

17 Frailty has been linked to an increased risk of coronavirus disease 2019 (COVID-19)-associated
18 mortality, but evidence has been inconclusive and limited to hospitalized older individuals.
19 Using data from the UK Biobank, we assessed whether frailty and comorbidity predict COVID-
20 19 mortality in the overall community population ($n=437,555$) and in a selected COVID-19
21 positive sample ($n=2,059$). Frailty was assessed using the Rockwood Frailty Index (FI) and the
22 Hospital Frailty Risk Score (HFRS), whereas comorbidity was assessed by the Charlson
23 Comorbidity Index (CCI). Overall, 408 individuals died of COVID-19, as ascertained from the
24 death register data. In the full sample, HFRS (odds ratio [OR] 1.07; 95% confidence interval [CI]
25 1.06–1.07) and CCI (OR 1.14; 95% CI 1.08–1.20) were associated with increased risk of COVID-
26 19 mortality, while FI was not statistically significantly different from null in the multivariable
27 logistic regression model. Adding HFRS or CCI to a model with only age and sex resulted in
28 significantly larger areas under the receiver operating characteristic curves. Nevertheless,
29 when restricting the analyses to COVID-19 positive cases, which is a sample with over-
30 representation of frail individuals, neither of the frailty measures or CCI added meaningful
31 predictive accuracy on top of age and sex. Besides, we observed stronger associations
32 between HFRS categories and COVID-19 mortality in relatively younger (<75 years) than older
33 individuals (≥ 75 years). Our results suggest that HFRS and CCI, which could be readily derived
34 from medical records, may be useful for COVID-19 mortality risk stratification in the
35 community.

36

37 **Keywords:** COVID-19, mortality, frailty, comorbidity, ageing

38 Introduction

39 Coronavirus disease 2019 (COVID-19), caused by the severe acute respiratory syndrome
40 coronavirus 2 (SARS-CoV-2), has led to a global pandemic, affecting more than 41 million
41 individuals and causing ~1.1 million deaths worldwide as of 22nd October 2020 [1].
42 Accumulating evidence has shown that older age, male sex, comorbidities (e.g. diabetes,
43 hypertension), social deprivation, black ethnicity, and laboratory indicators such as elevated
44 levels of d-dimer and interleukin 6 are risk factors for mortality associated with COVID-19 [2–
45 6]. However, there are relatively few data available for risk stratification in community
46 samples compared to hospitalized patients.

47 Frailty, characterized as a state of increased vulnerability due to cumulative decline in
48 multiple physiological systems [7], has consistently shown to be a strong predictor of mortality
49 in the general population [8–10]. Various tools have been developed for measuring frailty.
50 Some of which require assessment by physicians, such as the Clinical Frailty Scale (CFS) [11],
51 which is more suitable in clinical settings. Another widely used measure is the Rockwood
52 frailty index (FI), which is defined as a ratio of accumulated deficits over the total number of
53 deficits considered [12]. The Hospital Frailty Risk Score (HFRS), constructed based on *the*
54 *International Statistical Classification of Diseases and Related Health Problems, Tenth Revision*
55 (ICD-10) coding system [13], was developed for frailty risk stratification among older
56 hospitalized patients and has been validated for its ability to predict adverse outcomes in
57 various settings [14,15].

58 A growing number of studies have investigated the association between frailty,
59 frequently measured using the CFS in hospital settings, and mortality among COVID-19
60 patients, but findings remain inconclusive. While there is evidence that frailty may add to the
61 risk prediction in hospitalized patients [16–19], some studies have observed weak [20,21], or

62 even null associations [22]. Heterogeneity in the prior results may partly be owing to the
63 COVID-19 patients being a non-random, selected sample with a particularly high prevalence
64 of frailty [23], potentially causing selection bias [24]. With the continuing spread of the SARS-
65 CoV-2 across the world, it is of importance to assess whether COVID-19 mortality can be
66 predicted using other frailty and comorbidity measures, such as the HFRS and CCI that can be
67 readily derived from medical records, in community samples.

68 Using a large population cohort from the UK Biobank study, we aimed to investigate
69 the predictive ability of frailty, measured using the HFRS and FI, and the Charlson Comorbidity
70 Index (CCI) as a measure of comorbidity, for COVID-19 mortality among (a) the overall
71 community population and (b) COVID-19 positive individuals. Our goal was to assess whether
72 an easily accessible frailty and/or comorbidity measure could aid in COVID-19 mortality risk
73 stratification in community settings. In keeping with the observations that higher levels frailty
74 carry a relatively greater risk of all-cause mortality in younger than older ages [9,10,25], we
75 additionally assessed whether the same holds true for COVID-19 mortality. As excess mortality
76 due to COVID-19 may be more pronounced in younger and fitter individuals compared to old
77 and frail [22], it is essential to identify the factors contributing to this risk.

78

79 **Methods**

80 *Study population*

81 This is a population-based cohort study using data from the UK Biobank. Between 2006 and
82 2010, more than 500,000 participants completed a touch-screen questionnaire, had physical
83 measurements taken, and provided biological samples at one of the 22 assessment centres in
84 England, Wales or Scotland [26]. The UK Biobank study was approved by the North West Multi-

85 Centre Research Ethics Committee. All participants provided written informed consent for
86 data collection, analysis, and record linkage.

87 We excluded participants who died before 1st March 2020, requested to withdraw
88 from the study prior to August 2020, and had missing data on frailty and comorbidity measures.
89 This resulted in a sample size of $n=437,555$, which we referred to as the “full sample”. The
90 subgroup of “COVID-19 positive sample” ($n=2,059$) consisted of those being tested positive,
91 diagnosed as COVID-19 patients in hospitals, and/or died of COVID-19. Analyses were
92 performed in both samples (**Fig. 1**).

93

94 *COVID-19 diagnosis and mortality*

95 Information on COVID-19 was obtained from three data sources linked to UK Biobank:
96 laboratory test results, inpatient medical records, and death register. SARS-CoV-2 PCR test
97 results were provided by Public Health England [27], with data available in England only,
98 between 16th March and 24th August 2020. Hospital inpatient data were sourced from the
99 Hospital Episode Statistics (HES), containing electronic medical records (i.e., ICD-10 diagnostic
100 codes) for all hospital admissions to National Health Service (NHS) hospitals in England up to
101 30th June 2020. Death register data included all deaths up until 24th August 2020 in England,
102 Wales and Scotland, containing ICD-10 codes assigned as individuals’ primary and contributory
103 causes of death.

104 Participants were considered “COVID-19 positive” when meeting at least one of the
105 following criteria: (i) being positive in at least one of the PCR tests; (ii) shown as COVID-19
106 inpatients, with ICD-10 code U07 in hospital admission; and (iii) died of COVID-19, defined as
107 those with COVID-19 (ICD-10 code U07) as the primary or contributory causes of death.
108 COVID-19 mortality was used as the main outcome in the analyses.

109 Among the COVID-19 positive individuals, we compared characteristics of those
110 diagnosed as patients (i.e., with positive test result or was a COVID-19 inpatient; $n=1,970$) and
111 those died of COVID-19 but without positive test record ($n=89$), and found that both groups
112 were generally comparable except that individuals in the latter group were more likely to be
113 older, with lower income and with higher HFRS (**Appendix Table S1**).

114

115 *Frailty and comorbidity measures*

116 Frailty was assessed using the FI and HFRS, and comorbidity was measured using the CCI
117 (timeline of data collection is shown in **Appendix Fig. S1**). The FI has previously been created
118 and validated by us for the UK Biobank participants, using 49 self-reported frailty items
119 assessed at baseline during 2006–2010 that cover a wide range of items for physical and
120 mental well-being (**Appendix Table S2**) [10]. The FI was calculated as the sum of the items
121 (deficits) present in an individual divided by the total number of deficits, for instance, an
122 individual with 7 deficits from 49 items would receive an FI of $7/49=0.14$. The FI was used as
123 both continuous and categorical variable, the latter being categorized into four groups:
124 relatively fit (≤ 0.03), less fit ($>0.03-0.1$), least fit ($>0.1-0.21$) and frail (>0.21) [28]. HFRS and
125 CCI were computed based on the ICD-10 codes from hospital records [13,29]. Only medical
126 records before 1st March 2020 were included so that diagnoses due to or associated with
127 COVID-19 would not bias the results. The HFRS was derived based on 109 frailty-related ICD-
128 10 codes, as previously described by Gibert *et al* (**Appendix Table S3**) [13]. While it was
129 originally developed for older individuals (≥ 75 years) who had been admitted to hospital
130 during the prior 2 years, we utilized all available ICD-10 codes for each individual for
131 calculation. Each of the 109 codes were assigned a weight ranging from 0.1 to 7.1, depending
132 on its strength of association with frailty. HFRS was then calculated by summing all the

133 weighted codes, and used both as continuous and categorical measures, the latter being
134 categorized into low (<5), intermediate (5–15) and high (>15) risk of frailty [13]. Similarly, CCI
135 was derived by summing weighted ICD-10 codes, based on 17 comorbidities with weights from
136 1 to 6 depending on disease severity and mortality risk (**Appendix Table S4**) [29], and was
137 treated as a continuous variable in all analyses. Individuals who had missing hospital data were
138 those who had not been hospitalized or resided outside England (these data were only
139 available for England). To maximize data utilization, we first excluded individuals who
140 attended baseline assessment in Wales or Scotland and with missing hospital data, and then
141 coded the remaining individuals with missing hospital data as 0 for HFRS and CCI. As a
142 sensitivity analysis, we assessed whether including diagnoses from long ago would affect the
143 results by calculating 2-year HFRS and CCI scores using diagnoses assigned only during the past
144 two years (i.e., between 1st March 2018 and 29th February 2020). The FI, HFRS and CCI
145 correlated moderately with each other (**Appendix Table S5**).

146

147 *Other study variables*

148 Demographic characteristics (e.g. birth year, sex, ethnicity, smoking status) and
149 socioeconomic indicators (e.g. education, income, Townsend deprivation index) were
150 collected at baseline during 2006–2010. Education was assessed by the highest self-reported
151 qualification and categorized into low (no relevant qualifications), intermediate (A levels, O
152 levels/GCSEs, CSEs, NVQ/HND/HNC, other professional qualifications) and high (college or
153 university degree). Annual household income was self-reported and categorized into four
154 groups (<£18,000, £18,000–30,999, £31,000–51,999, ≥£52,000). Townsend deprivation index
155 was derived from national census data regarding unemployment, car ownership, home

156 ownership, and household overcrowding; higher scores correspond to higher level of
157 socioeconomic deprivation.

158

159 *Statistical analyses*

160 Descriptive statistics were calculated for the full sample and COVID-19 positive sample. Due
161 to the apparent over-representation of frail individuals in the COVID-19 positive sample, we
162 performed logistic regression to formally ascertain if frailty and comorbidity were
163 determinants for being COVID-19 positive.

164 In both samples, multivariable logistic regression models were applied to investigate
165 the associations of frailty and comorbidity (FI, HFRS, CCI, as continuous measures) with COVID-
166 19 mortality, adjusted for age (as linear effect, after confirming that the age-mortality
167 relationship was approximately linear) and sex. Ethnicity, smoking status, and socioeconomic
168 variables were subsequently added into the models to test whether they had an effect on the
169 associations. Areas under the receiver operating characteristic curves (AUROC) were used to
170 assess the predictiveness of the different measures. Because the HFRS was originally designed
171 for individuals older than 75 years and previous studies have reported age-varying risks for
172 frailty [9,10,25], we additionally stratified the analysis by age <75 and ≥75 years, as well as
173 performed an analysis with an interaction term between HFRS (continuous) and age group.

174 We further performed a series of sensitivity analyses to assess the robustness of our
175 findings, which included (i) using categorical instead of continuous FI and HFRS variables; (ii)
176 using 2-year HFRS and CCI, constructed by ICD-10 codes from the past 2 years only; and (iii)
177 performing multinomial logistic regression models to account for non-COVID-19 deaths as
178 competing risk, where mortality due to COVID-19 or other causes than COVID-19 were
179 compared to those who were alive as of 24 August 2020.

180 To account for multiple comparisons, the Benjamini-Hochberg false discovery rate
181 method was applied [30]. All analyses were performed using Stata v16.0 (Stata Corp, College
182 Station, TX) and R v3.6.3 (R Foundation for Statistical Computing, Vienna, Austria).

183

184 **Results**

185 *Sample characteristics*

186 **Table 1** shows the characteristics of participants in the full sample and COVID-19 positive
187 sample. In the full sample of 437,555 participants, the mean age as of the year 2020 was 68.1
188 (standard deviation [SD] 8.1) and 55.3% were women. The proportions of men, Black ethnicity,
189 previous or current smokers, low education, lowest income and most deprived groups were
190 higher in the COVID-19 positive sample than the full sample. Frailty appeared to be over-
191 represented among COVID-19 positive individuals, with 21.6% being “frail” (assessed by FI)
192 and 22.4% being “high frailty risk” (assessed by HFRS), compared to 12.1% and 2.9% in the full
193 sample. Logistic regression models for COVID-19 positivity showed that FI, HFRS, and CCI were
194 all associated with higher risk of being COVID-19 positive, after adjusting for age and sex
195 (**Appendix Table S6**).

196

197 *Frailty and comorbidity in predicting COVID-19 mortality*

198 In total, 408 individuals died of COVID-19 between 1st March and 24th August 2020. Results for
199 the logistic regression models for COVID-19 mortality are presented in **Table 2**. In the full
200 sample, when each of the measures – FI, HFRS, and CCI were tested separately, they were
201 significantly associated with higher odds of COVID-19 mortality after controlling for age and
202 sex (models 2–4). AUROC for the model including only age and sex was 0.76 (95% confidence
203 interval [CI] 0.74–0.78); adding FI into the model resulted in a slightly larger AUROC of 0.78

204 (95% CI 0.76–0.80), while adding HFRS and CCI yielded significantly larger AUROCs of 0.83
205 (95% CI 0.81–0.86) and 0.82 (95% CI 0.80–0.84) respectively (**Fig. 2A**). In the multivariable
206 model with both frailty measures and the CCI included (model 5), HFRS (odds ratio [OR] 1.07;
207 95% CI 1.06–1.07) and CCI (OR 1.14; 95% CI 1.08–1.20), but not FI, predicted statistically
208 significantly higher risk of COVID-19 mortality. AUROC of the multivariable model (0.84; 95%
209 CI 0.83–0.87) was similar to the age and sex-adjusted univariable models of HFRS and CCI (**Fig.**
210 **2A**). After restricting the sample to COVID-19 positive individuals, all of these associations
211 were attenuated, and the predictive accuracies were decreased. In the fully adjusted model
212 (model 5), only CCI was marginally associated with COVID-19 mortality (OR 1.09; 95% CI 1.01–
213 1.14). Frailty and comorbidity did not add predictive value on top of age and sex, as indicated
214 by similar AUROCs across all models (**Fig. 2B**). We subsequently adjusted for ethnicity, smoking
215 and socioeconomic variables in both samples; associations of frailty and comorbidity with
216 COVID-19 mortality were not affected by these variables (**Appendix Table S7**).

217 In both samples, compared with older individuals (≥ 75 years), relatively younger
218 individuals (< 75 years) had higher ORs for COVID-19 mortality across HFRS categories (**Fig. 3**);
219 there was also significant interaction between HFRS and age in the COVID-19 positive sample
220 ($P_{\text{interaction}} < 0.001$), but not in the full sample (**Appendix Table S8**). We also tested the
221 interaction between HFRS and sex, yet it was not statistically significant and thus we did not
222 further perform subgroup analysis by sex.

223

224 *Sensitivity analyses*

225 The predictive abilities of frailty and comorbidity for COVID-19 mortality were largely similar
226 compared to the main analyses when (i) using FI and HFRS as categorical instead of continuous
227 variables (**Appendix Table S9**), (ii) using the 2-year HFRS and CCI variables instead of the

228 original scores (**Appendix Table S10**), and (iii) accounting for competing risk by deaths due to
229 other causes than COVID-19 (**Appendix Table S11**).

230

231 **Discussion**

232 Using data from the UK Biobank, we found that HFRS and CCI, measures of frailty and
233 comorbidity respectively, were viable predictors of COVID-19 mortality and added predictive
234 value on top of age and sex in the overall community population. The associations persisted
235 even after adjusting for ethnicity, smoking and socioeconomic variables. Nonetheless, among
236 COVID-19 positive individuals who were already more likely to be frail, HFRS and CCI did not
237 improve predictive accuracy for COVID-19 mortality in addition to age and sex. Stronger
238 associations between HFRS and COVID-19 mortality were seen among younger (<75 years)
239 than older individuals (≥ 75 years), indicating that the HFRS may be applicable for predicting
240 mortality risk in younger adults as well.

241 To the best of our knowledge, this is the first study that has assessed the associations
242 between frailty and COVID-19 mortality in the community population. We showed that frailty
243 was associated with an elevated risk of COVID-19 mortality, and that a HFRS constructed
244 based on ICD-10 codes was a stronger predictor than an FI calculated using self-reported data
245 at baseline. The CCI, a measure of comorbidity computed by ICD-10 codes, likewise predicted
246 COVID-19 mortality, which is in line with prior research showing a positive association
247 between comorbidity and COVID-19 deaths [18,21,31]. Together, our results imply that frailty
248 and comorbidity measures available in routinely collected medical records may be applied for
249 risk stratification of COVID-19 mortality in the overall community population.

250 However, the predictive accuracies of frailty and comorbidity for COVID-19 mortality
251 were reduced after restricting the sample to only those with the disease. It has been argued

252 that using non-random samples may induce selection bias in COVID-19-related studies [24]. In
253 our COVID-19 positive sample, there was an over-representation of the most frail individuals,
254 with even greater proportion of the “high frailty risk” group in our sample than in the cohort
255 of older hospitalized individuals in the original HFRS study (22.1% vs 20.0%) [13]. Consistent
256 with a previous study [32], we confirmed that frailty and comorbidities are determinants of
257 being COVID-19 positive in the UK Biobank sample. Such over-representation of frailty may
258 partly explain the inconsistencies in the frailty-mortality associations among hospitalized
259 COVID-19 patients [16–22]. In a relatively frail sample, COVID-19 mortality risk may in fact be
260 more related to other factors, such as viral load and host immune characteristics [20,33].
261 Indeed, none of our models in the COVID-19 positive sample yielded a good predictive
262 accuracy of AUROC>0.8, even when smoking, ethnicity and socioeconomic variables were
263 included. More research is warranted to identify the most accurate predictors for mortality
264 among COVID-19 patients.

265 Given that the HFRS was initially developed for older individuals, we stratified the
266 analysis by age and observed a more pronounced association between HFRS and COVID-19
267 mortality among the younger individuals (<75 years). A similar pattern has also been reported
268 in the literature, in which frailty has shown to be more strongly associated with mortality at
269 younger old ages than the oldest ages [9,25]. Our findings thus highlight the importance of
270 frailty screening in younger individuals in prevention for COVID-19 related mortality.

271 The large sample of UK Biobank participants with linkage to COVID-19 data enabled us
272 to study the associations among the overall population and to examine the potential effects
273 of sample selection. Nevertheless, there are several caveats to this study. Firstly, demographic
274 variables, socio-economic indicators and the deficits for construction of FI were assessed
275 during baseline in 2006–2010. In particular, the FI, calculated by self-reported data ~10 years

276 ago, may not fully reflect participants' current physiological status. Future research may utilize
277 an FI based on routine primary care data, such as the electronic FI [34], for assessing its
278 predictive ability for COVID-19 mortality among the general population. Secondly, with the
279 limitation of data availability, we were not able to retrieve test results and hospital inpatient
280 data for people living in Scotland or Wales. Thirdly, during the earlier periods of the epidemic,
281 COVID-19 testing in the UK was largely restricted to hospitalized individuals, who have more
282 severe course of the diseases. As such, mild or asymptomatic COVID-19 cases may conceivably
283 be missed, leading to an underestimation of COVID-19 positive cases. Fourthly, we modelled
284 the outcome, COVID-19 mortality, as a binary variable rather than a time-to-event or survival
285 outcome because we could not ascertain the exact date of confirmed COVID-19 infection for
286 several individuals in the COVID-19 positive subsample. However, as the follow-up time was
287 limited, it could be considered essentially complete for most participants (i.e., minimal
288 censoring due to migration and other deaths). Finally, UK Biobank is not a nationally
289 representative sample, with generally healthier and less socioeconomically deprived
290 participants than the UK average [35], thereby reducing the generalizability of our findings.

291

292 **Conclusions and implications**

293 In conclusion, HFRS and CCI, measures of frailty and comorbidity respectively, constructed
294 using routinely collected medical records, predicted COVID-19 mortality in the overall
295 community sample and added predictive value on top age and sex. However, similar effects
296 were not seen in those who already have the disease. Our findings suggest that identification
297 of frail individuals in the general population may be a viable strategy for COVID-19 mortality
298 risk stratification.

299 **Acknowledgements**

300 This research was conducted using the UK Biobank resource, as part of the registered project
301 22224.

302

303 **Declarations**

304 **Funding:** This work was supported by the Swedish Research Council (2018-02077, 2019-
305 01272), the Loo & Hans Osterman Foundation, the Strategic Research Program in
306 Epidemiology at Karolinska Institutet and the Karolinska Institutet Foundations.

307 **Conflicts of interest:** The authors declare that they have no conflict of interest.

308 **Ethical approval:** Ethical approval for this study is covered by the general ethics review for the
309 UK Biobank, conducted by North West Multi-Centre Research Ethics Committee (Reference:
310 16/NW/0274, 13 May 2016).

311 **Consent to participate:** Informed consent was obtained from all individual participants
312 included in the study.

313 **Consent to publish:** Not applicable.

314 **Availability of data and material:** UK Biobank is an open access resource. All bona fide
315 researchers can apply to use its data for health-related research that is in the public interest
316 (<http://www.ukbiobank.ac.uk/register-apply>).

317 **Code availability:** Not applicable.

318 **Authors' contributions:** J.K.L.M., R.K.-H., and J.J. contributed to the study concept and design;
319 Y.W., S.H. and J.J. were responsible for acquisition of data; J.K.L.M., R.K.-H. and J.J. analysed
320 and interpreted the data; J.K.L.M. and J.J. drafted the manuscript; R.K.-H., Y.W. and S.H.
321 critically revised the manuscript for important intellectual content. All authors read and
322 approved the final manuscript.

323 **References**

- 324 1. Dong E, Du H, Gardner L. An interactive web-based dashboard to track COVID-19 in real
325 time. *Lancet Infect Dis.* 2020;20:533–4.
- 326 2. Zhou F, Yu T, Du R, Fan G, Liu Y, Liu Z, et al. Clinical course and risk factors for mortality of
327 adult inpatients with COVID-19 in Wuhan, China: a retrospective cohort study. *Lancet.*
328 2020;395:1054–62.
- 329 3. O’Dowd A. Covid-19: People in most deprived areas of England and Wales twice as likely to
330 die. *BMJ.* 2020;369:m2389.
- 331 4. Albitar O, Ballouze R, Ooi JP, Sheikh Ghadzi SM. Risk factors for mortality among COVID-19
332 patients. *Diabetes Res Clin Pract.* 2020;166:108293.
- 333 5. Lu L, Zhong W, Bian Z, Li Z, Zhang K, Liang B, et al. A comparison of mortality-related risk
334 factors of COVID-19, SARS, and MERS: A systematic review and meta-analysis: Mortality-
335 related risk factors of COVID-19, SARS, and MERS. *J. Infect.* 2020. p. e18.
- 336 6. Golestaneh L, Neugarten J, Fisher M, Billett HH, Gil MR, Johns T, et al. The association of
337 race and COVID-19 mortality. *EClinicalMedicine.* 2020;25.
- 338 7. Clegg A, Young J, Iliffe S, Rikkert MO, Rockwood K. Frailty in elderly people. *Lancet.*
339 2013;381:752–62.
- 340 8. Grabovac I, Haider S, Mogg C, Majewska B, Drgac D, Oberndorfer M, et al. Frailty Status
341 Predicts All-Cause and Cause-Specific Mortality in Community Dwelling Older Adults. *J Am*
342 *Med Dir Assoc.* 2019;20:1230-1235.e2.
- 343 9. Li X, Ploner A, Karlsson IK, Liu X, Magnusson PKE, Pedersen NL, et al. The frailty index is a
344 predictor of cause-specific mortality independent of familial effects from midlife onwards: A
345 large cohort study. *BMC Med.* 2019;17:94.
- 346 10. Williams DM, Jylhävä J, Pedersen NL, Hägg S. A Frailty Index for UK Biobank Participants.

- 347 Journals Gerontol - Ser A Biol Sci Med Sci. 2019;74:582–7.
- 348 11. Rockwood K, Song X, MacKnight C, Bergman H, Hogan DB, McDowell I, et al. A global
349 clinical measure of fitness and frailty in elderly people. *CMAJ*. 2005;173:489–95.
- 350 12. Searle SD, Mitnitski A, Gahbauer EA, Gill TM, Rockwood K. A standard procedure for
351 creating a frailty index. *BMC Geriatr*. 2008;8:24.
- 352 13. Gilbert T, Neuburger J, Kraindler J, Keeble E, Smith P, Ariti C, et al. Development and
353 validation of a Hospital Frailty Risk Score focusing on older people in acute care settings using
354 electronic hospital records: an observational study. *Lancet*. 2018;391:1775–82.
- 355 14. Kundi H, Wadhera RK, Strom JB, Valsdottir LR, Shen C, Kazi DS, et al. Association of Frailty
356 with 30-Day Outcomes for Acute Myocardial Infarction, Heart Failure, and Pneumonia among
357 Elderly Adults. *JAMA Cardiol*. 2019;4:1084–91.
- 358 15. McAlister F, Van Walraven C. External validation of the Hospital Frailty Risk Score and
359 comparison with the Hospital-patient One-year Mortality Risk Score to predict outcomes in
360 elderly hospitalised patients: A retrospective cohort study. *BMJ Qual Saf*. 2019;28:284–8.
- 361 16. Hewitt J, Carter B, Vilches-Moraga A, Quinn TJ, Braude P, Verduri A, et al. The effect of
362 frailty on survival in patients with COVID-19 (COPE): a multicentre, European, observational
363 cohort study. *Lancet Public Heal*. 2020;5:e444–51.
- 364 17. Aw D, Woodrow L, Ogliari G, Harwood R. Association of Frailty with Mortality in Older
365 Inpatients with Covid-19: A Cohort Study. *Age Ageing*. 2020;1–8.
- 366 18. Hägg S, Jylhävä J, Wang Y, Xu H, Metzner C, Annetorp M, et al. Age, frailty and comorbidity
367 as prognostic factors for short-term outcomes in patients with COVID-19 in geriatric care. *J*
368 *Am Med Dir Assoc*. 2020;0.
- 369 19. Kundi H, Çetin EHÖ, Canpolat U, Aras S, Celik O, Ata N, et al. The role of Frailty on Adverse
370 Outcomes Among Older Patients with COVID-19. *J Infect*. 2020;

- 371 20. De Smet R, Mellaerts B, Vandewinckele H, Lybeert P, Frans E, Ombelet S, et al. Frailty and
372 Mortality in Hospitalized Older Adults With COVID-19: Retrospective Observational Study. *J*
373 *Am Med Dir Assoc*. 2020;21:928-932.e1.
- 374 21. Owen RK, Conroy SP, Taub N, Jones W, Bryden D, Pareek M, et al. Comparing associations
375 between frailty and mortality in hospitalised older adults with or without COVID-19 infection:
376 a retrospective observational study using electronic health records. *Age Ageing*. 2020;1.
- 377 22. Miles A, Webb TE, Mcloughlin BC, Mannan I, Rather A, Knopp P, et al. Outcomes from
378 COVID-19 across the range of frailty: excess mortality in fitter older people. *Eur Geriatr Med*.
379 2020;1:3.
- 380 23. Collins JT, Short R, Carter B, Verduri A, Myint PK, Quinn TJ, et al. The Clinical Frailty Scale:
381 Estimating the Prevalence of Frailty in Older Patients Hospitalised with COVID-19. *The COPE*
382 *Study. Geriatr (Basel, Switzerland)*. 2020;5.
- 383 24. Griffith G, Morris TT, Tudball M, Herbert A, Mancano G, Pike L, et al. Collider bias
384 undermines our understanding of COVID-19 disease risk and severity. *medRxiv*.
385 2020;2020.05.04.20090506. Available from: <https://doi.org/10.1101/2020.05.04.20090506>
- 386 25. Tran DTT, Tu J V., Dupuis JY, Eddeen AB, Sun LY. Association of frailty and long-term survival
387 in patients undergoing coronary artery bypass grafting. *J Am Heart Assoc*. 2018;7.
- 388 26. Sudlow C, Gallacher J, Allen N, Beral V, Burton P, Danesh J, et al. UK Biobank: An Open
389 Access Resource for Identifying the Causes of a Wide Range of Complex Diseases of Middle
390 and Old Age. 2015;12:e1001779.
- 391 27. Armstrong J, Rudkin JK, Allen N, Crook DW, Wilson DJ, Wyllie DH, et al. Dynamic linkage of
392 covid-19 test results between public health england's second generation surveillance system
393 and uk biobank. *Microb Genomics*. 2020;6:1–9.
- 394 28. Rockwood K, Song X, Mitnitski A. Changes in relative fitness and frailty across the adult

- 395 lifespan: Evidence from the Canadian National Population Health Survey. *CMAJ*.
396 2011;183:E487-94.
- 397 29. Charlson ME, Pompei P, Ales KL, MacKenzie CR. A new method of classifying prognostic
398 comorbidity in longitudinal studies: Development and validation. *J Chronic Dis*. 1987;40:373–
399 83.
- 400 30. Benjamini Y, Hochberg Y. Controlling the False Discovery Rate: A Practical and Powerful
401 Approach to Multiple Testing. *J R Stat Soc Ser B*. 1995;57:289–300.
- 402 31. Atkins JL, Masoli JAH, Delgado J, Pilling LC, Kuo C-L, Kuchel GA, et al. Preexisting
403 Comorbidities Predicting COVID-19 and Mortality in the UK Biobank Community Cohort.
404 *Journals Gerontol Ser A*. 2020;75:2224–30.
- 405 32. Woolford SJ, D’Angelo S, Curtis EM, Parsons CM, Ward KA, Dennison EM, et al. COVID-19
406 and associations with frailty and multimorbidity: a prospective analysis of UK Biobank
407 participants. *Aging Clin Exp Res*. 2020;32:1897–905.
- 408 33. Ji D, Zhang D, Xu J, Chen Z, Yang T, Zhao P, et al. Prediction for Progression Risk in Patients
409 With COVID-19 Pneumonia: The CALL Score. *Clin Infect Dis*. 2020;71:1393–9.
- 410 34. Clegg A, Bates C, Young J, Ryan R, Nichols L, Ann Teale E, et al. Development and validation
411 of an electronic frailty index using routine primary care electronic health record data. *Age*
412 *Ageing*. 2016;45:353–60.
- 413 35. Fry A, Littlejohns TJ, Sudlow C, Doherty N, Adamska L, Sprosen T, et al. Comparison of
414 Sociodemographic and Health-Related Characteristics of UK Biobank Participants with Those
415 of the General Population. *Am J Epidemiol*. 2017;186:1026–34.

Tables and Figures

Table 1 Characteristics of UK Biobank participants in the full sample and COVID-19 positive sample

	Full sample (<i>n</i> =437,555)	COVID-19 positive sample (<i>n</i> =2,059)
Deaths, <i>n</i> (%)	2,146 (0.5)	477 (23.2)
Age (years), mean ± SD	68.1 ± 8.1	68.8 ± 9.0
Sex, <i>n</i> (%)		
Women	241,791 (55.3)	976 (47.4)
Men	195,764 (44.7)	1,083 (52.6)
Ethnicity, <i>n</i> (%)		
White	411,094 (94.3)	1,798 (87.7)
Asian	10,471 (2.4)	94 (4.6)
Black	7,608 (1.7)	102 (5.0)
Others	6,886 (1.6)	57 (2.8)
Smoking status, <i>n</i> (%)		
Never	242,414 (55.6)	981 (48.0)
Previous	150,245 (34.5)	806 (39.5)
Current	43,346 (9.9)	256 (12.5)
Education, <i>n</i> (%)		
Low	70,461 (16.4)	512 (25.6)
Intermediate	218,540 (50.9)	999 (50.0)
High	140,713 (32.8)	489 (24.5)
Income, <i>n</i> (%)		
<£18,000	81,674 (22.0)	564 (33.5)
£18,000–30,999	94,319 (25.4)	438 (26.0)
£31,000–51,999	98,079 (26.4)	372 (22.1)
≥£52,000	97,456 (26.3)	311 (18.5)
Townsend deprivation quintile, <i>n</i> (%)		
1 (least deprived)	87,712 (20.1)	291 (14.1)
2	88,844 (20.3)	334 (16.2)
3	88,525 (20.3)	375 (18.2)
4	87,596 (20.0)	431 (20.9)
5 (most deprived)	84,352 (19.3)	627 (30.5)
Frailty Index, median (IQR)	0.112 (0.066–0.163)	0.133 (0.083–0.199)
By category, <i>n</i> (%):		
Relatively fit (≤0.03)	26,412 (6.0)	78 (3.8)
Less fit (>0.03–0.1)	164,761 (37.7)	604 (29.3)
Least fit (>0.1–0.21)	193,409 (44.2)	933 (45.3)
Frail (>0.21)	52,973 (12.1)	444 (21.6)
Hospital Frailty Risk Score, median (IQR)	0.7 (0–3.2)	3.2 (0–12.9)
By category, <i>n</i> (%):		
Low risk (<5)	365,958 (83.6)	1,196 (58.1)
Intermediate risk (5–15)	59,046 (13.5)	402 (19.5)
High risk (>15)	12,551 (2.9)	461 (22.4)
Charlson Comorbidity Index, median (IQR)	0 (0–1)	1 (0–3)

IQR, interquartile range; SD, standard deviation

Table 2 Logistic regression models for the associations of age, sex, frailty and comorbidity with COVID-19 mortality in the full sample and COVID-19 positive sample

	Model 1: age + sex OR (95% CI)	Model 2: FI + age + sex OR (95% CI)	Model 3: HFRS + age + sex OR (95% CI)	Model 4: CCI + age + sex OR (95% CI)	Model 5: Multivariable OR (95% CI)
(a) Full sample (n=437,555)					
Age	1.14 (1.12–1.16)*	1.13 (1.11–1.15)*	1.11 (1.09–1.13)*	1.11 (1.09–1.13)*	1.10 (1.09–1.12)*
Male sex	1.99 (1.63–2.44)*	2.12 (1.73–2.59)*	1.93 (1.57–2.36)*	1.77 (1.45–2.17)*	1.86 (1.52–2.29)*
FI (per 10% increase)		1.70 (1.52–1.90)*			1.09 (0.96–1.23)
HFRS			1.08 (1.07–1.09)*		1.07 (1.06–1.07)*
CCI				1.40 (1.35–1.45)*	1.14 (1.08–1.20)*
Area under the ROC curve	0.76 (0.74–0.78)	0.78 (0.76–0.80)	0.83 (0.81–0.86)	0.82 (0.80–0.84)	0.84 (0.83–0.87)
(b) COVID-19 positive sample (n=2,059)					
Age	1.12 (1.10–1.14)*	1.12 (1.10–1.14)*	1.11 (1.09–1.13)*	1.11 (1.10–1.13)*	1.11 (1.09–1.13)*
Male sex	1.45 (1.14–1.83)*	1.47 (1.16–1.87)*	1.44 (1.14–1.83)*	1.43 (1.13–1.81)*	1.43 (1.12–1.81)*
FI (per 10% increase)		1.09 (0.96–1.25)			1.00 (0.87–1.15)
HFRS			1.01 (1.00–1.02)*		1.01 (1.00–1.01)
CCI				1.09 (1.04–1.15)*	1.09 (1.01–1.14)*
Area under the ROC curve	0.74 (0.72–0.77)	0.74 (0.72–0.77)	0.75 (0.72–0.77)	0.75 (0.72–0.77)	0.75 (0.72–0.77)

CCI, Charlson comorbidity index; CI, confidence interval; FI, Frailty Index; HFRS, Hospital Frailty Risk Score; OR, odds ratio; ROC, receiver operating characteristic curve.

*Significant with a false discovery rate corrected significance level at 0.044

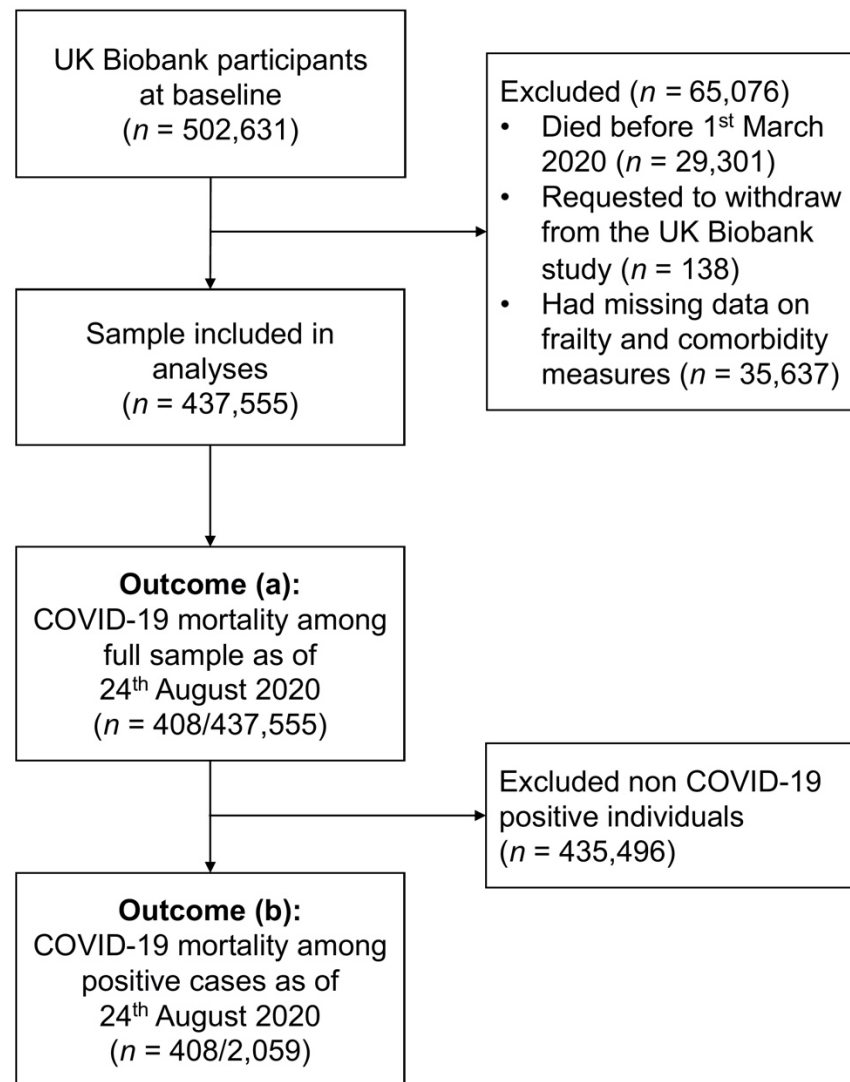


Fig. 1 Flowchart of selection of study sample from the UK Biobank

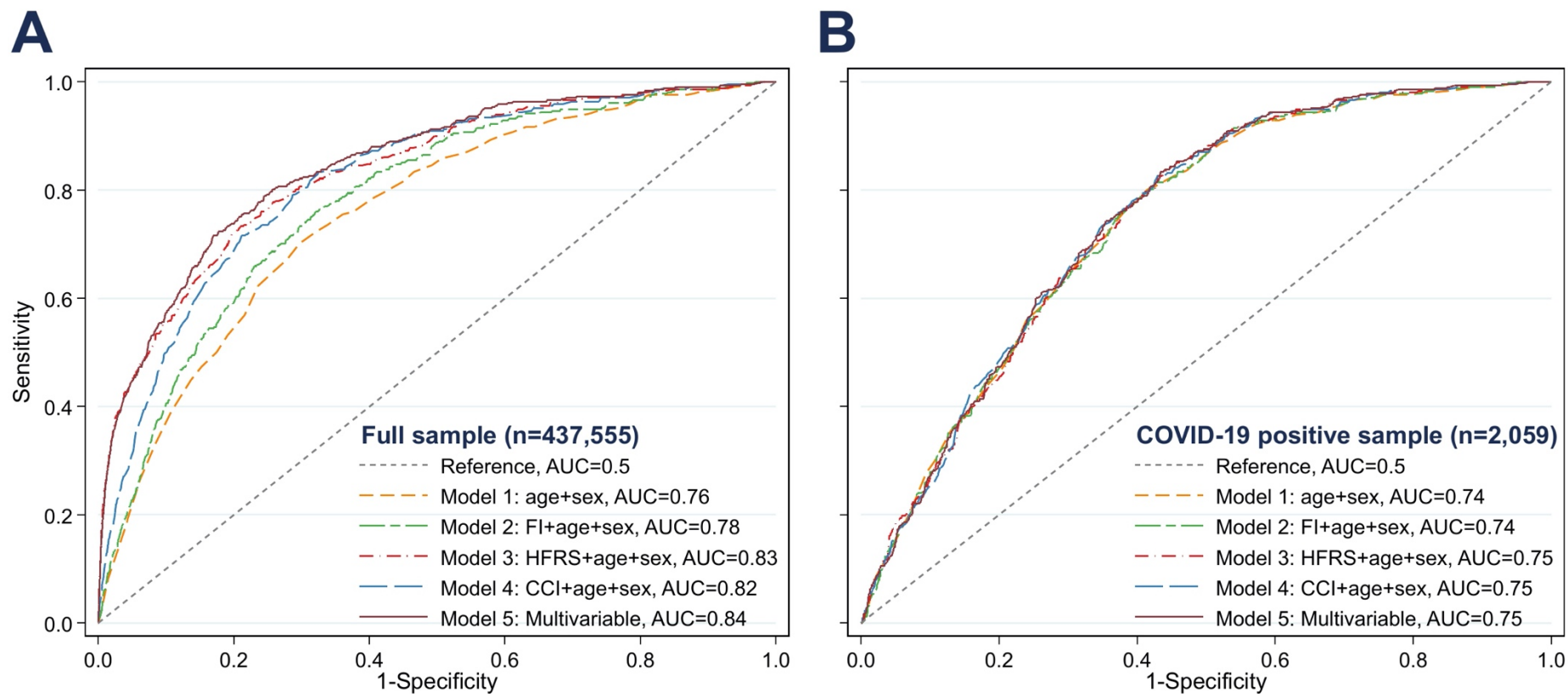


Fig. 2 Receiver operating characteristic (ROC) curves for age, sex, frailty and comorbidity in predicting COVID-19 mortality. **(A)** Analyses performed in the full UK Biobank sample ($n=437,555$); **(B)** analyses performed in the COVID-19 positive sample ($n=2,059$). Model 1 to model 4 are univariable logistic regression models adjusted for age and sex, while model 5 is the multivariable logistic regression model. AUC, area under the receiver operating characteristic curves; CCI, Charlson comorbidity index; FI, Frailty Index; HFRS, Hospital Frailty Risk Score

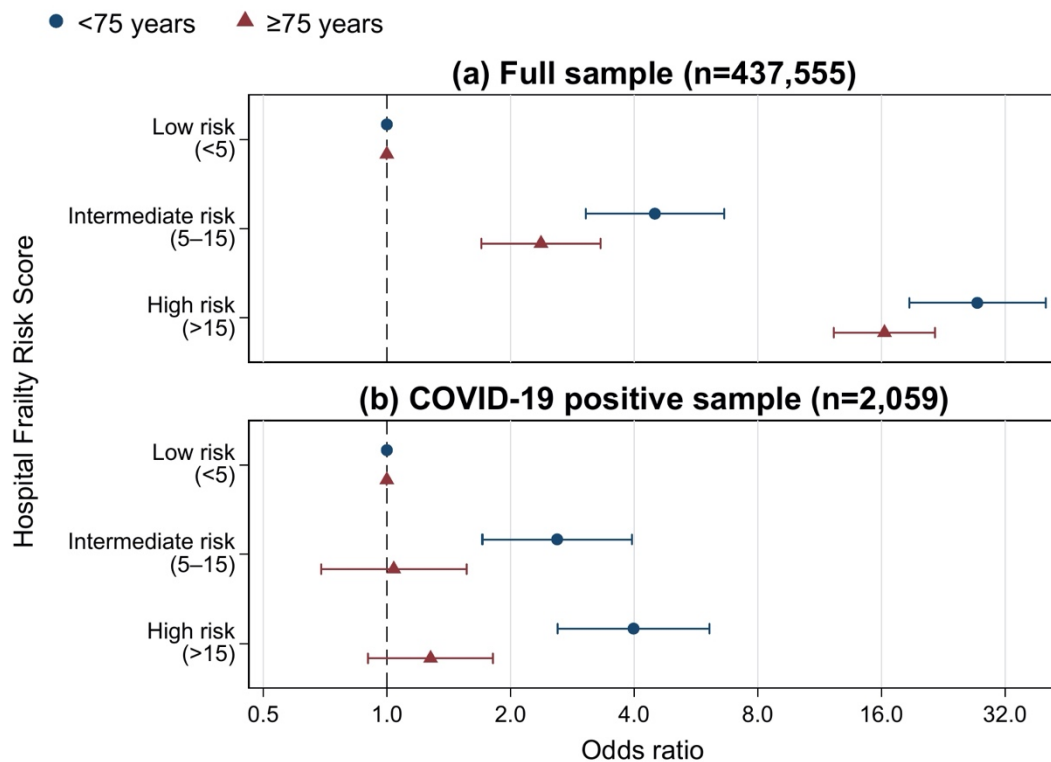


Fig. 3 Associations between Hospital Frailty Risk Score and COVID-19 mortality stratified by age into younger (<75 years) and older (≥75 years) individuals in full sample ($n=437,555$) and in COVID-19 positive sample ($n=2,059$). Error bars indicate 95% confidence intervals. Models were adjusted for sex.

Note: The point estimates for the stratified analysis can be found in *Appendix Table S8*