

# 1 **Effect of park use and landscape structure on COVID-19** 2 **transmission rates**

3 Thomas F. Johnson<sup>1</sup>, Lisbeth A. Hordley<sup>1</sup>, Matthew P. Greenwell<sup>1</sup>, Luke C. Evans<sup>1</sup>

4 1: Ecology and Evolutionary Biology, School of Biological Sciences, University of Reading, Reading, UK

5 Corresponding author: Thomas Frederick Johnson ([Thomas.frederick.johnson@outlook.com](mailto:Thomas.frederick.johnson@outlook.com))

## 6 **Abstract**

7 The COVID-19 pandemic has had severe impacts on global public health. In England, social  
8 distancing measures and a nationwide lockdown were introduced to reduce the spread of the virus.  
9 Green space accessibility may have been particularly important during this lockdown, as it could  
10 have provided benefits for physical and mental wellbeing. However, the effects of public green  
11 space use on the rate of COVID-19 transmission are yet to be quantified, and as the size and  
12 accessibility of green spaces vary within England's local authorities, the risks and benefits to the  
13 public of using green space may well be context-dependent. To evaluate how green space affected  
14 COVID-19 transmission across 98 local authorities in England, we first split case rates into two  
15 periods, the pre-peak rise and the post-peak decline in cases, and assessed how baseline health  
16 and mobility variables influenced these rates. Next, looking at the residual case rates, we  
17 investigated how landscape structure (e.g. area and patchiness of green space) and park use  
18 influenced transmission. We first show that pre- and post-peak case rates were significantly reduced  
19 when overall mobility was low, especially in areas with high population clustering, and high  
20 population density during the post-peak period only. After accounting for known mechanisms behind  
21 transmission rates, we found that park use (showing a preference for park mobility) decreased  
22 residual pre-peak case rates, especially when green space was low and contiguous (not patchy).  
23 Whilst in the post-peak period, park use and green landscape structure had no effect on residual  
24 case rates. Our results suggest that a reduction in overall mobility is a good strategy for reducing  
25 case rates, endorsing the success of lockdown measures. However, if mobility is necessary,  
26 outdoor park use is safer than indoor aggregated activities (e.g. shopping or office-based working),  
27 especially during an exponential phase of transmission.

28

29 **Keywords**

30 COVID; coronavirus; ecosystem services; fragmentation; green space; health; park use; public  
31 health

32 **Introduction**

33 The COVID-19 pandemic has had severe impacts on public health (Mahase, 2020) and remains an  
34 emergency of international concern. In response to the first wave of the pandemic, the UK  
35 government implemented social distancing measures and a nationwide lockdown to control the  
36 spread of the virus (UK Government, 2020b). During this period, the general public was limited in  
37 the distances they could travel and the number of times they could leave their residence each day;  
38 with an allowance of one non-essential trip during the peak of transmission (UK Government,  
39 2020b). This restriction meant that members of the public were unusually reliant on amenity spaces  
40 close to their residences for daily exercise and/or recreation. Green spaces may provide a  
41 comparatively safe place for these activities, though the amount and structure of green space  
42 available for public use differs widely across the UK. Here we evaluate if differences in the  
43 availability and structure of public green space within local authorities in England influenced the  
44 local rate of incidence of COVID-19.

45 Green spaces, which we define as vegetated non-arable areas - see Taylor & Hochuli (2017) for  
46 further details - provide important cultural and recreational ecosystem services, benefiting both  
47 mental and physical health (Beyer et al., 2014; Cohen-Cline, Turkheimer, & Duncan, 2015). These  
48 benefits are usually considered in terms of reducing the prevalence or severity of conditions such as  
49 mental stress (Nutsford, Pearson, & Kingham, 2013) or cardiovascular disease (Seo, Choi, Kim,  
50 Kim, & Park, 2019), and some of these benefits have continued throughout the pandemic (Slater,  
51 Christiana, & Gustat, 2020; Soga, Evans, Tsuchiya, & Fukano, 2020). However, the influence of  
52 green space use on disease transmission rates has received less investigation, but is of great  
53 importance as green space use has increased rapidly during the pandemic (Venter, Barton,  
54 Gundersen, Figari, & Nowell, 2020). Furthermore, its unclear how safe green spaces are, especially  
55 in densely populated areas (Shoari, Ezzati, Baumgartner, Malacarne, & Fecht, 2020).

56 We anticipate that green space could impact COVID-19 incidence in two ways: general health and  
57 wellbeing, and transmission. It is conceivable that general health and well-being is greater in areas  
58 with more green space, as higher levels of green space are associated with healthier populations  
59 (Maas, Verheij, Groenewegen, De Vries, & Spreeuwenberg, 2006; Mitchell & Popham, 2007; van  
60 den Berg et al., 2015). As COVID-19 has a greater impact on those with underlying health  
61 conditions and sedentary lifestyles (Hamer, Kivimäki, Gale, & Batty, 2020; Jordan, Adab, & Cheng,  
62 2020), green space may, therefore, indirectly provide some level of resilience to the disease and/or  
63 reduce incidence. Regarding transmission, evidence suggests that COVID-19 is spread via droplet  
64 infections, contact with contaminated individuals or surfaces, and potentially through aerosol  
65 transmission (Bahl et al., 2020). These risks are likely minimised in green space areas, as generally,  
66 they are less spatially confined, and with fewer surfaces prone to frequent touching or contact.  
67 Consequently, green space use may represent a safe form of recreation by minimising risk of  
68 infection.

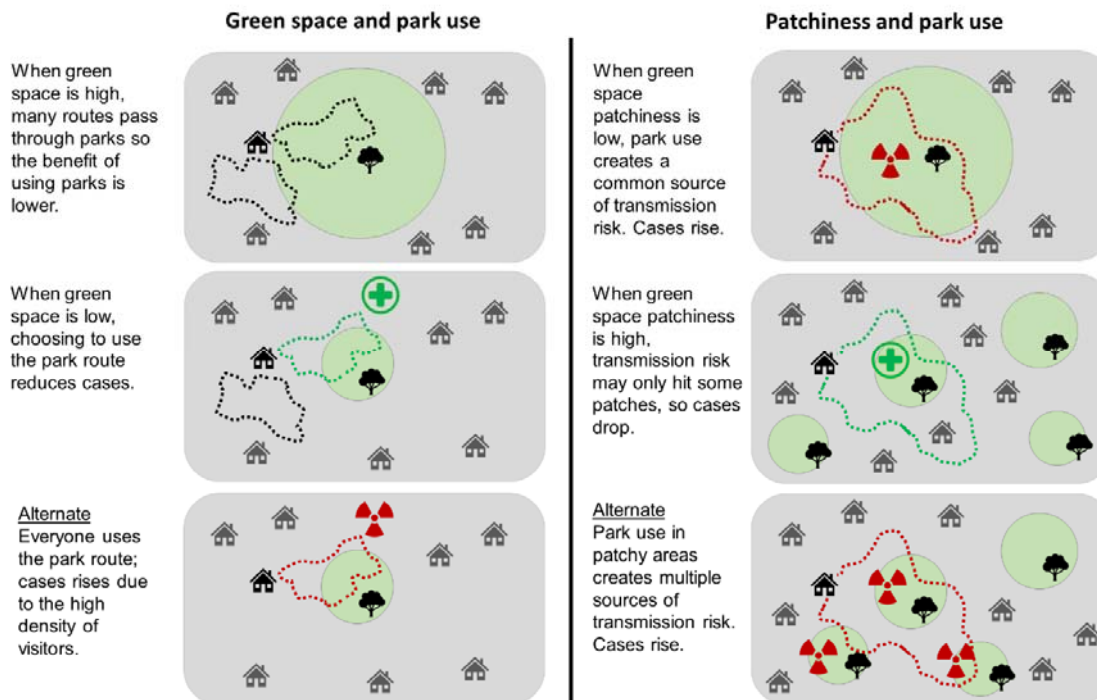
69 In England and Wales approximately 87% of the population are within a 10-minute walk of public  
70 parks and gardens (Shoari *et al.* 2020). However, both the structure and amount of green space  
71 vary between local authorities, and both could influence COVID-19 incidence. Generally, it has been  
72 found that greater health benefits are derived from larger areas of green space (Ekkel & de Vries,  
73 2017). In the context of disease transmission, larger areas may offer more space per individual,  
74 lowering transmission risk. However, smaller fragmented areas of green space are common in  
75 many residential areas and are, therefore, more accessible to much of the population and may be  
76 used more frequently. Further, if public use is distributed across fragmented green spaces, the  
77 wider effects of a transmission incident could be reduced, as contacts would be isolated to the  
78 members of a neighbourhood or community adjacent to a particular green space. This process can  
79 be seen in animal diseases where habitat fragmentation reduces transmission due to limiting  
80 interactions between groups in different patches (Mccallum & Dobson, 2002). However,  
81 fragmentation also typically results from reductions in the total area of green space (Fahrig, 2013),  
82 leading to less overall space per individual, possibly increasing transmission rates.

83 Whilst the effects of green space on COVID-19 transmission are currently unclear, other  
84 environmental and social factors are known to influence both the spread and severity of the

85 disease. For example, human mobility drives the spread of infectious diseases (Kraemer et al.,  
86 2019) and studies have shown that reducing social interactions by restricting mobility can lead to a  
87 decrease in transmission rates of COVID-19 (Chinazzi et al., 2020; Gatto et al., 2020). Furthermore,  
88 as diseases are often spread along transport links and in offices (Zhang, Huang, Su, Ma, & Li, 2018;  
89 Gatto et al., 2020), enforcing lockdown situations that curtail movement, such as requiring people to  
90 work from home, can have a great effect on reducing transmission rates. In addition to mobility,  
91 health and social factors have been associated with increased severity of the disease such as age,  
92 underlying health conditions and deprivation (Richardson et al., 2020; Williamson et al., 2020).  
93 Consequently, any possible effects of green space must be considered after attempting to account  
94 for factors that could increase recorded incidence.

95 Given the stated benefits of green space, it is important to attempt to evaluate using available  
96 evidence, the impact of green space use on transmission rates. In addition, understanding the  
97 influence of green space on COVID-19 incidence could provide an estimate of the value of green  
98 space for maintaining public health if subjected to a resurgence of the COVID-19 pandemic. And, in  
99 the longer term, indicate the potential benefits of local green space on future pandemics of  
100 comparative severity. Here, using time series of local authority cases in England, we explore how  
101 both green space use and access influence COVID-19 incidence, which we define as the pre-peak  
102 rise, and post-peak drop in cases during the first wave of the pandemic. Our approach is to first  
103 construct a baseline health model to attempt to control for factors likely to influence recorded  
104 COVID-19 incidence and then to explore how green space influenced case rates above or below  
105 this baseline. We predict that green space and the way it is structured, in itself, will have no effect  
106 on case rates. However, we expect that an increase in park use (i.e. spending time in green space)  
107 will make the structure and availability of green space important (Figure 1). Specifically, when green  
108 space is low, park use will likely represent a safer form of movement (e.g. compared to shopping),  
109 unless the green space becomes a congregation zone that inflates transmission risk. Furthermore,  
110 we predict that case rates will be lower when green space is fragmented, as the disease will be  
111 contained in more localised areas. For example, if the local authority has one large park the  
112 presence of an infected individual puts more people at risk than an infected individual attending one  
113 of many parks. Further, we predict, as others have found (Kraemer et al., 2020), that increased

114 mobility will increase incidence, but that park use (measured as relative use of parks) is the safest  
115 form of mobility (e.g. preferable over shopping).



116

117 **Figure 1.** Mechanisms by which green space and patchiness could interact with park use to influence  
118 COVID-19 transmission. The upper two rows describe the primary predictions, whilst the bottom row explains  
119 alternate predictions. All variables (e.g. population density) except green space and patchiness, respectively,  
120 are held at a constant in these predictions. Green circles with a tree icon indicate the presence of green  
121 space. Dotted lines indicate walking routes, which becomes park use when the line overlaps a green space.  
122 The green health symbol indicates that the landscape metric and park use is beneficial, whilst the red toxic  
123 symbol indicates a risk.

## 124 **Methods**

### 125 Data compilation

#### 126 *COVID-19 case rates*

127 We compiled daily lab-confirmed cases (incidence) of COVID-19 in England from January 1<sup>st</sup> up to  
128 29<sup>th</sup> June 2020 (available from <https://coronavirus.data.gov.uk/>). Cases were recorded at the local  
129 authority level for 343 administrative areas. These local authorities vary in size (3 – 26,000km<sup>2</sup>),  
130 demographics, cultures, and in socio-economic circumstances. Incidence over this time consists of  
131 a period with zero cases at the beginning of the year, sporadic cases for a short time, followed by a  
132 period of rapid case increases, and then a subsequent decline. To focus only on the pandemic, we

133 first reduced the dataset to only include the period where new COVID-19 cases were reported in six  
134 out of seven consecutive days in each local authority. This, by visual inspection, captured the period  
135 of rapid incidence across authorities. Authorities were then further excluded if this period consisted  
136 of less than 10 consecutive days of cases. We then modelled the rapid growth and decline of  
137 incidence over time using two log-linear exponential growth models in each local authority (Ma,  
138 Dushoff, Bolker, & Earn, 2014). The first model was fitted to the time-period up to the peak of  
139 incidence in each local authority, and the second to the period from the peak of incidence. The  
140 coefficients of these models provided a daily pre- and post-peak case rate. We converted these  
141 coefficients into a daily percentage change in cases.

#### 142 *Baseline transmission variables*

143 We compiled variables which describe the mechanisms known to influence case rates. Firstly, we  
144 derived two variables which describe the structure of the local authority population: population  
145 density – residential population density (controls for green space in the green transmission  
146 difference model below); and population clustering – Moran's I spatial autocorrelation of residential  
147 population density (controls for patchiness in the green transmission difference model below).  
148 Secondly, we compiled three variables which describe the health of the human population in each  
149 local-authority prior to COVID-19: health – risk of premature death or a reduction in quality of life  
150 due to poor mental or physical health (Ministry of Housing Communities & Local Government,  
151 2019); demography - the proportion of the population over 70 (Office for National Statistics, 2019);  
152 economy – the percentage of unemployed-individuals in the non-retired local authority population  
153 (UK Government, 2018). A high baseline health, whereby few individuals have pre-existing  
154 underlying health conditions, may decrease the chances of an individual presenting with severe  
155 symptoms of COVID-19 and further passing the virus to others (Clark et al., 2020). Accounting for  
156 this baseline health may also assist in controlling for the presence of asymptomatic undetected  
157 infections in case rates.

158 Finally, to obtain information on population movements during the COVID-19 pandemic, we used  
159 Google Community Mobility Reports (Google, 2020). These reports chart movement trends over  
160 time across six categories: retail and recreation, groceries and pharmacies, transit stations,

161 workplaces, residential, and parks. These trends describe how visitors to, or time spent in, each of  
162 the six categories changed compared to a pre-pandemic 5-week period (the median value from 3<sup>rd</sup>  
163 January to 6<sup>th</sup> February 2020). Gaps in the mobility data do not indicate a lack of movement,  
164 instead, gaps occur when the data fall below the required quality and privacy thresholds to ensure  
165 anonymity. Complete data were only available for 44 of the 343 local authorities in England, but  
166 were available in six of England's 9 higher level regions (Greater London, South East, South West,  
167 West Midlands, North West, North East, Yorkshire and the Humber, East Midlands, East of  
168 England). Missing local authority mobility values were populated with their regional estimates,  
169 producing a complete dataset of 98 local authorities. From this mobility dataset, we derived a  
170 variable which described overall mobility change, which is the change in overall mobility since  
171 baseline, averaged across each of the six categories. We calculated overall mobility separately for  
172 the pre-and post-peak period in each local authority, with the same respective start and end date as  
173 the COVID-19 case rate models.

#### 174 *Green variables*

175 We compiled three variables which describe the structure of green spaces in each local authority:  
176 patchiness – median frequency of parks within a 1km<sup>2</sup> radius around households in the local  
177 authority (Office for National Statistics, 2020); gardens – percentage of addresses with gardens  
178 (Office for National Statistics, 2020); green space – available green space per person (m<sup>2</sup>) within  
179 the local authority, derived by dividing the green-cover area by the local authority population size.  
180 Green-cover area was calculated from the UKCEH 2015 25metre land cover raster (Rowland et al.,  
181 2017) and included the following landscape categories: broadleaved woodland, coniferous  
182 woodland, improved grassland, neutral grassland, calcareous grassland, acid grassland, fen, marsh  
183 and swamp, heather, heather grassland, and bog. For this green-cover area calculation, we set a  
184 1km buffer around the local authority, to represent green space access of households on the local  
185 authority border.

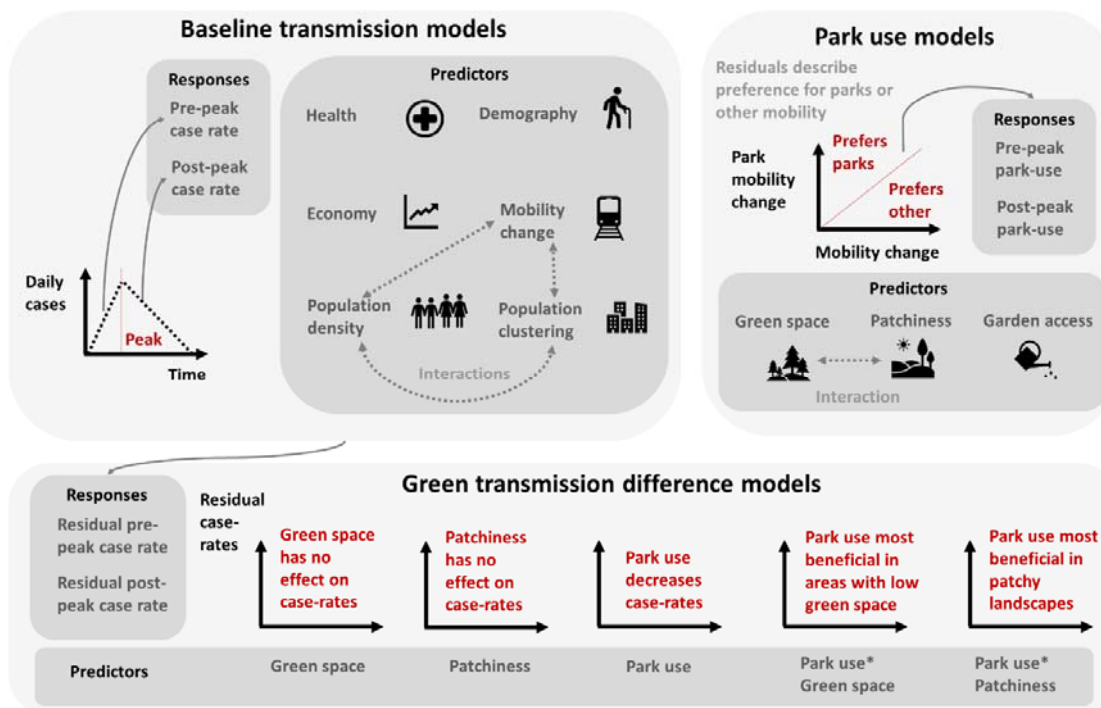
186 Using the mobility dataset, we also produced a park use variable, which represents how parks are  
187 used relative to overall mobility. This park use metric is derived by fitting a linear model between  
188 park use and overall mobility, and extracting the residual park use, where positive values represent

189 a preference for using parks over other forms of mobility (in the original percentage units). Parks  
190 include public gardens, castles, national forests, campsites, observation points, and national parks,  
191 but exclude surrounding countryside in rural areas. As a result, the Google (2020) definition of parks  
192 differs slightly to the landscape categories used in our green space metric but are our best available  
193 representation of how green space was used during the pandemic.

#### 194 Modelling

195 We developed three core model types (Figure 2): baseline transmission – aimed at controlling for  
196 the major mechanisms influencing case-rate changes; green transmission difference – impact of  
197 landscape structure and park use on case rates; and park use – impact of landscape structures on  
198 park usage, providing a mechanistic understanding of the green transmission difference model e.g.  
199 if park use is important, what influences park use. The baseline transmission and green  
200 transmission difference models are both focussed on case rates, but we anticipated that any effects  
201 of green space on COVID-19 case rates were likely to be much smaller than variables known to  
202 affect disease transmission (e.g. population density). As a result, we structured our analyses to first  
203 account for the presence of these more influential variables in a baseline transmission model, and  
204 then in the green transmission difference model, we explored how green areas (the focus of this  
205 study) can alter the residuals of these case rates. Conventionally, it is advised to include all  
206 variables within one regression instead of analysing the residuals separately (Freckleton, 2002).  
207 However, variables were highly correlated (e.g. population density and green space per person are  
208 derived in similar ways), and resulted in multicollinearity issues. Dealing with the major  
209 mechanisms first (e.g. population density) mitigated these multicollinearity issues.





210

211 **Figure 2.** Model structure for baseline transmission, green transmission difference, and park use models,  
 212 depicting the process for developing the response variables, as well as the predictors used in each model. In  
 213 the green transmission difference models, the red text represents the main model predictions.

214

215 We z-transformed all predictor variables in the models to determine effect sizes and reduce  
 216 multicollinearity where interactions are present. Each of the models described below was repeated  
 217 for the pre- and post-peak period, and all model assumptions passed e.g. multicollinearity, absence  
 218 of spatial autocorrelation, homogeneity of variance, and normality of residuals. When summarising  
 219 results, we report the mean  $\pm$  standard deviation, and when describing model outputs we report the  
 220 following: coef = standardised slope coefficient, t = model test-statistic, and p = significance value.  
 221 We report the model accuracy using two metrics described in Mayer (2020):  $wR^2$  – a weighted r-  
 222 squared which describes the proportion of deviance captured by the model; and  $wmae$  – the  
 223 weighted mean absolute error. Both of these metrics describe the accuracy of the model predicted  
 224 values, and were derived within the dataset, rather than through an independent sub-sample. These  
 225 metrics cannot indicate which aspect of the model contributed most to the prediction accuracy (e.g.  
 226 model accuracy will be influenced by the fixed effects, random effects, the spatial correlation  
 227 structure, and weighting structure).

228 *Baseline transmission models*

229 To control for the baseline health and transmission mechanisms influencing COVID-19 case rates,  
230 we developed linear mixed effect models, with case rate (pre- or post-peak) as the response. We  
231 included the following predictor parameters: health, demography, economy, population density,  
232 population clustering, and mobility change. We also included interactions between population  
233 density and clustering, population density and mobility change, and population clustering and  
234 mobility change. Lastly, in the post-peak case-rate models, we wanted to control for instances  
235 where the case-rate drop was steeper because it had a higher starting point. As a result, we  
236 included the maximum daily case count within the model, as well as pre-peak mobility change which  
237 was found to be influential in the pre-peak case rate model.

238 We allowed the model to vary by region with a random intercept to account for the non-  
239 independence of some regions sharing mobility data. We also set an exponential spatial correlation  
240 structure (using the local authorities' latitude and longitude centroid) to account for the spatial  
241 autocorrelation of neighbouring local authorities sharing similar case rates. Case rates were also  
242 weighted according to their variance (i.e. the variance of the slope in the log-linear case rate  
243 regressions), such that areas where pre- and post-case rates were less certain contributed  
244 proportionally less to the model fit. We extracted the residuals from these models for the green  
245 transmission difference models.

246 It should be noted, even though variance inflation factors were suitably low for the baseline  
247 transmission models, the precision of the coefficients may be reduced as many predictors were  
248 correlated. Our justification for retaining these predictors in the baseline model is that the primary  
249 goal was identifying the impact of green space use after controlling for other factors, and  
250 multicollinearity has no impact on predictive performance. However, to support inference and  
251 explanation, we also report a simplified version of these baseline transmission models in Table S1,  
252 where the health, demography and economy variables were removed.

253 *Green transmission difference models*

254 To assess how landscape structure and park use influenced residual case rates, we developed  
255 linear mixed effect models, with pre- or post-peak residual case rates from the baseline

256 transmission models as the response, as well as the following predictor parameters: park use  
257 (inverse hyperbolic sine transformed), green space (log10 transformed), patchiness, an interaction  
258 between park use and green space, and finally an interaction between park use and patchiness.  
259 These models also included region as a random intercept, but we did not control for the spatial  
260 structure of the data, which was addressed in the earlier baseline transmission model. We did,  
261 however, still include the variance weighting to specify that residuals from local authorities with a  
262 smaller variance in case rates should contribute more to the model.

### 263 *Park use models*

264 To understand how landscape structure influences park use and in turn, clarify the mechanisms by  
265 which park use influences case rates, we developed linear mixed effect models, with pre- or post-  
266 peak park use (inverse hyperbolic sine transformed) as the response, and the following predictor  
267 parameters: gardens, green space (log10 transformed), patchiness, and an interaction between  
268 green space and patchiness. We also included the region random intercept and a spatial correlation  
269 structure for the same reasons as in the baseline transmission model.

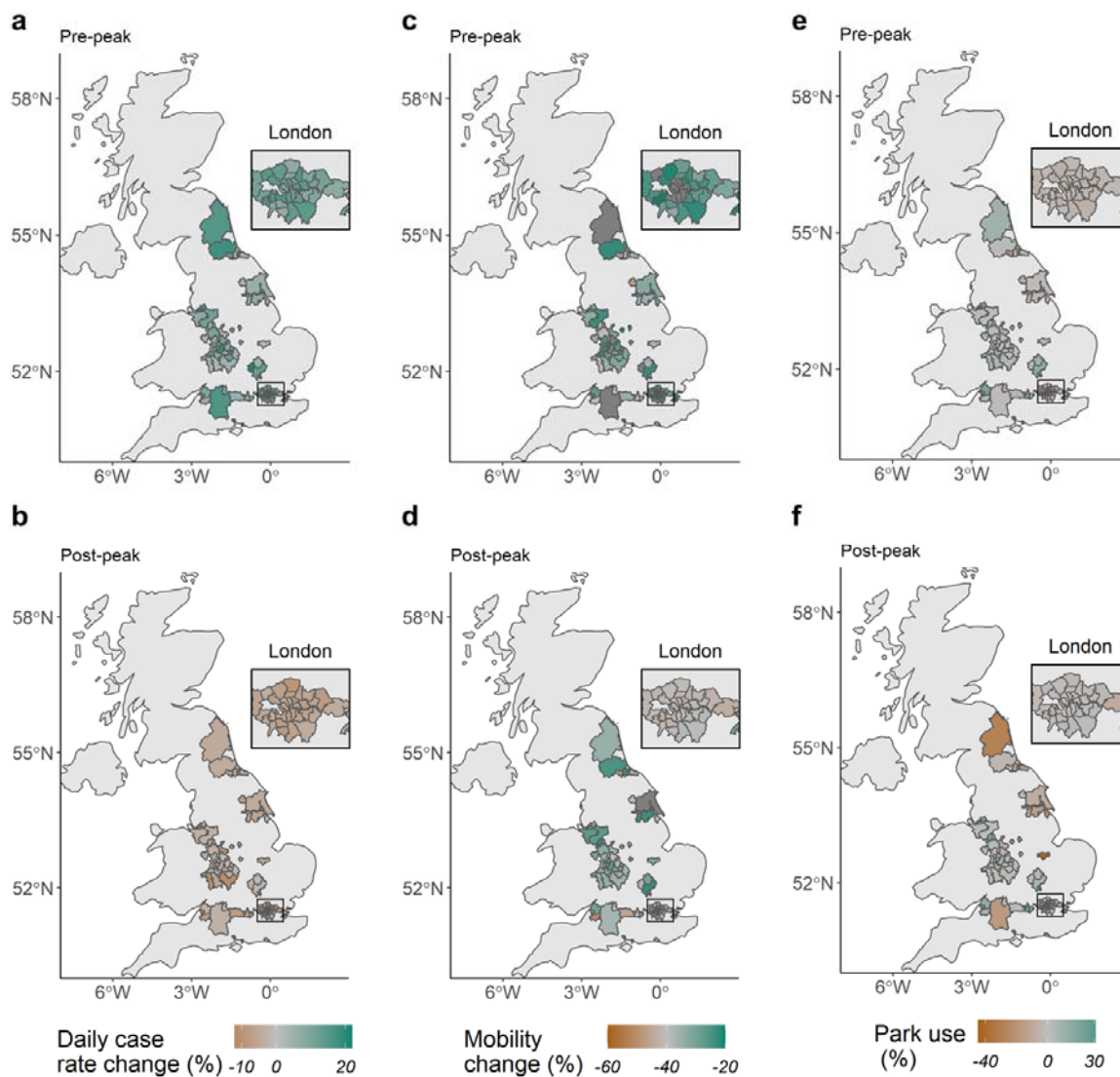
### 270 *Sensitivity analysis*

271 As the mobility data contained a high frequency of missing values, which we filled (where possible)  
272 with regional estimates, we were conscious this may introduce error in the inference. When values  
273 are imputed, it is recommended to repeat the modelling with imputed values excluded (i.e. complete  
274 case analysis) to assess how model coefficients change (Johnson, Isaac, Paviolo, & González-  
275 Suárez, 2021) . As a result, we determined the sensitivity of coefficients to the inclusion of regional  
276 mobility values by repeating all models after excluding the regional data – see Supplementary  
277 material. Throughout the results, we only report the regional imputed model coefficients as  
278 coefficient agreement was high, with all regional imputed model coefficients confidence intervals  
279 overlapping complete-case model coefficients. A lack of overlap could indicate a significant  
280 difference in model coefficients which may indicate inference errors (Johnson et al., 2021)

## 281 **Results**

282 Across the 98 local authorities, the pre-peak cases rose 9.8% ( $\pm$  4.6) per day and peaked between  
283 24<sup>th</sup> March and the 8<sup>th</sup> May. The peaks ranged in size from 9 to 132 daily cases, and then post-

284 peak, the daily case rate declined at  $-4.8\%$  per day ( $\pm 2.2$ ). Mobility reduced substantially in the pre-  
285 peak period ( $-28.3\% \pm 8.5$ ) and further again in the post-peak period ( $-37.0\% \pm 6.4$ ), but not equally  
286 across England, with mobility increasing in 20.4% of local authorities between the pre- and post-  
287 peak period (Figure 3). In the pre-peak period, park use ranged from  $-19.7\%$  to  $22.4\%$ , but post-  
288 peak this range increased from  $-43.3\%$  to  $30.8\%$ . Between this pre- and post-peak period, some  
289 authorities altered their park use, for example, park use decreased by 38% in Peterborough, whilst  
290 park use increased by 22% in Luton.



291

292 **Figure 3.** Change in a) pre-peak case rate, b) post-peak case rate, c) pre-peak mobility, d) post-peak mobility,  
293 e) pre-peak park use, and f) post-peak park use, across 98 local authorities in England. X and Y axes indicate  
294 longitude and latitude in decimal degrees.

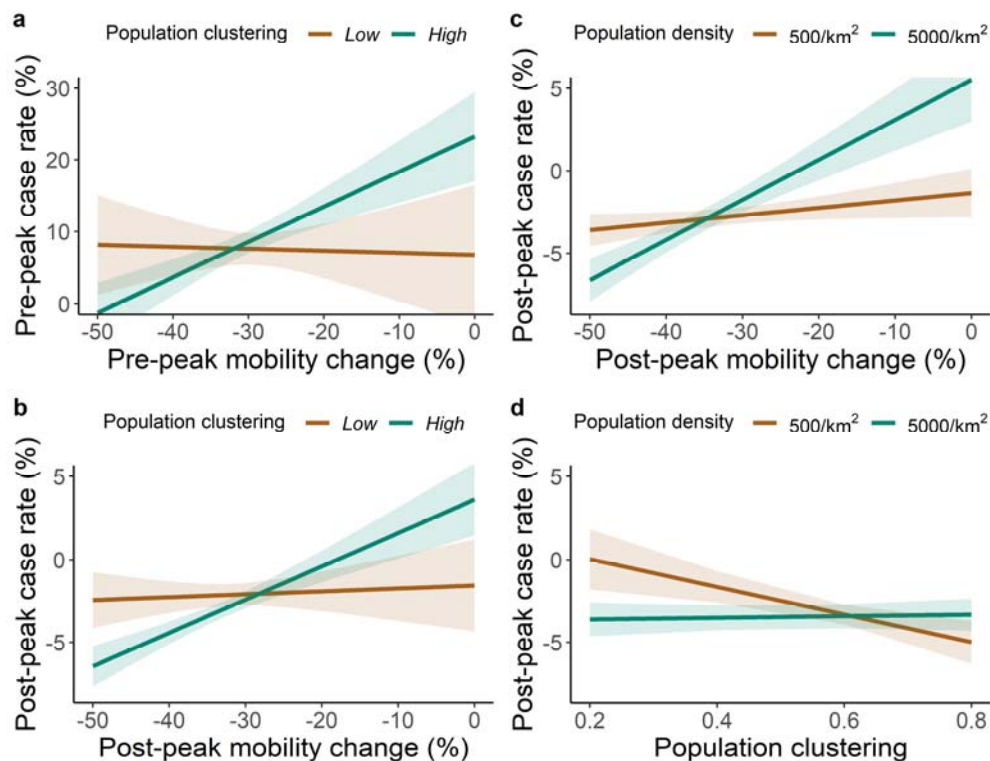
295

296 *Baseline transmission models*

297 Pre-peak case rates were lower in areas with a reduction in mobility (coef = 2.39, t = 4.56, p <  
298 0.001; Figure S1). Population density had no effect on pre-peak case rates. Population clustering  
299 had a weak effect when interacting with mobility change, where the effect of mobility diminished  
300 when population clustering was low (coef = 0.96, t = 1.76, p = 0.08; Figure 4a) - this interactive  
301 effect was lost in the simplified baseline transmission model and in the full complete-case model  
302 (Table S1-S2). Given the variation in pre-peak case rates (Figure 3a), where daily case rises ranged  
303 from 2 – 21%, the model error was reasonably low ( $wmae = 2.42\%$  the  $wR^2 = 0.43$ ).

304 The post-peak case rates were also lower in areas with a greater reduction in mobility (coef = 0.99, t  
305 = 5.52, p < 0.001; Figure S2a). We also observed an interaction between population clustering and  
306 mobility change, where the effect of mobility diminished when population clustering was low (coef =  
307 0.28, t = 2.0, p = 0.048; Figure 4b), as in the pre-peak model. A similar result was found for the  
308 interaction between mobility change and population density, where the effect of mobility increasing  
309 post-peak case rates diminished at low population densities (coef = 0.65, t = 4.18, p < 0.001; Figure  
310 4c). Case rates also declined faster in authorities with a high population density (coef = -0.35, t =  
311 2.20, p = 0.04) and clustering (coef = -0.48, t = -2.11, p = 0.04), but only when population density  
312 was low (coef = 0.42, t = 2.81, p = 0.006; Figure 4d).

313 Post-peak case-rates were also influenced by pre-peak activity, as areas with a larger peak in cases  
314 had a faster decline in post-peak case-rate (coef = -0.54, t = -5.16, p < 0.001; Figure S2c; no effect  
315 in complete-case analysis), and case rates were lower in areas with a reduction in pre-peak mobility  
316 (coef = 0.46, t = 2.40, p = 0.02; Figure S2b; no effect in complete-case analysis). The model error in  
317 post-peak case rates was lower than in the pre-peak case rates, with a moderately high post-peak  
318 prediction accuracy ( $wmae = 0.69\%$  the  $wR^2 = 0.61$ ).



319

320 **Figure 4.** Marginal effects of important interaction parameters in the baseline transmission models. Marginal  
 321 effects are held at zero for all other parameters as variables were z-transformed. In panels a and b, population  
 322 clustering was set at 0.35 (Low) and 0.7 (High), where 0 indicates a random distribution of clustering, and 1  
 323 indicates a complete separation in clustering. Error bars represent the 95 confidence intervals.

324

325

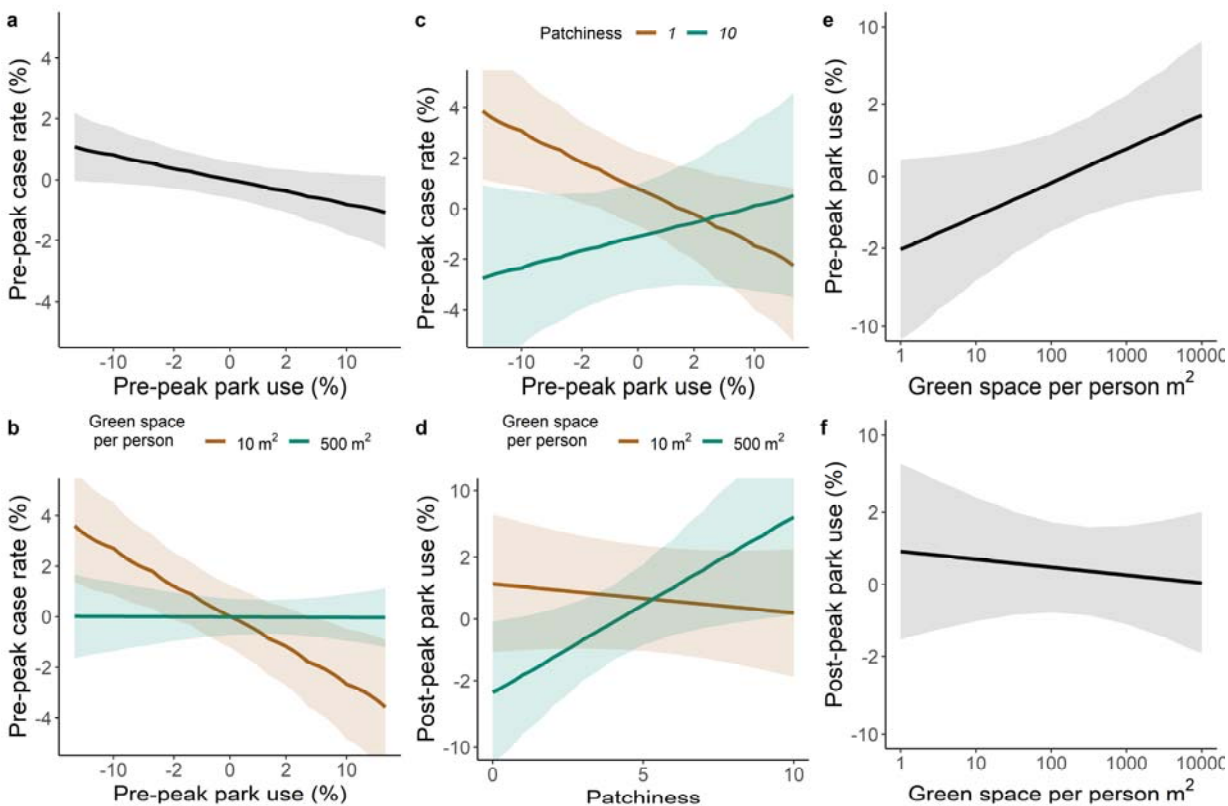
326 *Green transmission difference models*

327 Park use decreased residual pre-peak case rates (coef = -0.61,  $t = 1.99$ ,  $p = 0.049$ ; Figure 5a), but  
 328 there was an interaction between park use and green space, with the effect of park use diminishing  
 329 when green space was high (coef = 0.95,  $t = 2.59$ ,  $p = 0.01$ ; Figure 5b). There was also a weak  
 330 interactive effect between park use and patchiness, as park use decreased the residual pre-peak  
 331 case rate when patchiness was low, but increased the case rate when patchiness was high (coef =  
 332 0.55,  $t = 2.03$ ,  $p = 0.04$ ; Figure 5c). Green space and patchiness had no general effect on residual  
 333 pre- or post-peak case rates, whilst park use and the interactive effects also had no effect on  
 334 residual post-peak case rates (Table S2). Nevertheless, incorporating these park use and  
 335 landscape structure effects led to a modest decrease in case rate prediction error;  $wmae$  decreased

336 from 2.43% to 2.33% in the pre-peak period, and from 0.69% to 0.64% in the post-peak period. This  
337 equated to more dramatic improvements in the  $wR^2$ , where accuracy jumped from 0.43 to 0.5 in the  
338 pre-peak period, and from 0.61 to 0.68 in the post-peak period, which represent a 18% and 11%  
339 accuracy increase, respectively.

340

341



342

343 **Figure 5.** Marginal effects of a selection of parameters in the green transmission difference (a-c) and park use  
 344 (d-f) models. All other parameters are held at their mean (zero) for the marginal effects. In panels d-f, the y-  
 345 axes are inverse hyperbolic sine scaled, as are the x-axes in panels a-c. In panels e & f, the x-axis is log10  
 346 scaled. Error bars represent the 95 confidence intervals.

347

348 *Park use models*

349 Access to gardens, patchiness, and the interaction between green space and patchiness had no  
 350 effect on pre-peak park use, but pre-peak park use was marginally greater in authorities with high  
 351 green space (coef = 0.79, t = 1.77, p = 0.08; Figure 5e). However, in the post-peak period, green  
 352 space had no effect on park use (Figure 5f), except in the interactive effect with patchiness, where  
 353 post-peak park use increased with patchiness, but only when green space was high (coef = 0.42, t =  
 354 2.51, p = 0.01; Figure 5d). Patchiness and gardens did not have an overall effect on post-peak park  
 355 use (Table S3).

356



## 357 **Discussion**

358 In this study, we attempted to quantify the effects of local green space on COVID-19 case rates  
359 after accounting for mechanisms known to influence pandemics in our baseline transmission model.  
360 We found that high overall mobility increased both pre- and post-peak case rates, especially when  
361 population clustering and density were high (this mobility-density interaction effect was only  
362 important in the post-peak period). After accounting for these variables, we found that higher park  
363 use, compared to other amenity areas, led to a reduction in pre-peak case rates, especially in areas  
364 with low and contiguous green space. These results suggest that utilising green spaces rather than  
365 carrying out other activities (e.g. visiting shops and workplaces) may reduce the transmission rate of  
366 COVID-19, especially during an exponential phase of transmission.

367 From our baseline transmission model results, population density (Figure 4c) and clustering (Figure  
368 4a-b) were only important when considered in an interaction with mobility, and population density  
369 was only important in the post-peak period. This is surprising, but is consistent with person-person  
370 contact as the major mechanism of transmission i.e. even a very dense and clustered population  
371 will have slow transmission rates if there are few interactions between people. This appears to  
372 demonstrate the general effectiveness of lockdown measures in reducing case rates, as others  
373 have demonstrated previously (Davies et al., 2020; Lau et al., 2020). However, we found mobility  
374 had less impact in low density, low clustered areas, which again may be expected, as people are  
375 more likely to be able to maintain distance and the potential number of interactions is reduced.  
376 However, even in these conditions, mobility still slightly increased post-peak case rates and so  
377 lockdown still appeared to have some effect on reducing case rates even in low density and low  
378 clustered areas.

379 Previous research has shown the importance of health, deprivation, demography and economic  
380 prosperity on COVID-19 case rates (Abedi et al., 2020; Atkins et al., 2020; Dowd et al., 2020).  
381 However, in our baseline health transmission models, these variables did not explain differences in  
382 COVID-19 case rates found in our dataset. This is likely due to the variables being somewhat  
383 correlated with population density, with consequent reductions in the information available in the  
384 data to assess their effects (as described in *Methods*). For example, an older population is

385 correlated with decreased population density, and though older people seem to be more vulnerable  
386 to COVID-19 (Jordan et al., 2020), they are more likely to reside in safer (low population density)  
387 areas; consequently separating these effects may simply not be possible given the data used.

388 Another consideration between findings for demographic/social groups at a national scale and local  
389 case rates, is that the assemblages being compared contain varying proportions of the groups in  
390 question i.e. we ask 'does an older population lead to higher local case rates?', not 'are there  
391 differences in the per-capita rate of cases between different demographic, economic, and health  
392 groups?'. We suggest that our analysis is unsuited to resolving questions of the second type and  
393 that the baseline transmission model is best viewed simply as controlling for possible factors in an  
394 attempt to isolate the effects of green space.

395 Once we had accounted for known drivers of case-rates, we investigated how landscape structure  
396 and park use (i.e. mobility in green spaces) affected residual case rates using the green  
397 transmission model. Here we found that using parks, relative to other types of mobility, led to a  
398 reduction in pre-peak case rates (Figure 5a). However, reducing overall mobility (i.e. mobility to all  
399 amenity areas) led to a far more substantial decline in both pre- and post-peak case rates,  
400 especially in dense and clustered populations as found in the baseline transmission model. For  
401 example, continuing mobility at pre-pandemic levels led to 15.4% daily increase in cases when park  
402 use was at its highest, compared to a 17.4% daily increase when park use was at its lowest - a 2%  
403 case rate reduction. In contrast, halving overall mobility reduced case rates by 13.6%. This  
404 suggests that the use of parks may have modestly helped in reducing transmission rates in some  
405 areas during the increasing phase of the pandemic, but reducing overall mobility is substantially  
406 more beneficial than maintaining mobility at pre-pandemic levels and spending that mobility in  
407 parks.

408 Whilst park use, overall, had a relatively small effect, we did note stronger effects of park use when  
409 the context of the local area was considered as using parks was beneficial in authorities with low  
410 and contiguous green space (Figure 5b and 5c). That park use has a minor beneficial effect overall  
411 seems to support our hypothesis that recreation in green space and parks may be safer than in  
412 other amenity areas. This is probably because it is easier to maintain distance and green spaces  
413 have fewer surfaces which could result in transmission if contaminated. However, the limiting impact

414 of this when green space is high and accessible seems to suggest diminishing returns in how park  
415 use can impact COVID-19 transmission. This is perhaps not surprising if the main value of parks in  
416 this context is as an alternative to other relatively more hazardous amenity areas. Consequently, if  
417 there are other safe options outside of public parks then parks will likely have little impact. However,  
418 our findings do suggest that the use of public parks in a highly urbanised area may be  
419 advantageous, though as noted above the strongest effect was from the reduction of all forms of  
420 mobility. Therefore, cautiously, and given that it corresponds with common sense, we suggest that  
421 reducing mobility is a successful strategy for reducing case-rates but given a need for some non-  
422 essential time outside of a home, using green spaces such as local parks may be the next best  
423 thing, particularly in highly urbanised areas.

424 As we demonstrated the importance of park use over other types of mobility in reducing the  
425 exponential rise in cases, we then aimed to understand what green space parameters (area and  
426 patchiness of green space and access to gardens) influenced pre- and post-peak park use. We  
427 found that, overall, accessible green space marginally predicted an increase in pre-peak park use  
428 (Figure 5e), but not post-peak (Figure 5f). We also noted an interaction between use of parks and  
429 the amount and patchiness of the green space (Figure 5d). We found that if an area had high green  
430 space, but it was not patchy, then it was used less, but that in low green space areas patchiness  
431 had little effect. A possible explanation for this is that in less green areas overall, large areas of  
432 concentrated green space act as a stronger attractor for a certain kind of experience for members of  
433 the public. For example, a large park in a heavily urbanised area provides a walking experience that  
434 may not be readily substituted by walking through other local areas, whereas a walk in an overall  
435 greener area may be more comparable to that in a park. This is supported by evidence that  
436 suggests greater psychological benefits when walking in green parks as opposed to urban streets  
437 (Johansson, Hartig, & Staats, 2011), as well as evidence highlighting the combined health benefits  
438 of physical activity within green spaces (Pretty et al., 2007). Consequently, as would be predicted  
439 from basic considerations of scarcity, local green space provision seems to have more consistent  
440 value in areas where there is less green space, independent of its structure, however, overall,  
441 accessibility seems to be a driving factor of usage.

442 A major limitation of the work is the difficulty in comparing across local authorities that vary  
443 simultaneously in many different variables likely important to case rates. As mentioned previously,  
444 this makes inference about the importance of their individual effects very difficult, or simply not  
445 possible. Therefore, we reiterate that our results do not provide evidence that the demographic and  
446 social groups included are not more or less affected by COVID-19, and we suggest that any findings  
447 from studies directly addressing questions about these groups are given priority. Another challenge  
448 is that pandemics are rare events, consequently, our analysis covers only a snapshot of time for  
449 each local authority. During this period, many different factors not included in the analysis (e.g.  
450 chance super spreading events) may have explained much of the variation between local  
451 authorities. Despite this, the model fits are reasonably high, especially after incorporating the green  
452 transmission models. However, the modest beneficial effect of park use on COVID-19 transmission  
453 could be useful in the general attempt to develop guidance for which spaces to use during an  
454 exponential phase of transmission.

455 A further limitation in the work is the underlying quality of the COVID-19 case data. In the first wave  
456 of the pandemic, COVID-19 testing capacity was very limited and there were reports of testing  
457 demand exceeding capacity, where people showing COVID-19 symptoms were unable to receive a  
458 test (Wise, 2020). Furthermore, during this period, testing was primarily only available to  
459 symptomatic individuals (UK Government, 2020a), and so daily cases ignore the prevalence of  
460 asymptomatic individuals. This is important, as the prevalence of asymptomatic cases could be  
461 linked to the underlying health and demographics, skewing local authorities' daily case estimates.  
462 Whilst we tried to capture health and demographic features within our models, including these  
463 additional terms is not a true substitute for surveillance-based testing schemes. As a result, our  
464 daily case estimates, and the rates we derived, are subject to some unknown degree of error that  
465 cannot be captured, which may have impacted on the robustness of our results.

466 An additional limitation in our analyses is the absence of Google mobility data in the majority of local  
467 authorities. We handled these missing values by filling in local authorities with regional mobility  
468 estimates (where available), and attempted to ensure models were robust by comparing regional  
469 imputed models with complete-case models. Encouragingly, our complete-case and regional  
470 imputed results are similar, which suggests the regional imputation has not introduced any missing

471 data bias (Johnson et al., 2021). However, there is no guarantee that the complete-case or regional  
472 imputation models are sound, as both could be equally error-prone. Given this uncertainty, and the  
473 further limitations we have identified above, our mobility findings should be interpreted cautiously.

474 Understanding the risks of different amenity areas could be important for longer-term management  
475 of COVID-19 and the landscape-dependency of this advice could be important for developing 'local-  
476 lockdown' guidance. In particular, access to green spaces has been shown to have benefits for  
477 mental and physical well-being (Slater et al., 2020; Soga et al., 2020), and consequently,  
478 understanding the relative risks of using these areas is important. Our results show that spending  
479 time in parks, relative to other amenity areas may reduce COVID-19 case rates especially in  
480 urbanised, high-density areas. Although further research is needed, these findings suggest that the  
481 use of parks for recreational activity in these contexts could be advisable, demonstrating a possible  
482 additional utility of these green spaces in addition to the known benefits to health and wellbeing (de  
483 Vries, Verheij, Groenewegen, & Spreeuwenberg, 2003; Mitchell & Popham, 2007; Nutsford et al.,  
484 2013) in normal non-pandemic conditions.

#### 485 **Acknowledgments**

486 Thanks to the NERC Covid-19 hackathon for instigating this work. This work was partly funded by  
487 the following NERC (Natural Environment Research Council) Centre for Doctoral Training  
488 studentships: J71566E, P012345, and L002566.

#### 489 **Data accessibility**

490 Code and data to repeat analysis are presented in  
491 [https://github.com/GitTFJ/COVID19\\_parks\\_landscape](https://github.com/GitTFJ/COVID19_parks_landscape)

#### 492 **Author contributions**

493 All authors contributed to project design. Analysis was led by TFJ and LCE, but all authors  
494 contributed. TFJ and LCE co-wrote the first draft and co-authors contributed to revisions.

#### 495 **References**

496 Abedi, V., Olulana, O., Avula, V., Chaudhary, D., Khan, A., Shahjouei, S., ... Zand, R. (2020).  
497 Racial, Economic and Health Inequality and COVID-19 Infection in the United States.

- 498 *MedRxiv*: *The Preprint Server for Health Sciences*. doi:10.1101/2020.04.26.20079756
- 499 Atkins, J. L., Masoli, J. A. H., Delgado, J., Pilling, L. C., Kuo, C.-L., Kuchel, G. A., & Melzer, D.  
500 (2020). Preexisting Comorbidities Predicting COVID-19 and Mortality in the UK Biobank  
501 Community Cohort. *The Journals of Gerontology: Series A*. doi:10.1093/gerona/glaa183
- 502 Bahl, P., Doolan, C., de Silva, C., Chughtai, A. A., Bourouiba, L., & MacIntyre, C. R. (2020).  
503 Airborne or Droplet Precautions for Health Workers Treating Coronavirus Disease 2019? *The*  
504 *Journal of Infectious Diseases*. doi:10.1093/infdis/jiaa189
- 505 Beyer, K. M. M., Kaltenbach, A., Szabo, A., Bogar, S., Javier Nieto, F., & Malecki, K. M. (2014).  
506 Exposure to neighborhood green space and mental health: Evidence from the survey of the  
507 health of wisconsin. *International Journal of Environmental Research and Public Health*.  
508 doi:10.3390/ijerph110303453
- 509 Chinazzi, M., Davis, J. T., Ajelli, M., Gioannini, C., Litvinova, M., Merler, S., ... Vespignani, A.  
510 (2020). The effect of travel restrictions on the spread of the 2019 novel coronavirus (COVID-  
511 19) outbreak. *Science*. doi:10.1126/science.aba9757
- 512 Clark, A., Jit, M., Warren-Gash, C., Guthrie, B., Wang, H. H. X., Mercer, S. W., ... Jarvis, C. I.  
513 (2020). Global, regional, and national estimates of the population at increased risk of severe  
514 COVID-19 due to underlying health conditions in 2020: a modelling study. *The Lancet Global*  
515 *Health*. doi:10.1016/S2214-109X(20)30264-3
- 516 Cohen-Cline, H., Turkheimer, E., & Duncan, G. E. (2015). Access to green space, physical activity  
517 and mental health: A twin study. *Journal of Epidemiology and Community Health*.  
518 doi:10.1136/jech-2014-204667
- 519 Davies, N. G., Kucharski, A. J., Eggo, R. M., Gimma, A., Edmunds, W. J., Jombart, T., ... Liu, Y.  
520 (2020). Effects of non-pharmaceutical interventions on COVID-19 cases, deaths, and demand  
521 for hospital services in the UK: a modelling study. *The Lancet Public Health*.  
522 doi:10.1016/S2468-2667(20)30133-X
- 523 de Vries, S., Verheij, R. A., Groenewegen, P. P., & Spreeuwenberg, P. (2003). Natural  
524 environments - Healthy environments? An exploratory analysis of the relationship between

- 525 greenspace and health. *Environment and Planning A*. doi:10.1068/a35111
- 526 Dowd, J. B., Andriano, L., Brazel, D. M., Rotondi, V., Block, P., Ding, X., ... Mills, M. C. (2020).  
527 Demographic science aids in understanding the spread and fatality rates of COVID-19.  
528 *Proceedings of the National Academy of Sciences of the United States of America*.  
529 doi:10.1073/pnas.2004911117
- 530 Ekkel, E. D., & de Vries, S. (2017). Nearby green space and human health: Evaluating accessibility  
531 metrics. *Landscape and Urban Planning*. doi:10.1016/j.landurbplan.2016.06.008
- 532 Fahrig, L. (2013). Rethinking patch size and isolation effects: The habitat amount hypothesis.  
533 *Journal of Biogeography*. doi:10.1111/jbi.12130
- 534 Freckleton, R. P. (2002). On the misuse of residuals in ecology: Regression of residuals vs. multiple  
535 regression. *Journal of Animal Ecology*. doi:10.1046/j.1365-2656.2002.00618.x
- 536 Gatto, M., Bertuzzo, E., Mari, L., Miccoli, S., Carraro, L., Casagrandi, R., & Rinaldo, A. (2020).  
537 Spread and dynamics of the COVID-19 epidemic in Italy: Effects of emergency containment  
538 measures. *Proceedings of the National Academy of Sciences of the United States of America*.  
539 doi:10.1073/pnas.2004978117
- 540 Google. (2020). Google COVID-19 Community Mobility Reports.  
541 <https://www.google.com/covid19/mobility/> Accessed: <18 May 2020>.
- 542 Hamer, M., Kivimäki, M., Gale, C. R., & Batty, G. D. (2020). Lifestyle risk factors, inflammatory  
543 mechanisms, and COVID-19 hospitalization: A community-based cohort study of 387,109  
544 adults in UK. *Brain, Behavior, and Immunity*. doi:10.1016/j.bbi.2020.05.059
- 545 Johansson, M., Hartig, T., & Staats, H. (2011). Psychological benefits of walking: Moderation by  
546 company and outdoor environment. *Applied Psychology: Health and Well-Being*.  
547 doi:10.1111/j.1758-0854.2011.01051.x
- 548 Johnson, T. F., Isaac, N. J. B., Paviolo, A., & González-Suárez, M. (2021). Handling missing values  
549 in trait data. *Global Ecology and Biogeography*. doi:10.1111/geb.13185
- 550 Jordan, R. E., Adab, P., & Cheng, K. K. (2020). Covid-19: Risk factors for severe disease and

- 551 death. *The BMJ*. doi:10.1136/bmj.m1198
- 552 Kraemer, M. U. G., Golding, N., Bisanzio, D., Bhatt, S., Pigott, D. M., Ray, S. E., ... Reiner, R. C.  
553 (2019). Utilizing general human movement models to predict the spread of emerging infectious  
554 diseases in resource poor settings. *Scientific Reports*. doi:10.1038/s41598-019-41192-3
- 555 Kraemer, M. U. G., Yang, C. H., Gutierrez, B., Wu, C. H., Klein, B., Pigott, D. M., ... Scarpino, S. V.  
556 (2020). The effect of human mobility and control measures on the COVID-19 epidemic in  
557 China. *Science*. doi:10.1126/science.abb4218
- 558 Lau, H., Khosrawipour, V., Kocbach, P., Mikolajczyk, A., Schubert, J., Bania, J., & Khosrawipour, T.  
559 (2020). The positive impact of lockdown in Wuhan on containing the COVID-19 outbreak in  
560 China. *Journal of Travel Medicine*. doi:10.1093/jtm/taaa037
- 561 Ma, J., Dushoff, J., Bolker, B. M., & Earn, D. J. D. (2014). Estimating Initial Epidemic Growth Rates.  
562 *Bulletin of Mathematical Biology*. doi:10.1007/s11538-013-9918-2
- 563 Maas, J., Verheij, R. A., Groenewegen, P. P., De Vries, S., & Spreeuwenberg, P. (2006). Green  
564 space, urbanity, and health: How strong is the relation? *Journal of Epidemiology and  
565 Community Health*. doi:10.1136/jech.2005.043125
- 566 Mahase, E. (2020). China coronavirus: WHO declares international emergency as death toll  
567 exceeds 200. *BMJ (Clinical Research Ed.)*. doi:10.1136/bmj.m408
- 568 Mayer, M. (2020). MetricsWeighted.
- 569 Mccallum, H., & Dobson, A. (2002). Disease , habitat fragmentation and conservation. *Proceedings  
570 Biological Sciences*.
- 571 Ministry of Housing Communities & Local Government. (2019). English indices of deprivation 2019.  
572 Retrieved from <https://www.gov.uk/government/statistics/english-indices-of-deprivation-2019>
- 573 Mitchell, R., & Popham, F. (2007). Greenspace, urbanity and health: Relationships in England.  
574 *Journal of Epidemiology and Community Health*. doi:10.1136/jech.2006.053553
- 575 Nutsford, D., Pearson, A. L., & Kingham, S. (2013). An ecological study investigating the  
576 association between access to urban green space and mental health. *Public Health*.



- 577        doi:10.1016/j.puhe.2013.08.016
- 578        Office for National Statistics. (2019). Local authority ageing statistics, based on annual mid-year  
579        population estimates. Retrieved from [https://www.ons.gov.uk/datasets/ageing-population-](https://www.ons.gov.uk/datasets/ageing-population-estimates/editions/time-series/versions/3)  
580        estimates/editions/time-series/versions/3
- 581        Office for National Statistics. (2020). Access to gardens and public green space in Great Britain.  
582        Retrieved from  
583        [https://www.ons.gov.uk/economy/environmentalaccounts/datasets/accesstogardensandpublicg](https://www.ons.gov.uk/economy/environmentalaccounts/datasets/accesstogardensandpublicgreenspaceingreatbritain)  
584        reenspaceingreatbritain
- 585        Pretty, J., Peacock, J., Hine, R., Sellens, M., South, N., & Griffin, M. (2007). Green exercise in the  
586        UK countryside: Effects on health and psychological well-being, and implications for policy and  
587        planning. *Journal of Environmental Planning and Management*.  
588        doi:10.1080/09640560601156466
- 589        Richardson, S., Hirsch, J. S., Narasimhan, M., Crawford, J. M., McGinn, T., Davidson, K. W., ...  
590        Zanos, T. P. (2020). Presenting Characteristics, Comorbidities, and Outcomes among 5700  
591        Patients Hospitalized with COVID-19 in the New York City Area. *JAMA - Journal of the*  
592        *American Medical Association*. doi:10.1001/jama.2020.6775
- 593        Rowland, C. S., Morton, R. D., Carrasco, L., McShane, G., O'Neil, A. W., & Wood, C. . (2017). Land  
594        Cover Map 2015. *NERC Environmental Information Data Centre*.
- 595        Seo, S., Choi, S., Kim, K., Kim, S. M., & Park, S. M. (2019). Association between urban green space  
596        and the risk of cardiovascular disease: A longitudinal study in seven Korean metropolitan  
597        areas. *Environment International*. doi:10.1016/j.envint.2019.01.038
- 598        Shoari, N., Ezzati, M., Baumgartner, J., Malacarne, D., & Fecht, D. (2020). Accessibility and  
599        allocation of public parks and gardens in England and Wales: A COVID-19 social distancing  
600        perspective. *PLoS ONE*. doi:10.1371/journal.pone.0241102
- 601        Slater, S. J., Christiana, R. W., & Gustat, J. (2020). Recommendations for keeping parks and green  
602        space accessible for mental and physical health during COVID-19 and other pandemics.  
603        *Preventing Chronic Disease*. doi:10.5888/PCD17.200204

- 604 Soga, M., Evans, M. J., Tsuchiya, K., & Fukano, Y. (2020). A room with a green view: the  
605 importance of nearby nature for mental health during the COVID-19 pandemic. *Ecological*  
606 *Applications*. doi:10.1002/eap.2248
- 607 Taylor, L., & Hochuli, D. F. (2017). Defining greenspace: Multiple uses across multiple disciplines.  
608 *Landscape and Urban Planning*. doi:10.1016/j.landurbplan.2016.09.024
- 609 UK Government. (2018). Unemployment by ethnicity: Unemployment by local authority. Retrieved  
610 from [https://data.gov.uk/dataset/fe6c83aa-62aa-4a8c-94cc-225f47287225/unemployment-by-](https://data.gov.uk/dataset/fe6c83aa-62aa-4a8c-94cc-225f47287225/unemployment-by-ethnicity/datafile/eba34752-0512-4cbe-9941-c9e5745fa937/preview)  
611 [ethnicity/datafile/eba34752-0512-4cbe-9941-c9e5745fa937/preview](https://data.gov.uk/dataset/fe6c83aa-62aa-4a8c-94cc-225f47287225/unemployment-by-ethnicity/datafile/eba34752-0512-4cbe-9941-c9e5745fa937/preview)
- 612 UK Government. (2020a). COVID-19 testing data: methodology note.
- 613 UK Government. The Health Protection (Coronavirus, Restrictions) (England) (Amendment) (No. 4)  
614 Regulations 2020, legislation.gov.uk § (2020).
- 615 van den Berg, M., Wendel-Vos, W., van Poppel, M., Kemper, H., van Mechelen, W., & Maas, J.  
616 (2015). Health benefits of green spaces in the living environment: A systematic review of  
617 epidemiological studies. *Urban Forestry and Urban Greening*. doi:10.1016/j.ufug.2015.07.008
- 618 Venter, Z. S., Barton, D. N., Gundersen, V., Figari, H., & Nowell, M. (2020). Urban nature in a time  
619 of crisis: Recreational use of green space increases during the COVID-19 outbreak in Oslo,  
620 Norway. *Environmental Research Letters*. doi:10.1088/1748-9326/abb396
- 621 Williamson, E. J., Walker, A. J., Bhaskaran, K., Bacon, S., Bates, C., Morton, C. E., ... Goldacre, B.  
622 (2020). Factors associated with COVID-19-related death using OpenSAFELY. *Nature*.  
623 doi:10.1038/s41586-020-2521-4
- 624 Wise, J. (2020). Covid-19: What's going wrong with testing in the UK? *BMJ*, 370(8261).
- 625 Zhang, N., Huang, H., Su, B., Ma, X., & Li, Y. (2018). A human behavior integrated hierarchical  
626 model of airborne disease transmission in a large city. *Building and Environment*.  
627 doi:10.1016/j.buildenv.2017.11.011
- 628
- 629

