



23

## ABSTRACT

24 Molecular diagnosis of SARS-CoV-2 in developing countries is still a big challenge.  
25 The reference standard, RT-qPCR, recommended by WHO, is not widely available,  
26 difficulting early identification of cases. Furthermore, the transport logistic between  
27 the sample collection point and the laboratory facilities can alter the samples,  
28 producing false negative results. RT-LAMP is a cheaper, simpler molecular technique  
29 that can be an interesting alternative to be offered in hospital laboratories. We  
30 present the evaluation of a RT-LAMP for diagnosis of SARS-CoV-2 in two steps: the  
31 laboratory standardization and the clinical validation, comparing it with the standard  
32 RT-qPCR. In the standardization phase, limit of detection and robustness values  
33 were obtained using RNA from a Peruvian SARS-CoV-2 strain. It presented 100%  
34 agreement between triplicates (RT-LAMP agreement with all RT-qPCR reactions that  
35 presented  $Ct \leq 30$ ) and robustness (RT-LAMP successful reactions with 80%  
36 reaction volume and 50% primer concentration). 384 nasal and pharyngeal swabs  
37 collected from symptomatic patients and stored in the INS biobank were tested and  
38 we obtained 98.75%, 87.41%, 97.65% and 92.96% for specificity, sensitivity, positive  
39 predictive value and negative predictive values respectively. Then, 383 samples from  
40 symptomatic patients with less than 15 days of disease, were tested both with the  
41 RT-LAMP and with the RT-qPCR, obtaining e 98.8%, 88.1%, 97.7% y 93.3% of  
42 specificity, sensitivity, positive predictive value and negative predictive values  
43 respectively. The laboratory standardization and the clinical validation presented the  
44 same value by Kappa-Cohen index (0.88) indicating an almost perfect agreement  
45 between RT-LAMP and RT-qPCR for molecular detection of SARS-CoV-2. We  
46 conclude that this RT-LAMP protocol presented high diagnostic performance values  
47 and can be an effective alternative for COVID-19 molecular diagnosis in hospitals,

48 contributing to early diagnosis and reducing the spread of virus transmission in the  
49 Peruvian population.

50

51 **KEYWORDS:** COVID-19; molecular testing; RT-LAMP; healthcare unit.

## 52        **1. INTRODUCTION**

53            The World Health Organization (WHO) declared COVID-19 as a pandemic in  
54 the beginning of March. Since, the virus has been detected in every continent and  
55 produced more than 1 million deaths. Currently, some Latin America countries such  
56 as Brazil and Peru are considered pandemic epicenters [1], but many more low and  
57 middle –income countries are facing important health constraints.

58            Molecular tests require considerable financial and logistical investments, when  
59 compared to other diagnostic tools. The reference standard test suggested by WHO,  
60 the Real Time Reverse Transcription Polymerase Chain Reaction (RT-qPCR),  
61 requires molecular laboratory facilities, uses expensive equipment (thermocycler),  
62 reagents (probes) and specialized staff all of which are not always widely available in  
63 these countries. Results are available between 4 and 8 hours of processing [2, 3].

64            In Peru, at the beginning of the pandemic, RT-qPCR was only able to be  
65 performed in a standardized way in Lima (capital of the country) in the National  
66 Reference Laboratory of Respiratory Viruses of the Instituto Nacional de Salud (INS).  
67 Progressively, the diagnosis was extended to regional laboratories in a decentralized  
68 manner, but the demand for these tests, in practice, has not been fully met in some  
69 places. This situation has led to the concern of the local scientific community for the  
70 development of diagnostic alternatives.

71            On the other hand, the simple and low-cost reverse transcription loop-mediated  
72 isothermal amplification (RT-LAMP) method could be a good alternative for molecular  
73 diagnosis in places where there is no complete laboratory infrastructure, particularly  
74 in hospitals. It is an isothermal technique that uses from four to six primers, two/three  
75 forward and two/three reverse to identify DNA targets to allow its amplifications. RT-  
76 LAMP uses cheaper equipment, is fast (results generally available in almost 50

77 minutes, without considering sampling and RNA extraction time) and highly sensible  
78 [4]. There are several publications about this technique, showing good results when  
79 compared to the RT-qPCR method.

80 Our goal was to develop a RT-LAMP for molecular detection of SARS-CoV-2  
81 and to evaluate its diagnostic performance both through basic laboratory  
82 standardization as well as through assessment of diagnostic parameters in patients  
83 with clinical suspicion of COVID-19, comparing it with RT-qPCR as the reference  
84 standard.

85

## 86 **2. MATERIAL AND METHODS**

### 87 **2.1. ETHICAL CONSIDERATIONS**

88 The laboratory standardization did not need to be sent for evaluation by the  
89 Ethics Committee since it is included in the action plan of INS-Peru. Nonetheless, all  
90 samples were processed completely anonymously. The clinical validation protocol  
91 was submitted to the Ethics Committee of the INS-Peru and approved on August 6<sup>th</sup>,  
92 2020, under the procedure "Revisión de protocolos en el marco de epidemias, brotes  
93 o situaciones de emergencia" as indicates RD No. 283-2020-OGITT-INS.

94

### 95 **2.2. EXPERIMENTAL DESIGN**

96 The diagnostic performance values of RT-LAMP in comparison to RT-qPCR  
97 were obtained from qualitative and quantitative parameters used for laboratory  
98 standardization and clinical assessment. All experiments were conducted under the  
99 same conditions (samples, equipment, technicians and environment).

100

### 101 **2.3. SAMPLES AND EVALUATION PARAMETERS**

### 102        **2.3.1. LABORATORY STANDARDIZATION**

103            The limit of detection and the robustness (concordance degree of the results  
104 when we change primers concentration – 0.5P – and the final volume of reaction–  
105 0.8V, 0.6V, 0.5V and 0.4V) were performed using a SARS-CoV-2 Peruvian strain  
106 isolated and titred in Vero cell line. The cross-reaction analysis was performed *in*  
107 *silico* using multiple sequences alignment between external primers of RT-LAMP and  
108 reference sequences for all known human coronaviruses (HCoV) (NC\_005831.2,  
109 HCoV-NL63; NC\_002645.1, HCoV-229E; NC\_006213.1, HCoV-OC43 strain ATCC  
110 VR-759; NC\_006577.2, HCoV-HKU1; NC\_004718.3, Severe Acute Respiratory  
111 Syndrome-related Coronavirus Type 1; NC\_019843.3, Middle East Respiratory  
112 Syndrome-related Coronavirus; FJ415324.1, HCoV 4408) and SARS-CoV-2 strains  
113 from strains from China (NC\_045512.2) and Peru (all complete sequences made  
114 available on the GISAID) [5].

115            Specificity, sensitivity positive and negative predictive values were obtained  
116 through evaluation of 384 nasal and pharyngeal swabs collected from routine  
117 epidemiological screening. From these, 193 were submitted to a new RT-LAMP  
118 round by other laboratory technician and equipment to test the reproducibility. The  
119 sample size was calculated using the formula for difference between 2 proportions  
120 assuming a 90% power and a 95% confidence interval [6] from the total number of  
121 samples processed by RT-qPCR (almost 240,000 samples until July 2020).

122

### 123        **2.3.2. CLINICAL ASSESSMENT**

124            Specificity, sensitivity, positive and negative predictive values were  
125 obtained through evaluation of 383 COVID-19 suspected people up to 15 days after  
126 symptom onset, from Lima, Peru, assessed in Hospital Cayetano Heredia, Hospital

127 Hipolito Unanue and Hospital Arzobispo Loayza and patients that were treated by  
128 home care teams. The sample size was calculated using Epidat software version  
129 4.2, considering an estimate of 91.489% sensitivity and 99.531% specificity  
130 according to Jiang et al. [7]. People older than 18 years old without a previous  
131 diagnosis of COVID-19 by molecular test were included in the study after signature  
132 of informed consent. Pregnant women and severe or critical patients were excluded.  
133 The validation criteria considered 95% significance level, 5% absolute error and  
134 39.5% positivity probability (based in the positive results obtained by RT-qPCR  
135 reported by INS-Peru and assuming a loss rate of 20%). Nasal and pharyngeal  
136 swabs were performed on each subject, using the Yocon Biology Technology  
137 Company sampling kit, which includes viral transport media and flocked dacron  
138 swabs. The samples were transported to the INS-Peru using triple containers with  
139 cold accumulators, at temperatures between 2 to 8 ° C.

140

## 141 **2.4. MOLECULAR DETECTION OF SARS-CoV-2**

### 142 **2.4.1. RNA EXTRACTION**

143 The RNA extraction was performed using GenElute™ Total RNA  
144 Purification Kit (Sigma-Aldrich – Merck), according to manufacturers' instructions,  
145 then quantified by NanoDrop™ Spectrophotometer and frozen to -80°C until further  
146 processing.

147

### 148 **2.4.2. RT-qPCR REACTION**

149 The primers and probes used in the RT-qPCR reactions standardized by  
150 INS-PERU, is available in table 1. The RT-qPCR was performed using Rotor-Gene  
151 Multiplex RT-PCR Kit, according to the RT-qPCR standardized and implemented to

152 COVID-19 diagnosis at the INS-Peru, summarized in the tables 2 (reactions  
153 conditions) and 3 (amplification conditions).

154

155 **Table 1:** Target genes, oligonucleotides and probes used in the RT-qPCR reactions.  
156 The targets for amplification were RNA dependent RNA polymerase (*RdRp*) specific  
157 for SARS-CoV-2 and the Glyceraldehyde-3-Phosphate Dehydrogenase (*GAPDH*), a  
158 human constitutive gene. The sample quality, the RNA extraction and amplifications  
159 performances were evaluated in a single multiplex reaction using *GAPDH* as internal  
160 control.

TARGET	PRIMER / PROBE	SEQUENCE 5' → 3'
<b><i>RdRp</i></b>	RdRp_SARSr-F	GTGARATGGTCATGTGTGGCGG
	RdRp_SARSr-P2	FAM-CAGGTGGAACCTCATCAGGAGATGC-BBQ
	RdRp_SARSr-R	CARATGTTAAASACACTATTAGCATA
<b><i>GAPDH</i></b>	GAPDH-F	GTGAAGGTCGGAGTCAACGG
	GAPDH-P	ROX-CGCCTGGTCAACAGGGTCGC-BBQ
	GAPDH-R	TCAATGAAGGGGTCATTGATG

161

162 **Table 2:** Conditions of RT-qPCR multiplex reactions for SARS-CoV-2 and *GAPDH*  
163 using Capital™ RT-qPCR Probe Mix 4X (Biotechrabbit).

REAGENTS and CONCENTRATIONS	VOLUME (μL)
RdRp_SARSr-F (10 μM)	0.8
RdRp_SARSr-P2 (10 μM)	0.8
RdRp_SARSr-R (10 μM)	0.4
GAPDH-F (2.5 μM)	0.5
GAPDH-P (2.5 μM)	0.5
GAPDH-R (1.25 μM)	0.4
RTase with RNase inhibitor	1.0
qPCR PROBE MIX	5.0
Nuclease Free Water	5.6
<b>FINAL VOLUME</b>	<b>15.0</b>

164

165 **Table 3:** Conditions of RT-qPCR multiplex amplification for SARS-CoV-2 and  
166 *GAPDH* using Capital™ RT-qPCR Probe Mix 4X (Biotechrabbit).

STEPS	TEMPERATURE	TIME	NUMBER of CYCLES
<b>Reverse</b>	50°C	10 minutes	1



<b>Transcription</b>			
<b>Initial denaturation</b>	95 °C	3 minutes	1
<b>qPCR amplification</b>	95 °C	10 seconds	45
	58 °C	30 seconds	
	40 °C	30 seconds	

167

### 168 **2.4.3. RT-LAMP REACTION**

169 The RT-LAMP reactions were performed according to Lamb et al. (2020) [8] using  
 170 WarmStart Colorimetric LAMP 2X Master Mix, containing a pH indicator which allows  
 171 the colorimetric visualization. The robustness was tested from standard primers  
 172 concentration and final volume of reaction. The concentrations of reagents and the  
 173 reactions conditions were summarized in table 4.

174 **Table 4:** Conditions of RT-LAMP reactions to detect SARS-CoV-2, according to  
 175 Lamb et al. (2020). The primers' names were the same on the original publication.

<b>PRIMERS (100 µM)</b>	<b>Volume (µl)</b>	<b>REAGENTS</b>	<b>Volume (µL)</b>
<b>FIP</b>	16.0	<b>MIX-LAMP</b>	12.5
<b>BIP</b>	16.0	<b>MIX-Primers</b>	2.5
<b>F3</b>	2.0	<b>Water</b>	5.0
<b>B3</b>	2.0	<b>RNA</b>	5.0
<b>LOOP F</b>	4.0	<b>Final Volume</b>	25.0
<b>BUCLE B</b>	4.0	<b>THERMAL CONDITIONS</b>	
<b>Water</b>	56.0	45 minutes at 65°C	
<b>Final Volume</b>	100.0	5 minutes at 80°C	

176

### 177 **2.5. STATISTICAL ANALYSIS**

178 Data analysis was performed using the Stata v16.1 statistical package (Stata  
 179 Corporation, College Station, Texas, USA); point estimators and 95% confidence  
 180 intervals of the clinical-epidemiological characteristics of the people evaluated were  
 181 calculated. The values of the diagnostic performance measures of RT-LAMP in  
 182 comparison with RT-qPCR were calculated; considering: sensitivity, specificity,

183 positive and negative predictive value, positive and negative likelihood ratio, area  
184 under the ROC curve, Matthews Correlation Coefficient and F1-Score. The degree of  
185 concordance between the results of both tests was determined, as well as the  
186 agreement using Cohen's Kappa index. These analyzes were carried out for all  
187 evaluated cases, as well as in a stratified way according to week of illness. The  
188 relationship between time of symptoms and Ct values was established using  
189 Pearson's correlation coefficient.

190

### 191 3. RESULTS

#### 192 3.1. LABORATORY STANDARDIZATION

193 The limit of detection for SARS-CoV-2 by RT-LAMP was consistent only with  
194 those with Ct values < 30 in the RT-qPCR reactions (standard curve presented into  
195 figure 1, panel A, and RT-LAMP performance reaction, panel B) and RT-LAMP in  
196 table 5. This means that the RT-LAMP test was efficient to detect up to 1000  
197 copies/ $\mu$ L of the target gene. In the robustness experiments, high reactions  
198 performances were obtained with half of primers concentrations (0.5P) and with 20  
199  $\mu$ L of final volume (0.8V from final volume of standard reaction).

200

201 **Table 5:** Comparison of limit of detection between RT-qPCR and RT-LAMP reactions  
202 to detect SARS-CoV-2.

203

<b>SERIAL DILUTION</b>	$10^{-1}$	$10^{-2}$	$10^{-3}$	$10^{-4}$	$10^{-5}$	$10^{-6}$	$10^{-7}$
<b>CONCENTRATION (number of copies/<math>\mu</math>L)</b>	$10^7$	$10^6$	$10^5$	$10^4$	$10^3$	$10^2$	$10^1$
<b>Ct VALUES (RT-qPCR)</b>	13.59	16.70	20.37	25.04	29.17	35.12	-
<b>COLOR CHANGE (RT-LAMP)</b>	Yes	Yes	Yes	Yes	Yes	No	No

204

205 **Figure 1:** Standard curve of RT-qPCR (panel A) reactions and limit of detection by  
206 RT-LAMP (panel B) in two molecular methods to detect SARS-CoV-2.

207

208 The “cross-reaction analysis” performed *in silico* identified a very low-  
209 similarity degrees between the primers alignment and reference sequences of HCoV  
210 NL-63, HKU1, OC43, 229E, SARS-CoV-1, MERS and HCoV (figure 2: panel A  
211 refers to F3 primer alignment – forward; panel B refers to B3 primer alignment –  
212 reverse). These data, would indicate the absence of amplification of other HCoV, if  
213 they to be present in the sample. The yellow columns correspond to conserved  
214 regions. In addition, when these same primers were aligned with 194 Peruvian  
215 strains made available on GISAID initiative, there was none exclusion of conserved  
216 regions, exhibiting a high-similarity and specificity, which may be designated as  
217 absence of concomitant detection of other HCoV non-SARS-CoV-2.

218

219 **Figure 2:** Multiple sequence alignment between RT-LAMP external primers  
220 F3 and B3 (Lamb et al., 2020) and reference sequences of all known human  
221 coronaviruses and all SARS-CoV-2 Peruvian strains made available on GISAID  
222 initiative. The alignment was conducted in ClustalW using MEGA. The primers  
223 sequences (panel A – F3, panel B – B3) were aligned with all reference sequences of  
224 known HCoV (NC\_005831.2, HCoV-NL63; NC\_002645.1, HCoV-229E;  
225 NC\_006213.1, HCoV-OC43 strain ATCC VR-759; NC\_006577.2, HCoV-HKU1;  
226 NC\_004718.3, SARS-CoV-1; NC\_019843.3, MERS; FJ415324.1, HCoV-4408 and  
227 NC\_045512.2, SARS-CoV-2 isolate Wuhan-Hu-1) and all 194 SARS-CoV-2 Peruvian  
228 strains (panel C – F3, panel D – B3). The yellow columns, on the panels A and B,  
229 and asterisks, on the panels C and D, represent conserved regions into *nsp3* gene  
230 fragment between the all known HCoV and all SARS-CoV-2 Peruvian strains  
231 complete genome, respectively.

232

233

234 The positivity obtained for each method, RT-qPCR and RT-LAMP, is  
235 presented in table 6. The values of Cohen’s kappa index comparing the diagnostic  
236 performance between both methods indicated a nearly perfect agreement between  
237 them, with the best agreement on the onset of symptoms.

238 **Table 6:** Results obtained in the laboratory standardization for performance  
239 diagnostic comparison between RT-LAMP and RT-qPCR in the SARS-CoV-2  
240 molecular detection.

RT-LAMP	RT-qPCR		Kappa Index (IC 95%)
	Positive	Negative	
Positive	125 (TP*)	3 (FP <sup>†</sup> )	0.88
Negative	18 (FN <sup>††</sup> )	238 (TN <sup>**</sup> )	

241 TP\*: True positive; TN\*\*: True negative; FP<sup>†</sup>: False Positive; FN<sup>††</sup>: False Negative (According to Parik  
 242 et al., 2008) [9]  
 243

### 244 3.2. CLINICAL ASSESSMENT

245 The study population was composed by 51.7% (n = 198) women and 48.3%  
 246 (n = 185) men, being young adults the most frequent age group (n = 236, 61.6%).  
 247 The most common symptoms were cough (n = 268, 70.0%) and pharyngeal pain (n =  
 248 262, 68.4%). Regarding time of symptom onset, the average was 7.1 ± 3.3 days, and  
 249 56.3% belong to the first week after symptom onset patients (group 1) and 43.7%  
 250 belong to the second week after symptom onset patients (group 2). One case was  
 251 excluded due to memory bias.

252 We determined 37.3% positive samples by RT-qPCR and 33.7% by RT-  
 253 LAMP (table 6). Among the 143 positive results by RT-qPCR, only 20 clinical  
 254 samples had discordant results with RT-LAMP, 17 were false negatives and 3 were  
 255 false positives. In group 1, the Ct was between 31.00 and 36.46, with a median of  
 256 34.43 (IQR: 34.2, 35.56). In group 2, the Ct values were higher than 37. The true  
 257 positive data presented significant concordance (p <0.001) between both tests  
 258 (Kappa index: 88.6; 95% CI between 83.8 and 93.5); being in group 1, 70 of 76  
 259 positive cases (Kappa index: 91.8; 95% CI between 86.2 and 97.4), while in group 2,  
 260 56 of 67 cases (Kappa index: 84.7; 95% CI between 76.4 and 93.0)] (table 7).

261

262 **Table 6:** Clinical and epidemiological data related to the study population (gender,  
 263 age grouping, signs and symptoms, time of illness onset, positivity by RT-qPCR and  
 264 by RT-LAMP.

	n	%	95% CI
--	---	---	--------

<b>Gender</b>			
Male	185	48.3	43.2; 53.4
Female	198	51.7	46.6; 56.8
<b>Age Grouping</b>			
Young	62	16.2	12.6; 20.3
Young Adult	236	61.6	56.5; 66.5
Elderly	85	22.2	18.1; 26.7
<b>Signs and symptoms</b>			
Ageusia (loss or impairment of the sense of taste)	19	5.0	3.0; 7.6
Anosmia	37	9.7	6.9; 13.1
Headache	214	55.9	50.7; 60.9
Nasal congestion	127	33.2	28.5; 38.1
Diarrhea	80	20.9	16.9; 25.3
Dyspnea	90	23.5	19.3; 28.1
Joint pain	27	7.0	4.7; 10.1
Sore throat	262	68.4	63.5; 73.0
Muscle pain	113	29.5	25.0; 34.3
Chest pain	67	17.5	13.8; 21.7
Fever or chill	179	46.7	41.7; 51.9
Irritability or Confusion	2	0.5	0.1; 1.9
General discomfort	232	60.6	55.5; 65.5
Nausea or Vomiting	46	12.0	8.9; 15.7
Cough	268	70.0	65.1; 74.5
<b>Time of symptom Onset *</b>			
First week	215	56.3	51.1; 61.3
Second week	167	43.7	38.7; 48.9
<b>Positivity by RT-qPCR</b>			
Negative	240	62.7	57.6; 67.5
Positive	143	37.3	32.5; 42.4
<b>Positivity by RT-LAMP</b>			
Negative	254	66.3	61.3; 71.0
Positive	129	33.7	29.0; 38.7

265 \*Data obtained from 382 patients (one patient was excluded due memory bias).

266

267 **Table 7:** Results from clinical validation, comparing diagnostic performance between  
 268 RT-LAMP and RT-qPCR for SARS-CoV-2 molecular detection. This data was used to  
 269 calculate the sensitivity, specificity, predictive positive (PPV) and predictive negative  
 270 (PNV) values.

RT-LAMP	RT-qPCR		Kappa Index (IC 95%)	Concordance %	p-value
	Positive	Negative			
<b>Overall</b>					
Positive	126 (TP*)	3 (FP <sup>†</sup> )	0.88 (0.83; 0.93)	94.8	<0.001
Negative	17 (FN <sup>††</sup> )	237 (TN <sup>**</sup> )			

RT-LAMP	RT-qPCR		Kappa Index (IC 95%)	Concordance %	p-value
	Positive	Negative			
<b>First week of symptoms</b>					
Positive	70 (TP*)	2 (FP <sup>†</sup> )	0.91 (0.86; 0.97)	96.3	<0.001
Negative	6 (FN <sup>††</sup> )	137 (TN <sup>**</sup> )			
<b>Second week of symptoms</b>					
Positive	56 (TP*)	1 (FP <sup>†</sup> )	0.84 (0.76; 0.93)	92.8	<0.001
Negative	11 (FN <sup>††</sup> )	99 (TN <sup>**</sup> )			

271 TP\*: True positive; TN\*\*: True negative; FP<sup>†</sup>: False Positive; FN<sup>††</sup>: False Negative (According to Parik  
 272 et al., 2008) [9].  
 273

### 274 3.3. DIAGNOSTIC PERFORMANCE of RT-LAMP

275 The sensitivity was 88.1% (95% CI: 81.6; 92.9) and the specificity, 98.8%  
 276 (95% CI: 96.4; 99.7). These values presented variations when a stratified evaluation  
 277 was made by time of symptom onset; where the sensitivity reaches 92.1% in the first  
 278 week, while for the second it drops to 86.6%. However, the specificity showed  
 279 minimal variation, with 98.6% and 99.0% for the first and second week respectively  
 280 (table 8).

281 The positive predictive value was 97.7%, which showed an increase  
 282 according to the time of symptom onset, from 97.2%, in the first week, to 98.2%, for  
 283 the second. It was identified that the overall positive likelihood ratio of the test was  
 284 70.5, taking values of 64.0 and 83.6 in the first and second week respectively.  
 285 Meanwhile, the negative likelihood ratio was 0.12, with values of 0.08 in the first  
 286 week, and 0.17 for the second. The accuracy tends to show lower results as the time  
 287 of illness onset progresses.

288

**Table 8:** Laboratory and clinical performance of RT-LAMP using RT-qPCR as reference test.

PARAMETERS	LABORATORY STANDARDIZATION		CLINICAL ASSESSMENT					
			Overall		First week of symptoms		Second week of symptoms	
	%	95% CI	%	95% CI	%	95% CI	%	95% CI
<b>Sensitivity*</b>	87.4	80.8; 92.4	88.1	81.6; 92.9	92.1	83.6; 97.0	86.6	72.5; 91.5
<b>Specificity**</b>	98.8	96.4; 99.7	98.8	96.4; 99.7	98.6	94.9; 99.8	99.0	94.6; 100
<b>Positive Predictive Value†</b>	97.7	93.3; 99.5	97.7	93.4; 99.5	97.2	90.3; 99.7	98.2	90.6; 100
<b>Negative Predictive Value‡</b>	93.0	89.1; 95.8	93.3	89.5; 96.1	95.8	91.0; 98.4	90.0	82.8; 94.9
<b>Accuracy</b>	94.5	91.8; 96.6	94.8	92.1; 96.8	96.3	92.8; 98.4	92.8	87.8; 96.2
<b>Area Under curve</b>	93.1	90.3; 95.9	93.4	90.7; 96.2	95.3	92.1; 98.5	91.3	86.7; 95.9
<b>Matthews Correlation Coefficient</b>	88.4	----	88.9	----	91.8	----	85.4	----
<b>F1 Score</b>	92.3	----	92.6	----	94.6	----	90.3	----

289 \*Sensitivity [(TP)/(TP+FN)]; \*\*Specificity [(TN)/(TN+FP)]; †PPV [(TP)/(TP+FP)]; ‡NPV [(TN)/(TN+FN)] (According to Parik et al., 2008) [9].

290

291

292       **3.4. RELATIONSHIP BETWEEN Ct VALUES AND DINAMICS OF VIRAL**  
293                   **INFECTION**

294               The overall median Ct value was 29.4 (7.8), 27.6 (8.0) for the first week of  
295 symptom onset and 30.5 (7.3) for the second week. The overall median Ct values  
296 obtained by RT-qPCR from all positive samples by RT-LAMP was 28.4 (7.0), 27.4  
297 (7.4) in the first week, and 29.9 (6.7) in the second. A non-linear trend was found for  
298 higher Ct values as there was a longer time of symptom onset. A direct relation of  
299 32.6% was identified between the Ct values of the positive cases detected by RT-  
300 qPCR with the time of symptom onset ( $p = 0.001$ ). Meanwhile, for the positive cases  
301 according to RT-LAMP, the correlation between Ct values and time of symptom onset  
302 was 35.0% ( $p = 0.001$ ) (figure 3, table 9).

303

304       **Figure 3:** Distribution of Ct values obtained by RT-qPCR (reference test) using  
305 positivity data obtained in the both methods, RT-qPCR and RT-LAMP. The results  
306 indicated that the Ct values increase with the course of the disease, suggesting a  
307 decrease of viral load.



308 **Table 10.** Correlation between Ct values and time of illness onset.

	Overall		First week of symptoms		Second week of symptoms		Rho†	P-Value
	Positive	Median (RIQ)	Positive	Median (RIQ)	Positive	Median (RIQ)		
<b>RT-qPCR</b>	143	29.4 (7.8)	76	27.6 (8.0)	67	30.5 (7.3)	0.326	0.001
<b>RT-LAMP</b>	126	28.4 (6.9)	70	27.4 (7.4)	56	29.9 (6.7)	0.350	0.001

309 †Spearman's Correlation Coefficient.

#### 310 **4. DISCUSSION**

311 In Peru, the first measure adopted to contain the virus dissemination was the  
312 quarantine that endured between March 16<sup>th</sup> and June 30<sup>th</sup>. On this long and difficult  
313 time, many diagnostic strategies were implemented and until now, almost 300,000  
314 samples have been processed by RT-qPCR only in the COVID-19 Emergency  
315 Laboratory from Instituto Nacional de Salud [10]. Even though other molecular  
316 biology laboratories have been implemented in different regions of the country, this  
317 strategy have not been enough to contain the virus dissemination in our country.  
318 Peru is the sixth country of the world in total number of COVID-19 positive cases and  
319 the first in the mortality (96 deceased for every 100,000 inhabitants) [11].

320 On the other hand, the sample transport logistics between collection point  
321 and processing remains as a problem to overcome. In this sense, the molecular test  
322 available at the healthcare unit should be a good strategy to detect on time and  
323 control the SARS-CoV-2 transmissibility. To select the best diagnostic strategy, some  
324 challenges must be considered. Additionally, It is essential to have clarity about the  
325 purpose, regulatory approval, diagnostic accuracy under ideal conditions, data on the  
326 diagnostic accuracy in clinical practice and finally, the test's performance used in  
327 routine use publicly available [12]. So, the method chosen must no require complex  
328 equipment or specialized human resources, must be fast producing results in short  
329 time and must be comparable to RT-qPCR, the gold standard molecular method  
330 recommended by WHO. Considering all these points, the RT-LAMP can be a feasible  
331 alternative for all these requirements.

332 Considering the geographic and economic structure of Peru that implies  
333 directly in the logistic transport and epidemiological conditions of several infectious  
334 diseases, the Ministry of Health and INS have gradually produced and implemented

335 molecular diagnostic tests based on RT-LAMP method for cholera, febrile disease  
336 caused by arboviruses Zika, and Dengue. Since other researchers, during this  
337 pandemic, already described several RT-LAMP for SARS-CoV detection [7, 8, 13,  
338 14, 15, 16, 17, 18 and 19], the INS Peruvian researchers' team selected the protocol  
339 described Lamb et al (2020) to compare its performance diagnostic in comparison  
340 with RT-qPCR. This protocol is based in a fast-colorimetric reaction and can provide  
341 results in less than 60 minutes after RNA extraction.

342 We compared the diagnostic performance of this specific protocol in two  
343 steps of quality verification. The first step was performed as laboratory  
344 standardization and, the second one, as clinical validation. In these two phases, 767  
345 clinical samples were processed and the results indicated that this protocol have  
346 similar diagnostic performance when compared to RT-qPCR. The limit of detection of  
347 this method was 1,000 copies/ $\mu$ L (table 5 and figure 1), ten times lower than RT-  
348 qPCR standardized and implemented in the molecular diagnostic routine by INS.  
349 However, this difference should be associated to the target gene for the methods to  
350 be different and to be in different *ORFs*. The primers for RT-LAMP were designed to  
351 align in the *ORF1a* region, to detect a SARS-CoV-2 *nsp3* gene fragment and the  
352 primers for RT-qPCR, into the *ORF1b*, for in *RdRp* gene fragment. Considering the  
353 CoV replication, many subgenomic RNA are generated in different quantities and this  
354 particular characteristic should be considered in the molecular test using different  
355 target gene [20]. From these replication characteristics of Coronaviridae family, the  
356 WHO has suggested that the diagnosis should be conducted using primers for  
357 Nucleocapsid (*N*) gene or for *ORF1ab* genes. Even so, since the *ORF1ab* represents  
358 2/3 of all genome (reference sequence NC\_045512.2), it should be considered that  
359 the genes located on the 5' genome has less copy during replication cycle.

360 Therefore, the *nsp3* gene may have a lower amount of RNA during replication when  
361 compared to the amount of RNA for the *RdRp* gene, which would justify the lower  
362 sensitivity of the RT-LAMP test. To overcome these difficulties, we designed new set  
363 of primers for others genome regions, especially for *RdRp*, to properly compare the  
364 diagnostic performance considering the same genomic region.

365 We also showed by *in silico* analysis that the set of primers used for RT-  
366 LAMP was really specific to detect the SARS-CoV-2 Peruvian strains and did not  
367 present cross-reaction with others HCoV in molecular test (figure 2, panels A and B).  
368 We know that this point was a limitation of our study because this analysis should be  
369 done *in vitro* using clinical samples. Furthermore, the INS does not have positive  
370 clinical samples for other HCoV. Due to the need to quickly evaluate the performance  
371 of this diagnostic method and finally start transferring this technology to the points of  
372 attention, the alternative of verifying the occurrence of cross reaction measured by *in*  
373 *silico* analysis was the most appropriate and scientifically feasible at the moment.  
374 The perfect identity in the region of primers alignment F3 and B3 with all available  
375 SARS-CoV-2 Peruvian strains (figure 2, panels C and D) also indicated specific  
376 detection and almost none probability of false negative results due primers  
377 specificity.

378 The robustness evaluation of this RT-LAMP protocol considered variables as  
379 primers concentration and final volume of reaction. This strategy focused the fact of  
380 the reactions will be performed by people that does not present routine contact with  
381 molecular biology techniques. Since the reactions performance was not  
382 compromised using half of primers concentrations and eighty percent of final volume  
383 of reaction, technical errors that may be made during small volume pipetting.

384           The RT-LAMP presented a high sensitivity and specificity in the both steps of  
385 quality verification (87.4% and 98.7%, 88.1% and 98.8%, available in table 8  
386 obtained by results presented in tables 6 and 7 in the laboratory standardization and  
387 in the clinical validation, respectively). These results were similar to those reported by  
388 Hu et al. (2020) [21] (88.57% and 98.98%, respectively) and lower than described by  
389 Jiang et al. (2020) [8] (91.4% and 99.5%, respectively) and Kitagawa et al. (2020)  
390 [22] (100% and 97.6%, respectively). These differences could be associated to the Ct  
391 values used to establish positivity by RT-qPCR. Furthermore, only the positive  
392 samples that presented Ct values > 30 disagreed with those obtained by RT-LAMP.  
393 So, our results indicated 100% specificity and sensitivity because Ct > 30 exceeds  
394 the minimum number of copies that represents the limit of detection of this protocol.  
395 In addition, the Kappa index about 0.9 showed a virtually perfect agreement between  
396 these tests, indicating that this RT-LAMP protocol can be used as alternative method  
397 of COVID-19 molecular diagnosis at healthcare centers.

398           The area under the curve of the RT-LAMP test was 93.4% for the clinical  
399 assessment. We did not find any article that has reported this aspect for the RT-  
400 LAMP. However, as it is very close to 100%, it reflects that RT-LAMP can be useful  
401 enough to identify infected patients in the active transmission phase.

402           It was found that the RT-LAMP test, when giving a Positive Predictive Value  
403 97.7%, in a similar way to that reported by Jiang et al. (2020) [7], (PPV: 97.7%), and  
404 much higher than mentioned by Hu et al. (2020) [21] (PPV: 91.18%), the latter  
405 evaluated 329 nasal and pharyngeal swabs from a cohort of 129 COVID-19 suspects  
406 and serial upper respiratory tract samples from asymptomatic carriers, unlike our  
407 study in which only samples of symptomatic cases. Similarly, when giving a negative  
408 result, the RT-LAMP succeeded in 93.3% of the cases in identifying a person without

409 SARS-CoV-2 infection, which although it is somewhat lower than that reported by  
410 Jiang et al. (2020) [7], who found a Negative Predictive Value (NPV) of 98.1%. This  
411 difference also could be associated to prevalence obtained in each study.

412 The degree of agreement or concordance in the identification of SARS-CoV-  
413 2 between RT-qPCR and RT-LAMP at clinical assessment was 94.8%, which  
414 indicated that there was a great concordance degree between the tests, similar to  
415 that found in other studies such as the one by Lu et al. (2020) [16], and Kitagawa et  
416 al. (2020) [22], where it was always greater than 90%. In contrast, we found 20  
417 discordant results between RT-LAMP and RT-qPCR in the clinical assessment, 17  
418 false negatives and 3 false positive; Jiang et al. (2020) [7] also found 5 discordant  
419 results, 4 false negatives and 1 false positive. Kitagawa et al. (2020) [22] reported  
420 only 2 discordant, which were false positives. Hu et al. (2020) [21] also identified 4  
421 discordant samples, theoretically false positives; however, these were confirmed as  
422 SARS-CoV-2 positive through a genetic sequencing test.

423 When evaluating the performance of the RT-LAMP by time of symptom  
424 onset, we found that the sensitivity and the Negative Predictive Value were higher in  
425 the first week, and although the Positive Predictive Value and the specificity showed  
426 an increase towards the second week, although this increase was not significant. We  
427 did not find any article that evaluates the performance of RT-LAMP by time of  
428 symptom onset, but RT-qPCR shows greater performance in the first week of  
429 symptoms; these findings could be verified with the area under the curve, which from  
430 being 95.3% in first week it is reduced to 91.3% at second week of the days onset of  
431 symptoms.

432 Within the clinical limitations, it should be mentioned that the RT-LAMP test  
433 was only evaluated in symptomatic cases. However, the purpose of this study was to

434 evaluate a simple, sensitive, specific and robust, low-cost diagnostic method to be  
435 implemented in healthcare units.

436 Finally, our data allow us to conclude that the RT-LAMP protocol  
437 implemented by INS should be the convenient alternative for SARS-CoV-2 detection  
438 directly at the healthcare centers in this moment. This strategy can provide  
439 appropriate prevention and control measures in all provinces and for decreasing the  
440 number of severe and non-severe cases of COVID-19.

441

## 442 **5. ACKNOWLEDGMENTS**

443 We thank Pan American Health Organization (PAHO) for providing us the  
444 reagents and to establish collaboration to conduct the experiment validations. Our  
445 recognition to all the workers of Laboratorio de Microbiología y Biomedicina of INS  
446 and all people from others institutions involved in obtaining, handling and processing  
447 the samples, in special to Jairo Mendez (PAHO), Rapid Response Team (CDC/INS),  
448 Lely Solari, Faviola Valdivia, Helen Horna, Gabriel de Lucio, Yanina Zarate, Iris  
449 Pompa, Isidro Antipupa, , Jhon Mayo, Carina Mantari, Kathia Tarqui, Romeo Pomari,  
450 Eduardo Juscamayta, Paquita García, Miryam Palomino, Pamela Rios, Priscila Lope,  
451 Johana Balbuena, Victor Jiménez, Yolanda Angulo, Yuli Barrios, Paul Pachas,  
452 Noemi Flores, and Ana Zeppilli.

453

## 454 **6. CONFLICT OF INTEREST**

455 The authors declare none conflict of interest.

456

457

458

459        **7. REFERENCES**

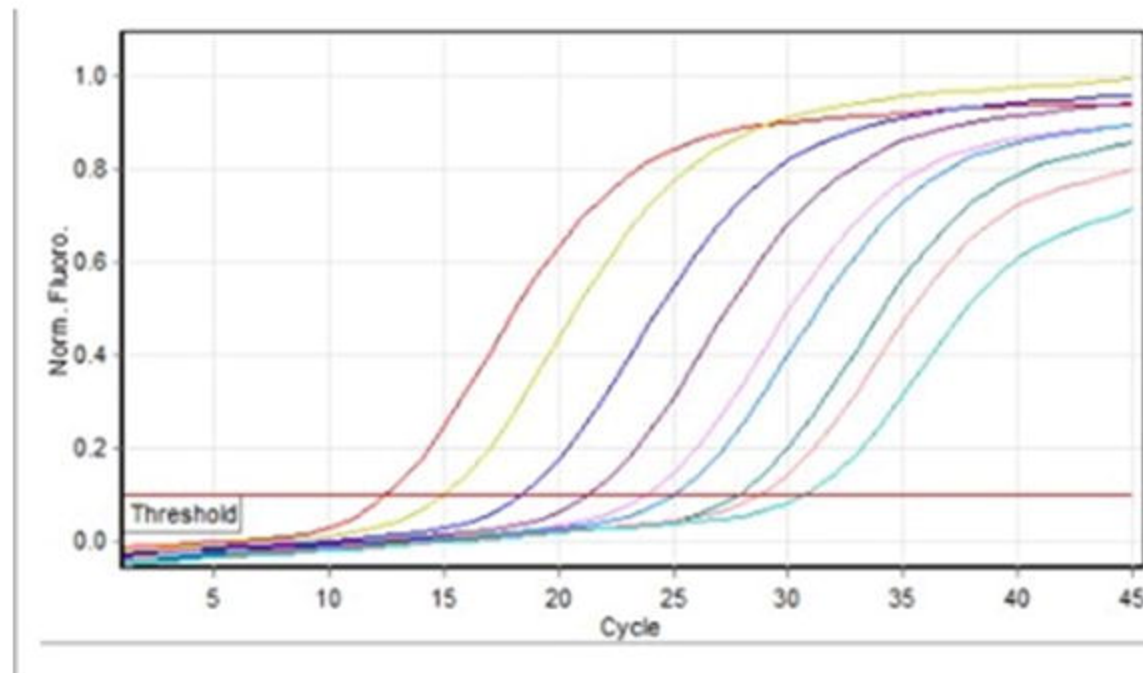
- 460        1. who.int [Internet]. Coronavirus disease (COVID-19) pandemic. [cited 2020 Sep  
461        24]. Available from: [https://www.who.int/emergencies/diseases/novel-coronavirus-](https://www.who.int/emergencies/diseases/novel-coronavirus-2019)  
462        [2019](https://www.who.int/emergencies/diseases/novel-coronavirus-2019).
- 463        2. Wölfel R, Corman VM, Guggemos W, Seilmaier M, Zange S, Müller MA, et al.  
464        Virological assessment of hospitalized patients with COVID-2019. *Nature*. 2020;  
465        581(7809):465-9. <https://doi.org/10.1038/s41586-020-2196-x>.
- 466        3. Deeks JJ, Dinnes J, Takwoingi Y, Davenport C, Spijker R, Taylor-Phillips S, et al.  
467        Antibody tests for identification of current and past infection with SARS-CoV-2.  
468        *Cochrane Database of Systematic Reviews* 2020.  
469        <https://doi.org/10.1002/14651858.CD013652>.
- 470        4. Notomi T, Okayama H, Masubuchi H, Yonekawa T, Watanabe K et al. Loop-  
471        mediated isothermal amplification of DNA. *Nucleic Acids Res*. 2000. Jun  
472        15;28(12):E63. <https://doi.org/10.1093/nar/28.12.e63>. pmid: 10871386; pmcid:  
473        PMC102748.
- 474        5. gisaid.org [Internet]. Genomic epidemiology of hCoV-19. [cited 2020 Sep 24].  
475        Available from: <https://www.gisaid.org/>.
- 476        6. Cochran WG. *Técnicas de muestreo*, CECSA, México, 1985.
- 477        7. Jiang M, Pan W, Arasthfer A, Fang W, Ling L et al. Development and Validation of  
478        a Rapid, Single-Step Reverse Transcriptase Loop-Mediated Isothermal Amplification  
479        (RT-LAMP) System Potentially to Be Used for Reliable and High-Throughput  
480        Screening of COVID-19. *Front Cell Infect Microbiol* 2020. 10:331.  
481        <https://doi.org/10.3389/fcimb.2020.00331>.
- 482        8. Lamb LE, Bartolone SN, Ward E, Chancellor MB. Rapid Detection of Novel  
483        Coronavirus (COVID-19) by Reverse Transcription-Loop-Mediated Isothermal



- 484 Amplification. PLoS One. 2020 Jun 12; 15(6):e0234682.  
485 <https://doi.org/10.1371/journal.pone.0234682>. eCollection 2020.pmid: 32530929.
- 486 9. Parikh R, Mathai A, Parikh S, Chandra Sekhar G, Thomas R. Understanding and  
487 using sensitivity, specificity and predictive values. Indian J Ophthalmol. 2008. Jan-  
488 Feb; 56(1):45-50. <https://doi.org/10.4103/0301-4738.37595>. pmid: 18158403; pmcid:  
489 PMC2636062.
- 490 10. covid19.minsa.gob.pe. [Internet]. Sala Situacional COVID-19 Perú. [cited 2020  
491 Sep 24]. Available from: <https://covid19.minsa.gob.pe/>.
- 492 11. coronavirus.jhu.edu/map.html. [Internet]. Coronavirus Resource Center. [cited  
493 2020 Sep 24]. <https://coronavirus.jhu.edu/map.html>.
- 494 12. who.int. [Internet]. Kosack CS, Page AL, Klatser PR. A guide to aid the  
495 selection of diagnostic tests. 2017. [cited 2020 Sep 24]. Available from:  
496 <https://www.who.int/bulletin/volumes/95/9/16-187468/en/>.
- 497 13. Ben-Assa N, Naddaf R, Gefen T, Capucha T, Hajjo H, et al. Direct on-the-spot  
498 detection of SARS-CoV-2 in patients. Exp Biol Med (Maywood). 2020. Jul  
499 16:1535370220941819. <https://doi.org/10.1177/1535370220941819>. Epub ahead of  
500 print. pmid: 32668983; pmcid: PMC7385438.
- 501 14. Huang WE, Lim B, Hsu C-C, Xiong D, Wu W, et al. RT-LAMP for rapid  
502 diagnosis of coronavirus SARS-CoV-2. Microb Biotechnol. 2020.  
503 <https://doi.org/10.1111/1751-7915.13586>.
- 504 15. Kashira J, Yaqinuddina A. Loop mediated isothermal amplification (LAMP)  
505 assays as a rapid diagnostic for COVID-19. Medical Hypotheses, 2020, Volume 141,  
506 August, 109786. <https://doi.org/10.1016/j.mehy.2020.109786>.

- 507 16. Lu R, Wu X, Wan Z, Li Y, Jin X, Zhang C. A Novel Reverse Transcription  
508 Loop-Mediated Isothermal Amplification Method for Rapid Detection of SARS-CoV-2.  
509 Int. J. Mol. Sci. 2020, 21(8), 2826; <https://doi.org/10.3390/ijms21082826>.
- 510 17. Osterdahl MF, Lee KA, Lochlainn MN, Wilson S, Douthwaite S, et al. Detecting  
511 SARS-CoV-2 at Point of Care: Preliminary Data Comparing Loop-Mediated  
512 Isothermal Amplification (LAMP) to PCR. Available at SSRN:  
513 <https://ssrn.com/abstract=3564906> or <http://dx.doi.org/10.2139/ssrn.3564906>.
- 514 18. Yan C, Cui J, Huang L, Du B, Chen L, Xue G, Li S, Zhang W, Zhao L, Sun Y,  
515 Yao H, Li N, Zhao H, Feng Y, Liu S, et al. Rapid and visual detection of 2019 novel  
516 coronavirus (SARS-CoV-2) by a reverse transcription loop-mediated isothermal  
517 amplification assay. Clin Microbiol Infect. 2020. Jun;26(6):773-779.  
518 <https://doi.org/10.1016/j.cmi.2020.04.001>. Epub 2020 Apr 8. pmid: 32276116; pmcid:  
519 PMC7144850.
- 520 19. Yu L, Wu S, Hao X, Dong X, Mao L, et al. Rapid Detection of COVID-19  
521 Coronavirus Using a Reverse Transcriptional Loop-Mediated Isothermal Amplification  
522 (RT-LAMP) Diagnostic Platform. Clin Chem. 2020. Jul 1; 66(7):975-977.  
523 <https://doi.org/10.1093/clinchem/hvaa102>. pmid: 32315390; pmcid: PMC7188121.
- 524 20. Case JB, Bailey AL, Kim AS, Chen RE, Diamond MS. Growth, detection,  
525 quantification, and inactivation of SARS-CoV-2. Virology 2020.  
526 <https://doi.org/10.1016/j.virol.2020.05.015>.
- 527 21. Hu X, Deng Q, Li J, Chen J, Wang Z, Zhang X, et al. Development and Clinical  
528 Application of a Rapid and Sensitive Loop-Mediated Isothermal Amplification Test for  
529 SARS-CoV-2 Infection. Spiropoulou CF, editor. mSphere. 2020; 5(4):e00808-20,  
530 /msphere/5/4/mSphere808-20.atom. <https://doi.org/10.1128/mSphere.00808-20>.

- 531 22. Kitagawa Y, Orihara Y, Kawamura R, Imai K, Sakai J, Tarumoto N, et al.  
532 Evaluation of rapid diagnosis of novel coronavirus disease (COVID-19) using loop-  
533 mediated isothermal amplification. Journal of Clinical Virology. 2020; 129:104446.  
534 <https://doi.org/10.1016/j.jcv.2020.104446>.

**A****B**

10-1	10-2	10-3	10-4	10-5	10-6	PC	NC
YELLOW	YELLOW	YELLOW	YELLOW	YELLOW	RED	YELLOW	RED
CT < 30					CT > 30		

A

MX: Sequence Data Explorer (Alineamiento\_2600-8800+PrimerF3.meg)

Data Display Search Groups Highlight Statistics Help

MS Excel Print TA LIND Phis C V Pi S O 2 4 ★

**F3**

Name		T	-	-	-	C	C	A	G	A	T	G	A	G	G	A	T	G	A	A	G	A	A	G	A	-	-	-	-							
1. Primer F3		-	-	-	-	.	.	.	.	.	.	.	.	.	.	.	.	.	.	.	.	.	.	.	.	.	.	.	.	.						
2. NC 045512.2 Severe acute respiratory syndrome coronavirus 2 isolate Wuhan-Hu-1 complete genome	C	C	C	.	.	.	.	.	.	.	.	.	.	.	.	.	.	.	.	.	.	.	.	.	.	.	.	.	.	A	G	G	T	C		
3. NC 004718.3 SARS coronavirus Tor2 complete genome	C	C	C	.	.	.	.	.	.	.	.	.	.	.	.	.	.	.	.	.	.	.	.	.	.	.	.	.	.	.	.	.	.	.	.	.
4. NC 019843.3 Middle East respiratory syndrome coronavirus complete genome	C	T	T	G	.	.	.	.	.	T	T	C	T	.	C	T	A	.	T	C	T	T	.	.	.	.	.	.	C	.	.	.	.	.	.	
5. FJ415324.1 Human enteric coronavirus 4408 complete genome	A	G	G	.	.	.	.	.	.	G	T	.	.	G	.	.	C	T	A	.	A	.	T	T	A	G	T	.	C	C	.	.	.	.	.	.
6. NC 006213.1 Human coronavirus OC43 strain ATCC VR-759 complete genome	A	G	G	.	.	.	.	.	.	G	T	.	.	G	.	.	C	T	A	.	A	.	T	T	A	G	T	.	C	C	.	.	.	.	.	.
7. NC 005831.2 Human Coronavirus NL63 complete genome	T	G	T	.	G	A	A	.	.	T	A	C	C	.	T	A	.	A	.	T	C	A	.	G	C	T	C	A	T	A	T	.	.	.	.	.
8. NC 006577.2 Human coronavirus HKU1 complete genome	A	G	A	.	.	.	.	.	.	G	T	T	.	T	.	A	C	T	.	G	.	.	.	C	A	.	T	.	.	C	G	A	T	C	.	.
9. NC 002645.1 Human coronavirus 229E complete genome	C	A	T	.	G	A	A	.	.	T	.	T	.	T	.	C	A	G	A	.	T	C	A	.	G	C	T	T	T	G	C	.	.	.	.	.

**B**

MX: Sequence Data Explorer (Alineamiento\_2600-8800+PrimerB3RC.meg)

Data Display Search Groups Highlight Statistics Help

MEGA X X TA UNO Plus C V P I S 0 2 4 \* Q Q NAME MOTIF

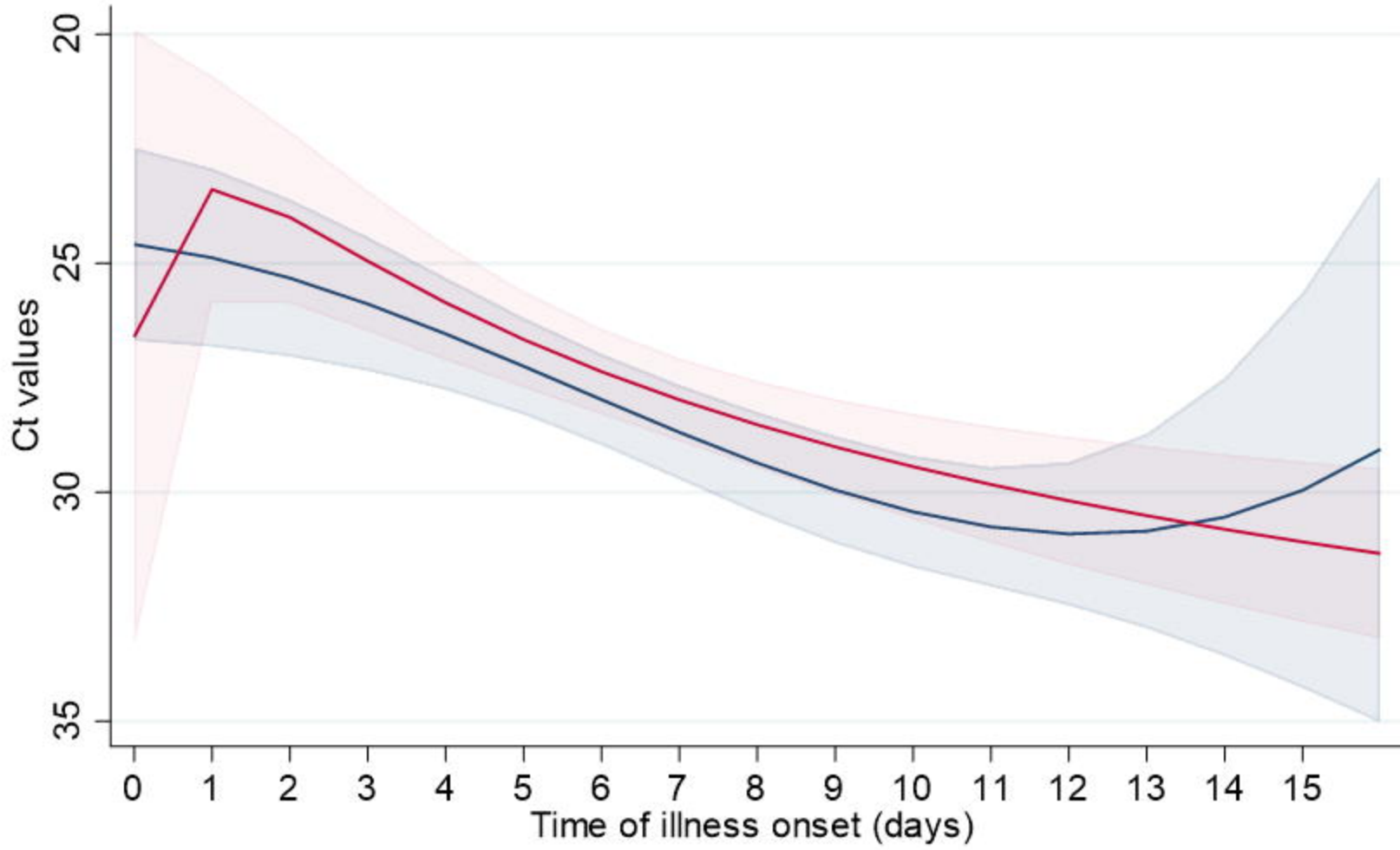
**B3**

Name	Sequence
1. Primers B3 RC	- - - - - C T T A C A C C A G T T G T T C A G A C T - - - - -
2. NC 045512.2 Severe acute respiratory syndrome coronavirus 2 isolate Wuhan-Hu-1 complete genome	- - - - - . . . . .
3. NC 004718.3 SARS coronavirus Tor2 complete genome	A G A G A T G G A A . . . . . A T T G A
4. NC 019843.3 Middle East respiratory syndrome coronavirus complete genome	A G A A C C A G A A . C . . . . T . A A . - - - - A . . C A - - - -
5. FJ415324.1 Human enteric coronavirus 4408 complete genome	A T T G A C G C A C . A . G . T A T T . C . T . A A C . C T G A - - - -
6. NC 006213.1 Human coronavirus OC43 strain ATCC VR-759 complete genome	S A - - A C A G - - - - G . G G A G T C . . C . G A . A T . . T A G A G
7. NC 005831.2 Human Coronavirus NL63 complete genome	S A - - A C A G - - - - G . G G A G T C . . C . G A . . T . . T A G A G
8. NC 006577.2 Human coronavirus HKU1 complete genome	T T T G A A G A A G . . G A . . A T . . G C . C T C A . T . A - - - -
9. NC 002645.1 Human coronavirus 229E complete genome	S A C A A T A A C G A . G . A G A G . T . G T . A . T . G T G A C A A T
	S A C A G T G G A T G . . . A . . A T . - - - - - - - - A T G . G - - - -









95% CI      Ct RT-PCR  
95% CI      Ct RT-LAMP