

1 **COVID-19 susceptibility and severity risks in a survey**

2 **of over 500,000 individuals**

3 Spencer C. Knight*¹, Shannon R. McCurdy*¹, Brooke Rhead*¹, Marie V. Coignet¹, Danny S.
4 Park¹, Genevieve H.L. Roberts², Nathan D. Berkowitz¹, Miao Zhang¹, David Turissini¹, Karen
5 Delgado², Milos Pavlovic², AncestryDNA Science Team², Asher K. Haug Baltzell², Harendra
6 Guturu¹, Kristin A. Rand¹, Ahna R. Girshick¹, Eurie L. Hong¹, Catherine A. Ball¹
7

8 *These authors contributed equally to this work.

9 1. AncestryDNA, 153 Townsend St, Suite 800, San Francisco, CA, 94107

10 2. AncestryDNA, 1300 West Traverse Parkway, Lehi, UT 84043
11

12 **Corresponding Author:** Kristin A. Rand, AncestryDNA, 153 Townsend St, Suite 800, San
13 Francisco, CA 94107, United States of America (e-mail: kristinmuench@gmail.com)
14

15 **Word Count:** 3,200

16
17 **Keywords:** COVID-19, Modeling, Genetic Epidemiology, Statistics
18

19 **Abbreviations:** aOR (adjusted odds ratio), AUC (area under the curve), BMI (body mass index),
20 CI (confidence interval), CDC (U.S. Centers for Disease Control), CKD (chronic kidney disease),
21 COPD (chronic obstructive pulmonary disease), EGA (European Genome-phenome Archive),
22 GWAS (genome-wide association studies), HWF (“How We Feel” study), ICU (intensive care
23 unit), LR (logistic regression), OR (odds ratio), ROC (receiver operating characteristic)
24

25 **ABSTRACT**

26 **Background**

27 The enormous toll of the COVID-19 pandemic has heightened the urgency of collecting and
28 analyzing population-scale datasets in real time to monitor and better understand the evolving
29 pandemic.

30 **Methods**

31 The AncestryDNA COVID-19 Study collected self-reported survey data on symptoms, outcomes,
32 risk factors, and exposures for over 563,000 adult individuals in the U.S. in just under four months,
33 including over 4,700 COVID-19 cases as measured by a self-reported positive test.

34 **Results**

35 We replicated previously reported associations between several risk factors and COVID-19
36 susceptibility and severity outcomes, and additionally found that differences in known exposures
37 accounted for many of the susceptibility associations. A notable exception was elevated
38 susceptibility for males even after adjusting for known exposures and age (adjusted odds ratio
39 [aOR]=1.36, 95% confidence interval [CI] = (1.19, 1.55)). We also demonstrated that self-reported
40 data can be used to build accurate risk models to predict individualized COVID-19 susceptibility
41 (area under the curve [AUC]=0.84) and severity outcomes including hospitalization and critical
42 illness (AUC=0.87 and 0.90, respectively). The risk models achieved robust discriminative
43 performance across different age, sex, and genetic ancestry groups within the study.

44 **Conclusion**

45 The results highlight the value of self-reported epidemiological data to rapidly provide public
46 health insights into the evolving COVID-19 pandemic.

47

48 **THUMBNAIL**

49 **What is already known on this subject**

- 50 • The COVID-19 pandemic has exacted a historic toll on human lives, healthcare systems
51 and global economies, with over 83 million cases and over 1.8 million deaths worldwide
52 as of January 2021.
- 53 • COVID-19 risk factors for susceptibility and severity have been extensively investigated
54 by clinical and public health researchers.
- 55 • Several groups have developed risk models to predict COVID-19 illness outcomes based
56 on known risk factors.

57

58 **What this study adds**

- 59 • We performed association analyses for COVID-19 susceptibility and severity in a large,
60 at-home survey and replicated much of the previous clinical literature.
- 61 • Associations were further adjusted for known COVID-19 exposures, and we observed
62 elevated positive test odds for males even after adjustment for these known exposures.
- 63 • We developed risk models and evaluated them across different age, sex, and genetic
64 ancestry cohorts, and showed robust performance across all cohorts in a holdout dataset.
- 65 • Our results establish large-scale, self-reported surveys as a potential framework for
66 investigating and monitoring rapidly evolving pandemics.

67

68

69

70 INTRODUCTION

71 The COVID-19 pandemic has resulted in over 83 million COVID-19 cases and over 1.8 million
72 deaths worldwide [1], including nearly 21 million cases and more than 350,000 deaths in the
73 United States as of early January 2021 [2]. The growing impact of the pandemic intensifies the
74 need for real-time understanding of COVID-19 susceptibility and severity risk factors, not only
75 for public health experts, but also for individuals seeking to assess their own personalized risk.
76 Prior research has indicated that differences in COVID-19 *susceptibility* are related to age [3], sex-
77 dependent immune responses [4], and genetics [5,6], while heightened *severity* of COVID-19
78 illness is associated with risk factors such as age [3,7–9], sex [4,10–12], genetic factors [13], and
79 underlying health conditions [7,9,10,14,15]. Self-reported survey data, which can easily be
80 collected in the home, afford the opportunity to dynamically monitor the continually evolving
81 pandemic and allow for real-time estimation of individual-level COVID-19 risk [16–19].
82 Furthermore, self-reported surveys allow for collection of information about known exposures, of
83 which few epidemiological COVID-19 studies have explicitly accounted for in association
84 analyses to date [20].

85
86 In this paper, we aimed to replicate previous literature and to provide new insight into factors
87 associated with susceptibility and severity of COVID-19 using a large survey cohort of 563,141
88 AncestryDNA customers who have consented to participate in the AncestryDNA COVID-19
89 Study [5]. We performed association tests of known or suspected COVID-19 risk factors with one
90 susceptibility and two severity phenotypes and report unadjusted ORs and ORs adjusted for
91 potential confounding factors. We additionally investigated associations of COVID-19 symptoms
92 with susceptibility and severity.

93

94 We further demonstrate that this type of self-reported dataset can be used to build accurate
95 predictive risk models for COVID-19 susceptibility and severity outcomes. For susceptibility, we
96 designed two models and additionally applied two literature-based models [18] to predict COVID-
97 19 cases among respondents reporting a test result. We also designed models to predict two
98 different COVID-19 severity outcomes based on minimal information about demographics, health
99 conditions, and symptoms: hospitalization due to COVID-19 infection and progression of an
100 infection to a life-threatening critical case among those reporting a positive COVID-19 result [14].
101 To evaluate the potential for generalizability, we assessed performance of all of the risk models
102 across different age, sex and genetic ancestry cohorts.

103

104 **METHODS**

105 **Ethics approval**

106 All data for this research project were from subjects who have provided informed consent to
107 participate in AncestryDNA's Human Diversity Project, as reviewed and approved by our external
108 institutional review board, Advarra (formerly Quorum, IRB approval number: Pro00034516).
109 Advarra operates under ethical principles underlying the involvement of human subjects in
110 research, including the Declaration of Helsinki. All data were de-identified prior to use.

111

112 **Survey description**

113 Survey responses were collected from AncestryDNA customers consented to research in the U.S.
114 between April 22 and July 6, 2020. The survey consisted of 50+ questions about COVID-19 test
115 results, 15 symptoms among those who tested positive or who tested negative and had flu-like
116 symptoms, disease progression for positive testers, age, height, weight, known exposures to
117 biological relatives, household members, patients or any other contacts with COVID-19, and 11
118 underlying health conditions (Supplementary Tables 1 and 2). Collection of self-reported COVID-
119 19 outcomes from U.S. AncestryDNA customers who consented to research for the study, and the
120 survey design are described in more detail in a genome-wide association study (GWAS) on a very
121 similar AncestryDNA dataset [5]. Here, participants reporting a negative test result were also
122 assessed for symptoms and clinical outcomes.

123

124 **Outcome definitions**

125 The study assessed three outcomes: one for susceptibility and two for severity of COVID-19
126 infection. Cases for COVID-19 susceptibility were individuals who responded, “Yes, and was
127 positive” to the question, “Have you been swab tested for COVID-19, commonly referred to as
128 coronavirus?” Responders who answered, “Yes, and was negative” were used as controls for the
129 susceptibility analysis.

130 The hospitalization outcome was defined among COVID-19-positive cases if a participant
131 responded "Yes" to a binary question about experiencing symptoms due to COVID-19 illness and
132 "Yes" to the hospitalization question ("Were you hospitalized due to these symptoms?"). Controls
133 were defined by a response of “No” to the symptoms question or a response of “No” to the
134 hospitalization question in addition to reporting a self-reported positive COVID-19 test result [5].

135
136 Critical cases of COVID-19 were defined via a response of “Yes” to one or more questions about
137 ICU admittance or, alternatively, self-reported septic shock, organ failure, or respiratory failure
138 resulting from a COVID-19 infection [14]. Controls were defined by a response of “No” across
139 all of these questions in addition to self-reporting a positive COVID-19 test result.

140

141 **Genetic sex and ancestry definitions**

142 All individuals were genotyped, using previously described general genotyping and quality control
143 procedures [21]. Both sex and genetic ancestry were defined for individuals based on their
144 genotypes. Genetic ancestry was estimated using a proprietary algorithm to estimate continental
145 admixture proportions [22]. All participants were assigned to one of four broad genetic ancestry
146 groups: European ancestry, admixed African-European ancestry, admixed Amerindian ancestry,
147 or other ancestry combinations.

148

149 **Data preparation for analysis**

150 Multiple-choice categorical questions were one-hot (“dummy”) encoded as binary risk factors.

151 We considered several risk factors and outcomes questions in our association analyses and risk
152 modeling efforts, some of which are summarized in Supplementary Tables 1 and 2. Based on the
153 dependency structure of the survey, we made the following inferences:

154

155 ● Participants reporting “No” to a binary question about symptoms arising from COVID-19
156 infection were designated as negatives for dependent questions about individual symptoms,
157 hospitalization due to symptoms, and ICU admittance due to symptoms.

158 ● Participants reporting “No” to a binary question about hospitalization were assigned to a
159 hospital duration of 0 days and designated as negative for ICU admittance due to
160 symptoms.

161

162 For association analyses, responses to a question about individual symptoms (“Between the
163 beginning of February 2020 and now, have you had any of the following symptoms?”) were
164 converted to a binary variable based on the following mapping: 0 = None, Very Mild, Mild; 1 =
165 Moderate, Severe, Very Severe.

166

167 **Association analysis**

168 Analyses were performed either with the *statsmodels* package in Python3 or in base R with the
169 *glm* function. For each susceptibility and severity outcome and risk factor of interest, a simple
170 logistic regression (LR) model was fit using unpenalized maximum likelihood (Supplementary
171 Tables 6-14) [23]. Multiple logistic regression was used to adjust the ORs for known COVID-19

172 exposures and potentially confounding risk factors. The adjusted model included age, sex, and four
173 known exposures (Y/N if any) for susceptibility outcomes; and age, sex, obesity (binarized if BMI
174 ≥ 30), and health conditions (binarized if any) for severity outcomes (Figures 1 and 2). Individual
175 adjustment variables were omitted when analyzing associations for risk factors within equivalent
176 categories (e.g., age was not included in adjusted models for age bin risk factors).

177
178 For each risk factor, 95% confidence intervals (CIs) for the log odds ratio were estimated under
179 the normal approximation. The significance threshold was Bonferroni-corrected for the 42
180 different risk factors examined (adjusted threshold of $0.05/42=0.0012$) [23].

181
182 **Risk factor selection and risk model training**

183 Prior to model training, the data were split with a fixed random seed into training and holdout
184 datasets. We chose risk factors based on a minimal subset of nominally significant ORs within our
185 training data as well as literature guidance [3,4,7,9,11,12,14,15]. For the susceptibility models
186 without symptoms, we included a subset of exposure-related questions, based on the training OR
187 analyses, as well as two demographic variables (age and sex, Supplementary Tables 15-17). For
188 susceptibility models with symptoms, we additionally included the five symptoms most
189 differentiated between symptomatic negative and positive testers from our training ORs. For the
190 severity models, we included pre-existing conditions, based on the training OR analyses, predictive
191 symptoms within our training dataset, morbid obesity (BMI ≥ 40), age, and sex (Supplementary
192 Table 18).

193

194 Once final risk factors were selected, we trained LR models with 5-fold cross-validated grid search
195 on the training dataset to select an optimal lasso regularization parameter lambda [23]. For the grid
196 search, we scanned 8 different values for lambda, equally partitioned geometrically across a 4-log
197 space. We then re-trained on the entire training dataset with the optimal lambda and evaluated the
198 final model on the holdout dataset.

199

200 **Model thresholding**

201 Phenotypes were predicted from the output of trained models based on a 50% probability threshold
202 (i.e., logistic model output > 0.5). Sensitivity and specificity were then calculated based on the true
203 vs. predicted binary outcomes.

204

205 **Estimation of performance error**

206 To estimate error in model performances, we bootstrapped our holdout dataset 1,000 times to
207 generate a sampling distribution for each evaluation metric. We estimated the mean and 95% CIs
208 for each metric based on the mean and standard deviation of this sampling distribution [23].

209

210

211 **RESULTS**

212

213 **Survey response and study population**

214 A total of 563,141 responses were collected, with 4,726 individuals reporting a COVID-19 positive
215 test result, 28,872 a negative test result, 71,761 no COVID-19 test but flu-like symptoms, and
216 454,542 no COVID-19 and no flu-like symptoms. 3,240 reported pending test results and were
217 excluded from further analyses. The survey completion rate was approximately 95%. In general,
218 the COVID-19 positive test rate and self-reported clinical outcomes were consistent with those
219 reported by the U.S. Centers for Disease Control and Prevention (CDC) over a similar period
220 (Supplementary Note 1) [24]. The majority of participants were female (67.5%) and of European
221 ancestry (75.4%), with some individuals of Admixed Amerindian (6.5%) or Admixed African-
222 European (3.0%) ancestries. The median age of the entire cohort was 56, and the median age of
223 those reporting a positive test result was 49 (Table 1 and Supplementary Tables 1-5).

224

225 **Table 1. Study population demographic information**

	COVID-19 Nasopharyngeal Swab Test Positive	COVID-19 Nasopharyngeal Swab Test Negative	Full AncestryDNA COVID-19 Cohort
	<i>n = 4,726</i>	<i>n = 28,872</i>	<i>n = 563,141</i>
Age			
Median, mean (sd)	49, 49.49 (15.43)	53, 52.68 (15.5)	56, 53.90 (16.13)
Bins (Counts, %)			
18-30	600 (0.13)	2496 (0.09)	52580 (0.09)
31-40	941 (0.2)	5001 (0.17)	87261 (0.15)
41-50	926 (0.2)	5333 (0.18)	90473 (0.16)
51-60	1057 (0.22)	6009 (0.21)	108062 (0.19)
61-70	735 (0.16)	5961 (0.21)	128200 (0.23)
71-90	467 (0.10)	4072 (0.14)	96565 (0.17)
Genetic Sex (counts, %)			
Female	3013 (0.64)	19945 (0.69)	380349 (0.67)
Male	1706 (0.36)	8867 (0.31)	183153 (0.32)
Genetic Ancestry Continental Groupings			
Admixed African-European ancestry	275 (0.06)	1244 (0.04)	17019 (0.03)
Admixed Amerindian ancestry	520 (0.11)	2336 (0.08)	36865 (0.07)
European ancestry	3026 (0.64)	20269 (0.7)	424328 (0.75)
Other ancestry	905 (0.19)	5023 (0.17)	84929 (0.15)
Pre-existing health conditions (any)	1911 (0.46)	15261 (0.55)	255788 (0.47)
BMI (med, mean, sd)	28.59, 29.83 (7.04)	28.67, 29.92 (7.05)	28.29, 29.53 (6.87)
Underweight (count, %)	<100	204	4407
Healthy (count, %)	971	6442	139565
Overweight (count, %)	1225	8503	172941
Obese (count, %)	1629	11264	203325
Flu			
Shot (yes)	2656 (0.63)	19856 (0.71)	356144 (0.65)
Test Dx (yes)	198 (0.05)	1180 (0.04)	11726 (0.02)
Symptoms (tested pos.)			
General, yes (count, % of pos.)	3862 (0.87)		9237 (0.47)
Hospitalization (count, % of positives)	453 (0.11)		1397 (0.02)
Duration, days (med, mean, sd)	5, 7.62 (9.08)		3, 4.78 (7.22)

226

227 **Susceptibility associations: replicated and novel**

228 We replicated many previously reported literature associations for susceptibility. The strongest
229 associations for a positive COVID-19 test result were known COVID-19 exposures, either through
230 a household case (OR=26.03; 95% confidence interval [CI]=(22.26, 30.43)), biological relative
231 (OR=5.77; 95% CI=(4.99, 6.68)), or other source of “direct” exposure (OR=6.94; 95% CI=(6.02,
232 7.99)) (Figure 1, Supplementary Table 6). In general, adjusting for known exposures, age, and sex
233 resulted in attenuation of the ORs, with many associations becoming insignificant after adjustment
234 (Figure 1, Supplementary Table 7).

235
236 One novel result was that the OR for males was not attenuated after adjustment, and males
237 remained at elevated odds after adjusting for known exposures and age (aOR=1.36; 95% CI=(1.19,
238 1.55); Figure 1, Supplementary Table 7). We also note that males and females reported
239 comparable exposure burden, with males slightly more likely to report a household case of
240 COVID-19 but less likely to report a case of COVID-19 among biological relatives
241 (Supplementary Tables 9 and 10).

242
243 Consistent with previous reports [25–29], younger individuals (ages 18-29; OR=1.51; 95%
244 CI=(1.26, 1.81)) were significantly more likely to test positive compared to older individuals (ages
245 50-64, the largest age group in this cohort), and individuals of admixed African-European
246 (OR=1.48; 95% CI=(1.18, 1.85)) or admixed Amerindian ancestry (OR=1.49; 95% CI=(1.26,
247 1.77)) were more likely to test positive compared to those of European ancestry (Supplementary
248 Table 6). Individuals in all three of these groups reported higher levels of COVID-19 cases within
249 the household, cases among biological relatives, and/or other known “direct” COVID-19
250 exposures (Supplementary Tables 8-10). Adjusting for age (ancestry groups only), sex, and known

251 exposures attenuated the OR for all of these groups (younger aOR=1.28; 95% CI=(1.03, 1.59),
252 African-European aOR=1.23; 95% CI=(0.94, 1.62), and Amerindian aOR=1.27; 95% CI=(1.04,
253 1.57); Figure 1, Supplementary Table 7).

254
255 Individuals reporting pre-existing medical conditions (e.g., cancer, cardiovascular disease, chronic
256 kidney disease [CKD], diabetes, hypertension) were less likely to test positive for COVID-19
257 (Figure 1, Supplementary Table 6). We observed significantly decreased odds of a known “direct”
258 exposure to COVID-19, as well as significantly decreased odds of a household case of COVID-
259 19, among such individuals relative to those without any health conditions (OR=0.71; 95%
260 CI=(0.65, 0.78) and OR=0.74; 95% CI=(0.65, 0.84), respectively; Supplementary Tables 8 and 9).

261
262 **Replicated associations for COVID-19 severity**

263 Consistent with previous reports [7,9,12,14,15], we observed positive associations between certain
264 health conditions and COVID-19 severity outcomes; many of these associations remained
265 significant after adjustment for age, sex, and obesity (BMI \geq 30) (Figure 2, Supplementary Tables
266 11-14). COVID-19 cases reporting at least one underlying health condition were significantly more
267 likely to progress to a critical case (OR=2.85; 95% CI=(1.78, 4.57); Figure 2, Supplementary
268 Figure 1, Supplementary Table 13). Specific underlying health conditions that were associated
269 with hospitalization and/or critical case progression included CKD, chronic obstructive pulmonary
270 disease (COPD), diabetes, cardiovascular disease, and hypertension (Figure 2, Supplementary
271 Figure 1, Tables S12 and S14). Among individuals testing positive for COVID-19, the oldest (\geq 65
272 years) were significantly more likely to be hospitalized compared to those aged 50-64 (OR=1.70;
273 95% CI=(1.13, 2.56); Figure 2, Supplementary Table 11). Individuals of admixed African-

274 European ancestry who tested positive were significantly more likely to report progression to a
275 critical case, compared to those with European ancestry (OR=2.07; 95% CI=(1.03, 4.17);
276 Supplementary Figure 1, Supplementary Table 13). Among COVID-19 cases, males were
277 significantly more likely than females to report progression to a critical case (OR=1.54, 95%;
278 CI=(1.00, 2.37); Supplementary Figure 1, Supplementary Table 13); these findings are consistent
279 with CDC reports of increased ICU admittance rates in males (3% vs. 2%) [24].

280

281 **Differential symptomology between susceptibility and severity**

282 We compared associations between susceptibility and severity to provide a more nuanced view of
283 symptoms associated with a positive test result versus those associated with severe illness
284 progression (Figure 3) [17,18,30]. Among symptomatic people reporting a COVID-19 test result,
285 those reporting change in taste or smell (OR=7.26; 95% CI=(5.54, 9.50)), fever (OR=1.60; 95%
286 CI=(1.28, 2.01)), or feeling tired or fatigue (OR=1.41; 95% CI=(1.05, 1.89)) were more likely to
287 test positive (Figure 3, Supplementary Table 6). Those reporting runny nose (OR=0.59; 95%
288 CI=(0.47, 0.75)) or sore throat (OR=0.49; 95% CI=(0.39, 0.62)) were more likely to test negative,
289 consistent with previous reports that these symptoms are more indicative of influenza or the
290 common cold (Figure 3, Supplementary Table 6) [17,18,30]. Change in taste or smell, a hallmark
291 symptom of COVID-19 infection, was not associated with hospitalization (OR=0.77, 95%
292 CI=(0.55, 1.07); Figure 3, Supplementary Table 11). By contrast, dyspnea (shortness of breath)
293 was strongly associated with hospitalization and critical case progression (OR=7.52; 95%
294 CI=(4.92, 11.49) and OR=11.55; 95% CI=(5.91, 22.59), respectively) [31], but was not associated
295 with a positive test result (OR=1.14; 95% CI=(0.91, 1.44); Figure 3, Supplementary Tables 6, 11,
296 and 13).

297

298 **Predictive risk models**

299 We further developed risk models that predict an individual’s COVID-19 risk (positive test result
300 or severity, Methods) [7,16–18,32,33]. The susceptibility models were designed to predict a
301 COVID-19 result (positive or negative) from risk factors among testers. We compared four
302 models: our model based on demographics and exposures only (“Dem + Exp”); our model based
303 on demographics, exposures, and symptoms (“Dem + Exp + Symp”); and for benchmarking
304 purposes, a replication of a previously published model called “How We Feel” based on nearly
305 identical self-reported symptoms (“HWF Symp”), and one which also included self-reported
306 exposures (“HWF Exp + Symp”) (Supplementary Note 2, Supplementary Table 18) [18].

307
308 All four susceptibility models performed robustly; the three models that included one or more
309 symptoms outperformed the model without symptoms (Dem + Exp), underscoring the value of
310 self-reported symptoms for discriminating between cases and controls (Figure 4, see
311 Supplementary Tables 19-22 for detailed model performance data). The model with demographics,
312 exposures, and symptoms (Dem + Exp + Symp) achieved the highest overall performance with an
313 AUC of 0.94 ± 0.02 , a sensitivity of 85%, and a specificity of 91% (Supplementary Note 3). Each
314 of the models performed comparably across different age, sex, and genetic ancestry cohorts (Figure
315 4, Supplementary Tables 19-22). We observed no significant overfitting in any of the models as
316 evidenced by comparable train-test performances (Supplementary Table 23).

317
318 We trained two severity models, designed to predict either hospitalization or progression to critical
319 illness among COVID-19 cases. We included a number of risk factors and symptoms most
320 associated with severe COVID-19 outcomes from the literature and/or our training dataset (Figure
321 3, Supplementary Tables 16 and 17); these included age [7–9,14], sex [4,7,11,12,14], morbid

322 obesity (BMI \geq 40) [7,34], and health conditions [7,9,12,14,15], as well as symptoms including
323 shortness of breath [31], fever, feeling tired or fatigue, dry cough, and diarrhea. Both models
324 performed robustly on an independent holdout dataset (AUCs of 0.87 \pm 0.03 and 0.90 \pm 0.03
325 for the hospitalization and critical models, respectively, Figure 4). The severity models performed
326 comparably when stratifying by age, sex, and genetic ancestry (Figure 4, Supplementary Tables
327 24 and 25), and there was no significant overfitting bias as evidenced by comparable train-test
328 performances (Supplementary Table 23).

329
330

331 **DISCUSSION**

332 The AncestryDNA COVID-19 Study provides a highly complete, self-reported dataset that
333 contains information about a plethora of risk factors in the context of COVID-19 susceptibility
334 and severity outcomes. The self-report framework provides fast, low-cost, population-scale data
335 that are particularly valuable in a pandemic, where knowledge is both limited and evolving rapidly
336 based on changing circumstances. Additionally, the broad collection mechanism enables data-
337 gathering from many more participants than typically seen in a medical setting, including those
338 with mild or no symptoms, and participants can safely provide data from their homes.

339

340 The study highlights exposure burden as the primary risk factor for COVID-19 susceptibility, and
341 the importance of accounting for known exposures when assessing differences in susceptibility to
342 COVID-19. Few studies have measured and explicitly adjusted for known COVID-19 exposures
343 at this scale [20]. Importantly, we found elevated susceptibility risk in males after adjusting for
344 age and known exposures, and unlike most of the risk factors we evaluated, the adjusted odds were
345 not attenuated compared to the unadjusted odds. This finding is distinct from previous findings on
346 elevated severity risk in males [4,7,11]. This result could be due to differences between men and
347 women in behaviors, unknown exposures, biology, genetics [4–6], or other risk factors not
348 measured within this dataset and should be investigated in future studies.

349

350 Another major contribution of this study is the use of self-reported data for the development of
351 novel risk models for predicting an individual's COVID-19 susceptibility and severity risk. The
352 risk models presented here perform comparably or better than similar and more complex models
353 reported previously [16–18,32,33]. Although some previously reported risk models have been

354 assessed in different age or sex cohorts [16,17], we are not aware of any that have been assessed
355 across genetic ancestry cohorts [7,16–18,32,33], highlighting the potential utility and
356 generalizability of the models to broader populations [17,18,30].

357

358 **Limitations**

359 We note that there are some inherent limitations of self-reported data for studying COVID-19 risk
360 factors. The most severe cases, especially those resulting in mortality, were not sampled. As a
361 result, many of the risk factor effect estimates may be underestimated. Additionally, the
362 AncestryDNA cohort is self-selected, slightly older, more European, and more female than the
363 broader U.S. population. Another potential issue is that those who reported a negative test may
364 have underestimated their exposures and symptoms relative to those who tested positive, leading
365 to upwardly biased exposure effect estimates. Finally, misclassification of COVID-19 positive
366 status is likely given the uneven availability of tests over the time period surveyed, potentially
367 leading to susceptibility effect estimates that are biased toward the null. However, the fact that
368 most of the associations observed in this study were similar to those previously reported in the
369 literature and the fact that risk model performance remained high when data were stratified by age,
370 sex, and genetic ancestry lends confidence to our findings in spite of limitations.

371

372

373

374 **CONCLUSION**

375 The COVID-19 pandemic has exacted a historic toll on healthcare systems and global economies
376 and continues to evolve based on changes in human behavior, public health guidelines, and societal
377 factors. This study demonstrates the power of a self-reported data in a large cohort to rapidly
378 elucidate more details about COVID-19 risk factors and help point the way to minimizing disease
379 burden.

380

381

382 **Acknowledgements**

383 We thank our AncestryDNA customers who made this study possible by contributing information
384 about their experience with COVID-19 through our survey. Without them, this work would not be
385 possible. We would like to thank Zach Bass, Robert Dowling, Disha Akarte, Swapnil Sneham,
386 Sean Enright and the entire Cyborg team for their tireless work in the release and continued support
387 of the COVID-19 survey.

388

389 **Contributors**

390 SCK, SRM, BR contributed equally to the manuscript and wrote the first draft of the paper. ARG
391 provided direct project guidance and lead the COVID-19 research teams. SCK, SRM, BR
392 performed the association analyses. SCK developed and assessed the risk models. MVC and KAR
393 designed the COVID-19 survey questionnaire. SCK and DP supported the dataset creation. GHLR
394 supported the phenotype definitions. MVC and NDB built the demographic tables. SCK, SRM,
395 BR, MVC, GHLR, ARG, and KAR helped with additional analyses and interpretation. MZ, DP,
396 DT, KD, MP, HG, AKHB helped with the EGA dataset. The AncestryDNA Science Team
397 contributed to additional work, allowing for the completion of the COVID-19 research and
398 manuscript. KAR, ELH, and CAB provided additional project guidance. All authors contributed
399 to the final manuscript.

400

401 **AncestryDNA Science Team**

402 Yambazi Banda, Ke Bi, Robert Burton, Marjan Champine, Ross Curtis, Abby Drokhlyansky,
403 Ashley Elrick, Cat Foo, Michael Gaddis, Jialiang Gu, Shannon Hateley, Heather Harris, Shea
404 King, Christine Maldonado, Evan McCartney-Melstad, Alexandra McFarland, Patty Miller, Luong

405 Nguyen, Keith Noto, Jingwen Pei, Jenna Petersen, Scott Pew, Chodon Sass, Josh Schraiber, Alisa
406 Sedghifar, Andrey Smelter, Sarah South, Barry Starr, Cecily Vaughn, Yong Wang

407

408 **Funding**

409 All work was supported and funded by Ancestry.com, a privately owned corporation.

410

411 **Competing interests**

412 Authors affiliated with AncestryDNA may have equity in Ancestry.

413

414 **Patient consent for publication**

415 Not required.

416

417 **Data availability statement**

418 A dataset (EGAC00001001762) is available to qualified scientists through the European Genome-
419 phenome Archive (EGA). The EGA dataset includes the risk factors and outcomes studied here.

420 The EGA dataset is de-identified and comprises ~15,000 individuals who tested for COVID-19,
421 including more than 3,000 individuals who tested positive, many of whom are in this study. The

422 EGA cohort is sufficient to nominally replicate the vast majority of susceptibility and severity
423 associations from this study. Risk models trained within the EGA cohort achieve comparable

424 discriminative performance to the models presented here when evaluated in an independent
425 holdout dataset (Supplementary Figure 5).

426

427 REFERENCES

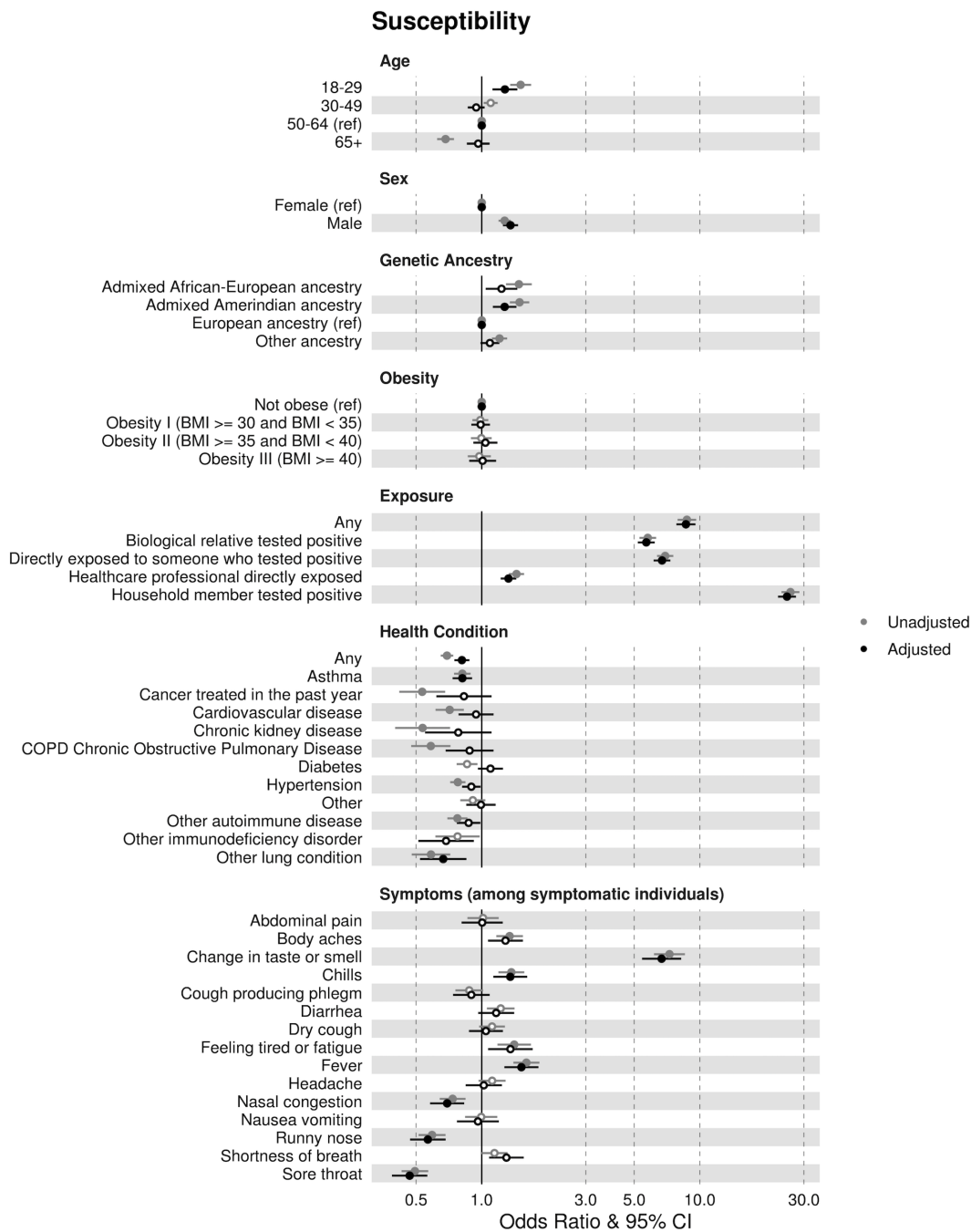
- 428 1 World Health Organization. Coronavirus Disease (COVID-19)– Weekly Epidemiological
429 Update. 2021. [https://www.who.int/publications/m/item/weekly-epidemiological-update---5-](https://www.who.int/publications/m/item/weekly-epidemiological-update---5-january-2021)
430 [january-2021](https://www.who.int/publications/m/item/weekly-epidemiological-update---5-january-2021) (accessed 6 Jan 2021).
- 431 2 U.S. Centers for Disease Control and Prevention (CDC). Coronavirus Disease 2019
432 (COVID-19): CDC COVID Data Tracker. 2021. [https://covid.cdc.gov/covid-data-](https://covid.cdc.gov/covid-data-tracker/#cases_casesper100klast7days)
433 [tracker/#cases_casesper100klast7days](https://covid.cdc.gov/covid-data-tracker/#cases_casesper100klast7days) (accessed 6 Jan 2021).
- 434 3 CMMID COVID-19 working group, Davies NG, Klepac P, *et al.* Age-dependent effects in
435 the transmission and control of COVID-19 epidemics. *Nat Med* 2020;**26**:1205–11.
436 doi:10.1038/s41591-020-0962-9
- 437 4 Yale IMPACT research team, Takahashi T, Ellingson MK, *et al.* Sex differences in immune
438 responses that underlie COVID-19 disease outcomes. *Nature* Published Online First: 26
439 August 2020. doi:10.1038/s41586-020-2700-3
- 440 5 Roberts GHL, Park DS, Coignet MV, *et al.* AncestryDNA COVID-19 Host Genetic Study
441 Identifies Three Novel Loci. *Epidemiology* 2020. doi:10.1101/2020.10.06.20205864
- 442 6 Zhao Y, Zhao Z, Wang Y, *et al.* Single-cell RNA expression profiling of ACE2, the receptor
443 of SARS-CoV-2. *medRxiv* Published Online First: 26 January 2020.
444 doi:10.1101/2020.01.26.919985
- 445 7 Williamson EJ, Walker AJ, Bhaskaran K, *et al.* Factors associated with COVID-19-related
446 death using OpenSAFELY. *Nature* 2020;**584**:430–6. doi:10.1038/s41586-020-2521-4
- 447 8 Liu Y, Mao B, Liang S, *et al.* Association between age and clinical characteristics and
448 outcomes of COVID-19. *Eur Respir J* 2020;**55**:2001112. doi:10.1183/13993003.01112-2020
- 449 9 Li X, Xu S, Yu M, *et al.* Risk factors for severity and mortality in adult COVID-19 inpatients
450 in Wuhan. *J Allergy Clin Immunol* 2020;**146**:110–8. doi:10.1016/j.jaci.2020.04.006
- 451 10 Clark A, Jit M, Warren-Gash C, *et al.* Global, regional, and national estimates of the
452 population at increased risk of severe COVID-19 due to underlying health conditions in
453 2020: a modelling study. *Lancet Glob Health* 2020;**8**:e1003–17. doi:10.1016/S2214-
454 109X(20)30264-3
- 455 11 Gebhard C, Regitz-Zagrosek V, Neuhauser HK, *et al.* Impact of sex and gender on COVID-
456 19 outcomes in Europe. *Biol Sex Differ* 2020;**11**:29. doi:10.1186/s13293-020-00304-9
- 457 12 Grasselli G, Zangrillo A, Zanella A, *et al.* Baseline Characteristics and Outcomes of 1591
458 Patients Infected With SARS-CoV-2 Admitted to ICUs of the Lombardy Region, Italy.
459 *JAMA* 2020;**323**:1574. doi:10.1001/jama.2020.5394

- 460 13 Ellinghaus D, Degenhardt F, Bujanda L, *et al.* Genomewide Association Study of Severe
461 Covid-19 with Respiratory Failure. *N Engl J Med* 2020;:NEJMoa2020283.
462 doi:10.1056/NEJMoa2020283
- 463 14 Richardson S, Hirsch JS, Narasimhan M, *et al.* Presenting Characteristics, Comorbidities,
464 and Outcomes Among 5700 Patients Hospitalized With COVID-19 in the New York City
465 Area. *JAMA* 2020;323:2052. doi:10.1001/jama.2020.6775
- 466 15 Guan W, Liang W, Zhao Y, *et al.* Comorbidity and its impact on 1590 patients with COVID-
467 19 in China: a nationwide analysis. *Eur Respir J* 2020;55:2000547.
468 doi:10.1183/13993003.00547-2020
- 469 16 Wynants L, Van Calster B, Collins GS, *et al.* Prediction models for diagnosis and prognosis
470 of covid-19: systematic review and critical appraisal. *BMJ* 2020;:m1328.
471 doi:10.1136/bmj.m1328
- 472 17 Menni C, Valdes AM, Freidin MB, *et al.* Real-time tracking of self-reported symptoms to
473 predict potential COVID-19. *Nat Med* 2020;26:1037–40. doi:10.1038/s41591-020-0916-2
- 474 18 Allen WE, Altae-Tran H, Briggs J, *et al.* Population-scale longitudinal mapping of COVID-
475 19 symptoms, behaviour and testing. *Nat Hum Behav* 2020;4:972–82. doi:10.1038/s41562-
476 020-00944-2
- 477 19 Martin LM, Leff M, Garrett C, *et al.* Validation of self-reported chronic conditions and
478 health services in a managed care population. *Am J Prev Med* 2000;18:215–8.
479 doi:10.1016/s0749-3797(99)00158-0
- 480 20 Nguyen LH, Drew DA, Graham MS, *et al.* Risk of COVID-19 among front-line health-care
481 workers and the general community: a prospective cohort study. *Lancet Public Health*
482 2020;5:e475–83. doi:10.1016/S2468-2667(20)30164-X
- 483 21 Han E, Carbonetto P, Curtis RE, *et al.* Clustering of 770,000 genomes reveals post-colonial
484 population structure of North America. *Nat Commun* 2017;8:14238.
485 doi:10.1038/ncomms14238
- 486 22 Ball CA. Ethnicity Estimate 2019 White Paper.
487 2019.https://www.ancestrycdn.com/dna/static/pdf/whitepapers/EV2019_white_paper_2.pdf
488 (accessed 1 Aug 2020).
- 489 23 Hastie T. *The Elements of Statistical Learning: Data Mining, Inference, and Prediction*. 2nd
490 ed. New York: : Springer 2009.
- 491 24 Stokes EK, Zambrano LD, Anderson KN, *et al.* Coronavirus Disease 2019 Case Surveillance
492 — United States, January 22–May 30, 2020. *MMWR Morb Mortal Wkly Rep* 2020;69:759–
493 65. doi:10.15585/mmwr.mm6924e2

- 494 25 Rosenberg A, Keene DE, Schlesinger P, *et al.* COVID-19 and Hidden Housing
495 Vulnerabilities: Implications for Health Equity, New Haven, Connecticut. *AIDS Behav*
496 2020;**24**:2007–8. doi:10.1007/s10461-020-02921-2
- 497 26 Price-Haywood EG, Burton J, Fort D, *et al.* Hospitalization and Mortality among Black
498 Patients and White Patients with Covid-19. *N Engl J Med* 2020;**382**:2534–43.
499 doi:10.1056/NEJMsa2011686
- 500 27 Millett GA, Jones AT, Benkeser D, *et al.* Assessing differential impacts of COVID-19 on
501 black communities. *Ann Epidemiol* 2020;**47**:37–44. doi:10.1016/j.annepidem.2020.05.003
- 502 28 Webb Hooper M, Nápoles AM, Pérez-Stable EJ. COVID-19 and Racial/Ethnic Disparities.
503 *JAMA* 2020;**323**:2466. doi:10.1001/jama.2020.8598
- 504 29 Julie Bosman, Mervosch S. As virus surges, younger people account for ‘disturbing’ number
505 of cases. N. Y. Times. 2020.[https://www.nytimes.com/2020/06/25/us/coronavirus-cases-](https://www.nytimes.com/2020/06/25/us/coronavirus-cases-young-people.html)
506 [young-people.html](https://www.nytimes.com/2020/06/25/us/coronavirus-cases-young-people.html)
- 507 30 Chow EJ, Schwartz NG, Tobolowsky FA, *et al.* Symptom Screening at Illness Onset of
508 Health Care Personnel With SARS-CoV-2 Infection in King County, Washington. *JAMA*
509 2020;**323**:2087. doi:10.1001/jama.2020.6637
- 510 31 Shi L, Wang Y, Wang Y, *et al.* Dyspnea rather than fever is a risk factor for predicting
511 mortality in patients with COVID-19. *J Infect* 2020;:S0163445320302887.
512 doi:10.1016/j.jinf.2020.05.013
- 513 32 Jehi L, Ji X, Milinovich A, *et al.* Individualizing Risk Prediction for Positive Coronavirus
514 Disease 2019 Testing. *Chest* 2020;:S0012369220316548. doi:10.1016/j.chest.2020.05.580
- 515 33 Jehi L, Ji X, Milinovich A, *et al.* Development and validation of a model for individualized
516 prediction of hospitalization risk in 4,536 patients with COVID-19. *PLOS ONE*
517 2020;**15**:e0237419. doi:10.1371/journal.pone.0237419
- 518 34 Dietz W, Santos-Burgoa C. Obesity and its Implications for COVID-19 Mortality. *Obesity*
519 2020;**28**:1005–1005. doi:10.1002/oby.22818

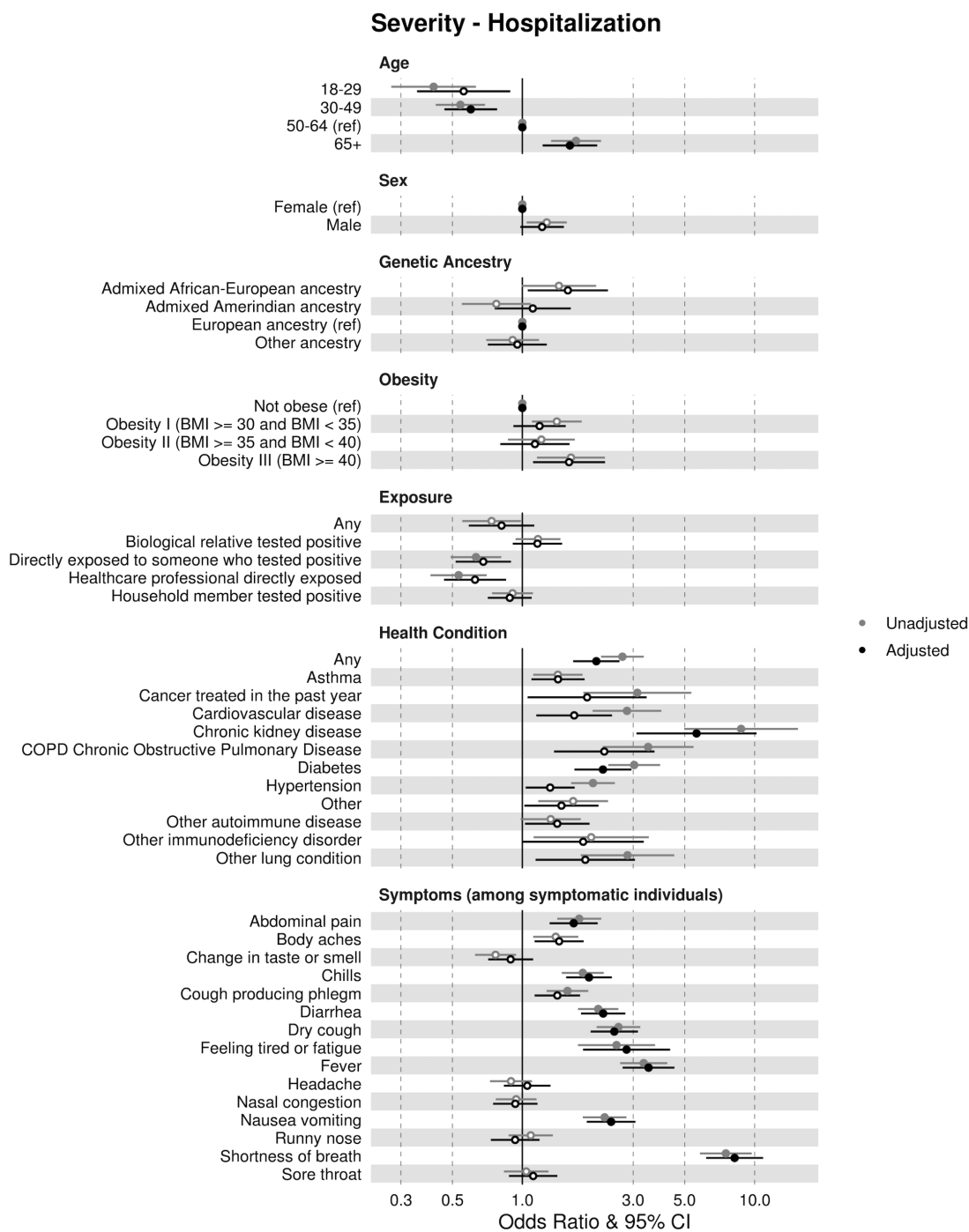
520

521 **FIGURES**



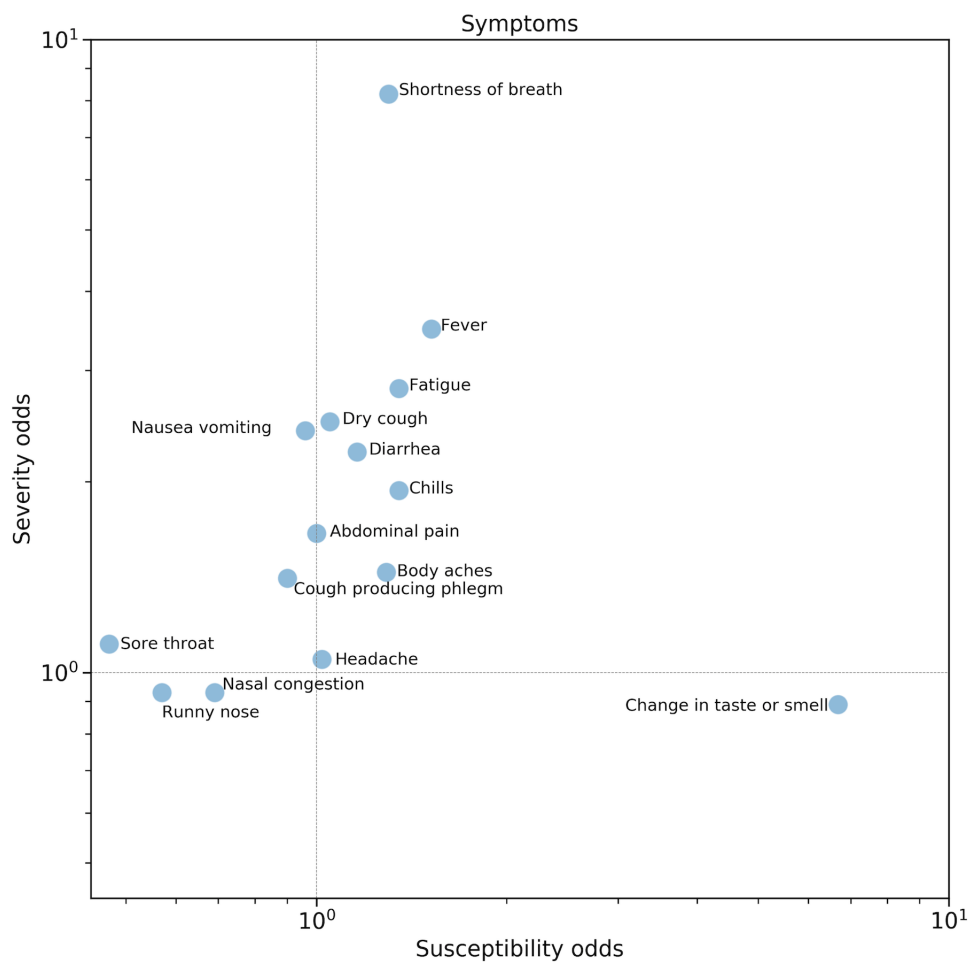
522 **Figure 1. Susceptibility odds ratios (ORs) and 95% confidence intervals (CIs) estimated from**
 523 **simple (“Unadjusted models,” grey) and multiple (“Adjusted models,” black) logistic**
 524 **regression with adjustment for other risk factors. Open circles indicate not significant (p-value**
 525

526 > 0.05) after accounting for multiple hypothesis tests using Bonferroni correction. Age, sex,
527 genetic ancestry, and obesity ORs were estimated in relation to the reference variables indicated.
528 Exposure, health, and symptom ORs were each estimated separately as binary variables. Symptom
529 ORs were estimated as binary variables among symptomatic testers only (Methods). Risk factor
530 adjustments for susceptibility include: sex, age, and at least one known COVID-19 exposure.
531 Where applicable, individual adjustment variables were omitted to avoid duplicate adjustment
532 (Methods).
533
534



535
 536 **Figure 2. Severity (hospitalization) odds ratios (ORs) and 95% confidence intervals (CIs)**
 537 **estimated from simple (“Unadjusted models,” grey) and multiple (“Adjusted models,” black)**
 538 **logistic regression with adjustment for other risk factors. Open circles indicate not significant**

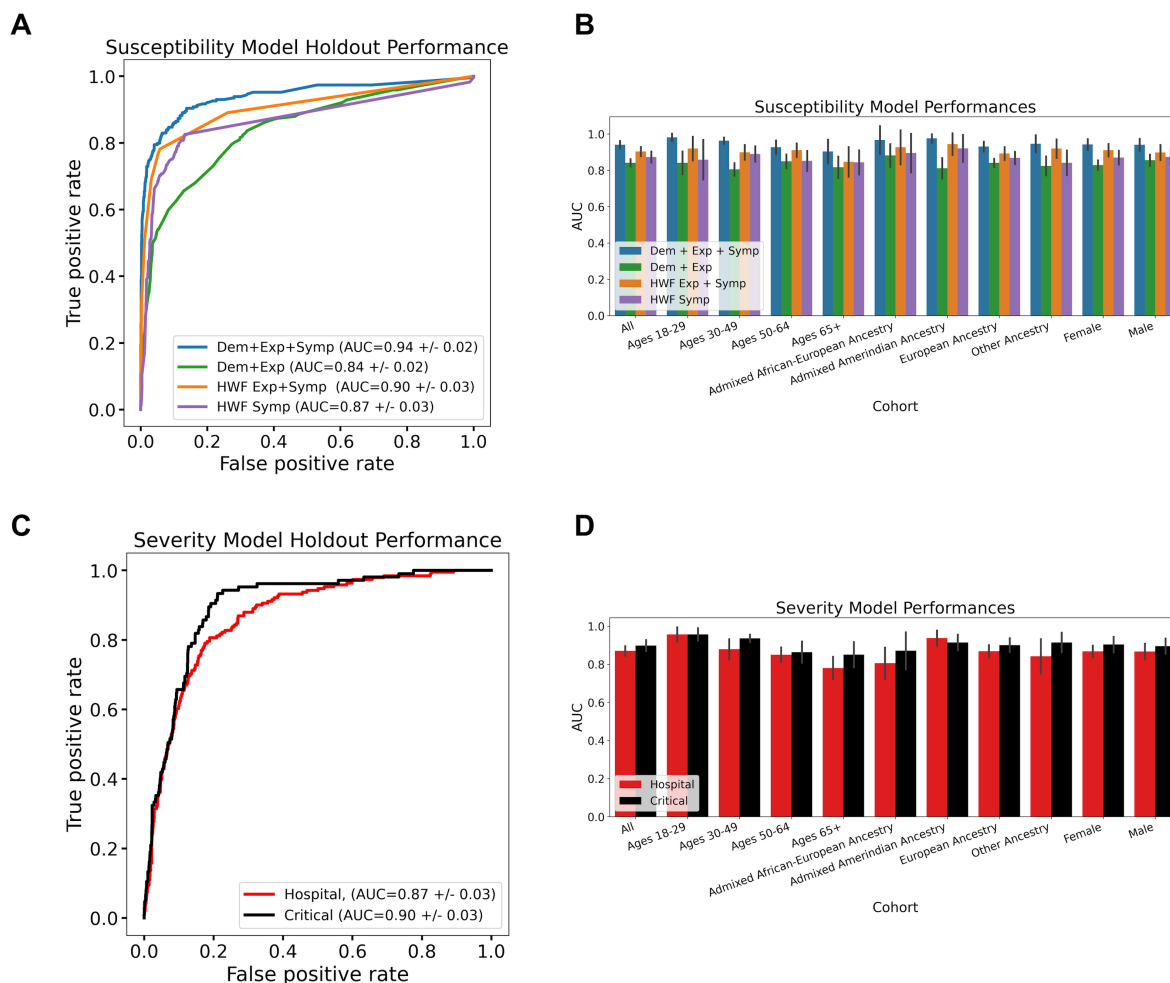
539 (p-value > 0.05) after accounting for multiple hypothesis tests using Bonferroni correction. Age,
540 sex, genetic ancestry, and obesity ORs were estimated in relation to the reference variables
541 indicated. Exposure, health, and symptom ORs were each estimated separately as binary variables.
542 Symptom ORs were estimated as binary variables among symptomatic testers only (Methods).
543 Risk factor adjustments for severity include: sex, age, obesity (Y/N), and underlying health
544 conditions (Y/N if any). Where applicable, individual adjustment variables were omitted to avoid
545 duplicate adjustment (Methods). See Supplementary Figure 1 for critical case severity ORs.
546



547
548 **Figure 3. Comparison of susceptibility adjusted ORs (horizontal axis) and severity adjusted**
549 **ORs (vertical axis) for symptoms in Figures 1 and 2.** Severity aORs are for hospitalization. Note
550 that aORs for susceptibility and severity are adjusted differently according to descriptions in Figure
551 1 and 2 captions. Adjusted ORs are plotted on a log scale for visibility. Shortness of breath is the
552 strongest indicator of increased severity, while change in taste or smell is the strongest indicator
553 for testing positive for COVID-19 among symptomatic individuals (Methods). Refer to
554 Supplementary Figure 2 for demographic, health condition, and exposure aORs.

555

556



557
 558 **Figure 4. Performance of risk models on independent holdout data.** A) Receiver operating
 559 characteristic (ROC) curves for susceptibility models to predict COVID-19 cases among testers
 560 reporting a result (positive or negative). B) Area under the curve (AUC) for the four susceptibility
 561 models in A), stratified by cohort. “All” represents everyone in A). C) ROC curves for severity
 562 models to predict either hospitalization (red) or critical illness progression (black) among COVID-
 563 19 cases. D) Area under the curve (AUC) for the two severity models in B), stratified by cohort.
 564 “All” represents everyone in C). Refer to Methods as well as Supplementary Figure 3 and
 565 Supplementary Tables 18-25 for additional model performance data and model risk factor
 566 information.

1 SUPPORTING INFORMATION

2 COVID-19 susceptibility and severity risks in a survey 3 of over 500,000 individuals

4 Spencer C. Knight*¹, Shannon R. McCurdy*¹, Brooke Rhead*¹, Marie V. Coignet¹, Danny S.
5 Park¹, Genevieve H.L. Roberts², Nathan D. Berkowitz¹, Miao Zhang¹, David Turissini¹, Karen
6 Delgado², Milos Pavlovic², AncestryDNA Science Team², Asher K. Haug Baltzell², Harendra
7 Guturu¹, Kristin A. Rand¹, Ahna R. Girshick¹, Eurie L. Hong¹, Catherine A. Ball¹
8

9 *These authors contributed equally to this work.

10 1. AncestryDNA, 153 Townsend St, Suite 800, San Francisco, CA, 94107

11 2. AncestryDNA, 1300 West Traverse Parkway, Lehi, UT 84043
12

13 **Corresponding Author:** Kristin A. Rand, AncestryDNA, 153 Townsend St, Suite 800, San
14 Francisco, CA 94107, United States of America (e-mail: kristinmuench@gmail.com)

15
16 **Keywords:** COVID-19, Modeling, Genetic Epidemiology, Statistics
17

18 **Abbreviations:** aOR (adjusted odds ratio), AUC (area under the curve), BMI (body mass index),
19 CI (confidence interval), CDC (U.S. Centers for Disease Control), CKD (chronic kidney disease),
20 COPD (chronic obstructive pulmonary disease), EGA (European Genome-phenome Archive),
21 GWAS (genome-wide association studies), HWF (“How We Feel” study), ICU (intensive care
22 unit), LR (logistic regression), OR (odds ratio), ROC (receiver operating characteristic)
23
24
25

26 **SUPPLEMENTARY NOTES**

27

28 **Supplementary Note 1. Comparison of AncestryDNA data to CDC data.** In general, the
29 COVID-19 testing results are consistent with those reported by the U.S. Centers for Disease
30 Control and Prevention (CDC) over a similar period [24]. For example, the CDC reported a 12%
31 cumulative overall positive test rate from 1 March to 30 May 2020, while 14.1% of AncestryDNA
32 survey participants reported testing positive (the denominator includes tests with “results
33 pending”). For hospitalization, the CDC reported that 14% of individuals testing positive for
34 COVID-19 were hospitalized, and 2% were admitted to an intensive care unit (ICU), between 22
35 January and 30 May 2020. Among the AncestryDNA survey respondents, 11% of those reporting
36 a positive COVID-19 test were hospitalized, and 4.9% were admitted to ICU between April 22
37 and July 6, 2020.

38

39 **Supplementary Note 2. Risk factors for predictive susceptibility models.** The HWF Exp +
40 Symp model includes three risk factors, including two exposures and one symptom (change in
41 taste or smell, Supplementary Table 18). The HWF Symp model includes seven symptoms most
42 commonly associated with COVID-19 according to the CDC (Supplementary Table 18) [18]. For
43 the Dem + Exp and Dem + Exp + Symp models, we incorporated responses to several exposure
44 questions that were primary risk factors in the OR analysis of the training set (Methods and
45 Supplementary Table 15) [18]. We also considered age and sex, given their nominal association
46 with COVID-19 in our ORs in the training dataset, as well as reports about these variables as risk
47 factors (Supplementary Table 15) [3,4,29]. For Dem + Exp + Symp model, we selected the most
48 differentiated symptoms between cases and controls amongst symptomatic COVID-19 testers

49 within the training dataset, including fever, change in taste or smell, feeling tired/fatigued, runny
50 nose, and sore throat [17,18,30].

51

52 **Supplementary Note 3. Comparison of AncestryDNA and HWF cohorts and performances.**

53 The HWF models performed better when trained and evaluated on the AncestryDNA dataset as
54 compared with the HWF dataset, particularly for the symptoms-only model (HWF Symp:
55 AncestryDNA-trained AUC=0.87 and HWF-trained AUC=0.76 and HWF Exp + Symp:
56 AncestryDNA-trained AUC=0.90 and HWF-trained AUC=0.87; Figure 4) [18]. This result could
57 be due to differences in survey flow design, demographics, or the relative prevalences of self-
58 reported symptoms between the two datasets. We re-trained and evaluated our models on a subset
59 of symptomatic COVID-19 testers (positives and negatives) reporting at least one symptom of
60 moderate or greater intensity. The performances of all models that included symptoms were
61 slightly attenuated in this cohort, with AUCs for the HWF models approaching previous reports
62 (HWF Symp: AncestryDNA-trained AUC=0.80 and HWF Exp + Symp: AncestryDNA-trained
63 AUC=0.87); the model without symptoms performed the same (Supplementary Figure 4). This
64 suggests that predicting COVID-19 cases on the basis of symptoms alone is more challenging
65 when symptoms are less differentiated between positive and negative testers.

66

67 **SUPPLEMENTARY TABLES**

68 **Supplementary Table 1. Selected subset of survey questions considered in the context of**

69 **COVID-19 severity outcomes analysis and modeling efforts.**

70

Risk factor description	Question	Possible responses
COVID-19 test result	Have you been swab tested for COVID-19, commonly referred to as coronavirus?	Yes, and was positive; Yes, and was negative; Yes, and my results are pending; No, but I have had flu-like symptoms with a fever at some point since the beginning of February 2020; No, and I have not had flu-like symptoms at some point since the beginning of February 2020
Case amongst direct biological relatives (multi-choice)	Have any of your biological relatives tested positive for COVID-19? Select all that apply.	Grandparent(s); Parent(s); Child(ren); Sibling(s); Other; None
Healthcare worker routinely exposed to COVID-19	Are you a healthcare professional working directly with or in close physical proximity to patients who have tested positive for COVID-19?	Yes; No; Not sure
Household case of COVID-19	Has someone in your household tested positive for COVID-19?	Yes; No; Not sure
Number of household cases of COVID-19	How many people in your household have tested positive for COVID-19?	Numeric
Known direct COVID-19 exposure	Have you been directly exposed to someone who has tested positive for COVID-19?	Yes; No; Not sure
Health condition(s)	Do you currently have any of the following health conditions? Select all that apply.	Asthma, COPD (Chronic Obstructive Pulmonary Disease); Other lung condition; Cancer (treated in the past year); Cardiovascular disease; Chronic kidney disease; Diabetes; Hypertension; Organ failure requiring a transplant (in the last year); Blood disorder requiring hematopoietic stem cell / bone marrow transplant; Other autoimmune disease; Other immunodeficiency disorder; Other; None; Not sure

71
 72 The survey flow was as described previously [5], with the addition of symptom and clinical
 73 assessment for negative testers.

74 **Supplementary Table 2. Selected risk factors considered in susceptibility or severity**
 75 **outcomes analysis and modeling efforts.**

76

Risk factor description	Question	Possible responses
COVID-19 test result	Have you been swab tested for COVID-19, commonly referred to as coronavirus?	Yes, and was positive; Yes, and was negative; Yes, and my results are pending; No, but I have had flu-like symptoms with a fever at some point since the beginning of February 2020; No, and I have not had flu-like symptoms at some point since the beginning of February 2020
Symptoms (binary)	Did you experience symptoms as a result of your condition?	Yes; No; Not sure
Symptoms (multi-choice)	Between the beginning of February 2020 and now, have you had any of the following symptoms?	Fever; Shortness of breath; Dry cough; Nasal congestion; Runny nose; Sore throat; Feeling tired or fatigue; Chills; Body aches; Headache; Cough producing phlegm; Abdominal pain; Nausea or vomiting; Diarrhea; Change in taste or smell
Symptom duration (multi-choice)	How long did these symptoms last?	Less than 1 day; 1-3 days; 4-7 days; 8-14 days; 2 weeks to a month; 1-3 months; More than 3 months
Hospitalization	Were you hospitalized due to these symptoms?	Yes; No; Not sure
Hospital duration	How long were you hospitalized?	Numeric
ICU with ventilator	Were you hospitalized in the Intensive Care Unit (ICU) with a ventilator?	Yes; No; Not sure
ICU with oxygen	Were you hospitalized in the Intensive Care Unit (ICU) with oxygen?	Yes; No; Not sure
Illness complications (multi-choice)	Have you had any of the following complications due to your illness? Select all that apply.	None; Pneumonia; Severe pneumonia leading to hospitalization; Respiratory failure; Septic shock; Multiple organ dysfunction or failure; Blood clots; Stroke; Other

77
 78 The survey flow was as described previously [5], with the addition of symptom and clinical
 79 assessment for negative testers.

80
 81
 82
 83
 84

85 **Supplementary Table 3. Demographics for susceptibility modeling cohort**
86

	COVID-19 Nasopharyngeal Swab Test Positive	COVID-19 Nasopharyngeal Swab Test Negative	Total Susceptibility modeling cohort (symptom data not required)
	<i>n</i> = 2,505	<i>n</i> = 16,830	<i>n</i> = 19,335
Age			
Median, mean (sd)	48, 47.96 (14.68)	53, 52.93 (15.5)	53, 52.29 (15.49)
Bins (Counts, %)			
18-30	350 (0.14)	1404 (0.08)	1754 (0.09)
31-40	531 (0.21)	2882 (0.17)	3413 (0.18)
41-50	511 (0.2)	3073 (0.18)	3584 (0.19)
51-60	580 (0.23)	3478 (0.21)	4058 (0.21)
61-70	365 (0.15)	3548 (0.21)	3913 (0.20)
71-90	168 (0.07)	2445 (0.15)	2613 (0.14)
Genetic Sex (counts, %)			
Female	1646 (0.66)	11688 (0.69)	13334 (0.69)
Male	859 (0.34)	5142 (0.31)	6001 (0.31)
Genetic Ancestry Continental Groupings			
Admixed African-European ancestry	130 (0.05)	730 (0.04)	860 (0.04)
Admixed Amerindian ancestry	287 (0.11)	1319 (0.08)	1606 (0.08)
European ancestry	1633 (0.65)	11886 (0.71)	13519 (0.70)
Other ancestry	455 (0.18)	2885 (0.17)	3350 (0.17)
Pre-existing health conditions (any)	1131 (0.45)	9168 (0.54)	10299 (0.53)
BMI (med, mean, sd)			
Total	28.7, 29.95 (7.16)	28.52, 29.88 (6.99)	28.73, 30.02 (7.08)
Underweight (count, %)	<100	111	135
Healthy (count, %)	629	4051	4680
Overweight (count, %)	759	5433	6192
Obese (count, %)	1069	7012	8081
Flu			
Shot (yes)	1617 (0.65)	12029 (0.71)	13646 (0.71)
Test Dx (yes)	125 (0.05)	761 (0.05)	886 (0.05)
Symptoms (tested pos.)			
General, yes (count, % of pos.)	2254 (0.9)	-	2905 (0.45)
Hospitalization (count, % of positives)			
Duration, days (med, mean, sd)	5, 6.68 (8.46)	-	4.5, 6.42 (8.08)

87
88

89 **Supplementary Table 4. Demographics for severity modeling cohort**
 90

	COVID-19 Nasopharyngeal Swab Test Positive
	<i>n</i> = 3,585
Age	
Median, mean (sd)	49, 48.62 (14.68)
Bins (Counts, %)	
18-30	463 (0.13)
31-40	725 (0.2)
41-50	748 (0.21)
51-60	832 (0.23)
61-70	555 (0.15)
71-90	262 (0.07)
Genetic Sex (counts, %)	
Female	2303 (0.64)
Male	1282 (0.36)
Genetic Ancestry Continental Groupings	
Admixed African-European ancestry	203 (0.06)
Admixed Amerindian ancestry	397 (0.11)
European ancestry	2317 (0.65)
Other ancestry	668 (0.19)
Pre-existing health conditions (any)	1666 (0.46)
BMI (med, mean, sd)	28.67, 29.83 (7.03)
Underweight (count, %)	<100
Healthy (count, %)	884
Overweight (count, %)	1128
Obese (count, %)	1498
Flu	
Shot (yes)	2293 (0.64)
Test Dx (yes)	174 (0.05)
Symptoms (tested pos.)	
General, yes (count, % of pos.)	3236 (0.9)
Hospitalization (count, % of positives)	
Duration, days (med, mean, sd)	5, 7.34 (8.73)

91
 92

93 **Supplementary Table 5. Demographics for susceptibility models with symptoms**

	Susceptibility modeling cohort (with symptom data)
	<i>n = 4,094</i>
Age	
Median, mean (sd)	58, 55.7 (15.82)
Bins (Counts, %)	
18-30	293 (0.07)
31-40	567 (0.14)
41-50	641 (0.16)
51-60	795 (0.19)
61-70	982 (0.24)
71-90	816 (0.20)
Genetic Sex (counts, %)	
Female	2744 (0.67)
Male	1350 (0.33)
Genetic Ancestry Continental Groupings	
Admixed African-European ancestry	172 (0.04)
Admixed Amerindian ancestry	298 (0.07)
European ancestry	2927 (0.72)
Other ancestry	666 (0.16)
Pre-existing health conditions (any)	2205 (0.54)
BMI (med, mean, sd)	28.59, 29.8 (6.84)
Underweight (count, %)	<100
Healthy (count, %)	1007
Overweight (count, %)	1335
Obese (count, %)	1662
Flu	
Shot (yes)	2935 (0.72)
Test Dx (yes)	160 (0.04)
Symptoms (tested pos.)	
General, yes (count, % of pos.)	1037 (0.25)
Hospitalization (count, % of positives)	
Duration, days (med, mean, sd)	5, 7.53 (10.11)

94

95

96 **Supplementary Table 6. Unadjusted risk factor odds ratios for COVID-19 susceptibility**

97

RISK FACTOR	ODDS RATIO (OR)	OR 95% CI (BONFERRONI)	logOR	logOR S.E.	P-VALUE (NOMINAL)	P-VALUE (BONFERRONI)
AGE						
Ages 18-29	1.51	(1.26, 1.81)	0.4108	0.0563	3.05E-13	1.28E-11
Ages 30-49	1.10	(0.97, 1.24)	0.0944	0.0377	1.22E-02	5.14E-01
Ages 50-64	1.00		0		nan	nan
Ages 65+	0.68	(0.59, 0.79)	-0.3819	0.0454	0.00E+00	0.00E+00
GENETIC ANCESTRY						
Admixed African-European	1.48	(1.18, 1.85)	0.3925	0.0694	1.57E-08	6.58E-07
European	1.00		0		nan	nan
Admixed Amerindian	1.49	(1.26, 1.77)	0.3995	0.0523	2.10E-14	8.82E-13
Other	1.21	(1.06, 1.38)	0.188	0.041	4.62E-06	1.94E-04
EXPOSURE						
Any	8.72	(7.42, 10.26)	2.1659	0.0501	0.00E+00	0.00E+00
Biological relative tested positive	5.77	(4.99, 6.68)	1.7529	0.045	0.00E+00	0.00E+00
Directly exposed to someone who tested positive	6.94	(6.02, 7.99)	1.9366	0.0438	0.00E+00	0.00E+00
Healthcare worker directly exposed	1.44	(1.26, 1.65)	0.367	0.0408	2.31E-19	9.69E-18
Household member tested positive	26.03	(22.26, 30.43)	3.2591	0.0482	0.00E+00	0.00E+00
HEALTH CONDITIONS						
Asthma	0.81	(0.71, 0.94)	-0.2046	0.0446	4.55E-06	1.91E-04
COPD (Chronic Obstructive Pulmonary Disease)	0.58	(0.41, 0.82)	-0.5374	0.1057	3.72E-07	1.56E-05
Cancer treated in the past year	0.53	(0.36, 0.80)	-0.6283	0.1237	3.80E-07	1.59E-05
Cardiovascular disease	0.71	(0.56, 0.91)	-0.3383	0.0762	9.12E-06	3.83E-04
Chronic kidney disease	0.54	(0.33, 0.87)	-0.6241	0.148	2.48E-05	1.04E-03
Diabetes	0.86	(0.71, 1.03)	-0.1547	0.0561	5.79E-03	2.43E-01
Hypertension	0.78	(0.68, 0.89)	-0.2522	0.0411	8.08E-10	3.40E-08
Other	0.91	(0.73, 1.13)	-0.0939	0.0675	1.64E-01	1.00E+00
Other autoimmune disease	0.77	(0.65, 0.92)	-0.2571	0.054	1.95E-06	8.20E-05
Other immunodeficiency disorder	0.77	(0.53, 1.14)	-0.2552	0.1194	3.25E-02	1.00E+00
Other lung condition	0.59	(0.42, 0.82)	-0.5355	0.1037	2.45E-07	1.03E-05

Any	0.69	(0.62, 0.77)	-0.3667	0.0336	0.00E+00	0.00E+00
OBESITY						
obesity I (BMI >= 30 and BMI < 35)	0.99	(0.86, 1.13)	-0.0146	0.043	7.35E-01	1.00E+00
obesity II (BMI >= 35 and BMI < 40)	1.00	(0.83, 1.19)	-0.0042	0.056	9.41E-01	1.00E+00
obesity III (BMI >= 40)	0.97	(0.80, 1.19)	-0.0255	0.0622	6.81E-01	1.00E+00
Not obese	1.00		0		nan	nan
GENETIC SEX						
Female	1.00		0		nan	nan
Male	1.27	(1.14, 1.42)	0.2419	0.0329	1.89E-13	7.95E-12
SYMPTOMS						
Abdominal pain	1.01	(0.77, 1.33)	0.0139	0.0841	8.69E-01	1.00E+00
Body aches	1.34	(1.06, 1.69)	0.2945	0.0717	4.04E-05	1.70E-03
Change in taste or smell	7.26	(5.54, 9.50)	1.9819	0.0832	1.62E-125	6.81E-124
Chills	1.37	(1.09, 1.71)	0.3126	0.0697	7.23E-06	3.04E-04
Cough producing phlegm	0.88	(0.69, 1.12)	-0.1318	0.0746	7.74E-02	1.00E+00
Diarrhea	1.22	(0.96, 1.56)	0.2006	0.0745	7.11E-03	2.99E-01
Dry cough	1.12	(0.89, 1.40)	0.109	0.0694	1.16E-01	1.00E+00
Feeling tired or fatigue	1.41	(1.05, 1.89)	0.343	0.0901	1.41E-04	5.91E-03
Fever	1.60	(1.28, 2.01)	0.4715	0.0701	1.74E-11	7.30E-10
Headache	1.12	(0.88, 1.41)	0.1098	0.0728	1.32E-01	1.00E+00
Nasal congestion	0.74	(0.59, 0.92)	-0.3072	0.0696	1.01E-05	4.24E-04
Nausea or vomiting	0.99	(0.75, 1.32)	-0.0055	0.0867	9.50E-01	1.00E+00
Runny nose	0.59	(0.47, 0.75)	-0.5245	0.0725	4.49E-13	1.89E-11
Shortness of breath	1.14	(0.91, 1.44)	0.1343	0.0705	5.67E-02	1.00E+00
Sore throat	0.49	(0.39, 0.62)	-0.7052	0.0717	8.10E-23	0.00E+00

98

99 Unadjusted odds ratios for a positive COVID-19 test were calculated among survey participants
100 reporting a test result (positive or negative) based on the self-reported response to the following
101 question: “Have you been swab tested for COVID-19, commonly referred to as coronavirus?” The
102 following groups served as reference populations for the odds ratio calculations: European genetic
103 ancestry (Genetic Ancestry), Ages 50-64 (Age), Female (Genetic Sex), and Not Obese (BMI < 30,
104 Obesity). Note that symptoms odds ratios were calculated in a binary fashion among symptomatic
105 customers only (Methods).
106

107 **Supplementary Table 7. Risk factor odds ratios for COVID-19 susceptibility, adjusted for**
 108 **exposure, age, and sex**
 109

RISK FACTOR	ODDS RATIO (OR)	OR 95% CI (BONFERRONI)	logOR	logOR S.E.	P-VALUE (NOMINAL)	P-VALUE (BONFERRONI)
AGE						
Ages 18-29	1.28	(1.03, 1.59)	0.2448	0.0672	2.72E-04	1.14E-02
Ages 30-49	0.94	(0.81, 1.09)	-0.0583	0.0453	1.97E-01	1.00E+00
Ages 50-64	1.00		0.0000		nan	nan
Ages 65+	0.96	(0.79, 1.18)	-0.0372	0.0613	5.44E-01	1.00E+00
GENETIC ANCESTRY						
Admixed African-European	1.23	(0.94, 1.62)	0.2091	0.0852	1.42E-02	5.95E-01
European	1.00		0.0000		nan	nan
Admixed Amerindian	1.27	(1.04, 1.57)	0.2417	0.0636	1.46E-04	6.11E-03
Other	1.09	(0.92, 1.29)	0.0863	0.0509	8.98E-02	1.00E+00
EXPOSURE						
Any	8.63	(7.31, 10.19)	2.1555	0.0512	0.00E+00	0.00E+00
Biological relative tested positive	5.68	(4.90, 6.58)	1.7372	0.0455	0.00E+00	0.00E+00
Directly exposed to someone who tested positive	6.71	(5.80, 7.76)	1.9034	0.0451	0.00E+00	0.00E+00
Healthcare worker directly exposed	1.33	(1.16, 1.52)	0.2823	0.0420	1.75E-11	7.34E-10
Household member tested positive	25.09	(21.44, 29.36)	3.2224	0.0485	0.00E+00	0.00E+00
HEALTH CONDITIONS						
Asthma	0.82	(0.69, 0.97)	-0.2045	0.0524	9.47E-05	3.98E-03
COPD (Chronic Obstructive Pulmonary Disease)	0.88	(0.58, 1.34)	-0.1281	0.1290	3.21E-01	1.00E+00
Cancer treated in the past year	0.83	(0.51, 1.34)	-0.1877	0.1488	2.07E-01	1.00E+00
Cardiovascular disease	0.94	(0.69, 1.28)	-0.0598	0.0944	5.27E-01	1.00E+00
Chronic kidney disease	0.78	(0.44, 1.40)	-0.2475	0.1791	1.67E-01	1.00E+00
Diabetes	1.10	(0.88, 1.36)	0.0922	0.0673	1.71E-01	1.00E+00
Hypertension	0.90	(0.76, 1.05)	-0.1097	0.0499	2.80E-02	1.00E+00
Other	0.99	(0.77, 1.28)	-0.0080	0.0790	9.20E-01	1.00E+00
Other autoimmune disease	0.87	(0.71, 1.07)	-0.1382	0.0636	2.97E-02	1.00E+00
Other immunodeficiency disorder	0.69	(0.42, 1.11)	-0.3764	0.1496	1.19E-02	4.99E-01

Other lung condition	0.67	(0.44, 1.00)	-0.4064	0.1248	1.13E-03	4.76E-02
Any	0.81	(0.71, 0.92)	-0.2092	0.0405	2.32E-07	9.76E-06
OBESITY						
obesity I (BMI >= 30 and BMI < 35)	0.99	(0.84, 1.16)	-0.0113	0.0502	8.23E-01	1.00E+00
obesity II (BMI >= 35 and BMI < 40)	1.04	(0.84, 1.28)	0.0390	0.0649	5.47E-01	1.00E+00
obesity III (BMI >= 40)	1.01	(0.80, 1.28)	0.0097	0.0724	8.94E-01	1.00E+00
Not obese	1.00		0.0000		nan	nan
GENETIC SEX						
Female	1.00		0.0000		nan	nan
Male	1.36	(1.19, 1.55)	0.3039	0.0409	1.09E-13	4.57E-12
SYMPTOMS						
Abdominal pain	1.00	(0.70, 1.44)	0.0048	0.1108	9.65E-01	1.00E+00
Body aches	1.29	(0.95, 1.74)	0.2508	0.0941	7.72E-03	3.24E-01
Change in taste or smell	6.68	(4.75, 9.39)	1.8991	0.1052	6.77E-73	2.84E-71
Chills	1.35	(1.01, 1.82)	0.3014	0.0912	9.56E-04	4.02E-02
Cough producing phlegm	0.90	(0.65, 1.23)	-0.1098	0.0986	2.65E-01	1.00E+00
Diarrhea	1.16	(0.85, 1.59)	0.1522	0.0970	1.17E-01	1.00E+00
Dry cough	1.05	(0.78, 1.40)	0.0442	0.0912	6.28E-01	1.00E+00
Feeling tired or fatigue	1.35	(0.92, 2.00)	0.3029	0.1202	1.17E-02	4.91E-01
Fever	1.52	(1.13, 2.05)	0.4189	0.0916	4.76E-06	2.00E-04
Headache	1.02	(0.74, 1.40)	0.0218	0.0977	8.24E-01	1.00E+00
Nasal congestion	0.69	(0.52, 0.93)	-0.3651	0.0918	6.93E-05	2.91E-03
Nausea or vomiting	0.96	(0.67, 1.38)	-0.0401	0.1128	7.22E-01	1.00E+00
Runny nose	0.57	(0.42, 0.77)	-0.5690	0.0958	2.83E-09	1.19E-07
Shortness of breath	1.30	(0.96, 1.76)	0.2607	0.0934	5.22E-03	2.19E-01
Sore throat	0.47	(0.34, 0.64)	-0.7609	0.0951	1.33E-15	5.60E-14

110
 111 Adjusted odds ratios for a positive COVID-19 test were calculated among survey participants
 112 reporting a test result (positive or negative) based on the self-reported response to the following
 113 question: “Have you been swab tested for COVID-19, commonly referred to as coronavirus?” The
 114 following groups served as reference populations for the odds ratio calculations: European genetic
 115 ancestry (Genetic Ancestry), Ages 50-64 (Age), Female (Genetic Sex), and Not Obese (BMI < 30,
 116 Obesity). Note that symptoms odds ratios were calculated in a binary fashion among symptomatic

117 customers only (Methods). Here, odds ratios were adjusted for four known exposures (Y/N if any),
118 age, and genetic sex (Supplementary Table 2 and Methods).
119
120

121 **Supplementary Table 8. Unadjusted risk factor odds ratios for a known “direct” COVID-**
 122 **19 exposure**

123

RISK FACTOR	ODDS RATIO (OR)	OR 95% CI (BONFERRONI)	logOR	logOR S.E.	P-VALUE (NOMINAL)	P-VALUE (BONFERRONI)
AGE						
Ages 18-29	1.80	(1.54, 2.12)	0.5896	0.0519	6.64E-30	1.66E-28
Ages 30-49	1.45	(1.31, 1.60)	0.3725	0.0325	2.00E-30	5.00E-29
Ages 50-64	1.00		0.0000		nan	nan
Ages 65+	0.32	(0.28, 0.37)	-1.1427	0.0437	0.00E+00	0.00E+00
GENETIC ANCESTRY						
Admixed African-European	1.49	(1.23, 1.82)	0.4012	0.0639	3.32E-10	8.31E-09
European	1.00		0.0000		nan	nan
Admixed Amerindian	1.40	(1.21, 1.62)	0.3384	0.0476	1.13E-12	2.82E-11
Other	1.17	(1.05, 1.31)	0.1584	0.0365	1.47E-05	3.67E-04
EXPOSURE						
Biological relative tested positive	4.43	(3.79, 5.18)	1.4888	0.0503	1.39E-192	3.48E-191
Healthcare worker directly exposed	11.53	(10.16, 13.08)	2.4450	0.0408	0.00E+00	0.00E+00
Household member tested positive	22.53	(17.88, 28.38)	3.1148	0.0747	0.00E+00	0.00E+00
HEALTH CONDITIONS						
Asthma	1.02	(0.92, 1.14)	0.0216	0.0353	5.40E-01	1.00E+00
COPD (Chronic Obstructive Pulmonary Disease)	0.44	(0.33, 0.57)	-0.8297	0.0875	0.00E+00	0.00E+00
Cancer treated in the past year	0.36	(0.26, 0.49)	-1.0310	0.1012	0.00E+00	0.00E+00
Cardiovascular disease	0.50	(0.41, 0.61)	-0.6880	0.0647	0.00E+00	0.00E+00
Chronic kidney disease	0.39	(0.27, 0.57)	-0.9295	0.1182	3.77E-15	9.44E-14
Diabetes	0.63	(0.54, 0.73)	-0.4656	0.0473	0.00E+00	0.00E+00
Hypertension	0.73	(0.66, 0.81)	-0.3181	0.0332	0.00E+00	0.00E+00
Other	0.99	(0.84, 1.18)	-0.0080	0.0556	8.86E-01	1.00E+00
Other autoimmune disease	0.87	(0.76, 0.99)	-0.1421	0.0424	8.06E-04	2.02E-02
Other immunodeficiency disorder	0.87	(0.65, 1.17)	-0.1389	0.0953	1.45E-01	1.00E+00
Other lung condition	0.62	(0.48, 0.78)	-0.4859	0.0778	4.22E-10	1.05E-08
Any	0.71	(0.65, 0.78)	-0.3393	0.0276	0.00E+00	0.00E+00

OBESITY						
obesity I (BMI >= 30 and BMI < 35)	1.03	(0.93, 1.15)	0.0338	0.0350	3.35E-01	1.00E+00
obesity II (BMI >= 35 and BMI < 40)	1.03	(0.90, 1.19)	0.0343	0.0456	4.52E-01	1.00E+00
obesity III (BMI >= 40)	1.10	(0.94, 1.28)	0.0927	0.0499	6.31E-02	1.00E+00
Not obese	1.00		0.0000		nan	nan
GENETIC SEX						
Female	1.00		0.0000		nan	nan
Male	0.96	(0.87, 1.05)	-0.0443	0.0295	1.33E-01	1.00E+00

124
 125 Unadjusted odds ratios for a known “direct” exposure to COVID-19 were calculated based on the
 126 self-reported response to the following question: “Have you been directly exposed to someone
 127 who has tested positive for COVID-19?” The following groups served as reference populations
 128 for the odds ratio calculations: European genetic ancestry (Genetic Ancestry), Ages 50-64 (Age),
 129 Female (Genetic Sex), and Not Obese (BMI < 30, Obesity).

130
 131
 132
 133
 134
 135
 136
 137
 138
 139
 140
 141
 142
 143

144 **Supplementary Table 9. Unadjusted risk factor odds ratios for a household case(s) of**
 145 **COVID-19**

146

RISK FACTOR	ODDS RATIO (OR)	OR 95% CI (BONFERRONI)	logOR	logOR S.E.	P-VALUE (NOMINAL)	P-VALUE (BONFERRONI)
AGE						
Ages 18-29	1.44	(1.15, 1.79)	0.3623	0.0715	4.01E-07	1.00E-05
Ages 30-49	0.98	(0.84, 1.14)	-0.0204	0.0488	6.76E-01	1.00E+00
Ages 50-64	1.00		0.0000		nan	nan
Ages 65+	0.50	(0.41, 0.61)	-0.6882	0.0641	0.00E+00	0.00E+00
GENETIC ANCESTRY						
Admixed African-European	1.35	(1.00, 1.81)	0.2971	0.0954	1.84E-03	4.60E-02
European	1.00		0.0000		nan	nan
Admixed Amerindian	1.95	(1.60, 2.37)	0.6686	0.0634	5.56E-26	1.39E-24
Other	1.23	(1.04, 1.47)	0.2107	0.0557	1.56E-04	3.90E-03
EXPOSURE						
Biological relative tested positive	14.32	(12.30, 16.67)	2.6615	0.0491	0.00E+00	0.00E+00
Directly exposed to someone who tested positive	22.53	(17.88, 28.38)	3.1148	0.0747	0.00E+00	0.00E+00
Healthcare worker directly exposed	1.11	(0.94, 1.32)	0.1073	0.0540	4.71E-02	1.00E+00
HEALTH CONDITIONS						
Asthma	0.91	(0.77, 1.07)	-0.0975	0.0549	7.59E-02	1.00E+00
COPD (Chronic Obstructive Pulmonary Disease)	0.58	(0.38, 0.89)	-0.5405	0.1363	7.31E-05	1.83E-03
Cancer treated in the past year	0.44	(0.26, 0.75)	-0.8217	0.1735	2.19E-06	5.48E-05
Cardiovascular disease	0.68	(0.50, 0.93)	-0.3795	0.0988	1.23E-04	3.07E-03
Chronic kidney disease	0.53	(0.30, 0.97)	-0.6255	0.1911	1.06E-03	2.66E-02
Diabetes	0.89	(0.72, 1.10)	-0.1187	0.0701	9.02E-02	1.00E+00
Hypertension	0.80	(0.69, 0.94)	-0.2182	0.0516	2.31E-05	5.77E-04
Other	0.93	(0.72, 1.21)	-0.0673	0.0845	4.26E-01	1.00E+00
Other autoimmune disease	0.85	(0.69, 1.04)	-0.1684	0.0667	1.16E-02	2.90E-01
Other immunodeficiency disorder	0.87	(0.56, 1.37)	-0.1357	0.1453	3.50E-01	1.00E+00
Other lung condition	0.63	(0.42, 0.94)	-0.4620	0.1292	3.48E-04	8.70E-03
Any	0.74	(0.65, 0.84)	-0.3047	0.0423	5.80E-13	1.45E-11

OBESITY						
obesity I (BMI >= 30 and BMI < 35)	1.05	(0.89, 1.23)	0.0460	0.0533	3.88E-01	1.00E+00
obesity II (BMI >= 35 and BMI < 40)	1.01	(0.81, 1.25)	0.0064	0.0704	9.28E-01	1.00E+00
obesity III (BMI >= 40)	1.04	(0.82, 1.32)	0.0374	0.0769	6.27E-01	1.00E+00
Not obese	1.00		0.0000		nan	nan
GENETIC SEX						
Female	1.00		0.0000		nan	nan
Male	1.18	(1.03, 1.36)	0.1688	0.0438	1.16E-04	2.89E-03

147
 148 Unadjusted odds ratios for a household case(s) of COVID-19 were calculated based on the self-
 149 reported response to the following question: “Has someone in your household tested positive for
 150 COVID-19?” The following groups served as reference populations for the odds ratio calculations:
 151 European genetic ancestry (Genetic Ancestry), Ages 50-64 (Age), Female (Genetic Sex), and Not
 152 Obese (BMI < 30, Obesity).

153
 154
 155
 156
 157
 158
 159
 160
 161
 162
 163
 164
 165

166 **Supplementary Table 10. Unadjusted risk factor odds ratios for a COVID-19 case(s)**
 167 **amongst close biological relatives (parent, grandparent, child, or sibling)**

168

RISK FACTOR	ODDS RATIO (OR)	OR 95% CI (BONFERRONI)	logOR	logOR S.E.	P-VALUE (NOMINAL)	P-VALUE (BONFERRONI)
AGE						
Ages 18-29	1.48	(1.18, 1.86)	0.3934	0.0730	7.16E-08	1.79E-06
Ages 30-49	1.02	(0.88, 1.19)	0.0222	0.0502	6.59E-01	1.00E+00
Ages 50-64	1.00		0.0000		nan	nan
Ages 65+	0.70	(0.58, 0.85)	-0.3523	0.0605	5.90E-09	1.47E-07
GENETIC ANCESTRY						
Admixed African-European	1.69	(1.28, 2.22)	0.5221	0.0896	5.62E-09	1.41E-07
European	1.00		0.0000		nan	nan
Admixed Amerindian	2.08	(1.71, 2.53)	0.7333	0.0634	5.85E-31	1.46E-29
Other	1.42	(1.20, 1.68)	0.3472	0.0547	2.14E-10	5.34E-09
EXPOSURE						
Directly exposed to someone who tested positive	4.43	(3.79, 5.18)	1.4888	0.0503	1.39E-192	3.48E-191
Healthcare worker directly exposed	1.04	(0.87, 1.23)	0.0384	0.0558	4.91E-01	1.00E+00
Household member tested positive	14.32	(12.30, 16.67)	2.6615	0.0491	0.00E+00	0.00E+00
HEALTH CONDITIONS						
Asthma	0.98	(0.82, 1.16)	-0.0245	0.0547	6.54E-01	1.00E+00
COPD (Chronic Obstructive Pulmonary Disease)	0.68	(0.46, 1.02)	-0.3791	0.1293	3.37E-03	8.42E-02
Cancer treated in the past year	0.60	(0.37, 0.97)	-0.5105	0.1542	9.33E-04	2.33E-02
Cardiovascular disease	0.77	(0.57, 1.04)	-0.2600	0.0959	6.72E-03	1.68E-01
Chronic kidney disease	0.52	(0.28, 0.95)	-0.6619	0.1977	8.12E-04	2.03E-02
Diabetes	1.04	(0.84, 1.28)	0.0368	0.0677	5.86E-01	1.00E+00
Hypertension	0.88	(0.75, 1.03)	-0.1281	0.0513	1.25E-02	3.12E-01
Other	1.03	(0.80, 1.33)	0.0297	0.0829	7.20E-01	1.00E+00
Other autoimmune disease	0.90	(0.73, 1.10)	-0.1057	0.0663	1.11E-01	1.00E+00
Other immunodeficiency disorder	0.99	(0.65, 1.53)	-0.0065	0.1394	9.63E-01	1.00E+00
Other lung condition	0.96	(0.69, 1.36)	-0.0368	0.1104	7.39E-01	1.00E+00
Any	0.85	(0.74, 0.97)	-0.1668	0.0429	1.02E-04	2.55E-03

OBESITY						
obesity I (BMI >= 30 and BMI < 35)	1.03	(0.87, 1.22)	0.0327	0.0541	5.45E-01	1.00E+00
obesity II (BMI >= 35 and BMI < 40)	0.88	(0.70, 1.11)	-0.1292	0.0748	8.41E-02	1.00E+00
obesity III (BMI >= 40)	1.10	(0.87, 1.39)	0.0945	0.0761	2.14E-01	1.00E+00
Not obese	1.00		0.0000		nan	nan
GENETIC SEX						
Female	1.00		0.0000		nan	nan
Male	0.87	(0.75, 1.00)	-0.1404	0.0462	2.39E-03	5.99E-02

169
 170 Unadjusted odds ratios for a case(s) of COVID-19 among close biological relatives (grandparent,
 171 parent, child, or sibling) were calculated based on the self-reported response to the following
 172 question: “Have any of your biological relatives tested positive for COVID-19? Select all that
 173 apply.” The following groups served as reference populations for the odds ratio calculations:
 174 European genetic ancestry (Genetic Ancestry), Ages 50-64 (Age), Female (Genetic Sex), and Not
 175 Obese (BMI < 30, Obesity).

176
 177
 178
 179
 180
 181

182
 183
 184
 185
 186
 187
 188

189 **Supplementary Table 11. Unadjusted risk factor odds ratios for COVID-19 hospitalization**
 190

RISK FACTOR	ODDS RATIO (OR)	OR 95% CI (BONFERRONI)	logOR	logOR S.E.	P-VALUE (NOMINAL)	P-VALUE (BONFERRONI)
AGE						
Ages 18-29	0.42	(0.21, 0.83)	-0.8793	0.2143	4.06E-05	1.71E-03
Ages 30-49	0.54	(0.36, 0.81)	-0.6143	0.1246	8.24E-07	3.46E-05
Ages 50-64	1.00		0.0000		nan	nan
Ages 65+	1.70	(1.13, 2.56)	0.5325	0.1263	2.49E-05	1.05E-03
GENETIC ANCESTRY						
Admixed African-European	1.44	(0.78, 2.65)	0.3625	0.1884	5.43E-02	1.00E+00
European	1.00		0.0000		nan	nan
Admixed Amerindian	0.77	(0.44, 1.36)	-0.2579	0.1745	1.39E-01	1.00E+00
Other	0.91	(0.59, 1.40)	-0.0964	0.1335	4.70E-01	1.00E+00
EXPOSURE						
Any	0.74	(0.46, 1.19)	-0.3048	0.1483	3.98E-02	1.00E+00
Biological relative tested positive	1.17	(0.81, 1.69)	0.1550	0.1136	1.73E-01	1.00E+00
Directly exposed to someone who tested positive	0.63	(0.42, 0.96)	-0.4595	0.1279	3.28E-04	1.38E-02
Healthcare worker directly exposed	0.53	(0.34, 0.84)	-0.6317	0.1423	9.09E-06	3.82E-04
Household member tested positive	0.91	(0.65, 1.27)	-0.0971	0.1033	3.47E-01	1.00E+00
HEALTH CONDITIONS						
Asthma	1.42	(0.95, 2.13)	0.3525	0.1249	4.77E-03	2.00E-01
COPD (Chronic Obstructive Pulmonary Disease)	3.48	(1.65, 7.32)	1.2469	0.2296	5.64E-08	2.37E-06
Cancer treated in the past year	3.13	(1.29, 7.57)	1.1396	0.2730	2.99E-05	1.26E-03
Cardiovascular disease	2.82	(1.61, 4.96)	1.0374	0.1740	2.50E-09	1.05E-07
Chronic kidney disease	8.74	(3.44, 22.21)	2.1684	0.2876	4.71E-14	1.98E-12
Diabetes	3.03	(1.98, 4.63)	1.1085	0.1311	2.78E-17	1.17E-15
Hypertension	2.01	(1.41, 2.88)	0.7002	0.1105	2.37E-10	9.96E-09
Other	1.65	(0.93, 2.93)	0.5038	0.1767	4.35E-03	1.83E-01
Other autoimmune disease	1.32	(0.81, 2.17)	0.2811	0.1523	6.49E-02	1.00E+00
Other immunodeficiency disorder	1.98	(0.77, 5.09)	0.6826	0.2915	1.92E-02	8.05E-01
Other lung condition	2.84	(1.32, 6.10)	1.0423	0.2364	1.04E-05	4.35E-04

Any	2.70	(1.90, 3.83)	0.9919	0.1081	4.43E-20	1.86E-18
OBESITY						
obesity I (BMI >= 30 and BMI < 35)	1.41	(0.94, 2.12)	0.3418	0.1258	6.61E-03	2.78E-01
obesity II (BMI >= 35 and BMI < 40)	1.21	(0.70, 2.09)	0.1883	0.1693	2.66E-01	1.00E+00
obesity III (BMI >= 40)	1.62	(0.93, 2.83)	0.4820	0.1719	5.04E-03	2.12E-01
Not obese	1.00		0.0000		nan	nan
GENETIC SEX						
Female	1.00		0.0000		nan	nan
Male	1.27	(0.92, 1.77)	0.2418	0.1015	1.72E-02	7.22E-01
SYMPTOMS						
Abdominal pain	1.76	(1.23, 2.52)	0.5638	0.1112	3.92E-07	1.65E-05
Body aches	1.39	(0.96, 2.02)	0.3309	0.1142	3.75E-03	1.57E-01
Change in taste or smell	0.77	(0.55, 1.07)	-0.2657	0.1039	1.05E-02	4.42E-01
Chills	1.82	(1.29, 2.57)	0.5991	0.1061	1.65E-08	6.92E-07
Cough producing phlegm	1.56	(1.11, 2.20)	0.4474	0.1054	2.19E-05	9.18E-04
Diarrhea	2.12	(1.52, 2.95)	0.7521	0.1021	1.75E-13	7.35E-12
Dry cough	2.59	(1.81, 3.71)	0.9528	0.1104	6.26E-18	2.63E-16
Feeling tired or fatigue	2.54	(1.35, 4.78)	0.9335	0.1949	1.68E-06	7.04E-05
Fever	3.33	(2.26, 4.90)	1.2032	0.1192	5.93E-24	2.49E-22
Headache	0.89	(0.63, 1.26)	-0.1125	0.1063	2.90E-01	1.00E+00
Nasal congestion	0.94	(0.67, 1.31)	-0.0610	0.1030	5.54E-01	1.00E+00
Nausea or vomiting	2.26	(1.58, 3.23)	0.8156	0.1104	1.52E-13	6.39E-12
Runny nose	1.09	(0.76, 1.56)	0.0831	0.1118	4.57E-01	1.00E+00
Shortness of breath	7.52	(4.92, 11.49)	2.0172	0.1309	1.48E-53	6.21E-52
Sore throat	1.04	(0.72, 1.50)	0.0386	0.1127	7.32E-01	1.00E+00

191

192 Unadjusted odds ratios for hospitalization due to COVID-19 infection were calculated among
 193 those reporting a positive COVID-19 test result. The following groups served as reference
 194 populations for the odds ratio calculations: European genetic ancestry (Genetic Ancestry), Ages
 195 50-64 (Age), Female (Genetic Sex), and Not Obese (BMI < 30, Obesity). Note that symptoms
 196 odds ratios were calculated in a binary fashion among symptomatic customers only (Methods).
 197

198 **Supplementary Table 12. Risk factor odds ratios for COVID-19 hospitalization, adjusted**
 199 **for health conditions, obesity, age, and sex**
 200

RISK FACTOR	ODDS RATIO (OR)	OR 95% CI (BONFERRONI)	logOR	logOR S.E.	P-VALUE (NOMINAL)	P-VALUE (BONFERRONI)
AGE						
Ages 18-29	0.56	(0.26, 1.20)	-0.5815	0.2359	1.37E-02	5.75E-01
Ages 30-49	0.60	(0.39, 0.92)	-0.5110	0.1333	1.26E-04	5.28E-03
Ages 50-64	1.00		0.0000		nan	nan
Ages 65+	1.60	(1.02, 2.51)	0.4713	0.1381	6.43E-04	2.70E-02
GENETIC ANCESTRY						
Admixed African-European	1.57	(0.81, 3.03)	0.4513	0.2026	2.59E-02	1.00E+00
European	1.00		0.0000		nan	nan
Admixed Amerindian	1.11	(0.59, 2.07)	0.1035	0.1922	5.90E-01	1.00E+00
Other	0.95	(0.59, 1.54)	-0.0493	0.1490	7.41E-01	1.00E+00
EXPOSURE						
Any	0.81	(0.48, 1.39)	-0.2060	0.1653	2.13E-01	1.00E+00
Biological relative tested positive	1.16	(0.78, 1.74)	0.1498	0.1248	2.30E-01	1.00E+00
Directly exposed to someone who tested positive	0.68	(0.43, 1.07)	-0.3870	0.1397	5.61E-03	2.36E-01
Healthcare worker directly exposed	0.63	(0.38, 1.04)	-0.4685	0.1567	2.79E-03	1.17E-01
Household member tested positive	0.88	(0.62, 1.26)	-0.1245	0.1109	2.62E-01	1.00E+00
HEALTH CONDITIONS						
Asthma	1.42	(0.92, 2.20)	0.3537	0.1343	8.42E-03	3.54E-01
COPD (Chronic Obstructive Pulmonary Disease)	2.25	(0.99, 5.14)	0.8123	0.2542	1.40E-03	5.87E-02
Cancer treated in the past year	1.90	(0.72, 5.04)	0.6422	0.3012	3.30E-02	1.00E+00
Cardiovascular disease	1.67	(0.90, 3.11)	0.5139	0.1914	7.24E-03	3.04E-01
Chronic kidney disease	5.62	(2.10, 15.03)	1.7267	0.3034	1.26E-08	5.30E-07
Diabetes	2.22	(1.39, 3.55)	0.7988	0.1442	3.06E-08	1.28E-06
Hypertension	1.32	(0.88, 1.97)	0.2757	0.1239	2.61E-02	1.00E+00
Other	1.47	(0.80, 2.71)	0.3878	0.1875	3.86E-02	1.00E+00
Other autoimmune disease	1.41	(0.83, 2.40)	0.3461	0.1635	3.42E-02	1.00E+00
Other immunodeficiency disorder	1.83	(0.68, 4.93)	0.6032	0.3062	4.88E-02	1.00E+00

Other lung condition	1.87	(0.83, 4.22)	0.6242	0.2514	1.30E-02	5.47E-01
Any	2.08	(1.42, 3.04)	0.7333	0.1172	3.93E-10	1.65E-08
OBESITY						
obesity I (BMI >= 30 and BMI < 35)	1.19	(0.77, 1.82)	0.1707	0.1323	1.97E-01	1.00E+00
obesity II (BMI >= 35 and BMI < 40)	1.13	(0.64, 2.00)	0.1249	0.1750	4.75E-01	1.00E+00
obesity III (BMI >= 40)	1.59	(0.88, 2.87)	0.4631	0.1821	1.10E-02	4.62E-01
Not obese	1.00		0.0000		nan	nan
GENETIC SEX						
Female	1.00		0.0000		nan	nan
Male	1.22	(0.85, 1.74)	0.1960	0.1103	7.57E-02	1.00E+00
SYMPTOMS						
Abdominal pain	1.66	(1.12, 2.46)	0.5086	0.1214	2.81E-05	1.18E-03
Body aches	1.44	(0.96, 2.15)	0.3646	0.1240	3.27E-03	1.37E-01
Change in taste or smell	0.89	(0.62, 1.29)	-0.1159	0.1139	3.09E-01	1.00E+00
Chills	1.94	(1.33, 2.82)	0.6609	0.1156	1.07E-08	4.51E-07
Cough producing phlegm	1.41	(0.97, 2.05)	0.3470	0.1150	2.54E-03	1.07E-01
Diarrhea	2.23	(1.55, 3.20)	0.8014	0.1120	8.21E-13	3.45E-11
Dry cough	2.49	(1.69, 3.67)	0.9114	0.1196	2.55E-14	1.07E-12
Feeling tired or fatigue	2.81	(1.38, 5.74)	1.0333	0.2203	2.73E-06	1.15E-04
Fever	3.49	(2.29, 5.34)	1.2510	0.1309	1.24E-21	5.19E-20
Headache	1.05	(0.72, 1.54)	0.0487	0.1180	6.80E-01	1.00E+00
Nasal congestion	0.93	(0.65, 1.34)	-0.0698	0.1122	5.34E-01	1.00E+00
Nausea or vomiting	2.41	(1.62, 3.59)	0.8801	0.1230	8.38E-13	3.52E-11
Runny nose	0.93	(0.62, 1.39)	-0.0710	0.1232	5.65E-01	1.00E+00
Shortness of breath	8.20	(5.14, 13.08)	2.1042	0.1440	2.37E-48	9.96E-47
Sore throat	1.11	(0.75, 1.66)	0.1074	0.1224	3.80E-01	1.00E+00

201
202 Adjusted odds ratios for hospitalization due to COVID-19 infection were calculated among those
203 reporting a positive COVID-19 test result. The following groups served as reference populations
204 for the odds ratio calculations: European genetic ancestry (Genetic Ancestry), Ages 50-64 (Age),
205 Female (Genetic Sex), and Not Obese (BMI < 30, Obesity). Note that symptoms odds ratios were
206 calculated in a binary fashion among symptomatic customers only (Methods). Here, odds ratios
207 were adjusted for age, sex, comorbidities (Y/N if any), and obesity (Y/N if BMI > 30, Methods).
208

209 **Supplementary Table 13. Unadjusted risk factor odds ratios for progression of COVID-19**
 210 **to a critical case.**
 211

RISK FACTOR	ODDS RATIO (OR)	OR 95% CI (BONFERRONI)	logOR	logOR S.E.	P-VALUE (NOMINAL)	P-VALUE (BONFERRONI)
AGE						
Ages 18-29	0.35	(0.13, 0.95)	-1.0599	0.3114	6.64E-04	2.79E-02
Ages 30-49	0.55	(0.32, 0.94)	-0.5983	0.1652	2.92E-04	1.23E-02
Ages 50-64	1		0		nan	nan
Ages 65+	1.65	(0.97, 2.80)	0.5001	0.1632	2.19E-03	9.18E-02
GENETIC ANCESTRY						
Admixed African-European	2.07	(1.03, 4.17)	0.7269	0.2166	7.91E-04	3.32E-02
European	1		0		nan	nan
Admixed Amerindian	0.75	(0.35, 1.62)	-0.2871	0.2377	2.27E-01	1.00E+00
Other	0.82	(0.45, 1.49)	-0.2044	0.1853	2.70E-01	1.00E+00
EXPOSURE						
Any	0.77	(0.40, 1.45)	-0.2675	0.1981	1.77E-01	1.00E+00
Biological relative tested positive	1.15	(0.70, 1.86)	0.1356	0.1502	3.67E-01	1.00E+00
Directly exposed to someone who tested positive	0.59	(0.34, 1.01)	-0.5348	0.1691	1.56E-03	6.55E-02
Healthcare worker directly exposed	0.53	(0.29, 0.99)	-0.6277	0.1912	1.03E-03	4.31E-02
Household member tested positive	1.00	(0.64, 1.55)	-0.0001	0.1353	1.00E+00	1.00E+00
HEALTH CONDITIONS						
Asthma	1.26	(0.74, 2.17)	0.235	0.1672	1.60E-01	1.00E+00
COPD (Chronic Obstructive Pulmonary Disease)	3.76	(1.57, 9.02)	1.3257	0.2696	8.79E-07	3.69E-05
Cancer treated in the past year	2.07	(0.60, 7.12)	0.7266	0.3814	5.68E-02	1.00E+00
Cardiovascular disease	2.44	(1.17, 5.05)	0.8906	0.2251	7.60E-05	3.19E-03
Chronic kidney disease	8.00	(2.92, 21.91)	2.0794	0.3109	2.26E-11	9.47E-10
Diabetes	3.14	(1.85, 5.32)	1.1431	0.1629	2.29E-12	9.61E-11
Hypertension	2.06	(1.30, 3.27)	0.7214	0.1425	4.15E-07	1.74E-05
Other	1.07	(0.45, 2.54)	0.0649	0.2674	8.08E-01	1.00E+00
Other autoimmune disease	1.35	(0.71, 2.55)	0.2973	0.1973	1.32E-01	1.00E+00
Other immunodeficiency disorder	1.81	(0.53, 6.16)	0.5907	0.3788	1.19E-01	1.00E+00

Other lung condition	3.29	(1.35, 8.00)	1.1909	0.274	1.39E-05	5.82E-04
Any	2.85	(1.78, 4.57)	1.0485	0.1452	5.22E-13	2.19E-11
OBESITY						
obesity I (BMI >= 30 and BMI < 35)	1.31	(0.76, 2.27)	0.2714	0.1696	1.09E-01	1.00E+00
obesity II (BMI >= 35 and BMI < 40)	1.16	(0.56, 2.43)	0.1525	0.2275	5.03E-01	1.00E+00
obesity III (BMI >= 40)	2.06	(1.05, 4.02)	0.7211	0.2071	4.98E-04	2.09E-02
Not obese	1		0		nan	nan
GENETIC SEX						
Female	1		0		nan	nan
Male	1.54	(1.00, 2.37)	0.4342	0.1325	1.05E-03	4.42E-02
SYMPTOMS						
Abdominal pain	1.95	(1.23, 3.08)	0.666	0.1413	2.45E-06	1.03E-04
Body aches	1.58	(0.95, 2.60)	0.4547	0.1546	3.27E-03	1.37E-01
Change in taste or smell	0.79	(0.51, 1.23)	-0.2319	0.1358	8.79E-02	1.00E+00
Chills	2.04	(1.28, 3.23)	0.7106	0.1423	5.96E-07	2.50E-05
Cough producing phlegm	1.83	(1.18, 2.84)	0.6063	0.1351	7.24E-06	3.04E-04
Diarrhea	2.48	(1.61, 3.84)	0.9102	0.1339	1.08E-11	4.53E-10
Dry cough	2.67	(1.66, 4.31)	0.9836	0.1474	2.49E-11	1.04E-09
Feeling tired or fatigue	2.55	(1.09, 5.97)	0.9344	0.2628	3.77E-04	1.58E-02
Fever	3.52	(2.08, 5.96)	1.2595	0.1622	8.00E-15	3.36E-13
Headache	0.97	(0.61, 1.52)	-0.0356	0.1402	8.00E-01	1.00E+00
Nasal congestion	1.06	(0.69, 1.64)	0.0592	0.1337	6.58E-01	1.00E+00
Nausea or vomiting	2.27	(1.44, 3.60)	0.8217	0.1415	6.30E-09	2.64E-07
Runny nose	1.31	(0.83, 2.07)	0.2696	0.1415	5.68E-02	1.00E+00
Shortness of breath	11.55	(5.91, 22.59)	2.4466	0.2069	2.93E-32	1.23E-30
Sore throat	1.45	(0.92, 2.29)	0.374	0.1396	7.40E-03	3.11E-01

212
 213 Unadjusted odds ratios for progression of COVID-19 infection to a critical, life-threatening illness
 214 were calculated among those reporting a positive COVID-19 test result. The following groups
 215 served as reference populations for the odds ratio calculations: European genetic ancestry (Genetic
 216 Ancestry), Ages 50-64 (Age), Female (Genetic Sex), and Not Obese (BMI < 30, Obesity). Note
 217 that symptoms odds ratios were calculated in a binary fashion among symptomatic customers only
 218 (Methods).
 219

220 **Supplementary Table 14. Risk factor odds ratios for progression of COVID-19 to a critical**
 221 **case, adjusted for health conditions, obesity, age, and sex.**

222

RISK FACTOR	ODDS RATIO (OR)	OR 95% CI (BONFERRONI)	logOR	logOR S.E.	P-VALUE (NOMINAL)	P-VALUE (BONFERRONI)
AGE						
Ages 18-29	0.46	(0.15, 1.45)	-0.7675	0.3506	2.86E-02	1.00E+00
Ages 30-49	0.67	(0.38, 1.17)	-0.4033	0.1735	2.01E-02	8.45E-01
Ages 50-64	1		0		nan	nan
Ages 65+	1.51	(0.85, 2.69)	0.41	0.1785	2.16E-02	9.07E-01
GENETIC ANCESTRY						
Admixed African-European	2.34	(1.11, 4.95)	0.8516	0.2308	2.25E-04	9.43E-03
European	1		0		nan	nan
Admixed Amerindian	1.12	(0.49, 2.56)	0.1145	0.2548	6.53E-01	1.00E+00
Other	0.85	(0.44, 1.65)	-0.164	0.206	4.26E-01	1.00E+00
EXPOSURE						
Any	0.83	(0.41, 1.67)	-0.1862	0.2163	3.89E-01	1.00E+00
Biological relative tested positive	1.23	(0.73, 2.08)	0.2104	0.1609	1.91E-01	1.00E+00
Directly exposed to someone who tested positive	0.62	(0.34, 1.13)	-0.4747	0.183	9.49E-03	3.98E-01
Healthcare worker directly exposed	0.62	(0.31, 1.24)	-0.4703	0.2116	2.63E-02	1.00E+00
Household member tested positive	1.01	(0.63, 1.60)	0.0068	0.1434	9.62E-01	1.00E+00
HEALTH CONDITIONS						
Asthma	1.24	(0.69, 2.22)	0.2124	0.1806	2.40E-01	1.00E+00
COPD (Chronic Obstructive Pulmonary Disease)	2.39	(0.90, 6.36)	0.8704	0.302	3.95E-03	1.66E-01
Cancer treated in the past year	1.08	(0.26, 4.55)	0.0784	0.4429	8.59E-01	1.00E+00
Cardiovascular disease	1.42	(0.64, 3.15)	0.3485	0.2469	1.58E-01	1.00E+00
Chronic kidney disease	4.88	(1.67, 14.30)	1.586	0.3314	1.70E-06	7.13E-05
Diabetes	2.16	(1.20, 3.89)	0.7699	0.1816	2.23E-05	9.38E-04
Hypertension	1.34	(0.80, 2.24)	0.2903	0.1599	6.95E-02	1.00E+00
Other	1.19	(0.49, 2.88)	0.1765	0.2714	5.16E-01	1.00E+00
Other autoimmune disease	1.55	(0.78, 3.06)	0.4368	0.2105	3.80E-02	1.00E+00
Other immunodeficiency disorder	1.82	(0.52, 6.31)	0.5962	0.3844	1.21E-01	1.00E+00

Other lung condition	2.09	(0.80, 5.47)	0.7376	0.2965	1.29E-02	5.40E-01
Any	2.22	(1.33, 3.69)	0.7959	0.157	4.00E-07	1.68E-05
OBESITY						
obesity I (BMI >= 30 and BMI < 35)	1.09	(0.62, 1.93)	0.0882	0.1761	6.17E-01	1.00E+00
obesity II (BMI >= 35 and BMI < 40)	1.06	(0.50, 2.26)	0.0605	0.2334	7.96E-01	1.00E+00
obesity III (BMI >= 40)	1.95	(0.96, 3.98)	0.6695	0.2196	2.29E-03	9.64E-02
Not obese	1		0		nan	nan
GENETIC SEX						
Female	1		0		nan	nan
Male	1.5	(0.95, 2.37)	0.4041	0.142	4.42E-03	1.85E-01
SYMPTOMS						
Abdominal pain	2.03	(1.24, 3.32)	0.7095	0.1514	2.77E-06	1.16E-04
Body aches	1.88	(1.08, 3.27)	0.6321	0.1707	2.13E-04	8.95E-03
Change in taste or smell	1.03	(0.63, 1.66)	0.025	0.1485	8.66E-01	1.00E+00
Chills	2.22	(1.35, 3.66)	0.7975	0.1542	2.31E-07	9.70E-06
Cough producing phlegm	1.69	(1.05, 2.70)	0.5233	0.1452	3.14E-04	1.32E-02
Diarrhea	2.74	(1.71, 4.39)	1.0077	0.1457	4.58E-12	1.92E-10
Dry cough	2.73	(1.62, 4.59)	1.0041	0.1601	3.60E-10	1.51E-08
Feeling tired or fatigue	2.86	(1.10, 7.40)	1.05	0.2938	3.51E-04	1.48E-02
Fever	3.34	(1.91, 5.85)	1.2074	0.1726	2.65E-12	1.11E-10
Headache	1.18	(0.72, 1.95)	0.1678	0.1537	2.75E-01	1.00E+00
Nasal congestion	1.12	(0.70, 1.78)	0.1106	0.1435	4.41E-01	1.00E+00
Nausea or vomiting	2.72	(1.65, 4.49)	0.9997	0.1547	1.03E-10	4.31E-09
Runny nose	1.19	(0.72, 1.95)	0.1704	0.153	2.65E-01	1.00E+00
Shortness of breath	12.87	(6.18, 26.81)	2.5549	0.2265	1.62E-29	6.79E-28
Sore throat	1.65	(1.01, 2.68)	0.4991	0.1503	9.01E-04	3.79E-02

223
 224 Adjusted odds ratios for progression of COVID-19 infection to a critical, life-threatening illness
 225 were calculated among those reporting a positive COVID-19 test result. The following groups
 226 served as reference populations for the odds ratio calculations: European genetic ancestry (Genetic
 227 Ancestry), Ages 50-64 (Age), Female (Genetic Sex), and Not Obese (BMI < 30, Obesity). Note
 228 that symptoms odds ratios were calculated in a binary fashion among symptomatic customers only
 229 (Methods). Here, odds ratios were adjusted for age, sex, comorbidities (Y/N if any), and obesity
 230 (Y/N if BMI > 30, Methods).

231 **Supplementary Table 15. Unadjusted risk factor odds ratios for COVID-19 susceptibility**
 232 **(training dataset)**

RISK FACTOR	ODDS RATIO (OR)	OR 95% CI (BONFERRONI)	logOR	logOR S.E.	P-VALUE (NOMINAL)	P-VALUE (BONFERRONI)
AGE						
Ages 18-29	1.6	(1.21, 2.11)	0.4693	0.0857	4.42E-08	1.86E-06
Ages 30-49	1.11	(0.92, 1.34)	0.105	0.0584	7.22E-02	1.00E+00
Ages 50-64	1		0		nan	nan
Ages 65+	0.49	(0.38, 0.63)	-0.7051	0.077	0.00E+00	0.00E+00
GENETIC ANCESTRY						
Admixed African-European	1.24	(0.85, 1.81)	0.2158	0.1168	6.47E-02	1.00E+00
European	1		0		nan	nan
Admixed Amerindian	1.59	(1.22, 2.07)	0.462	0.0814	1.36E-08	5.73E-07
Other	1.16	(0.94, 1.44)	0.1516	0.0665	2.27E-02	9.52E-01
EXPOSURE						
Any	9.49	(7.65, 11.77)	2.2503	0.0665	4.79E-251	2.01E-249
Biological relative tested positive	5.74	(4.66, 7.07)	1.7467	0.0644	4.71E-162	1.98E-160
Directly exposed to someone who tested positive	7.63	(6.33, 9.19)	2.0317	0.0576	4.44E-272	1.87E-270
Healthcare worker directly exposed	1.56	(1.29, 1.87)	0.4417	0.0576	1.78E-14	7.47E-13
Household member tested positive	24.28	(19.62, 30.03)	3.1896	0.0657	0.00E+00	0.00E+00
PRE-EXISTING CONDITION						
Asthma	0.81	(0.65, 1.00)	-0.2166	0.0677	1.37E-03	5.75E-02
COPD (Chronic Obstructive Pulmonary Disease)	0.54	(0.31, 0.93)	-0.6217	0.1684	2.22E-04	9.32E-03
Cancer treated in the past year	0.57	(0.32, 1.00)	-0.564	0.1731	1.12E-03	4.71E-02
Cardiovascular disease	0.74	(0.51, 1.06)	-0.3014	0.1122	7.26E-03	3.05E-01
Chronic kidney disease	0.55	(0.28, 1.10)	-0.5938	0.2139	5.49E-03	2.31E-01
Diabetes	0.9	(0.69, 1.17)	-0.105	0.0816	1.98E-01	1.00E+00
Hypertension	0.76	(0.62, 0.93)	-0.2728	0.061	7.64E-06	3.21E-04
Other	0.93	(0.66, 1.31)	-0.0726	0.1049	4.89E-01	1.00E+00
Other autoimmune disease	0.8	(0.61, 1.04)	-0.2241	0.081	5.65E-03	2.37E-01
Other immunodeficiency disorder	0.77	(0.42, 1.40)	-0.2669	0.1854	1.50E-01	1.00E+00
Other lung condition	0.64	(0.39, 1.03)	-0.4524	0.1502	2.59E-03	1.09E-01

Any	0.67	(0.57, 0.79)	-0.3983	0.0498	1.33E-15	5.60E-14
OBESITY						
obesity I (BMI >= 30 and BMI < 35)	1.02	(0.83, 1.25)	0.0212	0.0628	7.35E-01	1.00E+00
obesity II (BMI >= 35 and BMI < 40)	1.15	(0.94, 1.41)	0.1376	0.0626	2.81E-02	1.00E+00
obesity III (BMI >= 40)	1.13	(0.85, 1.50)	0.12	0.0874	1.70E-01	1.00E+00
Not obese	1		0		nan	nan
GENETIC SEX						
Female	1		0		nan	nan
Male	1.16	(0.98, 1.37)	0.1459	0.0525	5.43E-03	2.28E-01
SYMPTOMS						
Abdominal pain	0.97	(0.64, 1.48)	-0.0303	0.1303	8.16E-01	1.00E+00
Body aches	1.56	(1.09, 2.23)	0.4461	0.1104	5.34E-05	2.24E-03
Change in taste or smell	7.02	(4.67, 10.56)	1.9493	0.1257	2.96E-54	1.24E-52
Chills	1.38	(0.97, 1.96)	0.3211	0.1085	3.08E-03	1.29E-01
Cough producing phlegm	0.93	(0.64, 1.37)	-0.0685	0.1178	5.61E-01	1.00E+00
Diarrhea	1.18	(0.81, 1.72)	0.1672	0.1158	1.49E-01	1.00E+00
Dry cough	1.29	(0.91, 1.84)	0.2578	0.1082	1.72E-02	7.21E-01
Feeling tired or fatigue	1.54	(0.99, 2.42)	0.4341	0.1381	1.67E-03	7.03E-02
Fever	1.54	(1.08, 2.19)	0.4295	0.1088	7.84E-05	3.29E-03
Headache	1.39	(0.97, 2.00)	0.33	0.1118	3.17E-03	1.33E-01
Nasal congestion	0.85	(0.60, 1.21)	-0.1632	0.1081	1.31E-01	1.00E+00
Nausea or vomiting	0.82	(0.53, 1.26)	-0.1979	0.1327	1.36E-01	1.00E+00
Runny nose	0.59	(0.41, 0.86)	-0.5246	0.1137	3.92E-06	1.65E-04
Shortness of breath	1.25	(0.87, 1.79)	0.2219	0.1106	4.48E-02	1.00E+00
Sore throat	0.48	(0.34, 0.69)	-0.7286	0.1117	6.84E-11	2.87E-09

233
 234 Unadjusted odds ratios for a positive COVID-19 test were calculated among survey participants
 235 reporting a test result (positive or negative). The following groups served as reference populations
 236 for the odds ratio calculations: European genetic ancestry (Genetic Ancestry), Ages 50-64 (Age),
 237 Female (Genetic Sex), and Not Obese (BMI < 30, Obesity). Note that symptoms odds ratios were
 238 calculated in a binary fashion among symptomatic customers only (Methods).
 239

240 **Supplementary Table 16. Unadjusted risk factor odds ratios for COVID-19 hospitalization**
 241 **(training dataset)**

242

RISK FACTOR	ODDS RATIO (OR)	OR 95% CI (BONFERRONI)	logOR	logOR S.E.	P-VALUE (NOMINAL)	P-VALUE (BONFERRONI)
AGE						
Ages 18-29	0.53	(0.20, 1.37)	-0.6395	0.2951	3.02E-02	1.00E+00
Ages 30-49	0.5	(0.27, 0.92)	-0.6907	0.1879	2.37E-04	9.95E-03
Ages 50-64	1		0		nan	nan
Ages 65+	1.64	(0.87, 3.08)	0.4956	0.1943	1.07E-02	4.51E-01
GENETIC ANCESTRY						
Admixed African-European	1.19	(0.43, 3.28)	0.176	0.3121	5.73E-01	1.00E+00
European	1		0		nan	nan
Admixed Amerindian	0.77	(0.32, 1.86)	-0.2551	0.2703	3.45E-01	1.00E+00
Other	0.69	(0.34, 1.39)	-0.3752	0.2169	8.37E-02	1.00E+00
EXPOSURE						
Any	0.69	(0.34, 1.39)	-0.3732	0.2174	8.61E-02	1.00E+00
Biological relative tested positive	1.06	(0.60, 1.88)	0.0572	0.1772	7.47E-01	1.00E+00
Directly exposed to someone who tested positive	0.54	(0.29, 0.98)	-0.6207	0.1867	8.86E-04	3.72E-02
Healthcare worker directly exposed	0.57	(0.29, 1.10)	-0.5698	0.2042	5.26E-03	2.21E-01
Household member tested positive	0.88	(0.53, 1.45)	-0.1332	0.1551	3.90E-01	1.00E+00
HEALTH CONDITIONS						
Asthma	1.17	(0.62, 2.19)	0.1555	0.1944	4.24E-01	1.00E+00
COPD (Chronic Obstructive Pulmonary Disease)	2.95	(0.82, 10.67)	1.083	0.3962	6.27E-03	2.63E-01
Cancer treated in the past year	3.21	(0.88, 11.78)	1.1677	0.4006	3.56E-03	1.49E-01
Cardiovascular disease	2.73	(1.18, 6.28)	1.0036	0.2573	9.62E-05	4.04E-03
Chronic kidney disease	10.82	(2.86, 40.90)	2.3812	0.4103	6.49E-09	2.73E-07
Diabetes	3.21	(1.70, 6.06)	1.1676	0.1957	2.44E-09	1.02E-07
Hypertension	1.68	(0.98, 2.88)	0.5172	0.1664	1.88E-03	7.91E-02
Other	1.63	(0.74, 3.63)	0.4906	0.2463	4.64E-02	1.00E+00
Other autoimmune disease	1.21	(0.58, 2.54)	0.1914	0.2288	4.03E-01	1.00E+00
Other immunodeficiency disorder	0.77	(0.11, 5.53)	-0.2655	0.6094	6.63E-01	1.00E+00

Other lung condition	1.8	(0.50, 6.55)	0.5883	0.3983	1.40E-01	1.00E+00
Any	2.36	(1.41, 3.93)	0.8574	0.1575	5.26E-08	2.21E-06
OBESITY						
obesity I (BMI >= 30 and BMI < 35)	1.32	(0.74, 2.34)	0.2765	0.1771	1.19E-01	1.00E+00
obesity II (BMI >= 35 and BMI < 40)	1.08	(0.56, 2.06)	0.0753	0.2001	7.07E-01	1.00E+00
obesity III (BMI >= 40)	1.42	(0.62, 3.26)	0.3505	0.2566	1.72E-01	1.00E+00
Not obese	1		0		nan	nan
GENETIC SEX						
Female	1		0		nan	nan
Male	1.29	(0.79, 2.12)	0.2584	0.1525	9.02E-02	1.00E+00
SYMPTOMS						
Abdominal pain	1.79	(1.04, 3.10)	0.5841	0.1686	5.33E-04	2.24E-02
Body aches	1.6	(0.90, 2.83)	0.4695	0.1765	7.80E-03	3.28E-01
Change in taste or smell	0.83	(0.50, 1.38)	-0.189	0.1582	2.32E-01	1.00E+00
Chills	2.18	(1.29, 3.71)	0.7814	0.1632	1.68E-06	7.07E-05
Cough producing phlegm	1.51	(0.90, 2.53)	0.4096	0.1596	1.03E-02	4.31E-01
Diarrhea	2.04	(1.24, 3.36)	0.7114	0.154	3.87E-06	1.62E-04
Dry cough	2.5	(1.47, 4.28)	0.9179	0.1653	2.80E-08	1.18E-06
Feeling tired or fatigue	4.47	(1.35, 14.73)	1.4965	0.3681	4.79E-05	2.01E-03
Fever	3.06	(1.72, 5.44)	1.1178	0.178	3.36E-10	1.41E-08
Headache	0.87	(0.52, 1.47)	-0.1351	0.16	3.99E-01	1.00E+00
Nasal congestion	0.73	(0.44, 1.23)	-0.3139	0.1595	4.90E-02	1.00E+00
Nausea or vomiting	2.48	(1.45, 4.23)	0.9068	0.1653	4.13E-08	1.74E-06
Runny nose	0.87	(0.49, 1.55)	-0.1355	0.1777	4.46E-01	1.00E+00
Shortness of breath	6.4	(3.49, 11.73)	1.8558	0.187	3.34E-23	1.40E-21
Sore throat	1.03	(0.59, 1.80)	0.0332	0.1717	8.47E-01	1.00E+00

243
 244 Unadjusted odds ratios for hospitalization due to COVID-19 infection were calculated among
 245 those reporting a positive COVID-19 test result. The following groups served as reference
 246 populations for the odds ratio calculations: European genetic ancestry (Genetic Ancestry), Ages
 247 50-64 (Age), Female (Genetic Sex), and Not Obese (BMI < 30, Obesity). Note that symptoms
 248 odds ratios were calculated in a binary fashion among symptomatic customers only (Methods).
 249

250 **Supplementary Table 17. Unadjusted risk factor odds ratios for progression of COVID-19**
 251 **to a critical case (training dataset)**

252

RISK FACTOR	ODDS RATIO (OR)	OR 95% CI (BONFERRONI)	logOR	logOR S.E.	P-VALUE (NOMINAL)	P-VALUE (BONFERRONI)
AGE						
Ages 18-29	0.48	(0.12, 1.84)	-0.7444	0.4175	7.46E-02	1.00E+00
Ages 30-49	0.61	(0.28, 1.33)	-0.4935	0.2408	4.04E-02	1.00E+00
Ages 50-64	1		0		nan	nan
Ages 65+	1.32	(0.56, 3.12)	0.2779	0.2651	2.95E-01	1.00E+00
GENETIC ANCESTRY						
Admixed African-European	2.2	(0.72, 6.73)	0.7892	0.3445	2.20E-02	9.24E-01
European	1		0		nan	nan
Admixed Amerindian	1.08	(0.36, 3.21)	0.0779	0.3354	8.16E-01	1.00E+00
Other	0.84	(0.34, 2.13)	-0.1692	0.2852	5.53E-01	1.00E+00
EXPOSURE						
Any	0.67	(0.26, 1.72)	-0.3951	0.2884	1.71E-01	1.00E+00
Biological relative tested positive	1.18	(0.56, 2.50)	0.1677	0.2304	4.67E-01	1.00E+00
Directly exposed to someone who tested positive	0.46	(0.20, 1.03)	-0.7835	0.2502	1.74E-03	7.31E-02
Healthcare worker directly exposed	0.61	(0.25, 1.47)	-0.4938	0.2711	6.85E-02	1.00E+00
Household member tested positive	0.99	(0.51, 1.93)	-0.0064	0.2055	9.75E-01	1.00E+00
PRE-EXISTING CONDITION						
Asthma	1.04	(0.44, 2.46)	0.0353	0.2669	8.95E-01	1.00E+00
COPD (Chronic Obstructive Pulmonary Disease)	4.34	(1.06, 17.88)	1.4689	0.4366	7.66E-04	3.22E-02
Cancer treated in the past year	1.66	(0.23, 12.21)	0.5094	0.6149	4.07E-01	1.00E+00
Cardiovascular disease	2.88	(1.03, 8.08)	1.0584	0.318	8.74E-04	3.67E-02
Chronic kidney disease	13.83	(3.59, 53.34)	2.6267	0.4165	2.85E-10	1.20E-08
Diabetes	3.53	(1.61, 7.75)	1.2624	0.2422	1.86E-07	7.82E-06
Hypertension	2.16	(1.09, 4.29)	0.7721	0.2113	2.59E-04	1.09E-02
Other	1.64	(0.58, 4.63)	0.4926	0.3206	1.24E-01	1.00E+00
Other autoimmune disease	1.28	(0.49, 3.36)	0.2478	0.2976	4.05E-01	1.00E+00
Other immunodeficiency disorder	2.16	(0.37, 12.54)	0.7723	0.542	1.54E-01	1.00E+00

Other lung condition	3.74	(1.01, 13.88)	1.3195	0.4045	1.10E-03	4.64E-02
Any	3.13	(1.52, 6.45)	1.1406	0.2233	3.25E-07	1.37E-05
OBESITY						
obesity I (BMI >= 30 and BMI < 35)	1.24	(0.57, 2.68)	0.2116	0.2385	3.75E-01	1.00E+00
obesity II (BMI >= 35 and BMI < 40)	1.12	(0.48, 2.62)	0.1104	0.2632	6.75E-01	1.00E+00
obesity III (BMI >= 40)	1.5	(0.51, 4.38)	0.4053	0.3305	2.20E-01	1.00E+00
Not obese	1		0		nan	nan
GENETIC SEX						
Female	1		0		nan	nan
Male	1.53	(0.80, 2.94)	0.4266	0.2013	3.41E-02	1.00E+00
SYMPTOMS						
Abdominal pain	2.02	(1.01, 4.06)	0.7042	0.2147	1.04E-03	4.37E-02
Body aches	2.16	(0.95, 4.93)	0.7723	0.2541	2.37E-03	9.95E-02
Change in taste or smell	0.73	(0.37, 1.41)	-0.3191	0.2051	1.20E-01	1.00E+00
Chills	2.32	(1.14, 4.72)	0.8403	0.2196	1.30E-04	5.44E-03
Cough producing phlegm	1.89	(0.97, 3.66)	0.6342	0.2046	1.94E-03	8.13E-02
Diarrhea	2.33	(1.21, 4.48)	0.844	0.2021	2.96E-05	1.24E-03
Dry cough	2.69	(1.30, 5.56)	0.9909	0.2238	9.53E-06	4.00E-04
Feeling tired or fatigue	6.27	(0.93, 42.41)	1.8352	0.59	1.87E-03	7.84E-02
Fever	3.33	(1.50, 7.36)	1.2022	0.2449	9.18E-07	3.85E-05
Headache	0.86	(0.44, 1.70)	-0.1487	0.2098	4.78E-01	1.00E+00
Nasal congestion	0.92	(0.48, 1.80)	-0.0791	0.2053	7.00E-01	1.00E+00
Nausea or vomiting	2.43	(1.22, 4.84)	0.8874	0.2129	3.07E-05	1.29E-03
Runny nose	0.95	(0.45, 2.01)	-0.0495	0.2303	8.30E-01	1.00E+00
Shortness of breath	10.57	(3.99, 28.02)	2.3584	0.3007	4.35E-15	1.83E-13
Sore throat	1.27	(0.63, 2.57)	0.2369	0.2177	2.76E-01	1.00E+00

253

254 Unadjusted odds ratios for progression of COVID-19 infection to a critical, life-threatening illness
 255 were calculated among those reporting a positive COVID-19 test result. The following groups
 256 served as reference populations for the odds ratio calculations: European genetic ancestry (Genetic
 257 Ancestry), Ages 50-64 (Age), Female (Genetic Sex), and Not Obese (BMI < 30, Obesity). Note
 258 that symptoms odds ratios were calculated in a binary fashion among symptomatic customers only
 259 (Methods).
 260

261 **Supplementary Table 18. Summary of risk factors and performances of different models**

262
263

Model	Risk Factors in Final Model	Holdout AUC (95% CI)
Susceptibility– symptoms excluded (Dem + Exp)	sex, aged 18-29 (Y/N), aged 30-49 (Y/N), aged 50-64 (Y/N), aged 65+ (Y/N), Healthcare worker directly exposed, Household member tested positive, Household positive case count, Biological relative tested positive, Directly exposed to someone who tested positive	0.84 (0.82, 0.86)
Susceptibility– symptoms included (Dem + Exp + Symp)	sex, Fever, Runny nose, Sore throat, Feeling tired or fatigue, Change in taste or smell, aged 18-29 (Y/N), aged 30-49 (Y/N), aged 50-64 (Y/N), aged 65+ (Y/N), Healthcare worker directly exposed, Household member tested positive, Household positive case count, Biological relative tested positive, Directly exposed to someone who tested positive	0.94 (0.92, 0.96)
Susceptibility– symptoms excluded, L1-penalized model across larger set of risk factors	aged 18-29 (Y/N), aged 30-49 (Y/N), aged 65+ (Y/N), Biological relative tested positive, Directly exposed to someone who tested positive, Hypertension, Healthcare worker directly exposed, Household positive case count, Household member tested positive, Health condition (Y/N if any)	0.86 (0.85, 0.87)
Susceptibility– symptoms included, L1-penalized model across larger set of risk factors	aged 18-29 (Y/N), aged 30-49 (Y/N), aged 65+ (Y/N), Biological relative tested positive, Directly exposed to someone who tested positive, Hypertension, Healthcare worker directly exposed, Household positive case count, Household member tested positive, Health condition (Y/N if any), Abdominal pain, Body aches, Change in taste or smell, Chills, Cough producing phlegm, Diarrhea, Dry cough, Feeling tired or fatigue, Fever, Headache, Nasal congestion, Nausea or vomiting, Runny nose, Shortness of breath, Sore throat	0.90 (0.86, 0.94)
Susceptibility– literature-based "minimal" model (HWF Exp + Symp)	Change in taste or smell, Household member tested positive, Directly exposed to someone who tested positive	0.90 (0.88, 0.93)
Susceptibility– literature-based "symptoms-only" model (HWF Symp)	Fever, Shortness of breath, Dry cough, Sore throat, Chills, Body aches, Change in taste or smell	0.87 (0.84, 0.90)
Severity– hospitalization	sex, Fever, Shortness of breath, Dry cough, Feeling tired or fatigue, Diarrhea, Obesity III (BMI >= 40), aged 18-29 (Y/N), aged 30-49 (Y/N), aged 50-64 (Y/N), aged 65+ (Y/N), Health condition (Y/N if any)	0.87 (0.84, 0.90)
Severity– hospitalization, L1-penalized model across larger set of risk factors	aged 30-49 (Y/N), aged 50-64 (Y/N), aged 65+ (Y/N), COPD (Chronic Obstructive Pulmonary Disease), Cancer (treated in the past year), Cardiovascular disease, Chronic kidney disease, Diabetes, Hypertension, Other, Health condition (Y/N if any), Abdominal pain, Chills, Cough producing phlegm, Diarrhea, Dry cough, Feeling tired or fatigue, Fever, Nausea or vomiting, Shortness of breath	0.87 (0.86, 0.88)
Severity– critical case	sex, Fever, Shortness of breath, Dry cough, Feeling tired or fatigue, Diarrhea, Obesity III (BMI >= 40), aged 18-29 (Y/N), aged 30-49 (Y/N), aged 50-64 (Y/N), aged 65+ (Y/N), Health condition (Y/N if any)	0.90 (0.87, 0.93)
Severity– critical case, L1-penalized model across larger set of risk factors	aged 30-49 (Y/N), aged 65+ (Y/N), COPD (Chronic Obstructive Pulmonary Disease), Cardiovascular disease, Chronic kidney disease, Diabetes, Hypertension, Other lung condition, Health condition (Y/N if any), Seasonal flu, sex, Abdominal pain, Body aches, Chills, Cough producing phlegm, Diarrhea, Dry cough, Feeling tired or fatigue, Fever, Nausea or vomiting, Shortness of breath	0.89 (0.87, 0.91)

264

265 Risk factors for models were selected based on literature as well as nominally significant odds
266 ratios within the training dataset (Methods). 95% confidence intervals for the area under the curve
267 (AUC) on the holdout dataset were estimated via bootstrapping (Methods).
268

269 **Supplementary Table 19. Stratified holdout performance assessment for a COVID-19**
 270 **susceptibility model built from age, sex, and exposures (Dem + Exp)**

271

cohort	N	ncase	ncontrol	AUC	Sensitivity	Specificity
Admixed African-European Genetic Ancestry	228	38	190	0.88 (0.82, 0.94)	0.89 (0.80, 0.99)	0.65 (0.59, 0.72)
All	4834	632	4202	0.84 (0.82, 0.86)	0.75 (0.72, 0.79)	0.76 (0.75, 0.78)
European Genetic Ancestry	3372	408	2964	0.84 (0.82, 0.87)	0.74 (0.70, 0.78)	0.79 (0.77, 0.80)
Admixed Amerindian Genetic Ancestry	410	73	337	0.80 (0.74, 0.86)	0.74 (0.64, 0.84)	0.71 (0.66, 0.75)
Other Genetic Ancestry	824	113	711	0.83 (0.78, 0.87)	0.77 (0.69, 0.85)	0.71 (0.68, 0.75)
Ages 18-29	340	74	266	0.83 (0.77, 0.89)	0.81 (0.72, 0.90)	0.65 (0.59, 0.71)
Ages 30-49	1744	270	1474	0.80 (0.77, 0.83)	0.82 (0.77, 0.86)	0.59 (0.56, 0.61)
Ages 50-65	1515	200	1315	0.85 (0.82, 0.88)	0.73 (0.67, 0.79)	0.81 (0.79, 0.83)
Ages 65+	1235	88	1147	0.81 (0.75, 0.87)	0.57 (0.47, 0.67)	0.96 (0.95, 0.97)
Female	3354	409	2945	0.83 (0.81, 0.85)	0.73 (0.68, 0.77)	0.77 (0.75, 0.79)
Male	1480	223	1257	0.85 (0.82, 0.88)	0.81 (0.76, 0.86)	0.75 (0.73, 0.77)

272

273 Case/control status is defined based on a self-reported COVID-19 positive test result. The Dem +
 274 Exp model includes questions about exposures, age, and sex (Supplementary Table 18). Metric
 275 performance columns reflect mean and nominal 95% confidence intervals for each metric on an
 276 internal, independent holdout dataset (Methods). Cohort-level receiver operator characteristic
 277 (ROC) curves were constructed from predicted class probabilities of models trained on the entire
 278 training dataset (Methods).

279

280

281 **Supplementary Table 20. Stratified holdout performance assessment for a COVID-19**
 282 **susceptibility model built from age, sex, exposures, and symptoms (Dem + Exp + Symp)**

283

cohort	N	ncase	ncontrol	AUC	Sensitivity	Specificity
Admixed African-European Genetic Ancestry	96	12	84	0.96 (0.88, 1.00)	0.91 (0.75, 1.00)	0.92 (0.86, 0.98)
All	2047	229	1818	0.94 (0.92, 0.96)	0.85 (0.80, 0.89)	0.91 (0.90, 0.93)
European Genetic Ancestry	1457	146	1311	0.93 (0.90, 0.96)	0.83 (0.77, 0.90)	0.91 (0.90, 0.93)
Admixed Amerindian Genetic Ancestry	155	23	132	0.98 (0.95, 1.00)	0.96 (0.87, 1.00)	0.89 (0.84, 0.95)
Other Genetic Ancestry	339	48	291	0.94 (0.90, 0.99)	0.81 (0.70, 0.92)	0.93 (0.90, 0.96)
Ages 18-29	132	29	103	0.98 (0.95, 1.00)	0.93 (0.84, 1.00)	0.92 (0.87, 0.97)
Ages 30-49	582	77	505	0.96 (0.95, 0.98)	0.89 (0.82, 0.96)	0.88 (0.85, 0.91)
Ages 50-65	616	83	533	0.93 (0.90, 0.97)	0.84 (0.76, 0.92)	0.91 (0.88, 0.93)
Ages 65+	717	40	677	0.89 (0.83, 0.96)	0.72 (0.58, 0.86)	0.95 (0.93, 0.97)
Female	1380	139	1241	0.94 (0.91, 0.97)	0.86 (0.80, 0.92)	0.91 (0.89, 0.92)
Male	667	90	577	0.94 (0.90, 0.97)	0.83 (0.76, 0.91)	0.93 (0.91, 0.96)

284

285 Case/control status is defined based on self-reported COVID-19 positive test result. The Dem +
 286 Exp + Symp model includes questions about exposures, age, sex, and five symptom questions
 287 (Supplementary Table 18). Metric performance columns reflect mean and nominal 95%
 288 confidence intervals for each metric on an internal, independent holdout dataset (Methods).
 289 Cohort-level receiver operator characteristic (ROC) curves were constructed from predicted class
 290 probabilities of models trained on the entire training dataset (Methods).

291

292

293

294 **Supplementary Table 21. Stratified holdout performance assessment for a literature-based**
 295 **COVID-19 susceptibility model based on two exposures and one symptom (HWF Exp +**
 296 **Symp)**

297
 298

cohort	N	ncase	ncontrol	AUC	Sensitivity	Specificity
Admixed African-European Genetic Ancestry	96	12	84	0.94 (0.84, 1.00)	0.92 (0.76, 1.00)	0.94 (0.89, 0.99)
All	2047	229	1818	0.90 (0.88, 0.93)	0.78 (0.73, 0.83)	0.94 (0.93, 0.95)
European Genetic Ancestry	1457	146	1311	0.89 (0.86, 0.92)	0.75 (0.68, 0.82)	0.94 (0.93, 0.95)
Admixed Amerindian Genetic Ancestry	155	23	132	0.94 (0.88, 1.00)	0.87 (0.73, 1.00)	0.92 (0.87, 0.97)
Other Genetic Ancestry	339	48	291	0.92 (0.87, 0.97)	0.79 (0.68, 0.90)	0.96 (0.94, 0.98)
Ages 18-29	132	29	103	0.92 (0.85, 0.99)	0.79 (0.65, 0.94)	0.96 (0.92, 1.00)
Ages 30-49	582	77	505	0.91 (0.86, 0.95)	0.82 (0.73, 0.91)	0.92 (0.90, 0.95)
Ages 50-65	616	83	533	0.91 (0.87, 0.95)	0.81 (0.73, 0.89)	0.93 (0.91, 0.95)
Ages 65+	717	40	677	0.85 (0.77, 0.92)	0.65 (0.50, 0.80)	0.96 (0.95, 0.98)
Female	1380	139	1241	0.91 (0.88, 0.94)	0.81 (0.75, 0.88)	0.94 (0.92, 0.95)
Male	667	90	577	0.89 (0.85, 0.94)	0.73 (0.64, 0.83)	0.95 (0.94, 0.97)

299 Case/control status is defined based on self-reported COVID-19 positive test result. The literature-
 300 based HWF Exp + Symp model contains two exposure questions and a question about one
 301 symptom (change in taste or smell, Supplementary Table 18).[18] Metric performance columns
 302 reflect mean and nominal 95% confidence intervals for each metric on an internal, independent
 303 holdout dataset (Methods). Cohort-level receiver operator characteristic (ROC) curves were
 304 constructed from predicted class probabilities of models trained on the entire training dataset
 305 (Methods).

306
 307
 308
 309
 310

311 **Supplementary Table 22. Stratified holdout performance assessment for a literature-based**
 312 **COVID-19 susceptibility model based on seven symptoms (HWF Symp)**

313
 314

cohort	N	ncase	ncontrol	AUC	Sensitivity	Specificity
Admixed African-European Genetic Ancestry	96	12	84	0.90 (0.77, 1.00)	0.84 (0.62, 1.00)	0.92 (0.86, 0.98)
All	2047	229	1818	0.87 (0.84, 0.90)	0.75 (0.69, 0.80)	0.91 (0.90, 0.93)
European Genetic Ancestry	1457	146	1311	0.87 (0.83, 0.91)	0.75 (0.68, 0.82)	0.91 (0.89, 0.93)
Admixed Amerindian Genetic Ancestry	155	23	132	0.92 (0.85, 0.99)	0.87 (0.73, 1.00)	0.93 (0.89, 0.97)
Other Genetic Ancestry	339	48	291	0.83 (0.76, 0.91)	0.67 (0.53, 0.80)	0.92 (0.89, 0.95)
Ages 18-29	132	29	103	0.85 (0.75, 0.96)	0.79 (0.64, 0.95)	0.94 (0.90, 0.99)
Ages 30-49	582	77	505	0.89 (0.85, 0.93)	0.75 (0.66, 0.85)	0.88 (0.85, 0.91)
Ages 50-65	616	83	533	0.86 (0.80, 0.91)	0.75 (0.65, 0.84)	0.89 (0.87, 0.92)
Ages 65+	717	40	677	0.84 (0.76, 0.92)	0.70 (0.55, 0.85)	0.95 (0.93, 0.96)
Female	1380	139	1241	0.87 (0.83, 0.91)	0.76 (0.69, 0.83)	0.90 (0.88, 0.92)
Male	667	90	577	0.87 (0.83, 0.92)	0.73 (0.63, 0.82)	0.94 (0.92, 0.96)

315 Case/control status is defined based on self-reported COVID-19 positive test result. The literature-
 316 based HWF Symp model contains 7 symptoms most commonly associated with COVID-19
 317 (Supplementary Table 18).[18] Metric performance columns reflect mean and nominal 95%
 318 confidence intervals for each metric on an internal, independent holdout dataset (Methods).
 319 Cohort-level receiver operator characteristic (ROC) curves were constructed from predicted class
 320 probabilities of models trained on the entire training dataset (Methods).

321

322 **Supplementary Table 23. Comparison between train and holdout performances for different**
323 **risk models**

324
325

Model	Train AUC (95% CI)	Holdout AUC (95% CI)
Susceptibility– no symptoms (Dem + Exp)	0.83 (0.81, 0.85)	0.84 (0.82, 0.84)
Susceptibility– with symptoms (Dem + Exp + Symp)	0.95 (0.93, 0.97)	0.94 (0.92, 0.96)
Susceptibility– literature-based "minimal" model (HWF Exp + Symp)	0.90 (0.88, 0.92)	0.90 (0.88, 0.93)
Susceptibility– literature-based "symptoms-only" model (HWF Symp)	0.87 (0.84, 0.90)	0.87 (0.84, 0.90)
Severity– hospitalization	0.85 (0.82, 0.88)	0.87 (0.84, 0.90)
Severity– critical case of COVID-19	0.90 (0.87, 0.93)	0.90 (0.87, 0.93)

326
327 Columns reflect mean and nominal 95% confidence intervals for the area under the curve (AUC)
328 of trained models on either the training or holdout dataset. Confidence intervals were estimated
329 via bootstrapping (Methods).
330

331 **Supplementary Table 24. Stratified holdout performance assessment for models to predict**
 332 **hospitalization amongst COVID-19 positive cases**

333

cohort	N	ncase	ncontrol	Auc	Sensitivity	Specificity
Admixed African-European Genetic Ancestry	110	20	90	0.81 (0.72, 0.90)	0.85 (0.68, 1.00)	0.71 (0.62, 0.80)
All	1793	191	1602	0.87 (0.84, 0.90)	0.83 (0.78, 0.88)	0.75 (0.73, 0.77)
European Genetic Ancestry	1133	120	1013	0.87 (0.84, 0.90)	0.82 (0.76, 0.89)	0.74 (0.72, 0.77)
Admixed Amerindian Genetic Ancestry	219	16	203	0.94 (0.90, 0.98)	0.93 (0.81, 1.00)	0.79 (0.74, 0.85)
Other Genetic Ancestry	331	35	296	0.85 (0.77, 0.93)	0.80 (0.67, 0.94)	0.75 (0.70, 0.80)
Ages 18-29	201	7	194	0.95 (0.91, 0.99)	0.85 (0.57, 1.00)	0.90 (0.85, 0.94)
Ages 30-49	705	49	656	0.87 (0.82, 0.93)	0.76 (0.63, 0.88)	0.85 (0.82, 0.88)
Ages 50-65	616	78	538	0.86 (0.81, 0.90)	0.86 (0.78, 0.94)	0.65 (0.61, 0.69)
Ages 65+	271	57	214	0.78 (0.72, 0.85)	0.86 (0.77, 0.95)	0.53 (0.47, 0.60)
Female	1166	118	1048	0.87 (0.83, 0.90)	0.80 (0.72, 0.87)	0.77 (0.74, 0.79)
Male	627	73	554	0.87 (0.83, 0.91)	0.89 (0.82, 0.96)	0.71 (0.67, 0.75)

334

335 Case/control status is defined based on self-reported hospitalization due to COVID-19-related
 336 illness (Methods). Metric performance columns reflect mean and nominal 95% confidence
 337 intervals for each metric on an internal, independent holdout dataset (Methods). Cohort-level
 338 receiver operator characteristic (ROC) curves were constructed from predicted class probabilities
 339 of models trained on the entire survey cohort (Methods).

340
 341

342 **Supplementary Table 25. Stratified holdout performance assessment for models to predict**
 343 **critical COVID-19 cases amongst all COVID-19 positive cases**

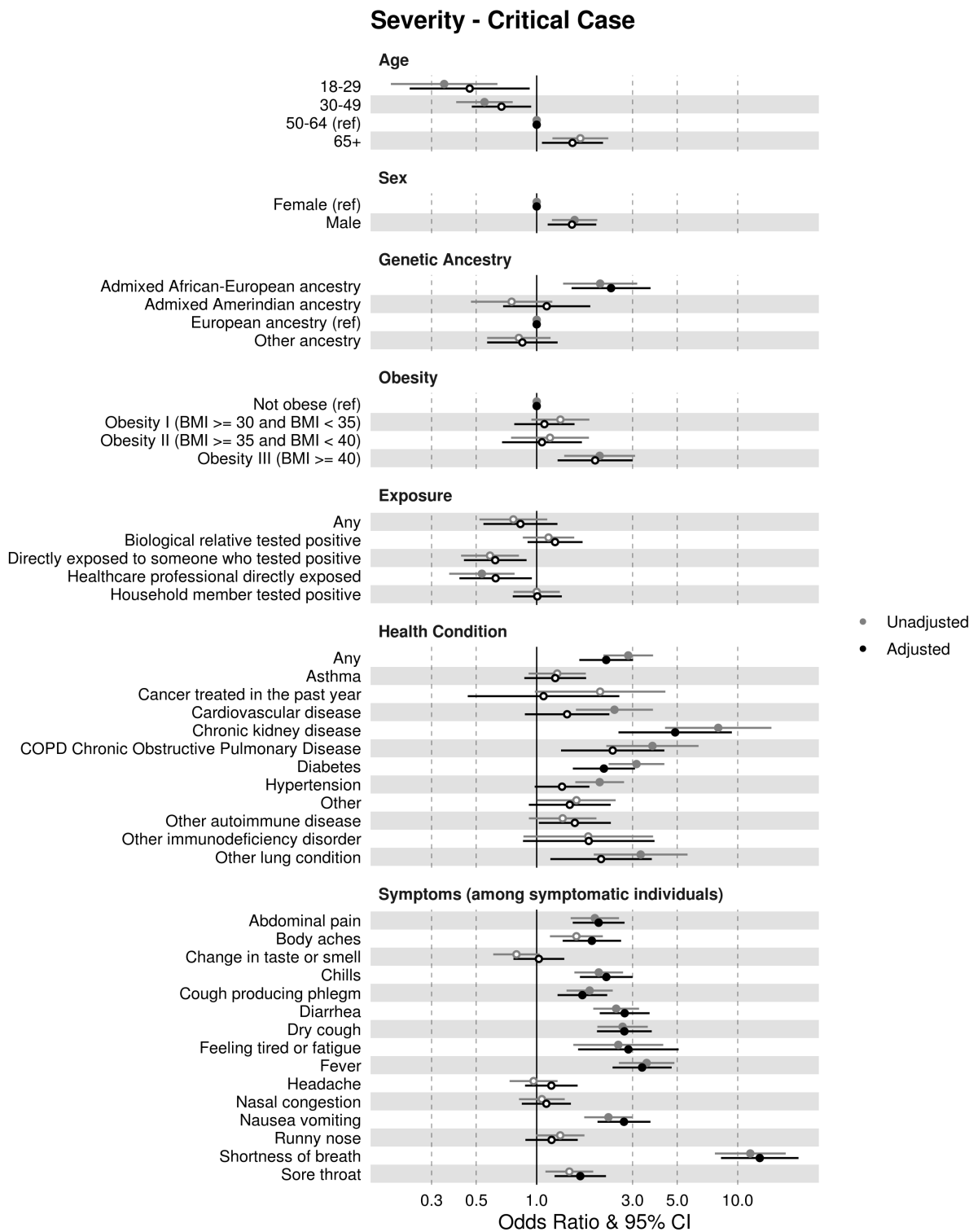
344

cohort	N	ncase	ncontrol	AUC	Sensitivity	Specificity
Admixed African-European Genetic Ancestry	110	15	95	0.87 (0.78, 0.97)	0.93 (0.80, 1.00)	0.75 (0.66, 0.83)
All	1793	105	1688	0.90 (0.87, 0.93)	0.93 (0.87, 0.98)	0.79 (0.77, 0.81)
European Genetic Ancestry	1133	70	1063	0.90 (0.86, 0.93)	0.90 (0.83, 0.97)	0.79 (0.76, 0.81)
Admixed Amerindian Genetic Ancestry	219	7	212	0.92 (0.88, 0.96)	1.00 (0.60, 1.00)	0.83 (0.78, 0.88)
Other Genetic Ancestry	331	13	318	0.92 (0.87, 0.97)	1.00 (0.73, 1.00)	0.77 (0.73, 0.82)
Ages 18-29	201	2	199	0.96 (0.92, 0.99)	1.00 (0.29, 1.00)	0.92 (0.88, 0.96)
Ages 30-49	705	24	681	0.94 (0.92, 0.96)	1.00 (0.84, 1.00)	0.84 (0.81, 0.87)
Ages 50-65	616	43	573	0.87 (0.82, 0.93)	0.91 (0.82, 0.99)	0.71 (0.68, 0.75)
Ages 65+	271	36	235	0.84 (0.78, 0.91)	0.89 (0.78, 0.99)	0.71 (0.66, 0.77)
Female	1166	60	1106	0.90 (0.86, 0.94)	0.93 (0.87, 1.00)	0.80 (0.77, 0.83)
Male	627	45	582	0.89 (0.85, 0.93)	0.91 (0.83, 0.99)	0.77 (0.73, 0.80)

345
 346 Case/control status is defined based on self-reported critical case progression among all COVID-
 347 19 cases. Here, a critical case is defined based on self-reported ICU admittance, respiratory failure,
 348 organ failure, or septic shock resulting from COVID-19-related illness (Methods). Metric
 349 performance columns reflect mean and nominal 95% confidence intervals for each metric on an
 350 internal, independent holdout dataset (Methods). Cohort-level receiver operator characteristic
 351 (ROC) curves were constructed from predicted class probabilities of models trained on the entire
 352 survey cohort (Methods).

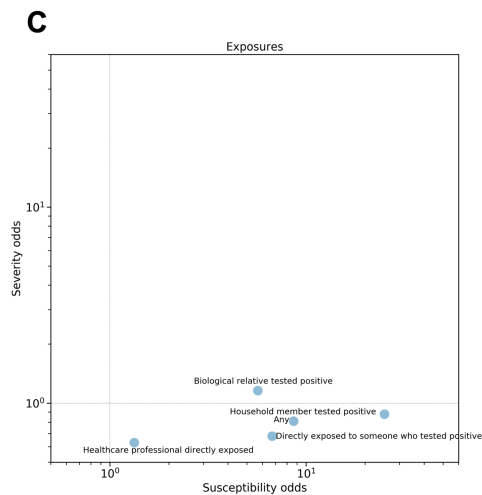
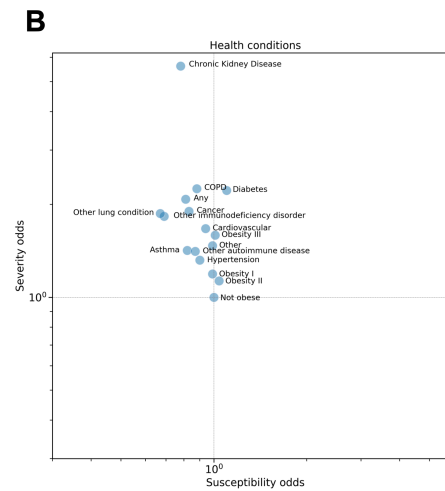
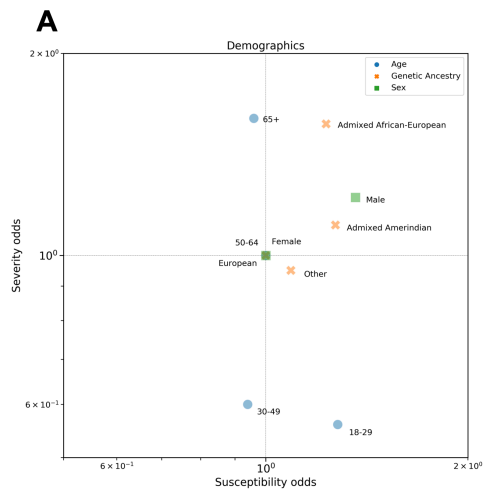
353
 354
 355

356 SUPPLEMENTARY FIGURES



357

358 **Supplementary Figure 1. Severity (critical case) odds ratios (ORs) and 95% confidence**
359 **intervals (CIs) estimated from simple (“Unadjusted models,” grey) and multiple (“Adjusted**
360 **models,” black) logistic regression with adjustment for other risk factors.** Open circles
361 indicate not significant (p -value > 0.05) after accounting for multiple hypothesis tests using
362 Bonferroni correction. Age, sex, genetic ancestry, and obesity ORs were estimated in relation to
363 the reference variables indicated. Exposure, health, and symptom ORs were each estimated
364 separately as binary variables. Symptom ORs were estimated as binary variables among
365 symptomatic testers only (Methods). Risk factor adjustments for severity include: sex, age, obesity
366 (Y/N), and underlying health conditions (Y/N if any). Where applicable, individual adjustment
367 variables were omitted to avoid duplicate adjustment (Methods).
368



370 **Supplementary Figure 2. Comparison of Susceptibility and Severity adjusted ORs.**

371 Comparison of susceptibility ORs (horizontal axis) and severity ORs (vertical axis) from Figures

372 1 and 2. Severity aORs are for hospitalization. aORs are adjusted as in Figures 1 and 2 (see Figure

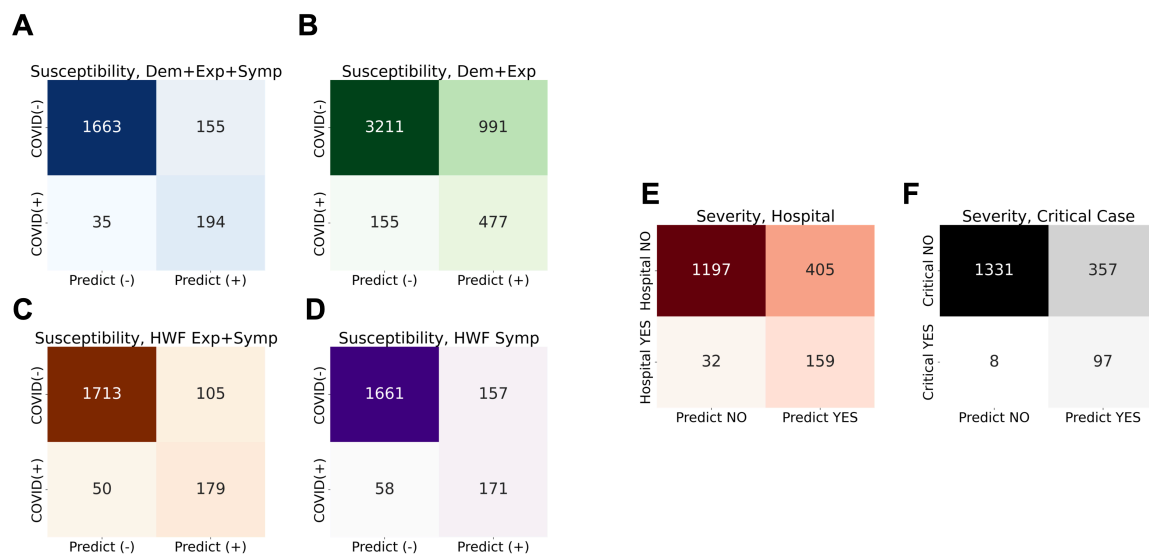
373 3 for adjusted ORs for symptoms). Plotted on a log scale for visibility. A) **Demographics**, broken

374 down by age, sex, and genetic ancestry. B) **Health conditions**: Some pre-existing health

375 conditions have increased odds of critical outcomes but susceptibility is not characterized by health

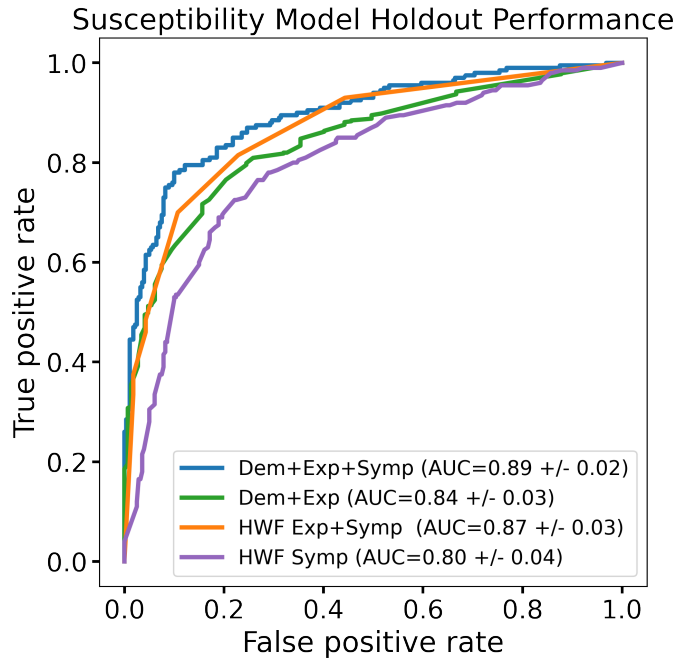
376 conditions. C) **Exposures** are important for susceptibility but not severity.

377



378
379 **Supplementary Figure 3. Risk model confusion matrices for independent holdout data.**

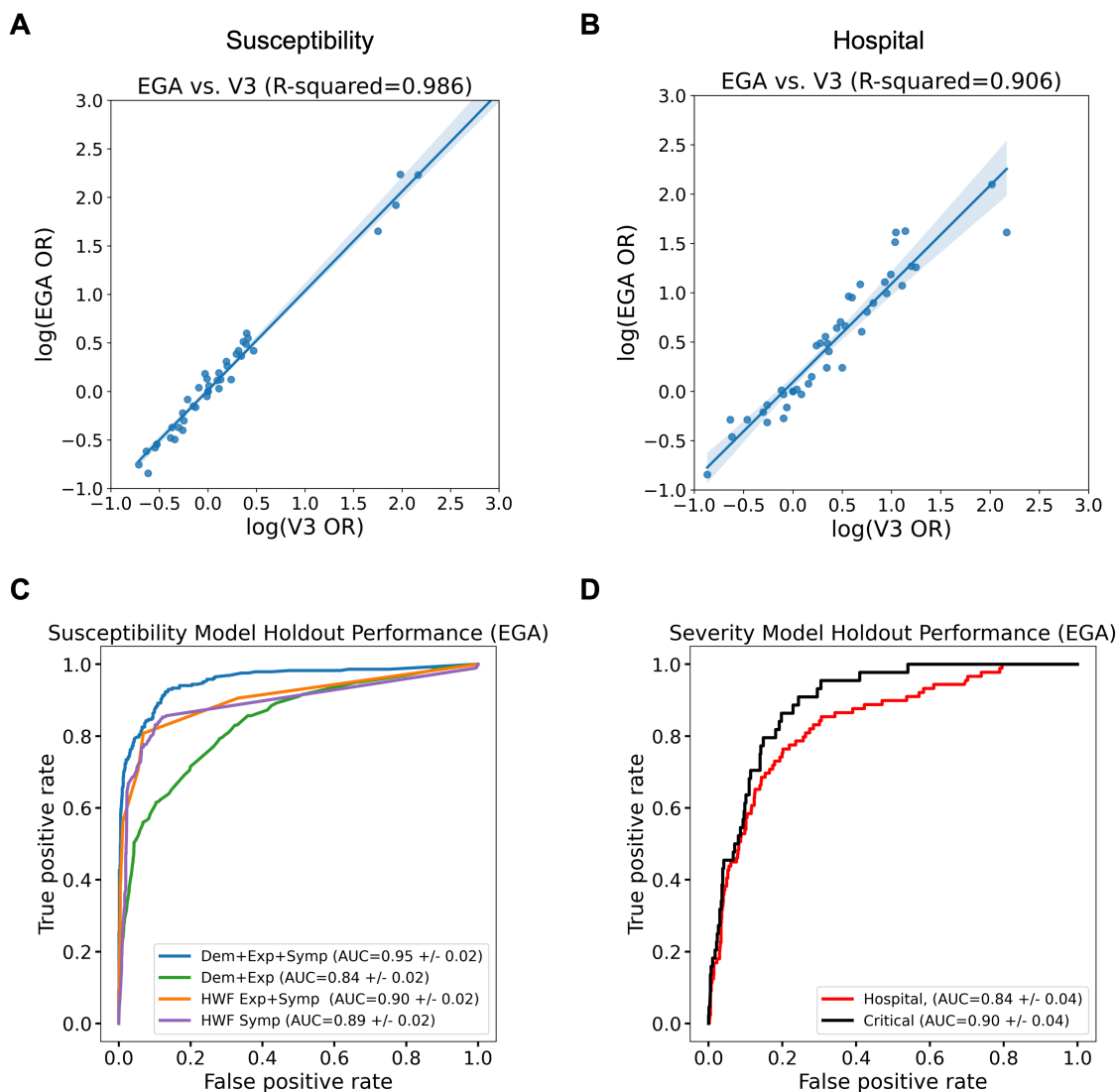
380 Numbers represent number of individuals in each category. A) Susceptibility model with
381 demographics, exposures, and symptoms. B) Susceptibility model demographics and exposures
382 (symptoms excluded). C) Literature-based susceptibility model with three risk factors including
383 two exposures and change in taste or smell. D) Literature-based susceptibility model with seven
384 COVID-19 symptoms. E) Hospitalization risk model. F) Critical case risk model. Refer to Methods
385 as well as Supplementary Tables 18-25 for additional model performance data and model risk
386 factor information.



387
388

389 **Supplementary Figure 4. Performance of susceptibility models evaluated in a symptomatic**
390 **cohort of positive and negative testers.** Plot depicts receiver operating characteristic (ROC)
391 curves for four susceptibility models (Supplementary Table 18). Here, the modeling cohort has
392 been restricted to positive and negative testers reporting at least one symptom of moderate or
393 greater intensity for model training and evaluation.

394



395

396 **Supplementary Figure 5. Concordance between the EGA cohort and AncestryDNA cohort**

397 **(V3) from this study.** A) Concordance of susceptibility associations between the EGA dataset

398 (vertical axis) and the AncestryDNA dataset from this study (V3, horizontal axis), plotted as log

399 mean effect estimates (logORs). B) Concordance of hospitalization associations between the EGA

400 dataset (vertical axis) and the AncestryDNA dataset from this study (V3, horizontal axis). C)

401 Independent holdout performance of susceptibility models trained within the EGA dataset. D)

402 Independent holdout performance of severity models trained within the EGA dataset.

403

404

405

406