

**Title: The clinical course of COVID-19 in the outpatient setting: a prospective cohort study**

**Running title:** The course of outpatient COVID-19.

**Authors:** Paul W. Blair<sup>1,2\*</sup> Diane Brown<sup>1</sup>, Minyoung Jang<sup>1</sup>, Annukka A.R. Antar<sup>1</sup>, Jeanne C. Keruly<sup>1</sup>, Vismaya S. Bachu<sup>1</sup>, Jennifer L. Townsend<sup>1</sup>, Jeffrey Tornheim<sup>1</sup>, Sara C. Keller<sup>1</sup>, Lauren Sauer<sup>3</sup>, David L. Thomas<sup>1</sup>, Yukari C. Manabe<sup>\*1</sup> on behalf of the Ambulatory COVID Study Team\*\*

**\*Corresponding Author:** Yukari C. Manabe, MD. Division of Infectious Diseases, Department of Medicine, Johns Hopkins University, School of Medicine, Baltimore, MD, USA; email:

[ymanabe@jhmi.edu](mailto:ymanabe@jhmi.edu) \*\***Ambulatory COVID Study Team:** Andrea Cox, Chris Heaney, Sabra Klein, Shruti Mehta, Heba Mostafa, Andy Pekosz, Nora Pisanic, Derek Armstrong, Razvan Azamfirei, Brittany Barnaba, Curtisha Charles, Taylor Church, Samantha N. Walch, Weiwei Dai, Christine B. Payton, Joelle Fuchs, Justin Hardick, Jeffrey Holden, Jaylynn R. Johnstone, Kate Kruczynski, Oyinkansola Kusemiju, Anastasia Lambrou, Lucy Li, Kirsten Littlefield, Manuela Plazas Montana, Caroline Popper, Michelle Prizzi, Carolyn J Reuland, Thelio Sewell, Amanda Tuchler.

**Affiliation:** <sup>1</sup>Division of Infectious Diseases, Department of Medicine, Johns Hopkins University School of Medicine, Baltimore, MD, USA; <sup>2</sup>Austere environments Consortium for Enhanced Sepsis Outcomes, Henry M. Jackson Foundation, Bethesda, MD, USA; <sup>3</sup>Department of Emergency Medicine, Johns Hopkins University School of Medicine, Baltimore, MD, USA.

**Key words:** Coronavirus Infections / epidemiology; Middle Aged; Recovery of Function; Ambulatory Care; Treatment Outcome

**ABSTRACT**

**Background:** Outpatient COVID-19 has been insufficiently characterized.

**Objective:** To determine the progression of disease and subsequent determinants of hospitalization.

**Design:** A prospective outpatient cohort.

**Setting:** Outpatients were recruited by phone between April 21 to June 23, 2020 after receiving outpatient or emergency department testing within a large health network in Maryland, USA.

**Participants:** Outpatient adults with positive RT-PCR results for SARS-CoV-2.

**Measurements:** Symptoms, portable pulse oximeter oxygen saturation (SaO<sub>2</sub>), heart rate, and temperature were collected by participants on days 0, 3, 7, 14, 21, and 28 after enrollment. Baseline demographics, comorbid conditions were evaluated for risk of subsequent hospitalization using negative binomial, logistic, and random effects logistic regression.

**Results:** Among 118 SARS-CoV-2 infected outpatients, the median age was 56.0 years (IQR, 50.0 to 63.0) and 50 (42.4%) were male. Among those reporting active symptoms, the most common symptoms during the first week since symptom onset included weakness/fatigue (67.3%), cough (58.0%), headache (43.8%), and sore throat (34.8%). Participants returned to their usual health a median of 20 days (IQR, 13 to 38) from the symptom onset, and only 65.5% of respondents were at their usual health during the fourth week of illness. Over 28 days, 10.9% presented to the emergency department and 7.6% required hospitalization. Individuals at the same duration of illness had a 6.1 times increased adjusted odds of subsequent hospitalization per every percent decrease in home SaO<sub>2</sub> (95% confidence interval [CI]: 1.41 to 31.23, p=0.02).

**Limitations:** Severity and duration of illness may differ in a younger population.

**Conclusion:** Symptoms often persisted but uncommonly progressed to hospitalization. Home SaO<sub>2</sub> might be an important adjunctive tool to identify progression of COVID-19.

**Registration:** Clinicaltrials.gov NCT number: NCT04496466

**Funding Source:** The Sherrilyn and Ken Fisher Center for Environmental Infectious Diseases Discovery Program and the Johns Hopkins University School of Medicine

**Abstract word count: 270**

49

## 50 **INTRODUCTION**

51 SARS-CoV-2 (severe acute respiratory syndrome coronavirus 2) is the cause of the COVID-19 pandemic  
 52 that has affected nearly every region of the world and by August 8<sup>th</sup>, 2020 is responsible for the deaths  
 53 of more than 723,000 people(1). In persons who are hospitalized, the clinical features of COVID-19 and  
 54 disease course are well described(2-4). However, most SARS-CoV-2 infected persons are not  
 55 hospitalized, and relatively little is known about the progression of symptoms, clinical outcomes, and  
 56 severity predictors among outpatients(5-7). The prevalence and time course of unique clinical features  
 57 of COVID-19 such as the occurrence of low oxygen saturations with a delayed patient sense of dyspnea,  
 58 or 'silent hypoxemia,' has yet to be fully characterized(8-10). Additionally, seroprevalence studies  
 59 suggest that the number of outpatient cases are much greater than have been reported(11).

60 To investigate COVID-19 in the home setting, a prospective outpatient observational cohort was  
 61 recruited and studied using structured measurements to characterize the course of disease. To better  
 62 study risk factors for severe disease, the cohort recruitment efforts enriched for older individuals (12).  
 63 Given the dominance of pulmonary syndromes in those hospitalized and to investigate the incidence of  
 64 asymptomatic hypoxemia, we supplemented home monitoring with daily pulse oximetry(9).

65

## 66 **METHODS**

### 67 **Study design**

68 In an Institutional Review Board-approved study, persons  $\geq$  age 18 who attended one of the Johns  
 69 Hopkins Health System COVID-19 testing sites and tested positive for SARS-CoV-2 were offered  
 70 enrollment in the study, excluding patients hospitalized at the time of screening. To maximize  
 71 recruitment of older persons, we focused recruitment to individuals who were midlife adults or older  
 72 ( $\geq 40$  years) (12). Verbal consent was obtained via telephone. After providing verbal consent a study

coordinator contacted the participant to confirm their willingness to participate and verify the shipping address to which a study self-testing kit was shipped and received by the participant within 24-48 hours. This kit contained a thermometer (CVS Health, Woonsocket, RI), a pulse oximeter (Zewa, Fort Myers, FL) and supplies for self-testing.(13) A study coordinator scheduled a video or phone study visit (Day 0) to occur upon receipt of the study kit to instruct participants on self-testing procedures and appropriate use of the pulse oximeter. Study visits occurred via phone for days 0, 3, 7, 14, and 21. Participants attended an in-person follow-up visit between study days 28 and 60 if they were asymptomatic at the time, consistent with local hospital infection control procedures.

Vital signs (heart rate, oxygen saturation, and temperature) were prospectively collected and recorded by participants for 14 days and reviewed with the study coordinator at each study visit. Participants were requested to call the study team and their primary care physician for oxygen saturation values <93%. At each time point participants completed a 32-item influenza Patient –Reported Outcome (FLU-PRO) (14) questionnaire verbally over the phone with the study coordinator. This questionnaire assessed participants’ sense of physical well-being including symptoms. Symptoms were reported using a Likert scale. This instrument has been previously validated for patient reported outcomes for influenza and other respiratory viruses(14-17). The FLU-PRO was modified to allow participants to report symptoms they perceived to be related to COVID-19 that were not already listed on the questionnaire (e.g. ageusia and anosmia). These additional items were not included in the mean FLU-PRO score. Study data were collected and managed using a REDCap electronic data capture tool hosted at Johns Hopkins University (18).

Preceding symptoms were recorded at enrollment and present symptoms recorded on study days. Summary statistics including prevalence, incidence, and duration were calculated for baseline

demographics, baseline comorbidities and for time-varying parameters such as vital signs and modified FLU-PRO symptoms. FLU-PRO total score means and symptom domain (e.g. respiratory) means were calculated (16). To identify common symptom patterns at the onset of illness, we evaluated the frequency of combinations of CDC COVID-19 case definition symptoms in addition to diarrhea and weakness using an upset plot (19). Symptom prevalence was categorized by week of illness. To reduce the effect of recall bias, prior symptoms were included in the determination of prevalence by week of illness only if symptoms had started within a week of enrollment. To evaluate the correlation between oxygen saturation at rest and with ambulation, a Pearson's correlation was performed, and a Bland-Altman plot was created. Kaplan-Meier plots were created to describe the time from symptom onset to a return to usual health and the time to a return to usual activities. After checking the proportional hazards assumption, Cox regression was performed to evaluate for baseline demographics and duration of illness affecting activities. Univariate negative log binomial regression was performed to evaluate the association between age, sex, baseline comorbid conditions (dichotomous), heart rate (continuous), temperature (continuous), oxygen saturation (continuous) on the occurrence of a subsequent hospitalization. Logistic regression was performed for significant values and an Area Under the Curve (AUROC) determined. A random effects logistic regression model was used to evaluate for an association oxygen level as a time varying covariate and subsequent hospitalization. Days since symptom onset (continuous), age (continuous) and resting oxygen saturation (continuous), and an interaction term between duration of illness and resting oxygen saturation (continuous) were candidate model covariates. Models were compared using Akaike information criterion (AIC) model estimates. Persons that withdrew or were lost to follow-up were excluded from regression analyses. The sample size includes that which was operationally obtainable during the described study period in a Master Protocol study (clinicaltrials.gov NCT04496466). Analyses were performed using Stata version 16.0 (StataCorp

LLC, College Station, TX, USA) and figures were created using Stata or R statistical platform version 4.0.1 (R Foundation).

## RESULTS

From April 21 to June 23, 2020, 118 participants enrolled a median of 5.0 (3.0-10.0) days from symptoms onset, while a total of 115 others were contacted but refused participation (Figure 1). Participants were a median of 56.0 (IQR, 50.0 to 63.0) years of age, 42.4% male (N = 50), and the median Charlson Comorbidity Index was 2 (IQR, 1 to 3) (Table 1). In the prior two weeks before developing symptoms, 40.2% (N=39) had contact with someone with confirmed COVID-19 and an additional 21.9% (N=21) had contact with someone with symptoms concerning for unconfirmed COVID-19. The duration of symptoms at enrollment was 5.0 days (IQR, 3.0 to 10.0) (Table 1).

### *Symptoms and physiologic parameters at the onset of illness*

The most common initial symptoms were measured or suspected fever (28.0%), dry cough (23.7%), body aches (21.2 %), weakness or fatigue (20.3 %), and headache (17.0 %)(Appendix Figure S1). There were five (4.2%) asymptomatic participants and four patients (3.4%) who were pauci-symptomatic (one symptom prior to or at enrollment). Asymptomatic patients were tested because they had a positive contact (N=3) or during screening for medical encounters (N=2).

### *Symptoms and physiologic parameters during the clinical course of disease*

Among those reporting symptoms, the most common during the first week since onset included weakness/fatigue (67.3%), cough (58.0%), headache (43.8%), and sore throat (34.8%) (Appendix Table 1; Figure 2A). Repeated unexpected symptoms included a skin burning sensation (N=3) and a smell of burning wood (N=2). During the first month of illness, the prevalence of symptoms decreased but a

substantial proportion of individuals still reported weakness (15.4%) or a dry cough (18.3%) (Figure 2A and 2B).

The effect of symptoms on activities of daily living and illness severity varied greatly at any given point and over time (Figure 3). Interestingly, during the first week of illness, 43.1% of patients reported no effect of their symptoms on daily activities. Participants returned to their usual health a median of 20 days (IQR, 13 to 38) from the onset of symptoms, and the median time to returning to usual activities was 17 days (IQR, 11 to 28) from symptom onset (Figure 3A-B). Baseline factors of age, sex, or comorbid conditions were not associated with a delay in return to health or to usual activities with unadjusted Cox proportional hazards regression (data not shown). Notably, while the majority 63.7% of participant had no symptoms or only had mild symptoms during the first week of illness a substantial proportion continued to have mild or moderate symptoms for over one month (Figure 3C-E). During the third and fourth week of illness, only 52.6% and 65.5% of respondents had returned to their usual health, respectively.

#### *Oxygen saturation, heart rate, temperature, and subsequent hospitalization*

The initial median oxygen saturation values (SaO<sub>2</sub>) at rest were 98.0% (IQR, 96.0 to 98.5) and during ambulation were 97.0% (IQR, 95.0 to 98.0) (Table 1). Correlation between walking and ambulatory SaO<sub>2</sub> was 0.61, with a larger difference between values noted at lower oxygen saturations (Appendix Figure S2A). Resting SaO<sub>2</sub> at 92% or less occurred among 11.1% (N=8) of participants at a median 11.5 days from symptom onset (IQR, 10, 14), but only accounted for 3.4% of all SaO<sub>2</sub> levels. When evaluating the mean value of respiratory symptom questions at the time of oxygen measurements, five out of eight individuals with an ambulatory SaO<sub>2</sub> ≤92% and two out of five individuals with a resting SaO<sub>2</sub> ≤92 had mild or no respiratory symptoms (Appendix Figure S2B-C). Additionally, there were 8 participants with at

least one low ( $\leq 92\%$ ) ambulatory  $\text{SaO}_2$  and 4 participants with at least one low resting home  $\text{SaO}_2$  who did not seek medical attention, despite prior guidance.

Low oxygen saturation ( $< 93\%$ ) was the leading factor for 5 participants being sent to the ED, followed by dyspnea ( $N=4$ ), diarrhea ( $N=2$ ), fever ( $N=1$ ), chest pain ( $N=1$ ), and elevated blood pressure ( $N=1$ ). During the study period, 13 (11.0%) presented to the emergency department and 9 (7.6%) required hospitalization (Appendix Table S2). The median time from symptom onset to hospitalization was 11 days (IQR, 9 to 12).

Baseline demographics and initial study vital signs were evaluated for associations with subsequent hospitalization. Each year of age was associated with 9% increased odds of subsequent hospitalization (OR: 1.1, CI, 1.00 to 1.19,  $p=0.04$ ; IRR: 1.1, CI, 1.00 to 1.17,  $p=0.049$ ). Other baseline demographics or comorbidities were not associated with an increased risk of subsequent hospitalization (Appendix Figure S3).

Among those who were subsequently hospitalized, the initial median  $\text{SaO}_2$  at rest was 95.0 percent (IQR, 90.0 to 97.0) and during ambulation was 95.0 percent (IQR, 88.0 to 96.0) (Table 1; Figure 4A-B).

Temperature, heart rate, and  $\text{SaO}_2$  were plotted over time and stratified by a need for subsequent hospitalization (Figure 4C-F). However, each percent decrease in value of the first recorded resting  $\text{SaO}_2$  ( $N=91$ ) was associated with a 30.0% increased relative risk of a subsequent hospitalization (IRR: 1.3, CI: 1.413 to 1.49,  $p=0.004$ ; OR 1.7, CI: 1.18 to 2.37,  $p=0.004$ ). While the initial ambulatory  $\text{SaO}_2$  was similarly associated with subsequent hospitalization (OR: 1.76; CI, 1.24 to 2.48,  $p=0.001$ ), temperature (OR: 1.5 per degree Fahrenheit; CI, 0.81 to 2.69,  $p=0.20$ ) and heart rate (OR: 1.0 per 10 beats per



minute; CI, 0.58 to 1.88,  $p=0.90$ ) were not. The AUROC for the initial  $\text{SaO}_2$  for predicting subsequent hospitalization was 0.85 (CI, 0.71 to 0.89).

To further explore the utility of a resting  $\text{SaO}_2$ , the performance characteristics of the individual-level nadir of resting  $\text{SaO}_2$  were determined for those within the first week of illness ( $N=42$ ). The AUROC was found to be 0.84 (CI, 0.67 to 1.0) for predicting subsequent hospitalization.  $\text{SaO}_2$  values of 93% or below in the first week of illness were specific (92.1%) but not sensitive (50%) for predicting subsequent hospitalization with a 6.3 positive likelihood ratio. There was a negative likelihood ratio of zero for subsequent hospitalization among those with a resting oxygen saturation that went no lower than 96% (Appendix Table S3).

To evaluate for the association of oxygen saturation levels over time, a random effects logistic regression model was fit adjusting for age. The model was more parsimonious according to a lower AIC when including age as a covariate. Individuals at the same duration of illness were found to have a 6.6-fold increased crude odds (CI: 1.41 to 31.23,  $p = 0.02$ ) and a 6.1-fold increased adjusted odds of subsequent hospitalization per every  $\text{SaO}_2$  percent decrease (CI: 1.41 to 31.23,  $p=0.02$ ).

## DISCUSSION

This may be the first study to prospectively characterize the incidence, intensity, and duration of COVID-19 in an outpatient setting. Presenting symptoms were diverse, persistent, and uncommonly required hospitalization, especially when high ambulatory blood oxygen concentration were sustained.

These findings support early observations from hospitalized patients that symptoms may persist long-term after acute COVID-19 illness (6, 7, 20, 21). Despite outpatient COVID-19 being considered

generally mild, we also found that respiratory and systemic symptoms persistent for weeks, notably longer than with common respiratory viruses(16, 17). Our findings were consistent with a cross-sectional survey that found that 35% of outpatient COVID-19 positive respondents had not returned to their usual state of health between 2 to 3 weeks from diagnosis(6). Additionally, cough, fatigue, or shortness of breath were present among 43%, 35%, and 29%, respectively, among those that initially reported symptoms(6). In comparison, participants in our cohort reported cough among 23.4%, weakness or fatigue among 40.8%, and shortness of breath among 11.7% during the third week of illness regardless of initial symptoms. Weakness or fatigue was the most pervasive symptom and almost one-third of participants reported fatigue after 22-28 days of illness. Between 10-20 percent of participants continued to have some degree of cough, headache, or anosmia as long as a month or more after the onset of symptoms. The prolonged duration of loss of taste and smell has been previously noted in the study using telephone surveys and is consistent with our prospective findings(6).

While hospitalization was uncommon in our outpatient cohort, low ambulatory or resting oxygen saturation (<93%) were predictive for requiring subsequent hospitalization, suggesting a role for home pulse oximetry in outpatient management of COVID-19. We found that the initial SaO<sub>2</sub> value, a SaO<sub>2</sub> nadir during the first week of illness, or any SaO<sub>2</sub>, adjusting for duration of symptoms, is predictive of subsequent hospitalization. We found no major difference in the diagnostic yield between resting and ambulatory SaO<sub>2</sub> in this setting. The predictive value of outpatient oxygen saturation values have been previously described (5, 22). One study provided pulse oximeters to participants with COVID-19 who presented to an ED or outpatient testing centers; 29% required subsequent hospitalization. Low oxygen saturation detected on pulse oximetry was associated with hospitalization and more severe outcomes(22).

Although in the present study pulse oximetry was predictive of hospitalization, the measure alone often was not sufficient. Some persons needed hospitalization for non-respiratory symptoms (e.g. diarrhea) that logically were not detected by lower oxygen saturation. In addition, no single oxygen saturation reading alone predicted outcome as there was overlap in both the resting and ambulatory oxygen saturations of those who remained at home and those who were hospitalized. Therefore, pulse oximetry may be most useful as an adjunct to clinical monitoring of high risk populations such as those over 60 years of age, males, and persons with elevated body mass index (5, 23).

While this is the largest prospective outpatient cohort to characterize the clinical course of COVID-19, the study has several limitations. First, this study predominantly included older individuals to increase the statistical power for severe outcomes given the known association between age and hospitalization(12). Symptoms including severity and duration of illness may differ considerably in younger individuals and our results are more generalizable for persons of similar ages (24). Outpatients have been previously found to be younger and have less comorbidities compared to hospitalized patients(25). Second, the recruitment strategy may have skewed the study population. For instance, participants with milder symptoms and those with altruistic professions (e.g. healthcare workers) could have been more likely to participate in the study processes than others. A quarter of participants had symptoms of onset 10 days prior to enrollment, and therefore a proportion of participants may have been selected who had successfully passed a time window of disease severity. Additionally, due to operational requirements, Spanish-speakers were not enrolled proportionate to cases early after study initiation and individuals without active mobile phone access were not enrolled. Third, missing data from loss to follow-up or withdrawals during the study period could have skewed the longitudinal severity of results. For example, participants with milder illness could have been more likely to

withdrawal the course of the study. Despite limitations, our results help elucidate the progression of outpatient COVID-19.

The prospective cohort provides additional insight into the clinical progression of outpatient COVID-19 patients, who comprise the majority of patients with SARS-CoV-2 infection. Presenting symptoms were generally diverse and often persisted longer than expected for a respiratory virus. Hospitalization occurred among 7.6% and was associated with low home SaO<sub>2</sub> values, supporting the utility of pulse oximetry as a supplemental tool for remote clinical decision making. Given the diversity of manifestations of COVID-19, immunologic studies and longer-term follow-up of these patients is warranted to determine the extent of symptoms among those with persistent symptoms. There remains great uncertainty about the long-term effects of SARS-CoV-2 infection regardless of symptom severity.

#### ACKNOWLEDGEMENT

We thank Dr. John Powers, Leidos Biomedical, the National Institute for Allergy and Infectious Diseases (NIAID), and the National Institutes of Health for supplying the FLU-PRO Questionnaire.

#### REFERENCES

1. 2020 Pages <https://coronavirus.jhu.edu/data/new-cases> on 7 June, 2020.
2. Zhu J, Ji P, Pang J, Zhong Z, Li H, He C, et al. Clinical characteristics of 3,062 COVID-19 patients: a meta-analysis. J Med Virol. 2020.
3. Guan WJ, Ni ZY, Hu Y, Liang WH, Ou CQ, He JX, et al. Clinical Characteristics of Coronavirus Disease 2019 in China. N Engl J Med. 2020.
4. Huang C, Wang Y, Li X, Ren L, Zhao J, Hu Y, et al. Clinical features of patients infected with 2019 novel coronavirus in Wuhan, China. Lancet. 2020;395(10223):497-506.

- 286 5. Sun H, Jain A, Leone MJ, Alabsi HS, Brenner LN, Ye E, et al. COVID-19 Outpatient  
287 Screening: a Prediction Score for Adverse Events. medRxiv. 2020.
- 288 6. Tenforde MW, Kim SS, Lindsell CJ, Billig Rose E, Shapiro NI, Files DC, et al. Symptom  
289 Duration and Risk Factors for Delayed Return to Usual Health Among Outpatients with  
290 COVID-19 in a Multistate Health Care Systems Network - United States, March-June  
291 2020. MMWR Morb Mortal Wkly Rep. 2020;69(30):993-8.
- 292 7. Alwan NA. A negative COVID-19 test does not mean recovery. Nature. 2020;584:170.
- 293 8. Jouffroy R, Jost D, Prunet B. Prehospital pulse oximetry: a red flag for early detection of  
294 silent hypoxemia in COVID-19 patients. Crit Care. 2020;24(1):313.
- 295 9. Tobin MJ, Laghi F, Jubran A. Why COVID-19 Silent Hypoxemia is Baffling to Physicians.  
296 Am J Respir Crit Care Med. 2020.
- 297 10. Wilkerson RG, Adler JD, Shah NG, Brown R. Silent hypoxia: A harbinger of clinical  
298 deterioration in patients with COVID-19. Am J Emerg Med. 2020.
- 299 11. Havers FP, Reed C, Lim T, Montgomery JM, Klena JD, Hall AJ, et al. Seroprevalence of  
300 Antibodies to SARS-CoV-2 in 10 Sites in the United States, March 23-May 12, 2020.  
301 JAMA Intern Med. 2020.
- 302 12. Severe Outcomes Among Patients with Coronavirus Disease 2019 (COVID-19) - United  
303 States, February 12-March 16, 2020. MMWR Morb Mortal Wkly Rep. 2020;69(12):343-6.
- 304 13. Vyse AJ, Cohen BJ, Ramsay ME. A comparison of oral fluid collection devices for use in  
305 the surveillance of virus diseases in children. Public Health. 2001;115(3):201-7.

14. Powers JH, Guerrero ML, Leidy NK, Fairchok MP, Rosenberg A, Hernández A, et al. Development of the Flu-PRO: a patient-reported outcome (PRO) instrument to evaluate symptoms of influenza. BMC Infect Dis. 2016;16:1.
15. Yu J, Powers JH, 3rd, Vallo D, Falloon J. Evaluation of Efficacy Endpoints for a Phase IIb Study of a Respiratory Syncytial Virus Vaccine in Older Adults Using Patient-Reported Outcomes With Laboratory Confirmation. Value Health. 2020;23(2):227-35.
16. Powers JH, 3rd, Bacci ED, Guerrero ML, Leidy NK, Stringer S, Kim K, et al. Reliability, Validity, and Responsiveness of InFLUenza Patient-Reported Outcome (FLU-PRO®) Scores in Influenza-Positive Patients. Value Health. 2018;21(2):210-8.
17. Han A, Poon JL, Powers JH, 3rd, Leidy NK, Yu R, Memoli MJ. Using the Influenza Patient-reported Outcome (FLU-PRO) diary to evaluate symptoms of influenza viral infection in a healthy human challenge model. BMC Infect Dis. 2018;18(1):353.
18. Harris PA, Taylor R, Minor BL, Elliott V, Fernandez M, O'Neal L, et al. The REDCap consortium: Building an international community of software platform partners. J Biomed Inform. 2019;95:103208.
19. 2020;Pages<https://wwwn.cdc.gov/nndss/conditions/coronavirus-disease-2019-covid-19/case-definition/2020/> on 29 July, 2020.
20. Carfi A, Bernabei R, Landi F. Persistent Symptoms in Patients After Acute COVID-19. Jama. 2020;324(6):603-5.
21. Rimmer A. Covid-19: Impact of long term symptoms will be profound, warns BMA. BMJ. 2020;370:m3218.

327 22. Shah S, Majmudar K, Stein A, Gupta N, Suppes S, Karamanis M, et al. Novel use of home  
328 pulse oximetry monitoring in COVID-19 patients discharged from the emergency  
329 department identifies need for hospitalization. Academic Emergency Medicine;n/a(n/a).

330 23. Hamer M, Gale CR, Kivimäki M, Batty GD. Overweight, obesity, and risk of  
331 hospitalization for COVID-19: A community-based cohort study of adults in the United  
332 Kingdom. Proc Natl Acad Sci U S A. 2020.

333 24. Scheuller HS, Park J, Lott L, Tavish M, Danaher P. Comparison of Clinical Features in a  
334 Population of Basic Military Trainees Versus the General Department of Defense  
335 Beneficiary Population Presenting With Influenza. Mil Med. 2017;182(9):e1917-e21.

336 25. Tenforde MW, Billig Rose E, Lindsell CJ, Shapiro NI, Files DC, Gibbs KW, et al.  
337 Characteristics of Adult Outpatients and Inpatients with COVID-19 - 11 Academic  
338 Medical Centers, United States, March-May 2020. MMWR Morb Mortal Wkly Rep.  
339 2020;69(26):841-6.

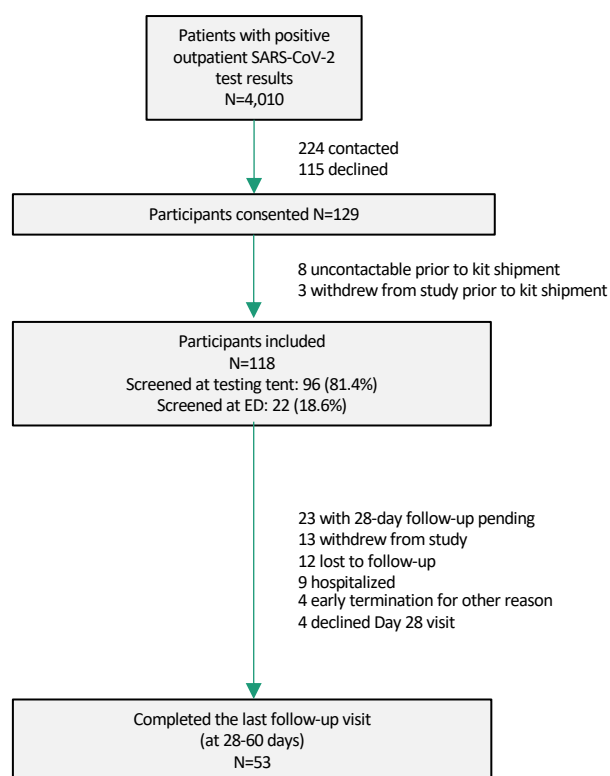
340

**Table 1.** Baseline demographics and clinical characteristics of cohort stratified by subsequent hospitalization.

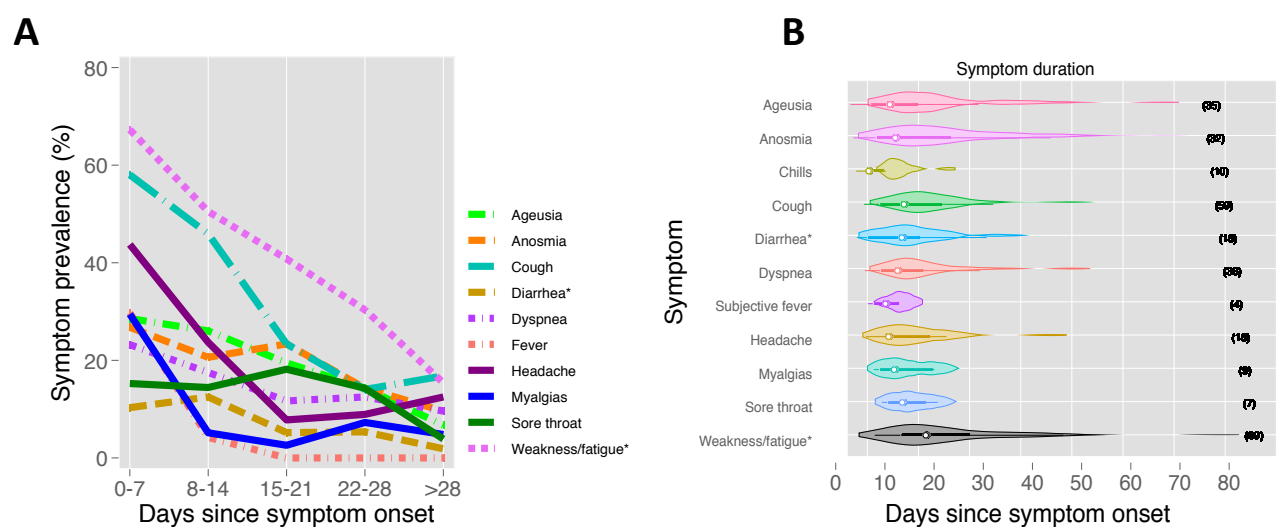
Characteristic		Total	Subsequently Hospitalized	Ambulatory care
Male sex — no./total no. (%)		50/118 (42.4)	4/ 9 (44.4)	46/109 (42.2)
Age, Median (IQR) — yr		56.0 (50.0-63.0)	65.0 (54.0-69.0)	56.0 (49.0-62.0)
Race, no. (%)				
	White	56 (47.5)	7 (77.8)	49 (45.0)
	Black	46 (39.0)	1 (11.1)	45 (41.3)
	Other	8 (6.8)	0 (0.0)	8 (7.3)
	Asian	6 (5.1)	1 (11.1)	5 (4.6)
	Native American	1 (0.8)	0 (0.0)	1 (0.9)
	Native Hawaiian or other Pacific Islander	1 (0.8)	0 (0.0)	1 (0.9)
Ethnicity — no. (%)				
	Hispanic	18 (15.3)	3 (33.3)	15 (13.8)
Charlson Comorbidity Index, Median (IQR)		2 (1, 3)	2 (1, 3)	2 (1, 3)
Coexisting disorder — no. (%)				
	Hypertension	46 (39.0)	6 (66.7)	40 (36.7)
	Current or history of tobacco use	27 (26.0)	3 (33.3)	24 (25.3)
	Diabetes	19 (16.1)	3 (33.3)	16 (14.7)
	Asthma or COPD	18 (15.3)	2 (22.2)	16 (14.7)
	Solid tumor malignancy	18 (15.3)	1 (11.1)	17 (15.6)
	HIV	7 (6.6)	0 (0.0)	7 (7.2)
	Hematologic malignancy	6 (5.1)	0 (0.0)	6 (5.5)
	CKD stage 3 or 4	4 (3.4)	0 (0.0)	4 (3.7)
	History of myocardial infarction	2 (1.7)	1 (11.1)	1 (0.9)
Employment, no. (%)				
Healthcare setting				
	Hospital	15 (12.7)	0 (0.0)	15 (13.8)
	Skilled Nursing Facilities, Long-term Care Facility, or Nursing Home	9 (7.6)	0 (0.0)	9 (8.3)
	Clinic	3 (2.5)	0 (0.0)	3 (2.8)
	Other	3 (2.5)	0 (0.0)	3 (2.8)
	Home Health	2 (1.7)	0 (0.0)	2 (1.8)
	Prison or Jail	1 (0.8)	1 (11.1)	0 (0.0)
Essential worker, no. (%)		21 (20.6)	1 (14.3)	20 (21.1)
Body mass index, Median (IQR)		30.0 (26.0-36.0)	31.0 (29.0-36.0)	30.0 (25.0-36.0)
Duration of symptoms at enrollment, median (IQR) — days		5.0 (3.0-10.0)	3.0 (2.0-7.0)	6.0 (3.0-11.0)



Vital sign parameters				
	Resting oxygen saturation (IQR) — %	98.0 (96.0-98.5)	95.0 (90.0-97.0)	98.0 (96.0-99.0)
	Ambulatory oxygen saturation (IQR) — %	97.0 (95.0-98.0)	95.0 (88.0-96.0)	97.0 (96.0-98.0)
	Heart rate (IQR) — beats per minutes	85.0 (74.0-91.0)	85.0 (73.0-94.0)	85.0 (74.0-91.0)
	Highest temperature (IQR) — °Fahrenheit	98.3 (97.6-98.8)	98.4 (97.9-100.2)	98.3 (97.6-98.8)

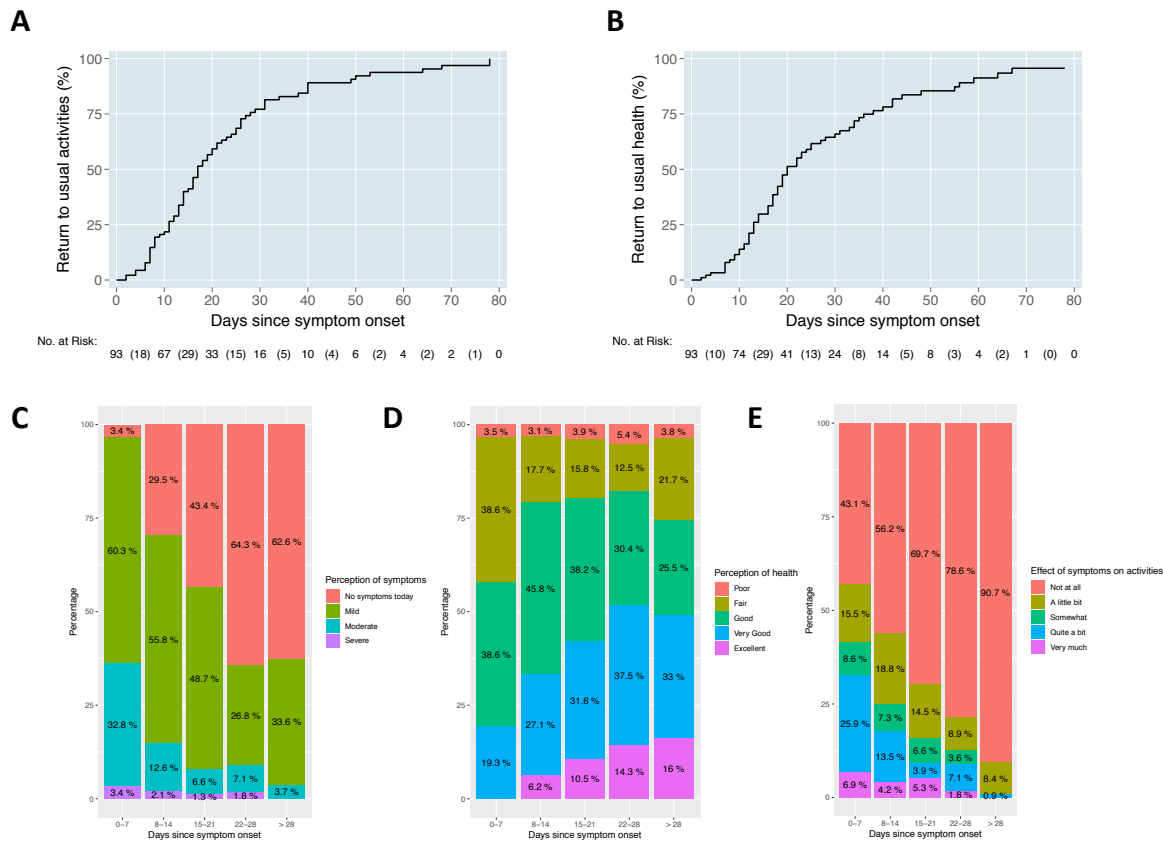


**Figure 1.** Screening, enrollments, and follow-up.



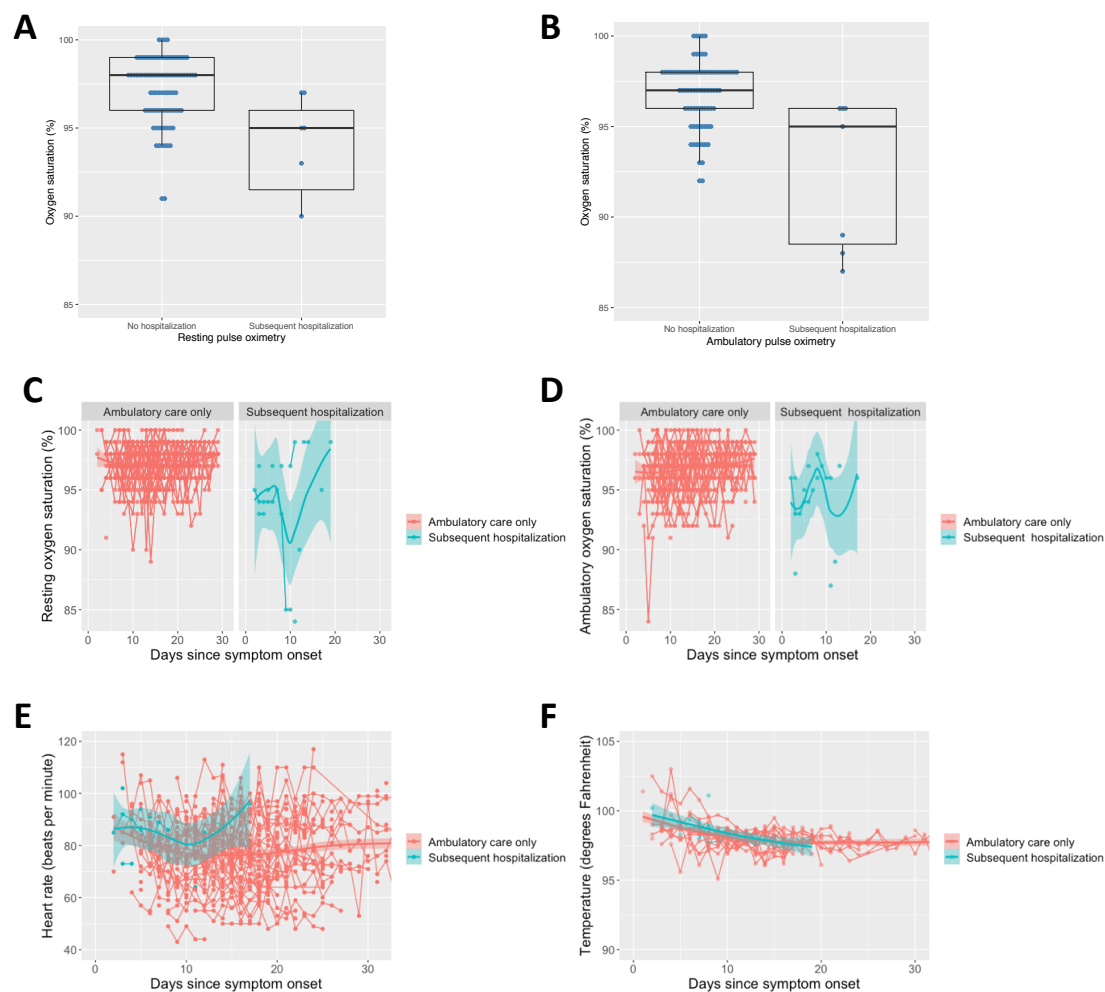
**Figure 2.** (A) Symptom prevalence by week of illness per a FLU-PRO questionnaire and additional COVID-19 specific questions and (B) violin plots of symptom duration centered by onset of the first symptom(s) to illustrate the course of disease over time from questionnaire responses during the study period

\*Not present in interim April 2020 CDC COVID-19 case definition.



**Figure 3.** Kaplan-Meier curve of time to participants returning to usual activities (A) and to usual health (B).

Severity of disease during first month of illness among those with symptomatic outpatient COVID-19 including (C) perception of disease, (D) perception of health, and (E) the effect on usual activities.



**Figure 4.** Box plots of resting (A) and ambulatory (B) oxygen saturation (%) at enrollment among those that subsequently were hospitalized and those that were not during the study period. Outpatient vital signs over time by duration of symptoms stratified by subsequent hospitalization requirement including (C) resting oxygen saturation, (D) ambulatory oxygen saturation, (E) heart rate (beats per minute), and (F) temperature (degrees Fahrenheit).