

1 **Evaluation of the current therapeutic approaches for**
2 **COVID-19: a meta-analysis**

3 Zeinab Abdelrahman, MS ^{1,2}, Qian Liu, BS ^{1,2}, Shanmei Jiang, BS ^{1,2}, Mengyuan Li,
4 MS ^{1,2}, Yue Zhang, Ph.D. ^{3,4,5}, Xiaosheng Wang, Ph.D. ^{1,2*}

5 ¹ Biomedical Informatics Research Lab, School of Basic Medicine and Clinical
6 Pharmacy, China Pharmaceutical University, Nanjing 211198, China.

7 ² Big Data Research Institute, China Pharmaceutical University, Nanjing 211198,
8 China

9 ³ Pinghu Hospital of Shenzhen University, Shenzhen 440307, China

10 ⁴ Futian Hospital for Rheumatic Diseases, Shenzhen 518000, China

11 ⁵ Department of Rheumatology and Immunology, The First Clinical College of Harbin
12 Medical University, Harbin 150001, China

13 **Authors emails**

14 Zeinab Abdelrahman (zeinabmohamed86@yahoo.com)

15 Qian Liu (3319091437@stu.cpu.edu.cn)

16 Shanmei Jiang (shanmei.jiang@stu.cpu.edu.cn)

17 Mengyuan Li (limengyuan_cpu@163.com)

18 Yue Zhang (zy1001@yahoo.com)

19 * Correspondence to Xiaosheng Wang, MD, PhD

20 Director, Biomedical Informatics Research Lab

21 Associate Professor, School of Basic Medicine and Clinical Pharmacy

22 China Pharmaceutical University

23 Address: No. 639 Longmian Avenue, Jiangning District, Nanjing 211198, Jiangsu,

24 China

25 E-mail: xiaosheng.wang@cpu.edu.cn; Tel: +86-186-0129-9809

26 ***Funding***

27 This work was supported by the China Pharmaceutical University (grant number

28 3150120001 to Xiaosheng Wang).

29 ***Running title***

30 Evaluation of therapeutic approaches for COVID-19

31 ***Word count***

32 Abstract: 241, Main manuscript: 2380, Tables and Figures: 5, Supplemental contents:

33 13

34

35

36

37

38

39

40

41

42

43

44

45 *Abstract*

46 **Background and rationale:** Limited data on the efficacy and safety of currently
47 applied COVID-19 therapeutics and their impact on COVID-19 outcomes have raised
48 additional concern. **Aim and Methods:** We estimated the impact of the current
49 treatments on the efficacy and safety of COVID-19 by a meta-analysis. The
50 comprehensive search included studies reporting clinical features and treatment
51 strategies published from January 21, 2020, to May 15, 2020. **Results:** We included
52 52 studies that involved 13,966 COVID-19 patients. We found that the most prevalent
53 treatments were antivirals (proportion: 0.74, 95% CI ¹: [0.65, 0.83]) and antibiotics
54 (proportion: 0.73, 95% CI: [0.62, 0.83]). The COVID-19 severity increased among
55 patients taking glucocorticoids (risk ratio (RR) ² = 1.71, 95% CI: [1.06, 2.76]) or
56 immunoglobulins (RR = 3.83, 95% CI: [1.27, 11.53]), and renal replacement therapy
57 (RRT) and glucocorticoids increased the length of ICU stay (RRT ³: RR = 11.89, 95%
58 CI: [3.26, 43.39]; glucocorticoids: RR = 3.10, 95% CI: [1.52, 6.29]). The COVID-19
59 severity and mortality increased among patients taking tocilizumab (severity: F =
60 25.53, $P = 0.02$; mortality: $F^4 = 19.37$, $P = 0.02$). The most effective treatment was
61 the combination of arbidol with lopinavir/ritonavir compared with placebo (mean
62 difference = 0.5, 95% CI [-0.60, 1.66]), and the safest combination was remdesivir
63 and lopinavir/ritonavir (RR= 0.78, 95% CI [0.32, 1.91]). **Conclusion:** glucocorticoids,
64 immunoglobulins, RRT, and tocilizumab might worsen COVID-19 outcomes, and the

¹ CI: confidence interval

² RR: risk ratio

³ RRT: renal replacement therapy

⁴ F: F-test

65 most effective and safest treatment strategy for COVID-19 is the combination of
66 different antivirals.

67

68 **Keywords:** COVID-19 drug treatment; COVID-19; Antiviral Agents; Interferons;

69 Hydroxychloroquine; tocilizumab

70

71

72

73

74

75

76

77

78

79

80

81

82

83

84

85

86 ***1. Introduction***

87 Since the outbreak of the coronavirus disease 2019 (COVID-19) caused by severe
88 acute respiratory syndrome coronavirus 2 (SARS-CoV-2) in December 2019, more
89 than 14 million cases and 613,879 deaths have been reported as of July 22, 2020, in
90 the world ^[1]. Compared to other beta coronaviruses that have caused epidemics over
91 the last two decades, including severe acute respiratory syndrome coronavirus
92 (SARS-CoV) ^[2] and Middle East respiratory syndrome coronavirus (MERS-CoV) ^[3],
93 SARS-CoV-2 exhibits higher infectivity while lower fatality that makes it more
94 destructive ^[4]. The rapid development of effective treatment approaches for
95 COVID-19 is urgently needed since there is no specific therapy or vaccine for
96 COVID-19 currently. Previous experiences from SARS and MERS treatment suggest
97 that several interventions, including antivirals, such as lopinavir/ritonavir and
98 umifenovir, glucocorticoids, interferons, ribavirin, besides newly introduced drugs
99 such as chloroquine or its derivative hydroxychloroquine, and convalescent plasma,
100 may improve clinical outcomes in COVID-19 patients, whereas the related data are
101 not conclusive. Since the evidence of the effectiveness of these treatments remains
102 lacking, we conducted a meta-analysis of the therapeutic approaches for COVID-19.
103 This meta-analysis aimed to identify favorable and unfavorable treatment strategies
104 for COVID-19 by comparing different treatment approaches using machine learning
105 models.

106 First, we conducted a proportional meta-analysis to summarize the pooled effect
107 of the weighted proportion of each treatment. Next, we identified the impact of each
108 treatment on the severity and mortality of COVID-19. Finally, we conducted the

109 network meta-analysis to, directly and indirectly, compare different treatment
110 strategies. We summarized available randomized and non-randomized clinical trials of
111 several treatment strategies and provided point estimates and their 95% confidence
112 intervals (CIs) for the associations between these treatment strategies and given
113 endpoints.

114 **2. Methods**

115 **2.1 Search strategy and selection criteria**

116 We searched for publications between January 21, 2020, and May 15, 2020, in
117 databases of PubMed, EMBASE, CNKI, Wanfang, Cochrane library,
118 ClinicalTrials.gov, Scopus, Lancet, N Engl J Med and JAMA platforms, and Web of
119 Science. We used the EndNote X9.0 software to exclude duplicate or irrelevant
120 articles. We used the search term “2019 novel coronavirus, COVID-19 and
121 SARS-CoV-2” AND “treatment, clinical characteristics, epidemiological
122 characteristics, clinical trials, cohort studies, observational studies, case series”
123 without language and age restriction. To identify missed studies, we checked the
124 reference list for each selected paper. Our meta-analysis included publications
125 involving the following information: clinical features, laboratory findings, and
126 treatment approaches for COVID-19 patients with clinically defined severity or
127 mortality. We excluded the following studies: duplicate publications, preprints,
128 reviews, case reports, family-based studies, unrelated titles or abstracts, studies not
129 involving clinical features, laboratory findings, treatment approaches, and animal or
130 in vitro studies. The literature search steps followed the transparent reporting of

131 systematic reviews and meta-analyses “PRISMA” (Figure 1, Supplemental Content
132 1).

133 ***2.2 Data extraction***

134 Two investigators (QL and SJ) performed a literature search and data extraction, and
135 another investigator (ZA) resolved the disagreements. We extracted the following
136 variables: author, date, age, gender, number of participants in different groups for
137 comparisons, including severe versus non-severe, ICU versus non-ICU, death versus
138 survival, and deterioration versus discharge. The extracted data included publication
139 date, country, study design, number of enrolled subjects, data collection method,
140 baseline characteristics before treatment, diagnostic method, population, treatment
141 details, time from admission to starting treatment, and outcomes in patients.

142

143 ***2.3 Data analyses***

144 We conducted a proportional meta-analysis to account for the weighted average
145 proportion of each treatment. We also conducted the subgroup meta-analysis to
146 identify the impact of each treatment on the disease severity, such as the utility of
147 antibiotics or antivirals in severe versus non-severe, ICU versus non-ICU, death
148 versus survival, and deterioration versus discharge patients. Besides, we conducted
149 the network meta-analysis to account for the relationship between clinical outcomes
150 and borrowed strength across studies. We defined the disease severity as a
151 dichotomous variable. We normalized the data by double-arcsine- or
152 logit-transformation and confirmed their normal distribution by the Shapiro-Wilk test

153 before meta-analyses. We assessed statistical heterogeneity using the I^2 statistic and
154 Cochran's Q test with a threshold of $I^2 > 50\%$ or $P \leq 0.05$. We adopted a
155 random-effect model in terms of statistical heterogeneity. We performed the
156 meta-analysis using R software and Cochrane software REVMAN 5^[5]. For the
157 proportional meta-analysis, we used the R package "metafor" and "meta"^[6] based
158 on the restricted maximum likelihood method. We estimated the summary
159 proportional effect size as the weighted average of the observed effect sizes in
160 individual studies.

161 For subgroup meta-analysis, we applied random models and mixed-effect
162 meta-regression for different outcomes. The subgroups were defined by different
163 severity definition terms in the studies. We used the random-effect model in the
164 subgroup meta-analysis, and in the meta-regression, we used the mixed-effect model
165 with the risk ratio (RR) as the estimated effect size to evaluate the impact of different
166 drugs on the disease severity. We also conducted the network meta-analysis of 10
167 different drugs in 13 studies to estimate if one intervention is more or less effective
168 than another intervention for COVID-19 patients. In the network meta-analysis, we
169 used a random-effect model with the RR as the size effect and estimated the network
170 inconsistency.

171

172 ***2.4 Study selection and risk of bias assessment***

173 We assessed the risk of bias eligible observational studies, such as cross-sectional,
174 cohort studies, and case series, following the Strengthening the Reporting of

175 Observational Studies in Epidemiology (STROBE) reporting guidelines ^[7]. We
176 assessed the risk of bias in randomized control trials using the Cochrane risk-of-bias
177 tool for randomized trials (ROB-2) ^[8]. We conducted both risks of bias evaluations by
178 the two investigators (QL and SJ) independently, each assigned an overall risk of bias
179 to each eligible study, and consulted a third reviewer (ZA) if they disagreed. We
180 summarized the results in Supplemental Content 6.

181

182 **3. Results**

183 We initially identified 2,221 articles based on our search criteria, most of which were
184 irrelevant to our research objective or without published results (Figure 1). Finally, we
185 included 52 articles ^{[9, 10, 11, 12, 13, 14, 15, 16, 17, 18, 19, 20, 21, 22, 23, 24, 25, 26, 27, 28, 29, 30, 31, 32, 33, 34,}
186 ^{35, 36, 37, 38, 39, 40, 41, 42, 43, 44, 45, 46, 47, 48, 49, 50, 51, 52, 53, 54, 55, 56, 57, 58, 59, 60]} in our meta-analysis,
187 which involved a total of 13,966 subjects. A summary of these studies is presented in
188 Supplemental Content 2.

189 **3.1 Proportional meta-analysis**

190 We performed proportional meta-analyses to estimate one-dimensional binomial
191 (weighted) average proportions. We obtained the average of the proportions of
192 multiple studies weighted by the inverse of their sampling variances using the
193 random-effect model. We defined eight groups of treatments commonly used against
194 COVID-19, as shown in Supplemental Content 3. The sample sizes in these studies
195 ranged from 9 to 5,700, with a total number of 13,966. The treatment categories
196 included antibiotics, antivirals, glucocorticoids, chloroquine or hydroxychloroquine,

197 immunoglobulin, interferons, tocilizumab, and renal replacement therapy (RRT). The
198 random-effect model estimated the prevalence of each treatment and found that the
199 highest prevalence were antivirals (proportion: 0.74, 95% CI: [0.65, 0.83]) and
200 antibiotics (proportion: 0.73, 95% CI: [0.62, 0.83]) (Figure 2). We showed the results
201 of proportional meta-analysis heterogeneity in Supplemental Content 4.

202 To estimate the association between treatment and disease severity, we performed
203 a subgroup meta-analysis or meta-regression to quantify each drug's effect on the
204 severity of COVID-19. This analysis would elucidate whether a treatment can reduce
205 COVID-19 risk or not. The severity terms included "severe" versus "non-severe,"
206 "death" versus "survival," "deterioration," versus "discharge," and "ICU" versus
207 "non-ICU." We performed a subgroup meta-analysis on 42 studies. We also conducted
208 meta-regression for chloroquine or hydroxychloroquine and tocilizumab for which we
209 had no sufficient data to perform subgroup meta-analysis. We used the general term
210 "relative risk (RR)" to uniformly refer to the different severity terms. The results
211 showed that the risk of COVID-19 severity increased among patients taking
212 glucocorticoids (RR = 1.71, 95% CI: [1.06, 2.76]) or immunoglobulins (RR = 3.83,
213 95% CI: [1.27, 11.53]), and RRT and glucocorticoids increased the length in ICU
214 among COVID-19 patients (RRT: RR = 11.89, 95% CI: [3.26, 43.39];
215 glucocorticoids: RR = 3.10, 95% CI: [1.52, 6.29]). In addition, meta-regression
216 analysis showed that the COVID-19 severity and mortality increased among patients
217 taking tocilizumab (severity: $F = 25.53$, $P = 0.02$; mortality: $F = 19.37$, $P = 0.02$), but
218 there were no significant differences among patients taking chloroquine or

219 hydroxychloroquine. The pooled RR of eight treatments indicated that the use of
220 glucocorticoids, immunoglobulin, tocilizumab, and RRT were likely to increase
221 COVID-19 progression and severity (Table 1 and Supplemental Content 7 and 8).

222 To determine if there are outliers that could influence our analysis results, we
223 performed leave-one-out (LOO) analyses. In brief, each study was removed once, and
224 the summary proportion was re-estimated based on the remaining studies. Studies
225 with a statistically significant impact on the fitted model were removed as outliers,
226 and the model was re-fitted again. Among the eight models, we found that only in
227 RRT, interferon, and tocilizumab models, the studies ^[54, 32, 28] had a significant impact,
228 with Z values of 3.5, 4.5, and -5.2, respectively, and the heterogeneity reduction to
229 75.9%, 96.8%, and 88%, respectively (Supplemental Content 9 and 10). Finally, we
230 assessed the potential publication bias in each treatment model using a funnel plot of
231 the mixed-effect meta-regression model and the Egger's regression test with the
232 standard error as a predictor. We observed that the funnel plots were roughly
233 symmetrical and that the Egger's test was significant in four treatment models
234 (antibiotics, antivirals, immunoglobulin, and RRT), indicating the clear evidence of
235 publication bias (Supplemental Content 11).

236

237 **3.2 Network meta-analysis**

238 To compare the effect of different anti-COVID-19 treatment approaches, we
239 performed network meta-analysis. We included only 13 studies ^{[38, 32, 26, 24, 22, 23, 28, 60, 30,}
240 ^{27, 21, 29, 25]} in the analysis because of network inconsistency (Supplemental Content 5).

241 First, we used the frequentist network model to define the effect size of each
242 comparison as the mean difference (MD) and the source of network heterogeneity as
243 the Q value. We observed the highest Q value ($Q = 21.02$) in the study by Tang et al.
244 ^[23], and its network inconsistency was as high as 93.7%. Next, we estimated the effect
245 of the treatments relative to the placebo, which was supplemental oxygen,
246 noninvasive and invasive ventilation, antibiotics, vasopressor support, RRT, or
247 extracorporeal membrane oxygenation (ECMO) (Figure 3). Many studies ^{[38, 26, 22, 30, 21,}
248 ^{60]} have performed a comparison between lopinavir/ritonavir or remdesvir and placebo.
249 The best improvement in the effect was the combination of arbidol with lopinavir or
250 ritonavir (MD = 0.5, 95% CI [-0.60, 1.66]), and the next one was hydroxychloroquine
251 (MD = 0.3, 95% CI [-0.15, 0.68]) when compared to placebo. We also estimated the
252 percentage of direct and indirect evidence used for each comparison, which may
253 contribute to the assumption of consistency underlying the network meta-analysis
254 model. Nevertheless, this estimate can evaluate the extent to which the comparisons
255 were inferred by direct or indirect evidence. We produced a matrix for the effect sizes
256 of all possible treatment combinations and found that the combination of remdesivir
257 and lopinavir/ritonavir had the lowest RR (RR = 0.78, 95%CI [0.32, 1.91]) (Figure 4).

258 To determine which COVID-19 treatment is the most effective, we ranked the
259 treatments based on the P score in the frequentist model (Supplemental Content 12).
260 We observed that arbidol plus lopinavir/ritonavir had the highest P score of 0.9995,
261 and lopinavir/ritonavir plus interferon had the second-highest P score of 0.851,
262 followed by chloroquine (P score = 0.579). These results indicate that the antiviral

263 treatment has the best effect against COVID-19 and that chloroquine and its
264 derivative are also effective.

265 Assessing the publication bias of a network meta-analysis in its aggregated form
266 is problematic ^[61]. Thus, we conducted an analysis called “comparison-adjusted
267 funnel plot” to assess the possible publication bias under an a priori hypothesis that
268 specific mechanisms may cause the publication bias. We did not observe the funnel
269 asymmetry (Egger’s Test, $P = 0.38$) (Supplemental Content 13).

270

271 **4. Discussion**

272 Currently, most of the COVID-19 treatments are symptomatic treatments, and oxygen
273 therapy is the first step in addressing respiratory impairment. Accumulating
274 knowledge on the pathophysiology of lung damage provides clinicians the strategies
275 for dealing with respiratory failure caused by COVID-19 ^[62]. Several treatment
276 attempts have become an essential part of COVID-19 treatment and management
277 protocol, such as antibiotics, antivirals, glucocorticoids, interferons, RRT, chloroquine
278 or hydroxychloroquine, and tocilizumab, whereas there were no recommendations or
279 rationale for using them. Earlier, 58% of COVID-19 patients in Wuhan were treated
280 with antibiotics. Later on, the WHO recommended using empiric antibiotics to cover
281 bacterial superinfections of COVID-19 patients ^[63]. The rationale for using
282 glucocorticoids is still controversial, although the most common reason for using
283 steroids is to mitigate the destructive inflammatory response in severe COVID-19
284 patients ^[64]. Several mechanisms have proposed that chloroquine or

285 hydroxychloroquine could be effective against SARS-CoV-2 ^[65]. However, the
286 clinical evidence regarding the effectiveness of these treatments remains lacking. Our
287 meta-analysis identified and summarized eight therapeutic approaches commonly
288 used in COVID-19 treatment, including antibiotics, antivirals, immunoglobulin,
289 glucocorticoids, interferons, chloroquine, or hydroxychloroquine, RRT, and
290 tocilizumab. First, we found that the use of antibiotics, antivirals, and chloroquine or
291 hydroxychloroquine was the most prevalent. Second, we found that the use of
292 glucocorticoids, immunoglobulin, RRT, and tocilizumab was likely to promote the
293 disease severity and deterioration among COVID-19 patients. Third, we found that
294 the use of a combination of arbidol plus lopinavir/ritonavir had the best effect on
295 COVID-19 patients relative to placebo, while the use of umifenovir had the worst
296 effect. Finally, we confirmed that antivirals, especially lopinavir/ritonavir, were
297 superior to the other anti-COVID-19 treatments.

298 This meta-analysis has several limitations. First, we may not include some
299 relevant studies due to certain restrictions in searching for some databases. Second,
300 the quality of evidence is limited by data primarily derived from retrospective
301 analyses, which included heterogeneous data reporting and study design. Third, the
302 confidence of the results from this meta-analysis is limited by insufficient data of the
303 randomized control trials.

304 In conclusion, glucocorticoids, immunoglobulins, RRT, and tocilizumab may
305 worsen outcomes in COVID-19. The most effective and safest treatment strategy for
306 COVID-19 is the combination of different antivirals, supporting the use of antivirals

307 as the basic treatment of COVID-19 with no association with disease progression and
308 mortality. Our data are potentially valuable for clinical treatment and management of
309 COVID-19 patients.

310

311

312 ***Funding***

313 This work was supported by the China Pharmaceutical University (grant number
314 3150120001 to Xiaosheng Wang).

315 ***Declarations of interest***

316 The authors declare that they have no known competing financial interests or personal
317 relationships that could have appeared to influence the work reported in this paper.

318 ***Author contribution***

319

320 **Zeinab Abdelrahman:** Conceptualization, Methodology, Software, Investigation,
321 Formal analysis, Writing - Original Draft, Visualization; **Qing Liu:** Investigation;
322 **Shanmei Jiang:** Investigation; **Mengyuan Li:** Visualization; **Yue Zhang:**
323 Conceptualization; **Xiaosheng Wang:** Conceptualization, Methodology, Project
324 administration, Funding acquisition, Writing - Review & Editing, Supervision.

325 ***Acknowledgments***

326 We thank China Pharmaceutical University, for its support and funding.

327

328

329

330

331

332

333

334

335

336 5. References

- 337 [1] University JH. coronavirus resource center.
338 <https://coronavirus.jhu.edu/map.html>.
- 339 [2] Ksiazek TG, Erdman D, Goldsmith CS, et al. A novel coronavirus associated
340 with severe acute respiratory syndrome. *N Engl J Med*.
341 2003;348(20):1953-1966.
- 342 [3] Baharoon S, Memish ZA. MERS-CoV as an emerging respiratory illness: A
343 review of prevention methods. *Travel Med Infect Dis*. 2019:101520.
- 344 [4] Rabaan AA, Al-Ahmed SH, Haque S, et al. SARS-CoV-2, SARS-CoV, and
345 MERS-COV: A comparative overview. *Infez Med*. 2020;28(2):174-184.
- 346 [5] *Review Manger Web (RevMan Web)* [computer program]. 2019.
- 347 [6] Wang N. *How to Conduct a Meta-Analysis of Proportions in R: A*
348 *Comprehensive Tutorial*. 2018.
- 349 [7] von Elm E, Altman DG, Egger M, Pocock SJ, Gøtzsche PC, Vandenbroucke JP.
350 The Strengthening the Reporting of Observational Studies in Epidemiology
351 (STROBE) statement: guidelines for reporting observational studies. *PLoS*
352 *Med*. 2007;4(10):e296.
- 353 [8] Higgins JPT, Altman DG, Gøtzsche PC, et al. The Cochrane Collaboration's
354 tool for assessing risk of bias in randomised trials. 2011;343:d5928.
- 355 [9] Yu M, Liu Y, Xu D, Zhang R, Lan L, Xu H. Prediction of the Development of
356 Pulmonary Fibrosis Using Serial Thin-Section CT and Clinical Features in
357 Patients Discharged after Treatment for COVID-19 Pneumonia. *Korean J*
358 *Radiol*. 2020;21(6):746-755.
- 359 [10] Xu K, Chen Y, Yuan J, et al. Factors associated with prolonged viral RNA
360 shedding in patients with COVID-19. *Clin Infect Dis*. 2020.
- 361 [11] Wang D, Hu B, Hu C, et al. Clinical Characteristics of 138 Hospitalized
362 Patients With 2019 Novel Coronavirus-Infected Pneumonia in Wuhan, China.
363 *JAMA*. 2020.
- 364 [12] Richardson S, Hirsch JS, Narasimhan M, et al. Presenting Characteristics,
365 Comorbidities, and Outcomes Among 5700 Patients Hospitalized With
366 COVID-19 in the New York City Area. *JAMA*. 2020.
- 367 [13] Ouyang Y, Yin J, Wang W, et al. Down-regulated gene expression spectrum
368 and immune responses changed during the disease progression in COVID-19

- 369 patients. *Clin Infect Dis.* 2020.
- 370 [14] Myers LC, Parodi SM, Escobar GJ, Liu VX. Characteristics of Hospitalized
371 Adults With COVID-19 in an Integrated Health Care System in California.
372 *JAMA.* 2020.
- 373 [15] Mo P, Xing Y, Xiao Y, et al. Clinical characteristics of refractory COVID-19
374 pneumonia in Wuhan, China. *Clin Infect Dis.* 2020.
- 375 [16] Liu Y, Yang Y, Zhang C, et al. Clinical and biochemical indexes from
376 2019-nCoV infected patients linked to viral loads and lung injury. *Sci China
377 Life Sci.* 2020;63(3):364-374.
- 378 [17] Lian J, Jin X, Hao S, et al. Analysis of Epidemiological and Clinical features
379 in older patients with Corona Virus Disease 2019 (COVID-19) out of Wuhan.
380 *Clin Infect Dis.* 2020.
- 381 [18] Jacobs JP, Stammers AH, St Louis J, et al. Extracorporeal Membrane
382 Oxygenation in the Treatment of Severe Pulmonary and Cardiac Compromise
383 in COVID-19: Experience with 32 patients. *ASAIO J.* 2020.
- 384 [19] Grein J, Ohmagari N, Shin D, et al. Compassionate Use of Remdesivir for
385 Patients with Severe Covid-19. *N Engl J Med.* 2020.
- 386 [20] Bhatraju PK, Ghassemieh BJ, Nichols M, et al. Covid-19 in Critically Ill
387 Patients in the Seattle Region — Case Series. *N Engl J Med.* 2020.
- 388 [21] Huang M, Tang T, Pang P, et al. Treating COVID-19 with Chloroquine. *J Mol
389 Cell Biol.* 2020;12(4):322-325.
- 390 [22] Wang Y, Zhang D, Du G, et al. Remdesivir in adults with severe COVID-19: a
391 randomised, double-blind, placebo-controlled, multicentre trial. *The Lancet.*
392 2020.
- 393 [23] Tang W, Cao Z, Han M, et al. hydroxychloroquine in patients with mainly
394 mild to moderate coronavirus disease 2019: open label, randomised controlled
395 trial. *BMJ.* 2020;369:m1849.
- 396 [24] Singh S, Chakravarty T, Chen P, et al. Allogeneic cardiosphere-derived cells
397 (CAP-1002) in critically ill COVID-19 patients: compassionate-use case series.
398 *Basic Res Cardiol.* 2020;115(4):36.
- 399 [25] Lian N, Xie H, Lin S, Huang J, Zhao J, Lin Q. Umifenovir treatment is not
400 associated with improved outcomes in patients with coronavirus disease 2019:
401 a retrospective study. *Clin Microbiol Infect.* 2020.
- 402 [26] Hung IF, Lung KC, Tso EY, et al. Triple combination of interferon beta-1b,
403 lopinavir-ritonavir, and ribavirin in the treatment of patients admitted to
404 hospital with COVID-19: an open-label, randomised, phase 2 trial. *Lancet.*
405 2020.
- 406 [27] Hu K, Guan WJ, Bi Y, et al. Efficacy and Safety of Lianhuaqingwen Capsules,
407 a repurposed Chinese Herb, in Patients with Coronavirus disease 2019: A
408 multicenter, prospective, randomized controlled trial. *Phytomedicine.*
409 2020:153242.
- 410 [28] Geleris J, Sun Y, Platt J, et al. Observational Study of Hydroxychloroquine in
411 Hospitalized Patients with Covid-19. *N Engl J Med.* 2020.
- 412 [29] Gautret P, Lagier JC, Parola P, et al. Hydroxychloroquine and azithromycin as

- 413 a treatment of COVID-19: results of an open-label non-randomized clinical
414 trial. *Int J Antimicrob Agents*. 2020:105949.
- 415 [30] Deng L, Li C, Zeng Q, et al. Arbidol combined with LPV/r versus LPV/r alone
416 against Corona Virus Disease 2019: A retrospective cohort study. *J Infect*.
417 2020.
- 418 [31] Colaneri M, Bogliolo L, Valsecchi P, et al. Tocilizumab for Treatment of
419 Severe COVID-19 Patients: Preliminary Results from SMAtteo COvid19
420 REgistry (SMACORE). *Microorganisms*. 2020;8(5).
- 421 [32] CHEN Jun LD, LIU Li, LIU Ping, XU Qingnian, XIA Lu, LING Yun, HUANG
422 Dan, SONG Shuli, ZHANG Dandan, QIAN Zhiping, LI Tao, SHEN
423 Yinzhong, LU Hongzhou. A pilot study of hydroxychloroquine in treatment of
424 patients with common coronavirus disease-19 (COVID-19). *J Zhejiang Univ*
425 *(Med Sci)*. 2020;49(1):0-0.
- 426 [33] Zheng S, Fan J, Yu F, et al. Viral load dynamics and disease severity in
427 patients infected with SARS-CoV-2 in Zhejiang province, China,
428 January-March 2020: retrospective cohort study. *BMJ*. 2020;369:m1443.
- 429 [34] Zhao XY, Xu XX, Yin HS, et al. Clinical characteristics of patients with 2019
430 coronavirus disease in a non-Wuhan area of Hubei Province, China: a
431 retrospective study. *BMC Infect Dis*. 2020;20(1):311.
- 432 [35] Zhang J, Yu M, Tong S, Liu LY, Tang LV. Predictive factors for disease
433 progression in hospitalized patients with coronavirus disease 2019 in Wuhan,
434 China. *J Clin Virol*. 2020;127:104392.
- 435 [36] Yu Y, Xu D, Fu S, et al. Patients with COVID-19 in 19 ICUs in Wuhan, China:
436 a cross-sectional study. *Crit Care*. 2020;24(1):219.
- 437 [37] Yang X, Yu Y, Xu J, et al. Clinical course and outcomes of critically ill patients
438 with SARS-CoV-2 pneumonia in Wuhan, China: a single-centered,
439 retrospective, observational study. *Lancet Respir Med*. 2020.
- 440 [38] Cao B, Wang Y, Wen D, et al. A Trial of Lopinavir-Ritonavir in Adults
441 Hospitalized with Severe Covid-19. *N Engl J Med*. 2020.
- 442 [39] Zhou F, Yu T, Du R, et al. Clinical course and risk factors for mortality of
443 adult inpatients with COVID-19 in Wuhan, China: a retrospective cohort study.
444 *Lancet*. 2020;395(10229):1054-1062.
- 445 [40] Xu XW, Wu XX, Jiang XG, et al. Clinical findings in a group of patients
446 infected with the 2019 novel coronavirus (SARS-Cov-2) outside of Wuhan,
447 China: retrospective case series. *BMJ*. 2020;368:m606.
- 448 [41] Wu J, Liu J, Zhao X, et al. Clinical Characteristics of Imported Cases of
449 COVID-19 in Jiangsu Province: A Multicenter Descriptive Study. *Clin Infect*
450 *Dis*. 2020.
- 451 [42] Wu C, Chen X, Cai Y, et al. Risk Factors Associated With Acute Respiratory
452 Distress Syndrome and Death in Patients With Coronavirus Disease 2019
453 Pneumonia in Wuhan, China. *JAMA Intern Med*. 2020.
- 454 [43] Wang Z, Yang B, Li Q, Wen L, Zhang R. Clinical Features of 69 Cases with
455 Coronavirus Disease 2019 in Wuhan, China. *Clin Infect Dis*. 2020.
- 456 [44] Wang D, Yin Y, Hu C, et al. Clinical course and outcome of 107 patients

- 457 infected with the novel coronavirus, SARS-CoV-2, discharged from two
458 hospitals in Wuhan, China. *Crit Care*. 2020;24(1):188.
- 459 [45] Shekerdemian LS, Mahmood NR, Wolfe KK, et al. Characteristics and
460 Outcomes of Children With Coronavirus Disease 2019 (COVID-19) Infection
461 Admitted to US and Canadian Pediatric Intensive Care Units. *JAMA*
462 *Pediatrics*. 2020.
- 463 [46] Saleh M, Gabriels J, Chang D, et al. The Effect of Chloroquine,
464 Hydroxychloroquine and Azithromycin on the Corrected QT Interval in
465 Patients with SARS-CoV-2 Infection. *Circ Arrhythm Electrophysiol*. 2020.
- 466 [47] Piva S, Filippini M, Turla F, et al. Clinical presentation and initial
467 management critically ill patients with severe acute respiratory syndrome
468 coronavirus 2 (SARS-CoV-2) infection in Brescia, Italy. *J Crit Care*.
469 2020;58:29-33.
- 470 [48] Pan L, Mu M, Yang P, et al. Clinical Characteristics of COVID-19 Patients
471 With Digestive Symptoms in Hubei, China: A Descriptive, Cross-Sectional,
472 Multicenter Study. *Am J Gastroenterol*. 2020;115(5):766-773.
- 473 [49] Lo IL, Lio CF, Cheong HH, et al. Evaluation of SARS-CoV-2 RNA shedding
474 in clinical specimens and clinical characteristics of 10 patients with
475 COVID-19 in Macau. *Int J Biol Sci*. 2020;16(10):1698-1707.
- 476 [50] Liu W, Tao Z-W, Wang L, et al. Analysis of factors associated with disease
477 outcomes in hospitalized patients with 2019 novel coronavirus disease. *Chin*
478 *Med J*. 2020;133(9):1032-1038.
- 479 [51] Liu K, Fang Y-Y, Deng Y, et al. Clinical characteristics of novel coronavirus
480 cases in tertiary hospitals in Hubei Province. *Chin Med J*.
481 2020;10.1097/CM1099.0000000000000744.
- 482 [52] Jiang Y, He S, Zhang C, et al. Clinical characteristics of 60 discharged cases of
483 2019 novel coronavirus-infected pneumonia in Taizhou, China. *Ann Transl*
484 *Med*. 2020;8(8):547.
- 485 [53] Huang C, Wang Y, Li X, et al. Clinical features of patients infected with 2019
486 novel coronavirus in Wuhan, China. *Lancet*. 2020;395(10223):497-506.
- 487 [54] Hu L, Chen S, Fu Y, et al. Risk Factors Associated with Clinical Outcomes in
488 323 COVID-19 Hospitalized Patients in Wuhan, China. *Clin Infect Dis*. 2020.
- 489 [55] Hong KS, Lee KH, Chung JH, et al. Clinical Features and Outcomes of 98
490 Patients Hospitalized with SARS-CoV-2 Infection in Daegu, South Korea: A
491 Brief Descriptive Study. *Yonsei Med J*. 2020;61(5):431-437.
- 492 [56] Chen N, Zhou M, Dong X, et al. Epidemiological and clinical characteristics
493 of 99 cases of 2019 novel coronavirus pneumonia in Wuhan, China: a
494 descriptive study. *Lancet*. 2020;395(10223):507-513.
- 495 [57] Chen H, Guo J, Wang C, et al. Clinical characteristics and intrauterine vertical
496 transmission potential of COVID-19 infection in nine pregnant women: a
497 retrospective review of medical records. *The Lancet*.
498 2020;395(10226):809-815.
- 499 [58] Cao J, Tu WJ, Cheng W, et al. Clinical Features and Short-term Outcomes of
500 102 Patients with Corona Virus Disease 2019 in Wuhan, China. *Clin Infect Dis*.

- 501 2020.
- 502 [59] Cai J, Xu J, Lin D, et al. A Case Series of children with 2019 novel
503 coronavirus infection: clinical and epidemiological features. *Clinical*
504 *infectious diseases : an official publication of the Infectious Diseases Society*
505 *of America*. 2020:ciaa198.
- 506 [60] Beigel JH, Tomashek KM, Dodd LE, et al. Remdesivir for the Treatment of
507 Covid-19 - Preliminary Report. *N Engl J Med*. 2020.
- 508 [61] Chaimani A, Higgins JP, Mavridis D, Spyridonos P, Salanti G. Graphical tools
509 for network meta-analysis in STATA. *PLoS One*. 2013;8(10):e76654.
- 510 [62] Cascella M, Rajnik M, Cuomo A, Dulebohn SC, Di Napoli R. Features,
511 evaluation and treatment coronavirus (COVID-19). In: *Statpearls [internet]*.
512 StatPearls Publishing; 2020.
- 513 [63] Guan WJ, Ni ZY, Hu Y, et al. Clinical Characteristics of Coronavirus Disease
514 2019 in China. *N Engl J Med*. 2020;382(18):1708-1720.
- 515 [64] Saghazadeh A, Rezaei N. Towards treatment planning of COVID-19:
516 Rationale and hypothesis for the use of multiple immunosuppressive agents:
517 Anti-antibodies, immunoglobulins, and corticosteroids. *Int Immunopharmacol*.
518 2020;84:106560.
- 519 [65] Cortegiani A, Ippolito M, Ingoglia G, Einav S. Chloroquine for COVID-19:
520 rationale, facts, hopes. *Critical Care*. 2020;24(1):210.

521

522

523

524

525

526

527

528

529

530

531

532

533

534

535

536

537

538

539

540 ***Tables***

541 Table 1. Summary of the impact of the eight treatments on COVID-19 severity.

542 ***Figures***

543 Figure 1. PRISMA 2009 flow diagram.

544 Figure 2. Proportional meta-analysis forest plots of the eight treatment strategies for
545 COVID-19 by the random-effect model. Cases, number of patients taking the drug;
546 Total, the total number of patients enrolled in the study.

547 Figure 3. a) Network frequentist model of 10 treatment approaches for COVID-19
548 and b) the mean difference between each treatment and placebo. The edge thickness is
549 proportional to the comparison frequency of both treatments, represented by the nodes
550 the edge connects. These results were obtained by the random-effect model.

551 Figure 4. The matrix for the effect sizes of all possible treatment combinations. The
552 risk ratios and their 95% confidence intervals are shown generated by the
553 random-effect model.

554

555 ***Supplemental Content***

556 Supplemental Content 1. PRISMA 2009 Checklist.

557 Supplemental Content 2. Characteristics of the 52 studies included in the

558 meta-analysis.

559 Supplemental Content 3. Characteristics of the studies included in the proportional
560 meta-analysis.

561 Supplemental Content 4. Heterogeneity results from the proportional meta-analysis.

562 Supplemental Content 5. A summary of the 13 studies included in the network
563 meta-analysis.

564 Supplemental Content 6. Cochrane Risk of bias analysis (ROB-2) of five randomized
565 trial studies of COVID-19 treatment.

566 Supplemental Content 7. Subgroup meta-analysis of six treatments to estimate the
567 impact of each treatment on the severity of COVID-19. The forest plots showing the
568 treatment effect on different subgroups (severe versus non-severe, ICU versus
569 non-ICU, death versus survival, and deterioration versus discharge) by the
570 Mantel-Haenszel random-effect model using REVMAN 5 software.

571 Supplemental Content 8. meta-regression plots showing the impact of chloroquine or
572 hydroxychloroquine and tocilizumab on the severity of COVID-19. The
573 meta-regression plots showing the treatment effect (log (risk ratio)) versus the number
574 of patients who died or stayed in ICU obtained by the mixed-effect model.

575 Supplemental Content 9. Forest plots showing outlying and influential studies in eight
576 treatments by externally studentized residuals analysis. Each box represents a
577 summary proportion estimated by the leave-one-out study, and the dashed reference
578 line indicates where the original summary proportion lies. The further a box deviates
579 from the reference line; the more pronounced the impact of the corresponding
580 leaving-out study exerts on the original summary proportion.

581 Supplemental Content 10. Diagnostic plots showing significant and influential studies
582 by analyses of externally studentized residuals, difference in fits values, Cook's
583 distances, covariance ratios, tau², and Q-test of leave-one-out heterogeneity, hat
584 values, and weights.

585 Supplemental Content 11. Funnel plots showing proportional meta-analysis
586 publication bias by testing for the funnel plot asymmetry using the Egger's regression
587 test. The *Z* and *P* values are shown.

588 Supplemental Content 12. Dot plot showing the treatment ranking by the network
 589 meta-analysis. The ranking is based on P scores determined by the point estimates and
 590 standard errors of the network meta-analysis.

591 Supplemental Content 13. Comparison-adjusted funnel plot showing the network
 592 meta-analysis publication bias by testing for the funnel plot asymmetry using the
 593 Egger's regression test.

594

595

596

597 **Table 1. Summary of the impact of the eight treatments on COVID-19 severity**

Treatment	Pooled effect size	P-value	Method	Heterogeneity I^2 (%)
Glucocorticoids	Risk ratio (RR) = 2.01, 95% CI: [1.48, 2.74]	< 0.0001	Subgroup meta-analysis ^c	87
Antibiotics	RR = 1.03, 95% CI: [0.99, 1.08]	0.16	Subgroup meta-analysis	45
Antivirals	RR = 1.00, 95% CI: [0.99, 1.01]	0.93	Subgroup meta-analysis	0
Immunoglobulins	RR = 3.09, 95% CI: [1.63, 5.87]	0.0005	Subgroup meta-analysis	82
Renal replacement therapy	RR = 10.95, 95% CI: [0.46, 258.94]	0.14	Subgroup meta-analysis	99
Interferons	RR = 1.12, 95% CI: [0.54, 2.30]	0.77	Subgroup meta-analysis	48
Chloroquine or hydroxychloroquine ^a	F = 0.033	0.85	Meta-regression ^d	97.27
Chloroquine or hydroxychloroquine ^b	F = 0.03	0.87	Meta-regression	97.27
Tocilizumab ^a	F = 25.53	0.02	Meta-regression	26.47
Tocilizumab ^b	F = 19.37	0.02	Meta-regression	26.47

598 note:

599 ^a The moderator used in the meta-regression is the number of patients in ICU.

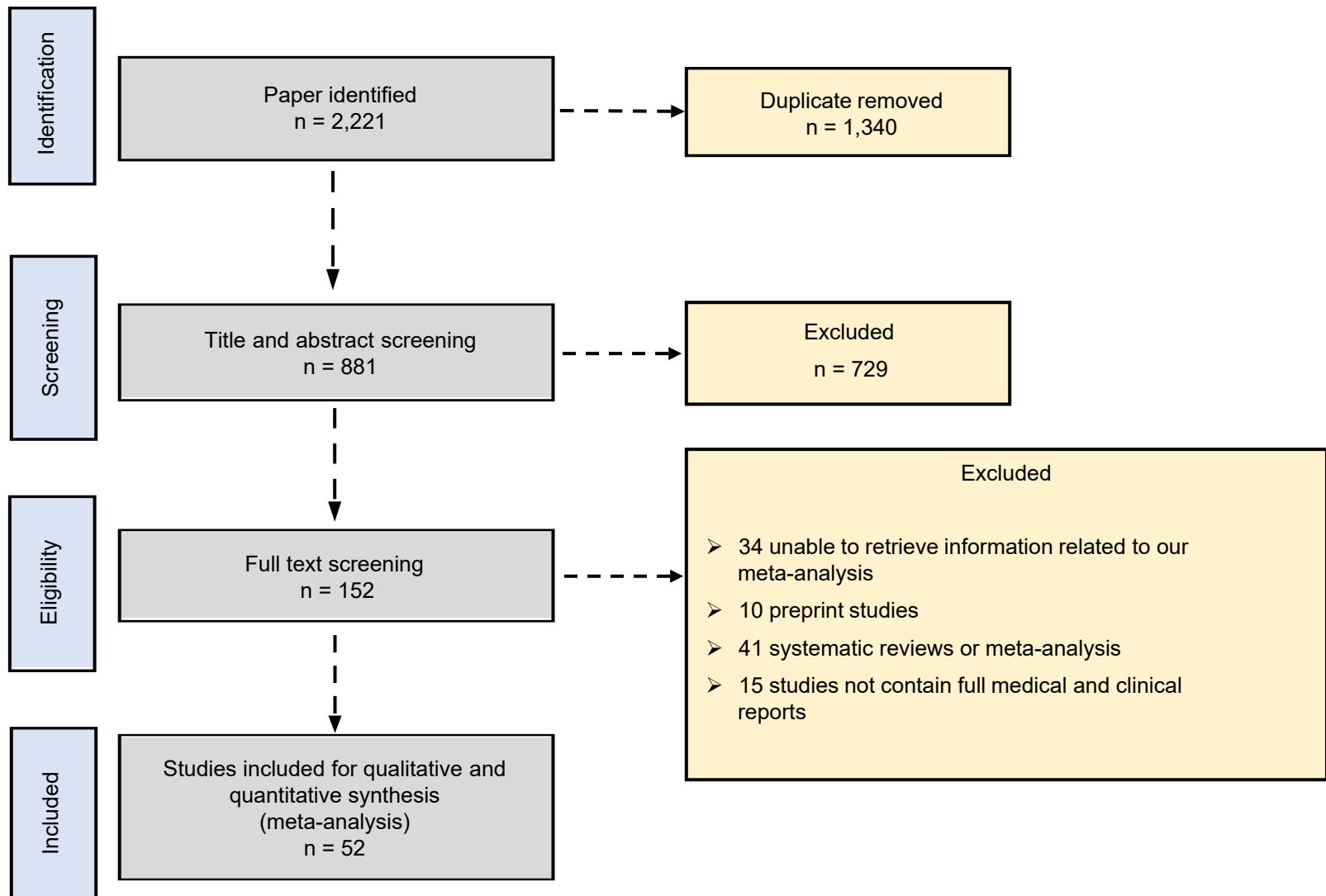
600 ^b The moderator used in the meta-regression is the number of patients died.

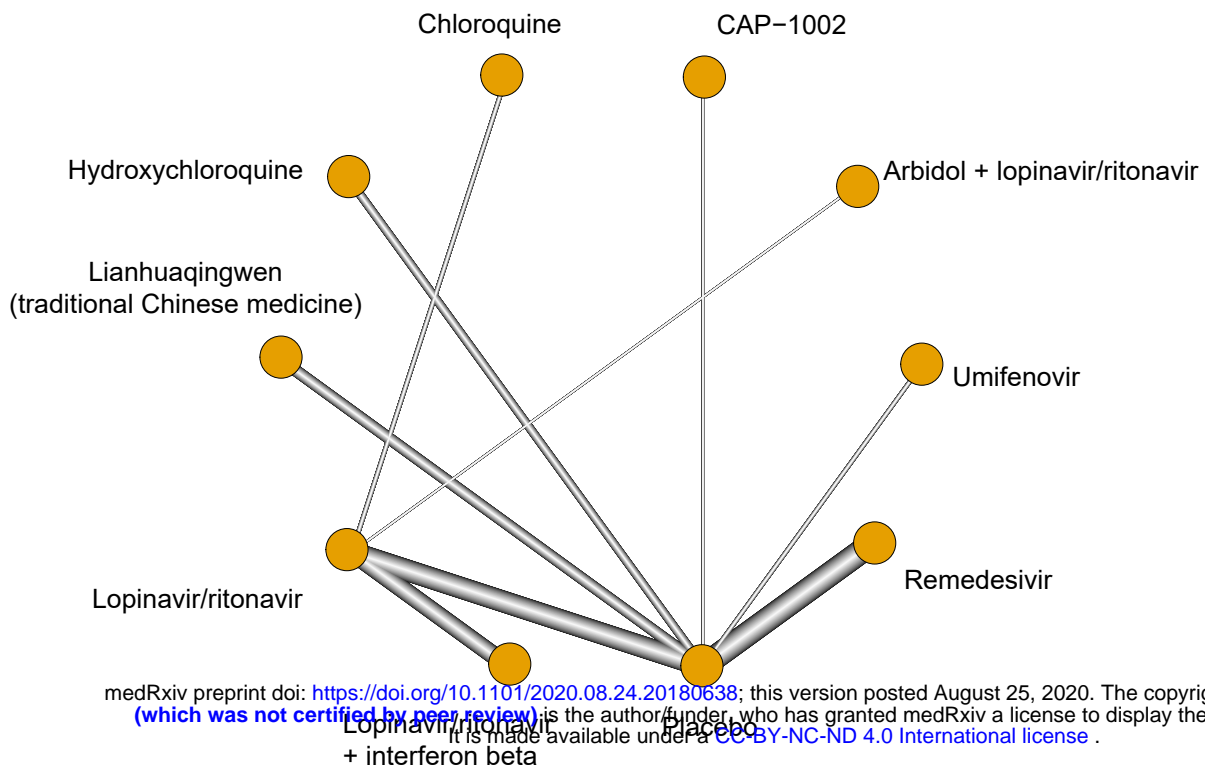
601 ^c Subgroup meta-analysis of severe versus non-severe, ICU versus non-ICU, death versus survival, and
 602 deterioration versus discharge by the random-effect model.

603 ^d Meta-regression of two moderators (the number of patients in ICU and the number of patients died)
 604 by the mixed-effect model.

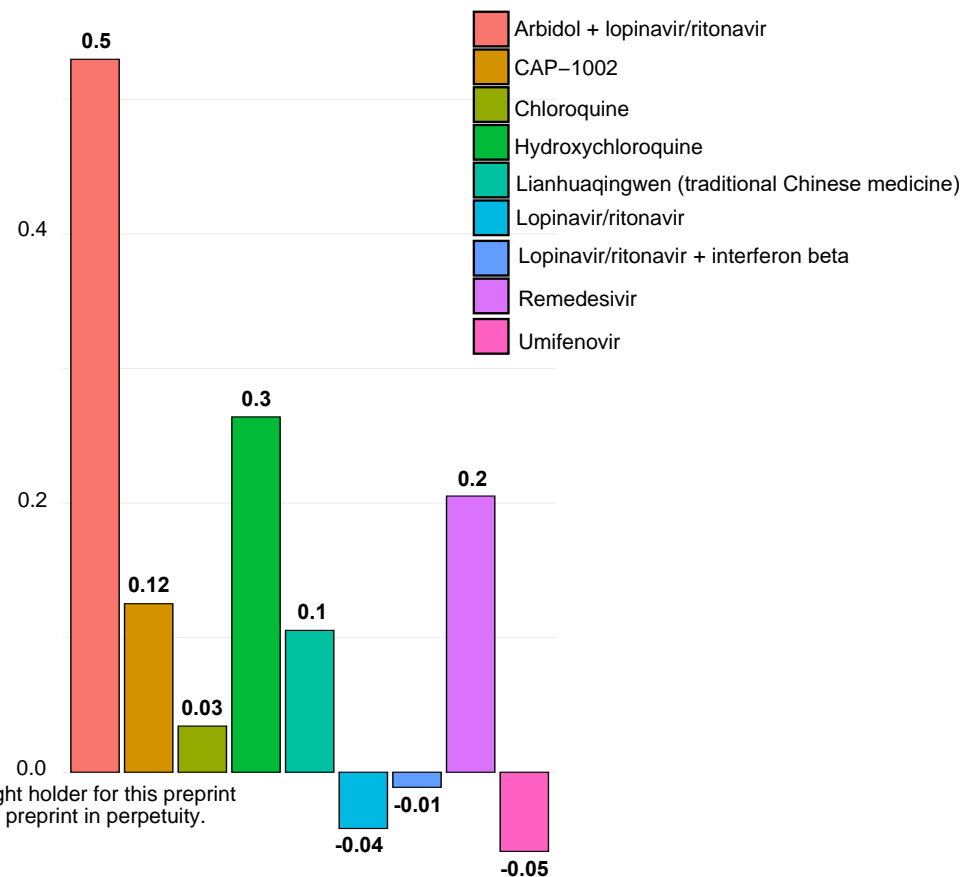
605

606



a**Frequentist network model**

medRxiv preprint doi: <https://doi.org/10.1101/2020.08.24.20180638>; this version posted August 25, 2020. The copyright holder for this preprint (which was not certified by peer review) is the author/funder, who has granted medRxiv a license to display the preprint in perpetuity. It is made available under a [CC-BY-NC-ND 4.0 International license](https://creativecommons.org/licenses/by-nc-nd/4.0/).

b**Mean difference between treatment and placebo**

Arbidol + lopinavir/ritonavir										
1.50 [0.34, 6.61]	CAP-1002									
1.64 [0.52, 5.20]	1.10 [0.26, 4.57]	Chloroquine								
1.30 [0.39, 4.35]	0.87 [0.30, 2.49]	0.79 [0.26, 2.47]	Hydroxychloroquine							
1.53 [0.40, 5.88]	1.02 [0.30, 3.42]	0.93 [0.26, 3.37]	1.17 [0.50, 2.72]	Lianhuaqingwen						
1.77 [0.75, 4.20]	1.18 [0.35, 3.95]	1.08 [0.50, 2.32]	1.36 [0.59, 3.14]	1.16 [0.41, 3.26]	Lopinavir/ritonavir					
1.72 [0.55, 5.32]	1.15 [0.28, 4.70]	1.05 [0.36, 3.01]	1.32 [0.43, 4.01]	1.12 [0.32, 3.98]	0.97 [0.47, 2.01]	Lopinavir/ritonavir + interferon				
1.70 [0.55, 5.26]	1.13 [0.43, 2.97]	1.03 [0.36, 2.97]	1.30 [0.86, 1.98]	1.11 [0.53, 2.31]	0.96 [0.46, 1.99]	0.99 [0.35, 2.77]	Placebo			
1.38 [0.40, 4.80]	0.92 [0.31, 2.76]	0.84 [0.26, 2.74]	1.06 [0.54, 2.07]	0.91 [0.37, 2.22]	0.78 [0.32, 1.91]	0.81 [0.25, 2.56]	0.81 [0.48, 1.37]	Remdesivir		
1.80 [0.46, 7.06]	1.20 [0.35, 4.12]	1.10 [0.30, 4.05]	1.38 [0.58, 3.31]	1.18 [0.41, 3.41]	1.02 [0.35, 2.93]	1.05 [0.29, 3.79]	1.06 [0.49, 2.29]	1.30 [0.51, 3.29]	Umifenovir	