

Title Page

Title:

Factors Associated with Disease Severity and Mortality among Patients with Coronavirus Disease 2019: A Systematic Review and Meta-Analysis

Author names:

Vignesh Chidambaram¹ MD MPH; Nyan Lynn Tun¹ MD MPH; Waqas Z Haque¹ MPH; Marie Gilbert Majella² MD; Ranjith Kumar Sivakumar³ MD; Amudha Kumar⁴ MD; Angela Ting-Wei Hsu¹ MD MPH; Izza A Ishak¹ MPH; Aqsha A Nur¹ MD MPH; Samuel K Ayeh⁵ MD MPH; Emmanuella L Salia⁶ MD MPH; Ahsan Zil-E-Ali¹ MD MPH; Muhammad A Saeed⁷ MD; Ayu PB Sarena⁸ MD; Bhavna Seth⁹ MD; Muzzammil Ahmadzada⁷; Eman F Haque¹⁰; Pranita Neupane⁵ MD; Kuang-Heng Wang¹ MD MPH; Tzu-Miao Pu¹ MD MPH; Syed MH Ali¹¹ MBBS; Muhammad A Arshad¹² MBBS; Lin Wang¹ MD ScM; Sheriza Baksh¹ PhD MPH; Petros C Karakousis⁵ MD; Panagis Galiatsatos⁹ MD MHS.

Affiliations:

¹Johns Hopkins Bloomberg School of Public Health, Baltimore, MD, USA

²Department of Preventive and Social Medicine, Jawaharlal Institute of Postgraduate Medical Education and Research, Puducherry, India

³Department of Anaesthesia and Intensive Care, The Chinese University of Hong Kong, Prince of Wales Hospital, Shatin, Hong Kong, China

⁴Department of Internal Medicine, University of Arkansas for Medical Sciences, Little Rock, AR, USA

⁵Division of Infectious Diseases, Department of Medicine, Johns Hopkins School of Medicine, Baltimore, MD, USA

⁶Department of Pediatrics, Johns Hopkins School of Medicine, Baltimore, MD, USA

⁷Johns Hopkins University, Baltimore, MD, USA

⁸Bhayangkara Setukpa Hospital, Sukabumi, Indonesia

⁹Division of Pulmonary and Critical Care Medicine, Department of Medicine, Johns Hopkins School of Medicine, Baltimore, MD, USA

¹⁰Southern Methodist University, Dallas, TX, USA

¹¹Fatima Memorial Hospital, Lahore, Pakistan

¹²Nishtar Hospital, Multan, Pakistan

Correspondence to:

Panagis Galiatsatos, MD

Division of Pulmonary and Critical Care Medicine,

Department of Medicine,

Johns Hopkins School of Medicine,

733 North Broadway

Baltimore, MD 21205-2196 USA

Email: pgaliat1@jhmi.edu

Ph: 410-550-2304

No of words:

Abstract – 271

Text - 3998

ABSTRACT:

Background: Understanding the factors associated with disease severity and mortality in Coronavirus disease (COVID-19) is imperative to effectively triage patients. We performed a systematic review to determine the demographic, clinical, laboratory and radiological factors associated with severity and mortality in COVID-19.

Methods: We searched PubMed, Embase and WHO database for English language articles from inception until May 8, 2020. We included Observational studies with direct comparison of clinical characteristics between a) patients who died and those who survived or b) patients with severe disease and those without severe disease. Data extraction and quality assessment were performed by two authors independently.

Results: Among 15680 articles from the literature search, 109 articles were included in the analysis. The risk of mortality was higher in patients with increasing age, male gender (RR 1.45, 95%CI 1.23–1.71), dyspnea (RR 2.55, 95%CI 1.88–2.46), diabetes (RR 1.59, 95%CI 1.41–1.78), hypertension (RR 1.90, 95%CI 1.69–2.15). Congestive heart failure (OR 4.76, 95%CI 1.34–16.97), hilar lymphadenopathy (OR 8.34, 95%CI 2.57–27.08), bilateral lung involvement (OR 4.86, 95%CI 3.19–7.39) and reticular pattern (OR 5.54, 95%CI 1.24–24.67) were associated with severe disease. Clinically relevant cut-offs for leukocytosis($>10.0 \times 10^9/L$), lymphopenia($< 1.1 \times 10^9/L$), elevated C-reactive protein($>100mg/L$), LDH($>250U/L$) and D-dimer($>1mg/L$) had higher odds of severe disease and greater risk of mortality.

Conclusion: Knowledge of the factors associated of disease severity and mortality identified in our study may assist in clinical decision-making and critical-care resource allocation for patients with COVID-19.

Primary Funding Source: None.

Introduction

Since the first documented reports of the severe acute respiratory syndrome coronavirus 2 (SARS-CoV-2) infection, the virus has had a global impact, affecting millions, which led the World Health Organization (WHO) to declare the outbreak a pandemic[1,2]. Patients who develop Coronavirus Disease 2019 (COVID-19) may require hospitalization and intensive care unit admission[3–5].

With variable access to critical care resources across countries, recent guidelines for the COVID-19 pandemic have called for allocating life sustaining treatments based on a patient's risk of mortality[6,7]. Health systems preparedness requires a deeper understanding of how to effectively triage patients with COVID-19, in order to maximize the benefit of scarce intensive care unit resources while minimizing the potential harm of outpatient management of ill patients. While the guidelines warrant utilizing triage scores that have been previously validated for assessing organ failure/dysfunction and survival (e.g. sequential organ failure assessment, SOFA), these are non-specific in etiology[7,8]. Thus, having an understanding of the predisposing conditions and disease-specific clinical, laboratory and radiological parameters, may lay the groundwork for developing a COVID-19 specific composite score at a later stage, which can predict unfavorable clinical outcomes.

With the massive influx of studies on COVID-19 in the recent months and their often conflicting or unclear findings, a systematic review of the factors associated with survival or disease severity in patients with COVID-19 that takes into consideration the inherent

variability in study population, will be of great utility to clinicians, researchers and policy makers. In this systematic review and meta-analysis, we sought to better understand the clinical, laboratory and radiological parameters associated with mortality and disease severity among patients with COVID-19.

Methods

Search strategy and study selection

We followed the PRISMA guidelines for reporting in systematic reviews and meta-analyses (9). We searched PubMed, Embase and the WHO COVID-19 database by using the search strategy included in the supplementary document (Section I). For PubMed and Embase, an initial search on March 26, 2020 was conducted, and updated multiple times with the final update performed on May 7, 2020. The WHO database was initially downloaded on March 27, 2020 and the final update was performed on May 8, 2020. Only articles published in the English language were included.

We included observational studies that included patients with microbiologically confirmed SARS-CoV-2 infection, irrespective of the age of the participants. The study designs of the included studies were assessed and recorded independently by two authors (VC and MM). The differentiation between case series and cohort studies was made based on the criteria outlined by Dekkers et al [10]. Case reports, case series, and randomized control trials were excluded from this review. We included all studies that reported a direct comparison of clinical, laboratory or radiologic characteristics between a) patients who died and those who survived or b) patients with severe disease and those without severe disease. Only those studies which defined “severe disease” based on the American Thoracic Society guidelines for the treatment of Community-acquired Pneumonia [11] or

the Chinese National Health Commission guidelines for the Treatment of Novel Coronavirus infection [12], were included in our analysis. Studies which only described the characteristics of patients who died or patients with severe disease were excluded if there was no comparison group.

We only included studies reporting primary hospital data on patients, while studies with centralized data from national health agencies and databases were excluded from our review. Efforts were made, as feasible, to minimize overlap of patients across studies by collecting information on the name of the hospital, date of hospital admission of the participants and the names of the investigators.

Literature Screening

The COVIDENCE platform was used for conducting this systematic review[13]. After de-duplication, the titles and abstracts of the articles retrieved from the search strategy were screened independently by at least two of the following authors (VC, NT, WH, RS, AK, AH, II, AN, SA, ES, and MS) and conflicts were resolved by consensus between VC and NT. The full texts of the articles included after title and abstract screening were independently screened by at least two of the following authors (VC, NT, WH, RS, AK, AH, II, AN, SA, ES, and MS) and conflicts were resolved based on consensus between VC and NT. Specific reasons for study exclusion are listed in Figure 1.

Data extraction and Quality assessment

Data extraction was performed independently by at least two of the authors (VC, NT, WH, MM, RS, AK, AH, II, AN, SA, ES, MS, AS, KW, and TP) and conflicts were

resolved by a consensus between two authors (MM and VC). The data extraction form for this review was created using the Qualtrics platform[14]. The primary outcomes were a) death of the patient and b) the presence of severe disease in the patient. There were no secondary outcomes. Data on the study characteristics, source of funding, demographic characteristics, comorbidities, clinical symptoms, in-hospital complications, laboratory, and radiological features of the study participants were extracted. Data on sex of the patient, smoking status, presence of comorbidities, clinical symptoms, in-hospital complications, and radiological features were extracted as binary variables, while age was extracted as continuous data. For the laboratory parameters, data were extracted as both continuous and categorical variables. Binary data for the laboratory variables were collected using all the cut-offs described in the included studies. The time points for lab measurements, radiological evaluation and the disease severity assessment were extracted for the included studies. Continuous data for the age and laboratory variables were documented as mean. The median values reported in studies were transformed into mean[15].

The risk assessment for bias for all the studies included in this review was performed using the Newcastle-Ottawa quality assessment scale (NOS) for observational studies[16]. The three major domains of quality of a study covered by this tool were selection of participants, comparability of cohorts and outcome assessment against a total score of 9. This was performed independently by at least two of the following authors (RS, MM, ES, SA). When conflicts related to bias arose, the final decision was taken by a consensus between VC and NT.

Data Synthesis and Analysis

We performed a meta-analysis with random effects model to obtain pooled effect sizes for the outcomes of interest. The associations between binary parameters and mortality were reported using pooled risk ratios (with 95%CI). Due to the lack of consistency in the time point of assessment of disease severity, odds ratios (with 95%CI) were used to determine the association between the various factors and the presence of severe disease. When the laboratory parameters were reported using different cut-offs, we reported the effect sizes for each cut-off taken separately in addition to the pooled effect sizes for all the cut-offs taken together. Statistical heterogeneity across the studies was assessed by forest plots, I^2 and Tau^2 statistics. When the I^2 was more than 60%, we performed subgroup analyses based on the whether the studies included all patients with COVID-19 or only the patients who were critically ill. If the heterogeneity was still higher than 60%, we performed sensitivity analyses by excluding studies with a low quality (NOS ≤ 5). Sensitivity analyses for the laboratory and radiological parameters were also performed by excluding studies which did not report the time points of assessment. Publication bias was assessed by visual inspection of the funnel plot, and Egger's test was performed for those exposures reported by at least 10 studies. For continuous variables, meta-regression was performed to assess the percentage change in mortality or the presence of severe disease with unit increase in the mean of laboratory parameter reported in the studies. For the binary exposures, unadjusted effect sizes were calculated from the summary data. Adjusted effect sizes were not used due to the lack of consistency in the parameters that they are adjusted for, among the included studies. All analyses were carried out using the meta package in Stata (StataCorp, version 16) [17].

Role of the funding source

This study was not supported by any funding source.

Results

We identified 15680 studies from three databases after removing duplicates, of which the full text was retrieved for 502 articles. All the articles included were in the English language. The reasons for exclusion of studies are outlined in Figure 1. A total of 109 studies were included for this review, of which 42 studies assessed mortality risks [18–59]; 72 studies determined association with severe disease [23,33,38,40,55,57,60–125], out of which 5 studies reported both the outcomes [23,33,38,55,57]. Of the total 109 studies in the review, 101 were retrospective cohorts, seven were prospective cohorts, and one of them was an ambispective cohort study. There were no cross-sectional or case control studies that satisfied the inclusion criteria. Of the studies that determined the risk of mortality, an aggregate of 20296 participants were assessed, with 32 studies from China, six from the United States, two from Spain, one from the United Kingdom, one from Italy, one from Iran and a multi-country study. Five of these studies only included patients who were critically ill or invasively ventilated [18,22,31,34,47]. Among the studies that assessed the association with severe disease, a total of 17992 participants were included with seventy-one studies from China and one study from Italy. The characteristics of the included studies, along with the time points for laboratory, radiological and disease severity assessment, are outlined in the tables S1 and S2 (Supplementary Section II).

Quality assessment was performed using the New-Castle Ottawa scale (NOS) as all of the studies used a cohort study design. This revealed that one of the studies (0.9%) had

scored 9, 54 studies (49.5%) had scored 8, 39 studies (35.7%) scored 7, six studies (5.5%) scored 6. A total of nine studies were identified as low-quality studies ($\text{NOS} \leq 5$) with six studies (5.5%) scoring 5, and the remaining three studies (2.7%) scoring 4 (tables S3 and S4 – Supplementary section III).

Table 1 and Figure 2 show the list of exposures and their relationship with mortality. Males (RR 1.45, 95%CI 1.23–1.71) and ever-smokers (RR 1.43, 95%CI: 1.09–1.87) had higher risk of mortality. Patients with diabetes, hypertension, cardiovascular diseases, chronic renal disease, chronic liver disease and malignancy were associated with an increased risk of mortality; while hepatitis B and HIV infections did not result in higher risk of mortality. Section V of the supplementary document illustrates the forest and funnel plots of these associations.

Patients who had dyspnea (RR 2.55, 95%CI: 1.88–3.46) and hemoptysis (RR 1.62, 95%CI: 1.25–2.11) had a significantly higher risk of mortality while other clinical features like fever, sore throat, cough, expectoration, vomiting, diarrhea, nausea, myalgia, headache, anorexia, chest pain, abdominal pain, palpitations, and anosmia did not demonstrate any significant association with mortality. Acute respiratory distress syndrome (ARDS) was associated with an RR of 20.19 [95%CI: 10.87–37.52] with an I^2 of 79%. Cardiac complications such as acute cardiac injury and acute cardiac failure had higher risk of mortality with RR of 5.42 [95%CI: 3.79–7.77] and 3.10 [95%CI: 2.55–3.77] respectively. Other complications with higher risk of mortality were sepsis, bacteremia, shock, disseminated intravascular coagulation (DIC), acute kidney injury and acute liver dysfunction. Association of laboratory parameters (based on specific cut-offs) with the risk of mortality are mentioned in the Table 2. Among the laboratory parameters that were

assessed using binary cut-offs, increased total leucocyte count, increased neutrophil count, decreased lymphocyte count and reduced platelet count were associated with increased risk of death. Inflammatory parameters such as C-reactive protein and procalcitonin were associated with increased risk of death with RRs of 5.49 [95%CI: 1.72–17.51] and 3.09 [95%CI: 2.35–4.07] respectively. Abnormal renal and liver parameters, hyponatremia and hyperkalemia also were associated with increased risk of mortality.

Presence of bilateral lung infiltrates (RR 1.35, 95%CI 1.07–1.69), consolidation (RR 2.07, 95%CI 1.35–3.16) and air-bronchogram (RR 3.56, 95%CI 1.37–9.29) on CT were associated with increased RR for mortality. The presence of unifocal involvement on CT had lower risk of death (RR 0.31, 95%CI 0.11–0.92). The presence of ground glass opacities or pleural effusion on CT demonstrated no association with mortality.

The odds ratios (OR) of severe disease in patients with various clinical characteristics are shown in Table 1 and Figure 3. The odds of severe disease were high in patients with diabetes, hypertension, cardiovascular diseases, chronic kidney disease, chronic liver disease and chronic obstructive pulmonary disease. HIV and hepatitis B infections were not associated with severe disease. Odds ratios for severe disease were higher in patients with fever, cough, expectoration, anorexia, chest pain, dyspnea, and hemoptysis. The OR for severe disease in patients who had dyspnea was 4.72 [95% CI: 3.18–7.01] among 34 studies. Gastrointestinal symptoms nausea, vomiting and diarrhea did not show association with disease severity.

Among the laboratory parameters that were assessed for association with severe disease using binary cut-offs (Table 3), decreased lymphocyte count (OR 2.64, 95%CI 1.12–6.23), decreased serum albumin (OR 5.63, 95%CI 1.45–21.87), increased aspartate

transaminase (OR 4.33, 95%CI 2.17–8.63) demonstrated increased odds of severe disease. Inflammatory parameters namely, elevated CRP (OR 3.32, 95%CI 1.92–5.71), elevated procalcitonin (OR 5.50, 95%CI 3.38–8.93) and increased ESR (OR 1.68, 95%CI 1.13–2.49) had high ORs for severe disease. Bilateral lung involvement on CT was associated with an OR of 4.86[95%CI: 3.19 –7.39] among 19 studies. Other radiological features on CT with higher odds of severe disease were lung consolidation, ground glass opacities, air bronchogram, hilar lymphadenopathy, pleural effusion, crazy-pavement pattern, reticular pattern, tree-in bud appearance, inter-lobar septal thickening, and bronchiectasis. However, the OR of severe disease were not increased with peripheral distribution of infiltrates, nodular infiltrates, linear infiltrates, unifocal involvement or pleural thickening.

Meta-regression of continuous variables (Table 4) revealed that with every ten-year increase in the mean age of the patients, there was a 7.6% and 11.2% increase in the mortality (p-value =0.02) and disease severity (p-value <0.001) respectively. Increase in the mean total leukocyte count (p-value=0.04) and a decrease in the mean lymphocyte count (p-value=0.02) were significantly associated with higher mortality. Higher levels of mean C-reactive protein and mean D-dimer during admission were linked to higher proportion of both severe disease as well as mortality. Increasing mean lactate dehydrogenase and creatine kinase among the included studies were associated with higher mortality but not severe disease. Higher serum creatinine levels and lower serum albumin levels correlated with disease severity but was not significantly associated with mortality, though the direction of the relationship was consistent. Unit increase in the mean blood urea nitrogen resulted in 5.3% increase in the mortality (p-value=0.030). Our analysis did not reveal a significant association between mortality or disease severity and other

laboratory parameters, such as platelet count, hemoglobin, prothrombin time, activated partial thromboplastin time (aPTT), procalcitonin, aspartate transaminase (AST), alanine transaminase (ALT), erythrocyte sedimentation rate, total bilirubin and interleukin-6 levels. Bubble plots assessing the linear relationship between the variables and the outcomes (proportion with severe disease and proportion who died) are shown in Figure 4 and Figure 5 and Supplementary Section VI.

Subgroup analyses based on the restriction of inclusion to critically ill participants are shown in Supplementary Table S5 and in the Supplementary Figures in Section IV. Subgroup analysis did not significantly reduce heterogeneity between studies except for the association of elevated procalcitonin levels and presence of diarrhea with mortality. The magnitude of the effect size changed significantly in the subgroups however the direction of the effect remained consistent for multiple parameters, including dyspnea, cardiovascular disease, cerebrovascular disease, diabetes mellitus, bacteremia, and gastrointestinal bleeding. In studies with critically ill patients, the direction of the effect was reversed for gender and elevated procalcitonin levels, but the association was not statistically significant in the subgroups. Sensitivity analysis by excluding low-quality studies ($NOS \leq 5$) did not significantly reduce heterogeneity or alter the pooled effect sizes for the exposures with $I^2 > 50\%$ for mortality. Sensitivity analysis by excluding low-quality studies reporting COVID-19 severity yielded a decrease in the heterogeneity for various exposures, such as smoking, hypertension, myalgia, and air-bronchogram in CT. Nevertheless, heterogeneity was substantially high for exposures, such as dyspnea, chest pain, abdominal pain, unifocal involvement in CT and certain laboratory parameters. Sensitivity analysis for the laboratory and radiological variables by excluding studies with

an unclear timepoint for the assessment of the parameters did not result in change in the direction or significance of the association. In our analysis, bias due to small study effect could not be ruled out while assessing risk of mortality for the following exposures, such as gender, diabetes mellitus, hypertension, ARDS and acute kidney injury and hence the results for these factors should be interpreted with caution.

Discussion

A total of 109 articles were deemed suitable for data synthesis and identification of variables associated with severe COVID-19 disease and mortality. Specific determinants were identified from a array of clinical parameters such as symptoms, co-morbidities, laboratory, and radiological data. Our findings have potential implications for clinical decision-making, as well as allocation of scarce critical care resources for patients with COVID-19.

The presence of various comorbidities was reported to be associated with severe disease and/or death in patients with COVID-19 in prior studies[126]. Although the direction of association was consistent with previous reports, the risks of death in patients with diabetes and hypertension were lower in our study with an RR of 1.59 [95% CI: 1.41–1.78] and 1.90 [95%CI: 1.69–2.15] respectively for mortality. The levels of control of diabetes and hypertension in these patients, as well as pharmacotherapy for these conditions were not taken into consideration in our review, which might account for the clinical heterogeneity. There was a significant association between pre-existing cardiovascular diseases and COVID-19 attributable mortality, with an RR of 2.27 [95%CI: 1.88–2.79]. This is similar to the association of cardiovascular diseases with mortality seen in patients with other viral infections[127,128]. Chronic kidney disease and chronic liver

disease were also associated with higher mortality, but because of the lack of data in the available studies, distinction could not be made with respect to the stage of the kidney and liver dysfunction. Pre-existing diseases of the lung were also associated with adverse outcomes in our study.

The identification of COVID-19-related symptoms associated with mortality and severe disease is especially important since this is among the most readily accessible information during the initial evaluation of patients. Our finding that dyspnea was associated with higher RR of mortality and higher OR for severe disease is consistent with data reported in other retrospective studies on ICU admission and the development of ARDS in patients with COVID-19[22,129]. Despite the common occurrence of gastrointestinal symptoms (nausea, vomiting and diarrhea) in patients with COVID-19, no association was found between the presence of these symptoms and the presence of severe disease or mortality in our study.

We found that ARDS had a RR of 20.19 [95%CI: 10.87– 37.52] for mortality, which is consistent with a previous study reporting a 28-day survival of 50% among COVID-19 patients with severe ARDS[19]. In contrast to the relatively transient cardiac involvement in SARS-CoV infection[130], we found that cardiac complications such as acute heart failure and acute cardiac injury were associated with a high RR of death in COVID-19 in our study. While the presence of underlying cardiovascular disease increases the risk of developing cardiac complications, Chen *et al* reported that COVID-19 related cardiac complications were also frequent among those without pre-existing cardiovascular diseases[19]. A previous report from 2009 suggested direct cardiac muscle damage in patients with SARS-CoV infection[131]. The cardiac injury seen in patients with COVID-

19, might be due to a similar mechanism. Elevated troponin levels were associated with an OR of 3.04[95% CI: 1.03–8.97] for severe disease in our study. Consistent with our findings, patients with underlying cardiovascular diseases and non-elevated levels of troponin were shown to have lower death rates compared to those without cardiovascular disease but with elevated troponin [132].

Patients with leukocytosis and lymphopenia had higher OR for severe disease and greater RR for mortality. The occurrence of lymphopenia in severe disease may be due to apoptosis of lymphocytes as a result of increased levels of cytokines in the blood in patients with severe disease[133–135]. Hypoalbuminemia was associated with an increased RR of mortality (RR 3.30, 95%CI 2.61–4.18), and is likely related to the systemic inflammatory response in severe COVID-19[73]. Increased levels of acute phase reactants, such as CRP and ferritin in patients with severe disease, also documented in our review, further supports the inflammatory nature of the disease[84]. Elevated levels of procalcitonin may indicate a secondary bacterial sepsis in patients with severe COVID-19, which was associated with a high RR of mortality in our meta-analysis[136]. COVID-19 has been hypothesized to be a prothrombotic state due to endothelial dysfunction and increased hypoxia-inducible transcription factor in patients with severe pneumonia, and plasminogen activation inhibition in patients who develop sepsis[137–139]. DIC, which is common in patients succumbing to COVID-19, is typically accompanied by elevated D-dimer levels[20]. The levels of D-dimer were found in our meta-analysis to be significantly associated with mortality (RR 3.98, 95%CI 2.87–5.52) and severe disease (OR 2.75, 95%CI 1.92–3.93). Although their association with mortality has not been fully

investigated, thromboembolic complications, such as pulmonary embolism and acute stroke, have been noted with increasing frequency in patients with COVID-19[140,141].

COVID-19 can manifest in a variety of radiographic patterns on chest CT scan, most of which are consistent with viral pneumonia. We found that bilateral lung involvement and consolidation were associated with higher RR of mortality and higher OR of severe disease. Consistent with our findings, the occurrence of bilateral lung involvement was shown to increase with disease progression, and is more commonly observed in the late phases of COVID-19[142]. The ground-glass opacities seen in a large proportion of COVID-19 patients may be due to the thickening of the alveolar septa following inflammation or the incomplete filling of the alveoli, as seen in Influenza A[143]. As noted for other respiratory viruses, our data revealed that consolidation was associated with a higher RR of mortality and OR of severe disease compared to ground glass opacities in patients with COVID-19[144,145]. Hilar lymphadenopathy, though rare in COVID-19 patients, could be due to infiltration of the hilar lymph nodes by lymphocytes and macrophages, and appears to be associated with severe disease in our meta-analysis[146–148].

Although this systematic review is able to delineate important parameters associated with disease severity and mortality in COVID-19, our study has a few limitations. First, we included current published articles related to the highly dynamic information available on COVID-19. As this pandemic has not impacted all regions within the same time frame, there is a potential timing bias, whereby the majority of patients described are from early-hit regions, which may not be representative of other patient populations, based on sociodemographic characteristics and pre-existing conditions.

Although a pooled analysis of effect sizes adjusted for potential confounders would have been desirable, most studies did not uniformly report estimates adjusted for the same parameters. Time points of evaluation of laboratory, radiological and disease severity assessment were not clearly defined in many of the studies, which precluded the calculation of risk ratio of severe disease. We did not take into account the critical care interventions and strategies that potentially impact the course of the disease and/or survival, as such interventions (e.g. mechanical ventilation, extracorporeal membrane oxygenation, convalescent plasma) vary across different regions. Further investigation is warranted to evaluate which interventions impact the morbidity and mortality of patients with COVID-19. Future studies may investigate if individual and contextual-level sociodemographic factors are associated with morbidity and survival.

In summary, this study comprehensively examined the effect of several demographic, clinical, laboratory and radiological risk factors associated with mortality and severe disease among patients with COVID-19. Knowledge of these risk factors may help health care professionals to develop improved clinical management plans based on risk stratification. Policy makers can utilize these findings to develop triage protocols and effectively allocate resources in resource-limited settings.

Contributors:

VC, NT, and WH conceived the study and performed the literature search. VC, NT, WH, RS, AK, AH, II, AN, SA, ES, and MS screened articles. AA created data extraction forms. VC, NT, WH, MM, RS, AK, AH, II, AN, SA, ES, MS, AS, KW, and TP extracted the data. MM and VC performed the meta-analysis. MM, LW, and SB guided the meta-regression. VC, NT, WH analyzed the data. RS, MM, ES, SA performed the quality assessment. VC and NT created the figures. RS and AK created the tables. MM, MA, EH, and PN formatted tables. VC, NT, WH, II, SHA, MA, AA, MS, PK and PG co-drafted the first version of the draft. PK and PG corrected the final version of the draft. All authors interpreted the results and critically revised the manuscript for scientific content. All authors approved the final version of the article.

Declaration of interests:

We declare no competing interests.

Data sharing

Extracted data for all included studies are available on request to the corresponding author. Forest plots for all the pooled estimates are available in the supplementary document.

Acknowledgments

We thank Lori Rosman (Lead informationist, Welch Medical Library, Johns Hopkins University) for her advice on the literature search strategy.

References

1. WHO Director-General's opening remarks at the media briefing on COVID-19 - 11 March 2020. [cited 23 May 2020]. Available: <https://www.who.int/dg/speeches/detail/who-director-general-s-opening-remarks-at-the-media-briefing-on-covid-19---11-march-2020>
2. WHO Timeline - COVID-19. [cited 23 May 2020]. Available: <https://www.who.int/news-room/detail/27-04-2020-who-timeline---covid-19>

3. Grasselli G, Pesenti A, Cecconi M. Critical Care Utilization for the COVID-19 Outbreak in Lombardy, Italy: Early Experience and Forecast During an Emergency Response. *JAMA*. 2020;323: 1545–1546. doi:10.1001/jama.2020.4031
4. Grasselli G, Zangrillo A, Zanella A, Antonelli M, Cabrini L, Castelli A, et al. Baseline Characteristics and Outcomes of 1591 Patients Infected With SARS-CoV-2 Admitted to ICUs of the Lombardy Region, Italy. *JAMA*. 2020;323: 1574–1581. doi:10.1001/jama.2020.5394
5. Huang C, Wang Y, Li X, Ren L, Zhao J, Hu Y, et al. Clinical features of patients infected with 2019 novel coronavirus in Wuhan, China. *Lancet*. 2020. doi:10.1016/S0140-6736(20)30183-5
6. Rhodes A, Ferdinande P, Flaatten H, Guidet B, Metnitz PG, Moreno RP. The variability of critical care bed numbers in Europe. *Intensive Care Med*. 2012;38: 1647–1653. doi:10.1007/s00134-012-2627-8
7. Maves RC, Downar J, Dichter JR, Hick JL, Devereaux A, Geiling JA, et al. Triage of Scarce Critical Care Resources in COVID-19 An Implementation Guide for Regional Allocation: An Expert Panel Report of the Task Force for Mass Critical Care and the American College of Chest Physicians. *Chest*. 2020. doi:10.1016/j.chest.2020.03.063
8. Pettilä V, Pettilä M, Sarna S, Voutilainen P, Takkunen O. Comparison of multiple organ dysfunction scores in the prediction of hospital mortality in the critically ill. *Crit Care Med*. 2002;30: 1705–1711. doi:10.1097/00003246-200208000-00005
9. Moher D, Shamseer L, Clarke M, Ghersi D, Liberati A, Petticrew M, et al. Preferred reporting items for systematic review and meta-analysis protocols (PRISMA-P) 2015 statement. *Systematic Reviews*. 2015;4: 1. doi:10.1186/2046-4053-4-1
10. Dekkers OM, Egger M, Altman DG, Vandenbroucke JP. Distinguishing Case Series From Cohort Studies. *Annals of Internal Medicine*. 2012;156: 37. doi:10.7326/0003-4819-156-1-201201030-00006
11. Metlay JP, Waterer GW, Long AC, Anzueto A, Brozek J, Crothers K, et al. Diagnosis and Treatment of Adults with Community-acquired Pneumonia. An Official Clinical Practice Guideline of the American Thoracic Society and Infectious Diseases Society of America. *Am J Respir Crit Care Med*. 2019;200: e45–e67. doi:10.1164/rccm.201908-1581ST
12. Lin L, Li TS. Interpretation of “Guidelines for the Diagnosis and Treatment of Novel Coronavirus (2019-nCoV) Infection by the National Health Commission (Trial Version 5).” *Zhonghua Yi Xue Za Zhi*. 2020;100: E001–E001. doi:10.3760/cma.j.issn.0376-2491.2020.0001
13. Covidence systematic review software, Veritas Health Innovation, Melbourne, Australia. Available at www.covidence.org.

14. Qualtrics (2020) Qualtrics.com. Available at: <http://www.qualtrics.com/> (accessed 24 march 2020).
15. Hozo SP, Djulbegovic B, Hozo I. Estimating the mean and variance from the median, range, and the size of a sample. *BMC Medical Research Methodology*. 2005;5: 13. doi:10.1186/1471-2288-5-13
16. Ottawa Hospital Research Institute. [cited 26 May 2020]. Available: http://www.ohri.ca/programs/clinical_epidemiology/oxford.asp
17. StataCorp. 2019. Stata Statistical Software: Release 16. College Station, TX: StataCorp LLC.
18. Yang X, Yu Y, Xu J, Shu H, Xia J, Liu H, et al. Clinical course and outcomes of critically ill patients with SARS-CoV-2 pneumonia in Wuhan, China: a single-centered, retrospective, observational study. *The Lancet Respiratory Medicine*. 2020. doi:10.1016/S2213-2600(20)30079-5
19. Chen T, Wu D, Chen H, Yan W, Yang D, Chen G, et al. Clinical characteristics of 113 deceased patients with coronavirus disease 2019: retrospective study. *BMJ*. 2020; m1091. doi:10.1136/bmj.m1091
20. Tang N, Li D, Wang X, Sun Z. Abnormal coagulation parameters are associated with poor prognosis in patients with novel coronavirus pneumonia. *Journal of Thrombosis and Haemostasis*. 2020;18: 844–847. doi:10.1111/jth.14768
21. Ruan Q, Yang K, Wang W, Jiang L, Song J. Clinical predictors of mortality due to COVID-19 based on an analysis of data of 150 patients from Wuhan, China. *Intensive Care Med*. 2020; 10.1007/s00134-020. doi:10.1007/s00134-020-05991-x
22. Wu C, Chen X, Cai Y, Xia J, Zhou X, Xu S, et al. Risk Factors Associated With Acute Respiratory Distress Syndrome and Death in Patients With Coronavirus Disease 2019 Pneumonia in Wuhan, China. *JAMA Internal Medicine*. 2020 [cited 25 May 2020]. doi:10.1001/jamainternmed.2020.0994
23. Li Y, Peng S, Li L, Wang Q, Ping W, Zhang N, et al. Clinical and Transmission Characteristics of Covid-19 — A Retrospective Study of 25 Cases from a Single Thoracic Surgery Department. *Current Medical Science*. 2020;40: 295–300. doi:10.1007/s11596-020-2176-2
24. Deng Y, Liu W, Liu K, Fang Y-Y, Shang J, Zhou L, et al. Clinical characteristics of fatal and recovered cases of coronavirus disease 2019 (COVID-19) in Wuhan, China: a retrospective study. *Chinese Medical Journal*. 2020; 1. doi:10.1097/CM9.0000000000000824
25. Yuan M, Yin W, Tao Z, Tan W, Hu Y. Association of radiologic findings with mortality of patients infected with 2019 novel coronavirus in Wuhan, China. *PLOS ONE*. 2019; 10.

26. Zhou F, Yu T, Du R, Fan G, Liu Y, Liu Z, et al. Clinical course and risk factors for mortality of adult inpatients with COVID-19 in Wuhan, China: a retrospective cohort study. *The Lancet*. 2020;395: 1054–1062. doi:10.1016/S0140-6736(20)30566-3
27. Cao J, Tu W-J, Cheng W, Yu L, Liu Y-K, Hu X, et al. Clinical Features and Short-term Outcomes of 102 Patients with Corona Virus Disease 2019 in Wuhan, China. *Clinical Infectious Diseases*. 2020 [cited 25 May 2020]. doi:10.1093/cid/ciaa243
28. Du R-H, Liang L-R, Yang C-Q, Wang W, Cao T-Z, Li M, et al. Predictors of mortality for patients with COVID-19 pneumonia caused by SARS-CoV-2: a prospective cohort study. *European Respiratory Journal*. 2020;55: 2000524. doi:10.1183/13993003.00524-2020
29. Tu W-J, Cao J, Yu L, Hu X, Liu Q. Clinicolaboratory study of 25 fatal cases of COVID-19 in Wuhan. *Intensive Care Medicine*. 2020 [cited 25 May 2020]. doi:10.1007/s00134-020-06023-4
30. Wang L, He W, Yu X, Hu D, Bao M, Liu H, et al. Coronavirus disease 2019 in elderly patients: Characteristics and prognostic factors based on 4-week follow-up. *Journal of Infection*. 2020;80: 639–645. doi:10.1016/j.jinf.2020.03.019
31. Wang Y, Lu X, Chen H, Chen T, Su N, Huang F, et al. Clinical Course and Outcomes of 344 Intensive Care Patients with COVID-19. *American Journal of Respiratory and Critical Care Medicine*. 2020 [cited 25 May 2020]. doi:10.1164/rccm.202003-0736LE
32. Dai M, Liu D, Liu M, Zhou F, Li G, Chen Z, et al. Patients with cancer appear more vulnerable to SARS-COV-2: a multi-center study during the COVID-19 outbreak. *Cancer Discovery*. 2020; CD-20-0422. doi:10.1158/2159-8290.CD-20-0422
33. Ding M, Zhang Q, Li Q, Wu T, Huang Y. Correlation analysis of the severity and clinical prognosis of 32 cases of patients with COVID-19. *Respiratory Medicine*. 2020;167: 105981. doi:10.1016/j.rmed.2020.105981
34. Barrasa H, Rello J, Tejada S, Martín A, Balziskueta G, Vinuesa C, et al. SARS-CoV-2 in Spanish Intensive Care Units: Early experience with 15-day survival in Vitoria. *Anaesthesia Critical Care & Pain Medicine*. 2020 [cited 25 May 2020]. doi:10.1016/j.accpm.2020.04.001
35. Chen T, Dai Z, Mo P, Li X, Ma Z, Song S, et al. Clinical Characteristics and Outcomes of Older Patients with Coronavirus Disease 2019 (COVID-19) in Wuhan, China: A Single-Centered, Retrospective Study. Newman A, editor. *The Journals of Gerontology: Series A*. 2020 [cited 25 May 2020]. doi:10.1093/gerona/glaa089
36. Trujillo H, Caravaca-Fontán F, Sevillano Á, Gutiérrez E, Caro J, Gutiérrez E, et al. SARS-CoV-2 Infection in Hospitalized Patients With Kidney Disease. *Kidney International Reports*. 2020 [cited 25 May 2020]. doi:10.1016/j.ekir.2020.04.024

37. Webb GJ, Moon AM, Barnes E, Barritt AS, Marjot T. Determining risk factors for mortality in liver transplant patients with COVID-19. *The Lancet Gastroenterology & Hepatology*. 2020 [cited 25 May 2020]. doi:10.1016/S2468-1253(20)30125-4
38. Yao Q, Wang P, Wang X, Qie G, Meng M, Tong X, et al. Retrospective study of risk factors for severe SARS-Cov-2 infections in hospitalized adult patients. *Polish Archives of Internal Medicine*. 2020 [cited 25 May 2020]. doi:10.20452/pamw.15312
39. Wei F, Wang H, Huang H, Luo C, Zhou X, Xu N, et al. Acute myocardial injury is common in patients with covid-19 and impairs their prognosis. : 6.
40. Tomlins J, Hamilton F, Gunning S, Sheehy C, Moran E, MacGowan A. Clinical features of 95 sequential hospitalised patients with novel coronavirus 2019 disease (COVID-19), the first UK cohort. *Journal of Infection*. 2020 [cited 25 May 2020]. doi:10.1016/j.jinf.2020.04.020
41. Yang X, Yang Q, Wang Y, Wu Y, Xu J, Yu Y, et al. Thrombocytopenia and its association with mortality in patients with COVID-19. *Journal of Thrombosis and Haemostasis*. 2020 [cited 25 May 2020]. doi:10.1111/jth.14848
42. Yang R, Gui X, Zhang Y, Xiong Y. The role of essential organ-based comorbidities in the prognosis of COVID-19 infection patients. *Expert Review of Respiratory Medicine*. 2020; 1–4. doi:10.1080/17476348.2020.1761791
43. Richardson S, Hirsch JS, Narasimhan M, Crawford JM, McGinn T, Davidson KW, et al. Presenting Characteristics, Comorbidities, and Outcomes Among 5700 Patients Hospitalized With COVID-19 in the New York City Area. *JAMA*. 2020 [cited 25 May 2020]. doi:10.1001/jama.2020.6775
44. Gold JAW, Wong KK, Szablewski CM, Patel PR, Rossow J, da Silva J, et al. Characteristics and Clinical Outcomes of Adult Patients Hospitalized with COVID-19 — Georgia, March 2020. *MMWR Morbidity and Mortality Weekly Report*. 2020;69: 545–550. doi:10.15585/mmwr.mm6918e1
45. Gao L, Jiang D, Wen X, Cheng X, Sun M, He B, et al. Prognostic value of NT-proBNP in patients with severe COVID-19. *Respiratory Research*. 2020;21. doi:10.1186/s12931-020-01352-w
46. Singh S, Khan A. Clinical Characteristics and Outcomes of COVID-19 Among Patients with Pre-Existing Liver Disease in United States: A Multi-Center Research Network Study. *Gastroenterology*. 2020 [cited 25 May 2020]. doi:10.1053/j.gastro.2020.04.064
47. Zangrillo A, Beretta L, Scandroglio AM, Monti G, Fominskiy E, Colombo S, et al. Characteristics, treatment, outcomes and cause of death of invasively ventilated patients with COVID-19 ARDS in Milan, Italy. *Critical Care and Resuscitation*. : 12.

48. Yan Y, Yang Y, Wang F, Ren H, Zhang S, Shi X, et al. Clinical characteristics and outcomes of patients with severe covid-19 with diabetes. *BMJ Open Diabetes Research & Care*. 2020;8: e001343. doi:10.1136/bmjdr-2020-001343
49. Wang K, Zuo P, Liu Y, Zhang M, Zhao X, Xie S, et al. Clinical and laboratory predictors of in-hospital mortality in patients with COVID-19: a cohort study in Wuhan, China. *Clin Infect Dis*. 2020. doi:10.1093/cid/ciaa538
50. Wang K, Zhang Z, Yu M, Tao Y, Xie M. 15-day mortality and associated risk factors for hospitalized patients with COVID-19 in Wuhan, China: an ambispective observational cohort study. *Intensive Care Medicine*. 2020 [cited 25 May 2020]. doi:10.1007/s00134-020-06047-w
51. Zhang L, Yan X, Fan Q, Liu H, Liu X, Liu Z, et al. D-dimer levels on admission to predict in-hospital mortality in patients with Covid-19. *Journal of Thrombosis and Haemostasis*. 2020;18: 1324–1329. doi:10.1111/jth.14859
52. Wang D, Yin Y, Hu C, Liu X, Zhang X, Zhou S, et al. Clinical course and outcome of 107 patients infected with the novel coronavirus, SARS-CoV-2, discharged from two hospitals in Wuhan, China. *Critical Care*. 2020;24. doi:10.1186/s13054-020-02895-6
53. Liu Y, Sun W, Guo Y, Chen L, Zhang L, Zhao S, et al. Association between platelet parameters and mortality in coronavirus disease 2019: Retrospective cohort study. *Platelets*. 2020;31: 490–496. doi:10.1080/09537104.2020.1754383
54. Liu Y, Du X, Chen J, Jin Y, Peng L, Wang HHX, et al. Neutrophil-to-lymphocyte ratio as an independent risk factor for mortality in hospitalized patients with COVID-19. *Journal of Infection*. 2020 [cited 25 May 2020]. doi:10.1016/j.jinf.2020.04.002
55. Li J, Wang X, Chen J, Zhang H, Deng A. Association of Renin-Angiotensin System Inhibitors With Severity or Risk of Death in Patients With Hypertension Hospitalized for Coronavirus Disease 2019 (COVID-19) Infection in Wuhan, China. *JAMA Cardiology*. 2020 [cited 25 May 2020]. doi:10.1001/jamacardio.2020.1624
56. Nikpouraghdam M, Jalali Farahani A, Alishiri G, Heydari S, Ebrahimnia M, Samadinia H, et al. Epidemiological characteristics of coronavirus disease 2019 (COVID-19) patients in IRAN: A single center study. *Journal of Clinical Virology*. 2020;127: 104378. doi:10.1016/j.jcv.2020.104378
57. Zhang J, Wang X, Jia X, Li J, Hu K, Chen G, et al. Risk factors for disease severity, unimprovement, and mortality in COVID-19 patients in Wuhan, China. *Clinical Microbiology and Infection*. 2020;26: 767–772. doi:10.1016/j.cmi.2020.04.012
58. Mehta V, Goel S, Kabarriti R, Cole D, Goldfinger M, Acuna-Villaorduna A, et al. Case Fatality Rate of Cancer Patients with COVID-19 in a New York Hospital System. *Cancer Discovery*. 2020; CD-20-0516. doi:10.1158/2159-8290.CD-20-0516

59. Zou X, Li S, Fang M, Hu M, Bian Y, Ling J, et al. Acute Physiology and Chronic Health Evaluation II Score as a Predictor of Hospital Mortality in Patients of Coronavirus Disease 2019: Critical Care Medicine. 2020; 1. doi:10.1097/CCM.00000000000004411
60. Guan W, Ni Z, Hu Y, Liang W, Ou C, He J, et al. Clinical Characteristics of Coronavirus Disease 2019 in China. New England Journal of Medicine. 2020. doi:10.1056/NEJMoa2002032
61. Xu Y-H, Dong J-H, An W, Lv X-Y, Yin X-P, Zhang J-Z, et al. Clinical and computed tomographic imaging features of Novel Coronavirus Pneumonia caused by SARS-CoV-2. Journal of Infection. 2020. doi:10.1016/j.jinf.2020.02.017
62. Tian S, Hu N, Lou J, Chen K, Kang X, Xiang Z, et al. Characteristics of COVID-19 infection in Beijing. Journal of Infection. 2020;80: 401–406. doi:10.1016/j.jinf.2020.02.018
63. Li K, Wu J, Wu F, Guo D, Chen L, Fang Z, et al. The Clinical and Chest CT Features Associated With Severe and Critical COVID-19 Pneumonia: Investigative Radiology. 2020;55: 327–331. doi:10.1097/RLI.0000000000000672
64. Zhao W, Zhong Z, Xie X, Yu Q, Liu J. Relation Between Chest CT Findings and Clinical Conditions of Coronavirus Disease (COVID-19) Pneumonia: A Multicenter Study. AJR Am J Roentgenol. 2020; 1–6. doi:10.2214/AJR.20.22976
65. Han H, Yang L, Liu R, Liu F, Wu K, Li J, et al. Prominent changes in blood coagulation of patients with SARS-CoV-2 infection. Clinical Chemistry and Laboratory Medicine (CCLM). 2020;0. doi:10.1515/cclm-2020-0188
66. Qian G-Q, Yang N-B, Ding F, Ma AHY, Wang Z-Y, Shen Y-F, et al. Epidemiologic and Clinical Characteristics of 91 Hospitalized Patients with COVID-19 in Zhejiang, China: A retrospective, multi-centre case series. QJM. 2020. doi:10.1093/qjmed/hcaa089
67. Qu R, Ling Y, Zhang Y, Wei L, Chen X, Li X, et al. Platelet-to-lymphocyte ratio is associated with prognosis in patients with Corona Virus Disease-19. Journal of Medical Virology. 2020 [cited 25 May 2020]. doi:10.1002/jmv.25767
68. Gao Y, Li T, Han M, Li X, Wu D, Xu Y, et al. Diagnostic Utility of Clinical Laboratory Data Determinations for Patients with the Severe COVID-19. Journal of Medical Virology. 2020 [cited 25 May 2020]. doi:10.1002/jmv.25770
69. Liu K-C, Xu P, Lv W-F, Qiu X-H, Yao J-L, Gu J-F, et al. CT manifestations of coronavirus disease-2019: A retrospective analysis of 73 cases by disease severity. European Journal of Radiology. 2020;126: 108941. doi:10.1016/j.ejrad.2020.108941

70. Wan S, Xiang Y, Fang W, Zheng Y, Li B, Hu Y, et al. Clinical features and treatment of COVID-19 patients in northeast Chongqing. *Journal of Medical Virology*. 2020 [cited 25 May 2020]. doi:10.1002/jmv.25783
71. Shi Y, Yu X, Zhao H, Wang H, Zhao R, Sheng J. Host susceptibility to severe COVID-19 and establishment of a host risk score: findings of 487 cases outside Wuhan. *Critical Care*. 2020;24. doi:10.1186/s13054-020-2833-7
72. Li K, Fang Y, Li W, Pan C, Qin P, Zhong Y, et al. CT image visual quantitative evaluation and clinical classification of coronavirus disease (COVID-19). *European Radiology*. 2020 [cited 25 May 2020]. doi:10.1007/s00330-020-06817-6
73. Qin C, Zhou L, Hu Z, Zhang S, Yang S, Tao Y, et al. Dysregulation of Immune Response in Patients With Coronavirus 2019 (COVID-19) in Wuhan, China. *Clin Infect Dis*. [cited 6 Jun 2020]. doi:10.1093/cid/ciaa248
74. Huang L, Han R, Ai T, Yu P, Kang H, Tao Q, et al. Serial Quantitative Chest CT Assessment of COVID-19: Deep-Learning Approach. *Radiology: Cardiothoracic Imaging*. 2020;2: e200075. doi:10.1148/ryct.2020200075
75. Zhang J-J, Dong X, Cao Y-Y, Yuan Y-D, Yang Y-B, Yan Y-Q, et al. Clinical characteristics of 140 patients infected by SARS-CoV-2 in Wuhan, China. *Allergy*. 2020; 10.1111/all.14238. doi:10.1111/all.14238
76. Chen G, Wu D, Guo W, Cao Y, Huang D, Wang H, et al. Clinical and immunological features of severe and moderate coronavirus disease 2019. *Journal of Clinical Investigation*. 2020;130: 2620–2629. doi:10.1172/JCI137244
77. Chu J, Yang N, Wei Y, Yue H, Zhang F, Zhao J, et al. Clinical characteristics of 54 medical staff with COVID-19: A retrospective study in a single center in Wuhan, China. *Journal of Medical Virology*. 2020 [cited 25 May 2020]. doi:10.1002/jmv.25793
78. Yuan J, Zou R, Zeng L, Kou S, Lan J, Li X, et al. The correlation between viral clearance and biochemical outcomes of 94 COVID-19 infected discharged patients. *Inflammation Research*. 2020;69: 599–606. doi:10.1007/s00011-020-01342-0
79. Wang L, Li X, Chen H, Yan S, Li D, Li Y, et al. Coronavirus Disease 19 Infection Does Not Result in Acute Kidney Injury: An Analysis of 116 Hospitalized Patients from Wuhan, China. *American Journal of Nephrology*. 2020;51: 343–348. doi:10.1159/000507471
80. Han H, Xie L, Liu R, Yang J, Liu F, Wu K, et al. Analysis of heart injury laboratory parameters in 273 COVID-19 patients in one hospital in Wuhan, China. *Journal of Medical Virology*. 2020 [cited 25 May 2020]. doi:10.1002/jmv.25809

81. Xie H, Zhao J, Lian N, Lin S, Xie Q, Zhuo H. Clinical characteristics of non-ICU hospitalized patients with coronavirus disease 2019 and liver injury: A retrospective study. *Liver International*. 2020 [cited 25 May 2020]. doi:10.1111/liv.14449
82. Cai Q, Huang D, Ou P, Yu H, Zhu Z, Xia Z, et al. COVID-19 in a designated infectious diseases hospital outside Hubei Province, China. *Allergy*. 2020 [cited 25 May 2020]. doi:10.1111/all.14309
83. Zhang Y, Zheng L, Liu L, Zhao M, Xiao J, Zhao Q. Liver impairment in COVID-19 patients: A retrospective analysis of 115 cases from a single centre in Wuhan city, China. *Liver International*. 2020 [cited 25 May 2020]. doi:10.1111/liv.14455
84. Tan C, Huang Y, Shi F, Tan K, Ma Q, Chen Y, et al. C-reactive protein correlates with computed tomographic findings and predicts severe COVID-19 early. *J Med Virol*. 2020 [cited 5 Jun 2020]. doi:10.1002/jmv.25871
85. Chen X, Yang Y, Huang M, Liu L, Zhang X, Xu J, et al. Differences between COVID-19 and suspected then confirmed SARS-CoV-2-negative pneumonia: a retrospective study from a single center. *Journal of Medical Virology*. 2020 [cited 25 May 2020]. doi:10.1002/jmv.25810
86. Zheng F, Tang W, Li H. Clinical characteristics of 161 cases of corona virus disease 2019 (COVID-19) in Changsha. : 7.
87. Deng Q, Hu B, Zhang Y, Wang H, Zhou X, Hu W, et al. Suspected myocardial injury in patients with COVID-19: Evidence from front-line clinical observation in Wuhan, China. *International Journal of Cardiology*. 2020 [cited 25 May 2020]. doi:10.1016/j.ijcard.2020.03.087
88. Li H, Xiang X, Ren H, Xu L, Zhao L, Chen X, et al. Serum Amyloid A is a biomarker of severe Coronavirus Disease and poor prognosis. *Journal of Infection*. 2020;80: 646–655. doi:10.1016/j.jinf.2020.03.035
89. Zou Y, Guo H, Zhang Y, Zhang Z, Liu Y, Wang J, et al. Analysis of coagulation parameters in patients with COVID-19 in Shanghai, China. *BioScience Trends*. 2020 [cited 25 May 2020]. doi:10.5582/bst.2020.03086
90. Shi F, Wu T, Zhu X, Ge Y, Zeng X, Chi Y, et al. Association of viral load with serum biomarkers among COVID-19 cases. *Virology*. 2020;546: 122–126. doi:10.1016/j.virol.2020.04.011
91. Wang G, Wu C, Zhang Q, Wu F, Yu B, Lv J, et al. C-Reactive Protein Level May Predict the Risk of COVID-19 Aggravation. *Open Forum Infectious Diseases*. 2020;7. doi:10.1093/ofid/ofaa153
92. Ji M, Yuan L, Shen W, Lv J, Li Y, Li M, et al. Characteristics of disease progress in patients with coronavirus disease 2019 in Wuhan, China. *Epidemiology and Infection*. 2020;148. doi:10.1017/S0950268820000977

93. Shen L, Li S, Zhu Y, Zhao J, Tang X, Li H, et al. Clinical and laboratory-derived parameters of 119 hospitalized patients with coronavirus disease 2019 in Xiangyang, Hubei Province, China. *Journal of Infection*. 2020 [cited 25 May 2020]. doi:10.1016/j.jinf.2020.03.038
94. Yang F, Shi S, Zhu J, Shi J, Dai K, Chen X. Clinical characteristics and outcomes of cancer patients with COVID-19. *Journal of Medical Virology*. 2020 [cited 25 May 2020]. doi:10.1002/jmv.25972
95. Ma J, Yin J, Qian Y, Wu Y. Clinical characteristics and prognosis in cancer patients with COVID-19: A single center's retrospective study. *Journal of Infection*. 2020 [cited 25 May 2020]. doi:10.1016/j.jinf.2020.04.006
96. Chen Q, Zheng Z, Zhang C, Zhang X, Wu H, Wang J, et al. Clinical characteristics of 145 patients with corona virus disease 2019 (COVID-19) in Taizhou, Zhejiang, China. *Infection*. 2020 [cited 25 May 2020]. doi:10.1007/s15010-020-01432-5
97. Colaneri M, Sacchi P, Zuccaro V, Biscarini S, Sachs M, Roda S, et al. Clinical characteristics of coronavirus disease (COVID-19) early findings from a teaching hospital in Pavia, North Italy, 21 to 28 February 2020. *Eurosurveillance*. 2020;25. doi:10.2807/1560-7917.ES.2020.25.16.2000460
98. Zhao X-Y, Xu X-X, Yin H-S, Hu Q-M, Xiong T, Tang Y-Y, et al. Clinical characteristics of patients with 2019 coronavirus disease in a non-Wuhan area of Hubei Province, China: a retrospective study. *BMC Infectious Diseases*. 2020;20. doi:10.1186/s12879-020-05010-w
99. Chen L, Li Q, Zheng D, Jiang H, Wei Y, Zou L, et al. Clinical Characteristics of Pregnant Women with Covid-19 in Wuhan, China. *New England Journal of Medicine*. 2020 [cited 25 May 2020]. doi:10.1056/NEJMc2009226
100. Sun L, Shen L, Fan J, Gu F, Hu M, An Y, et al. Clinical Features of Patients with Coronavirus Disease 2019 (COVID-19) from a Designated Hospital in Beijing, China. *Journal of Medical Virology*. 2020 [cited 25 May 2020]. doi:10.1002/jmv.25966
101. Zhu Z, Cai T, Fan L, Lou K, Hua X, Huang Z, et al. Clinical value of immune-inflammatory parameters to assess the severity of coronavirus disease 2019. *International Journal of Infectious Diseases*. 2020;95: 332–339. doi:10.1016/j.ijid.2020.04.041
102. Liu Y, Liao W, Wan L, Xiang T, Zhang W. Correlation Between Relative Nasopharyngeal Virus RNA Load and Lymphocyte Count Disease Severity in Patients with COVID-19. *Viral Immunology*. 2020 [cited 25 May 2020]. doi:10.1089/vim.2020.0062
103. Feng Y, Ling Y, Bai T, Xie Y, Huang J, Li J, et al. COVID-19 with Different Severity: A Multi-center Study of Clinical Features. *American Journal of*

- Respiratory and Critical Care Medicine. 2020 [cited 25 May 2020]. doi:10.1164/rccm.202002-0445OC
104. Zhang R, Ouyang H, Fu L, Wang S, Han J, Huang K, et al. CT features of SARS-CoV-2 pneumonia according to clinical presentation: a retrospective analysis of 120 consecutive patients from Wuhan city. *European Radiology*. 2020 [cited 25 May 2020]. doi:10.1007/s00330-020-06854-1
 105. Chen X, Zhao B, Qu Y, Chen Y, Xiong J, Feng Y, et al. Detectable serum SARS-CoV-2 viral load (RNAemia) is closely correlated with drastically elevated interleukin 6 (IL-6) level in critically ill COVID-19 patients. *Clinical Infectious Diseases*. 2020 [cited 25 May 2020]. doi:10.1093/cid/ciaa449
 106. Wei X, Su J, Yang K, Wei J, Wan H, Cao X, et al. Elevations of serum cancer biomarkers correlate with severity of COVID-19. *Journal of Medical Virology*. 2020 [cited 25 May 2020]. doi:10.1002/jmv.25957
 107. Zheng Y, Xiong C, Liu Y, Qian X, Tang Y, Liu L, et al. Epidemiological and clinical characteristics analysis of COVID-19 in the surrounding areas of Wuhan, Hubei Province in 2020. *Pharmacol Res*. 2020;157: 104821. doi:10.1016/j.phrs.2020.104821
 108. Wang R, Pan M, Zhang X, Han M, Fan X, Zhao F, et al. Epidemiological and clinical features of 125 Hospitalized Patients with COVID-19 in Fuyang, Anhui, China. *International Journal of Infectious Diseases*. 2020;95: 421–428. doi:10.1016/j.ijid.2020.03.070
 109. Yao Z, Zheng Z, Wu K, Junhua Z. Immune environment modulation in pneumonia patients caused by coronavirus: SARS-CoV, MERS-CoV and SARS-CoV-2. *Aging*. 2020;12: 7639–7651. doi:10.18632/aging.103101
 110. Lei F, Liu Y, Zhou F, Qin J, Zhang P, Zhu L, et al. Longitudinal association between markers of liver injury and mortality in COVID-19 in China. *Hepatology*. 2020 [cited 25 May 2020]. doi:10.1002/hep.31301
 111. Lu L, Xiong W, Liu D, Liu J, Yang D, Li N, et al. New onset acute symptomatic seizure and risk factors in coronavirus disease 2019: A retrospective multicenter study. *Epilepsia*. 2020 [cited 25 May 2020]. doi:10.1111/epi.16524
 112. Yang Y, Shen C, Li J, Yuan J, Wei J, Huang F, et al. Plasma IP-10 and MCP-3 levels are highly associated with disease severity and predict the progression of COVID-19. *Journal of Allergy and Clinical Immunology*. 2020 [cited 25 May 2020]. doi:10.1016/j.jaci.2020.04.027
 113. Bi X, Su Z, Yan H, Du J, Wang J, Chen L, et al. Prediction of severe illness due to COVID-19 based on an analysis of initial Fibrinogen to Albumin Ratio and Platelet count. *Platelets*. 2020; 1–6. doi:10.1080/09537104.2020.1760230

114. Liu F, Li L, Xu M, Wu J, Luo D, Zhu Y, et al. Prognostic value of interleukin-6, C-reactive protein, and procalcitonin in patients with COVID-19. *Journal of Clinical Virology*. 2020;127: 104370. doi:10.1016/j.jcv.2020.104370
115. Pei G, Zhang Z, Peng J, Liu L, Zhang C, Yu C, et al. Renal Involvement and Early Prognosis in Patients with COVID-19 Pneumonia. *Journal of the American Society of Nephrology*. 2020; ASN.2020030276. doi:10.1681/ASN.2020030276
116. Hu L, Chen S, Fu Y, Gao Z, Long H, Wang J, et al. Risk Factors Associated with Clinical Outcomes in 323 COVID-19 Hospitalized Patients in Wuhan, China. *Clinical Infectious Diseases*. 2020 [cited 25 May 2020]. doi:10.1093/cid/ciaa539
117. Liu X, Zhou H, Zhou Y, Wu X, Zhao Y, Lu Y, et al. Risk factors associated with disease severity and length of hospital stay in COVID-19 patients. *Journal of Infection*. 2020 [cited 25 May 2020]. doi:10.1016/j.jinf.2020.04.008
118. Wei Y-Y, Wang R-R, Zhang D-W, Tu Y-H, Chen C-S, Ji S, et al. Risk factors for severe COVID-19: Evidence from 167 hospitalized patients in Anhui, China. *Journal of Infection*. 2020 [cited 25 May 2020]. doi:10.1016/j.jinf.2020.04.010
119. Li X, Xu S, Yu M, Wang K, Tao Y, Zhou Y, et al. Risk factors for severity and mortality in adult COVID-19 inpatients in Wuhan. *Journal of Allergy and Clinical Immunology*. 2020 [cited 25 May 2020]. doi:10.1016/j.jaci.2020.04.006
120. Zheng Y, Zhang Y, Chi H, Chen S, Peng M, Luo L, et al. The hemocyte counts as a potential biomarker for predicting disease progression in COVID-19: a retrospective study. *Clinical Chemistry and Laboratory Medicine (CCLM)*. 2020;0. doi:10.1515/cclm-2020-0377
121. Wang F, Hou H, Luo Y, Tang G, Wu S, Huang M, et al. The laboratory tests and host immunity of COVID-19 patients with different severity of illness. *JCI Insight*. 2020;5. doi:10.1172/jci.insight.137799
122. Lyu P, Liu X, Zhang R, Shi L, Gao J. The performance of chest CT in evaluating the clinical severity of COVID-19 pneumonia: identifying critical cases based on CT characteristics. *Investigative Radiology*. 2020; 1. doi:10.1097/RLI.0000000000000689
123. Liu R, Ma Q, Han H, Su H, Liu F, Wu K, et al. The value of urine biochemical parameters in the prediction of the severity of coronavirus disease 2019. *Clinical Chemistry and Laboratory Medicine (CCLM)*. 2020;0. doi:10.1515/cclm-2020-0220
124. Hou H, Zhang B, Huang H, Luo Y, Wu S, Tang G, et al. Using IL-2R/lymphocytes for predicting the clinical progression of patients with COVID-19. *Clinical & Experimental Immunology*. 2020 [cited 25 May 2020]. doi:10.1111/cei.13450
125. Zheng S, Fan J, Yu F, Feng B, Lou B, Zou Q, et al. Viral load dynamics and disease severity in patients infected with SARS-CoV-2 in Zhejiang province, China,

- January-March 2020: retrospective cohort study. *BMJ*. 2020; m1443. doi:10.1136/bmj.m1443
126. Huang I, Lim MA, Pranata R. Diabetes mellitus is associated with increased mortality and severity of disease in COVID-19 pneumonia – A systematic review, meta-analysis, and meta-regression. *Diabetes & Metabolic Syndrome: Clinical Research & Reviews*. 2020;14: 395–403. doi:10.1016/j.dsx.2020.04.018
127. Pranata R, Huang I, Lim MA, Wahjoepramono EJ, July J. Impact of cerebrovascular and cardiovascular diseases on mortality and severity of COVID-19—systematic review, meta-analysis, and meta-regression. *Journal of Stroke and Cerebrovascular Diseases*. 2020;29: 104949. doi:10.1016/j.jstrokecerebrovasdis.2020.104949
128. Yeh J-J, Lin C-L, Kao C-H. Relationship between pneumonia and cardiovascular diseases: A retrospective cohort study of the general population. *Eur J Intern Med*. 2019;59: 39–45. doi:10.1016/j.ejim.2018.08.003
129. Wang D, Hu B, Hu C, Zhu F, Liu X, Zhang J, et al. Clinical Characteristics of 138 Hospitalized Patients With 2019 Novel Coronavirus-Infected Pneumonia in Wuhan, China. *JAMA*. 2020; 10.1001/jama.2020.1585. doi:10.1001/jama.2020.1585
130. Yu C-M. Cardiovascular complications of severe acute respiratory syndrome. *Postgraduate Medical Journal*. 2006;82: 140–144. doi:10.1136/pgmj.2005.037515
131. Oudit GY, Kassiri Z, Jiang C, Liu PP, Poutanen SM, Penninger JM, et al. SARS-coronavirus modulation of myocardial ACE2 expression and inflammation in patients with SARS. *Eur J Clin Invest*. 2009;39: 618–625. doi:10.1111/j.1365-2362.2009.02153.x
132. Guo T, Fan Y, Chen M, Wu X, Zhang L, He T, et al. Cardiovascular Implications of Fatal Outcomes of Patients With Coronavirus Disease 2019 (COVID-19). *JAMA Cardiol*. 2020 [cited 5 Jun 2020]. doi:10.1001/jamacardio.2020.1017
133. Singh S, Sharma A, Arora SK. High Producer Haplotype (CAG) of -863C/A, -308G/A and -238G/A Polymorphisms in the Promoter Region of TNF- α Gene Associate with Enhanced Apoptosis of Lymphocytes in HIV-1 Subtype C Infected Individuals from North India. *PLoS One*. 2014;9. doi:10.1371/journal.pone.0098020
134. Liao Y-C, Liang W-G, Chen F-W, Hsu J-H, Yang J-J, Chang M-S. IL-19 induces production of IL-6 and TNF-alpha and results in cell apoptosis through TNF-alpha. *J Immunol*. 2002;169: 4288–4297. doi:10.4049/jimmunol.169.8.4288
135. Aggarwal S, Gollapudi S, Gupta S. Increased TNF-alpha-induced apoptosis in lymphocytes from aged humans: changes in TNF-alpha receptor expression and activation of caspases. *J Immunol*. 1999;162: 2154–2161.

136. Simon L, Gauvin F, Amre DK, Saint-Louis P, Lacroix J. Serum procalcitonin and C-reactive protein levels as markers of bacterial infection: a systematic review and meta-analysis. *Clin Infect Dis*. 2004;39: 206–217. doi:10.1086/421997
137. Levi M, van der Poll T. Coagulation and sepsis. *Thrombosis Research*. 2017;149: 38–44. doi:10.1016/j.thromres.2016.11.007
138. Schmitt FCF, Manolov V, Morgenstern J, Fleming T, Heitmeier S, Uhle F, et al. Acute fibrinolysis shutdown occurs early in septic shock and is associated with increased morbidity and mortality: results of an observational pilot study. *Ann Intensive Care*. 2019;9. doi:10.1186/s13613-019-0499-6
139. Gupta N, Zhao Y-Y, Evans CE. The stimulation of thrombosis by hypoxia. *Thrombosis Research*. 2019;181: 77–83. doi:10.1016/j.thromres.2019.07.013
140. Grillet F, Behr J, Calame P, Aubry S, Delabrousse E. Acute Pulmonary Embolism Associated with COVID-19 Pneumonia Detected by Pulmonary CT Angiography. *Radiology*. 2020; 201544. doi:10.1148/radiol.2020201544
141. Avula A, Nalleballe K, Narula N, Sapozhnikov S, Dandu V, Toom S, et al. COVID-19 presenting as stroke. *Brain Behav Immun*. 2020 [cited 17 Jun 2020]. doi:10.1016/j.bbi.2020.04.077
142. Bernheim A, Mei X, Huang M, Yang Y, Fayad ZA, Zhang N, et al. Chest CT Findings in Coronavirus Disease-19 (COVID-19): Relationship to Duration of Infection. *Radiology*. 2020; 200463–200463. doi:10.1148/radiol.2020200463
143. Marchiori E, Zanetti G, Fontes CAP, Santos MLO, Valiante PM, Mano CM, et al. Influenza A (H1N1) virus-associated pneumonia: High-resolution computed tomography–pathologic correlation. *European Journal of Radiology*. 2011;80: e500–e504. doi:10.1016/j.ejrad.2010.10.003
144. Grinblat L, Shulman H, Glickman A, Matukas L, Paul N. Severe Acute Respiratory Syndrome: Radiographic Review of 40 Probable Cases in Toronto, Canada1. *Radiology*. 2003 [cited 6 Jun 2020]. doi:10.1148/radiol.2283030671
145. Feng F, Jiang Y, Yuan M, Shen J, Yin H, Geng D, et al. Association of Radiologic Findings with Mortality in Patients with Avian Influenza H7N9 Pneumonia. *PLOS ONE*. 2014;9: e93885. doi:10.1371/journal.pone.0093885
146. Song F, Shi N, Shan F, Zhang Z, Shen J, Lu H, et al. Emerging Coronavirus 2019-nCoV Pneumonia. *Radiology*. 2020; 200274–200274. doi:10.1148/radiol.2020200274
147. Jin Y-H, Cai L, Cheng Z-S, Cheng H, Deng T, Fan Y-P, et al. A rapid advice guideline for the diagnosis and treatment of 2019 novel coronavirus (2019-nCoV) infected pneumonia (standard version). *Military Medical Research*. 2020;7: 4. doi:10.1186/s40779-020-0233-6

148. Chen Y, Feng Z, Diao B, Wang R, Wang G, Wang C, et al. The Novel Severe Acute Respiratory Syndrome Coronavirus 2 (SARS-CoV-2) Directly Decimates Human Spleens and Lymph Nodes. medRxiv. 2020; 2020.03.27.20045427.
doi:10.1101/2020.03.27.20045427

Table 1: Association of clinical characteristics with mortality and severe disease in patients with COVID-19

Clinical characteristics	Risk of Mortality					Odds of Severe disease				
	No. of Studies	No. of Patients	Pooled RR [95% CI]	Heterogeneity		No. of Studies	No. of Patients	Pooled OR [95% CI]	Heterogeneity	
				I ²	T ²				I ²	T ²
Baseline characteristics and co-morbidities										
Male sex	26	16422	*1.45 [1.23–1.71]	49%	0.07	59	17063	1.38 [1.24–1.53]	31%	0.04
Ever smoker	7	10419	1.43 [1.09–1.87]	0	0	10	4511	1.51 [1.06–2.14]	62%	0.33
Diabetes	27	16263	*1.59 [1.41–1.78]	23%	0.02	36	7552	2.09 [1.66–2.64]	40%	0.16
Hypertension	26	15947	*1.90 [1.69–2.15]	28%	0.02	33	7002	2.63 [2.08–3.33]	64%	0.25
Cardiovascular diseases	25	16576	2.27 [1.88–2.79]	71%	0.13	31	6932	2.83 [2.21–3.63]	23%	0.09
Congestive Heart Failure	5	9910	2.08 [1.54–2.80]	0%	0	3	558	4.76 [1.34–16.97]	0%	0
Cerebrovascular Disease	15	2437	2.63 [1.97–3.51]	75%	0.20	13	4246	2.62 [1.76–3.90]	7%	0.04
COPD	15	9717	2.29 [1.90–2.75]	0%	0	19	4790	3.23 [1.97–5.31]	24%	0.27
Asthma	2	643	0.98 [0.42–2.32]	0%	0
CKD	15	6556	2.24 [1.78–2.81]	39%	0.07	14	4442	2.62 [1.46–4.71]	27%	0.31
Chronic liver disease	6	3672	2.18 [1.40–3.40]	20%	0.07	17	8869	1.56 [1.12–2.17]	0%	0
Hepatitis B infection	2	822	1.14 [0.61–2.12]	0%	0	3	1945	0.54 [0.17–1.71]	0%	0
HIV	1	274	1.21 [0.17–8.64]	2	397	4.86 [0.50–47.22]	0%	0
Cancer	18	7008	1.52 [1.21–1.90]	0%	0	20	6026	2.90 [1.99–4.24]	4%	0.04
Immunodeficiency	4	1838	2.51 [0.62–10.10]	16%	0.36
Endocrine diseases	4	1378	2.45 [1.49–4.04]	0%	0
Clinical features										
Fever	21	3551	0.82 [0.67–1.00]	28%	0.05	37	7501	1.75 [1.32–2.31]	56%	0.31
Sore throat	4	1256	0.79 [0.44–1.42]	0%	0	20	4721	0.79 [0.60–1.04]	0%	0
Cough	22	4098	1.00 [0.88–1.14]	16%	0.01	39	7746	1.22 [1.08–1.38]	5%	0.01
Expectoration	9	1977	1.19 [0.98–1.45]	55%	0.04	21	4960	1.55 [1.27–1.90]	32%	0.06
Vomiting	5	1644	0.86 [0.51–1.44]	0%	0	7	1919	1.02 [0.65–1.60]	0%	0
Diarrhea	14	3230	1.15 [0.85– 1.57]	65%	0.17	33	6831	1.31 [1.00–1.71]	43%	0.19
Nausea	7	1725	1.00 [0.67–1.50]	1%	0	13	3809	1.01 [0.61–1.68]	49%	0.34
Myalgia	18	3270	0.91 [0.76–1.08]	8%	0.01	25	5831	1.22 [0.90–1.65]	62%	0.29
Headache	11	2645	0.95 [0.66–1.37]	21%	0.07	26	6340	1.44 [1.00–2.06]	53%	0.37
Anorexia	5	1119	1.04 [0.86–1.26]	0%	0	10	1157	2.72 [1.84–4.01]	0%	0
Chest pain	7	2026	1.16 [0.77–1.75]	43%	0.11	16	3558	2.70 [1.56–4.68]	75%	0.73
Dyspnea	20	3595	2.55 [1.88–3.46]	77%	0.30	34	7356	4.72 [3.18–7.01]	86%	0.90
Hemoptysis	6	1014	1.62 [1.25–2.11]	0%	0	5	2584	2.93 [1.47–5.83]	0%	0
Abdominal pain	5	1498	1.22[0.47–3.16]	7%	0.09	9	2506	2.86 [1.00–8.13]	69%	1.67

Palpitations	1	225	0.94 [0.59–1.49]	2	254	3.14 [0.88–11.19]	0%	0
Rhinorrhea	1	52	1.48 [0.96–2.29]	4	1096	0.94 [0.38–2.30]	0%	0
Anosmia	1	95	0.45 [0.03–6.40]
Complications										
ARDS	14	2795	*20.19 [10.87–37.52]	79%	0.90
Shock	9	1844	6.12 [3.59–10.45]	93%	0.54
Sepsis	3	573	47.95 [11.81–194.72]	0%	0
Bacteremia	6	1365	5.07 [2.02–12.69]	94%	1.18
Acute cardiac injury	14	2860	5.42 [3.79–7.77]	86%	0.36
Acute heart failure	3	495	3.10 [2.55–3.77]	0%	0
DIC	4	1394	3.41 [2.00–5.81]	95%	0.28
GI bleeding	4	1028	2.53 [1.42–4.49]	76%	0.26
Acute Kidney Injury	15	5331	*4.65 [3.25–6.65]	95%	0.42
Acute liver injury	10	4796	2.54 [1.77–3.66]	93%	0.28
Hepatic encephalopathy	1	109	3.99 [2.71–5.87]
Ventilator associated pneumonia	1	52	0.51 [0.16–1.62]
CT features										
Peripheral distribution	1	27	0.32 [0.05–2.08]	4	313	1.40 [0.36–5.50]	28%	0.57
Bilateral involvement	11	2067	1.35[1.07–1.69]	0	0	19	3515	4.86 [3.19–7.39]	47%	0.28
Consolidation	3	243	2.07 [1.35–3.16]	0	0	9	1084	3.01 [1.32–6.88]	76%	1.09
GGO	5	706	1.41 [0.87–2.28]	55%	0.15	14	2629	1.63 [1.22–2.17]	11%	0.03
Mixed GGO and consolidation	3	263	1.63 [0.69–3.85]	0	0
Air bronchogram	1	27	3.56[1.37–9.29]	4	333	4.79[1.11–20.61]	85%	1.85
Nodular infiltrates	1	27	0.41 [0.03–5.41]	..	0	4	356	1.03 [0.39–2.73]	46%	0.45
Hilar Lymphadenopathy	5	397	8.34 [2.57–27.08]	0%	0
Tree in bud appearance	1	120	4.30 [1.07–17.23]	.	0
Unifocal involvement	2	463	0.31 [0.11–0.92]	44%	0.27	3	1237	1.13 [0.46–2.81]	66%	0.38
Pleural effusion	2	78	1.06 [0.27–4.21]	8	642	5.30 [2.74–10.26]	0%	0
Pleural thickening	1	52	1.86[0.35–9.92]	..	0
Inter-lobular septal thickening	2	124	2.86 [1.06–7.72]	0%	0
Bronchiectasis	2	221	5.62 [2.22–14.24]	0%	0
Linear infiltrates	3	324	3.21[1.00–10.25]	72%	0.74
Crazy pavement sign	5	650	4.52 [2.08–9.81]	64%	0.50
Reticular pattern	4	425	5.54 [1.24–24.67]	72%	1.61

Abbreviations: ARDS =Acute Respiratory Distress Syndrome. CKD=Chronic Kidney Disease. COPD=Chronic Obstructive Pulmonary Disease. CT= Computed Tomography. DIC=Disseminated Intravascular Coagulation. GGO=Ground Glass Opacity. GI Bleeding=Gastrointestinal Bleeding. HIV=Human Immunodeficiency Virus. OR=Odds ratio. RR=Risk ratio.

*denotes presence of publication bias by Egger's test (p-value < 0.05).

Table 2: Association of laboratory parameters with mortality in patients with COVID-19

Laboratory Parameters	Pooled Risk of Mortality					Lab Cut-offs	Risk of Mortality (based on cut-offs)				
	No. of Studies	No. of Patients	Pooled RR [95% CI]	Heterogeneity			No. of Studies	No. of Patients	Pooled OR [95% CI]	Heterogeneity	
				I ²	T ²					I ²	T ²
Decreased TLC	8	1534	0.43[0.31-0.59]	0%	0	TLC < 3.5 x10 ⁹ /L	1	154	0.58[0.26-1.30]	-	-
						TLC < 4.0 x10 ⁹ /L	7	1380	0.43 [0.29-0.58]	0%	0
Increased TLC	9	1708	3.85[2.56-5.78]	80.87%	0.06	TLC > 9.5 x10 ⁹ /L	3	353	3.60 [2.22–5.84]	31.88%	0.06
						TLC >10.0 x10 ⁹ /L	6	1355	3.97[2.06-7.64]	90.80%	0.55
Decreased Neutrophil	2	727	0.33[0.03-3.15]	72.18%	1.93	N < 1.8 x10 ⁹ /L	1	179	0.94[0.24-3.72]	-	-
						N < 2 x10 ⁹ /L	1	548	0.09[0.01-0.66]	-	-
Increased Neutrophil	3	1001	4.45 [3.20–6.18]	38.52%	0.03	N > 6.3 x10 ⁹ /L	2	453	3.83 [2.90–5.07]	0%	0
						N > 6.5 x10 ⁹ /L	1	548	5.95[3.93-8.99]	-	-
Decreased Lymphocyte	8	1554	4.09 [1.69–9.91]	83.63%	1.24	L < 0.8 x10 ⁹ /L	2	299	4.45[2.70-7.32]	0%	0
						L < 1.0 x10 ⁹ /L	2	329	2.20[0.35-14.07]	91.96%	1.65
						L < 1.1 x10 ⁹ /L	4	378	5.97[0.98-36.29]	79.77%	2.68
Decreased Platelet count	6	1439	2.42 [1.78–3.30]	51.04%	0.07	Plt count < 100 x 10 ⁹ /L	3	354	2.45[1.30-4.62]	51.44%	0.16
						Plt count < 125 x 10 ⁹ /L	2	537	2.45[1.26-4.75]	74.92%	0.17
						Plt count < 150 x 10 ⁹ /L	1	548	2.08 [1.39–3.13]	-	-
Decreased Albumin	4	1031	3.30[2.61-4.18]	0%	0	Albumin < 32 g/L	1	274	3.52[2.61-4.74]	-	-
						Albumin < 35 g/L	2	702	3.27[2.19-4.88]	0%	0
						Albumin < 40 g/L	1	55	1.24[0.36-4.25]	-	-
Increased Globulin	2	603	1.65[1.15-2.37]	0%	0	Globulin >35 g/L	2	603	1.65[1.15-2.37]	0%	0
Increased T· Bilirubin	3	810	2.74[1.96-3.82]	0%	0	T. Bilirubin > 20 umol/L	3	810	2.74[1.96-3.82]	0%	0
Increased AST	5	1210	2.33[1.93–2.82]	0%	0	AST > 40 U/L	5	1210	2.33 [1.93–2.82]	0%	0
Increased ALT	6	1330	1.48[1.20-1.82]	8.88%	0.01	ALT > 40 U/L	3	976	1.30[1.04-1.64]	0%	0
						ALT > 50 U/L	3	354	2.00 [1.39–2.87]	0%	0
Increased GGT
Increased ALP
Increased INR
Increased PT	2	345	1.97[1.41–2.76]	0%	0	PT > 16s	2	345	1.97 [1.41–2.76]	0%	0
Elevated CK–total	4	508	1.96[1.43-2.70]	9.52%	0.01	CK–total > 171 U/L	2	209	1.87[0.88-3.97]	54.89%	0.18
						CK–total > 185 U/L	1	191	1.78[1.09-2.91]
						CK–total > 190 U/L	1	108	1.56[0.47-5.23]
Elevated CK-MB	1	108	5.75[2.12-15.62]	-	-	CK-MB > 25 U/L	1	108	5.75[2.12-15.62]
Increased BUN	2	702	4.42[2.99-6.55]	45.89%	0.04	BUN ≥ 7.6 mmol/L	1	548	5.34 [3.63-7.85]
						BUN ≥ 8.3 mmol/L	1	154	3.58 [2.32–5.51]
Increased Creatinine	6	1235	2.92[2.35-3.62]	0%	0	Creatinine > 85 umol/L	1	548	2.99[2.35-3.62]
						Creatinine > 104 umol/L	1	55	2.61[1.36-4.98]

						Creatinine > 115 umol/L	1	154	2.88[2.02-4.10]
						Creatinine > 133 umol/L	3	478	3.19 [1.62-6.31]	42.97%	0.15
Increased Na ⁺	2	428	2.70 [2.00–3.64]	63%	0.03	Na ⁺ > 145 mmol/L	2	428	2.70 [2.00–3.64]	63%	0.03
Increased K ⁺	3	536	2.34[1.87-2.94]	9.45%	0.00	K ⁺ > 5 mmol/L	2	428	2.36[1.85-3.01]	24.03%	0.01
						K ⁺ > 5.4 mmol/L	1	108	2.20[0.57-8.54]	9.45%	0.00
Decreased K ⁺	3	536	0.99[0.43-2.29]	60.38%	0.33	K ⁺ < 3.5 mmol/L	2	428	0.70[0.22-2.27]	67.68%	0.52
						K ⁺ < 3.8 mmol/L	1	108	2.07 [0.69–6.23]
Elevated LDH	5	1222	5.37 [2.10-13.74]	80.61%	0.84	LDH > 245 U/L	3	345	4.19[0.85-20.66]	83.47%	1.59
						LDH > 250 U/L	1	548	13.10[3.26-52.66]
						LDH > 350 U/L	1	274	6.33[4.16-9.63]
Elevated Myoglobin	1	179	5.30 [2.36–11.92]	..	0	Myoglobin> 100 µg/L	1	179	5.30 [2.36–11.92]	..	0
Increased Uric acid
Elevated Cystatin C	1	108	1.75[0.41–7.50]	Cystatin C >1.2mg/L	1	108	1.75[0.41–7.50]
Elevated D–Dimer	9	2026	3.98[2.87-5.52]	65.13%	0.13	D–Dimer > 0.5mg/L	4	562	3.33[1.48-7.49]	63.45%	..
						D–Dimer > 1mg/L	3	847	4.82[3.29-7.07]	0%	0
						D–Dimer > 2mg/L	1	343	5.54[4.15-7.39]
						D–Dimer > 21mg/L	1	274	3.06[2.44-3.85]
Increased CRP	6	1338	5.49[1.72-17.51]	93.21%	1.59	CRP > 10 mg/L	1	108	6.22[0.83-46.36]
						CRP > 100 mg/L	5	1175	5.72[1.40-23.41]	95.68%	2.12
Elevated ESR	2	603	0.96[0.64-1.44]	0%	0	ESR>15 mm/h	2	603	0.96[0.64-1.44]	0%	0
Elevated Procalcitonin	8	1555	3.09[2.35-4.07]	53.89%	0.07	Procalcitonin >0.05 µg/L	3	810	4.45[3.19-6.21]	0%	0
						Procalcitonin >0.5 µg/L	4	690	2.21[1.13-4.33]	87.85%	0.35
						Procalcitonin >1 µg/L	1	55	2.67[1.45-4.90]
Increased Serum ferritin	1	191	5.6 [1.47–21.6]	S. ferritin > 300 µg/L	1	191	5.6 [1.47–21.6]
Increased SAA
Increased IL–1β	1	274	0.84 [0.38–1.83]	IL–1β > 5 ng/L	1	274	0.84 [0.38–1.83]
Increased IL–2	1	274	4.04 [2.18–7.49]	IL–2 > 710 U/L	1	274	4.04 [2.18–7.49]
Increased IL–6	2	503	22.59[3.19-160.03]	0%	0	IL–6 > 2.9 ng/L	1	229	12.66[0.79-202.89]
						IL–6 > 7 ng/L	1	274	40.13[2.53-636.24]
Increased IL–8	1	274	2.29 [1.51–3.45]	IL–8 > 62 ng/L	1	274	2.29 [1.51–3.45]
Increased IL–10	1	274	4.19 [2.56–6.84]	IL–10 > 9.2 ng/L	1	274	4.19 [2.56–6.84]
Increased TNF–Alpha	1	274	2.57 [1.46–4.52]	TNF–Alpha >8.1 ng/L	1	274	2.57 [1.46–4.52]
Increased NT–ProBNP	2	822	5.48 [3.78-7.34]	0%	0	NT–ProBNP > 285 ng/L	1	275	5.87[3.43-10.03]
						NT–ProBNP > 500 ng/L	1	548	5.136[3.07-8.60]
Elevated troponin	6	1006	4.49[3.74-5.38]	0%	0	hs Tn I > 15.6 ng/L	2	375	4.62[2.80-7.65]	52.63%	0.07
						hs Tn I > 26.2 ng/L	1	107	6.01[2.80-7.65]
						hs Tn I > 28 ng/L	1	191	4.29[3.05-6.05]
						Tn I > 50 ng/L	1	179	5.47[2.44-12.28]
						hs Tn I > 100 ng/L	1	154	4.28[2.91-6.29]

Abbreviations: ALP=Alkaline Phosphatase. ALT=Alanine Aminotransferase. AST=Aspartate Aminotransferase. BNP=Brain Natriuretic Peptide. BUN=Blood Urea Nitrogen. CK=Creatine Kinase. CRP=C-Reactive Protein. ESR=Erythrocyte Sedimentation Rate. GGT=Gamma-Glutamyl Transferase. IL=Interleukin. INR=International Normalized Ratio. K+=Potassium. LDH=Lactate Dehydrogenase. N =Neutrophil count. Na+=Sodium. NT-ProBNP=N-Terminal Fragment Brain Natriuretic Peptide. Plt count= Platelet count. OR=Odds ratio. PT=Prothrombin Time. RR=Risk ratio. T Bilirubin=Total Bilirubin. TLC=Total Leucocyte Count. TNF=Tumor Necrosis Factor.

*denotes presence of publication bias by Egger's test (p-value < 0.05).

Table 3: Association of laboratory parameters with disease severity in patients with COVID-19

Laboratory Parameters	Pooled Odds of Disease Severity					Lab Cut-offs	Pooled Odds of Disease Severity (based on cut-offs)				
	No. of Studies	No. of Patients	Pooled RR [95% CI]	Heterogeneity			No. of Studies	No. of Patients	Pooled OR [95% CI]	Heterogeneity	
				I ²	T ²					I ²	T ²
Decreased TLC	11	3074	0.84[0.52-1.37]	78.58%	0.46	TLC < 3.5 x10 ⁹ /L	4	548	0.70[0.37-1.33]	29.06%	..
						TLC < 4.0 x10 ⁹ /L	6	2482	0.89[0.43-1.82]	88.86%	0.67
						TLC < 5.0 x10 ⁹ /L	1	44	1.21[0.36-4.08]
Increased TLC	11	3353	3.70[2.31-5.93]	49.71%	0.27	TLC > 9.5 x10 ⁹ /L	4	548	2.94[2.31-5.93]	47.12%	0.47
						TLC >10.0 x10 ⁹ /L	6	1706	4.65[2.17-9.98]	63.09%	0.49
						TLC >11.0 x10 ⁹ /L	1	1099	2.54[1.43-4.52]
Decreased Neutrophil	2	689	0.33[0.19-0.58]	0%	0	N < 1.8 x10 ⁹ /L	1	141	0.95[0.10-8.97]
						N < 2 x10 ⁹ /L	1	548	0.31[0.17-0.55]
Increased Neutrophil	3	554	2.00[0.93-4.31]	52.14%	0.25	N > 6.3 x10 ⁹ /L	1	141	4.95[1.67-14.68]
						N > 6.5 x10 ⁹ /L	1	90	1.19[0.32-4.42]
						N > 7.5 x10 ⁹ /L	1	323	1.52[0.93-2.47]
Decreased Lymphocyte	7	2922	2.64[1.12-6.23]	87.02%	1.04	L < 0.8 x10 ⁹ /L	2	342	3.10[0.49-19.69]	83.84%	1.49
						L < 1.0 x10 ⁹ /L	1	476	4.04[2.59-6.31]
						L < 1.1 x10 ⁹ /L	2	638	1.77[0.09-33.23]	94.51%	4.23
						L < 1.5 x10 ⁹ /L	1	1143	8.56[0.44-165.38]
						L < 2.0 x10 ⁹ /L	1	323	1.84[1.12-6.23]
Decreased Platelet count	9	2691	2.39[1.72-3.34]	34.31%	0.13	Plt count < 100 x 10 ⁹ /L	3	592	2.27[1.08-4.78]	0%	0
						Plt count < 125 x 10 ⁹ /L	3	408	3.09[1.37-6.99]	45.21%	0.23
						Plt count < 150 x 10 ⁹ /L	3	1691	2.22[1.32-3.73]	67.23%	0.13
Decreased Albumin	2	663	5.63[1.45-21.87]	77.32%	0.77	Albumin < 35 g/L	1	548	3.19[2.22-4.57]
						Albumin < 40 g/L	1	115	13.07[3.68-46.40]
Increased Globulin	2	663	1.98[1.44-2.72]	0%	0	Globulin >30 g/L	1	115	1.67[0.77-3.64]	0%	0
						Globulin >35 g/L	1	548	2.05[1.44-2.90]	0%	0
Increased T· Bilirubin	5	2031	2.23[1.34-3.71]	23.14%	0.08	T. Bilirubin > 20 umol/L	5	2031	2.23[1.34-3.71]	23.14%	0.08
Increased AST	7	2624	4.85[2.52-9.34]	86.47%	0.62	AST > 40 U/L	7	2624	4.85[2.52-9.34]	86.47%	0.62
Increased ALT	7	2920	2.40[1.09-5.29]	89.03%	0.97	ALT > 40 U/L	4	2607	2.36[0.81-6.89]	97.33%	2.41
						ALT > 50 U/L	3	313	2.33[0.85-6.38]	0%	0
Increased GGT	1	115	1.42[0.44-4.55]	GGT > 57 U/L	1	115	1.42[0.44-4.55]
Increased ALP	1	115	6.07[1.05-35.03]	ALP > 120 U/L	1	115	6.07[1.05-35.03]
Increased INR	1	115	1.38[0.60-3.18]	INR > 1.15	1	115	1.38[0.60-3.18]
Increased PT	2	413	2.35[1.26-4.41]	0%	0	PT > 12.8s	1	90	1.65[0.58-4.67]
						PT > 14s	1	323	2.88[1.31-6.32]

Elevated CK-total	6	1733	3.11[1.74-5.55]	41.86%	0.21	CK-total > 190 U/L	3	359	3.73[1.97-7.07]	2.42%	0.01
						CK-total > 190 U/L	3	1374	2.87[1.03-8.00]	49.25%	0.42
Elevated CK-MB	4	794	1.41[0.42-4.67]	72.23%	1.02	CK-MB > 5 U/L	2	596	0.73[0.14-3.69]	77.79%	1.08
						CK-MB > 25 U/L	2	198	2.83[1.03-7.82]	0%	0
Increased BUN	2	871	4.06[2.71-6.07]	0%	0	BUN ≥ 7.6 mmol/L	1	548	4.77[2.75-8.29]
						BUN ≥ 8 mmol/L	1	323	3.37[1.87-6.09]
Increased Creatinine	8	2508	2.49[1.41-4.41]	21.59%	0.14	Creatinine > 87 umol/L	2	709	1.66[1.14-2.43]	0%	0
						Creatinine > 97 umol/L	2	225	5.88[0.63-54.73]	47.51%	1.33
						Creatinine > 133 umol/L	3	1251	3.81[1.4-10.11]	0%	0
						Creatinine > 144 umol/L	1	323	2.18[0.42-11.41]
Increased Na ⁺
Increased K ⁺	1	108	0.94[0.18-4.86]	K ⁺ > 5.1 mmol/L	1	108	0.94[0.18-4.86]
Decreased K ⁺	1	108	7.59 [2.67-21.60]	K ⁺ < 3.8 mmol/L	1	108	7.59 [2.67-21.60]
Elevated LDH	7	2425	3.77[1.95-7.30]	82.69%	0.61	LDH > 225 U/L	1	161	4.70[2.02-10.94]
						LDH > 243 U/L	1	115	5.90[2.33-14.95]
						LDH > 250 U/L	4	2105	2.92[0.95-8.93]	92.70%	1.18
						LDH > 300 U/L	1	44	6.29[1.60-24.73]
Elevated Myoglobin	1	273	4.57[2.05-10.17]	Myoglobin > 100 µg/L	1	273	4.57[2.05-10.17]
Increased Uric acid	1	90	3.28[0.52-20.77]	Uric acid > 417 umol/L	1	90	3.28[0.52-20.77]
Increased Cystatin C	1	108	2.14[0.66-6.88]	Cystatin C > 1.2mg/L	1	108	2.14[0.66-6.88]
Elevated D-Dimer	5	1985	2.75[1.92-3.93]	32.40%	0.05	D-Dimer > 0.25mg/L	2	230	3.44[1.48-8.02]	0%	0
						D-Dimer > 0.5mg/L	1	1099	1.94[1.27-2.97]
						D-Dimer > 1mg/L	2	656	3.33[2.37-4.69]	0%	0
Increased CRP	12	3375	3.32[1.92-5.71]	73.74%	0.55	CRP > 30 mg/L	3	595	1.82[0.63-5.24]	50.77%	0.45
						CRP > 50 mg/L	1	108	9.25[2.05-41.80]]
						CRP > 80 mg/L	2	301	14.43[3.89-53.50]	0%	0
						CRP > 100 mg/L	6	2371	2.92[1.55-5.51]	77.52%	0.43
Elevated ESR	1	548	1.68[1.13-2.49]	ESR > 20 mm/h	1	548	1.68[1.13-2.49]
Elevated Procalcitonin	8	2392	5.50[3.38-8.93]	38.70%	0.18	Procalcitonin > 0.05 µg/L	2	240	3.45[1.61-7.37]	0%	0
						Procalcitonin > 0.1 µg/L	2	275	6.34[1.58-25.38]	78.13%	0.79
						Procalcitonin > 0.5 µg/L	4	1877	6.97[3.12-15.58]	39.61%	0.26
Increased Serum ferritin	1	548	3.57 [2.12-6.01]	S. ferritin > 500 µg/L	1	548	3.57 [2.12-6.01]
Increased SAA	5	830	1.54[0.84-2.82]	19.73%	0.10	SAA > 1mg/L	1	121	0.92[0.43-2.01]
						SAA > 10mg/L	4	709	2.39[0.92-6.22]	27.08%	0.28
Increased IL-1β	1	548	0.62[0.37-1.02]	IL-1β > 5 ng/L	1	548	0.62[0.37-1.02]
Increased IL-2	1	548	2.60[1.63-4.14]	IL-2 receptor > 710 U/L	1	548	2.60[1.63-4.14]
Increased IL-6	3	778	3.30[0.73-14.93]	82.0%	1.38	IL-6 > 7 ng/L	3	778	3.30[0.73-14.93]	82.0%	1.38
Increased IL-8	1	548	1.83[0.79-4.27]	IL-8 > 62 ng/L	1	548	1.83[0.79-4.27]
Increased IL-10	1	548	1.62[0.98-2.67]	IL-10 > 9.2 ng/L	1	548	1.62[0.98-2.67]

Increased TNF-Alpha	1	548	1.90[1.20-3.03]	TNF-Alpha >8.1 ng/L	1	548	1.90[1.20-3.03]
Increased NT-Pro BNP	2	821	4.43[2.80-7.02]	0%	0	NT-Pro BNP > 500 ng/L	1	548	4.23[2.36-7.59]
						NT-Pro BNP > 900 ng/L	1	283	4.78[2.27-10.08]
Elevated troponin	2	596	3.04 [1.03-8.97]	77.67%	0.48	hs Tn I > 40 ng/L	2	596	3.04 [1.03-8.97]	77.67%	0.48

Abbreviations: ALP=Alkaline Phosphatase. ALT=Alanine Aminotransferase. AST=Aspartate Aminotransferase. BNP=Brain Natriuretic Peptide. BUN=Blood Urea Nitrogen. CK=Creatine Kinase. CRP=C-Reactive Protein. ESR=Erythrocyte Sedimentation Rate. GGT=Gamma-Glutamyl Transferase. IL=Interleukin. INR=International Normalized Ratio. K+=Potassium. LDH=Lactate Dehydrogenase. N =Neutrophil count. Na+=Sodium. NT-ProBNP=N-Terminal Fragment Brain Natriuretic Peptide. Plt count= Platelet count. OR=Odds ratio. PT=Prothrombin Time. RR=Risk ratio. T Bilirubin=Total Bilirubin. TLC=Total Leucocyte Count. TNF=Tumor Necrosis Factor.

*denotes presence of publication bias by Egger's test (p-value < 0.05).

Table 4: Association of clinical parameters expressed as continuous variables with mortality and disease severity in patients with COVID-19 by meta-regression

Variable	Mean increase of the variable	No. of studies	No. of patients	Percentage change in mortality [95% CI]	p-value	No. of studies	No. of patients	Percentage change in severe disease [95% CI]	p-value
Age	10 years	41	20296	7.6 [1.0, 14.2]	0.02	70	17799	11.3 [6.5, 16.2]	<0.001
Hb	1g/L	12	2519	1.1 [-1.4, 3.6]	0.41	13	3013	-1.1 [-1.6, -0.5]	0.002
TLC	1x10 ⁹ /L	20	9797	5.4 [0.2, 10.6]	0.04	28	5370	15.2 [6.23, 24.18]	<0.001
Lymphocyte count	0.1x10 ⁹ /L	24	10097	-4.1 [-7.4, -0.8]	0.02	31	5696	-17.3 [-35.9, 1.3]	0.07
Neutrophil count	1x10 ⁹ /L	14	8930	10.5 [0.5, 20.6]	0.04	22	3586	9.8 [0.5, 19.1]	0.04
Platelet count	50 x 10 ⁹ /L	14	3120	-18.8 [-41.6, 3.85]	0.10	15	3190	0.1 [-0.4, 0.51]	0.82
Prothrombin time	1 s	16	3277	3.3 [-4.2, 10.8]	0.39
aPTT	1 s	12	2651	1.0 [-0.9, 3.0]	0.24
CRP	100 mg/L	19	3974	6.1 [3.3, 8.9]	<0.001	27	4517	5.0 [2.9, 7.0]	<0.001
D-dimer	1mg/L	15	3621	21.6 [7.0, 36.4]	<0.01	21	3387	2.9 [0.1, 5.8]	0.04
Pro-calcitonin	0.1 mg/L	10	2349	4.5 [-19.3, 28.5]	0.71	19	2725	8.5 [-1.5, 18.4]	0.09
Serum LDH	100 U/L	13	2682	9.1 [2.4, 15.8]	0.01	12	1666	-0.02 [-0.1, 0.1]	0.52
Serum creatinine	10 µmol/L	19	3817	0.2 [-0.4, 0.7]	0.51	18	3062	9 [0.7, 17.5]	0.03
BUN	1 mmol/L	14	2979	5.3 [0.5, 10.2]	0.03
Total Bilirubin	1 µmol/L	12	2191	2.6 [-0.2, 5.5]	0.07	13	8040	-2.0 [-6.8, 2.7]	0.41
Albumin	10 g/L	12	1986	-4.1 [-22.9, 14.6]	0.67	12	7789	-5.0 [-7.2, -2.8]	<0.001
AST	10 U/L	15	8927	1.7 [-0.9, 4.4]	0.19	18	8395	-1.9 [-14.6, 10.8]	0.77
ALT	10 U/L	19	9664	2.6 [-1.2, 6.4]	0.18	20	8836	7.4 [-7.6, 22.5]	0.33
CK-total	10 U/L	10	2051	1.6 [0.02, 3.1]	0.04	12	2331	-0.3 [-0.7, 0.2]	0.31
IL-6	10 ng/L	13	2404	1 [-0.2, 3]	0.09

Abbreviations: ALT=Alanine Aminotransferase. aPTT=activated Partial Thromboplastin Time. AST=Aspartate Aminotransferase. BUN=Blood Urea Nitrogen. CK=Creatinine Kinase. CRP=C-Reactive Protein. Hb=Hemoglobin. IL=Interleukin. LDH=Lactate Dehydrogenase. TLC=Total Leucocyte Count.

Figure 1: Study selection

Figure 2: Meta-analysis to assess risk of mortality for (A) smoking status. (B) hypertension. (C) diabetes mellitus. (D) COPD. (E) acute cardiac injury. (F) acute kidney injury. (G) bilateral lung involvement. (H) Lung consolidation.

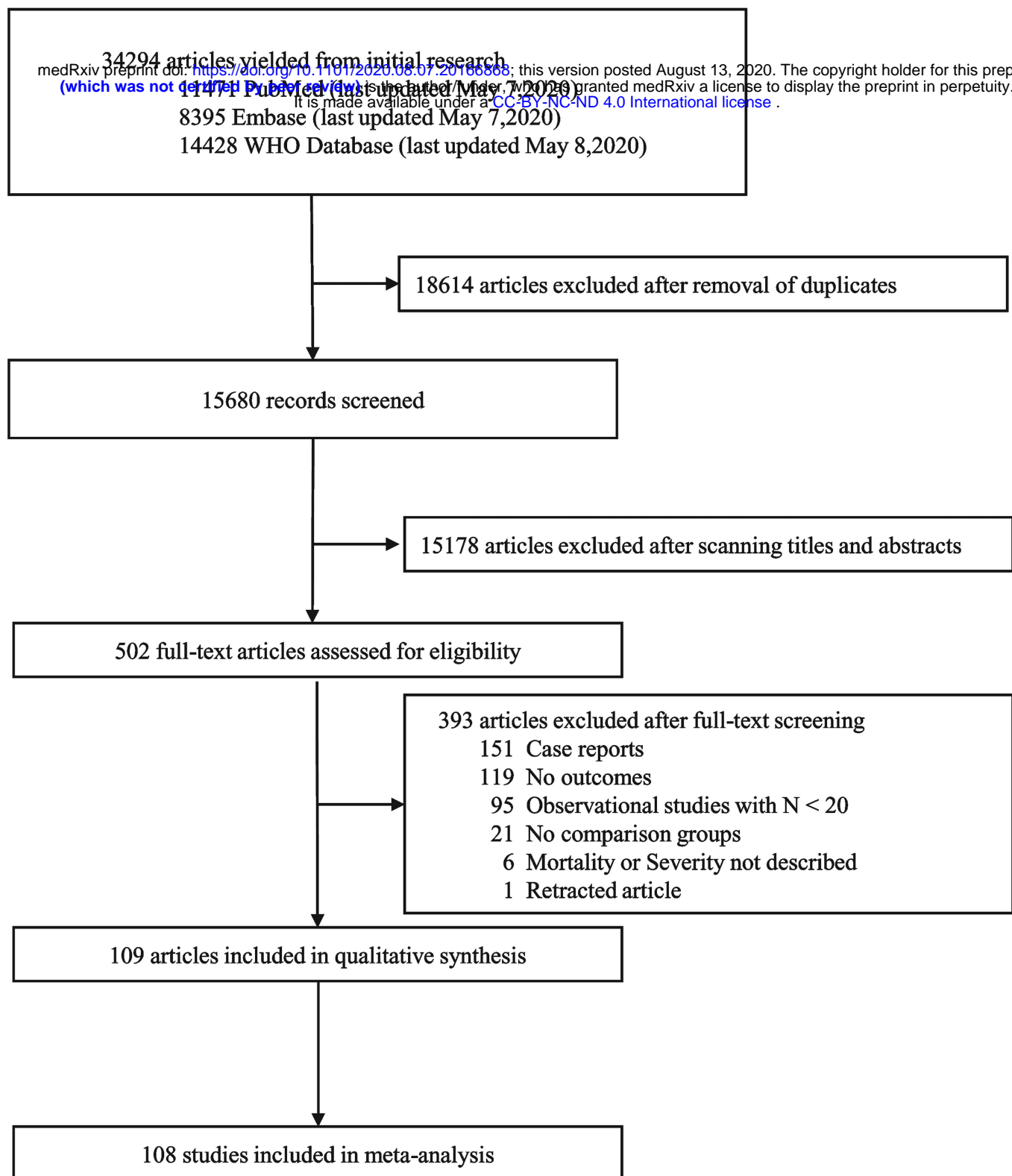
COPD = chronic obstructive pulmonary disease. !Shenzhen Third People's Hospital, Shenzhen, China. #Tongji Hospital, Wuhan, China. \$Wuhan Jinyintan Hospital, Wuhan, China. *Zhongnan Hospital of Wuhan University, Wuhan, China. %Tianyou Hospital, Wuhan, China. &Taizhou Public Health Medical Center, Zhejiang, China. +Chongqing Three Gorges Central Hospital, Chongqing, China. @Renmin Hospital of Wuhan University, Wuhan, China. ^General Hospital of Central Theater Command of People's Liberation Army, Wuhan, China

Figure 3: Meta-analysis to assess odds of severe disease for (A) smoking status (B) hypertension (C) diabetes mellitus (D) COPD E. bilateral lung involvement (F) Lung consolidation.

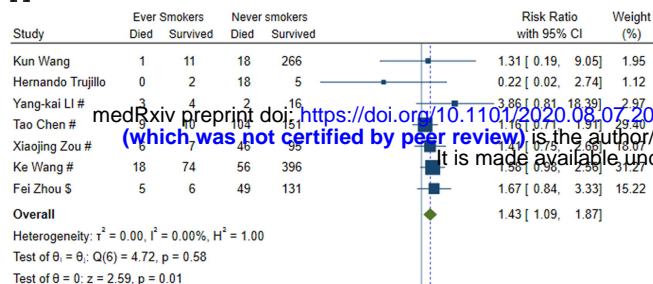
COPD = chronic obstructive pulmonary disease. !Shenzhen Third People's Hospital, Shenzhen, China. # Tongji Hospital, Wuhan, China. \$Wuhan Jinyintan Hospital, Wuhan, China. *Zhongnan Hospital of Wuhan University, Wuhan, China. %Tianyou Hospital, Wuhan, China. &Central hospital of Wuhan, Wuhan. +Chongqing Three Gorges Central Hospital, Chongqing, China. @Renmin Hospital of Wuhan University, Wuhan, China. ^General Hospital of Central Theater Command of People's Liberation Army, Wuhan, China

Figure 4: Meta-regression plot showing the proportion increase in mortality among COVID-19 patients regressed against (A) mean age. (B) mean leukocyte count. (C) mean lymphocyte count. (D) mean serum albumin. (E) mean C-reactive protein. (F) mean D-dimer.

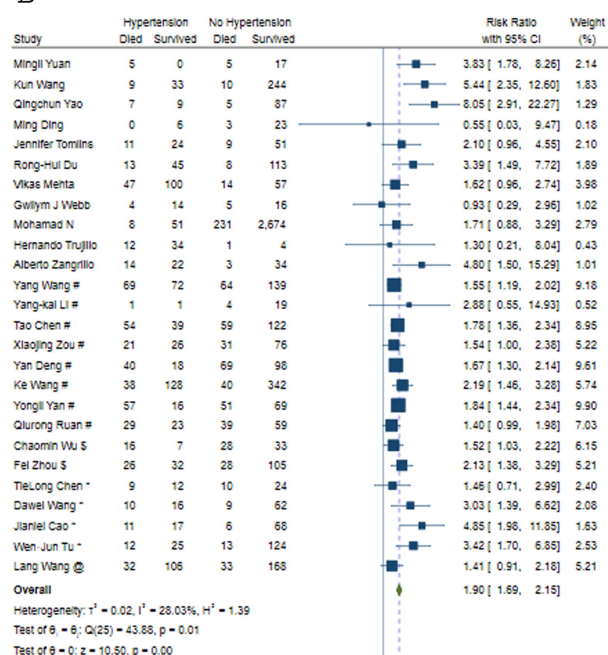
Figure 5: Meta-regression plot shows the proportion increase in severity among COVID-19 patients regressed against (A) mean age. (B) mean leukocyte count. (C) mean lymphocyte count. (D) mean serum albumin. (E) mean C-reactive protein. (F) mean D-dimer.



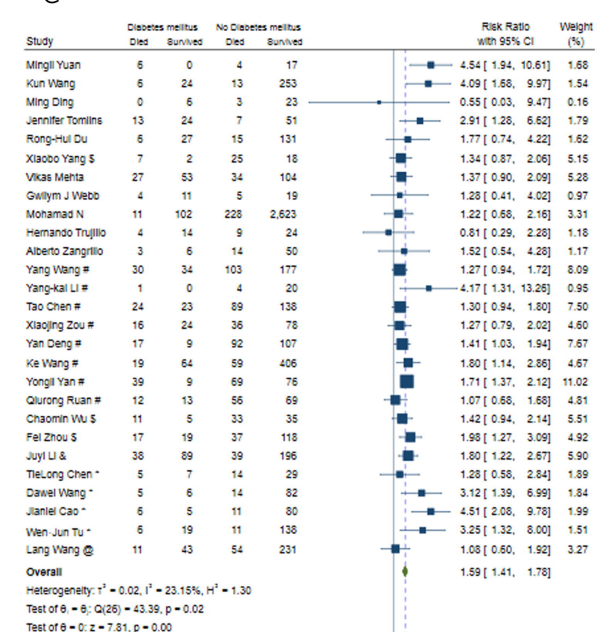
A



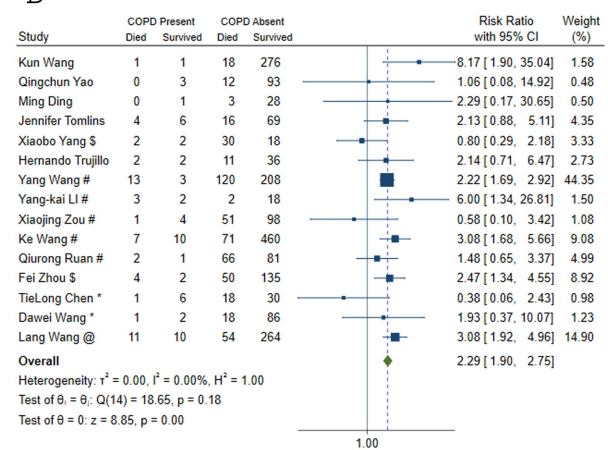
B



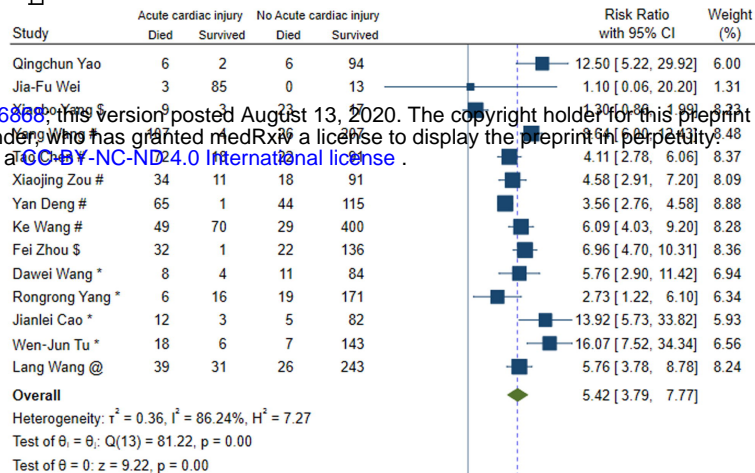
C



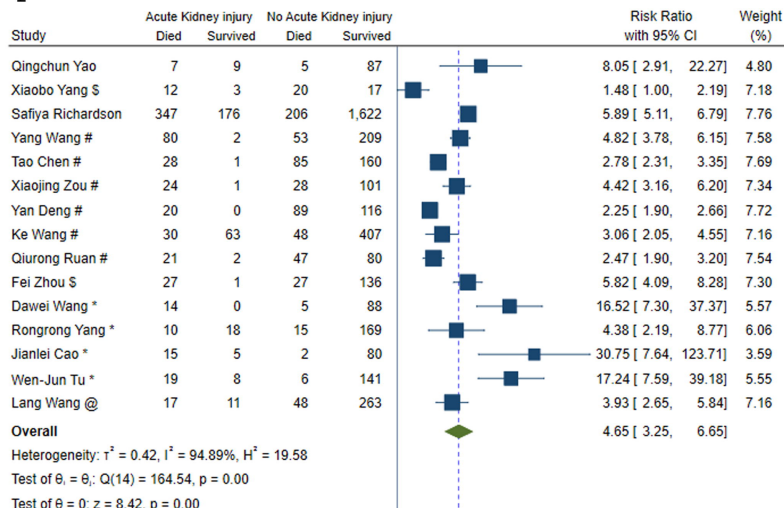
D



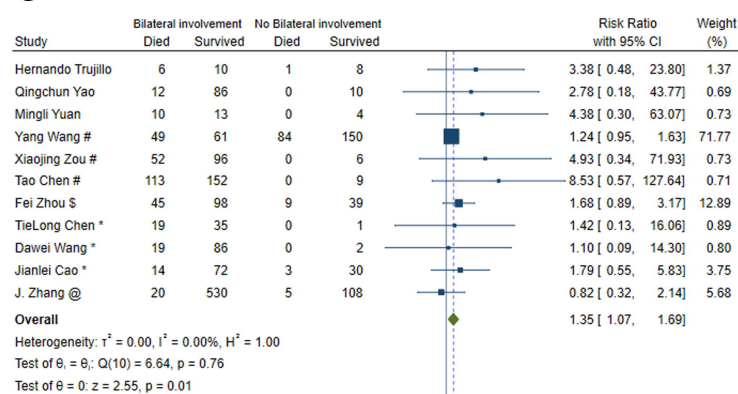
E



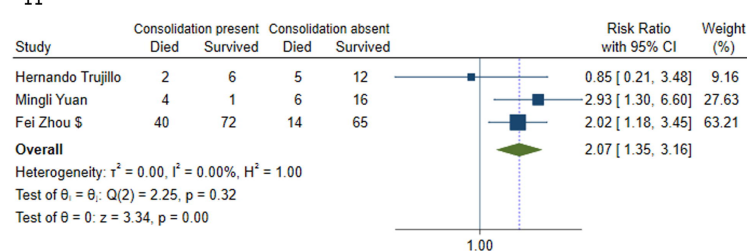
F

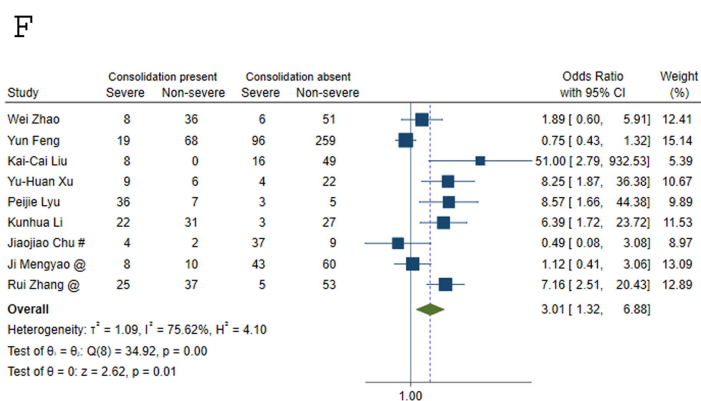
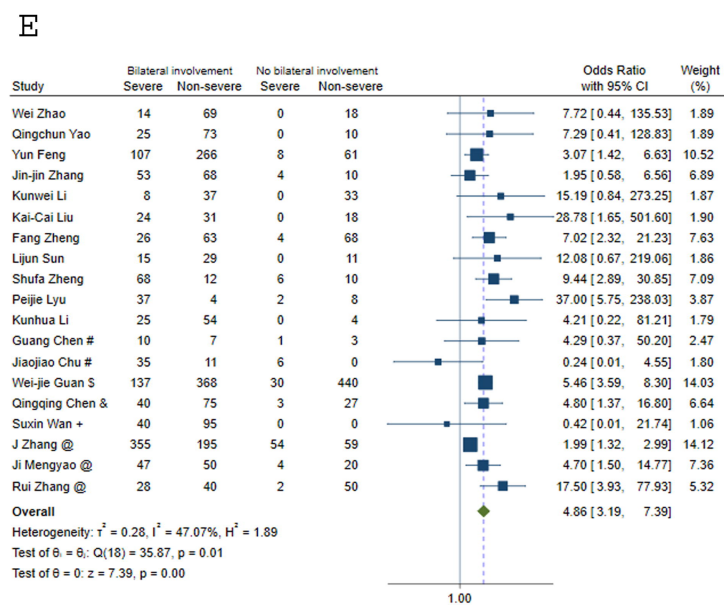
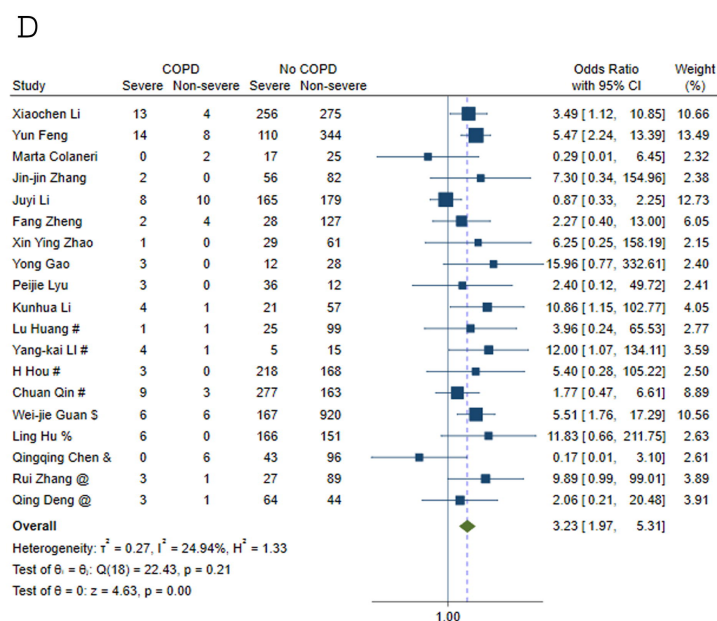
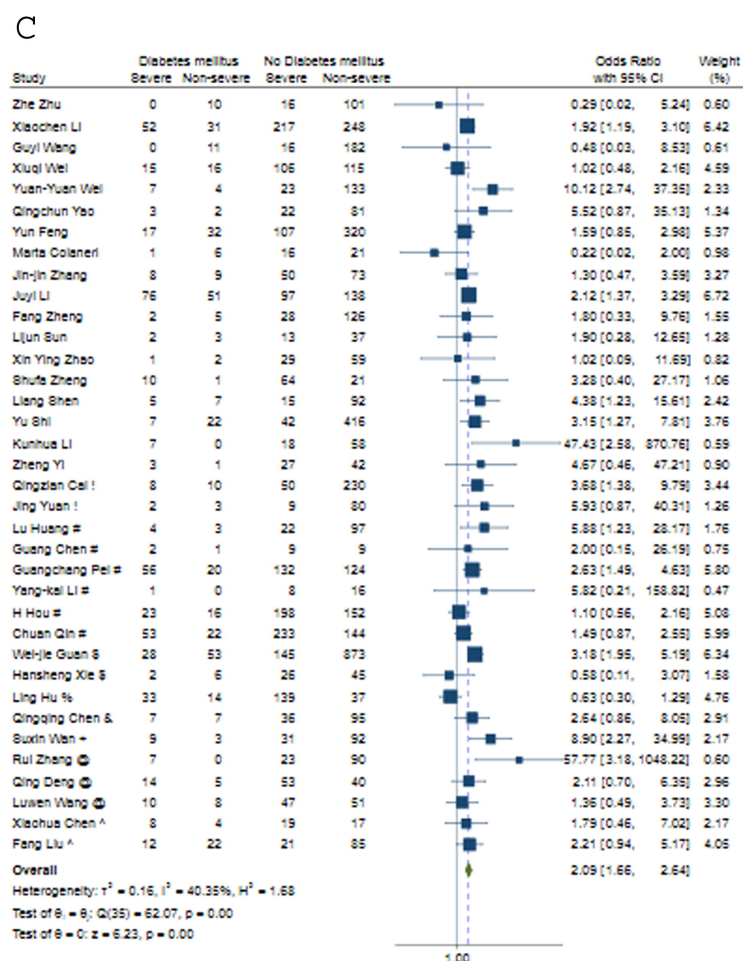
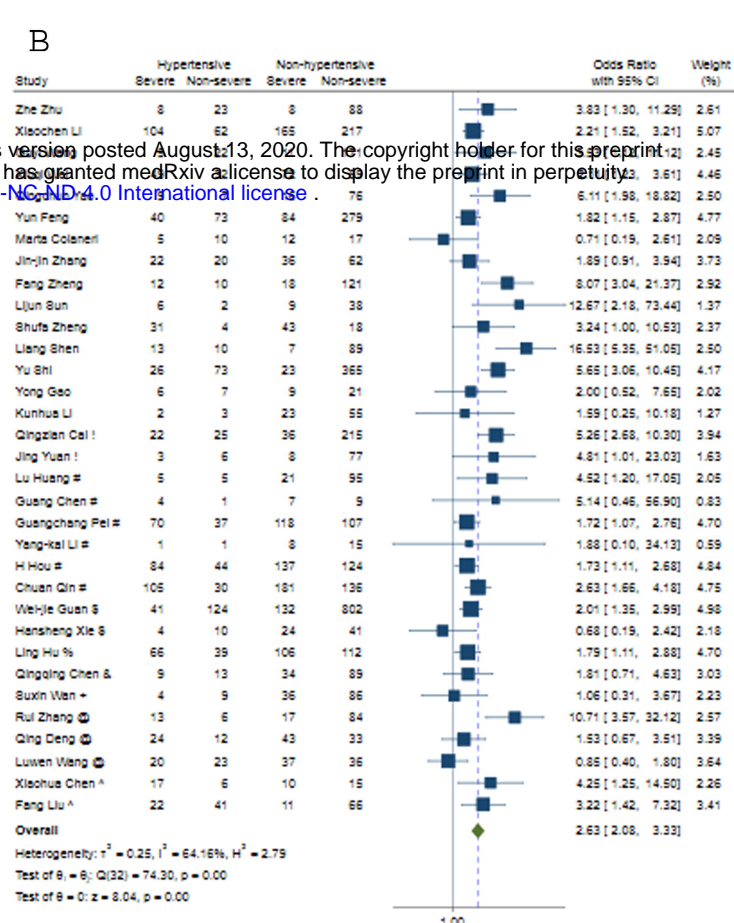
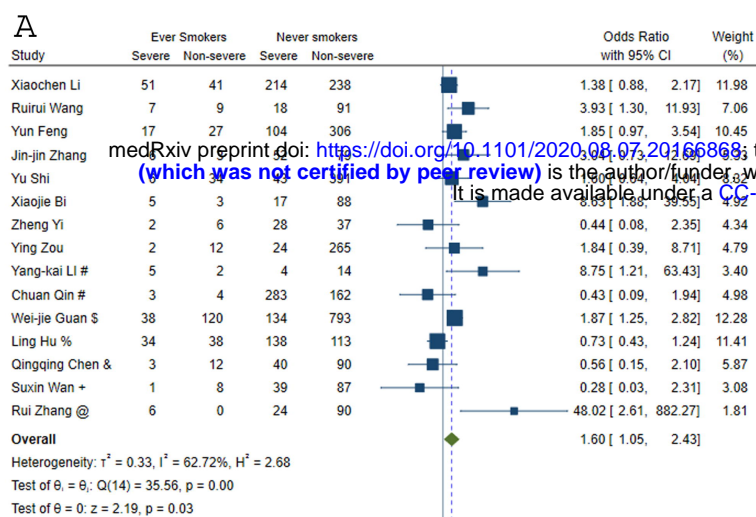


G

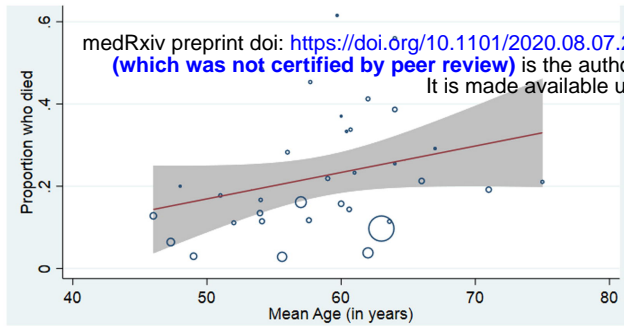


H

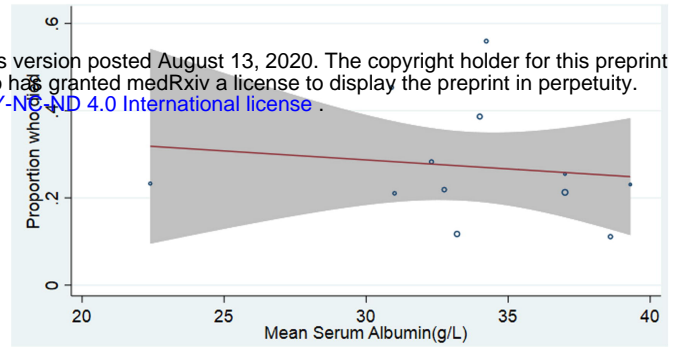




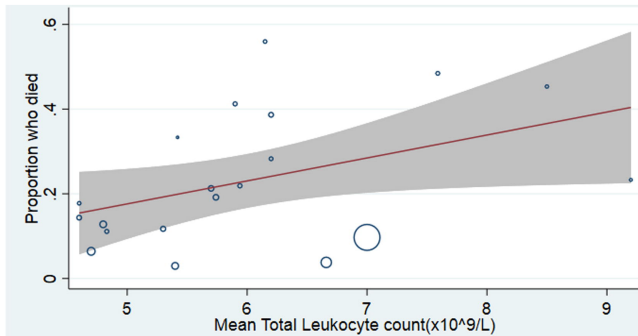
A



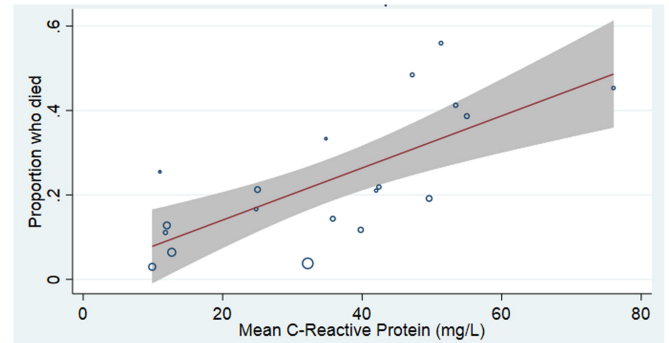
D



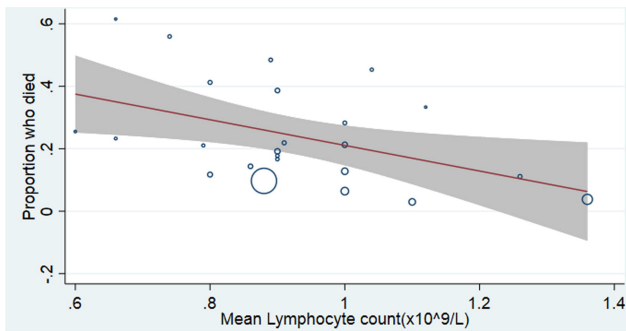
B



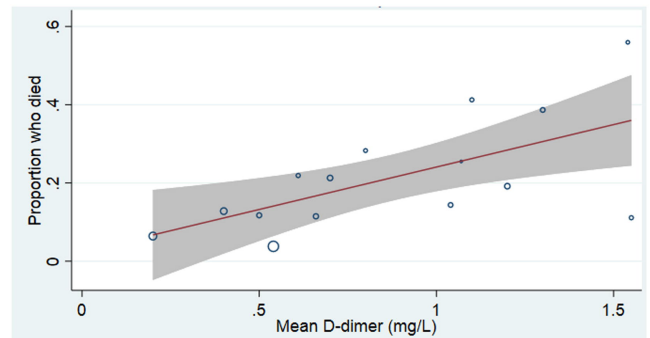
E



C



F

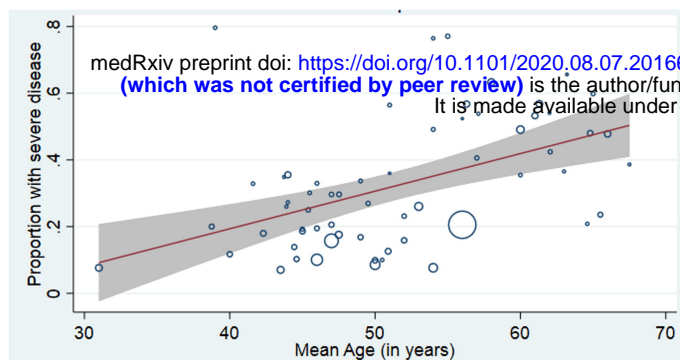


95% CI • Studies

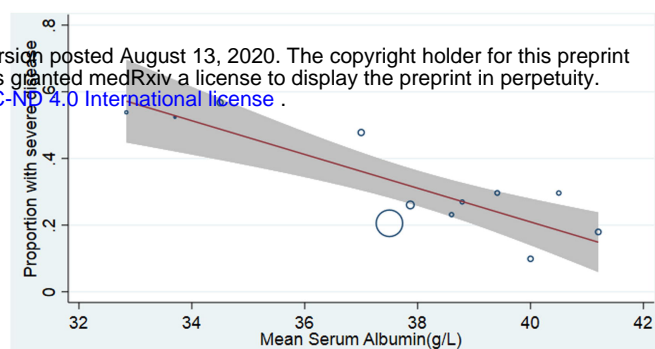
— Linear prediction

Weights: Inverse-variance

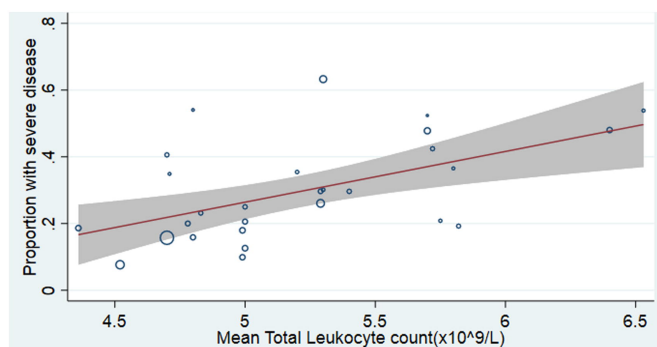
A



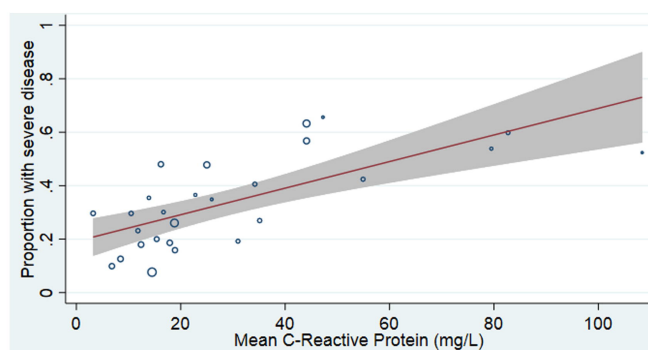
D



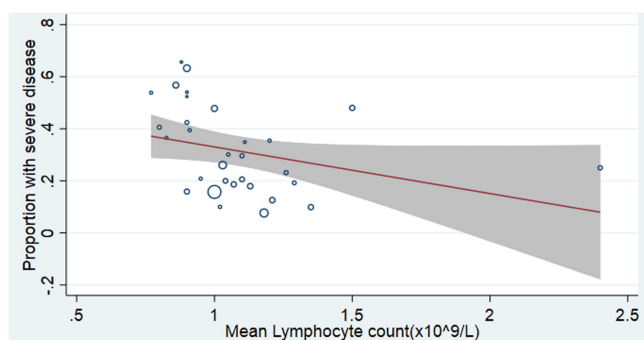
B



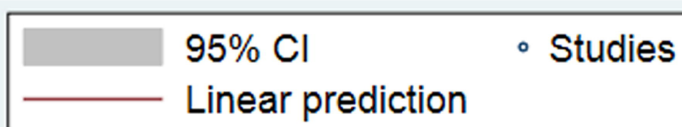
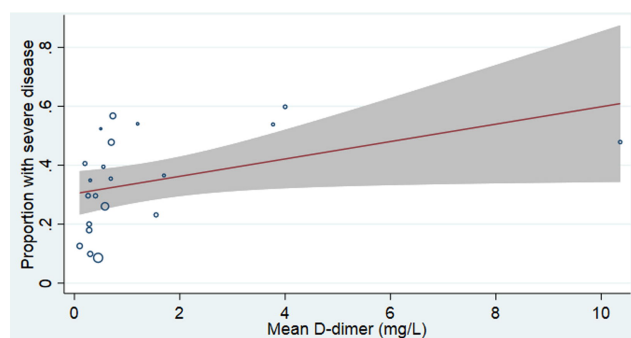
E



C



F



Weights: Inverse-variance