

Title

Comparative Effectiveness Study of Home-Based Interventions
to Prevent CA-MRSA Infection Recurrence

Authors

Jonathan N. Tobin, PhD^{1,2}

Suzanne Hower, PhD¹

Brianna M. D'Orazio, MPH¹

María Pardos de la Gándara, MD, PhD^{2,3}

Teresa H. Evering, MD, MS^{2,6}

Chamanara Khalida, MD, MPH¹

Rhonda G. Kost, MD²

Kimberly S. Vasquez, MPH²

Hermínia de Lencastre, PhD^{4,5}

Alexander Tomasz, PhD⁴

Barry S. Collier, MD²

Roger Vaughan, MS, DrPH²

¹Clinical Directors Network, Inc. (CDN) (New York, NY)

²The Rockefeller University Center for Clinical and Translational Science (New York, NY)

³Institut Pasteur (Paris, France)

⁴The Rockefeller University Laboratory of Microbiology and Infectious Diseases (New York, NY)

⁵Instituto de Tecnologia Química e Biológica (ITQB/UNL), Oeiras, Portugal

⁶Weill Cornell Medicine Medicine (New York, NY)

RUNNING TITLE: Home-based Interventions to Prevent CA-MRSA Infection Recurrence

CORRESPONDING AUTHOR: Jonathan N. Tobin, PhD, Clinical Directors Network, Inc. (CDN)

and The Rockefeller University Center for Clinical and Translational Science (New York, NY)

FUNDING SOURCE: PCORI Contract Number CER-1402-10800

WORD COUNT: 3483

BACKGROUND: Recurrent skin and soft tissue infections (SSTI) caused by Community-Associated Methicillin-Resistant (CA-MRSA) or Methicillin-Sensitive *Staphylococcus aureus* (CA-MSSA) present treatment challenges.

OBJECTIVES: Can an evidence-based intervention (CDC Guidelines, topical decolonization, surface decontamination) reduce SSTI recurrence, mitigate household contamination and transmission, and improve patient-reported outcomes?

DESIGN: Randomized trial

SETTING: Community settings

PARTICIPANTS: Participants (n=186) with confirmed MRSA(+)/MSSA(+) SSTIs and household members.

INTERVENTION Community Health Workers/Promotoras conducted home visits and provided participants with instructions, a five-day supply of mupirocin for nasal application, chlorhexidine for body cleansing, and disinfecting wipes for household cleaning (EXP) versus Usual Care (UC).

MEASUREMENTS: Primary outcome was six-month SSTI recurrence recorded in electronic health records (EHR). Home visits (months 0/3) and telephone assessments (months 0/1/6) collected self-report data. Surveillance culture swabs (nares, axilla, groin) were obtained from index patients and participating household members. Secondary outcomes included household surface contamination, household member colonization and transmission, quality of life and satisfaction with care.

RESULTS: Among patients with SSTIs (n=421), 44.2% were MRSA(+)/MSSA(+); an intent-to-treat analyses (n=186) demonstrated no significant differences in SSTI recurrence (OR: 1.4, 95% CI: 0.51-3.5). Among the enrolled cohort (n=119), there were no significant SSTI recurrence effects (OR=1.14, 95% CI=0.35-3.6). EXP participants showed reduced but non-significant colonization rates. There were no differential reductions in household member transmission or in reductions in

proportions of households with ≥ 1 contaminated surface. Mupirocin resistance did not increase. No significant improvements for patient-reported outcomes were seen.

LIMITATIONS: A lower-than-predicted six-month recurrence rate may have limited the ability to detect effects.

CONCLUSION: This intervention did not reduce clinician-reported MRSA/MSSA SSTI recurrence. No differences were observed for household members decolonization or household surfaces decontamination.

Methicillin-Resistant *Staphylococcus aureus* (MRSA) causes multi-drug resistant infections that pose serious clinical and public health challenges. Skin and soft tissue infections (SSTIs) (1, 2) caused by MRSA carry significant morbidity and mortality, and impact patients, families, caregivers, and health-care institutions (3, 4). While studies comparing protocols for reducing healthcare-associated MRSA (HA-MRSA) infections (5) exist, those adapted for community-associated MRSA (CA-MRSA) (6) SSTIs have provided mixed results (7-12). CA-MRSA SSTIs commonly affect healthy, young individuals without exposure to healthcare risk factors or contacts (13).

Most CA-MRSA SSTIs are treated successfully in ambulatory care. However, treatment failure may result in risk of exposure and transmission to household and community members (10, 14-18). Even when primary treatment is successful, recurrent infections are common, ranging from 16% (14, 19, 20) to 43% (9, 21). Little research has examined the feasibility and effectiveness of implementing evidence-based interventions in primary care settings (22). This trial tested two community-based interventions: (1) Usual Care (UC): CDC-Guidelines directed care (incision and drainage (I&D) and antibiogram-selected oral antibiotics (versus (2) Experimental (EXP): UC combined with universal household decolonization and environmental decontamination interventions based on the REDUCE MRSA Trial (5, 23, 24), provided in the home by Community Health Workers (CHW)/Promotoras. We evaluated the comparative effectiveness on SSTI recurrence rates (primary outcome) and household contamination, household member colonization and transmission, and patient-centered measures (pain, depression, quality of life, and care satisfaction) (secondary outcomes) using a two-arm 1:1 randomized controlled trial (RCT). We hypothesized that participants assigned to EXP would experience fewer SSTI recurrences compared to UC.

METHODS

This RCT included practicing clinicians, patients, clinical and laboratory researchers, NY-based Federally Qualified Health Centers (FQHCs) and community hospital Emergency Departments (EDs). The stakeholder research collaborative expands an earlier partnership, the Community-Acquired MRSA Project (CAMP1) which developed research to address CA-MRSA (25-29). The study was approved by Institutional Review Boards at Clinical Directors Network and Rockefeller University.

Study Setting

Three NYC FQHCs and three EDs recruited participants presenting with an SSTI with culture-positive MRSA or MSSA.

Participants

Inclusion/Exclusion Criteria: Participants included were: (1) between 7-70 years, (2) fluent in English or Spanish, (3) planning to receive follow-up care at the FQHC or ED, (4) presenting with SSTI signs/symptoms, (5) had laboratory-confirmed baseline wound culture positive for MRSA or MSSA (also a significant cause of SSTIs; (6) willing/able to provide informed consent, and (7) willing to participate in two home visits. Participants were excluded if they were: (1) unwilling to provide informed consent, (2) acutely ill or visibly distressed (for example, crying, wheezing, bleeding, screaming or shaken), and/or (3) unable to participate in home visits or in a discussion about the study.

Study Protocol

Screening: Patients seeking care for an SSTI were identified via the site's electronic health record (EHR) or clinical dashboard. CHWs flagged patients for treating clinicians to determine eligibility.

Procedures: Recruitment, informed consent, and baseline clinical assessments were conducted by trained CHW/Promotoras with clinicians and FQHC/ED staff. Following written informed consent, clinicians conducted baseline clinical assessments and collected wound cultures. Wound and surveillance (nasal, axilla, and groin) cultures were sent to one commercial clinical laboratory (BioReference) for culture, antibiotic susceptibility testing, and speciation. Additional molecular epidemiologic testing was carried out by Rockefeller’s Laboratory of Microbiology and Infectious Diseases (27) Mupirocin susceptibility was tested using E-test strips (bioMérieux, Durham, NC) following CLSI recommendations (30).

All participants received clinician-directed standard-of-care treatment, including I&D and/or oral antibiotics. If I&D was performed, a sample of purulent drainage material was obtained; if I&D was not indicated, the clinicians took a swab of the wound or, if the wound was weeping or draining, obtained purulent material. During the same visit, on-site CHW/Promotoras scheduled the home visit. If a CHW/Promotora or other research staff member was not present, per “warm hand off” procedures (31), clinical staff informed participants that a CHW/Promotora would telephone them.

When culture lab results became available (2-3 days later), medical staff disclosed MRSA/MSSA status. CHW/Promotoras then called each participant to inform them of eligibility. For those with MRSA+ or MSSA+ SSTIs, CHW/Promotoras confirmed the baseline telephone interview appointment and baseline home visit.

Assessments

Baseline Assessments: Supplement Figures 1a and 1b detail the full assessment protocol. A Baseline Telephone Questionnaire including demographics, medical history, comorbidity, social, occupational and environmental exposures, household composition and patient-centered outcomes (Supplement Table 1) was administered in English or Spanish.

The Baseline Home Visit Assessment (T1) captured: (1) consenting household members' demographics, comorbidities, SSTI history, and index patient and household member personal hygiene, (2) household sharing behaviors, (3) collection and retrieval of self-sampled surveillance cultures from the index patient and consenting household member, (4) census of the numbers of rooms, household inhabitants and regular visitors, (5) 13 samples obtained from high touch/high traffic household environmental surfaces (see figure 3a) using ESwabs™ (Copan Diagnostics, Inc., Murrieta, CA).

CHWs/Promotoras oversaw participants' and household members' self-sampling of nares, inguinal folds, and axillae. Prior to randomization, participants received the educational pamphlet, "Living with MRSA", available in English and Spanish (32).

Follow Up Assessments: Home visits occurred at three-months (T3). Interim telephone assessments at one-month (T2) and six-month follow-up (T4) were conducted (Supplement Figure 1a). Reviews of EHRs were conducted at T4 to record SSTI recurrence (i.e., one or more discrete clinical SSTI(s) at the same or new site in addition to the baseline infection during the six months following trial enrollment). Patient-reported SSTI recurrence was also recorded. While we had planned to combine SSTI recurrence data from EHR and self-reports, participants' self-reports had poor concordance with EHR-based clinician reports, so we limited the main analysis to clinician-documented SSTI recurrence.

Randomization: After baseline questionnaires and household sampling data were collected, and while still at the home, CHWs/Promotoras opened a sealed opaque envelope containing the computer-generated randomization (1:1), overseen by the offsite, blinded study statistician (JCdR). Participants were not stratified during randomization based on recruitment site or pathogen (MRSA or MSSA). If

randomized to UC, the CHW/Promotoras explained the timeline for remaining assessments and concluded the visit. No further intervention materials were provided to UC.

Interventions: Modeled on the REDUCE MRSA trial (5), EXP received CDC and Infectious Disease Society of America guidelines-directed usual care (23, 33) combined with universal household decolonization and environmental decontamination educational interventions (5) and materials from CHWs/Promotoras. They received detailed verbal, written, and demonstrated instructions of the five-day protocol of twice-daily application of mupirocin ointment to the anterior nares with a clean cotton applicator (34), once-daily Hibiclens[®] (chlorhexidine gluconate solution 4% w/v) whole body wash (9, 12, 23, 35-37), and household decontamination instruction including: (1) proper handwashing technique, (2) laundering bed linens and pillows in warm water every other day, and (3) disinfection of “high touch” environmental surfaces with disposable disinfecting wipes (33, 38).

Retention and Withdrawal: Participants who withdrew were asked to provide reason(s) for withdrawal (see CONSORT Diagram, Figure 1. We attempted to reach all participants until the trial completion date.

Sample Size Calculations and Power

Sample size estimation was based on SSTI recurrence rate from CAMP1, where 33.3% experienced an recurrence during the six months following their index SSTI (28); previous studies of HA-MRSA reported reductions between 30% and 55% (39-41) To achieve 80% power at 5% significance level in a two-sided Chi Square/Fisher’s Exact test for recurrence at 6-month follow-up, estimated sample size requirement was 120 participants (60 per group).

Analytical and Statistical Approaches

Chi-square tests were applied for comparison of proportions and *t*-tests were used for continuous quantitative variables. All primary main effects outcomes analyses (n=186) were

evaluated according to “Intent-to-Treat” (ITT). Subsequent planned analyses included patients who completed the baseline home visit (n=119, “analysis cohort”) and pre-specified subgroups. Logistic regression and generalized linear mixed effect models were used for hypothesis testing. All analyses were conducted with SAS (Version 9.3) or R (Version 3.0).

Missing Data/Sensitivity Analyses

Although we observed a small proportion of missing data, data were assumed to be “missing not at random” (MNAR) so we used a sensitivity approach rather than multiple imputation. No meaningful or statistically significant differences were revealed between the original versus sensitivity analysis results.

Role of Funding Source

The trial was funded by Patient-Centered Outcomes Research Institute (PCORI). PCORI scientific staff played no role in study design and conduct, and were actively involved in the preparation of the final report.

RESULTS

Baseline Comparisons: Experimental versus Usual Care

A total of 602 patients were assessed for eligibility (Figure 1; 115 from FQHCs and 487 from EDs), of whom 421 (86.4%) provided informed consent, and 186 (44.2%) tested positive for MRSA or MSSA, and were invited to complete the baseline home visit (i.e., “intent-to-treat cohort”). Of 186 eligible consented participants, 120 (65%), completed baseline home visits.

Patients who did (n=120) and did not (n=66) complete the baseline home visit were similar (Supplement Table 2), with equal proportions undergoing I&D (60.7%). Both groups exhibited similar dermatologic symptoms, with no differences in lesion location, size, type, purulence, or signs/symptoms of SSTIs (Supplement Table S2). We also compared those who completed the

allocated intervention and had 6-month follow-up data (n=92) to those who received the allocated intervention but did not complete the 6-month follow-up survey (n=28, Supplement Table S3). Rates of I&D, MRSA/MSSA, and recruitment source (FQHC vs ED) were similar.

No statistically significant differences were detected between EXP and UC in baseline demographics, comorbidity, baseline occupational or environmental or social exposures (Tables 1a-1c) or in the proportion of household members who participated in the study: 64.1% of household members provided surveillance cultures (EXP=67.5%, UC=60.2%, $p=0.34$; see Figure 4). About half (52.5%) spoke English as their primary language and 36.4% spoke Spanish as their primary language. Microbiological and dermatologic characteristics, and health care utilization were similar, (Supplement Table S4) but MRSA+ wounds were more common among patients randomized to EXP (66.1%) as compared to UC (32.1%, $p=0.0004$).

SSTI Recurrence

We used logistic regression analyses to detect treatment group differences on EHR-documented SSTI recurrence at six-month follow-up (Table 2). We conducted initial main effects analysis using all randomized subjects (n=186, “intent-to-treat cohort”). Based on the sensitivity analysis, we conducted all further analyses using completed cases (n=119, “analysis cohort”). The ITT analysis demonstrated no significant differences in infection recurrence between EXP (11.1%) and UC (10.7%; OR=1.4, 95% CI=0.51-3.5). Likewise, when examining the analysis cohort, there were no statistically significant differences between EXP and UC on EHR-documented SSTI recurrence: 11.1% of EXP vs 10.7% of UC had a documented SSTI recurrence (OR=1.14, 95% CI=0.35, 3.6; Table 2).

Differences in SSTI recurrence based on self-report (Table 2) showed a trend in the opposite direction: EXP reported a greater recurrence rate at 6 months (22.2%) than UC (7.5%, OR = 3.5 95%

CI=0.89, 13.8). Given the differences between EHR-documented and self-reported recurrence we examined concordance by treatment group and by baseline wound characterization. 15.4% of participants with a self-reported SSTI recurrence also had a documented clinical SSTI recurrence. Retrospective self-report of pre-study infections found 30.5% of participants reported ≥ 1 prior SSTI, whereas 90.7% of participants had documented pre-study SSTIs in their EHRs, indicating poor concordance between EHR and self-report.

The ITT analysis resulted in similar trends when restricted to the enrolled analysis cohort. We also added one additional unplanned analysis comparing the EHR-measured 6 month SSTI outcome with an “observation only control group” (n=66) comprised of eligible individuals with a confirmed MRSA+/MSSA+ wound culture who had initially consented to participate, but did not complete the baseline home visit, so their randomization assignment was never disclosed to these participants or study staff (Supplement Table 2). These participants did not receive any intervention or assessment beyond what was extracted from the EHR, and had no further interactions with research staff, although they continued to receive care where they were recruited. The observed prospective SSTI recurrence rate at 6 month EHR review for the “observation only control group” (10.5%) was similar to those of the EXP (11.1%) and UC (10.7%) groups.

Index Patient Colonization

Index patient colonization (nares, axilla, and groin) was measured at baseline and three months. Similar baseline colonization rates were observed: nares (EXP = 41.3% vs UC = 32.1%), axilla (EXP = 34.9% vs UC = 32.1%), groin (EXP = 49.2% vs UC = 44.6%; Figure 2a). *S. aureus* was recovered at baseline from at least one site (Figure 2b) in most patients (EXP = 74.6 % vs UC = 66.1%). While most patients were colonized at one site (EXP = 34.9 % vs UC = 35.7%), some were colonized at two (EXP = 28.6% vs UC = 17.9%) or three sites (EXP = 11.1% vs UC = 12.5%)

Three months post-intervention, there was an overall reduction in colonization, with *S. aureus* less frequently recovered from all body sites. Implementation of the decolonization intervention demonstrated that colonization rates in EXP were non-significantly reduced at three months for nares (OR=0.41, 95% CI=0.16-1.04), axilla (OR=0.77, 95% CI=0.31-1.91) and groin (OR=0.53, 95% CI=0.24,1.20), whereas there were little decreases in UC (Figure 2a). Overall, the increase in participants with no organisms detected at three months was greater in EXP (36.5% point increase) as compared to UC (17.2% point increase; Figure 2b). We did not observe any increase in mupirocin resistance between baseline (3%) and three months (0%; data not shown).

Patient-Centered Outcomes

No intervention-related behavioral changes were observed, including infection prevention knowledge and hygiene, prevention self-efficacy, decision-making autonomy, mupirocin and chlorhexidine adherence, QoL or patient satisfaction (Supplement Tables S1 and S5).

Household Surfaces Contamination

At baseline, the most frequently contaminated surfaces included: toilet seat (EXP = 52.4% vs UC = 53.6%), bedroom floor (EXP = 49.2 % vs UC = 60.7%), and kitchen floor (EXP = 60.3% vs UC = 58.9%; Figure 3a), and most households had ≥ 1 contaminated surfaces (EXP = 96.8% vs UC = 96.4%). Both groups showed similar reductions in environmental contamination (Figure 3b). There were no differences in reductions in proportions of households with ≥ 1 contaminated surfaces, EXP (96.8% to 60.3%) vs UC (96.4% to 66.1%). Linear regression examining the average difference in numbers of contaminated surfaces (0-13) showed that there were 0.31 fewer contaminated surfaces at follow-up in EXP versus UC, after adjusting for baseline number of contaminated surfaces ($p=0.08$; data not shown). Multivariate models with treatment allocation and number of household surfaces did not reveal any associations among these environmental-level factors and SSTI recurrence.

Household Members Colonization and Reported Infection

Consenting household members were screened for colonization (nares, axilla, groin) at baseline and three months. Among household members, similar reductions in proportions of colonized sites were seen for nares (EXP 27.0% to 17.5% vs UC 23.2% to 17.9%), axilla (EXP 17.5% to 9.5% vs UC 14.3% to 10.7%) and groin (EXP 28.6% to 19.1% vs UC 21.4% to 19.6%; Figure 4a). There was a non-significant reduction in household member colonization for EXP (9.5% to 3.2%) versus UC (8.9% to 5.4%). MSSA+ household members were similar at baseline and three-month follow-up in both EXP and UC, with no observed reductions in percentages of household members colonized by MSSA (Figure 4b).

Subgroup Considerations/Heterogeneity of Treatment Effects (HTE)

We conducted pre-specified subgroup analyses using logistic regression with treatment assignment and with each subgroup coded as dummy variables. Consistent with previous studies (28), foreign-born participants were more likely to have MSSA+ than MRSA+ wound cultures. Other HTE subgroup comparisons [wound culture type (MRSA vs MSSA), birthplace (USA vs non-USA), household contamination levels (low vs high), household members colonization (present vs absent), pets living in the household (present vs absent), recruitment site (ED vs FQHC), and baseline I&D treatment (yes vs no)] revealed no statistically significant differences for EHR-documented SSTI recurrence (data not shown).

DISCUSSION

This study adapted and implemented an effective hospital ICU-based intervention (5) into the community. We examined the comparative effectiveness of usual care: CDC/Guidelines-directed care (23, 24) versus an experimental intervention: UC combined with universal decolonization and environmental decontamination (5, 23, 24). Results suggest that this was a null trial. There were few

observed hypothesized intervention-related differences for clinical, microbiological and patient-centered outcomes.

The primary and secondary outcomes analyses indicated that EXP fared as well as UC. Despite a significant baseline difference in MRSA-positive (more common in EXP) and MSSA-positive (more common in UC) cultures which we had not anticipated and therefore did not stratify during randomization, we saw no evidence that this baseline imbalance affected the analyses.

Interestingly, the overall study rate of SSTI recurrence was substantially lower (10.8%) than previous studies (42, 43), although a recent cohort study reported a comparable 3-month recurrence rate (10.3%) (10). It is possible that high study rates of I&D plus oral antibiotics contributed to the lower than expected SSTI recurrence rate. One recruitment site, a large public hospital ED, predominated, which might explain a lower than expected recurrence (44) since treatments used there have been demonstrated effective in preventing treatment failure and SSTI recurrence (10, 17, 45, 46); thus suggesting a statistical floor effect hindered detection of differences in recurrence. Similarly, the low event rates of household and environmental outcomes reduced the study's power to detect significant treatment effects. Finally, EXP were more likely to have no detectable *S. aureus* colonization at three months, but again the difference was not significant.

The environmental persistence of *S. aureus* and as a colonizer despite active eradication efforts is well-documented and multifactorial (9, 44, 47-49) and likely modulated by interactions inside the household and surrounding community (10, 19, 50-53). Overall, the percent of households with no environmental contamination increased substantially (from 3.2% to 39.7%). However, 60.3% of households were still contaminated and enhanced antimicrobial measures were not more effective (9) than standard patient education and UC. This reflects the inherent challenges of eradicating this opportunistic pathogen in residential settings. While previous studies have demonstrated higher rates

of colonization and contamination are associated with recurrence (21, 53, 54), there are conflicting reports of whether reduction in bioburden translates into less recurrence (22, 55, 56). Previous interventions to reduce *S. aureus* carriage and SSTI recurrence provide mixed results (7, 9, 11, 12, 22, 56-60). Interestingly, Golding, *et al* showed community education focusing on patient and household hygiene decreased SSTI incidence (61). The universally distributed *Living with MRSA* pamphlet (32) likely contributed to total study recurrence reduction, potentially obscuring the intervention impact.

Study Limitations

This study's results likely reflect unmeasured and uncontrolled variables, including application and effectiveness of bioburden reduction and microbial dynamics in an open system (44, 48, 49, 62). Additionally, there were significantly more MRSA+ wounds in EXP vs UC. This higher MRSA bioburden may have made decolonization and decontamination more challenging (53), thereby obfuscating any study treatment-related differences. Since EXP participants were aware of the intervention methods, it is plausible that their sensitization led participants to focus on minor skin symptoms that were ignored by UC, resulting in higher self reported SSTI recurrence.

In order to minimize the burden of multiple home visits and increase study participation, follow-up sampling took place at three months, rather than immediately following initial decolonization and decontamination. Therefore, the immediate effectiveness of the experimental protocol was not measured. It is possible that organisms detected after three-months were not eradicated at baseline since *S. aureus* can exhibit long-term survival on surfaces (63, 64). However, host recolonization and replenishment of the environment over time is also possible.

Future directions

Implementing common hospital cleaning protocols (5, 33, 65, 66) within a community setting was a formidable challenge and warrants further investigation. Future studies should stratify on infection wound culture type [MRSA(+) vs MSSA(+)] prior to randomization, to ensure balance in treatment assignment, and may wish to power each subgroup sufficiently for SSTI recurrence, as well as measure effects of active antimicrobial measures immediately following completion of the regimen. While nasal decolonization routine herein is standard practice (24), it is possible that a longer and/or more potent decolonization protocol is required to reduce MRSA recurrence (12, 43, 54, 67, 68). In fact, recent studies implementing a similar yet more intense decolonization intervention decreased recurrent MRSA infection recurrence (12, 67). These data, combined with our data, indicate that greater frequency and longer duration of decolonization may be required.

Conclusions

This trial aimed to understand systems-, patient-, pathogen-, and environmental-level factors associated with SSTI recurrence and household transmission. Home visits presented a major challenge. Although the perceived (or actual) intrusiveness of home visits proved difficult to overcome, the “warm hand-off” strategy facilitated a modest improvement in home visit completion rates (69). The lower-than-expected six-month recurrence rate (10.9% here as compared to our previous observational study of 33.3% (28)) may have limited the power to identify a treatment effect. Multiple well-designed studies conducted in different settings have all converged on similar findings: decolonization and decontamination can be accomplished in the household to varying degrees, but extensive, long-term decontamination may be required to achieve a medically meaningful reduction in disease recurrence. These findings suggest that other mechanisms may also contribute to the disconnect between exposure and outcome, such as intrinsic host factors including immunologic

competence, as well as perturbations of host and environmental microbiomes. These factors warrant further observational and experimental studies.

Acknowledgements

The authors wish to thank the Clinical Directors Network, Inc. (CDN) Research Team (TJ Lin, MPH; Dena Moftah, BA; Anthony Rhabb, MA, Branny F. Tavarez, MD, Cynthia Mofunanya MD, Jasbir Singh MBBS, MPH, Jessica Ramachandran, MD, Johana Gonzalez, MD, Musarrat Rahman, MPH, Raul Silverio MD, Sisle Heyliger, BA, Tameir Holder MPH, Umamah Siddiqui, BS, Viktorya Snkhchyan MD, Lois Lynn, MS), the The Rockefeller University Research Team (Barry S. Coller, MD, Rhonda G. Kost, MD, Joel Corrêa da Rosa, PhD, Roger Vaughan MS DrPHm Andrea Leinberger-Jabari, MPH, Cameron Coffran, MS, Helen Marie Curry, Kimberly S Vasquez, MPH, Maija Neville Williams, MPH, Marilyn Chung, Teresa H. Evering, MD, MS, Mina Pastagia, MD, MS, Teresa L. Solomon, JD, Alexander Tomasz, PhD, Hermínia de Lencastre, PhD, Maria Pardos de la Gandara MD PhD), the Federally Qualified Health Centers (FQHCs): Community Health Network (Satoko Kanahara MD, FAAP, Tyler Evans, MD), Family Health Centers at NYU Langone (William Pagano, MD, MPH, Barry Kohn MD, PhD, Isaac Dapkins MD; Paula Clemons PA; Viral Patel, MD, Jason Hyde, LMSW, M.Ed), Maria Ferrer, Keenan Millan; Open Door Family Health Center (Daren Wu, MD, Asaf Cohen MD), Urban Health Plan (Claude Parola, MD, Tracie Urban RN, Franco A. Barsanti, PharmD; Ali Saleh PA, Scott Salvato PA, Jennifer Concepcion), Hospital Emergency Departments (EDs): NYC Health + Hospitals/Coney Island Hospital ED (Regina Hammock DO; Rosalee Ngyyen, DO; Candace Gopaul; Ronette Davis), NYC Health + Hospitals/Metropolitan Hospital ED (Getaw Worku Hassen MD; Van Johnson), Patient and Community Stakeholders (Rosa Perez, RPh/Cordette Pharmacy and Dennis Mitchell/Denny Moe Barber Shop), the Data and Safety Monitoring Board (DSMB: Katherine Freeman, DrPH, DSMB Chair/Extrapolate Statistics LLC and Florida Atlantic University; Marilyn Gaston, MD/Assistant Surgeon General and HRSA Associate Administrator for Primary Health Care (ret.), Maria Ferrer/Patient Representative)

Scientific Consultants/Advisors (Susan Huang, MD, MPH, Christopher R. Frei, PharmD, Msc, Eric Lofgren, PhD, Christopher Mason, PhD, Ebbrahim Afshinekoo, BS, Chou Chou, MD, Shirshendu Chatterjee, PhD, Sarah Johnson, MD, Bárbara Milioto, E Denise Digirolomo, Edward Clayton, Vicki Seyfert-Margolies, PhD, Dana Wershiner, Trang Gisler, MS, Suzanne Lechner, PhD, Suzanne Hower, PhD and Sara Vargas, PhD.

The Corresponding Author attests that he has listed everyone who contributed significantly to the project.

REFERENCES

1. Farr AM, Aden B, Weiss D, Nash D, Marx MA. Trends in hospitalization for community-associated methicillin-resistant *Staphylococcus aureus* in New York City, 1997-2006: data from New York State's Statewide Planning and Research Cooperative System. *Infect Control Hosp Epidemiol*. 2012;33(7):725-31.
2. Moran GJ, Krishnadasan A, Gorwitz RJ, Fosheim GE, McDougal LK, Carey RB, et al. Methicillin-resistant *S. aureus* infections among patients in the emergency department. *N Engl J Med*. 2006;355(7):666-74.
3. Centers for Disease Control and Prevention. Methicillin-resistant *Staphylococcus aureus* (MRSA) infection in healthcare settings. 2012.
4. Klevens RM, Morrison MA, Nadle J, Petit S, Gershman K, Ray S, et al. Invasive methicillin-resistant *Staphylococcus aureus* infections in the United States. *JAMA*. 2007;298(15):1763-71.
5. Huang SS, Septimus E, Kleinman K, Moody J, Hickok J, Avery TR, et al. Targeted versus universal decolonization to prevent ICU infection. *N Engl J Med*. 2013;368(24):2255-65.
6. Tenover FC, Goering RV. Methicillin-resistant *Staphylococcus aureus* strain USA300: origin and epidemiology. *J Antimicrob Chemother*. 2009;64(3):441-6.
7. Cluzet VC, Gerber JS, Metlay JP, Nachamkin I, Zaoutis TE, Davis MF, et al. The effect of total household decolonization on clearance of colonization with methicillin-resistant *Staphylococcus aureus*. *Infect Control Hosp Epidemiol*. 2016;37(10):1226-33.
8. Ellis MW, Schlett CD, Millar EV, Wilkins KJ, Crawford KB, Morrison-Rodriguez SM, et al. Hygiene strategies to prevent methicillin-resistant *Staphylococcus aureus* skin and soft tissue infections: a cluster-randomized controlled trial among high-risk military trainees. *Clin Infect Dis*. 2014;58(11):1540-8.
9. Fritz SA, Hogan PG, Hayek G, Eisenstein KA, Rodriguez M, Epplin EK, et al. Household versus individual approaches to eradication of community-associated *Staphylococcus aureus* in children: a randomized trial. *Clin Infect Dis*. 2012;54(6):743-51.
10. Hogan PG, Rodriguez M, Spenner AM, Brenneisen JM, Boyle MG, Sullivan ML, et al. Impact of systemic antibiotics on *Staphylococcus aureus* colonization and recurrent skin infection. *Clin Infect Dis*. 2018;66(2):191-7.
11. Papastefan ST, Buonpane C, Ares G, Benyamen B, Helenowski I, Hunter CJ. Impact of decolonization protocols and recurrence in pediatric MRSA skin and soft-tissue infections. *J Surg Res*. 2019;242:70-7.
12. Huang SS, Singh R, McKinnell JA, Park S, Gombosev A, Eells SJ, et al. Decolonization to reduce postdischarge infection risk among MRSA carriers. *N Engl J Med*. 2019;380(7):638-50.
13. DeLeo FR, Otto M, Kreiswirth BN, Chambers HF. Community-associated methicillin-resistant *Staphylococcus aureus*. *Lancet*. 2010;375(9725):1557-68.
14. May L, Klein EY, Martinez EM, Mojica N, Miller LG. Incidence and factors associated with emergency department visits for recurrent skin and soft tissue infections in patients in California, 2005-2011. *Epidemiol Infect*. 2017;145(4):746-54.
15. Mistry RD, Scott HF, Zaoutis TE, Alpern ER. Emergency department treatment failures for skin infections in the era of community-acquired methicillin-resistant *Staphylococcus aureus*. *Pediatr Emerg Care*. 2011;27(1):21-6.
16. Shank N, Soe PM, Tam CC. Prevalence and risk of acquisition of methicillin-resistant *Staphylococcus aureus* among households: A systematic review. *Int J Infect Dis*. 2020;92:105-13.
17. Williams DJ, Cooper WO, Kaltenbach LA, Dudley JA, Kirschke DL, Jones TF, et al. Comparative effectiveness of antibiotic treatment strategies for pediatric skin and soft-tissue infections. *Pediatrics*. 2011;128(3):e479-87.

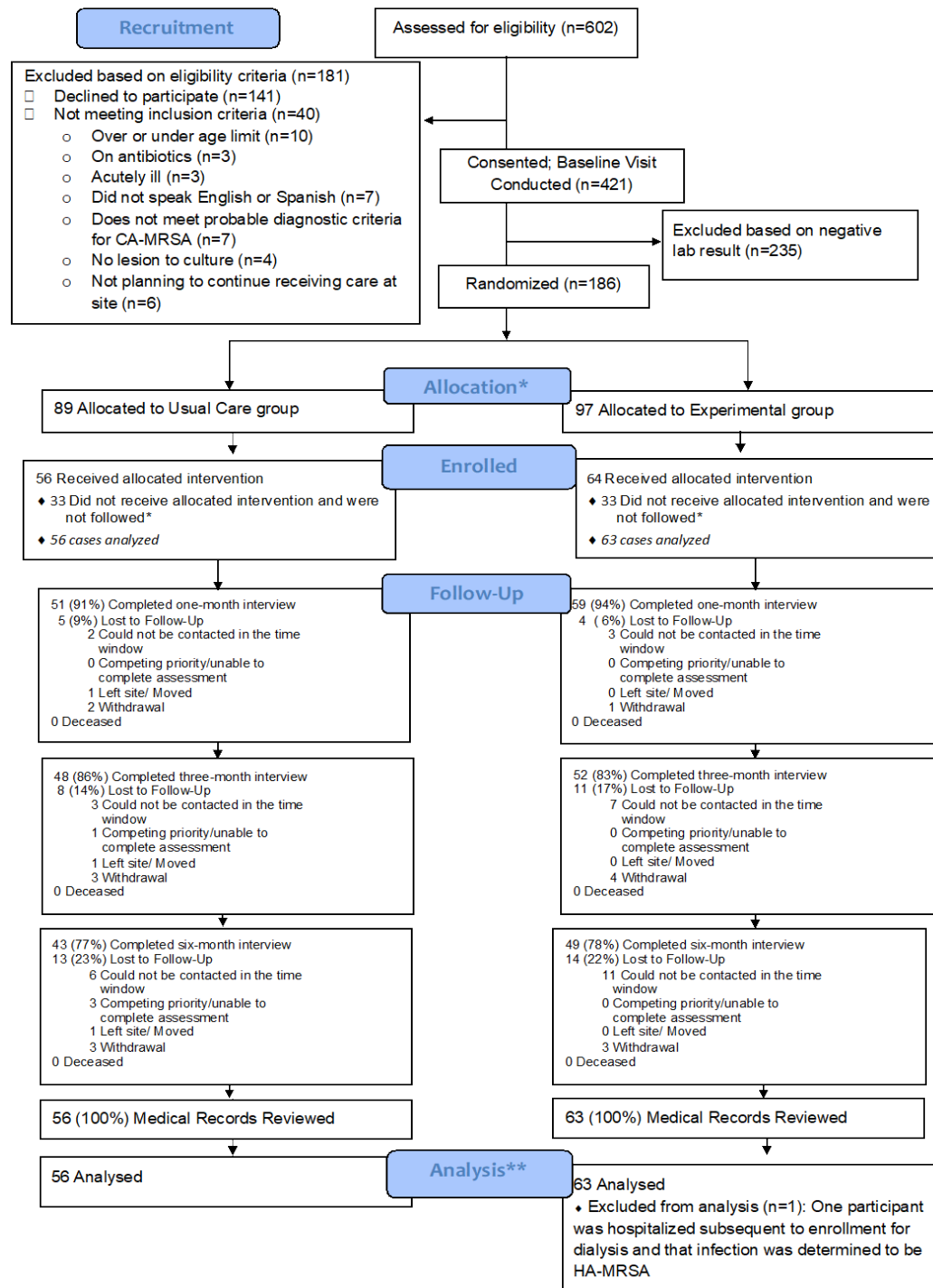
18. Hogan PG, Parrish KL, Mork RL, Boyle MG, Muenks CE, Thompson RM, et al. HOME2: Household vs. personalized decolonization in households of children with Methicillin-Resistant *Staphylococcus aureus* skin and soft tissue infection - A randomized clinical trial. Clin Infect Dis. 2020.
19. Miller LG, Eells SJ, Taylor AR, David MZ, Ortiz N, Zychowski D, et al. *Staphylococcus aureus* colonization among household contacts of patients with skin infections: risk factors, strain discordance, and complex ecology. Clin Infect Dis. 2012;54(11):1523-35.
20. Miller LG, Tan J, Eells SJ, Benitez E, Radner AB. Prospective investigation of nasal mupirocin, hexachlorophene body wash, and systemic antibiotics for prevention of recurrent community-associated methicillin-resistant *Staphylococcus aureus* infections. Antimicrob Agents Chemother. 2012;56(2):1084-6.
21. Knox J, Sullivan SB, Urena J, Miller M, Vavagiakis P, Shi Q, et al. Association of environmental contamination in the home with the risk for recurrent Community-Associated, Methicillin-Resistant *Staphylococcus aureus* infection. JAMA Intern Med. 2016;176(6):807-15.
22. Fritz SA, Camins BC, Eisenstein KA, Fritz JM, Epplin EK, Burnham CA, et al. Effectiveness of measures to eradicate *Staphylococcus aureus* carriage in patients with community-associated skin and soft-tissue infections: a randomized trial. Infect Control Hosp Epidemiol. 2011;32(9):872-80.
23. Liu C, Bayer A, Cosgrove SE, Daum RS, Fridkin SK, Gorwitz RJ, et al. Clinical practice guidelines by the Infectious Diseases Society of America for the treatment of methicillin-resistant *Staphylococcus aureus* infections in adults and children. Clin Infect Dis. 2011;52(3):e18-55.
24. Stevens DL, Bisno AL, Chambers HF, Dellinger EP, Goldstein EJ, Gorbach SL, et al. Practice guidelines for the diagnosis and management of skin and soft tissue infections: 2014 update by the Infectious Diseases Society of America. Clin Infect Dis. 2014;59(2):e10-52.
25. Balachandra S, Pardos de la Gandara M, Salvato S, Urban T, Parola C, Khalida C, et al. Recurrent furunculosis caused by a community-acquired *Staphylococcus aureus* strain belonging to the USA300 clone. Microb Drug Resist. 2015;21(2):237-43.
26. Kost RG, Leinberger-Jabari A, Evering TH, Holt PR, Neville-Williams M, Vasquez KS, et al. Helping basic scientists engage with community partners to enrich and accelerate translational research. Acad Med. 2017;92(3):374-9.
27. Pardos de la Gandara M, Raygoza Garay JA, Mwangi M, Tobin JN, Tsang A, Khalida C, et al. Molecular types of methicillin-resistant *Staphylococcus aureus* and methicillin-sensitive *Staphylococcus aureus* strains causing skin and soft tissue infections and nasal colonization, identified in community health centers in New York City. J Clin Microbiol. 2015;53(8):2648-58.
28. Piper Jenks N, Pardos de la Gandara M, D'Orazio BM, Correa da Rosa J, Kost RG, Khalida C, et al. Differences in prevalence of community-associated MRSA and MSSA among US and non-US born populations in six New York community health centers. Travel Med Infect Dis. 2016;14(6):551-60.
29. Leinberger-Jabari A, Kost RG, D'Orazio B, Burgess R, Khalida C, Tsang A, et al. From the bench to the barbershop: community engagement to raise awareness about community-acquired methicillin-resistant *Staphylococcus aureus* and hepatitis c virus infection. Prog Community Health Partnersh. 2016;10(3):413-23.
30. Clinical and Laboratory Standards Institute (CLSI). Performance Standards for Antimicrobial Susceptibility Testing: Twenty-Third Informational Supplement. CLSI document M100-S23. Wayne, PA: Clinical and Laboratory Standards Institute (CLSI); 2013.
31. Agency for Healthcare Research and Quality 2017;Pages. Accessed at U.S. Department of Health and Human Services at <https://www.ahrq.gov/professionals/quality-patient-safety/patient-family-engagement/pfprimarycare/interventions/warmhandoff.html>.
32. Tacoma-Pierce County Health Department. Living with MRSA. Tacoma-Pierce, WA; 2006.
33. Sehulster LM CR, Arduino MJ, Carpenter J, Donlan R, Ashford D, Besser R, Fields B, McNeil MM, Whitney C, Wong S, Juranek D, Cleveland J. Guidelines for environmental infection control in

- health-care facilities. Recommendations from CDC and the Healthcare Infection Control Practices Advisory Committee (HICPAC). American Society for Healthcare Engineering/American Hospital Association. 2004.
34. Cluzet VC, Gerber JS, Nachamkin I, Metlay JP, Zaoutis TE, Davis MF, et al. Duration of colonization and determinants of earlier clearance of colonization with methicillin-resistant *Staphylococcus aureus*. *Clin Infect Dis*. 2015;60(10):1489-96.
 35. Huang SS, Septimus E, Kleinman K, Moody J, Hickok J, Heim L, et al. Chlorhexidine versus routine bathing to prevent multidrug-resistant organisms and all-cause bloodstream infections in general medical and surgical units (ABATE Infection trial): a cluster-randomised trial. *Lancet*. 2019;393(10177):1205-15.
 36. Climo MW. Decreasing MRSA infections: an end met by unclear means. *JAMA*. 2009;301(7):772-3.
 37. Velazquez-Meza ME, Mendoza-Olazarán S, Echaniz-Aviles G, Camacho-Ortiz A, Martínez-Reséndez MF, Valero-Moreno V, et al. Chlorhexidine whole-body washing of patients reduces methicillin-resistant *Staphylococcus aureus* and has a direct effect on the distribution of the ST5-MRSA-II (New York/Japan) clone. *J Med Microbiol*. 2017;66(6):721-8.
 38. Lopez GU, Kitajima M, Havas A, Gerba CP, Reynolds KA. Evaluation of a disinfectant wipe intervention on fomite-to-finger microbial transfer. *Appl Environ Microbiol*. 2014;80(10):3113-8.
 39. Lowe CF, Lloyd-Smith E, Sidhu B, Ritchie G, Sharma A, Jang W, et al. Reduction in hospital-associated methicillin-resistant *Staphylococcus aureus* and vancomycin-resistant *Enterococcus* with daily chlorhexidine gluconate bathing for medical inpatients. *Am J Infect Control*. 2017;45(3):255-9.
 40. Mehta S, Hadley S, Hutzler L, Slover J, Phillips M, Bosco JA, 3rd. Impact of preoperative MRSA screening and decolonization on hospital-acquired MRSA burden. *Clin Orthop Relat Res*. 2013;471(7):2367-71.
 41. Ridenour G, Lampen R, Federspiel J, Kritchevsky S, Wong E, Climo M. Selective use of intranasal mupirocin and chlorhexidine bathing and the incidence of methicillin-resistant *Staphylococcus aureus* colonization and infection among intensive care unit patients. *Infect Control Hosp Epidemiol*. 2007;28(10):1155-61.
 42. Creech CB, Al-Zubeidi DN, Fritz SA. Prevention of recurrent staphylococcal skin infections. *Infect Dis Clin North Am*. 2015;29(3):429-64.
 43. McNeil JC, Fritz SA. Prevention strategies for recurrent community-associated *Staphylococcus aureus* skin and soft tissue infections. *Curr Infect Dis Rep*. 2019;21(4):12.
 44. Parrish KL, Hogan PG, Clemons AA, 2nd, Fritz SA. Spatial relationships among public places frequented by families plagued by methicillin-resistant *Staphylococcus aureus*. *BMC Res Notes*. 2018;11(1):692.
 45. Daum RS, Miller LG, Immergluck L, Fritz S, Creech CB, Young D, et al. A placebo-controlled trial of antibiotics for smaller skin abscesses. *N Engl J Med*. 2017;376(26):2545-55.
 46. Talan DA, Mower WR, Krishnadasan A, Abrahamian FM, Lovecchio F, Karras DJ, et al. Trimethoprim-Sulfamethoxazole versus placebo for uncomplicated skin abscess. *N Engl J Med*. 2016;374(9):823-32.
 47. Eells SJ, David MZ, Taylor A, Ortiz N, Kumar N, Sieth J, et al. Persistent environmental contamination with USA300 methicillin-resistant *Staphylococcus aureus* and other pathogenic strain types in households with *S. aureus* skin infections. *Infect Control Hosp Epidemiol*. 2014;35(11):1373-82.
 48. Fritz SA, Hogan PG, Singh LN, Thompson RM, Wallace MA, Whitney K, et al. Contamination of environmental surfaces with *Staphylococcus aureus* in households with children infected with methicillin-resistant *S. aureus*. *JAMA Pediatr*. 2014;168(11):1030-8.
 49. Knox J, Uhlemann AC, Lowy FD. *Staphylococcus aureus* infections: transmission within households and the community. *Trends Microbiol*. 2015;23(7):437-44.

50. Knox J, Uhlemann AC, Miller M, Hafer C, Vasquez G, Vavagiakis P, et al. Environmental contamination as a risk factor for intra-household *Staphylococcus aureus* transmission. PLoS One. 2012;7(11):e49900.
51. Mukherjee N, Dowd SE, Wise A, Kedia S, Vohra V, Banerjee P. Diversity of bacterial communities of fitness center surfaces in a U.S. metropolitan area. Int J Environ Res Public Health. 2014;11(12):12544-61.
52. Uhlemann AC, Dordel J, Knox JR, Raven KE, Parkhill J, Holden MT, et al. Molecular tracing of the emergence, diversification, and transmission of *S. aureus* sequence type 8 in a New York community. Proc Natl Acad Sci U S A. 2014;111(18):6738-43.
53. Uhlemann AC, Knox J, Miller M, Hafer C, Vasquez G, Ryan M, et al. The environment as an unrecognized reservoir for community-associated methicillin resistant *Staphylococcus aureus* USA300: a case-control study. PLoS One. 2011;6(7):e22407.
54. Hogan PG, Mork RL, Thompson RM, Muenks CE, Boyle MG, Sullivan ML, et al. Environmental methicillin-resistant *Staphylococcus aureus* contamination, persistent colonization, and subsequent skin and soft tissue infection. JAMA Pediatr. 2020;174(6):1-11.
55. Baud O, Giron S, Aumeran C, Mouly D, Bardon G, Besson M, et al. First outbreak of community-acquired MRSA USA300 in France: failure to suppress prolonged MRSA carriage despite decontamination procedures. Eur J Clin Microbiol Infect Dis. 2014;33(10):1757-62.
56. Tidwell J, Kirk L, Luttrell T, Pike CA. CA-MRSA decolonization strategies: do they reduce recurrence rate? J Wound Ostomy Continence Nurs. 2016;43(6):577-82.
57. Finnell SM, Rosenman MB, Christenson JC, Downs SM. Decolonization of children after incision and drainage for MRSA abscess: a retrospective cohort study. Clin Pediatr (Phila). 2015;54(5):445-50.
58. Ellis MW, Griffith ME, Dooley DP, McLean JC, Jorgensen JH, Patterson JE, et al. Targeted intranasal mupirocin to prevent colonization and infection by community-associated methicillin-resistant *Staphylococcus aureus* strains in soldiers: a cluster randomized controlled trial. Antimicrob Agents Chemother. 2007;51(10):3591-8.
59. Kaplan SL, Forbes A, Hammerman WA, Lamberth L, Hulten KG, Minard CG, et al. Randomized trial of "bleach baths" plus routine hygienic measures vs. routine hygienic measures alone for prevention of recurrent infections. Clin Infect Dis. 2014;58(5):679-82.
60. Weintrob A, Bebu I, Agan B, Diem A, Johnson E, Lalani T, et al. Randomized, double-blind, placebo-controlled study on decolonization procedures for methicillin-resistant *Staphylococcus aureus* (MRSA) among HIV-infected adults. PLoS One. 2015;10(5):e0128071.
61. Golding GR, Quinn B, Bergstrom K, Stockdale D, Woods S, Nsungu M, et al. Community-based educational intervention to limit the dissemination of community-associated methicillin-resistant *Staphylococcus aureus* in Northern Saskatchewan, Canada. BMC Public Health. 2012;12:15.
62. Mollema FP, Richardus JH, Behrendt M, Vaessen N, Lodder W, Hendriks W, et al. Transmission of methicillin-resistant *Staphylococcus aureus* to household contacts. J Clin Microbiol. 2010;48(1):202-7.
63. Petti S, De Giusti M, Moroni C, Polimeni A. Long-term survival curve of methicillin-resistant *Staphylococcus aureus* on clinical contact surfaces in natural-like conditions. Am J Infect Control. 2012;40(10):1010-2.
64. Wagenvoort JH, Sluijsmans W, Penders RJ. Better environmental survival of outbreak vs sporadic MRSA isolates. J Hosp Infect. 2000;45(3):231-4.
65. Carling PC, Huang SS. Improving healthcare environmental cleaning and disinfection: current and evolving issues. Infect Control Hosp Epidemiol. 2013;34(5):507-13.
66. Lei H, Jones RM, Li Y. Exploring surface cleaning strategies in hospital to prevent contact transmission of methicillin-resistant *Staphylococcus aureus*. BMC Infect Dis. 2017;17(1):85.

67. Hanitsch LG, Krüger R, Hoppe PA, Humme D, Pokrywka A, Niebank M, et al. Outpatient decolonization after recurrent skin infection with Panton-Valentine leukocidin (PVL)-producing *S. aureus*-The importance of treatment repetition. *PLoS One*. 2020;15(4):e0231772.
68. Raz R, Miron D, Colodner R, Staler Z, Samara Z, Keness Y. A 1-year trial of nasal mupirocin in the prevention of recurrent staphylococcal nasal colonization and skin infection. *Arch Intern Med*. 1996;156(10):1109-12.
69. D’Orazio B, Ramachandran J, Khalida C, Gonzalez J, Kost RG, Vasquez KS, et al. Stakeholder engagement in a comparative effectiveness/implementation study to prevent CA-MRSA infection recurrence: CA-MRSA Project (CAMP2). Submitted for Review. 2020.

Figure 1. CONSORT Diagram



* “Intent-to-treat” cohort (n=186)** “Analysis” cohort (n=119). An additional n=66 participants were eligible for participation based on having either MRSA+/MSSA+ wound culture and provided informed consent; however these participants did not complete the baseline home visit, and therefore never received the intervention. Since these participants had consented to be followed, their six-month chart review data were extracted and are provided as an additional “observation-only control group” (n=63 of these participants were analyzed, for a 95.5% response rate). Upon subsequent review, one patient was determined to have met criteria for HA-MRSA and considered ineligible and these data were removed from the analysis, leaving n=119 (“analysis cohort”). Data collection spanned 11/01/2015 and 11/25/2017.

Figure 2a. Proportion of Index Patient *S. aureus* Colonization by Colonization Site at Baseline and Three Month Follow-up Household Visits

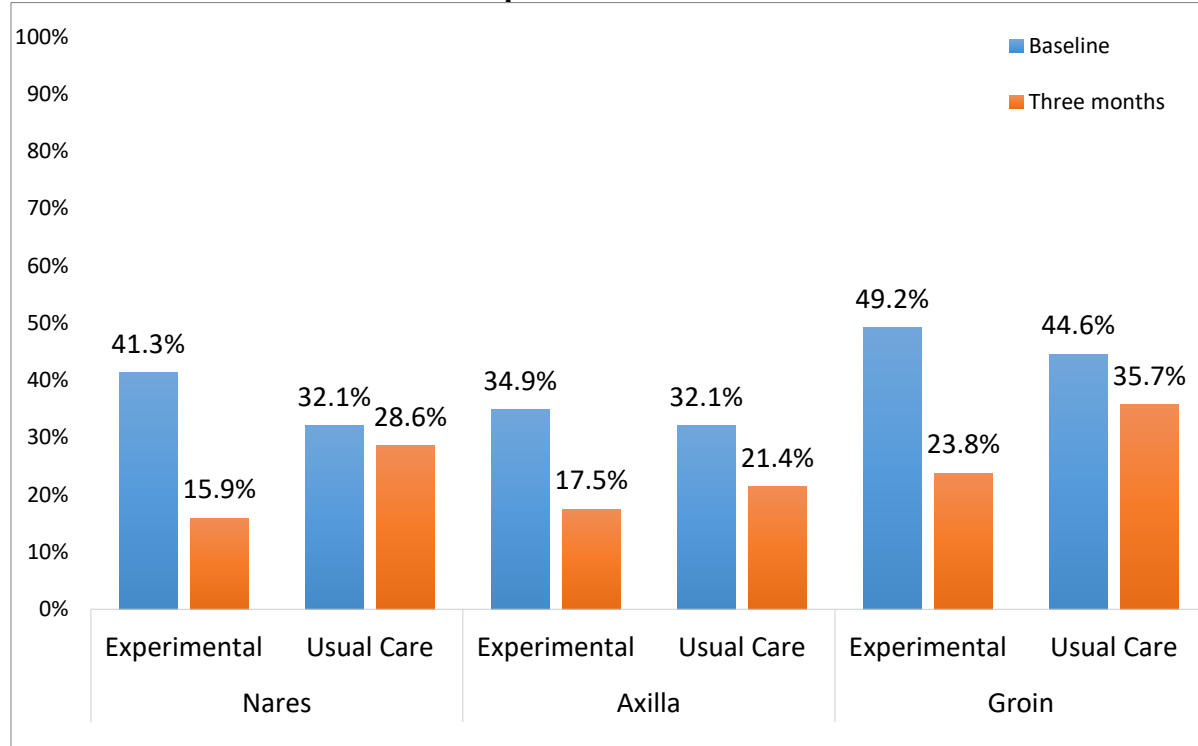


Figure 2b. Proportion of Index Patient *S. aureus* Colonization by Number of Colonized Sites at Baseline and Three Month Follow-up Household Visits

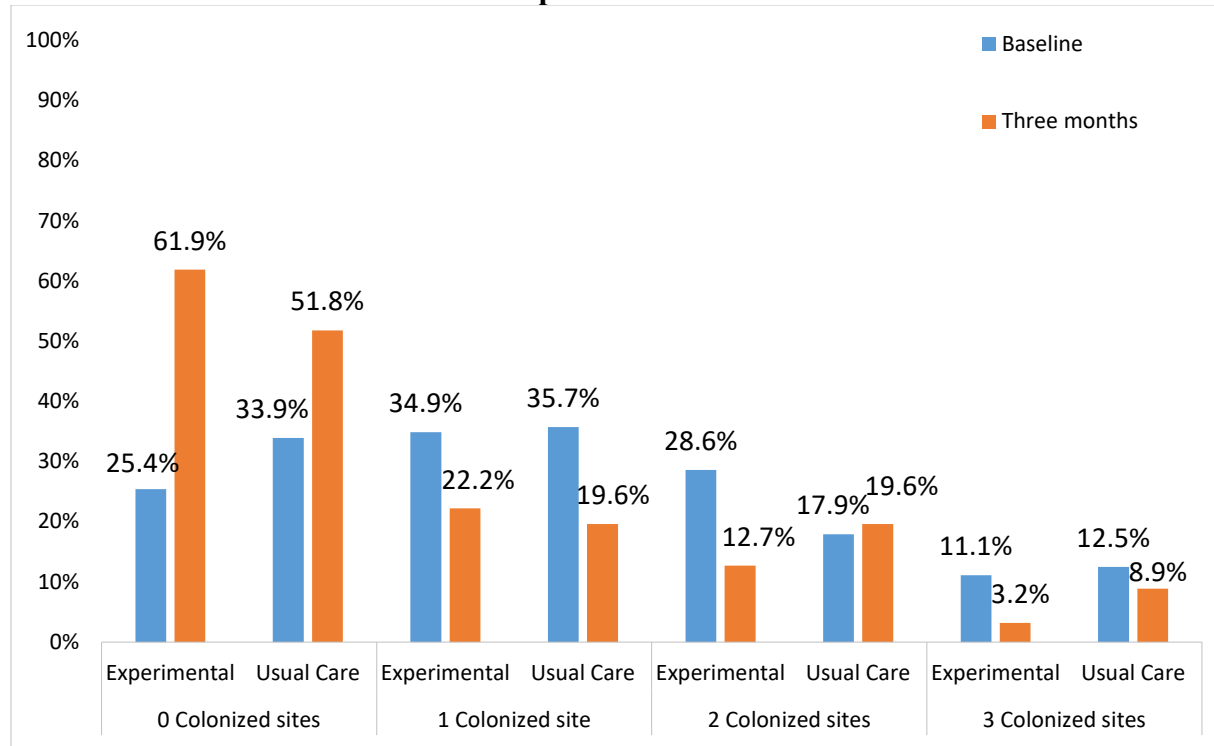


Figure 3a. Specific Household Surfaces Contaminated by *S. aureus* by Treatment Group at Baseline and Three Months Household Visit

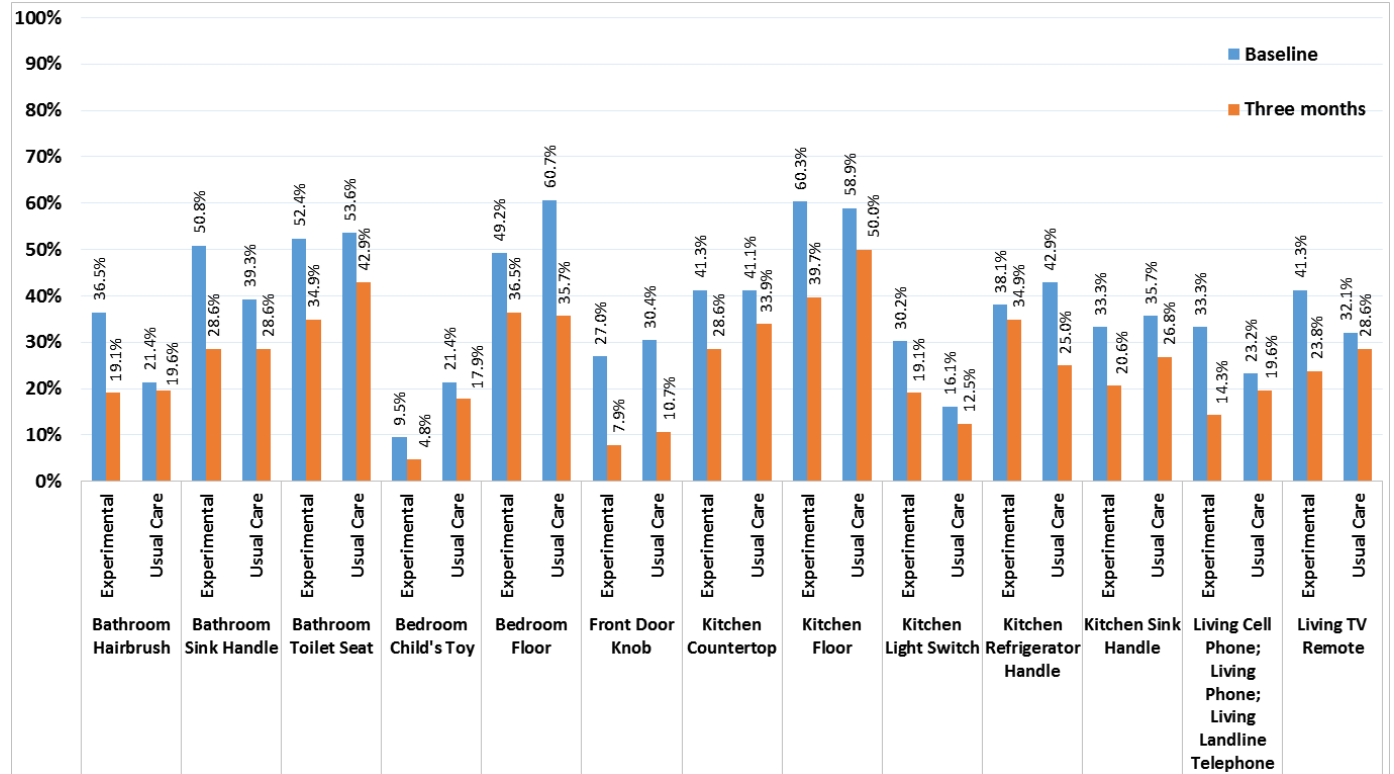


Figure 3b. Numbers Household Surfaces Contaminated by *S. aureus* by Treatment Group at Baseline and Three months

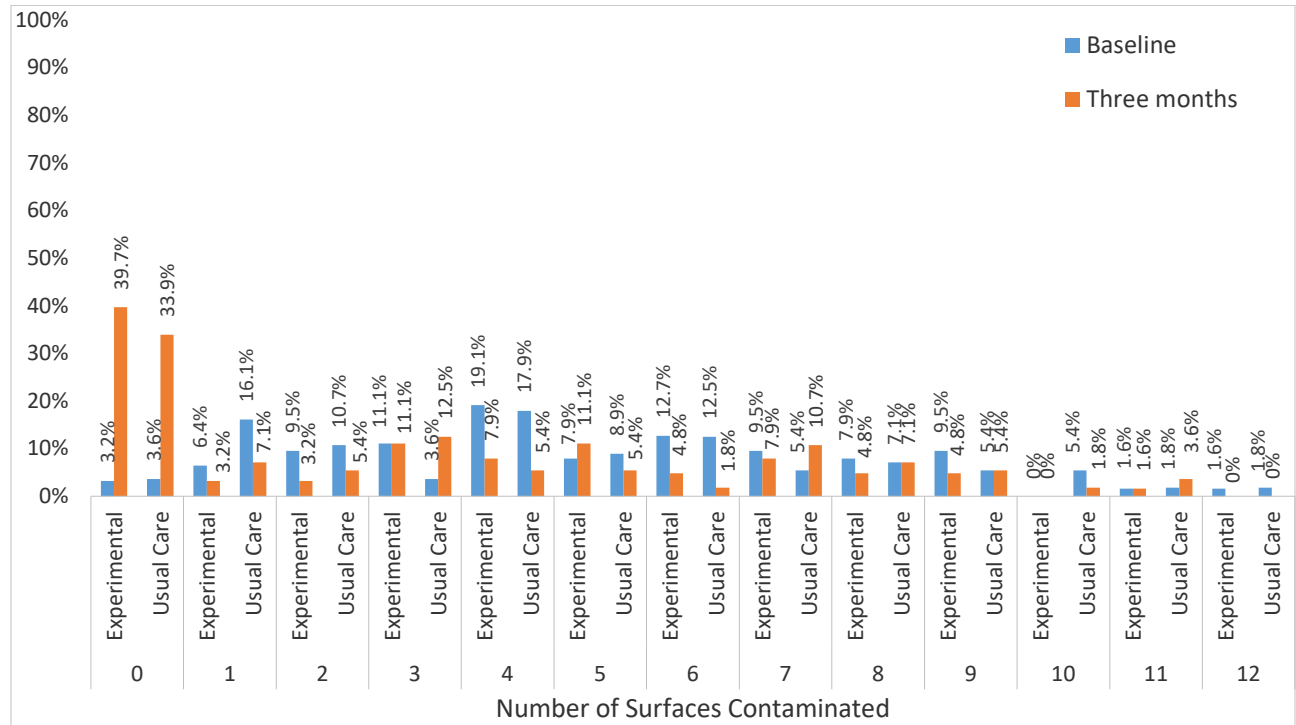
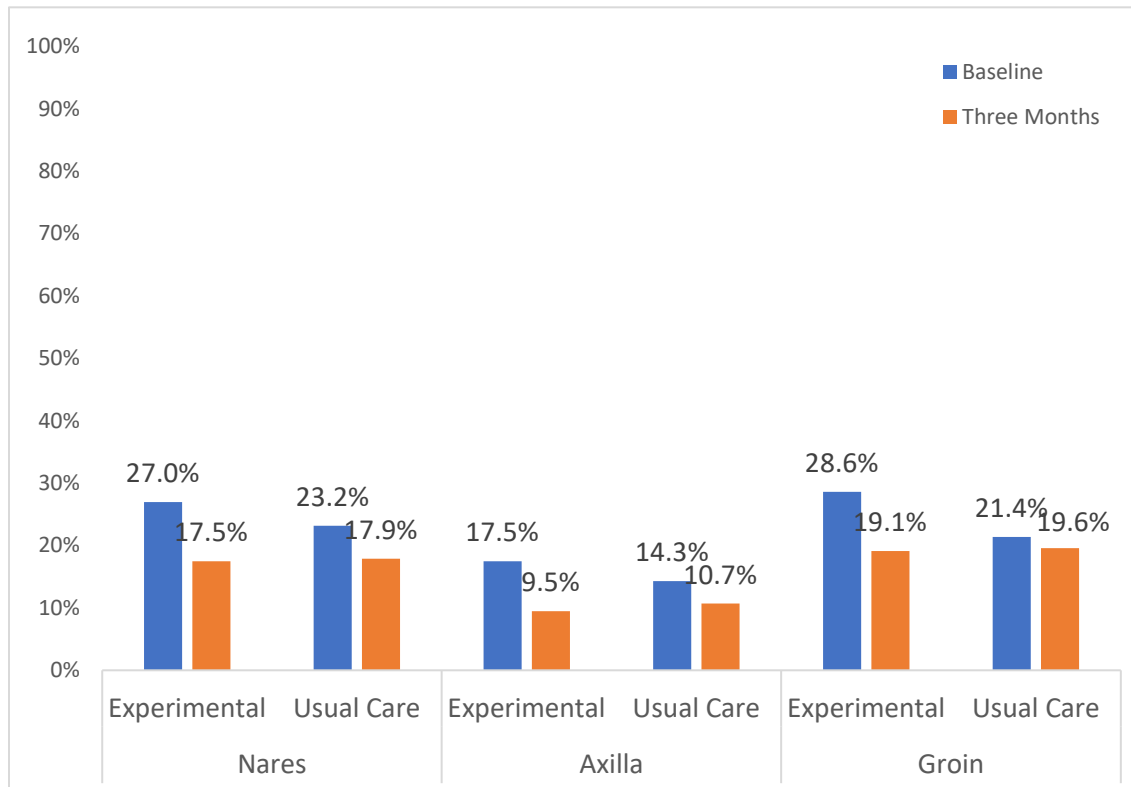
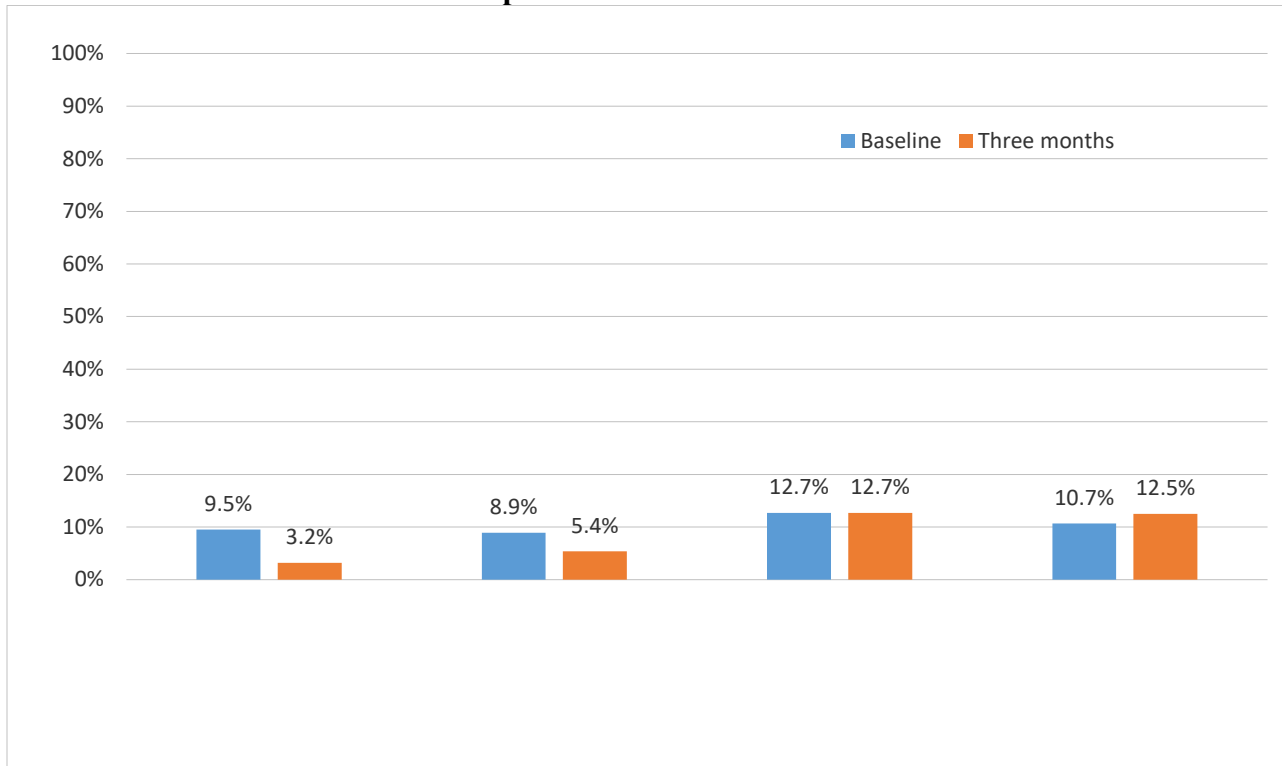


Figure 4a. Proportion of Index Patient *S. aureus* Colonization by Colonization Site at Baseline and Three Month Follow-up Household Visits

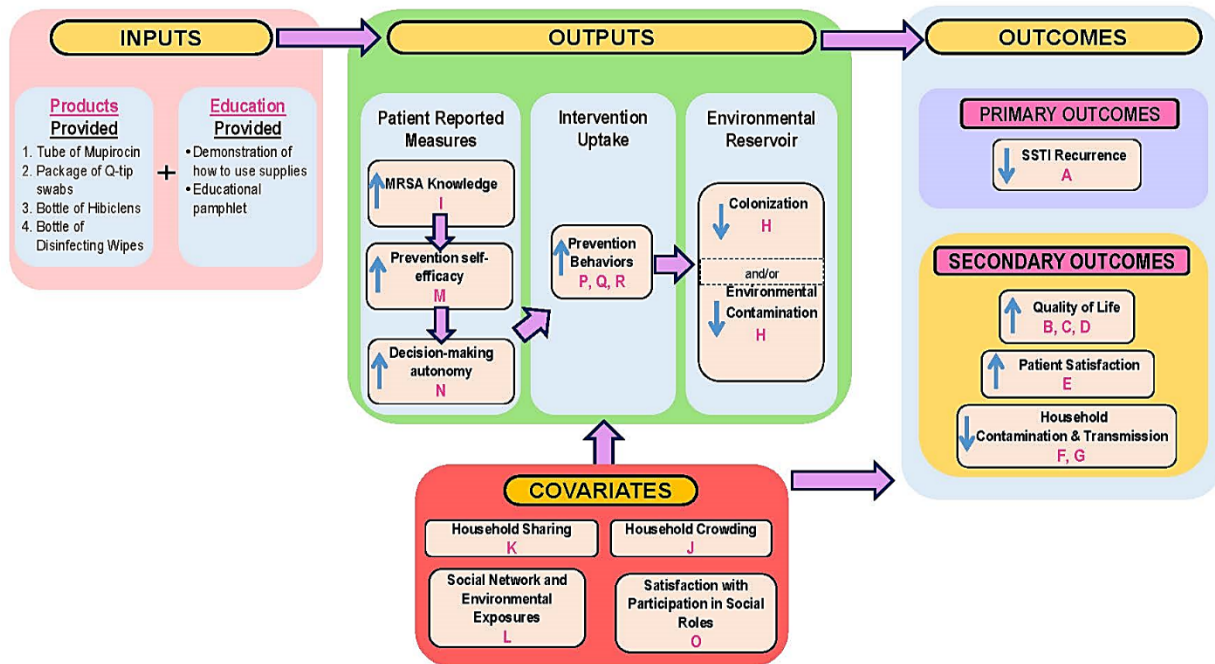


Note: 64% of household members participated in the study and provided surveillance cultures (EXP = 67.5%, UC=60.2%, $p=0.34$) There were no differences by treatment group in the number of co-residents in households where the index patient had a MRSA wound (EXP=2.4 vs UC = 3.4, $p=0.06$).

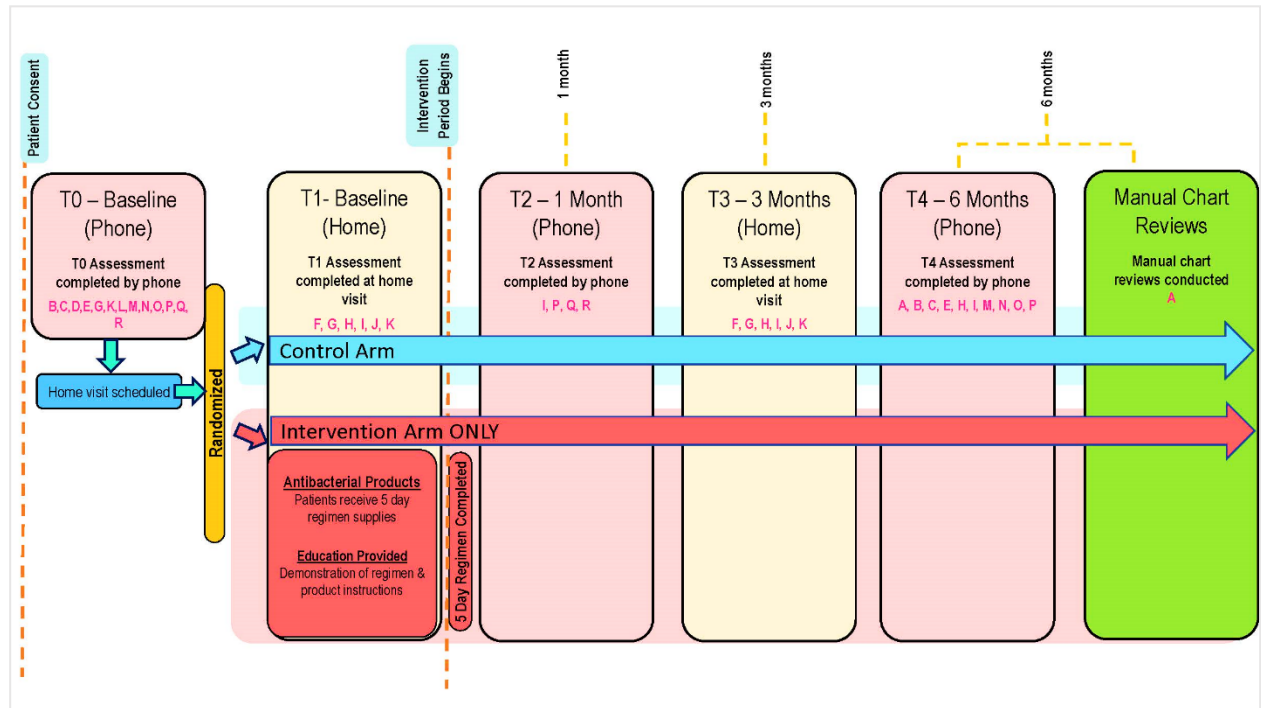
Figure 4b: Household Members Colonized with MRSA vs. MSSA by Treatment Group at Baseline and Three-Month Follow-up Household Visits



Supplemental Figure S1a. Conceptual Model



Supplemental Figure S1b. Study Procedures and Timeline



* Letters in Figures 1a and 1b refer to measures described in Supplemental Table S1

Table 1a. Demographic Characteristics by Treatment Group at Baseline

	Total (n=119)	Experimental (n=63)	Usual Care (n=56)
AGE, n (%)			
7-18 years	12 (10.1)	5 (7.9)	7 (12.5)
19-64 years	103 (86.6)	55 (87.3)	48 (85.7)
over 65	4 (3.4)	3 (4.8)	1 (1.8)
Mean (SD)	38.1 (14.9)	39.5 (15.4)	36.5 (14.4)
GENDER, n (%)			
Female	47 (39.5)	22 (34.9)	25 (44.6)
Male	72 (60.5)	41 (65.1)	31 (55.4)
ETHNICITY, n (%)			
Hispanic or Latino	72 (64.9)	37 (62.7)	35 (67.3)
Not Hispanic or Latino	36 (32.4)	21 (35.6)	15 (28.9)
Prefer not to answer	3 (2.7)	1 (1.7)	2 (3.9)
RACE, n (%)			
American Indian or Alaska Native	1 (1.0)	0 (0)	1 (1.8)
Asian	0 (0)	0 (0)	0 (0)
Black or African American	27 (22.7)	14 (22.2)	13 (23.3)
White	22 (18.5)	13 (20.6)	9 (16.1)
More than one race	21 (17.6)	11 (17.5)	10 (17.9)
Prefer not to answer/Unknown	48 (40.3)	25 (39.7)	23 (41.1)
BIRTHPLACE, n (%)			
One of the 50 U.S. States	70 (58.5)	40 (63.5)	54 (53.6)
Puerto Rico	7 (5.9)	5 (7.9)	2 (3.6)
“Other” Country	42 (35.3)	18 (28.6)	24 (42.9)
Birthplace, if not USA, per self-report, n (%)			
Africa (Ivory Coast, Senegal, Other Unspecified)	3 (7.1)	2 (11.1)	1 (4.2)
South America (Colombia, Ecuador)	5 (11.9)	4 (22.2)	2 (8.3)
North/Central America (Dominican Republic, Guatemala, Honduras, Mexico, Panama)	29 (69.0)	12 (66.7)	17 (70.8)
Europe (Russia, Ukraine)	2 (4.8)	0 (0)	2 (8.3)
Asia (Uzbekistan, Yemen)	3 (7.1)	1 (5.6)	2 (8.3)
Length of time in the USA (if non-USA born), n (%)			
Less than 10 years	96 (80.7)	52 (82.5)	44 (78.6)
10 years and over	23 (19.3)	11 (17.5)	12 (21.4)
Years in US, Mean (SD)	17.2 (13.7)	18 (14.4)	16.5 (13.5)
LANGUAGE SPOKEN AT HOME, n (%)			
English	62 (52.5)	32 (51.6)	30 (53.6)
Spanish	43 (36.4)	24 (38.7)	7 (12.5)
Other (Portuguese, Ghanaian)	13 (11.0)	6 (9.7)	19 (33.9)
RELIGIOUS AFFILIATION, n (%)			
Christianity	80 (67.8)	44 (69.8)	36 (65.5)
Islam	8 (6.8)	4 (6.4)	4 (7.3)

Judaism	2 (1.7)	1 (1.6)	1 (1.8)
None	12 (10.2)	6 (9.5)	6 (10.9)
Other	12 (10.2)	6 (9.5)	6 (10.9)
Prefer not to answer	4 (3.4)	2 (3.2)	2 (3.6)
Practice Religion Regularly?, n (%)			
Yes	54 (47.0)	28 (46.7)	26 (47.3)
No	55 (47.8)	30 (50.0)	25 (45.5)
Not reported	6 (5.2)	2 (3.3)	4 (7.3)
Frequency of Visits to Place of Worship , n (%)			
1-5 visits/month	100 (93.5)	57 (95)	43 (91.5)
6-9 visits/month	2 (1.9)	3 (5.0)	2 (4.3)
>10 visits/month	5 (4.7)	0 (0)	2 (4.3)
MARITAL STATUS, n (%)			
Married/Living with partner	44 (37.3)	22 (34.9)	22 (40.0)
Widowed	5 (4.2)	4 (6.4)	1 (1.8)
Divorced	6 (5.1)	3 (4.8)	3 (5.5)
Separated	7 (5.9)	4 (6.4)	3 (5.5)
Never Married	56 (47.5)	30 (47.6)	26 (47.3)
Not reported	1	0	1
HIGHEST DEGREE OR LEVEL OF SCHOOL COMPLETED, n (%)			
Below high school	46 (39.0)	24 (38.7)	22 (39.3)
High school or over	72 (61.0)	38 (61.3)	34 (60.7)
Not reported	1	1	0
COMBINED FAMILY INCOME, n (%)			
Less than \$10,000	33 (27.7)	18 (28.6)	15 (26.8)
\$10,000 or greater	57 (47.9)	31 (49.2)	26 (46.4)
Not reported	29 (24.4)	14 (22.2)	15 (26.8)
TYPE OF INSURANCE, n (%)			
Private Insurance	10 (8.5)	5 (7.9)	5 (9.1)
Medicare	11 (9.4)	7 (11.1)	4 (7.3)
Medicaid	56 (47.5)	35 (55.6)	21 (38.2)
HMO	1 (0.9)	1 (1.6)	0 (0)
Military or Veteran	1 (0.9)	0 (0)	1 (1.8)
None	26 (22.0)	11 (17.5)	15 (27.3)
Other	13 (11.0)	4 (6.4)	9 (16.4)
EMPLOYMENT HISTORY, n (%)			
Currently Employed	56 (47.5)	29 (46.8)	27 (48.2)
EXTENT OF EMPLOYMENT, n (%)			
Full time	33 (58.9)	17 (58.6)	16 (59.3)
Part time	23 (41.1)	12 (41.4)	11 (40.7)

Note: No significant differences at baseline were observed between experimental and control groups at an alpha (2-tailed) = 0.05

Table 1b. Comorbidity and Health Care Utilization by Study Condition at Baseline

	Total (n=119)	Experimental (n=63)	Usual Care (n=56)
BODY MASS INDEX (BMI), n (%)			
Underweight (≤ 18.5)	3 (2.8)	1 (1.8)	2 (3.9)
Normal weight (18.6-24.9)	32 (29.6)	16 (28.1)	16 (31.4)
Overweight (25-29.9)	34 (31.5)	17 (29.8)	17 (33.3)
Obese (≤ 30)	39 (36.1)	23 (40.4)	16 (31.4)
Mean (SD)	28.8 (6.5)	29.2 (6.3)	28.3 (6.8)
CO-MORBIDITY, n (%)			
Abscess/Boil	108 (90.8)	57 (90.5)	51 (91.1)
Alcohol Abuse	4 (3.4)	3 (4.8)	1 (1.8)
Arteriosclerotic Cardiovascular Disease or Coronary Artery Disease	8 (6.7)	3 (4.8)	5 (8.9)
Asthma	20 (17.1)	12 (19.4)	8 (14.6)
Chronic Liver Disease	3 (2.5)	2 (3.2)	1 (1.8)
Chronic Renal Insufficiency	6 (5.0)	4 (6.4)	2 (3.6)
Chronic Skin Breakdown	6 (5.1)	3 (4.8)	3 (5.4)
Current Smoker	33 (28.2)	17 (27.4)	16 (29.1)
CVA/Stroke (Not TIA)	6 (5.1)	3 (4.8)	3 (5.5)
Cystic Fibrosis	0 (0)	0 (0)	0 (0)
Decubitus/Pressure Ulcer	2 (1.7)	2 (3.2)	0 (0)
Dementia	1 (0.9)	0 (0)	1 (1.8)
Diabetes	29 (24.6)	16 (25.8)	13 (23.2)
Emphysema/COPD	3 (2.7)	3 (5.1)	0 (0)
Heart Failure	4 (3.4)	4 (6.4)	0 (0)
Hematologic Malignancy	1 (0.8)	1 (1.6)	0 (0)
Hemiplegia/Paraplegia	1 (0.8)	0 (0)	1 (1.8)
HIV or AIDS	4 (3.4)	1 (1.6)	3 (5.4)
Immunosuppressive Therapy	3 (2.5)	2 (3.2)	1 (1.8)
Intravenous Drug Use	5 (4.2)	4 (6.4)	1 (1.8)
Metastatic Solid Tumor	2 (1.7)	2 (3.2)	0 (0)
Obesity	16 (13.7)	8 (13.1)	8 (14.3)
Other Drug Use	9 (7.6)	4 (6.5)	5 (8.9)
Peptic Ulcer Disease	4 (3.4)	3 (4.8)	1 (1.8)
Peripheral Vascular Disease	1 (0.8)	1 (1.6)	0 (0)
Rheumatoid Arthritis	1 (0.9)	0 (0)	1 (1.9)
Sickle Cell Anemia	2 (1.7)	2 (3.2)	0 (0)
Systemic Lupus Erythematosus	2 (1.7)	1 (1.6)	1 (1.8)
HEALTHCARE UTILIZATION: Six Months Prior to Baseline, n (%)			
Hospitalized	37 (31.1)	24 (38.1)	13 (23.2)
Nights hospitalized, Mean (SD)	3.0 (8.3)	3.1 (6.8)	2.9 (9.8)
Visited ER/Urgent care facility	106 (89.1)	54 (85.7)	52 (92.9)
Visits to ED/Urgent care facility, Mean (SD)	1.9 (2.2)	2.0 (2.6)	1.9 (1.5)

Doctor Visits, n (%)			
≤3	88 (74.6)	47 (75.8)	41 (73.2)
4 to 8	18 (15.3)	8 (12.9)	10 (17.9)
≥9	12 (10.2)	7 (11.3)	5 (8.9)
Mean (SD)	3.1 (5.3)	3.1 (5.6)	3.1 (5.1)
MEDICAL HISTORY, n (%)			
Prior Treatment for Same Lesion	32 (27.1)	14 (22.6)	18 (32.1)
Family/Friends with Same Lesion	15 (12.6)	8 (12.7)	7 (12.5)
Had Lesion While in School	13 (10.9)	5 (7.9)	8 (14.3)
Had Lesion While Working	23 (19.3)	12 (19.1)	11 (19.6)

Note: No significant differences at baseline were observed between experimental and control groups at an alpha (2-tailed) = 0.05

Table 1c. Occupational and Social Exposures for Study Participants at Baseline

	Total	Experimental	Usual Care
OCCUPATIONAL EXPOSURE, n (%)			
Healthcare Employee	0 (0)	0 (0)	0 (0)
Nursing Home Employee	1 (0.8)	1 (1.6)	0 (0)
Daycare Center Employee	2 (1.7)	1 (1.6)	1 (1.8)
Correctional Facility Employee	1 (0.8)	1 (1.6)	0 (0)
Animal Facility Employee	1 (0.8)	1 (1.6)	0 (0)
ENVIRONMENTAL EXPOSURES, n (%)			
Handwashes per Day:			
0-1 times	0 (0)	0 (0)	0 (0)
2-3 times	11 (9.2)	6 (9.5)	5 (8.9)
4-6 times	44 (37.0)	23 (36.5)	21 (37.5)
7-10 times	25 (21.0)	12 (19.1)	13 (23.2)
>10 times	39 (32.8)	22 (34.9)	17 (30.4)
In Month Prior to Baseline:			
Surgery	8 (6.7)	6 (9.5)	2 (3.6)
Wounds, cuts, abrasions	33 (27.7)	16 (25.4)	17 (30.4)
Spent time in hospital	39 (32.8)	24 (38.1)	15 (26.8)
International Travel	7 (5.9)	4 (6.4)	3 (5.4)
Incarceration	0 (0)	0 (0)	0 (0)
Lived in Dormitory	3 (2.5)	0 (0)	3 (5.4)
Lived in Military Barracks	0 (0)	0 (0)	0 (0)
Taken Antibiotics	105 (88.2)	55 (87.3)	50 (89.3)
Spent time at Daycare Center	6 (5.1)	4 (6.5)	2 (3.6)
Played Contact Sports	17 (14.3)	7 (11.1)	10 (17.9)
Had Pets in the House	40 (33.6)	19 (30.2)	21 (37.5)
SOCIAL NETWORK, n (%)			
How many people live in your house?			
Lives alone (one person household)	7 (5.9)	5 (7.9)	2 (3.6)
2-3 people	52 (43.7)	31 (49.2)	21 (37.5)
4 or over	60 (50.4)	27 (42.9)	33 (58.9)
Sharing Characteristics			
Shared Bedroom or Sleeping Space	62 (52.1)	31 (49.2)	31 (55.4)
Shared Bath Towels	12 (10.2)	8 (12.7)	4 (7.3)
Household Member Risk Factors			
Household Member with Recent SSTI	1 (0.8)	1 (1.6)	0 (0)
Household Member with Recent Surgery	7 (5.9)	4 (6.4)	3 (5.4)
Household Member Works in Healthcare	12 (10.1)	7 (11.1)	5 (8.9)

Note: No significant differences at baseline were observed between experimental and control groups at an alpha (2-tailed) = 0.05 with the exception of: (1) MRSA+ wound cultures, which were more common in the experimental group and MSSA+ wound cultures, which were more common in the usual care group (both $p=0.0004$), (2) USA 300 was more common in the experimental group (52%) as compared to the control group (32%, $p=0.03$).

Table 2. SSTI Recurrence at Six-Month Follow-Up¹

	Total³ (n=119)	Experimental (n=63)	Usual Care (n=56)	OR (95% CI)	p-value
<u>Prospective, n (%):</u>					
EHR-Based (n=119)	13 (10.9) ²	7 (11.1)	6 (10.7)	1.14 (0.35, 3.6)	0.82
Self-Report (n=92)	13 (15.3)	10 (22.2)	3 (7.5)	3.5 (0.89, 13.8)	0.07
Combined Measure (Either EHR-Based or Self-Report)	24 (20.3)	15 (24.2)	9 (16.1)	1.7 (0.66, 4.2)	0.27

Notes:

¹Prospective recurrence is defined as report of a new SSTI in the 6-month period following the initial (baseline) infection for which the participant was recruited. EHR-based outcomes were assessed at 6-months post-baseline and include the time period 12 months prior and 6 months after the baseline infection. At the baseline telephone assessment (T0), and prospective recurrence was assessed at the 6-month telephone assessment (T4).

²The observed prospective recurrence rate at 6-month EHR review for the Observation Only Group (n=66, 10.5%) was not different from either the Experimental (11.1%) or Usual Care (10.7%) or Total (10.7%).

³Total n differs by data source: EHR-based (n=119), Self-Report (n=92). All analyses are unadjusted for covariates.

Supplemental Table S1. Measures, Data Sources and Time Points[‡]

#	Construct/Topic	Measure/Instrument	Data Source	Time
Primary Outcome				
A	Recurrence	Chart Review, Clinical Response Questionnaire (70)	EHR, Survey	T4
Secondary/Intermediate Outcomes				
B	Pain Interference	PROMIS Adult Pain Interference (71)	Survey	T0, T4
C	Depression	PROMIS Adult Depression Short Form (72)	Survey	T0, T4
D	Quality of Life	Quality of Life Scale, Medical Outcomes Trust (73)	Survey	T0
E	Satisfaction with Care	AHRQ CAHPS 2.0 12-month 4pt Scale(33)	Survey	T0, T4
F	Household Contamination	Microbiologic Data (culture, sensitivity), Environmental Surface Contamination and Household Member Colonization (31)	Laboratory, Survey	T1, T3
G	Household Transmission	Index Patient Household Member SSTI Report, Household Member SSTI History (74)	Survey	T1, T3, T4
Co-variates, Effect Moderators				
H	Bacterial Genotype and Phenotype	Dermatological Symptoms Instrument;(70) Molecular Data (<i>Spa</i> , MLST, <i>mecA</i> , <i>SCCmec</i> , ACME, <i>pvl</i> , <i>mupA</i>) (31)	Laboratory, Clinician Report	T0, T1, T3
I	Infection Prevention and Hygiene Behaviors	Personal Hygiene Score (74)	Survey	T1, T2, T3, T4
J	Household Crowding	Household Crowding Index(74) (75)	Survey	T1, T3
K	Household Sharing	Household Sharing Index(74)	Survey	T0, T1, T3
L	Social Network and Environmental Exposures	Social and Environmental Exposures Questionnaire	Survey	T0
M	Prevention Self-Efficacy	Generalized Self-Efficacy Scale(76) (77)	Survey	T0, T4
N	Decision-making autonomy	O'Connor AM. User Manual – Decision Self-Efficacy (78)	Survey	T0, T4
O	Satisfaction with Participation in Social Roles	PROMIS Satisfaction with Social Roles and Activities (79)	Survey	T0, T4
P	Overall Medication Adherence	Morisky 8-Item Medication Adherence Questionnaire, Adapted(80)	Survey	T0, T2, T4
Q	Modified Morisky - Mupirocin Adherence	Morisky 8-Item Medication Adherence Questionnaire, Adapted(80)	Survey	T0, T2
R	Modified Morisky - Chlorhexidine Adherence	Morisky 8-Item Medication Adherence Questionnaire, Adapted(80)	Survey	T0, T2
T0 and T1 =baseline; T2=one-month post T1 ; T3=three-months post T1; T4=6 months post T1				

[‡] Information reflects a combination of details from cited sources as well adapted versions. A certified translation service provided forward- and back-translation on measures that were not available in Spanish.

Key

- a) = Score range, score derivation, or response scale; b) = Item number count; c) = Cut-point; d) = Reliability; e) = Patient population in which measure was validated/designed for

- * = Derived from adapted version (see Appendix D)

[^] *Clinical Response Questionnaire*: a) 3-point scale - 0 = “Not at All Sure” to 3 = “Extremely Sure” *; b) 5*; e) Patients 18+ years of age, presenting to medical clinics in Texas with an SSTI and a planned wound culture

- ^B *PROMIS Adult Pain Interference (6a/6b)*: a) 6-30; b) 6*; d) 0.96-0.99; e) Developed for adults (18+ years of age)
- ^C *PROMIS Adult Depression Short Form (8a/8b)*: a) 8-40; b) 8*; e) Developed for adults (18+ years of age)
- ^D *Quality of Life Scale, Medical Outcomes Trust - Short Form (SF) -12*: a) 0-100 [via SF-36]; b) 12, 7*; e) 0.89 (physical), 0.76 (mental) e) Observational patient data collected via the National Survey of Functional Health Status (NSFHS)
- ^E *AHRO CAHPS 2.0 12-month 4pt Scale. CAHPS Clinician & Group 12-Month Survey 2.0*. a) 4-point scale - "Never, Sometimes, Usually, Always" b) 23*; e) Survey constructed for adult patients, (18+ years of age), providing review of doctor's visit
- ^F *Microbiologic Data (culture, sensitivity), Environmental Surface Contamination and Household Member Colonization*: N/A
- ^G *SSTI History*: a) "Yes, No, Don't Know, Prefer not answer"*; b) 8*; e) 201 patients discharged following hospitalization for CA-MRSA or CA-MSSA infection. SSTI Report: N/A
- ^H *Dermatological Symptoms Instrument*: a) Pains scores: 1 to 10, 10 = "Worst"; b) 4*; e) Patients presenting to medical clinics in Texas with CA-MRSA and SSTI. Molecular Data: N/A
- ^I *Personal Hygiene Score*: a) 4-point scale; b) 4*; e) 201 patients discharged following hospitalization for CA-MRSA infection or CA-MSSA infection
- ^J *Household Crowding Index*: a) Crowding index = # of residents/# of rooms, excluding kitchens and bathrooms; b) 3*; e) 2,466 parous women delivering, over a year, at 8 hospitals in Greater Beirut
- ^K *Household Sharing Index*: b) 6*; e) 201 patients discharged following hospitalization for CA-MRSA or CA-MSSA infection.
- ^L *Social Network and Environmental Exposures Questionnaire*: N/A
- ^M *Generalized Self-Efficacy scale*: a) 5 point scale - "Not at All" to "All of the time" adapted to: 1 = "A great deal" to 4 = "Not at all" and for the following portion of the measure: 1 = "Not at all true" to 4 = "Exactly true"* b) 12*; c) <10 = minimal depression, 10-18= mild to moderate depression, 19-29=moderate to severe depression, >30 = severe depression; d) 0.76 - 0.90; e) Low-income, minority adult women (18+ years of age), meeting case-defined criteria of AIDS as defined by the CDC, with at least a 6th grade level of education
- ^N *Decision Self-Efficacy*: a) 5-point scale - 0 = "Extremely low self-efficacy" to 100 = "Extremely high self-efficacy" b) 11*; d): 0.86; e) Patients diagnosed with Schizophrenia
- ^O *PROMIS Satisfaction with Social Roles and Activities -7a*: a) 7-35; b) 7*; e) Developed for adults (18+ years of age)
- ^{P-R} *Medication Adherence*: 2) 0-2; b) 8*; c) >2 = "Low adherence", 1 or 2 = "Medium adherence", 0 = "High adherence"; d) 0.61 e) Randomly selected patients receiving high blood pressure care at designated clinics

70. Forcade NA, Parchman ML, Jorgensen JH, Du LC, Nyren NR, Trevino LB, et al. Prevalence, severity, and treatment of community-acquired methicillin-resistant *Staphylococcus aureus* (CA-MRSA) skin and soft tissue infections in 10 medical clinics in Texas: a South Texas Ambulatory Research Network (STARNet) study. *J Am Board Fam Med*. 2011;24(5):543-50.

71. Amtmann DA, Cook KF, Jensen MP, Chen W-H, Choi SW, Revicki D, et al. Development of a PROMIS item bank to measure pain interference. *Pain*. 2010;146(1-2):173-82.

72. Pilkonis PA, Yu L, Dodds NE, Johnston KL, Maihoefer CC, Lawrence SM. Validation of the depression item bank from the Patient-Reported Outcomes Measurement Information System (PROMIS) in a three-month observational study. *J Psychiatr Res*. 2014;56:112-9.

73. Ware JE Jr., Sherbourne CD. The MOS 36-item short-form health survey (SF-36). I. Conceptual framework and item selection. *Med Care*. 1992;30(6):473-83.

74. Miller LG, Quan C, Shay A, Mostafaie K, Bharadwa K, Tan N, et al. A prospective investigation of outcomes after hospital discharge for endemic, community-acquired methicillin-resistant and -susceptible *Staphylococcus aureus* skin infection. *Clin Infect Dis*. 2007;44(4):483-92.

75. Melki IS, Beydoun HA, Khogali M, Tamim H, Yunis KA. Household crowding index: a correlate of socioeconomic status and inter-pregnancy spacing in an urban setting. *J Epidemiol Community Health*. 2004;58(6):476-80.

76. Jones DL, Ishii Owens M, Lydston D, Tobin JN, Brondolo E, Weiss SM. Self-efficacy and distress in women with AIDS: the SMART/EST women's project. *AIDS Care*. 2010;22(12):1499-508.

77. Schwarzer R, Jerusalem M. Generalized Self-Efficacy Scale. *Measures in health psychology: A user's portfolio*; 1995:35-7.

78. O'Connor AM. User Manual – Decision Self-Efficacy Scale. Ottawa Hospital Research Institute. 1995.

79. Hahn EA, DeWalt DA, Bode RK, Garcia SF, DeVellis RF, Correia H, et al. New English and Spanish social health measures will facilitate evaluating health determinants. *Health Psychology*. 2014;33(5):490-9.
80. Morisky DE, Green LW, Levine DM. Concurrent and predictive validity of a self-reported measure of medication adherence. *Med Care*. 1986;24(1):67-74

Supplemental Table S2. Characteristics of Consented Participants who Completed the Baseline Home Visit (T1) versus Patients Who Did Not Complete the Baseline Home Visit (T1)

Variable	Completed T1			Did Not Complete T1			p-value
	TOTAL	EXP	UC	TOTAL	EXP	UC	
Age							
Mean age (SD)	38.1	39.5	36.5	40.7	42.4	39.0	0.29
Median	37.0	38.0	36.0	40.5	45.0	35.2	
IQR	27, 51	27, 54	27, 48	25.4, 54.8	27.6,	24.3,	
Gender, n (%)							
Female	47 (39.5)	22 (34.9)	25	20 (30.3)	13	7 (21.2)	0.21
Male	72 (60.5)	41 (65.1)	31	46 (69.7)	20	26	
Ethnicity: Hispanic/Latino, n (%)	72 (64.9)	37 (62.7)	35 (67.3)	18 (69.2)	10 (71.4)	9 (64.3)	0.91
Race, n (%)							
Black/African American	27 (22.7)	14 (22.2)	13	14 (21.2)	10	4 (12.1)	<0.0001
White	22 (18.5)	13 (20.6)	9 (16.1)	6 (9.1)	3 (9.1)	3 (9.1)	
American Indian/Alaska Native	1 (0.8)	0 (0)	1 (1.8)	1 (1.5)	0 (0)	1 (3.0)	
Asian	0 (0)	0 (0)	0 (0)	2 (3.0)	2 (6.1)	0 (0)	
More than one race/Other	21 (17.6)	11 (17.5)	10	17 (25.8)	6 (18.2)	11	
Did not Report	48 (40.3)	25 (39.7)	23	26 (39.4)	12	14	
Baseline MRSA/MSSA							
MRSA+	59 (50.0)	41 (66.1)	18	35 (53.0)	19	16	0.65
MSSA+	59 (50.0)	21 (33.9)	38	33 (50.0)	15	18	0.96
Incision & Drainage (I&D)	70 (61.9)	34 (56.7)	36	37 (60.7)	18	19	0.87
Recruitment Site: ED vs. FQHC							
ED	102	54 (85.7)	85.71	57 (86.4)	54	48	0.90
FQHC	17 (14.3)	9 (14.3)	14.29	9 (13.6)	9 (14.3)	8 (14.3)	
Lesion Location							
Abdomen/Torso	7.56 (9)	6.35 (4)	8.93 (5)	16.67	15.15	18.18	0.72
Arm	6.72 (8)	7.94 (5)	5.36 (3)	4.55 (3)	3.03 (1)	6.06 (2)	
Axilla	16.81	15.87	17.86	9.09 (6)	15.15	3.03 (1)	
Back	3.36 (4)	3.17 (2)	3.53 (2)	4.55 (3)	6.06 (2)	3.03 (1)	
Breast	0.84 (1)	1.59 (1)	0	0	0	0	
Buttock	13.45	11.11 (7)	16.07	13.64 (9)	6.06 (2)	21.21	
Foot/Ankle	12.61	9.52 (6)	16.07	13.64 (9)	15.15	12.12	
Groin	4.20 (5)	3.17 (2)	5.36 (3)	1.52 (1)	0	3.03 (1)	
Hand/Finger	8.40 (10)	7.94 (4)	8.93 (5)	7.58 (5)	12.12	3.03 (1)	

Head/Neck	8.40 (10)	9.52 (6)	7.14 (4)	10.61 (7)	9.09 (3)	12.12	
Lower Leg	9.24 (11)	14.29 (9)	3.57 (2)	12.12 (8)	9.09 (3)	15.15	
Thigh	8.40 (10)	9.52 (6)	7.14 (4)	6.06 (4)	9.09 (3)	3.03 (1)	
Lesion Size							
0-5cm	90.76	87.30	94.64	80.30	76.79	81.82	0.13
>5 to 10cm	6.72 (8)	9.52 (6)	3.57 (2)	18.18	21.21	15.15	
>10 to 15cm	1.68 (2)	3.17 (2)	0	1.52 (1)	0	3.03 (1)	
over 15cm	0.84 (1)	0	1.79 (1)	0	0	0	
Signs and Symptoms of SSTI							
Redness	109	58 (92.1)	51	60 (90.9)	29	31	0.8734
Swelling	107	56 (88.9)	51	59 (89.4)	33	31	0.9108
Warmth	91 (76.5)	49 (77.8)	42	49 (74.2)	20	29	0.7351
Pain/Tenderness	110	59 (93.7)	51	61 (92.4)	30	31	0.9975
Complaint of “Spider Bite”	5 (4.2)	4 (6.4)	1 (1.8)	0 (0)	0 (0)	0 (0)	0.0914
Redness	109	58 (92.1)	51	60 (90.9)	29	31	0.8734
Lesion Type							
Folliculitis	10 (8.4)	6 (9.5)	4 (7.1)	8 (12.1)	3 (9.1)	5 (15.2)	0.68
Abscess	92 (77.3)	46 (73.0)	46	50 (75.8)	24	26	
Furuncle/Boil	5 (4.2)	2 (3.2)	3 (5.4)	3 (4.6)	1 (3.0)	2 (6.1)	
Carbuncle	4 (3.4)	1 (1.6)	3 (5.4)	2 (3.0)	1 (3.0)	1 (3.0)	
Cellulitis	23.53	18 (28.6)	10	20 (30.3)	9 (27.3)	33.33	
Purulence							
Fluctuance	72 (60.5)	33 (52.9)	39	40 (60.6)	17	23	0.43
Yellow/White Center	44 (37.0)	21 (33.3)	23	37 (56.1)	16	21	
Central Point or Head	45 (37.8)	21 (33.3)	24	32 (48.5)	15	17	
Draining Pus	62 (52.1)	32 (50.8)	30	35 (53.0)	16	19	
Possible to aspirate with needle and syringe	24 (20.2)	9 (14.3)	15 (26.8)	11 (16.7)	5 (15.2)	6 (18.2)	
Follow-up Visit							
Yes	99 (88.4)	51 (87.9)	48	54 (88.5)	27	27	0.98
Treatment							
Incision & Drainage	73 (61.9)	35 (56.5)	38	37 (60.7)	18	19	0.94
Antibiotic prescription, any	102	54 (87.1)	48	56 (84.9)	28	28	
Both	61 (51.7)	29 (46.8)	32	33 (48.5)	16	16	
Nasal Surveillance							
MRSA+	16 (19.5)	8 (19.5)	8 (19.5)	12 (23.1)	7 (26.9)	5 (19.2)	0.41
MSSA+	33 (40.2)	17 (41.5)	16	15 (28.9)	9 (34.6)	6 (23.1)	

Supplemental Table S3. Demographics of Participants who were Followed-up vs. Not Followed-up

	FOLLOWED-UP (N=92)	NOT FOLLOWED-UP (N=28)	p-VALUE
MEAN AGE (SD)	38.9 (15.5)	35.7 (12.6)	0.31
GENDER, N (%)			
FEMALE	36 (39.6)	11 (37.9)	1.00
MALE	55 (60.4)	18 (62.1)	
ETHNICITY: HISPANIC/LATINO, N (%)	62 (72.1)	10 (37.0)	0.0006
RACE, N (%)			
BLACK/ AFRICAN AMERICAN	17 (32.7)	10 (52.6)	0.32
WHITE	16 (30.8)	6 (31.6)	
AMERICAN INDIAN/ALASKA NATIVE	1 (1.9)	0 (0)	
ASIAN	0 (0)	0 (0)	
MORE THAN ONE RACE/OTHER	18 (34.6)	3 (15.8)	
BASELINE MRSA/MSSA			
MRSA+	47 (51.7)	12 (41.4)	0.40
MSSA+	44 (48.4)	17 (58.6)	0.40
INCISION & DRAINAGE (I&D)	55 (64.0)	15 (53.6)	0.37
RECRUITED FROM ED VS. FQHC			
ED	76 (83.5)	27 (93.1)	0.24
FQHC	15 (16.5)	2 (6.9)	

Supplemental Table S4. Microbiologic and Dermatologic Characteristics of Study Participants at Baseline

Dermatologic Characteristics	Total (n=119)	Experimental (n=63)	Usual Care (n=56)
Wound, n (%)			
MRSA+	59 (50.0)	41 (66.1)	18 (32.1)
MSSA+	59 (50.0)	21 (33.9)	38 (67.9)
USA 300	50 (42.4)	32 (51.6)	18 (32.1)
Non-USA 300	51 (43.2)	24 (38.7)	27 (48.2)
Nasal, n (%)			
MRSA+	16 (19.5)	8 (19.5)	8 (19.5)
MSSA+	33 (40.2)	17 (41.5)	16 (39.0)
USA 300	36 (30.5)	23 (37.1)	13 (23.2)
Non-USA 300	46 (39.0)	24 (38.7)	22 (39.3)
Location of Lesion, n (%)			
Abdomen/Torso	9 (7.6)	4 (6.5)	5 (8.9)
Arm	8 (6.8)	5 (8.1)	3 (5.4)
Axilla	20 (17.0)	10 (16.1)	10 (17.9)
Back	4 (3.4)	2 (3.2)	2 (3.6)
Breast	1 (0.9)	1 (1.6)	0 (0)
Buttock	16 (13.6)	7 (11.3)	9 (16.1)
Foot/Ankle	15 (12.7)	6 (9.7)	9 (16.1)
Groin	5 (4.2)	2 (3.2)	3 (5.4)
Hand/Finger	9 (7.6)	4 (6.5)	5 (8.9)
Head/Neck	10 (8.5)	6 (9.7)	4 (7.1)
Lower Leg	11 (9.3)	9 (14.5)	2 (3.6)
Thigh	10 (8.5)	6 (9.7)	4 (7.1)
Size, n (%)			
0-5 cm	95 (89.6)	49 (86.0)	46 (93.9)
>5 to 10 cm	8 (7.6)	6 (10.5)	2 (4.1)
>10 to 15 cm	2 (1.9)	2 (3.5)	0 (0)
over 15 cm	1 (0.9)	0 (0)	1 (2.0)
Mean (SD)	4.05 ± 2.55	3.14 ± 2.83	3.64 ± 2.71
Median (IQR)	4 (3, 5)	3 (2, 4)	3 (2, 4)
Signs/Symptoms, n (%)			
Redness	108 (91.5)	57 (91.9)	51 (91.1)
Swelling	106 (89.8)	55 (88.7)	51 (91.1)
Warmth	90 (76.3)	48 (77.4)	42 (75.0)
Pain/Tenderness	109 (92.4)	58 (93.6)	51 (91.1)
Complaint of "Spider Bite"	5 (4.2)	4 (6.5)	1 (1.8)
Lesion Type, n (%)			
Folliculitis	10 (8.5)	6 (9.7)	4 (7.1)
Abscess	91 (77.1)	45 (72.6)	46 (82.1)
Furuncle/Boil	5 (4.2)	2 (3.2)	3 (5.4)
Carbuncle	4 (3.4)	1 (1.6)	3 (5.4)

Cellulitis	28 (23.7)	18 (29.0)	10 (17.9)
Purulence, n (%)			
Fluctuance	71 (60.2)	32 (51.6)	39 (69.6)
Yellow/White Center	43 (36.4)	20 (32.3)	23 (41.1)
Central Point or Head	45 (38.1)	21 (33.9)	24 (42.9)
Draining Pus	62 (52.5)	32 (51.6)	30 (53.6)
Possible to aspirate with needle and	24 (20.3)	9 (14.5)	15 (26.8)
Follow-Up Visit, n (%)			
Yes	98 (88.3)	50 (87.7)	48 (88.9)
Treatment, n (%)			
Incision & Drainage	73 (61.9)	35 (56.5)	38 (67.9)
Antibiotic prescription	102 (86.4)	54 (87.1)	48 (85.7)
Both	61 (51.7)	29 (46.8)	32 (57.1)
Wound Antibigram (Resistance), n (%)			
Ceftaroline	0 (0)	0 (0)	0 (0)
Ciprofloxacin	35 (30.4)	23 (37.7)	12 (22.2)
Clindamycin	13 (11.3)	7 (11.5)	6 (11.1)
Erythromycin	65 (56.5)	40 (65.6)	25 (46.3)
Gentamicin	6 (5.2)	4 (6.6)	2 (3.7)
Levofloxacin	29 (25.7)	18 (30.5)	11 (30.4)
Oxacillin	56 (49.1)	40 (66.7)	16 (29.6)
Penicillin	115 (100.0)	60 (100.0)	54 (100.0)
Rifampin	1 (0.9)	0 (0)	1 (1.9)
Tetracycline	7 (6.1)	2 (3.3)	5 (9.26)
Tigecycline	0 (0)	0 (0)	0 (0)
Trimethoprim/Sulfamethoxazole	2 (1.7)	2 (3.3)	0 (0)
Vancomycin	0 (0)	0 (0)	0 (0)

Supplemental Table S5. Patient Reported Outcomes Scores at Baseline and Six Months for the Total Sample, Experimental Condition, and Control Condition

	Total Sample (n=119) Mean ± SD		Experimental (n=63) Mean ± SD		Usual Care (n=56) Mean ± SD		<i>p</i> - value*
	Baseline n=119	Six- months n=92	Baseline n=63	Six- months n=49	Baseline n=56	Six- months n=43	
Pain Interference	15.74 ± 7.95	9.17 ± 5.01	17.30 ± 8.09	9.42 ± 4.62	13.95 ± 7.49	8.87 ± 5.49	0.25
Emotional Distress – Depression Short Form	13.40 ± 6.93	11.16 ± 5.51	13.74 ± 7.12	11.48 ± 5.24	13.00 ± 6.76	10.77 ± 5.88	0.96
Satisfaction with Care	26.62 ± 18.03	25.13 ± 15.48	26.35 ± 19.87	25.00 ± 17.66	26.89 ± 19.06	25.27 ± 15.72	0.93
Satisfaction with Participation in Social Roles	25.49 ± 8.50	30.15 ± 6.25	24.70 ± 9.06	29.65 ± 6.63	26.38 ± 7.82	30.75 ± 5.80	0.80
Prevention Self-Efficacy	33.89 ± 5.01	34.54 ± 5.30	34.17 ± 5.62	34.73 ± 5.72	33.56 ± 4.27	34.31 ± 4.81	0.87
Decision-making autonomy	84.22 ± 21.31	91.33 ± 14.65	85.28 ± 21.06	92.90 ± 13.91	83.04 ± 21.78	89.35 ± 15.51	0.72
Infection Prevention and Hygiene Behaviors	5.1 ± 1.17	4.64 ± 0.90	5.06 ± 1.14	4.63 ± 1.06	5.21 ± 1.21	4.64 ± 0.67	0.32
Overall Medication Adherence	1.66 ± 1.57	2.00 ± 2.00	1.67 ± 1.58	2.75 ± 2.06	1.66 ± 1.59	0.50 ± 0.71	1.00

**p*-value refers to dependent *t*-tests examining changes over time (baseline-six-month follow up) by condition (experimental versus control).